

# Utility Post

See  
Page 2

# JOURNAL

May 9, 1968

Price Per  
Single Copy

**10¢**

## e Frederickson Rezoning

See Page 2



**CUTE COLT**, a Shetland foal displayed by Donna Steinhoff, gets acquainted with Micheal Davis. Hostess Dennise Atlee supervises the introduction. See story page 6.

# Raber Resigns

Alvin Raber, manager of Parkland Light & Water the past 7 years, has resigned from the firm effective May 8, the Journal learned Wednesday morning.

The resignation was accepted by the Mutual's board of directors during their Tuesday night May 7 meeting.

Raber said he had no immediate plans for the fu-



ALVIN RABER

ture and that the resignation was tendered over a difference of opinion with the board.

Mike Wutz, previous manager of the utility, will act as interim manager replacing Raber.

"It's been a real pleasure to have been with a utility that is considered one of the top in the nation," Raber told the Journal adding, "I have enjoyed the 7 years I put in working for Parkland Light and Water."

"The company is in strong financial condition and is one of the few in the nation that is out of debt and has ample cash reserves," he stated.

In other board action Ruth McManis, an employee of 15 years, was released and Rod Olson was given complete authority over the business office.

Mrs. McManis said no reason was given for terminating her 15 years of service. She was employed as a secretary.

## FPEA Banquet Friday, May 10

Franklin Pierce Education Association will hold their annual spring banquet Friday at the Top of the Ocean Restaurant.

Teachers retiring from the district will be honored and officers for the 68-69 school year are slated to be installed. Speaker will be William Jeske, Director of Business Research for Pacific Northwest Bell.

To receive a special tribute are Frances Johnson, Parkland; Esther Myhre, Kiethley; Almira Norton, Harvard; Elza Simons, Franklin Pierce High; and Georgia Stay, Parkland. All are retiring in June.

Officers to be installed are: Jerry Corrigan, president; Anita Christian, president elect; Barbara Thorpe, recording secretary; Sue Bachmeier, corresponding secretary, and Frank Serviss, treasurer.

## PBC Slates May Meeting

Parkland Business Club will meet at 6:30 p.m. May 15th at the Ranch Club, 10203 Sales Road.

Speaker for the evening will be Bob Hilgeson, land and tax administrator for St. Regis Paper Company. His topic will include "Logging in the Northwest," accompanied by color slides showing the old and the new methods of his business.

Dinner will be at 8 p.m. and the program will follow.

# Principalships And Salaries Keep Bethel Board Busy

Wallace Auty and Duane Lobeda were both selected for principalships in the Bethel School District Monday night at a meeting of the Board of Directors.

Auty, presently a 6th-grade teacher at Clover Creek Elementary School who has 15 years teaching experience behind him, two of which have been with the Bethel District, will take over the Roy-Lacamas School effective with the new school year.

Charles McAvoy the present principal of the Roy-Lacamas Schools will become principal of the Clover Creek school, replacing Will Darnau, new head for the Chester H. Thompson



DUANE LOBEDA



WALLACE G. AUTY

Elementary School.

The second principalship awarded at the Monday meeting to Duane Lobeda, is for the new middle school, which is slated to open for the 1969-70 school year.

Lobeda, presently vice principal at the Bethel Junior High School, has been with the district since 1955.

With the deadline on budget hearings drawing near, the Board appeared disappointed when, after they thought negotiations were complete, Bob Rolstad, spokesman for the Bethel District Public School Employees, stated that group was not satisfied with the proposed new Classified Salary Schedule.

The new schedule for bus drivers was as far as the board was able to go and was the only one discussed.

According to Rolstad, the bus drivers are demanding more fringe benefits.

A dumbfounded Dr. Gramann stated that he had been under the impression that the PSE and the district were in agreement on the schedule after a week of negotiations. The board then decided to send the schedule back to the PSE's, but it was clearly pointed out by Dr. Gramann and board members that the amounts offered are - 1. Above what the state recommends; and 2. Absolutely all the district's budget will allow.

Under the schedule 11 of the 33 bus drivers would receive a 65 cent an hour raise, the other two thirds also would receive substantial raises, a minimum of which would be for a third year driver, 45 cents an hour.

In other action the board accepted the resignation of David C. Ratko, head baseball coach and assistant basketball coach. The resignation, which is effective immediately, is for personal reasons, according to Ratko.

Other resignations accepted by the board include those of Beverley Anderson who will relocate to Seattle, Jerald A. Curtis who will go to the Edmonds School District, Ted Kramer, Colville; and Janice Wicks, California.

## Local Eyesore To Be Removed Saturday By REO

C. Melvin McKenney has announced the James Sales Grange of Parkland fully supports "Operation Bootstrap" started by Rural Economic Opportunity, Inc., (R.E.O.) of Parkland.

R.E.O. conducts the War on Poverty in rural Pierce County. Short of funds, these folks act as catalysts to bring together jobs needing done and public-spirited volunteers. An example of this is this Operation Bootstrap.

Saturday, May 11, during Parkland Development Association's "Annual Clean Up-Fix Up" drive, they will level a nursery sales office located on 125th and Pacific belonging to Mr. John P. Nagle which, through vandals, became an eyesore. After the wrecking operation, the site will be cleaned up and the lumber hauled a few blocks to the home of a widow for building a giftshop addition to her home where she will sell the handicraft of senior citizens badly in need of an outlet.

Anyone ready to help please call LE 7-4848 or LE 7-4861. Men needed with clawhammers, wrecking bars, crowbars, nail-pullers, handsaws, old garbage cans for glass, pickups or trucks.

The group will assemble at 9 a.m. on the south parking lot of Pacific Lutheran University with entrances on 122nd So. and So. Garfield Streets, off Park Avenue, to be organized into teams.

Stragglers showing up late in the morning or during the afternoon should look for a car with radio antenna flag. If you can't work the full day, come over and put in what hours you can spare. Let's make this an Equal Opportunity opportunity! No Tacoma people barred from the job.

Call above phone numbers also if willing to provide real coffee and sandwiches for workers at noon, you cooperative gals!

Pierce County Herald and  
**The TIMES JOURNAL**

Published weekly at 14620 Pacific Ave., Parkland 98444 and delivered by U.S. Mail and carrier to subscribers. Publishers: Pierce County Publishers, Inc.  
 Managing Editor ..... Em Matson  
 News Editor ..... Sandy Ingram  
 Sports Editor ..... Bob Ingram

Subscriptions \$3.50 per year, \$1.80 six months, or 30c monthly by carrier. News stand price 10c copy.  
 Qualified as a legal publication under Chapter 213 of the Legislature Acts of the 1941 regular session of the State of Washington  
 Second Class Postage Paid at Tacoma, Wash.

Vol. 24, No. 19 May 9, 1968

# F.P. Board Tax Levy, Budget, Union Demands On Agenda

Franklin Pierce School Directors will consider the 1968-69 Preliminary Budget, tax levy alternatives, labor union demands, and award bids during their May 14 meeting to be held at the District Administration Building, 315 South 129th, Tacoma.

The board will look over the \$5,614,671 preliminary budget, but are not expected to take

action until after a public hearing slated for May 28. The proposed budget represents a \$572,912 increase over the 67-68 year, most of which is in the area of instruction.

Four alternatives for the tax levy to be submitted to the voters November 5, 1968 will be presented to the board. Alternatives vary from a levy reduction request to tax in-

crease, dependent upon availability of state funds.

A counter offer to a Teamster Union transportation employee wage proposal is expected to come under discussion. Teamsters are asking \$2.85 for a 30 day probationary period, then \$3.25 hr for bus drivers, \$3.70 hr for mechanics, and \$3.30 hr for helpers. Need for higher wages was cited because district does not give paid holidays or pro rata vacation pay to employees working 9 months or less. Bus drivers are hired on a part time job basis and have not received paid vacations.

Bids are expected to be awarded covering the water proofing and painting of Parkland School, school buses, and furniture for Washington High School.

Other action includes a master 5 year plan for Parkland School. Meeting is open to the public.

## Frederickson Rezoning Approved By Commissioners

Rezoning of the Frederickson area, requested by the Port of Tacoma, was approved by the Pierce County Commissioners Monday.

James J. Mason, the attorney representing the Port in the rezoning hearings, said that within five years, all the land on the Tideflats would be occupied and there would be no further sites available on Commencement Bay. He added that the Frederickson area is well suited for industry.

The rezoned 650-acre tract is bordered by 38th Avenue East, the Bonneville transmission line, 180th Street East, the Tacoma-Orting Prairie Road, a line following 50th Avenue East between 188th Street East and the Tacoma-Orting Prairie Road.

Objections by nearby residents were voiced at the hearing, claiming such zoning would bring smokestacks, air pollution, heavy traffic and other undesirable features, which presently, except for the Columbia Powder Plant directly to the east of the area, is residential. The tract was rezoned from general use and suburban agriculture to heavy industrial.

Air pollution, according to Commissioner Pat Gallagher, is controlled by the Tri-County Pollution Control Commission (including Pierce, King and Snohomish Counties). Regulations of the Pollution agency cannot be changed by state agencies, he added.

## WWI Vets Set Meet

Parkland Barracks and Auxiliary 2131 World War I will meet at James Sales Grange at 7 p.m. May 14th to elect delegates for the June convention.

A pie walk will precede the meeting. Ladies of the organizations are asked to bring cookies for the McGee Home visit.

**EAST**

**STARCRAFT 68**

14 Ft. Starcraft 35 H.P. Mercury and Trailer **\$1595<sup>00</sup>** Complete

Open Evenings Til 9 p.m.

**PARKLAND Sports CENTER**

11122 PACIFIC AVENUE TACOMA, WASHINGTON PHONE LE 7-5677

HI HO

PUYALLUP

HI HO

### FORS WASHINGTON-GROWN FRYER PARTS SALE

**DRUMSTICKS  
and  
BREASTS**

**49<sup>c</sup>**  
lb.

**FRYER WINGS**

lb. **27<sup>c</sup>**

**BACKS and NECKS**

**10** lbs. **1<sup>00</sup>**

A MOTHER'S DAY  
SPECIAL TREAT

**PRIME RIB  
ROAST**

**98<sup>c</sup>**  
lb.

NO. 300 TINS  
DUCHESS  
**FRUIT  
COCKTAIL**  
**5/1<sup>00</sup>**

**FULLY COOKED PICNICS** ..... lb. **39<sup>c</sup>**

**FULLY COOKED SLICED PICNICS** ..... lb. **47<sup>c</sup>**

**HORMEL'S WIENERS** ..... 12-oz. Pkg. **43<sup>c</sup>**

**BAR-S BACON** ..... lb. **75<sup>c</sup>**

**BONELESS "FIESTA" HAMS** ..... lb. **98<sup>c</sup>**

LARGEST  
SELECTION OF  
FANCY BOX  
**CHOCOLATES**  
**10% OFF**

BANQUET  
**MEAT  
PIES**  
**7/1<sup>00</sup>**



PRICES EFFECTIVE MAY 5 through 11th

ARDEN'S  
**COTTAGE  
CHEESE**  
**29<sup>c</sup>**  
PT.

JUMBO SIZE  
**ALL**  
**1<sup>89</sup>**

### LOWEST DRUG PRICES ANYWHERE

REG. 65<sup>c</sup> VO5 SHAMPOO ..... **3/1<sup>00</sup>**

REG. 95<sup>c</sup> CREST TOOTHPASTE ..... **59<sup>c</sup>**

REG. 1.59 SECRET <sup>SUPER</sup> SPRAY DEODORANT ..... **97<sup>c</sup>**

REG. 2.35 RESPOND HAIR SPRAY ..... **99<sup>c</sup>**

REG. 69<sup>c</sup> CURAD STRIPS ..... **39<sup>c</sup>**

KRUSTEAZ PANCAKE MIX ..... 3 1/2-lb. **59<sup>c</sup>**

22-oz. HI HO SYRUP ..... **3/1<sup>00</sup>**

NO. 2 TINS  
SEA ISLAND  
CHUNK  
**PINEAPPLE**  
**5/1<sup>00</sup>**

MAKE IT EASY FOR MOTHER

Mother's Day  
**CAKE** **1<sup>39</sup>**

HOT FROM OUR OVEN  
**FRENCH  
BREAD**  
**19<sup>c</sup>**  
Loaf

ALL-GREEN NO. 1 WASHINGTON

**ASPARAGUS** **25<sup>c</sup>**  
lb.

EXTRA FANCY DELICIOUS APPLES <sup>3-LB.</sup> CELLO BAG **59<sup>c</sup>**

RADISHES and GREEN ONIONS **3/25<sup>c</sup>**

HI HO

PUYALLUP

HI HO

## Choir of The West To Present Bach's Mass in B Minor At PLU

A 50-piece orchestra will complement the voices of 122 choir members when Pacific Lutheran University presents its major musical organizations in a performance of J.S. Bach's "Mass in B Minor."

The student artists will be joined by five highly talented professionals in the execution of the difficult piece on May 11 and 12. In addition, a noted trumpet player from Iowa will play the extremely demanding horn sections.

David Urness, director of what will be PLU's largest musical venture, has been rehearsing the Choir of the West, the University Chorale and the University Symphony in combined force for their opening performance in East-vold Chapel.

Urness selected his soloists from among his fellow-faculty members as well as the general public. Members of the music department are Mrs. Charlotte Garretson, soprano; Mrs. Karen Marra, mezzo soprano; and Frederick Newnham, bass. The other two are Mrs. Yona Urness, wife of the director, contralto, and Wilbur Elliott, director of music education at Clover Park School District, Tacoma, tenor.

John Beer, an assistant professor of music at the University of Iowa, will be on campus to play the trumpet for the piece. He has played

first trumpet with the Davenport and Cedar Rapids (Iowa) Symphonies, and the Arlington (Va.) Symphony, the U.S. Navy Band and the Atlanta (Ga.) Symphony.

"We are very fortunate in securing the services of this unusually talented musician for our performances," said Urness.

While Bach's immortal piece is new to most of the youthful performers, it is an old acquaintance to several of the soloists and the director. Urness conducted the Augustana College musical groups in a similar performance when he was a member of its faculty.

Mrs. Garretson, a veteran operatic performer, has not only sung a solo in the "Mass," but has such musical credits as: Haydn's "Lord Nelson Mass," Mendelssohn's "Elijah," and Handel's "Messiah." Later this month she will appear as a soloist in the University of Washington's presentation of Handel's "Sampson."

Another veteran of Bach's "B Minor Mass" is Mrs. Urness. She has had solo roles in Mozart's "Requiem," Vivaldi's "Gloria," and Handel's "Messiah."

Newnham, a faculty member at PLU since 1950, has sung solo parts in numerous concerts. The well-known Northwest performer has

sung with several orchestras in the United States, Canada and England. As a soloist Newnham performed in Great Britain's premiere of the Faure "Requiem" and the Canadian premiere of Walton's "Balshazzer's Feast."

Among Newnham's many oratorio engagements have been solos in Handel's "Messiah," Mendelssohn's "Elijah," and Brahms, Verdi and Mozart "Requiem Masses," and Bach's "B Minor Mass."

Mrs. Marra, now in her first year as a member of PLU's faculty, has sung the soprano solos in Bach's "Christmas Oratorio" and Handel's "Messiah" in addition to Vivaldi's "Gloria."

Elliott will share with the students the thrill of performing Bach's "Mass" for the first time. The local educator is no stranger to opera, however, and he has done solo performances with the Kentucky Opera Association and the University of Washington Opera. In addition, he has presented numerous recitals in the Tacoma area.

"We have selected some of the best musical talent in the area to perform Bach's work," said Urness, "because it represents probably the most monumental musical composition conceived by man."

Tickets for reserved seats may be obtained by calling or writing PLU's box office.



**GIRL STATERS.** Patty Rice (left) and Marcia Poorman have been selected to attend Evergreen Girl's State June 9 at Central Washington State College in Ellensburg. The girls, both juniors at Bethel High School, are sponsored by American Legion Auxiliary. Patty is the daughter of Mr. and Mrs. Sterling Rice, 1004 South 138, and Marcia the daughter of Mr. and Mrs. Ed Poorman Jr., Route 2, Box 2714A, Spanaway.

### Bethel School Board Report

By E.W. (Doc) Webster  
Chairman  
Bethel School Board

Again we held one of those short meetings, it lasted until after midnight. All board members present except Don Goddard and it takes a mighty good reason for Don to miss a meeting.

Superintendent Gramann reported on the building program. The three rooms at Spanaway are well under way and the Thompson Elementary School is on schedule.

The board will meet at the County Treasurer's Office at 2 p.m. May 13th to open bids on the sale of \$325,000 in bonds to take care of the building program.

The salary schedule for Classified Employees had a few points to iron out so the board sent it back for further study.

The board held an executive session and Wallace G. Auty was chosen for the principalship of the Roy-Lacamas School and Duane Lobeda was selected for that position at the new Middle School.

As of now we have an enrollment of 4,203 students. At this rate the new classrooms will be full as soon as they are built.

Remember your board meetings the first and third Monday of each month.

### Dr. R. Bolstad To Lecture At Trinity Lutheran

Dr. Ralph Bolstad, director of the Lutheran Hospital in Manambaro, Madagascar, will speak at worship services at Trinity Lutheran Church on May 19. Services at the church, which is at 12115 South Park, begin at 8:30 and 10:30 a.m.

There will be a potluck dinner at 12:30 honoring the Bolstad family, after which a movie, "No Greater Love" will be shown. This film shows the excitement of professional volunteer programs for overseas service. It was filmed partly in Madagascar.

Dr. Bolstad and his family are living at 301 South 118th, during his furlough year. About July 1 they will return to Madagascar for another 2 year term. He plans to return to this area when the service there is completed, and resume psychiatric training at Western State Hospital.

Dr. Bolstad attended Pacific Lutheran and St. Olaf College, and received his M.D. degree from the University of Southern California. He interned at Swedish Hospital in Seattle, and went to Madagascar in 1948.

Mrs. Bolstad takes active part in the mission presentations to churches, and will speak to Sunday school children at Trinity. She has previously spoken to various groups in the church, interpreting world mission con-

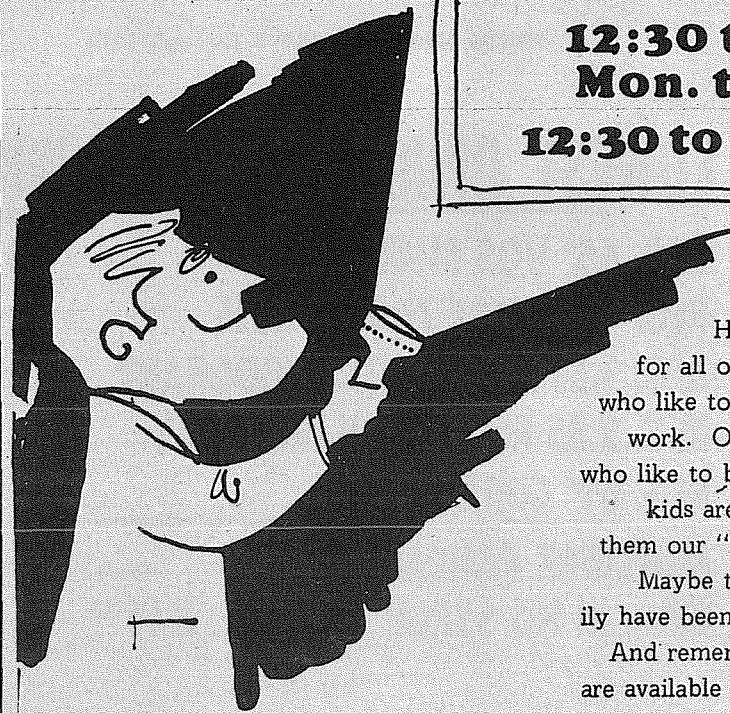
cerns and goals, and sharing personal experiences. She is a registered nurse, and served in the medical program in Madagascar.

IN ALL FOUR BRANCH OFFICES....

## LATE AFTERNOON BANKING HOURS\*

12:30 to 5:30 P.M.  
Mon. thru Thurs.

12:30 to 6:00 P.M. Friday



Here are banking hours designed for all of you working men and women who like to bank on the way home from work. Or for you wives and mothers who like to bank in the evening after the kids are home from school. We call them our "Suburban Banking Hours".

Maybe they're what you and your family have been looking for all these years? And remember, evening banking hours are available at all four of our branch banking offices. Just another service to help serve you better.

\*MAIN OFFICE HOURS 10 AM-3 PM (TILL 6 PM FRIDAY)

# Citizens STATE BANK

MEMBER:  
FEDERAL  
DEPOSIT  
INSURANCE  
CORPORATION



- ★ MAIN OFFICE - PUYALLUP
- ★ SUMNER
- ★ SUMMIT VIEW
- ★ EDGEWOOD - MILTON
- ★ WILLOWS

CHURCH DIRECTORY ATTEND OUR WORSHIP SERVICES	
<b>CHRIST THE KING Lutheran Church</b> 8:30 & 11 a.m. Worship Service 9:45 a.m. Sunday School East 85th at Van Buren LE 7-4272	<b>Spanaway Assembly of God</b> 166th & Pacific Ave. Sunday School 9:45 a.m. Morning Worship 11 a.m. Evening Evangelistic 7 p.m. Family Night Wed. 7:30 p.m. LE 1-1412
<b>Spanaway Lutheran Church</b> 8:30 & 11 a.m. Worship Service 9:45 a.m. Sunday School Grades 1 & Up 11 a.m. Sunday School 3, 4 and 5 Year Olds John L. Briehl, Pastor 160th & A St. LE 7-5978	<b>Parkland Lutheran Church &amp; Christian Day School</b> Worship... 10:30 a.m. Sunday School-Bible Study 9:15 a.m. All ages H.A. Theiste, pastor LE 7-5492 LE 1-0777
<b>Trinity Lutheran Church</b> Worship Services 8:30 & 10:30 Sunday School 9:30 & 11:30  PASTORS Erving C. Thompson Robert Drowes 12115 So. Park LE 7-0201	<b>PARKWAY Presbyterian Church</b> Sunday School 9:30 a.m. Worship Service 10:45 a.m. Nursery Service Provided 714 - 138th East LE 1-4373 Rev. Wesley J. Drummond

## PCES Offers Consumer Ed.

Women's groups in Tacoma and in Pierce County will be able to keep up to the second with the fast-changing field of consumer information next year. Miss Bernice Belshaw and Mrs. Florence Allen, County Extension agents, announce that the Extension Service will offer twelve programs in consumer education to all women's groups in the county during 1968-69.

The new consumer education programs were developed by extension specialists at Washington State University. Topics range from "Credit Cards - Thirty Days to Reality" to "How to Buy Furniture." There are other programs in home furnishings, family finance, and buying clothing.

Women's groups may select any of the programs they desire.

Miss Belshaw said that descriptive material on each of the programs has been mailed to the presidents of various women's groups. Groups that have not received this material and are interested in consumer education programs may contact her at FU 3-3311, Ext. 511.

Miss Belshaw added that groups should schedule programs for their 1968-69 club calendars by June 1. She explained that this early sign-up date is necessary so she may train representatives from the clubs in the subject matter they will present to their groups.

## Jersey Club To Hold Third Spring Show

The West Central Jersey Club will hold its third annual Spring Show and Sale on May 11, 1968, at the Thurston County Fairgrounds. The show begins at 10:30 a.m. Mr. Lawrence Newman, Port Orchard dairyman, will be the official judge.

4-H and FFA members are invited to attend the show. There will be a fitting and showing contest held. There will be two divisions. One group will be for Junior 4-H members, the other for senior 4-H members and FFA members.

Winners of the two divisions will be awarded large Jersey plaques and the 2nd and 3rd place winners will be awarded Jersey head plaques. Other participants will receive other Jersey awards.

The show is open to anyone in the state. 4-H and FFA members may also participate in the open show if they have registered animals, but grade animals may be shown in the showmanship contest.

The showmanship contest will start at 12:00. After the contest all are invited to attend a potluck lunch. Following lunch, six registered Jersey heifers will be offered to 4-H and FFA members.

## R. Christiansen Guest At Altrusa

Roy Christiansen, a Certified Life Underwriter, will explain the HR10 and tax sheltered annuities for business women at the Parkland Altrusa Club at 7 p.m. May 9th.

Christiansen, a Seattleite, is well versed on both top topics and will conduct a question and answer period after his talk.

Mrs. Alfred Grodvg, chairman of community service of Altrusa, will introduce the speaker.

The dinner will be at Richard's Restaurant. Reservations can be made by calling Ella Rostedt at GR 5-2450. Guests are welcome.

# GIFTS for MOM

SPROUSE

- REITZ

## Mother's Day Specials



8-piece  
**GLASS SNACK SET**  
Service for 4  
Reg. \$2.79 **\$1.99**



4-piece  
**SALAD SET**  
Glass plate and bowl, with plastic serving pieces.  
\$3.49 Value **\$2.47**

**WEXFORD DISTINCTIVE ACCENT PIECES**  
by Anchor Hocking  
Candy Dishes - Vases - Bowls  
Your Choice **\$1.99** ea.



"Cameo Rose"  
• Wash cloth  
• Hand towel  
• Bath towel  
**TOWEL ENSEMBLE \$2.99**  
Also sold individually

**GIFT-PACKED DUSTING POWDER**  
Reg. \$1.00 Asst'd. Colors **67c**

**ROOM SIZE RUGS**  
8 1/2' x 11 1/2', 100% nylon pile. Non-slip foam back.  
\$24.95 Value **\$19.99**



3 Piece  
**SPARKING GLASS "Swedish"**  
**CHIP & DIP SET**  
8" bowl, dip dish, brass frame. Honey Gold or avocado.  
**97c** SET

**LADIES' NYLON HOSE**  
Mesh & plain knit. Demi-toe, nude heel.  
6 PR. **\$1.99** Reg. \$2.64



**HALF SLIPS**  
Permanent press polyester. 65% Kodel, 35% cotton. New bold, bright colors, pastels or white.  
**\$1.00**

**DINETTE SET**  
• Walnut Finish • Center Leaf • 4 Chairs  
**49.95**

**HANGING BASKETS**  
While They Last **\$1.99**

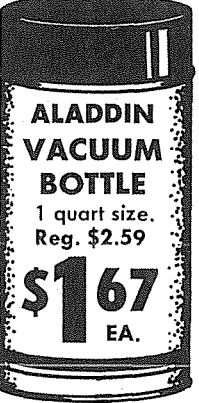


**FOSTORIA HAND MIXER**  
3-speed, push-button beater release.  
Reg. \$9.95 **\$6.99**

**MAGNUS ELECTRONIC CHORD ORGAN**  
• Professional Sound  
• Play your favorite music in 60 sec.  
**\$199.95**



Reg. to 59c  
**SPRING FLOWERS**  
Colorful, decorative, artificial flowers. **7c** EA.



**ALADDIN VACUUM BOTTLE**  
1 quart size. Reg. \$2.59 **\$1.67** EA.



**FOSTORIA AUTOMATIC TOASTER**  
2-slice, chrome finish. Reg. \$9.95 **\$6.99**



**FOSTORIA SPRAY-STEAM-DRY IRON**  
Teflon coated, automatic temperature settings. **\$9.99** Reg. \$12.95



27" x 48"  
**SHAGGY RUGS**  
100% rayon pile. Latex back, decorator colors. \$3.98 Value **\$2.88** EACH

**Roymac MELAMINE DINNERWARE**  
34 piece, service for 8. Reg. \$12.95 **\$9.99** SET

**SPROUSE - REITZ VARIETY STORES**  
Prices Effective May 9-12  
Hours: Mon. through Sat. 9 a.m. - 9 p.m. Open Sundays Noon 'til 6 p.m.  
**8218 Pacific Ave.**

# 4-H Farm Attracts County Youngsters



**CUDDLY KID** receives the petting of youngsters, some of whom got their first close up look at farm animals during the 4-H Farm display. Kid belongs to Larry Woods.



**PUDGY PIGLET** caught the eye of these Parkland preschoolers as they toured 4-H farm at Luis Atlee barnyard, 311-123rd East.



**DOCILE DONKEY**, owned by 4-H'er Chuck Earle, seems unimpressed with his youthful visitors.

When the Four Hoofs Each 4-H Club started a display farm for the benefit of Pierce County Headstart programs, they had no idea of how popular their project would become.

Idea for the project was conceived a year ago when club members learned that Headstart officials were looking for a place for pupils to visit farm animals. During the planning, the program was expanded to include preschools, nursery groups, and children who seldom have the opportunity of seeing farm animals.

Last year more than 880 wide-eyed youngsters visited the farm and the club hopes to register more than 1000 visitors this year.

The 4-H Farm, set up on the Luis Atlee property, 31 E 123rd, opened current displays April 30 and will continue to schedule groups of children through May 10.

A nanny goat with two kids, sheep, a Shetland mare with a foal, a burro, rabbits, a piglet, and chickens were supplied by 4-H and FFA members. Loaned stock is supplemented by farm animals and birds, including a peacock, owned by the Atlees. Youngsters are allowed to pet the animals and for many, this is a first time experience.

Although Mrs. Atlee supervises the club's activities, work and financing is provided by members. 4-H'ers clean the pens, pay the feed bill and buy the shavings. Each member is scheduled to spend a day on the farm and help guide visiting groups. School authorities have cooperated by granting a special dismissal from school for that day.

Membership includes students from Bethel High, Clover Park High, Franklin Pierce High, and the two Pierce School District Junior High Schools.

This will be the final year the Atlees will host the 4-H Farm as they will be moving to Mountain Home, Idaho. He is employed by the Air Force Exchange Service, and has been transferred to that area.

## 4-H Farm Future In Doubt

The 4-H Farm, sponsored by the Four Hoofs Each 4-H Club, may be in session for the last time unless someone volunteers to take over the

project, Mrs. Luis Atlee, 311 123rd East, told the Journal Tuesday.

The Atlees have been transferred to Mountain Home, Idaho, forcing them to give up supervision of the project. For the past two years they have made property available for club members to set up the farm for a two week period.

"The members put in so much effort in their project, we would like to see it continued," she said. "It is gratifying to work with teenagers so willing to assume responsibility."

## Princess Named

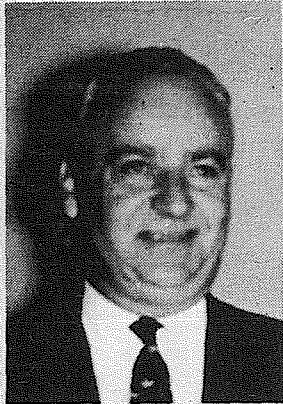
Carla Balmer, (right) daughter of Mr. and Mrs. John Balmer, Sr. of Orting, has been chosen as 1968 Pierce County Dairy Princess.

Another Orting dairy maid, Miss Kathy Gratzler (left) has been chosen alternate Dairy Princess. Kathy is the daughter of Mr. John Gratzler.

Other members of the Princess Court are Edna Schilter, Graham; Diane Doohan, Eatonville, and Karen Wood, Spanaway.

The Princess and her court will be active in several June Dairy Month activities which will be sponsored by the Pierce County Dairy Wives and Dairy Federation.

### Announcing!



**MIKE LATTERELL**

**HAS MOVED TO**



8223 Pacific GR 4-9404

## Bethel Senior To Give Piano Recital

Kim Hansen, daughter of Mr. and Mrs. Marvin Hansen of 124 So. 146th, will be presented in a senior piano recital at 8 p.m. Saturday at the home of her teacher, Betty Ruth Potter.

The program will include compositions by Bach, Beethoven, Chopin, Sebellow, Griffis and Iturbi. She will be assisted by Catherine Wilbar and Virginia Fanelli, folk singers.

Miss Hansen is a senior at Bethel High School where she has served as an accompanist. Her former study was with Calvin Knapp of Pacific Lutheran University.

## Call Bell Telephone Before You Dig

Ever dig a hole in the front yard and find a couple hundred people at the bottom talking to each other?

It could happen.

Pacific Northwest Bell is putting more and more telephone cable underground these days, according to Robert F. Heuser, PNB manager. Buried cable is protected from the weather and it's easier on the eyes than poles and wires.

But, since it's vulnerable to

trenchers, shovels, picks and other sharp digging tools, PNB has this plea: "Please call us before you dig!"

A single break in a major line can create a \$20,000 repair job, the manager said. What's worse, a sliced cable can disrupt telephone calls, television transmission and even vital emergency communications for miles around.

"The problem can be avoided by taking a couple of minutes to call the telephone

company business office before you dig a basement, lay a pipe, build a fence or plant a tree," he said. "If there's any buried cable in your area, we'll quickly tell you where it is."

That way you'll be sure that all you find in the hole is the biggest rock in the world.

**Journal Classifieds**  
Get Results  
LE 7-0223

## Where To Buy INSURANCE



### INSURANCE

Military - Home - Business

**LE 7-4904**

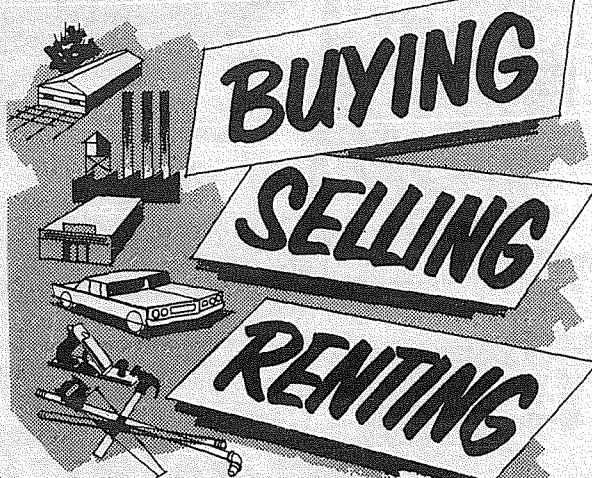
Auto Fire Life Bonds

**IRENE CLEMENS**

Agency - Parkland  
10329 Pacific Ave.

## BUY SELL CLASSIFIED ADS TRADE LEASE

### FOR BEST RESULTS IN:



### USE THE WANT ADS

Ten Words . . . Only \$1<sup>00</sup>  
Use This Form For Ad Insert

Name \_\_\_\_\_  
Address \_\_\_\_\_  
City \_\_\_\_\_ Zip \_\_\_\_\_  
Amount Enclosed \_\_\_\_\_  
Classification \_\_\_\_\_  
Copy \_\_\_\_\_  
\_\_\_\_\_  
\_\_\_\_\_  
\_\_\_\_\_

The Times Journal PO BOX 2116 Parkland 98444  
LE 7-0223



**INCOMING HOMEMAKERS** — Officers for the County Homemaker Extension Service, elected at a recent banquet, include, from left, Mrs. Merl (Beverley) Crosbie, vice president; Mrs. Lloyd (Bernetta) Southern, president; Mrs. Matt (Grace) Manley, outgoing president; and Mrs. Arnold (Diane) Judd, secretary. At the banquet Mrs. Ben Kibler gave a report on the "Governor's State Conference on Health Planning" which she attended April 19th and 20th.  
— T.J. Staff Photo

## Vaccinations Being Planned To Prevent Rabies

"A single bite from a rabies infected animal can kill a person or an animal — unless they have been protected by proper vaccination," Dr. Stephen Jones, veterinary epidemiologist for the Washington State Department of Health, warned today.

To avoid this, clinics for the vaccination of large numbers of dogs and cats against rabies are being planned in many areas of this state during May.

Pet owners are urged to

bring their animals to the clinics, which will be conducted by local veterinary medical associations in cooperation with local health departments.

"It can be expected that rabid bats will make their appearance again as the season advances," Dr. Jones stated.

Rabies has been known to occur in bats in Washington State since 1961, he said, when the first one was found. Since then 70 rabid bats have been discovered — 3 during 1967.

"It is disturbing to note that the incidence of rabies in bats is steadily increasing to the point where they are now the major reservoir of rabies in the Pacific Northwest," Dr. Jones said.

In 1967, four persons in Washington State bitten by rabid bats, or bats suspected of carrying the disease, were given anti-rabies treatment.

Bat rabies causes concern for several reasons. Bats are wild animals and cannot be vaccinated — so control is impossible. They also harbor the rabies virus for a very long time after exposure, providing greater opportunity to spread the disease.

Bats in the United States normally feed on insects in the evening and at night.

All persons should avoid any bat exhibiting abnormal behavior — such as flying about in the daytime, or acting erratically.

If attacked or bitten by a bat, one should kill it and consult his local health department and personal physician immediately.

Dogs and cats are frequently exposed to rabid bats. For this

reason, rabies vaccination for pets is most important in preventing the spread of rabies from bats to the pet population and, subsequently, to humans.

The Washington State Public Health Association by resolution has declared its intent to work with the Washington State Veterinary Medical Association in promoting a statewide Rabies Control Month.

"So — take your pet to one of the rabies vaccination clinics in your area. It may save his life — and, perhaps yours," Dr. Jones said.

## This Week's Winner

L. H. Randall, 1003 South 116, celebrated his birthday Monday by properly identifying his house pictured in last week's Journal to claim the \$8 Jackpot.

The Randalls purchased their home new in 1955, while he was in the service. He has since retired as a 1st Sgt, and is currently employed by Philco-Ford.

Randall said his wife received a number of phone calls advising the house had been pictured in the Times Journal "Is This Your House" contest ad.



MR. THISBIE, a 200 pound St. Bernard owned by Charles Rankin of Puyallup, plays his "Man's Best Friend" role to the hilt as he showers his affection on young Dan Kearl. Mr. Thisbie, along with many other thousands of pets in the Pierce and Thurston County area, can take advantage of the Rabies Vaccination Clinics being held Saturday, May 18th, from 2:00 to 5:00 pm at 13 different locations. Clinics in the Herald circulation area are located at the Fife fire station, the Puget Sound Bank at Hi-Ho Shopping Center in Puyallup and the Parkland fire station at 114th South in Parkland. Sponsored by State and local health departments and the South Puget Sound Veterinary Association, the clinics request pets should be 3 months or older, with cats in a suitable carrying case and dogs on a leash. The Rabies vaccination will be provided for a fee of only \$2.00 each.

**SING**  
a song of value on car, home and life insurance. Contact me today.

To Call For The Best Buy On Your Auto Insurance

**Al Langseth**  
9920 Pacific Ave.  
LE 1-1800

P 6470  
**STATE FARM**  
Insurance Companies  
Home Offices: Bloomington, Illinois

**FLOWERS**  
SAY IT BEST FOR MOTHER'S DAY

**FLORAL DELIVERY**  
ANYWHERE WITHIN HOURS

Telephone  
LE 7-0206

**Stella's FLOWERS**  
ARTISTRY IN FLOWERS  
12169 Pacific Avenue (at Parkland)  
P.O. Box 2567 Tacoma, Washington 98444

**The Country Parson**

"A pessimist is a fellow who doesn't trust his own praying."  
Copyright, by Frank A. Clark

Copyright, by Frank A. Clark

**Dwyer MORTUARY**  
1134th & Pacific  
PARKLAND

**If This Is Your House...**

**You Are A Winner! \$8**  
This Week's Jackpot is

Each week our photographer takes a random picture of a home in the Times Journal coverage area. If you can identify the pictured home as yours, you can claim the jackpot.

Winners receive Times Journal Trade Bucks, redeemable in merchandise or cash at the following businesses.

<b>ARMSTRONG'S USED CARS</b> 11009 Pacific Ave.	<b>PIERCE COUNTY REFUSE</b> 13502 Pacific Ave.
<b>ANDERSON LUMBER</b> 9813 Pacific Ave.	<b>MILLIE'S STYLETTE BEAUTY SHOP</b> 228 169th E.
<b>IDON'S WIG SERVICE</b> 11214 Pacific Ave.	<b>PARKLAND LIGHT &amp; WATER CO.</b> 404 Garfield St.
<b>ELMHURST MUTUAL POWER &amp; LIGHT CO.</b> 120 So. 132nd	<b>E&amp;S ELECTRIC</b> 13621 Pacific Ave.

Winner Must Claim Jackpot Before 5 p.m. Tuesday following date of publication.

# HORSEMEN'S NEWS

## Tacoma Tacoma Unit One Lariettes

Pierce County Sheriff's Posse There will be another six zone play day May 12 at Trail's End Stable. Admission is free, and everyone is invited to turn out to cheer our local posse. A pot luck luncheon follows, so bring your favorite goodies and join the fun.

Members are looking forward to the state posse meet, scheduled for June 19-20-21 at Lynden.

The posse is among the first to sponsor a Princess for the Parkland Roundup. Coleen Smith will be the 1968 representative.

New members are Dick Chapin, Ray Wiessman, and Don Watkins.

### Tacoma Lariettes

The ladies drill team is having all sorts of fun drilling every Monday night at the Tacoma Unit Arena, having parties, and preparing for horse shows. New members include Charlene Marshall, Sheri Corver, and Frances Chapin. New members are always welcome.

### Colts and Fillies

Colts and Fillies rode reservation trails Saturday after drill. Drill team reports first drill competition is coming up in June at Meridian.

The organization is now 24 members strong including Carol Abbott, Sharon Ackley, Debbie-Cherie-Vicky Bowerman, Jimmy Bunger, Cam Mims, Melanie Gilbert, Lenore Kalapus, Tracy Moore, Kimberly Stecker, Rhonda Watkins, Seral Wilbar, Jack Wulfekuhle, Michael Nelson, Terry Davis, Gayle Sprague, Elizabeth Morgan, Jonnany Grahn, John Pielak, Jean Sturdevant, Karry Moore, Lorie Ackley, and Sherry Nelson. Advisor is Tudi Erickson SK 9-4141.

### Newsworthy

Do you have a newsworthy story? If so, call this newspaper.

# News

Mark and Dot Tower, Yelm, had a filly by Crimson Page. Janet Sullivan has a new black filly with a white blanket by Kitsap Mingo. Martin O'Toole now owns a black colt with white markings by Jubilee Arden. Dean Bartelsson had a filly by Crimson Page.

Clint and Kay Marshall had a filly by Franks Sunglow. Peg and Norm Redding had a filly without spots out of their pinto mare. Arnold and Irene Stron had a filly by Maverick Coke.

# Men In Service

Seaman Apprentice Dennis C. Nelson, USN, son of Mr. and Mrs. Ethan H. Nelson of Spanaway, Wash., has been graduated from nine weeks of Navy basic training at the Naval Training Center here.

In the first weeks of his naval service he studied military subjects and lived and worked under conditions similar to those he will encounter on his first ship or at his first shore station.

In making the transition from civilian life to Naval service, he received instruction under veteran Navy petty officers. He studied seamanship, as well as survival techniques, military drill and other subjects.

# Rodeo Calendar

May 12 Mt. Vernon  
May 18-19 Rainier  
June 1-2 Roy  
July 4 Oak Harbor  
July 29-30 Parkland

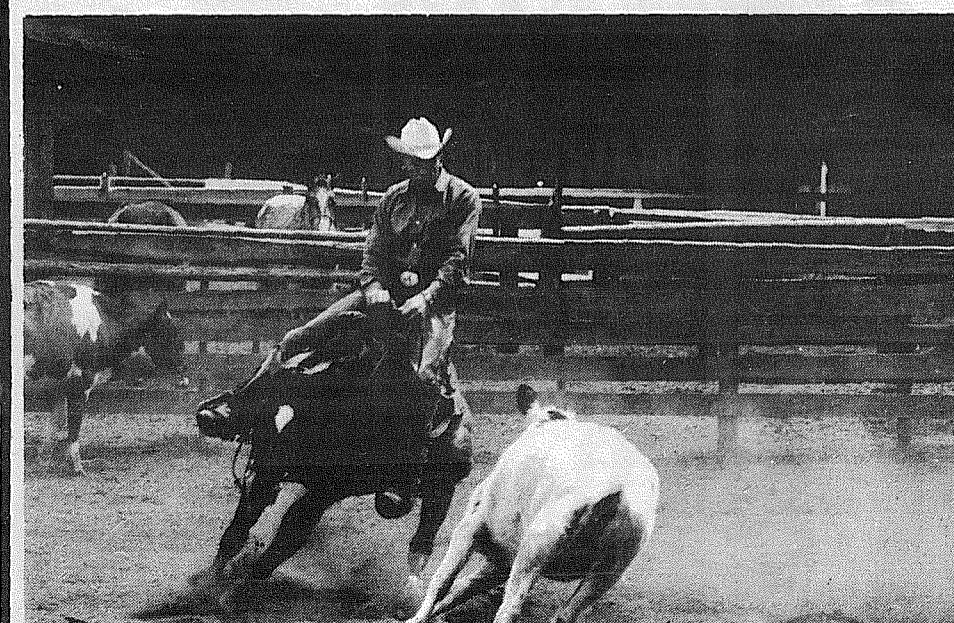
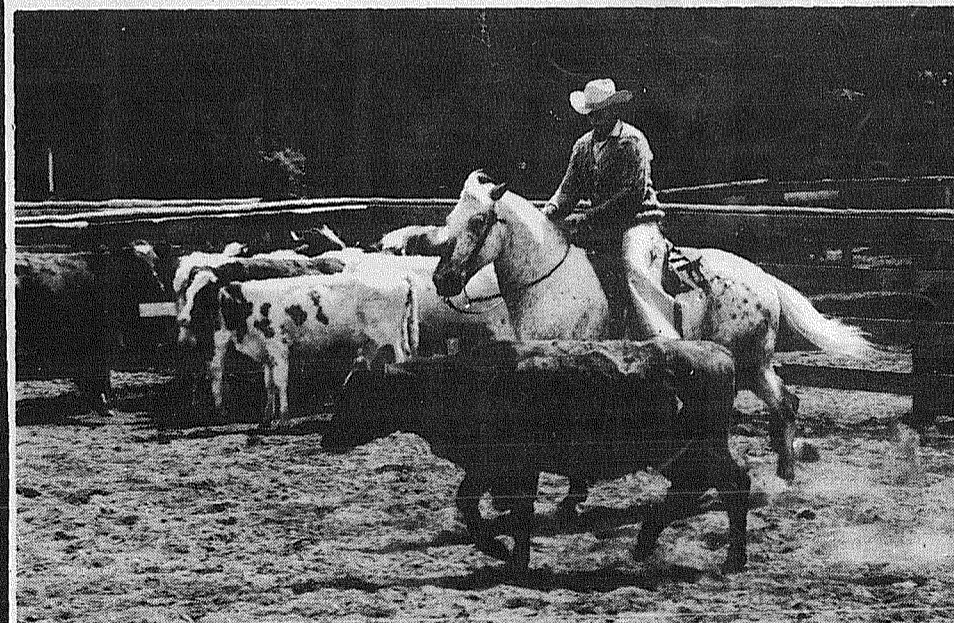
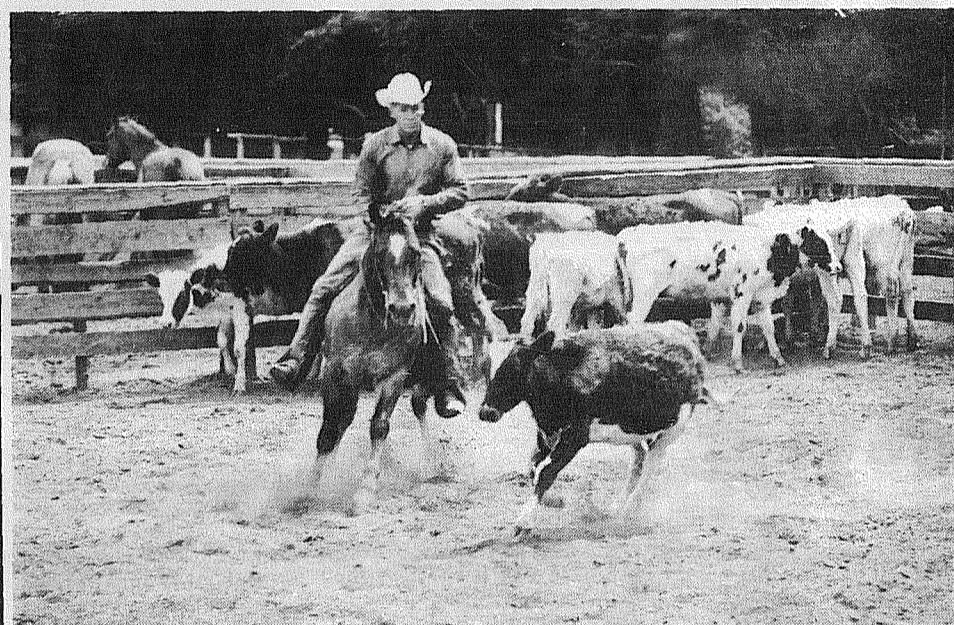
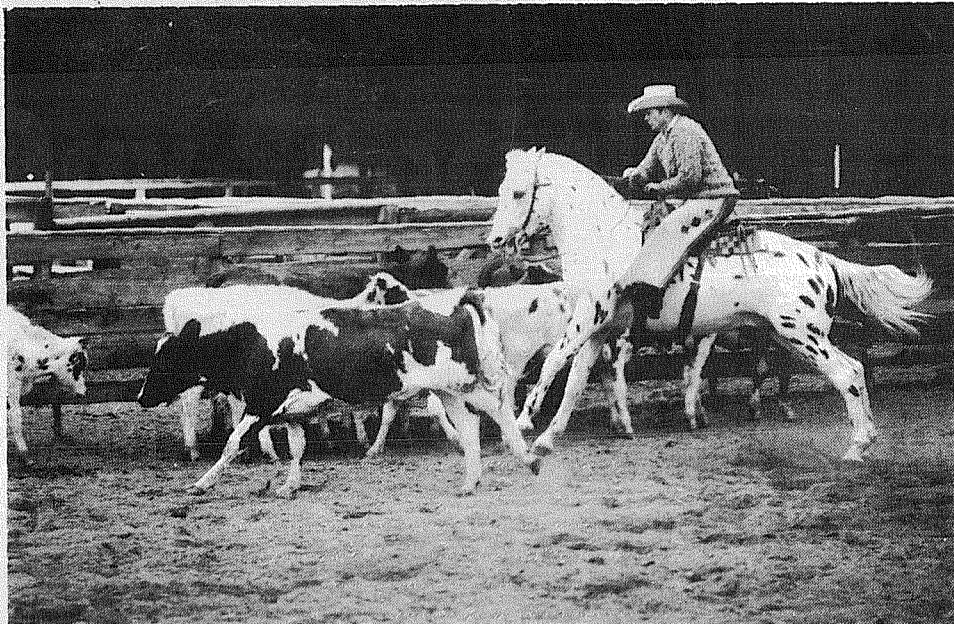
# Men In Service

Army Specialist Five Ronald A. Gaines, whose mother, Mrs. Ruth V. Feller, and wife, Lynne, live at 401 E. 127th St., Tacoma, Wash., was assigned

to the 4th Infantry Division near Pleiku, Vietnam, March 20.

Spec. Gaines is a mechanic in Company D, 2nd Battalion of the division's 8th Infantry. He entered the Army in 1962 and was last stationed in Germany.

Gaines is a graduate of Franklin Pierce High School, Parkland, Wash.



**CUTTING ACTION.** Area trainers Dee Parham and George Karr practiced cutting earlier this week at Parham's Stables in preparation for the May 17-18-19 horse show sponsored by Tacoma Unit #1 to be held at the Unit's arena. 1. George Karr gives Thunder Kemosabe a workout. 2. Dee Parham on Joker B Fleet. 3. S. Will Dee, Apaloosa owned by George Karr. 4. Quarterhorse Rushaway cuts a calf.

**For All Your Electrical Wiring & Heating Needs Replacement Elements for All Type Electric Heat Free Estimates**

**Goedert's Electric Heat**  
753 S. 108th St.  
LE 1-6711

## "Horsemen's Market Place"

Classified Directory  
Board - Trainers - Breeders  
Outfitters - Feed Dealers

<b>AT STUD</b> Madsen Arabians <b>STALLIONS AT STUD</b> Rt. 1 Box 1297 Spanaway VI 7-7721	<b>Horseshoeing</b> PROMPT RELIABLE SERVICE <b>HORSESHOEING</b> VI 7-2449 FLOYD A. GREEN P.O. Box 142 Puyallup, Wash.	<b>Training</b> BILL JACKSON BREAKING-TRAINING VI 7-7854 Rt. 1 Box 186B Eatonville
<b>Feed Dealers</b> WALLER ROAD FEED 7710 Waller Road Fisher and Alber's Feed Hay - Grain - Tack Vitamins - Vet Supplies LE 7-5552	<b>Tack</b> TACK SUPPLIES SAVE AT Grange Supply 10625 Pacific Ave. LE 1-5777	<b>Outfitters</b> The Bunkhouse COMPLETE LINE OF TACK & WESTERN APPAREL 12605 Pacific Ave. Tacoma, Wa. 98445 LE 7-5510
Support Times Journal Advertisers — It Pays!	We can't shoe your horses BUT We can shoe your cars — trucks — trailers <b>TINY'S TIRE SERVICE</b> 108th & Pacific Ave. LE 1-4535	
<b>ALBERS FEED</b> Open Sunday The Farm Boys 112th Canyon Rd.	<b>Boarding - Training</b> DIGGERS STABLES HORSES BOARDED Rt. 2 Box 2254 Spanaway VI 7-2789 STECKER'S STABLES New Location 2021 - 176th St. East Spanaway LE 1-3126 Watch For Our Grand Opening	
<b>LOGAN</b> Feed & Livestock Rt. 1 Box 1112 Spanaway VI 7-7578	<b>BOARDING-BREAKING-TRAINING-RACE TRACK-ARENA</b> <b>MARS STABLES</b> DON LINDQUIST-TRAINER TH 5-1231 11919 144th E. Puyallup, Wash.	
<b>Fencing - Hardware</b> Everything In Hardware For The Horseman Fencing tool! South End Hardware S. 185th & Pacific Spanaway		

LE 1-4555  
**RODEO  
CUSTOM SHOP**

Dean & Dodie Vosburg

164th & Pacific  
Spanaway, Wash.

Complete Saddle  
Repair Shop  
Western Wear  
English Tack & Togs

Board-Train-Riding Lessons  
Also At Stud  
S-Will-Dee . . . . . Appaloosa  
Marion's Dice . . . . . Quarter Horse  
THUNDER'S KEMOSABE  
IS HERE

We have Arabian; Quarter  
Horses, Appaloosa, Walking  
Horse Stallions. A few breed-  
ings available on these fine  
horses.

Visitors Always Welcome.  
VI 7-2881  
George Karr  
Tacoma Unit #1 Stables  
1 Mile East of Pacific on 176th



### Junior Golf Program At Spanaway And Meadow Park Courses

Registration for the junior golf program offered by the Metropolitan Park District and Pierce County Park Department at Lake Spanaway and Meadow Park courses will begin May 20 in the County-City Building only. Youngsters between the ages of 11 and 18 must sign up for the 10-week program between May 20 and June 14 at either the Park District office, Room 236, or the County Park Department, Room 735, in the County-City Building. No registrations will be accepted at the two golf courses.

A fee of \$2, which includes insurance coverage, will be required at the time of registration. Each youngster will receive a participation card which must be shown each week of the program.

Three mandatory meetings will be held prior to the start of the weekly play. The 7 p.m. meetings are set for Tuesday, May 28, and Wednesday, June 14, at Lake Spanaway, and Wednesday, June 7, at Meadow Park. Registrations will be accepted during the meetings.

The program will include free Monday play June 17 through Aug. 12 at Lake Spanaway and Meadow Park between 7 and 10 a.m. Instruction will be given only at Lake Spanaway each Monday starting at 8 a.m. except on July 1, July 15 and Aug. 12. Youngsters who desire instruction should report at 8 a.m. on June 17 to be assigned to a specific class time for the following weeks of the program.

Entry forms for the Aug. 19 County-City tournament at Meadow Park will be available at the time of original registration.

### Spanaway Washed Out

SPANAWAY - The second part of Spanaway Speedway's big weekend double header fell victim to rain last Sunday, with the superstock program now rescheduled for Mother's Day, May 12th.

Also on tap for this special program will be the Spanaway Speed Queens in another Powderpuff Derby outing, complete with heats and a main event. Sally Balzer won the initial '68 outing for the gals when she rode the 66 car to a wire to wire victory 3 weeks ago. There should be at least 15 entries to answer the call of starter Lucky O'Neil's green flag on Mother's Day.

A full slate of superstock activity, including dashes, heats and mains, will complete the program. Most of the "AA" division boys will be out to corral Don Hall and his hot #2 car. Hall has won 3 straight mains on the Spanaway oval. By the same token, the "A" division pilots hope to head Steve Kiser off at the pass, as he is attempting to make a runaway of the division.

Seattle's Ken Peterson swept the program last Saturday evening to win the Washington Midget Racing Association's first program of the season at Spanaway.

Peterson, piloting an Offenhauser car in its first race, led from the early going in the 35-lap event. Bob McLees, also of Seattle, had the evening's fast time trial clocking of :15.71.

### Cardinal 9 Still In Loop Race

Franklin Pierce will entertain Auburn tomorrow night in a Southern Division baseball contest after playing Puyallup yesterday afternoon.

With a 3-3 record after last week's action, the Cards still have a shot at the Southern Division title. In last week's games, the F.P. nine dropped a 6-4 decision to Federal Way and walked over Lakes 8-1.

### Swim Program Slated At PLU

A learn-to-swim program for beginners, intermediate and advanced swimmers will be offered in three summer sessions at the Pacific Lutheran University pool by the Pierce County Park Department.

Registration for the first session, June 17 through July 5, will be held at the PLU pool office on May 23-24 from 6:30-8:30 p.m. and on May 25 and June 1 from 10 a.m. to 1 p.m.

Additional sessions will be held July 8-26 and July 29-Aug. 16 with registrations beginning June 27-29 for the second session and July 18-20 for Session 3.

Registration fees will be \$4 per session for children and \$5 per session for housewives. Children must be at least six years of age and stand 39 inches tall at chin height.

The Franklin Pierce School District will provide transportation to the pool from the Central Ave., Collins, Harvard, Elmhurst and Midland elementary schools. A transportation fee of \$2 for Franklin Pierce residents and \$3 for Bethel School District residents will be charged per session.

Class hours will be as follows:

9 to 9:30 a.m. - Central Ave., Collins, Harvard, Elmhurst and Midland area residents.

9:30 to 10 a.m. - Bethel area.

10 to 10:30 - Open classes.

10:30 to 11 a.m. - Open classes.

11 to 11:30 - Open classes.

11:30 to Noon - open classes.

Noon to 12:30 p.m. - Housewives classes.

Classes will be held for three weeks on Monday through Friday basis.

Both Federal Way and Lakes were holders of 4-2 league records as of Friday night

In the game with the Eagles, Woody Harris, Cardinal sophomore, tallied twice for the Cards, but early game hitting power and a 3-0 first inning lead were too much for the Cards to overcome as the Eagles kept up their winning pace.

Against Lakes, the Cards exploded for four runs in the fifth inning to break open a close 1-1 ballgame.

Jim Hadlund opened the contest with a first-inning home run for Franklin Pierce. A double off the bat of Ed Standel in the fifth accounted for two Cardinal tallies, and Pierce closed out the victory with three more runs in the final frame.

Cardinal bats collected eleven hits in the contest, played at Lakes.

### BOWLING RESULTS

PARADISE BOWL CHAMPS

MONDAY LEAGUES ROLLING BEES - Christensen Shell.

BELLES - Royal Homes. PINETTES - Williams Truck.

"600" MIXED - Ken's Depot. PARKLAND MERCHANTS - Western Auto.

TUESDAY LEAGUES SPORTSMAN - Pochels. INDUSTRIAL - Len's Haven.

FRIENDLY DOUBLES. PREMIER - Bungalow.

WEDNESDAY LEAGUES FRANKLIN PIERCE FACULTY.

SENIOR CITIZENS - 3 Dofers. TOP ROLLERS - Sun Realty.

MIXERS - H. & N. GRAHAM - Metzker Grocery.

THURSDAY LEAGUES EAGER BEAVERS - Harold's Cafe.

BIRDS OF PARADISE - Ma & Pa's Tavern. HI-LOWS.

PARKLAND MIXERS - Harkness Furniture. 850 SCRATCH - Concrete Tech.

CLASSIC - Devereaux Realty. EVERGREEN - Cy's Rebels.

FRIDAY LEAGUES BOWLERETTES - Brewer's Tavern.

LAST NITERS - Dari Diner. 4X8'S - Tacoma Hauling.

SUNDAY LEAGUES EXPRESS - Breon Automotive. LITTLE LUTES.

PARADISE BOWL 4-29-68 ROLLING BEES - Lois Yurisich, 545, 229.

THE BELLES - Betty Morrow, 518, 215. PINETTES - Sue Sweaney, 559; Myrt Cambren, 556; Kit Campbell, 203.

PARKLAND MERCHANTS - Winston Thornhill, 192-213-228, 633; Craig Sundquist, 201-178-239, 618 - 239.

FRIENDLY DOUBLES - Dave Ketter, 198-231-189, 618; Edris Haikkila, 473; Rose Moore, 173.

EAGER BEAVERS - Ann Harris, 556, 200. HI-LOWS - Sue Sweaney, 529; Mike Lent, 196.

BOWLERETTES - Ole Steeves, 497; Ruth Gustafson, 186.

4X8'S - Walt Daniel, 597, 224; Ann Pilcher, 521; Diane Fogle, 190; Bob White, 6-7-10; Shirley Bennett, 6-7-10.

EXPRESS - Del Miller, 554; Dick Breon, 193; Betty Breon, 488, Margie Miller.

LITTLE LUTES - Jay Young, 202-218-187, 607 - 218; Marsha DePrez, 384; Caren Simdars, 163.

### Low-handicap Golf Tournament Set At Spanaway Golf Course

Nearly a dozen low-handicap shotmakers are among the first 50 entries received by the Tacoma Sports-Recreation Federation for its third annual Puget Sound Amateur golf tournament May 25-26 at Lake Spanaway.

With one-fourth of its anticipated field of 200 players checked in, the Federation is anticipating a steady rush of entries until the cut-off date of May 16 at 5 p.m. Entries will be accepted at Lake Spanaway or at the Federation office, 236 County-City Building.

The early list of players includes former Seattle University golf team star Orrin Vincent, two-time national lefty champion Jack Walters, of Fircrest, University of Washington golf team member Steve Cole, former UW star Clint Names, defending state junior champion Kim Wenger, of Fircrest, and current Tacoma Community College stand-out Chuck Morris, of Elks-Alenmore.

Still to be heard from, but expected to enter, are defending champion George Lanning, of McChord, Inglewood star Tom Storey, and 1966 titlist Jon Wilhelm, of Portland.

The tournament offers \$100 for low net and low gross scores over the entire field as well as in each of the three divisions. In addition, lap prizes will be offered and players will have a chance to shoot for accuracy in a special hole-in-one contest on the practice area adjacent to the clubhouse.

A \$15 entry fee must accompany the entry blank submitted to the tournament office or Lake Spanaway pro shop.

### Seasons To Be Set

The next scheduled meeting of the Washington State Game Commission is May 20-21 at the Cascadian Hotel in Wenatchee, Washington. Fall hunting seasons for big game animals will be established at this meeting.

## Sports

RECREATION CALENDAR TUESDAY - Final entry deadline, County and City adult softball and slow pitch teams, 5 p.m.

Monday, May 13 - League play begins, City adult softball and slow pitch teams.

Tuesday, May 14 - Entry deadline, County-City Industrial Golf League play, County-City Building, Room 236 and Room 735, 5 p.m., \$10.

Thursday, May 16 - Entry deadline, Puget Sound Amateur golf tournament, County-City Building, Room 236, or Lake Spanaway, \$15.

Monday, May 20 - League play begins, County slow pitch adult leagues.

Monday, May 20 - Registration begins, County-City junior golf program, County-City Building, Room 236 or Room 735, 11-18 years of age.

Saturday, May 25 - Recreation swimming, South End and Titlow outdoor pools, 1-5:30 p.m. and 6:30-9 p.m.

Sunday, May 26 - Recreation swimming, South End and Titlow outdoor pools, 1-5:30 p.m. and 6:30-9 p.m.

**BROOKDALE**  
Lumber  
13602 Pacific Ave.  
LE 7-8669

**MAKE US YOUR FENCING HEADQUARTERS**

Choose from a wide selection of fencing materials. Whether you want privacy or just decorative fencing we've got the answers, come see!

WANT ADS WORK EVERYWHERE

Smith Built  
CAMPERS & CANOPIES  
QUALITY  
CUSTOM  
14606 Pacific Ave.  
Tacoma, Wash.  
Phone LE 7-8022

"WHERE TO GET SERVICE"  
Parkland Enco Service  
13303 PACIFIC AVE.  
LE 7-9954

Representing the world's largest car insurance company means I can get you top car insurance value—top service, and protection. Let's talk!

Milton L. "BJ" Bjurman  
16607 Pacific Ave.  
Spanaway - LE 1-6833

State Farm Mutual  
Automobile Insurance Company  
Home Office: Bloomington, Illinois

### Youth League Parents Meet

Parents of children expecting to play in County youth leagues are urged to attend a meeting scheduled for 7:30 p.m. May 9 at James Sales School. Parents must be present at the meeting to sign up their children, the Journal learned Friday. League covers boys ages 9-13, and girls grades 5-8. Additional information can be secured by calling Tony Corso, LE 1-4061.

IT HAS TO COST YOU LESS AT  
Andy EGAN RAMBLER  
NEW '68 RAMBLER  
If you think this is a good price for a new Rambler \$1,890\*  
Wait till you subtract your EXTRA "Andy" EGAN Rambler Trade Allowance!

Price is Important! So is Quality!  
You Get Both at  
Andy EGAN RAMBLER  
8223 Pacific Ave. GR 4-9404


Open Mon. and Thurs. Nights 'Til 9 p.m.  
"COME SEE US"  
"Fairness to All"

SPANAWAY SPEEDWAY PRESENTS  
Special Mother's Day Program....  
SPANAWAY SPEED QUEENS  
Powder Puff Derby  
INCLUDING HEATS AND MAINS plus  
A.R.I. Stocks  
★ TROPHY DASHES ★ HEATS ★ MAINS  
Time Trials, 1:30 P.M.  
Racing, 3:00 P.M.  
2 MILES EAST OF PACIFIC AVE. ON 159TH.

BOWLING 30¢  
SATURDAYS UNTIL 7 P.M. - SUNDAYS ALL DAY  
35¢ GOOD ANYTIME LANES ARE AVAILABLE UNTIL MAY 15th, 1968 for Summer League Bowlers - Call Now or Come In and Sign Up.  
TEAM AND LEAGUE OPENINGS FOR THE 1968-69 WINTER SEASON  
LEAGUE BOWLING FEES, DAYTIME \$1.50, NIGHT \$1.65  
LE 7-6012 PARADISE BOWL 108th & Pacific

**CLIP & SAVE**  
**START YOUR CLEAN-UP AT**  
**IDON'S WIGS**  
 With  
**50% OFF ON ALL**  
 Cleaning, Setting and Styling  
 on 100% Human Hair Wigs & Wiglets  
**WITH COUPON**  
 11214 Pacific COUPON GOOD THRU MAY 25th LE 1-2676

**Penny's Donutville**  
**LUNCH**  
 Burgers - Fries  
 Shakes  
 Hourly Fresh Donuts  
**TO GO**  
 Hours: 7 a.m.-9 p.m.  
 Thru Fri. 9201 Pacific Ave. (Next to Wigwam)  
 TUE-WED ONLY  
 15c off on any order when customer has ad  
 GR 2-9868



**Angelo's**  
**PIZZA HOUSE**  
**ORDERS TO GO**  
 Featuring top sirloin and American dishes, spaghetti, rigatoni, meat balls, sausage, ravioli, beer and wine.

Choice of Pizzas  
 cheese & tomato  
 anchovie  
 mushroom  
 Italian sausage  
 pepperoni  
 tuna  
 bacon  
 peppers  
 olive  
 hamburgers  
 ham  
 salami  
 onion

LE 7-7233  
 14102 PACIFIC AVE.  
 PARKLAND  
 CALL AHEAD, IT'S PIPING HOT ALL THE WAY HOME  
 PICK UP A BOX, PAIL, BUCKET OR A BARREL



**TICKETS ON SALE**  
**AT BOX OFFICE**  
 for Exciting Opening Thursday, May 16

**TACOMA UNITED'S MALL THEATRE**  
 PRE-OPENING ACTIVITIES AT 8 PM  
 SHOW TIME AT 8:30 PM  
 Bands! Glamour! Lights!  
 Spectacular  
**"FIRST-NIGHTER"**  
 Performance  
 ★  
**HOLLYWOOD STARS IN PERSON!**  
 ★  
 ON OUR GIANT SCREEN  
 THE ACADEMY AWARD WINNER  
 SIDNEY POITIER  
 SPENCER TRACY • KATHARINE HEPBURN  
**"guess who's coming to dinner"**  
 TECHNICOLOR



**Hurry For Tickets!**  
**"FIRST NIGHTER"... ADULTS \$2.00**  
 BOX OFFICE OPEN DAILY 12 NOON  
 Elegance in Entertainment for Everyone  
**TACOMA UNITED'S MALL THEATRE**  
 "Where Movie-Going Is An Event"  
 IN THE HEART OF THE TACOMA MALL • 472-4448



**DUMPING GROUNDS** - The Parkland Clean-up, Fix-up Campaign got underway Wednesday with, from left, Paul Hartsell, Pierce County Refuse Co., Vern Voss, Voss Auto Wrecking Co., and Clean-up Chairman Hank Hette, sales manager with the Doxol Redi-Gas Service. The Parkland Development sponsored yearly event is for the beautification of our community and all residents are strongly urged to participate in every way to make the event successful. Free garbage pickup will be offered residents on Saturday, all you have to do to qualify is to put your garbage in front of the house and the volunteers will pick it up. So now you have cleaned out your garages, attics and basements you can get rid of the excess "fire hazards."  
 -TJ Staff Photo

**PLU Drama Fraternity Sets Play**

Pacific Lutheran University's national drama fraternity will present an old-fashioned melodrama, complete with a sultry siren, a prudish heroine, and a fiendish villain, May 9 through 11 in the Classroom Building.

Tickets for the 8:15 p.m. Alpha Psi Omega presentations of Morland Cary's "Love Rides the Rails or Will the Mail-train Run Tonight" may be reserved by contacting PLU's box office.

Barbara Kohl of Los Angeles, Calif. plays the innocent heroine, Prudence Hope-well, and everybody's hero Truman Pependennis is portrayed by Robert Dickson of Everett, Wash. The evil Simon Darkway is acted by Peter Christensen of Seattle, and the sensuous Carlotta Cortez is played by Cynthia Berentson, also of Everett.

The traditional tying of the heroine to the railroad tracks is modified somewhat in the play. Instead of Miss Hope-well, the hero is bound to the rail in front of the onrushing locomotive. In order to save him the heroine must decide if her prudish modesty is more important than the life of Pependennis.

Other actors in the play will be Stan Johnson, Patricia Tuggle, Anita Alvord, Glen Anderson, Scott Green and William Dikeman. And in keeping with the tradition of the old-time melodramas, piano-playing Bruce Gallagher will maintain an exciting tempo throughout the production.

**Legals**

**NOTICE OF INTENTION TO SELL REAL PROPERTY OWNED BY PIERCE COUNTY (Spanaway Park Area)**  
 NOTICE IS HEREBY GIVEN that a public hearing will be held on MONDAY, the 13th day of MAY, 1968, at the hour of ten o'clock A.M. before the Board of Pierce County Commissioners in the Chambers of the County Commissioners in the County-City Building at Tacoma, Washington, at which time evidence will be received for or against the propriety and advisability of disposing of the following property owned by Pierce County by sale at public auction, to-wit:  
 Parcel A: (Spanaway Park Area)  
 A parcel of unimproved real property, comprising about 4.97 acres, located within Section 21, Township 19 North, Range 3 East, W.M., Pierce County, Washington, more particularly described: Beginning at the Northeast Corner of Bushalier Donation Land Claim; thence West along the centerline of 149th Street South for a distance of 50 feet; thence South 30 feet to the South right-of-way line of said 149th Street South and the true point of beginning of this description; thence South and parallel with the West line of Block 4 in Wright's Acre Tracts to the Northerly right-of-way line of Military Road; thence Northwesterly along said Northerly right-of-way line of existing Military Road to the East right-of-way line of Pacific Avenue; thence North along the East line of said Pacific Avenue to the South right-of-way line of 149th Street South; thence East along the South line of said 149th Street South to the true point of beginning in the Northwest Quarter of Section 21, Township 19 North, Range 3 East, W.M., EXCEPT the South 10 feet reserved for additional right-of-way on Military Road.  
 Parcel B: (Spanaway Park Area)  
 A parcel of unimproved real property, comprising about 1.88 acres, located within Section 21, Township 19 North, Range 3 East, W.M., Pierce County, Washington, more particularly described: Beginning at the Southwest

**Legals**

Corner of Lot 16, Block 3 of Egermoyer's Addition; thence West along the North right-of-way line of Louvre Street to the East line of Pacific Avenue; thence North along said right-of-way of Pacific Avenue to the South right-of-way line of Old Military Road; thence Southeasterly along Military Road to the West line of Egermoyer's Addition; thence South along said West line of Addition to the point of beginning; EXCEPT the North 10 feet reserved for additional right-of-way for Military Road and EXCEPT the East 50 feet for county road.  
 Parcel C: (Spanaway Park Area)  
 A parcel of unimproved real property, comprising about 1.42 acres, located within Section 21, Township 19 North, Range 3 East, W.M., Pierce County, Washington, more particularly described: Beginning at the Northwest Corner of Lot 15, Block 2 of Egermoyer's Addition; thence West along the South line of Louvre Street to the East right-of-way line of Pacific Avenue; thence South along said Pacific Avenue right-of-way to the North right-of-way line of Spanaway Street; thence East along said North right-of-way of Spanaway Street to the West line of Egermoyer's Addition; thence North along said West line of Addition to the point of beginning, EXCEPT the East 50 feet for County road.  
 Parcel D: (Spanaway Park Area)  
 A parcel of unimproved real property, comprising about 1.23 acres, located within Section 21, Township 19 North, Range 3 East, W.M., Pierce County, Washington, more particularly described: Beginning at the Southwest corner of Lot 16, Block 2 of Egermoyer's Addition; thence South along the West line of said Addition 70 feet to the true point of beginning; thence continuing South to the inside corner of Bushalier Donation Land Claim; thence West parallel with the South right-of-way line of Spanaway Street to the East right-of-way line of Pacific Avenue; thence North along east right-of-way line of

**Legals**

Pacific Avenue to the South right-of-way line of Spanaway Street; thence East along said Spanaway Street right-of-way to the point of beginning, EXCEPT the South 60 feet and the East 50 feet for County Roads.  
 Parcel E: (Spanaway Park Area)  
 A parcel of unimproved real property, comprising about 9.41 acres, located within Section 21, Township 19 North, Range 3 East, W.M., Pierce County, Washington, more particularly described: Beginning at the intersection of the North right-of-way line of 159th Street East (Metropolitan Park Road) and the East right-of-way line of Pacific Avenue, in the South one-half (S ½) of Section 21, Township 19 North, Range 3 East, W.M.; running thence East on the North right-of-way line of East 159th Street 320 feet; thence North parallel to the East line of Pacific Avenue 1281.81 feet more or less; thence running West parallel to East 159th Street 320 feet; thence South on the East line of Pacific Avenue 1281.81 feet more or less to the point of beginning.  
 Parcel F: (Spanaway Park Area)  
 A parcel of unimproved real property, comprising about 23.54 acres, located within Section 21, Township 19 North, Range 3 East, W.M., Pierce County, Washington, more particularly described: Beginning at a point 320 feet East of the intersection of the North right-of-way line of East 159th Street (Metropolitan Park Road) and the East right-of-way line of Pacific Avenue as located in the South one-half (S ½) of Section 21, Township 19 North, Range 3 East, W.M.; thence continuing East on said North right-of-way line of East 159th Street 800 feet; thence North parallel to Pacific Avenue 1281.81 feet more or less; thence running West parallel to said East 159th Street 800 feet; thence South parallel to Pacific Avenue 1281.81 feet to the point of beginning.  
 By ORDER OF THE BOARD OF COUNTY COMMISSIONERS of Pierce County, Washington, dated APRIL 23RD, 1968.

**Legals**

**BOARD OF COUNTY COMMISSIONERS**  
 Jack W. Sonntag,  
 County Auditor and Clerk of the Board  
 By L. Hamre, Deputy  
 Published in the Pierce County Herald and Times Journal May 2 and 8, 1968.

**IN THE SUPERIOR COURT OF THE STATE OF WASHINGTON IN AND FOR PIERCE COUNTY NO. 180978 SUMMONS BY PUBLICATION**  
**TAMI S. RIGBY, Plaintiff,**  
 vs.  
**HAROLD M. RIGBY, Defendant.**

THE STATE OF WASHINGTON to the said HAROLD M. RIGBY, Defendant:

YOU ARE HEREBY SUMMONED to appear within sixty (60) days after the date of first publication of this Summons, to-wit: within sixty (60) days after the 18th day of April, 1968, and defend the above entitled action in the above entitled Court, and answer the complaint of the plaintiff, and serve a copy of your answer upon the undersigned attorneys for plaintiff at their office below stated; and in case of your failure so to do, judgment will be rendered against you according to the demand of the complaint, which has been filed with the Clerk of said Court.

This is an action for divorce upon the grounds that defendant has rendered plaintiff's homelife burdensome in the extreme.

**PETERS & TRACY**  
 By: s/ Phillip S. Tracy  
 Attorneys for Plaintiff  
 11024 Pacific Ave.  
 Tacoma, Wash., 98444  
 Published April 18, 25, May 2, 9, 16 and 23 in the Pierce County Herald & Times Journal.

"Notice is hereby given that the Bethel Board of Directors, Pierce County School District No. 403, Spanaway, Washington, shall conduct a SPECIAL MEETING for the purpose of selling general obligation bonds in the amount of \$325,000.00, to be held on Monday, the 13th day of May, 1968, at the hour of 2:00 P.M. at the Pierce County Treasurer's Office, County-City Building, Tacoma."

This notice is submitted as required by Chapter 216, laws of 1953 of the State of Washington.  
 Francis Olson, Clerk  
 Bethel School District  
 No. 403  
 Spanaway, Washington  
 Published in the Pierce County Herald & Times Journal May 9, 1968.

**Parkland Ceramics**  
 Greenware, Gifts and Supplies. Firing priced by firing chart by the piece. Free general instruction.  
 1303 S. 117th LE 1-0823

**ENTERTAINMENT**  
**1 P.M. and 7:30 P.M.**  
 Open to Public  
 3508 McKinley Ave.

# CLASSIFIED ADS

## Call LE 7-0223 For Want Ads

### T Misc. For Sale

MAYTAG automatic washer, refrigerator, propane range, davenport, chairs, misc. 722 South 160th. 68-158

PORTABLE PHONOGRAPHS \$2.50 and up. Take your old one in trade. GR 4-2583. 68-154

100% HUMAN HAIR wig, hand tied. Brunette. \$60, or best offer. Woman's leather riding jacket, small size, \$20. Hay wagon and heavy work harness, \$75 or best offer. LE 1-5999. 68-121

### Hot Water Tanks

Come in and let us show you how to save **\$50.00**  
Magdanz Hardware  
11401 Pacific Ave.

PYLON Liquid plastic coating. 7.95 a gallon. Guaranteed clear. LE 1-5718. 68-140

BED daveno, white wash basin, toilet basin nearly new. LE 7-6603. 68-152

### Continuous GUTTERS

26 Gauge - No Seams  
Long Lasting  
Galvanized or Stainless Steel

Financing Available  
**COLUMBIA**

Sheet Metal  
1525 S. 108th LE 7-8320

One 600x13 B.F. Goodrich Silvertown 4 ply tubeless; one 600x13 U.S. Royal Low Profile 4 ply tubeless; and two 650x13 Penny's Foremost Custom nylon 4 ply tubeless tires. Many miles of wear left. These were an extra set for a company car that we have sold. \$3.50 Each. See at the Northwest Flyer office in the Times Journal Building, 14620 Pacific Avenue, Parkland, Wash. 68-101

1965 HARLEY "74" Extras. \$1195. LE 1-0295.

WRINGER type washer and mangle good condition. LE 7-4668. 68-124

DRY chicken fertilizer. 6 sacks \$3.50. LE 1-1722. 68-64

17 TON TRACTOR, 3 riding horses. 843-2248, Roy. 68-156

### RENT TV

Portables All Sizes **RENTAL MARTS, INC.** Color TV  
Parkland Lakewood  
GR 5-3755 JU 4-4100  
9440 Pacific Ave. 108th & Bridgeport

## BUSINESS DIRECTORY

### Furnaces

### Sheet Metal

• Furnace Repair and Service  
• Installations

### PARKLAND

### FUEL OIL

12002 Pacific Ave.  
LE 7-0256

### T Misc. For Sale

GARAGE Sale, moving. Davenport, chairs, radio-phonograph, other items. LE 1-5072 after 6 p.m.

### Barbed Wire

80 Rd Roll **\$747**  
Grange Supply  
10625 Pacific Ave.  
LE 1-5777

FAIRBANKS Morse automatic sump pump, new 24" Sears riding mower, 8' stairway with newells and bannister, bicycle wheels for trellises and yard decorations. Used bikes, wagons and trikes. Wheels and parts for all. Expert repairing. LE 1-4741.

Original Designs Custom Made Fashions

### Boutique 49

Specializing in Hard to Fit Sizes  
2314 - 168th St. East  
Spanaway  
LE 7-6440

PHOTOGRAPHIC dark room equipment. 5620 East 112th, Puyallup.

### Shake Paint

Free Custom Coloring **\$2.97** Gal.  
Grange Supply  
10625 Pacific Ave.

WESTERN saddle. Like new. \$100. TH 5-7349 after 6:30 pm.

SELF-LEVELING frame trailer hitch, 400 lbs capacity, \$50. TH 5-0213.

### Wedding Announcements & Accessories

**DAVIS OFFICE SUPPLY**  
12147 Pacific Ave.  
LE 1-1740

### 7 Furniture, Appliances

LEATHER Couch and chair, chair/coffee table, end tables, with lamps, \$145 or best offer. GR 2-7735. After 5 p.m. 68-111

NEARLY NEW daveno, club chair, swing rocker. \$200. LE 7-7096. 68-157

MAYTAG Automatic Washer, Refrigerator, Propane Range, Davenport, chairs, misc. 722 South 160th. 68-158

UPRIGHT piano. Real good tone. \$125. TH 8-1989.

### Trophy Storm Doors

Heavy Duty Aluminum Full Piano Hinge Standard & Special Sizes  
Also Storm Windows Repair Service Available

Manufactured By  
**PARKLAND DOOR INC.**  
318 E. 96th GR 4-7011

### 8 Garden Supplies

BIG EVERGREEN shrubs in field, you dig, bring containers, reasonable. Bethel District End Bowers Road, East Mt. Highway at County Road shops. Sidney Bennett. 68-157

### 10 For Sale Or Trade

TRADE Mobile home on home equity or duplex. LE 1-4953. 68-160

### 22 Misc. Wanted

MODEL A, T, or T Roadster. LE 1-3336. 68-138

### 23 Help Wanted

3 MEN, full or part. Display and delivery. Apply 209 South 28th, 11 a.m. 68-156

HOUSEWIVES earn full time pay for part time interesting work no investment. LE 1-1482. 68-147

PART TIME cook. Plantation Restaurant. Apply in person. 701 E. Main.

FREE RENT and utilities for reliable couple to live on property in Kapowsin vicinity. Write for interview - Stan Albert, 1306 -2nd Av., Seattle.

3 WOMEN, full or part. Display and delivery. Apply 209 South 28th. 11 a.m. 68-155

### 24 Work Wanted

HOUSE cleaning service new construction only. Experienced. LE 7-5508. 68-135

### 27 Misc. Services

EXPERT alterations, men's and women's fast service and reasonable. LE 1-3506. 67-186

PIANO TUNING. \$11 repair. George Messengee. JU 8-7092. 68-40

FREE clothing have a Beeline Party. For information call LE 1-0254. 68-119

AA ELECTRIC, new and re-wiring done. LE 1-4445. 68-144

CUSTOM Dress Making and Alterations. LE 1-4268. 68-136

DOZING - LE 7-4934, GR 4-5663. 68-129

### TREASURE HUNTERS COIN HUNTERS

Metal Detectors for coins, beachcombing, ghost trowing, prospecting, also Treasure Maps and Books. Call LE 1-1736 between 5 and 10 p.m. for free demonstration. 10305 Waller Road.

### RUSSELL'S AUTO

SALES & SERVICE

'65 Mustang, V-8, Auto. and Console . . . . \$1,595  
'64 Chev "6", 3/4 pickup, 4 speed . . . . .1,395  
'63 Ford Galaxie, 4 dr. Hdtp. . . . .999  
'62 Rambler Classic Sta. Wg., Auto. . . . .645

13401 Pacific

LE 1-2124

### 27 Misc. Services

### WATER PUMPS REPAIRED

All Makes  
**GRANGE SUPPLY**  
LE 1-5777

### 28 Building Services

CARPENTRY work. Framing. Remodeling. Repair. TH 5-2841. LE 1-0434.

REMODELING, leveling, block foundations, cabinets, free estimate. Reasonable. LE 7-3550. 68-48

### 29 Land Services

TOP SOIL, J.E. Pelland. LE 1-1124. 68-156

DOZING. LE 7-4934, GR 4-5663.

### 31 Animal Services

REGISTERED Thoroughbred at Stud. Como Tuna registration number FR11827. Call John Siemen VI 7-7507. 68-131

REGISTERED Morgan Stud Service. Good blood lines. LE 1-5999. 68-150

AKC Registered Mini poodle and Toy poodle at stud, good lumes. Silver or black. LE 1-5778. 68-118

### 36 Personals

HAVE AN Alcoholic Problem? GR 5-1093 or VI 7-7715. Write Box 2265, Parkland. 67-194

CARD OF THANKS - GEORGE BROOKS. The family of George Brooks expresses sincere gratitude to the many friends and relatives who were so kind and thoughtful during our sudden loss. Our heartfelt thanks for expressing your sympathy in so very many ways.  
Ruby and Larry Brooks

### 38 Instruction

VIOLIN, piano, saxophone, clarinet, trumpet lessons. Instrumentation and Theory. LE 7-5274. 68-151

PIANO and organ lessons. LE 7-4242.

### 19 For Rent Or Lease

OFFICE SPACE-Boat & Trailer space for rent. Office \$50 per month. Lights, heat, water and garbage furnished. Covered boat and trailer spaces, \$10 per month. Phone LE 7-0223 days 10 to 4. 67-164

2 BEDROOM house, partly furnished. No pets, 1 child welcome. LE 7-6563.

### HOME VACANT

We desperately need good rentals \$80 to \$150 per month

CALL NOW  
Let us handle your worries

### SUBURBAN REALTY

11302 Pacific Ave.  
LE 7-8638 or LE 7-6896

HOUSE, 3 rooms and bath, rent \$65. TH 5-9069.

### Listings Wanted

Buying or Selling  
Real Estate Service  
Call  
**Devereaux Realty**  
12152 Pacific Ave. LE 7-8658

### 2 Autos For Sale

FOR sale 1930 model A \$75. LE 1-3336. 68-137

'65 MUSTANG 6. Must sell. Top condition. TH 5-7662.

1964 SUPER Sport Chevy, 327 engine, automatic. GR 4-7035.

'59 FORD 6 Wagon, auto, power steering, \$275. GR 4-2583. 68-153



### HEADQUARTERS

"MOST FOR THE MONEY"  
All Makes...All Kinds

**ARMSTRONG'S USED CARS** LE 7-5524

### PIERCE COUNTY HEADQUARTERS FOR

### 1968

- ★ CHRYSLER
- ★ PLYMOUTH
- ★ VALIANT
- ★ BARRACUDA

CALL GR 4-0621



### NEW- MORE POWERFUL

### the 1968's

### ARE HERE VOLKSWAGEN

27 MAJOR CHANGES  
COME IN AND

### Tom Carstens AUTOHAUS

7030 So. Tacoma Way  
GR 4-0666  
TACOMA DEALER SINCE 1955



### USED CARS

TWO YEAR GUARANTEE

- 1967 Chev Impala Sport Coupe, V-8, PG, PS, New Rubber . . . . \$2395
- 1965 Bel Air 4 Door Stick Shift V8..... \$1395
- 1964 Chev S.W. 4 dr. V8, PS, PB, Auto... \$1595
- 1965 Chev Impala 4 dr. V8, PG, PS..... \$1795
- 1964 Pontiac Catalina 2 dr. V8, stick, 22,000 miles, new tires..... \$1495
- 1963 Chev Bel Air Wagon, air, V8..... \$1395
- 1962 Chev Bel Air Wagon, PS, PB, V8.... \$1095

### USED TRUCKS

- 1966 El Camino 327 PG, PS, PB..... \$2195
- 1965 El Camino V8, PG, PS, 37,00 Miles . . . . . \$1895
- 1961 GMC 1/2 ton, 6 cyl., OD, new valve grind..... \$1095
- 1962 1/2 Ton, 6 cyl., 3 speed Long - Wide . . . . . \$1195
- 1962 Ford 6 cyl., 4 spd..... \$995
- 1957 Volkswagen Panel..... \$295

### Good Transportation

- 1963 Chev Impala 4 dr. hdtp..... \$1095
- 1962 Plymouth Valiant 2 dr, 6 cyl..... \$595
- 1961 Checker Sta Wag..... \$100
- 1960 Chev 4 dr. Wagon, V8..... \$495
- 1956 Chev, 4 dr., 6 cyl., PG . . . . . \$195

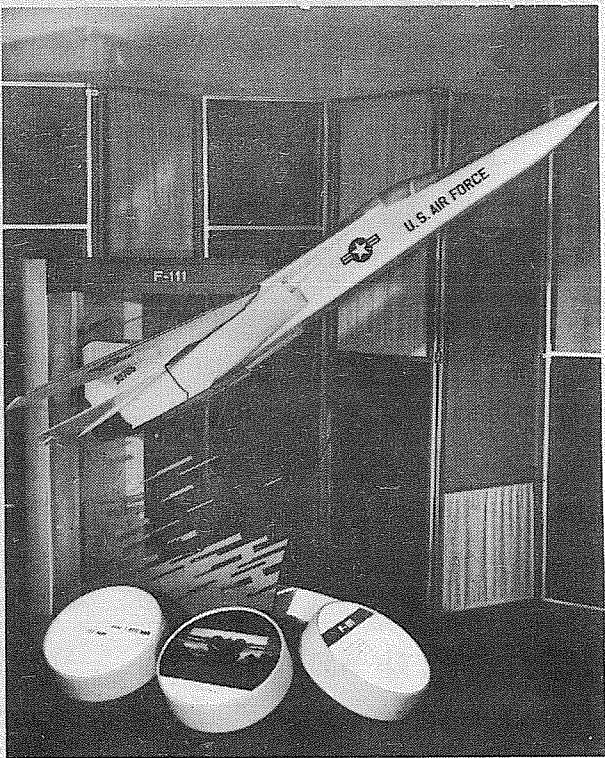
## VAN EATON CHEVROLET

Phone 832-3131

Eatonville



**EVER RISING** - The Bethel School District thought it would be a good idea to have an enrollment board so area residents could see how the district is growing. It is ironic, but the district's growth seems faster than the signboard. Dr. Fred M. Gramann, superintendent of the district, puts up the March growth figures and at the board meeting Monday night he announced that April showed an increase of 28 putting total enrollment to 4,203. -TJ Staff Photo



**McCHORD AIR FORCE BASE, WASH.** - A static display of the revolutionary F-111 fighter-bomber, one-tenth scale, will be present at the Seattle Armed Forces Spectacular, May 17-19. (USAF Photo)

9 a.m. - 10 p.m.  
7 DAYS  
A WEEK

**BARGAIN BASKET**

16618  
Pacific Ave. S. Spanaway  
LE 7-3371

No Sales To  
Dealers

WE RESERVE THE  
RIGHT TO LIMIT  
QUANTITIES

We Carry A Complete Line Of Sacked Feeds - Presto Logs

**We Are Locally Owned & Operated  
HELP YOUR BUDGET  
WITH THESE SAVINGS**

**PRICES  
EFFECTIVE  
May 9-10-11  
Thur-Fri-Sat**

INSTANT  
**FOLGER'S  
COFFEE**  
10 Oz. **99¢**

NALLEY  
**POTATO CHIPS**  
Regular - Dippers - Barbecue  
Reg. 69¢  
Box **49¢**

ZEE  
**Giant  
Towels**  
**29¢** ea.

DIAMOND  
Heavy Duty  
**FOIL**  
18"x25" **49¢**

ADAMS  
**PEANUT BUTTER**  
40 Oz. **89¢**

GHIRADELLI  
**Chocolate  
Chips**  
6 Oz. **6/\$1**

FAMILY JOY  
Crushed or Tidbit  
**Pineapple**  
20 Oz. **5/\$1**

Double Luck  
**Green Beans**  
303 Tins **8/\$1**

Sunshine  
**HYDROX**  
One Pound **43¢**

DARIGOLD  
**BUTTER**  
One Pound Cubes **75¢**

BLOCK ICE	Produce	PARTY ICE
New Crop <b>Calif. Corn</b> 3 ears <b>29¢</b>	Chiquita <b>BANANAS</b> 2 Lbs. <b>25¢</b>	Slicing <b>CUKES</b> ea. <b>10¢</b>
		#1 <b>POTATOES</b> 10 Lb. Cello <b>49¢</b>

**Everyday Low Meat Prices . . . 25 lb. Locker Boxes \$14.95**

BLADE <b>ROAST</b> <b>43¢</b> Lb.	CHUCK <b>STEAKS</b> <b>53¢</b> Lb.	ROUND BONE <b>ROAST</b> <b>63¢</b> Lb.
GROUND <b>ROUND</b> <b>79¢</b> Lb.	CUBE <b>STEAKS</b> <b>98¢</b> Lb.	CROSS RIB <b>ROAST</b> <b>57¢</b> Lb.

**Gift Checklist  
For  
Mother's Day**

- Sandals
- Bestform
- Lingerie
- Nylons
- Slippers
- Hand-tooled
- Purses
- Blouses
- Capris

From  
**PAUL'S**  
Shoes & Clothing  
161st & Pacific  
LE 7-0552

**Waller Road**  
By Mrs. Verne W. Fogle  
Le 7-5210

Waller Road Garden Club will hold a spring smorgasbord and plant sale at the Waller Road Grange Hall from noon to 2 p.m. May 15th. Co-chairmen for the event are Mrs. Rudolph Geise and Mrs. Verne Fogle. Mrs. Emma Gordon, is chairman of the plant sale and will have loads of plants and plenty of good bargains.

Rudolph Geise will attend the State Grange Convention as an alternate delegate due to Carl Schuler, Master of the Grange being unable to go.

Pierce County's Only  
Professional  
**AMBULANCE  
SERVICE**  
Parkland Ambulance  
and  
Lakewood-Pacific  
JU 4-3344 LE 7-3322