



BANK OF WASHINGTON ribbon cutting ceremonies dedicating the new banking center at 112th and Pacific Avenue were held Saturday morning. Roundup Queen Marilyn Mullins cautiously cut a ribbon of dollar bills to officially open the new building. Scores of visitors inspected the facilities during the open house.



Patrol Ambulance Policy Changed See Page 2

Bethel Board Meet . . .

Final Budget Approved

By E. W. (Doc) Webster
Chairman
Bethel School Board

The meeting lasted from 8 to 11:55 p.m. Superintendent Dr. Fred M. Gramann presented the final budget in the amount of \$3,004,166.75 for the General Fund which we approved. It is just over \$600,000.00 more than last year. Reasons for this increase include additional personnel to take care of the area growth, raises and cost of materials.

The table shows where the monies for the budget will come from and a comparison of where they came from last year:—

| REVENUES: | 68-69 | percent | 67-68 | percent |
|---|----------------|---------|----------------|---------|
| Local Taxes | \$449,845.92 | 14.97 | \$327,190.67 | 13.67 |
| County Administered Funds | \$100,000.00 | 3.32 | \$85,746.03 | 3.57 |
| State | \$2,012,215.94 | 66.97 | \$1,685,006.39 | 70.20 |
| Federal | \$231,411.00 | 7.70 | \$169,058.90 | 7.04 |
| Local Non-Tax Revenue Receipts | \$5,350.00 | 0.18 | 7,495.31 | 0.30 |
| Local Non-Revenue Receipts | \$128,600.00 | 4.28 | \$105,452.64 | 4.39 |
| Federal Non-Revenue Receipts | \$17,421.00 | 0.58 | \$18,244.79 | 0.76 |
| Transfers and Payments from other districts | \$5,000.00 | 0.16 | \$2,374.00 | 0.10 |
| Cash Balance | \$54,322.89 | 1.80 | \$18,317.59 | 0.76 |
| Total | \$3,004,166.75 | | \$2,398,284.00 | |

This seems like a lot of money and is, but we must keep pace and make room for the new students that keep coming into our system. The budget took up a lot of time, but if we don't prepare for the increase in classrooms we will be faced with double shifting and that is not good.

Architects Jacobson and Wall were present and stated that the Thompson School was on schedule as was the rest of the program.

We also have a survey to be made that will net us the Public Law 874 funds regarding students of the military or those working on federal projects. These are funds awarded the district in lieu of taxes from the federal properties.

The cards this year will be sent home with each and every student in the district on October 14. If all parents do not receive a card for this survey, the district would appreciate it if you would call any of the building principals or the district office:— Elk Plain, VI 7-7667; Clover Creek, LE 7-5424; Kapowsin, VI 7-2271; Roy, 843-2236; Spanaway, LE 7-3361; Thompson, LE 7-8626; Junior High, VI 7-2209; Senior High, VI 7-2144; District office, VI 7-2233.

Remember November 5th is the big election and don't forget to vote "YES" on your school issues. Watch for all the details of the propositions in forthcoming Times Journals.

I would like to suggest more of you attend the school board meetings and give us your ideas. Remember it's your children we are educating. Next meeting is Monday, October 21st at 8 p.m.

FP Board Meet . . .

Teamster, Op. Engineers Sign Negotiated Contracts

The long dispute between the Franklin Pierce School District and the Teamster Union came to a close Tuesday night as board members signed the contracts.

The main item which caused the hold-up was a "union security clause". The unions demanded all employees of the district, under their representation jurisdiction, become members or pay a pro rata share of the dues. The district disagreed.

The negotiated and signed contract states on this matter:

"Present members of the union must maintain continuous membership or pay normal dues.

"Present employees who are now non-members will not be required to join or pay dues.

"New employees must join the union after 40 days of employment and remain a member for 90 days thereafter. Between the 131st and 136th day of employment, the employee may, by certified mail, return receipt requested, notify the exclusive bargaining representative of his desire to withdraw from the local union, and also notify the employer. After this withdrawal, he continues as an employee of the district."

A contract, with the same clause was entered into with the Operating Engineers of the district.

Other action taken by the board included approval of a regulation on the recruitment and selection of classified personnel, which states, in part: "Members of the immediate family of a Supervisor or Central Office Administrator are not eligible for classified employment — and — Principals may not recommend for employment, members of their immediate family. The regulation outlines the procedure for selection and the method of selection.

— Final acceptance of the James Library addition, with a minor punch list to be completed.

— Approval of the by-laws for the Board of Directors of the district.

— And Mrs. Jo Anne Matson was elected as the Legislative Representative for the School Board.

The October 22nd meeting was cancelled due to the conflict with "Back to School" night at the schools and all business of that meeting will be conducted at the November 26th meet.

State Patrol Changes Ambulance Policy

By EM MATSON

Ambulance service policy for the Pierce County area has been changed to the "closest ambulance" system, WSP Capt. E. G. House notified the Journal last week.

The Times Journal has been advocating such a change for some time, feeling that the nearest available ambulance should be summoned as opposed to a rotation plan between ambulance companies.

Our sincere "Thank You" to Capt. House and the State Patrol for implementing the change. We also wish to thank State Senator Larry Faulk for his interest in the problem.

As a result, the community will be better served.

Lions Blood Bank

The Spanaway Lions, Spanaway's live-wire service club, have rendered outstanding service to the community since this writer attended their charter banquet a little more than one year ago.

Probably the most noteworthy among a long list of successful and worthwhile projects is the maintenance of a blood donor program at the Pierce County Blood Bank. The Lion's account is available to members and residents, and already has been instrumental in helping save lives.

For those who enjoy helping their fellow man and looking for a fine service club to join, may we recommend the Spanaway Lions?

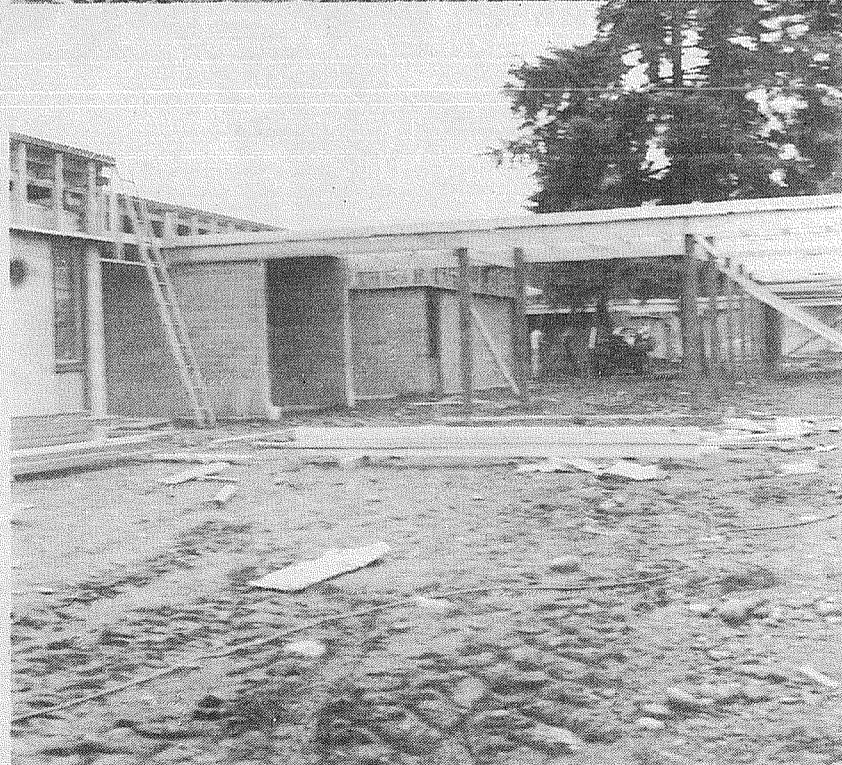
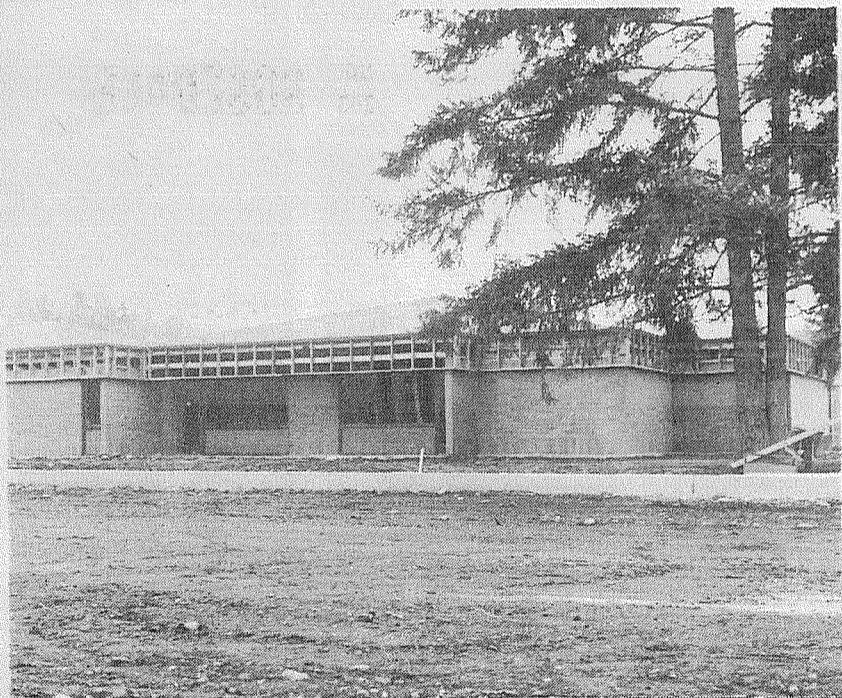
F. P. Levy Request Reasonable

In asking district voters for an approximate 5 mill increase over the levy approved last year, the Franklin Pierce School Board is attempting to meet the problems of growth, low valuation, and inflation.

If district property owners think this levy increase is high, we invite them to examine these comparative figures. During the period of 1965 to 1968, Clover Park had an increase in M & O levies of 25%, Auburn 174%, Kent 161%, Highline 106%, Puyallup 94%, Federal Way 67%, Renton 19%, and Franklin Pierce 16%. The proposed 1969 levy would raise Franklin Pierce to 37%.

Comparing levy dollar amount per student in 1968, Kent received \$264 per student, Auburn \$262, Renton \$169, Highline \$163, Clover Park \$105, Puyallup \$103, Federal Way \$90. Franklin Pierce was low among all Puget Sound League District Schools with a levy amount per student of \$78.

With the cost of educational services sharply increasing, we recommend support of schools in the November General Election.



NOVEMBER OPENING — Chester H. Thompson Elementary School, in the Bethel District, is still predicted to have a November 15th opening date, according to architects Jacobson and Wall. Students slated to attend the new school are presently double-shifting at Spanaway Elementary School.

— TJ Staff Photo

Junior High To Celebrate Back To School

All the Moms and Dads of Bethel Junior High School are expected to attend classes Monday night celebrating the school's 10th annual "Back To School Night," according to Sam Greene, principal.

Starting at 7:30 p.m. parents will be given their daughter/sons daily schedule and will go through an "abbreviated school day," visiting the student's classrooms and teachers.

At the end of the school day, refreshments will be served in the multipurpose room.

All parents are urged to attend.

Span Lions Donate Blood

A delegation of Spanaway Lions donated blood to the club's account Saturday, to be used for members and residents of the Spanaway area.

Lion Skip Reeves was awarded a "Gallonaire's Pin" for his donations by the Pierce County Blood Bank, where the donations were made. The Lion's next meeting is slated for October 25.

PDA Slates First Meet


Parkland Development Association, under presidency of Curt Roberts, will host the first meeting of the year at 8 p.m. Monday, October 14th in the Parkland Light and Water building.

"New Projects for the Year" will be the main item on the agenda, according to officials of the club. All those interested in the area are urged to attend.

Pierce County Herald and
The TIMES JOURNAL

Published weekly at 14620 Pacific Ave., Parkland 98444 and delivered by U.S. Mail and carrier to subscribers. Publishers: Pierce County Publishers, Inc.
Managing Editor Em Matson
News Editor Sandy Ingram
Sports Editor Bob Ingram

Subscriptions \$3.50 per year, \$1.80 six months, or 30c monthly by carrier. News stand price 10c copy.
Qualified as a legal publication under Chapter 213 of the Legislature Acts of the 1941 regular session of the State of Washington
Second Class Postage Paid at Tacoma, Wash.

October 10, 1968  Vol. 24 No. 41



LAY-A-WAY YOUR NEW HEAD SKIS TODAY 

Open Evenings Til 9 p.m.

PARKLAND Sports CENTER

1122 PACIFIC AVENUE TACOMA, WASHINGTON PHONE LE 7-5677

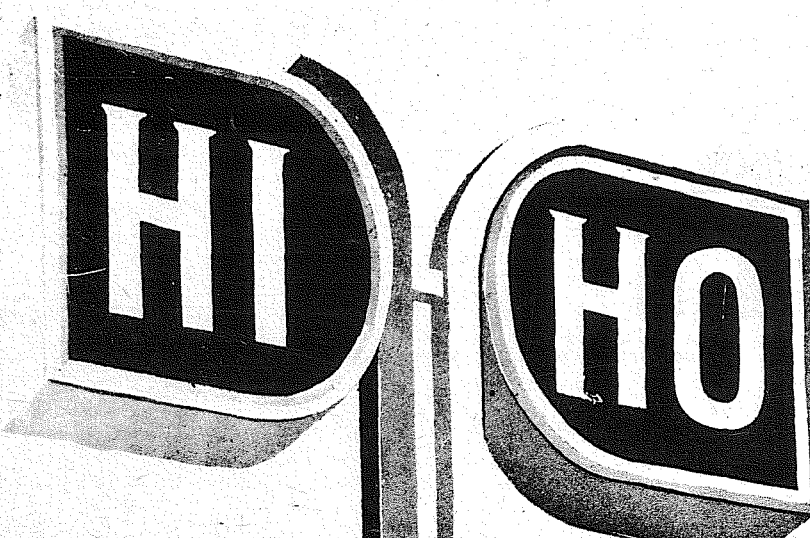
PRICES EFFECTIVE NOW THROUGH OCT. 12th

HYGRADE
FIESTA
BACON
59¢
LB.

REG. 1.75
VO⁵
HAIR COLOR LOTION
49¢

LEG O' LAMB
HALF OR WHOLE
79¢
LB.

REG. 1.19
PALMOLIVE
RAPID SHAVE
69¢



TURKEY HEADQUARTERS NORBEST GRADE "A" LB. 27¢
SMOKED PICNICS OLD FASHIONED LB. 37¢
SLICED PICNICS DEEP SMOKED LB. 45¢
PORK SPARERIBS LIGHT & LEAN LB. 59¢
BOLOGNA OSCAR MAYER REG. OR ALL BEEF ½ LB. PKG. 39¢

REG. 1.59 **CONTAC** COLD CAPSULES 99¢
REG. 1.89 **VO⁵** SHAMPOO 69¢
REG. 1.07 **SUDDEN BEAUTY** HAIR SPRAY 59¢
FIRST QUALITY **NYLONS** 3 PAIR 77¢

*These Specials In Honor Of The Grand Opening
At The New 64th And Yakima Branch Of The
Hi-Ho Shopping Center In Tacoma*

NO. 303 **ROSEDALE**
CUT GREEN BEANS
CREAM CORN
WHOLE KERNEL CORN
PEAS
TOMATOES
7/1⁰⁰

BEEF KIDNEYS
29¢
LB.
FRUIT BARS
3 DOZ. 1⁰⁰
BANANA CAKE
1²⁹

MD TOILET TISSUE 4 ROLL PKG. 3/1⁰⁰
CAMPBELL'S SOUP EACH 7/1⁰⁰

EXTRA FANCY RED OR GOLDEN **DELICIOUS APPLES** 4 LBS. \$1
TURNIPS, RUTABAGAS, CARROTS LB. 10¢

VALLEY GROWN
HUBBARD
SQUASH
WHOLE 1¢
LB.
CUT SQUASH 2¢
LB.

HI-HO SHOPPING CENTER
OPEN
7-DAYS-A-WEEK 8 A.M. - 11 P.M.
Puyallup *Tacoma*
RIVER ROAD & MERIDIAN 64th & YAKIMA

NO. 2 1/2 TINS
HUNTS
YELLOW CLING
PEACHES
4/1⁰⁰
LIMIT 4

WSP Endorses Initiative 242

Initiative No. 242, the implied consent measure, will provide new safe guards for motorists if approved by

voters on November 5 according to Colonel O. C. Furseth, Assistant Chief of the Washington State Patrol. "Under our present laws, when an officer arrests a driver on a charge of driving while intoxicated — and

the suspect refuses to take a Breathalyzer test — the officer's testimony in court is based entirely on his personal observations of how the defendant's car was being driven or how the driver conducted himself at the

scene of an incident." In a few instances, the defense has been that the person was ill, or injured, thus causing the unusual behavior. Colonel Furseth said it is not always possible to pin-

point the level of intoxication by just observing a driver's behavior. "He may appear more intoxicated than he really is, or he may temporarily display more control than he actually has," Furseth said.

"The Breathalyzer test gives scientific, objective evidence," he said. Colonel Furseth cited a case in which a man was jailed on a charge of driving while intoxicated — all symptoms pointed to intoxication. Fortunately, however, it was discovered in time that the man was a diabetic, and was given the necessary medical help. The symptoms of diabetes and intoxication are often-times identical.

"Under the proposed implied consent initiative, the truth could have been determined at once, and the man given prompt medical attention," Colonel Furseth said.

There are more than 60 pathological conditions in which the symptoms resemble intoxication. Oftentimes, the best trained personnel are unable to determine the difference. This makes the use of the Breathalyzer, as stated under Initiative No. 242, a very important tool of the police officer; and a real safe guard for motorists.

FACT:

Initiative 32 is a proposed law. It would replace open competitive bidding with a system of restricted bidding. For all practical purposes, only those who process logs in Washington could bid on this timber. The measure was REJECTED by the 1967 State Legislature.

FACT:

More than 7,543 people in this state have jobs because we export logs to overseas nations. These jobs make the difference between economic health and depression in much of Washington State.

FACT:

Initiative 32 would permit the **TIMBER BARONS IN THIS STATE** to sell their logs at a **HIGH EXPORT PRICE**, but it prohibits the State from selling State-owned logs for export overseas. These same **TIMBER BARONS** can then buy state timber to meet their own domestic needs at **LOWER PRICES** without competition from overseas buyers. Guess who will benefit most when the owners of private timber lands have a **MONOPOLY** on the sale of logs to overseas nations.

FACT:

Initiative 32 would create a need for millions in new taxes to replace revenue lost to school and county road funds. When state timber is sold the money now goes into these two funds . . . the higher the price received, the more money available for schools and county roads.

FACT:

The Washington State Labor Council **REFUSED** to endorse Initiative 32.

FACT:

The Washington State Grange **REFUSED** to endorse Initiative 32.

FACT:

The Washington State Legislature **REFUSED** to endorse Initiative 32.

FACT:

The Washington State Democratic Party by platform resolution **IS ON RECORD OPPOSED** to Initiative 32.

FACT:

The export of logs from public lands constitutes about 8% of the total logs exported. If the export of logs is so bad, then why is a public log more dangerous to the economy than a privately owned log? The fact is the Timber Barons, crying crocodile tears over these sales, really want a monopoly on the sale of logs for **EXPORT AT HIGHER PRICES**.

PROOF:

Research done by the State Department of Natural Resources and other government agencies establishes these **FACTS**: 1. We are not overcutting our forests; 2. We have ample timber resources to meet all of our domestic and export needs; 3. We're growing timber faster than we're using it; 4. Employment in the forest products industries of Washington has grown from 41,600 in 1961 (the year log exporting began) to 44,000 in 1967, with employment UP during the first two quarters of this year over 1967. The export of logs overseas has created a new labor market which employs 7,543 people in this state; 5. Profits are up! Profit increases of over 50% are reported for some **BIG** timber concerns this year, resulting in the **HIGHEST EVER INCOME TO THESE FOREST INDUSTRY GIANTS**; 6. Production is up! U. S. Government figures show lumber and plywood production is also on the increase. Increased production and **INCREASED PROFITS** are the name of the game for the **TIMBER BARONS** supporting Initiative 32. **THESE ARE THE TRUE FACTS. EACH ONE HAS BEEN PROVEN.**



IS BAD FOR YOU

That's What These Highly Respected Organizations Believe

- LEAGUE OF WOMEN VOTERS OF WASHINGTON
- COUNCIL OF THE PACIFIC NORTHWEST LOG EXPORTING INDUSTRIES
- INTERNATIONAL LONGSHOREMEN'S AND WAREHOUSEMEN'S UNION
- LOG TRUCKERS CONFERENCE — WASHINGTON TRUCKING ASSNS., INC.
- WASHINGTON EDUCATION ASSOCIATION
- WASHINGTON STATE SCHOOL DIRECTORS' ASSOCIATION
- WASHINGTON PUBLIC PORTS ASSOCIATION
- WASHINGTON ASSOCIATION OF STEVEDORES
- WASHINGTON FARM FORESTRY ASSOCIATION
- WASHINGTON ASSOCIATION OF WHEAT GROWERS

PAID FOR BY RESOURCE AND TRADE COMMITTEE AGAINST INITIATIVE 32
WM. F. DEVIN AND MRS. JAMES E. PECK, CO-CHAIRMEN, P. O. BOX 303, OLYMPIA

Men In Service

Master Sergeant Lauren J. Webber, son of Mr. and Mrs. Ernest J. Webber of 212 S. 117th, Parkland, has been assigned to the U.S. Air Force "Hurricane Hunters" at Ramey AFB, P.R.

Sergeant Webber is a maintenance scheduling superintendent in the 53rd Weather Reconnaissance Squadron that flies the WC-130 Hercules and WB-47 Stratojet.

The squadron provides vital weather warnings after entering the hazardous weather to seek the "eye" of each storm. Being stationed in Puerto Rico enables the squadron to search out developing storms more than 2,000 miles away.

The squadron also supports aerial refuelings, Air Force Missile Test Center shots and atmospheric sampling missions for the Atomic Energy Commission and other government agencies.

He is a graduate of Lincoln High School, Tacoma, Wash.

Sergeant Webber is married to the former Margaret R. Bahr.

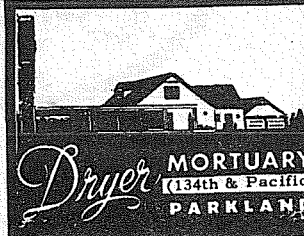


The Country Parson



"It's surprising how many folks regard as good behavior that which I believe to be bad."

Copyright, by Frank A. Clark



FP Night School Schedules Set

The Fall Night School classes are starting in the Franklin Pierce School District. More than 50 different classes now being offered.

Adults interested in Business classes may still enroll in a Basic course in Data Process. Electric Typewriting, Beginning Accounting & Bookkeeping, Business Law, Business Machines, Office Practice, Investments, and How to Conduct a Meeting. Most of these classes meet Monday and Wednesday evenings.

The Basic Course in Data Process meets Monday and Wednesday nights, 7 to 9:30 p.m., for 10 weeks at the Franklin Pierce High School. The cost is \$5.00. Mr. Gerald Russell, the instructor, is new to the district and will be responsible for developing both the high school day program and the Adult Education Data Process program.

For further information, call the Franklin Pierce Adult Education Office, LE 7-0211, ext. 214.

"Hair Piece and Wig Clinic" is one of the new popular classes being offered this fall through the Franklin Pierce Adult Education Program, said Howard Motteler, the Director. The Wig Clinic meets Wednesday nights, 7 to 9:30 p.m., at the Franklin Pierce High School.

"Stretch Fabrics Sewing"

— the instruction in the special techniques of sewing stretch materials — is another new class which meets Thursday nights, 7 to 10:00 p.m., at Keithley Junior High School.

Other classes include: Interior Decorating, Landscape Gardening, Cake Decorating, Beginning and Intermediate Sewing, Tailoring, and Bishop Fitting & Pattern Adjustment.

For further information, call Franklin Pierce Adult Education Office, LE 7-0211, ext. 214.

PC 4-H Clubs Observe Week

Pierce County 4-H members and leaders are observing National 4-H Club Week, October 6-12. During this time they would like to invite other youth and adults to share in their fun and activities for the 1969 club year.

There are some 48 different projects which boys and girls, 9 to 19 years of age, can take. Examples are: electricity, small engine, forestry, automotive, entomology, dog, foods, clothing and many others.

Activities include a week's camp at Shelton, State 4-H Conference in Pullman, exhibiting projects at community and County Fairs, attending tours, judging, and demonstrating skills learned to other 4-H members and

Parkland Moose Lodge

Officers of the Newly Instituted Parkland Moose Lodge 1814 will hold an Officers Meeting at 8 pm Oct. 9th at the Residence of Morris Silver 1220 South 108th St.

All members are also invited to attend. The next Regular meeting of the Parkland Moose will be held at 8 pm Oct. 16th in the Banquet Room of the Villa Bowl.

Governor Robert Kennedy of the Newly Chartered Parkland Moose Lodge 1814 has set Oct. 19th as the date for the Inaugural Charter Dance to be held at the Banquet Room of the Villa Bowl commencing at 9:30 pm.

All Moose members and guests are cordially invited to attend. Further information may be obtained by contacting the Parkland Moose Lodge Secretary Steve Smith at BR 2-8696.

leaders.

Our basic philosophy is to provide a program that can contribute to the mental, physical, moral and social development of boys and girls.

Further information about the 4-H program may be obtained by contacting the county Extension office.



IN FORCE — Fire Departments turned out in force Monday morning to parade for the opening of Fire Prevention Week. Chief Ray Hixon, Parkland Fire Department, led the Parkland entry. Other fire departments participating in this area included, Spanaway, Midland, Summit, and McChord Air Force Base.

Art Display At PLU Mon.

London Grafica Arts will present a collection of original graphics at an exhibition and sale in the Pacific Lutheran University Student Union Monday, Oct. 14, from 10

a.m. to 7 p.m.

The collection of prints is taken on a tour of colleges and universities throughout the United States to enable students, faculty and collectors to view works usually seen only in major galleries or museums.

A wide range of the history of prints is covered from 16th century manuscript pages; old masters, such as Rembrandt and Durer; 18th, 19th and 20th century examples; modern masters — Picasso, Braque, Chagall; and a wide range of superb contemporary prints commissioned especially by London Arts.

All the prints are original, having been printed

directly from the plate or stone that the artist himself has done. They are on sale at prices ranging from \$10 to \$3,000.

Many of the prices reflect the results of a recent survey taken by the New York Times which showed that prices paid for old master prints by Rembrandt, Durer, Bruegel and Goya have appreciated 1400 to 2400 per cent over the past 15 years. Similar increases have been recorded for many modern masters. According to the Times, however, the ceiling has by no means been reached.

SAVE MONEY ON YOUR NEW CAR



Are you a careful new car shopper? A person who carefully checks out every dealer.....and every deal.....before you buy?

Well, you should be. And there's nothing wrong with that. Your Puyallup-area new car dealers invite you and your family to stop by this week and look at all the wonderful new car models they have to offer. We guarantee you won't find a better deal anywhere else.

And we guarantee, too, that you can't find lower new car financing anywhere in Pierce County than right here at Citizens. Chances are.....in fact.....that we can save you money on your new car financing.

Figure it out for yourself. With one of our 4½% new car loans you pay only \$4.50 per \$100 per year on the balance you owe. But don't take our word for it. Check around yourself.

Then stop by the nearest Citizens office. You'll always be glad you did!

Citizens STATE BANK

MEMBER
FEDERAL
DEPOSIT
INSURANCE
CORPORATION



- ★ MAIN OFFICE - PUYALLUP
- ★ SUMNER
- ★ SUMMIT VIEW
- ★ EDGEWOOD - MILTON
- ★ WILLOWS



U. S. Air Force Master Sergeant Donald J. Reber, son of Mr. and Mrs. Joseph J. Reber, 24817 51st Ave., E., Graham, has been decorated with the Bronze Star Medal at Ramstein AB, Germany, for meritorious service while engaged in military operations against Viet Cong forces.

Sergeant Reber was cited for his performance as a weapons technician at Phu Cat AB, Vietnam. He is now at Ramstein in a unit of the U. S. Air Forces in Europe. The sergeant is a 1948 graduate of Hancock (Minn.) High School.

He is a veteran of the Korean War. His wife, Nancy, is the daughter of Huston D. Garoutte Sr., Rt. 1, Turner, Ore. Major General Rollen H. Anthis, commander of the Seventeenth Air Force, made the presentation.

(U.S. AIR FORCE PHOTO)

Angelo's PIZZA HOUSE

ORDERS TO GO

Featuring top sirloin and American dishes, spaghetti, rigatoni, meat balls, sausage, ravioli, beer and wine.

Choice of Pizzas

- | | |
|-----------------|------------|
| cheese & tomato | bacon |
| anchovie | peppers |
| mushroom | olive |
| Italian sausage | hamburgers |
| pepperoni | ham |
| tuna | salami |
| | onion |



LE 7-7233
14102 PACIFIC AVE.
PARKLAND



CALL AHEAD, IT'S
PIPING HOT
ALL THE WAY HOME

PICK UP A BOX, PAIL, BUCKET,
OR A BARREL

W.H.S., F.P. Sophs Clash in District Showdown

The TIMES JOURNAL

SPORTS

Braves Warriors Suffer Beat Cards Setback

By Bill Hallman

Led by the running of junior fullback Scott Hansen, the Sumner Spartans downed the Bethel Braves 26-12.

Walt Houston ran the opening kickoff back 37 yards for the Braves. Eleven plays later, Chuck Bullion scored from 4 yards out, but his run for the extra point failed and the Braves had an early 6-0 lead.

The lead soon disappeared as Sumner ran up a 26-6 half-time lead. Bethel played on even terms with Sumner throughout the second half and scored on a blocked punt which Larry Loete recovered and ran in from the 2 yard line. Steve Sabalaska's kick was blocked and that ended the scoring for both teams.

"Failure to execute fundamentals cost us our hopes of victory," Bethel head coach Ed Tingstad stated after the game, adding "I was pleased that our kids did not give up but played Sumner on even terms during the second half."

High tacklers for the Braves were Dale Failey with 15, Chuck Bullion 9, and Jack Doyle 9.

Sumner chalked up 13 first downs to Bethel's 10 and ripped off 460 yards rushing to Bethel's 150. Bethel led in the passing department by gaining 21 yards in the air to Sumner's 12.

The Braves will meet the Curtis Vikings on Curtis's home field Friday, October 11.

Somthin' Old,
Somthin' NEW,
Somthin' For Me,
Somthin' For YOU . . .
In Classified Ads —

P6827



symbol of
"hometown
service"
wherever you
drive.

Al Langseth
9920 Pacific
LE 1-1800



STATE FARM
Mutual Automobile Insurance Co.
Home Office: Bloomington, Illinois
State Farm is all you need
to know about insurance.

Lutes, C.O.I. Tie

The running of sophomore halfback Dave Halstead and the defensive prowess of linebackers Fred Minch and Bill Tye provided the stand-out performances as Pacific Lutheran University's Knights broke their losing streak with a 20-20 tie against College of Idaho at Caldwell Saturday.

The return of sophomore Hans Lindstrom to top form was another high point of the contest. Lindstrom carried nine times for 33 yards; several of his runs came at critical moments during the three PLU touchdown drives. He also grabbed three passes for 25 yards.

Halstead was the workhorse with 21 carries for 118 yards and caught one pass for 14 yards. He contributed 74 yards and the pass reception during the second half as College of Idaho came from behind threatening to pull the ball game out.

Minch and Tye, both solid performers all year, contributed 20 tackles and seven assists between them.

The Knights got off to a fiery start in the first quarter, building a 13-0 lead in their Northwest Conference opener, but the Coyotes came back following the first of four pass interceptions to score and go to the locker room at half-time with the score 13-7.

The Knights missed two scoring opportunities in the final quarter and had to settle for the tie.

Coach Roy Carlson is still seeking that winning combination, and his quarterback will be the key to that combo. Both Bob Lovell, Saturday's signal-caller, and Rod Bolek have been brilliant at times, but 10 intercepted passes in the first three games have put the damper on a number of promising scoring drives.

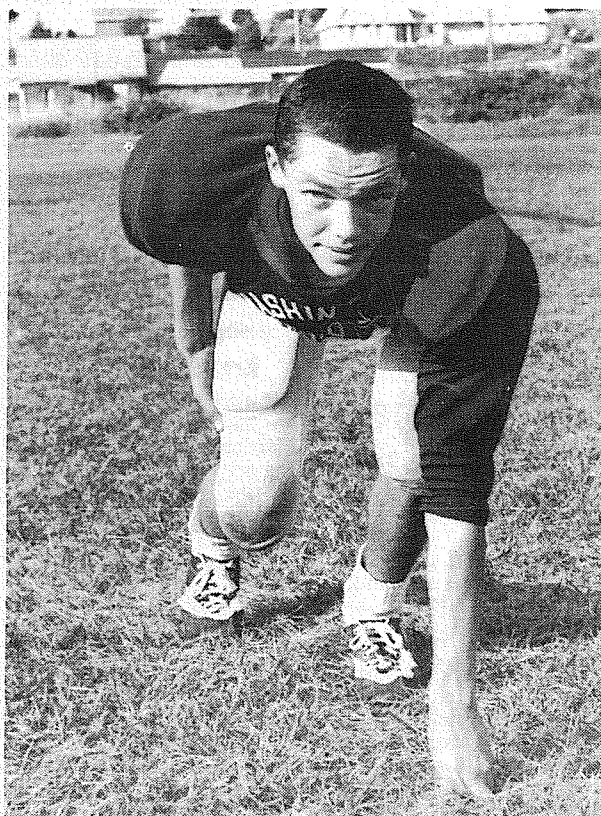
Next Saturday the Lutes face a strong Lewis & Clark team, seeking their first win. Lewis & Clark won their first two games over Eastern Oregon 47-6 and Oregon College 33-0 before dropping a hard-fought decision to Linfield this Saturday 17-7.

Carlson again felt fortunate that there were no injuries to his small squad Saturday. "But we'll have to work hard," he said following the Coyote contest. "When you want to win you have to work very hard."

Another pitcher — Jim Ollom could be up for grabs at Minnesota, as could Bob Miller (3.88), and Chicago's Don McMahon, Bob Priddy (3.06), and even ageless Hoyt Wilhelm (1.50) might be vulnerable.

The California Angels' Minnie Rojas is another possibility as are John Wyatt and Jon Warden, Detroit; Jim Palmer, Baltimore; Fred Talbot, Thad Tillotson, and Al Downing, New York; Darrell Brandon, Lee Stange, and Galen Cisco, Boston; and Frank Bertaina, Washington.

As the old saying goes — "what's in a name." In the case of these and other American League draftables there could be a clue to Seattle's future success in the American League. We'll know on October 15 in Boston when the A.L. holds the expansion draft. That's the date we call E-Day and the day that will see the fruition and result of hours, days, and weeks of intensive study and preparation.



BOB SOUTHWELL, Patriot end, who has earned 5 stars for his helmet for outstanding play so far this season, will be a probable starter on the Washington High School eleven when they meet Franklin Pierce sophomores Thursday night at Pierce stadium with kick off time slated for 7:30 p.m. Patriot coach Tom Gilmer awards his players a star for their game helmet based on their efforts.

W.H.S. Harriers Place

Washington High School cross country runners captured second place in a three way meet with Franklin Pierce and Clover Park on Friday, October 4 at the Western State Hospital grounds.

Final tabulations gave Franklin Pierce Jayvees first place with 15 points, Washington second with 56, and Clover Park third with 93. In cross country the low

score is the winner.

First runner to cross the finish line was Cardinal Mark Tschabold, who was followed by 5 team mates to sweep the first 6 places for Pierce. Tschabold's winning time was 12:26 for the 2.2 mile course.

Washington runners, all sophomores who are showing improvement with each meet, placed four men ahead of the first Clover Park finisher. Patriots Gary Arndt, Steve Riley, Ed Denmark, Jack Cinotto, and John Lincoln scored points as Washington defeated Clover Park 18-42 in the dual meet.

The Patriots face Clover Park, Jefferson, and John Rogers in a 4 way duel Friday, October 11 at the Western State Course.

Eatonville Downs Yelm

Eatonville High School rolled up a total of 341 yards and scored 7 touchdowns to win over Yelm 46-14 in an impressive East Central League victory.

The win deadlocked the Cruisers in a three-way tie with Orting and Tenino for the league lead. Don Daw-

kins streaked 67 yards to start the scoring in the first quarter. He made his second touchdown during the game late in the third quarter on a 2 yard plunge.

Other Cruisers carrying the ball to pay dirt were Bennett (twice), Hermson, Anderson, and Redic. Rabb and Butler scored for Yelm.

Marine Band At PLU

"The Red-Coats are coming!"

You've seen the slogan on pins, posters, car stickers and even as space-fillers. If this were 1775, the announcement would be ominous as it would herald the militant approach of the British troops.

Now it is good news and means that the red-coated United States Marine Band will arrive at Pacific Lutheran University Memorial Gymnasium on Oct. 14 under the auspices of the Lute Club as a part of the Presidentially approved tour, for the more peaceful purpose of presenting two thrilling

concerts.

Matinee and evening concerts will be presented at Memorial Gymnasium with musical works by the world's finest composers, stirring marches, and solo performances which have brought the Marine Band acclaim from visiting dignitaries of almost every country in the world.

Under the directorship of Lt. Col. Albert Schoepper, the Marine Band is known to millions of Americans through its annual tours, its frequent radio and television appearances and its concert series in the Nation's Capital. The annual tours originated under the direction of John Philip Sousa in 1891 and have afforded Americans living outside the Washington area an oppor-

A cross-district rivalry will make its debut Thursday night at Franklin Pierce stadium when Washington High School meets Franklin Pierce in a sophomore football game.

Washington, which has only sophomores in the school at this point, will not field a varsity team until next year making the first meeting between the schools a sophomore contest. So far the Patriots are undefeated in three outings. Last week they squelched Lakes 19-0.

The Cardinal soph team has one win against two defeats. They downed Clover Park 13-7, and have been beaten by Puyallup and Federal Way.

In the Washington-Lakes contest, the Patriots had little trouble with the Lancers. The first Washington score came when speedster Steve Butt scampered 55 yards to pay dirt in the first quarter.

After taking the ball on their own 42 yard line early in the second quarter, the Patriots drove to the Lancer 39 yard stripe in 4 plays. On the next play, Hans Woldseth cut loose with a 39 yard pass to Jim Sharp for a touchdown. Dana LeDuc kicked the try for point.

Final Patriot tally came in the 3rd Quarter after a Lakes pass was intercepted on the Lancer 18 yard line. Wayne Hammer took the ball to the Lancer 2, and plunged over to score on the next play.

Coach Tom Gilmer played his reserves for the balance of the game. Hans Woldseth completed 5 for 9 passes, and Steve Butt chalked up 86 yards in 5 carries.

Hunters Advised To Watch Hearts

"Take as good care of your heart as you do of your gun!" Pierce County Heart Association advises hunters.

At this season when the family deer-stalker is preparing to go into the woods, the Heart Association suggests that a visit to the family physician is a good safety precaution. Hunters who are middle-aged or older should follow their doctors' advice on altitude, climbing and weight of pack, according to the Heart Association.

General heart safety rules for hunters suggested by the Heart Association are:

See your doctor first. If you are taking medication, take two supplies on your trip carrying one with you and leaving the other at camp. Tell your companions where it is and how you take it.

Never Hunt Alone! Know where the nearest phone, ranger station or settlement is before you go into the woods.

Dress sensibly, wearing warm yet light-weight clothing.

Don't try to haul an animal out of the woods alone. Get help.

Work up your exercise tolerance gradually before the season opens.

tunity to see and hear the world-famous band.

Given the title "The President's Own" by Thomas Jefferson, the Marine Band has played for every inauguration since. It was created in 1798 by an Act of Congress.

Smith Built

CAMPERS & CANOPIES

C
U
S
T
O
M

Q
U
A
L
I
T
Y

14606 Pacific Ave.

Phone LE 7-8022 Tacoma, Wash.

Pierce County's Only
Professional
**AMBULANCE
SERVICE**
Parkland Ambulance
and
Lakewood-Pacific
JU 4-3344 LE 7-3322

PSNB Names Branch Boss

Dennis Daugs, assistant cashier, branch banking department, Puget Sound National Bank, has been appointed manager of the bank's new Spanaway branch at 176th & Pacific Avenue, according to bank president, A. E. Saunders.

The new bank is PSNB's 22nd branch. Scheduled to open Saturday, October 19, it will serve residents and businesses in the Spanaway and McChord Air Force Base areas.

Daugs came to the bank in 1960 as a part-time employee while attending Pacific Lutheran University, where he received a degree in Business Administration. Since that time he has worked in the bank's operations, personal loans and

Rescue Team Works Fast

Volunteer groups making up the Search and Rescue Council were pressed into action by Sheriff's Sgt. Bud Edmunds to help find a Rainier School youth reported missing in a heavily wooded area near Buckley.

After receiving the missing report at 5:30 p.m., Edmunds immediately notified the Council made up of volunteer groups willing to aid the Sheriff's Department during such emergencies.

By approximately 9 p.m. a total of 75 volunteers were working the area. The youth was located at 11:25 p.m. by a German Shepherd search dog team, deep in a bramble thicket. He was tired and hungry, but otherwise in good condition.

Working out of a base of operations set up near the Rainier School were 6 German Shepherd search dog teams, 9 men on trail bikes from Tacoma Trailriders, 16 Explorer Scouts and advisors, 4 Webfooter jeeps, 16 members of Tacoma Citizen's Band Radio Association, 4 men from Mountain Rescue, and personnel from the Rainier School.



ALMOST THERE — Puget Sound's new Spanaway branch at 176th and Pacific Avenue is near completion. Grand opening of the bank is slated for October 19th, according to officials of the bank.

credit departments. He has also served as a note teller at the South Tacoma Way and Parkland branches, and was assistant branch manager at the Lincoln branch. He was elected assistant

cashier in 1967, and came into the branch banking department in 1968.

Daugs lives at 14302 6th Avenue South, with his wife, Jeanette, and three children.

— TJ Staff Photo

Gary Peterson, a mathematics instructor at Pacific Lutheran University, departs this week for Ole Delhi, India, where he will teach geometry and algebra to Indian secondary school teachers.

Grangers Set Pot Luck Dinner

Collins Grange Booster night will start with a Pot Luck supper, Thursday night, Oct. 10th, at 6:30 in the Grange Hall, 3404 120th St. East.

The Lecturer, Clara Heindselman, has planned a very special program, with dancing and instrumental num-

bers. Lee Biggs the Pomona Master will show slide and give a very important message to all concerning the HJR 1 bill that is of interest to us all if we are to preserve our "Green Belt and recreation areas", from the urban sprawl. Other Grangers are invited to take part in this program.

CENTS Make Dollars

when invested in Classified Ads. Place your ad by telephoning now.

INSURANCE

Military - Home - Business

LE 7-4904

Auto Fire Life Bonds

IRENE CLEMENS

Agency — Parkland
10329 Pacific Ave.

SELLING OUT!

\$50,000 Inventory of fine furniture

MUST BE SOLD!

Now you can own the furniture you've always wanted at a fraction of its original retail price, and on your terms.

No Reasonable Offer Refused

Our 4 Story Warehouse Must Be Cleared!

- ★ Sofas
- ★ Mattresses
- ★ Dining Sets

Recliners

Choose from stock of 250 and save up to 50%

\$44⁰⁰

Many Styles and colors Similar To Illustration Prices Start at

Rare Opportunity — On a sale like this we prefer cash, but contract terms can be arranged on all liquidated merchandise.

DISCOUNT FURNITURE CENTER

13014 PACIFIC AVENUE

SEE & HEAR



Monday, Oct. 14
Memorial Gymnasium
Pacific Lutheran Univ.

Matinee - 1:30 p.m.
 School Children . . . \$.50
 Adults 1.00

Evening - 8 p.m.
 Reserved Section . . \$2.50
 General Admission . . 2.00
 Students 1.00

Tickets on sale at Lakewood Record & Book Shop, Ted Brown Music Co., PLU (LE 1-6900)

THE UNITED STATES MARINE BAND

LT. COL. ALBERT SCHOEPPER, Director

Use Your Bank Card
Considered same as cash.

HORSEMEN'S NEWS

Over The Fence Rail

By Ernie & Paulette Cook

The Tacoma Unit No. 1, of Washington State Horsemen, has decided to postpone the

performance division of the Equestrian Team Benefit Show which was to be held on the 20th. of October at the Tacoma Unit Sports arena. The games which were scheduled for Saturday, October 19 will still be held however. Judge for the games division will be Chet Kelly.

Games to be run included; Keyhole, Figure 8 Stake, individual Polebending Jr. and Sr., Texas Barrels Jr. and Sr. Individual Scurry Jr. and Sr., Rescue Race, Three Barrel Flag, Baton Race, Canadian Flag, Hangman, Wheelbarrow Race, Bareback Relay, and Water Race.

There will be United States Equestrian Team souvenirs sold in the concession arena of the area.

The Puget Sound Zone awards banquet was held Saturday, October 5, at Anton's Restaurant in Puyallup.

Awards in the games division were as follows: Individual Scurry, 1. Ward Bradley, 2. Marlene Medley, 3. Cindy Loveland, 4. Ernie Cook, 5. Marge Curbow.

Figure 8 Stake Race, 1. Marlene Medley, 2. Val Merrill, 3. John Schill, 4. Ward

Bradley, 5. Marge Curbow.

Individual Flag Race: 1. Pat Morrison, 2. Marlene Medley, 3. Marge Winjum.

Individual Poles Jr.: 1. Tim Brown, 2. Marlene Medley, 3. Cindy Loveland, 4. Diane Cook.

Individual Poles Sr.: 1. Ward Bradley, 2. John Schill, 3. Val Merrill, 4. Marge Curbow, 5. Liz Waller.

Keyhole Race: 1. Marlene Medley, 2. Ward Bradley, 3. Cindy Loveland and 4. Marge Curbow and 5. Liz Waller, 6. Vince De Chau.

Texas Barrels Jr.: 1. Marlene Medley, 2. Cindy Loveland, 3. Cindy Johnson, 4. Tim Brown, 5. Diane Cook.

Texas Barrels Sr.: 1. Val Merrill, 2. Ward Bradley, 3. Joanne Lakey, 4. Ernie Cook, 5. Liz Waller.

Team Baton Race: 1. Ward Bradley, Marlene Medley, Marge Curbow, Vince De Chau, 2. Don Miskar, Pat Criss, Cindy Johnson Rosemary Vest, 3. Tim Brown, Liz Waller, Pam Curran, Cindy Loveland.

Bareback Relay: 1. Tim Brown, Liz Waller, Cindy Loveland, Pam Curran.

Hangman: 1. Tim Brown, Liz Waller.

The performance division awards for the Puget Sound Zone were as follows:

Equitation 10 and under: 1. Laura Stroh, 2. Kimberly Stecker, 3. Lori Ackely, 4. Melanie Gilbert, 5. Joleen Murray Equitation 11 thru 13: 1. Lenore Kalapus, 2. Peggy Harader, 3. Sherrie Sulenes.

Equitation 14 thru 17: 1. Vicki Eyestone, 2. Janet Johnson, 3. Betty Menge and Barb Menge, 4. Sharon Ackely.

Equitation Senior Amateur: 1. Carol Kalapus, 2. Joan Mitchell, 3. Sharon Perking.

Bareback Horsemanship 13 and under: 1. Sherrie Sulenes, 2. Lenore Kalapus.

Bareback Horsemanship 17 and under: 1. Vicki Eyestone, 2. Janet Johnson, 3. Barb Menge, 4. Karen Callies.

Hunt Seat Equitation 10 and under, and 11 thru 13: 1. Susie G. Dixon, 2. Kimberly Stecker, 3. Lenore Kalapus.

Hunt Seat Equitation 14 thru 17: 1. Janet Johnson, 2. Vicki Eyestone.

Fitting and Showing 17

and under: 1. Vicki Eyestone, 2. Peggy Harader, 3. Janet Johnson.

English Pleasure: 1. Nomad Rahas, 2. Jewel's Shower, 3. Gin Din, 4. Just Plain Pete.

Western Pleasure 13 and under: 1. Jade Island, 2. Mica's Chip, 3. Oklas Harland, 4. Batches Rio Grande.

Western Pleasure 14 thru 17: 1. Gin Din, 2. Showers Jewel, 3. Nomad Rahas, 4. Aint that something, 5. Brake Away Coke and Preview Isle.

Western Pleasure Sr.: 1. Beetles Fright, 2. Pete.

Trail Horse Jr.: 1. Gin Din, 2. Beetles Fright and Showers Jewel, 3. Okla Harlan, 4. Buddy.

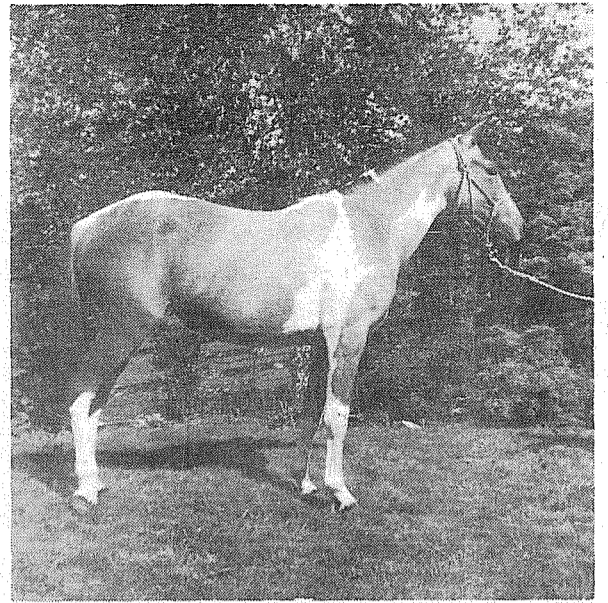
Trail Horse Sr.: 1. Mica's Chip, 2. Bimbo Echols and, 3. Batches Bio Grande, 4. Pete.

Stock Horse Open: Gin Din. Stock Horse Amateur: 1. Mica's Chip, 2. Gin Din, 3. Bimbo Echols.

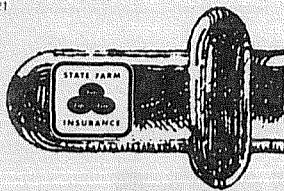
Color Class: Gin Din.

Western Pairs: 1. Mr. Tahome, 2. Aint that something, 3. Pete, 4. Preview Isle.

Quarter Horse Pleasure: 1. Aint that something, 2. Jade Island, 3. Mr. Tahoma.



TROPY and award system for high point Paint Horses will be discussed at the Oct. 13 meeting of the Washington State Paint Horse Association at Graham. Dee Parham will be guest speaker.



WORN PROUDLY
by some 10,000,000 cars coast-to-coast!

Does your car have one? Call:

Bill McMonnies
16607 Pacific Ave.
Spanaway -
LE 1-6833



STATE FARM
Mutual Automobile Insurance Co.
Home Office: Bloomington, Illinois

"Horsemen's Market Place"

Classified Directory

Board - Trainers - Breeders
Outfitters - Feed Dealers

A & W SEARS
BOARDING STABLES
Box Stalls, Pasture,
Riding Trails & Arena
\$45.00 per mo.
Pole Line & Taylor Rd. E.
Roy 843-2575

Outfitters
The Bunkhouse
COMPLETE LINE OF
TACK & WESTERN APPAREL
12605 Pacific Ave.
Tacoma, Wa. 98445
LE 7-5510

J. W. RANCH
Appaloosa Stud Service
Colts for Sale
Spanaway VI 7-2642

Vet Supplies
Complete supply animal health
products.
Franklin - Farnam - Anchor
at
ASHMORE'S
Spanaway Drugs
165th & Pacific Ave. LE 7-5993

CEDAR
LUMBER - FENCING
TACOMA
CEDAR PRODUCTS CO.
"At the Waterfall"
14512 Pacific LE 1-2559

Board-Train-Riding Lessons
English And Western
Jumping And Cutting
Quality Stallions At Stud
Quality Horses For Sale
Champions Made And Shown
To Your Specifications.
Visitors Always Welcome.
VI 7-2881
George Karr
Tacoma Unit #1 Stables
1 Mile East of Pacific on 176th

Everything
In Hardware For
The Horseman
Fencing tool
South End Hardware
S. 185th & Pacific Spanaway

Automobiles
STATION WAGONS, CARS
AND TRUCKS
"Come See Us"
Andy EGAN
RAMBLER
Fairness to All
8223 Pacific GR 4-9404

HORSES BOARDED & RENTED
B & B STABLE
on the Mountain Hiway
1 1/2 miles past Roy Y on left.
Open 10 a.m. to 5 p.m.
TUES. - SUN.
VI 7-7162

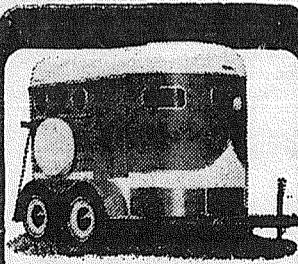
BOARDING-BREAKING-TRAINING-RACE TRACK-ARENA
MARS STABLES
BOB ROUNDY - TRAINER
TH 5-1231 11919 144th E.
Puyallup, Wash.

LE 1-4555
RODEO
CUSTOM SHOP
Dean & Dodie Vosburg
Complete Saddle
Repair Shop
Western Wear
English Tack & Togs
164th & Pacific
Spanaway, Wash.

Lariettes Plan Fun Night

The Tacoma Lariettes will finish their season with a Halloween Fun Night October 26 at the Tacoma Unit One Sports Arena, 1 mile east of Pacific on 176th.

The program will feature their fluorescent mounted drill.



AVAILABLE NOW...
New "Flying L" CHIEF!

The horse trailer with real class. It will grow on you—in about 5 seconds flat. It comes complete with all those desirable "Flying L" luxury features you have always wanted. See the "Big" name this year—Go "Flying L."

STOP IN TODAY.
ART'S AUTO MART
WA. 7-4900
33333 Pacific Hiway So.
Federal Way, Wash. 98002

Paint Horse Association To Meet

Washington Paint Horse Association members will meet October 13, 1:30 p.m. at Pioneer Park in Graham.

To be discussed will be the State high point trophy and award system. Guest speaker is noted trainer Dee Parham. For further information call Dan McMahn WA 7-2864, Howard Yeager WA 7-2807, or Bob Hoar BA 6-7919.

Tacoma Livestock Market Report

Sales Thursday October 3

1210 head of cattle, 15 hogs, 7 sheep, and 2 horses. Good Holstein springers — \$375.00 to \$415.00, market also active on good colored cows and open heifers.

Choice veal, \$38 to \$40 per CWT; heavy lean bulls, up to \$26.20 per CWT; best Holstein and Whiteface cows, \$18 to \$19.30 per CWT; good colored cows, \$15 to \$17 per CWT; shell cows, \$13 to \$15 per CWT; hvy Holstein steers (grass fat), \$22 to \$22.75 per CWT; hvy Holstein feeder steers, around \$21 per CWT; light Holstein steers, \$23 to \$25 per CWT; good light steer calves, \$29 to \$32.75 per CWT; good heifer calves, \$22 to \$25 per CWT; good hvy steer calves, \$26 to \$28.80 per CWT; medium steer calves, \$24 to \$25 per CWT; good yearling steers, around \$25 per CWT; medium yearling steers, \$23 to \$24 per CWT; baby calves, \$10 to \$37 per head; block hogs, \$20.50 to \$21 per CWT; good weaner pigs, \$13 to \$17 per head.

For Thursday, October 9 the Tacoma Livestock Market has a special consignment of 20 head of Holstein milk cows and some good feeder consignments along with the regular slaughter run. For information call Ed and Lee Flood, Auctioneers, Route 2 Box 2330, Spanaway, Wash. Phone VI 7-7567.

If This Is Your House...



You Are A Winner!
This Week's Jackpot is **\$9**

Each week our photographer takes a random picture of a home in the Times Journal coverage area. If you can identify the pictured home as yours, you can claim the jackpot.

Winners receive Times Journal Trade Bucks, redeemable in merchandise or cash at the following businesses.

ARMSTRONG'S USED CARS
11009 Pacific Ave.

PIERCE COUNTY REFUSE
13502 Pacific Ave.

ANDERSON LUMBER
9813 Pacific Ave.

LITTLE PARK CAFE
South 171st and Pacific Ave.

ELMHURST MUTUAL POWER & LIGHT CO.
120 So. 132nd

PARKLAND LIGHT & WATER CO.
404 Garfield St.

SQUIRE BARBER SHOP
132 162nd So.

E & S ELECTRIC
13621 Pacific Ave.

SHOP MART DEPT. STORE
133rd and Pacific

Winner Must Claim Jackpot Before 5 p.m. Tuesday following date of publication.

Ansted-Winslow Wedding



A recent wedding of interest to Spanaway residents united Rosetta Winslow and Ronald Ansted at the McChord Air Force Base Chapel.

Rosetta is the daughter of Mr. Mrs. Ralph Winslow, Spanaway and the groom's parents are Chaplain Harry and Mrs. Ansted of Griffiss AFB, New York. Chaplain Ansted officiated the ceremony.

Matron of honor was Mrs. Lucille Martin, Seattle, a sister of the bride. Brides-

maids were Mrs. Vera Stephens, Houston, Texas, and Susan Cruse, Tacoma. Organist was Mary Freisen of Salem, Oregon.

Bridegroom was attended by his best man, Harold Hagglund, Seattle.

Bridal gown was slipper satin created and made by the bride and Mrs. D. W. Holt, Lakewood. The new couple will be at home in Lexington, Kentucky where Ronald is attending Asbury Theological Seminary.



FASTER — The Bethel School District enrollment goes up faster than the engravers can make signs it seems. The district's enrollment sign at 152nd and Pacific, shows 4,464 as of September, but it was announced at the Bethel board meeting Monday that enrollment as of October 1st was 4,568.

— TJ Staff Photo

Census Set Here

Information to determine how many children and adults under 35 are enrolled either in school or college will be sought here the week of October 14, Director John E. Tharaldson of the Regional Office of the U.S. Bureau of the Census in Seattle announced today.

Questions are asked of householders each year at this time to update national figures on enrollment in public, private and special schools; full- and part-time college attendance; the number of high school graduates and dropouts; and the last year of regular schooling for non-high school graduates.

The questions to be asked here are in addition to those that the Census Bureau asks each month to obtain data for use by the Department of Labor's Bureau of Labor Statistics in determining national employment figures.

The survey will be taken simultaneously throughout the U.S. from a representative sample of the nation's households. All answers are confidential, and the information obtained will be used for statistical purposes only.

Census Bureau interviewers who will visit households here are: Mrs. Harriett D. Lindom, 10919 39th Ave. S.W., Seattle, Wash. 98146; Mrs. Alene F. Riehle, 515 So. Fawcett Ave., Tacoma, Wash. 98408.



A Legal Publication from the office of
A. LUDLOW KRAMER, Secretary of State

To be voted upon November 5, 1968.

SENATE JOINT RESOLUTION 17

Proposed Constitutional Amendment

*Ballot Title as issued by the Attorney General.

PROVIDING FOR STATE BUILDING AUTHORITY

Shall Article VIII of the State Constitution be amended by adding a new section authorizing creation by the legislature of a state building authority to construct buildings and improvements for lease to state agencies or departments for up to seventy-five years, and to finance such construction through issuance of bonds or other evidences of indebtedness to be paid from the authority's revenues which would not be subject to the constitutional debt limitation?

Vote cast by members of the 1967 Legislature on final passage:
SENATE: (49 members) Yeas, 46; Nays, 2; Absent or not voting, 1.
HOUSE: (99 members) Yeas, 92; Nays, 3; Absent or not voting, 4.

Explanatory comment issued by the Attorney General as required by law

The Law as it now exists:

The construction of buildings and other improvements for the various state agencies is from time to time financed through the issuance by the state of general obligation, limited obligation, or revenue bonds. Under the present constitution no law authorizing the state to contract debt in excess of the state constitutional debt limit through the issuance of general obligation bonds can take effect until it shall have been submitted to and approved by the people at a general election. The state supreme court has held this requirement of voter approval to be applicable to bonds which are issued to finance the construction of buildings for lease to state agencies when the rental payments are to be financed from state general fund appropriations.

Effect of Senate Joint Resolution No. 17 if approved into Law:

The proposed amendment would authorize the legislature to create a state agency called the state building authority. If authorized by the legislature, this agency could contract with other state agencies to construct buildings and improvements for their use on a lease basis at a reasonable rental rate for a term not to exceed 75 years. In addition, if authorized by the legislature, the building authority could finance such construction by borrowing funds solely on its own credit through the issuance of bonds or other evidences of indebtedness to be secured by pledges of the authority's income or by mortgages of its leaseholds. In the event the authority utilizes this method of incurring indebtedness, the bonds or other evidences of indebtedness would not be subject to the constitutional debt limitation and could, therefore, be issued without a vote of the people.

Approval of this proposed amendment will validate the provisions of chapter 162, Laws of 1967, which creates a state building authority.



A Legal Publication from the office of
A. LUDLOW KRAMER, Secretary of State

To be voted upon November 5, 1968.

SENATE JOINT RESOLUTION 24

Proposed Constitutional Amendment

*Ballot Title as issued by the Attorney General.

VACANCY: LEGISLATIVE, COUNTY ELECTIVE OFFICES

Shall the State Constitution be amended to provide for filling vacancies in legislative or partisan county elective offices as follows:

- (1) The county commissioners of the county affected shall appoint a person from the same legislative, county or county commissioner district and political party as the officer whose office has been vacated;
- (2) On failure of the county commissioners to so appoint within sixty days, the governor shall within thirty days appoint a person similarly qualified?

Explanatory comment issued by the Attorney General as required by law

The Law as it now exists:

The approval of Senate Joint Resolution 24 is required to prevent subversion of the people's wishes and commands in county government and to guarantee full and adequate representation of the people. Under the present constitutional provision the county commissioners, when a vacancy occurs in a partisan elected county office, have complete and unqualified power to appoint, or not to appoint, a new official to the vacated position. For example, if the official vacating the county office is of a different party affiliation from that of the majority of county commissioners, they may subvert the will of the people by (1) filling the vacancy with a person of party affiliation contrary to that of the official vacating the office, or (2) not appointing any new official.

Effect of Senate Joint Resolution No. 24 if approved into Law:

The approval of Senate Joint Resolution 24 will further the will of the people by first placing qualification on the county commissioners' power of appointment. Their power will be restricted to the appointment of a person who is (1) from the same county or county commissioner district as the officer whose office has been vacated; (2) a member of the same political party; and (3) one of the three persons nominated by the county central committee of that party. Second, if the county commissioners fail to act within 60 days time the governor shall make the appointment from the list of three nominees who shall be of the same political affiliation as the person who vacated the office.

The approval of Senate Joint Resolution 24 is required so as to prevent subversion of the people's wishes such as has occurred in Kitsap County in years past. The importance of Senate Joint Resolution 24 was recognized by the Legislature in its vote on the resolution. Unanimous approval was voiced—47 to 0 in the Senate, 96 to 0 in the House of Representatives.



A Legal Publication from the office of
A. LUDLOW KRAMER, Secretary of State

To be voted upon November 5, 1968.

SENATE JOINT RESOLUTION 23

Proposed Constitutional Amendment

*Ballot Title as issued by the Attorney General.

TAXING DISTRICTS: EXCESS LEVY ELECTIONS

Shall the State Constitution be amended to permit taxing districts, if authorized by the legislature, to submit propositions for property tax levies exceeding the forty-mill limit to their voters up to 24 months before the levy date, thereby permitting two consecutive annual excess levies to be approved at one election; and authorizing submission of a second proposition in any twelve-month period only if it is substituted for the excess levy previously approved for that year?

Vote cast by members of the 1967 Legislature on final passage:
SENATE: (49 members) Yeas, 48; Nays, 0; Absent or not voting, 1.
HOUSE: (99 members) Yeas, 93; Nays, 0; Absent or not voting, 6.

Explanatory comment issued by the Attorney General as required by law

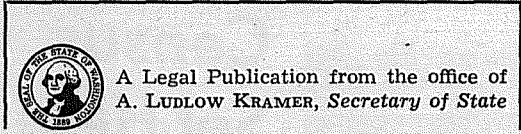
The Law as it now exists:

Amendment 17 of the state constitution (commonly referred to as the 40 mill limit provision) limits the aggregate of property tax levies by taxing districts to 40 mills on the dollar of assessed valuation, unless the voters of a taxing district, under certain specified conditions, have authorized levies in excess of the 40 mill limit. Except in the case of excess levies to pay principal and interest on general obligation bond issues, no proposition to levy a tax in excess of 40 mills may be submitted to the voters of the district more than 12 months before the proposed levy is to be made. Thus, the voters of a taxing district can only authorize a single one year excess levy for other than bond redemption purposes at any given election.

Effect of Senate Joint Resolution No. 23 if approved into Law:

The proposed amendment would permit taxing districts, if authorized by appropriate act of the legislature, to submit propositions for tax levies exceeding the 40 mill limit to their voters up to 24 months before the levy date, thereby permitting the submission of two consecutive annual excess levies for approval at one election.

No taxing district would be permitted to submit to the voters a proposition to authorize additional levies under the amendment for any year for which the voters have previously authorized an excess levy. However, under certain specified conditions, a taxing district could submit to the voters at any time a new proposition to be substituted for the excess levy authorization which had been previously approved for that year.



To be voted upon November 5, 1968.

HOUSE JOINT RESOLUTION 1

Proposed Constitutional Amendment

*Ballot Title as issued by the Attorney General:

TAXATION BASED ON ACTUAL USE

Shall Article VII of the State Constitution be amended by adding a section authorizing the legislature to provide that farms, agricultural lands, standing timber and timberlands, and other open space lands used for recreation or enjoyment of their scenic or natural beauty, shall be valued for purposes of taxation on the basis of the use to which such property currently is being applied, rather than on the highest and best use?

Vote cast by members of the 1967 Legislature on final passage:
HOUSE: (99 members) Yeas, 84; Nays, 9; Absent or not voting, 6.
SENATE: (49 members) Yeas, 44; Nays, 0; Absent or not voting, 5.

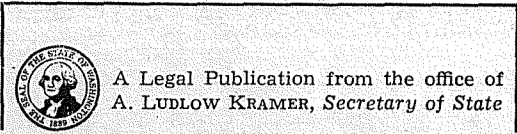
Explanatory comment issued by the Attorney General as required by law

The Law as it now exists:

Under the present state constitution and pertinent legislative enactments, all real property is valued for purposes of taxation on the basis of its true and fair value in money, which is determined by the "highest and best use" to which the property could be applied, without regard to its present actual use. The term "highest and best use" is defined by a Department of Revenue regulation to mean the most profitable, likely use to which a property can be put.

Effect of House Joint Resolution No. 1 if approved into Law:

The proposed constitutional amendment would authorize the legislature to provide by law, subject to such conditions as it may enact, that certain real property shall be valued for taxation purposes in terms of its present actual use rather than its highest and best use. Types of property which would be eligible for such treatment are (a) farms, agricultural lands, standing timber and timber lands, and (b) other open space lands which are used for recreation or for enjoyment of their scenic or natural beauty.



To be voted upon November 5, 1968.

HOUSE JOINT RESOLUTION 13

Proposed Constitutional Amendment

*Ballot Title as issued by the Attorney General.

AUTHORIZING COMPENSATION INCREASE DURING TERM

Shall the State Constitution be amended by adding a new article permitting the compensation of all elected and appointed state, county and municipal officers who do not fix their own compensation (including judges of courts of record and justice courts), to be increased during their terms of office to the end that such officials shall receive compensation for their services as provided by the law in effect at the time the services are being rendered?

Vote cast by members of the 1967 Legislature on final passage:
HOUSE: (99 members) Yeas, 89; Nays, 8; Absent or not voting, 2.
SENATE: (49 members) Yeas, 40; Nays, 6; Absent or not voting, 3.

Explanatory comment issued by the Attorney General as required by law

The Law as it now exists:

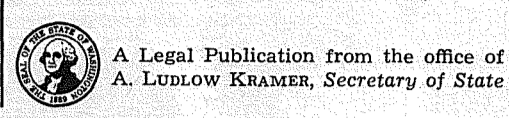
Under the constitution the compensation of elective and appointive state, county and municipal officers, including judges of courts of record and justice courts, is fixed by the state legislature or some officer or public body to whom the legislature has delegated such authority.

In the case of such officers who serve for a fixed term (which, depending upon the law governing the particular office, will be from four to as many as nine years in length) there are several provisions in the present constitution which prohibit increases in their compensation during their respective terms of office. These constitutional provisions apply to officers serving for staggered terms on multi-member boards, commissions and tribunals as well as to other officers serving fixed terms.

Effect of House Joint Resolution No. 13 if approved into Law:

The proposed constitutional amendment would add a new Article to the constitution which would provide that the compensation of those officers

named above, who do not fix their own compensation, may be increased during their term of office to the end that such officers shall receive compensation for their services in accordance with the law in effect at the time the services are being rendered.



To be voted upon November 5, 1968.

SENATE JOINT RESOLUTION 5

Proposed Constitutional Amendment

*Ballot Title as issued by the Attorney General.

INVESTMENT OF PUBLIC PENSION FUNDS

Shall the Constitution of the state of Washington be amended by adding a new article and section permitting the moneys of any public pension or retirement fund to be invested in such manner as may be authorized by law?

Vote cast by members of the 1967 Legislature on final passage:
SENATE: (49 members) Yeas, 40; Nays, 8; Absent or not voting, 1.
HOUSE: (99 members) Yeas, 86; Nays, 1; Absent or not voting, 12.

Explanatory comment issued by the Attorney General as required by law

The Law as it now exists:

Under the present constitutional provisions relating to the investment or other use of public funds, there is some uncertainty as to the type of investments which the legislature may authorize the various public employees retirement boards to make when investing pension and retirement funds.

Effect of Senate Joint Resolution No. 5 if approved into Law:

The proposed constitutional amendment would remove this uncertainty by expressly permitting the investment of public pension and retirement funds in such manner as is authorized by appropriate legislative enactment.

OFFICIAL NOTICE:

THREE PROPOSED STATE BOND ISSUES TO BE SUBMITTED TO THE VOTERS FOR APPROVAL OR REJECTION AT THE STATE GENERAL ELECTION TO BE HELD ON NOVEMBER 5, 1968.

REFERENDUM BILL NUMBER 17

Chapter 106, Laws of 1967

*Ballot Title as issued by the Attorney General.

WATER POLLUTION CONTROL FACILITIES BONDS

AN ACT providing for the issuance and sale of state general obligation bonds in an amount not exceeding \$25,000,000 to finance grants by the pollution control commission to public bodies, in conjunction with federal grants authorized pursuant to the federal water pollution control act, for the purpose of aiding in the construction and improvement of water pollution control facilities; providing for payment of the bonds from unpledged retail sales tax revenue or other means authorized by the legislature; and appropriating \$9,000,000 to the pollution control commission for the above described purposes during the present biennium.

Vote cast by members of the 1967 Legislature on final passage:
SENATE: (49 members) Yeas, 39; Nays, 0; Absent or not voting, 10.
HOUSE: (99 members) Yeas, 93; Nays, 3; Absent or not voting, 3.

Explanatory comment issued by the Attorney General as required by law

The Law as it now exists:

Under present law governmental facilities for controlling water pollution are financed by local public bodies and state agencies with whatever funds are available for that purpose.

At its 1967 session, the legislature enacted legislation providing for the issuance of state general obligation bonds, the proceeds of which would be used to finance construction of water pollution control facilities. Under the state constitution, a law authorizing the state to contract a debt through the issuance of such bonds cannot take effect until it shall, at a general election, have been submitted and approved by the people.

Effect of Referendum Bill No. 17 if approved into Law:

If approved, the law will authorize the sale of state general obligation bonds in an amount up to \$25,000,000. The proceeds from the sale of the bonds shall be administered by the Water Pollution Control Commission, an agency of the state. The commission is authorized to make and administer grants of such funds to municipal or public corporations, to counties and to state agencies, in conjunction with federal grants authorized pursuant to the federal water pollution control act. The act also appropriates \$9,000,000 from the bond proceeds to the commission for the above-described purposes during the current biennium.

The act provides for the payment of the bonds from a portion of the proceeds of the retail sales tax and such other sources as may be authorized by the legislature, and in addition provides that the bonds shall pledge the full faith and credit of the state for payment of the principal and interest thereon when due.

REFERENDUM BILL NUMBER 18

Chapter 126, Laws Extraordinary Session, 1967

*Ballot Title as issued by the Attorney General.

BONDS FOR OUTDOOR RECREATION

AN ACT authorizing the issuance and sale of state general obligation bonds in an amount not exceeding \$40,000,000 to finance the acquisition and development of outdoor recreation areas and facilities. The act directs the Interagency Committee for Outdoor Recreation to allocate half of the money so raised to state agencies for such acquisition and development as the legislature may direct and the other half to local public bodies for acquisition and development of outdoor recreation areas and facilities within their jurisdictions. Payment of the bonds will come from unpledged retail sales tax revenues or other means authorized by the legislature.

Vote cast by members of the 1967 Legislature on final passage:
HOUSE: (99 members) Yeas, 92; Nays, 2; Absent or not voting, 5.
SENATE: (49 members) Yeas, 47; Nays, 1; Absent or not voting, 1.

Explanatory comment issued by the Attorney General as required by law

The Law as it now exists:

Under existing law the acquisition and development of outdoor recreation areas and facilities is financed by various state agencies and local public bodies with whatever funds are made available for that purpose. State and local outdoor recreation budgets are presently supplemented by state funds derived from two measures approved by the voters in 1964: Initiative 215, which provides about one-half million dollars a year from unrefunded motor vehicle fuel taxes paid by purchasers of fuel used in boats, and Referendum 11, which authorized the sale of \$10 million in bonds between 1964 and January 1, 1970. The Interagency Committee for Outdoor Recreation, an agency composed of state officials and members of the public appointed by the Governor, administers these supplemental funds, allocating one-half to state agencies and one-half to counties, cities, and other local public bodies on the basis of an approved statewide outdoor recreation and open space plan.

Under the state constitution, a law authorizing the state to contract debt through the issuance of general obligation bonds cannot take effect until it shall, at a general election, have been submitted to and approved by the people.

Effect of Referendum Bill No. 18 if approved into Law:

If approved, the act will authorize the sale of general obligation bonds in an amount up to \$40 million for the acquisition and development of outdoor recreation areas and facilities in this state. The money will be allocated half to state agencies and half to local public bodies, and will be administered by the Interagency Committee for Outdoor Recreation.

The act provides for payment of the bonds from a portion of the proceeds of the retail sales tax and such other sources as may be authorized by the legislature, and in addition provides that the bonds shall pledge the full faith and credit of the state for payment of the principal and interest thereon when due.

REFERENDUM BILL NUMBER 19

Chapter 148, Laws Extraordinary Session, 1967

*Ballot Title as issued by the Attorney General.

STATE BUILDING PROJECTS: BOND ISSUE

AN ACT authorizing the issuance and sale of state general obligation bonds in an amount not exceeding \$63,059,000; appropriating the proceeds to finance various building projects for the Department of General Administration, the Department of Institutions, and certain state institutions of higher education; and providing for payment of the bonds from unpledged retail sales tax revenues or such other means authorized by the legislature.

Vote cast by members of the 1967 Legislature on final passage:
SENATE: (49 members) Yeas, 41; Nays, 1; Absent or not voting, 7.
HOUSE: (99 members) Yeas, 76; Nays, 12; Absent or not voting, 11.

Explanatory comment issued by the Attorney General as required by law

The Law as it now exists:

The construction and improvement of buildings and other facilities for use by various state agencies is from time to time financed with the issuance by the state of general obligation bonds. The 1967 legislature passed an act authorizing the issuance of such bonds to finance various building projects for the Department of General Administration, the Department of Institutions, and certain state institutions of higher education. However, under the present state constitution, no law authorizing the state to contract debt through the issuance of general obligation bonds can take effect until it shall at a general election have been submitted to and approved by the people.

Effect of Referendum Bill No. 19 if approved into Law:

If approved, the act will authorize the sale of state general obligation bonds in an amount up to \$63,059,000. Proceeds from the sale of these bonds will be used to finance buildings and facilities for the Department of General Administration, the Department of Institutions, the University of Washington, Washington State University, Western Washington State College, Central Washington State College, and the new Evergreen State College. A detailed list of these projects and the specific amounts appropriated for each project appears in the text of the act itself, as set forth on pages 43 and 44 of this pamphlet. The act provides for payment of the bonds from a portion of the proceeds of the retail sales tax and such other sources as may be authorized by the legislature, and in addition provides that the bonds shall pledge the full faith and credit of the state for payment of the principal and interest thereon when due.

SENATE JOINT RESOLUTION 6

Proposed Constitutional Amendment

*Ballot Title as issued by the Attorney General.

AUTHORIZING STATE COURT OF APPEALS

Shall the State Constitution be amended to provide for establishment by the legislature of a state court of appeals with such jurisdiction as may be granted by statute or rules as authorized thereby; providing that the number, manner of election, compensation, term of office, removal and retirement of judges of such court shall be prescribed by statute; and providing that the administration and procedures of the court shall be prescribed by supreme court rules?

Vote cast by members of the 1967 Legislature on final passage:
SENATE: (49 members) Yeas, 47; Nays, 2; Absent or not voting, 0.
HOUSE: (99 members) Yeas, 88; Nays, 4; Absent or not voting, 7.

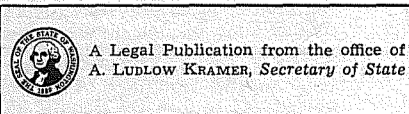
Explanatory comment issued by the Attorney General as required by law

The Law as it now exists:

Under the present state constitution, the state court system is comprised of a supreme court, together with superior courts in each county, justices of the peace, and such inferior courts as the legislature may provide. The superior courts are primarily trial courts of original jurisdiction, although they also have appellate jurisdiction to the extent provided by appropriate legislative enactment with respect to causes arising in justice courts and other inferior courts in their respective counties. The supreme court has original jurisdiction in certain cases involving state offices and mandatory appellate jurisdiction in all actions or proceedings except in certain cases where the amount in controversy does not exceed \$200. In all of its appellate cases the supreme court is required to enter a written decision.

Effect of Senate Joint Resolution No. 6 if approved into Law:

The proposed amendment provides for establishment by the legislature of a new court of appeals. The new court's jurisdiction and extent of review power over superior courts is to be provided for by statute or by supreme court rule authorized thereby. The number, manner of election, compensation, term of office, removal and retirement of judges of the court of appeals are also to be prescribed by statute, while the administrative procedure of the court is to be prescribed by supreme court rule.



CLASSIFIED ADS

Call LE 7-0223 For Want Ads

1 Misc. For Sale

MAKE YOUR own candles. Candle making supplies. Grange Supply Co., 10625 Pacific Ave. LE 1-5777. 68-524

USED LUMBER 4x4 to 8x8 up to 20 feet. WA 2-7858 after 5 p.m. 68-527

PARKLAND CERAMICS
fall classes start Sept. 3rd sign up early for day or evening classes
Supplies, firing, instruction
1303 So. 117th - LE 1-0823
Helen & John Kratoch - Parkland

COLONIAL braided wool rugs. (Matching set) 4'x6' green orlon rug, redwood picnic table with benches, nice for recreation room. Boys' clothes, size 12. LE 7-6206. 68-529

GARAGE SALE Oct. 16, 17, 18 from 10 a.m. to 4 p.m. at 710 So. 116th. Lots of good toys and clothing.

VERY GOOD condition. Kenmore automatic washer with suds saver. Call after 6 p.m. LE 7-6000. 68-532

TOP SOIL, fill dirt, bank run gravel, J.E. Pelland. LE 1-1124.

McNESS PRODUCTS, GR 5-2734. 68-303

1968 S-65 Honda. Like new. 135 miles. \$225 includes 2 helmets. TH 5-9684.

FENCE rails, large split cedar 10' \$1.25. 5121 East 72nd.

1968 SINGER Touch and Sew - \$300 machine will sell for \$148. 2 full size beds, \$25. 848-1362.

CHICKEN feeders and nest. Water fountains. Cheap. TH 5-2653.

ANTIQUe shotgun, ditcher. Heating stove, feather bed, plywood skill saw, large choice blueberry plants, rhubarb roots, thirty ducks. VI 7-2268.

1 Misc. For Sale

LIKE new 4 drawer file cabinet - gray. \$22.50. TH 5-4675.

UNDERWOOD standard typewriter. SK 2-4728.

ATTENTION fat men. Beautiful hand knit Irish sweater, green tones. TH 5-2564.

2 Autos For Sale

'56 CHEV, V-8, 4-door, \$125. TH 5-4675.

PIERCE COUNTY HEADQUARTERS FOR 1969

- ★ CHRYSLER
- ★ PLYMOUTH
- ★ VALIANT
- ★ BARRACUDA

CALL GR 4-0621

Steven MOTOR CO.

2705 SOUTH TACOMA WAY.

NEW- MORE POWERFUL

the 1968's ARE HERE VOLKSWAGEN

27 MAJOR CHANGES COME IN

Tom Carstens AUTOHAUS

7030 So. Tacoma Way GR 4-0666
TACOMA DEALER SINCE 1955

9 Animals For Sale

AKC registered poodles, black or brown, \$50. LE 1-0571.

WANTED - Horses to board. Tacoma-Puyallup area, VI7-2894.

TEAMS 1 - 6 riding ponies. \$425. WA 2-6222

GOOD Sow \$70. WA 7-2714.

2 YEAR Jersey Angus heifer, bred. \$150 or best offer. 5701 4th St. East, Tacoma.

21 Wanted To Rent

HOME VACANT

We desperately need good rentals \$80 to \$150 per month

CALL NOW

Let us handle your worries

SUBURBAN REALTY

11302 Pacific Ave. LE 7-8638 or LE 7-6896

23 Help Wanted

EARN CHRISTMAS expenses early by selling Baum Toys and Gifts party plan. Car necessary. LE 7-5834, GR 2-6008, or GR 5-1215. 68-290

24 Work Wanted

BABYSITTING my home Mon. thru Fri. Have 4-yr-old girl of my own. East Spanaway. LE 7-6380. 68-517

IRONING, experienced, references. GR 5-5663. 68-311

IRONING Experienced, LE 7-5736. 68-282

BABYSITTING my home, Monday through Friday, Spanaway area, LE 1-2002. 68-310

CARPENTER Work. Remodeling repair. New additions. Custom built cabinets. VI 7-2601. 68-525

27 Misc. Services

AA ELECTRIC, new and re-wiring done. LE 1-4445.

EXPERT alterations, men's and women's. Fast service and reasonable. LE 1-3506.

MIDLAND AUTOMOTIVE

Complete Repair Foreign & Domestic
Elect. - Alt. - Gen. - Weld. - Trans. - Overhaul - Valve Grind
LE 1-4331 8-6 Mon.-Sat.

WATER PUMPS REPAIRED

All Makes GRANGE SUPPLY
LE 1-5777

BABYSITTING days in my home. LE 1-1334. 68-507

NEWBURY'S

Dozer Service

LE 7-7455

Sandy Loam Bank Run Mixed Soil - Fill Dirt

"WHERE TO GET SERVICE"

Parkland Enco-Service
13303 PACIFIC AVE.
LE 7-9954

28 Building Services

REMODELING, leveling, block foundations, cabinets, free estimate. Reasonable. LE 7-3550. 68-48 TFN

29 Land Services

Water - Gas Lines - Footings

DICK'S DIGGING SERVICE
LE 1-5401

601 South 160th St. Spanaway, Wash.

36 Personals

LOSE WEIGHT safely with Dex-A-Diet Tablets. Only 98c at Johnson's Drug.

35 Announcements

SIGHT IN AT Paul Bunyan covered range. Nights Wed. - Thur. - Fri. Days Sat., Sun. Details. GR 2-0863 68-528

39 Lost

INSTAMATIC camera between Sumner and Summit View. Name on camera "Marie". LE 1-2680.

BLACK female Poo-docker. Rainier Terrace area. Reo Rainier Terrace area. Reward. TH 5-3265.

40 Found

2 MONTHS old kitten. White with black spots. 98th Ave. E. and 120th. TH 5-4017.

CALL LE 7-8647



Sheet Metal

- Furnace Repair and Service
- Installations

PARKLAND FUEL OIL

12002 Pacific Ave.
LE 7-0256

ARMSTRONG'S USED CARS

11009 Pacific Ave. LE 7-5524

| | |
|-----------------------------------|-------|
| 1962 Olds F-85 9 pass wagon | \$675 |
| 1963 Falcon Futura 4 dr., 4 spd. | 575 |
| 1962 Ford Galaxie 500, 4 door | 495 |
| 1960 Ford Starliner hdtp., V-8 AD | 395 |
| 1960 Chev 4 dr. V-8, power glid | 375 |
| 1959 Olds 4 dr. hardtop | 175 |
| 1963 Pontiac Wagon | 850 |
| 1957 Olds 88 Fiesta Wagon | 250 |
| 1964 Plymouth Savoy 4 dr | 795 |
| 1963 Chev hardtop, V-8, P.G. | 795 |

\$5 Discount

To Times Journal subscribers who present this ad with purchase one ad accepted per sale.

USED CARS

TWO YEAR GUARANTEE

| | |
|--|--------|
| 1968 Impala SS Custom Cpe | \$2995 |
| 1967 Camaro Spt. Cpe., 6 cyl. auto . . | \$2195 |
| 1966 Chevelle Spt. Cpe., 327, Auto, Pwr Str | \$1895 |
| 1965 Plymouth Fury II, 4 dr., 40,000 miles | \$1495 |
| 1964 Ford Gal. 500, Spt. Cpe. V-8 . . . | \$1395 |
| 1965 Impala S.S. Cpe., V-8, Auto. . . | \$1695 |

USED TRUCKS

| | |
|--------------------------------------|--------|
| 1963 Chev 1/2 Ton 292 | \$1395 |
| 1960 Chev 1/2 ton 292 4 spd. | \$795 |

Good Transportation

| | |
|--|--------|
| 1962 Chev Wagon 4 dr. V-8 auto P.S. | \$1095 |
| 1962 Ford Galaxie 500 Spt. Cpe . . . | \$995 |
| 1962 Plymouth Sport Fury | \$695 |
| 1962 Ford Falcon 2 dr., stick "6" . . . | \$495 |
| 1963 Renault R-8 New Trans | \$495 |
| 1961 Ford Hardtop V-8 | \$495 |
| 1960 Chev Wagon 6 cyl. auto. | \$295 |

VAN EATON CHEVROLET

Phone 832-3131 Eatonville

RENT TV

Color TV RENTAL MARTS, INC.

Parkland GR 5-3755
9440 Pacific Ave.

Lakewood JU 4-4100
108th & Bridgeport

TROPHY ALUMINUM PRODUCTS

- Heavy Duty Storm Doors
- Standard and Special Sizes
- Storm Windows and Screens
- Awning and Patio Covers
- Carports

• FREE ESTIMATES

PARKLAND DOOR INC.

318 East 96th St. GR 4-7011

An Endowed Care Cemetery



Fir Lane Memorial Park
Dryer Fir Lane Chapel

924 East 176th Street Spanaway LE 1-5500

CAN YOU SMILE?



The Dillows, Hiway House Motel, Albuquerque
if you can smile, you can succeed in
MOTEL MANAGEMENT

Do as the Dillows and hundreds of Ambassador graduates and learn motel operation with our short, inexpensive course at home followed by two weeks on-the-job training in a motel operated by Ambassador. Men, women and couples needed now. Free nationwide placement assistance upon completion. For personal interview mail coupon today.



Send to:
Management
P.O. Box 2116
Tacoma, Wash. 98444

NAME
ADDRESS CITY STATE
PHONE

Legals

Legals

STATEMENT OF OWNERSHIP, MANAGEMENT, AND CIRCULATION

Title of Publications: Pierce County Herald and Times Journal. Frequency of issue: weekly. Location of known office of publication: 14620 Pacific Avenue, Tacoma 98444. Location of the Headquarters or general business offices of the publishers: 14620 Pacific Avenue, Tacoma 98444. Name and address of Publisher: Pierce County Publishing Co., Inc. 14620 Pacific Avenue, Tacoma 98444. Name and address of editor: Emerson N. Matson, 11015 Bingham Ave. East, Tacoma 98446. Name and address of managing editor: Emerson N. Matson, 11015 Bingham Ave. East, Tacoma 98446. Owners: Emerson N. Matson, 11015 Bingham Ave. East, Tacoma 98446; Earl Clemens, 2008 East 121st, Tacoma 98445; Morris Anderson 9703 Pacific Avenue, Tacoma 98444; A. Donald Visser, 609 141st South, Tacoma 98444; Dale Tibbitts, 1212 142d South, Tacoma 98444; Alvin Raber, Spanaway Loop Road, Spanaway 98387; Larry Armstrong, 11011 Pacific Avenue, Tacoma 98444; Harold LeMay, 13502 Pacific Ave. Tacoma 98444; George Potter, 2323 Brookdale Road, Tacoma 98445. Known bondholders, mortgagees, and other security holders owning or holding 1 percent or more of total amount of bonds, mortgages or other securities: Puyallup Publishers, Inc. P.O. Box 517, Puyallup 98371. Average net press run during preceding 12 months each issue: 2500. Single issue nearest filing: 2500. Paid circulation. Item 1: Sales through dealers and carriers, street vendors and counter sales: average number copies each issue during preceding 12 months-767. Single issue nearest Oct. 1 filing date: 701. Item 2 Mail subscriptions: Average number copies each issue during preceding 12 months-1556. Actual number of copies of single issue published nearest to filing date, mail subscriptions-1716. Total paid circulation-average number copies each issue during preceding 12 months-2323. Actual number copies of single issue nearest Oct. 1, 1968 filing date-2417. Sample distribution average number copies each issue during preceding 12 months-5. Actual number copies single issue published nearest to filing date-5. Total distribution average number copies during preceding 12 months-2328. Actual number copies of single issue published nearest to filing date-2422. Office use, left-over, unaccounted, spoiled after printing. Average number copies each issue during preceding 12 months-172. Actual number copies of single issue published nearest to filing date-83. Totals equal net press run. I certify that the statements made by me are correct and complete. Emerson N. Matson.

READ & USE the WANT ADS for BEST RESULTS

12 Real Estate For Sale

ONE ACRE building sites. Water available. LE 7-3469 or LE 7-8774. 68-526

\$5,000 - 120'x168', North of Puyallup. LE 7-7778.

BY OWNER - 2 bedroom home, close in Summer. Refrigerator range, heater. 9x12 rug and furniture. For more information call TH 5-4012.

FOUR CHOICE tracts, Summer area. \$6400 left on contract. Cash - equity. Trade for car or ? UN 3-7204.

BEAUTIFUL 1/2 acre wooded, secluded lot. Located on South Hill in Wildwood Park area. TH 5-0138 after 6.

33 Licensed Child Care

ONE CHILD age 3 or 4. Parkland. LE 7-4738. 68-507

12 Real Estate For Sale

Listings Wanted
Buying or Selling
Real Estate-Service
Call
Devereaux Realty
12152 Pacific Ave. LE 7-8658

38 Instruction

PRIVATE tutor for English language. LE 7-5274; SH 2-2758. 98-296

PIANO LESSONS, beginning to advanced. Children and adults, home or studio. LE 1-3246 or SK 2-7695. 68-179

PAVONES CERAMIC STUDIO

6702 106th Crt. E.
Puyallup
TH 5-6529
Fall Class Open
Weekdays & Evenings

DANCE - Married couples 21-80 interested in forming dance club. Ballroom, Fox Trot, Waltz etc. Call LE 1-3018 or GR 2-7602. After 5:30 p.m. 68-530

Legals

In the Superior Court of the State of Washington For the County of Pierce

IN PROBATE No. 77694

Notice to Creditors

In the matter of the estate of LOUISE E. SLACK, Deceased.

Notice is hereby given that the undersigned has been appointed and has qualified as Administrator of the estate of the above named deceased; that all persons having claims against said deceased are hereby required to serve the same, duly verified, on said Administrator or his /her attorney of record at the address below stated, and file the same with the Clerk of said Court, together with proof of such service within four months after the date of first publication of this notice, or the same will be barred.

Date of first publication Oct. 3, 1968.

s/ Quinby R. Buxton
Quinby R. Buxton
Administrator of said Estate
11024 Pacific Avenue
Tacoma, Wash 98444
PETERS & TRACY
s/ Phillip S. Tracy
Phillip S. Tracy
11024 Pacific Avenue
Tacoma, Washington 98444
LE 7-0264

Published in the Times Journal Oct. 3, 10, 17, 1968.

CHURCH DIRECTORY

ATTEND OUR

WORSHIP

SERVICES

PARKWAY

Presbyterian Church
Sunday School 9:00 a.m.
Worship Service 10:00 a.m.
Nursery Service Provided
714-138th East LE 1-4234
Rev. Wesley J. Drummond

Spanaway Assembly of God
166th & Pacific Ave.
Sunday School 9:45 a.m.
Morning Worship 11 a.m.
Evening Evangelistic 7 p.m.
Family Night Wed. 7:30 p.m.
LE 1-1412

Spanaway Lutheran Church

8:30 & 11 a.m. Worship Service
9:45 a.m. Sunday School
Grades 1 & Up
11 a.m. Sunday School
3, 4 and 5 Year Olds
John L. Briehl, Pastor
160th & A St. LE 7-5978.

Parkland Lutheran Church & Christian Day School

Worship... 10:30 a.m.
Sunday School-Bible Study 9:15 a.m.
All ages
H.A. Theiste, pastor
LE 7-5492 LE 1-0777

Trinity Lutheran Church

Worship Services 9 a.m. & 11 a.m.
Sunday School 10 a.m.
Wednesday School 4-5 (through Grade 9)
Erving C. Thompson
Robert Drowes PASTORS
12115 So. Park LE 7-0201

Spanaway United Methodist Church

Church School 9:30 a.m.
Worship 11:00 a.m.
R. Gordon Harrison, Pastor
163 & Pacific LE 7-5134

9 a.m. - 10 p.m.
7 DAYS
A WEEK

BARGAIN BASKET

16618
Pacific Ave. S. Spanaway
LE 7-3371

No Sales To
Dealers

WE RESERVE THE
RIGHT TO LIMIT
QUANTITIES

We Carry A Complete Line Of Sacked Feeds - Presto Logs

We Are Locally Owned & Operated HUNTER'S SPECIALS

PRICES
EFFECTIVE

Oct. 10-11-12
Thur.-Fri.-Sat.

NALLEY
Lumber Jack
SYRUP
21 Oz. **29^c**

CENTENNIAL
PANCAKE FLOUR
4 lbs. **49^c**

FOLGER'S
Instant
COFFEE
10 Oz. **99^c**

SILK FACIAL
TISSUE
150 Cnt. **19^c**

FAMILY JOY
MARGARINE
6 Lbs. **\$1**

NALLEY
BEEF STEW
30 Oz. **69^c**

LIBBY
Halves - Freestone
PEACHES
2 1/2 Tin 3 **\$1**

ABC
**CHOCOLATE
ECLAIRS**
12 Oz. **43^c**

West Best
**BUTTON
MUSHROOMS**
4 Oz. 4 **\$1**

REYNOLD
FOIL
Economy Size 75' Roll
69^c

BLOCK ICE PRODUCE PARTY ICE

CHIQUITA
BANANAS
2 Lb. **25^c**

TUBE
TOMATOES
Ea. **19^c**

MEDIUM
ONIONS
3 Lbs. **19^c**

GREEN
PEPPERS
Ea. **5^c**

Everyday Low Meat Prices. . .25 lb. Locker Boxes **\$14.95**

BAR S SLAB
BACON
Lb. **55^c**

RIB
STEAK
Lb. **98^c**

BEEF
LIVER
Lb. **39^c**

HYGRADE
WIENERS
12 Oz Pkg. **53^c**

CUBE
STEAK
Lb. **98^c**

PORK
SAUSAGE
Lb. **43^c**