

The TIMES JOURNAL

THURSDAY, AUGUST 18, 1960 • VOL. 15, NO. 50 • PUBLISHED AT PARKLAND, WASH. • LE 7-0223

New Assistant Bank Manager Takes Over Parkland Area Youth Program



Cliff Becklund (left) goes over ideas for Parkland youth program with George Potter, president of Parkland Business Club. Cliff volunteered to take over the youth program for the club. He was recently promoted from assistant cashier at the Parkland Branch of the National Bank of Washington to assistant manager of that same branch, following last month's meeting of the bank's Board of Directors.

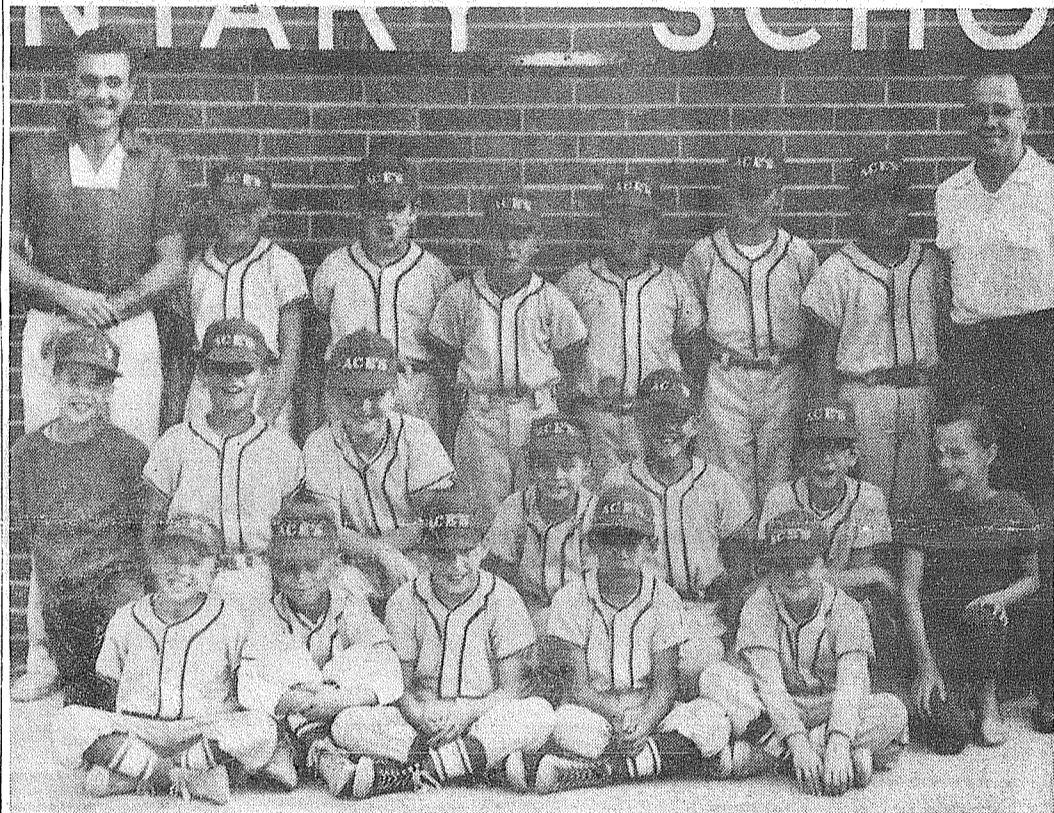
The problem of youth development and guidance is a natural concern to the residents of the Parkland area. Lack of proper recreational facilities and activities still presents a stumbling block on the road to ideal conditions.

Until Tuesday, George Potter, president of Parkland Business Club, had an additional problem. There was no one to fill the chair of the head of the Youth Progress & Development committee.

Then Cliff Becklund, recently appointed assistant manager of the Parkland branch of the National Bank of Washington, came along. Already possessing considerable experience with young people (Cliff is finance chairman of the Southeast District of the Boy Scouts and has three children of his own), he well realizes the problems that need to be overcome. He immediately volunteered to take over the Parkland youth program.

Cliff is busy in many activities besides the Boy Scouts. He is a member of the Tacoma Chamber of Commerce, the Tacoma Retail Credit Association, treasurer of the Parkland Kiwanis Club, the board of directors of the Tacoma Chapter American Institute of Banking, the Tacoma Elks, and was assistant cashier at the bank before his recent promotion.

ACES Take All in First Year of Ball



The ACES of Andrew Christensen Elementary School smile happily after winning the Rookie Championship in the Franklin Pierce District with only one loss all season, including tournament play. It was the first year of Rookie Baseball for players and coaches. Sitting in the front row left to right are Doug Cornelius, Jay Richert, Danny Simpson, Fred Spencer, Mike Strackey. Kneeling in the second row are Teddy Riedle (bat boy), Manfred Blasberg, Mike Holm, Roger Ellis, Jerry Steuby, David Morris, and No-Miss-Game Cindy, the mascot. Standing are Ray Morris (Coach), Donald Usher, Alvin Fugate, Earl Wolfe, James Mundell, Doug Ellis, George Perry, Ted Riedle, manager. Absent was Ronnie Woodward. The coach, manager, and players wish to thank the following sponsors for their financial help in making their team successful: Dari Diner, Pacific Avenue Veterinary Clinic, Gordie's Auto Wrecking, Rudy Dehler Masonry Contractor, Smalley's Used Cars, Devreaux Realty, Armstrong Used Cars, Fletcher's Texaco, Parkland Heating Co., Martens Automotive, Sheridan Motors, Cart-Craft, R. W. Rhine Excavating Contractor, IGA Foodtown, Mulls Garage, Mountain & Sales Serv-U, Kimball Body Shop and others who have contributed in any way.

Local Groups Set "Meet Candidates Night" August 22

The public is cordially invited to participate in the "Meet the Candidates Night" being co-hosted by three communities in the rural area of the 28th District. They can attend the meeting at the hall nearest their home and candidates for public office will circulate among the three halls.

At the Lacamas Community hall, Roy and Harts Lake Grange and the Lacamas Community Club will offer hospitality and refreshments. Benston and Elk Plain Granges have made the same arrangements in their respective halls. Refreshments will be served all evening. The date: August 22 at 8:00 p.m.

Power Off Sunday In Graham, Roy Areas

Residents south of Spanaway, including the Graham and Roy areas, will be without power Sunday, August 21 from 9 a.m. until noon. The power of the Loveland Mutual Co. will be shut off during that time.

LAUNDROMAT
WASH DRY
10c 10c
PER LOAD
56th & Pacific Ave.

For Clothing & Shoes for All the Family...
SHOP AND SAVE AT
SEYMOUR'S
9714 Pacific Ave. - 1 Block North Park 'N Shop
SHOP DAILY 9 to 9 EVERY SUNDAY 10 to 6

Goomes Rest Home
MR. AND MRS. CLAUDE GOOMES
OWNERS AND OPERATORS
Excellent food, individual attention.
Private and Welfare patients. State Dept. of Health License No. 113.
321 South 116th St.
Tacoma 44 - LE 7-3022

SPANAWAY HARDWARE
ELECTRICAL AND PLUMBING SUPPLIES
SAND, GRAVEL & CEMENT
PLASTIC PIPE
170th & Pacific
LE 7-8378
Open Sundays 8:30-1:30

CANYON
READY MIX CONCRETE COMPANY
72ND & CANYON ROAD LE 7-3943
NOW! 3 BIG MIXERS
TO INSURE YOU THE FASTEST POSSIBLE DELIVERY OF YOUR ORDER
ALL DAY SATURDAY DELIVERY
WASHED SAND - GRAVEL
DRAIN FIELD ROCK - BANK RUN
AFTER 6 P.M. CALL LE 1-0095

Is This Killer in Your Yard? Patty Huston Fund Drive Underway



Mrs. John Holmes looks at deadly nightshade plant in the backyard of her home at 216 East 121st. A three year old Tacoma girl died in July from eating the poisonous red berries of the plant, which cause death in a few hours. The plant grows to a height of two feet and has leaves resembling those of the poplar. — Photo By McKewen

Before you do anything else today, better take a good look in your garden. An innocent looking weed, which is in reality the deadly nightshade plant, may well be residing in your shrubbery.

Mrs. John Holmes, of 216 East 121st, can well testify to this fact. She found two right in her own backyard!

She and her husband first came in contact with the plant during a vacation in Oregon. While camping at one of the state parks they came across a large specimen right by their camp. A ranger identified it as the nightshade plant and immediately destroyed it.

Upon returning home from their vacation they discovered a similar looking plant in their yard. They looked around and found another growing underneath a large shrub. They checked and found it was indeed the deadly nightshade. As they are expecting children to visit

them this weekend, they promptly made plans to have the plant removed.

A three year old Tacoma girl was killed in July after eating the plant's berries. Only two or three berries may cause death within a few hours.

The leaves of the plant resemble those of the poplar. It grows to a height of about two feet and has purple blossoms. The berries appear about two months after the plant starts growing. They turn from green to orange to deep red.

All parents in the area are urged to warn their children not to eat the berries from any strange plant. If you find a plant resembling the nightshade in your yard, it is best to pull it up and destroy it immediately. No harm can come from touching the plant. The only way the poison can be consumed is by eating the berries.

Anyone desiring to see the plant close up are invited to drop by the Times-Journal and see the one on display there.

Roy Entries Open

The entry books are now open for contestants for the Roy Rodeo September 4-5. The Books will close at 6 p.m. Friday, September 2.

A Rodeo dance will be held at Benston Grange Hall the night of Sept. 3. A cowboy dance will take place in the Roy school gym Sunday night, Sept. 4.

The Country Parson
"If you can't think of good things to say about your friends—you have the wrong friends."
DRYER'S FUNERAL PLAN CUTS COSTS
MORTUARY
15th AND PACIFIC
PARKLAND

Open 7 Days A Week Sundays 8 a.m. to 4 p.m.
HUNTING & FISHING LICENSES, SPORTING GOODS, PAINT
SOUTH END PLUMBING AND HARDWARE
185th & Pacific Avenue Phone LEnox 7-4100

INTERESTING FACTS
Marked PERSONAL
So Is The Appearance of Your Clothes
PARKLAND CLEANERS
11004 Pacific Avenue North of the Bank Corner
LEnox 7-3221

Local Store to Feature Model Planes 25, 26, 27

Youngsters 6 to 60 of the area are invited to take their model airplanes to Parkland Super Market the weekend of Aug. 25, 26, 27 for a big display. The model planes will be arranged in an exhibit of local people and will be guarded carefully to insure that none will be damaged in any way.

Prizes and more prizes are promised and the clever workman can expect something pretty nice for a winning model.

The model planes should be taken to the Market Thursday, Aug. 25 if possible, or as early Friday morning, Aug. 26, as possible. Owners are asked to register their names, addresses and phone numbers so prizes can be sent to winners, even though they may not be present when awards are announced. All planes should be picked up at the Market the Sunday or Monday following the contest.

PROFESSIONAL DIRECTORY

Farmers Mutual of Enumclaw
Fire - Auto
ED MAREK
12909 Pacific Ave. LE 7-4000

Farmers Insurance Group
Fire, Life, Auto
ROBERT GRAVES
1915 East 91st LE 7-4506

TODAY'S LAFF

SERVICE STATION: A place where you fill the Radiator and Drain the Family.

School Shoe SALE!

Boys Heavy Duty Oil Tan 6" SHOES
Regular \$9.00
Sizes 3 to 5, only \$5.95!

GIRLS' SADDLES
All White, White Buck, Black & White.
Soap and water.
Sizes 4 to 10—AA, B, C.
Regular \$7.00 \$5.95!

ALL SIZES DISPOSABLE VACUUM CLEANER BAGS

To Fit All Types of Cleaners AVAILABLE HERE
PARKLAND HARDWARE
12169 Pacific Ave. LE 7-3171

Women's & Girls' TEARDROPS

Wore \$6.00 \$4.99!

Men's PIGSKIN OXFORDS
Regular \$9.00 \$6.95!

WATCH FOR THE OPENING OF OUR NEW UPSTAIRS BARGAIN BASEMENT!

Boy's PIGSKIN OXFORDS
Regular \$8.00 \$5.95!

WE SPECIALIZE In Repair of Any Type of Shoes.
PAUL'S SHOES
161st & Pacific LE 7-0552
Closed Mondays

HILLTOP CONCRETE CO.
LOOK FOR THE BIG "H" THE SIGN OF SERVICE
READY MIX CONCRETE ALSO DELIVERED ON SATURDAY FOR YOUR CONVENIENCE
(AT SATURDAY'S RATES)

● Sack Cement ● Crushed Rock
● Washed Sand ● 3/4" Beach Gravel
● Washed Gravel ● Select Pit Run
● Drain Gravel ● Fill Dirt
Plant: 2223 - 23rd Ave. S.E. P.O. Box 648, Puyallup
PUYALLUP TH 5-9525 TACOMA FU 3-3624

BULK RATE
U. S. Postage Paid
Parkland Branch
Permit No. 9P
Tacoma, Wash.

Rural Route
Occupant or Boxholder
Postmaster: If unable
to deliver, return post-
age is guaranteed on
addressed papers.

Rummage Sale
The Kapowsin Grange Auxiliary
804 will hold a rummage sale Aug.
25, 26 and 27.

Also, on Aug. 20 the members
will hold a work day. The ladies
will furnish a potluck dinner for
the participants.

SHOP & SAVE
at
BROOKDALE LUMBER CO.

ONE MORE WEEK
BOYSEN PAINT
31st Annual
1c SALE

BUY ONE QUART
BOYSEN RUBBERGLO
FOR \$1.98 - GET
SECOND QUART 1c

Boysen Rubberglo is a latex flat
wall finish that dries evenly,
has no odor.

**OTHER BOYSEN MONEY
SAVING SPECIALS**
These are not 1c Sale Items
Odorless Dream Semi Gloss
ENAMEL
12 Ready-mixed Colors to
Match Rubberglo Colors
Special Colors Slightly Higher

1 Qt. \$1.92
1 Gal. \$6.16

PLASOLUX
America's Finest Gloss Enamel
Inside or Outside Use

1 Qt. \$2.63
1 Gal. \$8.98

PLASOLUXER
NYLON BRUSH
2 1/2 in. size \$1.69
Special

**PORCH & DECK
ENAMEL**
or LATEX
FLOOR PAINT
Your Choice of 10 Colors

1 Qt. \$1.99
1 Gal. \$6.44

Complete 4 Pc.
**ROLLER &
TRAY SET**
7-in. Size... Packed in
Polyethylene Bag, Deluxe
Mohair Cover - Threaded
Handle for Extension

Special Set \$1.99

**PLASTIC
DROP CLOTH**
9 x 12 Size
Special 69c

**BOYSEN 100% PURE
HOUSE PAINT**
or EXTERIOR
WOOD PRIMER
Excellent Quality

1 Gal. \$6.78
5 Gal. \$6.64

**Boysen Shake
AND
RUSTIC PAINT**
Fire Resistant
Weathers Gradually -
Beautifully, Lasts for Years
7 Colors

1 Gal. \$5.18
5 Gal. \$5.03

**SPECIAL
Redwood Stain**
An Ideal Product for Protecting
Natural Redwood or Cedar

Galvin \$2.83

**TYNEX NYLON 4-in
WALL BRUSH**
Metal Bound - Beaver Tail
Handle

Special \$3.79

5 Qt. METAL
PAINT PAIL
Heavy Gauge - Quart Measure

Special 73c

**BUY ONE QUART
BOYSEN RUBBERGLO
FOR \$1.98 - GET
SECOND QUART 1c**

**OTHER BOYSEN MONEY
SAVING SPECIALS**

ENAMEL
12 Ready-mixed Colors to
Match Rubberglo Colors

PLASOLUX
America's Finest Gloss Enamel

**PLASOLUXER
NYLON BRUSH**

**PORCH & DECK
ENAMEL**
or LATEX
FLOOR PAINT

**ROLLER &
TRAY SET**

**PLASTIC
DROP CLOTH**

**BOYSEN 100% PURE
HOUSE PAINT**
or EXTERIOR
WOOD PRIMER

**Boysen Shake
AND
RUSTIC PAINT**

Redwood Stain

**TYNEX NYLON 4-in
WALL BRUSH**

PAINT PAIL

BROOKDALE LUMBER COMPANY
136th & Pacific
LE 7-8669

Giants Open Home Stand Against Padres, Bees

Highlighted by a big Radio and Players' Appreciation Night, the next to the last home stand of the season opens Tuesday, August 23, at Cheney Stadium when the Tacoma Giants entertain the San Diego Padres in a three-game series.

The Salt Lake City Bees follow the Padres with a four-game week end stand on Friday, August 26. One of the outstanding nights of the entire season is slated for Wednesday, August 24, when Don Hill, the Giants radio broadcaster, presents his big Radio and Players' Appreciation Night.

The popular Voice of the Giants has lined up an entertaining pregame show featuring comedy stunts to be performed by Tacoma ball players. In addition there will be scores of top prizes for the fans including a combination radio-sterio phonograph, transistor radios and season passes plus a full-color team photograph to be given to every person at

tending the game.

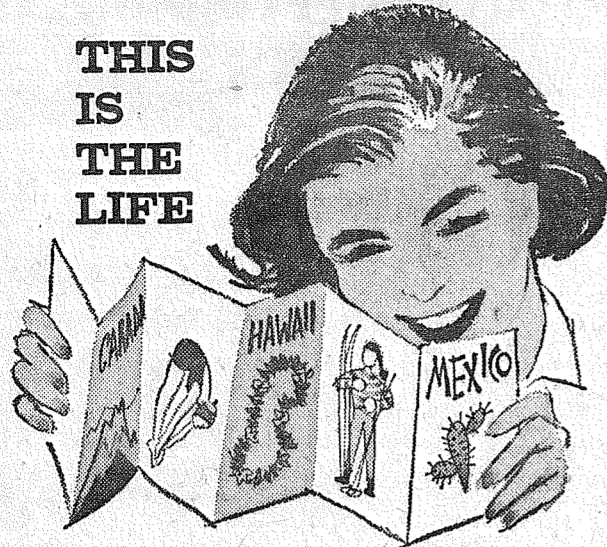
A banner crowd is expected for the evening with the entire grandstand already sold. However, over 3000 tickets will be available the day of the game at the Cheney Stadium ticket office.

Several other special nights are on tap during the home stand, including Junior Chamber of Commerce Night on Thursday, August 25 and Eagles Lodge Night on Friday, August 26.

GIANT GEMS — The Tacoma Police are currently selling tickets for their big night at the Stadium on September 9. Kent Erickson, chairman for the Police Benefit Night, reports nearly 3000 tickets have been sold to date. . . . Medicos report injured Ramon Montant should be fully-recovered from his injured ankle by early fall. . . . The Giants club house bulletin

board is posted with humorous cartoons of Giant players drawn by Joe Shipley, Tacoma's fireballing righthander who is quite an accomplished artist. . . . Frank Reveira plans to forego winter ball this season in favor of returning to his native Hawaii.

EASY TO CUT — Lamb shoulder makes an easy-to-carve roast if it is boned and tied into a roll. Economical, too.



THIS IS THE LIFE

SAVE to enjoy it at the Family Savings Center

A MUTUAL SAVINGS INSTITUTION

Pacific Federal Savings and Loan Association

Bellingham • Seattle • Tacoma
Longview • Portland • Eugene

11th AND PACIFIC LAKEWOOD AT VILLA PLAZA

CURRENT RATE **4%** COMPUTED ON MONTHLY BALANCES PAID 4 TIMES A YEAR

IT'S CHEAPER TO RENT THE TOOL YOU NEED

GARDEN TILLER
POWER LAWN MOWERS
BELT HAND SANDERS
OSCILLATING HAND SANDERS
FERTILIZER SPREADER
LAWN ROLLERS
LAWN SEEDERS
PAINT SPRAYERS
RUG SHAMPOO MACHINE

POWER MOWER SHARPENING & REPAIR
WINDOW GLASS INSTALLED

PARKLAND HARDWARE

12169 Pacific Ave. LE 7-3171

INTERURBAN AUTO FREIGHT INC.

3 Trips Daily
To Parkland, Spanaway
Summit, Midland

GENERAL FREIGHT
MA 7-4121

WET SUITS

Special \$37⁵⁰ - \$29⁵⁰ - \$24⁵⁰

Rentals | S.C.U.B.A. Lessons | Air, Sales

FREE - DEMONSTRATION DIVE
DIVERS DEN NO. 2
The Complete Diver's Shop

6645 So. Tacoma Way GR 2-4242

SUMMER CLEARANCE

WESTERN SHIRTS

33 1/3% OFF

Everything For Horse & Rider

HEREFORD BRAND
TEX TAN SADDLES

LEE RIDERS Men's & Women's Matching Colors

OPEN FRIDAY EVENINGS 'TIL 9 P.M.

THE BUNKHOUSE

12605 Pacific Ave. LE 7-5510

BUY THE BEST FOOD

... at the lowest prices

GOLD MEDAL FLOUR 25-lb. Bag **1.83**

HI-C ORANGEADE 46-oz. Tin **5 for 1.00**

MAXWELL HOUSE COFFEE

1-LB. TIN **59c**

BOOTH'S FRESH FROZEN FISH STICKS

14-OZ. PKG. **49c**

SWANSON'S QUICK FROZEN MEAT PIES
Beef - Turkey - Chicken

5 for 1.00

SUNSHINE GRAHAM CRACKERS 2-lb. Pkg. **59c**

SOFTASILK CAKE FLOUR 2-lb. Pkg. **29c**

BETTY CROCKER PIE CRUST MIX Large 20-oz. Pkg. **25c**

NABISCO PREMIUM CRACKERS 2-lb. Pkg. **47c**

PACIFIC PEARL TINY SHRIMP 4 1/2-oz. Tin **3 for 1.00**

LIBBY'S Tomato Juice 46-oz. Tin **19c**

DUCHESS TOMATOES 2 1/2 Tin **19c**

GAINES DOG MEAL 10-lb. Bag **99c**

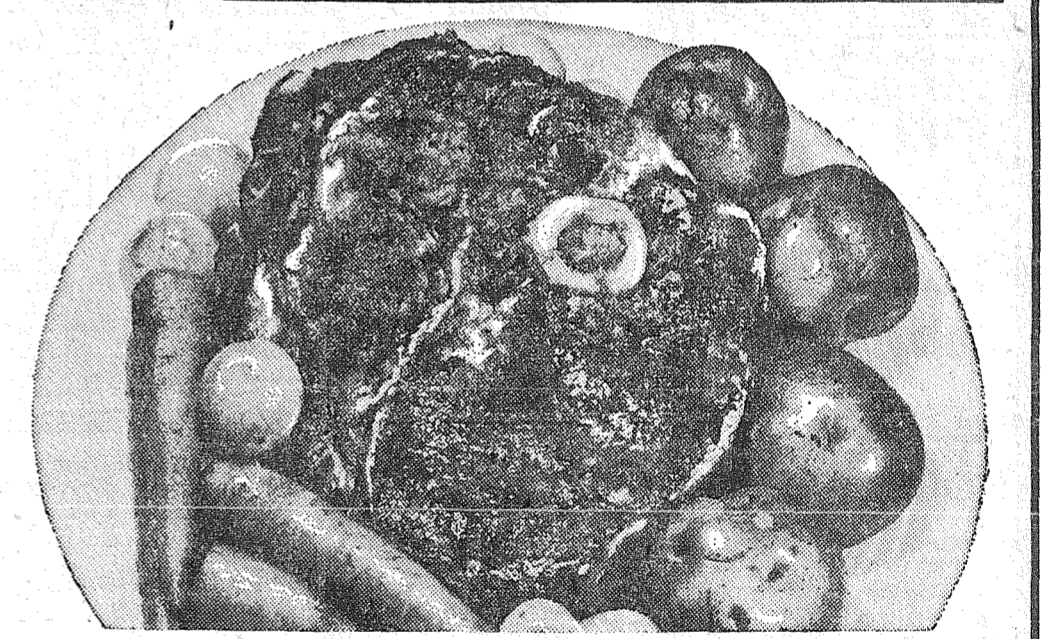
HEINZ KETCHUP 14-oz. Bottle **19c**

HOODY'S PEANUT BUTTER 2 Lb. Jar **69c**

LARGE AA WHITE EGGS Doz. **52c**

KRAFT JET-PUFFED MARSHMALLOWS 10-oz. Pkg. **19c**

LUXURY CHEESE WEDGE CUT Lb. **49c**



U.S. GOOD 7-BONE CUT POT ROAST LB. **47c**

ROUND BONE AND CROSS RIB Lb. 53c

U.S. GOOD CHUCK STEAKS LB. **49c**

BACON ENDS AND PIECES 1 Lb. Pkg. **27c**

RED SNAPPER OCEAN FRESH LB. **29c**

PRICES EFFECTIVE Thursday Through Sunday

SUMMIT TRADING COMPANY

10409 Canyon Road, Tacoma LE 7-5848

No Sales To Dealers
We Reserve The Right To Limit Quantities

OPEN SUNDAYS 10 A.M. TO 7 P.M.

FOR YOUR CONVENIENCE WEEKDAY HOURS 9 A.M. TO 9 P.M.

CHECK OUR FOR THE BEST IN PRODUCE DEPT. MONEY SAVING BUYS

LOCAL CELERY STALK EA. **9c**

YAKIMA TOMATOES **89c**

GREEN PEPPERS 5c ea.

FLAT

GUARANTEED RIPE WATERMELONS lb. **2 1/2c**

a-Wondering . . . and a-Wandering . . .

With JACK BROWN

I've got a long list of things to write about and one of my notes says to give a rundown of my activities for one week as requested by several people. This is probably as good a week as any and anyway it sounds like an easy out for me. Can't tax the old grey stuff too much, you know.

Monday August 8th 1960

7 A.M. and my bed has been invaded by my 2 1/2 yr. old, two legged alarm clock. That's all the sleep I'll get this day so might as well roll out and face old blue Monday. A quick shave, a bowl of corn flakes and I'm on the way making my rounds picking up grocery ads. My first call is at Elmer Bergman's home where I always sandwich in my arrival between the milk man and Elmer's fried eggs. Two more stops and back to the office by 9:10 with exactly twenty minutes to lay out one of the larger ads. The crew knows the plight I'm in and someone usually meets me at the door with a cup of coffee and then they all sort of fade away until I get that ad laid out and on the way. After that I try to become human and may even get around to say good morning to everybody, then after sorting through the morning mail in hopes of finding some of that green stuff, it's out on the streets again picking up ads. First my regular stops in Parkland then into Spanaway and then back to the office to make them up. Lunch time comes and goes and I'm still at the make-up table when Mrs. Honeywell feels sorry for me and runs next door to make me a lunch which I polish off while finishing up a couple of ads. Out of the office to show copy to a customer. "What's that say right there?" He asks me. "That don't say anything. That's a piece of my cake," I reply. Back to the office for a 2 o'clock appointment with the poor guy I growled at when he walked in at 9:15 this morning to see me. An hour or more spent going over his proposition to put on a pictorial for our area. Agreed. "Goodby. See you in the A.M." Out for more ads. Back at the office. "Here, the phone's for you." I answer it for the hundredth time today. It's Dolores. When am I coming home for supper?" "My gawd. Is it that time already? Be right there". "Jack! You're wanted on the other line." "State Patrol calling. Got a two-car accident with injuries 4 miles south of Graham on 5N. Will you cover it? McKewen isn't available." I'm on the way. As I try to make a few knots through the evening traffic I remember that we are having company for supper. Hope they have a pleasant conversation with my empty chair. Forty five minutes past a hot supper I arrive home. After a quick bite while reading the daily I suggest we head for the airport since I need to relax and my mother-in-law has never been for

back to the office to lay out some more ads. Ten to two. Let's roll. Got to stop at Bob's place and leave one car. Into the Renault and from there to Olympia. For the first time in months we're on time. What did we forget? Made it into the Daily O in Olympia right on the nose. Someone ought to give us a medal. Now down to work making page dummies and proof reading. It's 6:30 Let's get out of here and go eat. Over to the Oyster House we go. Who's we? Darrell and I, of course. Back to the Daily O and while we're killing time I'll hang out the first of this crazy column which brings me up to where I now sit at a strange typewriter here in Olympia trying to be sure I haven't missed something up to date this week in the life of Jack Brown, janitor, truck driver and publisher of the Times Journal. More as it happens. . . We're through at midnight and head for home. Into the nest by 1:30 and that's -30- for Tuesday.

Tuesday August 9th 1960

Up at 7:15. Gotta hurry and get to the office before 8. In the middle of my shower I seem to hear strange sounds like someone saying breakfast is ready. Can't be, but it is. Dolores must have flipped, for there sets a real honest to goodness breakfast cooked by hers truly. How lucky can I get! Over to the office and introduce a prospective new employee to the crew. For the next half hour while they get acquainted with him over a cup of joe I try to piece together all my notes for Thursday's column. Man, this is a deep one! Should have picked on something a little simpler this week due to my tight schedule. Too late to back down now. Nine a.m. and the joint's jumping. The new boy is leaving to make arrangements to come to work for us steady. Mac has just come in for the pictures I took. LeRoy is waiting to get started on the pictorial. Don is yelling about going to Omak for the day. Darrell and Vivian waved at each other down the road and each thought the other had been or was going to town to pick up a package. Have just discovered that the wave meant "good morning and not "I got it." There goes old D.A.D. heading for town, but fast. There goes that blasted phone again. It's only ten a.m. and I've already been on the horn ten times. It's Dolores. "NO! GOODBY!" Wonder how she thought I'd found time to pick up the lawnmower. Let's see. Where was I? Oh yes! Trying to explain to Mac how come I had about fifteen pictures all mixed up. That's easy. I had help. My son Mark. Out of the office for ads. Back to the office. Out of the office. What time is it? Noon? Got time for a piece of pie and a glass of milk. Got to give Dutch a bad time anyway. That didn't take long. Now over to McKewen Studio to pick up the pictures and

back to the office to lay out some more ads. Ten to two. Let's roll. Got to stop at Bob's place and leave one car. Into the Renault and from there to Olympia. For the first time in months we're on time. What did we forget? Made it into the Daily O in Olympia right on the nose. Someone ought to give us a medal. Now down to work making page dummies and proof reading. It's 6:30 Let's get out of here and go eat. Over to the Oyster House we go. Who's we? Darrell and I, of course. Back to the Daily O and while we're killing time I'll hang out the first of this crazy column which brings me up to where I now sit at a strange typewriter here in Olympia trying to be sure I haven't missed something up to date this week in the life of Jack Brown, janitor, truck driver and publisher of the Times Journal. More as it happens. . . We're through at midnight and head for home. Into the nest by 1:30 and that's -30- for Tuesday.

back to the office to lay out some more ads. Ten to two. Let's roll. Got to stop at Bob's place and leave one car. Into the Renault and from there to Olympia. For the first time in months we're on time. What did we forget? Made it into the Daily O in Olympia right on the nose. Someone ought to give us a medal. Now down to work making page dummies and proof reading. It's 6:30 Let's get out of here and go eat. Over to the Oyster House we go. Who's we? Darrell and I, of course. Back to the Daily O and while we're killing time I'll hang out the first of this crazy column which brings me up to where I now sit at a strange typewriter here in Olympia trying to be sure I haven't missed something up to date this week in the life of Jack Brown, janitor, truck driver and publisher of the Times Journal. More as it happens. . . We're through at midnight and head for home. Into the nest by 1:30 and that's -30- for Tuesday.

Wednesday Aug. 10th
It's 6:30 and there goes the alarm. Out of bed, grab a glass of milk, pile into the truck and head back for Olympia to pick up the finished papers. Back to the office by 9 and unload. Now to the mail, lay out the pages for the McChord Observer, talk to a couple of people about ads and try to make it to Kent for a luncheon appointment. Back to the office by three and now to settle down and try to get to the bottom of the pile of this office work. By 6 p.m. Dolores has chow cooked in our shop luncheonroom for all hands and we stop to eat. This is the night we work late to put out the McChord Observer. Back to my desk to work while the sound of the press running in the shop fills the whole place with its roar. By nine thirty I am busy as a beaver bundling up the papers preparing them for mailing. It's ten thirty and the station wagon is all loaded so off to the terminal annex on (See Page 7, Column 1)

Summit . . . Summit Calendar Dates Available

The community information luncheon, the guests played games. Members present were: Freda Reynolds, Effie Dreis, June Lee, Bella Derig, Alice Haller, Marcella Lofgren, Nell Absten, Elin Johnson, Carol Smith, Violet Kniffenk, Ida Young, Jeanne Bottiger, Olive Burke, Nell Saasen, Fran Torbet, Phyllis Nevens, Susan Rink, Mabel Merkle, Evelyn Naslund, and Mary Bradford. Visitors were: Donna Scannell, Augustine Latham, Agnes Dassbey, and Mary Archer.

The Coaches thank the following boys for their faithful participation and sportsmanship in making the Little League program in the Central Avenue area a success. COOK MOTORS — Steve McKanna, Donald Torbet, Bobby Ashworth, Dennis Bauer, Ross Ratcliffe, Dennis Iverson, Larry Hellwich, Gary

Remember — for only \$2.00 you receive this unique community calendar with birthdays of your family, neighbors, and friends; meeting dates; and anniversaries. Buy one! CONGRATULATIONS The new diaper addition in the Wesley Templin home is another daughter. BURNETT BIRTHDAY CLUB Birthdays club members met at the home of Freda Reynolds, Tuesday, August 2, for their monthly celebration. The birthday celebrities were Freda Reynolds and Effie Dreis. After a delicious potluck

Faggerstad, Bobby Matson, Doug Cail, and Byron Moyer. COPE'S AUTO SALES — Robby Dearth, Richard Hill, Scott Craig, David Baxter, Arnold Kresse, Gerry Kaiser, Steve Faggerstad, Darrel Hart, Jim Martinson, Kim Morris, Eddie MacDicken, Ronnie and Bobby Lucas. SUMMIT VIEW MERCHANTS — Dick Smith, Paul Rushton, Bobby Bartrum, Kenneth Korsmo, John Ward, Douglas Armstrong, Wayne Barraekman, Rodney Mackey, Bobby Meisenburg, Allan Cail, Bob Adler, and Bill Ellington. SUMMIT YOUTH CENTER — Pat Ward, Ricky Robbins, chev's measurements.

General Sheet Metal Work Special Attention to Special Equipment RAU MFG. CO. LEnox 7-7372 14114 Pacific Avenue

Prescription Service Open 7 Days a Week 9:30 a.m. - 9:30 p.m. Sundays 10 a.m. - 6 p.m. JACOBS PACIFIC DRUGS Wallgreen Agency Pay Light & Water Bills Here 84th & PACIFIC AVE. Greenfield 2-6445

PISTON GRINDING Valve Seats Installed, Brake Drum Turning, Reboring, Pin Fitting, Lathes and Press Work, Head Surfacing, Key Seating, Complete Motor Rebuilding, etc. Rupe Machine Works and Garage AUTOMOTIVE & INDUSTRIAL WORK 13411 Pac. Ave., P.O. Box 2445, Parkland 44, Wn., LE 7-7450

ANNUAL MEETING The annual meeting for the Mile B Water and Power Company is set for 8:00 P.M. Monday, August 22, in the Collins Grange Hall, corner of Burnett and Allison roads. Reporter — Gwen Cail, LE 7-3766.


RIDDLE OF THE WEEK . . . 1331-13 - 45 - 78? . . . Nikita Khru- TER — Pat Ward, Ricky Robbins, chev's measurements.

LUMBER
ALL GRADES
ALL STANDARD AND BETTER LUMBER IS WCLA GRADE STAMPED
GLASS HARDWARE SHINGLES ROOFING FULL LINE OF HAND TOOLS
ORDERS NOW BEING TAKEN FOR SAWDUST — SHAVINGS
Baskett Lumber
9701 Portland Avenue LE 7-8663

NOW'S THE TIME TO PAINT WITH PARKER AT A SPECIAL PRICE Barsoni & Timm At the Roy Y LE 7-4221 Open 7 Days a Week, 7 a.m. - 9

ENROLL NOW FOR FALL CLASSES!
CLERK-TYPISTS
RECEPTIONISTS
STENOGRAPHERS
— AND —
IBM PUNCH CARD MACHINE OPERATORS
Classes Start Sept. 12
ENROLL NOW
KNAPP COLLEGE
10th and Pacific Ave. Tacoma MA 7-2181

FOOD SPECIALS
MUTTON SALE
LEG 'O MUTTON lb. 35¢
MUTTON SHOULDERS ROAST lb. 25¢
MUTTON STEAKS lb. 29¢
MUTTON CHOPS lb. 33¢

LOOK WHO'S SERVING YOU NOW . . .
NOW! BUDGET YOUR COMFORT WITH OUR **MOBILHEAT** AUTOMATIC FILL UP SERVICE

CECIL FRAZIER
Cecil Charles "Ceco" Frazier has been driving a truck for Pochel's for the past 10 years. Before that, "Ceco" did "everything from grocery clerk to boiler maker."
He brought his family to the northwest from San Francisco 15 years ago, simply because he "liked it better up here and it's a better place to raise children."
Cecil is the proud father of two boys, 21 and 19, and one 17 year old daughter. The boys are attending Central Washington College of Education at Ellensburg and Eastern Washington College of Education at Cheney. The girl attends Sumner High School.
Just one phone call from you and we're right on the job servicing your oil tank. All through the cold weather months, you can be SURE of our **DEPENDABLE** service!
YOUR FUEL OIL AND APPLIANCE DEALER
POCHEL DISTRIBUTING COMPANY
140th & Pacific LE 7-8624

Nalley's Famous **TANG** 39¢ Qt.
Golden Richtex **SHORTENING** 3-lb. tin 55¢
DREAM WHIP Perfect for any Topping 2 For 39¢
Fairlane and Polar Fresh **FROZEN VEGETABLES** 10-oz. Pkg. 6 for 89¢
Borden's Inst. **POTATOES** 5 1/2-oz. Pkg. 31¢
Mandalay Tidbits, Chunk, Sliced and Crushed **PINEAPPLE** 300 Tin 5 For \$1.00
N.B.C. OREO Creme San. **COOKIES** 11-oz. Pkg. 35¢
"AA" Mediums **EGGS** 43¢ Dozen
PRODUCE
CELLO Ea. 10¢ GREEN Lb. 10¢
CARROTS 10¢ PEPPERS 10¢
FANCY BANANAS **McDANIELS**
The Home of The Low Price
AIRPORT & CANYON ROAD
Store Hours: 9:00 'Til 9:00 — Sundays 9:00 'Til 7:00
PRICES EFFECTIVE Thursday Friday Saturday

LINOLEUM, FORMICA, CARPETS
FREE ESTIMATES
PACIFIC FLOOR COVERING
131 & Pacific LE 7-4545

Rural Garbage Service
Pierce County Permit
Serving Parkland, Midland, Summit and Spanaway
LEnox 7-8688

POWER TOOLS FOR RENT
SANDERS—EDGERS—POLISHERS—HAND SANDERS
SKIL SAWS—ELECTRIC DRILLS—CEMENT MIXERS
ETC.—ALSO HAND TOOLS FOR RENT
Anderson Lumber
9813 Pacific Avenue LEnox 7-7311

FIRST SEE NATIONALS
PARKLAND LE 1-1331
AUTO PARTS
127th & PAC. AVE.

Lloyd ANDREWS
keeps his promises to you.
Republican for Governor
Andrews for Governor Committee; Walt Woodward, Mgr., Vance Building, Seattle 1

Two Couples Mark Anniversaries

TRAIL TRIP
Mr. and Mrs. Jack Henriksen and Mr. and Mrs. Al Hart celebrated their wedding anniversaries together Aug. 6 at the beach home of the Henriksens at Grayland. It was the Henriksens' 35th and the Harts' 45th special date.

Fair Dance at Lacamas Saturday

SECRET PAL CLUB
Mrs. Oliver Omat was hostess for the Secret Pal club recently at the Omats' cabin on the Deschutes river. Those present were Mesdames Robert Rhone, Robert McCullough, Bob Steidel Sr., Edward Flannery, Jack Henriksen, Emerson Trappenning, George Stephenson, Ted O'Neill, Beulah Ballard, Lyneth Creamer, and Judy Omat.

Fair Dance at Lacamas Saturday

The Lacamas Community Fair dance, held each year to help finance the annual fair, will be held in the community hall on Harts Lake Loop road Saturday evening, Aug. 20. Several attractive features and awards are planned. Everyone in the community will be welcome; good music, good fun, fun for all.

Eatonville Has Baseball Winners

Eatonville Little League fans rewarded the four teams from that town playing in the summer Bethel tournament by taking the boys to Wenatchee last weekend to play in the State Eagles games. The Bald Eagles, a Pee Wee team in the Bethel play, took second place in its class for the state.

Graham Church Picnic Sunday

The Graham Community Covenant church invites the public to attend the annual Sunday school picnic Sunday, Aug. 21, at the Fred Erickson home on Clear Lake. The Rev. Paul Nelson is the pastor. Services will be held at the lake at 10:30 a.m., followed by the potluck dinner, games and swimming. For transportation, call VI 7-7221.

PREScription SERVICE
TED SWANSON
INSULIN - VITAMINS
Downtown Prices
Pay Phone Bills Here
PLENTY OF FREE PARKING
TINCHER'S PHARMACY
8227 Park Ave. GR 4-3444
Across from Fern Hill P. O.

BALDWIN MODEL 30 \$995.00
PROSSER PIANO & ORGAN CO.
6425 S. Tacoma Way GR 4-0605

Shop Safeway for FRESH MEATS

- Beef Sirloin Steak** U.S. D. A. Choice. Properly aged for perfect eating flavor. **lb. 89c**
- T-Bone Steak** U.S.D.A. Choice Beef **lb. \$1.09**
- Chuck Steak** U.S.D.A. Choice Beef **lb. 49c**
- Boneless Chuck Roast** U.S.D.A. Choice beef **lb. 79c**
- Corned Picnics** Bake or Boil for a menu change **lb. 39c**
- Luncheon Meats** Chunk Style Assorted varieties **lb. 55c**
- Turkey Wings** Tender and juicy. Bake or braise **lb. 39c**
- Breaded Shrimp** CAPTAIN'S CHOICE **10-oz. 59c**
- Fish Sticks** CAPTAIN'S CHOICE Easy to prepare. **3 8-oz. Pkgs. \$1.00**
- Cornish Game Hens** Rock. 20-oz. Tender **Each 69c**

SAFeway GUARANTEE
Every item at Safeway is sold on a money-back guarantee. This means the full purchase price will be cheerfully refunded on any item that does not give you complete satisfaction.
Shop with Confidence at SAFEWAY

CUBE BUTTER
Lucerne, Grade AA. Made from sweet cream.

lb. 65c

Pillsbury BISCUITS
or Ballard. Quick and easy.
Pkg. Of 10 **10c**

LEMONADE
Scotch Treat. Frozen. Easy to serve.
3 6-oz. Cans 25c

(the) Best! FRESH PRODUCE BANANAS

No. 1 Our Best Quality

3 lbs. 29c

FRESH EGG PLANT lb. **10c**

GREEN PEPPERS lb. **10c**

Yakima TOMATOES 16 Lb. Flat **89c**

HAPPY BIRTHDAY, BETTY! WE'VE BEEN THINKING ABOUT YOU BACK THERE AND WE'VE SEND OUR BEST WISHES TO YOU. SO LET US PHONE YOU TODAY FOR YOUR BIRTHDAY. WE'VE MANY MORE TO BE CALLING YOU AGAIN. IT'S ALWAYS FUN TO PHONE LONG DISTANCE—PERFECT FOR FAMILY VISITS.

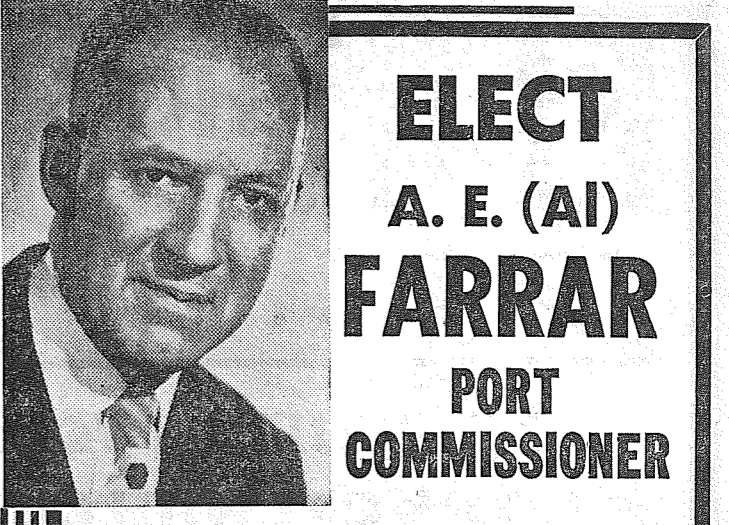
Pacific Telephone

Tomato Juice LIBBY'S. Ideal breakfast drink. **2 Giant 46-Oz. Cans 45c**

SNOW STAR ICE CREAM
VANILLA, CHOCOLATE, STRAWBERRY, NEAPOLITAN
2 1/2 Gal. \$2.93 **Gallon Ctn. \$1.17** **Half Gal. 59c**

BISQUICK
Favorite multi-purpose baking mix. **40-oz. Pkg. 39c**

APPLE JUICE
HI COUNTRY. Wonderful for parties or snacks.
5 Quart Bottles \$1.00



ELECT A. E. (Al) FARRAR PORT COMMISSIONER

A. E. (Al) Farrar, candidate for Port Commissioner, is pledged to work with Maurice Raymond for aggressive port development. This will include improvements to existing port facilities to meet present and future shipping needs; backed up by an all out sales and advertising campaign directed at shippers in Eastern Washington and through to the Atlantic Coast, to bring shipping tonnage in over Tacoma's piers. It will also include construction of a Tacoma Municipal Airport and Small Boat Haven at Gig Harbor.

Al Farrar believes in teamwork and as a member of the Tacoma Public Utilities Board he will do all in his power to interest industry to locate here with the assurance of low site cost and supporting service by Tacoma's Public Utilities.

Al Farrar believes payrolls are possible and is pledged to work with industry on site development along lines best suited to their individual needs rather than under unrealistic restrictions often imposed by a Port Commission too much concerned with squeezing the last nickel out of a prospective customer capable of providing a badly needed local payroll.

OCEAN SPRAY. A natural mate for meats.
Cranberry Sauce 2 16-oz. Cans **39c**

ROYAL SATIN. Pure vegetable.
Shortening 3-Lb. Can **59c**

All-vegetable shortening. All-purpose.
Snowdrift 3-Lb. Can **65c**

Ideal dinner vegetable for all occasions.
Gardenside Peas 17-oz. Can **10c**

LUCERNE. aHs that just churned flavor.
Buttermilk Half Gallon **41c**

PORK & BEANS
OLD YANKEE. Serve hot or cold.
2 Large No. 2 1/2 Cans 35c

EDWARDS Coffee
A blend of the finest quality... rich and aromatic.
1-lb. \$1.25 **2-lb. 63c**

M.J.B. Coffee
2-lb. \$1.29 **1-lb. 65c**

SAFeway
S
Sale starts 9 a.m. Thursday, August 18th through Saturday, August 20th in Tacoma, Sumner & Puyallup. We reserve the right to limit quantities. No sales to dealers.

Fresh. Serve heated for breakfast
Curtsy Danish Horns Pkg. **35c**

MRS. WRIGHT'S. Sugar Snacks.
Fresh Donuts Pkg. of 20 **29c**

High in flavor. 2-Lb. Bag \$1.07
Airway Coffee 1-Lb. Bag **55c**

Bel-air Green Peas
Or Bel-air Mixed Vegetables. Frozen Premium Quality **6 10-oz. Pkgs. \$1.00**

HORMEL'S SPAM
the Ideal Luncheon Meat **12 oz. Can 39c**

ARMOUR'S
STAR
SHANK
END

HAM | TURKEY

45^c LB.

YOUNG
YEARLING
HENS

THIS YEARS
CROP

35^c LB.

COFFEE M. J. B. 2-Lb. **65^c**
\$1.29 LB.

IGA CANNED MILK TALL TINS **8/\$1**

IGA MARGARINE 6 LBS. **99^c**

IGA SALAD OIL QUART **45^c**

IGA SHORTENING SNO-KREEM 3 LB. TIN **59^c**

FLOUR GOLD MEDAL 25 LBS. **10 LBS. 89^c**
\$1.85

IGA PEANUT BUTTER 18 OZ. **45^c**

SHOP WED-THURS-FRI-SAT-AUG-17-18-19-20

C&H Powdered or Brown SUGAR 4 LBS. **57^c**

SWANSONS
FROZEN
MEAT PIES

8 oz.

6/99^c

YAKIMA

TOMATOES

BY
THE
FLAT

89^c

HI-NEIGHBOR
COOKIES

Assorted
Package

14-oz.

39^c

STOKLEY'S
APPLE
SAUCE

NO. 303 TIN

6/\$1

SEE IGA AD IN TACOMA NEWS TRIBUNE FOR MORE SPECIALS

FOOD TOWN

112TH AND PARK AVENUE

SAVE \$ SAVE \$ SAVE \$

\$ SAVE \$

PARK WITH EASE—SHOP WITH PLEASURE

CORNER SOLD... MUST VACATE

Must Vacate! Everything Goes at Terrific Discounts

(Nationally Known Brands. Sorry We Cannot Mention Make.)

WASHERS—DRYERS—RANGES—REFRIGERATORS—FREEZERS

TV—STEREOS—DISHWASHERS—WATER HEATERS—WOOD HEATERS

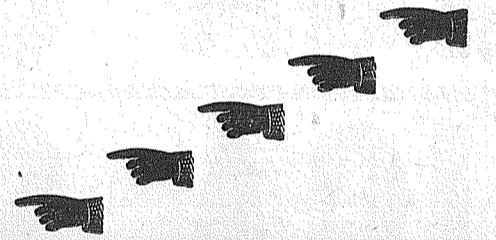
RADIOS—VACUUM CLEANERS—TOASTERS—IRONS—MIXERS

FRY PANS—HEATERS—FANS—AND MANY MORE SMALL

AND LARGE ELECTRIC APPLIANCES



*Contractors and Builders: Special Prices on All Built-in
Surface Units, Ovens and Hoods*



HARDWARE ITEMS

Everything Goes... Up To 50% Off!

PLUMBING—PAINT SUPPLIES—SPORTING GOODS—ELECTRICAL SUPPLIES

LIGHT FIXTURES—FARM SUPPLIES—AUTOMOTIVE SUPPLIES—TOYS

HOUSEWARES—TOOLS—GARDEN SUPPLIES—BUILDERS' SUPPLIES

COKE MACHINE—GAS PUMPS—AIR HOSES—PAINT SPRAYER

REGISTERS—PIPE MACHINE—NAIL BINS—AIR COMPRESSOR

GIFT ITEMS—DISPLAY FIXTURES AND COUNTERS—SCALES

... MANY, MANY MORE ITEMS

.....**Sorry... No Phone Orders During This Big Event!**.....

**OPEN
'TIL 9:00
EVERY
NIGHT**

SAT. 'TIL 6:00

MIDLAND HARDWARE

8502 PORTLAND AVE.

**OPEN
'TIL 9:00
EVERY
NIGHT**

SAT. 'TIL 6:00

a Wandering and a Wandering

From Page 3
38th street. Unload and head for the PIO office at McChord to slip their checking copies through the slot in the door. Back to the office to check all the doors and windows and now since it's only 11:45 I can have the rest of the evening to read the daily. That's - 30 - for Wednesday.

It's a cinch no one wants to read a book about my weekly activities and those of you who asked for this probably wish by now that you hadn't mentioned it, so here is a summary of the four remaining days of my week in capsule form.

Thursday . . . Office work, a dozen phone calls, lay out grocery ads, desk work and on that day I usually get to eat lunch. I even made it home for supper.

Friday, Saturday and Sunday. During that time I have answered the phone actually hundreds of times, layed out several large ads, driven many miles, done business in Portland and Albany, Ore., flown to the bay area in Cal. and slept on the floor under an open window trying to keep cool, spent six hours at Roseburg, Ore., in hot sun covering an air fair, got a good burn on my shiny dome because I didn't have brains enough to take a hat, taken dozens of pictures of planes, wrecks, people, governors and what have you, etc.

All in all, it's been about an average week. You should be around when we really get busy.

PIERCE COUNTY REFUSE CO.
Weekly
Garbage Collections
Phone LE 7-3688

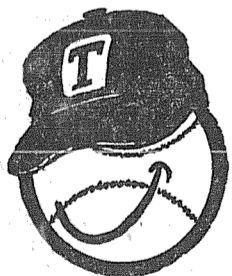
Clover Creek Baptist Church
Military and Knoble Road
Three Miles East of Pacific On 159th Street
Sunday School — 9:45 a.m.
Morning Service — 11:00 a.m.
Young People — 6:00 p.m.
Evening Service — 7:00 p.m.
Radio Broadcast — KAYE-1450
Sunday at 9:45 p.m.
Lyle Bramblet, pastor
Phone LE 7-6421

Rely on your PHARMACIST
Don't Pass On Prescription Medication!

Your doctor's prescription which has proved to be extremely effective in treating your particular ailment, may not necessarily have the same effect on someone else.

Prescriptions are highly personalized medications. They fit a specific set of conditions in terms of physical and mental needs of a patient at a given time.

ASHMORE'S SPANAWAY DRUG
PHONE LE 7-3993
165th & PACIFIC AVE. SPANAWAY, WASH.



TACOMA GIANT FANS!

Packets of colored pictures of the Tacoma Giants are now available at your nearby



Stop in and ask for yours. FREE while they last! 27 HELPFUL OFFICES

MEMBER FEDERAL DEPOSIT INSURANCE CORPORATION
MEMBER FEDERAL RESERVE SYSTEM

Elbe News

Mrs. Lillian Fisk was a visitor at the home of Mr. and Mrs. Paul Gaut of Lindberg, Aug. 7.
Mr. and Mrs. Arthur Hammond, and family, of Sutherlin, Oregon, spent several days last week at home of Mrs. Hammond's parents, Mr. and Mrs. Henry Ca-

Recent guests at the Don Barnes

home were Mr. and Mrs. Neil Lemke, and children, Mr. and Mrs. L. R. Barnes, and Mr. and Mrs. Thomas, all from Auburn.

Mrs. Barnes' mother, Mrs. Georgia Shelton, has returned to her home in Portland, Oregon, after a six month stay here, at the Barnes home.

Audie Geer, (Mrs. Luond's Brother) and daughter Wanda, from Minneapolis, Minn. were

guests at the Al. Luond home recently. While here they made a trip to Paradise, on Mt. Rainier; later the Luonds motored to Span-

away Park, where a number of friends and relatives gathered for a visit with the Geer family.

Caroline and Jack Dickensen, and daughter, of Buckley, were dinner guests at the Lanphere recently.

Reporter — Ruth Lanphere, Elbe

Parkland Lutheran Elementary School Opening Sept. 7

The Rev. H. A. Thieste, pastor of the Parkland Evangelical Lutheran church, announces the opening of the Parkland Lutheran Elementary school, Tule Lake road

South 129th) and Pacific avenue, on Wednesday, Sept. 7, at 9:00 a.m.

He appraises the value of the school as follows: "The Parkland Lutheran Elementary school provides a practical means to assist Christian parents in fulfilling their God-given duty in bringing up their children in the nurture and admonition of the Lord.

"Offering: Daily instruction in God's Word; Careful training in

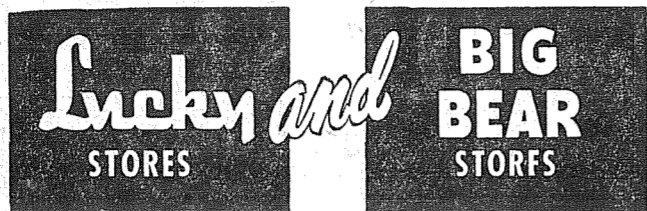
Thursday, August 18, 1960
The TIMES JOURNAL

Christian virtues; Development of good citizenship in the community and nation based on the Word and Command of God;

Standard instruction in the common school subjects as prescribed by State and County curriculum, Grades 1-8.

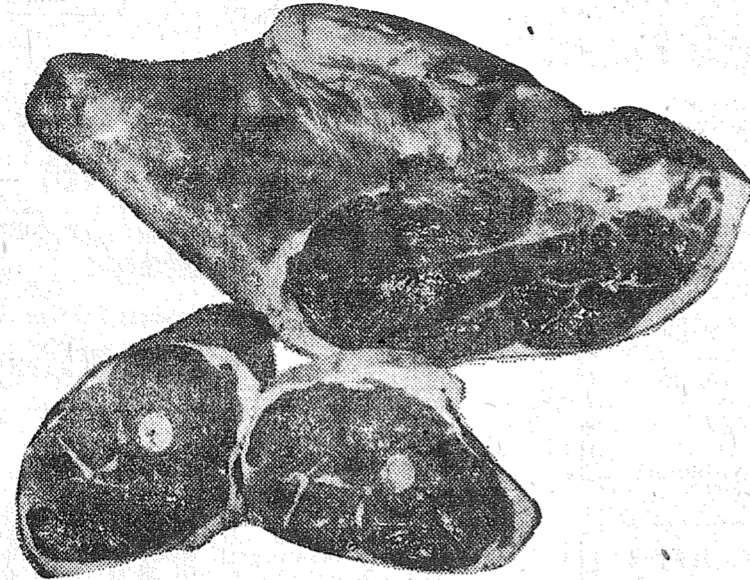
"Inquiries invited. Call LE 1-0777, LE 7-5492, LE 7-4220."

FENCING
Designers and Builders
EXPERT WORKMANSHIP
REASONABLE PRICES
Easy Monthly Payments
VAUGHAN'S
84th & Pac. Ave. GR 4-9515



Where better meals start!

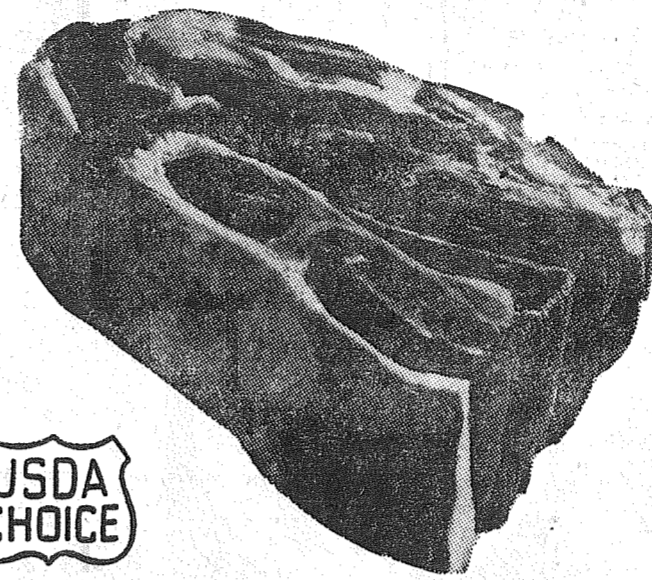
Better meals begin at Lucky-Big Bear Stores with FREE RECIPE IDEAS to help you create mealtime variety with quality foods at low, low prices. Pick up your FREE RECIPE IDEAS when you shop this week's Lucky-Big Bear specials!



Leg of Lamb

or BONELESS LAMB SARATOGAS! Graded Choice Lamb at an exceptional price.

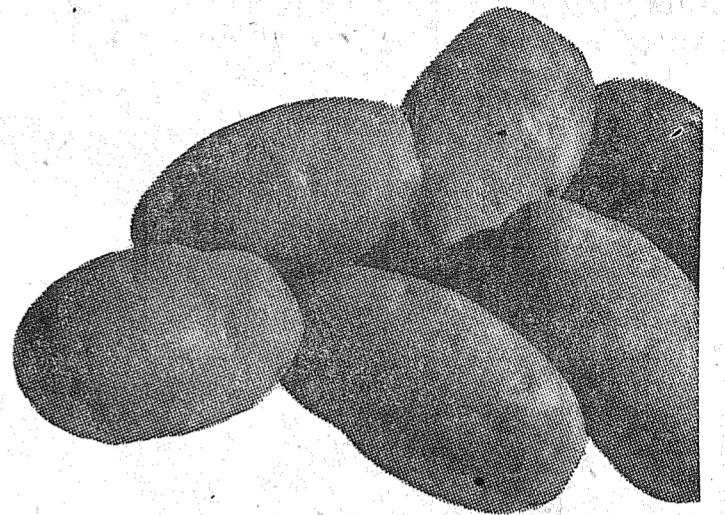
Pound 59¢



Chuck Roast

Center Cuts and 7-Bone Roasts are included at the same price. U. S. Choice.

Pound 43¢



New Potatoes

Yakima Grown New Russets. Selected U.S. No. 1, size A, washed, flavorful.

10 Pounds 49¢

BREAST OF LAMB U. S. Choice Lamb—nice and meaty and economical. **lb. 23¢**

RIB LAMB CHOPS from U. S. Choice Lamb. Well trimmed and meaty. **lb. 79¢**

LOIN LAMB CHOPS from U. S. Choice Lamb. Nice and meaty 'n lean. **lb. 89¢**

CHUCK STEAKS U. S. Graded Choice Beef. Fully tender and juicy. **lb. 49¢**

BONELESS ROAST U. S. Graded Choice Cross Ribs of Beef — oven roast. **lb. 79¢**

GROUND CHUCK From U. S. Choice Beef. Ground fresh every hour. **lb. 59¢**

LUCKY'S OWN SKINLESS WIENERS
FULL POUND 49¢

YAKIMA TOMATOES 16-lb. Crate **89¢**
Vino ripened and firm ripe, Washington No. 1 grade.

FRESH GREEN BEANS lb. **9¢**
Blue Lake variety, stringless, tender, and garden fresh.

TREE-RIPENED PEACHES lb. **15¢**
Wash. State Red Havens. Premium quality, sweet, juicy.

NEW-CROP APPLES lb. **12½¢**
Wash. grown, Gravensteins, fancy grade, season short. Tops for pies and sauce 28-lb. box . . . \$2.49.

Four Fishermen Frozen Foods

FISHSTICKS 8-oz. 37¢ 14-oz. 59¢ 24-oz. 89¢
FROZEN SCALLOPS 7-oz. 39¢
JUMBO PRAWNS 8-oz. 59¢

FRUIT JUICES Libby Tomato Hi-C Orange Pineapple-Grapefruit **4 46-oz. Cans 99¢**

MIRACLE WHIP Per Qt. **49¢**

DARIGOLD MILK 8 Tall Cans **1.00**

COFFEE HILLS BROTHERS • MJB FOLGER'S • BUTTERNUT or MAXWELL HOUSE 1-lb. Can **65¢**

QUICK MEALS IXL Chile Con Carne IXL Beef Raviola IXL Spaghetti/Meat **4 #300 Cans 1.00**

FRUIT DRINK TIP TOP ORANGE or TIP TOP GRAPE **7 6-oz. Cans 1.00**

POTATO CHIPS LUCKY BRAND 3-Bag Box **49¢**

MODESS 12's REGULAR **3 For Only 1.00**

Mandarin Oranges Kabuki 4 11-oz. Cans **1.00**
Albacore Tuna Cloverleaf Grated, White 5 No. ½ Cans **1.00**
Dole Pineapple Sliced 2 #1¼ Cans **45¢**
Dog Food HUCK FINN 12 #1 Cans **1.00**
Sponge Mops MODGLIN **1.89**
Scot Towels 150-ct. Roll **21¢**
Dinner Napkins Scotkins 2 50-ct. Pkgs. **49¢**
Niblets Corn Whole Kernel 2 12-oz. Cans **39¢**
Vegetables ROSEDALE PEAS CUT BEANS CREAM CORN 2 #303 Cans **27¢**
Tomatoes Contadina 2 No. 2½ Cans **49¢**
Chicken & Noodles Lyndon 3 14-oz. Jars **1.00**
Zee Waxed Paper 60-ft. Roll **19¢**
Biscuit Mix Krusteaz Buttermilk 32-oz. Pkg. **43¢**
Chiffon Toilet Tissue 3 2-roll Pkgs. **69¢**
Chiffon Facial Tissue 3 400-ct. Boxes **69¢**

All ad prices shown are effective Wednesday through Saturday. Limit rights are reserved.

133rd AND PACIFIC PARKLAND



Classified

Page 8 Thursday, August 18, 1960
The TIMES JOURNAL

Business Service 3
BULLDOZING and land clearing from estimates. VI 7-288. 3ctf
YOUNG NEIGHBORHOOD PAINTER and tapers, neat and reasonable. LE 1-2265. 3ctf

CUSTOM-BUILT CABINETS
Pre-hung Doors—Free Estimates
FORMICA & GE TEXTOLITE COUNTERS
We Install Cabinets—Drain Boards
BAKER'S Woodworking Co.
LE 7-0565 — LE 7-3290
13415 Pacific Ave. Parkland

Business Service 3
ART'S SHOE SHOP
Shoes for the Entire Family
EXPERT SHOE REPAIRING
315 Garfield St.
Between 121st and 122nd
Opposite Parkland Postoffice

STUMP LIFTING: The neat way, any size
SANDNER, 6401 Fairview Road, Puyallup, LE 7-8977 (Tacoma), LE 1-6355, LE 1-2775. 3ctf

SEPTIC TANK CLEANING
Prompt Service
C. V. HUTSON
GR 4-3980 GR 2-7038

We Have BUYERS for your HOUSE!
FARM and BLDG. SITES

Listings Wanted
DICK DEVEREAUX REALTY
Multiple Listing Service
Buying or Selling
Call LE 7-8659
11002 Pacific Avenue

Business Service 3
LAWNMOWERS SHARPENED

COMPLETE MOTOR REPAIR SERVICE
All Work Guaranteed
JOHNSON'S SHOP
5514 Pacific Ave. GR 4-7112

Business Service 3
BULLDOZING, land clearing, excavation, grading and gravel. LE 7-5112. 3c50
FOUNDATIONS, additions, remodeling, Free estimates, Financing, no down payment. Phone GR 4-7000 any time.

Boush Moving & Storage
Agents for U.S. Van Lines
Cost to Coast Service
LE 7-3696
Parkland, Wash.

Business Service 3
SEPTIC TANKS & WATER LINES INSTALLED. Riley Brothers. Phone LE 1-0981 or LE 7-4204.

COMPLETE TRACTOR WORK
Gravel & Driveways
LE 7-3846

PHOTOS
5x7, \$1 — 8x10, \$2
For Appointment, Phone GR 4-1986—Open Evenings
FAMILY PORTRAIT STUDIO
8411 South Park Ave.

NOW AT SILER'S
Complete service on electric ranges. All makes. Fast, dependable, reasonable. LE 7-8634. 3ctf

Webb Electric Co.
8240 B Pacific Ave.
GR 2-2902

ELECTRIC HEAT
All Types
Terms Can Be Arranged
FREE ESTIMATES
EMERGENCY PHONE
LE 7-4437

JACK SHANK'S Refrigeration Service
Parts & Service for All Makes
LE 7-0178

A-1 SANITARY SEPTIC TANK PUMPING AND SEWER CLEANING SERVICE
PUY. TH 5-2873

CALL POCHEL FOR Expert T.V. Repair
Satisfaction Guaranteed
Free Tube Testing
140th & Pacific LE 7-8624

Parkland Heating Co.
All makes of furnaces for sale; Specializing in Williams OIL 'O' MATICS; OIL, GAS, Hot Water Installations. Electric Heat & Lighting Fixtures; Service; reasonable.
755 South 108th LEnox 7-4045

TOP SOIL—SANDY LOAM—Parkland area special. Puyallup, TH 5-0759. 3ctf

Ace Dirt Moving Co.
Building - Ditching
TOP SOIL - GRAVEL
SEPTIC TANKS and DRAIN FIELDS
Phone TH 5-2452

WELL DRILLING Berkeley Pumps
• JETS
• SUBMERSIBLES
• CENTRIFUGALS
• TURBINES
Call LE 7-7281

TACOMA PUMP & WELL DRILLING CO.
14619 PACIFIC AVENUE
Terms Trades

GEORGE PURDUE—Plumbing, Heating, New work, remodeling, repairs. Phone LE 7-4477. 3ctf

South End Auto Wreckers
USED PARTS—Motors, Transmissions, Tires, Batteries. We buy junk cars. Also Custom welding by Joe's Welding.
1 Mile East Roy on Mt. Hy. Spanaway LE 7-6534

T and T PAINTING CO.
Efficient, Courteous Service
2325 So. Ash Street BR 2-0454

Fuel
FOR SALE—Heavy planer ends, small and large loads. EICHLER FUEL Puyallup, TH 5-2837. Call after 4 p. m. 4ctf

Help Wanted
SALESMEN WANTED
PART or full time men wanted. Service men welcome. \$60 to \$90 per week. Must have car. No experience necessary. GR 5-1338. 3ctf

Wanted To Rent
LADY TEACHER desires room and board in private home, Parkland area. Call LE 7-4040.

Real Estate
LOT—Clear Lake, Eatonville. Road to lake cleared, ready for building. \$6,800. First place So. Road. N. Nelson, Jr. Route 1, Box 247-A, Eatonville. 9c50

Real Estate 9

LIST WITH SUBURBAN
Home and Farm Specialists in South End Properties. Two offices open every day and evening for your convenience.
SUBURBAN REALTY, INC.
113th and Pacific, LE 7-8638
112th and Canyon, LE 7-0229
Member Multiple Listing Service & Tacoma Real Estate Board 8ctf

MIDLAND 11 year old 2 bedroom house. Low down payment. Owner will carry. 2216 E. Mt. Tac. Dr. LE 7-3197. 9c50

EATONVILLE — 2, 3 and 4 Bedrm. homes, walking distance to schools, churches and shopping center. Priced from \$2,000 to \$14,500. Call Mary Nagley, LE 7-8651.

"KAPOWINS AREA"
Fine large 4 Bedrm. Home. Living dining comb. 16x36. Fireplace, approx. 3 acres. 708 1 ACRE with small 2 Bedrm. Home. Cheap on terms, cheaper for cash. 709
35 ACRE FARM. Good barn, old house, basically sound, needs lots of work. 136 Call Mrs. Falk SK 9-8893 or LE 7-8651.

Fern Realty
11208 E. Leonard's Crossing
LE 7-8651

M. L. S. MULTIPLE LISTING SERVICE
LOW DOWN PAYMENT
Clean 3 bedrm. in 6th Ave. dist. Close to bus, stores and school. Immediate possession. Price \$6,950. Call Ralph Decker GR 4-9579. 3ctf

McKINLEY HILL REALTY
6311 McKinley Ave. GR 4-9579
Member of Multiple Listing Service and TACOMA REAL ESTATE BOARD

M. L. S. BARGAIN
3 bedroom house, completely furnished, in good north end location. Only \$5,000 and owner will accept terms. Call Edna Taylor, LE 7-8609, or LE 7-3556. HA 6600.

LOTS
4 lots in Parkland area for only \$1050. Good basement site. Owner will sell on terms. Call Edna Taylor, LE 7-8609, or LE 7-3556. EH 6749.

EATONVILLE FARM
with 45 cleared acres, barn with practically new shake roof, chicken house, nice landscaping around 3 bedroom home. Call Jennie Grodvg, LE 1-1201, or LE 7-8609.

MOVING TO TACOMA OR PARKLAND?
I have many lovely homes listed which you really should see before you buy! Jennie Grodvg, LE 1-1201 or LE 7-8609.

Jennie L. Grodvg PARKLAND REALTY CO.
Insurance of All Kinds
Notary Public
Est. in Parkland Since 1941
LE 7-8609 Office
302 Garfield St., Parkland
Jennie Grodvg, LE 1-1201
Edna Taylor, LE 7-3556
Thelma Scott — Yvonne White
JU 8-3838 LE 7-0440

"Deal with the people who give you their personal Attention"
Member of Multiple Listing Service and Tacoma Real Estate Board

Rentals 10
FOR RENT—Small 1-bedroom furnished house \$50. LE 7-4107. 10c49
FOR RENT—Two bedroom house with utility room wired for dryer. Call LE 7-5633 after 4:30. 10c50

RENTALS
2 Bed Unfurn 4355 South L Street \$50
1 Bed P/Furn. 16804 Park Avenue \$60
2 Bed Stove, Refr. Rt. 1 Box 198 B 4, Span. \$55
2 Bed Furn. 11052 South Almsworth \$75
2 Bed Furn. 8912 South A Street \$80
5 Bed Unfurn. 40th & Waller Road Dist., basement, 2 acres, Available Sept. 1. Per month \$90
3 Bed Duplex Stove, Refr., dryer, \$84.50
Deposit of \$50 required on each house. Call Suburban Realty, Inc. Rental Department, LE 7-8638.

FOR RENT 4 bedroom home near Graham. wired 2 1/2 baths. 10 acres fenced yard. 2 Bedroom unfurnished home in Parkland. No range or refrigerator. Call Parkland Realty, LE 7-8609. 10c50.

FURNISHED Apartment, two bedroom. Parkland area. Call after 6 p.m. LE 1-0996. 10cTF.

Repair Service 11
WASHING MACHINE PARTS — Largest stock in town. Repairing that pleases. BB'S WASHER SERVICE, 3727 So. G, LE 7-8811. 11cTF

LAWN MOWER SERVICING
Briggs & Stratton, Clinton, Power Products & Lauson. Engines and Repairs.
PARKLAND CYCLE & KEY
11021 Pacific Avenue
LE 7-5772 11cTF

NOW AT SILER'S
Complete washer and dryer service. All makes. Fast, dependable, reasonable. LE 7-8634. 11cTF

NOW AT SILER'S
Complete refrigerator service. Fast, dependable, reasonable. LE 7-8634. 11cTF

Old Fashioned BARGAIN Sale

Fireside Fig Bars 2 lb. Pkg. 39¢

6-oz. Maxwell Instant Coffee 89c
4-lb. Betty Crocker PANCAKE Flour 49c

Cut Rite Wax Paper 27c
6 1/2-oz. Pacific Pearl Crab 59c

Instant De Caf 4-oz. 55¢

Energy Bleach Gal. 39c
Lean Pork Steak lb. 45c
22-oz. Sunny Jim Syrup 33¢

Tender Steer Beef CUBE Steak lb. 79c
10-lb. Bag Red Spuds 35c

Pedersen's Cut Up Stewing Hens lb. 33¢

No. 1 Bananas 29c
2 lbs. Fresh Yakima Peaches lb. 9c

HERMANS FOOD STORE
162nd & Park Ave. Spanaway
(Right to Limit Reserved)

Automobiles 12
Auto Glass Installed
Approved By All Insurance Companies
WE are Tacoma's authorized replacement center for — United Service Automobile Assoc., International Service Ins. Co., Government Employee's Ins. Co.
Seat Covers and Convertible Tops
ART'S GLASS & UPHOLSTERY CO.
709 Tacoma Ave. MA 7-2200

ANDERSON'S CARS FOR LESS CHINOOK CAMPERS
LE 7-0404
176th & PACIFIC AVE.

Foreign Cars 12A
ALL FOREIGN CAR KEYS
107 Varieties
PARKLAND CYCLE & KEY
11021 Pacific Ave. LE 7-5772

Farm Column 13
MILKING GOATS FOR SALE—Grade and registered. WA 2-5281. 13c50
STRAYED young Jersey bull in the Graham area. For information call Orling TW 5-3850.
EASTERN WASHINGTON HAY—By the bale, ton or truck load. J. A. Dove. Phone LE 1-2185. 13cTF

Work Wanted 14
BABY SITTING, your home or mine, 1312 14th St. LE 1-1416. 14c50
BABY SITTING, my home, Parkland district. Licensed. LE 7-4172. 14c50
LICENSED CHILD CARE—Hour, day, week; Outdoor gym. 8425 South "D". GR 2-6391. 14cTF

Miscellaneous 15
TAP, ACROBATIC, BALLET and BATON classes, all ages. Mildred Killee, LE 7-7881. 15c50

MORSE SEWING MACHINE
Call LE 1-2000
Parkland Sewing Center
Right in The Parkland Theater Bldg.

LEAVE MOVIE & KODACHROME SLIDE FILM at QUALITY PHOTO for 2 day processing. 9818 Pacific Avenue. LE 1-7271. 15cTF

ATTENTION HOUSEWIVES — POCHEL'S are now the authorized dealers for Speed Queen washers, automatic or wringer type, and dryers. Come in and see them at 140th and Pacific Avenue. LE 7-8624. 15cTF

we'll remember to save for you

Check With The Puget Sound
Tacoma's Home-Owned Preferred Service Bank!

Enjoy the convenience of a Puget Sound checking account—plus the AUTOMATIC SAVINGS way to a cash reserve. Just tell us how much you want to save each week or month, and we'll do the rest. It's just one of many Preferred Services you get when you check with the Puget Sound!

70 B PUGET SOUND NATIONAL BANK
84th and PACIFIC
MEMBER FDIC

PEDERSON WASH. GROWN CUT UP STEWING CHICKENS lb. **29¢**

JAMES HENRY YANKEE BRAND SLICED BACON POUND **49¢**

3 POUNDS GROUND BEEF **89¢**

Round • Sirloin • Rib
STEAK POUND **69¢**

25 POUNDS GOLD MEDAL FLOUR \$ **17.99**

3 DOZ. MED. CHEX EGGS **99¢**

NALLEY'S TANG QT. **39¢**

OLYMPIC HALF GALLON Dill Pickles **49¢**

OLD RANGER APRICOTS
4 For 1⁰⁰ 2 1/2 Tin

BLOSSOM TIME—FANCY LIGHT TUNA
SOLID PACK 5 For 1.00

BONELESS Fillet RED SNAPPER LB. **29¢**

SIRLOIN TIP ROAST LB. **69¢**
ALL MEAT NO WASTE

T-BONE STEAK LB. **79¢**

RUMP ROAST LB. **59¢**
WELL TRIMMED

FRESH Roasting Ears CORN 5 For **29¢**

POTATOES 25 lbs. No. 2's for **79¢**

STALKS CELERY **10¢ EA.**

WE RESERVE THE RIGHT TO LIMIT QUANTITIES

STORE HOURS:
9 A.M. to 10 P.M.
7 DAYS A WEEK

BARGAIN BASKET
16618 PACIFIC AVE., South SPANAWAY, WASH.

NO SALE TO DEALERS

TIRES NEW - USED - RECAPS
Nation Wide Guarantee
LET US RECAP YOUR TIRES
Wheel Balancing
Weights Free **\$1.50**
Liberal Budget Terms
TIRES ARE OUR BUSINESS—NOT A SIDELINE
Ray's TIRE STORES
9639 Pacific Avenue LE 7-7355

SUNNYDALE MARGARINE
5 Lbs. **89¢**

WESCO CREAM STYLE CORN
303 Tins
7 FOR \$1.00

STOKELY'S APPLESAUCE
303 Tin
5 FOR \$1.00

SWANSDOWN CAKE MIX
4 FOR 89¢

SWIFTNING SHORTENING
3 Lbs. **59¢**

JELL-O
4 FOR 25¢

BY THE CHUNK BOLOGNA
Lb. **35¢**

SWIFT'S ASSORTED LUNCH MEATS
4 Pkgs. 99¢

ROASTING EARS CORN
Doz. **45¢**

ICE COLD WATERMELON
Lb. **4¢**

JUMBO CANTALOUPE
5 FOR \$1.00

Gibbons FOOD CENTER
SPANAWAY

IT PAYS TO ADVERTISE IN THE TIMES JOURNAL CLASSIFIED SECTION

Classified
(Continued From Page 8)

Miscellaneous 15

WANTED—Cameras and photographic equipment for resale.
QUALITY PHOTO SERVICE
9018 Pacific, LE 7-7271 15c1

Necchi ZIG-ZAG \$30.74

This like new machine, at \$30.74 Full Balance or pick up payments of \$4.13 per month. Needs no attachments. Just a flick of the wrist to overcast, monogram, sew on buttons, make button holes and many decorative designs. For free home demonstration call GR 4-0651 anytime.

PHEASANTS FOR SALE—Full grown fryers, LE 7-4100. 15c1

FOR SALE—Baby goats, LE 1-1327. 15c3

LET ME CARE for your livestock while you vacation. References. LE 1-1327. 15c3

FOR SALE—Electric range, good condition. \$50. New coffee table, \$12. Used davenport, \$12. 4601 E. 112th, Tacoma. 15c50

RABBITS—5 does, 1 buck; young rabbits. Also hutchers. Sell or trade. LE 7-4501. 15c50

FOR SALE—Subteen girls' clothing. Skirts, dresses, sweaters; good quality. Reasonable. LE 7-8394. 15c50

FOR SALE—Kenmore dryer, good condition. reasonable. Mercury outboard motor, model KE7 with speed prop. Best offer. LE 1-2197. 15c50

SEARS used wringer washer and double stationary tubs and stand, cheap. Call offer 6 p. m. LE 7-3796. 15c50

BEAUTIFUL GORDON SETTERS, the King of dogs. Young male German Shepherd, Cocker, black and red; young terriers and others. Most have shots. Nice cats and kittens. \$20 to good homes. PET HAVEN SHELTER, 10222 East Park St. 15c50

STAUFFER POSTURE REST, automatic timer and leg attachments; Lill Ann suit and formal, size 16, like new, cost \$100 each, sell for \$20; Whirlpool washer, \$30; diamond engagement and wedding rings, \$25; man's suit, size 40, \$10. LE 7-6206. 15c50

FOR SALE—Utility pole complete, wired 110 and 220. \$25. LE 1-2244. 15c50

BLACK AND WHITE female puppy free to good home. LE 7-4673. 15c50

Horses and Equip. 16

HORSESHOEING
Including Corrective Shoeing for All Conditions
Ken Lehman — TH 5-5536

Aviation 17

FREE—FIRST FLYING LESSON—LEARN TO FLY—\$10 A WEEK
New and Used Aircraft Sales
TAHOMA FLYING SERVICE
Spanaway Airport, LE 1-0442 17c1

Flying
With **JEANNE**

The organization of Washington Pilots Association is well under way. The first annual convention held in Yakima this last weekend was attended by Don and Barbara Norris of the Northwest Flyer and Owen and Iris Evjen. Four chapters have been organized and more are in the making. Those interested in helping or joining this long needed organization may contact Don Norris at the Times Journal or the secretary Bob Bargewell, P.O. Box 124 Yakima, Washington.

High Adventure
A summer of high adventure is being enjoyed by Jack and Jerry Dickinson, sons of Mr. and Mrs. Everett Dickinson of East 72nd St. They are gold mining up by Rainier. Mr. Dickinson reports he is sure his ears must be growing longer as he has to pack in food every two weeks in place of a burro.

Fine Vacation
The Mike Latterell family - Mike Opal, Charlene and Mikie - returned home after a wonderful vacation taking in San Francisco, Disneyland, Las Vegas and finally a weekend at the ocean.

Back to School . . . BICYCLES
SHOP NOW WHILE STOCKS ARE COMPLETE
SEE THE NEW COLUMBIAS
20" \$39.75 24" 38.95 26" 39.95
SCHWINN 8 SPEED VARSITY only \$72.95
SCHWINN 10 SPEED CONTINENTAL \$89.95
PARKLAND CYCLE & KEY
11021 Pacific Avenue LE 7-5772

Horses & Equip. 16

Aviation 17

Canyon Road . . . Hix Chix Picnic Pleasant Event

The Canyon Road community was well represented at the Hix 'n' Chix square dance picnic held Lake last Sunday. Attending were Don and Mary Hansen with Rosemary, Donny, and Susan; John and Joyce Andrews, daughter Linda and guest, Charlene Latterell; the Ed Hoffmans and Jimmy and Kathy, and the John Folks. Mr. Folk is president of the Square Dance club. After a potluck dinner, games and dancing were enjoyed.

High Adventure
A summer of high adventure is being enjoyed by Jack and Jerry Dickinson, sons of Mr. and Mrs. Everett Dickinson of East 72nd St. They are gold mining up by Rainier. Mr. Dickinson reports he is sure his ears must be growing longer as he has to pack in food every two weeks in place of a burro.

Fine Vacation
The Mike Latterell family - Mike Opal, Charlene and Mikie - returned home after a wonderful vacation taking in San Francisco, Disneyland, Las Vegas and finally a weekend at the ocean.

Back to School . . . BICYCLES
SHOP NOW WHILE STOCKS ARE COMPLETE
SEE THE NEW COLUMBIAS
20" \$39.75 24" 38.95 26" 39.95
SCHWINN 8 SPEED VARSITY only \$72.95
SCHWINN 10 SPEED CONTINENTAL \$89.95
PARKLAND CYCLE & KEY
11021 Pacific Avenue LE 7-5772

TELEVISION SERVICE CENTER
PRESENTS TV CHUCKLES
He doesn't horse around with his TV set. He takes it to Television Service Center for expert repairs.
Phone GR 2-3386

TELEVISION SERVICE Center
"YOUR WINEGARD COLOR CEPTOR DEALER"
GR23386 8431 PACIFIC AVE

Franklin Pierce Baseball Finals Decide Winners

All play-offs in the Franklin Pierce Little League were completed last week, with championships as follows:
Kellers won the Bantam League pennant by a 5 to 4 win over the Bombers.
S & M defeated the Giants 8 to 4 for the Pee Wee League title.
In the Rookie League, the Aces captured the crown with a 19 to 12 win over the Summit View Merchants.
The 1960 season has been highly successful and much interest has been shown by players and spectators alike.

Worley Const., Inc.
GR 5-1030
REMODELING
Room additions, cabinets, etc. Foundations, Basements, Block & Concrete Work.
Financing Available

Back to School . . . BICYCLES
SHOP NOW WHILE STOCKS ARE COMPLETE
SEE THE NEW COLUMBIAS
20" \$39.75 24" 38.95 26" 39.95
SCHWINN 8 SPEED VARSITY only \$72.95
SCHWINN 10 SPEED CONTINENTAL \$89.95
PARKLAND CYCLE & KEY
11021 Pacific Avenue LE 7-5772

TELEVISION SERVICE CENTER
PRESENTS TV CHUCKLES
He doesn't horse around with his TV set. He takes it to Television Service Center for expert repairs.
Phone GR 2-3386

TELEVISION SERVICE Center
"YOUR WINEGARD COLOR CEPTOR DEALER"
GR23386 8431 PACIFIC AVE

Fairview Road . . . Community Picnic Enjoyed By 100

One hundred neighbors and friends attended the community picnic held at the Rueben Larsens, 6218 Fairview road, Sunday, Aug. 7. This picnic, which started as a "get together" of a few neighbors eight years ago by Mrs. Larsen has snowballed into an annual event, looked forward to by everyone in the community.
Newcomers to this event were Mr. and Mrs. Robert Jones and family and Mr. and Mrs. Robert Newkirk, all of Fairview road.

Elk Plain . . . Jack & Jill Club Money Maker Set

Meeting Aug. 12 at the home of Mrs. Kenneth Ocken, members of the Elk Plain Preschool Jack & Jill club decided to hold "Come As Your Are" breakfast to raise funds for the club. The date will be set later. A meeting will be held today (Thursday) at 1:00 o'clock. All mothers with pre-school children are invited.

the gallery
8815 bridgeport way tacoma 99, washington - ju 8-5455
hours 1 to 6 Mon. thru Thurs. 1 to 9:00 Fridays 10 to 6 Saturdays

Tahoma Flying Service
SPANAWAY AIRPORT 185th and Pacific LE 1-0442
JERRY HEDLUND — RALPH LAWSON

FOR RENT TRUCKS & CARS
MA 7-9039
Save One Half
We Furnish Everything
HARMON'S
Driv - Ur - Self Co.
HARMON'S SERVICE
2112 Jefferson
Jim Harmon, Mgr.

TOPS
MAGIC-LIKE LATEX Wall Paint
Dries in 1/2 hour to flat velvet finish. Tops for washability. Tops for durability.
12 Beautiful Colors
PER GALLON..... \$2.98
"Thrifty" Matching Semi-Gloss ENAMEL \$1.39
Qt.....
KEYS MADE WHILE YOU WAIT
PHEASANTS FOR SALE
SOUTH END PLUMBING & HARDWARE
185th & Pacific Ave. LE 7-4100

VAUGHAN'S VALUES
WINTERIZE YOUR HOME WHILE THE WEATHER PERMITS
RE-ROOF REPAIR GUTTERS AND DOWN SPOUTS INSTALL STORM SASH INSULATE
NO DOWN PAYMENT AS LITTLE AS 10.00 PER MONTH
VAUGHAN'S PACIFIC LUMBER
84th & Pacific Avenue GR 4-9515

GOLD MEDAL FLOUR Reg. Price \$1.13 **10 lbs. 79¢**

SALAD DRESSING SALAD TIME BY NALLEY'S REG. PRICE 49c **Qt. 29¢**

BIG JUICE SALE
LIBBY'S TOMATO JUICE
DOLE PINEAPPLE JUICE
HI C ORANGE JUICE
HI C GRAPE JUICE
Mix 'Em or Match 'Em
5 46 oz. Cans **\$1.00**

SWANS DOWN CAKE MIXES
Reg. Price 39c Each **4 Pkgs. 89¢**

TOILET TISSUE
EACH ROLL **5¢**

SNOW MIST CHUNK STYLE TUNA
Reg. 29c Ea. **5** No. 1/2 Tins **\$1.00**

KITTY CAT CAT FOOD
12 No. 1/2 Tall Cans **\$1.00**

POT ROAST **39¢** lb.
Round or Sirloin, Full Cut

STEAKS **79¢** lb.

U.S. Choice Grade LAMB SHLD. CHOPS **49¢** lb.

All Steer Beef
RIB STEAKS **69¢** lb.

For Your Barbecue
CHUCK STEAK **49¢** lb.

Armour Crescent. Sliced BACON **39¢** lb.

Lean, Meaty
SPARE RIBS **43¢** lb.

12-ounce Pkg.
WIENERS **39¢** Pkg.

Lean, Tender
PORK STEAKS LB. **49¢**

SMOKED LIVER SAUSAGE or LARGE BOLOGNA PIECE LB. **35¢**

Young, Tender
STEER HEARTS LB. **29¢**

25-lb. LOCKER BOX Special **\$11.95**

Open 7 Days a Week For Your Convenience
PARKLAND Super MARKET
Right to Limit Reserved
HOURS: 9 a.m. 'til 10 p.m.
Formerly Kitchen's
12208 Pacific Avenue
PRICES EFFECTIVE THURSDAY THROUGH SUNDAYS EACH WEEK

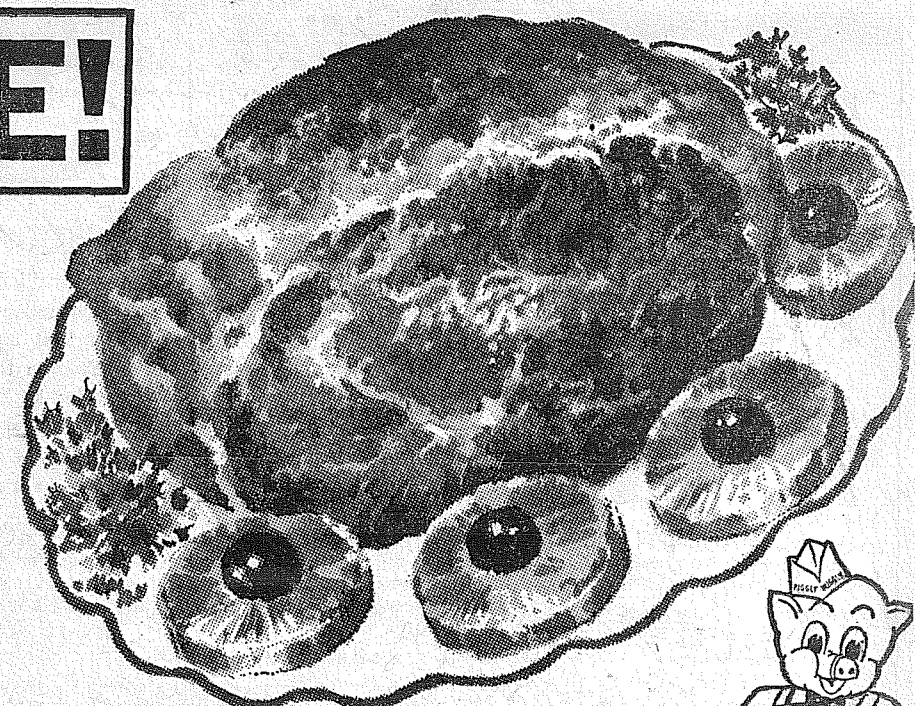
TOMATOES YAKIMA **79¢**
16 LB. FLAT



PIGGLY WIGGLY'S PORK SALE!

PORK ROAST

39¢



CENTER CUT SHOULDER OF PORK, MEATY, NUTRITIOUS AND ECONOMICAL!

PIGGLY WIGGLY'S OWN COUNTRY STYLE

PORK SAUSAGE

39¢

LEAN BLADE CUT

PORK STEAK

49¢

LEAN AND MEATY

PORK HOCKS

LB.

19¢

GROUND BEEF

LEAN AND FRESH

LB.

39¢

CANNED PICNICS

HYGRADE 3-LB. CAN

\$1.69

WIENERS

HYGRADE SKINLESS

LB.

49¢

CHIPPED BEEF

HYGRADE SMOKED 3-OZ. PKG.

29¢

BONE-LESS HAMS

ARMOUR'S STAR, FULLY-COOKED WHOLE, HALVES OR QUARTERS

LB.

79¢



OPEN 9 A.M. TO 10 P.M.

PIGGLY WIGGLY

FLOUR

GOLD MEDAL (25-LB. BAG \$1.89)

10-LB. BAG

87¢

TUNA

SURF MIST CHUNK STYLE

5 NO. 1/2 CANS

\$1.00

BEANS

S & W BAKED

4 28-OZ. CANS

\$1.00

BUTTER

DARIGOLD SWEET CREAM

PRINTS or QUARTERS 1-LB.

65¢

NAPKINS

M-D PAPER

80-COUNT PACKAGE

10¢

BIG DIP

MEDOSWEET ALL FLAVORS

1/2-GAL.

59¢

COCKTAIL

LIBBY'S FRUIT NO. 303 CANS

5 99¢

U & I SUGAR

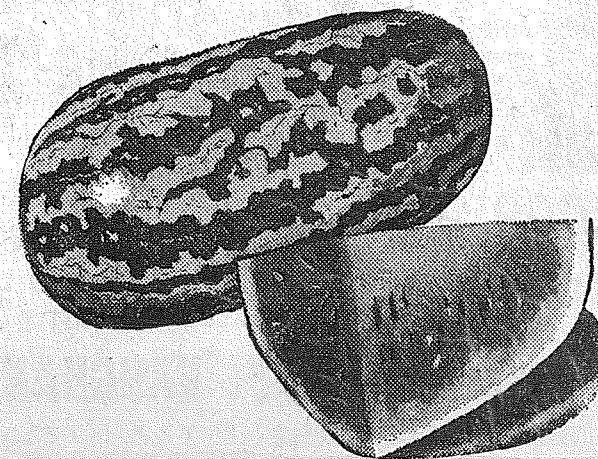
10 -LB. BAG

89¢

WATERMELON

Thumpin' Red Ripe

2 1/2¢



CELERY Fresh, Crisp, Local Grown . . . Each

9¢

Grapes Thompson SeedlessLb.

10¢

SQUASH Delicious DanishLb.

7¢

LYNDEN GRADE A LARGE EGGS DOZEN

49¢

Apple, Boysenberry, Cherry Morton's Fruit Pies 3 For

\$1.00

Chocolate, Lemon, Strawberry, Butterscotch Morton's Cream Pies Each

49¢

S & W FRESH CUCUMBER PICKLES 24-oz. Jar

39¢

HEAVY DUTY ALCOA FOIL 18"x25" Roll

69¢

N.B.C. HONEY GRAHAMS 1-lb. Pkg.

39¢

STOCK UP ZEE TOWELS 2 150-Ft. Rolls

41¢

N.B.C. WAFERS 7 1/2-oz. Pkg.

25¢

ZEE WAX PAPER 100-Ft. Roll

21¢

BATH SIZE PALMOLIVE 2 Bath Bars

31¢

ZEE LUNCH BAGS 2 20-Ct. Pkgs.

31¢

10c OFF VEL POWDER Giant Pkg.

69¢

BRUCE FLOOR CLEANER Quart Can

89¢

ANOTHER VALUE FAB Giant Pkg.

79¢

CANNED MILK DARIGOLD 3 Tall Cans

46¢

THE FOAMING CLEANSER AJAX 2 Giant Pkgs.

49¢

RED ROSE (10c OFF) TEA BAGS Pkg. of 48 Bags

59¢

SPECIALS IN OUR FIFE. HDWE. DEPT.

PAINT THINNER 50¢ Gallon Jug

FLY RIBBONS 5 for 35¢

FLY SWATTERS 5¢ Each

RUBBISH BURNER 5.95 Large 30-Gallon Size, Regular 7.50

POLAR FRESH FROZEN

STRAWBERRIES 5 10-OZ. PKGS.

1.00

COFFEE MAXWELL HOUSE (5c OFF LABEL) 1-LB. CAN

59¢

POTATO CHIPS NALLEY'SREG. 69¢

59¢

HASH NALLEY'S CORNED BEEF3 15-OZ. CANS

1.00

PARKAY KRAFT MARGARINE4 1-LB. CTNS.

99¢

Spaghetti and Meat Balls CHEF BOY-AR-DEE, 40-OZ. CAN

55¢

LASAGNA CHEF BOY-AR-DEE40-OZ. CAN

63¢

RAVIOLI WITH BEEF CHEF BOY-AR-DEE, 40-OZ. CAN

59¢

PEPPER SCHILLING'S BLACK4-OZ. CAN

39¢

ORANGE JUICE MINUTE MAID5 6-OZ. CANS

1.00

Van de Kamp's SPECIALS famous for QUALITY • FRESHNESS VARIETY • CONVENIENCE

Butter Ring CAKE Reg. 95c

85¢

Reg 6 for 39c DATE ROLLS

6/33¢

Chocolate Mint CAKE Reg. 1.25

\$1.05

Piggly Wiggly

PUYALLUP 1010 EAST MAIN

PARKLAND PACIFIC AT GARFIELD

FIFE FORMERLY ANDRE'S MKT.

SO. TACOMA 5252 SOUTH WASHINGTON

40th & PORTLAND AVE.

• PRICES EFFECTIVE THURSDAY, FRIDAY AND SATURDAY, AUG. 18, 19, 20 WE RESERVE RIGHT TO LIMIT—NO SALES TO DEALERS