

U.S. Postage Paid
Sec. 346 P.L. & B
Parkland Branch
Tacoma, Wash.
Permit No. 9P

Rural Route
Occupant or Boxholder
Postmaster: If unable
to deliver, return post-
age is guaranteed on
addressed papers.

The TIMES JOURNAL

THURSDAY, APRIL 16, 1959

VOL. 14, NO. 32

PUBLISHED AT PARKLAND, WASH. LE 7-0223

At Signal School



(AHTNC)—Army Pvt. Charles E. Ellis, son of R. E. Ellis, Route 3, Tacoma, Wash., recently completed the communications center operation course at the Southeastern Signal School, Fort Gordon, Ga. During the eight-week course Ellis was trained to receive, process and relay messages by various means of communications. The 23-year-old soldier is a 1953 graduate of Puyallup High School.

Parkland Christian Church
757 So. 138th, Parkland
Sunday School 9:45 a. m.
Morning Worship 11:00 a. m.
Youth Meeting 6:15 p. m.
Evening Service 7:30 p. m.
Bible Study, Thursday 7:30
Richard Crane, Pastor

American Legion News

Tacoma Post No. 228
Unit No. 228 announces the Department President's dinner honoring Mrs. Helen Eaton will be held at Wellman's, 3001 Pacific avenue, on Tuesday, April 21, at 6:30 o'clock. Reservations must be made not later than April 17 with President Hazel Mackey by calling JU 8-2218.

Pride and Love Inspired by Queen Carol

"Franklin Pierce School District, Home of the Daffodil Queen!" This was the greeting sent out to all incoming telephone callers Tuesday as the Franklin Pierce switchboard operator proudly and happily announced Pierce Senior Carol Mills' reign as the 1959 Daffodil Queen. Parkland residents, school officials and the student body were all thrilled. Carol's mother, Mrs. Mills, and sister, Pamela, were literally leaping for joy.

The student body through its council sent a congratulatory telegram which conveyed the feelings of the community and school. It read:

"Your graciousness, beauty and poise makes us all extremely proud of you. The entire student body congratulates you and your new exciting honor. We wish you good fortune in the days to come." Said the excited mother at the Mills residence in Parkland, "Words simply can't express the

"Little Black Sambo" Planned At School

The Parkland Lutheran school 130th and Pacific avenue, will present the three-act play, "Little Black Sambo," Thursday and Friday evenings, April 16 and 17, beginning at 8 o'clock.

Forty-five pupils of the school will be seen in the colorful story, directed by Elisabeth Helland, staging by Dalton Wolfarth. John Tietz plays Sambo; Shelley Edwards, Mumbo, and Steven Parker, Jumbo.

Principal Orville D. Weeks who led the school in its quest for a position on the Royal Court beamed happily all week. Weeks is the Vice-principal of the Parkland area Kiwanis club.

"Carol Mills has brought us a tremendous honor in being chosen Daffodil Queen. It is the success of individual students and of group endeavors that makes us proud of being associated with Franklin Pierce."

Weeks cited the basketball team's first appearance in the state tournament in Seattle, Phil Rousseau's winning of first place in the FFA speech contest, Marilyn Ganes' participation in the Miss Tacoma contest as well as Miss Mills' success in gratifying to both the staff and students alike.

Supt. Ed Nelson echoed the principal's comments and added that Franklin Pierce is "coming of age" in the eyes of Greater Tacoma as well as in the hearts of the community.

Pierce Spring Sports Now in Full Swing



Pierce track team returning lettermen talk things over prior to the opening meet of the season against Sumner. The Cards won it and also outscored the Enumclaw Hornets last Friday. They enter the Highline Relays Friday at Highline. From left to right in the front row are Bob Maxfield, Jim Mancuso, Coach Ed Stricherz, and Ken Southall. On the back row are Les Gaines, Reynoir Peterson, Bill Jeffries and Rick Smidt. All are returning lettermen. Golfers, tennis and baseballers are also in action with the warm weather finally making an appearance here. (Photo by C. R. McMillan.)

DE Students to Fete Employers 22nd

One of Franklin Pierce's most active clubs, Distributive Education, will hold the annual banquet for employers next Wednesday in the high school cafeteria. Ben Hanson, mayor of Tacoma, will be the principal speaker, according to Spence Nevan, Franklin Pierce DE Co-ordinator.

Also speaking will be Archie Breslin, state supervisor of the program; Harry Wuestney, president of the Retailers Clerk, and Orville Weeks, Franklin Pierce

principal. Some 20 employers will be on hand along with their student employees for the annual affair.

Daffodil Queen Carol Mills will be an honored guest. Leadership awards and other honors will be given to the most outstanding students.

The Pierce group played an active role in the recently concluded National DECA convention which brought more than 500 students co-ordinators to Tacoma during the first week of April. Nevan also announced that a field trip to Frederick & Nelson in Seattle is on the docket for the DE students Wednesday.

Completes Course

FORT BELVOIR, VA. (AHTNC)—Army Sgt. Donald L. Hair, 25, whose wife, Kuzuko, lives at 11466 S. Ainsworth Ave., Parkland, recently completed a special demolition course at the Army Engineer School, Fort Belvoir, Va.

Sergeant Hair was trained in the aspects of atomic demolition. He entered the Army in June 1951.

PARKLAND LAUNDROMAT
To Add Metered 24-Hr.
7 Days a Week Service
Watch for Opening Date
Across from Piggy Wiggly
12171 Pacific Avenue

Spanaway Water Company Expands

The purchase of one mile of new water pipe was announced this week by the board of directors of the Spanaway Water Company.

"The 4-inch and 6-inch pipe will be used to extend the company's lines to more of our members this summer," announced Hugh Govea, water company president. "An additional well has been drilled, by the Western Drilling Company of Tacoma, near the first well and a new 4,000-gallon tank is now being installed by the Water

company. This will not only give greater volume during peak periods, but will help guard against shut down in case of a pump failure."

An office has been established in the former Spanaway Meat Market next to Herman's Store.

In the very near future the water line on 163rd will extend to the Mountain Highway. The cost of extending the line under the Mountain Highway is now being investigated, as considerable in-

terest has been expressed by residents in this area. The high cost of boring under the highway, as required, has been the deterring factor.

With the coming of spring, there has been new interest in building in the Spanaway area, providing new memberships that will enable the company to further extend lines to some more older members as well as the new members.

Lawrence Sharley, Information

Franklin Pierce High School Election Set for Friday, April 17

After the school's attention was keyed to the Daffodil Festival for more than a week, students turned to the annual Associated Student Body elections which have attracted some spirited electioneering in the past. Primaries were conducted yesterday and the successful candidates will square off at the ballot box Friday morning.

Originally nominated for president were Jon Malmin, Terry Brink, and Don Myhre. Running for vice - president were Ken Southall and Phil Rousseau, while candidates for commissioner of finance were Ann Schnackenberg, Darrel Nordmark and Ginny Clinton. Four young office seekers sought the recrearial post Roxanne Johnson, Judy Leraas, Carolyn Myers and Kathy Taylor. A long list of hopefuls entered

the fight cheerleading and song leading divisions, which are two of the most sought after honors at Franklin Pierce. Running for cheerleader were Darlene Matilainen, Judy Webb, Janet Newman, Margaret Logan, Lillian Cullen, Janet Bombardier, Julie Klockner, Janice Peterson, Geraldine Osknes, Mike Rust, Fritz Herrick, Shirley Rous, and Karlene Scott. Four will be selected.

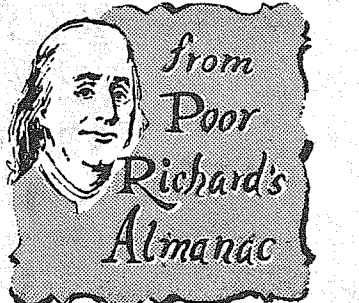
Four incumbents are out for their old positions on the songs staff. They include Judi Shoe, Elaine Erlanson, Margit Floyd and Sharon Madsen. Running against them in the primaries yesterday were Becky Gronlund, Sandie Evgjen, Mary Ellen Klockner, Cathryn Dammel, Annette Coleman, Tillie Harmon, Patty Halvorson, Mary

Ann Aldrich, and Ann Krysiak. The elections are under the supervision of the Student Council. Retiring from the four ASB posts will be President Ken Parker, Vice-President Bud Hellwich, Secretary Terry Schmechel and Commissioner of Finance Merry Meek. They're all seniors.

PROFESSIONAL DIRECTORY

Farmers Mutual Ins. Co.
Auto - Fire - Liability
and BARBER SHOP
J. J. GUNNS Agency
303 East 17th LE 7-7757
2 Blocks East of Transformers
Spanaway

Farmers Mutual of Enumclaw
Fire - Auto
ED MAREK
12807 Pacific Ave. LE 7-4000



Be slow in choosing a friend; slower in changing.

EASY PARKING
LE 7-0253
Dryer MORTUARY
1300 AND PACIFIC
PARKLAND

MAMA BEAR SELF SERVICE LAUNDROMAT

Located in the Big Bear Shopping Center

SPECIAL

LARGE SHAG RUGS (Up to 25 Pounds) WASH50c

FAST - FAIR - FRIENDLY
COMPARE RATES . . . SEE HOW MUCH
YOU MAY SAVE - CALL

IRENE CLEMENS

LE 7-4904

10329 Pacific Avenue

FARMERS AUTO INSURANCE



SCATTER RUGS

39c to 2.49

Allison's Variety Store

99th & Portland Ave. LE 7-5658

PARKLAND ROAD SHARKS

\$1.00

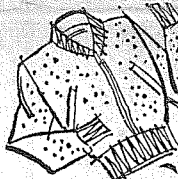
CAR WASH

SAT., APRIL 18

Starts 9 a.m.

MILLERS CARTER GAS

Across From Big Bear



HAVE WOOLENS CLEANED NOW

BEFORE THE MOTHS HAVE A CHANCE TO RUIN THEM
PARKLAND CLEANERS

11004 Pacific Avenue
North of the Bank Corner

LEnoX 7-3221

WINNER!



WINS SEWING MACHINE—Mrs. C. W. Goble, of Route 3, Box 203, Tacoma, being presented her new Morse Sewing Machine by J. F. Cline, Sales Mgr. of Morse, Tacoma. Mrs. Goble won her machine through a contest held at the Summit Trading Co.

SALE

Fri. & Sat. Only—April 17 - 18

Brand new, forward and reverse, light-weight, portable sewing machines... \$32.50
AND—still a few left... Completely re-conditioned, fully guaranteed, Singer portable sewing machines... Only \$18.88

Rent a Sewing Machine, \$4 Mo.

... We Pick-up and Deliver, AND... All Rent Applies Towards Purchase

MORSE SEWING MACHINE CENTER
5209 So. Tacoma Way GR 2-2702

—ALSO AVAILABLE AT—

PHONE NOW!

LE 7-0256

MARV TOMMERVIK'S PARKLAND FUEL OIL SERVICE

FOR AUTOMATIC FILL-UP SERVICE WITH THE FAMOUS

STANDARD HEATING OILS

Hobbies - Toys - Gifts

Antique Shop

SCHNEIDER'S

PLUS

SEWING MACHINE SALE

Custom Draperies—1/3 Off, Save Percal 3 Yds. \$1.00

FRI., AND SAT. ONLY, APRIL 17-18

— FREE COFFEE —

SCHNEIDER'S 231 Garfield PARKLAND

SHOP & SAVE

AT BROOKDALE LUMBER COMPANY



THIS WEEK'S SPECIALS

No. 4 Studs
2x4 -- 8' 24c Each
For Garages, Fences, etc.

FENCING

1 x 6 3c Per Ft.

CEDAR PANELING

(Air Dried)

1 x 8 \$13.50 Per 100

No. 2 \$2.47 Each

CELOTEX WALLBOARD

PRE-FINISHED

4x8--3/4" \$2.47 Each

KAISER ALUMINUM

4'x6' to 4'x16' Sheets

25c Sq. Ft.

For patios, houses and farm buildings.

MAHOGANY DOORS

\$4.95 Each

Sizes 16" to 36" Wide

Use Our Revolving Credit Plan for Your Purchases

BROOKDALE LUMBER COMPANY

LE 7-8669
136th & Pacific

We deliver your heating oil with care... no property damage!

You needn't worry about damage to your property and shrubbery when we fill your tank... we watch where we walk, and take extra care to avoid spill-overs. Our "All-Star" Service also offers:

AUTOMATIC DELIVERIES—based on the severity of the weather and your "degree-day" needs.

FINEST HEATING OIL—Clean-burning Texaco Fuel Chief with Additive A-200 is the finest. It doesn't leave harmful deposits that can clog the burner system—and can result in costly repair bills.



Distributed by

LAPENSKI FUEL CO.

9910 Pacific Avenue

Home of Clean Filtered Heating Oils

LE 7-8173

Spanaway News

The Fisherman's Breakfast featured by the Spanaway Volunteer Firemen's Auxiliary will be held

Sunday, April 19, at the Spanaway fire hall; serving from 3 a.m. till noon.

Preschool

Spanaway Preschool will meet Tuesday, April 21, at 8 p.m. in the Spanaway school lunch room with Mrs. Donald M. Palmer presiding. A film showing local kindergarten children will be shown, so come and see your child in action. This will be a good chance to get acquainted with the 1st grade teachers as they will all be on a panel — Mrs. David Pease, Mrs. Sam Green, Lillian Boudin and Mrs. Warren Ivers—and they will be prepared to answer questions you may have regarding what your child needs, learns and is expected to do in 1st grade. Following the program there will be an auction

PARKLAND WALLPAPER

STOCK PAPER—ORDER PAPER
KEM-GLO—SUPER KEM-TONE
508 Garfield Street
Just a Block-and-a-half Off
Pacific in Parkland
Phone LE 7-3435

LAF

LE 7-4984 330 Garfield St.
TYPEWRITER RENTALS
SALES AND SERVICE
Store Hours 9:30 to 5:30 Daily except Friday open till 9:00 P.M.

BALDWIN \$995.00
MODEL 30



PROSSER PIANO &
ORGAN CO.
6425 S. Tacoma Way
GR 4-0605

sale of ceramics, plants, household articles, etc. Hostesses will be Mrs. William Anderson, Mrs. Roland Wilson, Mrs. Tony Marsh and Mrs. Delores Perdue.

Best Wishes

Get Well wishes to Don McLellan who has been ill in the hospital.

Sympathy

Deepest sympathy to the families of Mrs. Oma Peterson and Edward Bowman; they both passed away last week.

Reporter—Mrs. Oliver Omat, LE 7-6466

WSCS

The regular monthly meeting of the Woman's Society of Christian Service of the Spanaway Methodist church will be held at the church Tuesday, April 21, with the business session at 7:30 p.m. Mrs. George Nafus will lead the devotions. The program theme is "Christian Concerns of Rapidly Developing Nations." Hostesses for the coffee hour will be Mrs. Donald Loete and Mrs. Lorien Buck.

Visit Your Library

In recognition of National Library Week, April 12-19, residents of Parkland are urged to visit the Parkland Public Library on South 119th street, just west of Pacific avenue. Library hours are 1 to 5 p.m. Tuesday, Wednesday and Thursday; 7 to 9 Wednesday evenings.

Volkswagen Club

By Kreeha B. Aikire

The Volkswagen Club of Tacoma's spring and summer outing season starts at noon May 3rd with the kickoff of the 100-mile "Towns Rally," starting in Tacoma.

Road Captain Norman Strand, Tacoma, said the originating point

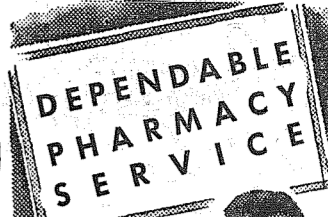
for this rally, which is open to all makes of cars, will be Imported Motors, 7030 South Tacoma Way, Tacoma. He said competitive drivers should be at this spot at 11:00 a.m. for registration. Entries will be \$1.50 per car and each vehicle must have a driver and a navigator.

Strand also announced that a short "Practice Rally" will be run from the same point preceding the main rally for the purpose of familiarizing new participants in this type of auto competition. Drivers entering this event must register at 10:00 a.m. Strand said participating drivers wishing to could compete in both or either event. Dash plaques or trophies will be awarded winning driving teams after the judges, who will be Strand and J. H. Kelly, Tacoma, compute the final scorings. Drivers wanting further information on these competitions, phoning either Strand at MA 7-6416 or President Jerry Siler, LE 1-0295.

An ocean clam digging trip and movies will be the main topics of business at the club's next business meeting, 8:00 p.m., Thursday, May 14th, at Imported Motors, 7030 South Tacoma Way. Frank Matzek will be in charge of plan-

ning the clam digging outing, refreshment chairman for May, tentatively scheduled for May 23. Road Captain Strand and John Miller will give a report on their progress in making plans for a June caravan road trip.

President Jerry Siler, 10804 A St., will be in charge of the business meeting and the showing of movies, while Strand, who will be



Bob Vaughan
Owner

TUSSY
1/2-PRICE SALE

Reg. \$1.00 Size
50c
Cream, Stick or Roll On

Parkland Rexall
Pharmacy
Pacific Avenue & Airport Road
LEnox. 7-8636
INTEGRITY • SERVICE • SAFETY

Thanks to Firemen

We would like to extend our thanks and appreciation to the Parkland Volunteer Fire Department for the efficient manner in which this fire fighting team saved our home from sure destruction last Saturday evening. There are many things we would like to say but we believe the most appropriate thing to say is THANKS! Mr. and Mrs. Ance E. Williams, 10633 Phillips St.

Try Our . . .
French Fried Louisiana Prawns
Tartar Sauce
It's Delicious!



RESERVATIONS FOR PARTIES WELCOMED

NETTIE'S CAFE

VISIT OUR DAFFODIL ROOM
TH 5-1156 116 SO. MERIDIAN ST. PUYALLUP

59th Street Laundromat

59th & South K St.

Grand Opening April 17-18

FREE WASH FRIDAY, SATURDAY

9:00 a.m. to 7:00 p.m.

(Limit One Per Family)

Refreshments Served

MR. AND MRS. J. J. JASPEL
Owners

FREE

FROM
SUMMIT
TRADING
COMPANY



If our Store Name is written on your entry

ONE YEAR'S SUPPLY OF GROCERIES UP TO \$1,000.00

IF AS OUR CUSTOMER YOU ARE ONE OF THE
GRAND PRIZE WINNERS IN

GENERAL MILLS CEREALS \$250,000 SWEEPSTAKES

ALL PURPOSE

OCCIDENT FLOUR

25 Lb. Bag

1.89

NALLEY'S For Springtime Salads

TANG SALAD DRESSING

Qt.

39c

EARLY GARDEN FREESTONE

PEACHES

No. 2 1/2
Tin

4/95c

RED DART CUT

GREEN BEANS

303
Tin

10c

SCOTT FAMILY WHITE

NAPKINS

60-Count
Pkg.

9c

HI-WEST

PEAS

Fresh 10-Oz.
Frozen Pkg.

10c

ORE-IDAHO Fresh Frozen

Potatoes

French Fries
or
Tater Tots

25c

THRIFTY SPRING PRODUCE!

CALIFORNIA FANCY

Asparagus

2 Lbs. 25c

TRY 'EM STUFFED

Green Peppers

Lb. 19c

CARROTS

Lb. 7c

Indian River Pink GRAPEFRUIT

6 for 45c

LUXURY MILD

CHEESE

Lb. 49c

SANITARY'S Bulk Pak

ICE CREAM

1/2 Gal. 85c

MISSION

EGG NOODLES

1-Lb. Pkg. 35c

PET

MILK

Tall Tins 3/44c

STORE HOURS

9 a.m. 'Til 9 p.m. Daily Except Sunday

SUMMIT

TRADING COMPANY

10409 Canyon Road, Tacoma

LE 7-5848

No Sales To Dealers

We Reserve The Right To Limit Quantities

GENERAL MILLS

CEREALS-FOR QUICK BREAKFASTS

Your Choice Mix or Match Em

- CHEERIOS 10 1/2-Oz. Pkg.
- WHEATIES 12-Oz. Pkg.
- COCOA PUFFS 8 1/2-Oz. Pkg.
- HI-PRO 6 1/2-Oz. Pkg.
- KIX 9-Oz. Pkg.
- SUGAR JETS 10-Oz. Pkg.
- TRIX 8 1/2-Oz. Pkg.

4 FOR 95c

CHEERIOS OR WHEATIES

Large Family
Size Pkg.

35c

DARIGOLD-Best For Toast

BUTTER

Print Pkg.
Or Quarter Lb. 65c

QUALITY-TRIMMED MEATS!

FRESH GRAIN FED

Pork Chops

Lb. 49c

FRESH GRAIN FED SHOULDER

Pork Roast

Lb. 39c

U.S. GOOD

Short Ribs

3 Lbs. 89c

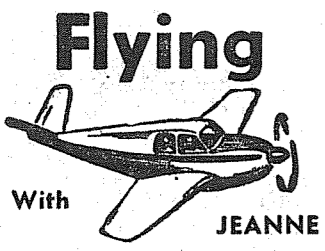
U. S. GOOD -- BLADE OR 7 BONE

Pot Roast

Lb. 49c

TRUCK LOAD DIRECT FROM FACTORY
DUTCH BOY

House Paint Gal. \$3.99



Flying

With JEANNE

Jerry Cooley, who works for Pacific Telephone, soloed a week ago. Because Jerry has set himself a goal of a Private Pilot's License by the first part of May, he has been flying nearly every day. He took his dual cross-country training flight with Slim Lawson instructing to Toledo, Hoquiam and return.

Another first solo flight was made by Chuck Shook. Chuck has an exciting and interesting profession in that he is a bareback and bull rider in rodeos. He is very well known around here and throughout the country for his work in rodeo. Flying can be a great help to him in getting from one rodeo to the other in a short time.

Dewey Hayes, a salesman for National Auto Parts, was soloed at Spanaway Airport by Slim Lawson, instructor. Another student who took to the air solo this week was Stan Bryant, who works for Pacific Telephone.

Karen Wymer was given her first airplane ride as a birthday gift from Larry Doesken. Ed Dahl at Thun Field, took Karen for her ride, which she enjoyed very much.

From Thun Field, Puyallup we have Merle Deerdorf, of Federal Way, who made his first solo flight.

Mike and Betty Mickelson and Ward and Ann Clemmo flew Thun's 172 around the Olympic Peninsula. While flying over the water they spotted a school of whales which was really putting on a show.

Other trips made were: Ward Clemmo in the SNJ to Portland and return; Bud Blancher to Port Angeles and return in his Stinson; Fred and Peggy Immen flew to Boeing field one evening for dinner; Bruce Gale and Marie Schuler flew Immen's Cessna 170 to Toledo where they picked up Marie's sisters Agnes and Marquerite who go to school in Toledo;

Bob LeSchack flew Judy Blancher, Bruce Thun and Rusty Harper to Olympia and return Sunday. Phil Hubbard took his wife on a night flight this week.

Tahoma Flying Service at Spanaway Airport, sponsored George Musser's boat in the Boat Parade Sunday and won 3rd prize, Commercial. We would like to take this opportunity to thank all those who helped in decorating the boat. Don't forget the "Western Party"

Canyon Road News

The Canyon Road Ladies Auxiliary will hold the annual Daffodil Luncheon Thursday, April 23, at 12:30 in the Community hall, East 80th and Canyon road. The guests of honor will be the Daffodil Queen and her court. Tickets may be purchased at the door. These luncheons have always been very enjoyable; this one promises to be the best ever.

Blood Bank

The Blood Bank reports a total of nine pints obtained here last Friday with promises of more from those unable to give that day because of colds. Thank you all so very much!

Community Club

At the last meeting of the Canyon Road Community club the guest speaker, State Senator Reuben Knobloch, gave some very interesting information on the inner working of our law makers, citing how certain laws have to give a little and take a little in order to reach a degree that they hoped would please most people. A surprise speaker was Mrs. Keller from the Puyallup school district who gave a detailed report on the crowded conditions in the schools; please vote at the election being held in May.

Newcomers

We are most happy to welcome to this community Mr. and Mrs. Ralph Baird and children Gregg, Cindy and Terry. They recently purchased the Munson home on Canyon road. Mr. Baird is principal of the Roosevelt school. Kids, he sounds like a very handy man to have in this neighborhood.

In Regatta

Last Sunday was a memorable day for Johnny Andrews of Canyon road. He launched his 17-foot converted cruiser, The Dasher, at the Daffodil regatta after months of scraping, painting and polishing. Along with Johnny was his wife Joyce and guests Mr. and Mrs. Ed Hoffman, ending the wonderful day with a crab dinner at Quartermaster Harbor.

Attends Rally

Charlene Latterell, daughter of Mr. and Mrs. Mike Latterell of Canyon road, returned home after spending three days in Portland attending the Youth of Unity Northwest Regent Rally as a member from Unity Center of Tacoma April 10, 11 and 12.

Reporter—Mrs. John Folk, LE 7-5801

April 16th at the Club House at Thun Field!

Phone your news to Tahoma Flying Service LEnox 1-0442.

Bethel Board Busy With Budget Plans

Members of the Bethel School Board have scheduled a special board meeting to be held on April 21 at 8:00 p.m. in the Bethel Senior High School to take under consideration the approval of a preliminary budget and the purchase of additional transportation equipment.

Superintendent Dewane Lamka reported that the board will consider a budget that will allow the school district to operate during the summer months while the school officials get the official income figures so that a final budget may be drawn up sometime in August? The need of two more school buses will also be under discussion by the board with the school officials recommending the purchase of at least two more 73-passenger transits.

Fruitland Grange

Fruitland Grange No. 999 will celebrate its 26th birthday at the regular meeting Friday, April 17 at 8:00 p.m. Faye Goelzer and Clara Lavik have planned the program. A film on "Indian Writings of the Columbia" will be shown by Roy McCue, horticulture inspector at large for the state of Washington. Square dancing, called by Lewis Bigelow, will be done by Joan, Myra and Bill Geddes, Elaine and Cliff Hurst, Gail and Bob Gilmore and Joe Janowski. Refreshments will be served by a committee consisting of Ione Williams, Alan Goelzer, Florence Glaser, Doris Smith, Cora Hill and Helen Lloyd. All grange members are cordially invited.

Wisconsin club of Tacoma will hold the regular monthly potluck supper at 6 p.m. Sunday, April 19, in the basement hall of the Odd Fellows Temple, Sixth and Fawcett avenues.

Andrews Keynotes Bethel Dedication

"It gives me a great lift to participate in this Dedication Program as you've done such a fine job in planning and constructing the Junior High School," State Superintendent Lloyd J. Andrews told a crowd of over 500 people at the dedication of the Bethel Junior High School recently.

The occasion for Andrews' remarks was the official dedication of the new Junior High School and came as part of his keynote speech. Before his talk, the keys to the Bethel Junior High were turned over to Board Chairman Roy Nixon from Harry Botesch, of the Botesch and Brown Architectural firm that designed the school. Nixon then turned the building, over to Principal Robert Minniti who accepted the school for his faculty and students.

Andrews pointed out that it was "especially noteworthy to realize that the Junior High School is one of the most efficient schools that has been built in this area." He went on to state that the Junior High was an effective building that had been constructed at the cost of \$1,076 per pupil, while the state average is around \$1,500 per student. The actual floor space, according to Andrews, is also proof that the building is efficient as the Bethel Junior High has allotted 84 sq. ft. per student, while the state average is nearer 100 sq. ft. per pupil.

The State Superintendent also took time out to commend the Bethel School Board members for their interest in creating such a "fine structure." He went on to pat all of the school boards in the state on the back as "they are the smallest units of our government and yet they carry out the most important function in the State—providing education for the

Andrews Keynotes Bethel Dedication

children in the State of Washington."

"Education in America," he went on, "is everyone's opportunity and everyone's responsibility to provide education for all. This is important as we need education for all as our youngsters need the proper education to keep the United States' system of self-government operating." A formula for good education was also presented by Andrews. This is X plus Y, where X is the well planned facilities by the schools. The X factor must be provided by the citizens of the state and the Y factor is the challenge to both teachers and the students, Andrews remarked.

The Bethel Junior High School was named after Mrs. Ruth Bethel, former Roy district superintendent and the present County Superintendent of Pierce County. The School District and the Senior High School also have been named for her.

Fishermen's Feed

A flapjack feed for fishermen is planned at McKenna school this weekend. Sponsored by the McKenna P-TA, serving will be continuous from 3:00 p.m. Saturday till 9:00 p.m. Sunday.

The event is arranged for the convenience of fishermen going to McKenna, Clear Lake, Lake Lawrence, etc. The menu includes flapjacks, sausage, ham, eggs, coffee, milk or tea. The public is invited.

It's the LAW

The unit of democracy is a meeting.

Call it what you please — the United National Assembly, Parliament, Congress, a town meeting, a lodge or garden club, or what have you.

For your meeting to work well, people—your chairman and everybody else—must know how to talk your problems over and make up your minds. For this you need rules.

Each group can make up its own rules, if the members want to. In important meetings they often do. Almost before it does anything else, a new Congress adopts its rules, sometimes after a long, hard fight. But name a candidate for President of the United States, or go to your child's PTA, and at your elbow will stand an almost forgotten Civil War general.

People, meet General Robert! In 1876, he first ran off 4,000 copies of "Robert's Rules of Order." Since then 1,500,000 copies have been printed. We have not changed our rules of order much since he put them down. If you plan to take part in church, school or civic groups, then, by all means read your parliamentary laws. The rules of order are tools of a democracy. Know them if only

PIERCE COUNTY REFUSE CO.

Weekly Garbage Collections
Phone LE 7-8688

Family Needs Help

Friends and neighbors of the David Wetherell family, 13822 South I street, are lending a helping hand since a disastrous fire early Sunday morning completely gutted their home while the Wetherells were away. Since all furniture, clothing and personal possessions were lost, the family can use practically anything that may be offered. There are two children, a boy of 7 and a girl, 10. Further information may be had from Mrs. Ronald Johnson, LE 7-0156.

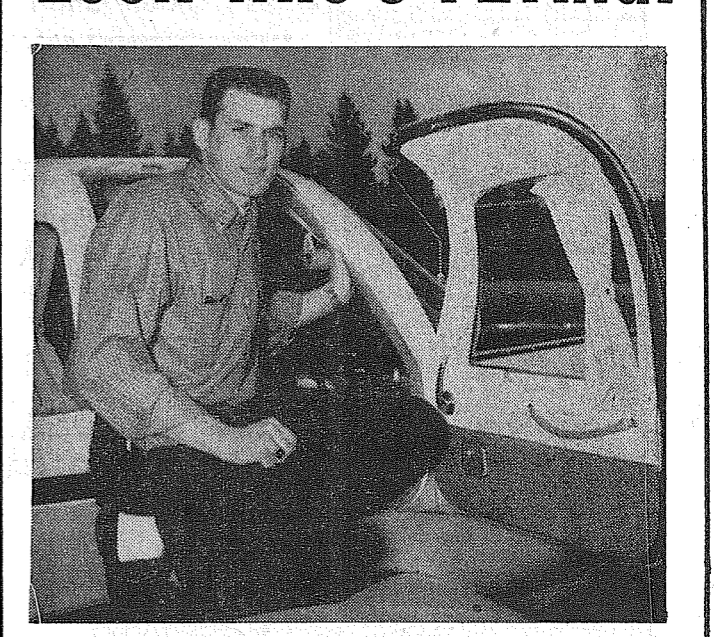
Car Wash

The Parkland Road Sharks are holding a car wash Saturday at Miller's Carter Service at 133rd and Pacific, across from Big Bear. Proceeds will be used to buy an engine to build up for use on the Shelton drag strip soon. The club, now in its fifth year, has a '36 Ford coupe as its current project; good driving practices and highway safety are stressed in club rules.

INTERURBAN AUTO FREIGHT INC.

3 Trips Daily
To Parkland, Spanaway Summit, Midland
GENERAL FREIGHT
MA 7-4121

LOOK WHO'S FLYING!



RICHARD NEWMAN

Richard Newman is a salesman for Standard Stations, Inc., working in the Tacoma area. With him, flying is strictly for pleasure; he has had 16 hours flying time and soloed April 2 after eight hours and 35 minutes of instruction. A hint to the fair sex: Newman is an eligible bachelor; maybe he feels safer up there in the wild blue yonder!

IT'S QUICK, EASY, INEXPENSIVE!

Our methods of teaching, modern planes and experienced instructors make it possible for most students to SOLO after only 8 lessons. Many are licensed to carry family and friends after only 40 hours of flying time.

FREE DEMONSTRATION LESSON

We want you to become part of the wonderful world of flying... whether for business or pleasure. Prove to yourself that you can learn to fly. Call or visit our school today and make an appointment for your FREE DEMONSTRATION LESSON.

TAHOMA FLYING SERVICE

SPANAWAY AIRPORT
185th and Pacific
LE 1-0442

if PAY CALL is too far away or you're short of cash for other reasons...

call on the folks at PUBLIC FINANCE

SPECIAL PLAN FOR ARMED FORCES PERSONNEL

Armed Forces personnel like the special service plan and the experienced way the manager at Public Finance helps them solve their money problems.

CASH LOANS... \$25 to \$500

We would like to supply you with the cash you need, any amount from \$25 to \$500 on a sensible plan, hundreds of other personnel are using.

QUICKLY AND PRIVATELY ARRANGED

Arrangements are made quickly and privately at a time suited to your convenience. Public Finance has a reputation for being dependable.

COAST-TO-COAST CREDIT CARD

Your credit record at Public Finance may serve you in times of emergency, transfer, leave or liberty at any one of more than 479 Affiliated offices from coast to coast. Ask for your Credit Card when you get your loan.

CALL, WRITE OR COME IN

If you're on a tight schedule, phone first and we'll arrange for you to come in at your convenience.

PUBLIC FINANCE CORPORATION

6433 S. Tacoma Way Greenfield 4-0641

Prescriptions INSULIN

Open 9:30 to 9 Weekdays (Closed Sunday)

SPANAWAY DRUG

165th & Pacific LE 7-5993

TV TROUBLES? WE GIVE FAST, COURTEOUS SERVICE

BIXBY TV - RADIO

12503 Waller Rd. LE 7-8309

Quickie Shine Spray

The No. 1 Aerosol Shoe Polish

Ask for it at Your Local Repair and Shoe Store

THIS FINE DEAL SELLS MY

24 HOUR THERMOSTATIC WOOD HEATERS

FREE INSTALLATION

COMPLETE LINE OF LAWN AND GARDEN SUPPLIES

—RENTALS—
GARDEN TILLER
HAND SANDER
POWER MOWERS
FLOOR WAXERS
RUG SHAMPOO MACHINE

For That Professional Job

Parkland Hardware
12169 Pac. Ave. LE 7-3171
Across from Piggy Wigly

Till close to hedges, under shrubs!

Simplicity

Roticut TILLER-CULTIVATOR

Plenty of capacity for tilling or cultivating heavy soils. Non-winding, self-sharpening tines, guaranteed against breakage! "Fastatch" time assemblies (8 1/2" to 29") change in seconds. Full working visibility. Ask us for a demonstration today!

Now 3 hp!

First with finger-tip POWER REVERSE

AVENUE FEED

98th & Pacific Avenue LE 7-4546

LOOK! SPECIAL FACTORY PURCHASE OF MILL-RUN "ORNYTE" FIBERGLAS PLASTIC PANELING

Convenient Lengths for the "Do-It-Yourself" Fan, 8, 10 and 12 Feet

37¢ Sq. Ft. While It Lasts

BUILD YOUR OWN:

- PATIOS
- CARPENTS
- SWIMMING POOL ENCLOSURES
- FENCES
- PARTITIONS

We stock framing materials, hardware and all items necessary to complete job.

Many Beautiful Translucent Colors Will not Crack, Warp, Rot or Peel (We Also Have a Variety of Grade A Panels at 45¢ Sq. Ft.)

YOUR TACOMA HEADQUARTERS FOR "ORNYTE FIBERGLAS"

CHAMBERS CREEK LUMBER

6402 So. Tacoma Way—Open Sat. 'Til 1—Phone GR 2-4494

SPECIAL COMPLETE PAINT JOB \$55.00

GUARANTEED AUTO REPAIR AT REASONABLE PRICES

6 DAYS A WEEK EVENINGS ALSO

DAVE JOHNSON AUTOMOTIVE

4708 E. 112th, LE 7-6966

PICNIC STYLE PORK ROAST Lb. 29¢	OREGON LARGE FRESH WALNUTS 3 Lbs. \$1.00	EGGS Large AA Fresh Daily DOZ. 42¢	NO. 1 NETTED GEM POTATOES 25 Lb. Bag 69¢	Sandwich Size Chunk Bologna Lb. 39¢
CALIF. CHOICE ORANGES Lb. 9¢	KOOLAIDE 3 Pkgs. 10¢	SILK TOILET TISSUE Per Roll 5¢	Delicious (Fancy Grade) APPLES 10 Lb. Bag 79¢	JAMES HENRY BACON Yankee Sliced Lb. 39¢
NO. 1 FIRM BANANAS Lb. 12¢	MISSION DEAL 1 Pkg. Macaroni 1 Pkg. Spaghetti Both For 35¢ (Save 11¢)	FREE FUN! CASH PRIZES When you play America's best loved Game — 9 A.M., 1450 on your dial, on KAYE Puyallup COME IN FOR YOUR FREE GAME-CARD	SEA GLORY CHUNK TUNA Large Tins 4 For 89¢	AUBURN Cottage Cheese Pints 25¢
VAN CAMP'S PORK & BEANS No. 2 1/2 Tins 4 Cans 89¢	GERBER'S BABY FOOD 12 Cans 97¢	BONNIE GOOD COFFEE Lb. 55¢	BISQUICK 40 Oz. Pkg. 39¢	SAVE! SPONGES 15¢
PEDERSON'S Whole Fryers Lb. 35¢	NO. 1 RED POTATOES 25 Lb. Bag 79¢	SPRUANCE BREAD MIX Makes 4 Loaves Bread 49¢	Onion Sets 2 Lbs. 49¢	LEAN PORK STEAK Lb. 43¢

MCDANIELS MKT.

"HOME OF THE LOW PRICE"
AIRPORT & CANYON RD.

TUNE IN RADIO STATION KAYE 9: A.M. DAILY

4-H Junior Queen To Be Chosen 21st

The Pierce County 4-H Junior Fair Queen will be chosen Tuesday evening, April 21, in the Tacoma library auditorium. The public is invited.

Candidates for the honor are Jarleth Hoffman of Fruitland; Shari Young, Edgewood; Karen Winch, Riverside; Donna Ayers and Jane Lawler, Midland, and Diana Perryman and Priscilla Pederson, Parkland. These attractive 4-H members were chosen last week in Tacoma by Judges John Condon, mayor of Puyallup; Jerry Kreuger, Summer city councilman, and County Home Agent Carol Mays, with Chuck Bond officiating.

The winner will be selected on her 4-H record, ability to speak and meet the public, as well as appearance; the choice will not be announced until the coming 4-H Rally Day. The Queen will reign at the annual Pierce County 4-H Junior Fair, held each year on the Summer high school grounds.

Rummage Sale

The Parkland Volunteer Firemen's Auxiliary is busy with plans for a big rummage sale May 1 and 2 at the fire hall. Anyone having used clothing or any other saleable items is asked to call LE 1-1325 or LE 7-3737 for pick-up or leave donations at the fire hall.

Elk Plain News

Starlite Rebekah Lodge No. 332 will meet Wednesday, April 22, at 8:00 p.m. at the Elk Plain Grange hall.

Firemen's Auxiliary
The Elk Plain Firemen's Auxiliary will meet Monday, April 20, at 8:00 p.m. at the fire hall with the president, Mrs. Bill Wright, presiding. The ways and means committee will give a report on the recent dance.

Community Church

The Elk Plain Community church has as guest speaker Sunday the Rev. William Foss of Tacoma. Sunday school is at 10:00 a.m., morning worship at 11:00. Everyone in the community is invited to attend and bring a friend.

Sick List

Mrs. Cal Sartain is recuperating very nicely now but still confined to bed. Cards would be greatly appreciated. Our best wishes for a speedy recovery, Jessie!

Reporter—Mrs. Eileen Schmidt VI 7-7638.

Lois's Beauty Shop

Machine Permanents and Cold Waves
Open Evenings by Appointment
1 Mile South of Roy "Y" On Mt. Highway
LE 7-6789

Cub Scouts

Cub Scout Pack No. 105 met April 2 at 7:30 p.m. at James Sales school. Mrs. Miller's, Mrs. Schuth's and Mrs. Fredrick's dens presented very interesting skits with Canada and Alaska as the themes.

The following awards were presented:
Bobcat Badge — John Kaliman, Steven Ellis.
Wolf Badge—Dale Adams, Kenneth Carver.
Bear Badge—Richard Taylor.
Lion Badge — Ellwood Miller, Dennis Nugent, David Lorenz.
Silver Arrows—Douglas Cornelius, Kenneth Carver, Roland Schuth.
Denner Stripe—Bill MacLean.
Assistant Denner Stripe — Gary Neal Rodgers.

The next Pack meeting will be Thursday, April 23, the theme to be "Down on the Farm."
The Cubs are out selling tickets for the Scout Exposition; welcome the little fellows.

Kapowsin Talent Show Set May 1

Plans for the annual Kapowsin P-TA Talent Show began this past week with entry blanks for talented individuals and groups being placed at a number of points throughout the Bethel area. The Talent Show will be staged on May 1 at the Kapowsin elementary school and, as in past years, a number of cash prizes will be given to winning acts.

According to Mrs. H. A. Lauenborg, publicity director for the Kapowsin P-TA, application blanks for any group or individual may be picked up at the Bethel Senior High, the Bethel Junior High, or the Kapowsin elementary schools. The program will be open for vocal and instrumental musical acts, novelty acts and dancing.

For the benefit of people who may have questions about securing an entry blank by mail, any of the following three members of the telephone committee may be contacted: Mrs. Winfred Dean

ELEMENTARY SCHOOL LUNCH MENU

Monday
Vienna sausage over mashed potato, buttered peas, corn bread, butter, pear halves, milk.

Tuesday
Chili con carne, crackers, cabbage and pineapple salad, raisin bread and butter, apple crisp, milk.

Wednesday
Barbecued pork on round buttered buns, carrot sticks, orange tapioca pudding, milk.

Thursday
Vegetable soup with crackers, hot dog, buttered bun, peach cobbler, milk.

Friday
Noodle - tuna - cheese casserole, celery sticks, bread and butter sandwich, grapefruit sections, milk.

at VI 7-7359, Graham; Mrs. Ben Staab at TW 3-5349, Orting; and Mrs. L. M. Garner at TE 2-7409, Eatonville.

Style Show

The Latchmaster Society will sponsor a style show for knitted clothing made on automatic knitting machines Saturday, April 18 at 8:00 p.m. in the South Tacoma Community Center. Live models will display a variety of garments for men as well as women and children. The affair is complimentary to the public.

Smorgasbord

The East Side Christian church, 59th and McKinley avenue, announces a smorgasbord Friday, April 17, with serving from 5:00 to 7:00 p.m.

General Sheet Metal Work

Special Attention to Special Equipment
RAU MFG. CO.
LEnox 7-7372

Quickie Shine Spray

The No. 1 Aerosol Shoe Polish
Ask for It at Your Local Repair and Shoe Store



Come - See - Hear - Sing
Share - Rejoice with Us
in God's Blessings

REVIVAL SERVICES
Daily through April 26
9:30 a.m.—7:30 p.m.

Nursery Provided

PARKLAND BAPTIST

So. 112th & J—LE 7-4196
Douglas DuBose, Evangelist
Andrew Seago, Pastor

Home Construction and Remodeling

Get Our Bid First
Looking for Quality? Call
HEDLUND CONST.
920 So. 121st LE 7-4227

Evergreen Baptist Church

Rev. Herbert Lawrentz, Pastor
92nd & Waller Road
Sunday School 9:45 a. m.
Worship Services, 11 a.m., 7 p.m.
"Ye Must Be Born Again"

POWER TOOLS FOR RENT

SANDERS - EDGERS - POLISERS - HAND SANDERS
SKIL SAWS - ELECTRIC DRILLS - CEMENT MIXERS - ETC.
ALSO HAND TOOLS FOR RENT

Anderson Lumber

9813 Pacific Avenue LE 7-7311

Council Luncheon

The Honorary Life Membership luncheon of Pierce County P-TA Council will be held Thursday, April 23, at 12:00 noon at Top of the Ocean. Mrs. Webster Walton of Parkland is chairman; Dr. Robert Albertson of CPS is guest speaker.

FLETT DAIRY

FARM FRESH
HOMOGENIZED AND
PASTEURIZED MILK
AND CREAM
ICE CREAM
Phone GR 2-3301

Rural Garbage Service

Serving Parkland, Lakewood, Midland, Summit, Spanaway and Lakeview.
Pierce County Permit
LEnox 7-8688

NAME THE DOG

AND WIN A PRIZE

FREE

COFFEE & DONUTS
FOR ADULTS AND

BALLOONS FOR THE KIDS

Saturday, April 18th

(All Entries for the Contest Must Be Made by Saturday, April 18th)



HOMESTEADER

ARTS, CRAFTS, AND GIFTS
414 Garfield St. Parkland

Complete Motor Rebuilding

Lathe Work, Press Work, Valve Seats Installed, Head Surfacing, Piston Grinding, Brake Drum Turning, Reborring, Pin Fitting, Key Seating, etc.
Rupe Machine Works and Garage
AUTOMOTIVE & INDUSTRIAL WORK
13411 Pac. Ave., P.O. Box 2445, Parkland 44, Wn., LE 7-7450

LET'S GO FISHING!

SEASON OPENS SUNDAY, APRIL 19

Is there any thrill in all the world like the bang you get from your first big catch of the new season? Right now you're looking forward to it... checking over last year's fishing tackle to see what's needed to complete your enjoyment of this fascinating sport. One thing sure: Whatever you need, it's to be found by shopping from this page, all items made right and priced right. You'll make many a good catch right here!

LET'S GO FISHING!

Rods - Reels - Eggs - Sinkers - Line - Leader - Hooks
Fls - Spinners - Baskets - Tackle Boxes - Etc.
Open Sun. 10 a.m. to 3 p.m.—Weekdays 8:30 a.m. to 8 p.m.
Magdanz Lumber & Hardware
11401 Pacific Avenue LE 7-5538

FISHING TACKLE

WIZARD OUTBOARD MOTORS
FISHING LICENSES AT
PARKLAND WESTERN AUTO
11108 Pacific Ave. LE 7-3112

FISHERMANS BREAKFAST

Sponsored by the Pacific Avenue South Lions Club
SUNDAY, APRIL 19TH
OPEN 2 A.M.
RICHARD'S CAFE
8201 Pacific Avenue

BILL'S BOAT HOUSE

Large Stock of FISHING TACKLE
Our Boats Are All Reserved for the First Part of Opening Day, But There Will Be Some Available Around 9:00 a.m. First Come First Served.
173rd St. on Spanaway Lake LE 1-0387

WEST BEND 2 H.P. "SHRIMP"

28 Lbs., Air-Cooled
Handy? You bet! It's light enough, safe enough for even the youngsters to handle, but don't let the small size fool you! It can go in where other motors fear to tread. Because of its air-cooled motor, it can laugh at sandy water. Purrs along even on frosty, duck-hunting days. Doubles as auxiliary on sailboats or any boat. Has many uses for any member of the family!

OPEN ALL NIGHT

Saturday, April 18th
COMPLETE LINE OF FISHING SUPPLIES
Al Deritis Sporting Goods
8242 Pacific Ave. GR 2-2725

FISHERMEN

WE WILL BE OPEN TILL 8:00 P.M.
THURS., FRI. & SAT. EVE
OPEN SUNDAY
5:00 a.m. 'Til 4:00 p.m.
Complete Line of FISHING SUPPLIES

FISHERMEN

We Carry a Good Assortment Of Fishing Tackle
SUCH AS
• POLES • REELS
• HOOKS & LINE All Types & Sizes
• FISHING BASKETS Small and Large
• TACKLE BOXES
OPEN - 9 'Til 9 Daily
11 'Til 6 Sunday

FISHING BOATS

12' SKIFFS	\$125.00
12' FIBERGLASS SPORTSMAN	\$229.00
12' ALUMINUM CRESTLINER	\$229.00
10' FIBERGLASS SEA-B	\$219.00
12' FIBERGLASS GLASSPAR	\$269.00

JOHNSON OUTBOARDS
Sales and Service
PLEASURECRAFT MARINE
90th and Pacific Avenue GR 4-0537

So. End Plumbing & Hardware

LICENSES FOR SALE HERE
185th & Pacific Avenue LE 7-4100

Spanaway 5 & 10

165th & Pacific (Across from Spanaway School) LE 7-8322

GET YOUR FISHING LICENSES AND FISHING SUPPLIES AT

PARKLAND HARDWARE
Also Complete Line of Lawn Supplies
Across From Piggly Wiggly
12169 Pacific Ave. LE 7-3171

THIS FISHING SEASON SAVE TIME

Get Your Fishing Supplies While You Fill Your Gas Tank
We Carry a Complete Line of FISHING TACKLE
Open 7 a.m. 'Til 9 p.m.
BROOKDALE SERVICE STATION
13106 Pacific Avenue LE 7-5722

IT'S TIME TO GO FISHING

Complete Line of FISHING TACKLE
Licenses Issued
• BOATS AND SUPPLIES
• PAINTS AND BOAT MATERIAL
• SCALE MODEL SECTION
• SPORTING GOODS
OPEN SUNDAY
Gayline Boats & Sport Equipment
9412 Portland Avenue LE 7-4755

FISHERMEN

WE INVITE YOU TO COME IN AND SEE OUR COMPLETE LINE OF FISHING TACKLE
OPEN ALL NIGHT SATURDAY, APRIL 18TH
Sundays 'Til 12 Noon
Al Guy Sporting Goods
96th & Pacific Ave. GR 2-8524
Licenses — Tackle — Worms & Information

MAKE BRESEMANN PARK . . . SPANAWAY LAKE YOUR ONE-STOP FISHING CENTER

OPEN 4:00 A. M. BOATS, CANOES, COMPLETE LINE OF FISHING TACKLE, FISHING LICENSES, LUNCHEES, OVERNIGHT CAMPING & BOAT LAUNCHING

OPEN 9 A.M. TO 10 P.M. EVERY DAY

FREE! ICE CREAM SUNDAES ALL DAY SAT.
ICE CREAM WELCOME All Flavors ... HALF GAL. **65¢**
COFFEE Gold Shield—Get Your Golden Message at Any Piggly Wiggly ... 2-LB. CAN **1.29**



ASSORTED FLAVORS AT A TREMENDOUS SAVING!

ROYAL GELATINS . . . PKG. **5**

MAYONNAISE . . . LARGE SIZE 24-OZ. FREEZER JAR **39**

DILL PICKLES . . . 56-OZ. JAR **49**

TISSUE 4 FOR **\$1.00** | **TOPPINGS** 2 CANS **29¢**

BROOMS . . . EACH **99**

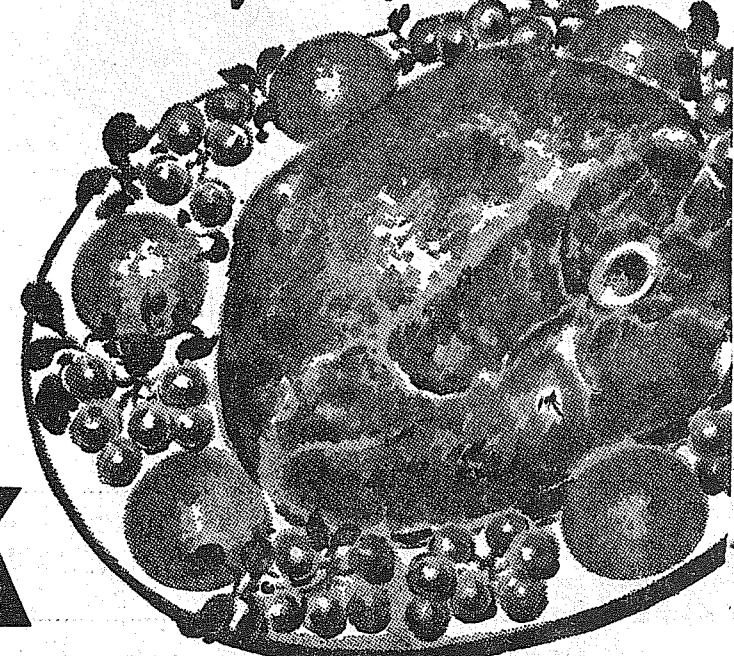
BUTTER . . . 1 LB. **65**

DOG FOOD No. 1 CANS **7/1**

ASPARAGUS 5/1

SALAD DRESSING QT. JAR **39**

CARNATION MILK
TALL CAN
10



PORK ROAST **29**
 • ROUND BONE, CENTER CUT SHOULDER lb.

LEAN BLADE CUTS
PORK STEAK lb. **39¢**
 FRESH, LEAN AND MEATY
PORK HOCKS lb. **19¢**
 CARSTENS AUTUMN LEAF
SLICED BACON 2 lbs. **69¢**
 MILWAUKEE OLD FASHIONED
FRANKFURTERS lb. **49¢**
 MILWAUKEE CHUNK
LIVER SAUSAGE lb. **49¢**

FRESH LEG O' PORK
 Whole or shank portion. The best cut of pork for roasting. Whole legs, 12 to 16-lb. average. **lb. 45**
CENTER CUTS All Meat . . . lb. **59¢**
Butt Portions Lots of Lean, lb. **49¢**

Chiffon
2-ROLL PKG. ASSORTED COLORS **27¢**

Blue Bonnet **MARGARINE** 1-lb. **4/89¢**
 Carnation Instant **CHOC. DRINK** 2 Pkgs. **65¢**
 Albers Flapjack **FLOUR** 2-lb. **35¢**
 Olympic Sandwich **PICKLES** 56-oz. Jar **79¢**

Bonnie **DOG FOOD** 2 No. 1 Cans **25¢**
 Softasilk **CAKE FLOUR** Pkg. **35¢**
 Another Saving **PROTEIN PLUS** 18-oz. Pkg. **33¢**
 Big One **ORANGE JUICE** 46-oz. Can **39¢**

HARDWARE SPECIALS
 (FIFE STORE ONLY)
SLUG DUST 15% Metaldehyde 4-LB. PKG. **2.25**
LIFE PRESERVERS
 STRAP-ON TYPE . . . \$7.95
 CUSHIONS **2.95**
 Coast Guard Approved
ANCHOR ROPE 50 Feet **59¢**

GOLDEN RIPE BANANAS lb. **12 1/2¢**
FANCY RED RIPE TOMATOES Cello Tube **19¢**
INDIAN RIVER LARGE SIZE PINK GRAPEFRUIT Each **9¢**
CELLO PACK CALIF. FANCY CAULIFLOWER Each **19¢**

the Fabulous—Nationally Advertised
MORSE Super Dial
 the World's Most Advanced Sewing Machine with the amazing FOTO-STITCH

So simple to use . . .
 So many advanced features!

List Price **\$269.95**

SEE the stitch BEFORE you sew!
 It's easy to sew like an expert with a MORSE SEWING MACHINE! MORSE Features let you sew forward, reverse, embroider, darn, sew plastic, oilcloth, dungarees, heavy seams as well as the finest fabric . . . ALL WITHOUT ATTACHMENTS! See the miracle of the MORSE Super-Dial with the exclusive FOTO-STITCH . . . See your stitch on a screen . . . BEFORE YOU start to sew!

RETAIL VALUE OF EACH MACHINE **\$269.95**

Machines to be awarded are complete with **LIMED. OAK CABINET**

FREE
 NOTHING TO BUY!!!

REDEEM YOUR COUPONS HERE

HANDY ANDY Quart Only 69¢ . Pt. **37¢**
LUX LIQUID Econ. Size 75¢ Quart \$1.05 . Lge. **43¢**
MARGARINE 1-lb. Impartial . Ctn. **39¢**
DOVE SOAP 2 Bath Bars **49¢**
LUX SOAP Colored. 3 Reg. Bars **32¢**
DISHWASHER ALL 20-Oz. Pkg. **49¢**
WISK 1/2 Gallon \$1.49 Quart **77¢**

BUTTER RING CAKE REG. 93¢ SPECIAL **83¢**
 REG. 1.05 MILK CHOCOLATE 2-LAYER CAKE . . . **91¢**
 REG. 6 FOR 41 BUTTERFLY COFFEE CAKE 6/35c

Van de Kamps BAKERIES

Prices Effective Thursday, Friday and Saturday, April 16, 17, 18. Limit Rights Reserved

piggly wiggly

Where you are always served courteously & well

PUYALLUP 1010 EAST MAIN
PARKLAND PACIFIC AT GARFIELD
40th and Portland TACOMA
So. Tacoma 5252 SO. WASHINGTON
 OPEN 9 A.M. TO 10 P.M. EVERY DAY OF THE WEEK
FIFE FORMERLY ANDRE'S MKT.

Woodland News

Woodland P-TA is busy forming plans for a potluck dinner at the school May 8. The business session will follow, with installation of the following new officers: President, Victor Gawley; 1st vice president, Mrs. Robert Vorak; 2nd vice president, Mrs. George Hopkins; secretary, Mrs. Rom Bailey Jr.; treasurer, Mrs. Stuart Scott. An art show by students of the school is programmed during the evening; the glee club will sing.

Mrs. Robert Vorak and Mrs. Betty Webb, Preschool 1st vice president-elect, will travel to the convention at Yakima together. Reporter—Mrs. Jack Dillon, LE 7-8057.

Prescription Service

Open 7 Days a Week
9:30 a.m. - 9:30 p.m.

JACOBS PACIFIC DRUGS

Wallgreen Agency
Pay Light & Water Bills Here
84TH & PACIFIC AVE.

Greenfield 2-6445

Building Permits

H. E. Thaden, \$13,500 frame home, 509 E. 138th; Sam Slater, \$300 patio, 4920 E. 104th; John Adler, \$5500 remodel to home, 7025 E. 104th; R. E. Maas, \$5500 remodel to home, 8117 Woodland Rd.; R. R. G. (c)ubertson, \$2000 addn. to home, 1414 E. 72nd; Clinton Wood, \$12,500 frame home, 3203 E. 80th.

A. P. Waterson, \$350 barn, 11807 Vickery Rd.; Floyd Hinkle, \$500 addn. to home, 632 So. 168th; Leon Piper, \$13,000 frame home, 762 So. 110th; John Tobacco, \$350 mov. garage to prop., 212 E. 115th; Morris Ford, \$11,000 frame home, 505 So. 123rd; David D. Varner, \$10,000 frame home, 715 E. 99th; Dan Stanke, \$12,500 frame home, 1021 So. 124th.

Riverside Grange

Riverside Valley Grange will hold a luncheon and card party Wednesday, April 22, at 12:00 phone Dorothy Berg, WA 2-7156, for reservations.

Riverside Valley Grange hall is located on the north side of the Puyallup river bridge at Clarks creek.

FENCING

Designers and Builders
EXPERT WORKMANSHIP
REASONABLE PRICES
Easy Monthly Payments
VAUGHAN'S
84th & Pac. Ave. GR 4-9515

Graham News

The Kapowsin P-TA will meet Thursday, April 23, at 8 p.m. in the gymnasium, Mrs. Arthur Coile presiding. The program will include a mystery skit by some of the board members and installation of officers by Mrs. Sidney Halversen, 1st vice president of Pierce County Council. A Life Membership will be presented in a surprise feature.

Rebekahs
The Kapowsin Rebekah Lodge No. 241 will meet April 21 at 8 p.m. in the Kapowsin Grange hall; Noble Grand Mrs. Cecil Van Horn and Vice Grand Inez Langwait are in charge.

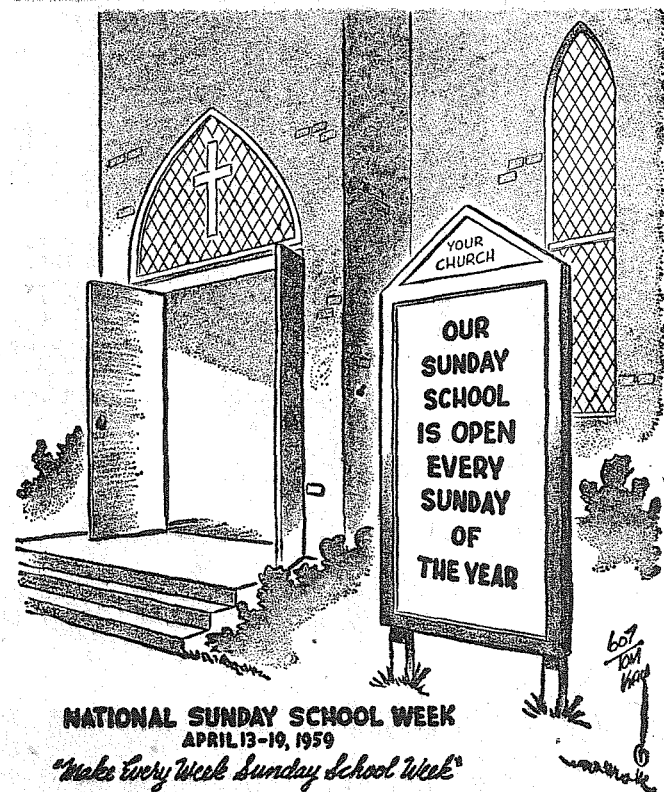
Schmidt-North
Wedding vows were exchanged in the Benston Assembly of God Church Feb. 13 by Doris Irene Schmidt, daughter of Mr. and

Mrs. Floyd E. Schmidt of Eatonville, and Walter Reuben North, son of Mr. and Mrs. Walter Schmidt of East Jordan, Mich. The Rev. Wayne Barker officiated before an altar banked with pink and yellow carnations, cedar boughs and lighted tapers. Rose Schmidt was maid of honor; Mrs. Donald Buhler, bridesmaid; Sheri Buhler, flower girl; Leslie Buhler, ring bearer; Carl R. Groves, best man, and Roger Schmidt and Sheldon Johnson, ushers. The wedding reception was held in the church parlors.

Grateful
Mrs. Roy Carlsen wishes to thank friends for the many cards and letters received following the loss of her brother, Cyril Enlow. Reporter—Mrs. Marie Tinius, VI 7-7394.

The total investments in golf courses in the United States approximates \$1,325,000,000.

THE AMERICAN WAY



NATIONAL SUNDAY SCHOOL WEEK
APRIL 12-19, 1959
"Make Every Week Sunday School Week"

a-Wondering . . . and a-Wandering . . .

With JACK BROWN

Any baseball fan can tell you the number of home runs Mickey Mantle belted last year or the salary of Ted Williams. But can he tell you who wore the first baseball glove? Or what player was the first to catch a ball dropped from the Washington Monument?

Statistics will be flying thick and fast now that the baseball season is here. But for those who really want to impress their wives or girl friends, here are some baseball firsts.

The first clash between a player and his archenemy—the umpire—occurred June 19, 1846, when the Knickerbocker Club of New York played the New York Baseball Club at Elysian Fields in Hoboken, N.J. A player named Davis was fined six cents for cussing. The umpire was Alexander Cartwright, a leading player for the Knicks, who had chosen to umpire instead.

That game was also the first instance of team baseball as we know it. The New York club won 23 to 1 after four innings.

The Knickerbocker Club, formed in 1845, was the first regular baseball organization. And in their third season, the members donned blue and white uniforms to become the first team uniformly outfitted.

A breach of baseball etiquette made Al Reach the first paid ball player. In 1864, it was considered unethical for a player to "jump" from one team to another. Reach, however, deserted the Brooklyn Atlantics when he was offered money by the Philadelphia Athletics.

Five years later, the Cincinnati Red Stockings turned professional and became the first salaried team.

In those days, baseball was far from the gentlemanly game the Knickerbockers had played. A player might leave the field bleeding or unconscious after stopping a fast ball, but he refused to baby himself by wearing protective equipment.

In 1875, however, Charles Waite, first baseman for Boston, put on a glove—flesh-colored, so the fans wouldn't notice it. A. G. Spalding finally wore a dark brown glove, adding stuffing to it a little at a time.

The first catcher's mask was developed in 1878 for a Harvard player who preferred being called a sissy to having his fine Barrymore profile smashed.

Still wondering about the Washington Monument? Well, Billy "Pop" Schriver of a Chicago ball club caught a ball dropped from the 500-foot level of the memorial in 1892.

Just a grandstander, but—that's baseball, and since so many of my acquaintances know that I know nothing of sports, I'll admit it: I stole this material from the research dept. of the World Book Encyclopedia.

HELLO MOM! I WAS FEELING A LITTLE LONELY HERE AWAY FROM HOME. SO I THOUGHT I'D CALL AND TALK TO HER. HOW'S EVERYBODY? IS THERE ANY NEWS? WHEN WILL YOU BE HOME? LEAVE ME A MESSAGE FOR THE NEXT TIME YOU CALL. I'VE BEEN SITTING ALONE TRYING TO HEAR A VOICE. A TELEPHONE CALL BACK HOME CAN BRIGHTEN UP YOUR WHOLE DAY. AND IT COSTS SO LITTLE. Pacific Telephone



SPRING Savings Spree

COTTAGE CHEESE

Lucerne - Large or Small Curd.
Low in calories. Qt. Carton 45c

Pint Carton **23c**



- | | | | |
|----------------------|---|----------------|--------|
| Miracle Whip | Kraft | Quart | 49c |
| Fruit Cocktail | Libbys | 4 17-Oz. Cans | 89c |
| Shortening | Royal Satin | 3-Lb. Can | 69c |
| M. D. Tissue | Assorted Colors | 4-Roll | 29c |
| Mrs. Wright's Donuts | Plain or Sugared | Pkg. of 12's | 39c |
| Post Cereals | Alpha Bits, Krinkles, Sugar Crisp, Sugar Coated Corn Flakes | 4 10-Oz. Pkgs. | \$1.00 |
| Peanut Butter | Real Roast | 2-Lb. Jar | 69c |
| Deluxe Margarine | Kraft | 1-Lb. Pkg. | 29c |
| Tide Detergent | America's Favorite | 46-Oz. Pkg. | 69c |

No. 1 Potatoes

Long White Shafers - Top Quality. Serve creamed with new peas.

lb. **4c**

Spring Cauliflower	Snow White Heads	19c
Rhubarb	Spring—Local outdoor grown.	2 Lbs. 15c
Grapefruit	Pink, Famous Indian River	4 for 29c
STRAWBERRIES	Full Cup	25c
Whip. Cream	Half Pint	33c
Shortcake Cups	Pkg. of 6's	25c

MILD CHEESE

Delicious for Snacks, Casseroles

LB. **39c**

BALLARD BISCUITS

Pkg. of 10 **10c**

BEL-AIR VEGETABLES

Fresh Frozen -- Peas, Reg. Cut Green Peas, Cut Corn, premium quality.

Your Choice **6** 10-Oz. Pkgs. **\$1**

SMOKED PICNICS

Morrells or Carstens

lb. **33c**

4 to 8-Lb.

BEL-AIR FRUIT PIES

Fresh Frozen -- Peach, Apple, Cherry, Boysenberry.

24-Oz. Pie **39c**

- | | | | | | |
|-------------------|-----|-----|---------------|------------|-----|
| Carsten's Bologna | lb. | 39c | Turkeys | lb. | 39c |
| Carsten's Wieners | lb. | 49c | Fresh Oysters | 12-Oz. Jar | 49c |
| Sliced Bacon | lb. | 49c | Fish Sticks | 8-Oz. Pkg. | 33c |
| Pork Steaks | lb. | 39c | Scallops | 7-Oz. Pkg. | 49c |



Prices effective Thursday, April 16 through Saturday, April 18 at 82nd & Pacific Safeway.

Out Of This World Frozen Food Sale



FOOD TOWN



Fill Your Freezer

PICTSWEET PEAS ^{10-Oz.}/_{15c} **7/\$1**
 PICTSWEET CORN ^{10-Oz.}/_{15c}

PICT FRENCH CUT BEANS ^{10-Oz.}/_{17c Ea.} **6/\$1**
 PICT MIXED VEGETABLES ^{17c}/_{Ea.}
 PICT BROCCOLI CUTS ^{17c}/_{Ea.}

PICTSWEET SQUASH ^{17c}/_{Ea.} **6/\$1**
 PICT FRENCH FRIES ^{17c}/_{Ea.}
 PICT CREAM CORN ^{17c}/_{Ea.}

PICT PEAS & CARROTS ^{17c}/_{Ea.} **6/\$1**
 PICT CHOPPED SPINACH ^{17c}/_{Ea.}
 PICT STRAWBERRIES ^{17c}/_{Ea.}

PICT BROCCOLI SPEARS ^{21c}/_{Ea.} **5/\$1**
 PICT CAULIFLOWER ^{21c}/_{Ea.}
 PICT ORANGE JUICE ^{21c Ea.}/_{6-Oz.}

PICT ORANGE JUICE ^{12-Oz.} **39c**
 REDDI WHIP ^{7-Oz.} **49c**

IGA --- 1 lb. **MARGARINE 6/\$1**

CRISCO 3 Lbs. **79c**

MANNINGS **COFFEE** ^{2-lb.}/_{\$1.37} **69c**

FANCY -- JERSEY **BUTTER** PRINT OR CUBES **65c**

LARGE AA FRESH **AA EGGS** Doz. **39c**

WHEATIES, JETS, TRIX, HI-PRO **CEREALS 4 \$1**

IGA TABLERITE CUT-UP

FRYERS 39c Lb.

IGA TABLERITE **T-BONE STEAK** Lb. **93c**

IGA TABLERITE **SIRLOIN STEAK** Lb. **83c**

HENRY HOUSE **SLICED BACON** Lb. **53c**

PRODUCE SPECIALS

CALIFORNIA -- RED & RIPE **TOMATOES** LB. **19c**

NO. 1 SHAFTER 10 LBS. **POTATOES 37c**

NO. 1 LONG 2 LBS. **ASPARAGUS 29c**

AVOCADOS Each **9c**

ENTER GENERAL MILLS CEREALS

\$250,000 SWEEPSTAKES

THIRTY-TWO 1959 PONTIACS PLUS 3,800 OTHER PRIZES Details on back of all GENERAL MILLS CEREALS

SWEEP CLEAN

BROOMS Each **\$1.59**

NYLONGE (2 PAC)

SPONGE Pkg. **39c**

HANDY ANDY HOUSEHOLD CLEANER QUART **73c**

RINSO BLUE KING SIZE **99c**

AIRPORT (112th) AT PARK AVE.

AD DAYS APRIL 16-17-18

Classified

Crisco 3 lbs. 85c
Post's **Bran Flakes** 19c
Adams **P'nut Butter** 49c
Swift's Prem. Thick Sliced **Bacon** lb. 61c
Swift's Pure Pork **Sausage** lb. 39c
Pure **Gr. Round** lb. 69c
Indian River Florida **Grapefruit 2/19c**
Crisp **Celery** lb. 7c
Fancy **Tomatoes** Ctn. 23c

ECONOMY KITCHENS
Remodeling — Roofing & Siding Foundations
LORD'S CONSTRUCTION CO., INC.
10428 Pacific Avenue. LE 7-6779
PAINTING, sheetrock taping and finishing. LE 7-8564.

CALL POCHÉL FOR Expert T.V. Repair
Satisfaction Guaranteed
Free Tube Testing
140th & Pacific LE 7-8624

RURAL REAL ESTATE
April 15th, 1959
MR. & MRS. FARM OWNER,
Dear Folks:
I am just a small independent company, however, we do get a few nice people to drop in looking for farms. So I am dropping you a line to let you know, just in case you are considering selling your place, that we are interested, large or small. Just give us a call, or drop a post card and I'll be very glad to stop in and talk it over with you.
Sincerely Yours,
BILL BLACK & JOHN TODD.

RURAL REAL ESTATE
14403 Pacific Avenue — Parkland 44
P.S. Write or call us soon.

WE HAVE BUYERS For YOUR HOUSE!
Listings Wanted
DICK DEVEREAUX REALTY
Buying or Selling
Call LE 7-8659
11002 Pacific Avenue

Gibbons FOOD CENTER
SPANAWAY

ART'S SHOE SHOP
Shoes for the Entire Family
EXPERT SHOE REPAIRING
315 Garfield St.
Between 121st and 122nd
Opposite Parkland Postoffice

COMMERCIAL PAINTING
Taping and Texturing
Broadwell Painting
LE 7-6893

COMMERCIAL INSTALLATIONS
CORNELL
Plumbing & Heating
LE 7-7293

Business Service
BULLDOZING, backhoe digging, hourly or contract; gravel, top soil. Reasonable. LE 7-0114. 3ctf

BULLDOZING, grading, backfilling; foundations; no job too small; hourly or contract. LE 7-7856, LB 1-1974. 3ctf

WE BUILD HOMES—Remodel, level buildings; cabinet work, concrete work. Reasonable. LE 7-2550. 3ctf



12th Anniversary
HARRY SPRINKER County Commissioner AS
ART SWINDLAND Mgr. National Bank of BOXBOYS
Wash. Parkland Branch SAT. 10 A.M. TO 6 P.M.

SLAVES From Bethel Boosters Club

CARNATION MILK Tall Tins 3 for 39c

CLOWNS FRIDAY AND SATURDAY
ENJOY BOYD'S FREE COFFEE WHILE YOU HAVE A CUP

NEW 5-Quart POWDERED MILK 49c

SUNNY JIM BLACKBERRY - RASPBERRY STRAWBERRY PRESERVES 20 oz. 39c

COTTON CANDY SAT. ONLY FOR KIDS accompanied by parents.

SUNNY JIM Peanut Butter Creamy or Krunchy... 18-Oz. 49c

Tom. Soup EA. 10c

5c HOT DOGS FRIDAY & SAT.

Vacuum Cleaner Winners Choice
FREE NOTHING TO BUY DROP IN, SIGN UP.
DRAWING TO BE HELD SAT. 5 p.m. Need Not Be Present To Win.

COFFEE 2-lb. Tin \$1.19

ICE CREAM SANDWICHES Take Home a Quart of 10 Slices for 49c Qt.

25 lb. FLOUR \$1.99
Hi West Frozen PEAS Pkg. Only 9c
BALLARD BISCUITS Ea. 10c
Frozen Strawberries 19c

SPAGHETTI 2 for 29c
ICE CREAM SANDWICHES Take Home a Quart of 10 Slices for 49c Qt.

Gr. Beef 3 lbs. for 89c
OYSTERS Full Pint 49c
RATH BLACKHAWK -- Sliced or Chunk

PRODUCE
LETTUCE EA. 5c
GRAPEFRUIT EA. 5c

BOYS COFFEE 2-lb. Tin \$1.19

BOLOGNA Lb. 39c
Wieners or Franks 2 Lbs. For 89c

LETTUCE EA. 5c
GRAPEFRUIT EA. 5c

BOLOGNA Lb. 39c

Wieners or Franks 2 Lbs. For 89c

LETTUCE EA. 5c
GRAPEFRUIT EA. 5c

BOLOGNA Lb. 39c

Wieners or Franks 2 Lbs. For 89c

BARGAIN BASKET
167th and Pacific Avenue Spanaway

TOP SOIL SANDY LOAM LE 7-6391

SPANAWAY ELECTRIC CONTRACTORS
Residential & Commercial Heating Specialists
LE 7-7064 LE 7-4792

RADIO and SERVICE
ABC ELECTRONICS
Garfield & C Streets LE 7-4900

NEAT BEAUTY SHOP
GR 2-7628
6314 McKinley Avenue

Webb Electric
8240 B PACIFIC GR 2-2902
Notice to the DO IT YOURSELF BUILDER
See us for advice on your wiring problems.
Estimates are free
LE 7-4437 EMERGENCY PHONE

South End Auto Wreckers
USED PARTS
Motors—Transmissions
Tires—Batteries
We Buy Junk Cars Also Custom Welding by Joe's Welding
1 Mile East Roy Y on Mt. Hy. Spanaway LE 7-6534

Parkland Electric
Contracting Wiring, Electric Heat
Estimates Without Obligation anytime, anywhere.
LE 7-0397
Evenings LE 7-4541
G. "Slim" Mulkins

Real Estate
PARKLAND REALTY CO.
Jennie L. Grodvis
Insurance of All Kinds Notary Public
Est. in Parkland Since 1941
LE 7-8609 Office
302 Garfield St., Parkland
Jennie and Al Grodvis, LE 1-1210
Marguerite Ammann, GR 2-6752
Edna Taylor, LE 7-3556
Lloyd Brooker, TH 5-2110
"Deal with the people who give you their personal Attention"
Member of Multiple Service

HOME PLUMBING & HEATING CO.
REPAIRING, REMODELING NEW CONSTRUCTION
328 Garfield St., Parkland
Call Day or Night
LE 7-4615

Real Estate
PARKLAND REALTY CO.
Jennie L. Grodvis
Insurance of All Kinds Notary Public
Est. in Parkland Since 1941
LE 7-8609 Office
302 Garfield St., Parkland
Jennie and Al Grodvis, LE 1-1210
Marguerite Ammann, GR 2-6752
Edna Taylor, LE 7-3556
Lloyd Brooker, TH 5-2110
"Deal with the people who give you their personal Attention"
Member of Multiple Service

UPLAND SLAB WOOD
CALL LE 7-5844
BASKETT LUMBER CO.
UPLAND SLAB WOOD, 2 cords 84c
LE 1-3086

Real Estate
PARKLAND REALTY CO.
Jennie L. Grodvis
Insurance of All Kinds Notary Public
Est. in Parkland Since 1941
LE 7-8609 Office
302 Garfield St., Parkland
Jennie and Al Grodvis, LE 1-1210
Marguerite Ammann, GR 2-6752
Edna Taylor, LE 7-3556
Lloyd Brooker, TH 5-2110
"Deal with the people who give you their personal Attention"
Member of Multiple Service

UPLAND SLAB WOOD
CALL LE 7-5844
BASKETT LUMBER CO.
UPLAND SLAB WOOD, 2 cords 84c
LE 1-3086

Real Estate
PARKLAND REALTY CO.
Jennie L. Grodvis
Insurance of All Kinds Notary Public
Est. in Parkland Since 1941
LE 7-8609 Office
302 Garfield St., Parkland
Jennie and Al Grodvis, LE 1-1210
Marguerite Ammann, GR 2-6752
Edna Taylor, LE 7-3556
Lloyd Brooker, TH 5-2110
"Deal with the people who give you their personal Attention"
Member of Multiple Service

WELL DRILLING
Berkeley Pumps
• JETS
• SUBMERSIBLES
• CENTRIFUGALS
• TURBINES
Call LE 7-7281

Real Estate
PARKLAND REALTY CO.
Jennie L. Grodvis
Insurance of All Kinds Notary Public
Est. in Parkland Since 1941
LE 7-8609 Office
302 Garfield St., Parkland
Jennie and Al Grodvis, LE 1-1210
Marguerite Ammann, GR 2-6752
Edna Taylor, LE 7-3556
Lloyd Brooker, TH 5-2110
"Deal with the people who give you their personal Attention"
Member of Multiple Service

TACOMA PUMP & WELL DRILLING CO.
14619 PACIFIC AVENUE
Terms Trades

Real Estate
PARKLAND REALTY CO.
Jennie L. Grodvis
Insurance of All Kinds Notary Public
Est. in Parkland Since 1941
LE 7-8609 Office
302 Garfield St., Parkland
Jennie and Al Grodvis, LE 1-1210
Marguerite Ammann, GR 2-6752
Edna Taylor, LE 7-3556
Lloyd Brooker, TH 5-2110
"Deal with the people who give you their personal Attention"
Member of Multiple Service

JACK SHANK'S
Refrigeration Service
Parts & Service for All Makes
LE 7-0178

Real Estate
PARKLAND REALTY CO.
Jennie L. Grodvis
Insurance of All Kinds Notary Public
Est. in Parkland Since 1941
LE 7-8609 Office
302 Garfield St., Parkland
Jennie and Al Grodvis, LE 1-1210
Marguerite Ammann, GR 2-6752
Edna Taylor, LE 7-3556
Lloyd Brooker, TH 5-2110
"Deal with the people who give you their personal Attention"
Member of Multiple Service

SEPTIC TANK CLEANING
Prompt Service
C. V. HUTTON
GR 4-3980 GR 2-7038

Real Estate
PARKLAND REALTY CO.
Jennie L. Grodvis
Insurance of All Kinds Notary Public
Est. in Parkland Since 1941
LE 7-8609 Office
302 Garfield St., Parkland
Jennie and Al Grodvis, LE 1-1210
Marguerite Ammann, GR 2-6752
Edna Taylor, LE 7-3556
Lloyd Brooker, TH 5-2110
"Deal with the people who give you their personal Attention"
Member of Multiple Service

Parkland Heating Co.
All makes of furnaces for sale; Specializing in Williams Oil 'O' MATICS; Oil, Gas, Hot Water Installations. Service; reasonable; 755 South 108th. LEnox 7-4045. 3ctf

Real Estate
PARKLAND REALTY CO.
Jennie L. Grodvis
Insurance of All Kinds Notary Public
Est. in Parkland Since 1941
LE 7-8609 Office
302 Garfield St., Parkland
Jennie and Al Grodvis, LE 1-1210
Marguerite Ammann, GR 2-6752
Edna Taylor, LE 7-3556
Lloyd Brooker, TH 5-2110
"Deal with the people who give you their personal Attention"
Member of Multiple Service

Automotive
1959 FORDS AND CHEVROLETS — Wholesale prices; bank terms. SMALLEY'S MOTORS, 10410 Pacific Ave. LE 7-4060 anytime. Open nights also. 12ctf

12A Foreign Cars
- ALL - FOREIGN CAR KEYS
107 Varieties
PARKLAND
CYCLE & KEY
11021 Pacific Ave. LE 7-5772

Farm Column
WELL-BRED Guernsey cow, fresh short time, first calf, 1770. V1 7-7354, evenings. 13p32
EASTERN WASHINGTON HAY—By the bale, ton or truck load. J. A. Dove, Phone LE 7-9739. 12ctf
CASH for all kinds of livestock and horses; Puyallup TH 6-6414 13ctf

Feed, Seeds and Fertilizer
SELLE'S FARM SUPPLY STORE
(Graham VI 7-2127)
Hansen Rd. Eatonville
BOAF SERVICE; 1/2 Palouse; LE 1-1125.
SAWDUST and SHAVINGS delivered. LE 7-5757 after 5 p. m. 13ctf

Work Wanted
WANTED—Ironing in my home; 75c an hour. LE 7-3106. 14ctf
ENGLISH DOMESTIC needs daily housework. \$1 an hour. References. Doves, Phone LE 7-9739. 12ctf
BABY SITTING, your home or mine; 1312 South 120th. LE 1-0416. 14ctf
IRONING in my home, 80c an hour; LE 1-0848. 14ctf
JAPANESE - AMERICAN gardener for flower bed and lawn maintenance. WA 8-3833. 14ctf
SCHOOL GIRL wants baby sitting after school and evenings, your home. LE 7-4051. 14ctf
SEWING, cleaning or night baby sitting, own transportation. 14p33 7-7591. 14ctf

Miscellaneous
LEAVE MOVIE & KODACHROME SLIDE FILM at QUALITY PHOTO for 3-day processing; 9318 Pacific Ave. LE 7-7271. 15ctf
REGISTERED MINIATURE Dachshund, black and tan at stud, LE 7-3859. 15ctf
FOR SALE—Rabbit hutch, 3 does, 12 young, 1500 South 111th. LE 7-5751. 15p32
THREE YEAR registered German Short Hair female. Will give away. VI 7-7354, evenings. 15p32
COME INTO US
If you need a TV or appliance; we trade wild and sell with nothing down on 25c-each-day meter plan. Open 7:00 p.m. UPTON ELECTRIC CO., 1148 Market St., PU 3-2551. 15p32

GASH FOR CARS and EQUITIES
HOURS:
8:00 - 9:00—Closed Sunday
TED'S
920 River Road, Puyallup TH 5-1609 BR 2-8989

FOR SALE—50x100 lot, 611 East 72nd. \$600. LE 7-6901. 9p32
FOR SALE—\$7,800. Modern 3 bedroom garage, large yard, Lakeview Village. JU 8-8794. 9c32
FOR SALE—One acre, beautiful site overlooking Clover Creek. LE 7-6209. 9c32
FOR SALE—Store building, Parkland; good for small business or office. Call Duane, James R. Loring Real Estate, LE 7-3501. 9c32
FOR SALE—\$2500 equity in 3-bedroom home, 2 lots, for \$600 plus closing costs. Puyallup, TH 5-4970. 9c32

FOR SALE—\$1,000
Nine lots and 2 bedroom home, separate dining room, kitchen, wired 220, electric range included. Large utility room, new 2 car garage. Total price \$6,000. Call Ralph Decker, GR 4-9579. Ra-1
3 BEDROOMS
Owner will carry contract. Very good home, living and dining room combination 13x30, nice fireplace, kitchen, good builtins, breakfast nook, part basement, automatic oil furnace, paved street. All district, nice view. Price \$8,950. Call Ralph Decker GR 4-9579. Rb-6

FOR SALE—New pram; painted, ready to use, our locks included; 701 South 115th, Apt. No. 3, after 5:00. 15p32
FOR SALE—Crawford electric range. Built-in trash burner, copper coils, tank and stand, excellent condition; \$90; large tricycle \$10; 10694 So. Park. LE 7-3322. 15c32
WANT RELIABLE PARTY who has a \$5 bill take over payments on MOTOROLA TV, repossessed with only \$29 due. Open til 9:00 p.m. UPTON ELECTRIC CO., 1148 Market St., PU 3-2551. 15c32
BABY FURNITURE—New and used. For sale or rent. SMALL FRY EXCHANGE, 1109 Market St., BR 2-3505. 15 ctf

FOR SALE—Mossbergh 22 rifle, Remington 22 with 4-power scope, US Springfield 45-70, model 1894, in fine condition. A real relic. LE 1-0762. 15p32
TAP, ACROBATIC, BALLETT and BALLY classes; all ages. Mildred Keller, LE 7-7851. 15c32
FOR SALE—Piano (Kimball made), small apartment size, with bench. LE 7-3709. 15c32
C&K Decouping Lessons. My home or yours. For information call LE 7-0673. 15ctf
PARKLAND FURNITURE—New and used miscellaneous. Airport and Pacific Ave. Residence phone LE 7-8748. 15ctf

FOR RENT—2 bedroom home, fireplace, on Tanwalk Lake, \$55. Entering LE 2-4532 after 6. 10ctf
FOR RENT—Attractive furnished Court Apartments; knotty pine interiors; on bus line, near shopping center, \$80 month plus electricity. 1295 Pacific Ave. 10c32
FOR RENT—Four bedrooms and bath unfurnished house, 1/4 mile south of Rocky Ridge Store, 10c32
FOR RENT—Unfurnished apartment, three bedrooms, 401 South 116th, Parkland. 10p32
FOR RENT—Unfurnished duplex, 708 South 128th St., \$50. JU 8-5422 10c32
FOR RENT—Two-bedroom house near Roy "Y" partially furnished, \$50. LE 7-6767. 10c32

FOR RENT—Unfurnished duplex, 708 South 128th St., \$50. JU 8-5422 10c32
FOR RENT—Two-bedroom house near Roy "Y" partially furnished, \$50. LE 7-6767. 10c32

FOR RENT—Unfurnished duplex, 708 South 128th St., \$50. JU 8-5422 10c32
FOR RENT—Two-bedroom house near Roy "Y" partially furnished, \$50. LE 7-6767. 10c32

FOR SALE—Girls' winter and summer clothing, 5-10 years. LE 7-5611.
BABY PARAKEETS, seed and canaries. 11121 E. St. LE 7-4146. 15ctf
FOR SALE OR RENT—Power mower, hand saw, sanders, tools, spray guns, sanders, plumbings tools, power tools, etc. A tool for every job. South 12nd Plumbing and Hardware. Phone LE 7-4100. 15ctf
WANTED—Cameras and photographic equipment for resale. QUINN PHOTO SERVICE, 9318 Pacific, LE 7-2711. 15ctf

STORKVILLE Baby Shop
Everything For Baby
Including:
Juvenile Furniture
9618 Pac. Ave. LE 7-4664

SPECIAL ORDER CAKES—Phone LE 7-3330. Pntty Ann Bakery. 15ctf
Aviation
FREE—FIRST FLYING LESSON LEARN TO FLY—\$10 A WEEK. New and Used Aircraft Sales. TACHOMA FLYING SERVICE. Spanaway Airport. LE 1-0412 17ctf
AVIATORS, subscribe now to the Northwest Flyer, a new newspaper about flyers for flyers. Subscriptions taken at your local airport or write to P. O. Box 2008 Parkland, Wash.—Trit. 17c32
PTER SUPER CRUISER, 1,950 T.T., 92 S.M.O.H. Metal prop, good fabric, Licensed to 5-1-60. Primary panic, cpl. head temp. 2-way low speed, good fuel. \$507. 908 Pn. SEE US FOR AIRCRAFT Financing. Port Orchard Airport. TR 6-3272. 17c32

County Agent's Corner
By Ernest I. Hopp
Last Thursday was "International Day" for me in Pierce County. I had an opportunity to be host to two Yugoslavian Agriculturists, Mr. Anta Antic is secretary for the Union of Livestock producers in Belgrade. He is responsible for the organization, marketing, production and raising of livestock for processing. Mr. Krsto Kis is Livestock Officer for the Union of State Farms of Croatia. He does Extension work on state farms and introduces new methods of livestock production.

We spent the day visiting commercial poultry farms. Mr. Kis and Mr. Antic were anxious to prove or disprove some of the stories they had read of American agriculture. Among these was a statement that buildings on American farms were cheaply constructed. There was a strange silence when we drove around the corner into the Wilcox farm driveway at Harts Lake. The three large, triple-story laying houses stood defiantly in view as if to say, "Who said we were cheaply constructed?" The Yugoslavians were spellbound. "You mean to say that there are 10,000 birds in each of those buildings? That it requires only one man to care for the routine chores of 10,000 birds? That this is not a state owned farm? That private capital and initiative have developed this over a period of five years?" These were typical questions asked by the awestricken Yugoslavians.

At the Sig Severson farm in the Edgewood vicinity, we saw another fine example of the results of our free-enterprise American way of life: Well constructed, neatly kept, poultry buildings housing six thousand layers and three thousand youngsters. Sig proudly showed off his labor saving bulk feed bins, auger and feed cart. Mr. Kis and Mr. Antic were quite impressed also with Severson's egg handling methods. His oiling program to insure a high quality product for consumers made quite an impression.

On the Jack Linn Fryer farms the visitors had an opportunity to see mass production of fryers. The bulk feed bins, automatic feeders, and large buildings again made quite an impression. Last, but not least, I'm sure that the Yugoslavians were impressed with the fine hospitality shown them by our local people. They will take home with them many lasting impressions of the free-enterprise, democratic way of life that we have in our country.

By Carol S. Mays
Thursday, April 23rd. is J. C. Penny night for 4-H's. Taking clothing projects. The girls will participate in a style show to model their three-piece co-ordinated outfits. Four top-notch 4-H girls will receive a Campship Award to State 4-H Conference in Pullman, Washington. Each J. C. Penny store in Pierce County presents one Campship each year. The girls will enjoy a program presented by the J. C. Penny stores.

Seven excited, starry-eyed girls gathered around Mrs. Carol Mays, home agent, Tuesday night, April 7, to plan a shopping trip. The girls had just been chosen as the seven finalist competing for the title of Pierce County Junior Fair 4-H Queen. They are: Priscilla Pedersen, Parkland; Jane Lawler, Midland; Donna Aerys, Midland; Midland; Donna Perryman, Parkland; Jarlith Hoffman, Puyallup; Karen Winch, Puyallup and Sherry Young, Puyallup.

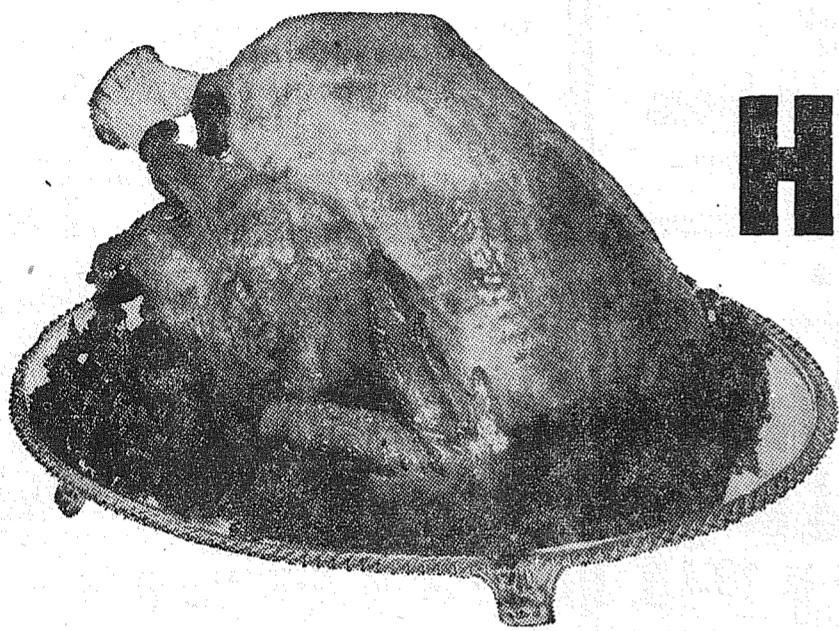
The girls will choose a pattern and fabric for the dresses they will wear in the Coronation Ceremony. Being eager 4-H members, the girls will make their own dresses. The girls do not know which one of them will be the lucky one to wear the Queen's robe yet. The Queen will be chosen on Tuesday, April 21, 8:00 p.m. at the Public Library Auditorium. The judges' choice will not be announced until (Continued on Page 12)

BIG BEAR'S APRIL SHOWER OF FOOD VALUES

Rain or shine — you're sure to find a shower of excellent values at your local Big Bear store. They have the tops in all Meat, Produce and Grocery items!



FRESH GRADE "A" HEN TURKEYS



YEARLINGS, 12 to 16 lb. Avg.
LOTS OF VERY TENDER MEAT.

This is a really wonderful value on top grade turkeys. Now is the time to shop Big Bear and save!

lb. **37**

Also featured this week in the Big Bear meat department!

CHOICE BONELESS CROSS RIB Ideal oven roast. Top quality, too! lb. **83¢**

FRESH PORK SPARERIBS Nice and meaty, and a very economical meal to serve! lb. **43¢**

FRESH FILLET OF SNAPPER Delicious ocean fresh flavor! lb. **33¢**

MORRELL'S PRIDE, READY-TO-EAT SMOKED PICNIC per lb. **35¢**
6 to 8-lb. avg. Cello wrapped. Nice and lean; one of the quickest, most delicious meats you can serve!

WESTERN MAID MARGARINE
The delicious and economical spread!

1-lb. cubes for **15¢**

LARGE, FRESH AA EGGS
Guaranteed fresh at all Big Bear stores!

per doz. only **39¢**

MILD CHEDDAR CHEESE
Your favorite Cheddar variety. Delicious!

1-lb. for only **39¢**

REG. or DRIP COFFEE
MJB, FOLGER'S OR HILLS BROS.

1-lb. can for **69¢**

C & H SUGAR POWDERED OR BROWN 2 1-lb. pkgs. **25¢**

SCOTT NAPKINS 60 COUNT WHITE **10¢**

KLEENEX 400 Count Assorted Colors 4 pkgs. for **1.00**

APPLE JUICE Hi-Country Brand 46-oz. can **29¢**

LUNCHEON MEAT Peacock Brand 12-oz. for **39¢**

PRESERVES Kraft, Strawberry, Orange Marmalade, Peach or Pine-cot 4 12-oz. jars **1.00**

CEREAL Choice of Wheaties, Kix, Sugar Jets, or Cheerios 4 10-oz. pkgs. **1.00**

OCCIDENT FLOUR 25-lb. bag **1.89**

ICE CREAM Big Bear's Own All Flavors per qt. **39¢**

OCEAN SPRAY Cranberry Sauce 2 #1 Cns **43¢**

SPONGE MOPS O'Cedar Brand Reg. 3.50 value **2.95**

O'CEDAR Sweep Queen BROOMS each only **1.59**

MARSHMALLOWS Kraft Jet 10-oz. pkg. **19¢**

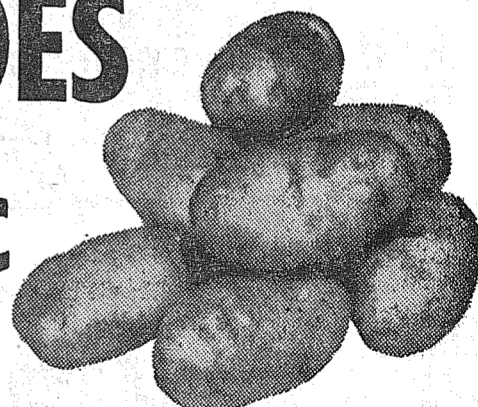
POTATO CHIPS Blue Bell Brand Triple Pack **49¢**

NEW POTATOES

U. S. No. 1 Grade, Size A

California grown Shafter long whites — selected top quality U. S. No. 1 Grade, Size A's, washed!

lb. **4¢**



FRESH SWEET CORN 6 large ears for **49¢**

Florida grown, tender, sweet, top quality small kernels of new crop corn on the cob. First of the season.

RHUBARB 3 lbs. for **19¢**

Home grown, tender and piquant Crimson Wine variety. Garden fresh flavor!

SUNKIST LEMONS

Thin Skinned, Juice Laden **14¢**
Per Pound

Name that Mystery Lemon Pie and win...?

BEDDING PLANTS

Snagdragons, Petunia's, Pansies, Stock, Primroses, Carnations, Lobelia, Potted Geraniums and Saxifrage... all hardy, well weathered plants in handy baskets!

Peat Moss, Peat Moss enriched and Alaska Liquid Fish Fertilizer.

133rd at Pacific Parkland

Store Hours: 9 to 11 Weekdays SUNDAY 9 TO 9



BIG BEAR

A DIVISION OF **Lucky STORES**



Midland News

Nine new members who were initiated into the Midland Volunteer Fire Department Saturday April 11, at 9:00 p.m. were Les Wolfe, Ed Burness, Gay Harkey, Walt Olsen, Terry Bowman, John Both, Clarence Martineau, Vern Smith, and Jim Gill. The Ladies Auxiliary initiated five new members as follows, Mesdames Violet Pyette, Olive Gill, Lorraine Stevens, Nancy Bowman, and Mae Burness.

Committee members were Fred McPherson, John Pyette, Ralph Taylor, Audrey Roley and Treva Olsen. Honorable mention goes to Al Bombardier for his help in the kitchen. After the usual pranks, based on the theme of "Outer Space," a delicious ham dinner with all the trimmings was served by the firemen.

The Midland Volunteer Fire Department is anxiously awaiting the arrival of their new Crown fire truck to be delivered within the next two weeks, reports Ralph L. Taylor, publicity chairman.

Games Night

The men of St. John of the Woods Parish will sponsor another of their popular "Evening Games" this Friday evening, April 17, starting promptly at 8:00 p.m. The public is cordially invited to come out and enjoy an evening with their friends and neighbors. The party will be held in the parish hall and ladies of the St. Ann and St. Theresa Circle will be in charge of the coffee program beginning at 1:30 p.m.

Orthopedic Award

Persons awarded the Midland Orthopedic Guild's boxes of linens were Don Wolnievicz, Chuck Brouwer and Ray S., Lorraine Stevens and Edna Davidson.

Queen Candidates

The auditorium of the Tacoma Vocational School was the scene of the elimination contest for the seven finalists chosen for the 4-H Queen's royal court who will preside over the Junior Youth Fair of Pierce County during August, which is held every year on the Sumner High School grounds. Chuck Bond, chairman of the Junior Fair Board Queen committee this year, was in charge of the contest, assisted by Mrs. Kenneth Graves of Parkland. The lucky girls chosen from the state of fifteen running were Donna Ayers and Jane Lawler from Midland, Diana Perryman and Priscilla Pederson from Parkland, Karen Winch from Riverside, Shari Young from Edgewood, and arleth Hoffman from Fruitland. The judges for the evening were Puyallup's Mayor John Condon, Jerry Krueger from Sumner and Mrs. Carol Mays of the County Extension Office. Tuesday evening, April 21, another group of judges will choose the one to be Queen, in the auditorium of the Tacoma Public Library. The other six girls will act as Princesses in the court. Announcement of the winner will not be revealed until the county-wide Rally Day which will be held at Point Defiance Park Saturday, April 25, with clubs gathering for lunch at noon and the program beginning at 1:30 p.m.

Campships

Just a reminder for all 4-H members who wish to compete for Leaders' Council and Senior 4-H State Conference Campships, June 8 to 12 at Pullman to assist them with camp expenses, that their last year's record book and this year's up-to-date, along with a letter of recommendation from a teacher or clergyman, are due in the County office by Monday, April 20.

Golden Wedding

Many friends and relatives honored Mr. and Mrs. and Mrs. Francis Hushek Sunday, April 5, at an open house held at their home from 2:00 until 6:00 p.m. celebrating the couple's 25th wedding anniversary. Hostesses were Mesdames William Shanahan, Frank Baskett, Leonard Petersen and Clarence Johann. The honored couple's daughter, Mary Frances, was in charge of the guest book and their son, Charles, assisted at the punch bowl. Centering the collation table was a beautifully decorated three tiered wedding cake. Assisting the hostesses were Mesdames Frank Morton, Sylvia Olsen, Victor Dawson, Henry Tefre, and Fred Scott. At the bunchbowl were three nieces of Mrs. Hushek, Mesdames Robert Hoover, Robert Fredricks, and Robert Harris. Many lovely gifts were presented the couple for their silver anniversary.

Preschool

The March meeting of Midland Preschool, held April 1 because of school vacation, featured election of officers. Mrs. Kenneth McCulloch was chosen president; Mrs. Salle Hiblick, 1st vice president; Mrs. June Casey, 2nd vice president; Mrs. Audrey Roley, secretary; Mrs. Barbara Farren, treasurer. Members wish to thank all those who donated articles for the rummage sale, which was a big success; special thanks also to

neth Gores, Robert Harris, William Shanahan, Leonard Petersen, Mike Hansler, Henry Tefre, Victor Dawson, LaVerne Olsen, Nels Johnson, Elmer Nordstrom, Ranghill Peterson, Ray Lohrengel, Clarence Snelson, Kenneth Keil, Bud Gadwa, Frank Morton, Paul Wilson, Walter Eshpeter, Everett Robertson, Orland Myers, Marion Madsen, Edwin McFarland, Alred Severson, Donald Dailey, Robert Mallery, Frank Smith, Jerry Haller.

Messrs. and Mesdames John Bussanich, James Walker, Richard Johnson, Clarence Stone, John Johnson, James Gill, Fred Malloy, Albert Bombardier, Norman Nelson, Harold Johnson, John W. Foster, Frank Baskett, Don Kemp, George Turner, Robert Hansler, Roy Christensen, Conrad Kaelin, Aaron Balmer, Bert Sundstrom, John B. Hanson, Fred Scott, Albert Asplund, Victor Eshpeter and Clarence Johann and Messrs. Alex Husby and George Lind.

Also Mesdames Sylvia Olsen, Florence Allen and Loree, Florence Brantner and Myrtle Culver.

Bethel Education Assn. Installs

Legislative achievements and problems were disclosed by Joe Chandler, executive secretary of the Washington Education Association, at the recent installation banquet of the Bethel Education Association. The dinner-meeting was held at the Top of the Ocean with nearly 100 people attending the formal installation.

Chandler urged the Bethel teachers and their guests to keep in mind that all of the taxes passed in this session of the legislature were "only temporary measures that solved nothing. In two years from now the Legislature will be facing the same problems, only they will be possibly even more crucial." The only hope, according to Chandler, would be the adoption of a whole new tax

Mr. and Mrs. James Walker for the use of their building. The next meeting will be April 22.

Reporter—Mariene Corrigan, LE 7-8945.

program for the State, such as for the program. The other retiring officer was Walt Sahli, vice president.

A number of musical selections were presented by an All-Bethel German Band, consisting of Richard Curtis, Ronald Poage, Glenn Hull and Lee Whiteman. Members of the Bethel school board, their wives and members of the district's administrative staff were the honored guests of the BEA at the banquet.

Don Wallin is starting his third term in the treasurer's post. Outgoing President Duane Lobeda served as master of ceremonies

Identify parts: Make - Model - Serial PARKLAND CYCLE & KEY 11021 Pacific Ave. LE 7-5772

TRAILERS, 8 and 10 wide. We take anything in Trade. Also we trade you new carpeting Furniture & Appliances for your trailer Beautiful Selection of Furniture Maple and Contemporary

LINDSTROM'S HOME FURNISHINGS 8021 Portland Ave. LE 7-8627

Collins News

Apologies to two candidates for office in Collins P-TA for an error in last week's Times Journal: Mrs. Les Doyle has been nominated for president, Mrs. Dorothy Moon for vice president. Other candidates, whose names were correctly listed, are Mrs. Ralph Fuller and Mrs. Thomas Molyneux, treasurer, and Mrs. Nellie Carson and Mrs. Betty Jane Bell, secretary.

B GRACE P T I S T

SPECIAL MUSICAL
Fri., April 17—7:30 p.m.
FRED H. LINDBLAD of Christian Home League
Former Tenor on the First Mate Bob Program
Also Colored Christian Movie
Sunday Afternoon, April 19—2:30
1 1/2 Mile East of Bethel High

PLANNING TO REMODEL?

Let us help you with any of your Remodeling Needs from start to finish—F.H.A. Terms
WINDOW SCREENS MADE TO ORDER - WINDOW GLASS INSTALLED - FREE MEASUREMENTS & ESTIMATES
SEPTIC TANK INSTALLATIONS
PARKLAND HARDWARE
— Across From Piggly Wiggly —
12169 Pacific Avenue LE 7-3171

NEW FOR '59 — ZENITH



21" Console T.V.
Full Console Quality at a Savings
Price of Only **\$229.95**
With Base

Model C 2223
YOUR FUEL OIL AND APPLIANCE DEALER
POCHEL DISTRIBUTING COMPANY
140th & Pacific Avenue LE 7-8624

LUMBER --- ALL GRADES
PAINTS - GLASS - HARDWARE
UPLAND SLAB WOOD
BASKETT LUMBER CO.
9701 Portland Ave LEnox 7-5844

RICH'S DRIVE-IN

- Fish & Chips • Prawns & Chips
- Chicken & Chips
- HOME MADE PIZZA
- CONEY ISLANDS • HAMBURGERS
- SHAKES • SUNDAES
- COLD DRINKS

OPEN EVERY DAY
Sunday thru Thursday: 11:00 a.m.—11:00 p.m.
Friday & Saturday: 11:00 a.m.—1:00 a.m.
602 South 112th LE 7-4181

WILLOWS

FOOD VALUE LEADERS

FREE! 10-LB. HAM GIVEN AWAY EACH SATURDAY AT 4 P.M.! JUST REGISTER

Strawberries Fresh Full Cups **3/69c**

Orange Hi C — 46-Oz. **5/\$1**

WEINERS Hormel's Skinless 12-oz. Pkg. **39c**

MAYONNAISE Nalley's QUARTS **49c**

★ FOOD CENTER
AT WILLOWS CORNER • OPEN 9 TO 8 DAILY — 10 TO 7 SUNDAY • PRICES APRIL 16-17-18

What makes these fantastic prices possible? That's easy! We buy merchandise that has been damaged in transit on trains and trucks at a fraction of their original value. Some of our stocks come from bankrupt stores or those which are going out of business. We also purchase insurance salvage stocks. In some instances, cans or packages may show slight damage marks. The merchandise itself is as good as new. Compare these prices and see just what great savings are yours for driving out to Salvage Mart. The items advertised here are not so-called "specials." They are prices we sell for every day.

GOODYEAR CONST. \$9.95 Value
Boys Boots 4.95

FRISKIE NO. 1
Save \$3.00 on case of 48 cans
CAT FOOD 3.98

LIBBY'S TOMATO, 46 Oz.
JUICE 4/1.00
All Purpose Gal.

White Paint 1.98
LONG HANDLED POINTED NOSE

SHOVELS 1.98

DUNCAN HINES 303 Tin
PEAS 8/1.00

VALLEY LIMA 300 Tin
BEANS 10/1.00

MEN'S PRINT — SEDGFIELD
SPORT SHIRTS \$1.98

SALVAGE MART
13014 Pacific Avenue — Hours: 10-6 'Til 8 Fri.

TREE TOP APPLE JUICE 24 Oz. 2/25c

COLORED T-TOWELS 8/1.00

CHILDREN'S STRAW C'boy Hats 29c

Women's acetate rayon crepe SLIPS Reg. 3.98 1.98

POPULAR Ma'naise 2/49c

GIRL SCOUT — 100% WOOL SWEATERS \$1.98

These are not so called "Advertised Specials", they are EVERDAY selling prices and are therefore subject to stocks on hand

2-B GIRDLES \$4.98

BRAS — \$1.50
NURSING AND MATERNITY & 2.95

Smart Spring Toppings!
FOR HAPPY EXPECTANCY
Rushed to us from fashion headquarters—For ladies-in-waiting... new tops and coordinating skirts make B & I's new Maternity Department outstanding.

Wash 'n wear cottons, rayon linens, featured in solid colors with contrasting trim, checks and gingham, are eye-catchers... in pretty detail and long wearability. Sizes 9 to 15, 10 to 20.

\$4.98 - \$5.98 - \$6.95

PANTIES
Small, medium, large... 79c
Some with detachable garters... \$1.29

USE OUR LAY-AWAY PLAN
\$1.00 holds any article

MATERNITY CAPRIS \$3.98
To make your summer fun more enjoyable—Sizes 10 to 18, come in black, red turquoise, blue and yellow.

HALF SKIRTS \$2.69
Maternity half-skirts with elasticized tops are new in Nylonized acetate... very washable and comfortable for summer ward- robes.

B & I Shopping Center
— Open Evenings and Sundays —
8012 South Tacoma Way



THRIFTWAY

AD PRICES ARE EFFECTIVE THURSDAY,
FRIDAY & SATURDAY, APRIL 16, 17, 18

★ DEL MONTE ★ SPRING GARDEN SALE

PEAS DEL MONTE NO. 303 SIZE CANS FOR
BEANS DEL MONTE CUT GREEN 303 CANS
CORN DEL MONTE CREAM STYLE 303 CANS

6/1



DEL MONTE FRUIT COCKTAIL
Sparkling Fruits
Trim, Tidy Cuts!

No. 303 Cans **4/\$1**

DEL MONTE FRUIT DRINK
Delicious Pineapple and Grapefruit Juices!

46 Oz. Cans **3/89c**

DEL MONTE 14 OZ. BOTTLES

CATSUP 6/\$1



SHURFINE CHUNK STYLE No. 2 Can... **29c**
Pineapple
STAR-KIST NO. 1/2 CAN
Chunk Tuna 4/\$1
DREW SLICED ELBERTA No. 2 Cans... **5/\$1**
Peaches
PILLSBURY ASSTD. LAYER Pkgs. **4/\$1**
Cake Mixes
4-ROLL PACK - INCL. 4c OFF
MD Tissue 29c

RIGHT TO LIMIT IS RESERVED

STEWED TOMATOES

Juicy Tomato Chunks With Peppers & Onions
No. 303 Cans

5/\$1

NO. 2 1/2 CANS - IRREGULAR SHAPES & PIECES

BANQUET

PEARS 4/\$1



STRAW-BERRIES

CAL. FRESH
4 Boxes For

89c



WEISER LAKE

Spuds
10 Lb. Bag.

39c

Radishes or Green Onions

3 BUN. FOR

13c

Whole Body

FRYERS

lb. **29c**

Chunk — Any Size Piece

BOLOGNA

lb. **35c**

Blade Cut — Choice or Good

POT ROAST

lb. **45c**

BETTY CROCKER 18-OZ. PKG
PROTEIN PLUS 29c

SHURFINE CHICKEN, TURKEY BEEF
MEAT PIES 8-Oz. Ea. 5/\$1

BOOTH BREAD
SHRIMP 10-Oz. Pkg. 55c

SIMPLE SIMON APPLE OR CHERRY
PIES 8-Inch Each 49c

Procter & Gamble Products

IVORY FLAKES Or Snow Giant Pkg. 83c

CAMAY Reg. 3/32c, Bath 2/31c

DUZ SOAP Giant 83c

OXYDOL Giant 76c

BUTTER

DARIGOLD
PRINT OR CUBE
POUND

65c

COFFEE

M J B
DRIP OR REG.
2-LB. TIN \$1.37
Lb. Tin

69c

TIDE

DETERGENT
5c off Reg.
Price Giant
Pkg.-You Pay

63c

EGGS

AA LARGE
DOZEN

42c

NABISCO
GRAHAMS

1-Lb. Pkg. **39c**

SUNSHINE
HI-HO
Crackers

1-Lb. Pkg. **33c**

TREE TOP
APPLE JUICE

Qt. Btl. **27c**

SUMMIT VIEW THRIFTWAY

AIRPORT AND CANYON ROADS

Summit News
 A western theme is to be featured at the Central Avenue P-TA and Preschool Carnival this Friday. General chairman for the event is Mrs. Carl Escene, assisted by Mrs. Ken Fuller. The Chuck Wagon will open at 5 p.m. and will have the following menu: Barbecued hamburgers, tuna burgers, hot dogs, chili with crackers, potato salad, lemon jello salad, pie, cake, dixie cups, coffee.

REPLACE IT
 For safety's sake, keep your vision clear. Let us install new glass today. Low prices.
AUTO GLASS
 QUICK INSURANCE CLAIM SERVICE
PARKLAND MOTORS
 Open Evenings & Saturdays
 138th & Pacific Ave. LE 7-4991

Methodist church will meet at 1 p.m. Thursday, April 23, at the home of Mrs. C. R. McMillan at 10305 Canyon road.
Improved
 Mrs. George Haaland was in Good Samaritan hospital last week as a result of a severe case of neuritis. She is now at home and her condition is much improved.
Suffers Burns
 Harold Leaman suffered severe burns on both hands while at work last week.
Sympathy
 We wish to extend our sympathy to the William Yotty family. Mr. Yotty's mother passed away last week; funeral services were held Saturday in Portland.
Visitors
 Mrs. Berry Leftwich of Port Orchard and her daughter, Mrs. Bert Thorpe of Tacoma, were callers at the home of Mr. and Mrs. Glen Schanck on Saturday.

PLANNING A PARTY? CLUB DINNER? RECEPTION?
RICHARDS
 PRIVATE DINING ROOM
 MODERATE PRICES
 2801 Pacific Avenue For Reservations, Call GR 4-2063

Dinner At Roy
 Warren Rebekah Lodge at Roy will hold a beef-turkey dinner Friday, April 17, 5:30 to 7:30 p.m. in the Rebekah hall at Roy. Donations are \$1.00 for adults, 50c for children under eight. The public is invited.
BAKE SALE
 The Spanpark 4-H club will hold a bake sale at Piggly Wiggly, Pacific and Garfield, on Saturday, April 18, beginning at 10 a.m.
 Mrs. Leftwich lived in the Summit area for many years before moving to Port Orchard.
Father-Son Banquet
 Remember the Father and Son Banquet tonight at 6:30 at Summit Methodist church hall.
 Reporter — Mrs. C. R. McMillan, LE 7-6529

OUTSIDE BARN & HOUSE PAINT
 SPECIAL \$2.98 Gal.
 Open 7 Days a Week — 7 a.m. - 9 p.m.
Barsotti & Timm
 At the Roy Y Union 76 Serv. Sta. LE 7-4221

Sea Food
 HONOLULU — There's a lot of food in the ocean, but a scientist says the chances that you'll get to eat much of it are slim.
 "It'd be better to mow your lawn and eat the grass," advises marine biologist Albert J. Bernatowicz. "And cheaper."
 The University of Hawaii scientist pointed out that a column of water one yard by 100 feet would contain only about 3/4 of a pound of vegetable matter even though the oceans catch far more solar energy than does the earth.

LEAKY TANK
 SPRINGFIELD, Ohio — When service station attendants discovered 1,740 gallons of gasoline had unaccountably vanished from a storage tank, authorities were called in. Their conclusion: the tank leaked.
 Ernest L. Holt, machinist's mate second class, is serving aboard the cargo ship USS Pollux, operating with the U. S. Seventh Fleet in the Western Pacific. Before entering the Navy, he attended Puyallup high school. His parents are Mr. and Mrs. Laurence E. Holt of Rt. 3, Tacoma.

PROMPT PERSONALIZED PRESCRIPTION SERVICE
TED SWANSON
INSULIN - VITAMINS
 Downtown Prices
 Pay Phone Bills Here
 PLENTY OF FREE PARKING
TINCHER'S PHARMACY
 8227 Park Ave. GR 4-3344
 Across from Fern Hill P. O.

County Agent
 (Continued from Page 8)
 4-H Rally Day, April 25th, at Point Defiance.
 Women from all over the county are invited to attend Home Demonstration Day at Midland Grange Hall on May 1st. Pierce County Homemakers Clubs have planned a full day which begins at 10:00 a.m. They are holding a plant sale and many of the club members are donating some of their most prized plants for the sale.
 Honoring their International Theme this year, the clubs plan to have table decorations typical of the country they have chosen to study. Also, the potluck dishes they bring will be made from recipes typical of the countries. Some of the clubs plan to exhibit articles they have collected from their foreign country and some even plan to wear costumes from their country.
 All homemakers should make plans now to attend Home Demonstration Day.

By George Purcell
 Busy boys and girls are some Pierce County 4-H'ers nowadays, as usual. Feeding and grooming their meat type, well fleeced lambs, hogs and steers for the Auburn Junior Livestock Show and Sale to be held at the stockyards there on April 16, 17 and 18th. Entering stock are:
 LeRoy Cox, hogs; Jean Young, hogs; Kyles Young, hogs; Shari Young, hogs; Vernon Smith, hogs. Buzzy Delano, lambs; Tommy Bunnell, hogs; Kenneth Green, hogs; Phyllis Dawson, steers; Peter Fjellstad, steers; David Crimmins, steers; Dan Crimmins, steers; Greg LaVelle, steers.
 Mary Andersen, steers; Mike Wade, hogs; E. G. Toote, steers; Trygve Haaland, steers; Harry Ackerson, lambs; Walter Ackerson, lambs; Kathryn Polly, lambs; Gerri Singleton, lambs; Dean Roberts, lambs; Ronald Roberts, lambs.
 Stanley R. Shields, commissary man second class, is serving aboard the attack aircraft carrier USS Essex on the Atlantic coast. His parents are Mr. and Mrs. Andrew J. Shields of 10418 South Sheridan avenue.

DISTRICT 402 SCHOOL CALENDAR
 April 16
 PARKLAND P-TA will hold their regular meeting on Thursday, April 16, (tonight), at 8 p.m. in the school auditorium, Mrs. P. E. Bondo presiding. The program subject will be, "Know Your School's Program." Colored slides taken this year at the school will be shown. Mr. Paul Larson will speak during the film and explain the school's curriculum. Two Honorary Life Memberships will be awarded. Refreshments will be served by Third Grade Mothers.
 April 20
 FRANKLIN-PIERCE HI-BOOSTERS will hold their executive board meeting.
 April 21
 HARVARD PRESCHOOL will hold the regular meeting Tuesday, April 21, at 8 p.m. in the Harvard school auditorium, Mrs. E. B. Carden Jr. presiding. The program will center around the recreation offered to the small child in the community. Guests will include Mrs. M. C. Bradley, Cub Scout Den Mother in the Harvard area; Mrs. F. L. Kertzman, Blue Bird leader; Mrs. K. R. Woodhead, representing the co-operative play-school nursery, and Tom Cross, superintendent of recreation for Pierce County, who will explain the summer recreation program for Dawson Field. The beginners band from Harvard school, under direction of Eugene Ahrendt, will play. Fred (Freddie) McPherson, driver of the Harvard school bus, will show movies of last year's kindergarten Christmas party at the fire hall. Hostesses will be Mesdames Olive Gamin, Nancy Pettibone, Jean Cimino and Olive Fletcher.

Stanley R. Shields, commissary man second class, is serving aboard the attack aircraft carrier USS Essex on the Atlantic coast. His parents are Mr. and Mrs. Andrew J. Shields of 10418 South Sheridan avenue.

YOU TOT-EM BARGAINS
 Shinn's Grade AA Large EGGS 39¢ doz.

ADAMS PEANUT BUTTER 18-Oz. Jar 39¢
SNOWDRIFT SHORTENING 3 Lb. Tin 69¢
HUNT'S TOMATO JUICE 46 Oz. Tin 19¢

HUNT'S, WHOLE POTATOES 303 Tin 10¢
VERIFINE MACARONI & SPAGHETTI 5 Lb. Box 79¢
BANQUET PEARS 2 1/2 Tin 29¢
M.D. Assorted Colors Toilet TISSUE 4 Roll Pack 33¢
OLD FASHIONED FRANKS OR CHUNK STYLE **Bologna** 39¢ lb.
SAUSAGE ROLLS COUNTRY STYLE... Lb. 33¢
GROUND BEEF Pure, Lean 3 lbs. \$1

KRISPY CRACKERS Sunshine 1-Lb. Pkg. 27¢
BONELESS SIRLOIN TIP ROAST OR FULL CUT ROUND **STEAK** 69¢ lb.
CAMPBELL'S VEG. SOUP No. 1 Tall Tins 8/\$1
SHURFINE INST. COFFEE Large 6 Oz. Jar 69¢

FRESH ROASTED Peanuts Lb. 35¢
Bananas 2 Lbs. 25¢
RADISHES AND Gr. Onions Bunch 5¢
Grapefruit 3/25¢

OPEN SUNDAYS KITCHEN'S
 EVERYDAY LOW PRICES FORMERLY FLETCHER'S
 Right to Limit
 Open 9 a.m. 'Til 10 p.m. Daily
 10 a.m. 'Til 9 p.m. Sundays
 PRICES EFFECTIVE THURS., FRI. & SAT. 12208 Pacific Ave.

ALSO VILLA PLAZA IN LAKEWOOD
 People save at the Family Savings Center for security, independence and comfort in old age.
 A MUTUAL SAVINGS INSTITUTION
Pacific Federal Savings and Loan Association
 Bellingham • Seattle • Tacoma
 Longview • Portland • Eugene

HOME MEMBER VAUGHAN'S VALUES
GATE ARBORS Each 8.95
TRELLISES 1.20
6 Foot x 36" BASKETWEAVE FENCE 3.50
WHITE FENCE PAINT Gallon 1.98
25-Foot PLASTIC HOSE (5 - Year Guarantee) 1.29
50 Foot PLASTIC HOSE (12 - Year Guarantee) 5.95
Vaughan's
 PACIFIC AVENUE LUMBER COMPANY
 84th & Pacific Avenue GR 4-9515

SPECIALS! ON ALL NEW AUTO PARTS
ASK FOR OUR 20% DISCOUNT
 USED PARTS FOR ALL CARS
REBUILT TRANS. \$30.00 & Up
REBUILT GEN. \$10.50 & Up
VOSS BROS' AUTO PARTS
 2518 So. 112th JU 8-7252

SEE THE NEW 1959 LINES
Schwinn Bicycles — Savage Lawnmowers
Motor Scooters — Go-Carts
 LAWNMOWER SHARPENING, ENGINE PARTS & REPAIRS, AND BICYCLE RENTALS
PARKLAND CYCLE & KEY
 11021 Pacific Avenue LE 7-5772

SAVE 25% STOP! SAVE 25%
 REGULAR PRICE 79¢
POPLINS AND SAILCLOTH 59¢ Yard
 SOLID COLORS — Red, Blue, White, Turquoise, Orange, Tan, Black
SHOP-ETTE
 VARIETY And DEPARTMENT STORES
 56th and Pacific Avenue 133rd and Pacific Ave.
 Across from "Tradewell" Next to "Big Bear"