

Santa Visits Parkland Area Youngsters

BULK RATE
U. S. Postage Paid
Permit No. 9P
Parkland Branch
Tacoma, Wash.

Rural Route
Occupant or Boxholder
Postmaster: If unable
to deliver, return post-
age is guaranteed on
addressed papers.

The TIMES JOURNAL

THURSDAY, DECEMBER 22, 1960 • VOL. 16, NO. 16 PUBLISHED AT PARKLAND, WASH. LE 7-0223

FP Xmas Concert Tonite



Seen in rehearsal for Franklin Pierce's annual Christmas Concert to be performed in the school gymnasium this evening are vocalists Wanda Stedfeld, Harold Iseberger, Kathy Kanson, Chauncey Turney and Linda Ellefson.

Franklin Pierce's annual Christmas concert will be held in the school gym tonight.

The program will feature musical numbers by the choir, mixed chorus, Girls' Glee, the Nonette, and the Swing Choir. The band and orchestra will also perform. Efforts have been made in preparing the concert to show both the religious and the secular aspects of Christmas: the Christmas of the manger and the Holy Child, and the Christmas of the plum pudding, the wassailing and the sleigh bells.

particular invitation to this program by music director Eugene Ahrendt and Principal William Whitesel.

Honey-Bee 4-H Will Go Caroling

The Honey-Bee 4-H club will go caroling tonight at a rest home. Afterwards the group will gather at Mrs. Jordan's for a party. Their next meeting will be Jan. 4.

Parkland Residents Awarded



Charles E. Bond, delegate from the Pierce County Junior Fair accepted the sweepstakes trophy for the best scrapbook entered in the Washington State Fairs Assn. convention in Bellingham earlier this month. Making the presentation was S. J. Agnew, (left) president of the Washington Horse Breeders Association on behalf of the association. The presentation is of particular significance to Parkland people, since Mrs. Mel Pederson and former fair queen Priscilla created the winning book. It was the first sweepstakes award the fair has received and the first blue ribbon in eight years.

Junior Artists Are Awarded

The annual Times Journal Coloring Contest ended Wednesday, with each store spending the weekend feverishly checking the many entries turned in by young artists throughout the South End.

The merchants have carefully studied the entries and are extremely proud to announce the following winners:

Bargain Basket awards a \$5 cash prize to Tina Allen, 4, Rt 7, Box 469.

Big Bear will give a box of fancy Washington apples to Richard Hoffman, 13, 4906 E. 112.

Brookdale Lumber Co. has a pair of roller skates for Marilyn Brownlee, 6½, 403 E. 133rd.

Ashmore Spanaway Drug will present a model airplane and a coloring book to Mike Potts, 9, of Rt 1 Box 305, Graham. They also have an Uncle Wiggly game and a coloring book for Delores Barber, 10, Rt 1, Box 252F, Spanaway.

Parkland Rexall Pharmacy awards a table tennis set to Philip Butler, 8½, 1610 So. 120th.

Parkland Western Auto has a bowling set for Don West, 8, of 105 Fruitland, and a doll for Roberta Nicholson, 7, Rt 1, Box 493 Spanaway.

Shopette has a football helmet and shoulder pads for Danny Simpson, 10, of 822 So. 103rd, and a box of assorted girl's toys for Margaret Adkins, 10, of 3820 E. 101st.

South End Plumbing will present a flash camera kit to Dennis Hoffman, 11, of 4906 East 112th.

Paul's Shoe Store has a pair of Welco slippers for Bobby Abra, 10 1/2, Military Rd., and a pair of tennis shoes for Danny Loran, 9, 9308 Golden Given. They also have shoeshine kits for Richard Hoffman, 4906 E. 112th; Christie Loran, 9308 Golden Given; Carmelia Nelson, 502 So. 125th; Donald Rind, Rt 1, Box 176 A, Graham; Linda Larsen, 5725 E. 106th; Stephen Bradley, Rt. 2 Box 958 B, Puyallup; Bill Ellington, 8115 Fairview; and Lida Anda, 11019 A St.

Summit Trading will award a York Archery set to Rod Skaar, 7, of 8905 Canyon Road, Puyallup, and a Badminton set to Margaret Adkins, 10, 3820 E. 101st.

On New Year's Day, 1818, the White House was thrown open for the first time since the War of 1812 for a public reception. The Marine Band played for the occasion.



"And what do you want for Christmas?" Santa, who visited youngsters Saturday at the Parkland theater, is seen asking the familiar question of one of three junior editions of the Harold Johnson family. Santa is perched on the Parkland Fire truck which escorted him to the theater for the Parkland Business Club's annual Christmas party. (Photo by McKewen)

Despite the harassment of typical party. The highlight of the day's festivities came shortly after 2:00 p.m. when Santa Claus (Walter Larson) came roaring up to the theater on a big red Parkland Fire truck driven by Howard Carmin.

The occasion was the annual Parkland Business Club Christmas party. Also helping were Fire Chief Bud Larson, who arranged the trip, Paul Bowen, Chuck Bohall, Harry Webster, and Harold Wright.

Santa had candy canes for all the children, and met each one as they came crowding out of the theater after the show to see him. All the youngsters enjoyed themselves immensely at seeing the jolly old man with the long white beard.

Let Us Go To Bethlehem

By S. C. Eastvold, President
Pacific Lutheran University

TEXT: "Let us go even unto Bethlehem, and see this thing which has come to pass, which the Lord hath made known unto us." (Luke 2:15).

Not many people can go to Palestine and visit the real physical Bethlehem. Even though I have been there twice (1952 and 1958), I do not feel that it is necessary for anyone to visit Palestine in order to have been to Bethlehem. It is more important to be where Jesus is for a few minutes, than to be where he was two thousand years ago.

As we go to Bethlehem this Christmas, may we be reminded of the fact that Christmas, with its great message, is for all people. On December 25th, the days will begin to lengthen, and gradually will become longer. A little bit of night will be taken and added to the day, until more and more of darkness will be swallowed up. This is symbolical of the coming of Christ, Who is the Light of the World, and since He came two thousand years ago, light has come little by little, and darkness has been dispelled in equal proportions around the world. As we go to Bethlehem, may we be conscious of this.

The coming of Christ to dwell in the flesh accomplished the fact that He is identified with us in our sinful hearts. Let me illustrate this in simple terms. A choice little dog fell from its master's arms into the big ocean. The master ran quickly to the captain and pleaded with him to stop the engine, and to send a rescue squad to save the dog. He was ridiculed for asking such a favor for so insignificant a creature. Then the man inquired of the captain if he would stop the ship if a human being fell into the water. Of course he said that he would do that. Whereupon, the man jumped out into the water. Then the lifeboats were let down, the engine stopped, and the man and the dog were both rescued. He had identified himself with the dog.

In like manner, Christ came down to the world and identified Himself with us, and our Heaven-

ly Father has made Him to be the rescue squad for all those who are willing to let Him take them back on board the Ship of Salvation.

Christmas is the creation of a Child, Man is not the architect of Christmas. Man was never able to concern himself with anything so beautiful. There was nothing like Christmas until Christ came. Before His coming, the world centered its attention around full-grown men. Historians lecture (Continued on Page 13)

ALL SIZES DISPOSABLE
VACUUM CLEANER BAGS
To Fit All Types of Cleaners
AVAILABLE HERE
PARKLAND HARDWARE
12169 Pacific Ave. LE 7-3171

As We Celebrate

This Christmas Season let us be mindful of our Heritage from the Christ Child. Particularly that Christ Wisdom which has instructed and preserved our way of life in Freedom and Prosperity.
Everett F. Koford

PETERSON'S COLOR CENTER
LE 1-0711 11000 Pacific Ave.

Highest
TEXACO
QUALITY



Lapenski Fuel Co.
LE 7-8173
9910 PACIFIC AVE.

The Country Parson



"Reading the Bible doesn't do a fellow much good if he's doing it to prove his opinions instead of forming them."

DRYER'S FUNERAL
PLAN CUTS COST



Open 7 Days A Week Winter Hours
Sun. 9 to 4
HUNTING & FISHING LICENSES, SPORTING GOODS, PAINT
SOUTH END PLUMBING AND HARDWARE
185th & Pacific Avenue Phone LEnox 7-4100

HILLTOP
CONCRETE CO.
LOOK FOR THE BIG "H"
THE SIGN OF SERVICE



WINTERIZED CONCRETE
Call For Recommendations

- Sack Cement
- Washed Sand
- Washed Gravel
- Drain Gravel
- Crushed Rock
- 3/4" Beach Gravel
- Select Pit Run
- Fill Dirt

Plant: 2223 - 23rd Ave. S.E. P.O. Box 648, Puyallup
TACOMA
TH 5-9525 FU 3-3624

READY-MIX ORDERS TAKEN 'TIL NOON SATURDAY

MERRY CHRISTMAS
TO ALL OUR MANY CUSTOMERS
AND FRIENDS
FROM
ALL OF US HERE AT

CANYON

READY MIX CONCRETE COMPANY
72ND & CANYON ROAD LE 7-3943

FATHERS & SONS
WILL HAVE A GOOD
CHRISTMAS WITH TOYS
From
PETERSON'S COLOR CENTER
LE 1-0711 11000 Pacific Ave.

LAUNDROMAT
WASH DRY
10c 10c
PER LOAD
56th & Pacific Ave.

SAVE 50 TO 75% ON FUEL
ASHLEY AUTOMATIC WOOD STOVES
FREE INSTALLATION
WRIGHT POWER BLADE SAWS
PARKLAND HARDWARE
12169 PACIFIC AVE. LE 7-3171



Best wishes

May Christmas morning break to find you thrilled and surprised at the many lovely gifts you have waiting for you. We wish the best for you because you are always so pleasant to serve.

RAY, LETTIE, CLEVE, LEE and GEORGE

BOB'S PLACE
LE 7-3395
Airport Road & Jay St.

Christmas Values

LADIES' WOOL CAPRIS \$3.98

LADIES' CHENILLE ROBES \$4.98

LADIES' BABY DOLL NIGHTIES \$2.98

MEN'S 100% ORLON SWEATER SHIRTS \$4.98

MEN'S FLANNEL SHIRTS \$1.49

MEN'S LONG SLEEVE BULKY KNIT SWEATERS \$7.98

BOYS' 100% ORLON BULKY KNIT SWEATERS \$4.98

BOYS' LONG SLEEVE KNIT SHIRTS \$1.99

LITTLE GIRLS' CAPRIS \$1.99

CLOSED CHRISTMAS DAY
SHOP DAILY 9 TO 9 EVERY SUNDAY 10 TO 6

SEYMOUR'S
9714 Pacific Avenue

SEASONS GREETINGS

PARKLAND

ECON-O-WASH

WASH 20c-DRY 10c
OR LET US DO IT FOR YOU
12171 PACIFIC AVENUE

PROFESSIONAL

DIRECTORY

Farmers Mutual of Enumclaw
Fire - Auto
ED MAREK
12909 Pacific Ave. LE 7-4000

CALLING ALL SANTAS



After this holiday why not bring your suits to us for expert service? We'll have them back to you in time for New Year's.

PARKLAND CLEANERS
11004 Pacific Avenue
North of the Bank Corner
LEnox 7-3221

MERRY CHRISTMAS



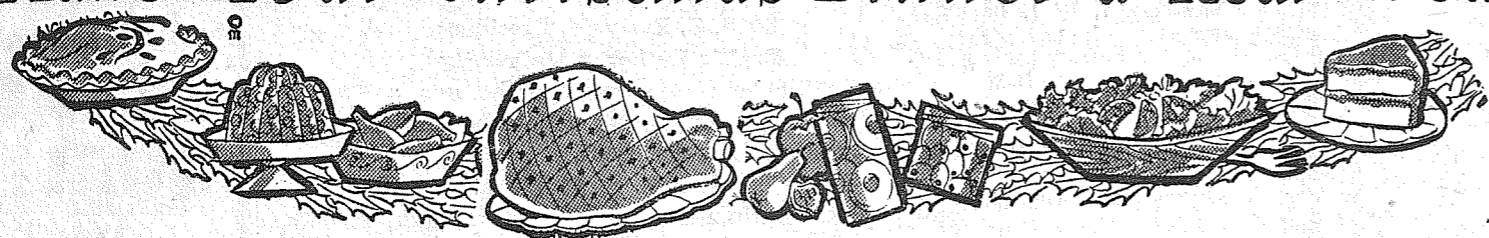
"Ye shall find the babe wrapped in swaddling clothes, lying in a manger. And suddenly there was with the angel a heavenly host praising God and saying, 'Glory to God in the highest, and on earth peace, good will toward men.'"

Across the years echo the words of the Christmas story, an inspiration, a promise and a blessing to all mankind. At this holy, joyous season, we wish to all our friends and customers a holiday rich in the spiritual rewards of Christmas, and a full portion of all the good things that a happy Yuletide holds.

The Staff
AT
**SUMMIT
TRADING CO.**



Make Your Christmas Dinner a Real Treat!



COFFEE

FOLGERS 2-lb. Tin \$1.17
LB. **59**^c

ALLSWEET

MARGARINE 5 LBS. **\$1.00**

EGGS FARM FRESH LARGE AA Doz. **61c**

PACIFIC PEARL **CRAB MEAT** 6½-Oz. Tin **59c**
KITTY CAT **CAT FOOD** Tall Tin **2/19c**
SCOTKINS **DINNER NAPKINS** Pkg. **2/49c**
KAISER HEAVY DUTY **ALUMINUM FOIL** Pkg. **69c**
SNOW'S **CLAM CHOWDER** Tall Tin **29c**
SOCIETE **HOLIDAY CANDIES** WIDE ASSORTMENT

OCEAN SPRAY **CRANBERRIES** STRAINED OR WHOLE **19c**

WALLA WALLA **PEAS** 303 Tin **6/\$1.00**

WALLA WALLA **ASPARAGUS** Cut Spears 300 Tin **29c**

U & I SUGAR 2-lbs. **25c**
Brown or Powdered **25c**

LIBBY'S 303 Tin **FRUIT COCKTAIL** **20c**

FRESH WINTER PRODUCE FOR YOUR CHRISTMAS FEASTING

SUNKIST NAVEL Large Size **ORANGES** lb. **10c**

GOLDEN RIPE **BANANAS** 2 lbs. **23c**

CALIF. **CELERY** lb. **7c** | **LARGE SIZE CUCUMBERS** Ea. **9c**

ROYAL

GELATINE Pkg. **5c**

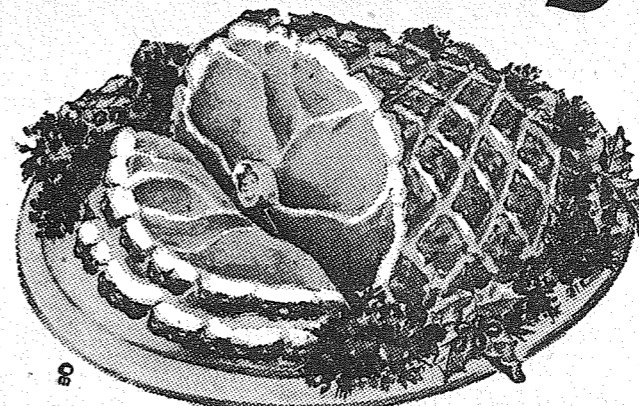
DARIGOLD

BUTTER PRINT PKG. OR QUARTERS Lb. **69c**

LIBBY'S Family Size

OLIVES Tall Tin **25c**

HOLIDAY HAMS



BONELESS FULLY COOKED

JAMES HENRY OR BAR-S **HAM** Lb. **89c**

U.S.D.A. INSPECTED FRESH FROZEN ALL GRADE "A"

TURKEYS
TOMS lb. **47c**
HENS lb. **53c**
Fresh Birds Available — Call Early

HOLIDAY TREATS

FRESH MADE **POTATO SAUSAGE** Lb. **59c**
FANCY NORWEGIAN **LUTEFISK** Lb. **33c**
LARGE ICELAND **SALT HERRING** Each **29c**

SUMMIT TRADING COMPANY

10409 Canyon Road, Tacoma LE 7-5848
No Sales To Dealers
We Reserve The Right To Limit Quantities

**WE WILL CLOSE AT 7 P.M. CHRISTMAS EVE
CLOSED SUNDAY
CHRISTMAS DAY
OPEN MONDAY 10 TO 7**

Summit ...
Girl Scouts Give Tea

Thursday afternoon, December 15, the Girl Scouts of Troop 93 entertained their mothers, Mr. Colton, teachers of Central Avenue, and Mrs. Ruth Johnson, PTA. After the tea the girls sang carols, exchanged gifts, and presented their mothers with poinsettia corsages.

Bluebird Party
Three Central Avenue and three Collins 3rd and 4th grade Bluebird groups joined together to have a Christmas party at the Summit Youth Center Monday, December (See Page 6, Column 6)

Waller Road ...
Puyallup Adult Courses Continue

The week of December 5th brought to a close a very successful term of the Puyallup Schools Adult Education Program. Three hundred forty people participated in the seventeen classes.

Plans are being made for the second semester classes. Registration will be held Wednesday, January 4, at 7:00 p.m. in the Puyallup Senior High School. Regular sessions of the classes will begin the following Monday and Wednesday evenings. You are urged to register on January 4th if you plan to participate so that instruction can begin on the first night of the class meets. Only classes with sufficient enrollment will be continued.

Most courses carry a \$4.00 registration fee but some are higher since the State Board of Education has withdrawn support of courses previously scheduled. The courses available are Clothing (Bishop Method), Tailoring, Upholstering, Interior Decorating, Landscape Gardening-\$10.00, Cake Decorating \$6.00, Typing, Bookkeeping, office Training, Public Speaking, Reading Acceleration, Citizenship, Driver Training-\$25.00, Woodshop-\$10.00, Farm Machinery Repair-\$6.00, Radio and Electricity, Conversational French, Beginning and Intermediate Conversational Spanish, Creative Writing, Shorthand, English Composition and Literature, and Mathematics (any course from Algebra through beginning College Mathematics).

Bookworms Rest Dec. 26 and Jan. 2

The Parkland Pierce County Public Library will be closed Dec. 26 and Jan. 2.

Benison Xmas Program Dec. 27

Santa will pay a post-Christmas visit to Benison members and their small fry Dec. 27 for the Grange's annual Christmas program.

The Youth Committee is directing plans for the evening's entertainment.

There will be no Auxiliary meeting this month.

Installation of officers for 1961 will be held at Fruitland Dec. 29 at 8:30 p.m.

Cubs Hold Annual Xmas Meeting

The Trinity Cub Pack No. 133 had their Christmas pack meeting Dec. 16.

After the pack meeting the parents had a coffee hour, and the cubs saw two short films.

Ward Harris and Richard Platt received wolf badges, John Nelson, Paul Kuethe, Dean Cook, and Duane Bjorke received bear badges. Robert Bjorke received the Den Chief's Braid.

Mark Salzman, Marvin Korsmo, and Mark Klopsch received silver arrows, Dennis Unkrus, Mark Korsmo and Thomas Zulauf received gold arrows. David Henderson received a gold and silver arrow.

Bob's Barber Shop
9820 Pacific Avenue
Courteous Service Always
Hours 9 to 6 Tues. thru Sat.

LAST CALL!

FOR BICYCLES
Accessories & Wheel Goods
GOOD USED BICYCLES \$12.50 & UP
TRADE IN BICYCLES As Is Or Rebuilt
BOY'S NEW COLUMBIA RAMBLER MODELS
OR 20-Inch \$37.95 24-Inch \$38.95 26-Inch \$39.95 & UP
Season's Greetings To All
PARKLAND CYCLE & KEY
11021 Pacific Ave. LE 7-5772

FENCING
Designers and Builders
EXPERT WORKMANSHIP
REASONABLE PRICES
Easy Monthly Payments
VAUGHAN'S
84th & Pac. Ave. GR 4-9515

ART'S TUNE UP
Brookdale Road
131st East LE 7-4396

IVY'S CAFE
14102 Pacific Avenue

FRITZ'S TAVERN
HARRY & HILDA
3121 East 112th

PRESCRIPTIONS
FAST SERVICE
Veterinary Supplies
Photo Equipment
Gifts for Everyone
From Infants to Grandfather
McAULEY SUMMIT DRUG
Airport & Canyon LE 7-0468

From Mt. View Lockers
2519 E. 112th LE 7-5332

GEO. DORFNER PLUMBING CO.
907 So. 113th St.
PARKLAND LE 7-7489

Season's Greetings
Unto us a Savior is born.
Come, Let Us Adore Him
Park Avenue Shoes
8229 South Park
GR 2-9985

May His blessing be with you this Christmas
KELLY NELSON'S Chevron Station
8401 Pacific Avenue GR 2-9892

JACOBS PACIFIC DRUGS
Open 7 Days a Week
9:30 a.m. - 9:30 p.m.
Sundays 10 a.m. - 6 p.m.
Wallgreen Agency
Pay Light & Water Bills Here
84th & PACIFIC AVE. Greenfield 2-6445

Wishing All Our Customers And Friends
A HAPPY HOLIDAY SEASON
FRED - BILL - OTTO - HERB - CHET - AL - TED - BOB - LOU - PAUL - DENNIS - ORVILLE - HELEN - BERT - FLORANCE
OUR STORE WILL BE CLOSED AT 2 P.M. DEC. 24
VAUGHAN'S PACIFIC AVENUE LUMBER
84th & Pacific Avenue GR 4-9515

SANTA'S IN A HURRY TO BE ON TIME TO WISH YOU ALL A MERRY CHRISTMAS
MARVIK'S FISH MARKET
8018 Pacific Avenue GREENFIELD 4-9211

MAY THE HOLIDAYS BE FULL OF HAPPINESS
KIMBALL'S BODY SHOP
LE 7-8131
10325 Pacific Ave.

SEASON'S BEST EATING!

LEAN PORK STEAK
POUND 49¢

WE HAVE TURKEYS 8 TO 25 POUNDS AND READY-TO-EAT HAMS

TENDER SIRLOIN STEAK 79¢ 3 POUNDS \$1.00

HENRY HOUSE HICKORY SMOKED PICNICS
6 to 8 Pounds 33¢ lb.

EXTRA LEAN PORK SAUSAGE

A number of FREE GIFTS to be given away Dec. 23. Just register or ask any clerk in the store about them...

Fresh Roasted PEANUTS 33¢ lb.

SALTED MIXED NUTS Large 14-Oz. Tin 79¢

NALLEY'S POTATO CHIPS An 87c Value 59¢

Sugary Sam YAMS 303 Tin 19¢

Manning's COFFEE
1-Lb. 59¢
2-Lb. \$1.17

Pet-Ritz Fresh Frozen Fruit PIES PEACH, APPLE, CHERRY
1½-Lb. Pies 39¢ Each

Pillsbury FLOUR 25 Lb. \$1.85

Nalley's Mayonnaise Qt. Jar 49¢

Nalley's Fresh Crisp CUCUMBER CHIPS 22-oz. Jar 33¢

Clark's Chocolate CANDY Box 33¢

FRESH CELERY Pound 7¢

EMPEROR GRAPES Pound 10¢

NO. 1 BANANAS Pound 10¢

McDANIELS
The Home of The Low Price
AIRPORT & CANYON ROAD
Store Hours: 9:00 'Til 9:00 - Sundays 9:00 'Til 7:00
Free Coffee and Cookies Friday and Saturday
OPEN Monday 9 to 7 p.m.
PRICES EFFECTIVE Thursday Friday Saturday

REPEAT OF A SELL OUT
MORSE ZIG ZAG 89.95 FOR ONLY 1¢ FOR AN ADDITIONAL
LOOK WHAT YOU RECEIVE

Westinghouse Twin Speaker Stereophonic Portable

This Morse Sewing Machine is Guaranteed by Good Housekeeping. Commended by Parents Magazine.

FREE HOME DEMONSTRATION
THE MORSE
● Zig Zags ● Embroiders
● Button Holes ● Overcasts
● Sews On Buttons ● Blind Hems
ALL WITHOUT Attachments

You Purchase The Morse . Sale Price 89.95
Westinghouse Twin Speaker Stereophonic Portable 01
BOTH FOR 89.96

HURRY first 10 to buy will get RECORD of their CHOICE.
Limited Supply—3 Days Only
Open 9 to 9 From Now Until Christmas. Sun. 10-6
American Sewing Center
8232 PACIFIC AVENUE GR 4-0651



HOLIDAY MEAT SPECIALS

WASHINGTON CO-OP CHOICE
20 to 30 lb. Avg. Size

TURKEYS LB. 39

WASHINGTON CO-OP CHOICE
10 to 14 lb. Avg. Size

TURKEYS LB. 49

GROUND BEEF LB. 29 | GROUND PORK LB. 29
Lucky Big Bears Own — Ground Fresh Hourly | Lucky Big Bears Own — Ideal for Dressing

LUCKY COFFEE

REG. OR DRIP
1-lb. Can

49

LUCKY MARGARINE

6 1-lb. Pkgs. (Cubes)

1.00

ICE CREAM

LADY LEE BRAND — ALL FLAVORS

Per Quart **29**

HUBBARD SQUASH

Thick meated, any size piece. **2** per pound

FOR ADDITIONAL FOOD VALUES, SEE OUR REGULAR AD IN THE WEDNESDAY TRIBUNE

13320 PACIFIC AVENUE

Store Hours 9 to 11 Daily — 9 to 9 Sunday
Sale Prices Effective Wednesday through Saturday
We Reserve the Right to Limit



a-Wondering . . . and a-Wandering . . .

With JACK BROWN

It's that time of year again. A time to be happy and cheery. A time when editors and publishers normally come up with epic editorials. I've got so many things I'd like to say that I could fill a book, however, none of them would come near the above adjective.

It's hard to put into words sometimes the thing you'd like to say. Mentally I can write an editorial that even brings tears to my own eyes, yet when I try to put it on paper it seems to come out mush.

It seems like I can get more thinking done in an hour of flying than in a whole day on the ground. The other day while flying back from Snohomish, I got to thinking about the season of the year, the whole idea of giving, and the benefits derived from same. More than anything else I began to think of the self satisfaction I've had several times in life at Christmas time (and other times as well) by giving other than when asked or expected by the recipient.

What brought this to mind? I had recently been subjected to an unsolicited act of kindness that you rarely run into in this day and age. On Sunday the 11th I was heading for home from up Bellingham way when I ran into a storm and decided to park my plane at Snohomish, get home the best way I could, and pick up the plane later when the weather improved. Once on the ground at Snohomish I found that

there were no buses running to Seattle for hours and the only train had gone by. About the time I hung up the phone after calling Dolores, my wife, to tell her I was grounded and didn't know for sure when or how I would get home, a young man dressed in ski clothes came up to me and asked if he could be of some help. I told him my problem and he immediately offered me a ride to the bus station in Seattle where buses left on the hour for Tacoma. I was elated to get the ride and enjoyed the conversation with him and his friend who had been skiing with him. Seems he had been to the mountains, and liking planes, had just happened to stop by the airport. He left me off at the bus station at eighth and Union in Seattle. As I got out I reached for my wallet and out of curiosity asked him how far he

had yet to drive through the miserable rain and heavy downtown traffic. He said, "Just back to Lake City is all." That woke me up. This young fellow had driven half way across Seattle just to get me to the bus station. When I offered him money he would have no part of it and all he said as he drove off was: "Merry Christmas, Mr. Brown. It's been my pleasure." These words are his and not a figment of my imagination. As he drove off I realized that I don't even know his name. I'd told him mine but I don't think he mentioned his.

At any rate, do you wonder that the next day as I flew back over the same route that all I could think about was the young man's parting remarks. "Merry Christmas, Mr. Brown, it's been my pleasure." Looking back over the years I came to the conclusion that perhaps this unknown young man meant exactly what he said. It had been his pleasure. He was wise far beyond his years and knew the true meaning of self satisfaction through giving.

Thinking of it made me wonder how many of you readers have ever truly known the inner satisfaction of giving unsolicited to someone.

How many of you have ever patted a strange child on the head and reached in your pocket for a nickel or a dime to give the child? How many of you have ever reached over and picked up the check in a restaurant for a

total stranger? Have you ever met some down-and-out on the street, taken his arm, and led him into a restaurant and thrown down the price of a meal for him? Have you ever stopped along the road to help a stranger change a flat tire? How many of you women have ever baked a pie and taken it down the street to a complete stranger's house? Like I said at the beginning, a lot of my writing turns out to be clear mush and this is probably the case here. Be that as it may, I'm sure that this Christmas and those to follow will find me with a new attitude towards giving. Memories of the few times in my life I have acted on impulse and given to a stranger have lain dormant in my mind for too long. It took the action of a stranger to remind me that some of the greatest satisfaction I have had in life has come from giving or lending a hand to a stranger. You ought to try it yourself this Christmas season. * * *

Merry Christmas to all!

FEASTER'S BARBER SHOP

LOOK YOUR BEST FOR THE HOLIDAY SEASON

Hrs. Wk Days 10 to 6
Saturdays 9 to 6:30
99th & Portland Ave.



We Hope Your House is Filled with Joy.

GENE'S MIDLAND DRUG

MIDLAND
99th & Portland Avenue

PEACE ON EARTH
GOOD WILL TOWARD MEN

Allison's Variety Store

99th & Portland Ave.



We Wish YOU the Very Best of EVERYTHING

ANGLEA'S

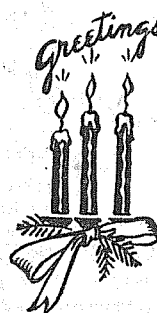
ICE CREAM SHOP

7511 Portland Avenue



Merry Christmas
FRANK GURAL and JOE POWLOSKI
North Pole Food Lockers
Midland LE 7-8181

HOLIDAY



Gay-Line Boats and Sporting Equipment

LE 7-4755
9412 Portland Ave.

OUR WISH FOR YOU
... Christmas expectations happily fulfilled!



CLAY ROLEY AGENCY

99th & Portland Avenue

LE 7-8501

MERRY CHRISTMAS

The Holiday season at last is here,
Time to wish friends far and near
Merry Christmas, Happy New Year.
From The Entire Staff
At

POCHEL'S

YOUR FUEL OIL AND APPLIANCE DEALER

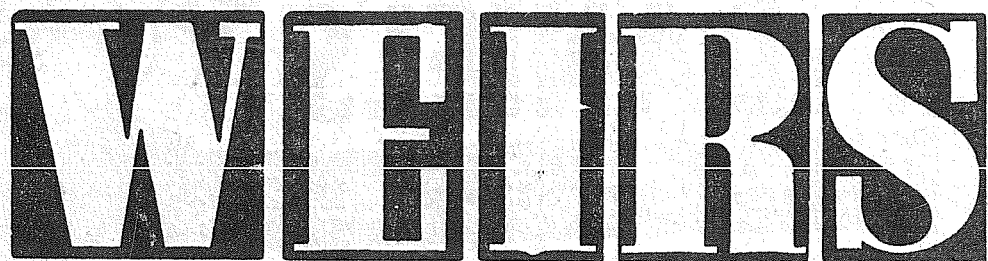
140th & Pacific Ave.

LE 7-8624



HEADQUARTERS FOR AUTOMATIC BUCCANEER WOOD HEATERS

OPEN 9 to 9 — SAT. 'TIL 6



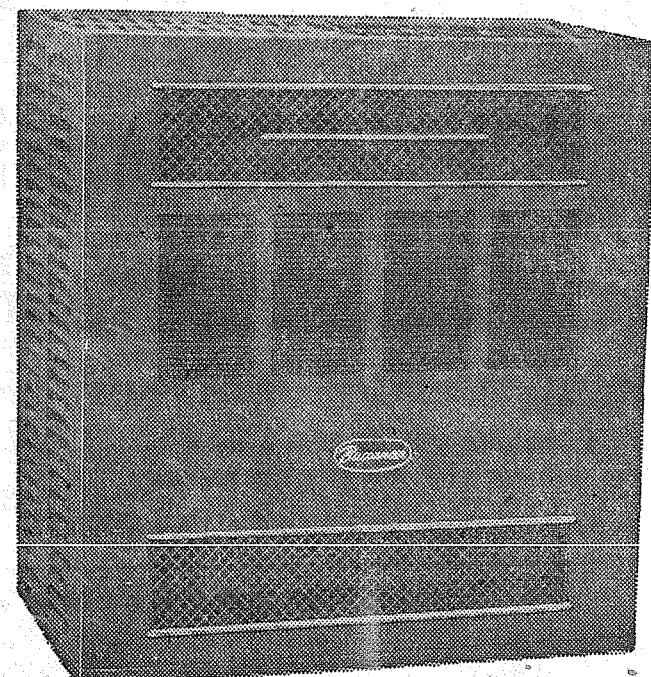
8419 PORTLAND AVENUE

LE 7-0231

- SAVE UP TO 35% ON YOUR WOOD BILL
- GIANT AUTOMATIC BLOWER
- AUTOMATIC THERMOSTAT
- WARM FLOORS

PRICES TO FIT YOUR BUDGET—EASY TERMS

LARGE TRADE-INS



from ALL
of us at...



● Van Valin Frozen Fancy
STRAWBERRIES 8 10-oz. Pkgs. \$1

a very Merry Christmas

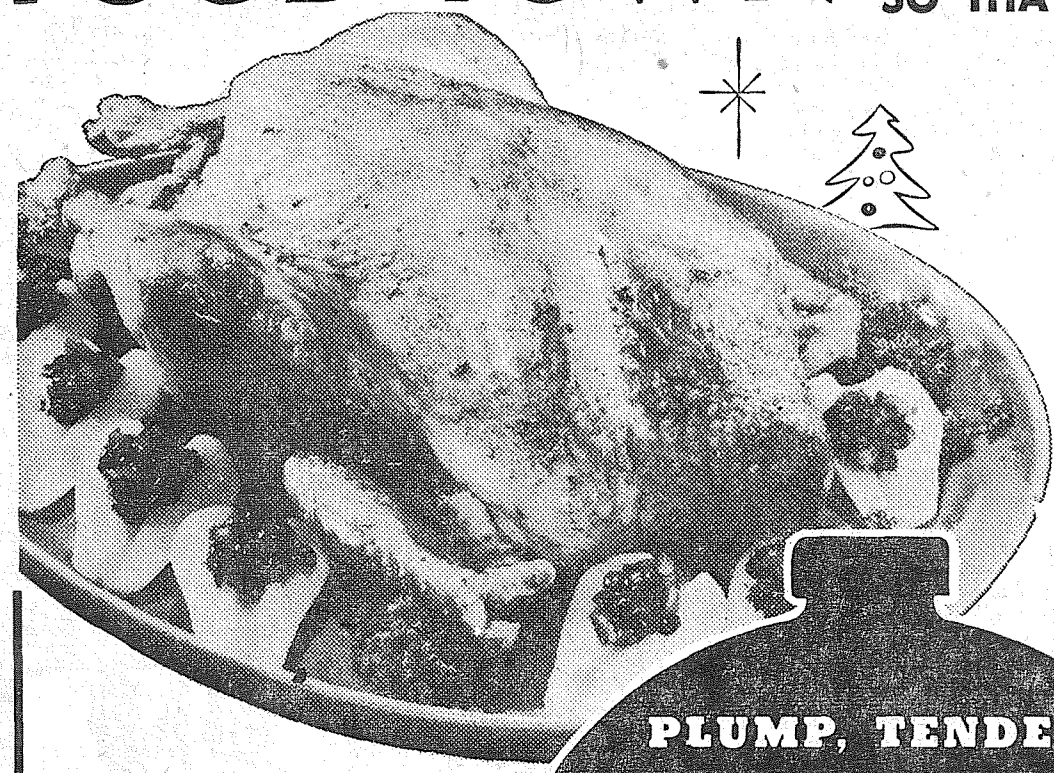
IGA, 3-LB. TIN
SNO-KREEM 59^c

IGA DELUXE 2-LB. 1-17;
COFFEE 1-Lb. 59^c

LIBBY, 2½ TIN
PUMPKIN 2 FOR 29^c

Agan Frozen, 10-oz.
GREEN PEAS 8 FOR \$1

FOOD TOWN WILL BE CLOSED CHRISTMAS DAY
SO THAT ALL OF OUR EMPLOYEES CAN BE WITH THEIR FAMILIES



● **IGA MARGARINE** 1-POUND PACKAGE 15^c

● **C&H SUGAR** BROWN OR POWDER 2 1-LB. PKGS. 25^c

GRADE 'A' TABLERITE WASHINGTON GROWN, 18-24 LBS. AVERAGE
TOM TURKEYS Lb. 47^c

GRADE 'A' TABLERITE WASHINGTON GROWN, 10-14 LBS. AVERAGE
HEN TURKEYS Lb. 53^c

BONELESS HAMS BAR-S OR HYGRADE FULLY-COOKED 7-11 LBS. 79^c

CANNED HAMS
BONELESS ★ FULLY-COOKED
-HYGRADE 5 lb. tin 4.19
-ARMOUR'S 4 lb. tin 3.98
-RATH'S 3 lb. tin 2.98

FRESH OYSTERS
MEDIUM SIZE;
12-OUNCE JAR 59^c
SLICED BACON
SWIFT PREMIUM
1-POUND PACKAGE 59^c

PLUMP, TENDER
TURKEY
U.S.D.A. Inspected "B" Grade
Limited Quantity
39^c Lb.

TANGARINES
A TREAT FOR CHRISTMAS
lb. 10^c

CRANBERRIES
EASTERN U.S.D.A. INSPECTED
lb. box 15^c

EMPEROR
GRAPES 10^c Lb.

FRESH CRISP
CELERY 10^c Stock

FRUIT COCKTAIL
IGA FANCY GRADE,
303 TINS ... 5 FOR 99^c

BUTTERMILK BISCUITS 8-Oz. Pkg. Pillsbury Each 8^c
SWEETMILK BISCUITS 8-Oz. Pkg. Ballard Each 8^c
SWEET POTATOES 2 No. 3 Squat Tins Taylor's 49^c
ASPARAGUS SPEARS Walla Walla No. 300 Tin 35^c
TOMATO CATSUP Del Monte 14-Oz., 18c. 4 For 69^c
PARTY CRACKERS Sunshine 5 Varieties 4 For \$1.00

CREAM CHEESE Phila. 8-Oz. 35^c
APPLE JUICE Tree Top Quart 27c. 4 For \$1.00
TINY SHRIMP Pacific Pearl 4½-Oz. 35c. 3 For \$1.00
RIPE OLIVES Wyandotte Large 4 7-Oz. Tins \$1.00
M.J.B. RICE Quick White or Brown, 24-Oz. 39^c
LIBBY'S DILLS Reg. or Kosher 22-Ounce Jar 35^c

IGA HALVES
RIPE 'N' RAGGED
PEACHES
4 2½ TINS \$1
Each 27c

● WALLA WALLA
GREEN PEAS
OR WHOLE KERNEL OR
CREAM CORN
303 Tins — 17c
6 FOR \$1

● **IGA BOOK MATCHES** 50 Count Package 10^c

● **IGA PAPER NAPKINS** White 80 Count 8^c Pkg.

Heavy Duty 18 in. x 25 ft.
ALCOA FOIL 59^c

GIANT PANDA BEARS \$1.99
Reg. 4.59 SPECIAL

FOOD IGA TOWN

AIRPORT (112th) AT PARK

AD DAYS DEC. 22-23-24

**LINOLEUM, FORMICA,
CARPETS**
FREE ESTIMATES
PACIFIC FLOOR COVERING
131st & Pacific LE 7-4545

**Clover Creek ...
Pack 79 Will Meet**
Cub scout pack 79 will have its regular monthly meeting Dec. 23 at 7:30 p.m. in the Clover Creek

School Refreshments will be served after the short business meeting.
New Scout Rep
LaMar Bentley has resigned from the job as Scout Institutional Representative. Mr. Bentley has taken a new job in Portland. Mr. Jasmer has been selected as his Scout replacement.

Test Tubes Free
Radio and T.V. tubes will be tested free at the Roy Barber Shop
PTA Xmas Treats
The PTA Christmas treat will be given to every child in school Friday afternoon, Dec. 23.
Mrs. Tennyson Back
Glad to see Mrs. Ed Tennyson at the Clover Creek women's club and the Clover Creek Grange. She's feeling much better.
Reporter — Kathryn Deady

now that a complete line of tubes are stocked and available. Call at the home of Chuck Miles Sundays and Mondays.
No Church
Because of Christmas and New Years falling on Sunday, there will be no services held in the Roy Congregational Community Church the next two Sundays. Services will resume on January 8.
Visits
Mrs. Gary (Janice) Wymore is visiting in the home of her parents, Mr. and Mrs. Earl Graves over the holidays.
Home From College
Neil Lambertsen, son of Mr. and Mrs. George Lambertsen, returned from WSU on Friday to spend the holidays with his parents.
Reporter, Martha Berggren.

Girl Scouts To Give Afternoon Tea
(From Page 3)
A gift exchange took place with presents having been made by the girls during their meetings. The sixty girls enjoyed the refreshments of hot chocolate, open faced sandwiches, cookies, and candy canes. Games were led by Joanne Norris. Leaders and helpers participating in the party were: Hannah Hansen, Joanne Norris, Mona Bjorkman, Minnie Hansen, Darlene Lytle, Mary Graham, and Irene McKee.
4-H Party
The 4-H Christmas party is completely in the hands of its members. A representative from each group met in the Youth Center to discuss plans. It too will be held in the Youth Center for all the community 4-H groups. Instead of an exchange of presents the 4-Hers will contribute 35 cents, ordinarily spent on a gift, to buy a polaroid camera for an orphanage. Pictures of the youngsters are needed for prospective parents.
Busy Chix — The Busy Chix felt so rewarded in the grateful acceptance of their Thanksgiving basket that they are making a Christmas basket to give to the same needy family. The basket will consist of food and toys.
Mrs. Arlo Morton and Mrs. Clifton Patterson were presented with 5 year Leadership Pins December 3rd, during County Achievement Day ceremonies at Sumner High School.
Two-In-One — At the last regular meeting of the Two-In-One 4-H group, Mrs. Wayne Little presented year pins and the premium money received from the Junior Fair. Four demonstrations were given as follows: Jim Butler — "Proper way to lift and carry a rabbit"; Linda Celmer — "How to frost a cake"; Karen Moyer — "The parts of a horse's hoof"; and Lynn Little — "Articles needed for grooming a dairy animal".
Burnett Birthday
Burnett Birthday club members met Tuesday, December 6, at the home of Pearl Dietrich. The birthday celebrities were Pearl Diet-

F P Schools Out Tomorrow
Schools in the Franklin Pierce District will close tomorrow for Christmas vacation, according to Superintendent Edwin Nelson.
Classes in all schools will dismiss one hour early, with buses carrying students home then on regular schedule.
On January 3, school will reopen with a full-day of regular class.

Estimates Without Obligation
QUALITY HOMES
DESIGN ASSISTANCE
Hedlund Const.
868 Tule Lake Rd. LE 7-4227



**Airport Way
Cabinet
AND
Millwork**

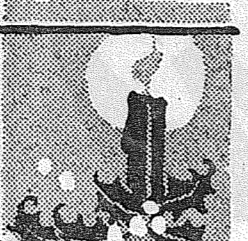
1413 So. 12th LE 7-3579

**Merry
Christmas
FOLKS**



From All of Us To
All Of You.
RICHARDSON
WELL DRILLING CO.
219 So. 115th. LE 7-7332

**MERRY
CHRISTMAS**



**PARKLAND LE 1-1331
AUTO
PARTS**
127th & PAC. AVE.

**PIERCE COUNTY
REFUSE CO.
Weekly
Garbage Collections
Phone LE 7-8688**

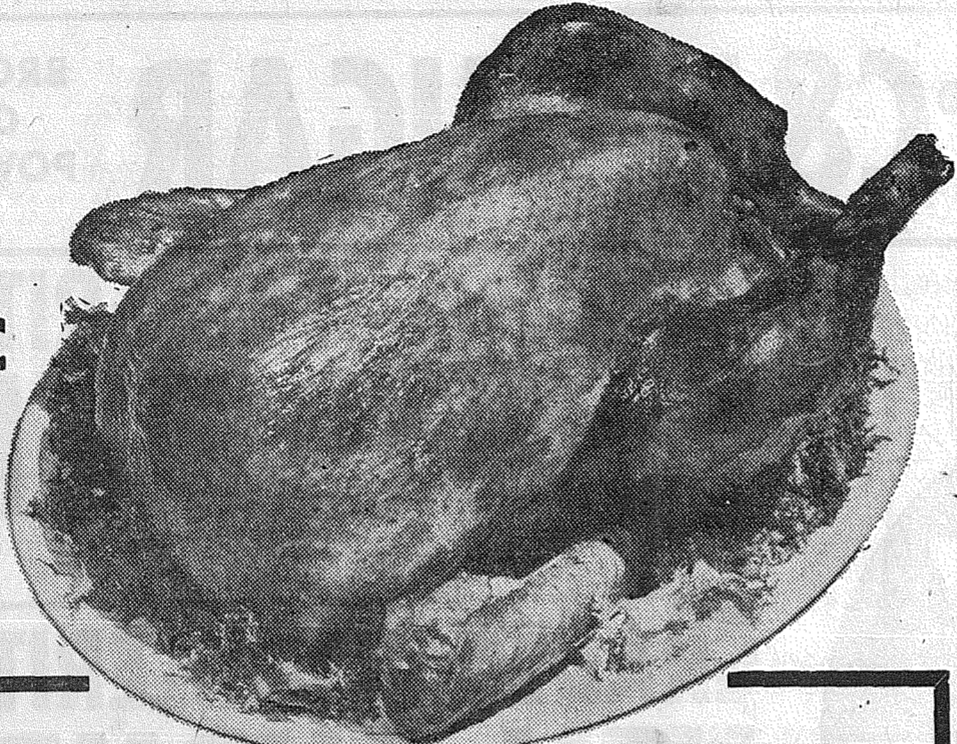


**BLUE SPRUCE SERVICE
AND
AUTOMOTIVE REPAIR**
127th & Pacific Avenue LE 7-9996

**AND BEST WISHES
FOR
THE NEW YEAR**

TURKEYS
GRADE "A"
GOVT.
INSPECTED
TOMS
19 to 23 lb. Avg.
Shurfresh or
Lynden Brand

**47^c
lb**



PRICES EFFECTIVE THURS., FRI., SAT.,
DEC. 22 - 23 - 24. RIGHT TO LIMIT RESERVED

ALL GREEN STALKS CELERY	2/15 ^c
NO. 1 TEXAS YAMS	2 lbs. 29 ^c
BRUSSELS SPROUTS	2 lbs. 29 ^c
U.S. NO. 1 SPUDS	10 lbs. 45 ^c

U.S. Choice, Boneless Top Round ROUND STEAKlb.	89 ^c
U.S. Choice Blade Cut POT ROASTlb.	39 ^c
Fresh Pacific (Medium) OYSTERS12-Oz. Jar	55 ^c

BEVERAGES SHASTA 28-oz. BOTTLES NO DEPOSIT **6/\$1**

BEST FOODS MAYONNAISE QUARTS ONLY **45^c**

BULK NUTS Filberts, Walnuts, Almonds, Brazils or Mixed **49^c LB.**

C & H SUGAR 10-Lb. Bag **99^c**

CRANBERRIES SHURFINE — 15-Oz. Whole or Strained.....	2/39 ^c	FOLGER'S COFFEE 2-LB. TIN 1.29 1 Pound Tin Now.....	65 ^c
MINCEMEAT S&W BRAND 28-Ounce.....	49 ^c	SHUR-FRESH COFFEE 2-LB. TIN \$1.17 1-Lb. Tins.....	59 ^c
PUMPKIN SHURFINE 29-Ounce Tin.....	2/29 ^c	PAPER NAPKINS SOFLIN ASSTD. 80 Count.....	10 ^c
MEDIUM RIPE OLIVES SHURFINE 7½-Oz.....	2/49 ^c	HOLIDAY MIX CAROUSEL CANDY, 2 Lbs.....	59 ^c
COCKTAIL SHRIMP PACIFIC PEARL, 4½-Oz.....	3/\$1	N.B.C SNACK ITEMS Yours.....	3/\$1

SHUR-FRESH — Reg. 69c
POTATO CHIPS..... **59^c**
MORTONS PUMPKIN OR
MINCE PIES..... **39^c**
SPARKLE, ASSORTED FLAVORS
ICE CREAM 2½ Gallon **2.98**

**SUMMIT
VIEW**

THRIFTWAY
WHERE Every CUSTOMER IS IMPORTANT!

**A&H GUARANTEE
BODY WORKS**
Airport and Canyon Roads
LE 7-8890

**Christmas
GREETINGS**
FROM
**SUMMIT VIEW
AUTO REPAIR**
10904 E. Canyon Rd.
LE 1-0424



**JERRY'S
SHELL SERVICE**
Knapp & Canyon Road

**Harold's
Shoe Service**
Airport and Canyon Roads

**Yuletide
GREETINGS**
From
ART & RAYS AUTO
4708 East 112th LE 1-2121



**JERRY'S
SHELL SERVICE**
Knapp & Canyon Road

**Summit
FURNITURE & APPLIANCE**
5303 E. 112th
LE 7-8676

**Yuletide
GREETINGS**
From
ART & RAYS AUTO
4708 East 112th LE 1-2121



**The Old Fashioned
CHRISTMAS SPIRIT**

Behind the joy, feasting and gift giving which help so much to make Christmas the most important day in the year there rests a fundamental spiritual and religious feeling.

Our Christmas has become an institution, successfully serving an inner as well as an outer need . . . an institution based on old, well founded precepts . . . yet as well adapted to the needs of the world today as it was centuries ago. It is an institution capable of fulfilling an age-old requirement . . . that of joy to mankind.

It is our hope that from this day you will gain the full measure of joy . . . and that the New Year will be the best you've ever had.

**YE STAFF OF THE
TIMES JOURNAL PUBLISHING CO.**
PUBLISHERS OF
The Times Journal, McChord Observer & Northwest Flyer

From Soup To Nuts

By Floyd A. Fessler

WHAT'S IN A POLL? The Washington Huskies, who most people east of the Mississippi have probably heard of by now, were ranked fifth and sixth in most leading polls. Yet one of the most accurate, namely the Harmon Forecasts, put them in the embarrassing position of 17th. This is embarrassing because on Jan. 2 they will be exchanging unpleasantries with a bunch of gentlemen from Minnesota who happen to be frequently ranked No. 1 and at least No. 3, no matter whose poll you read.

Now, according to Harmon, Washington has no business being on the same field as the Gophers. How come? Because the Huskies are too far west of the Mississippi? Because they just don't have it this year? We'll just have to wait and see.

In the meantime, every columnist takes advantage of his position, prestige, and self-inflated egotism to make those ridiculous things known as predictions. These consist of nothing more than saying team A, which is ranked higher than team B, will whip the pants off team B. About 70 per cent of the time this will happen, thus most columnists are usually about 70 per cent correct. (Merry Christmas to all columnists achieving more than 70 per cent accuracy once or more times in their lives. Send your complaints on the back of a Christmas card, we need them to decorate the office).

Being at least as egotistical and self-confident as anybody else, we shall now crawl out on the well-known limb:

Rose Bowl: Who's tougher? It is the practice of both the Huskies and the Gophers to wear down opponents through the line, causing them to make mistakes. Washington has a more wide-open offense, but can they stop Tom Brown? We look for the Huskies to go through the air more than usual in an effort to get over Minnesota's here-to-fore impenetrable defense. Washington has the advantage of Rose Bowl experience, while Minnesota will be fighting Big-Ten lethargy. Both teams are firmly con-

FP Homecoming Festivities Will Begin Tomorrow



Franklin Pierce Homecoming committee, left to right: Mary Ann Aldrich; Judy McNickle, chairman; Margaret Logan and Sue Jensen.

Kicking-off the basketball season and honoring alumni, the Franklin Pierce student body begins homecoming festivities tomorrow with an assembly featuring the crowning of the 1960-61 homecoming queen.

Chairman Judy McNickle has issued a special invitation to all alumni to attend the affair.

Alumni and student performances, the drawing of a ticket for a gift certificate raffle and community singing will also be presented on the program. Mary

Ann Aldrich, girls' Club president, will act as mistress of ceremonies. A reception for alumni is scheduled for the evening of December 30 at the school, followed by a basketball game with Lincoln and an after-game dance based on the theme of welcoming the new year in.

Some Alumni included in the assembly program are Darlene Hendrickson, Joanne Ripoli, Judy Abbott, Sharron Peecher, Roxanne Johnson, Sue Sullivan and Virginia Miller.

vinced they can whip their opponent. However, Husky fans must remember this is not Wisconsin, this is the number one team in the nation. MINNESOTA 22-WASHINGTON 14.

Cotton Bowl: Duke upset Navy, but the Blue Devils were the only stout competition the Middies faced all year, besides the Huskies. Arkansas has a clear cut advantage, besides being closer to home. RAZORBACKS 27-BLUE DEVILS 8.

Sugar Bowl: Count on Ole Miss to give another good show. Consistent as they come, Mississippi should chalk up another bowl victory in this one. Rice will try their utmost to knock off a highly favored team, but we don't think it will happen. OLE MISS 24-OWLS 12.

Orange Bowl: How good are Joe Bellino's teammates? Can the one-man Navy gang twist the Tiger's Tail? Will the boys from the show-me state stop that All-American? This should be a close one. MISSOURI 21-NAVY 20.

Harmon Gazes East, Places Huskies 17th

The final Harmon football forecast, distributed exclusively to weeklies throughout the nation, places the Huskies of Washington 17th among the country's top football teams.

Washington ranked fifth and sixth in most other final tabulations, shouldn't feel too bad about this one as they were the only team more than a stone's throw west of the Mississippi to receive mention in the Harmon top twenty. The final tabulations, complete with bowl predictions, read like this:

THE TOP 20 COLLEGE FOOTBALL TEAMS FOR 1960

1-Iowa	113.8
2-Mississippi	111.9
3-Minnesota	107.7
4-Kansas	106.7
5-Missouri	105.5

6-Ohio State	105.2
7-Mich. State	105.0
8-Arkansas	102.5
9-Rice	102.2
10-Alabama	101.0
11-Purdue	100.9
12-Syracuse	100.4
13-Baylor	100.3
14-Auburn	100.2
15-Florida	99.9
16-Michigan	99.9
17-Washington	98.8
18-Navy	98.6
19-Tennessee	98.5
20-Texas	98.3

Friday, December 30
Tangerine Bowl: — The Citadel
21 — Tennessee Tech. 17

Saturday, December 31
Gator Bowl: — Baylor 8 — Florida 7

Sun Bowl: — New Mexico St 28 — Utah State 22.

Monday, January 2

Cotton Bowl: — Arkansas 17 — Duke 6
Orange Bowl: — Missouri 21 — Navy 14.
Rose Bowl: — Minnesota 23 —

Washington 14. Final Forecasting Average: Sugar Bowl: — Mississippi 17 — 945 correct, 276 incorrect, 48 Ties Rice 7. — 774.

Announcing the Reopening of the

PARKLAND CHIROPRACTIC CENTER

Open Mon.-Wed.-Fri. From 10 - 6

11110 Pacific Ave. LE 1-2616

Merry Christmas Foods



ENRICHED FLOUR. FOR HOLIDAY BAKING

Gold Medal 10-lb. Bag 89¢

OCEAN SPRAY WHOLE OR JELLIED, SO GOOD WITH TURKEY

Cranberry Sauce 16-oz. Can 19¢

LIBBY'S, A MUST FOR CHRISTMAS DINNER

Pumpkin 2 No. 2 1/2 Cans 29¢

NU MADE—PERFECT FOR HOLIDAY SALADS

Mayonnaise 24-oz. Jar 39¢



TURKEYS

LYNDEN, GRADE "A"—BROAD-BREAST—U.S.D.A. INSPECTED—BUY NOW!

10-17 Pounds **53¢ lb.** 18-24 Pounds **47¢ lb.**

CANNED HAMS

BONELESS—NO WASTE—FULLY COOKED—HEAT AND SERVE

HORMELS MORRELLS

9-lb. **\$6.99** Can 5-lb. **\$3.99** Can

Smoked Hams DIAMOND F, 10-16 lbs. Whole or Shank Half **55¢ lb.**

Ducklings MANOR HOUSE, 3-4 lbs. FROZEN—SERVE ROASTED **55¢ lb.**

Scallops FRESH FROZEN—NO SAUTE, BROIL OR FRY—ummmmmmm! **59¢ lb.**

FRESH CRAB

OCEAN CAUGHT—SERVE COCKTAILS FOR CHRISTMAS **33¢ lb.**

Bakery Features

Brown'n Serve Rolls

SKYLARK, WHITE OR HALF AND HALF. PRE-BAKED, TASTE LIKE HOME MADE **3 Pkgs. \$1.00**

MRS. WRIGHT'S, 3-lb. Pkg. \$1.79

Fruit Cake Rings 21-oz. Pkg. 93¢

ICE CREAM

LUCERNE, Spumoni or Peppermint Candy **Half Gal. 79¢**

Frozen Foods

BEL-AIR FRESH FROZEN Mince OR Pumpkin Pie **24-oz. Pie 39¢**

BEL-AIR FRESH FROZEN SPEARS Asparagus **3 8-oz. Pkgs. \$1.00**

BEL-AIR FROZEN—PREMIUM QUALITY Green Peas **6 10-oz. Pkgs. \$1.00**

Turkeys **NORBEST—4 TO 8 POUNDS BUY YOURS NOW FOR CHRISTMAS 55¢ lb.**

Armour's Boneless Hams **79¢ lb.**

Fiesta Boneless Hams **89¢ lb.**

Holiday Boneless Hams **89¢ lb.**

Ham Slices **CUT FROM TENDER SMOKED HAMS 89¢ lb.**

Leg of Pork **WHOLE OR HALF TENDER, GRAMIN FED PORK 59¢ lb.**

Sausage Rolls **SAFEWAY—PURE SAUSAGE 1-lb. Pkg. 39¢**

Fresh Oysters **CAPTAIN'S CHOICE MEDIUM SIZE 12-oz. Jar 55¢**

MIRACLE WHIP

SALAD DRESSING **Quart Jar 39¢**

Potato Chips **Triple Pack 59¢**

Nalley's Dips **8-oz. 49¢**

Sample Nalley's Chips & Dips at 82nd & Pacific Safeway, Fri. & Sat.

CRAGMONT. Assorted Flavors

Beverages **6 12-oz. Cans 49¢**

LUCERNE Egg Nog **All Mixed and Ready to Pour Qt. 59¢**

Alka-Seltzer **FOR SPEEDY RELIEF (REG. 54¢) Bottle of 25 45¢**

Presto Logs **10 logs 89¢**

Lucerne Slenderway

900 CALORIE DAILY DIET VANILLA OR CHOCOLATE—Quart **79¢**

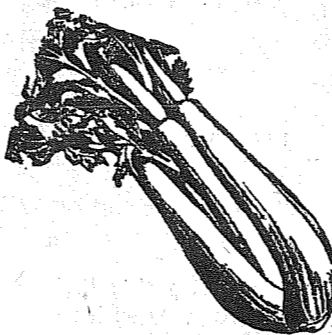
FLAVORS—For Weight Control. Ctn. **79¢**

Chocolates Mrs. Wright's Box **2 1/2-lb. \$1.69**

7-Up **(PLUS BOTTLE DEPOSIT) 2 29-oz. Bottles 45¢**

Margarine **GOOD LUCK 2 1-lb. Pkg. 55¢**

Mild Cheese **SAFEWAY 1-lb. 65¢**



CELERY 5¢ lb.

CRISP AND CRUNCHY—FULL OF JUICY FLAVOR—IDEAL FOR CHRISTMAS DINNER RELISH TRAYS AND SALADS

Navel Oranges

LARGE PREMIUM SIZE—SWEET, JUICY—FULLY FLAVORED **lb. 10¢**

Holiday Tangerines

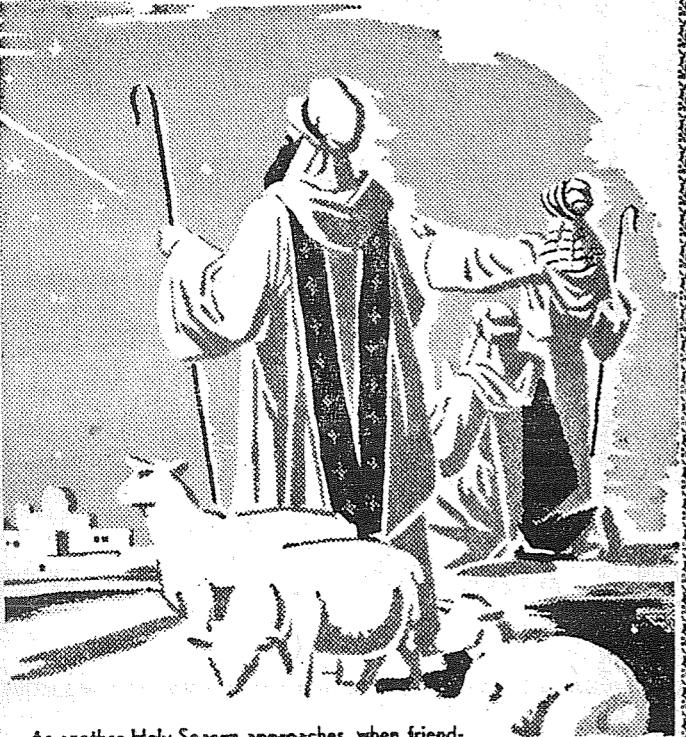
EASY TO PEEL, JUICY. FOR CHRISTMAS STOCKINGS **2 lbs. 25¢**



SAFEWAY

Sale starts 9 a. m. Thursday, December 22nd through Saturday, December 24th at 82nd & Pacific & Lakewood. We reserve the right to limit quantities. No sales to dealers.

Merry Christmas



As another Holy Season approaches, when friendships are not measured but cherished, we want to wish our family of friends a truly Merry Christmas, a Christmas that will linger endlessly.

Harold E. LeMay and Family

and Employees of

LUCKY SALES & SERVICE

and

PIERCE COUNTY REFUSE CO.

MERRY CHRISTMAS



We wish you a Christmas merry,
A Yuletide cheery and bright
And we wish when the holidays
are done,
Your great joys will have
only begun.

National Bank of Washington
MEMBER FDIC PARKLAND BRANCH



WILMA'S BEAUTY SHOP

11000 Pacific Ave. (Keller's Kort) LE 7-5852

May your Christmas
Eve be filled with sweet
voices of carollers. May
your day be bright with
joy.

Our good wishes are many,
our hopes for your happi-
ness are warm and deep,
our thanks for your patron-
age are hearty. We say it
all with, "Merry Christ-
mas."



A-I AUTO WRECKING

13818 Pacific Ave. LE 7-3445



Here's a tree-full of wishes
for your Christmas joy. May
you and yours be richly
blessed with all the good
things of the season.

**SOUTH END PLUMBING
& HARDWARE**

185th & Pacific Ave. LE 7-4100

Bright as the ornaments on a
Christmas tree are our
holiday wishes for you. We
hope the Yuletide season
finds you at the peak of
health and happiness.



**GUNDERSON'S
FLYING A**

133rd & Pacific Ave. LE 7-9910



The best news
is that the Yule-
tide season
is here! We

hope you and
yours enjoy it
to the full!

BROOKDALE LUMBER

136th & Pacific Ave. LE 7-8669



Popping up again with a
chest full of good wishes
for everybody! May the joy
of this wonderful season
pervade the year to come
and may you and your loved
ones share in its riches!

CARL T. LINDGREN
410 Garfield St. LE 7-4083



Warmest regards to you
and yours during this most
happy and inspiring Christ-
mas season.

**RUDY'S FEED &
SEED CO.**
14660 Pacific Ave. LE 7-4888



Merry Christmas

Santa may skate off with
the prizes for the best
Christmas greetings but we
can't help adding our wish-
es that all your dreams
come true!

SHERIDAN MOTORS
10203 So. Sheridan LE 7-3340



Yuletide Joy

Here's hoping that every
home will be clothed in the
joyous spirit of the season
and that every good wish
for the holiday comes true!

PARKLAND HEATING CO.
755 So. 108th LE 7-4045

Yuletide Greetings



We're sending this little
cherub your way with the
cheeriest greetings we
know, hoping that this
holiday will be the happi-
est ever for you and
yours.

FLETCHER'S TEXACO

9827 Pacific Ave. LE 1-2442



MERRY CHRISTMAS

Here's hoping your
Christmas will "ring the
bell" for good cheer and
good fellowship
for wishes fulfilled and
dreams come true
for happiness all around
your family circle
for festive fun for one
and all.

**TACOMA PUMP &
WELL DRILLING**

Harold Hillman — Marv Hanson
146th & Pacific Ave. LE 7-7281



We've left a note for
Santa on the chimney
but your Christmas
greeting goes right here
. . . . Cheers to you this
happy season . . . to all
your loved ones too.
May the holiday bring
great happiness and all
your dreams come true!

**PARKLAND
HARDWARE**

12169 Pacific Ave. LE 7-3171



Santa'd like to wake up
the town with his Christmas
greetings and we can't help
joining in just as enthus-
iastically to wish you all the
Season's best.

SQ-EARLY CORNER

10802 So. Park Ave. LE 7-9944

On the highest branch of
our Christmas tree, we
fondly place our warmest
holiday greetings to you,
our friends and neighbors.

**PARKLAND WESTERN
AUTO**

11108 Pacific Ave. LE 7-3112



Merry Christmas



The light of Christmas shines brightly all over
the world, piercing the darkest shadows, lifting
every heart with its message of "Peace on Earth
Good Will to Men." May it shine most kindly on
you and yours . . . renewing for you all the wonder
of the Day.

TAHOMA FLYING SERVICE

SPANAWAY AIRPORT
185th & Pacific Avenue LE 1-0442



Christmas Greetings

As the sound of Christmas
music fills the air, may the
wonder of the Christmas
story fill your heart anew,
bringing you all the joys of
this happiest of all days.

RAU MFG. CO.
14114 Pacific Ave. LE 7-7372



The warmth of our wishes
for your happiness in the
holiday season would quick-
ly melt the biggest snow-
man ever made. Have a
merry Yuletide

HAVEN'S TAVERN
JOE & ANN

125th & Pacific Ave. LE 7-9995

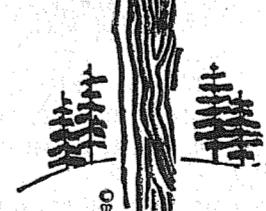


Yuletide Greetings

What a bright store of
memories the holidays
make! Here's wishing all
the joys of the season to
you.

**PACIFIC
FLOOR COVERING**

13023 Pacific Ave. LE 7-4545



Whether or not they are
white . . . may all your
Christmases be bright and
right. Cheers!

NOLA'S BEAUTY SALON
Big Bear Shopping Center
LE 7-0666

Your friends and neighbors in this
community, who serve you through-
out the year, join in the great Christ-
mas tradition of exchanging greet-
ings and good wishes.

Holiday Greetings



Much of the world has changed since our grand-
parents urged the team to a gallop over snowy
roads to family gatherings. But unchanged remains
the holiday, the family, the gathering. Let us
guard closely in our hearts the spirit of this won-
derful season to pass on to generations to come.

VIS-REY SHAKE & SIDING

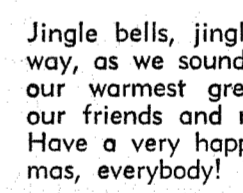
12702 Pacific Ave. LE 7-4080



May this grand season be
a masterpiece of merriment
and a memorable meeting
of hearts for you and yours
. . . in a setting of peace
and plenty.

ARMSTRONG'S USED CARS

11009 Pacific Ave. LE 7-5524



Jingle bells, jingle all the
way, as we sound off with
our warmest greetings to
our friends and neighbors.
Have a very happy Christ-
mas, everybody!



MT. VIEW CLEANERS

119th & Pacific Ave. LE 7-3261

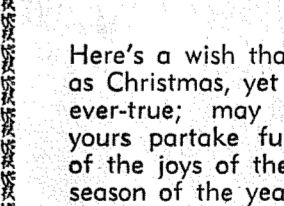


Yuletide Greetings

Here's to a heavenly holi-
day . . . rich in love and
friendship . . . a Day long
to be remembered most
happily by you and yours.
Merry Christmas!

ART'S SHOE SHOP

315 So. Garfield St. LE 7-8771



Here's a wish that's as old
as Christmas, yet ever-new,
ever-true; may you and
yours partake fully of all
of the joys of the happiest
season of the year.

ANDERSON CHEVRON SERVICE

176th & Pacific Ave. LE 7-0404



It's hard to frame our
greetings in any better
words than those that have
meant so much to so many
for so long; a very Merry
Christmas to one and all!

COPE'S USED CARS

9614 Pacific Ave. LE 7-5060



In this season of joyous
gathering and exchanging
of gifts, may each one
discover in his own heart
the deep spiritual inspira-
tion of Christmas.

A & A AUTO WRECKING

13620 Pacific Ave. LE 7-3811

GREETINGS TO ALL

Here, they take the opportunity to send your way their thanks for your patronage and their sincere hopes for your happiness at the holiday season.



MERRY CHRISTMAS

As Santa scoots along from house to house spreading holiday joy, we add our wish that your Christmas be the brightest and the happiest ever!

SPANAWAY HARDWARE
170th & Pacific Ave. LE 7-8378



A whole tree-full of holiday greetings! We hope yours will be a most joyful Christmas.

HERMAN'S FOOD STORE
162nd & Park Ave. Spanaway



Merry Christmas

With signs of Christmas all about us, we are reminded to wish you and yours all the joys of the season.

WEBB ELECTRIC CO.
11112 Pacific Ave. LE 1-1133



We're trying to "cut a pretty figure" as we hold high our wishes to you for the merriest Christmas ever!

AIRPORT LUMBER & BUILDING SUPPLIES
10506 Sales Road JU 8-3257

Once again we want to take this opportunity during the gala holiday season to thank our many customers and to wish for every one of our friends the fullest measure of good cheer and happiness at Christmas ... and always!



RURAL REAL ESTATE
14403 Pacific Ave. BILL, JACK & ORA LE 7-5440



In the spirit of the first Christmas, it is our sincere wish that you and your family will partake in fullest measure of all the blessings of this Holy Day, which for so long has meant so much to so many.

SHOP-ETTE VARIETY & DEPT. STORE

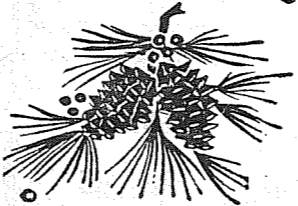
133rd & Pacific Ave.
Big Bear Shopping Center

Along with Santa, we want to wish you the happiest of holidays ... abounding in good health, good cheer and good fellowship!



L & M AUTOMOTIVE
170th & Pacific Ave. LE 7-6772

Christmas Greetings



As the festive season bows in, we take the occasion to wish you a Yuletide rich in good cheer and high happiness.

LLOYD DILLINGHAM'S RICHFIELD SERVICE
12166 Pacific Ave. LE 7-3040



Shining brightly on the road to the festive holiday season, is our sincere wish that you and yours may enjoy an abundant measure of the good cheer and good fellowship that make Yuletide the happiest time.

JOHNSON DRUG
Pacific Avenue at Garfield Street Parkland



Maybe it's a bit old-fashioned but we wouldn't feel right if we let the holidays pass without expressing our very best wishes for your joy and happiness!

PARKLAND PHARMACY
11000 Pacific Ave. LE 7-8636



Yuletide Joy

May your home and your heart be richly filled with all the joys of Christmas!

ABC ELECTRONICS
Garfield & C Sts., Parkland LE 7-4900



Season's Greetings

May the Star of Bethlehem shine in your heart and inspire you anew with its promise of Peace on Earth.

TIC-TOC JEWELRY
10331 Pacific Ave.



With the cherubic carolers, we sing out greetings and our warm wishes for your happiness at Christmastime.

COLLEGE & CENTRE CLEANERS
LE 7-5361 Parkland LE 7-4300



Carolers will sing, joyful bells will ring. Faces will be bright with smiles, as Christmas cheer spreads across the miles. To you and yours our wishes go, for a season that's all aglow with peace and joy, without alloy ... a Christmas that is merry, very!

PARK 'N SHOP AND MIDLAND FOOD CENTER



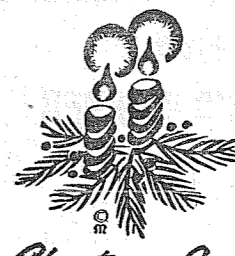
To our wonderful friends and patrons, we send warm thanks for your loyalty and good will, and sincere wishes that the holidays bring you much happiness.

GIBBONS FOOD CENTER
SPANAWAY

Packages and packages of happy Christmas wishes ... to you from all of us! May this truly be a season of peace and good will, with many blessings.

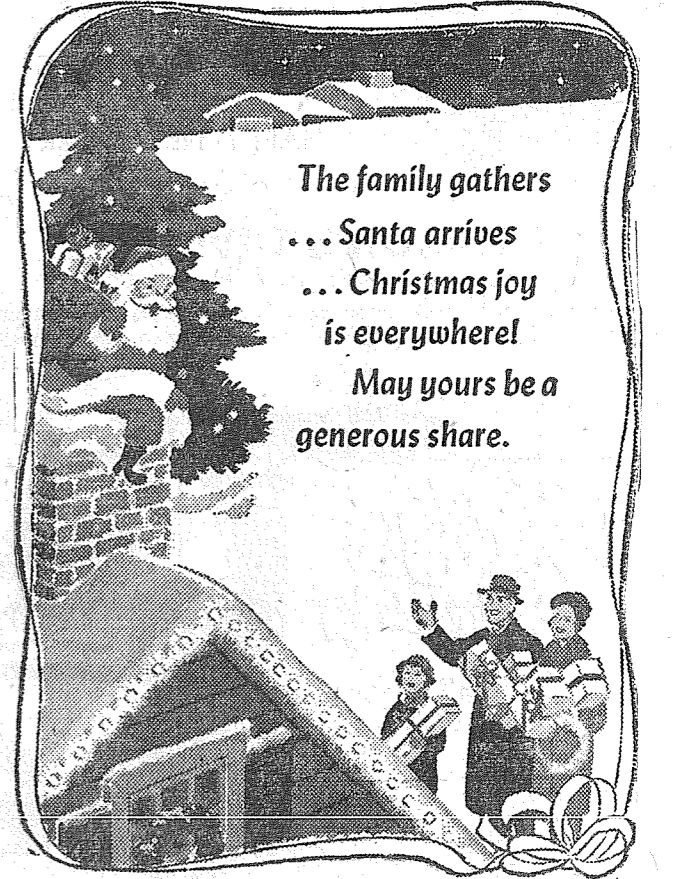


DRYER MORTUARY
THE DRYERS
220 So. 134th



Friendly and bright as the glowing flame of a candle are our Christmas greetings and warm wishes for you. May good health and good cheer be yours.

SPANAWAY AUCTION
14803 Pacific Ave. LE 7-6895



The family gathers ... Santa arrives ... Christmas joy is everywhere! May yours be a generous share.

McKEWEN STUDIO
11812 Pacific Avenue LE 7-3833



Gathered on this day are happy people celebrating Christmas among family and friends ... enjoying the good fellowship that is so important a part of the season. We're happy too! We have enjoyed the opportunity of serving you, and we thank you for the privilege.

PARKLAND GRILL

Garfield Street Near P.L.U. LE 7-5135

Christmas is a good time for thinking of our friends and for appreciating them! We thank you for your good will and for your patronage which has meant so much to us.



PARKLAND FUEL OIL SERVICE

12002 Pacific Ave. LE 7-0256

NOËL



We join jolly Santa and his merry friends in singing songs of Christmas and wishing you the best of everything at this festive season!

TOMHOFF'S FURNITURE & APPLIANCES
12716 Pacific Ave. LE 1-1875

Greetings



SPANAWAY 5 & 10

165th & Pacific Ave. LE 7-8322



We bring you a sleighfull of holiday wishes ... may your Christmas be chock full of happiness and good cheer ... rich in love and friendship.

HOME PLUMBING & HEATING
330 Garfield St. LE 7-4615

Happy Holiday



Here's hoping every little miss has all her wishes everyone to enjoy a happy holiday season — one that will be long remembered.

PARKLAND CLEANERS
11004 Pacific Ave. LE 7-3221

May the Star of Bethlehem shine on you and yours, and bring you all of the rich blessings and abiding joys of Christmas.



PARAGON PRINTERS
11802 Pacific Ave. LE 7-7100

Clear as a Christmas bell, our wishes ring out for your happiness throughout the holiday season. May its memories brighten many a long day ahead.

LEE'S Texaco Service
135th & Pacific Ave. LE 7-9903



Happy Holiday


Spanaway...
Secret Pals Hold Annual Xmas Party
The Secret Pal Club met at... followed by a gift exchange. Richard's for their annual Xmas Party Dec. 15th. There was a dinner followed by a gift exchange. The next meeting will be at Mrs. Robert Rhone's.

Get Well
Speedy get-well wishes to Mrs. Jeff Williams who has been ill in the hospital.
Sympathy
Deepest sympathy to the family of Herbert Gunns who was recently killed in an auto accident.
Home
Miss Joy Barsotti of Seattle

spent the weekend at the home of her parents, Mr. and Mrs. Joe Barsotti.
New Neighbors
A welcome to Mr. and Mrs. John Ockfen Jr. and family who have moved from Elk Plain to their new home in Spanaway.
Reporter - Mrs. Oliver Omat.

Pack 105 Will Hold Christmas Party
Cub pack 105 will hold its annual Christmas meeting and party on Dec. 22 at 7:30 p.m. at the James Sales School.
There will be a skit "Twas the Night Before Christmas". Santa


PROMPT PERSONALIZED PRESCRIPTION SERVICE
TED SWANSON
INSULIN - VITAMINS
Downtown Prices
Pay Phone Bills Here
PLENTY OF FREE PARKING
TINCHER'S PHARMACY
8227 Park Ave. GR 4-3344
Across from Fern Hill P. O.

Season's Greetings

The BUNKHOUSE
12605 Pac. Ave. LE 7-5510

General Sheet Metal Work
Special Attention to Special Equipment
RAU MFG. CO.
LEnoX 7-7372
14114 Pacific Avenue

Holiday Greetings


From
All Your Friends
On The
Roads To Paradise


ALPINE INN
1 Mile from Park
ON MT. HIGHWAY
LO 9-3215



VON'S GENERAL STORE
Frank and Georgia Carlisle
LO 9-2373 ASHFORD


BURGESS SHELL SERVICE
ELBE PHONE 2431


BUD'S RICHFIELD
Tires, Batteries, Accessories
TE 2-3291 EATONVILLE


FRANK'S PLACE
Frank Fataco
Mt. Highway


ROMAINE'S SERV. CAFE & MOTEL
LO 9-2504 Mt. Highway


LA GRANDE CAFE
Jack and Elaine Jackson
Mt. Highway—TE 2-3835


BABE'S CAFE
JUST FINE FOOD
The Way You Like It
Eatonville, Washington



SOUTHWORTH SERVICE
VI 7-7602
Corner of Kapowsin and Meridian Rds.

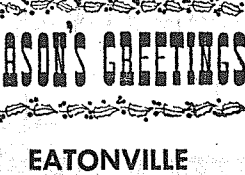

CORNER TAVERN
Fred and Mabel Miller
ELBE PHONE 2351


GENE'S VELTEX SERVICE
253 Marshall Ave. S.
Eatonville TE 2-5676


RAINIER CLEANERS
Glen and Lucille Clark
TE 2-3101 EATONVILLE


COUNTRY KITCHEN
Myrtle McMillan
Corner of Kapowsin and Meridian Rds.



A & M CAFE
Food—Not Famous BUT GOOD
Elbe, Wash. Phone 2311



EATONVILLE HOTEL & MOTEL
Rooms by Day, Week or Month
Margaret and Dick Taylor
TE 2-5666 EATONVILLE



GRAHAM GARAGE
Graham, Wn., VI 7-2221
Fred Erickson


WOODY'S MARKET
Loveland, Wash., on Ht. Hiway


CEDAR PARK MOTEL
Mt. Highway LO 9-2594


Elbe Chevron Serv.
Paul Fish
Elbe, Wash.


PARNELL'S GROCERY & LOCKERS
Eatonville, TE 2-4646


JOHNSON'S CORNER TAVERN & LUNCH
Refreshing Beverages
Mt. Road at Johnson's Cor.

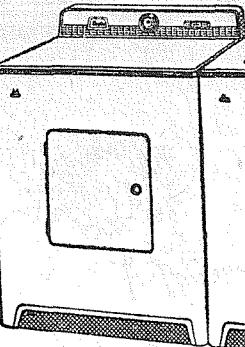

TYRRELL'S SERVICE
Mt. Highway at Roy "Y"
LE 7-7937

AIR CHARTER


FLIGHT INSTRUCTION
Approved Flight School
Wash. MOONEY Distributor
TAHOMA FLYING SERVICE
Spanaway Airport LE 1-0442



MARTEN'S AUTOMOTIVE SERVICE
761 So. 106th LE 7-6047

INCOME TAX SERVICE
PARKLAND REALTY
CHARLE PETERSON
For Appointment Call LE 7-8609


Frick & Franz Furniture & Appliance Store
8406 South Tacoma Way JU 8-6686
2 STORES TO SERVE YOU
Summit Airport & Canyon LE 7-8676

IF YOU WANT OR NEED AN AUTOMATIC WASHER, DRYER OR WRINGER WASHER SEE OUR FAIR DEAL ON SEE OUR FAIR DEAL ON MAYTAG
(America's No. 1 Laundry)
Shop Our Carload Sale and Save!

MERRY CHRISTMAS

BARSOTTI & TIMM
At the Roy Y LE 7-4221
Open 7 Days A Week, 7 a.m.-9

DRUG FACTS
ASHMORE'S SPANAWAY DRUG
JOIN ME IN WISHING YOU, ONE AND ALL—A VERY MERRY CHRISTMAS!



ASHMORE'S SPANAWAY DRUG
PHONE LE 7-5993
165th & PACIFIC AVE. SPANAWAY, WASH.

Season's Greetings
GART CRAFT
14706 Pacific Ave. LE 1-2652


Sather's Grocery
102nd & Sheridan


LOU FLORENCE
YOUR MERCHANT PATROLMAN



PARKLAND BARBER SHOP
Across from Post Office Garfield & C Sts.


KUPER'S KORNER
Groceries - Meats - Drugs
Feed - Beer - Gas - Oil
Mt. Hiway at Loveland
Phone LE 7-8031 or VI 7-7444


AND OUR WISH FOR YOU IS A VERY MERRY CHRISTMAS AND A HAPPY NEW YEAR
Gordon & Betty
WILLOW'S TAVERN
Corner of Meridian Rd. & Airport Way


BUTH HAY, GRAIN & LUMBER
On The Mountain Highway


LLOYD F. HOPKINS CO.
Distributors of
LUMBER & CEDAR PRODUCTS
Located at Oasis Trout Farm
Mt. Highway VI 7-7448


May all good things be yours this happy season
BUTLER'S GROCERY and SERVICE
GAS, HARDWARE, NOTIONS
Open 7 Days a Week
Kapowsin TE 2-4822


THE SISTERS OF THE ELK PLAIN CAFE
Mt. Highway VI 7-2136


SEASON'S GREETINGS
WESTERN CORRAL
Wearing Apparel and Riding Equipment
Mr. and Mrs. W. H. Thackeray
Willows Corner TH 5-8228


THE LONE PINE SERVICE
Near Firgrove School
Paul & Betty Orr
TH 5-5858


Greetings
WILKENS PACKING CO.
Rt. 1, Box 205 Graham
Phone VI 7-7600

13014 Pacific Avenue **SALVAGE MART** Hours: 10 - 6 Closed Xmas Day
ALL 88c TOYS NOW **59c**
APPLES Delicious, 23-Lb. Box — Regular 1.59 **99c**
CAR COATS With Hood **3.49**
CHILDRENS QUILTED HOOD Without Hood **2.98**
MEN'S SPORT SHIRTS LONG SLEEVE **1.98**
THERMAL UNDERWEAR Heavy Weight Per Piece **1.69**
SOX WHITE CUSHION SOLED **4 Pair 1.00**
BLANKETS 62x84 40% Wool **2.98**
LOCATED IN THE SALVAGE MART **LOW COST SHOE MART**
MEN'S SLIPPERS CREPE SOLE, FLEECE LINED **2.98**
BASKETBALL SHOES White Cushion Insole Suction Sole **2.98**
TENNIS OXFORDS Ladies' Nylon 4 Colors **2.98**
SLIPPER SOX WOMEN'S - MEN'S - CHILDREN'S **99c To 1.79**
GIRLS BLACK PATENTS **2.98**

Notice

Effective Jan. 1 a fire permit will be required for the burning of any large piles of debris or any type of open fire. In the past the Spanaway fire department has answered several calls, only to discover on arrival that the fires were attended by owners who failed to notify the department that they were going to burn. The same danger exists on a false alarm as on a real one. The department hopes in the future all burners will obtain a permit which they will be glad to inspect.

JOHN FARREN,
Spanaway Fire Chief

Collins Grange Xmas Party

Collins Grange will have its annual Christmas Party Thursday, Dec. 22 at 8 o'clock in the Grange Hall, Allison and Burnett Rds. Special Christmas program with the children taking part is being planned by the Lecturer, Gloria Krueger.

All members and their families and friends are invited to attend. Santa Claus is taking time out of his very busy schedule to be there to distribute gifts and treats for the children.

The women should bring 50 cent gifts for women, men for men, and be sure and put the name of your child on the gift you bring for them.

The Home Economics Chairman, Ruth Gorow, asks that the Grange members bring some of their choice Christmas cookies, the Auxiliary will furnish ice cream, coffee, and punch. Social hour will follow, all other Grangers in the County are cordially invited to attend.

The first Baptist Church in Providence, R.I., was the meeting house of the oldest Baptist congregation in America, founded in 1638 by Roger Williams.

WE MAKE LUMBER
LUMBER
GLASS
HARDWARE
SHINGLES
ROOFING
GET OUR PRICE
FIRST ON ECONOMY
GRADE LUMBER
Baskett Lumber
9701 Portland Avenue
LE 7-8663

**LETTERS
to the
EDITOR**

Dear Editor,

Regarding the X in Christmas — twice this week I have seen complaints on using X to represent Christ. It might be of interest to your readers to know that about twenty-five years ago I was quite disturbed about this as Mrs. Joe Hamilton recently was in her letter to you.

I did quite a bit of reading about the subject and found out this — the early Christians hid in caves and had to meet secretly and disguise the fact that they were Christians to escape persecution and death. They used the sign of the cross Christ died on to identify themselves to one another. This cross X was put on their dwelling and meeting places too and showed to other Christians a follower of Christ lived and met there. So, later on, the X meaning Christ was written Xmas in Christmas.

This seems a logical fact the books I looked through were old ones. Also the cross is an important part of the life of Jesus as He came into the world to die on the cross. So I would say there is no harm in using X to signify Christ in Christmas when it is understood the cross and Christ are one.

Ann Browning
Editor's note: We agree. By the way, did you know that X is supported in Funk & Wagnell's unabridged dictionary? It is also the sign for the Greek letter "Chi", thus X stands for Christ in the Greek word "Christmas." (P.S.—To all who read this, Merry Xmas!)

YELM THEATER
THURS.-FRI.-DEC. 22-23
THE JAY HAWKERS
JEFF CHANDLER
FESS PARKER
Technicolor —
Vista Vision
Selected Shorts
& Cartoons
Paramount Pictures
Show Starts 7:00 p.m.
No Show Xmas Eve or
Xmas Day
COMING ATTRACTIONS
DEC. 26 - 27 - 28
YOUR LAST CHANCE TO SEE
The Ten
Commandments
FIRST TIME AT REGULAR PRICES!

**Rev. Douthit At
Parkland Baptist**

Rev. J. D. Douthit Jr., has accepted the pastorate of Parkland Baptist Church. Rev. Douthit, wife and four boys came here from Alabama. Rev. Douthit has an A. B. degree from Howard College, Birmingham, Alabama, and one year graduate work at Stetson University, Deland, Fla. For three years he served as Associational Missionary in Georgia.

The new pastor will lead the church in a Christmas revival, beginning Dec. 25, thru Dec. 31. Everyone is invited to attend. The church is located at 112th and Jay streets on airport road. Services will be held each evening at 7:30, with Rev. Douthit doing the preaching, and Capt. McCord from First Baptist Church of Lake City leading the singing. The nursery will be open. The pastor will also teach a class on the abc's of salvation, 7:00 - 7:30.

May We Present Our Card —
Phone TH 5-8282
Larson's
PUYALLUP FURNITURE CO.
"EVERYTHING FOR THE HOME"
Leif Larson 302 South Meridian
Puyallup, Wash.

**Local Army Man
Arrives In Korea**

7TH INF. DIV., KOREA (AFTNC) — Army Sergeant First Class Julius Klimach, whose wife, Renate, lives at 7625 Pacific ave., Tacoma, Wash., recently arrived in Korea and is now serving with the 7th Infantry Division. Sergeant Klimach entered the Army in 1952 and was last stationed at Fort Lewis, Wash. Klimach is the son of Mrs. Lydia Klimach, 2540 W. 38th St., Chicago, Ill.

**Card Matmen
Face Wilson**

Franklin Pierce wrestlers meet Woodrow Wilson matmen on the Parkland mats this afternoon in the final warm-up match before taking on League opponents after the vacation. While the Cardinal grapplers have yet to take a meet, though tying last week with the Lincoln Abes 26-26, they boast two who have taken three decisions each.

IT'S CHEAPER TO RENT THE TOOL YOU NEED
BELT HAND SANDERS
OSCILLATING HAND SANDERS
SABER SAWS
PAINT SPRAYERS
RUG SHAMPOO MACHINE
POWER MOWER SHARPENING & REPAIR
WINDOW GLASS INSTALLED
PARKLAND HARDWARE
12169 Pacific Ave. LE 7-3171

Rural Garbage Service
Pierce County Permit
Serving Parkland, Midland,
Summit and Spanaway
LEnoz 7-8688

DURING THE HOLIDAYS SERVE SOMETHING DIFFERENT! SOMETHING NEW!

PHEASANT

GRAIN FED RINGNECKS
OPEN 7 DAYS A WEEK
SUNDAYS, 9 A.M. TO 4 P.M.
South End Plumbing & Hardware
185th & Pacific Ave. LEnox 7-4100

Saturday, Dec. 24, 11 p.m.
CANDLELIGHT SERVICES
Sunday, Dec. 25, 7 p.m.
CHRISTMAS CANTATA
Bob Villont, Director
IMMANUEL BAPTIST CHURCH
'Growing With The South End'
94th & Pacific Ave. Tacoma

Merry Christmas



Santa

WILL BE HERE • FRIDAY & SATURDAY • HOURS BOTH DAYS 10 am - 1 pm 2 pm - 6 pm

TURKEYS WASH. CO-OP GRADE B TOMS Pound **39¢**
ARMOURS STAR GRADE "A" TOMS LB. **47¢** ARMOURS STAR GRADE "A" HENS LB. **53¢**

SWEET POTATOES Fancy No. 1 2 Lbs. For **29¢**

FRESH CRANBERRIES **15¢** 16-oz. Pkg.

CRISP CELERY **10¢** Stalk

FLORIDA TANGERINES **10¢** Lb.

M.J.B. COFFEE 1-lb. **69¢** 2-lbs. **\$1.29**

KRAFT "PHILLY" — Large 8-Oz. CREAMED CHEESE **29¢**

Powdered 1-lb. Pkgs. SUGAR **2/25¢**

NALLEY'S MAYONNAISE Qt. **49¢**

GOLDEN 3-lb. Tin FLUFFO **69¢** WHITE KING Giant Size SOAP **55¢**

PARTY ICE 10 Lbs. For **35¢**

HAROLDS KIST MIXERS 2 Qts. For **33¢** Plus Dep.

Complete Line Of Bulk Holiday Nuts

Hygrade Boneless • Whole • Half • Quarters HAMS lb. **89¢**

100% PURE GROUND BEEF 3 Lbs. for **89¢**

Country Style PORK Sausage 3 Lbs. for **\$1.00**

BAR-S Thrifty Brand SLICED BACONLb. **39¢**

FRESH HOOD CANAL OYSTERS MED. SIZE.....12-Oz. **55¢**

TAYLOR-KRAF SEW SHOP
OPEN FOR BUSINESS
Tailoring — Dressmaking — Alterations
HEAVY DUTY SEWING
LEATHER — PLASTIC
Coats — Jackets — Cushions
Reasonable Prices
8240B Pacific Avenue GR 2-8280

MERRY CHRISTMAS **LITTLE PARK SPECIAL STEAK** \$1.25
FRI. AND SAT. NIGHT ONLY
Delicious Steak, Lots of Hash Browns,
Little Park's Special Tossed Green Salad With Our Own Dressings, Garlic Bread & Home Made Dressing
171st and Pacific Avenue LE 1-1343

NEW CRYSTAL STEAM BATHS
UNDER NEW MANAGEMENT
ORVILLE GRANT
New Owner
BRING IN THIS AD AND GET OUR REGULAR 1.50 STEAM BATH FOR ONLY 50¢
HRS. 9 A.M. TO 10 P.M. (Later by Appointment)
5424 So. Puget Sound GR 4-8989

TELEVISION SERVICE CENTER
PRESENTS TV CHUCKLES

He stepped over by the spectators to join us in wishing you a Merry Christmas
TELEVISION SERVICE Center
"YOUR WAREHOUSED COLOR CEPTOR DEALER"
GR2386 8431 PACIFIC AVE.

SUNSHINE HI-HO CRACKERS 1-lb. **29¢**

BARGAIN BASKET
16618 PACIFIC AVE South SPANAWAY, WASH.

We Will Be Closed CHRISTMAS DAY
OPEN MONDAY DEC. 26TH AS USUAL 9 A.M. TO 10 P.M.
NO SALES TO DEALERS • Our Prices Are The Best Around

Classified

Page 12 THURSDAY, DECEMBER 22, 1960
The TIMES JOURNAL

Peanuts In Shell... lb. 39c
Salted
Peanuts..... lb. 47c
Mild Salted
Nuts 14-oz. Can..... lb. 69c
Asst. Lunch
Meats 3 pkgs. 79c
Celery..... stalk 10c
Large Sweet Navel
Oranges 2 lbs. 19c
Emperor
Grapes 2 lbs. 35c
Fancy
Bananas 2 lbs. 25c
Pep Pop
Pop Corn..... lb. 10c

Gibbons
FOOD CENTER
SPANAWAY

Business Service 3
BOOKKEEPING, small business accounts, your place or mine. LE 1-927. 3c17

CUSTOM-BUILT CABINETS
Pre-hung Doors—Free Estimates
FORMICA & GE TEXTOLITE COUNTERS
We Install
Cabinets—Drain Boards
BAKER'S Woodworking Co.
LE 7-0565 — LE 7-3290
13415 Pacific Ave. Parkland

FOUNDATIONS, ADDITIONS, REMODELING. Free Estimates. Financing, no down payment. Phone GR 4-7000 any time. 3c17

CALL POCHEL FOR Expert T.V. Repair
Satisfaction Guaranteed
Free Tube Testing
140th & Pacific LE 7-8624

Merry Christmas
FREE LET US CHECK AND ADJUST YOUR BRAKES FOR SAFE DRIVING
FREE WITH THIS AD
OFFER EXPIRES JANUARY 10TH
COLLINS GARAGE
1/2 Mile West of Canyon On Collins Road LE 7-4550

Business Service 3
TOP SOIL—SANDY LOAM—Parkland area special. Puyallup. TH 5-8759. 3c17

SEPTIC TANK CLEANING
Prompt Service
C. V. HUTSON
GR 4-3980 GR 2-7038

TREES—SHRUBS LANDSCAPE PLANNING
EARLE'S EVERGREEN NURSERY
LE 1-1055
South End of Vickery Road

Parkland Heating Co.
All makes of furnaces for sale; Specializing in Williams OIL 'O' MATICS; OIL, GAS, Hot Water Installations. Electric Heat & Lighting Fixtures; Service; reasonable.
755 South 108th L Enox 7-4045

South End Auto Wreckers
USED PARTS—Motors, Transmissions, Tires, Batteries. We buy junk cars. Also Custom welding by Joe's Welding
1 Mile East of Roy Y on Mt. Hy. Spanaway LE 1-6534

Boush Moving & Storage
Agents for U.S. Van Lines
Cost to Coast Service
11816 Pacific Avenue
LE 7-3696
Parkland, Wash.

GEORGE PURDUE—Plumbing, Heating
New work, remodeling, repairs. Phone LE 7-4477. 3c17

Ace Dirt Moving Co.
Bulldozing Ditching
TOP SOIL GRAVEL
SEPTIC TANKS and DRAIN FIELDS
Phone TH 5-2452

Help Wanted 5
HOUSEKEEPER to live in, care for working man and wife, room and board, companionship. Call before 5. GR 2-8002, after 5, TH 5-4997. 3c15

HELP WANTED
Parkland, Midland or Rural resident, to list and sell Real Estate. Exceptional opportunity.
Call Dick Devereaux, LE 7-8659

Lost and Found 6
FOUND — Collie dog, call Bob, LE 7-0223. 6p11

Rentals 10
Small 3 room furnished house. Adults only \$45. LE 7-2782. 10p17

Rentals 10
2 Bed 11402 S. Sheridan. Built-in oven and range \$90.00
2 Bed 6228 S. Stevens. P/Furnished. \$70.00
3 Bed 501 So. 57th St. Stove, refrig. \$85.00
2 Bed 803 So. 112th. Furnished. \$70.00
3 Bed 11212 So. L St. Built-in oven and range \$110.00
2 Bed 12802 Park Ave. Unfurnished. \$75.00
1 Bed 904 So. 113th. Unfurnished. \$60.00
2 Bed Spanaway Lake. Furnished. \$60.00
2 Bed unfurnished. 828 E. 68th St. \$75.00
3 Bed unfurnished 13820 Golden Givan Rd. \$100.00
We also have others that will be available soon. Call our Rental Department, Suburban Realty, Inc. LE 7-8638. 10c17

RENTALS
2 Bed 11402 S. Sheridan. Built-in oven and range \$90.00
2 Bed 6228 S. Stevens. P/Furnished. \$70.00
3 Bed 501 So. 57th St. Stove, refrig. \$85.00
2 Bed 803 So. 112th. Furnished. \$70.00
3 Bed 11212 So. L St. Built-in oven and range \$110.00
2 Bed 12802 Park Ave. Unfurnished. \$75.00
1 Bed 904 So. 113th. Unfurnished. \$60.00
2 Bed Spanaway Lake. Furnished. \$60.00
2 Bed unfurnished. 828 E. 68th St. \$75.00
3 Bed unfurnished 13820 Golden Givan Rd. \$100.00
We also have others that will be available soon. Call our Rental Department, Suburban Realty, Inc. LE 7-8638. 10c17

RENTALS
2 Bed 11402 S. Sheridan. Built-in oven and range \$90.00
2 Bed 6228 S. Stevens. P/Furnished. \$70.00
3 Bed 501 So. 57th St. Stove, refrig. \$85.00
2 Bed 803 So. 112th. Furnished. \$70.00
3 Bed 11212 So. L St. Built-in oven and range \$110.00
2 Bed 12802 Park Ave. Unfurnished. \$75.00
1 Bed 904 So. 113th. Unfurnished. \$60.00
2 Bed Spanaway Lake. Furnished. \$60.00
2 Bed unfurnished. 828 E. 68th St. \$75.00
3 Bed unfurnished 13820 Golden Givan Rd. \$100.00
We also have others that will be available soon. Call our Rental Department, Suburban Realty, Inc. LE 7-8638. 10c17

SEASON'S GREETINGS
Rupe Machine Works and Garage
AUTOMOTIVE & INDUSTRIAL WORK
13411 Pac. Ave., P.O. Box 2445, Parkland 44, Wn., LE 7-7450

Real Estate 9

We Have BUYERS for your HOUSE!
FARM and BLDG. SITES

For Christmas
EXCEPTIONAL 5 ACRES on 84th near Waller Rd. Fenced. Cute 3 Bedrm home, woody back yd. Good small barn. Call Mrs. Hughes. LE 7-8651. 825

A Bldg. Site For A New Home In 1961
94x300 Grant Rd. \$1,500
100x150 Knapp Rd. 1,250
110x264 Cedar Rd. 1,700
300x150 Rainier Terrace 1,850
3/4 Acre, Woodland Rd. 1,750
5 Acres, South Meridian 2,750
7 Acres, Cleared 7,500
9 Acres, Spanaway 6,750
10 Acres, Military Rd. 8,500
100x130 Daylite Bsmt, Trees, Carlson Rd. \$2,000.
Many others to Choose From, Reasonable Terms

MERRY CHRISTMAS
FERN REALTY
11208 E. Leonard's Crossing
LE 7-8651

LIST WITH SUBURBAN
Home and Farm Specialists in South End Properties. Two offices open every day and evening for your convenience.
SUBURBAN REALTY, INC.
113th and Pacific, LE 7-8638
112th and Canyon, LE 7-0229
Member Multiple Listing Service & Tacoma Real Estate Board 8c17

Rentals 10
COZY TWO bedroom cottage. Electric kitchen, utilities. \$65. LE 1-0392, 1015 Pacific Avenue. 10p15
TWO bedroom unfurnished home convenient to McChord & Ft. Lewis. Available Jan. 1. VI 7-2100. 10c17
FURNISHED Apartment, two bedroom, Parkland area. Call after 6 p.m. LE 1-0978. 10c17
SMALL 3 room furnished house. Adults only \$45. LE 7-6768. 10p16
NEW, MODERN furnished apartment, \$50 month. VI 7-4468. Graham. 10c17
1 BEDROOM furnished duplex apartment, clean, with utilities. \$65. Also roomy upstairs apartment. All utilities, \$38. 4526 Pacific Avenue, GR 4-0364. 10c16.

Repair Service 11
NOW AT SILER'S Complete washer and dryer service. All makes. Fast, dependable, reasonable. LE 7-8634. 11c17
WASHING MACHINE PARTS — Largest stock in town. Rebuilding that pleases. BB'S WASHER SERVICE, 3727 So. G. GR 4-9409. 11c17
NOW AT SILER'S Complete refrigerator service. Fast, dependable, reasonable. LE 7-8634. 11c17
LAWN MOWER SERVICING Briggs & Stratton, Clinton, Power Products & Lauson. Engine Parts and Repairs. PARKLAND CYCLE & KEY LE 7-5772 11021 Pacific Avenue 11c17

Automobiles 12
1948 3/4 TON GMC at 113 E. 133rd St. LE 7-3864. 12p16

BUY OF A LIFETIME 1961 SIMCA
DE LUXE 4-DOOR With 14 World Records Fully Equipped, Delivered in Tacoma—Reg. \$1,869 NOW ONLY \$1,544
THE BEST BY FAR
Kraus Motor Co.
Simca-Jeep Headquarters
Cor. 13th and A BR 2-5177

Chinook Campers
As Low as \$1,045 at ANDERSON'S
LE 7-0404
176th & Pacific Ave.

It Pays To Advertise in The Times Journal Classified Section

Real Estate 9

Listings Wanted
DICK DEVEREAUX REALTY
Multiple Listing Service
Buying or Selling
Call LE 7-8659
11002 Pacific Avenue

M. L. S. MULTIPLE LISTING SERVICE
\$250 DOWN FHA 2 lrg bedrms, 22x13, living rm with fireplace, nice kitchen, dinette, oil furnace, conc fdn, garage. Nice yard. A-1 location. Price \$7950. Call Ralph Decker GR 4-9579. RB-8031.

4 BEDROOMS Built 1952. Clean and well built. Hdw floors, 4 extra lrg bedrms, lrg living rm, kitchen with brook, 4 pc bath, Elec range, aut washer and drapes included. Will sell low down FHA. Price \$9500. Call Ralph Decker GR 4-9579. RC-7723.

WHY RENT?
I have a few 1 and 2 bedrm homes you can buy with very low down payment and immediate possession. Call Ralph Decker, GR 4-9579.

MCKINLEY HILL REALTY
6311 McKinley Ave. GR 4-9579
Member of Multiple Listing Service and TACOMA REAL ESTATE BOARD

M. L. S. MULTIPLE LISTING SERVICE
Jennie L. Grodvg
PARKLAND REALTY CO.
Insurance of All Kinds
Notary Public
Est. in Parkland Since 1941
LE 7-8609 Office
302 Garfield St., Parkland
Jennie Grodvg, LE 1-1210
Edna Taylor, LE 7-3556
Thelma Scott — Yvonne White
JU 8-3838 LE 7-0440
"Deal with the people who give you their personal Attention"
Member of Multiple Listing Service and Tacoma Real Estate Board

Automobiles 12
BUY OF A LIFETIME 1961 SIMCA
DE LUXE 4-DOOR With 14 World Records Fully Equipped, Delivered in Tacoma—Reg. \$1,869 NOW ONLY \$1,544
THE BEST BY FAR
Kraus Motor Co.
Simca-Jeep Headquarters
Cor. 13th and A BR 2-5177

Chinook Campers
As Low as \$1,045 at ANDERSON'S
LE 7-0404
176th & Pacific Ave.

It Pays To Advertise in The Times Journal Classified Section

Foreign Cars 12A

ALL - FOREIGN CAR KEYS
107 Varieties
PARKLAND CYCLE & KEY
11021 Pacific Ave. LE 7-5772

Farm Column 13
CHRISTMAS SPECIAL. Good quality Easter Washington hay. All three cuttings. 533 and up. LE 1-2185. 13c16
SHAVINGS, call after 5 p. m. LE 7-5757. SHAVINGS SUPPLY. 13c17
FOR SALE—Easter Washington hay. 7645. Grain. Jack Burks, Graham, VI 7-6545. 13c17

TIED DOWN? LIVESTOCK CARE
While You're Vacationing
LE 1-1327

Work Wanted 14
Warm home, motherly care for baby or child of working mother. LE 1-2764. 14c16
BABY SITTING—Your home or mine. 1312 South 120th. LE 1-0416. 14c17

Miscellaneous 15
Apartment size refrigerator and bed with box spring and innerspring mattress. LE 7-3022. 15p16
ALDER FIREPLACE wood, \$18.75 cord. VI 7-2117. 15p17
MERRY CHRISTMAS Girl's 26" bike, boy's 20" bike, Hamilton Driver, refrigerator, electric guitar, 1/2 horse, motor, numerous miscellaneous items. Christmas trees. Rainier Exchange, 122 E. 167th, Spanaway. 15c16
Rent or buy a TV at Upton's 25c a day meter plan or weekly rental. Upton Electric, 1148 Mkt. St., FU 3-2551. 15c16

WELL DRILLING
Berkeley Pumps
• JETS
• SUBMERSIBLES
• CENTRIFUGALS
• TURBINES
Call LE 7-7281

TACOMA PUMP & WELL DRILLING CO.
14619 PACIFIC AVENUE
Terms Trades

1960 SINGER
Balance \$23.96 payments \$4.03. No attachments to buy to zig zag, make buttonholes, overcast, sew on buttons, etc. Call GR 4-0651.
American Sewing Center
8232 Pacific Ave.

PHASANTS FOR SALE—Full grown fryers. LE 7-4010.
FOR SALE—Late model Kelvinator apartment size refrigerator. Full width freezer chest, vegetable crisper and egg and butter in door. Perfect condition throughout. Sacrifice for \$75 cash. Contact Mrs. Guy Rocca in trailer home immediately behind the Times Journal Park. Co. of 14620 Pacific Avenue. 15p17
REGISTERED German Shepherd puppies. 3 months old. Have shots. LE 1-2475. 15c17

SUMMERIZE YOUR LAWNMOWER
Free Pickup, Storage, and Spring Delivery
Parkland Cycle & Key
11021 Pacific Ave. LE 7-5772

TandT PAINTING CO.
Efficient, Courteous Service
2325 So. Ash Street BR 2-0454

CLASSICAL piano instructions. Beginning or advanced students accepted on trial. Walter Rostedt. JU 8-3561 evenings. LE 7-7271 days. 15c17
Drop leaf table and 4 chairs, electric metal guitar and set of encyclopedias. LE 7-6719. 15p16

FOR SALE or trade—6 year Stork line crib with double drop side & cowboy decor. Simonson baby beauty mattress. Both for \$18. or trade for large spring type horse. LE 7-3872. 15c16
JAPANESE SWORDS WANTED—Will trade new train sets or cash. SK 9-2714. 8c16

DING-A-LING
Sounds crazy, but little old lady with 1954 Buick Wildcat is hardly used at all. \$10 monthly payment with full price of only \$69. Upton Electric, 1148 Mkt. St., FU 3-2551. 15c16
ATTENTION CONTRACTORS—Metal rack for panel or pickup truck with canopy, \$6.50. See at Times Journal Office. 15p17

CROFT TRAILERS
Local and One-Way Trailer Rentals — NATIONWIDE
Hwy 99 GR 4-8437
74th & So. Tacoma Way

ATTENTION HOUSEWIVES—POCHEL'S are now the authorized dealers for Speed Queen washers, automatic or wringer dryers. Come in and see them at 140th and Pacific Avenue. LE 7-8624. 15c17
TWO ft. Alder fireplace wood. LE 7-5079. 15c16

ACE DIRT MOVING CO.
BULLDOZING DITCHING GRAVEL - TOP SOIL - SEPTIC TANKS DRAIN FIELDS
1750 9th St. S. W., Puyallup
Phone Puyallup TH 5-2452

4-BURNER apartment size gas range with bottle and resistor. CR 1-1599. 15p16
LIVE DUCKS, \$1.50 each. 602 East 121st Street. 15c16
PUPPIES—Well behaved, healthy, 20 to 25 weeks old. Adorable dogs. Your choice of all. \$2.50 each. Also nice cats. Call Haven Shelter, 10522 East Polk. LE 1-0781. 15c16
FREE TO GOOD HOME—White male Samoyed mixture. Young shot. WA 7-0163. 15c16
PRIVATE Accordion lessons. Your home. Parkland—Tacoma-Puyallup area. 15c16
Barem. GR 4-766. 15c16

Christmas Goodie

BISCUIT MIX "Jiffy" 40-Oz. 25c

Aunt Jemima PANCAKE Flour 4 lbs. 49c
BAKER'S Asst. Chips 6-oz. 19c
SUNNY JIM Blackberry, Peach, Apricot, 20-oz. Preserves 39c
Krispies 1-lb. Box 25c

CHUCK ROAST Steer Beef 45c

Lamb Legs 69c
Little Pig 2-lbs. Sausages 99c
TURKEYS, Lynden Grade A... Hens 53c, Toms 47c

Boneless Shoulder Lamb 100% Pure 3 lbs. Roasts 69c
Gr. Beef 89c

OYSTERS 12-Oz. Jar 49c

Fancy Comb Honey each 47c
Old Fashioned CHOC. Drops 2-1lb. pkgs. 75c
Stewart's No. 1 Fresh Roasted Peanuts \$1.00
Crisp, Calif. Celery 2 for 15c
Calif. Novels, 113 size, Doz. Oranges 39c

Hunts 303 FRUIT Cocktail 19c
Ballard or Pillsbury Biscuits pkg. 9c
10 lb. Idaho Potatoes 55c
lb. pkg. Cr'berries 19c
3 lb. Broiler Onions 15c

COLOVOS, ARTICHOKE, SPROUTS, ETC.

CLOSED SUNDAY & MONDAY

HERMANS FOOD STORE
162nd & Park Ave. Spanaway
(Right to Limit Reserved)

Miscellaneous 15
BICYCLE with training wheel, \$10; swing set, slide and guitar, \$15. LE 7-5904. 15c16
PUPPIES—PUPPIES—PUPPIES Norwegian Elkhounds, Schipperkes, Basenjis, Cats and Dogs Bred. Professional handling, grooming and bathing. Roxbury Kennels, 10003 Portland Avenue. 15c17

Aviation 17
FREE—FIRST FLYING LESSON—LEARN TO FLY—\$10 A WEEK
New and Used Aircraft Sales
TACOMA FLYING SERVICE
Spanaway Airport. LE 1-0442. 17c17

LEGAL NOTICES
NOTICE TO CREDITORS
IN PROBATE
In the Superior Court of the State of Washington for the County of Pierce,
In the Matter of the Estate of John P. Swanson, Deceased.
Notice is hereby given that the undersigned has been appointed and has qualified executor of the estate of John P. Swanson, Deceased; that all persons having claims against said deceased are hereby notified to serve the same, duly verified, on said executor or her attorneys of record at the address hereinafter set forth, together with proof of such claim within six months after the date of first publication of this notice, or the same will be barred.
Date of first publication Dec. 8, 1960.
MRS. ALMA C. SWANSON, Executor of said Estate, 11024 Pacific Avenue, Tacoma 44, Washington.
Published in the Times Journal, December 8, 15, 22, 1960.

CALL FOR BIDS
Sealed bids will be received by Franklin Pierce School District No. 402, 1124 Parkland Avenue, Tacoma 44, Washington, for supplying the District's gasoline requirements for the calendar year of 1961. Bids will be received in the District Auditor's Office, 1124 Parkland Avenue, Tacoma 44, Washington, until 10:00 a.m., at which time they will be opened and read aloud.
The District reserves the right to reject any or all bids and waive informality in bidding.
By order of the Board of Directors, Franklin Pierce School District No. 402
Louise D. Lynd, Secretary
Published in the Times Journal December 22, December 29, 1960 and January 5th, 1961.

PETITION FOR A CONDITIONAL PERMIT
Zone No. 103, SR-5 Suburban Residential.
NOTICE IS HEREBY GIVEN THAT the County Planning Commission has filed with the Board of County Commissioners a Conditional Permit in Zone No. 103, SR-5 Suburban Residential for the construction of a SHOPPING CENTER on property within said zone district, in the general location of 1457 Pacific Avenue, in the Parkland area; said property described as follows, to-wit:
Section 9, Township 19 North, Range 3 East, W.M. D. 2, 6. Beginning 30 feet West and 168.25 feet north of Southeast corner of Lot 4 West 591.55 feet north 200 feet east 589.64 south 200 feet to point of beginning.
Notice is further given that a hearing on said petition will be held before the Board of County Commissioners of Pierce County, Washington, on Tuesday, the 27th day of December, 1960, at the hour of ten o'clock a. m. of said day, when anyone interested may appear and be heard in the matter.
By order of the Board of Pierce County Commissioners, dated December 13, 1960.
JACK W. SONTAG, Clerk of the Board of Pierce County Commissioners.
County Auditor and Clerk of the Board, By H. LEIF, Deputy.
Published in the Times Journal, December 22, 1960.

SUMMONS BY PUBLICATION
NO. 14598
In the Superior Court of the State of Washington and for Pierce County,
Katharine Hamann Plaintiff, vs. Ruth A. and John Doe Delle, husband and wife and Metropolitan Mortgage and Securities Co., Inc., a corporation, and all other persons or parties unknown claiming any right, title, estate, lien or interest in and to the real estate herein described, Defendants.
You, and each of you, are hereby summoned to appear within 60 days after the 22nd day of December, 1960, and defend the above-entitled action in the Superior Court aforesaid and answer the complaint of the plaintiff and serve a copy of your answer upon the undersigned attorneys for the plaintiff, at their office below stated; and, in case of your failure to do so, judgment will be rendered against you according to the demands of the complaint in this action which has been filed with the Clerk of said Court.
The object of this action is to quiet title in plaintiffs to real estate in Pierce County, Washington, described as follows: The West 50 feet of the East 100 feet of the following: Beginning 977.55 feet West and 122.25 feet North of the Northeast corner of Lot 2 in Section 8, Township 19 North Range 3 East of the Willamette Meridian, Thence Section 8, 100 feet, thence East 250 feet, thence North 100 feet, thence West 250 feet to the point of beginning. Thence Section 8, 100 feet, thence East 250 feet, thence North 100 feet, thence West 250 feet to the point of beginning. The above-described premises are claimed by the defendants and any one of them.

PETERS AND TRACY, GEORGE Y. POTTER, Attorneys for Plaintiff
11024 Pacific Avenue, Tacoma 44, Washington.
Published 22, 29, 1960; January 5, 12, 19, 26, 1961.

Get-Well Wishes
On our sick list this week is Mrs. Julius Marinacci, who is ill with the mumps.
Also, Sandy Smith, daughter of Mr. and Mrs. C. B. Smith, is recovering from the mumps. We send them both get-well wishes.
Brother Dies
Word has been received of the sudden death of Mr. Percy J. Silars, in New Orleans, Louisiana. Mr. Silars is the brother of Mrs. Jack L. Scherer, 8615 Golden Given, long-time residents of the Midland area.

Thanks
Midland's Boy Scout Troop 84 wishes to take this opportunity to thank everyone who patronized their Christmas tree lot this month. The lot, located at 94th and Pacific, will remain open until noon on December 24th.

Xmas Tea Held
A Christmas tea was given Thursday, December 15th, by the Lazy Daisy Blue Birds, at the home of their leader, Mrs. Dave Lorraine. Members of the group are Letty Wolfe, Marilyn Theno, Corinne Leavitt, Denise Fleming, Christine Lorraine, Patty Qunell and Judy Crawford.
The guest list included their mothers, Mrs. James' Fleming, Mrs. Jack Leavitt, Mrs. Kenneth Crawford, and their fourth grade teacher, Mrs. Gunnett, and Mrs. Charney, Mrs. Helen Ludington, a field director from the Camp Fire Office, was guest of honor. Unable to attend were Mrs. James Qunell and Mrs. M. J. Theno.

Xmas Party
The ladies of the Midland Fire Department Auxiliary held their annual Christmas party last Saturday night at the Fire Hall, for the families of all the firemen. Highlight of the evening was a visit by Santa Claus, who distributed gifts to the children and grown-ups.

Pre-Christmas Sale

FREE MOTOROLA TRANSISTOR RADIO

WITH EVERY TV OR STEREO HI-FI SET SOLD!

(Enjoy the Bowl Games and Christmas Programs On A New Motorola)

COME IN AND SEE THE LARGEST MOTOROLA DISPLAY IN THE N.W.
HEAR THE NEW VIBRASONIC - STEREO - HI-FI, The NEWEST SOUND

★ One Full Year Warranty On Parts And Labor on TV
★ We Sell The Best — Repair The rest.

Your Old Set Will Normally Make Down Payment First Payment In February

CLOVER PARK TV
TV - STEREO - RADIOS - PORTABLE TV - TABLE MODELS
5469 Steilacoom Blvd. S.W. Open 8:30 a.m. - 11:30 p.m. JU 8-1081

Let Us Go To Bethlehem

(Continued From Page 1)

And as He grew to manhood and lived His life, He organized no army, He owned no real estate, He had no bank account, and He gained no sheepskin diploma. He was mocked by the great, and died as a common criminal. Notwithstanding this, He revolutionized the world, and He has more followers today than ever before, and beside those alive, there have been millions who have lived and died for Him. As we look at Him through twenty centuries, we find that even His greatest critics can find no flaw in His character. Yet when He came, there was only a manger, for the inn was crowded by the great of the day. There was no room in Herod's palace, and the soldiers hunted Him to put Him to death, while the synagogues were closed to Him, and officialdom frowned on Him, and when He came to His own, they received Him not. There was no place for His head. He had a borrowed home in Bethlehem, and a borrowed grave in Jerusalem.

I wonder how much room there is for this great Person of history today. Certainly, there is no room for Him in the sinful pleasure of the day, nor in the dishonest business enterprises, and there is a bar in every evil heart, while

polite society excludes Him. And in the homes of the ungodly rich, He is turned out, and He is not wanted in the haunts of vice. In contrast, may we call your attention to the fact that there will be no room for these when He comes to count His redeemed, and to set up His rule over the Princes of Eternity.

Unless we have Christ, we will have a Christless world. I can think of no eclipse so dark as to have the light of Christ go out of the world. Read pagan history, if you will, and see the truth of this. Or take a look at dark Africa, or hungry India, or the troubled Far East, where Christ has not been welcomed. To be sure, we have trouble where Christ is accepted, but that is not because of Christ, but in spite of Him.

Finally, let us go even unto Bethlehem and see this thing which has come to pass. As we look into the cradle, we hear the cooing voice, which one day will speak the words of Eternal Judgment; we see the little hands, which will one day hold the scepter of Eternal Power; and we look at the little feet, which one day will step across the mountains in the magnitude of His power; in fact, we see in the cradle the King of Kings, and the Lord of Lords.

In our Christmas giving, let us not be satisfied with outgrown relics. Let us not be satisfied to give our things. But with the Indian, who gave his dog, and then his gun, and then himself, we will give ourselves to Him, and make

It's the LAW

Jones received his pay check and deposited it in the bank on his way home. The same evening he wrote several checks and mailed one each to the grocer, landlord and department store in payment of their monthly bills.

Two days later, Jones' bank was served with a writ of garnishment. None of the above checks having been presented to the bank, the whole account was impounded. Jones, on learning of the garnishment, asked the bank to release enough to cover the checks. He contended that having mailed the checks in payment, he had assigned to the payees a right to the funds, which assignment preceded the writ of garnishment.

Jones was in error. A check is not an assignment of any present right to the funds in the bank, but merely an order directed to the bank to pay the amount of the check to the payee, or holder, upon presentation of the check. As none of the checks had been presented, the payees thereof had acquired no right in the bank account.

(This column is written to inform, not advise. Facts may change the application of the law.)

Merry Christmas TO ALL

WE WILL BE OPEN SUNDAY AND MONDAY

HAMS ARMOUR'S STAR SHANK PORTION **49^c** Lb.

TURKEYS GRADE A TOMS **43^c** Lb. 16 to 18 lb. Average

PURE—HOME MADE **Pork Sausage** Lb. **39^c** ROLLED **Rump Roast** Lb. **79^c**

MEDIUM **Oysters** 12-Oz. Jar **59^c** ARMOUR'S CRESCENT **Sliced Bacon** Lb. **39^c**

Large Size—For Roasting **Chickens** While They Last Lb. **29^c** STEAKS — STEAKS — STEAKS **T-BONES — RIB OR SIRLOIN** Lb. **69^c**

COFFEE Chase and Sandborn 2 1-lb. cans **\$1¹⁵** All Delicious Flavors **JELLO**

SUGAR C & H 10-lb. Bag **99^c** **JELLO** 5^c

DUTCH MAID **MARGARINE** 5 1 lb. Gtns. **79^c** Reg. Pkg.

MEDOSWEET'S **BIG DIP** LIBBY'S—Ripe Pitted **OLIVES** U Like It—It Likes You **SEVEN-UP**

FROZEN DESSERT **HALF GAL.** 59^c 4 No. 1 Cans **\$1⁰⁰** 2 20-oz. Bottles **39^c** Plus Dep.

FARM FRESH **EGGS** BETTY CROCKER **CAKE MIX** NALLEY'S **TANG** or PARKLAND SUPER **MAYONNAISE**

LARGE "AA" Doz. **59^c** 3 Pkgs. **89^c** qt. **39^c**

Large Size **ORANGES** lb **10^c** Green Crisp **CELERY** bu **10^c** Large Size **TOMATOES** lb **23^c** Golden Ripe **BANANAS** lb **10^c**

Open 7 Days a Week For Your Convenience

PARKLAND Super MARKET

Right to Limit Reserved

HOURS
Sunday 9 a.m. to 8 p.m.
Weekdays 9 a.m. to 9 p.m.
Fridays 9 a.m. to 10 p.m.

Formerly Kitchen's
12208 Pacific Avenue

PRICES EFFECTIVE WEDNESDAYS THROUGH SUNDAYS

Attend The Church Of Your Choice

TRINITY LUTHERAN CHURCH

121st and South Park Avenue
DECEMBER 24—
Christmas Eve Candlelight Service, 7:00 P.M. and 11:00 P.M.
DECEMBER 25—
Worship Service, 9:30 A.M. and 11:00 A.M.

OUR LADY QUEEN OF HEAVEN PARISH

14601 A Street
Rev. William Greier
Tacoma, Washington
Feast of the Nativity of Our Lord Jesus Christ
December 25, 1960
12:00—Midnight Mass
8:30 a.m.—Mass
10:30 a.m.—Mass
Saturday, Dec. 24 — Masses
from 2:00 to 4:00 and 6:30 to 8:00 p.m.

SUMMIT METHODIST CHURCH

(The Community Church)
East 104th and Canyon Road
Rev. Douglas Mitchell, Pastor
SUNDAY, DECEMBER 25th—
Worship At 10:00 A.M.

Evergreen Baptist Church

92nd & Waller Road Rev. Iverson, Pastor
DECEMBER 23rd—
Caroling for Young People
DECEMBER 25th—
9:45 A.M. Sunday School, Family Visitation after 11:00 A.M. Christmas Service, Pastor speaks on "Chronology of Christ".
7:00 P.M. Candlelight Service
DECEMBER 31st—
9:00 P.M. New Years Eve Service, "The Importance of Prayer"

ST. JOHN OF THE WOODS CHURCH

9903 East Taylor Street
Rev. Andrew M. Prouty
DECEMBER 23rd —
Confessions, 7:30 - 9:00 P.M.
CHRISTMAS EVE —
Confessions, 10:00-11:30 a.m.; 2:00-5:00 p.m. 7:00 - 9:00 p.m.
CHRISTMAS MASSES —
12:00 Midnight Mass—8:00 a.m. Mass
10:30 a.m. Mass.

ELK PLAIN COMMUNITY CHURCH

Rev. Vern Slater, Pastor
"And she shall bring forth a son. Thou shalt call his name JESUS: for He shall save His people from their sins." Matt. 1:21.
Your friendly Community Church welcomes YOU to experience the JOY of old time shepherds and wise men who come to worship the CHRIST.
Friday — 7:30 P.M. Sunday School Christmas Program. Treats for all children.
Christmas Sunday Only: 10:30 to 11:30 — Combined Sunday School and Worship Service. Children will meet for Sunday School while older ones meet for Worship Service. Parents are urged to stay. The Message will be presented with the aid of beautiful oil painted pictures.
There Will Be No Evening Youth Meeting.

CLOVER CREEK BAPTIST CHURCH

Corner Military and Knoble Roads
Three Miles East of Pacific on 159th Street
Lyle Bramblet, Pastor; Phone LE 7-6421
SUNDAY, DECEMBER 25
11:00 A.M. — "The True Meaning of Christmas"
7:00 P.M. — Choir Cantata
Message — "The Beauty of Jesus"
9:45 P.M. — Radio Broadcast, KAYE
Romans 6:23—"The wages of sin is death; but the gift of God is eternal life through Jesus Christ our Lord."
— WELCOME —

SPANAWAY ASSEMBLY OF GOD

166th Street and Pacific Avenue
Rev. A. M. Olsen, Pastor
DECEMBER 22 —
Closing of Missionary Convention, 7:30 p.m.
DECEMBER 25 —
Special Family Christmas Service, 9:45-11:00 a.m.
Christmas Candlelight Service, 7:00 - 8:00 p.m.
EVERYONE WELCOME

FERN HILL METHODIST CHURCH

8409 - 23 South G Street, Tacoma
Adam S. Forch, Pastor
DECEMBER 24—
Christmas Eve Midnight Service beginning at 11:15 P.M.
DECEMBER 25—
Christmas Day, Reception of Members at 11:00 A.M.

COVENANT COMMUNITY CHURCH

Peterson Road, Graham
Rev. Paul T. Nelson, Pastor
Rev. Melvin Walker, Associate Pastor
DECEMBER 24 —
Christmas Eve, Candlelight service at 11:00 p.m.
DECEMBER 25 —
Christmas Day, Service at 11:00 a.m.
DECEMBER 31 —
Watchnight Service at 10:00 p.m.

FAITH LUTHERAN CHURCH

(Wisconsin Synod)
96th and A Streets
Paul E. Nitz, Pastor
DECEMBER 24—
Candlelight Service at 11:00 P.M.
DECEMBER 25—
Festival Day Service at 11:00 A.M.

PARKLAND EV. LUTHERAN CHURCH

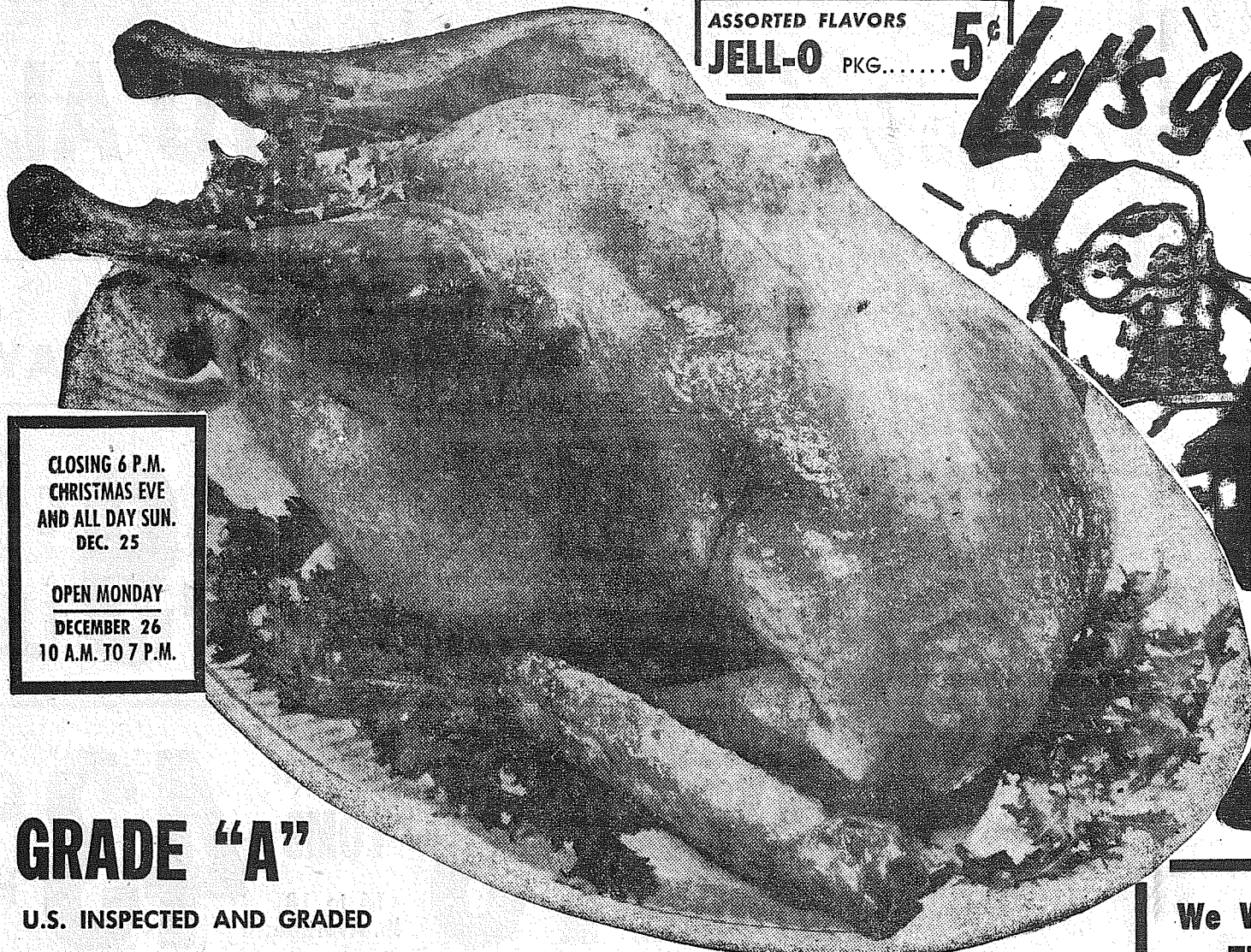
123rd and Pacific Avenue, Parkland
DECEMBER 25—
Christmas Service at 10:30 A.M.
JANUARY 1—
New Years Day Service at 10:00 A.M.
Rev. H. A. Theiste, Pastor
CORDIAL CHRISTMAS GREETINGS TO ALL

HARVARD COVENANT CHURCH

East 85th & Portland Avenue
Rev. D. P. Rundquist, Pastor
DECEMBER 23 —
Christmas program at 7:30 p.m.
Co-Chairmen—Mrs. Elner Sundqvist and Mrs. William Daniels.
DECEMBER 25 —
Sunday School, 9:45 a.m. Worship, 11:00 a.m.
DECEMBER 31 —
New Year's Eve Service, 10:00 p.m.
CORDIAL WELCOME TO ALL

THE METHODIST CHURCH IN PARKLAND

12183 A Street
Donald Northdruff, Pastor
DECEMBER 24—
Candle Lighting Service at 7:00 P.M.
DECEMBER 25—
Worship Services at 9:30 A.M. and 11:00 A.M.



ASSORTED FLAVORS
JELL-O PKG..... 5¢

Let's get together and plan your best Christmas Dinner!

PIGGLY WIGGLY

CLOSING 6 P.M.
CHRISTMAS EVE
AND ALL DAY SUN.
DEC. 25

OPEN MONDAY
DECEMBER 26
10 A.M. TO 7 P.M.

FIESTA OR HOLIDAY FULLY COOKED
BONELESS NO WASTE HAMS WHOLE, HALF OR QUARTER lb. **89¢**

GRADE "A"
U.S. INSPECTED AND GRADED
PILGRIM BRAND
17 to 25 lbs. Avg.
(Parkland and Portland Ave. Store only)

PIGGLY WIGGLY'S OWN LEAN
FRESH—FINEST QUALITY MADE!
GROUND BEEF Lb. **29¢**
(PARKLAND STORE ONLY)

We Will Have
FRESH TURKEYS
Order Now!

HORMEL'S BONELESS (9- to 10-LB. AVERAGE)
CANNED HAMS . . lb. **69¢**

HYGRADE SWEET'NIZED—BEST QUALITY
SLICED BACON . . . lb. **59¢**

HYGRADE'S SMOKED—SERVE CREAMED!
SLICED BEEF . . . 3-oz. Pkg. **29¢**

BAR-S VIRGINIA REEL PORK
SAUSAGE A REAL TREAT! lb. **63¢**

LYNDEN BRAND—19-24 Lb. Average
TURKEYS (Young Hens 11-14 Lb. Avg. Lb. 53c) **47¢**

39¢

WE WILL ALSO HAVE FRESH TURKEYS — ORDER NOW!

SMALL OR EXTRA SMALL
FRESH OYSTERS 12-oz. Jar **59¢**

SHRIMP MEAT 6-oz. Pkg. **49¢**

a Very Merry Christmas... from **PIGGLY WIGGLY!**

TO GO WITH THAT DELICIOUS LYNDEN TURKEY!

SUNNY JIM
STRAINED OR WHOLE
CRANBERRY SAUCE LARGE 11-OZ. JAR **10¢**
Another Example of Piggly Wiggly's Low Prices!

POTATOES
U.S. NO. 2 IDAHO'S
25-lb. BAG **89¢**

POINSETTIAS
LARGE SELECTION AT LOWEST PRICES!

FRESH OCEAN SPRAY
CRANBERRIES . . . 2 1-lb. pkgs. **29¢**
GRAPES California No. 1 Emperor . . . lb. **10¢**
CELERY Fresh Crisp lb. **5¢**

MARIANI SLICED FRESH FROZEN FOR HOLIDAY DESSERT—10-OZ. PKG.
STRAWBERRIES 17¢

WELCOME—ALL FLAVORS
½ GAL.
ICE CREAM 59¢

DARIGOLD AA SWEET CREAM
BUTTER 1-lb. **65¢**

HUNT'S FRUIT—NO. 303 CAN
COCKTAIL 19¢

JACK AND THE BEANSTALK
PUMPKIN LARGE NO. 2½ CAN **10¢**

PictSweet
FRESH FROZEN
★ MIXED VEGETABLES
★ CUT CORN OR
★ PEAS AND CARROTS
Mix 'Em or Match 'Em
5 10-OZ. PKG. 89¢

LYNDEN GRADE A STRICTLY FRESH
LARGE EGGS DOZ. **59¢**

PLYMOUTH—OUR OWN LABEL BRAND
MARGARINE 1-LB. CARTON **15¢**

GUEST RANCH ASSTD. COLORS
TISSUE TOILET 4-ROLL PACK **25¢**

COFFEE HOUSE
COFFEE 1-LB. CAN **55¢**

Another Piggly Wiggly Value!
MINUTE RICE 23-oz. Pkg. **59¢**

Chicken, Beef or Spanish
RICE-A-RONI 2 8½-oz. Pkgs. **49¢**

C&H Powdered or
BROWN SUGAR 2 1-lb. Cartons **25¢**

Nalley's Kosher, Banquet or Regular
DILL PICKLES 24-oz. Jar **35¢**

Wyandotte Med. Whole (7-oz.) or Select
PITTED OLIVES 4 5½-oz. Cans **\$1**

Kraft Miniature
MARSHMALLOWS 10½-oz. Pkg. **25¢**

Plymouth
SALAD DRESSING Quart Jar **39¢**

Hardware Specials
IN OUR FIFE STORE ONLY!
G.E. STEAM OR DRY
IRON Reg. 17.95 **12⁸⁸**
RADIO SUPER, 26"×13"×3¼"
WAGON Reg. 14.45 . . . **9⁹⁵**

SALMON EGGS Skin lb. **59¢**
CHRISTMAS COOKIE CUTTER SET
Coppertone Aluminum, Set of 5 **59¢**

Van de Kamp's SPECIALS
PUMPKIN or MINCE PIES
Reg. 69¢ SPECIAL **59¢**

Christmas CUP CAKES
5 FOR 49¢

Van de Kamp's BAKERIES

Schilling HOLIDAY HOUSE OF FLAVOR
Ground Cinnamon 1½-oz. 19¢
Ground Nutmeg .1½-oz. 45¢
Ground Sage 1-oz. 19¢
Poultry Seasoning 7/8-oz. 17¢
Minced Onion . . . 1½-oz. 29¢
Pumpkin Pie Spice 1¼-oz. 27¢
Ground Ginger . . . 1½-oz. 21¢
Ground Cloves . . . 1½-oz. 29¢



Chase and Sanborn (27¢ off) 6-oz. 79¢
INSTANT COFFEE . . . 10-oz. jar **1¹⁹**
Farmington Plain or Almond
CHOCOLATE BARS 3 Giant Bars **1⁰⁰**
Branded
S&W MINCEMEAT 28-oz. jar **49¢**
Adams
MIXED NUTS 14-oz. Pkg. **69¢**

MORE SANTA SAVINGS!

Another Big Saving
DREAM WHIP 4-oz. Size **39¢**
6¢ Off Label
LOG CABIN SYRUP Large bottle **79¢**
M-D NAPKINS 80-Cnt. Pkg. **10¢**
Alcoa
FREEZER FOIL 25-ft. Roll **69¢**
Sunshine Assorted
Fancy Chocolates 10-oz. Pkg. **59¢**
Blue Bell
KORN KURLS 6½-oz. Pkg. **39¢**
Zee
WAX PAPER 200-ft. Roll **39¢**
Canned
DARIGOLD MILK 3 Tall Cans **46¢**

Everyday Need
ELASTIC STARCH . . . Quart **29¢**
Modess Package of 12
SANITARY NAPKINS . . . **45¢**
Kraft 7-oz. Size
Marshmallow Creme **29¢**
Chunk Style
SNOW MIST TUNA No. ½ Can **29¢**

PROCTER & GAMBLE'S SOAP VALUES
CHEER, 7¢ off Giant size 72¢
JOY, 5¢ off 12-oz. size 38¢
Mr. CLEAN, 8¢ off, 28-oz. size 65¢
IVORY FLAKES . . . Giant size 83¢
IVORY SNOW . . . Giant size 83¢
IVORY LIQUID . . . 22-oz. 69¢
COMET CLEANSER, 2 reg. size 33¢
NEW OXYDOL . . . Large size 39¢

Piggly Wiggly
PUYALLUP PARKLAND FIFE SO. TACOMA 40th & Port-
1010 EAST PACIFIC AT FORMERLY 5252 SOUTH 40th & Port-
MAIN GARFIELD ANDRE'S MKT. WASHINGTON land Ave.

Prices Effective Thursday, Friday, Saturday, Dec. 22, 23, 24.
We Reserve the Right to Limit No Sales to Dealers
OPEN 9 A.M. TO 10 P.M. DAILY