

Sewer District Replies See Page Two

Pierce County Herald and

The **TIMES** JOURNAL

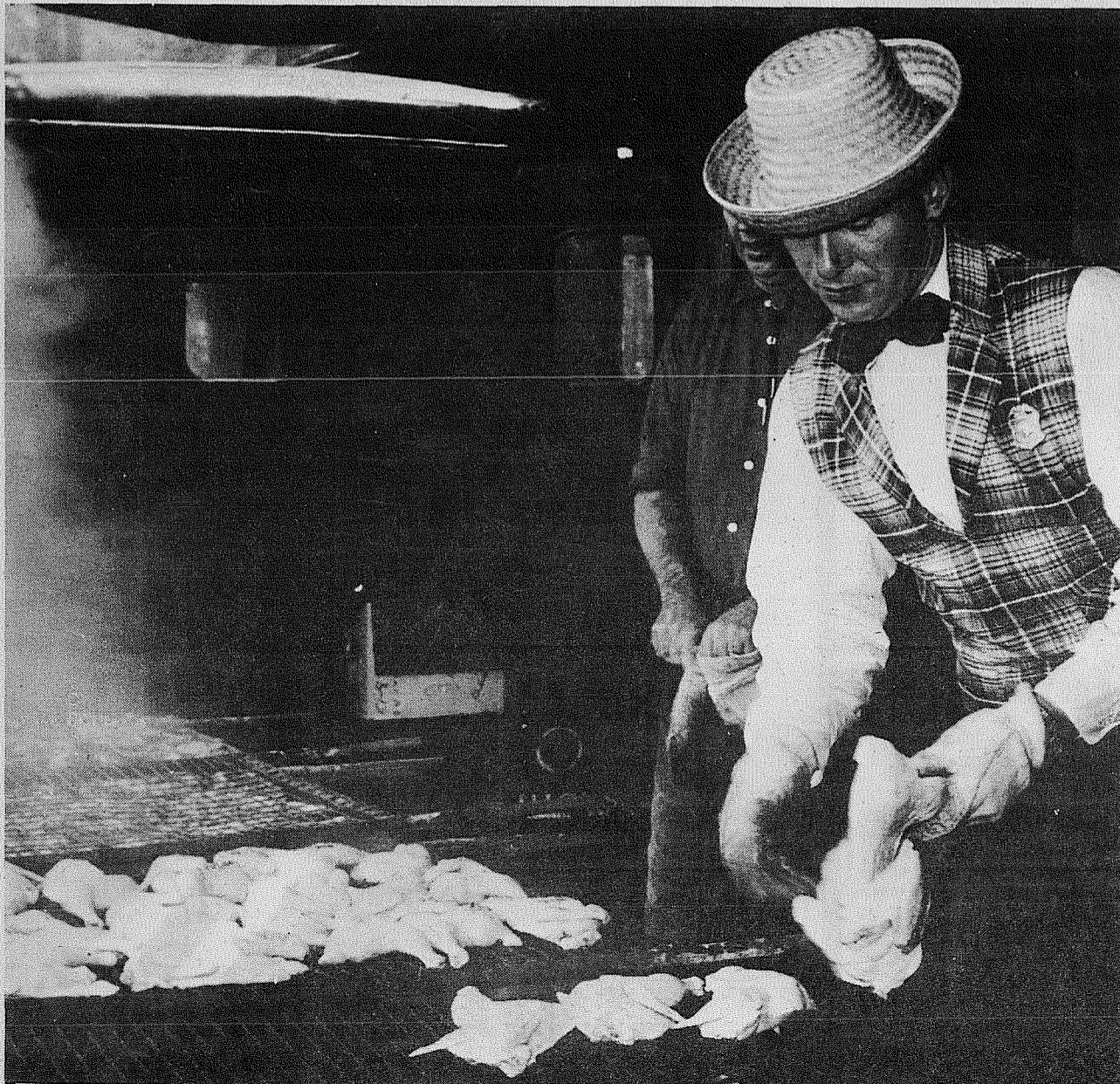
Vol. 23 No. 34

August 23, 1967

Price Per
Single Copy
10¢

Firemen, Soldiers, Bulldozers Halt Roy Fire See Page Five





CHICKEN BAR-B-Q—Bob Way and Harry Thomas, both of the Spanaway-Elk Plain Fire Department, serve chicken at their annual bar-b-q in the Spanaway Park

last Sunday. Results of the outing were not as good as was expected but a good time was had by all who attended.

In This Issue

- Comics Page 10
- Classified Pages 10-11
- Correspondents Page 12
- General News Page 2
- Society Page 6
- Sports Page 8-9
- Women's Page Page 7

MAIL IMMEDIATELY

If you haven't already entered your subscription to the new Times Journal.

Please place my name on the Times Journal delivery list as indicated below.

- \$3.50 Annual \$1.80 Six Months
- 30¢ Monthly (Carrier Routes Only)
- Bill Me Check Enclosed

Name

Address Zip

Send to Subscriptions P.O. Box 2116
Parkland 98444

Sewer District Replies To Opponents

Assessment Notices Are Informational

By Sandy Ingram

Opposition to the South Suburban Sewer District is coming from people who "don't know the facts, ignore the facts and distort the facts," said Clayton Peterson, president of the South Suburban Sewer District at a Parkland Kiwanis meeting Thursday night.

At the meeting Peterson explained the beginning of the sewer district and Pacific Lutheran's involvement. Approximately seven years ago, he said, the Parkland Sewer District was in operation, but was too small and at that time was dissolved.

"Now we have a sewer district that is not too small and yet is still being opposed," the president added.

PLU's involvement came when a self study of the university's sewer plant was conducted and it was advised that the university enlarge it. The sewer district was formed and the commissioners, necessarily residents of the district, pondered on whether it would be ethical to go ahead and tend only to the university's needs, when the university is the largest employer in the Parkland area and the majority of the employees are area residents.

"We knew it was a gamble to go ahead and organize a sewer district that would allow for annexation, and we knew we would be subjected to criticism," Peterson said, but added with a lighter tone, "we did not know at that time just how much criticism, but soon found out."

At the Thursday night meeting Peterson announced that a number of petitions for the disincorporation of the sewer district had been received and are in the hands of the county auditor, who will check them for validity. If the petitions contain the necessary 25 per cent of the voter's signatures then the matter will go to the public on the November ballot sheet.

A hearing, in regard to the South Suburban Sewer District, has been set for August 31st in the Parkland Light and Water Auditorium.

The assessment notices that have been sent to members of the South Suburban Sewer District are basically informational in purpose according to Howard Harstad of Harstad and Associates, consulting engineers to the sewer district. Final assessment notices will not be prepared until after the public hearing is held on August 31 and actual construction bids are received. A second public hearing will then be held so that landowners may request adjustments

of their assessments before the sewer commissioners. Final assessment notices will not be mailed until early next year.

The two assessment notices and the two public hearings are the means that the legislature has provided to insure fair and equitable treatment for every landowner. "We had to prepare assessments for over 2000 separate parcels of land," noted Harstad. "The same formula was used for all of them. However, there is a great differ-

SPEAKER — Clayton Peterson, left, was welcomed to a Parkland Kiwanis meeting Thursday night by Del Schaffer, president of Kiwanis. (Times Journal Staff Photo)



ence in lots and conditions. It is natural that some inequities would occur. The time lapse between the first and second assessment notices will enable us to iron out any problems that may exist.

"We would like to invite any landowner who feels he has an inequity in his assessment to inform the Sewer Commission in writing so that it may be properly considered for adjustment."

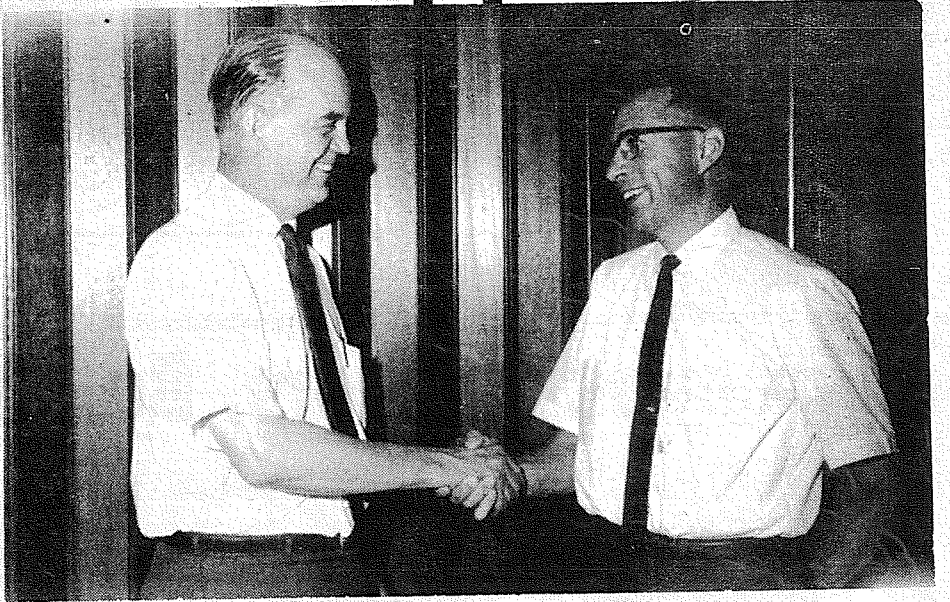
Assessments have been made on the basis of \$5.00 per front foot plus one half cent per square foot of acreage in the lot assessed.

This will cover part of the cost of laying the lateral main in front of the lot. (The remainder of the cost will come from a federal grant.) A hook-up charge of \$100 is included in the assessment to provide a connecting pipe from the sewer to the property line of the land owner. These are the elements included in each assessment.

The cost of interceptor and disposal facilities will be paid from the monthly service charge. This charge is estimated at \$4-\$4.50 per month.

"The assessment notices," Mr. Harstad pointed out, "have been prepared from the records of the County Treasurer, as required by law. In some cases the records are not current so that notices will have been sent to former landowners who have recently sold their property. In other cases the County Treasurer's office does not have the latest addresses of present landowners. Wherever possible the assessment notices are being forwarded to the new owners."

Under the law it is mandatory to send an assessment notice for every parcel of land listed in the Treasurer's record even if two



parcels are next to one another and owned by the same person. Many landowners will therefore receive more than one assessment notice. PLU, for example, has been sent 40 separate assessment notices.

When the final assessment roll is approved landowners will have the option of either paying for the assessment over a 15 year period at six per cent simple interest or in cash, which will save the interest charges.

T.J. Delivery Day Changed

Most Times Journal subscribers will receive their paper on Thursday instead of Wednesday due to a change of press time, Managing Editor E. M. Matson announced Monday.

"The change will be necessary during the period of installation of a new three color press at the plant where the paper is printed," Matson stated. The move will permit greater use of pictures to illustrate news stories, he said.

Classified deadlines will remain Monday noon, as well as all advertising or news copy scheduled to be published in both the Pierce County Herald and Puyallup Tribune and Times Journal. Final deadline for the Times Journal only will now be 2:30 p.m. Monday provided the copy is typed and ready for press. The deadline had been Friday at 5 p.m.

Early Entrance Program Adopted By Bethel

An "Early Entrance Program", adopted by Bethel School District on July 8, 1967, which would allow certain children who do not meet normal age requirements and yet would suffer by being kept out of school for a full year, has gone into effect.

"The problem of when to enter children in school has been one of the most perplexing and difficult problems schools and parents have faced," Dr. Fred M. Gramann, superintendent of Bethel District, said, "In past years school districts have been besieged by parents who wanted to enroll their children in school early. As a result of this, schools in Pierce County agreed to the date of September 10th as the "cut-off" date. This stopped the practice of enrolling a student in a district that would allow a later birthdate, and then transferring the student to the home district after the student had been in school," he added.

"We all recognize that students grow at different rates, and many are enrolled in school before they are actually ready for it. By the same token, there are a few who can benefit by enrolling early. In order to do the best for all of the students of the Bethel School District, the practice that has been outlined is to be initiated," he stated. According to a pamphlet the school district has put out there are three steps to follow in the early entrance procedure.

The first step is a check list of questions to see if a child is more advanced than his years. "If you are hesitant, (of giving your child the test) remember that districts having used this program report that only between one and two percent of the students can benefit by early entrance," the pamphlet explains.

The second step is an intelligence test, given by the school psychologist. This can be arranged by appointment. The parent would be notified if the child is still eligible after the intelligence test has been scored. If the child is eligible the parent would be asked to have a physical examination given to the child and results sent to the principal of the local school.

After the principal receives the report from the doctor, he will arrange for a conference with parent and child. Recommendations for early entrance will be made on the basis of the intelligence test results, the pediatrician's report and the conference.



DEATH CAR—A 55 year old Spanaway man was killed when this late model sedan sideswiped the Steele Overpass supports bordering SR 512 Friday night. Impact from the crash forced the victim partially out the passenger window pinning him between the car and a drainage pipe.

Man Killed In Freak Accident

Failure to buckle a seat belt cost a 55 year old Spanaway man his life in an auto-overpass support accident on SR 512 at the Steele Street Overpass 9:20 p.m. Friday night.

Dustin A. Malotte, 12105 Spanaway Loop Road was killed instantly when his head struck a steel drainage pipe after he was partially thrown from his vehicle. The car had previously sideswiped overpass supports causing the victim to be partially thrown out of the passenger window, Troopers reported.

As the car careened back along the overpass, Malotte was caught between the pipe and his car.

The vehicle was equipped with seat belts, but they were not in use at the time of the tragedy, investigating Trooper Ed Hewitt stated. The car sustained approximately \$500 damage.

Football Gear To Be Issued

Bethel High School will issue football equipment on Monday, August 28 to Varsity members of last year's squad from 9 until 12 and all other prospects between 1 and 4. Football turnouts will begin Tuesday morning at 8 a.m.

Bethel Junior High football gear will be issued to all ninth graders on September 6 immediately after school. Physicals, insurance and parents' permission should be completed prior to drawing of equipment.

NOTICE!

\$50,000 Inventory Must Be Cleared

- ★ **Lost Our Lease**
- ★ **Liquidation Necessary**
- ★ **Prices Slashed To Move**

**Merchandise Fast
DON'T MISS THIS!**

J. C. CYGLAN
LIQUIDATION MGR.

**Furniture
Clothing
Groceries**

SALVAGE MART

13014 Pacific Ave.

LE 1-0770

OPEN
TIL
9 p.m.

OPEN
TIL
9 p.m.

HI HO


PUYALLUP

HI HO

Eastern "Grain-Fed" PORK SALE!

CENTER-CUT PORK CHOPS Well-Trimmed **79^c lb**
 COUNTRY-STYLE SPARERIBS **69^c lb**
 DOUBLE-THICK PORK CHOPS For Stuffing **85^c lb**

LOIN-END PORK ROASTS **69^c lb**
 FIRST CUT PORK CHOPS **73^c lb**
 BONED-ROLLED PORK ROASTS **79^c lb**
 HI HO COUNTRY-STYLE PORK SAUSAGE **39^c lb**
 BEEF LIVER **39^c lb**

LEAN BEEF  **\$1.09** lb.
 CUBE STEAKS

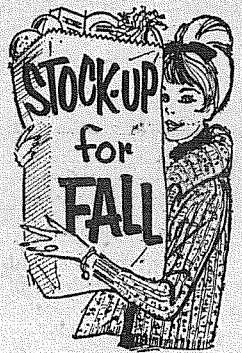
COFFEE SHOP
 OPEN FOR BREAKFAST



40-oz. ADAMS Peanut Butter **99^c**

3-OZ. PKG. JELL-O **9^c**

3-lb. SWIFT'NING **69^c**



4-PACK ZEE TOILET TISSUE **3/89^c**

WE'RE RUNNING IN CIRCLES TRYING TO SERVE YOU BETTER!

THE WORLD'S MOST MODERN SUPERMARKET

HI HO

ONE STOP SHOPPING PUYALLUP

OPEN TILL 11 PM 7 DAYS A WEEK

MASCOT DOG FOOD **14/\$1**



2-lb. FESTIVAL QUEEN PRESERVES **69^c**

PRICES EFFECTIVE AUG. 21st through 26th

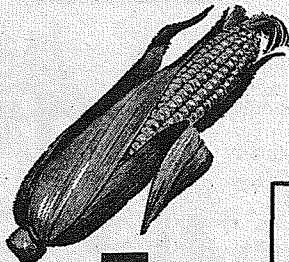
REG. 59^c 15-oz. COLGATE PRUFI SPRAY STARCH **29^c**

KING-SIZE AJAX KING-SIZE FAB KING-SIZE COLD POWER **89^c**

BEST VALUES BIGGER VARIETY BETTER QUALITY!

Quality

PRODUCE



VALLEY-GROWN CORN **5^c EAR**

RUBY GEM TOMATOES CELLO-PKG. **19^c**

VALLEY-GROWN BLUE LAKE GREEN BEANS **10^c lb**

JUMBO-SIZE CANTALOUPE **5/\$1**

THE BEST IN BAKED GOODS

CAREFULLY BLENDED AND ALL YOURS!

DUTCH APPLE PIE **69^c**

GARLIC BUTTERED French Bread **39^c loaf**

Drug Needs

LOWEST DRUG PRICES ANYWHERE

REG. 1.00 LANOLIN PLUS SHAMPOO **59^c**

REG. 1.00 LANOLIN PLUS CREAM RINSE **59^c**

REG. 59^c SHOWER-TO-SHOWER Body Powder **39^c**

REG. 1.09 VOTE TOOTHPASTE **69^c**

REG. 99^c SUAVE HAIR SPRAY **49^c**

HI HO

HI HO

PUYALLUP

PUYALLUP

HI HO

HI HO

HI HO

PUYALLUP

HI HO

Firemen, Soldiers, Bulldozers Halt Roy Fire

Reservation Burn Threatens Roy

Tempers Flare Over Set Fire



ARMY BULLDOZERS were pressed into service, using their giant blades to smother advancing flames with tons of dirt. Roy residents credited the dozers with saving homes in the threatened area. G.I. dozer operator (above) assaults blazing underbrush, almost disappearing into clouds of smoke and dust. —Staff Photo



TROOPS ARMED with shovels and picks marched into the burned area to help dozer operators and firefighters help mop up remaining flames. Foot troops were used after fire was knocked down by experienced firemen and dozer operators. —Staff Photo



A ROY FIREMAN adds water to a bucket of ice to provide a refreshing drink for men working fire line. Many members of Roy Fire Department worked around the clock fighting fire and on standby service. They were paid one dollar for responding to fire call. T.J. Staff Photo

Waller Road Project Improve As You Go Playfield

WALLER ROAD - Community effort here for three years has produced an "improve-as-you-go" playfield area near Waller Road Grade School.

The playfield was first begun in 1964 by the Pierce County Park Board and Puyallup School District. They installed a backstop and water meter on the school grounds but because of a shortage of funds discontinued any further work.

In October, 1965 the Waller Road Grange appointed a committee to see what could be accomplished toward completion of the field. The committee included James Taylor, Roy Looker, Dave VanHulle, chairman, Bob Frantz and Waller Road teacher Lloyd Morgan.

Plowing, grading, raking and leveling by a group of 15 men followed. They hauled in

Roy Volunteer Firemen teamed up with U.S. Army Engineers to bring a stubborn two day out-of-control "controlled" burn to a halt within a county road width of nearby residences on the outskirts of Roy early last week. Eight homes were seriously threatened throughout the blaze, and Wednesday morning the entire town was endangered when burning debris showered down on roofs and property. Residents of nearby Yelm reported ashes falling on their community.

The fire resulted from a controlled burn of an artillery impact area on the neighboring Fort Lewis Military Reservation. The fire was set as a precaution against an uncontrolled fire kindled by exploding artillery shells, town officials learned.

Army officials failed to notify Roy firemen of the controlled burn, and when smoke was sighted originating from the impact area Roy firefighters investigated.

Arriving at the scene, they found a civilian government employee igniting the tinder-dry area with a tank torch. Firemen were told what they had come to snuff out was a "controlled burn" and ordered to leave the reservation under threat of arrest.

The only fire safety precaution visibly present was a pickup truck equipped with a 200 gallon water tank, a portable pump, and a roll of garden hose, the firemen reported.

As wind-whipped flames raced in the direction of Roy, the firefighters became skeptical of just how controlled the "controlled" burn was. Questioning the amount of equipment on hand, the volunteers were assured everything was under control and if the flames got out of hand Muck Creek would act as a natural firebreak. It was noted that Muck Creek was dry.

At this point tempers flared and the firemen were ordered to leave or be "arrested by M.P.'s".

Later troops and heavy equipment were moved in to help contain the fire. Several homes were evacuated, but no injuries or cases of personal property loss were reported.

Estimates on the amount of land involved in the fire varied from 85 acres to 400 acres.

Wednesday morning the fire flared up a second time, and troops spent most of the day and evening bringing the blaze back under control. Roy firemen stood by to water down numerous roof and lawn fires caused by falling sparks. "It's a miracle the entire town wasn't lost," one fireman commented to the Times Journal pointing out the seriousness of the threat.

Soldiers and firemen were provided with cold drinks and sandwiches by Roy women. Many of the soldiers had only a sack lunch provided for supper Tuesday, so the women got together and kept hastily set up canteens supplied with food and a variety of cold drinks.

Waller Road

By Mrs. Verne W. Fogle Le 7-5210

The descendents of Frank and Mary Boone, held their annual get-together at Kaner flats Camp Ground at the Little Naches River.

The "Re-Boone-Yun" as it was named when the families held their first get-together 15 years ago, has gathered members throughout the years.

The original family came from Kentucky, Illinois and Indiana.

Marvin E. Boone, who resides at 10008 Waller Road was elected President of the group, Ralph A. Hagen of 13415 103rd Ave. E., Puyallup, vice-president; Lloyd G. Boone of Coos Bay, Oregon, 2nd vice-president; Mrs. Harold (Alice) Johnson of 8207 E 128th, Puyallup was made secretary-treasurer. To Mrs. Johnson will fall the duties of keeping records of the families. It is the desire of the Boone groups to contact anyone interested, who may be descendents of Daniel Boone.

This year's "Re-Boone-Yun" was attended by 48 persons.

The fourth in the series of Gavel meetings for the County Granges will be at James Sales Grange Hall on August 25th.

Firwood officers will be conducting the meeting. Clover Creek Grangers will present the program.

Howard Freeman, Master of Pomona Grange, invites members of all granges to attend. "It is good to get together in the summer time, as well as the regular meeting," Freeman said, "For now, pleasure comes before business."

400 yards of top soil for grass and 40 bales of peat moss last summer.

By this spring the site was ready for the first ball game—and also ready to be mowed. An old riding lawn mower was purchased from the Puyallup School District and, with a little doctoring and nursing, put into service at Waller Road.

The next project was benches for the ball players. Twenty-two feet of 2 x 12's in two sections were bolted to piping and anchored in concrete. A four foot chain link fence was installed in front of each bench to protect the players.

The entire area was fenced at the direction of the Puyallup School Board from the backstop to the school building.



PARKLAND

Fire Reports at Parkland Fire Department last week included:

8-14-67. A brush fire at 10616 So. Sprague, which was apparently started by a trash barrel without a screen, spread and caused a house fire at 10617 Sales Road, causing an estimated \$150 damage.

8-14-67. A grass fire at the 900 block of East 139th, about two acres was burned out but no other damage.

8-14-67. A grass fire in the 2500 block of So. 96th. No damage.

8-15-67. A grass fire at 922 So. 135th. No damage.

8-17-67. A grass fire at 809 So. 110th. No damage.

8-19-67. A television fire at 1304 So. 116th.

8-19-67. A brush fire at 112th and Golden Given. No damage.

The Parkland Fire Department is not issuing any burning permits whatsoever.

SPANAWAY

Reports from the Spanaway-Elk Plain Fire Department this week included:

8-14-67 at 12:21 p.m. a grass fire at 230 So. 161st Street. There was no damage although there was some scorching to three houses and two cars.

8-14-67 at 8:55 p.m. a trash-barrel that turned into a grass fire at 192nd and East "B". No damage.

8-14-67 at 9:55 p.m. a rekindle of the fire on So. 161st, and at 4:58 a.m. on the 15th another rekindle of the same fire, this time destroying a outdoor shed.

8-15-67 at 5:48 p.m. Mutual Aid to Roy Fire Department, four rings from Spanaway were sent to help

8-15-67 at 10:11 a.m. at 105 East 174th an electrical short caused a fire, but there was no damage.

8-16-67 at 3:38 p.m. Mutual Aid with Roy on a standby basis.

8-16-67 at 3:40 p.m. a grass fire caused by children playing with matches burned out three acres of land at 703 Military Road.

8-16-67 at 2:59 p.m. a water cooler mounted on top of a house trailer had a direct short and caught fire. The short in the cooler was causing it to pull power from a mile radius, causing people's lights to dim.

8-19-67 at 8:49 p.m. at 16411 22nd Ave East a car fire, caused by a cutting torch destroyed a car.



NEW - MORE POWERFUL

the 1967's

ARE HERE

VOLKSWAGEN

27 MAJOR CHANGES

COME IN AND

Tom Carstens

AUTOHAUS

7030 So. Tacoma Way
GR 4-0666
TACOMA DEALER SINCE 1955

Ceramics

Parkland Ceramics

1303 So. 117th

Fall Classes Sept 4

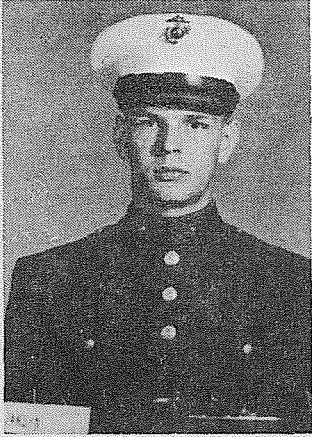
LE 1-0823

PLASTER BOARD

4X8X 1/2" \$1⁹⁸ EA.

Anderson Lumber

9813 PACIFIC AVE.



Robert L. Jansen

Marine Private Robert L. Jansen, son of Mrs. Gilbert P. Debson of Route 1, Eatonville, Wash., was graduated from eight weeks of recruit training at the Marine Corps Recruit Depot here.

He will now undergo about three weeks of individual combat training and then, after leave at home, will report to his first Marine Corps assignment.

The intensified Marine recruit training emphasizes rigid physical conditioning and survival techniques, both at sea and ashore, to develop self-confidence and endurance. Marksmanship with the M-14 rifle and 45-calibre pistol are equally stressed, and close order drill instills the traditions of Marine Corps teamwork.

A thorough study of basic military subjects; hygiene; first aid and sanitation; and the customs, courtesies, history and mission of the Marine Corps serve to polish the new Marine's recruit education and prepare him to join Marine combat forces.

BATTLE CREEK, Mich. - Technical Sergeant Arthur J. Welch Jr., whose wife, Bonita, is the daughter of Mr. and Mrs. Earl R. Winters, of R.R. 1, Graham, Wash., has arrived for duty at Custer Air Force Station, Mich.

Sergeant Welch, a radar operator, previously served at Can Tho AB, Vietnam. He is assigned to the Air Defense Command which provides aerospace defense against hostile aircraft and missiles.

The sergeant, a 1951 graduate of Midland (Ind.) High School, attended Indiana State Teachers College at Terre Haute.

Fire Permit Violators Will Be Cited

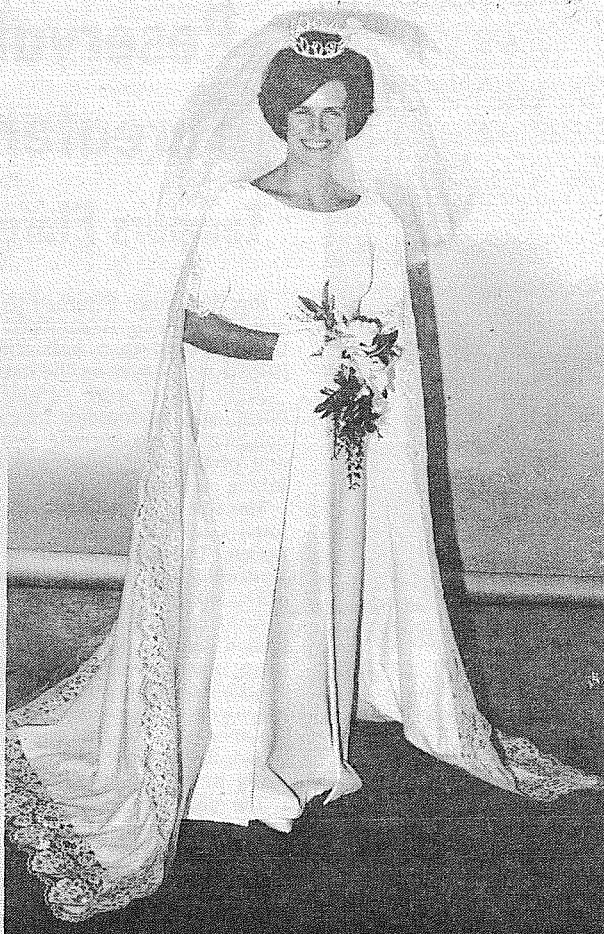
Residents that are conscientious about their burn barrels and methods of burning are going to be allowed to burn, according to John F. Farren, chief of the Spanaway-Elk Plain Fire Department.

Only those that are inconsiderate and do not take extreme precautions will be penalized, and, he said, any violators will be cited into court.

Burn barrels should be well clear of any grass or debris and should be covered with a screen to prevent any possibility of the fire spreading.

Permits are required by anyone who wants to burn trash from March 15 to October 15 of each year in the Pierce County Fire Department District No. 7. Anyone who is not sure of their barrel can call the fire department and someone will come out to the house and check it.

Church Rites For Area Couple



Soft candlelight shed a glow on altar arrangements of white gladiolus and yellow daisies for the Saturday evening wedding in Our Savior Lutheran Church, which united Marqua Christine Bertsch and Bendik Earl Erickson.

The bride is the daughter of Mr. and Mrs. Christ Donald Bertsch. Parents of the bridegroom are Mr. and Mrs. Magnus Erickson.

The Rev. Daryl Wildermuth performed the ceremony and Mrs. William Lobeda and Mrs. Laverne Stargel provided the wedding hymns.

Given in marriage by her father, the bride wore a full-length gown of white crepe design with kubuki sleeves and full sweeping court train of crepe edged with Chantilly lace. A queen's crown of pearls held to the bride's dark hair a cloud of silk illusion and she carried a bouquet of carnations and roses.

Marlys Bertsch was honor attendant. Misses Jane Erickson, Lynda Byrd, Evelyn Thomason, JoAnn Layton and Barbara Lewis were bridesmaids. They wore full-length sheaths of mint green and carried yellow roses.

Christopher Washam was ring bearer and Kari Mudge was flower girl.

Edward Mudge served as best man and ushers were Kevin Bertsch, Arthur Sortland, Wes Mudge, Don Kelley and Thomas Bilyeu.

Mrs. Bertsch was gowned in a cocoa brown and the bridegroom's mother chose a green ensemble. Their flowers were carnations.

A reception followed in the church parlors. A three-tiered fountain provided the punch and assisting with the reception were Mmes. Johnny Garcia, Ed Mudge, Jerry Lewis, Gerald Mount, R. Van Hook and Miss Connie Lewis.

For a Canadian honeymoon, the bride donned a blue knit sheath with white accessories. Her flowers were white orchids.

The couple will reside in Parkland.

Pam Peterson To Study Abroad

Pam Peterson, daughter of Mr. and Mrs. Clayton Peterson 1320 South 120th, has accepted a one year scholarship to study Australian culture in Newcastle, New South Wales on the Australian Continent, her family disclosed early this week.

She was one of 25 applicants selected for the award to represent Rotary International District 502 in overseas study. The District covers the area from the Northern tip of Vancouver Island to the Washington-Oregon border.

Miss Peterson, a 1966 Franklin Pierce High School graduate, will attend a teacher's college near Newcastle and live with Australian Rotarians during her stay. She plans to arrive in Australia sometime in September.

Bethel Student's Enrollment Set

Registration dates for the student in the Bethel School District have been set for the following dates and times:

Elementary students can enroll beginning August 29th through September 5th. Secondary student's enrollment is set for August 22nd through September 5th. Hours for registrations will be from 9 a.m. to noon and 1 p.m. to 3 p.m. all days.

Physicals will be required for students entering the first and seventh grades, and a secretary will be on duty at the registrations.

Hearing Set

OLYMPIA - A public hearing on the proposed freeway link between Summit and Puyallup's south city limits will be held at 10 a.m., Thursday, September 7, in the War Memorial Building in Puyallup. Property owners along the right-of-way already have been notified of the hearing, but the public is welcome as well.

Legal Notices

SUPERIOR COURT OF WASHINGTON FOR PIERCE COUNTY
ESTATE OF S.M. CHAVIS, SR. and ADA M. CHAVIS, Deceased.

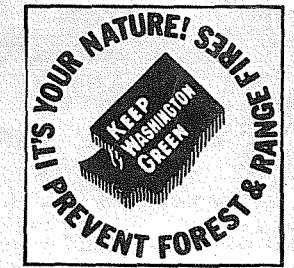
No. 76184
NOTICE TO CREDITORS
The Undersigned has been appointed and has qualified as Administratrix of the Estate of S.M. CHAVIS, SR. and ADA M. CHAVIS, Deceased. Each person having a claim against the above named persons or their Estate must serve the claim, duly verified by the claimant on the undersigned or attorney of record for the undersigned at the address stated below and must file it with the clerk of the court, together with proof of the service, within four months after the date of first publication of this Notice or the claim will be barred.

Date of First Publication July 26, 1967.
s/ Shirley Martin
Administratrix of said Estate
159 South 112th Street
Parkland, Washington 98444
s/ George F. Potter
George F. Potter, Attorney for Estate
George F. Potter
Attorney at Law
159 South 112th Street
Parkland, Washington 98444
LEnox 1-2889
Published Aug. 23, 30, and Sept. 6, 1967.

IN THE SUPERIOR COURT OF THE STATE OF WASHINGTON FOR THE COUNTY OF PIERCE In the Matter of the Estate of JAMES M. BURGESS Deceased. In Probate No. 76313

NOTICE TO CREDITORS
Notice is given that the undersigned has been appointed and has qualified as personal representative of this estate. Persons having claims against the deceased are required to serve the same, duly verified, on the undersigned or the attorney of record at the address stated below and file the same with the Clerk of this court, together with proof of such service within four months after August 9, 1967 or the same will be forever barred.

s/ Harold M. Hanson
Personal Representative
159 South 112th Street
Parkland, Washington 98444
s/ George T. Potter
Attorney for Estate
159 South 112th Street
Parkland, Washington 98444
LEnox 1-2889



LOOK THE RANCH
DINE AND DANCE
ORCHESTRA
Every Sat. Night

Pan-Fried Chicken,
Char-Broiled Steaks,
Prawns, True Italian
Spaghetti served
with every order.

For Reservations or
Directions Call
JU 8-9933 or JU 8-9145
10203 Sales Road

APPLIANCE PARTS
ADAMS APPLIANCE
SERVICE
817 EAST MAIN
TH 5-1395

New Owner-Manager
**Pleske's Conservatory
Of Music & Dance**

Guitar
Piano
Organ
Accordion

Classic Ballet
Tap
Ballroom
Modern
Acrobatic

Private or Class Instruction
Instruments Sold & Rented
JU 8-3937
10520 Bridgeport Way S.W.

Sprouse-Reitz

Key Chains
Summer Caps
Girls' Rings
Boys' Rings
Vegetable Brush

Bread Baskets
Shower Caps
Dish Cloths
3"X5" Mirrors
Paring Knives
Plastic Dust Pans

10¢

SALE
Many, Many
More
Your Choice
10¢ Each

**SPROUSE
-REITZ**
VARIETY STORES

OPEN
Mon-Sat.
9 A.M. - 9 P.M.
Noon til 6 P.M. Sun.

8218 Pacific Ave.

Journal Classifieds
Get Results
LE 7-0223

Pre-Rain Special
FREE
Fiberglass Furnace
Filters with our
Cleaning Special
\$1950
Only MOST MODELS

Includes
Ducts, Blower,
Chimney, Smoke
Pipe. Special
Lower Rates on
Stoves & Fireplaces

Free Estimates on
Service or installation
of burners, stoves, fur-
naces.
Free Estimates on Gut-
ter & Downspout Work

Satisfaction Guaranteed
or your soot refunded

HOME FURNACE
GR 2-5591 - 24 hrs.
30 Years Experience

**SAVE 25% to 40%
ON HEATING BILLS**

Replace your worn-out oil burner now. A new, modern oil burner unit will cut your winter fuel bills and improve your home comfort. Scientific research has given today's equipment new efficiency and economy. Customers report savings on oil bills from 25% to 40%.

**Call your oil heat
dealer today!**

Ask for a colorful folder on
"5 WAYS TO MODERNIZE
WITH NEW OIL HEAT
EQUIPMENT."

Make Spring Happen At Your Home This Winter

OIL HEAT INSTITUTE OF WASHINGTON

Times Journal Office Manager



Leila M. Courtney, 1212 South 118th, is a recent addition to the Times Journal staff. Mrs. Courtney's duties as office manager will include supervision of mail subscriber accounts, the classified advertising department, and display billing.

She came to the Journal from Anchorage, Alaska where she worked for the Corvi Construction Company. She has a 10 year old son, Bobby Mrs. Courtney's parents, SM. Sgt. Vernon A. Carpenter, also are residents of Parkland.

Of Interest to Women

Interviews For Library Volunteers

Volunteers to assist with Pierce County Library's new service to nursing homes are being interviewed now at the county library headquarters. In October, the library will begin service to licensed nursing homes in the county outside the city limits of Tacoma and Puyallup.

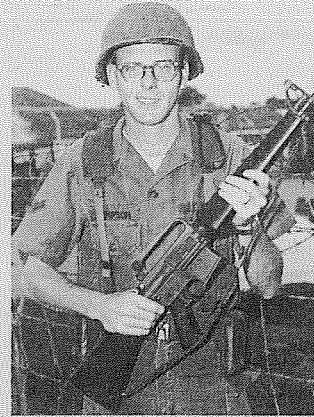
Last May, the county library was granted funds for a three-year demonstration program under the Older Americans Act. During this period the service will be evaluated, and if proved worthwhile, will continue.

According to plans described in the application for the grant, three kinds of library service will be available to nursing homes. Special services will include reading to individuals or groups; providing films and phonograph records; book discussions and storytelling. Some homes will house a library collection, to be attended and refreshed by the volunteer staff. Those individuals in nursing homes not maintaining a collection will receive library materials bi-monthly from the volunteer staff. Friendly visiting will be a feature of the three types of service.

Pierce County Library will supervise these services and supply the materials. Volunteer assistance is a necessary part of the project. Volunteers visit with the residents of the nursing homes; they request library materials that correspond to resident interests, and fulfill the other services already mentioned. In preparation for these activities, volunteers receive training from the Tacoma-Pierce County chapter of the American Red Cross and from the county library.

Persons interested in volunteering for this vital new service should phone Pierce County Library for an appointment.

Airman Receives Medal



Airman Second Class Leonard R. Thompson, whose wife Linda is the daughter of SM. Sgt. and Mrs. Vernon A. Carpenter of 1212 So. 118th, has been awarded the Air Force Commendation Medal for meritorious service as a Security Patrolman in Viet Nam.

The Citation accompanying the award states:

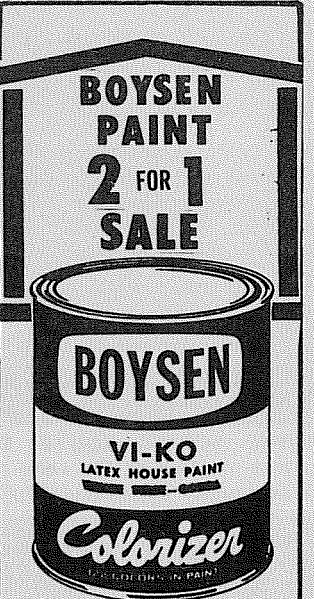
"Airman Second Class Leonard R. Thompson distinguished himself by meritorious service as a Security Policeman, 377th Security Police Squadron, Tan Son Nhut Air Base, Republic of Viet Nam from 24 August, 1966, to 17 July, 1967. During this period, Airman Thompson's outstanding professional skill and initiative aided immeasurably in identifying and solving numerous problems encountered in the accomplishment of his duties. The energetic application of his knowledge has played a significant role in contributing to the success of the United States Air Force mission in Southeast Asia. The distinctive accomplishments of Airman

Thompson reflect credit upon himself and the United States Air Force."

Airman Thompson arrived in Parkland from Viet Nam, where his wife is staying with her parents, Monday, which also happened to be their second wedding anniversary.

The couple will be leaving the Parkland area, to go to Roseboom, N.Y., soon to be with Thompson's parents, Mr. and Mrs. Kenneth Thompson.

AUCTION
EVERY FRI, 7:30 P.M.
34233 Pacific Hwy. So.
Buy, Sell or Consign
WA 7-2611 VE 8-9622



VI-KO

A new exterior latex paint with a color retention far superior to ordinary paints. Dries quickly. Water cleanup. Good on wood or stucco. 10 custom colored colors. (Custom colors slightly higher.)

SAVE 7⁹⁸

SPECIAL THRU SEPT. 2nd

2 GALLONS 7⁹⁸

BROOKDALE LUMBER

13602 PACIFIC

Car Salesmen To Be Licensed

(Editor's Note: This is the second of two articles on a new state law regulating car sales and the people who sell them.)

Car salesmen will join the ranks of licensed professions in Washington state after September 30, under a new law aimed at protecting the car-buying public.

Like real estate salesmen, doctors, beauticians, engineers and many other professional groups, car salesmen will have to meet certain licensing standards in order to work in this state.

Licenses may be denied to salesman applicants who have a past history of criminal convictions or civil judgements involving fraud or misrepresentation.

The Department of Motor Vehicles has mailed license applications to all car dealers in the state for distribution to their employees. Officials expect about 6,000 salesmen to be licensed under the new law by the September 30 deadline.

"A record of honest and integrity in past business dealings will be the main requirement of car salesmen," Motor Vehicles Director Douglas Toms explained. He added that passage of the new licensing requirement was supported by the Auto Salesmen's Union, Local 882 in Seattle.

In his license application, a salesman must report whether he has been convicted of "any felony within the past five years involving moral turpitude" or "any misdemeanor concerning fraud or conversion." He must report any judgements against him in a civil action involving fraud, misrepresentation or conversion. Involvement in such cases would be grounds for denial of a license. Past bankruptcies or unsatisfied court judgements must also be reported.

The motor vehicles director is then empowered to deny, suspend or revoke the license "if he finds that the order is in the public interest."

A salesman's license could be suspended or revoked if he knowingly sells a stolen vehicle, forges the signature of the owner on a vehicle title, or fails to produce the title for any attempt to defraud the state of vehicle licenses fees and taxes would also result in suspension of the license.

Car dealers are subject to the same regulations as their salesmen, although they must have dealer, rather than salesman, licenses. Dealer licenses can be revoked if the dealer employs unlicensed salesmen.

The salesman license fee is \$10 for the original and \$10 for the annual renewal. Dealers must pay a \$50 fee for the original license and \$20 for annual renewal.

The license requirement is part of a new law passed by the 1967 legislature which prohibits a number of false or deceptive practices in the advertising and sale of cars.

The state attorney general reports that at least one-third of all complaints to his Consumer Protection Division involve car sales.

"This law will go a long way toward eliminating unethical practices in the car sales business," Motor Vehicles Director Toms declared, "if the public will help by reporting any suspected violations to the Department of Motor Vehicles at Olympia or the Consumer Protection Division."

RETIREE



LAST TIME — Ben Kuper, of Kuper's Korner Store in Spanaway, steps off "No. 13" for the last time. Kuper is retiring from 14 years, with zero accidents, as a bus driver for the Bethel School District. On "No. 13" alone it is estimated that he drove around 175,000 miles.

(Times Journal Staff Photo)

Fair Entries Spanaway Art Invited Show

All entries to the Lamas Community Fair must be registered by 8 p.m. Sept. 8, Herb Schraml and Paul Chalk, local artists, will display original oil paintings 10 a.m. last week.

Exhibitors may register on the parking lot of Paul's their entries by telephoning Shoes, 161st and Pacific, 843-2379. Fair officials are holding work parties August 26-27.

BOWLING 30¢ INCL. TAX
Price Good Through Labor Day
BALLS \$17.95
AMF PLASTIC & COLORED RUBBER
COLUMBIA PLASTIC
PRICE INCLUDES FITTING, DRILLING, ENGRAVED NAME OR INITIALS AND 10 FREE PRACTICE GAMES. BALL PRICE GOOD THROUGH SEPT. 15
PARADISE BOWL 108th Pacific LE 7-6012

INSURANCE
Auto-Fire-Life-Bonds
A COMPLETE SERVICE FOR HOME OR BUSINESS
IRENE CLEMENS
INSURANCE AGENCY
10329 PACIFIC AVE.
AGENT-BROKER-NOTARY

Used Car
HEADQUARTERS
"MOST FOR THE MONEY"
All Makes... All Kinds
ARMSTRONG'S
USED CARS LE 7-5524
11109 Pacific Ave.

PARKLAND CLEANERS
KELLER CENTER
BRING IN THE A.M. PICKUP IN THE P.M.
It's Back-to-School Time
Be Ready!
Garments Weatherproofed
Fall Cleaning
Get Wardrobes Ready
For Back-to-School
Beat The Rush . . . Call Now!
Parkland Cleaners
Free Pickup & Delivery
110th & Pacific Ave. Call LE 7-3221

The TIMES JOURNAL

SPORTS

Demolition Derby, Powderpuff

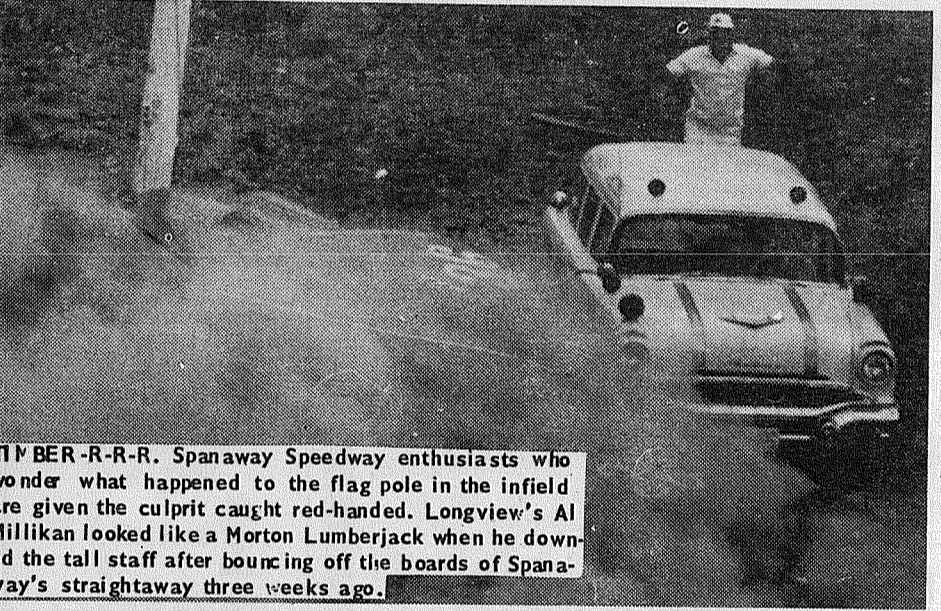
Highlight Spanaway Program



THE SHORT CUT. Ron Wilbert (1) and Bernie Bond (61) tried some sneaky tactics on the infield side of Spanaway's west turn. The maneuver turned sour when both spun out and lost valuable time.



THE SCENIC ROUTE. Unidentified "A" stocker apparently didn't want to waste time running on the same track as his competition at a recent Spanaway main. He eventually wound up in Tullie country behind the grandstand.



TIMBER-R-R-R. Spanaway Speedway enthusiasts who wonder what happened to the flag pole in the infield are given the culprit caught red-handed. Longview's Al Millikan looked like a Morton Lumberjack when he downed the tall staff after bouncing off the boards of Spanaway's straightaway three weeks ago.

SPANAWAY - The popular rockem-sockem Demolition Derby and a featured Powderpuff race will highlight action at Spanaway Speedway this Sunday, sharing the spotlight with the regular super-stock program.

Demolition Derby is exactly what the name implies - all cars attempting to demolish their competition until only a single vehicle is able to move. Everything goes in the wild affair except head-on collisions.

The powderpuff is in itself a form of demolition by design. Women drivers, fast cars... and all going the same direction (more or less) on the SAME track... there's all the necessary ingredients for total destruction.

In last Sunday's racing card, Don Hall and Steve Kiser drove to victories in the double A and A, mains, with Kiser showing little hospitality to Dennis (the menace) Scott, just back from a tour of duty with Uncle Sam. Scott did manage to salvage 3rd spot in the feature 50 lap main after leading through the middle 13 laps.

Many of the leading double A cars were not on hand to provide Hall with stiffer competition. Missing from gasoline alley were Jack Kuper, Bob Rollins, Ed Looney, Jack Jeffers and Ray Goodman.

Promoter Dick Boness was back on his feet after suffering painful injuries in an auto accident two weeks ago. He put in an appearance at the track despite sore ribs and bruises.

Complete results of last Sunday's card was as follows: "B" Trophy Dash, Terry Standish (8), Ron Wilbert (1)

and Dick Scott (41). Time 1,15:54. "A" Trophy Dash, Joe Holden (28), Dennis Scott (61) and Steve Kiser (63). Time 1,20:52. "AA" Trophy Dash, Rick Brock (33), Bob Short (17) and Don Hall (5). No time available. 1st Heat, Standish, D. Scott and Paul Strook (84). Time, 3,15:07, 2nd Heat, Harold LeGault (22), Ken Longley (92) and Kiser. No time available. 3rd Heat, Brock, Hall and Short. Time, 3,06:06. "A" Main (50 laps), Kiser, Longley and D. Scott. No time available. "AA" Main (35 laps), Hall, Brock and Lennie Russell (4). No time available.

Time To Unlimber The Ol' Scattergun

By Tony Solmen

PUYALLUP - Bird hunters! Don't let your gun gather dust in the closet. Stay in shape during the off season at the Tacoma Sportsman's Club Chateau, Skeet chairman, Frank Havens, would like to put you through the paces on the range.

Havens feels that some have forgotten skeet shooting was intended as a practice to improve reflexes and wing-shooting ability long before it became a world wide sport.

The idle off-season hunter will be amazed at how fast the moss can gather when he discovers it's not so easy to pot a clay bird barreling by at sixty miles per hour. So there must be some truth in the old saying that practice makes perfect.

"Beginners as well as experienced shooters are welcome to use our facilities," Havens said.

Organized practice sessions are held Sundays noon till about 6 p.m., and Tuesdays from 6:30 p.m. till around 11 p.m., at TSC Chateau on Canyon Road.

Arriving on the range you will notice eight shooting stations situated along a half-circle pattern. They are numbered counter-clockwise from one to eight.

With the exception of position eight each station is twenty three yards from where the clay birds whiz by. Station eight is located between the two launching huts and from there you bag the birds almost head on.

The clay pigeons are hurled from the "high house" and "low house" at sixty miles per hour.

The high house is left of the half-circle course behind station one. The birds are flung from the top of the house and off to the right.

On the right of the course to the rear of shooting station seven is the low house. The birds fly from the bottom of this booth and off to the left.

"Singles" and "doubles" are the two methods of shooting.

In singles you blast at a bird from the high house first. Then you load up and try again for a bird from the low house.

The birds are ejected from both houses at the same time in doubles. It will take a sharp eye and smooth coordination to smash both birds when shooting doubles.

A round of singles and doubles are allowed at stations one, two, six and seven. Only singles are permitted at the remaining positions.

An option shot is called the "25th bird."

If you shoot successfully at all right stations you have wiped out only twenty four clay pigeons, so you are given an option shot or 25th bird.

The 25th bird is taken either at the time of your first miss or at station seven if you have clipped them all up until then.

After the circuit is completed you have had a chance to down twenty five clay pigeons from every possible angle.

"Six hits out of twenty five is an average score for a beginner," said skeet boy and score keeper, Scott Jonas.

Perhaps you would be wise to touch up that .12 gauge now and prepare for the coming season before it's too late. See how close you can come to a score of twenty five.

As Havens said, "To a hunter proficient at skeet shooting - a pheasant will look like a boxcar!"

FINAL STANDINGS	
BETHEL ROOKIE	
Clover Creek Dodgers	12 2
Elk Plain Braves	11 3
Kapowsin Rookies	7 3
Spanaway Red Sox	6 4
Roy Rustlers	4 6
Spanaway Lions	3 7
C. C. Mini-Giants	2 8
Elk Plain Warriors	0 10
BETHEL PEE WEE	
Elk Plain Fire Dragons	7 2
Roy Rattlers	5 4
Spanaway	4 5
Graham Giants	3 6
BETHEL LASSIE	
C.C. Purple Bombers	7 2
Elk Plain Lucky Stars	8 3
Kapowsin Swingers	6 4
Spanaway Cookies	4 6
Kapowsin Sluggerettes	2 8
Roy Roadrunners	1 8
FRANKLIN PIERCE BANTAM	
Pederson Fryers	9 2
Parkland Giants	8 3
Parkland Cubs	6 4
Trinity Luth. Giants	3 7
Central Ave. Sonics	3 7
Collins Cobras	2 8
FRANKLIN PIERCE PEE WEE	
Collins Wildcats	8 2
Trinity Luth. Giants	7 3
Central Ave. Cards	7 3
Central Ave. Orioles	6 4
Corso's Cougars	5 5
Korum Dodge Boys	3 7
Westlar-Mayfair	2 8
Parkland Blue Jays	2 8
FRANKLIN PIERCE ROOKIE I	
Collins Colts	7 1
Trinity Luth. Giants	6 2
Dryer Mortuary	5 2
Christ the King	4 3
G&G Enco Tigers	2 5
Central Ave. Cards	2 5
Economy Angels	2 5
Bryson Bullets	1 6
FRANKLIN PIERCE ROOKIE II	
Central Ave. Cubs	7 0
Parkland Hawks	6 2
Central Ave. Tigers	4 3
Mighty Mites	2 6
Garfield St. Merchants	0 8
Nov 9 - Renton at Mt. Rainier	
Nov 10 - Auburn at Franklin Pierce	
Lakes at Puyallup	
Evergreen at Glacier	
Highline at Clover Park*	
Federal Way at Vernon*	
Nov 11 - Kent-Meridian at Tye	
Nov 17 - Championship play-off	
* Non-league contests	

PS League Football Schedule

Sept. 15 - Franklin Pierce vs. Tye*
 Clover Park vs. Glacier* at Highline (double-header)
 Evergreen at Federal Way*
 Auburn at Kent-Meridian*
 Mt. Rainier at Lakes*
 Puyallup at Renton*
 Sept. 16 - Mercer Island at Highline*
 Sept. 22 - South Kitsap vs. Mt. Rainier*
 Lakes vs. Highline* at Highline (double-header)
 Evergreen at Franklin Pierce*
 Glacier at Auburn*

Kent Meridian at Federal Way*
 Renton at Clover Park*
 Tye at Puyallup*
 Sept 28 - Puyallup at Evergreen.
 Sept 29 - Clover Park at Auburn
 Federal Way at Lakes
 Mt. Rainier at Glacier
 Renton at Kent-Meridian
 Franklin Pierce at Lincoln*
 Sept 30 - Tye at Highline
 Oct 5 - Federal Way at Mt. Rainier*
 Oct 6 - Auburn at Puyallup
 Franklin Pierce at Clover

Park
 Evergreen at Tye
 Glacier at Renton
 Highline at Kent-Meridian
 Lake vs Wilston at Stadium Bowl*
 Oct 12 - Renton at Highline
 Oct 13 - Lakes at Auburn
 Puyallup at Federal Way
 Glacier at Tye
 Kent-Meridian at Franklin Pierce*
 Mt. Tahoma at Clover Park*
 Oct 14 - Mt. Rainier at Evergreen
 Oct 19 - Federal Way at Auburn
 Clover Park at Puyallup
 Kent-Meridian at Glacier
 Oct 20 - Franklin Pierce at Lakes
 Highline at Evergreen
 Stadium at Renton*
 Oct 21 - Tye at Mt. Rainier
 Oct 26 - Auburn at Tye*
 Oct 27 - Clover Park at Lakes
 Franklin Pierce at Federal Way
 Evergreen at Renton
 Glacier at Highline
 Mt. Rainier at Kent-Meridian
 Summer at Puyallup*
 Nov 2 - Lakes at Glacier*
 Nov 3 - Federal Way at Clover Park
 Puyallup at Franklin Pierce
 Highline at Mt. Rainier
 Renton at Tye
 Lake Washington at Auburn*
 Nov. 4 - Kent-Meridian at Evergreen

SPANAWAY SPEEDWAY
 PRESENTS

Demolition Derby
Super Stocks
Powderpuff Derby

ALL ON THE SAME CARD!
Sunday...Aug. 27th
 TIME TRIALS 1:30 PM RACING 3 PM
 *THRILLS *CHILLS *SPILLS

SPANAWAY SPEEDWAY
 2 MILES EAST OF PACIFIC
 ON 59TH...TACOMA

HUNTERS

DON'T FORGET YOUR LICENSES, ELK TAGS, DEER TAGS, OR DUCK STAMPS

COMPLETE HUNTING SUPPLIES
 *CAPS *LANTERNS *AMMO *GUNS

SOUTH END HARDWARE
 South 185th & Pacific
 VI 7-7211 SPANAWAY

\$\$\$ VAUGHAN'S VALUES \$\$\$

Yes, we are now operating from one location
6402 South Tacoma Way

Lots of Parking...
 Plenty of Merchandise
 The Same Friendly Service

VAUGHAN'S
 6402 South Tacoma Way

Building Materials Inc.
 GR 2-4494 & GR 4-9515

PIERCE COUNTY HEADQUARTERS FOR 1967

★CHRYSLER
 ★PLYMOUTH
 ★VALIANT
 ★BARRACUDA
 CALL GR 4-0621

Steven MOTOR CO.
 2705 SOUTH TACOMA WAY



JUNIOR TENNIS CHAMPIONS—winners and runners-up in the Tacoma-Pierce County Junior Tennis Championships included: In front row, left to right, are: Steve Juisti, elementary novice singles runner-up; Rick Burkhalter, elementary novice singles champion; Rick Gustafson, bantam singles champion; Mike Graves, bantam singles runner-up; Megan Slikas, bantam singles runner-up; Jan Perry, junior singles champion; Debby McPherson, bantam singles champion; Mary Merrill, tournament director. In middle row, left to right, are: Dave Merrill, senior singles and doubles champion; Rick Gamas, senior doubles champion and senior mixed doubles runner-up; Barb Scott, senior singles runner-up, senior doubles champion and senior mixed doubles runner-up; Jane McGovern, junior mixed doubles champion and junior doubles runner-up; Diane Nelson, junior doubles champion; Debra Walsh, junior singles champion; Barbara Bevegni, junior novice singles champion, and Sue Zobriski, junior novice singles runner-up. In back row, left to right, are: Dan Merrill, tournament director; Carl Foster, junior novice singles champion; Bernd (Cq) Sparbell, junior novice singles runner-up; Char Mooney, senior doubles runner-up; Jim Smith, senior mixed doubles champion; Lisa Nemchik, senior mixed doubles champion; Nancy Peterson, junior singles runner-up; Dave Knodel, junior singles champion, and Brian Berg, tournament director.

Football Practice Sessions Slated

Practice sessions for boys football teams in the four Pierce County Park Department leagues will officially begin on Friday, Sept. 1.

Dates for pre-season meetings, player weigh-ins, jamboree and the start of league competition have also been announced by Jack Johnson, County Park Department athletic supervisor.

Coaches of teams in the County leagues—Bantam (13-under), Pee Wee (12-under), Rookie (11-under) and Small Fry (10-under) will meet with recreation officials on Thursday, Sept. 7, at 8:30 p.m. in the South Park Community Center, S. 50th and South Tacoma Way. Details of the 1967 season will be discussed.

A deadline date of Tuesday, Sept. 12, has been set for payment of \$15 entry fees and insurance charges for all teams. The pre-season jamboree will be held Sunday, Sept. 17.

Player weigh-ins will be held at a location to be announced later on Thursday, Sept. 14. League play will start Sunday, Sept. 24, and conclude on October 29.

Memos containing information on deadline dates, fees and key rules and regulations will be mailed to all team-sponsoring agencies this week by the Pierce County Park Department

Deadlines For Entries In Western Washington Fair Exhibits Announced

Deadlines for entries of exhibits in the Western Washington Fair will be held in Puyallup, Wash., September 16 through 24 have been announced by John H. McMurray, secretary-manager.

Entries for the most part are accepted on a first-come, first-served basis and already space in a few exhibits has either been filled or nearly filled. The space in the horse barn for the heavy draft teams, for example, is already gone.

"Exhibits in the various categories run into the thousands," McMurray said. "We have tremendous exhibition space but even so it is important that exhibitors get their application in early."

The only major change in exhibition procedure this year will be the women's department. In previous years the fair had picked up entries in Tacoma and Seattle. Now, entered items must be delivered to the fairgrounds.

The deadlines for the major departments and the department superintendents are:

Cattle—Dr. F.R. Murdock, Supt. 6:30 p.m., Sept 9
Poultry and Rabbits—H.W. Beckendorf, Supt.—Sept 9
Agriculture and Horticulture—Worth Vassey, Supt.

Community Exhibits—Contact supt. for space if any available. Fruit—6 p.m., Sept. 15

Vegetables—7 p.m., Sept. 15
Grain and seed—Fred Kropf, Supt. — 6 p.m., Sept. 15
Flowers and decorative plants—Carter N. Sandahl, Supt.

Flowers—9 a.m., Sept. 16
Baskets — 10 a.m., Sept. 19
Roses — 9 a.m., Sept. 23
Campfire Girls—Marian McMillan, Supt.

Baked Goods—1 p.m., Sept. 14
All Other—9 p.m., Sept. 12
Four—H— Thomas Quann, Gen'l Supt.

Dairy and Livestock—Sept. 5
Baked goods, canned goods, forestry, garden—Noon, Sept. 15
Clothing, Photography, Electric, Entomology, Sept. 12
Flowers — 5 p.m., Sept. 15

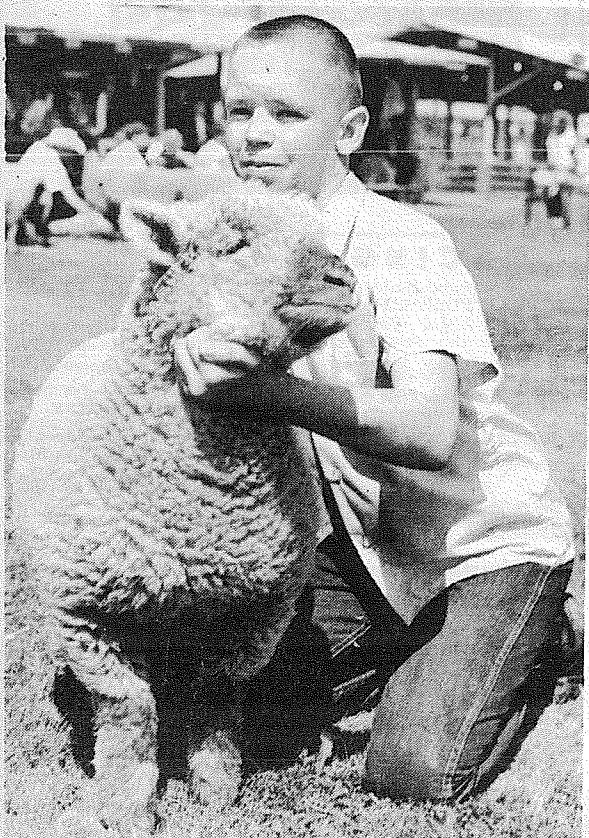
Future Farmers of America H. L. Polis, Supt.

Preliminary Entries in by Sept. 1 to P.O. Box 248, Olympia
Photographic Salon—George Kinkade, Supt. - 6 p.m., Sept. 2
Art—Robert W. Gorham, Supt.—Sept. 7 through 9, 2 to 7 p.m.

Women's Department—Mrs. Margaret Howard, Gen'l Supt.
Culinary items—Sept. 14 11 a.m. to 7 p.m.

All Other—Sept. 8 through 10, 9:30 a.m. to 4:30 p.m.
Hobby Hall—Mrs. John Espy, Supt. — 8 p.m., Sept. 12

Pierce County Junior Fair Winners



4-H'ERS — Richard Kenschuh and Tony Davis, both received livestock awards from Puyallup Kiwanis. The boys entered the contest with an essay on why they wanted the animals. Kenschuh, son of Mr. and Mrs. Harold Kenschuh of Route 2, Box 2735, is seen with his Holstein and young Davis, of Route 2, Box 2782, with his south down ewe.

— Times Journal Staff Photos

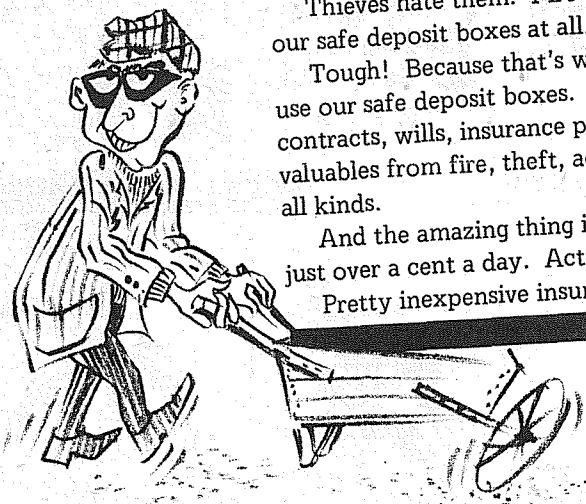
OUR SAFE DEPOSIT BOXES ARE UNPOPULAR!

It's a fact. The only people who REALLY like Citizens safe deposit boxes are the people who rent them.

Thieves hate them. Fire and water don't get along with our safe deposit boxes at all.

Tough! Because that's why so many wise families use our safe deposit boxes. For complete protection of contracts, wills, insurance policies, heirlooms, jewelry and valuables from fire, theft, accidental loss and damage of all kinds.

And the amazing thing is that this total protection costs just over a cent a day. Actually only \$4 a year. Pretty inexpensive insurance. . . . wouldn't you say?



Citizens STATE BANK



MEMBER FEDERAL DEPOSIT INSURANCE CORPORATION

- ☆ MAIN OFFICE - PUYALLUP
- ☆ EAST SUMNER OFFICE
- ☆ SUMMIT VIEW OFFICE
- ☆ EDGEWOOD-MILTON OFFICE

WANT ADS

Personals

DRINKING problems? Alcoholics Anonymous in Puyallup area. TH 5-5882, UN 3-6403, WA 7-1113, TH 5-3313, JU 8,3963.

HAVE AN alcoholic problem? LE 1-1022, GR 2-5267, LE 7-8526. Write Box 2265, Parkland

\$50 CASH to churches, clubs, schools or groups for selling 84 bottles Watkins Vanilla. Call between 8 and 10 a.m. Monday thru Friday. LE 7-6101

LOSE WEIGHT safely with Dex-A-Diet tablets. Only 98¢ at Bealls Rexall.

ARE YOU living with or near a drinking problem? GR 2-8011, LE 1-5979.

LOSE WEIGHT safely with Dex-A-Diet Tablets. Only 98¢ at Ashmore Drug.

ONE BEDROOM, furnished apartment. \$80 per month. TH 5-7362.

Repair Services

RADIO, TV and Appliance repair. 6 years experience. Repair all makes and models. 1735 East 65th. GR 2-1532.

GUARANTEED sewing machine repair. TH 5-8162.

FOR FURNACES, repairs, sheet metal work, call Parkland Fuel Oil. LE 7-0256.

For Rent

RENT high-weed mowers, 5 sizes. United Rent - Alls. 9440 Pacific Ave.

CAMP trailers for rent. Call Roy 843 - 2273

BRICK GARAGE. TH 5-8253.

INDUSTRIAL location. Approximately 600' frontage. Rail Switch. One acre ground, utilities adjacent. Will sell or lease or submit your proposal. Zoned G-General. Box 100A, Times Journal. 67-41

OFFICE SPACE for rent. 30x30 center office in the Times Journal Building. Larger customer counter, lighters, water, heat, and garbage furnished. Ideal for real estate, insurance, bookkeeping office. Plenty of customer parking space. \$65 per month. Or 30x15 space for \$100 per month. Contact Jack Brown or Parti Bullo at Times Journal office 10 a.m. to 4 p.m. or phone LE 7-0223 ... or better yet come on in and we'll drink coffee and swap lies. 67-24

FURNISHED bachelor apt. Fife area. WA 2-6071.

BOAT OWNERS attention! For rent, stall for dry storage of your boat on trailer. 10' wide by 11'6" high by 25' deep. Lights, constant surveillance, easy access behind the Times Journal Bldg. on Pacific Ave. \$15. per month. Phone Jack LE 7-0223 or LE 7-0473 evenings.

PARTIALLY FURNISHED 2 bedroom small house. Call GR 4-1667. 7515 South Yakima for appointment to see. 67-63.

3 BEDROOMS, 1 1/2 baths, fenced yard, double fireplace, double carport, drapes, carpeting. \$150. Lease. TH 5-3216.

Real Estate For Sale

DUPLEX - Zone G-General. Live in one 3-bedroom apartment, use other apartment for acceptable business or professional office (or family rental residence). Plenty parking space. Owner wants 1/4' down. Total price \$20,000. Box 100-A, Times Journal. 67-42.

Listings Wanted
Buying or Selling
Real Estate Service
Call
Devereaux Realty
12152 Pacific Ave. LE 7-8658

PARKLAND: near PLU. Large 3 bedroom home with bath and 1/2. Recreation room, fireplace, utility shed, on large lot. \$16,800. LE 7-0300. 67-58

LARGE WOODED building sites in area of new homes. East 72nd St. area. Reasonably priced. Owner, WA 2-8542, LE 1-1587.

HOME VACANT
We desperately need good rentals \$80 to \$150 per month
CALL NOW
Let us handle your worries
SUBURBAN REALTY
11302 Pacific Ave.
LE 7-8638 or LE 7-6896

Instruction

PLAY SCHOOL -- limited openings. Experienced teacher. \$5.50 monthly. TH 5-3025.

PIANO teacher in Milton has opening for students. Call WA 2-8248.

MRS. GWEN DANIELS - instructor of piano. Fife Heights. WA 2-5468.

PIANO studio - 72nd & Canyon Road. LE 7-5064.

PIANO and organ lessons. LE 7-4242.

PIANO, guitar, band instruments. Students home or studio. LE 1-3246, SK 2-7695

DRIVER TRAINING. 3 week course. Free Pick up. LE 1-0505 anytime.

Trailer Space For Rent

TRAILER SPACE for rent. Call **Craney Crow Trailers** Park. VI-7-2560.

Legals

SUPERIOR COURT OF WASHINGTON FOR PIERCE COUNTY
NO. 8225
NOTICE
In the Matter of the Adoption of PERRY GENE VANDERFORD, A Minor.
TO: RUTH J. VANDERFORD and to all whom it may concern.
YOU ARE HEREBY NOTIFIED that there has been filed in the Court a Petition for the Adoption of PERRY GENE VANDERFORD praying that an adjudication that your consent to such proceeding is not required by law.
A hearing for such purpose will be had on the 25th day of Sept. 1967 at the hour of 9:30 a.m. at the County-City Building in Tacoma, Washington, before the above entitled Court, Department of the Presiding Judge, when and where all persons interested shall appear and show cause why such adjudication should not be made and why, if made, such petition should not be heard forthwith, and the prayer thereof granted.
WITNESS the Honorable WM. F. LEVEQUE Judge of said Superior Court and the Seal of said Court hereunto affixed this 17 day of August, 1967.
DON PERRY, Clerk
By HENRY RUIT, Jr.
Deputy
George F. Potter
Attorney at Law
159 South 112th Street
Parkland, Washington 98444
Lenox 1-2889
Published Aug. 23, 30, Sept. 6, 1967.

Legals

IN THE SUPERIOR COURT OF THE STATE OF WASHINGTON FOR THE COUNTY OF PIERCE
In the Matter of the Estate of AGNES M. ROGERS Deceased.
In Probate
No. 76206
NOTICE TO CREDITORS
Notice is given that the undersigned has been appointed and has qualified as personal representative of this estate. Persons having claims against the deceased are required to serve the same, duly verified, on the undersigned or his attorney of record at the address stated below and file the same with the Clerk of this court, together with proof of such service within four months after July 19, 1967, or the same will be forever barred.
s/ Kathryn A. Rogers
Personal Representative
159 South 112th Street
Parkland, Washington 98444
s/ George F. Potter
George F. Potter
Attorney for Estate
159 South 112th Street
Parkland, Washington 98444
Lenox 1-2889
Published Aug. 23, 30 and Sept. 6, 1967.

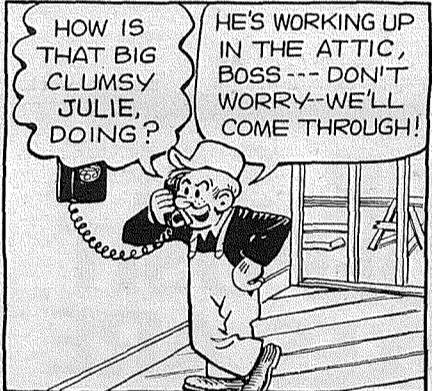
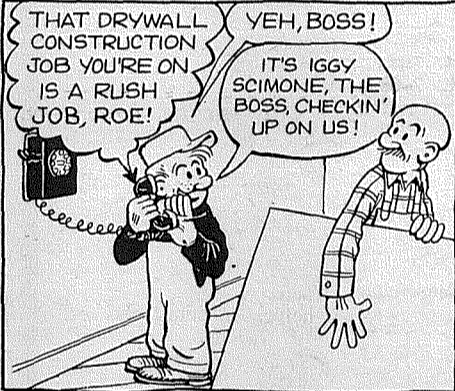
IN THE SUPERIOR COURT OF THE STATE OF WASHINGTON FOR THE COUNTY OF PIERCE
In Probate
No. 76373
NOTICE TO CREDITORS
In the Matter of the Estate of AGNES TAUT Deceased.
Notice is given that the undersigned has been appointed and has qualified as personal representative of this estate. Persons having claims against the deceased are required to serve the same, duly verified, on the undersigned or the attorney of record at the address stated below and file the same with the Clerk of this court, together with proof of such service within four months after August 23, 1967, or the same will be forever barred.
Herman Taut
Personal Representative
159 South 112th Street
Parkland, Washington 98444
George F. Potter
Attorney for Estate
159 South 112th Street
Parkland, Washington 98444
Lenox 1-2889
Published Aug. 23, 30, Sept. 6, 1967.

SUPERIOR COURT OF WASHINGTON FOR PIERCE COUNTY
NO. 75112
NOTICE OF HEARING
FINAL ACCOUNT
In the Matter of the Estate of JAMES F. CRECCA, Deceased.
NOTICE is given that the final account and petition for distribution has been filed with the Clerk of the above court and the personal representative seeks settlement of the account, distribution of the Estate, and discharge, which matters have been set for hearing on Sept. 15, 1967 at 9:30 A.M. in the Courtroom of the Probate Department of this Court.
Elvira C. Yager
Personal Representative
George F. Potter
Attorney for Estate
159 South 112th Street
Parkland, Washington 98444
Lenox 1-2889
Published Aug. 23, 30, Sept. 6, 1967.

IN THE SUPERIOR COURT OF THE STATE OF WASHINGTON FOR THE COUNTY OF PIERCE
In Probate
No. 76313
NOTICE TO CREDITORS
In the Matter of the Estate of JAMES M. BURGESS Deceased.
Notice is given that the undersigned has been appointed and has qualified as personal representative of this estate. Persons having claims against the deceased are required to serve the same, duly verified, on the undersigned or the attorney of record at the address stated below and file the same with the Clerk of this court, together with proof of such service within four months after August 9, 1967, or the same will be forever barred.
s/ HAROLD M. HANSON
Personal Representative
159 South 112th Street
Parkland, Washington 98444
s/ GEORGE F. POTTER
George F. Potter
Attorney at Law
159 South 112th Street
Parkland, Washington 98444
Lenox 1-2889
Published Aug. 23, 30, Sept. 6, 1967.

OUR WEEKLY COMICS

Rural Delivery



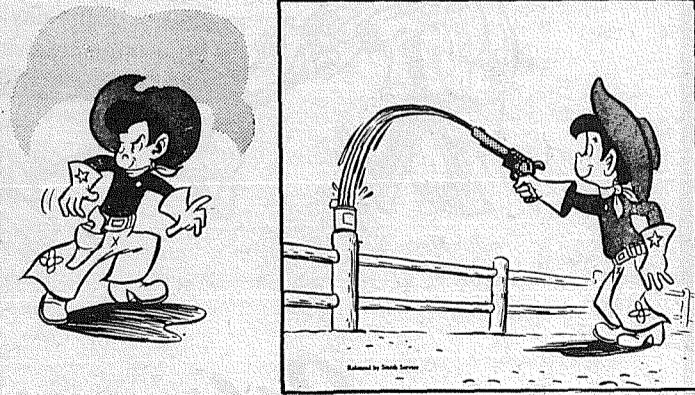
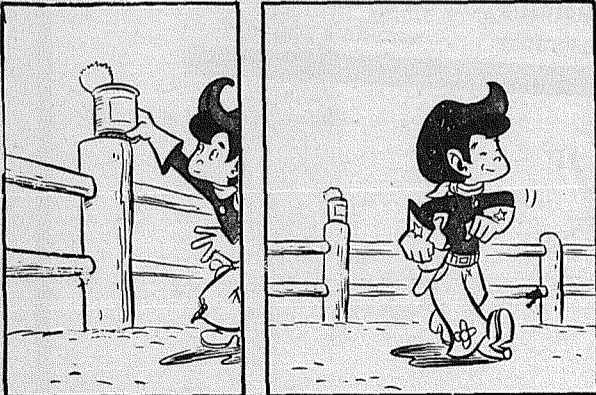
By Al Smith

Grubby



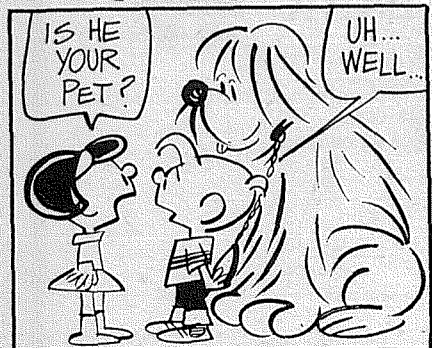
By Warren Sattler

DEEMS



By Brad Anderson

Grandpa's Boy



LAKE TAPPS
Large, wooded residential recreation lots with lake access. Underground power, hard-surfaced roads, piped pressure water - all in. Priced from only \$2395 with \$50 down.
Drive to Sumner. Go East on Highway 410 to Lake Tapps Sales Office.

Lake Tapps Sales Company
UN 3-4406 or VE 8-9393

FAMOUS CHEF BURGERS
6 FOR \$1.00
DARI-FLO
1210 East Main - Puyallup
2 blocks East of Piggly Wiggly

BUSINESS DIRECTORY

Fencing
Designers and Builders
EXPERT WORKMANSHIP
REASONABLE PRICES
Easy Monthly Payments
VAUGHAN'S
84th & Pac. Ave. GR 4-9515

Top Soil
BALMER & SON
EXCAVATING
Bulldozing - Loader
Land Clearing - Dump Trucks
Grading - Road Construction
Top Soil, Backhoe For Hire
FREE ESTIMATES
LE 7-3165 VI 7-7133

Sheet Metal
• Furnace Repair and Service
• Installations
PARKLAND FUEL OIL
12002 Pacific Ave.
LE 7-0256

Boush Moving & Storage
Agents for U.S. Van Lines
Coast to Coast Service
121 WEST STEWART
TH 5-5436

PARKLAND FUEL OIL
12002 Pacific Ave.
LE 7-0256

INTERURBAN AUTO FREIGHT INC.
3 Trips Daily
To Parkland, Spanaway, Summit, Midland.
GENERAL FREIGHT
MA 7-4121

Use the Want-ads - It Pays

CLASSIFIED ADS

Miscellaneous For Sale

FENCE PICKETS, 3¢ ft. Cove 3/4 round molding, 5¢ ft. 8441 S. Park.

CLEAN slab wood. \$1.00 pick up load. U haul. Gale, Patterson Road, Orting.

VACATION trailers for rent. 15' with brakes. Sleeps 6. \$6.50 per day including hitch and insurance. Bunce-U Rent, 1812 E. Main. TH 5-7527.

TV'S working, \$14.95 and up. 34233 Pacific Highway South. Federal Way.

RENT ADMIRAL portable TV's. All sizes, color too. United Rent-Alls. GR 5-3755, 9440 Pacific Ave.

TOP SOIL, lawns, leveling, landscaping. ADM. Co. TH 5-2452.

COW FERTILIZER. Double MB Dairy. We deliver. TH 5-1309.

CHOICE AFRICAN violets. 10214 East B. LE 1-1926.

FINE, YOUNG ducks. Rouen, Muscovy, Pekin. VI 7-2268.

MENESS Products. GR 5-2734.

COLDSPOT REFRIG. Kitchen table & chair box springs with legs, car carrier, chest drawers. LE 1-5718. 67-59

PYLON plastic cement sealer and paint. Reg. \$12.95 now \$7.95. LE 1-5718.

GRAVEL FOR driveways. Coarse or fine screen. 5 1/2 yards, \$14. Coarse washed sand, pea gravel crushed rock, mixes for concrete work. Cedar fence rails and posts. Phone evenings. Norman, LE 7-4088.

'65 FLEET CRAFT 15' with brakes, gas lights, window guard. Sleeps 6. \$895 including license. New Fleet Craft trailers, too. Bunce-U-Rent, 1812 E. Main. TH 5-7527.

TO SEE Minnesota woolens, new fall line, call WA 2-8473.

LUGGAGE CARRIER for station wagon. Used twice - like new. 1/2 price. GR 4-2757.

BARBER SHOP equipment. 2 chairs, uptown Puyallup. TH 5-8198.

YOUR MINNESOTA woolen fashion adviser is waiting to serve you with wearables for the entire family. TH 5-6101.

COUCH, 6-YEAR crib and high chair, 2 wool rugs. TH 5-6897.

DINING TABLE, 40 years old. Make offer. Large end table. TH 5-1681.

HAND SPLIT shakes and shingles. Ridge. BR 2-6083.

APPLIANCES, Private party. LE 1-6597.

FRIGIDAIRE authorized appliance service. Newell Hunt Furniture. TH 5-1735.

FRANK'S 2nd Hand. 1512 East Pioneer. Furniture and Appliances. Buy, sell, and swap.

VACUUM cleaner bags for most makes. Cleman's Furniture, 201-3rd St. S.E. Puyallup.

KNAPP SHOES - G.H. Rowe, 711 East 133rd St. LE 7-5128.

LUZIER cosmetics. TH 5-5362.

RUMMAGE SALE sponsored by Naomi Chapter OES at Paulson Motor Co., 116 W. Pioneer August 25-26, 8am-6pm. All proceeds to go toward Eastern Star training awards for religious leadership.

Miscellaneous For Sale

NEW LINE of Baum toys for parties. UN 3-1519.

BOX SPRINGS, matching 6" foam mattress. \$65. Like new. 1111 E. 139th, Tacoma. 67-60

WESTINGHOUSE washer & dryer. Both - \$50. TH 5-0831.

ORDER LETTERMEN school sweaters. Any color. River Road Gift Shop. TH 5-4336.

RUMMAGE SALE: 1100 E. Main. Thursday and Friday. 9:30-6.

APPROXIMATELY two cords, two feet, fireplace wood, nearly new dinette table and six chairs, 219 6th Ave. N.W. Puyallup.

RENTAL PURCHASE plan on TV and appliances. Upton's, 1148 Market St., FU 3-2551, open Monday and Friday nights till 9.

1967 SUZUKI X6 Hustler. Low mileage, excellent condition. Warranty. UN 3-7440 after 5.

GREEN DAVENPORT and chair, foam rubber cushions, \$80. Twin mattress, box springs and frame, \$30. TH 5-0254.

REFRIGERATOR. Metal cot, folding high chair, chrome dinette set with 6 chairs. All good shape, UN 3-9115, after 5 p.m.

TWO REGISTERED Corriedale ewes, one ewe lamb. One upright piano, best offer over \$75. TH 5-4302.

MICROPHONE and amplifier, \$30. Diamond Elk pin, \$25. TH 5-5081.

TRAILER for sale. 4336 McKinley Ave., Tacoma. GR 5-3956.

RENT THIS small chest freezer for \$10 each month and payments will apply on purchase. Full price \$79.95. Upton's, 1148 Market St., FU 3-2551, open Monday and Friday nights till 9.

F.M. IS THE finest freezing and canning corn. The place to buy at Louderback Farms, Orting. \$1.50 per sack. 893-5554.

CABIN TENT 9x12 with floor and windows. \$50. UN 3-7329.

GOOD LOCAL hay. 50¢ bale. TH 5-3848.

BOAT. 18 1/2 convertible. Full canvas, tandem trailer, Evinrude motor. \$1500. UN 3-7958.

BLUE Lustre not only rids carpets of soil but leaves pile soft and lofty. Rentelectric shampooer \$1. Puyallup Furniture, 302 Meridian S., Puyallup.

MOVED OUT of city and returned Emerson combination TV radio record player with only \$169 due. Assume \$15 monthly payments and you will save some money. Upton's, 1148 Market St., FU 3-2551, open Monday and Friday nights till 9.

GOOD WORKING Cold Spot refrigerator, fully guaranteed, only \$29. Rent or buy for \$5 each month. Upton's, 1148 Market St., FU 3-2551, open Monday and Friday nights till 9.

GUERNSEY COW due to calf February. \$150, 856 Chevrolet Station Wagon, 6 cyl., stick, \$225 or best offer. LE 1-2891.

GIRLS' school dresses, size 8. TH 5-3128.

MONARCH combination wood and electric range. Reasonable. TH 5-7662.

GE FREEZER. Like new, \$135. TH 5-2796.

Miscellaneous For Sale

BEAUTIFUL wedding gown, size 12. Roller skates, size 8. Western boots, size 9. Western suede jacket from Germany, size 13. TH 5-0913.

UPRIGHT grand Hobart-Cable piano. Excellent condition. \$125. TH 5-2514.

SWING SET, baby furniture. LE 7-8253.

FREEZER, refrigerator, TV, beds and other household items. TH 5-7197.

61 PONTIAC, TEMPEST, 4 door. \$275. 1946 1 1/2 ton Chev. \$295. Lawrence roping saddle, almost new. VI 7-2741.

VACUUM CLEANERS: Many bargains in used and rebuilt. Hoover \$10, Ureka \$15, Electrolux \$19, Kirby \$49. Parts, hose, repairs for all makes and sewing machine. Upton's, 1148 Market St., FU 3-2551, open Monday and Friday nights till 9.

For Sale or Trade

TOP SOIL, lawns, leveling, landscaping. ADM Co. TH 5-2452.

For Trade

SWAP BRAND new never used Sunbeam electric razor for good used shower stall. TH 5-7048.

TRADE 58 Ford pickup with canopy, radio and heater for '58 or later Ford panel. No junk. TH 5-7048 after 6.

Livestock Services

LICENSED FARM slaughtering and custom cutting. 893-4012, Orting. Call collect.

Livestock For Sale

SHETLAND pony - friendly 3 year old gelding. \$65. Angus steer. Orting 893-5875.

LIVE LAYERS. Good producers. Reasonable. Your container. 5910 Clark Creek Rd., TH 5-7662.

THREE rabbits (four-months old). WA 2-5903.

PHILLIPS HARD LUCK Ranch. Board horses wanted. Appaloosa Stud Service - Joseph R. Standing, Rt. 1, Box 347, Graham. 893-5851.

6 WEEKS OLD Holstein Bull. TH 5-5101.

NICE Shetland pony with three-month-old filly. Best offer. English bridle with Martin gale. Never been used. TH 5-0913.

3-YEAR-OLD registered Appaloosa mare. Gentle, flashy, good blanket, well started reining. \$350 cash. LE 7-8253.

HOLSTEIN cow. Fresh in few days. Second calf. WA 2-7837.

For Free

FREE to good homes - Large and small dogs, puppies, healthy cats. WA 7-1119 - WA 7-0163.

FREE to good homes - Large and small dogs, puppies, healthy cats. WA 7-1119, WA 7-0163.

FEMALE SAMOYED. To good farm home. 4 months old. TH 5-1247.

Lost

POMERANIAN Red Sable. 3 lbs. 'Mite'. WA 2-7837.

LADY HAMILTON platinum-diamond watch with white gold stretch band. Lost afternoon Aug. 15 at Elks Pool. \$175 anniversary gift. Reward. UN 3-4519.

Pets For Sale

CUTE 6-weeks-old Shepherds for sale. Reasonable. Call Hal Jonas, 843-2466. 67-61

HALF MANX - Half Siamese kittens. WA 2-6873.

Pet Care

STUD SERVICE: Small toy poodle. Champagne. LE 7-0195.

POODLE and cocker clipping - \$4.00. LE 1-5558.

GROOMING to your liking. Dogs given tender loving care. Call Kaye, TH 5-3105.

PROFESSIONAL poodle grooming, private grooming lessons. Pet and professional courses. Lovely orange apricot pups. Stud service. Mr. Lucky's Kennel. LE 1-4131.

RUSSTAN KENNELS
6721-13th St. N.E. - Puyallup WA 7-9012
BASSET HOUNDS
All Breed Boarding
Visitors Welcome

Land Services

TOP soil, sandy loam, black soil, mixed soil. LE 7-7455.

BULLDOZING. Days, week-ends. LE 1-1892.

TOP SOIL, lawns, leveling, landscaping. ADM Company. TH 5-2452.

TOP SOIL and gravel. Loader work. R.D. Beeler. LE 7-4940.

ROTOVATING, plowing, smooth and pack lawns in preparation for planting. Call Keller. TH 5-8529.

DOZER & LOADER WORK
Hour or Contract
Hauling State CC Permit
8-10 yd. new truck
NEWBURY'S
DOZER SERVICE
LE 7-7455

Wanted

BUILDINGS to tear down - any size. References. Lloyd Sherman, Rt. 2 Box 241, Sumner.

Building Services

LANDSCAPING, lawns, leveling, top soil. ADM Company. TH 5-2452.

GARAGES, additions and remodeling - either all or part. Terms. GR 2-3383 Eves. TH 5-3232.

CARPENTER work from small jobs to new homes. Free Estimates. TH 5-9461.

CERAMIC tile and Formica applications. Ask about our tile entries. No recessing necessary. Free estimates. TH 5-2800 mornings or evenings.

ADD-A-ROOM specialists; we will not be undersold on quality remodeling. Either all or part. 100% financing. Free estimate. GR 2-3383 Eves WA 7-4674.

FIREPLACES. Start enjoying the warmth of your own fire right now. You'll be amazed at my low prices and easy terms. Estimates. 100% financing. TH 5-4051.

I NEED work. All types of remodeling, additions, foundations, siding, roofing, windows, fireplaces. 100% financing. Free counseling. 10% discount on all work. TH 5-4051.

REMODELING, leveling, block foundations, cabinets. Free estimates. Reasonable. LE 7-3550.

Miscellaneous Service

SHADE TREE pruning, shaping. Dangerous limbs and tops removed. Reasonable. Call UN 3-1676 for my estimates and recommendations

FOR appliance Service call Cleman's Furniture. TH 5-8846.

TOP SOIL, lawns, leveling, landscaping. ADM Co. TH 5-2452.

BULLDOZING, ditching, gravel, top soil. ADM Co. TH 5-2452.

WE BUY junk batteries, sell Chief batteries. Do welding and radiator repairs, 213 W. Stewart. TH 5-6956.

FURNITURE refinishing and repairing. TH 5-5518.

TV Sales and Service. Call Cleman's Furniture Inc. TH 5-8846.

REMODELING, roofing and siding additions. Free estimates, financing. No down payment. GR 4-7000 anytime.

DRESSMAKING and sewing. Fast, dependable work. TH 5-9691.

HAVE TRUCKS. Will haul trash, dump, old buildings. Free estimate. LE 1-2618.

CARPET cleaning in your home or our plant. 25% discount for cash and carry. McCaleb's Rug Cleaners, Carpet and Drapery Sales. 404 - 2nd St. S.E. Puyallup TH 5-6732.

DRIVEWAY GRAVEL: Bank run \$2 a yard, screened \$14 for 5 yard load. Don Abbott, tractor work. LE 7-3846.

DOZER, LOADERS, dump trucks, excavating, grading, backfill, roads, gravel & fill. Hour or contract, VI 7-7193.

EXPERT ALTERATIONS. Men's and women's Fast guaranteed work. Reasonable prices. LE 1-3506.

CAR FAILIN? Bring it to Aylen! Aylen's Richfield Service, 2nd and West Pioneer, Puyallup.

TREE topping and removal. Bonded and free estimates. UN 3-1017.

TROPHY STORM DOORS
Heavy Duty Aluminum
Full Piano Hinge
6 Models to Choose From
Manufacturer - Repair Service
Parkland Door Inc.
318 East 96th GR 4-7011

Wanted to Buy

WILL PAY around \$9,000 for 2-3 bdrm home. TH 5-6732.

2-5 ACRES valley land, Sumner-Orting area. TH 5-7035.

WANTED: In any repairable condition. Cedar chest, round table, wooden wardrobe, old food cupboard, piano stool, desk, round trunk. SK 9-4760.

Help Wanted

MATURE babysitter. Immediately. Own transportation - my home. TH 5-4668.

TWO GIRLS for Puyallup fair booth during the Puyallup fair. Must be able to meet people and talk to them about ladies apparel. Prefer ages 20 to 40. Shift 9 a.m. to 5 p.m., shift 5 p.m. to 10 p.m. Contact Mr. Sam Hoffman, Rent. UL 2-3360.

BABYSITTER. Starting Sept. 5. My home or yours. Wade Calavan School area. 6 to 5:15. UN 3-7158 after 6.

PERMANENT babysitter. Your home. Firgrove School district. TH 5-0860 evenings.

COOK, full charge for children's summer camp. Nine weeks. Also assistant cook, call Seattle MA 4-8431 or write JCC, 1306-2nd Ave., 98101 for details.

AVAILABLE NOW -- Rawleigh Business in Pierce County. Trade well established. No investment needed. See or phone Mr. Elliott, 5415 So. 338th St., Auburn, WA 7-3847, or write Rawleigh, 306 Adeline, Oakland, Calif.

MEN & WOMEN earn \$2,000 - \$4,000 or more per year. Part time as dealer for Fuller Brush Company. LE 7-6965, 5 - 7 p.m. 67-49

LUZIER COSMETICS. Ladies to work from home. Experience unnecessary - we train. No territory restrictions. Commission up to 45% TH 5-6436.

RELIABLE babysitter needed. Infant girl, My home or yours. Bonney Lake area. UN 3-1641.

BABYSITTER. Starting Sept. 2. Parkland area. LE 1-3157. 67-53.

Situations Wanted

EIGHT YEARS experience in hand dishwashing and kitchen helper in small cafe. Call LE 7-7904. 67-62

IRONING, experienced. Pick-up and delivery. Housework. references. TH 5-9774 evenings.

TEENAGER wants babysitting after school. References. TH 5-4289.

IRONING, EXPERIENCED, references. LE 1-6597.

EXPERIENCED babysitter with references will work week days. TH 5-2300.

SEWING and dressmaking. Reasonable rates. LE 7-7917.

Child Care

LICENSED. My home, days. 5th, S.E. TH 5-7018. #69675

MY HOME, weekdays. Southwest area. TH 5-4307. 86001

DAY NURSERY. My home. By day or hour. TH 5-0470. #9179

The TIMES JOURNAL
and Pierce County Herald

Published weekly at 14620 Pacific Ave., Parkland and delivered by U.S. Mail and carrier to subscribers.

Publishers: Pierce County Publishers Inc.
Managing Editor Em Matson
News Editor Sandy Ingram

Subscriptions \$3.50 per year, \$1.80, 6 months, or 30c monthly by carrier.

Qualified as a legal publication under Chapter 213 of the Legislature Acts of the 1941 regular session of the State of Washington.

Vol. 23 No. 34 August 23, 1967

FROM OUR
Correspondents

Collins News

By Mrs. W.S. Morris LE 1-2421

The first board meeting of the Tots Club for the new fiscal year will be August 29th at 8 p.m. in the home of Ruby Howard, 3421 East 138th. The meeting is to set up events for the year. All members and interested mothers are urged to attend.

Friends of Mrs. Hannah Hansen and son Harold, who were injured in an automobile-train collision near Lakewood recently, will be pleased to know they are now home from the hospital.

Eunice Overland is a happy girl because her unfashioned two-year-old Brown Swiss Heifer, senior class, which she entered in Pierce County Junior Fair in Summer, won a blue ribbon in "Senior 4—Fitting and Showing" and a blue ribbon in "Reserve Champion in Type for Brown Swiss." Eunice was chosen to enter her animal in the Puyallup Fair, also.

L.Cpl Neal Shafer, son of Mr. and Mrs. Kenneth Shafer of 50th Ave. E., is now stationed in Okinawa for the rest of his overseas tour after winning two purple hearts while in Vietnam.

Mr. and Mrs. Chas. Moore and son Dean visited with Mrs. Moore's parents, Mr. and Mrs. Ken Shafer last week-end, en route home from Polson, Mont., after visiting "Chuck's" father, Roscoe Moore, who is in a rest home there.

Dorwin L. Ashby and daughter, Barbara, of Portland, Ore., visited Saturday with Mrs. Ashby's parents, Mr. and Mrs. Warren S. Morris.

Mr. and Mrs. Robert E. Pottinger are enjoying a visit with Mr. Pottinger's parents, Mr. and Mrs. H. E. Pottinger, whose home is in Munnik, Transvaal, Africa. On their way up through California, senior Pottingers celebrated their fiftieth wedding anniversary in the home of a daughter in Ventura. From here they will go on to Spokane where they will meet with friends in the Church of The Open Bible. From there they will go on an itinerary through the Mid-Western States and return to spend the winter on the West Coast, after which they will return to Africa, where they have been missionaries for twelve years.

Greg Shafer returned Wednesday from Gilbert, Mont., where he worked in the harvest fields. He reports the harvest was very poor, due to the dry weather. There has been no moisture there since the snow storm in May.

Marie Eicheberger, of Denver, Colo., granddaughter of Guy E. Elliott, arrived Friday to visit two weeks with her grandfather and her aunt and uncle, Mr. and Mrs. Bob Johnson, before entering her third year in the University of Denver, where she is taking a pre-medical course.

Mrs. Peter Svinth, who with her family, moved to Spokane in June, spent a week visiting with Mr. and Mrs. Jas. Stockwell and other friends.

We welcome two new families to the area of 138th and Canyon. Mr. and Mrs. Chas. Romaine and five children and Mr. and Mrs. Larry G. Kelley and two boys.

Franklin Pierce
School Opening
Schedule Listed

Schools in the Franklin Pierce School District will open Tuesday, September 5, 1967. All day sessions will be maintained for all students except kindergarten on September 5th. Kindergarten students will report briefly to meet with their teachers and to receive session assignments. Wednesday, September 6th, kindergarten classes will convene for one hour in the morning and one hour in the afternoon beginning at 8:45 and 11:55 respectively. Parents are responsible for kindergarten transportation Tuesday and Wednesday.

Starting on Thursday, September 7th, the kindergarten students will attend a regular schedule and district transportation will be available.

The tentative class schedule is: ELEMENTARY — 8:45 a.m., Begin classes; 11:10 a.m., End of a.m. kindergarten; 11:55 a.m., Begin p.m. kindergarten; 2:15 p.m., Dismiss grades K, 1 & 2; and 3:15 p.m., Dismiss grades 3, 4, 5, & 6. SECONDARY — 8:00 a.m., Begin classes and 2:45 p.m., Dismiss classes.

All cafeterias will be in operation the first day of school. Lunch prices will be 30 cents for elementary, 40 cents for junior high and 45 cents for senior high school students. The bus runs and times will be essentially the same as last year.

High school students should report to the gymnasium at 8:00 a.m. Tuesday, September 5th to receive class schedules.

August 29, 30, and 31 are teacher orientation days. Elementary teachers new to the district will meet in the high school library at 9:30 a.m. New secondary teachers will meet in the Keithley Junior High School library at 9:30 a.m.

The school district PTA will host a luncheon for all new personnel at 12:00 noon August 29th.

9 a.m. - 10 p.m.
7 DAYS
A WEEK

BARGAIN BASKET

16618
Pacific Ave. S. Spanaway
LE 7-3371

No Sales To
Dealers

WE RESERVE THE
RIGHT TO LIMIT
QUANTITIES

We Carry A Complete Line Of Sacked Feeds - Presto Logs

We Are Locally Owned & Operated
HELP YOUR BUDGET
WITH THESE SAVINGS

PRICES
EFFECTIVE
Aug 24-25-26
Thur - Fri - Sat

NALLEY'S
MAYONNAISE
New Whole Egg
49¢ Qt.

Parowax
1-lb. Ctn. **21¢**

Insulite
Foam Cups
Pack of 20
7 oz **25¢**

Red Dart
PEAS
303 Tin **10¢**

Sunny Jim
Asstd Jams - Jellies
5 Flavors 10 oz **4/\$1.00**

Sunshine
Graham Crackers
2 lb **63¢**

Cheerios
10 OZ PKG **3/\$1.00**

Giant Size
CHEER
69¢

Dole
Pink Grapefruit
JUICE
46 OZ. **4/\$1.00**

Kingsford
Charcoal
10-lb. Bag **69¢**

PRODUCE

FRESH
CORN
10 EARS FOR **49¢**

CANTS
5/\$1.00

CRISP
STALKS
CELERY
LB. **10¢**

NO. 1
POTATOES
10 LB. CELLO
39¢

EVERYDAY LOW MEAT PRICES... 25 LB. LOCKER BOXES \$13.95

COUNTRY STYLE
PORK
SAUSAGE
49¢ LB.

LEAN
Ground Beef
43¢ LB.
(Bulk)

HENRY HOUSE
Smoked Picnics
39¢ Lb.
Sliced 49¢ Lb.

Chuck Steaks
49¢ LB.

Cube Steak
98¢ Lb.

Rib Steaks
89¢ Lb.

Henry House
Wieners
12 OZ. Pkgs. **49¢**

Pot Roast
Blade Cut 49¢ lb
7-Bone 59¢ lb
Rd Bone 69¢ lb

Round & Sirloin
Steak
89¢ Lb.

School Shoes
Huge Stock For Your Selection
Women's Shoe Special!
Reg. to \$7.00 Pr.
600 Pr. Reduced to \$1.99 \$2.99 \$3.99
OPEN SUNDAYS
PAULS SHOES
161 st & Pacific LE 7-0552
Open 9 to 9 Daily
Till 6 Sat. & Sunday