

The TIMES JOURNAL

P. O. Box 2008,

Delivered to over 14,000 families

Parkland 44, Wash.

Thursday, September 26, 1963

Vol. 19, No. 4

Le. 7-0223

BULK RATE
U. S. Postage Paid
Parkland Branch
Tacoma, Wash.
Permit No. 9P

Rural Route
Occupant or Boxholder
Postmaster: If unable
to deliver, return post-
age is guaranteed on
addressed papers.

Boosters Beat Deadline For Bethel Stadium Built By Volunteers With Vigor — And Elbow Grease

Real Boosters



ART CRATE AND BOB MARTIN show what it takes to get a community moving on a worthwhile project—you just dig in! This is the start of the ground-breaking for the now completed Bethel Stadium which will get its first try-out at the Friday night game between Bethel and North Thurston. The Stadium will seat approximately 1500 and has a snack bar annex which will be operated by student organizations for fund raising projects.

To Christen Stadium At First Home Game

Finishing touches on the new Bethel Stadium, totally financed and built by the Bethel Junior and Senior High Boosters, will be complete this week in time for the first home kick-off against North Thurston.

"With the best construction men in the business on the job there was never any doubt about beating the deadline," was the comment from Booster president Art Crate, who spear-headed the drive for a new stadium last February.

From Bull to Building The Crates, long aware of the need for a covered stadium on the Bethel field, gave the fund drive its initial shove with the donation of a Palomino horse and a white face bull to the Boosters. This was the start of what is now a building set-up valued at \$35,000, including a snack bar, completely insulated and equipped which will be turned over to the student body for fund raising projects.

Asked to point out particular volunteers for creditable comment, Crate said it just couldn't be done. "Everybody from John Milroy, school superintendent, to the fellows who swept up the shavings just couldn't have worked harder, been more cooperative, or enthusiastic about a job. You'll just have to credit them all!"

Workers Named He named the block layers as Kenneth W. Nickelson, Eckhard Wollgramm, and "Tex" Ennis. Chris J. Christensen was chief welder and E. L. Lucas, steel worker. Delbert Ladwig operated the crane, as did Les Magoon. Carpenters included Ingvold Sorensen, Gus Sorensen, Claude Riley, Clifford B. Toskey, Ed Voss, Glenn Barker, E. L. Yager, L. R.

Hudgins and Mike McDaniel. Wiremen were Beryl J. Potter and Tony Hymer. Chadwick Painting and Decorating company of Spanaway are completing the finishing touches this week. Hauling was done by Clyde Hoover. Trucking, Lloyd B. Hopkins, Art Harpel, Buth Lumber Co. and Clarence Rice. Lumber was donated by Lloyd S. Hopkins Lumber Co., Buth Lumber Co., E. A. Elston Lumber Co. and shakes were donated by Bob and Roger Martin of Spanaway, and paint by the Parker Paint Company.

Hammersmith Saw Mill was included in the list of contributors, and workers included members of the Blue Baron Motorcycle Club who contributed two weekends of volunteer labor.

Individual Assistants Individual Boosters who assisted in the construction work were Clyde Hoover, Macklin Stephenson, Raymond S. Graves, John Milroy, Ray Burkhardt, Bayard Crate, Rocky Crate, Jim Engebretsen, Gil Miller, Clyde "Skip" Hoover, Glen Swick, Wes Swick, Max Swick, Dale Burkhardt, Bob Landgrebe, John Shelan, Hally Platt, Jon Esarey, Rick Selden, Don Miller, Larry Brooks, John Zurfluh and J. E. Teague.

"We didn't encounter any labor, supply, or even weather problems," Crate said. "If we've missed thanking anybody, we surely do hope they know how much their help was appreciated anyway." The Crate's youngest child graduated from Bethel last year and is now attending college. However, as he says, it isn't necessary to have a child in high school to be a Bethel Booster. You just have to have the enthusiasm that seems to be contagious around here, he said.

Trooper Will Address P-TA

The first meeting of the Kapowsin P-TA for this school year will be brought to order Thursday at 8:00 p.m. at the Kapowsin grade school.

Darwin Myers, new president, will introduce the officers and executive staff for the coming year. The grade school staff will be introduced by the principal, Virgil Baker.

The evening's entertainment will continue with a talk by Trooper Sherman, of the Washington State Patrol, concerning traffic safety at schools and on school buses. Miss Lynn Erickson, daughter of Mr. and Mrs. Fred Erickson of Graham, will plan some piano selections. Mrs. Benn Bennest, den mother for this area's Cub Scouts, will encourage support for this newly organized activity. The more formal part of the evening will conclude with a short reading by Mr. Charles McAvoy. Coffee will be served after the meeting.

Bethel Booster Plans

The Bethel Booster Club will hold the first meeting of the year Monday, Sept. 30, 1963 at 8 o'clock at the Bethel Senior High School.

A business meeting will be held followed by introductions of the teachers.

Coffee and refreshments will be served by the ladies from Rocky Ridge.

Notice

Tacoma Lariette Club invites everyone who owns or does not own a horse to participate in Play Night at 7 p.m. Saturday, September 28 at the Tacoma Unit Covered Arena. Admission is 75c which includes entering one class and dancing afterward. Additional classes will be 50c each.

Parkland P-TA Meets Tonight

The Parkland Elementary School P-TA holds its first meeting of the year on Thursday, September 26, at 8:00 p.m. in the school gymnasium.

Following a business meeting, with President Floyd Hicks presiding, the teachers will be introduced.

A coffee hour will follow in the lunchroom.

Post No. 9 Invites Vets

Citation Post No. 9 will meet at the Knights of Columbus Hall September 27th at 8 p.m. for the election of permanent officers.

Pete Miller, present commander of the post, invites veterans of World War II or Korea, who live in the Spanaway, Parkland, Fort Lewis, McChord or South End area to join. The number to call for further information is LE 1-1531.

Notice

The Times Journal office is open daily, Monday thru Friday from 8 a.m. to 5 p.m. and Saturday from 9 a.m. to 1 p.m. Deadline for advertising and current news items is 5 p.m. on Monday!

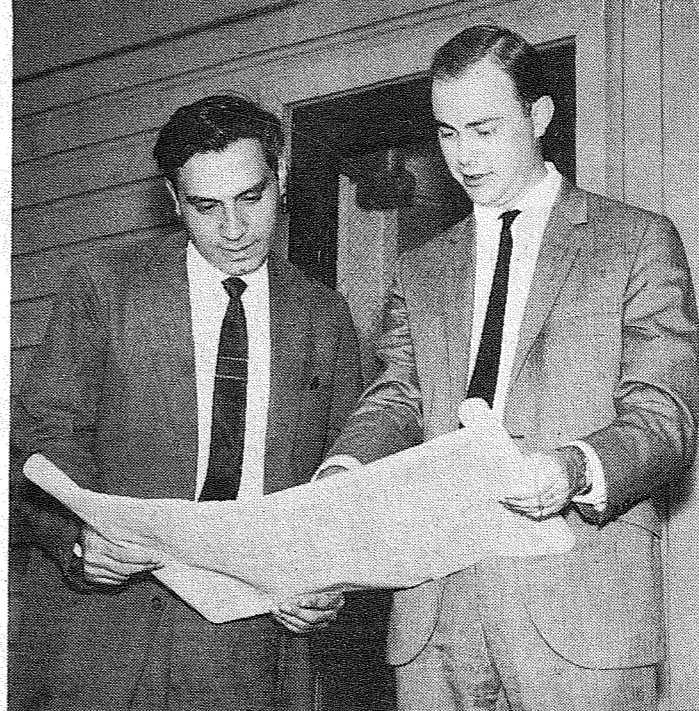
Blackburn Son At Texas Base

Airman Oscar S. Blackburn Jr., son of Mr. and Mrs. Oscar S. Blackburn of Rt. 2, Spanaway, is being reassigned to Sheppard AFB, Texas, for technical training as a United States Air Force communications wiring specialist.

Airman Blackburn, who enlisted in the Air Force a short time ago, has completed his initial basic military training. He is a 1963 graduate of Bethel High School.

FP Grandstand Dedication Will Coincide With First Home Game Of Football Season

Expansion Plans Renton Here Friday



MARK SULEIMAN, left, and R. Graham Stubblefield, campus planners from Los Angeles, look at the Pacific Lutheran University campus as they begin their study of the university's campus. They are consultants from a firm which has been engaged to develop a master campus plan for PLU. The study of the campus which they have just begun is expected to take about six months, and from the study will emerge recommendations for the placement of seven new buildings which PLU expects to erect during the next seven years.

PLU Plans 7 New Units To Be Built

Quinton Engineers, Ltd., of Los Angeles has been engaged by Pacific Lutheran University to develop a campus master plan, it was announced recently by Dr. Robert Mortved, president.

Hiring of the planning firm is the first step in a \$7,500,000 development program at the university which calls for erection of seven buildings and other capital and endowment additions during the next seven years.

Headed by George Wickstead, director of planning for Quinton Engineers, a three man team is making a study of PLU's physical plant. Others in the team are R. Graham Stubblefield, planner, and Mark Suleiman, engineer.

Makes Inventory The firm, which specializes in the planning of campuses, industrial parks and cities, is making an exhaustive inventory of the PLU campus. This includes land use, buildings, utility systems, exterior and interior circulation of students and staff, topography and landscaping. The growth, economy, population, political conditions and climate of the area are also under study.

Upon completion of the inventory, recommendations will be presented to the university. This plan will include a model of the campus with existing buildings and the placement of the new buildings which will be needed in the development program.

Plans Panel

A panel discussion of unsigned questions pertaining to children and school submitted by members of the Keithley Junior High Boosters will be a regular feature of this year's meetings. The first meeting of the Boosters will be held at 8 p.m. Tuesday, October 1, in the school cafeteria under the leadership of Walt Suter.

Dedication of the spanking-new 2,000-seat grandstand and football field at Franklin Pierce High School will take place Friday night just before kick-off time for the Cardinals' first home game. Master of ceremonies, Wm. Whitesel, high school principal, will get the ceremony under way at 7:45 p.m., and the opening whistle will sound at 8:15 for the initial contest at the new athletic area. The Cardinals will play Renton Indians, pre-season favorites to take everything in the Puget Sound League this fall.

Speakers for the occasion will be Roger Elder, Pierce County Superintendent of Schools; Edwin L. Nelson, Franklin Pierce Superintendent, who will introduce the school board members; Robert C. Richardson, Assistant Superintendent, who will introduce the architect and the contractors; Del Schafer, Director of Athletics; and Lance Perryman, Franklin Pierce High School Student Body President.

Passage of a \$120,000 bond issue last spring enabled the District to construct the massive concrete grandstand. The football field and track, plus two other large athletic fields adjoining it on the north, were built last year with \$131,785 paid the District by the State. The old athletic field will eventually be dug up to allow for construction of a new Highway 5-G. Local funds amounting to \$32,330.70 were also used in the construction of the athletic facilities.

The grandstand, completely covered, also provides spectators with wooden seats constructed on the concrete base. Two large concession stands and restrooms are located under the seating area. Two large ramps at each end will carry spectators to and from their seats. A large press, radio and television box has been constructed high atop the cantilever concrete roof on the grandstand. A new public address system has also been installed.

At the extreme south end of the field is a new electric scoreboard. The 1963 and 1964 senior classes from the high school donated funds to purchase the scoreboard for

use this fall. While the regular field lighting was moved from the old field, the addition of two large light towers above the grandstands will provide some of the best athletic field lighting in the area. Completion of the track around the football field is scheduled for before the start of track season next spring. Cheering sections from visiting schools will use wooden bleachers which were in use on the old field. They have been moved to the opposite side of the new football field and are to be repainted.

While the construction of the field areas was basically completed, except for landscaping, last year, construction on the grandstand did not begin until about July 1. The turf was planted early in the summer. Strom Construction Co. was the general contractor for the grandstand. Tucel and Sons, Inc. did the clearing, grading and fill work for the athletic fields, and Merit Construction Co. was in charge of the drainage, the fresh water supply and the lighting. Lea, Pearson and Richards, architects, designed the grandstand facilities.

The members of the Franklin Pierce School Board, who originally received approval from the voters to construct the covered grandstand, are Andrew Christensen, Jr., chairman; Phyllis Erickson, Matt Manley, C. K. Meek and Kathleen Skaar.

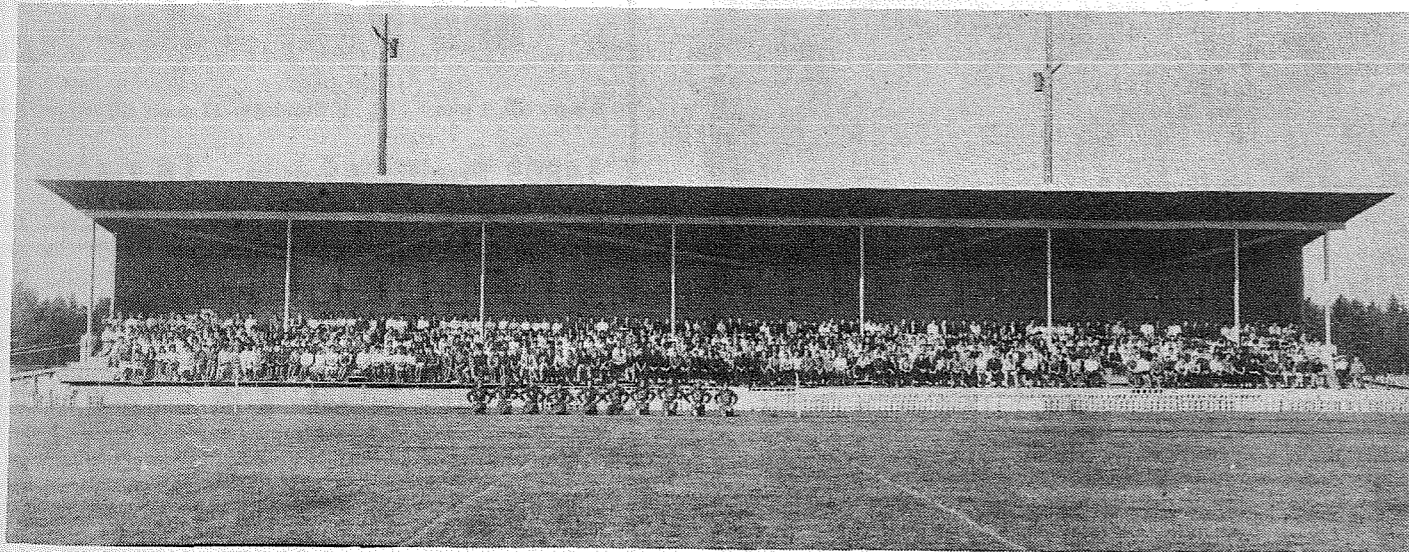
Evans To Hit

'Mismanagement'

Dan Evans, Seattle Republican who was minority leader in the State House of Representatives during last winter's Legislature, will speak at a meeting of the 28th District Republican Club October 2 at 8 p.m. in the Pacific Lutheran University Administration Building.

Evans, who is prominently mentioned as a Republican candidate for governor next year, will speak on "Government by Mismanagement," according to Col. R. H. Ziehm, chairman for the meeting.

Filling The Bleachers



THE NEW ART CRATE STADIUM at Bethel Football Field will be filled to overflowing with students, boosters, and friends of the Bethel Braves when they meet North Thurston in the first home game of the season Friday, September 27. —Photo by Dugan

Babe Ruths' Yearly Meet Is Thursday

The Board of Trustees of the Parkland Babe Ruth Booster Club, Inc. has announced its annual meeting to be held Thursday evening, September 26, at 8 p.m. in Gonyea Field House on So. 132nd and "J" St.

Ted Bottiger, president Board of Trustees has stated that the agenda will include reports by the officers, election of trustees and a discussion of next year's program.

Attorney Is Club Speaker

Local attorney George Potter at the regular Collins Tots Club meeting October 1, 8 p.m. in the school gym. His topic will concern parents legal responsibilities. A question and answer period will follow.

The business meeting will include carnival progress reports. The Ways and Means committee will suggest money raising projects. Coffee hour hostesses are Mesdames Stephen Line, Duane Wilson, Fred Schossow, and Herman Winberry.

"Thank You"

A heartfelt "Thank you" was extended to the community by Mrs. Lee Seeley and her children this week. Mrs. Seeley reports that friends, neighbors, and total strangers rallied round to assist the family after a Times Journal report concerning the fire which totally destroyed their home and all of its contents this summer.

Post 118 Meets

Clover Creek Auxiliary 118 of the American Legion will meet September 27 at 8 p.m. at Legion Hall in Spanaway. A social hour will follow the business meeting.

Real glory springs from the silent conquest of ourselves. —Joseph Parrish Thompson

Spanaway Man Is Reassigned

Camp Pendleton, Calif. — Marine Private Michael G. Axelson, son of Mr. and Mrs. Gordon D. Axelson of Rt. 1, Spanaway, completed the fourth week individual combat training, August 9, at Second Infantry Training Regiment, Marine Corps Base, Camp Pendleton, Calif. The Second Infantry Training Regiment, where every Marine undergoes combat training upon completion of recruit training at nearby San Diego, is located at Camp San Onofre, one of Camp Pendleton's training areas.

I believe the first test of a truly great man is his humility. —John Ruskin

Hawaii Bound



ASSISTANT CHIEF CHET KIRK of the Parkland Fire Department accompanied by his wife, Milly, left by jet Friday to attend the Pacific Coast Intermountain Association of Fire Chiefs convention in Honolulu. The association consists of fire departments all over the Pacific coast area as well as Alaska. Kirk is a past president of the Puget Sound Firemen's Association. —Photo by Dugan

FALL OPENING

Christopher's Charbroiler

128th & PACIFIC AVENUE

Friday - Saturday - Sunday

A BRAND NEW MENU
FEATURING THE VERY BEST
in STEAK and CHICKEN

SPECIAL This Weekend

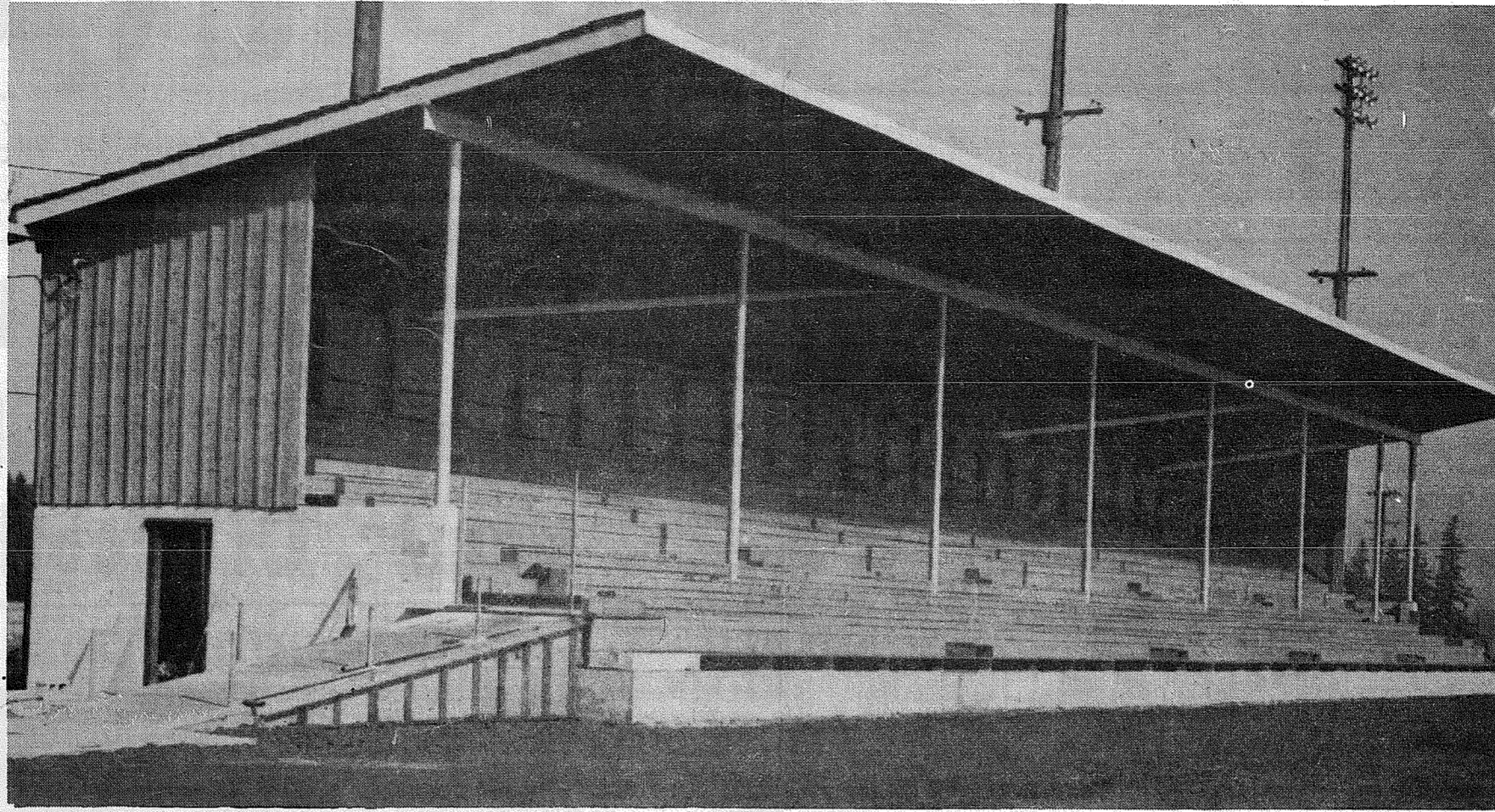
16 Oz. Rib Steak - \$2.50

Phone For Reservations
LEnoX 7-9945

FREE Coffee & Ice Cream with the Meal

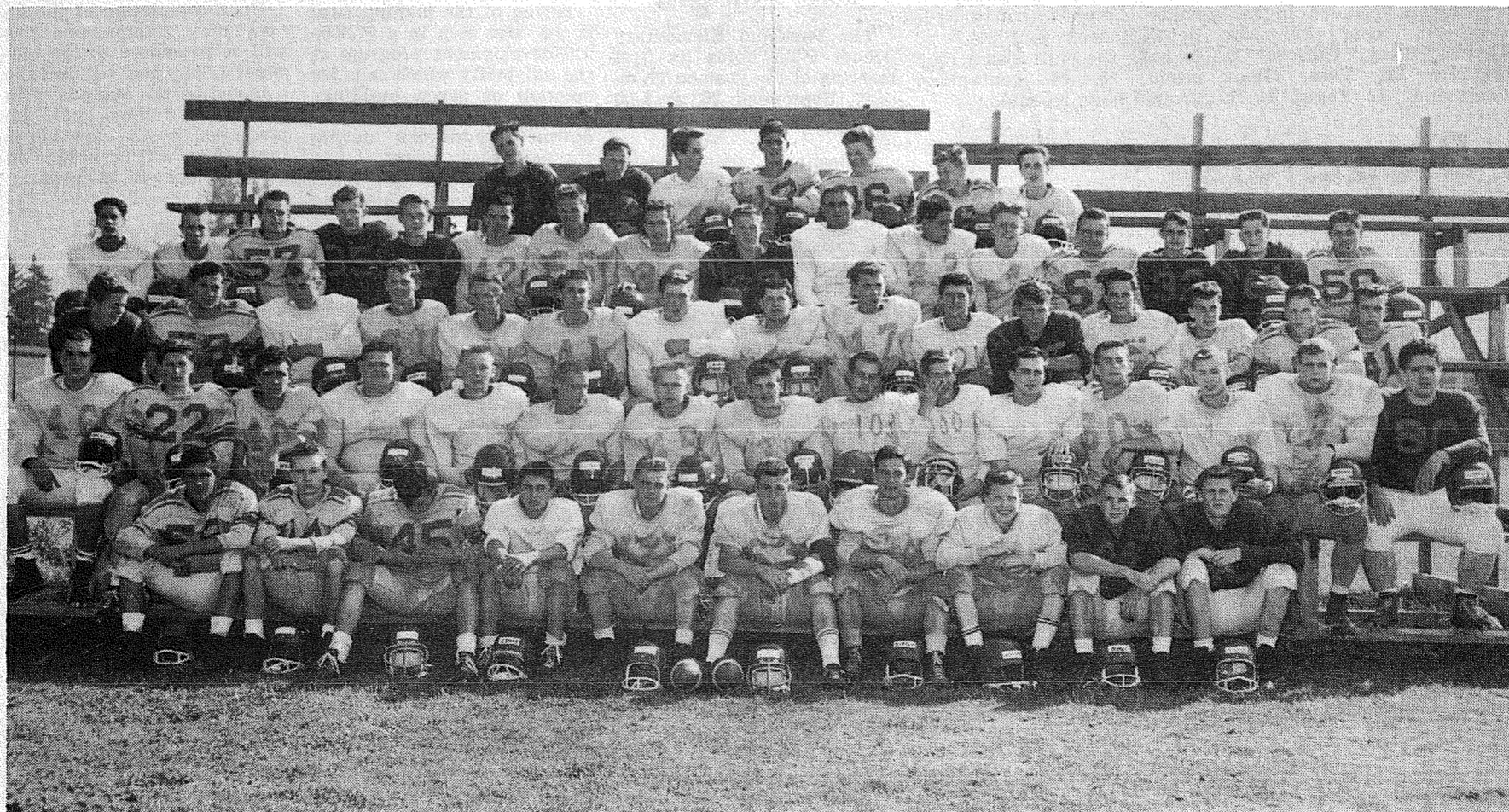
HOURS: Open 4:30 til 11 p.m. Weekly
4:30 til 1:00 Friday & Saturday
11:00 til 8:00 Sunday

"Home Of The Braves"



Join The Bethel Boosters At The Dedication
Of
ART CRATE FIELD
September 27th, 1963

First Home Game Of The Season
BETHEL vs NORTH THURSTON
Game Time 7:30 p.m.
DEDICATION CEREMONIES AT HALF TIME



INCLUDED ON THE 1963 SQUAD ARE:—Jerry Dutton, Larry Brooks, Rick Selden, Ed Curry, Don Miller, Dennis Doescher, Gary Austin, Gary Turner, Lee Martin, Marion Dukes, Buck McFadden, Gary Cooley, Gene Ahola, Rick Nickolas, Bill Olson, Dave Jorgensen, Cody Miller, Gary Schriver, Larry Burkhart, Tom Carey, Ronnie Crippen, Dave Fries, John Zurfluh, Jim Ladwig, Bob Otterstad, Pat Jupiter, John Hansen, Dan Staab, Ken Esarey, Mike Graves,

Ken Lind, Doug Murphy, John Miner, Ron Colbeck, Bill McFadden, Garth Scrimsher, Monty Critchley, Byron Virden, Terry Bramblet, Lloyd McAninich, Steve Fries, Dave Justice, Earl Hardie, Doug Butler, Dave Latham, Norris Stussy, Neil Berray, Dick Zurfluh, Lanny Gilstrap, Doug Parsons, Don Webb, Dennis Staab, Bob Adams, Curt Parsons, Bruce Belvin.

Photos by Dugan

The Graham Store

GENERAL MERCHANDISE

Good Luck To The Braves

Roy and Helen Thorsen

Dun Rovin Inn

"Where Friends Meet To Eat"

Meridian Ave. at Graham

Graham Welding

Custom Welding
Portable Gas & Electric

Meridian at Graham VI 7-7706

Kuper's Korner

Why go further
Why pay more?
Stop and Shop
at the Kuper's Store

at Loveland VI 7-7444

Woody's Market

Mt. Highway at Loveland

Felkins Union Service

"Good Luck Braves"

Henry & Marie
On the Mt. Highway

Avery's Mobile Service

"From a Tune-Up to an Overhaul"

Pacific Avenue at the Roy Y

The Best To The Braves
For A Successful Season

Dorothy and Bill Righetti,
Art Miller, Jay Cole, Marion
Dukes and Wilma Thomas

South End Hardware

South 185th & Pacific VI 7-7211

L & M Automotive Service

Steam Cleaning - General Repair
Electric & Gas Welding

170th & Pacific Ave. LE 7-6772

Tahoma Flying Service

Approved Flight School Charter Flights
2 Place or 4 Place Airplanes Anywhere in the United States
Airplane Rentals at a Price to Fit Your Pocketbook
Standard Aviation Products

SPANAWAY AIRPORT

VI 7-2266

Truck Parts & Equip. Co.

"LET'S GO BRAVES"

14606 Pacific Avenue

LE 1-2424

Ashmore's Spanaway Drug

165th and Pacific Avenue
LE 7-5993

Bill Black's Rural Real Estate

"Buy, Sell, or Trade"
We Specialize in Rural Properties

14403 Pacific Avenue LE 7-5440

Bargain Basket

11618 Pacific Avenue
LE 7-3371

Spanaway 5 & 10

165th & Pacific Avenue
LE 7-5993

Modahl Auto Parts

16317 Pacific Avenue
LE 7-8677

Thurmond Real Estate

Rent Buys Nothing . . .
But Payments Buy a Home

Merle & Goldie Thurmond
16217 Pacific Ave., Tacoma, Wash.
LE 1-1308

Fritz

Spanaway Texaco

"Tune-Up . . . Wheel Alignment"

15905 Pacific Avenue LE 7-4077

Spanaway Auction and Daily Sales

9 a.m. till 6 p.m. Sundays: 11 a.m. till 5 p.m.

14803 Pacific Avenue LE 7-6895

Tacoma Pump & Drilling Co. Inc.

Well Drilling - Berkeley Pumps

14621 Pacific Avenue LE 7-7281

Anderson Chevron Service

Travel Queen & Chinook Camp Coaches
Pick-Ups and Trailer Houses
SPECIAL FALL DISCOUNTS

176th & Pacific Avenue LE 7-0404

ADDRESS . . . P. O. BOX 2008, PARKLAND, WASHINGTON
 14620 Pacific Avenue Phone LE 7-0223
 JACK BROWN . . . Publisher
 NEIL McLEAN . . . General Manager
 CONNIE TALBOT . . . Editor
 WAYNE JOHNSON . . . Circulation
 CHET CHAMBERLAIN . . . Accounting
 DAVE HIBBARD . . . Shop Superintendent
 DICK MARCELLE . . . Composing Room Foreman
 Qualified as a Legal Publication under Chapter 213 of the Legislative Acts of the 1941 Regular Session of the State of Washington.
 Delivered free by U.S. Mail, or carriers, to all homes in the trade territory. Paid subscriptions elsewhere. In Washington State \$2.50 per year. Outside the state, \$3.00 per year.
ADVERTISING RATES ON REQUEST

**a - Wondering and
a - Wandering**

With **JACK BROWN**
 Took my thundering herd to the Fair last week and managed to survive ten hours on the grounds and still be able to get out of bed the next day. Later I tried to analyze the trip as to its worth, and particularly considering the fact that I left, as near as I could figure, around forty-four bucks within the gates.

My number one son seemed to have other things on his mind and although the day wasn't lost on him, I think his impending induction into the Navy the next day was foremost in mind. My number two son seemed to want to race thru the displays at breakneck speed and I finally gave him some money and told him to make the tour himself. My littlest guy had a gay old time. Of course the main attraction to him was the pop corn and ice cream vendors. My number one's girl friend was a little sad it seemed over the Navy bit, and my Filipino housekeeper isn't long on conversation. She has little to say and you can't tell if she's mad or glad, happy or sad, and so it finally came down to what the fair had done for me, other than deflate my pocketbook.

As I look back on my day at the fair the main thing that comes to mind is the intermingling of the races up here in the Northwest without any of the racial tension that has seized much of our nation. At the fair, black, brown, yellow, white and reds mixed without a thought to color or creed. They sat together in the bleachers, walked shoulder to shoulder past the blocks of display booths, shared the fun on the fairway, sat side by side in the restaurants, and belied up to the counter together where there were no seats. I just can't help but think this is the way the Almighty planned things to be.

My day at the Fair made me think of my old Chow dog lying home on the back porch. Many visitors to my home for the first time back away when they see the dog, but somewhere along the line she failed to get the message that she, as a chow, was supposed to be vicious. A friendlier old dog can't be found. I think our colored folks up here in the Northwest are somewhat on the same order. No one has told them that they are supposed to be down-trodden and discriminated against, and as a result have a vicious attitude towards their white neighbors. I think during my day at the fair I saw perhaps more colored folks in one day than in any other one day for a long time, and like my Chow, you couldn't find a friendlier bunch.

I hear rumors that there are some who think these people should put on racial demonstrations here in the Northwest. I personally think this would be the biggest mistake ever made by the Negro race. I can't help but wonder what organizations the instigators of the suggested demonstration might belong to. Could their membership cards be red?

I don't know about you but I am still a man who is proud to stand and be counted as one who has friends among all races. I personally don't give a damn what color a man's hide is. It's what's inside that counts with me.

Had another interesting experience in Canada last Friday. I landed at Harrison Hot Springs, parked my plane, picked up my camera, suit case, brief case, etc, hung my extra suit over my shoulder and started walking what I knew to be about six or seven blocks to the village center.

As I left the airport and started up the street I could see cars passing on the main highway about two blocks away. About half way to the highway I saw one driver look down the street I was on towards the airport, immediately put on the brakes, back up and head down the street, my way. He pulled up along side and asked me, "Can I lift you in?" I asked for a repeat, for I could hardly believe my ears. Here a man had gone this far out of his way just to offer a ride to a total stranger. I thankfully climbed in and was promptly dropped off downtown. My good samaritan friend kept on going up the lake to his summer home, some fifteen miles away. How's that for an incident to restore your faith in human nature?

Either I'm becoming intellectual, and that I doubt, or else the new policy at the fair this year as regards the art exhibit put it in a new light. For one thing, I made the complete tour and enjoyed it and for the first time didn't leave the exhibit with the thought that someone on the committee had tried to insult my intelligence. A tip of the hat to those responsible for the new look in that Dept.

The other day I happened to stroll up Garfield street in Parkland. I couldn't help but think back to the good old days when the Garfield Street merchants thought enough of their community to hire a street sweeper to keep the street clean and pick up the litter along the sidewalks.

There's one section on Garfield street today that sure could stand a little policing up. As the gateway to PLU it just doesn't seem right to have visitors drive down a street bordered with litter.

I would suggest it either be cleaned up or the street re-named "Litter Way".

FRIENDLY SERVICE SINCE 1908



Now With a 100 Car Free Parking Lot right next door.

PIPER FUNERAL HOME
 PHONE Greenfield 2-3353 - 5436 SO. PUGET SOUND

Firgrove P-TA Schedules Meet

Mrs. Sara Harvey, president of Firgrove P-TA has scheduled a business meeting for this year's first program. This will be held Wednesday, Sept. 25, 1963 at 8:00 p.m. in the Firgrove School auditorium.

Mrs. Ernest I. (Irene) Hopp, a member of the group will present two vocal numbers for the entertainment. Mrs. Hopp does vocal teaching in the Puyallup area. She also has taught school in the Puyallup School District.

All teachers will be present to meet the parents following the meeting.

The host for the evening will be the officers and board members. Photographs of the teachers and P-TA officers

will be taken for the year book.

Sara Harvey and principal Kenneth Keener attended the President and Principal's annual meeting at the Top of the Ocean on Monday, Sept. 24th. Many fine ideas were discussed in an outstanding program.

Dance Tuesday

Round Dancers will meet every Tuesday at Square Acres. All round dancers are invited to attend. Current dances plus dances of the month are taught.

Ralph and Eleanor Rowland, instructors, will serve coffee and tea.

Bethel Offers Adult Classes Starting Monday

September 30 marks the start of adult evening education program of Bethel District. Classes meet one evening a week from 7 to 10 p.m. for a ten week period. Enrollment fee is \$5.00 per course.

Courses are designed to provide credits for high school graduation, continuation of formal education, deal with problems of home and community and increase occupational proficiency.

Classes offered are based on attendance interest. A

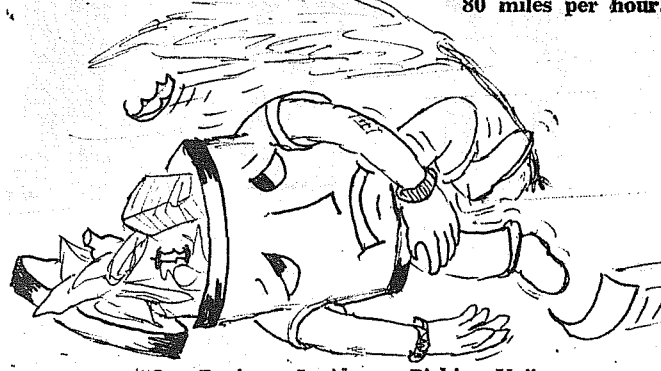
Bake Sale Set

Spanaway Home League, a sewing circle of the Salvation Army of Tacoma, is having a harvest and bake sale at the Bargain Basket store in Spanaway, September 28.

Registration may be made by reporting to the first class meeting either Monday, September 30 or Tuesday, October 1. Further information may be obtained by calling the Bethel District Office at VI 7-2233.


Honor lies in honest toil.

Litter Les Says: That wind must have been at least 80 miles per hour!



"Our Business Is Always Picking Up!"
Pierce County Refuse Co.
 Tacoma, 98444 13502 PACIFIC AVENUE LE 7-8688

DEL MONTE ROUND-UP

| | | |
|---|--|--|
| Kool-Aid 3 For 10 | PEACHES LADY ELBERTA Halves Or Slices 4 \$1 2 1/2 Tins |  |
| Lemonade Minute Maid 6-Oz. 10 | CATSUP DEL MONTE Fancy Tomato 6 \$1 14-Oz. Btts. | |
| Strawberries Polar-Frozen 5 For \$1 | COCKTAIL DEL MONTE Fruit 5 \$1 303 Tins | |
| Apples Jonathan 10 Lb. | CORN DEL MONTE Cream or Whole Kernel 6 \$1 303 Tins | |
| Bread Our Own 4 Large Loaves \$1 | FRUIT DRINK Del Monte Pine-Grp-Ft. 3 46-Oz. Tins \$1 | DILL PICKLES Nalley's 2 22 Oz. 79 |
| We Feature Gai's Bread And Bakery Products | PINEAPPLE Del Monte Assorted 5 2 1/2 Tins \$1 | ASPARAGUS All Green Spears 2 300 Tins 79 |

FLOUR
 Drifted Snow \$1.89
 25-Lbs.

VNF MEATS



CHUCK ROAST
 VNF, U.S. "CHOICE" BEEF TENDER, FLAVOR BLADE CUTS . . . TRY A DELICIOUS CHUCK ROAST TONIGHT!
43
 POUND

TURKEY HINDQUARTERS
 "4 1/2 to 5 1/2 lb. sizes". From young tender, U.S. grade "A" Norbest Turkeys, consisting of one Thigh, Drumstick, 1/4 part of Back & Giblet.
29
 LB.

POTATOES
 U.S. No. 2 Netted Gems. 50-Lbs. 89
 U.S. No. 1 Netted Gems. 10-Lbs. 25

TOKAY GRAPES
 Fancy Flame Tokay 2 Lbs. 23

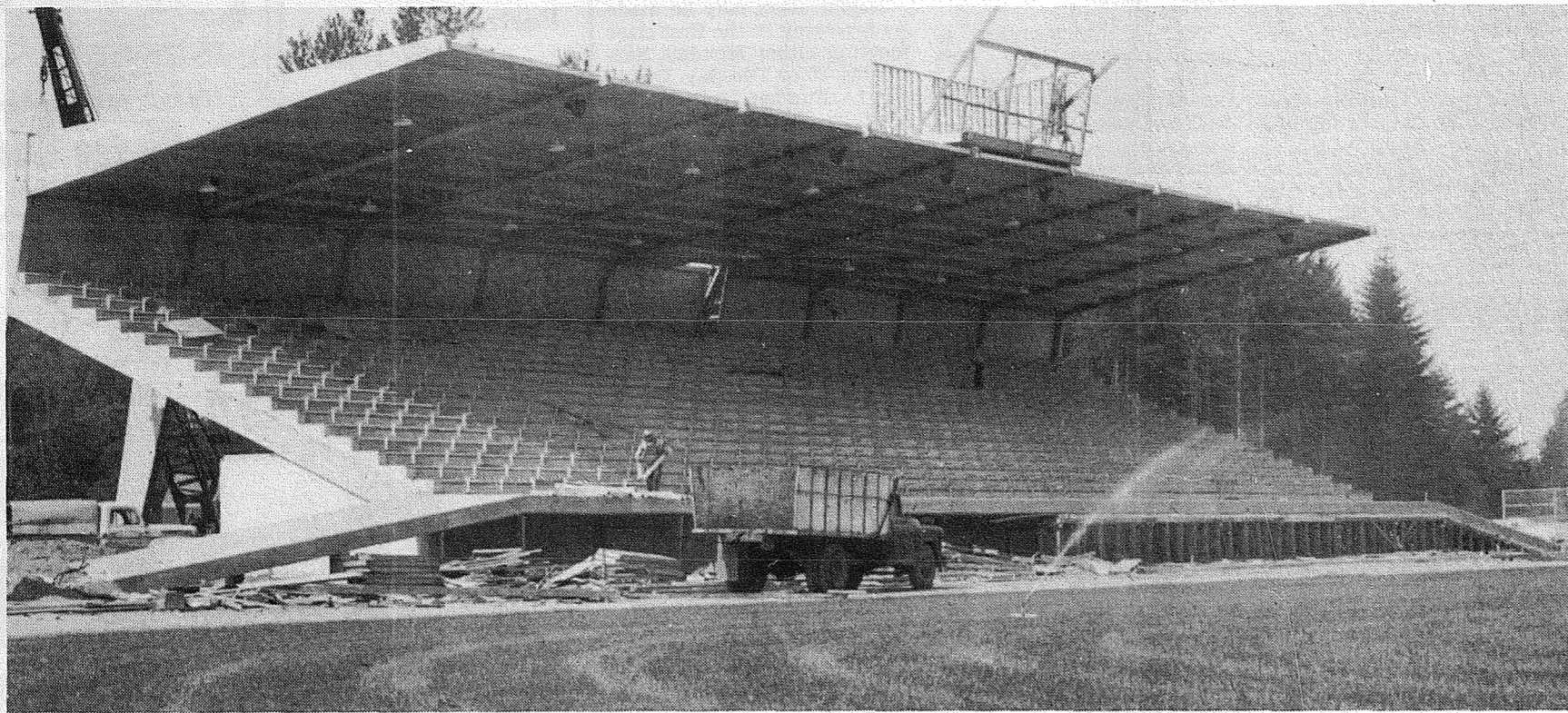
TOMATO JUICE Del Monte 4 46-Oz. Tins \$1
TOMATO SAUCE Del Monte 12 8-Oz. Tins \$1
PEAS BEANS Or STEWED TOMATOES Del Monte 5 303 Tins \$1
BABY FOOD Gerber's Strained Varieties Jar 10

Wholesale Meat
 USDA GOOD And CHOICE
LOCKER BEEF
 WHOLE OR HALF Lb. 49
 HIND QUARTER Lb. 59
 FRONT QUARTER Lb. 39
 CUSTOM CUT and WRAP 6c lb. CUSTOM CURE Or SMOKE 8c lb.

SUMMIT TRADING CENTER
 U.S. Post Office Here LE 7-5848
Shop Rite
 FOOD CENTERS
 PRICES EFFECTIVE SEPT. 26 - 27 - 28. LIMIT RIGHTS

IT'S KICK OFF TIME FOR FRANKLIN

CEREMONIES SEPTEMBER



—Photo by Dugan

New Franklin Pierce Stadium

- PROG

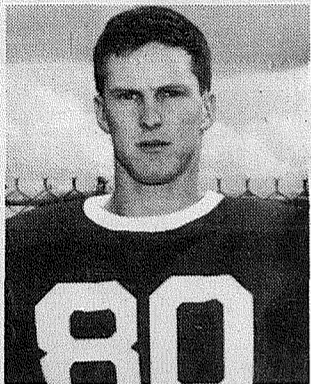
Opening Ceremonies
Speaker
Introductions

WILLIAM WH
ROGER ELDER
EDWIN L. NE
ROBERT C. RI
DEL SCHAFER
LANCE PERRY

FRANKLIN PIER

GAME TIME

TEAR 'EM UP, CARDS



BRUCE HARDING

Show Those
Indians Who's
The Boss
●
For Those
Every Day Low Prices
Shop

Park-N-Shop

98th & Pacific Avenue

ROOT FOR THE CARDINALS



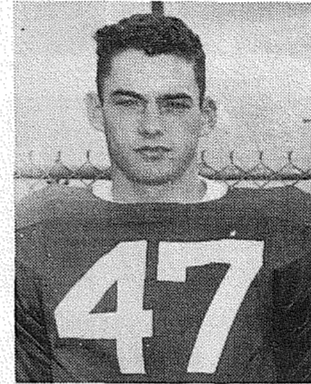
BOB COOK

After The Game, Visit
Sargent's A&W Drive-In
●
Featuring the Burger
Family. Mamma -
Papa - Baby & Teen
Come As You Are — We
Serve In The Car

A & W Root Beer

8442 Pacific Avenue

CLEAN UP ON THOSE INDIANS

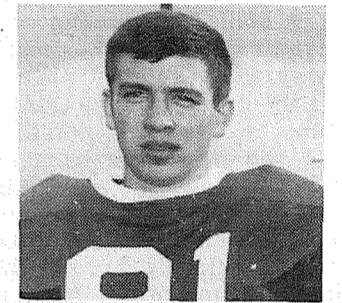


KEITH SMITH

We're All
For You,
Cards
●
For like-new
Cleaning & Pressing
Call

Parkland Cleaners

11004 Pacific Avenue LE 7-3221



RICK PAYNE

BACK THE CARDINALS



TERRY LUMSDEN

Let's All Go
To The Card's
Dedication Game
Friday
●
For Wheel Alignment &
Front End Repairs, its

Kimball's

10111 Pacific Avenue LE 7-0276

MAKE IT HOT FOR RENTON



DENNIS ROUFS

Give the Indians
a Warm Reception.
●

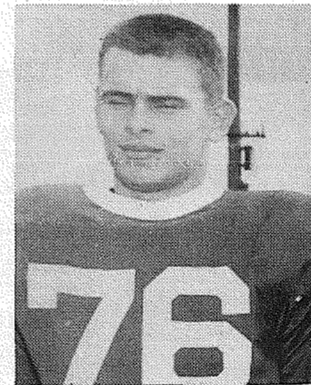
Give Your Home a
Warm Reception, Too
with MOBILHEAT

Your Pioneer
Fuel Oil, Appliance
& Auto Parts Dealer

Pochel Mobil

140th & Pacific Avenue LE 7-8624

KNOCK 'EM DEAD



BOB JONES

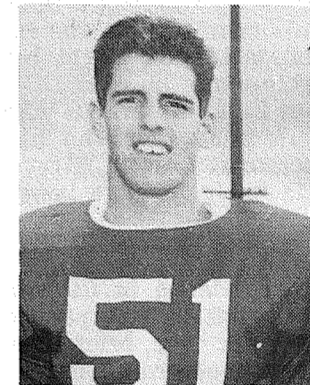
Let's Make It a
Big Win!
●

If it's for your Car,
Home, or for personal
pleasure, we have it!

Parkland Western Auto Supply

11108 Pacific Avenue LE 7-3112

TAKE THE AXE TO RENTON



TERRY GUNTER

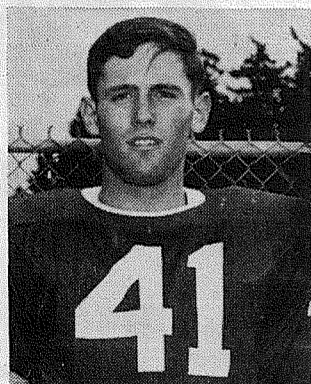
Scalp
The
Indians
●

For Best Buys in
Building Materials,
always call

Brookdale Lumber Inc.

13602 Pacific Avenue LE 7-8669

BEAT THOSE INDIANS



JIM BALLMAN

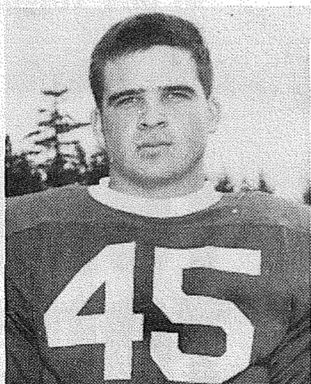
Don't Let
Them Camp On
The Field
●

Before the games
top off your tank
at

Gunderson's "Flying A"

133rd & Pacific Avenue LE 7-9910

SHOW THEM YOUR HEELS, CARDS



TOM BRUNTON

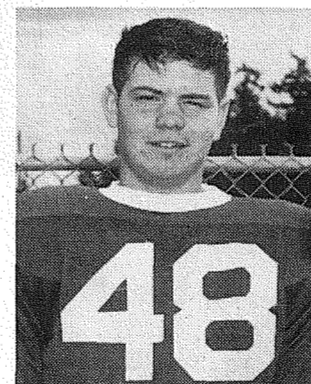
Stay Out
In Front
●

"You List — We Sell"
For expedient handling
of your Real Estate
Transactions, see

Dick Devereaux Realty

12153 Pacific Avenue LE 7-8658

PASTE THOSE INDIANS



RICK WELFRINGER

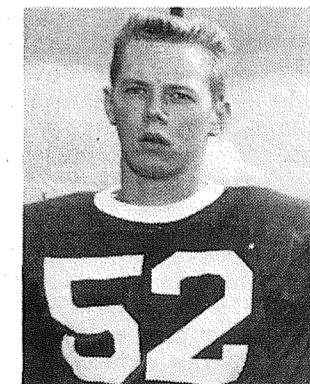
Knock 'Em For
A Roll
●

The
Best in Decorated
Cakes & Pastries

Patty Ann Bakery

11216 Pacific Avenue LE 7-3330

HOW ABOUT IT, CARDS?



KENT ERICKSON

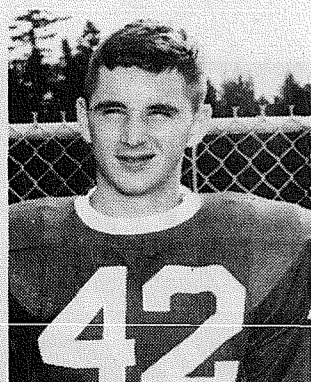
We Want
A Win
Over Renton
●

For the Courtesies
That You'll Remember,
Shop

Parkland Thriftway

138th & Pacific Avenue LE 7-0281

GO GET 'EM CARDS



MIKE BERTUCCI

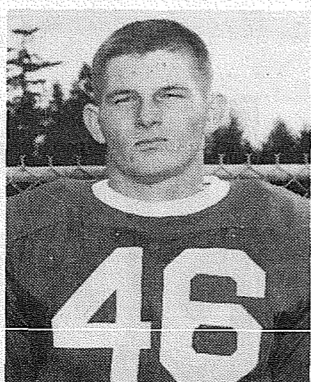
Show Those
Indians Who
Has The Steam
●

Look Sharp at the
Game in Sportswear
for the Teen Set

Carl's Cleaners & Clothiers

14104 Pacific Avenue L E1-0150

GOOD LUCK TO THE CARDS



DICK CHAMBERS

Make it a
Big Score!
●

For Tires, Front
End Alignment and
Brakes, stop in at

Jerry's OK Tire Store

9639 Pacific Avenue LE 7-7355

BACK OUR CARDINALS



WALT KRUCKEBERG

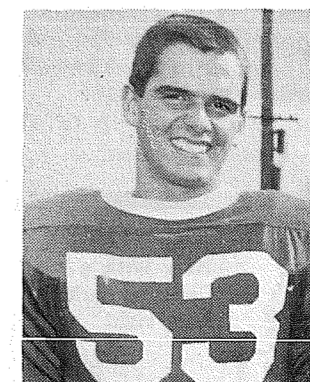
Let's Floor
Renton Friday
●

For Floors Done to
Your Particular Taste
Call

Pacific Floor Covering

13005 Pacific Avenue LE 7-4545

MOW 'EM DOWN CARDS



SCOTT SPENCER

Let's Cut The
Feathers Off
Those Indians
●

Real Estate - Insurance
Property Management
See

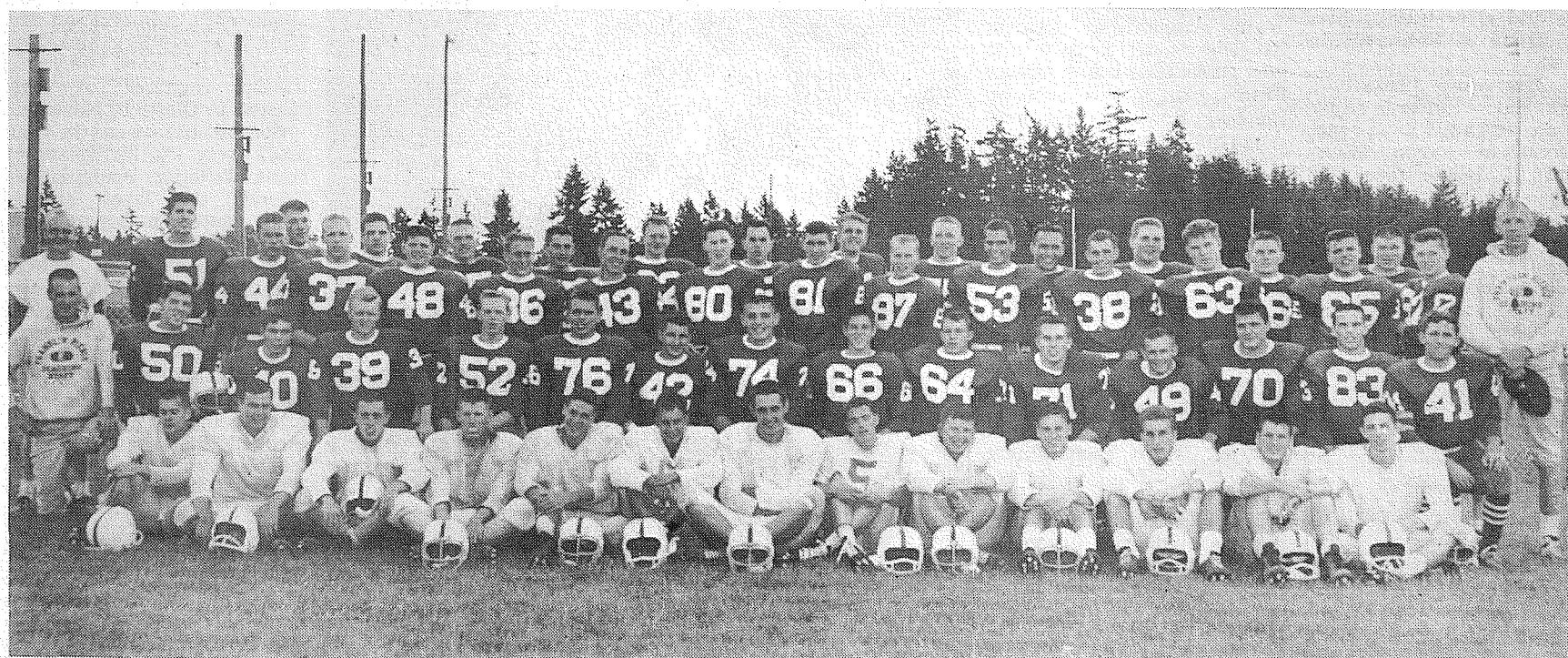
Suburban Realty

11302 Pacific Avenue LE 7-8638

FRANKLIN PIERCE'S NEW ATHLETIC PLANT

AT 7:45 P.M.
 SEPTEMBER 27, 1963

PROGRAM -
 FRANKLIN PIERCE Principal
 CLATSOP County Supt. Of Schools
 JAMES W. JOHNSON, Franklin Pierce Supt.
 RICHARDSON, Assistant Supt.
 Director Of Athletics
 JIM MAN, Student Body President

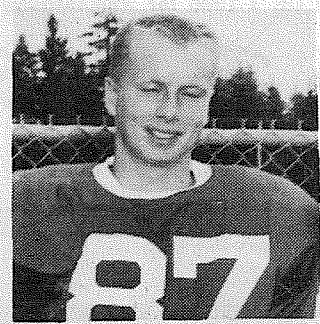


—Photo by Dugan

FRANKLIN PIERCE vs RENTON

1963 Franklin Pierce Football Squad

8:15 P.M.

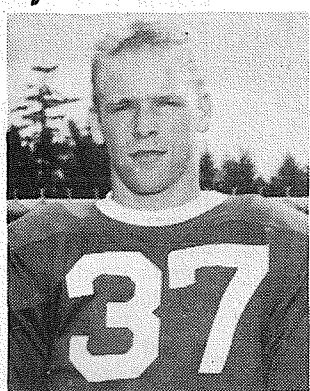


FRED REYNOLDS

STOP RENTON, CARDS

Drive Right Down
The Field

When you drive out
in one of our fine cars,
you drive the best!



BRAD PETERS

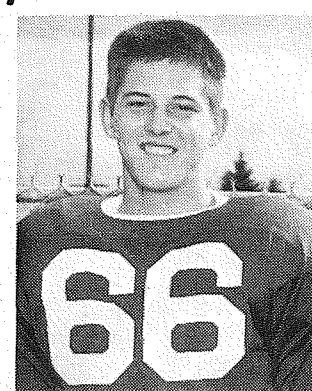
Smalley Motors Inc.

10325 Pacific Avenue LE 1-2291

CUT 'EM DOWN, CARDINALS

We'll Beat
Renton

Beat
High Prices
At



JIM McDUFFIE

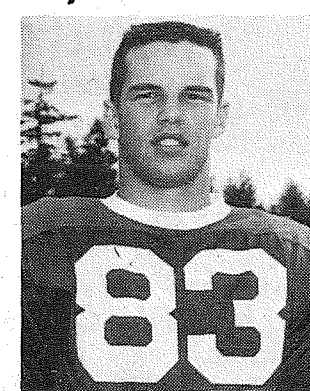
Vis-Rey Shake & Siding

12702 Pacific Avenue LE 1-3230

BEST OF LUCK, CARDS

You've Got The
Stuff To Win

We've Got The
Service To Make
Your Car a Winner



JAY STRICHERZ

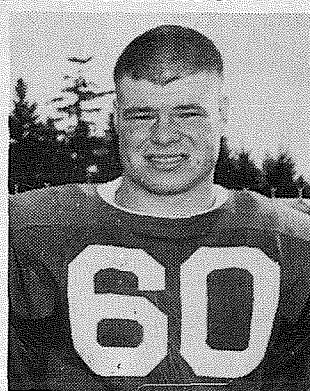
Dick's Midland Servicer

99th and Portland Avenue LE 1-2023

SCALP THOSE INDIANS

Show Renton
Who Is
Boss

For Complete
Prescription, and
Sundries, shop at



RICH HOUK

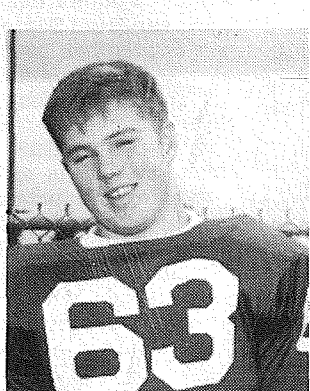
Johnson Drug

Garfield & Pacific Avenue LE 7-0221

WE'RE WITH YOU

Let's All Go
To The Game
Friday

Any day you will find
Good Service, Quality
At



LOREN JOHNSON

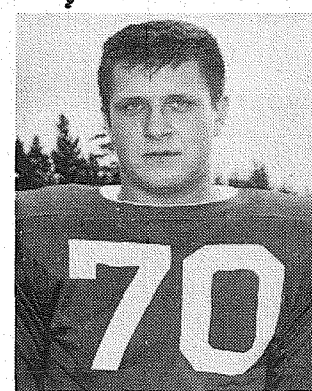
The Farm Boys

112th & Canyon Road

KEEP 'EM DOWN, CARDS

Make It
A
Big Score

You'll know the
score with our
Quality Auto Parts



RAY ALKOFER

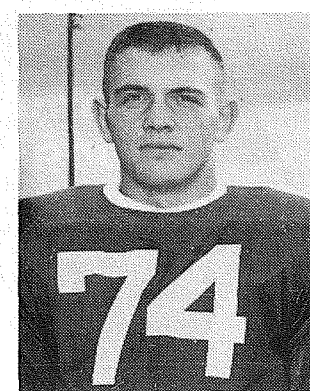
Parkland Auto Parts

12615 Pacific Avenue LE 1-1331

LET'S GO ALL THE WAY

Take Command and
Stop Those Indians!

Garden Supplies
and
Floral Arrangements



JIM JENSEN

Stella's Flowers

12169 Pacific Avenue LE 7-0206

YOU CAN WIN, CARDS

Hit 'Em Hard and
Play To Win!

For The Best in
Heating Supplies



BEN ERICKSON

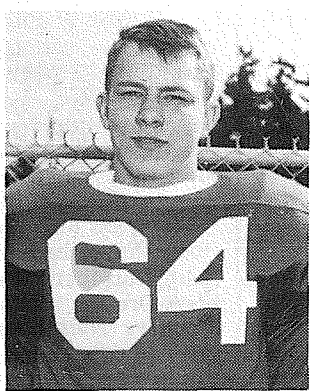
Parkland Fuel Oil

12002 Pacific Avenue LE 7-0256

THE CARDS CAN DO IT

We Know You'll
Score a Win!

Our Staff
is a Winner
for Courtesy
and Service!



GARY ARCHER

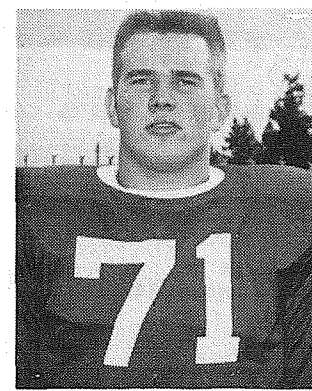
Summit View Thriftway

112th & Canyon Road LE 1-4142

KEEP 'EM GUESSING

You'll Stop
'Em Cold

No Guessing Here.
For Complete
Hardware Stocks



FRED ABRAHAMSON

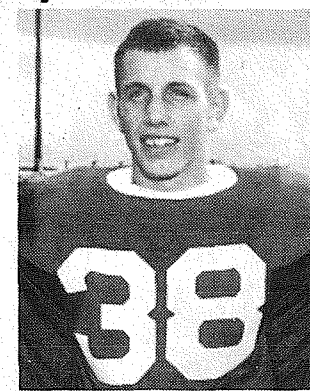
Magdanz Hardware

11401 Pacific Avenue LE 7-5538

YOU'RE TOPS, CARDS

We're With You
All The Way!

Our Furniture and
Appliance Team is tops



ED IMHOFF

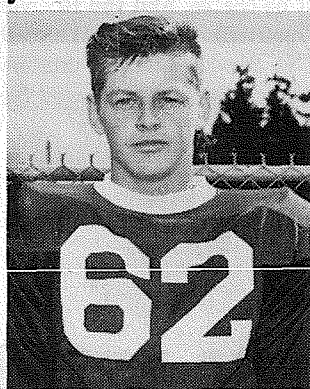
Summit View Furniture

112th & Canyon Road

POUR IT ON, CARDS

Don't Let Them
Spoil Your Dedication

After the game
stop for a Burger
and Malt



MEL BURRELL

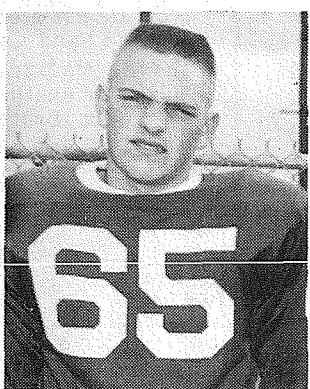
Rich's Drive In

112th & Park Avenue LE 7-4181

WE'RE BEHIND THE CARDS

You've Got The
Best Team

Try Our Team of
Lubricating Specialists



STEVE PRICE

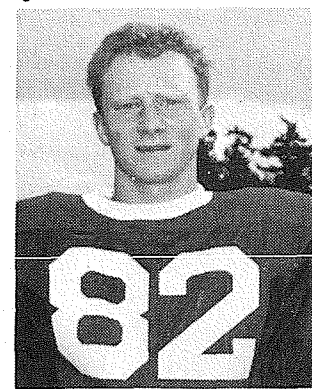
Bob's Place

112th & Jay Streets LE 7-3395

YOU'RE TOPS, CARDS

Hunt Down
Those Indians

Get Your Hunting
Outfit Here



RANDY LUMSDEN

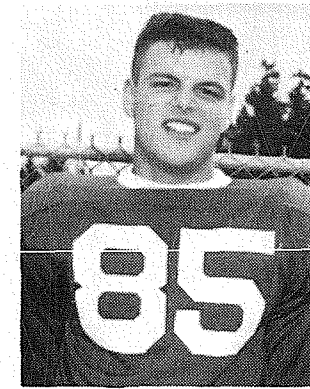
Al Deritis Sporting Goods

13001 Pacific Avenue LE 7-6665

TOMAHAWK THE INDIANS

Leave 'Em
Staggering

After The Game
Try Our Malts
and Burgers



TOM YOTTY

Walt's Malt Shop

112th & Canyon Road LE 1-0553

Meeting Held At Andersons

Mrs. Fred Most LE 7-7552 at the home of Mrs. A. Youngblood. **New Home** The Loren Irish's who have been building a new home will soon be moving into it. **California Guests** The Roy Longs of Downey, California, have been recent guests of the James Stockwells and after leaving here were going to Nebraska for a visit. **Mrs. Rouse Visits** Mrs. Harry Rouse is enjoying an extended visit with relatives in Fargo, North Dakota. It is her first visit to her home town in 25 years. **Seattle Trip** The Ellsworth Campbells and Mrs. Anna Erlandson spent Saturday with the Lloyd Erlandsens and family in Seattle.

Dancing
Midland Community Club
every Friday Night
97th and E. HARRISON

Kapowsin Grange
FREE DANCE
OPENING NIGHT
SATURDAY, SEPT. 28
9 to 2
Music By
The Western Shadows
Formerly from
Elk Plain Grange

Congratulations

TO THE
Franklin Pierce School District
ON THE
Dedication
OF THEIR
FINE NEW
Physical Education AND Athletic Plant

We are proud to have had a part in the building of this fine athletic installation.

Tucci & Sons, Inc.

2815 S. Lawrence FU 3-4385
HEAVY CONSTRUCTION
EXCAVATING SEWER and WATER MAINS HIGHWAYS

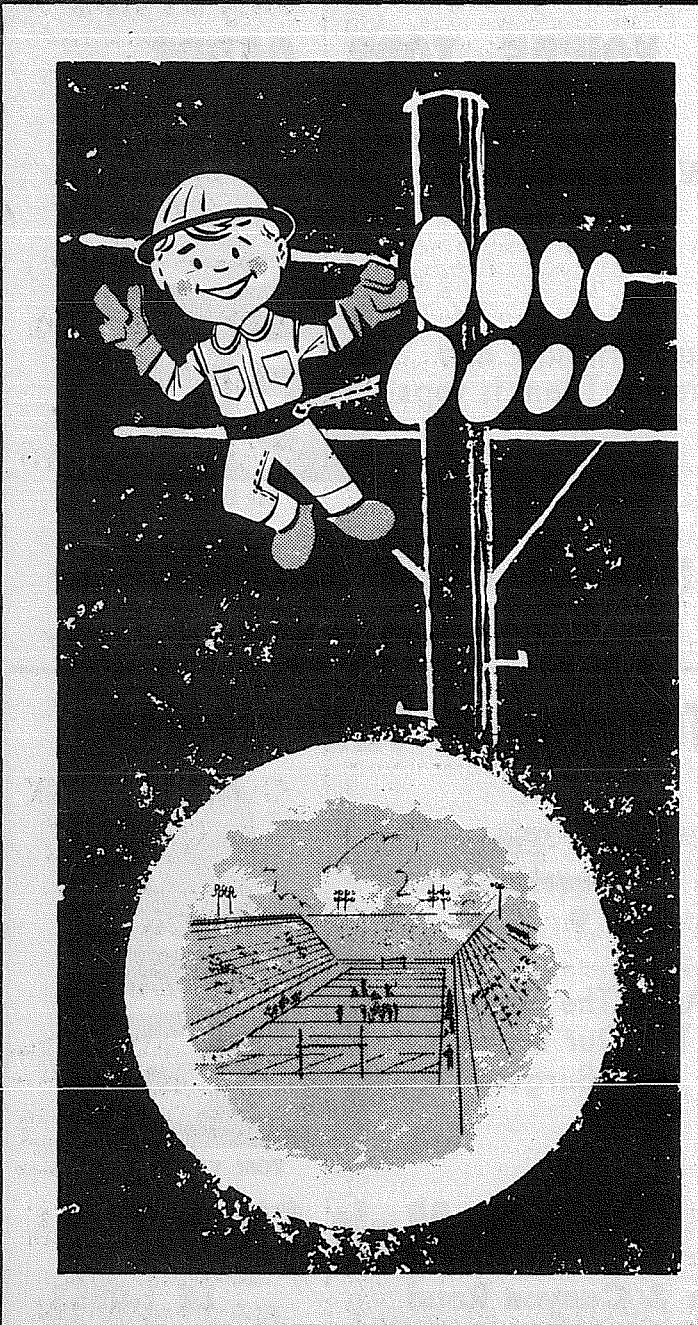
Congratulations

FRANKLIN PIERCE

on the opening of your fine, new athletic center . . .

from your new neighbor in progressive Parkland.

Our Parkland Branch at 114th & Pacific Ave. Opens Oct. 25 with Complete Savings and Loan Services.



Football . . .

Under The Lights

Comes To Franklin Pierce

Illumination Cost . . .
Only \$3.59 A Game
on the low rates of Tacoma City Light

When the lights go on for night football at the new Franklin Pierce Field, it will add another lighted playfield to the many now in the greater Tacoma area. Tacoma is one of the pioneer cities of the west to light outdoor athletic areas. On November 1, 1929 the first night football game on the Pacific Coast was played at the Tacoma Stadium.

Of course, stadiums are lighted much better now. Yet, the cost for night illumination is still very low. To light Franklin Pierce Field with 240,000 watts from its one hundred sixty 1500-watt lamps is only \$3.59 a game.

Tacoma City light is proud to be a part of this new era in sports at Franklin Pierce . . . proud to provide low-cost electricity to "light the night" for athletics and recreation.

Fine Service and Low Rates by:
TACOMA CITY LIGHT

Voters Must Register At Spanaway

Mrs. Louis Symmons LE 1-1425
Everyone who is of voting age, or has moved and not registered is urgently requested to do so at the following registrars: Gibbons Grocery Store (next to the Post Office); and Mrs. Vivian Frame, (Rt. 1, Box 1604, on the Loop Road). This is most important, not only to your country but to your community.

Fireman's Aux. Meets
The regular monthly meeting of the Spanaway Fireman's Auxiliary will be held at the Fire Hall on Tuesday, Oct. 1, at 8 p.m. All members are urgently invited to attend as important business is on the agenda. The hostesses are: Mesdames Oliver Omat, Harvey Ouhl, Curtis Parsons, Charles Phipps, and William Reghetti.

Hospitalized
Mrs. Emmerson Tarpenning has undergone an operation in the Tacoma General Hospital. We all wish her a speedy recovery, and hope she will be home very soon.

Student Returns
John Ferren, son of Mr. and Mrs. Dave Merritt, has returned from a year's schooling in Germany and has now returned to Bethel High School.

Sympathy
Deepest sympathy of the community is extended to the family of Christopher Turner, 105 Military Road So., who died September 18 at the age of 92 years. He is survived by his six children, Raymond B. Turner, Byron C. Turner, Mrs. Ethel Tweeden, Ben L. Turner, Mrs. Cecil Key and Mrs. Merle Prettyman.

Bethel 23 Meet

The regular meeting of Bethel 23 of the International Order of Job's Daughters will be held Wednesday in Fern Hill Masonic Temple on 84th and Park avenue at 7 p.m. Initiation will be held for Mary Ann Corklin and Susan Castille.



MRS. EDWARD McCLANNAHAN demonstrates a sample of fall fashion to Mrs. Eugene Sailar, president of the Town and Country Guild for retarded children, who will greet guests at the guild's annual fashion show, Sept. 27, at 8 p.m. in the Waller Road Grange Hall on East 64th Street. Members of the committee in charge are Mrs. McClannahan, Mrs. Quentin Henderson, Mrs. Morris Rice, Mrs. Robert Fredricks, and Mrs. Robert Kersey. There will be entertainment, door prizes and refreshments. Tickets may be purchased at the door.

—Photo by Dugan

Big Elk Lost? Wondering Through Bald Hills Area

Marjorie L. Smith
Rt. 1, Box 110, Roy, Wash.
Recently in the Bald Hills area several residents have been a large bull elk with five points on one side and four on the other. A few years ago a cow was spotted in the Lacamas-Roy area. It is theorized that they had split off from the Eatonville area herd.

Community Club
Lacamas Community Club will meet at the Community Hall October 1 at 8:30 p.m. Everyone is invited to attend.

Lacamas P-T-O
Lacamas P-T-O met at the school September 19 for a discussion of a "Calendar of Events" which was drawn up. John Molroy and Earl Solie attended and each spoke a few words about the schools. It was voted to start future meetings at 8 p.m. The telephone situation was discussed and we are going to try to have a speaker for our next meeting.

Congratulates Winners
Congratulations go to Mrs. Mel Berglund who won a blue ribbon for a cake she baked at the Puyallup Fair. Judy Corbin tied for first in fitting and showing in the Ayshire division.

Prize Recipients
Mrs. George Logan received the afghan, William Lenz was awarded the picnic table, and Mrs. Lyle Armstrong got the stuffed dog at the Lacamas Fair.

Accident Victims
We are sorry to hear of the unfortunate accidents Gordon Miller and Emil Lenz had recently. We wish both a speedy recovery.

Just Married
The Canyon Road Community Club was the scene of the beautiful wedding reception of Mr. and Mrs. Lee

Teen Dance Sponsored By Canyon Road
Mrs. John Folk LE 7-5801
The Canyon Road Community Club will again sponsor a Teen Dance Friday, Sept. 27th from 8 to 11 p.m. with Curly Campbell M.C. Girls are asked to wear dresses or skirts, there will be no pass-outs or smoking and parents are asked to pick them up after the dance.

Grange Activities
The Grange has sponsored various events of a community service nature. The community fair is an outlet for showing products and awarding trophies for all types of work well done. Under the health program, a community blood bank reserve account was established, with three pints of blood being given out during the year. Members were also instrumental in obtaining 23 donors for the eye bank at Doctors Hospital in Tacoma.

Francis who had just been united in marriage at All Saints Catholic Church in Puyallup by the Reverend Father Benaski. Mrs. Francis is the former Susan Herron, daughter of Mr. and Mrs. Rod Herron of Puyallup, and Lee is the son of Mr. and Mrs. Tom Francis of Sumner. The happy couple went on a mountain trip for their honeymoon and will make their new home in Sumner.

Hospitalized
Also hospitalized is John Wingard, son of Mr. and Mrs. Sigurd Wingard of Canyon Road, who has found out the hard way that gasoline and fire do not mix. He had splashed gas on his pant leg just before he tried to make a torch. He has a badly burned leg and hand and expects to be in Madigan General Hospital for another week.

On Leave
Mike Hansen, son of Mr. and Mrs. Don Hansen of E. Pioneer, is home on leave until Oct. 14th when he will return to Pearl Harbor where he will have duty aboard a tug boat.

Three Month Tour Of Europe Yields Many Happy Memories

Mrs. Vern Fogle LE 7-5210
The Neil Hustedts and sons, Robert and Ronald, are home again after a three month tour of Europe. After a leisurely trip by car through the States, they boarded ship in New York and made the return trip by plane.

Much of their time was spent with relatives of Mr. Husted at Esbjerg and Copenhagen, Denmark. They also visited relatives of Mrs. Husted in Olesund, Norway. Special attractions in Denmark were the birthplace of Hans Christian Anderson at Odense, the Tivoli amusement center in Copenhagen, and the Danish Independence Day celebration in Rebild. They also met the Pacific Lutheran Choir while they were on tour and visited with some of the directors.

In Cologne, Germany, the Hustedts saw a city rebuilt after being 92 per cent destroyed in the war. After leaving Germany they toured France, Spain and Italy where they toured the museums and the Coliseum. They saw the "Fountain of Trevi" where the film, "Three Coins in a Fountain" was made. A trip to Vatican City and St. Peter's Square and the principality of Monaco completed a summer vacation which the family describes as "a real education for each of us." They brought the record of their holiday home in their movies and anticipate reliving their experiences for many years to come.

Sleigh Bells
Sleigh bells for Friday the 13th? Who ever heard of such a thing! The jingling of sleigh bells, beating of pots and pans, and lots of voice-power greeted Mrs. Verne Fogle at her front door at 11 p.m. on Friday the 13th.

The merry makers were Grange Master David Van Hulle, his wife, Anna, Allen Johnson of the State Grange Radio and Research Department, State Deputy Frank Ballou, Mrs. Ballou, Mrs. Kenith Aarhus, the Howard Freemans and Donna Freeman. They had just completed work on the State Grange booth at the Western Washington Fair and chose this way of "surprising" Mrs. Fogle, chairman of the project, with the news that the booth had placed third in the state-wide community service contest. Over 140 granges in the state participated in the contest which is sponsored annually by the National Grange and Sears Roebuck Foundation. The contest ran from September, 1962 to September, 1963.

Welcome
We are glad to welcome the Julius Remarks (ne Elsie Trusler) to the community. They will be staying at the Art Young place.

House Guests
The John Folks' of Canyon Road have had as guests John's brother Tom of Hillsboro, Oregon, and sister, Mrs. Margery Nelson, of Anchorage, Alaska, who had been called because of the critical condition of their father, Mr. Peter Folk.

Hospitalized
Also hospitalized is John Wingard, son of Mr. and Mrs. Sigurd Wingard of Canyon Road, who has found out the hard way that gasoline and fire do not mix. He had splashed gas on his pant leg just before he tried to make a torch. He has a badly burned leg and hand and expects to be in Madigan General Hospital for another week.


On Leave
Mike Hansen, son of Mr. and Mrs. Don Hansen of E. Pioneer, is home on leave until Oct. 14th when he will return to Pearl Harbor where he will have duty aboard a tug boat.

Notice
It is with deep appreciation that I take this opportunity to thank my neighbors and friends for their warm hearted concern for my family during my recent hospitalization.

Stan H. Morris

ance was shared by Mrs. Mathiason and Mr. Wetzel, due to a tie. Hostesses for the evening were Mesdames Robert Myron, James Olsson, Robert Kearsey and Ray Corrigan.

Thompsons Honored
Mr. and Mrs. Earle Thompson, former Waller Road residents who now live in Randle, were honored Sunday at a reception at the Waller Rd. Grange. Over 100 guests attended to offer congratulations to the couple who have been married for 50 years. Their son and daughter-in-law, Mr. and Mrs. Bill Thompson of Portland, and their son-in-law and daughter, Mr. and Mrs. Clair Farley, were in charge.



Grindley Trophy

and Specialty Supply
110 South 15th St.
BR 2-4511

Championship awards, medals, ribbons for all sports events! Expert engraving! King Louie and Nat Nast lettered bowling shirts!

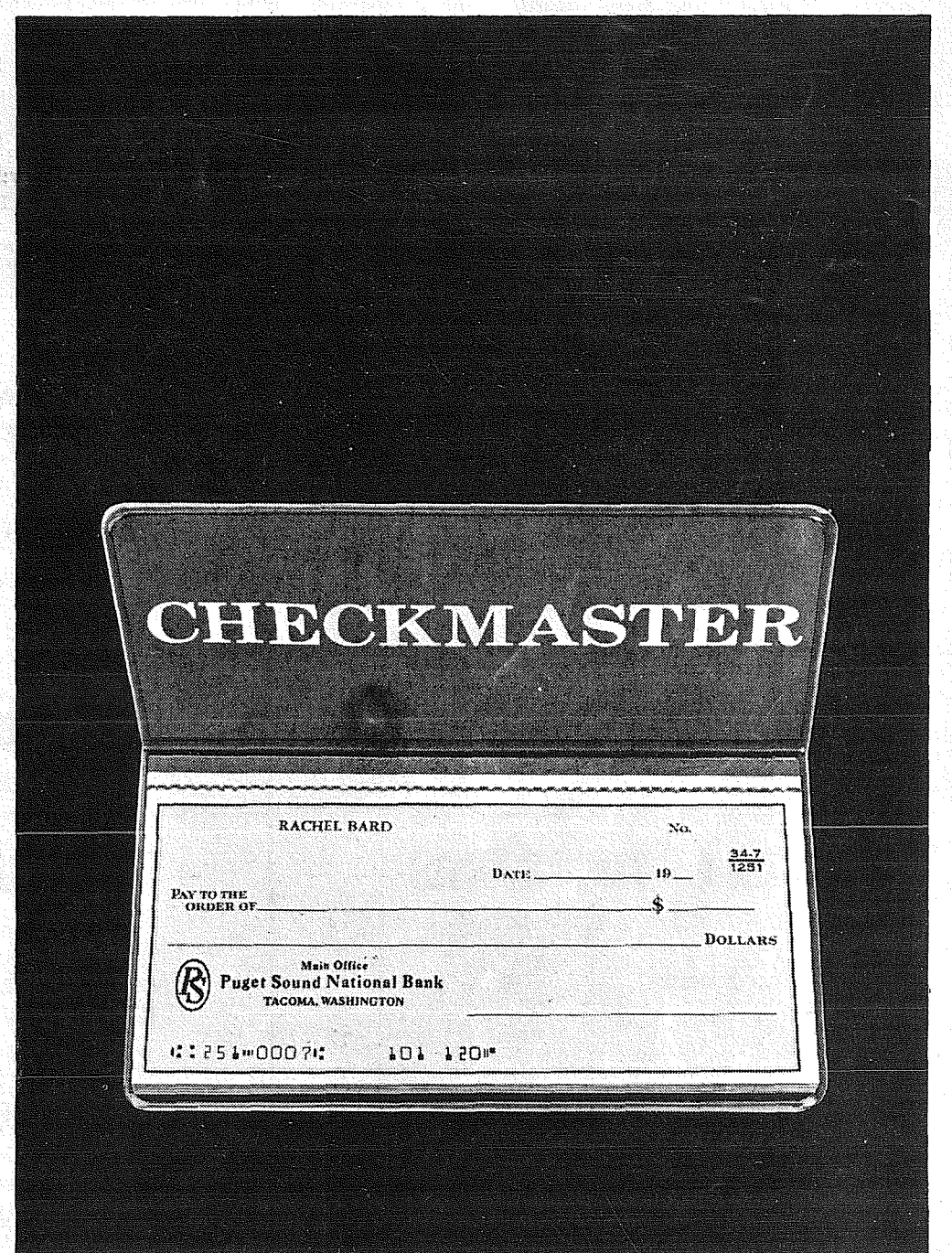
PHOTOGRAPHS

Children: 5x7, \$1.00
8x10, \$2.00
Adults: \$3.00 Per Order Additional

\$5 minimum orders
Offer Good Until December 15
Open 10 a.m. till 8 p.m.
Phone GR 4-1986 for Appointment

Family Portrait Studio

8411 S. Park Ave.




CHECKMASTER

RACHEL BARD No. 247
DATE: 10 24 1963
PAY TO THE ORDER OF \$ _____ DOLLARS
Man Office: Puget Sound National Bank
TACOMA, WASHINGTON
⑆ 254 0007⑆ 101 120⑆

No monthly service charge on "PS" CHECKMASTER accounts

There is no service charge on a Puget Sound National Bank CHECKMASTER account. You pay only 10c per check when it is posted. Lost or spoiled checks cost you nothing. Checks are even personalized with your name and account number at no charge. And you receive monthly statements—some banks send them quarterly. If you're not already using CHECKMASTER, stop in and open a "No Service Charge" CHECKMASTER account soon. Regular checking accounts at The Puget Sound cost less, too!



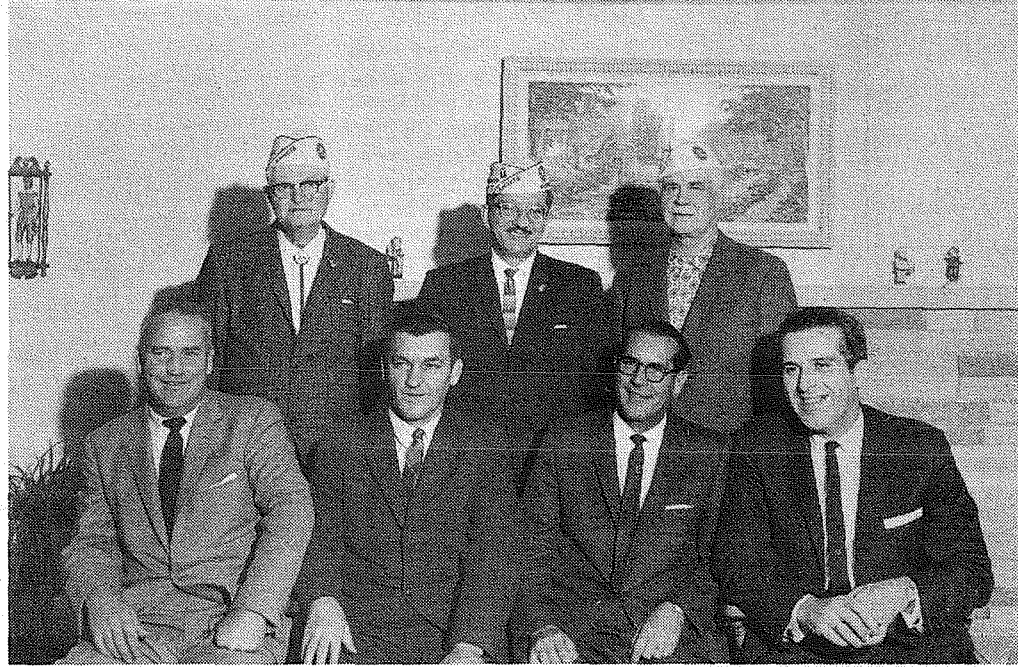
PUGET SOUND NATIONAL BANK

Tacoma's Friendly Bank... with 13 offices to serve you

M. W. Eagan, Mgr. PARKLAND BRANCH 122nd and Pacific Ave.
Ralph Hubbard, Mgr. 84th & PACIFIC BRANCH 8402 Pacific Ave.

By James J. Kane
A Fever In The Blood. By William Pearson. New York: St. Martin's Press.
There is an old saying, in reference to people working in the railroad industry, "once a railroad, always a railroad." Expressions of this kind have been made about people in show business and the newspaper field.

The second part, covers the period leading up to the state primary election. This is a period of "mud-slinging," by both candidates. Sometimes it's hilarious and at all times entertaining.
The final part, made up of unexpected events and situations, leads us to the climax, the State General Election. Perhaps the most emotional part of the story.
The romantic life of the story, although not connected with the two candidates, is a welcome diversion. The reaction of the wives of the candidates, friends, and newspapers, have been blended into the story with finesse.
It is no easy task to lay this book aside, once you have started reading it.



OFFICERS of the newly formed Citation Post No. 9 of the AmVets are, left to right, first row: Robert Daniels, public relations officer; Robert Cummings, adjutant; and Pete Miller, commander. In the second row are: Skinney Templeton, state commander 1963-64; Jack Tsappralis, past state commander; and Herb Kester, national service officer. —Photo by Dugan

Plan For Firemen Frolic

Mrs. Harley Parsons 832-4709 Mrs. Fritz Hilderbrand 832-3668
Plans for the best dance yet are going ahead rapidly according to chairmen Bill Barlow and Bill Sharbono.

were ably assisted by Debbie Bullion and Valerie Parsons and a lovely Swedish "gal", Resucianna, the perfect wife—never speaks back, requires a skimpy wardrobe, and lives and breathes on air alone.

Sense shines with a double lustre when set in humility. —William Penn

Legals

In the Superior Court of the State of Washington for the County of Pierce. IN PROBATE No. 71760 NOTICE TO CREDITORS In the Matter of the Estate of FLOYD D. STONE Deceased.

Notice is hereby given that the undersigned has been appointed and has qualified as Executor of the estate of Floyd D. Stone, Deceased, that all persons having claims against said deceased are hereby required to serve the same, duly verified, on said National Bank of Washington or its attorneys of record at the address below stated, and file the same with the Clerk of said Court, together with proof of such service within six months after the date of first publication of this notice, or the same will be barred.

Date of first publication Sept. 26, 1963. NATIONAL BANK OF WASHINGTON By: s/John S. Hewitt Executor of said Estate 11024 Pacific Avenue Tacoma, Wash. 98444 s/PHILLIP S. TRACY s/Peters & Tracy Attorneys for Estate, 11024 Pacific Avenue Tacoma, Washington 98444 Published in the Times Journal Sept. 26, Oct. 3, 10, 1963.

In the Superior Court of the State of Washington, for the County of Pierce. No. 71703 NOTICE TO CREDITORS In the Matter of the Estate of ODLAUG C. LEWIS Deceased.

Notice is hereby given that the undersigned has been appointed and has qualified as Executor of the above entitled estate; that all persons having claims against said deceased are hereby required to serve the same, duly verified, on said Robert R. Lewis or his attorney of record at the address below stated, and file the same with the Clerk of said Court, together with proof of such service, within six months after the date of first publication of this notice or the same will be barred.

Date of first publication September 12, 1963. Executor of said Estate ROBERT R. LEWIS 1036 So. 110th St. Tacoma, Washington GEORGE F. POTTER Attorney for Estate 159 So. 112th Street Parkland, Washington Published in the Times Journal Sept. 12, 19, 26, 1963.

County of Pierce NOTICE OF PUBLIC HEARING ON PROPOSED CHANGE OF ZONE CLASSIFICATION Case No. Z38-63

NOTICE IS HEREBY GIVEN, that a public hearing will be held in the Chambers of the Board of County Commissioners of Pierce County, Washington, in the County-City Building at Tacoma, Washington, on Tuesday the 8th day of October, 1963, at the hour of 10:00 a.m. on petition initiated by Planning Commission, Case No. Z38-63, to zone change from classification SR 8.4 Suburban Residential to "PS-2 PLANNED SHOPPING CENTER" approximately 2 acres abutting the west boundary of the existing PS-2 Planned Shopping Center zone at the NW corner of the intersection of Pacific Avenue South and Military Road, at Spanaway Park; said property more particularly described as follows, to-wit:

Beginning at a point on the north line of the H. Debuschlar DLC, 50 ft. west of the center line of PSH No. 5, in Section 21, Township 19 North, Range 3 East, W.M.; thence north 89° 21' 10" west along the north boundary of said DLC 630.00 ft.; thence on a curve to the right from a back tangent bearing north 7° 15' east, and on a 90 foot radius through an angle of 60°, a distance of 94.06 ft.; thence on a tangent south 67° 15' west, a distance of 110.00 ft.; thence on a 42° curve to the left through an angle 44° 30' on a radius of 136.40 feet, a distance of 105.94 feet; thence south 22° 45' west, a distance of 250.38 feet to a point 10 feet NE of the northeasterly right of way line of Old Military Road, 40 feet from the center line; thence south 67° 45' 30" east, and parallel to the right of way line of said road, a distance of 998.65 feet, to a point of a curve to the left on a radius of 30 feet through an angle 112° 58', a distance of 59.21 feet to a tangent parallel and 50 feet west of the center line of PSH No. 5, thence north to the point of beginning and containing 12.32 acres.

Said HEARING will be held on said date and hour, or as soon thereafter as the same can be heard, when any person firm or corporation may appear before the Board and be heard in the matter. By ORDER of the Board of Pierce County Commissioners, dated September 16th, 1963. BOARD OF COUNTY COMMISSIONERS Jack W. Sonntag, County Auditor and Clerk of the Board. By: L. Hamre, Deputy. Published in the Times Journal Sept. 26, 1963.

County of Pierce NOTICE OF PUBLIC HEARING ON PROPOSED CHANGE OF ZONE CLASSIFICATION Case No. Z37-63

NOTICE IS HEREBY GIVEN that a public hearing will be held in the Chambers of the Board of County Commissioners of Pierce County, Washington, in the County-City Building at Tacoma, Washington, on Tuesday the 8th day of October, 1963, at the hour of 10:00 a.m. on petition of G. Wayne Bush, Case No. Z37-63, to zone change from classification SA Suburban Agriculture to "SR-12 SUBURBAN RESIDENTIAL" approximately 17 acres lying south and west of Military Road, 600 ft. north of the intersection of 160th and Military Road; said property described as follows, to-wit:

Commencing 660.00 ft. east of the southwest corner of Sec. 22, Twp. 19 North, Range 3 East of the Willamette Meridian; thence north to the south line of the north one-half of the southwest one-quarter of

Section 22 which is the point of beginning. Thence along said south line west to a point 295.00 feet east of the west line of the southwest one-quarter; thence north parallel with said west line to the southerly right of way line of Military Road; thence along said southerly right of way line southeasterly to its intersection with the east line of the southwest one-quarter of the southwest one-quarter; thence south along said east line to the south line of the north one-half of the southwest one-quarter; thence west along said south line to the point of beginning. Except roads.

Said HEARING will be held on said date and hour, or as soon thereafter as the same can be heard, when any person firm or corporation may appear before the Board and be heard in the matter. By ORDER of the Board of Pierce County Commissioners, dated September 16th, 1963. BOARD OF COUNTY COMMISSIONERS Jack W. Sonntag, County Auditor and Clerk of the Board. By: L. Hamre, Deputy. Published in the Times Journal Sept. 26, 1963.

County of Pierce NOTICE OF PUBLIC HEARING ON PROPOSED CHANGE OF ZONE CLASSIFICATION Case No. Z38-63

NOTICE IS HEREBY GIVEN that a public hearing will be held in the Chambers of the Board of County Commissioners of Pierce County, Washington, in the County-City Building at Tacoma, Washington, on Tuesday the 8th day of October, 1963, at the hour of 10:00 a.m. on petition initiated by Planning Commission, Case No. Z38-63, to zone change from classification SR 8.4 Suburban Residential to "PS-2 PLANNED SHOPPING CENTER" approximately 2 acres abutting the west boundary of the existing PS-2 Planned Shopping Center zone at the NW corner of the intersection of Pacific Avenue South and Military Road, at Spanaway Park; said property more particularly described as follows, to-wit:

Beginning at a point on the north line of the H. Debuschlar DLC, 50 ft. west of the center line of PSH No. 5, in Section 21, Township 19 North, Range 3 East, W.M.; thence north 89° 21' 10" west along the north boundary of said DLC 630.00 ft.; thence on a curve to the right from a back tangent bearing north 7° 15' east, and on a 90 foot radius through an angle of 60°, a distance of 94.06 ft.; thence on a tangent south 67° 15' west, a distance of 110.00 ft.; thence on a 42° curve to the left through an angle 44° 30' on a radius of 136.40 feet, a distance of 105.94 feet; thence south 22° 45' west, a distance of 250.38 feet to a point 10 feet NE of the northeasterly right of way line of Old Military Road, 40 feet from the center line; thence south 67° 45' 30" east, and parallel to the right of way line of said road, a distance of 998.65 feet, to a point of a curve to the left on a radius of 30 feet through an angle 112° 58', a distance of 59.21 feet to a tangent parallel and 50 feet west of the center line of PSH No. 5, thence north to the point of beginning and containing 12.32 acres.

Said HEARING will be held on said date and hour, or as soon thereafter as the same can be heard, when any person firm or corporation may appear before the Board and be heard in the matter. By ORDER of the Board of Pierce County Commissioners, dated September 16th, 1963. BOARD OF COUNTY COMMISSIONERS Jack W. Sonntag, County Auditor and Clerk of the Board. By: L. Hamre, Deputy. Published in the Times Journal Sept. 26, 1963.

Pierce County Civil Defense Will Offer Medical Self-Help Course

Troop 84 will hold a Court of Honor on Thursday, September 26, at 8 p.m. at the Midland Scout Hall. Over 30 merit badges will be awarded. All parents are urged to attend.

Orthopedic Guild The next meeting of the Midland Orthopedic Guild will be held on Tuesday, October 1, at 12:30 p.m. at the Midland Community Hall. Hostesses for the luncheon will be Mrs. James Rhodes, Mrs. Kenneth Lampitt, and Mrs. Dorothy Tribble. Every one willing to help with Orthopedic work is welcome. Plans will be made for a rummage sale in October.

Canadian Guests Mr. and Mrs. Ted Wiersma entertained Mr. and Mrs. Karl Westra from Port Alberni, Canada, this past week. The Westras were married in Canada on September 14th, and are on their honeymoon in Washington State. Mr. Wiersma and Mr. Westra were boyhood friends in the Netherlands.

National 4-H Week The nature's Defender 4-H Club is helping in the promotion of National 4-H Week—September 26 through October 3. A large window display of many projects will be shown at Harvard School. Posters will be on display with several Midland merchants. We wish to encourage new members into 4-H. This can only be done if parents will take an interest in be leaders. The satisfaction of developing wholesome interests is very rewarding.

Parents Meeting A parents meeting of Boy Scout Troop 84 will be held on Tuesday, October 1, at 8 p.m., at the Scout Hall.

Thank You We would all like to thank Mrs. Willow Bullion for the long hours she put in at the Civil Defense booth at the Fair. She is to be commended as are the courteous firemen from Puyallup for the kindness shown us. Mrs. Bullion and Mrs. Parsons

Gone Family Sgt. and Mrs. Foss, formerly living at Lake Whitman, have moved into Parkland with their baby daughter.

It's The Law Danger Signals There is no sorrier person than one who has been victimized by a phony deal. Unfortunately, once the buyer has signed an order or contract, little can be done to get him off the hook. "But I didn't realize..." are words often heard by lawyers who are usually unable to help at that point. Despite the complete disavowal of "caveat emptor" (let the buyer beware) by ethical merchants, there are still some businesses that thrive on high promotion deals. Buyers are contacted by direct mail, over the telephone, or by "come on" advertisements. Such sellers resort to fancy claims and a high pressure approach. How can you avoid such sales tactics? There is no sure way, outside of dealing with reputable, established merchants, and using common sense in reading the ads. But there are certain danger signals that should ring the alarm bell. Here are a few:

"Buy now or lose the chance..." "You have been specially selected..." "It's only a legal form..." "You can save up to..." "Yours absolutely free..."

These signals do not necessarily indicate a bad deal, but they are frequently used by shady promoters. So read carefully, think it over, compare prices, and ask for information from a merchant you know, or from a friend. Remember, in this world tough business competition, one seldom gets anything for nothing. Once you have signed an order, even the law may not be able to help you, no matter how bad the deal may be for you.

In fact, unless the seller is doing something illegal, the law may wind up helping him to enforce the bad deal that you made. So watch the signals and look before you leap—or sign!

(This column is written to inform not advise. Facts may change the application of the law.)

BUY what you do need... SELL what you don't need Do BOTH with a low-cost Classified Ad in the Times Journal LE 7-0223 The Journal and your ad reach over 15,400 homes each week

JOHN BIRCH SOCIETY TAKES THE POSITION

that it is both immoral and stupid to enter into any treaty with criminals who have no respect for treaties. The Communists say that promises, like pie crusts, are made to be broken; that they enter into treaties only for the advantages to themselves, and with no expectation of abiding by such treaties. And they have proved by their actions, in violating dozens of solemn treaties before the ink was hardly dry, that they are just as unscrupulous as they claim to be. Amid the infinite confusion around us today, the only safe guide is the moral standard. The important question about any proposed action, by a man or by a nation, is not "Is it smart?" but "Is it right?" Entering into the test-treaty with the Soviet murderers is morally wrong. And for that very reason it is assuredly unwise. (Paid Advertisement)

Presbyterians Now Organizing Sunday School

Due to the fine response since the start of the new Parkway Presbyterian Church two weeks ago Sunday School classes are now being organized and study will begin on Sunday morning, October 6, at 9:30 a.m. The new church group is meeting each Sunday in temporary quarters at the Parkland Masonic Temple, located on 134th Street, just west of Pacific Avenue. A committee, made up of Mrs. Richard Kunkle and Miss Roberta Cauvel, have been making the preliminary arrangements for the Sunday School classes. Miss Cauvel is a recent graduate of Whitworth College with a Christian Education Major and Mrs. Kunkle has also had training in the field of Christian Education, together with practical experience in previous churches. It is planned to have classes for all age groups, beginning with the Nursery and up through the Adult level. With the start of Sunday School on October 6, the church will move to a new time schedule. Sunday School will be at 9:30 a.m. and the worship service will be at 10:45 a.m. Next Sunday, September 29, will be the last Sunday with the worship service at 10 a.m. Interested parents who would like to have their children in the new Sunday School may bring them on the morning of October 6, or may call the organizing minister, The Rev. Wesley J. Drummond, LE 1-4234, for advance registration. Children not attending any Sunday School are cordially invited.

COLLEGE BUDGET GUIDE NATIONAL BANK OF WASHINGTON

FREE for College Students (or their parents)

Today, most college students find it necessary to budget expenses very carefully. With this thought in mind, National Bank of Washington has designed a College Budget Guide for you. This booklet shows how to project your income and expenses for each semester and keep a detailed monthly record of actual income and expense.

You'll find the College Budget Guide useful, we're sure... and it's yours for the asking. Stop in at our Parkland Branch of National Bank of Washington and ask for your free copy tomorrow. (Parents will find this book interesting, too!)

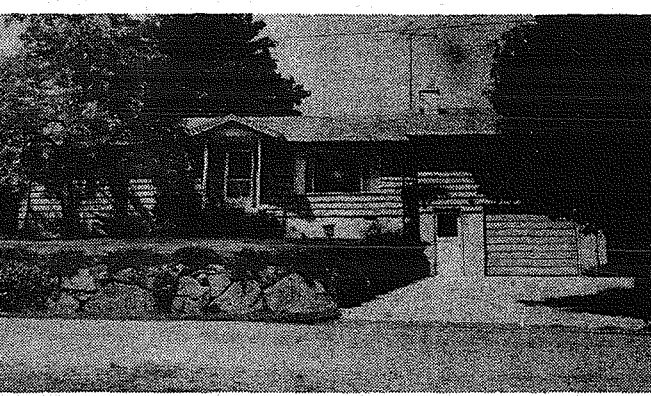
Parkland Branch



THE BANK OF PERSONAL SERVICE... WHERE OUR INTEREST IS YOU!

MEMBER FEDERAL DEPOSIT INSURANCE CORPORATION MEMBER FEDERAL RESERVE SYSTEM

FOR SALE Move in Now



IMMEDIATE OCCUPANCY - FHA, Equity REDUCED TO \$15,950. APPROX. \$4,000 EQUITY Call Mrs. Leverenz, SK 2-6684 or SK 2-2710 IMMEDIATE OCCUPANCY on credit approval. Immaculate 3-bedroom, or 2-bedroom and large rec. room over garage. Only 4 years old, with well landscaped and well kept yard. Extra large concrete patio in shaded back yard. 34' wide concrete driveway. Large 1-car garage. Fireplace, beautiful hardwood floors, Exceptionally nice kitchen. All new aluminum screen doors and screens. Two short blocks to shopping center, church, school bus 10 minutes to McChord Field, Summit View district. This home must be seen to be appreciated. 10216 East 65th Ave. (1 block East of Canyon Road). Call Owner LE 1-3116.

AN ENDOVED CARE CEMETERY Fir Lane Memorial Park SPANAWAY, WASHINGTON E. 176th St. GR 2-3397

MAKE Concrete IMPROVEMENTS Fast Service - LE 7-3943 Quality Products Saturday Delivery 72nd & CANYON Canyon Ready Mix, Inc.

SHOP and SAVE at BROOKDALE LUMBER, Inc. 1x6 - 1x8 KNOTTY PINE PANELLING only 16.90 Per 100 Sq. Ft.

Our lake cottage would be beautiful, finished in this! We Can Build For You A 16x20' GARAGE Complete. For only \$795.00 Nothing Down Easy Monthly Payments

Steel CLOTHES LINE POLES Heavy only \$14.95 Per Pair

STILL A FEW LEFT! REJECT PLYWOOD 30"x8'- 5/8" \$1.80

1x12 DRY SHELIVING only 15c Per Ft.

Garage Studs No. 4 - 8 Ft. 24c ea.

1x4 E FLOORING (Kiln Dried) \$7.95 Per 100 Sq. Ft.

CONCRETE MIX \$1.00 Per Bag

MASON MIX \$1.25 Per Bag

PHONE LE 7-8669

BROOKDALE LUMBER, Inc. 13602 PACIFIC AVE.

Five Generations



A RECENT GATHERING brought five generations of one family together at the Norman F. Seaman residence. Shown above are Mrs. Reuben Harvey, Norman F. Seaman, Mrs. Norman Seaman, Mrs. Ola Walters and little Lorraine K. Seaman. Eighty year old Mrs. Walters of Strawberry Point, Iowa, traveled to the Northwest to visit a few of her nine children and their families. Mrs. Harvey is her daughter, Mrs. Seaman is her granddaughter, Norman is her great-grandson, and Lorraine is her great-great-granddaughter. —Photo by Dugan

Marchers Are Needed For Annual Drive

An appeal to residents of Tacoma and Pierce County for help in ringing doorbells in the 1963 March For Muscular Dystrophy was issued recently by Mrs. Dorothy King, Chairman, Annual Marcher's Drive, Muscular Dystrophy Associations of America, Inc.

The nationwide drive seeks funds to support research into the mysterious disease for which there is, as yet, no known cause or cure. MD afflicts more than 200,000 Americans, more than two-thirds of them children. The majority of the latter will not grow to maturity unless a cure is found.

Research Imperative
Appealing for volunteers to join the house-to-house drive, Mrs. King said, "I know that the good people of this community will want to help these stricken people by volunteering a few hours of their time for the March. Increased research holds the solution to this tragic disease, and it calls for a great deal of money. MDAA is depending on the help of the public-spirited Americans to raise these funds."

Those wishing to volunteer are asked to contact Pierce County Chapter headquarters at No. 722 Jones Building Tacoma or telephone MA 7-5995. MDAA Chapters, such as Pierce County Chapter, Tacoma, help defray the cost of wheel chairs, lifts, braces, crutches and social work counselling to all victims of muscular dystrophy.

Agent Warns On Flying Insect Pests

If you have a home termite problem, then in all probability it is making itself known at this time through the flying adults. However, County Agent Jack Parsons warns that simply because you find them flying is not positive proof that they are infesting your home. Before any control is applied, examine the foundation and other areas of your home where wood is in contact with the soil. In all probability this is where they will be found. Also, in the flying stage you can often locate the area of infestation by observing where they are flying from.

Another sign of termite infestation is flattened earthen shelter tubes on the surface of foundation walls. The tubes are from 1/4 to 1/2 inch wide and are used by termites as passageways between wood and soil. These connect with soil and are necessary for termites to obtain water.

Parsons warns also to not confuse the termite with carpenter ants. Termites look like ants but have a thick waistline instead of the wasp-waist of ants. Also, flying termites have two pairs of long whitish, opaque wings of equal size and length. Flying ants have wings of unequal length.

Late Blight Fungus Is Fall Hazard

Late blight is a fungus disease that is rampant in potatoes and tomatoes in both commercial fields and home garden plots. The spores of this fungus are present every year, but only become seriously destructive when we have a series of foggy, cool mornings. This type weather is particularly favorable for late blight.

County Agent Jack Parsons suggests that gardeners growing potatoes should remove infested vines from their plantings. If the vines are not infested and still green, then allow the potatoes to finish developing.

However, if late blight is present, then remove the vines and 10 to 20 days later dig the potatoes. The waiting period is necessary to allow time for the fungus to die. This is important because most of the infection on the potato tubers actually takes place during harvest.

Parsons says that even though some infection may still occur, good storage conditions will reduce the damage to a minimum. First of all, after the potatoes are plowed from the soil, they should be allowed to lay for an hour or two (to "set" the skin) before they are handled. Then, before placing them in storage, make certain they are clean and dry.

House cellars are not usually good for potato storage because of high fluctuating temperatures and low humidity. Ideal storage of potatoes is low average temperatures, 40 to 45° F., and high humidity.

"Storing Fruits and Vegetables" is the title of a fine bulletin on this subject which is available from your County Extension Office.

PROMPT PERSONALIZED
PRESCRIPTION SERVICE
TED SWANSON
INSULIN - VITAMINS
Downtown Prices
Pay Phone Bills Here
PLENTY OF FREE PARKING
TINCHER'S PHARMACY
8227 Park Ave. GR 4-3344
Across from Fern Hill P. O.

Minor Overhaul Special
SEPT. 20 THRU SEPT. 27
Labor on 6 Cyl. \$49.50
Labor on V-8 \$74.50
Plus Parts. Includes Install Rings, Grind Valves and Rod Bearings.
Martens Automotive Service
761 So. 106th LE 7-0251
Hours: 8 to 5 Monday thru Saturday

Home loans cost less at Pacific First!

A MUTUAL SAVINGS INSTITUTION
Pacific First Federal Savings and Loan Association
BELLINGHAM • SEATTLE • TACOMA • LONGVIEW • PORTLAND • EUGENE • SPRINGFIELD
ESTABLISHED 1907

UNDER THE BIG REVOLVING CLOCK
11th and Pacific
Phone Fulton 3-2511
Lakewood at Villa Plaza
Phone Juniper 8-6681

Prof AT PLU Will Teach In Sociology

Dr. Harold F. Mackey has been added to the faculty of Pacific Lutheran University as an assistant professor in sociology according to an announcement by Dr. Robert Mortvedt, PLU president.

A graduate of Hope College, Holland, Michigan, Dr. Mackey has a bachelor of divinity degree from Garrett Biblical Institute, Evanston, Ill., and a doctor of sociology degree from Washington State University. He graduated cum laude from Hope College and is a member of Alpha Kappa Delta, honorary sociology fraternity.

A native of New Jersey, he served for 12 years as a Methodist minister in Idaho and Oregon.

He was a graduate assistant while working on his doctor's degree at WSU. His principal interests in research are in the needs of the town and country church.

The Mackey's, who have two children, Margaret, 18, and David, 14, are residing at 11514 "I" Street.

Miss Dee Ann Arko, a native of Ferndale, Washington has been appointed as an instructor in health and physical education at Pacific Lutheran University.

Mr. and Mrs. Willis Dodge will teach the new dance of the month. Also general review of others, as this is workshop night. All dancers are welcome.

We Have
Clean Reconditioned Fully Guaranteed Refrigerators-Range Automatic Washers
We invite you to See Them and Compare Our Prices. Terms Available
LE 7-7825
Is the number to call for expert repair for your Refrigerators - Freezers - Range - Washer - Dryer. All work guaranteed. Reasonable rates.
ENTERPRISE REFRIGERATION
APPLIANCE REPAIR
8505 Waller Rd. — Midland

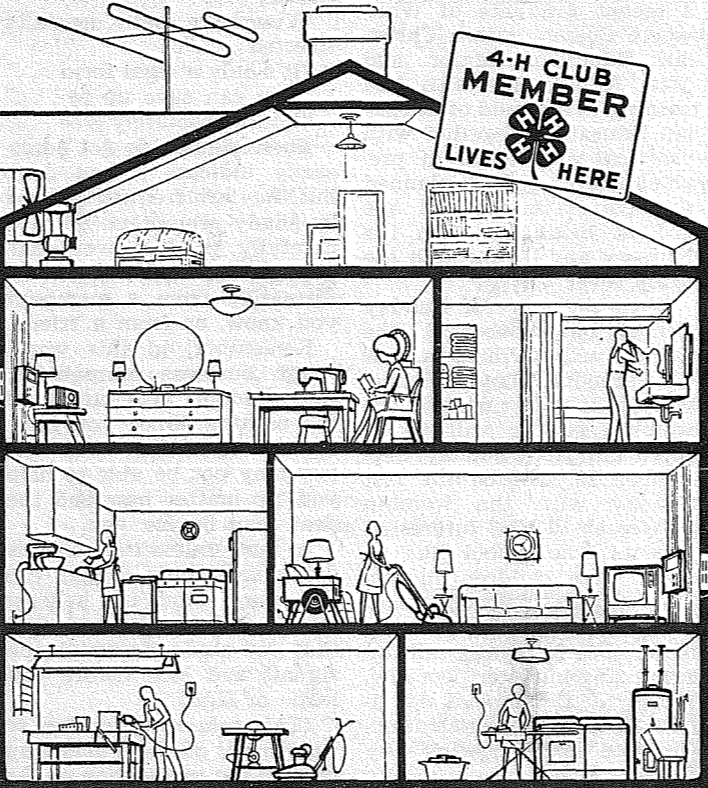
Book Pick-Up

Dixie Lee Guild of Roy now has a close-in pick-up point for books, toys, and clothing to be donated to the Rainier State School for Children in Buckley. Eleanor Trusler, 880 S. 99th Street will accept such donations for the Guild. For further information donors should call LE 7-4118.

A 1958 graduate of Ferndale High School, she received her BA from PLU in 1962.

For the past year she was an instructor of physical education in the Morris E. Ford Junior High School.

Students need good lighting and study conditions. Be sure study desk or table is the proper height. Twenty-eight or twenty-nine inches from the floor is the recommended height.



How many ways is electricity used in this picture? How many ways is it used in your home? Do you ever wonder what happens when you plug into a wall outlet? Where does the power come from? You usually can't see it unless it is in a light. Why do fuses blow? Why should you NEVER touch an electrical object with wet hands? Scores of 4-H Club members could tell you the answers. They found them while working in the 4-H electric program. Through the Cooperative Extension Service and sponsoring groups, the young people have access to some of the best personal guidance and informative literature in the electrical field. Boys and girls interested in electricity should see the county extension agent.

MOST WISE
home protection for your money—our Homeowners Policy! Contact me today!
choice—for high value, low cost life insurance. Contact me today!

Al Langseth
9920 Pacific Ave. LE 7-4040

Bill Ehli
9920 Pacific Ave. LE 7-4040

STATE FARM Fire and Casualty Company Home Office: Bloomington, Illinois
STATE FARM Life Insurance Company Home Office: Bloomington, Illinois
STATE FARM INSURANCE

Bureau Provides Proof Of Birth

Last year, more than 1,700 residents of Washington turned to the Bureau of the Census, US Department of Commerce, for help in proving where and when they were born, the Bureau reported today. They needed proof of age to collect social security and other retirement benefits. They needed it to obtain passports. They needed it to qualify for jobs carrying certain age or citizenship requirements. They needed it for some forms of insurance.

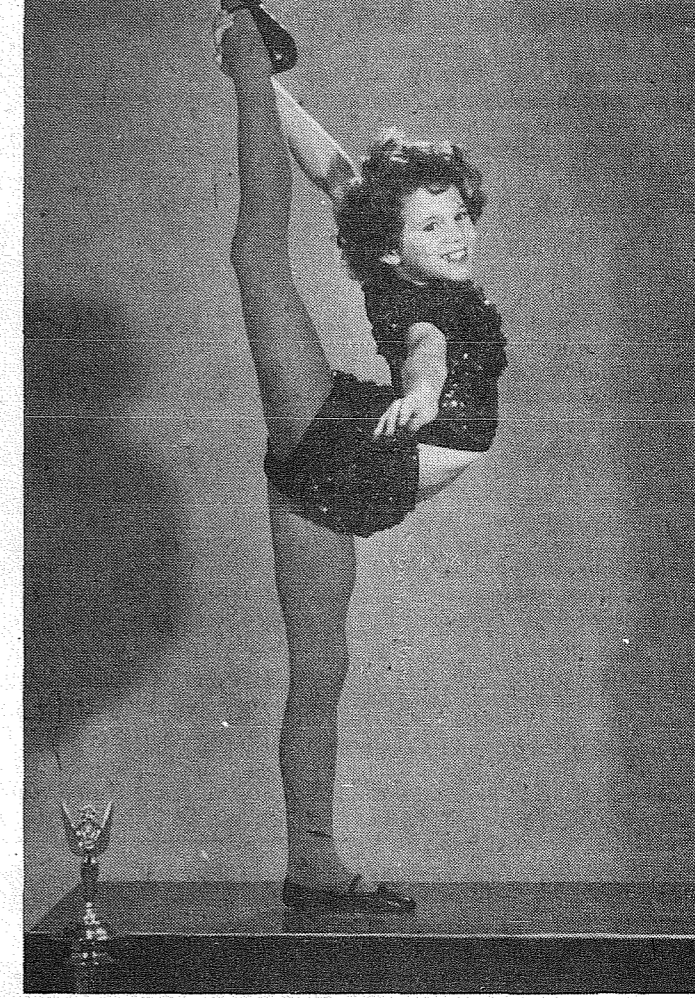
These persons who requested assistance from the Census Bureau last year were among an estimated 20 million United States residents who are without proof of age or birthplace. The historical records of the Census Bureau provide the only acceptable source of this information for many of these people.

Since its beginning in 1790, the US Census has recorded identifying data for almost 350 million persons, many of them listed several times in separate censuses. The Bureau has provided copies of these records to about three and one-half million people, as legal proof of age, place of birth, citizenship, or kinship.

Persons seeking such a record for social security purposes should go to the Social Security Office, or, for other purposes, write to the Personal Census Service Branch, Bureau of the Census, Pittsburgh, Kansas, for an application form. A fee of \$3 is charged for a search of not more than two censuses for one person and for one copy of the information found. Additional copies cost \$1 each. An expedited search costs \$4. Expedited searches are usually completed within a few days while the routine \$3 search may take up to 30 days.

OUR FIRST Social Night
SEPT. 27th at 8 p.m.
Elk Plain Grange Hall

Joni Selden



IT'S EASY WHEN YOU KNOW HOW—according to little Joni Selden who's acrobatic skill is matched only by her beautiful smile as she demonstrates the skill that won her three first place decisions on the Ted Mack Television show and will take her for her final competition to New York this week.

Attend A Stadium Dedication Friday!

VAUGHAN'S VALUES

2x4 8-Ft. Economy ea. 24c
1x4 6-Ft. Utility & Btr. Cedar . ea. 15c
4x4 6-Ft. Utility & Btr. Cedar . ea. 48c
1/2x6 6-Ft. Basket Weave . . . ea. 24c

CALL US FOR ALL YOUR FENCING NEEDS

VAUGHAN'S PACIFIC AVENUE LUMBER
Serving The Tacoma Area Since 1928
84th & Pacific Avenue GREENFIELD 4-9515

Joni On Mack's Show

Ten year old Joni Selden, daughter of the Wally Seldens of Parkland, will appear on the Ted Mack Show Sunday, September 29 at 5:30 p. m. on channel seven for her final competition of the year. She will compete with all other three-time winners for the large scholarship to be awarded.

Championship place is decided on the basis of votes sent in from the viewing audience. In March they flew to Hollywood, Florida where she again placed first. Thursday they will leave by plane for New York City. All transportation expenses are paid for by the Ted Mack Show.

Joni is an acrobatic dance student of the Keller Dance Studio in Parkland.

NOW OPEN Jensen's
Bookkeeping and Tax Service
25 years experience
11457 Pacific Avenue
(next to O'Leary Realty)

The Country Parson



"The character of a man who never goes to church can get just as shaggy as his hair does if he never goes to a barber."

Copyright by Frank A. Clark
DRYER'S FUNERAL PLAN CUTS COST
Dwyer MORTUARY
TACOMA AND PASTORIE PARKLAND

Clip THIS HANDY ORDER BLANK

TO PLACE YOUR CLASSIFIED AD BY MAIL
(If more convenient than placing it by phoning LEnox 7-0223)
WRITE YOUR MESSAGE HERE: (one word each space)

Name _____ Address _____ City _____ State _____
Please run _____ Weeks in _____ Starting _____
(Number) (Classification) (Date)
Amount enclosed \$ _____

Order your advertisement to run for a reasonable number of times. As soon as you get results, notify us and we will cancel further insertions and refund what is due for the unused period.

Rate: 7¢ Per Word 1 Insertion

Minimum charge 10 words. Each initial and each set of figures count as one word. Name and address count the same as any other words.

Mail

Your Want Ads to: WANT ADS The Times Journal P. O. Box 2008 Tacoma, Wash. 98444

Read and Use the Want Ads!

Thursday, September 26, 1963 The Times Journal Page 9

- Personal (1) through Classified ads! Dial LE 7-0223 for an ad-writer. 2ptf
WANT TO MEET lady on social security whose check doesn't make ends meet. Write Box "B" c/o P. O. Box 2008, Parkland. 1p4
Swap (2) SWAP ANYTHING FAST
Business Serv. (3) PRENA'S BEAUTY SALON -

- ANTIQUE and used items. 104th and Canyon Rd. 3ctf
TREE SERVICE - Topping, Limbing, Removing. 24 hour service. Andy Balmer, 13721 East Vickery Road, Tacoma, LE 1-0697. 3ptf
KNITTING CLASSES - Learn the basics in knitting. Classes start Monday evening, Sept. 30th, 7 till 9 p.m. Parkland Knit Craft, 9995 So. Park Ave., LE 1-3030. 3c4
PLOWING, discing, blade work, mowing, raking, LE 1-2088. 3ctf
BREON'S AUTO SERVICE Automatic transmission, motor rebuilding, brakes and tune-up. LE 1-0595. Emergencies after 5:30 p.m. LE 7-8747. 3ctf
TOP SOIL, Fill, Dosing, Lawn Work. Call LE 1-4000. Free Estimates. 3ctf
ALL TYPES cement work, competent and reasonable. Free estimate, cash or ? LE 7-4551. 3ctf
PLOWING, rotovating lawns, gardens. Top soil, gravel hauling and spread. LE 7-4940. 3ctf
ALTERATIONS of all types, 20 years experience. Mrs. Lu Brundin, LE 7-6009. 3p5
BACKHOE, bulldozing and dump truck work, by hour or by job. Yelm 458-7289. 3ctf
A J ELECTRIC FOR your wiring and electric heating needs, call LE 7-0349, or TH 5-2822. Free estimates. 3ctf
FOR FURNACES, repairs, sheet metal work, call PARKLAND FUEL OIL. LE 7-0256. 3ctf
FOUNDATIONS ADDITIONS, REMODELING. Free Estimates. Financing, no down payment. Ph: GR 4-7000 any time. 3ctf
NOW AT SILER'S Complete work on electric ranges. All makes. Fast, dependable, reasonable. LENOX 7-8634. 3ctf
Fuel (4) SPECIAL Saturday & Sunday - Mahogany planer ends, 50c sack, 3 sacks, \$1. 8441 South Park (rear). 4p4
Help Wanted (5) TAKING Applications for boys or girls for Midland routes. All interested, call LE 7-0223. 5p4
TRADE new Westinghouse Electric Roaster to man with full gardening knowledge for two days work. LE 1-3448 between 8 and 10 a.m. 5c4
Real Estate (9) M. L. S. MULTIPLE LISTING SERVICE FURNISHED \$4,450 Clean inside and out. Ready to move in. Bedroom 10x12, liv. rm. 12x24, nice dinette, 3-pc. bath, concrete foundation, lge. garage, 2 lots. Close to bus & shopping. Call Ralph Decker, GR 4-9579. RA-63 CASH \$2500 A good investment. Always rented. \$50 mo. 14x20 living rm, 10x14 bedroom, kitchen with eating space, 3-pc. bath, utility room, part basement. Shown by appointment only. Call Ralph Decker, GR 4-9579. RA-9118 McKinley Hill Realty 6311 McKinley Ave. GR 4-9579 Member of Multiple Listing Service and Tacoma Real Estate Board

- FOR RENT - Puyallup, all electric, new 1-bedroom duplex, furnished or unfurnished, part utilities, no children. TH 5-5083. 10c4
FOR RENT - Furnished 2-bedroom apartment, all utilities except gas, \$50 plus deposit. LE 1-4353. 10p4
FOR RENT - 2-bedroom duplex, furnished, \$50 plus utilities. Call VI 7-2243. No drinkers. 10c4
FOR RENT - 1-bedroom house, furnished. Close to McChord and Ft. Lewis, schools, etc. 1 mile past Roy Y on right hand side. Rt. 1, Box 1112, Spanaway. \$40.00 plus part utilities for single person. 10c4
PARKLAND AREA - Clean, attractive, 2-bedroom house, mostly furnished, attached garage. Large fenced yard, \$75. VI 7-7219. 10p4
BACHELOR APT. - Furnished, newly renovated, garbage and water included, \$50.00. LE 7-8716. 10p4
We Rent Anything (almost) BEDS - CRIBS RUG SHAMPOOERS DOLLIES - LADDERS TOOLS - POLISHERS Open 7 days a week UNITED RENT ALLS 9440 Pacific Ave. or 10012 Bridgeport Way GR 5-3755 JU 4-4100 Two Stores to Serve You!
FOR RENT - New 2 bedroom unfurnished duplex. Range, refrigerator, drapes, utility room, garage, part utilities. 1037 So. 112th, LE 7-4424. 10ctf
FOR RENT - Furnished efficiency apartment including utilities, \$50.00. LE 1-1071. 10ctf
Rentals UNFURNISHED 229 So. 173rd, 2 bed, \$80; 227 So. 173rd, 2 bed, \$80; 6531 94th St. SW, 2 bed, plus den, \$80; 210 E. 144th, 2 bed, \$70; 7023 E. 126th, 3 bed, \$90; 9502 E. 126th, 3 bed, plus basement, \$135; FURNISHED 11211 "A" St., 2 bed, \$110; 1615 So. Hum., 2 bed, \$70; 1101 So. 119th, 2 bed, \$80; 720 So. 120th (upstairs apt.) 2 bed, \$80; 708 So. 108th, 1 bed. apts., \$75 and \$80. Suburban Realty 11802 Pacific Ave., LE 7-8638 Member of MLS and Tacoma Board of Realtors
Repair Serv. (11) WASHING MACHINE PARTS - Largest stock in town. Repairing that please. BB'S WASHER SERVICE, 3727 So. G. GR 4-9409. 11ctf
Used Autos (12) 1958 HILLMAN MINX Convertible. Good motor, minor body work, \$300. Eatonville 832-4807 before 4 p.m. 12p4
'61 CORVETTE - GIVE AWAY all my equity. Just refinance to get my name off title. Approx \$3025 balance. Call LE 1-3116. 12ptf
Farm Ads (13) PLOWING, Discing, Rotovating, Hay Mowing and Hay Baling. Call Keller, TH 5-8529. 13c11
EASTERN Washington Alfalfa Hay, Roy 328. 13ctf
YOUR FARM ANIMALS AND EQUIPMENT have more buyers when announced in the Classified Ad column. Call LE7-0223 to place your ad today. 13ptf
FOR SALE - Hereford Heifer with first 2-month old calf. Orting 983-5255. 13c4
THE BEST ALFALFA HAY from the Columbia Basin - costs no more. Write Alfalfa Ben Hawes & Co., Star Rt., Box 37A, Quincy. 13p13
Situation Want 14 TAKE baby sitting or ironing, Spanaway, LE 1-3406. 14c4
BABY SITTING - My home by day or week. LE 1-1390. 14c4
CHILD CARE by day or week, large fenced yard, close to Spanaway School. Ironing, 75c hour. 212 So. 162nd, LE 1-1867. 14ctf
PERSONABLE mature widow, full charge bookkeeper, all phases. Own transportation. JU 4-4093. 14c4
BABY SITTING, my home, LE 7-4616, 218 168th St., Spanaway. 14c5
BABY SITTING, my home days, James Sales area, LE 1-0496. 14c4
WOMAN desires full or part time office work, 12 years experience, TH 5-6848. 14c4
EXPERIENCED sewing, alteration, mending, ironing, house-keeping. Parkland - Spanaway area. LE 7-6440. 14c4
SITUATION WANTED - Baby sitting, your home or mine. 1312 So. 120th. LE 1-0416. 14ctf
EXPERIENCED MOTHER desires child care. Lots of love and play equipment; my home. 2822 E. 121st; phone LE 1-2593. 14ptf
BABY SITTING, day or night, my home. 40c hour, \$2.50 day. LE 7-7393. 14ctf
Miscellaneous 15 GOT SHIPPED TO ALASKA and returned nice Electrolux Vacuum with only \$29 due. Assume \$5 monthly payments & save. Upton's, 1148 Market, FU 3-2551. Open Mon. and Fri. nites till 9 p.m. 15c4
STUDENT DESK, \$19.95. Doxcel's Furniture, 312 So. 112th, LE 7-7512. 15c4
MOBILE HOME - 1958 Flamingo, 2 bedroom, washer, dryer. Perfect condition. Many extras. 14411 Pacific Ave., Space 16. 15p4
BLUEBERRIES - Frozen. 25c. Ed Bonn, 3030 So. Military Rd., Auburn, TA 4-2432. 15c4
WANTED - Old table and magazines for school use. LE 7-6332. 15c4
7-PC. BEDROOM SET, \$149.95. Doxcel's, 312 So. 112th, LE 7-7512. 15c4
LOST JOB and can't pay for nice Motorola TV with only \$39 due. Take over \$10 monthly payments and save. Upton's, 1148 Market, FU 3-2551. Open Mon. and Fri. nites till 9 p.m. 15c4
JOIN THE THOUSANDS who use Classified Ads for easy problem-solving. Call LE 7-0223. 15ptf
FISHWORMS - 9-doz. \$1.00. Spanaway Worm Farm, 129 E. 168th, Spanaway. 15ctf
SANDY LOAM O. A. Kernahan, SK 9-6278. 15ctf
PIANO BUY! - Late model high grade piano, this area, must be sold. Buyer may assume small monthly payment or will sell for cash. Phone Credit Manager, Tallman's Pianos-Organs, 4759 University Way NE, Seattle, LA 2-5859. 15c5
WISE BUYERS SHOP Classified! For a home, a car, furniture or anything else, see the Want Ads FIRST.
GOOD utility trailer, 4'x7', 6x tires. Best offer over \$45. 2708 E. 112th. 15p4
RECLINER, heavy vinyl cover, \$89.95. Doxcel's Furniture, 312 So. 112th, LE 7-7512. 15c4
BOSTON BULL TERRIERS, AKC registered, 3 females, 1 male, LE 7-5306. 15c4
TRY BEFORE YOU BUY - Rent this Packard Bell TV for only \$10 ea. mo. and rental will apply on purchase. Full price only \$79. Upton's, 1148 Market, FU 3-2551. Open Mon. & Fri. nites till 9 p.m. 15c4
GIRL SCOUT Leader's Uniform, 2 piece and hat, size 12, like new, \$10.00 LE 7-3238. 15c4
FOR SALE - Matching bedspread and drapes, \$10; electric heater, \$10; ladies clothes, size 16 and 18, original designs, \$2, and up. LE 7-5206. 15c4
ELECTRIC Performa Chord Organ with bench, \$55; Ho Train Set, LE 7-5213. 15c5
ELK HUNTERS - Have room for 2 parties from Copper City area. Tom Scurlock, Alder, Phone 2705. 15c5
Cackleberry Ranch has fine live white hens at 50c each This week. 1/4 mile So. of Summit View, just off Canyon Rd. LE 1-0352
WELL SWAP - Furniture or what have you. Child's Roll Top Desk, \$19.95. Schneider's Furniture 326 Garfield St. LE 1-0403
DUNCAN PHYFE walnut dining table, 3 leaves; mahogany metronome. 9249 Pacific Ave. 15c4
SWIVEL CHAIR, \$29.95, vinyl or nylon fabric, Doxcel's Furniture, 312 So. 112th, LE 7-7512. 15c4
ALUMINUM SIDING and Etc. - Direct from dealer to you; no salesmen. Call Parkland Builders for free estimates, LE 7-7965. 15ctf
RENT invalid and guest equipment. Bunce Rental Inc., 4516 So. Tacoma Way, GR 2-3348. 15ctf
DRIVEWAY GRAVEL - All sizes, 5 yards, \$8.00; complete tractor work. LE 7-3846. 15ctf
OLD NEWSPAPERS - 10-lb. bundle for 10c. Excellent for kindling, puppy training, etc. The Times Journal, 14620 Pacific Ave. 15ptf
GRAVEL, bank run or screened for driveways, etc. packs hard. Washed pea gravel, sand and rock. Grading, leveling, etc. Norman, E. 72nd, LE 7-4088. 15ctf
Horses & Equip 16 HAVE PASTURE and boarding facilities for horses. Box stalls available. Roy 891. 16ptf
Building Permits The following building permit applications have been issued by the county engineer, building inspection department, as of Sept. 11, 1963: Richard F. Hyatt, \$1650 cabin, Near Rainier Nat'l. Park; Dale Glidden, \$16,000

BOB'S FRIENDLY MARKET CLOSED SUNDAY 160th & Park Spanaway

LEG-O-PORK ROAST Lb. 59c

Pure Lean Ground BEEF 3 Lbs. \$1 Medium OYSTERS 12-Oz. Jar 55c

RHODES-Bake 'N Serve BREAD 2 Loaf Pkg. 39c

SWANSON'S TV Dinners Eca. 49c PILLSBURY FLOUR 10 LBS 89c

SNIDER'S CATSUP 5 1/4 Oz. 89c JELLO All Flavors Pkg. 5c

SQUASH Marble-head Lb. 3c

GRAPES Tokay Lb. 10c

Fancy CAULIFLOWER Lb. 19c

Coveted Award



ONE OF THE BIG 4-H PRIZES at the Western Washington Fair each year is the Leo Stokes plaque awarded to the junior and senior fitting and showing champion in the sheep section of the livestock judging program. This year, for the second in a row, Jeannie Van Slyke, 14, Graham, did the top job of preparing and showing her animal. She is pictured receiving the Stokes plaque in the junior division from George Purcell, former Pierce County Extension Agent who worked closely with the 4-H program. Miss Van Slyke is the daughter of Mr. and Mrs. E. T. Van Slyke. Her sheep is a Hampshire ram. Also pictured is Ken Killingsworth, Coulee City, who was judge of the livestock program.

2ND. RECORD-SMASHING WEEK TAHOMA RAMBLER'S GIANT DISCOUNT SALE

OF NEW '63 RAMBLERS



\$46.30 Mo. After Normal Down Payment PUTS YOU BEHIND THE WHEEL OF THIS SMART NEW '63 RAMBLER CLASSIC SEDAN

Features include exclusive Weather-Eye heating and ventilating system, reclining seats, undercoat, wheel discs, Dowgard, double safety brakes and full factory equipment.

Full Price Cut To Just \$2095!

- '63 RAMBLER AMERICAN 2-DOOR With normal down payment \$39.90 Mo. Complete with full factory equipment. Full Price Now Just \$1,895
'63 RAMBLER CLASSIC STATION WAGON With normal down payment \$55.90 Mo. Plus Tax & Lic. All the features you've ever wanted in your new Rambler, including Weather-Eye heating and ventilating system, reclining seats, undercoat, double safety brakes, wheel discs, Dowgard and full factory equipment. FULL PRICE CUT TO JUST \$2,395.

EVERYTHING GOES... In our final year-end closeout! Don't miss out on the savingest deal you can ever make on the Rambler of your choice. Our floor must be cleared by October 10th!

Full Financing Available! SERVICEMEN WELCOME! Credit Counseling Available Our experienced credit counselors can help you fit that new car in your budget.



FORMERLY BOYD MOTOR CO. 8223 PACIFIC AVE. GR 4-8431 OPEN THURSDAYS & FRIDAYS 'TIL 9

BUSINESS SERVICES DIRECTORY

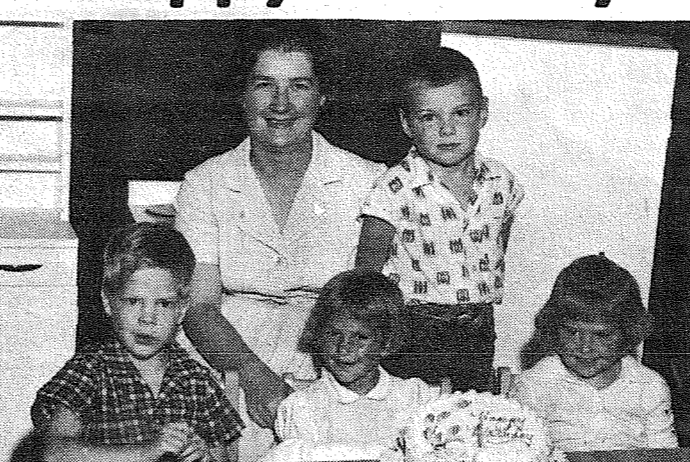
Grid of business service advertisements including: Floor Covering (PACIFIC FLOOR COVERING), Driving Schools (ABC Driving School), Pharmacies (TINCHER'S PHARMACY), Moving - Storage (Boush Moving & Storage), Auto Parts (South End Auto Wreckers), Building & Remodeling (Parkland Builders & Remodeling Cont.), Garden Supplies (LET THIS SPACE WORK FOR YOU!), Auto Repair (McCALLUM'S AUTO REPAIR), TV Repair (Zenith TELEVISION), Fencing (VAUGHAN'S), and others.

Advertisements for various services including: Situation Want 14, Baby Sitting, Child Care, Personable mature widow, Baby Sitting, Woman desires full or part time office work, Experienced sewing, SITUATION WANTED - Baby sitting, Experienced mother, Baby sitting, and Photos (FAMILY PORTRAIT STUDIO).

Marianne Morton Marries Paul Bastin At Summit

Miss Sue Johnson LE 7-7150
September 14th was the wedding day chosen by Miss Marianne Morton and Paul Martin Bastin. The ceremony was held at the Summit Methodist Church and Rev. Douglas Mitchell officiated, for the daughter of the Arlo Mortons of Summit and the son of Mrs. Helen Farr.
Bridal attendants were Miss Joyce Morton, sister of the bride, Miss Lola Molyneux and Miss Anita Morton, also sister of the bride. Their costumes carried out the color scheme of salmon pink and green.
The accident sent four people to a near-by hospital, all were from out of town.

Happy Birthday



THE FIRST YEAR was the hardest and after a most successful first year, Mrs. Charles Eccles, teacher at the Parkland Cooperative Nursery School, along with young Mark Anderson, Tom Reynolds, Marsha Evans and Sander Jeffers beam over the first birthday cake.
—Photo by Dugan

Parkland Nursery School Celebrates 1st Birthday

When Parkland Cooperative Nursery School students, active nursery school is to parents and teachers sang "Happy Birthday To Us" this year they felt that celebration was definitely in order. September 30 will mark the second school year for the Co-op at Gonyea Park Field house.
Mrs. David Jeffers, publicity chairman of the group, announces that two openings in the four-five year class and three in the younger group still exist.
"The purpose of a cooperative nursery school is to provide for the growth and development not only of the youngster, but of the parents as well," she said. Parkland Cooperative has been unusually successful, she feels, because both parents attend meetings and hold joint offices. Fathers constructed most of the play equipment and mothers helped staff the school. Mrs. Doris Eccles, professional teacher, will again lead the group.
All equipment is sealed to child-size. Mrs. Jeffers pointed out. A typical day at the school begins with free play with blocks, cars, trains, kitchen equipment, dolls, creative art supplies, and puzzles.
Outdoor equipment includes slides, swings, bicycles, balls, wagons. After free play comes story time, snack time, music and a few minutes more of free play before the youngsters call it a day.
Three year olds will attend on Tuesday and Thursday mornings and four to five year olds will attend Monday, Wednesday and Friday. Cooperative car pools will again be established. Further information may be obtained by calling Mrs. Robert Magdanz, LE 7-5538 or Mrs. Charles Evans, LE 7-3384.

Roy Congregationalists Celebrate Anniversary

Martha Berggren Roy 229
The Roy Congregational Church will celebrate its 75th anniversary Sunday, October 6. There will be an 11 a.m. worship service, after which, Holy Communion will be given by the Reverend George Barber, Assistant Minister, Washington and Northern Idaho Conference of the United Church of Christ.
A roast beef dinner will be served by the ladies of the church from 12:30 to 3:00 p.m. There will be no charge for the dinner. A free will offering for the building fund will be asked.
From 3 to 4 p.m. a special program and fellowship hour will take place, commemorating the 75th anniversary of the Church. Anyone having pictures of the early years of Roy or the Church are urged to bring them to help relive the past 75 years.
To Consider Budget
Roy Elementary School P.T.A. is starting its first school term meeting Monday, October 7 at 8 p.m. in the school cafeteria. The meeting will be called to order by President Harvey J. Hicks. The budget for the forthcoming year will be read and approved. Also, a First Vice-President must be elected. The program includes two speakers of interest to the community, Mr. John Milroy, Bethel District Superintendent and Mr. Robert Minitti, Bethel Junior High School Principal.
Harvey J. Hicks, Roy P.T.A. president, has been elected president of the Bethel District Committee of Principals and Presidents.
Officers and Committees for the coming year are: Harvey J. Hicks, president; Mrs. Ruth Rotendo, 2nd vice president; Mrs. Delores Hawn, secretary; Mrs. Ruby Reese, treasurer; George Emly and Mrs. Nora Johnston, program; refreshments, Mrs. Ruby Reese, Mrs. Loris Ketter, Mrs. Violet Reeder; publicity, Mrs. Marguerite Hicks; membership, Mrs. Eunice Roush; sunshine, Mrs. Emma Betschart; legislative, Earl Solie; library and reading, Mrs. Suzanne Ng.
To Texas
Mr. and Mrs. James Smith (Judi Graves) left last week for Fort Arthur, Texas. Mr. and Mrs. Smith plan to visit with his relatives and stay in Texas indefinitely.
Judy Corbin Wins
Judy Corbin, Mix Masters 4-Her, won the Junior Grand Champion 4-H Ayreshire fitting and showing award at the Western Washington Fair with her Ayreshire heifer. Judy also won a high blue ribbon in her type class. Other fair ribbon-winners are Dick Roush, forestry, blue; Jane Allender, cookies, 2 blue; Al Berggren, forestry, red; Bob Berggren, forestry, red.
Enjoys Stay
Oscar Bloom, who is staying at the George Lambertsen home while they are on vacation, is enjoying visiting with old friends of the Roy area.
The louder he talked of his honor, the faster we counted our spoons.
—Ralph Waldo Emerson

Nelsen Wins AF Commission

Richard (Dick) Nelsen, son of Mr. and Mrs. Norman Nelsen, received his commission in the United States Air Force at Lackland AFB, Texas, this past week. His next assignment takes him to Biloxi, Mississippi.
In June, Dick graduated from the University of Washington receiving his Bachelor of Science Degree in Forestry.

Boosters Meet
Roy Grange Booster Night will be held October 3rd, at 8 p.m. at the Roy Grange Hall. Dr. W. S. Harris, veterinarian, will speak on "What To Do Until the Doctor Comes". There will also be a question period. All people in the area are urged to attend.

Now Catering To Banquets
(BANQUET PERMIT GRANTED)
To Private Parties, Wedding Receptions, Etc. - From 12 to 200
8 to 10 on Weekdays 8 to 8 a.m. on Fri. & Sat.
Barney's Restaurant
Meridian & Eatonville Cut-Off Rd. Ph. Eatonville 832-5101

BAR S Thrifty Sliced
Bacon 49¢ Lb. **PORK Steak 49¢ Lb.**

RATH BLACKHAWK Chunk BOLOGNA 39¢ Lb.

Skinnerless WIENERS 2 Lb. 79¢ Bag

Beef Rump ROAST Lb. 59¢

Beef T-Bone STEAK Lb. 79¢

Beef ROUND SIRLOIN RIB STEAK Lb. 69¢

Beef Sirloin Tip ROAST Lb. 69¢

100% Pure GR. BEEF 3 Lbs. 98¢
EVERYDAY LOW PRICES
1 lb. 33¢

COUNTRY STYLE PORK SAUSAGE 3 Lbs. \$1

Complete Repair SERVICE
• Television
• Ranges
• Washers
• Dryers
RADIO DISPATCHED FOR FAST SERVICE.
SILER'S TV and APPLIANCE
11230 Pacific Avenue
LE 7-8634

BUILDERS SUPPLIES
Ship Lap \$45 Per Thousand
Basket Lumber
9701 Portland Avenue
LE 7-8663

Summit Group Schedules Meet
Thursday, September 26th the Ladies of the Summit Fire Department will meet for the first meeting of the season.
Mrs. Kenneth Hoff will preside. Hostess will be Mrs. Burton Parrot.
It is a worthier thing to deserve honor than to possess it.
—Thomas Fuller

Shoe Clearance Sale
STORE-WIDE CLEARANCE, INCLUDING SPECIAL PURCHASE OF BANKRUPT STOCK. MOST SHOES AT 1/2 REGULAR PRICE OR LESS! HUNDREDS OF SALE SHOES NOT LISTED.

Womens Dress Heels. All colors, broken sizes, 4 1/2 to 10's. Reg. to 14.00. (New Bankrupt stock from Seattle) 2.99 & 3.99

Boys Dress Shoes, 8 1/2 to 3. 3 to 6. Reg. to 8.00 2.99 & 3.99

Girls Shoes, 8 1/2 to 3, Reg. to 8.00 2.99 & 3.99

Mens Dress Shoes, Roblee - Weyenberg-Pedwin, etc. Reg. to 14.00. (Bankrupt Stock) . . . 5.95 to 7.95!

Mens Rebuilt Army Boots, 4 1/2 to 14 1/2 (3 days only). Hunting Season Just Ahead! 1.99 pr.

3 Prs. Bone Dry Logger Caulked Boots, 5 1/2 & 6 only. Reg. 40.00 . . 14.95 pr.

Womens "Amigo" Plastic Sandals. Reg. 3.00 99c pr.

2 Pr. Football Shoes, size 2 and 3. (Somebody stole the lugs) . . . 99c pr.

5 Pr. Chippewa Wellingtons, 10 1/2 E & 11 E only. Reg. 15.00 4.99

Womens White Wellington Boots, 10 pair. Reg. 8.00 3.99

FINAL CLEARANCE Upstairs Bargain Basement:
Specials - Womens Flats, Sandals, House Slippers, Squash Heels, Heels, 15 pr. Childrens Shoes - Soiled, Broken Sizes, Reg. to 8.00. TO CLEAR FAST! 99c pr.

(FRIDAY ONLY)
50 Pr. Womens Old Style, Round Toe Heels. Reg. to 8.00 . . . 9c pr.

Paul's Shoes
Open Monday thru Saturday 9 to 6 — Fridays Till 9 p.m.
161st & Pacific Ave. LE 7-0552
(Closed Sundays)

\$25,000 BAKE-OFF RECIPE AT OUR STORE
PILLSBURY'S BEST FLOUR 10 LBS. 89¢

Pillsbury WHITE-CHOC. FUDGE DOUBLE DUTCH CAKE MIX 3 Pkgs. For 89¢

Sunny Jim No. 10 Tin SYRUP 89¢
A REAL VALUE AT

POTATO CHIPS 49¢ (Nabobs Triple Pack Reg. 69c)

APPLE BUTTER 29¢ (Dutch Girl 28-Oz.)

3 MINUTE POPCORN 49¢ (White or Yellow 4-Lb. Bag)

PORK & BEANS 89¢ (Van Camp 2 1/2 Tin 4 For)

Sunny Jim PEANUT BUTTER 39¢ (18-Oz.)

FOLGERS COFFEE 1.79 (3 Lb. Tin)

Star-76 LIQUID STARCH 19¢ (Qt.)

Heinz KETCHUP 1 (20-Oz. 4 for)

Warring TORAY GRAPES Lb. 10¢

Fancy DELICIOUS APPLES Lb. 10¢

California YAMS Lb. 10¢

Green PEPPERS Lb. 10¢

Knorr SOUPS YOUR CHOICE 4 Pkgs. For \$1

FREE 6-TRANSISTOR RADIO
including earphones and carrying case.
SIGN UP NOW AT SEYMOUR'S
No obligation — Nothing to Buy! Do it before Oct. 1st!

Look how much they do for you . . .

look how little you spend

Daintily embroidered cotton broadcloth bra that's as pretty as the shape it gives you! In white. 30-36A, 32-40B, 34-42C. \$1.00

Even more for the money! Cotton bra with circular stitched foam-rubber padding. In white. 28-34AA, 30-36A, 32-40B. \$1.00

When you choose these beautiful bras by **BESTFORM®**

SEYMOUR'S
CLOTHING AND SHOES FOR ALL THE FAMILY
9714 PACIFIC AVENUE
Shop Daily 9 a.m. to 9 p.m. — Sundays 10 a.m. to 6 p.m.

QUITTING BUSINESS SALE
EVEN MORE DRASTIC REDUCTIONS

All Women's DRESS HEELS **15 - 20% OFF**

Women's Smart FLATS **3.99**
2 Pr. \$7.00

Women's CANYAS and CORDUROS **\$2.79**
2 For \$5.00

Women's Hand-Tooled Shoes. Reg. to 18.95 - \$3.99 & \$4.99

THIS WEEK'S SPECIALS
MEN'S - SALE - BOYS'

17 Pr. Blk. Loafers . . . 6.99 to 10.99
11 Pr. Blk. Oxf. 6.99 to 8.99
10 Pr. Brn. Loafers . . . 6.99 to 10.99
13 Pr. Brn. Oxf. 7.99 to 10.99
11 Pr. Wh. Leather Loafers 6.99 to 10.99
6 Pr. Wh. Buck. Oxf. 5.99

12 Pr. Blk. & Brn. Oxfords, 12 1/2 to 4. 3.99
10 Pr. Sturdy Black on Brown Oxfords, 3-7 1/2. 6.75
11 Pr. Black on Brown Loafers, 4-7 1/2. 5.90
1 Pr. Olive Loafers, 3D. 4.99
1 Pr. S" Boots, 10E. 2.99
5 Pr. Wh. Buck Oxf. 5 1/2 to 7. 4.99
HUSH PUPPIES, 10-11 1/2. 5.99
Oxf. Loafers, Chukkas, 12 1/2-6. 6.99

MEN'S WORK SHOES - 15% OFF
Slippers, Many Styles 15% Off
Black Hi Top P.F.'s . \$3.99 Rubbers . . . all 10% Off
7 pr. Packs, Insulated \$11.95 - 3 pr. Uninsulated \$9.95

ART'S SHOES
315 Garfield Street Opposite Parkland P.O.
Between 121st and 122nd St. On Spanaway Bus Line
OPEN WEEKDAYS 9 A.M. TO 9 P.M.

9 a.m. to 10 p.m. 7 DAYS WEEK

BARCAIN BASKET
16618 PACIFIC AVE. South SPANAWAY, WASH.
LE 7-3371

NO SALE TO DEALERS
We Reserve The Right To Limit Quantities

We Carry A Complete Line of Sacked Feeds
Prices Effective Thurs.-Fri.-Sat. Sept. 26, 27, 28.