

Permit No. 9P  
Tacoma, Wash.  
Sec. 34.66 P.L. & R.  
U.S. Postage Paid  
Parkland Branch

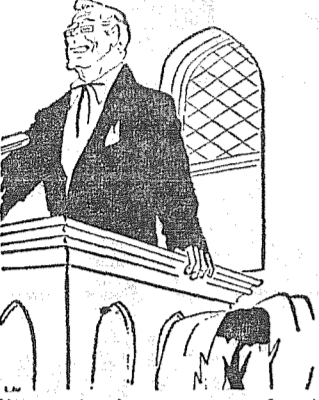
Rural Route  
Occupant or Boxholder  
Postmaster: If unable  
to deliver, return post-  
age is guaranteed on  
addressed papers.

## Easter Breakfast

James Sales Grange will hold the usual Easter breakfast in the Grange hall, South 113th just off Park avenue, Sunday, April 17, from 7:00 a.m. to 2:00 p.m. Mrs. Henry Henkel, chairman, assures patrons that delicious home cooked foods will be served, as in former years.

It Pays To Advertise in  
The Times Journal  
Classified Section

## The Country Parson



"It isn't that we are fond of ourselves — we just get so used to us that we don't realize how bad we are."

## DRYER'S FUNERAL PLAN CUTS COSTS



## SHOP & SAVE at BROOKDALE LUMBER CO.

2 x 4  
8' STUDS  
Ea. 24c  
2x6's & 2x8's  
ALL LENGTHS  
Per M \$48  
2 x 6 KILN DRY  
CAR DECKING  
Per M \$65  
GROOVED SHAKES  
With Undercourse  
Per Sq. \$8.95



## ECONOMY LUMBER BARGAINS

2 x 4  
8' STUDS  
Ea. 24c  
2x6's & 2x8's  
ALL LENGTHS  
Per M \$48  
2 x 6 KILN DRY  
CAR DECKING  
Per M \$65  
GROOVED SHAKES  
With Undercourse  
Per Sq. \$8.95

## GROOVED SHAKES

With Undercourse  
Per Sq. \$8.95

## For Your Summer Pleasure PREFABRICATED CABINS

24 x 12 \$490.00  
Size  
24 x 18 \$625.00  
with Porch  
34 x 18 \$1100.00  
with Carport  
NO DOWN PAYMENT

## 1 x 4 KILN DRY FLOORING

Good For Under Linoleum, Etc.  
Per 100 Sq. Ft. \$8.50

## PLYWOOD

1/4" 4 x 8 Fir Plywood REJECT POPS  
Ea. 2.56

3/8" 4 x 8 Fir Plywood REJECT POPS  
Ea. 3.20

1/2" 4 x 8 Fir Plywood REJECT POPS  
Ea. 4.16

## PLUMBING & WIRING SUPPLIES

**BROOKDALE LUMBER COMPANY**  
136th & Pacific  
LE 7-8669

## Easter Dinner At Elbe Sunday

The Elbe Grange will sponsor the annual Easter dinner Sunday, 12:30 to 5:00 p.m. in the hall.

Mrs. Jack DeLong, Home Economics chairman, and her committee will serve turkey and ham with all the trimmings for this event.

Members will meet at the hall Friday to clean the grounds and hall in preparation for the dinner and a 7:00 o'clock potluck dinner will precede the regular Grange meeting, with Gerhard Loden, Master, presiding.

## TODAY'S LAFF . . .

Economy—That's a reduction in what the rest of the family gets.

## Anniversary Sale

WOMEN'S HEELS  
flat—broken sizes  
Reg. 7.00  
2.99

WOMEN'S THONGS  
Dress Capri—Small size only  
Reg. 1.49  
.49

WOMEN'S WEDGES  
canvases—all colors  
Reg. 3.00  
1.99

Men's & Boys'  
RIPPLE SOLE OXFORDS  
never need shining—4 to 7 only  
Reg. 4.00  
1.99

MEN'S BOOTS  
cushion insoles—Vulcork soles  
Reg. 11.00  
8.95

BOYS' TENNIS SHOES  
black or white  
Reg. 6.00  
3.99

GIRLS' EASTER PATENTS  
Sizes 3 to 13, 1 to 3  
Reg. 2.99  
1.99

GIRLS' SQUASH HEELS  
Reg. 6.00  
4.99

NYLONS  
Guaranteed 30 days  
.69

TABI'S FOR THONGS  
Reg. .99  
pair .49

HAND TOOLED BILLFOLDS  
2.95

Many More Drastic Reductions  
LOOK FOR THE GREEN SALE TAGS

HOURS 9 A.M. TO 6 P.M.  
FRIDAY TIL 9 P.M.

PAUL'S SHOES  
Spanaway  
161st & Pacific Ave.  
LEnox 7-0552

## 4-H Campers Lay Summer Camp Plans



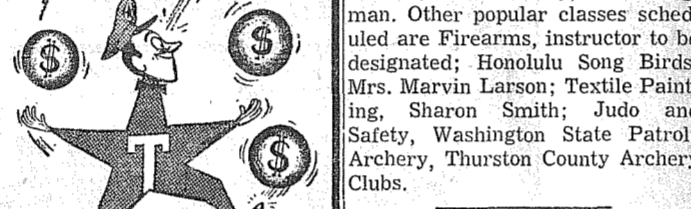
SUMMER EVENT—County 4-H Camp committee plans ahead for the annual camp outing at Millersylvania State Park; camping, swimming, learning and fun are all on the schedule from July 5 to 13. Pictured sitting at table, left to right are: Mrs. Frank Lepenski, Services; Herbert Cone, General Chairman; Ray William, Camp Brochure; Mrs. Howard Young, Foods; Standing, left to right are: Mrs. Howard Blumh, Music and Indoor Recreation; Mrs. Herbert Cone, Classes and Crafts; Mrs. Ray William, Camp Policy; Howard Young, Vice Chairman and Finance.

Eagerly saving their dollars and dimes for the happy sessions at Millersylvania are some 270 Pierce county 4-H club members.

Camp fee is \$13.00, paying all costs of camp for four days. Two

four-day camps are slated consecutively to handle the enrollment.

Craft classes occupy all campers in the morning hours. Classes and volunteer instructors tentatively scheduled by Class Chairman, Mrs. Cone, include Leather Craft, Ben Petrie; Recreational leadership, Mrs. Evelyn Rodgers; Copper Enameling and Copper Tooling, Kathryn Hamma; Back Yard Craft (Bark Carving, Peasant Painting, Sawdust Modeling), Mrs. Kenneth Graves; Water Safety, Jean Bergman. Other popular classes scheduled are Firearms, instructor to be designated; Honolulu Song Birds, Mrs. Marvin Larson; Textile Painting, Sharon Smith; Judo and Safety, Washington State Patrol; Archery, Thurston County Archery Clubs.



You save money with our Texaco "All-Star" heating oil service!

LE 7-8173

Lapenski Fuel Co.

Elk Plain Pee Wees To Turn Out Saturday

The Elk Plain Fire Department sponsored Pee Wee League will have a turn out at Bethel Saturday, April 16, at 2:00 p.m.

All boys from the Elk Plain district that are interested in joining a team for the season are welcome. Ray Burkhardt is manager; Webb Gilstrap, coach. For further information, call VI 7-7386.

## New Cloverleaf 4-H

The R & F Cloverleaf 4-H group has been organized with Gary Ottman as president; Don Hoessel, vice president; Bobby Simons, secretary; David Hoessel, recreation director; and Jim Pagel, reporter. Vernon Pagel is the leader. Projects are rabbits and forestry. The forestry group will make a trip to a tree farm in the near future.

## Parkland P-TA Spring Style Show Set



GLAD RAGS—A touch of Spring will be seen at the Parkland P-TA Wednesday, April 20, at 8 p. m. in the school basement when the annual style show, Spring Fashions, will be held. All garments displayed have been designed and sewed by P-TA members. There will be attractive entertainment during the evening, followed by a brief business session, and refreshments will be served by 5th grade mothers. Pictured above, left to right, are: Mrs. Clinton Wilder, Mrs. Ralph Riley (modeling) and Mrs. Charles Courtwright. —Photo by McKewen.

McAULEY'S SUMMIT DRUG  
AIRPORT & CANYON 9 to 9 Weekdays LE 7-0668

## HILLTOP CONCRETE CO.

LOOK FOR THE BIG "H" THE SIGN OF SERVICE

## READY MIX CONCRETE HOME OWNERS!!

Ask About Our POUR NOW PAY LATER PLAN

SATURDAY—OPEN TILL NOON For Pickup Only As Listed Below

● Sack Cement ● Crushed Rock  
● Washed Sand ● 3/8" Beach Gravel  
● Washed Gravel ● Select Pit Run  
● Drain Gravel ● Fill Dirt

PUYALLUP TACOMA  
TH 5-9525 FU 3-3624

Plant: 2223 - 23rd Ave. S.E. P.O. Box 648, Puyallup

## Franklin Pierce School Menu

April 18  
Chicken noodle soup with crackers, peanut-butter sand., apple & orange wedges, frosted grahams, milk.

April 19  
Surprise Day, milk.

April 20  
Sloppy Joe, potato chips, carrot sticks, chocolate - marsh - mellow pudding, milk.

April 21  
Macaroni & cheese, raisin bread sand., shredded lettuce, Fr. Pierce Drsgn, deep dish apple pie, milk.

April 22  
Tuna sandwich toasted, tomato soup-crackers, finger salad, upside down cake, milk.

## Girl Scout Leaders

The Girl Scout basic leadership training sessions will start April 19, 7 to 10 p.m., in the Parkland Methodist church, 12183 A St. There will be five sessions in all: April 19, 21, 26, 28 and 29, the last two times 8 to 10 p.m. All women interested in the leadership training should plan to attend.

## Bethel Boosters In Sunrise Rites

The Bethel Booster Club, with the co-operation of the local churches, are again planning Sunrise Services at Easter at the Senior High School athletic field. In case of inclement weather, services will be held in the High School gymnasium. The Rev. Paul Nelson is in charge of the services, and has engaged an outstanding speaker from Auburn. Many of the community pastors will be participating in the services together with the Bethel High School choir.

The annual Sunrise Services were originated with the idea of serving the community and not to compete with any other particular sunrise service. The past two years has seen large crowds gather at day-break, and it presents a tremendous scene with Mt. Rainier in the background.

Immediately after the services, a pancake breakfast will be served in the Senior high school cafeteria with a charge of 50 cents for adults and 25 cents for children. This breakfast is to be a community service and was not originated as a profit-making venture, but merely hoped to break even. Mrs. Antoine and Mrs. Petoski are co-chairmen of the pancake breakfast.

## Girl Scouts

Six new girls were invested into Mrs. Salzman's Girl Scout Troop 449, with mothers invited to share the event. Boy Scouts of Troop 133 presented the girls with a flag and standard.

Troop 455 visited the submarine at the Naval Station and also enjoyed a cook-out at Spanaway, using buddy burners, and laid trails; all had a wonderful time.

Mrs. Rodger's Troop 453 planted bulbs, shrubs and seeds at the Parkland library to help earn their 2nd class rank.

## Christensen P-TA

Andrew Christensen P-TA is having an International Night program at the regular monthly meeting April 20 at 8:00 p.m. at the school.

Parents and teachers are contributing articles from several foreign countries and the display promises to be varied and interesting.

A style show of costumes from other lands with P-TA members modeling will be the highlight of the program. Refreshments with a foreign flavor will be served after the business session.

Parents and their children are cordially invited.

## Exercise Puerto Pine

FORT CAMPBELL, Ky. (AHT-NC) — Army PFC Wayne C. Ostrander, 23, son of Mr. and Mrs. William A. Ostrander, 7021 S. Sheridan, Tacoma, participated with other personnel from the 101st Airborne Division in Exercise Puerto Pine in Puerto Rico. The 18-day exercise, which included the largest peacetime airlift ever attempted, ended March 31.

During the exercise, participating troops of the Strategic Army Corps (STRAC) were air transported from their home stations throughout the U. S., to a staging area in Puerto Rico and returned. Puerto Pine was designed to determine the effectiveness of these STRAC units in overcoming the complex supply and operational problems resulting from the rapid deployment of a sizeable force by air over great distances.

Ostrander is regularly assigned as a rifleman in Company B of the division's Infantry at Fort Campbell, Ky. He entered the Army in January 1959 and completed basic training at Fort Ord, Calif.

## In Honolulu

HONOLULU (AHTNC) — Sgt. Joseph Manzo Jr., 35, whose wife, Claudette, lives at 865 LaFayette st., Parkland, Wash., recently was assigned to the staff of Tripler Army Hospital, Honolulu, Hawaii.

Sergeant Manzo entered the Army in 1942 and was last stationed in Tacoma, on the staff of Madigan Army General Hospital.

## 20th Grandchild

Mrs. Ann Browning of 2102 East 121st St. is rejoicing in the birth of her 20th grandchild, Caroline Kaye, born April 8 to Mr. and Mrs. Jesse H. Brownings at Anchorage, Alaska. The couple went to Alaska two years ago with the Army's largest "whirly bird" move from Fort Riley, Kansas. Jesse attended Collins school and Roy high school and graduated from Clover Park high school.

## Plant Sale Planned

The Auxiliary of Faith Chapter No. 255, Order of Eastern Star will have a plant sale on Friday and Saturday, the 15th and 16th of April at 10116 Pacific Avenue, just South of Park 'n Shop. Mrs. Fred Anderson is chairman of the Plant sale.

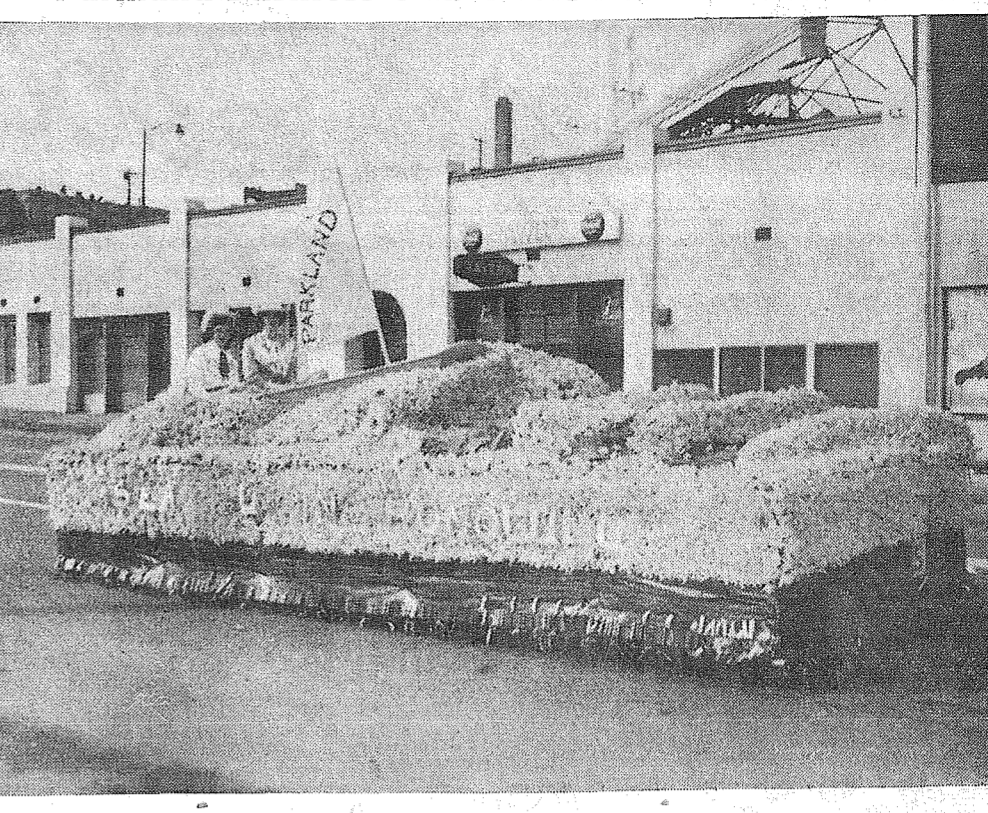
## Grange Breakfast

Riverside Valley Grange will serve its annual Easter Sunday breakfast, 6 a.m. till 1 p.m., at the Grange hall located at the north approach of the Puyallup river bridge at Clark's Creek, Puyallup.

## The spire of Salisbury Cathedral

(404 feet) is the highest structure in England.

## Parkland Business Club Enters Beautiful Parade Float



ALOHA—Two beautiful young Parkland girls in a daffodil covered sail boat as they embark on a make believe voyage to greet the new sister state, Hawaii—this is the theme of the colorful float sponsored by the Parkland Business club in Saturday's Daffodil parade. Bearing the slogan, "See U in Honolulu," the golden boat is "powered" by a sail marked Parkland to identify the community. Garbed in attractive western costumes (to publicize the forthcoming Parkland Round-up), Kathy Black, left, and 1959 Round-up Queen Linda Ross, right, add glamour to the entry. —Photo by McKewen.

## Canyon-Summit Co-op Playschool

The Canyon-Summit Co-operative Playschool will meet April 21 at 8 p.m. in the home of Mrs. Pauline Molund, 7923 Vickery road. Co-hostesses will be Mrs. Marion Brennan and Mrs. June Fulkerson. The auction will be the main item of business.

The playschool offers many opportunities for the three to five-year-old to socialize with children of this age group. Any mother interested in entering her child for next year should contact Mrs. Marion Brennan, LE 7-7614.

## Exercise Cimarron Drive

FORT HOOD, Tex., (AHTNC)—Army Sergeant First Class Lino A. Dummire, whose wife, Marjorie, and mother, Mrs. Elsie C. Underwood, live on Route 3, Tacoma, has been participating with other personnel from the 1st Armored Division, Combat Command A, in Exercise Cimarron Drive at Fort Hood, Tex. The exercise was scheduled to end April 13.

Cimarron Drive, a Strategic Army Corps (STRAC) mobility test, is providing complete and detailed training of the 1st Armored Division and other Fort Hood units in the preparations for overseas movement. The test will not concentrate on speed, but on the ability of the division to completely pack its equipment and efficiently move out.

Sergeant Dummire, first cook in Company D of the division's 13th Cavalry at Fort Hood, entered the Army in 1943.

## Easter Breakfast

F. W. Keaton DeMolay will hold an Easter breakfast in the Royal Gove Temple, 38th and South Sheridan, April 17, 7 to 11 a.m. The public is invited. Proceeds will be used for activities of the group.

## Spana-Park 4-H

Spana-Park 4-H club—will meet in the James Sales Grange hall Monday, April 18, at 8 p.m. All members are urged to be present as there is a questionnaire to be filled out by the club. Also there will be sign-ups for the demonstration contest to be held April 30.

## Open 7 Days A Week

HUNTING & FISHING LICENSES, SPORTING GOODS, PAINT  
SOUTH END PLUMBING AND HARDWARE  
185th & Pacific Avenue Phone LE 7-4100

## TRUST US WITH ALL YOUR DRY CLEANING!

In One Package . . . All Your Family's Cleaning Needs

## PARKLAND CLEANERS

11004 Pacific Avenue North of the Bank Corner  
LE 7-3221

## CANYON READY-MIX CONCRETE

72ND AND CANYON ROAD LE 7-3943

## ALL DAY SATURDAY DELIVERY

SIX YARD MIXERS  
With 21' of Hydraulically Operated Chute

Washed Sand & Gravel — Bank Run  
WE HAUL OR U-HAUL  
Wheelbarrows, Etc. Free of Charge on Call  
AFTER 6 P.M. CALL LE 1-0095

## SPANAWAY HARDWARE

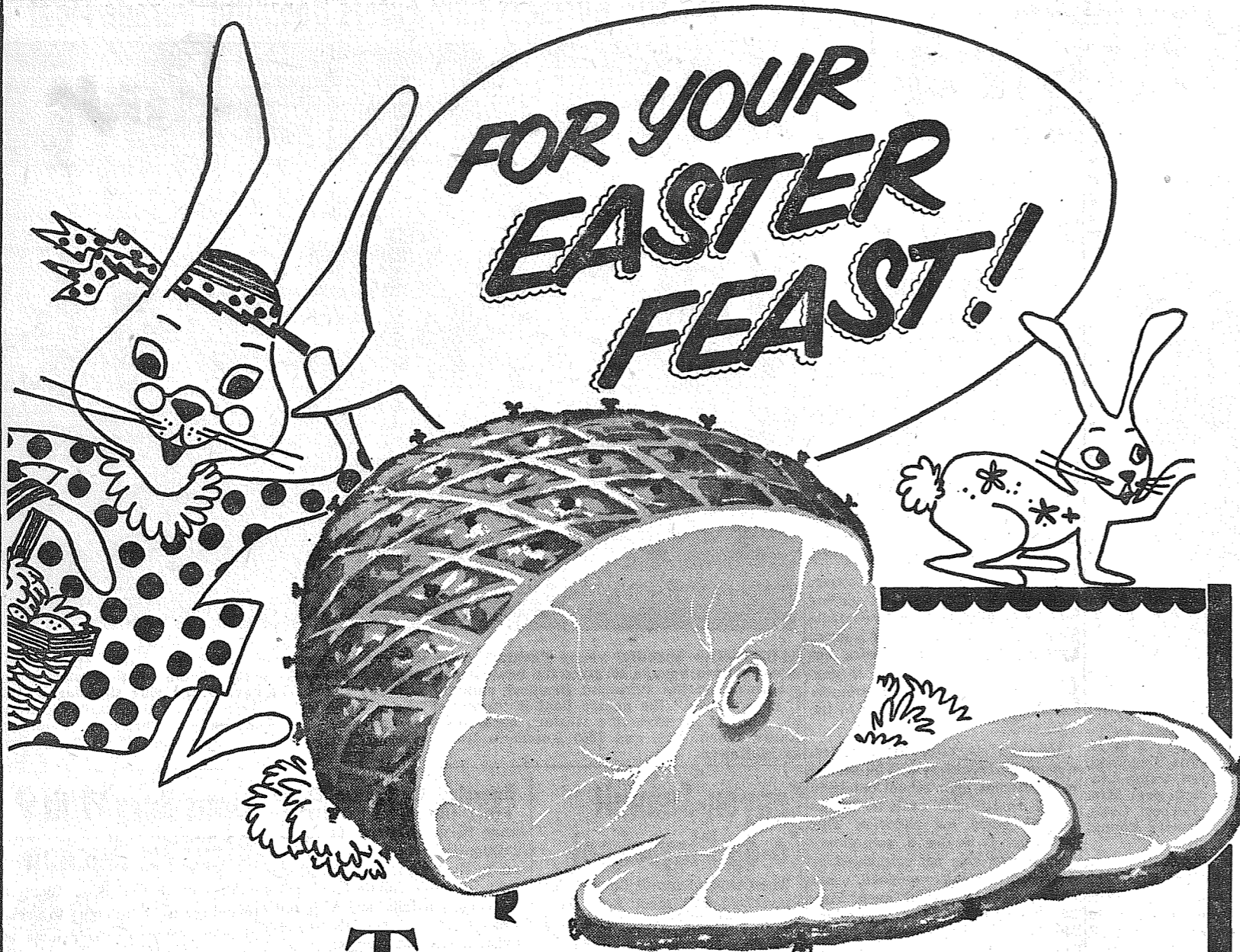
ELECTRICAL AND PLUMBING SUPPLIES  
SAND, GRAVEL & CEMENT  
PLASTIC PIPE  
170th & Pacific  
LE 7-8378  
Open Sundays 8:30-1:30

## OPEN EASTER SUNDAY FOR DINING ROOM DINING

BEAUTIFULLY REDECORATED ADEQUATE PARKING

## RICHARDS

8201 PACIFIC AVENUE  
OPEN 12 TIL 8 P.M.  
FOR RESERVATIONS CALL  
GR 4-2063



**FOR YOUR  
EASTER  
FEAST!**

The fabled banquets of the Ancients with their spiced meats, wines and cakes have nothing on our fine selection of Easter Feast Foods . . . Choose from this Treasure House of inexpensive delicacies . . . Set a king's table on a budget.

**JAMES HENRY OR FIESTA** Lb. **79<sup>c</sup>**  
**HAMS** Boneless Fully Cooked

**PORK ROAST** 37<sup>c</sup>  
Center Cut Shoulder . . . . . Lb.

**ROPE SAUSAGE** SPECIAL MADE FOR EASTER Lb. 63<sup>c</sup>  
BLADE CUT, PORK

**STEAKS** Lb. 43<sup>c</sup>

STORE HOURS  
9 a.m. 'Til 9 p.m. Daily Except Sunday  
**SUMMIT**  
TRADING COMPANY  
10409 Canyon Road, Tacoma LE 7-5848  
No Sales To Dealers  
We Reserve The Right To Limit Quantities

NEW SHAFTER  
**Potatoes** Lb. 7<sup>c</sup>

SWEET NO. 1  
**POTATOES**  
2 Lbs. 27<sup>c</sup>

**RADISHES OR  
GREEN ONIONS**  
Bunch 5<sup>c</sup>

FOLGER'S **COFFEE** All Grinds LB. 59<sup>c</sup>

SANITARY'S BULK PACK **ICE CREAM** 1/2 Gal. 89<sup>c</sup>

WALLA WALLA 303 Tin Cream Style or Whole Kernel **PEAS or CORN** 6/89<sup>c</sup>

OLYMPIC **DILL PICKLES** Economy Size Jar 49<sup>c</sup>

WYANDOTTE **OLIVES** Select Pitted 4/1<sup>00</sup>

PICTSWEET FRESH FROZEN **ORANGE JUICE** Large 12-oz. Tin 3/1<sup>00</sup>

PICTSWEET **PEAS** QUICK FROZEN 10 oz. Pkg. 15<sup>c</sup>

ZEE WHITE **PAPER NAPKINS** 80 Count Pkg. 10<sup>c</sup>

ALL VEGETABLE **CRISCO** SHORTENING 6 Lb. Tin 1<sup>35</sup>

KAISER **ALUMINUM FOIL** Heavy Duty 59<sup>c</sup>

NABISCO **Graham Crackers** 2-Lb. Pkg. 59<sup>c</sup>

DARIGOLD **Butter** Prints or Quarters Lb. 69<sup>c</sup>

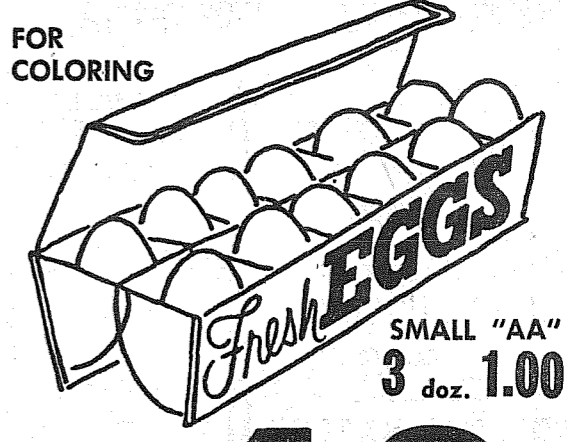
HI-HO **Crackers** 1-Lb. Pkg. 33<sup>c</sup>

KRAFT MINIATURE **Marshmallows** 10 1/2 Oz. Pkg. 20<sup>c</sup>

GERBER'S STRAINED **Baby Food** 6/59<sup>c</sup>

SNOW'S **Minced Clams** 7 1/2-Oz. Tin 29<sup>c</sup>

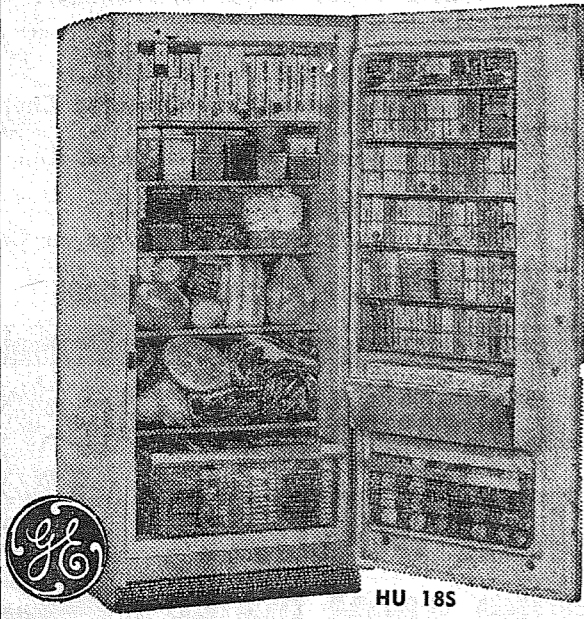
BLEACH **Purex** Gal. Jug 54<sup>c</sup>



FOR COLORING  
SMALL "AA" 3 doz. 1.00  
LARGE AA WHITE DOZ. 48<sup>c</sup>

NALLEY'S Reg. 69c  
**POTATO CHIPS** 59<sup>c</sup>

**BOY!! WHAT A DEAL!!!**  
**18 CU. FT. GENERAL ELECTRIC FREEZER**



Was \$449.95  
NOW \$299<sup>00</sup> At

**W H O L E S**

OPEN EVERY NIGHT

LARGEST DISPLAY OF GENERAL ELECTRIC APPLIANCES IN THE WHOLE PACIFIC NORTHWEST!

YOUR CORNER

TILL 9 P.M.

8419 PORTLAND AVE. PARK FREE AT OUR FRONT DOOR

LE 7-0231

(Saturday 'til 6)

**Summit . . .**  
**Jerry Bosequett**  
**FFA Star Farmer**

Jerry Bosequett, Franklin Pierce High School junior, was named Star Farmer of his FFA Chapter. The award was given to Jerry, a young sheep farmer, to climax the annual FFA Award Banquet. He also won the annual sheep project award for, according to advisor Lyle Smith, "doing the most with the least."

Starting with one ewe and one lamb 2½ years ago, he now owns 20 head, charted up a 200 per cent lamb crop and has a history of good care and record keeping. Chapter officers initiated "Pop Kelly, superintendent of the Dyslin Boys' Ranch, as an Honorary Chapter Farmer, a surprise award. Rusty Allen, a student from the Jesse Dyslin Boys Ranch, won the frosh scholarship award.

The lone four-year activity letter went to Phil Rousseau, National

FFA public speaking champion. Phil presented the Chapter's public speaking award to his brother, Ellis.

Hillery Hansen was the only freshman, among 30, to receive a letter.

Awards to other Summit youth for best projects were: Farm shop, Bob Hansen, and beef, Ellis Rousseau.

**P-TA Meeting**

A Fashion Show will be the highlight of the Central Avenue P-TA and Preschool meeting April 20, 8:00 p.m., in the school multipurpose room. Chairmen for the various groups will be: Mrs. Donald Freestone and Mrs. Ed Hill, 4-H; Mrs. Robert Kelley and Mrs. James Lucas, Preschool; Mrs. Hylan Johnson, Family; Mrs. Palmer Skaar, Decorations; and Mrs. Ray Forsber, music. The music will be conducted by Mrs. LeRoy Carlson Jr. Mrs. Stanley Ratcliffe and Mrs. Lawrence Larson are in charge of the added attraction of an International Group dressed in authentic costumes from foreign lands.

Refreshments will be served in the school lunchroom after the meeting by mothers from Mrs. Fink's kindergarten and Mrs. Miller's third grade rooms.

**Sunrise Service**

Members of the Summit church will again greet the dawn of Easter morning with a Sunrise Service at 6:00 o'clock in the Clifford McMillan back yard, 10305 Canyon road (1 block north of the church), with beautiful Mt. Rainier in the foreground. Rev. Raymond

Proudfoot, District Superintendent, will be the speaker for this service. In case of rain, the service will be held in the church. Following the Sunrise Service, everyone is invited to a fellowship breakfast served by the Men's Brotherhood in the church hall.

**Golden Expo Tickets**

The Boy and Cub Scouts are selling tickets for the big Scout Golden Expo and Anniversary Pageant. It will be held on May 6, 7 at the U.P.S. Fieldhouse. By purchasing a ticket you help give the scouts a better Summer Camp.

**Brakeman Bill Guests**

Cub Scouts from Den 2, Pack 76, visited the Brakeman Bill television program the 5th of April. The stars were as follows: John Bosequett, Allan and Douglas Cail, Scott Craig, Eddy and Steve Spindel, and Donald Torbet. Mascots were Deann and Jimmy call.

**Surprise Party**

The children in Mrs. Jack Winger's 2nd grade room gave her a surprise farewell party last Friday. A beautiful orchid and guest apron was the children's way of saying how much they loved and will miss their teacher.

**Refreshments**

Refreshments were served by Mesdames Ed Hill, Harold Daffer, and Al Nix. The children will be waiting for Mrs. Winger's new address in Las Vegas, Nevada, but are also looking forward to getting better acquainted with their new teacher, Mrs. Skog.

**Farewell Square Dance**

A farewell Square Dance was given April 5 in Jim Kerr's honor by several of his friends. Jim, an employee at MROD, left Wednesday for a government school in Savanna, Illinois.

**Hawaiian Vacation**

Mr. and Mrs. Carl Colton and Mr. and Mrs. Clifford Olson left April 9 for a Spring vacation in Honolulu, Hawaii. Not only is the trip going to be a wonderful vacation, but will also give the travelers an opportunity to renew their friendship with the Ed Hettricks. Mrs. Hettrick taught the 6th grade at Central Avenue school five years ago. Carolyn Colton, the principal eldest daughter who

resides in Honolulu, will have much to show her parents.

**Burn Victim**

Mrs. Harold B. (Nerene A.) Lloyd suffered burns over 40 per cent of her body in a fire at her Summit View home recently. She told hospital attendants she must have fallen asleep while smoking a cigarette. She suffered first and second degree burns, mostly on her back and legs.

**Newly Weds**

Miss Darlene Diane Kopp, daughter of Mr. and Mrs. Darrell Kopp, became the bride of Lyle Arthur Haller, son of Mr. and Mrs. Glen Haller, April 1st in Parkland's Trinity Lutheran church. The bride attended Franklin Pierce High School, where her husband is a senior.

**Congratulations**

Keith Melvin, born April 2nd, is the new boss in the Martin Korsmo home.

**Vacationing**

Mr. and Mrs. C. R. McMillan are vacationing at their daughter's home, Mrs. George Sparks, in Richland, Washington.

**The Arlo Mortons are visiting**

Mr. Morton's brother and family in Walla Walla, Washington, are important, but until it is known Little League Baseball Mike Cail would like to form a Little League Rookie Baseball Team of 9, 10 and 11-year-olds in the Central Avenue area. The team would be starting from scratch so helpers, sponsors, and then boys would be needed. All are important, but until it is known for sure that there will be sufficient help and sponsors the boys' names will be immaterial. If you would be willing to work with the boys two evenings a week or sponsor the team, please contact Mike Cail, LE 7-3766. As soon as the helpers and sponsors are lined up, questionnaires will be sent home with the boys who are interested.

**RECEIVES WINGS**

Rex M. Stewart, son of Mr. and Mrs. Robert E. Stewart of 10811 East Canyon road, has received the wings of the Air Force navigator and a commission as a second lieutenant at Harlington Air Force Base, Texas. The course including training the fundamentals of electronics, dead reckoning and radar navigation. He has been assigned to Keesler AFB, Miss., for his Electronic Warfare Officer's course.

**Canyon Road . . .**  
**Potluck Dinner**  
**At Hall Tonight**

Don't forget the potluck dinner this (Thursday) evening at 6:30 at the Canyon Road Community club hall. Everyone in the neighborhood should plan to attend.

**Star Twirler**

We hope everyone noticed our own Charlene Latterell, daughter of Mr. and Mrs. Mike Latterell, in the Dafodil Parade last Saturday. She was one of the leading twirlers from Puyallup High School.

**More Bad Luck**

Robert Ladwig of White road sure hit a streak of bad luck. The animal he has been keeping for next winter's steak dinners kicked him and shattered his knee cap. He will be confined to the hospital for some time. Let us send him a word of cheer now and then.

**Clover Creek . . .**  
**Unusual Program**  
**For Grange Friday**

An important program feature will be presented Friday evening at the regular meeting of Clover Creek Grange, which starts at 8 in the Grange hall. A group of retarded children that Mr. and Mrs. Roy Melvin of Spanaway have been taking care of, and who are now attending Elk Plain school, will be presented in a demonstration showing their progress. The Melvins are members of Clover Creek Grange.

**SYMPATHY**

Deepest sympathy to the family of Stanley I. Carlson who passed away April 2 in a local hospital; he left his wife Stella and one daughter, Mrs. Ed Tennyson. Reporter—Kathryn Deady, LE 7-8897.

**There are 44,146 drug addicts**

in the United States, according to the National Bureau of Narcotics. . . . Hinduism designates the social customs as well as religion of the majority of people in India. . . . Original paintings of any date are duty-free when brought into the United States. . . . Canada's westernmost province, British Columbia, is almost half again as big as Texas. . . . Honey produced from the blossoms of some species of Asian rhododendron is poisonous to man, but bees thrive on it.

No bunny BUT NO BUNNY has better  **Easter Buys**

**Sugar Cured PICNIC HAMS** . . . 1-Lb. **34<sup>c</sup>**

**Henry House SAUSAGE Rolls** 3 for **99<sup>c</sup>**

**Henry House Skinless Wieners** 1-Lb. Pkg. . . **47<sup>c</sup>**

**Young Steer Beef SIRLOIN STEAK** . . . 1-Lb. **79<sup>c</sup>**

**We Will Be Closed All Day Easter Sunday, April 17th**  
wishing you and yours a very **HAPPY EASTER**

**CHASE & SANBORNE, Reg. or Drip COFFEE**  
1-Lb. **55<sup>c</sup>**  
2-Lb. **\$1 09**

**Salteasa New England Style CLAM CHOWDER** 15-oz. Tin Condensed **4 For 99<sup>c</sup>**

**ALCOA ALUMINUM FOIL**  
Heavy Duty - 18 Inches Wide. 25 Foot Roll **59<sup>c</sup>**

**BORDEN'S EVAPORATED MILK** Tall Tin 6 for **79<sup>c</sup>**

**SUGARY SAM LOUISIANA YAMS** 303 Tin 2 for **45<sup>c</sup>**

**TREE TEA** ½ lb. Pkg. **69<sup>c</sup>** 48 Bag Pkg. **49<sup>c</sup>**

**SUNSHINE OR NABISCO -1-LB. PKG. Graham Crackers** **33<sup>c</sup>**

**NALLEY'S MUSTARD** 9-oz. Jar 2 for **25<sup>c</sup>**

**HUNT'S - 300 TIN Fruit Cocktail** 4 for **89<sup>c</sup>**

**VETS - REGULAR OR LIVER FLAVOR DOG FOOD** No. 1 Tin 12 for **99<sup>c</sup>**

**PRODUCE DEPT.**  
**U.S. No. 1 Asparagus** 2 lbs. **29<sup>c</sup>**  
**Fresh Crisp CELERY** . . . each **9<sup>c</sup>**  
**Fresh Green ONIONS** 2 bunches **9<sup>c</sup>**

**"AA" Large EGGS** Doz. **48<sup>c</sup>**  
We Also Have Jumbo, X Large, Medium and Small All at Real Saving Prices.

**McDANIELS**  
*The Home of The Low Price*  
**AIRPORT & CANYON ROAD**  
Store Hours: 9:00 'Til 9:00 - Sundays 9:00 'Til 7:00  
PRICES EFFECTIVE Thursday Friday Saturday

**FOR FINE PANELING**  
**CALIFORNIA Redwood**  
**TONGUE & GROOVE**  
The warm beauty of California redwood — the distinctiveness of narrow widths — are combined to form a backdrop for gracious living.  
**VAUGHAN'S PACIFIC AVENUE LUMBER**  
84th & Pacific Ave. GR 4-9515

**BUSINESS TRAINING PAYS**  
TOP JOBS FOR STENOGRAPHERS AND RECEPTIONISTS - ENROLL NOW - **KNAPP COLLEGE**  
10th & Pac. Ave. MA 7-2181

**Key Seating**  
Lathe and Press Work, Brake Drum Turning, Reboring, Pin Fitting, Piston Grinding, H e o d Surfacing, Complete Motor Rebuilding, Valve Seats Installed, etc.  
**Rupe Machine Works and Garage**  
AUTOMOTIVE & INDUSTRIAL WORK  
13411 Pac. Ave., P.O. Box 2445, Parkland 44, Wn., LE 7-7450

**Key Seating**  
Lathe and Press Work, Brake Drum Turning, Reboring, Pin Fitting, Piston Grinding, H e o d Surfacing, Complete Motor Rebuilding, Valve Seats Installed, etc.

**RECEIVES WINGS**  
Rex M. Stewart, son of Mr. and Mrs. Robert E. Stewart of 10811 East Canyon road, has received the wings of the Air Force navigator and a commission as a second lieutenant at Harlington Air Force Base, Texas. The course including training the fundamentals of electronics, dead reckoning and radar navigation. He has been assigned to Keesler AFB, Miss., for his Electronic Warfare Officer's course.

**B.F. Goodrich**  
**NOW you can get Smileage Plus Nylon**  
as low as **13<sup>95</sup>\*** **BIGGEST NYLON NEWS IN HISTORY**  
Now you can have rugged, bruise-resisting nylon cord in a superior economy tire—the B.F. Goodrich Safety-S. Get the added strength and safety of Nylon in a 4-ply tire with full-sized tread—extra protection against bruise-blowouts at this unbelievably low price.  
Here are the 3 most popular sizes  
**CHECK YOUR SIZE AND CHECK OUR PRICE!**  
IF YOU DRIVE A—  
CHEVROLET—All models '37-'48 **13<sup>95</sup>\***  
DODGE—All models '46, '47  
FORD—Most models '41-'52  
HUDSON—All models '46, '47  
NASH—Most models '46, '47  
OLDSMOBILE—"66" '46, '47  
PLYMOUTH—All models '46, '47  
PONTIAC—Most models '46, '47, '48  
WILLYS JEEP—"51" '60  
6.00-16  
IF YOU DRIVE A—  
CHEVROLET—Most models '49-'56 **13<sup>95</sup>\***  
DODGE—Most models '49-'56  
FORD—Most models '52-'56  
HUDSON—"Wasp" '55, '56  
KAISER—Most models '52-'56  
NASH—Statesman '52-'56  
PLYMOUTH—Most models '48-'56  
RAMBLER—"57  
STUDEBAKER—"56-'58  
THUNDERBIRD—"55, '56  
WILLYS STATION WAGON—"52-'60  
6.70-15  
IF YOU DRIVE A—  
CHEVROLET—Conv. '50-'54 **15<sup>95</sup>\***  
DODGE—Coronet '53-'56  
FORD—Most models '52-'56  
FRAZER—All models '52-'56  
HUDSON—Most models '48-'56  
MERCURY—Most models '49-'56  
NASH—Ambassador '48-'56  
OLDSMOBILE—Most models '48-'56  
PONTIAC—Most models '49-'56  
STUDEBAKER—Some models '56-'58  
7.10-15  
Size 7.60-15 available as low as **17.95\***  
IF YOU WANT ECONOMY IN A TIRE AND A NAME YOU WILL RECOGNIZE AS A LEADER... SEE YOUR B.F. GOODRICH SMILEAGE DEALER TODAY!  
\*Net tire and your schedule fee  
WHITEWALLS ALSO AVAILABLE AT NEW LOW PRICES!  
**RAY'S Auto Float TIRE STORE** LE 7-7355  
9639 Pacific Ave. Parkland  
Nobody knows tires like your B.F. Goodrich Smileage Dealer

It Pays To Advertise in  
The Times Journal  
Classified Section

The outlook is bright at the Family Savings Center

**4%**  
CURRENT RATE ON INSURED SAVINGS  
Computed on Monthly Balances

PAID **4** TIMES A YEAR  
We transfer your funds without charge from anywhere in the U.S.

Resources over \$236,000,000  
**Pacific Federal Savings and Loan Association**  
11th and Pacific Lakewood at Villa Plaza  
A MUTUAL SAVINGS INSTITUTION  
Bellingham • Seattle • Tacoma Longview • Portland • Eugene

### County Corner Agent's

By George Purcell  
Current Farm Activities Noted

New seedlings of oats recently put in by Art Young near Roy, will surely come along. He put in Victory oats. Other farmers are seeding Overland as well as Victory.

John Olson and his wife, who live on a small farm at Orting, plan to start on a detailed planned program of farm and home planning the keeping of good useful business-like records concerning their home and farm operations. He was so very pleased to discover we county agents offer this service to farm families including part time farm people.

Dr. Hellyer's farm, north of Eatonville, has a fine stand of Orchard Grass and White Dutch Clover, seeded last spring. He fol-

lowed the booklet of recommendations about seeding and fertilizer available in our office to all farmers. This most useful booklet was written by County Agent C. R. Doran, Al Moffat, of Puyallup, S.C.S., Fred Kropp, of Agricultural Stabilization and Conservation office, Puyallup, and Herman Austenson of the Western Washington Experiment Station at Puyallup.

Ethel Merrill of Gig Harbor has a blocky Angus steer she is spending an hour a day grooming to show and sell in the Northwest Junior Livestock show at Auburn stockyards, April 23rd. Altogether we have 30 Pierce county boys and girls preparing 37 meat animals—lamb, hogs and steers for this event. These boys' minds are not on getting in trouble loafing!

By Ernest I. Hopp  
Training in Civil Defense is like paying hospital insurance premium. The person involved hopes that he will never have to use the protection offered but in the event

of an emergency, it is certainly wonderful to have.

Recently I had an opportunity to attend a Civil Defense meeting organized by Gus Partridge, Director of the Pierce County Civil Defense; Frank Evans, Director of Tacoma Civil Defense, and Harold Sanders, Manager of the Red Cross. We were told of latest developments in the Civil Defense field. It seems as if rural people will play quite an important role in the event of a future emergency. Food will be a limiting factor. This is where rural people fit into the picture.

A home preparedness drive is being started. Women's groups and church organizations will spearhead a drive to see that each family knows what to do in case of an emergency. An important part of this program is that families understand the need for having a supply of food on hand. Rural people will carry even a more important part of this food storage program than their city neighbors.

It is always difficult to see the need for something that doesn't exist at the present time. I got the feeling at this meeting that I attended that it is quite important that each of us know what our part is and how to play it in case an emergency strikes. It seems to me that we as individuals can accomplish much by cooperating with the various groups that are spearheading this home preparedness program. It could very easily save our lives some day.

Anyone who would like to have more information on this and other Civil Defense activities may contact Gus Partridge, Frank Evans, or Harold Sanders.

By George Purcell

The Pierce County Youth Study Committee, which is a part of the Pierce County Rural Suburban Council got under way the other day. The objectives of this committee are to study youth situation influences and trends of local and broad nature for facts, opinions, and convictions and then document them and suggested objectives and recommendations based on their studies. This, and other studies, for immediate and long-range planning is being supported all over the U. S. through the U. S. A. and

the various State Extension Services.

For their first five studies the committee decided to separate into five sub-committees. These are:

1. Youth Employment — Mrs. Uebel—temporary chairman, Tacoma, Fred Miller, South Prairie, Bruce Brennan, Tacoma.
2. Family Influences—family attitudes, guidance, and sense of values. Rev. Secord, temporary chairman, Eatonville, Mrs. J. Jarvis, Sumner, W. White, Ashford.
3. Present Youth Organizations—their scope, objectives, functions. H. West, temporary chairman, Tacoma, Mr. Ostberg, Tacoma, Joyce Whisler, Puyallup, Tom Cross, Tacoma, Mrs. George Richey, River-side.
4. Community Resources — e.g. PTA, Grange, Farm Bureau and various adult groups. Mrs. George Fisher, Temporary chairman, Puyallup, Fern Gray, Edgewood, Mrs. Gregory Bob Leonard, Puyallup, Hal Mulholland, Tacoma.
5. Schools—study of their curriculum, requirements, scope, objectives and plans. Mr. Sarver, temporary chairman, Alder, D. Smith, Franklin Pierce, Miss Bashey (County Health dept.) Tacoma.

How much does it cost you to live? Most families don't know. The money is spent and that's it! A group of farm families in Pierce county can give the answer to the above question. These families participate in the farm and home planning program. They budget and keep records of family living and farm business expenses.

Here are some figures they reported at a recent meeting of the group. Family living expenses for a family of four varied from about \$2100.00 to over \$5000.00. These expenses included all food and miscellaneous family living items. With a poor egg-feed ratio during 1959 it was necessary for most poultrymen to prune expenses as much as possible.

On the farm business side of the picture results also were interesting. The families under discussion were commercial egg producers. They estimated their net profit per layer for 1959 between fifty to seventy-five cents. This is a small return on investment and labor. These people who participate in the farm-home planning program are thankful that they had good records to tell the story of their operation. When the cost-price squeeze gets real tough is when planning, budgeting, and record keeping really pay off.

The poultry farm and home planning cooperators in Pierce county include: Leo Doty, South Prairie; Everett Shinn, Firgrove; E. M. Antonson, Elva Morgan, and Richard Sutton from Gig Harbor; Phil Arneson, Lakebay; R. W. Anderson, Winston Baker and Clifford Johnson from Edgewood; and Boyd Brakken, Woodland.

Other agricultural families also participate. Anyone interested may contact the county agents' office for details.

By C. R. Doran  
A few sunny days and spring fever symptoms begin to show.

### Spanaway... Fishers Breakfast Planned April 24

Final plans were made at the Monday meeting of the Spanaway Firemen's Auxiliary for the annual Firemen's Breakfast to be held April 24, (Sunday) starting at 2:30 a. m. and continuing till 12 noon in the Spanaway fire hall. Mrs. Robert Rhone is chairman. Mrs. Donald Palmer is a new member of the Auxiliary. At a recent meeting the Auxiliary celebrated its 14th birthday, the hostesses serving a cake.

GUILD  
The Dr. Lee A. Rademaker

While many green thumb artists putter in their back yard with the soil and shrubs, hundreds of horse owners in Pierce county will be saddling their favorite mount for a canter along a favorite back road or bridle path.

Now, then, is the time to give close attention to the horses physical condition. At this time of year horse flesh is at its lowest nutritive level. Local grass hays are low in energy value and, too, they are traditionally low in protein. Many owners have added to a bad situation by expecting their horses to supplement their limited rations by nibbling the close-cropped pasture. When you add to this low physical level the possibility of some internal parasites, such as a strong infestation of bots and stomach worms, there is little reason for surprise if your favorite horse doesn't seem to be quite up to a day of active exercise. Local veterinarians are now reporting many service calls at the request of troubled horse owners. In most cases the diagnosis indicates poor nutrition and internal parasites. At this time of year the bots are maturing in the stomach and it's the ideal time to treat for their elimination. The same treatment can be effective for the blood sucking parasites too that are bringing on a case of anemia.

Here are four precautions horse owners should take to insure the health of his horse: First — check the teeth—they might be in need of some work to improve his chewing as an aid to digestive efficiency. Two—treat for worms. This can be a combination type of medication that will take care of the two types of parasites described. Three — check on the quality of feed. Local hay can be supplemented with some grain (preferably oats) which will supplement energy value of the ration. Four—check the horse's feet. He may need either shoeing or foot trimming.

These precautions, if taken now, will help your horse get into condition so he too can enjoy those cantering in spring weather as much as his owner.

**FENCING**  
Designers and Builders  
EXPERT WORKMANSHIP  
REASONABLE PRICES  
Easy Monthly Payments  
**VAUGHAN'S**  
84th & Pac. Ave. GR 4-9515

### Roy News

Roy Community was saddened last week by the sudden death of Mrs. William (Zella) Lenz, long time Roy resident. Funeral services were held Saturday in the Roy Congregational Community Church with the Rev. Hans Svith officiating.

Two hundred books have been added to the 1900 books already in the Roy Branch of the Pierce County Library. Library hours are on Tuesday from 2 to 5 and 6 to 9. There are books to satisfy every taste and borrowers may also order certain books which they may not find in stock.

The State Board of Education gave its decision on the land transfer in South Pierce County. All land from ¼ mile south of the McKenna-Tanawax road south in Pierce County was transferred to Yelm School District in Thurston County from Bethel School District in Pierce County. The State Board of Education consists of two members from each Congressional district in the State.

Miss Judith Graves, daughter of Earl Graves, left Sunday to spend a week visiting relatives in Eastern Washington.

Reporter—Martha Breggren, Roy 229.

Orthopedic Guild met at the home of Mrs. Morris Schultz with Mrs. Joe Symmons co-hostess. Plans for the October smorgasbord were discussed. In the election, Mrs. Joe Symmons was chosen president; Mrs. Morris Schultz, vice president; secretary, Mrs. Irwin Timm; treasurer, Mrs. Orville Michaelson.

CONTRATULATIONS  
Congratulations to Mr. and Mrs. Emerson Tarpenning on the birth of a grandson, Jack Emerson, to Mr. and Mrs. Jack Rhode of Parkland March 30. A sister, Ann, welcomes the new baby into the home. Mrs. Rhode of Puyallup, the other grandmother, has been seriously ill but is now on the road to recovery.

Also to Mr. and Mrs. William McClement on the birth of a daughter, Karen Therese, April 4. Grandparents are Mr. and Mrs. Martin Gibbons of Spanaway and Mr. and Mrs. John McClement of Tacoma.

BEST WISHES  
Get Well wishes go to Mrs. Bernhard Salter who is home with her parents, Mr. and Mrs. Bill Righetti, following surgery; she will be there a few days.

ON HONOR ROLL  
The fall semester honor roll of Washington State University, announced this week, included the name of Thorne L. Tibbitts of Spanaway, a senior majoring in physical education.

PRESCHOOL BOARD  
The Spanaway Preschool executive board will meet at 8 p.m. April 19 in the new gym at Spanaway school. Howard Scott, a psychologist of Tacoma-Pierce County Program of Co-operative Education Service, will speak on "Is Your Johnny Ready for First Grade?"  
Reporter—Mrs. Oliver Omat, LE 7-6466.

If Pays To Advertise in  
The Times Journal

**IT'S CHEAPER TO RENT THE TOOL YOU NEED**  
GARDEN TILLER  
POWER LAWN MOWERS  
BELT HAND SANDERS  
OSCILLATING HAND SANDERS  
FERTILIZER SPREADER  
LAWN ROLLERS  
LAWN SEEDERS  
PAINT SPRAYERS  
RUG SHAMPOO MACHINE  
POWER MOWER SHARPENING & REPAIR  
**PARKLAND HARDWARE**  
12169 Pacific Ave. LE 7-3171

'B' IS FOR BABY FURNITURE  
TOYS & EQUIPMENT  
**Small Fry**  
Tacoma - 1109 Market - BR 2-9505  
and V/I/P LAKEWOOD  
VILLA PLAZA JU 8-1628

**Worley Construction, Inc.**  
GR 5-1030  
**Remodeling**  
Basements, Foundations  
Block and Concrete Work

## ATTEND CHURCH Easter Sunday

Now upon the first day of the week, very early in the morning, they came unto the sepulchre, bringing the spices which they had prepared . . . And they found the stone rolled away from the sepulchre. And they entered in and found not the body of the Lord Jesus.

And it came to pass, as they were much perplexed thereabout, behold, two men stood by them in shining garments: And as they were afraid, and bowed down their faces to the earth, they said unto them, Why seek ye the living among the dead? He is not here, but is risen.

St. Luke 24: 1-6

Easter Greetings from  
**Bethel Baptist Church**  
William S. Kepple, Pastor  
Special Music and Easter Message Easter Day  
Morning Service, 11:00 a.m. — Evening Service, 7:30 p.m.  
A Church with an Easter Message Every Sunday  
On Benston Road, ¼ Mile North of Kapowsin Highway  
EVERYONE ALWAYS WELCOME

**EASTER SUNRISE SERVICES PLANNED**  
Hope Chapel Church and Immanuel Baptist Church are pooling their members and conducting Easter Sunrise Services at 6:00 a.m. on the lawn at the Immanuel Baptist Church at 94th & Pacific Avenue. The Rev. Sauerwein of Hope Chapel will be conducting the services. A free breakfast will be served immediately after the services, under the direction of the Immanuel Baptist Church deacons.

**Summit Methodist Church**  
104th and Canyon Road  
6:00 a.m.—Easter Sunrise Service at the C. R. McMillan home, 103rd and Canyon Road  
7:00 a.m.—Complimentary fellowship breakfast in the church hall; please bring table service  
Two morning services, 9:45 and 11:00 p.m., with Rev. Bob Albertson of UPS as speaker  
Sunday School as usual at 9:45 a.m.

**Trinity Lutheran Church**  
121st and South Park Streets  
Pastors: Erling C. Thompson and John N. Skepstad  
Good Friday Service, April 15, 12:00 Noon to 1:30 p.m.  
Sponsored by the Lutheran Pastors' Association; Special music by the Trinity Senior Choir  
Easter Festival Service Sunday — 9:30 and 11:00 a.m.  
Pastor Erling C. Thompson's sermon theme: "God's Call in Christ to Eternal Life"

**Covenant Community Church**  
Petersen Road Between Meridian and Davis  
REV. PAUL T. NELSON, Pastor  
Good Friday Communion Service, 7:30 p.m.  
EASTER SUNDAY SERVICES:  
6:00 a.m. Bethel Community Easter Sunrise Service  
9:45 a.m. Sunday School program  
11:00 a.m.—Easter Worship; sermon, "Believing the Unbelievable"  
7:30 p.m.—Easter Vespers; sermon, "A Sunday Evening Walk With Jesus"

Easter Services of  
**Bethany Lutheran Parish**  
Rev. H. N. Svith  
Spanaway Trinity Lutheran Church, 109 East 169th St. Sunday School Easter service, 11:00 a.m.  
Weyerhaeuser Church, Mt. Highway at Fogel's Corner Sunday School Easter program, 10:30 p.m.  
Bethany Lutheran Church, Mt. Highway at Rocky Ridge Sunday School program, 1:00 p.m.  
Easter worship service, 2:00 p.m.

**Parkland Methodist Church**  
Donald Nothdurft, Pastor  
Maundy Thursday Communion — 7:30 p.m.  
Easter Sunday Sunrise Service, 12183 A St. — 6:30 a.m.  
Sunday School — 9:30 a.m.  
Two Easter Worship Services — 9:30 and 11:00 a.m.

**Parkland Evangelical Lutheran Church**  
123rd Street and Pacific Avenue  
H. A. THEISTE, Pastor  
Maundy Thursday Communion Service .....7:00 p.m.  
Easter Breakfast .....7:30 to 9:00 a.m.  
Regular Sunday School .....9:15 a.m.  
Easter Festival Service .....10:30 a.m.

**Fern Hill Methodist Church**  
8409-23 South G — Serving Fern Hill Since 1884  
Adam S. Force, Minister  
Maundy Thursday Communion Service, 7:30 p.m. in charge of Out-of-High MYF, Mrs. Kingsley Woodhead, Counselor  
Easter Sunrise Service, 6:00 a.m. on newly acquired church property on 84th St. between Fawcett and Tacoma; breakfast following in the parish house  
Regular Easter Service, 8:45 and 11:00 a.m.; reception of members; Open House and coffee hour at 12:00 at new Sunday School Annex, 8425 South G

**Collins Community Church**  
12416 Bingham Road  
11:00 a.m.—Easter Worship Service  
"The Risen Christ and Risen Men"  
Robert Pottinger, Pastor  
9:45 a.m.—Sunday School  
7:30 p.m.—Evening Service  
We urge for all God's new life in Christ

**THE ELK PLAIN COMMUNITY CHURCH**  
Vern A. Slater, Pastor  
Your friendly Community Church invites you to Worship the Living Saviour with us this Easter Sunday.  
Easter Services Will Be at ELK PLAIN GRANGE HALL  
10:00—Sunday School Program. Junior and Senior Choir with Easter Story in beautiful pictures.  
11:00—Worship Service. Message: "Life's Greatest Mystery Solved. Special singing."  
Sunday, April 24, 7:00 p.m. — Family Night program with excellent Christian movie in color.

**Mountain View Baptist Church**  
Summit Youth Center on Knapp Road  
Donald Leach, Pastor; LE 1-2041  
9:45—Sunday School Easter program, presented by Primary and Junior classes, with music by the Junior Choir, directed by Mrs. George Nagle  
11:00—Morning worship; sermon, "Now Is Christ Risen"; Junior Choir singing  
7:30 p.m.—Evening worship service

**Our Lady Queen of Heaven Church**  
Tacoma, Washington  
Father William Greier  
HOLY WEEK SERVICES  
WEDNESDAY—7:30 p. m.: Sermon, Rosary, Benediction; Confessions before and after service.  
HOLY THURSDAY—6:30 p. m.: High Mass, Communion and Eucharistic Procession; Confessions before and after service.  
FOOD FRIDAY—6:30 p. m.: Liturgy of the Passion and Death of Our Lord, Holy Communion and Stations of the Cross. Confessions before and after Liturgy.  
HOLY SATURDAY—3:00-5:00 and 6:30-8:00 p. m.: Confessions 10:45 p. m. Easter Vigil Service, Blessing of the Fire, Paschal Candle and Baptismal Water, 12:30 Midnight; High Mass.  
EASTER SUNDAY—Masses: 8:30 and 10:30 a. m.

**Clover Creek Baptist Church**  
Military Road at Knoble  
Rev. Lyle Bramblet, Pastor  
Special Meetings Thursday, Friday at 7:30 p.m.; Rev. Allen Taft of California, special speaker.  
Sunday, 9:45 a.m.—Sunday School  
11:00 a.m.—Special Easter Services, Rev. Taft guest speaker; Music by the church choir  
6:00 p.m.—Young People's Service  
7:00 p.m.—Evening Services, Rev. Taft speaker; baptismal services  
Radio Broadcast, 9:45 p.m., KAYE 1450

**St. John of the Woods Parish**  
9903 East Taylor — LE 7-8551  
REV. ANDREW PROUTY  
HOLY WEEK SCHEDULE 1960  
HOLY THURSDAY—9 a. m.: Mass.  
6:7:30 p. m.: Confessions.  
8 p. m.: Solemn Mass of Last Supper. Adoration at Altar. Repose until Midnight.  
GOOD FRIDAY—2:30 p. m.: Stations of the Cross.  
8 p. m.: Good Friday liturgy, preceded by confessions.  
HOLY SATURDAY—3-5 and 7-9 p. m.: Confessions.  
10:30 p. m.: Easter Vigil, Blessing of the new fire, lighting of Paschal candle, reading of prophecies, singing of litanies, renewal of baptismal promises, Midnight Mass.  
EASTER SUNDAY—8 and 10:30 a. m.: Mass.

# SALVAGE MART

13014 Pacific Ave. Hours 10 to 6 Open Fri. Til 8 Sun. 12 to 6

**EASTER CANDY** BUNNIES and EGGS ..... 1/2 PRICE

**IRONING BOARDS** MARY PROCTOR ..... REG. \$5.95 \$12.95

1/4" ROPE 50 Foot ..... 39c T-SHIRTS BOYS' WHITE ..... 4/\$1

**MEN'S SOX** Cushion Sole Whites - Pastels 4/\$1 **WHITE PAINT** All Purpose Gal \$1.98

**TOOTHPASTE** ALL NATIONAL BRANDS ..... VALUES TO 83c 39c

**NEW TRUCKLOAD OF GROCERIES** GUARANTEED AT WHOLESALE OR LESS

**LOW COST SHOE MART** NOW LOCATED IN THE SALVAGE MART

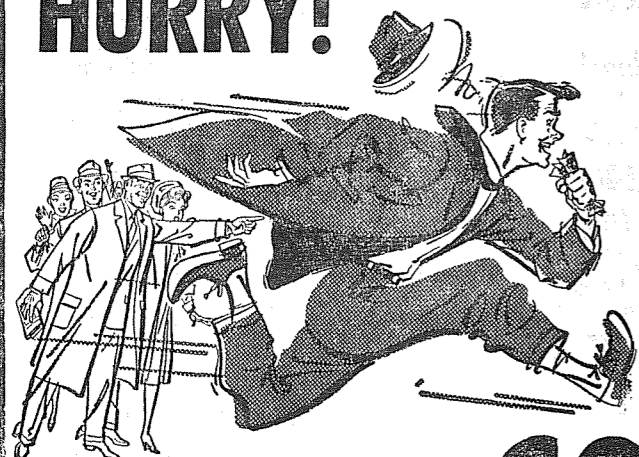
<b>LANCERS</b> WHITE BUCK, RED Sizes 4 to 9 N - M Reg. \$5.95 Pr. <b>2.98</b>	<b>SADDLES</b> RED & WHITE Kid's Sizes 5 to 8 PAIR..... <b>2.49</b>	<b>SQUASH HEELS</b> BLACK PATENT Sizes 8 1/2 - 3 PAIR..... <b>3.49</b>
<b>TENNIS OXFORDS</b> BLUE & RED Cushion Arch Kid's Sizes 5-12 13-3 PAIR..... <b>1.98</b>	<b>PATENTS</b> BLACK SWIVEL STRAP Sizes 8 1/2 to 3 PAIR..... <b>2.98</b>	<b>KIDS OFORDS</b> FOR EASTER BROWN BLACK CORDOVAN 8 1/2 to 3 PAIR..... <b>2.98</b>

# ON THE RIGHT TRACK FOR OUR EASTER PARTY

## OPEN HOUSE

FRIDAY & SATURDAY  
APRIL 15 & 16

**HURRY!**



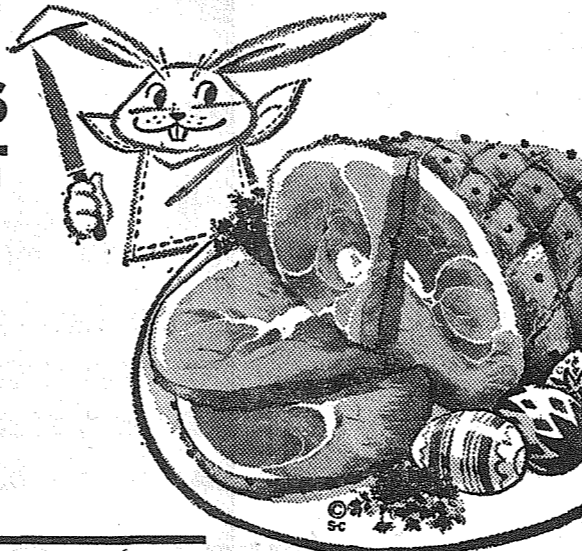
# FREE GIFTS

FOR ALL

SERVED ALL DAY FRI. & SAT.

**FREE** COFFEE- AND **FREE** Ham SANDWICHES

HIRES ROOT BEER



FABULOUS SAVINGS ON HUNDREDS OF ITEMS



\$79.95 Food Waste Disposer Only **\$38.88**

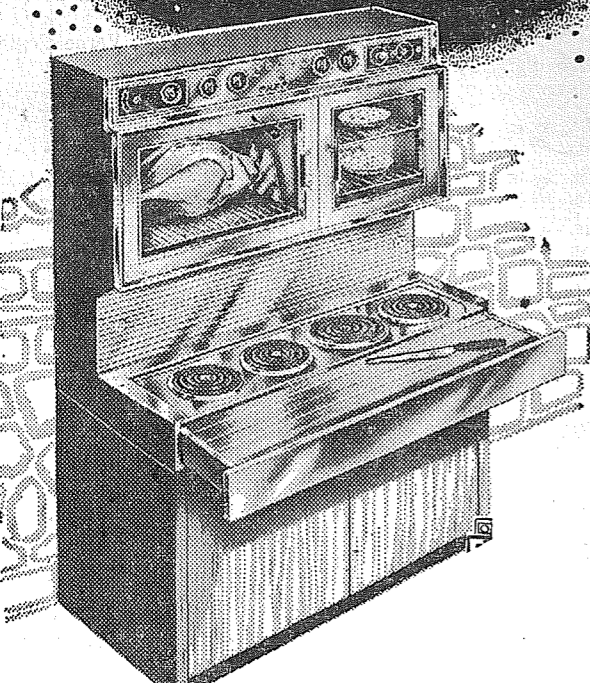
REG. \$29.95 **Elec. Blankets \$12.88**

\$12.95 CONVERTIBLE **Coffee Tables \$6.88**

\$69.95 HELBROS **17-JEWEL WATCHES ONLY \$23.88**

Limited Supply

SEE the new, futurized **TAPPAN** "fabulous 400" ELECTRIC RANGE



A Decorator-Inspired, Years-Ahead Range Revolution That Makes Cooking Effortless . . . Automatically!

**DEMONSTRATED ALL DAY FRI. & SAT.**

By Nancy Haugland  
Tappan's Home Economist

You'll Be Eating These Large Luscious Ham Sandwiches From Ham Cooked Before Your Eyes on the "Fabulous 400" Tappan Range



Complete with more advanced convenience features than any other electric range available today . . . including built-in Exhaust-O-Vent to whisk away all traces of top unit cooking odors. This is the range designed for luxury . . . a range setting tomorrow's standard today.

the new 1960 **SPEED QUEEN** AUTOMATIC WASHER

REMOVES LINT AND GRIT 4 WAYS

TRANSMISSION guaranteed 5 years

"NO-SPIN" SWITCH for Drip-Dry Fabrics

Start enjoying **\$2 50** now for only **\$2 50** per wk.

Easter Party Priced . . .

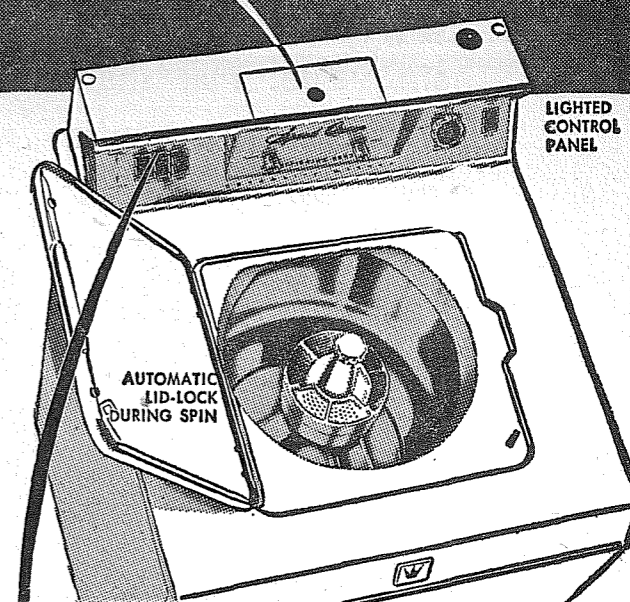
**HEAVY DUTY SPEED QUEEN** AUTOMATIC WASHER

This is the same machine used at Ft. Lewis coin operated laundry at P.L.U. and at your local laundry.

If you want a machine that will stand the hardest and roughest treatment, trouble free . . . Here It Is plus 2-year guarantee on all parts, 5 years on transmission.

Your trade is your down payment . . . Payments as low as 2.50 per week — Heavy duty Dryer to match. **Only \$239.95** With Trade

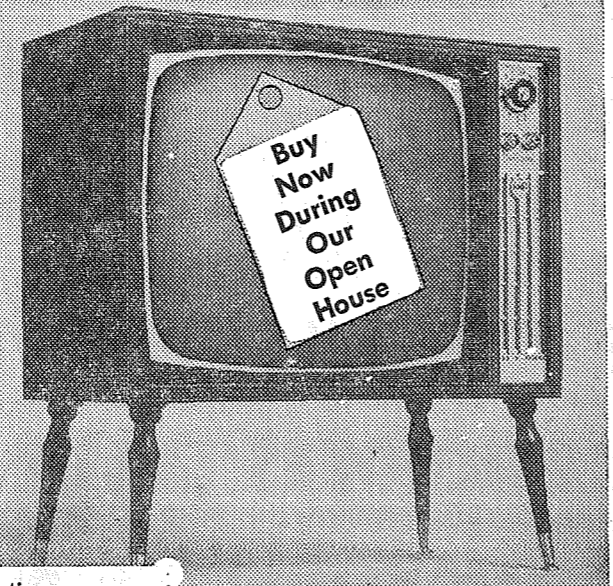
INTRODUCES — New Conditioning Center. BLEACH can be added automatically to wash water. Liquid or powder. SOFTENERS or BLUING can be added automatically to rinse water.



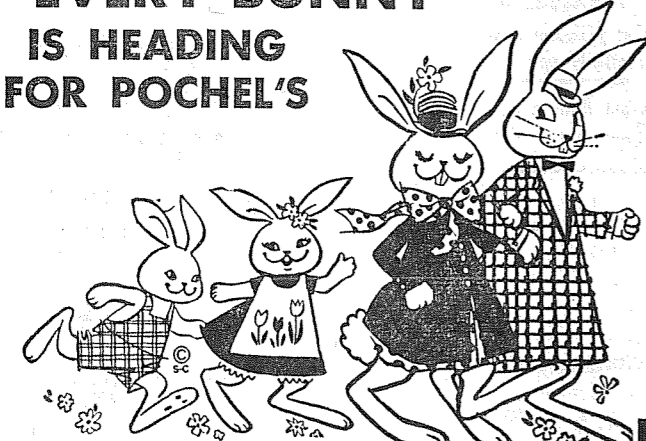
Bowl-Shaped STAINLESS STEEL TUB

Hoffman Pan-O-Vision 23" TV with a 21" price tag!

MODEL W3723 WALNUT FINISH ONLY . . . **299.95**



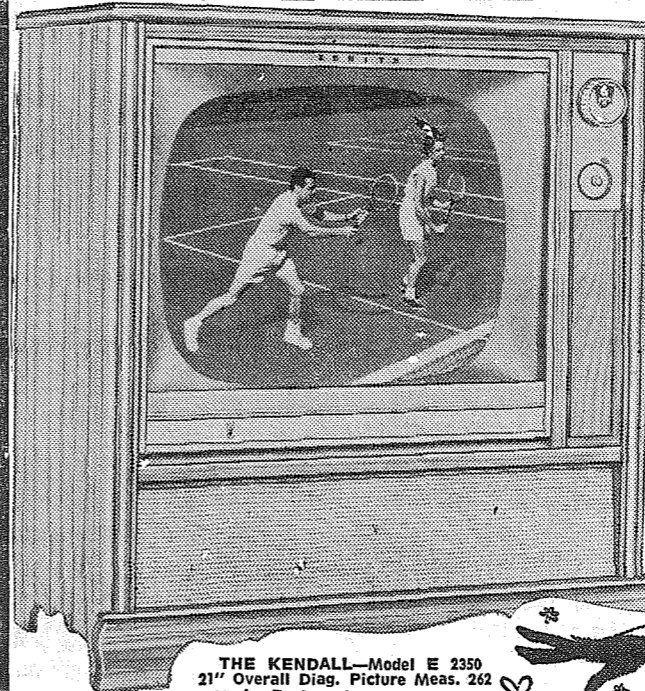
EVERY BUNNY IS HEADING FOR POCHEL'S



Revolutionary new Pan-O-Vision 23 lets you see ALL the picture from any angle without distortion. No mask, no corners to block your view! No extra glass to collect dust and dirt!

Here's an Open House Special that's really Special! Handsome console styling in your choice of four exquisite furniture finishes . . . and a price tag that's lower than many old-style 21" sets! Come see, come save — This offer is good only while our present inventory lasts!

Many - Many Others Priced To Meet Your Budget



THE KENDALL—Model E 2359 21" Overall Diag. Picture Meas. 24 5/8" in. Rectangular Picture Area

ZENITH Quality FEATURES

- 20,000 volts of picture power
- Sunshine Picture Tube • Spotlite Dial
- Cinelens® Picture Glass
- "Capacity-plus" components
- Tone control

UP TO **80.00** TRADE IN ON THE ALL NEW 1960

**ZENITH** CONSOLE TV

Only **\$359.95**

MANY OTHER MODELS TO CHOOSE FROM

# POCHEL DISTRIBUTING COMPANY

LE 7-8624

140th & Pac. Ave.

### Woodland Scouts In Court of Honor

On April 5, the Woodland Boy Scout Troop 174 had a potluck dinner and a court of honor at the Woodland school. It was well attended by the parents and the Scouts.

The Court of Honor was started after the dinner with the candle lighting ceremony. Philip Farcy, a new boy in the troop, was presented with his tenderfoot award by George Newcomer, the Scoutmaster. Bill Grass, Institutional Representative, presented Andy Linn with his Second Class award. Douglas Kauki received his Star award from Marion McRea, district Executive.

Harold Stol and Arnold Simmons, Committeemen, presented Merit Badges to the following boys: Doug Kauki, Geology; Dana Gawley, Reading; Public Speaking, Music; Tom Grass, Woodcarving, Mechanical Drawing, Public Speaking; Mike Peterson, Cooking, Home Repairs; Kenneth Quirie, Hiking, Pets, Woodcarving, Nature, Personal Fitness, Public Speaking, Athletics.

Year pins were presented by George Newcomer to the following boys: Kenny Nissen, one year, Joey Wilson and Paul Denny, two years; Bob West, three years. Paul Denny received his Den Chief Cord from Cubmaster of Pack 91, Victor Gawley. George Newcomer presented an Assistant Senior Patrol Leader's Badge to Armand LeBlanc. The Court of Honor and the evening was

**Parkland Grandmothers**  
The Parkland Grandmothers club No. 261 will meet at the home of Mrs. George Roberge, 4413 North 34th, Tacoma, Thursday, April 21, for 1 o'clock dessert luncheon and business session.

closed with the main phases of Scouting represented by putting out different flames on the candles.

### Waller Road . . . Juanita Perrin Chosen By Grange

Waller Road Grange has elected Juanita Perrin to the office of lecturer. She will be in charge of an interesting program for the April 15 meeting; special Easter numbers will be presented. Chaplain Violet Howard will be in charge of the impressive rites of draping the charter in memory of Mrs. Ernestine Savage, who passed away the past week.

**Bowling Stars**  
The bowling team sponsored by Angelea's of 7511 Portland avenue rolled into second place in the All-Coast Bowling Tournament being held at Vancouver, Wash. The team consists of Doug Fogle, Alex Rutt, Gene Rutland, Alex Miller Sr. and Alex Miller Jr. They totaled 3,104.

**Painful Accident**  
The first day of riding a bicycle to school proved memorable for nine-year-old Patrice, daughter of Mr. and Mrs. Kenith Aarhus of Vickery road. Losing control of her bike on the East 64th St. hill, Patrice was thrown to the road with force to knock her unconscious and get her a trip to the hospital by ambulance. She spent a day there for observation and treatment of severe cuts about the face. One front tooth is missing.

**School Registration April 27-29**  
Children entering kindergarten in the Waller Road school district must be registered at the school April 27, 28 or 29 between 10:00 a.m. and 4:00 p.m. To be eligible for kindergarten, a child must be five by Oct. 31, 1960; a birth certificate or equivalent will be required.

**Sympathy**  
Sincere sympathy goes to the families of two women well known and loved in the Waller Road area for years, who passed away recently. They were Mrs. Ernestine Savage, widow of the late Herbert W. Savage and a long-time resident of East 72nd St., who was 83 years of age, and Mrs. Lezetta Harris who resided in the district for many years before moving to Tacoma, who was 89. Both will be missed by a host of friends.

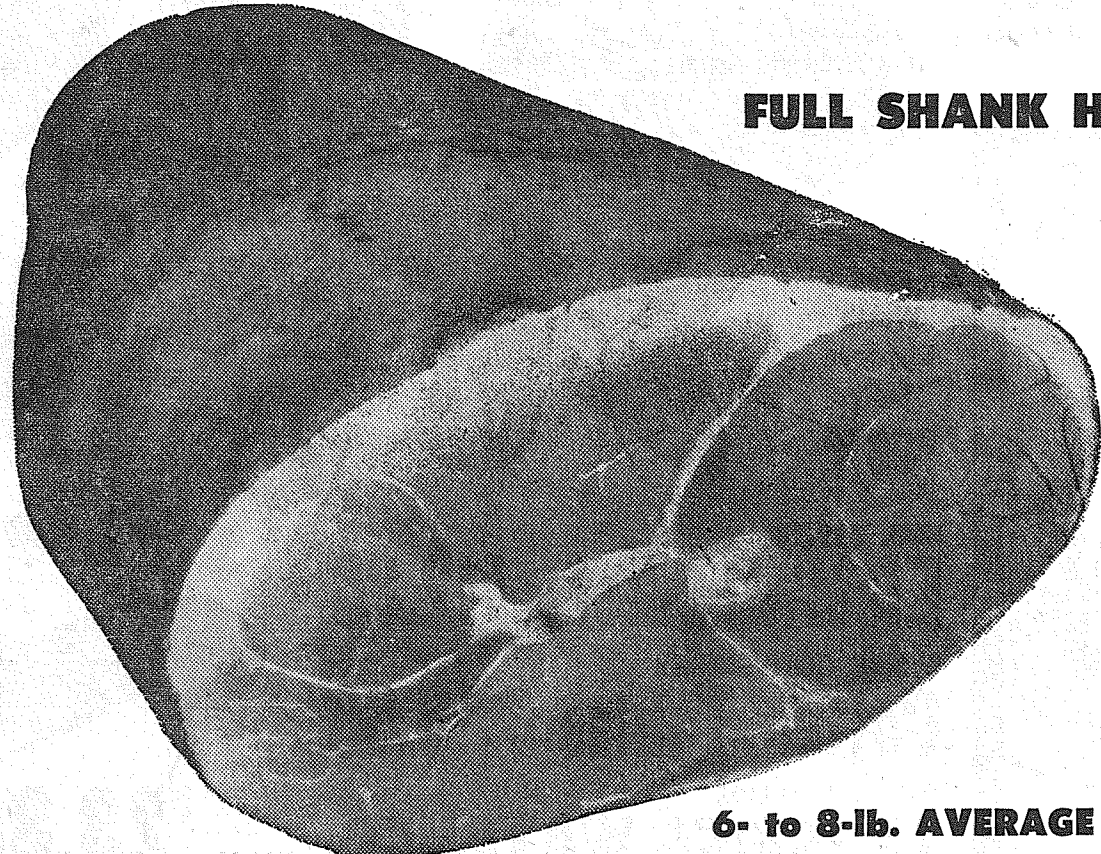
**BOY SCOUTS**  
Twenty-three Boy Scouts without a Scoutmaster! That is the problem the Scout committee of Troop 23 is up against. This is an example of what happens when parents all "let George do it." In this instance, they are unable to find the ever-famous "George." It is a shame when a community the size of Waller Road cannot find a leader and an assistant to give of their time for one year to help in this youth work. If you are interested, call Art Weston. Thanks to those who have served.  
Reporter — Mrs. Verne Fogle, LE 7-5210.

**Harvard P-TA**  
Due to Spring vacation, Harvard P-TA will hold its monthly meeting at a new time—Wednesday, April 20, at 8 p.m. at the school. The main business on the agenda will be election of officers; all members are urged to attend.

OUR THANKS TO Those of You Who Helped Make Our Grand Opening Such a Success . . . RAY AND MARY GOODMAN  
**GOLDEN SLIPPER TAVERN**  
138th and Pacific Avenue

# Lucky BIG BEAR 2nd BIG SALE WEEK!

... celebrating our exciting new Lucky Store at 205th & Aurora, Seattle, with these fabulous values!



**FULL SHANK HALF**

6- to 8-lb. AVERAGE SIZE

## Smoked Hams

Absolutely the finest ham value! Full shank halves with no center slices removed! Sugar cured, pink-meated and juicy. Guaranteed for tenderness. Federal.

# 43¢

**CENTER SLICES** .....lb. 89¢  
**BUTT PORTION** .....lb. 49¢  
**WHOLE HAMS** 12-16 lb. average .....lb. 49¢

**Tom Turkeys**  
18 to 20 lbs. Lynden tender Grade A young Tom Turkeys. Incomparably juicy.  
**45¢**

**Boneless Hams**  
7 to 10 lbs. Jilg's or Rath Hams. Fully cooked . . . pink-meated, tender.  
Whole or piece.  
**79¢**

**GRADE A HEN TURKEYS**  
Lynden tender, Grade A young Hen Turkeys. 11-13 lb. avg. **49¢**

**FRESH CHOICE LEG OF LAMB**  
Well-trimmed legs, juicy. Whole or half. **69¢**

**FRESH BONELESS LAMB ROAST**  
Fully boneless, rolled choice Saratogas. Whole or half. **69¢**

**MORRELL'S Canned Ham**  
8½ lb. avg., no bones, fully cooked, no waste. **79¢**

**CORNISH GAME HENS**  
Juicy, full meat game hens. Flavorful. 1 lb. 4 oz. average size. **79¢**

**STRAWBERRIES** AGEN FRESH FROZEN 10-oz. Pkg. **15¢**

**STARKIST CHUNK TUNA** ..... 4 No. ½ Cans **1.00**  
**BETTY CROCKER MIXES** Brownie, Date Bar & Macaroon 3 Pkgs. for **99¢**  
**BARTLETT PEARS** Duchess or Treasure Gold ..... 3 No. 2½ Cans **87¢**  
**PHILADELPHIA CREAM CHEESE** ..... 2 3-oz. Pkgs. **29¢**

**C&H SUGAR** BROWN OR POWDERED 2 1-lb. Ctns. **25¢**

**HI HO CRACKERS** ..... 1-lb. Box **29¢**  
**SUNSHINE CRISPY CRACKERS** ..... 1-lb. Box **29¢**  
**MEDIUM SIZE RIPE OLIVES** Early California ..... No. 1 Tall **29¢**  
**CAMPFIRE MARSHMALLOWS** ..... 12-oz. Box **29¢**

**HILLS COFFEE** Reg. or Drip (Lucky Coffee) 2-lb. can 1.19 1-lb. can **59¢**

**BANQUET MEAT PIES** Beef, Chicken or Turkey ..... 5 8-oz. Pies **1.00**  
**ROSEDALE GREEN PEAS** ..... 6 No. 303 Cans **89¢**  
**DUCHESS CREAM CORN** ..... 6 No. 303 Cans **89¢**  
**KLEENEX TISSUES** 200 Ct. Box ..... 2 For Only **29¢**

**NIBLETS CORN** W. K. 2 12-oz. CANS **29¢**

**ZEE SANDWICH BAGS** ..... 75 Ct. Pkg. **23¢**  
**SWANSDOWN CAKE FLOUR** ..... 2-lb. Pkg. **39¢**  
**S&W MARASCHINO CHERRIES** ..... 8-oz. Can **29¢**  
**TAYLOR'S SWEET POTATOES** ..... No. 3 Can **29¢**

**JELL-O, All Flavors** Per Pkg. **5¢**

**PINEAPPLE** HILLSDALE HALF SLICES No. 2½ Can **29¢**

**NEW Potatoes**  
Calif. New-Crop White Shufflers

**U. S. No. 1 Grade Size A** 6 lbs. for **39¢**

**FRESH GREEN PEAS** 2 lbs. for **29¢**  
Calif. new crop, sweet giant stride variety, well filled pods

**FRESH ARTICHOKEs** 2 for **19¢**  
Calif. grown, frost free, fancy large tender meaty globe variety

**FRESH CRISP CELERY** per lb. **9¢**  
Calif. grown, tender, crisp, sweet pascal variety.

**EASTER LILIES!**  
Selected premium quality . . . attractively pot wrapped.  
Fresh cut flowers . . . potted plants — economically priced.

Bedding plants, primroses, geraniums at your Parkland Big Bear Store. All are well weathered, sturdy premium quality plants . . . Plant Now.

### Polar Fresh-Frozen Foods Sale

**GREEN BEANS** Reg. Cut, 9-oz. Pkg. .... 6 for 99¢  
**GREEN BEANS** French Cut, .... 9-oz. Pkg. 6 for 99¢  
**BROCCOLI SPEARS** ..... 9-oz. Pkg. 6 for 99¢  
**MIXED VEGETABLES** ..... 10-oz. Pkg. 6 for 99¢

**FROZEN GREEN PEAS**...10-oz. Pkg. 6 for 99¢  
**PEAS AND CARROTS** ...10-oz. Pkg. 6 for 99¢  
**FROZEN SPINACH** .....12-oz. Pkg. 6 for 99¢  
**FROZEN FRENCH FRIES** 9-oz. Pkg. 6 for 99¢

**133rd At Pacific Parkland**

**Lucky BIG BEAR**

Prices shown effective Wed. through Sat. We reserve the right to limit.

**DRUG FACTS**

May the Blessings and Joy of Easter be Yours . . .  
**ASHMORE'S SPANAWAY DRUG**

ASHMORE'S R PHONE LE 7-5993  
**SPANAWAY & DRUG**  
165th & PACIFIC AVE.  
SPANAWAY, WASH.

**PAINT NOW**  
**LUMBER** ALL GRADES  
All Standard and Better Lumber is now Grade Stamped

**GLASS HARDWARE SHINGLES ROOFING**  
FULL LINE OF HAND TOOLS  
**Baskett Lumber**  
9701 Portland Avenue  
LE 7-8663

### Woodland . . . Howdy Partners Dance Party Set

Tonight, Thursday, April 14, is Howdy Partners party night again at Fruitland Grange. The dance of the month "Piano Roll Waltz" and the "Corrido" will be taught by the instructors, the Willis Dodges. This is election night too so come out and vote for your favorite candidate. Dancing is from 8:00 to 10:00 p.m. with the meeting and coffee after. Bring cups and snacks and the coffee and tea will be served by the club. Hosts and hostesses are Roy and Rose Holmes and George and Edith Thamer. All dancers are welcome.

#### Hoedowners

Saturday evening, April 16, the Harmony Hoedowners will dance again at Fruitland Grange. The newly elected officers will be installed: Messers and mesdames George Patrick, president; Al Goelzer, vice president; Jim Bigelow and Arne Bolter, secretaries; Harold Hanson, treasurer. The business meeting will be at 8:00 p.m. with the dancing to start at 8:30 p.m. All dancers are welcome to come. Bring your snacks and cups. Coffee and tea will be served by the club. Hosts and hostesses for the evening are the Bolters, Bigelows, Davids, Ed Royer and LaVerne Durbin. Come and join the fun.

#### Booster Club

The 112th Booster club is planning a square dance on Tuesday evening, April 19, from 8:00 to 10:00, at the Summit Youth Center hall behind the Central Avenue school. Jim Bigelow will call the squares for the dance. All dancers are more than welcome to come. Bring your snacks and cups. The club will serve coffee and tea.

#### Woodland P-TA

Election of officers will be the highlight of the April 20 meeting of Woodland P-TA in the school gym, starting at 8:00 p.m., President Victor Gawley presiding. Awards will be presented to the school patrol. Congratulations to Marge Vorak of the P-TA and Barbara Hill of the Preschool for merit awards and blue ribbons on their record and history books.

#### Help! Help!

WANTED! Someone to coach a Little League Baseball team. The 112th Booster Club would like to have a little league team again this year but are badly in need of a coach. Anyone interested or knowing someone that might be interested can call the club president, Dick Junk, at TH 5-4394.

#### Happy Neighborhood Club

The Happy Neighborhood Club met on March 17th at the home of Winnie Westman with 13 members present. The meeting was turned over to the new chairman Julia Franklin. A lovely necklace and earring set was presented to Barbara Hill, the out-going chairman. The ladies worked on hand bags during the day. Bertha Liechty and Katherine Flom received birthday cards and hankies. Refreshments were served by the hostesses. Those present were Mesdames Effie Tautte, Sarah Hopkins, Edith Bjerk, Katherine Flom, Lois Miracle, Eleanor Cooper, Cora Hill, Pat Arnold, Julia Franklin, Hattie Brown, Bertha Liechty, and the hostess, Winnie Westman. The next meeting will be at the home of Edith Bjerk on April 21 at 1:00 p.m.  
Reporter — Margaret David, LE 7-6668.

#### BUY U.S. SAVINGS BONDS

**QUALITY HOMES**  
Estimates Without Obligation  
DESIGN ASSISTANCE  
**Hedlund Const.**  
920 So. 121st LE 7-4227

### Collins . . . P-TA Sponsoring Mothers Work Day

Collins P-TA is planning a mothers' work party for the school park project Tuesday, April 19, 10:00 a.m. to 2:00 p.m. Mothers are asked to bring sack lunches. The next regular P-TA meeting on April 21 will have a guest speaker, Principal Dave Turnbull, talking on "The Elementary program of No. 402."

#### Pony Play Day

Pony fanciers young and old are invited to a pony play day Sunday, April 24, at the Taylor Pony Farm one block west of the Collins school on Collins road. "Mr. King," champion roadster pony from Dally's Stables at Bellevue, will be on hand to show what a real going pony can do. Mr. Dally will show, in contrast, a young colt just going into training.

At 10:00 a.m. there will be a judging practice for 4-H'ers and all interested young people, followed by a fitting and showing class. The play day opens at 1:00 p.m. with equitation classes, halter classes and roadster classes. Bring your ponies, carts or just yourselves and join in the fun. For further information, phone LE 1-1439 or LE 1-1691.

#### Girl Scouts

There will be a meeting in the home of Mrs. Bum, Golden Given and Allison roads, after school April 21 for all 5th and 6th grade girls who wish to pass tenderfoot requirements to "fly up" into the Girl Scouts. Ladies interested in becoming Scout leaders, please remember the free training next week in Parkland Methodist church beginning April 19 at 7:30 p.m.

#### Collins Grange

Collins Grange will meet in the April 14 at 8:00 p.m.

#### Church Guild

The Collins Community church Guild will attend a luncheon at the Lake City Community church Tuesday, April 19, at noon. All those wishing to attend should meet at Collins church at 11:20 a.m.

#### Grateful

Nita Preugschot wishes to thank the bakers of the cookies for the recent cookie sale. Her group of Brownies averaged two cases per girl; all with go to day camp.

#### Bunkhouse Featured

Connie Erickson of the Bunkhouse, Parkland's style center for horseclovers, provided the clothing shown in the Western division in Friday's style show at the Top of the Ocean. The event was sponsored by the Tacoma Police-men's Benefit & Relief Association and was a huge success. Mrs. Erickson directed a number of charming Parkland girls who modeled the clothing before the large group attending the luncheon.

#### IT'S NEW FAZE-FAZE Outside Latex Paint

- Blister Resistant
- Applies in Wet Weather
- Dries in 30 Minutes
- Lasts Years Longer
- Odorless
- More Coverage Per Gallon
- No Brush Drag - Saves Hours of Work

FREE — Trim Brush With Purchase of One or More Gallons of FAZE

**PETERSON  
COLOR CENTER**  
Featuring Spread Satin — General Points  
11000 Pacific Ave.  
(In Keller Kort)  
LE 1-0711

### Harvard Preschool

Harvard Preschool will meet April 19 at 8:00 p.m. in the Kindergarten room of the school.

The Girls' Sextette, a vocal group from Franklin Pierce high school, will sing under direction of Ron Smith, followed by an Easter inspiration by Mrs. James E. Smith. A visiting team from the P-TA County Council will demonstrate some do's and don'ts on parliamentary law, which will be a great help to all members, especially the newly elected officers. Refreshments will be served by hostesses Mrs. Robert V. Sampson, Mrs. John Miller, Mrs. Adolph Bosensius and Mrs. Richard Culbertson.

In six American League seasons Detroit's Frank Lary has compiled a 21-6 record against the Yankees.

### Serves In Disaster Area

PIRMASENS, Germany (AHT-NC) — Army Sergeant First Class Reynard R. Adleman, 31, whose wife, Joyce, lives at 13507 Pacific ave., Parkland, recently assisted in the work of recovery and rehabilitation in the disaster area of Agadir, Morocco, where an earthquake took 12,000 lives and left 25,000 homeless.

Sergeant Adleman, along with other members of the 79th Engineer Battalion, traveled with his unit from Germany to Morocco where he helped with the tasks of cleaning the city, replacing communications and utilities, and making preparations for rebuilding after probing the rubble for survivors and fatalities.

A mess steward in the battalion's Company A, he entered the Army in 1946 and arrived overseas in January of this year on his tour of duty.

### Graham . . . Friendship Nite For Rebekahs

Kapowsin Rebekah Lodge No. 241 will meet April 19 at 8 p.m. in the Kapowsin Grange hall for a Friendship Nite event; a cake walk will be held and games played. Noble Grand Marie Timus and Vice Grand Betty Napier will be in charge.

#### GRANDMOTHERS

The Grandmothers Sunshine club No. 250 met April 8 at the home of Mrs. Jack Redford with Mrs. John Nelson as co-hostess. Luncheon was served after the business session, followed by a spelling bee and a bazaar.

#### COVENANT LADIES AID

The regular monthly meeting of the Ladies Aid of the Covenant

Community church will meet in the Sunday school building at Graham for a noon luncheon April 20 with Bible study at 1 o'clock, the business meeting to follow.

#### HOME FROM TRIP

Mr. and Mrs. Charles Wilbur and son Pat have just returned from a week's visit to Glenview, N.D., where they attended the funeral of George Iszler, Mrs. Wilbur's father.

Reporter—Mrs. Marie Timus, VI 7-7394.

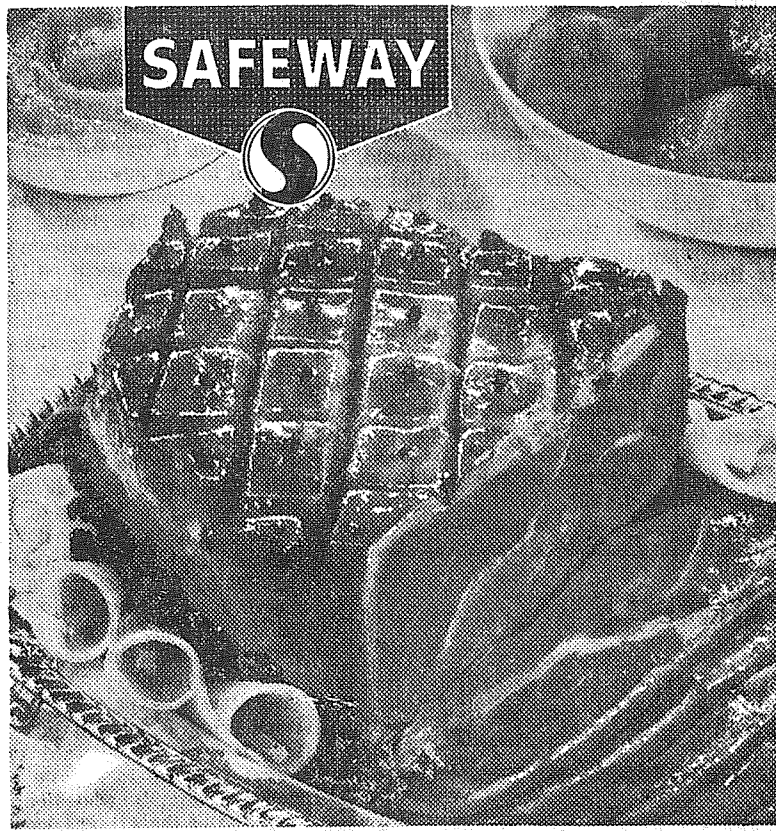
**Rural Garbage Service**  
Pierce County Permit  
Serving Parkland, Midland,  
Summit and Spanaway  
LEnox 7-8688

### Grandmothers Lunch

The Fern Hill Grandmothers club will hold its annual spring luncheon April 19 at 12:30 p.m. in the Fern Hill Methodist church parish house. For further information, call Mrs. Gus Bleich, GR 4-1260.

### Complete and Minor Motor Repairs

**VIRG ADAMS  
RICHFIELD  
BEACON  
SERVICE**  
8515 So. Tacoma Way  
JU 8-9613



**All Safeway Stores Will Be CLOSED  
EASTER SUNDAY, APRIL 17th**

# Easter's Finest

Homemakers have been bustling about for weeks, preparing for a joyous Easter! Fashionable outfits await the Easter parade. Homes are polished and shining in readiness for a festive Easter dinner. To help you prepare a real feast, our buyers have searched the market for especially fine foods for your holiday table. Come and see the marvelous selections in all departments!

Approximately  
67c Per Pound

**HAMS** 9-lb. \$ **5.99**  
Can  
BONELESS  
HORMEL, Canned. Fully cooked.  
5-lb. Can \$ **3.99**

**Boneless Hams** FIESTA or HOLIDAY Fully Cooked **79c** lb.  
**Small Turkeys** WILLMARET 6 to 10-lbs. **39c** lb.  
**Beef Rib Roast** U.S. Choice. Aged just right. Lean meat **79c** lb.

**Awards at Safeway!**  
**FREE-16-Ft. HOUSE TRAILER**  
**BIG BOY BARBECUE**  
With Barbecue Tools — 25 lb. Bag of Charcoal, 2 Porterhouse Steaks and 1 lb. of Wieners.  
**17" PORTABLE TV**  
Blanks available at all Tacoma, Sumner, Puyallup & Enumclaw Safeway Stores.

**Cube Butter** LUCERNE, Grade AA Made from sweet cream **65c** lb.  
**Mayonnaise** PIEDMONT. Ideal Salad dressing **39c** Quart Jar  
**Brown Sugar** or C & H Powdered **25c** 2 1-lb. Pkgs.  
**Ice Cream** LUCERNE, for better tasting ice cream **79c** Half Gallon

**Cranberry Sauce** OCEAN SPRAY 2 16-oz. Cans **35c**  
**Fruit Cocktail** TOWN HOUSE 5 17-oz. Cans **\$1.00**  
**Pineapple** ROSEDALE Sliced 2 15-oz. Cans **39c**  
**Nalley's Tang** Salad Dressing **39c** Quart Jar  
**Edwards Coffee** 2-lb. Can **\$1.13** 1-lb. Can **57c**  
**Cake Mix** BETTY CROCKER Angel White or Lemon Custard 16-oz. Pkg. **45c**  
**Dog Food** BLUE MOUNTAIN Chicken 6 16-oz. Cans **\$1.00**  
**Reynolds Foil** Aluminum Wrap 18"x25" Roll **59c**

**Strawberries** BEL-AIR, Fresh frozen, premium quality **5** 10-oz. Pkgs. **\$1**  
BEL-AIR FROZEN PEAS OR CUT CORN 10-oz. Pkg. **6 for 1.00**  
ZIPPY FRESH PACK KOSHER DILLS 24-oz. Jar **33c**  
CURTSY HOT CROSS BUNS Package **45c**  
RUTH ASHBROOK PARKER HOUSE ROLLS Pkg. **29c**

**Radishes or Green Onions**  
Finest of the spring season.  
Snappy - Garden Fresh  
**4 Bunches 19c**

**FRESH EGGS**  
CREAM 'O THE CROP. Snowy White, begging to be colored  
LARGE "AA" **2 93c** Dozen  
LARGE "A" **2 89c** Dozen  
**Easter Egg Dye** CHICK CHICK Pkg. **19c**  
**Food Coloring** CROWN COLONY 1-oz. Bottle **17c**  
**Food Coloring Kit** CROWN COLONY Each **25c**

**APPLES** Extra Fancy Winesaps **10c** lb.  
**Fresh Asparagus** **29c** 2 lbs.  
**New Potatoes** U.S. No. 1 **8c** lb.  
**New Green Peas** Sweet, tender and flavorful **29c** 2 lbs.

**EASTER LILLIES**  
Safeway has the finest U.S. No. 1 Grade Foil wrapped Ribbon Tied, every Plant Guaranteed

Sale starts Thursday, April 14 through Saturday, April 16, in Tacoma, Sumner & Puyallup.

**SAFEWAY**

**INCOME TAX SERVICE**  
BY  
**O. K. DIZMANG & JERRY HANSON**  
AT  
**SUBURBAN REALTY INC.**  
FOR DAY OR EVENING SERVICE  
**CALL LE 7-8638**  
11302 Pacific Avenue

**T.V. JINGLES** TELEVISION SERVICE CENTER  
NO MATTER HOW YOU LOOK AT IT...  
Television Service Center is a regular Sherlock Holmes when it comes to tracking down TV troubles. When your set acts up, call us up, GR 2-3386 — JU 8-1000  
**TELEVISION SERVICE Center**  
"YOUR WINEGARD COLOR CEPTOR DEALER"  
GR23386 JU-8-1000 8431 PACIFIC AVE.

**Promoted**  
son of Mrs. Lois V. Bason, 622 S. 86th st., Tacoma, recently was promoted to private first class at Fairchild Air Force Base, Wash., where he is a member of the 34th Artillery, a Nike-Hercules missile unit.  
Franks, assigned to the artillery's Battery C, entered the Army last July and completed basic training at Fort Ord.

**BART'S**  
PARKLAND  
APPLIANCE SERVICE  
Specialist in Small Appliances  
LE 1-0528 Any Time

**FLETT DAIRY**  
FARM FRESH  
HOMOGENIZED AND  
PASTEURIZED MILK  
AND CREAM  
ICE CREAM  
Phone GR 2-3301

**BALDWIN \$995.00**  
MODEL 30  
  
**PROSSER PIANO & ORGAN CO.**  
6425 S. Tacoma Way  
GR 4-0605

**A Real Treat**  
● Tossed Salad  
● French Fries  
● Garlic Toast  
**NETTIE'S CAFE**  
VISIT OUR DAFFODIL ROOM  
116 SO. MERIDIAN ST. PUYALLUP  
TH 5-1156

**Midland Marketing Tour For Lucky Lassies**

The Lucky Lassies 4-H club went on a marketing tour to Villa Plaza March 26. First stop was the material department where the girls were shown around and those purchasing material for their cotton outfits and aprons were Sandy Jordan, Kathy Connell, Joyce For-dyce, Diane Peterson, Rosemary Sherry, Cindy Dimond, Cindy Heyer, and Mary Blessing. Next they took a trip through a bakery which was interesting to all but especially to Nancy Dimond, Nancy Goettling and Kathy Connell who are taking Baking as a project this year. All the girls are practicing the demonstrations they plan to enter in the District Demonstration Contest at Franklin-Poerch High School April 30.

**Midland P-TA**  
Midland P-TA meets Wednesday, April 20, at 8:00 p.m. in the Midland school. Mrs. Lyle Landon will preside over the business session. On the program will be a speaker and film from the Goodwill Indust-

**COME IN AND SAY HELLO**  
**LORBEE'S**  
KNIT KNACK SHOP  
Across From Piggly Wiggly  
SEE THE NEW  
KNITTING MACHINE  
Demonstrations - Lessons  
Yarn and Accessories  
Custom Knitting  
Hours: 12 'Til 5:00 p.m.  
217 Garfield St. LE 1-1312

**Cub Scouts**  
The April Cub Scout Pack meeting of the Midland Pack 84 will be held in the Midland Improvement club hall Tuesday evening, April 19, starting at 7:30. All interested, be sure and note the change of night and also of time. Awards will be presented to all the Cubs earning them.  
**Cub Scout Awards**  
Awards presented to Midland Cub Scouts, Pack 84, by their Cub-Master, George Rodrick, Jr., Friday evening, March 25, in the Midland Improvement Club Hall were as follows: Den 3—Dennis Hutchins, Wolf. Den 12—Mark Vetter, one

**It's the LAW**  
PRESENTED AS A PUBLIC SERVICE BY THE WASHINGTON STATE BAR ASSOCIATION

**FORCIBLE REPOSSESSION**  
Joe bought a car from Jerry's Car Lot paying \$30 down and signing a conditional sale contract for the balance. The contract contained a provision stating that if Joe defaulted in the required payments the seller could repossess the car, and that Joe would peaceably yield possession.  
After a few months Joe got behind in his payments. Jerry drove to Joe's house and found the car parked in the street in front of the house. After telling Joe he was

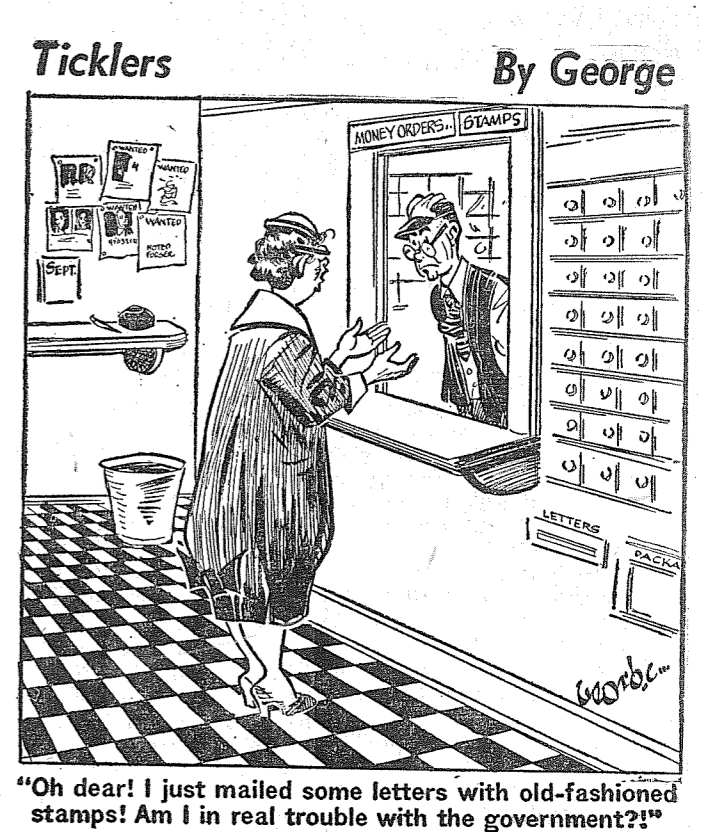
there to repossess the car, Jerry hooked on a chain to tow it away. Joe objected violently and climbed into the car. Jerry grabbed Joe and pulled him out and then towed the car away.  
Joe sued Jerry for civil damages for assault and battery and won. Although Joe had agreed that Jerry could repossess if Joe defaulted, Jerry still did not have the right to use force to repossess. Force is never justified on the part of a private individual merely to enforce a contract. The law provides adequate peaceful remedies.  
However, if Joe had no intention of bringing his payments up to date he should not have resisted the repossession. He had no legal right to possession and simply delayed the inevitable repossession by his actions.  
(This column is written to inform, not advise. Facts may change the application of the law.)

**LAWYERS HIT AT CRIMINALS**  
Congress has passed a number of laws which are intended to assist our various law enforcement agencies. Prior to enactment of these federal laws it was too easy for a criminal to flee across a state line and thus escape prosecution and punishment for his crimes.  
The Dyer act is one example of federal legislation designed to provide a more "open season" on criminals. This act makes it a federal offense to transport a stolen car, knowing it to be stolen, in interstate commerce.  
Another federal law designed to eliminate out of state sanctuaries for criminals is the Fugitive Felon Law. This provides that anyone who travels in interstate commerce intending to avoid prosecution under the laws of the state from which he flees for any one of several serious crimes, or avoid giving testimony in any criminal proceeding, shall be fined or imprisoned or both.  
This law was part of the anti-racketeering legislation passed in 1943. It was intended to enable federal agencies to go into action against criminals who flee from the scene of the crime beyond the jurisdiction of the state where the crime is committed and eventually escape punishment entirely.  
In a recent case under this law

there to repossess the car, Jerry hooked on a chain to tow it away. Joe objected violently and climbed into the car. Jerry grabbed Joe and pulled him out and then towed the car away.  
Joe sued Jerry for civil damages for assault and battery and won. Although Joe had agreed that Jerry could repossess if Joe defaulted, Jerry still did not have the right to use force to repossess. Force is never justified on the part of a private individual merely to enforce a contract. The law provides adequate peaceful remedies.  
However, if Joe had no intention of bringing his payments up to date he should not have resisted the repossession. He had no legal right to possession and simply delayed the inevitable repossession by his actions.  
(This column is written to inform, not advise. Facts may change the application of the law.)

**LAWYERS HIT AT CRIMINALS**  
Congress has passed a number of laws which are intended to assist our various law enforcement agencies. Prior to enactment of these federal laws it was too easy for a criminal to flee across a state line and thus escape prosecution and punishment for his crimes.  
The Dyer act is one example of federal legislation designed to provide a more "open season" on criminals. This act makes it a federal offense to transport a stolen car, knowing it to be stolen, in interstate commerce.  
Another federal law designed to eliminate out of state sanctuaries for criminals is the Fugitive Felon Law. This provides that anyone who travels in interstate commerce intending to avoid prosecution under the laws of the state from which he flees for any one of several serious crimes, or avoid giving testimony in any criminal proceeding, shall be fined or imprisoned or both.  
This law was part of the anti-racketeering legislation passed in 1943. It was intended to enable federal agencies to go into action against criminals who flee from the scene of the crime beyond the jurisdiction of the state where the crime is committed and eventually escape punishment entirely.  
In a recent case under this law

**LAWYERS HIT AT CRIMINALS**  
Congress has passed a number of laws which are intended to assist our various law enforcement agencies. Prior to enactment of these federal laws it was too easy for a criminal to flee across a state line and thus escape prosecution and punishment for his crimes.  
The Dyer act is one example of federal legislation designed to provide a more "open season" on criminals. This act makes it a federal offense to transport a stolen car, knowing it to be stolen, in interstate commerce.  
Another federal law designed to eliminate out of state sanctuaries for criminals is the Fugitive Felon Law. This provides that anyone who travels in interstate commerce intending to avoid prosecution under the laws of the state from which he flees for any one of several serious crimes, or avoid giving testimony in any criminal proceeding, shall be fined or imprisoned or both.  
This law was part of the anti-racketeering legislation passed in 1943. It was intended to enable federal agencies to go into action against criminals who flee from the scene of the crime beyond the jurisdiction of the state where the crime is committed and eventually escape punishment entirely.  
In a recent case under this law



"Oh dear! I just mailed some letters with old-fashioned stamps! Am I in real trouble with the government?!"

**PROMPT PERSONALIZED PRESCRIPTION SERVICE**  
TED SWANSON  
INSULIN - VITAMINS  
Downtown Prices  
Pay Phone Bills Here  
PLENTY OF FREE PARKING  
TINCHER'S PHARMACY  
8227 Park Ave. GR 4-3344  
Across from Fern Hill P. O.

**General Sheet Metal Work**  
Special Attention to Special Equipment  
**RAU MFG. CO.**  
LEnox 7-7372  
14114 Pacific Avenue

**FOR RENT TRUCKS & CARS**  
MA 7-9039  
Save One Half  
We Furnish Everything  
**HARMON'S**  
Driv - Ur - Self Co.  
HARMON'S SERVICE  
2112 Jefferson  
Jim Harmon, Mgr.

**B & M USED CLOTHING AND APPLIANCES**  
Bass Drum & Accessories  
163RD & PACIFIC SPANAWAY  
Open Week Days 9 to 7

**LINOLEUM, FORMICA, CARPETS**  
FREE ESTIMATES  
**PACIFIC FLOOR COVERING**  
131 & Pacific LE 7-4545

OPEN 7 DAYS A WEEK 9 TO 9 FOR YOUR CONVENIENCE

**MONEY! THERE IS ALWAYS A MONEY!**

That's what you save when you buy at **CENTRAL SURPLUS**

**SALE**

At **CENTRAL SURPLUS**

We Invite You to Compare Our Prices

<p><b>100% WOOL CAPRIS</b> Our Reg. 5.95 Value ON SALE <b>\$2.69</b></p>	<p><b>CHILDREN'S PLAY SUITS</b> While They Last 1.00 per set Buy Your Children's Needs Here</p>	<p><b>VERY SPECIAL G.E. APPLIANCES</b> STEAM &amp; DRY IRONS Reg. 15.95 SALE 9.95</p>	<p><b>LADIES' SHOES and TENNIS WEAR</b> Our Reg. 4.95 and 5.95 On Sale 1.75 and 2.45</p>	<p><b>Coleman COOLER CHEST</b> Reg. 18.95 Value SALE <b>\$12.25</b></p>
<p><b>MEN'S JACKETS</b> Our Reg. 10.95 Value ON SALE <b>\$4.95</b></p>	<p><b>LADIES' SKIRTS</b> Our Reg. 4.95 Value On Sale 1.95</p>	<p><b>ALARM CLOCKS</b> SALE 2.98</p>	<p><b>BOYS' WORK PANTS</b> Our Reg. 2.95 Value On Sale 1.50</p>	<p><b>TOOLS</b> Large Assortment YOUR CHOICE <b>\$1.00</b></p>
<p><b>Light Wt. Summer SPORT JACKETS</b> Reg. 7.95 <b>\$9.95</b></p>	<p><b>WE HAVE A COMPLETE SELECTION OF CHILDREN'S WEAR AT UNHEARD OF PRICES</b></p>	<p><b>ELECTRIC MIXER...</b> 29.95 <b>ELECTRIC BLANKETS</b> 16.95 Double 13.95 Single 13.95</p>	<p><b>MEN'S WORK PANTS</b> Our Reg. 4.75 and 5.95 Val. On Sale 2.00 and 2.50</p>	<p><b>SWIMMING TRUNKS</b> Buy One Now <b>\$1.25</b> Each</p>
<p><b>MEN'S SLACKS</b> While They Last <b>\$3.50</b></p>	<p><b>COAST GUARD APPROVED LIFE JACKETS</b> Our Reg. 5.95 Value On Sale 2.95</p>	<p><b>TERRY CLOTH BEACH COATS</b> Our Reg. 4.95 Value On Sale 1.95</p>	<p><b>MEN'S SHOES &amp; BOOTS</b> Our Reg. 23.00 Value On Sale While They Last 7.95 and 9.95</p>	<p><b>IRONING PADS and COVERS</b> While They Last <b>69c</b> Each</p>
<p><b>LADIES' DRESS RAINCOATS</b> Our Reg. 5.95 Value ON SALE <b>\$2.95</b></p>	<p><b>MEN'S HEAVY DUTY AND LIGHT RAINWEAR AT PRICES YOU CAN AFFORD</b></p>	<p><b>MEN'S 100% WOOL SWEATERS</b> Our Reg. 10.95 Value On Sale 4.25</p>	<p><b>MEN'S SHORTS</b> Our Reg. 1.25 Value On Sale 75c</p>	<p><b>IRONING PADS and COVERS</b> While They Last <b>69c</b> Each</p>
<p><b>BLANKETS</b> Our Reg. 6.45 Value ON SALE <b>\$2.50</b></p>	<p><b>WE HAVE A LARGE SELECTION OF FOAM RUBBER OF ALL KINDS</b> Long Sheets, Pillows, Etc. 3" x 24 x 72 8.50</p>	<p><b>LADIES' BEAUTIFUL JACKETS</b> Our Reg. 16.95 Value On Sale 6.95</p>	<p><b>LADIES' 100% WOOL AND CASHMERE SHORTY COATS</b> Our Reg. 21.95 Value On Sale 8.75 While They Last</p>	<p><b>MEN'S T-SHIRTS</b> Our Reg. 75c Value <b>3 for \$1.00</b></p>
<p><b>AIR MATTRESSES</b> While They Last Our Reg. 4.65 Val. 1.99 Plastics</p>	<p><b>LADIES' DRESS RAINCOATS</b> Our Reg. 4.95 Value On Sale 2.25</p>	<p><b>MEN'S DRESS NECKTIES</b> 1.50 Value On Sale 75c</p>	<p><b>LADIES' NYLON SLIPS</b> Our Reg. 2.98 Value On Sale 1.25</p>	<p><b>BEAUTIFUL 100% WOOL KNIT SUITS</b> Our Reg. 39.95 Value On Sale 10.75</p>
<p><b>OUTSIDE PAINT</b> Red, Brown White and Green 1.85 Value While They Last Gallon Only...Per Gal. 1.65</p>	<p><b>20 GAL. GARBAGE CAN</b> On Sale While They Last 1.99</p>	<p><b>MEN'S SPORT SHIRTS</b> Our Reg. 5.95 Value On Sale 2.50</p>	<p><b>LADIES' DUSTERS</b> Our Reg. 5.95 Value On Sale 2.75</p>	<p><b>MEN'S SWEATERS</b> While They Last Our Reg. 14.95 On Sale 3.50</p>

**CENTRAL SURPLUS**

1000 CENTER ST. WE DON'T MEET PRICES - WE MAKE THEM CORNER CENTER AND SO. J

OPEN EVERY EVE. 'TIL 9 P.M. EXCEPT SUNDAY

**APRIL... '60 COUPON SAVINGS AT SILER'S**

FOR THIS AREA, WE HIGHLY RECOMMEND THE **Winegard Annodized ALL CHANNEL TV ANTENNA**

Jack Siler Says..... I recommend **SYLVANIA'S SILVER SCREEN 85 PICTURE TUBE**

**BECAUSE.....**  
The Silver 85 has a super aluminized reflector that throws back onto the screen all the light that is lost in your old fashioned picture tubes.  
The Silver 85 picture guard vacuum protector provides longer tube life.  
Sylvania is the leading picture tube manufacturer.

**The Gold Antenna With The Gold Bond Guarantee**  
At last! A TV antenna styled to look good on your home... engineered to do more than just "pull in" a picture. The Colorceptor is factory guaranteed in writing to give you the clearest possible pictures on your TV. If Colorceptor won't bring in a station you want to see... nothing will!

**only \$29.95**

**THIS COUPON GOOD FOR \$4 ON A 17" or Smaller Silver 85 \$5 ON A 21" Silver screen 85 Tube \$6 ON A 24" or Larger Silver 85**

**THIS COUPON GOOD FOR \$12.00 TOWARDS A COMPLETE WINEGARD INSTALLATION OR \$6 TOWARDS PURCHASE OF A WINEGARD INSTALLATION, TOP ONLY. Offer expires April 30th.**

Name \_\_\_\_\_  
Address \_\_\_\_\_  
Phone Number \_\_\_\_\_  
This Coupon Redeemable At Siler's Only

**OUR REGULAR PRICES PREVAIL DURING THIS SPECIAL OFFER**

We invite you to come in and compare the Winegard annodized antenna with any other you've ever seen. You be the judge.

**SILER'S TV AND APPLIANCES**

11230 Pacific Avenue Check here for details on obtaining \$2 off on your next service call. LE 7-8634  
FACTORY-TRAINED SERVICE PERSONNEL

Silver Screen 85 gives you 3 times greater picture power and 7 times more picture contrast than ordinary picture tubes



### New Activities At Youth Center

Several new teachers have been added to the Christian Youth Center on Fairview road. They include Mrs. Fred Klapstein will include Mesdames Florence Noel, Dorothy Storm and Betty Wells. The Wednesday Bible Club that has been held at the home of Mrs. Fred Klapstein will in future be held at the Youth Center. Attendance has been going up each week, proving how popular these weekly sessions are with young folk; 137 children showed up last Tuesday and there is room for a lot more. Call Mrs. McFarland, WA 2-8204 for transportation.

**Congratulations**  
Congratulations to the Calvin Shipments on the birth of their first daughter, Crystal Durene, who was welcomed into the family on March 27. Also hello and welcome to Susan Elaine, daughter of Mr. and Mrs. Don Hicks, born March 30.

**Worth It?**  
Trying to recapture some of his lost youth cost Rube Larson a broken rib Sunday, April 3, while playing ball with the neighborhood kids. Try marbles next time, Rube; it's safer!

Reporter—Mrs. Everett Millican, WA 2-8330.

### Building Permits

A. E. Ghrmann, \$500 garage, 10709 So. Broadway, Tac.; Wm. Smith, \$13,750 residence, 5210 E. Mt. Tacoma Dr.; E. J. Rody, \$15,000 frame res., Eatonville, Wn.; Chas. R. Steiner, \$500 building, Puyallup, E. of city limits; Sixten G. Larson, \$1300 garage, 2905 E. 104th; Clifford Wagner, \$1500 addn. to res., Rt. 2, Box 918, Puy.; Everett Shinn, \$14,000 frame res., Meridian & Mitchell Gould Rd., Puy.; Anton Bullinger, \$13,000 frame res., 1923 88th; Jhon D. Dunkle, \$1000 Dog Kennel, Near Elk Plain, on Mt. Highway; Gay Const. Co. (2) residences, \$10,000 each, 11701 & 11615 South Alaska.

### Special Training

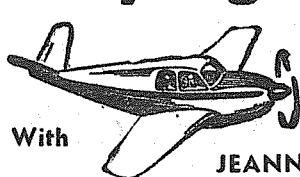
FORT SILL, Okla. (AHTNC) — Army Pvt. Norman F. Parmelee, son of Mrs. Evelyn Parmelee, 411 E. 71st st., Tacoma, has been receiving eight weeks of advanced training at The Artillery and Missile Center, Fort Sill, Okla., the training schedule to end April 11.

Parmelee is being trained to service and maintain the 105 millimeter howitzer, a light field-artillery weapon.

The 19-year-old soldier was stationed at Fort Ord, Calif., before arriving at Fort Sill.

He is a 1959 graduate of Lincoln High School, Tacoma.

### Flying



With JEANNE

Saturday several pilots took trips over the Daffodil Parade in Puyallup. Then Sunday some took trips down to see the Marine Regatta. These parades are a very colorful sight from the air.

Jake Jacobson and a friend took a flight around the mountain Sunday in the Luscombe.

Jack Brown and his family flew to Monroe and return Sunday. While there they went mushroom hunting and came home with a nice supply.

Dick Van Zanten completed his solo cross-country training by making a flight to Yakima, Ellensburg and return. Dick started his training in February and will be completing it in another month. Phone your news to Tahoma Flying Service, Lenox 1-0442.

### WELL DRILLING

Jacuzzi Pumps  
Pete Sylte  
LE 7-4748  
177th & Pacific Ave.

### Elk Plain P-TA to Elect Wednesday

Election of officers will high-light the business hour when Elk Plain P-TA meets in the school gym Wednesday, April 20, at 8:00 p.m. Everyone is welcome.

**Grange**  
The regular meeting of the Elk Plain Grange will be held at the hall this (Thursday) evening at 8:00 o'clock.

**Visits, Trips**  
Mr. and Mrs. John Ockfen and Carol left Saturday for Ogden, Utah, for a short visit.

Pvt. Dennis L. Burkhardt, son of Mr. and Mrs. Ray Burkhardt, is home from Fort Ord, Calif. He is to report back to Fort Ord

April 22 for eight weeks of extended training.

Mrs. Ann Coviness and children of Oakland, Calif., are visiting the Ray Burkhardts; she is Mr. Burkhardt's sister.

**Fire Auxiliary**  
The Elk Plain Firemen's Auxiliary will meet Monday, April 18, at 8:00 p.m. at the fire hall. Lois

**Midland — Summit — Parkland CUSTOM**  
Bookkeeping and Tax Service  
Also do-it-yourself method recommendations and consultation for small businesses  
LE 7-4589

Kuper is publicity chairman. Reporter — Mrs. Ray Burkhardt, VI 7-7386.

**DEPENDABLE PHARMACY SERVICE**

Bob Vaughan  
Owner

May He Bless you and yours this EASTER

Be Sure To Attend The Church Of Your Choice This Easter Sunday

**Parkland Rexall Pharmacy**  
11000 Pac Ave  
Keller's Kort  
LEnox 7-8636

INTEGRITY • SERVICE • SAFETY



"The Customer Is Always BOSS!"

### a-Wondering . . . and a-Wandering . . .

With JACK BROWN

The Pioche, Nevada, Record asks an unusual question: "How do you want your next pay raise—in more money or in lower prices?"

This was prompted by a statement made by Dr. Ralph Robey, a nationally known economist. Since World War II, he points out, almost every American worker has received a wage increase every year. He then says: "In my personal judgment the time has come to start using the entire growth in output per man-hour for a reduction of prices. This will not undermine the welfare of workers. It would mean that their present wages would buy more and more as the cost of living declined. That certainly is better than getting slightly higher wages which buy less and less."

This proposal sounds good to me but it's bound to receive the back-of-the-hand treatment from labor union officials, who seem to work on the principle that their duty is to force round after round of wage increases on the country, no matter how much inflation accompanies them. But what does the worker gain if his wage increases are cancelled out, or more, by prices? What does he gain if the worth of his old-age pension and other benefits are imperilled by the endless wage-price spiral? Nothing! And what happens to the millions of people who must exist in whole or large part on fixed dollar incomes? They eat less and have less.

This would be a stronger country, a more prosperous country, a more productive country, and a healthier country if Dr. Robey's plan were followed.

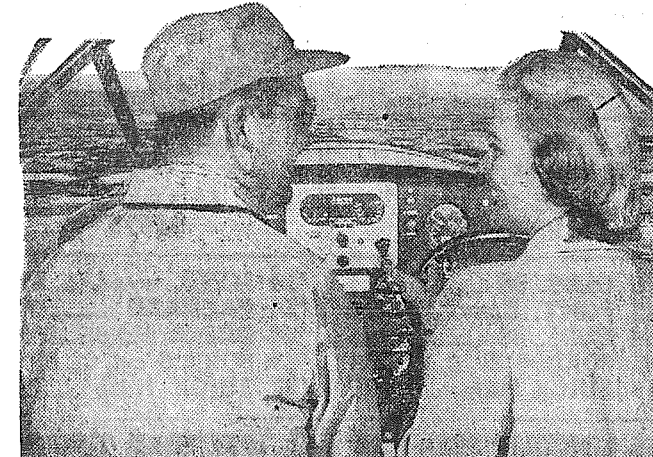
I'm happy to learn that the Select Committee on Small Business of the Senate has recommended that something be done to change the rules regarding tax depreciation on equipment.

"The committee's request for changes are based primarily on the need to link inflation with depreciation. If you bought a machine ten years ago for \$10,000, and depreciated it over 10 years, the depreciation deduction would now be used up. But, if you now buy a similar machine you will find its cost is now \$20,000 or more. Thus, half of the value, in terms of today's dollar, cannot, under present law, be depreciated for tax purposes.

"There have been a number of methods suggested for dealing with this matter. I don't consider myself expert enough to judge which might be most practical. But it is comforting to know that the committee which is supposed to look into the woes of small business has finally analyzed this subject and has asked Congress to remedy the situation."

In Cincinnati members of the Iron Workers Union asked for an extra hours pay to cover the time it takes to cash their pay checks. To me this request sounds rather assinine. Next thing they will be asking for a few hours pay to cover the time it takes to spend their weekly earnings. The worst part of this sort of thing is that it is you and I, the consumer, who are picking up the tab for all this nonsense.

**Free!** your first flying lesson!  
PROVE TO YOURSELF THAT YOU CAN LEARN TO FLY!



Investigate our BUDGET FLIGHT TRAINING PROGRAM less than \$10 per week

Here is your invitation to new thrills, new friendships, new horizons. Discover, as thousands of others have, that flying's for everyone. If you have any doubts about whether you can learn to fly, just try it and see. We invite you to take your first lesson free. We're confident that's all it will take to convince you that flying's for you. Everybody's doing it—so call for your appointment today.

FOR DETAILS . . . CALL

**TAHOMA FLYING SERVICE**

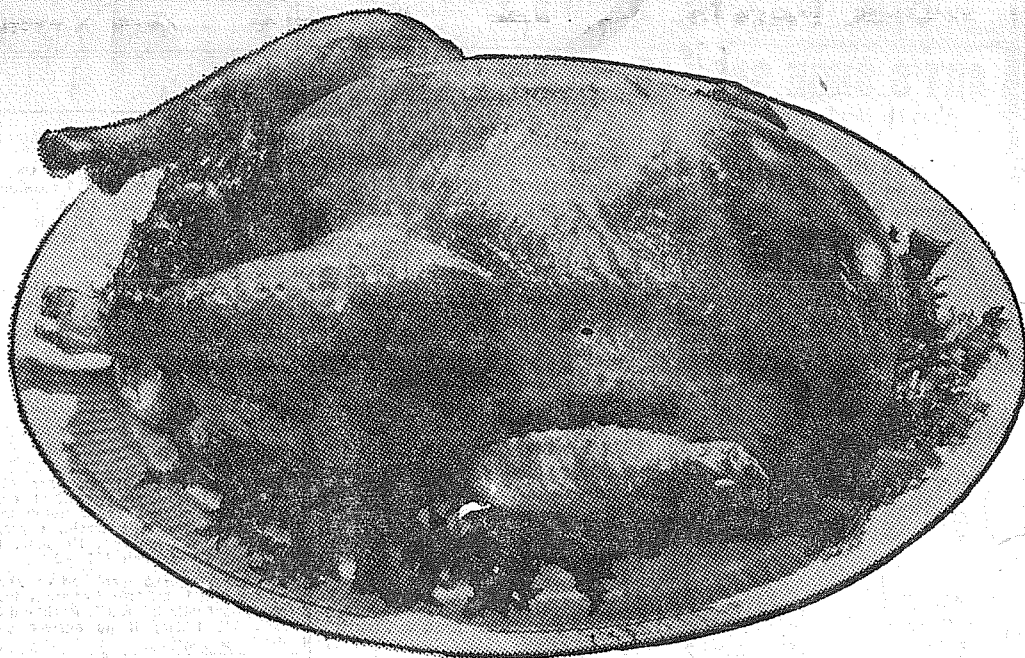
SPANAWAY AIRPORT  
185th and Pacific

LE 1-0442

# IGA EASTER HAM

**BONELESS—Fully Cooked** 79¢ lb.

**BONE IN, FULLY-COOKED**  
SHANK HALF 49¢ lb.  
WHOLE 55¢ lb.



GRADE "A" HENS—14-16 Avg.  
**TURKEYS** lb. 47¢

SWIFT PREMIUM Lb.  
**SLICED BACON** 49¢

VIRGINIA REEL  
**SAUSAGE** lb. 69¢

**LARGE SELECTION POTTED EASTER LILIES**

NEW CALIF. SHAFTER NO. 1  
**POTATOES** 6 lbs. 39¢

FRESH CALIFORNIA  
**PEAS** 2 lbs. 29¢

NO. 1 CELLO BAGGED  
**CARROTS** 2 pkgs. 17¢

NO. 1 CALIFORNIA  
**ASPARAGUS** 2 lbs. 27¢

- **LARGE 'AA' WHITE EGGS** FOR DYEING! DOZEN 45¢
- **CRANBERRY SAUCE** OCEAN SPRAY 7 NO. 1 TINS \$1 EACH 15¢
- **ANGEL CAKE MIX** BETTY CROCKER 3 VARIETIES! EA. 39¢
- **IGA DELUXE COFFEE** 1-LB. 57¢ 2-LB. \$1 13 TIN
- **LIBBY TOMATO JUICE** 46-OZ. 25¢ 4 FOR 89¢
- **IGA FRUIT COCKTAIL** 303 TIN EACH 21¢ 5 FOR \$1
- **STRAWBERRIES** AGEN FROZEN 10-OZ. PKG. 17¢ 6 FOR \$1
- **ORANGE JUICE** TREESWEET FROZEN, 12-OZ 3 FOR 97¢

Come In and Ask About the **FREE** SHRINE CIRCUS TICKETS AVAILABLE AT FOODTOWN

**WALLA WALLA VEGETABLES**  
Cream or Whole Kernel Corn, 3 Sieve Green Peas or Peas and Carrots  
6 303 Tins Each 17¢ **\$1**

# IGA FOODTOWN AIRPORT (112th) AT PARK AVE. AD DAYS APRIL 14-15-16

# BENEATH THIS BANNER ARE THE WORLD'S BEST BARGAINS

## CLASSIFIED ADS

Page 10 Thursday, April 14, 1960  
The TIMES JOURNAL

**Personal**  
INCOME TAX SERVICE, your home or ours; Ruster's GR 4-029, 5221 South Park, 1ctf

**Business Service**  
BULLDOZING, land clearing, excavation, grading and gravel. LE 7-5112. 3ctf

**PHOTOS**  
5x7, \$1 — 8x10, \$2  
For Appointment, Phone GR 4-1986—Open Evenings  
FAMILY PORTRAIT STUDIO  
8411 South Park Ave.

SEPTIC TANKS & WATER LINES INSTALLED. Riley Brothers. Phone LE 1-0987 or LE 7-3204. 3ctf

**PLOWING - ROTOVATING**  
**LAWN WORK**  
Garden & Small Dozing Work  
R. D. Beeler — LE 7-4940

**Webb Electric Co.**  
8240 B Pacific Ave. GR 2-2902  
**ELECTRIC HEAT**  
All Types  
Terms Can Be Arranged  
**FREE ESTIMATES**  
EMERGENCY PHONE LE 7-4437

**FOUNDATIONS**—New additions; free estimates; financing. Work guaranteed. LE 1-2929. 3ctf

**LAWNMOWERS SHARPENED**  
**COMPLETE MOTOR REPAIR SERVICE**  
All Work Guaranteed  
**JOHNSON'S SHOP**  
5514 Pacific Ave. GR 4-7112

**DON'T WAIT**  
TAKE ADVANTAGE OF OUR EASY TERMS  
If your set needs major repairs or you wish to purchase one of our low-priced reconditioned TVs.  
CALL GR 5-0658  
On Approval of Credit  
**A-1 TELEVISION AND RADIO SERVICE**  
CORNER OF 72nd AND PORTLAND AVE.  
WE USE RCA TUBES

**Business Service**  
SMITH CABINET SHOP—Remodeling, Carpenter work, kitchen cabinets, We stock and cut glass. 1639 South Park, Spanaway. LE 7-4855. 3ctf

**SEPTIC TANK CLEANING**  
Prompt Service  
**C. V. HUTSON**  
GR 4-3980 GR 2-7038

**COMPLETE TRACTOR WORK**  
Gravel & Driveways  
LE 7-3846

**USED AUTO PARTS**  
SATISFACTION GUARANTEED  
Bring This Ad For 10% Discount  
**GORDIE'S AUTO WRECKING**  
10620 Pacific Avenue  
LE 7-5565 — LE 7-4443

**Ace Dirt Moving Co.**  
Bulldozing — Ditching  
TOP SOIL — GRAVEL  
SEPTIC TANKS and DRAIN FIELDS  
Phone TB 5-2452

**CUSTOM-BUILT CABINETS**  
Pre-hung Doors—Free Estimates  
FORMICA & GE TEXTOLITE COUNTERS  
We Install Cabinets—Drain Boards  
**BAKER'S Woodworking Co.**  
LE 7-0565 — LE 7-3290  
13415 Pacific Ave. Parkland

**Business Service**  
TOP SOIL—SANDY LOAM—Parkland area special. Puyallup, TH 5-9729. 3ctf

**WELL DRILLING**  
Berkeley Pumps  
• JETS  
• SUBMERSIBLES  
• CENTRIFUGALS  
• TURBINES  
Call LE 7-7281

**TACOMA PUMP & WELL DRILLING CO.**  
14619 PACIFIC AVENUE  
Terms Trades

STUMP LIFTING—Pulling over (uprooting) trees; chain saw and haul away work. Free estimate. LE 7-8977. LE 7-8156. LE 7-3885. 3ctf

**JACK SHANK'S Refrigeration Service**  
Parts & Service for All Makes  
LE 7-0178

NOW AT SILER'S Complete service on electric ranges. All makes. Fast, dependable, reasonable. LE 7-8454.  
**South End Auto Wreckers**  
USED PARTS—Motors, Transmissions, Tires, Batteries. We buy junk cars. Also Custom welding by Joe's Welding. 1 Mile East Roy on Mt. Hy. Spanaway LE 7-6534

BLASTING BY BUD—Stumps, ditches, hard rock, etc. Problem jobs a specialty. Free estimates; insured; TH 5-9691, Puyallup. 3ctf  
COMPLETE remodeling, patios, porches, garages. Free estimate. SK 2-7587. 3ctf

**CALL POCHEL FOR Expert T.V. Repair**  
Satisfaction Guaranteed  
Free Tube Testing  
140th & Pacific LE 7-8624

GEORGE PURDUE—Plumbing, Heating, New work, remodeling, repairs. Phone LE 7-4477. 3ctf

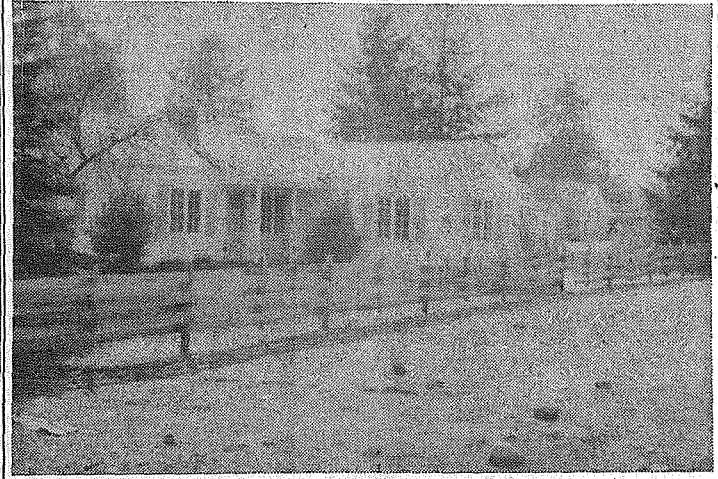
**Residential and Commercial PAINTING**  
Taping and Texturing  
**Broadwell Painting**  
LE 7-6893

**FOUNDATIONS**, additions, remodeling. Free estimates. Financing, no down payment. Phone GR 4-7000 any time. 3ctf

**Parkland Heating Co.**  
All makes of furnaces for sale. Specializing in Williams OIL O MATICS; Oil, Gas, Hot Water Installations. Service; reasonable; 755 South 108th. LEnox 7-4045. 3ctf

TAPING and texture work a specialty. Also painting and paperhanging. BR 2-8790. 3ctf

YOU JUST GOTTA SEE IT



Roomy, yet it's cute as a bug's ear. Completely remodeled to be like NEW. So many fine features we just can't describe them all. Ideal for large or small family, see for yourself, call BILL BLACK, LE 7-5440 anytime.

**RURAL REAL ESTATE**  
14403 PACIFIC AVE. LE 7-5440

**We Have BUYERS for your HOUSE!**  
FARM and BLDG. SITES  
**Listings Wanted**  
**DICK DEVEREAUX REALTY**  
Multiple Listing Service  
Buying or Selling  
**Call LE 7-8659**  
11002 Pacific Avenue

**Business Service**  
SEPTIC TANK, Drainfields, Sewer Installation. Luke, GR 2-7243. 3ctf

**FAST, DEPENDABLE BONDED TV-RADIO SERVICE**  
**ABC ELECTRONICS**  
Garfield & C Streets LE 7-4900

**A-1 SANITARY SEPTIC TANK PUMPING AND SEWER CLEANING SERVICE**  
PUY. TH 5-2873

GRAVEL FOR FILLS—Driveway gravel, clean sand, top soil. LE 1-2474. 3ctf

**ART'S SHOE SHOP**  
Shoes for the Entire Family  
**EXPERT SHOE REPAIRING**  
315 Garfield St.  
Between 121st and 122nd  
Opposite Parkland Postoffice

**M. L. S. MULTIPLE LISTING SERVICE**  
\$5,200.00  
Low down payment. Move in today. 2 bedrooms, cone fldn, extra lg garage, lots. Close to 64th & McKinley. Call Ralph Decker, GR 4-9579. RA-5118

**GI EQUITY**  
4 1/2% int on balance, payments only \$45.00, inc tax and in 3 bedrooms, aluminum storm windows and doors, 4 fenced lots. Quick possession. Price only \$6900. Call Ralph Decker, GR 4-9579. RB 4974

**McKINLEY HILL REALTY**  
6311 McKinley Ave. GR 4-9579  
Member of Multiple Listing Service and TACOMA REAL ESTATE BOARD

Real Estate — All Types  
**TACOMA REALTY, INC.**  
11004 Park Ave. LE 7-8681

**M. L. S. MULTIPLE LISTING SERVICE**  
Attractive 2 bedroom home located at 1412 South 120th St., in Parkland. Military transfer necessitates prompt sale. For appointment call Theina, LE 7-8609 or JU 8-3838. SB 5245

**M. L. S. MULTIPLE LISTING SERVICE**  
\$500 DOWN  
Well built 2-bedroom home; lots of closet space; nice yard, double garage. Call Fred Gahwiler, LE 1-0252 or LE 1-2659. RB-4199

Building site near Fawcett School; level, good soil, 50x100. Call Mrs. Ammann, LE 1-0252 or GR 2-6752. EC-5205

**RAINIER REALTY**  
13201 Pacific Ave. — LE 1-0252  
Member Tacoma Real Estate Board and Multiple Listing Service

**Rentals**  
FOR RENT  
3 bed 1015 Kline St. S.W. Unfurn \$65  
5 bed 1189 Golden Glen Furn 80  
3 bed 1001 Patterson Unfurn 80  
2 bed 1111 East 72nd St. Unfurn 55  
2 bed 1114 Broadway Stove, Refrig 100  
3 bed 1773 South 106th St. Range, 100  
5 bed 7301 South Prospect Refrig, W/W 110  
2 bed 202 East 14th St. Unfurn 65  
2 bed 1220 South 110th St. Unfurn 60  
2 bed 140 East Linden Unfurn 65  
2 (ap) 317 South 112th St. Stove, 100  
ACREAGE: 1/2 Acre tracts; trees, bus, cleared; LE 7-4137 evenings. 9ctf

**LIST WITH SUBURBAN**  
Home and Farm Specialists in South End Properties. Two offices open every day and evening for your convenience.  
**SUBURBAN REALTY, INC.**  
113th and Pacific, LE 7-8698  
112th and Canyon, LE 7-0229  
Member Multiple Listing Service & Tacoma Real Estate Board

**Rentals**  
FOR RENT—Two bedroom deluxe brick duplex with fireplace, electric heat, hardwood floors, natural wood cabinets, lots of closet space, new Hotpoint refrigerator and electric range furnished; 711 South 127th, Parkland. 10c2f  
FOR RENT—Two furnished duplex apartments: 2 rooms, bath, water and garbage paid; no pets; \$55; LE 7-6892. 10c2f  
NEW modern three-room furnished apartments, all electric. Adults only. \$50 per month. VI 7-7448. 10ctf

**NO MONEY DOWN ON ANY CAR SALE!**  
WHOLESALE PRICES  
We Finance Servicemen  
54 BUICK 2-dr. Htdp. power steering and brakes .....\$695  
55 FORD 4-dr. sedan V8 standard trans... 695  
53 PONTIAC 9-pass. station wagon, standard trans. .... 395  
55 PONTIAC 4-dr. sedan, auto. trans. ... 795  
54 CHEV. Bel Air 4-dr. standard trans. .... 445  
53 FORD ..... 295  
54 OLDS 88 4-dr. power steering, brakes ..... 695  
IF YOU ARE LOOKING FOR A REAL CLEAN CAR SEE US  
**CENTRAL MOTORS**  
1220 Center St. FU 3-3613  
(Corner of Center and M Sts.)

**Rental Management**  
List your rental property with us. Satisfaction is our by-word.  
Rental Headquarters for the Suburban Area  
**SUBURBAN REALTY, INC.**  
LE 7-8638 or LE 7-6896

**Repair Service**  
JOE WHITE APPLIANCE REPAIR  
9606 Portland Ave. LE 1-1155  
VALVE FACING and setting, \$10.00 cylinder; motor reboring, \$150.00 cylinder; by experts; TH 5-5193; Hagens Auto Parts, 15th & River Road, Puyallup. 24ctf  
NOW AT SILER'S Complete refrigerator service, Fast, dependable, reasonable. LE 7-8534. 11ctf  
Briggs & Stratton, Clinico, Fuwa Products & Lauson, Engine Parts and Repairs. PARKLAND CYCLE & KEY 11021 Pacific Avenue LE 7-5772 11ctf  
WASHING MACHINE PARTS — Largest stock in town. Repairing the pleases. BB's Washer Service, 3727 So. 6. GR 4-0409. 11ctf

# Happy Easter Baking!

Fresh from Brown's Farm — For Coloring  
**MED. AA EGGS** 2 Doz. 85c

10-oz. Ctns, Shur Fresh Frozen  
**STRAWBERRIES** 3 for 59c

Our own Little Pigs Link  
Sausage 2 lbs. 99c | Franks 2-lb. 79c Pkg.

Washington Crown  
**WHOLE FRYERS** .lb. 35c

Fiesta Boneless  
Hams .....Lb. 79c  
Ballard or Pillsbury  
Biscuits .....Pkg. 10c

U.S.D.A. Good Steer Beef  
Roasts .....Lb. 59c  
Non-fat Instant Dry Milk  
8-Oz. Size (Save 20c)  
Shurlac ..... 49c

Whole or Half  
**FEDERAL HAMS** .....lb. 49c

Skippy 7 Cans | Cubes or Print, Dairigold  
**Dog Food** 49c | **Butter** .....Lb. 69c

Shur Fresh Frozen Spears | White Shatters, Bulk LB.  
**Broccoli** .pkg. 19c | **Potatoes** 6 1/2c

**KRAFT** — All Varieties  
**COTTAGE CHEESE** .....Pint 25c

ONIONS 2 bunches 9c | Fresh, Crispy  
RADISHES ..... 9c | **Celery** .....Lb. 7c

**HERMANS FOOD STORE**  
162nd & Park Ave. Spanaway  
(Right to Limit Reserved)

**Automobiles**  
1960 FORDS and CHEVROLETS—Wholesale prices. Bank terms. SMALLLEY'S MOTORS, 10410 Pacific Avenue. LE 7-4060 any time. Open nights also. 12ctf

**Work Wanted**  
LICENSED Child Care in my home by hour or day. LE 1-1228. 14c34  
LICENSED CHILD CARE, day or night, 8425 South D. GR 2-5931. 14c34  
BABY SITTING, your home or mine. 1312 South 120th; LE 1-0416. 14c32  
EXPERIENCED WOMAN; general housework, two half-days each week; own transportation; LE 7-7173. 14c32  
RELIABLE day baby sitter; will do housework; have references; LE 7-8255. 14p32  
HIGH SCHOOL SENIOR wants odd jobs Saturdays; LE 7-6018 evenings. 14c32  
JAPANESE-American gardener, lawn and flower care. WA 2-8933. 14c34

**Miscellaneous**  
BROKEN HOME Can't pay for nice KIRBY; save \$10 by assuming \$5 monthly payments; only \$49 due; free home demonstration. Open till 9:00 p.m. Monday, Friday, UPTON ELECTRIC; own call LE 7-7181. 15c32  
FOR SALE—Set of metal ladder racks for truck top. \$6. See at Times Journal office. 15c1f  
DEEP WELL WATER PUMP BERKELEY 1/2 h. p. Jet Pump. Good condition. \$20. See at Times Journal office call LE 7-7181. 15c32  
FOR SALE—Pickett fence, 4x8' panels; very reasonable; VI 7-7623 after 5:00. 15c32  
FOR SALE—16-foot open boat with windshield, best offer over \$100. One Midgewater water heater with thermostat \$10. Outdoor grill \$2.50. Inquire at Highway Varieties, 702 Pacific Ave., or call GR 2-2725 between 8 and 3 p.m. or GR 2-6998. 15c31

**ANDERSON'S CARS FOR LESS CHINOOK CAMPERS**  
LE 7-0404  
176th & PACIFIC AVE.

**Auto Glass Installed**  
Approved By All Insurance Companies  
WE are Tacoma's authorized replacement center for United Service Automobile Assoc., International Service Ins. Co., Government Employee's Ins. Co.  
Seat Covers and Convertible Tops  
**ART'S GLASS & UPHOLSTERY CO.**  
709 Tacoma Ave. MA 7-2200

**Foreign Cars**  
ALL - FOREIGN CAR KEYS 107 Varieties  
**PARKLAND CYCLE & KEY**  
11021 Pacific Ave. LE 7-5772

**Farm Column**  
GARDENAID tractor with plow, disc and harrow, excellent condition, \$150. Also trailer, \$35; LE 1-1105. 13c32  
METAL NEST BOXES, 10 hole \$10, 15 hole \$15. Bob Carson, Thrift Corner, TW 3-7919 Orting. 13c32  
CUB TRACTOR; plow, cultivator, mower, dozer, power takeoff; LE 7-4942. 13c32  
WARD'S TRU-COLD FREEZERS, 15 cubic feet. Four refrigerator shelves, each has built in freezing coils. Only two left. Regular \$309.95, now only \$269.88, \$10 down, \$14 month, with a five year guarantee. Call JU 8-4654. Ask for Montgomery Ward Rep. 6010 Mt. Tacoma D. R. Lakewood.  
We're loaded with used equipment, wheel and crawler tractors, bulldozers, etc. SMITH TRACTOR AND EQUIPMENT CO. Linden Drive, Puyallup, Wash. TH 5-6688 13c32  
DRY or GREEN SHAVINGS, upland slab and sawdust. SHAVING SUPPLY, LE 7-5767 after 6. 13c1f  
EASTERN WASHINGTON HAY—By the bale, top or truck load. LE 1-1015. 13c1f

**Work Wanted**  
RESPONSIBLE BABY SITTER; my home days, your home evenings; LE 1-0195. 14c33

**Classified Continued**  
On Page 11

**FOR A GOOD BUY IN A USED CAR SEE THE FINE SELECTION AT PETE'S**

CHEV. & FORD STATION WAGONS '56 to '59 \$1195 to \$2495	FORD & CHEV. 1959 AS LOW AS \$1895
'56 OLDS. 88 .....\$1195	'54 MERC. w/od. ....\$745
'55 PONT. Conv. ..\$ 995	'54 PACKARD .....\$495
'54 OLDS. 88 .....\$ 795	'54 DODGE Htdp. ....\$595
'55 FORD 4 D .....\$ 795	'53 FORD 6 cyl. ....\$495
'54 BUICK Htdp. ....\$ 695	'53 BUICK Htdp. ....\$595

**56 LINCOLN PREMIERE** Convertible. All Power \$1495

**1959 FORD T-BIRD** All Power \$3795

**'59 CHEV. 6 cyl. ....\$1895**

**'58 CHEV. 6 cyl. ....\$1695**

**'56 MERC. Htdp. ....\$1395**

**'54 MERC. w/od. ....\$745**

**'54 PACKARD .....\$495**

**'54 DODGE Htdp. ....\$595**

**'53 FORD 6 cyl. ....\$495**

**'53 BUICK Htdp. ....\$595**

**56 LINCOLN CAPRI** Hd. Top. All Power \$1495

**PETE'S AUTO SALES**  
7629 So. Tacoma Way GR 2-0151

**Fresh Daily "AA" Large RANCH EGGS**  
White for Coloring  
Doz. 47c

**WASH. GROWN FRYERS**  
Cut Up lb. 39c

**100% PURE GROUND BEEF**  
3 Lbs. 89c

**Lamb Special**  
GRADED GOOD & CHOICE  
SHOULDER STEAKS .....lb. 49c  
SHOULDER ROAST .....lb. 39c  
BREAST 'O LAMB .....lb. 19c  
LAMB SHANK .....lb. 29c

**Country Style PORK SAUSAGE**  
3 Lbs. \$1.00

**Hygrade "Fiesta" BONELESS HAM**  
None Finer lb. 79c

**FRESH PACIFIC OYSTERS**  
12-oz. Jar 49c

**FRESH CELERY**  
Stalk 10c

**ADAMS** - Plain or Old Fashioned Peanut Butter 3-Lb Family Size 89c

**SUNSHINE** Graham Crackers 2 lbs. 59c

**MEDOSWEET** COTTAGE CHEESE Pint 25c

**CUCUMBERS** Each 19c

**CHOICE NAVEL ORANGES** lb. 10c

**Fresh RADISHES AND GREEN ONIONS** Bunch 5c

**BARGAIN BASKET**  
16618 PACIFIC AVE. South SPANAWAY, WASH.

**Classified**  
(CONTINUED FROM PAGE 10)

**Miscellaneous 15**  
WANTED—Cameras and photographic equipment for resale.  
**QUALITY PHOTO SERVICE**  
9818 Pacific, LE 7-7271 15c1t

**PARKLAND FURNITURE**—New and used miscellaneous. Airport and Pacific Aves. Residence phone LE 7-3748. 15c1t

**Horses & Equip 16**  
**HORSESHOEING**  
Including Corrective Shoeing for All Conditions  
**Ken Lehman — TH 5-5536**

**Aviation 17**  
FREE—FIRST FLYING LESSON—LEARN TO FLY—\$10 A WEEK  
New and Used Aircraft Sales  
TACOMA FLYING SERVICE  
Spanaway Airport, LE 1-0442. 15c1t

**Schools 18**  
NIGHT SCHOOL—ENROLL NOW  
Call MA 7-2181  
KNAPP BUSINESS COLLEGE  
10th & Pacific 15c1t

**LEGAL NOTICES**  
ANNON W. MAY  
Attorney  
802 P.S.N. Bank Bldg.  
Tacoma

**STORKVILLE Baby Shop**  
Everything For Baby  
Including Juvenile Furniture  
9722 Pac. Ave. LE 7-4664

**SPRING SPECIAL**  
21" DELUXE SAVAGE ROTARY MOWER  
Briggs & Stratton 4 Cycle Engine Recoil Starter  
**PARKLAND CYCLE & KEY**  
1021 Pacific Ave LE 7-5777

**LEGAL NOTICES**  
ANNON W. MAY  
Attorney  
802 P.S.N. Bank Bldg.  
Tacoma

NO. 14285  
SUMMONS BY PUBLICATION IN THE SUPERIOR COURT OF THE STATE OF WASHINGTON IN AND FOR THE COUNTY OF PIERCE  
G. A. BOARDSON and HERMINA R. BOARDSON, husband and wife, Plaintiffs,  
vs.  
C. L. PRAG and JANE DOE PRAG, husband and wife, and M. M. PRAG and all unknown or known heirs or successors in interests of any of the above named Defendants, and/or their heirs, known or unknown, Defendants.

**PIERCE COUNTY REFUSE CO.**  
Weekly Garbage Collections  
Phone LE 7-8688

County, Washington, described as:  
The East 90 feet of the West 340 feet of the North half of the Northwest quarter of the Southeast quarter of the Northwest quarter in Section 31, Township 20 North, Range 4 East of the Willamette Meridian.  
The West 250 feet of the North half of the Northwest quarter of the Southeast quarter in Section 31, Township 20 North, Range 4 East of the Willamette Meridian.  
EXCEPT ROADS.  
against the claim of the Defendants and any one of them.  
ANNON W. MAY  
Attorney for Plaintiffs.  
OFFICE AND POST OFFICE ADDRESS:  
802 Puget Sound Bank Building  
Tacoma 2, Washington.  
Published in the Times Journal March 24, 31; April 7, 14, 21, 28, 1960.

**PETERS & TRACY**  
Attorneys  
11024 Pacific Avenue  
Tacoma 44, Washington.  
No. 14279  
SUMMONS  
In the Superior Court of the State of Washington in and for Pierce County.  
Cleo J. Redus, Plaintiff,  
vs.  
Raymond R. Redus, Defendant.

**LEGAL NOTICES**  
ANNON W. MAY  
Attorney  
802 P.S.N. Bank Bldg.  
Tacoma

NO. 14285  
SUMMONS BY PUBLICATION IN THE SUPERIOR COURT OF THE STATE OF WASHINGTON IN AND FOR THE COUNTY OF PIERCE  
G. A. BOARDSON and HERMINA R. BOARDSON, husband and wife, Plaintiffs,  
vs.  
C. L. PRAG and JANE DOE PRAG, husband and wife, and M. M. PRAG and all unknown or known heirs or successors in interests of any of the above named Defendants, and/or their heirs, known or unknown, Defendants.

**LEGAL NOTICES**  
ANNON W. MAY  
Attorney  
802 P.S.N. Bank Bldg.  
Tacoma

NO. 14285  
SUMMONS BY PUBLICATION IN THE SUPERIOR COURT OF THE STATE OF WASHINGTON IN AND FOR THE COUNTY OF PIERCE  
G. A. BOARDSON and HERMINA R. BOARDSON, husband and wife, Plaintiffs,  
vs.  
C. L. PRAG and JANE DOE PRAG, husband and wife, and M. M. PRAG and all unknown or known heirs or successors in interests of any of the above named Defendants, and/or their heirs, known or unknown, Defendants.

**LEGAL NOTICES**  
ANNON W. MAY  
Attorney  
802 P.S.N. Bank Bldg.  
Tacoma

NO. 14285  
SUMMONS BY PUBLICATION IN THE SUPERIOR COURT OF THE STATE OF WASHINGTON IN AND FOR THE COUNTY OF PIERCE  
G. A. BOARDSON and HERMINA R. BOARDSON, husband and wife, Plaintiffs,  
vs.  
C. L. PRAG and JANE DOE PRAG, husband and wife, and M. M. PRAG and all unknown or known heirs or successors in interests of any of the above named Defendants, and/or their heirs, known or unknown, Defendants.

**LEGAL NOTICES**  
ANNON W. MAY  
Attorney  
802 P.S.N. Bank Bldg.  
Tacoma

NO. 14285  
SUMMONS BY PUBLICATION IN THE SUPERIOR COURT OF THE STATE OF WASHINGTON IN AND FOR THE COUNTY OF PIERCE  
G. A. BOARDSON and HERMINA R. BOARDSON, husband and wife, Plaintiffs,  
vs.  
C. L. PRAG and JANE DOE PRAG, husband and wife, and M. M. PRAG and all unknown or known heirs or successors in interests of any of the above named Defendants, and/or their heirs, known or unknown, Defendants.

**LEGAL NOTICES**  
ANNON W. MAY  
Attorney  
802 P.S.N. Bank Bldg.  
Tacoma

NO. 14285  
SUMMONS BY PUBLICATION IN THE SUPERIOR COURT OF THE STATE OF WASHINGTON IN AND FOR THE COUNTY OF PIERCE  
G. A. BOARDSON and HERMINA R. BOARDSON, husband and wife, Plaintiffs,  
vs.  
C. L. PRAG and JANE DOE PRAG, husband and wife, and M. M. PRAG and all unknown or known heirs or successors in interests of any of the above named Defendants, and/or their heirs, known or unknown, Defendants.

**LEGAL NOTICES**  
ANNON W. MAY  
Attorney  
802 P.S.N. Bank Bldg.  
Tacoma

NO. 14285  
SUMMONS BY PUBLICATION IN THE SUPERIOR COURT OF THE STATE OF WASHINGTON IN AND FOR THE COUNTY OF PIERCE  
G. A. BOARDSON and HERMINA R. BOARDSON, husband and wife, Plaintiffs,  
vs.  
C. L. PRAG and JANE DOE PRAG, husband and wife, and M. M. PRAG and all unknown or known heirs or successors in interests of any of the above named Defendants, and/or their heirs, known or unknown, Defendants.

**LEGAL NOTICES**  
ANNON W. MAY  
Attorney  
802 P.S.N. Bank Bldg.  
Tacoma

NO. 14285  
SUMMONS BY PUBLICATION IN THE SUPERIOR COURT OF THE STATE OF WASHINGTON IN AND FOR THE COUNTY OF PIERCE  
G. A. BOARDSON and HERMINA R. BOARDSON, husband and wife, Plaintiffs,  
vs.  
C. L. PRAG and JANE DOE PRAG, husband and wife, and M. M. PRAG and all unknown or known heirs or successors in interests of any of the above named Defendants, and/or their heirs, known or unknown, Defendants.

**LEGAL NOTICES**  
ANNON W. MAY  
Attorney  
802 P.S.N. Bank Bldg.  
Tacoma

NO. 14285  
SUMMONS BY PUBLICATION IN THE SUPERIOR COURT OF THE STATE OF WASHINGTON IN AND FOR THE COUNTY OF PIERCE  
G. A. BOARDSON and HERMINA R. BOARDSON, husband and wife, Plaintiffs,  
vs.  
C. L. PRAG and JANE DOE PRAG, husband and wife, and M. M. PRAG and all unknown or known heirs or successors in interests of any of the above named Defendants, and/or their heirs, known or unknown, Defendants.

**LEGAL NOTICES**  
ANNON W. MAY  
Attorney  
802 P.S.N. Bank Bldg.  
Tacoma

NO. 14285  
SUMMONS BY PUBLICATION IN THE SUPERIOR COURT OF THE STATE OF WASHINGTON IN AND FOR THE COUNTY OF PIERCE  
G. A. BOARDSON and HERMINA R. BOARDSON, husband and wife, Plaintiffs,  
vs.  
C. L. PRAG and JANE DOE PRAG, husband and wife, and M. M. PRAG and all unknown or known heirs or successors in interests of any of the above named Defendants, and/or their heirs, known or unknown, Defendants.

**LEGAL NOTICES**  
ANNON W. MAY  
Attorney  
802 P.S.N. Bank Bldg.  
Tacoma

NO. 14285  
SUMMONS BY PUBLICATION IN THE SUPERIOR COURT OF THE STATE OF WASHINGTON IN AND FOR THE COUNTY OF PIERCE  
G. A. BOARDSON and HERMINA R. BOARDSON, husband and wife, Plaintiffs,  
vs.  
C. L. PRAG and JANE DOE PRAG, husband and wife, and M. M. PRAG and all unknown or known heirs or successors in interests of any of the above named Defendants, and/or their heirs, known or unknown, Defendants.

**LEGAL NOTICES**  
ANNON W. MAY  
Attorney  
802 P.S.N. Bank Bldg.  
Tacoma

NO. 14285  
SUMMONS BY PUBLICATION IN THE SUPERIOR COURT OF THE STATE OF WASHINGTON IN AND FOR THE COUNTY OF PIERCE  
G. A. BOARDSON and HERMINA R. BOARDSON, husband and wife, Plaintiffs,  
vs.  
C. L. PRAG and JANE DOE PRAG, husband and wife, and M. M. PRAG and all unknown or known heirs or successors in interests of any of the above named Defendants, and/or their heirs, known or unknown, Defendants.

**LEGAL NOTICES**  
ANNON W. MAY  
Attorney  
802 P.S.N. Bank Bldg.  
Tacoma

NO. 14285  
SUMMONS BY PUBLICATION IN THE SUPERIOR COURT OF THE STATE OF WASHINGTON IN AND FOR THE COUNTY OF PIERCE  
G. A. BOARDSON and HERMINA R. BOARDSON, husband and wife, Plaintiffs,  
vs.  
C. L. PRAG and JANE DOE PRAG, husband and wife, and M. M. PRAG and all unknown or known heirs or successors in interests of any of the above named Defendants, and/or their heirs, known or unknown, Defendants.

**LEGAL NOTICES**  
ANNON W. MAY  
Attorney  
802 P.S.N. Bank Bldg.  
Tacoma

NO. 14285  
SUMMONS BY PUBLICATION IN THE SUPERIOR COURT OF THE STATE OF WASHINGTON IN AND FOR THE COUNTY OF PIERCE  
G. A. BOARDSON and HERMINA R. BOARDSON, husband and wife, Plaintiffs,  
vs.  
C. L. PRAG and JANE DOE PRAG, husband and wife, and M. M. PRAG and all unknown or known heirs or successors in interests of any of the above named Defendants, and/or their heirs, known or unknown, Defendants.

**LEGAL NOTICES**  
ANNON W. MAY  
Attorney  
802 P.S.N. Bank Bldg.  
Tacoma

NO. 14285  
SUMMONS BY PUBLICATION IN THE SUPERIOR COURT OF THE STATE OF WASHINGTON IN AND FOR THE COUNTY OF PIERCE  
G. A. BOARDSON and HERMINA R. BOARDSON, husband and wife, Plaintiffs,  
vs.  
C. L. PRAG and JANE DOE PRAG, husband and wife, and M. M. PRAG and all unknown or known heirs or successors in interests of any of the above named Defendants, and/or their heirs, known or unknown, Defendants.

**LEGAL NOTICES**  
ANNON W. MAY  
Attorney  
802 P.S.N. Bank Bldg.  
Tacoma

NO. 14285  
SUMMONS BY PUBLICATION IN THE SUPERIOR COURT OF THE STATE OF WASHINGTON IN AND FOR THE COUNTY OF PIERCE  
G. A. BOARDSON and HERMINA R. BOARDSON, husband and wife, Plaintiffs,  
vs.  
C. L. PRAG and JANE DOE PRAG, husband and wife, and M. M. PRAG and all unknown or known heirs or successors in interests of any of the above named Defendants, and/or their heirs, known or unknown, Defendants.

**LEGAL NOTICES**  
ANNON W. MAY  
Attorney  
802 P.S.N. Bank Bldg.  
Tacoma

NO. 14285  
SUMMONS BY PUBLICATION IN THE SUPERIOR COURT OF THE STATE OF WASHINGTON IN AND FOR THE COUNTY OF PIERCE  
G. A. BOARDSON and HERMINA R. BOARDSON, husband and wife, Plaintiffs,  
vs.  
C. L. PRAG and JANE DOE PRAG, husband and wife, and M. M. PRAG and all unknown or known heirs or successors in interests of any of the above named Defendants, and/or their heirs, known or unknown, Defendants.

**LEGAL NOTICES**  
ANNON W. MAY  
Attorney  
802 P.S.N. Bank Bldg.  
Tacoma

NO. 14285  
SUMMONS BY PUBLICATION IN THE SUPERIOR COURT OF THE STATE OF WASHINGTON IN AND FOR THE COUNTY OF PIERCE  
G. A. BOARDSON and HERMINA R. BOARDSON, husband and wife, Plaintiffs,  
vs.  
C. L. PRAG and JANE DOE PRAG, husband and wife, and M. M. PRAG and all unknown or known heirs or successors in interests of any of the above named Defendants, and/or their heirs, known or unknown, Defendants.

**LEGAL NOTICES**  
ANNON W. MAY  
Attorney  
802 P.S.N. Bank Bldg.  
Tacoma

NO. 14285  
SUMMONS BY PUBLICATION IN THE SUPERIOR COURT OF THE STATE OF WASHINGTON IN AND FOR THE COUNTY OF PIERCE  
G. A. BOARDSON and HERMINA R. BOARDSON, husband and wife, Plaintiffs,  
vs.  
C. L. PRAG and JANE DOE PRAG, husband and wife, and M. M. PRAG and all unknown or known heirs or successors in interests of any of the above named Defendants, and/or their heirs, known or unknown, Defendants.

**LEGAL NOTICES**  
ANNON W. MAY  
Attorney  
802 P.S.N. Bank Bldg.  
Tacoma

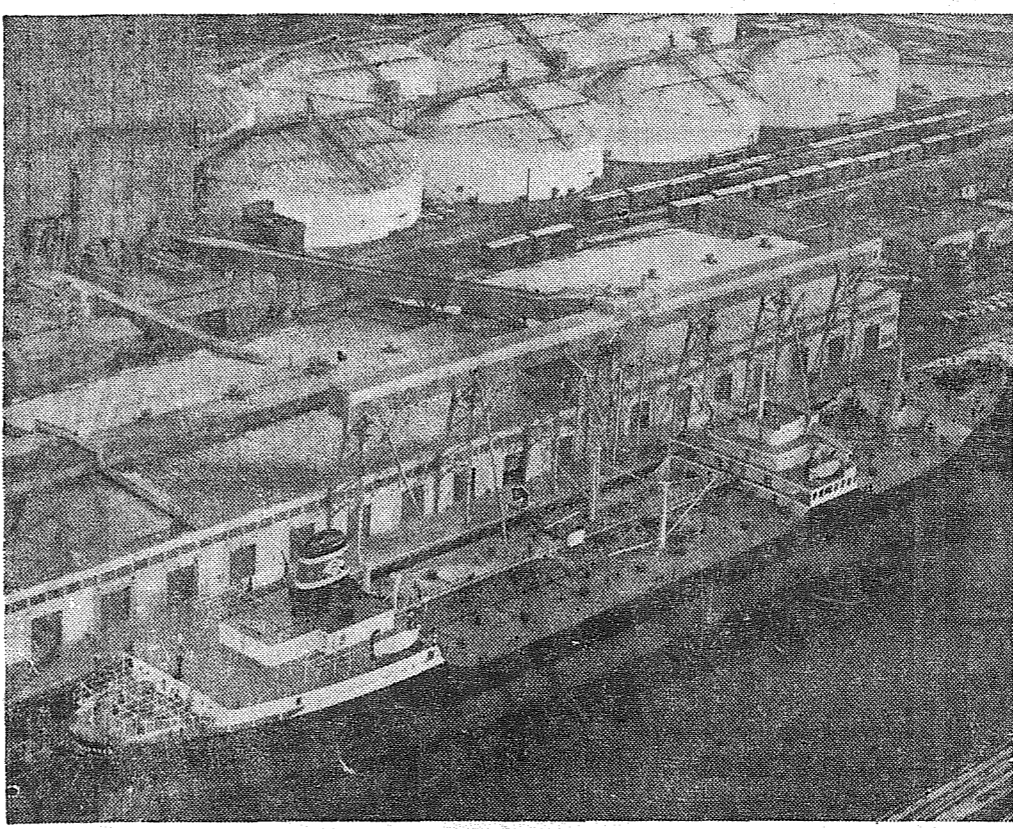
NO. 14285  
SUMMONS BY PUBLICATION IN THE SUPERIOR COURT OF THE STATE OF WASHINGTON IN AND FOR THE COUNTY OF PIERCE  
G. A. BOARDSON and HERMINA R. BOARDSON, husband and wife, Plaintiffs,  
vs.  
C. L. PRAG and JANE DOE PRAG, husband and wife, and M. M. PRAG and all unknown or known heirs or successors in interests of any of the above named Defendants, and/or their heirs, known or unknown, Defendants.

**LEGAL NOTICES**  
ANNON W. MAY  
Attorney  
802 P.S.N. Bank Bldg.  
Tacoma

NO. 14285  
SUMMONS BY PUBLICATION IN THE SUPERIOR COURT OF THE STATE OF WASHINGTON IN AND FOR THE COUNTY OF PIERCE  
G. A. BOARDSON and HERMINA R. BOARDSON, husband and wife, Plaintiffs,  
vs.  
C. L. PRAG and JANE DOE PRAG, husband and wife, and M. M. PRAG and all unknown or known heirs or successors in interests of any of the above named Defendants, and/or their heirs, known or unknown, Defendants.

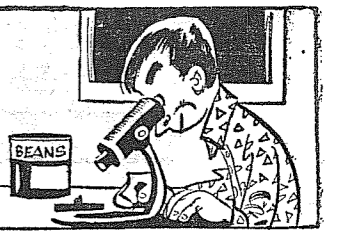
**LEGAL NOTICES**  
ANNON W. MAY  
Attorney  
802 P.S.N. Bank Bldg.  
Tacoma

NO. 14285  
SUMMONS BY PUBLICATION IN THE SUPERIOR COURT OF THE STATE OF WASHINGTON IN AND FOR THE COUNTY OF PIERCE  
G. A. BOARDSON and HERMINA R. BOARDSON, husband and wife, Plaintiffs,  
vs.  
C. L. PRAG and JANE DOE PRAG, husband and wife, and M. M. PRAG and all unknown or known heirs or successors in interests of any of the above named Defendants, and/or their heirs, known or unknown, Defendants.



**BIGGEST GRAIN CARGO** in U. S. maritime history is loaded aboard newly commissioned "Penn Challenger" at Portland terminal of Cargill, Inc. Nearly 1 1/2 million bushels of barley from Washington, Oregon, Idaho and Montana is being supplied by Cargill's Portland and Seattle elevators for delivery to Poland under special U. S. program which permits food-hungry countries to purchase surplus American foodstuffs. Tanker, built by Bethlehem Steel at San Francisco, is largest ever constructed on Pacific Coast.

**It's the LAW**  
PRESENTED AS A PUBLIC SERVICE BY THE WASHINGTON STATE BAR ASSOCIATION



(Continued from Page 8)  
tion, because no prosecution was pending.  
The court disagreed with his interpretation of the law and pointed out that the law does not say "to avoid pending prosecution," but rather the words "to avoid prosecution" mean "to avoid being prosecuted." The criminal's defense failed and he was convicted.  
(This column is written to inform not advise. Facts may change the application of the law.)

The smallest particle of matter is the piece of pork included in a can of baked beans.

**Parker Paint SPECIALS**  
ON INTERIOR OR EXTERIOR PAINT  
Check Our Prices  
**Barsotti & Timm**  
At the Roy Y LE 7-4221  
Open 7 Days a Week, 7 a.m.-9

**STRICTLY FRESH**

It's hard not to be a good sport when you're winning.  
Folks across the street from us are really roughing it. Can opener and home freezer broke down at the same time.

**Prescription Service**

Open 7 Days a Week  
9:30 a.m. - 9:30 p.m.  
Sundays 10 a.m.-6 p.m.  
**JACOBS PACIFIC DRUGS**  
Wallgreen Agency  
Pay Light & Water Bills Here  
84th & PACIFIC AVE.  
Greenfield 2-6445

**HIPPITY HOP! COME SEE! COME SHOP!**

<b>HAM</b> ARMOUR'S CRESCENT Sliced Bacon 3 lbs. 1.00	<b>FEDERAL BRAND SHANK PORTION</b> <b>39¢</b> ROUND OR LOIN <b>STEAKS</b> lb. 79¢	<b>TENDER RIB STEAKS</b> lb. 69¢	<b>WELL TRIMMED RUMP ROAST</b> lb. 59¢
<b>POT ROAST</b> BLADE CUT lb. 43¢	<b>HORMEL'S SKINLESS WIENERS</b> 12-Oz. Pkg. 39¢	<b>FRESH GROUND — HOURLY GROUND BEEF</b> 3 lbs. 89¢	
<b>25-lb. Locker Box Special \$11.95</b>			

<b>COFFEE</b> SHURFRESH 1 LB. TIN 49¢	<b>EGGS</b> WHITE LARGE AA doz. 47¢
<b>TANG</b> NALLEY'S QT. JAR 39¢	<b>SKIPPY</b> TALL TIN 10/89¢
<b>SIMPLE SIMON FROZEN PIES</b> PEACH APPLE CHERRY Your Choice 3/1.00	<b>WISK</b> New! Lux Plastic DETERGENT 1/2 Gal. 1.29 <b>PUREX</b> 1/2 Gal. 37¢

Have you forgotten anything for your EASTER FEAST?

**BANANAS**  
2 lbs. 25¢

**POTATOES**  
OREGON NO. 1  
10-lb. Plio Bag 59¢

**CELERY**  
LARGE STALKS Ea. 10¢

**HERE'S WHERE Smart Tacoma Shoppers SAVE MONEY!**

**SEYMOUR'S**  
WOMEN'S BULKY KNIT ORLON SWEATERS  
REGULAR 4.98 3.98  
34 to 46  
Popular bulky knit orlons with 3/4-length push-up sleeves! Button front. Turquoise, black, white or red. Extra special!

**GIRLS' BULKY KNITS**  
REGULAR 3.98 2.98  
8 to 14  
Easy-to-care-for Orlon in white or red. Push-up sleeves, cardigan style. Save now at Seymours!

**Children's Cotton, Rayon Panties**  
Special 29¢ each 4 for 1.00  
Sizes 2-4-6 in double-crotch panties! Pink, blue, yellow.  
White Cotton Training Panties, reg. 39¢ — 29¢

**Men's and Boys' TEE SHIRTS**  
Special 3 FOR 1.00  
Knit combed cotton the shirts for boys (4 to 14) and men (S-M-L). Save at Seymours!

**WOMEN'S BOATNECK Sweat Shirts**  
ONLY \$1.99  
White or faded blue, with nautical trim.

**Women's Pedal Pushers**  
Washable pre-shrunk Our Low Price!  
plaid, with zip side, pocket, adjustable waist-band. 10-18. 1.49

**MEN'S DENIM SLACKS**  
Favorites for summer Top Quality!  
wear! Popular faded blue washable slacks. 30 to 38 waists. 4.98

Shop Daily 9 to 9 — Sunday 10 to 6  
(We are closed Easter Sunday)

**FREE FRONT-DOOR PARKING**

9714 PACIFIC AVENUE  
**SEYMOUR'S**  
FAMILY DEPARTMENT STORE  
ONE BLOCK NORTH OF PARK 'N SHOP

OPEN SUNDAYS  
**KITCHEN'S**  
EVERYDAY LOW PRICES

Right to Limit  
Open 9 a.m. 'til 10 p.m. Daily  
10 a.m. 'til 10 p.m. Sundays  
12208 Pacific Ave.  
Prices Effective Thursday, Friday, Saturday This Week

<b>SUNSHINE GRAHAM CRACKERS</b> 1-Lb. 35¢	<b>WHEAT PUFFS</b> MELOGRAIN 1-lb 3-oz. Pkgs. 47¢
<b>JIF PEANUT BUTTER</b> 49¢	

HYGRADE FIESTA  
FULLY COOKED  
BONELESS  
HAMS

WHOLE, HALF  
OR QUARTERS

LB. **77¢**

HAM SLICES  
lb. **59¢**

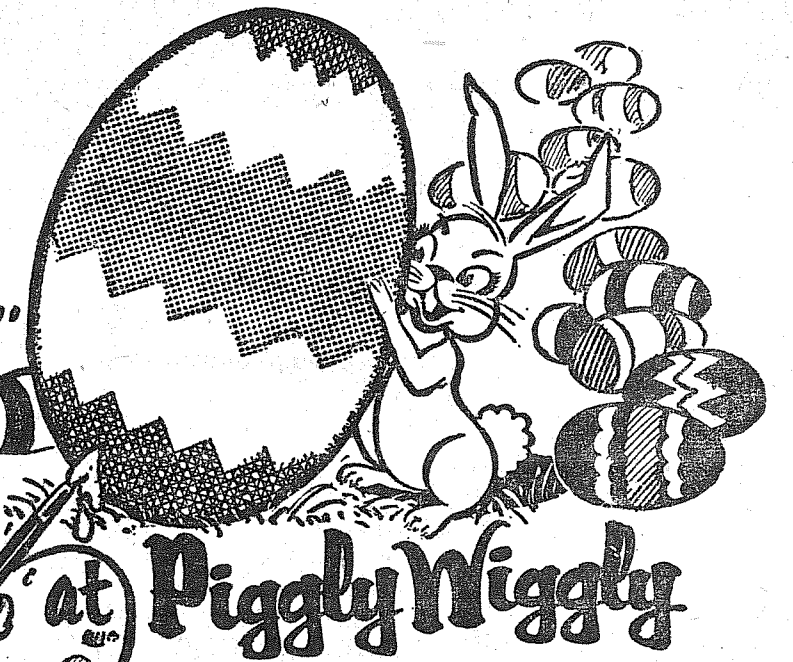
# HAMS

ARMOUR'S STAR OR FEDERAL  
BRAND. FULL SHANK HALF, 14-  
TO 18-LB. AVG.

BUTT PORTION  
OR WHOLE  
12- to 14-lb.  
Average,  
lb. **49¢**

Eastertime  
is **HAM** time...

**45¢**  
LB.



at Piggly Wiggly

## FRESH TURKEYS

• 1960 CROP, ARMOUR STAR  
JUNIOR SIZE, 4- TO 8-LB. AVG.

**53¢**  
LB.



Milwaukee Easter Polish Sausage  
**KOHLBASE** ..... lb. **69¢**

Swift's Premium  
**LEG OF LAMB** ... lb. **69¢**

Fancy Alaska  
**HALIBUT STEAK** lb. **39¢**

Whole or Half  
**PINK SALMON** .. lb. **49¢**

## SLICED BACON

HYGRADE NO. 1  
QUALITY, LEAN  
STREAKED **LB. 49¢**

ALL STORES  
WILL BE CLOSED  
EASTER SUNDAY!

STOKELY'S FINEST CUT  
**GREEN BEANS** ... 6 No. 303 Cans **\$1.00**

WELCOME  
**ICE CREAM** ..... 1/2 GAL. **59¢**

MACARONI & CHEESE  
**MISSION DINNERS** ..... 2 Pkgs. **25¢**

BLUE BELL  
**POTATO CHIPS** ... Reg. 59¢ Box **59¢**

### MORE EASTER VALUES

**BROILER FOIL** Kaiser..... 20-Ft. Roll **47¢**

**MARGARINE** PLYM-OUTH 2 1-Lb. Cartons **25¢**

**Ripe Olives** Wyandotte Pitted..... 2 7-Oz. Cans **49¢**

**ANGEL-FOOD CAKE MIX** SWANS-DOWN... 3 Pkgs. **\$1**

**PINEAPPLE** Dole Crushed..... No. 1/2 Can **29¢**

**DOLE DRINK** Pineapple-Grapefruit..... 46-oz. Can **32¢**

**FISH & CHIPS** Rupert's Frozen..... Package **59¢**

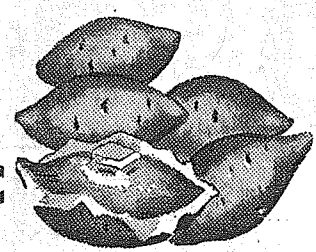
**NALLEY'S MUSTARD** ..... 9-oz. Jar **10¢**

**NALLEY'S MAYONNAISE** ..... Quart Jar **53¢**

**SWEET PICKLES** Nalley's (24-oz. Jar 49¢)..... 10-oz. Jar **29¢**

## YAMS

• FOR THAT  
EASTER  
FEAST  
**2 LBS. 23¢**



BROOKDALE FRESH FROZEN

**GARDEN PEAS** 10-OZ. PKGS. **10¢**

JELL-O PUDDINGS OR  
**JELLO** ALL FLAVORS . . . . PKG. **5¢**

BIRDSEYE FRESH FROZEN  
**ORANGE JUICE** 6-OZ. CANS **6¢**

PURE CANE  
**C & H SUGAR** 10-LB. BAG **93¢**

CENTENNIAL  
**FLOUR** SILK-SIFTED . . . . BAG **89¢**

DOLE SLICED HAWAIIAN  
**PINEAPPLE** . . . . NO. 2 CAN **29¢**

POLAR FRESH FROZEN  
**STRAWBERRIES** 5 10-OZ. PKGS. **99¢**

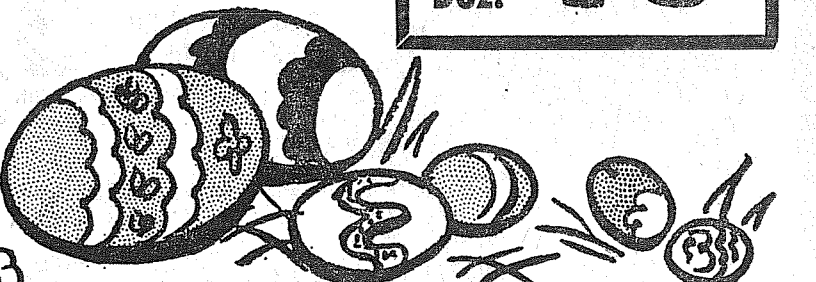
DRIP OR REGULAR GRIND  
**MJB COFFEE** 1-LB. CANS **59¢**

DARIGOLD "AA" SWEET CREAM  
**BUTTER** . . . . 1-LB. CTN. OR PRINT **65¢**

### BIG SAVINGS!

**SALAD BOWL SALAD DRESSING**

QT. **29¢**  
JAR



### LARGE EGGS

LYNDEN GRADE A WHITE  
EGGS, PERFECT FOR DYE-  
ING. FRESH AS CAN BE!

**45¢**  
Doz.

**BLUE BELL WALNUTS** ..... 7-oz. Pkg. **69¢**

**SOUR CREAM DIP** Blue Bell..... Jar **59¢**

**DIAL SOAP** Aqua or Gold (7¢ Off)..... 2 Reg. Bars **31¢**

**CHIFFON LIQUID** Plastic Bottle (5¢ Off)..... 12-oz. Size **38¢**

**BAKER'S COCONUT** ..... 7-oz. Pkg. **29¢**

**CHOC. MIX** Baker's Instant (10¢ Off Label)..... 2-lb. Size **69¢**

**HI HO CRACKERS** Sunshine..... 1-lb. Pkg. **33¢**

**Choc. Chip Cookies** Sunshine 7 1/2-oz. Pkg. **29¢**

**EASTER EGGS** Cream, Marshmallow or Jelly..... Pkg. **29¢**

**MARSHMALLOW EGGS** Sunshine Chocolate..... 10-oz. Pkg. **39¢**

**FACIAL TISSUES** Chiffon Assorted Colors ..... 2 Pkgs. **29¢**

**PAPER NAPKINS** Zoo, Assorted Colors ..... 2 Pkgs. **29¢**

**TOILET TISSUE** Chiffon, Assorted Colors ..... 2-Roll Pack **29¢**

**ZEE PAPER TOWELS** ..... 2 150-Ct. Pkgs. **29¢**

**ZEE WAX PAPER** ..... 100-Ft. Roll **21¢**

**ZEE SANDWICH BAGS** ..... 2 80-Ct. Pkgs. **21¢**

**CARNATION MILK** ..... 3 Tall Cans **47¢**

**CALO DOG FOOD** ..... 2 2-lb. Cans **29¢**

**SNOW MIST TUNA** ..... No. 1/2 Can **31¢**

**VERMONT MAID SYRUP** ..... 21-oz. Bottle **61¢**

Florida  
**ORANGES** ..... Lb. **9¢**

U.S. No. 1 Shafter  
**NEW POTATOES** ..... Lb. **6 1/2¢**

**PEAS** GARDEN FRESH ..... 2 Lbs. **25¢**

Best Selection of Easter Lilies at Low Prices

THURS., FRI., SAT. SPECIALS  
**HOT CROSS BUNS**  
Reg. 8 for 39¢  
8 for **33¢**

**FINE CHOCOLATES**  
Reg. 1.39  
1-lb. Box ..... **1.19**  
Reg. 2.69  
2-lb. Box ..... **2.29**

**EASTER LAYER CAKE**  
Decorated  
1.20 Value  
EASTER  
BUNNY CAKE ..... **1.19**

**Van de Kamp's SPECIALS**  
famous for  
QUALITY • FRESHNESS  
VARIETY • CONVENIENCE

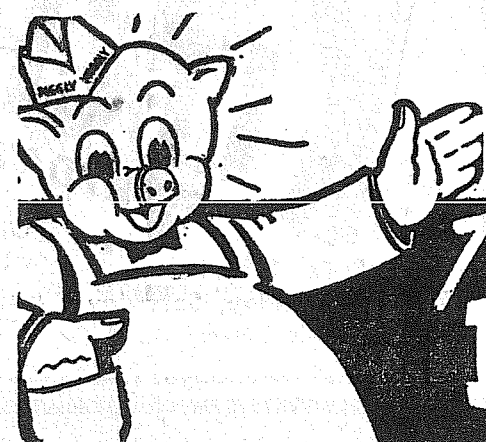
**Van de Kamp's BAKERIES**

FIFE HARDWARE DEPT.  
19" Rotary, 2 1/2 H.P.  
Quick Adjustable Wheels  
**POWER MOWER** Reg. 69.95 **59.95**

No. 1 Grade  
**GLADIOLA BULBS** Doz. **79¢**

GOOD SELECTION  
**SEED POTATOES** 10 lbs. **95¢**

**BULK GARDEN SEED**  
CORN, CARROTS, PEAS, BEETS, ETC.



<b>PUYALLUP</b> 1010 EAST MAIN	<b>FIFE</b> FORMERLY ANDRE'S MKT.	<b>SO. TACOMA</b> 5252 SOUTH WASHINGTON	<b>PARKLAND</b> PACIFIC AT GARFIELD	<b>40th &amp; Portland Ave.</b> TACOMA
-----------------------------------	--------------------------------------	--	--	---

STORE HOURS 9 A.M. TO 10 P.M. EVERY DAY

Thanks - for shopping with us...  
**Piggly Wiggly**