

AN
2
P5

P.L.U. Library
Tacoma, Wn. 98447

FEB 12 1970

PACIFIC LUTHERAN UNIVERSITY

Pierce County Herald and

The TIMES JOURNAL

Vol. 26 No. 6

February 12, 1970



PARKLAND REO worker Katie Hobbs is pictured making a last minute adjustment on the costume of Indian dancer Bena McCloud. Her sister Jule looks on. The helping hand came just prior to native dancing demonstrations during The Alaskan Federation of Natives held at PLU's Memorial Gym last Saturday. Miss Hobbs, who is an Eskimo, works with minority groups at REO. Story on Page 2.

COURTHOUSE NEWS

Sewer Agreement Talks With South Suburban Asked by Pierce County

Fresh from signing an agreement with Lakewood Water District, Pierce County Commissioners drafted a letter Monday inviting the South Suburban Sewer District to discuss a similar agreement.

The South Suburban Sewer District agreement represents the last legal hurdle before the county can put the Clover Creek - Chambers Creek Basin sewer package into one plan, Commissioner George Sheridan told the Journal Tuesday.

With 8 per cent to 10 per cent increases in construction costs, every day sewers are delayed it costs \$1,000, Sheridan said. The County is preparing assessment roles, and property descriptions that will go into the ULID.

"We will form one ULID that will cover the entire Clover Creek - Chambers Creek Basin," Sheridan stated. "There has been some talk of breaking it up into a number of ULID's, but this is a fallacy."

REO Holds Annual Meet

The Board of Trustees of Rural Economic Opportunity, Inc., announces the annual meeting will be held Monday, February 16, 7:30 p.m., at the James Sales Grange, 612 113th South, Tacoma, Washington.

Seven board members representing various areas of rural Pierce County are to be elected. Following the report of the Nominating Committee, other nominations may be made from the floor.

Annual reports will be given by REO President Paul A. Olson, and Executive Director Audrey L. Kirk.

Questions and comments will follow.

Commissioner said. The County will utilize its bonding capacity to build a treatment plant and trunks up to the capacity required for 30 years or more in the future, but initial customers will not pay for the larger installation. Cost will be deferred to future customers who will pay a "late comers charge," which will be used to retire the bonds.

The basin represents the largest populated area in the nation that is unsewered, and serves 40,000 parcels of property. In other sewer action Monday, Commissioners formalized policies regarding land developers. The adopted policy requires all developers planning or proposing sub-developments to install interim sewer systems. The interim systems, often referred to as neighborhood treatment facilities, are installed at the developer's expense. Sheridan pointed out that in excess of 3,000 units are in planning or use.

Commissioners reached an agreement with Lakewood Water February 3, and worked out a similar agreement with University Place earlier.

PARKLAND

Reference Data At Libraries

Timely materials to be found in branches of Pierce County Library include YOUR FEDERAL INCOME TAX 1970 EDITION FOR INDIVIDUALS and TAX GUIDE FOR SMALL BUSINESS 1970 EDITION.

Other important pamphlets now available at the Parkland and Midland libraries are CHAMBERS CREEK-CLOVER CREEK BASIN SEWERAGE GENERAL PLAN, PIERCE COUNTY, WASHINGTON, 1969; COMPREHENSIVE SEWERAGE PLAN FOR PIERCE COUNTY, WASHINGTON, 1969; and COMPREHENSIVE WATER SUPPLY STUDY AND PLAN FOR PIERCE COUNTY AND VICINITY.

Chaplain To Speak



L. G. Mathre

L. G. Mathre, Protestant chaplain at McNeil Island Penitentiary, will deliver a convocation address at Pacific Lutheran University Thursday, Feb. 12.

"Narcotics Use and Addiction" is the topic of his talk, which will be delivered in Eastvold Auditorium at 9:50 a.m.

Mathre, who has served at McNeil for six years, is a graduate of St. Olaf College, Northfield, Minn., Luther Theological Seminary, Minneapolis, and has studied at the University of Oslo, Norway, University of California, Berkeley, and Philips University, Enid Okla.

He has served in clinical

Pow Wow Held At PLU Gym

An Indian Powwow sponsored by Small Tribes of Western Washington (STOWW) was held in Memorial Gymnasium at Pacific Lutheran University Saturday, Feb. 7.

The event was organized to honor the Alaskan Federation of Natives and to publicize the problems of the group, chairman David O. Cottonware said.

Alaskan Federation, which sent a delegation to the powwow, is involved in disputes over territorial and oil rights.

Approximately 500 members of 13 western Washington small tribes attended the chairman added.

The program featured a group of speakers and a series of Indian dances. Dr. Eugene Wiegman, PLU president, delivered the greeting. A luncheon of reindeer, caribou, and moosemeat brought from Alaska, as well as king crab and varieties of fish from the Puget Sound area, was served.

pastoral education at Central State Hospital, Norman, Okla.; Federal Reformatory, El Reno, Okla.; and County Home School, Minnetonka, Minn.

Chaplain Mathre resides in Steilacoom, Wash.

PTA Members Asked To Express Opinions

"Since the mass media continues to insist that they give the public 'what it wants,'" said National PTA president, Mrs. Leon S. Price, Friday night in Dallas, Texas, "then we must urge our 10 million members to leave that 'vast silent majority' and express their opinions about specific media offerings."

Presiding over a meeting of the National PTA Board of Managers in Dallas this week, Mrs. Price discussed a statement presented by the National PTA's special committee on mass media which was adopted by the Board.

Mrs. Price said that the National PTA wants its members to express their opinions to publishers, producers, sponsors, distributors, and theater and television station managers.

"We want our members to let the decision-makers know what they think about specific media offerings," she explained, "and their reasons for either commending them or finding them objectionable." Mrs. Price explained that the PTA is not a censor of books, magazines, films, plays, radio, or television. The organization does not presume to dictate what adults may read, see, or hear; and she went on to say that it respects the right of every person in every group to choose their own intellectual and entertainment fare.

"It holds that no group has the right to use coercive action to suppress material that it finds objectionable," the

president of the world's largest voluntary organization added.

She commented that the freedom to express ideas and views, and the companion right to have access to them are very vital rights protected by the constitution of the United States.

"Obscenity, however, is not protected by the constitutional guarantees of freedom of speech," she said. "We cannot rely solely on the law to stem what has been called the rising tide of pornography."

The National PTA turns to the people for help in its effort to make all forms of the mass media enriching, rather than detrimental and possibly harmful, to the lives of children and youth.

"Because of this we urge parents to be aware of the TV programs their children watch, the movies they see, and the magazines and books they bring home and read," Mrs. Price said. "We urge parents to be informed, discriminating, and selective in their choices of mass media offerings."

The National PTA feels that the mass media have a responsibility to the public and especially to children and youth. It does not ask them to withdraw or refrain from presenting "adult-only" material, but does urge that when children most frequently watch TV or attend movies, that the material be suitable for young minds, Mrs. Price concluded.

LEWIS LLEWELLYN

Can This Really Be Illegal?



Recently, a friend of mine, returning from a trip which had taken her behind the Iron Curtain, told of meeting a woman who lived in Czechoslovakia—a woman whose husband, a minister, had been imprisoned because he refused to deny his Lord.

But this faithful woman, talking to her friends and neighbors, a few at a time in her own home, continued to tell others the good news of salvation and joy to be found in Christ.

Meetings Forbidden

Communist authorities warned her that she must not conduct such meetings in her home.

"Meetings?" she asked. "There have been only a few people here at a time. Can't I talk to my friends in my own home?"

She was told to quit having such meetings, where people were taught to believe in God.

But, after all, this happened in a Communist country.

The scene shifts to California—Los Angeles County—to the suburban town of La Canada.

In La Canada, Rev. Donald Sills, youth minister of a church in the area, has been holding some Bible study meetings in his home.

He has now been ordered to stop holding these Bible studies, which have usually been attended by 25 to 50 young people.

"The minister has had no personal complaints from neighbors," reports the Glendale Ledger, adding, "The minister notes that there is no singing, no music, and those in attendance are urged to be careful not to block driveways when parking their automobiles. Usually there are no refreshments, and noise is held to a minimum. . . . There is no offering taken at the meetings"—which are be-

ing held about twice a month. Rev. Sills has received a letter from a deputy district attorney stating, "It has come to the attention of the district attorney's office that you are in violation . . . in that you are conducting regularly scheduled public Bible studies in a residence."

The zoning ordinance does not forbid such meetings; it merely states that homes in that area are to be used as residences—places for people to live.

Can it really be against the law for a minister to conduct orderly, quiet Bible studies in his own home—in California?

The record indicates that there is no legitimate reason for the attack on these Bible study sessions. What the final outcome will be is not yet known.

A Losing Battle

It appears to be just another of the increasingly frequent onslaughts against anybody and everybody who respects the Bible as the Word of God and wishes to teach it to others.

People who read the Bible and live by its teachings are good citizens—honest, law-abiding, compassionate, interested in the welfare of their fellowmen.

Why is it that some people seem to be controlled by an undying hatred for the Sacred Book?

What can they hope to gain by waging this war which they are bound to lose?

Opponents of the Bible have long battled against it—but they have all failed. Why?

Perhaps the answer is to be found in the Scriptures. The prophet Isaiah declared, "The Word of our God shall stand forever."

Wouldn't you rather be on God's side?

Men In Service

WITH U.S. COMBAT AIR FORCES, Vietnam—U.S. Air Force Staff Sergeant David W. Wellan, son of Mr. and Mrs. William Wellan, Rt. 2, Spanaway, Wash., is on duty at Bien Hoa AB, Vietnam.

Sergeant Wellan, a legal technician, is with the 3rd Combat Support Group, a unit of the Pacific Air Forces, headquarters for air operations in Southeast Asia, the Far East and Pacific area. He previously served at Lockbourne AFB, Ohio. The sergeant attended

Bethel High School and completed requirements for his diploma after entering the service.

Fire District 12

Plans Party

Fire District 21 Fireman's Association will sponsor a delayed Christmas party Friday evening at Graham Frontier Park. Association president Ken Singleton announced the potluck supper will begin at 7 p.m. and has scheduled a big surprise for entertainment.

SEWERS FOR PARKLAND??

WANTED \$1,425.00 FOR SEWERS FROM EACH PROPERTY OWNER

PARKLAND VOTED NO!!

LAKEWOOD VOTES NO!!

COUNTY SAYS YES TO SEWERS. . . WHERE IS OUR RIGHT TO DECIDE?? WHERE IS OUR VOTE. . . HOME OWNERS, YOU OWE IT TO YOURSELF TO INVESTIGATE THE FACTS!!!

- 1. AVERAGE COST TO HOME OWNER WITH 100'x150' LOT (AVERAGE BREAK DOWN OF COST)
\$7.50 PER FRONT FOOT \$750.00
PLUS 1/2c PER SQ. FOOT \$225.00
SEWER TO PROPERTY LINE \$100.00
INSTALLING SEWERY FROM HOUSE TO CITY MAIN \$350.00 to \$750.00
\$1,425.00 IS THE AVERAGE COST FOR EACH HOME OWNER IN PARKLAND TO HAVE SEWERS AND BE HOOKED UP TO THEM.
2. INTEREST AT LEAST 8 PER CENT.
3. YEARLY SERVICE CHARGE \$72.00
4. MANY PEOPLE WILL SELL THEIR HOMES MAKING IT A BUYERS MARKET.
5. HOME PRICES WILL DROP.
6. THE TOTAL ASSESSMENT WILL HAVE TO BE PAID BY YOU AT THE TIME OF SALE.
7. CAN YOU AFFORD \$18.00 PER MONTH PLUS A \$6.00 SERVICE CHARGE . . . OR A TOTAL OF \$24.00 PER MONTH??
8. FIFE ESTIMATED THAT THEIR SEWER COST TO THE HOME OWNER WOULD BE APPROXIMATELY \$4.00 PER MONTH IN REALITY, THE PEOPLE IN THE COUNTY, HOOKED UP TO FIFE SEWERS, ACTUALLY PAY \$8.25 PER MONTH!! THAT'S \$99.00 PER YEAR, AND THAT ISN'T HAY.
9. IF YOU DON'T HOOK UP TO THE SEWER, DO YOU STILL PAY THE ASSESSMENT, AND MONTHLY SEWER RATE?? YES: DEFINITELY!!
10. DO YOU HAVE \$1,425.00 TO THROW DOWN THE SEWER?? IF YOU WOULD VOTE NO BUT YOU CAN'T—SO CALL YOUR COUNTY COMMISSIONERS.

INTERESTED CITIZENS COMMITTEE MR. R. LEE, CHAIRMAN

Pd. Political Ad.

The TIMES JOURNAL

Published weekly at 14620 Pacific Ave., Parkland 98444 and delivered by U.S. Mail and carrier to subscribers. Publishers: Pierce County Publishers, Inc. LE 7-0223 News and Advertising Deadline: Tuesday Noon Subscriptions \$4.00 per year, \$2.50 six months, or 40c monthly by carrier. News stand price 10c copy.

Qualified as a legal publication under Chapter 213 of the Legislature Acts of the 1941 regular session of the State of Washington. Second Class Postage Paid at Tacoma, Wash.

SPRING SKIIN'S A COMIN'



New Selections Arriving Daily!

BANKCARDS • LAYAWAY • OPEN NIGHTS TIL 9:00



11122 PACIFIC AVENUE TACOMA WASHINGTON PHONE LE7-5677

Business Club To Meet

The Parkland Business Club will meet February 18 at the Jolly Roger Cafe, 3724 East 112. The meeting will follow a 7:30 p.m. dinner. Dates of the 1970 Parkland Rodeo and Parade will be set.

Also on the agenda is Norman Rowley, public relations officer from the Puget Sound Bank, who will be guest speaker. Rowley was general chairman of Tacoma's 1969 Centennial.



Some of the old-fashioned flavor of pioneer days still can be found in Washington State's law books. One good example is in the

list of things that are exempt from seizure and forced legal sale for the payment of debts.

The early American state legislatures, including ours, no doubt remembering the rough treatment of unfortunate debtors in the "old country," were careful to see that while debtors' property could be seized to pay their legal debts, certain then-necessary items would be exempt.

For "householders" — husband and wife and near relatives living with them—the exempt items include: All clothing; private libraries worth up to \$500; family pictures and keepsakes; one bed and its bedding for each person and household utensils and furniture worth up to \$500.

And, reflecting an era when most households owned a milk-giving cow and a flock of egg-laying hens, the householder also is entitled to exemptions for two cows, five swine, two stands of bees and 36 fowl, plus food and fuel for

himself and feed for the animals for six months. (If he doesn't have or want the animals, he can exempt other property worth \$250.)

Specialized exemptions from seizure for debt include:

Doctor—library (\$500) and horse, harness and buggy, plus instruments and medicines of a value up to \$200.

Farmer—horses and farming equipment.

Mechanics—tools worth up to \$500.

Lawyers, clergy and other professional men—libraries up to \$1,000, plus office furniture, fuel and stationery.

Teamster—a team of horses.

Loggers—three yoke (pairs) of work cattle. For everyone, government pensions, firearms and a canoe, skiff or small boat are exempt. This column is written to inform, not advise. Facts may change the application of the law.)

Age 30 to 60?

You may save big money on auto insurance.

Why not check Farmers exclusive 30/60 Auto Package today!

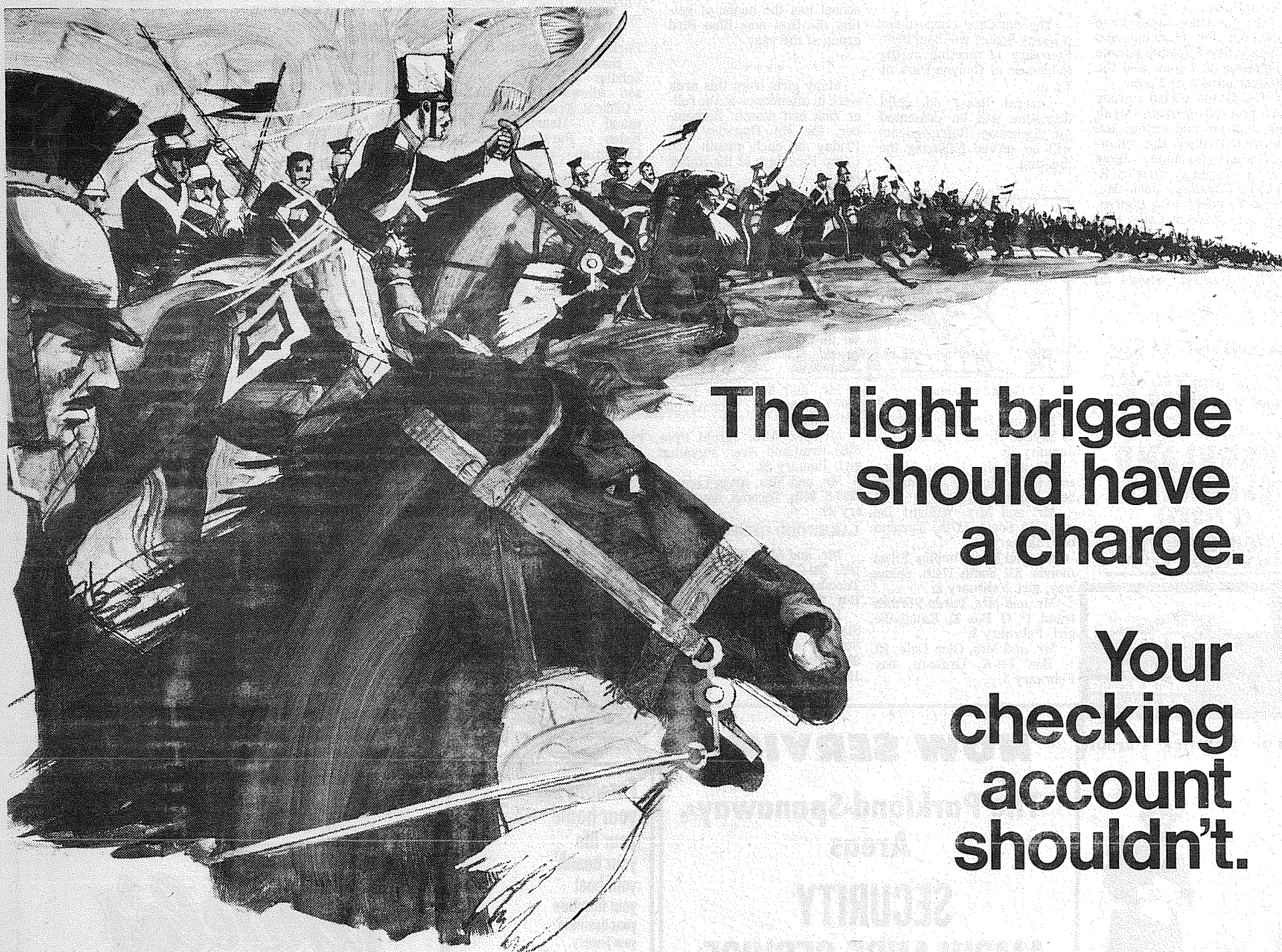


FARMERS INSURANCE GROUP

R.M. HARROD
M.J. TIPPIC
1124 East 72d

GR 5-7440

BUYERS WAITING!
Times Journal Classifieds For Results.
CALL LE 7-0223



The light brigade should have a charge.

Your checking account shouldn't.

At any Banking Center of Bank of Washington, you'll never be charged for another check as long as you do two things:

1. Come in and ask for a no-charge checking account.
2. Maintain a minimum \$200 balance at all times.

That's it. That's all you have to do to write an unlimited number of checks for absolutely nothing and never worry about that troublesome service charge problem again. Even if your balance slips below \$200, you pay only a flat \$2 charge. Plus, deposits are now insured up to \$20,000 by the Federal Deposit Insurance Corporation.

Charge ! ! ? ? That may be OK for the Light Brigade, but not for Bank of Washington. And certainly not for you.

At Your Service: Parkland Banking Center

Spanaway Banking Center



Bank of Washington

NATIONAL BANK OF WASHINGTON/TACOMA WASHINGTON/MEMBER FEDERAL DEPOSIT INSURANCE CORPORATION/MEMBER FEDERAL RESERVE SYSTEM

Of Interest to Women

Daffodil Parade Deadline Set

Organizations desiring to enter floats or other units in the Puyallup Valley Daffodil Festival's Grand Floral Parade have until March 6th to complete entry qualifications...

Almost 150 invitations have been sent out to bands, marching units, mounted groups and organizations who might enter floats, he said.

"But we don't want to miss anybody, so if your organization didn't receive an invitation, just contact us at Daffodil Festival headquarters in the Winthrop Hotel."

This year's parade will follow the same route as last year in Tacoma, Crawford said. Last year for the first time, the parade began at Stadium High School and proceeded down Stadium Way...

New starting times have been set for Puyallup and Sumner, the Puyallup parade beginning at 1 p.m. and the Sumner parade at 2 p.m.

The Grand Floral Parade also proceeds through Puyallup, Sumner and Orting and Crawford named the following area chairmen: Jerry Taylor, Tacoma; Charles R. Hogan, Puyallup; John McKean, Sumner; John Bohren, Fife and William Cope, Orting.

Date of the 1970 event is April 6th with a theme of "The Greatest Show on Earth."

Advertisement for Dryer MORTUARY (134th & Pacific PARKLAND) with text 'The Country Parson' and 'Fast, Expert DRY CLEANING'.

Advertisement for Dryer MORTUARY (134th & Pacific PARKLAND) with text 'The Country Parson'.

Advertisement for Dryer MORTUARY (134th & Pacific PARKLAND) with text 'The Country Parson' and an illustration of a man in a suit.

"The Church has some prosperous members, some generous members—and a few who are both." Copyright by Frank A. Clark

Advertisement for Dryer MORTUARY (134th & Pacific PARKLAND) with text 'The Country Parson'.

Dad's Day Sponsored By PLU Women

Fathers of coeds at Pacific Lutheran University have been invited to attend Dad's Day at PLU Saturday, Feb. 14.

The event, sponsored by the Associated Women Students of PLU, features a basketball game, dormitory open house, banquet and coffee hour.

Open house in the women's residence halls is from 2-5:30 p.m., followed by the AWS Dad's Banquet in Columbia Center at 6 p.m.

Coeds and their fathers will attend the PLU-Willamette basketball game in Olson Auditorium at 8 p.m., the final game on the Knights' 1969-70 Northwest Conference schedule.

Following the game a coffee hour in Chris Knutzen Fellowship Hall will be hosted by the men's president's council.

Coop Nursery To Meet

The Parkland Cooperative Nursery School will hold their February 12 meeting at the fieldhouse at Gonyea Park at 8 p.m.

Several items on child discipline will be presented for discussion. Refreshments will be served following the meeting.

Camp Fire News



CAMP FIRE CAPERS

The ODA-K-HI-Junior Hi Camp Fire group, 8th Graders of Morris Ford Jr. Hi, recently took a tour of the Underground City, in Seattle. The girls report a very interesting afternoon.

The annual Camp Fire Mint sale will continue through Feb. 18th. Many Blue Birds and older groups have, as their goal, a certain group bonus.

Several Horizon Club girls from Franklin Pierce and Washington Hi schools assisted with a movie at the Humane Society, for their Junior members. They helped with registration and served refreshments during intermission. The girls were made Honorary Junior members.

"A First" - Brookdale school has the honor of getting the first new Blue Bird group of the year.

Many girls from this area were in attendance at the roller rink last month. Remember, the 4th Thursday and Friday of each month are Camp Fire days at the Roller Bowl.



Good Samaritan

Mr. and Mrs. Harold Wells, 23 Skyline Drive, Graham, girl, January 30.

Mr. and Mrs. Dennis Magnuson, P. O. Box 584, Spanaway, boy, January 30.

Mr. and Mrs. William Jasper, 819 South 137th, Tacoma, boy, January 31.

Mr. and Mrs. Timothy Fitzsimonds, 231 South 174th, Spanaway, girl, February 2.

Mr. and Mrs. Loren Vormestrand, P. O. Box 22, Eatonville, girl, February 3.

Mr. and Mrs. Glen Dale, Rt. 1, Box 244-A, Graham, boy, February 3.

Mr. and Mrs. Lyle Rader, 3307 54th Ave. E., Tacoma, girl, February 3.

Mr. and Mrs. Jerald Free, 8303 Fruitland Ave., Puyallup, girl, January 28.

Mr. and Mrs. Alvin Lemons, 3253 S. 84th, Tacoma, boy, January 29.

LAKWOOD GENERAL

Mr. and Mrs. Ronald Baxter, 3014 156th Street East, Tacoma, Washington, Baby Boy, February 1, 1970.

Mr. and Mrs. Louis Stanke, 315 South 125th Street, Tacoma, Washington 98444, Baby Girl, February 3, 1970.

Dental Poster Winners Listed

Winners of the Pierce County Dental Auxiliary's 1970 Poster Contest have been selected. Children in grades 4, 5, and 6 participated in the contest. The first prize in each grade was \$5, second prize \$3, third prize \$2, and \$1 for each honorable mention.

4th GRADE

1st prize—Erin Campbell-Custer.

2nd prize—Tim Deuel-Parkland.

3rd prize—Laura Main-Harbor Heights.

Honorable Men.—Della Davis-Elmhurst; Sandra Poindexter-Carter Lake; Paula Brunson-Carter Lake; Debbie Donathan-Tillicum; Jerry Schick-Lake Louise Elementary; Dale Stevens - University Place; Kim Farley - Sunset Elementary.

5th GRADE

1st prize—Scott Jensen - Fife.

2nd prize—Todd Hellman - University Place Elementary.

3rd prize—John Gidley - Parkland Elementary.

Honorable Men.—Annette Schuler - Fife; Annalise Johnson - Idlewild; Debbie Malley - Central Avenue; Andy Grimaud - Heartwood; Lori Estes - Parkland; Valerie Chessman - Sunset Elementary.

6th GRADE

1st prize—Christine Deuel - Parkland

2nd prize—Debra Gehri - Andrew Christensen.

3rd prize—Bonnie Sorge - Heartwood.

Honorable Men.—Krina Nelson - Artondale Elementary; Sheryl Manning - Carter Lake; Lisa Woods - Idlewild; Gary Allen - Bonney Lake; Debbie Mix - Carter Lake; Mary Beth Klee - Narrows View Elementary; Margo Stuen - Parkland.

Hendrickson Honored

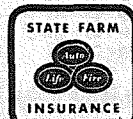
Arnold J. Hendrickson, Tacoma, district representative in this area for Aid Association for Lutherans, placed more than three-quarter million dollars of life insurance during 1969, announced George V. Krampien, senior vice president and director of agencies. AAL is a fraternal life insurance society serving Lutherans throughout the United States and Canada.

A car straddling the center line on a curve is a tip-off that the driver may be drunk. One in 50 drivers are, according to the Washington Traffic Safety Commission.

For your car your home your life your health your boat your furniture your business your jewelry your wardrobe your golf clubs your camera your watch your credit cards your apartment building.

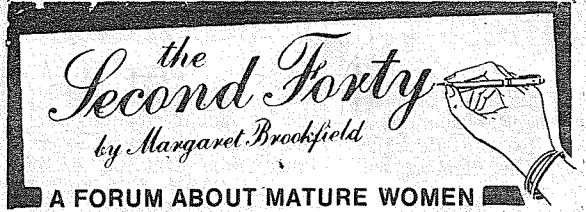
State Farm is all you need to know about insurance. Give me a call.

BILL McMONNIES 16607 Pacific Ave. Spanaway LE 1-6833



State Farm is all you need to know about insurance.

STATE FARM INSURANCE COMPANIES HOME OFFICES, BLOOMINGTON, ILLINOIS



A FORUM ABOUT MATURE WOMEN

Think Mink

Dear Miss Brookfield:

For years we had to struggle on my husband's income. But we were happy. About nine years ago, my husband went into business with a partner. They have been very successful. As a result, we squabble constantly about my inability to spend money foolishly. My husband wants me to "keep up with the Joneses." (The "Joneses," in this case, are the partner and his wife.) He wants me to buy a mink coat. (She bought one.) For a while, he wanted to move to a more luxurious home, just as his partner has, but I managed to change his mind. Our financial future is secure but we argue constantly about this problem. Is there any way I can change my husband's attitude?

L.E., Madison, Wis.

Dear L.E.:

Don't try. Change yours. After years of financial problems, perhaps you feel guilty about spending money on luxury items. But if you can't think mink, what about a less expensive fur — say, Persian? It may help, in your case, to take advantage of end-of-season sales.

Other women with past histories of financial burdens have learned to enjoy their husbands' success — sometimes too much so, judging by their husbands' complaints. If you can't bring yourself to spend money on yourself, indulge in a shared pleasure — perhaps a trip or a cruise with your husband.

Cash Gift

Dear Miss Brookfield:

I have been married for many years to a wonderful husband. He always remembers my birthday and our anniversary with a gift. This year, however, he gave me cash and told me to select my own birthday gift. He said he is tired of buying me nightgowns and perfume. (That's all he ever buys me.) I told

him I prefer a gift to cash — and certainly a more imaginative present than his usual choices. Was I wrong?

G.Y., Cleveland, O.

Dear G.Y.:

If he is still speaking to you, probably not. In selecting a gift, you might have inspired him to ignore the lingerie and perfume counters. Some husbands are rather unimaginative when it comes to choosing a gift for their wives. While we admit that years of nightgowns and perfume can become monotonous, these gifts are better than, say, an electric broom. No?

Before your next birthday, why not try dropping a few subtle hints about what you would like to have? If this ploy fails, just thank him for the lingerie or perfume and remember: it could be worse. He might have forgotten your birthday entirely. We would be curious to know what you buy him for his birthday. Not ties, we hope?

Computer Dates

Dear Miss Brookfield:

I just read the letter from the woman who met her husband by subscribing to a computer dating service. Do they really have computer dating services? How does one subscribe? I really am interested.

L.V., Indianapolis, Ind.

Dear L.V.:

If the postmark hadn't read "Indianapolis," we might have suspected your letter came from Mars. Computer dating services have been around for a number of years. However, we are not in a position to recommend or publicize any individual concern. We suggest you try the yellow pages.

Have you a problem as a mature woman, or with one? For advice and help, write to Margaret Brookfield, Information Center on the Mature Woman, 3 West 57th St., New York, N.Y. 10019.

Advertisement for Golden Touch of Hospitality by Jane Ashley, featuring a glass of champagne.

Flaming Dessert

This unusual dessert will make any holiday gathering a special occasion. Your guests will never guess that it was so quick and easy to prepare. Bring out your chafing dish to set a party mood. Follow the recipe and serve over ice cream.

Flaming Fruit Dessert 1 (10 to 12-ounce) package

frozen strawberries or raspberries, thawed 1 (10 to 12-ounce) package frozen mixed fruit, thawed 2 tablespoons corn starch 3 tablespoons brandy or Cointreau

Mix small amount of juice from fruit into corn starch in chafing dish or saucepan. Add remaining fruit and juice. Stirring constantly, bring to boil and boil 1 minute. Keep hot. Heat liquor in small pan or cup. Do not boil. Pour hot liquor over hot fruit and carefully ignite immediately. Serve over ice cream. Makes 5 to 6 servings.

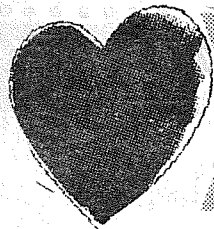
NOW SERVING The Parkland-Spanaway Areas SECURITY AMBULANCE SERVICE

24 Hour Service Oxygen Resuscitator Trained Personnel Parkland Based

CALL LE 7-4455

Advertisement for State Farm Insurance with text 'For your car your home your life your health your boat your furniture your business your jewelry your wardrobe your golf clubs your camera your watch your credit cards your apartment building.' and 'State Farm is all you need to know about insurance. Give me a call.' Includes logo and address: BILL McMONNIES 16607 Pacific Ave. Spanaway LE 1-6833.

Advertisement for Angelo's PIZZA HOUSE with text 'ORDERS TO GO' and 'Featuring top sirloin and American dishes, spaghetti, rigatoni, meat balls, sausage, ravioli, beer and wine.' Includes logo, address: LE 7-7233 14102 PACIFIC AVE. PARKLAND, and phone number: CALL AHEAD, IT'S PIPING HOT ALL THE WAY HOME. PICK UP A BOX, PAIL, BUCKET OR A BARREL.



VALENTINE'S DAY

REMEMBER FEB. 14

GIFTS GALORE AT SHOP MART DEPARTMENT STORE



LADY BREVONI

PANTY HOSE



- PETITE SIZE
- AVERAGE SIZE
- TALL SIZE

A BEAUTIFUL STYLED PANTY HOSE THAT REALLY FITS IN THE NEWEST SPRING COLORS.

\$1.00 PAIR

HI-FASHION

LADIES SWEATERS



- 100% ACRYLIC
- PASTEL SHADES
- SIZE 32-38 AND WASHABLE

\$3.99



1-POUND BOX VALENTINE CHOCOLATES

SOMETHING SWEET FOR YOUR SWEETHEART

1/4 POUND BOX

SWEET HEART CHOCOLATES

ONLY 49c

99c

SEE OUR MOST COMPLETE SELECTION OF VALENTINES FOR GROWN-UPS AS WELL AS FOR KIDS

GIRLS KNEE-HI STRETCH SOX

- WHITE - PASTELS
- SIZE 9 TO 11

88c PAIR ONLY

FIRST QUALITY

DISH CLOTH 9c EACH

WAFFLE WEAVE

TOSS PILLOWS \$1.67

- ASSORTED COLORS
- FRINGE EDGES.

REG. 2.49

LATEST FASHION

LADIES NYLONS 27c PAIR

- FIRST QUALITY
- SIZE 8-1/2 TO 11

MATCHING SHOWER AND WINDOW CURTAIN SET \$1.99 SET

\$4.95 VALUE

A LARGE SELECTION TO CHOOSE FROM IN MANY, MANY, COLORS

DOUBLE BED SIZE CHENILLE

BEDSPREAD \$2.99

- 100% COTTON
- WASHABLE

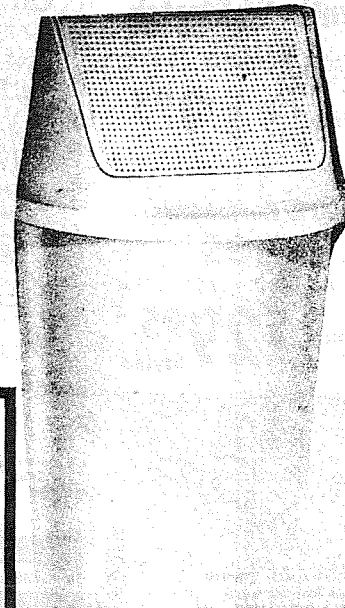
PASTEL COLORS

SQUEEZE TYPE

SPONGE KITCHEN MOP 99c

ASST. COLORS

SWING-TOP KITCHEN TRASH CAN



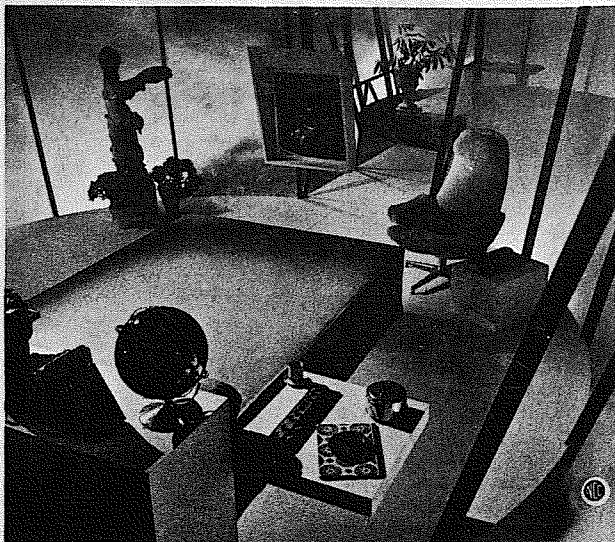
- STRONG
- DURABLE
- HEAVY GAUGE PLASTIC
- BEAUTIFUL KITCHEN COLORS.

ONLY \$1.77

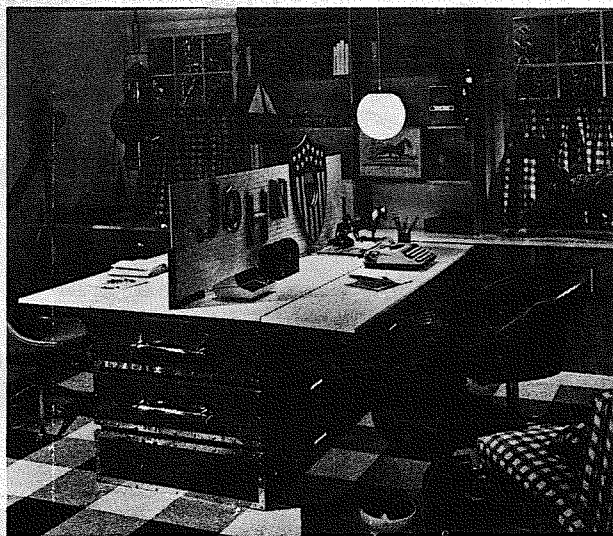
SHOP MART DEPARTMENT STORE

WEEKDAYS 11 A.M. TO 9 P.M. SATURDAY 10 A.M. TO 6 P.M. 13322 PACIFIC AVE. NEXT TO LUCKYS

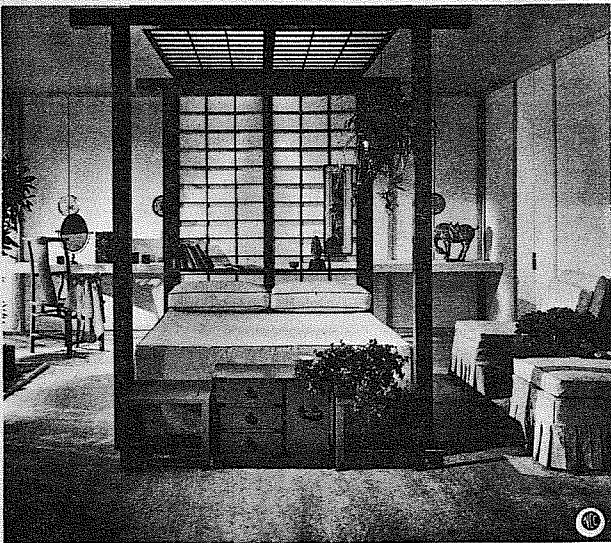
Space Limited? Sleep In A Drawer



FUTURISTIC—Here's a room you may be sleeping in when the year 2000 rolls around. Designer Ving Smith, A.I.D., combines electronic devices with classic statuary in this futuristic setting. The sleeping area, suspended on a circular platform, has a raised television screen for outer space observation. Down-to-earth comfort is provided by a super size cotton and innerspring mattress on the modernistic bed.



SPACE SOLVER—Even in limited space, brothers with different interests can find room for privacy. An ingenious bed-divider-desk is the secret. Set in the middle of the room, the handsome red chest has pull-out drawers on either side. At bedtime, drawers with comfortable cotton and innerspring mattresses are pulled out to make cozy sleeping quarters. Designed by Ving Smith, A.I.D.



ORIENTAL SERENITY—Shoji screens and Mandarin red posts and beams are cleverly combined to create a bedroom with Far Eastern charm. The queen-size bed, outfitted with a luxurious cotton and innerspring mattress, is covered with a snug-fitting spread of striped cotton. The Eastern motif is carried out with a highly functional system of built-ins hidden by sliding walls in the dressing area. Two deep upholstered chairs add a Western touch of comfort to this design by Ving Smith, A.I.D.

FASHION

1970 Hair Styles Stress Femininity

Hair fashions, which used to be a very dull subject of conversation because they changed so little, are now such a part of the 'total' look of the American woman 1970, that they cannot be neglected.

This week is National Beauty Salon Week, a time when those in the business of keeping America's women well-coiffed and styled are honored for their contributions to females across the land.

INSURANCE
Military - Home - Business
LE 7-4904
 Auto Fire Life Bonds
IRENE CLEMENS
 Agency - Parkland
 10329 Pacific Ave.

NATIONAL BEAUTY SALON WEEK

*Celebrate with a Beauty Treat
 ...a Brand New Beautiful You!*

It's National Beauty Salon Week, and we have all kinds of bright ideas to help you celebrate with us. This is a great time to put on a fresh new look for spring . . . a new hair-style, a new color, a wig or other new-you hairpieces.



Dedicated to happy and beautiful women

Best of professional hair care and styling



idon's WIGS
 11214 Pacific Avenue
 LE 1-2676

SPECIALS

Synthetic Stretch WIGS
 From **\$19⁹⁵**

100% Human Hair WIGS
 From **\$29⁹⁵** Styled

Sale Prices Good Thru Feb. 21, 1970

master charge THE INTERBANK CARD
 If you are unsure Let her be sure Give a Gift Certificate
 PUGET SOUND NATIONAL BANK/AMERICARD

CLEO'S BEAUTY SALON
 12104 GOLDEN GIVEN RD. E.
 LE 7-3298

GOLD-N-LOCKS STYLING SALON
 12211 PACIFIC AVE.
 LE 1-7383

CHARM BEAUTY SALON
 413 GARFIELD S.
 LE 7-7475

MILLIE'S STYLETTE BEAUTY SHOP
 228 - 169th E. SPANAWAY
 MILLIE COASH, OWNER, OPERATOR

DONNA'S HOUSE OF BEAUTY
 16118 PARK AVE. S.
 LE 1-6811

MARGE'S BEAUTY SALON
 13808 PACIFIC AVE.
 LE 1-3142

SHERWOOD INN STYLING SALON
 84th & FREEWAY - TACOMA
 GR 5-4400

Tips For Women Travelers

By Frieda Kaye
New York (MW) — A noted author of travel and guide books suggests that women who travel alone abroad are apt to have a better time if they forget the Hollywood stereotypes of European men. American women are not likely to meet Rossano Brazzi's double on the Grand Canal or a Charles Boyer on the Left Bank, according to Kate Simon, author of a number of travel books including *Kate Simon's New York*, *Kate Simon's London* and *Kate Simon's Paris*.

"Most women go with a valise full of misconceptions — that all Italians are romantic, handsome, flirtatious and play mandolins; Frenchmen are charming and Englishmen are shy," says Miss Simon. But all of this is untrue, she adds.

Don't Take Myths Seriously

She cautions women against taking too seriously the "Rudolph Valentino glances" of Italian men. Chances are that even if he makes a date, the Italian man won't show up because short encounters do not lead to friendship. "Italians don't need friends; they have families. And the family is quite enough," said Miss Simon.

The so-called British reserve is also a myth, says the author. In England, the traveler can start a conversation anywhere — on a bus, in a

restaurant or a museum — simply by saying "Hello," "Good morning," or "Was it raining when you came in?"

As for the highly-touted Frenchman's charm, Miss Simon dismisses it — unless, possibly, the traveler has an excellent grasp of the language. If Parisian male charm leaves much to be desired, however, Miss Simon says the country itself offers other pleasures. For example, "eating real French food."

Women Alone

Women alone encounter few problems abroad, according to Miss Simon. Not only can they dine alone but, with rare exceptions, they will be quite safe on the streets of major foreign cities, even late at night. In Paris, except for certain sections, "no one will bother her," explained Miss Simon. Students may follow the woman alone but the author suggests the traveler simply ignore them. In Italy, a woman alone may be followed. "It's not dangerous. It will be assumed that she wants to be followed, and that again is not a serious hazard.

"In London, there is absolutely no hazard of any kind. She'll feel rather sexless," said Miss Simon.

Adventurous Traveling

For greater stimulation, Miss Simon advises travelers to concentrate almost exclusively on a favorite artist, style of architecture, an idea of a town, and pursue that interest. While she recommends group tours for the timid traveler, or one going abroad for the first time, she feels that independent, mature women require only comfortable footwear and a guide book to see Europe. "All you need is a map, shoes and some money in your pocket."

She also suggests separate side trips for married couples to add zest to the European vacation. "There's no reason why a husband and wife can't separate for the day, or for two or four days — meeting later, say, in Paris. I've noticed middle-aged and elderly couples traveling together — they're tired, confused, bored and irritated with each other. A couple of days apart, with different things to tell

each other when they meet, is probably the solution.

Miss Simon is currently working on a guide book to small towns which surround major cities of Italy. Ultimately, she plans to write a guide book on Rome. Her books include details on hotels, restaurants, sightseeing attractions and out-of-the-way places. In Paris, for example, she recommends visiting the Hospital Museum and the Police Museum. "Practically no one ever goes and they are quite exciting."

Vienna Choir To Perform

Vienna Choir Boys, probably the world's most beloved choir, will appear in concert at Pacific Lutheran University Thursday, Feb. 19.

The performance, third of four attractions offered this season by the PLU Artist Series, will be held in Olson Auditorium at 8:15 p.m. The unique program includes costumed operettas, sacred songs, secular and folk music, maintaining a tradition that began 450 years ago.

Boys performing on the current tour range from eight to 14 and are products of the finest supervision in Vienna. Before enrollment is possible in the organization, which is equivalent to a school, the prospective choir boys must pass rigid examinations of their scholastic ability and musical talents.

The current 22-voice choir features the 24th group of youngsters to tour the United States since 1932. The school is divided into three choirs for touring purposes and each unit receives an opportunity to visit the numerous countries on the choir's itineraries.

Tickets for the concert may be purchased at the PLU Information Desk.



Collins Grange Meeting Night

Collins Grange will meet Thursday night, Feb. 12th at 8 p.m., in the Grange Hall, 34th Ave East and 120th St East. Mr. Ed. Hiner the Master will conduct the business meeting. At 9 p.m., William Markham, lecturer will present Ron Anderson from Washington State Patrol to show pictures and give a talk on Safe driving.

This is our March of Dimes Program, as pies will be sold for refreshments and all proceeds will go to the Birth Defects program. All members are urged to attend.

Group Examines Library Problems

A "task force" approach to broad-scale problems affecting libraries of all kinds in the state will be taken by an organization of laymen and library leaders which has just been formed.

"The new 33-member Statewide Library Development Council will give direction and purpose to library development across the state — searching-out problems and ideas and doing something with them," said Michael Lynch, Council Chairman who is also director of the North Central Regional Library headquartered in Wenatchee.

The new organization is the result of the merging of the Statewide Programs of Services Committee of the Washington Library Association and the Statewide Advisory Council for Title III (Interlibrary Cooperation) of the Library Services and Construction Act — two separate groups which have had parallel functions in planning for the development of libraries and their services across the state.

ies and their services across the state.

"Through widening our base and pooling our efforts for the good of all forms of library service, we can get much more accomplished," Lynch said. "Teams of council members will spearhead projects, relying on the staff of the State Library to provide necessary data and information for action. Miss Dorothy R. Cutler, head of the Library Development Division of the Library, is the chief staff contact."

"The task forces will cover libraries of all types — school, public, college-university, and special", Lynch said. "Subjects will be attacked from every angle so that we can come up with facts and figures to show what the problems are, where inadequacies exist, and why, and what can be done about them."

Members of the new Council from the Tacoma area are Mrs. Carolyn Else, director of Pierce County Library; Mr. Frank H. Haley, librarian for Pacific Lutheran University; and Mrs. Betty Parkany.

CALL JU 4-3344
or **LE 7-3322**
Professional AMBULANCE SERVICE
PARKLAND AMBULANCE
and **LAKEWOOD PACIFIC**

To Learn More About The John Birch Society, Stop By 14620 Pacific Ave. or Call LE 1-8022
American Opinion Book Store
Library & Gift Shop Paid Advertising

Legal Notices

State of Washington
DEPARTMENT OF WATER RESOURCES
OLYMPIA
AMENDED NOTICE OF GROUND WATER RIGHT APPLICATION NO. 10500
TAKE NOTICE:

That JESSE N. MOBLEY of Tacoma, Washington on November 12, 1969 filed application for permit to withdraw public ground waters through a well situated within Government Lot 6 of Section 26, Township 19 N., Range 3 E. W.M., IN Pierce County, in the amount of 40 gallons per minute, subject to existing rights continuously, each year for the purpose of domestic supply and irrigation. Any objections must be accompanied by a two dollar (\$2.00) recording fee and filed with the Department of Water Resources within thirty (30) days from Feb. 19, 1970.

Witness my hand and official seal this 2nd day of February, 1970.

GLEN H. FIEDLER
Assistant Director
Division of Water Management
Department of Water Resources
Published in the Times Journal & Pierce County Herald Feb. 12, 19, 1970.

Legals

IN THE SUPERIOR COURT OF THE STATE OF WASHINGTON IN AND FOR PIERCE COUNTY

NO. 192952
SUMMONS BY PUBLICATION

DELMAR A. MOHS, Plaintiff,
vs ANNMARIE E. MOHS, Defendant.

THE STATE OF WASHINGTON to the said ANNMARIE E. MOHS, Defendant:

YOU ARE HEREBY SUMMONED to appear within sixty days after the date of the first publication of this Summons, to-wit: within "sixty days after the 29 day of December, 1969, and defend the above-entitled action in the above-entitled Court, and answer the Complaint of the plaintiff, and serve a copy of your answer upon the undersigned, attorneys for plaintiff at their office below stated; and in case of your failure so to do, judgment will be rendered against you according to the demand of the Complaint, which has been filed with the Clerk of said Court. This is an action for divorce upon the grounds that defendant has abandoned the plaintiff.

PETERS & TRACY
By: s/Phillip S. Tracy
Phillip S. Tracy
Attorneys for Plaintiff

Published in The Pierce County Herald and Times Journal Jan. 8, 15, 22, 29, 1970, and on Feb. 5, 12, 1970.

OPEN TONIGHT

Don't FIDDLE AROUND figuring your own INCOME TAX

Taxes are too important to mess with, because they're the largest single expense of your lifetime! You can help minimize them by seeing H & R Block. We'll make sure you receive every legal deduction. Then we'll guarantee your return for accuracy. Why Rome around? Let Block light your fire!

COMPLETE RETURNS \$5 UP

GUARANTEE
We guarantee accurate preparation of every tax return. If we make any errors that cost you any penalty or interest, we will pay the penalty or interest.

H & R BLOCK Co.
America's Largest Tax Service with Over 4000 Offices

Puyallup 800 N. Meridian | **Parkland** 11810 Pacific Ave.

Weekdays 9 A.M. to 9 P.M., SAT. and SUN. 9 A.M. to 5 P.M.
NO APPOINTMENT NECESSARY

FURNITURE CLEARANCE

1969 MODELS Priced To Sell!!

Sofa & Chair \$8800 TERMS | **Mattress \$3300**

APPLIANCES UP TO 50% OFF RECLINERS

OPEN TIL 9 P.M. Sat. & Sun. Til 5

DINETTE SETS ALL REDUCED BUNK BEDS

ODDS & ENDS LAMPS Values To \$40 | **3 PC BEDROOM SUITE**

Your Choice **\$1188** Was \$299 **\$166**

Open A Charge Account **Save At Bank Cards Accepted**

HOME FURNITURE

9324 So. Tacoma Wy. JU 2-2700

George Washington Drank Tea



Did you know that George Washington was a great tea lover and that he kept a cow in lower Manhattan just to provide milk for his tea? The important point about this information is that he used *milk*, not cream or lemon.

Tea experts say that milk lets the true flavor of tea come through—while cream "coats" the distinctive flavor and lemon merely changes it to a lemon flavor.

However, whatever you prefer in your tea, be sure to make it properly. An aromatic, full-bodied cup of tea still requires (1) a teapot to keep the tea hot during the brewing, (2) bubbling, boiling water to extract the flavor goodness from the leaves, (3) 1 teaspoonful tea or 1 teabag per cup for a hearty, flavorful beverage and (4) a brewing period of 3 to 5 minutes to allow the leaves enough time to unfold and release their flavor.

A George Washington birthday celebration would never be complete without a special cake or pie with cherries. So to pay full homage to the Father of Our Country, try this Cherry Log.

George Washington Cherry Log (Makes about 8 servings)

- | | |
|--------------------------------|-----------------------------------|
| 3 eggs | Grated rind of 1 lemon |
| 3/4 cup sugar | 2/3 cup pancake mix |
| 2 tablespoons melted margarine | 1 cup heavy cream, whipped |
| 1 teaspoon lemon juice | 1/2 cup candied cherries, chopped |

Beat eggs until light and foamy. Gradually add sugar; continue beating. Stir in melted margarine, lemon juice, rind and pancake mix. Grease well a 10 x 15-inch shallow pan. Cover with waxed paper to fit bottom of pan. Sprinkle with flour. Pour batter into pan. Bake 12 to 15 minutes or until done in hot (400°F.) oven. Immediately turn out onto towel dusted with confectioners' sugar. Remove paper. Roll cake in towel. Cool 10 minutes. Combine whipped cream and chopped cherries. Unroll cake: Spread filling within 1/2 inch of edges. Roll tightly.

Area Holstein

Marks

Output Milestone

Holstein-Friesian Association of America has reported a production milestone for a Registered Holstein cow from this area. The career producer has been credited with more than 100,000 lbs. of milk output under official testing supervision.

The owner, Western Washington Experiment Station,

Puyallup, has been notified that Nisqually Cavalier Judy 4914270 (GP), has produced 112,717 lbs. of milk and 3,723 lbs. of butterfat in 2,960 days since becoming two years of age.

Because of current replacement heifer rearing and purchase costs, cows that stay in the herd longer and achieve high lifetime production levels have proven to be more profitable. The Holstein Association has 35,500 cows on file that have attained the 50-ton production milestone.

Officers Retire

FORT LEWIS, WASH. — A group of five officers and two enlisted men, six from the Tacoma area, have retired here with over 150 years combined services.

Major General Willard Pearson, Ft. Lewis commanding general, presented the seven with certificates of retirement.

Tacoma area retirees were Lieutenant Colonel Leonard F. Morse, Jr., Chief Warrant Officers Bruce P. Gentry, Walter G. Gates, Phillip A. Zoller, Kenneth McCarther, and Sergeant First Class Allan G. Chase.

Platoon Sergeant Menelio Pena-Ramos retired to Puerto Rico with his wife and four children.

Colonel Morse, 10504 Rowland Ave. SW, retired with over 22 years service. He was awarded the Meritorious Service Medal upon retirement. He and his wife, Georgia, have two children.

Mr. Gentry, 5704-111th St. SW, also retired with over 22 years service. He and his wife, Margaret, have three children.

COUNTY NEWS

COUNTY RECREATION STANDINGS (Through Feb. 5) CROSS-COUNTY

W	L
Briggs Thunderbirds 6	0
Malcom's Shope-Rite 5	1
Manke & Son 5	1
Morton Medics 3	3
Bird Construction 2	4
Gig Harbor 1	5
Berg's Tavern 1	5
Parkland Youth Act. 1	5

AMERICAN

Mr. Gates, 407 Barksdale, DuPont, retired with over 21 years service. He came here from his last assignment with military intelligence, Presidio, San Francisco, Calif. He and his wife, Darlene, have three children. Gates is a graduate of Clover Park High School.

Mr. Zoller, 155 East 133rd, retires with over 23 years service. He and his wife, Jean, have a daughter, Phyllis, 20, attending Pacific Lutheran University where she is a junior.

Mr. McCarther, 1701 East 61st St., has almost 22 years of service to his credit. He and his wife, Bobbie, have three daughters.

Sergeant First Class Chase, 4063 A St., retired with over 23 years service. He and his wife, Evelyn, have seven children.

NATIONAL

W	L
Stud Oldtimers 5	0
Len's Haven 4	1
Frontier Lands 2	3
Rejects 2	3
County Refuse 1	4
Whittaker Chalet 1	4

NATIONAL

W	L
B & B Class 5	0
College Club 3	1
Sumner Active 2	1
Puyallup Eagles 1	3
Tacoma Motorcycle 2	2
Wagonblast Chevron 3	2
Len's 1	3
Star Iron & Steel 0	5

SENIOR BOYS EAST

W	L
Puy. Lettermen 5	0
Sumner Golds 4	1
F.P. Crabs 4	1
Bethel 2	3
Fife 2	3
Dylin Demons 2	3
Super Zonkers 1	4
Sumner Purples 0	5

SENIOR BOYS WEST

W	L
Lakewood Lakers 4	0
Tacoma Screw Prod. 4	1
UP Lions 3	1
UP Boosters 2	3
Collins Service 1	3
Spadoni Bros. 0	5

SENIOR GIRLS

W	L
Lakes Lions 5	0
Puyallup Viks 4	1
Soine's Loafers 4	1
Warriorettes 3	1
N.O.T. 2	3
Orting 2	3
Sumner 1	4
Mountaineers 1	4

JUNIOR GIRLS

W	L
Dairy Dell 4	1
Soine's Shoes 4	1
Indianettes 3	2
Edgemont 2	3
Mann 2	3
Orting 0	5

SCHEDULES (Feb. 16-19)

AMERICAN — Wednesday: Whittaker Chalet vs. County Refuse, 7, Ford; Thursday: Rejects vs. Stud Oldtimers, 8:30, Woodbrook; Frontier Lands vs.

Len's Haven, 7, Woodbrook.
NATIONAL — Tuesday: Tacoma Motorcycle vs. Sumner Active, 8:30; Keithley; Len's vs. Star Iron & Steel, 7; Clover Park; Wagonblast Chevron vs. College Club, 8:30; Clover Park. Wednesday: B & B Glass vs. Puyallup Eagles, 8:30; Ford; Tacoma Motorcycle vs. Sumner Active, 8:30; Mann.
SENIOR BOYS EAST — Monday: Dylin Demons vs. F.P. Crabs, 7, Ford; Super Zonkers vs. Fife, 8:30, Ford. Wednesday: Bethel vs. Sumner Golds, 7, Sumner; Puyallup Lettermen vs. Sumner Purples, 8:30, Sumner.
SENIOR BOYS WEST — Tuesday: Collins Service vs. Lakewood Lakers, 7, Keithley; Thursday: Spadoni Brothers vs. UP Boosters, 7, Curtis J.H.; Collins Service vs. Lakewood Lakers, 7, Mann; Tacoma Screw Products vs. UP Lions, 8:30, Curtis J.H.
SENIOR GIRLS — Monday: Orting vs. Gig Harbor, 7:30, Woodbrook; Soine Loafers vs. Lakes Lions, 8:30, Woodbrook. Wednesday: Puyallup Rotary vs. N.O.T., 6:30, Sumner; Puyallup Viks vs. Mountaineers, 7:30, Sumner; Sumner vs. Warriorettes, 8:30, Sumner.
JUNIOR GIRLS — Monday: Orting vs. Edgemont, 6:30, Woodbrook. Tuesday: Dairy Dell vs. Soine Shoes, 7, Mann; Mann vs. Indianettes, 8, Mann.

BOWLING

35¢

Saturdays Until 7 p.m.
Sunday Until 1 p.m.

PARADISE BOWL

108th & Pacific
LE 7-6012

NARCOTICS??



IT'S WORTH YOUR TIME ...AND HIS

For You To Attend The Puyallup Jr. Women's Club

"Drug Education Forum"

•THURSDAY, FEB. 12, 8 P.M.

•PUYALLUP HIGH SCHOOL AUDITORIUM

•Moderator Capt. Frank Vasey, Puyallup Police Dept.

•Film "Marijuana" Starring Sonny & Cher

EVERYONE INVITED

THIS PUBLIC SERVICE MESSAGE BY

Citizens
STATE BANK

- ★ MAIN OFFICE - PUYALLUP
- ★ SUMNER
- ★ SUMMIT VIEW
- ★ EDGEWOOD - MILTON
- ★ WILLOWS



DON'T MISS A SINGLE ISSUE!

CALL LE 7-0223

The TIMES JOURNAL

Keep Up With The Local News Published Weekly in The Times Journal. Look forward to these regular features:

- The Second Forty
 - Horsemen's News
 - County News
 - Livestock Reports
 - School News
 - Club News
- And Coverage of Local Events

ONE YEAR Only \$4.00 6 Months \$2.50

Please enter my subscription for a period of _____ to the Times Journal.

Name _____

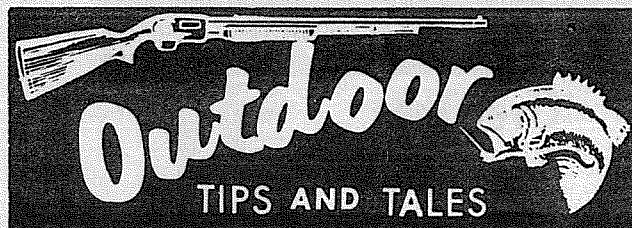
Address _____

City _____ State _____ Zip _____

Check enclosed

Bill me.

SPORTS



By Herb Williams
DABBLER is a term used to describe certain kinds of ducks, such as mallards. It's a term I also use to describe a certain kind of steelheader.

And just as the mallard is one of the best of ducks, so these steelhead dabblers are among the best fishermen. I've had them take fish practically from under my feet at times.

They usually work with a fly rod and in the past many of them worked out of stripping baskets. Some still do, but the technique can be used without the basket, which can be an ordinary letter basket of the type you see on desks in offices.

They use no swivels, put the hook right on their main line, which is monofilament. They use something like a No. 4 split shot for weight.

The basket fishermen strip line off their reels into the basket and then cast from that, so the line pays out easily through the guides.

They don't make those long, stream-crossing casts you can make these days with a good steelhead outfit. To them, a 20 or 30-foot cast is a long one. Instead, they move along the bank, or in the water close to the bank, dabbling their line here and there, close to rocks, along the bank, feeling out all the spots where they think a steelhead might be hanging out.

And how they do catch fish!

One reason they catch fish is that often steelhead are so close to shore, fishermen can wade right out into the river and stand where the dabbler does his catching.

If you see one of these dabblers, watch him, study his methods, see where he

catches his fish. Some of his methods just might be worth copying.

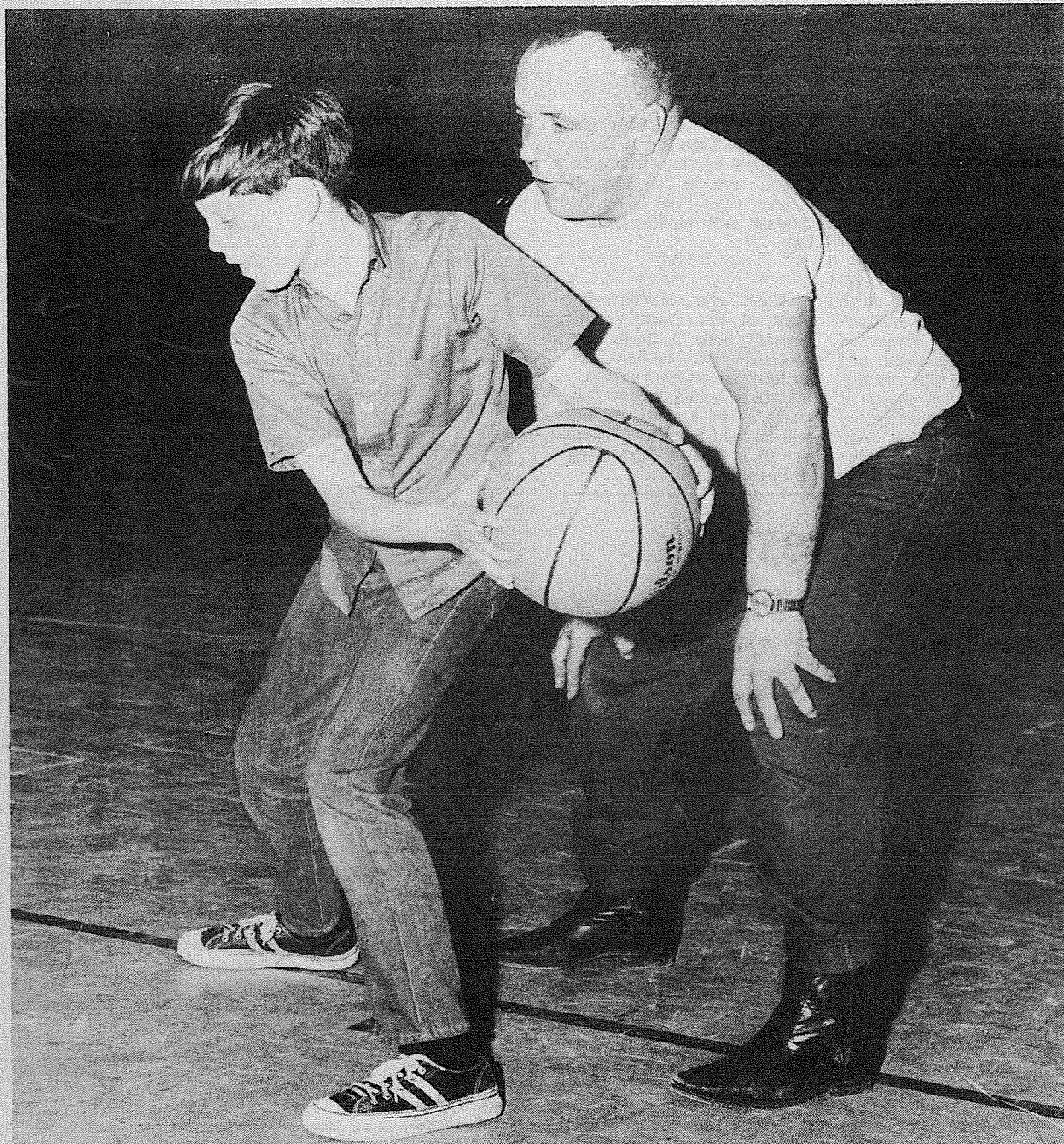
BRANT season is open through Feb. 22, but these small geese aren't a bird to hunt casually. There's a lot more to successful hunting of them (according to brant hunters) than there is to pheasant or duck hunting. If brant hunters are right in this, it gives you an idea of how tough it can be, for ducks and pheasants aren't always the easiest birds to limit out on.

Brant are a salt water bird and their favorite food is eel grass, which is exposed at low tide. Hence, there's not much use hunting them at high tide. You'll often see them then, far out from shore, taking it easy, resting and waiting for the outgoing tide to expose their dinner table.

When they're feeding, they're going to be doing just that, so unless you can sneak up on them then, you'll not pull them away from the dinner table into range. Then, once they're full and the tide is starting to roll back in, they're satisfied to head back out to deep water to take it easy and wait for the next chow call.

This leaves the time when the tide is starting out, when they're hungry and looking for something to eat, as the best time to hunt. This is the time to have your decoys out and be well hidden.

The more decoys the better, to give the birds the idea that down there is a flock working on some eel grass. Decoys have to be placed as far out as possible, because a dropping tide can leave them high and dry.



BETHEL'S 1975 CHAMPIONSHIP basketball team may well be the result of this session recently at the Elk Plain Elementary School gym. Mr. Leland Graybeal, who is a parent from the school comes to the school every afternoon to work in the gym with boys in the upper elemen-

tary grades. The program is strictly volunteer and Mr. Graybeal is spending his time at the school "just because he feels like it." When asked about his unselfish donation of time Mr. Graybeal smiled and remarked, "These are our kids and if the parents don't pitch in and help, who will?"

Tourney Deadline For Adult Hoop

Tuesday, Feb. 17, will be the deadline for Pierce County American and National adult basketball teams to enter the County-City Open post-season tournament.

Competition in the double-elimination tournament is scheduled to begin Feb. 24 and continue through March 19. A \$5 entry fee per team will be required by the deadline date.

All American and National teams and the second-division finishers in the Cross-County League are eligible for the Open Tournament. Other entries will come from the city's Cascade, Evergreen, Rainier and Skyline leagues and second-division finishers in the Metro League.

Church-Industrial and 5-10 post-season tournaments will also close to additional entries on Tuesday. Playing dates for these tournaments will be the same as the Open competition.

Both tournaments are sponsored by the Pierce County Park Department and the Tacoma School District. Entry fees should be submitted to the league office by the deadline date at 5 p.m.

Hoop Shoot Preliminaries

Preliminary competition at county schools and recreation centers is currently under way in the 23rd annual Hoop Shoot Contest offered by the Pierce County Park Department.

Boys and girls from the fourth through ninth grades are competing at their school or center for berths in the All-County finals at Clover Park High School. The girls will shoot-off on Feb. 25 and the boys the following night.

Youngsters entering the contest are given 25 shots and the highest number of attempts made will determine the champion and an automatic spot in the All-County finals. In addition, elementary boys making 15 or more and junior high boys making 20 or more will also be eligible for the finals.

Girls competition will include Tacoma and Pierce County schools.

Winners in the All-County boys finals Feb. 26 will meet similar champions from Tacoma and Puyallup in the Hoop Shoot finale March 7 at the University of Puget Sound Fieldhouse during the Class A state high school basketball tournament's final day of play.

Braves Sting Hornets

Bethel will face Tumwater at Tumwater Thursday night after stinging the Enumclaw Hornets 69-65 Tuesday.

The Tumwater contest was originally scheduled for Friday but due to a Wrestling Tournament, was changed to February 12. The JV game will start at 5:45 with Varsity play slated for 7:30 p.m.

Patriots Upend Lancers

The Washington Patriots put a strong first quarter together Tuesday night and held on to upset Lakes 62-49

At the end of the first quarter, the Pats led the Lancers 17-5 and managed to match the Lakes quintet basket for basket the remainder of the game to chalk up the win.

Next opponent for Washington is Rogers High February 17.

Cards Face Raiders

The Franklin Pierce Cardinals will meet the Jefferson Raiders in a South Puget Sound basketball contest Friday, February 13.

D&J's SPORTING GOODS
 12816 Pacific Ave. LE 1-1515

SUBSCRIBE NOW!

The TIMES JOURNAL

Your Best Source Of Local News

Annual \$4.00

6 Mos. \$2.50

Enter my subscription for a

One Year Six Month
 Subscription to the Times Journal.

Name _____

Address _____

City _____ State _____

Zip _____

Cash Enclosed Bill Me

BOWLING

PARADISE BOWL

EXPRESS — Dick Breon, 529; Dave Latham, 208; Doris Stephenson, 473; Betty Breon, 172.
 ROLLING BEES — Lois Lovelac E., 497; Thelma Thornhill, 195.
 THE BELLS — Nancy Cosgrove, 529, 198.
 PINETTES — Liz Jowett, 201 - 192 - 185, 578; Shirley Bennett, 197 - 183 - 183, 563; Lee Leggett, 199 - 183 - 175.

557; Sue Sweaney, 151 - 161 - 244, 556.
 "600" MIX — Woody Clapham, 531, 199; Fran Barry, 480; Marie Spain, 195.
 SPORTSMAN — Ralph Alexander, 562, 213.
 INDUSTRIAL — Bill Hiller, 559, 247.
 FRIENDLY DOUBLES — Dennis Lundgren, 576, 215; Pearl Axt, 511, 181.
 PREMIER — Jim Robbins, 587; Frank Meyer, 218.
 SR. CITIZENS — Gundy, Gunder,

son, 554, 200; Al Kleinsasser, 200; Clara Friedrick, 501, 172.
 FRANKLIN PIERCE FACULTY — Camille Eliason, 195 - 214 - 154, 563, 214; Russ Fulkerson, 578, 214.
 MIXERS — Helen Glenn, 515, 213; Paul Glenn, 578, 231; Lou Stagum, 231.
 TOP ROLLERS — Russ Hardford, 587, 251; Jennie Rugers, 549, 204.
 GRAHAM — Rosann Banks, 544, 202; Bob Sims, 571, 214.

HORSEMEN'S NEWS

Over The Fence Rail



By Barb. Menge

Tacoma Unit No. 1 Additions

February 7 & 9 Tacoma Unit No. 1 members toiled many hours beautifying the grounds. New additions include new railing in the arena, pea gravel behind the grandstands, a covered entry booth, an additional door at the east end of the arena, flag stands, and general ground clean up. Those turning out to help were Jerry Buck, Bill Russel, Bob Westlund, Martin Berger, Ingrid Dupard, Jamie Strom, Kim Stecker, Harlem Harris, Wilson family, Nelson family, Chapen family, Mitchel family, Wilson family, Wulfekuhle family, Ted and Sharon Perkins, and Myra and Don Jones. A thank you is extended to all those sacrificing personal time to help.

Happy Horse Club Ride

The Happy Horse club will be sponsoring a trail ride and cowboy breakfast February 22, at the Al Steele Ranch in Roy. The breakfast will begin at 8 a.m. with the ride following at 10 a.m. A potluck dinner will be held after the ride. The ride will be held at Rt. 1 Box 87 in Roy.

Jack Pot Play Day

A Jack Pot Playday will be held February 22 beginning at 10 a.m. at the B & L Stables in Everett. Events will be divided into Pee Wee, Intermediate, Junior, Senior divisions. The arena is located 2 miles east of Murphy's Corner on 132nd. For further information call 353-8327 or GE 5-3034. The following games will be offered:

- | | |
|--------------|----------------|
| 1. Barrels | 5. Baton Relay |
| 2. Poles | 6. Rescue Race |
| 3. Keyhole | 7. Stake Race |
| 4. Flag Race | 8. Ring Spear |

FARM NEWS

By Robert F. Bradley
Pierce County
Extension Forester

There is "Land Uses For Fun and Income."

This comprehensive series of seminars which proved so popular in 1969 is again presented by the Cooperative Extension Service, Washington State University. It is hoped that the new location will better serve the people of northern Pierce and southern King Counties.

Planning, Zoning and Land Use Changes, Taxation, Uses of Land For Income and Uses of Land For Recreation, constitute the titles of four sessions. They will be held on Tuesday evenings, 7:30 to 9:45 p.m. in four consecutive

weeks, beginning with February 17th at the White River Junior High School, Buckley.

A fee of \$3.50 to help defray costs is charged for the entire series with husband and wife having to pay only a single fee. Pre-registration by February 12th is encouraged — accepted later on the basis of space available. Free coffee served by the White River 4-H Club.

Speakers include county, state and university people, well versed in their respective fields.

For additional information, ask for a free brochure from the Pierce County Extension Service, 742 County-City Building, Tacoma, Washington 98402, or call FU 3-3311, Ext. 511.

A STUD Appaloosa, Spooks, Comanche Bars, Wash. State champion, also T. B. Jockey Club. Spotted pharo. 16307 Canyon Rd. LE 1-1479 69-361.

HORSESHOEING
RAY JOHNSON
TH 5-6006

"Horsemen's Market Place"
Classified Directory
Board — Trainiers — Breeders
Outfitters — Feed Dealers

SOUTH END HARDWARE
HUNTING & FISHING SUPPLIES - LICENSES
PAINTS & PLUMBING SUPPLIES

Call VI 7-7211

So. 185th & Pacific Ave.
Route 1 - Box 1360

Vet Supplies
Complete supply animal health products.
Franklin - Farnam - Anchor
at
ASHMORE'S
Spanaway Drugs
165th & Pacific Ave. LE 7-5993

LE 1-7768
Horseshoeing
BILL MAY

NOW OPEN IN NEW LOCATION
LE 1-4555
RODEO
CUSTOM SHOP

Dean & Dodie Vosburg

Complete Saddle
Repair Shop
Western Wear
English Tack & Togs

17302 Pacific
Spanaway, Wash.

Feed Box Chatter

Edna Berger brought her Morgan horse stallion, Shallowa Ringo, home last week. Ringo has been at Stecker's Stables being trained for cutting.

Dr. Ray Wiseman took his Morgan colt Tellinget Sirprise, who has been boarding at Ed-Mar farms, to Stecker's to begin his saddle training.

The Spanaway area recently acquired a new Arab stallion. Nancy and Ken Esarey have leased the 10 year old Arab stallion Sama-du and will be standing him this season. Sama-du was shown at Trails End last Sunday, by Nancy Esarey and Jean Bauer, and placed well in the English classes.

Lariets began their new season February 2. There was a good turn out for the drill practice.

Vicki Geehan took her new horse Opie Tebo to the Trails End show Sunday, where he placed high in the English classes. Opie Tebo is by the Quarter horse stallion Quincy Dan.

There was another fun night at the Tacoma Unit January 31st. A good time was had by all. The final family fun night in this years series will be held Saturday February 7. The Awards banquet will be held Saturday February 21 at Brad's Restaurant in Puyallup.

RESULTS FOR FUN NIGHT AT THE TACOMA UNIT JANUARY 31:

Western Pleasure JR.
1 Deb Dehrin
2 Katie Halcomb
3 Becky Bryson
4 Cheryl Doughs
5 Ingrid Dupard

Western Pleasure SR.
1 Steve Bryson
2 Judy Root
3 Dawn Jecs
4 Lynne Bennett
5 Bud Root

Texas Barrels JR.
1 Jessie Hamilton
2 Jackie Dillman
3 Melody Martin
4 Jan Lockwood
5 Colleen Keohane

Texas Barrels SR.
1 Deb Bauderer
2 Judy Root
3 Carol Perry
4 Steve Bryson
5 Mary Windjum

Hangman
1 Tim Donathan, Jessie Hamilton
2 Leonard Cochran, Deb Bauderer
3 Judy Root, Jim Gofarth
4 Carol Perry, Sheri Perry
5 Bonnie Kaasa, Dan Poorman

Rescue Race
1 Carol Perry, Mike Velke
2 Melody Martin, Daun Halverson
3 Jackie Dillman, Colleen Keohane
4 Jessie Hamilton, Tim Donathan
5 Judy Root, Jim Gofarth

Bareback Relay
1 Jackie Dillman, Colleen Keohane, Melody Martin, Jan Lockwood
2 Terri Christiansen, Jessie Hamilton, Tim Donathan, Marie Christiansen
3 Sheryl Wilbar, Karen Sprague, Deb Bauderer, Ernie Cook
4 Dawn Jecs, Lucky Jecs, Jim Gofarth, Judy Root
5 Bonnie Kaasa, Sheila Van, Ingrid Dupard, Dan Poorman.

Keyhole JR.
1 Bonnie Kaasa
2 Jackie Dillman
3 Dan Poorman
4 Jan Lockwood
5 Pam Carlsen

Keyhole SR.
1 Judy Root
2 Deb Bauderer
3 Mary Windjum

Polebending JR.
1 Jessie Hamilton
2 Bonnie Kaasa
3 Colleen Keohane
4 Vickie Stalcup
5 Melody Martin

Polebending SR.
1 Carol Perry
2 Steve Bryson
3 Ernie Cook
4 Leonard Cochran
5 Judy Root

Weed Book Published

WASHINGTON STATE UNIVERSITY, February 6 — "Man's welfare depends on his ability to control plant growth," agronomist Thomas J. Muzik writes as the first words in his newly published book.

"Weed Biology and Control" is the title of the Washington State University professor's book, just out under the McGraw-Hill imprint.

Rather than a handbook of weed control practices, Dr. Muzik's book emphasizes principles. Practices change as fast as one can publish, while principles are enduring, he explains.

Among the chapters are discussions of weeds in relation to man, chemistry and its uses in weed control, plant growth and how to use that knowledge for weed control, toxicology, and relations between weeds, crops and herbicides.

Although the book is technical, terms are explained so that one does not have to be a chemist or a botanist to get a great deal from it. Here and there, odd facts crop up that might interest anyone curious about the world around us. For instance, weeds do more damage than plant diseases and insects combined. One photograph shows tumbleweeds blocking a Washington highway. One tropical tree poisons people who stand under it during a rain, and perhaps kills those who sleep under it overnight.

Team Baton
1 Jan Lockwood, Jackie Dillman, Colleen Keohane, Melody Martin.
2 Bonnie Kaasa, Dan Poorman, Sheila Van, Ingrid Dupard
3 Jessie Hamilton, Sheri Perry, Deb Dehrin, Tim Donathan
4 Vincent DeChaux, Mary Windjum, Deb Bauderer, Ernie Cook.
5 Leonard Cochran, Dwan Jecs, Steve Bryson, Judy Root.

Tacoma Livestock Market Report



For Thursday, Feb. 5th, 1970. 428 Cattle, 14 hogs, 12 sheep, and 1 horse.

Good Hol. hef. springing (1300 lbs.)	\$475 to \$495.00
Hol. hefs. springing (1100 to 1200 lbs.)	\$385 to \$450.00
Hol. hef. open (700 to 800 lbs.)	\$29.00 to \$30.00
Veal up to	\$48.00
Heavy bulls	\$28.00 to 30.00 per hundred
Good slaughter cows	\$23.00 to \$25.00
Med. cows	\$20.00 to \$22.75
Colored cows	up to \$21.50
Shell cows	\$15.00 and up
Heavy Hol. steer	\$24.50 to \$25.80
Hol. steer (700 lbs.)	\$25.50 to \$27.00
Light Hol. feeder	\$32.00 to \$40.00
1 load W F Steers (1200 lbs.)-120 days on feed	\$27.90
Good feeder steers (600 to 750 lbs.)	\$28.00 to \$30.00
Good feeder hefs. (600 to 700 lbs.)	\$25.00 to \$26.60
Steer calves	up to \$34.50
Hef. calves	\$28.00 to \$31.00
Bull calves (500 lbs.)	\$31.50
Bull calves (600 lbs.)	\$27.00 to \$28.40
Baby calves	\$20.00 to \$50.00
Lambs	\$28.50
Small wiener pigs	\$14.00 per head

Market is holding exceptionally good.
Auctioneer Ed and Lee Flood
Ph. VI 7-7567

An Endowed Care Cemetery



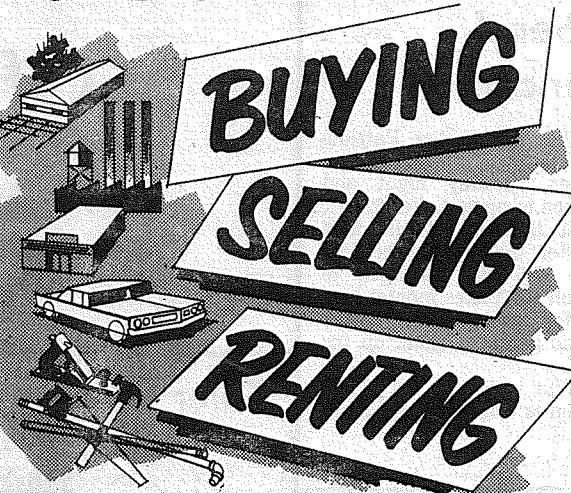
Fir Lane Memorial Park
Dwyer Fir Lane Chapel

924 East 176th Street
Spanaway

LE 1-5500

BUY SELL CLASSIFIED ADS TRADE LEASE

FOR BEST RESULTS IN:



USE THE WANT ADS

Ten Words . . . Only \$1⁰⁰
Use This Form For Ad Insert

Name _____
Address _____
City _____ Zip _____
Amount Enclosed _____
Classification _____
Copy _____

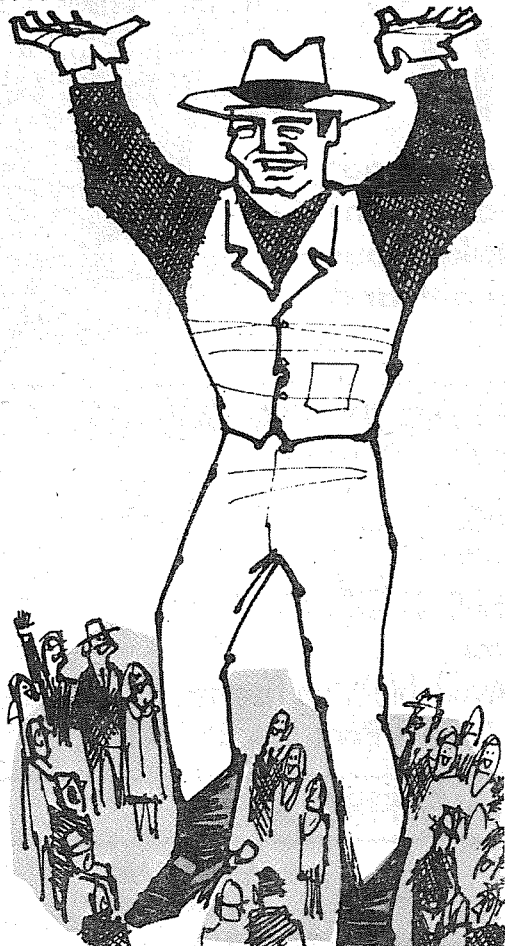
The Times Journal PO BOX 2116 Parkland 98444
LE 7-0223

Use the Want-ads - LE 7-0223 It Pays

AT ARMSTRONG'S We appreciate our customers knowing their Zip Code. The License Department wants the Zip on car titles. ARMSTRONG'S USED CARS 11009 Pacific Ave. LE 7-5524

KMO 1360 kc

THE COUNTRY GIANT TACOMA FT. LEWIS McCHORD SEATTLE



5,000 WATTS FULL TIME FACILITY Pierce County's Only

24 HOUR Country and Western Station * County News * Tacoma News * High School Sports



Join John Trimble - The Country Giant's authority on Country Music. Keep up to date with the latest hits and classics along with the latest news on the Country Artists on the John Trimble Show - Every evening on KMO - The Country Giant.

Every Sunday Morning Listen to Oral Roberts 8:30-9:00 a.m. KMO-1360 KC

KMO RADIO 1360 AM

27 Misc. Services

PIANO TUNING & Repair. LE 1-1021 or SK 2-7695. 69-179 TFN.

AOK Excavating Backhoe - Dozer - Hauling Orv Swim LE 1-2084

ELECTRICIAN, licensed, bonded, residential new and old. LE 1-2547 69348

Attention MOBILE HOMES We install poles, power service, complete to trailer. Emergency Service Day or Night. LE 1-0593

E&S Electric 13621 Pacific

EXPERIENCED TYPING, my home, addressing. LE 7-3808 69365

PROFESSIONAL typing service resumes. Letters - mailing lists - All types of mimeograph work. Photo copier - LE 1-1740 - Davis Office Supply - 12147 Pac. Ave. 69-328TFN.

23 Help Wanted EARN \$200-\$1,200 mo. selling the fabulous Slim Gym. LE 7-6489, LE 7-4200. 69364

38 Instruction PIANO LESSONS. Beginning & advanced. Children & adults. Studio or home. SK 2-7695 or LE 1-1021 69-360TFN.

30 Repair Services Sheet Metal • Furnace Repair and Service • Installations PARKLAND FUEL OIL 12002 Pacific Ave. LE 7-0256

WATER PUMPS REPAIRED All Makes Dealer BERKELEY and MYERS Water Systems GRANGE SUPPLY LE 1-5777

CENTS Make Dollars when invested in Classified Ads. Place your ad by telephoning now.

CHURCH DIRECTORY ATTEND OUR WORSHIP SERVICES

PARKWAY Presbyterian Church Sunday School 9:30 a.m. Worship Service 10:45 a.m. Nursery Service Provided 714-138th East LE 1-4234 Rev. Wesley J. Drummond

Spanaway Lutheran Church 8:30 & 11 a.m. Worship Service 9:45 a.m. Sunday School Grades 1 & Up 11 a.m. Sunday School 3, 4 and 5 Year Olds John L. Briebl, Pastor 160th & A St. LE 7-5978.

Trinity Lutheran Church Worship Services 9 a.m. & 11 a.m. Sunday School 10 a.m. Wednesday School 4-5 (through Grade 9) Erling C. Thompson Robert Drewes PASTORS 121-15 So. Park LE 7-0201

READ USE CLASSIFIED ADS for fast results

LE 7-0223

1 Misc. For Sale

FIREPLACE SLABWOOD Small, green 24" Fast Delivery in Spanaway & Parkland Area 1/2 Cord \$10. Delivered & Piled or U Haul \$8.00 VI 7-2428

STERLING SERVICE for 8. Like new. LO 4-1733. 69-358

PATIO SALE Thurs. through Sunday - hundreds of items - reasonable. 5006 - 104th St. E. Tacoma. LE 7-6960. 69362

MIXED SOIL • Sandy Loam • Black Humis • Mixed Bank Run LE 7-7455 NEWBURY'S DOZING SERVICE

EARLY American Spinnet Piano. Like new, assume low monthly payments. Phone adjustor, BR 2-5282, Tacoma. 69-346.

TOP SOIL, Gravel. LE 1-1124. 69-1

CERAMICS Parkland Ceramics 1303 So. 117th LE 1-0823

ONE deluxe wheelchair, new condition, 848-1873. 9e0

USED VACUUM CLEANERS Pick Up & Delivery Vacuum Repairing All Makes Kaelin Vacuum Sales 4702 Pacific Ave GR 4-5300

BOWLING ball and bag, sewing machine, boat motor, lawnmower, braided rug. TH 5-1245. (K)

TIRES? Dunlop - Miller New - Retreads See Tiny TINY'S TIRE CENTER 108th & Pacific - LE 1-4535

1969 Dodge 3/4 ton Camper Special. AT-PS-PB-15,000 original miles. PACIFIC TRUCK CENTER FREEWAY AT FIFE Phone 922-6601 (69-366)

43-Income Tax INCOME TAX SERVICE. Experienced. Call TH 5-0101. 69-334 TAX RETURNS PREPARED. Your home by my appointment. LE 1-3774. 69-333

2 Autos For Sale

WHOLESALE PRICES • USED CARS • PICKUPS

LARRY ATTWOOD MOTORS 8228 Pacific Ave. GR 4-9294

'64 FALCON, Custom, metalflake paint job, all flake interior, mag. wheels, wide ovals, new brakes, new shocks, suspension work, 1968 289 engine, 2000 miles. 411 rear end, \$1000. LE7-0493, GR5-0957 69354

'61 PLYMOUTH FURY clean. Best offer. Call Jack or Darlene days LE 7-0223 Evenings VI 7-7354.

NEW- MORE POWERFUL the 1970's ARE HERE VOLKSWAGEN 27 MAJOR CHANGES COME IN Tom Carstens AUTOHAUS 7030 So. Tacoma Way GR 4-0666 Tacoma Dealer Since 1955

15 Mobile Homes

1965 "STAR" 10 x 51 Mobile Home, 2 bedroom. 8 x 30 ft. awning. "new" condition. Asking \$4,495.00. Call JU 4-3281 Evenings & WkEnds. 69-357.

MOBILE HOME SPACE out in Bethel Green Acres. School buses right at door. Ready to hook up any trailer. \$29 a month. Call LE 7-0223, days; VI 7-7364, nights - ask for Darlene or Jack.

DO YOU NEED a mobile home moved or set up? Well then, call the best, Mobile Home Transporters. Licensed and insured movers. They'll move you anywhere in the state of Washington with care!!! Call LE 1-6069.

MOBILE HOMES 3 Bedroom, All Electric, Carpets. Price includes set up and delivery. Special built to compete with 12 wide market. \$7995.00 up to 10 years financing 2 ONLY 12x52 one bedroom, All electric, furnished 7% OVER INVOICE LUCKY SALES LE 7-8487 13502 Pacific Ave.

9 Animals For Sale

SAINT BERNARD puppies registered AKC. Pedigree championship line. Large breed. VI 7-281969-303TFN

PUPPIES - would make good watch dogs. Will be large. LE 7-4450. 69-365A

DEEL'S BARBER SERVICE PARKLAND SQUARE • 2 Barbers to Serve You • Plenty of Parking • Open Mon. thru Fri. 9 a.m. to 7:30 p.m. Sat. 9 a.m.-6 p.m. 12209 Pacific - By Barlo's

12 Real Estate For Sale

HOUSE in Eatonville for sale on 1/2 acre. 2 bedrooms & lg rec. room. Best offer, call 843-2329 69-345.

BEING TRANSFERRED over seas. Buy equity and assume 6% loan on nice 3-bedroom home, attached garage, fence, etc. Owner. VI 7-2882. 69-356.

MOVING, sell or trade new 3 bedroom. Spanaway VI 7-2371; 69-367C

EQUITY. Conventional, FHA 3-year, 3 bedroom home, TV room, fireplace, 1/2-car garage. LE 1-6164. 69-347

2 1/2 ACRE HOMESITES. Also zoned for mobile homes. \$3,750, terms. 6 mi. past Roy Y. LE 1-2017. TH 5-2871. 69363

Gracious Realty 2 1/2 acres Plus

Small compact 2 bedroom home, needs some finishing. On 2 1/2 acres. Little barn included. Must sell to settle estate.

Gracious Home On 4 1/4 beautiful treed acres. Home has 3 br. and full basement with 4 br. or rec. room, over the garage. Perfect home for family with kids. House only \$28,500 full price.

\$15,500 for this charming 2-br. home, living room with look through fireplace, attached garage. Shown by appt. only.

Let us build the home of your choice, we have 3 beautiful lots left. For details on this and above call, Dorothy Hutson, LE 7-6122 or GR 5-6262. 1122 E. 72nd

GR 5-6262 69-3668

18 Real Estate Wanted

Listings Wanted Buying or Selling Real Estate Service Call Devereaux Realty 12152 Pacific Ave. LE 7-8658

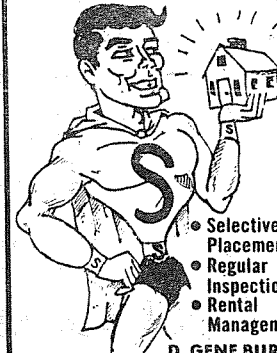
19 For Rent Or Lease

1 BEDROOM house. Un-furnished. Parkland area. LE 7-5736 69-360.

FURNISHED home for rent Parkland, large 3 room, bath; part utilities. \$68 month TH 5-8740 69-362B.

FOR RENT Spanaway Lake view. 1 bedroom furnished \$84.50. LE 1-0995. 69-364

Let "SUBUR-MAN" serve YOUR RENTALS



SUBURBAN REALTY 11302 Pacific Ave. LE 7-8638

For Rent

CAMPER RENTALS \$5.00 per day. Complete equipment. Reserve now. Trucks available. LE 1-4748. 10002 Pacific Ave. 69-349

RENT TV RENTAL MARTS, INC. Color TV GR 5-3755 9440 Pacific JU 4-4100 10012 Bridgeport

SLACK SALE!

Famous Harris-Koratron
"Pressed For Life"
SLACKS
Mens & Boys Broken Sizes ONLY **\$5.95** Pr.
Reg. \$9.50 pr.

Women's Shoe Clearance
Dress & Casuals Many Styles, Sizes & Colors
OPEN SUNDAYS 10 a.m. - 6 p.m.
MON Thru FRI. 9-6 SATURDAYS 9-6
USE YOUR BANK CARD

PAUL'S SHOES & CLOTHING

161st & Pacific Ave. LE 7-0552

SPECIAL NOTICES

Planning Commission Agenda Published

AGENDA
Pierce County Planning Commission Regular Meeting 10:00 a.m., Thursday, February 19, 1970

ROLL CALL:
MINUTES: Approval of the Minutes of the January regular meeting
SUBDIVISIONS:

Final: Bankers Island No. 1; Sunnydale 2nd Addition; Timber Ridge Division 1; Vernon Park Division No. 3; Wildwood.
Preliminary: Garlo 2nd Addition 14 acres lying on the south side of 152nd Street East between 23rd Avenue East and 25th Avenue East in the Brookdale area. Meridian East Division 2: 3.13 acres lying on both sides of 108th Avenue Court East beginning at 124th Street East and continuing north in the South Hill area. Zongas Third Addition: 30 acres bounded by 74th Avenue East, 78th Avenue East, 132nd Street East and 136th Street East in the Woodland area.
Case No. ZB-70
Petitioner: Tom Hawkins - ABC Motors, Inc.

Request: Zone change from FS Free-way Service to C-3 Heavy Commercial
Location: A 6 acre irregular tract of land abutting the west side frontage road to Interstate 5, beginning at 80th Street and extending south to 84th Street in the Lakes District.
Case No. Z5-70
Petitioner: Christensen and Capps
Request: Zone change from RMH Multi-Family Residence to C-3 Heavy Commercial
Location: A 3.5 acre rectangular tract of land lying at the northwest corner and a 2.7 acre rectangular tract lying at the southwest corner of the intersection of East 156th Street and Meridian Highway in the Thun Field area
Case No. Z7-70
Petitioner: Garlo, Inc.
Request: Zone change from RM Multi-Family Residence to SR 7.2 Suburban Residential
Location: A 1.3 acre irregular tract of land extending east from "C" Street between 173rd Street South and 174th Street South in Spanaway
Case No. UP2-70
Petitioner: Spanaway Water Company, Inc.
Request: An unclassified use permit to permit expansion of an existing water company in an SR-9 Suburban Residential District
Location: A 140 foot deep tract of land on the west side of Spanaway Lane having an area of 1.2 acres beginning at 174th Street and extending south 350 feet in the Spanaway area

Moose Meet

Governor Jack Bjork of Parkland Moose Lodge 1814 announces that members of Parkland Moose will convene in Yelm on Feb. 21st along with members of Enumclaw, Auburn, Tacoma, Lakes and Nisqually Valley at the District Four Visitation with Felt filet mignon dinner to commence at 7:30 p.m.

One hundred thirty-two Moose members participated in the District Bowlerama


MISCELLANEOUS ITEMS:
Pierce County Zoning Code Amendments
Article 10, the C-3 Heavy Commercial Classification, adding to the list of uses permitted "Cabinet Shops" and setting forth limitations thereto.
Article 3, updating the zoning classifications to include all those now listed in the Zoning Code.
Acceptance of the following final reports:
1. A Comprehensive Water Supply Study and Plan for Pierce County
2. Chambers Creek-Clover Creek Basin Sewerage General Plan, Pierce County, Washington, 1969.
3. Comprehensive Sewerage Plan for Pierce County, Washington, 1969.

Sunday, Feb. 8th as Lakes Moose Lodge again won membership participation travelling trophy for the third straight time. Parkland participants Isa McKenzie, George Thrall, Duke Tone and Laurie Genske all won trophies awarded by District Bowlerama Sports Chairman Bill Callahan of Enumclaw.

Parkland Moose Lodge 1814 is now situated in their new quarters at 3119 South 96th St. and all meetings will be held at 8 p.m. the first and third Wednesday of each month at this location. Members are urged to attend the all important meeting on Feb. 18th when scheduling of coming functions will be planned.

Gets Velvet Gloves


Like milk, beer has such a delicate make-up that it must be handled carefully and is kept free from all impurities by the breweries. Beer packaged in bottles or cans is protected by pasteurization.



PARKLAND - SPANAWAY RESIDENTS

Attend Your Local

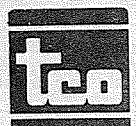

FIREMEN'S BALL!



Ticket sale proceeds help defray departmental costs not covered by tax expenditures, such as hot coffee for volunteers attending training drills. Why not plan to take your Valentine to the dance sponsored by your department and support your firefighters throughout the year.

<p style="text-align: center;">IF YOU ARE SERVED BY PARKLAND FIRE DEPARTMENT</p> <p>Time: Dancing 9 p.m. until 1 a.m. Date: Saturday, February 14 Place: James Sales Grange Hall Music: Jack Siler's Band Tickets: By Donation - Available from firemen or at Parkland Fire Hall, 100 South 114th. LE 7-8530.</p>	<p style="text-align: center;">IF YOU ARE SERVED BY SPANAWAY FIRE DEPARTMENT</p> <p>Time: Dancing 9 p.m. until 2 a.m. Date: Saturday, February 21 Place: Elk Plain Grange Hall (On Mountain Highway, 2-1/2 Miles from Roy Y.) Music: Bettner's Orchestra Tickets: By Donation - Available from firemen or at Spanaway Fire Hall, 162d & Park Ave. LE 7-4141.</p>
---	--

THIS SPACE MADE AVAILABLE BY THE FOLLOWING FIRMS:

 <p>PARKLAND THRIFTCO 138th and Pacific Ave.</p>	<p>Open 24 Hours</p> <p style="text-align: center;">Last FRONTIER (formerly Stagecoach Inn)</p> <p>Open 24 Hours</p> <p style="text-align: center;">180th & Pacific Avenue</p>	<p>PAUL'S SHOES AND CLOTHING 161st and Pacific Ave. LE 7-0552 Spanaway</p>
<p>CARL T. LINDGREN Realtor 410 Garfield St. LE 7-0234</p>	<p style="text-align: center;">PARKLAND LIGHT & WATER CO. LE 1-5666</p>	<p style="text-align: center;">PIERCE COUNTY REFUSE LE 7-8688 13502 Pacific Ave.</p>
<p>MAGDANZ HARDWARE LE 7-5538 11401 Pacific Avenue</p>	<p style="text-align: center;">CHADWICK PAINTING & DECORATING LE 1-2728 Route 1, Box 1460 Spanaway</p>	<p style="text-align: center;">BROOKDALE INN Open 24 Hours-a-Day, Mon. thru Sat. 'Til 10 p.m. Sun. Now taking reservations for our new banquet room. LE 1-1995 13021 Pacific Ave.</p>
<p>DRYER MORTUARY LE 7-0253 220-134th South Parkland</p>	<p style="text-align: center;">VIS-REY INC. LE 1-3230 12702 Pacific Ave.</p>	<p style="text-align: center;">MODAHL AUTO PARTS - FREE - Come in and get your NEW NAPA HOME and FARM SUPPLY Catalog. 16317 Pacific Ave. LE 7-8677</p>
<p style="text-align: center;">TIMES JOURNAL LE 7-0223</p>	<p style="text-align: center;">HAND OUT Drive-In 12901 Pacific Ave. LE 7-6201</p>	<p style="text-align: center;">ELMHURST MUTUAL POWER & LIGHT CO. LE 1-4646 120 South 132nd.</p>
 <p>OUHL'S RICHFIELD SERVICE LE 7-9956 16002 Pacific Ave. - Spanaway</p>	<p style="text-align: center;">MARTEN'S ECONOMY AUTO PARTS INC. LE 1-1144 11012 Pacific Avenue</p>	<p style="text-align: center;">LITTLE PARK CAFE South 171 & Pacific Ave. LE 1-1343 Spanaway</p>