

U.S. Postage Paid
Sec. 34.66 P.L. & E
Parkland Branch
Tacoma, Wash.
Permit No. 9P

The TIMES JOURNAL

THURSDAY, AUGUST 13, 1959 • VOL 14, NO. 49 • PUBLISHED AT PARKLAND, WASH. LE 7-0223

The Country Parson



"The best place to reflect upon things that are wrong with our world is in front of a mirror."

DRYER'S FUNERAL PLAN CUTS COSTS

MORTUARY
TRINIDAD PACIFIC
PARKLAND

EVERGREEN CHAPEL HOUR
KAYE 1450 On Your Dial
8:30 to 10:00 Every Saturday Evening
Offering the best in Gospel Music and Inspiration of the Bible
Sponsored by Members of Evergreen Baptist Church, 9120 Waller Rd.

STAN CHRISTENSEN INVITES YOU TO HIS

GRAND OPENING

THURS., FRI. & SAT., AUG. 13, 14, and 15

TREATS & FUN FOR THE WHOLE FAMILY
Large Enough to Serve You, But Small Enough to Know You

STAN'S SUPER JET FOOD STORE

26TH AND NORTH STEVENS

MAMA BEAR

Self Service LAUNDROMAT

GENTLE ACTION

Located in the Big Bear Shopping Center
Open 24 Hours Per Day 7 Days A Week
SELF-CLEANING WASHERS

WE ARE NOW

Specializing in Dyna-Flow And Hydramatic Transmissions — All Makes
Fast Service And All Work Guaranteed

"Automotive Service with a Reputation"

HONDLE'S

AUTO PARTS AND GARAGE

COMPLETE AUTOMOTIVE SERVICE AND PARTS FOR ALL CARS
8412 Pacific Ave., GR 2-4857

SALE! CLOSING OUT

★ CHILDREN'S WEAR
★ INFANTS' & SHOWER GIFTS
Also Fixtures for Sale

ESTHER'S NOOK

408 Garfield Street Parkland

REMODEL NOW

NO MONEY DOWN EASY PAYMENTS

- NEW ROOFS
- NEW SIDING
- FOUNDATIONS
- BASEMENTS
- NEW GUTTERS
- GARAGES
- BATH ROOMS
- KITCHENS
- ADDITIONS

Phone Me (Russ the Bldr.) Today
GRAHAM-VINEWOOD, 7-2168
Free Estimates . . .
No Obligations

PROFESSIONAL DIRECTORY

Farmers Mutual Ins. Co.
Auto - Fire - Liability

J. J. GUNNS Agency and BARBER SHOP
303 East 17th St. LE 7-7757
2 Blocks East of Transformers Spanaway

Farmers Mutual of Enumclaw
Fire - Auto
ED MAREK
12907 Pacific Ave. LE 7-4000

MINNESOTA WOOLEN CO.

SCHOOL CLOTHES NOW ON DISPLAY AT MY HOME

Drop in and Place Your Order for Immediate or Future Delivery.

JIM REED
1319 W. Pioneer, Puyallup, Wn.
TH 5-2739

J.P. Patches At IGA Next Saturday

J. P. Patches, the droll little clown who claims to live in a "shack down by the railroad tracks" and who has won the hearts of thousands of youngsters through his TV show, will visit Parkland in person Saturday, August 15, and invites his friends to visit with him at IGA Food Town, South 112th and Park, from 10:00 a.m. till noon.

J. P. will put on his comical unrehearsed show in which he



gives the star parts to his younger friends and the event will undoubtedly be enjoyed from a wide area.

John Schreiber, manager and co-owner of Food Town, promises a lot of bargain-wide thrills for the

TODAY'S LAFF

Economy—That's a reduction in what the rest of the family gets.

SUMMER CLEARANCE

Ladies & Girls Sandals 1.99
U.S. Keddettes 2.99
Childrens Canvas Oxfords 1.99

Bethel School District starts in two weeks!
Get your school shoes NOW — BEAT THE RUSH!

PAUL'S SHOES
Spanaway
161st & Pacific Ave.
LEnoX 7-0552
Open Friday and Monday
Til 9:00

Firemen's Dance Saturday at Chateau

The annual dance of the Summit-Woodland-Collins Volunteer Fire Department will be held Saturday evening, Aug. 15, 9 to 2 at the Sportsmen's Chateau, East 131st and Canyon roads.

The firemen have been making a canvass of the entire area with dance tickets and an informative folder on fire prevention. Because of the many calls they have been getting with the extreme dry weather (11 so far this month, as of Monday) they may not finish the canvass before the dance, in which case they wish to stress that everybody is invited to the dance and may obtain tickets at the door or by calling LE 7-8209 or TH 5-2831.

Mrs. Libak's orchestra will furnish the music for dancing and several very attractive extras are promised.

Youth Evangelist At Local Church

Rev. Wayne Bell, children's evangelist, will be in charge of special youth meetings at Evergreen Baptist church, 92nd and Waller road, August 17 to 21 inclusive, 7:30 to 9 p.m.

Boys and girls of all ages, also interested adults are cordially invited to attend. The Rev. Herbert F. Lawrentz is the pastor of the church.

SPANAWAY HARDWARE

ELECTRICAL AND PLUMBING SUPPLIES

SAND, GRAVEL & CEMENT
Mower Guards & Sections

170th & Pacific
LE 7-8378
Open Sundays 8:30-1:30

Open 7 Days A Week Sundays 8 a.m. to 4 p.m.

HARDWARE—PLUMBING—FISHING TACKLE

SOUTH END PLUMBING AND HARDWARE
185th & Pacific Avenue Phone LEnox 7-4100

HEAR EVANGELIST TOM FAIR

Converted Radio and Stage Entertainer
DIFFERENT—DYNAMIC—BIBLICAL

August 16-28—7:30 p. m.

Clover Creek Baptist Church

Military and Knoble Roads
3 Miles East of Pacific on 159th Phone LE 7-6421

FRIENDLY SERVICE SINCE 1908

Now With a 100 Car Free Parking Lot right next door.

PIPER FUNERAL HOME

PHONE Greenfield 2-3353 • 5436 SO. PUGET SOUND

ANNUAL FIREMEN'S DANCE

Summit-Woodland-Collins Volunteer Fire Department

Saturday, Aug. 15, 9:00-2:00

SPORTSMEN'S CHATEAU

East 131st and Canyon Road

MUSIC BY MRS. LIBAK'S ORCHESTRA
Donations \$1 Per Person

FAST — FAIR — FRIENDLY

COMPARE RATES . . . SEE HOW MUCH YOU MAY SAVE — CALL

IRENE CLEMENS
LE 7-4904
10329 Pacific Avenue

FARMERS AUTO INSURANCE

Give Your Clothes The 1-2-3 Treatment

WE Put New Life in Fabrics
WE Put Longer Life in Fabrics
WE Put Color-fast Life in Fabrics

PARKLAND CLEANERS

11004 Pacific Avenue North of the Bank Corner LEnox 7-3221

Thrift Community and 4-H Fair Attracts Many Exhibitors



EVERYBODY ENJOYED THE SHOW—Pictured above, alert 4-H'ers and parents show keen interest in activities of the Thrift Community and 4-H Fair, held at Thrift Sunday, August 2. Left to right, they are: Bill Irish and his mother, Mrs. Caspar Irish, 4-H leader, with another son Ed Irish standing behind her; Christie McFarland and her mother, Mrs. Lena McFarland, 4-H leader; Mrs. Fred Styf and husband, Fred Styf, with their daughter Susan between them. Among the scores of awards to 4-H'ers at the fair were the following in the cattle section; Holstein, Roger Calhoun, winner of the 1958 Puyallup Kiwanis calf; Ayrshire, Ronald Larson; Jersey, Bobby McFarland, winner of the 1958 Parkland Kiwanis calf; Guernsey, John Abrahamson, winner of the 1959 Puyallup Kiwanis calf. Exhibits represented all sections of Pierce county.

Pierce Co. Jr. Fair, Summer Aug. 13-15 Big Event for Youth

By Joyce McMahon

Every minute of every day and night will be filled to overflowing as the 11th annual Pierce County Junior Fair gets under way on Summer's Spartan Field. The fair grounds are already buzzing with activity as entries by the thousands pour in to be put on exhibit.

Doors officially open at 8 Thursday morning (August 13) and from then on 4-H members and F.F.A. youth will be competing in contests of every shape, form and description.

Demonstrations and illustrated talks; a horse show; rabbit, home economics, and tractor driving contests will be the big events on opening day.

Queen Priscilla Pedersen, 17, of Parkland, will rule festivities in royal fashion after her coronation on Thursday night with Governor Albert D. Rosellini doing the honors.

Barber Shop Four Jr. Fair Act 15th

The "Timber Fellers", champions of many Barber Shop Quartet Contests, will be a special added attraction on Saturday evening, August 15, the final night of the Pierce County Junior Fair.

The four young men, Paul Helton, tenor; Jack Rendle, lead; Larry Adolfsen, bass; and Bob Rychar, baritone, sing modern and old time numbers and appear in colorful loggers garb.

They are co-champions of the 1958 and 1959 Pacific Northwest Regional Barber Shop Quartet Contests and are now international semi-finalists and current Pacific Northwest District Champions.

Come and hear the "Timber Fellers" Saturday night, August 15 at the Pierce County Junior Fair in Sumner Washington. The program will begin at 7:15. There will be a slight admission fee for everyone not wearing a Junior Fair button. Buttons are now on sale for \$.50 and \$1.00 for children and adults or \$5.00 for patrons. Bring the whole family out and enjoy the fun and excitement of the 11th annual Pierce County Junior Fair, August 13, 14 and 15.

Spanaway Hardware

ELECTRICAL AND PLUMBING SUPPLIES

SAND, GRAVEL & CEMENT
Mower Guards & Sections

170th & Pacific
LE 7-8378
Open Sundays 8:30-1:30

Open 7 Days A Week

Sundays 8 a.m. to 4 p.m.

HARDWARE—PLUMBING—FISHING TACKLE

SOUTH END PLUMBING AND HARDWARE
185th & Pacific Avenue Phone LEnox 7-4100

HEAR EVANGELIST TOM FAIR

Converted Radio and Stage Entertainer
DIFFERENT—DYNAMIC—BIBLICAL

August 16-28—7:30 p. m.

Clover Creek Baptist Church

Military and Knoble Roads
3 Miles East of Pacific on 159th Phone LE 7-6421

FRIENDLY SERVICE SINCE 1908

Now With a 100 Car Free Parking Lot right next door.

PIPER FUNERAL HOME

PHONE Greenfield 2-3353 • 5436 SO. PUGET SOUND

ANNUAL FIREMEN'S DANCE

Summit-Woodland-Collins Volunteer Fire Department

Saturday, Aug. 15, 9:00-2:00

SPORTSMEN'S CHATEAU

East 131st and Canyon Road

MUSIC BY MRS. LIBAK'S ORCHESTRA
Donations \$1 Per Person

FAST — FAIR — FRIENDLY

COMPARE RATES . . . SEE HOW MUCH YOU MAY SAVE — CALL

IRENE CLEMENS
LE 7-4904
10329 Pacific Avenue

FARMERS AUTO INSURANCE

Give Your Clothes The 1-2-3 Treatment

WE Put New Life in Fabrics
WE Put Longer Life in Fabrics
WE Put Color-fast Life in Fabrics

PARKLAND CLEANERS

11004 Pacific Avenue North of the Bank Corner LEnox 7-3221

Three D's Featured On Jr. Fair Show

Young and old alike will thrill to the spins and turns of the Three D's, a professional novelty acrobatic act which will perform nightly at the Pierce County Junior Fair in Sumner, August 13, 14 and 15.

This fast moving, horizontal bar act has just the right blend of comedy added to the daring acrobatic tricks to make you smile and gasp at the same time.

The Three D's, one guy and two gals, have appeared on television on the Ed Sullivan Show, You Asked For It, and the Big Top Circus Show. They have also performed three times at the famous Palace Theatre in New York, at all of the leading fairs throughout the United States, and are the only novelty acrobatic act to work the top rodeos.

Evening programs will begin at 7:15 at the fair. An admission fee will be charged for everyone not wearing a Junior Fair button. Buttons may be purchased for \$.50 for children, \$1.00 for adults, and \$5.00 for patrons.

Fair time is fun time; visit the Pierce County Junior Fair in Sumner.

Kathy Collins Is Star Attraction

Kathy Collins, the youngest trick rider in the United States, will be featured on Thursday night, August 13, at the 11th annual Pierce County Junior Fair on Summer's Spartan Field.

Kathy, who is the daughter of Mr. and Mrs. Eugene Collins of Route 4, Olympia, Washington, is 11 years old and has been performing since she was two. She is now a sixth grader at Tumwater grade school.

This spectacular young miss will be riding her own horse, "Injun", in her act at the Junior Fair. She will perform such amazing stunts as the Russian Back Drag and the Roman Ride.

Kathy is an appropriate performer for the Junior Fair as she belongs to the Tenino T-Boners 4-H club.

A small admission will be charged for evening programs of the fair for all not wearing a Junior Fair button. Children's buttons are \$.50; adults, \$1.00 and \$5.00 for patron buttons. Programs will begin nightly at 7:15.

Remember those dates, August 13, 14 and 15 for the Pierce County Junior Fair.

Kellers Win in Pee Wee Play-Off

Tied for top spot in the Pee Wee League of the Franklin Pierce baseball summer play were the Midland Mites and Kellers, each team with nine wins and one loss.

The rules call for two best out of three games for the play-off; however Kellers took the first two games, played as follows:

Aug. 5—Mites; Hoover, Gustafson, Russel; 5 runs; Kellers; Rosco, Neighbors, Olson; 10 runs
Aug. 6—Mites; Hoover, Gustafson, Russel; 4 runs; Kellers; Peterson, Olson; 11 runs.

One of the last games of the season was played Aug. 3 between the Mites and the Chargers. The Mites, with Hoover and Russel, took 10 runs; the Chargers, with Taylor, Bemus and Archer, got one run.

Flying

With **JEANNE**

Mel Templeman made his first dual cross-country training flight last week in the Singaleers Champ with Slim Lawson instructing. George Whitney completed his dual cross-country work and made his

(Continued on Page 4)

Sunny summer days turn Washington into an outdoor wonderland. One carelessly tossed match or cigarette can turn our green forests into wasteland. Guard every spark. Keep Washington Green.

Family Gathering
The Howard clan met at Woodland Park in Seattle for their annual family get-together. Sharing the picnic and visit to the zoo and Playland were Miss Caroline Howard of Seattle, the Don Howards, the Doug Howards of Tacoma, the Dean Howards of Milton and the Lawrence Howards of Puyallup. Reporter—Mrs. Verne Fogle, LE 7-5210.

Canute, ruler of England from 1017 to 1035, was a Dane.

Clean-up on Summer Shoes
Many Styles to Choose From
BUT DEFINITELY !!!
We have the always-wanted styles in **CHILDREN'S SCHOOL SHOES**
Saddles, Loafers, White Bucks, etc.
Plus Brand New Styles
Park Avenue Shoes
8229 South Park Ave.

FOR RENT TRUCKS & CARS
MA 7-9039
Save One Half We Furnish Everything
HARMON'S
Driv - Ur - Self Co.
HARMON'S SERVICE
2112 Jefferson
Jim Harmon, Mgr.

Waller Road News
The Fair Committee for the Waller Road Community Fair to be held Sept. 11, 12, will meet at the hall at 8 p.m. August 20. All representatives of the organizations that sponsor the event are to be present, or have a stand-in for the evening.

Scouts
The Explorer Scouts, after being taken by car to Ohanapechot Springs this week will ride bicycles back home. The two-day outing will be exciting to the boys, who have looked forward to the trip.

Grange
The Waller Road Grange members and their families will hold their annual picnic next Sunday, Aug. 16, at Little Spanaway, with potluck picnic dinner at 1 p.m. Coffee, Koolaid and ice cream will be furnished. Bring your own table service. Games for the day will be in charge of Mr. and Mrs. Ed Perrin. For information, call Mrs. Geise at WA 2-7645 or Mrs. Fogle, LE 7-5210.

All Scout Picnic
The families of the Cub Scouts and Boy Scouts of Troop 23 and the Explorer Post will join forces for an All Scout picnic at Wapato Park Aug. 21 with potluck dinner at 6 o'clock. Mothers or parents who can accompany their youngsters may gather at the north end of the lake to enable the young ones to swim before dinner.

Magazine Drive
William Johnston, Explorer Scout committee chairman, reports that the boys will be conducting a magazine drive every two months from now on. If you have old magazines to donate you may call Mr. Johnston at WA 2-6587 for pick-up. Committeemen attending the last meeting at the Johnston home were Lawrence Howard, Leonard Merkt, A. H. DeMeerleer (Scout advisor), Ed Perrin, Roy Foster and Mr. Johnston.

Work Session
A special work session for the Waller Road Grange Auxiliary will be held at the home of Mrs. Rudolph Geise Friday, Aug. 21, at 11 a.m.
Visiting Here
Verge Fogle of Montana has

Collins Road
Collins Grange will meet tonight, Thursday, Aug. 13, in the Grange hall, Allison and Burnett roads at 8 o'clock. This will be the only meeting in August, so be sure to be there. Mrs. Lyle Parker, Mrs. George Garrison and Mrs. Knowels will have charge of the program; they have a very interesting program planned. Refreshments and social hour will follow.

A child's coat was found in the road at Vickery and Collins roads last week. It is one that fits about a four-year-old; if you know the owner call LE 7-7608 and describe the coat.

Boys and girls, don't forget the playground activities, Monday through Friday. The children taking part report that they are really having a good time.
Reporter—Mrs. John Gorow, LE 7-7070.

Soviet Russia declared war on Japan two days after the United States dropped an atom bomb on Hiroshima in 1945.

Housewarming
The Waller Road Scout Committee of Troop 23, accompanied by their wives, surprised Mr. and Mrs. Dean Howard with a housewarming at their new home at Milton the evening of July 31. Mrs. Rupert Peterkin and Mrs. Art Weston were co-hostesses for the affair. The group presented them with a beautiful fireplace set. Refreshments were served and the evening spent in conversation and games.

Special Meeting
Pursuant to Chapter 216, Laws of 1953, YOU ARE HEARBY NOTIFIED that at 2 o'clock P. M. on the 20th day of August, 1959, the Board of Directors of Puyallup School District No. 3, Pierce County, Washington, will hold a special meeting at the office of the Pierce County Treasurer in the County Courthouse at Tacoma, Washington, for the purpose of opening bids for the purchase of \$475,000 of general obligation bonds of the district and taking action with respect thereto.
MARION F. CATRON
Secretary of the Board of Directors

T.V. JINGLES
TELEVISION SERVICE CENTER
... When your TV set goes bad, Television Service Center, 8431 Pacific Ave., will do an artistic job of making it perform like new. At the first sign of trouble call GR 2-3386 or JU 8-1000.

TELEVISION SERVICE CENTER
"YOUR WINEGARD COLOR CEPTOR DEALER"
GR23386 JU-8-1000 8431 PACIFIC AVE.

PARKLAND ECON-O-WASH
WE DO IT or U DO IT
SHAG RUGS - BLANKETS
DRY CLEANING - SHIRTS
24-HOUR SERVICE
12171 Pacific Avenue LE 7-9970

FOR RENT TRUCKS & CARS
MA 7-9039
Save One Half We Furnish Everything
HARMON'S
Driv - Ur - Self Co.
HARMON'S SERVICE
2112 Jefferson
Jim Harmon, Mgr.

Little Art Exhibit
at the **HOMESTEADER**
414 Garfield, Parkland
Saturday, Aug. 15
Oil Paintings, Water Colors, Custom Knitting, Etc.
PUBLIC INVITED

LOOK WHAT YOU SAVE!

KRAFT Boysenberry - Blackberry - Apricot - Pinecot PRESERVES 12 oz. Jar **5 For 1⁰⁰**

EARLY GARDEN --- FREESTONE PEACHES 2 1/2 Tin **4 For 95^c**

STORE HOURS
9 a.m. 'Til 9 p.m. Daily Except Sunday
SUMMIT TRADING COMPANY
10409 Canyon Road, Tacoma LE 7-5848
No Sales To Dealers
We Reserve The Right To Limit Quantities

PRICES EFFECTIVE THURSDAY THROUGH SATURDAY

HAPPYVALE RED DART CUT GREEN LIBBY'S DICED

PEAS · BEANS · BEETS Your Choice **303 Tins 10^c**

SUMMIT SPECIAL MAYONNAISE QT. **45^c**

SUNNY JIM SYRUP QUART DECANTER **39^c**

CARNATION MILK TALL TINS **6 for 79^c**

WHITE OR COLORS M D TOILET TISSUE 4 Roll Pkg. **37^c**

BREAST O CHICKEN TUNA CHUNK STYLE 1/2 Size Tin **3/73^c**

JELLO REG. SIZE PKG. ALL FLAVORS **4 for 25^c**

FRESH GRAIN FED PORK CHOPS LB. **49^c**
CENTER CUTS LB. 59^c

OCEAN FRESH Whole or Half SALMON LB. **49^c**
CENTER SLICES LB. 55^c

CARSTEN'S HY-GRADE OR JAMES HENRY SLI. BACON 2 LB. PKG. **98^c**

BONELESS ROLLED BRISKET CORNED BEEF LB. **49^c**
Custom Curing and SmokingLb. 7^c
Custom Cutting and Wrapping.....Lb. 5^c

GUARANTEED RIPE Watermelons Lb. **3^c**

THOMPSON'S SEEDLESS GRAPES 2 Lbs. **25^c**

RED HAVEN PEACHES Large Size Lb. **19^c**

SUNNY LOU CARROTS Cello Pkg. Ea. **9^c**

MCP Quick Frozen --- Pink or Regular Lemonade 6 oz. Tin **10^c**

HI-WEST PEAS Quick Frozen 10 Oz. Pkg. **10^c**

NABISCO Graham Crackers 2 Lb. Pkg. **59^c**

LARGE AA "NEST FRESH" EGGS **51^c**

KRAFT - Jet Puffed Marshmallows 10-Oz. Pkg. **19^c**

CARNATION Dry Milk 14-Qt. Pkg. **99^c**

Purex Bleach 1/2 Gal. **35^c**

KAISER BROILER Aluminum Foil Pkg. **45^c**

M.C.P. POWDERED Pectin **2/25**



Summit News

Mr. and Mrs. Ray Bixby have rented their home on Waller road and they left last week for an extended tour of the country. They

planned to spend a few days with Mrs. Bixby's brother in Rainier, then go on to The Dalles, Oregon, to visit Mrs. Bixby's sister. She intends to accompany them to the Oregon coast where they plan to meet their son Bob Bixby and family of Milton Freewater and the combined group will spend a week at some coast resort.

The elder Bixbys will continue on to California and pick up a new house trailer at the factory and after visiting their son Jerry and his family they will travel across the southern part of the country

visiting points of interest. They expect to settle down in Arizona when they tire of travel and remain there until April when they will return home.

Sympathy

Anton Uden who passed away Tuesday, August 4, at his home, following a prolonged illness, had been a resident of Summit and lived in the area 32 years. We wish to extend our sincere sympathy to his family.

Improving

Mrs. Jerry Scalf, who was taken to a hospital last week, seriously ill, is now at home and much improved.

In New Home

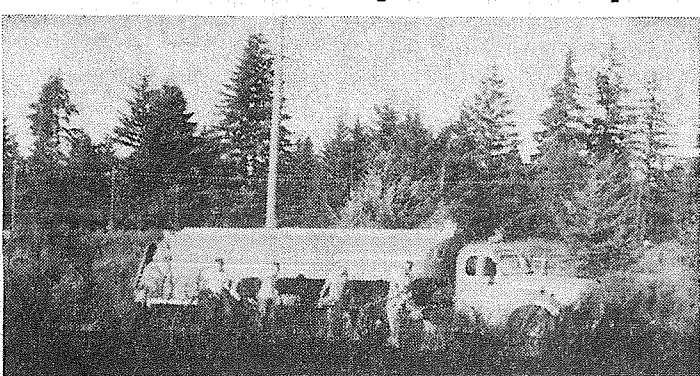
Mr. and Mrs. George Haaland and family, who have lived for several years at Summit View, have moved to their home on Collins road. The Haalands did much of the work on the house and can take great pride in its completion.

Serious Injuries

Gerry Larson, son of Mr. and Mrs. Lawrence Larson of East 106th St., fell and sustained a serious, back injury while the family was on vacation. He is now in Mary Bridge hospital and will be wearing a cast for a considerable time.

Larry Archer, son of Mr. and Mrs. Forest Archer of 4412 East 118th, had the misfortune to break one of his legs in two places and

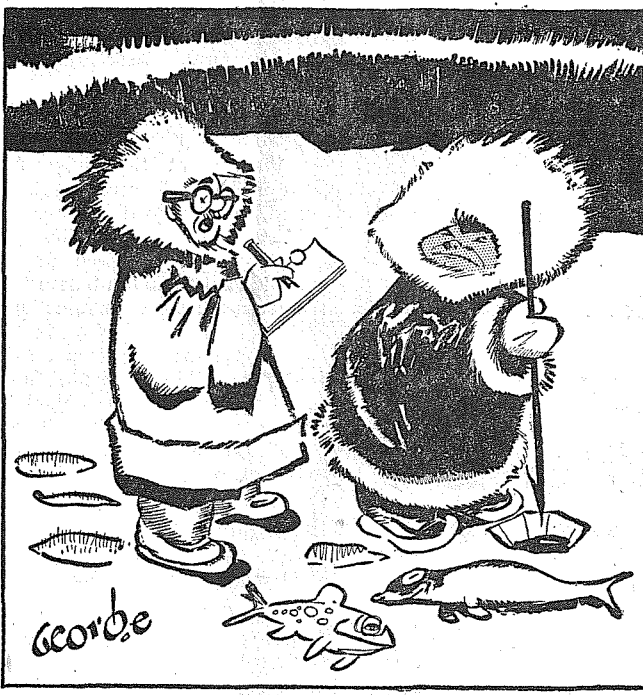
Grass Fires Keep Firemen Busy



THIS ONE DIDN'T GET AWAY!—Nothing unusual about the scene above—every volunteer fire department is run ragged by this sort of thing right along because of the tinder-dry conditions. This fire near Military road and Pacific avenue, was brought under control by the Spanaway Fire Department without property loss. The firemen urge that everyone be especially careful about fire until rains relieve the situation.

Ticklers

By George



"What is your name and what do you do for a living?"

was taken to Madigan hospital for treatment.

Bridal Shower

Mrs. Robert Carlson entertained Tuesday evening, August 4, with a kitchen shower honoring Marilyn Jean Hunter. Miss Hunter will become the bride of Byron Carlson, son of Mr. and Mrs. Oscar Carlson of Summit, on Friday, August 14, in Central Lutheran church, Tacoma. The guests, who were requested to wear kitchen frocks to carry out the kitchen motif, included Mesdames A. Roberts, John Martinsen, Harry Tweed, Milton Toburen, Eugene Heister, Alex Kelly, Ira Wagner, George Clark, Fay Clover, Robert Rave, Clifford McMillan, Oscar Carlson, Dagny Larson, Carl Mailand, and the Misses Karen and Myra Mailand, and Marilyn Anderson, and the guest of honor. The bride-to-be received many useful and attractive gifts and a delightful evening was enjoyed by all.

Extra Dividend

Beauty, registered Guernsey cow belonging to Mr. and Mrs. A. E. Wood, presented them with twin heifer calves August 4. The new-

comers have been named Dolly and Dimple.

Reporter—Mrs. C. R. McMillan, LE 7-6529.

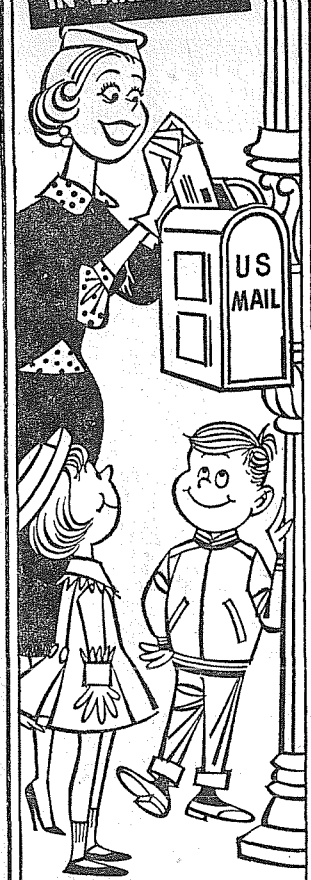
LAF

LE 7-4984 330 Garfield St.

TYPEWRITERS FOR SCHOOL SALES - RENTALS

Store Hours 9:00 to 5:00 Daily except We are Closed Wednesday

ALSO VILLA PLAZA IN LAKEWOOD



Savings received by mail are given prompt, personal attention at the Family Savings Center... we pay the postage both ways

A MUTUAL SAVINGS INSTITUTION
Pacific Federal Savings
and Loan Association

Bellingham • Seattle • Tacoma
Longview • Portland • Eugene

24 BANKING OFFICES

ACA-2

Fruitland 4-H Club

The last meeting of the Fruitland 4-H Home Economics Club was held at the home of Susan Harrington. Plans were made for the entries in the Jr. Fair in Summer, Aug. 13, 14, 15. It was found that the girls are very interested over their baking as they have 67 entries for 14 girls. Any Blue Ribbon winner from the Jr. Fair may then enter in the Puyallup Fair in September. They are all hoping for their Blue Ribbons.

Plans were also made for their annual picnic, to be held at Clear Lake near Eatonville next Sunday, August 16. We are hoping for a crowd of about 50 parents, brothers, and sisters.

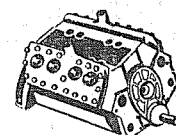
A very nice barbecue consisting of hot dogs with all the fixings, was served by Mr. and Mrs. Clare Harrington and Susan. Afterwards

Jacques Cartier, French navigator, explored the St. Lawrence River in 1534.

the girls roasted marshmallows. Mr. Harrington then showed movies of all the activities that the girls had done during the past year. It was enjoyed by all the girls and their mothers.

It was just learned that the Dinner Team, consisting of Gayle Kessler and Cheryl Hoffman, was made alternates to Yakima Fair with their Seafair Dinner. Club Reporter.

1 DAY Shoe Repair PAUL'S SHOES
Spanaway



Complete Motor Rebuilding

Key Seating, Head Surfacing, Piston Grinding, Valve Seats Installed, Reborning, Pin Fitting, Lathe and Press Work, Brake Drum Turning, etc.

Rupe Machine Works and Garage

AUTOMOTIVE & INDUSTRIAL WORK

13411 Pac. Ave., P.O. Box 2445, Parkland 44, Wn., LE 7-7450

QUALITY HOMES DESIGN ASSISTANCE Hedlund Const.

Estimates Without Obligation
920 So. 121st LE 7-4227



BACK TO SCHOOL DRUG NEEDS

- ★ VITAMINS
- ★ FIRST AIDS

McAULEY SUMMIT DRUGS

LE 7-0668 — 9 to 9 Weekdays — Airport & Canyon Roads

RELAX THIS WINTER

WITH ALL THE COMFORTS OF WARM, CLEAN BURNING

MOBILHEAT FUEL OIL

Call Today For Automatic Fill Up Service On Our Budget Plan. Don't Delay!

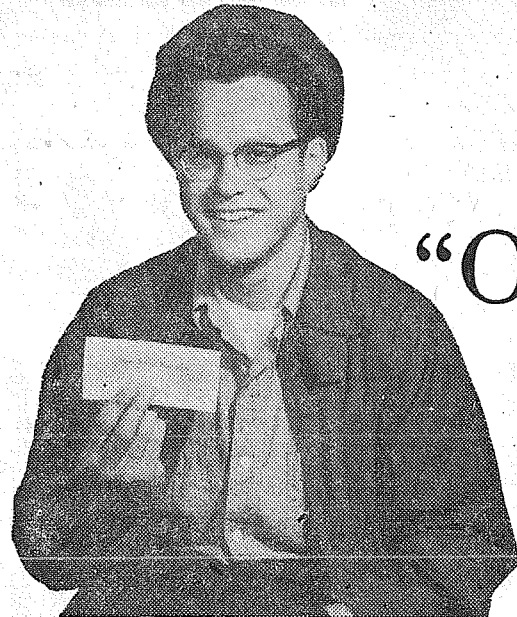
FURNACE REPAIRS
ALL MAKES AND MODELS
CLEANING AND ADJUSTING

Your Fuel Oil And Appliance Dealer

POCHEL DISTRIBUTING COMPANY

140TH & PACIFIC AVENUE

PHONE LE 7-8624



"ONE check saved me \$17.82"

"No one in our house could remember whether or not we'd paid for the battery. Luckily, I found the cancelled check—otherwise I'd have paid twice."

A National Bank of Washington checking account not only gives you positive proof of payment, but safeguards your money as well. And a checking account also helps build your credit at National Bank of Washington.

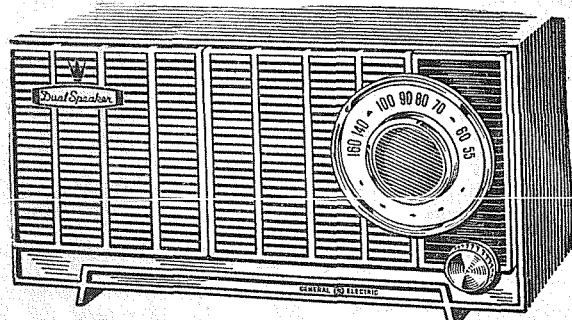
The Bank of Personal Service
... Where Our Interest Is Your!

PARKLAND BRANCH



24 BANKING OFFICES

MEMBER FEDERAL DEPOSIT INSURANCE CORPORATION • MEMBER FEDERAL RESERVE SYSTEM



MODEL 1140

NEW **GE** Dual Speaker TABLE RADIO

26⁹⁵ BETTER TONE... BUDGET PRICE!

Weir's Carry The Full Line of **G.E. RADIOS**

WHIRLS

OPEN 9 'TIL 9

YOUR **GE** CORNER

(SAT. 'TIL 6)

8419 PORTLAND AVENUE LEnox 7-0231

TUNE IN RADIO STATION KAYE 9:00 A.M. DAILY FOR FUN AND PRIZES

McDANIELS

The Home of The Low Price

AIRPORT & CANYON ROAD

Store Hours: 9:00 'Til 9:00 — Sundays 9:00 'Til 7:00



Prices Effective Thurs., Fri. & Sat.

REMODELING?

DO IT YOURSELF AND SAVE!
Complete Building, Remodeling, and Do It Yourself Headquarters

FINANCING AVAILABLE
Prompt FREE Estimates Given

COME IN OR CALL
CHAMBERS CREEK LUMBER CO., INC.
Open Saturday—8 A.M. to 4 P.M.
6402 So. Tacoma Way GR 2-4494

Collins Church Picnic Saturday

The Collins Community church picnic will be held at Clear Lake Saturday, Aug. 15, with potluck dinner at 1 o'clock. Each family is asked to bring a picnic lunch and table service. Fruit punch will be provided for all. There is a park charge of 25 cents per person and children under 12 must be accompanied by a parent.

Swimming and good fellowship are in store for those attending. Those having questions or needing transportation are asked to call LE 1-0981.

Pastor Robert Pottinger has returned from his vacation and will again be in charge of services. Several guests contributed sermons and music during his absence.

Collins Playground

Monday, August 17, will be "Lost and Found" day at Collins Playground, owners being asked to pick up their lost articles at the playground. Other days of the week will see the following activities: Tuesday, swimming; Wednesday, Jamboree; Thursday, swimming. Friday, August 21, will feature a general clean-up of the grounds in the morning, followed by the end of the year picnic at 11 a.m. at the home of Mrs. Preugschat, next to Collins Garage.

Parents of the playground children are invited to come and asked to send sandwiches for their own children only; Kool-Aid, potato salad, potato chips, pork and beans, cake and popovers will be furnished.

Flying With Jeanne

(Continued from Page 1)

first solo trip to Bellingham and return.

Ben McKay and Bill Jowders flew to Hoquiam and return in a Tri-Traveler this last week. Bob McCullough took Mrs. Sinclair and children Margaret and Vernon for their first airplane ride one evening this last week. Mrs. Sinclair is visiting her son Marion Sinclair. Slim Lawson took Ned Hazlip and friends for a ride in the Mooney.

Friday morning Paul Hoffman flew his Cessna 175 to Spokane where he visited for the week end returning here early Monday morning. Wayne and Eve Russell left Saturday morning to fly some friends to California. Wayne and Eve returned Sunday afternoon. Bob and Sophia McCullough and Donna Terrien flew their Cessna 172 to Newport, Oregon and return. Each of the ladies put in some flying time. Jack and Dolores Brown and boys, Monte, Mark and Scott flew to Port Angeles where they visited Jack's mother.

Blanchfields at Parkland Florists

Ken and Ayvee Blanchfield, new owners of the Parkland Florists at 12416 Pacific avenue, are beginning to get settled in the business which they purchased recently. They have increased the stock and



Ayvee Blanchfield

Rufus Bruce from San Francisco, Calif., who will be here for several days. Miss Kathie Christopherson of Tacoma is spending a week visiting her grandmother, Mrs. Emil Lauenborg.

Larry and Linda vanDerElzen of Puyallup have spent the past two weeks visiting their grandparents, Mr. and Mrs. Victor Anderson. Mrs. Pete Lauenborg had two sisters and their children visiting her from July 19 to August 2. They are Mrs. R. J. Wedgley and Steve and Judy from Seal Beach, Calif., and Mrs. Mary K. Vickery and Elaine from San Francisco, Calif. They stayed at Clear Lake, fishing and swimming, and also took a trip to Mt. Rainier.

4-H Club

The Graham Get Up and Goers 4-H Club entered their first fair on August 1st at the Thrift Community Hall. Exhibitors in the "Let's Cook" category were Kathy Emery, Rogie Guthrie, Linda Kennard, Nancy Shofner, Sally Shofner, Janice Sorensen, and Vickie Sorensen. The first efforts of the club met with much success as they were awarded a total of 9 blue ribbons and 3 red ribbons. The Get Up and Goers plan to enter the Summer Junior 4-H Fair on the 13th of this month.

Reporter. — Mrs. Marie Tinius, V1 7-7394.

Follow the instructions of the warden who issued your burning permit. If a wind comes up don't light your fire until you have consulted him. Keep Washington Green.

PROMPT PERSONALIZED
PRESCRIPTION SERVICE

TED SWANSON
INSULIN VITAMINS
Downtown Prices
Pay Phone Bills Here
PLENTY OF FREE PARKING
TINCHER'S PHARMACY
8227 Park Ave. GR 4-3344
Across from Fern Hill P. O.

THE BARGAIN BASKET

167th & Pacific Ave.

FEATURING THIS WEEK
HUNT'S DOLLAR SALE

PURE GROUND BEEF
3 Lbs.
89c

BEEF STEAK
Sirloin or Rib
Lb. 69c

Hunt's Halves **2 1/2 Tin PEACHES 4 For \$1.00**
Hunt's Solid Pack **2 1/2 Tin TOMATOES 5 For \$1.00**

Hunt's **300 Tins Fruit Cocktail 5/\$1**

Red Haven **Peaches Lb. 9c**
Fine For Stuffing **Gr. Peppers 3/10c**
Fancy Thompson Seedless **Grapes 2 Lbs. 29c**

Hunt's **6-Oz. Tomato Paste 11/\$1**
Cello Bag **5-Lb. Oranges 49c**
Fresh Radishes and **Gr. Onions 3 Bun. 10c**
Kraft - While It Lasts **6 Cube Pack Miracole Margarine Lb. 19c**

HUNT'S **300 TINS TOMATO JUICE 8 for \$1.00**
46 oz. TINS **5 for \$1.00**

HUNT'S **300 TINS TOMATO SAUCE 12 for \$1.00**
8 oz. TINS **12 for \$1.00**

HUNT'S **14 oz. BOTTLES TOMATO CATSUP 6 for \$1.00**
20 oz. BOTTLES **4 for \$1.00**

Visitors at Spanaway Airport from Hoquiam were Chuck Bunch and Mr. Northcott in a Champ. E. F. Coulter and Roy Gurley flew in from Salem, Oregon. Rev. Coulter is vacationing in Salem but had to return here for a meeting. Mr. Gurley is vacationing in Salem too but lives in Phoenix, Arizona. Thomas Allin of Santa Barbara, California stopped here to visit with his daughter and family, S-Sgt. and Mrs. Economou. Mr. Allin then continued on to Alaska in his Cessna 120.

Neal Church, of Fort Collins, Colorado flew in to demonstrate and show his new Fornaire airplane.

A news item overlooked last week was a first solo flight made by Judy Blancher at Thun Field.

Thun Field also reports a private license issued to Omer Yittri in his Champ.

Cliff Johnson made a business trip to Moses Lake this week in his Chief. Joe Miller and a friend flew to Copalis Beach and return in Joe's 140. Gene Moyer and his family flew to Forks where they had lunch, Sunday.

Don't forget the Tieton Flight the 14th, 15th and 16th at Tieton emergency strip in White Pass. All those wishing information please call Babe Thun or Boone Willmott.

plan a number of changes and improvements in the future. The couple have been happy to welcome old friends and new at their place of business and have received much encouragement in their new venture.

In speaking of plans, Mrs. Blanchfield mentioned her very pleasant association with Suburban Realty during recent years and said that she expected to continue her license work at that spot. She will also continue to serve her income tax clients but will probably do this work at her new business location.

Graham News

The Grandmothers Sunshine club No. 250 will meet at the home of Mrs. Sam Jenkins August 14 for a 12:30 luncheon. A bake sale will be held, also a stork shower for Mrs. Larry Williams. Mrs. Paul Lindberg, the president, will be in charge of the meeting.

In Hospital
Mrs. Martin Jorgensen spent the past week in the Good Samaritan hospital in Puyallup for surgery. We wish her a speedy recovery.

Visits, Trips
Mr and Mrs. Ewart Tinius have as house guests Mr. and Mrs.

Rent or Buy! Service On All Makes!

NO MONEY DOWN
BIGGER TRADES & IMMEDIATE DELIVERY AT UPTON'S

Only 25c Each Day On Meter Plan

Emerson TV

FREE Credit Investigation — anywhere in the country.
No Charge for Telegrams
Same Day Delivery
No Down Payment (on Acceptance of credit)

- Stereophonic High Fidelity
- Radios - Consoles - Table - Transistor

OPEN MON. AND FRI. NIGHTS TILL 9
UPTON ELECTRIC CO.
1148 Market St. Phone FU 3-2551

Back to School

MONEY SAVING VALUES

SALE STARTS THURSDAY MORNING

LUNCH KIT

School Lunch Kit with half pint Vacuum Bottle. Popular lithographed Buccaneer design kit with matching bottle.

ONLY **1.99** EACH
Reg. 2.98

BUCKET BAG

Large flip-top top back in everyone's favorite style. Short handle. Sold in colors in White, Red, Black or Patent Leather. SPECIAL VALUE.

88c EACH

Girls' Flannel PAJAMAS

Sizes 4-14
Reg 59c Yd.

39c Yd.

PRINTED FLANNEL
New Winter Patterns

HAIR CARE SPECIALS

Your choice of many items... Combs, Curlers, Hair Brushes, Bandeaux, Barrettes, Bobby Clips, Braidedes, Pin Curl Clips, etc. Get these necessary items for good hair grooming now at these special prices.

NOW **9c to 29c**

TOYS

Over 50 Assortment
88c

CANVAS **TENNIS SHOES 1.29** PAIR
Children's tennis shoes with zipper top and sponge rubber cushioned sole. Two-tone Red and White or Royal Blue and White. Sizes 5 to 3. Reg. \$2.00 value. SPECIAL

BOYS' PAJAMAS

Sizes 6-14 **\$2.19 to \$2.39** Assorted Patterns

KING SIZE **ZIPPER BINDERS 1.44**
King size 1 1/2" - 3-ring binders. Durable, self-proof vinyl film covering. Oversize dimensions throughout for extra capacity—holds up to 300 sheets of paper. Extra wide cloth gusset that will not crack or peel. Even accommodates textbooks.

A BIG VALUE!
SUPER VALUE **BINDER PAPER 57c**
200-sheet Filler Paper. Wide Rule. An extra value. ONLY

QUADRICA PRINTS

Yd. **49c**

LARGE SILK **SCARFS**
Large 33-in. silk scarfs with hand-rolled hems. Beautiful floral patterns in assorted colors. Useful as head scarfs, or neck scarfs. Brighten up your wardrobe at this special price!

SPECIAL VALUE **2 for 99c**

RUGS 59c Ea.
Drip Dry Cotton in washable, colorful prints. Assorted colors. Sizes 22 to 30. Reg. \$4.00. SPECIAL

SKIRTS 2.99
Drip Dry Cotton in washable, colorful prints. Assorted colors. Sizes 22 to 30. Reg. \$4.00. SPECIAL

DRIP 'N' DRY COTTON

Yd. **59c**
Reg. 89c

BOYS' FLANNEL SHIRTS SANFORIZED
long-sleeve Flannel Shirts in colorful plaids. Assorted colors. Boys' sizes 6 to 16. Regular \$2.00 value.
SPECIAL THIS SALE **2 FOR 1.99**

BLouses

Short-sleeve blouses in Spun Rayon. Assorted styles in White, Pink, Blue, or Red solid colors and also in beautiful prints.
Girls' sizes 7 to 14. Ladies' sizes 32 to 38.
88c

Ely & Walker

SAVE MONEY IN EVERY DEPARTMENT

GIRLS' and LADIES' BLOUSES

Spun Rayon with short sleeves in assorted colors and styles. Sizes 7 to 14 and 32 to 38.
SOLID COLORS & PRINTS
REG. 1.29 Special **88c** Each

QUADRICA PRINTS

Yd. **49c**

BOYS' PAJAMAS
SIZES 6-14 **\$2.19 to \$2.39** Assorted Patterns

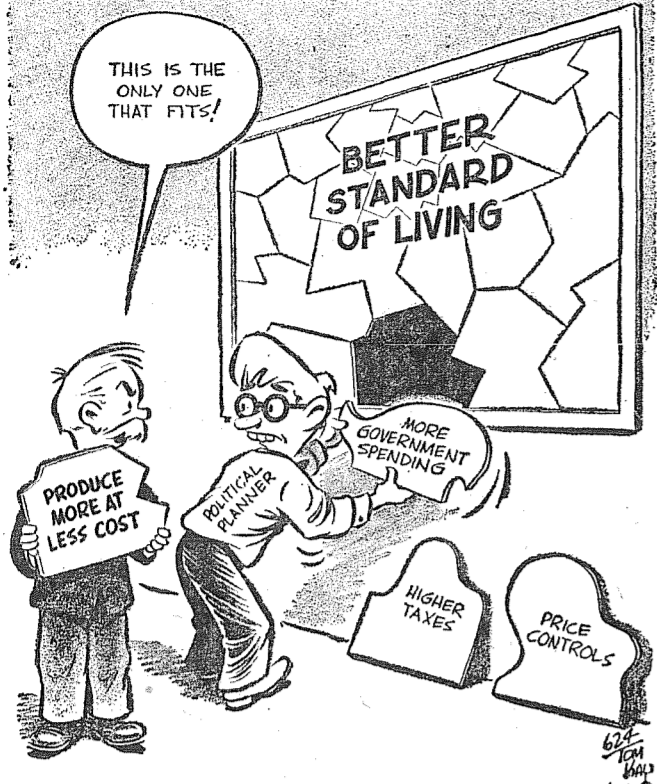
QUADRICA PRINTS

Yd. **49c**

BOYS' PAJAMAS
SIZES 6-14 **\$2.19 to \$2.39** Assorted Patterns

SHOP-ETTE

VARIETY And DEPARTMENT STORES
Open Daily 10 a.m. to 9 p.m.
Saturdays 10 a.m. to 6 p.m.
133rd and Pacific Ave.
Next to "Big Bear"



Simple Jig-Saw Solution

**a-Wondering . . .
and a-Wandering . . .**
With JACK BROWN

In the last issue I wrote about our teenagers: It seems a lot of people disagree with me. That figures, because when I write an article for this column, I have a 50-50 chance that 50 per cent of the readers may agree with me and a 50-50 chance that the other 50 per cent will still speak to me after the article appears. I usually never harp on the same subject two weeks in a row but my dander is up and I still think our teenagers are getting a raw deal by being nearly deprived of the right to learn by doing. So I wonder what you 50 percenters who do not agree with me will have to say about what I have on my mind this week along the same lines.

Since I wrote my last article I heard and read of two teenagers who were arrested for trying to procure forged passes to the Seafair races. Why? Because they were like all young people — interested in racing and thrilled at the prospect of the excitement of seeing the Gold Cup races first hand. Were there first thoughts along the line of obtaining fraudulent passes? No! They first attempted to see the races close up in the age old manner of working for the privilege, by selling hot dogs, peanuts, programs or something of this nature. Then came the rude awakening. They didn't belong to the vendors union or whatever it's called so no dice. No job, no race, and there the need to formulate other plans to get onto the barge was born. The thought of counterfeit passes came to mind and trouble came with it.

Prior to last Memorial Day, a county government in an Eastern state appropriated \$250 and sent it to the Memorial Day Committee for the purpose of hiring a band. But a proviso was attached—that it had to be a union band, and not a school or other volunteer band. The Committee, sent the check back. It said that it wouldn't pay men "to take part in a patriotic celebration." The incident drew this ironic comment from the Flemington, N.J., Democrat: "Let's call off Memorial Day until we get everybody in this country into a union. Let's bury no more veterans without the services of union pallbearers, union gravediggers, union embalmers, union chauffeurs driving the mourners to the cemeteries, union-made and set grave markers, union-grown flowers and union made-up floral pieces, union-made American flags over the graves, placed, not by volunteers like the Legionnaires and the Sons of Veterans but by card-bearing union grave decorators to the exclusion of comrades in service, neighbors, friends, relatives. And let no word of scripture be uttered, no prayer be said except by an AFL-CIO licensed and dues-paying pastor." The grim fact is that this isn't just sheer fantasy. It's precisely what some of the labor leaders would dearly love, judging by their drives for more and more monopoly power, which becomes increasingly more apparent when they enter a field that has been traditionally a "child's land" since time began.

As a final thought to keep some of you 50 percenters off my back, I hope, I'd like you to know that I am not anti-union. I hold withdrawal cards from both the AFL and CIO, and on the first day of doing business as the Times Journal Publishing Co. I called the typos union and advised them of the same and asked to be signed up as a union shop. Nobody had to twist my arm.

I am however against some union tactics and when union power begins to thrust the youth of our nation into the background, then I say things are going too far.

Elbe News

Mr. and Mrs. Al Bringle and daughters Sylvia and Helen have just returned from an extended trip. They report they had a very wonderful trip and took many pictures and collected butterflies from the various parts of the country that they visited. They spent a few days in Gold Beach, Oregon, then travelled on to Brice Canyon, Utah, where they stayed for a week. Also taking in the scenery and points of interest at Zion National Park and Grand Canyon. They then motored to Pomona, California, where they visited Mrs. Bringle's brother, Dr. Ritacca, for a week. While in Southern California they toured Disneyland. On their return trip they spent ten days at the church camp meeting at Gladstone near Portland, Oregon.

Visiting, Trips
Muriel Kast spent four days in Seattle taking in the Seafair festivities and visiting friends. While on her week-end trip she visited with Edna Culley, formerly of Elbe.

Patty Kemmer, daughter of Mr. and Mrs. Tommie Kemmer of Parkland, Washington, has been visiting with her grandparents, Mr. and Mrs. Art Bennett, for the past week.

Mrs. Mildred Sparks has had as a visitor her daughter, Mrs. Merle Blum, from Outlook, Washington, the past week.

Don Fitzner and Bob Sparks left Monday on a pack trip to meet Bob's sister and brother-in-law, Mr. and Mrs. Tom Scurlock, who are camping in the park between

Indian Henry and Klapatche. The Scurlocks packed in for a group of 35 members of an eastern mountain climbing club. The group are climbing Mt. Rainier. Bob and Don returned on Wednesday.

Mr. and Mrs. Frank Mettler Sr. had as week-end guests at their home Mr. Mettler's sister and husband, Mr. and Mrs. Kaelin of Buckley.

Sherman Whetzel of Brinnon, Washington is visiting with Mr. and Mrs. Frank Jewell.

Reporter—Muriel Kast, Elbe.

Spanaway News

Mrs. William Rieck (Rosalie Baker) of Lompac, Calif., has been visiting friends and relatives here. Her mother, Mrs. Marie Baker, is in the hospital for surgery.

Home From France
Glen White, son of Mr. and Mrs. Harry White, is home from France and stationed in the U. S.

Family Reunion
Mr. and Mrs. Robert McCullough were host and hostess Saturday for a large family reunion of Mrs. McCullough's side, the Christilaw family, attended by 54 people.

Legion
Clover Creek Post 118, American Legion, will meet in the Spanaway Legion hall Friday, Aug. 14.

Reporter — Mrs. Oliver Omat, LE 7-6466.

If you are in a forested area, find out why and where to report wild fires. Prompt action on little fires can prevent big ones. Help Keep Washington Green.

Turfgrass Field Day At W.W.E.S. Aug. 20

The first annual Turfgrass Field Day will be held at the Western Washington Experiment Station on Thursday, August 20, beginning promptly at 9 a.m. according to Dr. D. F. Allmendinger, Superintendent of the Station, Roy Goss, Turf Extension and Research Specialist, says that persons attending this field day will see a lawn fertilizer experiment in progress which may serve to answer some of your particular problems. The effect of several different levels of nitrogen, phosphorus, and potash can be observed, as well as different types of nitrogen.

The plastic house, for turfgrass disease research will be open for inspection and questions. Also seen at the Station will be the experimental golf putting green where various screening tests are conducted and prospective new varieties of turfgrasses which are being propagated at this time.

The tour will leave the Experiment Station at 10:30 for Alderton farm No. 5, where the new turfgrass research center is being established. An automatic irrigation system will be seen in operation which will be used in irrigation experimental studies. An explanation will be made of the various turf areas as to their specific use.

Dr. Angus Howitt, Entomologist, Dr. Chuck J. Gould, Plant Pathologist, Dr. Walt Mortensen, Soil Fertility researcher, and Dr. Walter J. Apt, Nematologist, will be on hand to answer your specific

Prescription Service
Open 7 Days a Week
9:30 a.m. - 9:30 p.m.
Sundays 10 a.m. - 6 p.m.

JACOBS PACIFIC DRUGS

Wallgreen Agency
Pay Light & Water Bills Here
84th & PACIFIC AVE. Greenfield 2-6445

LUMBER --- ALL GRADES
PAINTS - GLASS - HARDWARE
UPLAND SLAB WOOD
BASKETT LUMBER CO.
9701 Portland Ave LEnox 7-5844

School Shoes
Large Selection
PAUL'S SHOES
Spanaway

SEE THE NEW 1959 LINES
Schwinn Bicycles — Savage Lawnmowers
Motor Scooters — Go-Carts
LAWNMOWER SHARPENING, ENGINE PARTS & REPAIRS, AND BICYCLE RENTALS
PARKLAND CYCLE & KEY
11021 Pacific Avenue LE 7-5772

BIG BEAR
A DIVISION OF LUCKY STORES

the BEST VALUES... the BEST VARIETY!

Chuck Roast 39¢ lb.
Center Cuts included
7-Bone and Blade Cut chucks especially aged for flavor. Fully trimmed roasts... truly ideal for choice meals!

Leg of Lamb 69¢ lb.
U. S. Choice
Lamb. Choice of
Whole Leg or
Either Half.

Cross Rib Roast 79¢ lb.
U. S. CHOICE ROUND BONE SHOULDER ROAST: .lb. 59¢

Choice Lamb Chops Rib Chops Well-Trimmedlb. 79¢
Choice Loin Chops The Best That Money Can Buylb. 89¢

Choice Saratoga of Lamb Choice Boneless Lamb Roastlb. 63¢
Choice Lamb Riblets Ideal for Braising. Makes an Economical Meallb. 23¢

TIDE DETERGENT Giant Size Pkg. **65¢**

Joy Liquid Detergent..... 22-oz. 75¢	Spic 'n Span WALL CLEANER..... GIANT SIZE 93¢
Ivory Snow..... GIANT SIZE 83¢	Dash Laundry Detergent..... GIANT SIZE 2.45
Ivory Flakes..... LARGE SIZE 37¢	Cascade Detergent..... REG. SIZE 49¢
Ivory Liquid..... 22-oz. 75¢	Comet Cleanser..... GIANT SIZE 2 BARS FOR 49¢
Blue Cheer..... GIANT SIZE 81¢	Lava Soap..... REG. SIZE 2 Pkg. 27¢
Duz Soap Powder..... LARGE SIZE 37¢	Camay Soap 2 1/2" 33c..... 2 REG. SIZE 23c
Oxydol Detergent..... GIANT SIZE 83¢	Zest Soap 2 REG. SIZE 31c..... 2 BATH SIZE 43c
Dreft Detergent..... GIANT SIZE 83¢	Ivory Soap 1 1/2" BAR 17c..... REG. SIZE 11c

JERSEY BUTTER 1-lb. Print **59¢**

DINNERS MORTON FROZEN CHICKEN, BEEF or TURKEY Each Only **43¢**

FOLGERS COFFEE 1-lb. can Reg. or Drip **65¢**

CAKE MIX SWANSDOWN DEVILSFOOD, WHITE, YELLOW 5 Pkg. for **1.00**

CRISCO SHORTENING 3-lb. Can **79¢**

BABY FOOD GERBER STRAINED **10 Cans For 79¢**

RICH'S DRIVE-IN

- Fish & Chips • Prawns & Chips
- Chicken & Chips
- HOME MADE PIZZA
- CONEY ISLANDS • HAMBURGERS
- SHAKES • SUNDAES
- COLD DRINKS

OPEN EVERY DAY

Sunday thru Thursday: 11:00 a.m.—11:00 p.m.
Friday & Saturday: 11:00 a.m.—1:00 a.m.

PARKLAND LAKewood

Cantaloupe
CREAM OF THE CROP
VINE RIPENED
THICK MEATED
and FLAVORFUL
lb. 5¢

BLUEBERRIES Per Cup 25¢ Northwest grown, large and plump berries. Full cups... Home preserve now.

GREEN PEPPERS Per lb. 15¢ California Wonder Variety. Large, thick meated peppers.

FRESH PEACHES Per lb. 19¢ Washington grown Red Haven variety. Sugar sweet, juicy.

LIBBY CUT GREEN BEANS 5 Pkg. 1.00
DEL MONTE PINE-GRFT DRINK 48-oz. 33¢
KRAFT PRESERVES Apple, Strawberry, Pear-Gal, Boysenberry 3 12-oz. Jars **89¢**
SUNNY JIM PEANUT BUTTER Cream or Chunky 16-oz. Jar **59¢**
LESLIE SALT Finger Tip Pack 2 1/2-oz. Pkg. **25¢**
BAKERS INSTANT COCOA 3-lb. Can **89¢**
PILLSBURY PANCAKE MIX 4c OFF 5-lb. Pkg. **35¢**
SUNNY JIM SYRUP 16-oz. Pkg. **39¢**
OREO CREME SANDWICH COOKIES 1 1/2-oz. Pkg. **51¢**
BOOTH BREADED SHRIMP 16-oz. Pkg. **59¢**

STORE HOURS: 9 to 11 Weekdays; Sundays, 9 to 9. Ad prices are effective Thursday a.m. through Saturday, right to limit is reserved.

BIG BEAR
A DIVISION OF LUCKY STORES

133RD & PACIFIC AVENUE PARKLAND

SPECIAL VALUES IN ALL DEPARTMENTS

PLYWOOD

Fir 4 x 8
3/4" Good Fir Pops
ONLY **5.44** EA.

Fir 4 x 8
1/2" Good Fir Pops
ONLY **4.16** EA.

Cedar 4 x 8
1/4" Cedar Reject
ONLY **2.95** EA.

Birch 4 x 8
3/4" Good 1 Side Pops
ONLY **9.50** EA.

Oak 4 x 8
3/4" Good 1 Side Pops
ONLY **9.50** EA.

Free Estimates
on
Remodeling
Up to
5 years
to pay

WALLBOARD

Celotex 4 x 8
3/8" Prefinished
2.50 EA.

Prestwood 4 x 8
1/8" Prefinished
2.56 EA.

Ideal for Walls and Floors
Mahogany Flakewood TILE

ONLY **18¢** SQ. FT.
For Ceilings and Walls

USE OUR REVOLVING CHARGE PLAN

Mahogany - Birch CLOSET DOORS
4.95 EA.
Sliding Door HARDWARE
for 2 doors
2.45 SET

BROOKDALE LUMBER COMPANY

BOYSEN Paint

30th annual

1¢ SALE

NO LIMIT TO QUANTITY!

BUY ONE QUART... \$1.98

GET SECOND QUART... 1¢

HURRY! HURRY!
THIS OFFER ENDS
AUGUST 22nd!

BOYSEN RUBBERGLO Flat Wall Finish
Boysen Rubberglo is a modern, rubber latex flat wall finish that spreads easily, dries quickly, has no odor. Has a tough, smooth surface. One coat does the job. Wash your brushes and roller under the water faucet. Your choice of 12 ready-mixed colors—special custom-mixed colors slightly higher.

Save Money During BOYSEN 1¢ SALE!
Here's your big opportunity to save money on Boysen Rubberglo Flat Wall Finish and other Boysen specials! During the 29th Annual Boysen Paint 1¢ Sale, you get an extra quart of famous, top quality, Boysen Rubberglo for an extra penny! Paint up, clean up, NOW, and save money!

OTHER BOYSEN MONEY-SAVING SPECIALS!

(These are not 1¢ Sale items)

ODORLESS DREEM SEMI-GLOSS ENAMEL

12 ready-mixed colors which match Rubberglo colors. (Special colors slightly higher).

Quart **\$1.92** Gallon **\$6.16**

PLASOLUX—AMERICA'S FINEST GLOSS ENAMEL

Hundreds of uses around the home, interior and exterior, durable... easy to use.

Quart **\$2.63** Gallon **\$9.00**

OLD COLONIAL PORCH DECK AND FLOOR ENAMEL

For heavy-traffic spots. One-coat application, dries quick, wide color choice.

Quart **\$2.00** Gallon **\$6.45**

BOYSEN 100% PURE HOUSE PAINT

A really finer house paint—oil base, lasts for years and years.

Gallon **\$6.77** 5-Gal. tin **\$6.64**

BOYSEN SHAKE AND RUSTIC PAINT

Fire resistant! Weathers gradually, beautifully, lasts for years. (7 colors).

Gallon **\$5.18** 5-Gal. tin **\$5.03**

MIRACLE ROLLER SET

Save money on this roller painting set. Paint easier, faster, better!

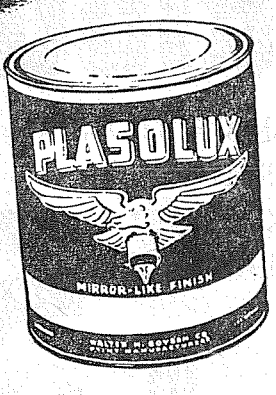
SPECIAL! **\$1.99**

HURRY! HURRY! THIS OFFER ENDS AUGUST 22nd!

INTRODUCING FAMOUS BOYSEN PAINTS

FREE!

1/2 PINT CAN OF
Amazing BOYSEN PLASOLUX ENAMEL



Come in and visit our store and receive absolutely FREE (to adults while supplies last) 1/2 pint of Boysen's famous Plasolux enamel with the amazingly beautiful mirror-like finish that resists boiling water, grease, alcohol, and even ACIDS! Plasolux is America's finest gloss enamel.

Nothing to buy. No obligation. Just come in and get acquainted. You can save on paint for every purpose by taking advantage of these special low opening sale prices on Boysen high quality paints shown below.

PAINT THINNER Gal. **29¢**

ALL PURPOSE PAINT BRUSHES

	4"	2 1/2"
Reg.	\$3.98	\$1.98
NOW	\$2.98	\$1.49

BROOKDALE LUMBER COMPANY

136th & Pacific Ave., LE 7-8669

FLOORING

1 x 4 Kiln Dry
Economy Grade
ONLY **3¢** LIN. FT.
Good for Under Linoleum or That Spare Room

OAK SHORTS
For a Beautiful Floor
\$25.00
Per 100 Sq. Ft.

SIDING
6"
Cedar X Grade
ONLY **3.50**
Per 100 Sq. Ft.
1 x 8 Utility

Kiln Dry
ONLY **9.00**
Per 100 Sq. Ft.
1 x 8

B & Btr Shorts
(Real Nice Stuff)
ONLY **15.00**
Per 100 Sq. Ft.

Room Additions
Garages
Remodeling
FREE ESTIMATES

ROOFING
This Week Only
45 Lb. Medium Black

ONLY **2.95**
100 Sq. Ft. Roll

90 Red or green slate
ONLY **4.95**

100 Sq. Ft. Roll
Aluminum ROOFING
by Kaiser

24¢ SQ. FT.
30 Year Guarantee!

Use Our Revolving Charge Plan
For Your Purchases

PLUMBING

5 Ft. Recess
Steel Tubs

less trim
1st Grade Only
\$69.50

Close Coupled
TOILETS
with Seat
\$29.50

less trim
Wash Basins
\$13.50

Everything in Fittings and Accessories

Howdy Partners Round Dance club will have a worknight tonight Thursday, August 13, 8:15 to 10:15 p.m. at Fruitland Grange. Willis Dodge will review the current round of the month "Del Rio Two-step" and will also teach the "Lindsey Waltz." All dancers are welcome and Willis would appreciate it if the dancers would bring their requests for previous rounds they would like to learn to help him plan his future programs.

The current Tuesday night classes in square dancing and round dancing taught by the Dodges will discontinue till in mid-September when they will resume to enable the dancers to pick up a few pointers to help them enjoy the winter dancing more.

Graduation night is here for the members of Willis and Loraine Dodges square dance class. This Saturday night, August 15, at 8:30 p.m. at Fruitland Grange is the night. The Harmony Hoedown Club has planned an evening of dancing and entertainment for the class members. Diplomas will be given out. All dancers are welcome to come. Bring your cups. Lunch will be served. Hosts and Hostesses are Charles and Ruth Sienkiewicz, George and Edith Thamer, and Ken and Florence Wade.

Harmony Hoedown annual family picnic will be this Sunday.

August 16, at the Tony Marsh home on Spanaway Lake. Each family is to bring a picnic dinner and it will all be served potluck. Coffee and Koolaid will be served by the club. They will eat from 12:30 to 2 p.m. but anyone wanting to come early to swim or water ski or go boating is welcome to come any time after 9 a.m. There will be signs posted to enable all to find their way to the Marsh home.

To Omak Stampede

Mr. and Mrs. Fred Butler of Grebe Road took a weekend trip to Omak, Washington. They went with members of the Port Orchard Riding club to attend the annual Omak Stampede. The club was guests of the Hogy Shattucks near Omak.

Good Year for Little Leaguers

The 112th Booster Club Little League baseball team finished the season with 3 wins and 4 losses. The boys did a fine job playing and the club owes a big vote of thanks to Mel Denny for his time and counseling as coach and manager with the able help of Ron Higgins and Ray Owings. Many thanks from the Booster club to the boys for their playing on the team and to the men who gave their time to help the boys.

New Daughter

Mr. and Mrs. Peter Lavrovitch of Grebe Road welcomed a new daughter on Sunday evening, August 2, at Tacoma General Hospital. Janell joins sister Judy and brothers Peter and Steven. Congratulations to the happy family.

Visitors

Mr. and Mrs. Harold Bosh of

Stockton, California, spent the past week visiting the Bill Westmans of Fruitland Avenue. The week was spent sightseeing with a trip around Mt. Rainier, up to the Staircase in the Olympics, around the Loop and up to Neah Bay and Cape Flattery and over to Orcas Island. The Boshes returned to California the 7th of August.

Reporter—Margaret David, LE 7-6668.

Kapowsin Grange

The Ohop Grange team will put on the 1st and 2nd degree work Sept 2 at the Kapowsin Grange hall.

The Kapowsin Auxiliary will hold a rummage sale in the hall August 28 and 29.

Backwoods 4-H

The Backwoods 4-H club held their meeting at the home of Mike Latterell. It was decided to give their animals shots in time for the Junior Fair at Sumner. Clifford Coomber showed pictures he took at the Enumclaw Dairy Show. Edward Kershner is the club reporter.

Birthday Party

Mrs. Opal Latterell held a birthday party in honor of Mrs. Wilma Folk last Monday. Guests were Mrs. Joyce Andrews, Evelyn Buckley of Spanaway and the

Summit Fire Department. Tom Folk of White road said their efficiency undoubtedly save a lot of destruction when his barn burned from spontaneous combustion last week.

Picnic for Pee Wees

The Elk Plain Fire Department Pee Wee baseball team and their families had a picnic Aug. 9 at the home of Mr. and Mrs. Webb Gilstrap and family. The children

enjoyed swimming in the pool. A good time was had by all.

Mr. and Mrs. Ted Otterstad and Bob left Saturday on a trip to Minnesota to visit relatives; they will be away about three weeks.

Mr. and Mrs. Bob Austin and family spent a week at the ocean and had a lovely time.

Donnie visited in Portland last weekend.

Visiting recently at the home of the Ray Burkharths were Mrs. Burkhardt's parents, Mr. and Mrs. L. B. Macy of Seneca, Mo., and her brother and family, Mr. and Mrs. Roland Macy and Bryan of

Racine, Mo. It was their first visit to our state and they thought it was very beautiful. They also enjoyed trips to Mt Rainier and Pacific Beach.

Mr. and Mrs. Al Greenlaw and Donnie visited in Portland last weekend.

Richard Crane, pastor

enjoyed swimming in the pool. A good time was had by all.

Mr. and Mrs. Al Greenlaw and Donnie visited in Portland last weekend.

Richard Crane, pastor

1 DAY Shoe Repair PAUL'S SHOES Spanaway

POWER TOOLS FOR RENT SANDERS - EDGERS - POLISERS - HAND SANDERS SKIL SAWS - ELECTRIC DRILLS - CEMENT MIXERS - ETC. ALSO HAND TOOLS FOR RENT

Anderson Lumber
9813 Pacific Avenue LENOx 7-7311

DEPENDABLE PHARMACY SERVICE
Bob Vaughan Owner

SEE REXALL'S HILARIOUS TV SHOW

O. HENRY'S The RANSOM of Red Chief

WILLIAM BENDIX with TEDDY ROONEY
(Mickey's son as "Red Chief")
SUNDAY, AUGUST 18th, NBC-TV
See TV schedule for time and channel

Coming - August 17 to 29 REXALL BIG "X" SALE

Parkland Rexall Pharmacy
Pacific Avenue & Airport Road LENOx 7-8636

BACK TO SCHOOL!

- SCHOOL SUPPLIES
- CLOTHING Boys & Girls
- GYM SHORTS

ALLSION'S VARIETY STORE
99th & Portland Ave LE 7-5658

FALL TERM ENROLL NOW

Qualify in a few short weeks for a high paying and rewarding position.

- Secretary
- Clerk-Typist
- Bookkeeper
- Accountant
- IBM Key punch operator
- Stenographer
- Comptometer

Write, phone or drop in for your copy of our 1959 Bulletin. It describes opportunities, courses and how you can save time and money through our streamlined method of instructions.

Act Now - No Obligations

Knapp College
Tenth and Pacific Avenue Tacoma, Wash. MA 7-2181

Vaughan's Values

ALUMINUM SCREEN DOORS 19.95
ALUMINUM STORM DOORS 36.95
(Complete with Hardware)

LATEX RUBBER BASE PAINT (13 Standard Colors) Gal. 2.69
FENCE PAINT Per Gal. 1.98

Vaughan's
PACIFIC AVENUE LUMBER COMPANY
84th & Pacific Avenue GR 4-9515



Safeway Meat Is Your Best Buy!

Prettiest meat you ever did see! Here is truly top-quality meat. Our buyers went right to the meat-producing areas to pick out the finest of tender meats - and we're offering your favorite cuts now at money-saving prices. (A great time to stock your freezer.)

Whole or Half - Delicious, Tender

PORK LOINS Lb. 49c

PORK Rib Chops Lb. 59c
Ideal for dinner

Pork Loin Roast Loin End Lb. 45c

Cooked Scallops Captain's Choice 7-Oz. Pkg. 49c

Cornish Game Hens Kickapoo Chief Ea. 69c

Fresh Silver Salmon Whole Fish 49c

Sliced Bacon
Armour's Banner Thick Sliced 1-lb. Pkg. 45c
2-lb. Pkg. 89c

Round Steak FULL CUT U. S. Choice Beef lb. 85c

No. 2 POTATOES 50-lb. Bag 89c

Sour Cream
Lucerne - For glamorous baked potatoes, for salads with personality. Free recipe at Safeway.

Pint 57c
Half Carton 29c

LEMONS 12 For 39c

Green Peppers lb. 10c

Blueberries 2 Full Cups 49c

Apples Gravenstein, New Crop Beauties 4 Lbs. 49c

-Salad Dressings-

Italian Dressing
Kraft - Delicious Zestful Flavor. 8-Oz. Bottle 35c

Bleu Cheese Dressing
Nalley's - Give Special Flavor to Favorite Salads. 8-Oz. Bottle 49c

Candi Cane Sugar 10-lb. Bag 95c

Pet Canned Milk 5 Tall Cans 69c

Nalleys Mayonnaise Quart Jar 49c

Orange Drink HI-C 4 46-oz. Cans \$1.00

Donuts Mrs. Wright's Plain or Sugar Pkg. of 6 25c

Asparagus Bel-air Fresh Frozen 3 8-Oz. Pkgs. \$1

Karo Syrup Red Label With Decanter Btle. Quart 49c

SUN DOWN Apricots
Whole Unpeeled
Large No. 2 1/2 Can 19c

Cottage Cheese Lucerne Pint Carton 25c Quart Carton 49c

Pork & Beans Keleys-Family Size Ideal for dinner 40-oz. Can 29c

Boyd's Coffee 2-lb. Can \$1.29 1-lb. Can 65c

SHORTENING

"Golden" 3-lb. Can 59c
Keen 3-lb. Can 65c

Golden Fluffo 3-lb. Can 65c

CAKE MIXES

"SWANSDOWN" Chocolate, White or Yellow 19-Oz. Pkg. 23c

Enter "My Favorite Supermarket" Contest in... **Family Circle**

Sale starts 9 a.m. Thursday, Aug. 13, through Saturday, Aug. 15 at 82nd & Pacific Safeway.

HI, HONEY! THE SALES TRIP IS COMING AND IT'S FINE. BUT I SURPRISE AND THE KIDS ARE YOU BEEN TELL GIRL LIKE

IT'S GREAT TO VISIT HOME BY LONG DISTANCE AND THE COST IS SO SMALL! Pacific Telephone

FROZEN DESSERT

Iced Milk Lucerne Vanilla or "Triple Treat" - A Combination of Vanilla Chocolate-Strawberry

Half Gallon 49c

SAFEWAY

County Agent's Corner

Signs of the Times
By George Purcell

While on a brief visit to see my relatives in Oklahoma last week I had occasion to see:

1. One Angus cattle ranch where detailed production records are maintained on each of the bulls as well as cows. These records show:
 - a. Growth rate of calves.
 - b. Whether the cow is a regular breeder.
 - c. Efficiency of feed utilization of offspring.
 - d. Milking ability of cows.
 - e. Quantity and quality of carcass of offspring.
2. One new poultry set-up near Oklahoma City owned by two millionaires will house 100,000 layers. It will use air-conditioning and slatted floors and mechanically

3. One FFA boy, 19 years of age, who manages and does most of the work on a 60 cow dairy farm owned by his widowed mother. His mother says "His day usually begins at 5:00 a.m. and ends about 10:00 p.m., or later, and he does not grumble."
4. Many farms being paid for considerably according to owner, by the soil bank contracts federal funds to keep farms out of production.
5. Impressive flat hill top site of the National Cowboy Hall of Fame

buildings to be built soon near Oklahoma City.

By Florence D. Allen

Blueberries for next winter can be put in the freezer now. Washington State Experiment Station reports that experiments have shown that for dessert use, berries frozen in syrup had finer flavor and more tender texture than those frozen with dry sugar or without sweetening. Those frozen in syrup or dry sugar were more attractive in appearance and superior in texture to the unsweetened pack.

Two new frozen products developed by the experiment station (Continued on Page 11)

All Small Businesses Now Eligible For Two-Way Radio Communications



New transistorized radio equipment has been designed to meet the needs of a wide variety of small business which previously could not obtain two-way communications licenses. New units are small-size and fit easily under the dash-boards of vehicles in which they are installed.

Regardless of size, virtually every business in the United States is eligible for mobile radio under recent Federal Communications Commission regulations. The broadened license provisions apply whether the applicant has only one car or hundreds requiring radio equipment to keep in constant contact with his office.

Communications systems may be obtained by salesmen, repair service firms, florist shops, farm equipment dealers, fuel companies and a wide variety of other businesses. The new FCC regulations make any legitimate commercial enterprise a two-way radio user.

As a result, hardly a segment of the American economy will be untouched, directly or indirectly, by the speedier service that two-way communications makes possible.

New Transistorized Design

Newly-announced is transistorized two-way transmitting and receiving equipment to be made available immediately by General Electric Company, Lynchburg, Virginia.

The design is small and compact and may be installed almost anywhere in a car or truck.

The new equipment uses little current from the car battery. When left in a standby position to receive calls, the current drain is negligible... like that of a car clock.

This battery-saving feature has been engineered even into high powered transistorized units, up to 75 watts, which enable cars to reach their offices when the cars are many miles away.

The hands holding the new two-way radio show size reduction which has been achieved in recent high-power, low battery drain designs. Compactness of the unit permits it to be installed in cars and trucks without taking valuable passenger space.

Bible Comment:

Can There Be Use Without Abuse?

The alcohol problem is as old as the history of man. The Bible itself takes the story of drunkenness back to the story of the flood. If Noah celebrated his emergence from the Ark by getting drunk, he was probably repeating an experience of man from even earlier times.

It is at once impressive and discouraging to realize how old this problem is. Discouraging because one wonders whether, and when, the problem that has lasted so long and baffled successive generations will ever be solved. Impressive because of the persistence of misuse. All that the Bible and history say about it increases the need for solution.

The scripture passages have to do with a great deal more than the question of alcohol. Sodom represented wrong choice in the case of Lot, who made a bad mistake when he pitched his tent in that direction.

But Sodom represented evils and debaucheries which a moderate drinker of today would shun as rigorously as the most upright total abstainer.

Perhaps what is stressed is the alliance of alcohol with deeper evils and immoralities. This alliance has been marked in the history of man and is marked today.

This is one of the facts that moderate men have to face in connection with the problem. The age-old question is still: can there be use without abuse?

With the proper conditions of wind and high temperatures, a tiny spark can turn into a raging forest fire. The Forks fire in 1951 travelled 18 miles in 6 hours, destroying more than 30,000 acres of forest land. Don't let it happen again. Guard every spark. Help Keep Washington Green.

School Shoes Large Selection PAUL'S SHOES Spanaway



MAGIC-LIKE LATEX Wall Paint

Dries in 1/2 hour to flat velvet finish. Tops for washability. Tops for durability.

12 Beautiful Colors

PER GALLON \$2.98

"Thrifty" Matching Semi-Gloss ENAMEL \$1.39

STEP LADDERS

4' \$2.88

5' \$3.88

6' \$4.88

SOUTH END PLUMBING & HARDWARE

185th & Pacific Ave. LE 7-4100

BACK to SCHOOL

BIG VALUES IN SCHOOL CLOTHES Use Seymour's Layaway Plan!

<p>GIRLS' 7 TO 14</p> <p>CORDUROY JUMPERS</p> <p>Special 1.99</p> <p>Expertly tailored and fully-cut corduroy. In red or turquoise. 7 to 14.</p>	<p>MISSSES 36 TO 44</p> <p>BULKY SWEATERS</p> <p>ONLY 3.98</p> <p>Choice of many colors in fancy pullovers and cardigans!</p>	<p>GIRLS' and MISSSES</p> <p>Wash 'n Wear SKIRTS</p> <p>Low Priced 2.98</p> <p>Easy laundering rayon-blends in gay plaids. Sizes 10 to 16, and 22 to 36.</p>	<p>GIRLS'</p> <p>Wash 'n Wear DRESSES</p> <p>Special 2.49</p> <p>Wash 'n wear cottons in plaids and checks! Sizes 3 to 6X, 7 to 10.</p>
<p>GIRL'S 2-STRAP School Shoes</p> <p>8 1/2 to 12 3.99</p> <p>Sizes 12 1/2 to 3 ONLY 4.99</p> <p>Sturdy leather, Goodyear welt, composition sole! N and M widths with narrow heels. Burgundy only.</p>	<p>GIRLS' SOAP'N'WATER Campus Oxfords</p> <p>8 1/2 to 12 3.99</p> <p>13 1/2 to 3 & 4 to 10 4.99</p> <p>Smart looking, comfortable fitting! Best-wearing Biltrite soles. N and M widths with narrow heels.</p>	<p>Black Suede Pumps</p> <p>Misses Sizes 2.99</p> <p>4 to 9</p> <p>Perfect for dress or school! Popular low, lithe styling. Trimly styled flatties in black suede!</p>	
<p>BOYS' 6 TO 16</p> <p>CORDUROY SHIRTS</p> <p>ONLY 1.99</p> <p>Assorted colors in guaranteed washable corduroy. Pearl-like buttons.</p>		<p>BOYS' 6 TO 16</p> <p>CORDUROY PANTS</p> <p>Special 1.99</p> <p>Expertly tailored, bar-tacked pants, with 2 flap pockets. Charcoal or navy blue.</p>	
<p>BOYS' 6 TO 16</p> <p>CORDUROY SHIRTS</p> <p>ONLY 1.00</p> <p>Flannels or rayons, with long or short sleeves. Many patterns, wanted colors.</p>		<p>BOYS' 8 TO 20</p> <p>CYCLE JACKETS</p> <p>Save! 9.98</p> <p>Authentically styled black plastic. Quilted wool, with satin lining.</p>	
<p>Boys' Platform OXFORDS</p> <p>3 to 6 B, C, D 7.99</p> <p>Men's 6 1/2 to 11 9.99</p> <p>Favorites with young men! Thick sponge rubber soles, black leather uppers, zipper opening.</p>	<p>Boy Natural-Leather School Shoes</p> <p>8 1/2 to 3 2.99</p> <p>Rugged leather uppers, rubber composition soles. Fancy side stitching. Ideal for active boys!</p>	<p>Boys' Patrol Shoes</p> <p>11 to 2 C and D Width 6.99</p> <p>LAYAWAY NOW!</p> <p>Sizes 3 1/2 to 7, C and D 7.49</p>	
<p>Regular? Husky? Slim?</p> <p>We'll Fit Your Boy!</p> <p>DUB-L-NEE DENIMS</p> <p>Sizes 1.99</p> <p>6 to 12</p> <p>Durable 10 oz. blue denim by Blue Bell. Fused double knees. Styles for regular, slim or husky boys.</p> <p>14 and 16's 2.29</p>		<p>BOYS' CHARCOAL JEANS</p> <p>10 oz. charcoal denim, double knee, zipper fly. Authentic western styling. Sizes 6 to 12. 2.29</p>	

SEYMOUR'S

FAMILY DEPARTMENT STORE

9714 Pacific Ave.

ONE BLOCK NORTH OF PARK 'N SHOP

Shop Daily 9:00 to 9:00

Sundays 10:00 to 6:00

HAVE YOUR HUBCAPS TURNED UP MISSING?

STOP THEFT!

Each Month Thousands of Hubcaps Are Reported Stolen. Here at Bob's Place We Propose to Stem This Tide of Theft Locally.

FREE HUBCAP ENGRAVING

YES! THAT'S CORRECT. STOP IN AND WE'LL ENGRAVE YOUR LICENSE NUMBER ON ALL FOUR OF YOUR HUB CAPS ABSOLUTELY FREE. NO PURCHASE OR ANY OTHER CONSIDERATION NECESSARY.

GASOLINE & OIL AT COMPETITIVE PRICES

TEXACO PRODUCTS

BOB'S PLACE

112th & AIRPORT ROAD (24 Years in Parkland) LEnox 7-3395

GENERAL ELECTRIC APPLIANCES

TERRIFIC DISCOUNTS

SLIGHTLY SCRATCHED

WEIR'S

YOUR G-E CORNER 8419 PORTLAND AVE. LE 7-0231

OPEN 9 'TIL 9 (SAT. 'TIL 6)



FOODTOWN



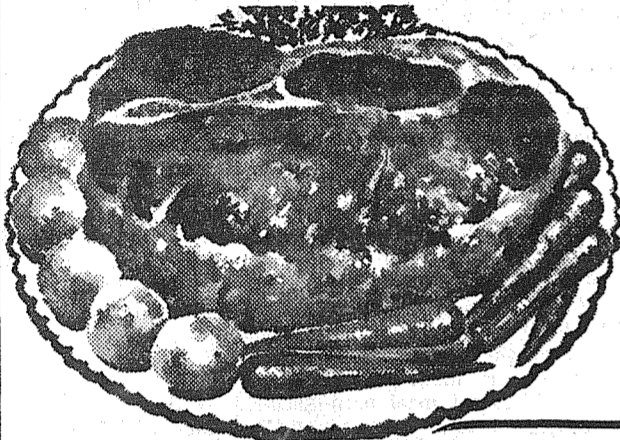
GIANT BEEF SALE

GOOD & CHOICE STEAKS

T-BONES lb. **95^c**

GOOD & CHOICE BONELESS

BEEF STEW lb. **63^c**



GOOD & CHOICE, BLADE CUT

POT ROAST lb. **39^c**

STEAKS

GOOD & CHOICE

SIRLOINS lb. **79^c**

GOOD & CHOICE

BAR-B-QUE

BLADE CUT

CHUCK STK. - Lb.

49^c

PAN READY

FRYERS lb. **39^c**

CARSTEN'S TOP QUALITY

Sliced BACON lb. **49^c**

HYDRO COOLED

CORN EARS **6 FOR 39**

APRICOTS

IGA Ripe 'n Ragged, 2 1/2 35c **3/\$1**

TOMATO JUICE

IGA 46-Oz. 25c Tin **4/99c**

Pineapple Juice

IGA's Own, 46-Oz. Tin **29c**

Everfresh Frozen

GREEN PEAS

10-Oz. Pkgs.

9 FOR 99c

SNO-KREEM

IGA Shortening 3-Pound Tin **69c**

Deluxe Coffee

IGA, 2-Lb. 1.29 1-Pound Tin **65c**

Peanut Butter

IGA 60-Oz. 1.49 18-Ounce Jar **45c**

IGA CHUNK TUNA

NO. 1/2 TIN **23^c**

IGA MAYONNAISE

QUART JAR **49^c**

IGA CANNED MILK

8 TALL TINS **\$1**

IGA SALAD OIL

QUART BOTTLE **39^c**

IGA PEACHES Ripe 'n Ragged 2 1/2 Tin--29c

3 FOR **85^c**

IGA COCKTAIL

FRUIT 303 Tins 3 FOR **69^c**

MATCH 'EM

OR

MIX 'EM

★ IGA ★ VEGETABLES

- Cream Corn
- Green Peas
- Cut Beans
- Tomatoes

No. 303 Tin Each 17c

6 FOR 99^c

GROUND BEEF

39^c lb.

TIP TOP FROZEN

GRAPE DRINK

6-Ounce Tins

8 FOR \$1

RED HAVEN

PEACHES lb. **15^c**

CALIFORNIA

CANT'LOUPE **7/\$1**

IN PERSON

J. P. PATCHES

AT FOODTOWN SATURDAY

AUG. 15TH 10 A.M. 'TIL 12 NOON



6 OZ. JAR **95^c**

with this coupon

COUPON GOOD ONLY AT IGA FOODTOWN

COUPON EXPIRES AUG. 15TH

TRY SIESTA You'll Agree It's Coffee-est of the Caffein Free

AIRPORT (112th) AT PARK AVE.

AD DAYS AUG. 13, 14 & 15

Classified

M. L. S.

MULTIPLE LISTING SERVICE
NEAR 61st & PARK
Neat and clean, one bedrm, living rm 15x12, kitchen bit-ins, nook space, 3 pc bath, h/w floors, conc fdn, garage, elec range and refrig included in price of \$5900. Call Ralph Decker Gr 4-9579. PA-2308

800 DOWN GI
3512 East T. 5 bedrm older home with separate dining rm, conc fdn, garage, 3 lots, fruit, sewer and sidewalks. Possession on approval of credit. Call Ralph Decker Gr 4-9579. RE-2175

MCKINLEY HILL REALTY

6311 McKinley Ave. GR 4-9579
Member of Multiple Listing Service and Tacoma Real Estate Board

M. L. S.

MULTIPLE LISTING SERVICE
HOMES
FARMS
ACREAGES
INVESTMENTS
One Call Does It All

TACOMA REALTY, INC.

11004 Park Ave. LE 7-8681
Member Multiple Listing Service and Tacoma Real Estate Board

M. L. S.

MULTIPLE LISTING SERVICE
55 ACRES
GRADE A dairy setup, 36 x 80 concrete block barn, 39 stanchions, block milk house, block hay barn, 20 x 80 hay shed, drilled well, 3 bedroom home. All fenced. Reasonably priced. Call Bob Anderson LE 7-0229 or LE 7-3894. Ae2334

WANT TO BUY
Low G. I. equity for cash. Sold my house and need 2 or 3 bedroom home QUICK. South End General Area. Call Marion Thompson LE 7-8638 or LE 1-1429.

SUBURBAN REALTY, INC.

MAIN BRANCH
11302 Pacific Ave. LE 7-8638
SUMMIT BRANCH
5326 East 12th LE 7-0229
Member Multiple Listing Service and Tacoma Real Estate Board

M. L. S.

MULTIPLE LISTING SERVICE
11114 Broadway (corner of 112th and C, across from IGA) is a nice 3 bedroom home with room which has been used for beauty parlor nicely finished inside. Fireplace in living room, dinette, and utility room wired and plumbed; covered patio, fenced yard. By equity and assume payments of \$112 per month.

Eatonville vicinity property on Mountain Hiway with 42 acres fronting on side road to town. Large family home with 4 bedrooms, large living area, \$18,000 with 100,000 down and balance on contract. AA1896

Extra nice 3 bedroom home with separate dining room, off living room, new kitchen with eating space 12x22 and attached garage. Sellers can give quick possession and right now is the time to make a purchase before school starts. Partly fenced yard. SC 2114. Call Jennie, LE 7-8609 or LE 1-1210.

New Parkland duplex in residential area. Extremely well built units with total of 1536 sq. ft. over all. Utility room has auto. washer and dryer included. 2 hotpots ranges included. \$18,500. Ca 1371. Call Jennie, LE 7-8609 or LE 1-1210.

PARKLAND REALTY CO.

302 Garfield LE 7-8609 or LE 1-1210
Member Multiple Listing Service and Tacoma Real Estate Board

M. L. S.

MULTIPLE LISTING SERVICE
ACREAGE WANTED
We need listings for acres, 1 to 80 acres. Call George Clement, LE 7-5088, who will be glad to come and talk to you about it.

CARL T. LINDGREN REALTOR

410 Garfield St. LE 7-5088
Member Multiple Listing Service and Tacoma Real Estate Board

Snowflake
Sodaslb. 25c
Van Camp's Grated Tuna 5 for \$1

Swift's Premium Bolognalb. 39c
Stuffed Frozen Turkeyslb. 43c
SILK T'let Tissue 4/25c

R'nd Steak lb. 69c
Large Stalks CeleryEach 10c
Large Lettuce 2/15c

Cherry Tomatoes Basket 19c
Jumbo Cants 4 for 1.00

Gibbons FOOD CENTER

SPANAWAY

Business Service 3
Parkland Heating Co.
All makes of furnaces for sale; Specializing in Williams OIL 'O' MATICS; Oil, Gas, Hot Water Installations. Service; reasonable; 755 South 108th. LEnox 7-4045. 3ctf

ECONOMY KITCHENS
Remodeling - Roofing & Siding Foundations
LORD'S CONSTRUCTION CO., INC.
10426 Pacific Avenue. LE 7-8779

RADIATOR CLEANING & REPAIRING

Guaranteed Work
DEL'S RADIATOR
10620 Pacific Avenue
LE 1-1144; Home: LE 1-1288

USED FURNITURE
WE BUY, SELL & TRADE TERMS
TRADING POST
722 So. 112th LE 1-0242

Hot Water Heating Residential and Remodel Work
CORNELL PLUMBING & HEATING
LEnox 7-7293

KNITTING MACHINE demonstration of New Long Automatic Knitting Machine with display of knit wear every Tuesday and Thursday, 1:00 to 3:00 p.m. at The Homeowner Arts & Crafts Shop, Garfield Street, Parkland. 3c49

BULL-DOZING

Excavating • Grading
Gravel
LE 7-5112

BULLDOZING

No Job Too Small
LE 7-7563 LE 1-1974

SMITH CABINET SHOP-REMODELING, carpenter work, kitchen cabinets; we stock and cut glass; 16308 South Park. Spanaway LE 7-4856

CALL POCHEL FOR Expert T.V. Repair

Satisfaction Guaranteed
Free Tube Testing
140th & Pacific LE 7-8624

Webb Electric Co.

8240 B Pacific Ave. GR 2-2902
ELECTRIC HEAT
All Types
Terms Can Be Arranged
FREE ESTIMATES
EMERGENCY PHONE
LE 7-4437

SEPTIC TANKS CLEANED-Contents nauded away. Don Redford, 8239 So. Farwett. GR 2-7334. If no answer call GR 2-9222. 3ctf

Webb Electric Co.

8240 B Pacific Ave. GR 2-2902
ELECTRIC HEAT
All Types
Terms Can Be Arranged
FREE ESTIMATES
EMERGENCY PHONE
LE 7-4437

WE HAVE BUYERS for your HOUSE!

FARM and BLDG. SITES

Listings Wanted

DICK DEVEREAUX REALTY
Buying or Selling
Call LE 7-8659
11002 Pacific Avenue

SPANAWAY ELECTRIC CONTRACTORS

Residential & Commercial Heating Specialists
LE 1-2127 LE 7-4792

FOUNDATION - New additions; Free estimates, financing. Work guaranteed. LE 1-2929. 3ctf

FOUNDATIONS, additions, remodeling. Free estimates. Financing. No down payment. Phone GR 4-7000 anytime. 3ctf

USED AUTO PARTS

SATISFACTION GUARANTEED
Bring This Ad For 10% Discount
GORDIE'S AUTO WRECKING
10620 Pacific Avenue LE 7-5565 LE 7-4443

WELL DRILLING Berkeley Pumps

JETS
SUBMERSIBLES
CENTRIFUGALS
TURBINES
Call LE 7-7281

TACOMA PUMP & WELL DRILLING CO.

14619 PACIFIC AVENUE

RADIO and TV SERVICE

ABC ELECTRONICS
Garfield & C Streets LE 7-4900

Home Plumbing & Heating Co.

REPAIRING, REMODELING NEW CONSTRUCTION
1017 So. 112th Call Day or Night LE 7-4615

UPLAND SLAB WOOD BASKETT LUMBER CO.

CALL LE 7-5844

ART'S SHOE SHOP

Shoes for the Entire Family
EXPERT SHOE REPAIRING
315 Garfield St. Between 121st and 122nd Opposite Parkland Postoffice

DRIVEWAY GRAVEL

Course or Fine
Pit Run CRUSHED ROCK
Drain Gravel, Sand, Fill

HILLTOP SAND & GRAVEL CO.

2223 23rd Ave. S.E. PUYALLUP TH 5-2198

JACK SHANK'S Refrigeration Service

Parts & Service for All Makes
LE 7-0178

Ace Dirt Moving Co.

Bulldozing Ditching
TOP SOIL GRAVEL
SEPTIC TANKS and DRAIN FIELDS
Phone TH 5-2452

NEAT BEAUTY SHOP

GR 2-7628
6314 McKinley Avenue

Residential and Commercial PAINTING

Taping and Texturing
Broadwell Painting
LE 7-6893

SEPTIC TANK CLEANING

Prompt Service
C. V. HUTSON
GR 4-3980 GR 2-7038

FOUNDATION - New additions; Free estimates, financing. Work guaranteed. LE 1-2929. 3ctf

FOUNDATIONS, additions, remodeling. Free estimates. Financing. No down payment. Phone GR 4-7000 anytime. 3ctf

USED AUTO PARTS

SATISFACTION GUARANTEED
Bring This Ad For 10% Discount
GORDIE'S AUTO WRECKING
10620 Pacific Avenue LE 7-5565 LE 7-4443

WELL DRILLING Berkeley Pumps

JETS
SUBMERSIBLES
CENTRIFUGALS
TURBINES
Call LE 7-7281

TACOMA PUMP & WELL DRILLING CO.

14619 PACIFIC AVENUE

RADIO and TV SERVICE

ABC ELECTRONICS
Garfield & C Streets LE 7-4900

Home Plumbing & Heating Co.

REPAIRING, REMODELING NEW CONSTRUCTION
1017 So. 112th Call Day or Night LE 7-4615

UPLAND SLAB WOOD BASKETT LUMBER CO.

CALL LE 7-5844

ART'S SHOE SHOP

Shoes for the Entire Family
EXPERT SHOE REPAIRING
315 Garfield St. Between 121st and 122nd Opposite Parkland Postoffice

DRIVEWAY GRAVEL

Course or Fine
Pit Run CRUSHED ROCK
Drain Gravel, Sand, Fill

HILLTOP SAND & GRAVEL CO.

2223 23rd Ave. S.E. PUYALLUP TH 5-2198

JACK SHANK'S Refrigeration Service

Parts & Service for All Makes
LE 7-0178

Ace Dirt Moving Co.

Bulldozing Ditching
TOP SOIL GRAVEL
SEPTIC TANKS and DRAIN FIELDS
Phone TH 5-2452

NEAT BEAUTY SHOP

GR 2-7628
6314 McKinley Avenue

Residential and Commercial PAINTING

Taping and Texturing
Broadwell Painting
LE 7-6893

SEPTIC TANK CLEANING

Prompt Service
C. V. HUTSON
GR 4-3980 GR 2-7038

WAC At Fort Huachuca

FORT HUACHUCA, ARIZ. (AHT-NC)-WAC Pvt. Sandra L. Noe, whose parents, Mr. and Mrs. William T. Moorehead, live at 718 1/2 E. 54th st., Tacoma, Wash., is a member of WAC Company of the Army Electronic Proving Ground, Fort Huachuca, Ariz.

Private Noe entered the Women's Army Corps in October 1958 and was last stationed at Fort Ord, Calif.

Farm Column 13

EASTERN WASHINGTON HAY, by bale, ton or truck load. Also grass, hay and straw. Louis Karamon, LE 7-8408.

EASTERN WASHINGTON HAY - By the bale, ton or truck load. J. A. Dove, Phone LE 1-2188. 13ctf

CASH for all kinds of livestock and horses. Puyallup TH 5-414. 13ctf

Work Wanted 14

MOTHER of two will care for your youngsters for next five years of age. If interested call LE 7-6570. 13ctf

WANTED-Restaurant work, light housework, baby sitting. Miss Carroll, 1501 South Hume. 14p49

EXPERIENCED COOK-UNION, NO night shift. Call LE 7-0504. 14p48

Miscellaneous 15

PARKLAND FURNITURE - New and used miscellaneous. Airport and Pacific Ave. Residence phone LE 7-3748.

KIRBY
THIS outfit was repossessed and you can make big savings here. Complete new home five years of age. It is only \$49.48 \$5 monthly. Terms. Open Monday, Friday 'til 9. T. J. KIRBY, ELECTRIC CO., 1148 Market St., PU 3-2551. 15c45

Ace Dirt Moving Co.

BULLDOZING · DITCHING
GRAVEL · TOP SOIL · SEPTIC TANKS DRAIN FIELDS
1750 9th St. S. W., Puyallup Phone Puyallup TH 5-2452

Baby Shop

Everything For Baby Including Juvenile Furniture
9722 Jac. Ave. LE 7-4664

LEGALS

NOTICE OF HEARING
PETITION FOR A CONDITIONAL PERMIT
Zone No. 4, SR-2 Residential Additions to Buildings for House Trainers

NOTICE IS HEREBY GIVEN that the County Planning Commission has filed with the Board of Pierce County Commissioners petition of R. L. Blanchard requesting a Conditional Permit in Zone 67, SR-2 Residential, for a new addition to existing building, and for a sign, located at 1525 South 108th Street, Parkland, within said zone; said property is divided as follows, to-wit:

Beginning 331.02 ft. West of the SW 1/4 of Sec. 15, Twp. 19 N., R. 3 E., W.M., thence West 300.19 ft. thence South 64.79 ft., thence East 218.87 ft., thence North 61.75 ft. to beginning, except the Easterly 131.8 ft. thereof, in Sec. 5, Twp. 19 N., R. 3 E., W.M.

NOTICE IS FURTHER GIVEN that a hearing on said petition will be held before the Board of County Commissioners of Pierce County, Washington, in their office in the County-City Building at Tacoma, Washington, on Monday, the 17th day of August, 1959 at the hour of ten o'clock a. m. of said day, when anyone interested may appear and be heard in the matter.

By Order of the Board of Pierce County Commissioners dated July 20th, 1959.

Board of County Commissioners
JACK W. SONNATAG, Clerk of Board.
By W. L. DEPT. Deputy.
Published in the Times Journal August 13, 1959.

NOTICE OF CONTINUED HEARING REZONING OF PROPERTY IN THE BROOKDALE AREA

NOTICE IS HEREBY GIVEN that continued hearing on the proposed rezoning of property in the Brookdale area on petition of J. J. Steavin and Associates will come before the Board of County Commissioners on Monday, the 17th day of August, 1959 at ten o'clock a. m. with the following recommendation of the Pierce County Planning Commission, to-wit:

That said property be rezoned to a new classification to be known as SR-14 SUBURBAN RESIDENTIAL, (T-1) DISTRICT (instead of the SR-5 Suburban Residential originally recommended. Said SR-14 Suburban Residential classification having a minimum lot width of 90 feet, a lot depth of 120 feet, a lot area of 10,800 square feet, and will in general be as protective as the present SR-4 classification. Said property proposed to be rezoned being described as follows: The NW 1/4 of Sec. 22, Twp. 19 N., R. 3 E., W.M., lying east of the West line and north of the south line of Christopher Mahon Donation Land Claim No. 48, and all that portion of the Christopher Mahon Donation Land Claim lying within the west half of Sec. 15, Twp. 19 N., R. 3 E., W.M., except the North 455 feet of the West 330 feet thereof.

Said continued hearing will be held on said date at the hour of ten o'clock a. m. or as soon thereafter on said day as the same can be heard at the office of the Pierce County Commissioners in the County-City Building, Tacoma, Washington, when any person, firm or corporation may appear before the Board and be heard in the matter. By order of the Board of Pierce County Commissioners dated August 10th, 1959.

Board of County Commissioners
JACK W. SONNATAG, Clerk of Board.
By W. L. DEPT. Deputy.
Published in the Times Journal August 13, 1959.

Horses & Equip 16

HORSESHOING - Breaking, Training, quirts, bosses, reins, etc., made and repaired. GR 5-0711. 16ctf

Aviation 17

FREE-FIRST FLYING LESSON LEARN TO FLY-\$10 A WEEK
Learn to fly in the safety of a Spina-way Airport LE 1-0442. 17ctf

AVIATORS subscribe now to the Northwest Flyer, a new newspaper about flyers by flyers for flyers. Subscriptions taken at your local airport or write to P. O. Box 3008, Parkland, Wash.-19ptf.

Automotive 12

1959 FORDS AND CHEVROLETS - A & B, 1958 FORDS, 1957 FORDS, SMALLEY'S MOTORS, 10410 Pacific Ave. LE 7-4060 anytime. Open nights also. 12ctf

12A Foreign Cars

- ALL - FOREIGN CAR KEYS
107 Varieties
PARKLAND CYCLE & KEY
11021 Pacific Ave. LE 7-5772

Complete Car Service

DONE BY EXPERTS
ROLLINS GAS-LAND AND D&W AUTO REPAIR
166th and Pacific LE 7-5155

Schools 18

NIGHT SCHOOL enroll now. Call MA 7-2181.
KNAPP BUSINESS COLLEGE
10th & Pacific 18ctf

Midland News

Members of Midland Cub Scout Pack 84 and their families will enjoy their annual picnic Sunday, August 16, at Edward's Resort on Lawrence Lake. They are all urged to attend this one summer gathering for a general get-together over tentative plans for the fall. Each family will bring their own picnic lunch and will meet around 1:00 o'clock.

Picnic for Sparkers

Barney Harrison, coach of the Midland Sparkers, who have just completed a successful peewee baseball season, has planned a picnic for all the team members and their families Saturday, August 15, at Wapato Park.

Church Event

Masses at St. John of the Woods Church on Saturday, August 15, the Feast of the Assumption of the Blessed Mother, will be at 8:15 a.m. and 6:30 p.m. After the evening Mass, members of the parish will gather in the backyard of the rectory where they will enjoy a potluck picnic supper.

Junior Fair This Weekend

This is a very busy week for all 4-Hers within Pierce County as their famous Pierce County Junior Fair opens this Thursday evening, August 13, when this year's 4-H Queen, Miss Priscilla Pedersen, will receive her crown from Governor Albert D. Rosellini. The Queen will be attended by six princesses, Misses Donna Ayers, Jane Lawler, Jarleth Hoffman, Karen Winn, Shari Young, and Diana Perryman. Holding the flower-decorated garlands making the pathway for the Queen and her court will be the largest group of junior princesses in the fair history, 86 young 4-H girls, ten and eleven years old.

The fair will continue on through Saturday evening on the Sumner High School grounds. This is a wonderful opportunity for the whole family to come out and enjoy a grand evening program, as well as viewing the many wonderful exhibits where people of the communities can see what the busy youth of their area have been doing

Local Girls Win

Announcement of the eight top winners in the recent meal preparation contests held in the new county extension office hosted room was a wonderful surprise to the lucky contestants. First place in the luncheon division went to our own Midland Cloverbud team of Janet Bombardier and Donna Ayers. Their luncheon featured chicken pie, waldorf marshmallow salad, coffee and milk. Many other things are considered in the judging beside just the cooking of the meal, which includes using the basic foods, savings in time, labor and money, menu plans for the entire day, hostess duties and courtesies and many other factors. The teams served many of the county and city officials and gave them an inside view of some of the many talents of 4-H youths. Running a close second in the luncheon division was the team of Karen Winch and Carol Armstrong who served Crab Louis and a new hit called Butter Dips.

1959 4-H Fair Queen, Priscilla Pedersen, and her partner, Roxanne Johnson, charmed their guests in the dinner division with a Turkish menu and appointments, and won themselves first place; their alternate team was Gayle Kessler and Cheryl Hoffman, who served a very interesting "Seafarer Dinner." The winning team will compete for state honors at the State 4-H Fair in Yakima in September. Reporter-Marlene Corrigan, LE 7-8545.

SHAKE, SHINGLE, RUSTIC SIDING, BARN AND ROOF PAINT

Reg. \$3.91 Gal.
SPECIAL \$2.98 Gal.
Open 7 Days a Week, 7 a.m. - 9 p.m.

Barsotti & Timm

At the Roy Y Union 76 Serv. Sta. LE 7-4221

SHAKE, SHINGLE, RUSTIC SIDING, BARN AND ROOF PAINT

Reg. \$3.91 Gal.
SPECIAL \$2.98 Gal.
Open 7 Days a Week, 7 a.m. - 9 p.m.

Barsotti & Timm

At the Roy Y Union 76 Serv. Sta. LE 7-4221

SHAKE, SHINGLE, RUSTIC SIDING, BARN AND ROOF PAINT

Reg. \$3.91 Gal.
SPECIAL \$2.98 Gal.
Open 7 Days a Week, 7 a.m. - 9 p.m.

Barsotti & Timm

At the Roy Y Union 76 Serv. Sta. LE 7-4221

SHAKE, SHINGLE, RUSTIC SIDING, BARN AND ROOF PAINT

Reg. \$3.91 Gal.
SPECIAL \$2.98 Gal.
Open 7 Days a Week, 7 a.m. - 9 p.m.

Barsotti & Timm

At the Roy Y Union 76 Serv. Sta. LE 7-4221

SHAKE, SHINGLE, RUSTIC SIDING, BARN AND ROOF PAINT

Reg. \$3.91 Gal.
SPECIAL \$2.98 Gal.
Open 7 Days a Week, 7 a.m. - 9 p.m.

Barsotti & Timm

At the Roy Y Union 76 Serv. Sta. LE 7-4221

SHAKE, SHINGLE, RUSTIC SIDING, BARN AND ROOF PAINT

Reg. \$3.91 Gal.
SPECIAL \$2.98 Gal.
Open 7 Days a Week, 7 a.m. - 9 p.m.

Barsotti & Timm

At the Roy Y Union 76 Serv. Sta. LE 7-4221

SHAKE, SHINGLE, RUSTIC SIDING, BARN AND ROOF PAINT

Reg. \$3.91 Gal.
SPECIAL \$2.98 Gal.
Open 7 Days a Week, 7 a.m. - 9 p.m.

Barsotti & Timm

At the Roy Y Union 76 Serv. Sta. LE 7-4221

SHAKE, SHINGLE, RUSTIC SIDING, BARN AND ROOF PAINT

Reg. \$3.91 Gal.
SPECIAL \$2.98 Gal.
Open 7 Days a Week, 7 a.m. - 9 p.m.

Barsotti & Timm

At the Roy Y Union 76 Serv. Sta. LE 7-4221

SHAKE, SHINGLE, RUSTIC SIDING, BARN AND ROOF PAINT

Reg. \$3.91 Gal.
SPECIAL \$2.98 Gal.
Open 7 Days a Week, 7 a.m. - 9 p.m.

Barsotti & Timm

At the Roy Y Union 76 Serv. Sta. LE 7-4221

SHAKE, SHINGLE, RUSTIC SIDING, BARN AND ROOF PAINT

Reg. \$3.91 Gal.
SPECIAL \$2.98 Gal.
Open 7 Days a Week, 7 a.m. - 9 p.m.

Barsotti & Timm

At the Roy Y Union 76 Serv. Sta. LE 7-4221

It's The Law

Mrs. Jones was driving along East Street and as she approached the arterial highway slowed down and came to a complete stop. However her view was blocked by two parked buses and she was unable to see more than a half a block to her left and did not see Black's car approaching on the arterial highway. She started across the intersection and ran into Black's car.

In the ensuing lawsuit against her, she contended that the accident was unavoidable and that she therefore was not liable for damages sustained by Black. Do you believe she is right?

The law defines an unavoidable accident as one that could not have been prevented by the exercise of due care by both parties under the circumstances prevailing. However it is the duty of the persons who must stop and look out for vehicles having the right of way to look, or stop and look, from a position where he can see approaching traffic from either direction.

It was Mrs. Jones' duty to stop and look from a place where she could see the approach of traffic on the arterial highway. If there was no place from which Mrs. Jones could have seen the approach of traffic, then the accident would have been unavoidable on her part.

However, since she could have driven forward to a point where she could have seen Black's car before starting across the arterial highway, the court held the accident was not unavoidable. She was liable for Black's damages.

(This column is written to inform, not advise. facts may change the application of the law.)

with their spare time. There is also a general flower show, and open dahlia show and the state gladiolus show, which will continue on through Sunday.

Announcement of the eight top winners in the recent meal preparation contests held in the new county extension office hosted room was a wonderful surprise to the lucky contestants. First place in the luncheon division went to our own Midland Cloverbud team of Janet Bombardier and Donna Ayers. Their luncheon featured chicken pie, waldorf marshmallow salad, coffee and milk. Many other things are considered in the judging beside just the cooking of the meal, which includes using the basic foods, savings in time, labor and money, menu plans for the entire day, hostess duties and courtesies and many other factors. The teams served many of the county and city officials and gave them an inside view of some of the many talents of 4-H youths. Running a close second in the luncheon division was the team of Karen Winch and Carol Armstrong who served Crab Louis and a new hit called Butter Dips.

1959 4-H Fair Queen, Priscilla Pedersen, and her partner, Roxanne Johnson, charmed their guests in the dinner division with a Turkish menu and appointments, and won themselves first place; their alternate team was Gayle Kessler and Cheryl Hoffman, who served a very interesting "Seafarer Dinner." The winning team will compete for state honors at the State 4-H Fair in Yakima in September. Reporter-Marlene Corrigan, LE 7-8545.

SHAKE, SHINGLE, RUSTIC SIDING, BARN AND ROOF PAINT

Reg. \$3.91 Gal.
SPECIAL \$2.98 Gal.
Open 7 Days a Week, 7 a.m. - 9 p.m.

Barsotti & Timm

At the Roy Y Union 76 Serv. Sta. LE 7-4221

SHAKE, SHINGLE, RUSTIC SIDING, BARN AND ROOF PAINT

Reg. \$3.91 Gal.
SPECIAL \$2.98 Gal.
Open 7 Days a Week, 7 a.m. - 9 p.m.

Barsotti & Timm

At the Roy Y Union 76 Serv. Sta. LE 7-4221

SHAKE, SHINGLE, RUSTIC SIDING, BARN AND ROOF PAINT

Reg. \$3.91 Gal.
SPECIAL \$2.98 Gal.
Open 7 Days a Week, 7 a.m. - 9 p.m.

Barsotti & Timm

At the Roy Y Union 76 Serv. Sta. LE 7-4221

SHAKE, SHINGLE, RUSTIC SIDING, BARN AND ROOF PAINT

Reg. \$3.91 Gal.
SPECIAL \$2.98 Gal.
Open 7 Days a Week, 7 a.m. - 9 p.m.

Barsotti & Timm

At the Roy Y Union 76 Serv. Sta. LE 7-4221

SHAKE, SHINGLE, RUSTIC SIDING, BARN AND ROOF PAINT

Reg. \$3.91 Gal.
SPECIAL \$2.98 Gal.
Open 7 Days a Week, 7 a.m. - 9 p.m.

Barsotti & Timm

At the Roy Y Union 76 Serv. Sta. LE 7-4221

SHAKE, SHINGLE, RUSTIC SIDING, BARN AND ROOF PAINT

Reg. \$3.91 Gal.
SPECIAL \$2.98 Gal.
Open 7 Days a Week, 7 a.m. - 9 p.m.

Barsotti & Timm

At the Roy Y Union 76 Serv. Sta. LE 7-4221

SHAKE, SHINGLE, RUSTIC SIDING, BARN AND ROOF PAINT

Reg. \$3.91 Gal.
SPECIAL \$2.98 Gal.
Open 7 Days a Week, 7 a.m. - 9 p.m.

Barsotti & Timm

At the Roy Y Union 76 Serv. Sta. LE 7-4221

SHAKE, SHINGLE, RUSTIC SIDING, BARN AND ROOF PAINT

Reg. \$3.91 Gal.
SPECIAL \$2.98 Gal.
Open 7 Days a Week, 7 a.m. - 9 p.m.

Barsotti & Timm

At the Roy Y Union 76 Serv. Sta. LE 7-4221

SHAKE, SHINGLE, RUSTIC SIDING, BARN AND ROOF PAINT

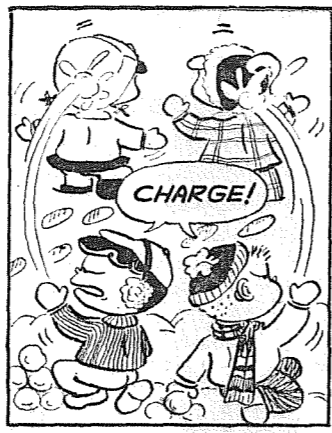
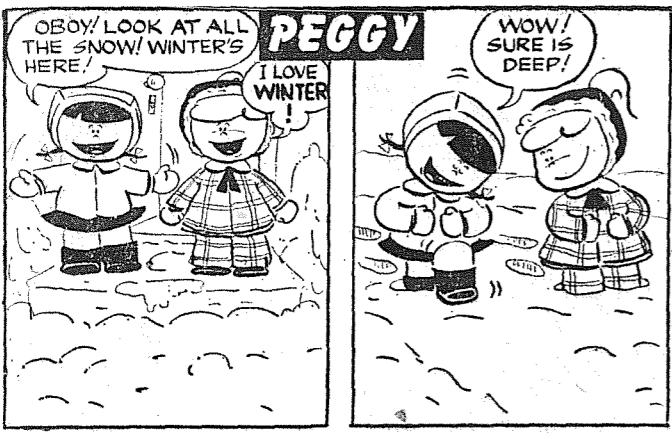
Reg. \$3.91 Gal.
SPECIAL \$2.98 Gal.
Open 7 Days a Week, 7 a.m. - 9 p.m.

Barsotti & Timm

At the Roy Y Union 76 Serv. Sta. LE 7-4221

SHAKE, SHINGLE, RUSTIC SIDING, BARN AND ROOF PAINT

Reg. \$3.91 Gal.
SPECIAL \$2.98 Gal.<



County Agent's Corner

(Continued from Page 8)
—Cranberry-blueberry pie filling and blueberry frozen fruit spread. Here is the recipe for one pint of blueberry frozen fruit spread.
1 cup pureed berries, 2 T granulated sugar, 2 T light corn syrup, 1/4 cup pectin for jam & jelly, 3/4 cup granulated sugar and 2 T lemon juice.
To make: Combine pectin and 2 T sugar and mix thoroughly. Add the pureed and mix well for 7 minutes, using the lowest speed on the electric mixer. Add 3/4 cup

sugar, then the corn syrup and lemon juice. Mix 3 minutes longer. Pour into freezer cartons. Let stand at room temperature until jelled—20 to 24 hours. Freeze at zero or below.
By Ernest I. Hopp
Eighty-six percent of lay! That was the mark recorded by the highest egg production flock on last month's country record summary. The flock was hatched in November 1958. The lowest production was forty-seven percent by a new pullet flock just coming into lay. Most of the reporting flocks averaged in the high seventies in rates of lay. The rate is figured on a hen day basis and results in the average rate for the month—not the highest or lowest daily figure.
The poultrymen who keep these records hail from all parts of Pierce County. R. W. Anderson is from Edgewood, Everett Shinn and Rollin Miller live at Firgrove, E. M. Antonson, Richard Sutton, Gilbert Morgan and Phil Arneson are from

the Gig Harbor-Lakebay area. Cecil Foster and Henry Whitehouse live near Buckley. William Hannan hails from Vickery Road. Boyd Brakken lives along Woodland Road near Puyallup.

Record supplies are furnished by the county agents' office. The monthly reports are sent by the producer to the county agents' office for summary. Yearly summaries are prepared by the farm management department at Washington State College. As a result of the record keeping system, poultrymen know what their production costs and margin of profit or loss is. Efficiency factors which contribute to success are also summarized. It seems to me that the day is fast disappearing when a poultryman can operate without careful records. The last three or four months in the egg production business was an example of how narrow profits can get. Without careful records to pin point production costs, a poultryman could easily be led to overexpand or even stay in business when he shouldn't. Let us know if we can help you in your record keeping system.

of benefit to land owners since the Tansy ragwort is more aggressive in its fast spreading habits and is also a threat to the health of livestock. Before any use can be made of the biological enemy of Tansy ragwort, the researchers must determine that it will feed only on the weed and not adopt some domestic plants as a source of food. Events leading up to this new scientific venture are related as follows by J. K. Holloway, Agricultural Research Service, U. S. Department of Agriculture Albany, California: U.S. Researchers attached to the USDA's European parasite Laboratory in France began investigating the moth as a potential control measure against Tansy ragwort four years ago.
During the 4-year interval, tests indicated the moth had an appetite

for Tansy ragwort but no beneficial plants. This spring permission was obtained to make releases of the moth in the U. S.

This experiment release will be maintained as an experimental plot for the next 2 or 3 years and studies will be made of the moth's life history and its effect on the weed.

At present, researchers are making extensive field collections of larvae in Europe and rearing them to the cocoon stage. Next spring, the adults emerging from this stock will be used to furnish a supply of eggs for shipment to the U. S. for the planned experiment field releases in the three Pacific-coast states.

It will take 2 or 3 years to determine how effective the moth can be in controlling Tansy. In the meantime, currently recommended control measures should be followed.

Each year we get many reports of new outbreaks of Tansy in Pierce County. Fortunately good communication between land owners, Fred Kroft, weed adviser and the Extension Service results in suc-

cessful application of control measures.

An outbreak has just been reported in the Lake Tapps area which is the first report from that district. This emphasis the importance of every land owner being alert and watch for the appearance of Tansy that is just now coming into its brilliant yellow bloom. Look for the inch wide daisy-like flowers with the twelve small petals. If they are present, then notify the County Agents' office @ 742 County-City Bldg. or Fred Kroft @ WA 2-8838.

FENCING
Designers and Builders
EXPERT WORKMANSHIP
REASONABLE PRICES
Easy Monthly Payments
VAUGHAN'S
84th & Pac. Ave. GR 4-9515

Prescriptions INSULIN
Open 9:30 to 9 Weekdays
(Closed Sunday)

ASHMORE'S SPANAWAY DRUG
165th & Pacific LE 7-5993

Thursday, August 13, 1959

Ferenc Molnar, the Hungarian playwright, was first a newspaper reporter, then a lawyer. A failure at both, he then wrote 17 hit plays and movies which made him a millionaire.

Sorghum grain is said to have originated in Africa and the seeds brought to America by the slave ships.

The flags of the British fleet were flown half-mast when George Washington died.

SALE
Thurs., Fri. & Sat. Only
BOYS' JEANS
Heavy Denim, Sizes 4 to 12
Reg. \$2.49 Only **\$1.37**
BATH MAT SETS
In Color Reg. \$1.98. Only **\$1.33**
GIRLS' PANTIES
Nylon. 3 For **\$1.00**
BOYS' FLANNEL SHIRTS
Long Sleeve Sizes 6 to 16
Reg. \$2.00 2 For **\$1.99**
Also 100 other specials
USE OUR LAY-AWAY PLAN
for Birthdays, Christmas, etc.
GARFIELD VARIETY STORE
326 Garfield St., 1/2 Block East of College
Open Till 8 p.m. Week Days
LE 7-9959

COMPLETE LINE OF LAWN AND GARDEN SUPPLIES
—RENTALS—
GARDEN TILLER
PAINT SPRAY MACHINE
HAND SANDER
POWER MOWERS
FLOOR WAXERS
POWER SAWS
RUG SHAMPOO MACHINE
For That Professional Job
Parkland Hardware
12169 Pac. Ave. LE 7-3171
Across from Piggly Wiggly

SLEEP AWAY TENSION
ON THE ENGLANDER TENSION-EASE
IDENTIFIED BY THIS RED LINE

AIRFOAM MATTRESS \$79.75
MATCHING TENSION EASE FOUNDATION \$79.75
20-Year Guarantee
TERMS—TRADES
PARKWAY FURNITURE
14103 Pacific Ave.
LE 7-3941
Open 'Til 9

PIERCE COUNTY REFUSE CO.
Weekly Garbage Collections
Phone LE 7-8688

FLETT DAIRY
FARM FRESH HOMOGENIZED AND PASTEURIZED MILK AND CREAM
ICE CREAM
Phone GR 2-3301

General Sheet Metal Work
Special Attention to Special Equipment
RAU MFG. CO.
LEnox 7-7372
14114 Pacific Avenue

By C. R. Doran
A moth with an exclusive taste for Tansy ragwort may soon come to aid of Pierce County farmers in fighting this noxious weed.

A colony of Cinnebar moth larva is expected to be released to Western Washington next summer. Large-scale experimental releases may also be made next summer in the coastal areas of Oregon and California.

If the experimental release is successful, the Cinnebar moth will join the goatweed beetle in man's use of biological warfare against weeds. A recent report in this column described the success of two plantings of the goat weed beetle on the Spanaway Prairie. The Cinnebar moth has even greater poten-

Complete or Minor TUNE UP SERVICE
VIRG ADAMS RICHFIELD SERVICE
8515 So. Tacoma Way
JU 8-9613

Big Parade of Values
MEAT **SALE**
IN ALL DEPARTMENTS

LEAN-PURE GROUND BEEF 3 lbs. \$1.00

ARMOUR'S CRESCENT SLCD. BACON 3 lbs. 1.00

MILK FED VEAL STEAK lb. 69c

BEEF - WELL TRIMMED RUMP RST. lb. 49c

BEEF LIVER lb. 29c

FROZEN MEAT PIES
CHICKEN 5 Pkg. \$1.00
TURKEY
BEEF

FISHER'S --- LARGE 40 OZ. BISKIT MIX 3 Pkgs. \$1.00

"KITCHEN-CHARM" WAX PAPER 19c
100-Ft. Roll

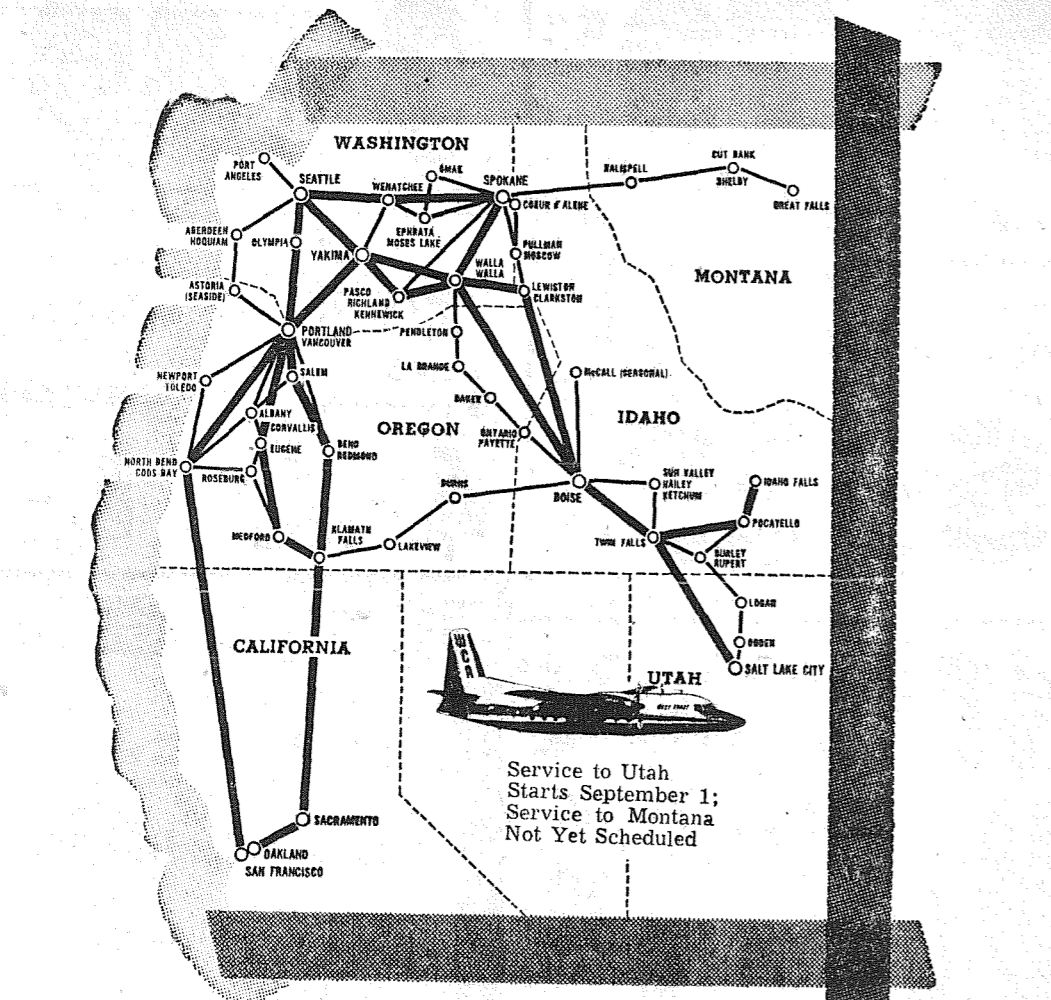
TASTEWELL MARGARINE Lb. 15c

5 Qt. Packets - Carnation DRY MILK Pkg. 49c

TANG SALAD DRESSING Qt. 39c

SUNSHINE 11 OZ. CUP CUSTARD COOKIES Pkg. 37c

SHINN'S "AA" "FARM FRESH" MEDIUM EGGS Doz. 39c
18 OZ. ADAM'S PEANUT BUTTER Jar 49c



NOW! WEST COAST SERVES ALL THE NORTHWEST AND CALIFORNIA

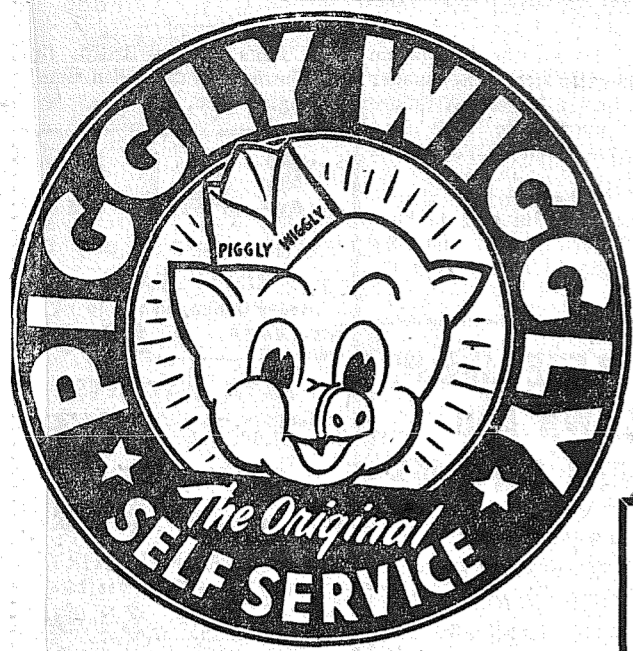
More and faster flights, a new "world" of jet-age comfort and convenience . . . throughout the Pacific West . . . Now

- new one-stop F-27 "commuter service" to Spokane
- New 40-minute non-stop flights to Wenatchee
- New, faster service to Eugene, Medford, Coos Bay, Klamath Falls, Walla Walla, Lewiston and Boise
- New service to Salem and Bend-Redmond . . . all from close-in Boeing Field
- For information and reservations call Mutual 2-7900

WEST COAST AIRLINES

OPEN SUNDAYS
KITCHEN'S
EVERYDAY LOW PRICES
Right to Limit
Open 9 a.m. 'Til 10 p.m. Daily
10 a.m. 'Til 9 p.m. Sundays
PRICES EFFECTIVE THURS., FRI. & SAT. 12208 Pacific Ave.

GREEN PEPPERS Pound . . . 10c
RED HAVEN Peaches lb. 8c
NO. 2 POTATOES 50 lbs. 99c

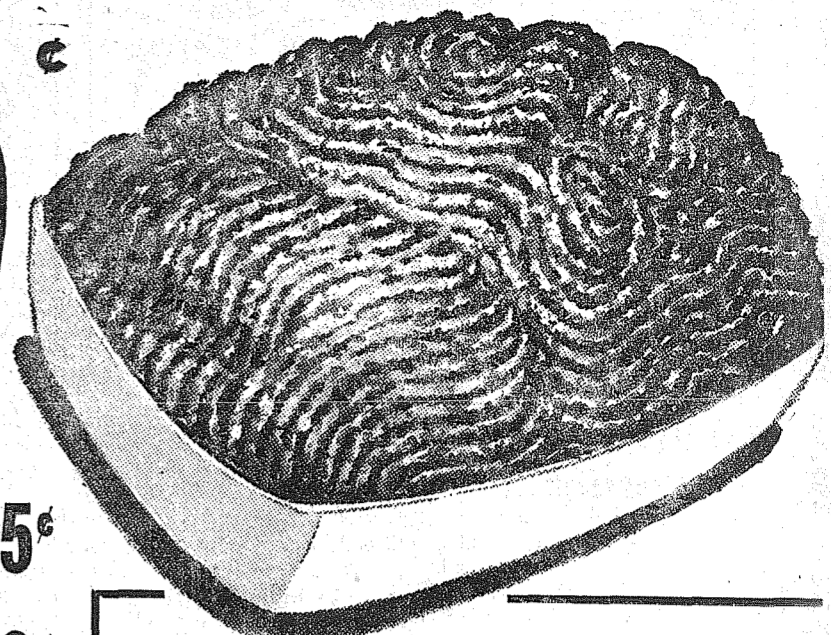


GROUND BEEF

Piggly Wiggly's Own, Lean Pure
Fresh Ground Beef!
Highest Quality!

39¢

LB.



FAMILY-SIZE MEAT BUY
SWIFT'S PREMIUM
FULLY COOKED
Pork Shoulder
PICNIC
POUND **35¢**

PURE LARD FEDERAL BRAND, A WHOLESOME NATURAL FAT FOR ALL BAKING AND FRYING 2-lb. Pkg. **25¢**

SKINLESS WIENERS NORTHWEST BRAND 2-lb. Pkg. **89¢**

PIECE BACON FEDERAL BRAND, SUGAR CURED, FRESH FROM THE SMOKE HOUSE. WHOLE OR HALF PIECE lb. **33¢**

CHEESE OF THE WEEK
KRAFT'S BIG EYE
SWISS CHEESE
Serve With
Ham and Fresh
Rye Bread lb. **59¢**

COFFEE HOUSE
COFFEE
59¢
POUND

PEANUT BUTTER HOODY'S
GIANT 3-LB. JAR **99¢**

S&W CATSUP 14-OZ. BOTTLES **95¢**

DINNERS BIRDSEYE FROZEN CHICKEN, TURKEY OR BEEF EACH **49¢**

CRISCO SHORTENING AT A SAVING 3-LB. CAN **79¢**

RANCH EGGS GRADE "A" LARGE DOZ. **47¢**

TUNA BREAST O' CHICKEN ... 3 NO. 1/2 CANS **79¢**

PRESERVES KRAFT Apricot, Pineapple-Apricot, Blackberry or Boysenberry 5 12-OZ. JARS **\$1**

POTATO CHIPS Nalley's Reg. 49¢ Bag **39¢**

SAVE 20¢ ON
Instant SIESTA Coffee
6 oz. jar with coupon **95¢**
GOOD ONLY AT PIGGLY WIGGLY
Coupon Expires Aug. 31, 1959
A DIFFERENT DECAFFEINATED

BETTY CROCKER
CAKE MIXES
FREE! White, Yellow, Honey, Marble, Devilsfood ...
1/2 GAL. ICE CREAM Chocolate Malt
SEE Betty Crocker CAKE MIX DISPLAY FOR DETAILS Peanut Cream, Black Walnut.
3 PKGS. 89¢

PILLSBURY
PUDDING CAKES
• LEMON • ORANGE • CHOCOLATE **\$1.00**
4 10-OZ. PKGS.

PILLSBURY'S BEST
FLOUR
25-LB. BAG **1.89**

HUNT'S 50-GRAIN CIDER
VINEGAR
FULL GALLON **59¢**

HARDWARE SPECIALS
AT OUR FIVE PIGGLY WIGGLY

5-FOOT STEPLADDER **\$4.50**

CLOSE-OUT
ASSORTED COLORS OUTSIDE
PAINT QUART **\$1.50**

SHAKE AND SHINGLE FINISH
GALLONS AS LOW AS **3.18 ea.**

MOTOR OIL 2-GAL. CAN **\$1.39**

Van de Kamp's BAKERIES
Famous for
QUALITY • VARIETY • FRESHNESS • CONVENIENCE

Reg. 55c
DATE NUT LOAF Special **49¢**

FROSTED ANGEL FOOD CAKE Reg. 1.19 **99¢**
Choc., Cherry or Lemon Frosting

CINNAMON ROLLS
Iced or Uniced Reg. 8/35c **8/29¢**

PIGGLY WIGGLY

Tip Top Frozen Grape or Orange ... 4 12-oz. Cans **1.00**

S & W Baked Beans ... 4 28-oz. Cans **1.00**

Nalley's Cuke Chips ... 2 16-oz. Jars **49¢**

Royal, All Flavors Gelatins ... 4 Pkgs. **29¢**

Chase & Sanborn Inst. Coffee 6-oz. Jar **79¢**

Tenderleaf Tea Bags 100 Count **99¢**

Blue Bonnet Margarine 2 1-lb. Pks. **49¢**

Campfire Marshmallows 2 Pkgs. **49¢**

Stock Up! Pet Milk ... 3 Tall Cans **44¢**

Another Saving Purex ... 1/2 Gallon **35¢**

Trend ... 2 Large Pkgs. **39¢**

PIGGLY WIGGLY

CANTALOUPE
CALIF. JUMBOS
6 FOR \$1.00

GREEN PEPPERS Large Bell Each **5¢**

HONEY DEWS Fancy Calif. lb. **7¢**

PEACHES Large Red Havens lb. **17¢**

PICKLING ONIONS CUCUMBERS AND DILL for CANNING

OPEN DAILY 9 A.M. TO 10 P.M.

PIGGLY WIGGLY

Tree Top Apple Juice 46-oz. Can **37¢**

Miracle—Pint Jar Sandwich Sprd. **37¢**

Aluminum Alcoa Foil ... 18-Ft. Roll **19¢**

Celo Dog Food 2 1-lb. Cans **29¢**

MCP Pectin ... 2 Pkgs. **29¢**

Liquid Chiffon ... 12-oz. Can **36¢**

PIGGLY WIGGLY

Where you are always served courteously & well

PUYALLUP 1010 EAST MAIN

PARKLAND PACIFIC AT GARFIELD

40th and PORTLAND AVE. TACOMA

SO. TACOMA 5252 SO. WASHINGTON

Prices Effective Thurs., Fri., Sat. Aug. 13-14-15

FIFE FORMERLY ANDRE'S MKT.

We Reserve the Right to Limit