

The TIMES JOURNAL

P. O. Box 2008,

Delivered to over 14,000 families

Parkland 44, Wash.

Thursday, February 28, 1963

Vol. 18, No. 26

Le. 7-0223

BULK RATE U. S. Postage Paid Parkland Branch Tacoma, Wash. Permit No. 9P Rural Route Occupant or Boxholder Postmaster: If unable to deliver, return postage is guaranteed on addressed papers.

Questions About Sewers Answered This Week

Prepared By Lawrence Armstrong

Last week's issue of The TIMES JOURNAL was a wonderful sample of team work of those wanting questions answered about sewers.

Mr. Ken Peterson's questions struck me as those of one who has put serious thought on the subject of sewers and has an honest desire to learn what the answers are and also a desire to learn what could be done, if possible, to improve our present plans.

1. The proposed treatment plant is a primary one. I believe all other plants now emptying into the salt water are of this type.

Plant Cost

2. I do not know exactly what a treatment plant for the town of Steilacoom would cost today.

3. You ask why the figure of \$7.00 per front foot was chosen instead of an equal amount for each residence.

4. In 1954, every registered voter within the proposed boundaries had a chance to vote to form the district.

5. If the bonds are voted in, the commissioners would probably attempt to form one Local Improvement District for the entire sewer district.

6. Each property owner builds his own line from his house to the edge of his property line.

7. I know of no present plan to assist those on Social Security.

8. You ask why the side sewer charge of \$100 is so high?

9. No, the Sewer District Commissioners will not get paid if the bonds are voted.

10. The engineering firm will get 10% of the actual construction costs for their services figured on the costs without the interest added.

11. There are no bills of any kind against the district that must be paid now.

12. To my knowledge, there are at present no laws enabling Public Utility Districts to construct or finance sewers in whole or in part.

13. You ask if ability to pay considered? I can only say that we must judge our ability to pay for sewers here in Parkland by what we see being done in other sewer districts.

14. Mr. Rich says we are bypassing the University and other outside areas which need sewers.

15. Mr. Rich says we are bypassing the University and other outside areas which need sewers.

16. You say one reason you are not for our present sewer plan is because of our uncertainty about the exact cost per front foot.

17. You ask why the side sewer charge of \$100 is so high?

18. You ask why the side sewer charge of \$100 is so high?

19. You ask why the side sewer charge of \$100 is so high?

20. You ask why the side sewer charge of \$100 is so high?

21. You ask why the side sewer charge of \$100 is so high?

22. You ask why the side sewer charge of \$100 is so high?

23. You ask why the side sewer charge of \$100 is so high?

24. You ask why the side sewer charge of \$100 is so high?

25. You ask why the side sewer charge of \$100 is so high?

26. You ask why the side sewer charge of \$100 is so high?

27. You ask why the side sewer charge of \$100 is so high?

28. You ask why the side sewer charge of \$100 is so high?

29. You ask why the side sewer charge of \$100 is so high?

30. You ask why the side sewer charge of \$100 is so high?

31. You ask why the side sewer charge of \$100 is so high?

32. You ask why the side sewer charge of \$100 is so high?

33. You ask why the side sewer charge of \$100 is so high?

34. You ask why the side sewer charge of \$100 is so high?

35. You ask why the side sewer charge of \$100 is so high?

36. You ask why the side sewer charge of \$100 is so high?

37. You ask why the side sewer charge of \$100 is so high?

38. You ask why the side sewer charge of \$100 is so high?

39. You ask why the side sewer charge of \$100 is so high?

40. You ask why the side sewer charge of \$100 is so high?

41. You ask why the side sewer charge of \$100 is so high?

42. You ask why the side sewer charge of \$100 is so high?

43. You ask why the side sewer charge of \$100 is so high?

44. You ask why the side sewer charge of \$100 is so high?

45. You ask why the side sewer charge of \$100 is so high?

46. You ask why the side sewer charge of \$100 is so high?

47. You ask why the side sewer charge of \$100 is so high?

48. You ask why the side sewer charge of \$100 is so high?

49. You ask why the side sewer charge of \$100 is so high?

50. You ask why the side sewer charge of \$100 is so high?

51. You ask why the side sewer charge of \$100 is so high?

52. You ask why the side sewer charge of \$100 is so high?

53. You ask why the side sewer charge of \$100 is so high?

54. You ask why the side sewer charge of \$100 is so high?

55. You ask why the side sewer charge of \$100 is so high?

56. You ask why the side sewer charge of \$100 is so high?

57. You ask why the side sewer charge of \$100 is so high?

58. You ask why the side sewer charge of \$100 is so high?

59. You ask why the side sewer charge of \$100 is so high?

60. You ask why the side sewer charge of \$100 is so high?

61. You ask why the side sewer charge of \$100 is so high?

62. You ask why the side sewer charge of \$100 is so high?

63. You ask why the side sewer charge of \$100 is so high?

64. You ask why the side sewer charge of \$100 is so high?

65. You ask why the side sewer charge of \$100 is so high?

66. You ask why the side sewer charge of \$100 is so high?

67. You ask why the side sewer charge of \$100 is so high?

68. You ask why the side sewer charge of \$100 is so high?

69. You ask why the side sewer charge of \$100 is so high?

70. You ask why the side sewer charge of \$100 is so high?

71. You ask why the side sewer charge of \$100 is so high?

72. You ask why the side sewer charge of \$100 is so high?

73. You ask why the side sewer charge of \$100 is so high?

74. You ask why the side sewer charge of \$100 is so high?

FP Musicians In Contest At Highline

The annual Puget Sound Solo and Ensemble Contest will be held Saturday at Highline High School.

Soloists from the band and orchestra are Janice Baker on the clarinet, Randy Bolger and Bob Leckridge on the trumpet, Wally Stricklin on the French horn and Lari Bernsten playing the violin.

A quartet for B Flat clarinets will be presented by John Smith, Arlene Powers, Janice Baker and Frank Hagen.

The choir will be represented in the contest by soloists Brian Irwin, Christine Morken and Jill Johnson.

Candidates for school board, not present at February's meeting, will give their viewpoints and ideas, and school district personnel will give information on the coming election.

Kapowsin P-TA Elects Officers

The Annual Founders Day meeting of the Kapowsin P-TA will be at 8 o'clock on February 28 in the school gym.

Mr. Paul Larson, school principal will speak on "Needs of the Schools".

Two Life Membership pins will be given.

Refreshments will be served in the luncheon room following the meeting.

Paint Party To Aid Nursery At Summit

The Mother's Club of the Summit Cooperative Nursery will hold a "Paint Party" March 5-7 at the Canyon Road Community Hall.

Nursery school mothers enjoyed a luncheon Feb. 15th at the home of Mrs. Karl Cordes.

Special guest was Mrs. Grace Koopmans, coordinator from the Tacoma Vocational-Technical Institute.

A business meeting was held Feb. 19 at Mrs. James Pelland's residence.

Another District 1 candidate is Edward M. Stricherz, 51, of 618 So. Polk St., who is a graduate of Puyallup High School and lists membership in both Kiwanis and Elks.

Bethel Board To Discuss Tax At Special Meet

Robert Westerman, chairman, Bethel Board of School Directors has called for a special board meeting for 7 p.m. Tuesday, March 5th at the High School Library.

At 8 p.m. the same evening, in the Auditorium, special election rally will be held.

Ford Boosters Meet March 6 With Athletes

The Ford Booster Club will meet at 7:30 p.m. March 6th at the cafeteria.

Refreshments will follow the meeting.

Parkland P-TA Honors Founders

Parkland P-TA will honor the past presidents of P-TA and Preschool at their Founders Day meeting Thursday, Feb. 28 at 8 p.m. in the school auditorium.

Mr. Paul Larson, school principal will speak on "Needs of the Schools".

Two Life Membership pins will be given.

Refreshments will be served in the luncheon room following the meeting.

Paint Party To Aid Nursery At Summit

The Mother's Club of the Summit Cooperative Nursery will hold a "Paint Party" March 5-7 at the Canyon Road Community Hall.

Nursery school mothers enjoyed a luncheon Feb. 15th at the home of Mrs. Karl Cordes.

Special guest was Mrs. Grace Koopmans, coordinator from the Tacoma Vocational-Technical Institute.

A business meeting was held Feb. 19 at Mrs. James Pelland's residence.

Another District 1 candidate is Edward M. Stricherz, 51, of 618 So. Polk St., who is a graduate of Puyallup High School and lists membership in both Kiwanis and Elks.

Ten Candidates Vie For Three Positions On Franklin Pierce Board



SORTING MATERIAL to provide Anderson, Brookdale P-TA; Mrs. Richard Johnson, Johnson, president of the FP Education Council and Midland P-TA; and Mrs. Sydney Wood, FP District P-TA Council.

Eight Men, Two Women Seek Election In March

Eight men and two women will vie for three positions on the Franklin Pierce School Board of Directors in the school election scheduled for March 12.

Only one incumbent is seeking re-election. He is Andrew Christensen Jr., who has served on the Board for eight years from District No. 3.

The fourth candidate for a District 1 post is LeRoy A. Trett, 38, of 1402 Violet Meadow, a former service manager and salesman for 12 years at General Tire and Rubber Company.

In District 3, incumbent Christensen, 42, of 9409 E. Washington St., is a carpenter who grew up in the local area, having attended Midland school when he was a boy.

Opposing him is E. B. (Gene) Carden, 45, of 1912 E. 91st St. He has five children and works as a retail inspector for the Washington State Liquor Control Board.

Another District 1 candidate is Edward M. Stricherz, 51, of 618 So. Polk St., who is a graduate of Puyallup High School and lists membership in both Kiwanis and Elks.

Three candidates are running in District 4. Frank C. Jackson Jr., 42, of 3212 East 84th St. has four school-age sons and is associated with the Aetna Life Insurance Co. and the American Wilbert Vault Co., Inc., of Puyallup.

He previously was a agriculture teacher in Puyallup for five years. He has a bachelor of science degree from Washington State University and has attended a number of other schools for graduate study.

The second woman in the race is Mrs. Kathleen Skaar, 33, of 8305 Canyon Road, a mother of three children. She is a member of the Central Avenue P-TA and Canyon Road Community Club.

Voters in the election will be able to cast ballots for three different board candidates, one from each District, according to Robert C. Richardson, assistant superintendent. He said that voting for candidates is not restricted to only the voters living within that particular district.

SEASON CLOSED ON LIGHTS We must have the cooperation of all the people of Parkland or Parkland will soon be without street lights. We are constantly having to replace street lights that have been shot out by B.B. guns. It is too costly and time consuming to keep replacing these lights. Hereafter if a street light is broken out it will NOT BE REPLACED! We would appreciate hearing from anyone who has any information regarding the shooting out of our street lights. THIS VANDALISM MUST BE STOPPED. PARKLAND LIGHT AND WATER CO. M. A. Wutz, Manager.

Hold This Date Open . . . AUG. 3rd & 4th For The National Air Show At THUN FIELD PUYALLUP Featured On CBS TV March 31st Nation Wide 90 Minute Show

Founder's Day Draws Crowd

Women Meet

Sewer Questions Answered

Mrs. Verne Fogle LE 7-5210
A large crowd was in attendance at the Founder's Day program of the Waller Road P.T.A. Tuesday evening. A short history of Founder's Day was read by the president, Mrs. Richard Frank, during the program. An election of officers will be held, and Mrs. Roy Looker will serve as President for the coming year. First vice president, Mrs. David Van Hulle; second vice president, Mrs. Ralph Baird, and Mrs. Lyle Landon, elected secretary. Mrs. Robert Jones will serve as treasurer.

The Trinity Lutheran Church Women will meet at 8 p.m. in the Friendship Room Tuesday, March 5th with the Dorcas Circle in charge of the program on Foreign Missions. Devotions will be given by Mrs. Robert Ross.

An introduction of the many foreign missions in our world today will be given by Mrs. A. W. Ramstad.

Sponge Painting
If you plan to attend the "Sponge Painting" class at the March 4th Workshop nite sponsored by the Waller Rd. Grange Auxiliary, please call LE 7-5210 to sign up. There will be a fee.

have charge of the Literary program at the March 1st meeting.

Mrs. Daphne Yoder, Home Economics Chairman of the Waller Road Grange will

Hostesses for the social hour following the meeting will be Mrs. Verne Fogle and Mrs. Beda Carlson.

(Continued from Page 1)
7. You quote me as saying that if we waited to enlarge our district, our costs would go up from the present \$6.00 to \$7.00 per front foot. You say: "This is a good example of why we oppose this."
What I said was: "Your commissioners, and I do not believe anyone else, would want to build sewers without first taking in East of A Street, South on Pacific Avenue, Pacific Lutheran University, or any territory west of present boundaries that we do intend to enlarge the district, but the easiest, least expensive method possible. If we

areas to join by vote. It could also be done by petition of the property owners without a vote. With the latter method, there is no expense whatsoever in the expansion process. To dissolve the district now and organize a new one would be a time consuming and costly process. By that time the costs would be up again. One group East of A Street has already become part of the district since it was formed."
I think my complete statement shows that we do intend to enlarge the district, but the easiest, least expensive method possible. If we

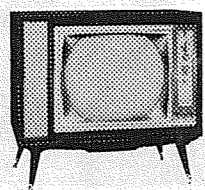
vote for sewers soon, construction could start much earlier than if we dissolve the district first and start all over again.
In answer to Mr. Bottiger: I remember before the sewer election in 1956, you wrote a similar letter to one of the papers which was printed and read by many. At that time, I did not bother to answer your statements. However, since after six years, you still seem to be in the dark as to the actual facts of the sewer situation, I shall take time to answer your letter.
1. You say are sewers needed? In 1955, Dr. Fargher, head of the Tacoma-Pierce County Health Department, said we had reached the point where our needs would be best filled by a regular sanitary sewer system.
2. You say we have not mentioned the cost of the pipe from a house to the street edge. You estimate this cost would be \$175. All I can say is that whatever this expense would be, we can be sure it will not be less or the technical problems involved be more easily solved five, ten or more years from now.
And there is no specified time when this hookup must

be made.
3. It is clear that you misunderstand me since you quote me as saying the \$3.50 monthly service charge would pay for the maintenance of the system and the treatment plant and to amortize the three and one half million dollar bond issue. First, the bond issue was 3.4 million, not 3.5 million. That is a \$100,000 difference. On page four, Times Journal, February 14, I said the \$3.50 was used partly to pay off the 30 year bonds. I did not mention the 20 year bonds at the time. These are paid by the front foot assessment. The 3.4 million you mention includes both 20 and 30 year bonds.
4. You say each customer would be obligated to pay \$56 in interest alone each year. In answer to this, I must refer you to questions number 1 and 2 in my answers to Mr. Rich.
I refer you to question No. 2 in my answer to Mr. Rich where I showed the total cost in 20 years including interest to be \$1075.20. Then \$450.20 minus \$625 equals \$830.00 which is the total interest in 20 years. \$450.20 divided by 20 equals 22.51 interest each year per customer. We realize there is interest included also in the \$3.50

per month or \$42 per year service charge. Exactly how much is difficult to determine since the maintenance is paid out of this too. But it is clear that the total interest per year is very much less than the \$56 you arrived at.
5. You computed the costs of a 75 foot lot be \$842 the first year as follows: footage at \$7 is \$525, side sewer charge \$100, estimate from house to street \$175, service charge the first year \$42. That is correct if you hook on the first year and spend \$175 doing it.
But if all this is paid for the first year, you will never have any more expense in the years following but the \$3.50 per month service charge. And you included the first year's service charge.
6. You say this \$42 does not provide for the retiring of the indebtedness. But for you, if you pay for all that you mentioned the first year, there is no indebtedness except what the \$3.50 per month service charge will pay for. And you say you do not believe it pays for the interest on the bonds. But as far as you are concerned, if you pay all that first year there are none and the \$3.50 takes care of paying them off and the interest on them, too.
7. You say, "If an actual need exists for a sewage system in Parkland, it seems to me that the same need exists in all of the Parkland area instead of the small portion included in the present district." In answer to this I must refer you to question number three of my answer to Mr. Rich.
8. Your suggestion to create at the county level a major trunk line and treatment plant and to permit the smaller district to provide the collections and connecting systems has merit. But sewer systems can only be built by sewer districts or municipalities, not counties. Sewer systems are hard enough to get support for where the population is dense and the need great. For further clarification of this question I refer you to No. 4 of my answer to Mr. Rich.
9. Yes, the failure to approve the former plan did result in an increase of 100% for front foot assessment. This did not mean the total cost was doubled as the \$100 side sewer charge and the monthly charge of \$3.50 were not changed and we did double the size of the trunk which makes a better overall plan. I hope this clears up your misunderstanding since you said, "While construction costs have gone up in the last five years they have not doubled. This leads to the conclusion that either the first proposal was too low or that the present proposal is too high. Which is it?"

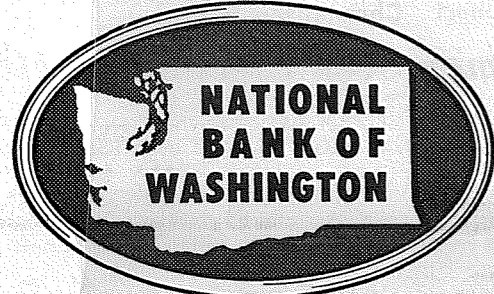
"ONE MOMENT PLEASE"

Now is the time to buy that NEW television set from your favorite dealer. Ask him about LOW-COST NBW BANKREDIT FINANCING, or stop in at the Installment Loan department of our branch nearest you. Today!



Build your **BANKREDIT** with NBW

Parkland Branch



MEMBER FEDERAL DEPOSIT INSURANCE CORPORATION

Ouch! We Have Growing Pains

WE ARE REMODELING THE SPANAWAY STORE! MORE ROOM - LARGER SELECTION

FREE - \$100.00 BILL

Just Drop Your Name In The Bucket Nothing To Buy - You May Win!!

1ST PRIZE - \$100.00 BILL
2nd Prize - Automatic Percolator
3rd Prize - 1/4" Electric Drill
FREE CANDY FOR THE KIDS

Pup Tents\$4.95
Shovels\$1.49
Rakes - Hoes\$1.49
Army Blankets\$3.98

Hammers98c
Cereal Bowls2/35c
Leather Gloves49c

HYDRAULIC JACKS
8 - 10 - 12 Ton
\$17.50
Guaranteed

AIRPLANE TOW TARGETS
Something Everyone Needs
\$9.95

Khaki Pants\$1.29
Oil Cans15c
Tarps, sq. ft.10c
Bake Pans\$1.50
CO2 Tanks\$7.50
Combat Boots\$2.98
FREE ARMY CAPS

Large Selection
CHAIRS . . . \$1.00
Each

BARGAINS ARE OUR BUSINESS

Dishes10c
Large Cookie Trays \$1

TONS OF SURPLUS!

- SHOP OUR RUMMAGE ROOM -

Cook's Whites69c

Mens WH. Undershorts .10c
Lined Ski Pants\$2.98
Socks10c
Hats-Shoes-Purses .10c
Boy Scout Uniforms
Sweaters, good selection .25c
Skirts, lots of sizes20c

Wool Jacket Shirts89c
Warm but light, all sizes
Slips10c
Dresses25c always
Aprons10c
Waitress Uniforms49c
1-Pr. New Tennis Shoes .98c

The BARGAIN BARN

Two Locations: 1106 Market, Tac.; 17501 Pacific, Spanaway

Mountain View
FOOD LOCKERS
OPEN UNDER NEW MANAGEMENT
Paul and Viola Anderson
BEEF Half or Quarter **48¢** Pound Cut and Wrapped
2519 E. 112th LE 7-5332

Still A Few Left - - -
CRYSTAL DOOR MIRRORS
18x60 FULL 3/16" THICK ONLY **6⁹⁵**
24x60 FULL 3/16" THICK ONLY **9⁵⁰**
It's First Come - First Served The Supply Is Limited

GLASS SHELVES Auto Glass Windows Aluminum Windows & Screen Storm Windows Patio Doors Thermopane
4" Wide Up To 36" Long **25¢**
PARKLAND GLASS
13719 Pacific Ave. LE 7-6400

FRIENDLY SERVICE SINCE 1908
Now With a 100 Car Free Parking Lot right next door.
PIPER FUNERAL HOME
PHONE Greenfield 2-3353 - 5436 SO. PUGET SOUND

VAUGHAN'S VALUES
Build Your Own Fence and Save
48" Basket Weave - per ft. 50c
60" Basket Weave - per ft. 60c
This Includes Posts, Fencing and Nails Drop In To Our Store and Get a Fencing Booklet - FREE!
VAUGHAN'S PACIFIC AVENUE LUMBER
Serving the Tacoma Area Since 1926
84th and Pacific Ave. GR 4-9515

PRICES EFFECTIVE FEB. 27-28 And MARCH 1-2
"We Reserve The Right To Limit"
the FARM BOYS
Hours: 9:00 'Til 9:00 - Sundays 9:00 'Til 7:00
E. 112th & CANYON ROAD
SPUDS 10-LB. POLY BAG **29¢**
"You Do Save More at Your Farm Boy Store"

SHETLAND PONY
TO BE GIVEN AWAY FREE! Its the Farm Boys way of saying thank you for your patronage. We will have a drawing for one Shetland Pony, plus other valuable awards. Come in for details - Nothing to buy. Anyone Can Win!

Darigold **BUTTER** Lb. **59¢**
PILLSBURY **CAKE MIXES** YELLOW WHITE CHOC. **4/\$1**

In Les' Meat Dept.
SLICED BACON Thrifty Lb. **39¢**
POT BLADE CUT ROAST Lb. **43¢**

HUNT'S **CATSUP** 14-Oz. Bottle **15¢**

Velveeta 2 Lbs. **CHEESE** **69¢**
Morning **MILK** Tall Tins **10¢**

Complete Repair SERVICE
• Television
• Ranges
• Washers
• Dryers
RADIO DISPATCHED FOR FAST SERVICE.
SILER'S
TV and APPLIANCE
11230 Pacific Avenue
LEnox 7-8634

**Summit Area
Style Show
Set March 29**

Miss Sue Johnson
LE 7-7150
Style Show Planned
With spring and Easter just around the corner, have you been thinking about sewing? Remember the Style Show is coming March 29th. The members of the Central Avenue Mother's Club are inviting you who live in the area to participate.

Anyone interested in sewing or knitting garments to model at the style show is asked to send the following information to the Central Avenue School as soon as possible: Name, address, phone, type of garment, type of fabric and color, accessories, and whom the item is worn by (name and age).

The committee would like to have entries of all types of wearing apparel such as sleepwear, playwear, lounging and evening, etc.

For further information please call one of the following numbers: LE 7-7572, Betty Adler; LE 7-6768, Jane Adams; TH 5-0008, Phyllis Hosler, or TH 5-5852, Diane Adler.

Candidates Speak
The regular meeting of the Pre-school Mother's Club was held at the Summit Youth Center last Tuesday, February 19th.

Discussion was held on the trip the mothers will make to visit the legislature on February 27th.

Betty Parker, Cheris Hopper and Barbara Rajcich were nominated for the Nominating committee.

Kathleen Skaar school board candidate from Central Avenue and Phyllis Erickson, candidate from Parkland attended.

Mrs. Bixby from the Pierce County Library also spoke. Sarah Drath and Barbara Ashby were hostesses.

Teens To Elect
March 2nd, 12:30 p.m. is the date set for the next meeting of the Youth Center Teen Club.

All members are invited to attend, and those who paid or signed up at the dance, will receive their membership cards at this meeting.

Business will include discussion on the future activities and the appointment of a nomination committee to elect officers.

Please remember this date!

Blue and Gold Dinner
The yearly Blue and Gold Dinner of Summit Cub Scout Pack 76 was held at the Summit Youth Center on Feb. 22 with over 150 in attendance.

The next committee meeting will be held at the Youth Center on March 5 at 8 p.m. All interested persons are invited.

Many Cubs will be wearing their new awards: Bobby Howard, Bear, Gold Arrow; Donald Hanson, Silver Arrow; Steven Phillips, Wolf, Gold and Silver Arrow; Erick Jones, one-year pin; Stanley Lind, two-year pin; Bobby Sorensen, Denner; Allen Nutler, Asst. Denner; Dennis Kinton, Denner; Warren McCoy, Asst. Denner; Randy Almont, Denner; Ronald Phipps, Lion; Ricky Almont, Asst. Denner; Robert Wilson, Denner; Bobby Knoblauch, Bobby Beadie, Robert Wilson, Fredrich Birch, Wanan McCoy and Michael Schmidt, Bobcat.

Members of the committee receiving pins: Fred Huggler, three year pin, and James McAlister, one year pin.

The Country Parson



"You can tell a good deal about a man by simply watching what makes him laugh."

Copyright, by Frank A. Clark



FREE CAR STEAK SANDWICH 10¢

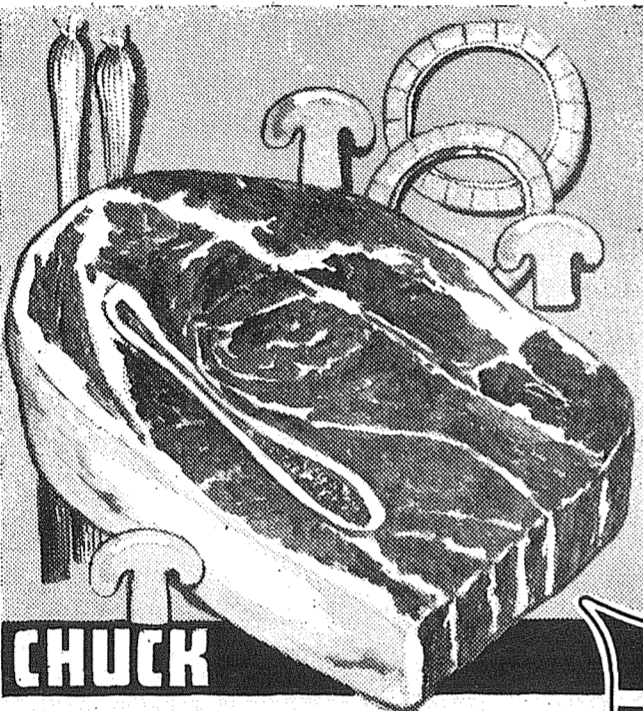
FRIDAY And SATURDAY
10 a.m. to 6 p.m.

ALL PROCEEDS GO TO SUPPORT
LITTLE LEAGUE BASEBALL TEAMS

FILLED WITH A LARGE SELECTION OF GROCERIES -- TO BE GIVEN AWAY FREE - APRIL 8th AT 6:00 P.M. MUST BE PRESENT TO WIN. JUST STOP IN AND REGISTER AT SUMMIT TRADING ---

PEACHES Lady Elberta Quality 4 2 1/2 TINS \$1
COCKTAIL Del Monte Fancy Fruit 5 303 TINS \$1

SEE THE NEW 1963 **RAMBLER BOYD** AT BOYD MOTOR CO. 8223 Pac. Ave. IT'S A QUALITY USED CAR FROM **BOYD MOTOR CO.** For 40 Years The Quality Leader!



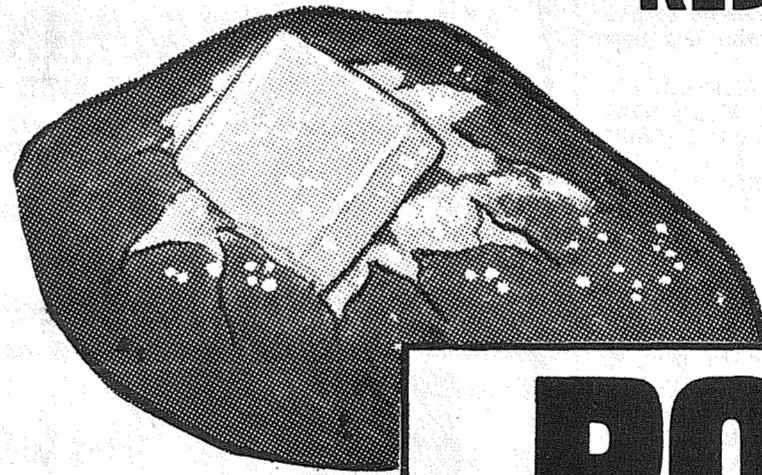
CHUCK ROAST VNF U.S. "Choice" Beef, Blade Cuts LB. 39
7 BONE ROAST VNF U.S. "Choice" Beef Roasts LB. 49
RIB STEAKS VNF U.S. "Choice" Beef. Lb. 89
RIB ROASTS VNF U.S. "Choice" Beef Roast Lb. 79

CHUCK
RANDY'S STEAKS BEEF OR VEAL Lb. Pkg. of 8 79



BEEF STEW Boneless VNF, U.S. "Choice" Beef LB. 69
SHORT RIBS VNF U.S. "Choice" Lb. 39
RED SNAPPER FRESH FILLET Lb. 39

For Perfect Seasoning Try Crescent M.S.G. On All Of Your Beef Roasts... Mmm Boy!



STEAK KNIFE 19¢
SPECIAL OFFER... 49c VALUE. YOURS FOR ONLY 19c AND ONE VNF MEAT LABEL. AND 1 VNF LABEL

MAYONNAISE NALLEY'S Quart 49
CHOC. CHIPS BAKER'S 6 6-Oz. Pkgs. \$1
TOMATOES WESCO SOLID PACK 4 2 1/2 TINS \$1
VELVEETA CHEESE 2-Lb. Loaf 79

ANGEL CAKE PILLSBURY WHITE 14-Oz. Box 39

JUICE DEL MONTE TOMATO PINEAPPLE JUICE or PINE-GRAPEFRUIT DRINK 4 46-Oz. TINS \$1

FISH STIX 4-Fishermen FROZEN 3 8-Oz. Pkgs. \$1

POTATOES U.S. NO. 1 WASHINGTON GROWN 10 LBS. 29
CARROTS "SUNNY LOU" Cello Bag 9
ONIONS "DRY" Med. Yellow Lb. 5

BREAD OVEN FRESH DOUBLE WRAPPED FOR YOUR FREEZER 4/\$1
FRENCH BREAD Large Loaf 19

Hardware Department
FREE 50 LB. LAWN AND GARDEN LIME WITH EACH PURCHASE OF SCOTT'S TURF BUILDER.

HURRY! HURRY! HURRY!

U.S. POST OFFICE HERE

SUMMIT SHOP RITE TRADING CENTER

PRICES EFFECTIVE FEB. 28; MARCH 1-2. LIMIT RIGHTS



The TIMES JOURNAL

ADDRESS P. O. BOX 2008, PARKLAND, WASHINGTON
14620 Pacific Avenue Phone LEnox 7-0223
JACK BROWN Publisher
NEIL McLEAN General Manager
RUTH THOMPSON Editor
WAYNE JOHNSON Circulation
CHET CHAMBERLAIN Accounting
DARRELL DUGAN Advertising
DAVE HIBBARD Shop Superintendent
DICK MARCELLE Composing Room Foreman
Qualified as a Legal Publication under Chapter 213 of the Legislative Acts of the 1941 Regular Session of the State of Washington.
Delivered free by U.S. Mail, or carriers, to all homes in the trade territory. Paid subscriptions elsewhere, in Washington State \$2.50 per year. Outside the state, \$3.00 per year.
ADVERTISING RATES ON REQUEST

a - Wondering and a - Wandering

with Jack Brown
This time I've got a new wrinkle. Write a whole column while out of town, beat it home, and now after reading it, it's completely outdated, so here I go again. Maybe I should hire an efficiency expert.

I keep harping about the economics of our country so much that it amazes me that any of you still read this column, but occasionally when I hear or read of someone else's remarks along the same line I take heart in the fact that I am not alone in my thinking.

In Phoenix, the other day, I read a speech by Eugene C. Pullman, publisher of newspapers both in Arizona and Indiana. He spoke to the Committee of One Hundred, an organization of community leaders, and had this to say: "The last four presidents, Democrats and Republicans alike, compiled records of broken promises in their pledges to curb bureaucratic power."

He told the Committee that federal bureaucracy will destroy free labor and free enterprise unless labor and business unite to destroy its power.

"American business has abdicated national leadership in favor of the Washington bureaucrats," Pullman charged. "We have gone so far toward a bureaucratic welfare state that today many of the most important government decisions are made by bureaucrats and not by elected officials."

The bureaucrats, he added, are "frozen into civil service. You can't fire them. They are responsible to nobody, and yet they were elected by nobody."

"And none of our last four presidents has done anything to stop this growth of federal bureaucracy. President Eisenhower promised to abolish two-thirds of the government commissions and reduce the federal payroll. But Eisenhower not only increased the number of bureaus, he expanded the federal payroll by almost 1 million workers."

He went on to say, "The same thing is happening under President Kennedy. In two years, the number on federal payrolls has increased by 972,000. The federal bureaucracy has expanded into something so big, so terribly immense that it threatens the very essence of individual freedom in all areas where the individual prerogatives touch those of government."

Pullman cited these examples:
Government spending today is 34 per cent of Gross National Product, as opposed to 8 per cent in 1900. The government operates 700 federal corporations, ranging from power dams to railroads to manufacturing plants.

Taxpayers have put up \$262 billion for these corporations, according to House Government Operations Committee, and the federal corporate activities have lost an average of \$10 billion annually since 1948.

Farm support program, enacted in 1938 with an original appropriation of \$90 million, now costs \$4 billion a year and the farm problem is worse than ever.

"American businessmen can turn the tide," Pullman said, "if they have the courage, the determination, the guts for selfless service to America."

Here on the homefront it seems that one T.J. reader has turned up a new threat to the life and welfare of our youngsters. Nationwide we have been warned of the dangers confronting our youngsters from discarded refrigerators, uncovered wells, plastic bags used to cover cleaning, etc.

Now the new threat exposed is discarded medicines, of the prescription type, either thrown out loosely or left in abandoned or vacant houses.

It will pay us all to keep an eye out for this potential killer. Two cases can be cited. Not too long ago one of my employees, who formerly worked as a pharmaceutical salesman, decided to clean all the old samples, etc. out of the back of his car and deposit same in the company truck along with a load of waste paper on the way to the dump. The result . . . my own son, with the idea of playing doctor, salvaged all the pills and lugged them off to his room where they were immediately pounced on by his little brother and fortunately discovered by us before he had consumed any.

Recently a Parkland father was confronted by his six year old son holding several bottles of prescription type pills that to a child could look invitingly like candy. He questioned his son on the find and soon discovered that the remains of a burned home nearby held a medicine cabinet full of various and sundry pills, some of which could be fatal if consumed in quantity by a little tyke. In fact, after examination, Bob Vaughan of Parkland Pharmacy classed the contents of seven out of the ten bottles brought in as potential killers!

So beware the discarded pills! An ounce of prevention now may save a tragedy in our community. Get rid of your old prescriptions, but be careful how you dispose of them.

Soldier Is Promoted

U. S. Forces, Korea—Jack Lockett, a supply sergeant in the command's 31st Field Hospital, entered the Army recently was promoted to staff sergeant while serving with the 9th Logistical Command in Korea.

Canyon Ready Mix, Inc.

72nd & CANYON
Saturday Delivery
Fast Service -
Quality Products
(ALL TRUCKS RADIO EQUIPPED)
Call For Estimates

Sharon Lenz Of Roy Is Showered

Marjorie L. Smith
Rt. 1, Box 110, Roy, Wash.
Showered

A wedding shower in honor of Miss Sharon Lenz of Roy was held at the home of Mrs. Eva Inderbitzen of Spanaway on February 15 in the afternoon. A delicious luncheon was served at 1 p.m. of salads, bread, coffee, dessert and cake, over which all the relatives got caught up on all the news. Sharon then opened her many lovely presents.

Those attending were Mrs. Kate Richmond, Mrs. Edna Lafwig, Mrs. Eva Inderbitzen, Mrs. Rosemary Inderbitzen, Mrs. Lorraine Smith, Mrs. Cox, Mrs. Kay Folden, Mrs. Margie Fallstrom, Mrs. Margie Larsen, Mrs. Bernice Cox, Mrs. Bea Reichel, Mrs. Nancy Reichel, Mrs. Claire Lenz, Mrs. Angie Jarstad and Jenny, Mrs. Molly Larsen and Mrs. Marjorie Smith.

Club Meets

The Lacamas Community Club will meet March 5th at 8:30 p.m. in the Community Hall. The Sept. Lacamas Fair will be discussed and board members will be elected. Please come and let us hear your views on the Fair. If you think changes should be made or any other suggestions you have are welcome to be discussed.

Tree Plant

4-H Tree Plant at Bonney Lake again March 2nd for 4-H Forestry members. Bring pruning shears or saw and a shovel.

Be sure and wear warm clothing.

Ladies Club

Lacamas Ladies Club will have a Card Party March 9th at the Lacamas Community Hall. Playing starts at 8:30 p.m. Pinochle and 500 are played. Eats afterward. Everyone welcome.

Social Night

Social night at the Lacamas Community Hall sponsored by the Lacamas P-T-O on Friday, March 1st instead of the usual date, as it conflicts with the Roy Fireman Dance. Playing begins at 8:30 with lunch served later.

Curtain Project

The Lacamas P-T-A met at the school on Feb. 20. They are going to purchase a stage curtain for the Community Hall, also the Lacamas Fair will reserve space for the activities they way wish to do. Everyone is to be thinking about this. There was discussion on the telephone problem of the Lacamas-Roy area.

Get Well

Get well wishes go to Mrs. Mae Jackson who has been ill.

Go To Edgewood

Mr. and Mrs. Henry Trusler and Mrs. Marjorie Smith and son Larry journeyed to Edgewood on Feb. 18 where the North Hill 4-H Club had as their speaker Mr. Remington, state trapper. He gave instructions as to how and where to set a trap for different kinds of animals and what sizes to use. He also showed how to make a Figure four trap. He also told of a special way to catch skunks. It was a very interesting program.

Flying With Slim

Reaching sixteen years of age meant the first solo for Jimmy Jensen, Franklin Pierce High School student. Let's hope Jimmy makes his Private at 17 and his Commercial at 18.

Harry Palmer finished his solo cross-country this week with a radio flight into busy Boeing Field and return. Don Christensen continued his training at a rapid rate starting his dual cross-country with a short trip to Shelton, Chehalis and return.

Art Wing returned from his vacation in sunny Mexico this past week. Ernie Treadway picked up Art at Boeing Field with one of Tahoma Flying Service Tri-Travelers.

Bede Aircraft of Springfield, Ohio, announced a low cost light plane this month. It is a 65 horsepower model which would have a basic price of \$2,495.00 and a deluxe version at \$4,200, which would have a larger engine and a cruising speed of 130 miles per hour.

The Bede has only 375 parts of which only 175 are different. Extensive use of honey comb construction with some fiberglass may well be the answer to break the cost barrier of airplane manufacturers.

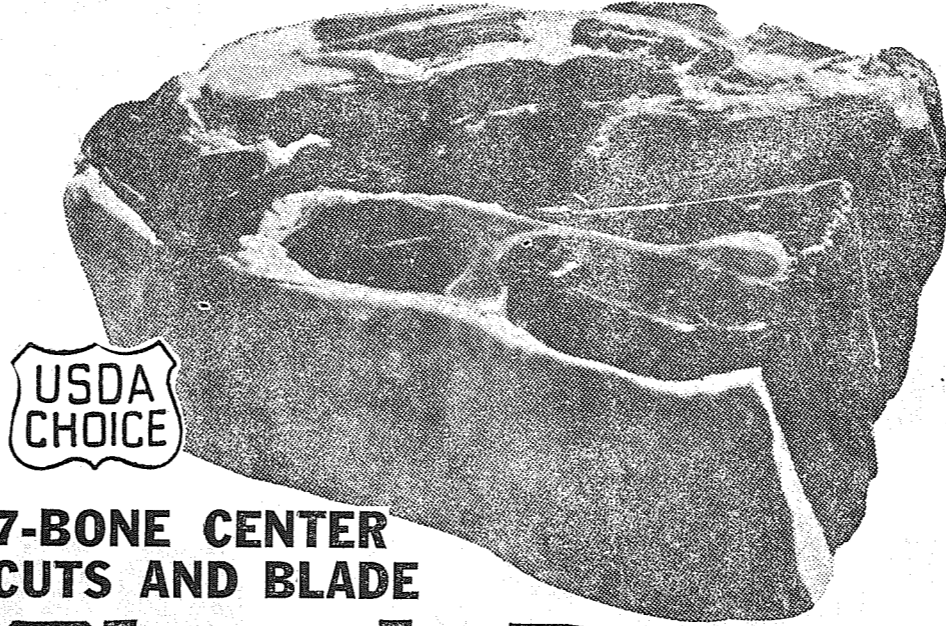
Sunday is the golden clasp that binds together the volume of the week.

Lucky 30TH

WE'RE CELEBRATING 30 YEARS OF SERVICE IN THE PUGET SOUND AREA!

SEE THE OUTSTANDING SAVINGS ON MEATS—
THEY'RE 100% GUARANTEED TO PLEASE YOU . . .

The Lucky Meat Department has a tremendous reputation for quality that has been known for 30 years of Lucky and Big Bear operation. Come in and save on our fabulous celebration specials!



7-BONE CENTER
CUTS AND BLADE

Chuck Roast

USDA CHOICE GRADE STEER BEEF,
AGED AND WELL TRIMMED.
THE FINEST POT ROAST
VALUE ANYWHERE!
PER LB. **39^c**

BEEF CHUCK STEAK U.S. CHOICE BLADE lb. **49^c**
BONELESS CROSS RIB U.S. CHOICE BEEF lb. **79^c**
LEAN GROUND BEEF lb. **39^c**
LUCKY SLICED BACON 1-lb. Pkg. **59^c**

FRESH WASHINGTON GROWN FRYER PARTS!
CUT FROM LARGE SIZE QUALITY CONTROLLED FRYERS FOR MORE FLAVOR

BREASTS, THIGHS OR DRUMSTICKS . . lb. **59^c** YOUR CHOICE
Necks and Backs . . . lb. **12^c**
Wings lb. **25^c**

Idaho Potatoes

U.S. No. 1 Grade **10-lb. Cello Bag** **39^c**
SIZE A LARGE

CALIFORNIA U.S. No. 1 Grade, WHITE ROSE VARIETY lb. **6^c**

NEW CABBAGE EACH **15^c**
ARIZONA NEW CROP—LARGE HEADS

FRESH CARROTS PER LB. **10^c**
TENDER, SWEET & CORELESS

CALAVO AVOCADOS LG. 2 for **29^c**
TRY HAWAIIAN WALDORF APPLICADO

FRESH DATES PLASTIC CUPS **37^c**
DESERT SWEET—PITTED OR REGULAR

FEATURED ITEMS: FRESH CUT FLOWERS, POTTED PLANTS AND YOUR FAVORITE ROSE BUSH

SAVE MORE ON THIS SELECTION OF GARDEN FRESH PRODUCE . . . THE FINEST AVAILABLE!
Every housewife in the Seattle-Tacoma area knows that Lucky stores traditionally carry the finest Produce available. This week, the Produce Departments in all Lucky Stores have an array of celebration specials!



Leg of **Lamb** **59^c**
WHOLE OR HALF
or fully Boneless Saratogas of Lamb Roasts. U. S. Graded Choice Lamb — extra flavorful . . . and guaranteed tender. lb.

LOIN LAMB CHOPS
U.S. Graded Choice Lamb Nice and well trimmed lb. **98^c**

RIB LAMB CHOPS
Nice and meaty ribs, from U.S. Choice Lambs lb. **89^c**

SHOULDER ROAST
U.S. GRADED CHOICE LAMB lb. **49^c**

HALIBUT CHEEKS
A LENTEN FAVORITE lb. **69^c**

BREAST OF LAMB
U.S. Graded Choice Lambs Extra nice 'n lean. lb. **19^c**

CHOICE LAMB ROAST
U.S. Choice Shoulder makes economical meal lb. **49^c**

OYSTERS
HOOD'S CANAL MED. 12-oz. **59^c**
FINEST SIZE Jar

LUCKY SLICED CHEESE
AMERICAN, SWISS or PIMENTO **3/89^c**
8 oz. PKG. lb.

LUCKY CHEDDAR CHEESE
MEDIUM SHARP lb. **59^c**
RANDOM WEIGHT PACKAGES

Apple Juice Tree Top Lge. 46-oz. can. . . **37^c**
Facial Tissue Asst. colors, 400 ct. . . **27^c**
Shasta Drinks Orange or Grape. 46-oz. . . **3/89^c**
Sauerkraut Steinfeld's fresh pack, qt. jar. . . **39^c**
Mt. Lassen
Breakfast Prunes . . . 2-lb. **59^c**
Sweet Potatoes Taylor Libby No. 3 can. **31^c**
Morton Frozen, 8-oz. pkg.
Macaroni & Cheese . . . 4/89^c
Pickles Pickle Barrel, 4 varieties, 12-oz. jar. . . **4/51**
Corned Beef Hash 16-oz. **39^c**
Silk Napkins Asst. Colors. Pkg. of 60. **10^c**
Frozen Pies Johnston, 8 varieties, 26-oz. . . **49^c**
Pie Cherries Jack 'n Bean RSP, 303 can **4/89^c**
Dog Food Pard No. 1 can. **7/51**
Margarine Allsweet 1-lb. pkg. **27^c**
Little Friskies
Dog Food Free feed bowl 5-lb. bag. **89^c**
Snider's Catsup 14-oz. bottle **2/35^c**

SCHILLING SPAGHETTI SAUCE MIX
1 1/2 oz. PKG. **23^c**

KOTEX REGULAR, SUPER OR JUNIOR
PKG. OF 12 **39^c**

ALCOA HOUSEHOLD ALUMINUM FOIL
25' ROLL **33^c**

PILLSBURY PIE CRUST MIX
9 1/2 oz. PKG. **2/43^c**

NALLEY'S POTATO CHIPS
TRIPLE PK. PKG. **59^c**

BALLARD BISCUITS OR PILLSBURY REG. PKG.
3/33^c

ANNIVERSARY

Watch for Anniversary Savings for the Whole Month of March
 FEATURING THIS WEEK . . . **NATIONALLY FAMOUS BRANDS CANNED GOODS SALE!**

TUNA	WHITE STAR	6 1/2- OZ. CAN	4/99^c
COFFEE	BUTTER-NUT	REG. OR DRIP 1-LB. CAN	49^c
VELVEETA	KRAFT	CHEESE FOOD Stock Up For Lent	2-lb. LOAF 69^c
ORANGE JUICE	DONALD DUCK	FROZEN 6-OZ. CAN	5/\$1

LIBBY FRUITS

FRUIT COCKTAIL, No. 303
 BARTLETT PEARS, 303
 GRAPEFRUIT Gans
 SECTIONS
 (CASE OF 24 \$4.99)

4/89^c

DUCHESS VEGETABLES

PEAS, CUT GREEN BEANS,
 GOLDEN CORN—CREAM STYLE
 or WHOLE KERNEL, ASPARAGUS,
 CENTER CUTS, or TOMATOES.
 NO. 303 CANS

7/99^c

(Case of 24, any item, \$3.25)

CRISCO 5¢ OFF LABEL **3 LB. CAN 69^c**

HUNT'S CANNED FOODS SALE!

HUNT'S APRICOTS WHOLE UNPEELED	Large 2 1/2 Can	3/89^c
HUNT'S PEACHES Cling. Halves or Sliced	Large 2 1/2 Can	3/89^c
HUNT'S TOMATOES Solid Pack	No. 300 Can	5/\$1.00
HUNT'S TOMATO JUICE	No. 300 Can	10/99^c
HUNT'S STEWED TOMATOES	No. 300 Can	2/39^c
HUNT'S TOMATO SAUCE	Large No. 2 1/2 Can	31^c

GLEEM TOOTH PASTE

REGULAR 69¢ Tube **53^c**

HAWAIIAN PUNCH

RED OR 46-OZ. GOLD CAN **3/\$1**

BAKERY SPECIAL!

VAN DE KAMP'S HOT CROSS BUNS

Pkg. of 8 **35^c**

LADY LEE ICE CREAM

Save 40c With This Coupon
 Good Only At LUCKY STORE
 13320 Pacific Ave., Parkland
 Limit 1 Coupon per Family
 Cash Value 1/20 of One Cent
 Good Thru March 6th

1/2 GAL. **39^c**

LUCKY BACON

Save 30c With This Coupon
 Good Only At LUCKY STORE
 13320 Pacific Ave., Parkland
 Limit 1 Coupon per Family
 Cash Value 1/20 of One Cent
 Good Thru March 6th

1-LB. PKG. **29^c**

STORE HOURS: 9 a.m. - 11 p.m. Daily
 9 a.m. - 9 p.m. Sunday

133rd & PACIFIC PARKLAND

Prices Effective This Store Only

Lucky

7 DAY SPECIALS
 LIMIT RIGHTS RESERVED

BOOTH BREADED SHRIMP	4 FISHERMEN FROZEN FISH STICKS
10-OZ. PG. 69^c	14-OZ. PKG. 59^c

Mix Masters Have Display In Roy Store

Martha Berggren Roy 229
 Display At Store
 March 2 through 9 is National 4-H Week. The Mix Master 4-H Club will have a display in the window of Murray's Store showing the work done by the members in the various projects. Meal Preparation, Dairy, Beef, Baking and Forestry work will be shown.

Trip To Paradise
 RYS members enjoyed a trip to Paradise and a day in the snow on Saturday.

Pastor To Speak
 Pastor Mednis of the Lutheran Church in Yelm will be the speaker at the Roy P-TA meeting on March 4 in the Roy Elementary School basement. Musical numbers are also planned.

Get Dance Tickets!
 Do you have your tickets to the Firemen's dance on March 2? They need your help, so support them.

Miss Earle Feted At Party

Mrs. Fred Most LE 7-7552
 Becomes Teener
 Rhoe Ann Earles, daughter of Mr. and Mrs. Walter Earle celebrated her 13th birthday on February 13, when 22 school friends gathered at her home. Games and dancing were enjoyed. A beautifully decorated cake, cookies and pizza was served.

Decorations were in the Valentine theme and were very colorful and attractive.

Holiday Birthday
 Friday, Feb. 22nd was the birthday of Mrs. William Irish. Her mother, Mrs. Dora Johnson of Tacoma, her sisters, Mrs. Russel Wing of Tacoma and Mrs. Ethel Potter of Modesto, Calif., her daughter, Mrs. Dorothy Ford gathered at the Irish home to help her celebrate. All shared a lovely birthday cake, and Mrs. Irish received many nice cards.

Brother Dies
 Mrs. William Irish has returned home, after being called to Modesto, Calif., by the death of a brother. She also visited a sister in Sparks, Nevada, and while there saw many points of interest, including trips to Reno, Virginia City and Carson City.

Lydia Circle
 The Lydia Circle of Trinity Lutheran Church met on Tuesday, Feb. 19th at the home of Mrs. Walter Earle. The March meeting will be held on March 19 at the home of Mrs. Gunderson.

Visits Ill Mother
 Mr. J. W. Cowan, who is principal of a school run by the U. S. Government in Japan, has been called here by the serious illness of his mother in Puyallup.

Mrs. Svinth Presides
 Mrs. Peter Svinth Jr. presided over the P-TA meeting Thursday evening, honoring Founders Day. Ex-presidents who attended were: Mesdames A. O. Anderson, Clinton Riis, Fay Engstrom, John Gorrow, L. A. Pulley, Wm.

Krueger, Walter Earle and Fred Most.
 Also present were several persons who had been awarded honorary life membership pins through the years. They included Mr. Turnbull, Matt Manley, Mrs. Cardy and Mrs. William Root. They, along with former presidents were presented with a lovely daffodil corsage.

The man of the evening was Delbert Howarth, who was presented with an honorary life membership pin. Delbert has always been outstanding in service to his community, particularly in P-TA and Scout work. All present were very happy that he was given the award.

Mrs. Robinson and Mrs. Kirkpatrick entertained with a hilarious skit which was greatly enjoyed.

Hurts Hand
 Matt Manley suffered an accident to his hand Thursday which required several stitches.

Former Resident Visits
 Mrs. Miles Kimball of Grantsville, Utah, a former resident of this area has been a guest of Mr. and Mrs. Ellsworth Campbell.

Nursery In Sunset Magazine
 The Waller Road Nursery will be pictured in an article on nurseries in this area, which is featured in the March Sunset Magazine.

Honor Birthday
 Mr. and Mrs. James Stockwell had the following friends in Thursday evening to honor the birthday of Mrs. Engstrom. Present were the hosts Mr. and Mrs. Engstrom of Seattle, Mr. and Mrs. Walter Earle and Mr. and Mrs. Pete Svinth.

Hoedowners Dance At Fruitland Grange

The Fruitland Grange Hall will be the location for the next Harmony Hoedowners Square Dance on Saturday night, March 2nd. There will be a short business meeting for club members at 8 p.m., followed with dancing from 8:30 till 12:00; with Willis Dodge acting as master of ceremonies.

Tea and coffee will be served by the hosts and hostesses, Mr. and Mrs. Carl Ziemer, Mr. and Mrs. Orville Torgelson, and Mr. and Mrs. Les Hoyt. The dancers will furnish their own table service, and refreshments.

1000 PROCESSED EMBOSSED Business Cards \$3.95
 ORDER FROM THIS AD & WRITE FOR SAMPLES & FRANK STEELE
 1016 N. 36th St. Seattle 3, Wash. Postpaid Promptly Agency Est. 1934. (Add Tax in Wn.)



Income Tax Service

Now At
 17023 S. Park Ave.
 Residence
 LE 7-5795

PREScription SERVICE

TED SWANSON
 INSULIN - VITAMINS
 Downtown Prices
 Pay Phone Bills Here
 PLENTY OF FREE PARKING
TINCHER'S PHARMACY
 8227 Park Ave. GR 4-3344
 Across from Fern Hill P. O.

Open Mon., Wed., Fri. 'til 8 p.m.

HOUSE WARMER!

ENJOY MORE WARMTH AT LESS COST!

Mobilheat® is regularly tested in 400 oil-heated homes throughout the country, and it contains RT/98—the most effective heating oil additive in use today. That's why you'll find it burns cleanly to give you maximum warmth for every heating dollar.

And when you sign up for Mobilheat, you'll enjoy our Automatic Personal Care—the complete home heating service. Call us for full information.

Mobilheat AUTOMATIC PERSONAL CARE **Mobil**

FEATURING A COMPLETE BURNER SERVICE DEPT.

POCHEL'S

Your Pioneer Fuel Oil, Auto Parts and Appliance Dealer.
 140th & Pacific
 LE 7-8624

Open Mon., Wed., Fri. 'til 8 p.m.

Vintage Apparel
The Mother's Club from the Central Avenue School is interested in obtaining apparel worn in the early 1900's. If

you have garments for this era and would be willing to loan them to the Club, please call Mrs. Norman Adams, LE 7-6768 or Mrs. Robert Adler, LE 7-7572.

To Visit Capitol

The O-Ki-Hi Camp Fire Girls, 4th graders at Midland School, will visit Olympia and the legislature on Saturday, March 2.
They will be accompanied by their guardian, Mrs. K. D. Caldwell, their Assistant Leader, Miss Jeannie Knapp, and two of the teachers, Miss Mitchell and Mrs. Gunnette.

Legals

Notice

Bids will be received at the Parkland Fire Station for furnishing one compact panel delivery truck. Information and specifications may be had at the fire station located at 130 South 114th in Parkland. Bids will be opened at 8:00 p.m. on March 6th, 1963.
Published in the Times Journal February 14, 21, 28, 1963.

INVITATION TO BID

Sealed proposals will be received at the Kapowsin Fire Station of Pierce County Fire Protection District No. 21, Graham, Washington (Mailing Address: c/o William L. Dugger, Secretary, P. O. Box 6, Graham, Washington), up to the hour of 8:00 p.m. on the 5th day of March, 1963, to furnish one or more used 500 G.P.M., Class A Triple Combination Pumping Engines with at least a 500 gallon booster tank, with or without equipment.

The Commissioners reserve the right to accept or reject without formality any and all bids and/or to accept the bid deemed best suited to meet the requirements of the district, and are not necessarily obligated to accept the low bid.
Bidders shall state the minimum time in which they can effect delivery.

William L. Dugger, Secretary

Published in the Times Journal February 21, 28, 1963.

NOTICE

Notice is hereby given that the Board of Directors of Pierce County School District No. 324 shall take action on the Real Estate excise tax resolution at their next regular meeting to be held on Tuesday, March 5th, 1963 at the hour of 8:15 o'clock p.m. at the Lacamas School.
This notice is submitted as required by Chapter 216, laws of 1953 of the State of Washington.

ALBERTA KIZER
Acting Clerk
Published in the Times Journal Feb. 21, 28, 1963.

In the Superior Court of the State of Washington in and for Pierce County.

No. 70896
NOTICE TO CREDITORS
In the Matter of the Guardianship of
CATHERN M. STEICHEN,
Incompetent.
Notice is hereby given that the undersigned has been appointed and has qualified as Guardian of the above entitled

Teen Twist Big Success

Mrs. John Folk LE 7-5801
Dance to Repeat
In spite of the fog our Teen Twist party was such a huge success that the Canyon Road Community Club has been asked to sponsor another in the very near future.

There will be a blood bank drive on March 22 with Mrs. Helen Bush in charge and Kathleen Skaar and Bonnie McPherson assisting.

New Addition
Mr. and Mrs. Ronald Hopkins are receiving congratulations upon the birth of their baby daughter Joanna Mae who arrived Feb. 17th and weighed 7 lbs. 7 ozs. She was welcomed by her brothers Ronald Keith and Gerald John. Especially by Gerald because it was his birthday also. Grandparents are Mrs. Stella Ragan and Mr. and Mrs. Carl Arneberg

Set Social Night

"Riverside Flames," Ladies Auxiliary of the Riverside Fire Department will hold a social evening, March 5th, 8 p.m. at the Fire Hall

of Tacoma. Greatgrand parents Mr. and Mrs. Lewis Field of E. 72nd.

Relatives III
Mr. and Mrs. John Folk of Canyon Road made an emergency trip to Portland over the week-end to visit Mrs. Folk's aunt and uncle, Mr. and Mrs. George Bartlett who have been seriously ill. They spent one night in Hillsboro, Oregon, with Mr. Folk's brother and sister-in-law, Mr. and Mrs. Tom Folk.

El Toro Restaurant
For Famous MEXICAN FOODS
12914 PACIFIC HWY. SO.
ORDERS TO GO
MEXICAN DINNERS \$1.50 Phone JU 8-1594
AVAILABLE FOR BANQUETS NOON TO 3:00 P.M.

Roy - Fire District No. 17
FIREMAN'S DANCE
EDWARDS PAVILION
Lake Lawrence
Saturday March 2, 1963 Donation \$1.00

Rainier Ranch Meats
WED. - THURS. - FRI. - SAT.
25-LBS. STEER
LOCKER BEEF
10-Lbs. Roasts.
10-Lbs. Steaks.
5-Lbs. Ground Beef.
only \$15.00
209 So. 84th GR 2-8985

RIB STEAKSlb. 69c
ROUND STEAKSlb. 79c
T-ROUNDSlb. 89c
GROUND BEEF3-lbs. \$1
Country Style
SAUSAGE3-lbs. \$1
PORK ROASTlb. 49c
4 LOAVES BREAD \$1
Any Combination

SHOP-ETTE
VARIETY-DEPARTMENT STORE
13322 PACIFIC AVENUE, PARKLAND
In the Lucky, Shop-ETTE Shopping Center
Ample Parking For 300 Cars.
OPEN DAILY 10 A.M. To 9 P.M. - SAT. 10 A.M. To 6 P.M.

MONTH-END SALE

11-Oz. Glass Decorated FANCY TUMBLERS
Floral and stripe design. Over 16 patterns to choose from. Reg. 15c
Now 12 For **96¢**

TREMENDOUS SAVINGS
VALUES GALORE!!!

LADIES SKIRTS
Latest Spring Colors
Sizes 10-18
Washable - Sanforized
Reg. \$2.99
NOW 2 For **\$5**

PLASTIC BOWL SET
3-Piece Assorted Colors
Reg. \$1.49
NOW **96¢**

Six Transistor RADIOS \$8.88
Complete with leather carrying case. Individual Earphones, Asst. Colors.
Regular \$15.95 NOW ONLY **8**

PLASTIC FRUIT Reg. 98c
11 pieces to the package.
2 Lemons, 2 Tangerines,
1 Banana, 1 Grape cluster,
2 Oranges, 2 Apples, 1 Pear.
NOW **77¢**

BOYS JEANS
Newest color and style. Forest Green and Light Tan
13-Oz. Sizes 6 to 16
Reg. \$2.98
NOW **2 Pairs \$5**

BABY DOLL PAJAMAS
Dainty pastel colors. Floral and lace trimmed. Sizes small, medium and large. Finest Tricot Rayon.
Reg. \$1.98
NOW **99¢**

LADIES CAPRIS & PEDAL PUSHERS
Sizes 10 to 18. New spring colors. Covered belts. Sanforized, washable. Reg. \$1.99.
NOW **2 Pair \$2.99**

Giant 70-Oz. PLASTIC PITCHER
Assorted Color Lids. Ideal for Juice and Beverages. Dishwasher Proof.
Reg. 98c
NOW **38¢**

LADIES SWEATERS
Latest colors and designs. Five styles to choose from. Cardigans, Slipovers, Shrug's, Boatnecks, Bulky Knits.
Reg. \$5.98
NOW **3.77**

LADIES BLOUSES
Assorted styles. New spring colors. Solid colors and prints. Short sleeve and sleeveless.
NOW ONLY **88¢**

LADIES SEAMLESS NYLONS
Two shades to choose from. Sizes 8 1/2 to 11.
Reg. 89c
NOW **2 Pairs \$1**

FINAL CLEARANCE YARDAGE SALE
DRIP DRIES - GINGHAMS PERCALES
31 Patterns To Choose From
Values To \$1.49
NOW **3 Yards For \$1**

THROW RUGS
100% Cotton Chenille. Heavy Rubber Backed. Washable. Brilliant High Colors.
Sizes 27x48 & 30x50 Inches.
Reg. \$2.99
NOW **\$1.99**

Plastic 54" by 72" Tablecloths Assorted Patterns
Reg. 98c
Now **47¢**

Mens Tool Assortment
Values To \$1.49
Now **77¢**

HEAD SCARVES
King Size - Hand Rolled Hems
Gay Floral Patterns.
Reg. \$1.00
NOW ONLY **43¢**

11-Oz. Size PLASTIC GLASSES
Red, Blue, Green and Yellow Stripe
Dishwasher Proof.
Reg. 19c
NOW **8/99¢**

Pottery Coffee Mugs
Brilliant Colors. Heavy Pottery. Reg. 39c
Now **4 For 99¢**

Silicone IRONING PAD & COVER SET
Reg. \$1.29
Now **66¢**

IN PROBATE
No. 70977
NOTICE TO CREDITORS
In the Matter of the Estate of CARL W. BRINK, Deceased.
Notice is hereby given that the undersigned has been appointed and has qualified as Administrator of the estate of CARL W. BRINK, Deceased; that all persons having claims against said deceased are hereby required to serve the same, duly verified, on said WAYNE D. BRINK or his attorneys of record at the address below stated, and file the same with the Clerk of said Court, together with proof of such service within six months after the date of first publication of this notice, or the same will be barred.
Date of first publication February 21, 1963.
/s/ Wayne D. Brink
Administrator of said Estate.
11024 Pacific Avenue
Tacoma 44, Wash.

PETERS & TRACY
/s/ Phillip S. Tracy
Attorneys for Estate
11024 Pacific Avenue
Tacoma 44, Washington
Published in the Times Journal February 28; March 7, 14, 1963.

In the Superior Court of the State of Washington in and for Pierce County.
IN PROBATE
No. 70977
NOTICE TO CREDITORS
In the Matter of the Estate of CARL W. BRINK, Deceased.
Notice is hereby given that the undersigned has been appointed and has qualified as Administrator of the estate of CARL W. BRINK, Deceased; that all persons having claims against said deceased are hereby required to serve the same, duly verified, on said WAYNE D. BRINK or his attorneys of record at the address below stated, and file the same with the Clerk of said Court, together with proof of such service within six months after the date of first publication of this notice, or the same will be barred.
Date of first publication February 21, 1963.
/s/ Wayne D. Brink
Administrator of said Estate.
11024 Pacific Avenue
Tacoma 44, Wash.

PETERS & TRACY
/s/ Phillip S. Tracy
Attorneys for Estate,
11024 Pacific Avenue
Tacoma 44, Washington.
Published in the Times Journal February 21, 28; March 7, 1963.

BUILDERS SUPPLIES
PLYWOOD LUMBER ROOFING HARDWARE PLUMBING ELECTRICAL SUPPLIES
Baskett Lumber
9701 Portland Avenue
LE 7-8663

HILLTOP CONCRETE CO.
READY MIX CONCRETE
● Crushed Rock ● Drain Gravel
● Fill Dirt ● Pit Run
● Gravel ● Sand
TH. 5-9525
Plant: 2223 - 23rd Ave. S.E. P.O. Box 648, Puyallup

Ladies TENNIS OXFORDS
POINTED TOE TAPERED TOE CORD Or CANVAS
Lots Of Colors
Made in U.S. by One of The Largest Manufacturers.
2.97 PR.

One Eyelet Tie
SANDPIPER STYLE
BLACK, WHITE, CHINO
SHOP-ETTE SHOE DEPARTMENT
in the Shop-ETTE Lucky Shopping Center
133rd and Pacific

SALVAGE MART
13014 PACIFIC AVE. LEnox 1-0770
Tacoma's ONLY Salvage Food Store - We Buy Cheap and Sell Cheaper
Hours: Open Daily, 9 to 8 Sundays, 10 to 7

CAMPBELL'S TOMATO SOUP Family Size **5/\$1**

WELCH'S GRAPE JUICE Reg. 39c Quart **4/\$1**

FRANCO AMERICAN SPAGHETTI **2/39¢**

POPULAR BRAND STARCH VANO 1/2 Gal. Reg. 55c **29¢**

POPULAR BRAND MAYONNAISE Quart **39¢**

Plan Missionary Study

The members of Spanaway Methodist Church at 163rd and Pacific, with Reverend John Qualley as minister, are planning a church wide missionary study during the month of March. The mission's theme, "Per-

sons of Special Need" is part of a nation-wide study by Methodist Church people, to consider their active compassion and expression toward personal human need, in all walks of life. Its purpose is to mold emotional and spiritual attitudes that will result in a deeper understanding for the persons behind this need. Each church-school class will use this theme at their age level. The first three grades will learn about problems of children who are blind. The next three will consider the effects of deafness and how it can be helped. The Junior High and high school classes will each deal with problems of their particular interest — orthopedic conditions, emotional upsets

and fitting into society in general. The adult class will consider the overall pattern of the ability of the church to meet these needs. The persons most responsible for this work are the church-school teachers: Mrs. Leslie Cook, first grade; Mrs. Shirley Griesbach, second grade; Mr. Delbert Force, third grade; Mrs. Harlan Dinwiddie, fourth grade; Mr. Orville Critchley, fifth and sixth grades; Mr. Jim Gray, Junior High; Mr. Hobart Ashmore, high school and Mrs. King Phelps, adult class. Both the Woman's Society of Christian Service, and the Methodist Men's Club will have "Persons of Special Need" as their program themes for the month of March. All interested persons are welcome.

INCOME TAX SERVICE
CHARLES PETERSON
 Call LE 7-8609 For Appointment
 Parkland Realty 302 Garfield

69¢ Lb. Round Steak	59¢ Lb. Rump Roast	69¢ Lb. Sirloin Steak	79¢ Lb. Porterhouse	69¢ Lb. Rib Steak	Our Own Country Style PORK Sausage 3 Lbs. \$1
69¢ Lb. Flank Steak	79¢ Lb. Beef Stew Boneless	98¢ 3 Lbs. Ground Beef	79¢ Lb. T-Bone Steak	49¢ Lb. Short Ribs	25 Lb. Beef LOCKER BOX 7 1/2 Lbs. ROAST STEAK 7 1/2 Lbs. GR. BEEF 2 1/2 Lbs. Short Ribs

Fresh SIDE PORK BY THE PIECE Lb. 39¢ SLICED Lb. 49¢	PORK Steak Lb. 49¢	Fresh Fillet RED Snapper Lb. 39¢
--	--------------------------	--

Fishers FLOUR 79¢ 10-LB. BAG	Mrs. Butterworths SYRUP 49¢ 24-Oz.
Golden Poppy TOMATO Juice 5 Tins \$1 46-Oz.	EXTRA LARGE WESSON OIL 59¢ Req. 7 1/2
NESTLES QUICK 79¢ Large 3-Lb., 6-Oz.	PRODUCE POTATOES 29¢ U.S. NO. 1 10 Lbs.
SUE BEE HONEY 49¢ 24-Oz.	Fresh RADISHES 5¢ And GRN. ONIONS Bunch
Pillsbury CAKE & FROSTING 4/\$1 N.B.C. 2-Lb. Box	Fresh Crisp LETTUCE Head 9¢
Steinfeld's Sauerkraut 29¢ 1/2	Bulls TOMATOES Lb. 19¢

9 a.m. to 10 p.m. 7 DAYS WEEK

BARGAIN BASKET
 16618 PACIFIC AVE. South SPANAWAY, WASH.

NO SALE TO DEALERS
 We Reserve The Right To Limit Quantities

COAL • PRES-TO-LOGS • LE 7-3371

Midland Parents Invited To Discuss Scout-O-Rama Plans

Mrs. Frank Gural LE 7-5989
Scout Parents Meet
 Moms and dads are invited to attend the Parents' Meeting of Midland's Boy Scout Troop No. 84 to be held on Tuesday evening, March 5th, at 8:00 p.m., at the Boy Scout Hall, 96th and East Harrison. Discussion will take place on the Scout-O-Rama; and also the Snow Camp to be held in March.

Mid-Park Demo Club
 The Mid-Park Democratic Women's Club will meet on Thursday, March 7th, at 1:00 p.m., at Gonyea Park in Parkland, with Don Perry, superintendent of the election board, as guest speaker.

Orthopedic Guild
 The regular meeting of the Midland Orthopedic Guild will be held on Tuesday, March 5th, with luncheon being served at 11:30, in the Midland Community Hall. Hostesses will be Mrs. James Rhodes, Mrs. Kenneth Lampitt, and Mrs. Elmer Morud. A short business meeting will be held.

Midland Preschool
 Moving pictures of the Kindergarten classes will be shown at the meeting of the Midland Preschool group on Wednesday evening, February 27th, at 8:00 p.m., at the Midland School, with Mrs. Richard Wilson presiding. The public is invited to attend.

Krafty Kapers To Decorate
 The Krafty Kapers 4-H held a Valentine's party after their meeting Feb. 6, at the home of their leader, Mrs. Kenneth Singleton. The girls exchanged Valentines and each of them brought one for Mr. Steele. Mr. Steele is the grandfather of one of the members, Flora Shoemaker.

Ocean Trip
 Mr. and Mrs. Clarence Johann spent last weekend at the ocean.

Blue And Gold Dinner
 Plenty of good food was enjoyed by everyone attending the Blue and Gold Dinner of Midland's Cub Scout Pack No. 84, held on the 23rd of February. Explorer Post No. 84 presented the colors. Entertainment was provided by the Webelos Den, with help of volunteer fathers, who gave a physical fitness exercise demonstration.

Another new arrival in the Midland area is a baby boy, Donald Jr., born to Mr. and Mrs. Donald Almont, on Saturday, February 23rd, at the Lakewood General Hospital. The baby is welcomed by sisters, Joyce and Janice. Grandparents are Mr. and Mrs. Wallace Cole, Mrs. Helen Cole and Mr. and Mrs. Lawrence Almont. Congratulations.

Blue And Gold Dinner
 Plenty of good food was enjoyed by everyone attending the Blue and Gold Dinner of Midland's Cub Scout Pack No. 84, held on the 23rd of February. Explorer Post No. 84 presented the colors. Entertainment was provided by the Webelos Den, with help of volunteer fathers, who gave a physical fitness exercise demonstration.

New Baby
 Congratulations are being extended to Mr. and Mrs. Don Clift (Donna Ayers), of Whittier, California, on the birth of their daughter on February 18th. Grandparents are Mr. and Mrs. Floyd Ayers, of Midland, and Mr. and Mrs. Don Clift, Sr.

It's A Girl!
 Congratulations to Mr. and Mrs. Terry Linde, 804 South 98th, on the birth of their daughter, Debra Ann, on February 2nd, at Madigan General Hospital. Grandparents are Mr. and Mrs. Paul Anderson and Mr. and Mrs. Erick Linde.

It's A Boy!
 Another new arrival in the Midland area is a baby boy, Donald Jr., born to Mr. and Mrs. Donald Almont, on Saturday, February 23rd, at the Lakewood General Hospital. The baby is welcomed by sisters, Joyce and Janice. Grandparents are Mr. and Mrs. Wallace Cole, Mrs. Helen Cole and Mr. and Mrs. Lawrence Almont. Congratulations.

Remodel Now & Save PARKLAND BUILDERS
 Remodeling Specialists No Job Too Large or Too Small.
 CALL LENOZ 7-7965 FREE ESTIMATES

Webb Electric Co.
 Commercial - Residential We Recommend & Install Electro-Ray Heat
 • WIRING & ELECTRICAL SUPPLIES
 • 24 Hr. EMERGENCY SERVICE
 LE 1-1133 11112 Pacific Avenue

END-OF-THE-MONTH SHOE SALE
 18 Pr. Womens Canvas & Corduroy Ties, 4 1/2 to 6, Reg. to 4.00 \$1.49
 14 Pr. Boys Dress Shoes, 3 to 6, Reg. to 8.00 \$3.99
 68 Pr. Little Girls Dress Flats, Patent, Bone, White, Reg. 4.00 \$2.99
 Just Received! Boys Tennis Shoes \$2.49 & \$2.99
 22 Pr. Womens Fuzzy Bedroom Slippers, 4's to 7's, Reg. 3.00 \$1.99
 16 Pr. Mens Oxfords, Crepe Soles, etc., Reg. to 13.00 \$5.95
 6 Pr. Mens Square Dance Boots, 9-9 1/2 B only, Reg. 18.00 \$4.99
 Mens Rebuilt Army Boots & Oxfords \$2.99

PAUL'S SHOES
 Open Monday thru Saturday 9 to 6 — Fridays Till 9 p.m.
 161st & Pacific Ave., Spanaway (Closed Sundays) LE 7-0552

Remodel Now & Save PARKLAND BUILDERS
 Remodeling Specialists No Job Too Large or Too Small.
 CALL LENOZ 7-7965 FREE ESTIMATES

YOUR CHOICE OF FLOOR PLANS

"READY-BUILT" ON YOUR LOT

- Concrete Foundations (2' Crawl Space Under Floor)
- No. 1 Oak Floors Over 2x6 Solid Decking (We Never Build on Concrete Slab Floor)
- 3 Bedrooms With Full Wall of Closets
- Forced-Air Furnace or Electric Heat Installed
- Beautiful Birch Cabinets
- Aluminum Windows and Patio Door
- Choice of Siding and Roofing
- All the Owner Does Is Paint

MANY OTHER PLANS AVAILABLE USE OUR FREE PLAN SERVICE

Remodel Now & Save PARKLAND BUILDERS
 Remodeling Specialists No Job Too Large or Too Small.
 CALL LENOZ 7-7965 FREE ESTIMATES

Webb Electric Co.
 Commercial - Residential We Recommend & Install Electro-Ray Heat
 • WIRING & ELECTRICAL SUPPLIES
 • 24 Hr. EMERGENCY SERVICE
 LE 1-1133 11112 Pacific Avenue

END-OF-THE-MONTH SHOE SALE
 18 Pr. Womens Canvas & Corduroy Ties, 4 1/2 to 6, Reg. to 4.00 \$1.49
 14 Pr. Boys Dress Shoes, 3 to 6, Reg. to 8.00 \$3.99
 68 Pr. Little Girls Dress Flats, Patent, Bone, White, Reg. 4.00 \$2.99
 Just Received! Boys Tennis Shoes \$2.49 & \$2.99
 22 Pr. Womens Fuzzy Bedroom Slippers, 4's to 7's, Reg. 3.00 \$1.99
 16 Pr. Mens Oxfords, Crepe Soles, etc., Reg. to 13.00 \$5.95
 6 Pr. Mens Square Dance Boots, 9-9 1/2 B only, Reg. 18.00 \$4.99
 Mens Rebuilt Army Boots & Oxfords \$2.99

BROOKDALE WILL BUILD YOUR DREAM HOME
 ON YOUR LOT
 For As Low As — **\$6,995⁰⁰**
 With Carport and Porch..... **\$7,795⁰⁰**
NO DOWN PAYMENT

Remodel Now & Save PARKLAND BUILDERS
 Remodeling Specialists No Job Too Large or Too Small.
 CALL LENOZ 7-7965 FREE ESTIMATES

Webb Electric Co.
 Commercial - Residential We Recommend & Install Electro-Ray Heat
 • WIRING & ELECTRICAL SUPPLIES
 • 24 Hr. EMERGENCY SERVICE
 LE 1-1133 11112 Pacific Avenue

END-OF-THE-MONTH SHOE SALE
 18 Pr. Womens Canvas & Corduroy Ties, 4 1/2 to 6, Reg. to 4.00 \$1.49
 14 Pr. Boys Dress Shoes, 3 to 6, Reg. to 8.00 \$3.99
 68 Pr. Little Girls Dress Flats, Patent, Bone, White, Reg. 4.00 \$2.99
 Just Received! Boys Tennis Shoes \$2.49 & \$2.99
 22 Pr. Womens Fuzzy Bedroom Slippers, 4's to 7's, Reg. 3.00 \$1.99
 16 Pr. Mens Oxfords, Crepe Soles, etc., Reg. to 13.00 \$5.95
 6 Pr. Mens Square Dance Boots, 9-9 1/2 B only, Reg. 18.00 \$4.99
 Mens Rebuilt Army Boots & Oxfords \$2.99

PAUL'S SHOES
 Open Monday thru Saturday 9 to 6 — Fridays Till 9 p.m.
 161st & Pacific Ave., Spanaway (Closed Sundays) LE 7-0552

BROOKDALE LUMBER, Inc.
 13602 Pacific Ave. LE 7-8669

BUSINESS SERVICES DIRECTORY

Floor Covering LINOLEUM, FORMICA, CARPETS FREE ESTIMATES PACIFIC FLOOR COVERING 131st & Pacific LE 7-4545	Moving - Storage Boush Moving & Storage Agents for U.S. Van Lines Cost to Coast Service 11816 Pacific Avenue LE 7-3696 Parkland, Wash.	Appliance Repair FRIGIDAIRE APPLIANCES New & Used No Down Payments Minimum Monthly Payments Maximum Trade-In Allowances McWik's JU 4-3300	Electric Contractor LET THIS SPACE WORK FOR YOU!	Auto Parts South End Auto Wreckers USED PARTS—Motors, Transmissions, Tires Batteries. We buy junk cars. Also custom welding by Joe's Welding. 1 Mile East of Roy Y on Mt. Hy Spanaway VI 7-7242
Roof Repairs ROOF REPAIRS GUTTERS Cleaned & Repaired Gordon VI 7-7873	TV Repair LET THIS SPACE WORK FOR YOU!	McWik's APPLIANCE REPAIRS All Makes Washers - Dryers - Ranges Dishwashers - Refrigerators HOME MAINTENANCE CO. 4804 E. 112th LE 1-2139	Trash Removal PIERCE COUNTY REFUSE CO. Weekly Garbage Collections Phone LE 7-8688	LET THIS SPACE WORK FOR YOU!
Cycle Shops PARKLAND CYCLE Lawnmower Winterizing FREE Pick-Up This Area 50-Yrs. Combined Experience ALSO — Duplicate Keys Made while you wait. LE 7-5772 11021 Pacific Avenue	McWik's Call Bill Bean JU 4-3300 or LE 7-7933 Two Shops to Serve You	Chimney Service Logan Chimney Service Cleaning Furnace & Chimney, Repairs, New Chimneys Very Reasonable - References 24-HOUR SERVICE GR 2-1511 8822 So. Park	Septic Tank Serv. SEPTIC TANK CLEANING Prompt Service C. V. HUTSON GR 4-3980 GR 2-7038	Auto Repair MCCALLUM'S AUTO REPAIR FOREIGN & DOMESTIC (Foreign Car Specialist) 112TH & CANYON ROAD Next to A&H Body Shop On Call After Hours LE 7-8890; Nites LE 7-0462
Rock Hounds ROCK HOUNDS-STUDENTS! Economy Priced Rock Tumbler Polish Up To 10-Lbs. Rocks \$17.95 COMPLETE VAUGHAN'S LUMBER Pacific Avenue GR 4-9515	Cabinet Work KNAP LINE CUSTOM MADE CABINETS Complete Kitchen Remodeling • Free Estimates • Mill Work LE 7-5859	Rentals U & E RENTALS GRADER - DOZER - LOADER CHAIN SAW You Rent - or We Operate Road Building - Excavating Driveways Fill & Washed Material Call Canyon Gravel LE 7-3948	Prescriptions JACOBS PACIFIC DRUG PRESCRIPTION SERVICE 84th & Pacific Avenue GR 2-6445	Photo Studio PHOTOS 5x7, \$1 - 8x10, \$2 For Appointment Phone GR 4-1986—Open Evenings FAMILY PORTRAIT STUDIO 8411 South Park Ave.