

Parkland 4-H Fair to Feature Chicken Barbecue

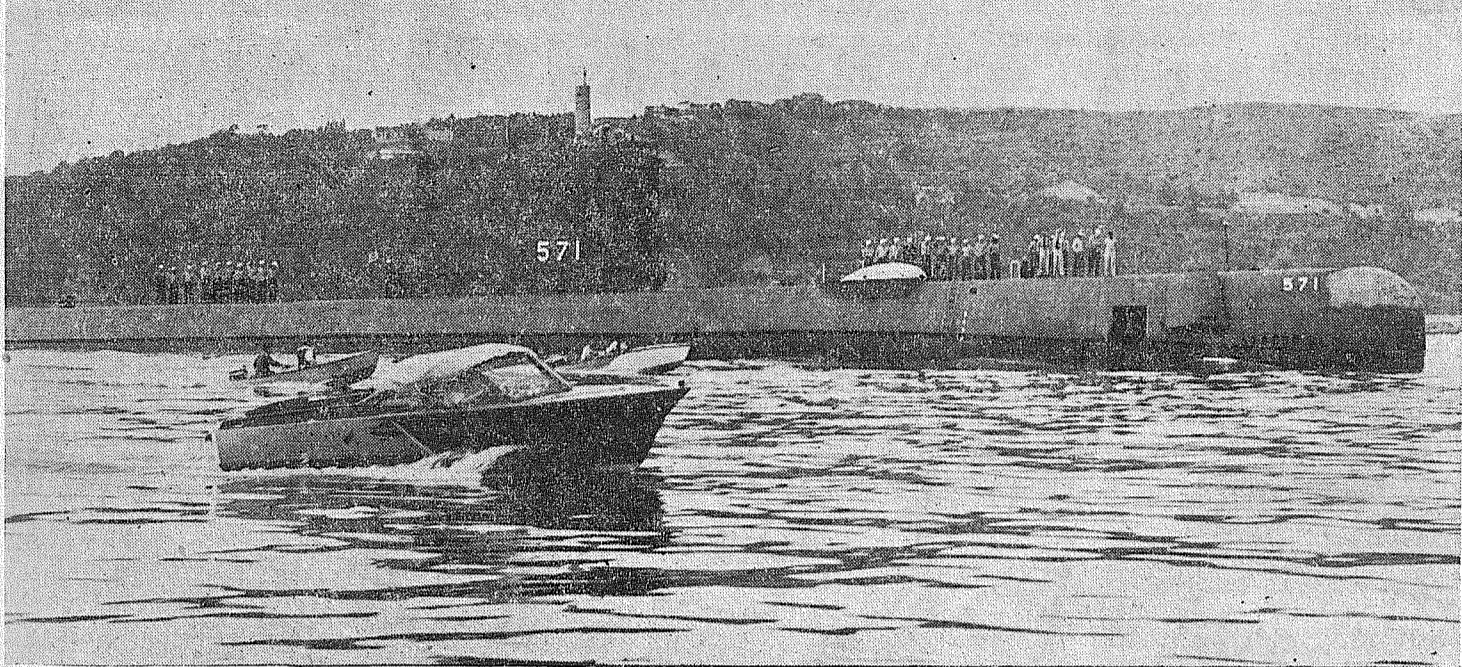
Sec. 34.66 P.L.&R
U.S. Postage Paid
Parkland Branch
Tacoma, Wash.
Permit No. 9P

The TIMES JOURNAL

THURSDAY, JUNE 20, 1957 1 Volume 12, No. 41 PUBLISHED AT PARKLAND, WASH. LEnox 7-0223

Occupant or Boxholder
Rural Route
Postmaster: In unable
to deliver, return
postage is guaranteed on
addressed papers.

The Nautilus, U. S. Navy's First Atom-powered Sub, Visits Tacoma Volkswagen Club In Sunday Trip



MIRACLE SUB—Greeted by a host of spectators along the waterfront, the Navy's first atom-powered sub cruised into Tacoma's harbor Monday afternoon to moor at the Naval Station dock over night. Leaving Seattle in the morning, the 300-foot undersea craft had visited the Navy's only acoustic range, in Carr inlet, returning through the Narrows for her brief stay in Tacoma. The Nautilus made a brief stop at Seattle Tuesday before passing

out through the straits of Juan De Fuca, then down the coast and up the Columbia to Portland where she was due on Wednesday. Captured on film by Wes McKewen, Times Journal photographer who went out in his boat to make his own record of this momentous occasion, the Nautilus is shown sailing through Commencement bay with a number of officers and crewmen "top side" enjoying the beauties of an ideal day on Puget Sound.

Photo by McKewen

Spanaway Play Program Now On

The Spanaway Playground program opened Monday, June 17, under the direction of George Fossen on the playground at Spanaway school. All young people are welcome from 10:00 a.m. on for a well rounded supervised program as directed by Norman Inveen of the Metropolitan Park Board.

As the success of the program depends on the number of children using the facilities, the cooperation of all in the area is urged. Anyone desiring information should phone LE 7-7425. Saturday and Sunday were busy days for Spanaway men helping with the recreation program. A bulkhead in the Metropolitan Park was partially completed and dirt dug and dumped for use when the job is finished, a new float was built and the beach was cleared of glass and debris.

Special thanks goes to Riley Eros for donating equipment for the Project, to Carl Rose for his help and to many others who so willingly assisted. Anyone willing to work on the project is asked to contact the Recreation Committee by calling LE 7-7425. Much more is to be done and all help is most gratefully received. The Committee has been given the green light from the Metropolitan Park Board to go ahead with plans for the building in the park and for conditioning of ball fields in the park for Little League play.

Five men in the Spanaway area are taking a course in small

bore rifle instruction at Pt. Defiance pavilion in preparation for a rifle club and shooting gallery in the school this fall. The class is being taught by Chet Paulson and other nationally recognized "hunter safety" marksmen. Fifty men and women are enrolled in the Monday night classes. The men from this area are Annon May, Art Hallingren, Byron Parker, James Fitts and John Newell.

Meeting Friday

A meeting of the Spanaway Recreation Committee is set for Friday, June 21, at 8:00 p.m. in the Spanaway fire hall to iron out problems and to make decisions pertaining to this project.

All clubs and churches are urged to send representatives in order to make sure that all those interested have a voice in the plans.

Bake Sale

Faith Chapter, O.E.S., will hold a bake sale at the Big Bear store, 133rd and Pacific avenue, on Friday, June 21, from 10:00 till 5:00.

Benston Grange

Benston Grange No. 892, now on summer schedule, announces one meeting each month during June, July and August, to be held the second Tuesday at 8:30 p.m.

Next Sunday afternoon at 1 o'clock, Sales Grange in Parkland will blossom out with a miniature 4-H Fair, complete with Dairy, Beef, Sheep, Poultry and Rabbit exhibits outdoors and Flowers, Clothing, Baking, Electrical, Garden and Craft displays inside.

Actual fitting and showing contests for the large animals and their owners will take place during the afternoon, also judging of small stock. This is a good preparatory show for the big Summer Junior Fair which is County wide and takes place in August. The 4-H'ers can profit by the criticism that they receive here and improve their articles or animals or showmanship.

All of the Parkland and Midland 4-H groups have been invited to take part. Clothing will be brought to the Grange Thursday morning at 10:00 o'clock and members and mothers are very welcome to watch the judging and ask questions. Bring a lunch. Friday the same will be done for baking; bring your articles, lunch and listen to the judge. Saturday the Grange will again be open for flower arrangers at 10:00 o'clock and throughout the day. Arrangements will follow the classes in the new Junior Fair Book, and must be made at the Grange.

Judging will start on the livestock Sunday afternoon at 1:00 o'clock. A fine chicken barbecue, which is something new in the County, and incidentally presided over by the Dads, will be served beginning at 5:30 until 7:00 for \$1.00 for adults and 65c for children. Tickets must be purchased by Friday from a 4-H'er or reservations phoned to Mrs. Graves, LE 7-8710, or Mrs. Perryman, LE 7-3452, or any local 4-H boy or girl.

A program of talent and demonstrations will follow in the evening. Everyone is invited, for a few minutes or a few hours.

Midland W.C.T.U.

The Midland Women's Christian Temperance Union will meet at the home of Mrs. August Elmquist Tuesday, June 25, for a picnic dinner, to be served at 12:30.

Mrs. Jessie Siddall will have the opening devotionals and prayer. Mrs. Paul Anderson will favor with a couple of accordion numbers and there will be group singing.

Being so close to Father's Day, the roll call will be answered with the name of some prominent father in the Bible.

Mrs. Gjuka, president, will preside at the business meeting, and there will be reports on important items. This being the regular flower mission month, the members who have some flowers are asked to bring a few and they will be made into bouquets for the sick.

Drive Safely

SHOP & SAVE AT
BROOKDALE LUMBER COMPANY

"The Handy-Mans Headquarters"

Aluminum Combination Storm & Screen Doors
only \$39.95

Screen Doors All Sizes

1x6 No. 3 Fir

Fencing Boards only 3 1/2c Ft.

Folding - Space Saving Doors \$8.95 ea. For 30"x80" Size

4"x4" No. 3 Cedar Posts . . 10c

1"x6" Cedar 5c

1/2"x6" Rough Cedar . . 4c

BROOKDALE LUMBER COMPANY
LE 7-8669
136th & Pacific

Building Permits

The following building permits have been issued by Keith T. Jones, County Road Engineer, Building Department:

Jack Busenius, \$700 store room, Rt. 7, Box 312, Tacoma; L. P. Bently, \$4000 mov. home to prop., Rt. 7, Spanaway; Wm. Keller, \$1000 addn. to home, Rt. 2, Box 861, Puyallup; Ernest F. Huebschman, \$15,000 brick-frame home, Rt. 4, Puyallup; Ruth M. Hartwell, \$2000 addn. to home, 10415 So. Ainsworth.

John G. Fadness, \$15,000 frame home, Spanaway; Loyd O. Hoyt, \$1000 frame garage, 11101 South Sheridan; Walter A. Anderson, \$3000 mov. home to prop., 861 So. 137th; George L. Tilton, \$500 addn. to garage, Spanaway; Earl Campbell, \$5000 frame home, 1627 So. 116th; W. D. Hecht, \$350 frame barn, 3007 So. 83rd.

Today's Laff

AUTOMOBILE . . . the thing that's almost put a stop to horse stealing!

SAFETY SHOES . . . \$12.00 value for only \$8.95. Lace-toe, neoprene soles.
SAFETY BOOTS . . . Regularly \$23.06 now for just \$19.95. Bone Dry, "The Best," offers you these special ladies canvas flats, in five colors, with crepe soles for only \$1.99.
TYNENTY-FOUR HOUR SHOE REPAIR SERVICE at

PAUL'S SHOES
167th & Pacific Spanaway
Next to Bargain Basket

Valley Riding Club Showdeo Planned July 4

The Valley Riding Club of Puyallup announced today that its annual "Showdeo" would be held at 1:30 p.m., July 4, at the Club grounds.

Programmed for the enjoyment of the whole family, events for both junior and adult riders will include such timed events as Pole Bending and the thrilling Trailer Race as well as judged performance classes including the popular Western Cow Horse competition. The Showdeo will feature a mounted drill exhibition by its uniformed team.

Al Bannerman, Showdeo chairman, invites all interested participants to compete for the beautiful trophies and ribbons offered at this popular show. Entries will be accepted up to noon of show day, the Fourth of July.

"Many families, looking for 'safe and sane' entertainment

Parkland JC's To Aid Library

The Parkland Junior Chamber of Commerce is spearheading a drive this month and next to renovate and rehabilitate the Parkland public library. The chairman, Anz Grazzini, reports that at present Parkland is in need of a more adequate building as the library has outgrown its old quonset hut quarters erected by the Community club.

The Jay Ceos have several money raising projects in progress to raise the necessary funds and urge the community to support this activity and help Parkland grow.

over the Fourth, will be bringing their lunches to enjoy this fine show under the commanding view of Mt. Rainier," said Bannerman, "but plenty of refreshments will be available in the club grounds."

Parkland Man Tapped by GMC

Los Angeles, June 17—Don L. Davis, director of Operations of the world-famous Gagget-Of-The-Month Club, Inc., today advised James E. Jones of 870 S. 117th Street, Parkland, that his invention of a unique pill crusher has been accepted and approved by the GMC Gadget Jury.

The Gadget Jury is the official screening agency of the Gagget-Of-The-Month Club and is composed of experts in patenting, manufacturing and marketing of new inventions of every kind, nature and description.

Born in Canadian, Oklahoma, Mr. Jones is a member of the American Legion and the Veterans of Foreign Wars. He is presently retired from the Civil Service. Discussing his invention, Jones said, "I was employed as a hospital aide in a mental hospital. I noticed that many of the patients could not swallow a whole pill, which necessitated the nurse to crush pills with a hammer. This proved impractical, since it caused time consumption and waste. Well, I like to tackle problems and develop new ideas, so I went to work and attempted to solve the problem."

Jones has successfully developed a fine crusher, according to GMC. It is quick, practical and extremely simple to operate. GMC has thoroughly tested the item and predicts that it will have a bright future on the professional market.

Save A Life

Cedar Mill Run Wood up to 25" PICKUP or TRAILER LOAD

U-Haul
50c

Split Cedar Fence Posts
37c ea. in lots of 300
43c ea. in lots of 100

LE 7-4080

Easy Parking LE 7-0253

Dryer MORTUARY
SUN AND PACIFIC
PARKLAND

Only Inches From Death in This Freak Accident



CALL HIM LUCKY—Roy Lee Parrot Jr., Fort Lewis soldier, will probably never be closer to death—and live to tell the tale—than he was at 5:30 last Friday morning. Enroute back to Fort Lewis driving a brand new Chevrolet car, Parrot apparently dozed at the wheel and the vehicle swerved across three traffic lanes to the side of the road where two stout posts supported a 2x6" plank to which were nailed a row of mail boxes. As the speeding car hit the first post, the end of the plank flew up and through the windshield, shelling off the mail boxes like peas from a pod. The plank grazed Parrot's chin and cheek, resulting in only a few splinters and scratches. The car, with 312 miles on the speedometer, was badly wrecked. State Patrolman Robert Bair investigated the accident. Upper view shows damaged car; lower left, interior pierced by plank.

Photo by McKewen

New Home For Parkland Cycle

Parkland Cycle & Key Shop, owned and operated by Del Cheney for the past eight years, is now settled in a brand new building at 11021 Pacific avenue.

Designed especially for the needs of the business, the 32' by 45' concrete block structure offers ample space for the enterprise. Facing the avenue is the display room, well stocked with shiny new bicycles, tricycles and wheel tops; behind a low partition are many similar well loved bikes and trikes which show the wear and tear of use by youthful owners, awaiting the skillful ministrations of the popular fix-it man to be "good as new" again.

In addition to sales and service of the wheeled wares, Del offers efficient work with locks and keys.

Professional Directory

Farmers Mutual Ins. Co.
Auto - Fire - Liability
J. J. GUNNS Agency
and BARBER SHOP
303 Ea. 176th St. LE 7-7757
2 Blocks East of Transformers, Spanaway

CLIFFORD M. KORSMO
Lutheran Brotherhood
Life Insurance
LEnox 7-5644

"HI NEIGHBOR" BUY A VACATION TRAILER

17-FOOT Rod & Reel Vacation Trailer equipped with Ice Box, Double Bed, Folding Bed, Butane Range, Hot and Cold Water. LIKE NEW. \$400 Down. (Rod & Reel is the trade name of this trailer).

21-FOOT Rod & Reel Vacation Trailer equipped with Refrigerator, Double Bed, Folding Bed, Shower and Toilet, Hot & Cold Water, Butane Heat & Range. LIKE NEW. \$700 Down.

With approved credit, you can buy either of these trailers with NO MONEY DOWN.

WRITE US - WIRE US - PHONE US
A SALESMAN WILL CALL

KLASEY CHEVROLET CO.

MORTON, WASH. PHONE 2454
Open Every Day 8:00 a.m. Till 8:00 p.m.

CHEVRON GAS STATION

be safe
Let us carry the ball on your

SUMMER VACATION LUBRICATION

HAVE THESE POINTS CHECKED

- ✓ Chassis Lubrication
- ✓ Crankcase
- ✓ Brake Cylinder
- ✓ Air Cleaner
- ✓ Covered Springs
- ✓ Oil Filter
- ✓ Transmission - drain inspect - fill.
- ✓ Differential - drain - inspect fill.
- ✓ Repack front wheels.
- ✓ Special points - wet clutch - power steering reservoir - shock absorbers - speedometer cable - Hydramatic power.
- ✓ Battery - recharge.
- ✓ Spark plugs - clean or replacement.
- ✓ Tire service - □ switch □ repair - □ replace.
- ✓ Exhaust system - replacement muffler - tail pipes & clamps.

FREE PICK - UP AND DELIVERY SERVICE

CALL LE 7-0256

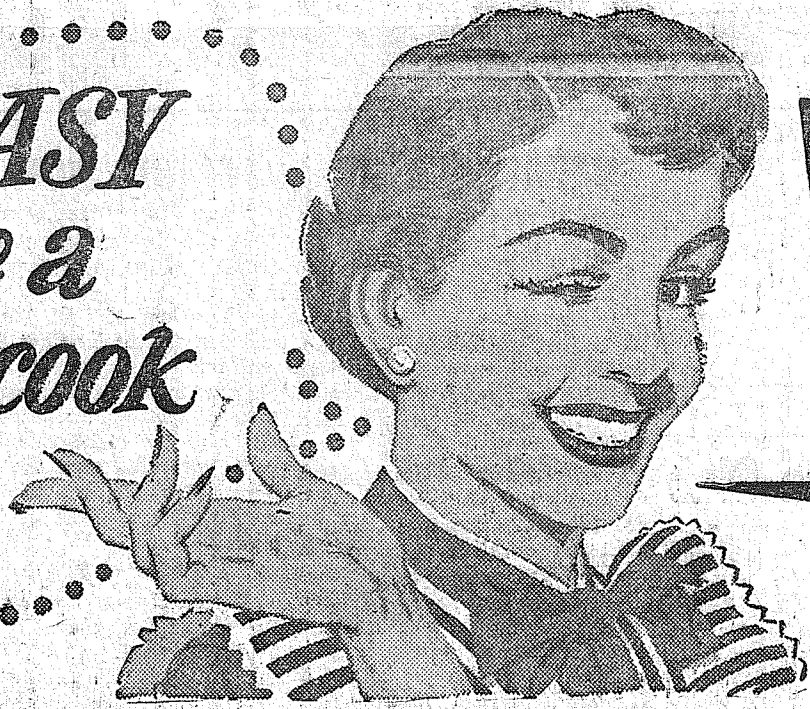
MARY TOMMERVIK'S

Parkland Fuel Oil Service

120th & Pacific Avenue

LEnox 7-0257

it's *EASY*
to be a
good cook



...with these

FINE QUALITY FOODS

From **SUMMIT TRADING CO.**

Uncle Sam's
Best
Work Shirts
Triple Stitched
Main Seams
Cigarette Pocket
E-Z Reach Pocket
Sanforized
Long Square Tails

\$1.98

C & H
Sugar 25-Lb. Bag **\$2.39**
LARGE AA
EGGS
doz. **44c**

FOR SUMMER MEALS 12-Oz. Tin
Spam **35c**
Sunny Jim New Crop 20-Oz. Jar
STRAWBERRY PRESERVES **3/\$1**
Buy By The Case - 12 Jars - \$3.95

FOLGERS
Coffee Pound **93c**
MIRACLE WHIP
Salad Dressing
quart **49c**
NEW KRAFT CATALINA FRENCH DRESSING 8-Oz. 33c

 SIRLOIN Or RIB Pound STEAKS 53c GOOD YOUNG STEER	<p>SUMMIT FARMS FRESH SMOKED & CURED IN OUR OWN PLANT</p> <p>HAMS WHOLE OR SHANK HALF 10 To 14 Lbs. Average LB. 53c</p> 	<p>Selected Quality TENDER and DELICIOUS CHUCK OR 7-BONE CUT Lb. Pot Roast 37c GOOD YOUNG STEER</p> 	<p>SUMMIT FARMS Our own dry cure gives you less shrinkage. Sold Here Exclusively - By The Piece</p> <p>BACON Lb. 57c</p> 
--	---	---	--

BOOTH'S FRESH FROZEN
Fish Sticks 8-Oz. Pkg. **33c**
Booth's Fresh Frozen Breaded
Shrimp 10 Oz. Pkg. **59c**

"KRAFT DAIRY MONTH SPECIALS"

- 13 1/4-Oz. MELLOW CRACKER BARREL 55c
- 13 1/4-Oz. SHARP CRACKER BARREL 65c
- 13 1/4-Oz. EXTRA SHARP CRACKER BARREL 69c
- 8-Oz. PLAIN OR PIMENTO CHEEZ - WHIZ 29c
- 8-Oz. DELUXE SLICES AMERICAN OR SWISS 29c
- 6-Oz. NATURAL SLICED SWISS 31c
- 3-Oz. PHILADELPHIA CREAM CHEESE 2/29c
- 5-Oz. BACON - GARLIC OR OLD ENGLISH JAR CHEESE 2/45c
- 1-Lb. Pkg. KRAFT VELVEETA CHEESE 45c
- 10 1/2-Oz. MINATURE MARSHMALLOWS 29c

NABISCO SNOWFLAKE
Crackers 2-Lb. Pkg. **47c**
NABISCO GRAHAM CRACKERS 2-Lb. Pkg. **59c**
RITZ CRACKERS Lb. Pkg. **33c**

<p>GAINES DOG MEAL 25-Lb. Bag \$2.29 KITTY CAT FOOD Tall Tin 2/19c</p>	<p>NALLEY'S DILL PICKLES 24-Oz. Banquet or Kosher. 32-Oz. Garlic or Polish 3/\$100 DOXSEE'S MINCED CLAMS Tin 29c</p>	<p>DEL MONTE PINEAPPLE-GRAPEFRUIT JUICE 46-Oz. Tin .27c NABISCO POTATO CRACKERS 8 1/2-Oz. Pkg. CHIPPERS 35c</p>
--	--	---

<p>POTATOES 10-Lb. Pliofilm Bag 35c</p> 	<p>Golden Ripe Finest Quality BANANAS 2 LBS. 29c</p> 	<p>Cantaloupes Sweet & Ripe California Lb. 7c</p> 
---	--	---

STORE HOURS
8 A.M. TILL 9 P.M. DAILY EXCEPT SUNDAYS
(Large Paved Parking Lot)
SUMMIT
TRADING COMPANY
10409 Canyon Road - Tacoma LE 7-5848
No Sale To Dealers
We Reserve The Right To Limit Quantities

Lewis Meat Market

FORMERLY MALCOM'S

Hormel's SMOKED PICNICS . . .	35c	SIRLOIN STEAK	59c
GROUND ROUND . . .	49c	BEEF LIVER	25c
Country PORK SAUSAGE . . .	3/89c	Shoulder RIB STEAK	47c
Lean GROUND BEEF	25c	SLICED BACON	41c
SAVE! For your freezer		By The Half For Your Freezer.	
B E E F	25-Lbs. \$9.95	B E E F	34c

• BEEF SLAUGHTERING - \$5.00 A HEAD •

10903 CANYON ROAD At SUMMIT VIEW

Open: Tuesday thru Saturday, 9 a.m. Till 6 p.m.

Phone LEnox 7-8258

Thursday, June 20, 1957
The TIMES - JOURNAL

Page 3

The TIMES JOURNAL

ADDRESS P. O. BOX 2008, PARKLAND, WASHINGTON
119th and Pacific Avenue Phone LEnox 7-0223

JACK BROWN PUBLISHER
NEVA T. HONEYWELL EDITOR
BOB WARREN ADV. MNGR.
ESTHER GODDARD ADVERTISING
LOUIS SPRY SPORTS EDITOR
KENNETH POTTE SHOP SUPERINTENDENT
WES McKEWEN PHOTOGRAPHER

Qualified as a Legal Publication under Chapter 213 of the Legislative Acts of the 1941 Regular Session of the State of Wash.

Delivered free by U. S. Mail to all homes in the trade territory. Paid subscriptions elsewhere!

In Wash. State \$2.50 per year; outside the state, \$3.00 per year.

ADVERTISING RATES ON REQUEST

4-H Busy Chix Win 3 Awards

Three girls of the Summit 4-H Busy Chix entered the 4-H District demonstration meeting held recently in the Waller Road school. Maryanne Morton received a blue ribbon, Joyce Burr a blue ribbon and Carol Adams a red ribbon.

The Busy Chix will meet Saturday, June 22, at the home of the leader, Mrs. Arlo Morton, 4020 East King St. During the summer months there will be only one meeting each month except on some special event which they are planning.

Visits, Trips
Mr. and Mrs. Robert Garland and their four children have returned to their home at Lee's Summit, Missouri, after a two-week vacation visit with Mrs. Garland's parents, Mr. and Mrs. Nichol of 104th and Grant.

Mr. and Mrs. William M. Lund of Canyon road have returned home from a vacation trip, Mrs. Lund and children spending three weeks with her parents in Nebraska. Mr. Lund met her there and they spent three weeks visiting friends and relatives in Wyoming and Colorado.

Clarence Heister has returned home to Washington, D. C., after spending his three weeks vacation with his parents, Mr. and Mrs. E. B. Heister, and his sister and family, the Arlo Mortons of East King St.

Mrs. C. R. McMillan spent the weekend at Winlock with her daughter, Nancy McMillan.

Ada Holden Circle
The Ada Holden Circle of the Woman's Society of the Summit church will meet Thursday, June 27, at 12:30 p. m. at the home of Mrs. Clarence Ralph on Mt. Tacoma Drive. The regular business session will follow the dessert luncheon.

Bible School Later
Due to the vacations of several workers in the Sunday school of the Summit church, the vacation Bible school will be held in August this year, the dates to be announced later.

Stock Raisers
All members of the Summit Stock Raisers 4-H club are asked to bring their record books to the next meeting, which will be Thursday, June 20, at 7:30 p. m. at the home of Robert Terp on Canyon road. The ribbons which were won at the demonstrations at Waller Road hall will be presented at this meeting.

Trygve Haaland, 4-H reporter.

Any News?
If you have been on vacation or have guests from away, or know any item of news, won't you please call LE 7-8391.
Reporter—Mrs. M. S. Rau, LE 7-8391.

Sixth Graders Feted At Party

As has been the custom for several years past, once again the graduating 6th graders of the Waller Road school were feted May 26 at a party held in the Community hall, sponsored by the P-TA, assisted by mothers of the young people.

Each girl was presented with a corsage, each boy with a boutonniere at the start of the evening of games and fun. Following the gaily refreshments were served by the mothers and the P-TA committee in charge.

For All Your Drug Needs See Us First!

Prescriptions Carefully Compounded

McAuley Summit Drugs

Airport & Canyon Roads
LEnox 7-0668

The students who will enroll in junior high school next September are: Susan Anderson, Joanne Boshell, Wilma Churning, Effie Clark, Lyla Hanson, Hazel Hite, Lois Kosmo, Jean Hulscher, Sandra Larkins, Marion Lee, Alice Massey, Joyce Notton, Karen Peters, Jane Pitzemeyer, Jackie Sperling, Carol Squires, Rose Taylor, Barbara Wood, John Bliner, Bill Fox, Bill Hoffman, Kenneth Martin, Charles Nelson, Willis Savage, Roger Swanson and Bill Rutherford.

Visitors
Visitors at the George May home the past week were Mrs. Lucille Heathcote, aunt of Mr. May, and her friend, Mrs. Marjeline Spencer, of Oakland, Calif. During their stay they were entertained on numerous occasions and also visited other relatives in Tacoma and Seattle.

Mr. and Mrs. Raymond Kulju and children of Richland were visitors at the Jonathan O'Brien home last weekend.

Mr. and Mrs. Nathan Turner of East 62nd street had as their guests for a week Mr. and Mrs. George Johnson of San Francisco. The Turners entertained their guests with trips to the ocean and the Mountain and also to visit relatives in Seattle. The Johnsons are Mrs. Turner's uncle and aunt.

To Locate Here
A recent graduate of Central Washington College of Education is John Roger Anderson who, with Mrs. Anderson and sons Roger and Danny, returned to this district recently. They spent several weeks at the home of his parents, Mr. and Mrs. Joseph Anderson, 80th and Vickery road, and are now establishing residence at Summit. Mr. Anderson will teach 4th grade at Maplewood school for his first teaching assignment.

Family Reunion
Mrs. Harvey Weeks Sr. of Waller road has returned to her home after a pleasant month-long stay at the home of relatives in Kokomo, Ind. For the first time in 43 years all of the eight members of her immediate family were together to help their mother, Mrs. Mary Smith, celebrate her 80th birthday on Mother's Day. Later at a reunion of relatives and old time friends, held in Little York, over 128 persons were in attendance. Despite the threatening weather in and around these Indiana towns, a gay time was had.

Birthday Party
Diane Ebert, daughter of Mr. and Mrs. Lloyd Ebert of Vickery road, celebrated her eighth birthday by inviting a group of classmates and friends in for a party. Games were played with prizes awarded to Debbie Graham, Laura Costantini, Ann Aarhus and Rosalie Notton. Many lovely gifts were presented to Diane by her little friends. Sharing the fun of the day and the decorated birthday cake were Ann Aarhus, Laura Costantini, Lavina Elmore, Debbie Graham, Debby Looker, Nani Mae Lovell, Susie Swain, Mary Ninemires, Rosalie Notton, Diane Perrin, Janet Shonborg, George Sprinkle, Karen Taylor, Vina Beuchler, the honored guest, Diane Ebert and her sister Janis and brother Wayne.

New Daughter
Mr. and Mrs. E. K. (Pat) Yoder of Vickery road welcomed a new daughter, Leasa Coline, June 3. Mighty proud also is brother Scott.

It's a Boy!
June 1 was a very special day for Mr. and Mrs. John Sand of

Carlson road, marking the birth of a grandson! The baby was born to Mr. and Mrs. Richard Barr (Vienna Sand) of Alexandria, Virginia. He has been named Jonnie Richard. Great-grandparents are Mr. and Mrs. Andrew Larson of Carlson road. Mr. Barr is serving with the U. A. Air Force at Washington, D.C.

Festival a Success
Once again the doors have closed on the annual strawberry festival sponsored each year by the Marie Hazen Orthopedic Guild at the Waller Road community hall. Hundreds of persons attended throughout the afternoon and evening. The talent of the young folks appearing on the program was well received by the audience. Thanks from the Orthopedic ladies in charge to all who supported them in their worthwhile project.

Vacation Bible School
Following the week-long Vacation Bible school held at the Community hall by the Evergreen Baptist Church, the Rev. Herbert Lawrentz announces that the closing exercises will be presented by the children at the Combined Sunday services June 23 at 9:45 a.m. The hour-long program will be given for parents and friends. Everyone is welcome. Sunday school and church are held each Sunday at Waller road.
Reporter — Mrs. Verne Fogle, LE 7-5210.

Sewing Circle To Meet Tuesday

The Mineral, Pleasant Valley and Elbe Community Sewing Circle will meet Tuesday, June 25, at the home of Mrs. Pearl Engel. With so much work piled up to be done, it was decided to abandon the usual potluck lunch this one day, each member being asked to bring her own sack lunch; coffee and cold drinks will be supplied. This will give the members more time to catch up on the work that has accumulated.

It is hoped that all members will be present.

Trips, Visits
Mrs. Richard Parker left Elbe last Wednesday to go by bus to Texas to join her husband.

Two daughters of Mr. and Mrs. Ralph Stevens, Lawana and Geraldine, are visiting their grandparents, Mr. and Mrs. Charles Miller. These Seattle girls enjoy the big out-of-doors freedom of country life.

Mr. and Mrs. John Fraser went to Raymond last weekend to comfort Mr. and Mrs. Ed Norman, whose three-month-old son Howard passed away June 5. Mrs. Norman is the granddaughter of the Frasers.

Mr. and Mrs. W. A. Pemberton of Smith River, Calif., uncle and aunt of Mrs. Floyd Kast, are guests of the Kast family. Mrs. Frank Jewell, mother of Mrs. Kast and sister of Mrs. Pemberton, arrived from Brinnon, Wash., Friday so the families could enjoy a pleasant reunion. Mr. and Mrs. Pemberton are on an extended vacation. They spent some time in Portland, Oregon, on their way to Elbe and plan to go eastward and visit several families in Montana before returning to California.

Casey Swanson and son Rodney, accompanied by Albert Wood of Kent, left Elbe to enjoy weekend rabbit hunting in Eastern Washington.

Mr. and Mrs. Ray Engel and Mrs. Pearl Engel enjoyed a pleasant visit with Mrs. Violet McLean at her home in Tacoma last Friday. They have been friends for over 30 years. The old timers at Elbe will remember Charlie McLean, her husband, who lost his life many years ago while fishing in the Nisqually river at Elbe.

Drill Team
The Theta Rho Girls drill team met June 11 with the Rebekahs to practice to prepare for the state convention.

Birthday Party
Friday afternoon, June 14, Mrs. Mae Kirkpatrick gave a birthday party honoring Ethel Taylor. The ladies present were Mrs. Mary Thompson, Theresa Bloom, Cora Lyday, Ann Snell, Sophia Kirkpatrick, Virgie Battle, Vada Loden, Allegra Bloom and Ruth Fitzer. Mr. George Battle, Mrs. Taylor's brother, was also present.

Reporter — Mrs. Pearl Engel, Elbe.

Alder - LaGrande News

LaVonn Sparkman from Mineral, Ben Wood, Charlie and Katy Reed from Morton were the delegates of Morton Rockologists attending the last Nisqually Rock Club meeting to explain the organization for the Rock Show that will be held at Morton the same dates as the Logger's Jubilee in August. Exhibits are welcomed from members or non-members of clubs. Details will be furnished the Nisqually club later and can be obtained from them or Morton.

Virgie and George Battles reported on their field trip to Silver Lake and the Pow-wow at Medford, Oregon. Jerry Hoyer recommended seeing the rock display in the Tacoma Public Library. Roy Millen from Alder was a visitor and demonstrated black light on fluorescent rock. Other visitors to our club were Myrtle Leach from the Canyada Lodge and Pat Stenberg from Tacoma.

A surprise feature of the Alder Square Dance Saturday night was the announcement of the 25th wedding anniversary of Helen and Lloyd Gilbert, followed by all dancing the Happy Polka. Square dance friends who

helped make it a special evening enjoyed an outdoor picnic with their families and balloons and weiner roast that went on all evening for the children, a tour of the Alder Power House, garden hats and handicraft prizes, and the talent of callers Ed Hendricks, Esther Hansberry and Ed Townsend who also donated his time to MC the entertainment. The Gilberts have been residents of this area practically all their lives and with to thank those who helped them celebrate.

THE U. S. AIR FORCE
— SPECIALISTS IN AIRPOWER

WE'VE GONE **HOG WILD** WITH OUR **Low Prices**

SO FRESH THE HENS ARE STILL CACKLING DOZ. **EGGS 44c**

LARGE AA U and I PURE SUGAR \$1.00

10 Lbs.

PURE CANE — GUARANTEED TO SWEETEN ANY GROUCHY DISPOSITION!

NEW! NEW! NEW! WHITE KING TALL FANCY CAN

CLEANSER 10c

ZEE WHITE NAPKINS 80-Count 10c	McDaniels Bonnie Good Lb. COFFEE 85c
Gold Medal FLOUR 10-Lbs. \$1.00	Calo DOG FOOD . . . 2 For 25c
SUNSHINE SWISS OR OREO COOKIES Pkg. 35c	Stahl Meyer MEATS . . . 2 Cans 43c
SUNSHINE SHREDDED WHEAT . . 2/35c	EXTRA CAN FREE!

FREE! JOKES, BACK SCRATCHING & GOSSIP

TASTY DELICIOUS - CHEF'S DELIGHT 2-LB. LOAF

CHEESE FOOD 69c

You'll Make A Hit With Every Mouse In The House!

GOLDEN RIPE Bananas 2-LBS. 29c

GUARANTEED TO HAVE NO BONES

FRESH SOLID Lettuce LB. 5c

COACHELLA VALLEY Grapefruit 5c

Each 5c

YOU'LL GO HOG WILD WHEN YOU

LOW MEAT PRICES

LOW MEAT PRICES:
POT ROAST Pound **35c**
From A Pampered Contented Steer!

SHORT RIBS Pound **19c**
So Meaty You'll Have To Hunt For The Bone!

FRESH SMOKED BACON SQUARES Pound **29c**

JAMES HENRY WEINERS 1-Lb. Cello **45c**

JAMES HENRY PICNICS Pound **39c**

FRESH BEEF LIVER Pound **39c**

KEEP YOUR GARDEN GROWING

Full Line of Insecticides, Plant Food and Fertilizers.

Summit Feed

Home of Fishers Quality Feeds
Knapp & Canyon Roads
Next to Summit Trading Co.
LE 7-1136 We Deliver

DANCING
Every Night To The Music Of **MEL McLAUGHLIN**

Starring Friday & Saturday
Glamorous Singer **DOROTHY WALLEY**

the Bungalow
Fishermen's Headquarters For Good Food!
OPEN ALL NIGHT
TRY OUR NEW SIZZLING STEAKS

Butler's Garage
Phone LE 7-8209
One Block North Airport
Road on Canyon Road

Plywood Finished Lumber Hardware - Paints Plumbing Supplies

FOR ALL YOUR BUILDING NEEDS - SEE . . .

Summit Lumber & Hardware Co.
5303 East 112th LE 7-4555
Open 9 a.m. Till 6 p.m.

Save! BUY BIG SIZES!

COLGATE DENTAL CREAM
Econ. Size **65c** SAVE 18c

HALO SHAMPOO
Giant Size **89c** SAVE 41c

Rapid-Shave
Giant Size **79c** SAVE 70c

MINUT MART
Non Foods Promotions
1542.44 Commerce
Market 7-5456

McDANIELS
AIRPORT & CANYON ROAD

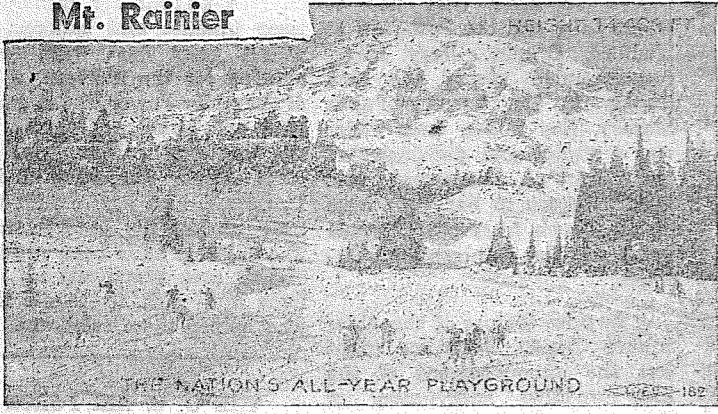
The Home of The Low Price

Store Hours: 9:00 Till 9:00 — Sundays 9:00 Till 7:00

Effective Prices THURS., FRI. & SAT. THIS WEEK

Lots Of Free Parking Space

Mt. Rainier

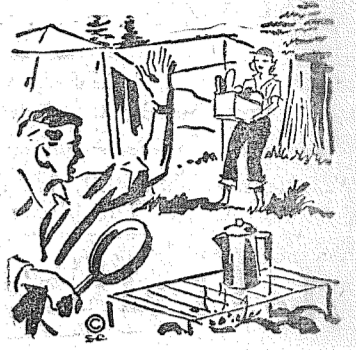
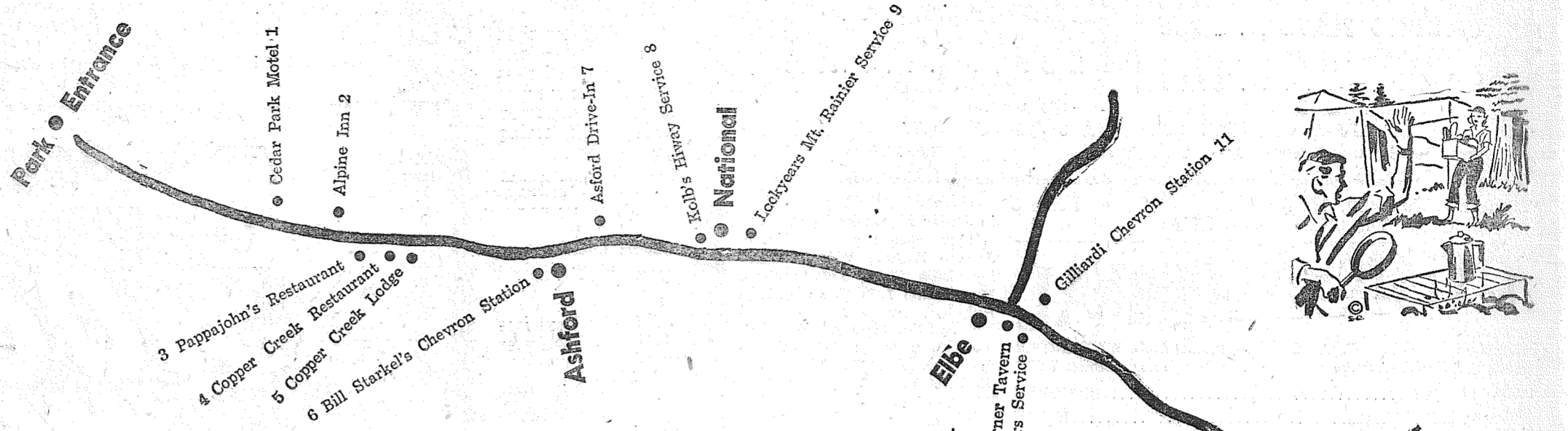


"WHERE FLOWERS AND GLACIERS MEET"—The many improvements that have been made, will add much enjoyment for the whole family.

MAKE YOUR TRIP A SOCIAL ONE.
THESE BUSINESS FOLKS INVITE
YOU TO STOP IN AND
GET ACQUAINTED!

MT. RAINIER NATIONAL PARK

FOR THE SUMMER SEASON



1 CEDAR PARK MOTEL
 Very Modern Cabins
 Kitchens - Showers - Automatic Heat
 Approx. 1/2 Mile from Park Entrance Ashford 5403

2 ALPINE INN
 Modern Cafe - Cabins - Gas & Oil
 Try Our Famous PIZZA BURGERS
 Mountain Highway Ph. Ashford 5203

3 PAPPAGOHN'S RESTAURANT
 BREAKFAST - LUNCH - DINNERS
 Parties & Banquets a Specialty - Dancing Facilities
 Mountain Hiway Ph. Ashford 5204

4 COPPER CREEK RESTAURANT
 Gad About - Dining Out? No Doubt!
 Homemade Bread - Coppers Toppers
 Wild Berry Pie - Dinners - Snacks - Curios
 Mountain Hiway Ph. Ashford 5205

5 COPPER CREEK LODGE
 Modern Cottages - Reasonable Rates
 Very Nice Playground for the Children
 Trout Fishing. No License Required
 Mountain Hiway Ph. Ashford 5206

6 BILL STARKEL'S CHEVRON STATION
 R.P.M. Oil - Atlas Tires - Tire Repair
 Picnic Supplies - Groceries
 Mountain Hiway Ph. Ashford 5011

7 ASHFORD DRIVE-IN
 HAMBURGERS - SHAKES & PIE
 Window Service - Picnic Tables - Overnight Rooms
 Mt. Hiway 7 Miles Past Elbe Ph. Ashford 5592

8 KOLB'S HIWAY SERVICE
 Hamburgers, Hot Dogs & Milk Shakes To Go
 Soft Freeze - Nick Nacks - Fishing Equipment
 National, Washington Ph. Ashford 5191

9 LOCKYEAR'S MT. RAINIER SERVICE
 Mobil Station - Cafe - Fountain Service
 Wheel Balancing - Tire Repair
 Wrecker Service
 National, Washington Ph. Ashford 5301

10 THE CORNER TAVERN
 A Friendly Spot to Stop & Relax
 Elbe, Washington
 At the Junction of the White Pass & Mountain Hiways

11 GILLIARDI CHEVRON SERVICE
 GAS - OIL - TIRES
 BATTERIES - ACCESSORIES
 Elbe, Washington Ph. Elbe 2171

12 WALKER'S SERVICE
 Parts House - Repair Service
 Service Station
 Elbe, Washington Ph. Elbe 2511

13 ALDER STORE
 Groceries - Sundries
 Gas - Oil - Tires
 Mt. Hiway at Alder Ph. Elbe 2801

14 LaGRANDE CAFE
 Breakfast - Short Orders - Dinners
 Tom & Louise Davis, owners
 Mt. Hiway - LaGrande Ph. TE 2-3835

15 LA GRANDE MOTEL
 Managed by Charlie & Mildred Bolten
 Modern Cabins - Camp Grounds - Trailer Park
 Mt. Hiway Past LaGrande Ph. TE 2-3833

16 CANYADA LODGE
 Managed by Mrs. Gemmell & Mrs. Leach
 BREAKFAST
 LUNCH - DINNERS
 Mt. Hiway at LaGrande Terrace 2-3837

17 SPRINGWATER TROUT FARM
 The trout are here: All sizes. Can you catch them? Your catch will be cleaned and wrapped for you. We furnish everything for fishing. No license required.
 Ph. VI 7-2110

18 LOVELAND MOORS
 BIG DISCOUNT ON 57 CHEVS & OLDS
 Mt. Hiway - Loveland, Wash. LEnox 7-3904

19 KUPER'S KORNER
 Mobil Gas-Groceries-Beer
 Everything to complete your picnic lunch. Open All Day Sunday For Your Convenience
 At Loveland ICE

20 ELK PLAIN CAFE
 Manager, Edna Burton
 Breakfast - Lunch - Dinner
 Good 5c Coffee
 Open 24 Hours Every Day
 Mt. Hiway at Loveland

21 WOODY'S MARKET
 ALMOST EVERYTHING - BUT NOT QUITE
 Loveland, Washington

22 B & B RIDING ACADEMY
 HORSES FOR RENT
 Outdoor Camping and Picnic Grounds
 Horses Boarded
 Very Reasonable
 English & Western Riding Taught

23 THATCHER & SONS RICHFIELD
 T.V. Sets - Free Tube Testing
 Groceries
 1 Mile Past Roy "Y" on Mt. Hiway

24 HOWARD BUTH
 Dairy Cows - Hay - Lumber
 Open 7 Days Per Week
 1st House Past Roy "Y" On Mt. Hiway

25 TYRELL'S Mobil Service
 GAS - OIL
 ACCESSORIES
 LE 7-7937
 Mt. Hiway at Roy "Y" Cut-off

26 ROY "Y" SAV-MOR
 Lloyd Thomas, owner
 GAS - OIL
 Accessories - Lubrication
 Vinewood 7-7880
 Mt. Hiway at Roy Y Cut-off

27 ROY "Y" CAFE & SERV. STATION
 — OPEN 7 DAYS A WEEK —
 Mountain Road at Roy Cut-off LE 7-4221

28 SOUTH END PLUMBING & HARDWARE
 Everything for the Home Handy Man and Fisherman and Hunter
 LE 7-4100
 SHORN PAINTS
 Fishing & Hunting Licenses
 Mt. Hiway near Roy "Y" Spanaway

29 L & M AUTO-MOIVE SERVICE
 TEXACO PRODUCTS
 Complete Repair Service
 Truck & Auto
 Electric - Acetylene
 Welding
 170th & Pacific LE 7-0935

30 REDWOOD COURT & CAFE
 Modern Units with Kitchenettes & Electric Heat
 BREAKFAST - LUNCH - SHORT ORDERS
 Home Made Apple Pie
 BILL & SELMA FISHER
 170th & Pacific Avenue LEnox 7-4651

31 THE BARGAIN BASKET
 Open Sundays
 FOR YOUR PICNIC SUPPLIES
 167th & Pacific Avenue, Spanaway "On the Road to Paradise"

32 SPANAWAY 5 & 10
 PICNIC SUPPLIES - FISHING TACKLE
 For All Your Needs, First Shop
 Across from the School on Mt. Hiway at Spanaway

33 TARGET SPORT STORE
 Voit Swimming Goggles & Frog Feet
 CHARCOAL FOR YOUR BROILER
 LICENSE - WORMS
 161st & Pacific Avenue LE 7-7082

34 OUHL'S ONE STOP SERVICE
 RICHFIELD GAS & OIL
 COMPLETE AUTO REPAIR SERVICE
 160th & Pacific Avenue LE 7-6547

35 GREEN ACRES EXCHANGE
 Used Furniture, Appliances, Etc.

36 PRETTYMAN HEATING CO.
 McPherson Furnaces
 147th & Pacific Avenue LE 7-6184 - LE 7-7861

37 RUDY'S FEED & SEED
 FEEDS - Dogs - Horses - Cattle - Chickens
 Fertilizer & Peat Moss
 Leather Goods - Parker Paints
 146th & Pacific Ave. Triangle Feeds LE 7-4888

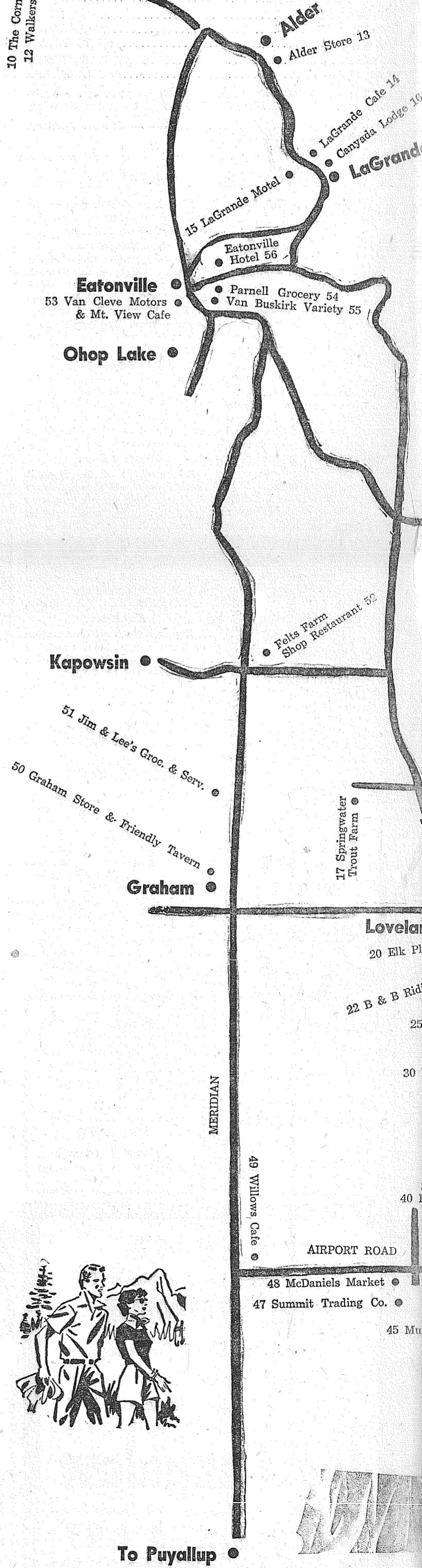
38 RAU MFG. CO.
 Specialty Sheet Metal Work
 You Name It - - - We Can Make It
 141st & Pacific Ave. LE 7-7372

39 PARKWAY FURNITURE
 OPEN TILL 9:00 P.M.
 Phone LE 7-3941
 141st & Pacific Avenue Mountain Highway

40 POCHEL DISTRIBUTING CO.
 YOUR FUEL OIL and APPLIANCE DEALER
 LE 7-8624
 140th & Pacific Mt. Hiway

41 MOUNTAIN BRAND SHAKES
 RESAW AND TAPER SHAKES
 210 South 127th LE 7-4080

42 SILER'S
 TV AND APPLIANCES
MOTOROLA
 TELEVISION
 CAR, PORTABLE & HOME RADIOS
 FACTORY TRAINED PERSONNEL
 ON DUTY TILL 9:00 P.M.
 LE 7-8634
 11230 PACIFIC AVE.



PARK OPENS JUNE 21ST

Plan Your Trip On The Road To Paradise

MT. RAINIER NATIONAL PARK, contains 378 square miles of America's superlative mountain grandeur, is easily accessible from the gateway cities of Tacoma and Seattle. Towering above all this is Mt. Rainier, an extinct volcano, 14,408 feet above sea level. It is the highest perpetually ice-clad peak, and has the largest single system of glaciers in the U.S. These glaciers, 26 in all, contain more than 45 square miles or 29,000 acres, of ice. Beneath these masses of moving ice are born many turbulent rivers which flow through the Evergreen Playground to the waters of the Pacific. Almost 700 species of flowering plants in addition to hundreds of ferns, mosses and fungi; 34 waterfalls, 62 lakes, and trees centuries old, add to this Mountain of grandeur. Here is fun for all—hiking, mountain climbing, saddle horse riding, fishing, dancing and easy walks through flower meadows. Hotels, lodges and camp grounds are provided for your comfort. Guides, Ranger Naturalists, spacious lobbies and experienced, intelligent personnel provide for your entertainment.

PARADISE VALLEY, situated on the south side of Mt. Rainier, is reached by way of excellent highways leading directly to Paradise Inn. You will thrill at the huge evergreen trees lining the high-

way on either side, the great Nisqually Glacier that flows precipitously down the mountain toward the roadside, beautiful Narada Falls dropping 168 feet to the Paradise River Canyon, unexcelled panoramas from the highway at Ricksecker and Inspiration points, and spectacular Mount Rainier itself, rising 14,408 feet above sea level.

We urge you to visit Paradise for it is without doubt THE GREATEST SINGLE SCENIC ATTRACTION IN THE ENTIRE NORTHWEST.

Paradise Inn, with its unique timbered lobby and dining room, is renowned for its excellent food and comfort, and will be open June 21.

NARADA FALLS, on the highway to Paradise Valley is one of 34 waterfalls in Mount Rainier National Park.

NATURALIST CONDUCTED TOURS see the beauties of Paradise Valley and the Tatoosh Range with Mt. St. Helens sixty miles away.

Be sure to plan a trip to the park this summer. On this page you will find listed many businesses and their location shown, who will endeavor to make your trip more pleasant. Keep this page, referring to it on your trip.



43 DARI DINER

Get It Here Before You Start That Trip. It Costs Less

19c Burgers & Hot Dogs
11c French Fries
34c Double Burgers

LE 7-4055
10018 Pacific Avenue

44 Bob Snyder Gas-O-Lene Talley

UNION 76

Fill Up Here For That Mt. Trip. Our Good Gas Will Give You That Needed Pep

U. S. ROYAL
TIRES - BATTERIES

LE 7-6076
10002 Pacific Ave.

45 MULL'S GARAGE & SERVICE

HAVE YOUR CAR SERVICED BEFORE YOU START THAT MOUNTAIN TRIP

COMPLETE AUTO AND TRUCK REPAIR
MOBIL GAS & OIL PRODUCTS

10005 Pacific Avenue LE 7-7342

46 ANDERSON LUMBER

VOR, POP, MOM AN-DER-SON

Vee Hav Supplies

PAINTS

Lumber & Bldg. Supplies

9813 Pacific Ave. LE 7-7311

47 SUMMIT TRADING CO.

104th & Canyon Road

FRIENDLY SERVICE

Full Line Groceries, Meats

Hardware And Picnic Supplies

48 McDANIELS

AIRPORT & CANYON ROAD

THE HOME OF THE LOW PRICE

STORE HOURS: 9 TILL 9 - SUN. 9 TILL 7

LOTS OF FREE PARKING

49 Willows Cafe

Either Road You Take

HOME BAKED PIES

Food As You Like It - Fountain -

Lois & Joe Baumgartner

Meridian & Airport

50 Graham Store & Friendly Tavern

Feel at Home Among Friends

Beer & Wine to Take Out

GAS and OIL - Groceries

General Merchandise

AT GRAHAM

Roy & Helen Thorsen

51 JIM & LEE'S GROCERY & SERVICE

Ride with the Flying Horse — MOBILGAS

Oil and Accessories

Groceries - Meats and Beverages

Meridian Highway and Carlson Road

52 FELTS FARM Shop Restaurant

AN UNUSUAL PLACE

Home-made Pie and the Famous Gypo Logger Hamburger

Operated by MARGARET & HORACE FELT

Meridian Hwy
5 Miles South of Graham

53 Mountain View Cafe

SUNDAY DINNERS a Specialty

EATONVILLE

Shortcut to Mt. Rainier

VAN CLEVE MOTORS

Ford Sales & Service

Chevron Gas

54 PARNELL GROCERY

"Personal Friendly Service Need Cost No More"

Hours: 8 a.m. - 6:30 p.m. — Sundays 10 - 2

Stop And Get Your Picnic Needs Here - We Carry Ice

EATONVILLE

55 VAN BUSKIRK VARIETY

Hours: 9 a.m. - 5:30 p.m.

Garden Supplies - Sun Glasses

Souvenirs - Films (48-Hour Service)

Box 426 Eatonville

56 EATONVILLE HOTEL

Margaret E. Taylor TE 2-4656

Friendly Service - Reasonable Rates

Attractive Rooms for Tourists - Home for Elderly Citizens

Centrally Located

Near Stores Near Churches

CLASSIFIED ADS

Thursday, June 20, 1957 The TIMES - JOURNAL Page 5

Business Service 3

HAY CUTTING — Farm-All tractor; first hour \$5; \$4 thereafter; LE 7-4815 or LE 7-7484. 3cft

BRICK WORK — House leveling and foundations, retaining walls, sidewalk and patios, fireplace and stone work. LE 7-4291. 3cft

ROTOTILLING — \$4.00 per hour LEnox 1-1755. 3cft

SANDY LOAM top soil, 6 yards \$12; Buck, JU 8-3189. 3cft

PLOWING, rotovating, leveling lawns; also hay mowing; R. D. Beeler; LE 7-4940. 3cft

ROOFING, composition, shingling; roof repairing; free estimates; LE 7-4859. 3cft

CANYON ROAD GRAVEL & SUPPLY; pick-ups and trailers loaded or we haul; LE 7-7586 3cft

HOUSE MOVING — Leveling, foundations; cement work; free estimates; SK 9-2653. 3cft

HAY CUTTING, side delivery rake, plowing and discing. Baler available. LE 7-4444. 93rd and Vickery Road. 3cft

CUSTOM KILLING, poultry of all kinds; WA 2-6952. 3cft

South End Auto Wreckers USED PARTS

Motors - Transmissions
Tires - Batteries
We Buy Junk Cars
Also Custom Welding by Joe's Welding

1 Mile East Roy Y on Mt. Hy. Spanaway LE 7-6534

SNAP ON TOOLS — Johnny Hall, 1012 South 110th, Lenox 1-0856. 3cft

ROTOVATING & TRACTOR WORK; Rt. 3, Box 167, Tacoma Chesney-Etter Road). LE 7-7559 3cft

SEPTIC TANK PUMPING — Replace and repair work. 3 years to pay; JU 8-8734 - GR 4-5945. 3cft

WELL DRILLING Berkeley Pumps

- JETS
- SUBMERSIBLES
- CENTRIFUGALS
- TURBINES

Call LE 7-7281

Tacoma Pump & Well Drilling Co.

Rt. 7, Box 316 Tacoma Trades Terms

CUSTOM HAY BAILING; LE 7-8375. 3cft

RAY GOGAN Landscape Construction. Puyallup sandy loam top soil, new lawns; nothing down, 30 months to pay. LE 7-3127. 3cft

AUTO GLASS, Seat covers; upholstery & convertible tops installed. Open 9:00 a.m. to 1:00 p.m. Saturdays. ART'S GLASS & UPHOLSTERY SHOP, 816 So. Tacoma Ave. MA 7-2200. 3cft

LAWN MOWERS Serviced and Stored

Power Mowers A Specialty

Free Pick-up & Delivery

PARKLAND CYCLE & KEY

11009 Pacific Ave. LE 7-5772.

FOUNDATIONS—New additions; free estimates, financing; work guaranteed; GR 4-2002. 3cft

SEPTIC TANK CLEANING Prompt Service C. V. Hutson

GR 4-3980 GR 2-7038

SEPTIC TANKS & WATER LINES INSTALLED. Riley Brothers. Phone LE 1-0987 or LE 7-3204. 3cft

SEPTIC TANKS CLEANED — Contents hauled away. Don Redford, 8232 So. Fawcett, GR 2-1025. If no answer call GR 2-7334. 3cft

WE BUILD HOMES — Remodel, level buildings; cabinet work, concrete work. Reasonable; LE 7-3550. 3cft

NEAT BEAUTY SHOP

GR 2-7628

72nd and Portland Ave.

AERIFYING & FERTILIZING; give your lawn a treat; JU 8-2111. 3cft

GEORGE PURDUE—Plumbing, heating, New work. Remodeling, Repairs. Phone LE 7-4477. 3cft

LAWNS MOWED reasonable; rotary or reel; Call Jerry; LE 7-3249. 3c40

BRICK & BLOCK WORK; fireplaces a specialty; LE 7-4228 3cft

DON'S LAWN SERVICE—Blade work, hauling, loading, top soil, new lawns; guaranteed work. Don Aldem, 608-E Woodland Road, Puyallup; LE 7-6571 or LE 7-5063. 3c43

Hot Water Heating Residential and Remodel Work

CORNELL PLUMBING & HEATING

LE 7-7293

Ace Dirt Moving Co.

Bulldozing - Ditching
TOP SOIL - GRAVEL
SEPTIC TANKS and
DRAIN FIELDS

Phone TH 5-2452 3cft

POWER MOWERS sharpened and serviced; pick-up and delivery; Baldwin & Son, 947 Tacoma Ave., MA 7-3431. 3cft

SPANAWAY ELECTRIC—Contracting and appliances; free engineering service for electric heat; LE 7-7064. 3cft

FERN HILL BEAUTY SHOP

COMPLETE BEAUTY SERVICE

8287 1/2 Park Ave. GR 4-3177

BLENDED TOP SOIL; peat; barnyard compost; sand; free estimates, JU 8-2111. 3cft

FAST PHOTO SERVICE — In at 10:00 out at 5:00. QUALITY PHOTO SERVICE, 9818 Pacific Ave., LE 7-7271. 3cft

SMITH CABINET SHOP—Remodeling, kitchen cabinets; we sell glass; 16309 S. Park, Spanaway; LE 7-7949. 3cft

Home Wiring

Free Estimates
Guaranteed Satisfaction
Emergency Service

PEARL ELECTRIC

LE 7-3563

PARKLAND HEATING CO.—All makes of furnaces for sale; specializing in Williams OIL 'O' MATICS; Oil, Gas, Hot Water Installations. Service; reasonable; 755 South 108th, LE 7-4045. 3cft

ECONOMY Builders Supply

Airport at Portland Ave.

LE 7-8591

BEST BUYS
New Lumber and Used Building Supplies

STAN'S SUPER SOIL SERV. ICE: Top soil, sandy loam, peat fertilizer; GR 4-2305 or LE 7-8259. 3cft

BULLDOZING

Bank Run Gravel Water Lines Septic Tanks

Top Soil at Reduced Prices

Frank Reardon

LE 7-5758

FOUNDATIONS, additions, remodeling. Free estimates. Financing, no down payment. Phone GR 4-7000 anytime. 3cft

PHYSIOTHERAPY treatments in your own home; day or night; LE 7-7254. 3cft

GRAVEL — All sizes; top soil; leveling; weekend deliveries; LE 7-7291. 3cft

Clogged Drains? Toilet Won't Flush?

Just Call Us

Sanitary Septic Tank Pumping Service

TH 5-2873

TOP SOIL and fill dirt; crushed rock, Utah coal; LE 7-3536 or Puyallup TH 5-2038. 3cft

Midland Nursing Home

10316 Portland Ave. LE 7-5395

LICENSED NURSES ON DUTY 24-HOURS A DAY

KITCHEN CABINETS, corner shelves, book cases; birch, fir or knotty pine; built to your specifications; get the best for less—my prices are the lowest. HOOVER'S CABINET SHOP, LE 7-5314. 3cft

HILL TOP GRAVEL CO.

Puyallup TH 5-2198 for delivery or will load your truck. Pit at end of 23rd Ave. S.E. Puyallup.

Screened Rd. Gravel
Crushed Rock - Top Soil - Drain Gravel

6 Days a Week

RILEY'S APPLIANCE SERVICE—We repair electrical appliances—coffee pots, irons, mixers, heaters, etc. Call LE 7-0323. 3cft

WOMEN 18-55, to address and mail our circulars at home on commission. Write GIFT FAIR, (Dept. 8), Springfield, Penna. 5p41

WANTED — Strong middle aged woman to clean house once a week; also someone for child care and light housework once a week; must have own transportation; LE 7-3563. 5c41

LOST — Yellow male cat with short tail, wearing red collar; vicinity Spanaway Loop; reward. Le 7-8833. 6c41

HIGHEST CASH PRICES paid for smelter pole and log timber. Call evenings. LE 7-5972. 3cft

CASH for livestock of all kinds. Also wanted live cattle for mink feed. WA 2-6797. ELMER MACK IN; MA 7-3565. 3cft

Homes in Parkland Communities; Acreage close in, either with or without buildings.

Bert Brown Realty

11220 Pacific Ave.
Office—Days: LE 7-8695
Evenings—WA 7-9221, GR 4-3315

BY OWNER — Modern 2-bed-room, Parkland; will finance; immediate possession; some furniture; LE 7-4806. 9c41

FOR SALE — Parkland home, 3 complete apartments, 4 well kept lots, corner location, 6 blocks from PLC; near McChord and Fort Lewis; 3 baths, storage, double garage, patio, fish pond, fruit trees; owner moving to Seattle; 401 South 116th. 9c41

HOUSING UNITS DELIVERED

\$1700 to \$2700. Can be financed if you own your lot. Pay cash and save up to \$200. Units are fully insulated and standard built. Let us build your foundation; average cost \$250. You save over 50% on your housing cost by purchasing one of these units. Look them over after 4:00 p.m. during the week, all day Saturday and Sunday, at East 46th and Roosevelt, Tacoma.

McDOWELL'S BUILDING SUPPLY
Milton
Waverly 2-8582

TAYLOR ROAD - \$11,950 PRICED below FHA appraisal. Living room, separate dining room, hardwood floors thruout, 2 extra large bedrooms, 4-pc. bath, lots of built-ins and large closets, attached garage. Barn 22x14. Land 100x347, all cleared. FHA terms. Call Ralph Decker, GR 4-9579.

\$5,250 - PARKLAND SELL OR TRADE. Cute, clean, 1 bedroom, living room, kitchen, wired 220, lots of built-ins, 3-pc. modern bath, concrete fdn, garage, 3 lots. Close to Pacific Avenue bus and stores. Call Ralph Decker, GR 4-9579.

SO. TACOMA - \$6500 \$500 DOWN, \$45 month, 2 bedrooms, living room, large kitchen, wired 220, breakfast nook, picture window, 3 lots, garage. Lots of fruit and garden. Call Ralph Decker, GR 4-9579.

McKinley Hill Realty

6311 McKinley Ave. GR 4-9579
Member of Tacoma Real Estate Board

Jennie L. Grodvg

Parkland Realty Co.

Insurance of All Kinds
Notary Public

Est. in Parkland Since 1941
LE 7-8609 Office
302 Garfield St., Parkland

"Deal with the people who give you their personal attention."

SALISHAN SALVAGE

Hardwood flooring, room 12'x14', you take up, \$15; we take up \$19 Sheetrock, room 26'x14'; you take off, \$10.

Stairs, 8-foot rise, \$12.

Inside Doors with trim, choice \$6 Round Concrete Posts, 12" diameter, 24" long FREE; you haul, we help load.

Wood Ranges & Heaters, good condition, \$10 each.

Kitchen Cabinets, base \$6, upper \$10.

After 4:00 p.m. week days or all day Saturday and Sunday only, at East 46th and Roosevelt, Tacoma.

McDOWELL'S Milton Waverly 2-8582

Rentals 10

FOR RENT — 2 bedroom house; near school, stores, bus; LE 7-7489. 9c41

BOARD AND ROOM, home cooking; LE 7-6009. 10cft

FOR SALE — 2 bedroom home plus one acre, \$5750; \$350 down, \$55 a month; LE 7-3851. 10c41

Repair Service 11

WASHING MACHINE PARTS. Largest stock in town. Repairing that pleases. B.B.'s Washer Service, 3727 So. G. GR 4-9409. 11cft

Gibbons

Spanaway Food Center

Kraft Salad Oil . . . 59c
3-Lb. Can
Crisco . . . 79c

Mortons Salt . . . 2/17c

Full Cream Sharp Cheddar Cheese . . . 59c

Kool Aid . . 6/25c

Large Fresh Franks . . . 41c

Swifts Premium Fresh Fryers . 49c

Carsten's Ham 12-Oz. Jar
Salad Spread . 63c

Top Round Cube Steaks . 65c

New Potatoes . . . 3c
Ice Cold Watermelon . 5c

Prices Effective Friday, Saturday This Week

Automotive 12

'57 FORDS & CHEVROLETS; wholesale prices. SMALLEY MOTORS, 10410 Pacific Ave., LE 7-4060 anytime, evenings, Sundays. 12cft

Evergreen Auto Sales

57 CADDILLAC Cpe. DeVille, full power, 6-way seats, factory air condition \$5495
138th & Pac. Ave. LE 7-4772
Open Sunday

This is Your Chevrolet Salesman



Don Flowers

New Chevrolet Cars & Trucks Used Cars & Trucks
Come to
Puyallup Valley Chevrolet

For The Best Deal
Opposite Postoffice
PUYALLUP, WASH.
BR 2-0734
TH 5-1766 - TH 5-1332

13--Farm Column

HAY BALING

Cutting and Raking
For dependable work call
LEnox 7-8373

JACK RANGLES
Fredrickson

HAY MOWING — LE 7-7794 or LE 7-6244. 13cft

FOR SALE — 1 1/2 acres standing hay; LE 7-5717. 13c41

FOR SALE — 4 acres standing hay; LEnox 7-4208. 13c41

FOR SALE — Fordson tractor with plow; also extra 3 wheel plow. Tractor runs but has blown head gasket; was recently overhauled and has new magnet. Sell for scrap iron price of \$45 for all. LE 7-6374. 13p41

FOR MORE Meat - Milk - Eggs

Per Feed Dollar "Use"
Triangle Farm Proven Feeds

Parker Paints

RUDY'S Feed & Seed Co.

14660 Pacific Ave. LE 7-4888

Work Wanted 14

PRIVATE DRIVER training lessons; call LE 7-4495 any time. 14cft

To Yelm

- Tyrell's Mobil Serv.
- Roy "Y" Sav-Mor
- So. End Plumbing
- Woodland Court & Cafe
- Spanaway 5 & 10
- Parkway Furniture
- Wholesale Distributing Co.

To Rocky Ridge

- Toreland Motors 13
- Kurper's Korner 20
- Woody's Market 21
- Thatcher & Sons
- Howard Bath 22

To Roy

- Roy "Y" Cafe & Serv. Station 27
- L & M Automotive Service 29
- The Bargain Basket 31
- Spanaway
- Target Sport Store 33
- Ouhli's One Stop Service 34
- Green Acres Exchange 35
- Prettyman Heating Co. 36
- Rudy's Feed & Seed 37
- Rau Mfg. Co. 38
- Mountain Brand Shakes 41
- Parkland
- Siler's 42

To Tacoma

- Dari Diner 43
- Gas-o-lene Alley 44
- Anderson Lumber

(Continued on Page 7)

SEWING, alterations, mending, ironing; reasonable; LE 7-5636. 14c44

BABY SITTING in my home days. LE 7-5340. 14c41

WILL DO HOUSEWORK; also ironing in your home or mine; \$1 an hour; Belle Maulsby; LE 7-5398 or LE 7-7423. 14c41

TENDER LOVING CARE for baby in my home; references; LE 7-5243. 14p43

Miscellaneous 15

FOR SALE — Large blooming baskets of fuchsias, your choice \$3.50. ROUSE'S FLOWERS, 12131 East F St. 15c41

DON'T encourage dishonesty; locks keyed, combinations changed; Parkland Cycle & Kep; 11009 Pacific Ave. LE 7-5772. 3c41

6-Ft. Picnic Tables
Built For **\$16.50**
Rugged Use
MT. HIWAY
CABINET SHOP
Graham VI 7-7638

CHILD CARE in my home, 1756 So. 106th Street. 14p41

FOR SALE — Eggs and cream; also good milk cow; LE 7-8720. 15p41

FOR SALE — Jersey-Guernsey cow giving 4 gallons or better; \$150; LE 7-7313. 15c41

FOR SALE OR TRADE — Estate range, bottled or natural gas, with griddle; good condition; phone Eatonville TE 2-4436. 15c41

OIL FOR LESS if you live within 2 miles of our plant. Why pay more than 18c for stove oil in 100-gallon lots? LAPENSKY'S HOME OF CLEAN OILS, 9920 Pacific Ave., LE 7-8173. 15c41

Englander
THE FINEST NAME IN SLEEP

30 Day Free Trial
20 Year Guarantee
Goodyear Air Foam
Famous Red-Line Foundation
Parkway Furniture
141st & Pac. Ave. LE 7-3941
Open Till 9:00 p.m.

TAP DANCING LESSONS. Beginning and advanced. Call Jim Nylander, LE 7-0374. 15c41

BABY FURNITURE, new and used, for sale or rent; SMALL FRY EXCHANGE 1109 Market St., BR 2-9505. 15c41

- Wheel Balancing
- Motor Tune-Ups
- Headlight Adjusting

Airport Rocket Service
Airport Rd. Next to IGA Shopping Center

BATON TWIRLING classes, beginners and advanced, by Frank Schreck of Lewisburg, Pa., now in Tacoma area; if interested call MA 7-5559 Thursday or Saturday. 15c41

LOCKER BEEF, wholesale plus cutting and wrapping, also retail counter. Avenue Meats, 8204 Portland Avenue. LEX 7-3570. 15c41

FOR SALE — Siegler heaters at Parkland Fuel Oil Service; LE 7-0256; 129th & Pacific Ave. 15c41

TACOMA UPHOLSTERY — Special on reupholstering dav. export, chair, as low as \$129. Davenos \$49.00; Rocker, \$29. Free estimates; GR 2-6955, LE 7-0327. 15c41

PARKLAND FURNITURE — New and used miscellaneous; Airport & Pacific Ave. Residence Phone LE 7-3748. 15c41

FOR SALE — 14'x70" wide beam boats \$275 unpainted; work guaranteed; Bantam Boat Co., 84th & Waller Rd. 15c41

FOR RENT
Riding Horses
B & B
Riding Academy
Mt. Hiway LE 7-6377

CAN'T PAY for nice SINGER electric walnut console; pay off balance of \$37 at \$5 each month and get free home demonstration. UPTON ELECTRIC CO., 1148 Market St., FU 3-2551. 15c41

VACATION TIME is here. Make a trip to the Tacoma-Pierce County Humane Society, 2608 Center St., and let your children select a pet. Open daily, Saturday & Sunday, 9:00 to 5:00. 15c41

PIANO, Wentworth upright; very good condition; \$165; GR 2-5627. 15c41

PIANO LESSONS — Classical and modern. Reasonable rate. Call LE 7-4051 or LE 7-0420. 15c41

NOW OPEN
SOOPER
SAW SURVUS
16808 Pac. Ave. LE 7-7918

SERGEANT got busted to a private and could not pay for SILVERTONE console TV with only \$49 due at \$7 each month; here's your chance to really save on a TV. UPTON ELECTRIC CO., 1148 Market St., FU 3-2551. 15c41

ROOMS WANTED — In Parkland and vicinity for college students. Call LE 7-8611, extension 14, office of Dean of Men, Pacific Lutheran College. 15c41

LEAVE FILM at Quality Photo Service for developing. In at 10. out at 5. 9818 Pacific Ave. 15c41

SWING ROCKERS
FULL size, four colors, good covers, \$39.50 or 2 for \$75.00; terms, trades. PARKWAY FURNITURE, 141st St. & Pacific Ave.; Open till 9:00. LE 7-3941. 15c41

ANNOUNCING a new service in this area. Have your precious baby's shoes and souvenirs metalized to last a lifetime. All work guaranteed. Write or phone Tiny Tot Metalizing Co., P. O. Box 323 Spanaway. LE 7-7922. 15c41

WANTED — Two ladies to share expenses and driving to Minneapolis; leaving July 6; LE 7-0165 after 5:00. 15p41

TOOLE'S SAWMILL
Rough or Finished Lumber
Direct From Mill
Graham, Wash. VI 7-2229

VIOLIN LESSONS in Parkland or Tacoma; beginners accepted; Blanche Yorktheimer, MA 7-7861. 15c42

STATION WAGON OWNERS NOW you can buy a Custom built Kar-Rac you can be proud to put on your Station Wagon. Beautifully varnished, gives that "town & country" look. Positive clip and turn-buckle fastening secure your Kar-Rac. Easily handled by one person. Save \$40.00 per Rac. Orchard Hill Duplexes, office, 143rd & Pacific Ave. So., Phone LE 7-5194. 15p48

SMALL REFRIGERATOR, good condition, \$25; free 6-weeks-old kittens and year-old cats; LE 7-6256. 15c41

SPECIAL ORDERS CAKES—Phone LE 7-3330. Patty Ann Bakery. 15c41

FOR SALE — Alder slab wood for range or fireplace, cheap. U-Haul. LE 7-6331, 4520 East 100th. 15c41

Ace Dirt Moving Co.
BULLDOZING DITCHING GRAVEL TOP SOIL SEPTIC TANKS DRAIN FIELDS
1750 9th St. S.W., Puyallup
Phone Puyallup TH 5-2452

Estimates For . . .
Home Wiring Remodel,
Dryers, Electric Heat,
Emergency Service Call
WEBB ELECTRIC
Days LE 7-7463,
Eve. LE 7-4437

BRIDE & GROOM SPECIAL — 8x10 tinted portrait, \$2.50. 8411 So. Park Ave. Family Portrait Studios. 15c41

EVINRUDE MOTORS, Bryant boats; wagon wheels for sale. Don't carry it—drive right into our complete out-board motor repair service shop. MAJOR OIL & MARINE SUPPLY, 7517 Portland Ave., LE 7-3644. 15c41

FOR SALE — Alder slab wood for range or fireplace, cheap. U-Haul. LE 7-6331, 4520 East 100th. 15c41

ANNOUNCING a new service in this area. Have your precious baby's shoes and souvenirs metalized to last a lifetime. All work guaranteed. Write or phone Tiny Tot Metalizing Co., P. O. Box 323 Spanaway. LE 7-7922. 15c41

WANTED — Two ladies to share expenses and driving to Minneapolis; leaving July 6; LE 7-0165 after 5:00. 15p41

IT'S NEW!
THE Contour chair that rocks. That's right, lean back to a comfortable position, wiggle your toes and rock. Good selections of covers, speedy special orders; first in the Northwest at PARKWAY FURNITURE, 141 St. & Pacific Ave., Open till 9:00. LE 7-3941. Terms, trades. 15c41

Cook and Jones Motors
9611 PACIFIC AVENUE
LE 7-4771

49 DE SOTO Coupe. R & H. Clean inside and out. Motor perfect. Good rubber \$325

51 PONTIAC 4-Dr. R & H. Stand. trans. Good motor, body and tires. Clean interior \$350

51 FORD 2-Dr. R & H. Fordomatic. Motor perfect. Clean interior. Good paint and chrome \$485

51 NASH Rambler Station Wagon. R & H, new tires, mechanical A1. Clean \$550

51 OLDS Super 4-Dr. Radio, heater, clean interior, new paint. Motor A-1 condition. Good rubber . . . \$625



GIANT SAVINGS FOR SUMMERTIME!



No matter what the season, you'll find that the savings are greater at Big Bear, the friendly, locally-owned store where better foods cost less - and cost less anytime and all the time. So come to Big Bear today, get acquainted with real savings to be found here!

FRESH TOMATOES
California solid firm ripe Beef Steak Variety!
Full Flavored
And Large.
You May
Choose
Your Own!

Per Lb. Only **12**¹/₂

POTATOES Per Lb. **3**¹/₂
Calif. Shafter Whites. U.S. No. 1 grade, washed.

FRESH PEAS Per Lb. **12**¹/₂
Home grown sweet and tender well filled pods with a garden fresh flavor. A low, low price!

LADY ELBERTA FANCY PEACHES
Luscious, golden halves; superior in flavor!

3 No. 2 1/2 Cans for only **87**

GRADE 'AA' MED. EGGS
THREE DOZEN **\$1**

LOIN PORK ROAST **45**
FRESH Rib End cuts of lean and tender, corn-fed pork. A top buy at Big Bear!
POUND

CENTER PORK CHOPS Per Lb. **65**
Lean, tender and well-trimmed; cut to your liking!

PORK LOINS POUND **49**
Whole or half fresh loins of pork; at this low price.

GROUND BEEF **\$1.00**
Freshly ground, lean beef; guaranteed to please!
4-POUNDS



RATH'S DRIED BEEF **4** 2 1/2-Oz. Cans **95**

The very finest, thin slices of selected, lean beef; cured just right and delicious in flavor - wonderful for quick, easy meals! A low, low price!

LARGE LAUNDRY BASKETS Each Only **1.19**

Sturdy, large woven laundry baskets at a tremendous savings! Just one of the many big values in our Housewares Dept.

HI-C BRAND SWEET REFRESHING ORANGEADE
Full-flavored, non-carbonated; rich in Vitamin C.

4 46-Oz. Cans For Only **89**

Gold Medal Bisquick **39**¢

Summertime is shortcake time—and for best results, there's no finer mix than new texturized Bisquick 40-OZ. PKG.

Big Bear Ice Cream **43**¢

Our own smooth and delicious rich ice cream; in many popular flavors. a real taste treat!
FULL QUART

193rd & Pacific. Open 8 a.m. to 11 p.m. daily, including Sundays. Prices Wed. noon thru Sat. Limit.

APPLE JILL'S TREE RIPENED APPLE JUICE
The pure, crystal-clear juice of choice Wash. apples!

5 24-Oz. Bottles For Only **99**



STOCK YOUR FREEZER NOW AT THESE MONEY SAVING PRICES AT ALBERTSON'S

FROZEN FOOD FAIR

ETON BRAND Frozen	PEAS CUT CORN PEAS & CARROTS	10-Oz. 10-Oz. 10-Oz.	CHOPPED SPINACH ... 10-Oz. FRENCH FRIES 9-Oz. YOUR CHOICE	8 / \$1
----------------------	------------------------------------	----------------------------	---	----------------

SWANSON'S TV DINNERS TASTY FROZEN Each **59¢**

M.C.P. FROZEN Lemonade	6-OZ. CAN 10¢	CHET'S CHICKEN - BEEF - TURKEY Meat Pies	8-OZ. 4 / 85¢
----------------------------------	-------------------------	--	-------------------------

PICTSWEET FROZEN **Orange Juice** ... 6-OZ. CAN **2 FOR 25¢**

ETON FROZEN **Broccoli Spears** ... 10-OZ. PKG. **19¢**

Coffee House **COFFEE** lb. **85¢**

MARGARINE
SUNNYDALE **5** POUNDS **\$1**

BUTTER
DARIGOLD SWEET CREAM
CUBE OR PRINT POUND **69¢**

MILK
DARIGOLD TALL CAN **3 / 39¢**

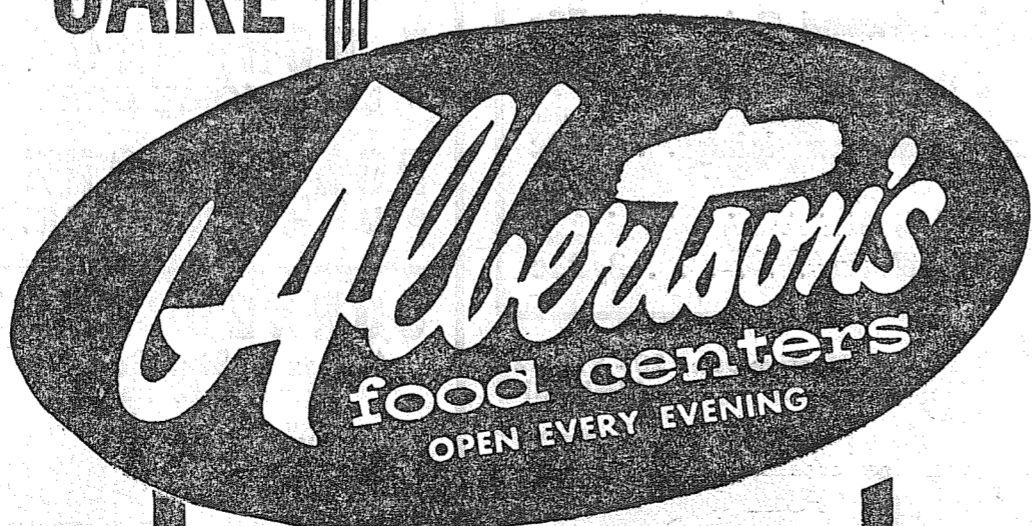
FACIAL TISSUE'S SCOTTIES 400 COUNT COLORED OR WHITE **4 FOR \$1.00**

LARGE **Angel Food CAKE**
ICED WITH BOILED ICING
98¢

WHOLE FRYERS LB. **41¢**

14 TO 16 LB. HEN
TURKEYS
..... LB. **33¢**

CHOICE TOP
ROUND STEAK
..... LB. **79¢**



SNOW WHITE
CAULIFLOWER
3 HEADS ... **25¢**

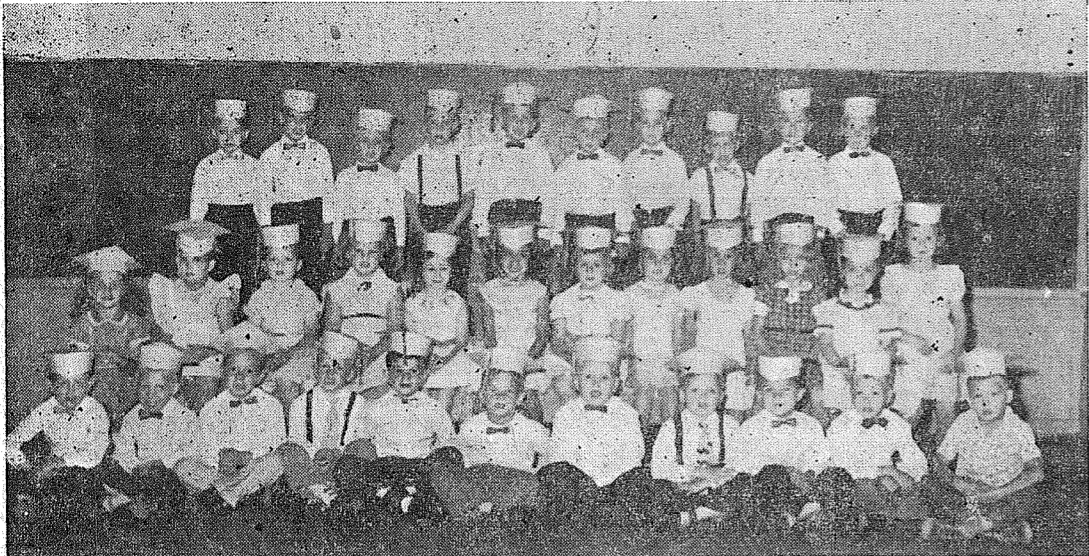
GREEN
Bell PEPPERS
..... LB. **17¢**

LARGE DANISH
Coffee Cake
49¢

2 STORES TO SERVE YOU
• 6010 MT. TACOMA DRIVE, LAKEWOOD
• 72ND AND PACIFIC AVENUE
OPEN DAILY 9 TO 9 - CLOSED SUNDAY

FIRST OF THE SEASON
SEEDLESS GRAPES Lb. **19¢**

Spanaway Preschoolers Graduate



HAPPY EVENT—Little Spanaway Preschoolers who have been meeting two mornings a week in the old kindergarten room at the school held "graduation" exercises May 31 in the gym. The children gave a short program and Mr. Fraser, the principal, presented the diplomas. Parents of the children and also the three 1st grade classes of the school were present. Mrs. Chester Creso has been the teacher of the class, assisted by Mrs. Ralph Tini. Pictured above in their graduation caps are, left to right: Front row—Frank O'Leary, Lyman Felins, Paul Black, Freddie Clemens, Larry Loete, Donald Ramseth, Burton Kriedler, Pat O'Hern, Billy Cantrell, Richard White, David Strocker; second row—Sharon McNiven, Cristine Myron, Vicki Fugate, Marcia Kanton, Linda Misner, JoAnn Green, Joyce Woracek, Sharon Frasch, Carol Nygren, Patricia Conley, Cathy Creso, Donna Tilton; third row—Ralph Taini, Dale Failey, Neal Brown, Larry Michaelson, Pete Smith, Joe Kindred, Johnny Dennis, Dale Lape, Jimmy Slakey, Daniel Agnew, Jean Domer, Randy Hendricksen and Billy Thomas were absent when the picture was taken.

Letter Box
EDITOR'S NOTE—All properly signed letters to the Editor will be printed as submitted, excepting deletions of portions which might be considered libelous. It is not the purpose of the Times-Journal to take sides in controversial questions; the Letter Box is designed merely to permit the expression of opinions of readers concerning matters of local interest. To the Editor:

June 14, 1957
Times-Journal
So. 119th & Pacific Ave.
Tacoma, Wash.
The parents committee thank you for all the time and patience extended us from your paper in publishing our notices about the Franklin Pierce Senior Class Cruise.
We appreciate your generosity in always giving us front page space.

Sincerely,
Victoria Davidek
General Sheet Metal Work
Special Attention to Special Equipment
RAU MFG. CO.
LEnox 7-7372

ELK PLAIN . . . Little Leaguers Starting Season
The Little Leaguers are playing ball again this year, most games to be on the Bethel field in the evenings. In the two classes, the Pee-Wees are boys under 12, the Midgets 12 and 13 years of age.

The Pee-Wees play tonight (Thursday) at 6:00 o'clock against the Spanaway Auctioneers at Bethel.
Next Monday evening, June 24, the Midgets will play Roy at Roy.
Wednesday, June 26, the Midgets will play Benston on the Bethel field.
On Thursday, June 27, the Pee-Wees play the Wilson Packers at Bethel.

To Grange Convention
Mr. and Mrs. Ben Kuper left Saturday morning, June 15, for Spokane where they will attend the annual state Grange convention. They are delegates from the Elk Plain Grange.
The Elk Plain Grange will hold only one meeting each month during the summer, on the second Thursday.
Family Reunion
A family reunion was held at the Ross Plumb home Friday evening, June 14, honoring Jerry Plumb who left Monday, June 17, for Texas.

Mrs. Godwin Said: "Bowl." - He Did, Won Trophy, \$150
One master sergeant who'll probably heed the advice of his "better half" forever-after is M/Sgt. Jackie Godwin of 325th Field Maintenance.
Mrs. Godwin urged her husband to enter the 3rd Annual South Tacoma Bowl Summer Singles, and he romped home with first place, a handsome trophy and a mighty welcome \$150 check.
To take the title, Jackie blasted scores of 228-222-166-175-228 for 1019. He had 135 pins handicap, and struck out in the last game to win the event by a slim 4-pin margin.

Drive Safely Save A Life!
HOBBY FUN
for all the Family!
Models of All Kinds . . . Boats - Planes - Cars - Etc. Also
RECORDS
Latest Popular - Classical - Western
HOMESTEADER
414 GARFIELD
LEnox 7-3137



MORE SAVINGS ON MORE FOODS!

KRAFT OIL ALL-PURPOSE QUART

COFFEE COFFEE HOUSE LB. CAN **89¢**
FLOUR OCCIDENT 10 LB. BAG **95¢**
BUTTER DARIGOLD AA SWEET CREAM 1-LB. CUBES **69¢**

49¢
ASSORTED COLORS 4-ROLL PACK
M.D. TISSUE . . . 39¢

LARGE "A" STRICTLY FRESH RANCH EGGS

PORK & BEANS Libby's 2 1/2 Size Can **19¢**
FROZEN DINNERS Morton's Beef or Turkey . . Ea. **53¢**
DILL PICKLES Olympic 1/2 Gal. **49¢**

37¢
DOZ.
NALLEY'S 24-Oz. SYRUP . . . 33¢

MARGARINE PLYMOUTH

LETTUCE LOCAL SOLID HEADS . Ea. **5¢**
CUCUMBERS CALIFORNIA Each **5¢**
WATERMELON CALIFORNIA KLONDYKE (WHOLE) **4¢**

1-LB. CTN. 19¢

C & H 10-Lb. Bag 99¢

Manning's BAKERY
MAPLE NUT DATE RINGS Reg. 59¢ Spec. 55¢
Regular 89¢ Special 79¢
1 Layer 8-Inch Round Cake
Regular 89¢ Special 79¢
Devils Food Rocky Road Icing
Regular 89¢ Special 79¢
White, Lady Baltimore Icing
Regular 89¢ Special 79¢
Mocca 79¢
Regular 3/39¢ Special 3/33¢
Walnut Butter Horns

U. S. CHOICE Beef Roast Sale

Pot Roast 39¢
• U. S. CHOICE GRAIN FED BLADE CUT LB.
7-BONE ROAST 45¢
• U. S. CHOICE GRAIN-FED BEEF LB.
ROUND-BONE ROAST 49¢
• U. S. CHOICE GRAIN-FED BEEF LB.

CORNED BEEF | CANNED HAM
Armour's Star Boneless 1 To 3 1/2-Lb. Pieces
Cryovac Wrapped **59¢**
Armour's Star Boneless Ready To Eat
6 3/4-LB. Can **\$5.79**

OVEN-READY TURKEYS
• U.S. Inspected, 14 to 16 Lb. Avg. Fancy Plump Yearling Hens **39¢**

Fresh Filet Of **RED SNAPPER . . 25¢** | Pound Kipped **SALMON . . . 79¢** Pound

GOODEE
POTATO CHIPS 6-Oz. Bag **27¢**
Prices Effective June 20 - 21 - 22 We Reserve the Right to Limit Sales
PIGGLY WIGGLY
PACIFIC AT GARFIELD IN PARKLAND

JOHNSON DRUGS

(WALGREEN AGENCY)
GREETING CARDS - GLASSWARE - STATIONERY
JEWELRY - COSMETIC - LUNCHES - CAMERAS

Greeting Cards
that express your wishes!

Hello
Get Well
Thank You
Good Luck
Congratulations
Happy Anniversary
Happy Birthday
Sincere Sympathy
Goodbye

American Greetings
to remember someone, too nice to forget

Childrens Badminton Plastic Play Sets Lots of Fun **79¢**
PICNIC Napkins Plates Straws Cups Vac. Bottle
test your own TV & Radio Tubes Free
Sun Glasses 25¢ to \$3.00
Camera Films All Sizes B. & W. - Color

PREVENT SUN BURN AND PEELING
Get A Nice Even Tan . . . These Fine Lotions Will Do It!

JAN 60¢ SEA and SKI 69¢
TARTAN 59¢ COPPERTONE . . . \$1.10
SKOC 49¢ SUN 'N SURF 98¢

PRESCRIPTIONS FILLED CAREFULLY - PROMPTLY
Store Open Daily 9 A.M. To 10 P.M. Sundays 12 to 3 P.M.

Spanaway, South Prairie, Orting, Tied For Valley East Top Spot

SECOND SECTION

The TIMES JOURNAL

THURSDAY, JUNE 20, 1957 • Volume 12, No. 41 PAGE 9 PUBLISHED AT PARKLAND, WASH. LEnox 7-0223

Cards And Colts Play Friday At Dawson Field

The Franklin-Pierce Cardinals of the Tacoma Junior League play their first home game of the season against the Sixth Avenue Colts this Friday at Dawson Field, at 94th and Portland Avenue. Game time is 5:45 p. m.

The Cards are 1-1 in the league while the Colts are unbeaten.

The Colts are spearheaded by Tom Sisul, a tall righthander, who is unbeaten this season.

Ken Southall will pitch for the Cardinals in Friday's game. Franklin-Pierce district teams came through with three victories in Boys Baseball last week.

Rich's Wolves won a pair, 13-8 Potover the UP Boosters and 4-3 over Pot n' Kettle. The former was a Tacoma Bantam League game and the latter an exhibition contest.

The Franklin-Pierce Cardinals won a 2-1 thriller from the Vaughn Lumberjacks, in Junior League Action.

Bill Hobert pitched both victories for Rich's striking out 15 Pot n' Kettle hitters and giving



only one hit to the Boosters.

Franklin-Pierce opened the scoring in the second inning when a four-base error allowed Ken Southall to score.

Southall ran into trouble in the fifth after two were out. After allowing one single he then walked three straight hitters to force in the tying run.

The Cards won it in the seventh when Joe Mancuso reached first on an error, stole second, was balked to third by losing pitcher Louis Overbo, and scored on Tom Lumsden's single.

The short scores:

Rich's 172 011 1-13 10 6
UP Boosters 101 402 0-8 1 7
Bill Hobert and Dan Hobert; Boosters' batteries unavailable.
Pot n' Kettle 000 001 2-3 10 2
Rich's Wolves 004 000 x-4 8 3

Peterson and Dunlap; Bill Hobert and Dan Hobert.
Franklin-Pierce 010 000 1-2 6 1
Vaughn Lumberjacks 000 010 0-1 5 3
Southall and Goings; Overbo and Schindler.

BETHEL LEAGUES

Results of last week's games:

PEE WEE — Spanaway Hawks 29, Roy 0. Spanaway Giants 21, Wilkens Packers 13. Spanaway Zurluh 35, Roy 7. Elk Plain 7, Spanaway Giants 0. Wilkens Packers 9, Spanaway Haviland 9. (suspended, darkness).

MIDGET — Kapowsin Eagles 15, Elk Plain 0. Kapowsin Eagles 13, Roy 1. Spanaway Merchants 16, Roy 12. Spanaway Firemen 24, Benston Grangers 3.

Advance schedule: All games start at 5:45. Last named team is the home team.

Thurs., June 20: PEE WEE — Roy vs. Spanaway Giants, No. 1; Elk Plain vs. Spanaway Zurluh, No. 2; Wilkens Packers vs. Kapowsin Cougars, No. 3.

Mon., June 24: MIDGET — Spanaway Firemen vs. Spanaway Merchants, No. 1; Kapowsin Eagles vs. Benston Grange, No. 2; Elk Plain at Roy.

Tues., June 25: PEE WEE — Spanaway Zurluh vs. Spanaway Haviland, No. 1; Wilkens Packers at Roy; Kapowsin Cougars vs. Spanaway Giants, No. 2.

Wed., June 26: MIDGET — Benston Grangers vs. Elk Plain, No. 1; Roy vs. Spanaway Firemen, No. 2; Spanaway Merchants vs. Kapowsin Eagles, No. 3.

DEFENDERS—The 1957 version of McChord's hopes on the baseball diamond pose for a family portrait at the start of the current season. Front row: Bob Hayes, manager and second baseman; Jule Hariston, short stop; Doug Duncan, catcher; Pete Nishikawa, catcher; Paul Simon, 3rd baseman; Jim Martinez, 3rd baseman; Glenn Meier, catcher; Back row: Toby Vashinder, outfielder; Gilbert Davenport, 3rd baseman; Joe Maurin, pitcher; Fredie Webb, outfielder; Don Sullivan, catcher; Bob Foster, outfielder; Russ Watkins, 1st baseman. Other players not present for picture include: Willis Jamison, pitcher; Jimmy O'Neal, pitcher; Jon Willis, outfielder, and Ron Loster, outfielder.

Playground News

In keeping with this year's nature theme, the County playgrounds will feature "bird week," June 24-28.

Stories, games and songs about birds will be stressed.

Also on next week's docket is a doll show and "quickie contests." The quickies will consist of freckle, pony tail, clothes, shoe, and what's in your pocket contests.

Other county wide events are the baseball school at Cheney Field, June 20th and 21st, the Teen-Age Dance at South Park Community Center, June 22nd and a Teen-Age Cruise, June 30th. Tickets for the cruise may be bought at the Metropolitan Park District office, 210 City Hall Annex.

The first swimming trip to the Spanaway Metropolitan Park District Beach, will be Thursday, June 20, and every Tuesday and Thursday thereafter, unless the weather is inclement.

All children, nine years old and up are welcome to go. The fee is five cents for partial payment of expenses.

Pick-up will be made at the following playgrounds shortly after 12:30 p. m. by Franklin-Pierce School District busses.

The pick-up points are: Dawson Playground, Collins School, Central Avenue School, Parkland School and James Sales School.

The children will be supervised by playground leaders and Metropolitan Park District lifeguards. The busses will return to the playgrounds at about 4 p. m.

Elementary swimming instruction will be given free of charge. The hours of operation have been changed at Collins School it was announced by leader Lee Reeves. The playground will now operate 12 to 7 instead of 10 to 5.

The daily schedule is: 12 to 1; organized games and special events; 1 to 2, handicrafts; 2 to 3, story time, dance and drama; 3 to 5, tournaments and free play; 5 to 6, team organization; 6 to 7, field play.

Adults are welcome. It is hoped that enough turn out to form a men's and a ladies' team.

A motorist given a \$65 traffic fine in Fond du Lac, Wis., called out to the sentencing judge: "You wouldn't lend me the money would you, Your Honor?" He had to pay \$10 more for contempt.

Model Boat Ass'n Announces Meets

The Parkland Model Power Boat & Yacht Association announced it will hold meetings on the first Thursday of every month at the Hobby Shop.

The Association, organized in January, 1957, is the first of its kind in the Tacoma-Parkland area and is affiliated with the National organization and the world-wide Association of Amateur Model Power Boatmen.

There are eighteen members in the club at present and any one desiring membership or other information should come to the meetings.

The officers are: Stanley Warburton III, President; John Cronk, Vice-president; Don Farrell, Secretary-Treasurer; Bill Welch, Chief Timer; and Don Frank, Delegate.

FLETT DAIRY
FARM FRESH
HOMOGENIZED AND
PASTEURIZED MILK
AND CREAM
ICE CREAM
Phone GR 2-3301

Every Sat. Night
SUNSET GARDENS
BRESEMANN PARK
SPANAWAY LAKE
Dancing 9 till 2

Presenting
JAY KANNEY
And His Trombone
10 MEN AND A GIRL
VOCALS BY BUNNY CLARK

FREE
• Mixer & Ice
• Tables For Everyone
• Reduced Prices
After Midnite
ENTERTAINERS DURING
INTERMISSION
(Adults Only)

OPEN FOR BUSINESS
Drake's Shoe Repair
8425 PACIFIC

HEADQUARTERS FOR PROTO TOOLS
GRANT PISTON RINGS
(Free Customer Parking)
LINCOLN AUTO PARTS
South 36th & G Streets HI Inside 3151

Spanaway Plays Prairie Sunday

Orting threw the Valley League Eastern Division race into a three-way tie by defeating previously unbeaten Spanaway, 4-3, in a 13-inning duel at Orting last Sunday.

South Prairie won Puyallup, 12-3, and thereby gained a share of first place. Edgewood squeezed past Lacamas, 3-2 in the other Eastern game.

Stanley took over undisputed possession of first place in the Western Division with an 11-3 win over the hapless 18 Vets. The Downtown Kiwanis took a 16-2 shellacking from Lakewood, while St. Paul's nudged Nalley's, 5-4.

Spanaway led until the ninth when Orting tied the score at 3-3 with a single run, and then went on to win in the thirteenth. Darrell Billings drove in Spanaway's first run in the third inning with an infield out that scored Wally Jones, who had reached first on a fielder's choice.

In the sixth, Spanaway took a 3-0 lead on an error and singles by Jimmy Olson, Chink Byrd and Bob Brewer. Byrd and Brewer got the RBI's.

Brewer held Orting scoreless until the eighth when he began to tire. Dave Glaser singled, Bill Johns was safe on an error, Larry Jones singled, scoring Glaser and Ulrich Balmer singled scoring Johns.

Brewer Out
Art Theil came on to pitch the ninth, and gave up the tying run. Two consecutive errors followed by John Balmer's sacrifice fly tied the count.

The teams were then scoreless until the thirteenth.

John Balmer and Glaser singled to start the rally with one out. Bernie Rakes forced Glaser at second, but the relay to first for the double play went into the crowd allowing the winning run to score.

Otto Balmer went the route for the win, Theil was the loser.

Latten and Luhtala hit homers at Puyallup as South Prairie, the defending champion, regained a portion of the top rung.

Al McCoy won his second of the season for Edgewood, by beating Lacamas, 3-2, on a five-hitter.

Sam Reichel got four of the Lacamas total. Jim Johnson trotted home from third on an outfield fly by Fred Minnitti for the winning run in the seventh inning.

Stanley's Wins Again
Stanley's used three hurlers in three-hitting the 18 Vets. Dave Gosk rapped out three hits in four times up for the winners. Bailey was the winner.

Jerry Hoxsey of Franklin-

Western Division

W	L	Pct.
Stanley's	3	1.000
Kiwanis	2	.667
St. Paul's	2	.667
Nalley's	1	.333
Lakewood	1	.333
18 Vets	0	.000

Results Sunday
Orting 4, Spanaway 3 (13 innings).
South Prairie 12, Puyallup 3.
Edgewood 3, Lacamas 2.
Next Sunday's Schedule
South Prairie at Spanaway.
Orting vs. Edgewood at West-ern State.
Puyallup vs. Lacamas at Bethel.

Valley League Eastern Division

W	L	Pct.
Spanaway	3	.750
South Prairie	3	.750
Orting	3	.750
Edgewood	2	.500
Lacamas	1	.333
Puyallup	0	.000

Results Sunday
Orting 4, Spanaway 3 (13 in-nings).
South Prairie 12, Puyallup 3.
Edgewood 3, Lacamas 2.
Next Sunday's Schedule
South Prairie at Spanaway.
Orting vs. Edgewood at West-ern State.
Puyallup vs. Lacamas at Bethel.

PROTECT YOUR PROPERTY

WITH CYCLONE FENCE!

DIRECT FACTORY PRICES
NOTHING DOWN
EASY TERMS
For free estimates phone

Market 7-4551
911 1/2 Pacific Avenue
Tacoma, Washington

ONLY UNITED STATES STEEL CORPORATION MANUFACTURES CYCLONE FENCE

MARINE PAINT
TOPSIDE DECK & HULL
ENAMEL
Durable - Seaworthy
Dries dust proof in 2 hours. Dries hard in 8 hours.

18 Colors to choose from

Prices Vary According to Color
\$2.25 Per Quart to \$2.65 Per Quart
So. End Plumbing & Hdwr.
Near Roy "Y" Spanaway LE 7-4100

GOLF NEWS

Brookdale will hold the qualifying rounds for the club championship this weekend. The first round of the title tourney will start June 30.

Also on the schedule at Brookdale for the weekend is a points tourney.

Results of last week's play.

GROOKDALE — Medal Play: First division, Nick Kneip 72-7-65, Jack Francis 77-9-68; Second division, Dave Edmunds 77-12-65, Russ Gaines 78-10-68.

Nalley's vs. Stanley's at SECC. 18 Vets vs. Lakewood at Clover Park.
Kiwanis vs. St. Paul's at Harmon.

The short scores.
Spanaway 001 002 000 000 0-3 11 5
Orting 000 000 021 000 1-4 15 3

Brewer, Thiel (9) and Byrd; Balmer and Wilkins. L—Thiel. S. Prairie 130 332 000—12 14 1
Puyallup 000 003 000—3 11 3
Kovacevich and Hodder; K. Brock, Seeberg (7) and Stroh, Howard HR—South Prairie, Latten, Luhtala.
Edgewood 000 020 100—3 7 2
Lacamas 010 010 000—2 5 2
McCoy and Johnson; Baker and Black.
Stanley's 103 410 200—11 13 4
18 Vets 000 300 000—3 3 10
Bailey, Martin (6), Bickford (8) and McLeod, Osness; Dantley, Gale and Charles.
L'kewood 006 020 503—16 10 1
Kiwanis 010 001 000—2 6 6
Hoxsey and Crone, Kohler; Cunningham, Evans (3), Matson (6), Bullatt (8) and Bullatt, Velkers.
St. Paul's 000 200 300—5 6 3
Nalley's 100 000 003—4 4 3
Coleman and Robbins; May and Chilton.

PIERCE COUNTY REFUSE CO.

Weekly Garbage Collections
Phone LE 7-8688

Custom Built
Cabinets & Store Fixtures
We Install
Free Estimates
R H O N E ' S
CABINET SHOP
So. 161st St. LE 7-3842
Spanaway

SEE & HEAR
TELEVISION & RADIO
AT ITS BEST
BRING YOUR SET IN TODAY
ALL WORK GUARANTEED
B I X B Y
TV - RADIO
12503 WALLER ROAD
CALL LENOX 7-8309

WE HAVE MOVED
2 DOORS SOUTH TO OUR NEW BUILDING
PARKLAND CYCLE & KEY
11021 PACIFIC AVENUE LEnox 7-5772

GILBERT'S COUNTRY STORE
Open 7 Days A Week
STREAMS OPEN IN PARK JUNE 16TH
LAKES OPEN IN PARK JULY 4TH
LaGrande, Washington

DANCE EVERY EVENING EXCEPT SUNDAY
Mon., Tues., Thurs. Wed., Fri., Sat.
Canned Music Orchestra Music
Live Music by the Ronnie Harrison Trio
MOONEE'S CABARET
MOONEE'S CORNER PUYALLUP

SEE US FOR A COMPLETE SELECTION OF **LUMBER** and BUILDING MATERIALS
8 FT. 2x4's Ea. 24c
MAHOGANY
Bean Poles Ea. 2c
PLASTIC WITH BRASS FITTINGS
50' Garden Hose \$1.99
FULL 5-YEAR GUARANTEE
• WE CUT GLASS TO SIZE •

Anderson Lumber
9813 Pacific Avenue LEnox 7-7311

Reach for **Jordan's** today! . . .
in the new improved wrap
Jordan's

Progress in Pharmacy

- PRESCRIPTIONS
Fast, Accurate Service
- MEDICINES
The Most Modern Developed
- VITAMINS
For Your Individual Needs
- INVALID SUPPLIES
To Make Them More Comfortable

In Any Emergency, Depend On Us!
We Are In Business For Your Health

FREE DELIVERY
PARKLAND PHARMACY
112th & Pacific Avenue LEnox 7-8636
SPANAWAY DRUG
165th & Pacific Avenue LEnox 7-5993

GENERAL ELECTRIC APPLIANCES
★ OPEN EVERY NIGHT UNTIL 9 P. M. (SAT URDAY 'TIL 6) FREE FRONT DOOR PARKING ★
Shop At WEIR'S & Save CALL LEnox 7-5650
8419 PORTLAND AVENUE

BOYSEN Has Come To Town

WALLER ROAD LUMBER CO. INTRODUCTORY OFFER JUNE 20 thru 29

4 For the price of 3

TAKE ADVANTAGE OF OUR AMAZING INTRODUCTORY OFFER ON FAMOUS BOYSEN PAINTS. FOR A LIMITED TIME YOU CAN PURCHASE 4 GALLONS FOR THE PRICE OF 3. OF ANY OF THE FOLLOWING PRODUCTS



- 100% Pure Outside House Paint



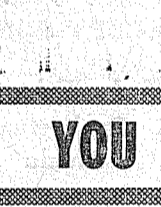
- Exterior Wood Primer



- Rubberglo Flat Wall Finish



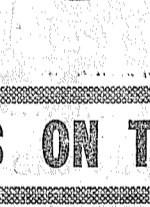
- Shake and Rustic Paint



- Dreem Odorless Semi-Gloss Enamel



- Porch and Deck Enamel



- 4 Hour Spar Varnish

YOU MAY CHOOSE QUARTS ON THE SAME BASIS

INTRODUCING FAMOUS BOYSEN PAINTS

FREE!

1/2 PINT CAN OF
Amazing BOYSEN PLASOLUX ENAMEL



VALUE \$1.02

Come in and visit our store and receive absolutely FREE (to adults while supplies last) 1/2 pint of Boysen's famous Plasolux enamel with the amazingly beautiful mirror-like finish that resists boiling water, grease, alcohol, and even ACIDS! Plasolux is America's finest gloss enamel.

WALLER ROAD LUMBER CO.

6401 WALLER ROAD

LEnox 7-5111

Franklin Pierce Graduates 162

The senior class of Franklin Pierce High School for 1957 held their commencement exercises Wednesday evening, June 5, in the high school gymnasium. The 162 seniors were very impressive in their red and white caps and gowns as they filed into the auditorium. Mr. Orville Weeks, principal, spoke for the faculty and the four student speakers were Janice Archer, on Security; Marlene Corrigan, on Freedom; Sharon Van Beek, on Opportunity, and John Barner, on Self Confidence. Robert Olsen presented the school with a portrait of Franklin Pierce, 14th president of the United States, as a gift from the class of '57.

Morris E. Ford, superintendent of the Franklin Pierce school district, accepted the class from Mr. Weeks. The Senior ensemble sang "No Man is an Island" and the "Lord's Prayer." Students taking part were Karen Crusan, Darlene Casey, Carolyn Colton, Janet Spearman, Joan Bonnellycke, Nina Ayers, Marianne Kanton, David Otto, Victor Pitzler, William Ostenson, James Teeters, Robert Stanley, George Rau and Larry Gannon, with Donna Bledsoe accompanying on the piano. Wayne Vernon played a baritone horn solo.

The Rev. Erling Thompson delivered the invocation and the Rev. Donald Nothdurft, the benediction. Receiving torch pins were John Barner, Lorraine Beshaler, Karen Crusan, Elaine Hurlburt, Lynn Murphy, Robert Olsen, William Ostenson, Evelyn Haakenson, Richard Ballew, Richard Skaugset, Sharon Van Beek, David Peterson and Paul Perdue. Other awards were received by Elaine Hurlburt, Betty Rice, Donna Bledsoe, Wayne Vernon and Rosemary Traill.

Enjoy 4-H Camp
A grand time was had by the Pierce County 4-H'ers who have just returned from a glorious week at the State 4-H Camp at Washington State college in Pullman. Some of the Midlandites attending were Valeria Bombardier, Donna Ayers, Sally Hanson, Kathie Jones and Pat Lawler.

Midland Graduation 6th
The graduating class from Midland school received their diplomas Thursday evening, June 6. This was one of the biggest classes to graduate from Midland and numbered 118. Kiwanis award winners were announced as Linda Stokes and Donald Marr, and they will be guests of the Parkland Kiwanis club Thursday.

Raymond Kempf Winner
The Midland Dairyman Daredevils and their leader, Mrs. Lena McFarland, are mighty proud of their club members and the many honors they have attained. Latest was the announcement by the Puyallup Kiwanis that Raymond Kempf is the winner of their '57 dairy calf



By Mickey Hamlin

The biggest news in records this past week was the introduction of Elvis Presley's new double decker, "Loving You," the theme song from Elvis' new motion picture, and "Teddy Bear," also from the picture. "Teddy Bear" is the side currently causing the most sensation, but I strongly believe that "Loving You" will at least share the honors if it doesn't pass "Teddy Bear" in eventual popularity. In any case, one of the two will soon hold that coveted number one spot on the popularity polls.

The Liberty label has recently released two albums, both of which should prove to be very popular. The more predominant of the two is "Exotica" by Martin Denny. "Exotica" features twelve very beautiful and unusual melodies, including the often played "Quiet Village." All the tunes are instrumental, accented with exciting jungle sounds. "Exotica" has already become one of the largest selling albums locally and strong national sales are also reported.

The second Liberty offering is Julie London's "All About the Blues." Julie, whose singing has become increasingly popular with each new recording, is at her best as she delivers such standards as "Blues in the Night," "Basin Street Blues" and "Bye, Bye Blues" in her quiet, sultry manner. This album will not only please her many avid fans, but it is sure to bring many more record buyers under her magic spell.

Half-Notes: "Send For Me" b/w "Personal Possession" is Nat "King" Cole's most commercial package in a long, long time. . . "Whispering Bells" by the Dell-Vikings, who are still riding high with their "Come Go With Me," has already started to move locally with much more action expected. . . Of the many recordings of "White Silver Sands," Don Rondo, who hit it big not too long ago with "Two Different Worlds," seems to have the favorite version. . . Percy Mayfield's "Digging the Moonglow" is starting to catch the teenagers' fancy. . . The Platters have a new album to coincide with their recent release of "My Dream." It is entitled "The Flying Platters," but more about that next week. See you then.

New Assignment
Fort Bragg, N. C. (AHTNC)—Army Sergeant First Class James R. Burkhalter, whose wife, Thelma, lives at 10130 S. Park Ave., recently was assigned to the U. S. Army Missile Command at Fort Bragg, N. C.

Burkhalter, a member of the command's Headquarters Company, entered the Army in 1948. The sergeant, son of Mr. and Mrs. George R. Burkhalter, Fairfield, Tex., is a 1947 graduate of Fairfield (Tex.) High School.

award. Ray is 13 and the son of Mr. and Mrs. Arthur Kempf. This award is based on scholarship, sportsmanship, 4-H club work, parental cooperation, housing, personal interview with the club judges and his 300-word essay on why he wanted the calf. Last year Pat McFarland was the Kiwanis calf winner.

Reporter — Marlene Corrigan, LE 7-8545.

GLASS HOME SERVICE
OUR SPECIALTY
Also Commercial Installations
DEAN'S GLASS
13021 Pacific LE 7-5661

Rupe Machine Works & Garage
13411 Pac. Ave., P.O. Box 2445 Parkland 44, Wn. LE 7-7450
COMPLETE MOTOR REBUILDING
Lathe Work, Press Work, Con-Rod-Grinding, Head & Block Grinding, Piston Grinding, Brake Drum Turning, Reborring, Main Line Boring, Pin Fitting, Rod Aligning, Armature Turning, Crank Service.

See It Next Week ? In The Times Journal

THE BIGGEST, NEWEST ADDITION To The Growing Parkland Area!

NEW! NEW! NEW! NEW! NEW! NEW!

DEPARTMENT STORE FOR PARKLAND

And Southern Pierce County

Spanaway Will Fete New Pastor

Spanaway Methodist church will honor and welcome the new minister, the Rev. George Nafus, and Mrs. Nafus Friday evening, June 21, at a potluck dinner at 6:00 o'clock at the church. All members of the church and friends in the community are cordially invited to attend.

WCSO to Meet

The Woman's Society of Christian Service will hold the first meeting of the new church year Tuesday evening, June 25, at 7:30 o'clock at the church. Mrs. Orville Critchley, president, will preside for business. Mrs. E. R. Seearce will give the final review of the book, "St. Paul's Letter to Local Churches." All women of the community are cordially invited.

Teen-Age Dances

Clover Creek Post 118, American Legion, will sponsor a teenage dance every Saturday evening, 7:00 to 11:00 o'clock. All teen-agers are welcome. There will be no admission charge; refreshments will be sold. Beginning July 20 there will be live music one evening each month through courtesy of the Teamsters.

Bridal Shower

A bridal shower was given in the Spanaway fire hall Friday evening, June 14, honoring Mrs. Jerry Larson, formerly Miss Nancy Williams, daughter of Mr. and Mrs. Williams. The young couple were married April 30. Jerry, the son of Mr. and Mrs. Edward E. Larson, is now stationed at Fort Bliss, Texas. Hostesses for the shower were Mesdames Robert McCulough, Edward Flannery, Morgan Webb, Harry White, Louis Symmons and O. Omat. Many lovely and useful gifts were received by the honored guest.

Pleasant Trip

William Righetti has just returned from a six-weeks trip to Frederickson, Pa., where he visited with his parents, Mr. and Mrs. James Righetti and many relatives and friends. His grandson, Billy Thomas, accompanied him. While there he was present at the golden wedding celebration of his parents, Mrs. Bernard Salter, his daughter from Tacoma, spent two weeks there and returned home with her father.

Friendly Dozen

The Friendly Dozen Birthday club, held a luncheon at the Top of the Ocean Thursday, June 6. Present were Mesdames William Zumbuhl and children, Emerson Tarpenning, Edward Flannery, O. Omat, Maria Kanton, Madge Pillsbury, Emily Ball and Charles Throssel.

Family Visit

Mrs. A. J. Warburton of Laramie, Wyoming, visited with her sister, Mrs. Edward Flannery, and family and other relatives here for two weeks. While here four sisters, Mesdames R. E. Anderson, A. J. LeBlanc, Edward Flannery and A. J. Warburton, enjoyed the excursion boat trip to Victoria.

Trip South

Mr. and Mrs. John Cotton and three sons visited friends in San Diego and Whittier, Calif. While there Mr. Cotton went deep sea fishing off the coast of San Diego. They visited many places of interest and especially enjoyed Disneyland.

Work Party For Hall Set 22, 23

At the last meeting of the Canyon Road Community club it was decided to put a new roof on the Community club hall. June 22 and 23, next Saturday and Sunday, was the time chosen for the work party. All men of the community are urged to turn out as "many hands make light work."

Backwoods 4-H

The regular meeting of the Backwoods 4-H club was presided over by Buzzy Delano in the absence of Tom Austin when it was held at the home of Edward Kershner. Mr. Kershner passed out ribbons to the members who participated in the demonstrations held at Waller Road May 25. There were three blue ribbons and two red ones. The club almost had a new member as Bobby Bacon's lamb followed him to the meeting.

Baby Shower

A surprise baby shower was held for Mrs. Bill Folk last Saturday at the home of Mrs. John Folk. There were 20 present, including friends, neighbors and relatives. Reporter—Mrs. John Folk, LE 7-5901.

Fencing

Designers and Builders
EXPERT WORKMANSHIP
REASONABLE PRICES
Easy Monthly Payments
VAUGHAN'S
84th & Pac. Ave. GR 4-9515

BATTERY CHECK

BOB AVITT'S Shell Service
133rd AND PACIFIC AVENUE



KEEP YOUR FAMILY

Together

... in a family group photograph you will all like as much as you like each other.

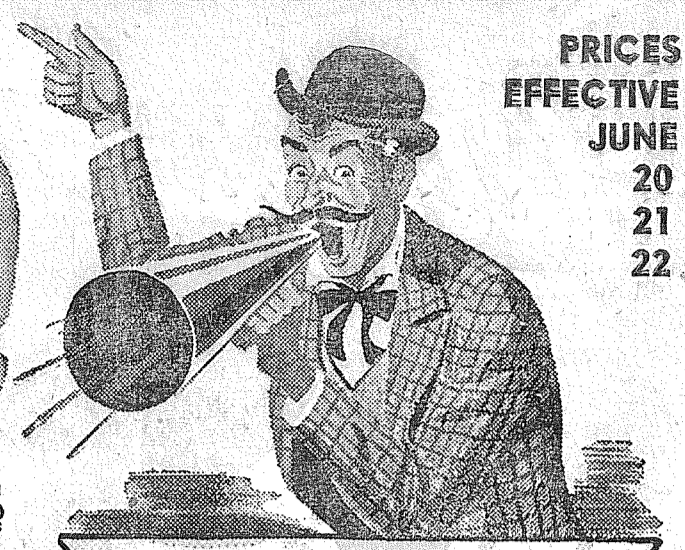
Be together always

Call, phone, or write for an appointment today.

McKEWEN STUDIO
405 Garfield Street, Parkland
LEnox 7-3833

JUNE BARGAIN

Jamboree



PRICES EFFECTIVE JUNE 20 21 22

step right up, folks, see how you save!

AT **IGA**

BUILDERS of your COMMUNITY

DARIGOLD
BUTTER
Quarters - Lb.
68c

KRAFT SALAD
OIL QUART **49c**
14 OZ. BOTTLE

GREEN TAG CUT GREEN
BEANS
303 Size Can
9/99c

NORWEST
PEARS
2 1/2 Size Tin
29c

DEL MONTE
CATSUP **15c**

C & H
SUGAR
25 Lb. Bag
\$2.41

Jumbo Size
CANTS Each **15c**
Watermelon
Pound **5 1/2c**

GOLD MEDAL
FLOUR ⁵ LB. BAG **55c**

THRIFTY Meats FULL OF FLAVOR!
Top Round Steak Lb. **79c**
BOTTOM ROUND STEAK Lb. **69c**
SWIFT'S PREMIUM
SLICED BACON Lb. **69c**
SWIFT'S PREMIUM POUND
Skinless Weiners **49c**
SWIFT'S PREMIUM
Brown & Serve Lb. **49c**
Ground Round Lb. **59c**
SWIFT'S PREMIUM - Fully Cooked, 4 to 8 Lb. Average
PICNIC HAM . . . Lb. **39c**

SWANS DOWN APPLE CHIP
Cake Mix **3/95c**

C & H POWDERED & BROWN
SUGAR **3/39c**

PET
MILK TALL TINS . . . **3/41c**

STOKLEYS - 303 TINS
Apple Sauce **4/69c**

STAR KIST
Chunk Tuna **2/53c**

PICTSWEET FROZEN ORANGE
JUICE 6-OZ. TIN . . . **6/85c**

BEST FOODS
Mayonnaise **59c**

GOLD SHIELD
COFFEE **93c**
2 LB. TIN . . . \$1.85

Vine Ripe
TOMATOES
Pound **15c**
Freestone - Red Ripe
PEACHES **19c**

FOOD TOWN **IGA** **FOOD TOWN**
112TH AND PARK AVENUE PARK WITH EASE - SHOP WITH PLEASURE



SUMMERTIME VALUES

Prices Effective Thursday, Friday, Saturday, June 20, 21, 22



LIBBY'S FANCY SECTIONS 303 CANS
GRAPEFRUIT 5/99c

LIBBY'S FIVE-FRUIT FLAVOR 303 CANS
FRUIT COCKTAIL 4/89c

LIBBY'S - CHILL & SERVE! 46-OZ.
TOMATO JUICE 4/99c

LIBBY'S 303 Cans
Whole Kernel Corn . 6/89c

LIBBY'S 303 Cans
Sweet Peas 5/89c

LIBBY'S 303 Cans
Pear Halves 4/99c

LIBBY'S 16-Oz.
Corned Beef Hash . . 2/59c

LIBBY'S 12-Oz. Cans
Corned Beef 2/79c

LIBBY'S 22-Oz. Jar
Sweet Pickles 2/89c

YELLOW CLING PEACHES Libby's 1/2's or Sliced. 2 1/2 3/89c

WHOLE GREEN BEANS Libby's 303 Cans 4/89c

CUT GREEN BEANS Libby's 303 Cans 5/89c

STEWED TOMATOES Libby's 303 Cans 5/89c

LIBBY'S 303 Cans
Cream Corn 6/89c

LIBBY'S 303 Cans
Spinach 6/89c

LIBBY'S 303 Cans
Cut Beets 4/49c

LIBBY'S 3 1/4-Oz. Can
Potted Meats 3/29c

LIBBY'S 24-Oz. Can
Beef Stew 39c

LIBBY'S SLICED 22-Oz. Jar
Kosher Dills 3/89c

THRIFTWAY CHOICE MEATS

U. S. Choice Or Good, Genuine California Spring Lamb. Ideal Dinner Roast.
LEG-O-LAMB Lb. 69c

Excellent For Barbecuing Or Frying. Neck and Giblets Removed. OCOMA 11-Oz. Pkg.
HALF FRYER Each 49c

Milwaukee Brand 1-Lb. Cello
SKINLESS WEINERS Lb. 49c

Milwaukee Brand - Chunk
BOLOGNA Or LIVERWURST . . Lb. 49c

U.S. Good Or Choice California Spring Lamb

Pound Pound
Loin Chops 89c Rib Chops 79c

Pound Pound
Shldr. Roast 45c Breast 19c

Fresh, Half or Whole. 6 to 8-Lb. Aver. Pound
RED SALMON 45c

Fillets, No Bone, No Waste Pound
FRESH SNAPPER 25c



AJAX CLEANSER
Polishes as it cleans with "FOAMING ACTION"

2c Off Deal 2 Reg. Cans 25c

PALMOLIVE SOAP
reg. 3/29c, bath 2/27c

Cashmere Bouquet
reg. 3/29c, bath 2/27c

AD 10-LB. PKG. \$1.79
FAB DETERGENT GIANT PKG. 77c
VEL DETERGENT GIANT PKG. 77c
VEL LIQUID 22 OUNCE 69c

THRIFTWAY FRESH PRODUCE

WATERMELONS
Half's 5 1/2c lb. **lb. 5c**
PEACOCK VARIETY

CAULIFLOWER
LOCAL
SNOWBALL **lb. 10c**

PEACHES
Fresh Grown
Lb. 19c

CORN
Golden Sweet
6 For 49c

BEANS
Oregon Green
2 Lbs. 29c

HAPPYVALE PEAS 303 Cans 8/\$1.00
ROSEDALE CORN Cream Style 303 Cans 8/\$1.00
ROSEDALE BEANS Cut 303 Cans 8/\$1.00

KRAFT QUART Salad Oil 51c

FRESH FROZEN FOODS
ORANGE JUICE MINUTE MAID FROZEN 6-OZ. 3/49c

SHURFRESH FROZEN 10-Oz. PEAS Pkg. 2/29c

PICTSWEET FROZEN 10-Oz. Strawberries . 2/35c

PICTSWEET FROZEN 10-Oz. Cut Corn 2/35c

PICTSWEET FROZEN 10-Oz. Peas & Carrots 2/35c

Pictsweet French Cut, Frozen 9-Oz. Pkg. Beans 2/39c

Kraft Quality Foods
KRAFT DELUXE MARGARINE
10c OFF PACKAGES
1 POUND Each **2/57c**

NATURAL SLICES 8-Oz. Pkg. CARAWAY 41c
Kraft Asst. 6-Oz. Processed 2-Lbs. **Handi-Snacks . 30c American . . 1.05**
Grated 3-Oz. Philadelphia Cream 3-Oz. **Parmesan . . . 33c Cheese . . . 2/33c**

SNOW DRIFT SHORTENING . . 3-lb. can 95c

FRISKIES CAT FOOD
No. 1 Can **27c** 8-Oz. Can **35c**
2 For . . . **27c** 4 For . . . **35c**

MD 4-ROLL PACK COLOR TISSUE 39c
4-ROLL PACK
POWDER ROOM TISSUE 53c

Choc. Milk Amplifier 24-Oz. Jar BOSCO 63c

Blue Bonnet 1-Lb. MARGARINE 2/ 63c

Hills Bros. Instant Coffee . . \$1.49

Hills Bros. Coffee \$1.89

BIG TOP 9 1/2-OZ. GOBLET PEANUT BUTTER . 47c
USE YOUR NEWSPAPER COUPONS

THRIFTWAY WHERE Every CUSTOMER IS IMPORTANT!

- Park 'N Shop Thriftway 9662 Pacific Avenue
- Villa Thriftway Store 10111 Gravelly Lake Dr. S.W.
- Summit View Thriftway 5309 East 112th
- Midland Thriftway 1701 East 99th
- Stan's Thriftway 6421 Steilacoom Blvd.
- Thriftway Food Fair 214 West Main, Puyallup

- Tastewell 1/2 Cans **GRATED TUNA . . 2/47c**
- Tastewell Quart **MAYONNAISE 57c**
- Locking Glass California 2-Lb. Pkg. **WHITE BEANS 37c**
- Tastewell 24-Oz. **TABLE SYRUP 35c**
- Shurfine 1/2's or Sliced 303 Cans **Y. C. PEACHES . . 2/45c**
- 1/2 Gallon **ENERGY BLEACH . . 29c**
- Philip's 12-Oz. Bottle **Milk of Magnesia . . . 52c**
- Bottle of 100 **BAYER ASPIRIN . . . 62c**
- KRISPY CRACKERS**
Sunshine 1-Lb. Pkg. **27c** Sunshine 2-Lb. Pkg. **53c**

Brownies Enjoy Outing At Beach

The 3rd grade Brownies (Troop 459) ended their year with a ferry boat ride to Vashon island on Memorial Day where they spent a happy day beach combing, clam digging and roasting weiners. Their leader, Mrs. Mitchell, wishes to thank Mrs. George Williams and Mrs. J. P. Bridges for their help.

Girls present were Virginia Grizzetti, Linda Burgeson, Wendy Williams, Sandra Mitchel, Cheryl Thompson, Carol Matheson, Betty Gogan, Sharon Kaiser, Wilma Carnes, Karen Hall, Sheila Taylor, Candace Shanley, Marjean Connell and Janet Bridges; members absent were Ruth Stounei and Mary Waddell. Also included in the party were George, Gary and Leslie Williams and Kenneth and Allan Bridges.

Vacation

Mr. and Mrs. Walter Earle and family left last Saturday for a two-week trip through California and to the Mexican border. While in California they will visit Disneyland.

Wins Award

David Anderson, son of Mr. and Mrs. H. O. Anderson, recently won a high school diploma awarded by the College of Musicians of the National Guild of Piano Teachers. Congratulations!

Scout Roundtable

Scout Roundtable will meet Friday evening, June 21, at the home of Mr. and Mrs. George Reporter—Mrs. Harold Burge-Garrison, LE 7-7640.

Kiwanis To Hear Talk On Spain

Main speaker for the 6:15 o'clock dinner meeting of the Parkland Area Kiwanis club this (Thursday) evening in the Trinity Lutheran church dining room will be Stan Willis, recently returned to the United States after two years teaching in Spain. He will show colored pictures and talk on interesting happenings of his stay in Spain. All members of the Kiwanis group are urged to attend.

Last week the Kiwanis club presented scholarship certificates to the outstanding boy and girl from the 8th grades of the elementary schools of the community, as follows:

Parkland school, Tom Limsden and Judy Leraas; Central Avenue, Dan Crodwill and Claudia Lovitt; Collins, Jerry Manley and Linda Abrahamson; Spanaway, Bob Durbin and Lorinda Green; Elk Plain, Robert Bonnell and Marlene Rutt; Roy, Donald Kleiven and Gail Loveland, who were accompanied by the runner-up, Ora Penrod; Midland, Don Marr and Linda Stokes.

The June 13 meeting was also Ladies Night and a wonderful dinner was served to everyone on hand and a very good time was reported—even Verne Ashford!

Weiner Roast For Parkland M.Y.F.

The regular meeting of the Parkland Methodist Youth Fellowship will be a weiner roast at someone's home. Young people wanting to attend meet at the church at 6:45 p. m. on Wednesday, June 26. Wear sports clothes and anyone coming may bring a guest.

For more information call Nancy Brown, LE 7-7873. The Parkland M. Y. F. has changed to a summer schedule which will be every other Wednesday evening at 7:00.

Busy Beavers 4-H Visit Hooker Ranch

The Busy Beavers 4-H club toured Col. Hooker's Hereford ranch at McKenna Friday, June 14. Col. Hooker has approximately 1200 acres of fertile river bottom land along the Nisqually river. We watched the heavy equipment dozers uprooting stumps to clear the land that will be used for pasture for the pure-bred Herefords which he raises.

After touring the farm, we were invited to lunch with Col. Hooker at the cook house. While the girls and leaders helped the cook prepare for lunch, Col. Hooker entertained the group with clever tricks of magic which were enjoyed by all.

Col. Hooker impressed upon us that cattle ranching is a big business and one has to have good sound planning to succeed. It takes large equipment, large tracts of land, good management

and planning as well as money to be successful and still one may not make a profit.

This tour will go down in our records as one of the unforgettable pleasures we have enjoyed during our club career.

Linda Breithaupt, reporter.

WOODLAND . . . 112th Boosters Meeting Tonight

The 112th St. Boosters club meeting is Thursday night, June 20, at 8:00 in the Woodland school lunchroom. Remember, new members are welcome so if you have a yen for some civic activity with a purpose, here's a start and a good way for you

newcomers to get acquainted with your neighbors in the Woodland area. The Club's big project at the present is to build a community hall in this area. Plans will be made at this meeting for the game night Friday, June 28, so keep that date in mind.

New Grandchild

Mr. and Mrs. Walter Waller are the proud grandparents of a bouncing baby girl, Karen Marie, born June 8 to Mr. and Mrs. Max Appelgate. Mrs. Waller has been at the Appelgate home in Tacoma caring for her daughter Jeanette's other 3 children.

Vacation Trip

The Geo. Newcomer family are leaving for a 2 weeks trip on June 21 as a high school graduation present for their son, Bill

Newcomer. A few of the sights they plan to see are the Grand Canyon, Zion and Bryce Canyon in Arizona, the Mormon Temple in Salt Lake City, the Sequoia National Park in California, and the Yellowstone National Park in Wyoming.

Neighborhood Club

The Woodland Neighborhood club met at Mrs. Oscar Swalander's home Thursday afternoon, June 13. Dessert luncheon was followed by games. Those present were Mesdames Oscar Swalander, Walter Waller, Frank Wiggins, Walter Burkette, Bill Henn, Wm. Westman and J. C. Mullins. July meeting is to be held at the home of Mrs. Wm. Westman.

Thanks!

Mrs. Al Cline wishes to thank

all neighbors for flowers and reading material sent to her husband, Capt. Al Cline, at Park Airforce Base in San Francisco where he is convalescing from an air crash in Greenland in December.

Injured

Donald McLean was seriously injured when a huge beam fell on his head Tuesday, June 11, at Fairbanks, Alaska, where he has been working. He is now in St. Joseph hospital at Fairbanks and will probably be there a month or two. His family here in Woodland say he is getting along fine.

Farewell Party

Mr. Hoggatt's room at Woodland school gave a farewell party for Mr. Hoggatt on the last day of school. The room is to be

split up next year and many of these students have been together since 1st grade. They go into the 6th grade next year. Those participating in the recital were: Piano, Joan Geddes, Bonnie Murdoch; accordion, Billy Crabtree, Rickard Collier and Toni Ruyle; singing, Gail Harris; trumpet, Nancy Humiston, Tom-

my Higgins, Gary Johnson and David Runkel; violin, Diane Fox; clarinet, Orna Hensley.

Ben Ruyle and family had a surprise visit from Ben's mother Mrs. John Smet of Yakima, who stopped by while on their vacation trip.

JACOBS PACIFIC DRUGS
PRESCRIPTION SERVICE
 Open 7 Days A Week from 9:30 A.M. to 9:30 P.M.
 Walgreen Agency • Pay Light & Water Bills Here
 84th & Pacific Ave., HA 6445 Tacoma, Wash.

LEGALS

State of Washington, Office of Supervisor of Water Resources Olympia.

NOTICE OF WATER RIGHT APPLICATION NO. 14334

TAKE NOTICE:

That Parkland Light & Water Company of Parkland, Washington on May 16, 1957 filed application for permit to divert the public waters of unnamed springs (Melville Spring) intermittent tributaries of Spanaway Creek, in the amount of 1.0 c.f.s. subject to existing rights, continuously each year for the purpose of municipal supply; that the approximate point of diversion is located within (SE¼SE¼) W.P. Melville Donation Land Claim of Section 17, Township 19 N., Range 3 E. W. M., in Pierce County.

Any objections must be accompanied by a two dollar (\$2.00) recording fee and filed with the State Supervisor of Water Resources within thirty (30) days from June 20, 1957.

Witness my hand and official seal this 4th day of June, 1957.

M. G. WALKER
 State Supervisor of Water Resources.

Published in the Times-Journal June 13, 20, 1957.

KENDALL HALVORSEN
 Attorney
 217 Garfield St.
 Parkland, Washington

In The Superior Court of the State of Washington and for the County of Pierce.

No. 132325
 SUMMONS BY PUBLICATION
 BETTY JANE MARTIN,
 Plaintiff

vs.
 ELDRED LELAND MARTIN,
 Defendant.

STATE OF WASHINGTON TO THE SAID ELDRED LELAND MARTIN, DEFENDANT:

You are hereby summoned to appear within sixty (60) days after the date of the first publication of this summons, to wit, within sixty (60) days after the 23rd day of May, 1957, and defend the above-entitled action in the above-entitled court, and answer the complaint of the plaintiff, and serve a copy of your answer upon the undersigned attorney at his office below stated; and in case of your failure so to do, judgment will be rendered against you according to the demand of the complaint, which has been filed with the clerk of said court.

That the cause of action herein is for a Decree of Divorce, on the grounds of cruelty, burdensome home life, non support, and neglect of supporting the family, and abandonment of over one year.

KENDALL O. HALVORSEN
 Attorney for the plaintiff
 Office and Post Office Address:
 217 Garfield Street
 P.O. Box 2456
 Parkland Branch
 Tacoma 44, Washington

Published in the Times-Journal May 23, 30; June 6, 13, 20, 27, 1957.

**INTERURBAN
 AUTO FREIGHT
 INC.**

3 Trips Daily
 To Parkland, Spanaway
 Summit, Midland
**GENERAL FREIGHT
 MA 7-4121**

**TRUCKS
 FOR RENT**
 MA 7-9039

Save One Half

We Furnish Everything
HARMON'S
 Driv-Ur-Self Co.
 HARMON'S SERVICE
 2112 Jefferson
 Jim Harmon, Mgr.

VAUGHAN'S VALUES

5 Fl. STEEL FENCE POSTS	Each	78c
6 Fl. STEEL FENCE POSTS	Each	88c
6 Fl. ROUGH CEDAR POSTS	Each	60c
CEDAR GATE ARBORS	Each	\$8.50
CEDAR TRELLISES	Each	\$1.20

Ask About Our Monthly Pay Plan

Vaughan's
 PACIFIC AVENUE LUMBER COMPANY
 84th & Pacific Avenue GR 4-9515

SAFEWAYS

Hunt's Catsup Stock up at this price. **2** 14-Oz. Bottles **29¢**

Ripe Olives Libby's Cadet Size. **2** 9-Oz. Cans **49¢**

Cream Corn Del Monte **7** 17-Oz. Cans **\$1.00**

FAMOUS BRANDS SALE

A blend of tropical fruit juices. **6-Oz. Cans**
HAWAIIAN PUNCH . . . 2/39c

Minute Maid, Frozen. **6-Oz. Cans**
ORANGE JUICE . . . 6/\$1.00

Stokelys Cut Stringless **16-Oz. Cans**
GREEN BEANS . . . 2/39c

Pillsbury — so easy to make. **4-Lb. Pkg.**
PANGAKE MIX . . . 55c

Orange, Chocolate or Macaroon, Curtsy **Pkg. of 2**
CUPCAKES . . . 10c

Tasty and Nourishing. **16-Oz. Cans**
DR. ROSS DOG FOOD . . . 4/49c

MAY DAY OR NU MADE

SALAD OIL

QUART 49c **1/2 GAL. 98c**

GERBERS

BABY FOOD

Strained Finest For Flavor. **10 Cans 79¢**

Dromedary, White, Yellow, Devilsfood **19-Oz. Pkgs.**
CAKE MIXES . . . 4/\$1.00

Libby — stock up at this price. **8 1/2-Oz. Cans**
FRUIT COCKTAIL . . . 7/\$1.00

Libby, Sliced Freestone **8 1/2-Oz. Cans**
SLICED PEACHES . . . 7/\$1.00

Libby's — firm and sweet **8 1/2-Oz. Cans**
BARTLETT PEARS . . . 7/\$1.00

White Star — for casseroles. **6 1/2-Oz. Can**
CHUNK TUNA . . . 27c

Soy — for everything you bake & fry. **3-Lb. Can**
SHORTENING . . . 87c

Made especially for the Northwest **10-Lb. Bag**
FISHER'S FLOUR . . . 97c

Redeem This Coupon At Your Safeway Store

10c COUPON

This Coupon Worth 10c on 18-Oz. Jar of Beverly Creamy or Chunky. **18-Oz. Jar with coupon**

PEANUT BUTTER 45c

Cash Value 1/20 cent — Void after June 25, 1957



Veal Roast

U.S. Choice Grade. Leg, Rump or Large Loins. Very Tender.

Lb. 79c

VEAL SHOULDER ROAST . . . U. S. Choice Grade 55c

VEAL RIB CHOPS U. S. Choice Grade 75c

VEAL LIVER U. S. Choice Grade 69c

BREAST OF VEAL Serve with Onions 29c

SMOKED PICNICS 1b. 37c

HOLIDAY HAMS 1b. 89c

SLICED BACON 1b. 69c

SKINLESS WIENERS 1b. 49c

FRESH WHOLE FRYERS 1b. 43c

FREE 75¢ LIPSTICK

Mail-in 4 Large or 6 Med. Wrappers

IVORY
 4 Large 58c | 6 Med. 58c

IVORY SOAP
 4 Personal Size 23c

OXYDOL
 Washes Whiter
 19-Oz. Pkg. 33c

TIDE
 Cost less to use.
 19-Oz. Pkg. 33c

WAXED PAPER Roll 21c
 Vano — makes ironing easier. Quart 27c

LIQUID STARCH Zeo Brand — economical. Rolls 4/37c
 Liquid — useful as a disinfectant. Half Gallon 33c

PUREX BLEACH Get your 'Sew & Go' kit. Pkgs. of 12 2/85c

MODESS NAPKINS For dishes & fine fabrics. 12-Oz. Pkgs. 2/59c

TREND DETERGENT 2/59c

Prices effective Thurs. June 20 thru Saturday, June 22, at 82nd and Pacific Safeway. No sales to dealers, right to limit is reserved.

POTATOES 3 1/2c

Clean Washed - Long white California Shaffers. Best Quality. **Lb. . . . 3 1/2**

Red ripe Beef Steak. For Slicing. **17c**

TOMATOES . . . lb. 17c

WELL FILLED EARS. TENDER. **39c**

SWEET CORN . 5/ 39c

BABY BEETS
 Young and tender. Local grown.
3 Bunches 10c

PERFECTLY RIPENED - GOLDEN YELLOW Pound

BANANAS 17c

Del Monte **CATSUP** Finest Flavor **7** 14-Oz. Bottle **\$1.00**

Mission Long **SPAGHETTI** or Elbo **MACARONI** 14-Oz. Pkgs. **23c**

SWEETHEART SOAP Special price 4 Reg. Bars 28c 4 Bath Bars 38c

Duncan Hines Blueberry **MUFFIN MIX** 13 1/2-Oz. Pkg. 39c

Chun King Chicken **CHOW MEIN** 2 1/4-Oz. Can 97c

Blue Bonnet — better flavor **MARGARINE** 1-Lb. Pkgs. 2/49c

Givard's — made without sugar. 6-Oz. Bottle **FRENCH DRESSING** 29c

Friskies—stock up at this special price. 10-Lb. Bag **DOG MEAL** \$1.35

Friskies—tasty and nourishing. 10-Lb. Bag **DOG CUBES** \$1.35

Trend—cuts grease like magic. 22-Oz. Can **LIQUID DETERGENT** 53c

FISHER'S BISKIT MIX, 40-Oz. Pkg. 39c
N.B.C. RITZ CRACKERS, 1-Lb. Pkg. 37c
SUNSHINE HYDROX COOKIES, 12-Oz. Pkg. 39c

SAFEWAYS your **BEST** place to save!

Top Energy

FOOD BUYS

TO FILL YOUR
'Bottomless
PITS'



SPRY 3-Lb. Tin **89c**

GOLD MEDAL

FLOUR 5-Lb. Pkg. **49c**

KRAFT'S

46-OZ.

Orange Drink **21c**

HUNT'S
PORK & BEANS
2 1/2 Tin **19c**

BISQUICK
40-Oz. Pkg. **39c**

LOOK **19c** WILL
WHAT BUY
YOUR CHOICE

2 CELLO BAGS	CARROTS
2 FRESH LOCAL HEADS	Cauliflower
2 LBS. LARGE SUNKIST	ORANGES
2 FANCY SLICING	CUKES
2 POUNDS NEW RED	SPUDS

PLAY FAIR Tall Tin
DOG FOOD **12/99c**

LIPTONS—It's Ice Tea Time! 48 Bags
TEA **59c**

GARDEN Bottle
CAT SUP **3/49c**

HUNT'S
TOMATO SAUCE . . **13/\$100**

HI NEIGHBOR Full Lb.
COOKIES **49c**

ZEE 4-Pack
TOILET TISSUE **33c**

DARIGOLD PRINTS Pound
BUTTER **65c**

SUNSHINE KRISPY Pound
CRACKERS **25c**

GRAIN FED BEEF - Select Center Cut Chuck
OVEN ROAST . . . Lb. **35c**

ROLLED ROAST SIRLOIN TIP Pound 59c	Thick Cut - To Broil Lb. PORTERHOUSE STEAKS 69c	Lean Tender RUMP ROAST Pound 39c
	Lean Lb. SHORT RIBS 10c	

GRAIN FED
STEAKS RIB or THICK CUT SWISS . . Lb. **49c**

Sirloin STEAK Pound 55c	Our Famous Lb. GROUND BEEF 3/89c	POT ROAST Pound 29c
	Skinless Lb. WIENERS 3/\$100	

CARSTEN'S HYGRADE - Ready To Eat
SMOKED PICNICS Lb. **37c**

YOUR ONLY HOME OWNED
SUPER MARKET
12208 Pacific Avenue

Fletcher's

OPEN:
7 Days A Week
9 a.m. to 10 p.m.
Prices Effective
THURS., FRI., SAT.
THIS WEEK

No Sales To Dealers
Right To Limit Reserved

"COURTESY" OUR MOTTO ALWAYS

County Agent's Corner

By Ernest I. Hopp
Poultrymen are the biggest liars on the face of this earth! That's what many poultrymen say when trying to interpret other's results. I'll admit that many times it is rather difficult to learn true production results from oral statements. That's why it is so interesting to follow the Pierce County poultry record results. These results are based on actual statistics rather than interpretations of verbal statements.

One of the most interesting phases of poultry production is rate of lay. The April record summary gives us some food for thought. A Gig Harbor poultryman led the list with a 91 per cent average rate of lay for his flock of October 1956 hatched White Leghorns. A Buckley poultryman was second with a 81 per cent average rate of lay for a June 1956 flock. In third position was a Lakebay producer reporting 78 per cent rate of lay for a September 1956 flock.

Not all the reporting flocks had these good results. One flock owner with several July 1956 hatched birds reported rates of lay in the high 50's and low 60 per cent bracket. Another flock owner with January 1956 hatched birds reported a 47 per cent rate of lay. So you see these factual reports give a good birds eye view of results on local farms. Some are good; some not so good. It is certainly true, however, that those individuals who are getting top results start with well bred production stock and follow good management and disease control practices. Good management includes such factors as vaccinating to immunize birds against health problems as bronchitis, Newcastle and fowl pox. Other good management practices include feeding a good poultry ration and watching little details such as ventilation and comfort of the birds. It's something that can come only as a result of experience in working with chickens.

By George Purcell
"That organization is dead" is an often overheard statement concerning some service, civic, community, church or other organization. These statements of course may or may not be true but if true here is a new idea I recently heard about that sounds practical—perhaps those organizations need more thought given to planning their meetings. Perhaps the word P A C E will help remind program planning committees of things needed for attractive, interesting meetings. P-ersonality development—"I got to put in my ideas" involvement of all the members. A-complishment of purpose—"We got somewhere at this meeting."

C-ooperation—A spirit of good will between members. E-njoyable—Fun and Fellowship and depending on the objective perhaps informative. E-very meeting should contribute to the Personality Development of those who attend, result in Accomplishment of your planned, clear and definite purpose, build Cooperation among the group, be Enjoyable if people are to attend often. Perhaps each meeting should be planned and later evaluated on the basis of P A C E. Or with the best planned meeting perhaps it was a "flop" because the president or certain members are disliked. Which reminds me of some sage advice I heard once given a group of organization presidents quote "If you ever expect to motivate people remember this—it is not your wants which causes them to respond, it's more likely because they like and respect you and want you to like and respect them. They want your good will."

TOWN TALK SPONSORED BY THE PARKLAND BUSINESS CLUB



Page 14 Thursday, June 20, 1957
The TIMES - JOURNAL

SHOP PARKLAND FOR QUALITY AND SAVE . . .

and appreciation. They know from past experience you will commend them if they do a good job and they like commendation. Know and understand each person of your group. Involve them in your planning. Real leadership is not what you exercise but what you evoke from your members. Be humble before God, improve yourselves constantly."

By Joseph Buhaly
County Extension Agent
Pierce County boys John Phelan, Graham and Richard S. Elliott, Tacoma; Larry Nelson, Buckley; and Clyde Baker of Graham, are winners of paid campships. The boys will attend Resource Management Camp at the Wind River Experimental Forest in the Gifford Pinchot National Forest June 16-22 at Carson, Washington.

The four boys are sponsored by the Northwest Kiwanis club, Pierce County Soil Conservation District, Pierce County Cattlemen's association and the South Tacoma Kiwanis club. The boys represent 4-H, F. F. A., Lincoln high school forestry club.

Resource Management Camp is organized to give outdoor resource education to exceptionally qualified youth. Boys will come from all Western Washington counties. Upon return the boys will speak to their sponsors and others about their experience and learning while at camp. During the six-day camp those attending will study soil and how its made, learn to manage forest land, identify plants and weeds, study the adaptability of crops to soil and learn the factors causing leaching and erosion and management of crop acres for profit and conservation.

Boy Scouts Plan Sunday Breakfast

Boy Scout Troop 34, Spanaway, will serve breakfast Sunday morning, June 23, at 7:30 p. m. at Spanaway Methodist church for their fathers and the sponsors, the Methodist Men's

group. All men of the community are cordially invited, whether they have a son in Scouting or not.

Dr. Charles Robbins of the Tacoma-Valley Methodist Union will be the speaker of the morning.

NOW OPEN
5 P.M. to 9 P.M.
Have your hair cut
During Your
Leisure Hours
LES'S
BARBER SHOP
617 South 112th Street

WALLER ROAD
FEED & FARM SUPPLY

- Complete Line of Albers Feeds
- Rentals On Merry Tillers

Till Futher Notice We Will Be
Closed Mondays

7714 WALLER ROAD LE 7-5552



Personal service makes every day Ladies' Day with us!

Women enjoy banking at National Bank of Washington. That's because their banking needs receive personal consideration here. For example, when you open a thrifty, convenient Tenplan checking account, the girl at the new accounts desk will be glad to show you exactly how to make out checks and deposit slips and keep your check register. She'll explain how other banking services can be helpful to you too . . . such as safe deposit boxes to hold your treasured keepsakes, savings bonds, and important documents; travelers checks to carry when you're vacationing; and ways of saving systematically for a nest egg for your future. It's these extra personal services that make National Bank of Washington a favorite with the ladies.

NATIONAL BANK OF WASHINGTON

PARKLAND BRANCH 21 BANKING OFFICES

The Bank of Personal Service

MEMBER FEDERAL DEPOSIT INSURANCE CORPORATION
MEMBER FEDERAL RESERVE SYSTEM

Mountain View Food Lockers
CUSTOM MEAT CUTTING
Locker Beef Available
2519 East 112th LE 7-5332

LOOK

1x6 No. 3 Per M
V RUSTIC SIDING . . . \$65.00
1x8 No. 4 100 Ft.
SHIPLAP \$3.90

DROP IN AND SEE OUR
NICE SELECTION OF
GARDEN EQUIPMENT

PAINT - GLASS - HDWR.
& ELECTRICAL SUPPLIES

BASKETT LUMBER CO.
MILL & RETAIL YARD
97th and Portland Avenue
LEnox 7-5844