

Estimates Without Obligation
QUALITY HOMES
DESIGN ASSISTANCE
Hedlund Const.
868 Tule Lake Rd. LE 7-4227

LINOLEUM, FORMICA,
CARPETS
FREE ESTIMATES
PACIFIC FLOOR COVERING
131st & Pacific LE 7-4545

Mysterious muscular dystrophy destroys muscles, leaves victims helpless. Volunteer for Muscular Dystrophy Associations' annual fund raising appeal.

Funds are vital ammunition in the war against muscular dystrophy. Join the fight as a volunteer in TACOMA MARCH. Call SK 2-4515.

Xmas Program At Collins School

Collins School will present two Christmas programs this year. An evening program will be presented on Wednesday, December 14th in which the children from Grades 3, 4, 5, and 6 will participate. An afternoon program will be presented on December 22nd by the children from the first and second grades. We hope to have Santa Claus present to present treats to the children which Collin's Tots Club and P.T.A. will have ready at this Program.

the men honored at a dinner given by St. Regis Paper Co. Mr. Pulley has completed 36 years of service with the company.

Benston, Crocker Will Exchange

An exchange program with Crocker Grange, which Benston members have enjoyed the past few years, will again be held next week.

On Tuesday evening, Dec. 13, Crocker members will visit the Benston meeting and present a program.

The following evening, Wed. Dec. 14, Benston members will return the visit. Lecturer Dryan Dalin announces that the following Benston members will participate: Mr. and Mrs. Harold Jacobson, Miss Vicki Jacobson, Mrs. Barbara Hulscher, Mr. Dean Thorson. Mrs. Erma Peck, home economics chairman, for 1961, will let out of an earlier article.

Games night will be held at the hall Sat., Dec. 10.

New Parents
Mr. and Mrs. Ivan Akers are parents of a new daughter, born Nov. 25. She is welcomed by two brothers Mark and Danny, and Grandparents, Mr. and Mrs. Harry Akers Sr. and Mr. and Mrs. Smithlin.

Bridal Shower
Miss Sylvia Anderson, whose wedding to Allen Trent is set for Dec. 10, at Bethany Methodist Church, was honored with a bridal shower Sunday, Dec. 4. The family party was given by Mrs. Anton Anderson, assisted by Mrs. Ira Reese and Mrs. Charles Sabalaska. The guest of honor was presented with many lovely gifts for the young couples new home. Those attending were Mrs. Ned Anderson, the Bride-to-be's Mother, Mrs. Charles Freeman, Mrs. Bob Freeman, Mrs. Harry Jessel, Mrs. Bob Lenz, Miss Emily Lenz, all of Fircrest; Mrs. Wm. House Jr. and Miss Christine House of Seattle, Mrs. Otto Robinson, Mrs. E. J. Anderson, Mrs. Bob Gerritz.

Cooley Family Expresses Thanks

The Harold Cooley family wishes to express their appreciation and thanks to "all the kind people who helped us at the time of our great loss of husband and father."

Mrs. A. H. Gerritz, Mrs. Kenneth Trent, and the Hostesses.
Reporter — Eva Pearl Morris.



TELEVISION SERVICE CENTER
PRESENTS TV CHUCKLES

Charlie decided he couldn't live without TV, so he's headed back for civilization and Television Service Center.

TELEVISION SERVICE Center
"Your WINEGARD COLOR CEPTOR DEALER"
GR23386
8431 PACIFIC AVE.

LITTLE PARK SPECIAL

STEAK . . . \$1.25
FRI. AND SAT. NIGHT ONLY

Delicious Steak, Lots of Hash Browns, Little Park's Special Tossed Green Salad With Our Own Dressings, Garlic Bread & Home Made Dressing
171st and Pacific Avenue LE 1-1343

POWER TOOLS FOR RENT

SANDERS—EDGERS—POLISHERS—HAND SANDERS
SKIL SAWS—ELECTRIC DRILLS—CEMENT MIXERS
ETC.—ALSO HAND TOOLS FOR RENT

Anderson Lumber

9813 Pacific Avenue LEnox 7-7311

YELM THEATRE

FRI.-SAT., DEC. 9 & 10
DARBY O'GILL AND THE LITTLE PEOPLE

Plus Selected Shorts and Cartoon.
Show Starts 7:00 p.m.

SUNDAY, DEC. 11
THIRD MAN ON THE MOUNTAIN

Selected Shorts and Cartoon.
Show Starts 2:00 P.M.

Matinee
Walt Disney Productions

36 Years
Mr. LaMont Pulley was one of



THIS YEAR MAKE IT A WESTERN CHRISTMAS

Everything for Horse & Rider

The BUNKHOUSE
Open Friday Evenings 'Til 9 P.M.

12605 Pac. Ave. LE 7-5510

Bob's Barber Shop

9820 Pacific Avenue

Courteous Service Always

Hours 9 to 6 Tues. thru Sat.

SERVE THE BEST!

shop here!

PAY THE LEAST!

TANG — NALLEY'S

Salad Dressing FULL QT. 39¢

WHITE STAR

TUNA CHUNK 1/2 Size Tin 4/\$1.00

SPRY — For Holiday Baking

Shortening 3-Lb. Tin 65¢

SWANSON'S PIES MEAT
Beef, Turkey, Chicken
5 For \$1.00

WALDORF — White or Colored TOILET TISSUE
4-Roll Pkg. 29¢

YUBAN — Luxury COFFEE
2-lb. Tin \$1.29

INSTANT — 20c Off Label
MAXWELL HOUSE
Large 10-oz. Jar \$1.19

MEDOSWEET Cottage Cheese
Pint Carton 27¢

LIBBY'S Crushed or Tibbits Pineapple
No. 211 Tin 5/\$1.00

HEINZ Ketchup
14-Oz. Bottle 19¢

BLEACH Purex
Gal. 49¢

GOLDEN GRAIN WHITE OR YELLOW Popcorn
2-Lb. Pkg. 29¢

LARGE AA WHITE EGGS
Doz. 61¢

B & M BEANS
28-oz. Tin 4/\$1.00

PACIFIC PEARL MANDARIN, ORANGES
11-oz. Tin 5/\$1.00

ONLY 17 SHOPPING DAYS 'TIL CHRISTMAS

MARKET DAY RAISINS
4-Lb. Pkg. 79¢

HEINZ'S STRAINED BABY FOOD
6/69¢

INSTANT FELS NAPHTHA
Giant Size 69¢

M&M CHOCOLATE COATED CANDY
Large Pkg. 49¢

PRICES EFFECTIVE THURSDAY THRU SUNDAY

SUMMIT TRADING COMPANY

10409 Canyon Road, Tacoma LE 7-5848

OPEN SUNDAYS

10 A.M. TO 7 P.M.

FOR YOUR CONVENIENCE

WEEKDAY HOURS

9 A.M. to 9 P.M.

FRYERS

PEDERSON'S FRESH DRESSED—PAN READY 3 LEGGED OR REG.

FRYERS POUND 39¢

FRESH GRAIN FED PORK CHOPS Lb. 59¢
CENTER CUTS... Lb. 69¢

FRESH TURKEY ORDERS TAKEN NOW

MEATY COUNTRY STYLE SPARERIBS Lb. 53¢

FANCY NORWEGIAN LUTEFISK Lb. 33¢



CALIFORNIA LETTUCE 2/15¢

EMPEROR GRAPES Lb. 10¢

CELLO WRAP Cauliflower Each 19¢

FOR SOUPS & STEWS Rutabagas Lb. 9¢

Post 228 Meets

Parkland Post 228 will meet tonight in Sunshine Hall at 8 p.m. The annual Xmas party will be discussed.

Parkland legion post is having a membership. Any vet serving in a war may call LE 1-1471.

League for equipment.

The 1947 Chevrolet panel truck, donated to the Little League by Earl (Tobey) Torbet, will be awarded at noon. Many thanks are extended to Tobey for this fine gift.

June Bugs

The June Bug Garden Club will hold a workshop on Christmas decorations Tuesday, December 13, at 10:30 a.m. in the Summit Youth Center. Outside decorations will be included on the agenda, as well as, an exchange of Christmas gifts. Hostesses for the gathering will be Darlene Rave and Donna Houtz.

Well Babies

The Well Baby Clinic will be held Wednesday, December 14, at the Midland Fire Hall. Registration begins at 9 a.m. and concludes at 10 a.m.

4-H

Explorer Scouts from Post 92 will be selling Christmas trees again this year. They will be on sale Saturday, December 10, at the Summit Methodist Church.

The Busy Chix 4-H group is going Christmas tree cutting Saturday, December 10. Anyone wishing to buy a tree please contact Mrs. Morton at LE 7-6428.

Methodists

Young Adults—Young adults of the Summit Methodist Church will be square dancing Saturday, December 10, 7:30 p.m., in the Church Fellowship hall. Chairmen Ken and Lois Leavens, want the beginners, as well as the advanced square dancers, to come for an evening of fun. Refreshments will be served by Mr. and Mrs. Leavens.

Thanks

M-Sgt. and Mrs. Harry Beggs would like to thank the Summit Fire Department for their speedy response and help when needed last Thursday afternoon. George Allan, their nine month old son, went into convulsions and Mr. Butler and another fireman gave oxygen to the baby, as well as taking him to Madigan Army Hospital for further treatment. Both Sgt. and Mrs. Beggs are grateful for this service.

Reporter—Gwen Cail, LE 7-3766.

Sheriff's Reserve Patrol Continues Training



Members of the Pierce County Sheriff's Reserve Patrol, continuing their training program, have completed the Radiological Instrument Operations course, the "UXO Explosive Ordnance Reconnaissance course, the Advanced First Aid and Industrial First Aid courses, for a total of four thousand, eight hundred, fifty (4,850) hours of instruction.

The Radiological Instrument Operations course, given in cooperation with Pierce County Civil Defense, was instructed by Harry Lunetti and Al Laursen of the Tacoma-Pierce County Health Department. Pierce County has one of the two training centers in the State of Washington qualified to teach this course.

Reserve Patrol members completing this course have been trained in the basic techniques of radiological instrument operations, logical safety measures, each man monitoring procedures, and radiological safety measures. Each man has been trained to measure, record, and report radiation, and has a working knowledge of radiation hazards, as well as protective measures sufficient for him to provide guidance for the protection of those persons within his assigned area.

Deputy sheriffs of the Pierce County Sheriff's Patrol Division have also completed this course.

The following Pierce County Sheriff's Reserve Patrol members have completed the Radiological Instrument Operations course: pictured front row kneeling left to right are: Sheriff Frank Stojack, Gus Partridge Director of Pierce County Civil Defense, Instructor Harry R. Lunetti, Instructor Al E. Laursen, and Inspector Rolly Morrison; second row, seated, are reserve members Tom Martin, Ed Bitar, William Shanahan, Wesley Drake, Jack Tsapralis, Harold Shaw, Tom Sullivan, Harry Web-

Summit 5c Lunch At Youth Center

A 5c luncheon will be held Saturday, December 10, in the Summit Youth Center from 11 a.m. to 1 p.m. There will be a variety of sandwiches, salads, pies, cakes, and cookies. Coffee and punch will be available also. All proceeds will go to the Central Avenue Little League.

9 TO 9 Weekdays

PRESCRIPTIONS

FAST SERVICE

Veterinary Supplies
Photo Equipment
Gifts for Everyone

From Infants to Grandfather

McAULEY SUMMIT DRUG

Airport & Canyon LE 7-6468

SUMMIT VIEW AUTO REPAIR

IS HERE CAR CHECKED

HAVE 10904 E. Canyon Rd. LE 1-0424

THIS CHRISTMAS GIVE A Schwinn BICYCLE

BOYS' OR GIRLS' COLUMBIA RAMBLER MODELS

20 - Inch \$37⁹⁵ 24 - Inch \$38⁹⁵ 26 - Inch \$39⁹⁵ & UP

Schwinn Bicycles Are Made In America For Americans

WE CARRY A FULL LINE OF WAGONS - TRICYCLES PEDAL CARS AND BICYCLE ACCESSORIES

Eff. Dec. 10th OPEN EVE'S. 'TIL 7:30 P.M. SAT. 'TIL 6

GOOD USED TRADE IN BICYCLES \$12⁵⁰ & UP As Is Or Rebuilt

BICYCLES

1021 Pacific Ave. LE 7-5777

Members of the Pierce County Sheriff's Reserve Patrol, continuing their training program, have completed the Radiological Instrument Operations course, the "UXO Explosive Ordnance Reconnaissance course, the Advanced First Aid and Industrial First Aid courses, for a total of four thousand, eight hundred, fifty (4,850) hours of instruction.

The Radiological Instrument Operations course, given in cooperation with Pierce County Civil Defense, was instructed by Harry Lunetti and Al Laursen of the Tacoma-Pierce County Health Department. Pierce County has one of the two training centers in the State of Washington qualified to teach this course.

Reserve Patrol members completing this course have been trained in the basic techniques of radiological instrument operations, logical safety measures, each man monitoring procedures, and radiological safety measures. Each man has been trained to measure, record, and report radiation, and has a working knowledge of radiation hazards, as well as protective measures sufficient for him to provide guidance for the protection of those persons within his assigned area.

Deputy sheriffs of the Pierce County Sheriff's Patrol Division have also completed this course.

The following Pierce County Sheriff's Reserve Patrol members have completed the Radiological Instrument Operations course: pictured front row kneeling left to right are: Sheriff Frank Stojack, Gus Partridge Director of Pierce County Civil Defense, Instructor Harry R. Lunetti, Instructor Al E. Laursen, and Inspector Rolly Morrison; second row, seated, are reserve members Tom Martin, Ed Bitar, William Shanahan, Wesley Drake, Jack Tsapralis, Harold Shaw, Tom Sullivan, Harry Web-

BARSOTTI & TIMM

Top Values HARDWARE VARIETY & PAINT

At the Roy Y LE 7-4221

Open 7 Days A Week, 7 a.m.-9

LOOK WHO'S SERVING YOU NOW ...

RAY HAS A CHRISTMAS SUGGESTION FOR EVERY MEMBER OF THE FAMILY

RAY POCHEL

In 1940 the Ray Pochel family of Arkansas City, Kansas, took a vacation trip to the Northwest to visit Mrs. Pochel's father. Something about the Northwest climate appealed to Ray. He liked it. He liked it so much, in fact, that he decided to stay.

Because of this decision, the people of the Parkland area can now be assured of clean, safe oil heat, in addition to the fulfillment of their appliance and television needs.

The job wasn't easy, however. In 1940 the Pochel's acquired the southern Pierce County distributorship for Mobilgas, extending from 72nd & Pacific to the towns of National and Rainier. At the time Pochel's was nothing but a cafe and service station. Ray put barrels of stove oil in back of his car and proceeded to make deliveries.

In 1945 disaster struck. The plant burned down. The present store was erected in its place, and has since branched out to include the appliance and television department. The lone car has long since been replaced by a big modern fleet of well known "ed Pochel trucks, which serve the entire city of Tacoma.

Ray divides his time between Parkland and San Diego where he lives with his wife Florence and 13 year old daughter Kathy. His son Gene, 27, works in an automotive parts store in San Diego.

As for the future, Ray has announced that a remodeling program shortly after the first of the year will thus provide a larger display area for customer convenience.

A HOFFMAN OR ZENITH T.V. FOR DAD

A ZENITH TRANSISTOR TYPE PORTABLE RADIO FOR SON

A SPEEDQUEEN OR FRIGIDAIRE WASHER & DRYER FOR MOM

A ZENITH RECORD PLAYER FOR SIS

AND MOBILHEAT FUEL OIL TO KEEP THE ENTIRE FAMILY WARM

POCHEL DISTRIBUTING COMPANY

140th & Pacific LE 7-8624

"AA" LARGE EGGS Doz. 61¢

ONE STOP FOOD SHOPPING

EASTERN PORK GRAIN FED PORK CHOPS Pound 59¢

BOLOGNA or LIVER SAUSAGE BY THE PIECE Pound 39¢

HENRY HOUSE SKINLESS WIENERS Pound 49¢

TENDER SIRLOIN STEAKS Pound 79¢

Zee New King Size NAPKINS 70 Ct. Pkg. 19¢

Chef Boy-ar-Dee SPAGHETTI 10¢ With Tomato Sauce and Cheese 15 1/2-oz. Tin

El Pasco Lunch-N-Mix OLIVES Qt. Jar 65¢

Jack and the Bean Stalk PUMPKIN 2 2 1/2 Tins For 33¢

Calo DOG FOOD No. 1 Tin 2/25¢

Clarks Assorted Box CANDY 3 For \$1.00

Alber's FLAPJACK MIX 10-Lb. Bag 99¢

Bee Brand HONEY 5 lb. jar \$1.09

Zee TOILET TISSUE 4-Roll Pkg. 35¢

NEW CROP ORANGES LARGE SIZE 10¢ POUND

SOLID CABBAGE 4¢ POUND

CLEARFIELD "INSTANT" POWDERED MILK \$1.59 22 1/2 Quart Size

NO. 1 BANANAS 10¢ LB.

McDANIELS

The Home of The Low Price

AIRPORT & CANYON ROAD

Store Hours: 9:00 'Til 9:00 - Sundays 9:00 'Til 7:00

PRICES EFFECTIVE Thursday Friday Saturday

COUNTRY BOYS' AUTO PARTS
 OPEN 7 DAYS A WEEK
 CUT RATE PRICES ON ALL PARTS
SPECIAL BRAKE SHOES \$3.95 Set of 4 Most Cars
 WILLOWS CORNER, AIRPORT & SO. MERIDIAN TH 5-4451

The TIMES JOURNAL
 THURSDAY, DECEMBER 8, 1960
 Page 4
 A gallon of water is larger in Britain than it is in the United States. A British imperial gallon weighs 10 pounds; the U. S. gallon of water weighs 8 1-3 pounds.

GRAND OPENING
 IN OUR NEW LOCATION
SATURDAY — SUNDAY, DEC. 10TH & 11TH
 LOTS OF FREE PARKING IN FRONT
FREE COFFEE-DONUTS-COOKIES-CANDY
 SEE THE ALL NEW ALPHA KART

CART CRAFT
 HOURS
 SATURDAY & SUNDAY
 9 TO 9

WE NOW OFFER AN ENGINE "HOP UP" SERVICE
New and Used Carts-Parts-Engine Repairs
 TERMS 10% DOWN—12 MONTHS TO PAY
 14706 PACIFIC AVENUE LE 1-2652

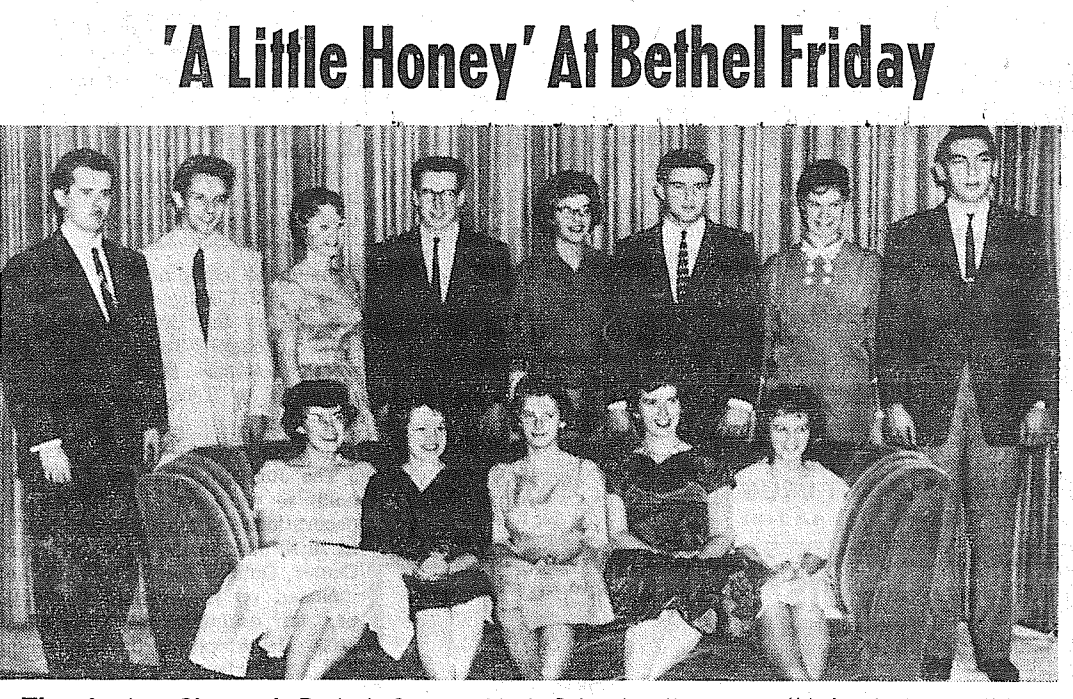


Families Visit
 Mrs. James Rugg and three children of Cedar Rapids, Iowa are guests of her parents, Mr. and Mrs. Ellsworth Campbell and other relatives in this area.
 More Visitors
 Mr. and Mrs. James Coward (Marlene Scott) of Chehalis have been visiting relatives and friends

There Is Still Time To Get Your Xmas PHOTOGRAPH
 Get as Many as You Want At The Following Prices
 8x10 Ea. \$2.00
 5x7 Ea. \$1.00
 Panels, Oil and Xmas Cards.
 No Sitting Charge.
 No Charge for Extra Persons.
 Phone GR 4-1986 for Appointment
Family Portrait Studio
 8411 Park Avenue

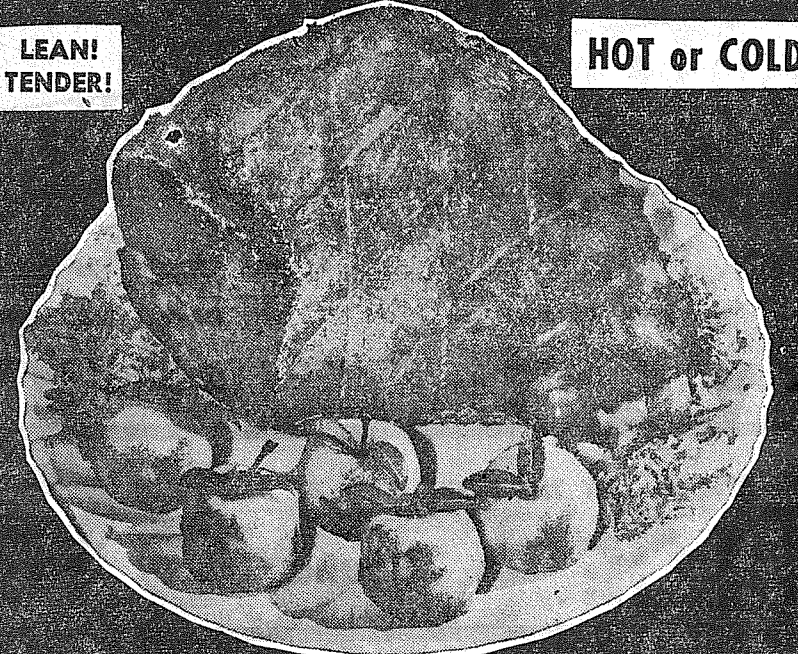
Flying With Jeanne
 Two more fellows are well on their way to becoming pilots. Recently Chuck Whitmore left his instructor "Slim" on the ground and made his first solo flight. Not to be outdone, Gilbert Sillars followed suit a little later.
 Seems Oregon has been hit by the heavy rains causing flood areas. A first hand report was brought back here by Don Abbott who flew down there in his 170 to look the situation over.

Boone Willmott, Britta Lundgren and John Simac recently took off to look over some sites for future practice in rescue work. The fog moved in and they were forced to land at Eatonville but they weren't alone there were several other planes joined them. One other from Thun Field was Don Abbott on his return from Oregon.
 over the holidays.
 Still More
 Rev. and Mrs. Robert Pottinger and family visited with relatives in Spokane.
 III
 Mr. Walt Shearer of Airport Road is ill in St. Josephs hospital.
 Tots Club
 Collins Tots Club will meet next Tuesday at 8 p.m. in the Collins school gym.
 Reporter—Mrs. Eva Pearl Morris



'A Little Honey' At Bethel Friday
 The Junior Class of Bethel Senior High School will present "A Little Honey" by William Davidson on Friday, December 9, in the high school auditorium. Director H. J. Dempsey announces the admission prices as; 75 cents for adults, 50 cents for students with activity and 25 cents for children under eight. A matinee performance will be held during the day Friday to permit more students to see the play and free evening performance for adults. Members of the cast include; seated, from (left to right); Judy Furro, Norma Coonc, Judie Smith, Judy Anderson, Delores Schriver; standing, (left to right); Herb Dempsey, director, Steve Wickline, Debbie Chambers, Jim Engebretson, Linda Sarver, Merle Carey, Vera Winslow and Gary Hart.

LEAN! TENDER! **HOT or COLD!**



PICNICS
 SWIFTS
 FULLY COOKED
 NO SHANK
 5 TO 7-LB. AVERAGE
35¢ LB.

Thriftway Quality Meats
LEG O' LAMB Whole or Half **65¢**
 U.S. CHOICE, WELL TRIMMED.....Lb.
LAMB — U.S. CHOICE
RIB CHOPS Excess Bone & Fat Removed Lb. **69¢**
LAMB SHOULDER, U.S. CHOICE
ROAST Neck Off Well Trimmed.....Lb. **49¢**

FRYERS
 VERIFINE
 FRESH WASHINGTON GROWN
 GOVERNMENT INSPECTED
 CUT UP
39¢ LB.

VEGETABLE SOUPS CAMPBELL'S 10½-OZ. **2/25¢**
BISQUICK 40-OUNCE PACKAGE **39¢**
GOLD MEDAL FLOUR 10 POUND SACK **99¢**
U & I SUGAR ... 10 POUND SACK **99¢**

LETTUCE Each **10¢**
BROCCOLI Bunch **19¢**
GRAPEFRUIT 8 Lb. Bag **49¢**

CHOP SUEY CHUN KING "BEEF" 2¾ Pound Pkg. **89¢**
CHOW MEIN CHUN KING "CHICKEN" 2¾ Pound Pkg. **89¢**
QUICK OATS 3 MINUTE 12-Ounce Pkg. **13¢**
LESLIE SALT PLAIN OR IODIZED 26-Ounce **2/25¢**
MEAT PIES SHUR-FRESH CHICK., TURKEY, BEEF 8-Ounce **5/\$1**

PRICES EFFECTIVE ON THURS., FRI., SATURDAY, DECEMBER 8 - 9 - 10
 RIGHT TO LIMIT IS RESERVED!

SUMMIT VIEW

THRIFTWAY
 WHERE EVERY CUSTOMER IS IMPORTANT!

Dance At Grange
 Tonight is Howdy Partners night again at Fruitland Grange. Dancing starts at 8. Couples should bring cups and Christmas cookies. Coffee and tea will be served by hosts George and Winnie Patrick and Charles and Ruth Sienkiewich.
 Preschool
 Woodland pre-school will have their regular monthly meeting on Wed., Dec. 14th at 8 pm. in the Woodland school gym. "The Spirit of Christmas" will be shown. A gift exchange will be held.
 Twigs
 The Evergreen Twigs 4-H club have voted Linda Juneau, 11 year old muscular dystrophy patient, an honorary member. Each member will plant some easy-to-grow seeds in a bedside garden which Linda can tend. Dawn Kempe will help her with her record book.
 New club officers are Danny Grounds, president; David Reed, vice president; Dawn Kempe, secretary and news reporter; Dennis Ridge, telephone.
 Reporter—Margaret David, LE 7-6668

CHRISTMAS TREES
 Green-Flocked-Sprayed
75c and up
 (Not the 97c Culls)
 WREATHS—GIRL SCOUT SWAGS.
 Open Evenings 7 days a wk.
 3 MILES EAST OF PACIFIC ON 112th ST.

IT'S CHEAPER TO RENT THE TOOL YOU NEED
BELT HAND SANDERS
OSCILLATING HAND SANDERS
PAINT SPRAYERS
RUG SHAMPOO MACHINE
POWER MOWER SHARPENING & REPAIR
WINDOW GLASS INSTALLED
PARKLAND HARDWARE
 12169 Pacific Ave LE 7-3171

Prescription Service
 Open 7 Days a Week
 9:30 a.m. - 9:30 p.m.
 Sunday: 10 a.m. - 6 p.m.
JACOBS PACIFIC DRUGS
 Wallgreen Agency
 Pay Light & Water Bills Here
 84th & PACIFIC AVE. Greenfield 2-6445

MOTOR REBUILDING
 Valve Seats Installed, Complete Brake Drum Turning, Reboring, Pin fitting, Lathe and Press Work, Head Surfacing, Key Seating, Pistoning Grinding, etc.
Rupe Machine Works and Garage
 AUTOMOTIVE & INDUSTRIAL WORK
 13411 Pac. Ave., P.O. Box 2445, Parkland 44, Wn., LE 7-7450

The only thing she'd recognize ...



Forty years ago in Washington State—as well as now—S & H Green Stamps offered a big bonus for shopping with cash. Today's modern super market is quite a change from the corner grocery store where Grandma used to trade, but S & H Green Stamps are still the same ... saved by thousands of thrifty families throughout Washington State. Wherever merchants give S & H Stamps, you receive the finest quality merchandise, competitively priced to give you more value for your dollar. Ask for S & H Green Stamps—still your big bonus when you buy!

The reason you don't get **MERCHANDISE** for S & H Stamps:
 In Washington State, S & H Green Stamps are redeemable for cash only. State law requires that dealers who wish to give trading stamps for redemption in merchandise must pay an annual tax of \$6,000 for the privilege.

ASK FOR S & H GREEN STAMPS

THE SPERRY AND HUTCHINSON COMPANY • ESTABLISHED 1896



Miss Thrifty Santa Buys

This week and the next 2 weeks Miss Santa (Mary Wardlow) knows where to buy. Miss Santa is getting acquainted with the local businessmen and the products and services that will play an important part in making her's a Merry Christmas.

It's not only Thrifty, says Miss Santa, to shop locally, but the services are also really tailored to serve your needs.



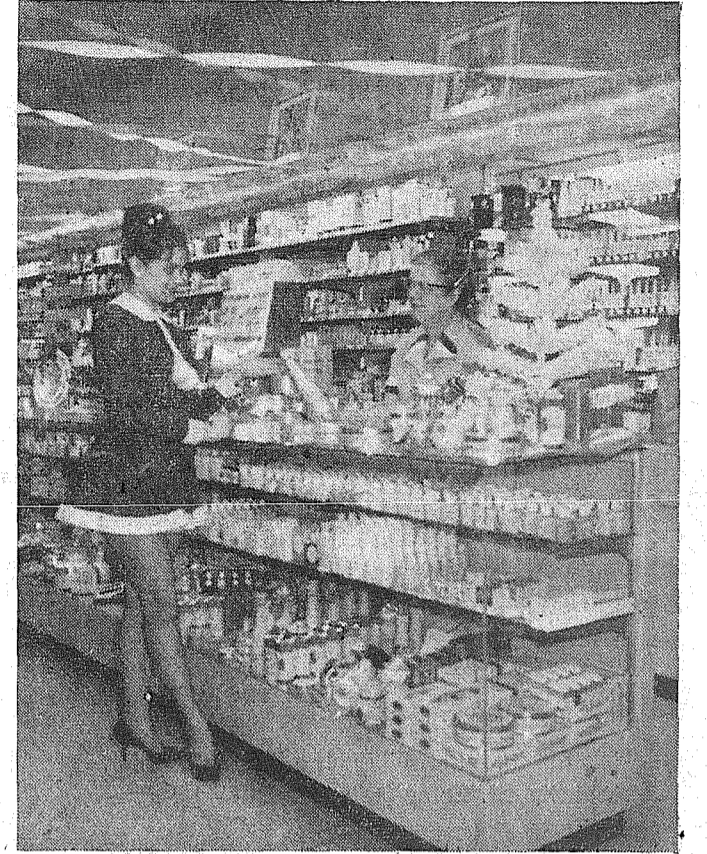
Assorted toys for 88 cents each is the Christmas special at the BARGAIN BASKET, 16618 Pacific Avenue. The Bargain Basket's convenient shopping hours through the holidays are from 9 a.m. to 10 p.m. seven days a week. Mr. and Mrs. Nelson are the owners, and Wes Drake is the store manager. LE 7-3371.



Laurinat's Apparel, 406 Garfield Street, is featuring a special on wool skirts during the holidays. Zelma Laurinat, owner, will show you a selection of clothing which will make fine Christmas gifts. Open during the Christmas season from 9:30 a.m. to 5:30 p.m. Monday thru Saturday. LE 7-5317.



Stella Jacobs, owner of STELLA'S FLOWERS, 12173 Pacific Avenue, is announcing open house to be held December 12-17 from 8 a.m. to 5:30 p.m. daily. Coffee and cookies will be served, and there will be favors for the ladies. A cash and carry special is ornamental Christmas trees, made with brightly colored Christmas ornaments, for \$1.95 and \$2.95. Stella's provides city-wide delivery. We have two phones to serve you: LE 7-0206 and LE 7-0207.



Miss Santa's thrifty buys at JOHNSON DRUG include cosmetics from Revlon, Coty, Dorothy Grey, Max Factor, Maybelline, 4711, Tosca, Yardley, Old Spice sets, and Evening In Paris sets, American greeting cards, camera supplies, baby supplies, candies, and toys. Located at 210 Garfield Street, Johnson Drug will be open during the holiday season Monday thru Friday from 9 a.m. to 10 p.m. and 12 noon to 8 p.m. on Sunday. Prescriptions will be filled from 9 a.m. to 10 p.m. Webb Saugen is the manager. LE 7-0221.



It's holiday time at PARK AVENUE SHOES, 3229 Park Avenue. Party springalators and spring heels, gaily sparkling with rhinestones or in clear vinyl or gold are now being featured. Surprise the lady in your house with a pair of slippers chosen from a variety of dainty-cuddly-durable styles found at Park Avenue Shoes. Solid comfort shoes for shopping or service are now expertly fitted. Stop by and let Beula Gentner, owner, show you the wide variety of shoes featured at Park Avenue Shoes. GR 2-9985.



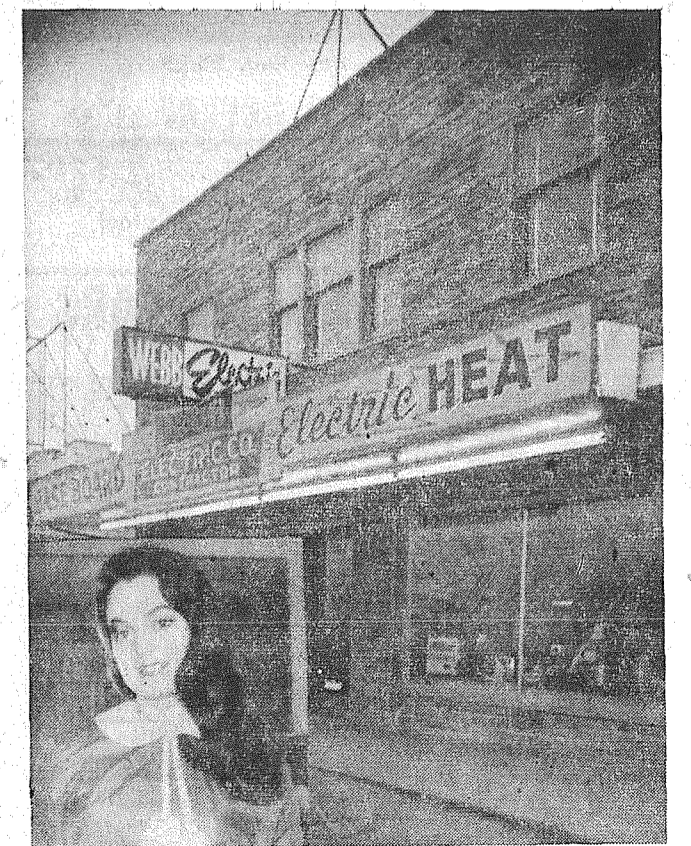
Christmas shopping can be fun when you shop at PARKLAND HARDWARE, 12169 Pacific Avenue. Let owners Harry and Maxine Newkirk show you the many fine house-hold appliances they are featuring this holiday season. Choose from an assortment of Dominion appliances which include electric fry pans, toasters, waffle irons, and hot dog warmers. Dad will be pleased with a gift from the line of new Wright power blade saws. Ashley wood heaters and Corning cookware also make fine gifts as well as helpful house-hold appliances. Convenient shopping hours, 8 a.m. to 6 p.m. Monday thru Saturday, make shopping at Parkland Hardware a pleasure. LE 7-3171.



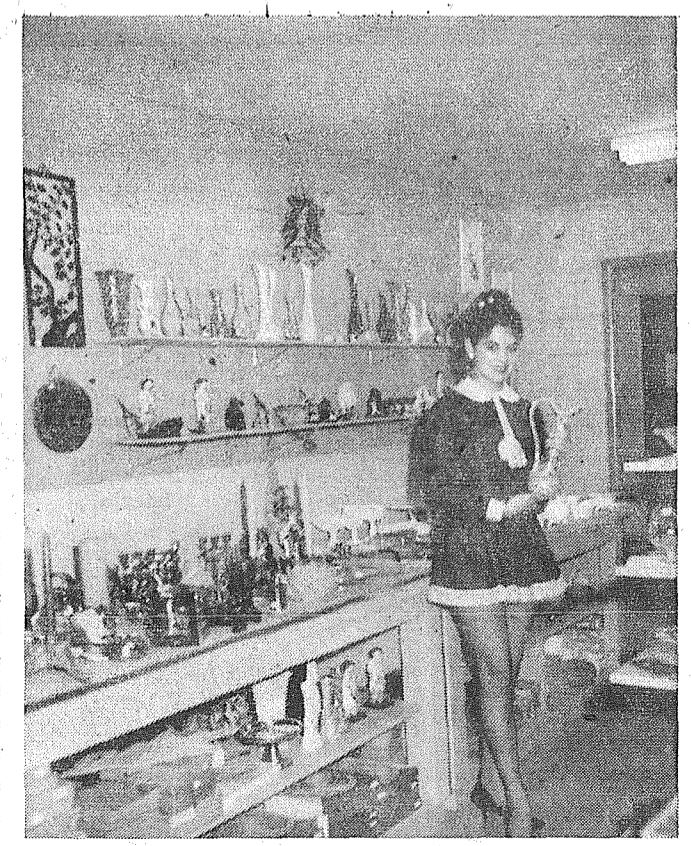
CHUCK'S CAFE & DRIVE IN, 207 So. 134th and Pacific Avenue, is a favorite stop for busy Christmas shoppers. A complete lunch for 96 cents is a favorite with thrifty shoppers as well as Chuck's famous sea-food burgers made from crab, shrimp, or oyster. Manager Chuck Christenson asks shoppers to stop by from 7:30 a.m. to 9 p.m. six days a week or call LE 7-9908 for take-out orders.



SOUTH END PLUMBING AND HARDWARE, 185th and Pacific Avenue, is featuring a Christmas special on Corning cookware. This line of cookware features casseroles, electric fry pans, pots and pans, and stove pieces, and new automatic 10 cup percolators. William and Dorothy Righetti are the owners. Stop by and let manager Art Miller and clerk Jay Cole show you a variety of items that will make wonderful gifts for Christmas. Open seven days a week from 8 a.m. to 6 p.m. and 9 a.m. to 4 p.m. on Sunday. LE 7-4100.



Surprise Mom this Christmas with a gift from WEBB ELECTRIC COMPANY, 1112 Pacific Avenue. Owners Arthur and Grace Webb will help you pick out an appropriate gift from a selection of coffee makers from Westinghouse, buffet fry pans, heating pads, new pull down fixtures for the dining room, and many more wonderful and useful items. Kids will be delighted to find a new hot dog roaster under the tree on Christmas morning. Shop Webb Electric Company from 8:30 a.m. to 5 p.m. Monday thru Friday for many Miss Thrifty Santa Buys. LE 1-1133.



A variety of Christmas gifts are featured at the WITS END gift shop, 5323 East 112th in Summit View. Christmas cards, a large selection of vases, napkins, candles, oriental gifts, and cut glass from Germany are just a few of the many fine items found here. Convenient holiday shopping hours, 10 a.m. to 5:30 p.m. and 6:30 p.m. to 8 p.m. Monday thru Friday, and a large parking area are just two of the convenient features the Wits End provides for shoppers. Virginia Lovitt and Lena McLain are the managers who will help you with your gift selections.



The Christmas holiday season is a time for many special parties and dinners. Look your best in a dress or suit freshly pressed or cleaned at PARKLAND CLEANERS. Mrs. Evelyn Kramer, owner, asks you to get your special clothing ready to wear during the holidays. Bring your holiday cleaning to Parkland Cleaners, 11004 Pacific Avenue, between the hours of 8 a.m. and 6 p.m. Monday thru Saturday. LE 7-3221.

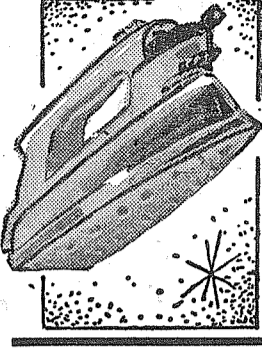


Christmas gifts for the entire family can be found at POCHEL DISTRIBUTING COMPANY, 14001 Pacific Avenue. Stop by and look over the selection of major appliances and Zenith television sets during the holiday season. Pochel's is open during Christmas holidays on Tuesday, Thursday, and Saturday from 7 a.m. to 6 p.m. and on Monday, Wednesday, and Friday from 7 a.m. to 8 p.m. Ray Pochel and Tom Moore are the owners. LE 7-8624.

**Stainless Steel
FLATWARE**
24 Piece, \$15.00 Value **\$7⁹⁷**
Lifetime Guarantee
Special

CHRISTMAS

SALE



MARY PROCTOR SPRAY-STEAM IRON

A steam-spray-dry deluxe iron. No more pre-dampening. Attractive white handle.
\$16⁷⁷
Reg. \$22⁹⁵ Special

BIG BOY TOOL SET

Includes a fine assortment of "Blue Diamond" tools in a sturdy steel tool box. Everything the young Mr. Fix-it needs. P.S. Now he'll leave dad's tools alone.
\$3¹⁹
Regular \$3.98 Value.....SPECIAL

DOLL CLOSE OUT

\$3⁹⁸
\$6.50 Value. Assorted Size. SALE

ROCKET LAUNCHER

Hit the target and launch a space ship high into the air. Complete with gun and 3 safety darts.
\$2⁷⁹
Regular \$3.50 Value.....SPECIAL

MINIATURE SPORT CARS

Miniature plastic cars with complete detailing, parts, accessories, etc. Fun to assemble yourself. Your choice of hot rods, racers and many other popular models.

Reg. 98c
Your Choice..... **79^c** ea.

Manning Bowman - Electric
FRY PAN Reg. \$19.95 **\$13⁹⁵**

Dominion Grill - Reg. \$24.95
WAFFLE IRON **\$17⁷⁷**

Stainless Steel
PIE PANS Reg. \$1.40 **99^c**

Smartly Designed - Reg. \$11.75
CARD TABLE **\$7⁹⁸**
Matching Chairs at \$7.00

Manning Bowman
3-Speed, All Chrome
Reg. \$17.95 Value
MIXETTES **\$13⁵⁰**

Party Pals Bar Accessories

STRAINER
Chrome on brass. For straining cocktails.

CORK PULLER
Power type. Chrome steel; rosewood handle.

STIRRERS
Plastic; assorted colors. Miniature whistles. Set of 6.

JIGGER
Double end; two sizes. Chrome on brass.

SQUEEZER
Highly polished aluminum. For lemons or limes.

OPENER
Stainless steel; rosewood handle. For bottles or cans.

Your Choice **77^c**
Valuts to \$1.00

COOKIE CUTTER SET



Set consists of snowman, candlestick, tree, reindeer, star and Santa. Lifetime stainless steel.
Reg. 1.00
77^c

**4-Quart
Stainless
Steel
MIXING BOWL**
Reg. \$3 Value
\$1⁹⁷
Can be used with popular mixer. 4 quart capacity. Perfect replacement for broken mixer bowls. Special.

**GOLD
SPRAY**
Press the button and spray. Easy to use for Christmas decorating. Big 16 ounce size. Reg. \$1.49.
Special..... **97^c**

**BIG 16"
TRIKE**
• Chrome Handlebars
• Platform
• Step Plate
• Truss Rods
16" ball-bearing front wheels. Large 1 1/2" semi-pneumatic tires. Vinyl saddle. Flamboyant blue with white trim.
Reg. \$20 **\$14⁷⁷**
Special.....

PINKING SHEARS

Ball bearing joint; chrome plated. 9" size. Precision made to cut all fabrics.

\$7.95 Value
3⁸⁷

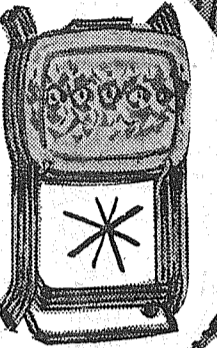


**THE
PERFECT
GIFT**
Here's a gift item that is attractive & rich looking and one that will be in use practically every day.

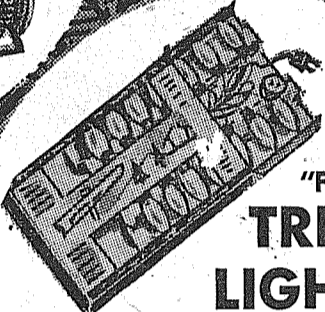
BATHROOM SCALE
Reg. \$5 **\$3⁷⁵**
Value Special

Cal-Dak TV TRAYS

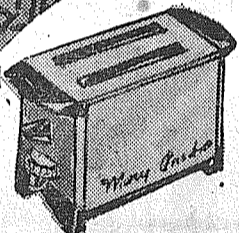
Half-Price! King size 20 1/2" x 16" white trays with rose design. Brass legs. 4 trays complete with separate roll-a-way rack. Reg. \$19.95.
\$9⁷⁷



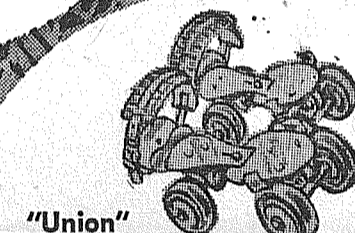
**"Festive"
TREE
LIGHTS**
American made wiring. One light goes out - others stay on. Weatherproof for outdoor use.
Reg. \$5.25 **\$2⁹⁸**
Value



**MARY
PROCTOR
ELECTRIC TOASTER**
Supreme quality. Color toast selector. Completely automatic - thermostatic. Snap open crumb tray. Reg. \$19.95
\$11⁷⁷



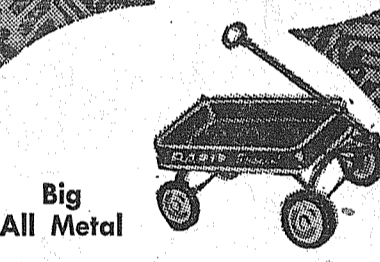
**"Union"
ROLLER SKATES**
Extends from 8 1/4" to 10 1/2". Double ball race steel rolls. Fun for everyone.
Reg. \$4⁷⁷
\$5⁹⁵



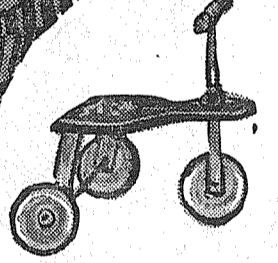
**Big
26"
DOLL CARRIAGE**
Terrific bargain. 26" x 13" quilted body. Rocking action; brake. Big 7 1/2" rubber-tired wheels. In the carton.
\$7⁷⁷



**Big
All Metal
WAGON**
Body 28" x 13". Big 7" wheels with large rubber tires; semi-pneumatic. Con-go graphite bearings.
Reg. \$9.00 **\$6⁷⁷**
Special



**Original
KIDDIE
KAR**
Seat height 9 3/4"; length 19 3/4". With 6" disc wheels. A long-time favorite.
Reg. \$5.95 **\$4⁷⁷**
Special.....



**Electric
KNIFE SHARPENER**
A wonderful gift. Quickly sharpens any knife. Convenient for the ladies. Portable - use anywhere. Special factory purchase. Reg. \$15.95.
Special..... **\$9⁷⁷**



WOODBURNING SET

It's fun - its educational. Complete with electric pencil, plaques, cork hot pads, etc., A big kit.
Reg. \$4.98.....SPECIAL **\$3⁹⁷**

CHILDS PLAY DESK

A favorite every year. So much play value. Blackboard top with the ABC's on the edge. Hours of amusement.
Reg. \$4.98.....SPECIAL **\$3⁹⁷**

Large Size - Reg. 59c
BATTER BOWL **37^c**

With Stencils - Reg. 98c
FROSTY SNOW **77^c**

Bright Brass - Reg. 98c
Candle Holder **77^c**

For Colorful Flames - Reg. \$1.69
Fireplace Pwdr. **\$1²⁰**

Outdoor, 20-Ft. - Reg. \$1.65
Elec. Cord **\$1²⁰**

Musical - 5-Cup Size
Tea Pot Reg. \$3.98 **\$2⁹⁷**

12"x17" - Reg. \$1.39
Cookie Sheet **97^c**

With Built-In Spotlight - Reg. \$7.95
Soldering Gun **\$5⁷⁷**

Oscillating
Sander Reg. \$24.95 **\$16⁷⁷**

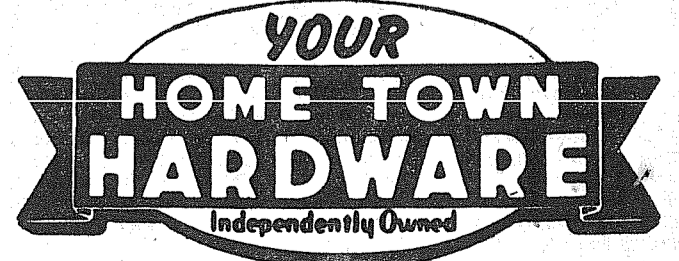
Ricochet Sound, Repeater
Air Rifle 850 Shot **\$9⁹⁵**

Candy & Deep Fat - Reg. 89c
Thermometer **57^c**

Cheese and - Reg. \$5.95
Cracker Server **\$3⁹⁷**

Platter **\$1⁹⁷**
Well and Tree - Tarnish proof
Reg. \$2.99 Value

MAGDANZ HARDWARE



11401 PACIFIC AVENUE (One Block South of Parkland Bank)

OPEN 'TIL 8 P.M.



Floyd Cowan (left) receives the man-of-the-year plaque from his boss, Harold LeMay.



Sgt. Tom Precious (left) presents the four year safe driving award to owner Harold LeMay.

Sheriff's Reserve Continues Training

(From Page 3)
James Kennedy, Ralph Landing, Leland Wicklein, and Earl Muddell.
The "UXO" — Explosive Ordnance Reconnaissance course was offered through the cooperation of the United States Army, Ft. Lewis, Wash. Arrangements for the class were made by Lt. Charles D. Ellison, Jr., of the 170th Ordnance Detachment (ED). Instructors were Sgt. 1st Class William A. Raymond and Sp-4 William T. Wingfield.

The Advanced First Aid and Industrial First Aid courses were instructed by Gordon E. Tatum, Safety Engineer for Tacoma City Light. All first aid classes were held during evening hours at the Tacoma County-City Building.

J. Sales Grange Meets Today

James Sales grange auxiliary will meet today at the home of Mrs. Louise Ebinger for a noon Pot Luck Lunch and Christmas Party. There will be an exchange of small gifts.

Canyon Road... Community Club Will Meet Tonight

The regular meeting of Canyon Road community club will be tonight at 8 p.m. in the community hall, E. 80th and Canyon Road.
Getting Better
Paul Bacon of Canyon Road, injured Thanksgiving Day in an auto accident, is now home and reported to be recuperating nicely. Reporter — Mrs. John Folk.

DEPENDABLE PHARMACY SERVICE

Bob Vaughan
Owner

Rx for the good health of you and your family
Your physician brings into focus all of his skill and learning in prescribing for you and your family. Our registered pharmacist fills his prescriptions with the utmost accuracy always.

General Sheet Metal Work
Special Attention to Special Equipment
RAU MFG. CO.
LEnox 7-7372
14114 Pacific Avenue

WE'VE A NICE SELECTION OF ITEMS FOR CHRISTMAS GIFTING
Parkland Rexall Pharmacy
11000 Pac Ave
Hours 9 to 9:30, Sun. 10 to 2
INTEGRITY • SERVICE • SAFETY

PRE-CHRISTMAS CAMERA CLEARANCE SALE
20% to 50% DISCOUNTS
MANY GOOD USED CAMERAS AT REAL SAVINGS
#0 Flash Bulbs now 9¢, 127-620-120 Guaranteed Film 3 for 9¢, 8MM Color Movie Film, \$2.85, 35 MM Color Film \$2.05. (Includes Processing — Save \$1.75)
QUALITY PHOTO SERVICE
9818 Pacific Avenue LE 7-7271

Want convenience?
THINK FIRST OF PACIFIC FIRST

FREE PARKING

A MUTUAL SAVINGS INSTITUTION
Pacific Federal Savings and Loan Association
Bellingham • Seattle • Tacoma
Longview • Portland • Eugene
11th AND PACIFIC LAKEWOOD AT VILLA PLAZA

4 COMPUTED MONTHLY BALANCES PAID 4 TIMES A YEAR

CHRISTMAS FOOD GIFT

SUGGESTIONS FROM



● 2-lb. Tin \$1.17
IGA DELUXE COFFEElb. **59¢**

● FLOUR, 25-lb. Bag \$2.19
GOLD MEDAL 10-LB. BAG **89¢**

● QUALITY MARGARINE
ALLSWEET 5 1-LB. PKGS. **\$1**

● PURE GRANULATED CANE
C&H SUGAR 10 L B S. **89¢**

● SHORTENING
SNOWDRIFT 3 lb. TIN **59¢**

● QUART BOTTLE, LIQUID SHORTENING
WESSON OIL **49¢**

- DUNCAN HINES EARLY AMERICAN **CAKE MIXES** Reg. Pkg. **35¢**
- PILLSBURY — 16-OUNCE PACKAGE **BROWNIE MIX** **33¢**
- 1-LB. PKG. OF LYON'S RADIANT **FRUIT CAKE MIX** **49¢**
- BETTY CROCKER'S ALL-PURPOSE **BISQUICK** 40-Oz. Pkg. **39¢**

IGA
ROYAL GUEST DELUXE HONEY & BUTTER FRUIT CAKES
Made With All Butter and the Choicest Ingredients 2-lb. Cake **2 79**

BETTY CROCKER CAKE MIXES
3/79¢
White, Yellow-Honey, Spice, Marble, Devils Food and Chocolate Malt.

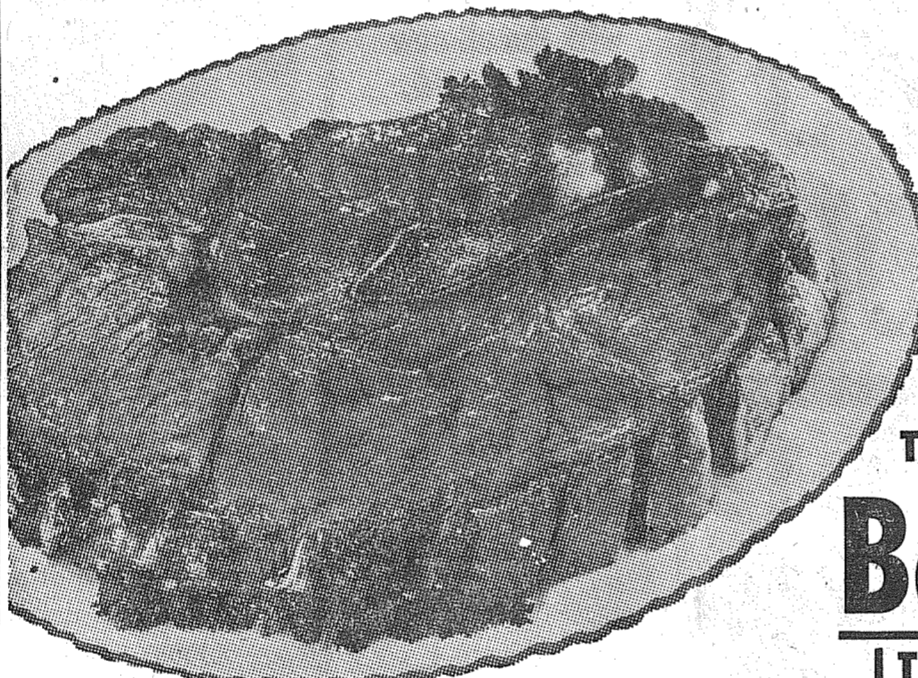
PITTED DATES
DESERT SWEETS 10-Oz. Pkg. **25¢**

UNPITTED DATES
DESERT SWEETS 2-Lb. Pkg. **59¢**

COCONUT
BAKER'S SHREDDED 8-Oz. **29¢**

RAISINS
SUN MAID SEEDLESS 15-Oz. Pkg. **23¢**

CHOCOLATE
BAKER'S PREMIUM ½ Pound **39¢**



VAN VALIN FROZEN MEAT PIES
6-OZ. PIE EACH 15c
7 FOR \$1

HYGRADE SLICED BACON
lb. **59¢**

TABLERITE, U.S. CHOICE OR GOOD
SIRLOIN STEAK lb. **89¢**

TABLERITE, U.S. CHOICE OR GOOD
T-BONE STEAK lb. **98¢**

TABLERITE, U.S. CHOICE OR GOOD
Bottom Rd. STEAK lb. **79¢**

TABLERITE, U.S. CHOICE OR GOOD
Top Rd. STEAK lb. **89¢**

TABLERITE, U.S. CHOICE OR GOOD
GROUND BEEF 3 lbs. **\$1.00**

FRESH LETTUCE **10¢**
FRESH CELERY **10¢** Each

Radishes or Gr. Onions 5¢ Bu.

EXTRA FANCY WINESAP APPLES 2 lbs. **25¢**

Foodtown Offers You A Large Assortment — Christmas Cards Wrappings, Tags, Seals and Tree Decorations. Come In and Browse Through Our Variety Section For Holiday Suggestions.

FOOD IGA TOWN

Airport (112th) At Park Ave.

Ad Days Dec. 8 - 9 - 10



MEAT SPECIALS!

SUGAR CURED SMOKED PICNICS LB. **33**

GROUND BEEF LB. **29**

WHOLE BODIED FRYERS Per Pound **33** | **FRYER NECKS & BACKS** 5 lbs. for **49**

GERBER'S STRAINED **BABY FOOD** 12 12-oz. Cans **1.00**

KP BRAND **LUNCH MEAT** 3 Cans for **1.00**

PINEAPPLE JUICE HONOLULU LADY, Packed By DEL MONTE 46-oz. Can **19**

POTATOES ECONOMY PACK **79**

20-lb. cello bag

FOR ADDITIONAL FOOD VALUES, SEE OUR REGULAR AD IN THE WEDNESDAY TRIBUNE

13320 Pacific Ave.

Store Hours 9 to 11 Daily - 9 to 9 Sunday

SALE PRICES EFFECTIVE WED. THRU SAT. WE RESERVE THE RIGHT TO LIMIT PURCHASES



Knights Make Home Debut

PARKLAND (Special) — Pacific Lutheran University plays host to a pair of invaders from Oregon—Willamette and Linfield—this weekend as the Knights make their home debut in PLU's Memorial Gymnasium.

The Wildcats of Willamette will test the twice successful Knights in an 8 p.m. encounter on Friday night and a tough Linfield quintet will follow on Saturday night.

Linfield Tough
Linfield has run up high scores in its openers over the past weekend and should provide PLU with its stiffest competition to date. On the other hand, Willamette is always in the run for the Northwest Conference royals and will be no pushover.

The Lutes are expected to open with the same five that started in the openers. Forwards will be Norm Dahl (6-2) and Larry Poulsen (6-5). Ralph Carr (6-6) gets the call at center and Bruce Alexander (6-0) and Dick Nelson (5-10) open at guards. The one exception to this would be if freshman Marv Frederickson continues to progress this week in practice he could get the starting call over Nelson.

Hustle
Coach Gene Lundgaard commented that he was "real pleased with the scrap and hustle shown by the team in the opening game. They have the desire to win! Singled out was the play of the reserves both nights.

Pacific Lutheran, after a slow opener Friday night against St. Martin's, came back strong on Saturday evening to drop the AAU Pederson's Fryers and claim the "unofficial" Tacoma Athletic Commission Invitation Tournament championship. The Lutes moved past the rangers, 60-47, in a ragged contest, then displayed winning form in handing the Fryers an 82-71 decision.

Both nights, it was the performance of reserves Bob Jacobsen, a sophomore forward, and Frederickson that boosted the Knights to

Victory. Frederickson displayed that he is going to be a top-flight courtman for the Lutes before the campaign is too far along by dropping in 22 points in two games. Jacobsen was impressive in the rebounding department (he stands only 6-1) with 19 and the scoring column with 23.

This pair, along with 6-6 freshman Jon Malmin and sophomore Rich Stanley, could be just what Lundgaard is looking for as bench depth.

Last Installment At Immanuel

"Crucifixion and Resurrection," a motion picture in full color, is to be shown at the Immanuel Baptist Church on Sunday, December 4th, at 6:00 p.m. and again at 8:00 p.m. The Rev. Ed Coy, Pastor, will elaborate on the cultural background of the times in connection with the film.

"The crucifixion and the resurrection achieved a dramatic peak unparalleled in all history," said Rev. Cooy. "Their portrayal in this film measures up to every expectation."

Outstanding sequences include the remorseful Judas throwing the purse of silver coins at the feet of Caiaphas and how he hangs himself; the sealing of the tomb; its discovery empty; the Upper Room; the convincing of Thomas.

"Everyone should see this breathtaking motion picture," said Rev. Cooy. The public is invited to attend.

Midland Preschool Will Meet Dec. 14

Midland Preschool will hold their regular meeting on Wednesday, December 14, at 8 p.m. at Midland School. Mrs. Weldon Hebllich will preside over a short business meeting.

The "Lazy Daisies" Blue Bird group under the leadership of Mrs. Dave Lorange will entertain with a Christmas program.

Refreshments will be served by Mrs. Fred Orendorff, Mrs. Robert Alexander, Mrs. Robert Whitworth, Mrs. Raymond Banks and Mrs. Albert Downs.

Mt. View Baptist Xmas Practice

Mt. View Baptist church is having a Christmas program practice, Dec. 10th from 10:00-11:30. All kindergarten thru junior high school age youngsters are included in this practice, which will be held in the Summit Youth Center.

Parents are asked to provide transportation. Those able to do so should call LE 1-2723.

It has been estimated that 37 million Americans enjoy recreational activities connected with boating.

Rural Garbage Service

Pierce County Permit
Serving Parkland, Midland, Summit and Spanaway
LEnoz 7-8688

FENCING
Designers and Builders
EXPERT WORKMANSHIP
REASONABLE PRICES
Easy Monthly Payments
VAUGHAN'S
84th & Pac. Ave. GR 4-9515

PROMPT PERSONALIZED
PRESCRIPTION SERVICE

TED SWANSON
INSULIN - VITAMINS
Downtown Prices
Pay Phone Bills Here
PLENTY OF FREE PARKING
TINCHER'S PHARMACY
8227 Park Ave. GR 4-3344
Across from Fern Hill P O

WE MAKE LUMBER

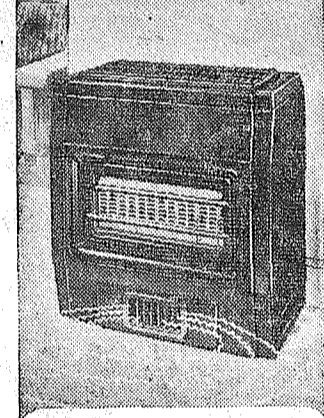
LUMBER
GLASS
HARDWARE
SHINGLES
ROOFING
GET OUR PRICE
FIRST ON ECONOMY
GRADE LUMBER

Baskett Lumber
9701 Portland Avenue
LE 7-8663

YOU CAN'T BEAT

LPGAS
HEAT
with the all new
FUEL SAVING,
FLOOR HEATING

Sieglar
PATENTED FORCED-AIR
LP GAS
FULL HOME HEATER



CUT
FUEL BILLS
up to 50%!

See it now—It's
YOUR VERY BEST BUY!
FREE TRIAL
REDI GAS SERVICE
LE 7-0208
14012 Pacific Avenue



So good you just can't wait...

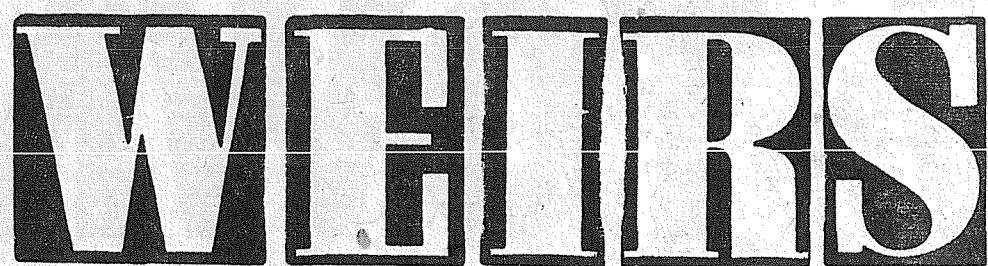
What a treat — Jordan's straight from the shopping cart! Jordan's delicious, home-baked flavor is SO tempting, sometimes you just can't wait for mealtime! Into every slice we bake EXTRA vitamins to give growing youngsters (and grownups, too) the same wholesome nutrients found in whole wheat bread. Better get an extra loaf today!



1st Choice . . .
and still growing!

HEADQUARTERS FOR AUTOMATIC BUCCANEER WOOD HEATERS

OPEN 9 to 9 — SAT. 'TIL 6



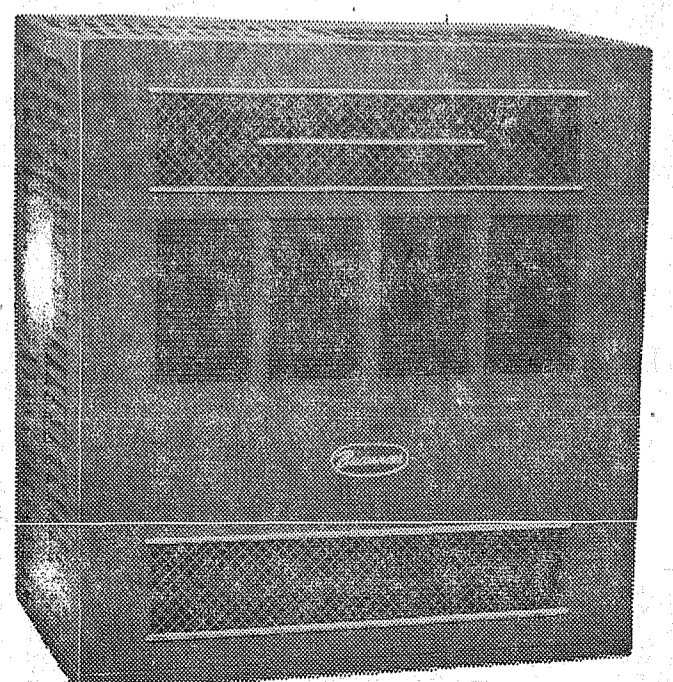
8419 PORTLAND AVENUE

LE 7-0231

- SAVE UP TO 35% ON YOUR WOOD BILL
- GIANT AUTOMATIC BLOWER
- AUTOMATIC THERMOSTAT
- WARM FLOORS

PRICES TO FIT YOUR BUDGET—EASY TERMS

LARGE TRADE-INS



a-Wondering . . . and a-Wandering . . .

With JACK BROWN

I was rather pleasantly surprised the other day to find an editorial in the December Readers Digest that quoted one notable word for word, as I had the same person and the same words a month earlier. Maybe I'm not quite so far off in my thinking as some people would lead me to believe.

Throughout this country, there will be one sure-fire subject of conversation for a considerable period of time to come. It can be summed up in a question: "What kind of a President will Kennedy be, and in what direction will he lead, or attempt to lead, the United States?"

There are groups which argue—either fearfully or hopefully, depending on their own views—that the Kennedy Administration will go far to the left, will be ultra-liberal in practically everything, and that, come next January, we will see what will amount to a re-enactment, on an even greater scale, of the famous "First Hundred Days" of F. D. Roosevelt's Administration. That was the period when the President sent one sweeping and unprecedented legislative proposal after another to Congress, and Congress, virtually abdicating its powers of debate and dissent, rubber-stamped them in short order.

But cooler heads forecast a very different sort of situation now—and for a variety of impressive reasons.

To begin with, 1932 is not the present. Then the country was in a great depression, unemployment was at an all-time high, and despair was widespread. Men and women who faced destitution felt that they could not possibly be worse off, and that any experiment, no matter how radical, was worth trying. Today, despite a falling off in some lines of business, spending, income, employment and savings are at, or near, the all-time high.

For another thing, F.D.R. had been elected by an enormous popular as well as electoral vote. He had every reason to claim a mandate. Kennedy, on the other hand, won by about as small a popular vote margin as one can imagine—less than 250,000 out of close to 70 million ballots cast. Putting it another way, his lead over Nixon was less than two tenths of one per cent.

For a third reason, one cannot conceive of the next Congress following the Executive lead almost without question. Nor can one conceive of it as being anything resembling left-wing liberal. Republicans actually made some small gains in both House and Senate. The long-established coalition of Republicans and conservative Southern Democrats will be as potent as ever, perhaps more so.

Finally, there is the thinking of the President-elect himself.

William L. White—one of the most experienced of the leading Washington columnists, and a man who commonly takes a dim view of extremists at either end of the political spectrum, has assayed Mr. Kennedy's position. White writes: "President-elect John F. Kennedy is no doctrinaire professional 'liberal' and never was. He has not the smallest intention of going off on any vast spending spree . . . The nature of Kennedy's victory forecasts what he will do. He will proceed with full respect for the views—particularly the economic views—of those who voted against him. He is fully aware that substantially half of the people preferred Nixon."

All candidates exaggerate in the heat of campaigns, and Mr. Kennedy was no exception to what seems to be an inflexible rule of politics. But, going by his record and that of Senator Johnson, he realizes that the American people, in this election, certainly did not demonstrate any stomach for extremism. To quote Mr. White again: "Our people have shown they respect reason; they reject the glandular approach to politics. They coolly weighed up two cool and able men. In the end they preferred the one; but they did not, therefore, think that the other should be treated as an enemy of the republic."

IT PAYS TO ADVERTISE IN THE TIMES JOURNAL

Come and see
**AMERICA'S MOST COMPACT
COMBINATION WASHER-DRYER**
with FULL CAPACITY, 22" CYLINDER

ONLY 25⁰⁰ WIDE

Washes and dries full normal load

THE NEW
SPEED QUEEN
"COMPACT-COMBO" WASHER-DRYER

- ★ Cycle selections for washing and drying all fabrics
- ★ Full load capacity
- ★ No venting required
- ★ No lint trap
- ★ Bleach dispenser
- ★ 2 drying cycles—fluff-dry or damp dry
- ★ Simple, dependable design
- ★ Low cost installation

Model 328
COMPLETE LAUNDRY \$5.00 Per Week
2 Year Parts Guarantee

Shop Till 9:00 Free Delivery
BLOCK'S FURNITURE MART
8219 So. Tacoma Way JU 8-5234

Midland . . . Boy Scouts Sell Trees

Midland's Boy Scout Troop No. 84 will be selling Christmas trees, starting December 11th, at a new location this year. The new lot is at the corner of 94th and Pacific Avenue. This is the only money-raising project they have each year and money made goes to help pay the boys' way to summer camp.

Thirteen scouts from Troop No. 84 camped in the snow at Silver Springs, on Mt. Rainier, last weekend. The boys were Richard Bradley, George McCue, Gary Larson, Tom Powell, Danny Hartman, Charles Price, Danny Loranca, Peter Sallee, Scott Burness, Dee Florence, Steve Becklund, Dave

Gural, and Larry Townsend. Fathers braving the elements were Al McCue, Forrest Sallee, Dave Loranca, and Scoutmaster Ed Townsend.

Thanksgiving Reunion
A family get-together was held at the home of Mr. and Mrs. Ralph Jones, 8502 Golden Given, with daughter, Kathy, home from Bellingham, where she is attending Western Washington College, and daughter and son-in-law, Mr. and Mrs. Jack (Karen) Armstrong from Seattle. Karen is now teaching school in Seattle, and her husband attends dental college at the University of Washington. We were sorry to hear that upon her return to Seattle, Karen came down with the mumps. We send her get-well wishes.

Explorer Encampment
Explorer Post No. 84 of Midland attended Mt. Rainier Council Explorer Encampment at Fort Lewis

November 25-27. Attending with Explorer Advisor Hillis "Curley" Thomas were Buddy Thomas, Eddie Thomas, Dale Seaburg, Gene Huber and Dean Huber.
Highlight of the encampment was an address by Major General William F. Train, Commanding General 4th Infantry Division and Fort Lewis. The boys also enjoyed swimming at McVeigh Pool, a demonstration and practical work in emergency service, a fire-crash demonstration, instruction in rifle marksmanship, and church services Sunday morning.

**PIERCE COUNTY
REFUSE CO.**
Weekly
Garbage Collections
Phone LE 7-8688

Missionary Circle To Meet
The Louise Bunnis Missionary Circle will hold their monthly meeting Friday at Mrs. Jack Bowmer's home, 11003 A st. at 12:30. Rev. Don Leach of Mt. View Baptist will be the speaker. A kitchen shower has been planned for the meeting to supply the kitchen for the new church.

**AIR
CHARTER**

FLIGHT INSTRUCTION
Approved Flight School
Wash. MOONEY Distributor
**TAHOMA FLYING
SERVICE**
Spanaway Airport LE 1-0442

VAUGHAN'S VALUES
P.G.L. PREFINISHED PLYWOOD

| | | |
|---------------|-----|------|
| BIRCH | EA. | 9.95 |
| KNOTTLY PINE | EA. | 9.95 |
| KNOTTLY CEDAR | EA. | 9.95 |

DEAL WITH THE SEAL
WE DO NOT CARRY REJECTS
ASK ABOUT OUR BUDGET PLAN
VAUGHAN'S PACIFIC AVENUE LUMBER
84th & Pacific Avenue GR 4-9515



DOLLAR DAYS

at **SAFEWAY**

Lucerne Egg Nog ^{Quart} Carton **59¢**
READY TO POUR—Half Gallon \$1.15

Sliced Peaches ^{MELLOWEST ELBERTA LOW PRICE} 5 ^{No. 2 1/2} Cans **\$1.00**

Tomato Soup ^{CAMPBELLS—SPECIAL LOW PRICE} 10 ^{10 1/2-oz.} Cans **\$1.00**

Darigold Milk ^{FOR COFFEE, FORMULA, COOKING,} 8 Tall Cans **\$1.00**

Ice Cream ^{SNOW STAR—CHOICE OF ASSORTED FLAVORS. LOW PRICE.} 3 ^{Quart} Cartons **\$1.00**

GROUND BEEF 3 ^{lbs.} **\$1.00**
FRESH GROUND HOURLY—MADE FROM LEAN, TENDER, JUICY CUTS OF BEEF—QUALITY CONTROLLED—SAFEWAY'S FINEST!

Beef Rib Roast ^{U.S.D.A. CHOICE—AGED AND TRIMMED} lb. **75¢**

Halibut ^{SERVE BAKED OR FRIED} Roast lb. **29¢** Steaks lb. **39¢**

Sliced Bacon ^{ARMOUR'S BANNER—LEAN SERVE WITH EGGS,} lb. **49¢**

Pork Sausage Rolls ^{ARMOUR'S STAR LEAN—JUICY,} 3 lbs. **\$1.00**

Luncheon Meats ^{SAFEWAY SLICED} 4 ^{6-oz.} Pkgs. **\$1.00**

Boneless Chuck Roast ^{U.S.D.A. CHOICE BEEF} lb. **75¢**

Breaded Shrimp ^{CAPTAINS CHOICE—FRESH FROZEN} 10-oz. Pkg. **59¢**

Beef Chuck Steaks ^{U.S.D.A. CHOICE} lb. **49¢**

Lamb Sale
Leg of Lamb ^{U.S.D.A. CHOICE—WASTE FREE} lb. **65¢**

Lamb Shoulders ^{U.S.D.A. CHOICE GRADE—BONELESS,} lb. **65¢**

Lamb Loin Chops ^{U.S.D.A. CHOICE} lb. **89¢**

Lamb Rib Chops ^{U.S.D.A. CHOICE—WASTE FREE,} lb. **69¢**

Choice Lamb Stew lb. **19¢**

GERBERS
Strained Baby Food
Choice of Assorted Fruits and Vegetables—Low Price
12 Cans \$1.00

Angel Cake Mix ^{PILLSBURY—WHITE ONLY—LOW PRICE,} 16-oz. Pkg. **39¢**

Nalley's Tang ^{PERFECT SANDWICH AND SALAD DRESSING,} Qt. **39¢**

Salad Dressing ^{PIEDMONT—TOPS FOR ALL SALADS,} Qt. **39¢**

Empress Olives ^{MANZANILLA—5-oz. JAR 35¢} 3 ^{5-oz.} Jars **\$1.00**

Clam Chowder ^{SALTESEA—QUICK AND EASY TO PREPARE,} 5 ^{15-oz.} Cans **\$1.00**

Safeway Cheese ^{IDEAL FOR SNACKS AND SANDWICHES,} lb. **59¢**

Nu Made Corn Oil ^{FINEST FOR FRYING, BEST FOR BAKING. IT'S NEW!} ^{Quart} Bottle **59¢**

Produce Bags of Bargains

| | | | |
|----------------|--|-----------------------|---------------------|
| Grapefruit | ARIZONA—LOTS OF FRESH JUICE. | 8 lb. Bag | YOUR CHOICE—PER BAG |
| Apples | WINESAP—EXTRA FANCY—CRISP AND JUICY | 4 lb. Bag | 49¢ |
| Potatoes | NO. 1 NORTH DAKOTA REDS. IN POLY BAGS. | 10 lb. Bag | |
| Onions | SWEET SPANISH YELLOW—MEDIUM SIZE. FRESH. | 10 lb. Bag | |
| HUBBARD Squash | lb. 2¢ | | |
| Fresh Peanuts | Ideal for TV and Between-Meal Snacks. | 3 lbs. \$1.00 | |
| Fresh Dates | Deglet Noor—Plump, Sweet and Tasty. | 2-lb. Pkg. 49¢ | |
| BANANAS | GOLDEN—PERFECTLY RIPENED—LOW PRICE | 2 lbs. 25¢ | |

Christmas Suggestions

| | | | |
|-------------|------------------------------|---------------|---------------|
| Aero Snow | WHITE OR PINK | 12-oz. Can | 49¢ |
| Flash Bulbs | GENERAL ELECTRIC—SIZE M55 | Pkg. of 12 | \$1.69 |
| Flash Bulbs | GENERAL ELECTRIC—SIZE PH-M2 | Pkg. of 12 | \$1.49 |
| C & H Sugar | CHOICE OF BROWN OR POWDERED. | 2 1/2-lb. Bag | 41¢ |

MRS. WRIGHT'S Freshly Baked
BEAR CLAWS Pkg. **35¢**

Calo Dog Food
OR CAT FOOD—LOW PRICE
8 ^{16-oz.} Cans **\$1.00**

Pooch Dog Food
8 ^{26-oz.} Cans **\$1.00**

White Magic
For Dishes or Laundry
4 1/2-oz. Pkg. **49¢**

| | | | |
|-----------------|----------------------------------|------------------------------|---------------|
| Pineapple Juice | DOLE—LOW PRICE. | 4 ^{46-oz.} Cans | \$1.00 |
| Chunk Tuna | SEA TRADER—LOW PRICE. | 4 ^{6 1/2-oz.} Cans | \$1.00 |
| Beverage | CRAGMONT—NON-RETURNABLE. | 6 ^{28-oz.} Bottles | \$1.00 |
| Sweet Pickles | HAPPY VALE—WHOLE OR MIXED. | 3 ^{22-oz.} Jars | \$1.00 |
| Sniders Catsup | CHILI PEPPER. | 6 ^{14-oz.} Btls. | \$1.00 |
| Asparagus | TOWN HOUSE—ALL GREEN CUT SPEARS. | 4 ^{14 1/2-oz.} Cans | \$1.00 |
| Ripe Olives | TOWN HOUSE LOW PRICE | 5 ^{9-oz.} Cans | \$1.00 |
| Raspberry Jam | EMPRESS—LOW PRICE—2-lb. 39¢ | 4-lb. Can | \$1.00 |
| Peanut Butter | NU MADE—CREAMY OR CHUNKY. | 18-oz. Jar | 49¢ |

CHOCOLATES
5-lb. Box **\$2.98** 2 1/2-lb. Box **\$1.69**

GIFT WRAP
"Connoisseur"
27 3/4"x26 3-roll Pack **59¢**

INSTANT COFFEE
AIRWAY—8-oz. **\$1.19**
2-oz. Jar **37¢** 6-oz. Jar **85¢**

GREEN PEAS
Walla Walla—Low Price
6 ^{17-oz.} Cans **\$1.00**

BROCCOLI
Bel-Air Frozen Spears
4 ^{10-oz.} Pkgs. **\$1.00**

SOUR CREAM
Lucerne—Ideal For Dips
Half Pint Carton **29¢** Pint Carton **55¢**

DENTAL CREAM
Colgate (83c Size)
6 3/4-oz. Tube **69¢**

Sale starts 9 a.m. Thursday, December 8th through Saturday, December 10th in Tacoma, Sumner, Puyallup & Lakewood. We reserve the right to limit quantities. No sales to dealers.



GIANT TIDE With Purchase of 4 Sylvania Light Bulbs At Reg. Price **29^c**

SUGAR U & I **10 lbs.** With Purchase of 4 Sylvania Light Bulbs At Reg. Price **69^c**

BABY FOOD Gerber's Strained **10 Cans** **79^c**

DINNERS BANQUET FROZEN 6 Varieties Reg. Price 59c Each **39^c**

TOILET TISSUE WALDORF 4 ROLL PKG. **29^c**

AA LARGE FRESH RANCH **EGGS** Doz. **59^c**

FREE BUY A 6 PACK OF QUENCH OR HONEYDEW ASST. FLAVORS AND GET A **6 PACK FREE**

SKIPPY **DOG FOOD** 14 Tall Cans **\$1⁰⁰**

CALIFLORIDA LARGE **NAVEL ORANGES** Lb. **10^c**

DELICIOUS **APPLES** Lb. **10^c**

CELLO PKG. **CARROTS** 2 For **19^c**

Open 7 Days a Week For Your Convenience

PARKLAND Right to Limit Reserved

HOURS
Sunday 9 a.m. to 8 p.m.
Weekdays 9 a.m. to 9 p.m.
Fridays 9 a.m. to 10 p.m.

Super MARKET

Formerly Kitchen's
12208 Pacific Avenue

PRICES EFFECTIVE WEDNESDAYS THROUGH TUESDAY

FREE!!

PICTURE OF YOUR CHILD WITH SANTA CLAUS

10 A.M. 'Til 12 Noon and 2 P.M. 'Til 6 P.M.

(CHILD MUST BE ACCOMPANIED BY AN ADULT)



HAMS ARMOUR'S STAR SHORT SHANK PICNIC STYLE Lb. . . . **35^c**

PORK CHOPS Eastern Grain Fed Lean Tender. Lb. **59^c**

PORK ROAST Rib or Loin End Full of Flavor. Lb. **49^c**

T-BONE STEAK Broil, Grill or Fry Lb. **79^c**

FRYERS WASH. GROWN 2 3/4 to 3-lb. Avg. Lb. **35^c**

PORK SPARERIBS For a Barbecue, 3 to 5-lb. average Lb. **39^c**

Double Smoked Eastern **SLAB BACON** Lb. **39^c**

U.S.D.A. Choice Real Treat Lamb **Shoulder Chops** Lb. **59^c**

ROUND OR SIRLOIN STEAK Young Steer Lb. **79^c**

POT ROAST LEAN STEER BEEF Lb. **39^c**

LARGE BOLOGNA By the iPece Lb. **39^c**

NETTED GEM **POTATOES** 10 Lb. Mesh Bag **9^c**

With Purchase of 4 Sylvania Light Bulbs at Regular Price

WIENERS Swift 12-oz. pkg. Each **37^c**

LUNCH MEAT Swift 12-oz. pkg. **4 for \$1**

25-lb. Locker Box Special ONLY **\$11.95**

DEB-U-TEEN COSMETIC CASE Vinyl case contains harmless cosmetics for the little miss. **1⁷⁷**

THIS SALE ONLY

RIDE 'EM STICKS Vinyl animal heads that make animal noises when you squeeze them. Each on sturdy stick. REG. 98c — NOW ONLY **77^c EACH**

BIG SAVINGS IN OUR TOYLAND

SMALL FRY CAMPING SET Adjustable leather-like belt with flashlight, canteen whistle and saddle bag . . . A sure hit. **\$1⁸⁸**

FARM VEHICLE SET 7-Pc. all-vinyl set, beautifully gift boxed. Includes Truck, Tractor, Cows, and Figurines. **1⁷⁷ SET**

NOW ONLY

BIG ALL-METAL TRUCKS Select from this popular assortment of friction motor trucks. A truck for every boy's need for those Big Jobs. **1⁸⁸ EACH**

NOW ONLY

JACK-IN-THE-BOX Exciting action. Press button and up jumps colorful figure with musical sound. Many styles to choose from. **88^c EACH**

THIS SALE

CHRISTMAS STOCKING Take home several for an exciting Christmas morning! Filled with a big selection of toys. REG. 1.98 **1⁷⁷ EACH**

THIS SALE ONLY

SNO-SPRAY For creating a beautiful and realistic snow appearance on your Christmas Tree, for window decorating, and many other holiday decorating ideas. **66^c**

THIS SALE ONLY

COMPARE AT 89c

ALL METAL EXTRA STRONG FOLDING **ASSORTED GAMES** Ea. **88c**

IRONING BOARD 27" Long and 22" high . . . every little girl will love it! **1⁸⁸**

THIS SALE ONLY

ELECTRIC IRON U.L. Approved toy iron really works—yet it's safe to use. **88^c**

NOW JUST

Light Up — Decorate for Christmas Christmas centers around your tree, so be sure it sparkles brightly. Choose your needs from our big assortment of Christmas Tree Light Sets and Bulbs. Series and multiple. All U.L. Approved.

GIFT WRAP Select from our big assortment of Gift Wraps, Ties and everything necessary for a beautiful package. **ALL AT POPULAR PRICES**

79-80-81-82-83-84

STATIONERY Choose from many styles for Christmas gift giving. REG. 1.00 **77^c**

NOW ONLY

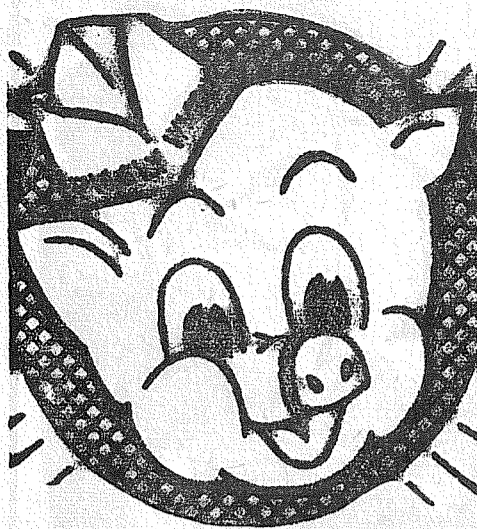
IN PERSON HERMIE HILDRETH Playing The Hammond Organ **EVERY SAT. 1-5 P.M.**

SHOP-ETTE OPEN DAILY 10 A.M. 'TIL 9 P.M. 133rd and Pacific Ave., Next to Big Bear

OPEN SUNDAYS 12 NOON TO 6 P.M. Parkland Store Only

OIL PAINTING SET Biggest value ever offered. Two matching numbered 8"x10" mounted panels, oil colors and brushes. **88^c SET**

SPECIAL ONLY



Finest Foods - Guaranteed Quality... and

Service a Smile Wide"

at Piggly Wiggly!

SWANSON'S BEEF, CHICKEN OR TURKEY

MEAT PIES 5 PIES FOR **99¢**

FAMOUS RED CAN

HILLS COFFEE (12¢ OFF LABEL) 2-LB. CAN \$ **1.17**

PLAYFAIR - YOUR PET'S FAVORITE

DOG FOOD 4 NO. 1 CANS **29¢**

ZEE - ASSORTED COLORS

TOILET TISSUE 4-ROLL PACK **29¢**

POLAR, FRESH FROZEN

STRAWBERRIES 5 10-OZ. PKGS. \$ **1.00**

MISSION BEST BET ELBOW MACARONI OR LONG

SPAGHETTI SAVE! 4-LB. PKG. **59¢**

MEADOWBROOK AA SWEET CREAM BUTTER 1-LB. CARTON DR PRINT **65¢** SNOW CROP ORANGE JUICE 6 6-OZ. FROZEN CANS \$ **1.00**

DURKEE'S 24-OZ. FREEZER JAR MAYONNAISE **39¢** REAL GOLD BASE ORANGE 6 6-OZ. CANS \$ **1.00**

LYNDEN GRADE A DOZEN LGE. EGGS **59¢** NIBLETS CORN 5 12-OZ. CANS **89¢**

DURKEE'S (3¢ OFF LABEL)

MARGARINE A BIG SAVING! 5 1-LB. CTNS. \$ **1.00**

MORE SAVINGS AT YOUR PIGGLY WIGGLY

| | | |
|---|--|--|
| White, Yellow, Devils Food, Honey CAKE MIX Betty Crocker 3 Pkgs. 89¢ | BAKER'S INSTANT CHOCOLATE MIX 2-lb. Pkg. 79¢ | FLUFFO (6¢ OFF LABEL PACK) 3-LB. CAN 69¢ |
| MAXWELL HOUSE (25¢ OFF LABEL) INSTANT COFFEE 10-oz. Jar 1.39 | M.J.B. WHITE OR BROWN QUICK RICE 24-oz. Pkg. 39¢ | |
| TRIANGLE THINS N.B.C., 9 1/2 oz. pkg. 35¢ | KITTY CAT FOOD 2 No. 1 cans 21¢ | |
| CHIFFON (10¢ Off Label) Liquid, Large Size 59¢ | FELS NAPHTHA Bar 2 12-oz. bars 33¢ | |
| WALNUT BITS Blue Bell 3 3/4-oz. pkg. 49¢ | KOTEX Sanitary Napkins, Pkg. of 12 45¢ | |
| PINEAPPLE Dole Grushed No. 2 can 29¢ | CHUNK TUNA Snow Mist No. 1/2 can 29¢ | |
| PINEAPPLE Dole, Sliced or Chunk No. 2 Can 37¢ | RED ROSE TEA 48 bags 59¢ | |
| CRISCO SHORTENING 1-lb. can 35¢ | FIG BARS A.B.G. Vanilla or Whole Wheat, 1 1/2-lb. pkg. 49¢ | |
| | | |
| | | |

NALLEY'S POTATO CHIPS

Regular 69¢ Box **59¢**

CORN CHIPS NALLEY'S Reg. 49¢ Box **39¢**

CHIP DIP NALLEY'S ASSORTED 8-oz. Size **39¢**

CUKE CHIPS (22-oz. 35¢) 2 16-oz. Jars **49¢**

BEEF STEW NALLEY'S 3 15-oz. Cans **1.00**

SYRUP NALLEY'S LUMBERJACK 22-oz. Bottle **29¢**

HARDWARE SPECIALS IN OUR FIFE STORE

FELTROCK INSULATION Bag **\$1.69**

CHRISTMAS LIGHT CORD WATERPROOF 14-2 4¢ per ft. 12-2 6¢ per ft.

SOCKETS WATERPROOF Each **20¢**

COLORLED 25-WATT GLOBES ea. **20¢**

CANNED HEAT Each **5¢**

NYLON FISH LINE 12-lb. Test 100 YDS. **\$1.00**
BRING YOUR OWN REEL

FISHERS BLEND FLOUR 10 LB. BAG **79¢**

Parkland Store Only



FULLY COOKED

PICNICS

• SWIFT'S PREMIUM
5- TO 8-LB. IDEAL FAMILY SIZE

35¢
LB.

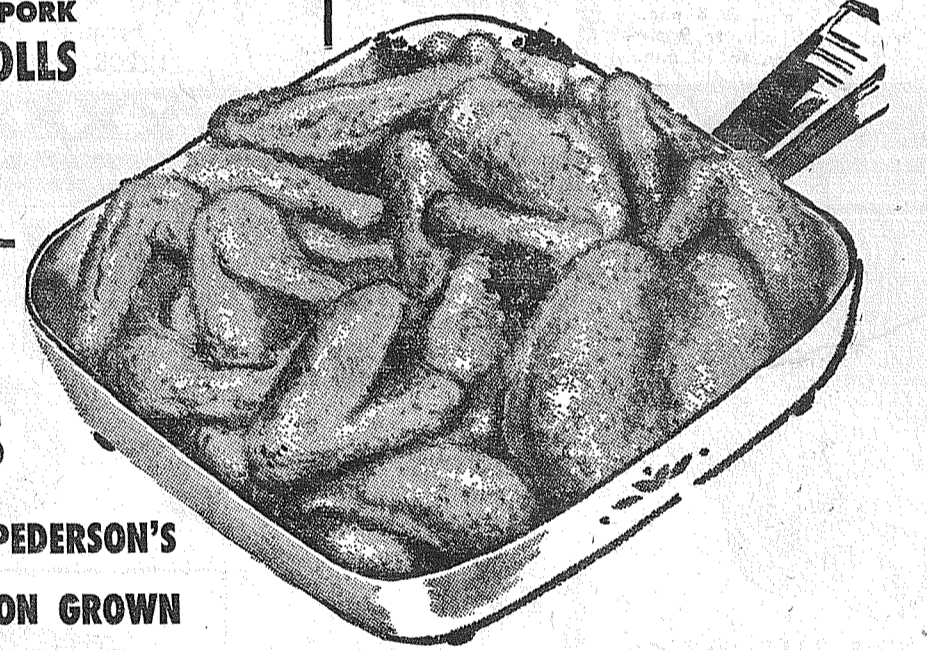
Open Daily 9 a.m. to 10 p.m.

ANOTHER POPULAR BEEF SALE

| |
|---|
| ROUND STEAK FULL CUT JUICY STEAKS LB. 73¢ |
| BEEF RUMP ROAST TENDER, TASTY LB. 73¢ |
| GROUND ROUND LEAN, GROUND FRESH HOURLY! LB. 69¢ |
| SIRLOIN TIP STEAKS OR ROAST FOR SUNDAY DINNER LB. 93¢ |

| | |
|--|---|
| JILG'S SKINLESS WIENERS LB. 45¢ | FRESH DUNGENESS JUMBO CRABS LB. 33¢ |
| MORRELL'S YORKSHIRE BRAND SLICED BACON LEAN-STREAKED EASTERN LB. 49¢ | SMALL HOOD CANAL FRESH OYSTERS 12-OZ. JAR 59¢ |

MORRELL'S PURE PORK **SAUSAGE ROLLS** (EACH 35¢)
3 1-LB. ROLLS \$ **1.00**



PIGGLY WIGGLY'S
OWN OR PEDERSON'S WASHINGTON GROWN

FRESH CUT-UP FRYERS LB. **39¢**

POTATOES U.S. No. 2 IDAHO 50-LB. SACK \$ **1.59**

| | | |
|--|--|--|
| CARROTS FRESH CRISP 1-LB. CELLO ... 5¢ | APPLES EX. FCY. RED DELICIOUS 2 lbs. 25¢ | CABBAGE FRESH SOLID HEADS ... LB. 4¢ |
|--|--|--|

Piggly Wiggly

PUYALLUP 1010 EAST MAIN
PARKLAND PACIFIC AT GARFIELD
FIFE FORMERLY ANDRE'S MKT.
So. Tacoma 5252 SOUTH WASHINGTON
40th & Portland Ave.

PRICES EFFECTIVE THURSDAY, FRIDAY AND SATURDAY, DEC. 8, 9, and 10. WE RESERVE RIGHT TO LIMIT NO SALES TO DEALERS