

FBI Enters Spanaway Case See Page 2

Pierce County Herald and

The **TIMES** JOURNAL

Vol. 24 No. 20

May 16, 1968

Price Per
Single Copy

10¢



LUCKY SALES, wrecker, is pictured raising a backhoe bucket loader to release 28-year-old Charles G. McLaughlin, 628 South 168th, Spanaway, who was injured when the rig rolled over a 7-foot bank to pin him under a rear wheel. The

accident occurred as McLaughlin was digging for a retaining wall at Spanaway Elementary School.

FP Board Accepts Bus Bid, Receive Title III Grants

A decision to reject submitted bids for water proofing and painting of the Parkland School and to resubmit the issue to the market was made by the Franklin Pierce School Board of Directors Tuesday night, because the bids received were 80 per cent higher than the estimates.

Dr. Edward E. Hill, superintendent of the District, told board members that all building projects are on schedule.

The forms are almost ready to provide the concrete "base" for seats at the High School Football field; the James Sales Library is 80 per cent complete and will be finished before school opens in the fall; plans for Washington High School are in the final design stages, the plans are expected to be submitted to the state by June 15th and bids awarded during August.

A request for a continuation grant of \$27,570 has been prepared and submitted by Dr. Hill through the Intermediate Office of Education to the United States Office of Education.

The grant, if approved, will furnish additional training and specialized equipment to help make Project Promise fully operational next year.

Dr. Hill has been selected to serve on the Title III Advisory Council, the administration of which is being shifted from the US office of Education to the State Department of Education. He will represent the Washington Association of School Administrators.

The state has provided a grant of \$1,000 for administration, clerical assistant, supplies and communication for the study of a "team" inter-disciplinary approach to vocational education. They also will fund 50 per cent of six week's training cost for Mr. Miller

and Mr. Alexander. Approval of a grant for \$2,590, to develop a technical math program for the FP high schools, in which Russ Fulkerson will work four weeks and Mr. Ward, two weeks to develop it, was announced at the meeting.

Sixteen teachers were recommended for employment by the administration. They include Ronald Caley for the upper elementary grades; Miss Karen Goodro, PE at the junior high; Mrs. Jill Halverson, primary; Judith Kieser, Home Ec at the senior high; Miss Ola Marshal, German at the junior and senior highs; Mrs. Elaine Motteler, primary; Bruce Orness, PE junior and senior high; Gerald Russell, business education, senior high; Mrs. Marjorie Salzman, primary; Miss Ginger Valor, PE, junior high; Mrs. Mildred Jensen, primary; Miss Donna Lormor, PE, junior high; Mrs. Ruth Ogburn, upper elementary; Richard Parks, distributive education at the senior high; Michael Roberts, social studies at the senior high; and Miss Sigrid Shelton, primary.

Resignations accepted included those of William F. Whitesel, Robert Daggett, Mary Lou Davis, Rozanne Hall, Walter Hall, Bonnie Hefty, Connie Kravas, Robert Lovell, Esther Myhre, Gary Parsons, Diana Parsons, Cheryl Pederson, Gerald Rogers, Larisa Schneider, Susan Stewart, Barbara Taplin, Anne Page Ward, Sandra Young, Mary Cay Weikert, Bruce E. Berry and Mrs. Sharon Elston.

Mrs. Faye M. Serviss was granted a maternity leave of absence.

Frank Buchanan Sales Co. of Tacoma was awarded the bid for two new buses, both 73 passenger. Buchanan, who was the only bidder, submitted the bid at \$48,035.35 for both buses.

FBI Sets Precedent On Spanaway Airport

Federal Bureau of Investigation agents set a new national precedent Tuesday by entering a case involving burglary and vandalism of aircraft parked at Spanaway Airport.

The Bureau was given the go-ahead by the U.S. Attorney in Tacoma after it was determined planes engaged in interstate and international commerce had been broken into and vandalized. According to agents, this is the first time craft smaller than commercial liners have been considered under the interstate classification.

Burglary in question occurred May 11 when forced entry was made into a dozen or more aircraft to steal equipment, ransack belongings, tamper with instruments, and in one case, pour foreign liquid into a gas tank.

Value of property taken during the airport crime spree will probably exceed the \$661 originally estimated by Sheriff's Deputies, and damage to aircraft will total several hundred dollars.

A colored liquid, probably a soft drink, was reported to have been poured into the left wing tank of a plane belonging to Jack Brown, 14620 Pacific Ave. The act of vandalism went undetected as Brown took off on an interstate flight to Idaho. Because he had a heavy passenger load on the right side of his single-engine Mooney, Brown elected to draw from the right tanks, switching to the left tank later in the flight.

"When I landed there was only a couple of inches of good gas left in the tank," Brown stated.

After removing equipment

valued at \$600 from Brown's aircraft, the thieves stuck a large piece of bubble gum on the windshield. Loss included emergency transmitters and personal items.

A Mooney owned by Harold LeMay, Parkland, sustained \$150 damage, investigating deputy Richard Melin reported. Sheriff's deputies were at the scene soon after it was reported about 8 a.m. Saturday morning. Time of the burglary was estimated to be an hour or so earlier.

Police are searching for a late model car seen in the area about the time the burglary was thought to take place. The vehicle was seen speeding from the scene taking a left on Pacific Avenue and heading for the Roy Y.

A pet rabbit, kept in a hutch near the airport hangar, also was stolen.

Exurbia Filthy Says PCE. Agent

"Today in Pierce County we have over 150,000 people using septic tanks. This contributes to the fact that exurbia has become the filthiest place in the world to live today," said Pierce County Agent Frank Jackson today.

"As water pollution continues to plague all areas of the United States, the need for trained manpower increases," Jackson continued.

Over \$1 billion were spent last year for facilities to treat industrial and municipal wastes. In the past 14 years over \$9 billion have been invested in such facilities.

"The next few years will witness a rapid increase in demand for personnel of all types in the clean water program," promised Jackson. This need would extend from postgraduate trained scientists and engineers to the staff required for day-to-day operation of thousands of sewage treatment plants. No single geographic area will be exempt from this need.

Trained manpower required to meet this need will have to increase at least 150 per cent by 1972, the report concluded.

Band And Choir Concerts Slated At Bethel High

Bethel High School will present the Spring Band Concert at 8 p.m. Friday, May 17th under the directorship of Glenn Hull.

Also slated is the 8 p.m. May 21st, Choir Concert, which will be comprised of the Clover Creek Boys Choir, Junior and Senior Chorus. Harold Turney will direct.

Both events will include selections from recent contest participation and will be hosted in the High School gymnasium.

Deputies Busy In Spanaway Area Lions Elect

Charles G. McLaughlin, 28, 628 South 168th, Spanaway, received a broken shoulder blade when the Ford backhoe bucket loader he was operating fell off a 7 foot bank at Spanaway School May 10, Deputy James Slack reported.

The victim had been operating the machine about 10 minutes when the left front outrigger of the tractor slipped, Slack stated. The rig then rolled over the bank pinning McLaughlin under the right rear wheel. Lucky Sales wreckers were summoned to free the operator.

McLaughlin is employed by the Riley Construction Co., Route 2, Box 2928, Spanaway, and was taken to Lakewood General Hospital by Lakewood-Pacific Ambulance.

Burglars forced a door lock and broke a window to enter the home of Mary E. Bush, Route 1, Box 1383, Spanaway, and steal a color TV set, Deputy James Slack reported last week.

The set was described as a 21" RCA and valued at \$479.28.

A 1967 Harley motorcycle valued at \$450 was stolen during a burglary of the Nannette Henricksen residence, Route 1, Box 1750, Spanaway. The suspects left in a blue pickup truck, deputies learned.

Beer, cigarettes, and candy were taken in a burglary of Joe's Tavern, Route 2, Box 2085, Spanaway, Deputy J.C. Taylor reported Monday.

Entry was gained through a rear window and a crowbar was used to break into the beer cooler, Taylor said. Loss was set at \$98.70.

A pair of men's slacks and a shirt were removed from the

Bethel Board Sets Meeting For Budget

Bethel School District, 403, Board of Directors will hold a special meeting at 8 p.m. May 20th in the Administration Building to conduct a budget hearing.

home of Gail Seifert, Route 1, Box 1226B, Spanaway, Deputies reported. Loss was valued at \$25.

Parkland

A 10-year-old Parkland girl, Cathy Derby, 703 East 128th, received leg injuries Monday when she was thrown from a horse into barbed wire, Deputy C.A. Klingenberg reported.

Witnesses told Klingenberg the horse started to buck when a youngster struck it with a stick as Cathy was mounting. The victim was taken to Mary Bridge Hospital.

Andrew Christensen Sets Installation

Andrew Christensen PTA will meet at 8 p.m. Thursday, May 16th, in the school's multipurpose room.

The Christensen band consisting of fifth and sixth grade students will present a concert under direction of Robert Koehnke.

Mrs. Richard Colburn will install the new PTA officers for the coming year. President, Mrs. Donald Wusterbarth; vice president, Mrs. Daniel Burke; secretary, Mrs. Charles Maginnis; and treasurer, Mrs. John Ostrander.

Grouping Plan To be Discussed At Bethel

Mrs. Eloise Corbin will discuss kindergarten grouping at the Bethel District Preschool meeting at 8 p.m., Thursday, May 16, at the Bethel Junior High School.

The Gesell Institute Grouping Plan will be inaugurated at the Chester Thompson and Clover Creek Elementary schools. The plan may best be described as ungraded, but placement is made by development rather than achievement or IQ. Children are placed in groups according to their development which is determined by such criteria as the way they make a circle or triangle, the way they hold a pencil or complete a drawing, and by their general behavior pattern.

All parents of preschool children in the district are invited to attend.

Roger Lincoln was elected president of the Spanaway Lions Tuesday night with a slate of new officers to be installed at the Club's charter banquet June 28.

Members selected Ted Stansbee 1st vice president, Bill Rhigetti 2nd vice, Jim Knaggs 3rd vice, Forrest King secretary, Jack Myers treasurer, and Skip Reeves and Cliff Anderson to the Board of Directors. Lincoln will replace Jay Campbell, who will assume the role of consultant to the president-elect during the coming year.

During the meeting, held at the Little Park Cafe, two new members were accepted. Leonard Knech, operator of Len's Tavern in Parkland, and Elk Plain Principal Chet Bardwell received membership pins.

The Spanaway Club has been maintaining a blood bank not only for members, but for those in need living in the Spanaway area, Campbell reported appealing for donors. Those wishing to donate may do so by making arrangements with the Tacoma-Pierce County Blood Bank and giving in the name of the Club.

Members are planning to roar Sunday at a chicken barbeque starting at noon to be held at the Stansbee residence on Lake Spanaway. All Lions are invited.

Dwight Robinson was awarded the District Governor's pin for bringing in new members during the period of January and February.



DEPUTY SHERIFF Richard Melin and Spanaway Airport operator Ralph "Slim" Lawson inspect a forced door lock on one of a dozen planes damaged during a crime spree at the airport early Saturday morning.

Census Slated In Parkland

Householders in this area will be asked questions about current employment and unemployment the week of May

13-18 by Census Bureau interviewers, Director John E. Tharaldson of the Bureau's regional office in Seattle announced.

Ford Junior High Sets Spring Concert

Morris E. Ford Jr. High School has slated its annual Spring Music Festival at 7:30 p.m. May 16th in the school's gymnasium.

Performing groups include three bands, the school choir and seventh-grade vocal ensembles.

Highlights from the program are: "A Trumpeter's Lullaby" a trumpet solo played by John Sigafos, with band accompaniment; "Music For a Ceremony" by Morrissey; and "American Folk Rhapsody" by Grundman.

Ilurt, vocal, and Robert Harper and Eugene Ahrendt, instrumental.

Firemen's Auxiliary Slates Games Night

The Spanaway-Elk Plain Volunteer Firemen's Auxiliary will hold a games night at 7:30 p.m. May 16th in the fire hall, 162nd and Park.

There are plenty of prizes and refreshments will be served.

The public is invited.

Pierce County Herald and

The TIMES JOURNAL

Published weekly at 14620 Pacific Ave., Parkland 98444 and delivered by U.S. Mail and carrier to subscribers. Publishers: Pierce County Publishers, Inc.

Managing Editor Em Matson
 News Editor Sandy Ingram
 Sports Editor Bob Ingram

Subscriptions \$3.50 per year, \$1.80 six months, or 30c monthly by carrier. News stand price 10c copy.

Qualified as a legal publication under Chapter 213 of the Legislature Acts of the 1941 regular session of the State of Washington

Second Class Postage Paid at Tacoma, Wash.

Vol. 24 No. 20 May 16, 1968

15' STARCRAFT

ready to go

Open Eyes

Til 9

50 hp Thunderbolt
 1968 Mercury
 950A Holsclaw Trailer
 \$2100

PARKLAND SPORTS CENTER

11122 PACIFIC AVENUE TACOMA, WASHINGTON PHONE LE 7-5677

HI HO

PUYALLUP

HI HO

CHUCK STEAK

LEAN CENTER CUT

49^c_{lb}

SPLIT FRYERS

FOR YOUR BAR-B-QUE

49^c_{lb}

PORK SPARERIBS

49^c_{lb}

CENTER CUT

CHUCK ROAST

49^c_{lb}

ARMOUR'S 6-oz. LUNCH MEAT 4/\$1

DUBUQUE BACON

69^c_{lb}

FROM CHECKERBOARD FARMS

14-oz. FROZEN

GIBLET GRAVY and SLICED TURKEY

JUST HEAT IN THE BAG

79^c



CHUCK ROAST BLADE-CUT 39^c_{lb.}

JILG'S ALL-BEEF OR REG.

WIENERS

53^c_{lb}

MILWAUKEE SLICED

BOLOGNA 79^c_{lb}

OUR OWN BEEF SAUSAGE 49^c lb.

CALAVO BRAND, SUMMER

AVOCADOES 2/29^c

CHERRY TOMATOES 29^c_{cup}

RED LEAF LETTUCE or **ROMAINE 2/29^c**

1-lb. CELLO PKG. **CARROTS 10^c**



IN PUYALLUP

PRICES EFFECTIVE MAY 13th THROUGH 18th

NO. 303 TINS S and W CANNED GOODS

CREAM CORN
KERNEL CORN
GREEN BEANS
PEAS
SPINACH
16-oz. Baked Beans
KIDNEY BEANS
GARBANZOS

5/1⁰⁰

LARGE "AA" PUYALLUP

EGGS

37^c_{DOZ}

QUART HI HO **MAYONNAISE 39^c**

32-oz. BUTTERY FLAVOR **WESSON OIL 59^c**

GALLON **PUREX 49^c**



FRESH FROM OUR BAKE SHOP **BUTTERHORNS**

10/1⁰⁰

RAISIN BREAD **4/1⁰⁰**

LOWEST DRUG PRICES ANYWHERE

Reg. 99c **Get Set Hair Spray 49^c**

39c to 69c **Colgate Toothbrushes 5/1⁰⁰**

Reg. 1.07 **Colgate "100" Mouthwash 59^c**

Reg. 89c **Halo Shampoo 39^c**

SWANSON'S **TV DINNERS**

49^c

6-oz. MINUTE MAID, PINK or REG.

LEMONADE 10^c_{TIN}

2-GALLON ARDEN **ICE CREAM**

2³⁹

CLOVERLEAF GRATED

TUNA 5/1⁰⁰

40-OZ. ADAMS **PEANUT BUTTER 99^c**

HI HO

PUYALLUP

HI HO

SPECIAL
Hair Cuts \$2²⁵
 at
Millie's STYLETTE
Beauty Shop
LE 7-8042
 HIGH STYLING AND CONSERVATIVE,
 ALL BEAUTY SERVICES,
 WIGS & WIGLETES
 3 OPERATORS TO SERVE YOU
 IN A BEAUTIFULLY MODERN SHOP
 PLENTY OF PARKING
 228 169 E. Spanaway

The Men from Merrill Lynch
 take a look at
5 Emerging Industries

Oceanography • New Medical Technology
Learning Aids • Nuclear Energy
Pollution Control

Make your forum reservations today

Our Research Department believes these industries have unusual potential for growth and could at least triple their present size within the next decade.

If you would like to learn more about these industries—and get specific information on which stocks we feel are attractive within them—come to our—

Emerging Industries Forum
Thursday evening, May 23
Puyallup Public Library
324 South Meridian, Puyallup
starting at 7:30 PM sharp

You'll find out about:

Oceanography—many experts believe it will one day be as large as today's \$7-billion space industry.

New Medical Technology—may well be on its way to outstripping our current giant American drug industry.

Learning Aids—shows promise of reaching a billion-dollar volume inside of the next decade.

Nuclear Energy—already has a backlog of \$6-billion in orders for utilities equipment alone.

Pollution Control—expenditures show a potential of \$10-billion a year within the next few years.

Reserve your seats today. There's no charge or obligation, of course, but space is limited. Simply call or mail in the coupon shown below.

Please reserve _____ seats for your Emerging Industries Forum on Thursday, May 23 in Puyallup.

Name _____

Address _____

City & State _____ Zip _____

Phone _____



Washington Building
 TACOMA 98402
 Telephone: FUlton 3-4741

Summer Library Schedule

Signs of summer are evident this week in the Pierce County Library system as new bookmobile schedules are issued.

Last summer the county library initiated a series of story hours at some of the county playgrounds, given by storytellers from the Children's Bookmobile. This program proved so popular it will be repeated this year.

From June 18 through August 6, the Children's Bookmobile will stop on Tuesdays at Elmhurst School from 10:30 a.m. to 11:30 a.m., at Dawson Playground from 12:30 to 1:30 p.m., and at Gonyea Playground from 2:00 to 3:00 p.m.; from June 19 through August 7 at American Lake Gardens, Economic Opportunity School, from 11:00 a.m. until noon, at Lakeview School from 1:00 to 2:00 p.m., and at Andrew Christensen School from 2:30 to 3:30 p.m.; and from June 20 through August 1 on Thursdays at Edgemont Playground from 10:30 to 11:30 a.m., at Fruitland Avenue, Frink's from 12:30 to 1:30 p.m., and at Collins School from 2:00 to 3:00 p.m.

The schedule for the community bookmobiles is as follows:

B-2 SPANAWAY - 1st and 3rd Tuesdays: June 4, 18; July 2, 16; August 6, 20. Roberts Rd. (Haire), 9:00 - 9:20; 159th St. and 7th Ave. E. (Guffey), 9:30 - 9:50; 171st St. and "C" St. So. (Troupe), 9:55 - 10:25; 6117 - 176th St. E. (Rogers), 10:40 - 11:00; 17219 - 74th Ave. E. (Hedlund), 11:05 - 11:20; 17915 - 52nd Ave. E. (Zengota), 11:25 - 11:40; 182nd St. and 38th Ave. E. (Hagen), 11:45 - 12:15; Lunch; Orting Prairie Rd. and 38th Ave. E. (Kuper), 12:50 - 1:20; 208th and Tom Wright (Downey), 1:25 - 1:55; Brown Rd. (Klein), 2:00 - 2:30; 184th St. and E. "B" (Hoover), 2:40 - 3:10; 168th St. and E. "S" (Drake), 3:30 - 3:55.

B-3 CANYON RD. - MERIDIAN - 1st and 3rd Wednesdays: June 5, 19; July 3, 17; August 7, 21. 128th St. and Waller Rd. E., 9:00 - 9:25; 128th St. and Canyon Rd. E. (Collin's Grocery), 9:30 - 9:55; 138th St. and Canyon Rd. E. (Van Beek), 10:10 - 10:40; 144th St. and 58th Ave. E., 10:45 - 11:10; 14327 - 47th Ave. E. (Wold), 11:15 - 11:40; 152nd and Bingham (Leonard), 11:45 - 12:15; Lunch; 15321 - 66th Ave. E. (Dempsey), 12:50 - 1:15; 148th St. and 70th Ave. E. (Firlane Valley), 1:20 - 1:55; 142nd St. and 94th Ave. E. (Reitz), 2:05 - 2:45; 144th St. and 107th Ave. Ct. E., 3:00 - 3:45.

B-8 PARKLAND-BROOKDALE - 2nd and 4th Wednesdays: June 12,

July 10, 24; August 14, 28. 98th St. and Patterson So., 9:00 - 9:20; Wheeler and Alaska So., 9:30 - 10:05; Tule Lake Rd. and Yakima So., 10:10 - 10:25; 138th St. and 13th Ave. S., 10:40 - 11:25; 505 East 138th St. (Phillips), 11:35 - 12:05; Lunch; 715 East Johns, 12:40 - 1:25; 1239 East 142nd St., 1:30 - 2:10; 138th St. and Golden Given E., 2:15 - 2:50; 142nd St. and 25th Ave. Ct. E. (Stanke), 3:05 - 3:25; Brookdale and Tisch, 3:35 - 4:05.

A-8 GRAHAM-ELK PLAIN - 2nd and 4th Wednesdays: June 12, 26; July 10, 24; August 14, 28. Muck-Kapowsin Road (Ockfin), 9:15 - 9:30; Lindberg Road (Olive), 9:40 - 10:05; McDonald Rd. and Meridian (Rensing), 10:20 - 10:40; Thrift Extension Rd. (Sharp), Rt. 1, Box 436, 10:45 - 11:10; Davis Road (Hand), 11:15 - 11:35; Carlson-Meridian, 11:40 - 12:05; Lunch; Kapowsin-Meridian, 12:40 - 1:00; Bethel Green Acres, 1:20 - 1:45; Ambassador (92nd St. and So. Tacoma Way), 2:30 - 3:55.

A-9 VALLEY-WALLER RD. - 2nd and 4th Thursdays: June 13, 27; July 11, 25; August 8, 22. Christian Youth Center (6622 - 48th Ave. E.), 9:00 - 9:30; 72nd St. and Canyon Rd. E., 9:40 - 10:05; 80th St. and Canyon Rd. E., 10:20 - 10:40; Thomas and Fruitland (Durkee), 10:50 - 11:05; 96th St. and 71st Ave. E. (Violet), 11:15 - 11:35; 96th St. and 62nd Ave. E. (Winsley), 11:40 - 12:00; Lunch; 96th St. and Canyon Rd. E., 12:35 - 1:05; 80th St. and Vickery Rd. E., 1:10 - 1:40; 64th St. and Waller Rd. E. (Waller Rd. Water Co.), 1:50 - 2:20; 53rd St. and 36th Ave. E., 2:25 - 3:05; 85th St. and Golden Given E., 3:25 - 4:05.

PLU Swim Program
Outlined By County

Four days have been set aside at the Pacific Lutheran University swim pool office for registration in the first session of the Pierce County Park Department's swim instruction program.

Youngsters from six years of age and older who stand 39 inches at chin height may register May 23-24 from 6:30 to 8:30 p.m. and on May 25 and June 1 from 10 a.m. to 1 p.m. for the first three-week session.

Classes will be offered for beginning, intermediate and advanced swimmers and a special class for housewives will be conducted at noon. The

opening session will run June 17 through July 5 at the PLU pool.

A registration fee of \$4 per session for children and \$5 per session for housewives will be required. Transportation will be provided at a \$2 per session fee in the Franklin Pierce District and \$3 per session in the Bethel area. Franklin Pierce buses will pick up youngsters at the Central Avenue, Collins, Harvard, Elmhurst and Midland schools.

Classes will be 30 minutes in length starting Monday through Friday at 9 a.m. and concluding with the housewives session at 12:30 p.m.

Other sessions will be given July 8-26 and July 29 to Aug. 16 at the PLU pool.

DISCOUNT FURNITURE CENTER

STOCK REDUCTION EVERYTHING GOES!

SAVE up to ONE HALF and MORE!

EXTRA SPECIAL!!

3-pc. SECTIONAL 1 Only \$145⁰⁰
BED DAVENO Deluxe, 3 Only \$77⁰⁰

SMALL SWIVEL ROCKER
 Reg. 44.95... **\$29⁹⁵**

WALNUT END OF COFFEE TABLE
\$6⁹⁵

MATTRESSES \$22
 Complete Deluxe **BUNK BEDS \$88**

100% Nylon BED DAVENO With Matching Chair \$99
 Reg. \$1.59...

HIDE-AWAY BEDS
 Reg. **\$139⁹⁵**
 219.95

13014 PACIFIC AVE. --OPEN 'Til 9 P.M.



RETIRING TEACHERS HONORED. Five Franklin Pierce District teachers who will retire at the close of this school year, were paid special tribute during the FPEA banquet Friday at the Top Of The Ocean. They are pictured (l-r): Frances Johnson (Parkland), Georgia Stay (Parkland), Elza Simons (F.P.H.S.), Esther Myhre (Kiethley), and Almira Norton (Harvard).



ERCELLE RASMUSSEN, retiring Bethel District teacher, is pictured receiving a pin of appreciation from Kapowsin principal, Robert Sims, on behalf of the Bethel Education Association. Mrs. Rasmussen is retiring from teaching 15 years at Kapowsin Elementary and 28 years in the State. The award was made at the BEA banquet last week.

LETTERS TO THE EDITOR

Dear Mr. and Mrs. Parkland:

On behalf of the entire Parkland Development Association, we wish to extend a heartfelt thank you to all of our friends and neighbors that made this, our 5th annual Parkland Clean-up Campaign, a success.

Through cooperation of our fine local businesses, large and small, civic organizations, PLU, Franklin Pierce School District, and our fine Parkland residents, we are indeed proud of each and every one of you who helped on "Clean-up Day" to make Parkland just a little more pleasant to live in.

We cannot stress enough the importance of each and every one of us in the Parkland area to take a second look at his or her place of business and residence and ask ourselves periodically. — "Am I doing my little part to make my place in Parkland a Clean, Safe and Pleasant area in which to live?" This costs so little and does so much to all of us. It could be contagious — so let's try it.

Health and sanitation are vital all year around and we ask your support.

Hank Hetle,
Chairman of the
Parkland Development
Association's Clean-up
Committee

May 13, 1968

The Times Journal
14620 Pacific Avenue
Tacoma, Wash. 98444
To The Editor:

The statements made by Mr. Harstead at the Hearings of the Boundary Review Board warrant some explaining. His statement

made on the first day of the hearing that the 21-inch trunk line was inadequate, is the only one that apparently holds water.

At the hearing, and also in the Tacoma News Tribune of June 7, 1967, he said the plan is designed to service 39,000 persons. In conflict, is his later statement that the line will serve only 17,000 or 18,000 persons — less than half as many. He might explain how he intends to cram 39,000 people's service into this undersized line between Parkland and Lakewood. It is reasonable to assume another line will have to be installed eventually over the same area.

Mr. Harstead might also explain his "logical" reasons for omitting the Franklin Pierce High School from the first L.I.D., and those reasons for including one side of a boundary street and not the other with the same density of population. One example is Croft Street, where, according to the statement made by Curt Roberts, "sewage is running down the street." A new home has recently been constructed directly across from Mr. Roberts' place of residence on this street. It seems incredible that the County Health Department would permit the issuance of a septic tank permit in an area that Mr. Roberts has termed as "unbearable." The South Suburban Sewer District is being selective and inconsistent in providing sewer service for Parkland.

As to the annexations to the S.S.S.D., it is apparent that the more land that is annexed the more irregular the boundaries become, and descriptions of future proposed annex-

ations show that there would be jogs formed in boundaries which are now straight. Mr. Binns stated that the S.S.S.D. "should not be criticized for using the method most likely to succeed." It was methods used, not sewers, that started the minor "civil war" in Parkland, and it will not be easily forgotten. The people of Parkland are entitled to be shown a comparison of cost figures per acre between the County's \$400

per acre for a permanent line, and the S.S.S.D.'s proposed temporary line. An election has been held and those supporting the District will lose a constitutional right as well as those opposing it if the vote is not recognized.

Instead of the County being 3 years away in planning, Mr. Sprinker estimated it at 4 to 6 months. It is very gratifying and encouraging to the residents to find rapid

progress is being made by the one source that can provide a complete sewer service line for the entire area of 35,000 people.

Pierce County
Improvement Assn.
(Signed) Leo Wilson

Good Samaritan

Mr. and Mrs. Roy Miller,
5621 35th Ave. Ct. E., girl,
May 7th.

Lakewood General
Mr. and Mrs. Bruce I. Messingale, 12120 52nd Avenue E., boy, May 3rd.
Mr. and Mrs. Leonard Schall, 1209 140th E., boy, May 3rd.
Mr. and Mrs. Charles D. Reedy, 9217 So. 92nd, girl, May 5th.
Mr. and Mrs. Michael R. Bolieu, Route 1, Box 1112, Spanaway, boy, May 7th.

**No Other Bank
Can Make
This
Statement**

CHECKS		DEPOSITS	DATE	BALANCE
10 00	43 94	328 82	2 29	17 65
50 00			2 29	292 53
3 18			3 01	242 53
10 21	14 83		3 05	239 35
130 96			3 15	214 31
12 50			3 15	83 35
3 36		348 38	3 15	70 85
69 59	23 39		3 20	415 87
100 15			3 25	322 89
1 27 SF			3 25	222 74
				221 47

PERIOD BEGINNING	PERIOD ENDING	NO. OF CHECKS	AMOUNT OF CHECKS	NO. OF DEPOSITS	AMOUNT OF DEPOSITS	SERVICE FEE
2 24 68	3 25 68	12	472.11	2	677.20	1.27

When it comes to balancing your checkbook, we have one statement to make... and we make it for our Regular checking and Budget checking account customers as well! It's a completely detailed monthly statement that itemizes every check, every deposit, every transaction that affects your checkbook balance. Our statement is the only *sure* way of keeping your records in order. Let us make *your* next statement.

CHECK WITH BANK OF WASHINGTON

AT YOUR SERVICE: PARKLAND BANKING CENTER

NATIONAL BANK OF WASHINGTON / TACOMA, WASHINGTON
MEMBER FEDERAL DEPOSIT INSURANCE CORPORATION

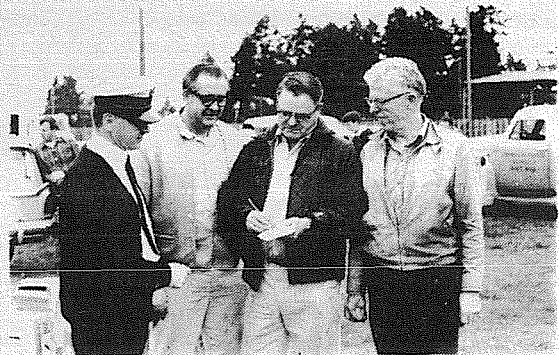
CHURCH DIRECTORY
ATTEND OUR
WORSHIP
SERVICES

<p>PARKWAY Presbyterian Church Sunday School 9:30 a.m. Worship Service 10:45 a.m. Nursery Service Provided 714 - 138th East LE 1-4373 Rev. Wesley J. Drummond</p>	<p>Spanaway Assembly of God 166th & Pacific Ave. Sunday School 9:45 a.m. Morning Worship 11 a.m. Evening Evangelistic 7 p.m. Family Night Wed. 7:30 p.m. LE 1-1412</p>
<p>Spanaway Lutheran Church 8:30 & 11 a.m. Worship Service 9:45 a.m. Sunday School Grades 1 & Up 11 a.m. Sunday School 3, 4 and 5 Year Olds John L. Briehl, Pastor 160th & A St. LE 7-5978</p>	<p>Parkland Lutheran Church & Christian Day School Worship... 10:30 a.m. Sunday School-Bible Study 9:15 a.m. All ages H.A. Theiste, pastor LE 7-5492 LE 1-0777</p>

Trinity Lutheran Church
Worship Services 8:30 & 10:30
Sunday School 9:30 & 11:30
PASTORS
Erling C. Thompson
Robert Drowes
12115 So. Park LE 7-0201

Attend Church This Sunday

Pierce County's Only Professional
AMBULANCE SERVICE
Parkland Ambulance and Lakewood-Pacific
JU 4-3344 LE 7-3322



GO-AHEAD — Workers on the Parkland Clean-up Campaign receive the fire permit from Chief Ray Hixon, Parkland Fire Department, left, on Saturday. Chief Hixon gave his okay to Don Visser, Elmhurst Mutual Power and Light Co., recruiting chairman; Hank Hetle, Doxel Redi Gas, Clean-up Chairman; and Al McManis, block captain Chairman.
— TJ Staff Photo



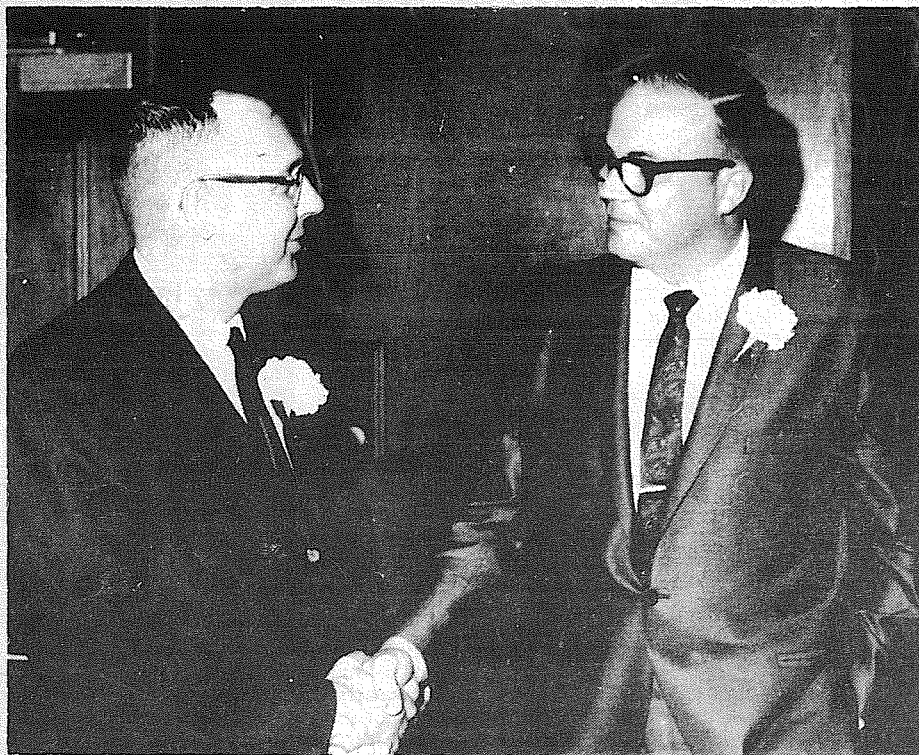
COFFEE-UPER — Ruth McManis serves coffee to John Hartsell, center, while Citizens Band radiomen, who turned-out enmasse to help with the clean-up on Saturday, wait to be served.
— TJ Staff Photo



TRASH BURN — The Parkland collected trash is set afire Saturday climaxing effort and hard work put in by Parkland residents to make the Clean-up Campaign a success.
— TJ Staff Photo



DEDICATED — Harry Sprinker, Chairman of the Board of County Commissioners, cuts the ribbon officially dedicating the median strip on Ainsworth Avenue Monday evening, praising the Parkland Development Association's initiative to make Parkland beautiful. Holding the ribbon are Curt Roberts, left, immediate past president of the PDA, and Dr. Dayle Tibbetts, PDA president. Other dignitaries celebrating this, the first beautified median strip in Pierce County, included Mr. and Mrs. Mike Wutz, Alvin Raber, Dr. Ralph Hanson, Rex Harrington, Clarence Marsh, Carl Lindgren, Glenn Messinger, and Mr. and Mrs. Hans R. Sjobeon, who arrived in a 1920 Model T Ford.
— TJ Staff Photo



PAT O'BRIEN(right), Bethel Education Association president for the coming year, is pictured being congratulated by past president Earl Solie following the installation of officers at the BEA banquet last week. Others installed were: Dick Myking, vice president; Marguerite Jorgenson, secretary; and Vern Pierson, treasurer.

Dr. J. Anderson Is Best Teacher

Pacific Lutheran University's chapter of Blue Key, national honorary fraternity for men, announced Wednesday its selection of Dr. Joseph Anderson as the recipient of the "Best Teacher" award.

Dr. Anderson, an assistant professor of religion, was chosen on the basis of his classroom teaching ability, promotion of intellect outside of the classroom, and willingness to aid students.

The son of Lutheran missionaries, Dr. Anderson was born on Mount Kilimanjaro in what is now the Republic of Tanzania. He graduated cum laude from Augustana College, Rock Island, Ill., and received his bachelor of divinity degree magna cum laude from Augustana Theological Seminary.

Following his schooling Dr. Anderson served as a field representative of the Lutheran World Federation Service in West Germany. In 1950 he accepted the Centennial Graduate Scholarship

Soil Stewardship Week Announced

Frank C. Jackson, County Extension Agent, urged all Pierce County citizens to join the observance of Soil Stewardship Week, May 19-26.

He said the observance is sponsored throughout the State by the Washington Association of Soil and Water Conservation Districts and nationwide by the National Association. Theme is, "A Time For Initiative."

In designating May 19 to 26 Soil Stewardship Week, Governor Daniel J. Evans said changing events within the state, the nation, and the world are focusing attention on resource management.

The Governor stressed that the issues bearing on resources have been broadened to include population growth, the spread of hunger, concern for resource quality, interest in resource planning, and urban growth.

Other aspects of resource management listed by the Governor included the basic and continuing problems of water supply, flood prevention, wildlife preservation, forest management, and erosion control; also, outdoor recreation, wilderness, multiple use of resources, river basins, natural beauty and reclamation.



Secretarial Openings Announced At CPEC

Additional openings are available in secretarial training classes at the Clover Park Education Center beginning immediately, according to school officials. Recent acquisition of additional equipment and added space has made the increased capacity possible.

Under the policy of contin-

uous enrollment, it is possible for persons with no skill or some prior skill or experience to enroll any time there is space in the classes desired. Because of the variation in background of applicants, and the different starting dates, each student is allowed and encouraged to progress at his or her own rate for maximum utilization of class time.

At the present time, new students may enroll in shorthand (with one semester prior study), typing, machine transcribing, business English and office machines. All except shorthand can accept students with no prior experience or training in these subjects. The office machines classes offer training in the use of modern equipment and techniques.

The hours of enrollment are 8:30 a.m. to 3:30 p.m. or 3:30 p.m. to 6:30 p.m. daily. Persons whose work or other schedules require some adjustment in these hours may discuss their plans with a counselor or instructor.

Dryer MORTUARY
(134th & Pacific) PARKLAND

The Country Parson

"One of the first things a baby learns is to love—which he does until someone disappoints him."

Copyright, by Frank A. Clark

Dryer MORTUARY
(134th & Pacific) PARKLAND

STATE FARM INSURANCE

Be backed by the big one

State Farm—The Big One with some 13,000 State Farm agents and claim representatives to give you unbeatable claim service wherever you drive. All this at low cost from State Farm.

The drivers of more than 9 million cars are already getting the world's best car insurance value from State Farm. Stop by.

Bill Ehli
9920 Pacific
LE 1-1800

STATE FARM MUTUAL AUTOMOBILE INSURANCE COMPANY
Home Office: Bloomington, Illinois

NEW CAR LOAN at 4 1/2%

New Cars Cost Less with a 4 1/2%

*\$4.50 A Year For Each \$100 Borrowed

STATE BANK
MEMBER FEDERAL DEPOSIT INSURANCE CORPORATION
Citizens
MAIN OFFICE · PUYALLUP · EAST SUMNER OFFICE
SUMMIT VIEW OFFICE · EDGEWOOD MILTON OFFICE

PRICES EFFECTIVE MAY 15 THRU MAY 19

SHOP MART

DEPARTMENT STORE

13322 Pacific Ave. (Next to Lucky) Tacoma

MID-MONTH BARGAINS

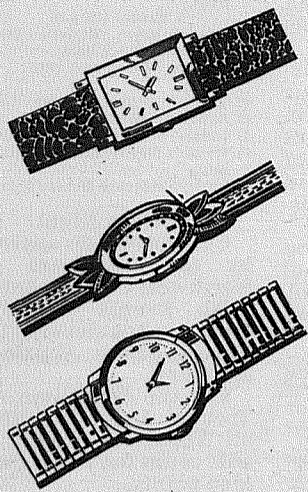
CLEARANCE "ONLY"

LADIES'

GIANT SALE

MEN'S

WATCHES



A FABULOUS ASSORTMENT OF MEN'S AND LADIES' BEAUTIFUL WATCHES

- EXPANSION BANDS
- IDEAL FOR GIFTS
- GUARANTEED

ONLY \$7.77

VALUES TO \$19.95

SPECIAL GROUP !!

LADIES DRESSES

\$1.99 ONLY

PATIO CHAIR

- WOOD ARM RESTS
- WROUGHT IRON LEGS
- BLUE-WHITE
- YELLOW-WHITE
- GREEN-WHITE
- IDEAL FOR PATIOS

Reg. \$6.95 VALUE



\$3.33

24" HOODED GRILL



\$16.95 VALUE

WITH ROTISERIE

ELECTRIC BARBECUE GRILL

\$8.99

Parkland Menu

- May 16, chili con carne, carrot sticks, r. wh. rolls-butter, applesauce, milk.
- May 17, creamed turkey on mashed potatoes, buttered peas, b-b sandwich, fruit cobbler, milk.
- May 20, macaroni-cheese, carrot sticks, raisin bread sandwich, orange wedge, milk.
- May 21, beef in gravy on mashed potatoes, finger salad, cookie, milk.
- May 22, hot dog-battered bun, potato chips, stuffed celery, fruit crisp, milk.
- May 23, toasted tuna sandwich, creamed peas-carrots, orange juice, lemon custard, milk.
- May 24, tomato soup-crackers, chopped ham sandwich, relish cup, cake squares, milk.
- May 27, hot meat sandwich, vegetable salad, fruit juice, cookie, milk.
- May 28, spaghetti-meat, garlic bread, waldorf salad, red jello-wh. topping, milk.
- May 29, fried chicken, wh. potatoes-gib. gravy, creamed corn, b-b sandwich, spicy applesauce, milk.
- May 30, Memorial Day.
- May 31, hot dog, buttered bun-relish, potato chips, finger salad, fruit cobbler, milk.
- June 3, spaghetti-meat, garlic bread, fruit salad, cookie, milk.
- June 4, creamed turkey on whipped potatoes, buttered bread, yeast rolls-honey bu., applesauce, milk.
- June 5 Cook's Surprise Day.

Recipe Of The Week

"Heat Lightning" Drink Cools You In A Flash



Steak into favor with friends this summer when you serve "Heat Lightning" refreshers, a dramatic combination of ice cream, quick chocolate-flavored mix and milk. First aid for the hot and thirsty was never achieved in such simple fashion as with drinks made with quick chocolate-flavored mix and milk. The mix stirs into milk and blends instantly. No beaters are necessary. Keep a box of quick chocolate-flavored mix on the shelf for a shortcut to nourishing coolers for summer.

"Heat Lightning"

For each serving, put scoop of vanilla ice cream in 12-ounce glass. Sprinkle with 1 heaping teaspoon quick chocolate-flavored mix. Repeat until glass is 3/4 full. To serve, add milk to fill glass. Stir gently. Add whipped topping if desired. Eat with spoon.

STATE TRAFFIC DEATHS

TO DATE	
LAST YEAR	THIS YEAR
276	268

PIERCE COUNTY TRAFFIC DEATHS TO DATE

LAST YEAR	THIS YEAR
26	34

DRIVE LEGALLY

WASHINGTON STATE PATROL

This Week's Winner

Donald L. Barnard, 11414 South Ainsworth, found his home pictured in the Times

Journal last week and identified it to claim an \$8 jackpot.

Barnard, who serves with the Army, has lived in the area since 1960. Friends started calling his wife early Thursday morning to advise

of the winning picture before his Journal arrived in the mail, Barnard said.

This week's jackpot has been increased to \$9 with the addition of Shop Mart Department Store as a sponsor.

If This Is Your House...



You Are A Winner! \$9 This Week's Jackpot is

Each week our photographer takes a random picture of a home in the Times Journal coverage area. If you can identify the pictured home as yours, you can claim the jackpot.

Winners receive Times Journal Trade Bucks, redeemable in merchandise or cash at the following businesses.

ARMSTRONG'S USED CARS
11009 Pacific Ave.

PIERCE COUNTY REFUSE
13502 Pacific Ave.

ANDERSON LUMBER
9813 Pacific Ave.

MILLIE'S STYLETTE BEAUTY SHOP
228 169th E.

IDON'S WIG SERVICE
11214 Pacific Ave.

PARKLAND LIGHT & WATER CO.
404 Garfield St.

ELMHURST MUTUAL POWER & LIGHT CO.
120 So. 132nd

E&S ELECTRIC
13621 Pacific Ave.

SHOP MART DEPT. STORE
133rd and Pacific

Winner Must Claim Jackpot Before 5 p.m. Tuesday following date of publication.

AN ENDOWED CARE CEMETERY

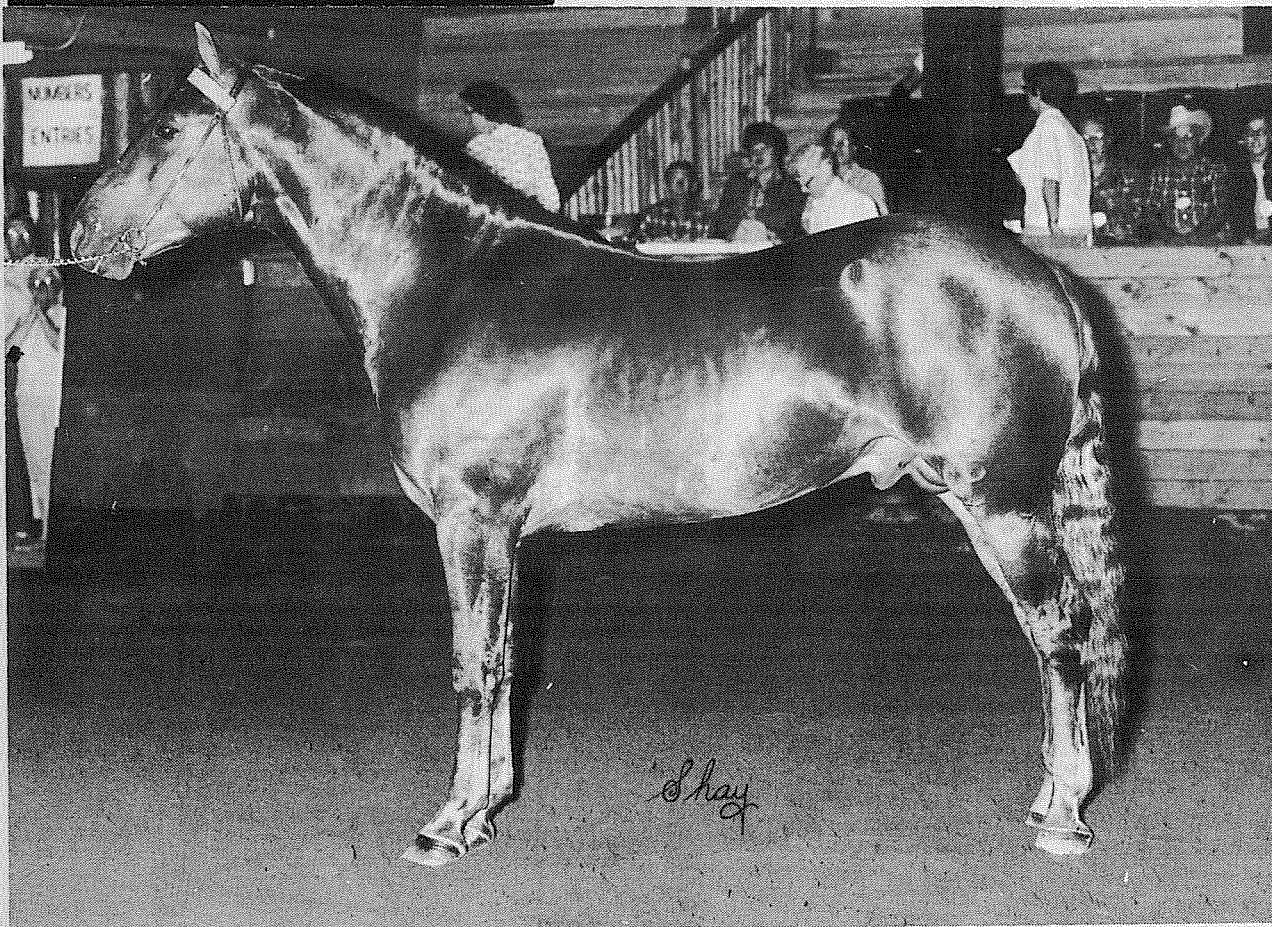


Fir Lane Memorial Park

924 EAST 176TH STREET

LE 1-5500

HORSEMEN'S NEWS



SHAWWALLA RINGO, 4-year-old Morgan stallion owned by Edna Berger, Spanaway, will be entered in the Tacoma Unit #1 Open Horse Show May 18-19 at the Unit's sports arena. Ringo is in training and now standing to approved mares at Stecker's Stables. The stallion was first shown at the 1967 Pacific Northwest

All-Morgan Show and won Colts of 1964 halter class, maiden western pleasure in addition to being named Junior Champion of the Show. He was purchased from the Shawalla Morgan Ranch, Walla Walla, in 1966, and will be shown in Walla Walla June 15-16.

Tacoma Unit One

An open horse show, sponsored by Washington Horsemen Tacoma Unit #1, will be held May 18-19 at the Unit One Sports Arena and Grounds, 1 mile east of Pacific Avenue on 176th Street.

A State Horsemen approved "B" System Puget Sound Zone Show, the program will include everything from a parade of ponies to individual breed classes. WSH senior judge will be Mr. Robert Conn, Bremerton, and A.H.S.A. steward will be Miss Reatha Chance, Olympia. Show chairman is Mrs. Lorraine Saxe, Puyallup.

Post entries will be accepted up to one hour before each performance. Registration numbers must accompany entry of any horses entered in classes calling for registered horses.

Gate donation will be 50c except for preschool children who will be admitted free. Events are scheduled as follows:

- 9:00 a.m. Saturday
- 1. Stock Seat Equitation, 10 and under.
- 2. Stock Seat Equitation, 11 thru 13.
- 3. Stock Seat Equitation, 14 thru 17.
- 4. Senior Amateur Stock Seat Equitation.
- 5. Hunter Seat Equitation (10 and under).
- 6. Hunter Seat Equitation (11 thru 13).
- 7. Hunter Seat Equitation (14 thru 17).
- 8. Senior Amateur Hunter Seat Equitation.
- 9. Saddle Seat Equitation, 10 and under.
- 10. Saddle Seat Equitation, 11 thru 13.
- 11. Saddle Seat Equitation, 14-17.
- 12. Senior Amateur Seat Equitation.
- 13. Junior Exhibitors' Trail Horses.
- 14. Senior Western Trail Horse.
- 15. English Pleasure, Hunter Type Open.
- 16. Half-bred Arabian, Western Pleasure.
- 17. Regular Working Hunter.

- 18. McCleave-Clearbrook Seat & Hands Over Jumps.
- 19. Half-bred Arabian English Pleasure.
- 20. Bridle Path Hack, Saddle Horse Type.

- Saturday Evening - 7 p.m.
- 21. Walking Horse, Plantation Class.
- 22. Parade Ponies.
- 23. Color Class, Western.
- 24. Open Jumpers.
- 25. Junior Working Hunters.
- 26. Pleasure Morgan, Western.
- 27. Stock Horse.
- 28. Walking Horse.
- 29. Pleasure Morgan, English.
- 30. Pleasure Horse Pairs.

- Sunday 9:00 a.m.
- 31. Fitting and Showing, Western.
- 32. Fitting and Showing, English.
- 33. Bareback Horsemanship.
- 34. Bareback Horsemanship 14 thru 17.
- 35. Western Pleasure Horse, Junior.
- 36. Western Pleasure Horse, 14 thru 17.
- 37. Western Pleasure Horse, Senior to Ride.

- Sunday 1:00 p.m.
- 38. Quarter Horse, Western Pleasure.
- 39. Appaloosa, Stock Horse.
- 40. English Pleasure, Other Than Hunter.
- 41. Quarter Horse Western Riding.
- 42. Appaloosa Western Pleasure.
- 43. Ladies' Western Pleasure Horse.
- 44. Western Pleasure Horse Championship.
- 45. English Pleasure Horse Championship.

Friday Night Cutting classes approved by the Appaloosa and Northwest Cutting Association. Events to include Junior Appaloosa, \$300 Novice, Senior Appaloosa, and Open.

For the first time at a Tacoma Unit One Show, all Appaloosa points will count for world championship points.



Ponies To Be Shown

Ponies Unlimited, an organization of families devoted to fun with ponies, will begin its show season on May 19th at Frontier Park in Graham with halter classes beginning at 9:00 a.m. and performance in the afternoon at 1:00.

Featured classes will be equitation for the young fry and these will be divided into age groups for the children and size groups for the ponies. There will be pet type roadster classes, parade pony, lead line, costume, English jumper, barrel racing, pole bending, scurry, all for children. Also, an owner-to-drive roadster class and chariot races and trotting races.

Everyone is welcome to enter for a small fee. There will be no admission to the grounds. Frontier Park will be the site of the 1968 Pierce County Fair and is located one mile north of Graham.

Parkland Roundup Queen Official Entry Blank

Single girls, 16-21 years, who can furnish a horse and transportation, are invited to enter.

Name _____
 Address _____
 Age _____ Phone _____
 Need Sponsor? _____


Clip and Send to: Roundup Queen

c/o Times Journal
 P.O. Box 2116 Parkland, Wa. 98444

"Horsemen's Market Place"

Classified Directory
 Board - Trainers - Breeders
 Outfitters - Feed Dealers

AT STUD Madsen Arabians STALLIONS AT STUD Rt. 1 Box 1297 Spanaway VI 7-7721	Horseshoeing PROMPT RELIABLE SERVICE HORSESHOEING VI 7-2449 P.O. Box 142 FLOYD A. GREEN Puyallup, Wash.	Training BILL JACKSON BREAKING-TRAINING VI 7-7854 Rt. 1 Box 186B Eatonville
Feed Dealers WALLER ROAD FEED 7710 Waller Road Fisher and Alber's Feed Hay - Grain - Tack Vitamins - Vet Supplies LE 7-5552	Automobiles STATION WAGONS, CARS AND TRUCKS "Come See Us"  "Fairness to All" 8223 Pacific GR 4-9404	Outfitters The Bunkhouse COMPLETE LINE OF TACK & WESTERN APPAREL 12605 Pacific Ave. Tacoma, Wa. 98445 LE 7-5510
Support Times Journal Advertisers - It Pays!	We can't shoe your horses BUT We can shoe your cars - trucks - trailers TINY'S TIRE SERVICE 108th & Pacific Ave. LE 1-4535	
ALBERS FEED Open Sunday  112th Canyon Rd.	DIGGERS STABLES HORSES BOARDED Rt. 2 Box 2254 Spanaway VI 7-2789	STECKER'S STABLES New Location 2021 - 176th St. East Spanaway LE 1-3126 Watch For Our Grand Opening
LOGAN Feed & Livestock Rt. 1 Box 1112 Spanaway VI 7-7578	BOARDING-BREAKING-TRAINING-RACE TRACK-ARENA MARS STABLES DON LINDQUIST-TRAINER TH 5-1231 11919 144th E. Puyallup, Wash.	
Fencing - Hardware Everything In Hardware For The Horseman Fencing too! South End Hardware S. 185th & Pacific Spanaway	Board-Train-Riding Lessons Also At Stud Appaloosa S-Will-Dee. Marion's Dice. Quarter Horse THUNDER'S KEMOSABE IS HERE We have Arabian, Quarter Horses, Appaloosa, Walking Horse Stallions. A few breed- ings available on these fine horses. Visitors Always Welcome. VI 7-2881 George Karr Tacoma Unit #1 Stables 1 Mile East of Pacific on 176th	



LE 1-4555
RODEO
CUSTOM SHOP

Dean & Dodie Vosburg

Complete Saddle
 Repair Shop
 Western Wear
 English Tack & Togs

164th & Pacific
 Spanaway, Wash.

HELLO! I'm Walt Rostedt.

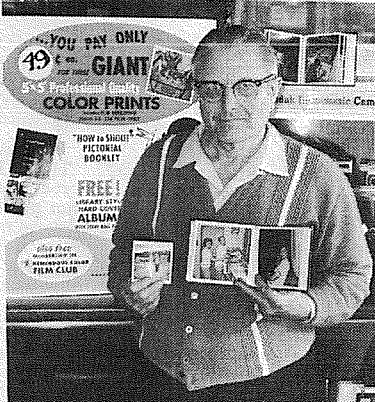
I'm here to announce a brand new film package for instamatic "126" users.

1. BIG 5"x5" Color Prints from each negative
2. "Library Style" Album with each roll processed.
3. Never a charge for film processing (cx 126-12 or cx 126-20)
4. Only 49¢ per print. (Compare at \$1.25 ea. regular price)

START YOUR LIBRARY NOW! EXCLUSIVE AT

QUALITY PHOTO

8242 Pacific Ave.





TOURNAMENT CONFERENCE - Pro-manager Ken Tyson, left, of Lake Spanaway Golf Course, discusses plans for the Puget Sound Amateur tournament, May 25-26, with co-chairmen Larry Iverson, center, and Marty Erdahl of the sponsoring Tacoma Sports-Recreation Federation. The 36-hole tournament will offer \$2,500 in prizes for 200 players. -Federation photo by Gary Lindgren

PS Amateur Golf Tournament Set

A classy field of 200 amateurs appears likely for the third annual Puget Sound Amateur golf tournament to be staged May 25-26 at Lake Spanaway by the Tacoma Sports-Recreation Federation.

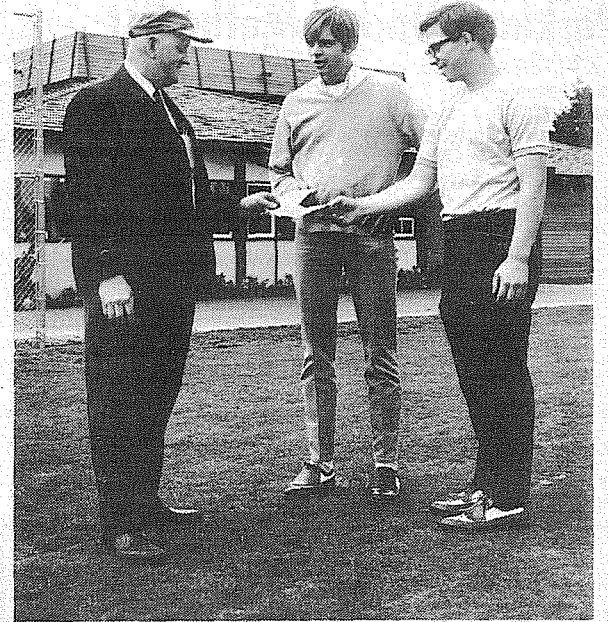
Pro-manager Ken Tyson of Lake Spanaway and tournament co-chairmen Marty Erdahl and Larry Iverson have combined to make several changes in the format of the \$2,500, 36-hole tournament. Proceeds will be used by the Federation to promote the Tacoma-Pierce County area junior golf program at Lake Spanaway and Meadow Park.

The latest group of entries in the tournament includes former City Match Play champions Bob Morris and John Kahaniak and Pacific Northwest Golf Association official Clarence Smith of Seattle's Rainier Golf Club.

Young Orrin Vincent of North Shore, a semi-finalist in the 1968 City Match Play tournament and former Seattle University golf star, has indicated he will participate, along with University of Washington golf team members Steve Cole and Gary Henderson, two-time left-handed golfers national champion Jack Walters of Fircrest and Chuck Morris, No. 1 man on the Tacoma Community College's golf squad.

More than 75 players have already submitted entries for the tournament with more than a week remaining until the May 16 deadline date. Starting times and pairings for the competition will be made May 17 at Lake Spanaway by co-chairmen Erdahl and Iverson and other members of the tournament committee.

The competition will feature an extra attraction of a special hole-in-one contest on the practice area at Lake Spanaway during the two days of play. The contest will offer a \$100 prize for a hole-in-one and \$35 top prize for the closest shot to the flag each day.



SCHOLARSHIP WINNERS - Clarence Taylor, former president and long-time treasurer of the Tacoma Golf Association, presents checks to Jay Robinson, center, of Pacific Lutheran University, and Joe Roberts, of the University of Puget Sound, as the 1968 winners of the TGA's annual Erv Marlow Jr. Memorial Scholarship to freshmen golf team members at the two schools. -Photo by Gary Lindgren

Connie Mack Team Forms

Practice for Parkland's Connie Mack League entry will commence the week of May 20th, Coach Todd Cornish announced Tuesday.

The team, sponsored by Parkland Post 228, will compete in County Connie Mack League play and also schedule interleague games with Tacoma teams. Post season tournaments await league winners.

"We have an experienced nucleus to build this year's team, and have a chance for a fine season," Cornish told the Journal. "We still are looking for players," he said and urged those interested to contact him at LE 7-6793 or Bud Galusha, Franklin Pierce baseball coach. Pat Kinsely will be assistant coach.

Candidates for the team include: pitchers - Glen Harkey, Tim Mann, Pat Howder, Terry Johnson; infield - Doug Cail, Allan Cail, Ross Ratcliffe, Jim Furlong, Rob Wickern, Woody Harris, Curt

REGISTRATION CALENDAR
Tuesday - Entry deadline, County-City Industrial Golf League, County-City Building, Rooms 236 or 735, \$10 and team roster due.

Monday, May 20 - Registration opens, County-City junior golf program, County - City Building, Rooms 236 or 735, \$2 per youngster.

Monday, May 20 - Entry deadline, County - City women's slow pitch pre-season tournament, County-City Building, Rooms 236 or 735, \$15 and team roster due.

Monday, May 20 - County-City Industrial Golf league play begins.

Monday, May 20 - Pierce County adult slow pitch league play begins.

Thursday, May 23 - Registration begins, Pierce County swim instruction, Pacific Lutheran University pool office, 6:30 to 8:30 p.m.

Calcote, Mike Buffelin; outfield - Ed Spandel, Doug Armstrong, Jim Hadland, Dave Rogers.

League is open for players 18 years and younger.

DJ's At Spanaway Next Sunday

SPANAWAY - A complete superstock racing program, with an additional feature of the Disc Jockey Jubilee debut, is on tap for Spanaway racing fans this coming Sunday.

Promising to tool the hot iron around Spanaway's asphalt oval are Jim Rogers (KTWV), Ed Dollar and Charlie Burd (KMO), Pat Pattee of Portland, plus an assortment totaling about 10 others. This one could easily end up like a freeway in a fog, with the boys spinning the wheel like a turntable.

In last Sunday's Mother's Day program, a die-hard core of 1,000 fans voted to watch an abbreviated program in spite of the rain. Aiming to please, a record turnout of 34 cars cranked up and ran heats and 50 lap mains, using time trials from two weeks ago for starting positions.

Don Hall continued his amazing string of successes, stretching an unbeaten streak through four straight. It wasn't easy, as Jackie Kuper and Bob Short chased him all the way home. Hall took over on the 24th lap, managing to get inside of Kuper's number 1 car.

In the 50 lap "A" main, Ken Longley took the checkered flag in front of Dave Rogers and Terry Standish. Steve

Kiser, leading the point parade this year, came a cropper when he hit Milt Balzer's 66 car in the 48th lap while running in 3rd position. Two invaders from Longview failed to place in the finals.

Hall leads the "AA" point gatherers with 218, followed by Kuper (206), Dennis Scott (202) and Short (179).

Kiser controls the "A" division, racking up 284 points to Ken Longley's 236. Rogers has 160 and Dick Williams 142.

Bethel In District Track Meet

Bethel sportsters will be participating in the District Track Meet at Highline College on Friday, according to officials of the school.

Entered are, in the mile relay - John Briehl, Mike Poorman, Loran Wright and Gary Grazzini; and in the shotput and discus, Ed Mayo will represent the school.

Used Car
HEADQUARTERS
"MOST FOR THE MONEY"
All Makes...All Kinds
ARMSTRONG'S
USED CARS LE 7-5524

BROOKDALE Lumber
13602 Pacific Ave.
LE 7-8669

MAKE US YOUR FENCING HEADQUARTERS

Choose from a wide selection of fencing materials. Whether you want privacy or just decorative fencing we've got the answers, come see!

Journal Classifieds Get Results
LE 7-0223

Where To Buy INSURANCE

CALL LE 7-8647

Ashford - McAloon Insurance
SAFECO INSURANCE 1901 Pacific Ave.

INSURANCE
Military - Home - Business
LE 7-4904
Auto Fire Life Bonds
IRENE CLEMENS
Agency - Parkland
10329 Pacific Ave.

Representing the world's largest car insurance company means I can get you top car insurance value—top service, and protection. Let's talk!

Bill McMonnies
16607 Pacific Ave.
Spanaway LE 1-6833

STATE FARM INSURANCE
State Farm Mutual Automobile Insurance Company
Home Office: Bloomington, Illinois

Junior Golf Registration

Offices of the Metropolitan Park District and Pierce County Park Department will begin accepting registrations Monday, May 20 for the summer junior golf free play-instruction program.

Youngsters between 11 and 18 years of age may register for the 10-week program beginning at 8 a.m. in either the Park District office, Room 236, or the County Park Department office, Room 735, in the County-City Building.

Announcing!

RAY BADER

Newly Appointed Sales Manager
AT
Andy EGAN RAMBLER
"Fairness to All"
8223 Pacific Ave.
GR 4-9404

Smith Built
CAMPERS & CANOPIES
C U S T O M Q U A L I T Y
14606 Pacific Ave.
Phone LE 7-8022 Tacoma, Wash.

SPANAWAY SPEEDWAY
2 Miles East of Pacific Ave. On 159th, Tacoma

A.R.I. SUPERSTOCKS
SUNDAY MAY 19th
Bigger and better than ever!!
Plus DJ JUBILEE DEBUT...
With Your Favorite Radio & TV Personalities
*TROPHY DASHES
*HEATS *MAINS
TIME TRIALS 1:30 RACING 3 PM

Adoption Panel Slated At Parkland United Methodist

A "Focus on Adoption" will be presented at 7:30 p.m. Tuesday, May 21st, at the Parkland United Methodist Church, 12813 A Street.

A film, "Angel by the Hand," will be shown, followed by a six-organization-representation-panel who will explain their agencies' requirements for adoptions.

Panel members will include Miss Bernice Burger, Children's Home Society of Washington; Mrs. Millie Jane Hubman, State Department of Public Assistance; Miss Betty Higley, Medina Children's Service; Mrs. Suzanne Myrene, Lutheran Family and

Child Service; Mrs. Frances Lam, Minority Adoption Project; and Eugene Matsusaka, Catholic Children's Services of Tacoma. Rounding out the panel will be John Hansler, attorney; Dr. J.J. Erickson, physician; and adoptive parents Mr. and Mrs. Jack Rosenow and Mr. and Mrs. Phillip E. Ogan. Rev. Arthur Campbell will act as moderator.

Following the panel presentation there will be a question and answer period. There will be no admission charge.

Mrs. Wilbur Roberts, president of the Parkland United Methodist W.S.C.S., will take charge of the coffee hour.

Lincoln HS Sets Reunion

Members of the Lincoln High School class of 1948 will hold their 20th reunion June 22 at the Top of the Ocean, Tacoma.

More than 100 couples have already indicated they will be there, some coming from as far away as Europe for the occasion, according to Dave Wood, of Seattle, class president.

A committee is now taking reservations for the affair and planning the evening's entertainment, which will begin with a no host social hour at 7 p.m.

Accepting reservations are Mr. and Mrs. George W. Bisson of 4310 62nd Ave. W., Tacoma. Others on the committee include Wood, John Eyres, vice president, Mrs. Vivien (Powell) Mason, Mrs. Patricia (Johnson) Myers, and Mrs. Louann (Tipton) Larison. Entertainment is being planned by Richard Webster.

The committee is especially interested, Eyres said, to receive the names and current addresses of class members. Many have already been contacted, he said, but there are several who cannot be located. Names and addresses should be sent to Mrs. Myers, 6040 S. Oakes St., Tacoma.

PLU To Present Major Musical FP Slates Band Concert

Pacific Lutheran University will stage its second major musical production in less than one week next Sunday when it presents the unusual "The Unicorn, the Gorgon and the Mantacore."

This musical work, written by Gian Carlo Menotti, is a madrigal fable for chorus, dancers and nine instruments. Performing these roles at 8:15 p.m. in PLU's Eastvold Chapel May 19 will be the school's Madrigal Singers, the Jan Collum Concert Ballet Group of Tacoma, and instrumentalists from both the university and the community.

David Urness, a member of the music faculty and conductor of the University Chorus, will direct the work. It will be the second production for him in a week span, as he is director of PLU's weekend (May 11-12) presentation of Bach's "Mass in B Minor."

According to Urness, the story of "The Unicorn, the Gorgon and the Mantacore" is about a strange character who is bored with life. However, on Sundays he leads three different animals on promenades. The beasts symbolize youth, middle age and old age, and the plot of the story concerns the reactions of the man's associates to the ani-

The Franklin Pierce High School Spring Music and Art Festival will be presented May 17 at 7 p.m.

A combination concert by all of the music groups and a fine and industrial art display, the festival will open with an hour's showing of art in the cafeteria. At 8 p.m. the musical concert will begin in the

gymnasium, and after the concert, the art display will continue to be open for another hour. This is the only art show to be held at the high school during the year. The concert will include numbers by the varsity band, the orchestra, concert band, mixed chorus, choir, and girls' glee club. The varsity band will play "Trumpets Up," Alan A'Dale, and "Fairest of the Fair."


Orchestra numbers will be "Music for the Royal Fireworks," "Fugue and Vivace," and "Sonata." The numbers of the concert band, will be "Barnum and Bailey's Favorite," "Roman Carnival Overture," and "Up, Up and Away."

The mixed chorus will sing "He Watching Over Israel," "Bless the Lord, O My Soul," and "Praise to Him, Alleluia." Numbers to be sung by the choir include "Joobali," "Spring," "Sanctu and Gloria." The girls' glee club will sing "Fire, Fire," "Hush, Hush Sweet Charlotte," and "Wendy." The combined choirs will present "Ain't Got Time to Die."


In charge of the concert are Angelo Manzo, Vocal; Sharon Wilmeth, Orchestra, and Eugene Ahrendt and Robert Harper, Band. The entire music and art festival is free to the public.

ENTERTAINMENT
1 P.M. and 7:30 P.M.
 Open to Public 3508 McKinley Ave.

Penny's Donutville
LUNCH
 Burgers - Fries
 Shakes
 Hourly Fresh Donuts
 TO GO
 Hours: 7 a.m.-9 p.m.
 Thru Fri. GR 2-9868
 'Til 6 p.m. Sat.
 9201 Pacific Ave. (Next to Wigwam)




ART GALLERY
 GIFTS SOUVENIRS
 Original Oil Paintings by Local Artists
Ashford, Wash.
 "On The Road To Paradise"



Angelo's
 PIZZA HOUSE
ORDERS TO GO
 Featuring top sirloin and American dishes, spaghetti, rigatoni, meat balls, sausage, ravioli, beer and wine.

Choice of Pizzas
 cheese & tomato
 anchovie
 mushroom
 Italian sausage
 pepperoni
 tuna
 bacon
 peppers
 olive
 hamburgers
 ham
 salami
 onion

LE 7-7233
 14102 PACIFIC AVE.
 PARKLAND



CALL AHEAD, IT'S PIPING HOT ALL THE WAY HOME
 PICK UP A BOX, PAIL, BUCKET OR A BARREL

TACOMA PREMIERE THURS.
 Elegance in Entertainment for Everyone
TACOMA MALL THEATRE
 Heart of the Tacoma Mall • Telephone 472-4448

AND THE
AUTO-VIEW DRIVE-IN THEATRE
 1202 No. Pearl - SK 9-4123

ACADEMY AWARD WINNER!
BEST ACTRESS! BEST SCREENPLAY!
 KATHARINE HEPBURN WILLIAM ROSE

COLUMBIA PICTURES presents a Stanley Kramer production
 Spencer Tracy | Sidney Poitier | Katharine Hepburn
guess who's coming to dinner
 TECHNICON



Sandpipers To Perform At PLU Show

The Sandpipers, a young musical group that rose to recording fame in 1966 with their release "Guantanamera," will present a concert at 8 p.m. Thursday May 16 at Pacific Lutheran University.

Tickets for the performance at PLU's Memorial Gymnasium may be purchased at the door. Seats are not reserved.

Prior to the release of "Guantanamera" in the summer of 1966 the three singers, Michael Piano, Jim Brady and Richard Shoff, performed under the name "Grads."

Fame came fast upon the release of their first major record hit, and they followed it up with an album by the same name. A short time later they released another single, "Louie, Louie," which also was a big seller.

Success didn't come overnight for the Sandpipers. They recorded four songs before producing a hit, and all three held other jobs to supplement their incomes. Eventually, however, they contracted nightclub jobs in Reno, Lake Tahoe, San Jose and Las Vegas.

The three men, all 23-years-old, formerly sang together in the world-traveled Mitchell Boys Choir.

Advanced Student Art Display At PLU

The department of art at Pacific Lutheran University is displaying the works of its advanced students this month in the University Gallery of the Robert Mortvedt Library.

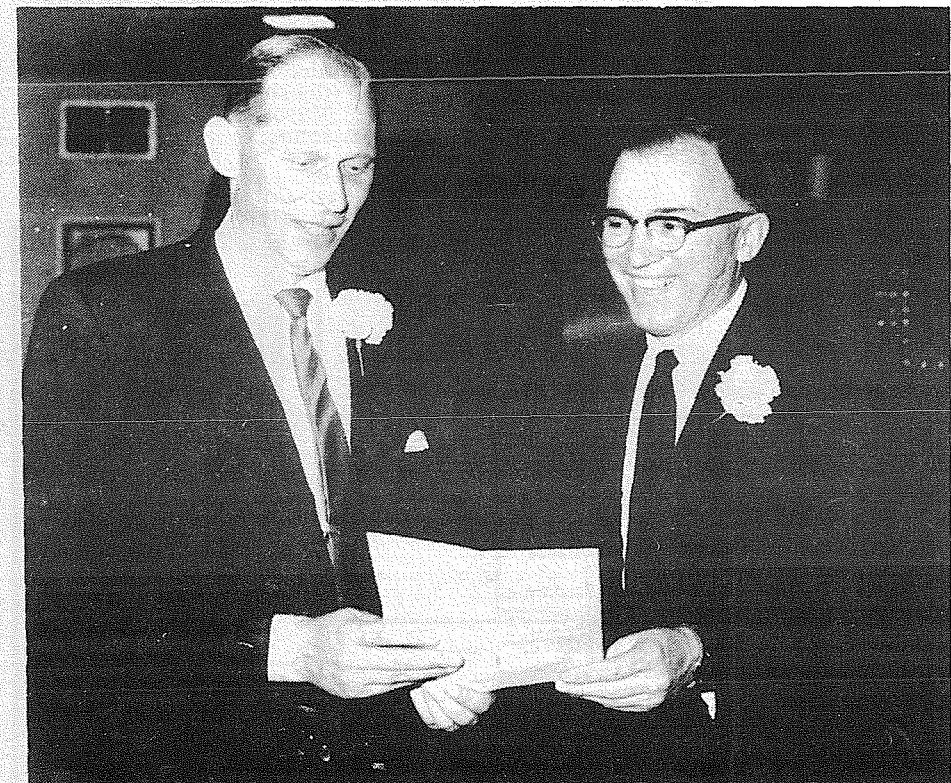
Members of the art department faculty selected student work representing all levels of study. On display are sculptures, oil paintings, ceramics and other art forms.

"Exhibitions of student endeavors are frequently pot-pourri in nature because of the wide diversity of media and as a result of personal efforts by a large number of different individuals," commented Ernest Schwidder, chairman of the department.

The professional artist added that while this diversity may sometimes be confusing to the viewer, "It is in fact a reflection of the highest ideals of this department. Each student is engaged in a search, exploring different ideas and investigating a variety of materials in a never-ending confrontation with his own reflections."



EARL SOLIE (right), past president Bethel Education Association and Spanaway School principal, presented Times Journal editor Em Matson with a statewide "Outstanding Contribution toward Better Understanding" WEA Award during Bethel banquet last week. Bethel educators, supported by community, nominated Times Journal for the honor in weekly newspaper classification.



DR. E.E. HILL, (right) Franklin Pierce Superintendent, admires WEA Better Understanding Individual Award presented to Journal editor Em Matson during Franklin Pierce Education Association banquet last Friday. In making presentation, outgoing FPEA president Wes Anderson described the honor as "The highest WEA award given to an individual who is a non-educator." Franklin Pierce educators nominated Matson for the honor.

CLASSIFIED ADS

Call LE 7-0223 For Want Ads

1 Misc. For Sale

PYLON Liquid plastic coating. 7.95 a gallon. Guaranteed clear. LE 1-5718. 68-140

Wedding Announcements & Accessories
DAVIS OFFICE SUPPLY
12147 Pacific Ave.
LE 1-1740

LARGE DOGHOUSE, roll 4 feet fence wire, 400 lbs. galvanized wire, cafeteria utensils, equipment. BR 4-1167. 68-174

LEATHER couch and chair, chair coffee table, end tables, with lamps. \$145 or best offer. GR 2-7735. After 5 p.m.

Hot Water Tanks
Come in and let us show you how to save
\$50.00
Magdanz Hardware
11401 Pacific Ave.

1965 HARLEY "740" Extras. \$1195. LE 1-0295.

WRINGER type washer and mangle good condition. LE 7-4668. 68-124

DRY chicken fertilizer. 6 sacks \$3.50. LE 1-1722. 68-64

LADIES CLOTHES - Size 16 to 18. Suits, dresses, Shoes 7 1/2B. Sport Clothes cheap \$1 and up. Boys clothes size 12. Toys. LE 7-6206. 68-167

Trophy Storm Doors

Heavy Duty Aluminum Full Piano Hinge Standard & Special Sizes
Also Storm Windows Repair Service Available

Manufactured By
PARKLAND DOOR INC.
318 E. 96th GR 4-7011

CHOICE tomato plants by piece or flat. Several varieties. LE 1-0400, 10520-50th Ave, East.

RUSSELL'S AUTO SALES & SERVICE
'67 Plymouth Fury, 9 passenger
8,500 miles, fact. warranty \$3,295
'66 Plymouth Fury, 4-dr. Power \$1,895
'64 Tempest '6', 2-dr. \$1,195
'64 Falcon 2-dr. stick \$845
'63 Buick Skylark \$1,095
'63 Buick LaSabre, 2-dr. hrdtp \$1,195
13401 Pacific LE 1-2124

BUSINESS DIRECTORY

Furnaces

Sheet Metal
• Furnace Repair and Service
• Installations
PARKLAND FUEL OIL
12002 Pacific Ave.
LE 7-0256

1 Misc. For Sale

1-600x13 B.F. Goodrich Silvertown 4 ply tubeless. 1-600x13 U.S. Royal Low Profile 4 ply tubeless and 2-650x13 Penney's Foremost Custom Nylon 4 ply tubeless tires. Many miles of good wear left. These were an extra set for a company car that we have sold. \$3.50 each. See at the Northwest Flyer office in the Times Journal Building, 14620 Pacific Avenue, Parkland, Wash.

ONE-WHEEL garden tractor. Good condition. \$40.00. TH 5-4141.

65 HARLEY Davidson, excellent condition. Best Offer. TH 5-4670.

7 Furniture, Appliances

NEARLY new daveno, club chair, swing rocker. \$200. LE 7-7096. 68-157

NAUGAHYDE davenport and Chairs rose colored sectional couch make offer. LE 1-5778. 68-153

LARGE CHEST of drawers, swing rocker, chrome arm chair, magazine table, portable, electric heater 220, 9x12 oval nylon braided rug. LE 1-0738. 68-171

8 Garden Supplies

BIG EVERGREEN shrubs in field, you dig, bring containers reasonable. Bethel District End Bowers Road East Mt. Hiway at County Road shops. Sidney Bennett. 68-157

9 Animals For Sale

THREE white, Poodle, Pomeranian, Terrier mix puppies. LE 1-4320. 68-170

APPALOOSA brood mare, two yearlings. VI 7-2642. 68-173

GENTLE Pinto mare and her colt. \$150. LE 1-5558.

EWE and spring lamb. LE 7-4064.

10 For Sale Or Trade

3 BEDROOM older home in South Tacoma. Trade for house trailer and cash. Inquire 4821 East 104th St., Tacoma.

23 Help Wanted

HOUSEWIVES earn full time pay for part time interesting work no investment. LE 1-1482. 68-147

3 WOMEN, full or part. Display and delivery. Apply 209 South 28, 11 a.m. 68-155

3 MEN, full or part. Display and delivery. Apply 209 South 28th, 11 a.m. 68-156

FULLER BRUSH areas open in Spanaway and Parkland. Need car, phone, 17 hours week. LE 7-6965. 68-168

LPN - days. \$18 shift. 909 S. Meridian.

27 Misc. Services

AA ELECTRIC, new and re-wiring done. LE 1-4445. 68-144

PIANO TUNING. \$11.00, repair. George Messagee. JU 8-7092. 68-40

EXPERT alterations, mens and womens fast service and reasonable. LE 1-3506. 67-186

"WHERE TO GET SERVICE"
Parkland Enco Service
13303 PACIFIC AVE.
LE 7-9954

CUSTOM Dress Making and Alterations. LE 1-4268. 68-136

DOZING - LE 7-4934, GR 4-5663. 68-129

28 Building Services

CARPENTRY work. Framing. Remodeling. Repair. TH 5-2841. LE 1-0434.

REMODELING, leveling, block foundations, cabinets, free estimate. Reasonable. LE 7-3550. 68-48

29 Land Services

TOP SOIL. J.E. Pelland. LE 1-1124.

BULLDOZING, land clearing, general excavating. LE 1-2378.

SANDY LOAM Top soil, bank run gravel. JE Pelland. LE 1-1124. 68-169

WATER PUMPS REPAIRED
All Makes
GRANGE SUPPLY
LE 1-5777

Continuous GUTTERS
26 Gauge - No Seams
Long Lasting
Galvanized or Stainless Steel
Financing Available
COLUMBIA
Sheet Metal
1525 S. 108th LE 7-8320

30 Repair Services

Canvas-Leather-Naugahyde Upholstery Repair and Custom Service
Tents - Tarps - Seats & Covers for Trailers - Boats Lawn Swings - Cars Furniture
B&E Upholstery
322 So. 126 LE 7-7847

31 Animal Services

REGISTERED MORGAN Stud Service. Good blood lines. LE 1-5999. 68-157

AKC registered mini poodle and toy poodle at stud, good lines. Silver or black. LE 1-5778. 68-118

REGISTERED Thoroughbred at Stud. Como Tuna registration number FR11827. Call John Siemen VI 7-7507. 68-131

36 Personals

HAVE an alcoholic problem? GR 5-1093 or VI 7-7715. Write Box 2265, Parkland. 67-194

11 For Free

FREE to good home - beautiful young collie, loves children. VI 7-2149. 68-172

15 Mobile Homes

1966 MONARCH mobile home 10x56 feet. Furnished with maple furniture. Washer-dryer combination. \$6000. Call VI 7-7178. 68-175

38 Instruction

VIOLIN, piano, saxophone, clarinet, trumpet lessons. Instrumentation and Theory. LE 7-5274. 68-151

39 Lost

GONE romancing. "Twiggy" one year old female seal-point Siamese. Brazen hussy wearing only a grey collar with a bell when last seen near 146th and Pacific Ave. If found send her home, all is forgiven. Kids miss her. Phone Jack Brown, LE 7-0223 or LE 7-0473 evenings. Thanks. 68-74

IN THE SUPERIOR COURT OF THE STATE OF WASHINGTON IN AND FOR PIERCE COUNTY NO. 180978 SUMMONS BY PUBLICATION TAMI S. RIGBY, Plaintiff, vs. HAROLD M. RIGBY, Defendant. THE STATE OF WASHINGTON to the said HAROLD M. RIGBY, Defendant:

YOU ARE HEREBY SUMMONED to appear within sixty (60) days after the date of first publication of this Summons, to-wit: within sixty (60) days after the 18th day of April, 1968, and defend the above entitled action in the above entitled Court, and answer the complaint of the plaintiff, and serve a copy of your answer upon the undersigned attorneys for plaintiff at their office below stated; and in case of your failure so to do, judgment will be rendered against you according to the demand of the complaint, which has been filed with the Clerk of said Court. This is an action for divorce upon the grounds that defendant has rendered plaintiff's homelife burdensome in the extreme. PETERS & TRACY By: s / Philip S. Tracy Attorneys for Plaintiff 11024 Pacific Ave. TACOMA, WASH. 98444 Published April 18, 25, May 2, 9, 16 and 23 in the Pierce County Herald & Times Journal.

19 For Rent Or Lease

OFFICE SPACE - BOAT & TRAILER SPACE for rent. Office \$50 per month. Lights, heat, water and garbage furnished. Covered boat and trailer spaces \$10 per mon. Phone LE 7-0223 days 10-4. 67-164

FOR RENT 1 bdrm furnished house in Parkland. Call LE 7-4904 days, LE 7-7295 evenings. 68-169

HOME VACANT
We desperately need good rentals \$80 to \$150 per month
CALL NOW
Let us handle your worries
SUBURBAN REALTY
11302 Pacific Ave.
LE 7-8638 or LE 7-6896

12 Real Estate For Sale

SPANAWAY Lake lot. LE 7-6206. 68-168

Listings Wanted
Buying or Selling
Real Estate Service
Call
Devereaux Realty
12152 Pacific Ave. LE 7-8658

PIERCE COUNTY HEADQUARTERS FOR
1968
★ CHRYSLER
★ PLYMOUTH
★ VALIANT
★ BARRACUDA
CALL GR 4-0621
Steven MOTOR CO.
2705 SOUTH TACOMA WAY

NEW - MORE POWERFUL
the 1968's
ARE HERE
VOLKSWAGEN
27 MAJOR CHANGES
COME IN AND
Tom Carstens AUTOHAUS
7030 So. Tacoma Way
GR 4-0666
TACOMA DEALER SINCE 1955

OK USED CARS
TWO YEAR GUARANTEE
1967 Chev Impala Sport Coupe, V-8, PG, PS, New Rubber \$2395
1965 Bel Air 4 Door Stick Shift V8..... \$1395
1964 Chev S.W. 4 dr. V8, PS, PB, Auto... \$1595
1965 Chev Impala 4 dr. V8, PG, PS..... \$1795
1965 Chevy II Station Wagon 6 Cyl., Automatic \$1495
1963 Chev Bel Air Wagon, air, V8..... \$1395
USED TRUCKS
1966 El Camino 327 PG, PS, PB..... \$2195
1964 Chev 3/4 ton 292 \$1595
1961 GMC 1/2 ton, 6 cyl., OD, new valve grind..... \$1095
1962 1/2 Ton, 6 cyl., 3 speed Long - Wide \$1195
1960 Chev 1/2 ton \$895
1956 Chev 1/2 ton \$495
1957 Volkswagen Panel..... \$295
Good Transportation
1963 Chev Impala 4 dr. hdtp..... \$1095
1962 Plymouth Valiant 2 dr, 6 cyl..... \$595
1961 Checker Sta Wag..... \$100
1960 Chev 4 dr. Wagon, V8..... \$495
1956 Chev, 4 dr., 6 cyl., PG \$195
VAN EATON CHEVROLET
Phone 832-3131 Eatonville

Fencing

FENCING
Designers and Builders
EXPERT WORKMANSHIP
REASONABLE PRICES
Easy Monthly Payments
VAUGHAN'S
6402 S. Tacoma Wy. GR 5-2622

Top Soil

NEWBURY'S
Dozer Service
LE 7-7455
Sandy Loam Bank Run
Mixed Soil Fill Dirt

RENT TV
Color TV
Rentals All Sizes
RENTAL MARTS, INC.
Parkland GR 5-3755 9440 Pacific Ave.
Lakewood JU 4-4100 108th & Bridgeport

Grange Waller Road

By Mrs. Verne W. Fogle Le 7-5210

Waller Road Granger, Mrs. Faye Hoyt, received a purple ribbon award on her beautiful afghan which was entered in the National Grange needlework contest. It will now go to Spokane to be entered in contest with other purple rib-

bon winners throughout the state.

The Waller Road Jr. Grangers will hold a special Mother's Day program at their regular meeting night, May 16th. All mothers are invited to attend.

The program will begin at 8 p.m. Regular meeting time will be 7 p.m. Mrs. Hazel Walk, Matron, plans to have all of the crafts on display prior to being taken to the State Grange Convention.

Special Sunday degree work for the County Grangers, held May 5th brought out close to 100 persons.

Fourteen candidates came from King County to join those of Pierce County being initiated in the 1st and 2nd degree at Waller Road Grange Hall by the team from Riverside Valley.

The ladies bowling team sponsored by Lookers Trucking were first place winners in the Valley Gals League.

The trophy winning team consisted of Merna West, Ruby Myron, Anna Van Hulle and Kitty Looker, all of the Waller Road area.

Diane Fogle, Ora Nelson and Anna Van Hulle, all Waller Road Grange Ladies, received blue ribbons on their cotton dresses entered in the Grange contest last week.

Grange baking contest coming up, for information call Grace Fogle.

Wednesday, May 15th, do not forget Waller Road Garden Club luncheon and plant sale at the Grange Hall at noon.

Another car crash in the wee small hours of last Saturday morning at the intersection of East 64th and Vickery.

Once more the guard rail was taken out, and the car turned completely over in the ditch. The two occupants miraculously escaped serious injury. This is a dangerous intersection — drivers keep it in mind.

WSP To Receive Cardiac Classes

A monthly program on the cardiac and the cardiac driver is being presented to all Pierce County detachments of the Washington State Patrol by the Pierce County Heart Association in April, May and June.

9 a.m. - 10 p.m.

7 DAYS
A WEEK

BARGAIN BASKET

16618

Pacific Ave. S. Spanaway

LE 7-3371

No Sales To
Dealers

WE RESERVE THE
RIGHT TO LIMIT
QUANTITIES

We Carry A Complete Line Of Sacked Feeds - Presto Logs

We Are Locally Owned & Operated

HELP YOUR BUDGET
WITH THESE SAVINGS

PRICES
EFFECTIVE
May 16-17-18
Thur-Fri-Sat

HUNT'S
Pork & Beans

4/89¢
2 1/2
Tin

VANO
LIQUID STARCH

1/2 Gal. 39¢

NALLEY'S
CHILI

Hot or Mild

15 oz. 3/\$1

100 Count
PAPER
PLATES

100
Count 79¢

FAMILY JOY
Margarine

6 Lbs. / \$1

Family Joy
PEACH
PRESERVES

2 Lb.
Jar 49¢

Mission
Macaroni &
Cheese Dinners

3/49¢

ABC
CRACKERS

2 Lb. Box 49¢

BOOK
MATCHES

50 Count 10¢

Family Joy
MUSHROOMS
Pieces & Stems

4 Oz. 5/\$1

BLOCK ICE

Produce

PARTY ICE

MED. SIZE
ONIONS

3
LB. 29¢

CARROTS
1# CELLO

10¢
EA.

TOMATOES

25¢
LB.

LARGE
PINK
GRAPEFRUIT

2/29¢

Everyday Low Meat Prices . . . 25 lb. Locker Boxes \$14.95

BAR S

WIENERS

53¢
Lb.

SMOKED

PICNICS

39¢
Lb.

CHUNK

BOLOGNA

49¢
Lb.

SHORT

RIBS

39¢
Lb.

MEAT

LOAF

39¢
Lb.

BEEF

LIVER

39¢
Lb.

STATE
BANK

Citizens

SUMMIT VIEW OFFICE
EDGEWOOD MILTON OFFICE
PUYALLUP
EAST SUMNER OFFICE

NEW CAR
LOAN at

4 1/2 %

New Cars Cost Less with a

*\$4.50 A Year For Each \$100 Borrowed

TENNIS
SHOES

\$199
Pr.

30 pr. Men's
90 pr. Women's
70 pr. Children's

PAUL'S

Shoes & Clothing
161st & Pacific
LE 7-0552