

L.E. Armstrong  
11011 Pacific Ave.  
Tacoma, Wash.  
98101

# FP Principal Resigns

See Page 2

Pierce County Herald and

## The TIMES JOURNAL

Vol. 24 No. 17

April 25, 1968

Price Per  
Single Copy

10¢

# Parkland Clean-up Outlined

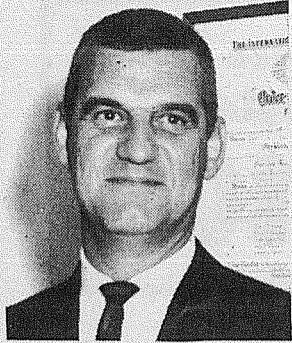
See Page 7



UNDERWAY - Beautification of the center strip on Ainsworth Avenue is now a project-in-action. The Parkland Development Association is sponsoring the project in its efforts toward a better community. -TJ Staff Photo



# W. Whitesel, R.E.O. Appoints FP Principal Resigns Post Youth Director



**WILLIAM WHITESEL**

William Whitesel, principal of the Franklin Pierce High School since 1959, has resigned, it was announced by Dr. E. E. Hill, superintendent of the district, at a meeting of the board of directors Tuesday night.

Whitesel has accepted a position in the administration of the Federal Way School District in charge of personnel. The Federal Way school district is listed as the fastest growing district in the State opening a new school each year. It now has an enrollment of 15,000.

Coming to Franklin Pierce from a principalship at Anacortes, Whitesel was president last year of the Washington Secondary School Principals, was appointed by Louis Bruno, State Superintendent of Public Instruction, to an advisory committee on youth, and is a member of the Parkland, Kiwanis.

Merlin H. Thoreson, Director of Rural Economic Opportunity, Inc., Parkland Branch has announced the appointment of former Recreation Director of State Institutions, Jack Farrell, as Youth Director of R.E.O., replacing Mrs. Bonnie Pontani who is following her husband to his new base in Texas.

Farrell is felt to be a valuable addition with today's emphasis on helping youth by pointing them in the right direction — recreation and training for responsibility and good health replacing "hanging out" or horseplay leading, by degrees, to vandalism.

He has taught acrobat, tap and ballet dancing, drama, music, sports and recreational therapy at many State institutions including Medical Lake, Western State Hospital and Grand Mound and will take charge of R.E.O. youth groups at Parkland, Gig Harbor, Roy and Kapowsin.



**CARL T. LINDGREN, Parkland Kiwanis President, presented 300 jump ropes to Franklin Pierce Elementary Schools on behalf of Kiwanians. Dr. E. E. Hill accepted for the school district while Mrs. Ruth Guame, director of elementary education, helped keep "loose ends" together. Jump ropes**

were donated to assist in district elementary physical education program and to provide additional recreation material during recesses. Each district elementary school will receive 30 individual and 3 sixteen foot jump ropes. Presentation was made Tuesday during a principal's meeting.

Chosen "Administrator of the Year" in the Franklin Pierce District Whitesel also was nominated for that honor statewide.

A member of Phi Delta Kappa, Whitesel graduated from the University of Washington, where he also received his master's degree.

The letter of resignation will be acted upon by the school board at the next meeting, when it is also expected a letter of commendation will follow board action.

## Eatonville Highway Hearing

Senator John T. McCutcheon (D-Steilacoom) said today the extensions subcommittee of the Joint Committee on Highways will conduct a hearing on a proposed Eatonville to Elbe route, at Eatonville Masonic Temple, April 26.

Senator McCutcheon, a member of the extensions subcommittee, said three routes have been studied by the Department of Highways. They include:

1. From the intersection of S.R. 161 and the northerly boundary of the Town of Eatonville, ascending easterly for 1.25 miles and then turning southerly across the Mashel River Valley; continuing through the high plateau country and then southeasterly to a junction with S.R. 7 at Elbe.

2. The same as the first route for the first four miles, thence through the New Reliance Valley to a junction with S.R. 7 in the vicinity of Alder.

3. Along existing S.R. 161, beginning at Washington and Lynch streets in Eatonville, extending on Washington Street to the southern boundary of the town; continuing along the east edge of the Eatonville sewage lagoon and across the Mashel River to the vicinity of the Little Mashel River, then returning to and paralleling the existing route to a junction with S.R. 7.

"These routes are 9.73 miles for the first system, 7.48 for the second and 3.20 for the third," Senator McCutcheon said.

"The estimated costs are \$6,246,000, \$4,464,000 and \$851,000, respectively. Data from a July, 1967, origin-destination survey from the Roy wye to Elbe was used in the study. This indicates average daily traffic for the year 1995 and 2,200 vehicles for the first and second routes and 2,250 for the third system."

Senator McCutcheon said the April 26 hearing will convene at the Eatonville Masonic Temple at 1:00 p.m., with Senator Lowell Peterson (D-Concrete) as chairman. Ralph Kerslake, district three engineer, will represent the Department of Highways at the hearing.

## Drum & Baton Corps, Accepting Members

The Tacoma Starliters Drum & Baton Corps are accepting new tyro members beginning Tuesday, April 23 through Tuesday, May 28, 1968. Girls, 9 years and over who are interested in twirling a baton in Parades and also boys and girls who have had some basic knowledge in snare, tenor or bass drumming, are invited to attend the practice sessions held at Manitou Hall, 66th and South Ferdinand, Tacoma, on Tuesday evenings from 6:30 until 7:30 P.M. Please bring your parent or guardian with you to your first practice session.

Under the direction of Mrs. Pamela Bradshaw, Route 1, Spanaway, the non-profit parade corps was formed to give twirlers and drummers an opportunity to perform as well as learn poise, coordination, team work, and good sportsmanship. In their three years of performing, the Tacoma Starliters have won 16 awards in Parade Competition at various festivals in Western Washington. Although they are mainly a parade corps, they also perform at many civic functions.

## Elk Plain PTA Plans Open House

Open house for grades four, five and six will be followed by a program presented by the second graders at the April 30th meeting of Elk Plain PTA.

The open house will begin at 7:30 p.m. and program at 8 p.m. in the multipurpose room.

Following the children's program J. S. Roberts from the Pierce County Assessors Office will discuss property taxes in this area. A question and answer period will follow.

## Annual Dinner Planned By Ladies Aux.

The annual buffet-dinner, sponsored by the Lacamas Ladies Auxiliary has been set from noon to 4 p.m. Sunday, May 5th, at the Lacamas Community Hall on the Harts Lake Loop Road.

The menu will offer a choice of oven-fried chicken or roast beef with all trimmings, including homemade pies for dessert.

A donation of \$1.50 for adults and 75 cents for children will be asked. The public is invited.

## Dairy Herd Leaders Announced

The dairy herd of Maurice DeMuyneck, South Prairie, is the leader in the Pierce County DHIA summary for the month of March, announces County Agent Eddie Thomason. DeMuyneck's herd of 35 Holsteins averaged 1635 pounds of milk and 59 pounds of butterfat per cow.

Honor roll leaders for cows completing lactations in March are: 2 year old - No. T4, a grade Holstein owned by Al Houtsma, Spanaway, with 16,802 pounds of milk and 624 pounds of butterfat; 3 year old - No. 77, a grade Holstein owned by Walt Schodde, Buckley, with 17,037 pounds of milk and 762 pounds of butterfat; 4 year old - No. 37, a registered Jersey owned by Cloverleaf Farms, Orting, with 21,480 pounds of milk and 862 pounds of butterfat; 5 to 10 year old - No. 105, a grade Holstein owned by Joe Sutter, Puyallup, with 21,282 pounds of milk and 838 pounds of butterfat; and 10 years and over - No. 118, a registered Jersey, also owned by Cloverleaf Farms, with 13,333 pounds of milk and 739 pounds of butterfat.

Testing and calculation of records was supervised by Washington State University.

Local supervisors are Roy Hartshorn, Orting, and Delmar Price, Spanaway.

## Parkland PTA Slates Final Meeting Here

Final meeting for Parkland PTA has been slated for 8 p.m. Thursday, April 25th.

Mrs. Claude Riley, District 12 president, will install new officers. They include: Mrs. Arthur Campbell, president; Mrs. Robert Teitzel, first vice president; Dale Storaasli, second vice president; Mrs. James Hartley, secretary; and Mrs. Edwin Roalkvam, treasurer.

## Kindergarten Registration Bethel

Bethel School District will hold its annual kindergarten enrollment the week of April 29-May 3rd. Birth certificates are required.

All children who will be five years of age as of September 10, 1968 should be enrolled at the grade school in their area.

Spanaway will enroll from 9 a.m. to 3 p.m., all other grade schools will enroll between 9:30-11:15 a.m. and 1:00-3:30 p.m.

## Franklin Pierce

Kindergarten registration in the Franklin Pierce School District will be held the week of May 6-10 from 9 a.m. to 3 p.m.

Registration will be conducted in each elementary school in the district for children who plan to attend kindergarten next fall.

Children must be age 5 by September 10 to register. Parents should be prepared to offer proof of age at the time of registration.

A physical examination will also be required, and parents may pick up the proper form when they appear at the school to register the child.

## Editorial

By Em Matson

Politics appeared to enter the non-partisan area of community college board appointments recently when the reappointment of Mrs. Phyllis Erickson was passed over in favor of a Lakewood man.

The selection of a Clover Park resident will give the board members from University Place, Steilacoom, Lakewood, Puyallup, and Sumner. This leaves the Franklin Pierce-Bethel-Eatonville area without representation, and during a period that new college sites are being considered.

State Representative Charles Newschwander, an announced candidate for 28th District Senatorial seat, told the Journal that nothing can be done to stop the appointment as the governor has already acted.

We feel the circumstances surrounding Mrs. Erickson's being replaced on the Community College Board warrants editorial airing.

The unseating of Mrs. Erickson started before she took office when the original nominations were made by members of the state legislature and appointed by the governor. Some Clover Park residents were miffed when a Steilacoom man was appointed to represent the Lakewood-Steilacoom area and have been waiting for the first term of office to expire. Unfortunately, Mrs. Erickson drew the one year straw.

Reasons for the switch were listed by Newschwander as follows:

1. The Clover Park School District had the original site for the present community college before it became a part of the new system, yet had no representative on the board.

2. Her appointment expired and according to Newschwander she had not expressed a desire to continue.

3. Her original appointment was recommended by a panel of legislators, a majority of whom were Democrats.

4. Newschwander, a Republican, must run for election in the Lakewood-University Place area, and must support the requests of his constituents.

5. The governor received a recommendation from only one legislator, a Democrat, on behalf of Mrs. Erickson's reappointment.

Of her appointment expiration, Mrs. Erickson said she had been informed that reappointment would be automatic.

Reading between the lines, it would appear that this area was manipulated out of a seat on the County Community College Board by a partisan-inspired political maneuver, in what is generally thought to be a non-partisan arena. And in doing so, the college lost the services of a highly qualified and dedicated person.

### Patrol Brass Won't Budge

Washington State Patrol brass are maintaining their ambulance rotation policy in the Parkland-Spanaway area despite the fact that Lakewood based ambulance company has added a third car and keep it for county calls.

We have stated in the past, and still insist that in cases where emergency ambulance service is called by State Troopers, that the nearest available ambulance be summoned. Somehow, it doesn't make sense to call a car from the Tacoma central business district when a fully equipped, fully manned car is standing by just minutes away.

## The TIMES JOURNAL

Published weekly at 14620 Pacific Ave., Parkland 98444 and delivered by U.S. Mail and carrier to subscribers. Publishers: Pierce County Publishers, Inc.

Managing Editor . . . . . Em Matson  
News Editor . . . . . Sandy Ingram  
Sports Editor . . . . . Bob Ingram

Subscriptions \$3.50 per year, \$1.80 six months, or 30¢ monthly by carrier. News stand price 10¢ copy.

Qualified as a legal publication under Chapter 213 of the Legislature Acts of the 1941 regular session of the State of Washington

Second Class Postage Paid at Tacoma, Wash.

Vol. 24 No. 17

April 25, 1968



HI HO

PUYALLUP

HI HO

**LEAN PORK STEAK**  
**49<sup>c</sup> lb.**

**ARMOUR'S SLICED BACON** 12-oz. PKG. **59<sup>c</sup> pkg.**  
 GRADE "A" FORS, WHOLE WASH.-GROWN **Fryers** **37<sup>c</sup> lb.**  
**CHOPPED SIRLOIN** **89<sup>c</sup> lb.**  
 HI HO'S OWN COUNTRY-STYLE **SAUSAGE** **39<sup>c</sup> lb.**  
 PEERLESS, ALL-BEEF OR REG. **WIENERS** **53<sup>c</sup> lb.**  
 OUR OWN PET FOOD ..... **3 lbs. 59<sup>c</sup>**

20 LBS. U.S. NO. 2 **OREGON NETTED GEM POTATOES**  
**69<sup>c</sup>**

FRESH, LOCAL **SPINACH**  
**10<sup>c</sup> bunch**

**PORK ROAST**  
 PICNIC STYLE  
**39<sup>c</sup> lb.**

PRICES EFFECTIVE APRIL 22 through 27

New Crop **YELLOW ONIONS**  
**2 LBS 29<sup>c</sup>**



1-GALLON **PUREX**  
**49<sup>c</sup>**

ALL REG. SIZE **CAMPBELL'S SOUPS**  
**6/1<sup>00</sup>**

46-oz. **HI-C**  
**4/1<sup>00</sup>**

**CAKE DONUTS** **49<sup>c</sup> doz.**  
**FRUIT BARS** ..... **5 doz. 1.00**  
**LOWEST DRUG PRICES ANYWHERE**  
**5-lb. EPSOM SALTS** ..... **29<sup>c</sup>**  
 REG. 2.00 VALUE, TWIN-PACK TINS  
**BAN SPRAY DEODORANT** ..... Only **89<sup>c</sup>**  
 REG. 95c **COLGATE DENTAL CREAM** ..... **59<sup>c</sup>**  
**KELLOGG'S CEREAL**  
 10-oz. RICE KRISPIES } **3 / 1<sup>00</sup>**  
 10-oz. RAISIN BRAN }  
 10-oz. FROSTED FLAKES }  
 14-oz. 40% BRAN FLAKES }

Banquet **FROZEN**  
 FRUIT OR CREAM **PIES**  
**4/1<sup>00</sup>**

6-oz. FAMILY SIZE **JELL-O**  
**5/1<sup>00</sup>**

HI HO

HI HO

PUYALLUP

PUYALLUP

HI HO

HI HO

HI HO


PUYALLUP

HI HO




**Dyer MORTUARY**  
134th & Pacific  
PARKLAND

**The Country Parson**



"Many good ideas have been overlooked by folks who would have liked the idea—if they had liked the person who had it." Copyright, by Frank A. Clark

Copyright, by Frank A. Clark



**Dyer MORTUARY**  
134th & Pacific  
PARKLAND

# Dairy Princess Coronation Set

Pierce County's 1968 Dairy Princess will be crowned during the 13th annual Pierce County Dairy Princess Coronation activities Friday, April 26, at 8:30 p.m. in the Fruitland Grange Hall.

Candidates are: Carla Balmer, Orting; Diane Doohan, Eatonville; Kathy Gratzler, Orting; Edna Schilter, Graham; and Karen Wood, Spanaway.

Miss Victoria Imhoff, 1967 County Princess, will crown the new princess.

Entertainment for the program will be furnished by The Swiss Kids (Randy, Arnie and Antonette Grab), Johnny Faver (accordion selections), and Rosemary Van Cleve (accordion and songs). Organ selections will be by Mrs. Al Houtsma.

Washington State Dairy Princess Diana Tait will attend the proceedings.

Mr. Joe Burgi, Jr., Public Relations Director for Flett Dairy, will be Master of Ceremonies.

Following the coronation, refreshments will be served. The general public is invited to attend. There will be no admission charge.

The Dairy Princess pro-

gram is sponsored by the Pierce County Dairy Wives. Mrs. Ted Ford, Orting, is President. Mrs. Donald Rasmussen, Eatonville, is Chairman of the Princess activities.

## Johnny Bullu To Play At Fircrest Golf Club

On Saturday, April 27, there will be a golf exhibition at the Fircrest Golf Club in Tacoma by the country's greatest ambidextrous golf professional Johnny Bullu of Scottsdale, Arizona.

Johnny Bullu will play one nine right handed and one nine left handed, and his partners will be right-handed Tacoma professionals Al Mengert and John Rudy and left-handed amateurs Jack Walters and Bob Morris. The players will warm up in the practice area prior to the scheduled starting time of 1:30, so everyone is invited to come early to watch a real lefty-righty show.

Proceeds will go to the American Cancer Society.

**Journal Classifieds**  
Get Results  
LE 7-0223

# Car Wash Slated For Foreign Student Funds

The Parkland Chapter of the American Field Service is sponsoring a "Car Wash" April 28th, 29th, 30th and May 1st at the Parkland Enco Service Station, 13303 Pacific Avenue.

Proceeds from the car wash will go to the fund for acquiring foreign students at the Franklin Pierce High School.

The car wash unit, loaned to fund-raising organizations by the Oil Heat Institute of Washington, provides hot water continuously.

The Parkland Chapter must raise at least \$750 by June 1st, if there is to be a foreign student here for the next school year. It is not known yet where the student would come from, but Chapter president, Coralie Johnson, expects to hear this month.

"We have no choice on sex or origin of the student at the local level," Mrs. Johnson stated. "The head office of the Service accepts the applications of local families who desire the student to reside with them, and matches a family to a student."

Donation for the carwash will be \$1 (one) and Mrs. Johnson asks that everyone who is interested in this program show their support on one of the four days of the car wash.

## Marketing Assn. Elects PLU Prof



The Puget Sound chapter of the American Marketing Association announced Thursday evening in Seattle the election of Dr. Gundar King of Tacoma to the club's presidency.

Dr. King, director of Pacific Lutheran University's School of Business Administration, succeeds Dr. Leonard M. Guss of Tacoma who will become chairman of the chapter's board of governors. Dr. Guss is director of corporate economics and marketing research for Weyerhaeuser Company.

Other area men elected to positions were Charles Hegtv, senior market analyst for Weyerhaeuser, vice president; and Peter Rosik of Gig Harbor, manager of advertising research at Weyerhaeuser, treasurer.

Dr. King, professor of marketing and industrial management, has been on PLU's faculty since 1960.

Active in professional organizations, Dr. King is a member of the American Management Association, Purchasing Agents' Association of Washington, Tacoma Sales and Marketing Executives Club, Tacoma Advertising Club, and several honorary societies.

## Preachers To Change Pulpits

Sunday, April 28th, is the date set for the celebration of COCU (Consultation on Church Union), to be observed by the Parkway Presbyterian Church and the Parkland United Methodist Church.

The celebration will be in the way of an exchange of pulpits by Rev. Arthur Campbell, who will preach at the Presbyterian Church, and Rev. Wesley Drummond will preach at the Methodist Church.

Ten protestant denominations are working together on the possibilities of union.

## Knit Show Planned Here

Tacoma "Knitters Unlimited" will be sponsors of the 11th Annual Fashion Show "Constellation of Knits" at 8 p.m. May 2nd at the Realart Square Dance Center, 5415 So. Tacoma Way.

The show will feature knits from the entire Northwest area.

Garments modeled in the show will be hand or machine knits. Many will be original designs drafted by the knitters individual size or to the person for whom the garment was knit.

Garments for all occasions will be shown, daytime, formal, sports, men's sweaters, children's garments, and a variety of women's fashions.

In addition to the modeled garments at the show, there will be a display of knits on tables in the lobby.

## \$5000 Grant Awarded To Aid In Phys. Ed. Auditorium at PLU

The Seattle Foundation announced last week that it has awarded a \$5,000 grant to aid in the cost of constructing the Clifford O. Olson Physical Education - Auditorium Building at Pacific Lutheran University.

The structure, currently under construction, will be completed in January. A public-support drive has raised part of the money for the building, while additional funds have come from federal sources.

## Brides Galore At PLU Fraternity Wedding Services

Beautiful brides will be in abundance next Thursday (April 25) when Pacific Lutheran University's chapter of Mu Phi Epsilon presents its program of wedding services, complete with brides, music and gowns.

The music sorority will host the event, entitled "With This Ring . . ." at 8:15 p.m. in Eastvold Chapel. The program is open to the public.

While some of the sorority sisters model coordinated wedding gowns from Nordstrom Best, others will play appropriate musical selections. A string ensemble, plus trumpet, oboe and flute solos will be featured.

The program will be divided into three services: the first being a morning wedding, the second a contemporary afternoon setting, and the third a formal evening service.

## Graham Ladies Need Items For Rummage

GRAHAM - Those unwanted items found in attics, garages or closets during any recent spring housecleaning binges are just what the ladies of Fire District 21 are seeking.

Books, toys, good used clothing, household items, baby furniture, canning jars, gardening equipment are all being sought for the Firemen's Helpers' rummage sale to be held Saturday, May 4, at The Graham Fire Station #1.

Also with the sale, which begins at 9 a.m., will be a bake sale featuring all kinds of bakery items. A handmade quilt will be awarded during the day.

Those wishing to donate rummage articles or "goodies" for the bake sale are asked to call VI 7-2244 or VI 7-7216.

All proceeds will be used to help provide the volunteer firemen with necessary fire fighting equipment.

**You've Seen it on TV!**

# LATEX PAINTS



**5.88 GAL. 7.69 value** NALPLEX latex flat wall finish

- It's Dutch Boy's finest flat wall finish
- Acrylic formula—easy water clean-up
- Free of odor—one-coat hiding!
- Made expressly for rollers—30 minute dry!

**6.88 GAL. 9.10 value** LATEX satin gloss enamel

- It's the finest of all semi-gloss finishes
- For kitchens, baths, cabinets and trim
- Odorless—easy to apply—water clean-up
- Non-yellowing, fade resistant, fast drying

"Money Orders" Buy At "Bank Americard"

## SOUTH END HARDWARE


South 185th & Pacific Ave.

VI 7-7211 "To Vote, Register Here" Spanaway

**Andy EGAN**  
**RAMBLER**  
"Fairness to All"

**"Come See US"**  
8223 Pacific Ave.  
GR 4-9404  
Select Used Cars  
AMX - REBEL - JAVELIN - AMERICAN - AMBASSADOR

**"Can't find the number? Need directory assistance?"**



Look in the "CALL GUIDE" section—in the front of your TELEPHONE DIRECTORY





No one tool stands out so plainly, or often, in the history of our nation as the gun. Perhaps it's because a good weapon and the ability to use it effectively in a just way has been the hallmark of a free people wherever history has been recorded from the sling of David, the spear of the Greeks, the long bow at Flanders, the American rifle at King's Mountain or the Alamo and we could mention Bela Wood and so on.

For nearly two hundred years our enemies have felt the bite of American rifles and have been astounded by the high degree of proficiency with which Americans can handle them. Talk to any Marine or Dog Face returning from Vietnam and you will find out in short order how important he thinks it is to be good with a rifle.

The informal shooting match was a normal pastime many an afternoon only a generation or two ago. It was our national sport before baseball.

So, again we ask, Why? Why have we Americans watched such a priceless tool and a national sport be ridiculed beyond imagination? Why here in America have we been lately exposed to such a rash of wanton murder and shooting? Why has it only been in the last few years that it has been such a disgrace to enjoy shooting and be proficient in the use of firearms? It's almost as though guns were un-American; or is it that Americans are becoming un-American? Why does the world sit by like a hungry vulture in anticipation of the American citizen not sticking by his gun?

Could we have lost shooting as a national sport because we would rather sit than do? We are ridiculed here at home because we spend hours on the range, working hard to put ten shots into one square inch at one hundred yards. While in Europe we are humiliated because our government does its best to discourage the proficient use of firearms. Could it be that we have so much more murder and assault now than in years past because we learn nothing else through our new medium? When was the last time you saw on your television firearms used in a sane and prudent manner? Don't they simply start the child in his tender years on comedies and children's shows pointing shotguns at whatever moves, and blast away? Pistols are made to point in someone's nose, bullets almost always miss and if they do hit they don't do much. Then finally the child shakes his childish ways. And the dollar-scraper boys are ready to feed him something with a little more meat to it. So now we see how only crooks and cops really have guns and you know guns do kill people because we can see how they writhe in agony. And all that blood! And better yet, you can now watch all this in color —

Do you at all see the picture? Then what happens as the time comes when the loftiest efforts of the "whodun-its" and spy shows fail to satisfy this carefully perverted person? What happens? Well, you read about it in the newspapers. Consequently the stigma is attached; only bad people have guns!

Talk guns and people would have you locked up, or if they are of the kinder sort, they tactfully try to change the subject to something a little less barbaric, like say L.S.D. Or permissive sex in the lower grades, for a well rounded society.

And the world sits by like a hungry vulture. The Communist nations know Communism will not work unless it's

guns in the wrong hands get in the way. The one-world thinkers know the world must be managed for the good of all, but especially for the good of the managers! Sheep have no need for guns — again guns would get in the way.

Then we would have the Old Home crowd who would go to bed with the insane murderer of ten! But that young lad who shot the mayor's cat with his B.B. gun, they would send to the youth correctional center for six months — and his parents to the salt mines.

So maybe the answer to that question "Why?" isn't too far in the future, as we step, ever faster, away from our heritage as a people and our honor as a nation.

Frankly, I seriously doubt if we in our present society could be trusted to even handle, let alone possess the rights of our founding fathers. I think it would only be fair to ask, if you have similar thoughts as expressed here, you make them known, in a gentlemanly or lady-like manner to your representative. And you who don't agree, that's your right also. We respect that right. But you might take a long hard look at the rest of the world — and note the basic prerequisite for becoming a peasant.

Don B. Goddard  
Graham, Washington

### Coronary Conference Slated In Tacoma

The Pierce County Heart Association said today that 130 nurses from six Puget Sound areas counties are now registered to attend its two-day conference on emergency and continuing care of the patient with acute coronary disease at Jackson Hall in Tacoma April 30 and May first.

The conference is sponsored by Pierce County and Washington State Heart Associations. Committees of nurses from Pierce, Kitsap and Thurston counties cooperated in developing the program plan.

The medical sessions will include a review of the coronary patient, laboratory tests, drugs, treatment, teaching aids, medical complications, nursing care and emergency procedures to be taken when a cardiac arrest occurs.

Medical speakers include Dr. C. L. Anderson, Dr. James Early, Dr. James Billingsley, Tacoma, Dr. Steven Yarnell, Regional Medical Program, Seattle; Patricia Fitzgerald, R. N. research instructor of Nursing, University of Washington; Major Betty McGranahan, R. N. Educational Coordinator, Madigan General Hospital.

John Krilich, Tacoma attorney, will present a session on legal aspects in cardiac care.

The program will include sessions designed to acquaint nurses with new electronic monitoring equipment and other devices now being installed in coronary care units of many hospitals. These include electronic monitors, defibrillators, pacemakers, respirators, and emergency "crash carts." Nurses will also receive instruction and procedures for organizations of cardiac arrest teams in their own hospitals.

Registrations may be made at the office of Pierce County Heart Association. There is no fee as the conference is an educational service to nurses.

## "Big Spenders" Challenged PLU Receives Grant For Teacher Training

Senator John T. McCutcheon (D-Steilacoom) today challenged "big spenders" whose plans for a multi-purpose stadium in King County "will place the taxpayers of Washington State in the same position as the farmer who shut the barn door after the horse was gone."

The Pierce County legislator said:

"The hired experts, after a detailed and careful study, have come up with two cost figures for the construction of a multi-purpose stadium.

"It will cost \$41 million if the stadium is built immediately outside the Seattle city limits to the south, and \$76 million if it is constructed in downtown Seattle.

"If these big spenders are allowed to proceed in their present course, the taxpayers of Washington State will be in the position of the farmer who shut the barn door after the horse was gone."

Senator McCutcheon noted that the Legislature diverted 2 per cent of the sales tax on hotel and motel rooms in King County to help support the multi-purpose stadium. Higher costs, he said, could continue this tax diversion into the far distant future.

"Added costs in the range of \$35 million are not 'hay'" he declared. "The fact re-

mains that the bond issue was submitted to the voters and passed on the theory that the cost would be \$41 million. Mayor Braman of Seattle implies that the experts are 'crazy' and that their figure of \$76 million is way out of line."

He pointed out that Senator David McMillan (D-Colville) has asked the Legislative Budget Committee to investigate the entire stadium financing picture.

"Governor Evans, a member of the stadium commission, says it's premature to conclude that any wrong has been done, since nothing 'has been done yet' but to this I heartily disagree."

The National Science Foundation (NSF) has awarded a \$10,640 grant to Pacific Lutheran University to establish an "In-Service Institute in Mathematics for Secondary School Teachers" announced President Robert Mortvedt.

Dr. Lawrence Eggan, chairman of PLU's mathematics department, and Gary Peterson, an instructor in mathematics, will teach the courses beginning next fall. Dr. Eggan is director of the institute.

The program, explained Dr. Eggan, is designed for teachers who have had little or no contact with modern geometry or analytical geometry, but who are expected to teach these concepts in their class-

rooms. The institute will last from Sept. 16 through May 30. The Monday-evening course will meet 32 times, and six semester hours of graduate credit will be awarded.

Dr. Eggan said the program carries over two semesters, and two separate but related courses are involved. The first session will concentrate on modern geometry, and the second will be concerned with analytical geometry concepts.

"The philosophy of the courses will be to offer the participant a solid basis on which to build his teaching and to relate modern concepts to his classroom presentation," said Eggan.

Funds for travel for the 35 participants is available, said Dr. Eggan. In addition, the NSF grant pays the cost of textbooks for students.

Junior high school instructors who teach at least one mathematics class, and teachers who are in a supervisory capacity or are involved in curriculum recommendations will be given preference in enrollment selection.

Teachers interested in participating in the institution are invited to write for information and application forms from Dr. Eggan in care of PLU's Department of Mathematics.

## Two New Courses At FP Adult Ed.

Two new courses began this week in the Franklin Pierce Adult Education program. They are first aid and investments. Both met for the first time April 17.

First Aid is an eight-week class which meets at 7 p.m. on Wednesday at Franklin Pierce High School. The class is certified for the initial issuance or the renewal of a first aid card.

The investment class meets

for three weeks at 7 p.m. each Wednesday. Being taught by James E. Layton, a representative of the New York Stock Exchange, the class will deal with the relationship a person has to an investment, how stocks are bought and sold and how to plan an investment program.

Interested persons may still register for either class, according to Howard Motteler, adult education director.

# Citizens STATE BANK

MEMBER: FEDERAL DEPOSIT INSURANCE CORPORATION

- ★ MAIN OFFICE - PUYALLUP
- ★ SUMNER OFFICE
- ★ SUMMIT VIEW OFFICE
- ★ EDGEWOOD - MILTON OFFICE
- ★ WILLOWS OFFICE



# Gallows Mystery Solved



SPANAWAY PILOTS flying over Brown's Point area were astonished to see authentic gallows in wooded area off Brown's Point Blvd. Ground party of two Tacoma police officers and Times Journal reporter investigated. Graveyard with freshly turned earth is circled.



## Neighborhood Hanging Post Just For Fun

An object that appeared to be a full-fledged gallows caught the eye of a Spanaway pilot as he circled over Brown's Point recently.

After circling the area several times to confirm his find, he bee-lined back to the airport to share the news with fellow flyers.

The whole thing came to light when a Times Journal reporter followed two Tacoma police officers to the alleged hanging site.

Two Brown's Point men, with the help of community teenagers, constructed the gallows and a nearby graveyard, as a neighborhood project. It is a featured attraction on Halloween, with up to 500 persons attending a special mannequin hanging party, the pair report.

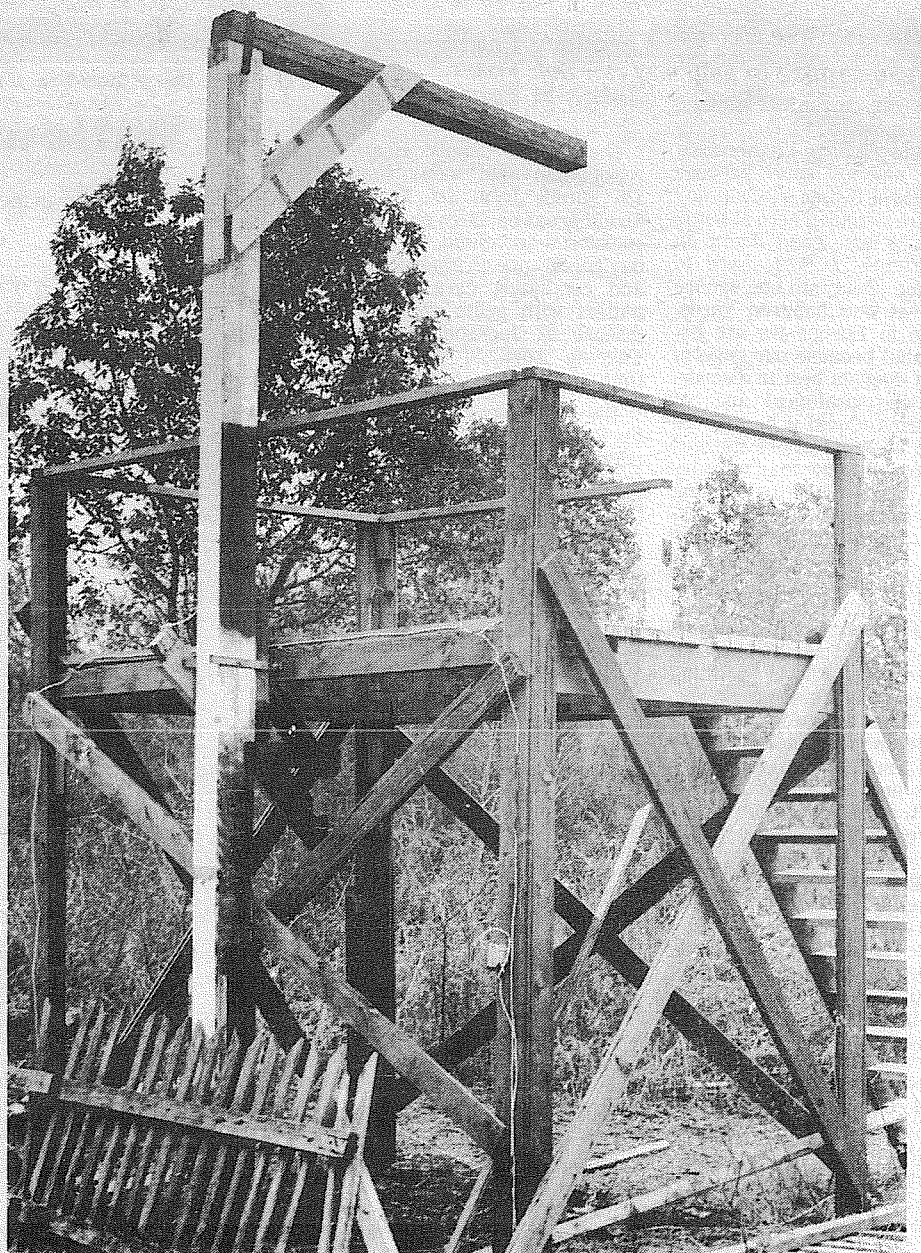
The project started about 5 years ago, and has been going strong ever since. Elaborate lighting and sound effects adds an eerie touch of realism to the affair.

"It's for the kids," designer Larry Lumley told the Journal. "It helps keep the kids off the street and eliminates Halloween vandalism." Lumley has an electronics background and designed the electrical circuitry.

Bill Reynolds, a neighbor, supervised construction. "We usually put a cover on the top so it looks like a clubhouse," he said.



WORKING GALLOWS, authentic in every detail including a solenoid-fired trap door, is used to lend atmosphere to neighborhood Halloween parties. Last October, nearly 500 persons witnessed demonstration hangings of a mannequin while tape-recorded sound effects filled the air to make it a frightening experience, the builders stated.



3-6-7-8.  
 Mixers: Darold Mattoni 557; Ben McMilian 225; Janeane Key 450; Beth Billdt 167.  
 Top Rollers Lou Stagun 566-226; Marian Unkrur 508; Gladys Morley 219.  
 Graham: Bill Lauenborg 212-212-186-010; Bill Hansch 224; Rosann Banks 543--182. Step Ladder Rosann Banks 180-181-182. All Spare Game Rosann Banks 182; Helen Wood 3-7.  
 Birds of Paradise: Bobbie Graham 512--212; Ethel Mills 3-4-7-10.  
 Eager Beavers: Geneva Thiel 488; Alice Hamilton 209; Pauline Jurgens 6-7.  
 Hi-Lows: Sue Sweaney 541; Lois Bolen 201; Lil Roller 3-7-10.  
 Parkland Mix.: Grant Harlow 565; Bill Dettrich 211; Kay Fulton 594--235; Mickey Boutiette 553; Split Pick Up Emil Giroux 6-8-10; Doug Forsythe 4-10; Ardeen Iverson 4-10.  
 850 Scratch: Russ Fulker-

son 586; Willie Gordon 234.  
 Classic: Paul Faulkner 663--234.  
 Evergreen: Gene Ketter 528; Nye Brown 207.  
 Bowlerettes: Rose Eveleth 518--182; Split Pick Up Ole Steeves 6-7-10.  
 Bantams (2 games): David Brown 347--203; Linda Hocking 255; Vicki McTaggart 142.  
 Juniors: Gary Bowman 552--233; Betty Unkrur 473--177.  
 Express: George Moe 529--224; Betty Breon 523--195.

### BOWLING RESULTS

#### PARADISE BOWL 4-15-68

Rolling Bees: Lois Yurisich 562--233; Eleanor Jones 6-7; Lois Yurisich 4-7-9; Madeline Meisner 3-7.

The Belles: Willa Woodford 545; Lois Herbrand 223; Step Ladder Gloria Gamblin 111-127-143; Barbara Brooks 73-110-137.

Pinettes: Sandy Everett 572; Sue Sweaney 552; Liz Jowett 544; Loretta Smith 544; Beverly Gilmore 234.

"600" Mixed: Larry Nestegard 542; Cal Martens 203; LaVonne Estes 536--201; Don Bradshaw 6-7-10.

Parkland Merchants: Stan Rau 176-190-255 -- 621--255; Everett Semler 173-246-182 -- 601.

Sportsman: Jim Langseth 546; Dick Amundsen 211.  
 Friendly Doubles: Jim Lovestrom 567--213; Pauline Simpson 431--167.

Industrial: Orin Bunn 573--223; Walt Feddersen 8-10; Howard Schick 6-7-10.

Senior Citizens: John Dahl 543; Al Kleinsasser 210; Jane Scott 500--180; Beth McLellan

### CHURCH DIRECTORY

ATTEND OUR

# WORSHIP

### SERVICES

**CHRIST THE KING Lutheran Church**  
8:30 & 11 a.m. Worship Service  
9:45 a.m. Sunday School  
East 85th at Van Buren  
LE 7-4272

**Spanaway Assembly of God**  
166th & Pacific Ave.  
Sunday School 9:45 a.m.  
Morning Worship 11 a.m.  
Evening Evangelistic 7 p.m.  
Family Night Wed. 7:30 p.m.  
LE 1-1412

**Spanaway Lutheran Church**  
8:30 & 11 a.m. Worship Service  
9:45 a.m. Sunday School  
Grades 1 & Up  
11 a.m. Sunday School  
3, 4 and 5 Year Olds  
John L. Briehl, Pastor  
160th & A St. LE 7-5978

**Parkland Lutheran Church & Christian Day School**  
Worship... 10:30 a.m.  
Sunday School-Bible Study 9:15 a.m.  
All ages  
H.A. Theiste, pastor  
LE 7-5492 LE 1-0777

**Trinity Lutheran Church**  
Worship Services 8:30 & 10:30  
Sunday School 9:30 & 11:30  
**PASTORS**  
Erling C. Thompson  
Robert Drews  
121 So Park LE 7-0201

**PARKWAY Presbyterian Church**  
Sunday School 9:30 a.m.  
Worship Service 10:45 a.m.  
Nursery Service Provided  
714 - 138th East LE 1-4373  
Rev. Wesley J. Drummond



# Parkland Clean-Up Nears With Mowers

## Care Needed With Mowers

## Trash March Begins May 8th

Plans for the community-wide clean up in Parkland are well underway this week as the Parkland Development Association moves to promote the project.

The area is about to embark on what is hoped to be the largest clean-up and beautification drive ever.

Set for May 8th, 9th, 10th and 11th, the PDA sponsored event has received County "OK" for residents to dump garbage free of charge at the dump on Meridian.

Everybody in the community is asked to help by "looking at your own yard and house to see if it can be improved."

In the home clean-up suggestion include starting in the attic and work down until every part of the house is covered, storage in the attic should be eliminated and in no case should papers, tree decorations, and that type of material be near heat sources.

In the downstairs area clean all closets of old clothing and boxes and other burnables that you don't use, search the kitchen for hidden sources of trouble by looking in the concealed storage areas, around chimneys and flues, etc.

Basements and garages need a real going over as they usually get all the junk from the rest of the house.

Burnable items can be disposed of at the site at 135th and J Street, between Gonyea Park and the Rodeo Grounds.

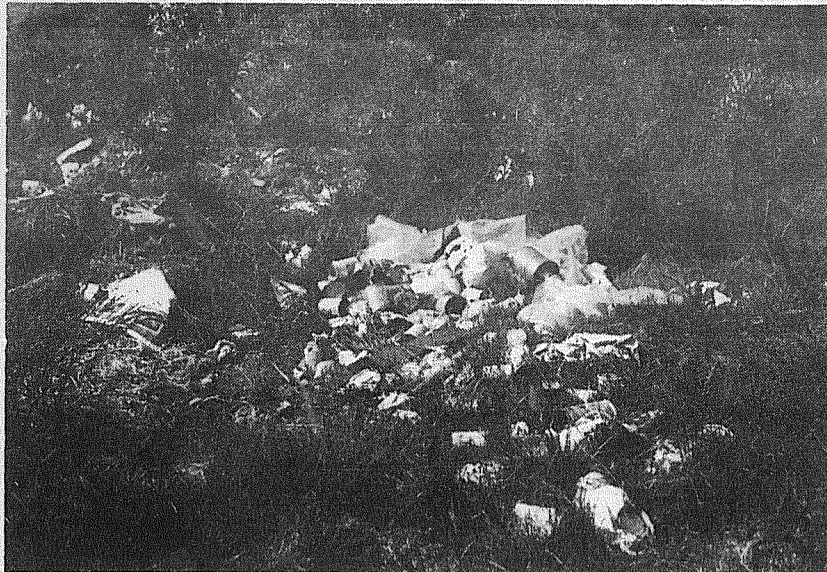
Cleaning up around the house and yard, not only makes for a better Parkland, but reduces fire risks as well.

The Clean-Up Committee of the Parkland Development Association, under heading of Hank Hetle, urges all residents and businesses to keep a constant eye on a clean community and be prepared to go all out on the drive.

At a meeting of the committee last Thursday Earle McKasson and Harold Chambers of the Citizens' Band Radio offered assistance on the area-wide event.

One example of what can be done by an individual business is the tremendous effort put forth by Thane R. Devereaux last year, who, after the initial clean-up was finished, clear the lost, termed the "greatest eye sore in the Parkland area" between So. 102nd and So. 108th on Sheridan.

Anyone wishing to help may call Don Visser at Elmhurst Mutual Power and Light, any equipment donation, call John Hartsell, Pierce County Refuse, and any general help or inquiries, call Hank Hetle at LE 7-4468.



SCENES like these found in a number of places in Parkland are unsightly. This is what the Parkland Development Association and area volunteers are striving to eradicate during the forthcoming clean-up campaign. Make sure that there are no scenes like this near your home or business and help make this a more beautiful Parkland.

Owners of gasoline-powered lawn mowers got this safety reminder today: ALWAYS crank the engine outdoors where there is adequate ventilation. Gasoline engines have exhaust gases containing carbon monoxide, a deadly poison. This reminder came from Frank C. Jackson, County Extension Agent. He also threw in these additional tips for safe operation of gasoline mowers. Refill the tank when the engine is cool; NEVER when it is hot! Allow expansion space when filling the fuel tank. Heat causes gasoline to expand. If it spills over the hot engine, fire will likely result.

Store gasoline in an approved metal container, never in a glass jug that could break.

When starting the mower, stand firmly and make sure your feet are in a safe position. Keep clothing away from the mower. If loose clothing gets entangled in the moving parts, disaster could result!

The County Extension Agent also provided the following tips about electric mowers aimed at preventing serious injury and expensive doctor and hospital bills.

Learn mower controls before operating it, especially how to STOP the mower. Do not operate the mower when the ground is wet. A cut cord or short in the wiring could mean extreme danger for the operator. A person on wet ground could be killed by touching a live wire.

In using an electric mower, always move back and forth, working away from the power source. This reduces the danger of cutting the cord. Mow across slopes, never up and down. This helps prevent the operator from slipping and falling into the mower, or the mower from sliding into the operator. Always shut off the power before attempting to adjust belts or remove trash from the mower.

NEVER leave the mower without turning off the motor and disconnecting the cord from the outlet.

## Area Captains

Captains include Walter Kleber, 1715 So. 106th Street, LE 1-2905; Vern Voss, 2518 So. 112th, JU 8-1775; Tom Stewart, 804 So. 112th, LE 1-1731; Norman Peterson, 801 So. 118th, LE 7-3729; Dr. Kenneth Pate, 856 Tule Lake Rd., LE 1-0293; Jim Newkirk, 1609 So. 121st, LE 1-1345; Delwyn Cady, 815 So. Polk, LE 1-1288; John Hein, 216 So. 125th, LE 7-4129; Dr. Raymond Klopsch, 764 South 117th, LE 7-3308; Carl Lindgren, 410 Garfield, LE 7-0234; Ben Staab, 518 So. 143rd, LE 1-4203; Larry Armstrong, 11011 Pacific Ave., LE 7-5524; Bob Hogberg, 11907 So. A., LE 7-4878; Everett Manfull, 514 East 123rd, LE 7-4326; Oliver Magnusson, 13702 10th Ave. E., LE 7-4236; Eldon Kylo, 13710 10th Ave. E., LE 7-5455; Okal Hooks, 14118 Golden Given Road, LE 7-5326.

Each area captain will recruit four men to assist him in making surveys and cleaning his area on the main day of the Clean-Up, which this year will be held May 8th, 9th, 10th and 11th.

- EVERGREEN:** Harold Legault, 517; Mose Lyons, 223.
- BOWLERETTES:** Rose Eveleth, 201-220-183, 604---220; Split pick up, Ruth Cox, 4-7-10; Ole Steeves, 3-4-10.
- LAST NITERS:** Don Butts, 577---223; Edie Thompson, 539; Dawn Hill, 193; Fred Berg, 156-157-158.
- BANTAMS (2 GAMES):** Mark Miller, 331; Richard Wood, 176; Vicki McTaggart, 265---139.
- JUNIORS:** Greg Rau, 566---235; Jerry Guizzetti, 235; Kathy Ness, 487; Betty Unkrur, 216.
- EXPRESS:** Dick Breon, 545---225; Nona Stephenson, 459---173.

## This Week's Winner

Mrs. Max A. Kethadre, 1101 East 137th, identified her home in last week's issue of the Times Journal to claim the \$8 jackpot.

The Kethadre's have landscaped their Mayfair property with a large lawn bordered by selected shrubs and are especially proud of their roses.



- PARADISE BOWL 4-8-68**
- ROLLING BEES:** Phyllis Huff, 538; Eleanor Carlson, 198; Dorothy Eichler, 3-7-10; Esther Sparling, 4-9; Lorna Bodin, 2-7-10.
- THE BELLES:** Mickey Boutiette, 516; Ann Bryant, 200; Step Ladder, Oma Smith, 110-141-172.
- PINETTES:** Sue Sweaney, 190-256-176---622---256; Sandy Everett, 553; Lee Leggett, 548; Eileen Andreasen, 547; June Nelson, 3-7.
- "600" MIXED:** Skip Estes, 524; Stan Catchpole, 204; Darline Besaw, 467---179.
- THE PARKLAND MERCHANTS:** Larry Bittner, 188-256-185---629---256; Craig Sundquist, 179-228-199---606.
- SPORTSMAN:** Ron Hill, 583---231.
- INDUSTRIAL:** Howard Schick, 553; Ken Kuper, 205.

- FRIENDLY DOUBLES:** Dave Ketter, 543---200; Rose Moore, 475---178; Joan Kenworthy, 178; Ron Hardy, 6-7-10.
- PREMIER:** Bill Schaefer, 212-224-182---618; Bob Bjorke, 216-206-185---607; Royce Adams, 244.
- SENIOR CITIZENS:** Wendall Gundersen, 560---224; Beth McLellan, 549---203.
- MIXERS:** Hal Crisman, 591; Bob Sims, 237; Ruth Rickert, 471---200; Step Ladder; Hal Crisman, 196-197-198; Beth Bildt, 6-7; Georgia Johnson, 6-7-10; Bob Johnson, 6-7-10.
- TOP ROLLERS:** Jack Mitchell, 562; Harold O'Brien, 208; Diane Fogle, 547; Gladys Morley, 205; Kay Jeffries, 3-7.
- GRAHAM:** Louie Berka, 597; Bob Bjornstad, 222; Nadine Berka, 513; Rose Eveleth, 196; Peggy Dickinson, 4-6-7.
- EAGER BEAVERS:** Arabelle Frerichs, 585---248.
- BIRDS OF PARADISE:** Marge Jones, 519---191.
- HI-LOWS:** Sue Sweaney, 514; Doroth Clark, 192; Step Ladder; Vivian Anderson, 140-148-156.
- PARKLAND MIXED:** Grant Harlow, 564; Emil Giroux, 216; Sally Skorupshi, 534---232; Split pick up, Babe Forsythe, 4-7-10.
- 850 SCRATCH:** Jonas Smelzer, 608---221.
- CLASSIC:** Dave Hammer, 657; Terry Trowbridge, 617; Lou Stagun, 244.

## Mrs. Otis Covin Recipe Contest 5th-Place Winner

Mrs. Otis Covin, Route 2, Spanaway, was a fifth place winner in the nationwide "Little King Recipe Contest" conducted by the Regal-Ride Shock Absorber Co., Monroe, Mich.

For submitting her "fit for a king" recipe for "Never Fail Dumplings," Mrs. Covin will receive a kitchenware prize and a first edition copy of the Regal-Ride Cook Booklet which will compile all the winning recipes.

The contest, which was open to wives and women employes of National Automotive Parts Association (NAPA) jobbers and warehouse employes, attracted several thousand entries.



# ASK ME!

HOW MUCH YOU MAY SAVE ON YOUR CAR INSURANCE WITH STATE FARM!



Al Langseth  
9920 Pacific Ave.  
LE 1-1800



STATE FARM Mutual Automobile Insurance Company Home Office: Bloomington, Illinois

## Spring Sale!

14 ft. Extension <b>LADDER</b> 40% Stronger Than Usual Aluminum or Magnesium Alloys <b>\$12.88</b>	20 Gallon <b>TRASH CAN</b> Won't Crack, Rust, or Dent 7 Year Guarantee <b>\$2.88</b> ea.	
Yard <b>BASKET</b> Wicker Design 2 1/2 Bushel Capacity <b>\$2.99</b>	Big 3 cu. ft. <b>Wheelbarrow</b> Steel Tray Semi-Pneumatic Tire <b>\$6.99</b>	Garden <b>HOSE</b> 50 ft. 100% Nylon 5/8" dia. <b>\$3.99</b>
<b>GRASS SEED</b> 5 Lb. Bag <b>99c</b> Hardy grasses that grow lush, green lawn		

**South End Hardware**  
South 185th and Pacific Ave.  
VI 7-7211 Spanaway

**HEADQUARTERS**  
"MOST FOR THE MONEY"  
All Makes...All Kinds  
**ARMSTRONG'S USED CARS** LE 7-5524

**PIERCE COUNTY HEADQUARTERS FOR 1968**

- ★ CHRYSLER
- ★ PLYMOUTH
- ★ VALIANT
- ★ BARRACUDA

CALL GR 4-0621

**Steven MOTOR CO.**  
2705 SOUTH TACOMA WAY

**NEW- MORE POWERFUL**

the 1968's ARE HERE

**VOLKSWAGEN**  
27 MAJOR CHANGES

Tom Carstens  
**AUTOHAUS**  
7030 So. Tacoma Way  
GR 4-0666  
TACOMA DEALER SINCE 1955



# HORSEMEN'S NEWS

## Roy PTA Rodeo May 5

Pint-sized cowboys and cowgirls will compete for prizes during the 7th annual Roy PTA Junior Rodeo Sunday May 5 at the Roy Rodeo Arena.

Entries will range in age from 7 to 18 years, with a special added bronc riding attraction for 15-18 year olds. Eight events are scheduled including bareback riding, calf riding (14 and under), calf rope scramble, steer riding, ribbon roping, mounted ribbon roping, open barrel racing, and barrel racing 14 yrs. and under.

Prizes will be awarded to the top three in each event and an engraved trophy will be presented to the high point boy and girl of the day.

Entry blanks are available at the Bunkhouse in Parkland, Custom Rodeo Shop in Spanaway, Simon's Western Shop in South Tacoma, Alber's Feed or W.F.A. in Puyallup, or from Tony Rotondo, Box 232, Roy.

Proceeds from this rodeo will be used for school projects.

## Tacoma Unit One News

Washington Horseman, Tacoma Unit No. 1, will hold a Fun Night at the Unit Arena 8 p.m. Friday night April 25. The arena is one mile east of Pacific Avenue on 176th.

Members and prospective members are invited to participate in a variety of mounted events including O'Reilly Says, Musical Sacks, Water Race, Pair Barrel Racing, Pairs Class, and a Slow Canter Race. Entry fee is set at \$1, with no admission for spectators. Ribbons will be awarded to three places.

Leonard and Barbara Rike are cochairmen for the program.

### First Aid Class At Franklin Pierce

Medical Self Help and First Aid Class for vacationers and campers will begin Wednesday evening April 15th at Franklin Pierce High School room 401.

There is no fee for the class which meets from 7 to 9 p.m. each Wednesday for 8 weeks.

To enroll or for more information call Franklin Pierce Adult Education Office

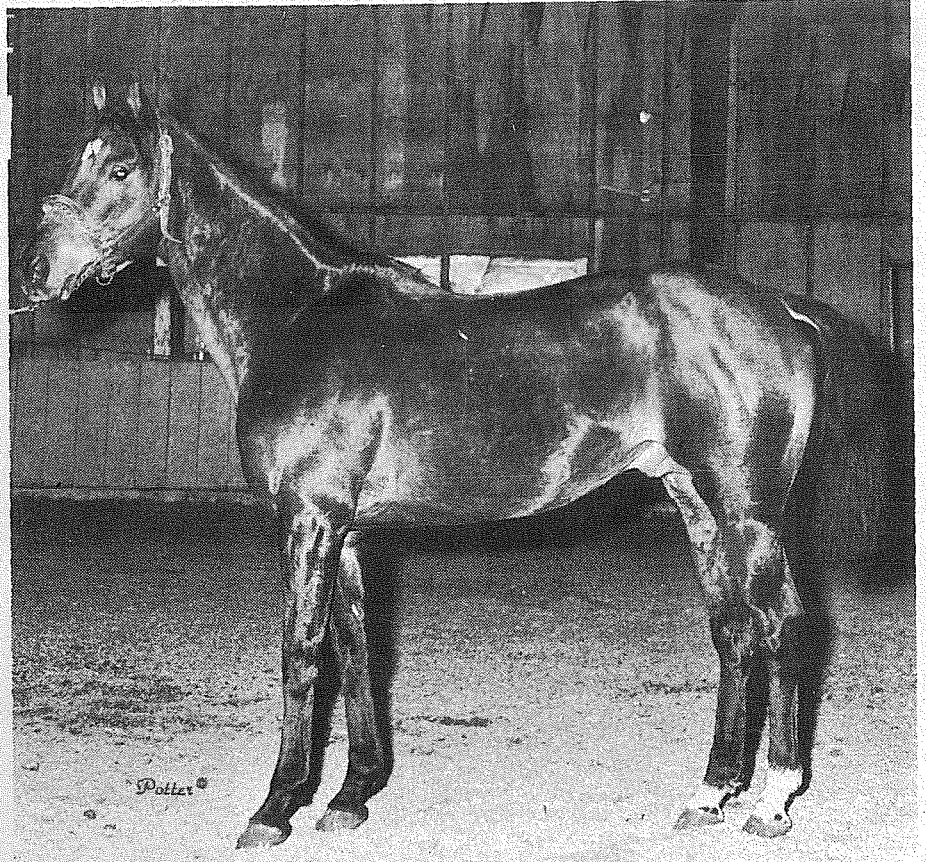
## Riding Club News

Following Easter Sunrise Services, Meridian Riding Club members enjoyed a pancake breakfast and braved rain to complete a two hour ride exploring the many trails leading from the clubhouse. Forty-two members participated.

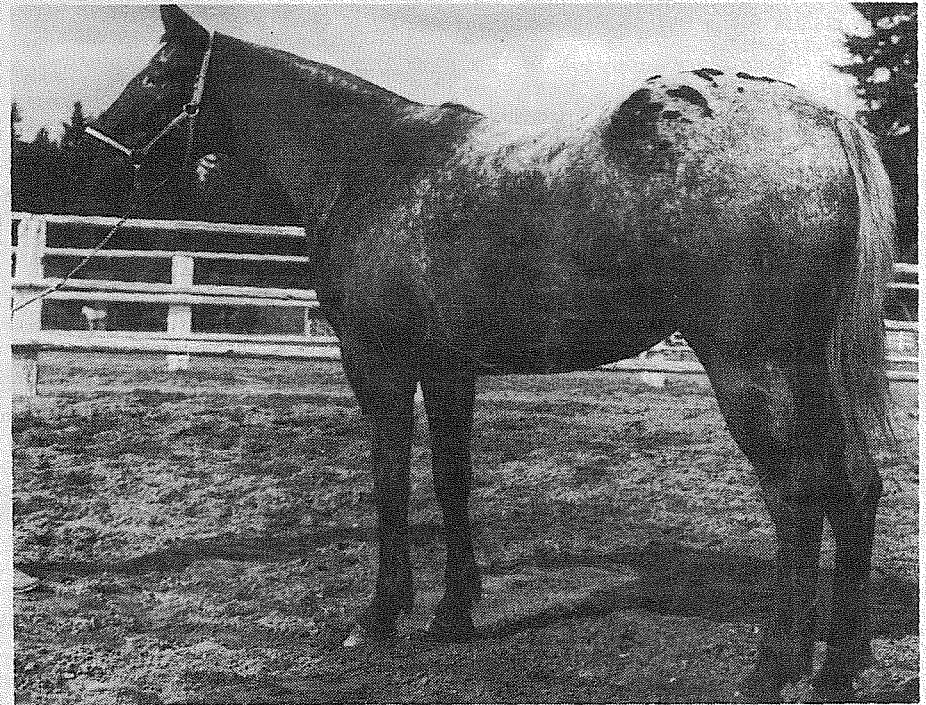
A Puget Sound Zone judges and timers clinic will be held at 1 p.m. Sunday April 28 at the Meridian Riding Club meeting hall. The public is invited.

## News

Dee Parham Training Stable reports that a ladies group instruction riding class is being held in their arena on Saturday mornings 10:30 a.m. The class is being instructed by Bobbie Hatfield, well known for the many fine equitation students she has produced. The group now consists of both English and Western riders which will be split into two classes as soon as there are enough riders to form two groups. Riders must furnish their own horses and bring a sack lunch for the coffee and lunch session that follows. For further information call Dee Parham Training Stable, TH 5-3067.



**COMO TUNA**, Thoroughbred stallion imported from Chili, was recently purchased by Dr. John Siemens, Spanaway. He is by Cockney, rated number six among the top 10 horses in Chili. Sister Ann, Como's dame, won almost 5 million pesos during her racing career. Foals sired by this stallion are eligible for registration in The American Stud Book provided they are out of registered thoroughbred mares and all usual registration requirements are fulfilled.



**SIMCOE'S APACHE SKEEN**, consistent 3 year old halter winner, is now in training for Costume and Western Pleasure classes at Dee Parham Training Stable, Puyallup, and soon will be ready for the 1968 show season. The mare is from Simcoe's Skenna and was sired by Apache King S.

### "Horsemen's Market Place"

Classified Directory  
Board - Trainers - Breeders  
Outfitters - Feed Dealers

<b>AT STUD</b> Madsen Arabians <b>STALLIONS AT STUD</b> Rt. 1 Box 1297 Spanaway VI 7-7721	<b>Horseshoeing</b> PROMPT RELIABLE SERVICE <b>HORSESHOEING</b> VI 7-2449 FLOYD A. GREEN P.O. Box 142 Puyallup, Wash.	<b>Training</b> BILL JACKSON BREAKING-TRAINING VI 7-7854 Rt. 1 Box 186B Eatonville
<b>Feed Dealers</b> WALLER ROAD FEED 7710 Waller Road Fisher and Alber's Feed Hay - Grain - Tack Vitamins - Vet Supplies LE 7-5552	<b>Tack</b> TACK SUPPLIES SAVE AT Grange Supply 10625 Pacific Ave. LE 1-5777	<b>Outfitters</b> The Bunkhouse COMPLETE LINE OF TACK & WESTERN APPAREL 12605 Pacific Ave. Tacoma, Wa. 98445 LE 7-5510

Support Times Journal Advertisers - It Pays!

**ALBERS FEED**  
Open Sunday  
**The Farm Boys**  
112th Canyon Rd.

We can't shoe your horses  
BUT  
We can shoe your cars - trucks - trailers  
**TINY'S TIRE SERVICE**  
108th & Pacific Ave. LE 1-4535

**LOGAN Feed & Livestock**  
Rt. 1 Box 1112 Spanaway  
VI 7-7578

**Boarding - Training**  
DIGGERS STABLES  
HORSES BOARDED  
Rt. 2 Box 2254 Spanaway  
VI 7-2789

**Fencing - Hardware**  
Everything In Hardware For The Horseman  
Fencing tool!  
South End Hardware  
S. 185th & Pacific Spanaway

**STECKER'S STABLES**  
New Location  
2021 - 176th St. East  
Spanaway  
LE 1-3126  
Watch For Our Grand Opening

**BOARDING-BREAKING-TRAINING-RACE TRACK-ARENA**

## MARS STABLES

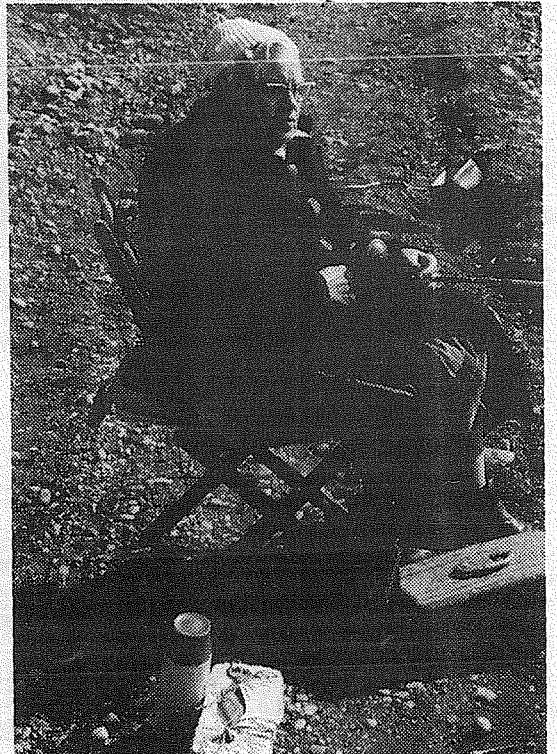
DON LINDQUIST-TRAINER

TH 5-1231      11919 144th E.  
Puyallup, Wash.

**LE 1-4555**  
**RODEO CUSTOM SHOP**  
Dean & Dodie Vosburg  
Complete Saddle Repair Shop  
Western Wear  
English Tack & Togs  
164th & Pacific  
Spanaway, Wash.

**Board-Train-Riding Lessons**  
Also At Stud  
S-Will-Dee. . . . . Appaloosa  
Marion's Dice. . . . . Quarter Horse  
**THUNDER'S KEMOSABE IS HERE**  
We have Arabian; Quarter Horses, Appaloosa, Walking Horse Stallions. A few breedings available on these fine horses.  
Visitors Always Welcome.  
VI 7-2881  
George Karr  
Tacoma Unit #1 Stables  
1 Mile East of Pacific on 176th

## ...An' Th' Livin' Is Easy...



**FISH ARE JUMPIN'**. Opening day brought out a record number of anglers according to game department officials, including these young at heart oldsters at Spanaway Lake. They came prepared to stay all day if need be, stocking up with coffee and sandwiches and a comfortable stool.



## Bethel Band To Compete In Band Concert At TCC

Bethel High School Band, directed by Glenn Hull, will be one of 19 bands from 16 high schools to compete at the West Central District Band Concert, April 27, at Tacoma Community College. The Concert is under sponsorship of the Western Washington Music Educators Association.

Judges for the contest will be Walter Welke, director of bands and professor of music at the University of Washington; Don McCaw, conductor of the Grays Harbor Symphony; Don McCammack, director of bands at Portland State College; and Jerry Bayne, supervisor of music for Highline Public Schools.

Robert H. Dezell, of the TCC music faculty, said the public is invited. The free program will begin at 8:30 a.m. in the Giardrone Fine Arts Building and the Little

### Theater.

Other bands competing, with their directors, include: Lincoln, V. R. Jowders; South Kitsap, Port Orchard, Gene Huber; Sumner, Eric Nelson; Tumwater, Raymond Seegers; Mount Tahoma, Edward Anderson; West Bremerton, William E. Bissell; Stadium, Jack Lloyd; Wilson, Robert Main; North Kitsap, Poulsbo, John A. Castleman; Central Kitsap, Silverdale, R. Pederson; North Thurston, Lacey, Larry F. Price; Tahoma, Maple Valley, Ed Monger; Foster, Seattle, R. J. Schazzenbach; East Bremerton, R. E. Norton; and White River, Buckley, Gary J. Cleasby.

Cadet bands from Foster, Bethel and Stadium will also take part.

## Talent Galore!



SOME TOP NOTCH entertainment has been planned for the Wildwood Elementary School PTA talent show which begins at 7:30 p.m. Friday at the School. "A Lei of Talent" is the theme chosen by co-chairmen Phyllis Kriese and Toni Paul. Sixteen acts will be presented including (left to right) hula dancer Tanya Kriese, sixth grader Ted Johnson who is a member of "The Cracked Coconuts" group and acrobatic dancers Tammy Caple and Kirk Thorndike. Young Thorndike is a seventh grader at Keithley Junior High School. Master of ceremonies will be Warren Hunt. Pie and coffee will be served following the show.

### ENTERTAINMENT

1 P.M. and 7:30 P.M.

Open to Public

3508 McKinley Ave.

## Where To Buy INSURANCE



### INSURANCE

Military - Home - Business

LE 7-4904

Auto Fire Life Bonds

IRENE CLEMENS

Agency - Parkland  
10329 Pacific Ave.

## BOWLING 30¢

SATURDAYS UNTIL 7 P.M. - SUNDAYS ALL DAY

35¢ GOOD ANYTIME LANES ARE AVAILABLE UNTIL MAY 15th, 1968 for Summer League Bowlers - Call Now or Come In and Sign Up.

TEAM AND LEAGUE OPENINGS

FOR THE 1968-69 WINTER SEASON

LEAGUE BOWLING FEES, DAYTIME \$1.50, NIGHT \$1.65

LE 7-6012 PARADISE BOWL 108th & Pacific

## Harmony Lodge Slates Banquet

Harmony Lodge Scandinavian Fraternity of America, will celebrate its 42nd anniversary Banquet on Friday at 6 p.m. April 26th at V.F.W. Hall 20th, So Union Streets.

Mrs. Arvilla L. Dabroe is general chairman and will also be M.C. for the affair. Mayor A. L. Rassmussen will bring greetings from the City of Tacoma. Mr. William Sherwood will render selections on the organ.

Speaker will be Paul O. Anderson managing editor of the Tacoma News Tribune.

Harmony Lodge Charter Members will be honored and seated with other honored guests.

Following the banquet and program the Harmony Lodge Drill Team will give a short exhibition drill. There are 22 members in the team and six ladies in costume.

Dancing and games will follow.

Reservations must be in immediately. Call Vix Edlund MA 7-0039 or Eloy Johnson MA 7-1845 or general chairman Arvilla L. Dabroe MA 7-4060.

## Faculty Club Sets Spring Carnival At Spanaway School

The Family Faculty Club of Spanaway School will present its annual Spring Carnival from 5-9 p.m. Friday, May 3rd, in the Spanaway School Gym.

Features will include a White Elephant Sale, Cake Walk, Mexican Food, games, novelties, etc. Fun for all ages. Everyone is cordially invited to attend.

## 4-H Fun Night Set At Grange

Pierce County 4-H members and leaders are planning their annual 4-H Fun Night. It will be held Saturday, April 27, from 7:00 until 11:00 p.m. at Fruitland Grange Hall.

There will be a carnival for the younger boys and girls, and the Senior 4-H'ers are sponsoring an open dance for the older youth.

Proceeds from this event provide ribbons for demonstration and meal preparation contests, 4-H member and leader grants to State 4-H Conference at Pullman, and fees for National trip winners.

The Fun Night is open to the public.

**Donna's House of Beauty**  
Evenings By Appointment  
ALSO  
Wigs and Wiglets  
16118 So. Park LE 1-6811

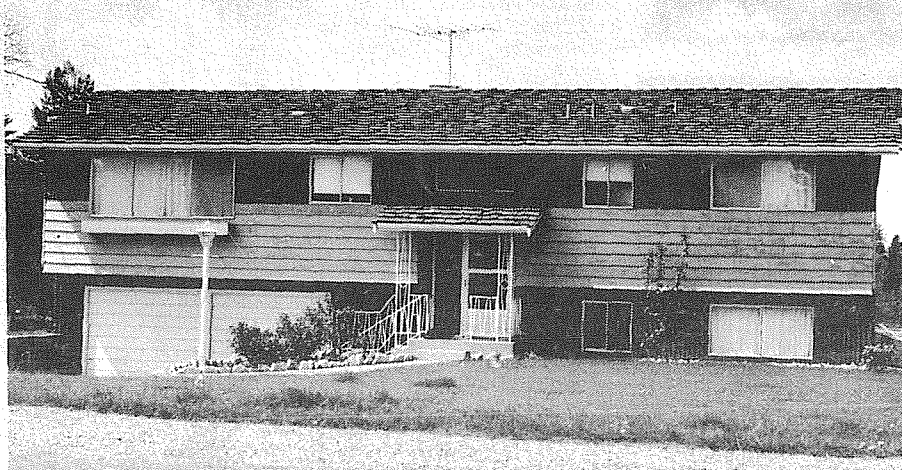
**Penny's Donutville**  
**LUNCH**  
Burgers - Fries  
Shakes  
Hourly Fresh Donuts  
TO GO  
Hours: 7 a.m.-9 p.m.  
Thru Fri.  
Til 6 p.m. Sat.  
GR 2-9868  
TUE-WED ONLY  
15c off on any order when customer has ad  
9201 Pacific Ave. (Next to Wigwam)

**Angelo's PIZZA HOUSE**  
**ORDERS TO GO**  
Featuring top sirloin and American dishes, spaghetti, rigatoni, meat balls, sausage, ravioli, beer and wine.

Choice of Pizzas  
cheese & tomato  
anchovie  
mushroom  
Italian sausage  
pepperoni  
tuna  
bacon  
peppers  
olive  
hamburgers  
ham  
salami  
onion

LE 7-7233  
14102 PACIFIC AVE.  
PARKLAND  
CALL AHEAD, IT'S PIPING HOT ALL THE WAY HOME  
PICK UP A BOX, PAIL, BUCKET OR A BARREL

## If This Is Your House...



You Are A Winner! \$7  
This Week's Jackpot is

Each week our photographer takes a random picture of a home in the Times Journal coverage area. If you can identify the pictured home as yours, you can claim the jackpot.

Winners receive Times Journal Trade Bucks, redeemable in merchandise or cash at the following businesses.

**ARMSTRONG'S USED CARS**  
11009 Pacific Ave.

**PIERCE COUNTY REFUSE**  
13502 Pacific Ave.

**ANDERSON LUMBER**  
9813 Pacific Ave.

**MILLIE'S STYLETTE BEAUTY SHOP**  
228 169th E.

**IDON'S WIG SERVICE**  
11214 Pacific Ave.

**PARKLAND LIGHT & WATER CO.**  
404 Garfield St.

**ELMHURST MUTUAL POWER & LIGHT CO.**  
120 So. 132nd

Winner Must Claim Jackpot Before 5 p.m. Tuesday following date of publication.



# County

Managers of Pierce County adult slow pitch teams are keeping an eye on the calendar for the rapidly approaching April 30 deadline date for entering the pre-season tournament and league play.

All teams which intend to enter leagues supervised by the Pierce County Park Department and the single-elimination pre-season slow pitch tournament must submit the \$15 entry fee and legal team roster to the league office, 735 County-City Building, by 5 p.m. on April 30.

Tournament play will begin Saturday, May 4, and league games are scheduled to begin May 20 for all adult slow pitch teams.

### RECREATION CALENDAR

**TUESDAY** — County-City girls softball league meeting, County-City Building, Room 741, 7:30 p.m.

**SATURDAY** — County-City girls softball team practices begin.

**Tue., April 30** — County-City adult baseball league meeting, County-City Building,

Room 741, 8 p.m.

**Tue., April 30** — Entry deadline, County-City adult softball and slow pitch leagues and pre-season tournament, \$15.

**Sat., May 4** — County slow pitch tournament begins.

**Sun., May 5** — City slow pitch tournaments begin, Peck Field.

**Tue., May 7** — Final entry deadline, County-City adult softball and slow pitch leagues, \$15.

**Mon., May 13** — City adult softball and slow pitch league play begins.

**Tue., May 14** — Entry deadline, County-City golf team leagues, \$10.

**Mon., May 20** — County-City golf team league play begins, L. Spanaway.

**Mon., May 20** — County adult slow pitch league play begins.

**Tue., May 28** — Entry deadline, County-City boys and girls leagues, County-City Building, league offices, \$15 and rosters.

## Cards Host Warriors Tomorrow

Lakes High School opened up the initial round of PSL Southern Division diamond play with a win as its baseball club downed Franklin Pierce 4-2 on Tuesday, April 16. Eight Cardinal batters swung out against the Lancer's pitching, handled by Gary Tomasch. Glen Harkey went the distance for F.P., allowing five hits, two of them to Tomasch.

Franklin Pierce baseballers will entertain Clover Park tomorrow night and will travel to North Thurston Friday night for a non-league tilt.

The Franklin Pierce cindermen collected 95 points to run over Tye 95-32 in a league track meet last Friday afternoon. George McCue and Steve Slavens led the Cards, McCue capturing the discus and shot events and Slavens turning a 10 flat 100, along with winning the 220 yard dash. Slavens also sprinted a leg for the winning 880 relay. The Card track team will enter the Highline Relays at Highline Friday night, the Shelton Invitational Saturday, and will host area cinder squads in the F.P. Invitational Tuesday, April 29.

## Spanaway Powderpuff Derby

**SPANAWAY** — With a little help from Mother Nature, the Spanaway Speed Queens will again attempt to make their 1968 Powderpuff debut Sunday, April 28th. The rains came by the bucketsfull at their initial try two weeks ago. Reliable sources claim the field could reach as many as 20 cars to greet starter Lucky O'Neil's green flag. How many are still running after the first turn is anybody's guess.

In last Sunday's ARI superstock action, both Ken Longley and Jackie Kuper gave all indications they're ready to race, Longley finally getting a checkered flag in the class "A" 50 lap main in his 92 buzzbomb. Kuper, rolling out a brand new number 1 car that looked like it just came from the dealer's custom showroom, displayed a great deal of acceleration as he captured the trophy dash and heat race, but had to settle for 3rd behind Don Hall and Longley in the 50 lap "AA" main because of a burned piston.

Dick Williams supplied a few anxious moments in the 10th lap of the "A" main as his 12 car lost a wheel coming out of the east turn and wiped out about 15 feet of fence on its way through gasolene alley.

Steve Kiser had to drop out of the race when his 63 car also threw a shoe in the main. Longley was trailed over the finish line by Larry Davis and Dave Rogers.



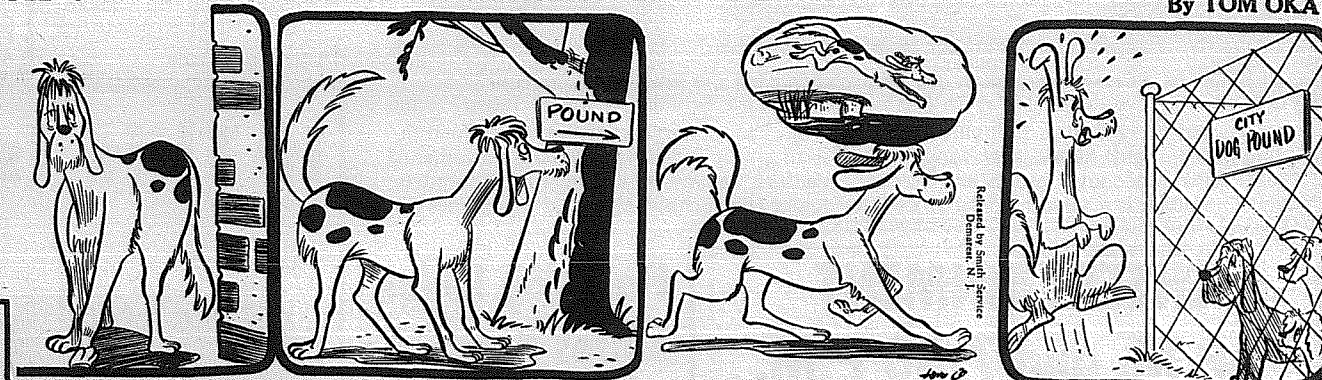
**FENDER TAG.** It took Bob Short (17) less than one lap to supply all the action necessary for the above photos, as the lead footed stock pilot tried to duck in low on the groove, lost it, then spun high on the corner just missing Don Hall (2).

**AA main event (50 laps)**—1, Hall; 2, Longley; 3, Kuper.  
**A main event (50 laps)**—1, Longley; 2, Larry Davis, Seattle; 3, Dave Rogers, Tacoma.  
**First AA heat (eight laps)**—1, Fred Miles, Vashon Island; 2, Bob Bull, Seattle; 3, Chuck Chambers, Seattle, 2:30.51.  
**Second AA heat (eight laps)**—1, Kuper; 2, Hall; 3, Bob Short, Tacoma, 2:16.57.  
**First A heat (10 laps)**—1, E. R. Twedor, Victoria, B.C.; 2, Bruce Liner, Tacoma; 3, Joe Holden, Seattle, 3:14.12.  
**Second A heat (10 laps)**—1, Longley; 2, Steve Kiser, Renton; 3, Fred Sirain, Orting. No time listed.  
**AA-B trophy dash (four laps)**—1, Pete Burton, Seattle; 2, Miles; 3, Larry Guldry, Tacoma, 1:16.81.  
**A trophy dash (four laps)**—1, Kiser; 2, Harold LeGault, Tacoma; 3, Dave Rogers, Tacoma, 1:11.89.  
**B trophy dash (four laps)**—1, Art Pettengill, Tacoma; 2, Twedor; 3, Holden, 1:18.50.

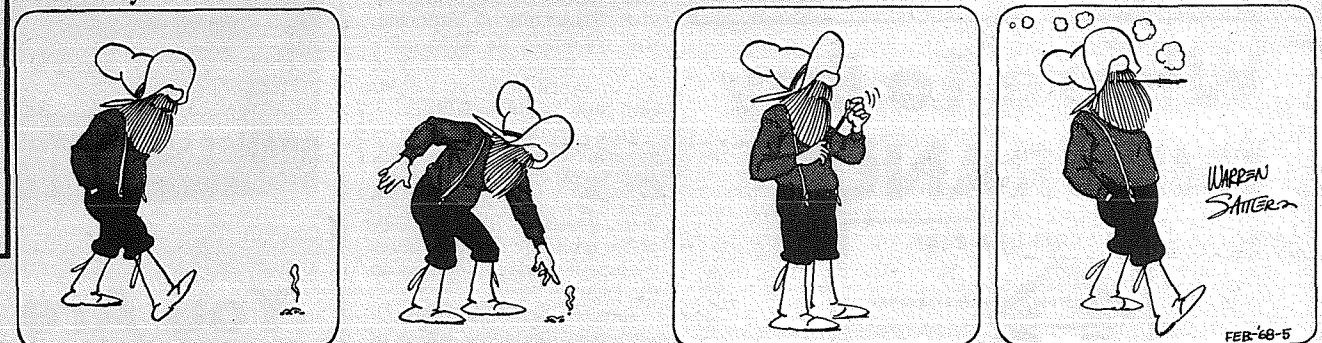


## OUR WEEKLY COMICS

DEEMS

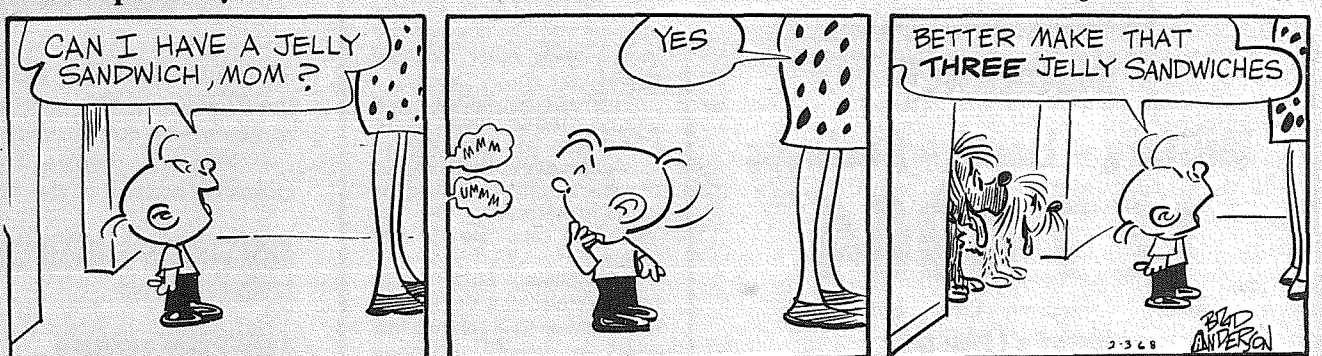


Grubby



By Warren Sattler

Grandpa's Boy



By Brad Anderson

Rural Delivery



By Al Smith

**BROOKDALE Lumber**  
 13802 Pacific Ave.  
 LE 7-8669

**MAKE US YOUR FENCING HEADQUARTERS**

Choose from a wide selection of fencing materials. Whether you want privacy or just decorative fencing we've got the answers, come see!

**Smith Built**  
 CAMPERS & CANOPIES

**CUSTOM QUALITY**

**14606 Pacific Ave.**  
 Phone LE 7-8022 Tacoma, Wash.

**SPANAWAY SPEEDWAY**

2 Miles East of Pacific Ave On 159th, Tacoma

**1968 DEBUT POWDERPUFF DERBY**

Bigger and better than ever!!

**SUNDAY, APRIL 28TH**

Plus a full slate of ARI SUPER STOCKS including HEATS - DASHES - MAINS

**TIME TRIALS 1:30 RACING 3 PM**



# CLASSIFIED ADS

## Call LE 7-0223 For Want Ads

12/90

### 1 Misc. For Sale

SINGLE BOX SPRING, night stand. Rabbits \$1. Rabbit cages. LE 1-5718. 68-128

WRINGER type washer and mangle good condition. LE 7-4668. 68-124

65 COMET 404 4 door Sedan, standard 6 cylinder, excellent. LE 1-2907. 68-115

**Reconditioned Water Pumps \$25<sup>00</sup> & Up**  
**GRANGE SUPPLY**  
LE 1-5777

100 per cent human hair wig, hand tied. Brunette. \$70.00. Woman's suede leather riding jacket. Good condition, small size. \$20.00. Haywagon and heavy work harness. \$75.00. Call LE 1-5999. 68-121

3 SETS wooden frame Army bunk beds. \$12.50 each. TH 5-2001.

18" ROTARY MOWER, \$25. Auto washer, \$15. TH 5-5909.

Original Designs Custom Made Fashions  
**Boutique 49**  
Specializing in Hard to Fit Sizes  
2314 - 168th St. East Spanaway  
LE 7-6440

BEAUTIFUL maple stereo. Like new. Cost \$379. Sell \$150. TH 5-6037.

PICKUP canopy - fits most long wide box pickups. \$100. TH 5-0917.

1966 EVINRUDE Fastwin 18, controls - \$275. 24" girls bicycle, \$15. TH 5-9140 evenings.

'57 OLDS - give me an offer. Singer buttonhole attachment and other attachments. Table top washer. TH 5-1039 after 5:00.

CHILDRENS pedal tractor, pedal car and tricycle. TH 5-7129.

'63 ARISTOCRAT Hi - Liner 16". Sleeps 8. \$1300. '65 Suzuki 80 \$165. TH 5-6128.

UNDERWOOD portable typewriter. Like new. TH 5-0004.

### 1 Misc. For Sale

**Hot Water Tanks**  
Come in and let us show you how to save  
**\$50.00**  
**Magdanz Hardware**  
11401 Pacific Ave.

1-600x13 B.F. GOODRICH Silvertown 4-ply tubeless; 1-650x13 U.S. Royal Low Profile 4 ply tubeless; and 2-650x13 Penny's Foremost Custom Nylon 4 ply tubeless tires. Many miles wear left. These were an extra set for a company car that we have sold. \$3.50 each. See at the Northwest Flyer office in the Times Journal Building, 14620 Pacific Avenue; Parkland, Wash. 68-101

YARDMAN silent mower, like new. Also traverse rods and stepladder. TH 5-4138.

PILED chicken fertilizer - \$1.00 a yard. TH 5-6040.

**Trophy Storm Doors**  
Heavy Duty Aluminum Full Piano Hinge Standard & Special Sizes  
Also Storm Windows Repair Service Available  
Manufactured By  
**PARKLAND DOOR INC.**  
318 E. 96th GR 4-7011

ARCO Ideal coal, wood, hot water furnace. U-haul, \$20. LE 7-8229.

HOMKO power reel mower - \$25. Craftsman riding mower - \$50. TH 5-5704 after 5 pm.

11x13 TENT with sideroom. Lantern, camp heater, \$50. TH 5-5676.

**Parkland Ceramics**  
Greenware, Gifts and Supplies. Firing priced by firing chart by the piece. Free general instruction  
1303 S. 117th LE 1-0823

FORD tractor, mower, plow, harrows, scraper and 2-wheel trailer. TH 5-8751.

LEATHER Couch and chair, chair coffee table, end tables, with lamps \$145 or best offer. GR 2-7735 after 5 p.m. 68-111

### 1 Misc. For Sale

DRY chicken fertilizer. 6 sacks \$3.50. LE 1 - 1722. 68-64

Wedding Announcements & Accessories  
**DAVIS OFFICE SUPPLY**  
12147 Pacific Ave.  
LE 1-1740

### 2 Autos For Sale

60 COMET wagon excellent condition. Best offer LE 1-5718. 68-109

### 3 Trucks, Equipment

1 1/2 TON Chev horse truck with new engine. \$350. TH 5-3094.

### 4 Boats, Equipment

18' MANSFIELD cabin cruiser, trailer, 35hp Johnson electric start. \$1395. LE 7-6600.

### 6 Musical Instruments

120 BASS accordion. Very reasonable. TH 5-1590.

### 9 Animals For Sale

10 1/2 YEAR old gelding. General pleasure horse. LE 7-8888.

BABY Mallard ducks - excellent slug eaters. \$1.50, 3 weeks. UN 3-7646.

LYNNDALE ponies. Reg. Welsh. UN 3-4677.

LABRADOR puppies. Excellent hunters. TH 5-0634.

QUARTER horse yearling filly, gentle \$100 Waggoner breeding. LE 1-3587. 68-125

### 11 For Free

HORSE manure fertilizer, U-HAUL. LE 1-5999. 68-103

### 15 Mobile Homes

1966 10x50 CHAMPION, all electric, furnished. Excellent condition. \$1100 equity. LE 7-8888.

### 16 Trailer Spaces

MOBIL HOME SITE 200x165 secluded, private, surrounded by trees. \$4250 or best offer. Or with 1966, 2-bedroom 10x55 Marlet Colonial \$9450. LE 1-3373, 13522 50th Ave. E. Tacoma. 68-130

### 10 For Sale

**TREASURE HUNTERS COIN HUNTERS**  
Metal Detectors for coins, beachcombing, ghost towning, prospecting, also Treasure Maps and Books. Call LE 1-1736 between 5 and 10 p.m. for free demonstration. 10305 Waller Road.

HAVE an alcoholic problem? GR 5-1093 or VI 7-7715. Write box 2265 Parkland. 67-194.

### 21 Wanted To Rent

**HOME VACANT**  
We desperately need good rentals \$80 to \$150 per month  
CALL NOW  
Let us handle your worries  
**SUBURBAN REALTY**  
11302 Pacific Ave.  
LE 7-8638 or LE 7-6896

### 23 Help Wanted

EXPERIENCED waitress that would like to work Saturday & Sunday, 21 to 30 years old. VI 7-7379. 68-126

DRIVER for car & 18' Travel Trailer from Florida to Tacoma. References required. VI 7-7379. 68-127

EXPERIENCED salesladies needing extra money call TH 5-4336.

GONE ROMANCING. "Twiggy" one-year-old female seal point Siamese. Brazen husky wearing only a grey collar with a bell when last seen near 146th and Pacific Ave. If found send her home. All is forgiven. Kids miss her. Phone Jack Brown, days LE 7-0223 or LE 7-0473 evenings. Thanks. 68-74

### 27 Misc. Services

For All Your Electrical Wiring & Heating Needs Replacement Elements for All Type Electric Heat Free Estimates  
**Goedert's Electric Heat**  
753 S. 108th St.  
LE 1-6711

EXPERT alterations, mens & womens fast service and reasonable. LE 1-3506. 67-186  
FREE Clothing have a Beeline Party. For information call LE 1-0254. 68-119  
DOZING - LE 7-4934, GR 4-5663. 68-129  
PIANO TUNING. \$11 Repair. George Messegue. JU 8-7092. 68-40

REMODELING, leveling, block foundations, cabinets, free estimate. Reasonable. LE 7-3550. 68-48

TRACTOR work, plowing, discing and cultivating. TH 5-6896.

**28 Building Services**

**29 Land Services**

**30 Repair Services**

**31 Animal Services**

**32 Licensed Child Care**

**33 Personal**

**34 Wanted To Rent**

**35 Home Vacant**

**36 Personal**

**37 Personal**

**38 Personal**

**39 Personal**

**40 Personal**

**41 Personal**

**42 Personal**

**43 Personal**

**44 Personal**

**45 Personal**

**46 Personal**

**47 Personal**

**48 Personal**

### 19 For Rent Or Lease

OFFICE Space - Boat and Trailer space for rent. Office \$50 per month. Lights, heat, water and garbage furnished. Covered boat and trailer spaces, \$10 per mo. Phone LE 7-0223 days 10-4. 67-164

### 12 Real Estate For Sale

**Listings Wanted**  
Buying or Selling Real Estate Service Call  
**Devereaux Realty**  
12152 Pacific Ave. LE 7-8658

50 ACRES. Two homes for sale. By owner. Phone after 6:30. 893-5104.

5 ACRES. Close in. Will divide. \$15,000. TH 5-6040.

SUMMIT AREA, lovely 3 bedroom home on wooded lot, large entry, separate living room with fireplace, carpeting, large family kitchen with lots of cabinets and built-ins, 2 large baths, utility off double garage, gas heat. Only \$19,000. Call TH 5-3239.

### 18 Real Estate Wanted

WANTED to Buy 1 to 20 acre site. VI 7-7515. 68-93

### Legals

NOTICE OF PUBLIC HEARING BEFORE THE PIERCE COUNTY BOUNDARY REVIEW BOARD  
NOTICE IS HEREBY GIVEN that the Pierce County Boundary Review Board will conduct a public hearing on a proposal to dissolve the South Suburban Sewer District.

Said HEARING will be held in the Chambers of the Pierce County Commissioners, Room 1046, County-City Building, Tacoma, Washington, on THURSDAY the 2ND day of May, 1968 commencing at the hour of 1:00 P.M.

The purpose of the hearing is to receive evidence relating to all factors recited in Section 17 of the Boundary Review Act of 1967 (Chapter 189, Laws of 1967), to the end that the Board can decide whether to approve, disapprove or modify the said proposal.

BOUNDARY REVIEW BOARD  
By Marlene Ellsworth  
Chief Clerk  
Published April 11, 18, and 25, 1968 in the Pierce County Herald & Times Journal.

IN THE SUPERIOR COURT OF THE STATE OF WASHINGTON FOR THE COUNTY OF PIERCE IN PROBATE No. 77103  
Notice To Creditors  
IN THE MATTER OF THE ESTATE OF BESSIE T. JOHNSON, Deceased.

Notice is hereby given that the undersigned has been appointed and has qualified as Administrator of the estate of the above named deceased; that all persons having claims against said deceased are hereby required to serve the same, duly verified, on said Administrator or his/her attorney of record at the address below stated, and file the same with the Clerk of said Court, together with proof of such service within four months after the date of first publication of this notice, or the same will be barred.

Date of first publication April 18, 1968.  
C. M. Johnson  
Administrator of said Estate  
11024 Pacific Ave.  
Tacoma, Wash. 98444  
Phillip S. Tracy  
Attorney for Estate  
PETERS & TRACY  
11024 Pacific Avenue  
Tacoma, Wash., 98444  
LE 7-0264

Published April 18, 25 and May 2 in the Pierce County Herald & Times Journal.

IN THE SUPERIOR COURT OF THE STATE OF WASHINGTON IN AND FOR PIERCE COUNTY NO. 180978 SUMMONS BY PUBLICATION  
TAMI S. RIGBY, Plaintiff, vs. HAROLD M. RIGBY, Defendant.

YOU ARE HEREBY SUMMONED to appear within sixty (60) days after the date of first publication of this Summons, to-wit: within sixty (60) days after the 18th day of April, 1968, and defend the above entitled action in the above entitled Court, and answer the complaint of the plaintiff, and serve a copy of your answer upon the undersigned attorneys for plaintiff at their office below stated; and in case of your failure so to do, judgment will be rendered against you according to the demand of the complaint, which has been filed with the Clerk of said Court.

This is an action for divorce upon the grounds that defendant has rendered plaintiff's homelife burdensome in the extreme.  
PETERS & TRACY  
By: s / Phillip S. Tracy  
Attorneys for Plaintiff  
11024 Pacific Ave.  
Tacoma, Wash., 98444  
Published April 18, 25, May 2, 9, 16 and 23 in the Pierce County Herald & Times Journal.

ADVERTISEMENT FOR BIDS  
Sealed bids are invited by Franklin Pierce School District No. 402 for classroom furniture and equipment.  
Specifications may be obtained in the District Administration Office, 315 South 129th Street, Tacoma, Washington 98444.  
Bids will be received in the District Administration Office until 3:00 p.m. May 10, 1968, at which time they will be opened and tabulated. The bids will be considered by the Board of Directors at their meeting on May 14, 1968 at 8:00 p.m. Bids received after the time fixed for opening will not be considered.  
The District reserves the right to reject any or all bids and to waive informalities in bidding.  
No bidder may withdraw his bid after the time set for the opening, therefore, unless the award is delayed for a period exceeding thirty days.  
Thomas L. Stephens  
Assistant Superintendent  
Business-Operations  
To be published two consecutive weeks  
April 25 and May 2 1968.  
Published April 25 and May 2 in the Pierce County Herald and Times Journal.

ADVERTISEMENT FOR BIDS  
NOTICE TO BIDDERS:  
Sealed bids will be received by Franklin Pierce School District No. 402 for WATERPROOFING AND PAINTING at the Parkland Elementary School, 121st Street and Pacific Avenue, Tacoma, Washington, 98444.  
Bids for Waterproofing and Painting will be invited at the District Administration Office, 315 South 129th Street, Tacoma, Washington until 4:00 P.M. Friday, May 10, 1968 and will then and there be publicly opened and read aloud. Bids received after the time fixed for opening cannot be considered.  
Specifications, including contract documents, may be examined at the office of the Superintendent of the Franklin Pierce School District and may be obtained there, upon deposit of \$10.00 for each set.  
The full amount of the deposit for one (1) set of documents will be refunded to actual bidders upon return of the documents, unannotated and without marks or annotations within seven (7) days after the time set for opening the bids. Other deposits will be refunded, with deduction for the actual cost of reproducing under the same conditions.  
Each bid must be accompanied by a certified check, cashier's check or bid bond with State Licensed Surety Company as Surety, in an amount not less than five percent (5%) of the largest bid; made payable to the Franklin Pierce Schools.  
No bidder may withdraw his bid after the time set for the opening thereof, unless the award of contract is delayed for a period exceeding thirty (30) days.  
By Order of  
The Board of Directors  
Franklin Pierce School District No. 402  
Pierce County, Washington  
Mr. Thomas L. Stephens, Clerk  
Published Apr. 25 and May 2, 1968 in the Pierce County Herald & Times Journal.

Pierce County's Only Professional  
**AMBULANCE SERVICE**  
Parkland Ambulance and Lakewood-Pacific  
JU 4-3344 LE 7-3322

**RENT TV**  
Portables All Sizes RENTAL MARTS, INC. Color TV  
Parkland Lakewood  
GR 5-3755 JU 4-4100  
9440 Pacific Ave. 108th & Bridgeport

**BUSINESS DIRECTORY**

### Furnaces

**Sheet Metal**  
• Furnace Repair and Service  
• Installations  
**PARKLAND FUEL OIL**  
12002 Pacific Ave.  
LE 7-0256

### Fencing

**FENCING**  
Designers and Builders  
EXPERT WORKMANSHIP  
REASONABLE PRICES  
Easy Monthly Payments  
**VAUGHAN'S**  
6402 S. Tacoma Wy. GR 5-2622

### Top Soil

**NEWBURY'S**  
Dozer Service  
LE 7-7455  
Sandy Loam Bank Run  
Mixed Soil Fill Dirt



**FROM OUR**  
**Correspondents**

**Collins News**  
By Mrs. James Wystrach  
LE 7-1466

A combination housewarming and welcome back get-together was held last Friday at the home of Mrs. Jack Hovey. Gen has been absent from the community for a few years and it is nice to have her and the family back.

The Hovey's have a son, Gary, attending Morris Ford Jr. High; a daughter, Melanie, at Collins and a son, Chuck, still at home.

Those in attendance at the party were Mmes. Janet Bac-cus, Marge Brazeau, Ruth Wilcher, Dolores Baskett, Pat Stahl, Margaret Imhoff, Virginia Leegard, Hannah Han-son, Ella Mae Earl, Betty Hartman, Vieno Denny and Kathy Wystrach.

Don't forget the annual Tots Club Dance to be held this Saturday at the Sportsman's Chateau. Last minute tickets can be had by calling Diane Haisman at LE 7-8052.

The dance is held each year as a fund-raising event in which the monies raised are used to help the kindergarten, first- and second-graders with

supplies they may need.

The Busy Bees, Handy Maids, and Thrifti Maids Homemaker Clubs from the Collins area will be attending the annual Achievement Day Luncheon this Thursday at the Sherwood Inn.

All Pierce County Home-maker Clubs will be there for a recap of the training lessons given the past year. Some of the lessons included retire-ment, small appliance repair, convenience foods, altering ready-mades, helping chil-dren develop responsibility and the week-long "Home Furnishings Workshop", given for the public in coopera-tion with the County Exten-sion Office.

Homemaker Clubs are open to anyone of any age interest-ed in bettering themselves, their families and-or their surroundings and is a good way to meet new friends.

More information can be obtained by calling Mrs. Matt Manley, county president, at LE 1-2408, or Mrs. Dwaine Bac-cus, Thrifti Maids presi-dent, at LE 7-8288.

**Waller Road**

By Mrs. Verne W. Fogle Le 7-5210

The Grange members of Pierce County will have the opportunity to see the King County Pamona 5th degree team in action at McMillin Grange Hall at 8 p.m. April 26 when they will initiate Pierce County Candidates for mem-bership in Pamona Grange.

Lee Biggs, Pamona Master urges all Granges to bring their candidates. He also issues a special invitation to all Grange members to attend

and show their appreciation to the visiting King County Grange members.

In this exchange program Fruitland Grange's 3rd and 4th degree team will visit the Northside Grange in Seattle to initiate their candidates at 8 p.m. April 23 and the North-side team will initiate mem-bers of the Pierce County Granges at the Benston Grange Hall at 8 p.m. April 23.

**Elmer Larson, Roy**  
**New President Of**  
**Pierce County DHIA**



**Lakewood General**

Mr. and Mrs. Timothy Moe, 806 East 112th, boy, April 13th.

Mr. and Mrs. Dennis R. Ellis, 7232 So. Fawcett, girl, April 15th.

Mr. and Mrs. William J. Schultz, 10702 12th Ave. E., April 15th.

Mr. and Mrs. Dennis Har-die, Route 2, Box 2239, Spana-way, girl, April 16th.

Mr. and Mrs. Roland Kent, 10307 Twinkle Drive E., boy, April 16th.

Elmer Larson, of Roy, is the new President of the Pierce County Dairy Herd Improvement Association. Bert Inglin, Jr., South Prairie, will serve as Vice President, and Joe Sutter, Puyallup, as Treasurer. Willis Wood, Ea-tonville, and Joe Dieringer, Buckley, are Directors. Mrs. Winnie McKinney, Puyallup, is Secretary for the group.

**SUMMER SHOE TIME!**

**Men's, Women's and Kids**  
**Sandals - \$2.99 & up**

**Tennis Shoes - "Keds,"**  
**"Dobies," "Red Ball Jets,"**  
**Mr. Sneakers"**  
**\$2.99 & up**

**PAUL'S SHOES**

**161st & Pacific Ave.**  
**Open Daily 9 to 9 - LE 7-0552**  
**Open Sat. & Sun. Til 6 p.m.**  
**Always Save \$\$\$ at Paul's**

9 a.m. - 10 p.m.  
7 DAYS  
A WEEK

**BARGAIN BASKET**

16618  
Pacific Ave. S. Spanaway  
LE 7-3371

No Sales To  
Dealers

WE RESERVE THE  
RIGHT TO LIMIT  
QUANTITIES

We Carry A Complete Line Of Sacked Feeds - Presto Logs

**We Are Locally Owned & Operated**  
**HELP YOUR BUDGET**  
**WITH THESE SAVINGS**

**PRICES**  
**EFFECTIVE**  
Apl 25-26-27  
Thur-Fri-Sat

Red Dart  
**PEAS**  
8/\$1  
303  
Tins

HI-C  
**ORANGE DRINK**  
4/\$1.00  
46 oz.

'Tidy Cat  
**Cat Litter**  
10 Pound Bag  
**39c**

Funny Face  
Pre Sweetened  
**DRINK**  
Asst'd. Flavors  
3/25c

**Nalley**  
**Pancake**  
**SYRUP**  
21 oz. **29c**

Sunshine  
**Vienna Fingers**  
or  
**Nut Goodies**  
2/89c

Armour  
**DOG FOOD**  
Chicken, Liver & Beef  
5/\$1.00  
15 1/2 oz Tins

PRIDO  
Shortening  
3  
Lbs. **69c**

CHIFFON  
Detergent  
12  
oz. **23c**

Mission  
**Macaroni & Cheese**  
**Dinners**  
3/49c

**BLOCK ICE**      **Produce**      **PARTY ICE**

<b>SOLID HEADS</b> <b>LETTUCE</b> 2 <b>25c</b> FOR	<b>CHIQUITA</b> <b>BANANAS</b> 2 <b>25c</b> LBS.	<b>RADISHES</b> <b>GREEN ONIONS</b> 2 <b>15c</b> BUNCHES	<b>CELLO</b> <b>CARROTS</b> <b>10c</b> EA.
---	---	---	---

Everyday Low Meat Prices . . . 25 lb. Locker Boxes \$14.95

<b>Rump</b> <b>ROAST</b> <b>69c</b> Lb.	<b>Bar S</b> <b>WIENERS</b> <b>49c</b> Lb.	<b>Cube</b> <b>STEAKS</b> <b>98c</b> Lb.
<b>Slab</b> <b>BACON</b> <b>59c</b> Lb.	<b>Beef</b> <b>STEW</b> <b>69c</b> Lb.	<b>Ham</b> <b>SHANKS</b> <b>29c</b> Lb.