

NOV 10 1967

PACIFIC LUTHERAN UNIVERSITY

P.L.U. Library  
Tacoma, Wn. 98447

# Area Voters Decide

See Page Two

Pierce County Herald and

## The TIMES JOURNAL

Vol. 23 No. 45

November 9, 1967

Price Per  
Single Copy

**10¢**

### New Buildings Add to Local Skyline



EARL DRYDEN, National Bank of Washington, looks over construction of the new Parkland Banking Center at 112th and Pacific Ave. The 14,000 sq. ft. building

is expected to open in about one year. More construction page 5.

# Unofficial Election Results

## Bethel Voters Approve M&O, Bond Issue, Defeat Swim Pool

Bethel School District voters gave solid support to the \$320,000 annual maintenance and operation levy, approved a \$325,000 bond issue, but narrowly defeated a 196,000 Spanaway School project coupled with a proposal to build a swimming pool at the High School.

Proposition 2, which would have renovated Spanaway Elementary School by replacing existing sub-standard classrooms with adequate facilities and built the high school pool, required a 60% yes vote to win. The 1015 yes votes cast in favor of the measure gave a 59.09% yes vote and doomed the levy by a fraction of a percent.

Proposition 3 will build the first phase of a new middle school with the sale of \$325,000 in bonds. The issue passed with a 62.56% favorable vote polling 1103 yes ballots to 660 no.

Proposition 1 will provide \$320,000 to meet the district operating expenses, receiving a 68.55% yes vote. The levy received 1201 yes votes to 551 no.

Incumbent school directors Dr. William P. Hauser, and E.W. "Doc" Webster retained their seats, but Webster narrowly stood off the threat of two challengers.

Unofficial tabulations are as follows:

Director District 1	
William P. Hauser .....	826
A.E. Dolfin .....	586
Director District 2	
Fred L. Reno .....	513
Phillip W. Zurfluh Jr. ....	925
Director District 3	
E.W. "Doc" Webster .....	586
Jerry D. Woods .....	471
Darwin L. Myers .....	421
Director District 4	
Don Branson Goodard .....	875
Marvin Antonie .....	605

## FP Residents Pass Two Propositions

Franklin Pierce balloted two propositions and two propositions passed according to unofficial returns tabulated by the school district and the Times Journal.

The unofficial returns showed that Proposition I carried by 2,727, for; and 1,029 against. Proposition II carried 2,327 for; and 1,440, against. Although both were carried by a wide margin of votes, it was the percentage of voters that determined the election. Percentages were 72.5 per cent for Proposition I and 61.8 per cent for the second proposition. For the motions to carry the voting per cent had to be more than 60.

Proposition I was a levy request for \$644,000 (approximately 28 mills) to be used to help pay the costs of maintaining and operating the Franklin Pierce School District for the 1968-69 school year. Money derived from this proposition will be used to pay part of the expenses incurred in running the district, such as textbooks, salaries, library books, utilities, insurance, transportation, instructional supplies, equipment, and maintenance materials.

The second proposition was a levy request for \$23,000 (approximately 1 mill) to be used to replace the wooden bleachers at the Franklin Pierce High School stadium. The old bleachers were torn down after the school board condemned them because they were unsafe.

When the new high school is in operation, all home games for both high schools will be played on the Franklin Pierce Field. The present seating is not adequate for two schools. The bleachers will be concrete with wooden seats.

Students already raised \$7,000 toward the bleacher fund. Part of this money is being used this year to rent temporary bleachers, but it is cheaper to build than to continue to rent bleachers next year.

## Eatonville School Board, Council Results Tallied

Eatonville voters turned out Tuesday to elect new town council members, school board members, and approve school and library measures.

Norma Treadwell, David Williams, and Margorie Butler were town council seat winners. Topping the ballot for school directorships were Donald Stewart, Dave Marchetti, and Leland Bloom.

Voters approved a school request for \$43,925 to pay costs of maintaining the present school program during the 1968-69 school year. The levy carried by 63%, receiving 374 yes votes to 219 no in unofficial returns.

Unofficial Return Tabulations

Town Council Position 1	
Norma Treadwell .....	161
George Smallwood .....	136
Town Council Position 2	
David Williams (unopposed) .....	259
Town Council Position 3	
Marjorie Butler .....	157
Roy L. Durham .....	84
Everett Hale .....	64
Library Maintenance .....	Yes 215 No 67
School Maintenance .....	Yes 374 No 219
School Director District 1	
Donald Stewart (Unopposed) .....	499
School Director District 3	
Leland Bloom .....	354
Fred Guske Jr. ....	264
School Director District 4	
Dave Marchetti .....	328
Louie Miller .....	288

## Sewer District Issue A Close Race At Polls

A close race resulted in possible defeat Tuesday in the fight to bring sewers into the Parkland area when unofficial returns showed, with two precincts yet to report, that residents in the South Suburban Sewer District voted 725 for dissolution and 687 against dissolution.

Legality of the election will be question, because of a law under the McKenzie title, which states that any sewer district operating in an area of more than 4,000 residents may not be dissolved. It is expected that the South Suburban Sewer District will contest the election under this law.

The case could go to the State Supreme Court, disclosed Clayton Peterson, president of the sewer district.

## Eatonville Town Council And Library First Aid Classes In Roy

Norma Treadwell, David Williams and Marjorie Butler gained victory in the Eatonville race for Town Council.

District One: Mrs. Treadwell received 161 votes to her opponent's 136. George Smallwood ran against her.

District Two: David Williams tallied 259 votes running unopposed.

District Three: A three-way race resulted in 157 for Mrs. Butler; 84 for Roy L. Durham and 64 for Everett Hale.

Also passed on the town's ballot sheet, according to unofficial returns, was the Library Maintenance Levy for \$1,500. Results read 215 "Yes" and 67 "No."

Sigurd Asp, Tacoma Fire Department, will hold first aid classes 8 a.m. Saturday November 18 at the Roy Fire Station.

First aid, including use of the resuscitator and mouth-to-mouth resuscitation will be covered.

## Fire Issues Win

Parkland and Spanaway Fire District voters overwhelmingly approved improvements asked for by the firefighters in Tuesday's election.

Parkland area residents balloted to approve a \$250,000 general obligation bond issue to construct a new fire station, add one 1250 gallon pumper, and install an alarm system.

Spanaway voters authorized the purchase of two new 1000 gal. capacity pumpers and elected Emerson Tarpening Fire Commissioner.

Former Fire Chief E. R. "Bud" Larson was the apparent winner over incumbent John Skwirut for the Parkland Fire Commissioner seat.

## Segregation In Tacoma Public Schools Meeting Slated November 10

The State's role and responsibility for the alleviation of de facto segregation and racial imbalances in Tacoma public schools will be subjects of a Tacoma hearing of the Metropolitan Education Subcommittee of the Legislature's Joint Interim Committee on Education on Friday, November 10. According to Subcommittee Chairman, Senator Wesley C. Uhlman of Seattle, the public hearing will be held at the Hilltop Youth Activity Center, South 16th and "K" Streets, and will begin at 9:00 a.m.

Chairman Uhlman indicated that he expected the hearing to last until 1:00 p.m. He expressed the hope that an opportunity would be provided for the Subcommittee members to visit some of the Tacoma public schools in the afternoon.

Uhlman indicated his Subcommittee will seek to find methods to help local districts alleviate de facto segregation. He said: "The State Constitution requires the Legislature to provide equal educational opportunity to all children without regard to race or color. Therefore, when school districts are either unwilling or unable to solve the problem at the local level, the State Legislature has an obligation to become involved."

Uhlman noted that a similar public hearing will be held in Seattle December 15. He stated that he was in complete agreement with earlier testimony provided for the Committee by Seattle Superintendent Dr. Forbes Bottomly, who said: "There is no more important issue today than that of assuring all our citizens equal rights, opportunities, responsibilities and participation in our total society. The schools have a major job in this. We need all the help you (the Legislature) can give us."

The Metropolitan Education Subcommittee is one of eight subcommittees under the auspices of the Legislature's Joint Interim Committee on Education, chaired by Representative Frank B. Brouillet of Pierce County. Members of the Subcommittee are: Senators David E. McMillan, R. G. "Dick" Marquardt, and Wesley C. Uhlman; Representatives Frank B. Brouillet and Audley F. Mahaffey; Reverend John H. Adams, Mr. Fred T. Haley, and Mr. Frank Perkins. Ralph V. Stevens of Seattle is the Subcommittee's Consultant.

## Spanaway Golf Course To Participate In Military Appreciation

Tours, dinners, luncheons, sporting events will be part of the sixth annual "Military Appreciation Week," through Nov. 12.

McChord Air Force Base airmen will be the recipients of the week sponsored by local business men and organizations in the Puget Sound Area.

Each squadron on McChord has been allocated a certain number of invitations for airmen to attend these events. The invitations were given to each squadron according to its size. Many of those invitations are given by the many civic clubs (Rotary, Lions, etc.) in the area. These clubs will invite airmen to their club functions as guests of the club.

Many varied programs are in the final planning stages for Military Appreciation Week. Some of the programs planned are:

Spanaway Golf course will provide free golf passes for their new golf course.

Passes have been secured for the University of Puget Sound-Southern Oregon football game on Nov. 11. Bowling lanes will invite the military to use their lanes by issuing passes. The Tacoma Athletic Commission will invite men to a program and luncheon.

Many groups will be inviting military men with special interests. Examples of these are: the local branch of the American Bar Association and the American Management Society.

Each squadron commander will delegate his supervisors to pick men from his squadron to attend these varied functions.

## JoAnne Matson Wins Three-way FP Board Race

JoAnne Matson received a victory in the three-way race for Director District Four, Franklin Pierce School Board by defeating Al Rainwater and Truman E. Dawn.

Unofficial returns showed Mrs. Matson had 1,249 votes, Rainwater received 1,049 and Dawn tallied 649.

District four was the only contested position on the Franklin Pierce School Board, Emerson N. Matson held the position but did not file for reelection.

### Pierce County Herald and The TIMES JOURNAL

Published weekly at 14620 Pacific Ave., Parkland 98444 and delivered by U.S. Mail and carrier to subscribers. Publishers: Pierce County Publishers, Inc.

Managing Editor .....

Subscriptions \$3.50 per year, \$1.80 six months, or 30c monthly by carrier. News stand price 10c copy.

Qualified as a legal publication under Chapter 213 of the Legislature Acts of the 1941 regular session of the State of Washington

Second Class Postage Paid at Tacoma, Wash.

## SKI Fashions

- Roffe
- White Stag
- Edelwiess
- Meister
- Ernst Engle



TACOMA'S PRO SKI SHOP

OPEN EVENINGS 'TIL 9 P.M.



HI HO

PUYALLUP

HI HO

DUE TO THE MONDAY HOLIDAY, MEAT AD STARTS TUESDAY.

# Beef Sale

OPEN 8 A.M.

CLOSE 11 P.M.

ONLY THE WORLD'S FINEST BEEF CAN BE GRADED "PRIME"

WELL TRIMMED  
**ROUND STEAK**  
79<sup>c</sup><sub>lb</sub>

**RUMP ROAST** 75<sup>c</sup><sub>lb</sub>

**GROUND ROUND STEAK** 79<sup>c</sup><sub>lb</sub>

BONELESS TOP **ROUND STEAKS** 1.09<sup>L</sup><sub>B</sub>

BONELESS SIRLOIN TIP **STEAK** 1.19<sup>L</sup><sub>B</sub>

**BREAKFAST STEAKS** 1.29<sup>L</sup><sub>B</sub>

**SIRLOIN TIP ROAST** 1.09<sup>L</sup><sub>B</sub>

**TOP SIRLOIN** FOR BROILING 1<sup>69</sup><sub>lb.</sub>

LEAN  
**BEEF SHANKS**  
49<sup>c</sup><sub>lb</sub>

RATH'S "BLACK HAWK"  
**BACON**  
59<sup>c</sup><sub>lb.</sub>

RATH'S "ALL-BEEF"  
**WIENERS**  
57<sup>c</sup><sub>lb</sub>

EXTRA FANCY, APPLES  
**RED DELICIOUS** 2 lbs. 29<sup>c</sup>

OREGON UNBLEACHED  
**WALNUTS**  
3 lbs. / 1<sup>00</sup>

VALLEY-GROWN  
**CARROTS** 1-lb. CELLO PACKAGE 10<sup>c</sup><sub>ea</sub>

**FRESH BAKED FRENCH BREAD**  
19<sup>c</sup><sub>LOAF</sub>



LOWEST DRUG PRICES ANYWHERE

- Reg. 1.59 **EXCEDRIN** ..... 89<sup>c</sup>
- Reg. 95c **CREST** ..... 59<sup>c</sup>
- Reg. 1.00 **VO<sup>5</sup> CREAM RINSE** 59<sup>c</sup>
- Reg. 1.49 **SECRET SPRAY DEODORANT** ..... 79<sup>c</sup>
- Reg. 1.09 **VO<sup>5</sup> SHAMPOO** ... 69<sup>c</sup>

HI HO **MARGARINE** ..... 6 lbs. 1<sup>00</sup>

JUST MINUTES AWAY

SWANSON'S  
**TV DINNERS**  
49<sup>c</sup><sub>ea.</sub>

## LIBBY'S FROZEN FOODS

PEAS  
CUT CORN  
CHOPPED BROCCOLI  
PEAS and CARROTS

8 / 1<sup>00</sup>

2-lb. PKG. TATER BOY FROZEN  
**FRENCH FRIES** .... 5/1<sup>00</sup>

PRIZE CROP, MANDARIN  
**ORANGES** 5/1<sup>00</sup>

JUMBO  
**COLD POWER**  
1<sup>49</sup>

HI HO  
EVAPORATED  
**MILK**  
7/1<sup>00</sup>

PRICES EFFECTIVE NOV. 6 THROUGH NOV. 11TH

HI HO

PUYALLUP

HI HO

PUYALLUP

HI HO

PUYALLUP

HI HO

## 20 Year Members To Be Honored

Pierce County Library staff members who have served the county library for twenty years were honored Tuesday, October 31. A pot-luck luncheon in the headquarters building was arranged by other members of the staff to honor Robert Aitken, Miss Margaret Bixby, Mrs. Thelma Perry, and Mrs. Laura Smythe.

A letter of citation from the Pierce County Library Board of Trustees was presented to each of the four by Carl T. Lindgren, vice chairman of the Board. The headquarters staff contributed a plaque carrying the names of the honorees, to be hung in the headquarters building.

As a bookmobile driver for Pierce County Library since 1947, Mr. Aitken is known to library patrons in several areas of the county. Miss Bixby, now coordinator of children's services for the library, is equally well known for her work with children's materials since 1946. Mrs. Perry has been associated with office work at the library headquarters since its organization in 1946. She is now secretary to the director, Mrs. Carolyn Else. A resident of Gig Harbor, Mrs. Smythe's first connection with Pierce County Library in 1946 was as branch librarian in her own community. In 1956 she joined the headquarters staff and has been with the bookmobile department for some years.

Guests for the occasion included Mrs. Robert Aitken, Mr. Willis Perry, and Mrs. Louise Morrison, director of South Puget Sound Regional Library and the Timberline Project.

## Real Estate Training Available At CPEC

For the first time in this area, a fulltime course to train persons in Real Estate will be offered at the Clover Park Education Center, beginning December 4. Dr. Fred Miner, director of the Center, said the course curriculum is the result of more than a year of planning and development by a committee of local and state real estate leaders in cooperation with Clover Park Education Center.

This committee included representatives of the Tacoma Board of Realtors, the Washington Association of Realtors, the Washington Real Estate Commission, Savings and Loan institutions, title companies, mortgage companies, and real estate brokers.

Persons who complete the course will be qualified for employment in positions involving the sale, lease, management, exchange, and negotiation of real estate. Enrollees will be prepared and encouraged to take the Washington State Real Estate license examination near the end of their training.

Instruction will include units in real estate finance, real estate appraisal, real estate law, the business of real estate, sales and advertising, and seminars. The course will be 10½ months in duration, six hours per day.

Brian T. O'Neill has been employed to instruct the course. His experience includes 6 years as salesman and manager of his own real estate firm in the Seattle area. O'Neill said many area real estate brokers have expressed their desire to employ persons with the background of information and training which will be included in this new course.

Men and women over age 18 with high school diploma or equivalent are eligible to apply. An appointment for interview can be arranged by calling the school at JU4-7611. The cost of the course will be \$25.00.

## 'How Good Are Your Schools?' American Education Week Theme

Residents of the Franklin Pierce School District have been issued a challenge to become involved in the business of education.

The Department of Classroom Teachers committee of the Franklin Pierce Education Association has made the challenge as part of its observance of American Education Week, through Nov. 11.

Frank Serviss, chairman of the committee, said, "As stockholders in this, the fastest growing industry in the area, the people are invited to visit a school of their choice and evaluate for themselves the quality of the schools."

The 47th annual observance of American Education Week is emphasizing the theme, "How Good Are Your Schools?" Sponsored by the National Education Association and its local affiliates, the special week is inviting parents and citizens to personally inspect their schools to find out how good the schools are at shaping the character of youth, at providing learning opportunities for all, at meeting the challenge of change, at providing quality teaching, at stimulating lifelong learning, at developing vocational competence and at enriching human life.

In connection with the observance, Dr. Edward E. Hill, Franklin Pierce superintendent, emphasized that the schools are owned by and paid for by the citizens of the community and that the quality of education being offered in the schools is the concern of all citizens.

"Education has changed a lot in the last few years," Dr. Hill said, "and we want every interested citizen and parent to come into the schools and see what kind of an education his children are getting."

Several schools have held open houses in recent weeks so that parents could visit the school in the evening and meet the teachers, Serviss said, but now the education

association is inviting everyone to visit the schools during the day when the educational process is taking place.

"That's where you'll really see what the schools are doing," he said.

In an effort to take the classroom to the community, two elementary school science displays have been set up, one at the Summit Branch of The Citizens State Bank and one at the Parkland Branch of Puget Sound National Bank, Serviss said.

## Law Forum Slated At PLU

A panel of five lawyers moderated by Superior Court Judge Bertil Johnson will discuss questions submitted by local citizens when the Tacoma-Pierce County Bar Association presents the second program of a two-part series of law forums at Pacific Lutheran University Eastvold auditorium Thursday (Nov. 17) at 8 p.m.

The first program in the series was held at the University of Puget Sound Nov. 9. It dealt with problems concerning automobiles, homes and neighbors.

## "CINEMATIC WOOLS" Find Instant Stardom

The fashion beat is strong and winsome in the latest collections of "wool mark" fashions to flash out of the west.

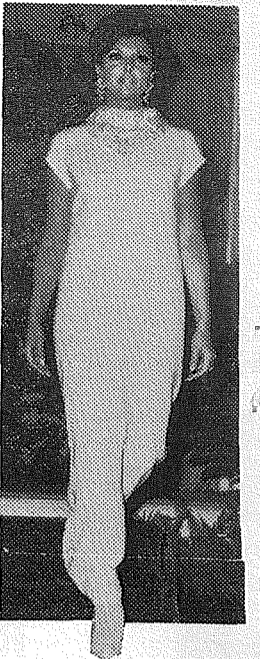
Fabrics emerge as the pace-setters amid styles designed both for Pacific living and peripatetic travel. Featured favorites among top designers include new double-woven, printed pure wool gabardine, double-face fleece, wool velour and melton, boldly plaided pure virgin wool shetland or gossamer sheer, soft pure "Naked Wool" challis.

Fashions in a cinematic mood reflect "wool mark" costumes for such forthcoming films as "Valley of the Dolls," and "Star" by noted designers including William Travilla and Donald Brooks.

Clear, uncluttered silhouettes are emphasized by deftly carved sculptured seam detailing, cascading lengths of "Naked Wool" delicately draped in evening or "at-home" wear, and patterned "wool mark" fabrics in plaid-within-a-plaid effects, jacquard styling, huge cube-checks and costumes reversing from solid to plaid.

The "wool mark"—an internationally established emblem awarded in accordance with strict standards of quality-control to fabrics tested and approved by the Wool Bureau as "the world's best... pure virgin wool"—is a consumer's assurance that fashions purchased are of the finest quality pure virgin wool obtainable.

Many of the "wool mark" costumes appearing in "Star" and "Valley of the Dolls" have been included in the collections of William Travilla and Donald Brooks and will be available at stores throughout the country.



Thursday night's session will focus on "Wills, Probate and Community Property." Bar Association President Elvin Vandenberg said that questions from readers are welcome. Persons with questions are asked to mail them in to LAW FORUMS, 706 Washington Bldg., Tacoma.

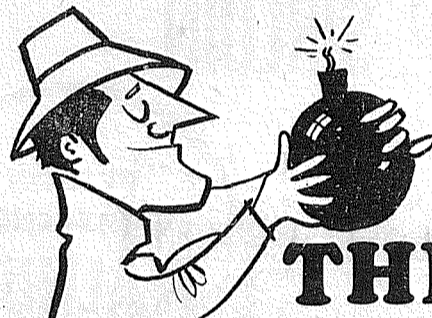
The most interesting questions will be discussed by the panel head-

ed by Raymond Graves. Other panel members are Stanley King, Dale Carlisle, Stanley Burkey and Wallace Hager.

Panel members for the first program at UPS included chairman William Rush, Jerome Combs, Gilbert Price, Robert Peterson and Richard Dolack. Superior Court Judge William Brown served as moderator.

Some of the questions expected to be received will relate to some of these items: risks in absence of probate, agreement among heirs, definition of community property, control of assets, probate procedure, necessity for wills and creditors' claims in probate.

Members of the ladies auxiliary of the bar association are ushering for the programs.



REMEMBER NOVEMBER 9, 1919?

# THE RED UPRISING IN AMERICA HAD JUST BEEN PUT DOWN

What kind of a day was this nearly a half-century ago?

Legislation urging air mail service all the way from Seattle to Chicago had just been introduced in Congress. Red troops were threatening "allied" forces in Siberia, and evacuation seemed imminent. Lieut. John Philip Sousa and his band (65 strong) were appearing in Seattle on the 10th and a nation-wide "Red" uprising on the 2nd anniversary of the Russian revolution was nipped in the bud by simultaneous arrests of key radicals across the country.

Here in Puyallup, W.A. Miller, cashier at Citizens State Bank, had accepted the chairmanship of Puyallup's 3rd annual Red Cross drive (it went over with flying colors), County Commissioner James R. Farrell was busy defending the radical "new" concrete method of paving county roads, and one button union suits were on sale at Gerstmann Brothers Store for only \$2.50 each.

And, on this drizzly day nearly 50 years ago, we here at Citizens were already over 20 years old.

This 70 years of experience is available to you, anytime, when you contact the banking specialists here at Citizens.

**Citizens STATE BANK**

Member: Federal Deposit Insurance Corp.

★ MAIN OFFICE · PUYALLUP  
★ EAST SUMNER OFFICE  
★ SUMMIT VIEW OFFICE  
★ EDGEWOOD-MILTON OFFICE



## Four Hoofs Each 4-H Club News

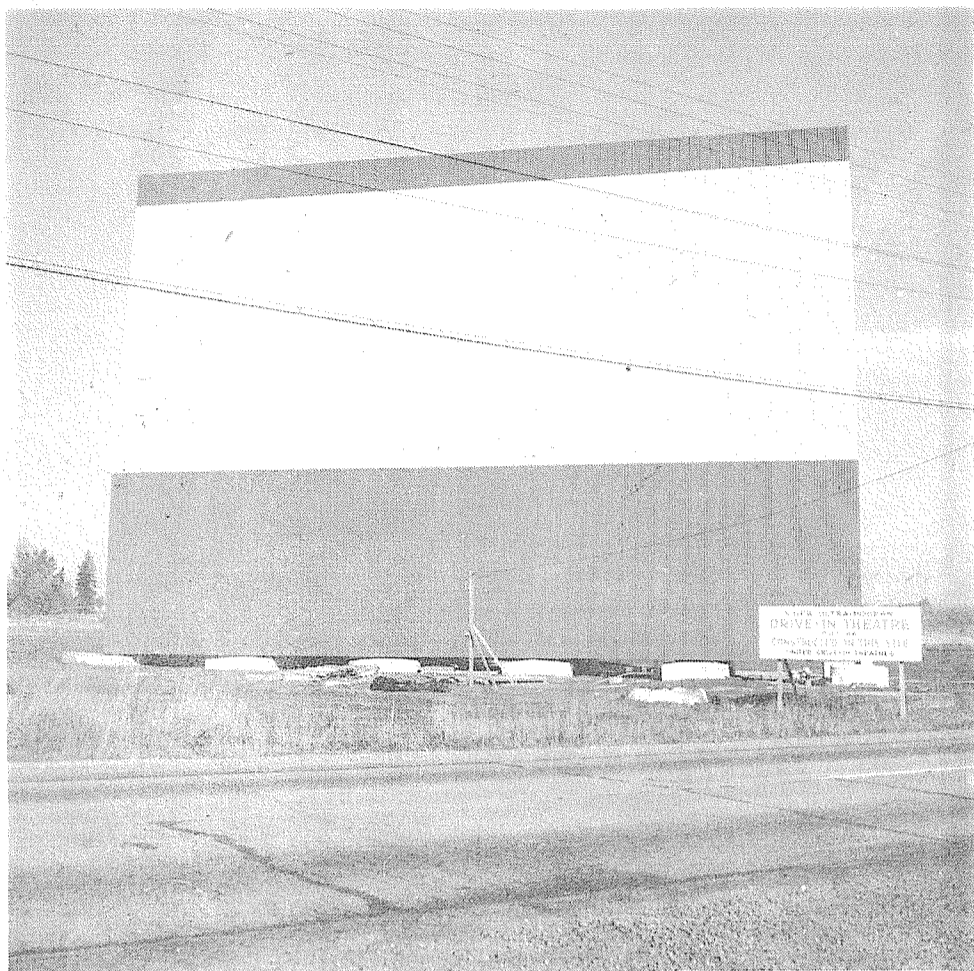
The 5th year of the Four Hoofs Each 4-H Club of Parkland has begun with the promise of another successful year. The officers for this year are: President, Cathy Foster; Vice President, Chuck Earle; Secretary, Jessie Haire; Treasurer, Rod Anderson; New Reporters Denise Atlee and Rod Marecle; and Parliamentarian, Molly Stuen.

On Nov. 4th the club took part in the County's Annual 4-H Achievement Day. The members put on a musical and narration titled "I am a Citizen." Mrs. Dorothy Atlee, leader, was presented a plaque donated by the pony and horse clubs in the county for being extremely active and helpful. Molly Stuen, a Pierce County Fair Princess, was Mistress of Ceremony.

Also receiving recognition were Denise Atlee and Jessie Haire as members of the State Champion Horse Judging Team. Jessie Haire was presented with the King Phelps Memorial Award as the most outstanding 4-H Girl in Pierce County. Denise Atlee received the Kiwanis Award for her outstanding record book in Junior Leadership.

Later this month the club will hold their installation of officers and Club Achievement Day. A pot-luck dinner for parents and members is being planned for this event. Project pins will be presented and recognition will be given to the members who won the various awards throughout the past year. The club's high point winner will be announced and a trophy will be presented.

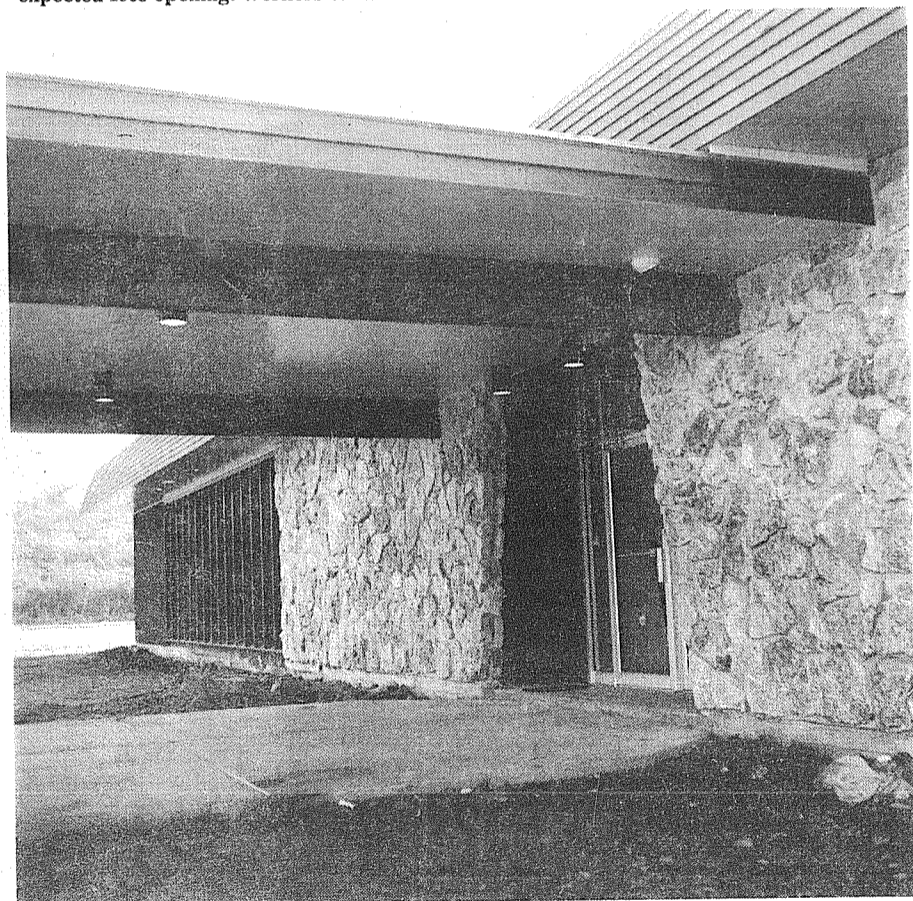
# New Buildings Add to Local Skyline



UNITED DRIVE-IN movie construction on the Airport Road site is progressing for an expected 1968 opening. Workers surfaced the screen last week.



E & S ELECTRIC recently completed this new building at 136th and Pacific. Owner Ernie Skonce is planning a grand opening in about two weeks.



BARLO'S RESTAURANT is planning to open in late November with this 6,800 square foot steak and pancake house at South 123rd and Pacific Avenue.



FRANKLIN PIERCE administrators are moving into this new administration building at South 128th and C Street. The building will eventually replace the surplus Salishan house on Portland Avenue and permit a more efficient operation of the school district.

## Hammer And Nail

Do this with care — to avoid waste and simplify your work. When many pieces are to be cut from one large full-size panel, you'll find it easiest to sketch the arrangement on a piece of paper before marking the plywood for cutting. Be sure to allow for a saw kerf between adjacent pieces.

Try to work it out so that

your first cuts reduce the panel to pieces small enough for easy handling, and most important, watch in planning your sequence of operations so as to cut all mating or matching parts with the same saw setting.

Note face grain direction. Except where indicated otherwise in the plan, you'll want this to run the long way of the piece. Mark the better face unless you are going to cut with a portable power saw; in that case, mark it on the back.

### SHELVES

### CABINETS FURNITURE

your design or ours  
made fast, inexpensively, and well

### TAYLOR MADE CABINETS, Inc.

10323 Pacific Ave.  
LE 7-4193

## Positions

The postmaster of Tacoma, Wa., announces that examinations will be held in the very near future to fill anticipated vacancies in the post office. These are positions as substitute clerk and substitute carrier, with a starting wage of \$2.64 per hour, and a minimum of \$3.60 per hour. Some of the advantages of postal employment include low cost life insurance, health insurance, a liberal paid vacation, and paid sick leave. Substantial civil service retirement benefits and job security are also an integral part of Federal employment.

No previous experience is necessary, but all competitors will be required to take a written test lasting about 2 1/2 hours, designed to test aptitude for learning and performing the duties of these positions. Any citizen, 18 years of age or older, and

high school graduates 16 years of age or older, may apply.

Applicants may contact the postmaster or Person-

nel Division of the post office for applications or other information or they may direct their inquiry to the Post Office Estab-

lishment Board, Board of U. S. Civil Service Examiners, P. O. Box F, Queen Anne Station, Seattle, Washington 98109.

## MAIL IMMEDIATELY

If you haven't already entered your subscription to the new Times Journal.

Please place my name on the Times Journal delivery list as indicated below.

- \$3.50 Annual  \$1.80 Six Months
- 30¢ Monthly (Carrier Routes Only)
- Bill Me  Check Enclosed

Name .....

Address ..... Zip .....

Send to Subscriptions P.O. Box 2116  
Parkland 98444

## GOOSEPIPLE REMOVER

### ZONOLITE® ATTIC INSULATION



helps make your whole house warm and cozy. Pour it right over the old-fashioned, thin fluff insulation in your attic, level it even with the joists and leave it.

ONLY \$1.65 A BAG  
10 Bags For \$15.90  
Save 60c

**BROOKDALE LUMBER INC.**  
13602 PACIFIC

Pierce County Herald and  
**The TIMES JOURNAL**

**WOMEN'S WORLD**

# Holiday Cooking School On Heart Risk Reduction

With the holiday season approaching rapidly and, with it, thoughts of holiday foods, the Pierce County Heart Association, Junior Woman's Club of Tacoma and Washington Natural Gas Company are sponsoring a cooking school Tuesday, December 5 at 7:30 p.m. in the Gas Company Blue Flame Room, 3130 South 38th Street.

The school will demonstrate preparation of fat-controlled foods for the holidays. Women attending will also receive instruction on how they may adapt their favorite recipes to fat-controlled diets.

The program is designed to appeal to those on fat or cholesterol controlled diets, for women cooking for patients on such diets or for the homemaker interested in learning to cook more healthfully for her family. The Heart Association includes a diet high in saturated fats as one of the major risks in developing coronary heart disease.

Mrs. Louise Kettleman, dietitian for the Washington State Heart Association, is planning the menus and the foods will be prepared as the audience watches by June Holiday, Home Service Supervisor for the Gas Company. Some of the dishes will be given as prizes at the program.

Admission is free and by ticket only. Reservations are limited to one hundred so that each woman attending can receive individual help if needed. If more than one hundred reservations are requested, the school will be repeated. Tickets may be requested by calling or writing to the Heart Association, 120

North Tacoma Avenue, Tacoma.

Mrs. Darrel C. Schrader, Junior Woman's Club Representative to the Pierce County Heart Association Board of Trustees, heads a committee of Junior Woman's Club members assisting the project.

## Housewives Work

### Too Hard On Floors

American housewives work too hard — at least in caring for floors. Modern floor covering materials, particularly vinyl asbestos tile, require far less attention than the housewife is accustomed to giving. As a result, according to The Better Floors Council, many women scrub and wax more than they need to and use more wax than is desirable.

Excessive deposits of wax do more harm than good because they form a "bed" that collects gritty particles ground in by foot traffic. Thus, the most important step in maintaining an asphalt or vinyl asbestos tile floor is to make sure that it's completely free of all old wax, before new wax is applied. This "stripping" need be done only two or three times a year, using a floor-cleaner available at hardware stores.

Frequent sweeping, wet-mopping when necessary and an occasional buffing in between washings will keep floors shiny new with a minimum of effort and expense. This is what maintenance engineers at schools and large office buildings do.

# Ordal Hall Dedication

## Measles Clinics To Be Held Here

Pierce County has a direct financial stake in the success of the 1967 "Measles Must Go" campaign, a drive aimed at immunizing an estimated 150,000 children between the ages of one and 12 years in Washington State.

Without a preventive program, officials of the Washington State Department of Health estimate the financial cost of average measles expectancy during a 12-month period could exceed \$300,000 in Pierce County. Whereas immunizing the susceptible children will be \$30,000.

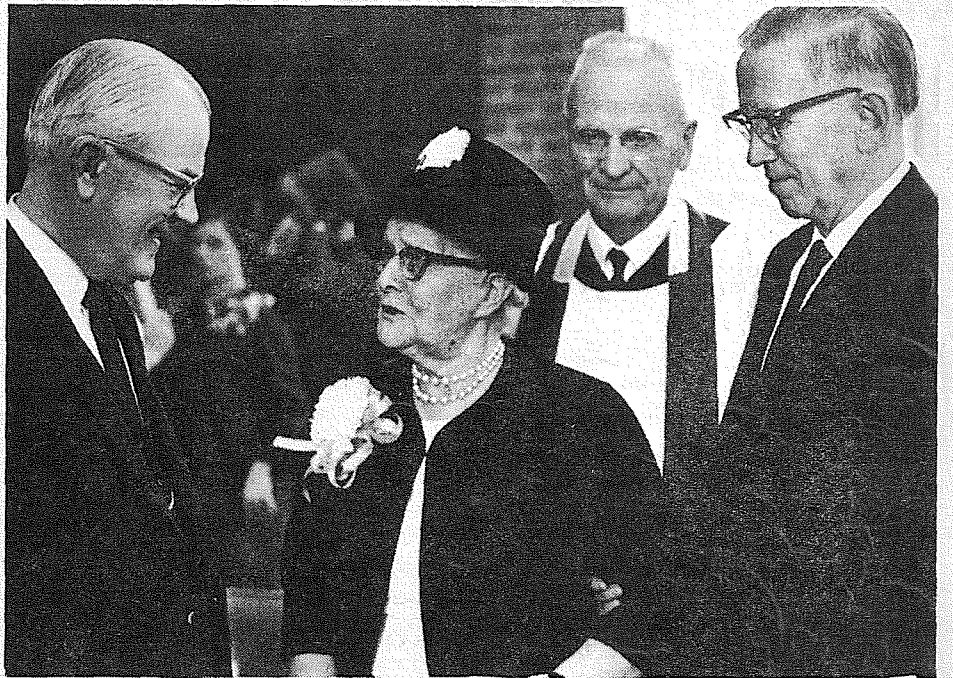
"Measles Must Go" has scheduled mass immunization clinics at all Junior High Schools, Tacoma Multi-Service Centers and Madigan, on Sunday, November 19, 1967 from 1:00 to 5:00 P.M.

The campaign is sponsored in Pierce County by Pierce County Medical Society and Tacoma-Pierce County Health Department. Many other community groups have volunteered their time and talent for a successful MEASLES MUST GO Sunday.

Clinics in this area will be at Bethel Junior High School, Eatonville High, Ford Junior High and Keithley Junior High.

## LOOKING AROUND

This year French police have come into possession of 2,500 old cars abandoned at ports in France by English drivers who decided to leave the heap rather than pay ferry fare to take it home after touring on the continent. But French and English have worked out a deal to return the old cars to their owners with a bill for the ferry fare and the trouble in returning them.



DEDICATION DIGNITARIES — Pacific Lutheran University's president, Dr. Robert Mortvedt, left, talks with Mrs. Ola J. Ordal following the dedication of a new women's residence hall named in honor of her husband, the late Rev. Ordal. Standing by are two men who served under Ordal when he was president of the University, Rev. A. W. Ramstad, center, and Dr. Philip Hauge.

## It's the LAW

PRESENTED AS A PUBLIC SERVICE BY THE WASHINGTON STATE BAR ASSOCIATION

Larry and Laura had finally decided, after many months of going "steady", to tie the knot. They set the date, as Larry presented his bride-to-be with a large diamond ring. Everybody was happy.

Laura's birthday was a few weeks later so Larry decided to surprise her with another gift. This time it was an expensive diamond dress pin.

A few weeks later, Laura told Larry the engagement was off, and all the plans for the wedding were canceled. It took Larry a while to get over the shock, but when he did he asked for the return of the ring and the pin.

"Sorry, Larry," Laura said. "You game me those after we were engaged. There were no strings attached to them. I don't have to give them back."

Fortunately for Larry, his ex-bride-to-be was only partly correct.

In similar cases, courts have ruled the engagement ring is a symbol or pledge of the coming marriage and signifies that the one who wears it is engaged to marry the man who gave it to her. If the engagement is broken, the ring should be returned, since it was a conditional gift.

It would be rather awkward for a man to tell his bride-to-be that she must give the ring back if they do not get married. Even though no such express condition is imposed, however, the law will imply

one because of the symbolic significance of the ring.

Larry was out of luck, however, in getting the pin returned. Although it was given after the engagement, the pin was only a token of the love and affection Larry had for Laura. It had no symbolic meaning. Under the law there is no consideration required for a gift. It is absolute once made, unless a condition is imposed.

There was no condition attached to the presentation of the pin, and the law will not imply one as in the case of the engagement ring.

(This column is written to inform, not advise. Facts may change the application of the law.)

## County Births

### Good Samaritan

Mr. and Mrs. Paul Hamilton, Star Route Box 25, Eatonville, Boy, October 29th.

Mr. and Mrs. Joseph Kies, Route 2, Box 2647, Spanaway, Boy, October 30th.

Lakewood General  
Mr. and Mrs. Donald R. Severeid, 2802 E. 120th, Girl, October 27th.

Mr. and Mrs. Larry Esposto, Route 1, Box 310, Graham, Girl, October 27th.

Mr. and Mrs. Larry G. Kelly, 5318 E. 138th, Twins, Boy and Girl, October 27th.

Mr. and Mrs. John M. Pedersen Jr., 3411 So. 88th, Girl, October 27th.

Mr. and Mrs. William P. Gillispie, 305½ East 138th, Girl, October 27th.

Mr. and Mrs. Douglas A. Shipman, 11916 So. Alaska, Girl, October 27th.

Mr. and Mrs. Raymond E. Darrah, 852 So. 84th, Girl, October 30th.

Mr. and Mrs. Phillip Lubliner, 4824 Military Road E., Boy, November 1st.

## Calendar of Events

Parkland Action Club, senior citizens, will be holding a Thanksgiving Dinner with the serving at noon on November 16 at James Sales Grange, 612 So. 113th.

Persons attending are asked to bring a complete table service, hot dish, salad or dessert. Turkey and coffee will be furnished.

## Brunch With A French Flair

Add a touch of France to your next brunch with Quiche (pronounced "keesch") Lorraine, a French inspired, open-faced, main-dish pie.

The classic French recipe for Quiche Lorraine called for a round shell of puff or pastry filled with eggs, cream and bacon or smoked ham bits.

The variation of Quiche Lorraine suggested below provides a zesty balance of sausage or bacon, cheese and eggs accented with onion and nutmeg. The ingredients can be quickly processed with the aid of an electric blender.

### QUICHE LORRAINE

- |   |   |
|---|---|
| 1 lb. pork sausage meat, crisply fried and crumbled, or | 1/2 lb. Swiss cheese, cubed               |
| 3/4 lb. sliced bacon crisply fried and crumbled         | 1 tablespoon flour                        |
| 1 medium onion, cut in eighths                          | 4 eggs                                    |
| 2 tablespoons meat drippings                            | 1-1/2 cups light cream or evaporated milk |
|   | 1/2 teaspoon salt                         |
|   | 1/4 teaspoon pepper                       |
|   | 1/4 teaspoon nutmeg                       |

Heat oven to 375°. Set aside 1/4 cup of crumbled sausage or bacon. Sprinkle remainder in pie shell. Put onion into Osterizer blender container, cover with water and turn control to Hi (Chop) and Off two or three times to coarsely chop onion. Drain well and saute in meat drippings until transparent. Put 1/2 cup of cheese cubes into blender container, cover and process at Hi (Grate) until finely grated. Empty into mixing bowl and repeat process until all cheese is grated. Sprinkle flour over cheese and toss well. Cover meat with cheese. Put remaining ingredients into blender container, cover and process at Lo (Whip) until thoroughly blended. Pour over cheese, sprinkle reserved meat on top and bake 35-45 minutes, or until silver knife inserted near center comes out clean. Yield: 4-6 servings.

Police in Billinge, England, are looking for a thief who stole a stone wall four feet high and 20 yards long.

## HINTS FOR THE HOMEMAKER

Now that holiday season is approaching we begin to worry about those busy days ahead and wonder what we could repair ahead. Several cookies freeze quite nicely while others don't. The oatmeal applesauce old standby is one that can be eaten directly from the freezer, heavy duty foil is perfect for wrapping these. If you need help with cleaning we are always available.

### ALL WOMEN HOUSE CLEANERS

LE 1-2981 9620 Pacific

## Avenue Furniture



- New and used quality furniture
- Appliances
- We buy - sell - trade
- In Spanaway

**LE 7-5144**

16318 Pacific

AN ENDOWED CARE CEMETERY



Fir Lane Memorial Park

924 EAST 176TH STREET

**LE 1-5500**

## DRAPERIES OUR SPECIALTY

FOR PROFESSIONAL DRY CLEANING OF YOUR LAUNDRY AND DRAPES

### DAVE'S NU-WAY CLEANERS

phone GR 5-1144 7209 Pacific Ave.

PIERCE COUNTY HEADQUARTERS FOR  
**1968**  
★ CHRYSLER  
★ PLYMOUTH  
★ VALIANT  
★ BARRACUDA  
CALL GR 4-0621

Steven MOTOR CO.  
2705 SOUTH TACOMA WAY

Dryer MORTUARY  
(134th & Pacific)  
PARKLAND

The Country Parson

"When success goes to a man's head, it crowds out what used to be there."

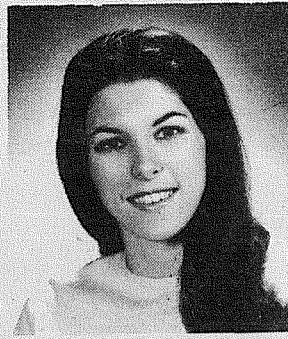
Copyright, by Frank A. Clark

Dryer MORTUARY  
(134th & Pacific)  
PARKLAND

# The TIMES JOURNAL

## ENTERTAINMENT

### Around The County



By DONNA DIXON RESTIVO

Well, Lakewood Players is now ready to open "Barefoot in the Park." The Neil Simon play, originally scheduled to open October 27, has to be delayed. Twice opening night was re-scheduled. But this third time should prove to be well worth waiting for.

Pearl Rehbeck directs Jeanne Olds, Tom Tomlin, Elizabeth Allen, Norm Russell and Ted McCullouch through the various capers. Be sure and catch this one!

RICHARDS Restaurant, now open on Sundays, is

really a cozy place to while away these rainy afternoons. That buffet really hits the spot, too. I never could make up my mind about what my favorite dish was. Now, I can have them all.

The final performance of the Children's Theater is set for this Saturday. At 10 a.m. and 1 p.m. dancers and gymnasts will whirl across the stage of University of Puget Sound's Jones Hall Auditorium.

The imaginative program, "The Motioneers", will in-

clude mad-cap clowns, a Swedish ball routine, a balance team, floor gymnasts, and two dream figures from Tchaikovsky's "Nutcracker Ballet."

This program has been very successful this year, and has brought quite an enjoyable and interesting selection of performances to the area. And this last one promises to be every bit as good as the rest. This Saturday, see you there.

"Romeo and Juliet" will play again tonight, tomorrow, and Saturday at 8:15 p.m. in the Eastvold Auditorium of Pacific Lutheran University.

LA PERGOLA's Judy Cope has nicely invited me to come on over for some of her special chicken cacciatori. It's one of the buffet specialties offered by La Pergola. And I plan on taking her up on it. Maybe even tonight!

Tacoma area singers are invited to attend the first rehearsal this coming Sunday for the 21st annual performance of Handel's "Messiah" in December. Rehearsal begins at two in the University of Puget Sound Jacobsen Recital Hall. Directing the work, to be performed December 3rd at 4 p.m. in the UPS fieldhouse will be director of the School of Music Bruce Rodgers.

Hope you all have a great weekend. As for me, I think I'll spend mine in a nice, unusual way...At home. Well, goodnight, everyone. And goodnight, Charlie.

## Old Press Shipped To Mexico

The presses that turned out the Times Journal until 1965 will soon be printing an English language newspaper in Cuernavaca, Mexico.

Jack Brown, former publisher of the Journal, disclosed he had traded the equipment to an Arizona man for 250 paintings. The paintings are from the Tom Rose collection and have been in storage since 1952, Brown stated.

The equipment originally inked the pages of the old Sixth Avenue Journal in Tacoma, then was used to print the Puyallup Community Shopping News. Brown purchased the type setting and press equipment in 1951, using it to make up the Times Journal until 1965.

When Puyallup Publishers purchased the Journal from Brown, the typesetting and printing was moved to a King County plant. The Journal's new owners, Pierce County Publishers, have continued to have the paper made up and printed in King County.

## PLU Symphony Orchestra To Present First Concert

The University Symphony Orchestra of Pacific Lutheran University will present its first concert of the academic year Sunday, Nov. 12, in Eastvold Auditorium.

The 4 p.m., performance will be directed by Jerry Kracht, a recent appointment to PLU's music faculty. The concert is complimentary to the public.

Featured music will include Beethoven's overture to "The Creatures of Prometheus," and Arcangelo Corelli's "Concerto Grosso No. 8, Opus 6." Brigitte Greve and Dalwyn Olberg on the violins, and Mikkel Thompson, cello, will be soloists.

Following a brief intermission, the 60-piece orchestra will play Schumann's "Symphony No. 4 in D Minor, Opus 120."

PLU faculty members in the orchestra are Ann Tremaine, concert-master, Gordon Gilbertson and Melba Cather on second violin, and Kathryn Strickland, playing a harpsi-

chord. Kracht, who was appointed a instructor in music this fall, completed his master of fine arts degree at the State University of Iowa last year. He also received his undergraduate training and obtained a master of arts degree from the Iowa school.

He has taught music for four years in the University's experimental schools, and was an active conductor throughout his schooling.

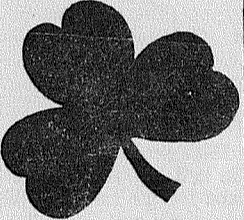
Lakewood Players Present "BAREFOOT IN THE PARK"

Oct. 27-28, Nov. 3-4 Nov. 10-11

Villa Plaza JU 8-2790

**PRAIRIE TAVERN**  
**CHICKEN & PIZZA**  
 Food! Dancing!  
**LIVE MUSIC**  
**FRIDAY & SATURDAY**  
 Jean & Chris — Betty Jean & Wade  
 on The Mountain Highway at Roy "Y"

"KEEP THE SHAMROCK GREEN"  
 Spend Your Money Here  
**POOL AND SHUFFLE BOARD**  
**SHAMROCK TAVERN**  
 11108 PACIFIC AVE.



**ELK PLAIN TAVERN**  
**Dance To Live Music**  
 Friday Eve 9:30 p.m.-1:30 a.m.  
 Saturday Afternoon 2 p.m.-4 p.m.  
 Saturday Evening 9:30 p.m.-1:30 a.m.  
 Sunday Evening 6:30 p.m.-9:30 p.m.  
**Open Every Sunday**  
 "On The Mountain Highway 2 1/2 Miles Past The Roy Y"

**IN THE DARK ABOUT A GOOD PLACE TO EAT? TRY BRAD'S**  
 banquet facilities for 30 to 300  
 open daily 11:30 to 8 p.m.  
 9201 Pacific GR 4-1234  
 26 & Pearl SK-2-5020

## Eatonville Homecoming Has "Wild West" Theme

"Wild West" has been chosen the theme for the 1967 Homecoming Activities of Eatonville High School, which will take place this week, November 6-10. The student body is enthusiastic over the festivities with many preparations for the various events honoring this homecoming.

Starting on Monday morning, and lasting all week the Student Council decided to have a prediction contest and the person that comes nearest the score will win a prize.

An afternoon tea will be held in the Home Economics room on Friday, November 10, at 1:15 p.m. and a panel of mothers will judge the three senior class candidates for Homecoming Queen. The selected princesses from the senior class are Carmen Beane who will be escorted by Bruce Coburn, Carolyn Hammer, escorted by Chuck Chapell, and Sandy Heacock escorted by Mike Hammer.

On Thursday evening, a Pep Rally will be held on the football field with a bonfire. The burning of the dummy signifies that our homecoming game opponents, Charles Wright Academy, will be handicapped without their star player.

The yell staff and student council will conduct the rally and football players will speak at the gathering in preparation for the game on Friday night. The pep rally will last about an hour.


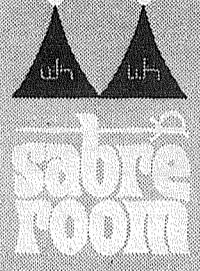
Early Friday afternoon, November 10, a Pep Assembly will be held in the high school auditorium followed by a student parade downtown. A rally will be held at the main intersection of town to invite all former students of Eatonville High School to attend the Homecoming game and other festivities of the evening. The Eatonville High School-Grade School Band will play the school song at the afternoon rally.

A car caravan will form at 7 p.m. at the high school and parade around town prior to the game. Fathers of the senior players will be asked to stand by their sons when they players are introduced before the game. The highlight of all events will be the crowning of the queen during half-time ceremonies. Homecoming Court representatives from the Freshmen Class will be Mary Ann Gordon and escort Dan Dawkins. Those selected by the Sophomore Class are Gaille Henriksen and escort Mark Dawkins.

The Cruisettes will also perform during half-time activities in honoring the 1967 Homecoming Queen.


Following the football game, a semi-formal Homecoming Dance will be held in the grade school cafeteria sponsored by the student council. Music will be furnished by a local band. The Queen will again be crowned by the King, surrounded by the Court at intermission. Refreshments will be served by the Student Council, dancing will continue until midnight.

**LITTLE PARK CAFE**  
 full dinner menu featuring **STEAK AND SEAFOOD**  
 daily lunch specials  
 Open 7 Days A Week  
 6 A.M. to 9 P.M.  
 171st & Pacific LE 1-1343

TONITE  
  
 Frank Moore Five  
 With Bobby Lewis  
 Winthrop Hotel Tacoma  


**La Pergola Inn**  
**DANCING TO LIVE MUSIC:**  
**LOWELL THOMAS AND HIS BAND**  
 Friday and Saturday  
 \$7 per couple  
 14522 PACIFIC AVE. LE 7-4747

**Richards**  
 RESTAURANT  
**BUFFET DINING**  
 a dazzling variety of foods — all you can eat — luncheon and dinner.  
 CHOICE STEAKS • SEAFOODS  
 SANDWICHES • COCKTAILS  
 8201 Pacific OPEN SUNDAYS  
 DINING NOON - 10 P.M. GR 4-2063  
 Cocktail Lounge 2 PM-10 PM

**Angelo's**  
 PIZZA HOUSE  
**ORDERS TO GO**  
 Featuring top sirloin and American dishes, spaghetti, rigatoni, meat balls, sausage, ravioli, beer and wine.  
 Choice of Pizzas  
 cheese & tomato  
 anchovie  
 mushroom  
 Italian sausage  
 pepperoni  
 tuna  
 bacon  
 peppers  
 olive  
 hamburgers  
 ham  
 salami  
 onion  
  
 LE 7-7233  
 14102 PACIFIC AVE. PARKLAND  
 CALL AHEAD, IT'S PIPING HOT ALL THE WAY HOME  
 PICK UP A BOX, PAIL, BUCKET OR A BARREL

# The TIMES JOURNAL

## SPORTS

# Lutes Blast C of I 27-7

### COUNTY PEE WEE FOOTBALL 2 (Final Standings) 1

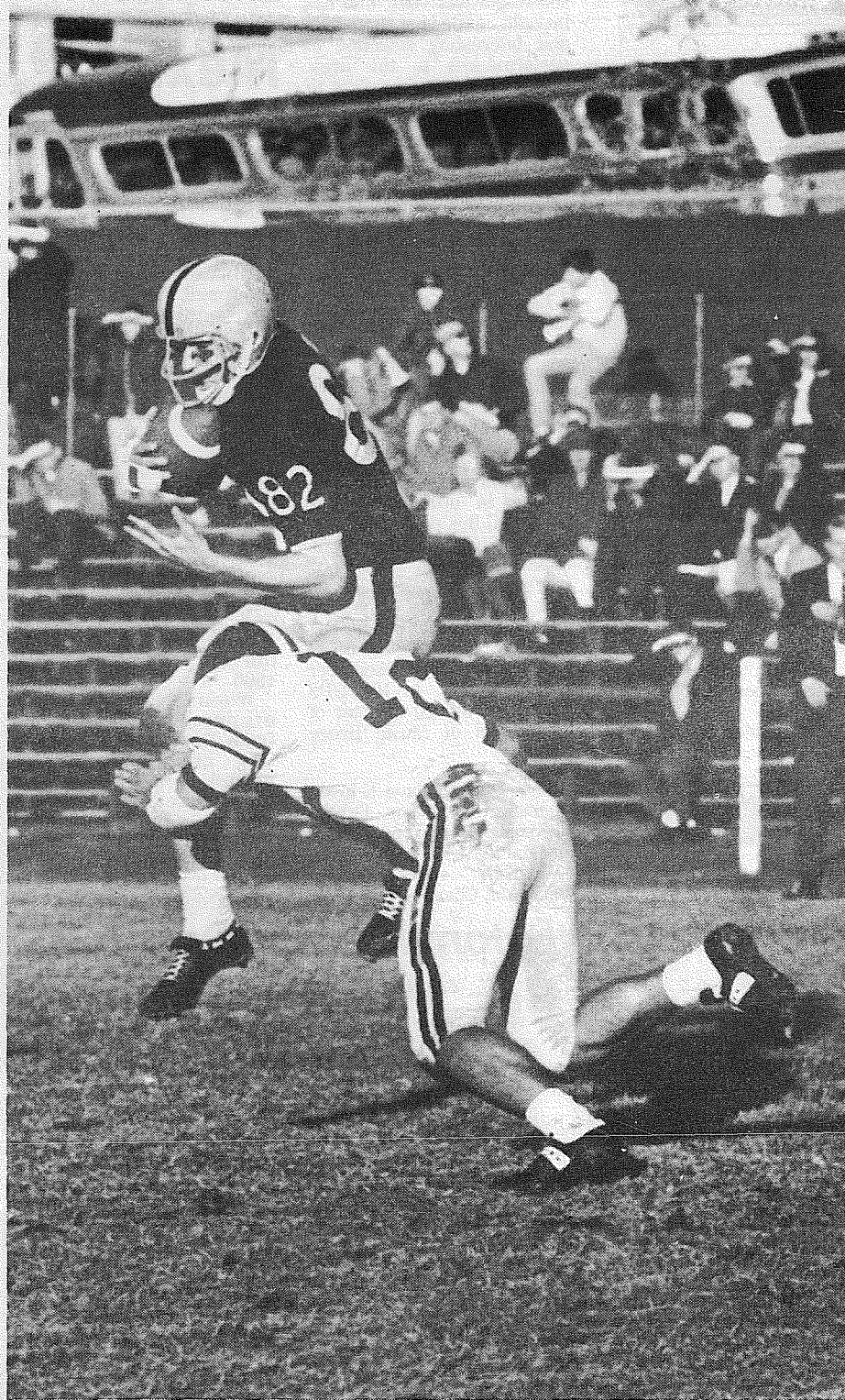
	W	L	T	PF	PA
United Pacific Cascaders	6	0	0	122	18
Fircrest	5	1	0	144	19
Lake City	3	2	1	37	30
Economy Vikings	3	3	0	78	52
Optimists	2	3	1	12	83
McChord Packers	1	5	0	19	88
Fort Lewis	0	6	0	12	139

Coach Earl Smith's United Pacific Cascaders cleared its final hurdle Sunday by defeating Fort Lewis 20-6 to clinch the Pierce County Park Department's Pee Wee League boys football championship.

Dave Arbanas led the Cascaders with two touchdowns. Arbanas grabbed a pass from Randy Reiter to complete a 20-yard scoring play and later broke loose for 45 yards on a triple reverse. John Emrick completed the Cascaders' scoring with a 12-yard run. Leon Leototo provided Fort Lewis' second touchdown of the season with a 60-yard burst.

Fircrest kept the pressure on by tripping the Economy Vikings 13-7 and finished one-game back of the Cascaders. Gary Pape teamed with Tom Davidson for a 20-yard touchdown pass and Mike Fouts scampered 70 yards for Fircrest. The Vikings score came on Mike Taylor's 80-yard run.

Lake City and the Optimists battled to a 0-0 tie in their final game of the season. The tie, combined with the Vikings' loss to Fircrest, enabled Lake City to finish in third place.



ON THE RECEIVING END — Dave Rollar, a Franklin Pierce High School graduate, is tackled by a College of Idaho player after he snagged a pass in last Saturday's Pacific Lutheran University homecoming game. Rollar, who plays split end for the Lutes, is their leading pass receiver.

Pacific Lutheran University's gridiron team travels to Walla Walla, Wash., Friday for a Saturday afternoon contest with the Missionaries of Whitman College. The Lutes will be seeking their third win of the season.

They presented last Saturday's Homecoming crowd with a 27-7 win over the College of Idaho. Four freshmen put PLU on the scoreboard. Pete Olbertz, a backup quarterback from Olympia; Hans Lindstrom, a starting halfback from Puyallup; Dave Halstead, another starter from Hillsboro, Ore.; and Paul Ferguson, a second-string linebacker from Federal Way, all pushed the ball into the end zone.

Lindstrom, who ran back four punt returns for 100 yards and one touchdown, also threw a pass to Halstead for another.

"It is great to have a player like Lindstrom in our lineup," said Carlson. "He can run well, and he gives us a double punch with his passing ability."

Lindstrom and Halstead were the workhorses in the PLU ground game Saturday, but another freshman, Ken Doggett of Colbert, Wash., had the top yardage.

Carlson had nothing but praise for his freshmen, who are starting to dominate the PLU lineup. Frosh Dave Roller of Franklin Pierce High School in Tacoma, caught three passes Saturday to continue his dominance of the receiving statistics.

Freshmen starters, in addition to Halstead, Lindstrom, Roller and Doggett, are Jack Irion of Hoquiam; John Saffstrom of Olympia, Wash., and Ross Boice of Custer, Wash.

Other freshmen who spend more time on the field than on the bench are Donald Aiken of Tacoma; Paul Ferguson of Federal Way; Ed Munson of Sheridan, Ore.; and John Polzin of Columbia Falls, Mont.

Polzin and Munson, said Carlson, will be fighting it out this week to win the starting right linebacker slot left empty after the injury of Skip Miller last Saturday.

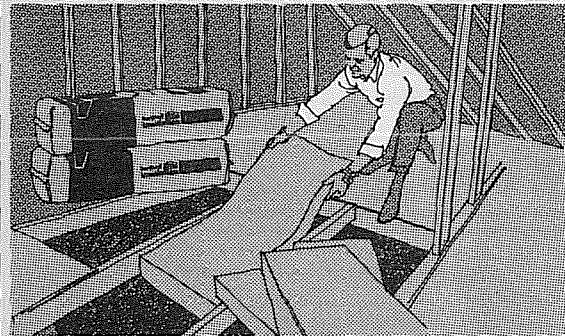
Carlson has some new offensive plans worked out for the Whitman game. In addition, he is planning to spend the week sharpening his blocking assignments.

Pacific Lutheran University Football Statistics (7 Games)						Individual Statistics					
Rush	tc	yg	yl	net	ga	Rushing	tc	yg	yl	net	avg
PLU	335	1508	245	1263	180.4	Halstead	67	325	12	313	4.67
Opp.	373	1471	310	1161	165.9	Davidson	43	299	6	293	6.8
Passing	pa	pc	phi	nyp	ga	Harding	31	274	9	265	8.5
PLU	96	46	10	548	78.3	Lindstrom	77	246	68	178	2.3
Opp.	157	74	14	1055	150.7	Moe	40	138	6	132	3.3
Tot Off.	att	rush	pass	net	ga	Doggett	14	69	4	65	4.6
PLU	431	1263	548	1811	258.7	Olbertz	15	56	24	32	2.1
Opp.	530	1161	1055	2216	316.6	Jansen	4	17	3	14	3.5
First Downs	rush	pass	pen	total		Tuke	1	9	0	9	9.0
PLU	57	25	10	92		Ferguson	1	1	0	1	1.0
Opp.	65	44	8	117		Rue	1	0	-1	-1	---
Pen. no.	yds	lost	ga			Lovell	29	54	-58	-4	---
PLU	38	339	48.4			Ranta	1	0	-11	-11	---
Opp.	48	488	69.7			Beller	11	20	-43	-23	---
Fumbles	no.	lost				Passing	pa	pc	phi	nyp	td
PLU	33	19				Lovell	56	27	6	289	2
Opp.	13	6				Lindstrom	12	7	0	123	3
						Beller	15	8	2	102	0
						Olbertz	13	4	2	54	0
Punting	no.	yds.	ave.			Pass Receiving	no.	yds	tds	con.	
Ranta	37	1265	34.2			Roller	18	183	0	0	
Moe	3	86	28.6			Ranta	8	146	2	0	
Carey	2	70	35.0			Halstead	6	24	1	0	
Team	1	0	---			Carey	4	107	2	0	
						Moe	3	35	0	0	
						Lindstrom	3	26	0	0	
						Harding	3	16	0	0	
						Jansen	1	11	0	0	

(Continued on Page 9)

**PARKLAND AUTO BODY**  
Complete Collision Service  
108th & PACIFIC LE 7-6303

Put a ceiling on your heating and cooling bills...



Simply lay it in place.  
**install FIBERGLAS**  
**INSTANT ATTIC INSULATION!**  
ONE BAG COVERS A FULL 50 SQ. FT. 4" THICK. YOU NEED FAR FEWER BAGS THAN WITH MOST POUR-TYPE INSULATIONS!  
**SPECIAL \$4.39 per bag**  
PLENTY OF FREE PARKING  
**VAUGHAN'S** Building Materials Inc.  
6402 South Tacoma Way GR 2-4494 & GR 4-9515

## PARADISE BOWL

- Express** — Del Miller, 557, 236; Betty Breon, 534, 190. Split pick up: Doris Quigley, 3-7-10; Lori Phillips, 4-10.
- Little Lutes** — Scott Green, 585, 227; Corrine Deetz, 496, 224.
- Rolling Bees** — Willa Woodford, 535; Sophia McCullough, 207.
- Belles** — Joan Hoover, 508, 201. Split pick up: Gaye Kempe, 6-7; Rosella Greer, 6-7-10.
- Pinettes** — Evie Baskett, 584, 210; Eileen Andreasen, 559; Sue Sweaney, 544. Split pick up: Pat Sundquist, 6-7-10; Jeanne Lawson, 4-7-9-10.
- 600 Mixed** — Don Bradshaw, 568; Larry Nestegard, 202; Lavonne Estes, 479, 170. Split pick up: Judi Nestegard, 2-7-10.
- Parkland Merchants** — Norm Nesting, 564; Jerry Nelson, 211.
- Sportsman** — Rex Edman, 635, 223.
- Industrial** — Grant Harlow, 592, 217.
- Friendly Doubles** — Jim Lovestrom, 491, 182; Pauline Simpson, 503; Joan Kendworthy, 198.
- Premier** — Rod Pardey, 634, 236.
- Sr. Citizens** — Wendal Gunderson, 542; Clarence Zacharias, 198; Wyatt Butterfield, 198; Jane Scott, 431, 156. Split pick up: Wyatt Butterfield, 3-7-10.
- Franklin Pierce Faculty** — Russ Fulkerson, 548, 204; Eleanor Ervin, 472; Gloria Larson, 472, 168. Split pick ups: Skip Larson, 3-7-10.
- Top Rollers** — Doug Fogle, 559; John Jeffries, 224; Diane Fogle, 516; Ernie Michaels, 198.
- Mixers** — Lacy Key, 528; Jonas Smeltzer, 200; Syd Sheppard, 584, 201.
- Graham Mixed** — Bob Bjornstad, 541; Bob Sims, 219; Rose Eveleth, 481, 175; Helen Wood, 175. Split pick up: Edna Boettner, 6-7-10.
- Eager Beavers** — Clair Robbins, 473; Lois Reeves, 192. Split pick up: Rita Bilderback, 3-6-7.
- Birds of Paradise** — Dot Phair, 487; Ethel Mills, 203. Split pick up: Annette, 4-7-10.
- Hi Lows** — Sue Sweaney, 493, 187; Stepladder: Ruby Crilly, 125-130-135.
- Parkland Mixed** — George Roscoe, 599, 244; Lois Lovelace, 549, 206. All spare game: John Bergstrom, 182.
- 850 Scratch** — Dick Henning, 588; Rex Edmans, 229. Split pick up: Einer Thomsen, 3-7-8-10.
- Classic** — Dick Henning, 622; Leo Arnestad, 606, 257.
- Evergreen** — Jim Hansen, 522; Mose Lyons, 190.
- Bowlerettes** — Betty Marrow, 517, 200.
- Last Niters** — Walt Daniels, 576, 207; Maxine Butts, 580, 299.
- 4x8's** — Bud Smith, 536, 190; Marlyce Ellis, 494, 211.

**Used Car**  
HEADQUARTERS  
"MOST FOR THE MONEY"  
All Makes... All Kinds  
**ARMSTRONG'S**  
USED CARS LE 7-5524  
11109 Pacific Ave.

**ADVANCE GLASS & UPHOLSTERY**  
Service while you wait  
Residential and Auto Glass  
we handle all insurance claims  
For your car's interior:  
Complete water leak service  
complete upholstery  
repair of torn or worn parts  
carpets  
10321 Pacific Ave. LE 7-8301

**PARKLAND AUTOMOTIVE**  
Automatic Transmissions  
Brake Work  
General Repair  
Tune Ups  
PICK UP AND DELIVERY  
FREE ESTIMATES  
108th & Pacific LE 1-3722



# Cards Hold Puyallup 7-6

## Eatonville Downs Montesano

A high snap from center over the head of the Montesano punter and into the end zone gave Eatonville the needed two points to come up with an 8-6 win last Friday on the Montesano home field.

The victory gave the Cruisers a perfect all win season at games played on foreign soil. They will be seeking their first win on their home field when they meet Charles Wright Friday night before Eatonville homecoming crowds.

Wright holds second place in their conference division with a 5-3 season record. The Cruisers have won four games and lost four.

After picking up two points on the safety late in the second period, the Cruisers found themselves trailing 6-2 in the closing seconds of the game. Montesano scored in the third quarter on a 35 yard pass play.

With 40 seconds left on the clock, Steve Rose plunged across the Montesano goal line with the tie breaking tally. Rose had uncorked a 34 yard pass play to Larry Anderson to set up the T.D. on the Montesano 6 inch line.

The Cruisers were over-rushed on the ground giving Montesano a 199 to 176 yard edge in total offense.

### More About —

Total Off.	tc	rsh	ps	tot	ga
Halstead	67	313	0	313	44.7
Lindstrom	89	178	123	301	43.0
Davidson	43	293	0	293	41.8
Lovell	85	4	289	285	47.5
Harding	31	265	0	265	53.0
Moe	40	132	0	132	18.9
Olbertz	28	32	54	86	17.2
Beller	26	23	102	79	15.8
Doggett	14	65	0	65	10.8
Jansen	4	14	0	14	2.0
Tuke	1	9	0	9	4.5
Ferguson	1	1	0	1	0.5
Rue	1	1	0	1	0.5
Ranta	1	11	0	11	1.5

Punt Ret.	no.	yds.	ave.
Lindstrom	18	194	10.8
Harding	1	14	14.0
Halstead	1	8	8.0

Scores
PLU 8 Cal. L.C. 20
PLU 14 EWSC 47
PLU 13 Willam. 40
PLU 0 UPS 37
PLU 34 Pacific 12
PLU 21 Linfield 24
PLU 27 C of I 7

The Franklin Pierce Cardinals will face a crucial game with the Auburn Trojans Friday after edging Puyallup 7-6 in a thriller last week.

The big win over Puyallup kept the Cardinal hopes alive for a possible playoff game with powerful Renton, and threw Pierce into a three-way tie for first place in division standings with Lakes and Auburn.

A victory over the Trojans Friday at Cardinal stadium, with a Puyallup win over Lakes, could set Franklin Pierce up for the Puget Sound League Championship playoff game at Highline Stadium November 17.

Costly fumbles recovered by an alert Cardinal defense and the educated tow of Pierce kicker Jim Furlong contributed to the win.

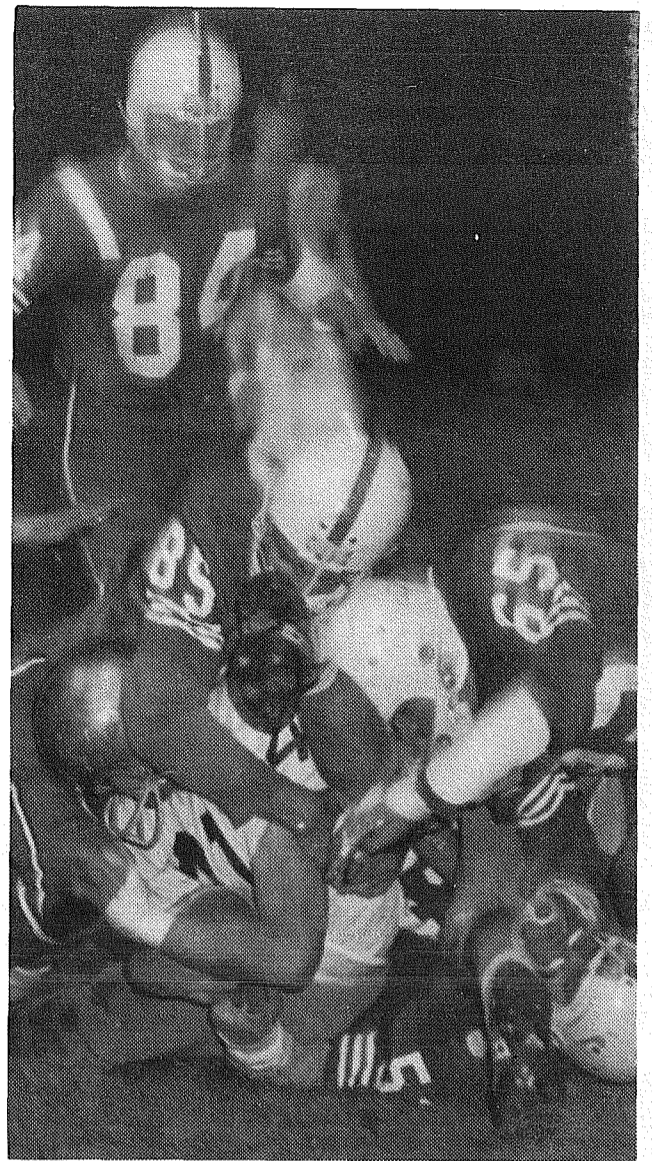
The pattern of first half play was set when Viking back Dennis Barry stepped out of bounds on his seven while fielding the opening kickoff. Later in the first quarter Puyallup found their backs to the wall after a Furlong punt was downed on the Viking 2 yard line.

The Cards big break came when Furlong's next kick was dropped by Viking Dory Clausnitzer and pounced upon by Cardinal Ross Ratcliffe. Two plays later Doug Cail plunged for six Franklin Pierce points and place kicker Morrie Shanahan booted the ball through the uprights for what proved to be the winning point.

Puyallup fumbled the ball six times during the contest, often on crucial plays. The Pierce defense recovered two of the Viking bobbles.

Puyallup's TD came in the fourth quarter resulting from a 70 yard drive. Rick Hahn's conversion attempt was wide.

Statistically the Vikings won in all departments, out-gaining the Cards 197 to 165 in total offense. Puyallup racked up 12 first downs to Franklin Pierce's 5, and controlled the ball for 60 plays against 42 for the Cardinals.



WHAP...BANG...KA-ZOW. Viking halfback Dory Clausnitzer (41) ran into a rude reception while trying to skirt the Card right side last Friday night. Franklin Pierce threw the southern division race into a wide open scramble by edging the Vikings 7-6.

**PSL Title Ducats Now Available**

## F. P. Harriers Close Season

Cardinal cross country runners closed out their 1967 season with a conference meet last week and a district meet Saturday.

At the Puget Sound conference meet held at Evergreen High School, the Franklin Pierce varsity took seventh place while the jayvees captured a fourth. Allan Cail paced the Card team with a 15th place finish, the highest placement in Franklin Pierce history for the event.

Following Cail to the tape were Gary Shumway (32nd), Tom Meade (38th), Terry Johnson (44th), and Todd Ketter (51st). Junior varsity finishers were Rick Anderson (17th), Bob Matson (22nd), Sam Wong (24th), Jon Soine (26th), and Rich Johnson (32nd).

Pierce harriers faced tough competition in the district meet to pull out a 13th team finish although individual times were comparable to the conference meet. Leading Card runners were Allan Cail (27th), Tom Meade (48th), Terry Johnson (61st), Todd Ketter (69th), and Rick Anderson (84th).

Highline's Jim Johnson was the individual winner, but Renton captured the team competition.

Franklin Pierce carried a squad of 36 runners during the season with 16 sophomores, 16 juniors, and 4 seniors. With plenty of runners returning for next year's competition, coach Jon Herrington is looking forward to a 1968 cross country team with plenty of depth.

Pre-sale of tickets for the Puget Sound League football playoff, to be held Friday, November 17th, at Highline School District Memorial Field, will be in the offices of the participating schools, and through the office of the Director of Athletics, Highline School District, CH 4-6100, ext. 237.

Ticket Prices: High School Students with A.S.B. Card 50¢, Junior High School Student with A.S.B. Card, 50¢, Elementary School Student, 50¢ and all covered grandstand seats (adult & children) \$2.00.

The 132 choice Press Box \$3.00 reserved seats are only available by calling CH 4-6100, ext. 237, and at the main ticket booth the night of the game.

The \$1.50 adult general admission tickets, which entitle the bearer to sit in the uncovered bleachers, and stanging room, will be sold only at the gate on the night of the game.



QUEEN CHERYL BURY reigned over the 1967 Bethel Homecoming festivities. Steve Harlow Photo.

## Braves to Hunt Tahoma Bears

The Bears from Tahoma (3-3-1) will be looking for their second straight win as they meet the Braves in the season's finale.

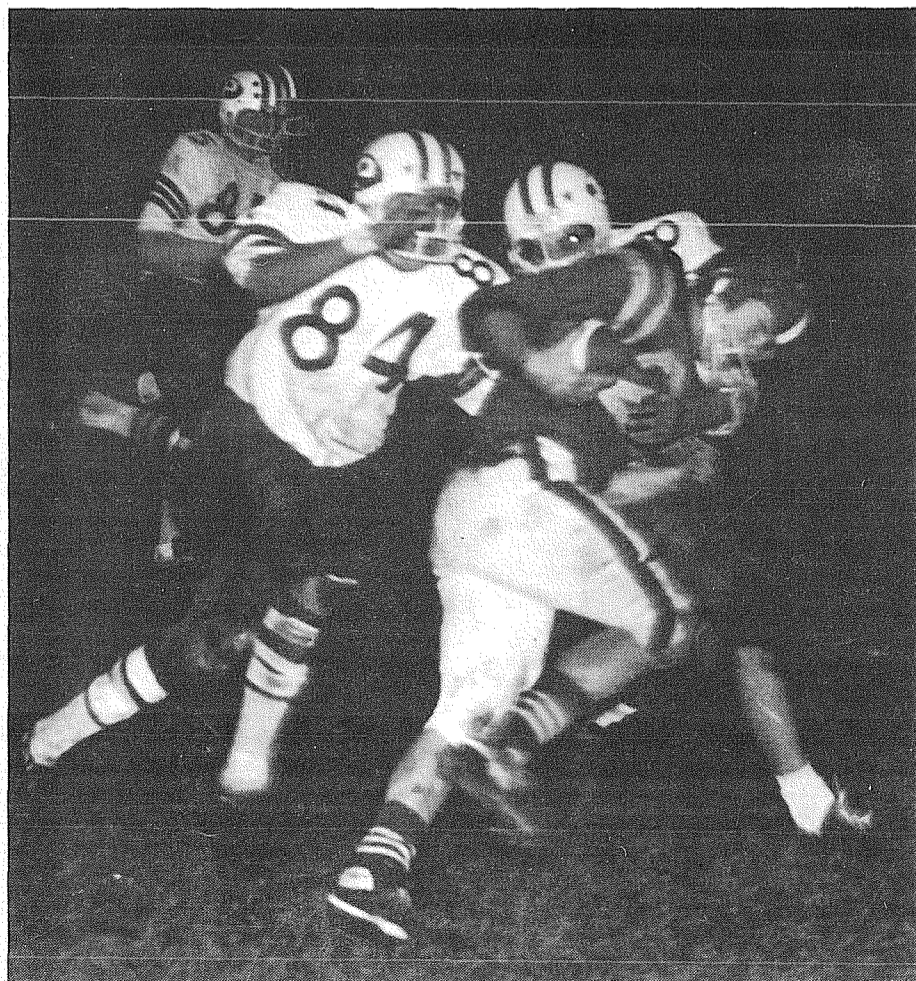
Although a non-league game, and of little importance in Seamount League standings, both teams will be battling to break the 7-7 tie of last season.

After being what has been called "thoroughly beaten" by Peninsula (21-0) last Friday, the Braves return at full strength in hopes of chasing the Bears back to Maple Valley.

It didn't take the league-leading Seahawks long for their first score (4:15) as they tallied on a twenty-yard pass play following the initial kickoff. A second quarter interception by safety John Zurfluh put his name in the record book with six for the season.

Being unable to stop the vicious ground attack of Peninsula, the Seahawks scored again on a three yard TD burst by Tom Lester. A spectacular 48 yard kick off return by Jody Miller following the Seahawk touchdown failed to spark the Braves as they gave up the football.

A fifteen yard pass play, Garnett to Brindley, made the final touchdown and cinched the contest for Peninsula.



BRAVE HALFBACK Jody Miller breaks through the Seahawk line before being stopped by Jim Wright and Pat Lysle. The league leading Peninsula team won the contest 21-0 before a capacity homecoming crowd at Art Crate Field.

— Photo by Steve Harlow.

**NEW - MORE POWERFUL**

**the 1968's**

**ARE HERE**

**VOLKSWAGEN**

27 MAJOR CHANGES  
COME IN AND

**Tom Carstens**  
**AUTOHAUS**

7030 So. Tacoma Way  
GR 4-0666  
TACOMA DEALER SINCE 1955

**SMALLEY MOTORS**

before you buy any new '68 automobile, try our

**New Car Discount House**  
also

New Security campers and trailers  
used automobiles and trucks

LE 1-2291  
10325 PACIFIC  
**OPEN EVENINGS UNTIL 9**

# Veterans To Receive Increase In Benefits

Veterans and dependents in Pierce and Kitsap Counties are expected to receive an increase of \$695,010 in benefits during the next 12 months, Congressman Floyd V. Hicks said today.

The added payments go to veterans and their widows and children in various benefits provided by the Veterans' Pension and Readjustment Act of 1967, signed recently by President Johnson.

Hicks said a major provision of the "new G.I. Bill" was a cost-of-living pension increase. For some 5,300 persons in the two counties, this will mean \$298,290 in added benefits.

Additional readjustment assistance for 140 eligible veterans will mean about \$32,560, Hicks was informed by the Veterans Administration, and the increase in educational and training benefits for 1,412 eligible veterans and dependents will total \$364,160 in the first year of operation of the new G.I. Bill.

The increased benefits went into effect October 1, Hicks noted.

The Sixth District Congressman said other provisions of the new G.I. Bill:

—Create a "housebound" rate of \$100 a month, in lieu of basic pension rate, for some veterans under the old pension law.

—Establish a new monthly allowance of \$50 in addition to pension otherwise payable to widows of veterans of all wars if they are in need of regular aid and attendance.

—Presume permanent and total disability of veterans at age 65.

—Presume the need of regular aid and attendance for pensioners in nursing homes.

Hicks noted that the new G.I. Bill also provides benefits for veterans of service in "the

Vietnam era," beginning on August 5, 1964, which previously have been authorized for Korean War veterans, including:

—Disability compensation at wartime rates.

—Disability pension for veterans and death pension for widows and children.

—Allowance, not to exceed \$1,600, for the purchase of an automobile for an eligible disabled veteran.

—Increase in educational assistance allowances for full-time courses from \$100 to \$130 a month for a single veteran, \$125 to \$155 for a veteran with one dependent, \$150 to \$175 for two dependents, and an additional \$10 for each dependent in excess of two. Proportionately smaller allowances will be paid for parttime training.

—Full educational assistance for "educationally disadvantaged" veterans so they may complete high school without reducing their eligibility for advanced educational benefits.

—A monthly allowance for on-the-job training for the first six months ranging from \$80 a month for a single veteran to \$100 for a veteran with two or more dependents. The allowances are reduced for succeeding six-month periods.

—A monthly allowance for farm cooperative training covering institutional agricultural courses with a minimum of 12 hours per week in addition to related work on a farm; allowances range from \$105 a month for a single veteran to \$145 for a veteran with two or more dependents, plus \$7 more a month for each additional dependent.

—Ninety percent of the established charge for flight training for a veteran with a private license, or the equivalent in flight training hours,

who can pass the physical examination for a commercial pilot's license.

—An increase in the age limit from 23 to 26 for children of certain deceased or totally and permanently disabled veterans entitled to war orphans' educational assistance from the Veterans Administration.

Hicks said that interested persons may obtain detailed information from any VA office.

## Magstadts To Be Honored By Dairymen

The Ted and Allan Magstadt families, Pierce County's 1967 Dairy Family of the Year, will be honored at the close of the Washington State Dairymen's Federation annual meeting November 15 in Vancouver.

At that time, the State Dairy Family of the Year and other award winners will be announced.

The Magstadt Dairy is an all-Jersey operation in the Buckley area.

## FP Graduate In Vietnam

LONG BINH, VIETNAM (AHTNC) — Army Private First Class Gary A. Wiffler, 21, son of Mr. and Mrs. Ralph C. Wiffler, 1405 E. 99th St., Tacoma, Wash., was assigned to the 199th Light Infantry Brigade near Long Binh, Vietnam, Oct. 10.

Pvt. Wiffler, a mortarman in the brigade, entered the Army in May 1967. He completed basic training at Ft. Lewis, Wash., and was last stationed at Ft. Polk, La.

Pvt. Wiffler, whose wife, Ginger, lives at 9924 Golden Given Rd., Tacoma, Wash., is a 1964 graduate of Franklin Pierce High School in Tacoma.

Before entering the Army, he was employed by Boeing Aircraft in Seattle.

## Adult Recreation Program Opens For Basketball

A meeting of adult recreation basketball team coaches, followed by the opening of gymnasiums for practice sessions, will mark the start of the Pierce County Park Department's winter athletic program.

Jack Johnson, recreation supervisor for County Parks, has called a meeting of adult team coaches for Thursday, Nov. 9, at 8 p.m. in the South Park Community Center, S.50th and South Tacoma Way. The joint meeting will also include coaches of teams in the Metropolitan Park District's adult basketball leagues.

Teams which intend to enter the American and National divisions of the Pierce County League, the County-City 5-10 and Industrial leagues, the County Church League and the County-City Old Timers League should be represented at the meeting.

A separate meeting for managers of Western Washington League teams will be held Thursday, Nov. 16, at 8 p.m. in the Metropolitan Park District office, 236 County-City Building.

Gyms will open Monday, Nov. 13, for the adult practice sessions. Johnson has announced that teams must reserve space for practices through their respective area director. The Western State Hospital gymnasium, available on Tuesday evenings

only, may be reserved through the County Parks office, 735 County-City Building or by telephoning FU3-3311, ext. 386.

The adult teams will be preparing for the pre-season tournament starting Monday, Dec. 4, and the start of league competition on Jan. 2.

The basketball activities for youngsters throughout Pierce County will begin with a meeting of team coaches on Nov. 20 at South Park Community Center. Practices will begin Nov. 27, the Christmas Tournament will start Dec. 26 and league competition will get underway on Jan. 2.

Area directors who will handle the reservation of gymnasiums are:

- BETHEL—Ed Niehl; EASTONVILLE—Dick Hermsen; EDMONT—Leo Gervais; FRANKLIN PIERCE—Del Schafer; LAKEWOOD—Wally Erwin; NORTH PIERCE COUNTY—Phil Norby; ORTING—Dick Patterson; PENINSULA—Roy Anderson; SUMNER—Bob Anderson; UNIVERSITY PLACE—Ray Mahoney, and WHITE RIVER—Jack Ross.

## Mentally Retarded Need Patterners

Oct. 29, 1967.

To The Editor: -

I'm writing you today about something very close to my heart; in the hopes that some other people will take it close to their hearts too.

It is about the mentally-retarded, slow learners, brain-damaged (through birth or accident) and Cerebral Palsy. Children with speech and reading problems; as well as muscular and other problems. These children CAN be helped now to be

self-sufficient. But it takes a lot of Love, and a desire to be an active partner. All it takes is a little of your reader's time to exercise these children.

Just think of the joy in knowing that just a few minutes (maybe once a week) will help make these children self-sufficient, able to do some things for themselves. There are quite a few children here in Tacoma and they do need help to be patterned.

I'm working in conjunction with the Northwest Unit at

Burien, with the "Institute for the Achievement of Human Potential," at Philadelphia, Pa.

When I said I was working in conjunction with the "Institute" I meant that I am a "Volunteer" patterner I'll admit you may miss a Bridge or Bingo game, but the rewards of seeing a child do some of the things for himself, will be greater.

Signed Olga K. Burris  
5417 South Fife Street

# OUR WEEKLY COMICS

By Al Smith

### Rural Delivery



Grubby



By Warren Sattler

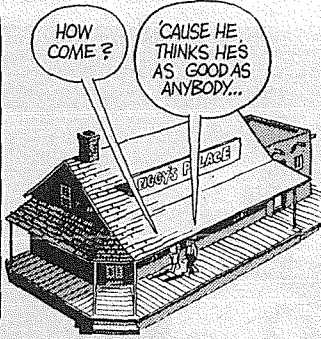
**RENT TV**  
Color TV  
Color TV  
**RENTAL MARTS, INC.**  
GR 5-3755 9440 Pacific  
JU 4-4100 10012 Bridgeport

**BETHEL HAY**  
ALFALFA HAY  
MUCK-KAPOWSIN RD. ON CEDAR  
VI 7-7252

**Under New Management**  
ORDER NOW! FRESH TURKEY  
BEEF — PORK — POULTRY — ALL CUT FRESH  
Halves, Quarters, or by the Piece  
We Can Save You Money.  
Locker Beef  
Free with each 25 lb. pack — One Pound Weiners  
**M&W MEATS**  
9202 South Tacoma Way  
In The Yakima Produce Store  
OPEN 9 A.M.-7 P.M. MON.-SAT.

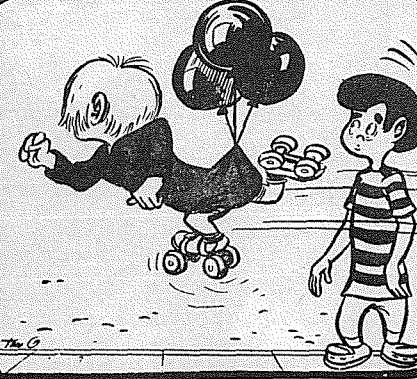


DEEMS



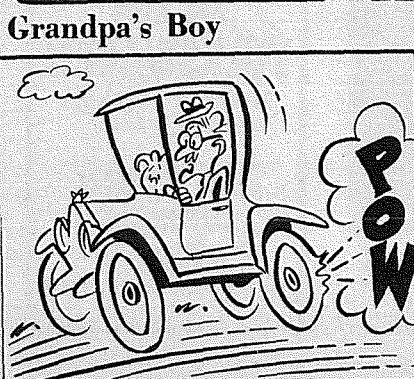
By TOM OKA

**INSURANCE**  
Auto-Fire-Life-Bonds  
A COMPLETE SERVICE FOR HOME OR BUSINESS  
**IRENE CLEMENS**  
INSURANCE AGENCY  
10329 PACIFIC AVE. LE 7-4904  
AGENT-BROKER-NOTARY



By Brad Anderson

**LOOK**  
8 ft. 2 x 4's  
**25<sup>c</sup>** ea.  
**Anderson Lumber**  
9813 Pacific Ave.



# CLASSIFIED ADS

## Call LE 7-0223 For Want Ads

### 1 Misc. For Sale

NEW SUPPLY of excellent used clothing for the whole family. Baby clothes from 5¢. Ladies bras and girdles 10¢. Men's work pants 30¢ up. See us first/also Army surplus by the ton, Bargain Barn 17501 Pacific Ave. Spanaway, 67-171

3 PIECE sectional, clean \$75.00. Good condition. LE 1-5718. 67-170

GIRLS BIKE and boys bike, sewing machine and two coats. LE 1 - 4942 after 3 p.m. 67-169

23" RCA T.V. remote control and casters. LE 1-3740 or 13614 So. 14th. 67-165

SET of Women's interlocking diamond rings. 7-diamonds. \$175. TH 5-1865 or LE 1-6203.

3 ALMOST NEW men's suits. Size 38. LE 1-3926.

SADDLE for sale. TH 5-3094.

### 2 Autos For Sale

1966 FORD Camper, spec. truck 3/4 ton fully equipped F250 model like new. Call after 5 p.m. LE 7 - 4293. 67-166

### 6 Musical Instruments

BALDWIN SPINET Piano like new. LE 1-3654. 67-158

PIANO - 49" upright, plain case. LE 7-7066.

**RENT OR BUY**  
The beautiful Howard Piano made by Baldwin, \$10 monthly.  
**LE 7-4221**

### 9 Animals For Sale

7 PUPPIES half German Shepherd half Norweigen Elk, 6 weeks old. \$250.00 each. LE 1-0836. 67-172.

### 11 For Free

ONE dozen Banty roosters. Free if you can get them. LE 1-2956.

FREE FILL gravel wanted at 120 133rd St. So. LE 1-4646 Elmhurst Mutual Light & Power Co. 67-113

### 24 Work Wanted

IRONING in my home, very fast, reasonable, Parkland area. GR 5-0163. 67-167

### 36 Personals

LOSE WEIGHT safely with Dex-A-Diet Tablets. ONLY 98¢ at Johnson Drug.

### 27 Misc. Services

GUARANTEED piano tuning. LE 1-3436.

SEWING & Alterations. LE 7-0403. 67-168.

### 29 Land Services

ROTOVATING, plow, disc, harrow, light blade work. LE 7-6058. 67-149

### 30 Repair Services

T.V. Service - Guaranteed stereo & CB repair call LE 7-3427.

BROKEN bicycles, tricycles and riding toys expertly repaired with economical used parts at the Bicycle Wrecking Yard. LE 1-4741.

### 38 Instruction

PIANO studio - 72nd and Canyon Rd. LE 7-5064.

IMPROVE your English LE 7-5274. 67-143

**PRIVATE LESSONS IN YOUR HOME**  
Piano - Organ - Accordion  
FURNISH ACCORDIAN ON Trial Period TH 5-3750

**HELEN'S Parkland Ceramics**  
Lessons-Supplies-Firing  
1303 S. 117th  
LE 1-0823

### 19 For Rent Or Lease

OFFICE SPACE - BOAT & TRAILER SPACE for rent. Office \$50 per month. Lights, heat, water and garbage furnished. Covered boat and trailer spaces \$10 per month. Phone LE 7-0223 days 10 to 4.

SMALL furnished apartment-\$40. 904 1/2 East Main. TH 5-6311.

### 12 Real Estate For Sale

**HOME VACANT**  
We desperately need good rentals \$80 to \$150 per month  
**CALL NOW**  
Let us handle your worries  
**SUBURBAN REALTY**  
11302 Pacific Ave.  
LE 7-8638 or LE 7-6896

**Need Money?**  
We have investors who will buy your equity or loan on second mortgage.  
**Lovelace Realty**  
12920 Pacific - LE 1-5555

### Legals

SUPERIOR COURT OF WASHINGTON FOR PIERCE COUNTY  
NO. 76944  
NOTICE TO CREDITORS  
In the Matter of the Guardianship of HUGH C. HARTLE, An Incompetent. NOTICE IS GIVEN that the Undersigned have been appointed and are qualified as Guardians of this Guardianship. Persons having claims against the Incompetent are required to serve the same, duly verified, on the undersigned or the attorney of record at the address below stated and file the same with the Clerk of this Court, together with proof of service on said attorney of record or the Undersigned, within four months after November 9, 1967, or the same will be forever barred.  
Adeline Maudlin  
Dorothy Whalen  
Guardians  
159 South 112th Street  
Parkland, Washington 98444  
George F. Potter  
Attorney for Guardians  
159 South 112th Street  
Parkland, Washington 98444  
Published November 9, November 16, and November 23, 1967.

IN THE SUPERIOR COURT OF THE STATE OF WASHINGTON FOR THE COUNTY OF PIERCE  
In Probate  
No. 76462  
NOTICE TO CREDITORS  
In the Matter of the Estate of EMMA H. VAN ARSDALL, Deceased.  
Notice is given that the undersigned has been appointed and has qualified as personal representative of this estate. Persons having claims against the deceased are required to serve the same, duly verified, on the undersigned or the attorney of record at the address stated below and file the same with the Clerk of this court, together with proof of such service within four months after October 5, 1967, or the same will be forever barred.  
/s/ George A. Van Arsdall  
Personal Representative  
159 South 112th Street  
Parkland, Washington, 98444  
GEORGE F. POTTER  
Attorney for Estate  
159 South 112th Street  
Parkland, Washington, 98444

SUPERIOR COURT OF WASHINGTON FOR PIERCE COUNTY  
NO. 178784  
SUMMONS BY PUBLICATION  
C.M. THOMPSON, Plaintiff;  
vs.  
LAVINA R. THOMPSON, Defendant.  
THE STATE OF WASHINGTON, to the said LAVINA R. THOMPSON.  
YOU ARE HEREBY SUMMONED to appear within sixty (60) days after the date of first publication of this summons, to-wit: Within sixty days after the 2nd day of November, 1967, and defend the above-entitled action in the above-entitled Court, and answer the Complaint of the above-named Plaintiff and serve a copy of your Answer upon the undersigned Attorney for above-named, C.M. Thompson, Plaintiff at his office below stated; and in case of your failure to do so, judgment will be rendered against you according to the demand of the Plaintiff's complaint which has been filed with the Clerk of said Court.  
This is an action for divorce.  
George F. Potter,  
Attorney for Plaintiff

George F. Potter  
Attorney at Law  
159 South 112th Street  
Parkland, Washington 98444  
LE 1-2889  
Published in the Parkland Times Journal November 2, 9, 16, 23, 30, December 7 and 14, 1967.

IN THE SUPERIOR COURT OF THE STATE OF WASHINGTON FOR THE COUNTY OF PIERCE  
In Probate  
No. 76543  
NOTICE TO CREDITORS  
In the Matter of the Estate of CHARLES H. JENNINGS, Deceased. Notice is given that the undersigned has been appointed and has qualified as personal representative of this estate. Persons having claims against the deceased are required to serve the same, duly verified, on the undersigned or the attorney of record at the address stated below and file the same with the Clerk of this court, together with proof of such service within four months after November 9, 1967, or the same will be forever barred.  
/s/ Rosco Jennings  
159 South 112th Street  
Parkland, Washington  
GEORGE F. POTTER  
Attorney for Estate  
159 South 112th Street  
Parkland, Washington 98444  
Published November 9, November 16, and November 23, 1967.

**Listings Wanted**  
Buying or Selling  
Real Estate Service  
Call  
**Devereaux Realty**  
12152 Pacific Ave. LE 7-8658

IN THE SUPERIOR COURT OF THE STATE OF WASHINGTON IN AND FOR PIERCE COUNTY  
NO. 76250  
NOTICE OF SALE OF REAL ESTATE  
IN THE MATTER OF THE ESTATE OF HUGH LEWIS SMITH, Deceased.  
NOTICE IS HEREBY GIVEN that Mavis E. Swift, in her capacity as administratrix of the above estate, will sell at private sale and for cash or contract the following described real estate:  
Lots 14, 15 and 16 in Block 1, Fernhill Addition to Tacoma, in Pierce County, Washington, to the highest and best bidder.  
Bids must be submitted in writing and may be left with the administratrix at 8849 Pacific Avenue, Tacoma, Washington, 98444. Bids will be received until the date of sale.  
The sale will be made on or after November 22, 1967. The administratrix reserves the right to reject any and all bids.  
Mavis E. Swift  
Administratrix  
McGAVICK, HEMMEN & BOTTIGER  
8849 Pacific Avenue  
Tacoma, Washington 98444  
Attorneys for Administratrix  
Published November 9, 1967 and November 16, 1967.

SUPERIOR COURT OF WASHINGTON FOR PIERCE COUNTY  
NO. 76339  
NOTICE TO CREDITORS  
In the Matter of the Guardianship of JOHN J. ZACEK, An Incompetent. NOTICE IS GIVEN that the undersigned has been appointed and has qualified as Guardian of the Person and of the Estate of JOHN J. ZACEK, a mentally incompetent person. Persons having claims against the incompetent are required to serve the same, duly verified on the undersigned or the attorney of record at the address below stated and file the same with the Clerk of this Court, together with proof of such service within four months after November 9, 1967, or the same will be forever barred.  
/s/ Mavis Zacek  
Mavis Zacek, Guardian  
159 South 112th Street  
Parkland, Washington 98444  
George F. Potter  
Attorney for Guardian  
159 South 112th Street  
Parkland, Washington 98444  
Published November 9, November 16, and November 23, 1967.

**DOZER & LOADER WORK**  
Hour or Contract  
Hauling State CC Permit  
8-10 yd. new truck  
**NEWBURY'S DOZER SERVICE**  
LE 7-7455



## USED TV SALE

17" Philco Table Model	\$34 <sup>50</sup>
19" Motorola Portable	\$69 <sup>95</sup>
23" Admiral Console	\$89 <sup>95</sup>
Late Model	
21" Motorola Console	\$59 <sup>95</sup>
21" RCA Console	\$59 <sup>95</sup>

Many Many Others Priced To Sell!  
LOOK  
Used Late Model Cherrywood Console Stereo \$199<sup>95</sup>  
**Pochel's Appliance & Television**  
"An Award of Merit Service Dept."  
14001 Pacific LE 1-1040

## BUSINESS DIRECTORY

**Fencing**  
Designers and Builders  
EXPERT WORKMANSHIP  
REASONABLE PRICES  
Easy Monthly Payments  
**VAUGHAN'S**  
6402 S. Tacoma Wy. GR 4-9515

**Furnaces**  
**Sheet Metal**  
• Furnace Repair and Service  
• Installations  
**PARKLAND FUEL OIL**  
12002 Pacific Ave.  
LE 7-0256

**Top Soil**  
**BALMER & SON EXCAVATING**  
Buildozing - Loader  
Land Clearing - Dump Trucks  
Blasting - Road Construction  
Top Soil, Backhoe For Hire  
FREE ESTIMATES  
LE 7-0165 VI 7-7133

**Boush Moving & Storage**  
Agents for U.S. Van Lines  
Coast to Coast Service  
121 WEST STEWART  
TH 5-5436

**Trophy Storm Doors**  
Heavy Duty Aluminum  
Full Piano Hinge  
Standard & Special Sizes  
Also Storm Windows  
Repair Service Available  
Manufactured By  
**PARKLAND DOOR INC.**  
318 E. 96th GR 4-7011

## BUY SELL CLASSIFIED ADS TRADE LEASE

**FOR BEST RESULTS IN:**  
**BUYING**  
**SELLING**  
**RENTING**

**USE THE WANT ADS**  
The Times Journal PO BOX 2116 Parkland 98444  
LE 1-0223

Ten Words . . . Only \$1<sup>00</sup>  
Use This Form For Ad Insert

Name \_\_\_\_\_  
Address \_\_\_\_\_  
City \_\_\_\_\_ Zip \_\_\_\_\_  
Amount Enclosed \_\_\_\_\_  
Classification \_\_\_\_\_  
Copy \_\_\_\_\_

**FROM OUR**  
*Correspondents*  
**Waller Road**

By Mrs. Verne W. Fogle Le 7-5210

The Waller Road PTA is again asking for good used clothing for the children of Remann Hall. Don't throw it away if it needs to be mended (that is if it is still in good condition). They have a group of older girls adept in the art of sewing who will gladly add a zipper or mend a tear. "Puzzles and models for the boys are also needed," said Mrs. Ehnat, PTA president.

ments are being made by Chairman Mrs. Joe Devish.

Roy Looker will be the Auctioneer for the affair that has been one of the most rewarding money making projects undertaken by the PTA.

This is the time to invite others to attend with the parents. The regular meeting will be in the multipurpose rooms.

\*\*\*\*\*

\*\*\*\*\*

Waller Road Garden Club will hold their regular meeting at the Grange Hall, Thursday, November 9th at 8 p.m. Mrs. Max Maynard will preside over the meeting.

The flower arrangements will carry a Thanksgiving Theme.

Mrs. A. Victor Johnson will hold a work shop on Christmas ideas. Members are asked to bring holiday ideas, too.

Hostesses for the evening will be Mrs. Alice Burwash and Mrs. Hazel Nichols.

\*\*\*\*\*

It will be "Back To School Night" for parents at the next meeting of the Waller Road PTA. Seven-thirty is the time that the teachers will greet you in your children's rooms. November 21st is the date to keep in mind.

Following a short business meeting that will be presided over by Mrs. Walter Ehnat, the PTA will once again hold their annual "Make it and Take it Auction." Arrange-

Waller Road Junior Grange was visited at their last meeting by State Grange officials; Mr. and Mrs. Merton Dick. Mr. Dick is State Junior Grange Superintendent.

Master Cindy Van Hulle conducted the regular business session that included election of officers for 1968. There was a touch of nervousness said Mrs. Hazel Walk, Junior Grange Matron, but everything went smoothly, even under careful scrutiny by the "unexpected honored guests."

Officers for 1968 were elected as follows: —

Master, Cindy Van Hulle; Overseer, David Larsen; Lecturer, Diane Walk; Steward, Gary Fredricks; Assistant Steward, Jay Looker; Chaplain, Cheri Taylor; Treasurer, Jim Van Hulle; Secretary, Patty Jones; Gate Keeper, Gordon Fredricks; Ceres, Susan Stone; Pomona, Debbie Iverson; Flora, Debra Sanford; Lady Assistant Steward, Gail Ehnat; Home Economics Chairman, Cindy Myron and Pianist, Natalie Luppino.

**Dream Dumplings**  
(Makes 6 dumplings)

**PASTRY:**

- 2 cups sifted all-purpose flour
- 1 teaspoon baking powder
- 1 teaspoon salt
- 2/3 cup Borden's Danish flavor margarine
- 1/4 cup homogenized milk

Sift together flour, baking powder and salt. With a pastry blender, cut in margarine until mixture resembles cornmeal. With a fork, gradually stir in milk. Press dough into a ball; wrap in waxed paper. Chill in refrigerator 1 hour. On a well-floured board, with a floured rolling pin, roll dough into an 18 x 12-inch rectangle. Cut into six 6-inch squares.

**FILLING:**

- 2-1/2 cups (1 lb. 4-oz. can) Comstock pie-sliced apples, drained
- 1 (9-oz.) package condensed mince meat, crumbled
- Sugar

In a medium-size bowl, combine drained apple slices and mince meat; mix lightly with a fork. Place 1/2 cup filling in center of each pastry square. Bring corners of pastry up over filling; pinch and press cut edges together. Place in ungreased 9 x 13 x 2-inch baking pan. Sprinkle tops generously with sugar. Bake in a moderate (375°F.) oven 35 minutes, or until golden brown. Serve slightly warm with light or heavy cream.

**ONLY FIVE YEARS AGO**



... many present day prescriptions could not be written, because uses were not yet established. Every day, medicine wins anew over disease, and your pharmacist assists in this victory.

**ASHMORE'S**  
**Spanaway Drugs**

LE 7-5993  
165th & Pacific Ave.

9 a.m. - 10 p.m.

7 DAYS  
A WEEK

**BARGAIN BASKET**

16618  
Pacific Ave. S. Spanaway  
LE 7-3371

No Sales To  
Dealers

WE RESERVE THE  
RIGHT TO LIMIT  
QUANTITIES

We Carry A Complete Line Of Sacked Feeds - Presto Logs

**We Are Locally Owned & Operated**  
**HELP YOUR BUDGET**  
**WITH THESE SAVINGS**

**PRICES**  
**EFFECTIVE**

Nov. 9-10-11  
Thur.-Fri.-Sat.

**HUNT'S**  
**Tomato Catsup**

5 for \$1  
14 Oz.

**NEW!**  
**Wesson**  
Buttery-flavor  
**Cooking Oil**

69¢  
Qt.

**WRIGHT'S**  
**RANCH**  
**EGGS**

3 Doz. \$1

**Ghirardelli**  
**Chocolate Chip**  
**FLICKETTES**

3 for 49¢  
6-Oz. Bag

**Sunshine**  
**Hi Ho**  
**Crackers**

2 for 49¢  
10 oz.

**PUREX**  
**BLEACH**  
29¢  
1/2 Gal.

**Sunny Jim**  
**Strawberry**  
**Preserves**

2 lb. 79¢

**Bits O Sea**  
**TUNA**

4 for \$1  
1/2 flat

**Best Bet**  
**Noodles**

24 oz. 49¢

**16 Piece**  
**DISH**  
Starter Sets

2.95

**Family Joy**  
**CHILI BEANS**  
or **RED BEANS**

300 TIN 10¢

**PRODUCE FOR STEW TIME**

**TURNIPS**

10¢  
LB.

**Rutabagas**

10¢  
LB.

**CARROTS**

1# CELLO BAG  
10¢  
EA.

**BANANAS**

10¢  
LB.

Everyday Low Meat Prices ... 25 lb. Locker Boxes \$14.95

**PORK**  
**CHOPS**

79¢  
Lb.

**END CUT**  
**CHOPS**

59¢  
Lb.

**LOIN END**  
**ROAST**

59¢  
Lb.

**BONELESS**  
**Pork Roast**

67¢  
Lb.

**WEST VIRGINIA**  
**BACON**

59¢  
Lb.

**BONELESS**  
**BEEF STEW**

69¢  
Lb.