

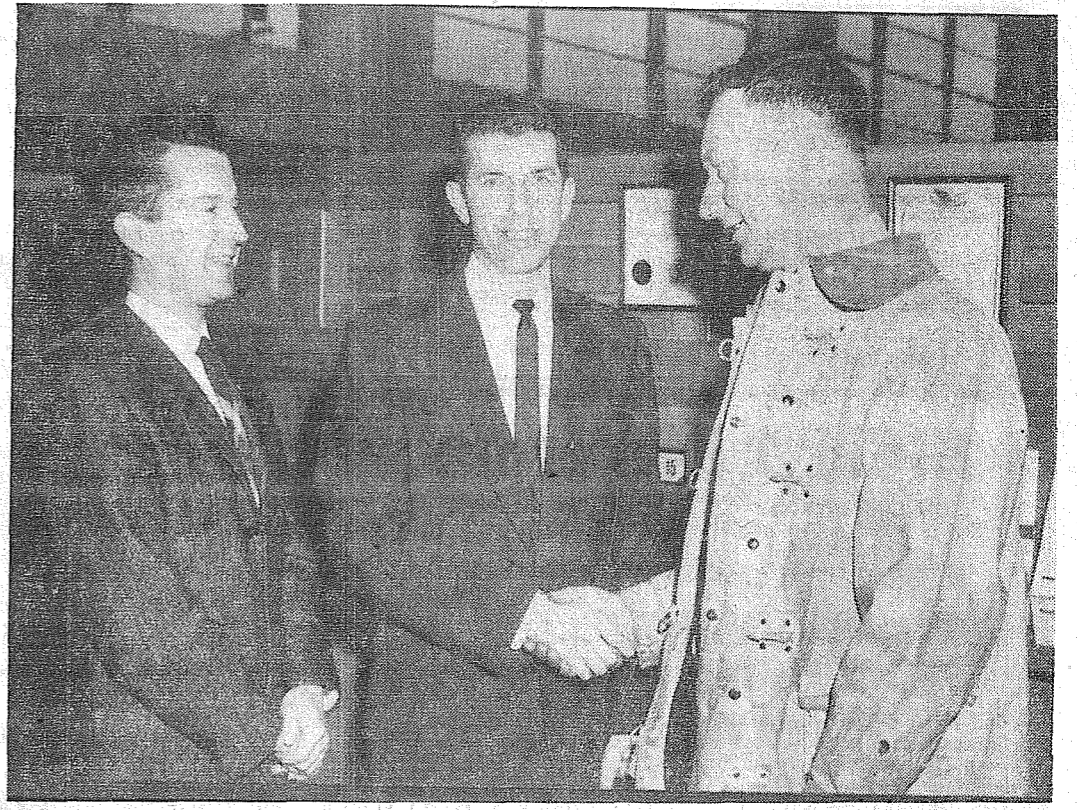
Permit No. 9P
Tacoma, Wash.
Sec. 34.66 P.L. & R.
U.S. Postage Paid
Parkland Branch

Rural Route
Occupant or Boxholder
Postmaster: If unable
to deliver, return post-
age is guaranteed on
addressed papers.

The TIMES JOURNAL

THURSDAY, JANUARY 21, 1960 • VOL. 15, NO. 20 • PUBLISHED AT PARKLAND, WASH. • LE 7-0223

New Bank Officers Receive Congratulations, Invitation



"PLEASE BE OUR GUESTS" says Parkland Fire Chief Bud Larson (right) as he offers his congratulations to two new staffers at National Bank of Washington, Parkland Branch; the invitation referred to the annual dance which the Parkland firemen will hold next month. Dale Phillips (left) and Earl Dryden (center) were elected assistant cashiers of the local bank at a recent meeting of the bank's board of directors. Phillips has been with the bank since 1949, starting at the Auburn Branch and transferring to the Parkland branch in 1956. Dryden was recently transferred to Parkland from the Tacoma office where he had been with the bank since 1948. —Photo by McKewen.

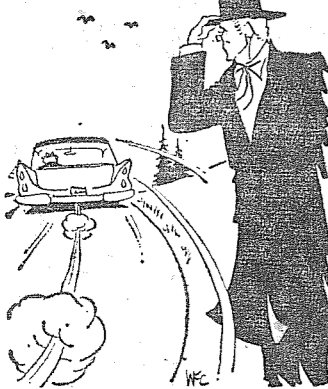
Midland Preschool

Movies "Kindergarten at Work" will be the highlight of the regular meeting for Midland Preschool on Wednesday, Jan. 27 at 8 p.m. at Midland school.

This promises to be a very interesting evening of entertainment for all parents and will afford them a "candid camera" view of their own child as well as the daily activities in kindergarten. Mrs. Charlotte Cutler, the kindergarten teacher, will narrate the movies taken by Mrs. Rita Craig.

Refreshments will be served by the hostesses, Mrs. Clark Casey, Mrs. James McClure and Mrs. Sammie Simmons.

The Country Parson



"We hold memorial services for lots of folks who can't see anything wrong with speeding if the highway patrol doesn't catch them at it."

DRYER'S FUNERAL PLAN CUTS COSTS
MORTUARY
DARKLAND

SHOP & SAVE at BROOKDALE LUMBER CO.

REMODELING SPECIALS

Celotex Wallboard
White Finish 4x8x 3/8 Each 2.25

Mahogany Panel
4x8x 1/4 Each 5.85
Gives your room that exquisite look!

Plywood — All Sizes —
LARGE USED
Windows & Frames
Buy the Window and Get Frame FREE

PLASTIC Storm Windows
ONLY Each 39c

Plastic Sheet
4 Ft. to 30 Ft. Wide ONLY Sq. Ft. 2 1/2c

Mahogany Doors
2nd Grade 4.95 Ea.

Free—Estimates—Free Remodeling—Add a Room A New Home

ECONOMY 2x8 8-Studs
ONLY Each 29c

CULL 2x8 8-Studs
12c and 5c Each

BROOKDALE LUMBER COMPANY
LE 7-8669
136th & Pacific

Home Improvement Council Elects Officers and Directors



NEW LEADERS for '60—The Pierce County Chapter of the National Home Improvement Council elected the following members as officers and directors for 1960 at a meeting at the Top of the Ocean. Seated, left to right: Lew Parker, director; James Weaver, director; Bert Vaughan, president; Gene Botsford, vice president; Dick Schultz, director; Walter Butt, director. Standing: Veard Ball, director; Mauri Milgard, director; Roy Hastings, Del Gash, Len Medlock, director, and Harold Larson. Officers not present are Ken Planzer, treasurer; Jack Nixon, executive secretary; Ken Heiman, director, and Dick Emery, past president. The purpose of the Council is to protect the homeowner against unfair charges for home improvements and to encourage worthwhile community improvement projects.

20% DISCOUNT ON DOLLS OF ALL KINDS
BLANKETS 72"x84" — Blue, Yellow & Pink
Rayon, Acrylic-Nylon Blend
CHILDREN'S CLOTHES & LADIES SWEATERS
ALLISON'S VARIETY STORE
99th & Portland Avenue — LE 7-5658

HILL TOP CONCRETE CO.
LOOK FOR THE BIG "H" THE SIGN OF SERVICE
WINTER IS HERE!! WEATHER—NO PROBLEM
WINTERIZED CONCRETE
HOT WATER MIX
SATURDAY DELIVERIES 8 a.m. to 12 Noon*
(Due to Overtime Costs on Saturday There is a Slight Increase on Charges)
OUR BIG YELLOW TRUCKS MEAN
● Up To 6 Cubic Yards Per Load!
● 20 Ft. of Hydraulically Operated Chute.
WASHED SAND & GRAVEL DRAIN GRAVEL CRUSHED ROCK PIT RUN
PHONE TH. 5-9525
2223 23rd Ave. S.E. Puyallup

Don't Miss The Annual Firemen's Ball

STARTS TODAY SOINE'S SHOE SALE FOR '60
OPEN TONIGHT AND FRIDAY NIGHT 'TIL 8 P.M.
CHILDREN'S SHOES
SIZES 8 1/2 to 3
SCHOOL SHOES 4.60
Regular to 8.95
Also a Few Boys' Styles in Sizes 12 to 4 at 4.60
MEN'S SHOES
GROUP 1
DRESS CASUAL WEDGES 6.60
GROUP 2
ODDS & ENDS 4.60
★ TEENAGE FLATS & CASUALS \$2.60
Reg. to 5.95
★ TEENAGE LANCER TIES & Low Cuff Ties \$5.60
DISCONTINUED PATTERNS & LEATHERS TEENAGE GIRLS SHOES
FLATS CASUALS 4.60
Regular to 8.95
SIZES 4 to 10
AAA-AA-A-B-C Widths
WOMEN'S SHOES
GROUP 1
HEELS Reg. 11.95 6.60
GROUP 2
T-BIRD CASUALS 6.60
GROUP 3
ODDS & ENDS WEDGES CASUALS 4.60
SOINE'S PARKLAND SHOE STORE
411 Garfield—Open 10:00-6:00
OPEN THURSDAY & FRIDAY NIGHTS, JANUARY 21 AND 22 'TIL 8:00 P.M.

FP Hi Boosters Meeting Tuesday

The Jan. meeting of the Franklin Pierce Hi Boosters will be held Tuesday, Jan. 26, at 8:00 p.m. in the High School cafeteria, according to Cornel Meek, Booster president. He invites all parents and friends to attend a very enjoyable program.

The High School band, under direction of Eugene Ahrendt, and the High School chorus, with Ronald Smith in charge, will present their first program before this group. Mr. Ahrendt has been teaching instrumental music in the elementary grades in the Franklin Pierce district since 1956 and this is his first year of teaching in the High School. This is Mr. Smith's first year of teaching after graduating from Pacific Lutheran College and serving in the Army as chaplain's assistant.

Court Of Honor

Boy Scout Troop No. 29 will meet Jan. 26 at 7:30 p.m. in the Fern Hill school; a Court of Honor will be held.

DEPENDABLE SERVICE
Lapenski Fuel Co.
LE 7-8173

Parkland Firemen Planning Dance

At the January business meeting of the Parkland Volunteer Fire Dept., the following officers were elected for the coming year: George Moe, president; Ray Hixon, vice president; Paul Bowen, secretary; Clay Bain, relief and pension representative, and Steve Baskett, historian. We would like at this time to remind you to keep in mind the up and coming fireman's ball to be held at the Sunshine hall on the 13th of February; a good time will be had by all with many prizes to fit every age group.

Your attention is respectfully called to new phone numbers which is now in operation for the reporting of all fires — LE 1-2511; this change made necessary to take care of the possibility of someone receiving a busy signal and being unable to report a fire. Under the new phone number this chance is eliminated, this is one more service we in the fire service hope will bring you better protection for you and your family. To all the people of Parkland your fire station is always open and we stand ready at any time to assist you in any way we can.

Registration Urged

Registration for voting in the March 8 Franklin Pierce special school election is now underway in all of the precincts. The books will close according to election officials Feb. 5. Voters are asked to call LE 7-0211 for the location of the registrars. There are six precinct changes for registration, with two registrars handling three each, John Younker of 105 East Tule Lake will have the books for Bingham, Brookdale and Cooper precincts. Florence Frick will handle new voters and those who have had their qualifications lapsed in the Central, Grant and Mulvey precincts. Her residence is 5303 East 112th.

Spanaway-Elk Plain Firemen Install



OFFICERS FOR '60—Installed at the annual dinner dance meeting at LaPergola Saturday evening, Jan. 16, were the following officers of the Spanaway-Elk Plain Volunteer Firemen, left to right: from Spanaway, Dick Meadows, re-elected treasurer; Don Palmer, vice president; Warren Symmons, president; John Todd, secretary. From Elk Plain, Jim Sartain, president; Frank Smith, vice president; Ken Kuper, secretary.—(McKewen Studio Photo).

Firemen, Auxiliary Install At Summit

The Summit Volunteer Firemen and Ladies Auxiliary held their annual installation dinner-Jan. 16 at the fire hall.

Officers for the Firemen are: Ben Fleming, president; Charles Stager, vice president; Larry Kerwin, treasurer; Don Harte, secretary.

Auxiliary officers are: Mrs. Don Harte, president; Mrs. Ashley Butler, vice president; Mrs. Burton Parrott, treasurer; Mrs. Robert Strang, secretary.

Chief Ashley Butler gave his annual report. The program for the evening featured a film provided by Mr. and Mrs. John Platt of Seattle of a trip to the Antarctic. Other guests for the evening were Rev. and Mrs. Floyd Cronkite and Mr. and Mrs. Jack Swayne.

Basket Social Planned

An old fashioned box social is being planned by the Methodist Men of the Parkland Methodist church. To be held at the Fellowship Hall at 12152 Pacific Ave., it promises to be an entertaining evening with bidding for the lunches waxing hot and heavy. It will be family affair with the children bringing their own box lunch. Richard Barnard will be the auctioneer and George Carlson is the chairman. A magician is to perform his magic tricks for both the young and old kids.

Monte Vista

The Monte Vista Garden club will hold the January meeting at the home of Mrs. Allen Peterson at 12:30 Thursday, the 21st. Mrs. Harold Meyer will address the club on "House Plants and Dish Gardens."

Members will answer roll call by naming ground cover other than grass, bringing a sample if possible.

Volkswagen Club

Volkswagen club of Tacoma will hold an award dinner Saturday, Jan. 23, at 6:00 p.m. at Lakewood Terrace. L. R. Isaacs, who has been score keeper for the year will total scores for the group's individual members and present the awards.

President Jerry Siler, 10804 A street, will announce the appointment of Joseph L. Kelly, Olympia, to the office of Road Captain. Kelly replaces John R. Miller who resigned.

The club's February business meeting will be 8:00 p.m. Thursday, Feb. 11, at Imported motors, 7030 South Tacoma Way. A February activity, possibly a Valentine party, will be planned for that month's social activity.

Mrs. C. H. McMillan, February hostess, will serve desert and coffee following the meeting.

Tip To Elk Hunters

Anyone with a yen for elk steak will be interested to know that a special elk season has been opened by Washington State Game Department on the Tony Novelli Ranch on the Elbe-Eatonville cutoff road, through January 31.

For information, call Mrs. C. Jenkins, LE 1-0136, after 6:00 p.m. or Eatonville TE 2-3152 after your arrival in Eatonville, or inquire at the Eatonville Club Room next to the Parnell Groery, for directions.

Clover Creek

On the sick list are Mrs. Donna Anderson and Mrs. Daisy Pratt, who have had the flu, and Kathryn Deady, who is recovering from mumps.

Collins Grange Installing

Brother George Fisher, State Deputy, will be at Collins Grange hall Thursday, Jan. 28, to install officers, also officers who could not attend the recent installation at Fruiland Grange hall. Watch for "pies for Polio" program announcement.

PROFESSIONAL DIRECTORY

Farmers Mutual of Enumclaw
Fire — Auto
ED MAREK
12909 Pacific Ave. LE 7-4000

Open 7 Days A Week Sundays 8 a.m. to 4 p.m.
HUNTING & FISHING LICENSES, SPORTING GOODS, PAINT
SOUTH END PLUMBING AND HARDWARE
185th & Pacific Avenue Phone LEnox 7-4100

RADIANT AIRE
ELECTRIC BASEBOARD HEAT
Call LE 1-2611 for an Expert's Estimate On Electric Heat Or Wiring Job
EVERGREEN ELECTRIC CONST. CO.
13021 Pacific Ave. (Home & Commercial) LE 1-2611

TRUST US WITH ALL YOUR DRY CLEANING!
GUESTS ARRIVING? — Fast
CLEANING • DRAPES
BLANKETS • LINEN
PARKLAND CLEANERS Call
11004 Pacific Avenue North of the Bank Corner LEnox 7-3221

CANYON READY-MIX CONCRETE
Covering the Southeast Tacoma Area
NO STAND-BY CHARGE
6-Yd. Mix Trucks to Serve You
Washed Sand & Gravel — Bank Run
WE HAUL OR U-HAUL
We Furnish Wheelbarrows, Etc. On Call Free of Charge
ALL DAY SATURDAY DELIVERY
72ND AND CANYON RD. LE 7-3943

By Popular Request
WE NOW OFFER...
A LAY-AWAY PLAN for
CAMERA & PHOTOGRAPHIC EQUIPMENT
20% DOWN PAYMENT
UP TO 3 MONTHS ON THE BALANCE
Ask For Details
COMPLETE STOCK
McAULEY'S SUMMIT DRUG
Airport & Canyon 9 to 9 Week Days LE 7-0668

SPANAWAY HARDWARE
ELECTRICAL AND PLUMBING SUPPLIES
SAND, GRAVEL & CEMENT PLASTIC PIPE
170th & Pacific LE 7-8378
Open Sundays 8:30-1:30

Keep Warmly Satisfied
With
TEXACO FUEL CHIEF
HEATING OIL
BLAKESLEE OIL SERVICE

BUSINESS TRAINING PAYS
TOP JOBS FOR STENOGRAPHERS AND RECEPTIONISTS - ENROLL NOW - **KNAPP COLLEGE**
10th & Pac. Ave. MA 7-2181

Waller Road . . . Pleasant Program For Garden Club
The January meeting of the **PIERCE COUNTY REFUSE CO.**
Weekly Garbage Collections
Phone LE 7-8688

RICH'S DRIVE IN
ON CUSTER ROAD AT SOUTH PARK
So. of Meadow Park Golf AND AIRPORT WAY
Course Club House South 112th St.
GR 2-9731 LE 7-4181

MOM - ARE YOU FRUSTRATED - For lack of time or lack of ideas?
Call Rich's Drive In for a Take-Home Order of Fish, Chicken or Prawn and Fries for yourself and Dad, and Hamburgers or Foot-Long Hot Dogs and Milk Shakes. They'll love it and it costs less than cooking at home.
FOR DESSERT - Order a quart of our delicious Vanilla or Chocolate Rich Freeze.
CALL YOUR ORDER TO EITHER OF THE ABOVE LOCATIONS AND PICK IT UP IN 20 MINUTES
NO DISHES TO WASH

Waller Road Garden club featured colored slides taken by Mr. and Mrs. Victor Johnson on a recent trip to the Grand Canyon, Bryce Canyon, the Mormon Temple, and Tabernacle and capitol building in Salt Lake City. Also beautiful pictures of the many fascinating rides in "Disneyland," and many more taken on their way to New Mexico where Mrs. Johnson attended a national convention.
The Haneys furnished slides of the Pasadena Rose Parade, enjoyed by all. Members answered roll call by telling of new birds seen in the garden this winter. The arrangements brought for study featured dry materials, driftwood and rocks. The horticultural topic included new shrubs to plant.

FENCING
Designers and Builders
EXPERT WORKMANSHIP
REASONABLE PRICES
Easy Monthly Payments
VAUGHAN'S
84th & Pac. Ave. GR 4-9515

'B' IS FOR BABY FURNITURE TOYS & EQUIPMENT
Small Fry
Tacoma - 1109 Market - BR 2-9505
and V/I/P LAKEWOOD
VILLA PLAZA JU 8-1628

Henry Lovell, who was injured recently when he fell while working on a ship, is reported recuperating nicely following several days in a hospital where doctors determined the extent of his injuries.
Vance Van Woert, member of the Waller Road Grange, has been laid up due to injuries received recently when his car was rammed from behind by another car.

Weekend Visit
Mr. and Mrs. Charles Sienkewich, accompanied by her mother, Mrs. Charles Severson, enjoyed a weekend in Spokane with their son-in-law and daughter, Mr. and Mrs. Jack Doyle, and sons Marty and Mike.
Grange Auxiliary
Mrs. Leonard Merkt will entertain the Waller Road Grange Ladies when they meet Thursday, Jan. 28, for a noon luncheon, followed by a business session conducted by the newly elected president, Mrs. William Johnston. Secret Pals will be revealed and new names chosen. Each lady is to bring a "thank you" gift for her unknown "pal."
Reporter—Mrs. Verne Fogle, LE 7-5210.

Spana-Park 4-H Club
Spana-Park 4-H club held its first meeting of the new year Jan. 9th in the James Sales Grange. President Edward Packard presiding. Judy Gaves, song leader, led the group in community singing. A committee was chosen to plan a Valentines Dance after the next meeting. We hope we can contribute a percentage to the March of Dimes. Our club chose as one of its community projects the collecting and repairing of toys to be given to children's homes. Five teams are busy planning for the meal preparation contest to be held in Feb. After the business meeting, a film on how meat is raised, cut, and cooked was shown.
Last Saturday our first "Toy Fixing Bee" went into full swing as Spana-Park 4-H members gathered at the home of Mr. and Mrs. George Packard with paint.

tools, materials, needles, scissors and enthusiasm! Toy repairers and doll clothes seamstresses were: Sharon Walters, Alice Score, Charlene and Linda Walters, Edward Packard, Ken and Bob Cashman, Davis Graves, Larry Stueby and Lance Perryman. Toy fixing was under the direction of Mr. Packard and Mrs. Walters.
Our meetings are held the second Saturday of each month; Feb 13 is the date of our next meeting.
More than 100,000 persons are engaged in Civil Defense in the State of Washington. The majority are volunteers.



Mrs. Avycc Blanchfield

INCOME TAX SERVICE

Headquarters at the offices of **JOHN L. CROSSEN BUSINESS CONSULTANT**
8410 Pacific Avenue
GR 2-8002

FLETT DAIRY
FARM FRESH
HOMOGENIZED AND PASTEURIZED MILK AND CREAM
ICE CREAM
Phone GR 2-3301

TRAILERS, 8 and 10 wide. We take anything in Trade. Also we trace you new carpeting Furniture & Appliances for your trailer
Beautiful Selection of Furniture Maple and Contemporary
LINDSTROM'S HOME FURNISHINGS
8021 Portland Ave. LE 7-8627

U.S. NO. 1 - WASH POTATOES
10 LBS. 49c

HUBBARD Lb. **Squash 5c**
DRY - MED. SIZE ONIONS 3 Lbs. 10c
SUNKIST LEMONS Lb. 10c

RED HOT Specials for WINTER MEALS!

NALLEY'S CHILI Hot or Mild 15-oz. Tin **4/\$1.00**

NALLEY'S FRESH SAUERKRAUT Jar 22-oz. **2/49c**

CHIFFON, White or Colored Facial Tissue 400 Count Pkg. **2/49c**

CAMPBELL'S SOUP VEGETABLE, TOMATO RICE **8/\$1.00**

CAMPBELL'S SOUP CHICKEN NOODLE VEGETABLE BEEF MUSHROOM **6/\$1.00**

NESTLES' 6 oz. Pkg. Chocolate Chips **2/45c**

SUNNY JIM SYRUP DECANTER JAR 31-oz. **39c**

SUMMIT SPECIAL MAYONNAISE Full Quart **47c**

SWANSON'S TV DINNERS Nine Varieties **49c**
MACARONI & CHEESE DINNERS - 33c

LARGE AA WHITE EGGS Doz. **48c**

DARIGOLD BUTTER Lb. **69c**
QUARTERS OR PRINTS

VELVEETA CHEESE 2 Lb. Pkg. **79c**

HOODY'S PEANUT BUTTER 3-Lb. Jar **99c**

PLEASE DOG FOOD 14 for Tall Tins **\$1.00**

READY TO EAT CEREALS, Reg. 29c Pkg.

CHEERIOS - KIX WHEATIES - FROSTY-O'S 4/\$1.00

COFFEE MJB Lb. **59c**

YOU CAN SAVE HERE ON EVERY ITEM ON YOUR LIST . . .

PORK ROAST Lb. **27c**
Picnic Style

PORK STEAK Blade Cuts Lb. **37c**

FILL YOUR FREEZER NOW!

FRESH - PORK LOINS **45c**
Whole or Half Lb.

STORE HOURS
9 a.m. 'Til 9 p.m. Daily Except Sunday

SUMMIT TRADING COMPANY
10409 Canyon Road, Tacoma LE 7-5848
No Sales To Dealers
We Reserve The Right To Limit Quantities

Instant **Fels Naptha** 79c
Liquid **Trend** 69c
Bleach **Clorox** 35c

Giant Pkg. **Waldorf Toilet Tissue** 39c
Quart Tin **Zee Lunch Bags** 29c
1/2 Gal. **Kitty Kat Cat Food** 2/21c

4-Roll Pkg. **50-Count Pkg.**

The family is the mainspring of Civil Defense. Get your family prepared to work as a team in preparing for emergencies — whether from enemy attack or local disaster.

Special Meeting For Water Company

The board of trustees and special committee of the MILE B Water & Power Company have found that to replace the present water system as a Mutual Company would be unfeasible. A special meeting

ELK PLAIN COMMUNITY CHURCH
(By Woody's Market on Mt. Hiway)
Sunday School10:00 a.m.
Worship Service11:00 a.m.
Missionary from Central America
Speaking at 10:00 and 11:00

will be held Jan. 25 at the Collins Grange, 8:00 p.m., for the purpose of voting on the course the board should now follow.

Firemen's Auxiliary
The Summit Firemen's Ladies Auxiliary will hold its first meeting of the new year at the fire hall Tuesday evening, Jan. 26. The newly elected president, Donna Harte, will preside over the business meeting. The committees will give their annual report. A social hour will follow the meeting.

Garden Club
The June Bug Garden club will meet Tuesday, Jan. 26 at 10:30 a.m. at the home of Mrs. Arthur Bjork, 2702 East 80th. Her co-hostess will be Mrs. Quin Rinehart. Since the program is on Weed Con-

Thursday, January 21, 1960 Page 3

The TIMES JOURNAL

rol, roll call will be answered by showing an unusual weed from the yard.

Sewing for the Carnival
Sewing for the school carnival will be 10:00 a.m. to 2:00 p.m. each Thursday at the home of Betty Kelly, 8706 East Vickery. Bring your sack lunch (coffee will be served), scissors, thimble, and needle. Old nylon stockings, scrap materials, and ideas are needed.

Workers Needed
Workers are needed for the small addition to the Youth Center. If you can help on this community project, please contact Bill Rave, LE 7-4321.

Square Dance
Saturday evening, Jan. 16, the Summit Youth Center was filled with square dancers from the community. A good time was had by all.

Manuscript Given
John McCallum, 11407 Knapp Moore road, recently presented the original manuscripts of "Six Roads from Abilene" and "Scoop" to his alma mater, Washington State University. "Six Roads from Abilene" is the story of the Eisenhower family as told to McCallum by Edgar Eisenhower. Already this book is on some best seller lists.

Ada Holden Circle
The Ada Holden Circle of the Summit Methodist church will meet Thursday, Jan. 28, 1:00 p.m. at the home of Mrs. C. V. Nichols, 5024 East 104th.

Home From Hospital
Otto Kostecky is home again with his family. He collapsed New Year's Day and was taken to the Puyallup Hospital. He will return to work the end of this week.

C. A. Johnson has proven that between pneumonia and him, he is stronger. He has been released

Spanaway Firemen, Auxiliary Installation Held

Almost 70 strong, the Spanaway-Elk Plain Firemen and Auxiliaries installation dinner Jan. 16 was a success. Besides officers of the groups installed, Fire Commissioners Bill Righetti, Emerson Tarpenning and Jarold Hillman were introduced, as were the two past fire chiefs, George Schnelle and Chet McAtee; also the present fire chief, John Farren.

Keep in mind the public dance at the Elk Plain Grange hall Feb. 13 which the Firemen are giving. The executive board of the Firemen's Auxiliary will meet Friday, Jan. 29, at 1:00 p.m. with Mrs. Robert Rhone presiding.

Convalescing
Wayne Pietz, son of Mr. and Mrs. Arthur Pietz, who has been confined to the hospital for injuries received when hit by a car, expects to be home this week. Cheery "get well" wishes to the plucky lad!

Congratulations!
Congratulations to proud grandparents, Mr. and Mrs. Martin Gibbons and Mr. and Mrs. Joseph Christensen of Tacoma on the birth Jan. 7 of a son, Thomas Stanley, to Mr. and Mrs. Stanley Christensen of Tacoma. The newcomer is welcomed into the home by two brothers.

Vacation Trip
Mr. and Mrs. William Iverson enjoyed an 11-day vacation trip which included seeing the Rose Parade at Pasadena and attending the exciting Rose Bowl game and rooting for the Huskies. They also visited friends and spent a delightful day at Disneyland.

Reporter—Mrs. Oliver Omat, LE 7-6466

To meet total war there can be nothing less than total defense. Civil Defense is a valuable deterrent to war.

from the hospital and is home recovering.

Vacationers
The Glenn Haller family is home from a month vacation in Texas, Arizona, and California. Mr. Haller had flown to Minnesota and New York before meeting his wife in Texas.

Reporter—Mrs. Gwen Cail, LE 7-3766.

IS YOUR TV TIRED?

CALL GR 5-0658

We Use RCA Tubes
A-1 TELEVISION AND RADIO SERVICE

KNITTED GARMENTS
Made to Order
(Hand Finished)
LE 1-1168

The outlook is bright...at the Family Savings Center!

4%

CURRENT RATE... COMPUTED ON MONTHLY BALANCES...PAID 4 TIMES A YEAR

Every penny is insured to \$10,000

11th and Pacific
Lakewood at Villa Plaza

A MUTUAL SAVINGS INSTITUTION

Pacific Federal Savings and Loan Association

BELLINGHAM • SEATTLE • TACOMA • LONGVIEW • PORTLAND • EUGENE

HI, HONEY! THE SALES TRIP IS COMING AND IT'S FINE. BUT I SURPRISE AND THE KIDS ARE YOU BEEN BEING TELL GIRL LIKE BUY THE FOR HEA COULD TALK TO IT'S GREAT TO VISIT HOME BY LONG DISTANCE AND THE COST IS SO SMALL! Pacific Telephone

INTERURBAN AUTO FREIGHT INC.

3 Trips Daily To Parkland, Spanaway Summit, Midland

GENERAL FREIGHT
MA 7-4121

Seymour's STORE-WIDE JANUARY SALE

SPECIAL SAVINGS ON SHOE SFOR THE FAMILY

Men's Black or Brown Dress Oxfords

Your Choice! **5.99**

Loafers and 5-yelet oxfords in plain toes, wing tips, etc. Sizes 6 to 12.

One Group Women's **FLATTIES**

Special! **2.99**

Ties and pumps styles in black or red nylon velvets, black and grey suedes. Sizes 4 1/2 to 9.

Boys' Scotch Grain **OXFORDS**

Special! **3.99**

Heavy duty for hard wear! Scotch grain leathers, sturdy composition soles! Sizes 3 1/2 - 6.

Girls' Soap and Water **Saddle Oxfords**

8 1/2 to 12 12 1/2 to 3 5 to 10

3.99 4.99 4.99

Better wearing Biltrite soles. B and C widths. Save at Seymour's.

Women's Large Size **Saddle Oxfords**

REG. 4.99 **2.99**

White with brown, white with black. Sizes 7 1/2 to 10 only, in AA to B widths.

Boys' Black Leather **WEDGIES**

REG. 6.99 **4.99**

Plain toe, black leather, cushion rubber wedge soles. 12 1/2 to 6.

Women's Wedge-Heel **Casual Pumps**

REG. 6.99 **4.99**

Suburban-aires, moccasin-toe casuals with elastic gore. White, black, red, tan in 5 to 10, AA to C.

One Group Women's **Hi-Heel Pumps**

REG. 4.99 **2.99**

Smart pump styles in velvets, suedes, kids. Broken sizes, 4 1/2 to 9.

Men's and Women's **Felt Slippers**

Special! **1.99**

Soft leather soles. In navy or wine. Women's, 5 to 9. Men's, 7 to 12. Save!

One Group Women's **Hi-Heel Pumps**

REG. 4.99 **2.99**

Smart pump styles in velvets, suedes, kids. Broken sizes, 4 1/2 to 9.

Rubber Footwear For All The Family

Galoshes, rubber, overshoes, 12" pacs for dress or work!

GALOSHES Children's and Women's — From **1.99**

ALWAYS FREE FRONT DOOR PARKING

Shop Daily 9:00 to 9:00, Sundays 10:00 to 6:00

9714 PACIFIC SEYMOUR'S FAMILY DEPARTMENT STORE

ONE BLOCK NORTH OF PARK 'N SHOP

SHOP! COMPARE! SAVE!

ALBER'S FLAPJACK PANCAKE & WAFFLE MIX 4-Lb. Bag **49c**

LOG CABIN Syrup 24-Oz. Bottle **55c**

PUREX 1/2 Gal. Bottle **33c**

MAXWELL HOUSE 1 lb. Tin **59c**

COFFEE 2 lb. Tin **\$ 1.17**

Reg., Drip or Fine

MANDALAY SLICED, 15 oz. Tin

PINEAPPLE 2 for **45c**

In Heavy Syrup

VANO LIQUID STARCH Qt. Bottle **25c**

FISHER'S BLEND FLOUR 25 lb. Bag **\$ 1.89**

BORDEN'S MILK Tall Tin **2/29c**

Best Foods Will Refund 25c Cash for Box Top

H-O Oats 2 Lb. Pkg. **39c**

Meats

OLD FASHIONED CURED **SLAB BACON**Lb. **29c**

LEAN TENDER **PORK CHOPS**Lb. **49c**

"BY THE PIECE" **JUMBO BOLOGNA** lb. **39c**

TENDER YOUNG **BEEF LIVER**Lb. **33c**

COUNTRY FRESH Vegetables

Texas Pink, Large **GRAPEFRUIT**Ea. **5c**

Fresh Cello **CARROTS**

Southern Grown **YAMS**Lb. **10c**

7c each

Juice & Eating **ORANGES** lb. **10c**

WELCH'S PURE GRAPE JELLY 20-Oz. Jar **2/65c**

"AA" Large **EGGS** Doz. **48c**

Fresh Daily From One Local Farm

GIANT SIZE TIDE 5c Off Deal..... **69c**

SUNSHINE KRISPY Lb. Pkg. **25c**

CRACKERS

McDANIELS

The Home of The Low Price

AIRPORT & CANYON ROAD

Store Hours: 9:00 'Til 9:00 — Sundays 9:00 'Til 7:00

PRICES EFFECTIVE Thursday Friday Saturday

PACIFIC FLOOR COVERING
LINOLEUM, FORMICA, CARPETS
 FREE ESTIMATES
131 & Pacific LE 7-4545

Bethel Boosters
 An unusual program is promised by President Glenn Ash for the regular January meeting of the Bethel Booster club, to be held Monday evening at 8:00 o'clock.

PARKLAND THEATRE
 121st and Pacific Avenue
STARTS FRIDAY

HAPPY DAYS ARE HERE!
MOVIE I.Q. CONTEST

GET YOUR SHARE!
\$1,000,000 IN PRIZES!

2 POWERFUL PICTURES
 THE AMAZING TRANSPARENT MAN
 Marguerite Chapman
 Douglas Kennedy

AND
 GET OUTTA TOWN
 Doug Wilson
 Jeanne Baird

Collins P-TA Due Tonight
 Calling all parents! Please be sure to attend the first P-TA meeting of the new year this (Thursday) evening at 8:00 o'clock. Parents who have not heretofore attended these meetings, why not start the year by being present and becoming more interested in the welfare of school children and their teachers? Let us make this year a most profitable one in the best sense of the word.

Golden Gift
 Preceding the Sunday morning service of the Collins Community church, a lovely gold-trimmed ceramic dish was presented by Pastor Robert Pottinger on behalf of the congregation to Mr. and Mrs. Shandrow who recently celebrated their golden wedding anniversary.

Ladies Guild
 The Ladies Guild of the Collins Community church held its monthly business meeting Jan. 12 in the

OK TAX SERVICE
\$\$\$ SAVE \$\$\$ AND TIME — WORRY
 LE 7-3861 or LE 7-8638
 Suburban Realty Bldg.
 11302 Pacific Ave.

10-11:30; 1-5:30 Sat., 10-5 Mon. Night, 5-8 JU 8-3556

TILlicum ENTERPRISES
 (On Highway 99, 1/4 Mile North of Madigan Overpass)
DISCOUNTS - EVERYTHING FOR HOME
 THIS WEEK'S SPECIAL
HOOVER CONSTELLATION VACUUM \$46.85

*OUR GUARANTEE: If, Within 24 Hours, You Find Locally A Lower Every-day Price, We Will Refund the Difference

home of Mrs. Delia Peterson. Mrs. Ellen Fleming, guest speaker, gave an interesting and helpful talk on "Prayer," typified by one of the spokes of a wheel representing "Christian Living," the Guild's theme for the year. Refreshments were served. The next work day meeting is set for 9:30 a.m. Jan. 21 in the Fellowship hall of the church, each member bringing her own sandwich, coffee and dessert to be served.

Collins Tots Club
 The Collins Tots club board will meet Tuesday, Jan. 25, at 8:00 p.m. at the home of Mrs. Monty Beam on Maple street. Plans for the proposed dance will be discussed and tickets distributed.

Mother III
 Mrs. Willard Gamin received word last week of the serious illness of her mother, who resides in Pomona, Calif.

Sympathy
 The sympathy of the Collins community is extended to Mr. and Mrs. Walter Balmer who recently lost their newborn baby boy.

In the Navy
 Verlyn Shafer, son of Mr. and Mrs. Kenneth Shafer, who has finished his advanced schooling in the Navy at Treasure Island, is now stationed in the Hawaiian Islands.

Reporter — Mrs. Eva Pearl Morris, Rt. 1, Box 196, Tacoma 44.

Here's A Suggestion For Better Phone Use



DIGITIS—Joyce Knoll has her finger on Tacoma's telephone problem: A rare disease known as "digititis" or misdialing telephone numbers. Joyce and three other Pacific Telephone customer dialing instructors will be visiting Tacoma customers who are dialing some 3,000 calls each day to non-existing phone numbers. The way to insure you reach the right number every time you dial is to dial all seven digits correctly. "When in doubt look the number up in your current directory," she reminds.

NOTICE
 I hereby do declare, as chairman of Spanaway Recreation Committee, that on the 21st day of February, Lord's year of 1960, the town crier shall shout from the house top a "thank you" to each and all male citizens who have made recreation a success here. Also, let it be known that wives of such will also accept our expression of appreciation for long hours and many moons of work away from home.

I would like to give special credit for the fine co-operation of my co-workers: Phil Zurfluh, president; Rudy Engebretson, treasurer, and Byron Parker, secretary.
 Signed John L. Newell

The state food supply council has developed a Civil Defense plan to supply disaster areas with food by pooling food company resources and handling whatever brands are available, with the assurance that everyone will have enough to eat.

YOUR ROOM LOOK LIKE THIS?

Why not redecorate with low-cost Dramex?
 Get DRAMEX from
SOUTH END PLUMBING & HARDWARE
 185th & Pacific Ave.
 LEnox 7-4100

100% PURE GROUND BEEF 3 lbs. for **89¢**

Country Style HOMEMADE PORK SAUSAGE 3 Lbs. **\$1.00**

PEDERSON Wash. Grown
Stewing CHICKENS Lb. **29¢**

BONELESS All Meat ROLLED PORK ROAST Lb. **49¢**

WHOLE OR HALF HALIBUT ROAST 6 to 8 Lbs. **29¢**

CARSTEN'S MORNING GLORY Sliced BACON **33¢ Lb.**

NICE CENTER CUT HALIBUT STEAK Lb. **39¢**

OUR OWN MAKE LINK SAUSAGE **49¢ Lb.**

NORTHWEST BRAND Old Fashion FRANKS 2 for **79¢**

BALLARD BISCUITS 9¢ Ea.

ADAMS REGULAR or OLD FASHION 3-Lb. Family Size Peanut Butter **95¢**

A REAL SAVINGS

HAPPY HOME PEAS 7 Cans For **\$1.00**
 16-Oz. Tins

KRAFT Parkay 5 Lbs. **\$1.00** for

K9 DOG FOOD 14 Tins **\$1.00**

CARNATION Instant Dry MILK 5¢ Qt. Package

NALLEY'S NOW BRINGS YOU LASAGNE IT'S NEW
 Large 40-Oz. **49¢**
 24-Oz. Size **39¢**

NORTH DAKOTA Red Potatoes 10 Lb. Bag For **49¢**

CELLO BAG CARROTS 88 SIZE ORANGES 3 Lbs. For **29¢** | **EMPEROR GRAPES** 10c Lb.

SUNNY JIM Orangeade 4 For **99¢**
 46-Oz. Tins

5¢ Pkg.

BARGAIN BASKET
 16618 PACIFIC AVE. South
 SPANAWAY, WASH.

PRICES EFFECTIVE THURS., FRI. & SAT. Jan. 21 - 22 - 23

STORE HOURS 7-Days-A-Week 9 A.M. to 10 P.M.

COAL, PRES-TO-LOGS, FEED — LE 7-3371

New Leaders For Midland Scouts
 The leaders of Midland's Boy Scout Troop 84 for 1960 will be: Committee Chairman Art Boudreaux; Scoutmaster, Ed Townsend; Assistant Scoutmasters, Jim Ewing, Dave Loran, Forrest Salles, and Frank Gural; Institutional Representative, Al McCue; secretary, Pauline Bilyeu; Treasurer, Don McCarty; Sunshine, Mrs. Don McCarty; Social Chairman, Maret Highland; Committeemen, Jack Getaz, Dick McNabb, Bob Lochridge, William Hart and Bob Reding. William Hart will be the Building Committee Chairman, and Tom Shannon, Transportation Chairman. With such a good, talented committee, it should be a very active year.

There will be a Fathers and Sons potluck dinner on Sunday, Feb. 7, at 5:00 p.m. We urge each father to attend with his son. For further information, call Bob Lochridge, LE 7-7888.

Any boy, 11 years old or older,

Midland .. . Horton Benefit Party On Friday
 The benefit party for the D. L. Horton family, whose home burned recently, will be held in the Midland fire hall Friday evening, Jan. 22, at 8:00 p.m. In addition to dancing, there will be attractive games with prizes for winners. The public is urged to attend; all proceeds go to the Hortons.

Orthopedic Projects
 The Midland Orthopedic Guild wishes to reamind everyone that linens, towels, aprons, dishtowels and pillow cases are still available at the Midland Water Co. office and that they make wonderful

in the Harvard-Midland area, interested in joining Boy Scouts, is invited to come to the Scout hall (located behind the Midland Improvement club hall) any Monday night at 7:00 o'clock.

General Sheet Metal Work
 Special Attention to Special Equipment
RAU MFG. CO.
 LEnox 7-7372
 14114 Pacific Avenue

DEPENDABLE PHARMACY SERVICE
 Bob Vaughan
 Owner

the FIRST delicious MULTI-VITAMIN WITH PRECIOUS LIVER CONCENTRATE AND IRON

NEW Rexall Meltamins Jr.
M-E-L-T in your mouth
 taste like candy

Now it's a pleasure to give your children vitamins.
 60 TABLETS 3.29

Ask for **FREE sample!**

Parkland Rexall Pharmacy
 11000 Pac Ave
 Keller's Kort
 LEnox 7-8636

INTAGRITY • SERVICE • SAFETY

LUMBER
 HARDWARE
 GLASS
 SHINGLES — ROOFING
 Full Line of Hand Tools

Baskett Lumber
 9701 Portland Avenue
 LE 7-5844 — LE 7-8663

"Brandin' Iron"
 RESTAURANTS

8413 Pacific Avenue
Brandin' Iron Restaurant

gifts. The Guild is also selling 1960 passenger automobile license tabs at the Midland Food Center.
 Reporter — Marlene Corrigan, LE 7-8545.

Rural Garbage Service
 Serving Parkland, Midland, Summit and Spanaway
 Pierce County Permit
 LEnox 7-8688

washer out of whack?
 USE THE NEW
Econ-o-wash
 SELF-SERVICE, COIN-OPERATED LAUNDRY

PARKLAND ECON-O-WASH
 12171 Pacific Avenue
 LE 7-9970

FOR YOUR AFTER HOLIDAY TREAT
SPECIAL CUT SIRLOIN
 With Bake Potato, Salad, Hot Roll and Coffee..... **\$1.15**

HOMEMADE PIES
 757 So. 39th Dorothy Sneider, Mgr. 39th St.

✓ CHECK THESE VALUES

WHITE TISSUE PAPER Reg. 25c Limit Two 16¢	KLEENEX Reg. 19c Limit Two 12¢
BABY PANTS Reg. 98c Plastic, Package of 4 Small, Med., Large, XL..Pkg. 66¢	BUBBLE GUN Reg. 98c 49¢

SUPPLY LIMITED — FIRST COME — FIRST SERVED

SHOP-ETTE
 These Prices at Parkland Store Only
 Open Daily 10 a.m. to 9 p.m.—
 Saturday, 10 a.m. to 6 p.m.

133rd & Pacific
 Next To Big Bear

SALE — CONTINUES
 LARGEST DISPLAY OF GENERAL ELECTRIC APPLIANCES IN THE NORTHWEST

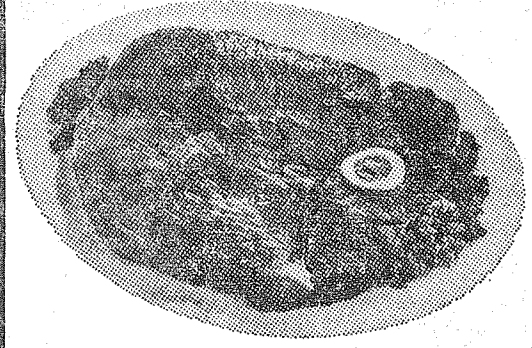
WEIR'S YOUR CORNER **LE 7-0231**

WASHER
 ● LARGE CAPACITY
 ● FILTER FLO
 ● 2-CYCLE WASHER
\$199.00
 WITH TRADE

WA-630T

8419 Portland Ave.

TABLERITE CHOICE
Round Steak



pound
69^c

BARGAIN BEEF or BARGAINS in BEEF
THERE IS A DIFFERENCE

...to the lady who pushes the cart!

Yes... There is a difference between Bargain Beef and "Bargains In Beef." Don't be fooled by Price and Price alone!
IGA chooses its meat right at the source - that means a chance to see the quality up close. There's no storing or reselling. IGA TableRite meat goes directly to your friendly IGA Retailer from his IGA Supplier and then you! No storing costs! - No reselling cost! - A savings on freight! - All this saves you more and guarantees you "Bargains In Beef" not poor quality, Bargain Beef. Today or tomorrow sure - get acquainted with IGA's Famous TableRite Beef!



CHOICE Rib Steak lb. 95^c

Sirloin Steak

TableRite tender, juicy steaks from grainfed Beef. Steaks whose tasty tenderness leaves nothing to be desired.



POT ROAST
BLADE CUT
Lb. **47^c**

83^c
Lb.

CHUCK STEAK
Lb. **49^c**
GROUND BEEF
3 Lbs. **\$1.00**

HUNT SOLID PACK
Tomatoes No. 1/2 27c ea. **4/\$1**

LUNCHEON MEAT
PREM 12-oz. tin **37^c**

BREAKFAST CEREALS
CHEERIOS 10 1/2-Oz.
WHEATIES 12-Oz.
FROSTY O's 9 1/2-Oz.
JETS 10-Oz.
27^c Each 4/\$1

MEXICORN 12-oz. **6/\$1⁰⁰**

FOUR FISHERMAN FISH STICKS 14-Oz. **57^c**

PRAWNS 8-Oz. **57^c**

ORE-IDA FRENCH FRIES 1-Lb. **25^c**

TATER TOTS 1-Lb. **25^c**

AA LARGE EGGS doz. **47^c**

SAVE MONEY FOR YOUR 1960 AUTO LICENSE TAB - TAXES DUE

8 FOR 99^c Sale
MATCH or MIX

- LIBBY APRICOTS, Halves, Unpeeled 8 oz. cans
- NORWEST APPLESAUCE . . . No. 303 cans
- LIBBY'S FIGS 8 oz. cans
- DOLE'S FRUIT COCKTAIL 8 oz. cans
- LIBBY'S GRAPEFRUIT Buf. tins
- LADY ELBERTA SLICED PEACHES . . . Buf. tins
- DEL MONTE PEARS, Halves 8 oz. cans
- LIBBY'S GRAPEFRUIT JUICE No. 2 cans
- DELMONTE Pineap.-Grapefr't Jce, No. 211 cans
- DOLE'S PINEAPPLE JUICE No. 2 cans
- LIBBY'S TOMATO JUICE No. 2 cans
- EVERREADY CARROT JUICE 12 oz. cans
- DELMONTE APRICOT NECTAR 12 oz. cans
- PIK NIK PEAS No. 303 cans
- NORWEST CREAM CORN No. 303 cans
- NORWEST WHOLE KERNEL CORN No. 303 cans
- NORWEST CUT BEANS No. 303 cans
- DOUBLE LUCK CUT BEANS No. 303 cans
- SEASIDE BUTTER BEANS No. 303 cans
- ASPARAGUS, Garden Grown No. 303 cans
- DELMONTE DRIED BEETS No. 303 cans
- KALE'S SLICED BEETS No. 303 cans
- KALE'S WHOLE BEETS No. 303 cans
- KALE'S DRIED CARROTS No. 303 cans
- WALLA WALLA PEAS & CARROTS . 11 oz. can
- VAN CAMPS WHITE HOMINY No. 303 cans

HUNT SOLID PACK No. 300, TOMATOES 7/\$1

NIBLETS WHOLE KERNEL CORN 12-oz. **6/\$1**

STARKIST CHUNK TUNA **4/\$1**

HUNT'S 8 oz. Tom. Sauce 6/49^c

HUNT'S 14 oz. CATSUP 6/\$1

HILLS BROS. COFFEE
2 lb. tin **\$1.17** 1 lb. **59^c**

ZEE 100' Wax Paper pkg. **19^c**

ZEE 80 Count Wh. Napkins pkg. **10^c**

ZEE 4 Pak Toilet Tissue pkg. **29^c**

CALIFORNIA CELERY
10^c Stalk

WASHINGTON U.S. NO. 1 POTATOES 10 lbs. **49^c**

PEARS
Delicious In Salads
14 1/2^c Lb.

Rebekahs Due
Starlight Rebekah Lodge will meet Wednesday, Jan. 27, in the Elk Plain Grange hall; all members are urged to be present.

Benston Grange
The first meeting of Benston Grange was held Jan. 12 with Master Harold Johnson bringing the gavel down for the first time. Mr. and Mrs. Raymond Ligrana and Mr. and Mrs. Charles Bowles were accepted as members. A speedy recovery was wished for three absent members, Mrs. Julia Hansch, Mrs. Anna Stromberg and Mrs. Mary Calvert. The 1959 committees made final

Get Up & Goers
The Graham Get Up & Goers 4-H club now has a membership of 18 with the addition of Dorothy Smith, Douglas Campbell and Brian Guthrie. At the last meeting Vice President Linda Kennard presented 4-H callers, the gift of Citizen State Bank, Puyallup. Mrs. Dolin of Kapowsin was a guest. Loretta Reding served cookies and made popcorn. Each member is asked to bring a Valentine to the next meeting, Feb. 13. — Nancy Shofner, reporter

Parkland Church Offers Movies
"A Haven of Refuge For The Handicapped" is the title of the movie scheduled to be shown at Parkland Evangelical Lutheran church, 123rd and Pacific avenue, Friday, Jan. 22, at 7:30 p.m. It will be the true-to-life story of the wonderfully inspiring work being done at Bethesda, "House Of Mercy," at Watertown, Wisconsin. Presently there are 500 "children" being cared for at the Home. A former Parkland man is the chaplain there and Pastor Adolph Harstad still has many relatives in the Parkland-Tacoma area. The movie is being sponsored by the Ladies Aid Society of the Parkland church who cordially invite your attendance. A social hour will follow.

a-Wondering . . . and a-Wandering . . .
With JACK BROWN

Not too long ago my wife began to chirk about visiting her relatives in Seattle. Since they live only a few blocks from Sea Tac I agreed that we'd fly over, come Sunday. Came Sunday and pea soup for weather so after committing myself I was faced with what I now consider a fate worse than death: having to drive someplace other than around the south end. Anyway, just to live things up a little I packed the family into one of our Renault Dauphines (that's one of those little French jobs with a toot-tweet horn) and away we went.

While driving the Alcan highway not too long ago I found that if I could get my lovable little monsters to counting something, I could avoid arguments, fights and a lot of ruckus in the back seat so as I pulled out onto Pacific Avenue I suggested that they count foreign made cars like we were driving. It wasn't long before the wife and I got into the act and joined the kids in watching for Volkswagens, Renaults, Triumphs, Datsuns, Morettis, MGs, Volvos, Austins, Simcas, Alfa Romeos, Fiats, BMWs, Nsuprins, Porsches, Opals, Vauxhalls, Hillmans and a dozen others. By the time we reached Sea Tac we had passed and counted 142 of these. Figuring that there were an equal number going the same direction we were, would give you a figure of 284 on the road in one 40-mile stretch and in a period of only 40 minutes. Start multiplying that by more roads and more 40-minute periods and suddenly you start getting an astronomical figure of foreign cars on our highways.

All this set me to thinking and doing a little research trying to put my finger on the final outcome of this influx of foreign cars into our country.

First, in analyzing my own case, I asked myself how it came to be that the Times Journal Pub. Co. was sporting two of these foreign cars. The answer: First they're sold by one of our steady customers who had a salesman that was not only a friend of mine but also a real fireball when it comes to talking you onto the dotted line so I had become easily sold. Next they get approximately 38 to 40 miles per gallon and even I was mentally capable of seeing an opportunity to slash my gas bill in half on at least two cars. Next for fifty bucks you can buy a repair kit and for another \$75.00 labor can come up with the equivalent of a new motor which means additional savings to my firm on that score. Then there is the price to be considered. You can buy them for as low as \$1455. (See ad in last week's Times Journal) That's a heck of a lot cheaper than the lowest priced American make. So all in all it boiled down to one big reason for replacing the two American made cars — a whopping big savings.

Going deeper into the foreign car situation, I learned that a few years ago the U.S. was exporting more than four times as many cars as were imported. Now imports are running four times more than exports. Why? One reason is fairly obvious. The American public is out to save as many of their fifty two cent dollars as possible and if they have to sacrifice a little bit of comfort to do it, so what?

Further research turned up the fact that employment in the auto industry has dropped off about 155,000 in the past four years, so what is the crux of the situation? It seems pretty plain to me. American auto companies gradually are being priced out of the foreign and home markets. Why? Rising costs of material and labor are the only answer. Everytime there is a raise in wages granted somewhere along the line, up go auto prices to offset the raise and down go sales and John Q. Workingman is the guy that gets it in the neck for with each of these ups and downs a few more join the ranks of the 155,000 former auto workers who have been dropped from the payroll in the past four years.

Something sure has to be done about this situation. Don't ask me what. If I was smart enough to know the answer I'd be a congressman or something besides a publisher.

I do know one thing for sure. If I were an employee of a firm in competition with the foreign markets I'd think things over carefully and when it came time to sit down at the bargaining table I'd be a little less insistent on wage increases for a while until the economy of our country became a little more stable. I'd be afraid that I might be one of those to join the 155,000 auto workers that are probably real glad to get a job on the business end of an idiot stick or anything else these days. It's a cotton picking cinch that very few of them moved up to bigger and better living after being laid off.

Oh yes! I forgot to mention that my wife's relatives weren't home and I did all that driving for nothing. Some days it just doesn't pay to get up.

VAUGHAN'S VALUES FOR '60
INVENTORY SPECIALS

RANGE HOOD AND FAN	Reg. Price 34.00	Sale Price 25.50
14x20 MEDICINE CABINET	10.50	7.75
11x18 MEDICINE CABINET	4.30	3.25
37x22 SLIDING MIRROR CABINET	43.60	32.70
30x32 IMPERIAL MEDICINE CABINET	34.00	25.50

VAUGHAN'S PACIFIC LUMBER
84th & Pacific Avenue GR 4-9515

QUALITY HOMES DESIGN ASSISTANCE
Estimates Without Obligation
Hedlund Const.
920 So. 121st LE 7-4227

Prescription Service
Open 7 Days a Week
9:30 a.m. - 9:30 p.m.
Sundays 10 a.m. - 6 p.m.
JACOBS PACIFIC DRUGS
Wallgreen Agency
Pay Light & Water Bills Here
84th & PACIFIC AVE. Greenfield 2-6445

SAFEWAY IS the PLACE TO BUY MEAT
Morrells Sausage Rolls



The PRIDE of Morrells
Deliciously Seasoned

4 1-Lb. Rolls **\$1.00**

HYGRADE

Sliced Bacon Lb. **43c**
No. 1 Fancy Grade — Perfect for breakfast menu.

Skinless Wieners Lb. **49c**
Economical — Just right for quick and easy meals.

Good Quality Imported Beef at Low Prices!

Beef Pot Roast Good Quality Blade Cut lb. **35c**

Beef Rib Roast Good Quality Tender lb. **59c**

Ground Beef Good Quality Low Price **3 lbs. \$1.00**

Star-Kist Tuna Chunk Style **4** 6½-oz. Cans **\$1.00**

Lunch Meat TEMT Ideal for school lunches **3** 12-oz. Cans **\$1.00**

Peaches YES MADAME Elberta Style Stock up now. **4** Large No. 2½ Cans **\$1.00**

Shortening VELKAY Economical For baking or frying **3-lb. Can 55c**

CRUSADE for COMFORT
in Snoozin' Season
KLEENEX TISSUES
Pkg. of 400 **25c**

Apple Pie BEL-AIR Fresh Frozen 24-oz. Pie **39c**

Orange Juice MINUTE MAID Fresh Frozen 4 Cans 6-oz. **89c**

Apple Whirls CURTSY Fresh Baked Pkg. **39c**

Cake Mixes JIFFY, White, Yellow Choc., Spice 9-oz. Pkg. **10c**

Shrimp SEA SURF Salad Style 3 4½-oz. Cans **\$1.00**

Spaghetti With Meat Balls Chef-Boy-Ar-Dee **5** 15½-oz. Cans **\$1.00**

Meat Ball Stew CHEF BOY-AR-DEE 30-oz. Can **49c**

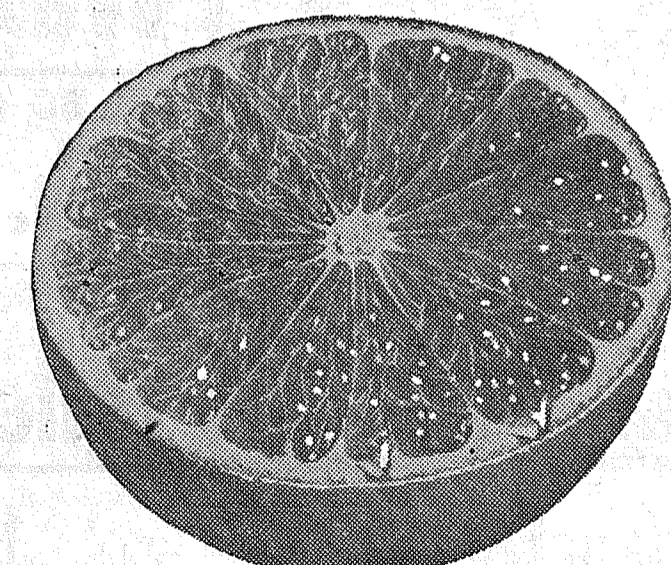
Beefaroni CHEF BOY-AR-DEE 15½-oz. Can **25c**

Raviolis CHEF BOY-AR-DEE 15½-oz. Can **31c**

COFFEE

Edwards 1-lb. Can **57c**
Finest quality at a saving
2-lb. Can \$1.13

Folgers 2-lb. Can **\$1.17**
Ideal blend with a perfect aroma. Stock up now.
1-lb. Can 59c



Grapefruit Pink Texas, Juicy and Sweet, 10 for 49c **Each 5c**

Bananas Golden, Perfectly Ripened **2 lbs. 25c**

New Carrots ARIZONA, Tender, Sweet Cliptops **2 lbs. 15c**

New Cabbage ARIZONA, Sweet — All Green **lb. 9c**

SUNKIST ORANGES
Peak of the season - Sweet and juicy, 35-lb. Case \$2.98

10 Lbs. **99c**

FREE Melmac Dinnerware Offer
Leave Your Name In The Entry Box At Any Safeway
16 Piece Melmac Dinnerware Set To Be Given Away
At Each Safeway Store

M.D. Toilet Tissue White or Colored **4-Roll Pkg. 39c**

Powder Room Facial Tissues **4** Boxes of 400 **\$1**

SAFEWAY

Sale starts 9 A.M. Thursday, Jan. 21, through Saturday, January 23, in Tacoma, Puyallup and Sumner.

Complete Motor Rebuilding
Lathe and Press Work, Brake Drum Turning, Reboring, Pin Fitting, Key Seating, Head Surfacing, Piston Grinding, Valve Seats Installed, etc.

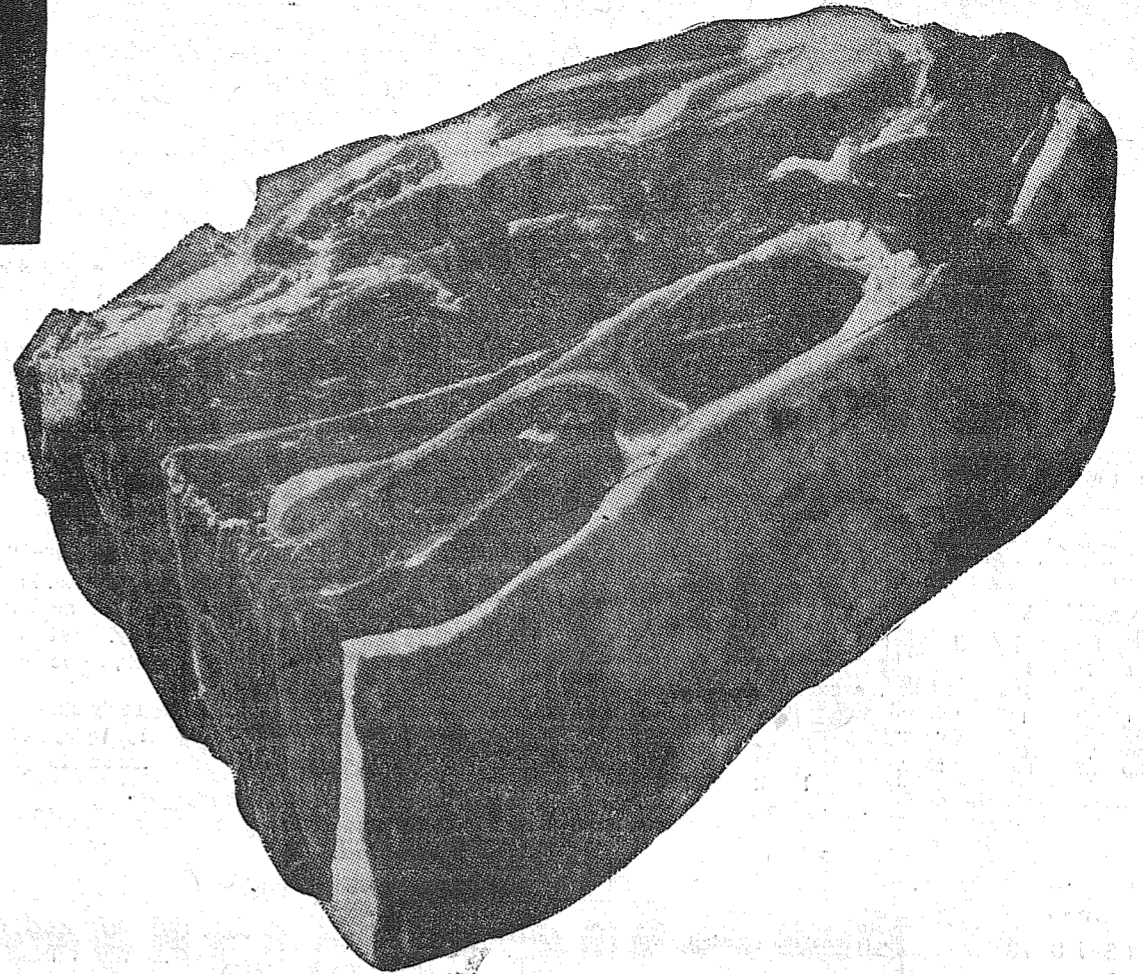
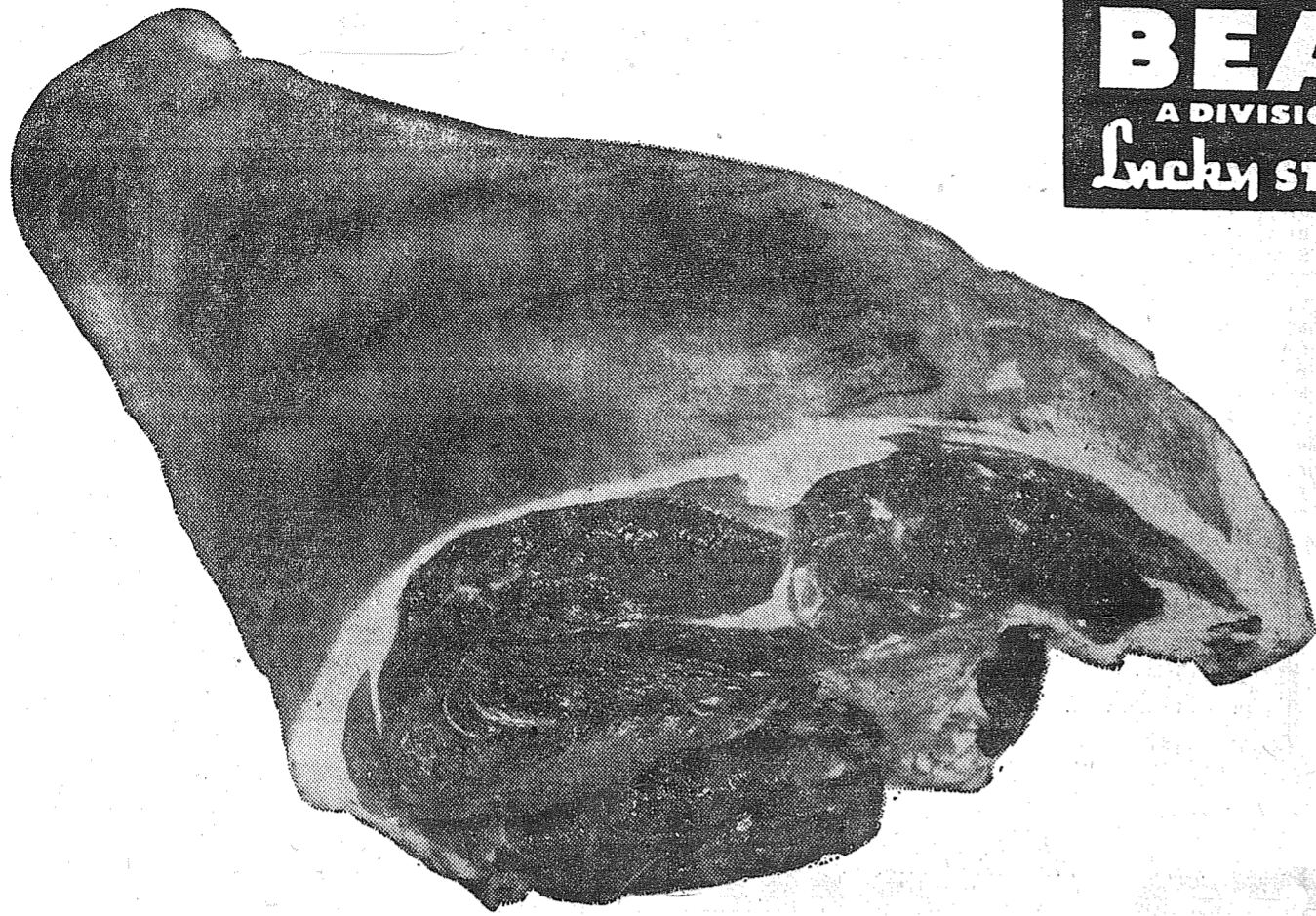
Rupe Machine Works and Garage
AUTOMOTIVE & INDUSTRIAL WORK
13411 Pac. Ave., P.O. Box 2445, Parkland 44, Wn., LE 7-7450

T.V. JINGLES by TELEVISION SERVICE CENTER

... the whole family can enjoy the tops in TV entertainment if you have Television Service Center, 8431 Pacific Ave., keep your set in tip-top shape. For the finest service in these parts, Call GR 2-3386 or JU 8-1000

TELEVISION SERVICE Center
"YOUR WINEGARD COLOR CEPTOR DEALER"
GR23386 JU-8-1000 8431 PACIFIC AVE.

BIG BEAR
A DIVISION OF
Lucky STORES



Leg of Lamb

... or Lamb Saratogas

The very finest . . . U. S. Graded Choice Lamb! Choose from well trimmed, extra tender, whole or half, Legs of Lamb . . . or, if you prefer, fully boneless, extra tender Saratogas of Lamb.

lb. **59¢**

Chuck Roast

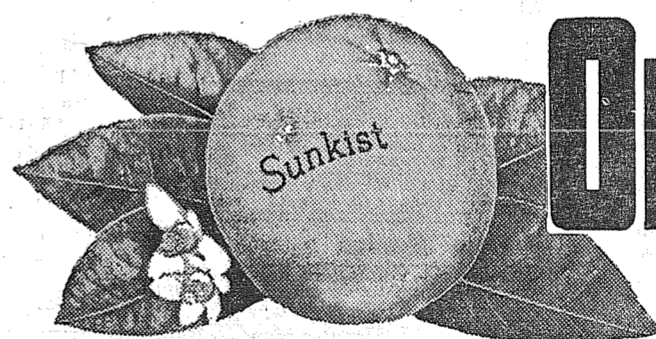
... Center Cuts Included

U. S. Graded Choice Steer Beef . . . specially aged and selected for complete tenderness and extra flavor! Center cuts and 7-bone roasts are included and each roast is fully trimmed.

lb. **45¢**

- CAKE MIXES** Pillsbury Loaf Cake Chocolate, Marble, White or Yellow 9-oz. Pkg. **10¢**
- LARGE 'AA' EGGS** Per Doz. **47¢**
- FLOUR GOLD MEDAL** 10-lb. Bag **89¢**
- SHORTENING CRISCO** 3-lb. Can **69¢**
- MJB COFFEE** Regular or Drip Grinds 1-lb. Can **59¢**
- DOLE JUICE** Hawaiian Pineapple 4 46-oz. Cans **1.00**

- Rib Lamb Chops** lb. **69¢**
- Breast of Lamb** lb. **19¢**
- Loin Lamb Chops** lb. **89¢**
- Cross Rib Roast** lb. **79¢**
- Chuck Steaks** lb. **53¢**
- Sliced Bacon** lb. **39¢**
- FRESH LEAN GROUND BEEF**lb. **39¢**
- MILWAUKEE ALL-MEAT WIENERS**lb. **49¢**
- MILWAUKEE DRIED BEEF**4-oz. Pkg. **35¢**



Sunkist Oranges
Thin-skinned seedless and juice laden—Medium Size Oranges lb. **10¢**

Golden Delicious Apples Per Lb. **15¢**
Extra fancy, fresh, crisp, loaded with golden goodness. All-purpose.

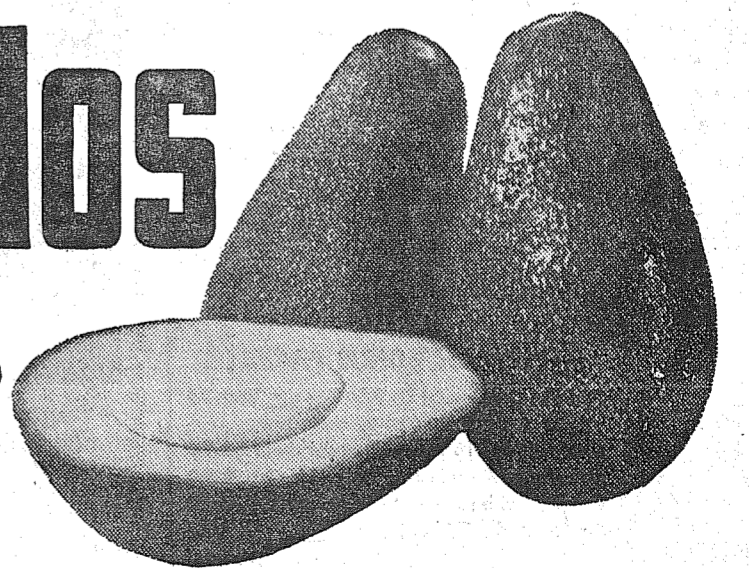
Hot House RhubarbPer Lb. **23¢**
Extra fancy, new and tender. Really succulent and piquant.

- WESSON SALAD OIL**Per Qt. **49¢**
- GERBER BABY FOOD** Strained .. 10 Cans for **79¢**
- BLUE BONNET MARGARINE** ... 4 1-lb. Cubes **89¢**
- SNOWMIST TUNA** Chunk Style 4 No. 1/2 Cans **1.00**
- DUCHESS TOMATOES** 2 No. 2 1/2 Cans **45¢**
- INSTANT COFFEE** MJB (10c Off Label) 6-oz. Jar **99¢**
- WALDORF TOILET TISSUE** 4-Roll Pkg. Assorted **39¢**
- PREM LUNCHEON MEAT** 12-oz. Can **45¢**
- KARO MAPLE SYRUP** (7c Off Label) 24-oz. Imitation Jar **35¢**
- BAKER'S INSTANT COCOA** 5c Off Label 1-lb. Pkg. **43¢**
- ZEE WHITE NAPKINS** 2 80 ct. Pkgs. **23¢**
- ROYAL PUDDINGS** 3 Pkgs. for **25¢**
- FROZEN TORTILLAS** New Moreno 12-oz. Pkg. **33¢**
- MEXICAN DINNERS** Moreno Per Pkg. **49¢**

CALAVO Avocados

Firm ripe, California grown, medium size . . . lowest price in years.

Each only... **5¢**



- IVORY FLAKES** 10c off label 69c
- IVORY SOAP** 3 mod. bars 31c
- PERSONAL IVORY** 2 lg. bars 33c
- IVORY SNOW** 4 bars for 27c
- CAMAY** 15c off label 1.20
- ZEST** 3 reg. bars 32c
- LAVA** 2 reg. bars 25c
- DUZ or DASH** 2 bath bars 43c
- OXYDOL** 2 bath bars 43c
- TIDE** king size **79c**
- CHEER** 61
- DREFT** 83c
- JOY LIQUID DETERGENT** 22-oz. can **75c**
- CASCADE** 22-oz. can **49c**
- SPIC & SPAN** 29c
- COMET CLEANSER** 2 reg. size **33c**
- IVORY LIQUID** 22-oz. can **75c**
- MR. CLEAN** 28-oz. can **73c**



Prices shown effective Wednesday thru Saturday. We reserve the right to limit.

BIG BEAR
A DIVISION OF **Lucky STORES**

**133rd AND
PACIFIC
PARKLAND**

Graham . . . Benefit Dance For Man Hurt In Woods

A benefit dance will be held at the Graham Grange hall Jan. 30 for Ricky Ackerman to raise money to help him pay the huge hospital bill due to an accident in the woods. Besides dancing, there will be games; many prizes have been donated by friends.

Rebekahs Install
Jan. 9 installation was held at the Kapowsin Grange hall by the Rebekah Lodge, the Past Noble Grands in charge. Marie Tinius was seated as Noble Grand; Betty Napier, Vice Grand; Lena Smetz, recording secretary; Carol Myers, financial secretary; Wilma Snyder, treasurer.

Margaret Gardner wishes to thank everyone for the many cards, letters and plants received during her stay in the hospital; especially warm thanks to the doctors and nurses at Good Samaritan hospital.

Reporter — Mrs. Marie Tinius, VI 7-7394.

FAMILY FELLOWSHIP DINNER

(Pot-Luck)
SPANAWAY METHODIST CHURCH
South 163rd at Pacific
SUNDAY — 6:00 P.M.
Bring the Family!

DRUG FACTS

A-A-CHOO!
WHAT CAN I DO FOR THIS COLD?
SEE YOUR DOCTOR— THEN TAKE HIS PRESCRIPTION TO **ASHMORE'S SPANAWAY DRUG**



ASHMORE'S SPANAWAY DRUG
PHONE LE 7-5993
165th & PACIFIC AVE.
SPANAWAY, WASH.

American Legion News

Clover Creek Post and Auxiliary No. 118, American Legion, will meet in the Legion hall at Spanaway Friday, Jan. 22, at 8:00 p.m. A Hard Time benefit jamboree and basket social will be held Saturday evening, Jan. 23, at 8:00 p.m. in the Legion hall. Every lady is asked to bring a basket; there will be prizes. The public is invited. — Birdie Ingham, publicity.

Guest Speaker To Tell Of Missions

Rev. Paul C. Reiter will present many aspects of the work of the Central American Mission at Collins Community church Sunday evening, January 24, in both the 6:30 and 7:30 services. The Central American Mission was founded by the late Dr. C. I. Scofield, editor of the famed Scofield Reference Bible. Mexico, Guatemala, El Salvador, Honduras, Nicaragua, Costa Rica, and Panama are the seven republics in which 190 persons carry on the work of the mission. Collins Community Church, located just North of Collins school on Bingham road, welcomes every interested person to share in this presentation of missionary work and need. Rev. R. E. Pottinger is pastor of the church.



Rev. Paul C. Reiter

SHOE REPAIR? PAUL'S 161ST & PACIFIC

PARKER PAINTS ★ HARDWARE ★ VARIETY

Barsotti & Timm
At the Roy Y LE 7-4221
Open 7 Days a Week, 7 a.m.-9

WE GIVE S&H STAMPS
VIRG ADAMS
RICHFIELD BEACON SERVICE
8515 So. Tacoma Way
JU 8-9613

Flying With JEANNE



Steve Bisig made a solo cross-country training flight to Shelton and return.

A dual cross-country training flight was made by Lloyd Smith to Shelton, Olympia and return with Slim Lawson instructing. Dave Porter instructed Stan Smart on his dual cross-country. They made their trip to Yakima and return. Both Stan and Lloyd are signed off to make their solo cross-country flights now.

Sunday Bob Martin and his friend Ray Roggenkamp made a flight to the Olympics. Bill Williams took his son for some scenic flights. Jack Smith also took some friends for a ride.

Don and Ruth Abbott, in their 170 and Otto and Al Wicklander and Merle Muxen, in Otto's 180 flew to Troutdale and return. They reported the winds were terrific down there. Leo Ferrel flew a friends 170 to Portland and return.

6:30 and 7:30 services. The Central American Mission was founded by the late Dr. C. I. Scofield, editor of the famed Scofield Reference Bible. Mexico, Guatemala, El Salvador, Honduras, Nicaragua, Costa Rica, and Panama are the seven republics in which 190 persons carry on the work of the mission. Collins Community Church, located just North of Collins school on Bingham road, welcomes every interested person to share in this presentation of missionary work and need. Rev. R. E. Pottinger is pastor of the church.

BALDWIN MODEL 30 \$995.00

Clover Creek Baptist Church
Military and Knoble Road
One Mile East of Pacific On 159th Street
Sunday School — 9:45 a.m.
Morning Service — 11:00 a.m.
Young People — 6:00 p.m.
Evening Service — 7:00 p.m.
Radio Broadcast — KAYE-1450
Lyle Bramblet, pastor
Phone LE 7-6421

Canyon Road . . . Too Many Dogs On The Loose

Once again we are having "dog days on Canyon Road." Packs of dogs are running around killing chickens, mutilating larger animals, etc. Your reporter has been asked to appeal to dog owners to be sure that their pets aren't loose at night.

APPOINTED
At the last meeting of the Canyon Road Community club, Mrs. Ann Runger was appointed treasurer in place of Mrs. Barbara Ladwig; Mrs. Frances Rice was appointed chairman of the Blood Bank. Ladies and gentlemen, please start building up your blood bank as the last blood in our bank has been used. Who knows — it might be you next!

Reporter — Mrs. John Folk, LE 7-5801.

Don and Ruth Abbott, in their 170 and Otto and Al Wicklander and Merle Muxen, in Otto's 180 flew to Troutdale and return. They reported the winds were terrific down there. Leo Ferrel flew a friends 170 to Portland and return.

ASCS Committee Elects Officers

By Joseph Buhaly
Newly elected Agricultural Stabilization and Conservation Committee members met recently to plan the 1960 ASC program for Pierce County. Fred Kropf was re-elected as county chairman of the ASC committee. Besides planning the ASC program for Pierce county, the county committee also approves all former applications for participation in the program. In Pierce county ASC activities center around the Agriculture Conservation, Soil Bank, Wheat, and Wool programs. The Agriculture Conservation program has the most participation. Financial incentives are provided in the ACP program to encourage farmers and forest owners to apply desirable conservation practices. In the case of forestry practices the payments are based on 70% of the cost not to exceed a dollar figure set by the ASC committee. Other agricultural practices such as drainage, pasture seeding and weed control are based on 50% of the cost not to exceed a set figure. Forestry practices during the past few years have been particularly popular with maximum acre rates set at \$30.00 for thinning, \$20.00 for pruning, and \$30.00 per thousand trees planted. Other local programs include the wool programs, where financial incentives are provided to encour-

age production of wool in the United States. The soil bank program provides for payments to compensate landowners for crop land taken out of production and put into grass or tree crops. The wheat program administered by the ASCS provides financial incentives for farmers to control the amount of wheat planted annually. Wheat farmers annually vote on this program. A yes vote will give them a support price for the wheat produced. ASCS office manager, Dorothy Thompson, can assist any landowner wishing more information on the various programs and how they may participate. The office is located at 106 1/2 W. Meeker in the Tribune Building in Puyallup.

IN GERMANY
NURNBERG, GERMANY (PAH-FNC)—Army Specialist Five James O. E. Barnett, whose wife, Mieke, lives at 13617 A Street, Parkland, Washington, recently returned to his home unit in Zirndorf, Germany after having participated in the testing of newly-developed Signal Corps equipment in Grafenwohr. The 23-year-old soldier, assigned to the 4th Armored Division Artillery's Target Acquisition Battery, entered the Army in August 1954 and arrived overseas on this tour of duty last May.

Building Permits

Richard G. Nobes, \$800 frame garage, 3403 So. 92nd; Ed I. Black, \$5000 residence, 16607 So. C; Max C. Aikins, \$6000 frame residence, 10919 McEachron Rd.; Brookdale Lumber Co., \$12,000 frame residence, 866 So. 141st; Brookdale Lumber Co., \$12,000 frame residence, 904 So. 141st; Wm. C. Chan, \$13,000 frame residence, 1208 So. 141st; Lee T. Alsbury, \$11,000 frame res., (each,) 2133 Cascade Place and 5902 E. 86th; E. J. Rody & Sons, \$18,000 frame (2), 8602 E. Rody Rd.; Jack Haugland, \$5000 frame res., 5604 E. 72nd; Donald Christensen, \$17,500 store bldg., 127th & Pac. Ave.; Ward & Grant

Melb, \$15,000 ea. (2) duplexes, 419-421 So. 124th.
First American to win the Nobel prize for literature was Sinclair Lewis, in 1930.

PROMPT PERSONALIZED PRESCRIPTION SERVICE

TED SWANSON INSULIN - VITAMINS
Downside Prices
Pay Phone Bills Here
PLENTY OF FREE PARKING
TINCHER'S PHARMACY
8227 Park Ave. GR 4-3344
Across from Fern Hill P. O.

A Real Treat
SPRING CHICKEN
Pan - - - • Tossed Salad
Fried - - - • Potatoes
• Rolls
with COUNTRY GRAVY

NETTIE'S CAFE
VISIT OUR DAFFODIL ROOM
PUYALLUP
TH 5-1156 116 SO. MERIDIAN ST.

January Jamboree
OF SUPER FOOD VALUES!
ANOTHER SCOOP!!

HORMEL - VALUE BRAND
SLICED BACON 4 Lbs. \$1.00

HORMEL PIECE
LARGE BOLOGNAlb. 39¢

FRESH LEAN PICNIC CUT
PORK ROASTlb. 25¢

TENDER RIB OR
SIRLOIN STEAKSlb. 69¢

TENDER
BABY BEEF LIVERlb. 29¢

EASTERN GRAIN FED
PORK STEAKSlb. 39¢

GOOD EATING
LOW COST
STEWING HENS
Pound 25¢

PREM LUNCHEON MEAT
Tin 39¢

TASTEWELL MARGARINE
POUNDS
5/89¢

KRISPY CRACKERS
2 lb. Pkg. 47¢

FRESH FROM SHINN'S
PUYALLUP FARM
LARGE AA EGGS Dozen 49¢

Tom. Juice LIBBY'S 6-Oz. Tins 13/89¢ } **Pork & Beans** VAN CAMPS 300 Tins 8/\$1

Dog Food SKIPPY 15-Oz. Tins 12/\$1 } **Tom. Soup** Reg. Size Tin 9/89¢

TUNA SNOW MIST Flat Tins 5 FOR \$1.00

PICKLES 49¢ OLYMPIC 56-Oz. Jar

COFFEE 59¢ SHURFINE 1-Lb.

PEANUT BUTTER \$1.09 SUNNY JIM 3-Lb. Jar

OPEN SUNDAYS
KITCHEN'S
EVERYDAY LOW PRICES
Right to Limit
Open 9 a.m. Til 10 p.m. Daily
10 a.m. Til 9 p.m. Sundays
This Week
12208 Pacific Ave.

JUICY NAVAL ORANGES
5 lb. Bag 49¢

LARGE - FLORIDA PINK GRAPEFRUIT
3 For 29¢

DELICIOUS APPLES
4 lb. Bag 29¢

Selden's LAKWOOD STORE ONLY!
First in Floor Coverings

Annual Broadloom REMNANT SALE!

THE LARGEST CARPET REMNANT SALE EVER
HELD IN LAKEWOOD . . . OVER 50 ROOM-SIZE RUGS!
Save up to 50% Fri. and Sat.

	REG.	NOW
12' x 17' ROSE BEIGE ALL-WOOL WILTON	248.50	179.50
12' x 15'9" QUALITY GEOMETRIC DESIGN, Acrilan	329.50	229.50
12' x 18'9" BROWN-BEIGE TWEED by Lees!	369.00	289.50
12' x 14'5" BEIGE WOOL by Lees! Shag texture	219.00	149.50
12' x 15'4" ALL WOOL HEAVY AXMINSTER	269.00	189.50
12' x 12' BROWN-BEIGE TWEED WOOL CARPET	189.00	129.50
12' x 12'2" BEIGE TWEED by Lees!	139.95	89.50
12' x 14' WOOL SABLE TWEED by Lees! Light Beige	274.00	219.50
12'9" x 9'1" DARK BLUE in Heavy Pile!	159.50	79.50
12' x 12'6" GREY WUNDA WEVE	239.50	144.50
12' x 15'9" SANDALWOOD COTTON CARPET	129.50	89.50
12' x 10'6" WOOL TWEED CARPET in Brown Tones	139.50	89.50
12' x 14' BEIGE SWIRL PATTERN CARPET!	269.50	189.50
12' x 17'4" CANDY STRIPE MULTI-COLOR!	96.50	49.50
12' x 12' SABLE COLOR ALL-WOOL! Bark Texture!	169.50	84.50
12' x 15'6" BEIGE AND BROWN TWEED	84.95	59.50
12' x 9'3" BEIGE TWEED ACRILAN CARPET	129.50	79.50
9' x 12' BEIGE TONE-ON-TONE by Lees!	139.95	69.95

See these and many others at Selden's! Sizes suitable for any area! All rugs bound at no extra cost! Many suitable for wall-to-wall installation!

Looking for VALUES?

then
LOOK at THESE

from **Piggly Wiggly**



MORTON'S

Apple, Cherry, Peach
and Boysenberry

PIES 3 24-OZ. PIES \$1

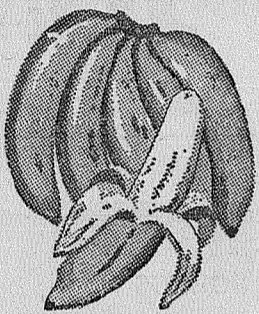
CHICK-A-DEE CUTS AND TIPS

ASPARAGUS 5 NO. 300 CANS \$1.00

PEACHES DUCHESS 4 NO. 2 1/2 CANS 89¢

PIGGLY WIGGLY'S OWN, PLYMOUTH
MARGARINE 2 lbs. 29¢

PIGGLY WIGGLY'S FRESHER PRODUCE



BANANAS

GOLDEN RIPE 12 1/2¢

POTATOES U.S. No. 1 10 lbs. 49¢

DELLO PKG. CAULIFLOWER 19¢ ARIZONA YAMS 9¢

Open 9 a.m. to 10 p.m. Daily

LOAD UP ON THESE AND SAVE!

HARDWARE SPECIALS (FIVE STORE ONLY)

PEAT MOSS POTS
Start Seed Now. Plant Pots Later ... Doz. 39¢

LIGHT FIXTURES
Close-Out on Fluorescent Fixtures. Complete 3 85¢

TACKLE BOX
With Plastine Lined Tray. Reg. 4.50 2 95¢

MOTOR OIL
VALVOLINE 5-Quart Can 1 75¢

NEW CROP TOMATO SEED NOW IN STOCK

3 New
SWANSON
TV DINNERS



MACARONI and CHEESE 35¢

CREAMED CHICKEN 49¢

SWISS STEAK 49¢

OTHER SWANSON TV DINNERS

EACH 49¢

CHICKEN BEEF
TURKEY MEAT LOAF
FILET OF HADDOCK
CHOPPED SIRLOIN BEEF

GROUND BEEF

Piggly Wiggly's Own
Lean Guaranteed Fresh
Quality Beef

3 lbs.

99¢



Cut Up

SWIFT'S PREMIUM FULLY COOKED

HAMS 45¢

Whole or Shank Portion 16- to 18-lb. Average... lb.

BUTT PORTION lb. 49¢ CENTER SLICES lb. 60¢

STEWING CHICKENS

PEDERSON'S FRESH
WASHINGTON GROWN

lb. 29¢

HYGRADE NO. 1 SWEETENIZED
SLICED BACON lb. 39¢

HYGRADE SKINLESS
WIENERS lb. 45¢

FRESH MINTERBROOK MEDIUM SIZE
OYSTERS 12-OZ. JAR 49¢

CHEESE
of the Week!
KRAFT MILD
CHEDDAR
By the Piece

lb. 49¢

COFFEE COFFEE 1-LB. HOUSE .. CAN 57¢

SWIFT'NING 3-lb. Can 59¢

TUNA STAR-KIST NO. 1/2 CHUNK STYLE CAN 25¢

EGGS LYNDEN LGE. GRADE A, DOZ. 45¢

PREM Luncheon 12-oz. Meat ... Can 37¢

FLOUR Gold 10-lb. Medal .. Bag 89¢

CHIPS NALLEY'S REG. REG. 69¢ OR DIPPER ... BOX 59¢

TISSUE M-D ASSTD. 4-ROLL COLORS ... PACK 37¢

MORE VALUES

Lipton's **ONION SOUP** Pkg. 35¢

Lipton's Soup **TOMATO-VEGETABLE** Pkg. 31¢

Lipton's Soup **BEEF-NOODLE** Pkg. 35¢

Lipton's Soup **CHICKEN-NOODLE** Pkg. 41¢

Lipton's **PEA SOUP** Pkg. 31¢

Premium Crackers **SNOWFLAKE** 2-lb. Box 53¢

N.B.C. Striped Cookies **SHORTBREAD** 10-oz. Pkg. 45¢

Quart Bottle 19¢ **CLOROX** 1/2 Gallon 35¢

Dole's Crushed **PINEAPPLE** No. 2 Can 27¢

Pineapple-Grapefruit **Dole's Drink** 46-oz. Can 29¢

Dole's Sliced **Pineapple** No. 2 Can 33¢

Dog Food Calo 2 No. 1 Cans 29¢

WALLA WALLA
PEAS

CREAM OR
WHOLE KERNEL

CORN

OR
PEAS AND
CARROTS

No. 303 Cans
MIX OR MATCH 'EM

6/1

Prices Effective
Thurs., Fri., Sat.,
Jan. 21-22-23
We reserve the
right to limit.

Betty Crocker **CAKE MIXES** 3 Pkgs. 99¢

New! (40-oz. 49¢) **NALLEY'S LASAGNE** 3 24-oz. 1 00

Cereal **ROMAN MEAL** 28-oz. Pkg. 39¢

Assorted Flavors **ROYAL PUDDINGS** 3 Reg. Pkgs. 25¢

1/4-lb. Pkg. 45¢ **LIPTON'S TEA** 16-Count Bags 25¢

Canned **CARNATION MILK** 3 Tall Cans 47¢

Van de Kamp's
REG 39¢
CINNAMON LOAF CAKE 33¢
DEVILS FOOD 3-LAYER
REG. 1.19 99¢
REG. 49¢ WALNUT RING
COFFEE CAKE 43¢
Famous for
QUALITY
VARIETY
FRESHNESS
CONVENIENCE
Van de Kamp's
BAKERIES



Thanks - for shopping with us...
Piggly Wiggly

PUYALLUP 1010 EAST MAIN	FIFE FORMERLY ANDRE'S MKT.	SO. TACOMA 5252 SOUTH WASHINGTON	PARKLAND PACIFIC AT GARFIELD	40th & Portland Avenue TACOMA
-------------------------------	----------------------------------	----------------------------------------	------------------------------------	-------------------------------------