

AUG 28 1969

Pierce County Herald and

The TIMES JOURNAL

Vol. 25 No. 34 35

August 28, 1969

Single Copy

15¢

In This Issue
See Inside

Fires Plague Area Firefighters

Spanaway Blaze Scorches 55 Acres of Timber, Brush



Sunday, August 24th at 2:10 in the afternoon saw this scene that looked like just another grass fire in a fire district plagued by grass fires. Shortly after this picture was taken the fire climbed a tree and began running amok. Roaring out of control the fire was contained after 4½ hours. Five bulldozers, fifteen fire rigs, and dozens of men all under the direction of Spanaway-Elk Plain Fire Chief John Farren fought the stubborn blaze to a halt. A partial tally of the fire equipment included all of the Spanaway-Elk Plain units, three Parkland trucks, one Roy truck, two Graham trucks, three Fort Lewis trucks, three McChord trucks, and five privately owned bulldozers; and crews and trucks from the Department of Natural Resources.



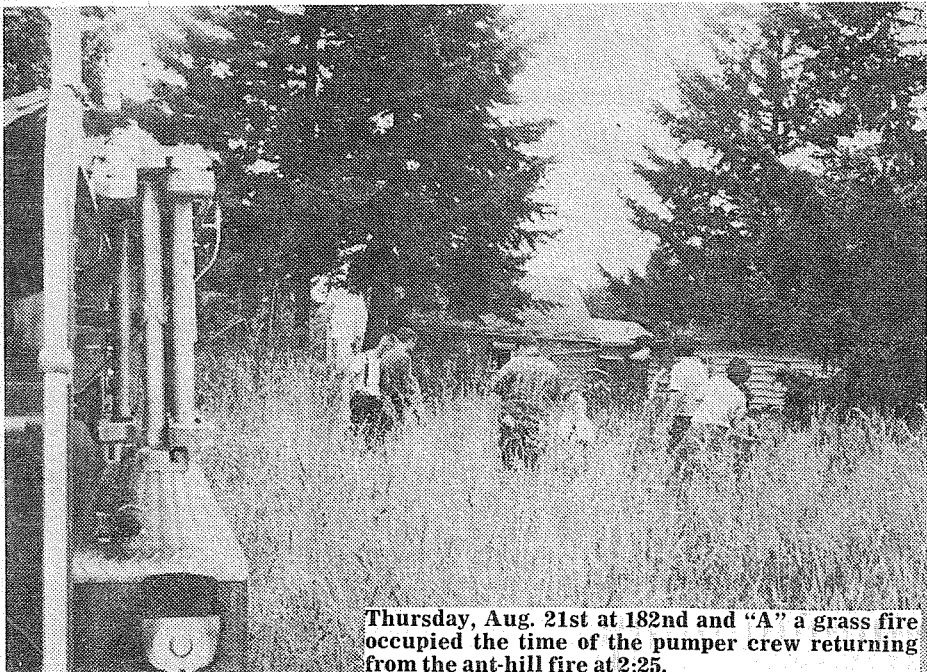
Wednesday and Thursday Spanaway-Elk Plain responded to fires in the Graham area. Units from the Department of Natural Resources, Graham and Spanaway-Elk Plain fought two large blazes in grass and heavy timber along the railroad right-of-way.



Firemen Slater and Van Zanten fight a stubborn anthill fire in the woods behind 815 172nd St. East. Fire was reportedly set by youngsters burning ants.



Crews from Ashford, Elbe and Mineral Fire Departments controlled this home fire before two additional units dispatched from Eatonville arrived at the scene. The home was reduced to rubble. Thursday and Friday homes in Ashford, McKenna and Spanaway were severely damaged or totally destroyed.



Thursday, Aug. 21st at 182nd and "A" a grass fire occupied the time of the pumper crew returning from the ant-hill fire at 2:25.



GRASS FIRE near Felkin's Service on the Mountain Highway consumed an estimated 1½ acres Tuesday afternoon. Children playing with matches was listed as the cause by Spanaway Fire Chief John Ferren. Flames swept across the field driven by gusts of wind faster than the firemen could run. No injuries were reported.

*Editorial Comment
and
Current Opinion*

Government Agencies Ignore State Law

Some laws are not enforced as rigidly as others. It does seem there is one such law that the public placed on the books and has the right to require it be enforced.

That law is one which requires vehicles owned by the various governmental agencies to be identified by two inch lettering. It appears that our local school districts are the only agencies making an effort to comply.

State, city and county owned cars and trucks are flagrantly violating its provisions. Many are not even aware of the law.



County and city-owned unmarked cars scurry about the county on missions of public importance. (We counted eight such unmarked cars in one tour of the Parkland-Spanaway area.) Three were parked at the Little Park Cafe for an extended two hour lunch break. Others were parked alongside the roads watching cars go by. Still others were driving to unknown destinations.

Why does this disturb us? Tax money is spent with little control by the public from whom it is collected. Frequently the only way the public even knows how its millions are being spent is when we actually see the names of the agencies we support on the hundreds of cars public employees drive as they rush to do the business we pay them to do. Once in a while we might like to know which agencies are studying shady lanes on hot days and which are lurching leisurely and avoiding the heavy traffic.

A check with the Pierce County Auditors Office, which issues, and we should hope, advises on the use and requirements of such exempt plates for public vehicles, revealed last Thursday that the individuals we talked with had no knowledge of such a law. A further check with the Traffic Deputy of the Pierce County Prosecutors Office disclosed that such a law exists and advised it is classified as RCW 46.08.065. We then called the Auditors Office back and gave them the information we received from the Traffic Deputy.

We have now given you the information and we will all watch as the violations diminish. Let's hope the public officials responsible get "with it."



Our family wishes to express our thanks to everyone who participated in helping fight the fire that threatened our home. God Bless all of you.

Mr. and Mrs. Alvin Little
Rt. 2, Box 2271
Spanaway, Wn. 98387

REO Office Schedule

During the first week in September the Rural Employment Office will be off the road for repairs to the bus. It will be back on its regular schedule September 8th.

Anyone in this area may apply to the head office at 401 Garfield So., Parkland, from 8:00 A.M. to 4:30 P.M. There is no charge for this service.

Pierce Announces Bus Route Changes

The following is student information for publication and for those students living in indicated areas, that will be attending Franklin Pierce High School, Ford Junior High School, Central Avenue Elementary School and Midland Elementary School.

Franklin Pierce High School & Ford Junior High School:

Students that will be attending these two (2) schools that live on 34th Ave., Vickery Ave., 40th Ave., 44th Ave., Bingham St., 48th Ave., and 50th Ave. must walk out either to 104th St., East or 112th St. East, depending on whether they live on the north or south side of the new Tacoma-Puyallup freeway now under construction, to catch their bus. (Note: This includes Vickery Rd. temporarily until the overpass is completed sometime during the coming school year.)

Central Avenue Elementary School:

Students that will be attending this school and living on 34th Ave., Vickery Ave., 40th Ave., 44th Ave., Bingham Ave., 48th Ave., and 50th Ave., and living on the south side of the new Tacoma-Puyallup freeway, must walk out to 112th St. East to catch their bus.

Midland Elementary School:

Students that will be attending this school and living on Waller Road and 34th Avenue on the north side of the new Tacoma-Puyallup freeway must walk out to 104th St. to catch their bus. Students living on the south side of the new freeway on Waller Rd. and Polk St. will walk out to 112th St. to catch the bus.

FRANKLIN PIERCE HIGH SCHOOL

Bus #22 will pick up 12th Graders in Mayfair area for Franklin Pierce High School using same route as last year.

Bus #26 will pick up 12th Graders for Franklin Pierce High School in the Andrew Christensen area using same bus route as last year.

KEITHLEY JR. HIGH

Bus #	Route	Run-Time	Students
18	Brookdale & Gldn. Gvn.	7:25	37
	138th & E. 10th Ave.	7:32	34
	K.J.H.	7:40	71

All other bus routes will be the same as last year.

TCC Board Meets

The Board of Trustees of Tacoma Community College will meet at 3:30 p.m. Aug. 28 in the TCC Administration Building, it was announced by Mrs. Maxine Myers, chairman.

Flareups Still Threaten Burned Spanaway Area

Rainfall Tuesday did little to snuff out the remaining hot spots left by a wind-swept blaze that roared out of control for 4½ hours Sunday and claimed about 55 acres in an area bordered by East 176th, East B Street, East 192nd, and Webb Road.

Spanaway firemen report that several days of mopping up around the outer fringes remain.

Although there was extensive damage to fences and some timber, no serious injuries or loss of buildings were reported. Cause of the fire was laid to a burning barrel and as a result Fire Chief John Ferren, Spanaway-Elk Plain District 7, announced that all burning permits in his district have been cancelled until further notice. Burning permits in Parkland Fire District had been cancelled until further notice by Chief Ray Hixon.

Firefighters and equipment from seven fire districts turned out to fight the flames, and were assisted by countless numbers of citizens who volunteered their services. Departments responding to mutual aid calls by Spanaway shortly after 2 p.m. Sunday included Parkland, McChord, Fort Lewis, Roy, Graham, and the Department of Natural Resources. Midland firemen helped man the Parkland station during the blaze.

Spanaway firemen and private citizens were at the scene until 2:30 a.m. Monday mopping up. They returned later Monday morning when the fire appeared to have flared up anew. Mopping up continued most of Monday and Tuesday, and firefighters stated that some of the stumps within the burn area could smolder for several weeks.

"This is the first time in 19 years that I've ever seen such cooperation from the community," Chief Ferren said praising the help from private citizens. "Restaurants and bakeries sent us hamburgers and sandwiches, and some came all the way from Tacoma."

Ferren also stated that 5 bulldozer firms from the area volunteered men and equipment, without waiting for his call. He listed them as Newbury Dozing, Don Leonard, Ed Barth, and Adrien Beaulien. The other company appeared on the scene, did their assigned job, and left before fire officials could identify them for credit.

Traffic congestion caused by sightseers often hampered the firefighters operation. As a result, many volunteers equipped with picks and shovels and some civilian citizen band mobile cars were turned away by police who were attempting to control traffic.

Citizen volunteers on the fire line were not limited to the male sex. Ferren reported a number of women worked shoulder to shoulder with their men. And they stood their ground when the flames got dangerously close.

A number of homes and outbuildings were seriously threatened by the fire, but due to tenacious fighting by volunteers and sudden wind changes they were not damaged.



MAYFAIR TEENAGE CLUB members held a car wash at 132nd and Pacific Avenue to build up their treasury. Pictured left to right putting the finishing touches on the Times Journal news car are Chris Hallman, Ruth Fox, Jim Triggs, Barbara Blanco, Sue Clarke, John Blanco, Steve Hallman, and Mike Ward. Club projects are aimed at helping to make Mayfair a better community and helping to keep teens off the street.

PLU Grid Ducats Go On Sale

Season tickets for the upcoming Pacific Lutheran University football season are now on sale, according to Dr. David Olson, director of athletics at PLU.

The ticket price of \$6 covers any four admissions and represents a \$2 savings over regular admissions for four contests, Olson said. He pointed out that tickets may be used by one person for four games, four persons for one game, or any other combination of admissions.

University of British Columbia's Thunderbirds open the PLU home season at Franklin Pierce Stadium this fall Sept. 13 at 8 p.m. The Lutes wallouped the Thunderbirds 40-0 last year in Vancouver.

Lewis and Clark battles the Lutes in a Northwest Conference clash in Tacoma Oct. 4 at 2 p.m.

Eatonville Schools Open Regular Time

Eatonville School will open at the regular time, 8:45 a.m., on Wednesday, September 3, 1969. Buses will operate on the same schedule as last year until it is determined what changes, if any, may be necessary. Dismissal is 2:30 the 1st day and 3:15 all other days.

Arrangements can be made with the principals for registration of new students prior to the opening of school.

Kindergarten pupils must be 5 years old and First Graders 6 years old prior to September 10.

Business Club Plans Cook-Out

Parkland Business Club will hold a Cook-Out rain or shine 6:30 p.m. Thursday, August 28 at Larry Armstrong's patio, 11009 Pacific Avenue.

Members are urged to bring their own silver and dishes, as well as a salad or hot dish. Menu includes charcoal-broiled steaks, potluck salads and casseroles. A good member turnout is expected for this popular annual event.

Fishing Closure

An unprecedented statewide closure to protect pink salmon began yesterday, the Washington State Department of Fisheries announced.

M.D. Carnival

A neighborhood carnival for the benefit of muscular dystrophy victims will be held on August 29 at 752 South 133rd Street.

Michael P. Murphy, son of Mr. and Mrs. Michael T. Murphy will serve as ringmaster, assisted by Kerry, Michelle, and Colleen Murphy, Angie Butning, and Jim Edgington.

The carnival, which is scheduled from noon until 6 p.m., will feature such games as ringtoss, penny drop, pin-tail-on-donkey, bowling the green, and marble shoot. All proceeds will go to aid the fight against dystrophy and related diseases afflicting millions.

The children got the idea for staging their event while watching TV personality Brakeman Bill who is promoting carnivals on his Brakeman Bill Show seen on KTNT-TV. For additional information call LE1-0483.

REC Board Meets

Immediately following luncheon at 11:45 a.m., the Board of Trustees of Rural Economic Opportunity, Inc. will hold its regular monthly meeting at Barlo's, 12221 Pacific Avenue, Wednesday, September 3rd.

Contract negotiations and other activities of REO will be discussed.

Pierce County Herald and
The TIMES JOURNAL

Published weekly at 14620 Pacific Ave., Parkland 98444 and delivered by U.S. Mail and carrier to subscribers. Publishers: Pierce County Publishers, Inc. LE 7-0223
News and Advertising Deadline: Tuesday Noon
Subscriptions \$4.00 per year, \$2.50 six months, or 40¢ monthly by carrier. News stand price 15¢ copy.
Qualified as a legal publication under Chapter 213 of the Legislature Acts of the 1941 regular session of the State of Washington.
Second Class Postage Paid at Tacoma, Wash.
Vol. 25 No. 34 August 28, 1969

PARKLAND LUTHERAN CHRISTIAN DAY SCHOOL
(Grades 1 to 7)
School opens Wednesday Sept. 3
Registration
Aug. 27 6:00 p.m. to 9:00 p.m.
Aug. 28 10:00 a.m. to 4:00 p.m.
PHONE LE 7-5492
South 123rd and Pacific Ave.
H. A. Theiste, Pastor - L. Joecks, Principal

BACK-TO-SCHOOL Specials
Good For Labor Day Too!
PLAIN SKIRTS
50¢ Each
SWEATERS
50¢ Each
Prices Effective Aug. 28-29-30
DAVE'S NUWAY CLEANERS
7209 Pacific Ave. GR 5-1144

GRADE "A"
FROZEN
12- to 16-lb. Avg.
**HEN
TURKEYS**
34^c_{lb}

FRESH
PICNIC STYLE
PORK ROAST
44^c_{lb}

LEAN TRIMMED
**PORK
STEAK**
68^c_{lb}

12-OZ.
MILWAUKEE
BEEF-N-CHICKEN
WIENERS
44^c_{PKG.}

**BAR-S SLAB
BACON**
58^c_{lb}

This Week's Low, Low Meat Prices

12-oz. BAR-S SMOKIES	69¢	LEAN GROUND BEEF	49¢
SMOKED HAM SHANKS	54¢	LINK SAUSAGE	85¢
FROZEN FRYER LEGS <small>In 5-lb. Box</small>	59¢	FRESH PORK SHANKS	49¢
FRESH CRAB MEAT	68¢	RESER'S POTATO SALAD <small>2 1/2-lb.</small>	89¢
FRESH SHRIMP MEAT	68¢	LEG-O-LAMB	94¢

BREADED
FISH STICKS
JUST HEAT AND EAT
58^c_{lb}

28-oz. SPRITE, SIMBA, FRESCA
COKE 7/1⁰⁰

LARGE "AA" PUYALLUP
EGGS doz. 45^c

EARLY CALIF. MEDIUM
PITTED OLIVES 3/1⁰⁰

NO. 2 1/2 VAN CAMP'S
PORK and BEANS 4/1⁰⁰

1/2 GALLON HI HO
ICE MILK 49^c

1/2 GALLON
PUREX 4/1⁰⁰

ROYAL RED
TINY SHRIMP 37^c

QUART HI HO
SALAD DRESSING 39^c

SEE TOM CONNORS IN
HIS KTAC HANG-UP
AT THE PUYALLUP HI HO
850 ON YOUR DIAL

HI HO SHOPPING CENTERS
OPEN 7 DAYS A WEEK

Puyallup RIVER ROAD and MERIDIAN | Tacoma 64th and YAKIMA

**LOWEST DRUG PRICES
ANYWHERE**

REG. 1.60 **COPPERTONE 97^c**
SUNTAN LOTION

REG. 69¢ **TEK TOOTHBRUSH 39^c**

REG. 1⁰⁰ **HAIR SPRAY 39^c**
HIDDEN MAGIC

REG. 1.09 **VASELINE 1-LB. JAR 59^c**

REG. 2⁹⁹ **PAMPERS 1⁶⁹**
DISPOSABLE DIAPERS

REG. 7⁹⁹ **THERAGRAN-M 4⁹⁹**
100+30 FREE

REG. 1.19, 500-COUNT
NOTEBOOK PAPER 67^c
COLLEGE- OR WIDE-RULED

Prices Effective Now through August 30th

FRESH
LOCAL
CORN
5^c_{ea}

VINE-RIPENED
JUMBO
Cantaloupes
5/1⁰⁰

1-LB. CELLO BAG
CARROTS
10^c_{ea}

SEEDLESS
GRAPES
25^c_{lb}

WOMEN'S WORLD

the Second Forty
by Margaret Brookfield

A FORUM ABOUT MATURE WOMEN

Nose Too Big?

Dear Miss Brookfield:
Am I too old, at 65, to undergo plastic surgery on my nose? I have been ashamed of my large nose all my life but I doubt if my family realizes this. I cannot afford the surgery as I live on Social Security benefits. Is there any way I can obtain this operation free of charge?
S.M., Trenton, N.J.

In answer to your concluding question: if there is, we do not know about it. As you are over 65, we checked with Medicare but they advised that cosmetic surgery — which means surgery to improve one's appearance — is not covered under Social Security's health insurance. We would suggest, however, that if you wish to obtain professional advice on the feasibility of the operation and its cost, you check with a plastic surgeon.

Lonely Widow

Dear Miss Brookfield:
Can you tell me where I can meet a nice, sincere man who is interested in getting married? I am an attractive widow in the late 40's and lonely.

V.L., Rocky Point, N.Y.
Dear V.L.:
That's the \$64,000 question and no one has a pat answer. Other women in your shoes have found a variety of solutions: some travel (with and without results); others move to cities where there is a higher proportion of men (ditto). About the only answer we can give you is that you will not meet eligible men just by sitting and wishing. If friends cannot introduce you, perhaps you might try joining social,

church or special interest groups in a large, nearby community. We can't guarantee that you'll definitely meet an eligible man this way or even, if you do, that he will be "nice and sincere." But give it a try.

Don't Be a Tattle-Tale

Dear Miss Brookfield:
I am very upset about the husband of my dearest friend: he is having an affair with another woman. I found this out quite accidentally while visiting a friend in a nearby city. He often goes out of town on business — at least, that's what he tells his wife. She believes him, I think. I did, but not any more. My husband said I should keep this news to myself, but I think I should tell my friend. What do you advise?

L.O., Easton, Md.

Dear L.O.:
Your husband is right. Your dearest friend might become your ex-friend, for no one likes the bearer of bad news. It is quite possible that the wife knows or suspects that her husband's trips are not completely devoted to business. You may only be confusing her silence with ignorance. If she really doesn't know and does find out — hopefully, not through you — avoid the mistake of saying, "I knew it all the time," if and when she confides her "problem."

Have you a problem as a mature woman, or with one? For advice and help write to Margaret Brookfield, Information Center on the Mature Woman, 3 West 57th Street, New York, N.Y. 10019.

Bookmobile Schedules

Bookmobiles of Pierce County Library will begin the fall schedule September 1st. For some routes within this area this will mean no change. Along some routes a few visits have been extended in time, others have been added, and a few have been dropped.

Bookmobile borrowers along route B-1 Lacamas should note these changes: beginning September 15, and continuing on 1st and 3rd Mondays, McKenna Cafe, 9:15 to 9:55 a.m., Hart's Lake Loop and Roy Christie Road, 10:15 to 10:45 a.m., 314th East and Pole Line Road, 10:50 to 11:10 a.m., Pole Line Road (Rohr), 11:15 to 11:45 a.m., Roy Christie Road, (Clemons), 12:20 to 1:00 p.m., and no stops at Hart's Lake Loop and Tisch Roads, or Schudy Road.

In 1968, the county bookmobiles traveled 30,028 miles to bring library service to unincorporated areas. Each vehicle goes over the same route twice a month, carrying to borrowers some 3,000 books, additional magazines, phonograph records, and the opportunity to request materials not carried by the bookmobile. Borrowers are not issued library cards, as a self-service borrowing method is used. Besides the driver, a clerk,



A get-acquainted party for 46 Tacoma area girls enrolling at Pacific Lutheran University was held Wednesday at the home of Mr. and Mrs. John Irwin, 1924 Brookdale Rd. E. Hostess for the gathering was former PLU student Cheryl Irwin, assisted by sponsors Gigi Gregorsen, Kathy Drews and Kristie Harstad. From left: Vernell Hill, Marade Holland, Miss Harstad and Miss Gregorsen.

and sometimes a professional librarian are on board to give complete service. Newcomers or others wish-

ing further information about bookmobile service are directed to phone Pierce County Library headquarters, FU 3-4308.



LIFE IS FILLED WITH ALL KINDS OF UNEXPECTED THINGS



Without a crystal ball it's almost impossible to know what the future will hold. Unexpected things such as accidents, sudden trips, business opportunities and hospitalization just "seem to happen". Then, of course, there are the things we do plan for, but that always seem to cost "just a little more." That's why so many people are putting their money away with us. They're beginning to save for those unexpected things. And they like the way their money grows. And the complete safety, too!

KEEP ON TOP OF THE NEWS WITH CITIZENS:

7:55 AM NEWS REPORT

3:30 P.M. CAPITOL REPORT

KDFL



1560



MEMBER: FEDERAL DEPOSIT INSURANCE CORPORATION

Citizens STATE BANK

★ MAIN OFFICE - PUYALLUP

★ SUMNER

★ SUMMIT VIEW

★ EDGEWOOD - MILTON

★ WILLOWS

Puyallup Fair Sept. 13-21

Let yourself go.



46 acres of family adventure that out funs anything since Christmas. A great grandstand show this year, twice daily. Featuring "The Establishment," Lawrence Welk TV stars, circus acts, rodeo, thoroughbred racing and sensational fireworks every night.

Western Washington Fair (Puyallup Fair to most folks) since 1900.

DRIVE BY THE RULES

SAVE SCHOOL CHILDREN'S LIVES



This Message Sponsored As A Public Service By . . .

Ashmore Spanaway Drugs
165th & Pacific
LE 7-5993

Anderson Lumber Co.
9813 Pacific
LE 7-7311

Stella's Flowers
12169 Pacific
LE 7-0206

Parkland Cleaners
110th & Pacific
LE 7-3221

Little Park Cafe
171st & Pacific
LE 1-1343

Cope's Auto Sales
9614 Pacific
LE 1-3060

Suburban Realty
11302 Pacific
LE 7-6896

Shop Mart Dept. Store
133rd & Pacific (Next to Lucky)

Clemens Insurance Agency
10329 Pacific
LE 7-4904

Parkland Realty
302 Garfield
LE 7-8609

Smith Built Canopies
14606 Pacific
LE 7-8022

Parkland Enco
13303 Pacific
LE 7-9954

Devereaux Realty
12152 Pacific
LE 7-8658

El Rancho Shell Station
106 & Pacific
LE 7-6700

Carl T. Lindgren, Realtor
410 Garfield
LE 7-0234

Lou Jean Apparel
406 Garfield
LE 7-5317

Parkland Fuel Oil
12002 Pacific
LE 7-0256

Parkland Light & Water
404 Garfield
LE 1-5666

Elmhurst Mutual Power & Light
120 So. 132nd
LE 1-4646

Tahoma Flying Service
Parkland-Spanaway Airport
VI 7-2266

HORSEMEN'S NEWS



Over The Fence Rail

By PEGGY PLUMMER

Events for this week are as follows:

Roy Pioneer Rodeo, Roy, Wn. August 31 and Sept. 1.

Walla Walla, Wn. Rodeo August 29-30-31.

Ellensburg, Wn. Labor Day RCA Rodeo. Sept. 1.

Polo Team of Tacoma will be playing Vancouver at Vancouver B.C. Labor Day weekend.

Q.H. Racing, Walla Walla, Wn. August 29-31.

Summer's End Open Horse Show, Argonne Village Arena, Spokane, Wn. August 29-Sept. 1.

Interstate Championship Western Games Meet, Centralia, Wn., August 30-31.

Wn. Paint Assoc. Show, Mar's Stables, Puyallup, Wn. August 31.

Twin City S.C. Perf. & Shodeo, Washougal, Wn. August 31-Sept. 1.

Events for the month of Sept. are as follows:
Evergreen Valley Riders Race Meet, Dollars Corner, Wn. Sept. 7.

N.W. Bloodstock Agency mixed T.B. sale, Sterling Stables, Woodinville, Wn. Sept. 8.

Pendleton Roundup, Pendleton, Ore. 10-13 Sept.

Silver Spur Club, W.S.H. Open Show, Dilbrtslr, Wn. Sept. 14.

TRI-CHALLENGE Q.H. SHOW, WN. HORSEMEN'S TACOMA UNIT NO. 1 ARENA, SPANAWAY, WN. SEPT. 20-21.

Northwestern Livestock Commission Co. Horse Sale, Hermiston, Ore. Sept. 21.

Woodinville Fall Q.H. Show. Condon's Q.H. Woodinville, Wn. Sept. 23-24.

Central Wn. Q.H. Show, Yakima, Wn. Sept. 27.

One of the biggest shows to hit the Sportsmen Arena is the up coming Tri-Challenge Quarter horse show scheduled for the 20th and 21st of Sept. Judging the show will be Judge H. L. Aiken from Frederick, Oklahoma. Approvals for the show are: A.Q.H.A., A.P.H.A., P.N.Q.H. coordinating Comm. Send the entries to Marie Hayes, 6408-150th S.W. Tacoma, Wn. 98439 or phone JU 8-0211.

ENTRIES CLOSE SEPT. 12, 1969

ENTRY FEES	
Performance & Halter AQHA	\$6.50
Youth AQHA-APHA-Appaloosa	\$3.50
Performance-APHA-Appaloosa	\$6.50
Classes 3-4-5-12-16-17	\$5.00
Classes 35-38	\$10.00
Classes 27-50-51	\$10.00

Make checks payable to Tri-Challenge Horse Show.

SATURDAY - SEPTEMBER 20. - 8:00 A.M.

- Youth Halter Mare
- Youth Halter Geldings
- Mare & Foal
- Fillies of 1969
- Fillies of 1968
- Fillies of 1967
- JR. CHAMPION & RESERVE
- Mares of 1966
- Mares of 1965 & before
- Broodmares
- SR. CHAMPION & RESERVE
- Youth Showmanship - 13 & under
- Youth Showmanship - 14 thru 18
- Geldings of 1968
- Geldings of 1967
- JR. CHAMPION & RESERVE
- Geldings of 1966
- Geldings of 1965 & before
- SR. CHAMPION & RESERVE
- Colts of 1969
- Colts of 1968
- Colts of 1967
- JR. CHAMPION & RESERVE
- Stallions of 1966
- Stallions of 1965 & before
- SR. CHAMPION & RESERVE

LUNCHBREAK
21. Trail Horse-Youth-AQHA
22. Trail Horse -All-Ages-APHA
23. Trail Horse-All Ages-Appaloosa
24. Trail Horse - All Ages - AQHA
25. Western Horsemanship-Youth AQHA
26. Hackamore Reining-AQHA
DINNERBREAK
27. Trail Horse CHAMPIONSHIP-obstacles only at 7 P.M.

SATURDAY 8 P.M.
PRESENTATION OF COLORS & INTRODUCTIONS OF OFFICIALS AND DIGNITARIES AT 8 P.M.
JUDGING OF GRAND CHAMPIONS AT HALTER FROM JR. & SR. & RESERVE CHAMPIONS FROM MORNING CLASSES

- Trail Horse CHAMPIONSHIP - Wall Work \$100. Purse
- Jumping-All Ages-AQHA
- Western Pleasure-Youth 13 & under-AQHA
- Stock Horse Reining-All Ages-Appaloosa
- English Pleasure-All Ages-AQHA
- TACOMA LARIETTES BLACK LIGHT DRILL EXHIBITION
- Barrel Racing-WBRA
- Senior Bit Reining-AQHA
- Western Pleasure-All Ages-APHA
- Calf Roping-All Ages-AQHA
- EXHIBITION OF "WHOA BOSSY" BY VISITING CLUBS AND SERVICE ASSOCIATIONS
- SUNDAY-SEPTEMBER 21-9:00 A.M.
- Western Riding-Youth-AQHA
- Western Pleasure-Youth 14-18-AQHA
- Reining-All Ages-APHA
- Western Pleasure-Youth-Appaloosa
- Western Pleasure-Junior-AQHA
- Reining-Youth-AQHA

LUNCHBREAK
PRESENTATIONS OF COLORS BY PIERCE COUNTY POSSE
INTRODUCTION OF VISITING DIGNITARIES & OFFICIALS

- Western Riding-All Ages-AQHA
- Western Pleasure-Senior-AQHA
- Barrel Racing-All Ages-AQHA
- Western Pleasure-All Ages-Appaloosa
- Junior Bit Reining-AQHA
- PIERCE COUNTY POSSE DRILL TEAM EXHIBITION
- Western Pleasure-Youth-AQHA
- English Pleasure-Youth-AQHA
- Western Pleasure-CHAMPIONSHIP \$100. Purse
- Reining-CHAMPIONSHIP \$100. Purse
- PRESENTATION OF AWARDS FOR THIS SHOW
- Hi-Point AQHA Horse
- Versatility Horse of the Show
- Hi-Point APHA Horse

Buys Registered Milking Shorthorns

Franklin Byrd, Jr., Spanaway, Washington, has purchased two heifer calves from Ray William & Sons, Enumclaw, Wash.

The new animals are registered Milking Shorthorn and the record of the transfer of ownership has been made by the American Milking Shorthorn Society at Springfield, Missouri.

Hi-Point Appaloosa Horse SADDLE FORHI-POINT HORSE
AQHA Hi-Point Youth OF DESIGNATED CLASSES

Roy, Wn. has scheduled their 2nd yearly Rodeo for this coming Sunday and Monday starting at 1:30 p.m. Again this is an NRA approved Rodeo with Jim Gibbs and Bob Howard furnishing the stock. Call the Rodeo Sec. at 843-2242

EVENTS	ENTRY FEE	ADDED PURSE
Bareback Riding	\$20.00	\$100.00
Saddle Bronc Riding	20.00	200.00
Bull Riding (Limited Entries)	20.00	100.00
Calf Roping	20.00	100.00
Cow Milking	20.00	100.00
Team Roping	20.00 (pm)	100.00
Girls Barrel Race (NRA-WBRA)	10.00	50.00

Wild Horse Race 15.00 (pt-pd) 100.00
Steer Wrestling (Behind Barrier) 20.00 100.00

Overflow in Timed Events will go after and before performances as posted at Rodeo Office. Buckles in all events, including WHR. Points from the June Rodeo count.

Tacoma Livestock Market Report

Market Report for Tacoma Livestock Market Thursday, Aug. 21, 1969. Market active on all classes. 567 cattle, 5 horses, and 15 hogs. Demand good for dairy cows and heifers.

Good Veal	\$33.00 to \$37.00
Heavy Lean Bulls	up to \$29.40
Light Bulls	\$22.00 to \$23.00
Best Hol. & Whte. Face Cows	\$20.00 to \$23.00
Colored Cows	\$16.00 to \$20.50
Blk./Whte. Face Steers (900 lbs.)	\$24.50 to \$25.75
Hvy. Hol. Steers w/flesh	up to \$24.60
Feeder Holstein Steers	\$22.85 to \$23.80
Hol. Steers (400-500 lbs.)	up to \$25.80
Whte. Face Steers (800 lbs.)	\$27.00 to \$28.20
Feeder Heifers (700-750 lbs.)	up to \$25.50
Good Steer Calves	\$28.50 to \$33.00
Good Heifer Calves	\$25.00 to \$29.00
Bull Calves (450-500 lbs.)	\$26.00 to \$29.75
Block Hogs	\$25.75 to \$27.00
Sows	\$17.00 to \$17.75
Weaner Pigs per head	\$14.00 to \$17.00
Good Baby Calver per hd.	\$30.00 to \$48.00

Market looks good for this Thursday - Auctioneers - Ed & Lee Flood, Rt. 2, Box 2330, Spanaway, Wn. Phone VI 7-7567.

HARDWARE FENCING
South End Hardware
S.185th & Pac. Spanaway

9 Animals For Sale
PINTO mare with saddle and bridle. \$175. Gentle, good with children. 893-2803. (S)
SADDLE HORSE, gentle kid's horse. TH 5-1924. (L)

"Horsemen's Market Place"
Classified Directory
Board - Trainers - Breeders
Outfitters - Feed Dealers

Back In Town BILL MAY
Horseshoeing
LE 1-7768

HORSESHOEING RAY JOHNSON
TH 5-6006

Vet Supplies
Complete supply animal health products.
Franklin - Farnam - Anchor at
ASHMORE'S
Spanaway Drugs
165th & Pacific Ave. LE 7-5993

Outfitters The Bunkhouse
COMPLETE LINE OF TACK & WESTERN APPAREL
LE 7-5510
12605 Pacific Ave. Tacoma, Wa.

Pierce County's Only Professional
AMBULANCE SERVICE
Parkland Ambulance and Lakewood-Pacific
JU 4-3344 LE 7-3322

Franklin Byrd, Jr., Spanaway, Washington, has purchased two heifer calves from Ray William & Sons, Enumclaw, Wash. The new animals are registered Milking Shorthorn and the record of the transfer of ownership has been made by the American Milking Shorthorn Society at Springfield, Missouri.

LE 1-4555
RODEO CUSTOM SHOP
Dean & Dodie Vosburg
Complete Saddle Repair Shop
Western Wear
English Tack & Togs
164th & Pacific Spanaway, Wash.

INSURANCE
Military - Home - Business
LE 7-4904
Auto Fire Life Bonds
IRENE CLEMENS
Agency - Parkland
10329 Pacific Ave.

Angelo's PIZZA HOUSE
ORDERS TO GO
Featuring top sirloin and American dishes, spaghetti, rigatoni, meat balls, sausage, ravioli, beer and wine.
Choice of Pizzas
cheese & tomato
anchovie
mushroom
Italian sausage
pepperoni
tuna
bacon
peppers
olive
hamburgers
ham
salami
onion
LE 7-7233
14102 PACIFIC AVE. PARKLAND
CALL AHEAD, IT'S PIPING HOT ALL THE WAY HOME
PICK UP A BOX, PAIL, BUCKET OR A BARREL

B&I HARDWARE & GLASS PLASTIC
8012 South Tacoma Way
Weather Protection
4 Mil Only 1 Sq. Ft.
1c
Door Mirrors
NOW Only **288**

Roy Rodeo Labor Day Weekend

The semi-annual Roy Pioneer Rodeo will be held in the Roy Rodeo arena Sunday and Labor Day, Aug. 31 and Sept. 1.

The top men in each event in the Northwest Rodeo Assn. standing will be on hand vying in the competition to either maintain their respective lead or perhaps outdo the fellow on top and go to the front.

The roster at the Roy Rodeo includes Sid Britt, Lexington, Oregon, leading in the Bareback Riding event, number three in the Steer Wrestling and number one in the All-Around standing standings; Dick Kelly of Ellensburg, a close second to Britt in the All-Around and way out ahead in the Steer Wrestling and sitting in number two position in the Calf Roping. Also on hand will be Terry Reiter, Eagle, Idaho, top man in Calf Roping; Harry Noble, Hermiston, Oregon leading in Saddle Bronc Riding and Joe Crowder, Glenwood, Wash. out in front at the present time in the Bull Riding, closely followed by Bob Wegner of Puyallup. These are only a few of the leading contestants and of the estimated 300 contestants of the Pacific Northwest and the Northwest Rodeo Assn. who will be on hand at the Roy Rodeo.

The Roy Rodeo program includes all of the standard rodeo events plus the famous Roy Rodeo Wild Horse Race. Cowboy interest and participation in the Wild Horse Race is keen because of the beautiful trophy buckles awarded to each man on the winning team for the season.

Livestock will be furnished by Jim Gibbs of Yelm and Bob Howard of Deer Island, Oregon. Jim has had the Timed Events stock at rodeos throughout the northwest for a number of years but within the last year has purchased the great bucking horses of John van Belle, a long time rodeo contractor, from Outlook, Wash. Bob Howard has joined forces with Jim Gibbs and furnishes the bucking bulls for rodeo competition.

There will be two rodeo dances this Labor Day weekend. Saturday night and Sunday night at the Roy Rodeo Hall, 9:30 each nite.

Legals

In the Superior Court of the State of Washington For the County of Pierce

IN THE MATTER OF THE ESTATES OF ALBERT BOTTIGER and AGNES BOTTIGER, Deceased.
IN PROBATE
No. 78804
Notice To Creditors

Notice is hereby given that the undersigned has been appointed and has qualified as Executor of the estate of the above named deceased; that all persons having claims against said deceased are hereby required to serve the same, duly verified, on said Executor or his attorney of record at the address below stated, and file the same with the Clerk of said Court, together with proof of such service within four months after the date of first publication of this notice, or the same will be barred.

Date of first publication August 28, 1969
Albert H. Bottiger
Executor of said Estate
711 So. 115th St.
Tacoma, Wash.

R. Ted Bottiger
8849 Pacific Avenue
Tacoma, Washington 98444
GR 5-4800
Published in the Pierce County and Times Journal Aug. 28, Sept. 4, Sept. 11, 1969.

Legals

ADVERTISEMENT FOR BIDS
Sealed bids are invited by Franklin Pierce School District No. 402, Pierce County, Washington, for two (2) school buses (one (1) seventy-three (73) passenger, transit type, diesel powered and one (1) twenty-eight (28) passenger, regular type, gasoline powered).
Specifications may be obtained from the District Administration Office, 315 South 129th Street, Tacoma, Washington 98444.

Bids will be received at the District Administration Office until 2:00 p.m., September 5, 1969, at which time they will be opened, read aloud and tabulated. Bus bids will be presented to the School Board at their regular board meeting, September 9, 1969, for their consideration.
Bids received after the time fixed for opening will not be considered.

Advertisement for bids shall be published two consecutive weeks, August 21 and August 28, 1969.

By order of
Franklin Pierce School District No. 402
Board of Directors
Pierce County, Washington
Thomas L. Stephens
Secretary
Published in the Pierce County Herald and Times Journal Aug. 21, Aug. 28, 1969.

30 Repair Services

Sheet Metal

- Furnace Repair and Service
- Installations

PARKLAND

FUEL OIL

12002 Pacific Ave.
LE 7-0256

WATER PUMPS REPAIRED

All Makes
GRANGE SUPPLY
LE 1-5777

23 Help Wanted

FOOD SERVICE employees needed for fall semester at PLU. LE 1-1865. 69-206

HELP! MEN - WOMEN Full or Part Time

We need YOU in this area as representatives for superbly different "SLIM GYM".
Televised, skyrocket response, customer's waiting.
Rewards, High Commissions.
\$200 - \$500 per mo. Part-Time
\$600 - \$1200 per mo. Full-Time
We help you succeed! For appointment call Mr. Haugland.
MA 7-2300

BABYSITTER for afternoons. Kindergarten child near Spanaway grade school. LE 1-0976. 69-209

BABYSITTER Christian woman in area of Parkland School LE 1-3091 Thur.-Fri. Only, after 6 p.m.

NEED SITTER - 6 yr. old boy. 8 hrs. day. 5:30 a.m. to 4 p.m. Own transportation. Call between 4 & 5 p.m. LE 1-1298. 69-211

BABYSITTER 2:30 to 5:30. 2 school age children. Brookdale School Area. LE 7-5261. After 5. 69-213

READ USE CLASSIFIED ADS for fast results

LE 7-0223

1 Misc. For Sale
WONDER HORSE, deluxe model. LE 1-2032.

BUFFALO DON'S

SPECIALS - New Plywood Stock Full 4x8 Sheets
1/4" Sheathing 1.79
1/4" Shop 1.99
3/8" Ptl. Bd. Underlayment-1.99
5/16" Sheathing 2.29
5/16" Shop 2.49
1/4" Panels - White Lead-Oil Primed 2.99

MURPHY has GONE C-R-A-Z-Y. He is selling NEW LUMBER for the same LOW PRICE as used. Plenty of 2x4's and 2x6's and 4x4's in NEW STOCK. ALSO, Used Lumber, Timber, Brick, Tubs, Sinks, Etc.

Our customers compliment us on our PRICES and QUALITY.

Open 7 Days a Week 8 A.M. to 7 P.M.

MURPHY LUMBER & SALVAGE SALES
6401 Waller Road, Tacoma
LE 1-1160

NICE SCHOOL DRESSES, 18-20 year old girl. Two semi-formal, one suit, also books. LE 1-1808. 69-210

EARLY AMERICAN CONSOLE PIANO, like new, Assume low mo. pyts. Phone BR 2-5282. 69-208

CHEST'S FLEA MARKET

11110 Pacific Ave.
Open 10 a.m. - 7 p.m.
7 Days a Week

50 GALLON oil tank with stand LE 1-2194

REMOVE EXCESS body fluid with FLUIDEX tablets, only \$1.49 at Johnson's Drugs. 69-201

2 Autos For Sale

GOOD SELECTION USED CARS - TRUCKS
GR 4-9294
LARRY ATTWOOD
8228 Pacific Ave.

56 CLASSIC T-BIRD. Just overhauled. New paint. Excellent tires. Both hard and soft tops. Skirts. A real cream puff. \$1,795 cash. Only trade considered would be a small Econovan or truck of like type. See in front of Times Journal building, 14620 Pacific Avenue days. Or phone LE 7-0223 days or VI 7-7364 evenings.

NEW - MORE POWERFUL

the 1969's ARE HERE
VOLKSWAGEN
27 MAJOR CHANGES COME IN

Tom Carstens
AUTOHAUS

7030 So. Tacoma Way
GR 4-0666
TACOMA DEALER SINCE 1955.

18 Real Estate Wanted

Listings Wanted
Buying or Selling
Real Estate Service
Call
Devereaux Realty
12152 Pacific Ave. LE 7-8658

EASY TERMS - FREE DELIVERY
HOME FURNITURE
9324 So. Tacoma Way
OPEN 10 to 9 DAILY

19 For Rent Or Lease

1-BDR., kitchen privileges, Christian home. Students, ladies preferred, \$20. Parkland area. LE 1-3674. 69-212

Let "SUBUR-MAN" serve YOUR RENTALS



D. GENE BURNS
Rental Mgr.
Residence
LO 4-6598
SUBURBAN REALTY
11302 Pacific Ave.
LE 7-8638

22-WANTED TO Rent

CLIENTS waiting for furnished and unfurnished rentals. Call Jennie. Parkland Realty LE 7-8609 Property Management since 1941 69-214

For Quick Cash
Use Classified Ads

RENT TV
Color TV
RENTAL MARTS, INC.
Parkland GR 5-3755
9440 Pacific Ave.
Lakewood JU 4-4100
108th & Bridgeport

AT ARMSTRONG'S
Financing is generally Quickly and Easily Completed Right at the Lot
ARMSTRONG'S USED CARS
11009 Pacific Ave. LE 7-5524

CHURCH DIRECTORY
ATTEND OUR WORSHIP SERVICES

PARKWAY Presbyterian Church
Summer Schedule
Sunday School 9:00 a.m.
Worship Service 10:00 a.m.
Nursery Service Provided
714-138th East LE 1-4234
Rev. Wesley J. Drummond

Spanaway Assembly of God
166th & Pacific Ave.
Sunday School 9:45 a.m.
Morning Worship 11 a.m.
Evening Evangelistic 7 p.m.
Family Night Wed. 7:30 p.m.
LE 1-1412

Spanaway Lutheran Church
8:30 & 11 a.m. Worship Service
9:45 a.m. Sunday School
Grades 1 & Up
11 a.m. Sunday School
3, 4 and 5 Year Olds
John L. Briehl, Pastor
160th & A St. LE 7-5978.

Parkland Lutheran Church & Christian Day School
Worship ... 10:30 a.m.
Sunday School-Bible Study 9:15 a.m.
All ages
H.A. Theiste, pastor
LE 7-5492 LE 1-0777

Trinity Lutheran Church
Worship Services 9 a.m. & 11 a.m.
Sunday School 10 a.m.
Wednesday School 4-5 (through Grade 9)
Erving C. Thompson PASTORS
Robert Doves
12115 So. Park LE 7-0201

Spanaway United Methodist
Summer Schedule
Worship ... 9:30 a.m.
Nursery During Service.
No Sunday Church School
R. Gordon Harrison, Pastor
163 & Pacific LE 7-5134

SUBSCRIBE NOW!

The TIMES JOURNAL

Your Best Source
Of Local News

Annual \$4.00
6 Mos. \$2.50

Enter my subscription for a

One Year Six Month
Subscription to the Times Journal.

Name _____
Address _____
City _____ State _____
Zip _____

Cash Enclosed Bill Me

Parkland Lions Report Activities

The main working and fun raising activity of the Parkland Lions during the month of August has consisted of action at the Pierce County Fair, where two booths were operated to raise funds for the current Lions sight conservation, playground and recreation facilities, etc. A pleasant pre-fair visit was had with the fair queen, princesses, and queen mother advisor, at the Lions meeting of August 5. Mrs. Eunice Steele of Sumner, as queen mother advisor, was most charming and gracious in handling the program outlines and introductions, and the girls really put on an excellent skit of acting, each as per her own 4-H or other fair participation.

Another interesting get-together was with Roger Lincoln, immediate past president of the Spanaway Lions, when he appeared and furnished the program for the club meeting of August 19, Roger being one of those fortunate Lions as privileged to attend the Lions International Convention in Tokyo, during July. Lion Lincoln gave a vivid and action-packed account of the Japanese customs, arrangements, and hospitality as seen through the eyes of a visitor and co-worker with Lions of Japan, as well as a fine rendition of Lions business as handled and plans and policies as projected by Lions International for the coming year.

Lions of the area are continual boosters for community betterment, community cooperation, and the welfare of the community, and seek to render service as needed in many ways whereby such services would not be otherwise provided, in fact, the performing of such community services is your Lions clubs' reason for existence. A worth while quote from Lions magazine reads — "You may be a fine upstanding citizen but, it makes no difference to a banana peel!" As reported by Lion Ben F. Potter.

German Prof Named

Glen L. Blubaugh of Blackwell, Okla., has been appointed to the Pacific Lutheran University faculty as an assistant professor of German, Dr. Eugene Wiegman, university president, announced.

Bethel Board Changes Dates

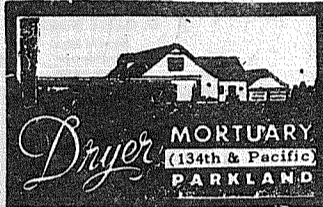
The Bethel Board of Directors, Pierce County School District No. 403, Spanaway, Washington, will conduct a special meeting on the third (3rd) day of September to conduct any business which may come before the board, Secretary V. Baker announced last week.

The regularly scheduled meeting of September 1st has been cancelled due to the meeting date falling on Labor Day.

At Paul's OFFICIAL GYM WEAR SCHOOL SHOES 3.99 & Up TENNIS SHOES 2.99 & Up

Open Labor Day 10 am-6 pm USE YOUR BANK CARD

PAUL'S SHOES & CLOTHING LE 7-0552 161st & Pacific Ave.



The Country Parson



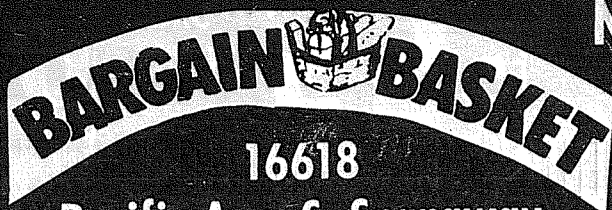
"Let's not waste on better institutions resources that could be used to build better people." Copyright, by Frank A. Clark



This special meeting is to be held on Wednesday, the third (3rd) day of September, at the hour of 8:00 p.m. in the Board Room of the Administration Building.

PARKLAND MOOSE BEEF BAR BQ
 \$1.25 Adults .75 Children
Midland Hall-Aug. 30 Starts At 6 P.M.
 Members, Prospective Members and Families
LULU LEDUC & His Band
 10 P.M. On — Rock N' Roll
 For Teens 7 P.M. - 9 P.M.

Open 7 Days A Week
 Sundays 9-9
 Weekdays 9-9



16618 Pacific Ave. S. Spanaway LE 7-3371

We Carry A Complete Line Of Sacked Feeds - Presto Logs

No Sales To Dealers

WE RESERVE THE RIGHT TO LIMIT QUANTITIES

HELP YOUR BUDGET WITH THESE SAVINGS
We Are Locally Owned & Operated

PRICES EFFECTIVE AUG 28-29-30
Thur-Fri-Sat

SHASTA CANNED POP 10/99c

MAXWELL HOUSE COFFEE 3 Lb Tin. \$1.89
 ONE POUND 75c TWO POUND

NALLEY'S POTATO CHIPS 49c
 Reg. 69c Box

ARMOUR POTTED MEATS 4/\$1
 5 1/2 OZ

COLD BEVERAGES
 All Varieties In Our Cooler

S&W OVEN BAKED BEANS 39c
 28 OZ.

SOFT PLY FACIAL TISSUE 5/\$1
 200's

HOT DOG OR HAMBURGER BUNS 3/\$1

LANGENDORF ASSTD. COOKIES 4/\$1

Block Ice	PRODUCE	Party Ice	
WATERMELON 4 1/2c 2 LB.	BEEFSTEAK TOMATOES 25c LB.	YAKIMA CORN 8c EAR	CUKES 10c EA.

WE CARRY A COMPLETE LINE OF SACKED FEEDS

T BONE STEAKS \$1.39 LB	SIRLOIN STEAKS 98c LB	ROUND STEAKS 98c LB
BAR S SLICED BEAN POT BACON 3/\$1.59 LBS	HYGRADE WIENERS 55c 12 OZ PKG	CANADIAN SLAB BACON 79c LB