

U.S. Postage Paid  
Sec. 3466 P.L. & E  
Parkland Branch  
Tacoma, Wash.  
Permit No. 9F

# The TIMES JOURNAL

THURSDAY, JUNE 18, 1959 VOL. 14, NO. 41 PUBLISHED AT PARKLAND, WASH. LE 7-0223

## F. P. Junior Ball Teams Now Busy

Spirited rivalry has developed among teams in the Franklin Pierce district junior baseball leagues. Below will be a list of games for the past week, with name of team, battery and score.

**Pee-Wee League**  
June 9 — Lucky Nine; Peters, Johnson; no runs. Keller's; Rosco, Olson; 23 runs.

June 10 — Shop-Ette; Griffiths, Alkofer, White; 9 runs. Pocher's; Thomas, Thomas; 7 runs.

June 11 — Trinity Lutheran; Sutor, Larson, Flatness; 29 runs. Bankers; Barnes, Moore; 3 runs. June 12 — Mt. View Memorial; Carver, Cashman, Wooseth; 3 runs. Midland Bombers; Cooper, Harrison; 13 runs.

June 12 — S&M; Mehan, Lumsden, Larson; 19 runs. Pocher's; Nelson, Thomas, Everetta, Thomas, L. Johnson; 7 runs.

June 13 — Midland Mites; D. Hoover, Eus, Russel 1 run. Chargers; Jones, Archer; 3 runs.

**Rookie League**  
June 8 — Midland Giants vs S&M; rained out.

June 9 — Midland Sparkers vs Picks; rained out.

June 10 — Trinity Lutheran Cubs; McCabe, Gibson; 16 runs. Cook's Motors; Gordon, Houk; 1 run.

June 11 — Parkland Pirates; Cornell, Roller; 15 runs. Summit Tigers; 8 runs.

## The Country Parson



"I suppose it is hard for a modern man to put money in the collection plate when all he has in his billfold is a bunch of credit cards."

## County Agent's Corner

By C. R. Doran  
"Short on hay but long on cattle" is a brief summary of the situation on many Pierce County farms.

"What can I do to help out on my feed supply?" was the most repeated question of cattle owners this last week.

Fortunately the research developments of the past three years in the use of plastic covers in silage making, show that even small amounts of surplus grass can be preserved successfully by excluding the entrance of air.

Cornell University has reported good silage made in plastic sacks. The sacks were then stored in piles similar to sacked potatoes.

At feeding time the sacks were moved out to the feed lot, ripped open and dropped in the feed bunk. Lou Fish, new dairy farmer in the Clover Creek Valley, made grass silage successfully on his first attempt last year. He constructed a trench silo and heaped in 100 tons of chopped grass. The top of the heap was covered with a plastic tarpaulin and weighted with four inches of sawdust. The edges were sealed and weighted down. The cover kept out the air successfully the entire stack made good feed.

Dr. F. R. Murdock, of the Puyallup Station, says in trying to make silage in small stacks farmers should not try to build them with perpendicular sides. It is better to slope out the sides. They will cover easier with plastic that can be weighted down. The cover can then be rolled back a little at a time.

(Continued on Page 2)

## Babe Ruth League

June 8 — Mavericks vs Trojans; rained out.

June 10 — Tommerviks vs Cubs; rained out.

June 12 — Mt. View Baptists; Newhouse, Varner; no runs; Wolves; Hungerford, Harmon; 24 runs.

June 15 — Mavericks; Hanson, Gural; 4 runs. Tommervik's; Hart, Houk; 2 runs.

## PROFESSIONAL DIRECTORY

Farmers Mutual Ins. Co.  
Auto — Fire — Liability  
and BARBER SHOP  
J. J. GUNNS Agency  
303 East 17th St. LE 7-7757  
2 Blocks East of Transformers  
Spanaway  
Farmers Mutual of Enumclaw  
Fire — Auto  
ED MAREK  
12907 Pacific Ave. LE 7-4000

## Postal Dept. Presents Award to Widow of Carrier



**DAY OF MEMORY**—On Monday afternoon members of the family of the late Ralph Mason, with several friends, were invited to gather at the Parkland post office for the award of a posthumous certificate of recognition in honor of the many years of devoted service given the postal department, which was presented to Mrs. Mason by Tacoma Postmaster Harvey Jones. Also present were Arnold Bader of Tacoma, personnel officer, and Richard Herold of Portland, regional awards officer. Ralph Mason had been a mail carrier in the area from 1921 until his sudden death a few weeks ago. Although he was nearly 70 years of age, he was vigorous and young at heart and often said he would never retire because his work was his greatest interest and pleasure. During the brief ceremony several of those present who had been very close to him paid tribute to the many fine qualities which had endeared him to thousands whom he had served so cheerfully and well. The picture above shows the presentation of the framed certificate to Mrs. Mason. In the front row, right to left, are: Arnold Bader, Jack Quill, Parkland postmaster; Harvey Jones; Mail-carrier Ole Gunderson, son-in-law of Mr. and Mrs. Ralph Mason; Mrs. Ralph Mason and three daughters, Mrs. Steve Baskett Jr. (Ruth), Mrs. Bob Herron (Doris) and Mrs. Ole Gunderson (Barbara). The ceremony was conducted before the case at which Mr. Mason sorted his mail during recent years, with a number of his postal service associates in the background. Photo by McKewen

## Benston Grange

When Benston Grange No. 892 met June 9, Mr. and Mrs. Floyd Schmidt were elected to receive the degrees.

Home Economics Chairman LaVonne Kronquist announced that Benston was very well represented at the recent Pomona judging of the crocheting, luncheon cloth and baking contest. Blue ribbon winners in crocheting were Mrs. Julia Hansch, Mrs. Beatrice Reichel and Mrs. Anna Stromberg. These women will enter final judging in National Grange competition.

Mrs. Stromberg and Mrs. Harriet Asmussen, who won blue ribbons for the embroidered luncheon cloth division, will be entered for State competition.

Mrs. LaVonne Kronquist, first-place winner in the yeast breads division, will also enter state competition. We're very proud of our wonderful group of Grange homemakers when they win six of eight blue ribbons awarded.

Lecturer Beulah Selle read the winning essays, in the Conservation essay contest written by Judy Furro, and the Safe Driving essay written by Alice Furro. Alice was presented a pin and a gift by the Grange. Essays written by the Grange and the nominees in the Young Grange Couples contest were read and a gift was presented to Mr. and Mrs. Dean Thorson.

During the lecture hour, Agriculture Chairman Fred Kronquist presented an attractive program of music and talks, followed by dancing.

The Auxiliary meets June 25 with Mrs. LaVonne Kronquist. The next Grange meeting will be June 14.

Mrs. Wilma Thorson, reporter.

## Chicken Dinner

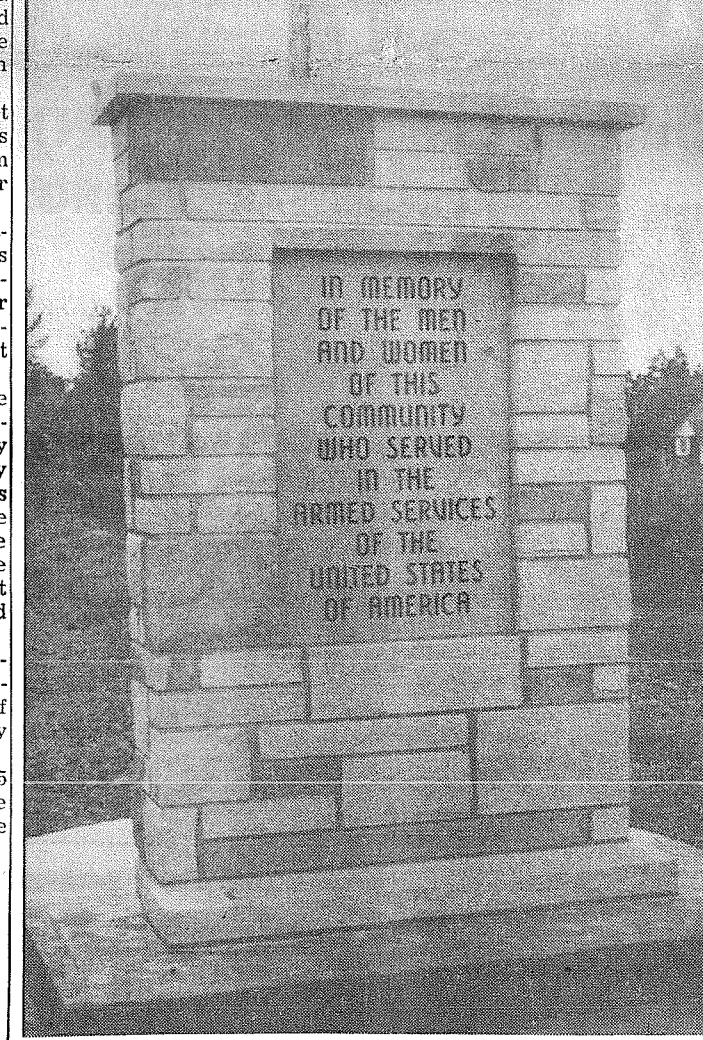
The Thrift Community club will hold a fried chicken dinner this Sunday, Father's Day, June 21, at the community hall. Strawberry shortcake for dessert; serving from 12:30 to 3:00 p.m.; reasonable prices; everyone invited.

## Wisconsin Club

The Wisconsin club of Tacoma will hold its regular monthly potluck supper at 6:00 p.m. Sunday, June 21, in the basement of the Odd Fellows Temple, Sixth and Fawcett.

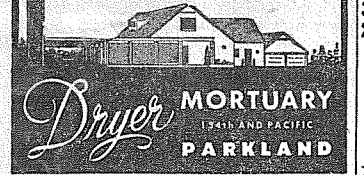
All former Wisconsinites are welcome. Colored slides will be shown.

## Midland Firemen Host Open House

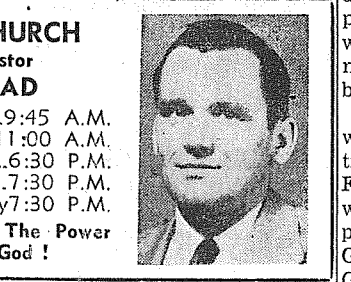


**EVERYONE INVITED**—The Midland Volunteer Fire Department will hold open house on Sunday June 21st, from 1:00 until 4:00 o'clock in the afternoon. The station is located at 9512 East Jackson. Firemen will be on duty to display and explain the operation of all equipment in the station. Also on display will be the new Crown fire truck which was recently acquired by the District. This is the only Crown fire truck in the State of Washington. The new memorial in memory of the men and women of this community who served in the armed services of the United States of America, is now on display at the side of the fire hall. Labor for the construction of the new memorial was donated by Ted Baskett and Eric Liljas. Refreshments will be served during the open house by the Midland 4-H girls. — Photo by McKewen

## EASY PARKING LE 7-0253



**EVERGREEN BAPTIST CHURCH**  
Rev. Herbert Lowrentz, Pastor  
92ND & WALLER ROAD  
SUNDAY SCHOOL ..... 9:45 A.M.  
MORNING WORSHIP ..... 11:00 A.M.  
YOUNG PEOPLE'S MEETING ..... 6:30 P.M.  
EVENING SERVICE ..... 7:30 P.M.  
PRAYER MEETING ..... Wednesday 7:30 P.M.  
We Preach Christ Crucified . . . The Power of God and the Wisdom of God!

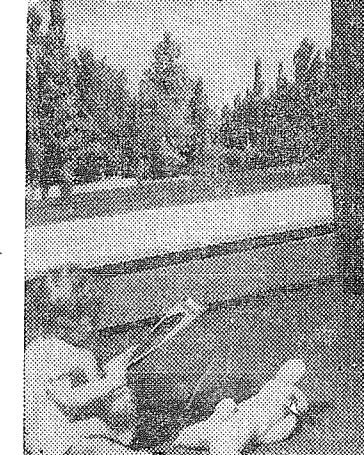


## HAVE NO FEAR!

**YOUR CLEANING IS GUARANTEED PERFECT HERE !!**  
Good grooming and thrift go hand in hand with regular dry cleaning! You'll always look your best, and spend less too!

## PARKLAND CLEANERS

11004 Pacific Avenue  
North of the Bank Corner  
LEnox 7-3221



## New Hot Water Electric Heat Saves Money!

Every home can now enjoy wonderful hot water heating, whether for one room or for the entire house, by simply setting an attractive, completely self-contained and sealed hot-water electric baseboard heater beneath the window and connecting to the electric circuit with thermostat. There is no expensive plumbing—no walls to rip open for pipes—no chimney, and no messy boiler or furnace—and no fuel tank. Everything is complete, and with its exclusive hot-water circulation, it brings amazing new economy to modern electric heating—with pleasant uniform comfort, cleanliness and absolute safety. And the cost—it's far less than you think! Before going through another winter with cold rooms, or a troublesome heating system, satisfy yourself on this modern heat of the future by phoning or mailing coupon below for the facts.

## PARKLAND ELECTRIC

Contracting — Wiring — Electric Heat  
LE 7-0397 Evenings LE 7-4541

## Grange Women Win in National Contest

Awards were won by many Pierce County Grangers in the National \$50,000 Grange Baking Contest Bake-Off for Pierce county, held at the Pomona Grange meeting June 6. Awards included the following:

Yeast breads of any kind—1st, Mrs. LaVonne Kronquist, Benston Grange; 2nd, Mrs. Dorothy Sekor, Ohop Grange; 3rd, Mrs. Winifred Olden, Ohop Grange.

Cakes of any type—1st, Mrs. Alice Bray, Ohop; 2nd, Mrs. Orpha Geise, Waller Road; 3rd, Mrs. Ston; 3rd, Mrs. Ida Russell, Summit.

Cookies of any kind—1st Mrs. Orpha Geise, Waller Road; 2nd, Mrs. Cam Stidham; 3rd, Mrs. Orpha Geise, Waller Road.

In the fancy work division, awards were made to the following:

Center pieces (crocheted)—1st, Mrs. Beatrice Reichel, Benston; 2nd, Mrs. Anna Stromberg, Benston; 3rd, Mrs. Ida Russell, Sumner.

Chair sets—1st Mrs. Anna Stromberg, Benston; 2nd, Mrs. Mary Calvert, Benston; 3rd, Mrs. Eva Capper, Ohop.

Bed spreads — Mrs. Julius Hansch.  
Vanity sets—2nd, Mrs. Winifred Olden, Ohop; 3rd, Mrs. Elsie Hanson, Sumner.

Luncheon cloths—B, Mrs. Harriet Asmussen, Benston; B, Mrs. Anna Stromberg, Benston; W, Mrs. Mary Calvert, Benston.

Many entries were judged but awards were made only in the top three of each division.

## Local Church Scores In Attendance Event

Word has been received that Mt. View Baptist church has placed second in a state contest for Sunday school attendance. In the local church a "Rounding up for Christ" proved so successful that it has been decided to make it an annual event.

The Sunday school and church are still meeting in the Central Avenue school gymnasium, Knapp road and Central avenue.

Father's Day will be observed during the 11 o'clock morning worship service Sunday, with something special planned.

Promotion Day will be observed June 28 during the Sunday school hour. Parents of the children are invited to come and see their youngsters being promoted. The black and orange bus will pick up parents, friends and children; call LE 7-5221 for information.

All those wishing to attend Daily Vacation Bible School please call LE 1-2759 or LE 7-8020 and transportation will be furnished.

Boys interested in playing league baseball should call GR 4-0947.

## C.A.P. Car Wash

Parkland Civil Air Patrol cadets will be washing cars Saturday, June 27, 8 a.m. to 4 p.m., at Gunderson's Flying A Service, South 133rd and Pacific, across from the Big Bear.

Proceeds from the project will be used to buy squadron equipment.

## Summer Recreation Program Operating

Franklin Pierce and Spanaway area playgrounds opened for action Wednesday, June 17. The playground season will run to August 21 with activities scheduled Monday through Friday.

All type of play will be emphasized including athletics, handicrafts, storytelling, dramatics, games and club meetings. There will be numerous special events spaced throughout the summer that will highlight the summer season. Pet shows, doll shows, hobby displays, storytelling contests and athletic leagues between playgrounds will keep the kids' interest high.

The Spanaway school will be the center for activities, once again led by George Fossen, in the Spanaway area. The hours will be from 10 a.m. to 5 p.m.

Dawson Playfield, located at 94th and Portland Avenue, will have Margaret Heinrich as leader and the hours will be from 10 to 5. James Sales school will have a five day a week program conducted by Larry Geppert and will also be open from 10 until 5. South 112th and South Sheridan marks the location of this playground, Parkland Park, South 135th and J street, will have Wilbur Elliot as leader and activities will run from 10 a.m. to 5 p.m. Sara Johnston will work a split day conducting a program from 9 a.m. to 12 noon at Collins school and then moving to Central Avenue school for the afternoon fun from 1 p.m. to 4 p.m.

The program is directed by the Pierce County Parks and Recreation Department with the cooperation of the Franklin Pierce School District. Del Schafer is acting as co-ordinator for the Franklin Pierce area.

## WCTU to Meet

The Julia Holden Women's Christian Temperance Union will meet Tuesday, June 23, at the home of Mrs. August Elmquist, 9722 East Monroe Avenue. There will be the regular business meeting and discussion of another part of the study book, "Shadows Over America." During the social hour sandwiches, coffee and dessert will be enjoyed.

recreation Department with the cooperation of the Franklin Pierce School District. Del Schafer is acting as co-ordinator for the Franklin Pierce area.

recreation Department with the cooperation of the Franklin Pierce School District. Del Schafer is acting as co-ordinator for the Franklin Pierce area.

recreation Department with the cooperation of the Franklin Pierce School District. Del Schafer is acting as co-ordinator for the Franklin Pierce area.

recreation Department with the cooperation of the Franklin Pierce School District. Del Schafer is acting as co-ordinator for the Franklin Pierce area.

recreation Department with the cooperation of the Franklin Pierce School District. Del Schafer is acting as co-ordinator for the Franklin Pierce area.

recreation Department with the cooperation of the Franklin Pierce School District. Del Schafer is acting as co-ordinator for the Franklin Pierce area.

recreation Department with the cooperation of the Franklin Pierce School District. Del Schafer is acting as co-ordinator for the Franklin Pierce area.

recreation Department with the cooperation of the Franklin Pierce School District. Del Schafer is acting as co-ordinator for the Franklin Pierce area.

recreation Department with the cooperation of the Franklin Pierce School District. Del Schafer is acting as co-ordinator for the Franklin Pierce area.

recreation Department with the cooperation of the Franklin Pierce School District. Del Schafer is acting as co-ordinator for the Franklin Pierce area.

recreation Department with the cooperation of the Franklin Pierce School District. Del Schafer is acting as co-ordinator for the Franklin Pierce area.

recreation Department with the cooperation of the Franklin Pierce School District. Del Schafer is acting as co-ordinator for the Franklin Pierce area.

recreation Department with the cooperation of the Franklin Pierce School District. Del Schafer is acting as co-ordinator for the Franklin Pierce area.

recreation Department with the cooperation of the Franklin Pierce School District. Del Schafer is acting as co-ordinator for the Franklin Pierce area.

recreation Department with the cooperation of the Franklin Pierce School District. Del Schafer is acting as co-ordinator for the Franklin Pierce area.

recreation Department with the cooperation of the Franklin Pierce School District. Del Schafer is acting as co-ordinator for the Franklin Pierce area.

recreation Department with the cooperation of the Franklin Pierce School District. Del Schafer is acting as co-ordinator for the Franklin Pierce area.

recreation Department with the cooperation of the Franklin Pierce School District. Del Schafer is acting as co-ordinator for the Franklin Pierce area.

recreation Department with the cooperation of the Franklin Pierce School District. Del Schafer is acting as co-ordinator for the Franklin Pierce area.

recreation Department with the cooperation of the Franklin Pierce School District. Del Schafer is acting as co-ordinator for the Franklin Pierce area.

recreation Department with the cooperation of the Franklin Pierce School District. Del Schafer is acting as co-ordinator for the Franklin Pierce area.

## Operation Deep South

7TH DIV., KOREA (AHTNC) — Army PFC Jerry A. Burkett, son of Mr. and Mrs. Eugene Burkett, Rue 1, Eatonville, Wash., recently participated in Operation Deep South, a field training exercise conducted by the 7th Infantry Division in Korea.

The exercise tested the combat efficiency and mobility of the division's units under simulated combat conditions.

He entered the Army last July and completed basic training at Fort Ord, Calif. Burkett arrived in the Far East last January and is a cook in Company A of the division's 127th Signal Battalion.

The 20-year-old soldier attended Eatonville High School.

## Benefit Dance

The newly formed Roy Pioneer Rodeo Association is sponsoring a benefit dance June 20, 9:00 to 2:00, in the Benston Grange hall. Lillian Johnson's Harmony Kings will provide the music for the affair. There will be three awards, games and lunch to complete the evening's entertainment. The donation is \$1.00; tickets are available from all members of the Association.

The proceeds will aid the Roy Association in bringing rodeo to the community.

## Now In Germany

AUGSBURG, GERMANY (AHTNC) — Army Specialist Four Michael W. McMullin, son of Mr. and Mrs. Michael A. McMullin, Route 3, Tacoma, Wash., recently arrived in Germany and is now a member of the 24th Infantry Division.

Specialist McMullin is a clerk in the division's 24th Administration Company in Augsburg. He entered the Army in 1957 and was stationed at Fort Bragg, N. C.

The 19-year-old soldier is a 1957 graduate of Bethel high school at Spanaway.

### SHOP & SAVE AT BROOKDALE LUMBER COMPANY

1 x 8 Cedar Air Dry Select \$13.50 per 100 sq. ft.  
1 x 8 Spruce \$16.90 per 100 sq. ft.  
4 x 8 1/2" Mahogany Panel Board, Only \$4.95 ea.  
4 x 8 1/2" Prefinished Hard Board \$2.56 ea.

### FLOORING

1 x 4 Kiln Dry, Economy Only \$8.50 sq. ft. for under linoleum or attic floor, etc.

### See our 12' x 20' Carport and Patio Shelter on display at \$149.00 our yard. Only ....

### PANELING

1 x 8 Cedar Air Dry Select \$13.50 per 100 sq. ft.  
1 x 8 Spruce \$16.90 per 100 sq. ft.  
4 x 8 1/2" Mahogany Panel Board, Only \$4.95 ea.  
4 x 8 1/2" Prefinished Hard Board \$2.56 ea.

### Use Our Revolving CHARGE PLAN For Your Purchases

### Plywood POPS

A REAL BUY!  
1/4" Thick ..... .08 sq. ft.  
3/8" Thick ..... .10 sq. ft.  
1/2" Thick ..... .12 sq. ft.  
5/8" Thick ..... .14 sq. ft.  
3/4" Thick ..... .16 sq. ft.

### Free Estimates on REMODELING and REPAIR JOBS

### Plumbing and Wiring Supplies

### BROOKDALE LUMBER COMPANY

LE 7-8669  
136th & Pacific

### Parkland Christian Church

757 So. 138th, Parkland  
Sunday School ..... 9:45 a. m.  
Morning Worship ..... 11:00 a. m.  
Youth Meeting ..... 6:15 p. m.  
Evening Service ..... 7:30 p. m.  
Bible Study, Thursday ..... 7:30 p. m.  
Richard Crane, Pastor

### SPANAWAY HARDWARE

ELECTRICAL AND PLUMBING SUPPLIES  
SAND, GRAVEL & CEMENT  
Mower Guards & Sections  
170th & Pacific  
LE 7-8378  
Open Sundays 8:30-1:30

### Stock Car Racing

Sunday, June 21  
At  
**SPANAWAY SPEEDWAY**

### Time Trial 1:30 Racing 3:00

### SPECIAL EVENT

### Race & Crash Elimination on Dirt Track

### Also Stocks Racing at Sea-Tac Every Friday Night

### MAMA BEAR Self Service LAUNDROMAT

GENTLE ACTION  
Located in the Big Bear Shopping Center  
Open 24 Hours Per Day 7 Days A Week  
SELF-CLEANING WASHERS

### FAST — FAIR — FRIENDLY

COMPARE RATES . . . SEE HOW MUCH YOU MAY SAVE — CALL  
IRENE CLEMENS  
LE 7-4904  
10329 Pacific Avenue  
FARMERS AUTO INSURANCE

### FRIENDLY SERVICE SINCE 1908

Now With a 100 Car Free Parking Lot right next door.  
**PIPER FUNERAL HOME**  
PHONE Greenfield 2-3353 5436 SO. PUGET SOUND

### Son Wins Honors

McKean Hintze, son of Mr. and Mrs. Vernon Hintze of Parkland, received his bachelor's degree in architecture Saturday, June 13, at graduation exercises at the University of Washington.  
At the same time it was announced that he had won the competition award sponsored by the Unit Masonry Association of Seattle.  
Marine Pfc. Richard E. Kiesel of 925 East 60th street recently took part in the two-week "Operation Twin Peaks," extensive air-ground landing exercises conducted on the California coast.  
Junior 4-H Fair; we surely are proud of her!  
Shari Bernsten, reporter.

### Pins & Needles 4-H Club Active

The Pins & Needles 4-H club of the Parkland area has started cooking, the cooking meetings being held on alternate Mondays.  
The cooking leaders are Mrs. Val Bernsten, Mrs. Harold Anderson, Mrs. George Stephenson and Priscilla Pederson, junior leader. Kathy Hall and Susan Mortenson are in the club just for cooking.  
New members of the club are Renae Brown, Cathy Haakenson, Sue Hendersen, Sharon Massie, Deanna Miller and Linda Stephenson, all planning to do two years' sewing in one year. There are now 19 members of the club.  
Priscilla Pederson, our junior leader, is Queen of the 1959



The British have come up with a 700-pound motor vehicle that can be folded into a 9-foot-long box, parachuted from a plane and assembled for action within five minutes after it leaves the plane.

The Bourse is the Paris stock exchange.  
Aruba is the most important oil refining center in Netherlands West Indies.

# SALE

## NIGHT GOWNS . . . . . 98¢

Ladies' Full Length

## BLouses & SHORTS . . . . . 98¢

Girls—Ages 3 to 6

## TRAINING PANTS . . . . . 4/98

Double Thickness, Triple Crotch

Full Line of Swimming Equipment — Boys' and girls' suits, caps, snorkels, fins, masks, etc.

# GARFIELD VARIETY

326 Garfield St.—½ Block East of PLC

### Flying With

(Continued from Page 1)

Commerce along with Tahoma Flying Service sponsored a Breakfast Fly-in at Spanaway Airport Sunday morning. This breakfast was in connection with the Parkland Round-up. About twelve planes took part in the flight as well as all the many local pilots who drove in.

The Champion Tri - Travelers and Mooney's from Tahoma Flying Service made formation take-offs and high speed passes to entertain the group congregated. Bill Scott also put on an aerobatic show for the spectators.

Jim Crandall and passengers in a 172 from South Tacoma and Bobby Green in his Swift made a flight to Yakima and other points on the east side of the mountains. They reported the weather beautiful and a very enjoyable flight.

### General Sheet Metal Work

Special Attention to Special Equipment

# RAU MFG. CO.

LEnox 7-7372

### Agent's Corner

(Continued from Page 1)

time when feeding, exposing only a small surface to the effects of air.

Using the information that is available makes it possible for cattle owners to ease the pressure on their winter feed supplies. Last year a large percentage of Western Washington grass was not cut because of a bumper crop and prevailing low hay prices. It is different now and the good farm managers are putting surplus growth into hay or grass silage.

By Joseph Buhaly  
Forest Lands Diminish  
70,000 acres a year is the loss of forest land to man - made encroachments in Western Washington.

Several of the Parkland J.C.'s enjoyed a ride in the Mooney after their work was done on the breakfast.

Mr. Carl Ellis flew in from California in a Stinson to visit his brother Clarence Ellis.

Phone your news to Tahoma Flying Service — LEnox 1-0442.

### Quickie White Is Here

Ask for It at Your Local Repair & Shoe Store

### Waller Road News

The Waller Road Fair board will meet at the hall June 26 at 8 p.m. Help keep this community project going and offer your help— you are needed.

### Court of Honor

A Court of Honor for boys of Scout Troop No. 23 will be held June 22 at 7:30 p.m. in the Waller Road hall. Parents and any other interested in Scouting are asked to attend.

### Wins Grange Honors

Mrs. Rudolph Geise of Waller Road brought home honors for the Waller Road Grangers in the run-off for Pierce County held at Pomona Grange at Graham. The National Grange Baking Contest is one of many open to Grange members. Mrs. Geise received 1st award in cookies and a 2nd placing in cakes; 1st placing will be entered at the State Grange Convention in Vancouver.

### 4-H Boys Club

Members of Waller Road 4-H Boys club who gave demonstrations on the recent Demonstration

### Fishing License Hunting License

Super Kem Tone & Kem Glo  
PARK AVENUE HARDWARE  
Corner 83rd & Park Ave., GR 4-0051

### TANK COMMANDER

Sgt. 1st class Arthur T. Swenson, whose wife, Helen, lives at 11454 South L street, is a tank commander with the 2nd Medium Tank Battalion of the 40th Armor, member of the famous Seventh Infantry "Bayonet" Division, which has been continually on active duty in Korea since the cease fire. The outfit recently celebrated its 18th "birthday."

### Prescriptions INSULIN

Open 9:30 to 9 Weekdays (Closed Sunday)

### ASHMORE'S SPANAWAY DRUG


165th & Pacific LE 7-5993

### BRAKE DRUM TURNING

Complete Motor Rebuilding, Head Surfacing, Piston Grinding, Valve Seats Installed, Re-boring, Pin Fitting, Key Seating, Lathe and Press Work, etc.

### Rupe Machine Works and Garage

AUTOMOTIVE & INDUSTRIAL WORK  
13411 Pac. Ave., P.O. Box 2445, Parkland 44, Wn., LE 7-7450



## FATHER KNOWS BEST VALUES

# AT SUMMIT TRADING CO.

### NEW WESTERN BLEND

# MAXWELL HOUSE COFFEE

LB. **65¢**  
2-Lb. Tin \$1.29

### NALLEY'S - FATHER'S FAVORITE

# LUMBERJACK SYRUP

22-Oz. Bottle **29¢**

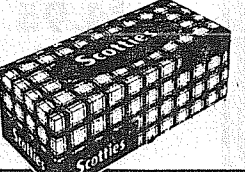


### SWANSON'S Beef - Turkey - Chicken

# MEAT PIES 5/\$1



## FATHER KNOWS BEST VALUES




### Scotties®

400 Count Pkg. **2/49c**



### Soft-Weave®

2-PACK **2/45c**



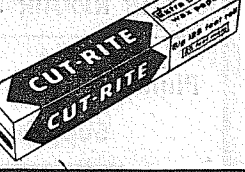
### Waldorf®

4-PACK **3/1.00**



### Scotkins®

Family Size **2/29c**



### Cut-Rite®

**2/39c**



### Scot Towels®

White—Reg. Size **2/35c**

### To Complete Pop's Feast

#### SWANSON'S QUICK FROZEN DESSERT PIES

Two 5-Oz. Individual Pies Per Pkg.

APPLE . . . . .	25c
PEACH . . . . .	25c
Coconut Custard	29c
CHERRY . . . . .	29c
BLUEBERRY . . . .	29c

### COUNTY FAIR ICE CREAM

½ GAL. **69c**

### LARGE AA WHITE Eggs Doz. **42¢**

### DUCHESS FREESTONE — 2½ TIN

Peaches **4/1.00**

### SCOTT WHITE PAPER Napkins

Pkg. **10c**

### FRESH PRODUCE

BEEFSTEAK SLICING	19¢
TOMATOES . . . . . lb.	19¢
SUNNY LOU CELLO	9¢
CARROTS . . . . . Pkg.	9¢
RED HAVEN PEACHES	2 Lbs. 29¢
SANTA ROSA PLUMS . . . . . lb.	19¢

### FATHER'S DAY SPECIALS

2-BURNER COLEMAN STOVE	Reg. \$12.88 \$14.95
¼ INCH—Reg. \$19.95	<b>\$13.88</b>
POWER DRILL	<b>\$13.88</b>
SABER SAW	Reg. \$29.95 <b>\$24.95</b>

### STORE HOURS

9 a.m. 'Til 9 p.m. Daily Except Sunday

# SUMMIT TRADING COMPANY

10409 Canyon Road, Tacoma LE 7-5848

No Sales To Dealers  
We Reserve The Right To Limit Quantities

### NOW ENJOY A CHICK-N-QUE

WITH YOUNG, TENDER

# SWANSON FROZEN CHICKEN

AND **SAVE 25¢ PER LB.**



HERE'S ALL YOU DO:

- Buy a package of Swanson Frozen Chicken (breasts, drumsticks or thighs).
- Send your name and address with the main panel (showing illustration of product) from a package of Swanson Frozen Chicken to: Swanson Chicken, P. O. Box 56-C, Mt. Vernon 10, New York
- Receive a 25¢ cash refund.

Hurry! . . . Offer expires July 31, 1959. Limit—two refunds (50¢) per family.

### SWANSON FROZEN CHICKEN

THIGHS	<b>63c</b>
BREASTS	<b>63c</b>
DRUMSTICKS	<b>73c</b>

### Here Comes Pop's Favorite

U.S. GOOD AND CHOICE RUMP OR BONELESS

# CHUCK ROAST LB. **69¢**

U.S. GOOD AND CHOICE

# T-BONE STEAK LB. **89¢**

AN ECONOMY MEAL—

# HAM LOAF LB. **39¢**

FRESH

# GROUND BEEF LB. **39¢**

FRESH GRAIN-FED

# PORK CHOPS LB. **53¢**

Custom Curing and Smoking . . . . . **7c**  
Custom Cutting and Wrapping . . . . . **5c**



Mr. and Mrs. Fred Pratt are on their vacation and on their way home will stop at Vancouver, Washington, to attend the 70th annual state convention of the Grange; Mr. Pratt is a delegate from the Clover Creek Grange No. 158.

**Visitors**  
Mrs. Frank Mayhak's folks came up from Yakima to see their granddaughter graduate from high school.

Mrs. Hattie Nunn has been visiting at Miles City, Mont., and aunts and a brother in Park Rapids, Minn.

**Sympathy**  
Our sincere sympathy goes to Chester B. Gunderson and his family as his father passed away last week in Minnesota.  
Reporter—Kathryn Deady, LE 7-8897.

A picnic shoulder may be baked as you would a regular ham; allow two and one-half hours at 325 degrees for a picnic weighing about five pounds. If you use an oven thermometer it should read 162 degrees. Score the surface, spread with a cup of brown sugar mixed with three teaspoons of dry mustard and then glaze in a hot (400 degrees) oven.

Times Journal  
Parkland, Washington  
Dear Editor:  
The National Grange Monthly, official publication of the National Grange, has just completed a country-wide survey of 6800 Grange women and has learned from over 4500 replies the names of weekly and daily newspapers in their areas that are, in their opinions, the best read. From communities in your vicinity, your newspaper was first choice in the weekly field.

As each woman replying was from a different Grange and as each Grange unit has an average membership of 100 (often greater), these women represent a number of families in your area.  
Because of this loyalty of Grangers to your weekly and because we, here at the National Grange Monthly, are interested in telling the Grange story through local newspapers, we will take the liberty of submitting to you releases that we think you can use.  
Thank you for any courtesy you may extend to us.

Sincerely yours,  
Beatrice Parsons

Glenn T. Armstrong, son of Mr. and Mrs. F. D. Armstrong of 120 South 84th street, is aboard the Navy ice-breaker Burton Island which left Boston in May to supply Thule Air Force Base in the Arctic; also on the ship is seaman Duane H. Gore, son of Mr. and Mrs. Harold L. Gore of Roy.

Haiti and Liberia are the world's two Negro republics.

**LAF**  
LE 7-4984 330 Garfield St.

**TYPEWRITER RENTALS**  
Store Hours 9:30 to 5:30 Daily except Friday open till 9:00 p.m.

The Cookery Cadets 4-H club had a tea for their mothers Tuesday, June 9, at the home of Mrs. Kovals. The guests were entertained with piano and clarinet solos. Janice Hart gave a demonstration on how to make a tossed salad. The girls served delicious refreshments, games were played, and everyone enjoyed the occasion.

**Joins WAVE's**  
Dorothy Irish, daughter of Mr. and Mrs. William Irish of Bingham Rd., has joined the WAVE's. She reported in Seattle on Monday and expected to leave on Wednesday by plane for the WAVE's Training Center in Maryland. Dorothy graduated from Franklin Pierce high school in June.

**Summer Jobs**  
Two other Franklin Pierce graduates from this area went to work the week after school closed. Sharon Jackson, daughter of Mr. and Mrs. Edwin Jackson, is employed by the Parkland branch of the National Bank of Washington. Ida McKinney, daughter of Mr. and Mrs. Robert McKinney, is working at the National Bank of Washington in Kent.

**Recovering**  
Mrs. Herman Beyer is now at home after spending several days in a Tacoma hospital and week convalescing at the home of her husband's parents, Mr. and Mrs. Emil Beyer of Lake Bay.

**In Hospital**  
Rose Kratochvil entered Doctors Hospital on Wednesday of this week to undergo eye surgery.

**Circle Meeting**  
The Ada Holden Circle of the Woman's Society of Christian Service meets at the home of Mrs. Russ Wilkerson June 25 at 1 p.m.  
Reporter—Mrs. C. R. McMillan, LE 7-6529.

Fireman apprentice Michael L. Nute, son of Mr. and Mrs. Norman S. Nute of 8925 East Taylor street, is serving aboard the Midway, aircraft carrier of the Seventh Fleet in the Western Pacific.

**State Flag**

**Here's the Answer**

**HORIZONTAL**  
1 Depicted is the state flag of —  
9 1/2 capital is Little  
13 Intensity  
14 English river  
15 Mystic ejaculations  
16 Wind indicators  
18 Goddess of infatuation  
19 West Indies (ab.)  
20 Is sorry  
22 Tellurium (symbol)  
23 Poker stake  
25 Image  
27 Frequentates  
29 Nickel (symbol)  
30 Higher  
31 Pronoun  
32 To (prefix)  
33 Skin blemish  
35 Duration of office  
36 Curved molding  
39 Iroquoian Indian  
40 Negative reply  
41 It has the only known — deposit in the U.S. states  
47 Mail (ab.)  
48 Excavated  
50 Barter  
51 Cooking vessel  
52 Famous English school  
54 Formal exposition  
56 Exemption

**VERTICAL**  
57 Having sharp teeth  
1 Affirmation  
2 Italian city  
3 Indian measure  
4 Masculine nickname  
5 Granular snow  
6 Crack  
7 Skin disorder  
8 Observed  
9 Egyptian sun god  
10 Eggs  
11 This state produces —  
12 Genus/fects  
17 Thoroughfare (ab.)  
20 Withstood  
21 It is — inland  
24 Holding  
26 Trim  
33 Marvel  
34 South  
42 Pronoun  
43 Wiles  
44 Female horse  
45 River in Germany  
46 Close  
49 Obtained  
51 Hole  
53 Direction (ab.)  
55 Tantalum (symbol)

**Wonderful Trip**  
Marlene Corrigan writes that she is having a wonderful time on her trip to Washington, D.C. where she and three other Washington 4-H'ers are attending the National 4-H Conference. They were given a rousing send-off from Pullman on Wednesday after being introduced on the Tuesday evening assembly. She is to serve as a page while at Washington. Another important event will be Wednesday when she and Keith Birkenfeld of Kitsap county will have lunch with Congressman Thor Tollefson. After two days in New York City next week end with the delegation, Marlene will return to Washington, D.C. for a six week

A bunch of happy but tired 4-H'ers and their chaperones arrived home Saturday morning from a week's stay at the 4-H State Conference at Washington State College in Pullman. A wonderful time was reported, with many interesting classes and tours. Pierce County winners of the J. C. Penney four-piece ensemble contest who were honored Tuesday noon, June 9, along with other county winners at a luncheon in the Club were Kathie Jones, Bonnie Christensen, Martha Hovey and Sharon Smith. On Thursday noon, the Junior Leadership winners were honored and Roberta Reed represented Pierce. International Farm Youth Exchange students from Iran, India and Burma added special interest to the Conference. Mrs. E. J. Lawler, chaperone, was especially impressed with the beautiful candlelighting ceremony.

**New 4-H Club**  
Head, Hart and Hands is the name of a new 4-H club for boys recently organized in the Midland area. Meetings are held at 7 p.m. the first and third Fridays of each month at the home of the leader, Mrs. Willis Dodge of Golden Given Road Summer project for the club is to clean up playgrounds of the community, starting with Dawson Field. Officers are: President, Benny Ereckson; vice president, Ronnie Murray; secretary, Arthur Sortland; treasurer, Danny

summer session at the Catholic University of America.  
**Engaged**  
Mr. and Mrs. Mike Hansler of Midland announced the engagement of their daughter Grace Marilyn, to Richard Glen Merrill of Seattle, son of Mr. and Mrs. H. G. Merrill of Anaheim, California. Miss Hansler is a graduate of Annie Wright Seminary and the ceremony will take place in the chapel, August 29, with Rev. W. C. Woodhams officiating. She is also a graduate of Harborview School of Nursing, Seattle.

**Card of Thanks**  
We wish to express our thanks to the many friends who have given so generously to the Heather Lynn Huddlestone Medical Trust Fund. We appreciate your kindness at this time.  
Sincerely  
Mr. and Mrs. Billy Huddlestone and family

**"ORNYTE" Plastic Panels**  
"B" Grade ..... 37c sq. ft. (Subject to Stock)  
"A" Grade ..... 45c sq. ft.

**CHAMBERS CREEK LUMBER**  
Saturday Hours: 8 am - 1 pm  
6402 So. Tacoma Way  
GR 2-4494

One easy coat of...  
**DRAMEX**

REFINISHES CRACKED PLASTER WALLS WITHOUT REPLASTERING. ON SALE AT Sportsmen's Headquarters

**SOUTH END PLUMBING & HARDWARE**  
185th & Pacific Ave LE 7-4100

**FATHER'S DAY GIFTS FOR JUNE 21st**



**MEN'S LIGHTWEIGHT SPORT JACKET**  
Colors in Blue or Black  
Sizes M - L and XL  
**\$3.98**

**MEN'S SPORT SHIRTS**  
Both Short and Long Sleeve  
Many Patterns to Choose From  
Sizes S - M - L and XL  
**\$1.49 & \$1.99**

**SHORT SLEEVE SWEATER SHIRT**  
100% Orlon in Red, White, Blue or Black — Sizes M - L  
**\$4.98**  
Others at \$3.98

**MEN'S WHITE DRESS SHIRTS**  
Drip - Dry  
Dual Cuff  
Wear Regular or as French Cuff  
Sizes 14 1/2 - 17  
**\$2.99**

**Wash-N-Wear DRESS SLACKS**  
Little or No Ironing - Shades of Grey or Brown  
Sizes 28 - 42  
**\$5.98**

**MEN'S ALL SPORT ACTION SHIRTS**  
Extra long, stays tucked in, shrinkage controlled, fine combed yarns.  
Blue, White, Red or Black  
Sizes S - M and L  
**\$2.98**

**Deluxe Quality Polished Cotton Slacks**  
Wash-N-Wear — Sanforized  
Trim Tailored for Perfect Fit  
Blue, Tan or Brown—Sizes 29 - 42  
**\$3.98**

**MEN'S STRETCH SOX**  
Stretch Yarns for Longer Wear  
Fits Any Size  
29c a Pair Or 4 Pairs. **\$1.00**

**MEN'S 100% NYLON JACKETS**  
Lightweight — Takes Up Small Space... Excellent Windbreaker  
Black or Tan — Sizes 38 - 46  
**\$4.98**

**COTTON ARGYLES**  
Nylon Reinforced Heel and Toe  
**69c Pair**  
3 Pairs, \$2.05

**9714 PACIFIC AVENUE**  
LE 1-0661  
Open 9 to 9 Week Days  
10 to 6 p.m. Sundays

**COLORED T-SHIRTS**  
With Pocket Full Cut for Comfort—S-M-L  
**\$1.00**

**SEYMOUR'S**

**It's the LAW**  
PRESENTED BY A PUBLIC SERVICE OF THE WASHINGTON STATE BAR ASSOCIATION

The law of negligence in regard to automobile injuries is vast and complex. There are certain instances though, where the pedestrian's actions can cause his own injuries. But each case must be decided on its own facts. A recent decision of our Supreme Court determined that the pedestrian in the case was the contributory factor. Here are the facts:

Aurora Avenue is a main street in Seattle, with four lanes running north and three lanes running south at the intersection with Harrison Street. The Seattle Traffic Division felt that one pedestrian crossing at this point was sufficient and posted several signs at the other crossing saying "Do Not Cross Here - Use the Crosswalk," with an arrow pointing to the proper crosswalk, where there is a traffic signal.

A pedestrian was in a hurry when he came to Aurora Avenue and the traffic light was red so he proceeded across Harrison Street to the next corner and then attempted to cross Aurora, disregarding the signs which said "Do Not Use This Crosswalk." Before he reached the curb the traffic light had changed and the North-South traffic proceeded. He was struck by the defendant's car. Because of other cars, neither party saw the other until impact.

The defendant contended the signs were illegal and were not placed so he could see them. But the Court felt that its former holdings "It must be presumed that such traffic control device was lawfully placed, or chaotic results would ensue," must be upheld. The court also found that the signs were fairly visible which advised pedestrians of the only authorized crosswalk across Aurora Avenue.

Every person using a street must exercise care for his own safety and is charged with notice of the street and highway signs. It was obvious to the court that


the defendant was guilty of contributory negligence as a matter of law and was not entitled to any damages against the driver of the car.

(This column is written to inform, not advise. Facts may change the application of the law.)

Cut small fresh pineapples in half and remove the insides; be sure to leave the plumes on each half. Fill the pineapple shells with curried chicken and top with slivered or diced toasted almonds. Serve with steamed rice, crisp bacon and cubes of the fresh pineapple.

**FOR RENT TRUCKS & CARS**  
MA 7-9039  
Save One Half We Furnish Everything  
**HARMON'S**  
Driv - Ur - Self Co.  
HARMON'S SERVICE  
2112 Jefferson  
Jim Harmon, Mgr.

**ALSO VILLA PLAZA IN LAKEWOOD**



Savings received by mail are given prompt, personal attention at the Family Savings Center... we pay the postage both ways

A MUTUAL SAVINGS INSTITUTION  
**Pacific Federal Savings and Loan Association**  
Bellingham • Seattle • Tacoma  
Longview • Portland • Eugene

**Love that Man! FATHER RATES A GIFT OF JEWELRY...**

"We have Shavers, Watches, Lodge Rings and many other items of interest to the man of the house. Come in and see our selection."

**SMITH JEWELERS**  
8238 Pacific Avenue GR 2-2351

**TOPS with POPS!**

**PARKAY MARGARINE** 5 For **99c**

"A Repeat Special" — LIBBY'S FROZEN **LEMONADE** 6-Oz. Tin **10c**

**HUNT'S - Make him a wonderful Fruit Salad**  
**FRUIT COCKTAIL** 5 For **99c**  
300 Tins

**BUDGET-PLEASING FRESH PRODUCE**

U.S. No. 1 White Shafter **POTATOES** 10 Lbs. **55c**  
Cello Bag.....

Fresh, Local, Solid Head **LETTUCE**.....Lb. **5c**

Local Grown, Tender and Mild **GR. ONIONS** 3 Bunches For **10c**

New Crop Local **CAULIFLOWER**.....Lb. **12c**

**NALLEY'S KOSHER OR REGULAR DILL PICKLES**  
1/2 Gal. Jars..... **2 for 99c**

**EAST POINT, EXTRA SMALL SHRIMP**  
4 1/2-OZ. TIN..... **39c**

**KOOL AID**  
All Flavors  
**3 Pkgs. 10c**

**NALLEY'S LUMBERJACK SYRUP**  
22-OZ. BOTTLE..... **29c**

**MEATS** **WHOLE FRESH FRYERS**

WASH. GROWN.....LB. **35c**

Boneless—Ready to Eat **HAM**.....Lb. **77c**

Fresh, Tender Young Beef **SIRLOIN STEAK**.....Lb. **79c**

**Smoked Liver Sausage**  
Perfect for that In-between Snack — By the Piece.....Lb. **39c**

Good Old Fashioned **FRANKS**.....Lb. **47c**

**SPERRY PANCAKE MIX**  
4-LB. BAG..... **49c**


**Tree Tea** Perfect for Ice Tea  
Black — 5c Deal Pkg.  
48 BAGS..... **59c**

Fresh Daily From One Local Farm  
**AA LARGE EGGS**.....Doz. **42c**

**McDANIELS**  
The Home of The Low Price

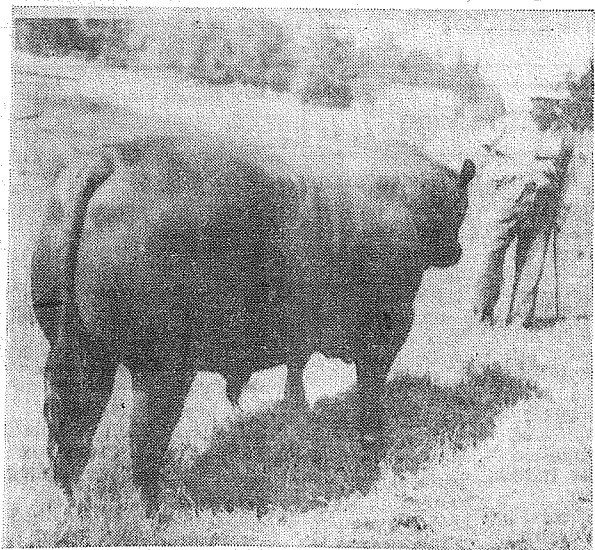
**AIRPORT & CANYON ROAD**  
Store Hours: 9:00 'Til 9:00 — Sundays 9:00 'Til 7:00

Prices Effective Thurs., Fri. & Sat.





**Cattlemen Sponsor Tour Tuesday, 23rd**



Sponsored by the Pierce County Cattlemen's Association, Cattlemen and Cowbells are invited to share the Cattlemen of the Year tour Tuesday, June 23, which will feature the ranch of Charles McPhail (formerly Nick Koenig's), six miles west of Eatonville, two miles west of Ohop Grange. McPhail was selected by the Cattlemen's Association as the 1959 Cattlemen of the Year.

Basis of the selection was: Herd management, proper land use, ranch appearance, business man-

agement and civic leadership. These points will be shown and explained on a tour of his place, where he has 106 head of purebred Angus cattle, headed by a two-time Grand Champion bull. Pictured above.

A hot pit beef barbecue will be served at a nominal charge and the approved ranch practices which won McPhail the Cattlemen of the Year title will be demonstrated and explained during the tour of his property, 10 a.m. till 3 p.m.

ership is more a matter of the heart than of the head and hands, our search for leadership potential will be futile. We tread on quicksand if we do not consider concern for people an indispensable ingredient of leadership.

Information, knowledge, and some skill in interpreting facts and gauging trends can be both taught and learned by adults. Concern for others resides in the impenetrable fastness of the heart and mind. These areas are seldom open to cultivation after an in-

dividual has entered adulthood. Concern can be shown in the actions of an adult, but I question if it can be engendered in an adult by others.

We urgently need bedrock thinking about the essence of leadership. If you do not agree with my definition, I hope you are challenged to develop your own. But keep it basic.

If we dilute the meaning of leadership, we may also water down the operation and function of leadership. And I question if we can afford such inflation.

We say leadership is essential to democracy. It is far more than that. It is essential to civilization itself. It is civilization's antidote to indifference, inaction, stagnation, and decline.

Leadership is the only force that can halt and reverse the course of events.

Let's examine, as individuals, and as an organization, the quality and effectiveness of our own leadership.

What gauge can we use to measure ourselves against the demands of our particular job? How adequate is it for anticipating new problems?

Do we welcome new ideas, search out new developments, record the changes occurring around us? How about our concern for people? Have we permitted fatigue and frustration to dim its luster so that it no longer shines through our actions?

Can we spot the really influential people in a group, in a community? Do we listen for the comments that will give us the proper cues?

Have we retained our sensitivity

to feelings and attitudes? Do we consider feelings as part of the facts? Do we seek and search for the knowledge, understanding, and skills needed to weld individuals into an effective planning and action group?

What about our attitude toward the volunteers who share our load? Are we willing to surrender to them the responsibilities that real leadership must assume?

**County Agent's Corner**

By Gorge Purcell  
Full of meaning, force and vigor—in other words, a pithy, as well as refreshing, article. That's the most accurate descriptive language I can think of to explain a recent nationally publicized article regarding a candid look at Leadership by C. A. Svinth, director of Extension of Washington State College. Without trying to grind any axe, I would like to share his challenging and thought provoking

opinions with you. Quote "What is the essence of leadership? What is it? What does it do? How do we recognize it? How may we develop it? The word is now used so loosely that its meaning has fallen into the category of "all things to all people". We have confused our own thinking by using solemn contradictions. We have applied the terms leadership and leader to all sorts of personalities and conditions of individuals and actions. We have said a leader is everyone and anyone who steps out of the role of passive participation for a few seconds or a few years. We have designated as a leader everyone from the person who unlocks the meeting room door to the person who inspires three generations of youth."

"Somewhere along the line, we have dropped the distinction between leadership and service, be-

**FENCING**  
Designers and Builders  
EXPERT WORKMANSHIP  
REASONABLE PRICES  
Easy Monthly Payments  
**VAUGHAN'S**  
84th & Pac. Ave. GR 4-9515

**Waller Road Variety Store**  
MEN'S SPORT SHIRTS — \$1.98 and \$2.98  
BILLFOLDS — 98c TO \$2.98  
TIES — HANKIES — SOCKS — BELTS, ETC.  
64th & Waller Road LEnox 7-5362

**FOUNDERS MUTUAL FUND**  
OFFERS Systematic Investment Plans  
for as low as \$20.00 initially \$10.00 periodically  
INVEST MONTHLY IN AMERICAN INDUSTRY  
Through Founders Mutual Fund you can acquire an ownership interest in a diversified group of carefully selected corporations.  
For prospectus fill in and return this advertisement to:  
Founders Mutual Depositor Corp.  
2401 First National Bank Bldg.  
AComa 2-2818  
Denver 2, Colorado

**BOAT RENTALS**  
12-Ft. \$1.50 Per Day  
After 5 p.m. \$1.00  
COMPLETE LINE OF FISHING TACKLE  
**BILL'S BOAT HOUSE**  
173rd on the South End of Spanaway Lake—LE 1-0387

**Daily Vacation Church School**  
June 15 thru 26—9:00 to 11:30 a.m.  
Ages 5 Years thru 12 Years  
**Spanaway Methodist Church**  
163rd Street, East of Pacific Avenue

**Woodland News**

112th Booster club will have their June meeting on Monday, June 22, at the Gordon David home on Grebe road. This meeting will be a potluck supper at 6 p.m. for the whole family. Bring your own table service.

**Guests**  
The Ben Ruyles of Knapp road had weekend guests the weekend of the 6th of June, Ben's niece and husband, Mr. and Mrs. Kanzigson Randy and daughters Traci and Kelly of Yakima.

**Delightful Trip**  
Rickey and Sally Johnson of Collins road and Bill and Edna Westman of Fruitland avenue took a trip around the Loop, Saturday and Sunday June 6 and 7. They took a side trip through Neah Bay and on out to Cape Flattery. They had to walk out on the cape. For those who like me, may not have known it before: Cape Flattery is a rock out in the ocean and is the westernmost point of the Continental United States.

**Square Dance Party**  
Because of the practice of most square dance clubs of holding only one dance a month during the summer, the regular Harmony Hoedown dance of June 20 will be a special Saturday night dance for the members of Willis and Loraine Dodge's current class. All dancers are welcome to attend and I'm sure will be appreciated for their help to the new dancers, so let's give them a good welcome to Saturday night dancing at Fruitland Grange hall June 20 at 8:30 o'clock. Bring dessert for potluck and your cups. Coffee and tea will be served by the club.

**Bluebirds**  
The Woodland Daisy Bluebirds have concluded their first year under the leadership of Mrs. Paul Holmes and Mrs. Joseph Miller. During the year the girls' leaders took them for visits to the Public Library and the Tacoma Coca-Cola Bottling Plant. The troop presented the Woodland school with a climbing shrub. Those attending the presentation ceremony in May were: Juanita Cuellar, Cheryl David, Sandra Grening, Marie Holmes, Chris Larson, Marlys Midgette, Laura Miller, Nancy Owings, Rebecca Reynolds, Karen Runkel, Kathy Scott, and Theresa Rouse. The only missing member of the troop on the day of the presentation was Lois Taute. Day camp was held at Wildwood Park June 8th through the 12th, with Mrs. Holmes, Mrs. Larson

**The TIMES JOURNAL**

ADDRESS P.O. BOX 2008, PARKLAND, WASHINGTON  
119th and Pacific Avenue Phone LEnox 7-0223  
PUBLISHER JACK BROWN  
EDITOR NEVA T. HONEYWELL  
ADVERTISING ESTHER GODDARD  
ADVERTISING NANCY LARSON  
ACCOUNTING CHEI CHAMBERLAIN  
SHOP FOREMAN DAVE HIBBARD  
CIRCULATION DOLORES BROWN  
PHOTOGRAPHER WES MCKEWEEN

**CORRESPONDENTS**  
Mrs. John Folk, Mrs. William Dalby, Mrs. Harold Bergeson, Muriel Kast, Mrs. Eileen Schmidt, Mrs. Ewart Tinius, Miss Marlene Corrigan, Mrs. Oliver Omat., Mrs. C. R. McMillan, Mrs. Verne Fogle, Mrs. Jack Dillon and Margaret David.

Qualified as a Legal Publication under Chapter 213 of the Legislative Acts of the 1941 Regular Session of the State of Wash.  
Delivered free by U. S. Mail to all homes in the trade territory. Paid subscriptions elsewhere!  
In Wash. State \$2.50 per year, outside the state, \$3.00 per year.  
ADVERTISING RATES ON REQUEST

**Thanks a Million!**  
I would like to thank all those who sent cards and flowers and good wishes to me while I was in the hospital following a heart attack. I never knew I had so many friends! Again, thanks a million!  
Bob Bartley

capitol, up to the top of the dome, and through the library and the greenhouse. Mrs. Burgmeier and Mrs. Walter West and the rest of their children went along with the boys. After lunch they went swimming in Millersylvania Park. Reporter—Margaret David, LE 7-6668.

**BIXBY TV-RADIO**  
12503 Waller Road—LE 7-8309  
FREE TUBE TESTING

**THE BARGAIN BASKET** 167th & Pacific Ave.

<b>GROUND BEEF</b> 3 lbs. For 89c	<b>Red Fryers</b> lb. 39c	<b>KRAFT'S PARKAY Margarine</b> 5 lbs. \$1
<b>Sliced Bacon</b> lb. 39c	<b>Fresh Boneless Fillet Red Snapper</b> lb. 29c	<b>AA Medium Fresh Daily Ranch Eggs</b> DOZEN 3/\$1
<b>Armour's Star Boneless, Lean Ham</b> lb. 69c	<b>Northwest Brand—12-Oz. or over Polish Sausage</b> 3/99c	<b>Hills Bros. Coffee</b> lb. 69c
<b>Rib or Sirloin Beef Steaks</b> lb. 69c	<b>Fresh Local—Large heads Cauliflower</b> Ea. 12c	<b>FRENCH'S FLUFFY INSTANT POTATOES</b> 6 1/4 Oz. Reg. 33c
<b>Boneless Sirloin Tip Roast</b> lb. 69c	<b>Jumbo Cantaloupe</b> lb. 7c	<b>Mail Coupon from display and get Refund of 33c.</b> 29c
	<b>Golden Ripe Bananas</b> Pound 2/25c	

**COMPLETE LINE OF LAWN AND GARDEN SUPPLIES**  
—RENTALS—  
GARDEN TILLER  
HAND SANDER  
POWER MOWERS  
FLOOR WAXERS  
POWER SAWS  
RUG SHAMPOO MACHINE  
For That Professional Job  
**Parkland Hardware**  
12169 Pac. Ave. LE 7-3171  
Across from Piggly Wiggly

**LUMBER --- ALL GRADES**  
**PAINTS - GLASS - HARDWARE**  
**UPLAND SLAB WOOD**  
**BASKETT LUMBER CO.**  
9701 Portland Ave LEnox 7-5844

**BAMBOO BARREL CHAIRS**  
\$3.99 EA  
**SHOP-ETTE**  
VARIETY And DEPARTMENT STORES  
133rd and Pacific Ave. Next to "Big Bear"  
56th and Pacific Avenue Across from "Tradewell"

**"STARLET" SANDALS**  
For Children — Size 6 to 12  
Rubber Soles & Snap Fasteners  
White & Red \$1.59 PR

**GENERAL ELECTRIC ACTION SALE AT WHIRLS!**

BRAND NEW 1959 GENERAL ELECTRIC APPLIANCES: RANGES, REFRIGERATORS, FREEZERS, TV'S WASHERS, DRYERS, HOT W/TR TANKS

SEE HOW MUCH YOU CAN SAVE DURING THIS EVENT AT WEIR'S!

WITH YOUR PURCHASE, YOU GET—FREE—ONE-YEAR FACTORY SERVICE

OPEN EVERY NIGHT UNTIL 9 P.M. SAT. UNTIL 6 P.M.

8419 PORTLAND AVENUE PLENTY OF FREE FRONT DOOR PARKING LE 7-0231

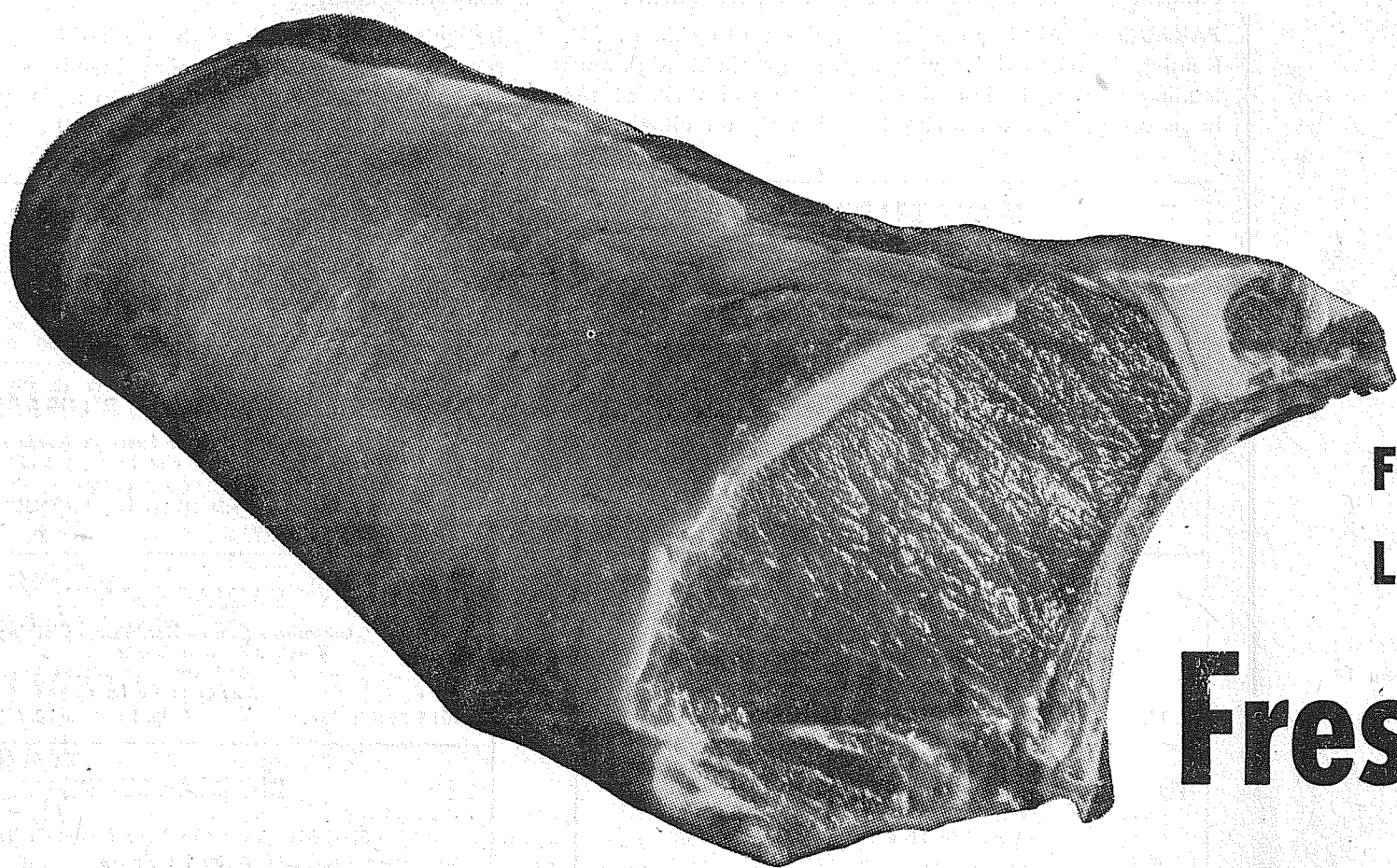
HOW'D YOU LIKE A 21" G.E. CONSOLE TV AT A TABLE MODEL PRICE?  
ONE YEAR WARRANTY ★ ALL PARTS ★ ALL TUBES  
★ FREE ★ DELIVERY AND INSTALLATION





Glistening fresh...rushed to you direct from the heart of the corn belt!

# LOIN PORK ROAST



Here's Armour's finest corn fed pork! Every roast is a full 7-ribs... extra tender, lean with wonderful flavor. Each loin has been carefully selected to assure uniform color and tenderness.

lb. **37¢**

**FRESH PORK CHOPS** lb. 55¢  
Center cuts of well trimmed tender pork.

**SWIFT'S WIENERS** lb. 49¢  
Premium quality all meat skinless wieners.

**LEAN SLICED BACON** lb. 49¢  
Morrell's Comet. It's extra nice 'n lean.

**SWIFT'S BOLONGA** lb. 39¢  
Premium quality by Swift. By the piece.

**Fresh Hen Turkeys** lb. **37¢**

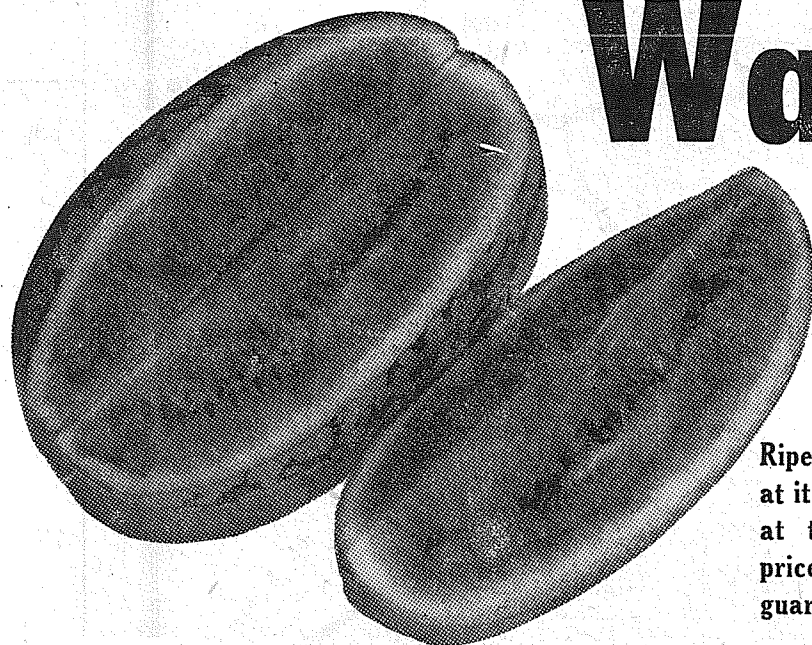
Grade "A" in sizes averaging between 12 and 16 pounds. Here's the ideal treat for Father's Day... a fully matured Grade "A" Turkey with lots of tender meat.

- TV DINNERS** SWANSON'S TURKEY, BEEF CHICKEN & MEAT LOAF Per Pkg. **45¢**
- MARGARINE** WESTERN MAID YELLOW CUBES Per Lb. **15¢**
- TOMATO SOUP** CAMPBELLS REG. SIZE Per Can **9¢**
- CANNED MILK** CARNATION BRAND Tall Can **10¢**

**POLAR BRAND FROZEN VEGETABLES**

- CUT GREEN BEANS 6 pkgs. for 99¢
- BABY LIMA BEANS 6 pkgs. for 99¢
- PEAS & CARROTS 6 pkgs. for 99¢
- SWEET CORN ..... 6 pkgs. for 99¢
- FRENCH FRIES..... 6 pkgs. for 99¢
- GREEN PEAS ..... 6 pkgs. for 99¢

- DUTCHESS PEACH HALVES** Freestone, Irregular 4 #2½ Cans **1.00**
- SNOWFLAKE SODA CRACKERS**..... 1-lb. Box **29¢**
- HEINTZ TOMATO KETCHUP**..... 2 14-oz. Bottles **45¢**
- LIBBY RIPE OLIVES, FAMILY SIZE**..... #1 Tall Can **33¢**
- HUNT'S TOMATO SAUCE**..... 9 8-oz. Cans **87¢**
- HUNT'S SOLID PACK TOMATOES**..... #2½ Can **29¢**
- LIBBY PINEAPPLE JUICE**..... 46-oz. Can **33¢**
- CAMPBELL'S FAMOUS MEAT SOUPS** 2 10½-oz. Cans **37¢**
- STARKIST CHUNK STYLE TUNA**..... #½ Can **29¢**
- NESTLE'S QUIK CHOCOLATE DRINK**... 1-lb. Can **47¢**
- LUMBERJACK MAPLE TABLE SYRUP** 22-oz. Bottle **37¢**
- GIANT SIZE TIDE DETERGENT**..... Per Pkg. **79¢**
- KLEENEX, ASSORTED COLORS**..... 2 200-ct. Boxes **29¢**
- ZEE BRAND TOILET TISSUE** ..... 4-roll Pack **39¢**



## Watermelon

Each **89¢**

Ripe, juicy watermelon at its best... and look at the low Big Bear price. Every melon is guaranteed ripe.

**FRESH CAULIFLOWER** each only 15¢  
Snow white, local grown big heads.

**SWEET TENDER CORN** each only 5¢  
Golden corn... long well filled ears.

**NEW CALIFORNIA PEACHES** per lb. 15¢  
Wonderful for slicing... and delicious with Big Bear's own ice cream! Look at this low Big Bear price!

We're also featuring—large, local grown strawberries extra sweet seedless grapes, juicy Santa Rosa plums and large tree-ripened sweet Bing Cherries.

STORE HOURS: 9 to 11 Weekdays; Sundays, 9 to 9. Ad prices are effective Thursday A.M. through Saturday, right to limit is reserved.

...your best food buys are always found at your Big Bear store!

133RD & PACIFIC AVENUE

PARKLAND





# MT. RAINIER NATIONAL PARK OPENS

## For The Summer Season Plan Your Trip On The Road To Paradise

MT. RAINIER NATIONAL PARK contains 378 square miles of America's superlative mountain grandeur, is easily accessible from the gateway cities of Tacoma and Seattle. Towering above all this is Mt. Rainier, an extinct volcano, 14,408 feet above sea level. It is the highest perpetually ice-clad peak, and has the largest single system of glaciers in the U. S. These glaciers, 26 in all, contain more than 45 square miles of 29,000 acres, of ice. Beneath these masses of moving ice are born many turbulent rivers which flow through the Evergreen Playground to the waters of the Pacific. Almost 700 species of flowering plants in addition to hundreds of ferns, mosses and fungi; 34 waterfalls, 62 lakes, and trees centuries old, add to this Mountain grandeur. Here is fun for all — hiking, mountain climbing, saddle horse riding, fishing, dancing and easy walks through flower meadows. Hotels, lodges and camp grounds are provided for your comfort. Guides, Ranger Naturalists, spacious lobbies and experienced, intelligent personnel provide for your entertainment.

**PARADISE VALLEY**, situated on the south side of Mt. Rainier, is reached by way of the excellent high-ways leading directly to Paradise Inn. You will thrill at the huge evergreen trees lining the highway on either side,

the great Nisqually Glacier that flows precipitously down the mountain toward the roadside, beautiful Narada Falls dropping 168 feet to the Paradise River Canyon, unexcelled panoramas from the highway at Ricksecker and Inspiration points, and spectacular Mount Rainier itself, rising 14,408 feet above sea level.

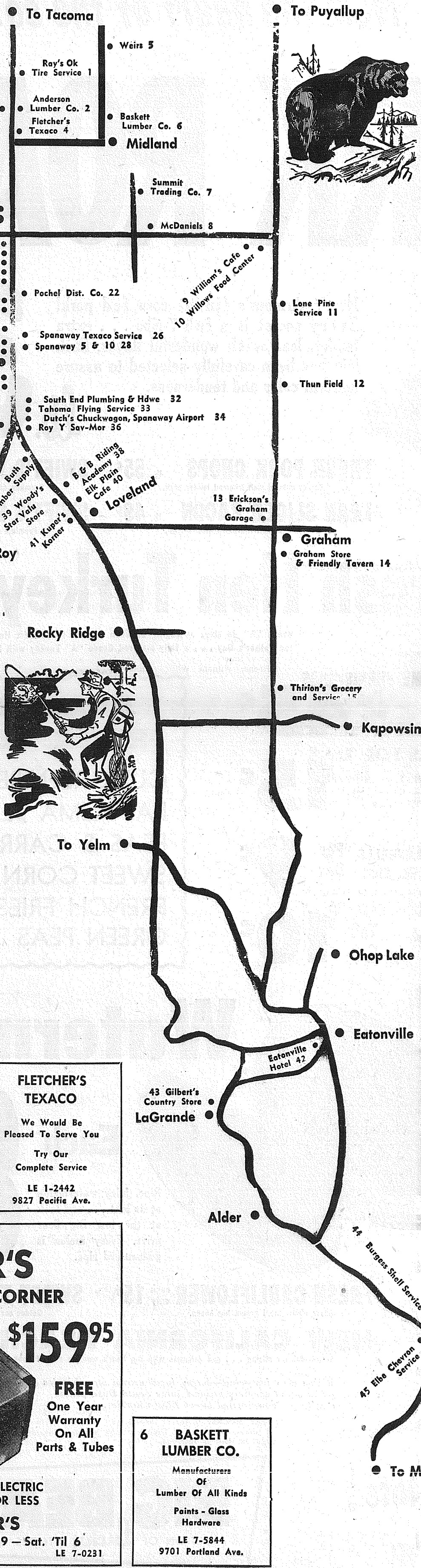
We urge you to visit Paradise for it is without doubt THE GREATEST SINGLE SCENIC ATTRACTION IN THE ENTIRE NORTHWEST.

Paradise Inn, with its unique timbered lobby and dining room, is renowned for its excellent food and comfort, and will be open June 20th.

**STEVENS CANYON ROAD** is now open for your pleasure, bringing new panoramic views to the traveler, never before accessible except via horseback.

**NATURALIST CONDUCTED TOURS**—See the beauties of Paradise Valley and the Tatoosh Range with Mt. St. Helens sixty miles away.

Be sure to plan a trip to the park this summer. On this page you will find listed many businesses and their location shown, who will endeavor to make your trip more pleasant. Keep this page, referring to it on your trip.



**1 RAY'S O.K. TIRE STORE**  
Where Tires Are Our Business . . . Not A Sideline  
LE 7-7355  
9639 Pacific Avenue

**2 ANDERSON LUMBER**  
VOR, POP, MOM AN-DER-SON  
Vee Hay Supplies PAINTS  
Lumber & Building Supplies  
9813 Pacific Ave. LE 7-7311

**3 QUALITY PHOTO SERVICE**  
Stop For 127-620  
120 Special 3 for 97c  
Film In At 10 Out At 4  
Kodachrome Movie and Slides, 2 Day Service  
LE 7-7271  
9818 Pacific Ave.

**4 FLETCHER'S TEXACO**  
We Would Be Pleased To Serve You  
Try Our Complete Service  
LE 1-2442  
9827 Pacific Ave.

**5 WEIR'S YOUR G-E CORNER**  
17" **\$159<sup>95</sup>**  
**FREE** One Year Warranty On All Parts & Tubes  
**PORTABLE T-V**  
BUY GENERAL ELECTRIC APPLIANCES FOR LESS  
**AT WEIR'S**  
Open Every Night 'Til 9 — Sat. 'Til 6  
8419 Portland Avenue LE 7-0231

**6 BASKETT LUMBER CO.**  
Manufacturers Of Lumber Of All Kinds  
Points - Glass Hardware  
LE 7-5844  
9701 Portland Ave.

<b>7 SUMMIT TRADING CO.</b> 104TH & CANYON ROAD FRIENDLY SERVICE - FULL LINE GROCERIES MEATS, HARDWARE AND PICNIC SUPPLIES
<b>8 McDANIELS</b> AIRPORT & CANYON ROAD THE HOME OF THE LOW PRICE STORE HOURS: 9 TILL 9 - SUN. 9 TILL 7 LOTS OF FREE PARKING
<b>9 WILLOWS CAFE</b> — Either Road You Take — HOME BAKED PIES — FOOD AS YOU LIKE IT — Fountain — TH 5-8796 Meridian & Airport
<b>10 WILLOWS FOOD CENTER</b> Complete Food Supplies For The Family Picnic Stop - Shop & Save At Willows Corner
<b>11 LONE PINE SERVICE</b> FLYING A GAS AND OIL Groceries - Pop - Ice Cream - Picnic Supplies Open 6 A.M. Til 11 P.M. Sun. Thru Fri., Sat. Til 12 P.M. Meridian Highway At Firgrove
<b>12 THUN FIELD</b> Scenic Flights Around The Mountain Short Orders - Fountain Service Watch The Planes Come And Go While You Eat On South Meridian — TH 5-5884
<b>13 ERICKSON'S GRAHAM GARAGE</b> TEXACO PRODUCTS — WRECKER SERVICE Phone Vinewood 7-2221 Repairs — Automobile Parts and Supplies GRAHAM, WASH. HOURS: 8 a.m. 'Til 6 p.m.
<b>14 GRAHAM STORE &amp; FRIENDLY TAVERN</b> Feel at Home Among Friends Beer and Wine to Take Out GAS and OIL — GROCERIES Roy and Helen Thorsen
<b>15 THIRION'S GROCERY &amp; SERVICE</b> COMPLETE RICHFIELD SERVICE Oil and Accessories Groceries — Meats and Beverages Meridian Highway and Carlson Road
<b>16 PARKLAND REXALL PHARMACY</b> Stop Here For All Your Drug Needs Sun Glasses - Bathing Caps - Lotions, Etc. 11114 Pacific Avenue LE 7-8636
<b>17 SILER'S TV &amp; APPLIANCES</b> Factory Trained Personnel On Duty 'Til 9:00 p.m. LE 7-8634 11230 PACIFIC AVE.

<b>18 PARKLAND FUEL OIL SERVICE</b> YOUR FRIENDLY CHEVRON DEALER Open 9 A.M. Til 9 P.M. Sundays 12002 Pacific Avenue LE 7-0256
<b>19 PRESBA'S SPORTING &amp; GIFT SHOP</b> Complete Line of Sporting Goods Everything in Fishing and Hunting Equipment CHOICE GIFT ITEMS FISHING AND HUNTING LICENSES 12816 Pacific Avenue LE 1-2131
<b>20 SALVAGE MART</b> Groceries - Shoes - Hardware - Clothing Truck And Rail Damaged Goods Fire And Bankrupt Stocks Wholesale Or Less 13014 Pacific Ave. Open Sundays 10 A.M. TILL 6 P.M.
<b>21 BIG BEAR STORE</b> Everything To Make Your Mountain Trip A Real Pleasure Foods Galore And Picnic Supplies Too 133rd & Pacific Ave.
<b>22 POCHEL DISTRIBUTING CO.</b> YOUR FUEL OIL and APPLIANCE DEALER LEnox 7-8624 140th & Pacific Avenue Mt. Hiway
<b>23 IVY'S CAFE</b> Food Prepared Just The Way You Like It HOME MADE PIES 14102 Pacific Ave. Open 7 Days A Week
<b>24 RAU MFG. CO.</b> Specialty Sheet Metal Work You Name It . . . We Can Make It 141st & Pacific Avenue LE 7-7372
<b>25 RUDY'S FEED &amp; SEED</b> FEEDS — Dogs - Horses - Cattle - Chickens Fertilizers and Peat Moss Leather Goods — Parker Paints 146th & Pacific Avenue Triangle Feeds LE 7-4888
<b>26 SPANAWAY TEXACO SERVICE</b> GAS - OIL - TIRES - BATTERIES Hours 7 to 9 — 7 Days A Week 159th & Pacific Avenue LE 7-4077
<b>27 OUHL'S RICHFIELD SERVICE</b> RICHFIELD GAS & OIL COMPLETE AUTO REPAIR SERVICE 160th & Pacific Avenue LE 7-6547
<b>28 SPANAWAY 5 &amp; 10</b> PICNIC SUPPLIES — FISHING TACKLE For All Your Needs — Shop Here First Across From the School On Mt. Hiway at Spanaway





"WHERE FLOWERS AND GLACIERS MEET"—The many improvements that have been made, will add much enjoyment for the whole family.

MAKE YOUR TRIP A SOCIAL ONE.  
THESE BUSINESS FOLKS INVITE  
YOU TO STOP IN AND  
GET ACQUAINTED!

29	<b>THE BARGAIN BASKET</b> Open Sundays for Your Meat and Grocery Needs FOR YOUR PICNIC SUPPLIES 167th & Pacific Avenue, Spanaway "On the Road to Paradise"
30	<b>L &amp; M AUTOMOTIVE SERVICE</b> TEXACO PRODUCTS — COMPLETE REPAIR SERVICE TRUCK and AUTO Electric — Acetylene Welding — Steam Cleaning 170th & Pacific LE 7-6772
31	<b>LITTLE PARK CAFE</b> Featuring Char-Broiled Steaks Catering To Families — Picnic Area Behind Restaurant 171st & Pacific Avenue LE 7-0321
32	<b>SOUTH END PLUMBING &amp; HDWE</b> Everything for the Home, Handy Man, Fisherman and Hunter SCHORN PAINTS — FISHING & HUNTING LICENSES 185th & Pacific Avenue LE 7-4100
33	<b>TAHOMA FLYING SERVICE</b> CHARTER FLIGHTS — STUDENT INSTRUCTION SPANAWAY AIRPORT 185th & Pacific Avenue LE 1-0442
34	<b>DUTCH'S CHUCK WAGON</b> BURGERS - DOGS & BAR-B-QUEED BEEF Hot And Cold Drinks At The Spanaway Airport
35	<b>ROY 'Y' SERVICE, PAINT &amp; VARIETY</b> OPEN 7 DAYS A WEEK — 7 A.M. 'TIL 9:30 P.M. Mountain Road at Roy Cut-off LE 7-4221
36	<b>ROY "Y" SAV-MOR SERVICE</b> Gas - Oil - Tires - Batteries - Accessories Mt. Highway At The Roy "Y" Hours 7 A.M. Til 9 P.M. 7 Days A Week
37	<b>BUTH LUMBER SUPPLY</b> ● HAY ● GRAIN Open 7 Days Per Week FIRST HOUSE PAST ROY "Y" ON THE MT. HIWAY
38	<b>B &amp; B RIDING ACADEMY</b> HORSES FOR RENT — OUTDOOR CAMPING AND PICNIC GROUNDS Horses Boarded Very Reasonable — English and Western Riding Taught
39	<b>WOODY'S STAR VALUE STORE</b> COMPLETE LINE OF FOODS GENERAL MERCHANDISE Loveland Washington
40	<b>ELK PLAIN CAFE</b> — RUN BY FOUR SISTERS — GOOD FOOD — OPEN 24 HOURS Loveland Washington
41	<b>KUPER'S KORNER</b> MOBIL GAS — GROCERIES — BEER - Everything to Complete Your Picnic Lunch Open All Day Sunday for Your Convenience At Loveland
42	<b>EATONVILLE HOTEL</b> ATTRACTIVE ROOMS — CENTRALLY LOCATED Phone Eatonville Eatonville TE 2-4656 Washington

43 **GILBERT'S COUNTRY STORE**  
GROCERIES - GIFT SHOP  
GAS & OIL  
LaGrande, Wash.

44 **BURGESS SHELL SERVICE**  
SHELL GAS  
Stove Oil — Diesel  
Propane  
Elbe, Washington

45 **Elbe Chevron Service**  
Service Station  
Minor Repairs  
ELBE, WASH.  
Phone Elbe 2301

46 **SWANSON'S GROCERY**  
and SPORTSMAN'S HEADQUARTERS  
Elbe, Wash.  
Phone Elbe 2821

47 **ASHFORD DRIVE-IN**  
HAMBURGERS  
SHAKES & PIE  
Window Service  
Picnic Tables  
Mt. Hiway, 7 Miles Past Elbe  
PH. LOGAN 9-2375

48 **Ashford Tavern & Cafe**  
At the Old School House  
Always a Cool Spot to Relax  
Pool — Shuffleboard  
Good Food  
Dancing Fri. & Sat. Nights  
Ph. Logan 9-8264

49 **Bill Starkel's Chevron Station**  
R.P.M. Oil — Atlas Tires  
Tire Repair — Picnic Supplies  
Groceries  
Mountain Hiway  
PH. LOGAN 9-2575

50 **Copper Creek Restaurant**  
Gad About - Dining Out?  
No Doubt!  
Homemade Bread  
Copper Toppers  
Wild Berry Pie — Dinners  
Snacks — Curios  
Mountain Hiway  
PH. LOGAN 9-2326

51 **ALPINE INN**  
THE ANDERMANN'S  
Cabins - Restaurant - Gas  
Facilities for Family Dining  
ASHFORD, WASH.  
Ph. LOGAN 9-2315

52 **CEDAR PARK MOTEL**  
Modern Cabins  
Kitchens — Showers  
Automatic Heat  
Approx. 1/2 Mile From  
Park Entrance  
Trailer Spaces

## Booklets Reveal Beauty Secrets Of Medieval Days

ROME — Women bent on glamour can take a tip from ancient beauty hints discovered in Italy. Recipes for health, beauty, and love are turning up in attics and old books. Many of the tips are hundreds of years old.

One booklet, called *The Book of Miracles*, recently was found in an attic at Catania. It contained 100 pages of cures for mental and physical ailments and aids to beauty and baldness.

This booklet was compiled by a monk named Father Antonio da Militello. He transcribed recipes from ancient scripts and usages which, he said, he personally proved for their worth.

Only one recipe which the good friar did not try was a concoction of olive oil and the juice of lizards for baldness. He died in 1946 at the age of 90, completely bald.

These recipes began in the days of the Medici. Probably the most famous of all were pamphlets compiled by Caterina Storza of Forli. She was one of the early beauty experts in the world. A descendant, Caterina dei Medici, made famous the Italian art of cosmetics and perfumes of the fifteenth century.

But Caterina Storza invented this

hand cream consisted of boiled nettle roots and leaves. Nettle juice also was considered good for dandruff.

Caterina Storza invented a face-freshener of rose water in which two ounces of camphor, sulphur and myrrh had been steeped.

In Venice, women were the first to dye their hair blonde. Their method was to wash the hair in egg and saffron and then bleach it in the sun on their terraces. It was more successful as a means to meet their lovers.

Caterina Storza experimented with the problem of bleaching and came up with the usual egg and saffron wash, but added a distilled concoction of cinnabar and sulphur.

She also invented the first blonde tints. One was celandine (figwort), pink agrimony, roots and stalks of brushbroom, and oat hay, boiled slowly in a sieve container.

**JACOBS PACIFIC DRUGS**  
Prescription Service  
Open 7 Days a Week  
9:30 a.m. - 9:30 p.m.  
Sundays 10 a.m. - 6 p.m.  
**Wallgreen Agency**  
Pay Light & Water Bills Here  
84TH & PACIFIC AVE. Greenfield 2-6445

**LINDSTROM'S HOME FURNISHINGS**  
TRAILERS, 8 and 10 wide.  
We take anything in Trade.  
Also we trade you new carpeting  
Furniture & Appliances  
for your trailer  
Beautiful Selection of Furniture  
Maple and Contemporary  
8021 Portland Ave. LE 7-8627

**POWER TOOLS FOR RENT**  
SANDERS - EDGERS - POLISHERS - HAND SANDERS  
SKIL SAWS - ELECTRIC DRILLS - CEMENT MIXERS - ETC.  
ALSO HAND TOOLS FOR RENT  
**Anderson Lumber**  
9813 Pacific Avenue LEnox 7-7311



who along with Mother means  
a lot to you, only the best in gifts  
is good enough...  
your portrait  
May we make it for you?  
**McKEWEN STUDIO**  
405 Garfield St. LE 7-3833

## Graham News

The 68th annual session of the Rebekah Assembly of Washington and Alaska will be held at Olympia June 21-24. Beth Norman of the Kapowsin Rebekah Lodge No. 241 will attend the four days as district deputy; Inex Langtrait and Dorothy Nelson will attend also to do typing as helpers from Kapowsin Rebekah Lodge.

On June 25 our own Elcie Saunders from Kapowsin Rebekah Lodge will receive the Decoration of Chivalry at Chehalis at 8 p.m. at the R. E. Bennett gymnasium.

**Visits, Trips**  
Arnold Thorsen is visiting his daughter and family, Mr. and Mrs. Walter Hill, in Montana for several weeks.

The Rev. and Mrs. Paul Nelson and daughter Carolyn will be gone a month for a visit to Chicago, making stops along the way to visit relatives and friends.

Mr. and Mrs. Paul Lindberg motored to Pullman to attend the afternoon graduation exercises at Washington State college when their daughter Audrey Lindberg received her diploma. They were accompanied by two daughters, Mr. and Mrs. Gordon Bolen and two sons and Mr. and Mrs. Carl Reece and children. Returning home with Audrey was her room mate of four years, Loretta McPeck of Cusick, Washington, for a week's visit.

Beth Norman has had two sisters from Nebraska visiting her for the past two weeks. She has taken them on many interesting tours of Washington.

**Bible School**  
Vacation Bible school is being held at the Graham Sunday School building June 15-19 for all - day sessions.

Reporter—Mrs. Marie Tinius, VI 7-7394.

## Spanaway News

Vacation Bible school will be held at the Spanaway Assembly of God church from June 15 to 25. Miss Gail White from Seattle will conduct a course on "Flying With Christ" at the church on 166th street.

**Home Again**  
Mr. and Mrs. M. L. Kirby returned recently from Moorpark, Calif., where they had been called by the illness of a nephew; while they were there he passed away.

**Bridal Shower**  
Miss Charlotte Gibbons, whose engagement to William McClements was announced recently by her parents, Mr. and Mrs. Martin Gibbons, was the honored guest at a bridal shower Friday evening, June 12, at the Spanaway fire hall. Hostesses for the shower were Mesdames Edward Flannery, Emerson Tarpenning, Robert Rhone, William Walin, William Rignetti, Grace Kintz, Don McLellan and C. Mason. Guests enjoyed playing games before the gifts were opened. The gift table was loaded with beautiful packages which were opened by the bride - elect, who received many gifts pretty and useful.

The tables where the guests were seated were decorated with arrangements of spring flowers, yellow predominating. The lunch, served buffet style, featured a beautiful cake with the names "Charlotte and Bill" in tiny wedding bells.

Reporter—Mrs. Oliver Omat, LE 7-6466.

Plan vegetable cooking time so that the vegetable is served soon after it reaches the just-tender stage.

**Rural Garbage Service**  
Serving Parkland, Lakewood, Midland, Summit, Spanaway and Lakeview.  
Pierce County Permit  
LEnox 7-8688

## Spreading Out Of Industry Brings More Airplane Use

NEW YORK (UPI)—Decentralization of industry goes on at an accelerating rate with the maze of plants cemented together with telegraphy and aviation.

Big and medium-sized companies have their far-flung plants and offices connected in a growing number of instances with their private teletype systems which keep the central office informed of all developments and help maintain a continuity of policy.

Busy executives make speedy trips to this or that plant by airplane when their presence is needed. And the planes in many instances are company owned and operated.

The airplane phase of business is getting to be big business in itself. It's bigger than scheduled commercial airlines, and the future holds the prospect of increased growth.

The current "Investor" sees business flying as the fastest growing segment of aviation today.

Business aircraft last year, it notes, logged 5 million hours. This was 25 per cent more than 4 million hours of all scheduled airlines.

The total, the magazine predicted, should soar to near 6 million hours by 1960 and to at least 10 million hours by 1975.

By 1965, Investor says, more than half of all the hours flown in general aviation will be for business use.

"The wide range of business operation currently using aircraft includes manufacturing, merchandising, banking, construction, finance, transportation, utilities, mining, oil production, farming and ranching."

The magazine finds many things working in favor of business flying—continued industrial dispersion with plants located at off-airways sites; general optimism of businessmen and the expectation of continued high profit levels; increasing sectional competition; realization by companies that they can keep travel time of high-salaried executives at a minimum by air travel.

The Civil Aeronautics Administration finds there has been a shift from single-engine, two-place units to the longer, single-engine models of four to five places and to the small twin-engine executive aircraft as well.

Makers of the small aircraft look for a big market ahead for executive purposes. Some of the bigger companies are eyeing the executive market. Gruman, for example, plans to bring out this month its Gulfstream turboprop executive transport—its first entry into commercial aviation since the Korean War.

**Quickie White Is Here**  
Ask for It at Your Local Repair & Shoe Store

washer  
out of whack?  
USE THE NEW  
**Econ-o-wash**  
SELF-SERVICE,  
COIN-OPERATED LAUNDRY  
**PARKLAND ECON-O-WASH**  
Across From Piggly Wiggly  
12171 Pacific Avenue LE 7-9970

**PRE-OPENING SPECIAL**  
3 Days Only—Thursday, Friday & Saturday  
OPEN 'TIL 9 P.M.  
TERMS  
\$792  
PER MONTH  
**BEDROOM ENSEMBLE**  
● DOUBLE DRESSER  
● MIRROR  
● BOOKCASE HEADBOARD & FOOTBOARD  
● BOX SPRINGS & MATTRESS  
● 2 VANITY LAMPS  
● FREE DELIVERY  
**\$149<sup>95</sup>**  
We Handle Complete Line of Quality Living Room, Dining Room & Bedroom Furniture, Also Full Line of Maytag, Philco & Norge Appliances at More Than Competitive Prices.  
**SUMMIT FURNITURE & APPLIANCES**  
Airport & Canyon Roads at Summit View LE 7-8676



**HOME MEMBER**  
**VAUGHAN'S VALUES**  
**KITCHEN CABINETS**  
Custom Built

Let Us Help You With Your Planning and Design  
NO DOWN PAYMENT.  
EASY MONTHLY PAYMENTS

**Vaughan's**  
PACIFIC AVENUE LUMBER COMPANY  
84th & Pacific Avenue GR 4-9515

**Elbe News**

Mr. and Mrs. Chas. L. Miller and Mr. and Mrs. Al Kilmer, brother and sister-in-law of Mrs. Miller, made a four-day camping and fishing trip to the Bogashiled river near Forks. While there they were quite surprised by the co-incidental meeting with a brother, John Miller, who lives near Forks. There were 17 people in the group. They report a grand time and fishing exceptionally good.

**Bible School**  
Elbe Community church announces Bible school will be held from June 15th to June 26th daily from 9:30 a.m. to 12 noon. There will be two teachers. All are welcome.

**Visiting, Trips**  
Mr. and Mrs. Joel Olsen and daughter Dorothy of Puyallup spent the week-end visiting with the Ray Fisk family. They mentioned the fact that Dean Gratzler of Puyallup, former mail carrier on the Tacoma-Morton route, is quite ill.

Mr. and Mrs. Earl Rembusch and daughter Sharon are home again after a four day trip to Yakima and Baker, Oregon. They reported a lovely sunny trip until they arrived on this side of the mountains.

**PROMPT PERSONALIZED PRESCRIPTION SERVICE**  
**TED SWANSON**  
INSULIN - VITAMINS  
Downtown Prices  
Pay Phone Bills Here  
PLENTY OF FREE PARKING  
**TINCHER'S PHARMACY**  
8227 Park Ave. GR 4-3344  
Across from Fern Hill P. O.

**Canyon Road News**

The potluck dinner held by the Canyon Road Community club at the last meeting of the season was greatly enjoyed by all. Mrs. Field, as chairman of the dinner, wishes to thank all those whose efforts made it such a success. Mrs. Folk, as chairman of the entertainment committee, thanks all those who donated the lovely baked goodies that were awarded as prizes in the games.

**Pleasant Trip**  
Miss Linda Munsey, celebrating her graduation from the Puyallup high school, left for a trip to New York with Mrs. Wessler of the Y.W.C.A. Linda is to be congratulated for winning the Juanita Cole scholarship to Washington State College. She was also editor-in-chief of the school annual.

Your reporter made a boo-boo when she left out the names of Joyce Afrank and Gary Lorenz from the list of graduates; 'scuse please!

Reporter—Mrs. John Folk, LE 7-3801.



**SAFEWAY presents**

**Nalley's Values Unlimited**

**Nalley's Chili** with Beans 30-oz. Can **55c**  
**Tang Salad Dressing** Exciting Flavor Quart **39c**  
Delicious Stock Up Now Jar

**Fresh Large Eggs**  
Breakfast Gems Large 'A' Dozen **39c**

**Party Pride Sherbet**  
Select from assorted flavors Delicious—Half Gallon 59c **3** Quart **\$1.00**  
Ctns.

**Bel-air Vegetables**  
Frozen Peas, Cut Corn, Peas & Carrot; or Mixed Vegetables 2-lb. Pkg. **49c**

**Nalley's Mayonnaise** Quart **49c**  
Jar

**Nalley's Lumberjack Syrup** 22-oz. Bottle **29c**

**Nalley's Potato Chips** Perfect for snacks. 10½-oz. Pkg. **49c**

**Nalley's Beef Stew** Quick and Easy 15-oz. Can **39c**

**NALLEY'S French Dressing**  
8-Oz. Bottle **19c**

**SMOKED PICNICS**  
Bar-S, Week-end low price 4 to 8-lbs. **Lb. 33c**

Nalleys Spaghetti & Meat 15½-oz. Can **25c**  
Nalleys Lima Beans & Ham 24-oz. Can **49c**  
Nalleys French Dressing 8-oz. Bottle **19c**  
Nalleys Prepared Mustard 20½-oz. Jar **25c**  
Nalleys Treasure Pickles 12-oz. Jar **25c**

**CORNISH Game Hens**  
Fresh Whole - Chickapoo Chief - 18-Oz. or Over **Each 69c**

**Cut-Up Fryers** Manor House Fresh Frozen **Lb. 39c**  
**Beef Round Steak** Full Cut U.S. Choice Beef **Lb. 79c**  
**Beef Rib Roast** U. S. Choice King of Roast **lb. 79c**  
**Beef Sirloin Steaks** U. S. Choice **lb. 89c**  
**Beef T-Bone Steaks** U. S. Choice **lb. \$1.09**  
**Cooked Perch Fillets** Captain's Choice **lb. 59c**

It's New — Safeway Brand **Breakfast Sausage Rolls** **Lb. 39c** | Safeway — It's New! **Beef Sausage Rolls** **Lb. 39c**

**a-Wondering . . . and a-Wandering . . .**  
With JACK BROWN

Mark Twain expressed the value of the written word when he said: "The difference between the right word and the almost right word is the difference between lightning and the lightning bug."

A man's home is no longer his castle in the sense that he may enjoy the exclusive privacy of it. The Supreme Court has so ruled.

The nine men who call themselves "chief justices" have decreed that public health officials may, at any time, open the doors of your home for inspection whether you like it or nor. They need no longer take the few minutes it shall require to obtain a search warrant. And so another American heritage has fallen before the dictates of a small group of men who appear determined to rewrite the Constitution and upset the laws, which have served so well since the beginning of our country.

The dandelion once was selected as the appropriate flower for Father's Day because "the more it is trampled on, the more it grows."

That about sums up the plight of Father. Once a year we throw him a bouquet—or a tie—and chalk up another duty well done.

But the old man surely is worthy of better treatment because his name is a title of honor given to those who establish anything important in human affairs.

Take George Washington, for example, known as the Father of His Country. Washington shares that title with such illustrious Romans as Cicero, Julius Caesar and the emperor Augustus.

Homer is called the Father of Epic Poetry because of his "Iliad" and the "Odyssey." Geoffrey Chaucer, whose "Canterbury Tales" established a standard form of English verse, is known as the Father of English Poetry.

Every physician honors the Father of Medicine when he takes the oath devised by the Greek physician Hippocrates. And any man who ever baited a hook knows that Izaak Walton, author of the "The Compleat Angler," is the Father of Angling.

The age of the atom has ushered in even more "fathers." J. Robert Oppenheimer has been called the Father of the Atomic Bomb, while Dr. Edward Teller is credited with being the Father of the Hydrogen Bomb. Admiral Hyman Rickover is known as the Father of the Atomic Submarine.

That's enough to put any father's head in the clouds. But lest he begin to feel giddy from these associations, let him remember that Satan is called the Father of Lies.

**Home Construction and Remodeling**  
Get Our Bid First Looking for Quality? Call **HEDLUND CONST.**  
920 So. 121st LE 7-4227

**PIERCE COUNTY REFUSE CO.**  
Weekly Garbage Collections  
Phone LE 7-8688

**Golden Bananas**  
Perfectly ripened for summer enjoyment. Select from large display. **4 Lbs. 59c**

**FRESH PEACHES** First of the Season **2 Lbs. 25c**  
**Head Lettuce** Garden Fresh Crisp Large Heads **2 for 15c**  
**Fresh Mushrooms** Dawn Fresh **2 Pkgs. 49c**

**POTATOES**  
Select No. 1 California Shatters - Clean, smooth. Compare and save. **10 Lbs. 63c**

**Gardenside Asparagus**  
14½-Oz. Can **10c**

**LUNCH BOX P'nut Butter**  
18-Oz. Jar **45c**

**PAY CALL**  
is too far away  
or you're short of cash for other reasons . . .

**call on the folks at PUBLIC FINANCE**

**SPECIAL PLAN FOR ARMED FORCES PERSONNEL**  
Armed Forces personnel like the special service plan and the experienced way the manager at Public Finance helps them solve their money problems.

**CASH LOANS . . . \$25 to \$1,000**  
We would like to supply you with the cash you need, any amount from \$25 to \$500 on a sensible plan, hundreds of other personnel are using.

**QUICKLY AND PRIVATELY ARRANGED**  
Arrangements are made quickly and privately at a time suited to your convenience. Public Finance has a reputation for being dependable.

**COAST-TO-COAST CREDIT CARD**  
Your credit record at Public Finance may serve you in times of emergency, transfer, leave or liberty at any one of more than 479 Affiliated offices from coast to coast. Ask for your Credit Card when you get your loan.

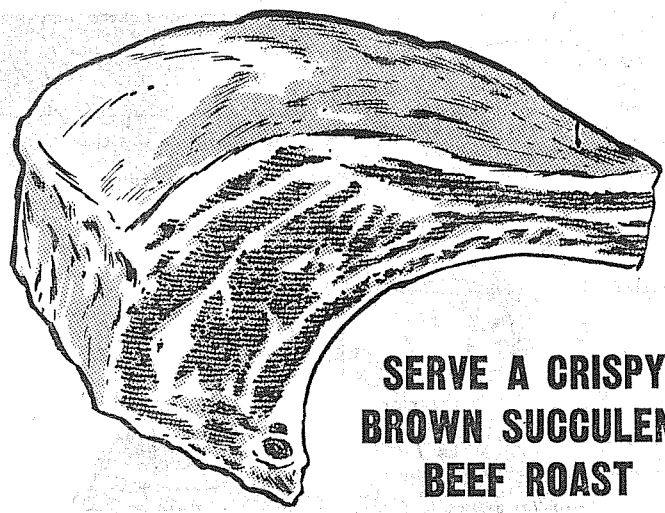
**CALL, WRITE OR COME IN**  
If you're on a tight schedule, phone first and we'll arrange for you to come in at your convenience.

**PUBLIC FINANCE CORPORATION**  
6433 S. Tacoma Way Greenfield 4-0641

Prices effective Thursday, June 18 through Saturday, June 20, at 82nd & Pacific Safeway.

**SAFEWAY**





SERVE A CRISPY,  
BROWN SUGGULENT  
BEEF ROAST  
THIS WEEK!

TABLE RITE  
**BEEF  
RIB  
ROAST**

**79<sup>c</sup>**  
lb.

TABLERITE  
**RIB  
STEAK** **83<sup>c</sup>**  
lb.

LIBBY'S 8 OZ.  
**PEAS**  
**CREAM CORN**  
**W. K. CORN**  
**CUT GR. BEANS**  
Fr. Style **GR. BEANS**  
**PEAS & CARROTS**

**8**  
FOR  
**\$1**

LIBBY'S 46-Oz.  
**TOMATO JUICE**

**5/\$1**

**MIX or MATCH**  
LIBBY'S 8 OZ.  
**FRUIT COCKTAIL**  
**GRAPEFRUIT**  
**Y. C. PEACHES**  
BARTLETT  
**PEAR HALVES**

**7**  
FOR  
**\$1**

VAN CAMP'S No. 2 1/2  
**PORK & BEANS**

**5/\$1**

**POTATOES**  
No. 1  
Shafters  
**5 1/2<sup>c</sup>**  
lb.  
Beat High  
Potato  
Prices

**IGA**  
**SHOP**  
AND  
**SAVE**  
AT  
**IGA**  
★  
112th  
&  
PARK  
AVE.

AD DAYS  
JUNE  
18-19-20

*Swanson's*  
**TV DINNERS**

Fried Chicken	<b>49<sup>c</sup></b> ea.	Beef Meat Loaf
Turkey		CHOPPED SIRLOIN
Haddock		

<b>IGA</b> PEANUT BUTTER	48-Oz. Freezer Jar	<b>\$1.19</b> SAVE
-----------------------------	--------------------------	-----------------------

<b>TANG</b> SALAD DRESSING	Qts.	<b>45<sup>c</sup></b>
-------------------------------	------	-----------------------

<b>HONEY</b> SILVER BOW	4-lb. Tin	<b>79<sup>c</sup></b>
----------------------------	--------------	-----------------------

<b>COFFEE</b> MAXWELL HOUSE	1 lb. . . . 65c 2 lbs. \$1.29
--------------------------------	----------------------------------

<b>APPLE SAUCE</b>	STOKELY NO. 303	<b>6/95<sup>c</sup></b>
--------------------	-----------------------	-------------------------

<b>EGGS</b> "AA MEDIUM"	3 Doz.	<b>\$1</b>
-------------------------	--------	------------

VAN CAMP No. 300 <b>PORK &amp; BEANS</b>	<b>4/45<sup>c</sup></b>
---	-------------------------

<b>WATERMELON</b>	lb	<b>5<sup>c</sup></b>
-------------------	----	----------------------

<b>Red Haven Peaches</b>	lb	<b>15<sup>c</sup></b>
--------------------------	----	-----------------------

<b>CANTALOUPE</b>	lb	<b>5<sup>c</sup></b>
-------------------	----	----------------------

<b>HAM</b> SHANK HALF	<b>43<sup>c</sup></b> lb	<b>Turkey</b> Yearlings 12-14-lb. av.	<b>35<sup>c</sup></b> <b>30<sup>c</sup></b> lb
--------------------------	-----------------------------	--	--





# BUY or SELL THE MODERN WAY THRU MULTIPLE LISTING SERVICE

OF  
THE TACOMA REAL ESTATE BOARD

29  
Carefully Selected  
FIRMS

ONE CALL  
TO SELL  
Gives You Complete Coverage

150  
Well Trained  
SALESMEN

ONE CALL  
TO BUY  
Assures The Widest Selection

BE SURE  
THAT CALL  
Is to a M.L.S. Member

## M.L.S.

Multiple Listing Service

112th & Yakima

ATTRACTIVE, quality - built 2 bedroom home, fireplace, full basement, FHA or terms. Call Mrs. Volkirch, LE 7-5283 or LE 7-8638. Sc1432

### Parkland

4 BEDROOMS, 16 x 32 living room, large kitchen, beautiful cyclone fenced yard. Everything in tip top shape. FHA financing. Let me show to appreciate. Call Mr. Dammal LE 7-5884 or LE 7-8638. Sc1562

### Building Sites

100 x 100 Lafayette 1,200 Ehs.  
50 x 100 127th & Park 900 Ehs 1296  
Call Leonard Wood—LE 7-8638 or GR 4-2502 for more details.

### Grade A Dairy

70 BEAUTIFUL ACRES bordering river, 4 bedroom home, excellent barn, sheds and irrigation system. Asking \$27,500. Owner will also sell herd and farm equipment. Please ask for Bob Anderson or Ada Mounts, LE 7-8634, GR 4-8558 or LE 7-8638. Xe 2

### ! Don't!

BUY FURNITURE, but buy this clean, modern 2 bedroom home in secluded location on 4 wooded lots. Bring your toothbrush and \$1,000 for the complete package. \$10,450 full price completely furnished. Call Mr. Hanson, LE 7-8638 or LE 7-8638. Re1164

## SUBURBAN REALTY, Inc.

11302 Pacific Avenue LE 7-8638  
Member of Multiple Listing Service and Tacoma Real Estate Board

## M.L.S.

Multiple Listing Service

10 ACRES \$3,000.

Half mile of mountain highway. 330 feet on good road. Some trees, some clearing. Wild strawberries and flowers. AB 1189

### NEAR P.L.C.

Modern rambler, 3 bedrooms, dining room, garage, near Parkland College. Full price \$9,800. Easy FHA minimum down \$300, plus closing costs. SC 1043

### PARKLAND AREA

Lot 135x120 good garden spot, fruit trees and berries. 3 Bedrooms, dining room, enclosed porch with utility room. Price \$8,300. \$850 down, \$65 month. FOR ANY OF THE ABOVE PLEASE CALL GEORGE CLEMENT OR CARL LINDGREN. SB 1225

## CARL T. LINDGREN

410 Garfield Street LE 7-5088  
Member of Multiple Listing Service and Tacoma Real Estate Board

## M.L.S.

Multiple Listing Service

NEAT LITTLE HOME

\$8,450

Let me prove it! A good size 2-bedroom rambler with built-in range and oven, lawn in and fenced yard, for only \$10,750. Already FHA inspected and appraised. Requires \$350 down. Please call Mr. Policam, LE 7-7868 or JU 8-1271, to see it. SB 1089

### HOMES FARMS ACREAGE

ONE CALL  
DOES IT ALL!

Convenient to McChord-Ft. Lewis. Two bedrooms, hardwood floors, 4-piece bath. Separate utility, plumbed and wired. Shade trees and fenced. Two car garage; 7 years old; \$250 down; FHA terms. Call Mr. Harned, JU 8-7816 or LE 7-8681.

## LE 7-8681 TACOMA REALTY, INC. 11004 Park Avenue

MEMBER TACOMA REAL ESTATE BOARD AND MULTIPLE LISTING SERVICE

## M.L.S.

Multiple Listing Service

### PUYALLUP

BEAUTIFUL Puyallup home with fireplace in living room; dining room; eating space in kitchen; 1 bedroom and bath down; 3 bedrooms up; garage; separate apartment rents for \$55. Xe 1220, owner building larger suburban home is only reason for selling.

### BROOKDALE

821 SOUTH 133rd is a furnished small, 3 bedroom home, on large lot, near Brookdale School, for only \$4,500 with \$500 down and \$60 month—just like rent.

### PARKLAND

DUPEX — brand new in the Parkland area with 1,536 sq. ft. all over. Joint utility room wired for 220 and heated with electricity. Buyer may move in and rent 1 side. Ca 1371

### COLLINS

2 ACRES COLLINS ROAD between Woodland Road Extension and Andrian. Lots of trees. Many nice homes being built in this district. \$2,000. Some terms. AA25. Call Edna Taylor, LE 7-8609 or LE 7-3556.

**PARKLAND REALTY CO.**  
302 Garfield LE 7-8609 or LE 1-1210  
Member of Multiple Listing Service and Tacoma Real Estate Board

## M.L.S.

Multiple Listing Service

PARK AVE. \$12,950.

RAMBLER, BUILT 1955. 4 Bedrooms, large closets, 1 1/2 baths, living room, dinette, nice kitchen with dishwasher, large utility plumbed for automatic washer and dryer. Attached garage, fenced back yard. Take over equity of \$3,000 or buy \$400 down FHA. Call Ralph Decker, GR 4-9573. PD 3

### GI EQUITY

84th EAST E. Very clean, 2 bedrooms, floored up for 2 more, large living room, brick kitchen with breakfast nook, 4-piece bath, hardwood floors, automatic oil furnace, garage. Good yard, \$2100 equity, or can arrange for less down. Call Ralph Decker, GR 4-9573. Re 9

### WHY RENT?

LOW DOWN, owner will carry contract. 3 bedrooms older home with living room, dining room, kitchen wired 220, 3-pc. bath, concrete foundation. 2 lots, 1 block to bus and stores. Good location. Call Ralph Decker, GR 4-9573. Ra 1133

**McKINLEY HILL REALTY**  
6311 McKinley GR 4-9579  
Member of Multiple Listing Service and Tacoma Real Estate Board

## M.L.S.

Multiple Listing Service

1212 Violet Meadow

Cute 2 bedroom cottage with 1/2 acre, large garage, near 102nd & So. Sprague \$5950; \$500 Dn. \$55 month. Call Dick, LE 7-8659. Sa 1237

### Rec Rm Special

4 BR Rambler \$16,000 FHA appraised 4 Bedrms, bar, beautiful basement rec room. Call Ernie DeRocher, LE 7-8659. Sd 1451

Rec Rm Special \$16,000 FHA appraised 4 Bedrms, bar, beautiful basement rec room. Call Ernie DeRocher, LE 7-8659. Pe 1169

8238 So. A St. \$10,750 or FHA appraisal. 2 bedroom dandy. Call Mrs. Murdock, LE 7-8659. Pc 1508

**DICK DEVEREAUX REALTY** 11002 Pacific Avenue  
MEMBER TACOMA REAL ESTATE BOARD AND MULTIPLE LISTING SERVICE

# Classified

Page 10 Thursday, June 18, 1959  
The TIMES JOURNAL

**Sharp Cheese** .....lb. 59c  
**Welch's Grape Drink 3/4**  
**Liver Sausage** .....lb. 49c  
**Swift's Premium Hams** .....lb. 43c  
**Swift's Boneless Ready to Eat Hams** .....lb. 79c  
**Bologna** .....lb. 39c  
**Round Steak** .....lb. 79c  
**Sirloin Steak** .....lb. 79c  
**Cantaloupes** lb. 8c  
**Bananas 2 lbs.** 29c  
**Lettuce** .....head 5c

## Gibbons

**FOOD CENTER**  
SPANAWAY

Business Service 3  
HAY CUTTING, raking, baling, 3cft  
WHITTS, LE 7-0630. 3cft

**Hot Water Heating Residential and Remodel Work**  
**CORNELL**  
PLUMBING & HEATING  
LEnox 7-7293

**KING FURNITURE and UPHOLSTERY**  
312 South 112th  
QUALITY & PRICES

**BULL-DOZING**  
Excavating • Grading • Gravel  
LE 7-5112

**HAY BALING**  
**Jack Randles**  
LE 7-8373

**WELL DRILLING**  
**Berkeley Pumps**  
• JETS  
• SUBMERSIBLES  
• CENTRIFUGALS  
• TURBINES  
Call LE 7-7281

**TACOMA PUMP & WELL DRILLING CO.**  
14619 PACIFIC AVENUE  
Terms Trades

**Boush Moving & Storage**  
Local & Long Distance  
Agent for U. S. Van Lines  
For Free Estimates Call  
11216 Pacific Avenue  
LE 7-3696

**ECONOMY KITCHENS**  
Remodeling — Roofing & Siding  
Foundations  
**LORD'S CONSTRUCTION CO., INC.**  
10426 Pacific Avenue. LE 7-6779

**Residential and Commercial PAINTING**  
Taping and Texturing  
**Broadwell Painting**  
LE 7-6893

**REFRIGERATION TROUBLES!**  
See  
**GLENN'S REFRIGERATION**  
Eatonville  
TE 2-4788 TE 2-4571

**CALL POCHEL FOR Expert T.V. Repair**  
Satisfaction Guaranteed  
Free Tube Testing  
140th & Pacific LE 7-8624

**Webb Electric Co.**  
8240 B Pacific Ave.  
GR 2-2902  
**ELECTRIC HEAT**  
All Types  
Terms Can Be Arranged  
FREE ESTIMATES  
EMERGENCY PHONE  
LE 7-4437

**ART'S SHOE SHOP**  
Shoes for the Entire Family  
EXPERT SHOE REPAIRING  
315 Garfield St.  
Between 121st and 122nd  
Opposite Parkland Postoffice

**Salvatori Design & Construction Co.**  
Complete Remodeling  
New Construction  
RESIDENTIAL — COMMERCIAL  
TERMS BR 2-2047

**South End Auto Wreckers**  
USED PARTS—Motors, Transmissions, Tires, Batteries. We buy junk cars. Also Custom welding by Joe's Welding.  
1 Mile East Roy on Mt. Hy.  
Spanaway LE 7-6534

**JACK SHANK'S Refrigeration Service**  
Parts & Service for All Makes  
LE 7-0178

**ACE DIRT MOVING CO.**  
Bulldozing - Ditching  
TOP SOIL - GRAVEL  
SEPTIC TANKS and DRAIN FIELDS  
Phone TH 5-2452

**UPLAND SLAB WOOD**  
CALL LE 7-5844  
**BASKET LUMBER CO.**

**Residential and Commercial PAINTING**  
Taping and Texturing  
**Broadwell Painting**  
LE 7-6893

**5 ACRES**  
Be in the envious position of having this choice piece of land complete with a dandy 2 bedroom home, garage, workshop, barn and storage shed. Priced for quick sale at only \$11,000. For showing call Dixie Griffith at LE 7-0236 or LE 1-1617.

**\$200 DOWN**  
To anyone with good credit rating. About \$65 per month puts you in this 4 bedroom house on McKinley Hill. Double plumbing, could be used as a duplex. Full price only \$6,700. BETTER HURRY and call Dean Gennai at LE 7-0236 or GR 4-3528.

We are happy to announce that Harry Brown and Gib Theis have joined our sales staff since our last ad. Now 12 salesmen to serve you.

**Park Way Realty**  
9618 Pac. Ave. LE 7-0236

**HAVE TIRES - WILL DEAL U TRAVEL**  
TIRES ARE OUR BUSINESS—NOT A SIDELINE  
**Rays OK TIRE STORES**  
9639 Pacific Avenue LE 7-7355

**Parkland Heating Co.**  
All makes of furnaces for sale; Specializing in Williams OIL O-MATICS; Oil, Gas, Hot Water Installations. Service; reasonable; 755 South 108th. LEnox 7-4045. 3cft

**SPANAWAY ELECTRIC CONTRACTORS**  
Residential & Commercial Heating Specialists  
LE 7-7064 LE 7-4792

**NEAT BEAUTY SHOP**  
GR 2-7628  
6314 McKinley Avenue

**SEPTIC TANK CLEANING**  
Prompt Service  
**C. V. HUTSON**  
GR 4-3980 GR 2-7038

**RADIO and SERVICE**  
**ABC ELECTRONICS**  
Garfield & C Streets  
LE 7-4900

**COMPLETE CAR SERVICE DONE BY EXPERTS**  
**ROLLINS GAS-LAND AND D&W AUTO REPAIR**  
166th and Pacific LE 7-5155

**Automotive 12**  
FOR SALE—One going concern, 1941 Plymouth 2-door, 11007 So. A. 12cft

**Fuel 4**  
UPLAND SLAB WOOD, 2 cords \$14. LE 1-2306. 4cft  
FOR SALE—Heavy planer ends, Small and large loads. BOLLER FUEL, Puyallup TH 5-2567. 4cft

**Help Wanted 5**  
NEEDED—Ladies to service established AVON territories, Parkland-Spanaway area. Call at once, MA 7-5271. 5cft

**Real Estate 9**  
FOR SALE—Lots in Fir Lane Memorial Park. Endowed; reasonable. LE 7-5754. 9cft

**12A Foreign Cars**  
**ALL FOREIGN CAR KEYS**  
107 Varieties  
**PARKLAND CYCLE & KEY**  
11021 Pacific Ave. LE 7-5772

**Farm Column 13**  
EASTERN WASHINGTON HAY—By the bale, ton or truck load. J. A. Dove, Phone LE 7-6709. 13cft

**Work Wanted 14**  
BABY SITTING, your home or mine; 1312 South 12th. LE 1-0416. 14cft

**Classified Continued On Page 11**

# SALVAGE MART

13014 PACIFIC AVENUE—HRS.: 10-6; FRIDAY 'TIL 8  
— OPEN SUNDAYS 10 A.M. 'TIL 6 P.M. —

## NOW LIQUIDATING

### Inventory Of Leading Seattle Super Market — All Merchandise In This Inventory Priced At WHOLESALE OR LESS



**Classified Continued From Page 10**

**WANTED**—Ironing in my home, 75c an hour. LE 7-3106. 14c 41  
**SCHOOL GIRL** wants baby sitting after school and evenings, your home. LE 7-4051. 14c 1  
**Miscellaneous 15**  
**PARKLAND FURNITURE**—New and used miscellaneous. Airport and Pacific Ave. Residence phone LE 7-3748. 15c 1f  
**BABY FURNITURE**—New and used. For sale or rent. SMALL FRYER, CHANG, 1109 Market St., BR 2-9505. 15c 1f  
**PLAN** now for accordion or organ lessons this summer. Enroll now. Call Maxine, LE 1-1864. 15c 1f  
**LEAVE MOVIE & KODACHROME SLIDE FILM** at QUALITY PHOTO for 2-day processing: 9818 Pacific Ave., LE 7-7271. 15c 1f

**WANTED**—Cameras and photographic equipment for resale. QUALITY PHOTO SERVICE 9818 Pacific, LE 7-7271. 15c 1f  
**FOR SALE**—Pheasants and eggs. PHONE LE 7-4100. 15c 1f  
**CASH FOR CARS and EQUITIES**  
**HOURS:**  
 8:00 - 9:00—Closed Sunday  
**TED'S**  
 920 River Road, Puyallup TH 5-1609 BR 2-8989  
 REGISTERED MINIATURE Dachshund, black and tan at stud, LE 7-3659. 15c 1f

**WOMAN WANTED** to take over payments on KIRBY outfit. Cost new almost \$200, but you can take over \$59 balance at \$5 each month; free home demonstration. Open till 9:00 p.m. UPTON ELECTRIC CO., 1148 Market St., FU 3-2551. 15c 1f  
**STORKVILLE Baby Shop**  
 Everything For Baby Including Juvenile Furniture  
 9722 Pac. Ave. LE 7-4664  
**SPECIAL ORDER CAKES**—Phone LE 7-3330. Pity Ann Bakery. 15c 1f  
**LAWN CUTTING**, mowing, edging, trimming. LE 7-7938. 14c 1f  
**HIGH SCHOOL** boy wants yard work and odd jobs. LE 1-0924. 14p 1  
**17 FOOT Skipper Craft** express cruiser. Sleeps two, cabin locker & table, bucket head, flying bridge, bridge controls on 40 h.p. Mercury with full electrical system. Dry storage space goes with boat. \$1275. Call LE 7-4312. 15c 1f

**TWIN SIZE**  
 Innerspring Mattress and Box Spring and 6 Hardwood Bed Legs.  
**COMPLETE**  
**39.50**  
 (Cash and Carry)  
**PARKWAY FURNITURE**  
 14103 Pac. Ave. LE 7-3941  
 Open 'til 9:00

**AVIATORS**, subscribe now to the Northwest Flyer, a new newspaper about flyers by flyers for flyers. Subscriptions taken at your local airport or write to J. O. Box 2008 Parkland, Wash.—17p 1f  
**Schools 18**  
**NIGHT SCHOOL** enroll now. Call MA 7-2181  
**KNAPP BUSINESS COLLEGE** 100 & Pacific 15c 1f  
**LEGALS**  
**PETERS & TRACY** Attorneys 11024 Pacific Avenue Tacoma 44  
 In the Superior Court of the State of Washington for the County of Pierce.  
 In the Matter of the Estate of Samuel Keller, Deceased.  
**NOTICE TO CREDITORS** NO. 66395  
 Notice is hereby given that the undersigned has been appointed and has qualified as executrix of the above entitled estate; that all persons having claims against said deceased are hereby required to serve the same, duly verified, on said executrix or her attorneys of record at the address below stated, and file the same with the Clerk of said Court, together with proof of such service, within six months after the date of first publication of this notice or the same will be barred.  
 Date of first publication, June 4, 1959.  
 Executrix of said Estate, EVELYN LINCOLN, Address, 11024 Pacific Avenue, Tacoma, Washington.  
 Published in the Times Journal June 18, 25; July 2, 1959.

**PETERS & TRACY** Attorneys 11024 Pacific Avenue Tacoma, Washington  
**NOTICE TO CREDITORS** NO. 66495  
 In the Superior Court of the State of Washington for the County of Pierce.  
 In the Matter of the Estate of Jay F. Barnes, Deceased.  
 Notice is hereby given that the undersigned has been appointed and has qualified as executrix of the above entitled estate; that all persons having claims against said deceased are hereby required to serve the same, duly verified, on said executrix or her attorneys of record at the address below stated, and file the same with the Clerk of said Court, together with proof of such service, within six months after the date of first publication of this notice or the same will be barred.  
 Date of first publication June 18, 1959.  
 Executrix of said Estate, MARY S. BARNES, Address, 11024 Pacific Avenue, Tacoma, Washington.  
 Published in the Times Journal June 18, 25; July 2, 1959.

**Peters and Tracy** Attorneys 11024 Pacific Ave., Tacoma 44, Wn.  
**Peters & Tracy** Attorneys 11024 Pacific Avenue Tacoma  
 In the Superior Court of the State of Washington for the County of Pierce.  
 No. 66322  
**NOTICE TO CREDITORS**  
 In the Matter of the Estate of WESTANNA GROCOTT, Deceased.  
 Notice is hereby given that the undersigned has been appointed and has qualified as Administrator with the Will Annexed of the above entitled estate; that all persons having claims against said deceased are hereby required to serve the same, duly verified, on said Administrator with the Will Annexed or his attorneys of record at the address below stated, and file the same with the Clerk of said Court, together with proof of such service, within six months after the date of first publication of this notice or the same will be barred.  
 Date of first publication, 4 June, 1959.

**R. L. PETERS**, Administrator of said Estate 11024 Pacific Avenue, Tacoma.  
**PETERS & TRACY** Attorneys for Estate, 11024 Pacific Avenue, Tacoma, Washington. June 4, 11, 18, 1959.  
**Hamilton Funds**  
 ... has investment plans for as little as \$10 monthly. Hamilton invests in over 80 American corporations. Write for free prospectus. HAMILTON FUNDS Box 5061, Dept. 11041 Denver 17, Colo.

**CAST-O-BRICK**  
**AMERICA'S MOST BEAUTIFUL WALLS**

**BEFORE... AFTER...**

**20TH CENTURY ECONOMY CONSTRUCTION**  
 For Building the NEW...  
 For Remodeling the OLD

**DON'T PAINT! IT COVERS!**  
 ANY WOOD SIDING • CONCRETE BLOCK  
 • ASBESTOS SIDING • ANY EXISTING STRUCTURE.

From old, outmoded walls to distinctive beautiful permanent structures of BRICK. CAST-O-BRICK is a 20th century scientific method combining beautifully colored ground brick and Portland Cement. It can be financed through F.H.A. with no down payment.

All of your remodeling needs handled by one man.

**MAINTENANCE FREE HOMES BY JACK L. SMITH**

Phone LEnox 7-4012 for Cast-O-Brick, Stone, Marbltex or other permanent materials.

**Ace Dirt Moving Co.**  
**BULLDOZING - DITCHING GRAVEL - TOP SOIL - SEPTIC TANKS DRAIN FIELDS**  
 1750 9th St. S. W., Puyallup  
 Phone Puyallup TH 5-2452

**SINGER ZIG ZAG**  
 IN BEAUTIFUL WALNUT CABINET  
 Full price \$57.27, \$5 per month. No Attachments Needed to overcast seams, make buttonholes, monogram, applique, embroider, etc. Get a 20-year guarantee and free home demonstration. MA 7-6555 any time. Dir. 15c 1f  
**FOR SALE**—40 rabbits, all sizes. Fred Stotler, 1509 South 14th, LE 7-7431. 15c 1f  
**UPTON DELIVERS THE GOODS** right now! Nothing down on 25c each day meter plan. Biggest trades, best terms on appliances and TVs. Open 'til 9 p. m. UPTON ELECTRIC CO., 1148 Market St., FU 3-2551. 15c 1f  
**MANY** female cat and 3 many kittens, free to good homes. Call LE 1-0732. 15c 1f  
**FOR SALE**—8'x14' aluminum awning, like new, 55 gallon oil drum and fittings. LE 7-4726. 15p 1f  
**JUST COULD NOT DO IT** and returned SINGER electric portable with only \$32 due. Assume \$5 monthly payments and get free home demonstration. Open 'til 9 p. m. UPTON ELECTRIC CO., 1148 Market St., FU 3-2551. 15c 1f  
**FOR SALE**—40' 1956 one bedroom house trailer. Call LE 7-4923. 15c 1f  
**FOR SALE**—Sound system, complete mobile and indoor, sound system \$200; one pink bathtub with fittings \$35; one 12-foot show-case, heavy duty, with drawers \$60. LE 1-0912, call evenings. 15c 1f  
**TAKE** over \$5 monthly payments on nice ELECTROLUX cleaner; like new condition and a balance of only \$29; free home demonstration. Open 'til 9 p. m. UPTON ELECTRIC CO., 1148 Market St., FU 3-2551. 15c 1f  
**FOR SALE**—Two young ducks. Four laying bantam hens. LE 7-4146. 15c 1f  
**FOR SALE**—Pressure feed paint roller, girl's bicycle, house and safety jacks, 12 ft. fiberglass boat, trailer, 10 hp motor, trailer tongue, sleeping bags, tool box, fishing poles. GR 4-0030. 15c 1f  
**MUST SELL** 6 used refrigerators or get crowded out on the street; prices as low as \$39 on \$5 monthly terms. Free delivery. Open 'til 9 p. m. UPTON ELECTRIC CO., FU 3-2551. 15c 1f  
**STRAWBERRIES**—Gallon can 60c, you pick. Also picked to order. Bring containers. VanDoren, Eatonville 2-4327. 15c 1f

**Horses & Equip 16**  
**FOR SALE**—Gentle, well trained Arabians: will foal in August; trade, terms. 11824 Waller Road. 16c 1f  
**HORSESHOEING**—Phone GR 2-2628. 16c 1f

**Aviation 17**  
**FREE**—FIRST FLYING LESSON LEARN TO FLY—\$10 A WEEK New and Used Aircraft Sales TAHOMA FLYING SERVICE Spawna-y Airport LE 1-0442 17c 1f

**SINCE DAD FOOTS THE BILLS, HE'LL APPROVE OF THESE VALUES...**



**B & M** Tall 28-Oz. Tins  
**BAKED BEANS 4/\$1.00**

**DURKEE'S** 24-Oz. Freezer Jar  
**MAYONNAISE 39c**

**SHURFINE** 1-Lb. Tin  
**COFFEE 59c**  
**KAISER** 12-in. wide, 25 ft. Roll  
**FOIL 29c**  
**SHINN'S** Grade 'AA' Large Dozen  
**EGGS 39c**

**CAMPBELL'S** No. 1 Tall Tins  
**VEG. SOUP 8/\$1.00**

**LIBBY'S FROZEN** Beef, Chicken and Turkey  
**MEAT PIES 5/\$1.00**

**LIBBY'S FROZEN** Family Size  
**FRUIT PIES 39c**

**SUNSHINE** 10 Oz.  
**CHEEZ-ITS 27c**

**SEEDLESS** Lb.  
**GRAPES 19c**

**CELLO PKG.**  
**Carrots 2/19c**

**Gr. Onions 3 Bunches AND Radishes 10c**

**OPEN SUNDAYS**  
**KITCHEN'S**  
**EVERYDAY LOW PRICES** FORMERLY FLETCHER'S  
 Right to Limit  
 Open 9 a.m. 'Til 10 p.m. Daily  
 10 a.m. 'Til 9 p.m. Sundays  
 12208 Pacific Ave.

**PORTERHOUSE STEAK** Lb. 89c For Your Barbecue  
**T-BONE STEAK** Lb. 85c A Dad's Day Special  
**RUMP ROAST** Lb. 55c  
**GROUND ROUND** Lb. 69c

**Steaks 69c**  
 ROUND, RIB OR SIRLOIN Lb.

**OLD FASHIONED FRANKS** Lb. 39c

**CAKE MIX 2/49c**  
**Beef ROAST 39c** Lb.  
**CARNATION MILK 8/\$1.00**

**SWANSDOWN**—White, Yellow, Devils Food and Butter-scotch, 20-oz. Pkg.  
**Beef ROAST 39c** Lb.

**OLD FASHIONED FRANKS** Lb. 39c

**OLD FASHIONED FRANKS** Lb. 39c

**ATTENTION-AVIATORS**  
**Subscribe Now**  
 To The  
**Northwest Flyer**  
**A NEWSPAPER**  
 About Flyers — By Flyers — For Flyers

Published in the N.W. By The Times Journal Pub. Co.  
 Fill Out The Subscription Blank Below and Mail

**SUBSCRIPTION ORDER BLANK**

The **Northwest FLYER** P.O. BOX 2008 PARKLAND, WASHINGTON

Date ..... 19.....

Name .....

Address .....

P.O. Box .....

City ..... Phone .....

(Please Print Plainly)

Mail subscriptions will be discontinued 30 days after expiration date. All mail subscriptions must be paid in advance to conform with Postal Laws and Audit Bureau of Circulation rules.

I hereby subscribe to the NORTHWEST FLYER for a period of (1) One Year and enclose  \$3.50, U.S. Delivery;  \$4.50, Foreign Delivery, in  Cash,  Check,  Money Order.

SIGNED .....

Notice of expiration will be sent to:

Name .....

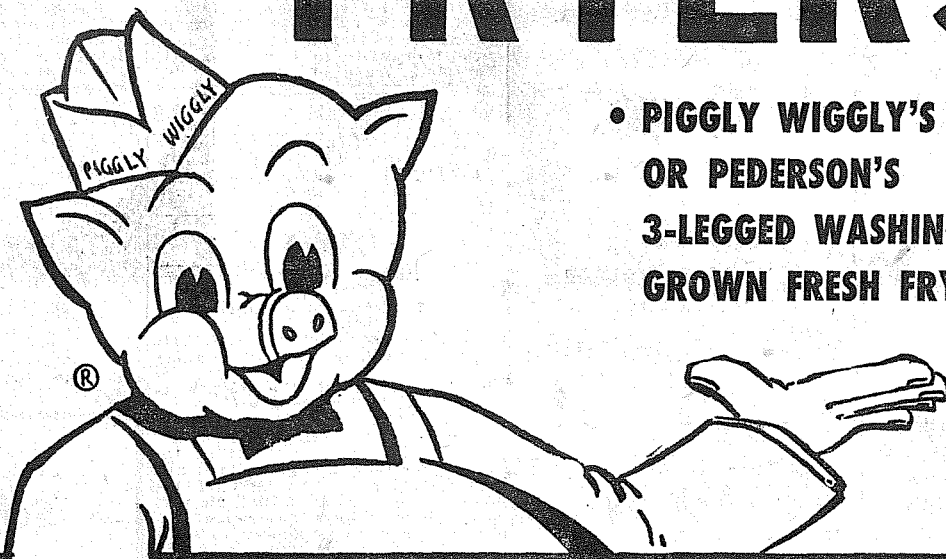
Address .....

City ..... Phone .....



# BETTER MEATS?

## CUT-UP FRYERS



• PIGGLY WIGGLY'S OWN  
OR PEDERSON'S  
3-LEGGED WASHINGTON-  
GROWN FRESH FRYERS

LB.

# 37



STRICTLY FRESH GRADE A LARGE

**EGGS** . DOZ. **35¢**

(7c OFF)  
**SPRY** . 3-LB. CAN **77¢**

Shop **Piggly Wiggly**

**BACON SLICED**  
CARSTENS HYGRADE  
lb. **49¢**

**SKINLESS WIENERS**  
CARSTENS HYGRADE  
lb. **47¢**

WELCOME BRAND — ALL FLAVORS

**ICE CREAM** . . . . . 1/2 GALLON **65¢**

MISSION — LARGE 24-OZ. CELLO PACKAGE  
**SALAD MACARONI** . **29¢**

WELCHADE  
**GRAPE DRINK** . . . . . QUART CAN **29¢**

NALLEY'S FAMOUS LUMBERJACK BRAND — 22-OZ.  
**NALLEY'S SYRUP** . . **29¢**

DARIGOLD — 1-LB. PRINTS OR 1/4'S  
**BUTTER** . . **63¢**

COFFEE HOUSE — 1-LB. CAN  
**COFFEE** . . **59¢**

40-OZ. PACKAGE  
**BISQUICK** . **37¢**

400s — ASSORTED COLORS  
**KLEENEX** . **4/\$1**

### STEAK SPECIALS FOR FATHER'S DAY

**RIB STEAK** U.S. GOOD TENDER, WELL-TRIMMED 7-INCH CUTS Lb. **79¢**

**SIRLOIN STEAK** TENDER AGED BEEF, BEST FOR BROILING Lb. **89¢**

**T-BONE STEAK** TENDER, MEATY CUTS OF U.S. GOOD BEEF Lb. **93¢**

**SAUSAGE ROLLS**  
Carstens Hygrade . . . . . 3 1-lb. Rolls **97¢**

**FRESH OYSTERS**  
Fresh Hood Canal 12-oz. Jar **49¢**  
Medium Size . . . . . Jar

NALLEY'S **CHILI CON CARNE** . . . . . 30-OZ. CAN **49¢**

NALLEY'S **CHILI CON CARNE** . . . . . 15-OZ. CAN **29¢**

3-QT. PKG. DARIGOLD **INSTANT MILK** . . . . . **29¢**

QUART BOTTLE VANO **LIQUID STARCH** . . . . . **29¢**

PACIFIC PEARL **CRAB MEAT** . . . . . 6 1/2-OZ. Can **63¢**

PINT **PARSON'S AMMONIA** . . . . . **19¢**

18-OUNCE PKG. PUREX **BEADS O' BLEACH** . . . . . **43¢**

A.B.C. HI NEIGHBOR **COOKIES** . . . . . 14-OZ. Pkg. **49¢**

N.B.C. SNOWFLAKE **CRACKERS** . . . . . 1-lb. Pkg. **29¢**

NO. 303 TIN WALLA WALLA **PEAS AND CARROTS** . . . . . 2 for **37¢**

BIT O' HONEY CREAM OR WHOLE KERNEL **CORN** . . . . . No. 303 Tin 2 for **37¢**

100-FOOT ROLL WAXTEX **WAX PAPER** . . . . . **21¢**

### MORE BIG PIGGLY WIGGLY VALUES

WALTER KENDALL **BURGERBITS** 5-lb. Pkg. **55¢**

DARIGOLD CANNED **MILK** . . . . . 3 Tall Cans **43¢**

KITTY CAT **CAT FOOD** 2 No. 1 Cans **19¢**

SANITARY NAPKINS **MODESS** . . . . . Pkg. of 12 **45¢**

QUART, 19c **PUREX** . . . . . 1/2-Gal. **35¢**

STAR KIST SOLID PACK **TUNA** . . . . . No. 1/2 Can **35¢**

DOLE'S SLICED **PINEAPPLE** . . . . . No. 2 Can **33¢**

DOLE'S CRUSHED **PINEAPPLE** . . . . . No. 2 Can **27¢**

TREE TOP **APPLE JUICE** . . . . . Quart Bottle **27¢**

SOAP POWDER **TREND** . . . . . Giant Pkg. **49¢**

PUSS 'N' BOOTS **CAT FOOD** 2 26-Oz. Cans **49¢**

SUNNY JIM — 18-OZ. JAR **PEANUT BUTTER** . . . . . **53¢**

VETS **DOG FOOD** 3 No. 1 Cans **29¢**

ZEE, ASSTD. COLORS, GIANT ROLL **PAPER TOWELS** . . . . . **29¢**

PACIFIC PEARL TINY **SHRIMP** . . . . . 4 1/2-Oz. Can **43¢**

ASSTD. COLORS — PKG. OF 2 **CAMAY SOAP** . . . . . Both Bars **26¢**

(18c OFF!) **JOY** . . . . . King Size **87¢**

ANOTHER SAVING! — 12-OZ. **LIQUID IVORY** . . . . . **43¢**

LARGE SIZE 37c **TIDE** . . . . . Giant Pkg. **79¢**

(25c OFF!) **DASH** . . . . . Jumbo Pkg. **2<sup>20</sup>**

### LIBBY'S FAMOUS FOODS

LIBBY'S **CATSUP** . . . . . 14-Oz. Bottles **5/89¢**

LIBBY'S **FRUIT COCKTAIL** . . . . . No. 303 Cans **4/89¢**

LIBBY'S **TOMATO JUICE** . . . . . 46-Oz. Cans **4/89¢**

LIBBY'S **PORK and BEANS** No. 2 1/2 Cans **4/89¢**

LIBBY'S **PEARS** . . . . . No. 303 Cans **4/1<sup>00</sup>**

LIBBY'S — 46-Oz. Cans **GRAPEFRUIT JUICE** . . . . . **3/1<sup>00</sup>**

LIBBY'S **DRINK** PINEAPPLE-GRAPEFRUIT . . . . . Quart Cans **4/1<sup>00</sup>**

LIBBY'S **DICED BEETS** . . . . . No. 303 Cans **9/1<sup>00</sup>**

LIBBY'S **PEAS** . . . . . No. 303 Cans **6/1<sup>00</sup>**

LIBBY'S **SPAGHETTI** AND MEAT BALLS . . . . . 24-Oz. Cans **3/1<sup>00</sup>**



New Low Price!

**COCA COLA**

Family Size . . . . . **2/33¢**

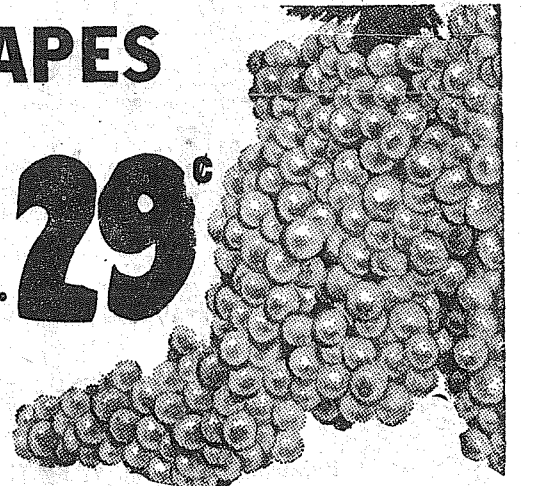
King Size . . . . . **6/49¢**

**BAKED BEANS** S&W 28-oz. . . . . **4/1<sup>00</sup>**

### PIGGLY WIGGLY PRODUCE

**GRAPES**

Fresh Seedless **29¢** LB.



**CORN** California Sweet . . . . . 6 Large Ears **29¢**

**TOMATOES** Fresh California . . . . . lb. **19¢**

**LEMONS** Sunkist . . . . . lb. **12 1/2¢**

**LETTUCE** Fresh Local Large Heads . . . . . Each **5¢**

### HARDWARE SPECIALS

(FIFE STORE ONLY)

**HAY RAKES** . . . . . ONLY **\$1.95**

AUSTRIAN **SCYTHE BLADES** . . . . . **\$4.75**

50-W, 1-LB. PKG. **METHOXYCHLOR** . . . . . **95¢**

**4-PLY TWINE** . . . . . 3 BALLS **45¢**

OPEN DAILY 9 A.M. TO 10 P.M.

**JUICE CUP JAMBOREE**  
**FREE** 4 PLASTIC JUICE CUPS  
INSIDE **KING SIZE** **1 35**

REGULAR 55¢  
**DATE NUT LOAF** . . . . . **49¢**  
LARGE 2-LAYER MILK CHOCOLATE  
**FATHER'S DAY CAKE** REG. 1.39 **\$1.15**  
REG. 35¢ (PACKAGE OF 8)  
**CINNAMON ROLLS** . . . . . **8/29¢**  
**Van de Kamp's BAKERIES**

**piggly wiggly**  
Where you are always served courteously & well

<b>PUYALLUP</b> 1010 EAST MAIN	<b>PARKLAND</b> PACIFIC AT GARFIELD	<b>40th and</b> Portland Ave. TACOMA	<b>50. TACOMA</b> 5252 50. WASHINGTON	Prices Effective Thurs., Fri., Sat., June 18, 19, 20 We reserve the right to limit	<b>FIFE</b> FORMERLY ANDRE'S MKT.
-----------------------------------	--	--	---	--	---