

Merry Christmas

Pierce County Herald and

The TIMES JOURNAL

Vol. 23 No. 50

December 21, 1967

Price Per
Single Copy

10¢



MRS. ROY LUND, 1761 South 93rd, and her 2 year old son Charles, inspect a Christmas tree at the Spanaway Lions lot at Garfield and Pacific Ave. Last minute tree buyers will

find an assortment at a number of community or civic sponsored tree lots from Summit View to Spanaway. As a-matter-of-fact, strictly commercial lots are far and few between.

Gymnasium-Auditorium . . .

Ground-Breaking Ceremonies Completed

Ex PLU Athletic Director Honored By Building

Construction on the Clifford O. Olsen Physical Education-Auditorium Building got underway at PLU Wednesday after President Robert Mortvedt and Clifford O. Olson, former PLU coach and athletic director, turned the first spade of dirt.

The ground breaking ceremonies for the \$2 million structure followed the release of federal funds totaling \$424,460 to aid in construction of the university's latest addition.

The \$424,460 grant was received last fall under Title I of the Higher Education Facilities Act of 1963. Buchanan said PLU has submitted another application for a supplementary grant. In addition, the school has applied for an Academic Facility Loan from the government to cover one-third of the building's cost.

Dean Buchanan, vice president for business and finance, explained the building, designed by Robert Billsbrough Price, FAIA, will be used as a gymnasium and auditorium.

A special suspended acoustical system, designed by Bolt, Beranek, and Newman of Los Angeles, will enable the gymnasium to fulfill the functions of a concert hall as well, he said.

Seating for 3,500 persons will be arranged by using folding bleachers on the stage during athletic events, and folding chairs on the floor during concerts.

In addition to the multi-purpose functions of the gymnasium-concert hall, the building will contain a 10,000-square foot fieldhouse; seven classrooms; a wrestling room; three handball courts; a squash court; training rooms; locker and shower rooms; a reception area; and concession booths.

Buchanan announced the contracts have been awarded to three Tacoma firms. Strom Construction Co.; with a \$1,173,189 bid, received the general contract; H-K Western Inc., received the mechanical bid for \$413,788; and Totem Electric bid \$207,700 for the electrical contracts.

"This building will be unique in our area," said Buchanan. "It will be the largest concert auditorium in the county, and it will enable the community to host a wide spectrum of activities never possible before."

The building is expected to be completed on Jan. 10, 1969, with occupancy set for the second semester of that year.



GROUNDBREAKERS—From left Dean Buchanan Tom Anderson fund drive head; Mark Salzman newly resigned athletic director; Clifford O. Olson ex athletic director; and

Dr. Robert Mortvedt president of the university, turned the spade to signify the going-up of the Clifford O. Olson gymnasium-auditorium.

St. Joseph's Challenge Fund Names Advisory Board

The advisory board of St. Joseph Hospital announced today that Mr. Frost Snyder will be the Honorary Chairman of its \$1 to \$1.5 million fund raising campaign. The campaign will help finance the \$10 million project for a new St. Joseph Hospital.

In accepting the chairmanship Mr. Snyder said, "I am proud to be Honorary Chairman of St. Joseph Hospital's Year of Challenge Fund and will continue to enlist the kind of leaders who will play such an important role in the success of our community-wide crusade."

Mr. Snyder is chairman of the Board, Vancouver Plywood Company. He was born in Tacoma and attended prep school in Connecticut before graduating from Yale University. He served as a Captain in the Army in World War I and was a consultant on plywood to the War Production Board in World War II. Snyder has been a director of Puget Sound National Bank since 1929. He is a member of the Tacoma Club, the Tacoma Golf and Country Club and is Past President of the American Plywood Association.

The soliciting group will be

picked by Snyder so that all segments of Greater Tacoma's business and labor community will be represented.

Headquarters for the "St. Joseph Hospital Year of Challenge Fund" has been established in room 410 of the Winthrop Hotel. It is here that a full-time staff and volunteers will man telephones to answer questions and give fund-raising assistance. By dialing 383-2547, questions can be answered.

Mr. Snyder stated that, "The advisory board of St. Joseph Hospital is unanimous that this capital fund appeal must go forward."

"As of today we go forward to meet the challenge for a new 300 bed, acute-care general hospital for the Greater Tacoma area."

Members of the advisory board are: August von Boecklin, 4117 Madrona Way, President; Mr. Thomas W. Anderson, 7525 Hegra Road; Anson H. Blaker, 1406 SW 124th, Seattle; George P. Bosovich, 10430 Brook Ln. SW; Goodwin Chase, 11415 Gravelly Lake Dr. SW; Robert L. DeLong, 12020 Nyanza Rd. SW; Philip Grenley, M. D., 40 Loch Lane SW; Jay A. Harrison, 602 Fairview Dr. No.; John W. Judy, 3535 Tahoma Pl., Edmund A. Kanar, M. D., 7009 So. Sheridan; Robert P. Mallon, 12208 Oak Tree Pl. SW; Archie McLean, Jr., 6602 Flanagan Rd.; Frank J. Meisenburg, 5807 E. McGhee; Joseph E. Nolan, 9542 Waverly Dr. SW; Conrad L. Peterson, 3110 Olympic Blvd. W.; Philip C. Staples, Jr.; 12124 Gravelly Lake Dr. SW.

Sewer Plan OK'd

The South Suburban Sewer District, presently fighting in court to maintain its identity following dissolution by a vote of the people last November, has received an okay on its comprehensive plan.

The state Water Pollution Control Commission, the State Board of Health, and the Pierce County Engineer have approved of the district's amended comprehensive plan to provide sewers for the Parkland area, said Clayton Peterson, president of the district.

Citizen Captures Burglar At Gunpoint

Two adults and a 17 year old student, alleged to have been involved in recent school burglaries, were taken into custody last week following the gunpoint capture of one of the men by a citizen in the Summit area.

The trio are suspected of burglarizing Franklin Pierce High School twice, Morris Ford Junior High, Waller Road Elementary School, West Junior High in Puyallup, and Puyallup's Meeker Elementary School. With their arrests, Deputies recovered 2 projectors, 5 microphones, stands, and a quantity of assorted amplifier cording.

The trail of burglaries ended for the suspects when they attempted to break into a Canyon Road business early last week. The owner, who was inside, pulled his pistol when he heard one of the men try to open his front door.

At his command to freeze, two of the men fled and one hid in nearby brush, deputies learned. When the man came out of hiding, he was held at gunpoint until a Sheriff's patrol unit arrived.

Follow up investigation by Detectives Russ Harford and Bud Meyer, assisted by Juvenile Officer Vic Knable, led to the arrest of the remaining suspects.

The suspects have been linked with two house burglaries on Canyon Road, the detectives stated. Loot included a revolver, ammunition, cameras, a coin collection, jewelry, and some whiskey.

At the time of his arrest, the juvenile was on parole to the custody of a relative, who turned out to be one of the two adult suspects.

Refuse Pickup Delay Schedule

The Christmas and New Year festivities will cause a slight delay in garbage pickup, according to four area refuse companies.

The companies, Pierce County Refuse, Edgewood Refuse, The Sanitation Company

and Rural Garbage Service, have released the schedule for the pick-ups.

All regular Monday routes for the two holidays will be on Tuesday with Tuesday routes being partially Tuesday and Wednesday. Wednesday routes will be finished Wednesday, but later than usual.

Bronze Star Winner Xmas Traffic And Roads Home For Christmas Need Extra Precautions

Sgt. First Class Thomas L. Orchard, a 1954 graduate of Puyallup High School, has been awarded the Bronze Star for "meritorious service while engaged in counter insurgency in Viet Nam."

Sgt. Orchard, son of Mr. and Mrs. Earl Orchard, of 15318 58th Ave. E., served with the headquarters 3rd Brigade, 4th Infantry Division and has been assigned to Fort Gordon, Georgia, as an instructor with USASEFS.

The soldier arrived here Tuesday to spend Christmas, after which he will go to his new post wife Rosemary and their sons.

Roy, Spanaway Head Honors On DHIA Herd

The dairy herd of Bert Inglin & Son, Orting, is the leader in the Pierce County DHIA summary for the month of November, announces County Agent Eddie Thomason. Inglin's herd of 94 cows averaged 1481 pounds of milk and 57 pounds of butterfat.

Honor roll leaders for cows completing lactations in November are: 2 year old — No. 273, a grade Holsteins owned by Wilcox Farms, Roy, with 19,236 pounds of milk and 649 pounds of butterfat; 3 year old — No. 17, a grade Holstein owned by Grant McLaughlin, Spanaway, with 16,153 pounds of milk and 681 pounds of butterfat; 4 year old — Dolly, a grade Guernsey owned by John Kominski, Roy, with 19,036 pounds of milk and 766 pounds of butterfat; 5 to 10

With the winter weather upon us as it has been this last week, the roads are getting slippery and remaining that way until after everyone has arrived at work.

Combine this with the fact Christmas is here and people will be traveling to see relatives and friends and a problem evolves. Automobile accidents. It is sad when loved ones are taken away through the neglect of someone who was not as careful as he or she should have been.

Take your time getting there. Be alert. Watch for the other guy. Be courteous, and above all remember this is a season of good will, so give a little to the other guy and everyone will get there safely.

Have a very merry Christmas.



Spanaway
Fire alarms turned into the Spanaway-Elk Plain Fire Department for the past week include:

12-12-67 at 11:28 a.m.: a resuscitator call.
12-14-67 at 12:29 p.m.: an

year old — No. 17, a grade Holstein owned by Joe Sutter, Puyallup, with 23,216 pounds of milk and 873 pounds of butterfat; and 10 year and over, Nina, a grade Holstein owned by Fred Krapf, Graham, with 21,016 pounds of milk and 745 pounds of butterfat.

Testing and calculation of records is supervised by Washington State University. Local supervisors are Roy Hart-schorn, Orting, and Charles Kelley, Tacoma.

overheated oil stove in a greenhouse at Route 2, Box 2505.

12-14-67 at 7:17 p.m.: a chimney fire at Route 1, Box 1385, caused approximately \$250 damage.

12-17-67 at 11:09 p.m.: a resuscitator call.

Parkland

Only one call was turned into the Parkland Fire Department last week, according to Chief Ray Hixon.

On December 14th at 5:33 p.m. the department was called to 507 East 131st Lot 1, to extinguish a fire started because of trying to thaw out frozen pipes with an open flame. Hixon warned of the dangers of this practice.

Pierce County Herald and
The TIMES JOURNAL

Published weekly at 14620 Pacific Ave., Parkland 98444 and delivered by U.S. Mail and carrier to subscribers. Publishers: Pierce County Publishers, Inc.
Managing Editor Em Matson
News Editor Sandy Ingram
Sports Editor Bob Ingram

Subscriptions \$3.50 per year, \$1.80 six months, or 30c monthly by carrier. News stand price 10c copy.
Qualified as a legal publication under Chapter 213 of the Legislature Acts of the 1941 regular session of the State of Washington
Second Class Postage Paid at Tacoma, Wash.

Vol. 23 No. 50 December 21, 1967

HI HO

PUYALLUP

HI HO

BAR-S
HOLIDAY
HAMS

"READY TO EAT"

98^c
lb

PRIME
RIB
ROAST

98^c
lb

YOUNG
AVONDALE

TURKEYS

8 TO 14 LBS.

33^c
lb.

5-lb. to 7-lb. **FORS BAKING HENS** **29^c**
lb

MEAT LOAF **39^c**
lb. READY TO BAKE IN A FOIL PAN

Norbest "Tender Timed" Turkeys 16 to 24 lbs. **37^c**
lb.

Norbest "Tender Timed" Turkeys 8 to 14 lbs. **39^c**
lb.

HYGRADE SMOKED PORK CHOPS **98^c**
lb.

18- to 23-lb. BUDGETWISE

**TOM
TURKEYS**

29^c
lb.

FOR FESTIVE HOLIDAY MEALS

Lefse, Lutefisk, Salt and Pickled Herring, Young Ducklings, Minnesota Geese, Turkey Rolls, Smoked and Canned Hams



NEW CROP
MIXED NUTS **39^c**
lb.

TANGERINES **2 25^c**
lbs.

JUMBO-SIZE FLORIDA
AVOCADOS **2/29^c**

CUCUMBERS **10^c**
ea.

OREGON UNBLEACHED
WALNUTS **3 1⁰⁰**
lbs.

FROM OUR HOT BAKERY

APPLE MINCE PUMPKIN **PIE** **69^c**
ea

ALL DINNER **ROLLS** **39^c**
doz.

YULAKAKA **49^c**

ALL YOUR YULETIDE FAVORITES

PRICES EFFECTIVE DEC. 18 THROUGH 23rd

LOWEST DRUG PRICES
ANYWHERE

REG. 99^c ULTRA BRITE
TOOTHPASTE **59^c**

REG. 2.35 RESPOND
HAIR SPRAY **79^c**

REG. 1.50 HAI KARATE
AFTER SHAVE **97^c**

REG. 19.95 BROXODENT ELECTRIC
TOOTHBRUSH **\$11⁹⁵**

RHODES
FROZEN BAKE-N-SERVE

DINNER ROLLS **10^c**
...10 in a pkg.

NO. 303 TINS
HONEY BEE YAMS **6/1⁰⁰**

NO. 2 TINS
FLOWERLAND PINEAPPLE **6/1⁰⁰**

HI HO MAYONNAISE **43^c**
...qt.

200 2-PLY CHIFFON
FACIAL TISSUE **5/1⁰⁰**

PRIZE CROP
MANDARIN ORANGES **5/1⁰⁰**

ROSEDALE PEARS **3/99^c**
No. 2 1/2 Tins

LARGE
"AA" PUYALLUP
EGGS

39^c
doz.

NO. 2 1/2 TINS
LADY ELBERTA
PEACHES

3/99

BETTY CROCKER
**CAKE
MIXES**

4/1⁰⁰

HI HO

PUYALLUP

HI HO

HI HO

HI HO

PUYALLUP

PUYALLUP

HI HO

HI HO

LOOK!



19⁹⁵ and up
WONDERING ABOUT THAT REALLY USEFUL GIFT FOR THOSE MARRIED KIDS? WHY NOT A NICE, CLEAN GIFT WRAPPED APPLIANCE? GUARANTEED UP TO ONE YEAR!

Bank Cards Welcome
Centenari's Appliance
 8038 Pacific
 GR 2-7511

FOR THE HOLIDAY PARTIES

that special "little something" dress

see our fine line of holiday gift ideas

**DRESSES
 SPORTSWEAR
 HOSIERY**

pegnoirs,
 and
 lingerie

come in and browse

LOU JEAN APPAREL

406 GARFIELD -Parkland



Rodeo Custom Shop

Still puzzled about what to get for Christmas?

Boots: from Hyer, Nocona, Lama and Acme. Prices and styles to suit everyone on your list.

Vests: from Pioneer and Jo-O-Kay are real men pleasers! Ladies and youth styles available too.

Saddles: Circle Y and Longhorn bring you the finest in quality and workmanship.

Jeans - Shirts - Belts - Buckles - Hats! Any or all are in the kid's letters to Santa.

"Top Form" the finest in horse products available now.

Many stocking stuffers to please horse or rider!
 Gift Certificates available too!!!

Complete Saddle Repair Shop
Open Monday - Friday evening 'til 9
For Your Shopping Convenience

Terms arranged for saddles on approved credit or use your Firstbank or BankAmericard

Rodeo Custom Shop
 164th & Pacific Ave. - Spanaway
 LE 1-4555

GIFT IDEAS

SHOP NOW!

CHRISTMAS GIFT GUIDE!

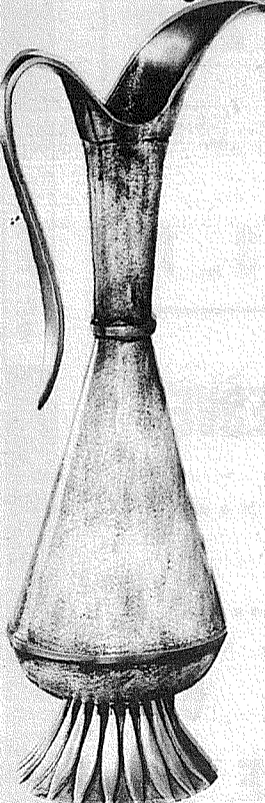
Stella's FLOWERS
 ARTISTRY IN FLOWERS
 12169 Pacific Avenue (at Parkland)
 LE 7-0206

centerpieces
 bright red poinsettias

Save Wiring Expense
 Place Your Orders Early
 Tacoma Mall GREENFIELD 5-3909



for the unique, the unusual, the "special" Christmas gift



Visit The **GIFT BOX**
 203 S. 9th - TACOMA
 Mon.-Sat. 9:30 to 6

FOR HIS CHRISTMAS-GIVE STANLEY TOOLS

TORPEDO LEVEL
 No. 264
 \$2.69
 Light weight aluminum. Easy to carry—only 9" long. 3 vials.

COMBINATION SQUARE
 No. 122 \$3.05
 Multi-use tool—try square, marking gauge, mitre square, level, etc. 12" blade.

"JOBMASTER" HAMMER
 No. 101½
 \$3.39
 Hold it! Swing it! You'll like this hickory handle 16 oz. hammer. Balanced for easy driving.

KEYHOLE SAW
 No. 175C
 \$3.85
 Cuts curved or straight in wood, steel, plastic. Three blades—for wood, metal, pruning.

"STEELMASTER" 50 FOOT TAPE
 No. MY50A
 \$6.20
 For accurate measurements. LIFEGUARD yellow blade—easy to read, longer lasting. Case contour shaped to fit the hand.

"HEX-A-MATIC" NUT DRIVER
 No. 66-525
 \$4.65
 One tool tightens and loosens 15 sizes hex nuts, hex head screws, socket head cap screws. Fast and easy to use.

USE YOUR BANKAMERICARD OR FIRST BANK CARD

LE 7-8669


BROOKDALE LUMBER INC.
 13602 Pacific Ave.

This Year Santa Goes WESTERN!

and he suggests boots for every one


select from
**TONY LAMA
 JUSTIN
 ACME BOOTS**

infants 4-8. \$4⁹⁸
 childs 8½-3. \$6⁹⁸
 youth 3½-6. \$10⁹⁸
 men's-ladies. \$15⁹⁸



OPEN TILL
 9 p.m. Monday through Friday
 Saturday till 6 p.m.

Simon's WESTERN STORE
 8606 South Tacoma Way
 JU 8-4546



idon's CHRISTMAS SPECIAL HAND-TIED WIGS
 regularly \$179.95 and up
 Now \$79⁹⁵

long and short 100% human hair falls, Regularly \$69.95 and up, now \$46⁰⁰

We carry a complete line of hair pieces, falls, wigs, wiglets

idon's WIGS
 11214 PACIFIC AVE.

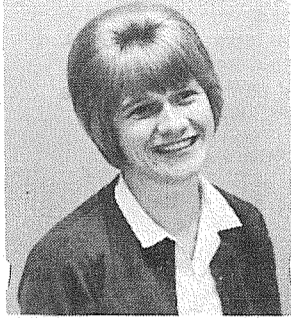
Come in and try some on!
 LE 1-2676



Parkland Memoirs . . .

Pit Under Trap Door Safety Measure

Log House Completed, Only To Be Burned By Indians



Sandy Ingram

(Editor's Note: This week is the third of a series on Peter Smith. Smith traveled the Oregon Trail to get to Parkland. After arriving here, the sheep-herder made few entries in his book. Some of which are as far apart as two years, but still tell the story vividly. The Smiths left a son with relations in Wisconsin, but now have a new daughter.)

In many of the writings, Smith inserted words in Chinook "Jargon" as he began to learn the words from the Indians.

"Sunday, February, 1853:

"Our new house is not much, but we live in a hy-as (beautiful) countryside. Our first shelter is made of logs and our one or two neighbors are kind and helpful. The Siwash Indians are in and out of our house most of the time and I am getting along well with my Chinook Jargon.

"Martha has traded most of her jewelry and some clothing for fried fish. I hope she keeps her wedding ring and dress as they seem to sort of tie us in with the world we left. But we do enjoy this country, its trees, fields and fine water. It seems La-a-aly (a long, long time) since Brodhead, Wisconsin. We admire the La-mon-ti De-late-hyas-t'kope la-mon-ti (mountain, a fine beautiful high mountain.)

"Our house is finished and I have concocted a pit under the bedroom floor and if, while I am away, Martha at night be molested with wild or drunken Indians, she can pull a leather thong and the floor door will drop and the Indian will drop into the pit and the door fall over him and she can then pull her bed over the door and said intruder will be held prisoner until my return and I can then deal with him as befits his case. He will be Ik-poo-ie (shut up) as it were. You see I am learning the Chinook.

"Having been a shepherd lad in Scotland, I know the work and am accumulating a fine herd of sheep, this prairie land is ideal for them with the stream running through my claim from Busheliars Lake, (Spanaway).



FAWCETT SWAMP — Airport Road now runs through this swamp which was the skating place of the gay swains in the '90s.

The Indians are very friendly and eat many meals at our house. But the Indians from the North keep our whites in constant alarm."

Although the above entry was dated February 1853, I am inclined to believe Smith only intended the first two paragraphs to be with that date. The rest appears to have been written after the couple was settled and partially established in the area.

"Sunday, 1855:

"Today we were warned by friendly Indians to go to the fort at Fort Nisqually for safety. The tuk-a-mo-nuk (soldiers), 1,000 strong are gathered in our orchard, they are in tents and I fear their treatment of the Indian women will cause more trouble. These Indians are thoroughly trained in watercraft and in the use of the canoe. As everywhere on the frontier the ingathering of

the whites in ever increasing numbers early awakens the apprehension of the Indians."

"Saturday, a month later:

"Upon our return from the fort our house was burned to the ground, but I shall build another. Martha went today to aid a sick woman suffering from small pox (Martha had small pox in England and is not afraid for herself.) To her surprise the sick woman is none other than the woman on the plains who refused her the bacon."

Settled and pleased with his decision to "go west" Smith becomes a major part of the Parkland childhood. In next week's story the Smiths gain another child...stop an Indian woman being buried alive...witness the outlaw McDonald being shot and train an Indian brave to run faster than his pursuers.

PLU Athletic Director Retires

H. Mark Salzman, director of athletics at Pacific Lutheran University, has resigned due to illness, it was announced Wednesday by President Robert Mortvedt. The retirement is effective immediately.

Mortvedt told a student convocation Wednesday morning that Roy Carlson, football coach and assistant professor of physical education, will become acting chairman of the department, and H. Joseph Broeker, baseball coach and instructor of physical education, will serve as acting athletic director. Both appointments are for the remainder of the school year.

Salzman, 45, a member of the faculty since 1951, has a disabling illness which prevents him from continuing his teaching and administrative duties, said Mortvedt. Salzman will continue to receive his full salary until the end of the current academic year. Meanwhile, said Mortvedt, arrangements will be made for a regular monthly income under the University's total disability agreement with Teachers Insurance and Annuity Association.

Dr. Mortvedt said: "The necessity for Marks' retirement is a matter of deep regret for the entire PLU community. Mark, during more than sixteen years at PLU, has rendered extremely valuable and loyal service. His dedication to his tasks has been noteworthy — often beyond the call of duty. We are deeply grateful."

He added that the University will re-study the entire physical education program, including intramural sports and intercollegiate competition, in the coming year.

"All possible support will be given to Carlson and Broeker as they face the new opportunities and challenges of their positions. We know we can count on their cooperation and leadership," said Mortvedt.

Salzman is a native of Dixon, Ill., and a 1947 graduate of Carthage College. While an undergraduate he lettered in three sports and was voted "Most Valuable Basketball Player" and received the "Outstanding Athlete of the Year" award.

He did graduate work at Northern Illinois State and George Williams College before receiving his master of arts degree from the State University of Iowa.

During World War II Salzman served as a Navy officer in the Pacific, and participated in the invasions of the Philippines and Okinawa. After his discharge he was director of physical education at Chicago's YMCA.



Mark Salzman

He was hired as an instructor in PLU's department of physical education in 1951, and was appointed athletic director in 1958. During his coaching career he has been assistant basketball and football coach, and head mentor of the track team.

Salzman has coached three national champions: John Fromm, javelin, 1956-58; Hans Albertsson, high jump, 1962; and Vern Lagesson, javelin, 1964. He was named NAIA District I "Track Coach of the Year" in 1964.

He married Marjorie Ruehrwein in 1947, and they have two children: Cheryl, a freshman at Concordia (Minn.) College, and Mark Edward, a student at Franklin Pierce High School.

Carlson, 49, is a native of Chicago, Ill., and a graduate of the University of Washington. He received his master of science degree in physical education from Washington State University.

A veteran football mentor, Carlson was coach of football, wrestling and track at Olympia (Wash.) High School for several years. He came to PLU as head football coach and physical education teacher in 1962.

He came West out of high school to play football at the University of Washington. He later served as an assistant coach for two years.

During World War II Carlson was a Navy officer, and served as a pilot in the Pacific.

His wife, Beverly, is also employed by PLU. They have two children, Linda and Caron, both students at the University of Washington.

Broeker, 25, is a 1964 graduate of Washington State. He received his undergraduate degree in mathematics, and last summer was granted a master of science degree in physical education by WSU.

He was born in Hinsdale, Ill., but was raised in Marysville, Wash. He played college football two years at Everett Junior College and Washington State. He is a member of Phi Kappa Phi, national scholastic honorary society.

He is married to the former Sharon Swagger of Everett, and they have one daughter, Julie.

Telephone Company Readies For Holiday

Most people are looking forward to one particular visit this week, but Pacific Northwest Bell is preparing for more than 150,000 visits on Christmas Day.

While others wait for Santa, PNB is gearing up for the heaviest calling holiday of the year, according to Robert F. Heuser, manager.

"Last year more than 150,000 long distance calls were completed on Christmas Day in the Washington-Northern Idaho area served by PNB," he said. "This year we're expecting an even heavier volume of calls."

"Nearly all our operators will be working through the Christmas weekend manning switchboards," he added. "We have scheduled extra personnel to handle the increased calling load."

Pacific Northwest Bell is advising callers to avoid the traffic peak on Christmas Day. Calls placed on Saturday and Sunday of Christmas weekend have a better chance of being completed, Heuser said. "Rates are low all three days. Direct dialing calls will help, too. If you need a number in a distant city, get the number now. Telephone numbers in other regions are available by dialing '1', the area code and 555-1212. This long distance information service is free of charge."

The TIMES JOURNAL

FASHION

FRENCH LINE / Romance Recaptures Fashion

NEW YORK (CFN) — For those who have been horrified at some of the more futuristic concoctions that seem to spark the direction of fashion following the Paris by-annual collections, Winter will come as a welcome relief.

There's every indication that femininity is staging a comeback — throw away your tent dresses, start waistline exercises immediately, and for heaven's sake, if you haven't done so already, shorten your skirts again.

Now, shoulders are narrow, fit through the ribcage is important, and skirts are tending to flare. Belts are making dress shapes look new again, whether chain circles or leather, worn at the rib or waist.

Black is back. Dior's black comes with plucked-eyebrow, rosebud mouth '30's oriented mood; St. Laurent sees his cus-

tomor in fitted coachman-style velvet; Givenchy designed a fitted waist black silk gazar; Ricci liked the shine of satin for his black.

Ungaro and Cardin remain crisp and sharp in silhouette. The majority of the Parisian Couture, however, have converted to softened shapes.

Michel Goma for Jean Patou created a host of long torso wool crepe dresses in bright colors or Donnegan tweeds, double breasted, often accented at the collar with large floppy bows, and hung with chatelaines — symbolic of a returning

interest in gold jewelry, particularly chains in necklace and belt form.

Boots are still very much a part of the fashion scene in both Paris and America. Stockings too, are part of the picture. Accessories get more important seasonally, according to Celanese's on-the-scene report.

When hair isn't shoulder length and slightly curled, it was a mass of tight ringlets in Paris — a style becoming to rather a small percent of the world, as a rule.

Tough chic is a thing of the past.

Merry Christmas

from everyone at
Vaughan's

Fred
Bud
Millie
Tom
George

Bill
Chet
Helen
Art
Lou

Ray
Don
Ted
Burt

We will close at 1 P.M.
Friday, December 22nd, and
Saturday, December 23rd.

VAUGHAN'S
6402 South Tacoma Way

Building Materials
Inc.
OR 2-4494
&
OR 4-9515

CHURCH DIRECTORY

ATTEND OUR

WORSHIP

SERVICES

CHRIST THE KING Lutheran Church

Christmas Eve
Communion 11 p.m.
Sunday Dec. 24
Christmas Day Festival
Worship — 10:30 a.m.
East 85th at Van Buren

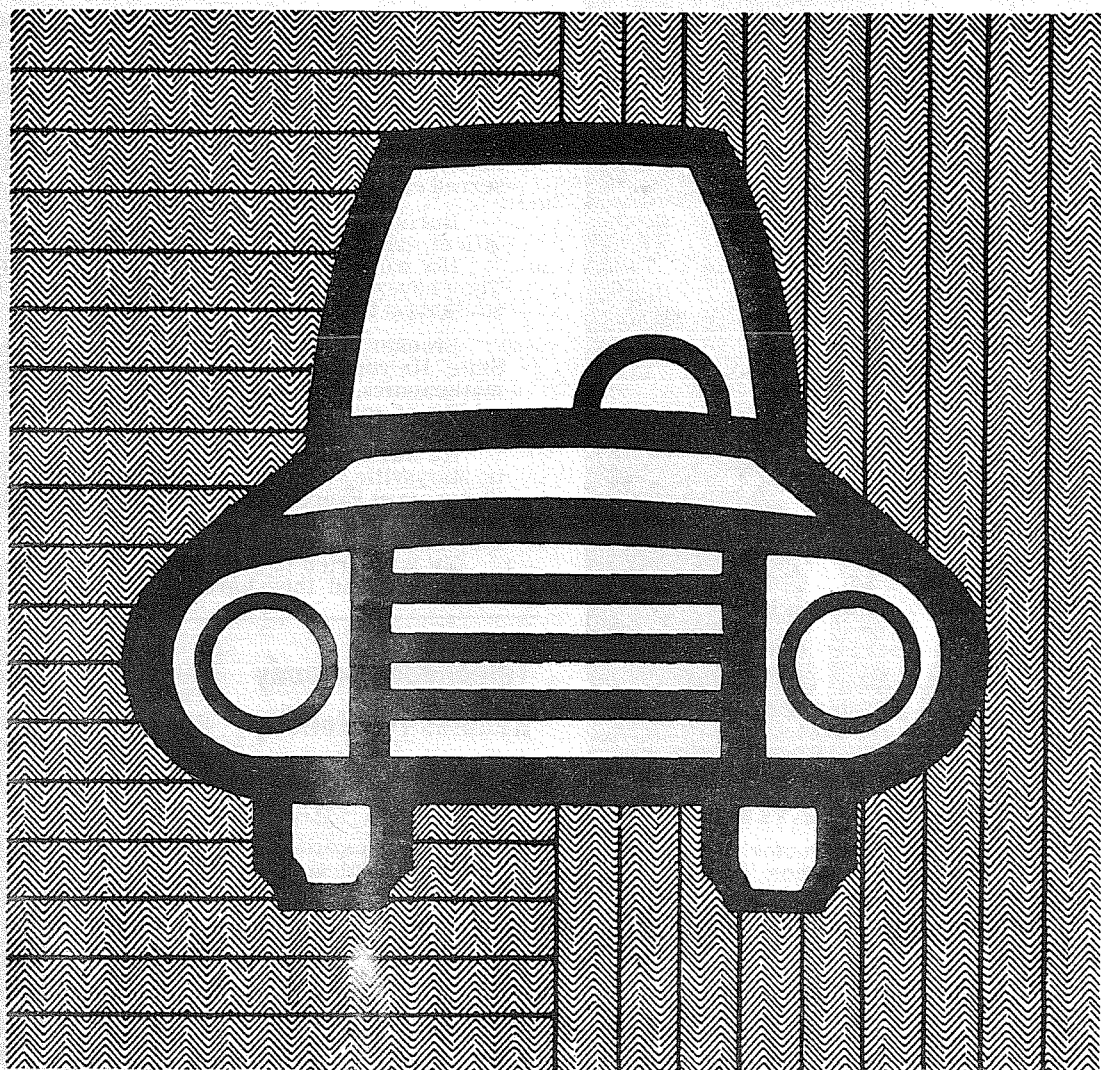
Spanaway Lutheran Church Dec. 24th

No 8:30 a.m. Service
No 9:45 a.m. or 11 a.m.
Sunday School
11 a.m. Worship Only
7 p.m. Christmas Service
With Grades 1 to 6
John L. Briehl, Pastor
160th & A St. LE 7-5978

(Left) American interpretations of the best of the French couture wouldn't be complete without St. Laurent's glitter edged tunic shape in mortar coloured Celanese acetate and rayon. (Center) Linear simplicity from the hands of a master... Givenchy's column of white crepe, copied in Arnel and rayon, complete with rolled tied collar over a scooped out back décolletage. (Right) Black returns with femme fatale impact. Nina Ricci's plunge necked black satin, complete with long skinny sleeves, copied here in Arnel and cotton.



Buying a car?



Check your dealer about a Bank of Washington low-cost auto loan

Your dealer not only knows cars, he knows how to arrange the most comfortable financing for the ones he sells. Chances are, he'll be quick to suggest an auto loan from Bank of Washington. If he doesn't, just ask for one by name—"A Bank of Washington low-cost auto loan, please." Have you tried us lately?

BANK OF WASHINGTON

AT YOUR SERVICE:
BANKING CENTERS THROUGHOUT THE STATE
NATIONAL BANK OF WASHINGTON / TACOMA, WASHINGTON
MEMBER FEDERAL DEPOSIT INSURANCE CORPORATION

Fashion Points

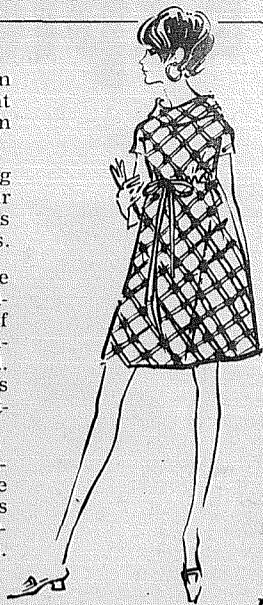
Having a Baby?

NEW YORK (CFN)—It's when you're going to have a baby that you observe how many other women are, too.

Another discovery is how young and gay, and how like your regular clothes, today's maternity fashions happen to be. On purpose, that is.

The neat and moderately A-line dress is the new favorite among maternity designs. And regardless of how it's detailed, it catches you looking up—as the designer intended. One of the freshest versions has fall's high and loose draw-through waistline, and a cowl collar.

The newest A-line maternity coat-dress has this season's smart little stand-up neckline. Other first choices in maternity departments include flaring jumpers with their own blouses.



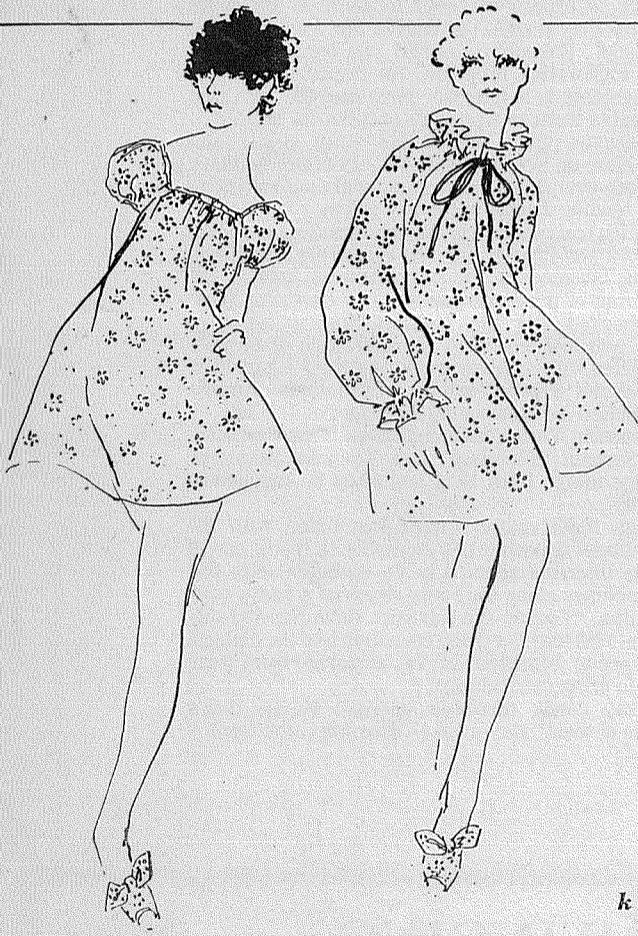
k



Interesting fabrics in soft two-toned colors—hound's tooth checks, plaids, basketweave textures and stripes—are as much in evidence in maternity clothes as elsewhere.

Like everybody having a baby, you expect a little pampering . . . and want to deserve it by looking your best. "Having-a-Baby Clothes," a free booklet offered by the Consumer Service Division of the ILGWU, tells you how. For a copy, write: Union Label Department, HL-6, 275 Seventh Avenue, New York, N.Y. 10001.

The Paper Doll Wrap-up



k

You have your paper dress. And the paper bra and slip to shape it. Maybe some snazzy throw-away jewelry and shoes. Now it's time for the "evening papers"—nightie and robe that are the very newest in disposable dressing. These late-night editions, made by Formfit Rogers, are a sleep-shift with pouf sleeves, its own pert cover-up coat, and bow-tied scuffs to match. All in print, of course—a "flower power" floral in hot pink embossed on bright white. And all wrapped up together in one splashy see-through package, ready to toss in your suitcase or gift your fashion-minded friends.



"U.S. SAVINGS BONDS are the gifts that keep on giving," says Dorie Damuth—Mrs. U.S. Savings Bonds, 1967. Dorie, attractive ranch-wife from Magnolia, Texas, was chosen Goodwill Ambassador for Savings Bonds at the Mrs. America Pageant in San Diego last spring.

SANTA CLAUS



Jacobson

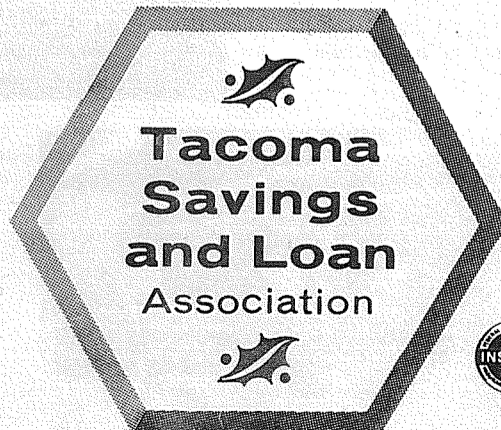
This is the season when mere man's accomplishments, however noteworthy, are invariably transcended by the wondrous works of Santa Claus. Who, but Santa Claus, does so much for so many all over the world? Millions of young hearts beat faster anticipating his annual visit. He is the symbol of kindness . . . the token of smiling generosity . . . the badge of all that is cheerfully benevolent in the makeup of man. We are glad he is with us again playing his familiar and indispensable role in making glad the heart of childhood. We salute Santa Claus for his always:

OUTSTANDING PERFORMANCE

... and a Merry Christmas to All from:

PARKLAND BRANCH
114th and Pacific Ave. So.

HOME OFFICE
9th & "A" Sts.



The Journal Visits....

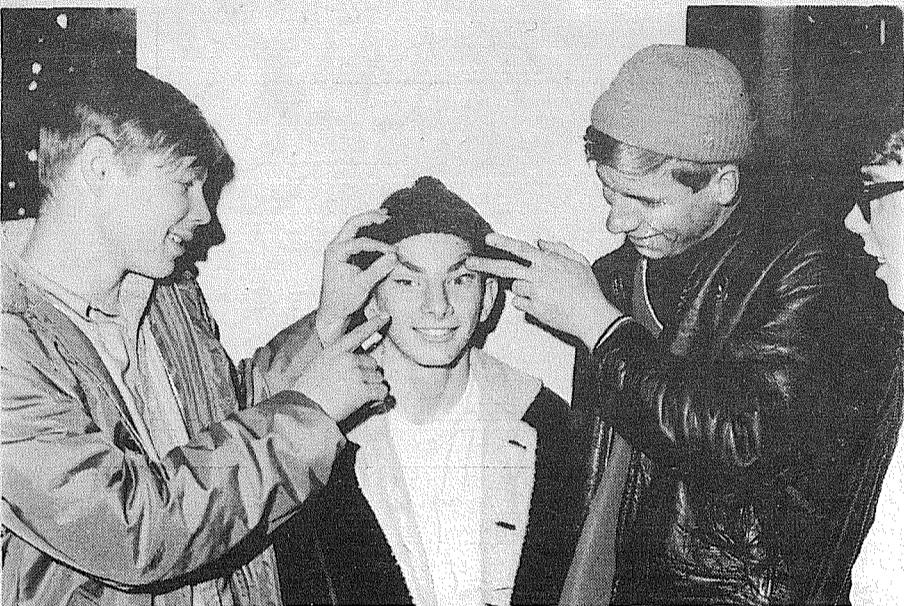
An All Night Vocational Exploration



CHARLES MARSH, Tacoma Police Department, explains how officers use police files to check history and sometimes locate wanted criminals. Following trip through Identification and Records and a briefing on "What it takes to be a police officer" the youths visited the city jail.



KTNT-TV color camera holds interest of Explorer Scouts. All phases of station operation was covered by TV personality Len Higgins.



BOB ABBOTT 17 (left) and Mike Schroeder 16 assist Mike Evans 15 (center) keep his eyes open at conclusion of tour. Abbott lives at 11915 Spanaway Loop Road, Schroeder at 424 East 123rd, and Evans at 10617 South Sprague. Evening started at 8 p.m. Friday and ended with a 5 a.m. breakfast, Saturday.

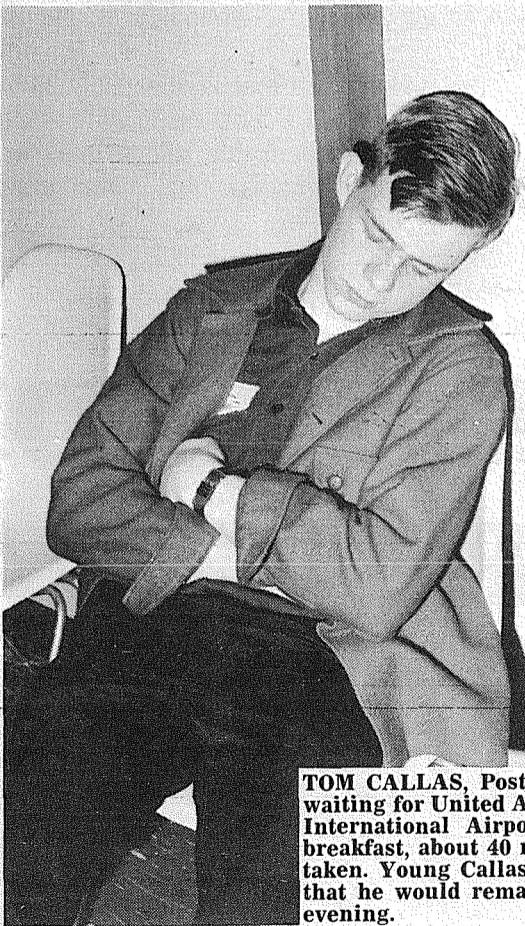
LOOKING AROUND

An army of white ants descended on the village of Batn Aharit in Egypt and destroyed all of the homes. The government has come to the rescue and is rebuilding the houses, now that the ants have gone.

A court in Munich, Germany, has denied the application of a 126-pound man to carry a pistol. He needs it, he says, to protect himself against the 185-pound woman who lives next door and who wants to marry him.

The court in Folkstone, England, saw no reason why Beulah Benton, who stands four feet, 10 inches, should not marry Tony Fagg, six-feet, two inches. Beulah's mother had objected because she said the pair would look ridiculous together.

The Allegheny County Bar Association is proposing change of an old law that makes it illegal for residents to move out of Pennsylvania.



TOM CALLAS, Post 272, catches 40 winks while waiting for United Airlines tour at Seattle-Tacoma International Airport. He was wide awake for breakfast, about 40 minutes after this picture was taken. Young Callas had wagered with his father that he would remain wide awake during entire evening.

By Em Matson

From 8 p.m. until 5:30 a.m. is a long time to go without sleep if you have been in school the previous day.

But Explorer Scouts from the Southeast District of the Mount Rainier Council stood up to the rigors of a sleepless night last Friday with amazing stamina and visited round-the-clock industries during the wee hours.

The idea for touring plants and agencies that never shut down was implemented a few years ago, and was so enthusiastically received that it became an annual affair.

"We try to expose the boys to some of the night activities that they wouldn't ordinarily see," Fred Linton, District Scout Executive, stated in explaining the vocational exploration program. An important part of Explorer Scouting is helping the boys find the field that might appeal to them as a possible occupation, he said.

The caravan gave the participating scouts and advisors a close-up look at a wide variety of occupations. Covered were everything from structural engineering to aviation to tending drunks in the city jail as a jailer.

In addition to a rundown of the opportunities available in police work and fire fighting, the Explorers looked into the printing business at Pioneer Business Forms, the manufacturing of pre-stress concrete at Concrete Technology; checked out the broadcasting industry at KTNT-TV; and learned about the multitude of occupations connected with aviation by touring the FAA plant in Auburn and the Seattle-Tacoma International Airport facilities. United Airlines hosted the group at Sea-Tac.

Participating Troops included those from Parkland, Midland, Summit, Puyallup, and Tacoma. Explorer Scouts range in age from 14-19 and must be enrolled in High School.

Although the Explorers were fascinated with the many vocational opportunities available to them, one of their prime interests seemed to be eating. Candy bar vending machines along the route received a heavy play by the youths. "I know the advisors have learned one thing for the 1968 tour," a troop councilor told the Journal during a special breakfast at the airport, "Next year we'll have to bring more change."

They say candy furnishes energy. Maybe that's where some of their "stay-awake" stamina came from.

WINGING YOUR WAY



With Season's Greetings

To All Our Friends & Relatives

From **The BROWNS**
JACK, MONTE, MARK & SCOTT

P.O. Box 2008 Parkland Station, Tacoma, Wn. 98444

AND THANKS FOR ALL THE BEAUTIFUL CARDS & GIFTS



EXPLORERS examine an offset press at Pioneer Business Forms.

Humane Society Hosts Open House

Tacoma-Pierce County Humane Society will have its 14th annual "Pets For Christmas" at the 2608 Center Street animal shelter.

The shelter will be decorated and everyone is invited to see the kittens and puppies on display and available for adoption.

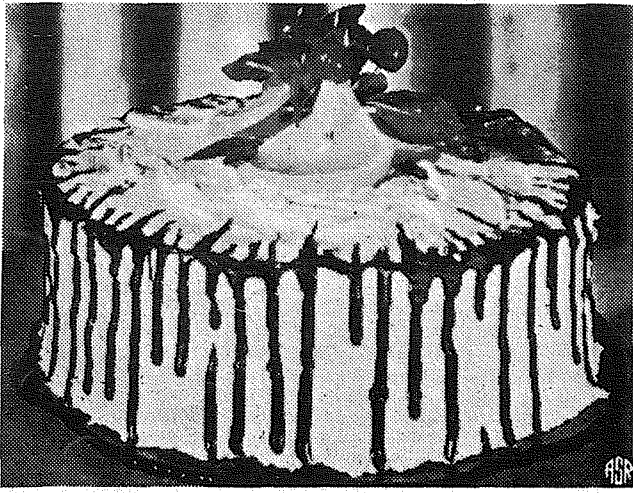
Times for the open house are 9 a.m. to 5 p.m. through Sunday, December 24th.

Third Grader To Perform

Monica Tarpenting, eight year old daughter of Mr. and Mrs. Harold E. Tarpenting, 1517 South 116th, will perform her table-acrobatic dance at James Sales School for fellow students.

She is a Keller Dance student and has been taking lessons the past three years.

Florida Prize-Winning Orange Cake



Harlequin Cake a l'Orange was the top prize winner in the recent Tourist Citrus Recipe Contest sponsored by the Florida Citrus Commission. Bake it now with reconstituted frozen Florida orange juice concentrate and packaged rind, using the luscious fresh fruit when it is in season later in the fall.

Harlequin Cake l'Orange

- | | |
|--|--|
| 1 1/4 cups Florida orange juice, divided | 1 teaspoon salt |
| 1/2 cup nonfat dry milk | 1 teaspoon almond extract |
| 1/2 cup butter or margarine | 3 tablespoons grated orange rind |
| 1 1/2 cups sugar | 2 squares (2 ounces) unsweetened chocolate, melted |
| 3 eggs | 2 tablespoons sugar |
| 2 1/2 cups sifted cake flour | |
| 2 1/2 teaspoons baking powder | |
| 1/2 teaspoon baking soda | |

Combine 1 cup of the orange juice with nonfat dry milk. Mix well and reserve. Cream butter; gradually add 1 1/2 cups sugar and cream until light and fluffy. Add eggs, one at a time, beating well after each addition. Sift together flour, baking powder, baking soda and salt. Add to creamed mixture alternately with orange juice mixture beginning and ending with dry ingredients. Mix well. Stir in almond extract. Divide batter in half. To one half add grated rind. Blend melted chocolate with other half and then stir in remaining 1/4 cup orange juice and remaining 2 tablespoons sugar. Drop the two batters alternately by tablespoonfuls into two well greased and floured 9-inch layer cake pans. Pull knife carefully through batter once in wide zigzag

pattern to give marbled effect. Bake in 350° F. oven, 25 to 30 minutes. Cool for 10 minutes; then turn out of pan and finish cooling on racks. Frost with Orange Frosting* and drizzle with Chocolate Glaze.

YIELD: One 9-inch layer cake.

***Orange Frosting and Chocolate Glaze**

- | | |
|--|--|
| 1/2 cup soft butter or margarine | 2 tablespoons milk or cream |
| 1/4 teaspoon salt | 2 tablespoons Florida orange juice |
| 3 tablespoons grated orange rind | 1 square (1 ounce) unsweetened chocolate |
| 1 pound (about 4 cups) sifted confectioners' sugar | 1 teaspoon butter or margarine |

Combine butter, salt, rind, and part of sugar; blend well. Add remaining sugar alternately with milk and orange juice until right consistency to spread, beating after each addition until smooth. Fill and frost layers. Melt chocolate and butter together; drizzle over edge and sides of cake. Garnish with thin orange slices, mint, and cherries, if desired.

Recipe Of The Week

Peach Bavarian
(Makes 6-8 servings)

- | | |
|--|--|
| 2 pounds fresh peaches, peeled* | 1/4 cup ReaLemon reconstituted lemon juice |
| 1 tablespoon (1 envelope) unflavored gelatine | 1/4 teaspoon almond extract |
| 1/4 cup cold water | 1 cup (1/2 pint) heavy cream, whipped |
| 1-1/3 cups (15-oz. can) sweetened condensed milk | |

Sieve or mash peaches to measure 1-1/2 cups purée. Soften gelatine in cold water; let stand 5 minutes. Place softened gelatine over hot water and stir until dissolved. In medium-size mixing bowl, combine condensed milk, lemon juice and almond extract; mix well. Stir in dissolved gelatine. Gently fold in whipped cream; then 1/2 cup peach purée. Pour into lightly oiled 1-quart mold. Refrigerate 3 hours or until firm. Unmold onto serving platter. Serve with Peach Sauce.

PEACH SAUCE: (Makes about 1 cup). In a medium-size saucepan, blend 1 tablespoon cornstarch in 1 cup reserved peach purée. Cook over medium heat; stir constantly until sauce thickens and is clear. Chill in refrigerator.

***NOTE:** If desired, 2 cups (1-lb. 1-oz.) can sliced peaches may be used. Sieve drained peach slices to measure 1/2 cup purée. Use remaining 1 cup peach juice and peach slices in the preparation of Peach Sauce.

AF Civil Engineers Gather Clothes For Remann Hall

For children of the Remann Hall Juvenile Home in Tacoma the Christmas season may take on an added warmth this year, thanks to the 325th Civil Engineering Squadron at McChord AFB.

Airmen from the squadron recently delivered letters requesting assistance in their campaign to gather clothing and bedding for the children to every home on the base.

The program, initiated last year, proved to be a "very favorable" project according to M/Sgt. Philip J. Taylor, first sergeant of the squadron.

In addition to this project, the squadron will host a Christmas party for Remann children on Dec. 13. Young airmen from the squadron have volunteered to be "Big Brothers" and buy gifts for 30 children from the home.

Arriving from Tacoma by bus, the children and their airmen sponsors will first see the Base Fire Department and then proceed to the Skylark Community Center for cake and ice cream, presents and, of course, Santa Claus.

Through the efforts of the squadron's airmen's council M/Sgt. Robert P. Rublin, party chairman, and the cooperation of Air Force families, the holiday season should indeed be a happy one.

Pierce County Bldg. Permits

- John P. Pirolo, \$20,000 res. 15609 Riverlook Drive E.
- C.M. Hume & Co., \$17,000 res., Larson Rd., Graham area.
- James R. Porter, \$18,000 res., 11702-90th Ave. E.
- Lund Construction, \$14,500 res., 8222-123rd St. E.
- Ted E. Schick, \$30,000 res., Rt. 2, Box 669, Sumner.
- Adrian DeGroot, \$25,000 res., 9801-122nd St. E.
- Lyle Coker, \$15,000 res., 5809-79th Ave. E.

Team Studies Local CPEA

At the request of the Clover Park Education Association, (the local teachers' professional association), an evaluation team composed of Wes Ruff, WEA staff member, Dorothy Brooksby, NEA staff, Ron Marks, president of the Renton Education Association, and Merle Vancycy, president of the Vancouver Education Association, visited the Clover Park School District, Dec. 14-16, to study the structure and operation of the local association (CPEA). They were not here to study the administration of the school district, emphasized an association spokesman.

While the evaluation team was in the district they talked to officers, committee chairmen and members, board of directors, and members of the association. They also talked to the district superintendent, administrative cabinet, school board, PTA representatives, and to community groups, as well as teachers who do not belong to CPEA. After these conversations and after studying records, procedures, office facilities, equipment, and staff, they will compile a report which will point out the strengths and weaknesses of the Clover Park Education Association and recommend action to be taken for improvement.

CP Community College Holds Open House

Clover Park Community College will hold its first Open House Thursday, Dec. 21 in the college administrative headquarters at 6010 Mount Tacoma Drive SW.

According to Dr. Marion O. Oppelt, president, "Friends and neighbors of the college are invited to meet the staff members in the college library between the hours of 3 and 5:30 p.m.

Student guides will be on hand to show guests the temporary facilities.

Refreshments will be served.

Calendar OF MEETINGS AND EVENTS

The Board of Trustees of Tacoma Community College District 22 will meet at 3:30 p.m. Jan. 4 in the Administration Building on the TCC campus, it was announced by Charles L. Edmunds, chairman.

It's the LAW
PRESENTED AS A PUBLIC SERVICE BY THE

WASHINGTON STATE BAR ASSOCIATION

Sally was waiting for a bus. Suddenly the large plate glass window in the XYZ Company's building made a popping noise and broke outward. The window shattered on the public sidewalk and particles of glass landed on Sally's head and shoulders.

Judy, who was standing near Sally at the time, heard her cry, "I got something in my eye."

In the days that followed, Sally's eye seemed to get worse. She was unable to watch TV without her eye becoming reddened and discharging.

As a result, Sally sued the XYZ Company, claiming it was negligent in installing the plate glass window and thereby causing her injury.

"It was an unavoidable accident," said the Company. "The wind blew the window out. It wasn't our fault. It was an act of God."

Can the company be held liable in this case?

Yes, said the Wisconsin Supreme Court in such a case.

The wind on the day in question was characterized by the weather bureau as a "moderate breeze." There was no evidence to justify the conclusion that the wind was of such force as to be unforeseeable in that area.

The owner of a building abutting a public sidewalk must exercise reasonable care not to endanger the safety of persons lawfully using the public way. While the owner or person in control of the building is not an insurer, he is bound to use reasonable care and skill in the construction and maintenance of the building, which includes the duty to inspect from time to time.

The court found that the window had not been properly installed, and that the negligence of the company was the cause of Sally's injury. (This column is written to inform, not advise. Facts may change the application of the law.)



Here's one that might just fit the bill. An insured savings account here at Citizens. Think about it!

No colors or sizes to worry about. It will never be outgrown.....or broken.

And, what's more, here is a gift that keeps on giving and giving. And it grows as our interest begins to compound and build.

But, more than that, a savings account here at Citizens is a way of showing a special feeling for the person who receives it. It's the perfect Christmas gift for that special grandchild, niece, nephew.....or just about anyone.

And you can open one in any amount. Why not stop by and see the man at Citizens? You'll make someone awfully glad you did!

Citizens STATE BANK



- ★ MAIN OFFICE - PUYALLUP
 - ★ EAST SUMNER OFFICE
 - ★ SUMMIT VIEW OFFICE
 - ★ EDGEWOOD-MILTON OFFICE
- MEMBER FEDERAL DEPOSIT INSURANCE CORPORATION

The TIMES JOURNAL

SPORTS

Seamont Hoop Roundup

Lutes Look To New Year

Pacific Lutheran University put away the basketball following its 80-61 defeat last week at the hands of Western Washington State College. The Lutes don't take to court again until Jan. 5.

It was a disappointing pre-Christmas schedule for the Lutes. Four rugged foes gave the Parkland squad a preview of what to expect during the season.

Central Washington State College, a top-ranked NAIA power, gave the Lutes two defeats, while Western and the University of Puget Sound each accounted for another. The Lutes did beat UPS once, and they also defeated Portland State College.

Lack of height and scoring punch from the guards hurt the team in all six games according to coach Gene Lundgaard. He has had to rely on his three front court men to score, but they have been plagued with fouls.

Senior Dennis Buchholz, a 6-5 forward, continues to lead the Lutes in scoring with a 19.2 per game average. He is followed by Al Kollar, a 6-6 center, who has dumped in an average of 17.0 points a game. The other forward, 6-5 Leroy Sinnes, another sophomore, is contributing 13.7 points a contest.

The guards, on the other hand, are only averaging about five points a game.

"We are going to have to put some scoring punch in our back court positions," said Lundgaard. The only problem with that, he added, is that the team might lose some of its quickness.

Right now Rick Ancheta, a flashy ball-handler from Auburn, Wash., and Kevin Miller, an excellent dribbler from Anacortes, Wash., are both needed to overcome any full-court presses or defensive stalls. But they are also shooting .303 and .421 from the floor to pull down PLU's shooting average.

"When you don't have high shooting average, or great rebounding, you lose games," said Lundgaard.

After six games the Lutes were out-rebounded 361 to 259. Kollar is the Lutes big man on the boards, with 10.5 rebounds a game. However, he is also the worst foul violator, having fouled out of three games while averaging over four a contest.

The Lutes open their 1968 season on Jan. 5 against Pacific University. The Forest Grove, Ore., team will be the first conference foes of the season for PLU.

Lundgaard is hoping his team will give him his Christmas present at the end of the season; the Northwest Conference championship. He doesn't care how they wrap it.

Fancying a perfect 6-0 record and finding itself as the team to beat, Summer begins its quest for the Seamont League Crown Friday night as they entertain the rugged Mount Si Wildcats who sport an impressive 5-1 record.

Fife, the latest victim of Summer's hoop perfection 49-44 last Saturday, begins its league play when they travel to Bethel. The Trojans carry a 4-2 record into Seamont competition while the Bethel Braves have broken even at 3 and 3.

In trying to improve their record to 7 wins without a loss and get a jump on the rest of the Seamont pack, the Spartans will be going against a team that won its last two ballgames very handily. The Wildcats blasted Curtis 68 to 46 Friday, and annihilated Bethel 80 to 45 Saturday. Don Bigler, who missed Mount Si's first 4 ballgames, scored 19 and 17 points last weekend.

In the Fife and Bethel clash, the area will have at least one winner who stands tied for the Seamont League lead with a 1-0 record as this is the first league game for both squads. Coach Bob Dinsmore will be trying to rebound his club from last Saturday's squeaker to Summer, while Erling Buholm will have the Braves mentally ready for their home opener.

Braves Divide

Bethel again split the weekend slate dropping Friday's encounter with Mt. Si 80 to 45 and winning Saturday 60 to 42 over White River.

Against Mount Si, Bethel never got going as they trailed 45 to 12 at the end of the first half. Saturday they started quicker, grabbing an early 10 to 3 lead and continually building on to it. Mark Belvin led the scoring both nights getting 14 Friday and 22 Saturday.

Bowlers To Donate To PC Heart Fund

Pierce County Bowlers will have opportunity to Strike Out Heart Attack in the Second Annual Heart Bowling Tournament Sunday, January 14 through Friday, January 19.

Co-Chairmen Dick Greco and Joe Stemp said the competition will be among men's leagues throughout the Pierce County area and trophies will be awarded to the league champions.

Entry fee is one dollar with 70 per cent of the proceeds going to the Heart Fund and 30 per cent to the prize fund.

The Heart Bowling event is nationwide and is co-sponsored by the National Bowling Proprietors Association and the Heart Association and is ABC and WIBC sanctioned. Last year's Heart tournament in the country with 6333 bowlers taking part.

Heart Volunteers will be on hand in lanes the week of the tournament to distribute entry forms and assist leagues.

PSL Round-Up

Vikings, Cards Host Northern Foes Friday

Puyallup, winners of last Friday's encounter with Kent, will be at home this Friday night when they tangle with another Northern Division powerhouse, the Highline Pirates. Franklin Pierce will also be on their home maps in a non-league cross-over contest facing Mount Rainier.

Highline downed Lakes in a tight ballgame last week, 43-37. Earl Faylor spearheads the Pirate attack, hitting at 20 points a clip. They have won two while only dropping one. Mount Rainier has had a tough go of it this year dropping their third game of the season last Friday 56-49 to Clover Park -- Franklin Pierce has also dropped a pair of games after losing to Glacier last weekend.

The Viks used a tenacious second half defense that held the Kent Royals to just three field goals in reversing a 4 point half time deficit into a 9 point victory, 52-43. Sharp-shooting guard Dan Bograd and forward Dan Ross led the second half surge as they hit for 23 and 12 points respectively. Bograd canned 15 in the second half.

The Cardinals never seemed to get in the ballgame against the Grizzlies as Glacier's two fine seniors, Roger Knutson and Mike Crotty exploded Glacier to a 42 to 20 half-time lead and they were

Cards Lose 2nd

After winning their first two games of the preseason schedule, Franklin Pierce found themselves on the short end of the score for the second straight time within 4 days, when they were defeated 68 to 43 by Glacier last Friday.

The Cardinals never seemed to get in the ballgame against the Grizzlies as Glacier's two fine seniors, Roger Knutson and Mike Crotty exploded Glacier to a 42 to 20 half-time lead and they were

never headed after that. Knutson netted 19 points, while Crotty and Mark Sabourin added 16 and 14 points respectively.

The win gave Glacier a 3-0 record, the only undefeated Puget Sound League team in either division. Cardinal Coach Del Schafer was very impressed with the Glacier ball club. "They have good size, are quick, can handle the ball and play good defense. Probably their only weak spot is a 6'6" Tim McQuade, but you still can't forget about him and concentrate on the others because he can still hurt you."

The Cards dropped its first game of the season December 5th, when they ran into the sharp-shooting Rams from Wilson and were gunned down 59 to 54.

FR. PIERCE (43)		GLACIER (68)	
fg	pt	fg	pt
Hadland 2	2	Knutsen 9	1
Korsmo 3	4	Sabourin 6	2
Armstrong 2	1	McQuade 1	0
Stegsill 1	3	Crotty 6	4
Furlong 1	0	McLean 3	0
Harvie 4	0	Emil 2	1
Harkley 3	1	Thompson 0	2
Harris 1	0	Brown 1	0
Saltzman 0	0	Bushaw 1	0
Call 0	0	Boyan 0	0
		Cagwin 0	0
Totals 17 9 12 43		Totals 29 10 17 68	
Franklin Pierce..... 8 12 8 43		Glacier..... 21 10 16 68	

Free throws missed: Franklin Pierce 14, Glacier 7.
Shots attempted: Glacier 74, Franklin Pierce 57.
Rebounds: Glacier 51, Franklin Pierce 44.

Parkland Mix

Grant Harlow 207-187-212, 606. Ardeen Iverson 215; Lois Lovelace 535, 196; Split Pick Up - Thelma Thornhill 6-7, Reta Craig 4-7-9-10.

850 Scratch - Frank Burkland 596; Eric Sandstrom 278.

Classic - Jay Young 221-189-226, -636, 226; Mo Bush 208-208-203, 619.

Evergreen - Gene Ketter 511; Art Bolstad 213.

Bowlerettes - Ruth Cox 510; Elaine Rodgers 198.

Last Niters - Don Butts 581, 226; Edie Thompson 534, 200.

4x8's - Bud Smith 514; Harley Irish 188; Shirley Bennett 483, 180. Split Pick Up - Rose Divilbiss 3-7.

Bantams (2 games) - Steve Hardwick 300, 174.

Juniors - Allen Tobacco 529; Chris Jacobson 213; Betty Unkrur 461, 169.

Split Pick Up - Steve Kanton 6-7.

Senior Citizens - Wendale Gunderson 573; Clarence Zacharias 214; Beth McLellan 479; Cora Zacharias 176.

Franklin Pierce Faculty - Russ Fulkerson 553, 202; Eleanor Ervin 509; Lou Shier 189. Split Pick Up - Jerry Rogers 6-7-10.

Mixers - Jonas Smeltzer 215; Bob Johnson 560; Ruth Rickert 492; Pat Smeltzer 182.

Top Rollers - Bill Paine 559, 207; Gladys Morley 497, 192.

Graham - Dick Hansch 538; Frank Gohr 211; Nadine Berka 503, 186.

Eager Beavers - Arabelle Frerichs 204-170-226, 600. This is her first 600.

Birds of Paradise - Ruth Wilcher 517; Arlene Daugherty 202; Split Pick Up - Marge Jones 6-7.

Hi-Lows - Peggy Holder 528, 194.



Express - Les Tatro 552, 204; Betty Breen 505, 192.

Split Pick Up - Doris Tatro 4-7-9, 6-7.

Little Lutes - Wade Marlow 567; Gordy Omdal 205; Corrine Deetz 425; Caren Simdars 162.

"600" Mixed - Tom Rex 574, 232.

Rolling Bees - Phyllis Huff 540; Jennie Rugers 201.

The Belles - Willa Woodford 522, 194.

Pinettes - Sue Swaney 586, 223; Lee Leggett 561; Ginger Pittman 557; Rose Eveleth 553; Evie Basket 553.

"600" Mixed - Steve Pierce 498; Stan Catchpole 188; Alice Edwards 469; Lorraine Overway 167. Split Pick Ups - Judi Nestegard 2-10; Lorraine Overway 3-7.

Parkland Merchants - Walt Daniel 576, 237; Split Pick Up - Bill Cook 3-7-10.

Industrial - Jim Crewse 580; Earl Hardy 210.

Sportsman - Ed Kinsey 555; Bruce Restad 212.

Friendly Doubles - Ted Haikkila 530, 222; Rose Moore 462, 180; Split Pick Up - Andy Ketter 6-7-10.

Premier - Larry Turner 242-201-203, 646; Jay Young 203-200-222, 625; Jerry Olson 209-214-202, 625; Bill Schaefer 188-198-237, 623. Don Kleiven 246.

Paradise Snow Report

Skiers found twelve inches of new snow last weekend, with total depth about 70 inches.

Currently, the temperature is 15 degrees with snow still falling. All tours are operating, as well as the ski school and lunch service.



HEADQUARTERS

"MOST FOR THE MONEY" All Makes...All Kinds

ARMSTRONG'S USED CARS LE 7-5524

F. Pierce's Homecoming Is Friday

Homecoming will be held Friday at Franklin Pierce High School and will feature an assembly, basketball game and dance.

The dance will be held after the game with Mt. Rainier High School. "The Proffets" will play for the dance and the Magic Lantern Light Company from Charles Wright Academy will be the featured entertainment. Royalty for the dance includes seniors Queen Linda French and King Jim Hadlund; juniors Princess Adrienne Rayeski and Prince Steve Bertucci; and sophomores Duchess Connie Lewis and Duke Marv Korsmo.

Dikka Schnackenberg is general chairman for the homecoming dance. Other chairmen are Rhoann Earle, band and refreshments; Mary Benson and Holly Hartwell, decorations and Kathy Lind and Linda Carlson, nomination and election of royalty.

For the game and assembly Molly Stuen and Cheryl Irwin will be in charge of decorating for the assembly; Gigi Gregerson, invitations; Ruth Olsen and Jennie Kimmel, window display and Pat Gerla and Pauline Isakson, half-time entertainment.

NEW - MORE POWERFUL

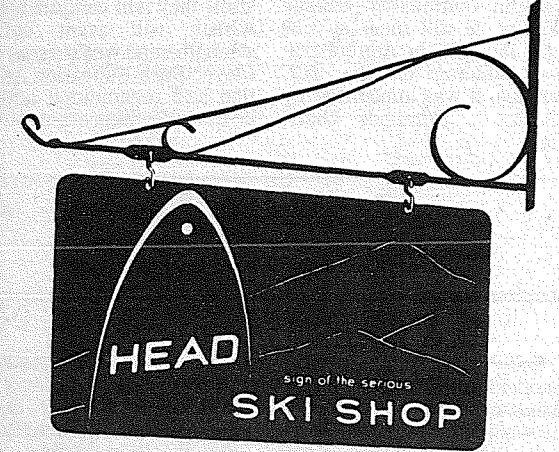
the 1968's ARE HERE

VOLKSWAGEN

27 MAJOR CHANGES COME IN AND

Tom Caister's AUTOHAUS

7030 So. Tacoma Way GR 4-0666
TACOMA DEALER SINCE 1955



Where Skiers Serve Your Every Skiing Need

Open every evening 'til 9 p.m.

PARKLAND SPORTS CENTER

1122 PACIFIC AVENUE TACOMA, WASHINGTON PHONE LE 7-5677

INSURANCE

Military - Home - Business

LE 7-4904

Auto Fire Life Bonds

IRENE CLEMENS

Agency - Parkland
10329 Pacific Ave.

P

ARKLAND AUTOMOTIVE

- Automatic Transmissions
- Brake Work
- General Repair
- Tune Ups

PICK UP AND DELIVERY FREE ESTIMATES

108th & Pacific LE 1-3722

Journal Classifieds

Get Results

LE 7-0223

Christmas Spirit Sometimes Fades For Mail Carriers

The letter carrier, his back bent beneath a bulging bag of Christmas cards, may feel that what Sherman said about war might equally be said about Christmas.

But it wasn't always that way. People didn't exchange Christmas cards until rela-

tively recent times. The first specially designed Christmas card is believed to have been printed by a London Company and placed on sale in 1843.

Charles Goodall & Sons of London began printing and selling Christmas cards on a wide scale in 1862, World Book Encyclopedia says, and printed

cards soon became as popular as the handwritten personal notes that people had exchanged earlier.

Louis Prang, a Boston lithographer, began printing multicolored Christmas cards in the 1860's and marketed them in Europe. By 1875 he was selling them in the United States. And that's how it began.

Got your Christmas cards mailed yet?

Enrollment Began At Tacoma-CC

Students who wish to enroll at Tacoma Community College beginning with the winter quarter may apply for admission and register for classes during the week after Christmas.

Joseph Kosai, records officer, said the records and admissions offices will be open from 9 a.m. to noon and from 1 to 3 p.m. Dec. 26-29.

Winter quarter classes begin Jan. 3.

Students who attended TCC during the fall quarter have already registered, Kosai said.

The records office is located in Building 2 and the admissions office in Building 5, both at the northwest end of the TCC campus.

PRAIRIE TAVERN

CHICKEN & PIZZA

Food! Dancing!

LIVE MUSIC

FRIDAY & SATURDAY

Jean & Chris — Betty Jean & Wade
on The Mountain Highway at Roy "Y"

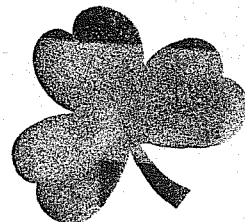
"KEEP THE SHAMROCK GREEN"

Spend Your Money Here

POOL AND SHUFFLE BOARD

SHAMROCK TAVERN

11108 PACIFIC AVE.



Expecting overnight guests?



RENT A ROLLAWAY AND SAVE

Our beds are always clean, comfortable, sanitized. Lightweight, easy to set up, easy to rollaway. Baby beds available, too. It's cheaper to rent for occasional use than to buy. When company calls, call us.

Member AMERICAN RENTAL ASSOCIATION

Rental Marts Inc.

Parkland

9440 PACIFIC AVE.
OPEN SUNDAY TOO
GR. 5-3755

'Christmas Carol' Slated at PLU

Pacific Lutheran University's Curtain Call Club will stage its annual presentation of Charles Dickens' "Christmas Carol" Monday in East-vold Auditorium.

Tickets for the 8:15 p.m. play may be purchased at the door, or reserved by calling the University's ticket office.

As is the custom, most of the actors are veterans of the play. Once a student is cast for a role, he retains it throughout his college career.

David Richardt will act the part of Scrooge on the third time. Other veterans are Richard Crouse, Dennis Flath, Bruce Govig, Dennis Goin, Sharon Gephart, Julie Halversen, Helen Hardtke, Anne Nehser, and Sandra Sanford.

Dr. Abe Basset, assistant professor of speech, will act as narrator, and his son Douglas will again play the part of Tiny Tim.

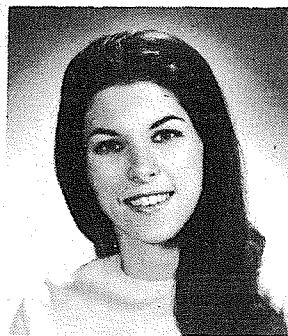
First-year cast members are William Askeland, Donna Maxin, Constance Smith, Kenneth Bakken, Robert Klavano, and John Elmer.

The play is directed by Linda Osmundson and Terry Nunly. Eric Nordholm is technical director.

The TIMES JOURNAL

ENTERTAINMENT

Around The County



By DONNA DIXON RESTIVO

Christmas is so close now children are counting hours, not days. The snow has begun to sprinkle down and it looks as though we may have a white Christmas after all.

This was going to be the year I beat the last-minute hassle and did everything weeks ahead. What am I doing running around at the last minute? Frantically begging the stores not to close on me.

The house is filling up with trees and presents. Guests are due in at the airport at the most irregular hours they could find. Carollers should be starting any night now.

One of my favorite Christmas activities is the annual Christmas Festival Concert held by Pacific Lutheran University. This year the theme was "My Soul Doth Magnify the Lord".

Beautiful narrations and songs filled the pageant with a wonderful Christmas mood. The costumes were breathtaking. The choreography was superb. What a wonderful way to begin the Christmas season.

The Bruce Davis Quintet, comedian-musicians who have been featured on Andy Griffith's television special, are now at the Winthrop's Sabre Room.

Highlights of the group's act include five-voice harmony arrangements, unusual brass instrument effects and humorous by-play. The five men use as many as twenty instruments in their performances.

Speaking of television,

Frank Sinatra Jr. will appear on the Dean Martin Show tonight. When he was up here for the Puyallup Fair in September, he was called away to film the Christmas Special with the Sinatras and the Martins and came back for the Sunday show. After the show he said, "Oh! Merry Christmas. I won't be around to say it to you at the right time." One thing that really puzzles me is how anyone could slip into the right mood three months ahead of time.

The Elk Plain Tavern will feature the Grover Jackson Trio for Christmas Eve. They will be open until three, dancing and watching for old Saint Nick. And I wouldn't be one bit surprised if the old codger joined the celebrating.

Now is the time to get in your reservations for New Year's. Chances are you'll need them wherever you decide to go. So act now and you won't be left out.

Parties are falling on all sides this time of the year. Last Sunday The Hunt Club had a Christmas breakfast after the hunt. After riding for hours in the drizzle, the hot punch was terrific. And this Friday we'll have our office party for all the hard workers of the Times Journal. And me, too.

Do have a wonderful time this Christmas. I wish you the very best. Merry Christmas to all. And to Charlie, good night.

DRAPERIES
OUR SPECIALTY

FOR PROFESSIONAL DRY CLEANING OF YOUR LAUNDRY AND DRAPES

DAVE'S NU-WAY CLEANERS
phone GR 5-1144 7209 Pacific Ave.

ADVANCE GLASS & UPHOLSTERY

Service while you wait
Residential and Auto Glass
we handle all insurance claims
For your car's interior:

- Complete water leak service
- complete upholstery
- repair of torn or worn parts
- carpets

10321 Pacific Ave. LE 7-8301

IN THE DARK ABOUT A GOOD PLACE TO EAT?

TRY BRAD'S

banquet facilities for 30 to 300
open daily 11:30 to 8 p.m.

9201 Pacific GR 4-1234 26 & Pearl SK-2-5020

Avenue Furniture

- New and used quality furniture
- Appliances
- We buy - sell - trade
- In Spanaway

LE 7-5144

16318 Pacific

BUY Anything
FIND IT HERE!
SELL Everything

Join The Crowd at Elk Plain Tavern

Dance To Live Music

Western Music on Friday
Saturday Your Favorite Band Music
Sunday - Celebrate Christmas Eve with the Grover Jackson Trio

6:30 P.M. to 9:30 P.M.
"On The Mountain Highway — 2 1/2 Miles Past the Roy Y"

Richards

RESTAURANT

BUFFET DINING

a dazzling variety of foods — all you can eat — luncheon and dinner.

CHOICE STEAKS • SEAFOODS
SANDWICHES • COCKTAILS

8201 Pacific OPEN SUNDAYS GR 4-2063
DINING NOON - 10 P.M.
Cocktail Lounge 2 PM-10 PM

Angelo's

PIZZA HOUSE

ORDERS TO GO

Featuring top sirloin and American dishes, spaghetti, rigatoni, meat balls, sausage, ravioli, beer and wine.

Choice of Pizzas

cheese & tomato	bacon
anchovie	peppers
mushroom	olive
Italian sausage	hamburgers
pepperoni	ham
tuna	salami
	onion

CALL AHEAD, IT'S PIPING HOT ALL THE WAY HOME

PICK UP A BOX, PAIL, BUCKET OR A BARREL

LE 7-7233
14102 PACIFIC AVE. PARKLAND

Merry

CHRISTMAS

"Best wishes for a very merry Christmas" and "Many thanks to you." These are the messages that local business firms extend to you here, as they welcome the oppor-

tunity to join in the traditional exchange of glad greetings at the holiday season, and to thank you sincerely for your valued patronage throughout the past year.



Happy Holidays!
VAUGHAN'S
Building Materials Inc.
6402 South Tacoma Way
GR 2-4494 or GR 4-9515



DAVE SEEBER

May we extend our warmest Holiday Greetings and wish you and yours a Joyous and Memorable Christmas.
CUSTOMIZED BOOKKEEPING
SPANAWAY LOOP
LE 1-3656



Yuletide Greetings

We're putting the finishing touches on Christmas by wishing you and yours an especially joyous and memorable holiday season.

College & Center Cleaners
11416 Park Ave.

Letting us serve you was the best



Christmas present of all, and we want to thank you for it. Happy Holidays!

Kittleson Rest Home
321 South 116th
Comfortable — Homelike Atmosphere
Individual Attention



To wish you a Merry Christmas

May you enjoy the best of everything on this glad occasion of the year, Christmas.

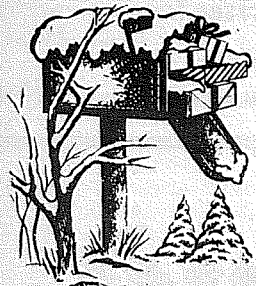
Brookdale Lumber Inc.
136th & Pacific



GREETINGS

We're heading your way with a sleighful of good wishes for Christmas! Our grateful thanks for their many kindnesses go to all those whom it has been our privilege to serve. May your holiday hold much happiness, love and contentment.

Parkland THRIFTCO
At Parkland Thriftway
138th Street and Pacific Ave.



MERRY CHRISTMAS

It's Christmas, presents all over. We'd like to thank you for the year-round present of your patronage.

Ashmore Drugs
165th & Pacific
Spanaway

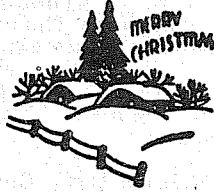


GREETINGS

We're heading your way with a plane-full of good wishes for Christmas!

Our grateful thanks for their many kindnesses go to all those whom it has been our privilege to serve.

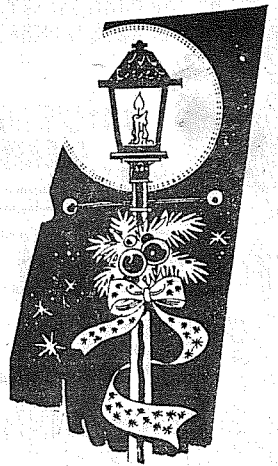
May your holiday hold much happiness, love and contentment.



TANOMA FLYING SERVICE
Spanaway Airport VI 7-2266

A Christmas Wish

We wish you all the best of holiday cheer... a Christmas bright with joy. Thanks to you our Christmas has been a happy one... serving you has been the greatest treat of all.



Johnson Drug
Parkland Shopping Center
Garfield Street & Pacific Ave.



Yuletide Joy

To All Of You From All Of Us.

BILL & DOROTHY RIGHETTI
JEAN ELSTON
WAYNE BUTLER
BILL THOMAS
WILMA THOMAS

South End Hardware
SOUTH 185TH & PACIFIC VI 7-7211 SPANAWAY

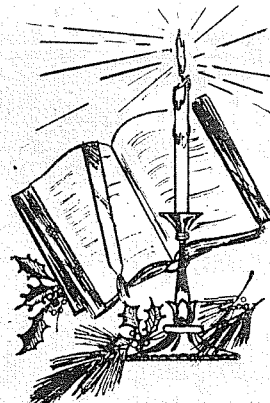


ADESTE FIDELIS
O come, let us adore Him! May the newborn King bless each and everyone at Christmas.

Parkland Western Auto
Associate Store

12151 Pacific Ave.
LE 7-3112

OPEN EVERY NIGHT TILL 9 P.M. EXCEPT SAT.



Peace On Earth, Goodwill To Men

Let us join in prayer this Christmas for a peace everlasting.

MAGDANZ HARDWARE
11401 PACIFIC AVE.
LE 7-5538

GREETINGS TO ALL



What Is Christmas?

What do you say if someone asks you to tell them about Christmas? What does a mother or father tell their little boy or girl when the youngster wants to know why we have Christmas?

Will the explanation begin with the statement that Christmas is a time of Christmas trees, shopping, ribboned packages in red and green and gold, parties and jingle bells?

Will the youngsters be told that the Christmas season is a time for new toys and clothes; a time when Santa Claus makes his annual journey from the North Pole to visit the children of the world. That they had better be good or Santa will not leave them any surprises?

Will you tell of pumpkin pie, ham and turkey and other Christmas goodies? Perhaps you will mention the snow and mistletoe and holly and brightly burning candles. Maybe the explanation will include the sweet sound of organ music from a church at twilight or the sound of children and their parents strolling through neighborhoods singing the Christmas carols in the early evening hours.

At what point in the explanation will you suggest to the searcher that Christmas is found somewhere amid the trappings and traditions of this particular holiday?

If you are to describe Christmas, why not begin at the beginning. And that is the simple and uncomplicated birth of a child in Bethlehem. Everyone knows the story. It has been repeated, unchanged, in every tongue for hundreds and hundreds of years. It doesn't change each year like so many of the other holiday trivialities.

Christmas is the message of Bethlehem - the realization that Christ is born and Christ is with us now and always.

Christmas is a simple, meaningful phrase: "For on this day is born unto the world a saviour." This, and only this, is Christmas.



Yuletide Greetings

Festive as candy canes and bright ribbons are our wishes for a joyous and fun-filled Christmas for you.

VIS REY, Inc.
12702 Pacific Ave.



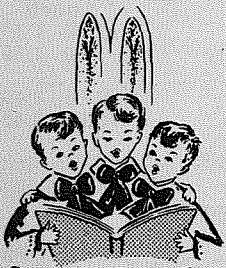
Happy Holiday

L & M

Automotive Service

170th & Pacific - LE 7-6772

Warm wishes and sincere thanks to our loyal friends and patrons.



Christmas Joy

We're joining the chorus with good wishes for you at Christmastime! May your home be filled with the best of holiday good cheer.

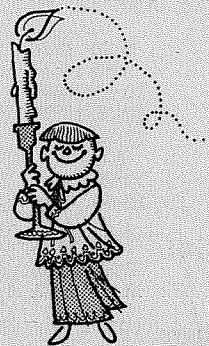
MARTENS ECONOMY AUTO PARTS INC.
11012 Pacific Ave.



MERRY CHRISTMAS

Here comes Santa with our very best wishes for those it has been our privilege and pleasure to serve. May your holiday be an especially happy one.

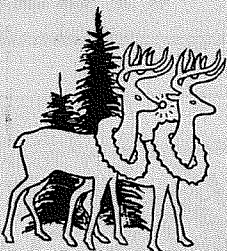
Parkland Cleaners
(In Keller's Kort)
110th & Pacific



Yuletide Greetings

Like a candle, cheery and bright, is our Yuletide wish for you. And warm as a candle's glow is our hearty "thank you" for your loyal patronage. It's always a pleasure to serve you.

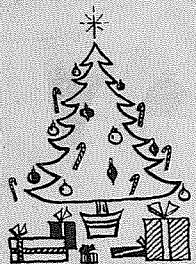
TINY'S TIRE CENTER
108th & Pacific - LE 1-4535



Merry Christmas

Once again, we pause to thank our many good friends and wish them the merriest of Christmases and a Yuletide season overflowing with happiness and good cheer.

OUHL'S RICHFIELD SERVICE
16002 Pacific Ave. - LE 7-9956

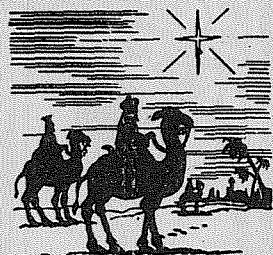


MERRY CHRISTMAS

It's time to trim the tree, and wish our good friends a happy holiday. Many thanks for your patronage.

Pochel's TV & Appliance
14001 Pacific Ave.

"Award of Merit Service Dept."



BEST WISHES AND MANY THANKS TO OUR LOYAL PATRONS. MAY THE CHRISTMAS SEASON BRING YOU HAPPINESS.

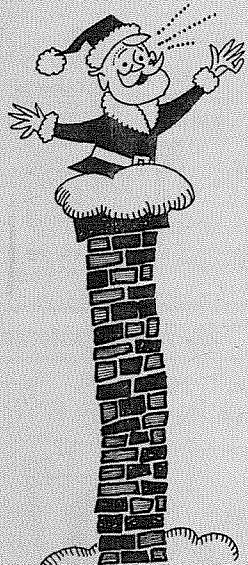
ARMSTRONG USED CARS
11009 PAC. AVE.



Merry Christmas

As lanterns glow with Christmas joy and greens disperse the scent of Christmas cheer, we wish you a Merry Yule.

ROY STANFILL WELL DRILLING
SOUTH 177TH & PACIFIC AVE.
VI 7-7150



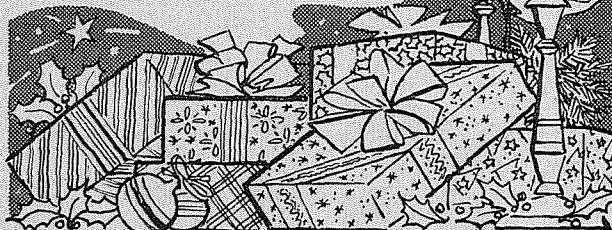
Christmas Greetings

We send our Santa to fill your chimney to the brim with our warmest holiday wishes, and to express our deep appreciation for your wonderful friendship and kind patronage. May you and yours be blessed with every Christmas joy!

SHOP MART
Department Store 133rd & Pacific

Here's to a bright and merry Christmas time blooming with many joys and packed with the pleasures of family, friends and home.

Elmhurst Mutual
Light and Water
The Trustees & Employees



USO Completes

Holiday Plans

For Servicemen

TACOMA - "Plans for the entertainment of hundreds of servicemen have been completed at the USO", according to Mrs. James Kors, USO Council president.

"Many will be going on leave", she added, "but thousands will remain and the USO is going everything possible to create a friendly atmosphere for them and to plan activities which will be of interest to them during their leisure time."

The period of program concentration is from Friday thru Jan. 1, 1968. On Friday an ice skating party has been scheduled at the Ice Arena and promises an evening of spills and excitement for those who have never skated. Those interested should be at the USO by 7:30 p.m.

Activities on three successive Saturdays include theme dances. On the 16th at 8:30 p.m., "Santa's Coming" will feature Santa Claus in person; on Dec. 23, the theme is "Silver Bells", and will be a formal dance. The New Year will be welcomed at the Dec. 30 dance with a theme of "Hi, 1968!" This will also be a formal dance and will include the installation of officers for the junior hostess group and for officers of the Servicemen's Council.

Appetites have not been forgotten. On Sunday, St. Luke's Episcopal Church Women will serve the weekly buffet supper of delicious home-cooked food to all military guests and their dependents. Although no groups were found to serve the following two Sundays, Christmas Eve and New Year's Eve, arrangements have been made and volunteers and USO staff members will prepare suppers on these two dates which will be just as appetizing and appealing as the others throughout the year.

Following the buffet supper a group of carolers will leave the club to sing at several locations including a retirement home and a home for dependent children. After singing the group will return to the USO for refreshments.

With the military bases on holiday routine, men will be visiting the club from morning to night. It is hoped to have candy, homemade cookies,

fruit and nuts within easy reach of these men. It is anticipated that more cookies and other homemade delicacies will be needed than planned at present. Families are invited to share their baked cookies, cakes or pies with men at the USO who have the appetites of normal, growing young men. In the past, it has taken two volunteers at a time to keep supplies of goodies within reach of our military guests during the holiday season.

Carols, recorded music, gaily decorated trees, wreaths, candles, family and friends are all a part of Christmas. The men coming to the USO may share in most of these good things of life. Absence of the family and the feeling of loneliness at being away from home the first Christmas will evoke many memories for them and they may look for a quiet corner in the USO.

"No attempt is made at the USO to 'organize' everyone into an activity", said Mrs. Blanche "Peg" Poole, program director, "although we try to schedule programs to please the majority. The serviceman who sits within hearing of carol-singing but does not want to sing, may be thinking of Christmas a year ago and comparing his experiences since that time. If that is the case, we leave him with his thoughts."

Other activities at the USO include bowling; kitchen parties with taffy and popcorn balls; movies; televised football games; ping pong, pool and table games; door prizes for steak dinners or long distance telephone calls. Every effort will be made to make it a happy holiday season for all.

Calendar of Events

The Board of Directors of Tacoma School District No. 10 will meet in special session at 8:00 p.m., Thursday, December 21, 1967, in Room 221 at the Vocational-Technical Institute in lieu of the regular meeting scheduled for December 28. The committee meeting will be at 7:30 p.m. in Room 224.

Blooming Orchid Plants
\$7.50 - \$12.50
Gift Packs Seedlings
\$4.00 - \$14.00
Orchids Unlimited
627 Pearl
Corner Bantz Blvd.

Guest Editorial . . . Bethel School Board Report

Dist. No. 1, Dr. William P. Hauser, absent; Dist. 2, Phil W. Zurfluh; Dist. 3, E.W. Webster; Dist. 4, Don Goddard; Dist. 5, Elsie Berggren; also present supt. Dr. F. Gramann and Mr. F. Olsen, clerk.

The board approved the purchase of two 73 passenger school buses to take care of the increased enrollment.

Then followed a study session in which Dr. Gramann showed slides of the different schools in Dist. and those that needed repair or replacement.

The board was also brought up to date on the many programs in Dist.

Planning for the eighteen class rooms, naming some and selecting the principal for same received a lot of attention. Next regular board meeting will be Tuesday, Jan. 2, 1968, at 8 p.m. in administration building. Remember, folks, everyone is welcome.

PIERCE COUNTY HEADQUARTERS FOR 1968

- ★ CHRYSLER
- ★ PLYMOUTH
- ★ VALIANT
- ★ BARRACUDA

CALL GR 4-0621

Steven MOTOR CO.
2709 SOUTH TACOMA WAY

BETHEL HAY

ALFALFA HAY
MUCK-KAPOWSIN RD. ON CEDAR
VI 7-7252

BOWLING 35¢

SATURDAY UNTIL 7 P.M.
SUNDAY UNTIL 1 P.M.

JUNIORS and SENIOR CITIZENS
all day - every day
PARADISE BOWL

108th & Pacific LE 7-6012

LOOK
8 ft. 2 x 4's
25¢ ea.
Anderson Lumber
9813 Pacific Ave.



All I Want For Christmas

Is A Gift Subscription To The Times Journal

The Times Journal Is A Welcomed Gift That Will Last All Year.

*For Servicemen *For Neighbors
Or Anyone Interested In This Area

Call **LE 7-0223**

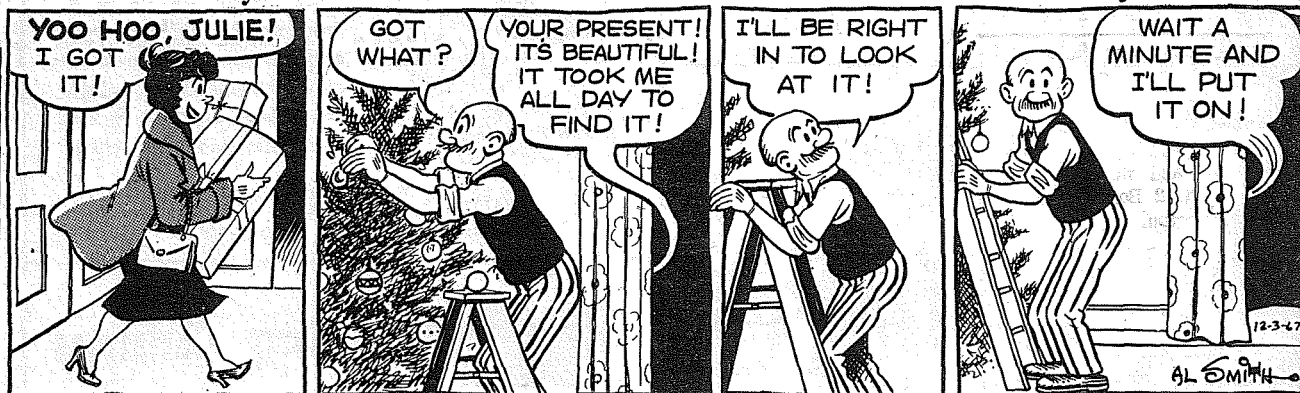
Bookmobile Schedule

A-3 WALLER RD.-WOODLAND - 1st & 3rd Wednesdays:	
Jan. 3, 17; Feb. 7, 21; March 6, 20; April 3, 17; May 1, 15.	
101st St. & 40th Ave. E.	9:00- 9:30
114th St. & 66th Ave. (Reigstad)	9:40-10:00
122nd St. & Woodland Rd. (Kerwin)	10:10-10:35
113th St. & Woodland Rd. (Lilja)	10:50-11:20
112th St. & Meridian (Willows Corner Trailer Court)	11:30-12:05
Lunch	
112th St. & 94th E. (Bowers)	12:40- 1:10
104th St. & 90th Ave. E. (Kimbel)	1:15- 1:35
101st St. & 74th Ave. E. (Joyce)	1:40- 2:10
102nd St. (Pipeline Rd. & Woodland Ave. E.)	2:15- 2:35
102nd St. & 64th Ave. Ct. E. (Colonial Park E.)	2:40- 3:00
101st St. & 61st Ave. E.	3:15- 4:00
A-9 VALLEY-WALLER RD. - 2nd & 4th Thursdays:	
Jan. 11, 25; Feb. 8, x; March 14, 28; Apr. 11, 25; May 9, 23.	
56th St. & 44th Ave. E.	9:00- 9:30
72nd St. & Canyon Rd. E.	9:40-10:05
80th St. & Canyon Rd. E.	10:20-10:40
Thomas & Fruitland (Durkee)	10:50-11:05
96th St. & 71st Ave. E. (Violet)	11:15-11:35
96th St. & 62nd Ave. E. (Winsley)	11:40-12:00
Lunch	
96th St. & Canyon Rd. E.	12:35- 1:05
80th St. & Vickery Rd. E.	1:10- 1:40
64th St. & Waller Rd. E. (Waller Rd. Water Co.)	1:50- 2:20
53rd St. & 36th Ave. E.	2:25- 3:05
85th St. & Golden Given E.	3:25- 4:05
A-10 GRAHAM-KAPOWSIN - 2nd & 4th Fridays:	
Jan. 12, 26; Feb. 9, 23; Mar. 8, 22; Apr. 12, 26; May 10, 24.	
McGee Home	9:30- 9:50
Snellstrom-Bush Rd. (Gardner)	9:55-10:15
Graham (Red Rose Restaurant)	10:25-10:45
Thrift Store	10:50-11:15
Orting Kapowsin Hwy. (Shanklin)	11:20-11:50
Lunch	
McDonald Rd. (Carpenter)	12:25-12:45
McDonald Rd. (Milton)	12:50- 1:10
McDonald Rd. (Chase)	1:15- 1:35
Kapowsin P.O.	1:45- 2:25
Orting-Electron Hwy. (McQuesten)	2:35- 2:55
King's Gate	3:05- 3:35
B-1 LACAMAS - 1st & 3rd Mondays:	
Jan. x, 15;	

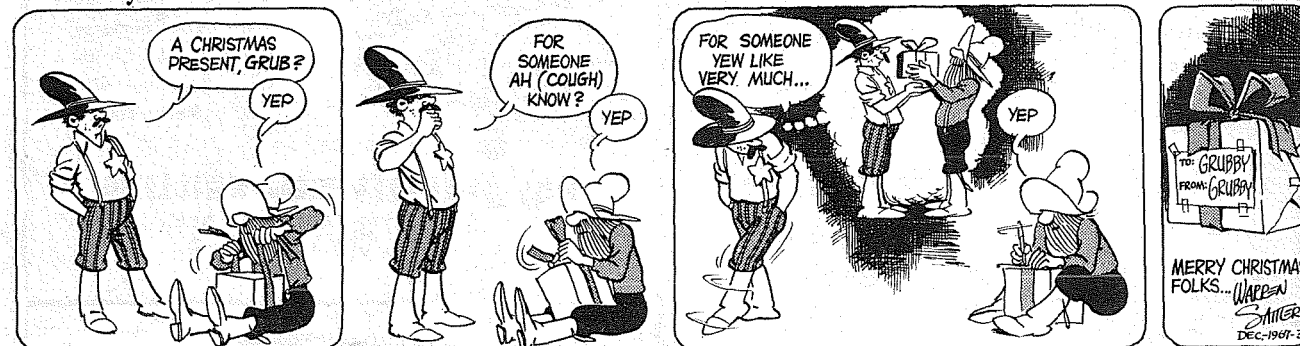
Feb. 5, 19; March 4, 18; Apr. 1, 15; May 6, 20.	
McKenna School	9:30-11:00
McKenna P.O.	11:10-11:50
Lunch	
Hart's Lake Loop & Tisch Rds.	12:40- 1:10
Tisch Rd. North (Coffman)	1:15- 1:45
Hart's Lake Loop & Roy Christie Rds.	1:55- 2:40
Pole Line Rd. (Rohr)	2:45- 3:15
Roy Christie Rd. (Clemons)	3:20- 4:00
B-2 SPANAWAY - 1st & 3rd Tuesdays:	
Jan. 2, 16; Feb. 6, 20; March 5, 19; Apr. 2, 16; May 7, 21.	
Roberts Rd. (Haire)	9:00- 9:20
159th St. & 7th Ave. E. (Guffey)	9:30- 9:50
171st St. & "C" St. So. (Troupe)	9:55-10:25
6117- 176th St. E. (Rogers)	10:40-11:00
17219- 74th Ave. E. (Hedlund)	11:05-11:20
17812- 52nd Ave. E. (Stenbak)	11:25-11:40
182nd St. & 38th Ave. E. (Hagen)	11:45-12:15
Lunch	
Orting Prairie Rd. & 38th Ave. E. (Kuper)	12:50- 1:20
Brown Rd. (Draper)	1:25- 1:55
184th St. & E. "B" (Hoover)	2:05- 2:35
168th St. & E. "S" (Drake)	2:55- 3:20
162nd St. & Pacific Ave. (Modahl)	3:25- 3:55
B-3 CANYON RD.-MERIDIAN - 1st & 3rd Wednesdays:	
Jan. 3, 17; Feb. 7, 21; March 6, 20; Apr. 3, 17; May 1, 15.	
128th St. & Waller Rd. E.	9:00- 9:25
128th St. & Canyon Rd. E. (Collin's Grocery)	9:30- 9:55
138th St. & Canyon Rd. E. (Van Beek)	10:10-10:40
144th St. & 58th Ave. E.	10:45-11:10
14327- 47th Ave. E. (Wolf)	11:15-11:40
152nd & Bingham (Leonard)	11:45-12:15
Lunch	
15321- 66th Ave. E. (Dempsey)	12:50- 1:15
148th St. & 70th Ave. E. (Firlane Valley)	1:20- 1:55
142nd St. & 94th Ave. E. (Reitz)	2:05- 2:45
144th St. & 107th Ave. Ct. E.	3:00- 3:45
B-8 PARKLAND-BROOKDALE - 2nd & 4th Wednesdays:	
Jan. 10, 24; Feb. 14, 28; Mar. 13, 27; Apr. 10, 24; May 8, 22.	
98th St. & Patterson So.	9:00- 9:20
Wheeler & Alaska So.	9:30-10:05
Tule Lake Rd. & Yakima So.	10:10-10:25
138th St. & 13th Ave. So. (Jacob)	10:40-11:25
505 East 138th St. (Phillips)	11:35-12:05
Lunch	
715 East Johns (Farris)	12:40- 1:25
1239 East 142nd St.	1:30- 2:10
138th St. & Golden Given E.	2:15- 2:50
142nd St. & 25th Ave. Ct. E. (Stanke)	3:05- 3:25
Brookdale & Tisch	3:35- 4:05

OUR WEEKLY COMICS

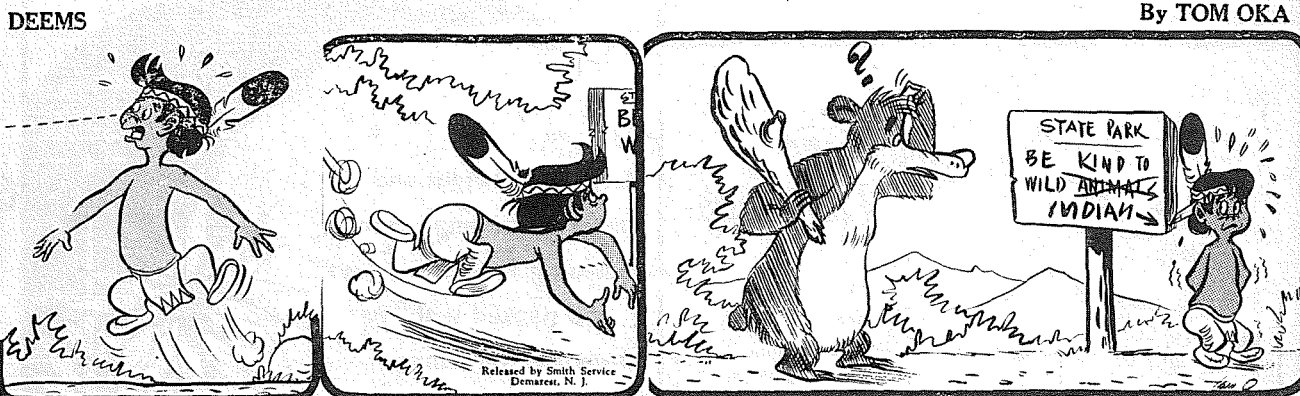
Rural Delivery



Grubby



By Warren Sattler



By TOM OKA



By Brad Anderson

CLASSIFIED ADS

Call LE 7-0223 For Want Ads

I Misc. For Sale

GRAVEL - fine screened, 5 yards \$13.50. Washed sand, pea gravel, drain rock, 10 ft. cedar fence rails. Norman LE 7-4088.

GRAVEL, bulldozing, ditching. ADM Co. TH 5-2452.

3/4 VIOLIN and case. Excellent tone. 1805-4th Ave. N.W. TH 5-6488. Call or see after 4 p.m. weekdays.

Trophy Storm Doors

Heavy Duty Aluminum Full Piano Hinge Standard & Special Sizes

Also Storm Windows Repair Service Available

Manufactured By

PARKLAND DOOR INC.

318 E. 96th GR 4-7011

REMINGTON 270 bolt action. Like new. See after 6:30. 7605-126th E.

16 MM camera, \$65. Copy machine & material. Binoculars, 2 tape recorders, 2 bar stools. All items nearly new. Very reasonable. 5001 - 26th St. E., Pife.

ORDER YOUR home made Christmas pies now. Free delivery. Call after 4:30. LE 7-0504.

NICE CABINET model Kenmore sewing machine. Includes button hole attachment. \$40. LE 7-3449.

9 Animals For Sale

POMERANIANS, AKC registered with shots - 3 white. Write and we will contact you, Rt. 2 Box 33, Mineral, Washington.

GERMAN Shepherd pups for Christmas Reg. LE 7-7102, 67-188

9 Animals For Sale

6 YEAR old Gelding. Good riding horse. \$150 or best offer. VI 7-2597.

WIRE HAired Dachshund puppies ready for Christmas, AKC papers. TH 5-9228.

SEALPOINT SIAMESE - 8 weeks old, 3 females. \$20. TH 5-0203.

BLACK POODLE puppies. \$20. TH 5-3516.

FLUFFY baby rabbits for sale. 10203 E. Canyon Rd. Puyallup, after 3pm. 67-197.

10 For Sale Or Trade

TREASURE MART. Buy, sell, trade, Fisher Treasure Finder 508 Garfield. 67-198.

22 Misc. Wanted

WANTED to buy - All U.S. coins as collected or layed aside. Will also trade coins or sell at reasonable prices. LE 7-7915.

FREE FILL gravel wanted at 120 133rd St. So. LE 1-4646 Elmhurst Mutual Light & Power Co. 67-113

23 Help Wanted

Midland and Pacific Ave. Areas Carriers Wanted
A few routes open
Times Journal
LE 7-0223

WOMAN to care for 4 children Wednesday thru Saturday. 3 school age, 1 baby. \$5. day. Live in or out. 12810 - 145th E. (Alderwood Estates).

30 Repair Services

TV SERVICE

All makes of Color and black & white.
LE 7-3427

27 Misc. Services

EXPERT alterations, mens & womens fast service and reasonable. LE 1-3506. 67-186

HELEN'S Parkland Ceramics Lessons-Supplies-Firing
1303 S. 117th
LE 1-0823

36 Personals

HAVE your hand writing analyzed, \$1.00. Parkland P.O. Box 2054. 67-193

HAVE an alcoholic problem? GR 5-1073 or VI 7-7715. Write Box 2265, Parkland. 67-194

38 Instruction

PRIVATE LESSONS IN YOUR HOME
Piano - Organ - Accordion
FURNISH ACCORDIAN ON Trial Period TH 5-3750

PIANO, guitar, band instruments. Students home or studio. LE 1-3246, SK 2-7695

PIANO and organ lessons. LE 7-4242.

DRIVER TRAINING. 3 week high school and adult course. LE 1-0505.

19 For Rent Or Lease

ONE bedroom house. Rental adjustment for plumbing, etc. Camp #1, Ohop. 893-5904.

OFFICE SPACE - Boat & Trailer Space for rent. Office \$50.00 per month. Lights, heat, water, and garbage furnished. Covered boat and trailer spaces \$10.00 per month. Phone LE 7-0223 days 10 to 4. 67-164

19 For Rent Or Lease

2 BEDROOM apt. Range, refrigerator, drapes, carpet. No pets. \$100. TH 5-5819.

HOME VACANT

We desperately need good rentals \$80 to \$150 per month

CALL NOW

Let us handle your worries

SUBURBAN REALTY

11302 Pacific Ave.
LE 7-8638 or LE 7-6896

Need Money?

We have investors who will buy your equity or loan on second mortgage.

Lovelace Realty

12920 Pacific - LE 1-5555

LIST WITH LION.

Our experienced and qualified personnel will appraise your property at no cost to you.

Call Lion Realty Inc.
LE 1-2242
11457 Pacific Ave.

Legals

SUPERIOR COURT OF WASHINGTON FOR PIERCE COUNTY
NO. 179436
SUMMONS BY PUBLICATION
ONEIDA C. MATNEY, Plaintiff
vs.
DENNIS O. MATNEY, Defendant.
THE STATE OF WASHINGTON, to the said DENNIS O. MATNEY.
YOU ARE HEREBY SUMMONED to appear within sixty (60) days after the date of first publication of this summons, to-wit: Within sixty days after the 7th day of December, 1967, and defend the above-entitled action in the above-entitled Court, an answer the complaint of the above-named plaintiff and serve a copy of your answer upon the undersigned Attorney for above-named, George F. Potter, at his office below stated; and in case of your failure to do so, judgment will be rendered against you according to the demand of the complaint for divorce which has been filed with the Clerk of said Court.
This is an action for Divorce.
George F. Potter
Attorney for Plaintiff
159 South 112th Street
Parkland, Washington 98444
LE 1-2889
Published in the Parkland Times-Journal Dec. 7, 14, 21, 28, 1967, and Jan. 4 and 11, 1968.

18 Real Estate Wanted

2 - 5 ACRES, Puyallup area, suitable for horse. Call TH 5-6795 after 6 p.m.

Listings Wanted

Buying or Selling
Real Estate Service
Call
Devereaux Realty
12152 Pacific Ave. LE 7-8658

Legals

NOTICE OF CALL FOR BIDS
Bids will be received by Pierce County Fire Protection District Number Six (6) for One (1) motorized combination pumping fire engine of 1500 G.P.M. capacity. Specifications may be obtained at the Parkland Fire Station located at 130 South 114th St., Parkland, Washington 98444. Bids will be opened at 8:00 P.M. on January 17, 1968 at the Parkland Fire Station located at 130 South 114th St., Parkland, Washington 98444. For further information call LE 7-8530.
Published in the Times Journal on December 21 and 28, 1967, and January 4, 1968.



Good Samaritan

Mr. and Mrs. Donald Hall, 15102 Bingham Ave. East, girl, December 7th.

Mr. and Mrs. Billy Honey, 2104 104th East, girl, December 8th.

Lakewood General

Mr. and Mrs. Eldon R. Palmer, 9824 So. Sales Road, girl, December 5th.

Mr. and Mrs. Glenn A. Ness, 8123 50th Ave. E., girl, December 6th.

Mr. and Mrs. Jerome W. Wing, 3402 So. 92nd Apt. 3-c-4, boy, December 6th.

Mr. and Mrs. Jerry Bittner, 1117 Violet Meadow, boy, December 7th.

Mr. and Mrs. Dale R. Nielsen, 510 So. 115th, girl, December 8th.

Mr. and Mrs. William P. Mitchell, 10115 So. Ainsworth, girl, December 12th.

Mr. and Mrs. Roger Indrebo, 9221 So. Alaska, boy, December 13th.

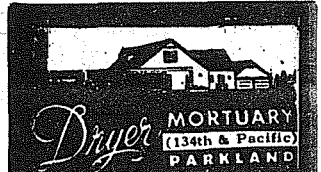
Mr. and Mrs. John D. Kerr, Route 1, Box 52, Eatonville, boy, December 13th.

Mr. and Mrs. Eugene O. Crump, 25309 51st. Ave. E. boy, December 14th.

RENT OR BUY
The beautiful Howard Piano made by Baldwin, \$10 monthly.
LE 7-4221

Legals

FOR SALE - LACAMAS SCHOOL HOUSE
Sealed bids will be received until 8:00 P.M., Tuesday, January 2, 1968, by Bethel School District No. 403, at the Administration Office for the "Old Lacamas School Building" located on Harts Lake Road. Bids will be received for the purchase and removal of said building. Description of property and bid form may be obtained at the District Administration Office and inspection by appointment. The Board of Directors reserves the right to reject any and all bids and waive all informalities.
Dr. Fred M. Gramann
Superintendent
Bethel School District No. 403
Spanaway, Washington
Published in the Parkland Journal Dec. 21, 1967 and Dec. 28, 1967.

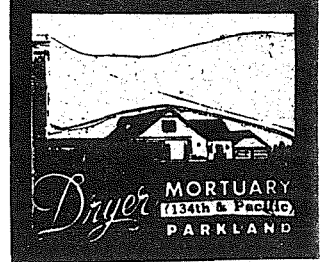


The Country Parson



"The tragic thing about trouble is that it is so much easier to get into than out of."

Copyright, by Frank A. Clark



RENT TV
Color TV
Portables All Sizes
RENTAL MARTS, INC.
Parkland GR 5-3755
9440 Pacific Ave.
Lakewood JU 4-4100
108th & Bridgeport

BUSINESS DIRECTORY

Furnaces

Sheet Metal
• Furnace Repair and Service
• Installations

PARKLAND FUEL OIL
12002 Pacific Ave.
LE 7-0256

Classified Ad Deadline is Monday 11 a.m.

Fencing

FENCING
Designers and Builders
EXPERT WORKMANSHIP
REASONABLE PRICES
Easy Monthly Payments
VAUGHAN'S
6402 S. Tacoma Wy. GR 4-9515

Top Soil

DOZER & LOADER WORK
Hour or Contract
Hauling State CC Permit
8-10 yd. new truck
NEWBURY'S DOZER SERVICE
LE 7-7455

Boush Moving & Storage
Agents for U.S. Van Lines
Coast to Coast Service
121 WEST STEWART
TH 5-5436

BUY SELL CLASSIFIED ADS TRADE LEASE

FOR BEST RESULTS IN:

BUYING SELLING RENTING

USE THE WANT ADS

The Times Journal PO BOX 2116 Parkland 98444
LE 7-0223

Ten Words . . . Only \$1⁰⁰
Use This Form For Ad Insert

Name _____
Address _____
City _____ Zip _____
Amount Enclosed _____
Classification _____
Copy _____

Final Revision Of Pollution Rules Due

A target date for final revision of the proposed air pollution regulations for the three counties of King, Pierce and Snohomish has been set for January 10, 1968. At that time, the Board of Directors for the Puget Sound Air Pollution Control Agency, will review and recommend adoption. The next step will be a formal public hearing preceded by preliminary, informal hearings in each of the

three counties, probably in February.

About 600 copies of the proposed regulations were sent out by the Board last August, according to Chairman John O'Brien. Comments were solicited from representatives of business and industry, government, civic and citizen groups. Since then the Agency's legal counsel, Keith McGoffin, together with the Advisory Council, have been working with the Agency Control Officer, Arthur R. Dammkoehler, and the Board to rework and refine the regulations.

The Advisory Council includes two representatives of industry, Gilbert L. Heath, Everett, and J.B. Adams, Tacoma. Also serving are Everett Community College President, Dr. Paul P. McCurley; Dr. August Rossano, University of Washington Civil Engineering; Mrs. George Gilman, Tacoma, representing the public-at-large. Commissioner O'Brien also serves as ex officio chairman.

The Board also announced the opening of a branch office in Everett. Staffed by three air pollution control inspectors and a clerk, the office is located in the Commerce Building, 1801 Hewitt Ave. The telephone number is AL 9-0288. Walter Gillard will be the inspector-in-charge for that office.

Additions to the Tacoma office staff were announced earlier and a new site will be selected in January.

Harold J. Johnson

Services were held Friday in Bellingham for Harold J. Johnson, 53, of 14614-50th Ave. E., Tacoma. Burial was in a Bellingham cemetery under the direction of Powers Wrigley Clements Funeral Home.

Johnson died Tuesday, Dec. 12, at his home. He was born in Idaho and had lived here the past 3 1/2 years. Johnson was an employe of the Fort Lewis Maintenance Division. He was a Navy veteran of World War II, and a member of the American Federation of Government Employees, Lodge 1504.

Survivors include his wife, Jessie A.; his mother, Mrs. Irene E. Johnson, of Walla Walla; two brothers, Jasper and Charles; and three sisters, Mrs. Alice Wood, of Walla Walla; Mrs. Irene Lage, of Seattle; and Mrs. Martha Sherman, of California.

98 New TB Cases Reported

Since January 1, of this year, 98 new cases of Tuberculosis have been reported to the Tacoma - Pierce County Health Department, the Tuberculosis Association of Pierce County announces.

Last year at this time, 110 new cases had been reported. Seven deaths from TB have occurred in the County thus far this year. Of these, four were under age 50.

Tuberculosis was reported from all areas of the county. The Puyallup Valley area, 11 cases; Brown's Point, 2; Gig Harbor, 3; Buckley, 2; Spanaway, 3; Orting, 1; Lakewood, 7; Milton, 5; Parkland, 4; Eatonville, 1; McNeil, 1. The remainder of the cases were in Tacoma.

LOOKING AROUND

Hope Palmer, pretty art teacher at Brake Junior High in Detroit has been advised by the school's principal to file an assault charge against a grandmother who caught Miss Palmer bending over to put pictures in a case and administered a well-placed boot. The grandmother said she took extreme action because Miss Palmer was wearing a miniskirt.

Moscow police gave a young policeman and an attractive policewoman an assignment of parking in a Lovers Lane section each night, cuddling and drinking wine. It worked. After several nights they were accosted by a man who had been posing as a policeman and collecting on-the-spot fines. They arrested him and their pleasant assignment was over.

9 a.m. - 10 p.m.
7 DAYS
A WEEK

BARGAIN BASKET

16618
Pacific Ave. S. Spanaway
LE 7-3371

No Sales To Dealers

WE RESERVE THE RIGHT TO LIMIT QUANTITIES

We Carry A Complete Line Of Sacked Feeds - Presto Logs

We Are Locally Owned & Operated
HELP YOUR BUDGET
WITH THESE SAVINGS

PRICES EFFECTIVE

Dec. 21-22-23
Thurs.-Fri.-Sat.

Folger's Coffee
3 lbs. \$1⁹⁹
2 lbs. \$1³⁹
One Pound 73^c
10-Oz. Instant 99^c

NALLEY
POTATO CHIPS
Regular, Dipper or Barbeque
Nalley CORN CHIPS Reg. 69c
47^c 49^c box

For Your Holiday Salads
NALLEY
MAYONNAISE
49^c Qt.

Snider
COCKTAIL SAUCE
29^c 11 1/2 oz.

Mrs. Nelson, Owner
and the staff wish
You A
MERRY
CHRISTMAS
We Will Be Closed
Christmas Day

Don't Forget
Nalley Chip Dips
43^c ea.

Lindsay
Large Pitted
RIPE OLIVES
#1 Tin 39^c

For Your Christmas Cookies
Ghirardelli
CHOC CHIPS
3/4 49^c 22 oz. 6 oz.

NALLEY
Cucumber Chip
PICKLES
39^c

DARIGOLD
BUTTER
One Pound 75^c

CHAIRS
For Little Tots
99^c ea.

For Your Salad or Cocktails
Pacific Pearl
TINY SHRIMP
49^c 4 1/2 oz. Tin

PRODUCE

TANGERINES 15 ^c LB.	CELERY Crisp Stalks 10 ^c LB.	Large Avocados 19 ^c Ea.	Hubbard Squash 1 ^c LB.
-----------------------------------	---	---------------------------------------	--------------------------------------

Everyday Low Meat Prices . . . 25 lb. Locker Boxes \$14.95

BAR-S CANNED HAMS 3 Lb. Can \$3 ⁰⁹	GRADE A TURKEYS 16-22 Lbs. 39 ^c Lb.	PORK SAUSAGE 39 ^c Lb.
MEAT LOAF 39 ^c Lb.	STANDING RIB ROAST 79 ^c Lb.	ROASTING CHICKENS 69 ^c Lb.

DEAR SANTA,



PAULS SHOES
161 St. & Pacific
LE 7-0552
Open 9 to 9 Daily
Till 6 Sat. & Sunday