



# DAD IS KING FOR A DAY

SUNDAY  
JUNE 16th

MOM WILL LOVE PREPARING A FATHER'S DAY DINNER WITH THESE SELECTED MENU MAKERS FROM SUMMIT TRADING CO.



School's Out...  
Soups On!

Campbell's

TOMATO  
SOUP  
10c

Campfire  
Marshmallows  
1-Lb. Pkg.  
29c

MCP  
POWDERED  
PECTIN  
2 For  
25c

ALL PURPOSE

Pillsbury Flour . . . . . 25-Lb. Bag \$1.98



DUTCH MAID

Margarine . . . 5-Lbs. 95c

NALLEY'S SALAD DRESSING

Nalley's Tang . . . . . Quart 39c

PILLSBURY - Perfect With Strawberries

Angel Food Mix . . . . . Pkg. 39c

HI-C

Orange Ade . . . . . 46-Oz. Tins 23c

Darigold Milk . . . . . 3 Tall Tins 39c

Darigold Butter . . . . . Print Pkg. 67c

LARGE AA NEST FRESH

EGGS . . . doz. 43c

SUMMIT SPECIAL

COFFEE . . . . . Lb. 79c

BITS-O-SEA GRATED LIGHT MEAT

1/2s

TUNA 20c

LIQUID DETERGENT

JOY . . . . . New Quart Size 79c

SUNSHINE

APPLE SAUCE COOKIES . . . . . 1-Lb. Bag 35c

A.B.C. HI NEIGHBOR

COOKIES . . . . . Lb. Pkg. 43c

MINUTE MAID

LEMONADE

PINK or REGULAR.  
6-OZ. TIN . . . . . 10c

SOLID HEADS

LETTUCE 2/15c

RED FIRM

Tomatoes 2 Lbs. 39c

Cauliflower . . . Lb. 10c

PILLSBURY  
PANCAKE  
FLOUR  
4-LB. PKG.  
39c

STORE HOURS

8 A.M. TILL 9 P.M. DAILY EXCEPT SUNDAYS

(Large Paved Parking Lot)

**SUMMIT**  
TRADING COMPANY

10409 Canyon Road - Tacoma LE 7-5848

No Sale To Dealers  
We Reserve The Right To Limit Quantities

MAXWELL HOUSE

Instant Coffee

6-Oz. Jar . . . . . \$1.19

MINUTE MAID

ORANGE JUICE

12-OZ. TIN . . . . . 29c

ROUND BONE & BLADE CUT - CHOICE MILK FED

Veal Steak . . . . . Lb. 49c

IT'S GOOD - CUT WITH POCKET FOR DRESSING

Brest o' Veal . . . . . Lb. 37c

CHOICE MILK FED - RUMP OR LARGE LOIN CUT

Veal Roast . . . . . Lb. 57c

CHOICE MILK FED LOIN

Veal Chops . . . . . Lb. 63c

CHOICE MILK FED

LIMITED SUPPLY

Veal Liver . . . . . Lb. 79c

LEG 'O VEAL

BREAD 'EM THEY'RE GOOD

Round Steak . . . Lb. 79c

Ham Loaf . . . . . Lb. 33c

IN OUR HARDWARE DEPT.

- Dry Goods
- Notions
- Hardware
- Sporting Goods





WHOLE OR SHANK PIECE SMOKED

# ARMOUR'S HAMS

20 To 22 Lb.  
Average. Will  
Cut Size To  
Order. Lb. . . .

# 45¢

CARSTEN'S CANNED  
PICNICS

3-LB. TIN

# 1.98

U. S. CHOICE BLADE CUT

POUND

# Pot ROAST 37¢

FRESH (CHEEKS)

POUND

# HALIBUT 49¢

# PRESERVES

STRAWBERRY  
SUNNY JIM  
(WHY CAN 'EM) CASE \$2.90  
12-OZ. SIZE . . . . .

# 4/1.00

OLD RANGER FREESTONE

No. 2 1/2 Tin

# Peaches 4/93¢

SNO MIST

No. 1/2 Tins

# TUNA 5/\$1

M-D WHITE OR COLORED

80 Count

# NAPKINS 10¢

# MARSHMALLOWS

KRAFT SALAD  
10 1/2-OZ. PKG. . . . .

# 2/39¢

# ICE CREAM

OUR OWN

DUTCH GIRL . . . . .

1/2 Gal.

# 79¢

BIT O' HONEY

303 Tin

# PEAS-CORN 3/49¢

JEFFY. YELLOW. CHOCOLATE OR WHITE

# CAKE MIX 11/1.00

# 11/1.00

# GIANT TIDE 69¢

# 69¢

Coca Cola

Plus Deposit  
REG. SIZE  
6 PACK . . . . .

# 2/56¢

# BREADED SHRIMP

SAN JUAN  
FROZEN

7-OZ.  
PACKAGE . . . . .

# 41¢

# Father's Day CAKE

8" Chocolate or White

Each

# 1.09

PARKER HOUSE

# ROLLS

DOZEN . . . 

# 39¢

# CANTALOUPE

CALIFORNIA  
JUMBO . . . . .

POUND 

# 7¢

# SWEET CORN

U. S. NO. 1

LARGE  
EARS . . . . .

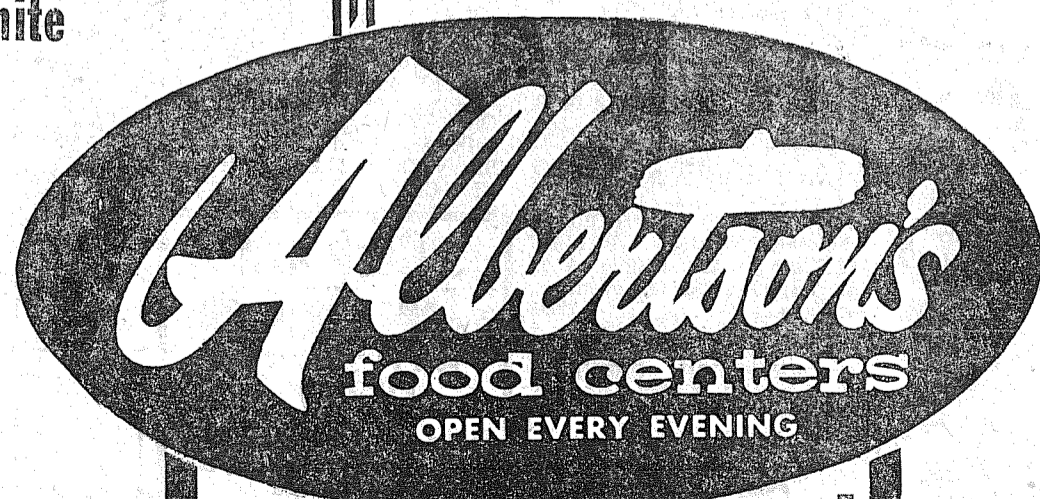
# 3/25¢

CALIFORNIA VALENCIA

# ORANGES

POUND

# 9¢



2 STORES TO SERVE YOU

• 6010 MT. TACOMA DRIVE, LAKEWOOD

• 72ND AND PACIFIC AVENUE

OPEN DAILY 9 TO 9 - CLOSED SUNDAY



### County Agents

By C. R. Doran  
Just out of Parkland and cruising along Airport road toward Parkland I was startled by a passing motor cycle rider and his escort. The exhaust explosions caught my attention but his shadowy companion held my interest. Altho the rider maintained a steady rate of 45 miles

an hour he was being paced by a pigeon that flew along at either elbow dodging over and around approaching vehicles. Seeming tire of steady flying the pigeon soared up and around a grove of trees joining the rider a quarter of a mile further along the road.  
At the Willows corner the rider parked his cycle and was standing over it with the pigeon perched on his cap when I pulled up. He is Earl Stahl of Wilkeson, happy looking fellow who works for a Tacoma lumber company. I asked about the need of occasional stops to give the bird a breather. Earl assured me his pet was in excellent condition as a result of 50 miles of road work every day. Pigeon insists on going along to work from Wilkeson to Tacoma and

return. "Is it difficult to train a pigeon?" "No" Earl explained. "After all it was his idea." Stahl had taken his pet as a homeless little squab from the mill where too many birds are a nuisance. Pigeon started escorting his owner on little trips around the neighborhood but one day he took the big hop and showed up at the mill. Now he puts in a regular 40 hour shift with Earl but as yet hasn't started punching the clock. While we talked the pigeon hopped around from one shoulder to the other occasionally pecking coyly at his pal's ear or pulling his hair. Few people have the ability to establish such understanding and confident relations with members of the animal kingdom.  
Carl Gockereel of Carnation Milk Farms was such a person. He was responsible for a long span of years for development of a series of world smashing

milk and butterfat records. In one year when I was testing at the Farm he was credited for making ten 1000 pound fat records which at that time was more than any other farm had made in its entire existence.  
Carl studies each cow closely and knew her likes and dislikes. He seemed to enjoy each animal's complete confidence. If one of his test cows needed medical attention or minor surgery he was never around during the treatment. There was no opportunity for the animal to associate him with pain.  
Regardless of the specie of animal, dog, cow or bird, the successful handler seems to develop a relationship of confidence and respect with his subject.

By Joseph Buhaly  
Brush stealing continues to be a subject of major concern to landowners on the Peninsula. Resolved to solve the problem are members of the Pierce County Farm forestry association. The group headed by Ted Knutsen of Key Center held it's second formal meeting to plan a program of action.  
Cecil Paul of Lakebay was elected temporary secretary - treasurer of the group. William Hinzman, Arne W. Armour, Edwin Voss all of Lakebay, Paul Alvestad, Gig Harbor, John Kingsbury, farm forester from Port Orchard and Joseph Buhaly, Pierce county Extension forester attended the meeting.  
An attitude of serious concern prevailed throughout the meeting. Edwin Voss stated, "It cost me \$30 a week in time lost patrolling my lands to prevent brush stealing." Arne W. Armour feels that unless this brush theft problem can be licked he will be forced to dispose of his property.  
Cecil Paul expressed typical sentiment of the group in comparing the brush farmer to the berry farmer. Both the brush farmer and the berry farmer put time and money into their crop. And as the berry farmer feels resentment against persons stealing his berries, so feels the sale and huckleberry brush farmer towards brush thieves. It's frustrating to spend days trimming brush, building trails, and making fertilizing trails and then have your crop stolen and your bushes recklessly damaged by thoughtless persons who cash in on the hard labor of others.

Without control of theft, no progress can be made in increased quantity and quality production of brush, this restricting the economy of the Peninsula.  
County legislation remains the best solution to date. A future meeting with Tom Garlington, deputy county prosecutor awaits the group for further discussion on the legislation possibilities.

The group expressed hope that similar classes would be held in the future. Of course our thanks go to Mrs. Johnson for her interest in helping these 4-H'ers in their project.

### Building Permits

The following building permits have been issued by Keith F. Jones, County Road Engineer, Building Department:  
John J. Hansch, \$3000 each, (3) homes moved to 1621 South 120th; Claude Miles, \$4000 frame home, Rt. 1, Box 468, Graham; Mrs. Alice Croston, \$750 garage, 615th So. 128th; A. E. Olson, \$2000 frame home, 5624 E. 128th; D. J. Ogden, \$5000 frame home, Spanaway; Edw. L. Massengale, \$4500 move home to prop.; 168th & Rademaker Road; E. P. Munsey, \$750 addn. to shop, 7924 Canyon Road; G. Emmett, \$200 addn. to home, Rt. 3, Box 900, Puyallup; James L. Ball, \$1000 lumber yard, Rt. 1, Box 363, Graham; George Mathewson, \$13,200 frame home, 612 So. 132.

**F-A-S-T**  
**COLOR FILM PROCESSING**  
IN 10 A.M. - OUT 5 P.M.  
SAME DAY  
35MM EKTACHROME  
**Quality Photo Service**  
9818 Pacific Ave.  
Two Doors North of Park 'n Shop

**Mountain View Food Lockers**  
**CUSTOM MEAT CUTTING**  
Locker Beef Available  
2519 East 112th LE 7-5332

**GLASS HOME SERVICE**  
OUR SPECIALTY  
Also Commercial Installations  
**DEAN'S GLASS**  
13021 Pacific LE 7-5661

Let Us Put Your Car In Top Shape For Carefree Motoring  
**COMPLETE AUTOMOTIVE REPAIRS**  
NO DOWN PAYMENT - BALANCE ON LOW MONTHLY BANK TERMS  
**PARKLAND AUTO REPAIR**  
10214 PACIFIC AVENUE LEnox 7-4433



# ONLY BIG BEAR HAS SUCH VALUES!



**STRAWBERRIES**  
Home grown large and solid ripe. Now at the peak of goodness. A delicious treat with Big Bear's Ice Cream also on special!

**2 FULL CUPS FOR 27**

**CANTALOUPE 8¢**  
Arizona vine-ripened melons. Pink sweet thick meated and full flavored. **POUND**

**TOMATOES 19¢**  
California Beef Steak variety. Meaty solid and firm ripe. Select your own. **POUND**

Week after week, month after month, you'll find the most outstanding values at Big Bear--for these big super markets have always been "the firstest with the mostest" when it comes to low prices!

**Western Maid MARGARINE**  
A smooth-spreading margarine, with a delicately natural flavor!  
**ONE POUND 19**

**COFFEE HOUSE COFFEE**  
Rich and full-bodied, fresh-roasted and finest flavor!  
**ONE POUND CAN 89**

Carsten's Hygrade or Federal Ready - to - Eat

**HAMS 49**  
Top-quality, tender and juicy hams; with a wonderful flavor and texture—12 to 16 pounds, whole or shank half. **POUND**

**Pot ROAST 37¢**  
Deliciously tender and meaty, well-trimmed blade cuts of Graded Choice beef. A dandy value! **POUND**

**SALMON 49¢**  
FRESH RED KING—Very tender, rich in flavor; whole or either half. Also center slices, 57c a pound. **POUND**

**VELVEETA CHEESE FOOD 2 Pound Loaf For 79**  
KRAFT---A delicious, digestible cheese food; chockful of milk nutrients and rich in milk, cheddar flavor---Always spreads, slices, toasts and melts perfectly.

**LIBBY'S TOMATO JUICE 4 46-Oz. Cans For 1.00**  
The full-bodied, refreshing juice of selected, vine-ripened tomatoes; rich in flavor and low in calories. Each can, just 25c!

**TREE-RIPENED FANCY CLINGS LIBBY PEACHES 3 No. 2 1/2 Cans For Only 87**  
SLICED OR HALVES—A quality pack of luscious, golden clings; picked at their peak of perfection. 29c a can.

**COTTAGE CHEESE 27¢**  
MEDOSWEET—Finest quality, extra fresh; your choice of Cream or Country Style at this low price! **POUND**

**ICE CREAM 39¢**  
Big Bear's own deliciously rich and smooth ice cream; in all popular flavors. A real taste treat! **QUART**

**LIBBY'S CRUSHED HAWAIIAN PINEAPPLE 4 No. 2 Cans For Only 99**  
Crisp, golden cuts of fancy Hawaiian pineapple; fresh-tasting, naturally sweet. Only 25c a can!

**BIG BEAR STORES**  
WHERE BETTER FOODS COST LESS!  
133rd & Pacific. Open 8 a.m. to 11 p.m. daily, including Sundays. Prices Wed. noon thru Sat. Limit.

**CLOVER CREEK . . .  
Many Awards at  
Graduation 6th**

Last Thursday, June 6, was the big day at Clover Creek school—Graduation! The program opened with the Pledge of Allegiance, followed by "America the Beautiful" by the band, with community singing of the second verse, Mr. Curtis directing. There were other hand selections and music by the glee club.

The invocation was by the Rev. Vance Babcock; welcome address, Sandra Randles; remarks, Will Damrau; salutatorian address, John McGee; class history, Christy Anderson; class will, Sharon Vorak; class prophecy, Roberta Barker; valedictorian address, Michael Taylor; graduation address, Clifford Boyce, Elk Plain principal.

John Connors presented the following awards: Valedictorian, Michael Taylor; salutatorian, John McGee; arithmetic, Vicki Reynolds; English, Michael Taylor; history, Sandra Randles; penmanship and spelling, Sharon Dahlseide; science, John McGee; inspirational, Sharon Vorak. Sharon gave a nice speech when accepting the cup, then introduced the class president, Gerald Hopkins, who presented a gift to John Connors, the 8th

**Preschool Picnic**

The Parkland Preschool picnic will be held at Wapato park on June 14 at 12:00 noon. It will be a potluck affair, coffee and Kool-Aid to be furnished.

All Preschoolers are welcome; bring your neighbors. For transportation call Mrs. L. E. Wheelock, LE 7-3629. In case of rain the picnic will be cancelled.

**Broken Bones**  
At the O'Leary house they have had bad luck. One day last week Margaret O'Leary broke a bone in her ankle and the next day her nephew, Patrick O'Leary, who lives in the same house on Rademaker road, broke his arm.

**Church News**  
The Clover Creek Baptist daily Bible school will have its closing program June 14 at 7:30 p.m. At the 7:30 p.m. Sunday service there will be baptism of 10 new members.

**Vacation**  
Your reported will be on vacation for the next two weeks, so please phone your news direct to the Times-Journal, LEnox 7-0223. — Mrs. Dalby.

**WISCONSIN CLUB** potluck supper will be held Sunday, June 16, at 6:00 o'clock in the basement of the Odd Fellows Temple, Sixth and Fawcett avenues.

**Collins Grange  
Members Busy**

Collins Grange members attended the Gavel meeting held June 4 at Benston Grange hall, with Benston Grange members as host, and Graham Grange conducting the meeting.

Collins Grange members put on the program; their theme was "Opportunity." They put on the same skit they used for the Talent Contest; those taking part were: Tommy and Alice Croston, Jewel Balmer, Loren Irish, Harley Hornbuckle, Lyle and Birdie Parker of Collins and L. E. Lovitt of Fruitland Grange.

The Crocker Quartette, consisting of Freeman Meyers, Harrison Ford, Robert Bartell and Noel Hale, accompanied by Tommy Croston, sang two numbers. This quartette and their accompanist, Gladys Berry (who was unable to be at Benston) will represent Pierce County at the State Grange convention in Spokane, June 16.

A stunt for audience participation, "The Town Cryer," gave some idea of the "opportunities" for hearing news in the old days.

Colored slides showing "Opportunities" for scenic trips, going north, south, east or west, were shown by Lyle Parker and prompted everyone to sing, "America, the beautiful."

Tonight, Thursday the 13th, is Collins Grange regular meeting. Fathers will be honored. See you at Grange.

**SPECIAL SAVINGS!**

PIGGLY WIGGLY \* PIGGLY WIGGLY \* PIGGLY WIGGLY \* PIGGLY WIGGLY

WELCOME  
**ICE CREAM** . . . . . 1/2 Gallon **79¢**

**C&H SUGAR** 25-Lb. \$2.47  
10-Lbs. . . . .

PLYMOUTH  
**MARGARINE** 2 LBS. **39¢**

FISHERS  
**BISKIT MIX** 40-OZ. PKG. **37¢**

LARGE "A"  
**RANCH EGGS**

**COFFEE** COFFEE HOUSE LB. CAN **89¢**

M. D. FAMILY  
**NAPKINS** PINK, WHITE, YELLOW 80 COUNT . . . PKG. **10¢**

FISHER'S BLEND 10-Lb. Bag **99¢**

**FLOUR** . . . . .

FRESH FROZEN BOOTH'S. 10-Oz. Pkg. **59¢**

**BREADED SHRIMP** . . . . .

GOLDEN GRAIN 24-Oz. Pkg. **33¢**

**SALAD MACARONI** . . . . .

B & M **BAKED BEANS** 4 28 Oz. Cans **99¢**

SURF MIST **TUNA** CHUNK STYLE

5-Lb. Bag **49¢**

**ORANGES** . . . . .

Ripe Calif. Lb. **15¢**

**TOMATOES** . . . . .

Jumbo Lb. **8¢**

**CANTS** . . . . .

CALIF. CRISP LONG GREEN STALKS Lb. **9¢**

**CELERY** . . . . .

CHET'S CHICKEN Or TURKEY Each  
**DINNERS** **63¢**

**Manning's** DATE COFFEE ROLL **4/35c**

Dotted Icingy - Reg. \$1.00. Special **93c**

**DEVILS FOOD CAKE** . . . . .

With Cherry Icing. Regular \$1.00. Special **93c**

**WHITE BUTTER CAKE** . . . . .

Regular \$1.00. Special **93c**

**MOCHA** . . . . .

Apple Sauce - Regular 59c. Special **49c**

**CINNAMON PAN** . . . . .

SUNNEE FRESH FROZEN **CUBE STEAKS** 8-Oz. Pkg. **43¢**

Prices Effective June 13 - 14 - 15  
We Reserve the Right to Limit Sales

**PIGGLY WIGGLY**

PACIFIC AT GARFIELD IN PARKLAND

ARMOUR'S STAR - TENDER, READY TO EAT!  
**HAMS** Whole or Shank Portion 12 to 16 Lb. Average. **49¢** POUND  
BUTT HALF Lb. 53c CENTER SLICES Lb. 89c

HORMEL'S MIDWEST BRAND **SLICED BACON** . . . . . Lb. **57¢**

CARSTEN'S HYGRADE, ALL MEAT Cello Pkg. **WIENERS** . . . . . Lb. **47¢**

CARSTEN'S HYGRADE **CHUNK BOLOGNA** . . . . . Lb. **39¢**

GENUINE 1957 SPRING LAMB SALE  
LEG 'O LAMB . . . lb. 69c | LAMB BREAST . . lb. 19c  
LAMB ROAST . . . lb. 49c | LAMB CHOPS . . lb. 79c  
LAMB STEAK . . . lb. 59c | LAMB PATTIES . . lb. 35c

SLICED SALMON 59c Lb. 6 To 8 Lb. Average. Whole or Half  
**FRESH KING SALMON** . . . lb. **49c**

**SLIK**  
AMAZING NEW WOODWORK CLEANER. Just brush on - Wipe Off. No Rub - No Scrub. Come in for FREE Sample.

WILL SWAP — Hardware, Paint, Plumbing & Electrical Supplies for Hand Tools, Power Tools, Power Mowers, Etc.

**Midland Hardware**  
8502 Portland Avenue  
OPEN SUNDAY

**ANNOUNCING  
ICE CYCLES  
OF 1957**

WITH CAST OF 150  
JUNE 12 - 13 - 14 - 15  
and  
JUNE 19 - 20 - 21 - 22

Managed and Produced by JOHN JOHNSON  
All Seats Reserved  
Call JU 8-7000 Shows Start - 8:00 p.m.

**LAKWOOD WINTER CLUB**  
ON STEILACOOM LAKE OFF STEILACOOM BLVD.  
(Only a few minutes from the Base)

**NO MONEY DOWN!**  
Long Term—  
Easy Payments  
when you  
buy

**CYCLONE FENCE**  
Direct From The Factory  
For a free estimate, phone  
Market 7-4551  
911 1/2 Pacific Avenue  
Tacoma, Washington

ONLY UNITED STATES STEEL CORPORATION MANUFACTURES CYCLONE FENCE

**JOHNSON DRUGS**  
(WALGREEN AGENCY)  
GREETING CARDS - GLASSWARE - STATIONERY  
JEWELRY - COSMETICS - LUNCHES - CAMERAS

**SCHICK SHAVER SPECIAL**  
Just in time for Father's Day. Regular \$29.50  
Genuine Schick Electric Shavers in case.  
Complete For Only \$18.50

Of course You'll **REMEMBER DAD**

This Sunday **JUNE 16**

WITH AN *American Greeting*  
**Father's Day Card**

**PRESCRIPTIONS FILLED CAREFULLY - PROMPTLY**

Cuff Link Tie Clasp Sets Fine Quality \$1 to \$3.49 Plus Tax

Sportsmen's Key Holders 75c

50 - 10c CIGARS Boxed Cigars \$4.50

Smokers Specials Pipes in assorted Styles 25c to \$5.00

Argus Slide Projector SPECIAL 300 Watt Lamp Magazine Load A \$59.50 Value For \$39.50

Easy To Use Zeiss Cameras Famous for finest pictures in color or black and white. \$49 to \$99

Store Open Daily 9 A.M. To 10 P.M. Sundays 12 to 8 P.M.



# Spanaway Wins Third Valley Game; Travel To Orting Sunday

SECOND SECTION

## The TIMES JOURNAL

THURSDAY, JUNE 13, 1957 • Voluce 12, No. 40 PAGE 9 PUBLISHED AT PARKLAND, WASH. LEnox 7-0223

### ALONG THE TRAIL

With Larry Kirkwood

Well, here we are again. We all lived through the Parkland Round-up, we think! We all feel real good to think that the Round-up was such a success this year again. Parkland is really getting on the map, with photographers, news reporters, television men, etc., all buzzing around. Did'a see some of the pictures taken at the Round-up shown on television? Course you

saw the picture of the cowboy hitting the dust on the front page of the Sunday paper? Course you couldn't help but notice what a nice appearance our queen, Leone Stant, and her princesses made. Art Drexler and Kenny Dunlap were really top notch pick-up men and it was almost as thrilling to watch their horses work as to watch the bucking stock. The steer dogging thrilled the crowd, also, with those steers just defying those cowboys to throw them. The Tacoma Lariettes gave a nice performance of their square dance on horseback, a fast moving event. All in all we are sure everyone had a wonderful time.

To turn our attention to coming events, the Pierce County Posse is spending every possible moment getting ready for the State Posse meet to be held in Yakima June 21, 22, and 23.

On June 30 there will be the annual Washington State Horsemen Telegraphic Meet, with the Puget Sound Zone meeting at the Elma fairgrounds. The program consists of strictly game and timed events and all of the best horses in this particular field will be there. Last year this meet was very successful so this year should be even better.

On July 4 and 5 there is to be a rodeo at Sedro Woolly. Also July 4 there is a rodeo at Oakville, with gymnastics events.

Our Tacoma Lariettes are holding their annual show on July 9 at Tacoma Unit grounds. Premium lists are not yet out but will be soon.

Other rodeos are at Auburn July 21 and Ft. Lewis August 9, 10 and 11.

Along the trail we saw the Colts and Fillies doing a very nice drill at the Round-up Horse show. Marge Betts being a very busy gal, queen mother for

### NAIA Champ



HEAVE AWAY—Here is NAIA javelin champion John Fromm of Pacific Lutheran College displaying the form that helped him establish a new record in this event at San Diego, June 7.

the Round-up princesses and secretary for the rodeo. The Mazzuca twins accompanying their father and mother, Ed and Carol, to the rodeo.

Send your news items to Larry's Mt. View Cleaners, 11903 Pacific Avenue, LEnox 7-3261.

**General Sheet Metal Work**  
Special Attention to Special Equipment  
**RAU MFG. CO.**  
LEnox 7-7372

### Fromm To Toss Spear At Austin In NCAA Meet

John Fromm, the traveling javelin thrower from Pacific Lutheran College will be in Austin, Texas, this weekend where he will pitch the spear in the NCAA finals.

Fromm won the NAIA title last week with a record toss of 243' 11", exactly nine feet better than his best effort this season and fifteen feet, five inches above the NAIA standard that he set last year in the same meet.

Fromm rates a good chance of winning the NCAA this year. He has the longest toss in the country with the exception of Bob Voiles of USC, but Voiles is ineligible for the NCAA this year.

As per usual, Fromm's toss last week was a new field record. It was the ninth time in eleven tries that John has set a field record this year.

Fromm will also throw in the National AAU meet at Dayton, Ohio, June 21-22.

### GOLF NEWS

Medal Play will be featured at both the College and Brookdale Golf Courses this weekend.

Of the 38 entries in the National Golf Day at the two clubs, 15 golfers qualified for the medal. The men's national open champ, Cary Middlecoff, shot a 70 which was beaten by 13 men. Two women also won medals.

Results of last week's play: Brookdale, best 17 holes. First Division: Len Blakely, 58; Spence Broomhead, 60. Second Division: Al Drost, 58; Vern Bishop, 59; Fred Sigby, 60. Third Division: Todd Johnson, 58; Ladd Hershey, 60; Al Stearns, 61; Jim Hill, 61. College: Mon-Fri.; Nine-hole medal: First Division: Bob Romnes, 31; Jim Hill, 32½. Second Division: Carl Peterson, 27½; Bill Payne, Jr., 28½; John Norris, 30½. College: Sat. and Sun.; Elective Nine. First Division: John Norris, 26½; Ed Marsh, 27½. Second Division: Frank Grattias, 25½; Ray Kuhns, 26½. Closest to pin: Oral Markward, 3' 8" on No. 6.

### VALLEY LEAGUE

Eastern Division		
W	L	Pct.
Spanaway . . . . .	3 0	1.000
South Prairie . . . . .	2 1	.667
Orting . . . . .	2 1	.667
Lacamas . . . . .	1 2	.333
Edgewood . . . . .	1 2	.333
Puyallup . . . . .	0 3	.000

Results June 9  
Spanaway 6, Lacamas 1.  
Orting 9, South Prairie 1.  
Edgewood 5, Puyallup 2.

Schedule June 16  
Spanaway at Orting.  
South Prairie at Puyallup.  
Edgewood vs. Lacamas at Bethel.

Western Division		
W	L	Pct.
Kiwanis . . . . .	2 0	1.000
Stanley's . . . . .	2 0	1.000
Nalley's . . . . .	1 1	.500
St. Paul's . . . . .	1 1	.500
Lakewood . . . . .	0 2	.000
18 Vets . . . . .	0 2	.000

Results June 9  
Kiwanis 4, Nalley's 2 (10 innings).  
Stanley's 7, Lakewood 3.  
St. Paul's 25, 18 Vets 3.

Schedule June 16  
Stanley's vs. 18 Vets at Portland Avenue.  
Lakewood vs. Kiwanis at Western State.  
St. Paul's vs. Nalley's at Harmon.

Spanaway, Kiwanis and Stanley's recorded victories in Valley League play last Sunday to keep their perfect records intact.

Spanaway's 6-1 victory over Lacamas coupled with South Prairie's 9-1 loss to Orting left Spanaway all alone atop the Eastern Division standings.

Kiwanis downed Nalley's, 4-2, in an extra inning, to keep pace with Stanley's, who defeated Lakewood, 7-3.

Edgewood beat Puyallup, 5-2, and St. Paul's ran by the 18 Vets, 25-3.

Bob Brewer went the route again for Spanaway. Brewer has now appeared in each of his team's three Valley League games this year.

He went the distance in winning the opener at Puyallup, 10-4. Then he saved Art Thiel's vic-

tory over Edgewood with a nice bit of relief work in the ninth inning and then went the full nine again last Sunday.

Buzz Eley went three for four and Ray Brammer hit a home run to lead the Spanaway hitters. Orting won easily at South Prairie behind the hitting of winning pitcher Otto Balmer, Boyd Wilkins and Ken Wilburn. Balmer had three hits, and Wilkins and Wilburn two each. Chuck Hodder and Swede Anderson each stroked three hits for South Prairie.

Al McCoy fanned 12 Puyallup hitters and gave only four safe hits as Edgewood won its first of the season, 5-2, at Puyallup.

Chuck Matson's perfect squeeze bunt with the bases loaded in the top of the tenth inning helped Kiwanis to a 4-2 victory over previously unbeaten Nalley's. An infield error accounted for the other run in the tenth.

Winner Jim Cunningham was touched for only three hits in ten innings, while Kiwanis could get only four off John Barnett and loser Gar Winder.

Bailey and Ford divided the pitching chores for the Shoemen. Ford relieved Bailey in the sixth, but Bailey was the winner.

The Lumbermen teed off on the 18 Vets' pitching staff for 17 hits and 25 runs, the season's high. The Vets made 14 errors behind their three pitchers.

The feature game next Sunday is the Spanaway at Orting contest. After losing its inaugural to Lacamas, Orting has scored 21 runs in its last two games and still have a good chance for the title.

The short scores:

Eastern Division		
Lacamas	000 000 100	1 4 3
Spanaway	210 000 03x	6 10 1

Western Division		
St. Paul's	310 706 800	25 17 5
18 Vets	102 000 000	3 4 14
Peterson, Coleman (7) and Robbins; Wilford, Simon (4), Dantzley (7) and Charles. W—Peterson. L—Wilford.		

### County Parks To Open Soon

Dan Inveen, director of County Recreation, announced Monday that six playgrounds in this area will be opened June 17 and will run through August 17. Four of the playgrounds will be open Monday through Friday, 10 a. m. to 5 p. m., and two will be operating only part time. The playgrounds, their leaders and their hours of operation are: Dawson—Florence Davison, Monday through Friday, 10 to 5. Collins School—Lee Reeves, Monday through Friday, 10 to 5. Central Avenue School—Gail Tacklackson, Monday through Friday, 10 to 5. Parkland School—Kathrine Brewer and Byrd. W—Brewer. L—B. Guthrie.

Wise. Monday, Wednesday and Friday, 10 to 5. James Sales School—Kathrine Wise. Tuesday and Thursday, 10 to 5. Spanaway School—George Posen. Monday through Friday, 10 to 5.

The swimming program will be run on Tuesday and Thursday from one to five. At that time most of the playgrounds will be closed.

Buses will be provided for the children to ride from the playground to the swim area. These buses will be provided by the Franklin-Pierce School District. Local playground leaders will have details on swim program and other special events.

The playgrounds will have a 'nature' theme this summer. The first week will be an introduction to nature. Special events during the week will be nature every hour, sandcraft contest, scavenger hunts and checker tournaments.

**Horse Shoeing**  
BY AN EXPERT  
**J. R. YOUNG**  
Phone Orting TW3-5362

**HOBBY FUN**  
for all the Family!  
Models of All Kinds . . . . .  
Boats - Planes - Cars - Etc.  
Also  
**RECORDS**  
Latest Popular—  
Classical—Western  
**HOMESTEADER**  
414 GARTFIELD  
LEnox 7-8137

**NOW \$69.95**  
Complete with Tools

**HOOVER Constellation Model 84**



the cleaner that walks on air!

AT A NEW LOW PRICE

- Follows you on its own air stream — without pulling.
- Nozzle glides smoothly on 3 wheels.
- Double-stretch hose lets you clean a full flight of stairs.
- Full 1 h. p. motor.
- King size throwaway dust bag.

**BIG SAVING!** Formerly Sold for \$97.50

**Parkway Furniture**  
141st & Pacific Avenue  
Open Til 9:00 Le 7-3911

**Tic-Toc JEWELRY**  
10331 PACIFIC AVE.  
Repairing of Fine Watches  
Our Specialty  
**GLEN A. CARMACK**



**Dr. L. H. Thurmond**  
OPTOMETRIST  
Complete Visual Service  
Tues. thru Sat: 9:30 to 6:00  
Closed Monday  
Evenings by Appointment  
Phone LE 7-4460  
11816 PACIFIC AVENUE  
Blk. So. of Parkland Br. Bank

**VAUGHAN'S VALUES**  
Aluminum STORM DOORS . . . . . \$38.95  
Wood STORM DOORS . . . . . \$19.95  
Wood SCREEN DOORS . . . . . \$7.92  
Tension Title WINDOW SCREENS  
All Aluminum - Easy to Install  
Ask About Our Monthly Pay Plan  
**Vaughan's**  
PACIFIC AVENUE LUMBER COMPANY  
84th & Pacific Avenue GR 4-9515

**SPECIAL FOR Pop SUNDAY JUNE 16**  
Camp & Trail SLEEPING BAGS  
With 3-lb. cellocloud insulation, plaid lining, water repellent and wind resistant cover. Reg. \$19.95.  
**Special \$14.85**  
HUNTING & CAMPING EQUIPMENT GALORE  
**TARGET SPORT STORE**  
165th & Pacific Le 7-7083

**GOOD NEWS**  
The most complete choice of size, power, weight, or price  
**for chain saw users**  
McCulloch Motors Corporation has appointed a new chain-saw dealer in your neighborhood.  
For service and sales on all McCulloch saws, be sure to visit  
**PACIFIC SAW AND KNIFE**  
224 Puyallup Avenue  
Tacoma, Wn. MA 7-2278

**PLAY BALL**  
Watch Or Listen To Baseball At It's Best On A Set In Perfect Operating Condition  
**BIXBY TV-RADIO**  
12503 WALLER ROAD  
CALL LEnox 7-8309

**SALES & SERVICE**  
**McCulloch CHAIN SAWS**  
Model 26  
Model 39  
Model D-44  
Model 49  
Model 56  
Model 77  
Model 99  
Plunge Saw Models

**gifts for V.I.P.'s**  
\*(VERY IMPORTANT POPS)\*  
**ON FATHER'S DAY!**

**E & W Brand White DRESS SHIRTS . . . . . \$2.99**  
With French Cuffs

**PHOTO COLOR TIES . . . \$1.29**  
6 Beautiful Scenes To Choose From!

**BOSTON BELTS . . . 98c**  
Genuine Steer Hide

**GENUINE LEATHER WALLETS**  
98c to \$2.19

**H & I POWER GLASS 8 1/2 Ft. MOOCHING ROD . . . . . \$14.49**  
Reg. \$28.95 With Spinning Guides . . . . .

**FLOATING SALMON NETS**  
With Telescope Handles  
Reg. \$6.98  
\$7.95

**NICE SELECTION GIFT ITEMS**  
PIPES, SOCKS, SUSPENDERS, PENS, TOOLS, CAMPING EQUIPMENT

**IMPERIAL HUNTING KNIVES**  
With Sheath  
**98c**

**SHOP-ETTE VARIETY** (Next Door to "Big Bear")  
Open Daily 10:00 A.M. to 9:00 P.M. — CLOSED SUNDAYS

**GENERAL ELECTRIC APPLIANCES**  
☆ OPEN EVERY NIGHT UNTIL 9 P. M. (SATURDAY 'TIL 6) . . . . . FREE FRONT DOOR PARKING ☆  
**BUY the BEST at WEIR'S . . . FOR LESS!**  
8419 PORTLAND AVENUE  
CALL LEnox 7-5650

# K.T.N.T. SELLARAMA

COME SEE THE CLOWNS AND HAVE FUN. FREE CANDY AND BALLOONS FOR THE KIDS. ENTERTAINMENT FOR EVERYONE!

12 NOON TILL 6 P.M.

**SATURDAY JUNE 15th**



COME SEE  
**NUTSY**  
THE CIRCUS PEANUT CLOWN  
**BEECHY**  
THE BEACHNUT CLOWN

COME SEE  
**BRAKEMAN BILL**  
AND HIS  
**WESTERN BAND**

**FREE!**  
BALLOONS  
COTTON CANDY  
COFFEE - PEANUTS  
CANDY, GUM, POPCORN

COME SEE  
**BON BON**  
THE DOCTOR ROSS  
DOG FOOD CLOWN

COME SEE  
**STAN**  
THE K.T.N.T.  
RECORD MAN

COME SEE  
**HAL HILL**  
YOUR FAVORITE DISK JOCKEY  
And  
**DON ST. THOMAS**  
PROGRAM DIRECTOR

COME SEE  
THE  
**SQUARE DANCE**  
EXHIBITION

**DUTCH MAID MARGARINE** 5 LBS. **99¢**  
**M. J. B. COFFEE** 2 LB. CAN **1.89** LB. CAN **95¢**  
**ASSORTED JELLIES** SUNNY JIM 5 JARS **\$1**

**CAKE MIX** DROMEDARY WHITE, YELLOW, DEVILS FOOD 4 BOXES **89¢**  
**BEECHNUT** GUM OR LIFESAVERS 2 PKGS. OF SIX **39¢**  
**PEANUTS** CIRCUS - VIRGINIA BLANCHED 3 CANS **99¢**  
**MIXED NUTS** CIRCUS CAN **56¢**  
**SKIPPY DOG FOOD** 3 CANS **25¢**  
**COOKIES** BROWNIE NEOPOLITAN CREME SANDWICH 14-OZ. PKG. **49¢**  
**U & I SUGAR** 25 LB. BAG **\$2.39**  
 POWDERED OR BROWN ..... 2-Lb. Pkgs. 25¢

Boneless Fully Cooked Fiesta

**Canisters HYGRADE BASEBALL BARGAINS HAMS** Lb. . . **89¢**

**JUMBO BOLOGNA OR PLAIN LIVER SAUSAGE** . . Lb. **39¢**

**SKINLESS WIENERS** . . . **45¢** LB. | **MORNING GLORY SLICED BACON** **59¢** LB.

**SPECIALS FOR FATHER'S DAY**

**Prime Rib Roast** . . . Lb. **65¢**  
**Rib Steaks** . . . . . Lb. **69¢**  
**Small Hams** FEDERAL Whole or Shank 1/2 . . . Lb. **45¢**

**STORELY VAN CAMP** 2 1/2 Can **19¢**  
**PORK & BEANS** . . . . . 14-Oz. Bottles **2/29¢**  
**CATSUP** . . . . . 303 Cans **5/99¢**  
**FRUIT COCKTAIL** . . . . . 303 Cans **6/99¢**  
**GREEN BEANS** . . . . . 46-Oz. Cans **4/99¢**  
**TOMATO JUICE** . . . . .

Picnic Pickles From Nalley's

**NALLEY'S POTATO CHIPS** . . . **49¢** Regular 59¢ Box  
**NALLEY'S MAYONNAISE** . . . **55¢** Quart  
**DILLS** Banquet or Kosher 24-Oz. **3/\$1.00** Polish or Garlic 32-Oz.

**CALIF. CORN** . . . . . 6 Ears **49¢**  
**CELLO CARROTS** . . . . . 2 Bags **19¢**  
**SUNKIST LEMONS** . . . . . 2 Lbs. **29¢**  
**SALAD MIX** . . . . . 2 Pkgs. **19¢**

**LARGE AA EGGS** . . . . . Dozen **43¢** | **Centennial FLOUR** . . . . . 10-Lb. Bag **95¢**

**BISQUICK** FOR WONDERFUL SHORTCAKE 40-OZ. PKG. **39¢**  
**BUMBLE BEE TUNA** 2 NO. 1/2 CANS **49¢**  
**SILK TISSUE** 3 ROLLS **19¢**

PRICES EFFECTIVE JUNE 13 - 14 - 15

# FOOD IGA TOWN

112TH AND PARK AVENUE

PARK WITH EASE - SHOP WITH PLEASURE

# Strawberry Fete Set Friday, 14th

Marie Hazen Orthopedic Guild will hold the annual Strawberry Festival Friday, June 14, at the Waller Road hall, 64th and Waller road, with serving from 2:00 to 9:00 p. m. The best in old fashioned strawberry shortcake and good coffee is promised.

A very enjoyable program has been arranged for the enjoyment of guests, with two performances, one in the afternoon and one in the evening, featuring novelty dances, baton twirling, accordion and piano music, a girls' quartette and a boys' quartette.

This will be the fourth Strawberry Festival since the affair started with an afternoon garden party at the home of Mrs. Godfrey Berg on Waller road. Since moving the festival to the Community hall, the ladies have retained the garden setting, with lovely flowers and beautiful fir trees pleasing to the eye.

Guild members will hold a bazaar also, with beautiful hand made articles and home baked goods for sale, with grab bags for the kiddies.

Proceeds from the event will go to the Tacoma Orthopedic Association for maintaining the Mary Bridge Children's hospital. The public is invited to attend; tickets may be had at the door. There will be a special award.

Mrs. Jack Johnson is in charge of decorations. Others serving on the committees are: Mesdames Homer Haney, George Hazen Sr., Rex Harrington, Carl Sanbeck, C. A. Benson, Godfrey Berg, E. Valentine, G. Carlson, George May, Harvey Weeks, J. M. Heath, Oscar Gilbo, S. H. Boyce, Earl Terrell, Thomas Burns, Ralph Thorsen, E. Anderson and H. Gustafson.

The Waller Road-Fair committee will meet Wednesday, June 13, at 8:00 p. m. at the Community hall. Representatives from Grange, P-TA, youth groups and the Garden club are to be present. Any other person who will volunteer to assist this group of community minded citizens will be welcome. Your help will be greatly appreciated and your suggestions for betterment of the annual fair considered by the board; E. D. Costantini is chairman.

**In Hospital**  
Mrs. Cliff Samuelson has been confined to Tacoma General hospital following major surgery. Her friends wish her a speedy recovery.

**Visitors**  
Mr. and Mrs. Hoyt Boobe of Dayton, Wash., were weekend visitors of their son-in-law and daughter, Mr. and Mrs. Douglas Fogle of 3414 East 48th St.

**At State Camp**  
Mrs. Gilbert Carlson, leader of the Waller Road 4-H Lassies, left Tacoma Sunday to attend the State 4-H Club Camp at Pullman; she was accompanied by three members of the club, Jeanette Baker, Claudette Baker and Lana Alexander. Mrs. Carlson is presiding over the week's business sessions. She has advanced as president of the State group since last year's convention.

The Baker twins will audition for the talent program, held during the week's activities. The girls have become well known for their ventriloquist act. The best wishes of the club members go with them.

**School Notes**  
Plans are being made for kindergarten next fall in the Puyallup public school district, of which the Waller Road school is a part. To be eligible for kindergarten a child must be five years old on or before Oct. 31, 1957. A birth certificate or its equivalent is required as proof of age. Pupils living outside the Puyallup school district will not be accepted. A physical examination is not required for kindergarten. Registration for kindergarten will be held one full week before the opening of school in each elementary building, dates to be announced.

## Completes Course



(AHTNC)—Army Capt. Harvey E. Jewett, whose wife, Betty, lives at 9203 Waller road, Tacoma, Wash., recently was graduated from an 18-week associate infantry officer advanced course at the Infantry School, Fort Benning, Ga. Captain Jewett, son of Harvey M. Jewett, 1308 S. 12th St., was a student at the University of Washington before entering the Army in 1940. He was last stationed at Fort Lewis.

## First Graders

To be eligible for 1st grade a child must be six on or before Oct. 31, 1957. A certificate or equivalent is required for proof of age. A physical examination is required and will be given free of charge by any Puyallup physician.

To help the doctors spread this examining load over the summer months, please take your child according to the following schedule. All pupils with names starting with the letters:

A through H—please get an appointment in June; I through N—please get an appointment in July; O through Z—please get an appointment in August.

**Meeting Cancelled**  
The June 21 meeting of the Waller Road Grange has been cancelled due to members attending the convention, taking trips, not being able to attend and for other reasons.

The Grange picnic was set for Aug. 4 at 2:00 p. m. at Wapato park—mark on your calendar! All Grangers and families may attend. The Auxiliary picnic will be at Wapato June 20 at 12:00 noon.

Reporter.—Mrs. Verne Fogle, LE 7-5210.

## Elk Plain News

Jerry Plumb, son of Mr. and Mrs. Ross Plumb, came home on leave from North Island near San Diego, Calif., May 30. Jerry will leave June 17 for Corpus Christi, Texas, for two months, then to Japan for a tour of duty. Good luck, Jerry!

**Home Again**  
Mrs. Mary Kuper returned Sunday, June 9, from San Francisco, Calif., where she visited with her sister, Mrs. Lettie Dickie, and two of her nieces, Mrs. Bud Miller and Mrs. Charles Leathers. Mary reports the weather was beautiful and she had a grand time.

**New Grandchild**  
Mr. and Mrs. Ted Otterstad are the proud grandparents of a new grandson, born to Mr. and Mrs. Bob Gray (Teddy) Ann Otterstad) June 5 in Anchorage, Alaska.

**Strawberry Festival**  
The Elk Plain Firemen's Auxiliary will hold a strawberry festival in the Elk Plain Grange hall Sunday, June 16, from 2:00 to 5:00 p. m. Strawberry shortcake and cream will be served and there will be games for the youngsters. Auxiliary members point out that this affair would be a treat for the dads on Father's Day. Proceeds will be used for Auxiliary activities.

Reporter.—Mrs. Ted Otterstad, LE 7-7658.

**Custom Built**  
Cabinets & Store Fixtures  
We Install Free Estimates  
**R H O N E ' S**  
CABINET SHOP  
So. 161st St. LE 7-3342  
Spanaway

**Feet Hurt?**  
Corns, Callouses, Bunions, Sore Heels, Tired, Aching Feet, Weak or Fallen Arches? Get quick, inexpensive relief from these and other common foot troubles with Dr. Scholl's Remedies, Appliances, Arch Supports and Shoes! Come in today for a FREE FOOT TEST!  
**Dr. Scholl's**  
FOOT COMFORT SHOP  
732 St. Helens, Tac. BR 2-1893

**Hurry!**  
...for extra earnings all savings placed on or before the 10th of the month earn from the 1st of the month  
A MUTUAL SAVINGS INSTITUTION  
**Pacific Federal Savings**  
and Loan Association  
Bellingham • Seattle • Tacoma  
Portland • Eugene

# TRUCK LOAD SALE

another first for BOB'S PLACE

TEXACO PRODUCTS

## HAVOLINE - heavy duty MOTOR OIL

THE BEST OIL MONEY CAN BUY!

BY THE CASE

REG. PRICE 50c A QUART YOU SAVE 17c A QUART!

# 7.98

24-QT. CANS

Premium Heavy Duty Oil In Convenient Easy To Use Cans. Here Is Your Opportunity To Make An Important Saving In Car Expense. Remember, It's The Finest Sold!

## Texaco Outboard MOTOR OIL

REGULAR PRICE 55c A QUART. YOU SAVE 20c ON EACH QUART.

# 8.24

Case Of 24 . . .

## TEXACO OIL

REGULAR PRICE 40c A QUART. YOU SAVE 11c A QUART!

# 6.98

Case Of 24 Qt. Cans . . .

## HAVOLINE 10-30

REGULAR PRICE 60c A QUART. YOU SAVE 15c A QUART!

# 10.80

Case Of 24 Qt. Cans .

## BULK HAVOLINE

YOUR CONTAINER SAVE 80c A GALLON!

# 1.20

Gal. . . . .

## HAVOLINE

REUSEABLE CONTAINER REGULAR PRICE \$2.50.

# 5.98

5 Gal. Can . . . . . SAVE 80c A GALLON!

USE OUR CONVENIENT **BUDGET PLAN** NO DOWN PAYMENT

Easy monthly payments on all automotive repair and accessories over Fifty Dollars. Entire transaction handled here.

## Complete Motor Overhaul

We replace rings, piston pins, conrod inserts, gaskets and oil. We re-face valves, rescat block, adjust main bearings, clean plugs, adjust carburetor, set timing and tune motor.

# 74.95

All 6 Cyl. Models

## BRAKE JOBS . . \$16.95

To \$17.95 incl. Banded Lining

Complete Relining, Adjusting and Road Testing

# BOB'S PLACE

Airport Road & Jay Street 22 Years In Parkland LEnox 7-3395

## Remember Father ON HIS DAY

DRESS SHIRTS \$2.98  
SPORT SHIRTS \$1.98 To \$3.98  
DRESS SOX 50c Pr.  
BELTS \$1.00  
TIES \$1.00

- Hankies
- Billfolds
- Caps
- Cards

**WALLER ROAD VARIETY**  
WE SELL AMERICAN EXPRESS MONEY ORDERS  
6410 WALLER ROAD LE 7-5362

## The World's Most Honored Show

52 Best Picture Awards and World-Wide Honors

starting **DAVID NIVEN**  
**CANTINFLAS**  
**ROBERT NEWTON**  
**SHIRLEY MacLAINE**  
Featuring 44 "Cameo" Stars

**TECHNICOLOR**  
Screenplay by JAMES POE, JOHN FARROW and S. J. PERELMAN • From the Classic by JULES VERNE • Directed by MICHAEL ANDERSON

Now Showing At The **BLUE MOUSE** Theatre — In Seattle

**MICHAEL TODD'S**  
**Around the World in 80 days**  
in 80 days Today-Go

The Only Showing In The State Of Washington

All SEATS RESERVED—  
Evenings at 8:30, Mon. Thru Thurs. \$2 & \$2.50; Fri. & Sat. \$2.50 & \$3. Sun. Eve. at 7, \$2 & \$2.50. Mat. at 2, Wed. \$1.50 & \$2.00. Matinees at 2 Sat. & Sun. \$2 & \$2.50. (All Prices Include Tax)  
Box-Office Open Daily 12 Noon till 9 P.M.

MAIL ORDERS PROMPTLY FILLED  
Herewith \$..... for..... seats for the .....

Performance on  
Name .....

Address .....

City .....

Make Check or M. O. Payable To: **BLUE MOUSE THEATRE**, Seattle, Wn. Please Enclose Self-Addressed Stamped Env.

## YOUR TRIANGLE DEALER Can Help You Get the Right Start for Your Chicks with TRIANGLE Chick Starter

This year feed for Extra Profit. Even though the season is late, your Triangle dealer can show you how you can speed up the growth of your chicks . . . in plenty of time for a good start in the laying house this Fall. He'll be glad to explain the improved formula of Triangle Chick Starter which now contains TMC-37 and Bifuran, plus a perfect balance of proteins, vitamins and minerals . . . a combination which gives you added life protection and amazingly rapid development for your chicks. Ask your dealer about it today. Mash or Pellet form.

**TRIANGLE MILLING COMPANY**  
603-665 N. TILLAMOOK PORTLAND, OREGON

**RUDY'S FEED & SEED CO.**  
PARKLAND, WASH.

SOLD LOCALLY BY

### Fine Class In Graduation 5th

Spanaway school graduated a fine class of boys and girls with colorful exercises at the school Wednesday evening, June 5. Diplomas were presented by Prin-

cipal Richmond L. Fraser. Honor students were: Valedictorian, Wyona Russell; salutatorian, Marsha Sleden; best all around girl, Lorinda Green; best all around boy, Bob Durbin; class prophecy, Lorinda Green; class will, Rita Frerichs; class historians, Bonnie Bishop, Marvin Rose, Claudette Pueston.

Members of the class are: Wavona Jean Akin, Joyce Elaine Ansteth, William Howard Bayley, Theodore Lawrence Beckman, David Bernard Belvin, Bonnie Sue Bishop, Sharon Ann Brees, Darlene Cora Bresemann, Carol Annette Bullock, Barbara Ann Charon, Claudia Lee Chiberg, Paula Lee Clinton, Harry P. Colbeck, Diana Joan Crooks, Marlin Boyd Durbin, Sidney Gene Felkins, Lloyd Oliver Fisher, Rita Raye Frerichs, Claudette Lee Pueston, Jerry William Funk-

house, Dorothy Roberta Gray, Lerinda Ann Green, Robert Arthur Greenhouse, Judith Elizabeth Gustin, Rosita Nakona Heiser, Nancy Lee Hoag, Carlene Ann Hoover, Patrick Clinton Hoskins, Gloria Jean Hoyt, Arthur Rolland Hughes, Alex Lynn Huston, Geraldine Gay Iverson, Sharon Anne Justice, Judith Elaine Kindred, Gloria Jean Krumpus, Jacqueline Lee Lawrence, Jeanette Marie Leedom, Ronald Ray Lindley, Kathleen Louise Lonergan, Uwe Ulich McCallister, Timothy Emmet McGinnis, Frank Rodell Moore, Robert Bruce Moore, Sharon Louise Moore, Sandra Lee Netzel, Dannie Ray O'Neal, Dianne Marie Parker, Norma Jean Patton, Nancy May Peacher, Shurman Henry Peterson, Arthur Wayne Pietz, Eileen Sue Reiter, Joe

Worth Reynolds, Mary Cactus Roberts, Marvin Lawrence Rose, Robin Marie Ross, Carol Edith Russell, Wyona Evalyne Russell, Marsha Dee Selden, David Lee Sullivan, James Elzure Southwell, Charles Norman Tensesch, Kenneth Harold Thompson, William Martin Thompson, Woodrow George Van Buskirk, Sandra Leslie Valor, Verlin Glen Villines, Geraldine Joy Whittlesey, Alberta Lucille Winslow, Lloyd Lewis Worster, Donna Ruby Wy-more.

affectionate good wishes honored Mrs. J. C. Snowden, wife of the pastor. Mrs. Ray Turner and Mrs. F. Zirkle were the coffee hour hostesses.  
**Bookmobile**  
Spanaway Loop Road residents on the west side of the lake will be glad to know that the Pierce County Library Bookmobile will make regular stops this summer at Searces, Rt. 1, Box 500-A, the first and third Thursdays from 10:10 to 10:30 a. m.  
**Grandmothers**  
The Spanaway Kan Do Grandmothers will meet Thursday, June 20, at the Spanaway fire hall, Mrs. Ima Quinlan presiding. Hostesses will be Emily Ball and Beulah Ballard.  
**Graduates**  
Gene Searce, son of Mr. and

Mrs. Edward Searce, recently graduated from Washington State college as a civil engineer. Young people of the community graduating from college to follow the teaching profession include Paul Lambertson, son of Mr. and Mrs. Frank Lambertson, Central Washington, and Margaret Ann Omat, daughter of Mr. and Mrs. Oliver Omat, Pacific Lutheran college.  
**New Pastor**  
A cordial invitation is extended to all to greet the new pastor, the Rev. George G. Nafus, Sunday at the Spanaway Methodist church. Rev. Nafus has been assistant pastor at the First Methodist church in Tacoma. The Rev. J. C. Snowden will be at Tunwater.

eroded from the sides of the lakes. This would also save another natural resource—fresh water fish.  
Mae Toble, master of Harts Lake Grange, and Edward Toble, husband, will represent the Grange at the state session which meets at Whitworth college, Spokane, June 17-21.  
**Disneyland Show To Aid Hospital**  
Two hundred-fifty little Disneyland characters will come to life next Monday and their dancing will give other little children, who are sick or crippled, a chance to get well. June 17 at 8:00 p. m. Mildred Keller will present her pupils in a dance revue at Weyerhaeuser at the Tacoma Y. M. C. A. as a benefit for the Mary Bridge Children's hospital.  
"Stories from Disneyland" will be the theme carried throughout the program featuring children of all ages. The program will be sponsored by the Judy Johnson Orthopedic Guild, proceeds going to the Mary Bridge Children's hospital. The public is invited.  
Reporter — Mrs. Oliver Omat, LE 7-6466.

### Rupe Machine Works & Garage

13411 Pac. Ave., P.O. Box 2445 Parkland 44, Wn. LE 7-7450  
**COMPLETE MOTOR REBUILDING**  
Lathe Work, Press Work, Con-Rod-Grinding, Head & Block Grinding, Piston Grinding, Brake Drum Turning, Reboring, Main Line Boring, Pin Fitting, Rod Aligning, Armature Turning, Crank Service.

### FENCING

Designers and Builders  
EXPERT WORKMANSHIP  
REASONABLE PRICES  
Easy Monthly Payments  
**VAUGHAN'S**  
84th & Pac. Ave. GR 4-9515

**SAFEWAY BRANDS SALE**  
BACK AGAIN... BIGGER AND BETTER THAN EVER!  
SHE'S A SMART SHOPPER SHE KNOWS HOW TO SAVE US LOTS OF MONEY!  
I KNOW HE LOVES ME MORE WHEN I SAVE SO MUCH SAFEWAY!

**3 MORE BIG DAYS**  
JUNE 13TH THRU JUNE 15TH

<b>Fresh Butter</b>	Montrose, in foil wrapped quarters.	1-Lb. Pkg.	<b>69c</b>
<b>Large 'A' Eggs</b>	Breakfast Gems	Dozen	<b>39c</b>
<b>Sliced Peaches</b>	Highway Yellow Cling	4 No. 2 1/2 Cans	<b>\$1</b>
<b>Shortening</b>	Royal Satin Brand	3 Lb. Can	<b>69c</b>

**SNOW STAR ICE CREAM**  
Your choice of Vanilla, Strawberry or Chocolate. Half Gallon **69c**  
Ideal for parties.

Homogenized, drink 3 glasses every day. Half Gal. **LUCERNE MILK . . . . . 2/89c**  
Lucerne, for reducing diets. Half Gal. **SKIM MILK . . . . . 39c**

NuMade, for salads or cooking	Half Gal.	
<b>SALAD OIL . . . . .</b>	<b>98c</b>	
Candi Cane, special low price.	10-Lb. Bag	
<b>SUGAR . . . . .</b>	<b>93c</b>	
Taste Teks, perfect for camping	No. 2 1/2 Cans	
<b>PORK &amp; BEANS . . . . .</b>	<b>2/35c</b>	
Busy Baker, 1-Lb. 23c.	2-Lb. Box	
<b>CRACKERS . . . . .</b>	<b>39c</b>	
Melrose Coconut Bar	12-Oz. Pkg.	
<b>COOKIES . . . . .</b>	<b>29c</b>	
Kitchen Craft, quick & easy.	2-Lb. Pkg.	
<b>BAKING MIX . . . . .</b>	<b>33c</b>	
Beverly, creamy or chunky	18-Oz. Jar	
<b>PEANUT BUTTER . . . . .</b>	<b>49c</b>	
Zippy Fresh Fancy Cucumber Chips.	16-Oz. Jar	
<b>PICKLES . . . . .</b>	<b>19c</b>	
Kitchen Craft - so convenient	3-Lb. Pkg.	
<b>PANCAKE MIX . . . . .</b>	<b>39c</b>	
Dutch Mill, Pimento, Swiss or American	8-Oz. Pkg.	
<b>SLICED CHEESE . . . . .</b>	<b>29c</b>	
Fine flavored sandwich spread.	2-Lb. Loaf	
<b>BREEZE CHEESE . . . . .</b>	<b>69c</b>	
White Mapi	Quart	
<b>LIQUID STARCH . . . . .</b>	<b>19c</b>	

**Strawberry Preserves**  
Empress, the finest quality.  
12-Oz. Jars **\$1.00**

**Jell-Well Gelatine**  
all flavors, economical to serve  
Pkg. **5c**

**Nu Made Mayonnaise**  
Special low price.  
Quart **59c**

**Watermelon** Lb. **5c**  
Red ripe - Imperial Valley. Finest quality. Every melon guaranteed.

**Strawberries**  
Fresh Strawberries. Local grown Northwest variety. Juicy, sweet. Now is the time to can or freeze them. Safeway has the best.

**RED PLUMS**  
Juicy Calif. Red Beauty  
Pound . . . . . **19c**  
COACHELLA GRAPEFRUIT  
Excellent for juicing or half portions.  
5-Lb. Bag . . . . . **39c**

Ripe, Beef Steak For Slicing  
**FRESH TOMATOES . . . . . lb. 23c**  
Large well filled ears. Best quality.  
**SWEET CORN . . . . . 5/39c**

Brand-new from  
**Porter-Cable**  
Gasoline Chain Saw  
Model 530  
**183.50**

**Harts Lake Grange Active**  
Two resolutions important to the state were recently passed by the Harts Lake Grange and sent to the State Grange session:  
(a) Save native shrubs, trees and flowers, and natural beauties for present and future generations.  
This resolution includes giving information on (a) laws on, taking trees, shrubs and flowers on government and private property; (b) protection of shrubs and flowers along our highways; (c) laws on cutting our native trees; (d) how to cut Christmas trees, (1) tree itself, and (2) leaving branch for future tree; (e) protection of natural beauties such as waterfalls, rock cliffs, gulches, rocks, petrified forests, etc.; encourage Granges in protecting and establishing historical landmarks.  
(b) Save two natural resources—lakes and fresh water fish. Whereas natural resources in the State of Washington have been of much value to our state, and whereas too often we lose these natural resources by neglecting to protect them so future generations may also benefit, and whereas motor boats on some of our lakes cause steady rolling waves which in time will erode the banks of the lakes thereby filling the lakes so that we lose the full use of the lakes and in time will spoil the lakes for fresh water fishing, therefore be it resolved that we work for legislation to save our lakes, one of our natural resources, from being filled in by soil

**Porter-Cable**  
Quality Power Tools  
Call For Free Demonstration  
Easy Terms  
**Webster Robinson Machinery**  
BRoadway 2-0841  
Puyallup Ave. & A St., Tacoma

**LOW COST**  
**Power Tool RENTAL**  
SANDERS - EDGERS - POLISHERS - HAND SANDERS - SKIL SAWS - ELECTRIC DRILLS - CEMENT MIXERS - ETC.  
ALSO HAND TOOLS FOR RENT

**Anderson Lumber**  
9813 Pacific Avenue LEnox 7-7311

**Smoked Picnics** Dubuque Brand, 4 To 8 Lbs. . . Lb. **37c**

<b>CUT-UP FRYERS</b> Manor House. Fresh Frozen. Stock up. 1 1/4-Lb. Each . . . . . <b>89c</b>	<b>BEEF POT ROAST</b> U. S. Choice Blade Cut . . . Lb. <b>39c</b>
<b>CHICKEN THIGHS</b> Manor House. Fresh Frozen. Serve Fried Pound . . . . . <b>79c</b>	<b>BEEF RIB ROAST</b> U. S. Choice Trimmed . . . Lb. <b>69c</b>
<b>CHICKEN BREASTS</b> Manor House. Fresh Frozen. So Convenient Pound . . . . . <b>79c</b>	<b>BEEF T-BONE STEAK</b> U. S. Choice Trimmed . . . Lb. <b>99c</b>
<b>CRANBERRY SAUCE</b> Whole or Jellied. Delicious with Chicken 16-Oz. Ocean Spray. Cans . . . . . <b>2/39c</b>	<b>BEEF SIRLOIN STEAK</b> U. S. Choice Trimmed . . . Lb. <b>83c</b>
	<b>FRESH GROUND BEEF</b> Ground Fresh . . . . . Lb. <b>39c</b>

**SLICED BACON**  
Armour's Banner Brand Lean and flavorful.  
1-Lb. Pkg. **55c**

Somerset Brand, the all meat wiener. 1-Lb. Pkg. **SKINLESS WIENERS . . . . . 47c**  
Bar "S" Brand. The finest. 1-Lb. Pkg. **LINK SAUSAGE . . . . . 65c**  
Captain's Choice, fresh frozen. 1-Lb. Pkg. **PERCH FILLETS . . . . . 35c**  
Captain's Choice, Fresh Frozen 8-Oz. Pkg. **FISH STICKS . . . . . 29c**

Empress, the finest you can buy. 2-Lb. Can **STRAWBERRY JAM . . . . . 59c**  
Bel-air, fresh frozen. 12-Oz. 19c. 6-Oz. Can **LEMONADE . . . . . 10c**  
Bel-air, leaf or chopped. 12-Oz. Cans **SPINACH . . . . . 7/\$1.00**  
Curtsy Apple Sauce 9-Oz. Ring **HALF RINGS . . . . . 33c**  
Curtsy, Cherry - ideal for snacks. 8-Oz. Pkg. **COFFEE CAKES . . . . . 29c**  
Tea Garden, stock up. 46-Oz. Cans **APPLE JUICE . . . . . 3/85c**  
Tea Garden, a family favorite. 24-Oz. Bottles **GRAPE JUICE . . . . . 4/\$1.00**  
Town House or Sunny Dawn 46-Oz. Cans **TOMATO JUICE . . . . . 5/\$1.00**  
Briargate Fancy Cut 16-Oz. Cans **GREEN BEANS . . . . . 6/\$1.00**  
Sugar Belle or Town House 17-Oz. Cans **FANCY PEAS . . . . . 6/\$1.00**

**WHITE MAGIC SOAP**  
Gets clothes really clean  
22-Oz. Pkg. **25c**

**PARADE Detergent**  
For washing or dishes.  
4 1/2-Oz. Pkg. **55c**

Prices effective Thurs., June 13th, thru Sat., June 15th, at 82nd & Pacific Safeway. No sales to dealers, right to limit is reserved.

**SAFEWAYS** your **BEST** place to save!

**Hail to the Male** IT'S FATHER'S DAY

- Billfolds . . \$1.00 to \$10.00
- Schick Shavers . . \$18.75
- Lighters - Pipes . . \$1 to \$5
- Remington - Ronson Shavers
- Father's Day Cards
- Kodaks & Supplies

**Jacobs Pac. Drugs**  
8248 PACIFIC AVENUE Greenfield 2-6445

# WASHINGTON Products Sale at THRIFTWAY

Prices Effective Thurs., Fri., Sat., June 13 - 14 - 15th

## THRIFTWAY CHOICE MEATS

U.S. GOOD OR CHOICE STEER - IDEAL FOR SWISSING!

**BOTTOM ROUND POUND STEAKS 69¢**

**Top R'nd Steaks 79¢** Good or Choice Steer

**Rump Roasts 69¢** U.S. Good or Choice Steer Beef

**Beef Cubes 59¢** U.S. Good or Choice Boneless Steer Beef, Braise or Stew



BUY THE MEAT THAT BRINGS YOU BASEBALL!

### CORNERED BEEF

Carsten's Hygrade Boneless Brisket 2-3 Lb. Aver. Lb. **59¢**

Carsten's Hygrade Skinless WIENERS 1-Lb. Pkg. **49¢**

Carsten's Hygrade Sliced BACON 1-Lb. Pkg. **69¢**

Carsten's Hygrade Sliced Luncheon Meat

COMBINATION LOAF SPICED LUNCHEON MEAT, SALAMI OR PEPPER

Flex-Vac 6-Oz. Pkg. **33¢**

MEAT PRICES EFFECTIVE UNTIL 6 P.M. SATURDAY

### Delicious Kraft Products

**KRAFT FRENCH DRESSING 33¢** 6-Oz. Bottle

**VELVEETA CASINO FRENCH DRESSING 33¢** 8-Oz. Bottle

**VELVEETA KRAFT VELVEETA 85¢** 2-Lb. Loaf

**Miracle Whip 59¢** Quart Dressing **American Cheese Spread 2/47¢** 5-Oz. Jar

**Swiss Cheese 53¢** Processed Lb. **Garlic Cheese Spread 28¢** 5-Oz. Jar

**Cracker Barrel 69¢** Sharp 3 1/2-Oz. **Mellow Cracker Barrel 63¢** 1 1/2-Oz.

### LEVER BROS. PRODUCTS

**SPRY SHORTENING 95¢** 3-Lb. Can

**RINSO BLUE DETERGENT 77¢** Giant

**LUX LIQUID 69¢** Makes Dishwashing Easy 22-Oz. Can

**LUX TOILET SOAP 2/27¢** Bath Bars

**LUX FLAKES 33¢** Efficient and Mild Large

### WHITE KING PRODUCTS

**WHITE KING "D" 67¢** DETERGENT Giant Pkg.

**Cleanser 2/31¢** 13-Oz. Cans

**White King Liquid 69¢** 22-Oz.

**Water Softener 25¢** Large Pkg.

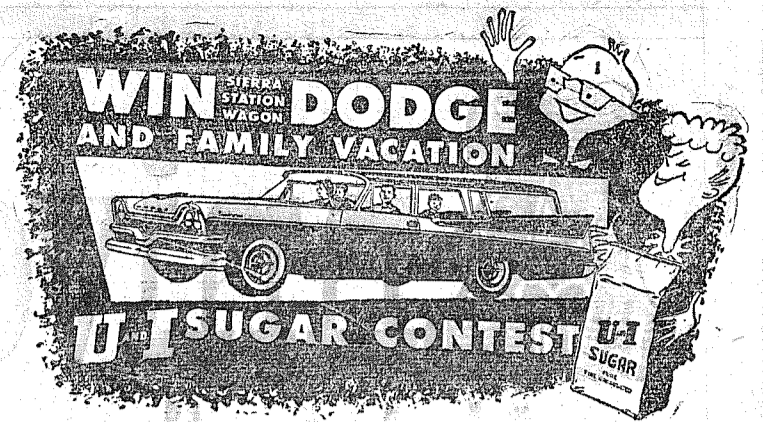
**White King Soap 67¢** Giant Pkg.



## U&I SUGAR

A Northwest Product!

**10 LB. BAG 1.03**



SHURFINE BRAND - A WHIRLYBIRD SPECIAL!

**INSTANT COFFEE 6-Oz. Jar 89¢**

**FRESH MILK 24¢** Quart Carton

**GARIGOLD 3/39¢** Tall Evaporated Milk

**BUTTER 69¢** Darigold Cubes 1-Lb. Pkg.

**FLOUR \$1.06** Gold Medal 25-Lb. Bag \$2.83. 10-Lb. Bag

**BISKIT MIX 35¢** Fisher's 40-Oz. Pkg.

**SUNNY JIM PRESERVES 3/89¢** Straw., Logan., Rasp., Blackberry, 12-Oz.



**JELL-O 5/39¢** ASST. FLAVORS REG. PKGS.

**AA EGGS 43¢** LYNDEN LARGE PER DOZEN

**NAPKINS 10¢** ZEE 80-COUNT PACKAGE

**CHILI 4/\$1.00** CON CARNE NALLEY'S 15-OZ. CANS

## THRIFTWAY FRESH PRODUCE

**JUMBO SIZE CALIFORNIA Cantaloupes . Lb. 9¢**

**CALIFORNIA Lemons . . 2 Lbs. 25¢**

**LOCAL GROWN Romaine 2 Bunches 15¢**

**RADISHES 9¢** YOUR CHOICE GREEN ONIONS 2 BUNCHES.

**POTATOES 49¢** Calif. No. 1 White Rose 10-Lb. Plio Bag

**N.B.C. OREO CREMES 39¢** 1 1/4-Oz. Package For

**Instant Powdered Cream 31¢** 4-Oz. Can **SHURFINE FRUIT COCKTAIL 37¢** 2 1/2 Can  
**SHURFINE WHOLE ROAST 93¢** 1-Lb. Pkg. **SHURFRESH FROZEN ORANGE JUICE 8/\$1** 6-Oz. Tins  
**MJB COFFEE 95¢** 1-Lb. Can **NEW STYLE BOX SARAN WRAP 39¢** 25-Ft.  
**Maxwell - 10c Deal INSTANT COFFEE \$1.39** 6-Oz. **Enriched Shurfine FLOUR 51¢** 5-Lb. Bag  
**Folgers COFFEE 95¢** 1-Lb. Can **SHURFINE PANCAKE MIX 53¢** 4-Lb. Bag  
**Fisher's Blend COFFEE 55¢** 5-Lb. Bag **New Lotion, Rollt Deodorant Stick 69¢** 1 1/2-Oz. Stick

**NEW DOVE TOILET BARS, Reg. 2/39¢** **DOVE CREAMS YOUR SKIN WHILE YOU WASH, Bath Bars 2/49¢**

**PUREX BLEACH 33¢** 1/2 Gal. **TREND DETERGENT 49¢** Giant Large **Beads O'Bleach SO EFFECTIVE 59¢** 32-Oz. Size

## THRIFTWAY

WHERE Every CUSTOMER IS IMPORTANT!

- Park 'N Shop Thriftway . . . . . 9662 Pacific Avenue
- Villa Thriftway Store . . . 10111 Gravelly Lake Dr. S.W.
- Summit View Thriftway . . . . . 5309 East 112th
- Midland Thriftway . . . . . 1701 East 99th
- Stan's Thriftway . . . . . 6421 Steilacoom Blvd.
- Thriftway Food Fair . . . . . 214 West Main, Puyallup

**PET-RITZ APPLE, PEACH or BOYSENBERRY - FROZEN 49¢** 24-Oz. REDEEM YOUR 15c COUPONS AT THRIFTWAY

**SUNNY JIM JELLIES 1.00** 4 12-Oz. Glasses  
 Cherry, Currant, Fruit and Berry, Crab Apple, Grape, Elderberry or Mint.

**FROZEN PEAS 3/49¢** Pictsweet Frozen 10-Oz.

**BABY LIMAS 2/49¢** Pictsweet Frozen 10-Oz.

**FRENCH FRIES 3/49¢** Pictsweet Frozen 9-Oz.

**BROCCOLI 2/45¢** Pictsweet Frozen Spears 10-Oz. Pkgs.

# Anniversary Sale

marking another year of better VALUES!

Prizes, Prizes, Balloons  
For The Kids. Fun For All

HILLS BROS.

**Coffee** . . . 2-Lb. Tin **\$1.77**

Served Free Friday & Saturday

PILLSBURY ANGEL FOOD

**Cake Mix** . Pkg. **39c**

FRISKIES

**Cat Food** **12/\$1** Tall Tins



**Carnation Milk**  
Tall Tins **3/39c**

**Carnation Instant Nonfat Dry Milk**  
8-Qt. **65c**

**Carnation Instant Chocolate Flavored Drink**  
**35c**

BREAST OF CHICKEN

**Tuna** . . . 6 1/2-Oz. **4/\$1**

SUNNY JIM

**Strawberry Jam** **3/\$1** 20-Oz.

HEINZ HAMBURGER OR

**Hot Dog Relish** **2/49c**

KRAFTS

**Salad Oil** . . . . . Quart **49c**

**TO OUR FRIENDS AND CUSTOMERS:**

It has been a pleasure to serve you. This is the anniversary of our twelfth year at this same location, our second year in the new store.

To show our appreciation to you, we are planning an anniversary sale with money saving values in every department. Make sure you stop in this weekend to say hello and save yourself a lot of money!

Thank You.

The Perfect Salad Dressing - "Potato Salad"

**Tang qt.** **39c**

**Nalley's 'Picnic Pickles'** 24-Oz. **3/\$1**  
Mix 'Em or Match 'Em. Banquet, Kosher Garlic or Polish Dills

**Cucumber Chips** . . . . . 16-Oz. Jar **2/45c**

**POTATO CHIPS** . . . . . 29c Reg. 39c Bag

**CHILI CON CARNE** . . . . . 2/49c Nalley's "Quickie Meals". Hot or Mild. 15-Oz. Tin

**BEEF STEW** . . . . . 29c 15-Oz. Tins

**White King Savings**



**GIANT SIZE SOAP - Liquid or "D"**  
**YOUR CHOICE**  
Each . . . . . **59c**

**TENDER GRAIN FED BEEF STEAKS**

**RUMP ROAST** Pound 39c

**SIRLOIN RIB SWISS** **Lb. . . . . 49c**

**SIRLOIN TIP ROLLED ROAST** Pound 59c

FULL CUT ROUND . . . . . 55c lb.

**U.S. INS. NO. 1 HEN TURKEYS** **39c** OVEN READY BROAD BREAST Lb. . . . .

**SELECT CUTS 7-BONE - WELL TRIMMED OVEN ROAST** . . . Lb. **35c**

**CARSTEN'S HYGRADE BONELESS FIESTA HAMS** **Lb. 89c** Fully Cooked, Ready To Eat

**GROUND BEEF** 3-Pounds 95c

**LEAN SHORT RIBS** Pound 10c

**ARMOUR'S SKINLESS WIENERS** . . . . . 3-lbs. **\$1.00**

**FRIDAY & SATURDAY Ham Sandwiches** **5c**

**IT'S STRAWBERRY SHORTCAKE TIME!**

**FRESH BERRIES** Cup 13c

**C&H CANE SUGAR** 25-Lb. Bag \$2.39

**Fresh Local Head LETTUCE** . . . . . **5c**

**Fancy Slicing TOMATOES** . . . . . **17c** Lb.

**Golden Bantum CORN** . . . 6 For **29c**

**Large Ripe CANTELOUPES** 2/ **25c**

**Ballard Biscuits** **10c** Pkg. . . . .

**NOW! new...frozen CREAM PIES**  
JUST DEFROST AND SERVE—NO BAKING! NO COOKING!  
Smooth creamy filling...light flaky crust

**SIMPLE SIMON Frozen Pies** **FRUIT PIES 49c** FAMILY SIZE

**BIRDSEYE FROSTED SPECIALS**

**LEMONADE** 6-Oz. . . . . 9 For **\$1.00**

**LIMEADE** 6-Oz. . . . . 9 For **\$1.00**

**ORANGE JUICE** 6-Oz. . . . . 7 For **\$1.00**

**FROSTED VEGETABLES**

**POTATO PATTIES** . . . **6/\$1**

**FRENCH FRIES** . . .

**PEAS** . . . . .

**GREEN BEANS** . . . . .

**PEAS & CARROTS** . . . . .

**CUT CORN** . . . . .

**BROCCOLI** . . . . .

**Birdseye FISH & CHIPS** . . . . . 3/**\$1.00** Pkgs.

**Served All Day Friday and Saturday**

**Pillsbury PANCAKE MIX** . . . . . **39c** 4-Lbs.

**Sunny Jim PEANUT BUTTER** . . . . . **49c** 20-Oz.

**B and M BAKED BEANS** . . . . . **25c** 28-Oz.

**Heinz SWEET PICKLES** . . . 3/**\$1.00**

**DUTCH MAID Margarine**

**5 Lbs. For . . . . . 99c**

**YOUR ONLY HOME OWNED SUPER MARKET**  
12208 Pacific Avenue

**Fletcher's**

**OPEN: 7 Days A Week**  
9 a.m. to 10 p.m.  
Prices Effective THURS., FRI., SAT. THIS WEEK

No Sales To Dealers  
Right To Limit Reserved

**"COURTESY" OUR MOTTO ALWAYS**