

# The TIMES JOURNAL

P. O. Box 2008,

Delivered to over 14,000 families

Parkland 44, Wash.

Thursday, January 31, 1963

Vol. 18, No. 22

Le. 7-0223

**BULK RATE**  
U. S. Postage Paid  
Parkland Branch  
Tacoma, Wash.  
Permit No. 9P  
  
Rural Route  
Occupant or Boxholder  
Postmaster: If unable  
to deliver, return post-  
age is guaranteed on  
addressed papers.

## Officers Installed



## Honored



**INSTALLED** — Officers of the Parkland Business Club for the coming year are shown here after their installation on Saturday evening. From left to right are: Johnny Guizzetti, corresponding secretary; George Dorfner, board member; Mrs. Betty Anderson, president; Mel Eagan, vice-president; Mrs. Esther Bowerman, treasurer; Don Bowerman, board member; Mrs. Louise Eagan, recording secretary; Kent Erickson, past president, and Ray Lingbloom, board member.

**CHOSEN** — The man and woman of the year for the Parkland Business Club, Don Bowerman and Mrs. Betty Anderson are all smiles after their choice was announced at the annual installation banquet on Saturday evening.

—Times Journal Photos

# Citizens Air Views Pro and Con On Parkland Sewer District

## Planning Tea



**DEMO WOMEN** — The newly formed Mid-Park Democratic Women's Club is sponsoring an informal Valentine's Day tea, February 7, at the Gonyea Field House. Committee members include, from left to right: Mrs. Victor

**Armstrong Says: Sewers Are Feasible For Area**

In 1954, the Parkland Sewer District was formed. At the same time a small five mill levy for preliminary expenses was defeated because the majority vote was not enough. It required a 60% majority.

After much work with no funds, a practical sewer plan was finally formulated and was approved by all the governing agencies. It consisted of a collection system, a gravity trunk line to the bay near Steilacoom, and a treatment plant at the water's edge.

**Statement By T.J. Publisher**

**PUBLISHER'S NOTE:** The Times Journal Publishing Co. has long been aware that the formation and the ultimate goal of the Parkland Sewer District has been a controversial issue. Many articles have appeared in the past in this publication prepared by those in favor of the district. To date none have been prepared, nor appeared opposing the action. It seems this has been found to be unpalatable by some of our readers. It has always been the policy of the Company to publish both sides of any issue when both sides were made available.

As many of you are aware there was a 14 month period wherein this publication was under lease to another firm and of course that time the T. J. Pub. Co. had no control over policy. Be that as it may, the past policies of this paper are now re-activated and it is our sincere hope that we never again are charged with partiality. All issues shall receive equal space when requested in the future, for we feel that a well advised community is a healthy community.

**Mrs. Lapenski Says: Proper Tank Installation Fills Need**

Shellfish, oysters and clams tend to concentrate bacterial pollution and can convey this to man if not properly cooked. Oysters eaten raw and clams quickly fried are potential sources of hepatitis. Beaches in New Jersey and Connecticut have been closed to clam digging because of hepatitis traced to sewer fed clams. Oysters from the Gulf of Mexico have been found to carry Leptospirosis (better known as sewer worker's fever) and hepatitis. Our Puget Sound beaches are no different from beaches in the rest of the world. The sewerage content of our bay waters is so high that people who have run tests on the water for pollution refuse to let their children swim in it. A primary treatment plant is a long way from sanitation.

If you or I dump our garbage over the fence or into Puget Sound we can be arrested, but as a community we can all go together and dump it and it is legal. If the effluent from a primary treatment plant is so harmless why can't it be dumped into Clover Creek and let run to the bay. If it is so harmless why is city after city having to put in secondary plants and why are they constantly looking for new and better ways to treat sewage? When Lake Washington became such a mess the tests showed that the largest source of trouble was the effluent from their treatment plants.

## Trinity Church Accepts Budget For Building

The annual congregational meeting of The Trinity Lutheran Church of Christ the King was held the evening of January 22nd, Martin Korsmo, congregational president, presiding.

Highlights of the meeting included the acceptance of the proposed budget of \$30,514.20 for 1963, and the approval of a building program for the expansion of Sunday School facilities.

Members elected to the official offices were: Martin Korsmo, President; Joseph Stratton, Vice-President; Mrs. Doris Jaspica, Secretary; Mrs. Gladys Carlson, Treasurer; Mrs. Marie Logan, Financial Secretary; Albert Meuli and Ralph Baird, Deacons; Robert Irving, Lee Galyean, Paul Ehnat, Trustees; Wm. Hansen, Mrs. Zaza Irving, Mrs. Clara Lorenz and Mrs. Jean Hanson, Board of Parish Education; Mr. and Mrs. Joseph Brunberg, Historians; Mrs. Gladys Larson, In Memoriam Committee; Harry Hintz, Head Usher; Jerry Haller, Assistant Head Usher; and Joel Larson, Sunday School Superintendent.

## Church Given Bible By Guild Member

The All Saints Guild of the All Saints Episcopal Church, 205 East 96th, held their 70th anniversary service on Sunday, January 27th, and presented a Lection Bible to the church, as the gift of Mrs. Anna Hessert, long-time member of the Guild and area resident.

The Guild was formed in 1892 and the church a few years after that. Rev. Stanley Macgirvan is the pastor.

## Club Sets Tea

An informal pre-Valentine Day tea has been scheduled by the Mid-Park Democratic Women's Club for February 7 at the Gonyea Field House, 134th and Jay Street. The tea will be held between the hours of 1 and 3 p.m.

The tea has been planned to introduce to the Democratic women their elected officials and their wives, both on the local level and state level. A number of officials have been invited to the tea.

Mrs. Don Dovey is tea chairman for the newly formed Mid-Park Democratic Women's Club.

## First Box Of Mints



**MINT SALE STARTS** — Getting the first box of Camp Fire Mints in the 1963 sale, Marv Hansen, of Tacoma Pump and Well Drilling, is well 'sold' by these representatives of the group holding the sale. Bluebirds, Camp Fire Girls, Junior Hi and Horizon Club members will be out in force next week. Helping with the first sale are:

front row, left to right, Kathy Campbell, Peggy DeVany, Danetta Kimball and Michele Munsey. Back row, left to right are: Elaine Kittinger, Arlene Davis, Anna Becker, Carla Hansen, and Roxanne Marsh, not present when the photo was made.

—Times Journal Photo

## Camp Fire Girls Launch Mint Sale Saturday

This Saturday, February 2nd, will mark the opening of the annual chocolate mint sale by the Camp Fire Girls.

All registered members of the Camp Fire and Blue Birds will be selling pound boxes of the chocolate mints at \$1 per box, with proceeds going towards mortgage payments and further development of Camp Wakoma, as well as to subsidize the operation of Day Camps, group camping and to help meet financial obligations that benefit all girls in the Tacoma council.

The sale will continue thru the 20th of February.

## Legion Post To Entertain 4th District

American Legion Auxiliary of Post 118, Clover Creek, will entertain Fourth District Council at Spanaway on February 4th at the American Legion Hall.

Mrs. Arthur Zurlfuh, who is President of the Fourth District and Mrs. Carl Haecanson, Vice President, will be the honored guests.

Fourth District is composed of 16 units—Puyallup, Sumner, Orting, Lacey, Olympia, Tenino, Shelton, Eatonville, Yelm, Parkland, Hood Canal, four units of Tacoma, Number 2, 138, 222 and 202, and Clover Creek of Spanaway.

A good program is planned and also a lovely luncheon.

## Parkland Man Given Alumni Post

Lawrence J. Hauge, a native of Parkland, has been appointed Director of Alumni Relations at Pacific Lutheran University, it was announced by Dr. Robert Mortved, president. He will take over the post in June.

Active in alumni work, Hauge recently served a three-year term on the PLU Alumni Association board, and was president of the Association in 1958-59.

Hauge has been a teacher and administrator in the Clover Park High School, and has three degrees from PLU. He received the bachelor of art degree in speech and history in 1950, the bachelor of education degree in 1951, and the master of arts in education degree in 1962.

## Auto Parts Staff



**NEW BUSINESS**—Owners and staff of one of the newest Parkland businesses posed for their picture during preparation for their Open House celebration on February 2. Left to right, the staff of Martens and Gordie Auto Parts are: George Saathoff, Carl Martens, Gordie Studholme, Del Cady, Al Pavlich and Dick Graves.

—Times Journal Photo

## Deadlines Advanced

Deadlines for all classified advertising placements and for news stories in the Times Journal were advanced this week.

Beginning with the next issue, all material to be included in the issue of the paper must be in the office before 5 p.m. on Monday each week.

## Founders Day Program Set By Collins Tots

The Collins Tots Club is planning a Founders Day program for February 5 at 8 p.m. in the school gym. Past presidents and charter members will be honored.

All past members are invited to attend the meeting, at which time a short history of each administration will be presented.

## Dance

Howdy Pardner Round Dance Club will meet at Fruitland Grange on January 31 at 8 p.m.

## Registrar Due

Come to Brookdale School on Monday, Feb. 4th from 2:30 to 8 p.m. and register for precincts Cooper, Tulle Lake, Pacific and Brookdale. Mrs. Harrigan is the registrar. Registration books close February 8th, 1963.

## Parkland Clinic

Parkland Well Baby Clinic will meet on Wednesday, Feb. 6th at the Parkland Fire Hall. Registration will be from 8:30 to 9:30 a.m. Dr. J. J. Erickson will be the attending physician.

## Boy's Speech Contest Planned By Optimists

The Southeast Optimist Club will sponsor its annual boys oratorical contest early in February, with eliminations planned for several weeks at the club meetings.

George Potter, and Vern Voss are heading the committee to plan the contests. Winners in the club contest get a club award and go on to compete in district contests. District winners compete with boys in the regional contest and the four finalists will go to Toronto, Canada, this year for the finals. The winner in the finals will receive a \$1000 scholarship, and the runnerup will get \$500 scholarships.

The contest is open to all boys who had not reached their 16th birthday by December 31, 1962. Contestants will give a five-minute oration on a title selected by the club.

## Youth Urged To Join Area Y Teen Club

Miss Sue Johnson  
LE 7-7150  
**Registration To Start**  
The first of two Saturdays being put aside for the teens of Summit to register for membership into the Youth Center Teen Club is this Saturday, February 2nd at the Youth Center from 1:00 to 3:00 p.m.

Parents are urged to attend the registration and become acquainted with the plans of the youth in our area.

Registration and membership fee will be 50c which must be paid that day. If you reside in the immediate Central Avenue - Summit area you are invited to come, however the age limit is from 13 to 18 years of age.

Be sure to tell your friends and be at the Youth Center this Saturday.

**Paper Drive By Rancher's**  
The Busy Rancher's 4-H Club is still collecting paper for their paper drive. The money they receive is used to help pay their way to 4-H camp next summer. If anyone in the Summit or Midland area has any papers to donate they may call Dale Morey at TH 5-4563 and he will pick them up.

**Trip To Capitol**  
On Wednesday, the 23rd of January the members of the Busy Rancher's 4-H Club enjoyed an all day trip to Olympia and the State Capital Building. Seeing the Legislature in action was to be the high point of their day, so it was discouraging to see the Representatives convene and adjourn all in approximately fifteen minutes. However, their disappointment was quickly forgotten when they were taken on a tour of the capital building.

A very nice woman in the Secretary of States' office gave them pamphlets and booklets on the history of Washington State, and explained how the state seal originated. She told them the very interesting story of the actual building of the capitol, which included details of how and where they got the different kinds of beautiful marble from all over the world.

After a visit to the reception room where they learned the history of the furnishings and fixtures they walked up to the top of the Capitol Dome for a view of the City of Olympia.

After leaving the Capital Building they visited the Department of Agriculture where they met two of the Doctors in that department. The members greatly appreciated all the time the Doctors gave them answering their questions and giving them a lot of useful information con-

(Continued on Page 7)

**Webb Electric Co.**  
Commercial - Residential  
We Recommend & Install  
**Electro-Ray Heat**

- WIRING & ELECTRICAL SUPPLIES
- 24 Hr. EMERGENCY SERVICE

LE 1-1133  
11112 Pacific Avenue

### The Country Parson



"Only rich folks can afford to be unhappy - poor folks have to be happy to overcome their misery."  
Copyright, by Frank A. Clark

**DRYER'S FUNERAL PLAN CUTS COST**

**Dryer's MORTUARY**  
1315 AND PACIFIC  
PARKLAND



**Summit Trading's Menu**  
**FREE BREAKFAST**

- ★ **PANCAKES** DELICIOUS AUNT JEMIMA HOTCAKES
- ★ **COFFEE or ORANGE JUICE**
- ★ **SAUSAGES** TASTY HYGRADE PORK SAUSAGE

Hot Coffee

SERVED SATURDAY, FEBRUARY 2nd - 10 to 4

### SUMMIT TRADING BONUS BUYS

**PEACHES** Or PEARS HILLSDALE 5 2 1/2 \$1  
Tins

**COCKTAIL** LIBBY'S Fruit 5 303 \$1  
Tins

**TV DINNERS** SWANSON Each 49

**BREAD** Oven Fresh - Large Loaf 4 For \$1

**COFFEE**  
Hills Bros. 55  
Lb. Tin

2-Lb. Tin 1.09

**Wesco Tomato SAUCE**  
14 8-Oz. \$1  
Tins

Libby's W.K. or Cream **CORN**  
6 303 \$1  
Tins

Libby's Fancy **PEAS**  
5 303 \$1  
Tins

# FREE PANCAKE BREAKFAST

SERVED SATURDAY, FEBRUARY 2nd . . . BE SURE AND SAMPLE OUR DELICIOUS AUNT JEMIMA PANCAKES . . . SERVED FROM 10 a.m. TO 4 p.m.

**PANCAKE MIX** AUNT JEMIMA'S BUTTERMILK - REGULAR OR BUCKWHEAT . . . TRY ALL THREE! 4-LB. BAG 49

**ORANGE JUICE** MINUTE MAID FROZEN 5 6-Oz. 1  
Tins

**AA LARGE EGGS** RANCH FRESH DOZEN 49

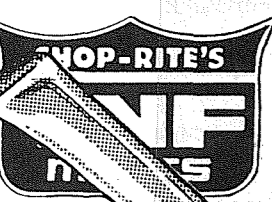
**SIRLOIN STEAK** VNF, U.S. "Choice and Good" Beef Rich and Flavorful POUND 93

**T-BONE STEAK** VNF, U.S. "Good and Choice" Beef. Pound 1.09

**ROUND STEAK** Boneless Top Rounds . . . VNF. Pound 89

**SWIFT'S PICNICS** Fully Cooked 5 - 8 Lbs. Pound 35  
Sliced and Tied Picnics . lb. 39

Read Tacoma News Tribune for Additional Items



**BONELESS ROAST** Bottom Round 89c

**WIENERS** Bar-S Skinless Pound 49

**WIENERS** Bar-S All Beef Pound 59

**STEAK KNIFE**  
DeLuxe 49c Value

**NOTE:**  
Get Your V-N-F Pamphlet With The V-N-F Story. Bring Back The Coupon For Free Steak Knife. Limit: One Per Family.

With 2 VNF Meat Labels. **EACH ONLY 9c**

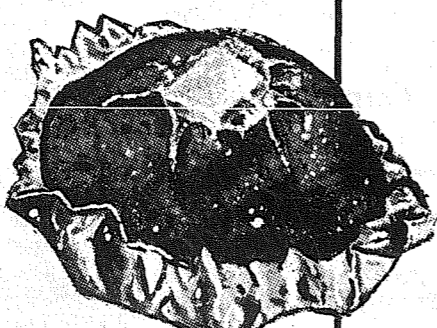


"Service Is Our Motto"

**POTATOES** U.S. No. 1 10-LBS. 29

**MUSHROOMS** Dawn Fresh 4-Oz. Carton 2 For 49

**PEARS** D'ANJOU 2 Lbs. 29



Use Our Free Bulletin Board to Sell or Buy!

**SUMMIT TRADING CENTER**

Prices Effective Jan. 31; Feb. 1-2

**Shop Rite**  
FOOD CENTERS  
Limit Rights

### . . . Look At These Great Values!

**KEN-L MEAL** 4-Lb. Pkg. 49

**PUSS 'N BOOTS** 8 Tall Tins \$1

**KEN-L MEAL** 20-Lb. Sack 1.29

**NESCAFE** INSTANT COFFEE 10-Oz. Jar 89

**CORN BEEF** LIBBY 12-Oz. Tin 49

**TOM. JUICE** LIBBY 4 46-Oz. \$1  
Tins

**Hardware**  
Reg. 99c - Supplies Limited  
400 Needle - 15 Denier

**1st QUALITY NYLONS**  
SEAMLESS (LIMIT 3 PAIR) 49c  
PAIR EA.

# 5 & 10 Dinner Feb. 14th By Little League

**Mrs. Fred Most**  
LE 7-7552  
**Five-Dime Dinner**  
The Little League Association is having a 5 and 10 cent dinner on Valentine evening, Thursday, Feb. 14th from 8

**Mrs. Lapenski**  
(Continued from Page 1)  
Pacific Lutheran University does have a problem, though officially they are not in the sewer district. An engineer with the city sewer department has stated that his department told the university how to help their problem and even offered to train their men free to do this. They were never taken up on the offer. Perhaps the new administration will be interested.

Most septic tanks in the area work well. Even where the water table is near the top of the ground and the drainage is poor they will work. We have one on the front of our property where the water table is very high. It sits in hardpan where the drainage is very poor. Of my knowledge this tank has been in constant use since 1944 and has given no trouble. Since 1956 when the sewer district was voted on a home owner paying \$3.50 a month would by now have paid approximately \$260.00 into the district. This amount will pay for pumping the average tank ten times with \$10.00 left over. Did any tank ever need pumping ten times since 1956? \$260.00 will more than pay for most complete septic tank systems and all this without costs of side arms, hoop-dips and so much a front foot plus the cost of a line from the house to the sewer.

Mr. and Mrs. Warren Hayt who have lived in this area for 37 years and most of it at 10435 Pacific Ave. are a good example. They live in the wettest spot along Pacific Ave. but have no septic tank trouble. Mrs. Hayt says they need drainage but not sewers.

Small sewer districts have not proven financially feasible. Several tried to make a go of it in California and were unsuccessful. After considerable cost to the home owners the state was forced to come in and take over. A small district cannot afford to hire properly trained help to run a plant. Tacoma's No. 1 plant was originally planned for two men to operate. They were nearly flooded out and at present there are sixteen men working this plant.

Each election held by the Sewer Commissioners adds to the cost against the district. The law requires an election every two years to elect a new sewer commissioner and there are the charges of the State Examiners office. The approximate cost against the district at present is \$2100.00 and must be paid for by those in the district even if the district is dissolved. If it is not dissolved these costs continue to add up and must eventually be paid.

**Complete Repair SERVICE**  
• Television  
• Ranges  
• Washers  
• Dryers  
**RADIO DISPATCHED FOR FAST SERVICE.**  
**SILER'S**  
TV and APPLIANCE  
11230 Pacific Avenue  
LEnox 7-8634

**Rely on your PHARMACIST**  
HERE'S MY REASON FOR HAVING PRESCRIPTIONS FILLED AT.....  
**ASHMORE DRUG**  
I WANT ONLY THE BEST WHERE THIS LITTLE FELLOW IS CONCERNED!  
  
**ASHMORE'S SPANAWAY Drug**  
1655 & PACIFIC Ave. SPANAWAY  
LE 7-5993

# Harvard Mothers To Hear Mental Health Discussion

**Mrs. Frank Gural**  
LE 7-5899  
The Harvard Preschool Mothers Study Group will meet on Thursday afternoon, February 7th, at 1:30 p.m., in the Harvard School. Walter Huber, Director of Mental Health for the Tacoma Public Health Department, will present a film on "The Mental Health of the Preschool Child". All mothers with preschool children are invited to attend.

Limited babysitting facilities will be provided. For further information, call Mrs. Ray Cheslik, LE 7-3265.

## PLU Teacher To Speak At Roy P-TA

**Miss Martha Berggren**  
Roy 229  
"Your Child Goes to School" will be the subject of a talk given by Anna Mann Nielsen, Director of Teacher Education at PLU at the Roy P-TA meeting to be held February 4th in the Roy Elementary School. There will be a short business meeting followed by refreshments.

**Jr. Rodeo Plans**  
"Circle May 5th on your calendar," advises Mrs. Harvey Hicks, Publicity Chairman. "That's the date of the second annual Junior Rodeo sponsored by the Roy P-TA."

**In Madigan**  
Bing Ng has been confined to Madigan Hospital for the past week while tests are run. While Mr. Ng was allowed to spend the weekend at his home, he returned to the hospital this week.

**New Books**  
Roy Library has had a new shipment of books. Tables have been installed for the convenience of those wishing to use the new en-

**Recreation Day**  
Tuesday is Recreation Day in the Roy Gym.

**Recreation Day**  
Tuesday is Recreation Day in the Roy Gym.

**Recreation Day**  
Tuesday is Recreation Day in the Roy Gym.

**Recreation Day**  
Tuesday is Recreation Day in the Roy Gym.

**Recreation Day**  
Tuesday is Recreation Day in the Roy Gym.

**Zoning Meeting**  
Just a reminder that all Midland residents should attend the Zoning meeting, on Tuesday morning, Feb. 5th, at 10 a.m., in the County Commissioners Office, in the County-City Bldg. For additional information, call LE 7-3917.

**Cub Pack Meeting**  
Midland's Cub Scout Pack No. 84 held their regular pack meeting on January 25 at the Midland Community Club Hall.

The following advancements and awards were awarded: Bobcat, Tim Lawson, Kim DeLaVergne; Wolf, Craig Daniels; Bear, Michael Sheppard; Russell Davis; Lion, David Peterson; Weblon, Mike Hanbaum.

Gold Arrows were earned by Ronald Both and David Peterson; and Silver Arrows by Michael Teffre (2), Gordon Pease (2), Randy Loranca, Thomas Stevens, Charles Knapp, Ronald Both and Michael Sheppard.

Denner Stripes were given to Toni Craig, Den 1; Steven Sada, Den 4; Rodney Rogness, Den 10; Michael Veit, Den 9; and Assistant Denner Stripe to Tommy Theno, Jimmy Simmons, David Nett and Roger Reed. One-year pins went to Mike Lawson, Mike Hanbaum, John Kusterer, and Roger Reed.

David Peterson became a member of the Weblon Den. Cubs advancing to the Scout Troop are Ricky Kennedy and Mike Hanbaum. Dens 4 and 7 tied for the Honor Flag.

**Recreation Day**  
Tuesday is Recreation Day in the Roy Gym.

**Recreation Day**  
Tuesday is Recreation Day in the Roy Gym.

**Recreation Day**  
Tuesday is Recreation Day in the Roy Gym.

**Recreation Day**  
Tuesday is Recreation Day in the Roy Gym.

**Recreation Day**  
Tuesday is Recreation Day in the Roy Gym.

**Recreation Day**  
Tuesday is Recreation Day in the Roy Gym.

**Recreation Day**  
Tuesday is Recreation Day in the Roy Gym.

**Explorer Encampment**  
Eight members of Midland's Explorer Post No. 84 were among the 150 Explorers from the Mount Rainier Council that attended the Explorer Encampment held at McChord Air Force Base, on January 26 and 27. Attending from Midland with their Advisor, Samuel R. Boone, were Ron Akins, Dee Florence, Zane Baldwin, Stan Jackson, Tom Powell, Dave Gural, Terry Nimick, and Harvin Hosum.

**Explorer Uniforms Wanted**  
Midland's Explorer Post No. 84 is in need of uniforms for new members in the Post. If you have a uniform that you no longer need and you would like to donate it to them, please drop it off at the Midland Shoe Repair, or call LE 7-5938.

**Midland Orthopedic**  
The Midland Orthopedic Guild will hold their monthly luncheon meeting at the home of Mrs. Charles Brouwer, 2602 South 90th. Hostesses will be Mrs. Brouwer, Mrs. Oni Tapio, and Mrs. Charles Berg. For further information, contact Mrs. Victor Espshper, Sr., LE 1-1644.

**Hammar Floya Wedding**  
Linda Jean Hammar and James W. Floya were married on Friday, January 25, at the All Saints Episcopal Church. The bride is the

daughter of Mrs. Ivy R. Hammar; and the groom, a member of the U.S. Armed Forces, is the son of Mr. and Mrs. C. W. Floya of Alabama.

**Open Heart Surgery**  
Janice Moorman, daughter of Mr. and Mrs. John Moorman, 8518 Golden Given, is recovering in Mary Bridge Children's Hospital, from open heart surgery performed on January 22nd.

**Nebraska Visitors**  
Visiting at the home of Mr. and Mrs. Jerry Brooks are Mrs. Brook's mother, Mrs. Harold Steckelberg, and Jimmy Steckelberg, from Osmond, Nebraska.

**Arizona Trip**  
Mr. and Mrs. Elmer Morud have returned from a motor trip to Tempe, Arizona, where they visited their daughter and son-in-law, Mr. and Mrs. Dale Rogers (Joanne Morud), and son, David. Also visiting in Tempe at the time were Mr. Morud's sister and brother-in-law, Mr. and Mrs. Archie Biddle, from

Minneapolis. The Moruds also made stops at Berkeley, and San Jose, California.

**Housewarming**  
A housewarming in honor of Mrs. Fred Reinicke was held by the Birthday Club, with a potluck lunch being served and a gift for the home presented. Guests were Mrs. Frank Baskett, Mrs. Albert Bombardier, Mrs. Jerry Haller and children, Mrs. Walter Seaburg and Cheryl, Mrs. Robert Tracht and children, Mrs. Carl Reinicke, Mrs. Wm. Baughn, Mrs. Carl Clarke, and Mrs. Clare Olson.

**Midland Play School**  
The Midland Cooperative Play School were guests of

the Summit Play School on January 24th. Refreshments were served by Mrs. Karl Walter Challenger, Midland's Play School teacher.

**URBAN PLUMBING SERVICE**  
RADIO DISPATCHED  
RESIDENTIAL  
COMMERCIAL  
FU 3-4636  
Nite Phone GR 4-6013

**Grand Opening Specials**  
SAT., FEB. 2-63  
FREE COFFEE AND DONUTS ALL DAY

<b>GOERLICH STOCK MUFFLER</b> \$9.50 to \$13.75 List SALE PRICE <b>5.70</b> To <b>8.52</b>	<b>Transmobil CAR RADIO</b> Portable <b>59.50</b>	<b>TIRE CHAINS</b> <b>7.95</b> To <b>11.95</b>
<b>PURIFYER OIL FILTERS</b> \$2.05 to \$3.45 List At <b>1.23</b> To <b>2.09</b>	<b>CHAMPION SPARK PLUGS</b> <b>49¢</b> Limit - One Set To A Customer	<b>TUNE-UP KITS</b> List \$3.90 to \$6.95 <b>2.39</b> To <b>4.19</b>
<b>IGNITION WIRE SETS</b> \$2.50 to \$5.25 List OUR PRICE <b>1.98</b> To <b>4.19</b>	<b>ALSO: See Us For USED CAR PARTS</b>	<b>Used YALE PADLOCKS</b> <b>49¢</b>

**Martens & Gordies Inc.**  
NEW & USED AUTO PARTS  
Open 8:30 a.m. To 8:00 p.m. Including Saturday MACHINE SHOP SERVICE  
11012 PACIFIC AVE.

**Canyon Ready Mix, Inc.**  
LE 7-3943  
72nd & CANYON  
Saturday Delivery  
Fast Service - Quality Products  
(ALL TRUCKS RADIO EQUIPPED)  
Call For Estimates

**WHEEL ALIGNMENT and BALANCING**  
**Front End Repairs**  
Newest Equipment Most Experienced Men  
**Kimball's**  
10111 Pacific Ave. LE 7-0276

**This Man Needs Your Help!**  
Attend SPANAWAY FIREMENS Annual DANCE  
FEB. 9th  
Dancing 9 Till 2 a.m.  
Elk Plain Grange  
DONATION: \$1.00

**PRICES EFFECTIVE JAN. 24-25-26**  
"We Reserve The Right To Limit"  
**the FARM BOYS**  
Hours: 9:00 'Til 9:00 - Sundays 9:00 'Til 7:00  
E. 112th & CANYON ROAD  
ORANGES Fancy Lb. 10  
TIMOTHY HAY Bale 1.09

**MJB COFFEE**  
1-Lb. **49¢**  
2-Lbs. **98¢**

**DARIGOLD BUTTER**  
Lb. **59¢**

**BLADE CUT POT ROAST**  
Lb. **43¢**  
Thrifty SLICED BACON Lb. 39

**DELICIOUS APPLES**  
4 Lb. Cello Bag **29¢**  
You'll Need Quality CRESCENT CINNAMON For Apple Pies!

**FARM BOYS TUNA** 4 1/2 Tins **\$1**  
**FARM BOYS SALAD DRESSING** Qt. **39¢**

# The TIMES JOURNAL

ADDRESS . . . . . P. O. BOX 2008, PARKLAND, WASHINGTON  
14620 Pacific Avenue Phone LEnox 7-0223  
JACK BROWN . . . . . Publisher  
NEIL McLEAN . . . . . General Manager  
RUTH THOMPSON . . . . . Editor  
WAYNE JOHNSON . . . . . Circulation  
CHET CHAMBERLAIN . . . . . Accounting  
DARRELL DUGAN . . . . . Advertising  
DAVE HIBBARD . . . . . Shop Superintendent  
DICK MARCELLE . . . . . Composing Room Foreman  
Qualified as a Legal Publication under Chapter 213, of the Legislative Acts of the 1941 Regular Session of the State of Washington.

Delivered free by U.S. Mail, or carriers, to all homes in the trade territory. Paid subscriptions elsewhere. In Washington State \$2.50 per year. Outside the state, \$3.00 per year.  
ADVERTISING RATES ON REQUEST

## Firemen Meet At Spanaway

**Mrs. Oliver Omat**  
VI 7-7156  
The Spanaway Volunteer Firemen will meet Monday, Feb. 4th at the Spanaway Fire Hall at 8 p.m. John Todd will preside.  
The Spanaway Volunteer Firemen's Auxiliary will meet at 8 p.m. Tuesday, Feb. 5th at the Spanaway Fire Hall. Mrs. Donald Palmer, newly elected President, will preside.  
Hostesses will be Mrs. Bob Phillips, Charles Phipps, Wm. Righetti and George Schelle.

**Executive Meeting**  
Mrs. Donald Palmer held her first Executive Board meeting last Friday. Present were Mrs. Alice Webb, Louis Symmons and Harry Thomas.

**Suffers Hurts**  
Sorry to hear that Mrs. Frank Failey suffered serious head injuries in a home accident. Speedy get well wishes go to Mrs. Harvey Ouhl, who broke her ankle some time ago.

**Reported Ill**  
Robert Slemmons has been reported ill in Doctor's Hospital. We all wish him a speedy recovery.

**Time To Register**  
Don't forget to register if you are not already a registered voter. Registration books close Feb. 28th.

## Keithley Sets "Back To School" Nite

Keithley Junior High School will hold their "Back to School Night" Tuesday, February 5, at 8 p.m. following the regular business meeting of the Booster Club in the school cafeteria.  
During the business meeting an announcement will be made regarding the Booster Club Dinner scheduled for a later date.  
During the Back to School Night program, parents will follow a shortened schedule of their student to acquaint themselves with the school curriculum.

**Income Tax Service**  
At  
**SUBURBAN REALTY, Inc.**  
REAL ESTATE and INSURANCE  
11302 Pacific Avenue LE 7-9638 or TH 5-5083

## TELLS ALL IN EXCLUSIVE INTERVIEW



"Billy broke our best teacup. Kitty's going to have kittens. Are you coming home soon, Daddy?" These were the startling revelations of a young woman when her father called home from a business trip. (Her mother was happy to hear from him, too.) Share your good news with family and friends—it's the next best thing to being there. Why not *this* evening, after 6, when the rates are lower? **PACIFIC NORTHWEST BELL**

## Elk Plain News

**Mrs. Ray Burkhart**  
VI 7-7586

**Outlook League**  
W.O.L. of the Elk Plain Community Church will meet Feb. 6th at 7:30 p.m.

**Social Night**  
Social night will be held at the Elk Plain Grange Hall Friday, Feb. 1st, at 8 p.m.

When the heart is afire, some sparks will fly out of the mouth.  
—Thomas Fuller

**TV INSTALLATION AND REPAIRS**  
  
**A.B.C. ELECTRONICS**  
Garfield & C Street  
LE 7-4900  
Guaranteed WORK  
LOW RATES

# SALVAGE MART

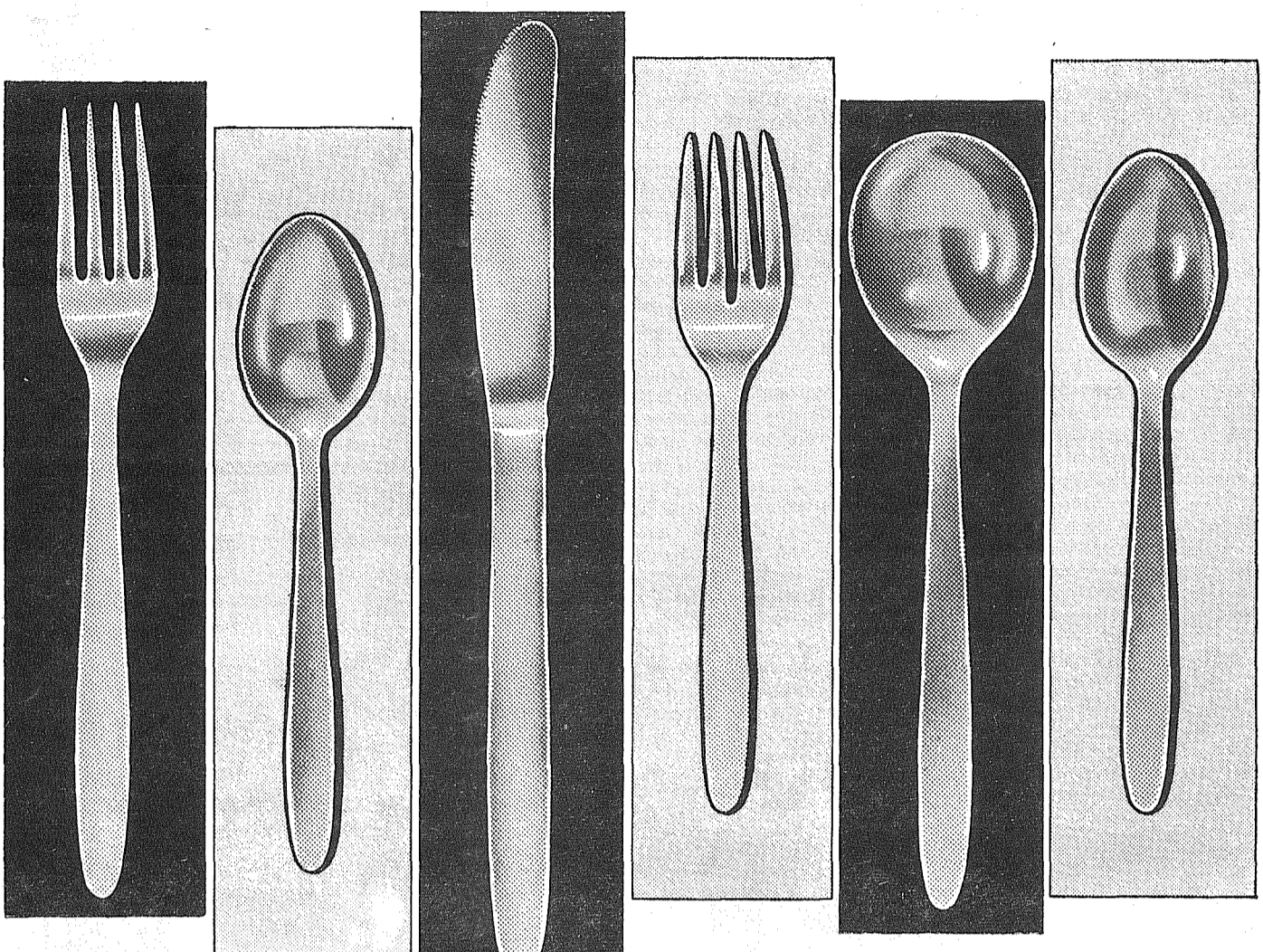
13014 PACIFIC AVE. LEnox 1-0770  
Tacoma's ONLY Salvage Food Store — We Buy Cheap and Sell Cheaper  
Hours: Open Daily, 9 to 8 Sundays, 10 to 7

Popular Brand  
**MAYONNAISE** qt. **39¢**  
**TUNA** 5 1/2 Tins **\$1**  
**FLOUR** 10-Lb. Bag **59¢**  
**SUGAR** POWDERED Pkg. **9¢**  
**HEINZ** 14-Oz. **KETCHUP** **5/75¢**

# Lucky

**INVITES YOU TO**

*Dine with beauty...*

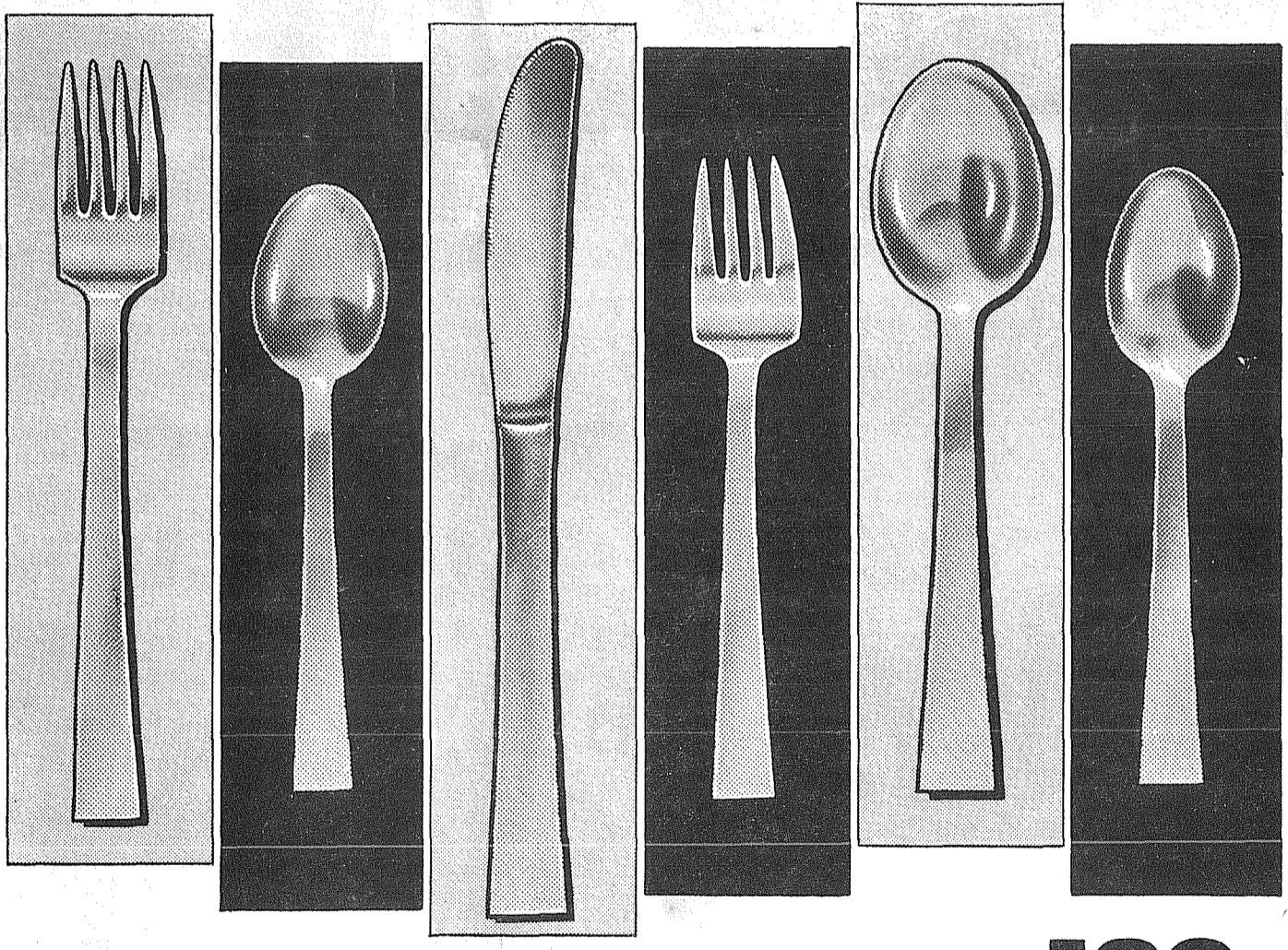


## Drama

Here is simple elegance with a curving flair! Add this enduring beauty to your table . . . each piece reflects the hallmarks of quality and design.  
**6-PC. BASIC PLACE SETTING ONLY**  
With Each \$2.50 Purchase at Lucky

**89**

. . . with beautiful, magnificently fashioned, imported, stainless steel flatware. Lustrous stainless steel is a lifetime investment. Now you may buy a place-setting a week at Lucky Stores and build a family heirloom. For the next 8 weeks, Lucky offers two beautiful patterns designed to enhance your table.



## Kronor

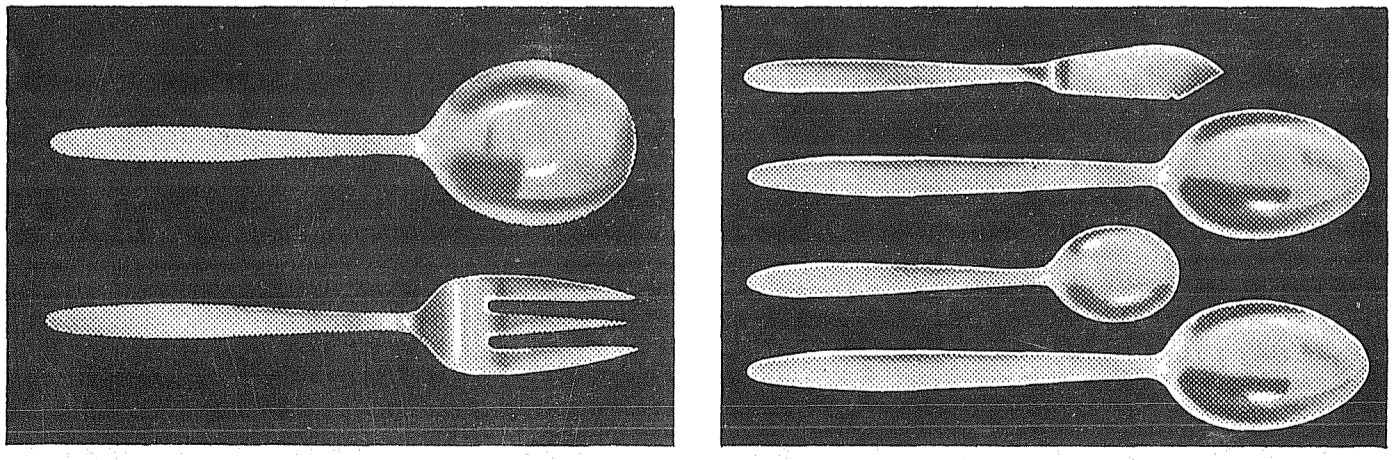
Look at this tailored simplicity . . . a touch of Nordic modern accent to add excitement to your table. Start your collection this week of this superior tableware.  
**6-PC. BASIC PLACE SETTING ONLY**  
With Each \$2.50 Purchase at Lucky

**89**

DRAMA reflects the traditional home; chintz and hooked rugs, ruffled curtains and ivy. DRAMA, with its gently curving handles and graceful flowing lines, rests beautifully on damask cloths surrounded by cut crystal and fine bone china. And, DRAMA is so versatile, it blends beautifully with everynight dining as well as company dinners.

KRONOR epitomizes the contemporary home; the aura of modern paintings, clean sweeping lines of modern furniture and bold dramatic splashes of color. KRONOR's stark Nordic beauty is right at home with heavy linen tablecloths, hand-blown crystal and elegant china. KRONOR suits place mats too, perfect when the family dines together as well as for those special candlelight occasions.

Both patterns may be found *only at your favorite Lucky Market*, so select yours now. Enjoy versatile stainless steel with festive dinner parties as well as everyday dinner. Never before offered at this low price.



**2 Piece SALAD SETS**  
Available in both patterns to complete your basic set  
ONLY **1.89**  
With Each \$2.50 Purchase

**4 Piece ACCESSORY SET**  
Available in both patterns to complete your basic set  
ONLY **1.89**  
With Each \$2.50 Purchase

6-Piece basis place-setting sold exclusively at Lucky Stores  
**\$1.89**

**WITH EACH \$2.50 PURCHASE AT ANY LUCKY STORE**

**SEE THE DISPLAY AT YOUR LUCKY STORE**

**Lucky**  
**7 DAY SPECIALS**

**133RD AND PACIFIC AVENUE PARKLAND**

**Lucky**  
7 DAY SPECIALS

# DOUBLE FEATURE EVENT

EVENT #1 **STAINLESS STEEL!** EVENT #2 **FAMOUS BRANDS SALE!**

SHOP FOR THE BRANDS YOU KNOW!

**COFFEE** FOLGER'S ALL GRINDS 1-lb. Can **49¢**

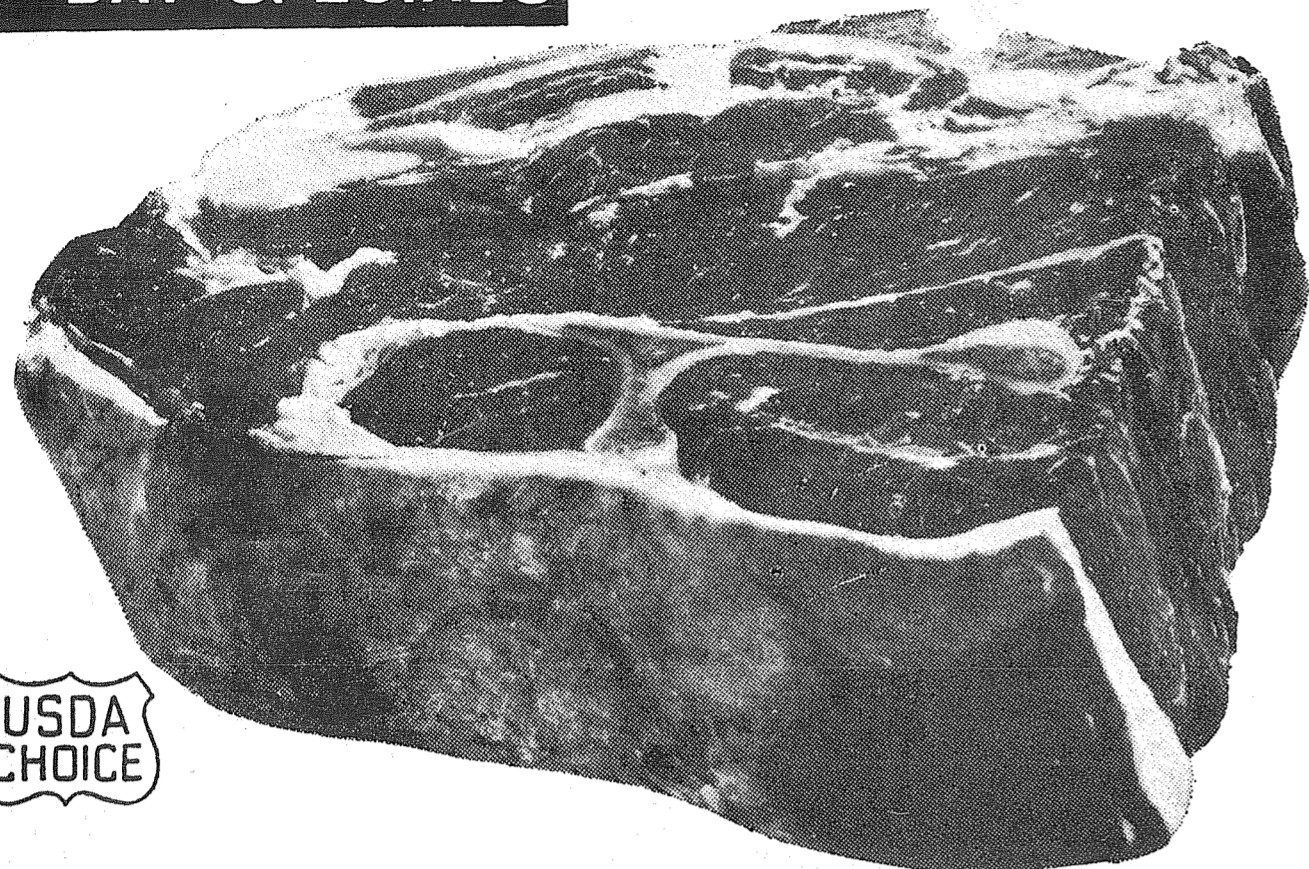
**JELL-O** ALL FLAVORS 3-oz. PKG. **5¢**

**SOUP** CAMPBELL'S 17 Meat Varieties Reg. Can **6/\$1**

**BISQUICK** 40-oz. PKG. **39¢**

**KETCHUP** HEINZ 14-oz. Btle. **19¢**

**FAB DETERGENT** Giant Package **55¢**



7-BONE CENTER CUTS AND BLADE

**Chuck Roast** **49¢**  
Lb.

OUR FINEST POT ROAST BUY!

Cut From Highly Flavored U.S. Choice Beef and Well Trimmed.

**CROSS RIB ROAST** Choice Boneless .lb. **89¢** **GROUND CHUCK** Beef .lb. **59¢**

**CHUCK STEAK** U. S. Choice Blade Cut .lb. **59¢** **PIECE BOLOGNA** Swift Premium .lb. **39¢**

**BEEF STEW** Choice Boneless .lb. **79¢** **SLICED HAM** .lb. **98¢**

**LUCKY SLICED BACON** EASTERN SUGAR-CURED 1-lb. Pkg. **59¢**

FRESH CUT-UP STEWING CHICKENS  
**Lb. 23¢**

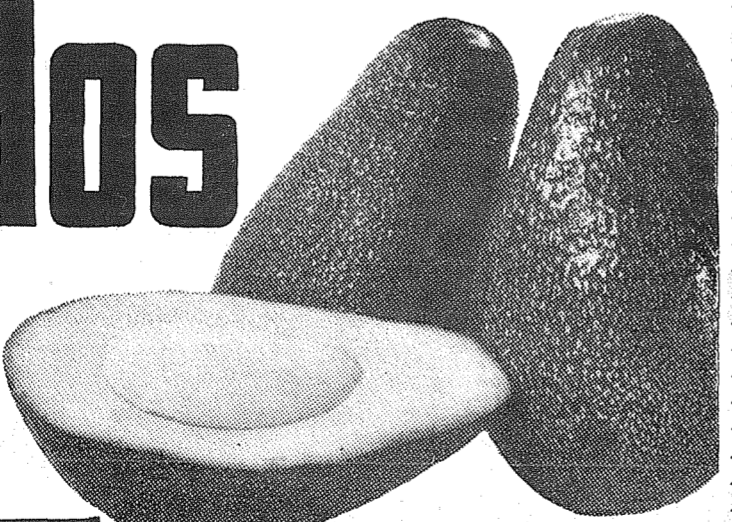
FRESH LEAN GROUND BEEF  
**3 Lbs. For 98¢**

**7-DAY SPECIALS**  
ALL GROCERY, MEAT AND PRODUCE PRICES IN THIS AD ARE EFFECTIVE FOR ONE WEEK: SEE FOR YOURSELF THAT YOU SAVE MORE BY SHOPPING  
**LUCKY STORES**  
AD EFFECTIVE THURS., JAN. 31 THRU NEXT WED., FEB. 6TH

**CHOICE LEG OF LAMB** OR BONELESS SHOULDER **Lb. 65**  
**LOIN LAMB CHOPS** Choice .lb. **98¢** **BREAST OF LAMB** or Lamb Stew Choice .lb. **19¢**  
**RIB LAMB CHOPS** Choice .lb. **89¢** **LAMBURGER** U.S. Choice .lb. **39¢**  
**SHOULDER LAMB ROAST** U.S.D.A. Well Trimmed CHOICE .lb. **49¢**

**APPLE SAUCE** Skookum.....No. 303 can **6/\$1** **GREEN BEANS** Del Monte Cut.....No. 303 can **4/89¢**  
**INSTANT COFFEE** Folger's .... 6-oz. jar **97¢** **FRUIT COCKTAIL** Del Monte.....No. 303 can **4/\$1**  
**DEL MONTE CORN** Whole Kernel, Redeem coupon here. 303 can **5/\$1** **WAX PAPER** Kitchen Charm.....75-ft. Roll **2/33¢**  
**POPCORN** Jolly Time, Yellow or White.....2-lb. bag **3/\$1** **MARGARINE** Allsweet.....1-lb. Pkg. **29¢**  
**CORNED BEEF** Hereford.....12-oz. Can **47¢** **SHORTENING** Swift's.....3-lb. can **69¢**  
**CAT FOOD** Capt. Kitt, All Tuna Red Meat.....6 1/4-oz. can **2/27¢** **CORNED BEEF HASH** Libby's.....16-oz. can **39¢**  
**SALAD DRESSING** Girard's French, 6-oz. btl. Redeem coupon here'.... **29¢** **SPACE NOODLES** Mission.....12-oz. Pkg. **3/\$1**  
**DIAL SOAP** Princess—Reg. Bar 'Redeem your coupon here'..... **6/\$1** **FRUIT DRINKS** Sunny Jim, Asst. Flavors.....46-oz. can **29¢**  
**DOG FOOD** Purina Dog Chow.....5-lb. bag **73¢** **IVORY LIQUID** Detergent, 4c off...12-oz. bottle **35¢**  
**FROSTED FLAKES** Kellogg Sugar.....10-oz. Pkg. **31¢** **FABRIC SOFTENER** Downy.....17-oz. bottle **47¢**  
**CAKE MIX** Duncan Hines, Layer Variety, 'Redeem Your Coupon Here'.....Pkg. **37¢** **SLICED CHEESE** Kraft Aged Swiss.....6-oz. Pkg. **39¢**  
**M&M CANDY** Plain Peanut Or Almond.....Family Pack **4/\$1** **PRESERVES** Strawberry, Sunny Jim...12-oz. Jar **35¢**  
**CAKE MIX** Pillsbury White.....14-oz. Pkg. **39¢** **MUSHROOM** Dawn Fresh Pieces and Stems.....3-oz. Can **4/\$1**  
**PAPER NAPKINS** Kitchen Charm, Ass'd. colors.....Pkg. of 60 **3/31¢** **SYRUP** Vermont Maid.....24-oz. Bottle **59¢**  
**WHITE BREAD** Kream Krust.....Large Loaf **33¢** **BOOK MATCHES** Universal, Carton of 50 **2/29¢**

**Avocados**  
Calif. large firm ripe **10¢**  
EACH



**EXTRA FANCY** 4 lbs. for **49¢**  
**FANCY GRADE** 23-lb. Box **1.69**  
**WINESAP APPLES**

**GRAPEFRUIT** Jumbo Florida Pink or White...lb. **19¢**  
**SPINACH** Fresh—Tender Lge. Broadleaf .....Bun. **19¢**  
**RED LETTUCE** Large Heads .....Ea. **19¢**  
**DRIED PRUNES** Extra 2-lb. Large...Cello **69¢**  
Featured Items: Fresh Dates, Sunkist Oranges, Lemons, Selected Tomatoes, Fresh Cucumbers.

Treasure Gold <b>ELBERTA PEACHES</b> CHOICE LARGE No. 2 1/2 Can <b>4/\$1</b>	Plastic <b>UTILITY PAIL</b> EASY GRIP HANDLE Asst. Colors <b>59¢</b>	<b>LISTERINE</b> REG. 59c BOTTLE ..... <b>49¢</b> <b>BAYER ASPIRIN</b> REG. 43c BOTTLE ..... <b>35¢</b>	Libby <b>PINEAPPLE</b> CRUSHED, CHUNKS OR TIDBITS No. 211 Can... <b>4/89¢</b>
---	---	--	--

**VAN de KAMP BAKERY SPECIAL!**  
FRESH BUTTERHORNS  
REG. 49c  
Pkg. of 4 **39¢**

**133rd & PACIFIC PARKLAND**  
STORE HOURS:  
9 a.m. - 11 p.m. Daily  
9 a.m. - 9 p.m. Sunday  
Prices Effective This Store Only

**Lucky**  
7 DAY SPECIALS  
LIMIT RIGHTS RESERVED

**Armstrong Says:**

(Continued from Page 1)

We think they were written to show that constant effort must be made to keep raw sewage as well as raw industrial wastes from our waters and to improve our treatment plant facilities, not to abolish them and leave our sewage in our back yards.

The dangers of building up detergent residues whether in the soil or in the waters must, and will be, eliminated. These detergents, we understand, are manufactured from petroleum. Harmless detergents have been developed, that is, the kinds that are self-destroying or self-liquidating so that there is no harmful residue left. No doubt these harmless, yet fully as efficient products, must rapidly replace the old types.

We can only guess how many times the Health Department would have to multiply their working force to enable them to properly inspect and police all the new and old backyard installations. On the other hand, it requires only the time of one or two men to insure the proper operation of a central treatment plant for an entire city.

But we are now told by a few men that sewer systems and treatment plants should not be built. These people have set as their goal the dissolution of the Parkland Sewer District. They are urging us to take a step backwards.

On the other hand, there are those that believe after waiting and marking time since 1954, now is the time to tackle the job. With a tax cut in the offing and an all time high in prosperity and employment envisaged for 1964, and the years beyond, how could a better time be chosen?

The sewer rates necessary to finance the building of sewers seem high now. But as wages go up the cost of installing the sewers will always remain the same and will gradually shrink by comparison.

If we get the voters approval by June of this year, the Federal Government, through the Pollution Control Commission, will encourage us by a grant of a quarter million dollars towards construction of a trunk and treatment plant.

**SHOP & SAVE**  
at **BROOKDALE LUMBER CO.**

INSULATE NOW!  
**ZONOLITE**  
**\$1.59 Sk.**  
Fiberglass  
**Blanket Insulation**  
ECONOMY **\$6.30** Per 100'  
MEDIUM **\$7.80** Per 100'

**MASONITE**  
4x8 1/4"  
**\$2.25 Ea.**  
10 OR MORE  
**\$1.98 Ea.**

7' Split  
**FENCE POSTS**  
U Pick Up  
**55c Ea.**

We Have First Grade Aluminum Combination  
**STORM & SCREEN DOORS**  
For Only **\$30.95**

We Still Have Some Of That Popular  
**CONOLITE**  
The Economical Plastic Deck Cover  
At Only **55c sq. ft.**

5 Years To Pay on Remodel Jobs  
**BROOKDALE LUMBER CO.**  
136th & Pacific Ave  
LE 7-8669

# CLASSIFIED

Page 6 Thursday, January 31, 1963  
The Times Journal

## Swap (2)

1953 CHRYSLER, radio and heater, good condition. Will trade for pick up or sell \$100. Utility trailer, \$35.00; 122 E. 167th, after 6 p.m. 2c22

## Business Serv. (3)

TOWN & COUNTRY TREE SERVICE. Trees topped, pruned or removed. Free estimates, prompt service. TH 5-9643. 3c25

SAVE 10% on Lawnmower sharpening now thru February. Free storage with winterizing. Free pick up & delivery. Bicycle Repairs. Harter & Scott, 8304 So. Park. GR 4-0051. 3c1f

FOUNDATIONS ADDITIONS. REMODELING. Free Estimates. Financing, no down payment. Ph: GR 4-7000 any time. 3c1f

## Now For The Holiday Season



BRIGHT NEW COLOR FOR FADED FABRICS  
FABSPRAY COLOR for Faded Fabrics 18 DECORATOR COLORS RESTORE THE "NEW LOOK" TO FADED, DRAB FURNITURE — chairs, sofas, drapes, auto interiors, lamp shades, etc. FOR LESS THAN \$5.00 ECONOMY SIZE 24 oz. Giant Spray . . . \$4.99  
So. End Plumbing & Hardware 185th & Pacific VI 7-1211

FOR SALE — My equity in 1957 Hallmark Trailer house. Trailer 35'x8', in very good condition. Call LE 7-0223, ask for Wayne. 9p1f

## M. L. S. MULTIPLE LISTING SERVICE

McKinley Hill Realty 6311 McKinley Ave. GR 4-9574  
Member of Multiple Listing Service and Tacoma Real Estate Board

Suburban Realty, Inc. Member of Tacoma Board of Realtors - Multiple Listing 11802 Pacific Avenue LExox 7-8638

## M. L. S. MULTIPLE LISTING SERVICE

JENNIE L. GRODVGJ Parkland Realty Co. Insurance of All Kinds Notary Public Est. in Parkland Since 1941 LExox 7-8609 Office 302 Garfield St. Parkland JENNIE GRODVGJ LE 1-1210 EDNA TAYLOR LE 7-3556 THELMA SCOTT JU 8-3838 "Deal with the people who give you their personal attention". Member of Multiple Listing Service and Tacoma Real Estate Board

INCOME TAX SERVICE at Thurmond Real Estate. 16217 Pacific Ave., Spanaway. Phone LE 1-1308. Open evenings. 3c1f

A J ELECTRIC FOR your wiring and electric heating needs, call LE 7-0349, or TH 5-2822. Free estimates. 3c1f

FOR FURNACES, repairs, sheet metal work, call PARKLAND FUEL OIL. LE 7-0256. 3c1f

BOYS WANTED to deliver papers in the Midland to Canyon Road area. Call LE 7-0223 for information. 5p1f

LOST — Lady's yellow gold watch, near 1112 So. 116th. Finder please call LE 7-3598. Reward. 6c22

WANTED — Coins. Lincoln, Indian pennies, all other old coins. LE 7-5068. 8c1f

80 ACRES \$18,950.00 — 3 bedrooms, full basement, very good condition, plenty of water. Terrific buy. 30 minutes from Parkland. A Z Z Realty 13023 Pacific Ave. LE 7-0259

PACIFIC AVENUE — 750 Sq. feet office space, \$65.00 mo. A Z Z Realty, LE 7-0259. 10c22

LEASE ONLY — 3-bedroom home, \$90 month; 419 So. 133rd. LE 1-1785. 10c22

### Notice Of Meeting

The annual meeting of the members of the Southeast Tacoma Mutual Water Company will be held Tuesday, February 5, 1963 at 8:00 p.m., at the Midland Fire Station, for the election of two trustees, and the transaction of such business as may come before the meeting.

(Signed)  
CLARENCE P. JOHANN  
President

**Rentals FURNISHED**  
1 Bedroom, 4 Plex. furnished. Just completed. Just \$85 plus light bill each month. Brookdale. 1017 So. 111th St. 3 rooms, \$60 includes all bills. Ideal for 1 person.  
11819 Golden Given, 4 bed, \$80; 1101 So. 119th, 2 bed, \$75; 315 East 99th St. 1 bed, \$55; 8001 East Wilkeson, 2 bed, \$60.

## Used Autos (12)

COMPLETS Tri-Power Set Up plus fuel block, \$70.00. Eastonville, 832-5238. 12p23  
1952 MERCURY Coupe. \$150. GR 4-4724. 12c22

## Farm Ads (13)

BABY CHICKS New Hampshire for brown eggs. Rowley's, 602 15th Ave., SW. Puyallup. TH 5-9166. 13c43

EASTERN WASHINGTON HAY. C. I. Flowers, Rt. 1, Roy, phone Roy 328. 13c1f

DRESSMAKING—Shirts, Skirts and Blouses, LE 1-2624. 14c23

CHILD CARE isn't just watching your children, it's caring for them. LE 7-6929. 14c22

WANTED — Ironing, my home. LE 7-3106. 14c24

CHILD CARE in my home by the day or week. 304 So. 125th, LE 1-2735. 14c22

GOING SHOPPING? Dentist, doctor, etc.? Need a dependable baby sitter? Call LE 1-2593. 50c an hour days. In a nursery-like setting, special rates for working mothers. 14p1f

SITUATION WANTED — Baby sitting, your home or mine. 1312 So. 120th. LE 1-0416. 14c1f

EXPERIENCED MOTHER desires child care. Lots of love and play equipment; my home. 2622 E. 121st; phone LE 1-2593. 14p1f

EXPERIENCED Child Care — Supervised play in my home. \$2.50 daily. LE 7-4262. 14c22

WANTED — Baby sitting, my home, fenced yard, competent care. Prefer permanent work. LE 1-2612. 14c22

PAINTING — Low winter rate. Expert workmanship. LE 7-4445. 14c23

REFRIGERATORS, Freezers, Ranges, Washers, Dryers—all makes. LE 7-7825. Enterprise Refrigeration and Appliance Repair, 8505 Waller Road, Midland. 11c1f

## Suburban Realty

11802 Pacific Ave., LE 7-8688  
Member of MLS and Tacoma Board of Realtors

FURNISHED deluxe apartment, fireplace, hot water heat, all utilities paid. Want working couple. No smoking or drinking. GR 4-5281. 10c22

ATTRACTIVE 2-bedroom home with range, refrigerator, \$80 per month. Call LE 7-6122. 10c22

ROOFING All Types. Free estimates. Jesse W. Ingram Roofing. TH 5-2841. 11p23

WASHING MACHINE PARTS—Largest stock in town. Repairing that pleases. BP'S WASHFR SERVICE, 3727 So. G. GR 4-9409. 11c1f

RENTAL Management LIST YOUR RENTAL PROPERTY SATISFACTION IS OUR BY-WORD Rental Headquarters for the Suburban Area

Suburban Realty, Inc. LE 7-8638 or LE 7-6896

Repair Serv. (11) TED'S REPAIR SERVICE — Special rates, repairing, sharpening lawn mowers. 319 Garfield St., opposite Post Office, Parkland. 11c1f

ROOFING All Types. Free estimates. Jesse W. Ingram Roofing. TH 5-2841. 11p23

WASHING MACHINE PARTS—Largest stock in town. Repairing that pleases. BP'S WASHFR SERVICE, 3727 So. G. GR 4-9409. 11c1f

WANTED — Baby sitting, my home, fenced yard, competent care. Prefer permanent work. LE 1-2612. 14c22

PAINTING — Low winter rate. Expert workmanship. LE 7-4445. 14c23

CEGAR FENCE POSTS — 42c delivered to Parkland area; 35c per post. Richard Eliff. 832-4808. 15p23

CROWN CLEANERS and Washette, P&X Shopping Center needs customers. 12-lb. washers, 25c; 9-lb. washers, 20c; drying, 10 minutes, 10c. 15c22

Hours: 8:30 a.m. to 7:00 p.m.  
162nd & Park Ave. - Spanaway  
LE 7-8213 - Closed Sunday

## Bob's FRIENDLY MARKET

U.S. GOOD RIB STEAKS **79¢** Lb.

U.S. Good STANDING RIB ROASTS **73¢** Lb.

U.S. Good SHORT RIBS <b>39¢</b> Lb.	Ocean Fresh CRABS <b>49¢</b> Lb.	U.S. Good BEEF STEW <b>63¢</b> Lb.	Chunk BOLOGNA <b>39c</b> Lb. Sliced <b>49c</b>	Fresh BEEF LIVER <b>29¢</b> Lb.
-------------------------------------	----------------------------------	------------------------------------	--	---------------------------------

PEANUT BUTTER <b>99¢</b> Reg. 1.39	BABY FOOD <b>10 For \$</b> GERBERS STRAINED Fruit Or Veg.
CREAM BANQUET PIES <b>39¢</b> Asst. 14-Oz. Ea.	FACIAL TISSUE <b>4 For \$</b> CHIFFON 400 Ct. Assorted Colors
Folgers - 3-Lb. Cannister COFFEE <b>1<sup>65</sup></b>	PEACH HALVES <b>4 For \$</b> LADY ELBERTA 2 1/2 Tin
AA Small EGGS <b>2 Doz. 79</b>	Snow Mist TUNA <b>4 For \$</b> 1/2 Tin
BANANAS <b>10¢</b> Lb.	RHUBARB <b>19¢</b> Lb. Fancy Grown In-Doors
Happy Vale PEAS <b>6 For \$</b> 303 Tin	

PART OR FULL TIME office work desired by dependable experienced woman. References furnished. Reply Box A. P. O. Box 2008, Tacoma 44, Wash. 14c1f

ALDER FIREPLACE WOOD — LE 7-4940. 15c1f

SHOE REPAIR, ORTHOPEDIC SHOE CORRECTION. ART'S SHOES, 315 Garfield St., opposite Parkland P.O. 15c22

ATTENTION HOUSEWIVES — POCHELS are now the authorized dealers for rSpeed Queen washers, automatic or wringer type, and dryers. Come in and see them at 140th and Pacific Ave. LE 7-8624. 15c1f

REAL SHARP Kenmore Dryer with guarantee, only \$49.00. Terms, Upton Electric, 1148 Market, FU 3-2551. Open Mon. and Fri. nites till nine. Sun. till four. 15c1f

NEW 2x4's and 2x2's, kindling wood, cheap. VI 7-7196. Loveland Trailer Courts. 15c22

SPINET PIANO — Will sacrifice to responsible party in this area. Cash or terms. Also ELECTRIC ORGAN. Write Kohler & Campbell factory representative, 395 S. 12th, Salem, Oregon. 15c22

PFC SMITH went to Alaska and wants someone to assume \$10 mo. payments on RCA TV. Bal. due only \$39.00. Save money here. Upton Electric, 1148 Market, FU 3-2551. Open Mon. and Fri. nites till nine. Sun. till four. 15c1f

WHY WASTE POSTAGE? "Postage Saving Guide". Copyright 1963, helps cut mailing costs, despite increased rates. Mail \$1 (plus tax); satisfaction or refund. Frank Steele, agt. 1016 N. 36th St., Seattle 3, Wash. 15c25

AIRWAY Sanitizer Bags, Parts, repairs and hoses for all makes of vacuum cleaners. Used cleaners as low as \$5.00. Upton Electric, 1148 Market, FU 3-2551. Open Mon. and Fri. nites till nine. Sun. till four. 15c1f

GRAVEL, fine or coarse, 5 1/2 yards, \$9.00. Washed sand, pea gravel, screened driveway mix, \$2.75 yard. Drain rock, beautiful quarry stone. Garden soil. Norman, any time, LE 7-4088. 15c1f

BLUE DAVENO and Chair, LE 7-5504, 1019 So. 108th, evenings. 15p22

DRIVEWAY GRAVEL — All sizes, 5 yards, \$8.00; complete tractor work, LE 7-3846. 15c1f

RENT invalid and guest equipment. Funch Rental Inc., 4517 So. Tacoma Way, GR 2-3348. 15c1f

ALCOHOLICS Anonymous. Call LE 7-4813 or LE 7-7335. 15c1f

Horses & Equip 16 HORSES BOARDED — 617 East 131st St. LE 1-2362. 16p23

Schools (18) START THE NEW YEAR with piano lessons. \$1.50. Phone LE 7-5819. 18c22

We Have Rentals CALL BILL BLACK Rural Real Estate L5 7-5440

## Murl's

RADIO & TV SERVICE  
LE 1-1212  
Open 10 a.m. to 9 p.m.  
122 E. 167th  
SPANAWAY

## BUILDERS SUPPLIES

PLYWOOD LUMBER ROOFING HARDWARE PLUMBING ELECTRICAL SUPPLIES

## Baskett Lumber

9701 Portland Avenue LE 7-8663

# ALL NIGHT PROTECTION

for only **ONE CENT**

## LEAVE A LIGHT ON

Besides beaming friendliness and hospitality, outdoor lighting provides your home and family with all night protection for only a penny. Whether you are at home, away on vacation, or just out for the evening, it's good insurance to leave your yard or porch light on at night. Leave an interior light on, too. Lighting discourages burglars, prowlers, vandals and other "uninvited" visitors, who appreciate darkness and shun lighted areas. So protect your home and family with LIGHT. It costs so little. On our Tacoma City Light lines a 100-watt bulb brightens the darkness all night long . . . for only one cent!

FINE SERVICE · LOW RATES

# TACOMA CITY LIGHT

## Grangers To Sponsor Junior Group

cerning their 4-H projects. The next stop was the museum. Especially interesting were the rock and shell collections. The boys of course spent a lot of time looking at the gun collection.

Before heading for home after a long day, a hamburger and milk shake was enjoyed by all. The members and their leaders going on the trip were as follows: Cheri Dearst, Refreshments were served to twenty-five mothers by hostesses Mrs. Betty Adler and Mrs. Kathleen Skaar.

Barbara Bauer, Dennis Bauer, Dale Morey, Tommy Parker, Ray Parker, Dennis Parrott, Royale Clark, Larry Sturn and Mrs. Vorelle Bauer and Mrs. Arlene Smith.

Also going on the trip as a guest was Pat Guizzetti.

**Mother's Club Meets**  
The Central Avenue Mother's Club meeting was held Tuesday, January 22, at the Youth Center. Mrs. Connie Knoblauch conducted the business meeting. Discussion was given on the style show which will be held March 29th. Also they are planning a trip to the Legislature in Olympia the end of February. More information on this will be given at the next meeting on February 19th.

Mr. Norman Adams introduced the speaker, Dr. Donald McKay of Summit who gave a talk on thumb sucking and adolescence.

**Pack Meeting**  
The Pack 76 meeting was held at the Summit Youth Center January 25th. Many new boys and their parents were there to welcome the Cub Scouts and their new

**Mrs. Verne Fogle LE 7-5210**  
Waller Road Grange had the largest attendance at the last meeting, that had been noted for some time. The Grange has voted to sponsor the Juvenile Grange for Waller Road. This worthwhile youth program is open

Cubmaster, Joe Baker. The boys of the pack were given their packaged Pinewood Derby material. Our thanks to Stan Swanson for the material and time in cutting the blocks.

The Webelos won the parents' attendance award. Let's keep it that way, Webelos! All boys 10 1/2 to 11 years are welcome to join. Meetings are held at the Summit Youth Center every Thursday from 6:30 to 7:30 p.m.

Graduating from Webelos into Scouts was Bobby Pilcher. In fact, right from the pack into a campout which the Boy Scouts were holding behind the Youth Center.

Bill Adler graduated into Webelos from Den 3. Awards were given to the following: Greg James, Bobcat and Denner; Ken Nelson, Bobcat and Assistant Denner; Larry Baker, two gold arrows, one silver arrow and Bear; Mitch Nelson, one year pin; Ricky Huggler, Assistant Denner; Henry Howard, Den Chief Award, and Ricky Blotby, Bobcat.

The following committee members received one year pins: Joe Baker, Otto Sorenson, Bob Adler, and George Longworth. Toby Torbet received a three year pin.

A one year pin was presented to Den Mother, Betty Parker. Den Mothers receiving their three year pins were Mrs. Frank Kinton and Mrs. Robert Howard.

Den 3 and 4 had a very interesting field trip January 26th to the Fire Department in downtown Tacoma.

Mrs. Joe Baker and Mrs. James Schmidt showed the boys a good time.

**Summit Mission Singing**  
One week from this coming Sunday on February 10th, Summit Bible Mission will hold their Sunday afternoon Singing at 3 p.m. Everyone is welcome! 112th (Airport Road) and Bingham Rd., just one-fourth mile west of Summit View.

for children of age 5 to 14 years. A meeting will be called soon, to which parents and children will be invited to come and learn what will be required for membership. The Grange, showing much interest in the International Farm Youth Exchange program, purchased 10 shares to help with the expenses of sending the 1963 Representative from Pierce County to a foreign country. A silver drill was held with proceeds sent to the March of Dimes.

Hostesses for the evening were Mrs. Oscar Asmussen and Mrs. Howard Freeman. February 1st meeting will be informative to new members and to old members who have forgotten Grange procedures. The literary program will be turned into a class of instruction.

The Feb. 15th meeting will see the Grangers celebrate their 18th birthday. They were organized in 1945. All members and families will gather for 6:30 pot luck supper. Business meeting and program to follow.

**Free Film**  
Ladies! Don't forget to see the free films by the American Cancer Society at the Waller Road Grange Hall, Monday, Feb. 4th at 8 p.m.

**Auxiliary Meets**  
Waller Road Grange Auxiliary met at the Grange Hall Jan. 22nd. Heading the group as President is Mrs. Daphne Yoder, who serves the Grange as Home Economics Chairman. Vice President is Mrs. LaVelle Larsen; Secretary, Mrs. Anna Van Hulle; Treasurer, Mrs. Mary Asmussen and Chaplain, Mrs. Mary Louise Farrington. Acting Secretary for the meeting was Mrs. Grace Fogle.

Pot luck luncheon followed the meeting. The program for the day was instruction on fibre flowers.

## 4-H Adds Members

**Marjorie L. Smith Rt. 1, Box 110, Roy, Wash.**  
The Evergreen Forestry and Rifle 4-H Club met at the home of their leaders, Marjorie and Fred Smith on January 12.

Welcomed as new members in the Club were Larry and Jerry Flowers, Carolyn Dove and Linda Smith. This gives us a total of 16 members in Forestry and 17 in Rifle. We are going to start working on demonstrations next. On February 28th we will go to Bonney Lake Tree Farm to

do some planting of trees.  
**Meeting Date**  
Don't forget the Lacamas Community Club meetings will be held on the first Tuesday of every month instead of the second Tuesday. February meeting will be on the 5th.

**PTO Meets**  
Lacamas PTO met at the school on January 17th. They had an interesting film on "The Meaning of Adolescence". The PTA plans to show a film every month now.

Things might be worse. Suppose your errors were published every day like those of a baseball player.

**Announcing**  
*Cleo's* BEAUTY SALON  
Opening . . .  
**FRIDAY, FEB. 1**  
For appointment call LE 7-3298  
9 to 5 Tues. thru Sat.  
12104 Golden Given Rd.

**INCOME TAX SERVICE**  
CHARLES PETERSON  
Call LE 7-8609 For Appointment  
Parkland Realty 302 Garfield

# BUSINESS SERVICES DIRECTORY

<p><b>Floor Covering</b> LINOLEUM, FORMICA, CARPETS FREE ESTIMATES PACIFIC FLOOR COVERING 131st &amp; Pacific LE 7-4545</p>	<p><b>Moving - Storage</b> Boush Moving &amp; Storage Agents for U.S. Van Lines Cost to Coast Service 11816 Pacific Avenue LE 7-3696 Parkland, Wash.</p>	<p><b>Appliance Repair</b> FRIGIDAIRE APPLIANCES New &amp; Used No Down Payments Minimum Monthly Payments Maximum Trade-In Allowances <b>McWik's</b> JU 4-3300</p>	<p><b>Trash Removal</b> PIERCE COUNTY REFUSE CO. Weekly Garbage Collections Phone LE 7-8688</p>	<p><b>Auto Parts</b> South End Auto Wreckers USED PARTS—Motors, Transmissions, Tires, Batteries. We buy junk cars. Also custom welding by Joe's Welding. 1 Mile East of Roy Y on Mt. Hy Spanaway VI 7-7242</p>
<p><b>Remodeling</b> "Winter Special"!! Re-modeling Specialists Foundations - Kitchens Additions-Roofing-Gutters Aluminum Siding 100% Financing Call Anytime FIFE CONST. CO. SK 2-5035</p>	<p><b>TV Repair</b> <b>TV REPAIR</b> Free Pick Up and Delivery All Work Guaranteed <b>McWik's</b> Call Bill Bean JU 4-3300 or LE 7-7933 Two Shops to Serve You</p>	<p><b>LET THIS SPACE WORK FOR YOU!</b></p>	<p><b>Rural Garbage Service</b> Pierce County Permit Serving Parkland, Midland, Summit and Spanaway LEnoz 7-8688</p>	<p><b>Nursery</b> Earl's EVERGREEN NURSERY HOME and COMMERCIAL LANDSCAPING 13806 Vickery Avenue LE 1-1055</p>
<p><b>Cycle Shops</b> PARKLAND CYCLE Lawnmower Winterizing FREE Pick-Up This Area 50-Yrs. Combined Experience ALSO — Duplicate Keys Made while you wait. LE 7-5772 11021 Pacific Avenue</p>	<p><b>LET THIS SPACE WORK FOR YOU!</b></p>	<p><b>U &amp; E RENTALS</b> GRADER - DOZER - LOADER CHAIN SAW You Rent - or We Operate Road Building - Excavating Driveways Fill &amp; Washed Material Call Canyon Gravel LE 7-8943</p>	<p><b>SEPTIC TANK SERV.</b> SEPTIC TANK CLEANING Prompt Service C. V. HUTSON GR 4-8980 GR 2-7038</p>	<p><b>LET THIS SPACE WORK FOR YOU!</b></p>
<p><b>Rock Hounds</b> ROCK HOUNDS—STUDENTS! Economy Priced Rock Tumbler Polish Up To 10-Lbs. Rocks \$17.95 COMPLETE VAUGHAN'S Pacific Avenue LUMBER 34th &amp; Pacific GR 4-9515</p>	<p><b>Cabinet Work</b> FENCING Designers and Builders EXPERT WORKMANSHIP REASONABLE PRICES Easy Monthly Payments VAUGHAN'S 84th &amp; Pac. Ave. GR 4-9515</p>	<p><b>Repairs</b> APPLIANCE REPAIRS All Makes Washers - Dryers - Ranges Dishwashers - Refrigerators HOME MAINTENANCE CO. 4804 E. 112th LE 1-2189</p>	<p><b>Prescriptions</b> JACOBS PACIFIC DRUG PRESCRIPTION SERVICE 84th &amp; Pacific Avenue GR 2-6445</p>	<p><b>Film Processing</b> LEAVE Your Kodachrome or Ektachrome Film at QUALITY PHOTO SERVICE. 9818 Pacific Avenue In At 10 a.m.—Out at 5 p.m. Same Day</p>
<p><b>VAUGHAN'S VALUES</b> Check Your Requirements For HOME AND PROPERTY IMPROVEMENTS  <input type="checkbox"/> Linen Closet <input type="checkbox"/> Tool Cabinet - Workbench  <input type="checkbox"/> Wardrobe Closet <input type="checkbox"/> Planter Table  <input type="checkbox"/> Shelf - Door <input type="checkbox"/> Wardrobe <input type="checkbox"/> Built-in Bar          FREE D.F.P.A. PLANS FOR ALL OF THE ABOVE PROJECTS  <b>VAUGHAN'S PACIFIC AVENUE LUMBER</b>          Serving the Tacoma Area Since 1926          84th and Pacific Ave. GR 4-9515</p>	<p><b>RENTALS</b> LET THIS SPACE WORK FOR YOU!</p>	<p><b>Landscaping</b> Don's Landscaping &amp; Paving Co. FREE ESTIMATES LE 7-6571 ASPHALT DRIVEWAYS Top Soil and Gravel</p>	<p><b>Photo Studio</b> PHOTOS 5x7, \$1 - 8x10, \$2 For Appointment, Phone GR 4-1986—Open Evenings FAMILY PORTRAIT STUDIO 8411 South Park Ave.</p>	

## Legal

In the Superior Court of the State of Washington, In and for Pierce County.  
No. 154250  
SUMMONS BY PUBLICATION  
EVELYN E. ANDERSON,  
Plaintiff,

vs.  
JOEL C. ANDERSON,  
Defendant.

THE STATE OF WASHINGTON TO THE SAID JOEL C. ANDERSON:  
You are hereby summoned to appear within sixty (60) days after the 10th day of January, 1963, and defend the above entitled action in the above entitled Court and answer the complaint of the plaintiff, and serve a copy of your answer upon the undersigned attorneys for plaintiff at their office below stated; that in case of your failure so to do, judgment will be rendered against you according to the demand of the complaint which has been filed with the Clerk of said Court.

This is an action for divorce on the grounds of abandonment and failure to provide support.

PETERS & TRACY  
By: /s/ Phillip S. Tracy  
Attorneys for Plaintiff  
11024 Pacific Avenue  
Tacoma 44, Wash.

Published in The Times Journal  
Jan. 10, 17, 24, 31; Feb. 7, 14, 1963.

## PROMPT PERSONALIZED PRESCRIPTION SERVICE

TED SWANSON  
INSULIN - VITAMINS  
Downtown Prices  
Pay Phone Bills Here  
PLENTY OF FREE PARKING  
TINCHER'S PHARMACY  
8227 Park Ave. GR 4-3344  
Across from Fern Hill P. O.

NOW IN OUR NEW LOCATION

- STEAKS
- CHOPS
- SEAFOODS
- SNACKS

HOME MADE PIES

TRIANGLE CAFE

113 So. 168th S.  
Half Block Off Pacific Ave.



# SAFeway

## THURSDAY, FRIDAY & SATURDAY SPECIALS

JAN. 31, FEB. 1 - 2

<p><b>GELATIN</b> JELL WELL - Assorted Flavors <b>5¢</b> Ea.</p>	<p><b>CREAM CORN</b> TOWN HOUSE - Buy Of The Year <b>7</b> 16 Oz. Cans <b>\$1</b></p>	<p><b>PEACHES</b> LADY ELBERTA <b>4</b> No. 2 1/2 Cans <b>\$1</b></p>
<p><b>HEINZ SOUPS</b> All Varieties - Price Includes Cents Off Label <b>9</b> 10 1/2 Oz. Cans <b>\$1</b></p>	<p><b>SUGAR</b> CANDI CANE Brand <b>10</b> Lb. Bag <b>89¢</b></p>	<p><b>GRAPEFRUIT</b> FRESH INDIAN RIVER PINKS <b>10</b> For <b>99¢</b></p>

### Choir From Minnesota At PLU

The Concordia College Choir from Moorhead, Minnesota will appear at Pacific Lutheran University Thursday, Feb. 7. The concert will begin at 8 p.m. in Eastvold Chapel.

Pall J. Christiansen, director, will present his 65-voice capella group in a program ranging from 16th Century classics down thru the Bach era to the contemporary writers. Several favorites will be included.

In 1958 the Concordia Choir won wide acclaim on a tour of Norway, Holland, Germany and Austria. They also appeared at the Brussels World's Fair and the Vienna Music Festival. The choir has toured the nation in recent years and this season are visiting the far west.

Their local concert will be sponsored by the Pierce County Lutheran Pastors Association.

Tickets are available at the PLU Bookstore, the Lakewood Record and Book Shop and the Bon Marche downtown.

**STOP FIGHTING Your Steering Wheel**

LET US ALIGN YOUR WHEELS THE HUNTER *Lite-A-Line* WAY

- Save Your Tires
- Save Your Energy
- Protect Your Safety

**Roy PayLess**

SERVICE CENTER  
LOW, LOW PRICE  
GAS - LUBE  
AUTO SERVICE

Roy, Wash. Roy 616

Special  
REG. \$8.95 FOR \$6.95  
With This Ad.

FEB. 1 THRU FEB. 7  
**DICK'S SIGNAL**  
112th & Canyon Road  
Authorized Service

Shop Daily 9 to 9, Sundays 10 to 6

**SEYMOUR'S**

CLOTHING AND SHOES FOR ALL THE FAMILY

9714 Pacific Ave. Free Front-Door Parking

Our Own Country Style PORK Sausages

69¢ Lb.	59¢ Lb.	69¢ Lb.	79¢ Lb.	69¢ Lb.
Round Steak	Rump Roast	Sirloin Steak	Porterhouse	Rib Steak

3 Lbs. \$1

**25 Lb. Beef LOCKER BOX**

7 1/2 Lbs. ROAST  
7 1/2 Lbs. STEAK  
7 1/2 Lbs. GR. BEEF  
2 1/2 Lbs. Short Ribs

Flank Steak 69¢ Lb.  
Beef Stew Boneless 79¢ Lb.  
Ground Beef 3 Lbs. 98¢  
T-Bone Steak 79¢ Lb.  
Short Ribs 49¢ Lb.

Whole Bodied - Fresh Dressed  
**STEWING Chickens** 25¢ Lb.

Henry House - Yankee  
**SLICED Bacon** 49¢ Lb.

Are-Ida INSTANT Mashed POTATOES 10¢ Pkg.

GOLDEN POPPY TOMATO Juice 4 Tins 89¢  
46-Oz. Tins

Maxwell House COFFEE 93¢  
2-Lb. Tin

POP Sale If You Purchase A 6-PACK R.C. COLA 16-Oz. For 49¢ Plus Deposit

You Then Can Have A 6 PACK OF DADS ROOT BEER FREE Plus Deposit

Medium Chex Eggs Doz. 37¢

West Best PORK & BEANS 300 Tin  
Hunt's New Whole POTATOES 300 Tin  
Sunny Jim CRANBERRY Sauce 11-Oz. Jar

YOUR CHOICE 10¢

A.B.C. CRACKERS 1-Lb. Box 19¢

All Varieties Bulk NUTS 3 Lbs. 89¢

POTATOES 50 Lbs. 99¢  
No. 2's

No. 1 Medium ONIONS Lb. 3¢

EXTRA FANCY Delicious APPLES 10¢ Lb.

9 a.m. to 10 p.m. 7 DAYS WEEK

**BARGAIN BASKET**

16618 PACIFIC AVE. South SPANAWAY, WASH.

COAL • PRES-TO-LOGS • LE 7-3371

**NO SALE TO DEALERS**

We Reserve The Right To Limit Quantities

We Carry A Complete Line of Sacked Feeds.

Prices Effective Thurs.-Fri.-Sat. Jan. 31; Feb. 1-2

**CHUCK Christensen Is Back With CHUCK'S CAFE**

IN A NEW LOCATION at 112th & PARK In P&X Shopping Center

Come In MONDAY, FEB. 4 9-11 a.m. and 3-5 p.m.

For Free Coffee and Doughnuts

**SHOP-ETTE VARIETY-DEPARTMENT STORE**

13322 Pacific Ave. In The Lucky - Shop-Ette Shopping Center - Parkland

HOURS: OPEN DAILY 10 A.M. 9 P.M. SATURDAYS 10-6

### a - Wondering and a - Wandering ....

*with Jack Brown*

I hate to harp on a subject that under normal conditions would interest so few of you, but a recent story appearing in the January 19th issue of the Saturday Evening Post leaves me no choice but to bring out some facts and figures on aviation.

The story I have mentioned will undoubtedly do much to firmly implant the misimpression in the minds of millions that a shower of planes is literally falling from our sky daily. It would do much to instill a greater fear of flying in the minds of those who read the article or even scan the headlines of the story.

But worst of all the story will, I believe, pave the way to more unnecessary government spending of your money and mine. The Federal Aviation Agency has submitted its new budget for congressional consideration. It will most certainly ask for more of our tax dollars than it received in the past year which amounted to \$766,000,000. It has cost every U.S. man, woman and child about \$4.32 and was more than the cost of the entire U.S. government for any year from 1789 through 1916.

The FAA presently employs 45,000 people and has a five year goal of 53,000 employees. Now these people are on the payroll to serve those of us who fly. At the present time in round figures there are 100,000 civilian aircraft in the nation, but only 70,000 of these are active, licensed and flying. Of this figure less than 2,000 are commercial airliners. To read the Post article would, I am sure, lead you to believe that we who fly are having one heck of a time squeezing thru a crowded sky. This just isn't so. I can take you from here to Boise or San Francisco time after time and never actually see another aircraft aloft. In fact it gets downright boring and lonesome up there, yet we have about one FAA employee for every 1.6 aircraft flying today and they want more. Articles like the one in the Post would lead you to believe we need more and more. Believe me, this is not the feeling of us who are in general aviation. We feel that we, along with all the rest of you taxpayers, are being taken for a ride.

Whenever anyone, either in the Bureau of Budget or Congress questions the present and projected expenditures by this one arm of government the answer is the same: "It's essential to safety".

Nowhere in recent government history, outside of perhaps the Department of Defense, has so much money been taken from the uninformed taxpayers in the name of safety.

Let's look at the real facts for a minute. In the last ten years, for example, only 9,616 people were killed in all segments of civil aviation. This includes all the headline stories you've read. Now think of this... in 1960 alone, twice this number of people died in falls, and we don't have one government agency worrying a hoot about eliminating falls in the home. In 1960 alone 1,700 people choked to death on food, 884 died due to medical and surgical mishaps. In 1961 alone there were 38,200 people killed and 1,400,000 disabled by motor vehicles, about four times as many dead in one year alone as in all ten past years in aviation, yet Congress hasn't seen fit to create a Government agency to cope with this slaughter.

If the gigantic outlay to maintain the Federal Aviation Agency can be justified largely on the basis of an average of 916.6 deaths per year then certainly the U.S. government should long ago have reacted violently to just the auto which in the same 10 years period killed 379,382 humans.

Mid-air collisions? I say, NUTS! The smokescreen that has been thrown up on this one subject has cost an unsuspecting and uninformed public millions of needless dollars with no end in sight, unless you, the public, start asking questions. The facts are that in the past ten years exactly 518 people have been killed due to a mid-air collision. This includes those in the spectacular Grand Canyon and Staten Island crashes.

In 1961 alone 460 people, almost half those killed in airplanes, were killed by bicycles.

This aviation safety smokescreen stinks and the flying public know it better than anyone and like it less. Stories such as that in the Post will do much to aid and abet the situation.

To me the scary thing of it all is just this. I know about this condition and the fleeing of tax dollars. How many other countless cases do we have in federal government that you or I do not know of. Certainly where one exists and flourishes to this point so can others.

### Canyon Road Dance to Honor Newcomers

Mrs. John Folk LE 7-5801

A free get acquainted dance will be held at the Canyon Road Community Club Feb. 9th from 9 to 12. This dance will be held especially for the new residents of this community—Fairview Road, Lidford Road, Bently Road, Canyon Road, Delano Road, East 72nd and East 84th from Pioneer to Vickery Road. The dance is being held to meet the old-timers. Each lady is asked to bring a lunch for two in an undecorated shoe box, plus silverware. Coffee and tea will be served. The committee for this affair will be the Messrs. Elmer Jones, Pat Munsey, Mel Denny and Paul Bacon.

*Leaves For College*

Miss Sandra Bacon, daughter of Mr. and Mrs. Paul Bacon of Canyon Road left Sunday for Spokane where she will enter Whitworth College.

*Return From Hawaii*

Mr. and Mrs. Harry Jackson of East 72nd have returned from a 10-day vacation in Honolulu. The Jacksons, with 16 couples, all friends, went by jet and stayed at the Moana Hotel.

*Utah Visitors*

Mr. and Mrs. Lowren Johnson of Canyon Road recently entertained Mrs. Johnson's sister and brother-in-law, Mr. and Mrs. Gilbert Cox recently from Tooele, Utah. The Cox's have purchased a new home on East 102nd.

*Move To Kent*

Mr. and Mrs. Wesley Townsend (Ann Jackson) and daughter Janice have sold their home on Bently Road and moved to their new one near Kent.

*Hospitalized*

Miss Linda Andrews, daughter of Mr. and Mrs. John Andrews of Canyon Rd. is in the Good Samaritan Hospital after being in an auto accident last Sunday afternoon. She is suffering neck and back injuries.

Hear The World Famous **CONCORDIA CHOIR**

Paul J. Christiansen, Director  
THURS., FEB. 7 - 8 p.m.  
Eastvold Chapel  
Pacific Lutheran University

Admission \$1.50  
Students \$1.00

Tickets at: PLU Bookstore, Lakewood Record Shop, Bon Marche

**Chuck Christensen Is Back With CHUCK'S CAFE**

IN A NEW LOCATION at 112th & PARK In P&X Shopping Center

Come In MONDAY, FEB. 4 9-11 a.m. and 3-5 p.m.

For Free Coffee and Doughnuts

**SHOP-ETTE VARIETY-DEPARTMENT STORE**

13322 Pacific Ave. In The Lucky - Shop-Ette Shopping Center - Parkland

HOURS: OPEN DAILY 10 A.M. 9 P.M. SATURDAYS 10-6

**Insurance Agents Attend Convention**

Albert I. Langseth and William A. Ehli, agents for the State Farm Insurance companies in the Parkland area, returned last week from the company's national convention in Denver, Colorado.

**INSIST ON SAFE, MODERN Radiant-Clave ELECTRIC BASEBOARD HEAT**

10 Year Warranty

Locally Manufactured by Intercity Manufacturing Co. LEnox 1-0311 13421 Pacific Ave.

**Shoe Clearance Sale**

80 Pr. Womens Flats, Canvas Slip-ons, Wedgies, Heels, Slippers, Sandals 99 Pr.

Boys & Girls Oxfords, Straps, Saddles 2.99

Womens Large Size Saddles, Reg. 8.00

Womens Heels, Satin, Leather, Patents, Reg. to 12.95

Womens Flats, late style, better grade

**PAUL'S SHOES**

Open Monday thru Saturday 9 to 6 - Fridays Till 9 p.m.  
161st & Pacific Ave., Spanaway (Closed Sundays) LE 7-0552

**HILLTOP CONCRETE CO.**

READY MIX CONCRETE

- Crushed Rock
- Drain Gravel
- Fill Dirt
- Pit Run
- Gravel
- Sand

TH. 5-9525

Plant: 2223 - 23rd Ave. S.E. P.O. Box 648, Puyallup

# MONEY SAVER SALE!

<b>IRONING BOARD PAD and COVER</b> LONG LASTING AND SMOOTH Cushions buttons, zippers, snaps and seams. Fits all 54" ironing boards. Guaranteed burn proof. Aluminized scorch proof silicone cover. REG. 1.49 Now <b>66¢</b>	<b>11 Quart PLASTIC PAIL</b> Assorted Colors Reg. 98¢ NOW ONLY <b>66¢</b>	<b>Rubber SHAMPOO SPRAY</b> <b>77¢</b>	<b>"Corral" by Blue Bell BOYS JEANS</b> Authentic Western cut jeans with zipper fly. 13 3/4 oz. sanforized coarse weave blue denim. Sizes 4 to 16. REG. 2.98 Pr. <b>1.97</b>
<b>20 Quart Plastic UTILITY TUB</b> Reg. 1.29 <b>96¢</b>	<b>50 Ft. Plastic CLOTHES LINE</b> REG. 1.35 Now <b>2/99¢</b>	<b>Plastic CUTLERY TRAY</b> REG. 98¢ <b>66¢</b>	<b>Plastic BREAD FRESHER</b> REG. 98¢ <b>66¢</b>

OVER 4000 YARDS **YARDAGE SALE** 3 YARDS FOR \$1

- Percale
- Prints
- Gingham
- Florals
- Drip-Dry
- Checks

Values To \$1.49 Yd.

<b>Birdseye DIAPERS</b> Soft fluffy and durable. Reg. 2.98 doz. Now <b>1.97</b> Doz.	<b>Big Money Saver PAINT ROLLER &amp; TRAY</b> REG. 1.29 <b>88¢</b>	<b>Milkwhite Glass Mixing Bowl Set</b> 4 Piece Reg. 1.59 NOW <b>87¢</b>	<b>2-Piece BATH SETS</b> Seat cover and bath mat, heavy chenille, rubber backed, assorted colors. Reg. 1.49 NOW <b>99¢</b>
<b>Plastic TABLECLOTH</b> 54x72, pinked edges, wipes clean with damp cloth. 25 patterns to choose from. Reg. 98¢ Now <b>47¢</b>	<b>SCATTER RUGS</b> 18"x30", beautiful selection. REG. 1.29 <b>88¢</b>	<b>King Size TV TRAYS</b> Reg. 1.98 each <b>2/2.88</b>	<b>11-Oz. Glass TUMBLERS</b> Many patterns to choose from, and colors. Reg. 15¢ each NOW <b>8¢</b>

**SHOP-ETTE VARIETY-DEPARTMENT STORE**

13322 Pacific Ave. In The Lucky - Shop-Ette Shopping Center - Parkland

HOURS: OPEN DAILY 10 A.M. 9 P.M. SATURDAYS 10-6