

# '61 Parkland Baby Derby Winner A Boy!

**BULK RATE**  
U. S. Postage Paid  
Permit No. 9P  
Parkland Branch  
Tacoma, Wash.

Rural Route  
Occupant or Boxholder  
Postmaster: If unable  
to deliver, return post-  
age is guaranteed on  
addressed papers.

## The TIMES JOURNAL

THURSDAY, JANUARY 5, 1961 • VOL. 16, NO. 18 • PUBLISHED AT PARKLAND, WASH. LE 7-0223

### Well-Baby Clinic

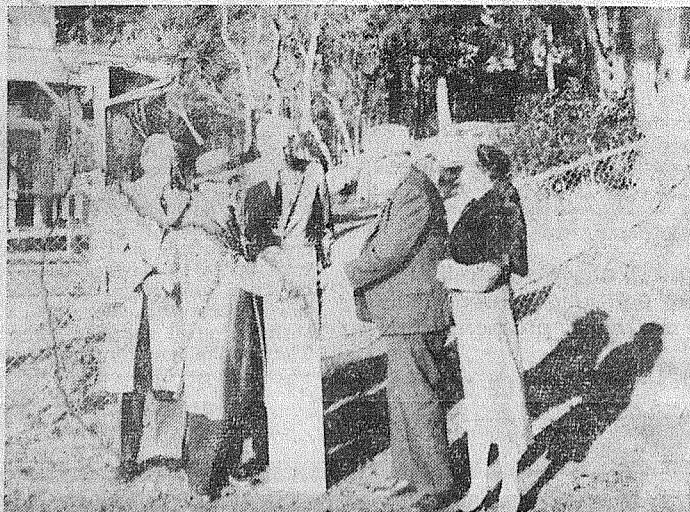
The Spanaway Well-Baby Clinic will meet Tuesday, January 10, at the Assembly of God Church. Registration is from 8:30 to 10:30. Dr. Kline is the attending physician. For further information call Mrs. Lloyd Landgrebe at LE 7-8814.

### Clinics Meet

Harvard, Midland, Central Ave., and Collins Well-Baby Clinics will meet Wednesday, January 11, at Midland Fire Hall, 95th and East Jackson.

Dr. William McPhee is the attending physician. Registration is from 9 to 10 a.m. For further information call Mrs. Dave Loran, LE 7-7200.

### Bresemann Park Changes Hands



\$150,000 worth of keys are presented to Harry Sprinker (left photo) by Gus Bresemann. Left to right are county commissioners Emmett Burks, Sprinker, Fritz Geiger, and Mr. and Mrs. Bresemann. A \$10,500 check for the down payment is presented by Mr. Sprinker to Mr. Bresemann (right photo). Looking on are (left to right) Mr. Burks, Mr. Geiger, and Mrs. Bresemann. Pierce County recently purchased the park from the Bresemanns for \$150,000. The remainder will be paid over a 30 year span. (McKewen studio photos).

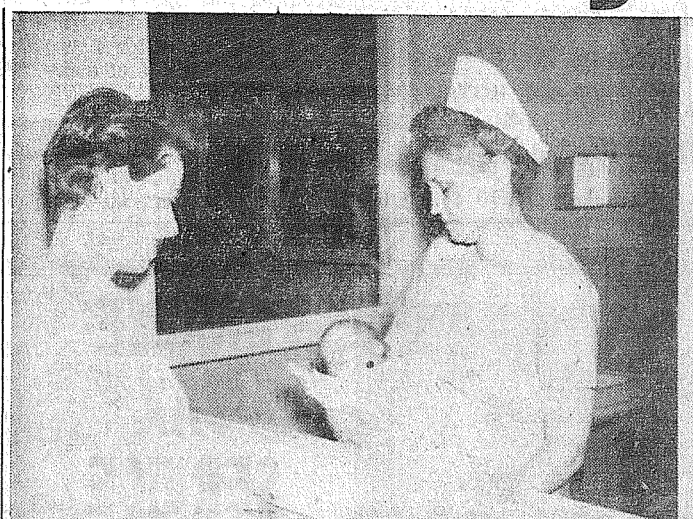


### Local Girl On Seventeen Board

A Parkland girl received national recognition in the January issue of Seventeen Magazine as a member of the teen publication's 1961 National Fashion Council. She is Joan Ellingson, 17, of P.O. Box 2413, Parkland, who will represent Rhodes-Lakewood.

Along with other teen-age members of the 245-girl National Fashion Council, Miss Ellingson is pictured in a special feature entitled "Our Fashion Board." Council members, who represent key department stores and specialty shops in leading cities from coast-to-coast, are selected on the basis of a flair for fashions, good grooming, responsibility and leadership. Miss Ellingson will keep Seventeen Magazine editors informed on local teen fashion trends, entertainment, school and social events throughout the year.

Seventeen organized its National Fashion Council in 1953 to learn firsthand the tastes and preferences of America's 9,750,000 teen-age girls.



**THE WINNAH!**—Mrs. R. J. Rehr, 968 So. 120th, watches her 8-lb., 7-oz. son, not yet named, as he relaxes in the arms of Maj. Lelia Nemeth, ANC, at Madigan Hospital. The Rehrs have good reason to be happy. Their new arrival checked in at 10:57 Monday morning, making them the winners of the 1961 Times-Journal baby derby contest. Many wonderful prizes will be received by the Rehrs from local merchants. (McKewen Studio Photo)

The search is over! After long hours of phoning, figuring, writing, and mostly waiting, the Times Journal has finally come up with the first local area baby born in 1961.

The proud winner, not yet named, is the son of PFC and Mrs. R. J. Rehr of 968 So. 120th. He entered our world at 10:57 Monday morning, just in time to watch the Rose Bowl game.

A whole host of wonderful prizes will be presented to the Rehrs and son by the following merchants:

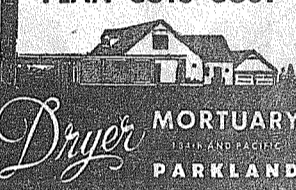
- Rich's Drive-in: dinner for dad while mom is in the hospital.
- Parkland Sewing Center: pattern and material for a new dress.
- Rural Real Estate: a championship trophy cup.
- Parkland Super Market: 24 tall cans of Carnation Milk.
- Pochel: 50 gallons of Mobilheat. (See Page 4)

### The Country Parson



"It's a common error to assume that more leisure would give us more time in which to be happy."

### DRYER'S FUNERAL PLAN CUTS COST



**IT'S FOR THE BIRDS**  
To fly south we can stay at home if we put up storm windows.  
Call LE 1-0711 For Free Estimate  
**PETERSON'S COLOR CENTER**  
MRS. T. A. M. To 4:30 P. M.  
LE 1-0711 1100 Pacific Ave.

**Open 7 Days A Week** Winter Hours Sun. 9 to 4  
**HUNTING & FISHING LICENSES. SPORTING GOODS. PAINT**  
**SOUTH END PLUMBING AND HARDWARE**  
185th & Pacific Avenue Phone LEnox 7-4100

**OFF WITH THE OLD ON WITH THE NEW!**  
**EXPERT DYEING**  
It's fun to have a new wardrobe — at half the expense. Try having a few favorites "done" expertly soon.  
FREE PICK-UP and DELIVERY  
**PARKLAND CLEANERS**  
11004 Pacific Avenue LEnox 7-3221  
North of the Bank Corner

**CANYON**  
READY MIX CONCRETE COMPANY  
72ND & CANYON ROAD LE7-3943  
WE GIVE PERSONALIZED SERVICE TO ALL OUR CUSTOMERS  
WHETHER IT'S FOR A STEP, SIDEWALK OR FOUNDATION ALL DAY SATURDAY DELIVERY  
**One Call Does It All**  
—WASHED SAND  
—GRAVEL  
—DRAIN FIELD ROCK  
—BANK RUN  
After 6 P.M. Call LE 1-0095

### Girls Rec Center Open

Area Director Earl Platt announces the opening of the evening girls' recreation center at the Spanaway Elementary School to be open Wednesday, January 4, from 6:30 to 9:30 p.m. Girls' athletic and recreation activities will be conducted for all elementary junior and senior high school girls. Miss Connie Engvall will be the director and she will be assisted by John Newell. This program will run through March.

This program is sponsored by the Pierce County Park and Recreation Department and the Bethel School District.

### Firemen Elect

At the regular monthly meeting of the Parkland Volunteer Fire Department Greg Vause was elected president for 1961, with Howard Carmin as vice president and Ray Hixon, historian.

Paul Bowen, secretary-treasurer, and Clay Bain, Firemen's Relief and Pension representative, were re-elected to their respective positions.

Charles Bohall, a brother fireman, has been hospitalized for a throat infection, but is expected to return to service very shortly.

**NOW AT PARKLAND ECON-O-WASH**  
WASH 20c—DRY 10c  
OR LET US DO IT FOR YOU  
12171 PACIFIC AVENUE

### "Curious Savage" At F.P.



**STRUGGLING** over a toy bear in a scene from next week's Franklin Pierce High school play "The Curious Savage" are Martha Hovey and Kathi Hansen. Watching the action are Jerry Smith and John Le-Master. The play is scheduled for the high school next Wednesday and Thursday evenings.

### Ladies, Too, Can Exercise

Pierce County Park Department-Franklin Pierce School District announces the opening of something new.

Area recreation director Del Schaefer has activated a women's exercise class which will be held at the Morris Ford Jr. High School on Thursday evenings from 7:30 to 9 p.m. Cam Eliason will be the activity director.

In addition to the exercises the women will take part in other recreation activities. Schaefer points out that if the class proves popular the hours will be extended to allow the husbands to take part with their wives in a co-rec type of program. The program will get underway tonight.

Anger and horsepower don't mix. When your anger flares you are very apt to act recklessly. Remember that "anger" is just one letter short of "Danger."

**LAUNDROMAT**  
WASH DRY  
10c 10c  
PER LOAD  
56th & Pacific Ave.



**BURNS CLEANER!**

No smoke or odor with Texaco Fuel Chief Heating Oil. Contains Additive A-200, protects against rust and deposits.



**LE 7-8173**  
Lapenski Fuel Co.

### Local Man Presides

A Spanaway resident, Dee Parham, has been elected president of Washington Horsemen - Tacoma Unit No. 1. He is a member of the Pierce County Sheriff's Posse.

Other local residents now holding office in the Horsemen Tacoma organization are George Miniski of Curran Road, and Bea Playford of Waller Road.

### PROFESSIONAL DIRECTORY

**Farmers Mutual of Enumclaw**  
Fire — Auto  
**ED MAREK**  
12909 Pacific Ave. LE 7-4000

**SAVE 50 TO 75% ON FUEL**  
**ASHLEY AUTOMATIC WOOD STOVES**  
FREE INSTALLATION  
**WRIGHT POWER BLADE SAWS**  
**PARKLAND HARDWARE**  
12169 PACIFIC AVE. LE 7-3171

For Clothing & Shoes for All the Family...  
☆☆ SHOP AND SAVE AT ☆☆☆  
**SEYMOUR'S**  
9714 Pacific Ave. - 1 Block North Park 'N Shop  
SHOP DAILY 9 to 9 EVERY SUNDAY 10 to 6

**HILLTOP CONCRETE CO.**  
LOOK FOR THE BIG "H" THE SIGN OF SERVICE

Use Ready-Mixed CONCRETE  
**WINTERIZED CONCRETE**  
Call For Recommendations  
● Sack Cement ● Crushed Rock  
● Washed Sand ● 3/8" Beach Gravel  
● Washed Gravel ● Select Pit Run  
● Drain Gravel ● Fill Dirt  
Plant: 2223 - 23rd Ave. S.E. P.O. Box 648, Puyallup TACOMA FU 3-3624  
TH 5-9525  
READY-MIX ORDERS TAKEN 'TIL NOON SATURDAY

SOINE'S ANNUAL HAPPY NEW YEAR

# SHOE SALE FOR '61

<b>FOR THE KIDS</b> S C H O O L S H O E S Styles for Boys and Girls. Regular to 8.95 <b>4.61</b> Sizes 8 1/2-3 A-B-C-D Widths and Girls Party Shoes	<b>FOR BIG SIS</b> Teenage Girls' Shoes GRAB RACK GROUP OF ODDS AND ENDS <b>FLATS</b> 4.61 Sizes 4 to 10 AAA-AA-A-B-C Widths. Regular 7.95 and 8.95 and School Casuals
<b>FOR DAD</b> SLIPPONS and Teenage Son BIG SELECTION OF TIES AND SLIP-ON STYLES Regular to 19.95 <b>8.61</b> in men's sizes 6 1/2-12 Boys' sizes 3-6 .. 6.61 and BUCKLE WEDGES	<b>FOR MOM</b> OUR ENTIRE STOCK OF 11.95 to 13.95 DRESS SHOES <b>HEELS</b> and CASUALS Slippers Overshoes Handbags Keds Casuals Flats Large Group of Your Favorite Casual Patterns. <b>6.61</b>

**SOINE'S PARKLAND SHOE STORE** 411 GARFIELD STREET LE 7-3526

**TODAY'S LAFF BORE:** A person that always has his Feet in his Mouth.

### SHOE CLEARANCE SALE

Our Upstairs Bargain Basement is Jammed with Money Saving Bargains — New Stock Added Daily.

<b>WOMEN'S</b> Flats & Heels & Wedges <b>99c - \$2.99</b>	New Army Oxfords. 5 1/2 & 6 <b>\$3.99!</b>
<b>LITTLE GIRLS'</b> Flannel Lined Shoes 12 to 3. Red Reg. \$6.00 ..... <b>\$2.99!</b>	<b>LITTLE GIRLS' DRESS SHOES</b> <b>\$1.99!</b>
<b>WOMEN'S</b> Dress Heels, Latest Styles <b>\$3.99 &amp; \$4.99</b>	<b>BOYS'</b> Black & Brown Oxfords 8 1/2 to 3 ..... <b>\$2.99</b>
<b>WOMEN'S &amp; GIRLS' Galoshes</b> <b>1/2 PRICE!</b>	<b>MEN'S LEATHER TOP</b> Rubber Bottom Pacs Size 9 only ..... <b>\$5.95</b>
<b>MEN'S</b> Rubber Knee Boots Reg. \$7.00 .... <b>\$4.99!</b>	<b>MEN'S</b> 5 Buckle Overshoes <b>\$4.95</b>
<b>MEN'S</b> 8" Oil Tanned Boots Reg. to \$18.00 ..... <b>\$8.95!</b>	<b>MEN'S</b> Rebuilt Army Boots & Oxfords <b>\$3.99!</b>

We have the finest SHOE REPAIR machinery available for the repair of any type shoe — FAST GUARANTEED SERVICE!

Open Every Sunday **Paul's Shoes** Fri. Nite 'til 9 p.m.  
LE 7-0552 161 & Pacific

**WE CAN BUILD IT FOR YOU**  
OR  
*You can do it—*  
with WEST COAST LUMBER

**BUILD THAT NEEDED EXTRA Living space!**

Whether you need an extra bedroom, a family room, sewing room or den, West Coast lumber will do the job for you economically. And we'll be glad to help you plan your project.

— FREE ESTIMATES —  
NOTHING DOWN — UP TO 5 YEARS TO PAY

## BROOKDALE LUMBER COMPANY

136th & Pacific Avenue LE 7-8669

**NATURAL GAS SPECIALISTS IN CONVERSIONS**  
LICENSED GAS INSTALLERS GR 2-8613  
**DUCOLON FURNACE**  
29th Year 210 So. 38th

The nuclear-powered USS Enterprise, christened Sept. 24th, 1960 has eight nuclear reactors producing horsepower rated at over 200,000. The reactors are expected to operate for five years on their first charge of fuel.

Good manners are made up of petty sacrifices. (Emerson) When we get a gentleman at the wheel, we need not fear the monster under the hood.



JERRY HANSON

**INCOME TAX SERVICE**  
AT  
**SUBURBAN REALTY, INC.**

11302 Pacific Avenue  
REAL ESTATE and INSURANCE  
LE 1-1081 — LE 7-8638

**County Agent's Corner**

By Morrill Delano  
**Blueberry Cost Study Completed**  
At a recent meeting in Summer of the Northwest Blueberry Growers Association — with which most of the blueberry growers of Pierce are affiliated — listened to a report that furnished data for last spring.

This was a cost study on getting into the blueberry business, compiled by Dr. Jay Swanson, Professor of Agricultural Economics at Washington State University.

First, the grower committee that advised Dr. Swanson agreed that the typical blueberry set up is four

Secondly, it is a part-time enterprise. The first harvested crop comes the fifth year from planting, when starting with two-year plants.

Full crop production is attained by the 13th year, with an average yield of four tons per acre.

The study includes all costs, land, labor, spray material, fertilizers and harvesting. A report of this nature is very helpful to Extension in counselling with people new to the area that are interested in developing a blueberry planting.

Herb Clothier of Midland, President of the Association, has been instrumental in getting this study made by WSU. These reports are available at the County Agents Office, 742 County-City Building, Tacoma.

**LETTERS to the EDITOR**

Dear editor:

We wish to thank you for the space you so graciously gave us in your paper.

Meeting dates and announcements are all essential in our organization so we appreciate it very much when we see our organization named. You have helped many in the Spanaway community the past year through the announcements in your paper.

We wish you and your help a most prosperous new year for 1961. Thanking you so much again.

Mrs. Birdie Ingham,  
President of Auxiliary 118.

Fifty-six persons were killed in traffic accidents in December, 1959, four of the fatalities occurred over the Christmas holiday.

**THANK YOU**

We at McAuley Summit Drug wish to thank ALL our customers for their patronage throughout the year and may 1961 be a year of prosperity for you.

AIRPORT & CANYON Rd.

LE 7-7450

**Music From Bell**

(From Page One)

segment program of music from the past, present and future. From the past comes a repeat performance by Renata Tedbaldi, who starred on the first TV program of the series. The present is represented by music and artists from the concert hall, Broadway and ballet. The future will be shown by a preview of a program to be offered on the award-winning TV series later this season.

Headliners of the January 6 telecast will be: Marilyn Van Derbur, Miss America of 1958, hostess of the hour-long telecast; and Keith Andes, Erik Bruhn, Jose Iturbi, Shirley Jones, Maria Tallchief and Renata Tedbaldi.

Donald Voorhees and the Bell Telephone Orchestra, which he organized for the first Bell Telephone Hour in 1940, will again comprise the backbone of the musical spectacular.

**Trims Golf Score Ten Strokes Easily!**



A golf club with a "magic hinge" that "breaks" with an incorrect swing—that's the Private Pro driver which promises to trim up to 10 strokes from most golfers' games. A scientifically designed golf teaching aid, the ingenious hinge was devised by the Private Pro Co., 1029 Fisher Bldg., Detroit 2, Mich. from stainless steel supplied by Allegheny Ludlum Steel Corporation. They make 'em for southpaws, too.

IT PAYS TO ADVERTISE



Start the New Year Right!

**Food Budget Beaters**

BLUE BONNET MARGARINE 5 Lbs. \$1.00

SPRY SHORTENING 3-lb. Tin 69¢

NALLEY'S CHILI Hot or Mild No. 300 Tin 4/\$1.00

DEL MONTE PINEAPPLE GRAPEFRUIT DRINK 46-oz. Tin 4/\$1.00

M-D—White or Colored TOILET TISSUE 4-Roll Pkg. 35¢

COFFEE HOUSE COFFEE Lb. 59¢

GERBER'S STRAINED BABY FOOD 12/\$1.00

LARGE AA WHITE EGGS Doz. 59¢

TREE TOP APPLE JUICE qt. 31¢

MEDOSWEET COTTAGE CHEESE Pint Ctn. 27¢

ROYAL GELATIN 4/29¢

LIBBY'S KRAUT 2 1/2 Tin 19¢

CAMPBELL'S Reg. Size TOMATO SOUP Tin 10¢

THE WHOLE FAMILY CAN SAVE



PUSS 'N BOOTS CAT FOOD 15-Oz. Tin 2/31¢

MISSION BEST BET LONG SPAGHETTI 4-lb. Pkg. 63¢

INSTANT FELS NAPHTHA Giant Pkg. 69¢

BLEACH PUREX 1/2 Gal. 39¢

**SUMMIT TRADING COMPANY**

10409 Canyon Road, Tacoma LE 7-5848

No. Sales To Dealers We Reserve The Right To Limit Quantities

STORE HOURS:  
Monday through Saturday  
9 A.M. - 9 P.M.  
SUNDAY HOURS:  
10 A.M. to 7 P.M.

TENDER PICNIC SHOULDER **PORK ROAST**



ECONOMY MEALS FOR THE NEW YEAR

PORK ROAST PICNIC STYLE LB. 33¢

FRESH GROUND Grd Beef 3 POUNDS 99¢

FRESH GRAIN FED PORK Steaks BLADE CUTS LB. 49¢

U.S. GOOD Short Ribs LB. 29¢

SWANSON'S Beef—Turkey—Chicken MEAT PIES FOR 5 \$1.00

DELICIOUS C-GRADE APPLES PEAR BOX \$1.59

TUBE TOMATOES PKG. 19¢

NO. 1 OREGON POTATOES 10-LB. CELLO BAG 49¢

# Cubs Awarded; Skits Presented For Parents

Cub Scouts and families met in the Summit Youth Center Friday, December 30, 8 p.m. The Golden Jubilee Award was presented to the Cubs who had completed the necessary requirements. Last

years Cubs earning the award were also present for the presentation. Skits were presented by Mrs. Earle's Den and seven boys from the Webelos Den who went into Boy Scouts. Changeover ceremonies brought in the new Cubmaster Mr. Earle (Toby) Torbet, and his committee. The monthly award for the best Den display was given to Mrs. Almont's Den.

The following awards were presented by Toby Torbet, Cubmaster: BOBCAT — Frank Thompson;

ROUND-UP — Fred Huggler (2) and Kenny Barrackman; WOLF — Fred Huggler, Kenny Barrackman, Dennis Armstrong, Richard Almont, Robert Pelcher, and Randal Almont; GOLD ARROW — Robert Ashworth; SILVER ARROW — Robert Ashworth (2); BEAR — Douglas Cail, Gerald Alexander, and Robert Ashworth; DENNER — Hal Lemmer and Robert Pelcher; ASSISTANT DENNER — Fred Huggler and Byron Moye; 1 YEAR PIN — Douglas Cail, Donald Torbet, John Besequett, Dale Morey, Robert Ashworth, Wayne Barrackman, Mark Nelson, and Larry Shepard; 2 YEAR PIN — Kenny Korsmo and Rodney Mackey; 3 YEAR PIN — Wayne Taranoff, Frank Bednash, and Kim Morris; and WEBELOS — Wayne Taranoff, Frank Bednash, Kenny Korsmo, Wayne Barrackman, Rodney Mackey, Mark Nelson, and Kim Morris. The seven boys receiving the Webelos badge were accepted into Boy Scout Troop 76 by Leonard Phernetton, assistant Scout Leader.

To receive the 50th Anniversary Award, the boys were required to bring a boy into scouting, advance one rank, learn to swim, and help to get-out-the-vote for the national election. The boys receiving the award were: Bob Adler, Bob Ashworth, Fred Arbuckle, Kenneth Barrackman, Wayne Barrackman, Robert Bartram, David Baxter, Frank Bednash, John Besequett, Allan Cail, Douglas Cail, Charles Celmer, Bill Ellington, Gary Fagerstad, Steven Fagerstad, Leland Gunderson, Darrel Hart, Fred Huggler, David Howard, Kenneth Korsmo, Dennis Koval, Gary Larson, Harold Lemmer, Rodney Mackey, Jimmy Martinson, Dale Morey, Kim Morris, Byron Moye, Mark Nelson, Steven Olmstead, Ray Parker, Tommy Parker, Ross Ratcliff, Richard Robbins, Larry Shepard, Gary Skaar, Richard Smith, Ronnie Stratton, Wayne Taranoff, Donald Torbet, Pat Ward, and John Yotly.

**June Bugs**  
The June Bug Garden Club will meet Tuesday, January 10, at the Summit Youth Center, 10:30 a.m. Members will answer roll call with their favorite flowering shrub. The guest speaker will talk on "Continuous Bloom in Flowering Shrubs." A plant sale will be held by the members. Hostesses will be Mesdames Harley Hornbuckle and Cliff Housekeeper.

**PTA**  
Thursday, December 29, P-TA Board members and their mates met in the Summit Youth Center for their annual Christmas party. Pirate Bingo was played with many interesting white elephant

## THE AMERICAN WAY



What Nonsense!

prizes. Mary Hart won a very unique gift for a woman, a large pair of suspenders. Naomi Bailey, Margaret Hoft, and Betty Parker served refreshments.

**Stock Raisers**  
Bill Irish handed out ribbons and 1 through 6 year pins at the December 13 meeting of the Summit Stock Raisers 4-H club; money was also presented for County and State Fair demonstrations. Glenna Haaland received the Championship award and accepted an invitation to Pullman, Washington, as the best demonstrationist. The George Haaland children were hosts for the pre-Christmas meeting. The next meeting, set for January 24, will be held in the Summit Youth Center. Reporter, Mike Waldrop.

**Party**  
Central Avenue Cub Scouts joined together to have a Christmas party at the Summit Youth Center Wednesday, December 21. The sixty boys enjoyed tossing popcorn through wreaths, cobbler, cobbler find my shoe, and walk the line relay. Before eating ice cream, cookies, punch, and candy canes, the Cubs sang Christmas carols. Gifts were exchanged as the closing for the afternoon of merriment. Leaders helping were: Fran Torbet, Betty Adler, Ruth Almont, Ann Earle, and Mr. and Mrs. Maurice Barrackman.

**Visitors**  
Mrs. Alice Besequett has had as visitors Mr. and Mrs. Paul Hawkins, and children, Paul, Jr., and Christina Marie. Paul, her oldest son, visited with many friends while home. The visitors returned to their home in San Pedro, California, in time to see the Huskies play in the Rose Bowl. Brothers, Jerry and John, would have liked to tuck themselves inside the baggage so that they too could see the game, but had to be satisfied with television.

**First Aid**  
A beginners First-Aid course will begin Thursday, January 5, in the Summit Fire Hall at 7:30 p.m. Around 30 have signed up for the 15 hour free course. No equipment will be needed for the first meeting.

**Well Babies**  
The Well Baby Clinic will be held Wednesday, January 11, at the Midland Fire Hall. Registration begins at 9 a.m. and concludes at 10 a.m.

**Dishes**  
Several dishes are still unclaimed from the Little League luncheon held December 10. I

Estimates Without Obligation  
**QUALITY HOMES DESIGN ASSISTANCE**  
**Hedlund Const.**  
868 Tule Lake Rd. LE 7-4227

**INTERURBAN AUTO FREIGHT INC.**  
3 Trips Daily  
To Parkland, Spanaway  
Summit, Midland  
GENERAL FREIGHT  
**MA 7-4121**

**BARSOTTI & TIMM**  
**Top Values HARDWARE VARIETY & PAINT**  
At the Roy Y. LE 7-4221  
Open 7 Days A Week, 7 a.m.-9

**AIR CHARTER**  
FLIGHT INSTRUCTION  
Approved Flight School  
Wash. MOONEY Distributor  
**TAHOMA FLYING SERVICE**  
Spanaway Airport LE 1-0442

### Thanks

I would like to thank everyone in the Summit area who has been so helpful in supplying news for our column. Variety is so dependent on all the little reporters who give me a call. I would also like to extend to all a very Happy and Prosperous New Year.

### Roses

Mr. and Mrs. Al Greco took their first trip together in thirty years. They left by bus December 27 for the big Rose Parade, Rose Bowl game, Disneyland, Knox Berry Farm, and to visit relatives in Los Angeles, California. Their chicken ranch was in the capable hands of their son, John, and son-in-law, Bob Meisenburg. Mr. and Mrs. Greco returned January 5 to rest up from the rest.

### Kudos

Congratulations are extended to Mr. and Mrs. Vernon Bates on the opening of their restaurant on 112th and Golden Given. Reporter, Gwen Cail, LE 7-3766.

I have found that with recent obligations I'll have to give up writing the Summit News as of this date. Please place an item in the column this week advertising for a new correspondent. Thank you very much.

GWEN CAIL

(Editor's note: We have done so. Anyone interested please call LE 7-0223.)



Lack of Will Power.

**PHOTOGRAPHS IN LIVING COLOR OF YOUR CHILDREN**  
(Offer Good 'Til Jan. 30)  
3-5x7 } ALL FOR  
3-2 1/2 x 3 } \$10.00  
5.00 at Time of Setting  
5.00 on Delivery  
OPEN EVENINGS FOR APPOINTMENT  
CALL GR 4-1986  
**FAMILY PORTRAIT STUDIO**  
8411 SO. PARK AVE.

**General Sheet Metal Work**  
Special Attention to Special Equipment  
**RAU MFG. CO.**  
LEnox 7-7372  
14114 Pacific Avenue

**PRE-INVENTORY AND PRE-SEASON LAWMOWER SALE**  
**USED - RECONDITIONED - 30% SAVINGS -**  
LIKE NEW DEMONSTRATOR  
**RIDING ROTARY** Reg. \$169... **\$109**  
Save NOW and Get A Better Model Than You Can Afford Later At Regular Prices  
**PARKLAND CYCLE & KEY**  
11021 PACIFIC AVENUE LE 7-5772  
Close Out on Some Model Bicycles. Save Here Too!!

why the first ten days of 1961 are a matter of interest to you...

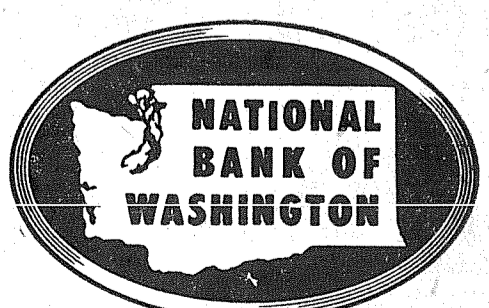


**your savings earn full bank interest from January 1 when deposited before January 10!**

Start the year right with an insured National Bank of Washington Savings Account. Savings deposited before January 10, earn full 3% interest from January 1. And don't forget—your money is always available instantly, without question or delay, and earns the highest bank interest rate the law allows!

Now's the time to bring your savings to National Bank of Washington. We'll show you how easily this can be done.

**PARKLAND BRANCH**



THE BANK OF PERSONAL SERVICE . . . WHERE OUR INTEREST IS YOUR! 27 HELPFUL OFFICES  
Member Federal Deposit Insurance Corporation • Member Federal Reserve System

**GOOD! GOOD! GOOD!**  
**STEAK SALE**  
**TENDER HAM KNUCKLES 19¢ POUND**  
**LEAN - TENDER SWISS STEAK 69¢ POUND**  
**TENDER SIRLOIN STEAK 79¢ POUND**  
**YOUNG BEEF RIB STEAK 69¢ POUND**  
**YOUNG BEEF LIVER 33¢ POUND**

**Swans Down, 12 different flavors**  
**CAKE MIXES 4 For 89¢**  
**Table Tested Fresh Frozen FRENCH FRIES 10¢ 9-Oz. Pkg.**

**All Flavors JELL-O 5 FOR 29¢**  
**3 Minute Quick OATS 12-oz. Pkg. 10¢**

**Borden's Evaporated MILK 9 Tall Tins For \$1**  
**Blue Bonnet MARGARINE 5 For \$1 1-lb. Pkgs. . . .**

**Country Kitchen SYRUP 24-oz. Bottle 39¢**  
**Baker's Instant CHOCOLATE MIX 2-lb. Pkg. 69¢**

**Nalley's Delicious LASAGNE 40-Oz. Tin 53¢ 24-oz. Tin 39¢**  
**"AA" Large EGGS Doz. 59¢**

**TEXAS PINK GRAPEFRUIT 5¢ Ea.**  
**McDANIELS The Home of The Low Price**  
**AIRPORT & CANYON ROAD**  
Store Hours: 9:00 TH 9:00 - Sundays 9:00 TH 7:00  
PRICES EFFECTIVE Thursday Friday Saturday  
**CELLO CARROTS 8¢ EACH**  
**SOLID CABBAGE 5¢ POUND**

### Rodger Lunde Meets

Rodger Lunde Auxiliary will meet tonight at 8 at the home of Mrs. Robert Surplus.

Members will co-hostesses to the Third District Friday, January 6 at the Tacoma Armory.

The average American family uses about 900 metal cans a year.

### Derby Winner

(From Page One)

Quality Photo Service: a surprise gift.

Art's Shoes: socks for baby's feet.

Patty Ann Bakeries: baby's christening cake.

Storkville: a blanket.

Rudy's Feed & Seed: 8 pound box of Sturdy dog food for baby's pet.

Parkland Fuel Oil Service: ten gallons of Chevron Supreme for daddy's trips to the hospital.

Frick & Franz: car seat.

Siler's: a free TV service call anytime in the next six months.

Parkland Hardware: a Sunbeam automatic bottle warmer for baby's bottle.

Blue Spruce Service: an auto

Parkland Cleaners: baby's ring.

Pierce County Refuse: three months free garbage service.

Lee Hendricksen Texaco: a job for daddy's car.

Park 'n Shop: 1 case Heinz baby food.

Shop-ette: assorted crib toys.

McKewen Studio: baby's first picture.

Chuck's Cafe: lunch for the proud father.

Johnson Drug: nursery night lamp.

Stella's Flowers: a beautiful bouquet expertly designed and delivered to the hospital.

Piggly Wiggly: 1 case of Gerber's strained baby food.

Big Bear Store: a basket of fruit delivered to the hospital.

Paul's Shoes: 1 free pair half-soles for daddy's shoes.

Shamrock Tavern: a box of labeled gift cigars.

Parkland Taxi: a ride home from the hospital.

Soine's: Jumping-Jack shoes for baby.

Parkland Western Auto: a surprise gift.

Bargain Basket: one dozen Curly diapers.

Parkland Pharmacy: A baby bottle warmer.

Little Park Cafe: mother's first dinner out.

Carl T. Lindgren, Realtor: baby's book.

Laurinat's apparel: a surprise gift for mother.

Crib & Cradle Shop: a waterproof insulated diaper bag.

Tahoma Flying Service: a scenic flight over beautiful Puget Sound for mother, dad and baby on their first outing.

Brogan's Mobil Service: Complete oil change.

National Bank of Washington: a bank account for the baby.

Brookdale Lumber Co: a collapsible light, wooden clothes dryer.

Parkland Econ-O-Wash: two weeks do-it-yourself diaper service.

Spanaway Five & 10: a box of fine chocolates.

French's Mt. Sales: 10 gallons of gas.

Parkland Western Auto: a surprise gift.

Bargain Basket: one dozen Curly diapers.

Parkland Pharmacy: A baby bottle warmer.

Little Park Cafe: mother's first dinner out.

Carl T. Lindgren, Realtor: baby's book.

Laurinat's apparel: a surprise gift for mother.

Crib & Cradle Shop: a waterproof insulated diaper bag.

Tahoma Flying Service: a scenic flight over beautiful Puget Sound for mother, dad and baby on their first outing.

Brogan's Mobil Service: Complete oil change.

National Bank of Washington: a bank account for the baby.

Brookdale Lumber Co: a collapsible light, wooden clothes dryer.

### Garden Club Meets

Clover Creek Garden Club will meet Tuesday, January 10 at 8 p.m. at Mrs. Lou Fisch's residence on Waller Road.

School Board

The Clover Creek School Executive board meeting will be January 10 in the school lunchroom at 1:30.

Visitors

Mr. and Mrs. Ralph Ferguson visited the Henry Fergusons Christmas Eve.

Grange

Clover Creek Grange will meet January 6 at 8 p.m. in the hall.

Reporter, Kathryn Deady, LE 7-8897.

Paradise Bowl: six free lines of bowling for dad.

Ashmore's Spanaway Drug: a hot plate diner to keep baby's lunches warm.

Flett Dairy: 12 quarts of Grade A milk.

## DRIVING after dark

by CAROL LANE, WOMEN'S TRAVEL DIRECTOR SHELL OIL COMPANY

the short days of winter mean more after-dark driving. For tips in safety, follow these motoring tips:

- eat lightly BEFORE A LONG NIGHTTIME TRIP. A HEAVY DINNER AND HEAVY BEVDS GO TOGETHER.
- turn ON PARKING LIGHTS OR HEADLAMPS AS SOON AS THE AFTERNOON DAYLIGHT BEGINS TO DIM. GO BY THE SKY, NOT BY YOUR WATCH.
- on the ROAD, TAKE FREQUENT BREAKS. WALK ABOUT IN THE COLD AIR TO SNAP UP YOUR REFLEXES, OR STOP FOR REST AND COFFEE.

Keep the car well ventilated and go easy on the heater. Ray the radio. Eye strain can make you sleepy. Avoid glare of oncoming cars by looking to right side of road. If you feel sleepy, pull completely off the road and take a refreshing nap.

© COPYRIGHT 1960 SHELL OIL COMPANY

## P.G.L. Prefinished Plywood

4'x8'x1/4" First Quality V-Grooved

BIRCH	EACH \$9.95
KNOTTY PINE	9.95
KNOTTY CEDAR	9.95

(We do not carry rejects)

ASK ABOUT OUR BUDGET PLAN

### VAUGHAN'S PACIFIC LUMBER

84th & Pacific Avenue GR 4-9515

### PARKLAND TRAILER VILLAGE

NEW ENCLOSED CAR PORTS A FRIENDLY PLACE FOR YOUNG AND OLD

507 E 131st. LE 7-9926

# Brighten your meals...stretch your budget with big savings at this SAFEWAY... WINTER-RAMA SALE!

<b>Strawberries</b>	BEL-AIR Frozen Sliced	5 10-oz. Pkgs.	\$1.00
<b>French Fries</b>	MR. G—Frozen Regular or Crinkle Cut	9-oz. Pkg.	10¢

<b>WIX 'EM or MATCH 'EM</b>	<b>WIX 'EM or MATCH 'EM</b>
Bel-Air Baby Limas OR FORDHOOK 10-oz.	Bel-Air Mixed Vegetables 10-oz.
Bel-Air Brussel Sprouts 10-oz.	Bel-Air Green Peas 10-oz.
Bel-Air Broccoli Spears 10-oz.	Bel-Air Peas & Carrots 10-oz.
Bel-Air Cauliflower 10-oz.	Bel-Air Leaf Spinach OR CHOPPED 12-oz.

<b>4 Pkgs. \$1.00</b>	<b>6 Pkgs. \$1.00</b>
-----------------------	-----------------------

# BEEF POT ROAST

U.S.D.A. CHOICE—BLADE CUT—AGED AND TRIMMED

## lb. 39¢

U.S.D.A. CHOICE BEEF—SERVE SWISS.	MILWAUKEE SKINLESS—SERVE WITH SAUERKRAUT.
<b>Chuck Steak lb. 49¢</b>	<b>Wieners lb. 49¢</b>
U.S.D.A. CHOICE BEEF—ROUND BONE.	BANNER—LEAN—FRIES CRISP AND TASTY.
<b>Chuck Roast lb. 59¢</b>	<b>Sliced Bacon lb. 49¢</b>
U.S.D.A. CHOICE BONELESS—NO WASTE	SAFEWAY—GROUND FRESH HOURLY—LEAN.
<b>Beef Roast lb. 79¢</b>	<b>Ground Beef lb. 39¢</b>
U.S.D.A. CHOICE GRADE—BONELESS.	U.S.D.A. CHOICE BEEF—DELICIOUS BRAISED.
<b>Beef Stew lb. 69¢</b>	<b>Short Ribs lb. 39¢</b>

<b>Heinz Ketchup</b>	14-oz. Bottle	19¢
<b>Margarine</b>	COLDBROOK TOPS IN VALUE 6 1-lb. Pkgs.	\$1.00
<b>Lucerne Cube Butter</b>	lb.	63¢
<b>Snowdrift Shortening</b>	3-lb. Can	59¢
<b>Table Syrup</b>	LUMBERJACK OR PACK TRAIN 22-oz. Bottle	29¢
<b>Chiffon Facial Tissue</b>	5 Pkgs. of 400	\$1.00

## Big POTATO AND ONION SALE

<b>Potatoes</b>	No. 1 WASHINGTON NETTED GEMS	<b>10 lbs. 49¢</b>
<b>Onions</b>	YELLOW, SWEET SPANISH, MEDIUM SIZE	<b>lb. 5¢</b>

No. 2 Potatoes	NETTED GEMS ECONOMICAL FOR LARGE FAMILIES	50 lb. Bag	\$1.69
North Dakota Potatoes	NO. 1 REDS IN POLY BAGS	10 lb. Bag	49¢
No. 1 Idaho Potatoes	IN POLY BAG GOOD FOR BAKING	10 lb. Bag	59¢
Dawn Fresh Mushrooms	SERVE WITH SAFEWAY STEAK	2 5-oz. Pkgs.	49¢

## CANDY BARS

BABY RUTH or BUTTERFINGER 5c SIZE—IN POLY BAG

**10 Bars 39¢**

### Cocoa & Marshmallows

Wonderful for cool winter evenings—Easy to make!

Cocoa Mix	HERSHEY'S INSTANT	38-oz. Pkg.	79¢
Marshmallows	FLUFF-1-EST—2 lbs.	1-lb. Pkg.	25¢

Nu Made Corn Oil	FRESH and PURE... Quart Bottle	59¢
Nob Hill Coffee	2-lb. Bag	\$1.17
Pancake Mix	BETTY CROCKER	4-lb. Pkg. 49¢
White Majic Bleach	Half Gal.	29¢

## Lettuce BANANAS

FRESH, CRISP SOLID HEADS FOR SALADS

**2 for 19¢**

No. 1—Our Best Quality

**2 lbs. 25¢**

Sale starts 9 a.m. Thursday, January 5 through Saturday, January 7 in Tacoma, Sumner, Puyallup & Lakewood.

No sales to dealers. We reserve the right to limit quantities.

# SAFEWAY

### Building Permits

Dale Glidden, \$17,000 residence, 14121 Park Ave. Wm. D. Loboda, \$1400 addn. to res., 763 So. Polk. Van Atkins, \$300 residence, 168th and East "E." Fred L. Smith, \$3000 Trailer, 10504 Spruce St. Keith Clark, \$8,000 residence, 9106 E. 118th, Puyallup. C. H. Stevensen, \$7,500 residence, 12510 Cedar Ave., Puyallup. H. L. Bartel, \$3,000 residence, Walder, Wash, Arthur L. Hansen, \$16,000 resident, 4411 9th St. N.E., Puyallup. Duane Hatterson, \$15,225 residence, 1307 Violet Meadow. Geo. R. Barkley, \$15,500 residence, 13638 Golden Given Rd. Geo. D. Barclay, \$15,500 residence, 13614 Golden Given Rd. Fred J. Hotes, 5685 repair to res., Route 1, Box 238, Eatonville. Harry Myers, \$11,000 residence, 10022 Collins Rd., Puyallup. Humble Oil & Refining Co., \$50 sign, 2219 So. 112th. E. M. Hamilton, \$80 remodel to res., 10157 McKinley Ave.

Ralph Brink, \$5,000 real estate office, 170th & Pacific Ave.; Walter T. Flitter (2) residences, \$9000 each, 1616 So. 119th & 1634 So. 119th; Edward J. Hill, \$900 garage 10807 E. Grant.

### FENCING

Designers and Builders  
EXPERT WORKMANSHIP  
REASONABLE PRICES  
Easy Monthly Payments

### VAUGHAN'S

84th & Pac. Ave. GR 4-9515

### PIERCE COUNTY REFUSE CO.

Weekly Garbage Collections  
Phone LE 7-8688

### Prescription Service

Open 7 Days a Week  
9:30 a.m. - 9:30 p.m.  
Sundays 10 a.m. - 6 p.m.

## JACOBS PACIFIC DRUGS

Wallgreen Agency  
Pay Light & Water Bills Here  
84th & PACIFIC AVE Greenfield 2-6445

### MOTOR REBUILDING

Valve Seats Installed, Complete Brake Drum Turning, Reboring, Pin fitting, Lathe and Press Work, Head Surfacing, Key Seating, Piston Grinding, etc.

## Rupe Machine Works and Garage

AUTOMOTIVE & INDUSTRIAL WORK  
13411 Pac. Ave., P.O. Box 2445, Parkland 44, Wa. LE 7-7450

treat yourself to a prepaid Christmas next year

## join our popular Christmas Club

Deposit fro 50c to \$10 a week, and 50 weeks later we'll hand you a check big enough to take care of your 1961 Christmas shopping. Join now!

84th and PACIFIC

### PUGET SOUND NATIONAL BANK

MEMBER FDIC



LATE FOR AN APPOINTMENT...  
BUT ON TIME FOR A DATE  
WITH DEATH!!

Washington State Highway  
Department & State Patrol

son, Wolf Badge; Steve Heyer, Wolf Badge; Kim Nordberg, Gold and Silver Arrow; Grady McNett, Silver Arrow and Denner; Jody Miller, Gold and Silver Arrow, and Assistant Denner Stripe; Dennis Selby, Bear Badge and Silver Arrow; Rodney Roemer, Denner Stripes; Barry Reed, Assistant Denner Stripe; Russell Milleson, Silver Arrow; Donald Becker, Silver Arrow; Steve Smith, Lion Badge; Bob Bradley, Lion Badge, Gold Arrow; Bob Bargelt, Bear Badge; Gary Lauderback, Lion Badge, 2-year Pin; Mark Vetter, Bear Badge, Gold Arrow, 1-year Pin; Eddie McCue, Bear Badge, Gold Arrow, Assistant Denner Stripe; Greg Blanchard, Denner Stripes, 2-year Pin; John Skucek, Lion Badge; Billy Cook, Assistant Denner Stripe; Ricky Dimond, Denner Stripes; William Hofner, Bobcat Pin; David Peterson, Bobcat Pin; David Both, Bobcat Pin; Michael Francis, Bobcat Pin, and Bruce LaVerge, Bobcat Pin.

**Birthday Party**

A birthday party was held in honor of Terry James, celebrating his third birthday. Guests were Connie and Donnie Beardemphl, Phyllis, Bernice and Mike Beardemphl, Janet, Dick and Mike Cordova, Bob and Susan Bortoluzzi, Ronnie and Ken Marshall, and Terry's sister, Diana. Games were played, and cake and ice cream served to the guests.

Later, the James' family visited the grandparents, Mr. and Mrs. Sherman James, in Spanaway, and had more cake and ice cream.

**Holiday Guests**

Recent visitors at the home of Mr. and Mrs. Roy Ripoli, 8702 East Van Buren, were Mrs. Ripoli's brother and sister-in-law, Mr. and Mrs. Joseph Gardner, and boys, from Reno, Nevada, who were here for two weeks.

Also visiting the Ripoli family was Mrs. Ripoli's niece, Miss Diane Buckley, from Sacramento, California.

**Brother Visits**

Visiting at the Alfred Winterton home, 2321 East 104th, was Mr. Winterton's brother, Martin Winterton, from Los Angeles, California, who was here for a week.

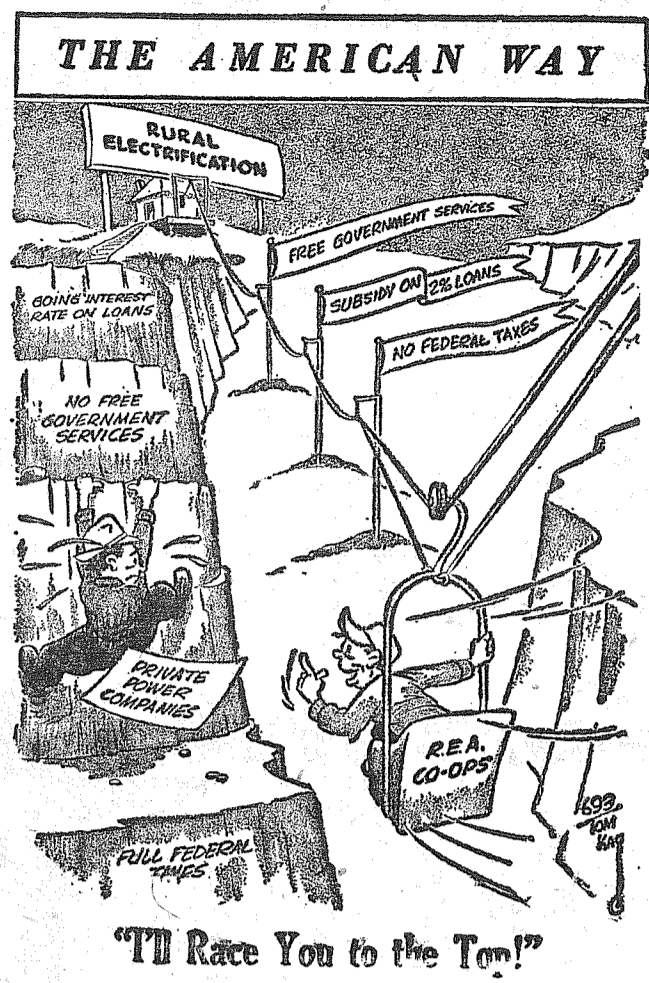
**Friends Gather**

Entertaining friends and neighbors New Year's Eve were Gus and Nina Balzarini, 1201 East 85th Street, with the highlight of the evening being Mr. Balzarini's specialty, a Lasagne Dinner with all the trimmings, served after midnight.

**Play School Will Meet**

The Midland Cooperative Play School will hold its January meeting at the home of Mrs. John Craig, 9911 Portland Avenue, on Thursday, January 12th, at 7:30 p.m. All mothers with children enrolled in the Play School are urged to attend. Reporter: Mrs. Frank Gural, LE 7-5939.

**Bob's Barber Shop**  
9820 Pacific Avenue  
Courteous Service Always  
Hours 9 to 6 Tues. thru Sat.



"I'll Race You to the Top!"

**Grange Will Meet**  
The Waller Road Grange will meet January 6th. Newly installed officers will take charge for the first time.

**Garden Club**  
The Waller Road Garden Club will meet January 5. Members will bring house plants for horticultural display and study. Mrs. William Hager will show colored slides of her vacation trip to England last summer. There will be other topics of interest featuring "Happy New Year."

A social hour will follow. Waller Road Improvement club will meet January 11 at 8 p.m. in the Waller Road school. They will discuss incorporation and improving the gravel pit area near 40th and Waller Road. Reporter, Mrs. Verne Fogle.

**SMALL CUTE EFFICIENCY APARTMENTS**  
SEPARATE BEDROOMS  
\$57.50 and Electricity  
LORING COURT  
12605 Pacific Avenue

**1961 CAR LICENSE**  
at  
MIDLAND FOOD CENTER  
East 99th & Portland  
(Pass Cars Only)  
Midland Orthopedic Guild

Greenfield 4-8989 5424 PUGET SOUND  
**NEW CRYSTAL STEAM BATHS**  
Bring In This Ad and Get Our  
Regular \$1.50 Steam Bath For  
only \$ .50  
New Owner—Orville Grant  
LADY ATTENDANT HOURS: 9 a.m. - 10 p.m.

**New Mop Wrings Itself Dry**



Automation has finally caught up with Mrs. Housewife's wet mop. Until now a wet, messy chore, this new automatic cellulose yarn mop makes floor mopping almost a breeze. It wrings itself.

Called Ring-a-Mop by its inventor, Quickie Manufacturing Corporation, the secret of the ingenious automatic action is in the ring that does all the "dirty work."

With this new household helper, floor mopping is a stand-up, hands-dry job. A quick push-pull on the handle grip wrings the mop dry, and returns the ring to position for the next wringing.

**Cubs Meet**

The Cub Scouts of Pack No. 84 held their combined monthly meeting and annual Christmas party December 22nd at the Midland Improvement Club Hall. Each scout brought an ornament he had made, to decorate the tree. He also brought a fruit and bar of soap to be presented to the Midland Nursing Home.

Mrs. Norma Bradley and Mrs. Goldie Cook were presented corsages as retiring den mothers. Mr. George Rodrick announced his retirement as Cubmaster, and that Mr. David Lorange will be the new leader.

The advancement award for December was awarded to the den of Mrs. McNett and Mrs. Smith.

Miss Virginia Miller, accompanied by Mrs. Shirley Reed, favored the group with a solo and also led the group singing of Christmas carols. Santa Claus (David Lorange) arrived with treats for the children.

Mr. Albert McCue delivered Christmas stockings for the pack to the Spanaway Children's Institute.

Mrs. Jean McLean and Mrs. Paul Jackson of Den No. 9 served the pack.

Remember—Parent's Committee meeting January 13th.

The following boys received awards this month: Tony Taylor, Wolf Badge, Gold Arrow; Timmy Hansen, Wolf Badge, Denner Stripes; Rick Kennedy, Wolf Badge, Gold Arrow, Assistant Denner Stripe; Skip Fletcher, Wolf Badge, Gold Arrow; John Dick-



OH, NO?—William C. Franck, 9, and dog seem to deliberately violate a Middletown, Conn., ordinance. Of course some joker had turned "parking" into "barking."

**matter of FACT**



The last sovereign of England to wash the feet of beggars on the Thursday preceding Easter was James II in the 17th century. The custom, begun in the Middle Ages, is now replaced by the giving to the poor by the sovereign of "Maundy money," coins specially struck for that purpose.

**REMODELING SALE!**  
PARDON OUR APPEARANCE.....  
....BUT DON'T MISS THE SAVINGS!!!

**SWEAT SHIRTS** MEN'S WHITE Special \$1.42

"HEIRLOOM" - 22"x36" **Rugs** Reg. \$4.49 \$1.97 With Rubberized Back

**LISTERINE** Reg. 89c Size 68c

**BATHROOM SCALE** "DART" Reg. \$5.99 \$3.99

**YARN** 4-Ply Knitting Worsted Reg. \$1.19 88c

**Adjustable Metal IRONING BOARDS** \$5.99 Regular Price \$7.99 - Special

**SPECIAL RACK CAR COATS** Children's Sizes 3 to 8 REDUCED TO CLEAR

**"DAYS" WHIPCORD PANTS** MEN'S Reg. \$9.95 \$5.88

**JACKETS** MEN'S Reg. \$12.95 \$8.88

**SHOP-ETTE**  
133RD & PACIFIC SHOPETTE - BIG BEAR CENTER

OPEN DAILY 10 A.M. TO 9 P.M.  
SAT. 10 A.M. TO 6 P.M.  
CLOSED SUNDAYS  
PRICES EFFECTIVE WHILE SUPPLIES LAST

**Lucky and BIG BEAR STORES**

**SPECIALS!**

**CHOICE ROUND STEAKS** CUT FULL LB. 69

**GROUND BEEF** GROUND FRESH HOURLY LB. 29

**STEER BEEF TONGUES** LB. 29

**LUCKY SHORTENING** 3-lb. CAN 49

**LUCKY COFFEE** 1-lb. CAN 49 (Regular or Drip)

Cloverleaf Brand, Grated Size 1/2 can

**WHITE TUNA** 15

**ARIZONA GRAPEFRUIT** 8 POUND BAG ONLY 49

HONEY-WHITE, MARSCH SEEDLESS, JUICE LADEN, SWEET GRAPEFRUIT

FOR ADDITIONAL FOOD VALUES, SEE OUR REGULAR AD IN THE TUESDAY TRIBUNE

**13320 PACIFIC AVENUE**  
STORE HOURS 9 to 11 DAILY - 9 to 9 SUNDAY

We reserve the right to limit purchases.  
Sale prices effective Wednesday through Saturday.

**Lucky and BIG BEAR STORES**

### Meeting Changes

January meeting of the Roy Rodeo Association will be held Tuesday, January 10, in the Roy Town Hall instead of January 3 as had been previously announced.

**4-H**  
Mix Master 4-H Club met in the home of the Assistant Leader, Mrs. Floyd Corbin on Thursday. At this meeting money won at the Junior Fair was presented to

the girls and pins which they had earned last year were also given. Next meeting will be held the third week of January in the evening at a date to be announced later.

**PTA**  
At the January 10 meeting of the Roy PTA there will be information on the many new projects available to young people interested in 4-H work.

**New Parents**  
Mr. and Mrs. Gary Roush Jr.

### Dr. Malyon At Collins Church

Collins Community Church, just North of Collins School, will present Dr. Ernest Malyon in a New Life Campaign, January 15-22. The pastor, Rev. Robert Pottinger, points out that Dr. Malyon's ministry is of particular interest in that he is a past president of the Conservative Baptist Association of

A member of the extension staff of Moody Bible Institute, Dr. Malyon will bring to these meetings a series of messages of immediate benefit. He will speak both Sunday morning and evening and Monday through Friday evenings. Allan Laursen, a fine baritone soloist, will lead group singing and provide special music. Church pastor and evangelistic team extend a cordial invitation to the meetings which will begin at 11:00 Sunday mornings and 7:30 evenings.

are the parents of a girl, Petra Elizabeth, born December 20. Grandparents are Mr. and Mrs. Gary Roush Sr. of Roy and Mr. and Mrs. Hugo Strenger of Osweil, Germany.

**Youth**  
Young People of the area who recently returned to school after spending the holidays with their families are Marie Garrison, daughter of the Harold Garrisons, Myrtle Lyons, daughter of the Merton Lyons, and Neil Lambertsen, son of the George Lambertsen. Reporter, Martha Berggren.

### a-Wondering... and a-Wandering...

With JACK BROWN

This morning I decided to give my wife a rest and conjure up my own breakfast. Early in the morning I don't perk too good, so all I could think of was eggs. While I decided on poached eggs, fried eggs, boiled eggs, egg omelet or some other way of trying to make them tasty, I remembered reading about the taxes on eggs. At the time it didn't ring a bell. But now, as I started to scramble up a couple of cackle-berries, it hit me like a ton of bricks. There are over 100 hidden taxes on the hen fruit you store away at the table. Sounds incredible, doesn't it?

When I got back to the office, I looked up a report from the Tax Foundation. They have some real eye openers to report. There are 116 hidden taxes on a man's suit, 150 on a woman's hat, 151 on a loaf of bread and 600 on a house.

It seems impossible, as young as this country is, that our lawmakers could have possibly found that many ways to dip into our pocketbooks.

How many times have you read with revulsion the antics of some individuals in the slum sections of our larger cities? Reports of vandalism run the gauntlet from slashed tires to arson. Like myself, you probably gave it little thought, thinking it is to be expected in those localities due to the environment.

By the same token, most of us living in this general area feel that the environment here is perfect for raising a family, creating new friendships, and in general enjoying the company of our fellow man.

Is it now? Somewhere along the line we seem to be failing. Some of these slum type characters are cropping up in our area.

Here's a recent example that smacks of Marxism and communism. What home fostered the action of the young criminals who took advantage of the absence of a state patrolman from his home during the Christmas season to throw paint all over a new patrol car and paint COP on the side of his house. Pity the warped mind that conjured up this insidious act.

There is undoubtedly only one answer for such action. This officer took an oath to uphold the laws of our land when he received his commission. In so doing he has probably stopped a lawbreaker and perhaps issued a citation to a person incapable of admitting that they were at fault or at least not yet man enough to accept a reprimand in any form. Result... an act of vandalism smacking of the slums against a man who selected our community to reside in and raise his family while working for you and me to protect our lives, children and property.

If this community has as many real Americans in it, as I think it has, there should be a good many people show up to help this particular patrolman paint the side of his house once he has raised the money to buy a few gallons of paint.

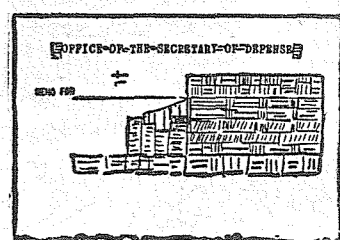
Maybe the smell of fresh paint will wipe out the smell of the skunk infesting our area.

Here's a little matter that gets under my hide every once in a while. How many times have you heard some one ask a youngster his or her nationality? How many times have you overheard this self same youngster proudly acclaim "I'm Swedish" or "I'm German" or "I'm something else." It's a sign that pride in family origin has been passed on to the child, but is that good? Nearly every child asked that question who answers as above is wrong for most of them are born here, therefore there can be only one correct answer. They are Americans. They should be taught to be proud of this and taught the true meaning of the word "nationality." Teach your children who are Americans to be and to live like an American. Above all, teach them to have pride in the fact that they are Americans.

If this article has offended anyone, kindly let me know and I will be glad to obtain sailing schedules for you.



Thomas S. Gates Jr.



**MILITARY SECRET** — Secretary of Defense Thomas S. Gates Jr. is a great doodler. One of his masterpieces retrieved from the wastebasket after a meeting is shown below his photo. It looks as if it means, "Come on, boys, let's build this country's defenses until they're like a granite wall."

JU 4-1526

## FREE PICNIC HAM

With All Orders  
Placed On or Before  
January 7, 1961

BASIC 3-MONTH SUPPLY CONSISTS:

### 120 LB. 1/2 SIDE U.S.D.A. GRADED CORN FED STEER BEEF

6-7 T-Bone Steaks	2 Pkgs. Cube Steaks
7 Rib Steaks	6 Pot Roasts
4 Sirloin Steaks	1 Rump Roast
4 Large Round Steaks	1 Sirloin Tip Roast
4 Swiss Steaks	26 Lbs. Ground Beef
4 Chuck Steaks	2 Pkgs. Boiling Beef
	2 Pkgs. Meaty Soup Bones

— PLUS —

- ★ 46 Lbs. U.S.D.A. Graded Pork
- ★ 12 Pkgs. Frozen Fruits and Berries
- ★ 27 Cans of Juices
- ★ 2 Cases Frozen Vegetables
- ★ We Pay First 3 Mo. Locker Rental

No Down Payment—No Payment for 30 Days

NO FREEZER PURCHASE REQUIRED  
(All Products Guaranteed)

BUDGET FROZEN FOOD SERVICE

## CALL JU 4-1526 CALL ANYTIME

PILLSBURY 25 lb. **FLOUR** \$1.89

GIANT SIZE **WHITE SOAP** 49¢

C & H POWERED **SUGAR** 2 Pkg. For 25¢

SUNNY JIM **PEANUT BUTTER** 3 Lb. FAMILY SIZE REGULAR CRUNCH OL' FASHION ONLY 99¢

BETTY CROCKER **CAKE MIXES** 3 Pkgs. For 99¢

GOLDEN **FLUFFO** 69¢ 3-lb. Tin

SALTESEA **MINCED CLAMS** REG. 29c 5 for \$1.00

HUNT'S **FRUIT COCKTAIL** 300 Tin 5 For 1.00

3 Little Kittens **CAT FOOD** 10 Tins For 99¢

NESTLES **CHOC. CHIP MORSELS** 5 Pkgs. For \$1.00

CARNATION **Instant CHOCOLATE DRINK** 3 For 99¢

**GRND. BEEF** 3 lbs. For 89¢

NORTHWEST BRAND SKINLESS **WEINERS** lb. 45¢

ROUND • RIB • SIRLOIN **BEEF STEAKS** lb. 69¢

**T-Bone STEAKS** All Cuts 79¢

WELL TRIMMED **RUMP ROAST** lb. 59¢

All Meat-No Bone <b>SIRLOIN TIP ROAST</b>	<b>CHUCK STEAK</b>	BAR-S Thrifty SLICED <b>BACON</b>	Boneless Fillet <b>RED SNAPPER</b>
69¢ lb.	49¢ lb.	39¢ lb.	29¢ lb.

**POTATOES** 10-lb. 39¢ No. 1 Gems

**CALAVOS** 10¢ Ea.

TUBE **TOMATOES** 19¢ Pkg.

CALIFORNIA **LETTUCE** 10¢ Ea.

WE CUT AND WRAP LOCKER BEEF

**BARGAIN BASKET**  
16618 PACIFIC AVE. South SPANAWAY, WASH.

STORE HOURS FROM 9 A.M. TO 10 P.M. DAILY 7 DAYS A WEEK

**WANT ADS**  
THE MARKET PLACE OF MILLIONS  
Only 5c Per Word  
50c Minimum

**WE MAKE LUMBER**  
LUMBER  
GLASS  
HARDWARE  
SHINGLES  
ROOFING  
GET OUR PRICE FIRST ON ECONOMY GRADE LUMBER  
**Baskett Lumber**  
9701 Portland Avenue  
LE 7-8663

**Rural Garbage Service**  
Pierce County Permit  
Serving Parkland, Midland, Summit and Spanaway  
LEnoz 7-8688

Transferring your funds?

THINK FIRST OF PACIFIC FIRST

We transfer your funds from anywhere in the United States, without charge!

A MUTUAL SAVINGS INSTITUTION

**Pacific 1st Federal Savings**  
and Loan Association  
Bellingham • Seattle • Tacoma  
Longview • Portland • Eugene

11th and PACIFIC LAKEWOOD AT VILLA PLAZA

CURRENT RATE  
**4%** COMPUTED ON MONTHLY BALANCES  
PAID 4 TIMES A YEAR

# JOBS

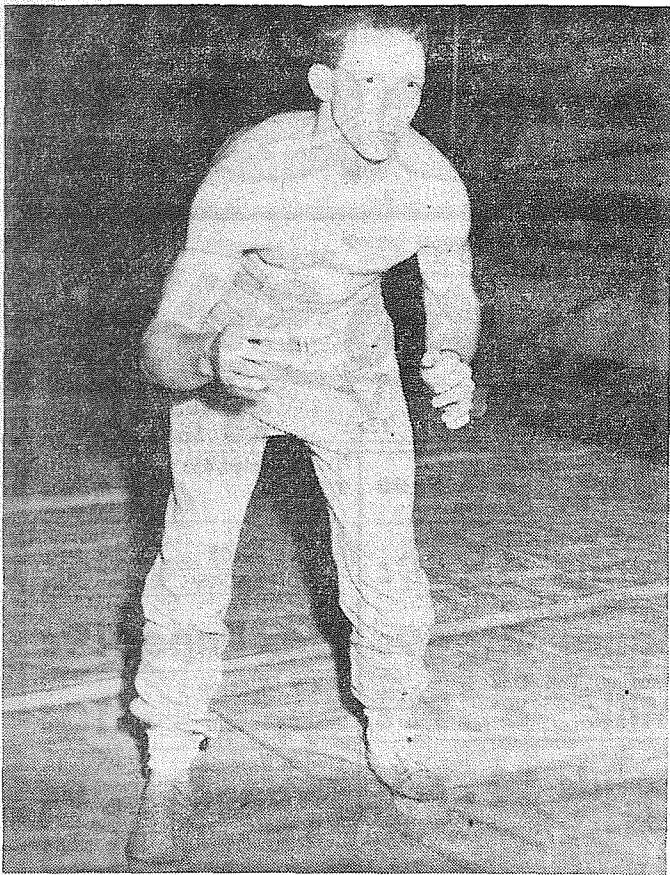
for  
**CLERK-TYPISTS,  
STENOGRAPHERS**  
and  
**IBM**  
PUNCH CARD OPERATORS

Demand for These Skills  
Exceeds Supply

## ENROLL NOW FOR CLASSES AT KNAPP COLLEGE

10th and Pacific MA 7-2181

# He's Ready For Injuns



SENIOR JIM KENT, Franklin Pierce High School, braces his 191 pounds in preparation for tonight's 7:30 encounter with Renton. In four practice meets this season Kent has pinned all his opponents

Wrestlers of Franklin Pierce contest when he came to the mat enter League competition against game directly from the gridiron. Renton on the Card mats tonight at 7:30.

Bob Lincoln and Jim Kent hope to continue their winning ways, having pinned all four opponents so far in practice meets.

Little is known of the Renton team, but the Cards are looking to a victory based upon their recent outings. After dropping two meets to Bethel and Stadium early in the season, the grapplers managed a tie with Lincoln and then took the measure of Wilson for a 1-2-1 season record in practice tilts.

Larry Gehrman, Pierce winner in the district tourney last year, is high on the list of possible winners after winning his last three matches. He lost his first

contest when he came to the mat

The fastest animal in America is the pronghorn, an antelope with bursts of speed up to 40 to 50 miles an hour.

PROMPT PERSONALIZED  
**PRESCRIPTION SERVICE**

TED SWANSON  
INSULIN VITAMINS  
Downtown Prices  
Pay Phone Bills Here  
PLENTY OF FREE PARKING  
**TINCHER'S PHARMACY**  
8227 Park Ave. GR 4-3344  
Across from Fern Hill P O



**TELEVISION SERVICE CENTER**  
PRESENTS TV CHUCKLES

He stepped off to watch "Adventures in Paradise" on his TV.  
Don't miss your favorite show either due to a faulty set.  
Call us, we guarantee our work.

**TELEVISION SERVICE Center**  
"YOUR WINEGARD COLOR CEPTOR DEALER"  
GR 23386  
8431 PACIFIC AVE.

# Cards Face Pirates

The Cardinals of Franklin Pierce carry their season record of two wins and three losses into the Puget Sound League wars tomorrow night when they take on the Highline Pirates of the Northern Division.

Both teams have similar records this season, and both are hurting because of a lack of height. The Pirates, however, boast an offensive strength in forward Tom Adams and guard Mike Mills.

Coach Del Schafer has added more backboard strength to his squad with the addition of sophomore Chuck Smith, who started the Cards' last encounter with the Lincoln Railsplitters. While Smith only picked up two centers in the scoring column, he pulled off 14 important rebounds. Tim Sherry, a big gun in recent games via the scoring route, has moved to forward opposite Joe Mancuso.

High-scoring Tom Tommervik, who leads in all phases of the offensive part of the game, teams at the guard position with Jerry Manley. Franklin Pierce takes to the road on Friday of next week to meet Mt. Rainier, and then goes to Enumclaw the following Tuesday. The Cards hold a 49-42 win over the Enumclaw club.

Michigan State University has started an African Language and Area Center, where African language are taught.



Only 6c Per Word  
60c Minimum

# It's The Law

Most people think that "Estate Planning" is only of value for wealthy people. As a practical matter people with small estates often can benefit proportionately more than wealthy people by intelligent foresight and planning. In a small estate, the minimum costs of a probate may be disproportionately great.

The most basic planning for a small estate calls for the preparation of a non-intervention will, which permits the surviving husband or wife or heirs to sell property of the estate without getting a special court order for each sale.

However, there are some people whose circumstances are such that they can avoid a probate entirely. Where only the rights of a husband and wife are concerned, a community property settlement can pass title to the property to the surviving spouse without court ac-

tion. But these agreements have their limitations and should not be used indiscriminately, without regard to the nature of the property in the estate, or the other heirs.

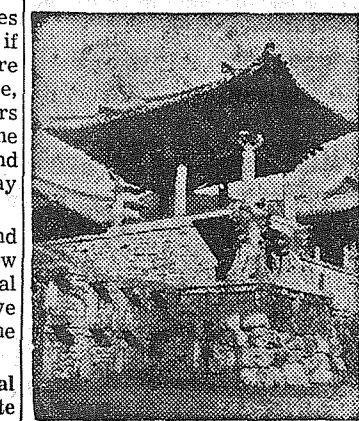
Mere passage of time sometimes makes a probate unnecessary if only husband and wife are involved. If the wife, for instance, keeps the property for six years after her husband's death, the rights of creditors are gone and in some instances probate may be avoided.

Both commercial banks and savings and loan associations now have joint accounts with a special right for the survivor to have ownership in the account after the death of the other party.

The intelligent use of these legal devices, by people who investigate to learn the limitations of each and the pitfalls to be avoided, can usually save money for even those with relatively small estates.

(This column is written to inform, not advise. Facts may change the application of the law.)

# KOREAN ARTS AND MONUMENTS RESTORED



Damaged and neglected national monuments and other nonreplaceable examples of Korean art and culture are being saved by the Art and Monuments Project of The American-Korean Foundation, working in close cooperation with American and Korean donors.

During the past eight years close to \$30,000 has been available under this project to preserve dozens of historical monuments for students, tourists, and all interested in the long past culture of Korea. This picture of a restored portion of a Buddhist temple at Kyung-ju, Korea, is typical of centers of culture which have been saved through American and Korean donations made through the Foundation. The American-Korean Foundation is a non-profit, permanent organization, with offices at 345 East 46th Street, New York City.

James J. Byrne, an official of the U. S. Forest Service, predicts helicopters and dirigibles will be used to get logs out of inaccessible areas and to reduce soil damage in logging mountainsides.

Temperatures of 125 degrees below zero have been recorded in Antarctica.

The Irish potato originally came from Peru.

# SHOP IGA in '61!

PRICES EFFECTIVE THURSDAY, FRIDAY SATURDAY, JAN. 5, 6, 7. Right to Limit

• Blue Bonnet, 1-lb. 21c  
**MARGARINE 5 FOR \$1**

• Granulated U & I  
**SUGAR 10 LBS 99c**

• Fisher's Fine, 40-oz. Pkg.  
**BISKIT MIX 35c**

• Norwest, 303 Tin 15c  
**APPLESAUCE 7 FOR \$1**

• Sunshine Krispy, 1-lb. Pkg.  
**CRACKERS 27c**

• Please . . . Ea. 8c  
**DOG FOOD 13 1-lb. Tins \$1**

**TABLERITE PICNIC STYLE PORK ROAST lb. 29c**

**WEEK-END SPECIAL!**

**FRESH SHOULDER CUT PORK ROAST ... DELICIOUS, SAVORY!**



• Tablerite Blade-Cut  
**SHOULDER PORK STEAK**  
Grand Eating!  
**POUND 43c**

NALLEY'S REGULAR OR HOT . . . 1-POUND TINS  
**CHILI CON CARNE 4 FOR 89c**

SUNNY JIM, SMOOTH OR KRUNCHY KERNEL  
**PEANUT BUTTER 3-POUND FREEZER JAR . . . 99c**

RED-RIPE OLD FASHIONED TOMATO  
**HEINZ KETCHUP 14-OUNCE BOTTLE 19c**

• Tablerite, Fresh Daily  
**PORK SAUSAGE 1-lb. Roll 3 FOR \$1**

• Smoky Canyon Sliced  
**CHIPPED BEEF OR HAM 2 FOR 69c**  
3-oz. Pkg.

• Hormel Dairy Brand  
**SKINLESS FRANKS 12-oz. Pkg. 39c**

• TABLERITE BONELESS  
**BEEF STEW Tender, Pound 69c**

FLORIDA INDIAN RIVER  
**Grapefruit ea. 10c** | EXTRA FANCY WINESAP  
**APPLES 4-lb. Bag 39c**

U.S. NO. 1 IDAHO  
**POTATOES 10-lb. Bag 55c** | CELLO WRAPPED  
**Cauliflower ea. 19c**

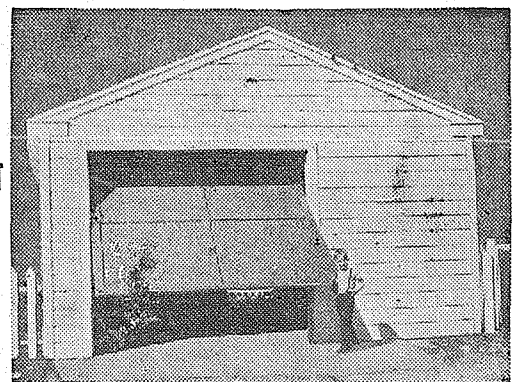
# FOOD IGA TOWN

AIRPORT (112th) at PARK

Ad Days Jan. 5 - 6 - 7

# GARAGES

NO DOWN PAYMENT  
— • —  
3 YEARS TO PAY



14x20, \$19.65 Per Mo. Free Estimates  
16x20, \$21.40 Per Mo. Given on  
20x20, \$26.35 Per Mo. Other Sizes

**REMODEL!!**

ADD-ON

REMODEL

REPAIR

MODERNIZE

PHONE FOR FREE ESTIMATE

If Job Cost

\$300  
\$500  
\$1,000

Your Monthly Payment Is

\$10.00  
\$15.97  
\$31.94

NOTHING DOWN

THREE YEARS TO PAY



**BROOKDALE LUMBER CO.**

136th and Pacific Avenue

LE 7-8669





**New Steel-Making Formula  
Brings Medical Aid — Advance**



DETROIT — A new high strength level for steel, developed here by National Steel's Great Lakes Steel division, permits a new emergency oxygen-giving device to house a 20-gallon, 60-minute "controlled-flow" oxygen supply inside a four-inch round container, weighing only 32 ounces. A full-hour supply for victims of cardiac attacks and other emergency situations has previously been available only from cylinder-shaped "continuous-flow" apparatus, as heavy as 125 pounds.

The new steel's "thin-gauge, light-weight" strength is called upon to keep more than 20 gallons of pure oxygen safely compressed inside the compact container. Its adoption for fabrication of the container climaxed six-years of testing many kinds of metals.

Its small-size and "controlled-flow" represent design-engineering goals established by medical and first-aid authorities. Distribution plans are aimed at establishing offices of every doctor and dentist, and their automobiles, of emergency oxygen dispensing stations. Shown here being demonstrated at the Great Lakes Steel Hospital in Ecorse, Mich., the new tiny oxygen-giving unit required six years' research and development.

It provides for the first time the small-size needed for making emergency oxygen available almost anywhere, instead of just the nearest hospital, ambulance service of similar time-element source. Patent rights to the formula for producing the new high strength steel (which involves precisely controlled additions of the once-rare earth element, columbium) are being sought, reports Mr. Wilfred D. MacDonnell, president of Great Lakes Steel.

"Our new steel's contribution to the engineering accomplishment which brings this medical advance to reality," said Mr. MacDonnell, "dramatizes the progress being made each day from efforts to create new, so-called tailor-made steels — steels with specific physical qualities for adaptation to specific end-product engineering and design requirements.

"It reflects the increased emphasis being given to opening new steel markets by seeking out individual customer needs, rather than restricting the customer's product development and improvement opportunities to existing steel-making knowledge."

**Figure Fashions**  
by Betsy White



These new bras are the happy result of surveys made to determine what women really want in a bra. Called "Formfit Life," both long line and bandeau styles feature balanced control, flattering fit and lasting comfort.

Who says that manufacturers don't listen to the voice of the people? We know of at least one that does.

It's The Formfit Company, which has just come up with a series of bras combining the most wanted features requested by American women in a survey of consumers, sales people and foundationwear buyers.

Bras in the "Formfit Life" group give the lady what she wants:

1. Both a bandeau and a long-line bra are made of embroidered white cotton — by far the most popular fabric.
2. Another "Life" bandeau is fashioned of nylon lace in black or white to satisfy the request for something "special."
3. Elasticized bias sections around cups provide snug fit through controlled stretch.
4. "Life-Lift" petals of soft fabric support the lower parts of each cup.
5. Cups are circle-stitched to maintain contour through countless washings. All the bras are machine washable.
6. Each bra is cut low in front, in back and under the arm.
7. Elastic releases at the back of shoulder straps keep straps and back of bra comfortably in place.

To sum up the new bras are pretty, flattering and comfortable. What more could you ask for?

The cotton bandeau comes in sizes 32A to 42D. The long line version with midriff control is available in sizes 32B to 44D. The nylon lace bandeau comes in 32A to 42D.

**IT PAYS**

TO ADVERTISE

IN THE

**TIMES JOURNAL**

CLASSIFIED SECTION

**HOME OWNERS  
QUESTION BOX**

Q—What can be done to stop vibration and noise in water pipes?

A—This condition is known as water hammer. It may be alleviated by attaching a short, vertical length of pipe above the main feed line. Cap the extension and insert a "T" fitting either in the horizontal supply line or in place of an existing elbow fitting. Air in the extra pipe acts as a cushion for the back surge that occurs when the water is turned off. This cushion of compressed air prevents jarring in the line.

Q—How long can I expect the roof on our house to last? It's an asphalt shingle roof and has been giving us excellent protection since we bought the house new 15 years ago.

A—FHA announced recently that studies show climate is the major factor influencing the life of a roof. A roof of asphalt shingles, FHA says, will last 10 to 15 years in the South, 15 to 20 years in central portions of the country, and 20 to 25 years in the North.

Q—We want to finish our basement as a playroom, but the cinderblock walls are constantly damp from moisture seeping through. Are water-proofing paints for masonry effective in stopping this seepage?

A—If properly mixed and applied, yes. The walls must first be scraped thoroughly with a wire brush to remove loose particles, then washed down, and holes and cracks filled with mortar. Walls must be damp when the special paint is applied. Best results usually are obtained when paint is scrubbed into the masonry with a stiff brush. Avoid application during or after a rain when water is actively seeping through.

**SUMMIT VIEW  
AUTO REPAIR**  
20% DISCOUNT ON ALL PARTS AND LABOR  
10904 E. Canyon Rd. LE 1-0424

**ALL THROUGH  
YOUR HOME**



Even if you have never painted, you can give walls and woodwork a uniform coat of color... with this velvet-smooth paint.

We Carry A Complete Stock

**SOUTH END  
PLUMBING &  
HARDWARE**

185th & Pacific Ave. LE 7-4100  
PHEASANTS FOR SALE

**OUR BIG  
WINTER**

**CANNED FOOD SALE**

**8** FOR

BITS OF HONEY <b>PEAS</b> No. 303	SUNNY FARM <b>Sliced Beets</b> No. 303	<b>\$1</b>
SUNNY FARMS <b>BEANS</b> No. 303	WEST BEST <b>Hominy</b> White or Yellow No. 303	
FAMILY JOY <b>CORN</b> No. 303	WEST BEST <b>Pork and Beans</b> No. 303	
	SUNNY FARMS <b>Pineapple</b> No. 1 Flat	

**10** FOR

FAMILY JOY <b>Peas</b> 8-oz.	LIBBY <b>Diced Beets</b> 8-oz.	<b>\$1</b>
FAMILY JOY <b>Corn</b> 8-oz.	BITS OF HONEY <b>Peas and Carrots</b> 8-oz.	
WEST BEST <b>Wax Beans</b> 8-oz.	WEST WEST <b>Pineapple Juice</b> No. 211	
<b>Tomato Paste</b>	HY GRADE <b>Potted Meat</b>	

**7** FOR

HUNT'S <b>RED BEANS</b> No. 300	WEST BEST <b>Sauerkraut</b> No. 303	<b>\$1</b>
VAN CAMPS <b>KIDNEY BEANS</b> No. 300	FAMILY JOY <b>Applesauce</b> No. 303	
	WALLA WALLA <b>Spinach</b> No. 303	

**6** FOR

FAMILY JOY <b>ASPARAGUS</b> No. 300	FAMILY JOY <b>TOMATOES</b> No. 303	<b>\$1</b>
BITS OF HONEY <b>PEAS &amp; CARROTS</b> No. 303	FAMILY JOY <b>CATSUP</b> 12-Oz. Bottle	

**HOT SAUCE** "Family Joy" Buffet Tins **12 For \$1**

**Peaches** "SUNNY FARMS" FREESTONE 4 2 1/2 Cans **\$1** | **PEARS** "SUNNY FARMS" 3 2 1/2 Cans **89c**

WEST BEST **Pie Cherries** 4 No. 303 Tins **\$1** | STOKELY **Fruit Cocktail** 5 No. 303 Tins **\$1**

**PORK CHOPS** Center Cut lb. **59c**

LAMB **SHOULDER CHOPS** lb. **55c** | BOIL 'EM, BAKE 'EM, BRAISE 'EM **BEEF SHORT RIBS** lb. **39c**

SEVEN BONE CUT—lb. 49c **BEEF ROAST** lb. **39c** | BONELESS **VEAL ROAST** lb. **69c**

Loin of **PORK ROAST** End Cut lb. **49c**

DINNER **FRANKS** lb. **39c** | CHOICE CUTS **RIB STEAKS** lb. **69c** | Round, Rib, Sirloin Steaks, Roast & Ground Beef **25 lb. Locker Box \$11.95**

**GROUND BEEF** Lean Fresh Hourly 3 lbs. **89c**

**POTATOES** No. 2's 50 lb. **\$1.39**

RUBY RED **TOMATOES** lb. **19c** | SOLID CRISP **LETTUCE** 2 Heads **25c** | GOLDEN RIPE **BANANAS** lb. **10c**

Open 7 Days a Week For Your Convenience

**PARKLAND** Right to Limit Reserved

**HOURS**  
Sunday 9 a.m. to 8 p.m.  
Weekdays 9 a.m. to 9 p.m.  
Fridays 9 a.m. to 10 p.m.

**Super MARKET**

Formerly Kitchen's  
12208 Pacific Avenue

PRICES EFFECTIVE WEDNESDAYS THROUGH SUNDAYS

**DISCOUNT SALE**

**YEAR END CLEARANCE**

OF 1960 MODEL

**REFERS And T.V. DRASTIC PRICE REDUCTIONS**

LARGE TRADE INS ) AT ( EASY TERMS

**POCHEL** Distributing Company

140th & Pacific Avenue LE 7-8624



"I always wanted a good picture of her"

stop wishing!

Now you can have that portrait you always wanted of a loved one... a professionally made portrait you will always treasure.

how?

Drop in any time. Purchase one of our Portrait Gift Certificates... and give it to the one whose picture you want.

It's easy... it's inexpensive... and it's the nicest gift you can give anyone.

**McKEWEN STUDIO**

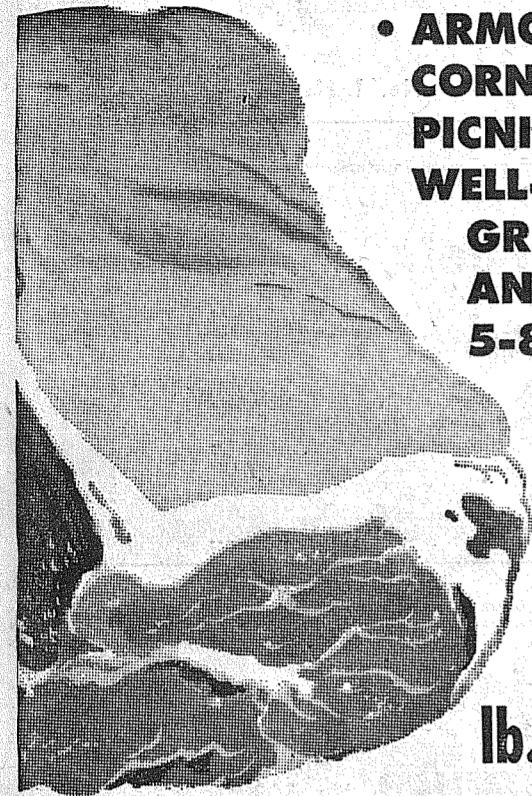
11812 PACIFIC AVE

LE 7-3833



# Hold Food Costs DOWN!

## PORK ROAST



• ARMOUR'S EASTERN CORN-FED PORK... FRESH PICNIC STYLE ROASTS, WELL-TRIMMED FOR GREATEST VALUE! LEAN AND MEATY! IDEAL 5-8-LB. AVG.

**29**  
lb.

Shop

## Piggly Wiggly!

U.S. CHOICE ARMOUR'S STAR LAMB SALE

U.S. CHOICE	LB.	U.S. CHOICE LAMB	LB.
Leg o' Lamb	65¢	Loin Chops	89¢
U.S. CHOICE SHOULDER	LB.	U.S. CHOICE LAMB	LB.
Lamb Roast	49¢	Rib Chops	69¢
U.S. CHOICE LAMB	LB.	U.S. CHOICE SHOULDER	LB.
Patties	49¢	Lamb Chops	59¢

STOKELY-VAN CAMP

## BIG CANNED FOODS SALE!

Stokely's Finest Whole Kernel or	5	No. 303	89¢
CREAM CORN		Cans	
Stokely's Finest	5	No. 303	99¢
FRUIT COCKTAIL		Cans	
Stokely's Finest Whole	4	No. 303	99¢
GREEN BEANS		Cans	
Stokely's Finest	4	No. 303	89¢
SHELLIE BEANS		Cans	
Stokely's Finest	6	No. 303	99¢
APPLESAUCE		Cans	
Van Camp's	6	14-oz. Bottles	99¢
TOMATO CATSUP			
Van Camp's	6	No. 300	99¢
KIDNEY BEANS		Cans	

## GROUND BEEF

LEAN - FRESH  
GROUND DAILY

**29**  
lb.

PARKLAND STORE

## FRESH CUT-UP CHICKENS

IDEAL FOR STEWING OR FRICASSEE

**29**  
LB.



ARMOUR'S STAR THICK  
SLICED BACON 2-LB. PKG. **98**

FILETS OF FRESH RED SNAPPER LB. **29**

PIGGLY WIGGLY PULLS FOOD COSTS DOWN FOR YOU IN 1961

## OCCIDENT FLOUR

HARD WHEAT 25-LB. BAG **\$1.79**

## VEGETABLES

Polar Fresh Frozen 17 VARIETIES! MIX 'EM OR MATCH 'EM! 6 PKGS. **89**

COFFEE HOUSE

X-tra Specials  
COFFEE 1-LB. CAN **55**

LUNCHEON MEAT

SPAM 12-OZ. CAN **39**

• DUCHESS CREAM CORN  
• DUCHESS GARDEN PEAS  
• DUCHESS GREEN BEANS  
Mix or Match! 8 NO. 303 CANS **99**

## LARGE EGGS

LYNDEN BRAND GRADE "A" DOZ. **57**

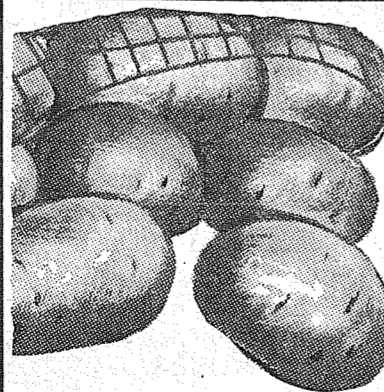
### SPECIALS IN OUR FIFE HDWE. DEPT.

Steelhead Fishermen!  
SPIN GLOW WING BOBBER ... Each **49¢**

CAULKING GUNS ... Each **\$1.25**  
(Cartridges, ea. 35¢)

WEATHERSTRIP  
17-ft. roll, complete with nails. Reg. \$1.25. ... **\$1.00**

WATER GLASSES  
5 patterns. Reg. 15c Ea. **10 for \$1.00**



## POTATOES

U.S. NO. 1 NETTED GEMS

**10** LBS. FOR **39**

RUBY GEM TOMATOES Cello Tube **19¢**

EMPEROR RED GRAPES ... LB. **10¢**

ARIZONA—SWEET, JUICY

GRAPEFRUIT 10-LB. BAG **49**



### Van de Kamp's SPECIALS

famous for QUALITY • FRESHNESS VARIETY • CONVENIENCE

(Puyallup and South Tacoma Stores Only)

BUTTER-HORNS  
4 for **35¢**



BLUE BONNET

MARGARINE 5 1-LB. CTNS. **\$1.00**

HUNT'S SMALL WHITE POTATOES 10 NO. 300 CANS **99**

## Piggly Wiggly

PUYALLUP 1010 EAST MAIN

PARKLAND PACIFIC AT GARFIELD

FIFE FORMERLY ANDRE'S MKT.

SO. TACOMA 5252 SOUTH WASHINGTON

40th and Parkland Ave.

CRACKERS N.B.C. Premium Snowflakes	1-lb. pkg.	<b>39¢</b>
CHOCOLATE PINWHEELS	12-oz. pkg.	<b>49¢</b>
CHUNK TUNA White Star (2c Off Label)	No. 1/2 can	<b>31¢</b>
DARIGOLD MILK	3 Tall Cans	<b>46¢</b>
DUTCH CLEANSER (3c Off)	2 Giant Size	<b>39¢</b>
RED ROSE TEA (10c Off)	48-bag Pkg.	<b>59¢</b>
WAX PAPER Cut-Rite	125-ft. Roll	<b>29¢</b>
TOILET TISSUE Scott Asstd. Colors	4-roll Pack	<b>49¢</b>
SCOTTIES Facial Tissues Assorted Colors	400-count Pkg.	<b>29¢</b>
PUREX BLEACH	1/2-gallon	<b>39¢</b>
SCOTKINS Dinner Napkins	50-count Pkg.	<b>27¢</b>
TREND SOAP	Giant Size	<b>49¢</b>

### GOLDEN GRAIN BEANS

• SMALL WHITE 4-LB. PKG.  
• PINTO or  
• LARGE WHITE **59¢**

SYRUP Old Timer .. Bottle **29¢**

BEEF STEW Nalley's 3 15-oz. Cans **\$1**

DRINK Dole Pine- 46-oz. Can **29¢**  
Grapefruit ...

QUICK Nestle's 1-lb. **39¢**  
Choc. Drink ... Pkg.

CRISCO The Best! ... 3-lb. Can **73¢**

Prices Effective Thursday, Friday, Saturday, Jan. 5-6-7. We Reserve Right to Limit No Sales to Dealers Open 9 a.m. to 10 p.m. Daily