

Pierce County Herald and

The TIMES JOURNAL

Vol. 24 No. 51

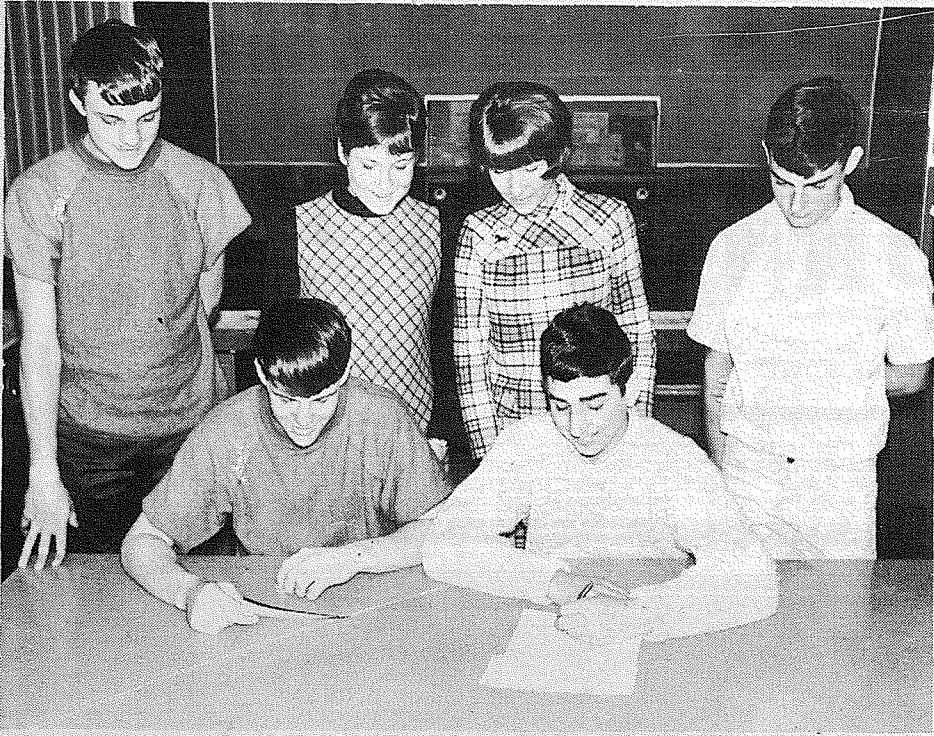
December 19, 1968

Price Per
Single Copy

10¢



SANTA RODE a fire truck through the Spanaway and Elk Plain area during his annual preview visit sponsored by Fire District 7. Visiting a different neighborhood each evening, the jolly old elf handed candy canes to about 3,000 youngsters, District 7 Chief John Farren estimated. Typical of the joy beaming from youthful faces was expressed by this tot held by Tom Bramhall. The Santa pictured above resembled Firefighter Connie Lawson from the Elk Plain station. Spanaway Fire Dept. Photo



STUDENTS from Ford and Keithley Junior High Schools prepare a check and sign a letter to the Peace Corp as a part of their participation in a program to build a school in an under developed country serviced by the Peace Corp. Each school raised \$500 each making a total contribution of \$1,000. Seated with the check is Gordy Pease, Ford ASB president while Jeff Morgan, Keithley ASB president signs the letter. Looking on left to right are Kerry Connell, Mary Bosenius, Jan Zurfluh, and Leo Waynehouse.

Skip Larson Photo

Ford, Keithley Complete Joint Student Project

In a joint effort during the 1967-68 school year the Ford and Keithley Jr. High School student bodies participated in the Peace Corps' School Partnership Program.

In this program, started in 1964, the U.S. schools raised \$1,000 to pay for the materials to build a school in an area where there are, or have been, Peace Corps members.

The communities that participate must supply the land, 25 per cent of the cost, and furnish the labor, for a school. The country in which it is built must also agree to supply the teachers for this school. The School Partnership funds go for the floor, walls and roof.

Three goals have been met when the project has been completed, they are: 1. New school construction in developing nations such as Africa, Asia, and Latin America; 2. Community development; 3. Cultural exchange between the two schools in the form of letters, magazines, books, and handicrafts.

Both the Keithley and Ford schools raised \$500 apiece by selling school-to-school donation tickets to their parents, holding faculty-student basketball games, and girls' basketball games.

The two schools sent their check and a letter signed jointly by their A.S.B. officers to the Peace Corps in Washington, D.C., asking that it be used somewhere in South America, if possible. The Peace Corps will let the students know where it is used at a later date.

The School Partnership Program puts developmental assistance on a personal, counterpart level — a direct commitment, voluntarily assumed to help others, and in so doing broaden one's own understanding.

Mayfair Tree Lighting Dec. 20

The Mayfair Christmas tree, corner of Brookdale Road and Golden Given east, will become a Christmas landmark when the hundreds of lights are turned on 7:30 p.m. December 20 in special ceremonies.

Elmhurst Power employees Clarence Jolly, Skip Reeves, and Ed Draper assisted Mayfair residents with the installation of the lights. Mayfair Board members working on the project included Chuck Hayward, Earl Hill, Marty Weil, Art Hahn, Dick Sears, Ron Boeson, and Ray Carlson. The public is invited.

Sen. Magnuson Mobile Center Helps Hilda Malone

Hilda Malone, Spanaway resident and employee of the Little Park Cafe, received a solution to a dilemma with an assist from U.S. Senator Warren G. Magnuson, the Journal learned early this week.

And it ends with the promise of one of the best Christmases ever for Mrs. Malone.

After receiving word her husband, SFC John Malone, would be spending 5 days leave in Hawaii starting Dec. 23, Mrs. Malone attempted to book airline passage to the 50th State for a long awaited Christmas reunion. Malone is currently on duty with the Army in Viet Nam.

The airlines, although sympathetic, could not find a seat for Mrs. Malone until December 25. This meant 3 of the 5 days leave would be lost, as far as she was concerned.

At the suggestion of the National Bank of Washington, she wrote Senator Magnuson asking for help. A prompt return communication from the Senator informed her she would be booked "space available" on a flight leaving December 23.

Mrs. Malone, who became a citizen in 1967, is looking forward to Christmas 1968 with a renewed faith in American government officials.

Santa Visits Post 118

A Christmas Party will be held at the American Legion Hall, 416 South 160th Street at 7 p.m., December 21.

Commander "Ken" (alias Santa Claus) of Post 118, Spanaway invites all Veterans, their families, and children in the community to come and enjoy the festivities.

Santa will have something for every child.

Holiday Party To Be Given For Cub Scouts

SUMMIT VIEW — A Christmas party is in store for Cub Scout Pack #76 Boy Scouts of America, when it holds its monthly pack meeting at 7:30 p.m., Friday in the Summit Youth Center.

Mobile Center Started For Senior Citizens

A program designed to make the same opportunities available to senior citizens in the rural areas as are now offered in urban areas has been started by the Mobile Senior Center of Senior Centers, Inc., Tacoma-Pierce County.

A member of this community, Dan E. Phillips, has been designated as Community Representative and he will assist in securing services for those who need assistance. When possible, the Mobile Center program helps provide minor maintenance repair, personal and health services, limited transportation, home services, and other service the citizen's budget will not allow, and printed and personal information on any subject of interest to seniors.

Those over 55 years of age are welcomed to participate in any scheduled group activity held in a community facility including learning a new hobby or craft, discussion groups, book reviews, guest speakers, or viewing travelogues.

An army bus, on loan, carries samples of work accomplished by other centers and will be visiting the area from time to time.

Anyone interested should contact Phillips at LE 1-1820.

Santa Claus To Visit Spanaway Cubs

Santa Claus, gifts, candy, and fun for all will be the scene for the Cub Scouts and families of Pack No. 134 at the December 19th Pack meeting, 7 p.m. in the Spanaway School Gym.

Cubmaster Jay Campbell will call the meeting to order, Den No. 5 will present the flag and lead the group in the Pledge to the Flag. Awards will be presented to the Cub Scouts by the Awardsman Robert Faulk.

A short Christmas program will be given by a few Cub Scouts from each den. Santa Claus will be there to pass out Christmas presents to the Scouts and their brothers and sisters.

Refreshments are furnished by the mothers of the Cub Scouts of Pack No. 134 and served by Mrs. Ruth Koolis and mothers from Den No. 2.

Roy Library New Books

Among books delivered this week by Pierce County Library headquarters to Roy Library are several on the fine arts.

Robert C. Marsh's "The Cleveland Orchestra" gives the inside story of the workings of the modern symphony orchestra, with this renowned organization as an example.

Recent developments in a specialized art field are probed in "American Sculpture of the Sixties," a publication of Los Angeles County Museum of Art. Eighty artists who made significant contributions during this period are represented in color as well as black-and-white illustrations.

For "America's Great Gardens," by Stanley Schuler, the author traveled to almost every part of the United States, photographing 36 private gardens, each reflecting the individual taste of the landscape architect.

Other books on the arts are "The World of Giotto," by Saral Eimerl and editors of the Time-Life books; and "A Short History of English Furniture," a publication of the Victoria and Albert Museum.

Record Yule Theft Expected

Yuletide thieves will be stealing autos and Christmas packages at a record clip as the holiday season reaches its shopping peak, the National Automobile Theft Bureau predicted today.

In Washington nearly 884 automobiles worth more than \$884,000 will be taken from their owners during December, said Gene Halm, Pacific Coast Division manager of the NATB. He based his figures on the 1967 totals for December adjusted by the crime rate increase experienced so far in 1968.

Another 2,500 Washingtonians will find packages and other items missing from their parked cars. This will cost another \$57,000.

The projected losses suggest a gloomy holiday for about 3,300 people. Many of them could protect their cars and parcels by taking a few simple measures suggested by metropolitan police chiefs.

— The first, and most obvious, precaution: Lock your car and take your keys. About one out of three stolen cars would not have been taken if the owner had followed that procedure.

— Keep all packages and valuables out of sight, preferably in the trunk. A professional "booster" — car burglar — can open most locked car doors in less than 20 seconds. Valuable items left on car seats are often too tempting to ignore.

— Park the car where it may easily be seen.

Besides the measurable loss of property caused by thefts, there is another pressing reason to protect cars from theft, Mr. Halm pointed out.

"About half of the car thieves arrested are juveniles. Many of them made car theft their first serious crime.

"Furthermore," Mr. Halm said, "one out of six stolen cars is involved in an accident. This rate is 200 times greater than normal. It is every citizen's responsibility to guard himself and others against this needless loss."

TCC Board Meets

The Board of Trustees of Tacoma Community College will meet at 3:30 p.m. Thursday (Dec. 19) in the TCC administration building, Frank Cooper, chairman, announced.

Local Teacher Engineer-Artist Joins Exhibitors

Jack Gaines, Parkland resident and teacher at Laughon High School, has emerged as an artist as another accomplishment of his varied career. Gaines, whose talents have ranged from a job as an engineer in the oil fields in Wyoming and Montana to a geology professor at Pacific Lutheran to a high school teacher of Chemistry and physics now has a display of original oils and copies of famous paintings on exhibit at a local gallery.

The Fitch and Quill Gallery at 11216 Pacific Avenue is featuring Gaines's paintings together with work from popular Spanaway businessman-painter Paul Chalk and others. Gaines' contribution of several originals adds to the collection of his personally made copies in oils of the works of many of the classic masters including: Leonardo da Vinci, Van Eyck, Van Gouh, Gauguin, Charles Russell and others.

Asked how an engineer ever started painting Gaines tells the story of his home on Flathead Lake in Montana's Rockies. The Gains had moved to Flathead Lake after an engineering assignment in the Oil fields and were planning a large A-

frame home in a rustic setting. Gaines wanted a mural across the entire room and was advised it would cost nearly \$2000, a price he felt was not one he could manage. "I can do a lot of painting for that amount of money," Gaines snorted. For Christmas that year he received a set of oil paints and a note to either put up or shut up. He painted and has been at it since.

For Quick Cash Use Classified Ads

Pierce County Herald and
The TIMES JOURNAL

Published weekly at 14620 Pacific Ave., Parkland 98444 and delivered by U.S. Mail and carrier to subscribers. Publishers: Pierce County Publishers, Inc.

Managing Editor Em Matson
News Editor Sandy Ingram
Sports Editor Bob Ingram

Subscriptions \$3.50 per year, \$1.80 six months, or 30c monthly by carrier. News stand price 10c copy.

Qualified as a legal publication under Chapter 213 of the Legislature Acts of the 1941 regular session of the State of Washington

Second Class Postage Paid at Tacoma, Wash.

Vol. 24 No. 51 December 19, 1968

HEAD 360 For Christmas

A gift long remembered

Open Evenings 'til 9 P.M.

PARKLAND Sports CENTER

11122 PACIFIC AVENUE TACOMA, WASHINGTON PHONE LE 7-5677

Bethel School Board Report

By E.W. "Doc" Webster
All members were present for the meeting held from 8 to 11:10 p.m. on Monday, December 16, 1968.

The big news of the evening was the report by Superintendent Gramann that the Thompson Elementary School will open according to plan on January 2, 1969. If all material arrives and is installed by the completion date, the many problems of the delay should be solved. This will make the many parents and students who have suffered patiently through the delay very happy.

Mr. Platt, Principal of the high school, gave a report to the board on the meeting he attended in Nevada of the Northwest Association. This alliance of high schools and colleges rates and approves high schools in the Northwest and accredits high schools who satisfy its rigid standards. The problems that are being experienced in this area are general throughout the western states according to the report.

Mrs. Berggren, School Director from Roy, reported on the School Directors meeting held in Seattle where the main topics were finance and problems attending the rapid growth rates throughout the state.

Humane Society Pets

It's "Pets for Christmas" this week at the Tacoma-Pierce County Humane Society, 2608 Center Street — and you are invited to come out, tour the premises and see all the dogs, cats, puppies and kittens that are awaiting adoption. There's a wide variety of breeds and sizes to fit any home.

Why not take the time to stop today, they're open from nine to five at the Tacoma-Pierce County Humane Society, 2608 Center Street.

BAR-S HOLIDAY
HAMS
 WHOLE OR HALF
98^c_{lb}

LYNDEN GRADE "A"
 YOUNG TOM

TURKEYS

18- to 22-lb. **37^c_{lb}**

LYNDEN GRADE "A" YOUNG HEN

TURKEYS 9-15 lb. **39^c_{lb}**

CENTER-CUT CHUCK STEAKS 47^c_{lb.}

USDA CHOICE BONELESS

CROSS-RIB ROAST 98^c_{lb.}

MILWAUKEE WIENERS 53^c_{lb.}

SMOKED PORK CHOPS 89^c_{lb.}

YES,
 "WE HAVE IT"

- LEFSE
- LUTEFISK
- GEESE
- DUCKLINGS
- CAPONS
- SPICED PRAWNS
- SALT HERRING
- TURKEY ROLLS

6-OZ. TRE SWEET FROZEN
ORANGE JUICE 7/1⁰⁰

HI HO **EVAPORATED MILK** 7/1⁰⁰

JUMBO SOF-PLY
PAPER TOWELS
 5/1⁰⁰

47-oz. STALEY'S SYRUP
 59^c

WE WELCOME YOUR U.S.D.A. FOOD STAMPS HERE.

HI HO SHOPPING CENTER
 OPEN 7 DAYS A WEEK

Puyallup | *Tacoma*
 RIVER ROAD & MERIDIAN | 64th & YAKIMA

PRICES EFFECTIVE DEC. 16 THROUGH 21

ZIPPER-SKIN
TANGERINES
 10^c_{lb}

NO. 1
IDAHO POTATOES
 10-lb. BAG
69^c

FANCY MIXED NUTS
39^c_{lb.}

TEXAS PINK GRAPEFRUIT
12/1⁰⁰

LOWEST DRUG PRICES ANYWHERE

- REGULAR 19.95 LIGHTED MAKE-UP MIRROR 12⁹⁵
- REGULAR 1.00 DUSTING POWDER WITH PUFF 59^c
- REGULAR 2.00 DERMA FRESH HAND CONDITIONER 1²⁹
- REGULAR 1.50 GILLETTE FOAM SHAVE HOT ONE 77^c
- REGULAR 1.10 MENNEN SKIN BRACER 69^c
- REGULAR 1.00 MARLOWE BATH OIL GEMS 39^c

YULA KAKA
49^c

JELLY OR LEMON ROLLS ... 49^c

BUMBLE BEE TINY SHRIMP 39^c

TABLE TESTED FROZEN VEGETABLES ... 10^c_{PKG.}

ARDEN'S COTTAGE CHEESE 23^c_{pt.}

PRIZE CROP MANDARIN ORANGES ... 5/1⁰⁰

2 GAL. ARDEN'S
ICE CREAM
2³⁹

Holly Wreaths
\$1.98
\$2.49
\$2.98

We Pack for Shipping

Bulk Holly
50¢ a lb.

Branches
 Silver-tip fir
 Noble fir
 Cedar
 Berried Juniper

See Our **Gift Chalet** for

Artificial Arrangements

Flocked Branches

Large branches of silver fir flocked, with silver glitter added to make them shine.

Only **98¢** each

Christmas is a Memorial Day, too!

Colorful Cemetery Plaques

You won't believe your eyes when you see them

Only **98¢** each

GIBSON'S Christmas Sale

Tacoma's largest greenhouses are proud to offer the largest selection of Christmas plants ever offered in the city of Tacoma.

25,000 - Twenty-five Thousand Poinsettias in Color
What a Sight - What a Sale!

SPECIAL POINSETTIA CASH and CARRY SALE

- 1-BLOOM **98¢***
- 2-BLOOM **1.49***
- 3-BLOOM **1.98**
- 4-BLOOM **2.98**
- 5-BLOOM **3.98**
- 6-BLOOM **4.98**

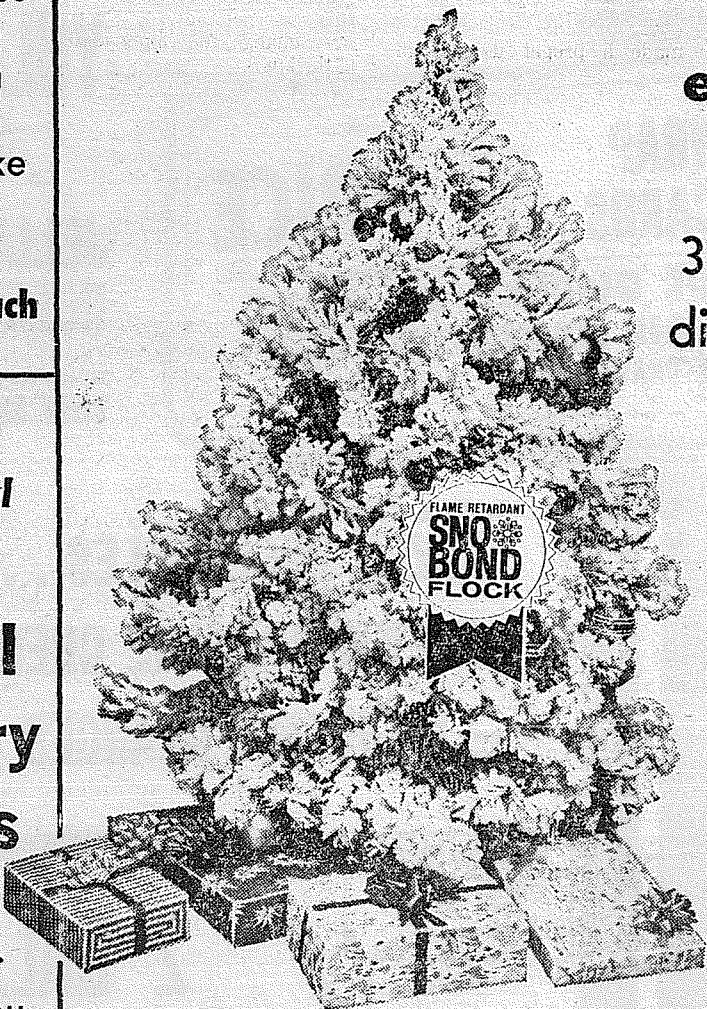


THESE LOVELY PLANTS DELIVERED ANYWHERE IN THE CITY LIMITS FOR 75¢ ADDITIONAL (*THESE SIZES NOT DELIVERED)

COME IN EARLY AND SEE THE DISPLAY

Flocked Trees

Douglas fir--Noble fir--Pine



example value
 3-foot tree dip painted, flocked, glitter, and stand **only 4.95**

We have the largest selection of flocked trees in the state—over 8,000 sq. ft. of indoor flocked tree area.

Note—all our trees are painted before flocking. No other system will produce truly white trees — our flock is all flame retardant.

GIBSON'S 50th and Pacific

GR 2-4464

OPEN WEEKDAYS 8 A.M.-6 P.M.

OPEN SUNDAYS 12-5 P.M.

New Air Force Program Disclosed

Air Force has announced a new program for classification, training, and assignment of recruits who are college graduates. The effort is part of an all-service attempt to get full mileage from the increasing numbers of degree holders entering the armed services.

The program calls for identification of the graduate enlistee, and assignment based upon his schooling. It also will include speeding up of or exemption from technical training for some degree-holding recruits. The end result should be quicker movement of the men into the field for on-the-job training.

Administrative action to end deferments for graduate students led to an increase of graduates into uniform. There will be about 100,000 college grads entering the military this year, compared to the normal 14,000. The Air Force expects to enlist about 8,000 of them.

To carry out the Defense directive the Air Force will have a Delayed Enlistment Program (DEP). Under it, a recruit enlists in the Reserve but waits up to 120 days before being called to active duty.

Once through basic, the degree-holders whose schooling and aptitudes warrant will be accelerated through technical training, or be exempt through bypass specialty training, and entered into a field assignment as soon as possible.

Among the speed-up actions available to the college grad trainee during technical training will be the following:

1. Where he demonstrates proficiency in a particular area by scoring high in block or proficiency tests, he will be allowed to advance to the next stage of training.
2. Where the student is able to complete certain blocks of training in off-duty time, he will be advanced.
3. Where the trainee is able, through use of self-pacing materials to complete training faster, he will be advanced.

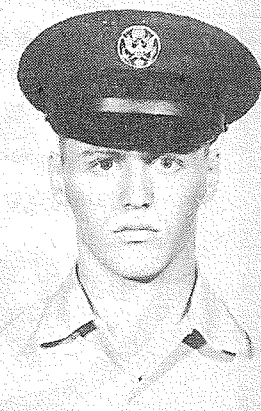
UGN Poem

TO OUR FRIENDS
 Christmas is the season
 For thanks and praise and giving;
 A time you need no reason
 For gracious acts of living.
 A time to think of friends
 and neighbors,
 Of relatives so dear —
 The folks you helped by all
 your labors
 Throughout the passing
 year.
 By giving of your time and
 means
 As well as making calls.
 "Tis I", you said (without
 extremes)
 "On whom the duty falls —
 To raise the funds for UGN
 So they can do their work —
 Supply the county with the
 'yen'
 So Ted won't go beserk."
 And so began the Campaign
 drive
 With goals extremely high —
 The challenge made you
 come alive
 You let no chance slip by.
 You reached that goal and
 went beyond
 To help your neighbors here.
 And simply cause you did
 respond,
 You'll aid them through the
 year.
 So at this time of joy and
 mirth
 Be glad in service rendered —

This season of our Lord
 Christ's birth
 Great hope you have engendered.
 We thank you each and
 everyone
 For being such a friend —
 For all the work that you
 have done
 For good, old UGN.

MERRY CHRISTMAS from
 THE UGN STAFF

Men In Service



Harvey D. Stephens
 AMN Harvey D. Stephens, son of Mr. and Mrs. Robert Stephens 12018 Waller Road, has completed his basic and Air Force schooling. After 2 weeks leave he is stationed at Luke AFB in Arizona.

USS ROGERS at sea Dec. 9 — Sonar Technician Third Class James A. Ladwig, USN, son of Mr. and Mrs. Ora A. Ladwig of Route 2, Spanaway, Wash., participated in operation "Beef Trust" aboard the destroyer USS Rogers off the coast of Southern California.

The last major First Fleet exercise of the year, the eight-day exercise involved 28 ships and 31 air squadrons, including four Canadian units.

Designed to prepare U.S. units for the conditions encountered in Southeast Asia and throughout the Western Pacific, the exercise consisted of missile firing exercises, bombing practice, close air support and anti-submarine warfare.

Cruisers and destroyers fired their guns at the San Clemente Island Range and at a target hull the ex-USS Jesse Rutherford, while guided missile ships tested their batteries against drone aerial targets in the Pacific Missile Range.

Carrier and land based aircraft flew strikes against the San Clemente Island Range, while the entire task force guarded against two U.S. submarines playing aggressors.

Dryer MORTUARY
 (134th & Pacific)
 PARKLAND

The Country Parson



"The number of carats in the diamond doesn't seem to have much to do with the duration of the engagement."
 Copyright, by Frank A. Clark

Dryer MORTUARY
 (134th & Pacific)
 PARKLAND



McCHORD AFB, WASH. (MAC) — Ilona Coleman is a civil service worker at McChord, working under the President's Back to School program. The 17-year-old senior from Mount Tahoma learns key-punch operation from supervisor Vida Brady in base supply.

(AIRFORCE PHOTO)

**Student Jobs
At McChord AFB**

The McChord civilian personnel office recently announced that many part time civil service positions here will be filled by students.

Fifteen local high school students have already been hired and an additional seven will be hired to work on base as part of the President's nation-wide back to school federal employment program.

The young men and women at McChord will be working in base supply, food service and other base activities. Their employment here will give these teenagers the opportunity to stay in school by helping support their families and possibly

achieving financial independence themselves.

The civilian personnel office hires each student on recommendations from schools and local social and welfare agencies through McChord's Equal Employment Opportunity Officer, Leroy Roberts Jr.

Mr. Roberts reports that some of the local agencies taking part in the program are, Neighborhood Youth Corps, Hilltop Multi-Service Center and the Tri-Mart Multi-Service Center.

Training received by the youngsters on the job could eventually lead to a regular civil service rating, Andy Sndres, base civilian personnel officer said.

Andrews, base civilian personnel officer said.

One of the young ladies recently employed here reported, the clerical training

**Optometrists
Attend Meet**

Dennis Langston, OD and Ronald Bussinger, OD, of Parkland Vision Clinic, 12203 Pacific Avenue, attended the 32nd annual Northwest Congress of Optometry at the Hilton Hotel, Portland, Ore., Dec. 8-10.

The congress was held under the auspices of the Optometric Extension Program, a national education foundation dedicated to the betterment of the profession of optometry.

that she is presently getting is probably much better than that she would receive at a business school. This is mainly because of the individual attention and instruction she receives.

It's the LAW
PRESENTED AS A PUBLIC SERVICE BY THE
WASHINGTON STATE BAR ASSOCIATION

"Curbstone" opinions about legal matters can be as dangerous as a loaded gun.

Take Frank's problem (we don't want it). He bought a used car on installment payments. He paid \$50 down and owed \$950. The car developed troubles and Frank refused to make any more payments until the dealer fixed the car. "The car's no good," he claimed.

A month after the next payment was due, a deputy sheriff knocked on Frank's door and handed him a summons. Frank had been sued for the \$950.

Frank's neighbor, Tom, was an "expert" on everything. "To heck with that summons," Tom said. "Just take the car back to the dealer. After all you've only lost \$50 and it'll cost more than that to hire a lawyer. Once the dealer has the car back, you can ignore the summons."

But the dealer refused to take the car. "O.K., Mac, we'll leave it on the vacant lot next to your sales room," Tom snapped. So Frank's car was left there.

A few days later Frank noticed that someone had broken the windows in the car and slashed two of the tires. "Boy, I'm glad to be rid of that wreck," he thought — until he got to the office.

"How come my paycheck is \$20 short this week!" Frank demanded.

"That auto dealer has a judgment for \$950 against you and garnisheed your wages," the supervisor told him. "Better see your lawyer."

But now it was too late. The lawyer could be of little help at this stage. If the car was "no good" as Frank claimed, he might have made a proper defense in

INSURANCE
Military - Home - Business
LE 7-4904
Auto Fire Life Bonds
IRENE CLEMENS
Agency — Parkland
10329 Pacific Ave.

Angelo Says

Mother will think I'm Santa when she takes home my delicious pizza's for the family. They're just the ticket to solve last minute cooking worries during the Christmas Shopping Rush.

Call ahead, it's piping hot all the way home.

Angelo's PIZZA HOUSE

ORDERS TO GO
LE 7-7233
14102 Pacific Ave.

court about making the payments and might have gotten out of the contract.

Instead, Frank chose to ignore the summons, relying on the "curbstone" legal advice of his "friend." He learned too late not to ignore legal papers served on him. It resulted in serious legal consequences. Frank was stuck with a wrecked car — and a bill for \$950.

(This column is written to inform, not advise. Facts may change the application of the law.)

ORCHID CORSAGE SPECIAL
Christmas — New Years
Sunday Only Dec. 22 & Dec. 29
1:30 to 4:30 p.m.
\$3.75
You select orchid on plant.
Bring ad to 627 South Pearl.

Your Friends & Neighbors remember, are the advertisers in these Classified ads.

a better kind of savings account ...

Statement Savings

**It's another
Personal Service
available now
to customers
of Bank
of Washington!**

Briefly, STATEMENT SAVINGS is the new way to handle regular savings accounts. At our Bank, it has some distinct advantages for savings account holders:

- YOU DON'T HAVE TO COME TO THE BANK — OR STAND IN LINE—to make deposits or have interest calculated and entered in a pass-book.
- YOUR SAVINGS RECORDS CAN NOW BE KEPT AT HOME—in a private place—and you have no old-fashioned passbook to keep track of anymore!
- BANKING-BY-MAIL is now even faster and easier for our savings account customers.
- YOU HAVE MORE INFORMATION, at your finger tips, with fewer trips to the bank—thanks to STATEMENT SAVINGS!

Want to know more about this new savings plan? Whether or not you keep your savings at Bank of Washington, come in and ask us about STATEMENT SAVINGS—the better kind of savings account. WE THINK YOU'LL LIKE WHAT YOU HEAR!

BANK OF WASHINGTON

AT YOUR SERVICE: PARKLAND BANKING CENTER

NATIONAL BANK OF WASHINGTON / TACOMA, WASHINGTON / MEMBER FEDERAL DEPOSIT INSURANCE CORPORATION

Classes Offered

Daytime registration for Clover Park Vocational Technical Institute adult evening classes begins Monday, December 16, according to Burt Severeid, supervisor. Severeid said the office, at 4500 Steilacoom Boulevard in Lakewood, will be open from 8:00 to 4:30 Monday through Friday from Decem-

ber 16 to January 3 for advance registration. Classes begin the week of January 6. Registration may be completed anytime up to the first night of class. However, early registration is advised as most classes limit enrollment, Severeid said.

Beginning January 6, the office will be open 6:30-9:30 each evening classes are in session. For preregistration, the hours will be 6:30 to 9:30 on December 30 and January 2 as a convenience

to persons who work during the day. There will be no registration on Christmas or New Years Day.

Over 85 classes are available in Office Occupations, Aeronautics, Machine Trades, Automotive Trades, Data Processing, General Interest subjects, Electronics and Engineering, Radio and Television, Law Enforcement, Real Estate, Landscape Gardening, Distributive Education, Home and Family Life, and Food Service. These classes are primarily designed to upgrade the skills of persons already employed in related vocations, according to Severeid. He emphasized that new classes can be offered if there is sufficient demand from either employers or the public, and the school welcomes suggestions from any person.

The blue winter quarter bulletin listing and describing all evening classes was distributed last week to all Lakewood Water District customers.

Sen. McCutcheon Acts To Halt School Fund Drain

Senator John T. McCutcheon (D-Steilacoom) today pre-filed legislation designed to correct "an illegal and fraudulent act of the 1967 session which stole approximately \$5,685,000 from school districts of our state in 1967-68 school year alone."

"Unless this drain is stopped, taxpayers in Pierce County will continue to lose approximately \$170,000 a month until the 1967 law is repealed," Senator McCutcheon declared. "This averages more than \$500,000 monthly, statewide."

The Pierce County legislature said the law was introduced, printed, and passed

by both houses of the Legislature in one day, three days before the 1967 session adjourned.

"This illegal and fraudulent measure created a formula whereby the State Superintendent of Public Instruction was empowered to reduce state allotments assigned to school districts which have large numbers of children of military personnel or federal employees."

Senator McCutcheon added:

"In the 1967-68 school year, the federally impacted school districts of Pierce County will receive under the Federal Law, the sum of \$3,056,105. The state will deduct 70 per cent of that amount, or \$2,139,274, from the state allotment that the districts otherwise would receive.

"This loss of \$2,139,274 is matched by \$2,597,689 in the 1968-69 school year, when the deduction rises to 85 per cent of the federal entitlement. These are net losses to the taxpayers and school districts of Pierce County and the money is gone forever. Every other impacted school district in the state faces proportional deductions, if this unlawful statute is continued on the books.

"In addition, districts in Pierce County have had added local levies on the ballot because of this lost share of funds."

Senator McCutcheon said his bill repeals the deduction formula and authority for the Superintendent to subtract the federal funds from state allocations due to local districts.

He said a decision in Virginia, handed down by a panel of three Federal judges, struck down a similar Virginia state law. In addition, Senator McCutcheon said, President Johnson signed into law in October, an act of Congress as an outcome of the Virginia decision that requires State Legislatures to correct state acts which deprive local school districts of the benefits of the Public Law 874 funds.

"In effect, our Legislature has defrauded every local school district which was entitled to the full measure of both the federal and state allocations, without any percentage deductions," Senator McCutcheon said.

He said the repealing legislation contains an emergency clause, so that it will go into effect immediately on signature by the Governor.

"When they passed the original bill setting up this deduction formula in one day in the Dying days of the 1967 session, an emergency clause was included," he said, "and it's equally an

emergency to correct it as soon as possible in the 1969 session.

Pierce County school districts have lost and are losing some \$170,000 per month, he said.

"For example, the DuPont School District was bankrupted by the state deduction formula," he said, "losing \$497,639 in its entitlement from the state in 1967 alone.

Other Pierce County Districts losing funds in 1967 include Clover Park, Franklin Pierce, Puyallup, Tacoma, Steilacoom, and Bethel.

Senator McCutcheon, chairman of the Subcommittee on Education of the Joint Interim Committee on Governmental Cooperation, said the intent of the Congress was to grant the Public Law 874 funds "over and above the state appropriated funds, to alleviate the burden of educating children of military and civilian employees personnel near and on military installations, such as Fort Lewis."

"This money is granted also because of the large amount of government owned property involved in the military installations, which pays no state taxes," he said. "It also takes into account the fact that the changing transient nature of the student population means that parents pay little or no property taxes in the area."

Service

FT. McCLELLAN, ALA. (AHTNC) — Private Cheri L. Powley, daughter of Mr. and Mrs. Harry L. Powley, Route 2, Spanaway, Wash., completed eight weeks of basic training at the Women's Army Corps Center, Ft. McClellan, Ala., Nov. 29.

She received instruction in Army history and traditions, administrative procedures, military justice, first aid and field training.

Poinsettia Tips From Stella's



MRS. STELLA JACOBS

"We wish you a Merry Christmas and a Happy New Year."

We would urge you to order Christmas flowers NOW — NOW — NOW while there is still a good supply.

Poinsettias are much longer lasting than they were in the past, — they last from one to five months with proper care. They like a well lighted window and plenty of water to keep them growing; — they like an even temperature — not too warm, and free from drafts.

Other exciting Christmas plants are the Jerusalem cherry, pepper pot, azaleas, and the faithful chrysanthemum. Dish gardens are popular with a touch of holiday sparkle — or an orchid or two tucked into the garden.

Artistically arranged cut flowers to adorn the dinner table or a festive bouquet of mums, carnations, antheriums, placed on the stereo or T.V. will complete your holiday decor.

Remember, Stella's is the place to do your Xmas shopping, — and, remember, we deliver.

Stella's Flowers
12169 Pacific Avenue
LE 7-0206

Brighten

YOUR Christmas

Add your name to the growing list of Parkland Light and Water Reimbursement Check recipients.

Here's How:

If you are planning to build, remodel, add-to-your-home, or replace a worn out hot water tank in our service area, as a member you may qualify for a cash reimbursement. And this could mean a savings up to several hundred dollars for you to help brighten the holiday season.



It's No Secret.

We already have paid \$30,610* to Parkland Light & Water members, under this program.


* For the first 10 months of 1968.

(offer may be terminated at any time by Board of Directors)

So, for a brighter Christmas
Call LE 1-5666.

Parkland Light & Water

"The Nation's Oldest Member-Owned Light and Water Co."



SAFECO INSURANCE

for personalized

AUTO INSURANCE

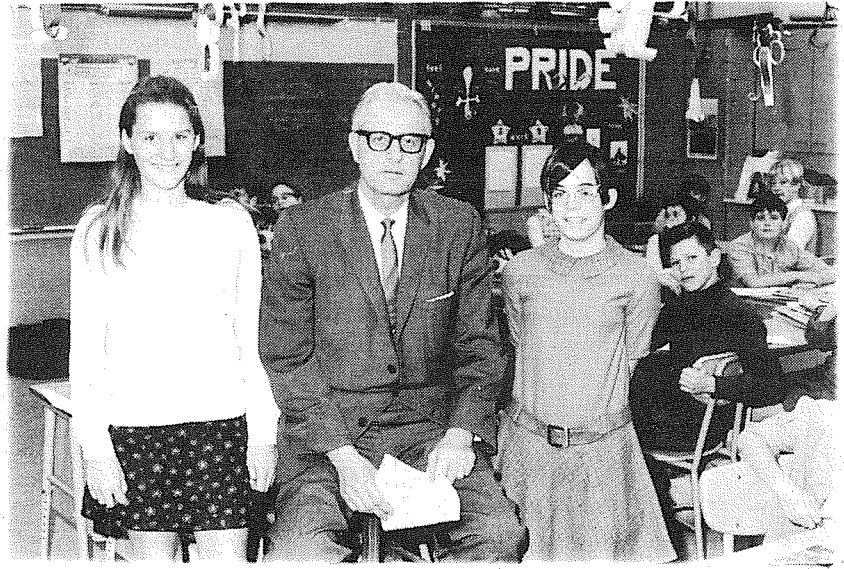
call:

Ashford-McAloon Ins.
12201 Pacific Ave.
(Parkland Square)
LE 7-8647
5436 So. Tacoma Way
GR 4-8431

he'll treat you like a person...not a number!



PLU COEDS among five U.S. contestants in the 1968 world-wide Lucia Celebration being held this week in Stockholm, Sweden, are Karen Wik (left) and Theresa Appelo. Karen, 18, was selected Oregon Lucia Bride in Portland earlier this month while Theresa, 19, is the reigning Vasa Swedish Lucia Bride selected during the annual festival in Seattle. Both are active in the PLU Norse Club.



U.S. CONGRESSMAN Floyd Hicks poses with members of Mrs. E. Platt's Elmhurst Elementary School Class after a visitation Tuesday. During his recent illness, members of class sent him "get well" messages and the Congressman appeared at the school in person to say "Thank You." He also gave the students a first hand rundown on legislative procedures and what activities in which he will participate when the 91st Congress convenes in January.

Benefit Tour Planned

The Parkland home of Mr. and Mrs. Ray Zitka will be the setting of an Open House Benefit on Friday, December 20th, for the Father Moreno Mission Group of St. John of the Woods Catholic Church.

The unusual home, completely built by the owners, is a lovely blend of Old World peasant charm and American pioneer warmth and inventiveness. Many of the furnishings, from rugs and clocks to fine paintings and carvings, were also made by the Zitka family.

Lead tour cars will leave from St. John of the Woods parish hall at 9903 24th Ave. East, Tacoma, (in the Midland area) at 1:15, 2:15, 3:15 and 4:15 in the afternoon and 6:30, 7:15 and 8:15 in the evening. The parish hall will open at 12:30 p.m. and again at 6 p.m. in the evening.

An added feature will be an arts and crafts show and sale of home made Christmas delicacies, at the hall, for those awaiting their tour departure.

All proceeds will go to Father Benjamin Moreno, S.J. whose mission is among scattered and remote Indian villages in the state of Chihuahua, Mexico.

Harry Sprinker Honored

The Puget Sound Governmental Conference bade farewell to six of its members at a dinner in Seattle on December 5 and unanimously passed a resolution calling for the release of Ft. Lawton for use as a regional park.

The Conference functions as a governmental coordinating and regional planning agency and provides a forum for local elected officials to discuss other problems of regional concern. In existence since 1957, the Conference took the opportunity at the dinner to celebrate over a decade of service to the region.

Guests of honor were Snohomish County Commissioner J. E. McCollum, Kitsap County Commissioner Robert G. Lloyd, Everett Mayor A. F. Alexander, and Everett Commissioners Mildred F. Simpson and A. C. Krekow, all of whom are retiring from public office. Pierce County Commissioner Harry Sprinker, who is also retiring and leaving the conference, was unable to attend.

Mrs. Phyllis Lamphere, Seattle Councilwoman, introduced the resolution memorializing the United States government to release Ft. Lawton to the City of Seattle for development as a regional park. Mayor Glenn Jarstad of Bremerton stated that acquisition of fee title to the property was not essential and that leasing at a nominal fee should be considered. Previously adopted

Conference policy calls for return of surplus federal property suitable for park use without charge to the local government.

In the absence of Conference Chairman Patrick J. Gallagher (Pierce County Commissioner), who was ill, King County Commissioner John Spellman presented certificates of appreciation to each retiring member.

Both Commissioner Sprinker and Commissioner McCollum were members of the Conference since its establishment in 1957.

4-H Group Changes Club Rules

WALLER ROAD - For the first time since its organization 23 years ago, the Waller Road 4-H Club has admitted its first girls into membership.

Sprinker served as Conference Chairman from 1957 to 1960. He was also Chairman of the Conference's Transportation Policy Committee, which advised the Puget Sound Regional Transportation Study during preparation of the regional highway and expressway plan.

Formerly known as the Waller Road 4-H Boys club, the group is led by Mrs. Rudolph Geise. Assistant leader is Mrs. Anna Van Hulle.

Elected to offices at the recent meeting were president Tim Van Hulle, vice president Gary Fredericks, secretary-treasurer Gordon Fredericks and reporter Cindy Van Hulle.



Mr. and Mrs. John Drew Anderson, Rt. No. 2 Box 2535, Spanaway, December 4, girl.

Mr. and Mrs. Charles Shields, 10127 Villa Lane, Tacoma, December 5, boy.

CLIP & SAVE

Get Your Christmas Candles Now
All sizes, shapes, colors - probably the greatest variety you've ever seen.
Priced from 49¢ to \$9.75
Bring this coupon to counter for
25% Discount Cash Value 1/20 of 1¢.
on any candle or display in stock.
Effective Dec. 20 - 21 - 22 from 2 'til 8 p.m.
One coupon per purchase.

LE 1-3125 PACIFIC TRADERS 14119 Pacific Ave.

Rodeo Custom Shop

Christmas Saddle Deal

Complete Bridal, Blanket, Halter and Grooming Tools FREE

With Any Saddle in The House at Sale Price.

Boots: from Hyer, Nocona, Lama, and Acme.
Prices and Styles to suit everyone on your list.

Saddles: Circle Y, Longhorn, Textan, and Colorado
Saddles bring you the finest in quality and workmanship.

Jeans - Shirts - Belts - Buckles - Hats - Vests
Any or all are in the kid's letters to Santa!
"Top Form" the finest in horse products available.
Many stocking stuffers to please horse or rider!
Gift Certificates Available Too!
OPEN MONDAY THRU FRIDAY EVENINGS 'TIL 9 P.M.

Complete Saddle Repair Shop. Terms Arranged on Saddles or Use Your Bank Card.

164th & Pacific Ave. LE 1-4555 Spanaway

Huge selection of saddles

WINGING YOUR WAY

With *Season's Greetings*

To All Our Friends & Relatives

JACK BROWN AND FAMILY

P.O. Box 2008 Parkland Station, Tacoma, Wn. 98444

AND THANKS FOR ALL THE BEAUTIFUL CARDS & GIFTS

FRIGIDAIRE TOP-LOADING DISHWASHER

MODEL DW-STP Snowcrest white

Come in and Register for a

FREE PONY

OR EQUIVALENT CASH VALUE

TO BE GIVEN TO SOME LUCKY YOUNGSTER

Frigidaire Fliptop

Dishmobile has slanted front for easier loading!

- There's little or no pre-rinsing required—shake off the large scraps and load.
- Slanted design with lower front for easier loading, less bending and stretching.
- 3-Level Super-Surge Washing Action gets all shapes and sizes of dishes shower-clean.
- Cushion-Coated steel tub reduces noise—helps protect your precious china.

as low as **47¢** PER DAY 18 MOS. O.A.C.

EXTRA BONUS DRAWING TICKETS
with every \$10 value purchased
See the pony at our store

POCHEL'S APPLIANCE & TV

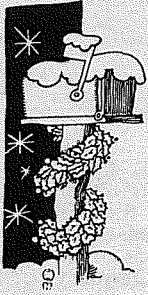
14001 PACIFIC AVE.
LE 1-1040

Merry

CHRISTMAS

"Best wishes for a very merry Christmas" and "Many thanks to you." These are the messages that local business firms extend to you here, as they welcome the oppor-

tunity to join in the traditional exchange of glad greetings at the holiday season, and to thank you sincerely for your valued patronage throughout the past year.



Seasons Greetings

Here's a special delivery of holiday good wishes and grateful thanks to all our many friends and patrons.

Collins Grocery
Bill and Hazel
Collins and Canyon Rd.



DAVE SEEBER

May we extend our warmest Holiday Greetings and wish you and yours a Joyous and Memorable Christmas.

CUSTOMIZED BOOKKEEPING
SPANAWAY LOOP
LE 1-3656

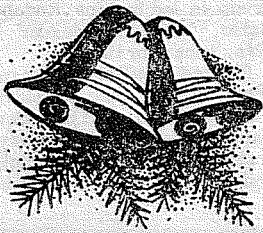


Yuletide Greetings

We're putting the finishing touches on Christmas by wishing you and yours an especially joyous and memorable holiday season.

College & Center Cleaners
11416 Park Ave.

Letting us serve you was the best



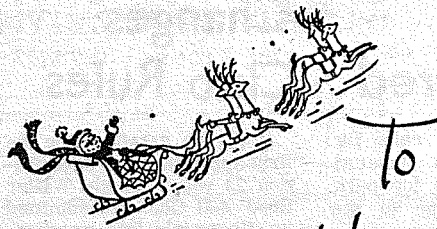
Christmas present of all, and we want to thank you for it. Happy Holidays!

Kittleson Rest Home

321 South 116th

Comfortable — Homelike Atmosphere
Individual Attention

State License #113



To wish you a Merry Christmas

May you enjoy the best of everything on this glad occasion of the year, Christmas.

Brookdale Lumber Inc.

136th & Pacific

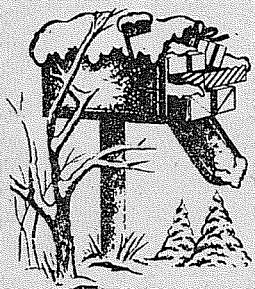


GREETINGS

We're heading your way with a sleighful of good wishes for Christmas! Our grateful thanks for their many kindnesses go to all those whom it has been our privilege to serve. May your holiday hold much happiness, love and contentment.

Parkland THRIFTCO

At Parkland Thriftway
138th Street and Pacific Ave.



MERRY CHRISTMAS

It's Christmas, presents all over.

We'd like to thank you for the year-round present of your patronage.

Ashmore Drugs

165th & Pacific
Spanaway



GREETINGS

We're heading your way with a plane-ful of good wishes for Christmas!

Our grateful thanks for their many kindnesses go to all those whom it has been our privilege to serve.

May your holiday hold much happiness, love and contentment.



TAHOMA FLYING SERVICE

Spanaway Airport

VI 7-2286

A Christmas Wish

We wish you all the best of holiday cheer... a Christmas bright with joy. Thanks to you our Christmas has been a happy one... serving you has been the greatest treat of all.



Johnson Drug

Parkland Shopping Center
Garfield Street & Pacific Ave.



Yuletide Joy

To All Of You From All Of Us.

BILL & DOROTHY RIGHETTI

JEAN ELSTON

WAYNE BUTLER

BILL THOMAS

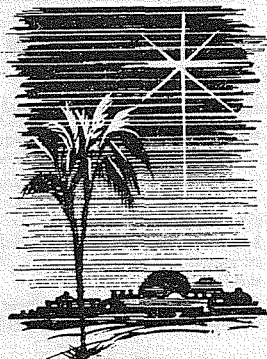
WILMA THOMAS

GARY SALTER

South End Hardware

SOUTH 185TH & PACIFIC

VI 7-7211
SPANAWAY



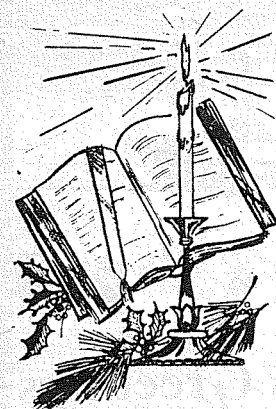
Parkland

Western Auto

12151 Pacific Ave.
LE 7-3112

OPEN EVERY NIGHT
TILL 9 P.M.
EXCEPT SAT.

ADESTE FIDELIS
O come, let us adore Him! May the newborn King bless each and everyone at Christmas.



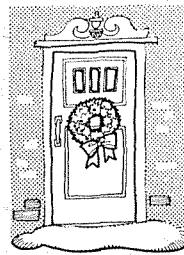
Peace On Earth, Goodwill To Men

Let us join in prayer this Christmas for a peace everlasting.

MAGDANZ HARDWARE

11401 PACIFIC AVE.
LE 7-5538

GREETINGS TO ALL



Seasons Greetings

Hope you'll be right at home with happiness on Christmas Day! We extend our best wishes and grateful thanks to our many kind patrons.

Management & Employees
Little Park Cafe
South 171st & Pacific Ave. — Spanaway



Yuletide Greetings

Festive as candy canes and bright ribbons are our wishes for a joyous and fun-filled Christmas for you.

VIS REY, Inc.
12702 Pacific Ave.



Happy Holiday

L & M

Automotive Service

Warm wishes and sincere thanks to our loyal friends and patrons.

170th & Pacific — LE 7-6772



GREETINGS

Merrily we roll along to a joyful holiday season. We're hoping it holds packages just brimful of happiness for you and all your family.

Ed & Lee Flood, Auctioneers
Tacoma Livestock Mart
Spanaway



Christmas Joy

We're joining the chorus with good wishes for you at Christmastime! May your home be filled with the best of holiday good cheer.

MARTENS ECONOMY AUTO PARTS INC.
11012 Pacific Ave.



MERRY CHRISTMAS

Here comes Santa with our very best wishes for those it has been our privilege and pleasure to serve. May your holiday be an especially happy one.

Parkland Cleaners
(In Keller's Kort)
110th & Pacific



Yuletide Greetings

Like a candle, cheery and bright, is our Yuletide wish for you. And warm as a candle's glow is our hearty "thank you" for your loyal patronage. It's always a pleasure to serve you.

TINY'S TIRE CENTER
108th & Pacific — LE 1-4535



Merry Christmas

Once again, we pause to thank our many good friends and wish them the merriest of Christmases and a Yuletide season overflowing with happiness and good cheer.

OUHL'S RICHFIELD SERVICE
16002 Pacific Ave. — LE 7-9956



MERRY CHRISTMAS

It's time to trim the tree, and wish our good friends a happy holiday. Many thanks for your patronage.

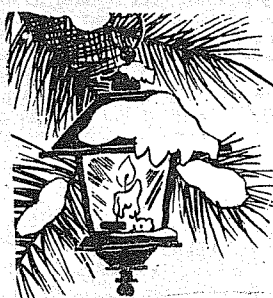
Pochel's TV & Appliance
14001 Pacific Ave.

"Award of Merit Service Dept."



BEST WISHES AND MANY THANKS TO OUR LOYAL PATRONS. MAY THE CHRISTMAS SEASON BRING YOU HAPPINESS.

ARMSTRONG USED CARS
11000 PAC. AVE.



Merry Christmas

As lanterns glow with Christmas joy and greens disperse the scent of Christmas cheer, we wish you a Merry Yule.

From All Of Us At

Parkland Light & Water

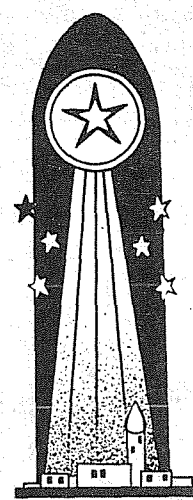
A Christmas Wish

Glad holiday greetings to you and yours! We're wishing you the very best of everything, from merry times to quiet joy, as you celebrate this glad and glorious Yuletide season.

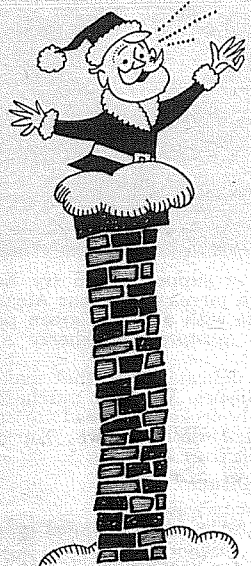
The Management and All The Employees

Pierce County Refuse Co.

13502 Pacific Ave.
LE 7-8688



NOEL



Christmas Greetings

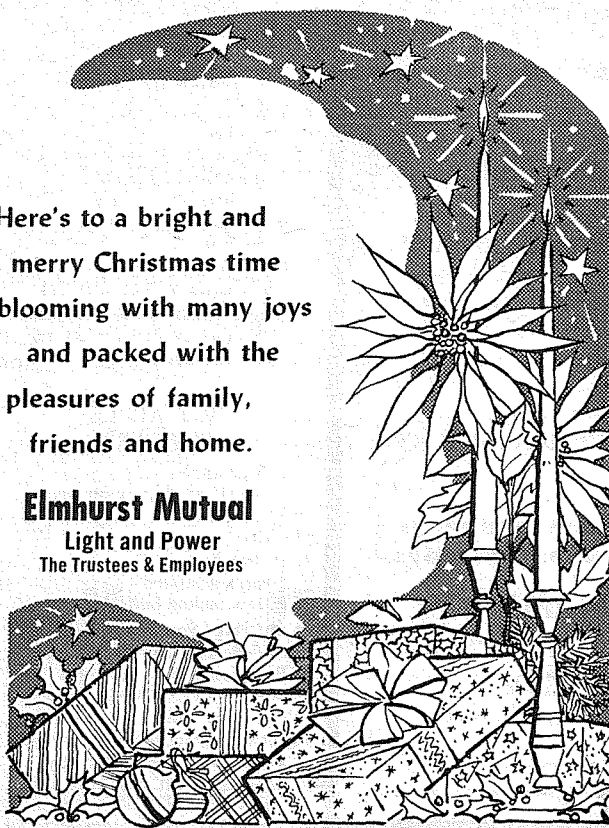
We send our Santa to fill your chimney to the brim with our warmest holiday wishes, and to express our deep appreciation for your wonderful friendship and kind patronage. May you and yours be blessed with every Christmas joy!

SHOP MART

Department Store 133rd & Pacific

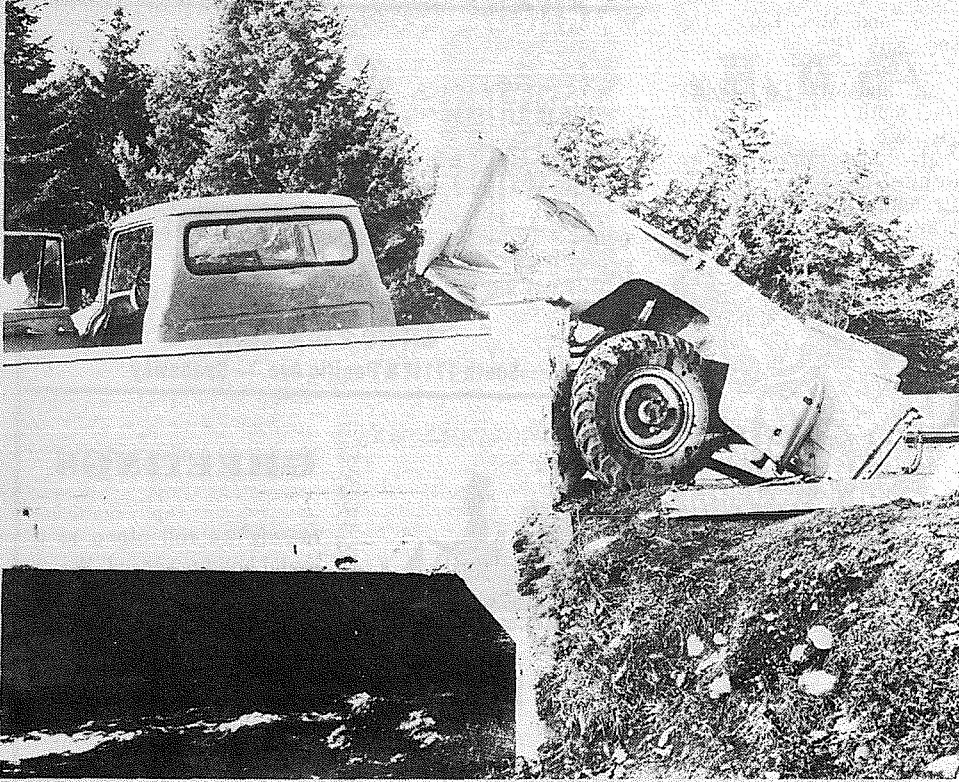
Here's to a bright and merry Christmas time blooming with many joys and packed with the pleasures of family, friends and home.

Elmhurst Mutual
Light and Power
The Trustees & Employees



At Christmas, our thoughts turn to those we serve, and it is with grateful appreciation that we wish them the best of everything during Yuletide season.

The Staff
Lake Spanaway Golf Course Pro Shop
Spanaway, Wash.



ROGER D. PENNINGTON, 42, of Rt. 6, Box 6674, Gig Harbor received lacerations to the left side of his head in this accident on the Roy Highway Saturday morning. Pennington, driver of the light truck, was heading toward Roy when the truck went out of control and struck the Muck Creek bridge ripping the rear end of the truck completely free.



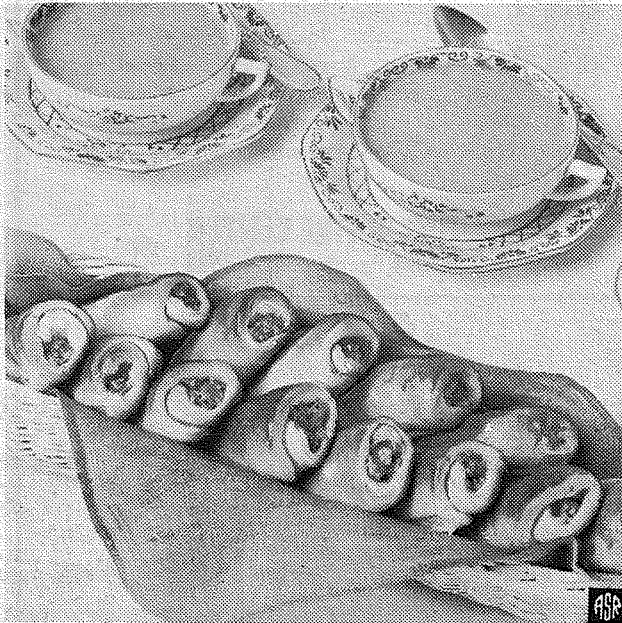
SANTA COMING. Timmy Mulkey takes a preview look at Santa who will visit the Spanaway American Legion Hall, 416 South 160th at 7 p.m. December 21. Santa, bearing a slight resemblance to Post 118 Commander Kenneth Montgomery, will have something for every child and children in the community are invited to attend.

TEENAGER WINS TITLE



Auburn-haired Dawn Gemay, of Milwaukee, Wisc., has been named "Miss Springmaid" for December as a result of having won the "Springmaid Needs Springmaids" talent search at a local department store, Gimbels-Schusters in Milwaukee. She was selected from hundreds of entrants at department stores throughout the country, and from fourteen finalists. She will appear in Springmaid's advertising in SEVENTEEN Magazine. Springs Mills, the sponsor, forecasts that the talent search will become a regular event.

Canned Salmon Featured In Cool Weather Menus



Salmon Roll-Ups and a cup of hot soup make a quick, nourishing and delicious luncheon in tune with crisp days ahead.

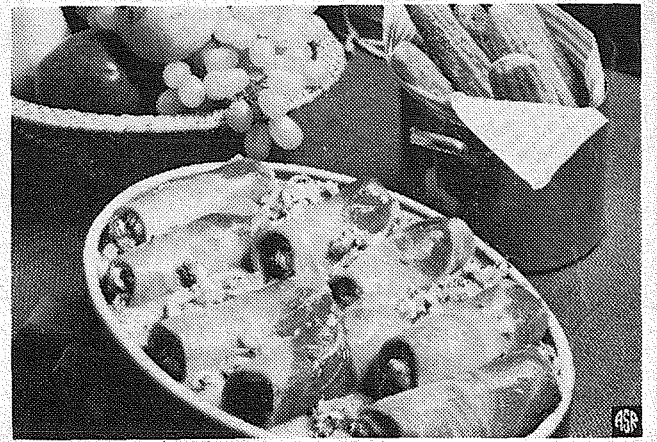
Crisp fall weather heralds the start of a new season, a new mood. Lunches should be hot and nourishing, yet remain within the budget. Canned salmon fits these requirements and there are dozens of ways to press this delicious convenience food into service for quick lunches and suppers. Such a way is this easy recipe for Deviled Salmon Roll-Ups. A small can of salmon and a package of refrigerator biscuits make twelve Roll-Ups, or enough to feed six hungry mouths. A cup of hot soup is all that is needed to round out the luncheon menu. Try them today, and they'll become family favorites for years.

Deviled Salmon Roll-Ups

- 1 egg
- 1 teaspoon dry mustard
- Pinch salt
- 1 teaspoon parsley flakes
- 1/2 teaspoon instant onion flakes
- 7 3/4-ounce can salmon, drained and flaked
- 12 Parker House refrigerated dinner rolls
- 2 tablespoons soft butter

Beat egg lightly and set aside 1 tablespoon for later use. Combine remaining beaten egg with mustard, salt, parsley flakes, onion flakes and salmon. With rolling pin roll out each dinner roll into a thin rectangle 3 x 5 inches. Spread each rectangle lightly with butter, then with salmon mixture. Roll up like fat jelly rolls and arrange on baking sheet. Brush rolls with reserved beaten egg. Bake in a preheated 375° F. oven for 10 to 12 minutes. Serve hot. Makes 12 Roll-Ups.

Turkey Talk . . . Second Appearance May Outshine The First



Count yourself lucky when you have enough turkey left to make this bountiful casserole of creamed turkey topped with stuffed ham rolls. It's scrumptious.

Key to the success of this dish is the savory sauce which binds the pieces of turkey together. Note that a simplified method of saucemaking is featured. With the help of the convenient and exceptionally rich-tasting powdered creamer, Pream, used in place of fresh cream, it's a simple matter to turn out perfectly smooth, elegantly rich sauces every time.

Casserole Turkey With Ham Rolls

- 4 cups cooked turkey, cut in large pieces
- 1/2 cup butter
- 1/2 cup flour
- 1 cup non-dairy Pream
- 4 cups boiling chicken broth
- 1/8 teaspoon rosemary
- 1/8 teaspoon pepper
- 2 cups soft bread crumbs
- 1/4 cup minced onion
- 2 tablespoons minced parsley
- 3/4 teaspoon poultry seasoning
- 1/4 teaspoon salt
- Dash of pepper
- 2-3 tablespoons chicken broth
- 8 slices boiled ham

Preheat oven to 350° F. Arrange turkey in a 3-quart casserole. In a heavy-bottomed saucepan, melt butter over low heat until frothy. Blend in flour and cook, stirring constantly, 1 minute without browning. Then add Pream and boiling chicken broth all at once, beating with wire whip to blend. Increase heat to moderately high; cook and stir until sauce comes to the boil and thickens. Add rosemary and pepper; pour sauce over turkey in casserole. Combine remaining ingredients, except ham, reserving 1/4 cup of the mixture. Place about 3 tablespoons stuffing on each slice of ham; roll. Place filled ham rolls on top of turkey mixture. Sprinkle remaining stuffing over top of casserole. Bake for 30 minutes. Makes 8 servings.



Need a new idea for a luncheon or supper? Then try this creamy, King Crab Bisque. Filled with pieces of luscious Alaska King crab, the bisque is easy to make with a can of green pea soup and cream. Green onion, dry mustard and sherry are added for extra flavor.

Alaska King crab has a rich, yet delicate, taste that makes it a delight to eat in salads or hot dishes. Whether purchased canned or frozen, the crab is completely cooked and ready to eat. Serve King Crab Bisque in mugs or ladle into bowls. Top off the meal with bread sticks and a fresh fruit salad.

King Crab Bisque

- 1 (7 1/2 oz.) can Alaska King crab or 1/2 pound frozen Alaska King crab
- 1 (11 1/4 oz.) can condensed green pea soup
- 1 teaspoon dry mustard
- 3/4 cup water
- 2 tablespoons chopped green onion
- 3/4 cup light cream
- 2 tablespoons sherry wine

Drain and slice canned crab or defrost and slice frozen crab. Combine soup and mustard. Add water, onion and crab. Bring to simmer, stirring frequently. Stir in cream and sherry. Heat, but do not boil. Makes 3 to 4 servings.

SAUERKRAUT HOFBRAU

- 1 qt.-can sauerkraut
 - 1 cup beer
 - 1 med. onion, finely grated
 - 1/2 peeled potato, grated
 - 1/4 peeled apple, grated
 - 4-6 whole peppercorns
 - 1 bay leaf
 - 6 smoked pork chops
- Wash sauerkraut with cold water, drain well. Simmer with other ingredients several hours or longer.

HOT APPLE FRITTERS



- 3 large apples
 - 1 cup sifted all-purpose flour
 - 1/2 tsp. salt
 - 2 tbsp. sugar
 - 2/3 cup beer
 - 2 eggs, separated
 - 2 tbsp. melted butter
- Cut cored apples into 4 slices. Sift together flour, salt, sugar. Beat yolks until light, stir in beer, butter. Sift in dry ingredients. Beat whites stiff, not dry. Fold into batter. Dip apple slices a few at a time. Fry in deep fat at 370 degrees 5 min. or until golden brown. Yield: 12.

ARE YOU IN DEBT?
Bills Pressing?
Civilian - Military
GET OUT OF DEBT
ONE PAYMENT AVOID

1. Letters to Employers
2. Letters to C.O.'s
3. Loss of paycheck

Call **MONEY MANAGERS**
MA 7-1700
 232 Security Bldg.
 915 1/2 Pacific Ave.
 Tacoma, Wash. 98402
 Eve. Appts. Home or Office
 24 Hr. Svc. State Approved

OLD FASHIONED REVIVAL HOUR

DR. CHARLES E. FULLER / SUNDAYS
 Heard each Sunday on KMD at 9:30-10:00 P.M.
 Write: Dr. Charles E. Fuller, P.O. Box 123, Los Angeles 90053

Looking For An Ideal Gift?



One of the finest things you can give is a paid up service. A simple call to our office can arrange a pre-paid garbage service for 3 months, 6 months, or a full year.

From standard curb pickup to special optional services this will be a most welcomed gift.

For Details Telephone **LE 7-8688** 8 a.m. - 5 p.m. weekdays
 9 a.m. - 5 p.m. Saturdays

Upon receiving your order, a special gift letter will be mailed.

Pierce County Refuse 13502 Pacific Ave.

P.S. Maybe one of our special services will appeal to you and make your New Year easier.

"That They Might See"
 brought to you by the
Gospel Association for the Blind
 each Sunday on KMO
 from 9:00 to 9:30 a.m.
KMO Radio 1360 k.c.



STORK REPORT
 Lakewood General Hospital
 Mr. and Mrs. Paul D. Piper, 19425 Crescent Drive East, Spanaway, girl, Dec. 9.
 Mr. and Mrs. Richard Wayne Taini, Rt. 2, Box 2729, Spanaway, boy, Dec. 11.

Mr. and Mrs. Larry Nelson, 5216 74th St. Ct. East, Tacoma, girl, Dec. 1.
 Mr. and Mrs. Carl Dolley, 912 South 115th, Tacoma, girl, Dec. 1.
 Mr. and Mrs. Gerald Schueller, Rt. 1 Box 195, Graham, girl, Dec. 2.
 Mr. and Mrs. Lauren Drath, 815 South 108th, Tacoma, boy, Dec. 2.
 Mr. and Mrs. Robert Jones, P.O. Box 372, Yelm, girl, Dec. 3.

School Administrator Shortage Hurts Districts Committee Told

"A shortage of highly qualified administrators has adversely affected education in small Washington schools."
 So stated Representative Harold S. Zimmerman of

Camas, in transmitting the report of the School Administration and Management Subcommittee to Representative Frank B. Brouillet of Pierce County, Chairman of the full Joint Committee on Education.

The report states: "The field of educational administration is characterized by a shortage of highly trained, competent individuals — particularly in small districts — who are technically and intellectually equipped to assume the demanded leadership role of the school superintendent."

Zimmerman further pointed out: "All too often administrators in small districts are called upon to perform the almost impossible task of running a school district single handedly. Our Subcommittee has recommended that statewide in-service training and administrative fellowship programs be instituted in order to help keep administrators informed about the latest innovations in educational and managerial technique."

Brouillet stated, "The Subcommittee was very clearly impressed with the need for quality administration in small districts. They have recommended that administrative salaries in second and third-class districts be revised upward in an attempt to attract the most qualified personnel possible for these positions."

The Subcommittee Report also recommends that the Washington State School Directors' Association improve the present method of orienting new school board members to their jobs. In addition, the Subcommittee has called upon the Directors' Association to make its voting procedure more equitable.

Zimmerman pointed out: "We also have requested the Legislature to finance the operations of the Washington State School Directors' Association by direct appropriation. Currently, dues from the membership is their only source of revenue."

The Subcommittee also reviewed the role of school boards and superintendents under the Professional Negotiations Act of 1965. The Report recommends that no substantial changes be made in the Act but suggests that the staff of the Washington State School Directors' Association be expanded in order that they might better assist local boards with the professional negotiations process.

Chairman Brouillet indicated that the Report would be presented to the full Committee sometime later this month in order that the legislation necessitated by the report might be prepared.

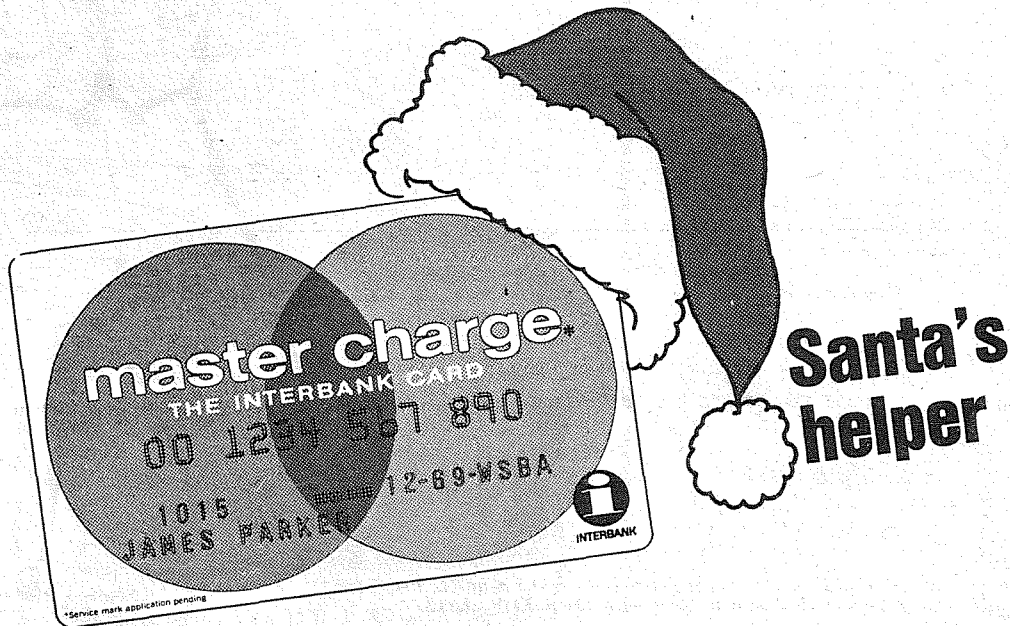
Aside from Zimmerman and Brouillet, members of the School Administration and Management Subcommittee are: Senator Wesley C. Uhlman, Seattle; Representatives Francis E. Holman and Audley F. Mahaffey, both of Seattle; Mr. John L. Gary, La Center; Mr. Jack Harvey, Seattle; and Mrs. Dorothy Johnson, Cunningham.

Dr. Norman E. Koch, formerly with the Department of Education at Washington State University, is the Subcommittee Consultant.

CENTS Make Dollars

when invested in Classified Ads. Place your ad by telephoning now.

Make Christmas shopping easy with a...



Do you have yours?

Your Master Charge card is free

You pay nothing for a Master Charge card. There are no annual dues or renewal fees. You can pick up an application from any Citizens State Bank office or from any merchant displaying the Master Charge emblem.

New shopping convenience

With a Master Charge card, you can charge clothing, tires, and parts for your car, lumber, tools, toys, and all kinds of household goods. You can take advantage of sales. And you can charge a wide range of services, from dry cleaning to medical and dental bills.

Cash when you need it

If you need ready cash, Master Charge will take care of that, too. All you have to do is present your card at any office of Citizens State Bank or any other Master Charge bank. For a nominal fee, you can get cash on the spot.

Why is Master Charge better than other credit cards?

Because Master Charge is the only nationwide program and will be in all 50 states by 1969. In addition, your Master Charge card will be honored nationwide by most other bank credit card outlets. Just look for the Interbank Card symbol.

Citizens STATE BANK

MEMBER
 FEDERAL
 DEPOSIT
 INSURANCE
 CORPORATION



- ★ MAIN OFFICE - PUYALLUP
- ★ SUMNER
- ★ SUMMIT VIEW
- ★ EDGEWOOD - MILTON
- ★ WILLOWS

Pierce County's Only
 Professional
AMBULANCE SERVICE
 Parkland Ambulance
 and
 Lakewood-Pacific
 JU 4-3344 LE 7-3322



MRS. JAMES STEWART, Chairman of the Park Board, welcomed pupils of the Buttons and Bows Nursery School last week during a visit to the new Aviary at Point Defiance Park. Prior to the visit, the children saved pennies to present to the board chairman to help purchase a new bird for the aviary. After accepting the donation, Mrs. Stewart gave the youngsters a tour of the new facility. Pictured on Mrs. Stewart's left is Mrs. Karl Cordes of the nursery school.

Racial Imbalance

Problem In Schools

A five-point program for the elimination of racial imbalance in Washington schools has been announced by the Metropolitan Education Subcommittee of the Legislature's Joint Committee on Education.

The recommendations were contained in the Subcommittee's final Report which was today transmitted to Representative Frank B. Brouillet, Chairman of the full Committee, by Subcommittee Chairman Senator Wesley C. Uhlman of Seattle.

The Report recommends:

1. That the State Board of Education withhold State financial assistance from any school district operating de facto segregated institutions.

2. That the State Legislature ease the way for inter-district cooperation for the elimination of de facto segregation by providing the legislation and financial assistance necessary to make such cooperation feasible.

3. That the State provide improved compensatory programs for inner-city youngsters by increasing State funding, recruiting minority teachers, and expanding pre-school kindergarten, summer school, vocational, and work-study programs.

4. That the Legislature provide the funds and enabling legislation to build an integrated educational park in the East Lake Washington area.

5. That the State Board of Education reduce its definition of a de facto segregated institution from 40 per cent to 25 per cent of one minority group in attendance.

Senator Uhlman pointed out that "Each of these recommendations reflects the Subcommittee's recognition that racial harmony will not be possible in our society unless the state takes the initiative in the effort to eliminate de facto segregation in our schools. The violence and racial inci-

dents which have been occurring in our metropolitan schools will continue and increase unless new state programs are immediately enacted."

"Consequently," Uhlman continued, "we have asked the State Board of Education to declare that any district with de facto segregated schools is not operating an approved program and, therefore, is ineligible for State aid."

Representative Brouillet indicated that he was "very pleased that the Subcommittee saw fit to accept the recommendations of its Metropolitan Educational Park Advisory Committee." He stated: "The recommendations for inter-district arrangements to deal with pressing educational problems can easily be applied to educational difficulties other than racial imbalance."

The Subcommittee also recommended additional measures for the improvement of urban school plants. The report suggests that the State Superintendent of Public Instruction examine the possibility of regulating the life span of school buildings in order to guarantee their utility.

"We are recommending that the construction formula be revised in order to provide more assistance to large urban school districts such as Seattle," Uhlman said. In addition to the recommendations on urban school problems, the Report calls for efforts to improve the working relationship between the State's public and private school systems.

Senator Uhlman pointed out: "Strong legal and constitutional obstacles make public financial assistance to private institutions almost impossible. However, private schools are in great need of assistance."

"We have recommended," he continued, "that the guidelines for cooperation with and assistance for private institutions be thoroughly reviewed by the State Superintendent of Pub-

A.L. Raber Jr. Receives Masters Degree

Alvin L. Raber Jr. was one of 257 candidates to be presented a masters degree in the University of Oregon's largest fall term graduating class in the history of the school.

Raber, son of Mr. and Mrs. Alvin Raber, Spanaway, was awarded a Master of Business Administration in Personnel and Industrial Management.

During the ceremonies held December 13, a total of 724 candidates were presented degrees. Of this total, some 384 were candidates for baccalaureate degrees, 257 for masters degrees, and 83 for doctoral degrees.

Adjustment Board Considers Parkland Case

The Pierce County Board of Adjustment will consider a lot width variance request for the Parkland area when they hold their regular meeting 1:00 p.m. Monday December 23.

The application submitted by Frankland Smith requesting a lot width variance for two single family building sites in an RE-9 Residential Estates District has been placed on the agenda. The property is at the southwest corner of South 136th and Yakima Avenue in Parkland.

lic Instruction."

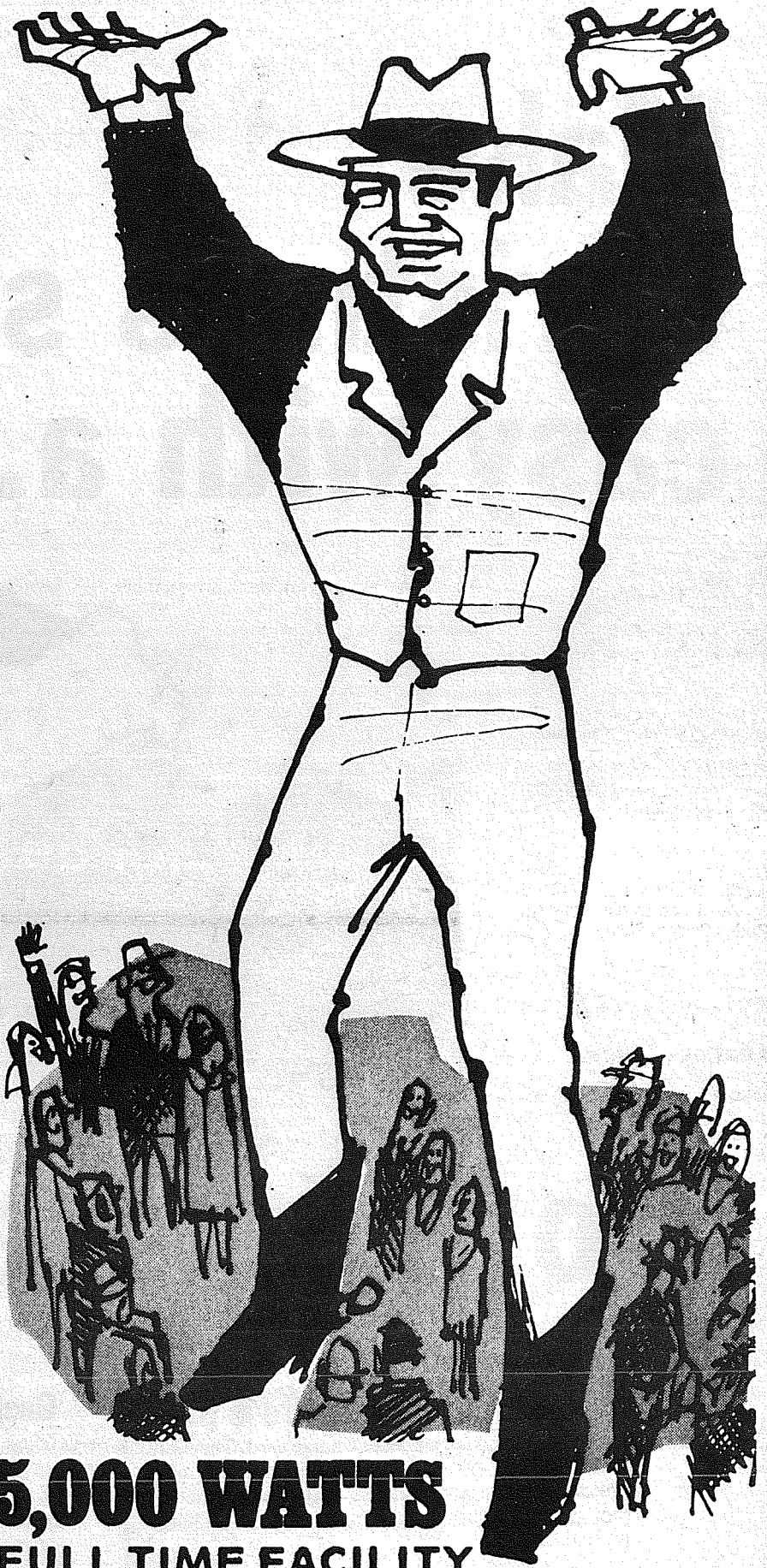
Chairman Brouillet indicated that the Report would be brought before the full Committee later this month for the preparation of necessary legislation.

Mr. Ralph V. Stevens, Director of Special Projects, Seattle Schools, is the Subcommittee Consultant.

Aside from Uhlman and Brouillet, the Subcommittee members are: Senators David E. McMillan of Colville and R. G. "Dick" Marquardt of Seattle; Representative Audley F. Mahaffey of Seattle; Mr. Fred T. Haley of Tacoma; and Mr. Frank Perkins of Seattle.

KMO 1360 kc

THE COUNTRY GIANT
TACOMA FT. LEWIS McCHORD SEATTLE



5,000 WATTS
FULL TIME FACILITY

Pierce County's Only
24 HOUR

Country and Western Station

* County News * Tacoma News * High School Sports
6 - 10 a.m. Hal Lavers
4 - 7 p.m. Ed Dollar
7 - 12 Midnight B.J. The D.J.
12 Midnight - 6 a.m. Jim Bennett

KMO RADIO 1360 A.M.

BUYERS WAITING!

Times Journal
Classifieds For
Results.

CALL LE 7-0223

HORSEMEN'S NEWS

Over The Fence Rail

Harry Twomey, new resident trainer at Tacoma Unit No. 1 Stables, is now open for business. He will be training, boarding, and giving riding lessons.

Moving to the Unit No. 1 grounds from Port Ludlow, Harry, his wife Ada and daughter Jo are now leasing the Unit No. 1 barn and arena.

He is making plans for horse clinics, and asks that those who are interested call him at VI 7-2071.

Larriettes Party

The Tacoma Larriettes held their annual Christmas Party Saturday night and morning with a gift exchange.

Tacoma Unit No. 1

Members are looking forward to their New Year Party slated for the Old Mill ... complete with live band and catered food.

Quarter Horse News

Washington Quarter Horse Association members held their annual awards banquet at the Holiday Inn Friday night. Winners were:

High Point Stallion — "Super Holiday" owned by Everett Reed.

High Point Mare — "Jade Island" owned by Fred Stroh.

High Point Gelding — "Could Be 5 Bar" owned by Jerry and Sue Buck.

High Point Race Horse — "Dustyetta" owned by Mark and Tresa Jones.

High Point Working Horse — "Jade Island" owned by Fred Stroh and shown by Carla.

All Around Horse — "Jade Island" won a hand made saddle crafted and donated by Dean and Dodie Vosburg, Rodeo Custom Shop.

Milk Deliveries Continue Down

Puget Sound dairymen delivered a total of 96.7 million pounds of Grade A milk to the market during November. Daily deliveries averaged 4.2 per cent below those in the previous month and 2.0 per cent below the level of a year earlier. According to Nicholas L. Keycock, Market Administrator, deliveries during the first eleven months of 1968 are 2.1 per cent below those in the same period of last year.

An estimated 1,879 producers delivered milk during November, 188 fewer than a year ago. Daily deliveries per producer averaged 1,716 pounds, an increase of 123 pounds or 7.7 per cent over a year ago.

Class I utilization during November totalled 54.8 million pounds. Daily usage dropped 1.7 per cent below the record level of the previous month but was 3.0 per cent above a year ago. Class I usage for 1968 is currently 4.3 per cent above the comparable period of last year.

Producers will receive a minimum of \$5.96 and \$4.21 per cwt., respectively, for their November deliveries of base and excess milk testing 3.5 per cent butterfat. The base price is up 5 cents from last month and is 30 cents over a year ago. The excess price is down 2 cents from October but 30 cents above last year. The weighted average price for all milk of \$5.33 is 3 cents above last month and 36 cents above a year ago.

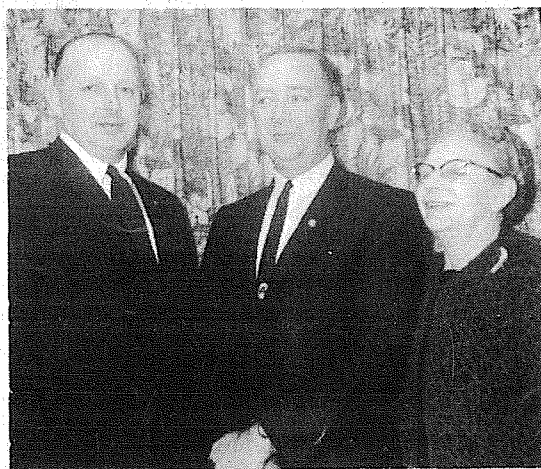
Producers without Class I bases will receive the base milk price for 27 per cent of their November deliveries. The ratio of Class I use to base milk was 87.18 per cent.

Riding Club News

At the annual reorganization meeting of the Meridian Riding Club a varied program under the direction of master of ceremonies Bill Perry saw Ken Cubor elected President of the club. Also elected were: Ray Johnson, vice president; Barbara Johnson, secretary; and Mavis Swanson, treasurer.

Junior officers are: Patty Bell, president; Sandy Hampton, vice-president; Eilleene Pilcher, secretary; Joe O'Leary, drill master; Ken Curbow, Man of the Year; Kitty Sprague, Woman of the Year; Sandy Hampton, Girl of the Year; Pat O'Leary, Boy of the Year; Toni Johnson, most improved rider 12 and under; and Eilleene Pilcher, most congenial personality.

The meeting concluded with a discussion of Junior Achievement Programs. Credit was given to Jan O'Leary whose efforts introduced the program to the club this year and gave the opportunity for three of the club members to place in the top ten of the state for Junior Achievement. A finale to the evening's entertainment was a series of skits presented by the Juniors.



ELMER LARSON (left), Roy dairyman, has been elected president of the Washington State Jersey Cattle Club. Pictured with Larson is Robert Goheen, Parkland, area representative for the American Jersey Cattle Club, and Mrs. Harriett Gross, Vancouver, elected to begin her 19th year as secretary for the Club.

Photo by Eddie Thomason

Spanaway Leaves Hollywood

The trotting horse Spanaway and namesake of a Pierce County unincorporated community, has left Hollywood Park after being plagued with hard luck, owner John S. Seaman wrote the Journal in a letter received Tuesday.

Although the Standardbred mare has 3 wins and 4 placings in eleven starts at the famed Hollywood track, she was harassed most of the season with broken equipment, a muddy track, fog, and pulled up lame in her last start. X-rays disclosed no bone damage and it is hoped she will be in shape for Bay Meadows early next year.

Despite the bad breaks, Seaman reports Spanaway's earnings were listed at \$7545.00.

Seaman and his brothers have added two young horses to their string and plan to race them soon. "If all goes well (at Bay Meadows) my brothers will take them and Spanaway on the Eastern Circuit in March 1969 while I plan to return to Washington," Seaman writes.

"Just for the record the weather here is no better than Washington in spite of what the Chamber of Commerce says about it," he added in a postscript.



OKAYA JOE, owned by Alden See during the 1968 show season and trained by Dee Parham, is pictured with Parham shortly before being sent to Oklahoma City and a new owner, J.L. Baker. Baker purchased the Appaloosa following the successful 1968 season. Joe was the 1968 Champion Junior Appaloosa cutting horse, and earned the title of 1968 Northwest Reserve Junior Champion Appaloosa Cutting Horse which involves Washington, Oregon, Idaho, Montana, and British Columbia. The pretty trophy girl was not identified.

Jerry Shea Photo

Tacoma Livestock Market Report

Thursday, Dec. 19th
568 Head of Cattle, 36 Hogs —

We are holding sales through the Holidays, Thursday after Christmas and Thursday after the New Year. The cattle market has been strong on all cattle. Choice Veal last Thursday brought \$40.00 to 44.00 per hundred, however hold veal now till after Christmas, then it will be back to normal again. Dairy, Feeder, Stocker, and slaughter cattle will hold in price through the holidays in good style. For this Thursday in addition to our regular run of cattle, we have a special consignment of 50 top Hol. Heifers — from one owner, 20 Head 400 to 600 lbs. — 10 Head around 850 lbs. (just bred or ready to breed), 10 Head of big Hol. Heifers approx. 90 days from calving, 10 Head of Closeup Heifers (springing), also 20 Head of outstanding Hol. Heifers weighing around 1200 lbs. or more (shipped in from Wisconsin — all are Springers. Dairy Cattle will all be sold early. For further information call Ed or Lee Flood, Phone: VI 7-7567 or VI 7-7518 (Graham).



Harry Twomey

LIVE WESTERN MUSIC
EVERY SATURDAY NIGHT
Nisqually Valley Moose Lodge 1905
Yelm, Wash.
Highway 510
ARCHIE GORE'S WESTERN BAND
Wonderful Music
Delicious Food
10 p.m. - 2 a.m.
Moose Members
And Their Guests

"Horsemen's Market Place" Classified Directory

Board — Trainers — Breeders
Outfitters — Feed Dealers

Outfitters
The Bunkhouse
COMPLETE LINE OF TACK & WESTERN APPAREL
12605 Pacific Ave.
Tacoma, Wa. 98445
LE 7-5510

J. W. RANCH
Appaloosa Stud Service
Colts for Sale
Spanaway VI 7-2642

Vet Supplies
Complete supply animal health products.
Franklin - Farnam - Anchor at
ASHMORE'S
Spanaway Drugs
165th & Pacific Ave. LE 7-5993

CEDAR LUMBER - FENCING
TACOMA
CEDAR PRODUCTS CO.
"At the Waterfall"
14512 Pacific LE 1-2559

A & W SEARS
BOARDING STABLES
Box Stalls, Pasture, Riding Trails & Arena
\$45.00 per mo.
Pole Line & Taylor Rd. E. Roy 843-2575

Back In Town
BILL MAY
Horseshoeing
TH 5-4902

Automobiles

STATION WAGONS, CARS AND TRUCKS
"Come See Us"
Andy EGAN
RAMBLER
"Fairness to All"

8223 Pacific GR 4-9404

HORSES BOARDED & RENTED
B & B STABLE
on the Mountain Hiway
1 1/2 miles past Roy Y on left.
Open 10 a.m. to 5 p.m.
TUES. - SUN.
VI 7-7162

The TIMES JOURNAL

SPORTS

PLU Knightlog

By Jim Peterson

What began as a week of trauma for Pacific Lutheran University cagers ended in triumph Saturday, December 7. It also served notice that the Knights do indeed have the potential indicated in pre-season press clippings. Even though they are still unseasonably cold from the floor, Coach Gene Lundgaard's quintet pulled off a surprising 67-66 upset against Central Washington State College Saturday, avenging Monday's humiliating 96-64 defeat.

The two CWSC contests sandwiched a disappointing 63-48 loss to Western Washington State College Friday. The Wildcats, last year's Evergreen Conference and district champions, cuffed the Lutes at will Monday, opening up a 51-28 halftime lead and coasting to victory. PLU had difficulty developing a consistent attack, hitting on only 33 per cent of its shots, while Central scored on 50 per cent of its attempts.

Junior center Al Kollar averted a complete Knight collapse, dropping 11 of 17 and leading both teams in scoring with 25 points. He also collected 15 rebounds, high for the game. The rest of the team, however, was converting on a horrendous 25 per cent of their shots.

The Lutes were still groggy Friday, but showed signs of life during the second and third periods, due primarily to a gratifying performance by 6-8 freshman Ake Palm. The touted Swedish import was all over the boards after entering the game with nine minutes left in the first half, and scored 12 points

before intermission.

Down 22-30 at the half, the Lutes, behind Palm and Kollar, moved to within one point of WWSC 33-34 with 12 minutes remaining before succumbing to a rash of fouls. Western outscored the Knights 27-16 from the charity line, mostly in the final stages of play.

Again PLU was cold from the field, hitting 28 per cent. Twenty turnovers were costly also.

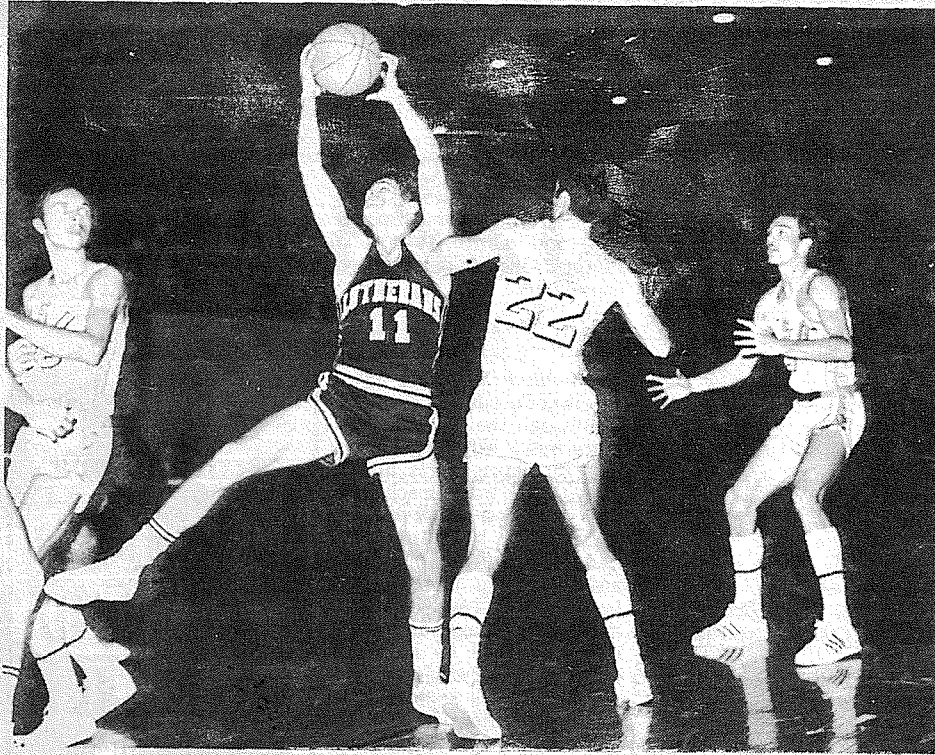
The return to form of junior forward Leroy Sinnes and the showing of reserve forward Bruce Reichert, a sophomore, made the difference during Saturday's revenge. Sinnes scored eight points and pulled down nine rebounds in the first half as PLU came from behind to take a 34-29 halftime lead. Reichert took over the second half, scoring most of his 11 points and finishing with eight rebounds.

The Burlington sophomore hit only three of seven free throw attempts but two of them won the game with two seconds left. Central, trailing 65-64, was trying desperately for the go ahead goal when Reichert pulled down the rebound and was fouled. His two clutch free throws gave PLU a three-point lead that even a floor length Central pass and successful jump shot couldn't overcome.

Shooting improved somewhat; the Lutes were 37 per cent from the floor and 67 per cent from the charity line.

Kollar again led the Lutes in both scoring and rebounding with 18 and 12 respectively. Sinnes was 17 and 10; Reichert 11 and eight.

Hopefully up from their early doldrums, the Lutes now have only the UPS Daffodil Tournament this weekend before Christmas vacation, where they will seek to recapture the tourney crown won in 1966 but given up to the University of Puget Sound last year.



PACIFIC LUTHERAN'S Kevin Miller (11) reaches for a rebound during Friday's Daffodil Basketball Classic clash with the University of San Diego. The Knights suffered a second half scoring drought and lost 70-63, dropping them to fourth place in the tournament. The Classic was held at the University of Puget Sound Fieldhouse.

T-Birds Pin Braves

By BILL HALLMAN

Under the guidance of new headcoach, Mr. Richard Mosier, the Bethel grapplers are still after their first Seamount League win.

The Braves most recent loss came at the hands of the Tumwater T-Birds who downed them 34-14.

The Braves were without three of their usual varsity members. Mike Gardner, Walt Houston, and Jody Miller were forced to watch the match from the bench due to colds and injuries.

Norm Cox, Tim Wheat, Dave Crockett, and Dale Failey were the only Bethel matmen to defeat their opponents. Crockett got the only Bethel pin for the evening as he pinned Lucas with 43 seconds gone in the second round. The matches went as follows:

- 103 - Norm Cox (B) dec. Thurmond, 4-1
- 112 - Gideon (T) pinned Ken Cox, 5:32
- 120 - Tim Wheat (B) dec. Anslie, 10-0
- 127 - Eden (T) dec. Don Ladwig, 9-6
- 133 - Steele (T) pinned Steve Benzing, 3:22
- 138 - Dave Crockett (B) pinned Lucas, 2:43
- 145 - Dale Failey (B) dec. Steinagel, 3-0
- 154 - Wueith (T) pinned Mike Smithlin, 1:30
- 165 - Carlyle (T) dec. Jerry Barrow, 7-0
- 175 - Shaffer (T) dec. Chuck Bullion, 8-2
- 191 - Adams (T) pinned Bill Robinson, 3:00
- Unlimited - Rixe (T) pinned Kevin Kelly, 5:05

Cards Look For Victory At Auburn

Federal Way's undefeated Eagle basketball squad literally "froze" the Franklin Pierce Cardinals Friday night as they rolled to a low-scoring, 55-32 victory at the Cards home court.

Cardinal Coach Tom Whalen saw his team play two different games, as it were, in the contest. Down by one point at the half, the Cards could manage only one point in the third quarter of play, going scoreless until Tom Harvie knocked the lid off the basket with a foul shot. To add to the scoring drought, the Franklin Pierce team did not sink a field goal from late in the second quarter until 7:36 of the final period, with Harvie canning a short tip-in off a rebound.

F.P. top point men were Jim Furlong with 7 and Woody Harris, a junior starter, with 8. Mike Shannon led the Eagles to their fourth consecutive season victory, snagging 22 rebounds and netting 13 points for the night. Federal Way outrebounded the Cards 66-52 as 54 F.P. shots missed their mark. Both teams had a poor night percentage wise, the Eagles hitting 15 of 62 for 24 percent and Franklin Pierce dropping in only 10 of 64 attempts for a record low, 16 percent.

Card Coach Tom Whalen cited the poor shooting and 19 turnovers to the Eagles for the out-come of the contest. The Cards are 0-2 for the season and will be looking for their first league win for 1968 when they travel to Auburn this Friday night. Trojan hoopsters will be looking for a second league triumph, coming off a 58-45 win over the Lakes Lancers.

Mayfield Salmon Illegal

The Washington State Department of Fisheries last week cautioned trout fishermen against keeping salmon caught from Mayfield and Davisson lakes in Lewis County.

The two lakes are reservoirs formed behind Tacoma City Light dams on the Cowlitz River near the town of Mossyrock. They are open year around for trout fishing but are closed at all times for salmon angling, Fisheries Director Thor C. Tollefson said.

Fishermen are catching many young chinook and coho salmon six to ten inches long and mistaking them for rainbow or cutthroat trout or kokanee salmon (also called "silver trout"), Tollefson said. These fish

T-Birds Dump Braves

By BILL HALLMAN

"Once we get over that first win we should be a pretty representative team in the league," stated Bethel's head basketball coach, Bob Fincham.

Unable to contain the hot shooting of Tumwater's Jeff Jeans the Braves ended up with their second one-point loss in non-league play.

Juniors Bob Niehl and Mark Belvin proved to be the backbone of the team in the Tumwater contest as they collected 21 points apiece.

Coach Fincham named Bob Niehl as the outstanding player in the game. Bob has scored 70 points for the Braves and hauled in 49 rebounds in three games.

Bethel lost their season opener on their home court when the referee ruled a last-second shot good which put the Mount Si Wildcats one point ahead of the Braves.

The Braves traveled to Bellarmine and took a sound 91-74 beating as the Braves ran into trouble with the Lions' press.

"Against Mount Si and Tumwater both games could have gone either way, the Bellarmine game showed the lack of speed as they literally ran us right off the floor," stated Coach Fincham.

Bob Niehl again proved to be the mainstay in the Bethel line-up as he tallied 22 points and hauled in 15 rebounds.

Bethel outrebounded Bellarmine 48-43 but was unable to keep up with the fast scoring displayed by the Lions.

Bethel next faces Fife on the Braves' home court. Tip off time is 6:30 for the J.V.'s and 8:00 for the Varsity.

are juvenile salmon on their way to sea from upstream spawning grounds, and if accidentally caught must be released, he stated.

Tollefson pointed out there are not kokanee salmon (silver trout) in either Mayfield or Davisson reservoir, so all salmon caught there must be released. He specified two ways to readily tell salmon from trout:

1. The inside of a trout's mouth is completely white - salmon have dark areas inside the mouth, especially along the lower jaw;
 2. Trout have a squarish tail - a salmon's tail is deeply forked.
- He also cautioned anglers to return troutlike fish lacking spots on the dorsal fin and tail, as this immediately identifies them as salmon.

White Pass Resort Open Daily

White Pass Ski Resort, on the crest of Washington's Cascade Mountains, moved from weekend to daily operation this week and will continue until May.

Located in Snoqualmie National Forest on all-weather U.S. Highway No. 12, White Pass slopes and trails underwent major face lifting during the summer months to permit early, safe skiing with a minimum amount of snow. Stump clearing and seeding work increased the area's total amount of open slopes to 185 acres, with 125 acres now completely free of stumps and seeded.

White Pass' 2.3-mile Holiday run, one of seven trails winding down from 6000-foot Pigtail Peak, has been completely rebuilt over the last two summers to eliminate the old uphill section that used to annoy many skiers. Holiday is now an easy, pleasant run that can be handled by anyone who can successfully execute snow-plow turns.

For those who like more challenging runs, there's Roller Coaster, the Chair Lift Line and Mach-V, all more than a mile in length. Snow grooming equipment is used to maintain the best possible skiing surfaces daily throughout the season.

Lift facilities available to White Pass skiers include three double chairs, Poma lift and rope tow. Runs and slopes serviced are suitable for all classes of skiers from novice to expert.

The White Pass Ski School will operate again this year, providing both class and private lessons for novice and advanced skiers. Combination lift and lesson tickets are available on a daily basis.

Only 105 miles from Seattle, 159 miles from Portland and 133 miles from the Tri-Cities, White Pass offers accommodations at the Village Inn which has 55 apartment units with kitchen and bath facilities. A heated swimming pool, sauna bath, service station, general store, the Nor'wester Restaurant and Alpine Room are located adjacent to the Village Inn.

Several skiers' package plans are available at White Pass this season to provide economical midweek vacations for as little as \$52.50 including lift tickets, meals and lodging. Information about the package plans can be obtained from most travel agents or the Village Inn, White Pass, Washington 98937 or White Pass Company, Box 354, Yakima, Washington 98901.

Hunter Safety Urged

OLYMPIA - With the general hunting season now well under way, the State Game Department urges all hunters to be especially careful in following the basic rules of safe gun handling.

Although many big game seasons are now completed, with fewer hunters now in the field, the Game Department once again reminds hunters that "hunter density" is not directly related to gun accident frequency.

Most hunting accidents are self-inflicted, a tragedy that could have been avoided had the individual followed the simple rules for safe gun handling.

Further, the majority of firearms accidents happen while the persons are hunting for small game.

For Your Best
New or Used Car Buy
See Your Number One
"GOOD GUY"

Dick Seamons USAF Ret.
MUNSON-SMITH MOTORS

GR 2-3307 4107 South Tacoma Way Res. LE 7-7637

Smith Built

CAMPERS & CANOPIES



14606 Pacific Ave.

Phone LE 7-8022

Tacoma, Wash.

CUSTOM

QUALITY

Full Time Performers

Classified ads work for you around the clock. Place your ad by calling an experienced ad writer today.

Christmas
Turkey Shoot
3 Games for \$3⁰⁰

100% Handicap - Men and Women
1 Prize for every 5 entries

Give A Bowling Gift For Christmas
Balls as low as \$15.95 - Bags 5.95 - Shoes 7.95

Special Weekend Bowling Rate - 35c
Saturdays until 7 P.M. Closed Dec. 24-4 p.m.
Sundays until 1 P.M. Open Dec. 25 - 1 p.m.

PARADISE BOWL

108th & Pacific

LE 7-6012



CLASSIFIED ADS

Call LE 7-0223 For Want Ads

1 Misc. For Sale

BSA 250 cc 1966 model. Set up for trail & racing. LE 1-4562.

ORCHID PLANT
in bloom
\$10.50
Orchid Culture Book Included
ORCHIDS unLTD
627 So. Pearl, Cor. Banks
SAT. - SUN. 11:30 to 5:00
(Bring this ad for this special)

AQUARIUM for sale. Reasonable. Call GR 4-6929.

LARGE Colonial braided rugs. Set of 2. Boy's Schwinn Stingray bike, \$20. Boy's dress suit, size 12, \$5. Boy's assorted toys. LE 7-6206. 68-610

TRUMPET, good condition. Used 1 year. Special price, \$40. VI 7-7174. 68-612

ALDER Fireplace wood. 24 inches. \$26. Eatonville 832-6331. 68-611

McNESS PRODUCTS, GR 5-2734. 68-303

TOP SOIL, fill dirt, bank run gravel, J.E. Pelland. LE 1-1124.

TWO large office desks, two file cabinets, two chairs, \$150. One 7 1/2' counter. \$75. TH 5-4574.

PUPPIES, 3/4 toy poodle, 1/4 chihuahua \$20. Girl's 24" bicycle \$10. TH 5-6453.

HOSPITAL bed. LE 1-2477.

AMPLIFIERS - Gibson, \$40, Silvertone, \$30, 10" speakers, TH 5-4705.

22 RUGER automatic rifle, \$40. 7311-124th E.

ARE YOU IN DEBT?
★ Civilian
★ Military

Call
MA 7-1700
MONEY MANAGERS

232 Security Bldg.
915 1/2 Pacific Ave.

Get Out of Debt
One Payment
Avoid: Letters to Employers
2. Letters to CO's
3. Loss of Paycheck

40"x40" net playpen with pad, \$10. Padded car seat, \$5. Like new car bed, \$5. 1 box clothes; boy's 1-2, girls 2-3. Call 829-0547.

EARLY AMERICAN hand made daveno. Like new. Half original price. 848-1403.

FOUR OR eight track stereo tape chime speakers, \$90; 26" girls' bike, like new, \$25. \$400 set of wedding rings, \$150. TH 5-4777.

NYLON uniform, blue, size 12. Worn once, \$10. TH 5-1808.

MAGIC CHEF range, 2 years old. Large oven. \$95. TH 5-4659.

26" GIRL'S Schwinn bike \$25. 26" boys Schwinn bike \$20. New tires. '31 Model A Coupe, restorable \$150. WA 2-6537.

RCA Black and white console TV. New picture tube. TH 5-8489.

2 Autos For Sale

1966 CATALINA stationwagon (Pontiac). 1 owner. Low mileage. Excellent condition. TH 5-1707, TH 5-6385 evenings.

FOR SALE: 1957 Chrysler. Good engine \$125. TH 8-1682.

PIERCE COUNTY HEADQUARTERS FOR 1969
★ CHRYSLER
★ PLYMOUTH
★ VALIANT
★ BARRACUDA

CALL GR 4-0621

Steven MOTOR CO.
2705 SOUTH TACOMA WAY

'60 FORD Falcon. Good transportation \$150. TH 5-5517.

NEW- MORE POWERFUL
the 1969's ARE HERE VOLKSWAGEN
27 MAJOR CHANGES COME IN

Tom Carstens AUTOHAUS
7030 So. Tacoma Way
GR 4-0666
TACOMA DEALER SINCE 1955

9 Animals For Sale

HOG FOR BREEDING or butchering. 250 lbs. 1940 Plymouth pickup, runs good. \$50 each. LE 7-6183.

PALOMINO stallion. Green-broke. Graham area. VI 7-2662 or VI 7-2152.

4 Boats, Equipment

1966 17' ELGIN Coastliner with trailer and 1964 55 horsepower Homelite motor. TH 5-2671.

6 Musical Instruments

BUNDY clarinet, new case. \$60. VI 7-7792.

SCANDELLI accordion and case, 3/4 size. 12 bass. \$150 or best offer, TH 5-1808.

HAWAIIAN steel guitar, case, stand, amplifier and foot pedal. TH 5-9456 after 5:00 p.m.

19 For Rent Or Lease

NEW UNFURN. APT. for rent. Appliances. \$145 plus your elec. LE 7-3333. 68-592

PROTECT YOUR boat & trailer. Covered stalls for rent, \$10 per month. Times Journal Bldg., 146th & Pacific Ave., LE 7-0223.

1 BEDROOM duplex, stove, refrigerator. \$87.50. LE 7-5582.

AVAILABLE Jan. 1. Older home, Firgrove area. \$75 mo. Deposit TH 5-4888.

AVAILABLE NOW. Deluxe, unfurnished, one bedroom apartment. Appliances, draperies, carport. Adults. TH 5-5930.

19 For Rent Or Lease

BRICK TRI-PLEX apartment: 1 bedroom, LR and kitchen. Appliances, draperies and carport. TH 5-8031.

HOME VACANT
We desperately need good rentals \$80 to \$150 per month

CALL NOW
Let us handle your worries
SUBURBAN REALTY
11302 Pacific Ave.
LE 7-8638 or LE 7-6896

24 Work Wanted

CHILD CARE. Close to P.L.U. LE 7-6736. 68-400

DOZING - Reasonable. Call LE 7-5761 after 4 p.m. 68-557

27 Misc. Services

WATER PUMPS REPAIRED
All Makes
GRANGE SUPPLY
LE 1-5777

EXPERT alterations, men's and women's. Fast service and reasonable. LE 1-3506.

MIDLAND AUTOMOTIVE
Complete Repair Foreign & Domestic
Elect. - Alt. - Gen. - Weld. - Trans. - Overhaul - Valve Grind
LE 1-4331 8-6 Mon.-Sat.

"WHERE TO GET SERVICE"
Parkland Enco Service
13303 PACIFIC AVE.
LE 7-9954

NEWBURY'S
Dozer Service
LE 7-7455
Sandy Loam Bank Run
Mixed Soil - Fill Dirt

RENT TV
Color TV
RENTAL MARTS, INC.
Parkland GR 5-3755 9440 Pacific Ave.
Lakewood JU 4-4100 108th & Bridgeport

27 Misc. Services

Sheet Metal
• Furnace Repair and Service
• Installations

PARKLAND FUEL OIL
12002 Pacific Ave.
LE 7-0256

REMODELING, leveling, block foundations, cabinets, free estimate. Reasonable. LE 7-3550. 68-48 TPN

36 Personals

ARTHRITIS, rheumatism sufferers, try Alpha tablets. Relief lasts for hours. Johnson's Drug. 68-609

PERSONAL LOANS on diamonds. We buy, sell and trade diamonds. Vince's Loans, 16001 Pacific Ave. LE 1-5100. 68-588

ARE YOU IN DEBT?
CIVILIAN-MILITARY MA 7-1700
MONEY MANAGERS
232 SECURITY BLDG.
915 1/2 PACIFIC AVE.
TACOMA, WASH. 98402
GET OUT OF DEBT ONE PAYMENT
AVOID:
1. LETTERS TO EMPLOYERS
2. LETTERS TO CO'S
3. LOSS OF PAYCHECK
Eve. appts., Home or office
24-hour srvs.—State approved

PIANO LESSONS, beginning to advanced. Children and adults, home or studio. LE 1-3246 or SK 2-7695. 68-179

TROMBONE VI 7-2831.

19 For Rent Or Lease

FOR RENT OFFICE space. Two rooms. Light heat and garbage service included. Located in Times Journal Bldg. 146th and Pacific Ave. Ample Parking space for customers. \$50 per month lease. Phone LE 7-0223 or stop by.

12 Real Estate For Sale

Listings Wanted
Buying or Selling
Real Estate Service
Call
Devereaux Realty
12152 Pacific Ave. LE 7-8658

4 NICELY wooded 1 1/4 acre tracts - Graham area, 330x165' Present road, petition for county road. \$2250 each \$200 down, \$30 per mo. Weekends only TH 5-1561.

3 BEDROOMS, 1 bath, all electric rambler. 2 garages, patio, acre. \$20,000. LE 1-4215.

LOT, 128x150', 13th St. S.W. \$3500. Call TH 5-1612 after 5 p.m.

LOT, 128th St. E. TH 5-1439, TH 5-1406.

22-WANTED TO BUY

WANTED to buy any kind of firewood by the truck load. Pay top price. UN 3-9510

23 Help Wanted

STANDARDS Checker. Project output, 2 years college. TH 5-8688 VES.

17 Business Opportunity

SUCCESSFUL business building with living quarters in excellent location. 508 Garfield, Parkland.

In the Superior Court of the State of Washington For the County of Pierce IN PROBATE No. 78010

Notice To Creditors
IN THE MATTER OF THE ESTATE OF BLANCHE GREENLAW Deceased.
Notice is hereby given that the undersigned has been appointed and has qualified as Executor of the estate of the abovenamed deceased; that all persons having claims against said deceased are hereby required to serve the same, duly verified, on said Executor or his / her attorney of record at the address below stated, and file the same with the Clerk of said Court, together with proof of such service within four months after the date of first publication of this notice, or the same will be barred.
Date of first publication Dec. 12, 1968.

s Cyrus A. Greenlaw
Executor of said Estate
11024 Pacific Avenue
Tacoma, Wash. 98444
PETERS & TRACY
Phillip S. Tracy
Attorney for Estate
11024 Pacific Avenue
Tacoma, Washington 98444
LE 7-0264
Published in the Times Journal
Dec. 12 & 26 - Jan. 2.

In the Superior Court of the State of Washington For the County of Pierce IN PROBATE No. 77961

Notice To Creditors
IN THE MATTER OF THE ESTATE OF OSCAR EDWIN NORDSTROM Deceased.

Notice is hereby given that the undersigned has been appointed and has qualified as executrix of the estate of the above named deceased; that all persons having claims against said deceased are hereby required to serve the same, duly verified, on said executrix or his / her attorney of record at the address below stated, and file the same with the Clerk of said Court, together with proof of such service within four months after the date of first publication of this notice, or the same will be barred.
Date of first publication Dec. 19, 1968.

s Faye Pauline Nordstrom
Faye Pauline Nordstrom
Executrix of said Estate
11024 Pacific Avenue
Tacoma, Wash. 98444
PETERS & TRACY
s Phillip S. Tracy
11024 Pacific Avenue
Tacoma, Washington 98444
LE 7-0264
Published in the Times Journal
12-19 - 12-26 - 1-2.

WE'VE MOVED TO 5606 Portland Ave. Trophy Aluminum Products
(Formerly Parkland Door Inc.)
Call us at GR 4-7011 for Trophy Storm Doors & Windows

BUY SELL CLASSIFIED ADS TRADE LEASE

FOR BEST RESULTS IN:
BUYING
SELLING
RENTING

USE THE WANT ADS
The Times Journal PO BOX 2116 Parkland 98444
LE 7-0223

Ten Words . . . Only \$1⁰⁰
Use This Form For Ad Insert

Name _____
Address _____
City _____ Zip _____
Amount Enclosed _____
Classification _____
Copy _____

BOWLING RESULTS

PARADISE BOWL 12/8/68
EXPRESS - Dick Breon, 594-231; Betty Breon, 525-206.
 Splits: Fran Thompson, 3-7; George Moe, 3-7-10.
LITTLE LUTES - Art Bolstad, 596-232; Carole Storch, 439-164.
ROLLING BEES - Florence Grimit, 543; Willa Woodford, 544; Carolyn Campbell, 258.
THE BELLES - Shirley Conway, 508; Ellen Kraiger, 200.
PINETTES - Sue Sweeney, 183-159-220 - 562-220; Evie Baskett, 191-168-205 - 562; Lee Leggett, 216-165-165 - 546; Oretta Allen, 201-160-179 - 540 - "600" MIXED - Ken Deede, 566 - 210; Jan Nestegard, 495-193.
PARKLAND MERCHANTS - Ken Cabbage, 588; Chuck Owens, 231. Splits: Ken Cabbage, 6-7-10.
SPORTSMAN - Gary King, 560-223.
INDUSTRIAL - Jim Couture, 566-223.
FRIENDLY DOUBLES - Bruce Webster, 490; Jerry Cope, 198; Jean Grove, 486-183.
PREMIER - Bill Emmert, 228-198-201 - 627; Bob Pitcher, 212-212-197 - 621; Larry James, 226-107-194 - 617; Ron Hopwood, 212-205-194 - 611; Bruce Goff, 215-195-191 - 601; Chuck Ellis, 236.
SR. CITIZENS - Wendale Gundersen, 550 - 220; Jack McKay, 220; Beth McLellan, 459; Edith Skaar, 190. Splits: Minnie Christin, 3-7-10.
FRANKLIN PIERCE FACULTY - Rose Gould, 197-167-205 - 569 - 205; Bob Harper, 513 - 202; Clint Richardson, 513. Splits: Glenn Ness, 3-6-7; Bob Harper, 4-7-10; Joseph Kistler, 3-10.
TOP ROLLERS - Jack Mitchell, 573-212; Marian Unkrur, 504; Ann Harris, 186. Splits: Mary Rogers, 4-7-10; Gary Ellis, 6-7-10.
MIXERS - Beth Billdt, 499-180; Bob Johnson, 242-170-189 - 601-242.
GRAHAM - Walt McGee, 552-211; Rosalie Cole, 513-196.
EAGER BEAVERS - Lorraine Futch, 519 - 181. Splits: Gloria Gates, 7-9-10; Edith Skaar, 4-7-10.
BIRDS OF PARADISE - Merrillis Johnson, 471; Ruth Almont, 196.
HI-LOWS - Barbara Coffey, 505; Violet McGee, 192.
PARKLAND MIX - Bob Lovelace, 201-223-184 - 608 - 223; Lois Lovelace, 536 - 197. Splits: Thelma Thornhill, 6-7-10.
850-SCRATCH - Bud Seaman, 180-193-248 - 621 - 248; Leo Arnestad, 191-235-193 - 619.
CLASSIC - Blair Steeves, 193-229-219 - 641; Bill Wold, 254.
EVERGREEN - Al Greenlaw, 581; Ken Wedin, 210. Splits: Tom Rex, 4-6.
BOWLERETTES - Jerry Garrett, 169-211-170 - 550 - 211. Splits: Margie Gribi, 6-7.
LAST NITERS - Walt Daniel, 202-189-221 - 612; Doc Musick, 247; Clara Neshiem, 494; Jean Daniel, 182. Splits: Gary Kazda, 2-7-10.
4x8'S - Del Miller, 552 - 213; Vi McGee, 499; Shirley Bennett, 191.

Service

SAN DIEGO, Nove. 25 - Seaman Recruit Richard G. Bercraft, USN, son of Mrs. Clemantine A. Drzazga of Route 1, Roy, Wash., has been graduated from nine weeks of Navy basic training at the Naval Training Center here.
 In the first weeks of his naval service he studied military subjects and lived and worked under conditions similar to those he will encounter on his first ship or at his first shore station.
 In making the transition from civilian life to Naval service, he received instruction under veteran Navy petty officers. He studied seamanship, as well as survival techniques, military drill and other subjects.

GIFT LIST

For Last Minute Shoppers

For Her

- Hand-tooled Purses
- Slippers
- Blouses
- Jackie Bags
- Western Boots
- Sweaters
- Bestform Products

For Him

- Jackets
- Sweaters
- Slacks
- Shoes
- Sport Shirts
- Gun Belts
- Wallets

For Children

- Sweatshirts
- Pajamas
- Caps
- Mittens
- Snow Boots

For The Family

- Original Oil Paintings
- Complete Line of Shoes & Clothing



Use Your Bank Card

PAUL'S

Shoes & Clothing
 161st & Pacific Ave.
 LE 7-0552

Winter Hours
 Open 7 Days A Week
 Sunday 10 - 9
 Weekdays 9 - 9

BARGAIN BASKET

16618
 Pacific Ave. S. Spanaway
 LE 7-3371

No Sales To Dealers

WE RESERVE THE RIGHT TO LIMIT QUANTITIES

We Carry A Complete Line Of Sacked Feeds - Presto Logs

We Are Locally Owned & Operated
 HELP YOUR BUDGET
 WITH THESE SAVINGS

PRICES EFFECTIVE

Week of
 Dec. 19-20-21-
 22-23-24

WE WISH YOU A MERRY CHRISTMAS

ZEE Asstd
PAPER NAPKINS
 10¢
 60 Cnt. Pkg.

DARIGOLD
BUTTER
 69¢
 One Lb. Cubes

NALLEY WHOLE
SWEET PICKLES
 39¢
 11 Oz.

HARD MIX
CHRISTMAS CANDY
 89¢
 3 Lb. Pkg.

PHILADELPHIA
CREME CHEESE
 10¢
 3 Oz.

BETTY CROCKER
PIE CRUST MIX
 29¢
 19 Oz.

LINDSAY
STUFFED OLIVES
 39¢
 5 Oz.

SNIDER
COCKTAIL SAUCE
 29¢
 1 1/2 Oz.

ABC
CREME COOKIES
 59¢
 2 Lbs.

NALLEY
MAYONNAISE
 49¢
 Qt.

CLOSED CHRISTMAS DAY

BLOCK ICE

PRODUCE

PARTY ICE

Tangarines
 10¢
 Lb.

No. 1
POTATOES
 49¢
 10 Lb. CELLO

CRISP GREEN
CELERY
 10¢
 Lb.

RADISHES
 GR. ONIONS
 215¢
 BUNCHES

Everyday Low Meat Prices... 25 lb. Locker Boxes \$14.95

CUBE
STEAK
 98¢
 Lb.

GROUND
BEEF
 Lean - Fresh
 49¢
 Lb.

BONELESS
BEEF STEW
 79¢
 Lb.

BAR S
FRANKFURTERS
 59¢
 Lb.

COUNTRY STYLE
SAUSAGE
 49¢
 Lb.

ROUND UP
BACON
 69¢
 Lb.

CHURCH DIRECTORY

ATTEND OUR

WORSHIP

SERVICES



PARKWAY Presbyterian Church
 Sunday School 9:30 a.m.
 Worship Service 10:45 a.m.
 Nursery Service Provided
 714-138th East LE 1-4234
 Rev. Wesley J. Drummond

Spanaway Assembly of God
 166th & Pacific Ave.
 Sunday School 9:45 a.m.
 Morning Worship 11 a.m.
 Evening Evangelistic 7 p.m.
 Family Night Wed. 7:30 p.m.
 LE 1-1412

Spanaway Lutheran Church
 8:30 & 11 a.m. Worship Service
 9:45 a.m. Sunday School
 Grades 1 & Up
 11 a.m. Sunday School
 3, 4 and 5 Year Olds
 John L. Briehl, Pastor
 160th & A St. LE 7-5978.

Parkland Lutheran Church & Christian Day School
 Worship... 10:30 a.m.
 Sunday School-Bible Study 9:15 a.m.
 All Ages
 H.A. Theiste, pastor
 LE 7-5492 LE 1-0777

Trinity Lutheran Church
 Worship Services 9 a.m. & 11 a.m.
 Sunday School 10 a.m.
 Wednesday School 4-5
 (through Grade 9)
 Erling C. Thompson
 Robert Drowes PASTORS
 12115 So. Park LE 7-0201

Spanaway United Methodist Church
 Christmas Eve Candlelight
 Communion 11:00 p.m.
 Church School 9:30 a.m.
 Worship 11:00 a.m.
 R. Gordon Harrison, Pastor
 163 & Pacific LE 7-5134