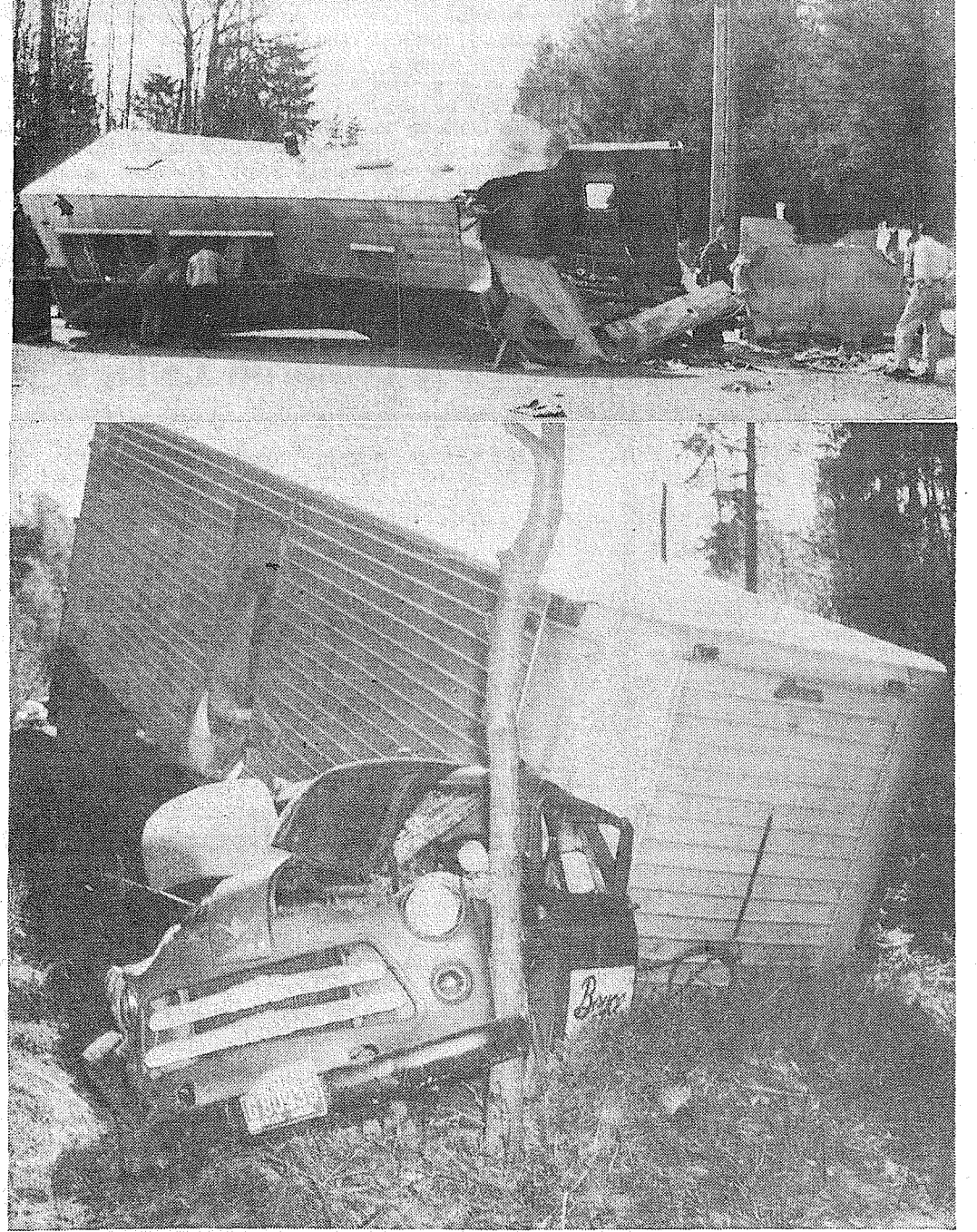


U.S. Postage Paid
 Sec. 34.66 P.L.&R
 Parkland Branch
 Tacoma, Wash.
 Permit No. 9P

The TIMES JOURNAL

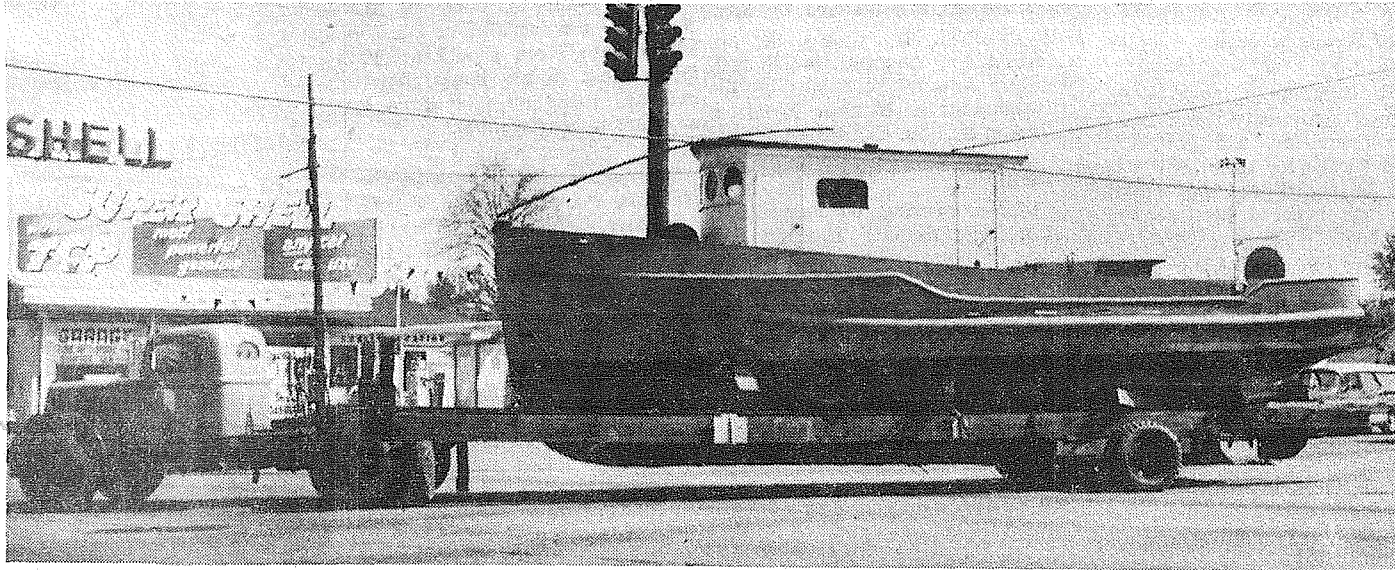
THURSDAY, APRIL 23, 1959 • VOL. 14, NO. 33 • PUBLISHED AT PARKLAND, WASH. LE 7-0223

Much Damage, Some Injuries in Spectacular Crashes



BAD TIME FOR TRUCKS AND TRAILERS — Sunday and Monday seemed ill-fated for certain types of vehicles on the highways. The upper picture shows the wreckage of a beautiful 42-foot house trailer which jack-knifed while being towed along the Mountain Highway near Johnson's Corner and slammed into a utility pole at 2:15 Sunday afternoon. R. W. Hamilton of Fort Lewis and his wife and small son were not injured although the pick-up in which they were riding rolled over. The trailer was totaled out; the pick-up was damaged about \$250. Considerably more serious was the accident pictured below, which occurred Monday afternoon at 2:25 near Lacey. The semi-trailer shown, driven by Vern J. Smart of Seattle, collided with an Army tractor, driven by Glen Shelton of Fort Lewis. Smart was taken to an Olympia hospital with possible internal injuries but later released; damages to his vehicle amounted to \$5500. Shelton, driver of the tractor, was taken to Madigan General hospital with lacerations of the head, concussion, shock and possible internal injuries; tractor damages \$3700. Highway Patrol Officers Max Hughes and C. Stansbury investigated the first accident, Officer Larry Linnell the second. (Photos by McKewen.)

Ed Currah's Fishing Boat Tania Dee Proceeds to Launching Spot



THIS DREAM PAID OFF — Pictured above, the fishing boat built by Ed Currah of Parkland is seen being towed down Pacific Avenue en route to an entirely successful launching in the Sound Monday. (Photo by McKewen.)

Monday was a perfect spring day. The sun shone, the birds sang and little waves on Commencement bay laughed in gentle chuckles as the Tania Dee, the fishing craft in whose building Ed Currah of Parkland has invested a considerable amount of money and practically his entire "spare time" for nearly six years, was launched.

The building of the Tania Dee is quite something. Currah decided he wanted a boat and that he would build it himself. True, he had never had any part in building a boat but he was a master craftsman in structural iron work and out of the host of his friends there was always someone to give him the answers when he got stuck.

Not long after he completed the (Continued on Page 2)

Lariettes to Sponsor Show

Sponsored by the Tacoma Lariettes, a spring horse show, zone approved, will be held at 1 o'clock Sunday, April 26, on the Tacoma Unit club grounds on Bridgeport Way.

There will be Junior drill competition with trophies and ribbons. Kent Erickson will be the judge; Evelyn Barrett is chairman.

Anyone interested may participate; entries will be received on the grounds, beginning at 11 a.m. Sunday.

P-TA Council at Sales Wednesday

Pierce County Council P-TA is planning an Officers' Workshop to be held Wednesday, April 29, at James Sales school. The meeting will begin at 7:30 p.m., but those who wish may register for convention from 7 until 7:30.

All local incoming officers and program chairman are invited to attend. Mrs. Kenneth Lampitt and Mrs. David Gray are co-chairmen for the meeting. James Sales P-TA and Preschool P-TA will be hosts at a coffee hour during the meeting.

Spring Luncheon

The Ladies Auxiliary of Fruitland Grange is having a spring luncheon on Tuesday, April 28th, at 12:30 p.m. at the hall. After luncheon there will be games played with beautiful hand made prizes awarded. The committees in charge under President Mrs. Lyle Winsley are: Ways and means, Mesdames John Lavik, Joe Heil and Lester Goelzer; tickets Miss Diane Milne; aprons, Mrs. Robert Geddes; decorations; Mesdames Harold Hanson and George Fisher; games, Mesdames Frank Balou and Oscar Swalander. There will also be a plant sale and a white elephant sale.

Tickets may be obtained from Auxiliary members or at the door and the public is cordially invited.

Parkland Round-up Camp Fire Girls, Blue Birds in Project Plans Gain Speed; Weekly Meetings

A lot of Parkland people are working like beavers as the plans for the 1959 Parkland Round-up (June 12-14) get into full swing. All committees and others interested will meet each Monday evening at 8:00 o'clock in the clubhouse on the Round-up grounds. The next meeting is especially important as plans for the May 3 round day will be completed.

The Round-up work day will take care of general repairs on the grounds and other chores necessary at this time. Anyone willing to work will be welcomed.



ARBOR DAY WARM-UP — Pictured above, Camp Fire Girl Frances Williams, and the district leader, Mrs. Lester Rozzane, left, Blue Bird Marcie Kendall, right, stage a practice tree planting ceremony in preparation for real plantings at Franklin Pierce district schools on Arbor Day. (Photo by McKewen.)

All in all, things are shaping up very well. Kent Erickson is the 1959 chairman and Betty Anderson secretary-treasurer. Committee chairmen are: Booths & rides, Wes McKewen; parade, Midland Business club; Queen Mother, Frances Sheppard; ground judges, Al Soine and Morrie Anderson; parking, Sheriff's Posse, Dean Vosburg and E. K. Dorwin; dance, Nancy Larson and Ray Bartley.

Publicity, Jim Loring; tickets and posters, Dona McKewen, Connie Erickson and Betty Anderson; merchant participation, Roger McDonald and Newt Willis; street dance, Jack Brown and Dale Phillips; construction, Morrie Anderson and Al Soine; beard judging, Shamrock Tavern; air mail, Ralph Lawson; letter from the President of the U.S., Ray Bartley; main gate, Lammert Funk; back gate, Al Soine. Announcers stand, Howard Carmen; inside booths, Dolores Brown and Muriel Loring. Candidates for Round-up Queen (Continued on Page 2)

"She cares — Do you?" Armed with this slogan and spurred by the challenge of long-term planning, Camp Fire and Blue Bird Girls throughout the country officially have begun their conservation project entitled "The World Around Her."

These groups in the Franklin Pierce school district are taking part in the nation-wide Golden Jubilee project which was founded nearly 50 years ago, the Camp Fire and Blue Bird at each of the elementary schools will plant a flowering tree on their school grounds on Arbor Day, Friday, April 24, to help beautify the community in which they live.

Leaders of the groups are: Brookdale school, Mrs. Lester Soiland; Central Avenue, Mrs. Stanley S. Reynolds; Collins, Mrs. C. L. Shipnough; Harvard, L. J. Wilson; Midland, F. D. Loranec; Parkland, Mrs. A. T. Unkrur; James Sales, Mrs. Lester Rozzane; Waller Road, Mrs. Lloyd Ebert.

SPANAWAY HARDWARE
 ELECTRICAL AND PLUMBING SUPPLIES
 SAND, GRAVEL & CEMENT
 170th & Pacific
 LE 7-8378
 Open Sundays 8:30-1:30

SHOP & SAVE AT BROOKDALE LUMBER COMPANY

Now you can afford to put doors on those upstairs closets!
\$4.95 will buy a MAHOGANY FLUSH DOOR!
 See these—16" to 36"

Glass and Pipe Cut to Size
 Don't bother to paint again — cover it with that easy to clean linoleum-type
WALL COVER
 ONLY 49c a ft.
 Choice of colors, easy to install. 54 inches high.

A Full Selection of Garden Tools

Good No. 4
STUDS -- 8'
 24c Ea.
 Aluminum Storm and Screen DOORS—32" to 36" ONLY \$39.50. These are nice.

Still some of that economy 1 x 6 CEDAR for fencing at 3c a ft.

Ask About Our Revolving Credit Plan

Hi Grade Plasolux BOAT ENAMEL Quarts—\$3.25 Vivid tones—pints \$1.92

BROOKDALE LUMBER COMPANY
 LE 7-8669
 136th & Pacific

CLOVER CREEK BAPTIST CHURCH
 WELCOMES YOU
 (Military Road Just Across From Clover Creek School)
 From Pacific Highway Turn East On 158 and Go 3 Miles

- A Bible Teaching Church
- A Friendly Church
- A Gospel Preaching Church

Rev. Lyle Bramblet, Pastor Phone LE 7-6421

FRIENDLY SERVICE SINCE 1908
 Now With a 100 Car Free Parking Lot right next door.
PIPER FUNERAL HOME
 PHONE Greenfield 2-3353 5436 SO. PUGET SOUND

EVANGELISTIC SERVICES
 With Reverend Harold Howard
EVERGREEN BAPTIST CHURCH
 Waller Road at 92nd
 Sunday, April 26th Thru Friday, May 1
 A WARM WELCOME AWAITS YOU

INDIANAPOLIS TYPE BIG CARS
 Will Race Sunday, April 26th
 AT **SPANAWAY SPEEDWAY**
 Time Trials 1:30 — Racing at 3 p.m.

PROFESSIONAL DIRECTORY

Farmers Mutual Ins. Co. Auto — Fire — Liability and BARBER SHOP
 J. J. GUNNS Agency
 303 East 176th LE 7-7757
 2 Blocks East of Transformers Spanaway
 Farmers Mutual of Enumclaw Fire — Auto
 ED MAREK
 12907 Pacific Ave. LE 7-4000

from Poor
Richard's Almanac
 Anger is never without a reason, but seldom with a good one.

EASY PARKING
 LE 7-0253
Dryer MORTUARY
 TRAIL AND PACIFIC PARKLAND

Bethel Boosters To Elect Monday

Next Monday night members of the Bethel Booster Club will vote for officers for the coming year. The regular April meeting of the Boosters will begin at 8:00 p.m. in the Senior High School and will be followed by a program of entertainment and refreshments.

Up for election, with nominations still to be accepted from the floor, are: Glenn Ash, president; Bruce Taylor, vice president; Art Crate, director from Elk Plain; W. H. Danforth, director from Clover Creek; Russell Ross or Frank Petoski, director from Spanaway; and Lawrence Wood or George Lambertson, director from Roy. Refreshments will be served by the members of the Boosters from the Roy area.

Belles Of Paradise
 Linda Neff and Eileen Dennis tied with 181 score for high game Monday night for Belles of Paradise at Paradise Bowl; Linda's 499 took the high series honors.

Compare Rates — See how much you may save with
FARMERS AUTO INSURANCE
 Irene Clemens LE 7-4904 FAST
 Karl Scott LE 7-4707 FAIR
 Sam Noe LE 7-6233 FRIENDLY
 Don Kessler TH 5-6489

Farmers Auto Insurance
MAMA BEAR SELF SERVICE LAUNDROMAT
 Located in the Big Bear Shopping Center
 Open 24 Hours Per Day 7 Days A Week

Firemen's Dance
 The Riverside Firemen are having their annual dance Saturday, April 25, from 9 to 1, in the Polish hall, East 30th and R streets, Tacoma. Jake Liengang's orchestra will furnish the music. Audley Gunchel is dance chairman. The public is invited; tickets are available from any fireman or may be purchased at the door.

Garden Club
 The Clover Creek Garden club members are having their second plant and rummage sale Friday and Saturday, May 8 and 9; location to be announced.

Parkland Christian Church
 757 So. 138th, Parkland
 Sunday School 9:45 a. m.
 Morning Worship 11:00 a. m.
 Youth Meeting 6:15 p. m.
 Evening Service 7:30
 Bible Study, Thursday 7:30
 Richard Crane, Pastor

Big Cars to Race
 Sunday will be a big day at the Spanaway Speedway with the Indianapolis type big cars providing the thrills. Several drivers of national reputation will be seen on the fine new asphalt track and there is sure to be a lot of excitement.

PARKLAND LAUNDROMAT
 To Add Metered 24-Hr. 7 Days a Week Service
 Watch for Opening Date
 Across from Piggly Wiggly
 12171 Pacific Avenue

TODAY'S LAFF . . .
 Bachelor: That's a man that thinks there's only two classes of people; unhappily married and happily unmarried.
 We now have the biggest stock of shoes in the South End.
 Everything—Baby's shoe size 0 to lineman's boots.
 See Don for Expert Shoe Repairing
PAUL'S SHOES
 Spanaway
 161st & Pacific Ave.
 LEnox 7-0552
 Open Friday Till 9:00

NOTICE
LOVELAND MUTUAL LIGHT CUSTOMERS
 The power of the Loveland Mutual Company will be shut off on Sunday, April 26th, at 9:00 a.m. for approximately one hour and thirty minutes in order to lower wires on the Mountain Highway.
 There has been quite a hazard for airplanes to land at the Spanaway Airport, and recognizing the fact that there could be a fatality, Loveland Mutual has felt it advisable to do all in its power to make the area as safe as possible.
 By FRED ERICKSON, President

KEEP 'EM CLEAN, KEEP 'EM TIDY . . . IF YOU CAN.
 Let Us Help With Our Expert Dry Cleaning Service
PARKLAND CLEANERS
 11004 Pacific Avenue North of the Bank Corner LEnox 7-3221

CALL LE 7-8173 LAPENSKI FUEL CO.
 9910 Pacific Avenue
HEATING OIL
 You save money with our Texaco "All-Star" heating oil service!
BURNS CLEANER!
 No smoke or odor with Texaco Fuel Chief Heating Oil. Contains Additive A-200, protects against rust and deposits.
AUTOMATIC DELIVERIES!
 Based on the severity of the weather and your "degree-day" needs. No need to call us — and no worry about running short.

Round-up Plans

(Continued from Page 1)

include Colleen Sheelan, Donna Abbott, Joyce McGinn, Wynette Russell, Karol Kreidler, Lynda

Ross, Layne Turner, Susie Nork and Joan Barrett.
The Round-up schedule starts with a teen-age dance at Spanaway Friday evening, May 29. A street dance will be held June 11 on the NBW parking lot. The Sheriff's Posse show will be June 12, the Round-up parade, rodeo and dance June 13, final rodeo June 14.

Dartmouth's first basketball team was a class squad organized in the Winter of 1898-99.

Fishing Boat

(Continued from Page 1)

keel he discovered the steel plate for the hull—a huge oil tank at Kapowsin, formerly used by the Milwaukee. This he cut into strips 30 inches wide and up to 12 feet long, enough for the boat, which he planked diagonally.

The Tania Dee is powered by a Mack diesel engine which had been used by St. Regis at Mineral. The boat is completely refrigerated with equipment salvaged from the Safeway store at 62nd and Pacific; when the building burned

a few years ago Mr. Currah bought all the metal in the wreckage and was happy to find that the refrigeration system was in fine shape. At that time his machine shop was next door to the Safeway store. Since that time he has been working at his home, 550 East 112th street.

So that's the way it was! With much salvaged and some new materials—plus a lot of know-how, determination and imagination, he acquired a real boat.

The Tania Dee is approximately 40 feet long, sturdy and dependable. All doubts as to her seaworthiness disappeared when she slipped into the Sound, perfectly balanced, handling beautifully on the short trial run. She is berthed at Fishermen's Dock, Port of Tacoma.

Since everyone will have the same question—What's he going to do with the boat?—well, it's a fish-

ing boat and he expects to use it for commercial fishing off the Washington-Oregon coast. Maybe Ed Currah doesn't know a lot about commercial fishing, but those friends of his are everywhere and he'll get all the help he needs. Someday, perhaps this summer, he expects to give the fishing a try. The Tania Dee could stay out five or six days and bring in a good catch in her refrigerated storage. And when he gets everything running the way he wants it, he hopes to take Mrs. Currah and their son, Ross Emerson Currah, 9, along, during vacation of course.

To complete a touch of tender family sentiment—Tania Dee was the name Mr. and Mrs. Currah had chosen for their second child, the little girl who was still-born. He has honored her memory in his boat.

There was no sadness in his heart Monday when Currah proved to the "doubting Thomases" what he had known all along. In fact, he remarked that there were several red faces among his friends. It seems that one very good friend of his went to a lot of trouble some time ago when one rainy night he tacked up a big sign at the end of Currah's field, reading "Look at the boat! It won't fly, it won't float!" Just about the time he drove the last tack, the friend's ladder slipped out from under him and he was submerged in a very wet, messy ditch.

Grandmothers Plan Dinner Tonight

The Grandmothers club of Fern Hill will hold its annual dinner this (Thursday) evening at 6:30 in the parish hall of the Fern Hill Methodist church.

Mrs. Gus Bleich, club president, is assisted by several committees. Decorations are planned by Mrs. Henry Bond. Mrs. Hyle Locke will present the program, which will feature musical selections by the Grandmothers' Kitchen Band, a reading by Mrs. Charles Woodhead and greetings to guests by the president.

Others working on committees are: Mrs. Samuel Tingstad and Mrs. William Miller, gift table; Mrs. Don Baldwin, tickets; Mrs. Ernest Connolly and Mrs. Nels Bjarke, menu.

The public is invited; for reservations, call GR 4-1260 or GR 2-3150.

Mr. Currah is grateful to a lot of folks for helping him get the Tania Dee into the water. Lloyd Headley (Parkland Motors) furnished the 12x12 timbers and dollies used to haul it to the dock and others lent a hand as they could. To all of them, a sincere "Thank You" from Commodore Currah.

Elbe News

Your correspondent for Elbe took a weekend trip to Bremerton to visit old time friends and failed to return home in time to write the news last week.

Blood Bank

On Thursday, April 23, the Pierce County Blood Bank mobile will visit the Columbia Crest school from 3:00 to 7:00 p.m. A free spaghetti dinner for a pint of blood is given to each of the donors by the Lions club. Persons who donate blood should not eat for a least three hours before but may make up afterwards by enjoying a hearty meal.

Sad News

Sad news came to the Elbe people this week through a letter from Mrs. Edna James of Sumner, telling of the death of Mrs. Carl Williamson's sister, Miss Noble. The two sisters have lived together these many years since the death of Mr. Williamson. Carl and Robert Williamson and A. R. Campbell were partners with Robert Patent Sr. for many years running the Elbe Lumber & Shingle mill which had a big pay roll for many families at Elbe. When the mill burned in the early twenties it was a crushing loss to the people of Elbe. The old timers still left extend heartfelt sympathy to Mrs. Williamson.

Reporter—Mrs. Pearl E. Engle, Elbe.

Card of Thanks

We wish to extend our heartfelt thanks and appreciation for the acts of kindness, messages of sympathy, donations of blood and beautiful floral offerings received from many friends in Tacoma and other cities in our sad bereavement in the loss of our beloved daughter, Sharon Gabrio (Kaufman). We especially thank the doctors and nurses of Tacoma General Hospital. Sharon attended Collins school and Franklin Pierce high school.

Mr. and Mrs. Eugene Kaufman and family

Rummage Sale

Members of the Parkland Volunteer Firemen's Auxiliary have a problem! They were getting along fine with preparations for their May 1-2 rummage sale when they received a call to aid the David Wetherell family who lost their home at 13821 South J street and all furniture and personal belongings in a recent fire. Since the purpose of the Auxiliary is to help needy families, supplies collected for the rummage sale were used and now must be replaced. Anyone having useful articles to donate may call LE 1-1325 or LE 7-3737 for pick-up, or leave them at the fire hall, 114th and Pacific. Mrs. Bud Larson is the rummage sale chairman.

BOAT RENTALS



WEEKLY FISHING REPORT:
Fishing is Good.
Weight Limits in 13 Fish.
COMPLETE LINE OF FISHING TACKLE
BILL'S BOAT HOUSE
173rd on the South End of Spanaway Lake—LE 1-0387

Pacific Lutheran College

announces its second annual **FAMILY LIFE CONFERENCE** April 27, 28 and 29

Featuring Dr. Evelyn M. Duvall and Dr. Granger E. Westberg, family life consultants

LECTURES... DISCUSSIONS... PROBLEM CLINICS

Open to the public... no registration fee

3:30 and 8 p.m. sessions in PLC Chapel
For further information, telephone LEnox 7-8611

General Sheet Metal Work

Special Attention to Special Equipment

RAU MFG. CO.

LEnox 7-7372



DON'T MISS THIS COMBINATION!

Good Foods - Lower Prices

YUBAN LUXURY BLEND

COFFEE Lb. **75¢**

ALL PURPOSE FLOUR

PILLSBURY 10-lb. Bag **99¢**

SWANSDOWN REG., STRAWBERRY, LEMON CHIP

Angel Food Mix **39¢**

HI-HO

CRACKERS 1-lb. Pkg. **27¢**

SWANSDOWN

CAKE MIXES White, Yellow, Devils, Butterscotch **4/89¢**

SAVE AT THIS LOW PRICE

SKIPPY DOG FOOD Tall Tin **14/\$1**

NABISCO PREMIUM

2-lb. Pkg.

DUTCH MAID

CRACKERS **47¢** | **OLEO** 5 Lbs. **95¢**

MEATS

U.S. Good Full Cut Round

STEAK Lb. **69¢**

IT'S GOOD - IT'S FRESH

GRD. BEEF 3 Lbs. **99¢**

BONELESS - FULLY COOKED

HAMS Lb. **75¢**

IT'S HERE NOW!

FRESH HALIBUT Lb. **39¢**

FRESH GRAIN FED

PORK STEAK Lb. **49¢**

PURE LARD Lb. **13¢**

Custom Curing and Smoking Lb. **7c**

Custom Cutting and Wrapping Lb. **5c**

PICTSWEET FROZEN

PEAS 10-Oz. Pkg. **7/1.00**

PICTSWEET CUT

CORN 10-Oz. Pkg. **7/1.00**

PICTSWEET FROZEN

10-Oz. Pkg.

Strawberries **2/35¢**

TREESWEET

6-Oz. tin

Orange Juice **5/95¢**



SHAFTER NEW

POTATOES 10 Lb **37¢**

RADISHES OR GREEN ONIONS Bunch **5¢**

Sunkist

LEMONS

Lb. **13¢**

Solid Heads

CABBAGE

Lb. **5¢**

LARGE "AA" WHITE

EGGS Doz. **40¢**

ABC

Lg. Pkg.

FIG BARS **43¢**

HARDWARE DEPT.

BADMINTON SETS

2 Rackets, Net Shuttlecocks... **\$2.88**

REGULATION SOFTBALL Each **95¢**

REGULATION SOFTBALL BAT Each **\$1.30**

BASEBALL GLOVE **\$4.95**

STORE HOURS

9 a.m. 'Til 9 p.m. Daily Except Sunday

SUMMIT TRADING COMPANY

10409 Canyon Road, Tacoma LE 7-584

No Sales To Dealers We Reserve The Right To Limit Quantities

THE AMERICAN WAY



The Siamese Twins — Aid and Control

a-Wondering . . . and a-Wandering . . .
With JACK BROWN

"Are we making a playground out of college?" This is the title of a lead article in a recent issue of the Saturday Evening Post, written by Jerome Ellison. And his answer, sad to say, is a loud Yes. In the words of a subtitle, "Our campuses are becoming marriage mills and fun factories, more devoted to beauty queens than to higher education."

Mr. Ellison is not an outsider looking in. A graduate of the University of Michigan, he has lectured at New York University and for the past four years has taught journalism at Indiana University. As he sees it from his vantage point, there is a growing national inclination "to push education aside whenever it interferes with love or comfort, money or fun." And that, in today's divided world, is something he believes we just can't afford, and I agree with him.

Mr. Ellison provides chapter and verse to make his case. One example is a young man taking pre-dentistry courses. He found these a heavy burden, particularly because of the emphasis on sciences. So he solved his problem by marrying and then switching from dentistry to recreation—"a curriculum which allowed him to become a bachelor of science without ever having to study mathematics, language, chemistry, physics, history or science, but only things like volleyball, archery, lacrosse, deep breathing and refereeing." More and more students, it seems are finding the basic studies "too hard." They'll go to devious extremes to avoid, for instance, foreign languages. And the prevalence of this sort of thing, along with the extent to which college authorities permit it, is something "really to be exercised about."

The trouble, as Mr. Ellison sees it, lies in what he calls the "Second Curriculum." The First Curriculum, of course, includes the studies that colleges are supposed to provide, to exist. But the Second Curriculum, which often takes precedence, consists of funtime and energy consuming activities far removed from education in any academic sense. Mr. Ellison cites the student unions which provide a day and night "rallying point for snacking, dalliance and amusement." He also mentions the prevalence of cars, which permit the students to go far afield in search of amusement, romance, or whatever. He is convinced that the large married minority of our colleges strongly influences the single majority—it turns minds to matrimony, either now or in the future, and away from the business of learning. And he stresses the bad effects of "the standard, souped-up program of professionalized athletics."

Mr. Ellison deals in considerable detail with these factors, and with many others—the rounds of dances, the carnivals and festivals, the entertainments and stunts, the beauty contests and so on. He isn't against amusement—he just thinks things should be in far better balance and perspective than is now the case. And he has proposals which a great many people won't agree with, but are worth noting. He advocates, for one thing, the prohibition of automobiles and the disbanding of fraternities and sororities. And he urges other steps which would put the Second Curriculum firmly in second place and keep it there.

He writes at the end: "We who are concerned about Jack and Jacqueline would like to see more, not less, love on the campus. Besides the inevitable and proper love of comfort and fun, of boy for girl, of status and position, or exercise and sport, of family and children, we'd like to see some love of truth and intellectual achievement, of discovery and high adventure, of beauty, harmony, design and great precision, of mankind and its farthest destiny. We would like, in short, to see the First Curriculum come first."

Flying



With JEANNE

Solos this past week in Tahoma Flying Service's Tri-Travelers at Spanaway Airport were Ronald Yingling, of McChord and Harry Palmer, who manages a Hobby-Bike Shop in Lakewood. Both soloed under the supervision of Slim Lawson.

Carl Olson, of Olson Realty in Tillicum, received his Private License in his Cessna 175 Friday. Murray Anslow, who has had a float plane rating, now has his Land rating.

Jerry Cooley, Steve Bisig, Dick Newman and Bill Black completed their dual Cross - Country flight training this week and are now ready to get in their ten hours of solo cross-country in preparation for their private licenses. Dick Vanderflute took part of his dual cross-country and will complete it this week.

George Musser, with Jerry Hedlund a pilot from Tahoma Flying Service, flew to Sacramento, Stockton and Ukiah, California on business in the Mooney this week.

Wayne, Eve and Wyona Russell flew two of Wyona's friends to Spokane, where they are going to college. They flew over Coulee Dam and other points of interest between here and Spokane.

Arnold Wymer's whole family is becoming interested in flying. His wife had her first flight with Slim this weekend.

Thun Field had two solo Cross-Country trips last week. Howard Beckstrom, in his Ercoupe and Lee Huston, in Thun's Tri-Traveler each took solo cross-country trips to Troutdale, Oregon and return.

Pleasure trips out of Thun Field this last week were: Fred and Peggy Immen to Copalis Beach and return in their Cessna 170; Gene Moyer and his family flew to Portland, The Dalles and return in their Stinson; John Thun and Frank Walley flew John's 172 to White Salmon.

Otto Wicklander has purchased a Cessna 180 and has it hanged right next to his 170 at Thun Field.

Dave Curry and Omer Ytri made their 1st Parachute jumps last week. They are jumpers with the Rainier Parachute Club, who have their headquarters at Thun Field.

Jerry Hedlund of Tahoma Flying Service was seriously injured Monday night when his auto crashed into a pole near Fire. State Patrol officers believed that he dozed at the wheel; he was returning from a business conference in Seattle. He was taken to St. Joseph's hospital with a fractured jaw and other injuries; a Tuesday afternoon report from the hospital indicated that he was doing well. The car was a total loss. Phone your news to Tahoma Flying Service LEEnox 1-0442.

Games Night

Our Lady Queen of Heaven parish will hold another games night Friday, Apr. 24, beginning at 8:00 o'clock. There will be merchandise or cash prizes for the games; refreshments will be served. The parish hall is at South 146th and A streets; the public is invited.

SLEEP AWAY TENSION

ON THE ENGLANDER TENSION-EASE®

IDENTIFIED BY THIS RED LINE

AIRFOAM MATTRESS \$79.75

MATCHING TENSION EASE FOUNDATION \$79.75

20-Year Guarantee TERMS — TRADES

PARKWAY FURNITURE

14103 Pacific Ave. LE 7-3941 Open 'Til 9

Collins News

Collins Grange will meet Thursday, April 23, (tonight) in the Grange Hall at 8:00 o'clock; all members are urged to attend and join in the meeting.

Appreciation

We wish to thank Mr. Ross Heindelman and Collins Scout Troop No. 92, with the Scoutmaster Pete Svynth, for the splendid job of cleaning up the grounds and leveling the back end to fill in the swamp that was at the back. If you have not seen the finished job it would be well worth your time to drive by. Thanks, Ross for donating your time and Bulldozer, and Scouts for your good work too.

Life Membership

Mrs. Will Guilford wife of the Collins principal was presented a Life Membership pin in the P-TA by the Pierce County Council at their last convention. This honor was given to her for organizing the first Rural Parent-Teacher organization in Pierce County at McKenna in 1913. She has been in P-TA ever since. Mr. Guilford was given his Life Membership while he was a principal at Collins school. Thursday all members that have been given this honor will be entertained at a luncheon at the Top of the Ocean. Those from Collins district that will attend will be Mesdames A. O. Anderson, Fred Most, John G. Gorow and Mr. Dave Turnbull.

Thanks!

Mrs. George Shandrow wishes to thank all the friends for the lovely flowers and gifts that was sent to her during her recent illness. She would also like to thank the Rev. Pottinger of Collins Community church and his wife for their kindnesses and comforting words. We are glad to report that she is feeling better and is able to be out some.

Guild

Mrs. Walletha Carlson was speaker for the Ladies Guild of Collins Community church April 13; her topic was "Youth."

Attend Wedding

Mr. and Mrs. Frank Most journeyed to Albany, Ore., recently to attend the wedding of their granddaughter Susan.

Reporter — Mrs. John Gorow, LE 7-7070.

Faith OES Meeting

The evening meeting of Faith Auxiliary OES will be held in the home of Mrs. Forrest Olson, 303 East 123rd street, Tuesday, April 28 at 7:30 o'clock.

Co-hostesses will be Mrs. George Rolstad and Mrs. J. K. Hartsell. A cordial invitation is extended to all Eastern Star members.

The Boston Tea Party took place Dec. 16, 1773.

It's the LAW

Because they have a right, many people think they ought to exercise it. The law does not guarantee your wisdom, even in your most lawful moments.

You have a right to marry or to go into partnership if you like, but do you know the other party well enough? The law lets you buy land or stocks or bonds, but you may still make a bad investment.

It is in driving, though, that people may insist too often upon their rights. Yes, a green light means go; a red one, stop; and yellow one, look out. As a walker, you may as a rule keep on going once lawfully in the cross walk, regardless of how the light turns. But isn't it lonesome and scary and unhealthy out there with the cars whizzing by every which-way?

Play safe, even with the law on your side. The other man may be wool gathering or have his hands full and fail to see you or he might get rattled, or his brakes might fail, and where would you be — for all your rights? True, your heirs might sue him and collect, but that's small cheer to you.

Which driver gets the right of way on streets with no signals? If you and the other driver get to the intersection at about the same time, the driver on the right may go through first. But some people can't remember their right from their left hands in a pinch. Sure, they ought to. But that's no help to you in a hospital.

(This column is written to inform, not advise. Facts may change the application of the law.)

The word "lynching" is believed to have derived its name from Justice Charles Lynch, a Virginia judge of the peace, who in 1780 caused British loyalists to be flogged without giving them recourse to due process of law.

District 402 School Calendar

District 402 School Calendar APRIL 28

FRANKLIN-PIERCE HI-BOOSTER'S will meet on Tuesday, April 28, at 8 p.m. in the school cafeteria, Mr. Floyd Hicks, president. Election of officers for the coming year will be held during the business part of the meeting. Mrs. Howie Snowden, program chairman, will introduce Carol Mills, 1959 Daffodil Queen, who will speak on her experiences during Daffodil Week; and Phil Rousseau, who will present the speech, which won him first place in the state FFA speech contest.

BROOKDALE PRESCHOOL will meet at 8 p.m. Tuesday, April 28, Mrs. A. G. Carrara presiding. Dr. Charles Kemp, Tacoma pediatrician, will be guest speaker, the program theme to be "Contagious diseases," a question and answer period to follow. Officers will be elected and a coffee hour will be enjoyed.

Hawks 4-H Club

The Hawks 4-H club, with Bill Mildon as leader, Dan Mildon as president, Floyd Afrank as treasurer and Ellen Afrank as secretary, has been busy practicing demonstrations.

The club met at Butch Crivelle's home and discussed this Saturday's Rally Day. They have had a paper drive and are planning a contest with an electric frying pan as the prize.

Megan Millican, a member, had her tonsils out; her grandmother, Mrs. Mathilda Truax, also had surgery and her little brother Morgan was in the hospital for treatment.

Fishing And Hunting Licence Tackle - Ammo

Plumbing & Electrical Supplies
Acme Paints & Varnishes
Kem Tone & Kem Glo

Park Ave. Hardware
Corner 83rd & Park Ave.
GR 4-0051

4 NEW TIRES \$47.80

B.F. GOODRICH SAFETY-S
Size 6.70x15 Plus Tax & Retreadable Tire
BLACK TUBE TYPE

TIRES ARE OUR BUSINESS—NOT A SIDELINE

Rays OK TIRE STORES

9639 Pacific Avenue LE 7-7355

ALSO VILLA PLAZA IN LAKEWOOD

People save at the Family Savings Center for security, independence and comfort in old age.

A MUTUAL SAVINGS INSTITUTION

Pacific Federal Savings
and Loan Association
Bellingham • Seattle • Tacoma
Longview • Portland • Eugene

the BEST for BABY

National BABY WEEK
APRIL 25 TO MAY 2

I NEED THE BEST OF BABY PREPARATIONS

• Powders • Soaps • Oils, Everything You Need!

YOU'LL FIND THEM ALL HERE!

McAULEY SUMMIT DRUG

LE 7-0668 9:00 to 9:00 Week Days Airport & Canyon Roads

OLD RANGER MUSHROOMS Large 300 Tins 2 for 89¢	EGGS Large AA Fresh Daily DOZ. 40¢	SAVE \$1.00 PEAT MOSS Bale \$2.98	ASSORTED OLIVES Pints 2 for 79¢	JAMES HENRY PICNICS Lb. 35¢
NEW SOLID HEADS LETTUCE Lb. 9¢	SUNSHINE CRACKERS 1-lb. Box 25¢	NEW SIESTA COFFEE Large 6-Oz. Jar 98¢	RETRACTABLE Ball Point Pens 10 For \$1.00	JAMES HENRY WIENERS Lb. 49¢
MED. SIZE AVOCADOS 2 For 15¢	CINCH WAFFLE MIX 5 Pkgs. \$1.00	FREE FUN!! CASH PRIZES When you play America's best loved Game — 9 A.M., 1450 on your dial, on KAYE Puyallup COME IN FOR YOUR FREE GAME-CARD	RED NO. 1 BLISS Seed Potatoes 100-Lb. Bag \$3.50	DARIGOLD CHEDDAR MILD CHEESE Lb. 49¢
No. 1 Kennewick Large ASPARAGUS 2 Lbs. 35¢	LIFESAVERS OR GUM 4 Pkgs. 15¢	PURITAN FLOUR 10-lb. Bag 69¢	CAMPBELL'S TOMATO SOUP Can 10¢	OLD FASHIONED SAUSAGE Lb. 35¢
PLEASE DOG FOOD No. 1 Tin 14 Cans \$1.00	TROPIC ISLE, CRUSHED PINEAPPLE 303 Tins 5 Cans \$1.00	CHILDREN'S LUNCH KITS Complete with Thermos. (Save \$1.00) \$1.98	HAPPY HOME TENDER PEAS 303 Tins 7 For \$1.00	GRADE A STEER STEAK Round or Sirloin Lb. 79¢

Complete Motor Rebuilding

Lathe Work, Press Work, Valve Seats Installed, Head Surfacing, Piston Grinding, Brake Drum Turning, Reborring, Pin Fitting, Key Seating, etc.

Rupe Machine Works and Garage

AUTOMOTIVE & INDUSTRIAL WORK
13411 Pac. Ave., P.O. Box 2445, Parkland 44, Wn., LE 7-7450

PARKWAY FURNITURE

14103 Pacific Ave. LE 7-3941 Open 'Til 9

McDANIELS MKT. "HOME OF THE LOW PRICE" AIRPORT & CANYON RD.

TUNE IN RADIO STATION KAYE 9: A.M. DAILY

TERRIFIC DISCOUNTS ON ALL GENERAL ELECTRIC APPLIANCES (Floor Models) MUST MAKE ROOM FOR 2 CARLOADS OF MERCHANDISE

OPEN EVERY NIGHT 'TIL 9 SAT. 'TIL 6 LE 7-0231

WHEELERS Your General Electric Corner 8419 Portland Avenue

Benson Grange

At the April 14 meeting of Benson Grange No. 892, Mr. and Mrs. Norton Wells were elected to receive initiation; 1st and 2nd degrees were received by Mr. and Mrs. F. C. Sarver.

A talent skit was presented by Grange members. The skit will be entered for competition when Pomona meets at Kapowsin May 2.

To represent April, Mrs. Julia Hanson showed an ashtray and some photographs depicting scenes of her birthplace in Austria. Mrs.

Esther Moreland brought gifts that she had received from Alaska.

The young people who plan to enter the essay contest, "A Safe Driving Code for Young Grangers," were reminded of the May 1 deadline.

Harold Jacobson reported the progress of the Korean clothing drive the Grange is conducting to assist the Weyerhaeuser church.

The Grange Auxiliary will meet today (Thursday) with Mrs. Emil Lauenborg instead of Mrs. Pecks, as originally scheduled.

April 28 will be Youth Night for the Grange and the young Grange members will participate.

Bethel Jr Hi in Calendar Sale

Last Monday the Bethel Junior High School students began a Bethel Community calendar sale to help raise funds for the Junior High music department. The calendars will include not only the national holidays, but also the birth days and anniversaries of the civic organizations in the Bethel area.

This Community Birthday calendar is not a new idea in the Bethel District as the Senior High School students have sold them in past years to help pay for choir robes and band uniforms. This year the sale was turned over to the Junior High School so that the music department at the school may benefit from the sales.

Heading the committee to sell the calendars is General Chairman Karen Iverson. She will be assisted by Mike Lamka, Ted Kestler, Vernis Benston and Sharon Irons. Glenn Hull, Bethel Junior High music director, is the faculty member in charge of the calendar sales.

The Junior High students within the next few weeks will canvass all of the Bethel district to sell the

Fire Permits

Spanaway Volunteer Firemen wish to remind the public that, according to state fire regulations, permits are required for all open fires from now until Oct. 15. Residents are also cautioned to be very careful with fire during the dry summer months. In the Spanaway area, fire permits may be obtained at South End Plumbing, Kuper's Korner and Tacoma Pump & Well Drilling.

Savings Team in Rolling Bee Win

Monday saw the wind-up of the 1958-59 Rolling Bee League play at Paradise Bowl. The winning team is sponsored by the State Savings & Loan; members are Goldie Danhauser, Eleanor Jones, Adell Holst, Lucille Smathers and Lois Shier.

Second place went to the team sponsored by Avenue Meats.

Calendars. Civic groups will also be contacted, Hull announced, so the dates of their meetings can be placed on the calendars that will be distributed early next fall.

Local Dog Is Champion

Champion Brittauna's Akemo, owned by Bob and Jean Hayes, 1417 East 99th, won his title in a repeat performance by going Best of Winners at the recent German Shepherd Dog Club of Washington State specialty show. Among other winners were several dogs formerly owned by the couple: Doris Gelston's Glenwood's Baron, Nancy Foster's Glenwood's Bern and Harvey L. Landis' Glenwood's Brinda all winning 1st in the classes in which they were shown. Bob and Jean's Haus Sachse's Sue Mac placed 2nd in a very large American Bred class. The Hayes had a very big day.

Other wins from Tacoma were taken by Brittauna's Brenon, owned by Walter C. Rybacki, placing 2nd in American Bred Dogs; Brittauna's Arrassa (Akemo's brother), owned by Betty Chelius, placing 3rd in Open Dogs; Brittauna's Duchess, owned by Patricia Lawthers, placing 2nd in Novice Bitch and Betty Chelius's Brittauna's Bardella went 1st in Open Bitch and Reserve Winners Bitch.

Akemo stepped aside this year after winning Best of Breed last year at the club's show and let his father, American and Canadian Champion Jareaux's Seahurst Buccaneer, go Best of Breed.

Noted Speakers at PLC Family Meet

Two outstanding family life consultants from Chicago will lecture at the second annual Family Life Conference to be held at Pacific Lutheran College Monday through Wednesday, April 27 to 29.

The speakers will be Dr. Evelyn M. Duvall, professional family life consultant; and Dr. Granger E.



Dr. Evelyn M. Duvall

Westberg, associated professor of religion and health at the Federated Theological Faculty and Medical School Faculty, University of Chicago.

The public is invited to the conference which will feature lectures, discussions, problem clinics and



Dr. Granger E. Westberg

private interviews. There is no registration fee, as the cost of the program has been underwritten as a public service by the Lutheran Brotherhood Life Insurance Society.

The schedule for the three-day conference includes a lecture at 9:50 a.m., problem clinics at 11 a.m. and 2:30 p.m., and lectures and discussions at 3:30 and 8 p.m. daily.

WCTU Circles in Spring Institute

On April 28 at 10 a.m. the Julia Holden and Dixon Women's Christian Temperance Unions will meet together for Spring Institute at McKinley Hill Free Methodist church, 3808 East Spokane street.

Mrs. Alta Barker will tell of temperance teaching in church schools and the Armed Services work; Mrs. N. J. Gjuka will give an object lesson; Mrs. Thurston Peterson will talk about Loyal Temperance Legion; Mrs. Alla Burleson will tell about Flower Mission work. Accordion selections will be offered by Mrs. Paul Anderson and Miss Beryl Ring will have the noontide devotion. Luncheon will be served by ladies of the church.

At 1 p.m. there will be an address by Rev. Everett McCormick, pastor of the host church. Mrs. Forrest Sallee will sing; the film strip, "The Grandview Story," will be shown. Mrs. P. J. Brown will explain rules for the poster contest and Miss Louella Angler will discuss legislation.

Members and friends are cordially invited.

Alvin J. Christenson, seaman apprentice, is stationed at the Naval Missile Center, Point Mugu, Calif. He is the son of Mr. and Mrs. Julius Christenson of Rt. 3, Box 285, Tacoma.

Cerebral Palsy Workshop Invites Guests



PROJECTS SHOWN — Lawn ornaments, here being painted by Orlene Graham, are one of the original items made at the United Cerebral Palsy Workshop, 1110 South 13th Street, Tacoma. Open house will be held Friday, April 24th from 2:00 to 9:00 p.m., so that everyone may become acquainted with the work being done here. Refreshments will be served, and free toys given to kiddies accompanied by their parents.

An invitation has been extended to the public to attend an open house at the United Cerebral Palsy Workshop, 1110 South 13th Street, Tacoma, by Ben Harmon, executive director. Hours will be from 2 to 9 p.m. April 24.

The open house will provide the public with an opportunity to see what is being done at the workshop, now in its fourth year of operation. Refreshments will be served, and free toys will be given to children accompanied by their parents.

Cerebral palsy is a lifetime condition, and individuals afflicted with it, are able to utilize their abilities at the workshop, to work at their own speed, and for the first time in their lives, to earn wages. Educated at the workshop so that they may be self-sustaining, they also receive physical, occupational, and speech therapy through workshop facilities.

The workshop specializes in small contract work for light industry. They have just completed a reclamation contract for a large airplane firm, but also accept such work as folding, packaging, labeling, tagging, springing, sorting, stuffing, assembling, collating and stamping. Also done are sacking, sanding, finishing, painting, drilling, filing, glueing, weaving, sewing, and mending.

Many original items are also made by employees of the workshop in order to earn wages. Lawn ornaments, cutting boards, spool boards, potholders, knifeholders, clothespin bags, and doll cradles, are among these items. Some 5,000 Christmas stockings were made and stuffed at the workshop this past year. During the open house, samples of work done by individuals here will be on display.

The workshop is the center of activity for the United Cerebral Palsy organization of Pierce County. It is hoped through the current "53-Minute March" campaign for funds to increase and expand these quarters so that more individuals may be helped to useful lives, and given a place in which to earn a living.

Canyon Road News

LADIES! — Don't forget your date for the Canyon Road Ladies Auxiliary Daffodil Luncheon today (Thursday) at 12:30 p.m. We'll see you all there.

Retirement Papers
M/Sgt Morris W. Rice of the 325th Transportation Squadron of McChord Field received his retirement papers from Col. Charles W. King, base commander March 31. The ceremony ended 31 years and 29 days of active federal service. The sergeant and his family reside on Fairview road. Mrs. Rice and daughter Marion, a graduating senior at Puyallup high school, witnessed the long-awaited ceremony. Sergeant Rice also observed his 50th birthday April 13.

Bad News
Chicken pox seems to have invaded Fairview road the past two weeks. Victims were Mike, Debra and Billy Rose, children of Mr. and Mrs. Duane Rose, and Stephen Westcott, son of Mr. and Mrs. Marshall Westcott.

Ernest Russell Passes
We are very sorry to hear of the passing of Ernest Russell. He had been blind for a number of years and made his home with his cousin, Eugene Russell, and daughter Fern of East 78th street.
Reporter — Mrs. John Folk, LE 7-5801.

PROMPT PERSONALIZED PRESCRIPTION SERVICE

TED SWANSON
INSULIN - VITAMINS
Downtown Prices
Pay Phone Bills Here
PLENTY OF FREE PARKING.
TINCHER'S PHARMACY
8227 Park Ave. GR 4-3344
Across from Fern Hill P. O.

"WE'LL FIX IT —
Never saw a car yet that was so dented, so full of rattles or so badly in need of engine repair that we couldn't fix it!"

COMPLETE AUTO REPAIR
Automatic Transmissions, Tune-up, Brake Service, Carburetor Service, Lubrication, Etc.

"SATISFACTION GUARANTEED"

VOSS BROS. AUTO PARTS
2518 So. 112th JU 8-7252

LUMBER --- ALL GRADES
PAINTS - GLASS - HARDWARE
UPLAND SLAB WOOD

BASKETT LUMBER CO.
9701 Portland Ave LEnox 7-5844

Quality Furniture Values

FAMOUS NAME BRANDS! HUGE SELECTIONS! SENSATIONAL SAVINGS!

21-PIECE 3-ROOM GROUPS

Many Colors and Combinations to Choose From **Priced As Low As \$385.00**

9-PIECE LIVING ROOM GROUP \$168.00
Other Living Room Groups start at \$139.

NO MONEY DOWN
YOU DON'T PAY 1¢ FOR 60 DAYS
(Upon Approval of Credit) Average Credit Clearance 1 Hour.

LIVING ROOM GROUP CONSISTS OF:
Beautiful overstuffed daveno, wide arm chair to match (several colors to choose from) 2 plastic topped, never mar end tables (your choice of color) 1 plastic top never mar coffee table, 2 sofa pillows, and 2 lamps: Total 9 pieces.

Open Evenings 'Til 8:30

5-PIECE BEDROOM SUITE \$189.00

7-PIECE KITCHEN ENSEMBLE \$59.50
As Low As.....

McCLANAHAN'S
8608 SOUTH TACOMA WAY (WE TAKE TRADES) JU 8-4468

Beautiful Harmon dresser, tilting plate glass mirror, sliding door bookcase bed, multiple coil attractive inner spring mattress and matching box spring.

HOME MEMBERSHIP VOLUNTEER COUNCIL

On April 28 at 10 a.m. the Julia Holden and Dixon Women's Christian Temperance Unions will meet together for Spring Institute at McKinley Hill Free Methodist church, 3808 East Spokane street.

VAUGHAN'S VALUES

3 Only HAND MOWERS.....	15.75
45-Lb. SMOOTH ROOFING.....Roll	3.20
6-Foot GRAPE STAKE FENCE (Bundle Covers 4 Foot).....Bundle	2.70
8-Foot HALF LOG FENCING.....Each	32c

ASK ABOUT OUR EASY MONTHLY PAYMENTS

Vaughan's
PACIFIC AVENUE LUMBER COMPANY
84th & Pacific Avenue GR 4-9515

LAF
LE 7-4984 330 Garfield St.

TYPEWRITER RENTALS
SALES AND SERVICE

Store Hours 9:30 to 6:30 Daily except Friday open till 9:00 P.M.

FOR RENT TRUCKS & CARS

MA 7-9039
Save One Half We Furnish Everything

HARMON'S
Driv - Ur - Self Co.
HARMON'S SERVICE
2112 Jefferson
Jim Harmon, Mgr.

BORROW BY CHECK

Let us show you how easy it is to borrow "from the bank"—day or night — every day of the week — Saturday and Sunday, too—with "BORROW BY CHECK", the Northwest's ORIGINAL, most popular and most versatile, revolving loan plan.

84TH & PACIFIC BRANCH
PUGET SOUND NATIONAL BANK
CONVENIENT NEIGHBORHOOD BRANCHES
MEMBER: FDIC FREE CUSTOMER PARKING

Contact one of our convenient offices or use the coupon

PUGET SOUND NATIONAL BANK
1119 Pacific Avenue
Tacoma 2, Washington

Please send information on "BORROW-BY-CHECK", the modern revolving loan plan.

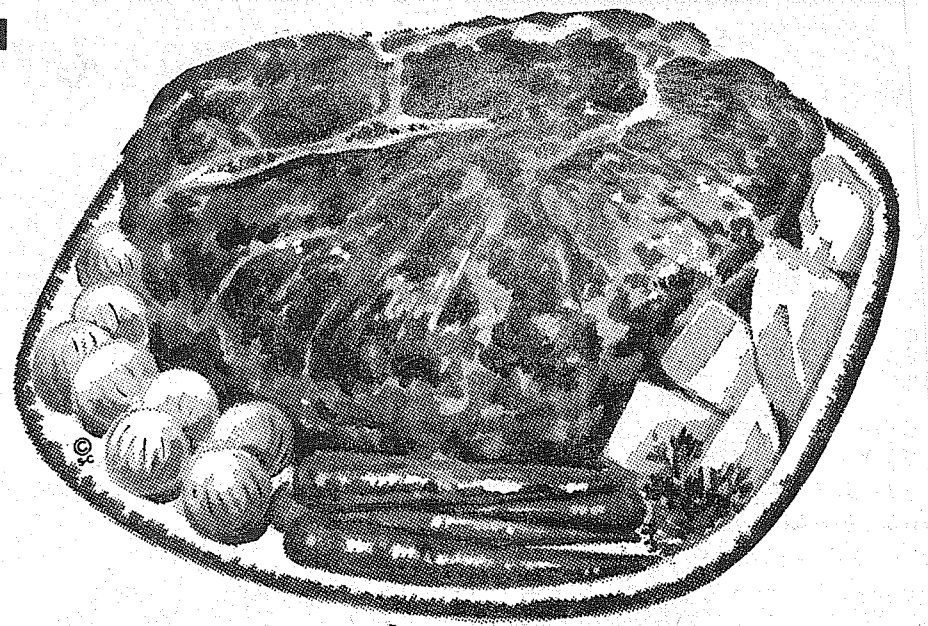
NAME.....
STREET.....
CITY.....ZONE.....STATE.....

BETTER MEATS?

POT ROAST

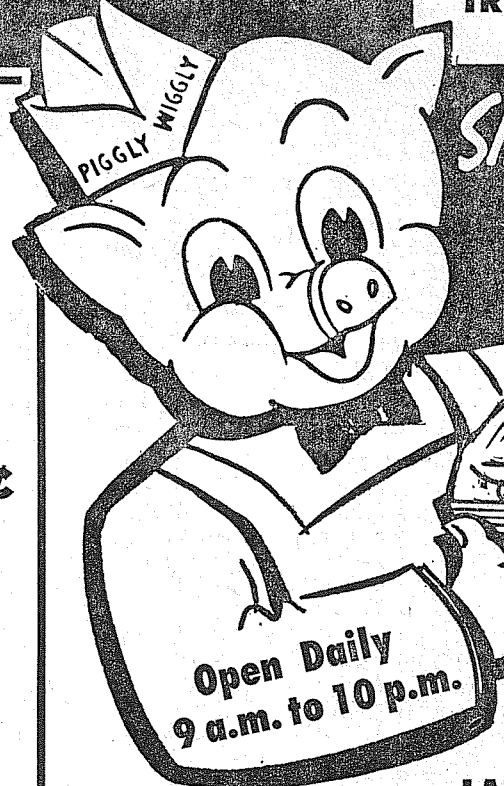
CARSTENS HYGRADE
U.S. GRADED GOOD OR
CHOICE MEATY BLADE
CUTS. EXTRA
FLAVORFUL, WELL
TRIMMED

lb. **45¢**



ALLSWEET
MARGARINE

4 SPECIAL
1-LB.
CTNS.
89¢



Shop **PIGGLY WIGGLY**

FIRST OF THE SEASON
FRESH **39¢**
HALIBUT lb.
Sliced or by the Piece

7-BONE ROAST

CARSTENS
HYGRADE,
GOOD OR
CHOICE BEEF lb. **53¢**

ROUND BONE ROAST

CARSTENS
HYGRADE,
GOOD OR
CHOICE BEEF lb. **59¢**

WIENERS Carstens Hygrade..... lb. 49¢
SLICED BACON Carstens Hygrade lb. 53¢
BOLOGNA Carstens Hygrade Sliced.... 12-oz. Cello 47¢
RED SNAPPER Fresh Fillets.... lb. 29¢

GROUND BEEF
LEAN, PURE, FRESH
GROUND..... lb. **39¢**

GRADE "A"
LARGE STRICTLY
FRESH RANCH

EGGS DOZ. **35**

35

Every item
Piggly
at Wiggly
is guaranteed
100%

MINUTE MAID
FRESH FROZEN
ORANGE
JUICE 6-oz.
tins **599**
(12-oz. Tin 39¢)

TOM. JUICE LIBBY'S 46-OZ. CAN.. **19¢**

MEAT PIES CHET'S TURKEY 8-OZ. 4 PIES **89¢**
BEEF, CHICKEN.

APPLE PIES CHET'S LARGE 24-OZ. **39¢**

PRESERVES KRAFT PEACH 5 12-OZ. **\$1** JARS



For Fast and Easy Meals, try Mission Macaroni Products.
For a Fast and Exciting contest, enter
**MISSION MACARONI • RICE-A-RONI
HYDRO CONTEST**
50 FABULOUS PRIZES!

- Three 1959 RENAULT DAUPHINE CARS
- 17-Foot BRYANT EXPRESS CRUISER with 35 H.P. Evinrude Outboard Motor
- WHITEHOUSE FIBERGLASS RUNABOUT with 18 H.P. Evinrude Outboard Motor
- Many other valuable prizes

Pick up your Mission Macaroni and your entry blank at this store.
COMBINATION SPECIAL! 39¢
1 PKG. LONG SPAGHETTI
1 PKG. ELBO MACARONI Spec.

FREE
NOTHING TO BUY!!!
ONE AT EACH
5 PIGGLY WIGGLY STORE!
the Fabulous—Nationally Advertised
MORSE Super Dial
the World's Most Advanced Sewing Machine
with the amazing FOTO-STITCH

So simple to use...
So many advanced features!

List Price **\$269.95**

Guaranteed by Good Housekeeping
Sponsored by
Morris Sewing Machine Center
5209 South Tacoma Way
Tacoma, Washington
Lakewood Necchi Elna
6111 Mt. Tacoma Drive SW.
Tacoma, Washington

POTATOES
CALIF. NEW SHAFTERS
U.S. No. 1 **3 1/2** lb. **35¢**

LOCAL FARM FRESH
RHUBARB lb. **5¢**

EXTRA FANCY WINESAP
APPLES 2 LBS. **23¢**

SUNNYSIDE NO. 1
ASPARAGUS lb. **15¢**

HI-C ORANGEADE 46-OZ. CAN **25¢**

BUTTER DARIGOLD PRINTS OR QUARTERS 1 LB. **65¢**

(4¢ OFF PACK) 4-ROLL PACK
M-D TISSUE . . . **33¢** | COFFEE HOUSE COFFEE 1-LB. TIN **63¢**

A BIG SAVING AT PIGGLY WIGGLY ON YOUR FAVORITE SHORTENING **3-LB. CAN** **69¢**

MEAT BALLS & SPAGHETTI 24-OZ. **\$1**
—SWIFT'S 3 CANS

DOG FOOD SWIFT'S PARD 2 NO. 1 CANS **25¢**

CHOPPED BEEF SWIFT'S 12-OZ. CAN . **43¢**

TODAY'S BEST BUYS!
Quality
WHITE KING
Products

The "Double Duty" Detergent
GIANT SIZE... 67¢
Easy on the Hands
65c SIZE... **59¢**

Bleaches Without Bleach Odor
14-OZ. CANS **2/25¢**
Gets Clothes Really Clean
GIANT SIZE... 59¢

Saves Soap
LARGE SIZE... **19¢**
5c OFF DEAL

Good Breakfast Means Good Morning!

BUTTERHORNs Reg. 4/39..... **4/35¢**
CINNAMON ROLLS Reg. 8/35..... **3/31¢**
CRULLERS Reg. 6/37..... **6/33¢**
Reg. 1.15 Devilsfood
3-LAYER CAKE **98¢**

Van de Kamp's BAKERIES

ENTER
SHOPPERS' SWEEPSTAKE WIN
28-PIECE SET
"WILLIAMSBURG" STAINLESS TABLEWARE
GET OFFICIAL ENTRY BLANK AT
OCCIDENT FLOUR DISPLAY
10-LB. BAG... **93¢** • 25-LB. BAG... **1.89**

8-QT. PKG. CARNATION
INST. MILK **59¢**
CARNATION NATURAL OR CHOC.
MALTED MILK 15 oz. **45¢**
15-OZ. FRISKIES
CAT FOOD **3/35¢**
12-OZ. PKG. CARNATION
CORN FLAKES... **19¢**

SUN
POWDERED DETERGENT
4 Lge. \$1.00
Pkgs.
GIANT SIZE 57¢

HARDWARE SPECIALS
FIFE STORE ONLY

CLAM GUNS **2.98**
Solid shank, minus tide at ocean beaches this weekend.

HOT CAPS ... 20 for **95¢**
Complete with setter, protect your new plants!

GETZUM "BIG WIND"
PLANT DUSTERS \$10.80
Good quality

PIGGLY WIGGLY
Where you are always served courteously & well

PUYALLUP 1010 EAST MAIN
PARKLAND PACIFIC AT GARFIELD
40th and Portland Ave. TACOMA
S. TACOMA 5252 So. WASHINGTON
Prices Effective Thurs., Fri., Sat., April 23, 24, 25
FIFE FORMERLY ANDRE'S MKT.

IGA YOUR SPARKLING FOOD FAIRY LAND IGA

FOODTOWN

SWIFT FULLY COOKED, 4-8 Lb. Average

PICNICS Lb. 39¢

IGA TABLERITE BLADE CUT

POT ROAST Lb. 47¢

IGA TABLERITE

GROUND BEEF Lb. 39¢

ARMOUR'S STAR

S'CED BACON 2 Lbs. 1.09

IMPERIAL MARGARINE 1 Lb. 39¢

CARNATION TALL TINS STARKIST CHUNK NO. 1/2
MILK can 10¢ TUNA 4/95¢

STOKELY NO. 303 UKELELE SLICED NO. 2
Applesauce 6/\$1 Pineapple 5/\$1

IGA QT. IGA 20 OZ.
Mayonnaise 45¢ STRAWBERRY PRESERVES 35¢

IGA 18-OZ. IGA 3 LB. FREEZER JAR
P'nut Butter 45¢ P'nut Butter \$1.19

ALLSWEET 23c LB. MD 4-ROLL PACK
Margarine 4/89¢ TISSUE 29¢

100 FOOT WAXTEX 19¢

NULIFE FARM & GARDEN FERTILIZER 80-Lb. \$2.88
SPECIAL OFFER!
12 pc. Individual Casserole Set
Brillo 23¢

GOLD SHIELD COFFEE 1 LB. 69¢

N-B-C GRAHAM CRACKERS 1-LB. 33¢

STRAWBERRIES Box 19¢

LETTUCE Pound 7¢

RHUBARB Pound 5¢

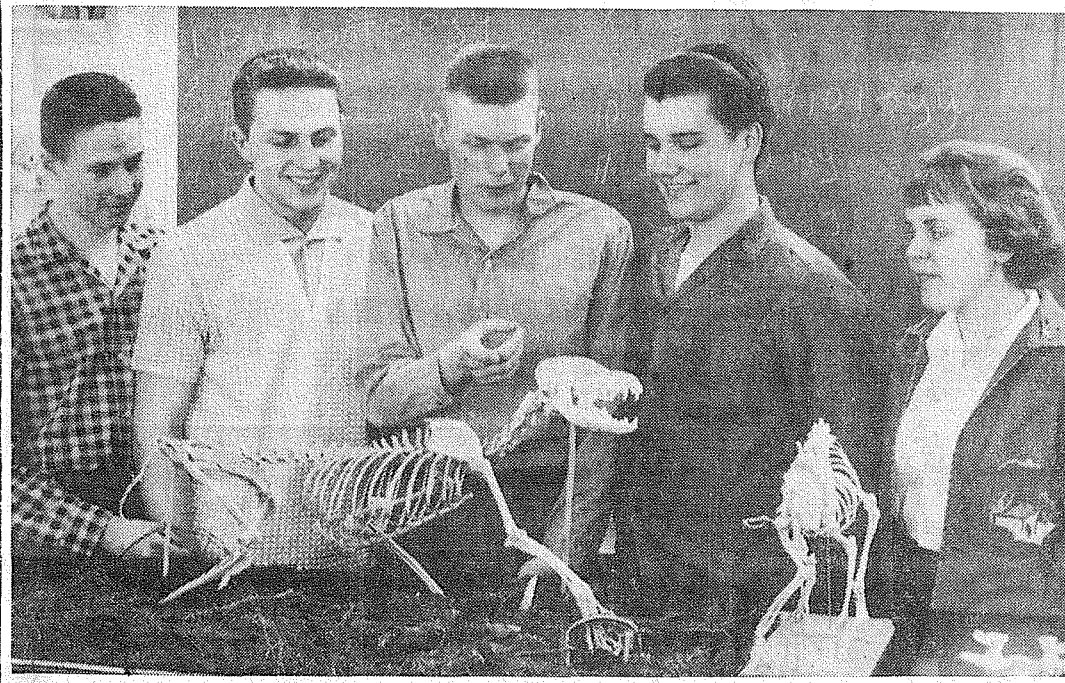
CABBAGE Pound 5¢

AVOCADOS 2/19¢

Radishes - Gr. Onions 3 Bun. 13¢

Airport (112th) At Park Ad Days April 23-24-25

Franklin Pierce Hi Students to Enter Science Fair



FP SENIOR HI COMPETING — Science Fair entrants talk over the big CPS show and their own entries. From left to right are Willis Gilleland, Dan Kratchavil, William Wallace, Jim Mirous and Judy Leraas. Wallace received honorable mention for his "Survival of the Fittest" entry. (Photo by C. R. McMillan.)



JUNIOR HI REPRESENTED — Junior High winners, Darrold Anderson and Bob McFarland, pose with their winning projects. McFarland took second place in the biological division while Anderson took honorable mention in the physical science part of the fair. McFarland entered an "ant colony" project while Anderson demonstrated a volcano cross-section. (Photo by Ken Parker.)

Franklin Pierce School District made its first major entrance into science fair competition two weeks ago when some 15 senior and junior high schoolers entered the College of Puget Sound Science Fair.

Leading the contingent of successful project builders was Bob McFarland, an eighth grader at the Morris E. Ford Junior High. McFarland's "Ant Colony" took second place in the biological science division of the Junior High School students who won honorable mentions include Darrold Anderson.

William Wallace, a Franklin Pierce High School sophomore, won honorable mention in the biological division for his "Survival of the Fittest." Wallace depicted Darwin's famed theory by showing a constructed skeleton of an animal being caught by a man-made trap.

Teachers who handled the junior high schoolers included Frank Berry, Donald L. Pattie, Nicholas K. Yost and Robert N. Ruby. Clifford R. McMillan, science and math department head, led the high schoolers. Students of Mrs. Ina H. Wake, and Eldon Kylo participated in the program.

Participants from the high school were Willis Gilleland, Dan Kratchavil, Jim Mirous and Judy Leraas.

Waller Road News

The next meeting of the Waller Road Garden club is scheduled for May 7 at 8 p.m. at the Community hall. Mrs. Rudolph Geise will speak on the successful planting of seeds in the open ground. Mrs. Jack Johnson will talk on outdoor living (patios and patio planting). Members are encouraged to enter horizontal or vertical line arrangements for study and comment. A plant exchange is on the agenda.

Members of the Garden club presented two beautiful Forsythia bushes to the Waller Road school for Arbor Day. In the absence of Mrs. Florence Martin, principal of the school, they were accepted by Mr. Maxwell. Two more shrubs will be planted soon by the Garden club. You are welcome to visit the Garden club meetings; husbands and wives alike may belong.

Explorers
A very wonderful program of Explorer scouting is being made available to boys in that particular age group. A. H. DeMeerleer is Post Advisor. Any young fellow wishing to join may call Mr. DeMeerleer for information.

In Service
Charles Bothwell, son of Mr. and Mrs. Charles W. Bothwell of 7714 Waller road, has left for basic training with the Coast Guard Reserves at Alameda, Calif. A group of his neighborhood friends gave a farewell party at the Bothwell home before he left.

Funeral services were held April 10 in Tacoma for Mrs. Ruth Metcalf, former resident of the Waller Road district. The Metcalf family lived at 72nd and Vickery for many years.

School Vote
The Puyallup School Directors in presenting the two propositions for elementary construction to the voters at the May 5 election propose an extensive program for constructing elementary classrooms. "This program will directly or indirectly benefit all the elementary children in our school district," stated Howard Thomas, school board president. "The program was unanimously adopted by our school directors after a full year of study with the help and recommendations of the Puyallup Citizens Committee for Education."

Waller Road citizens are urged to co-operate in getting out the vote for this election.

Kindergarten
Children who will be entering kindergarten in the Puyallup public schools in September should be registered April 29, 30 or May 1, 1 to 4 p.m. in Stewart, Spinning, Karshner and Waller road districts, 10 a.m. to 4 p.m. in Maplewood, Woodland and Meeker. Students should be registered in the school where they reside, even though that school building may not have kindergartens.

Requirements for enrollment:
1 To be eligible for kindergarten

PRE-FAB HOMES
Delivered to your lot complete with pier foundation, wiring, plumbing and fixtures, roofing, insulation, electric range, refrigerator and hot water tank.

TO PARKLAND FOR
2-B.R., 24' x 26'.....1249.00
3-B.R., 24' x 34'.....1635.00
3-B.R., 24' x 50'.....2410.00
4-B.R., 24' x 52'.....2410.00

BUDGET HOUSING CO.
2200 Simpson Avenue
Hoquiam, Wash.
Phone GE 9-1280

home before he left. Mrs. Bothwell will be visiting relatives in Pleasant Hill, Calif., in June and will be looking forward to seeing Charles at that time.

Evergreen Baptist
Evergreen Baptist church 92nd and Waller road, will be sponsoring an evangelistic campaign April 27 through May 1 with services at 7:30 o'clock each evening. Harold Howard will be the speaker. Pictures will be shown and there will be awards for children.

Funeral services were held April 10 in Tacoma for Mrs. Ruth Metcalf, former resident of the Waller Road district. The Metcalf family lived at 72nd and Vickery for many years.

Cyril E. Cnlow of 4925 Waller road passed away April 9 in a Valley hospital. He was a long-time resident of Waller Road.

School Vote
The Puyallup School Directors in presenting the two propositions for elementary construction to the voters at the May 5 election propose an extensive program for constructing elementary classrooms. "This program will directly or indirectly benefit all the elementary children in our school district," stated Howard Thomas, school board president. "The program was unanimously adopted by our school directors after a full year of study with the help and recommendations of the Puyallup Citizens Committee for Education."

Waller Road citizens are urged to co-operate in getting out the vote for this election.

Kindergarten
Children who will be entering kindergarten in the Puyallup public schools in September should be registered April 29, 30 or May 1, 1 to 4 p.m. in Stewart, Spinning, Karshner and Waller road districts, 10 a.m. to 4 p.m. in Maplewood, Woodland and Meeker. Students should be registered in the school where they reside, even though that school building may not have kindergartens.

Requirements for enrollment:
1 To be eligible for kindergarten

FERN HILL BEAUTY SHOP
Regular \$16.50
PERMANENT Now \$10.00
• Hair Cutting • Styling • Tinting
GR 4-3177
8337 Park Avenue

Prescriptions INSULIN
Open 9:30 to 9 Weekdays (Closed Sunday)

SPANAWAY DRUG
165th & Pacific LE 7-5993

Teachers Attend Reading Seminar

Four Franklin Pierce School District Elementary teachers took an active part in last Saturday's Washington Reading Development Conference at Woodrow Wilson High School in Tacoma. More than 2,000 primary teachers attended the Saturday sessions which were checkfull of helpful hints for teachers.

The "Word" meet saw Mrs. Ruth Olsen, Mrs. Marjorie McCue and Mrs. Elizabeth Sullivan demonstrate the instruction of a blind child in the public school. Display of teaching aids, and materials for use with blind children in regular classroom work. The three Harvard elementary teachers distributed mimeographed games for the blind.

Mrs. Mary Teasley, Parkland instructor, conducted demonstrations of visual aids and their part in the teaching of beginning reading.

Countless numbers of Pierce elementary teachers attended the Wilson affair. Mrs. Ruth Gaume directed Franklin Pierce's participation.

Grade School Menu

SCHOOL MENU FRANKPIERCE

Monday
Tomato soup, Crackers, egg salad sandwich, celery sticks, cinnamon rolls, milk.

Tuesday
Macaroni, Cheese, harvard beets, raisin bread sandwich, spiced applesauce, milk.

Wednesday
Pork-U-Pine casserole, rainbow salad, bread and butter sandwich, sliced peaches, milk.

Thursday
Potato salad, hot dog, chilled tomato juice, chocolate cake, milk.

Friday
Creamed tuna on baking powder biscuits, spring salad, French dressing, grapefruit sections, milk.

FREE INSTALLATION
COMPLETE LINE OF LAWN AND GARDEN SUPPLIES

—RENTALS—
GARDEN TILLER
HAND SANDER
POWER MOWERS
FLOOR WAXERS
RUG SHAMPOO MACHINE
For That Professional Job

Parkland Hardware
12169 Pac. Ave. LE 7-3171
Across from Piggly Wiggly

FOR GRADUATION

Give Her the Gift She'll Need the Most
A NECCHI or ELNA SEWING MACHINE

With these Fully Automatic Machines she can have all the clothes she needs with that smart tailored look and at tremendous savings. A truly life-time gift of lasting satisfaction.

\$99.50

TERMS - TRADE-INS -FREE SEWING LESSONS

LAKEWOOD
NECCHI-ELNA CO.
411 MT. TACOMA DRIVE S.W.
LAKEWOOD CENTER
JU 8-2331

Till close to hedges, under shrubs!

Simplicity Roticut TILLER-CULTIVATOR

Plenty of capacity for tilling or cultivating heavy soils. Non-winding, self-sharpening tines, guaranteed against breakage! "Fastatch" time assemblies (8 1/2" to 29") change in seconds. Full working visibility. Ask us for a demonstration today!

Now 3 hp!

First with finger-tip POWER REVERSE
AVENUE FEED
98th & Pacific Avenue LE 7-4546

SHOP AT BIG BEAR

There's no doubt about it... your local Big Bear store has the better values!
You'll find your favorite nationally known brands at lowest possible prices.



CAMPBELL'S

TOMATO SOUP No. 1 can **10¢**

BETTY CROCKER White, Yellow, Devils Food or Honey Spice!

CAKE MIX 20 oz. Pkg. **25¢**

GRADE 'AA' Guaranteed Farm Fresh at all Big Bear stores!

LARGE EGGS Per Doz. **37¢**

- BISQUICK** SHORTCAKE TIME! 40-oz. pkg. **39¢**
- FROZEN FRUIT PIES** Morton, Apple, Peach, Boysenberry or Cherry 24-oz. pkg. **43¢**
- HUNT NEW POTATOES** No. 300 can **10¢**
- LIBBY TOMATO JUICE** 5 46-oz. cans **1.00**
- LIBBY GARDEN PEAS** 5 No. 303 cans **95¢**
- CUT GREEN BEANS** LIBBY BRAND 5 No. 303 cans **95¢**
- CORNERED BEEF HASH** LIBBY BRAND No. 1 can **39¢**
- HERSHEY COCOA** 1-lb. pkg. **69¢**
- JOLLY TIME POPCORN** 10-oz. can **21¢**

CHUN KING AMERICAN-ORIENTAL FOOD SALE!



- CHICKEN CHOW MEIN No. 2/4 Cantonese Pack **93¢**
- CHICKEN CHOW MEIN No. 303 Can **49¢**
- CHOW MEIN NOODLES No. 2 1/2 Can **29¢**
- CHUN KING SOY SAUCE 5-oz. Bottle **19¢**
- CHOP SUEY VEGETABLES No. 303 Can **29¢**
- BEAN SPROUTS 2 No. 303 Cans **29¢**

STRAWBERRIES full cup **23¢**

Full cups of top quality, California grown luscious ripe berries.

HORMEL READY-TO-SERVE HAM **49¢**

WHOLE OR SHANK HALF 14 to 16-lb. AVERAGE

This is the quick and easy way to please the family at dinner-time. Delicious flavor and a universally favorite food. See Big Bear!

BOSTON RED LETTUCE Per Head **10¢**

Big, clean heads with easy-to-separate leaves. Deliciously different.

FRESH ASPARAGUS Per Lb. **15¢**

Washington State grown, top quality U. S. No. 1 Grade... full flavored!

RED RADISHES OR GREEN ONIONS 3 LARGE BUNCHES **14¢**

Home grown, garden fresh and zesty!

BEDDING PLANTS
Snapdragons, Pansies, Petunia's, Stock, Lobelia, Primroses, Carnations, Potted Geraniums and others. All hardy, well-weathered plants in handy baskets!
Peat Moss N-riched and Alaska Liquid Fish Fertilizer.



BIG BEAR
A DIVISION OF **Lucky STORES**

ROUND STEAKS lb. **83¢**

CHOICE—Delicious with any meal... full cut and makes an ideal Swiss Steak. Big Bear has 'em.

RUMP ROAST lb. **79¢**

CHOICE—These are well trimmed and make a wonderful oven roast. See Big Bear for these!

Store Hours: 9 to 11 Weekdays **ALL MEAT WIENERS** lb. **49¢**
SUNDAY 9 TO 9 CARSTEN HYGRADE—Extra delicious in a variety of ways. Serve 'em tonight!

133rd at Pacific **FEDERAL PIECE BACON** lb. **39¢**
Parkland Nice and lean and your choice of a whole or half slab. Buy at Big Bear!

PURE LARD 2 lbs. for **29¢**
FEDERAL—Now featured at the lowest price in years. Buy now, save!

Elk Plain News

Save the Date! May 8 is the date for the greatest show in the Elk Plain area...

with Miss Karol Lynn Kreidler, sister of the bride, and Lewis Martin, brother of the groom...

Quickie Shine Spray

The No. 1 Aerosol Shoe Polish

Your WINEGARD color ceptor dealer offers you these buys in . . .

- USED TELEVISION SETS
17" PACKARD BELL \$ 49.95
17" MOTOROLA (Just Overhauled) \$ 65.00
21" WESTINGHOUSE (New Picture Tube) \$ 99.50
24" G-E, New Picture Tube, 90-Day Unconditional Warranty \$129.95

TELEVISION SERVICE CENTER
Your Winegard Color Ceptor Dealer
8431 Pacific Avenue GR 2-3386



PIE, ANYONE—Mrs. Henry Trusler, chairman of the Lacamas Fair Dance Committee, helps Tom Davis, a Lacamas teacher, with a mouthful of pie as Larry Dove, (on the right) watches with keen interest.

The special feature of the dance will be the pie eating contest to be held at 11 p.m. during the intermission.

make the contestants eligible for a chance at a first prize that has been valued at \$15.

American Legion News

Parkland Post No. 228 By Hazel Mackey
Parkland American Legion Post and Auxiliary No. 228 will again hold their joint meeting this (Thursday) evening at 8 o'clock at Sunshine hall.

OUTSIDE BARN & HOUSE PAINT SPECIAL \$2.98 Gal. Open 7 Days a Week 7 a.m. - 9 p.m. Barsotti & Timm

ADDRESS P.O. BOX 2008, PARKLAND, WASHINGTON
119th and Pacific Avenue Phone LE 023
PUBLISHER NEVA T. HONEYWELL
EDITOR CURT MAY
ADVERTISING ESTHER GODDARD
ADVERTISING NANCY LARSON
ACCOUNTING CHEET CHAMBERLAIN
SHOP FOREMAN DAVE HIBBARD
CIRCULATION DOLORES BROWN
PHOTOGRAPHER WES MCKEWEEN

The Auxiliary of Kapowsin Rebekah Lodge No. 241 will meet April 29 at the home of Mrs. Ewart Tinius for a 12:30 potluck luncheon.

WE REPAIR ALL MAKES AND MODELS OF TELEVISION
Also call us for repair on any portable, transistor or table style radio. Low prices and guaranteed service!
BIXBY TV - RADIO
12503 Waller Rd. LE 7-8309

Introducing THE SOUNDCRAFT
19, 24, 25-Foot
Either Finished or Unfinished
Norlund Silva Boat Co.
3376 Lincoln Ave.
Week Days, Sat., 8:00 a.m. to 5:30 p.m.
Sundays, 11:00 a.m.-4:00 p.m.

SEE THE NEW 1959 LINES
Schwinn Bicycles - Savage Lawnmowers
Motor Scooters - Go-Carts
LAWNMOWER SHARPENING, ENGINE PARTS & REPAIRS, AND BICYCLE RENTALS
PARKLAND CYCLE & KEY
11021 Pacific Avenue LE 7-5772

EVERYONE Likes Bargains

GIRLS' BLOUSES 79c
Men's White SWEAT SHIRTS \$1.00
BOYS' JEANS AND SPORT SHIRT COMBINATION \$1.99
Men's Canvass Oxfords \$2.98
Misses' Twill & Denim JEANS \$2.49

100 Per Cent Dacron SLEEPING BAGS \$14.98
AIR MATTRESSES \$2.99

Women's Cotton HOUSE DRESSES \$2.98
Girls' PEDAL PUSHERS \$1.98

Women's DRESS SHOES \$1.98
9714 PACIFIC AVENUE LE 1-0661
Women's Black CORDUROY SKIMMERS \$1.99

SEYMOUR'S

Woodland News
The Fruitland Water Co. has installed a fire hydrant at the corner of Fruitland and Lunblad roads...
Preschool
Woodland Preschool party time will be April 28, 1:30 to 2:30 p.m. at the school.

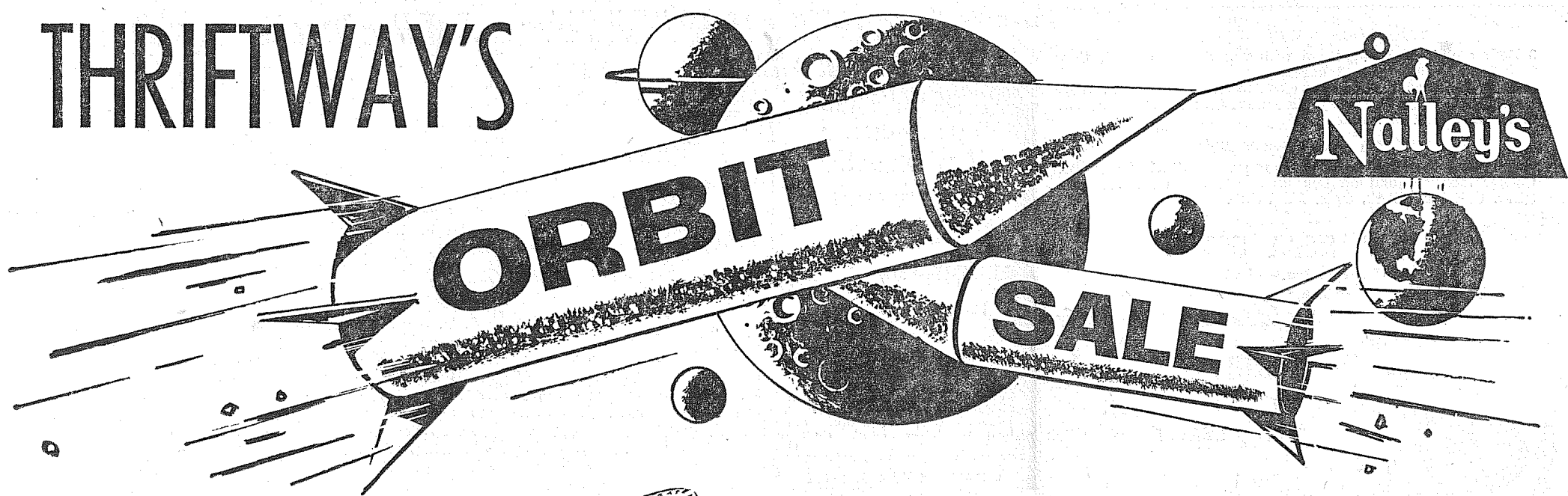
FLETT DAIRY
FARM FRESH HOMOGENIZED AND PASTEURIZED MILK AND CREAM
ICE CREAM
Phone GR 2-3301

DEPENDABLE PHARMACY SERVICE
Bob Vaughan Owner
TUSSY 1/2-PRICE SALE
Reg. \$1.00 Size 50c
Cream, Stick or Roll On
Parkland Rexall Pharmacy
Pacific Avenue & Airport Road LEnox 7-8636

THE BARGAIN BASKET 167th & PACIFIC AVE. SPANAWAY
MUTTON SALE
PARKAY MARGARINE 4 lbs. \$1
NALLEYS MAYONNAISE 59c
SIRLOIN TIP ROAST 69c
James Henry SLICED BACON 39c
Rib or Sirloin BEEF STEAKS 69c
Fresh—First of the Season Halibut Steaks 39c
Ballard Biscuits Roll 10c
SALAD SPECIAL
Lettuce 9c
Tomatoes 19c
Radishes and Green Onions 3 Bun. 10c
Salad Mix Cello 10c
T-BONE STEAKS 79c
Selected Cuts POT ROAST 43c
Well Trimmed RUMP ROAST 59c

House hunting?
There's nothing quite like the excitement of looking at homes for sale or working with an architect on a new home that's the answer to your dreams.
The Bank of Personal Service
PARKLAND BRANCH
MEMBER FEDERAL DEPOSIT INSURANCE CORPORATION • MEMBER FEDERAL RESERVE SYSTEM

THRIFTWAY'S



NALLEY'S LUMBERJACK SYRUP
22-oz. Bottle **29^c**

POTATO CHIPS
NALLEY'S 10½-OZ. CARTON **49^c**



NALLEY'S TANG MAYONNAISE
Salad Dressing Quart Jar **39^c**
NALLEY'S Quart Jar **49^c**



DILL PICKLES Nalley's Banquet, Reg., Kosher - 24-oz. **3/\$1**
CUCUMBER CHIPS Nalley's 16-oz. Jars **5/\$1**
SPAGHETTI & MEAT Nalley's 15-oz. **4/\$1**
NALLEY'S BEEF STEW 15-oz. **35c**
NALLEY'S CHILI Regular or Hot - 15-oz. **29c**
FRENCH DRESSING Nalley's 8-oz. Bottle **19c**

ARMOUR'S STAR PICNICS lb. **29^c**

VOLUME **5**
COOK BOOK AVAILABLE
Ea. **39^c**

PORTER SLICED BACON lb. **39^c**

CALIFORNIA WHITE SHAFTER Spuds 10 lb. **39^c**

PORK CHOPS Fresh Eastern Corn Fed Lb. **59^c**

FRESH TENDER PEAS 2 lbs. **25^c**

Gerber Baby Food Str. 4½ Oz. **10/79^c**

NEW CROP CABBAGE lb. **5^c**

Bumble Bee Tuna Chunk Style ½'s **4/\$1⁰⁰**

CALIFORNIA FANCY LEMONS lb. **15^c**

For Your Cat — 15-oz.
Puss'n Boots 4/49c
Friskies 15-oz. Cans
Horse Meat 2/45c
Doxsee — 15-oz. Cans
Clam Chowder 4/\$1
Vernell's Reg. — 7-oz.
Butter Mints 4/\$1

Cream of Wheat Quick or Reg 28-oz. Pkg. 37c	Krispy Crackers Sunshine 1-Lb. Pkg. 29c	Darigold Milk Tall Cans 3/43c	Apple Juice Tree Top 46-Oz. Can 37c	Giant Tide 5c Off Pkg. 74c
Liquid Wisk Detergent Quart Can 77c	ALL 10 Lb. Pkg. 2.59	Lux Soap Asstd. Reg. 3/32c	Lux Liquid 32-Oz. Can \$1.05	Paper Plates Mullen 80 Ct. Pkg. 78c

SHUR-FINE FLOUR 10 lbs. **69^c**

BOYD'S COFFEE
2-Lb. Can **\$1.09**

Prices Effective April 23, 24 & 25

Swanson Frozen Foods
Cut-Up Fryers 1-Lb. 12-Oz. **98^c**
Chicken Thighs Lb. Pkg. **69^c**
BREASTS Swanson Lb. Pkg. **69^c**
DRUMSTICKS 1-Lb. Pkg. **79^c**

KRAFT PARKAY MARGARINE
Lb. **23^c**
4/89^c

SUMMIT VIEW THRIFTWAY

AIRPORT AND CANYON ROADS

Classified

Page 10 Thursday, April 23, 1959 The TIMES JOURNAL

Sharp
Cheese lb. 59c
Crescent—2-oz. Each 10c
Blk. Pepper 10c
Zee—80 Count
Napkins 2 For 23c
New Instant Reg. Size
Ivory Flakes 29c
Swift
Lamb Liver lb. 31c
Swift Premium
Bologna lb. 39c
Swift Boneless, fully cooked
Ham lb. 77c
Swift
Franks lb. 49c
Avocados ca. 9c
Large
Oranges lb. 10c

Gibbons FOOD CENTER

SPANAWAY

Business Service 3
BULLDOZING, Backhoe Ditching, hourly \$9. Gravel, Top Soil. Reasonable. LE 7-0114.
TRACTOR WORK - Two bottom plow and disc. LE 7-4441.
Residential and Commercial PAINTING
Taping and Texturing
Broadwell Painting
LE 7-6893
WE BUILD HOMES—Remodel, level buildings; cabinet work, concrete work. Reasonable. LE 7-9550. 3ctf
CANYON ROAD GRAVEL AND SUPPLY. Pick-ups and trailers loaded or we haul. LE 7-5948. 3ctf
GEORGE F. DUDUE—Plumbing, Heating. New work, remodeling, repairs. Phone LE 7-4477. 3ctf

ECONOMY KITCHENS
Remodeling - Roofing & Siding Foundations
LORD'S CONSTRUCTION CO., INC.
10428 Pacific Avenue. LE 7-6779
PAINTING, sheetrock taping and finishing. LE 7-8564. 3ctf

CALL POCHEL FOR Expert T.V. Repair
Satisfaction Guaranteed
Free Tube Testing
140th & Pacific LE 7-8624

ART'S SHOE SHOP
Shoes for the Entire Family
EXPERT SHOE REPAIRING
315 Garfield St.
Between 121st and 122nd
Opposite Parkland Postoffice

BULL-DOZING
Excavating • Grading
Gravel
LE 7-5112

Hot Water Heating Residential and Remodel Work CORNELL PLUMBING & HEATING
LEx 7-7293

Webb Electric
8240 B PACIFIC GR 2-2902
Notice to the DO IT YOURSELF BUILDER
See us for advice on your wiring problems.
Estimates are free
LEx 7-4437
EMERGENCY PHONE

RADIO and SERVICE
ABC ELECTRONICS
Garfield & C Streets
LE 7-4900

TOP SOIL SANDY LOAM
LE 7-6391

HOME PLUMBING & HEATING CO.
REPAIRING, REMODELING
NEW CONSTRUCTION
328 Garfield St. Parkland
Call Day or Night
LE 7-4615

UPLAND SLAB WOOD
CALL LE 7-5844
BASKETT LUMBER CO.
UPLAND SLAB WOOD, 2 cords \$14.
LE 1-9308.

Ace Dirt Moving Co.
Bulldozing - Ditching
TOP SOIL - GRAVEL
SEPTIC TANKS and
DRAIN FIELDS
Phone TH 5-2452

WELL DRILLING
Berkeley Pumps
JETS
SUBMERSIBLES
CENTRIFUGALS
TURBINES
Call LE 7-7281

TACOMA PUMP & WELL DRILLING CO.
14619 PACIFIC AVENUE
Terms Trades

JACK SHANK'S
Refrigeration Service
Parts & Service for All Makes
LE 7-0178

LAKEWOOD RAMBLER, \$16,750
3 Bedroom, 30 ft living room with wall-to-wall carpet, fireplace, hot water heat, 2 car garage. Lawn in, and fenced back yard. Excellent location close to shopping center. \$1800 down, FHA, or you can buy GI equity. Call for appointment. Eves LE 7-7532. Mr. Todd.

96th AND McKINLEY
8 Lots and dandy 2 bedroom home with attached garage. Corner location, and on bus line. Will sell on EZ terms, \$6250. Call Mr. Black, eves. LE 7-3272.

RURAL REAL ESTATE
14403 Pacific Ave. — LE 7-5440
We Take Anything—Airplane, Car, Trailer, Boat, etc. Trades

WE HAVE BUYERS FOR YOUR HOUSE!
Listings Wanted
DICK DEVEREAUX
REALTY
Buying or Selling
Call LE 7-8659
11002 Pacific Avenue

SEPTIC TANK CLEANING
Prompt Service
C. V. HUTSON
GR 4-3980 GR 2-7038

Parkland Heating Co.
All makes of furnaces for sale.
Specializing in Williams Oil
'O' MATICS; Oil, Gas, Hot Water
Installations. Service; reasonable; 755 South 108th. LEx 7-4045. 3ctf

SPANAWAY ELECTRIC CONTRACTORS
Residential & Commercial
Heating & Electricians
LE 7-7064 LE 7-4792

NEAT BEAUTY SHOP
GR 2-7628
6314 McKinley Avenue

South End Auto Wreckers
USED PARTS—Motors, Transmissions, Tires, Batteries. We buy junk cars. Also Custom welding by Joe's Welding. 1 Mile East Roy on Mt. Hy. Spanaway LE 7-6534

Fuel 4
FOR SALE—Heavy planer ends, Small and large loads. EICHLEBER PUEL, Puyallup TH 5-2857. 3ctf

'BEAUTY COUNSELOR'
HAS OPENING FOR 3 PERSONABLE LADIES
Full or Part-Time
NO CANVASSING
WILL TRAIN
For Appointment
Call After 5:30
GR 2-8331

Repairs Service 11
WASHING MACHINE PARTS
Largest stock in town. Repairing that pesky BB's Washer Service 3727 So. G GR 4-3439. 3ctf

LAWN MOWER SERVICING
Briggs & Stratton, Clinton, Power Products & Lawson. Engine Parts and Repairs.
PARKLAND CYCLE & KEY
LE 7-5772. 11021 Pacific Ave. 11ctf

OUR SPECIALTY Automatic Transmission Repair SHERIDAN MOTORS
10203 So. Sheridan LE 7-3340

COMPLETE CAR SERVICE DONE BY EXPERTS
ROLLINS GAS-LAND AND D&W AUTO REPAIR
166th and Pacific LE 7-5155

Automotive 12
1959 FORDS AND CHEVROLETS - Wholesale prices; bank terms; SMALLLEY'S MOTORS, 10410 Pacific Ave. LE 7-4060 anytime. Open nights also. 12ctf

12A Foreign Cars
- ALL - FOREIGN CAR KEYS
PARKLAND CYCLE & KEY
11021 Pacific Ave. LE 7-5772

Farm Column 13
FOR SALE - 575 De Kalb having hens 9 months old, \$1 each for any amount. Phone WA 2-5656. 14c3c

Feed, Seeds and Fertilizer SELLE'S FARM SUPPLY STORE
(Graham VI 7-2127)
BOAF SERVICE; 3/4 Palouse; LE 1-1125. 13ctf

Work Wanted 14
SEWING; Drapes making at my home. LE 7-3329. 14c3c
WANTED—Ironing in my home; 75c an hour. LE 7-3106. 14c3c
BABY SITTING, your home or mine; 1312 South 120th. LE 1-0416. 14c3c
IRONING in my home, 80c an hour; LE 1-0348. 14c3c

Miscellaneous 15
17 CAMPING TRAILER with electric refrigerator, 210 East 6th. LE 7-3829. 14c3c
FOR SALE—Small davenport, mar- bone, \$25. LE 7-4322. 15p3c

CASH FOR CARS and EQUITIES
HOURS:
8:00 - 9:00—Closed Sunday
TED'S
920 River Road, Puyallup
TH 5-1609 BR 2-8989

STORKVILLE Baby Shop
Everything For Baby
Including Furniture
9618 Pac. Ave. LE 7-4664

Horses & Equip. 16
FOR SALE—Western saddle, two bridles, good condition, reasonable. Call evenings. LE 7-9297. 15ctf

Building Permits
Lester F. Jensen, \$11,500 frame home, 10407 Fruitland Rd.; Richard Campbell, \$12,000 frame home, 5507 E. 80th; J. F. Schibret, \$4,500 trailer, 235 So. 163rd; Sidney Whiteley, \$1000 addn. to store, 8625 So. Tacoma Way; C. A. Miller, \$6000 store building, 14600 Pac. Ave. Oscar L. Cortner, \$500 addn. to home, 765 So. 114th; K. S. Laycock, \$2800 frame garage, Rt. 1, Box 467 A 3, Span.; Russell D. Crask, \$8000 frame home, 12109 Vickery Rd.
T. G. Baker, \$9000 frame home, 5701 Lidford Rd.; Harold Larson, \$10,000 frame home, 1118 So. 141st; Joe Symmons, \$5000 frame home, 17114 Park Ave.; Clyde Rushton, \$2,000 garage, 11014 E. Penn. Ave.; Robert Adler, \$12,000 frame home, 8111 Fairview Rd. Puy.; H. B. Glastetter, \$2050 addn. to home, 704 So. 111th and Erling Berge, \$15,000 frame home, 1413 E. 103rd.

READER ADVICE ON ALL MATTERS
Questions answered free
No appointment necessary

MADAM MARIE
7017 So. Tacoma Way
Tacoma GR 5-1278

Returns To States
LONG BEACH, Calif. (FHNC)—Lowell R. Smith, seaman, USN, son of Mr. and Mrs. Lester C. Smith of 1602 S. 110th, Parkland, Wash., is scheduled to return to Long Beach, Calif., April 22 aboard the radar picket destroyer USS Herbert J. Thomas after a tour of duty with the U.S. Seventh Fleet in the Western Pacific.
While on patrol duty off Taiwan on Feb. 23, the Thomas was responsible for the 'at sea' rescue of a Chinese fisherman.
The Thomas visited Japan, Okinawa, Hong Kong and the Philippines while with the fleet.

LEGAL
NOTICE
Notice is hereby given that the Board of Directors of Franklin Pierce School District No. 402, Pierce County, Washington, will meet at 8:00 p. m. on Friday, May 1, 1959, in the Administration Building at 112th and Portland Avenues to fix and adopt the preliminary budget of the District for the school year 1959-60.
Copies of the budget are available in the Administration Office and may be had by contacting the Secretary of the Board.
The budget hearing is open to the public.
LOUISE D. LYNDE, Secretary
Board of Directors
Franklin Pierce School Dist. 402
Pierce County, Washington.
Published in the Times Journal, April 23, 30, 1959.

Spanaway Zoning
A meeting will be held at 8 p.m. on Friday, April 24, at the Spanaway elementary school under the chairmanship of Ted Stansbie, for the purpose of discussing the proposed zoning of two Spanaway districts.
One proposed area is bounded by Military Road on the north to 174th Street on the south, and by the Davis Berger Road on the east to 300 feet west of Pacific Avenue as the Western boundary.
The second area under consideration comprises a three and one-half block portion of Park Avenue, extending from 159th to 163rd streets and approximately 300 feet deep in width on either side of the avenue.
The meeting will be attended by representatives of the Pierce County Planning Commission.

Aviation 17
SEE US FOR AIRCRAFT Financing. Port Orchard Airport. TH 6-3272. 17c3c
FREE—FIRST FLYING LESSON LEARN TO FLY—\$10 A WEEK in New Aircraft. See our new catalogue by flyers for flyers. Subscriptions taken at your local airport or write to G. Box 2008, Parkland, Wash.—17p1c.

WEEKLY CROSSWORD PUZZLE

Feathered Creature

Here's the Answer

1	2	3	4	5	6	7	8	9	10	11	12
13	14	15	16	17	18	19	20	21	22	23	24
25	26	27	28	29	30	31	32	33	34	35	36
37	38	39	40	41	42	43	44	45	46	47	48
49	50	51	52	53	54	55	56	57	58	59	60

HORIZONTAL

1 Depicted feathered creature
9 It is a — of the genus Sturnus
13 One who threatens
14 Pseudonym of Charles Lamb
15 Charge with gas
16 Insert
18 Exist
19 Footlike part
20 Pedal digit
21 Exclamation of inquiry
22 Symbol for cerium
23 Tantalum (symbol)
25 Box
27 Heavily body
30 Swiss river
31 Hair
32 Evergreen tree
33 Morsel
34 Son of Seth (Bib.)
36 Small children
37 Size of shot
38 Right line (ab.)
39 Preposition
41 Arbitration
44 Chief petty officer (ab.)
46 French island
48 Reiterater
50 Evader
53 Soothsayer
54 It is a bird
56 Pismires
57 Feigns

VERTICAL

1 Pierce with a knife
2 Biblical pronoun
3 Arrive (ab.)
4 Harvester
5 Tardy
6 Roman date
7 Compass point
8 Sand
9 Assails exposure
10 Island (Fr.)
11 Ceremony
12 Confound
13 Negative reply
14 Vegetable
15 Kettledrum
16 Out of danger
17 Ache
28 Greedy
29 Rots flax by exposure
35 Guides
36 Theatrical company
39 Bear
40 Hammer head
42 Symbol for sodium
43 Pace
44 Protruberance on bird bill
45 Scheme
46 Peruse
47 Sea eagles
49 Fondle
51 Low haunt
54 Abraham's home (Bib.)

Door Buster
ALL PLASTIC BUTTER DISH
Reg. 29c
10c

BALL POINT PENS
Reg. 19c
10c

Door Buster
IMPORTED CHINA CUPS
4 For \$1.00
Reg. 79c Each

MEN'S DOUBLE FLEECE TWO-TONE CARDIGAN SWEATERS
Reg. 3.98
\$2.98

BOYS' ALL LEATHER BASEBALL GLOVES
Reg. 4.49
\$3.33

LADIES' SPORT SANDALS
Size 5 to 9, Assorted Colors...
\$1.44

CALYPSO HATS 19c
Straw

WE HAVE THEM AGAIN HULA HOOPS 19c
Regular 1.98

SHOP-ETTE
133rd and Pacific Avenue — Next to "Big Bear"

REPEAT SALE POPLINS & SAILCLOTH
Solid Colors, Reg. 79c... Yd. **59c**

MEN'S SPORT SHIRTS
Wash 'n Wear, Ass't'd. Patterns, Colors.
\$1.98

BONUS VALUE Plastic Play Pool
Big 34 Gallon. **\$2.99**

VARIETY AND DEPT. STORES

ITS NEW DENNIS THE MENACE SPORTSWEAR FOR BOYS

Door Buster
SET OF 4 PLASTIC TUMBLERS
Reg. 29c
10c

METAL WASTE BASKET 24c
Reg. 49c

Door Buster
TUFFLEX IRONING PAD COVER
Reg. 1.49
88c

Rodger Lunde Post To Install 27th

The Rodger Lunde Post and Auxiliary, Veterans of Foreign Wars, will hold joint installation of officers Monday, April 27, at 8 p.m. in Sunshine hall, Parkland.

Mrs. John W. Johnson, past 3rd District president, assisted by the 3rd District degree team. To be installed for the Auxiliary are: President, Mrs. Joe Coyle; Sr. vice president, Mrs. Ralph Rawley; Jr. vice president, Mrs. Joe McGarr; secretary and treasurer, Mrs. Jim McGuire; chaplain, Mrs. Arthur Mitchell; conductress, Mrs. Dick Anderle; guard, Mrs. Eva Steele; trustees, Mrs. Viola Morgan, Mrs. Emma Unkur, Mrs. Ralph Larson; patriotic instructor, Mrs. Arthur Mitchell.

Guy Steele, past commander, will install the following Post officers: Commander, Emanuel Jack Karch; Sr. vice commander, Don Casteel; Jr. vice commander, Bil Allan; chaplain, Turk Clothier; quarter-master, Joe Coyle; Post advocate, Ernest Harmon; surgeon, Guy Steele; trustee, Robert Surplus; judge advocate, Tom Morgan; officer of the day, Guy Steele.

Refreshments will be served at the close of the meeting.

Jack Hennen of Ada, Minn., 1959 University of North Dakota football co-captain, is a heavyweight wrestler. Hennen also is an honor student in mathematics.

PIERCE COUNTY REFUSE CO.

Weekly Garbage Collections
Phone LE 7-8688

Federal Money for Bethel District

Word that the federal government has reserved \$44,933.32 for the Bethel School District was officially received this past week according to Francis Olson, Bethel School District business manager. Along with the official notification, the Bethel district received the first payment from the government, a check for \$28,644.00.

This \$44,933.32 will be given to the Bethel schools to help finance the district's maintenance and operation expenses due to increased school population brought about by federal activities, such as Fort Lewis and McChord Air Force Base. The amount of money is determined by the number of students' parents who work on or

Midland News

The Harvard Homemakers club will meet on Tuesday, April 28, at the home of the president, Mrs. Frank Smith. The afternoon will be spent making table decorations corresponding to the Scandinavian countries, which is the club's

for government bases and agencies.

Bethel school officials stated that it should be understood by the Bethel residents that this amount has already been budgeted for school use and is not an extra amount of money that the district had not planned on receiving. The federal aid that is received annually, state support and county support is added to the millages raised at the local level to help finance the operation of the Bethel schools, Olson reports.

choice for the Pierce County Homemakers Demonstration Day to be held at the Midland hall on May 1, reports Wainita Severson, publicity chairman.

Cub scouts
Friday evening, April 24, is the date of the Midland Cub Scout's Pack 84 monthly Pack meeting, to be held in the Midland Improvement club Hall at 8 p.m. This is award night for the Cubs so all parents, families and interested people are urged to attend.

4-H Rally Day
4-H members from Midland and all over Pierce County will take part in the annual Rally Day to be held this year at Pt. Park. The individual clubs will gather at the noon hour Saturday, April 25, and enjoy their picnic lunch and the program will start at 1:30 p.m. when the announcement of the 1959 4-H Queen will be told to the eight or nine hundred expected to

attend.
4-H Style Show
Another important evening for 4-H members carrying clothing projects will be Thursday, April 23, when the girls from all over Pierce County will model their own co-ordinated outfits at an annual style show put on by the local stores of the J. C. Penney Company. Four top-notch 4-H clothing girls will receive Campship awards to the State 4-H Conference in Pullman at the Washington State University in June.

Surprise Visit
Ered Zook surprised his family

Home Construction and Remodeling
Get Our Bid First
Looking for Quality? Call
HEDLUND CONST.
920 So. 121st LE 7-4227

and friends by dropping in home last week from the Air Force Base in Spokane, where he is now stationed. He planned his visit home at this time to help celebrate his mother's birthday. Welcoming him home beside his parents, Mr. and Mrs. Ailen Zook, were his four brothers, Bob, Allen, Carl and Dennis.
Reporter — Marlene Corrigan, LE 7-8545.

POWER TOOLS FOR RENT
SANDERS - EDGERS - POLISHERS - HAND SANDERS
SKIL SAWS - ELECTRIC DRILLS - CEMENT MIXERS - ETC.
ALSO HAND TOOLS FOR RENT

Anderson Lumber
9813 Pacific Avenue LEnox 7-7311

SPECIAL COMPLETE PAINT JOB \$5500

GUARANTEED AUTO REPAIR AT REASONABLE PRICES

6 DAYS A WEEK EVENINGS ALSO

DAVE JOHNSON AUTOMOTIVE
4708 E. 112th, LE 7-6966

if **PAY CALL** is too far away or you're short of cash for other reasons...

call on the folks at PUBLIC FINANCE

SPECIAL PLAN FOR ARMED FORCES PERSONNEL
Armed Forces personnel like the special service plan and the experienced way the manager at Public Finance helps them solve their money problems.

CASH LOANS... \$25 to \$500
We would like to supply you with the cash you need, any amount from \$25 to \$500 on a sensible plan, hundreds of other personnel are using.

QUICKLY AND PRIVATELY ARRANGED
Arrangements are made quickly and privately at a time suited to your convenience. Public Finance has a reputation for being dependable.

COAST-TO-COAST CREDIT CARD
Your credit record at Public Finance may serve you in times of emergency, transfer, leave or liberty at any one of more than 479 Affiliated offices from coast to coast. Ask for your Credit Card when you get your loan.

CALL, WRITE OR COME IN
If you're on a tight schedule, phone first and we'll arrange for you to come in at your convenience.

PUBLIC FINANCE CORPORATION
6433 S. Tacoma Way Greenfield 4-0641



Spring Comes to Safeway!

BANANAS lb. **12 1/2** c
Golden — Select from our large displays. Slowly ripened for perfect eating quality.

Local, Finest Quality of the Year — All Green
Asparagus.....lb. **17c**
Garden Fresh, Large Heads
Romaine Lettuce 2 for **19c**
Calavo — At the Seasons Best, Economical
Avocados.....Each **3/25c**
Extra Fancy — Good Eating, Economical
Winesap Apples 5 Lbs. **49c**

FRESH Strawberries
It's Shortcake Time. Every Box Guaranteed!
FULL CUP
25c
Lucerne-Delicious for shortcake topping
Whip. Cream Half Pint **33c**

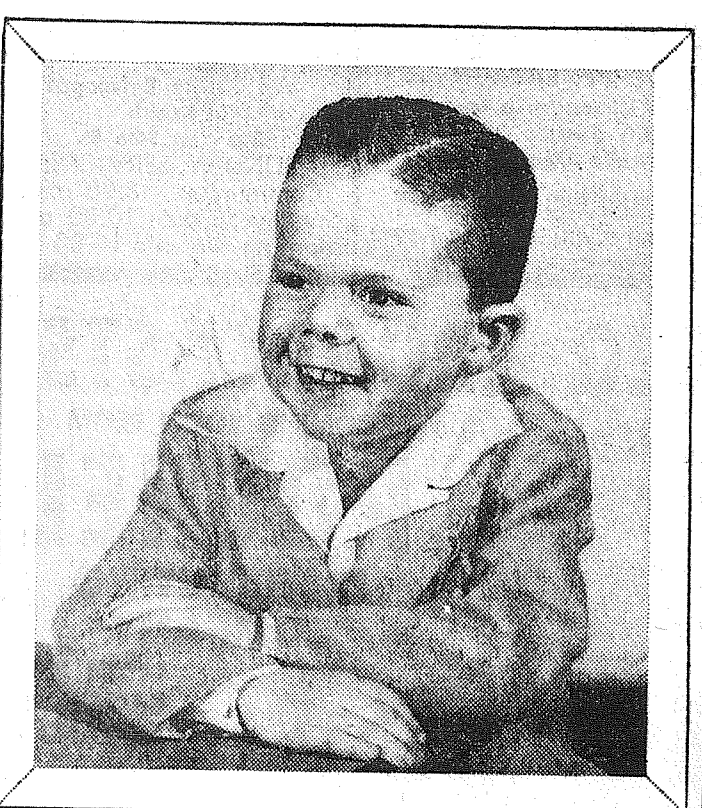
Orange Base	Real Gold	6 6-oz. Cans	\$1 ⁰⁰	Soda Crackers	Oven Glo	1-lb. Pkg.	19c
Jello Gelatins	Assorted Flavors	3 3-oz. Pkgs.	25c	Tomato Soup	Campbell's or Heinz	10 3/4-oz. Can	10c
Wesson Oil	Special Low Prices	Quart Bottle	49c	Veg'ble Soup	Heinz or Campbell's	7 10 1/2-oz. Cans	\$1 ⁰⁰
Salad Oil	Stock up At Safeway	Quart Bottle	45c	Meat Soups	Campbell's or Heinz	6 10 1/2-oz. Cans	\$1 ⁰⁰

Margarine Parkay 4 1-Lb. Pkgs. \$1⁰⁰
Bakers Chocolate 6-oz. Pkg. 29c
Spam Hormels Tasty 12-oz. Can 39c

SPAM HORMEL TASTY 12-Oz. Can **39c**

Scotch Treat—Fresh Frozen
Orange Juice 12-Oz. Can 39c 5 6-Oz. Cans \$1
Fresh Frozen—Premium Quality
Bel-air Rhubarb 2 12-oz. Pkgs. 39c
Sunny Jim Table Syrup 24-Oz. Bottle 29c
Gardenside Tomatoes 5 No. 2 1/2 Cans \$1

YESTERDAY Comes So Soon!



Childhood passes too quickly! The sprinkle of freckles that is his special charm... the "crew cut" that erased all traces of babyhood... these are the bits of boyhood you want to preserve with a portrait by our studio!

Call, write or stop in soon to arrange for an appointment for portraits to keep, to give!

McKEWEN STUDIO
405 Garfield St. LE 7-3833

Safeway's Top Quality Meats

WHOLE-FRESH FRYERS
PLUMP-TENDER **Lb. 33**

Turkeys Best Ready to Cook 12 - 20 Lbs. 37c

U.S. "Choice" Beef Steaks

Bottom Round	lb.	79c
Sirloin Steak	lb.	89c
Rib Steak	lb.	89c
Chuck Steak	lb.	55c

GROUND BEEF
Safeway Top Quality **Lb. 39c**

Skinless Wieners
Safeway Brand Lb. **49c**

Piece Bacon Diamond F. lb. 49c
Perch Fillets Captain's Choice lb. 39c

FRESH HALIBUT
ROASTS lb. 29c STEAKS. lb. 39c

CUBE BUTTER
Lucerne — Grade "AA" Montrose Made from sweet cream
lb. **63c** lb. **65c**

FAMILY FLOUR
Golden Heart All-purpose 10-lb. Bag **69c**

SHORTENING
Golden Keen—For fine Baking, frying 3-lb. Can **69c**

SAFEGWAY

Prices effective Thursday, April 23, through Saturday, April 25, at 82nd & Pacific Safeway.

Fruitland 4-H
The April 7 meeting of the Fruitland 4-H Home Ec. club was held at the home of Susan Reynolds. Plans were made for the annual Mother's Tea to be held May 9 at the Fruitland Grange. The following committees were appointed by the President Gayle Kessler: Invitations, Patti Snider and Patty Long; decorations, Susan Harrington, Marietta Long, Jill and Carolyn Joslin; program, Chris Cordes and Susan Reynolds; corsages, Judy Pilcher, Cheryl Hoffman and Jarleth Hoffman; refreshments, Betty Przybylski, Kren Keil and Gayle Kessler. The leader is Mrs. Everett Snider.

ALLISON'S VARIETY STORE
YOUR FRIENDLY CORNER STORE
20% Off on All Costume Jewelry
99th & Portland Avenue — LE 7-5658

PLANNING TO REMODEL?
Let us help you with any of your Remodeling Needs from start to finish—F.H.A. Terms
WINDOW SCREENS MADE TO ORDER - WINDOW GLASS INSTALLED - FREE MEASUREMENTS & ESTIMATES
SEPTIC TANK INSTALLATIONS
PARKLAND HARDWARE
— Across From Piggly Wiggly —
12169 Pacific Avenue LE 7-3171

Summit News

The Addie Rau circle of the Woman's Society of Christian Service will have a plant sale at Summit Trading Co. on Saturday, April 24. Donations of plants for the sale will be welcomed.

Potluck
There will be a potluck dinner at the Summit Church hall Thursday, April 30, at 6:30 p.m. Following the dinner, a film on Alaska will be shown. This should prove to be an enjoyable evening and a cordial invitation is extended to all.

Community Club
The newly organized Summit Community club will meet at 8

Lois's Beauty Shop
Machine Permanents and Cold Waves
Open Evenings by Appointment
1 Mile South of Roy "Y" On Mt. Hiway
LE 7-6789

JACOBS PACIFIC DRUGS
Wallgreen Agency
Pay Light & Water Bills Here
84TH & PACIFIC AVE.
Greenfield 2-6445

p.m. May 6 in the multi-purpose room at Central Avenue school.

In Hospital
Fay Clover entered the Medical Arts hospital last Friday for a series of tests. It was expected that he would have to remain in the hospital for several days.

Visitors
Mr. and Mrs. C. R. McMillan have had as their guests in the past week their three daughters and their families, Mr. and Mrs. George Sparks of Richland, Washington; Mr. and Mrs. Ben Eastwood and two daughters of Rialto, California, and Mrs. Ray Blaisdell and daughter of Seattle.

Thanks!
The April 17 carnival sponsored by Central Avenue P-TA at the school was a huge success, thanks to the fine co-operation of everyone in the community. We are most grateful to all who helped. Mrs. Carl Escene, chairman Reporter—Mrs. C. R. McMillan, LE 7-6529.

PLC Student Wins Sculpture Award

Theodore C. Hellman, 718 S. 117th, Tacoma, student at Pacific Lutheran college, is among seven collegiate artists sharing \$1,000 in purchase awards made by Lutheran Brotherhood in connection with the current Lutheran student art exhibition it is sponsoring at its home office building in Minneapolis.

Mr. Hellman was awarded \$150 for a sculpture entry, "Job." Carl F. Granrud, president of Lutheran Brotherhood, said the fraternal life insurance society also is awarding an additional \$1,000 to be shared by the art departments of the four colleges represented by the seven winners.

The seven works selected by a panel of judges represent the best of some 400 entries submitted in the competition by Lutheran student artists throughout the United States and Canada. The current exhibition, continuing through April includes 119 of these works.

Quickie Shine Spray
The No. 1 Aerosol Shoe Polish
Ask for It at Your Local Repair and Shoe Store

Annual Talent Show at Kapowsin May 1st



BUSY QUINTET— Pictured above are the members of the planning committee for the annual Kapowsin P-TA Talent Show that will be held on May 1 in the Kapowsin Elementary School's multi-purpose room. Seated, from left to right, are: Mrs. Corbin Bacon, and Mrs. Winifred Dean. Standing, from left to right, are: Mrs. Arthur Coile, Virgil Baker and Mrs. Donald Connelly.

Annual Talent Show at Kapowsin to be May 1 at School

The Talent Show, as in past years, will be divided into four divisions with cash prizes being offered for the winning performers in each division. The divisions are dancing, vocal music, instrumental music and novelty acts. Entry blanks are still available for any participant who would like to enter the annual affair and may be picked up at the Bethel Junior or Senior High Schools and the Kapowsin Elementary school. Heading the committees for the show this year are: Mrs. Coile, kitchen committee; Mrs. Bacon, decorations; Mrs. Dean, telephone; Mrs. Connelly, tickets; and Mr. Baker, judge's committee. Mrs. Coile, president of the Kapowsin P-TA, announced this week that auditions for the show will be held next Tuesday and Wednesday evenings at 7:30 p.m. in the Kapowsin Elementary school. All acts must audition if they expect to be in the show.

Spanaway News

Spanaway Cub Pack No. 34 will meet Friday evening at the school. Cubmaster Anson Hemenway will give out the following awards: Bobcat Pins: Bill Cantrel, Robert Lovy, Stanley Yarbrough, Douglas Yarbrough; Wolf Badges: Dennis Cotten, Tommy Croom and Curtis Jacobs; Arrow Points — John Ansteth, David Agnew, John Zurfluh, Dennis Cotten, Curtis Jacobs, Mike Cyrus, Keith Ivers, Johnny Buck, Bill Cunningham, and Mickey Wright. One year participation pins will be given Mrs. Jean Cotten, Mrs. Phil Zurfluh, Jr. and

Anson Hemenway. A two-year pin will be awarded Mrs. Anson Hemenway.

Boys in the community who are interested in becoming Cub Scouts and their parents are invited to attend.

Firemen's Auxiliary
The Spanaway Volunteer Firemen's Auxiliary celebrated its 14th birthday with a dinner party Tuesday evening, April 14, with 25 members attending. Games were played under direction of Mrs. Edward Flannery, assisted by Mrs. Robert McCullough. Mrs. Robert Rhone is now president. A very good time was reported. The Spanaway Volunteer Firemen and Auxiliary executive board will meet at the firehall Friday, April 24, at 1 p.m.

Sympathy
Deepest sympathy to the family of Mrs. E. Itner, who passed away recently.

Congratulations
Belated congratulations to Mr. and Mrs. Clyde Slater, proud grandparents of Stephen Slater, born to Mr. and Mrs. Jerry Slater (Shirley Peck) March 7 in Los Angeles. Mr. and Mrs. Leslie Peck of Tacoma are the maternal grandparents. Stephen is welcomed by a sister. Reporter—Mrs. Oliver Omat, LE 7-6466.

Rural Garbage Service
Serving Parkland, Lakewood, Midland, Summit, Spanaway and Lakeview.
Pierce County Permit
LEnox 7-8688

DO-IT-YOURSELF
LAWNMOWER ENGINE
REPAIR PARTS
B&S, CLINTON, PP, LAUSON...
This information is necessary to identify parts:
Make - Model - Serial
PARKLAND CYCLE & KEY
11021 Pacific Ave. LE 7-5772

Spanaway Day Camp Plans Set

Parkland, Spanaway and Collins Girl Scout leaders are preparing for Day Camp sessions at Spanaway in July with Mrs. M. A. Hartley director. Day Camp is open to all girls from 7 to 14. In order to provide adequate leadership, it is necessary to have enough adult help. Those who enjoy the outdoors and like working with children meet the essential qualifications.

A two-day training period called the Funfest is to be held at Camp Murray, on Highway 99, April 24 and 25; there is a food fee of 75c for one day or \$1.50 for both days. The Funfest will give the novice basic training and the experienced more advanced training. For more information, call LE 7-3333 or LE 7-3484.

On Tuesday, April 28, from 10 to 2, all Girl Scout leaders, assistant leaders and interested adults are invited to attend the outdoor Workshop to be held at Camp Curran Scout grounds, 3/4 mile east of Collins school. Mrs. John Mitchell, in charge of the program, invites all attending to share in outdoor craft or skill. The program will include exhibits of rock collections, nature specimens and bird slides presented by Mrs. Harry Dutton. Mrs. M. A. Hartley and Mrs. Laurie Lund will demonstrate outdoor cooking; bring a sack lunch or hamburger, vegetables and heavy foil for stew. Coffee will be served.

Dennis G. Fell, son of Mr. and Mrs. Denzel C. Fell of 10219 East Polk St., recently completed an 11-week course of recruit training at the Marine Corps Recruit Depot in San Diego.

All Saints Episcopal Church
205 East 96th St.
SUNDAY SERVICES:
Communion - 8:00 a.m.
Sunday School - 10:00 a.m.
Morning Worship 10:00 a.m.

Spring FOOD carnival

FOLGERS COFFEE 1 lb. **69¢**

HUNT'S TOMATO SAUCE 8-Oz. Tins **13/\$1.00**

MINUTE MAID FROZEN ORANGE JUICE 6-Oz. Tins **5/\$1.00**

Tastewell CATSUP 14-Oz. Bottle **7/\$1.00**

LIBBY 303 Tin **FRUIT COCKTAIL** **23c**

B&M 28-Oz. Tin **BAKED BEANS** **25c**

PILLSBURY 16-Oz. Pkg. **ANGEL CAKE MIX** **39c**

GOLDEN GRAIN 8-Oz. Pkg. **RICE-A-RONI** **29c**

GREEN — CRISP LETTUCE 10¢ HEAD

1 - LB. CARTON TOMATOES 23¢ EACH

5 - LB. CELLO BAG ORANGES 49¢ EACH

FRYERS

FRESH WHOLE, DRAWN POUND **31¢**

LEAN, MEATY SPARE RIBS LB. **39¢**

TENDER, JUICY BEEF ROAST LB. **39¢**

BEEF LIVER No Limit Lb. **29¢**

OPEN SUNDAYS

KITCHEN'S

EVERYDAY LOW PRICES FORMERLY FLETCHER'S

Right to Limit
Open 9 a.m. 'Til 10 p.m. Daily
10 a.m. 'Til 9 p.m. Sundays
PRICES EFFECTIVE THURS., FRI. & SAT. **12208 Pacific Ave.**

DRAMEX

THOSE CRACKED PLASTER WALLS AND CEILINGS

STEP LADDERS

4' . . . \$2.99
5' . . . \$3.89
6' . . . \$4.79

Sportsmen's Headquarters

SOUTH END PLUMBING & HARDWARE

185th & Pacific Ave. LE 7-4100

LIVE RADIO BROADCASTS

OVER RADIO STATION **KTAC** 850 ON YOUR RADIO DIAL

COMING SOON FROM **POCHEL** DISTRIBUTING COMPANY

140TH & PACIFIC, PARKLAND

YOU CAN'T AFFORD NOT TO LISTEN

Shinn's Grade AA LARGE EGGS Doz. **37¢**

HI-HO CRACKERS 1-Lb. Pkg. **29c**

KAISER FOIL 25-Ft. Roll **29c**

KITTY CAT FOOD No. 1 Tall Tin **3/25¢**