

The TIMES JOURNAL

Vol. 26 No. 32 33

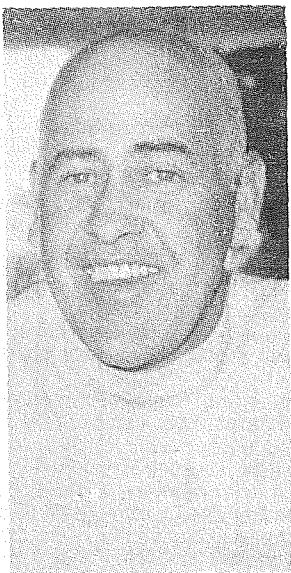
Serving 20,000 Active Families In Central Pierce County

August 20, 1970

Superintendents Announce Times, Staff Assignments And Bus Routes

See Story on Page 8

School Starts September 1



Robert McNeley
Eatonville School District
Superintendent



Edward Hill
Franklin Pierce School Dis-
trict Superintendent



Fred Gramman
Bethel School District Super-
intendent



Local Firemen Hard Workers

Dedicated firemen save millions of dollars
in losses every day by being well trained
and thorough.
See Story on Page 4



"We've got the SPIRIT" Also the Stick
See Story on Page 7



Patiently waiting outside Barlo's Restau-
rant for the up coming fashion show are:
(back row) Cathy Smith, Sheila Brewer,
Debbie Smith, Jennifer Middleton, (second
row) Kathy Isley, Kristina Middleton, Kim-
berly McLaren, Darcy Heinzman, (kneeling
in front) Kent McLaren, Brad Isley, and
Marty Brewer. Missing is Kevin McLaren.

See Story Page 6



Question Posed to Parkland Light and Power Owners!

See Story on Page 3

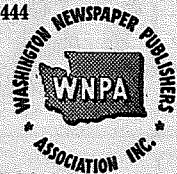
The TIMES JOURNAL

Serving South Central Pierce County

Published every Thursday
by Sun Publishing Co.
at 409 Garfield South
Tacoma, Washington, 98444
Telephone LE 1-8885

MEMBER

NATIONAL NEWSPAPER
Association - Founded 1885



News and Advertising Deadline: Tuesday Noon
Subscriptions \$4.00 per year, \$2.50 six months, or 40c monthly by carrier. News stand price 10c copy.

Qualified as a legal publication under Chapter 213 of the Legislature Acts of the 1941 regular session of the State of Washington.

EDITORIALS

U. S. SPENDING MEANS MORE TAXATION

Will the American people be willing to support an annual federal budget approximating \$400 billion by the end of this decade? This is a significant question, not just for politicians, but for all of us who are concerned about our country.

The level of federal spending doubled from \$92.2 billion in 1960 to \$184.6 billion in 1969. Another doubling of expenditures in the next ten years inevitably will mean that all of us will pay roughly twice the taxes we pay now.

Fine sounding arguments can be made for the many new spending proposals to solve "national problems." But the American people should realize that every new proposal which is adopted means a higher tax burden to support increased government services, unless it is accompanied by reductions elsewhere.

The next few years will be crucial in the battle against the inflation which has resulted from deficit financing of fast-growing federal spending. Do we as a nation wish to set priorities, eliminate programs that have out-lived their usefulness and undertake only those new ventures that we can afford? Or do we want to commit ourselves to an ever-increasing portion of our income being spent by government?

Candidates for Congress this election year should be asked if they favor traveling the road to a \$400 billion budget by the end of the decade. Their answer should tell many thinking Americans which candidates they wish to support in the coming election.

Conversion to Public Library

Last Tuesday's meeting of the Parkland Light and Power Company brought closer to a decision the problem of what should be done with their old building.

As the reports made during the meeting brought out that their new quarters at 133rd and Park Avenue will be available for occupancy the first week of September, a decision will have to be made as to the disposition of the vacated office at Garfield and C Streets.

The chairman of the Pierce County Library Board was present and offered for discussion the use of the building for a library.

It was brought out during the meeting that the C St. & Garfield building was still sound and valuable, that the building was owned by the Parkland Community, its membership, that the community use idea sounded great, affording the opportunity to save taxpayers considerable money in construction of a new building at 120th and Pacific. The C St. and Garfield location is desirable because it will allow use by more people without crossing Pacific Avenue and the city bus stops at the front door.

Parkland Light and Power has a record for being of great service to the community, and their board considering the use of its present quarters for a library is an outstanding gesture. The Parkland Light and Power Board should be complemented for its community minded attitude and the membership should attend the next board meeting on September 8 and give the board a vote of confidence on their library-use decision.

IT'S YOUR MONEY

If you would like to have something really big to stew over why not consider the federal debt which now stands at \$277 billion. If that is too overpowering, take the annual interest on the debt alone—approximately \$18 billion dollars.

Suppose that we had no national debt, and that the huge sum we pay in annual interest could be put to a really constructive use.

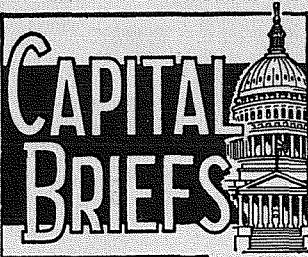
For example, President Nixon has proposed that an additional \$10 billion be spent for municipal waste treatment plants, over the next five years. If the \$18 billion now going to interest were available, the entire project could be under way this year!

Stewart Udall recently said that it would take about \$100 billion until the end of the century to restore the water, land and air to its natural quality. Again, if that \$18 billion didn't have to go for debt charges, pollution might be controlled in a half-dozen years instead of thirty.

Well, you may say, all this is useless speculation because the debt is there—all \$277 billion of it—and we have to pay the interest each year. True enough, but just stewing about the problem should show the folly of ever again having an unbalanced federal budget except in a national emergency. During the past five years alone interest costs increased by some 70 per cent. Isn't it about time for all of us to do more worrying and begin to apply the brakes on government spending?



HOW MUCH MORE CAN WE STAND?



CAPITAL BRIEFS UNDER THE CAPITOL DOME

By Robert C. Cummings

Olympia. . . Some 16 incumbent legislators who thought they might have "free rides" back into office have been disappointed.

After the filings of declarations of candidacy closed, the Democrats filled nine vacancies on their ticket. The Republicans filled seven.

After the filings of declarations of candidacy closed, the Democrats filled nine vacancies on their ticket. The Republicans filled seven.

Though the Democrats filed the larger number of candidates, the Republicans appeared to have the better of it.

Nine Republicans, including two in the Senate and seven in the House, are still without opposition and assured of reelection.

Eight Democrats are without Republican opponents, but only four can be absolutely sure of reelection. The others have opposition for nomination within their own party.

Smooth Sailing

Republicans headed for new terms in the Senate with nobody standing in their way are Senators Perry Woodall, Toppenish, and Damon Canfield, Sunnyside.

Republicans assured of another term in the House are A.J. Pardini and Jerry Kopet, both Spokane; Robert Goldsworthy, Rosalia; Otto Amen, Ritzville; Vaughn Hubbard, Wauksburg; Speaker Tom Copeland, Walla Walla, and Chet Hatfield, Yakima.

Democrats certain to return to the House are William J.S. May, Spokane; Paul Conner, Sequim, and John O'Brien and William Chatalas, both Seattle.

Not Serious

Four other Democrats are expected back, because they are without Republican opposition.

They are Margaret Hurley, Spokane; Robert Charlette, Aberdeen, and John Bagnariol and Robert Perry, both Seattle.

All of these have had opposition in the primaries in previous years and all have won their nominations easily.

Tax Splits

Action of the two political parties in endorsing Gov. Dan Evans' tax program could cause more dissension among Republican legislators than among the Democrats.

When the Democratic convention endorsed the tax, the convention delegates merely outvoted the official party leaders. The platform later was repudiated by Democratic legislators who attended.

The Republican endorsement, however, was contrary to an agreement reached earlier this year between Republican legislative at a closed-door meeting in the Governor's office.

Tune With Two Lyrics

The agreement involved the compromise tax plank which was defeated at the convention, one which at the time of the Olympia meeting was described as one on which all Republicans could run for reelection.

With the tax stand taken at the convention, those attending political rallies in some districts may hear two candidates singing the Republican tune, but with different lyrics.

They could be speaking from the same rostrum, with one talking in favor of the tax and the other against it.

That's how some legislators from the same district voted on the issue in the 1969 session.

Ticklish Job Ahead

The Building Code Advisory Committee, which has been assisting Sen. Gordon Walgren's Municipal Committee in the drafting of a statewide building code, is in general agreement on what it should include.

It has been conducting public hearings throughout the

Paul Harvey This Week

Stoking The Inflation Fire

by Paul Harvey



Negotiations are under way between the auto workers and the auto makers — with both sides so far apart another major strike appears inevitable.

When Chicago truck drivers were on strike for a dozen weeks, it hurt Chicago.

When the drivers who'd been earning \$4.15 an hour demanded and got \$5.80 an hour, it hurt all over.

Because the trucking companies are not going to pay that extra \$1.65; you are.

Chicago truck drivers were out for 12 weeks insisting that they needed more income than do truck drivers elsewhere because of the higher cost of living in Chicago.

When employers finally agreed to the raise, they specified that it must be spread over a period of 36 months — to allow employers time in which to increase revenues.

That means that the higher cost of doing business must be passed along to you to pay in higher prices for everything that moves by truck.

Here, brought into sharp focus, is the paradox of a union justifying higher wages — because of higher prices — thus forcing prices higher.

This is not going to be a tirade against the Teamsters. Their complaint is valid — but the remedy they have prescribed for themselves is a palliative, not a cure. It will ease the hurt only for a little while.

Railroads began going bankrupt after railroaders' wages increased 38 per cent in eight years, while the charge for hauling freight went down 2 per cent.

Every union, urging a similar solution, further compounds the problem. Higher wages resulting in higher prices inevitably accelerate the inflation spiral.

Your dollar is worth six cents less than one year ago because it will buy 6 per cent less goods or services.

Now we have the United Auto Workers demanding wage raises which you and I will pay in higher prices for new cars.

But the auto workers have already hiked their wages so high (more than \$6 an hour in pay and benefits) that American-made cars are being "overpriced." Each year more and more Americans buy the cheaper foreign-made cars; cheaper because foreign auto workers frequently work for less than \$2 per hour. Imported cars now represent more than 13 per cent of our total car market.

The UAW, asking an additional 26 cents an hour "to catch up with the cost of living" plus an additional 8 per cent pay hike, could further depress sales of new cars, thus creating widespread unemployment for the members of their own union.

Auto workers, already receiving 31 per cent more than the average production workers in manufacturing, heretofore persisted in pushing their pay scale ahead of most because the late Walter Reuther knew he was riding the crest of an unprecedented new-car buying boom.

This year our auto industry is sharing a national recession.

This year, auto workers might well consider such factors as inflation and foreign competition — in their own self-interest.

Copyright 1970, Gen. Fea. Corp.

state and now is ready to tackle the tough part.

This is a decision on which agency should administer the code. It was this issue which hung up enactment of a statewide building code in the 1970 session.

The advisory group now will meet in closed-door session with representatives of the various state agencies currently charged with responsibility for various phases of building inspection.

These include the State Fire Marshal and the Departments of Labor and Industries, General Administration, Public Instruction and the Division of Health in the new Department of Social and Health Services.

All will be invited to "let their hair down;" in presence of the others.

Why Nobody Squawked

If you are wondering why nobody except one member voiced opposition when the Highway Commission adopted its "emergency" regulation permitting the movement of 14-foot mobile homes on state highways, it was because the special meeting where the action was taken wasn't a public hearing.

Proper notice of the special meeting was sent out and publicized, but only proponents of the proposal were invited to speak.

This, of course, couldn't silence Commissioner Harold Walsh, Everett, the lone dissenting member, but he was outvoted, four to one.

Public hearings aren't required for adoption of emergency regulations, though there is nothing in the law which says one couldn't have been held.

The "emergency" regulation, however, is good only for 90 days.

If the commission wants to make it permanent, full public hearings will be required.

Tax Booster

Most observers agree that if the proposed income tax amendment is approved by the voters in November, it will be a personal victory for Governor Evans.

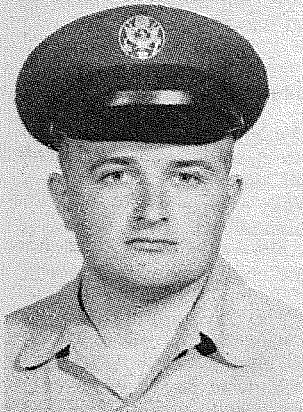
All of the endorsements of statewide organizations it may receive — and these probably will be plenty — can't put it over; only the intensive campaign which the Governor personally is conducting.

The pace of his campaign appears to be reaching a par with those of his two successful campaigns for Governor.

His activities so far indicate approval of the tax program is rated in importance even over election of a Republican majority in the Legislature.

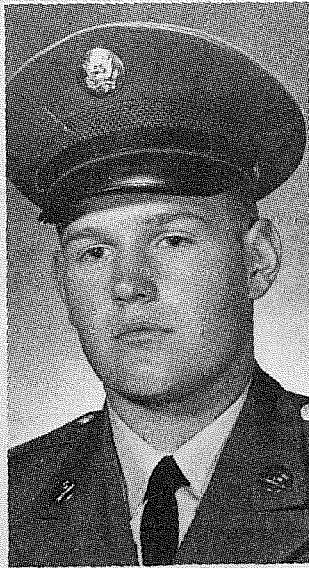
Men In Service

Completes Training



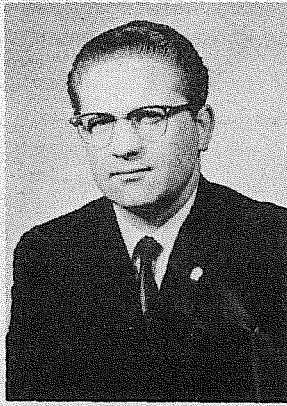
SAN ANTONIO — Airman James M. Painter, son of Mrs. Einor Mack of Rt. 2, Spanaway, Wash., has completed basic training at Lackland AFB, Tex. He has been assigned to Chanute AFB, Ill., for training in fuel services. Airman Painter is a 1967 graduate of Bethel High School.

Wounded In Vietnam



Spec. 4, Wilfred E. Hoyer, graduate of Franklin Pierce High School was wounded in Vietnam at the Makong Delta on August 3, for the second time in five months. He received a second Purple Heart and a first Oak Leaf Cluster. Spec. Hoyer is the son of Co. and Mrs. Lyle E. Van Buskirk now stationed in Germany.

Walter Currah Candidate Statement



Walter Currah has tossed his hat into the political ring. He is actively seeking the Republican candidacy for State Representative. His name will be on the primary ballot. Currah is a resident of the 29th District. He is campaigning for position No. 2.

Currah is a life time resident of Pierce County. He resides at 4401 So. 64th Street, Tacoma. He studied pre-engineering at the University of Puget Sound, and mechanical engineering at Washington State University. Walter is an Eagle Scout. He is a practicing member of The American Society of Mechanical Engineers.

Currah said he is campaigning for office because he believes that modern government must have technical representation, as well as legal representation. Walter is a Precinct Committeeman. He was recently appointed secretary to the 29th District Republican Club.

Walter is printing his own campaign signs, and with the help of his sign chairman, Carl Brodin, they will be ready soon.

CARE Aids Victims of East Pakistan Floods

With the toll of death and destruction still mounting in floods over a wide area of East Pakistan, including Dacca, the capital city, CARE is delivering aid by airlift to thousands of homeless and destitute survivors in emergency camps, according to word received by the regional CARE office in Seattle.

As the scope of the disaster became evident, CARE was the only foreign aid agency to respond with assistance to the thousands of

men, women and children fleeing from the rising waters. This is the second recent major disaster abroad at which CARE emergency aid has been rushed to victims, with relief and recovery aid also continuing to earthquake victims in Peru.

CARE world headquarters in New York has authorized its Pakistan mission chief to purchase additional clothing, blankets and other immediate necessities.

Parkland Light and Power Trustees Meeting

The regular meeting of the Board of Trustees of the Parkland Light and Water Company was held August 12, 1970 with all members present.

The highlight of the meeting was the discussion with Carl Lindgren, chairman of the Pierce County Library Board, the use of the Parkland Light and Power Company's Garfield Office, when vacated, for a library.

Carl Lindgren stated that the library board would be interested in using the building for a term of 10 years provided they could get together on the terms of a lease.

Les Heinemen, manager of the Light and Power Company said there had been several inquiries about the

future use of the building, one in particular was Parkland Sewing Center who wanted to lease it for two years with an option to buy.

Mr. Austin felt the utility company should not get into the leasing business and preferred to let the library use the building.

Board Chairman Ozzie Ellingson pointed out that the membership should be informed about their plans and hoped that the members would attend the next board meeting on September 8, 1970 and express their feelings.

It was moved by Mr. Austin and seconded by Mr. Beitz that the board intends to let the library use the building for a ten year period if they assume all cost of maintenance, taxes, repairs

and alterations and return the building in reasonable condition at the end of the period. The final decision would be made at the next meeting of the board on Sept. 8, where all interested parties could express themselves.

In other business Mr. Richards made a report on the progress of the new building at 133rd and Park Avenue. If everything continues at its present pace, the office will be ready for occupancy during the first week of September.

Manager Heinemen had on hand a list of old utility bills that owners refused to pay, those turned off for non-payment and those ready to be turned in for collection.

It was moved by Mr. Ellingson and seconded by Mr. Curtis that the manager contact Mr. Herbert Gelman, a lawyer and get advise on how to handle these delinquent accounts.

The meeting was adjourned with the reminder the next meeting will be held September 8, 1970 at 7:00 p.m.



Letters to the Editor:

Dear Mr. Editor:
Your Paul Harvey editorial for August 13th is excellent. If we don't have more common-sense exhibited, our great system of free enterprise will collapse, in my judgment.

Sincerely yours,
Rex S. Roudebush
Puget Sound Bank Bldg.

GREAT BARGAINS

DAY IN DAY OUT, YOU ALWAYS SAVE AT WOODY'S MARKET

TOMATOES

23c LB.

RED RIPE

PORK LOIN

WHOLE or HALF

WELL TRIMMED 69c LB.

Will Cut to Your Request

DUCHESS MARGARINE

6 Lbs. For \$1.00

DUCHESS POTATO CHIPS

TRIPLE PACK 39c

WASHTEX BLEACH

GALLON SIZE 39c

DARIGOLD

Alpine 1/2 Gal. 69c

Polar Frozen STRAWBERRIES
10 Oz. Pkg. 5 for \$1.00

TUNA..... Snowmist Chunk Style 3 FOR 89c

FUNNY FACE..... DELICIOUS SWEETENED DRINK 2 qt. Size 8 FOR \$1.00

PEACHES..... Duchess 2 1/2 SIZE TIN 5 FOR \$1.00

PICKLES..... Stienfeld's Home Style 32 OZ. 49c

SCOTTIES..... Facial Tissues 200's 4 FOR \$1.00

BATH TOWELS..... Assorted Colors 83c

No. 1 POTATOES

49c Bag.

10 Lb. CELLO BAGS

CHUCK STEAK

WELL TRIMMED

59c Lb.

Will Cut to Your Request

CARROTS

1 lb. Cello Bags

10c

OLD FASHIONED FRANKS

SMOKED 59c Lb.

Prices effective Aug. 20-21-22-23, 1970
WE RESERVE THE RIGHT TO LIMIT QUANTITIES

WOODY'S MARKET

2 MILES SOUTH OF ROY "Y" ON MT. HIWAY SPANAWAY, WASH. VI 7-7884



1971 SKI FASHIONS

ARRIVING DAILY



OPEN EVENINGS TIL 9:00 P.M.



11122 PACIFIC AVENUE TACOMA, WASHINGTON 98444 LE 1-4501

Firemen Get Our Thanks in Fires!

Would you make the sacrifices day after day that the firemen make?

Have you ever thought about what our firemen go through every day of their lives with little appreciation from the people they serve?

Most fire departments in South Central Pierce County are completely volunteer groups. Besides holding regular jobs, these civic-minded men volunteer to spend their free (?) hours to keep our homes safe from fire. Most volunteer firemen put in an average of 12 hours a week, but this past few dry months most of the men have put in that many hours in one day and then some; some of them have taken time off their jobs to stay and help fight fires. And did you know that most of the time they are out on a fire is spent in the clean-up part of it? Putting out the fire is usually done in a few minutes, but then the area has to be thoroughly watered down and watched for flare-ups. It's a long, dirty, messy job.

In appreciation for their hard work, we buy fireworks for our children to teach them to be patriotic and all our neighborhood fields get burned. We leave our matches laying around and the young chemists experiment with stumps and logs and they get burned too. We don't like to load up our auto's ashtrays with cigarette butts, so we throw them out the window and, sure enough, we get burns on the highway shoulder.

The past ninety days, 98 per cent of the fires reported have been caused by, number one: kids and fireworks, number two: kids and matches, number three: cigarettes thrown from cars and number four: sparks from trains.

Is this the way to show our appreciation of the hard working firemen?

In the future if we would think about the damage we could cause, the hard work for the firemen, and whether we would be willing to clean up these charred messes, maybe we wouldn't have all these careless fires starting all the time.



Firemen putting out a fire that was the result of someone's carelessness.

Campus Communique Human Nature: A Dual Concept



by Jim Peterson
PLU News Bureau

There is a relationship, Dr. Erving Severson believes, between Christian behavior and human behavior in terms of psychology.

His effort to teach and to mold his life style with that concept in mind has led him into a number of stimulating activities.

Dr. Severson, who lives at 921 S. 129th St., is uniquely qualified for his role. Currently an associate professor of psychology at Pacific Lutheran University, he has spent many years studying both theology and psychology.

He became an ordained minister in 1960 and served a parish in Madison, Wis., for two years. The next four years were spent as a graduate student in psychology at the University of Utah.



Dr. Erving Severson

"My goal is to harmonize what I understand of Christian behavior with the study of psychology," Severson explained. "It amounts to a personal sort of thing, and involves the ability to relate to people."

"A human being is influenced very significantly by his environment, experiences and what he has learned since birth," he added. "If man is nothing more than what he has learned, the scientific psychologist is fully equipped to deal with people."

"But from the Christian point of view, man is created in the image of God — with free will — for fellowship with God and with people."

Severson continued, "The Christian psychologist works with people in terms of that point of view. I believe that the ultimate meaning of life comes from a relationship with God and an understanding of the experiences a person has during his lifetime."

Severson admitted that correlation of the two aspects of human understanding could well be a lifetime pursuit — "if it can ever be done," he added.

His activities are by no means confined to the campus at PLU. He serves on the board of directors executive committee of the Tacoma Family Counseling Service, an organization intended to help families who have problems in living — people from all income brackets and walks of life.

He also serves the Good Samaritan Hospital Rehabilitation Center in Puyallup, providing a direct consultation service for patients as well as staff. He is involved in a similar way with the Washington State Division of Vocational Rehabilitation.

"I feel consultation not only provides a service to the community but it enhances my teaching," noted Severson, whose classes are primarily in applied areas of psychology. Continuous honing of his own skills, he believes, can help him be a more effective teacher.

During the past year he has helped carry out socialization programs at Western State Hospital and American Lake Veterans Hospital which have involved more than 100 students. More than 60 students were involved in year-long projects at the two institutions and an additional 40 participated in a therapeutic community familiarization program during last January's interim at PLU.

REV. LARSGAARD RETURNS TO PLU



Rev. John Larsgaard

Rev. John Larsgaard, student congregation pastor and university chaplain at PLU from 1959 until last year, has returned to the Parkland campus as an assistant professor of psychology.

A Puyallup resident, Rev. Larsgaard has been working as a counselor at the University of Washington this past year while pursuing advanced studies.

Born in Norway, Larsgaard began his association with PLU as an undergraduate in 1940. He also

has served as an Army chaplain and as a parish minister.

STARK REALITY

by Herb Stark

One of our Parkland businessmen has been active in stock car racing for some time. He is Don Vowell, shown below in the car with the 5 on its side, having just successfully passed through a maze of competition, slipping and sliding.



Irene Clemons brought her aunt to the Parkland Businessmen's Club barbecue in Larry Armstrong's backyard last week. Auntie, a native of London, England is over eighty and this is the first time she has been in the United States and the first time she has been away from the British Isles. And in Armstrong's backyard she ate her first barbecued steak. When asked if they do such things in England, she remarked, "by all means no, we don't have yards like this — all this lovely open space is beautiful. A story is coming soon about Auntie from England in the U.S.A."

Last week Thelma and Al Raber took leave for a few days from the trials of daily work routine at Devereaux Realty and entertained out-of-town guests. A pleasant week was spent visiting and having fun, but what happened at the office wasn't noticed till this Monday morning. Don't bother the Rabers for a few days, they are playing a game called catch-up. Lots of luck.

SPECIAL NOTICE

To All Club-Organization Publicity Chairmen

Has your club been neglected in the past as far as newspaper publicity is concerned? Perhaps the newspaper didn't receive your information, maybe you left out some important facts, maybe it was sent in too late.

We will be most pleased to print club news that is pertaining to the area covered by this newspaper. The deadline is Tuesday noon for the following Thursday's paper, that doesn't mean wait until Tuesday, it means that is the latest we can accept an article, but we prefer to get them sooner, so we have more time to process the article, maybe get a picture, or give it more attention.

We prefer to have a typed, double-space, item. It is easier to read, we usually don't have to re-type it to send it to press, and it avoids many mistakes, especially in spelling of names. But if you don't have a typewriter we will still accept it, and hope it is very legible. Married women's and widow's names should always include the husband's first name. Only divorced women use their own first name after Mrs. in print.

If you feel you can't write a story, send in the names and facts and we will write the story from that.

And most important, include your name and phone number. We can easily call you if we need more facts if we. If we have no number and important facts are missing, your article will most likely be left out.

We want to help you to get your news in the paper. Will you please help us?

Parkland Kiwanis

The Parkland Kiwanis Club was presented an interesting and informative speech by Trav Dryer, on "What You Don't Know About Funerals" at last week's meeting. The question and answer period was especially enlightening because of Trav's ad libs.

Next week's meeting, Thursday, August 20, 1970, will bring the Honorable Dewitt Rowland, Justice, Municipal Court of the City of Tacoma, as the speaker. He will be introduced by long-time Kiwanian and Parkland businessman Carl Lindgren.



DO YOU BELIEVE
IN LOCAL CONTROL
OF SCHOOLS?

SO DOES . . .

JERRY BAUGHMAN

DEMOCRATIC CANDIDATE
29th DISTRICT REPRESENTATIVE POSITION NO. 1

HELP ELECT JERRY BAUGHMAN

BY PLACING YARD SIGNS — BY ADDRESSING ENVELOPES
BY MAKING FINANCIAL CONTRIBUTION — BY DISTRIBUTING
LITERATURE — BY ANY OTHER MEANS —

PHONE LE 1-0392

PAID FOR BY COMMITTEE FOR JERRY BAUGHMAN, SALLY TINNER CHAIRMAN

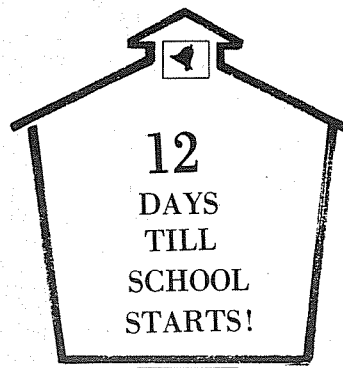
COMING SOON -
THE
ROADRUNNER
MURPH'S DRIVE-IN
207 South 134th

WANT ADS
WORK
EVERYWHERE
DOING MORE THINGS FOR MORE PEOPLE AT LOWER COST
THAN ANY OTHER KIND OF ADVERTISING

OPEN 24 HOURS
"NEVER CLOSED"
The Lively Market
TOMBOY - 45th & PACIFIC AVENUE
— ALSO —
STORE AT 72nd AND OAKES
OPEN 9 A.M. to 10 P.M.

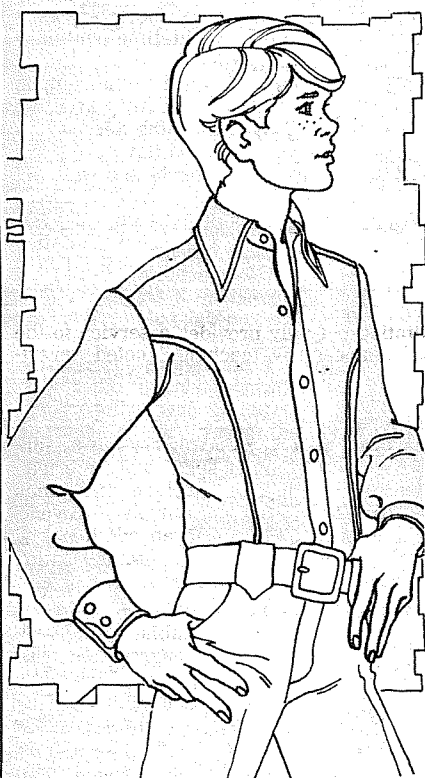
• TWO LOCATIONS • AT THE HI HO SHOPPING CENTERS • RIVER ROAD AND MERIDIAN IN PUYALLUP • 64th AND SOUTH YAKIMA IN TACOMA •

OPEN SUNDAYS
11 a.m. to 5 p.m.



TIME TO GET READY! TIME TO GO...

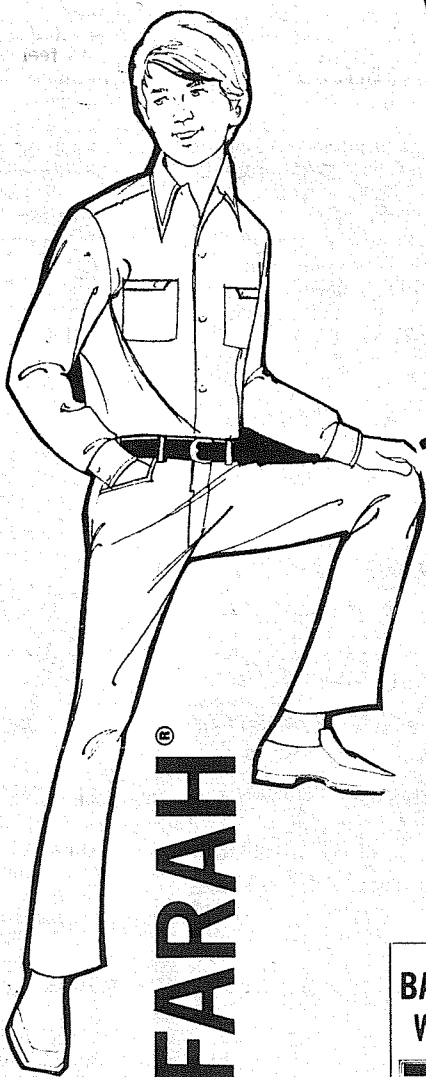
BACK TO SCHOOL



KAYNEE® THE BODY THING

Body shirt with soul. Longer collar, 2-button cuff, matching buttons, seam panels with physical fitness. Solid favorite of the student body in colors ranging from bright to dark to hazy. By Kaynee in Endura-Press™ 65% Dacron® polyester. 35% cotton. Sizes 8-20.

5.00 IN SOLID COLORS
5.50 IN GROOVY STRIPS



FARAH®

FLAIRS THE IN LOOK!

5.50 TO 8.00

CHOOSE FROM HERRINGBONE, BANKERS STRIPES, CLUSTERED STRIPES, SOLIDS, BOLD DENIM STRIPES IN MANY DIFFERENT COLORS. SIZES 6 TO 12 IN REGULAR AND SLIM.



FAMOUS-MAKE
BOYS' and GIRLS'
SIDE-ZIP &
SIDE-SNAP

CHAIR COATS

9.90

Regular 20.00

GIRLS' SIZES 7 TO 16

BOYS' SIZES 8 TO 20

WATERPROOF NYLON
WITH HIDDEN HOOD,
ZIP-POCKETS, GOOD
COLOR SELECTION.



Hanes

HANESSET® CONTROLLED LENGTH SHRINKAGE

T-SHIRT AND BRIEFS

3 FOR 2.59

SIZES 8 TO 20 100% COTTON, QUALITY WORKMANSHIP. BEST BUY FOR BACK-TO-SCHOOL.



LITTLE BOYS 4 TO 7
LONG SLEEVE
VELOUR
SHIRTS
2.99

REG. 4.00, PLUSH COTTON
VELOUR IN POPULAR FALL
COLORS. CREW NECK.



THE "HUNTER" BY PACIFIC TRAIL

Right on target! Winter-weight bush coat captures the fashion look for fall. It's long-wearing Oxford poplin of polyester and cotton... with Cravenette water repellent finish. Collar and lining are contrasting Acrilan® deep pile by Borg. Smart, warm and washable, too. Gold, Oyster. Boys Sizes 8 to 20

26.00



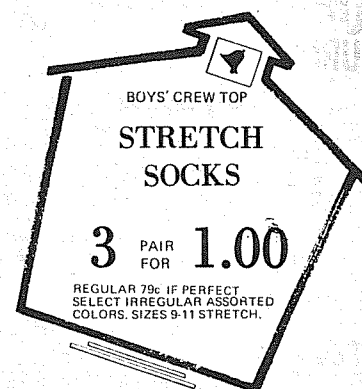
BANK CARDS
WELCOME!



BOYS ACRYLIC
SWEATER
SHIRTS
2.99

REGULAR 4.00 TO 7.00

Short sleeve sweater styles in crew neck or fashion collars. Assorted popular colors and textures. Sizes 8 to 20.



BOYS' CREW TOP
STRETCH
SOCKS

3 PAIR FOR 1.00

REGULAR 79¢ IF PERFECT
SELECT IRREGULAR ASSORTED
COLORS. SIZES 9-11 STRETCH.

STORE HOURS: Monday through Friday 9 am to 9 pm (Tacoma 10 am to 9 pm) Saturdays 9 am to 6 pm • Sundays 11 am to 5 pm •

the Second Forty

by Margaret Brookfield

A FORUM ABOUT MATURE WOMEN

Grandchildren Wanted

Dear Miss Brookfield:

Our daughter is making us very unhappy. She has been married for four years. Both she and her husband don't want to have children because the world, they say, is already over-populated. But if they had two children, that wouldn't be a large family. My husband and I would love to have grandchildren. We think it would be wonderful to be grandparents. Do most young couples feel this way?

R.G., Elkhart, Ind.

Dear R.G.:

We can't answer your question. Although parents can tell a child to turn off TV, get in at a certain hour, and abide by certain rules of behavior, we don't see how they can (and don't believe they should try) convince an adult child to have children. You may want grandchildren badly. But the ones who have to want, love and raise the children are your daughter and her husband. Your daughter is young and may have other interests (such as a career). If and when she wants children, she'll make you grandparents.

Big Eater

Dear Miss Brookfield:

You advised a Boston reader that walking would keep her from overeating. I weigh 190 pounds and I walk two miles every day. But it only increases my appetite. As a result, I overeat. Is there any way I can stop eating so much? I seem to be hungry all the time.

L.A., Eugene, Ore.

Dear L.A.:

It may be your diet, not the walking, that is adding to your weight. A 50-mile hike may make you ravenously hungry but a walk of a mile or two is not supposed to increase the appetite. The Harvard nutritionist and obesity specialist, Dr. Jean Mayer, who has studied overweight in mice and men, says: "If you don't walk at all, you may become a little less hungry if you start walking for an hour a day. If you are already active and increase your activity, your appetite will go up, but not so much that you won't profit from the activity."

Habitual walkers tend on the whole to be moderate eaters. Characteristically, they are not overweight. So keep walking — but also ask your doctor to recommend a sensible diet for you.

Help for Menopause

Dear Miss Brookfield:

Years ago my aunt went through a premature menopause and was given injections by her doctor. Recently, when I visited the doctor to consult him about my own menopausal problems, he put me on medication. He said it was the same as injections. Is it?

H.D., Cleveland, O.

Dear H.D.:

Your doctor may be referring to estrogen, which was given mainly by injection in the 1920's. Estrogen tablets have been available now for many years, so it's quite likely that this is what your doctor has prescribed for you. In both your aunt's case and yours, the estrogen was probably given to relieve symptoms caused by hormonal imbalance resulting from menopausal changes.

Have you a problem as a mature woman, or with one? For advice and help, write to Margaret Brookfield, Information Center on the Mature Woman, 3 West 57th Street, New York, N.Y. 10019.

Money, Money Money? Registration For Nursery

The regular monthly meeting of the Tacoma Coin Club will be held Friday, August 21st, 8 p.m. at the Fircrest Recreation Building. Tacoma Coin Club meetings are the 3rd Friday of each month. New members and guests welcome.

BOYS, GIRLS, MON, & DADS - A HUNTER SAFETY CLASS WILL BE OFFERED AT FRANKLIN PIERCE HIGH SCHOOL GYM, SATURDAY, AUGUST 29 FROM 8:00 AM TO 4:00 PM. BY ROBERT E. EAKES, JR. (WASH. STATE SAFETY INSTRUCTOR NO. 2024). BRING A SACK LUNCH. A HUNTER SAFETY CARD WILL BE ISSUED TO THOSE WHO QUALIFY.

Parkland Cooperative Nursery School is now receiving applications for the 1970-71 classes. Children who are four by September 13, 1970 are eligible for one of the four year old classes and children who are three by September 13, 1970 are eligible for one of the three year old classes. Classes begin September 21, 1970.

Persons wishing information or registration forms should call LE 7-7209.

The activities and emphasis of the curriculum cover a wide range of topics. Excursions to a dentist's office, a veterinary clinic, the Parkland Fire Department, a pumpkin farm, and McChord Air Force Base are especially designed for fun and learning by experience. Visitors are also an important

part of the curriculum. The Sheriff's Deputy will stop by to speak to the children on safety and a representative from the Humane Society entertained the children with a puppet show on kindness to animals.

The Parkland Cooperative Nursery School meets at the fieldhouse at Gonyea Park at South 133rd and J Streets. The school is sponsored by the Tacoma Pierce County Council of Cooperative Nursery Schools.

Mrs. Walter Perkuhn will return as teacher for the 1970-71 year.

A daily schedule allows an hour free time for the children, during which time they are allowed to choose what they wish to do: painting, working in the carpentry shop, housekeeping, block building or outside play. The second hour is directed to more organized group activities: storytime, music and exercises. This is followed by a snack time and specific craft activity. The class sessions last two hours and fifteen minutes.

Parkland Legion Auxiliary

American Legion Auxiliary of Parkland will meet Monday at 8:00 P.M. in the Post Hall. Mrs. Hazel Mackey will be presiding. Mrs.

and a Home Safety Check. Presently, they are collecting Betty Crocker coupons in cooperation with the Tacoma Retarded Children's Guild to purchase a bus for the Pacific Care Center, 9244 Pacific Avenue. They have collected 55,000 coupons this summer, but it will take time to reach the 500,000 goal. They also have been collecting old sheets and pillow cases to donate to the Tacoma Cancer Center to be used, after sterilization, for bandages. They are entirely sponsoring Olsen Hall at Rainier School in Buckley.

Future plans include a rummage sale in September. They are hoping to organize a Teens J.C. as part of the J.C. Leadership Program. If you have any questions about the Parkland J.C. Wives, if you would like to help their programs to further their community services, please feel free to call President Sue Middleton at LE 1-2197.

More Voltage For Graham

Graham residents, in the vicinity of 224th Street East and Meridian, will soon receive electricity from a more substantial system.

The Tacoma Public Utility Board last Wednesday (Aug. 12) awarded a \$22,850 contract for converting 4,000 volt power lines in the area to 12,500 volts.

Work will be completed by the Tye Construction Co., of Bellevue.

Tacoma City Light Superintendent J. D. Cockrell said the utility will furnish materials to expedite completion of the project.

In other utility board business, they authorized \$3,762 to purchase six power transformers previously ordered by the former Loveland Mutual Co.

They also heard a report that City Light's tree trimming contractor in the area is improving rights-of-way below power lines to lessen the possibility of wind-blown trees and branches interfering with power service.

World War I Auxiliary Meeting

The first quarterly meeting of the Barracks & Auxiliaries of District No. 5 of the Veterans of World War I will be held August 22, Saturday at Olympia in the V.F.W. Hall on Martin Way.

There will be potluck at noon, bring your table service. Business meeting will start at 1:30 p.m. with Commander Hilton Brown and President Mrs. Vivian Hull presiding.

Conquistadores Club To Meet

The Los Conquistadores Club will hold its next regular meeting Wednesday, August 19th 7:30 p.m., at the Tacoma Humane Society Building, 2608 Center Street. The program will be presented by Charlie Robinson, Jr., on the Old Virginia City.

Weekend trips are in the planning stage including visits to the Dosewallips and Ghost towns around Skamokawa and in the Mount Baker area. All trips and meetings are open to interested persons. For information call Henry Winther, JU 4-1646, or Elizabeth Mosher, SK 9-4190 (evenings only).

Franklin Pierce School District

Registration for junior and senior high school students that are new to the Franklin Pierce School District will be from 1:00 p.m. to 4:00 p.m. the week of August 17th, and 9:00 a.m. to 3:00 p.m. the week of August 24th.

Registration for new elementary students will begin August 17th. Elementary students may be registered from 9:00 a.m. to 3:00 p.m. at the school they will be attending.

Remember when \$20 worth of groceries would hardly fit into the trunk of your car? Now it fits in the glove compartment.—Wm. R. Davis, Three Forks (Mont.) Herald.

Hazel Jensen will give a report on the recent state convention.

The Post will join the auxiliary for refreshments.

Spanway Post American Legion



James (Rocky) Smith will be installed as the Commander of the Bruce A. Mercer Post of the American Legion in ceremonies at the Spanaway Post Headquarters on South 160th Street just east of Pacific Avenue on Saturday, August 22nd at 8 p.m.

The Bruce A. Mercer Post of the American Legion will hold its annual installation of officers and initiation of new members on August 22nd at 8:00 p.m. in the Spanaway Headquarters Building.

The New officers to be installed are James (Rocky) Smith, Commander; Larry Peterson, Junior Post Commander; Richard Micklenburg, Senior Vice Commander; Mike Banauch, Junior Vice Commander; Robert Shelman, Adjut; Gordon

Harless, Finance Officer; Jim Adams, Chaplain; Mike Underwood, Historian; Loen Patton, Sargent at Arms.

The installation of new officers and the initiation of new members will be conducted by respective teams from the 4th District.

The meeting is open to the public and everyone interested is invited to attend, especially any veterans who would like to see the Post in action before submitting a membership application.

Baughman Expresses Opinions



used and where it is coming from. I believe schools should be controlled from the local level and that too many tax dollars remain at the state level. I believe the state board of education, which controls the spending of huge amounts of tax money for schools should be elected by a popular vote of the general public. They are not at present.

I am against annexation, consolidation, or other ways of taking over unincorporated areas, water districts, school districts, fire districts, sewer districts and power districts without a vote of all of the people concerned.

I do not believe in the private ownership of property. At the rate property taxes are now going, we are increasingly denying this right to the retired, and others on fixed incomes. I feel the legislature must look with skeptical eye at any further granting of power of eminent domain. There are already too many ways for the private citizen to lose his property.

I do not believe in government by appointment. I am opposed to further legislating away of various county and state elective offices and having them replaced with someone's appointees. I have complete faith in the decisions of the general public to elect their different office holders and to defeat them when they cease being effective in their job.

Your support in this matters is appreciated.

Modern music is okay, but why did it have to come in our time.—Jim Thompson, The Madison (Ohio) Press.

BACK TO SCHOOL SPECIAL - 1¢ SALE

1 Garment - Regular Price
Second for 1¢
CLEANED & PRESSED

WASH 'N DRY CLEAN, INC.

12171 Pacific Ave.
13815 Pacific Ave.

CLIP THIS COUPON
GOOD MONTH OF AUGUST ONLY

ANY TUESDAY, WEDNESDAY, THURSDAY

Permanent-reg. 17.50 \$12.50 with coupon

Hair Color - reg. 9.00 \$7.50 with coupon

Hair Cut, Shampoo, and Set-reg. 6.50- \$5.00 with Coupon

Sherry's Styling Hut

1211 East 142nd LE 1-4660

Coupon Cash Value 1-20 of 1 Cent

SAVE MORE!

Feminism & Women's Lib.

by Alison Goddard

New York (MW) — Even though the advertisement assures women they have "come a long way," the feminists insist their sex is just taking its first baby steps toward equality.

So — on August 26 they plan a day of protest. That date is special because it marks the 50th anniversary of the ratification of the Constitutional amendment guaranteeing women the right to vote. Earlier feminists, the suffragettes, fought for this.

Their modern successors range from the militant groups (WITCH, SCUM and others) to the more conservative NOW, organized originally by author-Mrs. Betty Friedan. She became high priestess of the movement with the publication in 1963 of her best-seller, "Feminine Mystique," an indictment of the traditional image of the American housewife.

Unfortunately, the image of the feminist cause has been distorted somewhat by the anti-family, anti-men and anti-bra adherents. But the movement is picking up both momentum and converts daily among middle-class, middle-aged suburban housewives.

Aims

Essentially, the feminists seek social, political, economic and domestic equality. They hope to achieve this with the repeal of abortion laws, establishment of day-care centers for women who choose to combine marriage and a career (almost 11-million women with children under 18 are working mothers), a sharing of parental and domestic duties, and an end to laws that discriminate against women. These range from "protective" laws in many states that effectively exclude women from better jobs and higher pay to laws that deny women independent credit or exclude them from obtaining a mortgage to purchase a house. In some states husbands can sue for divorce if the wife fails to keep the house clean; in one state a woman's clothes legally belong to her husband.

Changing Roles

Both the Civil Rights Act of 1964, which prohibits discrimination in employment on the basis of sex, and the civil rights protest movement helped boom the feminist cause. Also important are the nearly 30-million women now in the labor market, the majority in relatively low-paying jobs.

American women represent 51 per cent of the population. By the year 2000, according to experts, they will be in an even greater percentage, particularly among

senior citizens. In their grandmothers' generation, the average woman's life ended with her reproductive capacity. But now women live well beyond the menopause, with a life expectancy of over 74 years.

Understandably, the longer life span can bring changes in the health, well-being and sex life of women. For instance, many menopausal problems have been traced to hormonal imbalance because at menopause the female body's production of estrogen declines. But it is now possible to relieve menopausal symptoms by replacing the estrogen through medication.

Tomorrow's World

The majority of mature women, according to reports, are hostile to the feminists. Many tend to view this movement as another demand for change in a society that has already changed too much. Along with the changes in family life are others in institutions that once helped strengthen the family: religion, school, law and government. Added to these are the revolts of the young, typified by the hippie cult, the drug scene, the sexual revolution, campus unrest, nudity in fashions and pornography in mass entertainment.

But each victory the feminists win will change the options, if not the lives of all women. Richard E. Farson, a California psychologist, has said: "...when women revolt, all of us will change."

YWCA Clubs & Programs Join Now

The Tacoma-Pierce County YWCA, a UGN agency, offers two "mothers-day-out" programs for women who are at home all day, with or without small children. One such program is the Eastside Y-Women's Club, meeting at the Eastside Youth Center at E. 44th and Q. on Mondays from 9:30 - 11:30 a.m. It is open to any Tacoma-Pierce County woman who is interested in making new friends, in crafts, speakers and trips. The Wednesday Y-Wives Club meets at the YWCA, 401 Broadway, on Wednesdays from 9:00 - 1:30 p.m. for exercises, swimming, lunch, speakers and crafts. Child-care is available for both programs.

The Outsiders, a single young adults club meets at the YWCA on Tuesdays at 7:00 p.m. for activities such as trips, speakers and swimming. Sat. and Sun., Sept. 12 and 13, an overnight trip to Vancouver, B.C. is planned. The bus will leave from the Y at 8:00 a.m. Since space is limited to eight, call now for reservations. Other trips include a tour of the Olympia Brewery on Sat. Oct. 17, and to Woodland Park Zoo and Seattle Center on Sun. Nov. 8.

Fridays is when the Mayflower Golden Age Club meets at the Y from 9:00 - 1:30 p.m. for card games, singing, refreshments and fellowship.

A new item on the Y-Teen scene is the Y-Teen Kitchen



They all won this round. Left to right: Washington's new cheerleading staff are Shirley Hideshima, 11th grade, Debbie Ahrendt, 11th, Carol Braithwaite, (12th, Janice Zurfluh, 11th, Sally Braithwaite, 11th, and Mike Hester, 11th. Missing from the picture are Debbi Diamond, 12th and Nancy Ginnis, 11th.

Kapowsin Rebecas To Have Rummage Sale

The Kapowsin Rebecca Auxilliary No. 241 I.O.O.F will be having a rummage sale on August 28th and 29th. It will be held at 116th and East Pioneer in Puyallup from nine to five o'clock. There will be many miscella-

neous items to buy.

If anyone would like to donate rummage they may call TH5-9006 or VI7-7235 and it will be picked up.

Everyone is most cordially invited to come by and see what is available for sale.

at the YWCA scheduled to open early this fall as a drop-in lounge for Y-Teen members and friends. Y-Teen Clubs are active in most of the junior and senior high schools.

The YWCA residence is open to girls 17 - 25 who are working or attending school. Temporary accommodations are available for women visitors by prior reservations.

A new service starting this fall is the YWCA nursery for those who wish to participate in YWCA activities on Tuesdays, Wednesdays, and Thursdays. The nurseries will be open on Tuesdays from 9:30 a.m. - 2:00 p.m., on Wednesdays,

from 9:00 a.m. - 1:30 p.m., and on Thursdays from 9:30 a.m. - 2:30 p.m. for nominal charges.

There will be two special courses this fall open to YWCA members without charge, and open to non-members for a small fee. On Fridays at 9:30 a.m. there will be a series on Community Health Services, designed to acquaint the public with local health agencies and their services. On Wednesdays, beginning on Sept. 16th at 7:30 p.m., at 5 week Medical Self-Help and First Aid class will be held. For further information on these courses, call the YWCA, BR 2-4181.

Cheerleaders Represent Washington in Ellensburg

Washington High School can be proud of its cheerleaders. All summer they have worked together in car washes, bake sales, selling candy bars and other things to raise money for their uniforms so they could go to the National Cheerleader's Clinic in Ellensburg.

They came back with smiles, happiness and a prized possession — a spirit stick. They also received four blue ribbons, one red and three white ribbons. Which goes to show that even being handicapped, as their Queen Carol wrenched a muscle and cheered for a couple of days with her arm in a sling, they've really got the spirit. They've been rehearsing all summer, five nights a week, for two hours. They have also supplied all the guys trying out for football with lemonade, donuts, cookies and smiles.

One sad note... on a shopping expedition the day they picked up their uniforms, two of the sweaters were taken. It won't be until the first of October that the sweaters can be replaced. The first game is September 11 with Lakes High School... and it will be a long wait until October.

SEE US FOR
**Fast, Expert
DRY CLEANING**

PARKLAND CLEANERS
LE 7-3221
110th & Pacific
IN KELLER'S KORT

NEW LIFE FOR OLD SHOES
Repair Them

**save money
INSURE
COMFORT**

Keep those worn shoes and let us put NEW life into them. Our expert craftsmen will repair your shoes and save you money. Try us soon and see for yourself!

LEE'S SHOES & REPAIR
Parkland Square
12213 Pacific Ave LE 7-4286

DUTCHMAN DRIVE IN CAFE

- HAMBURGERS
- HOT DOGS
- FISH N' CHIPS
- PRAWNS
- FRIED CHICKEN

ORDERS TO GO VI 7-2179
3/4 Mile South of Roy "Y" on Mountain Hiway

MILLIE'S STYLETTE BEAUTY SHOP
HAIRCUT*SHAMPOO*SET
\$6.00
LE 7-8042
228-169th E. SPANAWAY
MILLIE COASH, owner-operator
OPEN MON THRU SAT.

Red Quille

all-in-one

Clipmate Colored Canvas Binder 11 IN. x 8 1/2 IN. 3 Ring \$1.39

Notebook Paper College Ruling 11 IN. x 8 1/2 IN. 80 Sheets 49¢

Theme Book College Ruling 11 IN. x 8 1/2 IN. 33 Sheets 39¢

American Loose Leaf Dictionary 10 1/2 IN. x 8 IN. 24 Sheets 39¢

Dura-Dex Index Divider 11 IN. x 8 1/2 IN. 5 Dividers 29¢

Assignment Book 7 1/2 IN. x 5 IN. 30 Sheets 29¢

TOTAL VALUE \$324

SPECIAL \$198

SPROUSE-REITZ VARIETY STORES
8218 Pacific Ave. GR 4-3070
YOUR HEADQUARTERS FOR BACK TO SCHOOL SUPPLIES

Franklin Pierce

Schools in the Franklin Pierce School District will open Tuesday, September 1st. All classes will operate on a regular schedule except kindergarten. Kindergarten students will report in the morning of the first day, receive their assignments, and return home with their parents. Kindergarten students will meet for one hour sessions Wednesday, September 2nd and Thursday, September 3rd, and parents will be responsible for all kindergarten transportation on these days. Starting on Friday, September 4th, kindergarten children will attend regular sessions and kindergarten buses will be in operation.

Secondary classes will begin at 8:15 and Elementary classes will begin at 8:45.

New teachers will meet August 28th for orientation and a P.T.A. luncheon. All teachers will meet for orientation August 31st.

All school cafeterias will be in operation the first day of school.

Washington High

Run No. 1, Bus 32, King:
128th & Waller Rd., 7:20 a.m.; Chesney & Waller Rd., 7:23; 25th Ave. & Brookdale Rd., 7:32; Brookdale Rd. & Golden Given, 7:34; 138th & Golden Given, 7:38; 140th & Golden Given, 7:40; 142nd & Golden Given, 7:43; 10th Ave. & John's Rd., 7:46.

Run No. 2, Bus 11, Smith:
112th & D., 7:30; 112th & A., 7:32; 106th & Grayton, 7:36; 102nd & Patterson, 7:38; 100th & Patterson, 7:40; 98th & Patterson, 7:42; 99th & Barnes Lane, 7:45; 101st & Park Ave., 7:48; 102nd & Barnes Lane, 7:50.

Run No. 3, Bus 26, Elmore:
99th & Sheridan, 7:30; 102nd & Sheridan, 7:33; 102nd & Wilkeson, 7:36; 106th & Wilkeson, 7:38; 106th & Ainsworth, 7:40; 108th & Ainsworth, 7:42; 108th & J., 7:45; 108th & Park Ave., 7:48.

Run No. 4, Bus 13, Jamieson:
138th & 10th Ave., 7:30; 138th & F., 7:32; 138th & D., 7:34; 138th & B., 7:36; 138th & A., 7:38; 138th & C., 7:42; 138th & 13th Ave., 7:44; 508 Spanaway Loop Rd., 7:48.

Run No. 5, Bus 7, Russell:
112th & Golden Given, 7:27; 121st & Golden Given, 7:30; 121st & F., 7:32; 121st & A., 7:35; 127th & A., 7:37; 128th & McKinley, 7:39; 128th & Golden Given, 7:45; 131st & McKinley, 7:46; 131st & B., 7:48; 133rd & B., 7:50; 133rd & Pacific Ave., 7:51; Tule Lake Rd. & C., 7:55.

Franklin Pierce High

Run No. 1, Bus 1, Olson:
103rd & Vickers, 7:33; 96th & Vickers, 7:36; 92nd & Vickers, 7:38; 88th & Vickers, 7:40; 84th & Vickers, 7:41; 80th & Vickers, 7:42; 80th & E. 50th Ave., 7:44; 80th & Canyon Rd., 7:45; 84th & Canyon Rd., 7:46; Canyon Rd. & Pipeline, 7:47; Canyon Rd. & 96th St., 7:48; 96th & 48th Ave., 7:50.

Run No. 2, Bus 2, Simonson:
112th & Waller, 7:30; 112th & 34th Ave., 7:31; 112th & Vickers, 7:32; 112th & Bingham, 7:35; 108th & Bingham, 7:38; 141st & Bingham, 7:39; 144th & Bingham, 7:40; 1509 Bingham, 7:42; 152nd & 42nd Ave., 7:43; 152nd & Canyon, 7:45; 1474 E. 66th Ave., 7:47; 144th & 66th Ave., 7:47; 144th & 58th Ave., 7:49; 144th & Canyon, 7:51; 138th & Canyon, 7:52; 136th & 58th Ave., 7:53; 126th & 58th Ave., 7:54; 132nd & 60th Ave., 7:56; 128th & 60th Ave., 7:56; 128th & Canyon, 7:57; 112th & Canyon, 7:59.

Run No. 3, Bus 8, Hale:
80th & Portland, 7:35; 80th & Golden Given, 7:36; 72nd & Golden Given, 7:37; 72nd & East L., 7:39; 72nd & Portland, 7:40; 72nd & Wilkeson, 7:40; 72nd & 25th Ave., 7:43; 80th & 25th Ave., 7:44; 80th & Wilkeson, 7:45; 84th & Portland, 7:47; 91st & Portland, 7:49.

Run No. 4, Bus 19, Fry:
112th & A., 7:40; 106th & A., 7:41; 104th & A., 7:42; 99th & A., 7:44; 99th & East F., 7:46; 97th & Golden Given, 7:47; 90th & Golden Given, 7:48; 85th & Golden Given, 7:49; 85th & McKinley, 7:51; 88th & McKinley, 7:52; 90th & McKinley, 7:53.

Run No. 5, Bus 31, Sollinger:
Golden Given & 121st, 7:24; Golden Given & 128th, 7:25; 1420 E. 128th, 7:26; 128th & Portland, 7:27; 128th & Aqueduct, 7:28; 128th & Waller, 7:29; 134th & Waller, 7:30; 808 E. 138th, 7:31; 138th & Vickers, 7:32; 132nd & Vickers, 7:33; 128th & Vickers, 7:35; 128th & 40th Ave., 7:36; 128th & 42nd Ave., 7:37; 120th & Bingham, 7:39; 116th & Bingham, 7:40; 120th & Vickers, 7:44; 120th & 34th Ave., 7:46; 120th & Waller, 7:47; 120th & 28th Ave., 7:49; 121st & 20th Ave., 7:51; 121st & Aqueduct, 7:52.

Run No. 6, Bus 27, LaForce:
11127 E. 59th, 7:36; 104th & 59th Ave., 7:38; 1023 E. 61st Ave., 7:39; 2024 E. 58th Ave., 7:40; 104th & Canyon Rd., 7:42; 104th & 40th Ave., 7:44; 3501 E. 104th St., 7:45; 104th & Waller Rd., 7:46; 9925 Waller Rd., 7:48; 96th & Waller Rd., 7:49; 92nd & Waller Rd., 7:50; 88th & Waller Rd., 7:51; 84th & Waller Rd., 7:52; 80th & Waller Rd., 7:53; 84th & 24th Ave., 7:54; 91st & 24th Ave., 7:55; 93rd & 24th Ave., 7:56; 96th & 24th Ave., 7:57.

Ford Jr. High

Run No. 1, Bus 12, Armstrong:
104th & 48th Ave., 7:18; 104th & 40th Ave., 7:20; 104th & 34th Ave., 7:22; 104th & Waller, 7:24.

Run No. 2, Bus 12, Armstrong:
112th & 59th Ave., 7:37; 104th & 59th Ave., 7:38; 10317 E. 61st Ave., 7:39; 9912 E. 61st Ave., 7:40; 98th & E. 61st Ave., 7:41; 9808 E. 58th Ave., 7:42; 100th & 58th Ave., 7:43; 103rd & 58th Ave., 7:44; 104th & Canyon, 7:50.

Run No. 3, Bus 15, Amor:
112th & D., 7:19; 106th & "A", 7:22; 104th & "A", 7:23; 100th & "A", 7:24; 99th & East "F", 7:25; 97th & Golden Given, 7:27; 90th & Golden Given, 7:28; 85th & Golden Given, 7:30; 85th & McKinley, 7:31; 90th & McKinley, 7:32; 99th & McKinley, 7:34.

Run No. 4, Bus 16, McGann:
80th & Golden Given, 7:20; 72nd & Golden Given, 7:21; 72nd & East "L", 7:22; 72nd & Portland, 7:23; 72nd & Wilkeson, 7:24; 72nd & 25th Ave., 7:25; 80th & E. 25th Ave., 7:27.

Run No. 5, Bus 15, McGann:
80th & Waller, 7:42; 84th & Waller, 7:43; 88th & Waller, 7:44; 92nd & Waller, 7:46; 96th & Waller, 7:48; 100th & Waller, 7:50.

Run No. 6, Bus 20, Thompson:
96th & 48th Ave., 7:15; 96th & Canyon, 7:16; Pipeline & Canyon, 7:18; 8823 Canyon, 7:19; 86th & Rody Rd., 7:21; 84th & Rody Rd., 7:23; 84th & Canyon, 7:24; 80th & Canyon, 7:25; 80th & 50th Ave., 7:27; 80th & Vickers, 7:29.

Run No. 7, Bus 20, Thompson:
88th & Vickers, 7:45; 92nd & Vickers, 7:46; 96th & Vickers, 7:48; 101st & Vickers, 7:50.

Run No. 8, Bus 21, Black:
112th & 40th Ave., 7:30; 112th & Bingham, 7:32; 112th & Canyon, 7:34; Canyon & 116th, 7:35; 122nd & Canyon, 7:36; 128th & Canyon, 7:37; 128th & 62nd Ave., 7:39; 132nd & 62nd Ave., 7:41; 136th & 62nd Ave., 7:42; 136th & 58th Ave., 7:43; 136th & 57th Ave., 7:44.

Run No. 9, Bus 5, Irish:
112th & Waller, 7:20; 112th & 34th Ave., 7:22; 118th & Vickers, 7:25; 13305 Canyon Rd., 7:29; 136th & Canyon, 7:32; 138th & Canyon, 7:34; 144th & Canyon, 7:37; 144th & 50th Ave., 7:39; 144th & Bingham, 7:42.

Run No. 10, Bus 22, Campbell:
144th & 58th Ave., 7:30; 144th & 66th Ave., 7:32; 14802 E. 66th Ave., 7:33; 152nd & Canyon, 7:37; 152nd & 50th Ave., 7:38; 152nd & 47th Ave., 7:39; 141st & Bingham, 7:42; 13707 Bingham, 7:44.

Run No. 11, Bus 23, Hickman:
132nd & Vickers, 7:37; 138th & Vickers, 7:38; 3102 E. 138th, 7:39; 13219 Waller, 7:40; 128th & Waller, 7:41; 118th & 28th Ave., 7:42; 2406 E. 128th, 7:43; 128th & Aqueduct Dr., 7:44; 128th & Portland, 7:45; 1411 E. 128th, 7:47; Golden Given & 128th, 7:49; 12719 Golden Given, 7:50; 112th & Golden Given, 7:52.

Run No. 12, Bus 25, Sherwood:
91st & Van Buren, 7:20; 88th & Van Buren, 7:21; 85th & Portland, 7:23; 80th & Portland, 7:24; 80th & Wilkeson, 7:25.

Run No. 13, Bus 25, Sherwood:
85th & 24th Ave., 7:38; 90th & 24th Ave., 7:40; 93rd & 24th Ave., 7:41; 96th & 24th Ave., 7:42.

Run No. 14, Bus 28, Chance:
121st & Golden Given, 7:15; 121st & Aqueduct Dr., 7:17; 121st & 20th Ave., 7:18; 120th & 24th Ave., 7:20; 120th & 28th Ave., 7:21; 120th & Waller, 7:22; 120th & 34th Ave., 7:23; 116th & 34th Ave., 7:24.

Run No. 15, Bus 28, Chance:
120th & Vickers, 7:32; 128th & Vickers, 7:34; 128th & 40th Ave., 7:35; 128th & 42nd Ave., 7:36; 128th & Bingham, 7:38; 120th & Bingham, 7:42.

Keithley Jr. High

Run No. 1, Bus 3, Lyon:
610 E. 121st, 7:13; 1101 - A St., 7:14; Violet Meadow & A, 7:15; 121st & A, 7:17; 121st & East F, 7:18; 121st & Golden Given, 7:20; 100th & Patterson, 7:26; 106th & Prayton, 7:28.

Run No. 2, Bus 6, Stortie:
Brookdale & Waller, 7:15; Brookdale & 25th Ave., 7:18; Brookdale & Chesney, 7:19; 1654 Brookdale, 7:20; Brookdale Trailer Court, 7:22.

Run No. 3, Bus 6, Stortie:
133rd & B, 7:32; 131st & B, 7:33; 128th & Golden Given, 7:36; 128th & East F, 7:38; 129th & A, 7:40.

Run No. 4, Bus 17, Hale:
120 S. 143rd, 7:16; 143rd & D, 7:17; 138th & D, 7:18; 138th & D, 7:19; 138th & A, 7:20; 144th & C, 7:25; 142nd & C, 7:27; 138th & C, 7:29.

Run No. 5, Bus 18, Mirosh:
Brookdale & Golden Given, 7:26; 10th Ave. & 138th, 7:29; 138th & East F, 7:30.

Run No. 6, Bus 24, Selby:
108th & Park, 7:18; 108th & J, 7:20.

Run No. 7, Bus 24, Selby:
108th & Park, 7:18; 108th & J, 7:20; 108th & Barnes Lane, 7:37; 102nd & Barnes Lane, 7:38.

Run No. 8, Bus 29, Rodrigues:
96th & Sheridan, 7:30; 99th & Sheridan, 7:31; 102nd & Sheridan, 7:32; 102nd & Wilkeson, 7:35; 106th & Wilkeson, 7:37; 106th & Ainsworth, 7:38; 108th & Ainsworth, 7:40.

Run No. 9, Bus 30, Curtis:
140th & Golden Given, 7:30; 142nd & Golden Given, 7:32; 10th Ave. & John's Rd., 7:33.

Run No. 10, Bus 3, Lyon:
Violet Meadow & A, 2:48; 121st & A, 2:50; 121st & East F, 2:52; 121st & Golden Given, 2:54; 610 E. 121st, 2:57; 100th & So. Patterson, 3:03; 106th & Brayton, 3:05.

Run No. 11, Bus 6, Stortie:
133rd & B, 2:45; 131st & B, 2:47; 131st & Trailer Ct, 2:48; 1615 Brookdale, 2:49; Brookdale & Chesney, 2:50; Brookdale & 25th Ave., 2:51; Brookdale & Waller, 2:52; 128th & Golden Given, 2:58; 128th & East F, 2:59; 127th & A, 3:00.

Run No. 12, Bus 17, Hale:
138th & Tule Lk. Rd., 2:43; 138th & C St., 2:45; 144th & C, 2:46; 120 S. 143rd, 2:48; 143rd & D, 2:50; 138th & D, 2:51; 138th & E, 2:52; 138th & A, 2:54; 136th & A, 2:55.

Registration

Elementary, Grades K-5 August 24-28
Junior High, Grades 6-8 August 17-28
High School, Grades 9-12 August 17-28
Time (for all schools): 9:00 a.m. to 12:00 noon and 1:00 and 3:00 p.m.

HIGH SCHOOL ROUTE

ROUTE NO. 1, EAST SPANAWAY AREA, BUS NO. 67-32
Leave Bus Garage at 7:00 AM., First Pickup 7:10 AM corner of East 152nd and 7th Avenue. East on 152nd to 22nd Avenue, South to Military Road, West to 11th Avenue. North to Old Military Road, West to B Street, South to 92nd E. to Webb Road, South to Mt. Highway.

ROUTE NO. 2, EAST SPANAWAY AREA, BUS NO. 57-14
Leave Bus Garage 6:57 AM, First Pickup 7:07 AM 168th and East B Street. East on 168th to 18th Avenue. South to 172nd, West to Spanaway Lane, then south to 176th, West to Pacific. South to 208th. East to 22nd Ave. South to Mt. Highway.

ROUTE NO. 3, EAST SPANAWAY AREA, BUS NO. 66-30
Leave Bus Garage at 7:00 AM., First Pickup at 7:12 AM Corner 152nd and 22nd Avenue. East on 152nd to Brookdale Road, North on 152nd to Brookdale Road to Waller Road, South to Military Road, West to 22nd Avenue, South to 176th.

ROUTE NO. 4, CLOVER CREEK AREA, BUS NO. 65-29
Leave Bus Garage at 6:45 AM — First Pickup 6:55 AM, Old Military Road, Moore's residence. East on Old Military Road to Canyon Road, north on Canyon Road to 152nd, East to 66 Avenue, South to 160th, East on 160th to 74th Avenue, follow around to 78th, South on 78th to 160th. Turn around and return to 160th. East on 160th to Brookdale Road, Northwest on Brookdale Road to 38th Avenue East, South on 38th Avenue to Old Military, West on 36th Avenue East to 176th, East on 176th to 38th Avenue. South on 38th to 176th. Turn around and return to 176th. East on 176th to 22nd Avenue. South on 22nd Avenue to Mt. Highway.

ROUTE NO. 5, WEST SPANAWAY (Cres. Park), BUS NO. 52-6
Leave Bus Garage 7:05 AM, First Pickup at 7:10 AM — 208th (Kupers) — West on 208th to 28th Avenue East, North on 28th Avenue to East (200th) around and return to 208th, West on 208th to 22nd Avenue, North on 22nd Avenue to 192nd, East on 192nd to B Street, North on B Street to 176th, East to 14th Avenue, South on 14th Avenue to 6nd. Turn around and return to 176th. East on 176th to 22nd Avenue. South on 22nd Avenue to Mt. Highway.

ROUTE NO. 6, CLOVER CREEK AREA, BUS NO. 69-36
Leave Bus Garage 6:40 AM, First Pickup 6:50 AM — corner of 192nd and 38th Avenue. West on 192nd to 22nd Avenue, North to 176th, East to 28th Avenue, South to 192nd, East to 36th Avenue, North to 176th, East to 51st Avenue, South to 180th, West to 38th Avenue, South on 38th Avenue to Orting Prairie Road, East on Orting Prairie Road to 82nd Avenue, Via — 200th and Eastus Hunt Road, South on 82nd Avenue to 224th, West on 224th to 70th Avenue.

ROUTE NO. 7, FREDRICKSON AREA, BUS NO. 59-16
Leave Bus Garage 6:50 AM, First Pickup 176th and 52nd Avenue East at 7:05 AM. East on 176th to 78th Avenue, South to 204th Street, West to 66th Avenue, Via — Fir Meadows, South on 66th to 208th, West on 208th 1/2 mile and turn around and return to 66th, South on 6th to 212th Street East, West on 212th to 58th Avenue South on 58th to 224th.

ROUTE NO. 8, MT. HIGHWAY, BUS NO. 56-12
Leave Bus Garage 7:10 AM., First Pickup at 7:20 AM. — Roy Y. North on Pacific Avenue to 176th, East on 176th to 16th Avenue, Mt. Highway, South on Mt. Highway to 224th, East on 224th to 38th Avenue.

ROUTE NO. 9, BETHEL GREEN ACRES AREA, BUS NO. 60-19
(Via: Mt. Highway & Quiet Village) Leave Bus Garage 6:55 AM, First Pickup at 7:00 AM. — Mt. Highway and 232nd. South on Mt. Highway to 260th (Via: Quiet Village) East on 260th to 54th Avenue, North to 255th, West to 52nd Avenue, North to 254th, West to 51st Avenue, North to 252nd, West to 50th Avenue, North to 249th, East to 51st, South to 250th, East to Mathias Webster Road, East on Mathias Webster to 70th Avenue, North on 70th Avenue to 224th, West to 46th Avenue East, South on 46th to end. Turn around and return to 224th.

(Via: Mt. Highway & Quiet Village) Leave Bus Garage 6:55 AM, First Pickup at 7:00 AM. — Mt. Highway and 232nd. South on Mt. Highway to 260th (Via: Quiet Village) East on 260th to 54th Avenue, North to 255th, West to 52nd Avenue, North to 254th, West to 51st Avenue, North to 252nd, West to 50th Avenue, North to 249th, East to 51st, South to 250th, East to Mathias Webster Road, East on Mathias Webster to 70th Avenue, North on 70th Avenue to 224th, West to 46th Avenue East, South on 46th to end. Turn around and return to 224th.

(Continued on Page 19)

Bethel

Due to the growth of the Bethel School District, many changes have taken place. The sixth grade will now attend with the seventh and eighth grades in a middle school or junior high. The bus schedules have changed to make more runs, hence the change in time of the school day to allow time for buses to bring the students to school. Bethel High School starts at 7:45 a.m. and ends at 2:25 p.m. Junior High or Middle School (6,7,8) begins at 8:30 a.m. and ends at 3:00 p.m.. The elementary grades 3-4-5 start at 9:00 a.m. and finishes at 3:30 p.m., grades one and two from 9:00 a.m. to 2:30 p.m. and kindergarten from 9:00 a.m. to 11:30 a.m. and afternoon sessions from 1:00 p.m. to 3:30 p.m. The Central Administration Building is open from 8 a.m. to 4:30 p.m.

Physical examinations are required of students enrolling in the kindergarten, or the first grade if they did not have an examination last year. In addition, students entering the 7th grade are required to have a physical exam.

Students entering kindergarten must be 5 years of age by September 10th and proof of age is required.

Be sure and check the bus schedules printed below as many changes have been made in routes, drivers and time.

Registration

Elementary, Grades K-5 August 24-28
Junior High, Grades 6-8 August 17-28
High School, Grades 9-12 August 17-28
Time (for all schools): 9:00 a.m. to 12:00 noon and 1:00 and 3:00 p.m.

HIGH SCHOOL ROUTE

ROUTE NO. 1, EAST SPANAWAY AREA, BUS NO. 67-32
Leave Bus Garage at 7:00 AM., First Pickup 7:10 AM corner of East 152nd and 7th Avenue. East on 152nd to 22nd Avenue, South to Military Road, West to 11th Avenue. North to Old Military Road, West to B Street, South to 92nd E. to Webb Road, South to Mt. Highway.

ROUTE NO. 2, EAST SPANAWAY AREA, BUS NO. 57-14
Leave Bus Garage 6:57 AM, First Pickup 7:07 AM 168th and East B Street. East on 168th to 18th Avenue. South to 172nd, West to Spanaway Lane, then south to 176th, West to Pacific. South to 208th. East to 22nd Ave. South to Mt. Highway.

ROUTE NO. 3, EAST SPANAWAY AREA, BUS NO. 66-30
Leave Bus Garage at 7:00 AM., First Pickup at 7:12 AM Corner 152nd and 22nd Avenue. East on 152nd to Brookdale Road, North on 152nd to Brookdale Road to Waller Road, South to Military Road, West to 22nd Avenue, South to 176th.

ROUTE NO. 4, CLOVER CREEK AREA, BUS NO. 65-29
Leave Bus Garage at 6:45 AM — First Pickup 6:55 AM, Old Military Road, Moore's residence. East on Old Military Road to Canyon Road, north on Canyon Road to 152nd, East to 66 Avenue, South to 160th, East on 160th to 74th Avenue, follow around to 78th, South on 78th to 160th. Turn around and return to 160th. East on 160th to Brookdale Road, Northwest on Brookdale Road to 38th Avenue East, South on 38th Avenue to Old Military, West on 36th Avenue East to 176th, East on 176th to 38th Avenue. South on 38th to 176th. Turn around and return to 176th. East on 176th to 22nd Avenue. South on 22nd Avenue to Mt. Highway.

ROUTE NO. 5, WEST SPANAWAY (Cres. Park), BUS NO. 52-6
Leave Bus Garage 7:05 AM, First Pickup at 7:10 AM — 208th (Kupers) — West on 208th to 28th Avenue East, North on 28th Avenue to East (200th) around and return to 208th, West on 208th to 22nd Avenue, North on 22nd Avenue to 192nd, East on 192nd to B Street, North on B Street to 176th, East to 14th Avenue, South on 14th Avenue to 6nd. Turn around and return to 176th. East on 176th to 22nd Avenue. South on 22nd Avenue to Mt. Highway.

ROUTE NO. 6, CLOVER CREEK AREA, BUS NO. 69-36
Leave Bus Garage 6:40 AM, First Pickup 6:50 AM — corner of 192nd and 38th Avenue. West on 192nd to 22nd Avenue, North to 176th, East to 28th Avenue, South to 192nd, East to 36th Avenue, North to 176th, East to 51st Avenue, South to 180th, West to 38th Avenue, South on 38th Avenue to Orting Prairie Road, East on Orting Prairie Road to 82nd Avenue, Via — 200th and Eastus Hunt Road, South on 82nd Avenue to 224th, West on 224th to 70th Avenue.

ROUTE NO. 7, FREDRICKSON AREA, BUS NO. 59-16
Leave Bus Garage 6:50 AM, First Pickup 176th and 52nd Avenue East at 7:05 AM. East on 176th to 78th Avenue, South to 204th Street, West to 66th Avenue, Via — Fir Meadows, South on 66th to 208th, West on 208th 1/2 mile and turn around and return to 66th, South on 6th to 212th Street East, West on 212th to 58th Avenue South on 58th to 224th.

ROUTE NO. 8, MT. HIGHWAY, BUS NO. 56-12
Leave Bus Garage 7:10 AM., First Pickup at 7:20 AM. — Roy Y. North on Pacific Avenue to 176th, East on 176th to 16th Avenue, Mt. Highway, South on Mt. Highway to 224th, East on 224th to 38th Avenue.

ROUTE NO. 9, BETHEL GREEN ACRES AREA, BUS NO. 60-19
(Via: Mt. Highway & Quiet Village) Leave Bus Garage 6:55 AM, First Pickup at 7:00 AM. — Mt. Highway and 232nd. South on Mt. Highway to 260th (Via: Quiet Village) East on 260th to 54th Avenue, North to 255th, West to 52nd Avenue, North to 254th, West to 51st Avenue, North to 252nd, West to 50th Avenue, North to 249th, East to 51st, South to 250th, East to Mathias Webster Road, East on Mathias Webster to 70th Avenue, North on 70th Avenue to 224th, West to 46th Avenue East, South on 46th to end. Turn around and return to 224th.

(Continued on Page 19)

Eatonville

The Eatonville School District will begin school on Tuesday, Sept. 1, 1970. The school day will begin at 8:45 A.M. and will end at 3:15 P.M. A full day of school is scheduled for the first day and hot lunches will be served to those students who wish to purchase them. In grades 1 through 6 the price for school lunch is 30 cents and in grades 7 through 12 the cost is 35 cents. Additional milk may be purchased for 5 cents per half pint.

There will be a workshop for all teachers on Monday, August 31, 1970.

Teachers new to District No. 404 for the 1970-71 school year are:

Eatonville Elementary School
J. Ryan Davis - English, graduate of University of Virginia; Henry Hoffman - English, graduate of P.L.U.; Shirley D. McNeley - Elementary Librarian, graduate of CWSC; Annelore Stone - primary, University of Wash. graduate.

Columbia Crest Elementary School
Lucile Clark - Social Studies and Girls' P.E., graduated University of Wash.

Wyerhaeuser Elementary School
Thomas Chicker - 5th Grade, graduate WWSC; Agnes Miller - primary, graduate of PLU.

Eatonville High School
Fred D. Snodgrass - Principal, Master of Ed. Degree from CWSC; Michael Stone - Counselor, graduate Washington State University.

Bus runs will be the same as last year for the first week of school.

All Eatonville High School students will register at the Eatonville High School Office on one of the following days from 8:00 A.M. - 12:00 and from 1:00 P.M. to 4:00 p.m.: August 24, 25, and 26, 1970.

New Faces At Bethel

Miss Marian Mathews - She is a counselor at Bethel High School. A graduate of Iowa and has two years experience in Iowa. She holds a Masters degree in Counselor and Guidance.

Miss Marise Scott - A business Education

SHOP-MART DEPT. STORE

13322 - PACIFIC AVENUE

(Next To Luckys)

OPEN

WEEKDAYS — 11 A.M. to 9 P.M.
SATURDAYS — 10 A.M. to 6 P.M.
SUNDAYS — Noon Till 5 P.M.

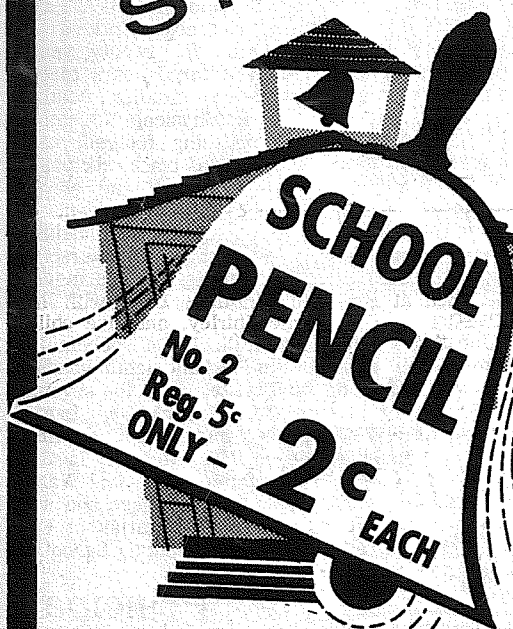
CHALK UP!! THESE KING SIZE SAVINGS!

BACK-TO-SCHOOL

STOREWIDE

SAVINGS

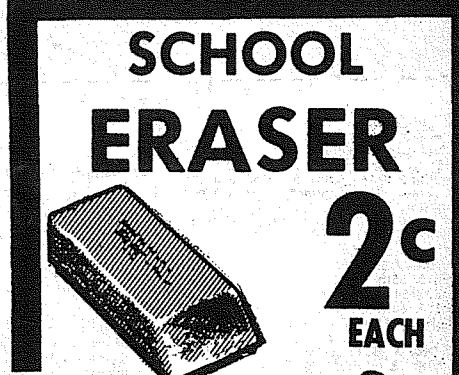
SALE STARTS
THURSDAY
AUGUST 20



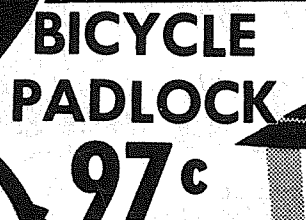
SCHOOL PENCIL
No. 2
Reg. 5c
ONLY — **2c** EACH



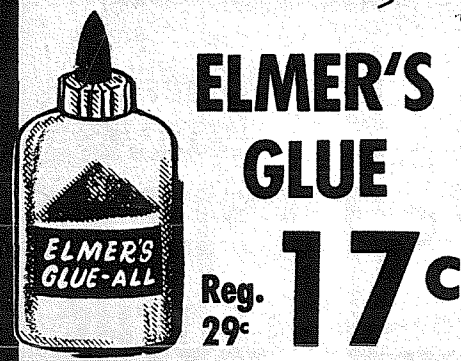
School Days
BACK-TO-SCHOOL MEMO BOOK **2c** EACH



SCHOOL ERASER **2c** EACH



BICYCLE PADLOCK **97c**



ELMER'S GLUE
Reg. 29c
17c



TERRY FINGER-TIP TOWELS
MIX or MATCH
Reg. 39c Value
ONLY **15c** EACH



GIRLS' KNEE-HI SOX
(STRETCH)
Ass't'd Colors — Solids
And White — 100% Orlon
Size 5 to 11
2 PAIR \$1 FOR

500 Count FILLER PAPER

College And Wide Rule **67c**

NYLON HEAD-SCARF
Ass't'd. Colors
Reg. 59c
ONLY **14c**

SHOP MART
DEPARTMENT STORE
Weekdays 11 a.m.-9 p.m.
Sat. 10 to 6; Sun. Noon 'til 5 p.m.
13322 PACIFIC AVE.
NEXT TO LUCKYS

SHOP-MART DEPARTMENT STORE

Back to School!



OPEN WEEKDAYS — 11 A.M. Till 9 P.M.

SPECIALS



GIRLS' RAYON PANTIES

FIRST QUALITY Asst'd Colors. Sizes 4 to 14 Reg. 39¢ Pair

4 PAIR FOR \$1.00



HAIR BRUSH And SPRAY

A Nylon bristle tease brush with a refillable Hair Spray container, built in. Handy Purse size.

ONLY 57¢

54 COLOR — ONLY

WATER COLOR SET

ONLY **57¢**

REG. SIZE **PLAYING CARDS**

PLASTIC COATED


Reg. 39¢ VALUE ONLY **17¢**

FLORAL **MATTRESS COVER**

TWIN **57¢**

KITCHEN TERRY'S

Reg. 49¢ **2 FOR 57¢**



HI-INTENSITY DESK LAMP

SOFT WHITE NON-GLARE LIGHT IDEAL FOR STUDY

\$3.47

CHILDREN'S **UMBRELLA**

For Girls Reg. 98¢ **67¢**

WAFFLE WEAVE **DISH CLOTHS**



BOYS — GIRLS BOXER PANTS

Elastic Waist Band. Wash 'em And Wash 'em. Sizes 3-8. Asst'd Colors.

77¢ Pair

LARGE SIZE **WHISK BROOM**

Reg. 79¢ Value **49¢**

4 FOR 57¢

ASST'D PATTERN **OVEN MITT**

Reg. 39¢ **19¢**

GYM BAG

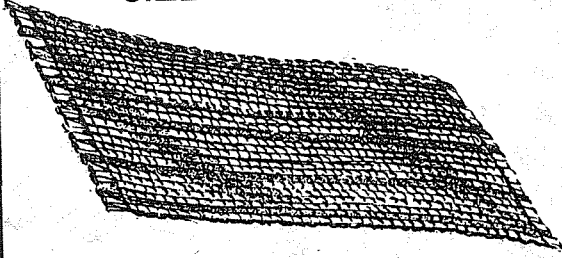
DURABLE SOFT VINYL FOR R-U-G-G-E-D SERVICE

66¢



OPEN SATURDAY — 10 A.M. Till 6 P.M.

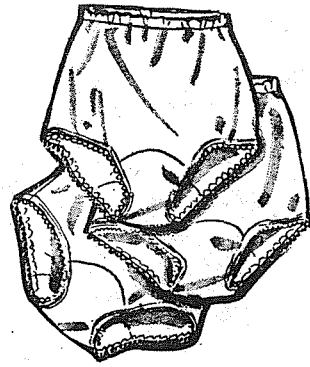
100% NYLON
"BOLO" SCATTER RUG
 SIZE 19"x36" - DECORATOR COLORS



USUALLY SELLS FOR 1⁹⁹

97^c

LADIES - GIRLS



PANTIES

100% ACETATE WITH
 SNUG FITTING
 WAIST AND LEG
 ELASTIC BAND

3 PAIR FOR 87^c

LADIES
SWEATER
VESTS

REG. 5⁹⁵
 VALUE

ASS'T. COLOR
 ASS'T SIZES

\$3⁹⁹



REG. 49^c VALUE

**TEASE
 BRUSH**

ASSORTED COLORS
 WITH AN EASY
 GRIP HANDLE
 AND FIRM BRISTLES
 A REAL VALUE

9^c

QUART SIZE

**THERMOS
 BOTTLE \$1⁴⁷**

COMPLETE
**SHOE
 SHINE
 KIT ONLY**

57^c

**PERCALE
 PILLOW CASES**

- SIZE 42x36
- 180 THREAD PAIR ONLY
- \$1⁴⁹ VALUE

73^c



**GIRLS
 SWEATERS**

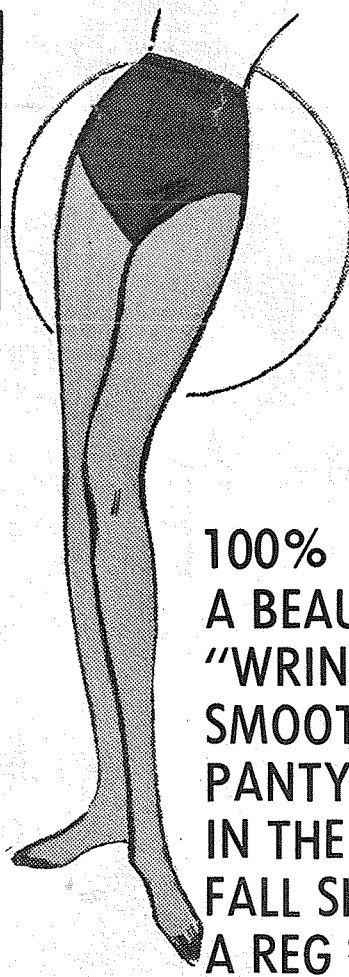
100% WASHABLE
 FINEST ACRYLIC
 YARNS, ASST'D
 COLORS & SIZES
 SIZES 7-14

Reg. \$4⁹⁵

\$2⁹⁹

ALL METAL
**9-PAIR
 SHOE
 RACK 88^c**

ALL METAL
**SKIRT
 RACK 88^c**
 HOLDS 4

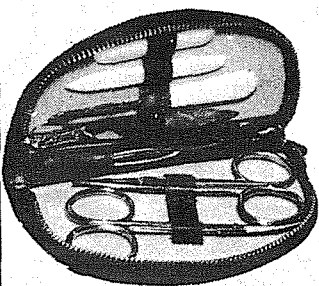


**ENKA
 SHEER
 PANTY
 HOSE**

100% NYLON STRETCH
 A BEAUTIFUL DESIGNED
 "WRINKLE FREE"
 SMOOTH FITTING
 PANTY HOSE
 IN THE NEWEST
 FALL SHADES
 A REG \$1⁴⁹
 VALUE

**77^c
 PR.**

**7-PIECE DELUXE
 MANICURE
 SET**

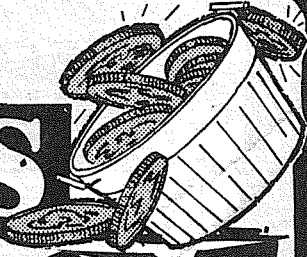
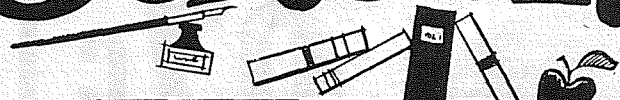


FITTED WITH
 EVERY HAND
 CARE NEED
 ASST'D COLORS
 SOFT GLOVE
 LEATHER.

77^c

SHOP MART DEPARTMENT STORE

Back to School!



SPECIALS

REG. 59¢ **THEME BOOK**

Wide and Regular
College Ruled
Gay Bright
Covers — ONLY

38¢

**PRANG
WATER
COLORS** 68¢
Reg. \$1.05

**QUICK
ADDER**

A Handy Pocket
Size Adder Adds
Up to 2000

ONLY **37¢**

**GIRLS'
PURSES
AND
HAND BAGS**

Super Styles
For the "Not Yet"
Jet Set

ONLY **57¢**

REG. 39¢

CRAYOLAS

- Non-Toxic
- 24 Brilliant Colors
- A Real Back-To-School Value

23¢ BOX

STAPLER SET

Chrome Desk Stapler
Set Complete With
"1000" Staples. A
REAL VALUE

ONLY **37¢**

STENO

STENO BOOK

A Superior Steno Book
Complete With a List of
Hard to Spell Words.

Reg. 29¢ ONLY **21¢**

PENCIL SHARPENER

Ideal For
School - Office.
A Real Value

ONLY **66¢**

BIG 39 PENCIL TABLET

A "Red Hot"
Value
For
Back-To-School

26¢

MARKING PENS

Felt Tip in 6
Asst'd. Colors
Set of "6"

ONLY **37¢**

BACK TO SCHOOL



BOYS' - MEN'S VINYL JACKETS

AN ALL WEATHER
JACKET THAT
RESISTS RAIN
ASST'D COLORS
SML-MED-LG-X LG.

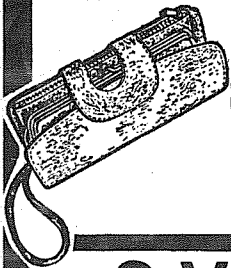
\$1.98
VALUE

99¢

COMPLETE
SERVICE FOR EIGHT
50 PC.
FLATWARE
A COMPLETE SERVICE FOR 8
IN BEAUTIFUL STAINLESS
STEEL. GIFT BOXED.

REG. \$20.00
VALUE
ONLY

\$10.95



TEEN AGE CLUTCH BAGS

ASST'D
STYLES

97¢

9-VOLT BATTERIES 2 FOR

STOCK UP NOW
A REAL VALUE

19¢



ALL CORN HOUSEHOLD BROOM

97¢



SIGNAL FLASHLIGHT

HI IMPACT PLASTIC
BATTERIES NOT INCLUDED

57¢

LITTLE GIRLS' AND BOYS' CORDUROY BOXERS

PINWALE CORDUROY
WITH ELASTIC TOP FOR
SNUG FIT
ASST. COLORS
SIZES 3-6X
REG. \$1.49
VALUE



57¢

ASSORTED KIDDIE BANKS

A REGULAR
98¢
VALUE

MANY
TO
CHOOSE
FROM

BACK TO SCHOOL

ZIPPER CARRYALL POUCH

REG.
98¢
VALUE
ONLY

11¢

IMPORTED ORIENTAL 2 FOR INCENSE

ASSORTED EXOTIC SCENTS

57¢

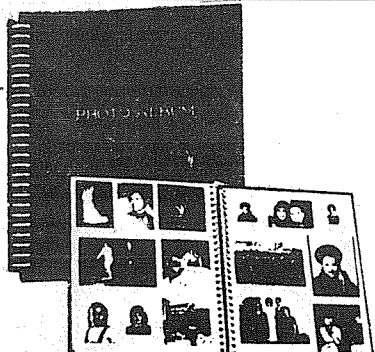
BACK TO SCHOOL

PHOTO ALBUM

ONLY

\$1.99

NO GLUING - NO PASTE
NO TACKING
HOLDS PHOTOS LIKE MAGIC
GAY COLORS REG. \$3.95



TRAVEL IRON

WITH FOLD UP HANDLE
110 VOLT - 250 WATT
FULLY GUARANTEED
A REG. \$3.95 VALUE

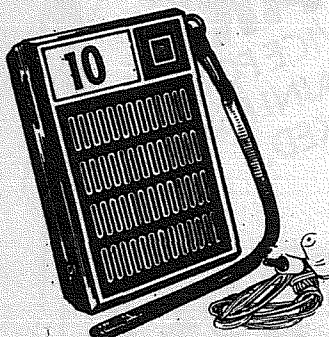
\$1.99

SHOP-MART DEPT. STORE

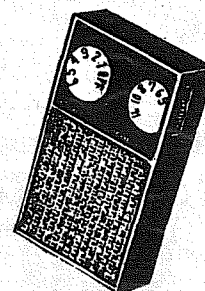
Back to School!



SPECIALS



2 For 1



BUY A TONEX 10 TRANSISTOR RADIO



FOR ONLY

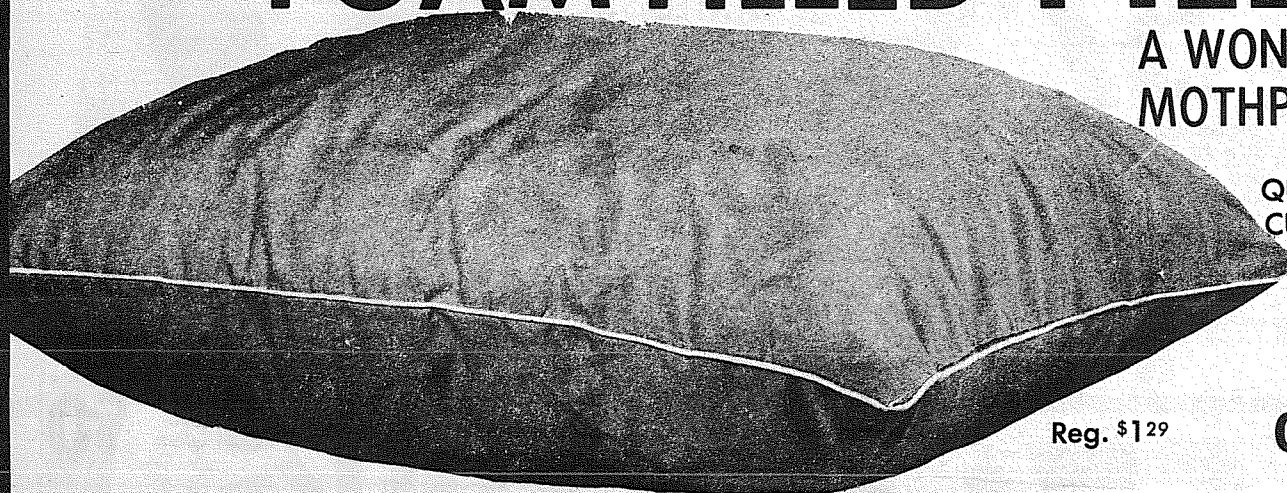
\$6.99

**AND GET A 6
TRANSISTOR
RADIO FREE**

- Complete
- CARRYING CASE
 - EAR PHONES
 - BATTERIES

**POPULAR TONEX
POCKET SIZE
RADIO**
COMES IN ASSORTED COLORS
SHOP EARLY QUANTITY LIMITED

FOAM FILLED PILLOW



A WONDER SOFT PILLOW
MOTHPROOF — NON ALLERGIC

WASHABLE
QUALITY TICKING
CUT SIZE 18"x24"

Reg. \$129

ONLY

77¢

9-PC. COFFEE SERVICE



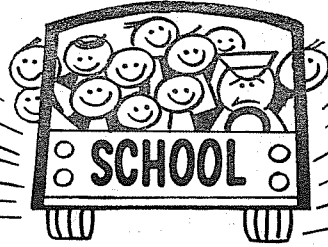
A BEAUTIFUL 9-PC. COFFEE SET
IN PROVINCIAL BROWN -
THAT WILL ENHANCE
THE BEAUTY OF
ANY TABLE

Reg. \$8.95
VALUE

ONLY

\$4.99

SCHOOLWARD HO!



JACKETS

Corduroy & Nylons

- New Styles
- New Fashions

BOYS' GYM TRUNKS

LATEST STYLES

\$1.27

BOYS' BASKET BALL

SHOES

\$3.97

BOYS' RUBBER SOLED

TRACK SHOES

\$2.97

GIRLS' GYM SHOES

ALL SIZES

\$2.97

BOYS' & GIRLS'

SCHOOL SHOES FROM \$5.97

SIZES 8 1/2 TO 3

BOYS' BELTS

WIDE GENUINE LEATHER

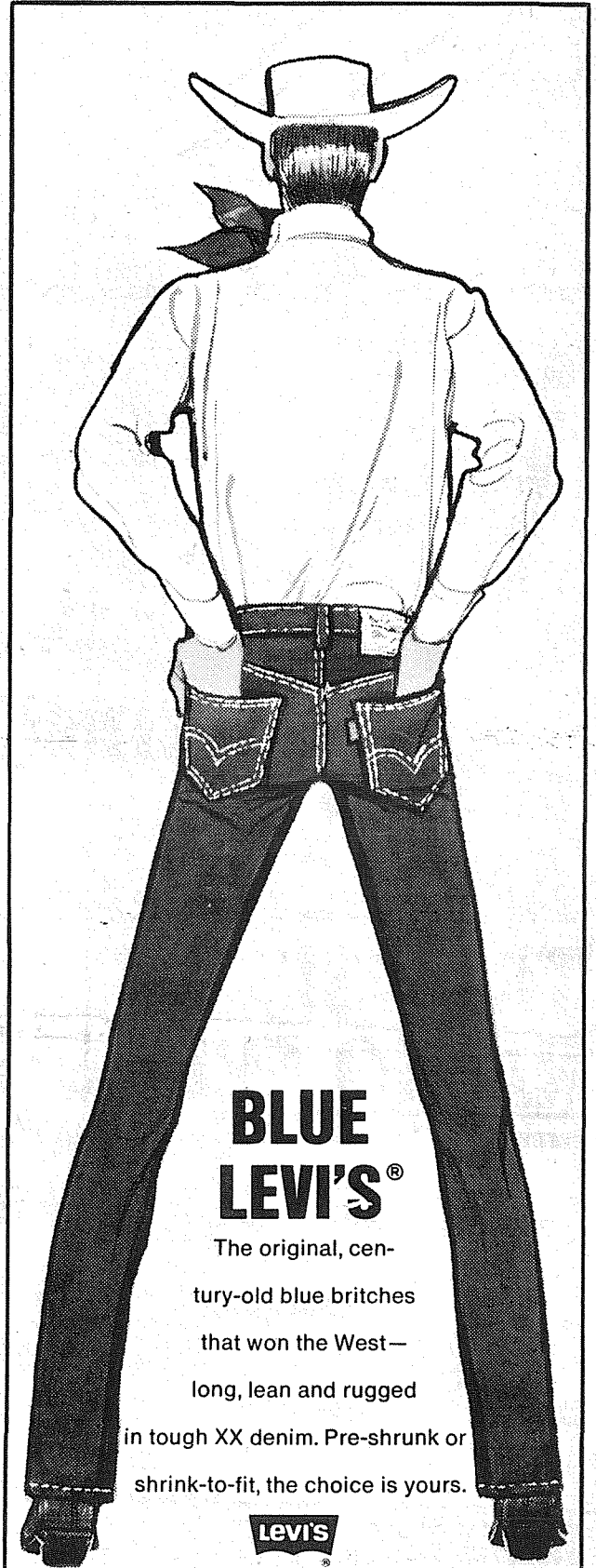
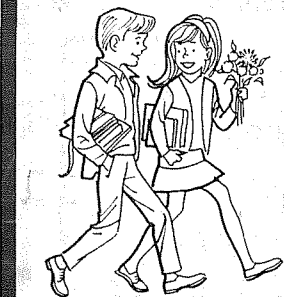
SIZES 22 to 32

97c

Boys' Shirts

From \$2.97

- NEW LONG COLLARS
- PLAIN COLORS
- PLAIDS
- BODY SHIRTS
- SHORT & LONG SLEEVES



BLUE LEVI'S®

The original, century-old blue britches that won the West—long, lean and rugged in tough XX denim. Pre-shrunk or shrink-to-fit, the choice is yours.



LEVI'S

BUTTON JEANS

\$6.50

LEVI'S

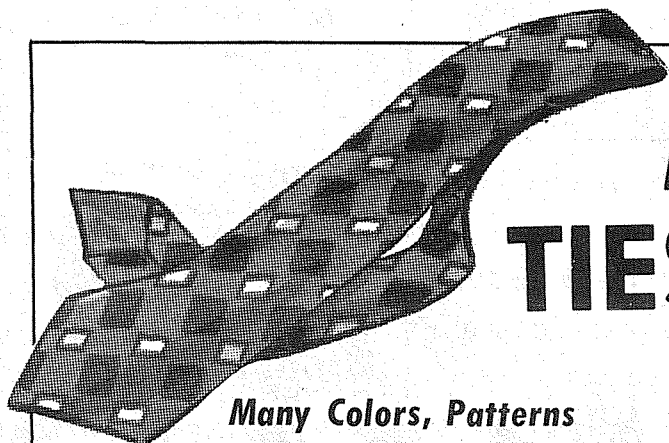
ZIPPER PRE-SHRUNK

\$6.98

LEVI'S

SUPER SLIM

\$6.50



MEN'S TIES

88c

Many Colors, Patterns

SHOP MART
DEPARTMENT STORE
13322 PACIFIC AVE.
NEXT TO LUCKYS

Weekdays 11 a.m.-9 p.m.
Sat. 10 to 6; Sun. Noon 'til 5 p.m.



AIR SHOW



PUYALLUP TRACTOR
514 River Road, Puyallup

ABSHER CONSTRUCTION
1106 Shaw Road, Puyallup

ANTON'S RESTAURANT
Linden Drive, Puyallup

HANK'S HILLTOP SERVICE
10302 S. Meridian, Puyallup

BLAIR INSURANCE
205 S. Meridian, Puyallup

PUYALLUP CHRYSLER-PLYMOUTH INC.
401 River Road, Puyallup

WILEN-CORNFORTH
Buick-Pontiac-Opel-G.M.C.
115 2nd St. S.E. Puyallup

PIGGLY WIGGLY
10 Stores to serve you

PUYALLUP CHIROPRACTIC CLINIC
1203 E. Main, Puyallup

GRANT-MILAM OLDSMOBILE INC.
608 River Road, Puyallup

POWERS-WRIGLEY-CLEMENTS
MORTUARY and AMBULANCE SERVICE
120 W. Pioneer, Puyallup

ELVINS DEPARTMENT STORES
Hi-Ho and Tacoma

LARSON MOTORS
Dodge-Dodge Trucks-American Motors
Rambler Dealer
300 River Road, Puyallup

PLANTATION RESTAURANT
Featuring Kentucky Fried Chicken
701 E. Main, Puyallup

PIERCE COUNTY HERALD
822 E. Main, Puyallup



SHOW TIMES:
1:00 P.M.

Your Attendance is Needed

at the **Thun Field**

(PUYALLUP INDUSTRIAL AIRPARK)

Benefit

AIR Show

SATURDAY - SUNDAY

AUG. 22nd & 23rd

ADMISSION: Adults \$2.00 - Children (under 12) \$1 - Little Tykes FREE

***FREE Parking - Come Early!**
See the Action, Enjoy the Displays - Bring the Family

ALL ACTION RIGHT BEFORE YOUR EYES

You'll See the Famed WORLD AIR SHOW Troupe

FEATURING Art Scholl, member of the World Champion U.S. Aerobatic Team, just back from winning the World Aerobatic title in England

2nd Top Northwest Aerobatic Pilots

***Skydivers *Clowns *Parafoil Jump**

***Flaming Wall Crash** HOLLYWOOD STUNT MAN JOHN KAZIAN ON ROPE LADDER BENEATH SPEEDING, SMALL PLANE ATTEMPTS TO SWING THROUGH THE FLAMES.

***Aerobatics** LOOPS, ROLLS, SPINS, INVERTED MANEUVERS, BACK-TO-BACK DUAL ROUTINE, LOMCEVAKS AND MANY, MANY MORE!

***Car-to-Plane Transfer** SEE STUNTMAN ATTEMPT THIS DARING FEAT!

***INVERTED RIBBON PICK-UP!!**

Here is your chance to look over Puyallup Industrial Airpark Facilities — You'll see the tremendous value of a fine Airport to Pierce County

SUGGESTED ROUTES TO AIRSHOW - 17500 BLOCK MERIDIAN ST. SO.

FROM: PARKLAND, SPANAWAY

EAST VIA 176th St.

PUYALLUP, SUMNER, & MILTON AREA RESIDENTS

SO. THROUGH PUYALLUP ON MERIDIAN ST. SO.

TACOMA AREA RESIDENTS

VIA 112th EAST TO MERIDIAN, THEN SOUTH.

SOUTH PIERCE COUNTY (EATONVILLE, ASHFORD, ELBE, ALDER & LAGRANDE)

GET ON MERIDIAN AND GO NORTH TO 176th St.

BEALL'S REXALL DRUG STORE
124 S. Meridian, Puyallup

HI-HO
Puyallup and Tacoma

DICK VANDERFLUTE
Parkland Sports Center
11122 Pacific Ave.

TAYLOR'S AUTO GLASS & UPHOLSTERY
117 E. Pioneer, Puyallup

G.I. MURPHY'S STORE
7824 River Road, Puyallup

JONES & MURTHA
Phillips Petroleum Co.
Distributor Phil-Heat

PACIFIC COCA COLA BOTTLING CO.
3333 So 38th Street

SLIM LAWSON
Tahoma Flying Service
Spanaway Airport

ART WING
Shop Mart Dept. Store
13322 Pacific Ave.

HAROLD LEMAY ENTERPRISES
Pierce County Refuse
Lucky Sales
13501 Pacific Ave.

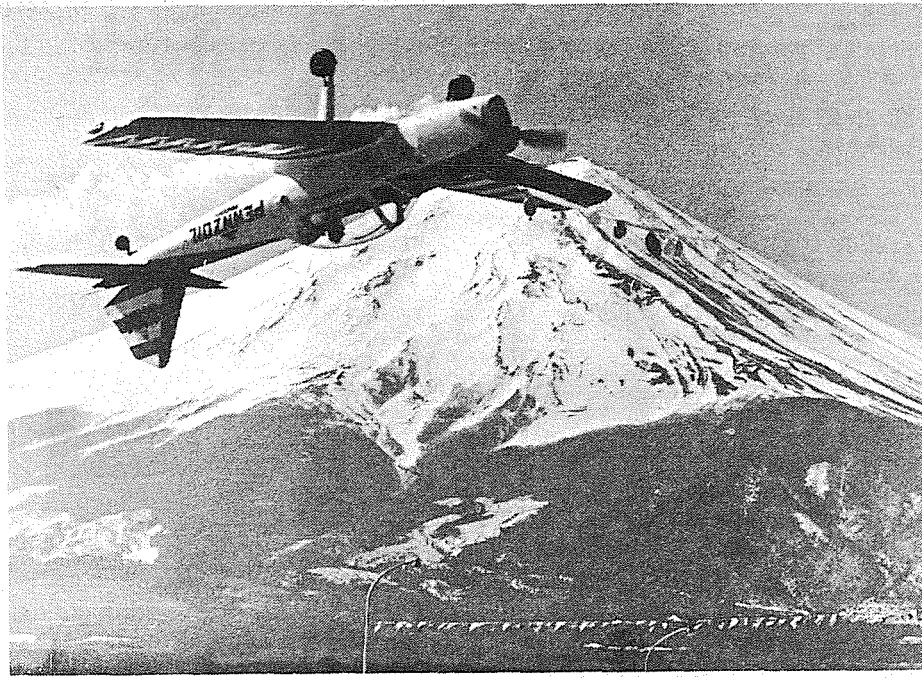
JACK BROWN
Shady Acres Airport
Spanaway,
The Northwest Flyer

LOREN SISLEY
Barlo's Restaurant
12221 Pacific Ave.

DEVEREAUX REALTY
12152 Pacific Ave.

TOM CARSTENS' AutoHaus
7030 So. Tacoma Way

THE TIMES JOURNAL
409 Garfield



ART SCHOLL, WORLD FAMOUS "FLYING PROFESSOR," from Los Angeles, Calif. is shown doing his inverted ribbon pick up act in Japan, last summer, with Mt. Fuji in the background. Scholl has just returned from England, after serving on the

U.S. aerobatic team (Now the world champions) in time for his appearance at the World Air Show, slated for Thun Field on August 22nd and 23rd. He will be performing this near impossible aerial act on both days of the show.

World's Greatest Air Show Thriller Slated For Thun Field August 22-23

The days of the aerial barnstormer will be reborn again this weekend, August 22-23rd, at Puyallup Industrial Airpark (Thun Field), on Meridian St. So., when the World Air Show troupe, aided and abetted by a lot of local aerial talent swings into action. The sky-tacular affair, billed as the "World" benefit Air Show features Art Scholl, the flying professor from Los Angeles; Skip Volk, from Pasadena; and John Kazian, famed Hollywood stuntman. Also appearing on the program will be a slate of the northwest's finest aerial stars doing their loops, immelmanns, spins and inverted flight.

Highlights of the show will be the daring flaming wall crash performed by Kazian, while hanging from a rope ladder suspended below a low flying plane; a thrilling car to plane transfer that takes split second timing to avoid a split skull (Kazian just now recovering from a broken arm resulting from his last attempt at this feat); a back to back aerial loop, flown by Art Scholl and Skip Volk (one of two teams still alive today after performing this act); Frank Geelan, Aloha, Oregon, in his giant yellow AT-6 World War II plane in aerobatics; a fly-by of the famous World War II P-38 owned by Larry Blumer, of Puyallup with Ward Clemmo at the controls; plus sky diving, clown acts; and a host of other stellar attractions.

Officers of the Puyallup Valley Development Corp. seek your support of their continued operation as an airport and invite you to visit Thun Field, see the show, and view the facilities offered at this fine airport. Admission price has been kept to a nominal \$2.00 for adults and \$1.00 for children

12 and under, with little tykes in free.

The show will be announced by the world's leading air show announcer, Toby Trowbridge, from Calgary, Alberta. Trowbridge is known as Canada's "Golden Voice of Aviation" and it's said to be worth the price of admission alone, just to hear him narrate an air show in his inimitable French-Canadian accent.

Suggested route to the show for Parkland, Spanaway, McChord, and Lake-

wood residents would be east on 176th street to Meridian. Plan to go early, enjoy the displays and carnival atmosphere and avoid the rush.



COUNTY NEWS

By George Sheridan

Lakewood Incorporation

The proposed incorporation of Lakewood was the subject of an abbreviated public hearing Tuesday before the Board of Pierce County Commissioners, because of legal ambiguities which had placed in doubt which governmental body should act first. Previously, sponsors of the incorporation movement had filed the required number of signatures with County Auditor Richard Greco to qualify for an election to decide the issue.

A question had arisen as to whether the County Commissioners or the Boundary Review Board holds jurisdiction over establishing the ultimate boundaries of the proposed city, which is the first step in the incorporation process. County Commissioners had authority under previous statutes to hear protests and reduce the area to be incorporated by up to 20 per cent. Subsequently the legislature established Boundary Review Boards to consider both original incorporations and annexations. Still later the Optional Municipal Code became effective, under which statute the Lakewood Incorporation Committee filed its incorporation petition.

Monday the Prosecuting Attorney advised County Commissioners that they no longer have authority to alter boundaries of proposed annexations, but that this power now rests exclusively with the Boundary Review Board.

Therefore, the Commissioners of necessity had to adjourn the hearing until such time as the Boundary Review Board has exercised its jurisdiction and defined the boundaries of the proposed incorporated area. It is expected that a hearing for this purpose will be scheduled and announced in the near future. Following final action of the Boundary Review Board the County Commissioners will then proceed with its hearing to determine the population of the area and finally to set a date of election.

The boundaries of the proposed city, as set forth in the incorporators' petition, follows generally the area included in the Lakewood Water District and includes most of the area enclosed between the City of Tacoma, Fircrest, Ft. Lewis and McChord Field, the town of Steilacoom and the sound. It would have a population of approximately 45,000.

Although no action could be taken at Tuesday's hearing, County Commissioners extended the opportunity to make statements to those in attendance. Expressing opposition to incorporation or signifying their intention to request deletion from the proposed incorporated area were representatives of the Franklin Pierce School District, Pioneer Sand & Gravel Co., New Tacoma Cemetery and fire districts.

The Board of County Commissioners is taking no official position at this time, feeling that the matter of incorporation is a question to be determined by the residents of the area involved. However, numerous requests are being received from both pros and cons for the county to take a position when the hearing is held before the Boundary Review Board.

Meantime, all residents of the county will watch developments with keen interest, since whatever final action is taken will have a pronounced effect on everyone, regardless of whether or not they reside in the area encompassed by the proposed city.

Social Security

Disability Benefits

Question: I get VA disability benefits? Can I get disability from social security, too?

Answer: Yes, if you meet the social security disability requirements. The fact you get VA payments will have no effect on social security benefits. The disability requirements for social security are different than the requirements for the VA benefits, however.

Question: I get social security because of my disability. Is there a limit on how long I can get checks?

Answer: Your benefits will continue as long as you are disabled or until you are 65. At 65 your disability benefits will be changed to retirement benefits. The amount of your payments will not change, however.

Question: I collect social security widow's benefits. I never worked myself. Will my survivors get a lump-sum payment when I pass away?

Answer: No. The lump-sum payment is only made after the worker's death, and the worker must have credit for a certain amount of work under social security.

New Office For Army Recruiting In Parkland

For the convenience of the residents in Parkland and vicinity, the army has established a recruiting office in the REO Office at the corner of Garfield and C

Streets. The hours will be from 10:00 a.m. to noon on Tuesdays only. The main office in Tacoma is at 11th and A Streets.

Question: When my wife died, I got a lump-sum payment. Must this money be used for burial expenses only?

Answer: No. You can use the check for any purpose. The lump-sum payment is paid to you as a matter of right because you were the surviving spouse living in the same household with your wife at the time of her death.

S.Sg. Ballantyne, in charge of the Parkland Recruiting Office, says in the three year enlistment program young men do have a choice of a field of education they would like go into. This education from the army is recognized by future civilian employers. It's a marvelous chance to get an education paid for and at the same time take care of military obligations, Sgt. Ballantyne says, and hopes the young men in the area will stop in and see him.



GOING TO THE AIR SHOW? VISIT THE COLONEL

BOYSEN PAINT SALE!



VI-KO LATEX HOUSE PAINT

A GALLON OF THE WORLD'S FINEST HOUSE PAINT IS YOURS FREE!

BUY ONE GALLON OF VI-KO LATEX HOUSE PAINT FOR ONLY \$7.95. YOU GET ANOTHER GALLON FREE!



ALKYD MARINE HOUSE PAINT

ALKYD MARINE HOUSE PAINT NOW - BUY TWO GAL for \$10.75

You SAVE \$6.99

BUY TWO GAL for \$6.55

You SAVE \$4.35



RUSTIC-KOTE EXTERIOR FLAT

9" ROLLER SET

Includes: deluxe dynel-covered roller, metal tray, mini E-Z brush, and 3-way paddle.

REG \$4.98 NOW ONLY \$2.98

BROOKDALE LUMBER

13602 PACIFIC AVENUE

LE 7-8669

Soleduck Salmon Dedication Fri.

The new Soleduck salmon hatchery of the Washington Department of Fisheries will be dedicated at 1 p.m. on Friday, August 21, Fisheries Director Thor C. Tollefson announced today.

Located near Forks on the Olympic peninsula, Soleduck becomes the 26th hatchery in Fisheries' salmon production system. Financed jointly by the United States Fish and Wildlife Service, it represents an investment of \$1,666,000. It will begin operations this fall, Tollefson said,

utilizing local and/or hybridized salmon stocks until a brood stock is developed which will return to Soleduck springs at the hatchery.

Close to 5 1/2 million chinook and coho eggs can be taken and more than 100,000 pounds of salmon will be reared annually at the 43-acre site. Yearly contribution to the sport and commercial fishery will approximate 18,000 chinook and 40,000 coho.

The dedication will conclude with a salmon barbecue.

HORSEMEN'S NEWS

Over The Fence Rail

by Samuel

Finally - here are the results of the Meridian Riding Club's Performance show held July 26 in their arena. I apologize for being so late.

- Fitting and Showing, Open**
 - Jeanine Larson
 - Sharon Ackley
 - Melanie Gilbert
 - Pat Green
 - Margaret Kiplinger
 - Bareback Horsemanship (13 & under)**
 - Kimberly Stecker
 - Becky Bryson
 - Melanie Gilbert
 - Jamie Strom
 - Lori Ackley
 - Bareback Horsemanship (14-17)**
 - Jeanine Larson
 - Lynne Robinson
 - Julie Magnuson
 - Pat Green
 - Barbara Thompson
 - Hunt Seat Equitation (17 & under)**
 - Lynne Robinson
 - Kimberly Stecker
 - Julie Magnuson
 - Melanie Gilbert
 - Barbara Thompson
 - Hunt Seat Equitation, Senior**
 - Steve Bryson
 - Jeanie Tei
 - Rita Cousineau
 - Lead Line**
 - Jonny Gilbert
 - Leann Moors
 - Jackie Criss
 - English Pleasure, Open**
 - Steve Bryson
 - Kimberly Stecker
 - Barbara Thompson
 - Jeanie Tei
 - Julie Magnuson
 - Kindergarten Class**
 - Jackie Criss
 - Leann Moors
 - Bareback Jumper**
 - Barbara Thompson - Dream Mist
 - Jan Meyer - Manhattan Brandy
 - Stock Horse, Open**
 - Gene Menge - AinThatSomething
 - Steve Bryson - Shari Lynn
 - Sandra Wade - Wee Willie Scout
 - Pat Green - Big Red
 - Stock Seat Equitation (13 & under)**
 - Andrea Tardiff
 - Kimberly Stecker
- HIGH POINT (13 and under)** - Kimberly Stecker
HIGH POINT (14 Thru 17) - Jeanine Larson
HIGH POINT (Senior) - Steve Bryson

A new riding club in Federal Way has just formed. They call themselves the Ricopat Riders and sponsored a Horse Show August 2 at the Meridian Riding Club Arena. The turn out was tremendous considering the other shows around on that same date. Results are printed below.

- Fitting and Showing**
 - Connie Burns
 - Jeanie Larson
 - Barbara Bunata
 - Barbara Thompson
 - Erin Brady
 - Cathy Hackstock
 - Bareback Horsemanship (13 & under)**
 - Wendy Iverson
 - Melanie Gilbert
 - Jamie Strom
 - Barb Bunata
 - Lori Ackley
 - Bareback Horsemanship (14-17)**
 - Erin Brady
 - Janis McFarland
 - Barb Thompson
 - Jeanine Larson
 - Kindergarten Class**
 - Jonny Gilbert
 - Leann Moors
 - Jackie Criss
 - Stock Seat Equitation (13 & under)**
 - Kimberly Stecker
 - Kathy Reinhard
 - Melanie Gilbert
 - Jamie Strom
 - Wendy Iverson
 - Stock Seat Equitation (14-17)**
 - Janis McFarland
 - Erin Brady
 - Connie Burns
 - Diane Parker
 - Margaret Kiplinger
 - Hunt Seat Equitation (13 & under)**
 - Kimberly Stecker
 - Melanie Gilbert
 - Andrew MacDonald
 - Hunt Seat Equitation (14-17)**
 - Connie Burns
 - Barb Thompson
 - Lynne Robinson
 - English Pleasure, open**
 - Erin Brady - Mibahari
 - Norma Smith - Quill's Subito
 - Kimberly Stecker - Stubby
 - Connie Burns - Misty Grey Lady
 - Steve Bryson - Shari Lynn
 - Bareback Jumper**
 - Andrew MacDonald - Martini
 - Connie Burns - Destiny II
 - Barb Thompson - Dream Mist
 - Jan Meyer - Manhattan Brandy
 - Barb Bunata - Jeremy
- HIGH POINT (13 & under)** - Melanie Gilbert
HIGH POINT (14-17) - Connie Burns

DHIA Summary For July

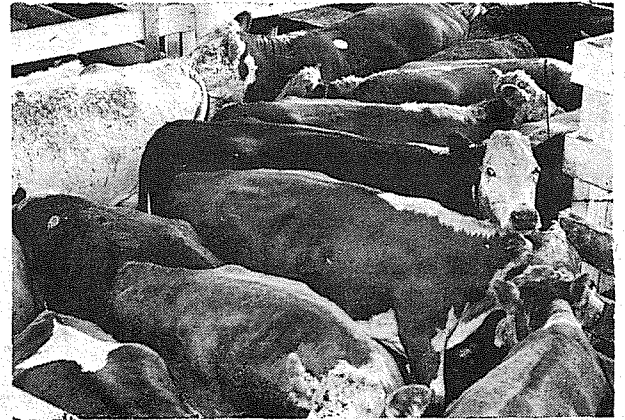
The dairy herd of Fred Krapf, Graham, is the leader in the Pierce County DHIA summary for the month of July, announces County Agent Eddie Thomason. Krapf's herd of 102 Holsteins averaged 54.0 pounds of milk and 1.87 pounds of butterfat per cow per day.

Spanaway, with 18,376 pounds of milk and 793 pounds of butterfat; 4 year old - No. 283, a grade Holstein, owned by Pete DeVries, Orting, with 22,295 pounds of milk and 814 pounds of butterfat; 5 to 10 year old - No. 110, a grade Holstein, owned by Wilcox Farms, Roy, with 21,640 pounds of milk and 901 pounds of butterfat; and 10 years and over - No. 775, a registered Holstein, owned by Wilcox Farms, Roy, with 15,315 pounds of milk and 554 pounds of butterfat.

PIERCE COUNTY FAIR HORSE WINNERS

- Fitting & Showing**
 - Jr. Horse**
 - Grand Champion-Melanie Gilbert, (Curry Comb).
 - Reserve Champion-Jeff Jones, (Heston Riders).
 - Jr. Pony**
 - Grand Champion-Patty Morton, (Silks & Saddles).
 - Reserve Champion-Stephani Tucci, (Silks & Saddles).
 - Blue ribbon-Karen Belshay, (Silks & Saddles); Laura Ciusti, (Silks & Saddles); Dawn Reimann, (Ponies a-go-go); Dennis Smith, (Ponies a-go-go); Beth Weber, (Kids Inc.).
 - Inter. Horse**
 - Grand Champion-Andrea Tardiff, Silver Spurs.
 - Reserve Champion-Vicki Stallcop, Western Riders.
 - Grand Champion-Andrea Tardiff, (Silver Spurs).
 - Reserve Champion-Vicki Stallcop, (Western Riders).
 - Blue ribbon-Terry Tardiff, (Silver Spurs); Lynn Morten, (Silver Spurs); Jill Hinceberger, (Horse & a half); Karen Ketcham, (Western Riders); Lisa Marsale, (Four Hoofs Each); Susie Harrington, Hilltop Hillbillies; Karen Thomas, (F Troop).
 - Inter. Pony**
 - Grand Champion-Teresa Basket, (Silks & Saddles).
 - Reserve Champion-Connie Belshay, (Silks & Saddles).
 - Blue ribbon-Brinda Doyle, (Western Riders); Paula Long, (Ponies on Parade); Clark McAbee, (Silks & Saddles); Bob Stover, (Silks & Saddles); Frank Valenta, (Golden horse Shoes); Doris Woods, (Ponies on Parade).
 - Sr. Pony**
 - Grand Champion-Pat Ludden, (Golden Horseshoes).
 - Reserve Champion-Gail Baker, (Golden Horseshoes).
 - Blue ribbon-Cathy McAbee, (Silks & Saddles) & Cindy Rempel, (Ponies on Parade).
 - Sr. Horse**
 - Grand Champion-Pat Jones, (Heston Riders).
 - Reserve Champion-Steve Bryson, (Saddle Hites).
 - Blue ribbon-LeAnn Bread, (F Troop); Rod Marecle, (Four Hoofs Each); David Meriweather, (F Troop); Carrie Williams, (F Troop); Beth Aisip, (F Troop); Sandy Schicher, (F Troop); Marne Sagen, (Silver Spurs); Pam Canont, (Horse & a half); Denisa Knudtsen, (Horse & a half); Sheryl Douglas, (Sunset Riders); Lynne Robinson, (Silver Spurs).
 - Intermediate**
 - Champion-Chris Valenta (Summer).
 - Reserve Champion-Andrea Lardoff (Graham).
 - Blues: Ledene Bettiger (Puyallup) & Jill Hinschberger (Graham).
 - Senior**
 - Grand Champion-Sandy Schlider (Fort Lewis).
 - Reserve Champion-Steve Bryson (Tacoma).
 - Blues: Pat Jones (Yelm); Nora Loman (Gig Harbor); Marcy Anderson (Puyallup); Lynn Robinson (Roy); Katie Holcom (Summer).
 - Senior Horse Western Equitation**
 - Grand Champion-Lynn Robinson (Roy).
 - Reserve Champion-Steve Bryson (Tacoma).
 - Blues: Marcie Andersen (Puyallup) Pam Canont (Eatonville); Nora Roman (Gig Harbor); Pat Jones (Yelm).
- Bare back**
 - Roadster Pony**
 - Grand Champion-Teresa Basket (Graham).
 - Reserve Champion-Connie Belshay (Puyallup).**
 - English Equitation**
 - Junior and Intermediate**
 - Grand Champion-Melanie Gilbert (Spanaway).
 - Reserve Champion-Andrea Lardoff (Graham).
 - Blue: Chris Valenta (Graham).
 - Senior**
 - Grand Champion-Sandy Schicker (Ft. Lewis).
 - Reserve Champion-Steve Bryson (Tacoma).
 - Blue: Lynn Robinson (Roy).
 - Harness Pony Junior and Intermediate**
 - Grand Champion-Teresa Basket (Graham).
 - Reserve Champion-Connie Belshay (Puyallup).
 - Blue: Karen Belshay (Puyallup).
 - Senior Pony Equitation**
 - Grand Champion-Pat Pearson, (Summer).
 - Reserve Champion-Pat Ludden, (Summer).
 - Blue Ribbon winner: Cindy Rempel, (Tacoma).
 - Practical Horsemanship**
 - Grand Champion-Tina Rempel, (Tacoma).
 - Reserve Champion-Linda Schlaht, (Spanaway).
 - Blue Ribbons: Melanie Gilbert, (Spanaway) & Bobbie Crawford, (Summer).
 - Intermediate English Riding Pattern**
 - Grand Champion-Karen Thomas, (Fort Lewis).
 - Reserve Champion-Lisa Hemerick, (Gig Harbor).
 - Senior**
 - Grand Champion-Sandy Schlicher, (Fort Lewis).
 - Intermediate Western Riding Pattern
 - Grand Champion-Ledene Bettiger, (Puyallup).
 - Reserve Champion-Maureen Moore, (Tacoma).
 - Senior**
 - Grand Champion-Pat Jones, (Yelm).
 - Reserve Champion-Nancy Abrahamson, (Tacoma).
 - Blue: Nora Boman, (Gig Harbor).
 - Halter Classes**
 - Grand Champion Horse-Marne Sagen, (Tacoma).
 - Grand Champion Pony-Tina Rempel (Tacoma).
 - Reserve Champion Pony-Linda Schlaht, (Spanaway).
 - Blue Ribbon: Debra Schlaht (Spanaway).
 - Grand Champion Broodmare-Pat Jones, (Yelm).
 - Grand Champion Junior Western-Becky Bryson, (Tacoma).
 - Grand Champion Junior Western Equitation-Becky Bryson, (Tacoma).
 - Res. Ch. Jr. Western Equitation-Jeff Jones, (Yelm).
 - Grand Ch. Junior Western Equitation Pony-Martha Long, (Auburn).
 - Grand Ch. Intermediate Western Equitation Pony-Paula Long (Auburn).
 - Res. Ch. Inter. Western Equitation Pony-Frank Valenta, (Summer).
 - Intermediate Horse Western Equitation**
 - Grand Champion-Andrea Tardiff, (Graham).
 - Res. Champion-Kim Wilson (Spanaway).
 - Blue Ribbons: Chris Valenta, (Summer); Jill Hinschberger, (Graham); Vicki Stallcop, (Graham); Kim Wilson, (Spanaway); Teresa Tardiff, (Graham), Ledene Bettiger, (Spanaway), & Karen Ketcham, (Puyallup).

Tacoma Livestock Market Report



Tacoma Livestock Market report for Thursday, August 13, 1970. The cattle market was up this week with 401 cattle, 5 horses, 10 hogs and one sheep.

Heavy Lean Bulls	\$28. to \$30. CWT.
Heavy Fat Bulls	25. CWT.
Light Bulls	25. to 27.50 CWT.
Hol. Steers (1000 to 1300 lbs.)	24. to 25. CWT.
Good Slaughter Cows	20 to 23.10 CWT.
Med. Cows	18. to 19.50 CWT.
Colored Cows	17. to 21. CWT.
W. F. Steers (600 to 650 lbs.)	29. to 31. CWT.
Good Steer Calves	32. to 36. CWT.
Hol. Hefs. springing	\$375. to 450. Head
W. F. or Ang. Hef. (600 to 650 lbs.)	26. to 27. CWT.
Hef. Calves	26. to 27. CWT.
Cow & Calf Pair (small calf)	257.50 Pair
Ave. Hol. Bull calves	40. to 45. Head
Heavy Veal	36. to 40. CWT.
Light Veal	37. to 42. CWT.
Block Hogs	24.75 to 25. CWT.
Weaner Pigs	18. to 21. Head

Auctioneers, Ed & Lee Flood
Phone VI 7-7567

"The Livestock Market"
 Rancher's Classified Directory
 - CATTLE, HORSES, FARM ANIMALS -
 FEED, SUPPLIES, & ANIMAL SERVICES

STOCK HAULING & Bull service. VI 7-7684. VI 7-2340. BEAUTIFUL 3-year-old filly, \$150. LE 1-4620.

HORSESHOEING
 HOWARD ANDERSON
 JU 4-0978

HORSESHOEING
 RAY JOHNSON
 TH 5-6006

\$500 REWARD
 For information resulting in the arrest, conviction, & sentencing of any persons stealing cattle on the Ft. Lewis Military Reservation.
 PHONE VI 7-7511

WELSH MARE, Appaloosa filly, \$200, good with children. LE 1-9287.

Vet Supplies
 Complete supply animal health products.
 Franklin - Farnam - Anchor
 at
ASHMORE'S
 Spanaway Drugs
 165th & Pacific Ave. LE 7-5993

SOUTH END HARDWARE

HUNTING & FISHING SUPPLIES - LICENSES

PAINTS & PLUMBING SUPPLIES
 So. 185th & Pacific Ave. Route 1 - Box 1360
 Call VI 7-7211

LUCKY DOLLAR RANCH & FEED
 EASTERN WASHINGTON HAY
 GRAIN & STRAW
 PHONE 893-3277
 25315- 150th EAST, GRAHAM
 (If we don't have it - Request it)

JOHNSON'S FEED and GARDEN SUPPLY
 ALL KINDS OF FEED
 LAWN MOWERS
 GARDEN TOOLS-FARM TOOLS
 SEEDS INSECTICIDES
 HORSE GROOMING SUPPLIES-VET SUPPLIES
 HORSE SHOES
 ON MT. HIGHWAY AT 208th 1 MILE SOUTH OF ROY "Y"
 ACROSS FROM TACOMA LIVESTOCK AUCTION VI 7-7535

Treat For Cattle Grubs Before Nov.

"Those 'bumps' or grubs that appear along the backline of cattle in February and March are warbles of the cattle grub or 'heel fly' that start development in the cattle this summer," reminds County Agent Frank Jackson.

He adds that you may not see them on long-haired cattle in the spring, but when animals go to slaughter "brubby" carcasses are down-graded and discounted in price. He points out that while cattle grubs are a concern for Washington cattlemen, we do have effective control measures today and his office has details on chemicals to use and how to apply them.

Control of the heel grubs must be done early, usually after July but before November 1, when the grubs are still small. If the grubs in the tissues are killed when they are large, by treatments later than November 1, toxic side reactions may occur. County Agent Frank Jackson explains the life cycle of the cattle grub this way: The adult fly lays eggs on the animals which hatch to form a grub which burrows into the body tissues of the animal - finally to come out along the backline of the cattle before dropping to the

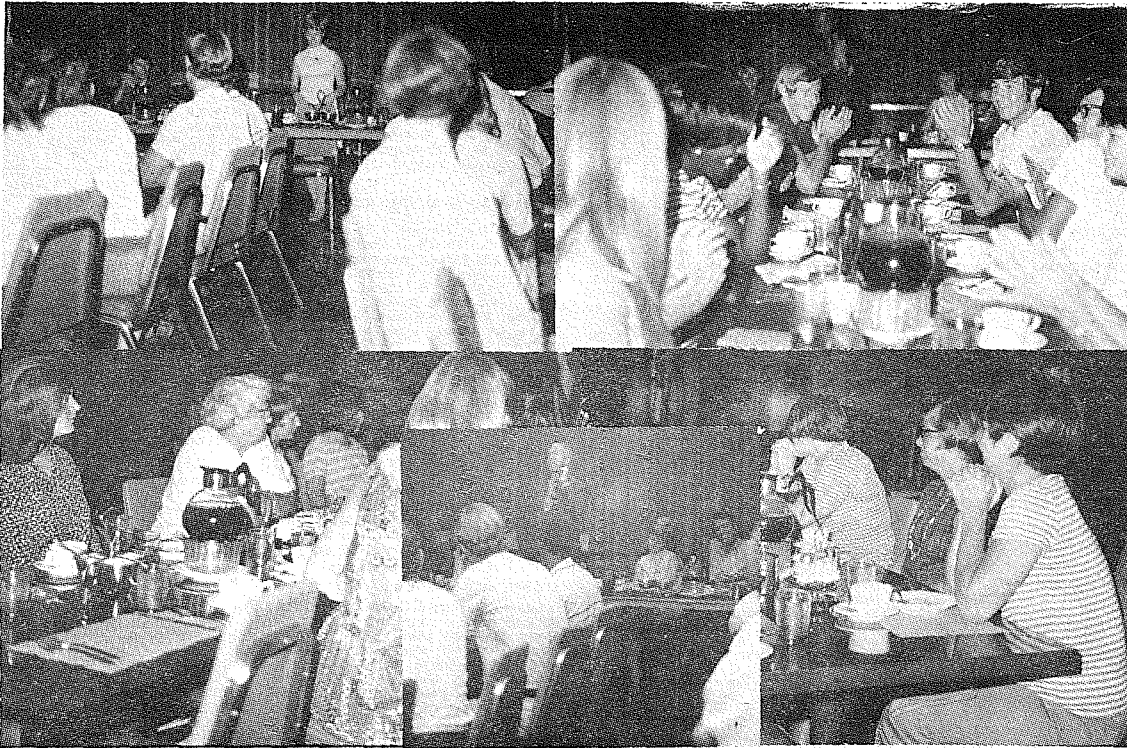
Quarantine Whatcom Co. For Crane Fly

OLYMPIA - The State Department of Agriculture today scheduled a public hearing in Bellingham, Thursday, September 10, on a proposed quarantine to restrict the spread of European Crane Fly. The hearing will be held at the Washington State Nursery, 3875 Guide Meridian Road, beginning at 10:30 A.M.

Infestations of European Crane Fly, a serious pest of turf and grasses, were found in northern Whatcom County several months ago. The pest spread across the border from British Columbia. The proposed quarantine would apply to that portion of Whatcom County north of Bellingham. It would regulate the movement from the quarantine area of soil, nursery stock, grass sod and soil moving equipment. The U.S. Department of Agriculture has imposed a similar quarantine on movement of these articles in interstate commerce.

ground to form the pupa from which the adult fly emerges. Cattle which are running or "gadding" about with tails in the air are often trying to escape the attentions of the adult heel fly or one of its cousins - the gad fly.

Culminating An Active Summer



Pierce County Parks and Recreation Director Tom Cross held his last staff meeting of the summer at Barlo's Restaurant last week. The meeting was full of success stories for the achievements made this summer. Important

were the people involved in the program that worked directly with the youth and encouraged enthusiasm for the activities.

Most important was the addition of Sprinker Park to the schedule. How did they get along without it?

Junior Soccer To Start October

The Tacoma-Pierce County Junior Soccer Association's 1970-71 season will start on October 3, 1970. Deadline for teams wishing to affiliate is Sept 19th.

Last year 1328 boys on 83 teams participated in this fast growing sport here in the Tacoma-Pierce County area, 25 teams were in the 8 and 9 year old leagues.

The program is open to boys 8 to 17 years. League play for the 8 and 9 years old boys will end in December and February 14, 1971 for the older boys. For information on team affiliation and registration please contact David Johnson, 2214 N. Mason SK 9-8613.

The association is in need of coaches, referees and team sponsors. Anyone interested is invited to attend the coaches meeting at the T.C.C. on Aug. 27th, building 12, at 7 p.m. For more information contact the association's secretary, Mrs. Carl Warren, 2506 N. Union SK 2-8762 or public relations chairman Doug Howard, SK 2-5312.

PADDLE-BALL ANYONE?

The Tacoma-McChord open Paddle-ball League held its first general meeting on Tuesday, August 11 to set the ground work for competitive play. According to Sidney Williams, League President, a great many people have shown interest in this fledgling sport, but additional applicants are needed to fill up the leagues. For further information contact Mr. Williams, 968-5322, McChord Air Force Base.

State Baseball Tournament Set For Sprinker Park

The American Amateur Baseball Congress State Tournament will be held at Harry Sprinker Recreation Center beginning on Friday, August 28 and concluding Sunday, August 30. Fridays opening game at 6:00

P.M. will feature the Western International League Champion, Seattle Cheney Studs, against the Southwest League number two team. Currently, Bremerton's "Out-side Inn" are in second place, however they still retain title hopes. The second game of the evening will match the W.I.L. runner-up, still undetermined, against the Southwest Leagues Champion. The Burien Cheney Studs presently occupy the top spot in the Southwest League. Additional games will be played on Saturday, August 29, with starting times at 1:00, 6:00 and 8:30. The finals will be Sunday the 30th at 1:00 P.M. The winner will advance to the Pacific Coast Regionals to be held at Sicks Seattle Stadium the following weekend.

Benefit Tournament For Jim Lane Fund

Len's Haven is putting on a 32 team Double-Elimination Tournament on August 21st through the 23rd. It will be held at Sprinker Recreation Center, Military Road & C Street. All the proceeds from the tournament will go to the Jim Lane Trust Fund. Jim was injured while playing ball at Sprinker Field during the Heidelberg Invitational Tournament.

A personal invitation is extended to all the public to make it a point to come out and watch these games.

"When a man forgets himself, he usually does something that everybody else remembers."

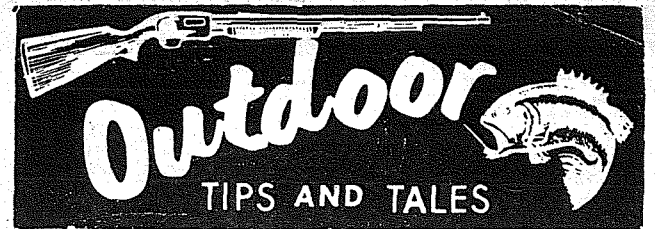
Tennis

10TH Annual Junior Tennis Championships

- Rookie Boys — Tim Larson defeated Tim Gibbons 6-3, 6-1
- Rookie Girls — Jeanne Dillingham defeated Sue Larson 6-4, 6-4
- Elementary Novice Boys — Richard di Furia defeated Mike Hawkins 6-3, 6-3
- Elementary Novice Girls — Shelly Dorna defeated Becky Burrows 6-1, 6-2
- Junior Boys — Lee Dolach defeated Mike Graves 6-2, 6-3
- Junior Girls — Diane Thompson defeated Debbie Kamper 6-0, 6-1
- Junior High Novice Boys — John Fisher defeated Jeff Hawkins 6-1, 8-6
- Junior High Novice Girls — Tracy Hagbo defeated Jorja Giannik 6-2, 6-1
- Bantam Boys — Larry Blackett defeated Donnie Doran 6-0, 6-2
- Bantam Girls — Gail Barker defeated Helen Vozenilek 6-1, 6-4

43RD Annual Pierce County Public Court Championships

- Senior Girls Singles — Barb Sands defeated Deanne Larson 6-2, 6-2
- Senior Girls, Doubles — Deanne Larson - Barb Sands defeated Barb Skurdall - Linda Weston 8-6, 6-4
- Senior Boys Singles — John Dimont defeated Less Noldenhauer 3-6, 6-1, 6-3
- Senior Boys Doubles — Rick Gunovich - Jim Roberts defeated Less Noldenhauer - Mark Polcyn 7-5, 10-8
- Women's Singles — Kathy Hemion defeated Lynn Soine 6-1, 6-0
- Women's Doubles — Fepie Verdick - Jean Mazzei defeated Lynn Soine - Sue Bortoluzzi 6-1, 6-2
- Men's Singles — R. J. Burt defeated Dave Knodel 6-3, 6-4
- Men's Doubles — Brian Berg - Jim Smith defeated Dan Merrill - Gary Thomas 6-4, 8-6
- Mixed Doubles — Thom Comfort - Kathy Hemion defeated Dan Merrill - Anne Popekla 6-4, 7-5



OUR long, dry summer is more like a simmer to fish such as silver salmon and steelhead. The low water levels in our streams can mean fewer of these two species in the 1972-73 and 73-74 seasons.

This is because these two species spend the first one or two years of their lives in fresh water before migrating to sea. Cohos, or silver salmon, spend the first year; naturally-born steelhead the first two. Steelhead which came out of the gravel this spring, and those which came out the spring before, are both in streams now.

Biologists refer to this amount of water as the kind of a "water year" the fish had.

The reason low water hurts these two species is simply that there is less living room and less food to eat when the water level is low. With less food, the number of young fish which survive to go out to sea is less than in the good water years.

The longer the streams stay low, the higher the mortality will be. So if we get a few good hard rains soon, don't complain too hard. Just stop and remember that it is helping the steelhead and coho fishing in the future.

It won't keep you any drier or salvage a loused-up camping trip, but it will make the rain a little easier to take.

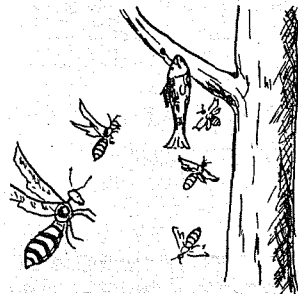
WHAT is the most critical period for a person who is lost, injured or for some other reason has to spend the night in the woods or along some mountain trail?

Members of the Mountain Rescue Council, who spend their spare time saving the lives of people who get in trouble in the outdoors, say the first six hours are the most critical. They say if a hunter or fisherman makes it through these first six hours, he stands a good chance of making it through alive, even if he has to spend several days out in the wilds.

Yet, in most cases, the victim fails to realize or admit that he is in serious trouble until several of those precious first hours have passed. By then it may be dark and hard to find good shelter or enough firewood. He may be wet and already suffering body heat loss, called hypothermia, which can be fatal in only a few hours.

So everyone who ventures into the outdoors should be mentally prepared to admit when he's in trouble. He should also carry a small "survival kit" which includes such things as waterproof matches and a candle to help start a fire; a small plastic tarp for protection; a small can to use for heating tea or bouillon cubes for a warm drink.

Above all, a person should be mentally prepared, by thinking out at home what he would do in a survival situation and what such a situation is. Most sports shops have pamphlets dealing with this. A few hours studying them now could save your life if trouble strikes.

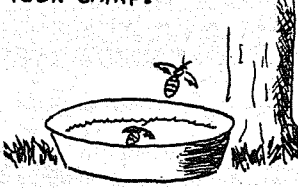


RID CAMP OF YELLOWJACKETS

SOMETIMES YELLOWJACKETS CAN MAKE LIFE MISERABLE IN CAMP. WHEN THIS HAPPENS HANG A PIECE OF MEAT OR A FISH ON A TREE AND PLACE A PAN OF WATER BELOW IT. THEY WILL GORGE ON THE MEAT UNTIL THEY CAN'T FLY, THEN FALL INTO THE WATER AND DROWN.

THIS ALSO WILL DECOY THEM AWAY FROM YOUR CAMP SPOT. SEVERAL SUCH STATIONS MAY BE NEEDED IF THERE ARE MANY OF THESE LITTLE PESTS.

PLACE THEM WELL AWAY FROM YOUR CAMP.



Bethel High Football Notice

Football Coach Ed Tingstead of Bethel High School announces that all team members should pick up their football uniforms Tuesday, August 25th. Uniforms will be issued from 8:00 a.m. until 12:00 noon at the high school.

BOWLING 35¢
ALL DAY-EVENINGS
THRU LABOR DAY

FALL LEAGUE
OPENINGS AVAILABLE
PARADISE BOWL
108th & PACIFIC
LE 7-6012

LAKE SPANAWAY
Golf Course · Driving Range

"Golf Lessons" Ken Tyson Manager

Roger Weister Professional LE 1-3660

HIS BUSINESS IS PICKING UP!

Parkland, Tillicum and Eatonville areas of Southern Pierce County have been receiving "Sloppy" refuse service for over 2½ years now. Sloppy is his name and the service is far from what the name implies. Customers of James Patrick Sloppy have attested to the excellence his driving and pick-up caution and thoroughness.

Jim and his wife Flo live in Roy, Washington, with their six children, Renneye 14, JoAnn 13, Keith 12, Leon 10, Lesli 9, and Patty 6.

If you hear any mention of sloppy service you know now what it means, the usual excellent dependable service from Pierce County Refuse Co.

James Patrick Sloppy

Safe Driving Makes Him Desirable To Serve You

Pierce County Refuse

LE 7-8688

SECURITY

AMBULANCE SERVICE

- 24 Hour Service
- Parkland Based

LE 7-4455

Schedule

(Continued from Page 19)

ROUTE NO. K-57, BUS NO. 65-29

(Take Home AM & Pickup PM Kindergarten) Leave Eik Plain Elementary 11:30 AM. North on 22nd Avenue East to 192nd, West to 12th Avenue, South through Crescent Park to 196th, West to Webb Road, South to Mt. Highway, North to Field Road, East to Ellis Lane, North to 196th, West to Mt. Highway, South to W. Field Road, West to end. Turn around and return to Mt. Highway, South to Pole Line Road, South to Mitchell Road, West 3/4 mile, turn around and return to Mt. Highway, South to 255th (Quiet Village) West to 30th and turn around and return to Mt. Highway, South to 260th, West to Northener Road, South to end. Turn around and return to Mt. Highway, North to 22nd Avenue. Arrives at school approx. 12:40.

ROUTE NO. E-58, BUS NO. 67-31

Leaves E.P. School 2:30 PM., South on 22nd Avenue to Mt. Highway, South to 224th, East to 38th Avenue, North 3/4 mile and turn around, return to 224th, East to 58th Avenue East, North 3/4 mile, turn around and return to 224th, East to 76th Avenue, turn around and return to 224th, East to 82nd Avenue, North to Eustis Hunt Road, Northwest to Orting Prairie Road, West to 66th Avenue, South 5/8 mile, turn around and return to Orting Prairie Road, West to 46th Avenue, South to 208th, East to 50th Avenue, turn around and go West on 208th to Geo. Brown Road, South to Jr. High.

ROUTE NO. E-59, BUS NO. 62-21

(Grades 1 & 2) Leaves Eik Plain Elementary 2:30 PM., North on 22nd Avenue to 208th, West to Mt. Highway, North to Webb Road, North to 196th, East to 12th Avenue East, North 1/2 block to Crescent Dr. East, North to 12th Avenue East and 192nd, East to 208th, South to 208th, East to 28th Avenue, North to end. Turn around and return to 208th, East to Brown Road, South to Jr. High.

ROUTE NO. E-60, BUS NO. 50-4

(Grades 1 & 2) Leaves Eik Plain Elem. 2:30 PM. North on Mt. Highway to 204th Street East (Lerens Road), East to 14th Avenue, North to end. Turn around and return to Mt. Highway, North to B Street, North to 192nd, East to 5th Avenue East, South to 196th, East to Ellis Lane, South to Field Road, West to Pirnie Road, North 1/4 mile, turn around and return to 196th, South to 8th Avenue East (Pole Line Road), South to Mitchell Road, West 3/4 mile, turn around and return to Mt. Highway, South on Mt. Highway to 22nd Avenue.

ROUTE NO. E-61, BUS NO. 50-1

(Grades 1 & 2) Leaves E.P. School 2:30 PM., South on Mt. Highway to 255th (Quiet Village) West to 30th Avenue, turn around and return to Mt. Highway, South to 260th, West to 34th Avenue (Northener Road) South to end. Turn around and return to Mt. Highway, South to Weiler Road, South to 276th, West to end. Turn around and return to Mt. Highway, North to 260th, East to 50th Avenue, North to 249th, East to 51st Avenue, South to 250th, East to 208th, South to 252nd, East to 54th Avenue, North to Mathias Webster Road, East to 70th Avenue East, South on Webster Road to top of the hill (Todds) turn around and return to 260th, and 70th Avenue, West on 260th to 66th Avenue, South to end. Turn around and return to 70th Avenue, East, North to 224th, West to 46th Avenue East, South to end. Turn around and return to 224th.

KAPOWSIN ELEMENTARY

ROUTE NO. E-62, BUS NO. 64-26

Leaves Bus Garage 7:55 AM., First Pickup 8:00 AM., end of Carlson Road (288th), 1 mile east of Mt. Highway, West to 288th, East to Highway, South to 292nd, West to 52nd Avenue, South to 292nd, East to end. Turn around and return to Mt. Highway, South to 304th (Johnson Corner), East to Webster Road, South to 308th, West to Labor Devore Road, South to 320th, West to McDonald turn around. Turn around and return to Webster Road, South to Meredian, North to Kapowsin Highway, West to Mathias Webster Road,

North to 274th (Via: 86th Avenue), East on 274th 1/2 mile turn around and return to Mathias Webster Road, South to 288th (Carlson Road), East to Meredian, North to 280th, East to 110th Avenue, North to 264th, West to school. Arrives at Kapowsin School 8:55 AM.

ROUTE NO. E-63, BUS NO. 60-18

Leaves Bethel Jr. High 8:20 AM., First Pickup 8:25 AM., corner of 224th and 86th Avenue East, South to 232nd, East to end. Turn around and return to 232nd Street East, East to 94th Avenue, South to end. Turn around and return to 232nd, East to Meredian, South to 234th, East to 114th Avenue East, North to 224th, West to Meredian, North to Military, East to end. Turn around and return to Meredian, North to 200th, East 1 mile, turn around and return to Meredian, North 1/4 mile beyond Puyallup Graham Road, turn around on West side off highway, Go South to 264th. Arrives at school approx. 8:57 AM.

ROUTE NO. E-64, BUS NO. 70-37

Leaves Bethel Jr. High 8:20 AM., First pickup 8:25 AM., 3/8 mile east of R.R. crossing on 224th, East on 224th to 146th Avenue East. Turn around and return to Thrift Corner (224th and Orting Kapowsin Highway) North to 208th, turn around on West side and return South to Thrift, West to 126th Avenue East, South to 232nd, West to 122nd Avenue East, South to 256th, West to 118th Avenue, South to 264th, West to 110th Avenue (Davis Rd.) North to 240th, West to 108th Avenue East, North to 234th, West to Meredian, South to 264th. Arrives at Kapowsin Elementary School 8:58 AM.

ROUTE NO. E-65, BUS NO. 68-34

Leaves Bus Garage 7:50 AM., First Pickup 8:05 AM., 288th and Meredian, South on Meredian to Kapowsin Highway, East to Hansch Road, North to end. Turn around and return to Kapowsin Highway, East to 144th Avenue East (Benbow Rd.), South to Benbow Dr. East, Southwest to Whitman Lake and turn around and return to Orting Kapowsin Highway (Via: 312th) North to 284th, West to end. Turn around and return to Orting Kapowsin Highway, South to 288th (Carlson Road) West to Meredian, North to 264th. Arrives at school approx. 8:55 AM.

ROUTE NO. E-66, BUS NO. 58-15

Leaves Bus Garage 7:50 AM., First Pickup 7:55 AM., 264th Street East (McDonald Rd.) 1 block east of Orting Kapowsin Highway, East on 264th to Orville Road East. (Via: Echo Forest) South to Kapowsin Highway, Southeast to Electron, West around Kapowsin Lake to Grigg Road, East and North to Foster Road, North to 158th Avenue East (Tallman Road), North to 254th (McDonald Road), West to Orting Kapowsin Highway. (Via: 150th Avenue East (Stoner Road) North on Orting Kapowsin Highway to 240th Street East (Bath Road) East to end. Turn around and return to Orting Kapowsin Highway, North to turn around (Antonies) return to 264th, West to school. Arrives at school approx. 8:55 AM.

ROUTE NO. K-67, BUS NO. 68-34

(11:00 AM) TO BE ANNOUNCED

ROUTE NO. K-68, BUS NO. 62-D

TO BE ANNOUNCED
NOTE: Please call VI 7-2271 for information concerning AM & PM kindergarten.

ROUTE NO. E-69, BUS NO. 62-D

(Grades 1 & 2) Leaves Kapowsin Elementary 2:30 PM., South on Meredian to 274th, West to 86th Avenue, South 1/2 block, West to Mathias Webster Road, South 1/2 mile to turn around by (L.D.S. Ward), turn around and return North to 288th, East to Orting Kapowsin Highway, South to 312th, West to Lake Whitman, (Via: Benbow Drive East) turn around and return to 144th Avenue East, North to Kapowsin Highway, West to 118th Avenue East (Hensch Road) North to end. Turn around and return to Kapowsin Highway, South to 118th Avenue, North to 296th (Kronquist Road) East to end. Turn around and return to cross Mt. Highway, West to 52nd Avenue, North to 292nd, East to Mt. Highway, North to 288th, East to end. Turn around and return to Mt. Highway, South to 320th (Arthur Christian Road) East to Labor Devore Road, Northeast to 308th, East to Webster Road, South to Meredian, North to 288th.

ROUTE NO. E-70, BUS NO. 56-11

(Grades 1 & 2) Leaves Kapowsin Elementary 2:30 PM., North on Meredian to 234th, East to 114th Avenue East, North to 224th, West to Meredian, North to Military Road, East to end. Turn around and return to Meredian, North to 200th, East 1 mile turn around and return to Meredian, South to 232nd (Via: 204th) West on 232nd to 94th Avenue East, South to end. Turn around and return to 232nd, West to 86th, South to end. Turn around and return North to 224th.

ROUTE NO. E-71, BUS NO. 54-A

(Grades 1 & 2) Leaves Kapowsin Elementary School 2:30 PM., West on 264th to 118th Avenue East, North to 256th, East to 122nd Avenue, North to 232nd, East to 126th Avenue, North to 224th, East to 146th Avenue, Turn around and return to Orting Kapowsin Highway, North 3/4 mile, Turn around and return to 240th Street (Bath Road), East to end. Turn around and return to Orting Kapowsin Highway, South to 264th, East to 150th Avenue, North to end, turn around and return to 264th, East to 158th Avenue, South to 264th, East to 158th Avenue, South to Electron, North West to 264th, West to Echo Forest.

LACAMAS ELEMENTARY

ROUTE NO. E-72 AM, BUS NO. 62-22

TO BE DETERMINED

ROUTE NO. K-73, BUS NO. 62-22

TO BE DETERMINED

ROUTE NO. K-74, BUS NO. 62-22

TO BE DETERMINED

ROY ELEMENTARY

ROUTE NO. E-75, BUS NO. 63-23

Leaves Bus Garage 7:45 AM., First Pickup 7:55 AM., corner of South Creek Road & 304th East. West on 304th to 8th Ave. East (Pole Line Road) North to 296th, West to 8th Avenue South (Harts Lake Loop Road) North to 288th, East to 8th Avenue East, South to 296th, West to 8th Avenue, South to 304th, East to 8th Avenue East, South to 336th (Via: 314th) West to 8th Avenue South, South to McKenna Tanwar Road, Cross highway. Turn around 1/4 mile south of highway. Return on 8th Avenue South to 288th, West on 288th to 72nd Avenue, North and West to Roy Highway. Arrives at Roy Elementary School approx. 8:55 AM.

ROUTE NO. E-76, BUS NO. 68-33

Leaves Bus Garage 7:45 AM., First Pickup 7:58 AM., 276th and 8th Avenue East, South to 288th, West to 24th Avenue South, South to 336th, (Via: Shady Road & 16th Avenue South), West to 40th Avenue South (Hawk Peterson Road), North to 288th (Via: Bayview Road), West on 288th to 48th Avenue South (Finck Road), South to 336th, West to Tisch Road, North to 288th (Via: 72nd Avenue South), East to Ledford Road (56th Ave.) South to end. Turn around and North to 280th Street South, West to Roy. Arrives approx. 8:55 AM.

ROUTE NO. E-77, BUS NO. 62-22

(Grades 1 & 2) Leaves Roy Elementary School 2:30 PM., (Route to be announced)

ROUTE NO. K-78

TO BE ANNOUNCED

SPANAWAY ELEMENTARY

ROUTE NO. E-79, BUS NO. 64-27

Leaves Spanaway Jr. High 8:20 AM., First Pickup Military Road 8:25 AM., West on Military to North Roberts Road, South to 151st, West to 15th Avenue, South to 153rd, East to Roberts' Road, North to Military, West to Eastgate, turn around and return to Spanaway Loop Road, South to Roberts Road South. Arrives at Spanaway Elementary approx. 8:50 AM.

ROUTE NO. E-80, BUS NO. 52-6

Leaves Bethel Jr. High 8:20 AM., First Pickup 8:32 AM., Apartment House on 170th and A Street, South on A Street to 175th, West to Yakima, North to 173rd, West to Rich Road, South to Spanaway Loop Road, West to South Roberts Road, Turn around and return to Park Avenue (Via: 174th) North on Park Avenue to 160th, East to school. Arrives at Spanaway School approx. 8:55 AM.

ROUTE NO. K-81, BUS NO. 64-27

Leaves Spanaway Elementary 11:30 AM., South on Pacific to 168th, East to B Street, South to 176th, West to A Street, North to 170th, West to C Street, South to 171st, West to Park Avenue, South to 174th, West to Yakima, North to 172nd, West to Rich Road, South to Spanaway Loop Road, to Military Road, West to Eastgate, turn around and return to 16th Ct. South, South to 152nd, East to 16th Avenue, North to Military, East to Roberts Road, South to 151st, West to 15th, South to 153rd, West to Roberts' Road, North to Military, East to Pacific.

ROUTE NO. K-82, BUS NO. 64-27

Leaves Spanaway Elementary 12:25 PM., First Pickup 12:30 PM., Military Road, West to Spanaway Loop Road (Via: North Roberts Road & 153rd & 15th Ct. South), South on Spanaway Loop Rd. to Creso Road, East to end and return to Spanaway Loop Rd. and South to Rich Rd., North to 173rd, East to Yakima, South to 176th, East to B Street, North to 174th, West to A Street, North to 168th, West to Park Avenue, North to 165th, East to school. Arrives at Spanaway Elementary 12:55 PM.

ROUTE NO. E-83, BUS NO. 63-24

(Grades 1 & 2) Leaves Spanaway Elementary 2:30 PM., South on Pacific Avenue to 170th, East to A Street, South to 174th, West to Rich Road, North to 173rd, West to Rich Road, South to Spanaway Loop Road, West to South Roberts Road, North and West to South Loop Road. North to Creso, East to end and return North to Military, East to Pacific — Via: North Roberts Road, 153rd and 15th Ct. South.

ROUTE NO. E-83 A, BUS NO. 54-8

(Grades 1 & 2) Leaves Spanaway Elementary 2:45 — West on 166th to Park Ave. South to 174th, West to S. Roberts Rd.

THOMPSON ELEMENTARY

ROUTE NO. E-84, BUS NO. 66-30

Leave Spanaway Jr. High 8:20 AM., First Pickup 8:27 AM — 1/4 mile North of Military on 22nd Avenue East, North on 22nd Avenue to 152nd, East to 38th Avenue, North to Brookdale Rd., Northwest to Waller Road, South to 152nd, West to 21st Avenue Court (Harmon Addition) Follow 151st to 19th Avenue Ct., return to 152nd, West to Terry Lane Addition. Pickup 12th Avenue and 11th Avenue. Return to 152nd, West to B Street, South to Louvre, East to Old Military, South to 160th, West to B Street. Arrives at school approx. 8:55 AM.

ROUTE NO. E-85, BUS NO. 54-B

Leave Spanaway Jr. High 8:20 AM., First Pickup 8:23 AM., 163rd and B Street, South on B Street to 168th, East to 22nd Avenue, North to Military, West to B Street. Arrives at school approx. 8:55 AM.

ROUTE NO. E-86, BUS NO. 61-20

Leave Bus Garage 8:15 AM., First Pickup corner of 16th Avenue East and 168th, East on 168th to 17th Avenue East, North to 165th Ct. East, East to end. Return to 168th, East to 22nd Avenue, North to Military, West to B Street. Arrives at school approx. 8:55 AM.

ROUTE NO. E-87, BUS NO. 57-G

Leave Spanaway Jr. High 8:20 AM., First Pickup 8:27 AM., 146th and Pacific Avenue, North on Pacific to 138th, East to Golden Given, South to 144th, and Joker Rd. E., West and North to 138th, West to D Street, South to 144th, West to 2nd Avenue Court East, North to 143rd, West to Pacific Avenue, North to 140th, West to C Street, North to 138th, West to Yakima, North to 136th, West to J Street, South to 141st, East to Pacific, South to 152nd, East to B Street. Arrives at school approx. 8:56 AM.

ROUTE NO. E-88, BUS NO. 59-16

Leaves Bethel Jr. High 8:20 AM., First Pickup Old Military Road and Spanaway Loop Road, 8:32 AM. North on Spanaway Loop Road to 138th, East to C Street, South to 143rd, West to 7th Avenue. Return to C Street, South to Military. Arrives at school approx. 8:55 AM.

ROUTE NO. E-89, BUS NO. 59-17

Leaves Spanaway Jr. High 8:25 AM., First Pickup 8:31 AM., 14th Avenue South, 1/2 block South of 138th, South on 14th Avenue to Durvey Lane, South to end. Return to 141st, East to J Street, North to 140th, East to C Street, South to 146th, East to Pacific Avenue, South to 159th, East to B Street. Arrives approx. 8:55 AM.

ROUTE NO. K-90, BUS NO. 61-20

(AM Take Home)
Leaves Thompson Elementary 11:30 AM., North on B Street to 152nd, East to 22nd Avenue (Via: Terry Lane & Harmon addition) South on 22nd Avenue to Military Road, West to Old Military, North to Lavore, West to 7th Avenue, South to Military, West to B Street, South to 168th, East to end.

ROUTE NO. K-91, BUS NO. 57-G

(AM Take Home)
Leave Thompson Elementary 11:30 AM., North on Pacific Avenue to 138th, East to D Street, South to 144th, West to B Street, North to 143rd, West to Pacific, North to 140th, West to C Street, North to 138th, West to Yakima, North to 136th, West to J Street, South to 138th, West to 14th Avenue, South to 141st, East to Durvey Lane, South to end. Return to 141st, East to I Street, North to 140th, East to C Street, South to Military, East to Pacific, South to 159th, East to B Street.

ROUTE NO. K-92, BUS NO. 61-20

(Afternoon Kindergarten)
First Pickup 168th and 22nd Avenue 12:20 PM., North on 22nd Avenue to 152nd, West to B Street (Via: Harmon addition and Terry Lane), South on B Street, East to Old Military, South to 160th, East to 22nd Avenue, South to 168th, West to B Street, North to school. Arrives approx. 12:55 PM.

ROUTE NO. K-93, BUS NO. 57-G

(Afternoon Kindergarten)
First Pickup Spanaway Loop Road and 152nd at 12:25 PM., North on Spanaway Loop Rd. to 138th, East to Yakima, North to 136th, West to I Street, South to 138th, West to 14th Avenue, South to 141st, East to Durvey Lane, South to end. Return to 141st, East to I Street, North to 140th, East to Yakima, South to 144th, East to C Street, South to 146th, East to Pacific Avenue, South to 159th, East to B Street. Arrives approx. 12:55 PM.

ROUTE NO. E-94, BUS NO. 59-17 (2:30 PM Take Home)

Leaves Thompson Elementary at 2:30, North on Pacific to 143rd, East to D Street, North to 138th, West to Yakima, North to 136th, West to J Street, South to 138th, West to 14th Avenue, South to 141st, East to Durvey Lane, South to end and return to 141st, East to I Street, North to 140th, East to C Street, South to Military (Via: 143rd & 7th Avenue South) West on Military to Spanaway Loop Road, North to 138th.

ROUTE NO. E-95, BUS NO. 52-7 (2:30 PM Take Home)

(Grades 1 & 2) Leaves Thompson Elementary 2:30 PM., North on B Street to 152nd, East to 38th Avenue East (Via: Terry Lane & Harmon addition), North on 38th to Brookdale Road, Northwest to Waller Road, South to 152nd, West to 22nd Avenue, South to Military Road, West to 11th Avenue, North to Louvre Street, West to 7th Avenue, South to Military.

ROUTE NO. E-96, BUS NO. 54-8

(Grades 1 & 2) Leaves Thompson Elementary 2:30 PM., South on B Street to 168th, East on B Street to 22nd Avenue, North to Military, West to B Street.

SPECIAL EDUCATION

ROUTE TO BE DETERMINED. PLEASE CALL VI 7-2725 or VI 7-2847 for further information.

Fort Steilacoom Community College Prepares for Another Year

A first meeting of the Puyallup Occupational Education Study Committee was held to determine the educational needs of this community. Consisting of community members and Ft. Steilacoom staff members, the main business of this meeting was discussion of future plans for a college in East Central Pierce County and possible expansion of the Puyallup Early Childhood Education program.

Dr. Marion Oppelt, Ft. Steilacoom Community College President, has been recently appointed Vice-Chairman of the Finance Committee for the State C.C. Council of Presidents.

Spanaway Speedway

Fort Steilacoom is instigating a new service to out of town students by compiling a list of low-rent, furnished apartments. The college will take no responsibility for the housing but is simply filling a service for the students. People wishing to list their houses or apartments should notify the Director of Student Activities at the College.

SPANAWAY--The red hot Midgets and the wild Claimer Stocks will share this week's program at Spanaway Speedway with A.R.I.'s Superstocks, taking over the Sunday afternoon time slot.

The Superstocks, as usual, will hold a complete program Saturday evening, with time trials starting at 6:30 and racing at 8:00 p.m.

In last week's double header, Ron Eaton, driving the #5 Lakes Body Shop Special, took full advantage of other driver's miscues to take the checkered flag in the 50 lap class "AA" feature. Eaton was chased by Rick Brock for 38 laps, but lost him when the Sunset Chevy special hit the wall and limped in well back of the pack.

Bruce Stanley brought the Riverside Inn 37 car in for a 2nd place finish and Terry Standish captured 3rd in the number 2 Gateway Chev special.

Kent Brock, chasing Stanley for 47 laps and almost hub to hub with him for the entire distance, blew his 292 cubes all over the asphalt after 4 years of competition.

Prominent community leader, Douglas Richter, was appointed to the Board of Trustees by Governor Evans. Richter replaces Wallace Hager who recently resigned. The new trustee will finish out the term expiring April 3, 1973. Richter, Vice-president of Western Plastics and manager of Northwest Processing Company, lives with his wife and two daughters in Lakewood.

Thomas Wright will join the College faculty this fall as a Mid-Management Coordinator/Instructor for the college's new occupational program, Food Marketing Management. Wright comes to the Lakewood area with his wife and four children and is very active in his Lutheran church and enjoys bowling.

Orville Stout will also join the staff this fall as a Media Specialist in charge of Media planning, direction and production. Stout is an active member of his Episcopal church and is an elected trustee of the Fort Vancouver Historical Society.

DAVE'S CLEANERS

SPECIAL

2 for 1

SWEATERS

PLAIN SKIRTS

7209 Pacific - GR 5-1144

PARK-WAY PATROL

MERCHANT PATROL SERVICE
BURGLAR ALARM MONITORING

24 HOUR SERVICE
RADIO DISPATCHED VEHICLES
LICENSED BONDED
COMMISSIONED OFFICERS
319 GARFIELD SO.
LE 1-2288

Angelo's

PIZZA HOUSE

ORDERS TO GO

Featuring top sirloin and American dishes, spaghetti, rigatoni, meat balls, sausage, ravioli, beer and wine.

Choice of Pizzas

- cheese & tomato
- anchovie
- mushroom
- Italian sausage
- pepperoni
- tuna

- bacon
- peppers
- olive
- hamburgers
- ham
- salami
- onion

LE 7-7233
14102 PACIFIC AVE.
PARKLAND

CALL AHEAD, IT'S PIPING HOT ALL THE WAY HOME

PICK UP A BOX, PAIL, BUCKET OR A BARREL

WINDOW GLASS

CUT TO SIZE

WINDOW SCREENS

MADE TO ORDER

STORM WINDOWS

MADE TO ORDER

You install or We install
FREE ESTIMATES

JU 8-3025
GLASS SHOP

8012 S. Tacoma Way

Spanaway Speedway

PRESENTS

Stock Car Races

SATURDAY, AUGUST 22

A.R.I. SUPERSTOCKS

COMPETING IN DASHES, HEATS & MAINS

TIME TRIALS 6:30 RACING 8:00 PM

SUND

CLASSIFIED ADS

2. ANIMALS

See the Farm Page for Livestock

11 MONTHS OLD Redbone Hound dog. Partly trained, deer broke. If interested call VI 7-7091.

BORDER COLLIE pups. GR 2-5558.

SHETLAND FILLY, reasonably priced. Youth saddle & bridle. \$65. LE 1-7914.

3. FOR SALE

BETTER ITEMS, rummage. Apparel, shoes, misc. 218 S. 112th.

USED refrigerator. VI7-7678.

LUMBER 2"x6" decking, select economy grade, \$69 per M 1"x8". Economy Shiplap 5 cents per lineal ft. 1"x4" economy flooring, 4 1/2 cents per lineal ft.

BROOKDALE LUMBER 13602 Pacific Ave. LE 7-8669

BYCYCLE — Perfect condition Schwinn Stingray bike — \$35. LE 7-8862.

DIAMOND engagement set - antique gold. Appraised at \$250. Will sell for \$100. GR2-8462.

ROLEX DIVER'S watch - \$85. Call Roy 843-2241.

TIRES?

Dunlop — Miller New — Retreads See Tiny

TINY'S TIRE CENTER
108th & Pacific - LE 1-4535

GOOD RECLINER, and Lang trash burner, 150 ft. roll 48 in. chicken wire 20 ga. Call evenings GR4-8756.

FENCING. Good 4"x4" cedar. 19c lineal ft. 1"x6" rough cedar, 8c lineal ft. 1"x8" rough cedar 10c lineal ft.

BROOKDALE LUMBER 13602 Pacific Ave. LE 7-8669

FENCE SLABS - cut to order up to 8 ft. D & C Fuel. VI 7-2428.

WHY spend good money on inferior home cleaning products, save money and get quality too, 100 per cent guarantee on all items. Call Eatonville. 832-6338.

FIREWOOD, 1/2 cord delivered, split, \$10.00, student, VI7-2215.

FIR SLAB WOOD for fireplace, heater, range, or trash burner. You haul & save any quantity or we deliver 1/2 cord or more. D & C Fuel VI 7-2428.

2x4 ECONOMY STUDS

21c

BROOKDALE LUMBER 13602 Pacific Ave. LE 7-8669

HICKS DAHLIA GARDENS

ROY, Wn. 98580 843-2426
Gardens Open Aug. 9 Till Frost

9-6 Daily

IN ROY FOLLOW THE LITTLE YELLOW SIGNS

CONCRETE MIX, \$1 per bag. Just the thing for small jobs. BROOKDALE LUMBER 13602 Pacific Ave. LE 7-8669

KOHL TIRE SHOP

MILLER TIRES NEW — USED — RECAPS

Under New Management

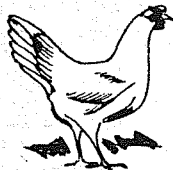
1723 VIOLET MEADOWS LE 7-4701

FOR SALE

PLUMBING. Standard grade toilets, \$22.55. 5' bath tubs, \$41.25. Toilet seats, \$3.95 each. Tank balls, 75 cents each. 3/4" plastic pipe, 100-lb test. 100' rolls, \$7.95.

BROOKDALE LUMBER 13602 Pacific Ave. LE 7-8669.

FARM FRESH EGGS



QUALITY PRODUCED

J.J.R. FARMS 11814 VICKERY AVE.

TACOMA WASHINGTON, 98446.

SID KINSEDAHL, Owner-Mgr.

Home Ph. LE 7-6049

BUS. PH. LE 1-6022

ELECTRICAL. Bedroom ceiling lights, \$1.98 each. Quiet toggle switches, 55 cents each. Bakelite switch boxes, 49 cents each. 12-2 Romex W-ground new code, 14 cents a ft.

BROOKDALE LUMBER 13602 Pacific Ave. LE 7-8669

GO!

To Lucky O'Neals For Locker Meats

BEAT!

The One Piece Price

L & L LOCKER MEATS

1023 Valley Ave. NE. Puyallup 848-3626 or TH 5-7043

WALL PANELS, 4"x8"x1/4" prefinished panels, 2 colors, only \$2.98 each. Special closeout prices on others.

BROOKDALE LUMBER 13602 Pacific Ave. LE 7-8669

Musical Instruments

MEDITERRANEAN Walnut console spinet piano. Like new, assume low monthly payments. Phone adjustor, BR 2-5282, Tacoma.

Heavy Equipment

TRACTOR, planet jr., Just like new. Including sickle bar, harrow, etc. Adams Place, 112th & Park.

5. AUTOS, TRUCKS

Going into service — WANT TO SELL IMMEDIATELY — 2-28 Commaro 1967, excellent condition, headers. Best offer for equity 832-6459, Eatonville.

1963 TEMPEST Sedan, automatic, radio, heater. Extra clean. \$450. 832-3962 Eatonville.

6. TRAILERS

Campers

CAMPER RENTALS reserve now - LE 1-4748, 10002 Pacific Ave.

1969 OPEN ROAD 9 ft. Balboa, one owner, used 5 times — cost \$1,600 new — ONLY \$1,095. 832-3131.

Van Eaton Chevrolet

1965 ALASKAN 10 ft. with gas elect. refrigerator. Extra storage boxes. Twin LP6 tanks. Built-in radio. \$1,195. 832-3131.

Van Eaton Chevrolet

1964 CHINOOK 10 ft. with jacks and furnace. Very clean — one owner \$1,095. 832-3131.

Van Eaton Chevrolet

MOBILE HOMES

NEW SHELBY - NEW HILCRESTS

12', 18', 20', or 24' WIDTHS
1, 2, 3, or 4, BEDROOMS 1 or 2 BATHS
LUXURIOUS LIVING, SLANT KITCHEN, UTILITY ROOM

— USED MOBILE HOMES —

VARIOUS HOMES IN STOCK OR AVAILABLE

FROM \$2,995.

SEE: **LUCKY SALES** BEFORE YOU BUY

135th & PACIFIC AVENUE LE 7-8487

NEW- MORE POWERFUL

the 1970's ARE HERE

VOLKSWAGEN 27 MAJOR CHANGES

COME IN **Tom Carstens AUTOHAUS**

7030 So. Tacoma Way GR 4-0666

Tacoma Dealer Since 1955

SOONER'S



BUY of The WEEK

'61 CAD. \$299.00

QUALITY CARS AT A PRICE ANYONE CAN AFFORD

DON VOWELL'S LTV MOTORS 13123 PACIFIC AVE LE 7-7722

NEW MOBILE HOME \$529500

QUALITY BUILT 12x60 ALL ELECTRIC CARPET LOW DOWN PAYMENT

* * * USED TRAILERS \$79500 & UP OVER 30 TO CHOOSE

TACOMA'S USED TRAILER HEADQUARTERS

SPANAWAY TRAILER SALES INC.

185th & PACIFIC AVE. PHONE VI 7-7706

REAL ESTATE Wanted

OLYMPIC REAL ESTATE CO. We Can Sell Your Home!

RENTALS APPRAISALS FARMS ACREAGE

MEMBER: Tacoma Board of Realtors Multiple Listing Service

ELK PLAIN-BETHEL BRANCH

22208 Mt. Hiway Spanaway, Wash.

VI 7-6434

Listings Wanted

Buying or Selling Real Estate Service Call **Devereaux Realty** 12152 Pacific Ave. LE 7-8658

9. EMPLOYMENT

Help Wanted

PART-TIME office girl. No great experience necessary. Apply before 4:00 p.m. daily in person. Shop-Mart 133rd & Pacific.

WOMAN WANTED live-in baby sitter from 18-25, one child accepted. \$100 month plus room & board. BR 2-7582.

REAL ESTATE sales people, experience preferred, if not & you wish to enter the fascinating field of real estate, we will train you if you qualify for interview. GR 5-6262. Arrow Realty 1122 E. 72nd St.

IF YOU SEW, knit, carve, crochet, quilt, patchwork; if you dabble with clays, pottery, ceramics, or tile; if you want additional income, write me. I will turn that hobby of yours into a money-making proposition for you. Send all inquiries to: W.E. Stone, 1650 Winona Blvd., Suite No. 4, Los Angeles, California 90027.

NEED SECOND PAYCHECK? Part-time, earn \$64 and up in any 20 hours per week. Car necessary, married preferred. Call JU 4-6644.

BROKE? BLUE? BORED? Sell Baum Toys. Party plan. Full or part time. We train. Car necessary. Call LE 1-1517 or LE 7-0325.

Work Wanted

BABYSITTER, dependable. Days, 138th St. LE1-8802.

Licensed Child Care

LOVING CARE - ages 3 to 6. Parkland LE 7-3598.

LICENSED BABY sitting ages 1 thru 12. GR 5-0282.

\$15-ONE CHILD. \$25-Two. Large play area. Hot lunches, snacks. Loving care. References. Mary Johnson. 10026 Sales. 582-2394.

TEACHER'S AID desires before-after school care - first graders & up. Sales - Parkland Schools. LE 1-0883.

Instruction

PIANO LESSONS, beginning & Advanced. Home or studio. Southend and Northend studio. Children and adults, SK 2-7695 or SK 9-3947. 69-4191f

PIANO LESSONS, Parkland area LE1-3254.

10 SERVICES

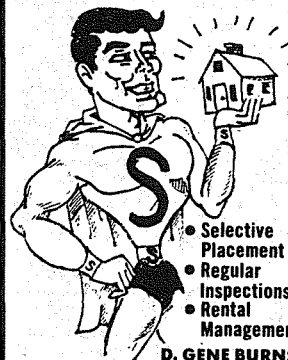
Building

REMODELING & LEVELING block work. Reasonable. LE 7-3550, LE 7-7424.

ALL CONCRETE work, patios, steps, driveways, basements. Licensed - bonded. WA 2-7227.

CONCRETE FINISHING PLACING & FORMING **J. L. Lewis** LE 1-5409

Let "SUBUR-MAN" serve YOUR RENTALS



Selective Placement Regular Inspections Rental Management

D. GENE BURNS Rental Mgr. Residence LO 4-6598

SUBURBAN REALTY

11302 Pacific Ave. LE 7-8638

8. FOR RENT

FURNISHED 3 BDRM family home. Parkland area. Gas heat. Washer & dryer. \$100 deposit, \$165 a month. LE 7-3428.

FURNISHED 2 bdrm. house near Spanaway Lake. Available after Sept 15. LE 7-6389.

Apartments

EXCELLENT FOR one, consider couple, Spanaway, bus, stores, P.L.U., bases. Has fireplace, carpeting, private entrance, two rooms, plus bath. \$90.00 or \$100.00 plus part utilities. Occupancy on 1st. LE 7-6325.

Copies 10¢

The Times Journal 409 Garfield

DEVEREAUX REALTY INC "REALTOR"

PARKLAND LE 7-8658 12152 Pacific Ave.

LOOKING FOR LAND?

10 acres on 48th Ave. South. Will sell on private contract. Total price - \$13,500. Beautifully situated with trees to complement the cleared acres. View of Mt. Rainier. Call Don Visser - LE 1-0295 or LE 7-8658, or Al Raber - LE 7-3469 or LE 7-8658. AU 23767.

MILTON - 3/4 ACRE - GOOD PRIVACY

3 plus bedrooms, full basement, den, new roof. Good view of the valley, partly fenced. Call Don Visser LE 1-0295 or LE 7-8658. Y 24571.

\$5,000 EQUITY - 3 BDRM

5 year old, on 90 x 130 site. Has double garage, 2 baths, large stone fireplace. Good area on East 124th. Very low interest on mortgage. Quick possession. Call Al Raber - LE 7-3469 or LE 7-8658. X 24097.

PARKLAND AREA BUILDING SITES

Suitable for homes up to \$60,000. Terms can be arranged. Call Al Raber, LE 7-3469 or LE 7-8658. S 20964

3 BEDROOM - DAYLIGHT BASEMENT

This beautiful 3 bedroom, 3 bath home on 1 1/2 acre at Summit View. This is a well planned home with loads of built in conveniences such as built in desk and shelving in 2nd bedroom, bath off Master bedroom, two fireplaces, intercom throughout and many more. For more information, please call Don Visser - LE 1-0295 or LE 7-8658.

You Save Plenty

at LARRY ATTWOOD'S AUTO WHOLESALE INC. 8228 Pac. Ave., Tac., Wn. 474-9294

1964 CHEV. PICKUP 1/2 TON NEW SHORT BLOCK \$795
1959 CHEV CARRYALL ENGINE OVERHAULED GOOD SHAPE \$488

Before you Buy Anything for Your Floors See Us!

UNITED FLOORS

12148 C St. PARKLAND LE1-7825

AT ARMSTRONG'S

After over 34 years of constant use with no repairs a kitchen refrigerator now demoted to the basement, is still in service.

ARMSTRONG'S USED CARS

11009 Pacific Ave. LE 7-5524

CLASSIFIED

LEWIS LLEWELLYN

Repeal All Laws On Pornography?



An 18-member commission was created by the U.S. Congress three years ago to study—at a cost of \$2,000,000—the extent and effects of pornography and to recommend legislation in the area of pornography control.

Seventeen members of the commission were named by President Lyndon Johnson, one by President Nixon.

A draft of the report—released in advance of the final report, and not yet approved by the commission—presents a finding that pornography does not cause "crime, juvenile delinquency, other antisocial acts, sexual or non-sexual deviancy, character disorders, or significant emotional disturbances."

Basing the recommendation on these findings, the commission report proposes the repeal of all federal, state, and local laws against showing and selling pornographic films, books and other material to adults.

However, the report has been attacked as unscientific by a prominent Utah psychologist.

"Report Rigged"

Dr. Victor B. Cline of Salt Lake City, testifying before the House Postal Operations subcommittee, said flatly, "The report has been rigged—that is the only word I can use."

"While this report presents itself on the surface as a fairly thoughtful rational review of the scientific evidence," Dr. Cline stated, "it, in fact, is a gross mixture of truth and error."

Dr. Cline said that the commission staff used statistics selectively to produce a "distortion of the actual evidence."

Is it really possible for anyone seriously to believe that continual exposure to demoralizing influences will have no

effect on a person's character or actions?

The Bible asks the pertinent question, "Can a man take fire in his bosom and not be burned?"

In another place, the Scripture warns that "It is as sport to a fool to do mischief."

How much of this should we tolerate in our nation? How much more of it can we tolerate and avoid the consequences which have befallen other permissive societies in the past?

Recently, Ralph Graves, the managing editor of "Life," wrote, "An appalling minor event happened to me: I attended the premiere of a new movie."

Naming the film, he continued, "I have seen a number of current movies specializing in all the new freedoms, and my shock level isn't what it used to be. But I know what I hate."

"Exercise in Vulgarity"

Naming the film again—which I prefer not to do—he described it as "an unforgivable movie, a consummate exercise in vulgarity . . . the longest 94-minute movie ever made. . . ."

"I feel," Graves continued, "that at some point we should make an effort to draw the line—not in censorship but in disgust."

Most of us are seeing and hearing things—on radio and television, in magazines and books and elsewhere—which can fairly be described as disgusting.

But when a government commission, after spending \$2,000,000 of our money, produces a report like this, I don't know whether "disgusting" is a strong enough word.

Where will we draw the line?

Trinity Lutheran

Junior Leaguers at Trinity Lutheran Church in Parkland are having their last fling before school starts. A hike to the ice caves on Mount Rainier will be enjoyed on Tuesday, August 25. Leaguers and their friends are invited to attend. They will leave the church at 10:00 a.m. and return at 4:30 to 5:00 p.m.

Help is needed from the parents of the Leaguers to transport the kids, one dollar entry fee per car required to get into the park.

Have You Seen Our Low Classified Rates ?? ??

SERVICES

Land

TOP SOIL, GRAVEL, excavating & light clearing. LE 1-1124.

BULLDOZING, LIGHT clearing, reasonable. Bud Moss. TH 5-6063.

MEIER & LEWIS DOZER SERVICE
gravel, topsoil, & fill
893-3377 or 893-2735

MIXED SOIL
Sandy Loam • Black Humus
Mixed Bank Run
LE 7-7455
NEWBURY'S DOZING SERVICE

Repair

PIANO TUNING & repair. SK 9-3947 or SK 2-7695. 69-41tf

Miscellaneous

ROLLINS AUTO WRECKING
LE 7-8621

CASH for your CAR
SAVE on used PARTS

SPANAWAY AUTO WRECKING
VI 7-7111
17705 PACIFIC AVENUE

FREDRICKSON UPHOLSTERY
Sofa & Chair, \$145, labor included. Vinyl or fabric. LE 7-0186.

DEEL'S BARBER SERVICE
PARKLAND SQUARE SHOPPING CENTER
ADULTS \$2.00
Children under 12 \$1.50
Open Mondays
Dick Moorish & Lee Deel
12209 Pacific — By Barlos

Sheet Metal
• Furnace Repair and Service
• Installations

PARKLAND FUEL OIL
12002 Pacific Ave.
LE 7-0256

CUSTOM DRAPES. Swags, valances, Austrians, & Romans. Very reasonable. Hundreds of samples. At Fredricksons. LE 7-0186.

WALL BOARD, 4'x8'x½" hard-board panels. Only \$1.98 each. 4'x8'x¾" insulating wall panels, white finish, 1 side only, \$2.87 each.
BROOKDALE LUMBER
13602 Pacific Ave. LE 7-8669

BUTH LUMBER SPECIAL

Cedar 4x4 10¢ per lineal ft.
Cedar 1x6 2 3/4¢ per lineal ft.
Utility Fir
Car decking 2x6, per lineal ft. 7 1/2¢
Open Tues.-Sat. 8 a.m.-7 p.m.
Sunday 8 a.m.-2 p.m.
Closed Monday
VI 7-2250

LEGALS

IN THE SUPERIOR COURT OF WASHINGTON FOR PIERCE COUNTY
No: 196338
SUMMONS BY PUBLICATION

VIRGINIA KATHERYN SMART, Plaintiff, vs. JACK LEON SMART, Defendant.

THE STATE OF WASHINGTON TO: JACK LEON SMART
YOU ARE HEREBY SUMMONED to appear within sixty (60) days after the date of the first publication of this Summons upon you, and to answer the Complaint and serve a copy of your answer upon the undersigned at the place below specified, and defend the above entitled action in the Court aforesaid; and in case of your failure so to do, judgment will be rendered against you, according to the demand of the Complaint which will be filed with the Clerk of the said Court, a copy of which is herewith served upon you.

This is an action in which the plaintiff seeks a divorce from the defendant on the grounds of burdensome home-life and to have a division of the property owned by the parties.

HEMMEN, COHOE & BOTTIGER
By: M. H. Hemmen
Attorney for Plaintiff
8849 Pacific Avenue
Tacoma, Washington 98444

Published in Times Journal July 23, 30, August 6, 13, 20, 27, 1970.

IN THE SUPERIOR COURT OF WASHINGTON FOR PIERCE COUNTY
NO 189958
SUMMONS BY PUBLICATION

JUDITH C. BLALOCK, Plaintiff, vs. JACK R. BLALOCK, Defendant.
THE STATE OF WASHINGTON TO: THE SAID JACK R. BLALOCK, Defendant

YOU ARE HEREBY SUMMONED to appear within 60 days after the date of the first publication of this summons upon you, and answer the complaint and serve a copy of your answer upon the undersigned at the place below specified, and defend the above-entitled action in the Court aforesaid; and in case of your failure so to do, judgment will be rendered against you according to the demand of the complaint which will be filed with the Clerk of said Court, a copy of which is herewith served upon you.

This is an action in which the plaintiff seeks a divorce from the defendant on the grounds of cruel treatment and burdensome home life.

HEMMEN, COHOE & BOTTIGER
By R. TED BOTTIGER
Of Attorneys for Plaintiff
HEMMEN, COHOE & BOTTIGER
8849 PACIFIC AVENUE
TACOMA, WASHINGTON 98444
GR 5-4800

Published in Times Journal Aug. 6, 13, 20, 27, Sept 3, 10, 1970.

11. ANNOUNCEMENTS

NEXT MONDAY
WILL BE
BETTY LINDSAY'S
BIRTHDAY

INVESTIGATE BAHAI'II!

"That all nations should become one in faith, and all men as brothers; that the bonds of affection and unity between the sons of men should be strengthened; that diversity of religion should cease, and differences of race be annulled . . . These strifes and this bloodshed and discord must cease, and all men be as one kindred and one family." From the sacred writings of the Baha'i Faith.

For Information Call
LE 1-9469

LEGALS

ABANDONED VEHICLE SALE
In compliance with the revised code of Washington No. 46.52.110 Lucky Towing will sell to the highest cash bidder at 13502 Pacific Avenue at the hour of 10:00 a.m. on Aug. 24, 1970, the following vehicles.
1959 Studebaker BNJ 630
1955 Studebaker GAN 463
1954 Pontiac BBW 434
Published in the Times Journal August 20, 1970.

In the Superior Court of the State of Washington For the County of Pierce

IN PROBATE
No. 79970
Notice To Creditors
IN THE MATTER OF THE ESTATE OF IDA J. GRIMES, Deceased.

Notice is hereby given that the undersigned has been appointed and has qualified as Administrator of the estate of the above named deceased; that all persons having claims against said deceased are hereby required to serve the same, duly verified, on said Administrator or his/her attorney of record at the address below stated, and file the same with the Clerk of said Court, together with proof of such service within four months after the date of first publication of this notice, or the same will be barred.

Date of first publication August 20, 1970.

William E. Grimes
Administrator of said Estate
11024 Pacific Avenue
Tacoma, Wash. 98444
PETERS & TRACY
Phillip S. Tracy
Attorney for Estate
11024 Pacific Avenue
Tacoma, Washington 98444
LE 7-0264

Published in the Times Journal August 20, 27, and September 3, 1970.

In the Superior Court of the State of Washington For the County of Pierce

IN PROBATE
No. 79971
Notice To Creditors
IN THE MATTER OF THE ESTATE OF ERNEST H. RAY, Deceased.

Notice is hereby given that the undersigned has been appointed and has qualified as Administratrix of the estate of the above named deceased; that all persons having claims against said deceased are hereby required to serve the same, duly verified, on said Administratrix or his/her attorney of record at the address below stated, and file the same with the Clerk of said Court, together with proof of such service within four months after the date of first publication of this notice, or the same will be barred.

Date of first publication Aug. 13, 1970.

Edith M. Ray
Administratrix of said Estate
159 So. 112th Street
Tacoma, Wash.
George F. Potter
Attorney for Estate

Published in Times Journal Aug. 13, 20, 27.

Personals

MRS. ROBERTS, spiritual reader & advisor, consult her on all problems of life. Open daily & Sun. from 8 a.m. - 8 p.m. 22663 So. Pacific Hiway, Des Moines. 2 blocks North of Midway, across from Bazaar Trailer Sales. TA 4-0446.

PSYCHIC READER HELP & ADVICE

On All Your Problems
Answer All Your Questions.
Can Tell you of Changes
You Should Or Should Not Make
OPEN
DAILY AND SUNDAY
3305 PACIFIC AVENUE
OLYMPIA
CALL 491-5040

RENT TV
RENTAL MARTS, INC.
Color TV
GR 5-3755
9440 Pacific
JU 4-4100
10012 Bridgeport

LEGALS

In the Superior Court of the State of Washington For the County of Pierce

IN PROBATE
No. 80019
Notice To Creditors
IN THE MATTER OF THE ESTATE OF WILLIAM H. BRANDFAS, Deceased.

Notice is hereby given that the undersigned has been appointed and has qualified as Executrix of the estate of the above named deceased; that all persons having claims against said deceased are hereby required to serve the same, duly verified, on said Executrix or his/her attorney of record at the address below stated, and file the same with the Clerk of said Court, together with proof of such service within four months after the date of first publication of this notice, or the same will be barred.

Date of first publication August 20, 1970.

Ida M. Brandfas
Executrix of said Estate
11024 Pacific Avenue
Tacoma, Wash. 98444
PETERS & TRACY
Phillip S. Tracy
Attorney for Estate
11024 Pacific Avenue
Tacoma, Washington 98444
LE 7-0264

Published in the Times Journal August 20, 27 and September 3, 1970.

IN THE SUPERIOR COURT OF THE STATE OF WASHINGTON FOR THE COUNTY OF PIERCE

IN PROBATE
No. 79535
NOTICE TO CREDITORS
In the Matter of the Estate of CHESTER A. REJMENT, aka/CHAD REJMENT & SHIRLEY D. REJMENT

Deceased.

Notice is given that the undersigned has been appointed and has qualified as personal representative of this estate. Persons having claims against the deceased are required to serve the same, duly verified, on the undersigned or the attorney of record at the address stated below and file the same with the Clerk of this court, together with proof of such service within four months after August 13, 1970, or the same will be forever barred.

R. Ted Bottiger
Personal Representative
8849 Pacific Avenue,
Tacoma, Washington 98444
HEMMEN, COHOE & BOTTIGER
By:
Attorney for Estate
8849 Pacific Avenue,
Tacoma, Washington 98444
Published in Times Journal August 13, 20, 27, 1970.



CHURCH DIRECTORY

Attend the Church Of Your Choice Regularly

<p>Parkway Presbyterian</p> <p>Summer Schedule: Family Service - 9 A.M. Nursery Service Provided 714 - 138th East LE 1-4234 Rev. Wesley J. Drummond</p>	<p>Spanaway Assembly of God</p> <p>Sunday School — 9:45 a.m. Worship Service — 11 a.m. Evening Evangelistic — 7 p.m. Family Night - Wed. — 7:30 p.m. LE 1-1412</p>	<p>Spanaway United Methodist</p> <p>SUMMER SCHEDULE: No Sunday School Worship Service — 9:30 a.m. Nursery During Service 163 & Pacific LE 7-5134 R. Gordon Harrison, Pastor</p>
<p>Trinity Lutheran</p> <p>SUMMER SCHEDULE: Worship Services - 9 & 11 a.m. Bible Study - 10 a.m. 12115 South Park LE 7-0201</p> <p>Pastors: Erling C. Thompson Robert Drewes Theodore Gulhaugen</p>	<p>Parkland Lutheran Church & Christian Day School</p> <p>Worship Service — 10:30 a.m. Sunday School & Bible Study (all ages) — 9:15 a.m. LE 7-5492 LE 1-0777 H. A. Theiste, Pastor</p>	<p>Spanaway Lutheran</p> <p>Worship Service 8:30 & 11 a.m. Sunday School — 9:45 a.m. (grades 1 & up) Nursery School — 11 a.m. (3, 4, 5 year olds) 160th & A Street LE 7-5978 John L. Briehl, Pastor</p>

DDT and the Agriculture Dept.: Model for Anarchy and Notes

by Ed Chaney

THE UNITED STATES DEPARTMENT OF AGRICULTURE IS REPORTEDLY MOBILIZING TO BEAT BACK EFFORTS TO BAN DDT.

Rachel Carson sounded the warning in 1962. But it was many years later before mounting natural resource disasters and proof of carcinogenesis bludgeoned the Federal Government into making the first mincing steps toward dumping DDT for safer pest controls.

But if the agricultural chemicals lobby lost ground for a moment, it quickly recovered and tightened the screws on their apologists in the Federal Government. When it was all over, only a small percentage of the domestic uses of DDT were affected, and even that ludicrous action was carefully couched to afford interminable delay before consummation. The Agriculture Department had capitulated again, and the heat was off. The agricultural chemicals lobby had earned its money.

Then on May 28, 1970, the U.S. Court of Appeals for the District of Columbia — acting on a petition by the Environmental Defense Fund, Sierra Club, West Michigan Environmental Action Council, National Audubon Society and Izaak Walton League — ordered Agriculture Secretary Hardin to either suspend the registration of DDT and implement cancellation proceedings or come to the court with a good argument to the contrary.

The Agriculture Department had tried to convince the court that the conservationists didn't have any legal right to be concerned with the environmental horrors of DDT. Even so, conservationists thought that once the order was issued it just might give the Department enough backbone to stop letting itself be led around by the nose by the agricultural chemicals lobby.

This hope was increased when mounting national notoriety stimulated by the National Wildlife Federation and a subsequent law suit by the Environmental Defense Fund, National Audubon Society and the Federation "encouraged" Olin Chemical Company to shut down its DDT plant on the Redstone Arsenal near Huntsville, Alabama. The closure took about 20 per cent of the Nation's DDT production out of circulation and conservationists hoped it would add a little starch to the Agriculture Department's spine.

In an effort to further encourage the Department to act in the public interest by seizing this opportunity to ban DDT, the Rachel Carson Trust For The Living Environment and the Federation kicked off a nationwide letter writing campaign urging concerned citizens to write President Nixon

and his Agriculture Secretary that they want DDT banned, and they want it done now.

And then we received a phone call from a good guy in the Agriculture Department. He was gagging on his Department's decision to drop all pretense of expediting DDT's demise and wage an all-out campaign to prove how great and indispensable it is to mankind.

In time, DDT and the Agriculture Department will go down kicking and screaming. By interminable delay, however, the agricultural chemicals lobby will have earned its money. And the Agriculture Department will have earned the public's disgust.

Notes: 1:45 a.m. . . . At this point in time it's foolish to rehash the mounting environmental disasters of DDT or to reiterate the reiterations of the suspected horrors. Nor does there seem to be any great point in documenting the Agriculture Department's actions in selling the public interest down the river. It's a fact, but the silent majority and tar baby don't say nuthin.

A five-day-old human being lies asleep in the other room. His name is Eric. His tiny, wiggly, red body contains DDT passed on to him from his mother's placenta. And every time he suckles the swollen breasts, he gets more DDT than is allowed in cow's milk at the supermarket.

Be objective? Forget it. Objective is for fence posts.

How can you be objective in the face of the global insanity that is DDT? In face of abdicated responsibility by the men the public pays to protect its interests.

Are the anarchists right? Are ashes the only fertile seed bed for growing new responsiveness to the public interest?

Picture a swarm of angry citizens bathed in the light of flames engulfing the Agriculture Department. Graphic, perhaps, but it doesn't seem to make too much sense. The Department, for all its faults, is buildings, desks, and organization charts. It does nothing. It just is.

Men are responsible, not buildings, desks, et. al. In fact, the horrible irony is that clumsy as it is sometimes, The System provides them with virtually absolute authority to act in the public interest. Anarchy might stimulate instant urban renewal, but could it improve upon existing powers held by governmental officials? Burning the buildings out from under them might alter men's talk, but their minds? I don't like the odds.

When they go to work the men who make and defend DDT must hang their conscience on a rack outside the door to be picked up at the end of the day. What manner of men can deliberately and unnecessarily contaminate the world and the bodies of all the Erics, even their own?

It would be nice to believe they're pasty-faced, evil little gnomes. But in fact, they're a lot like everyone else. They drive ailing products of Detroit; their shirt collars get dirty when they sweat; and they curse the rising price of ever-whiter hamburger at the local Safeway.

How can a man dehumanize himself from 9 - 5 and then go home and whistle "Yankee Doodle" while fertilizing his begonias? He can do it because he has to, I suppose. And because he is a victim of the American malady of allowing himself to be sold a bill of goods that individual human beings are not responsible for the actions of industry and government.

It does seem that anonymity is the essential ingredient for inhumanity in all the inherently evil. Who knows the name of one DDT company president? Just exactly what was the name of the man that reportedly decided Agriculture would use the public's money to go down kicking and screaming in defense of DDT?

A man did it. Not the Agriculture Department. Not the buildings, desks, and organization charts. Nor The System, but a man that puts his pants on one leg at a time. A man who had the responsibility, opportunity, and authority to end the environmental madness that is DDT. And he copped out.

Objectivity? At least we will have our vengeance, Eric and I. Now that conservation is considered relevant, the political historians will ferret out that man and deal with him unkindly. And most shamelessly delightful, he will have to deal with himself.

Happiness is find your glasses soon enough to still remember what you wanted them for.—Wm. R. Davis, The Three Forks (Mont.) Herald.

Dryer MORTUARY
(134th & Pacific) PARKLAND

The Country Parson

6-25

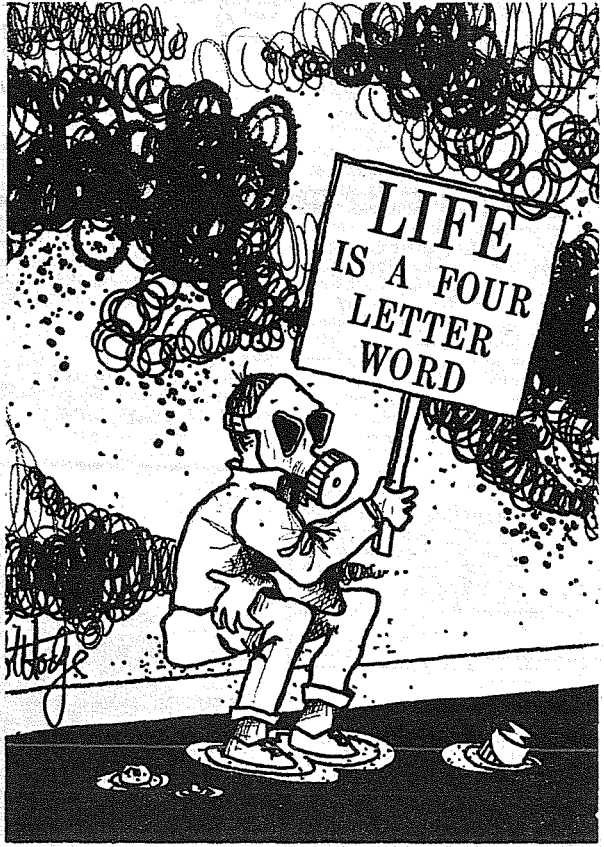
"You always can tell whether a man is ambitious or simply greedy—you decide by whether you like him or not."
Copyright, by Frank A. Clark

Dryer MORTUARY
(134th & Pacific) PARKLAND

SCHOOL STYLES AT PAUL'S

PAUL'S SHOES AND CLOTHING
161st & Pacific LE 7-0552

Use Your **BANK AMERICARD** or **FIRST BANK**



An Endowed Care Cemetery

Fir Lane Memorial Park
Dryer Fir Lane Chapel

924 East 176th Street
Spanaway LE 1-5500

Order From Us Now

- ANNOUNCEMENTS
- INVITATIONS

The Times Journal 409 Garfield
Parkland 98444

School Clothes Can Look Like New

Look Your Very Best

With our professional dry cleaning. Each garment resized to restore its original body. Quality cleaning at reasonable prices.

3 LOCATIONS TO SERVE YOU:

College Cleaners LE 7-5361	11416 Park Ave. Parkland
Centre Cleaners LE 7-4300	415 Garfield Parkland
Spanaway Cleaners LE 1-8944	17007 Pac. Ave. Spanaway