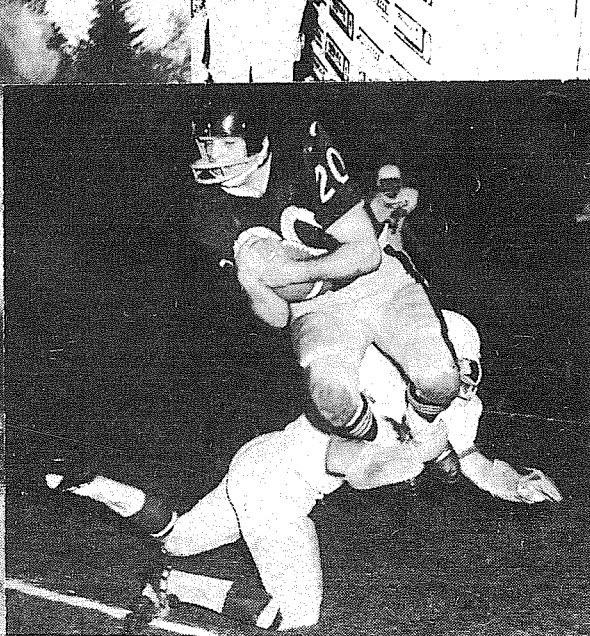
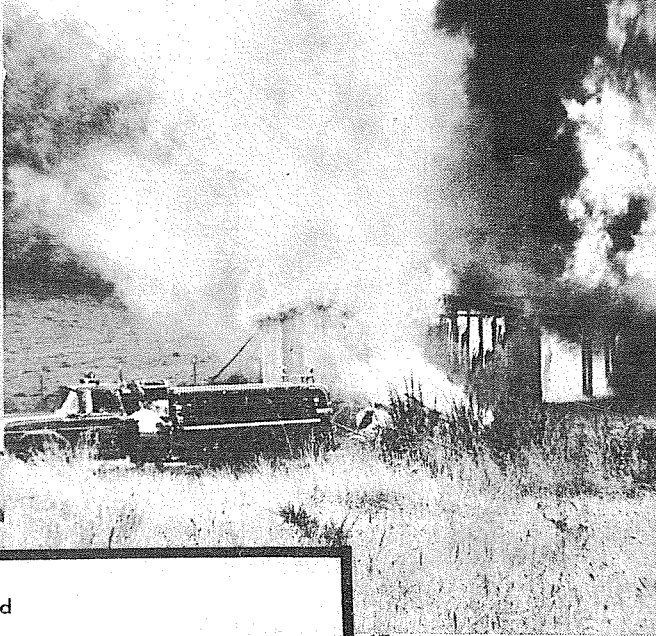
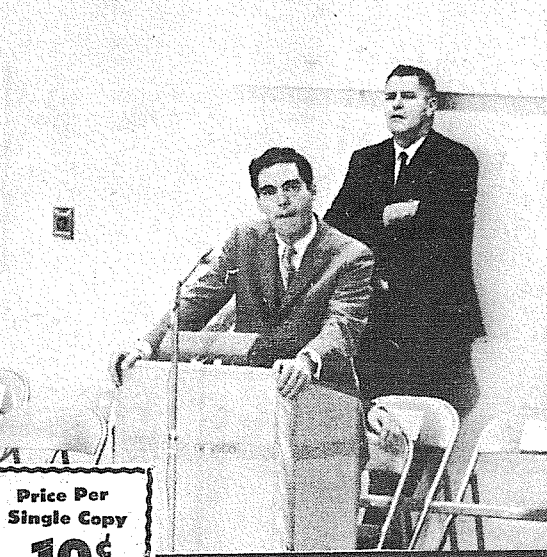
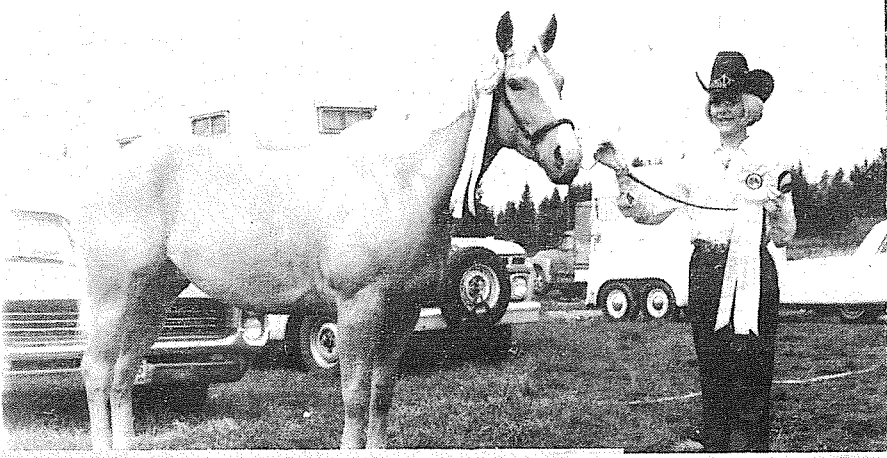


# This Was 1968 — New Year Arrives



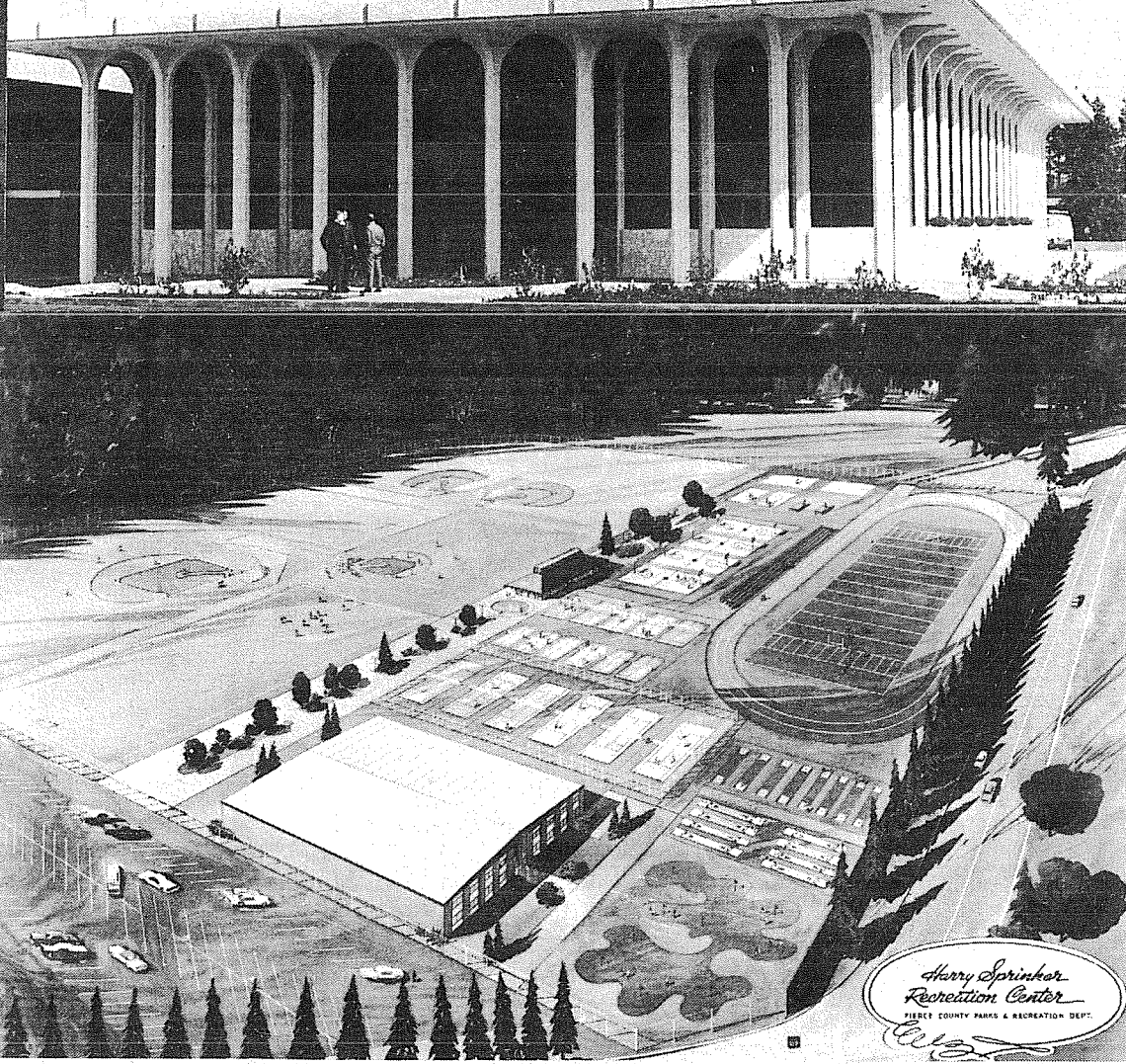
Price Per  
Single Copy  
**10¢**

Pierce County Herald

## The TIMES JOURNAL

Vol. 25 No. 1

January 2, 1969



Harry Springer  
Recreation Center  
PIERCE COUNTY PARKS & RECREATION DEPT.  
*W. J. [Signature]*



# Parkland Rezoning Scheduled

The hotly contested rezoning proposal of a Parkland area from General Use to Suburban Agriculture SA 10, will be considered at a public hearing 10 a.m. Tuesday January 7 in the Pierce County Commissioners Chambers.

The area, bounded by 128th Street East, Brookdale Road, 14th Ave. East extended and Waller Road, was recommended for SA 10 change after a Planning Commission hearing earlier. At that hearing, approximately 75-80 residents opposing the change turned out. Since then, 106 signatures have been secured to hold the area in the General Use Classification and more petitions are due to come in, one resident told the Journal.

Ten businesses are involved in the area and owners fear a change of classification might end or greatly hamper their operation.

## Parkland Masons Install Officers



CLYDE B. SOUTHALL, JR.

Parkland Masonic Lodge 299 installed officers for 1969 during the Fifteenth Annual Open Installation of Officers held at the Parkland Masonic Temple late last month.

Clyde B. Southall, Jr. was installed as Worshipful Master by Lorien Buck, R.T. Westerman was installed as Senior Warden and Lawrence Nelson Junior Warden by Travers Dryer, Sr. Others taking office were John Leedom, Treasurer; Walter Critchley, Secretary; Richard A. Wood, Chaplain; James Hilderbrand, Marshal; George W. Rolstad, Senior Deacon; John Huntsman Junior Deacon; Cleo Simonds, Senior Steward; Vincent Dowling, Junior Steward; Neil Thomas, Organist; and Oliver Omat as Tyler.

Outgoing 1968 Master is Joseph Barsotti.

## Doc Webster Dies At 69



Edward W. "Doc" Webster, Bethel School Director since 1963, died last Thursday at his home, Rt 1, Box 153A, Graham.

Dedicated to education, he served as president of the Bethel Board and wrote a summary of each meeting for the Journal.

Mr. Webster was born in the Graham area, where he lived and worked all his life. After retiring from farming, he owned and operated the Elk Plain Cafe. His public service included a seat on the board of Loveland Mutual.

From 1947 to 1967 he served on the Pierce County Committee on School District Organization. While on the committee he was vice president from 1954 to 1956 and its president from 1957 to 1964.

Survivors include two brothers, W. E. and Thomas, both of Pierce County; and three sisters, Mrs. Charles Kronquist, Graham, Mrs. Hazel Buchanan, Tacoma, and Mrs. Bernt Carlson, Graham.

Services were arranged by Dryer Mortuary.

## Altar Society Meets

Our Lady Queen of Heaven Altar Society will meet 8 p.m. Wednesday, January 8 in the parish hall. All ladies of the parish are cordially invited. Refreshments will be served during the social hour.

## Ft. Steilacoom Adult Classes Start Jan. 13

High School diplomas may be earned by adults through a high school completion program at Fort Steilacoom Community College. Required and elective courses are offered every 10 weeks. New classes begin the week of January 13.

Courses offered are: U.S. History I, U.S. History II, English Composition 11th and 12th, Algebra I and II, Northwest History, and Contemporary Affairs. Also a wide variety of courses in the College may be used for elective credit.

To help you plan a course of studies, trained counselors will evaluate your previous schooling. Credits will also be granted for military training and schooling, civilian work experience, and credit through a testing program.

The high school completion program leads to a regular high school diploma. Last year, over 160 adults received their diplomas.

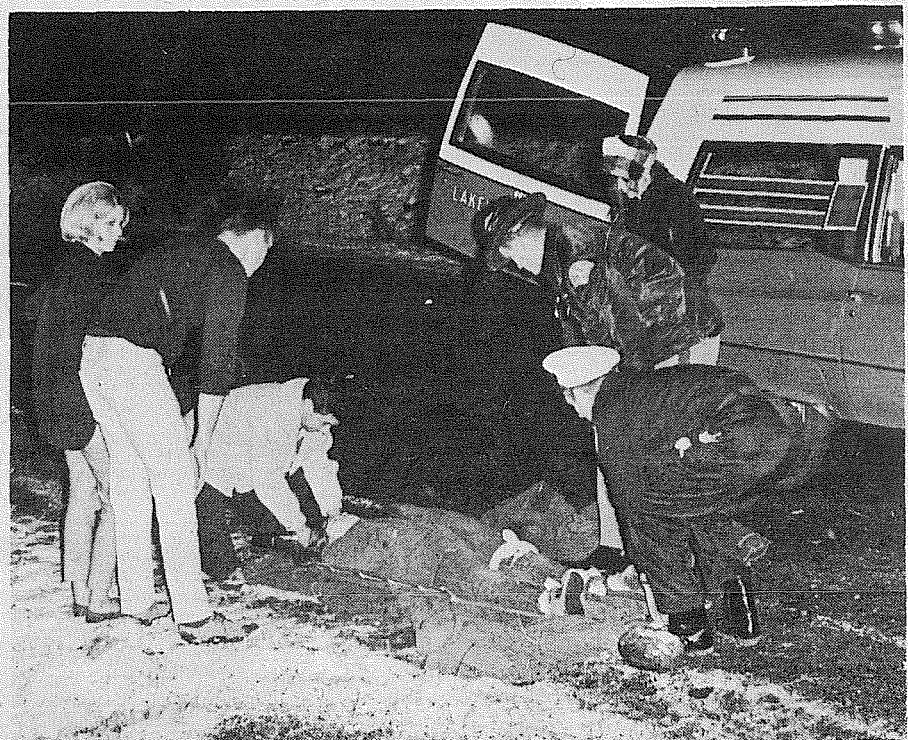
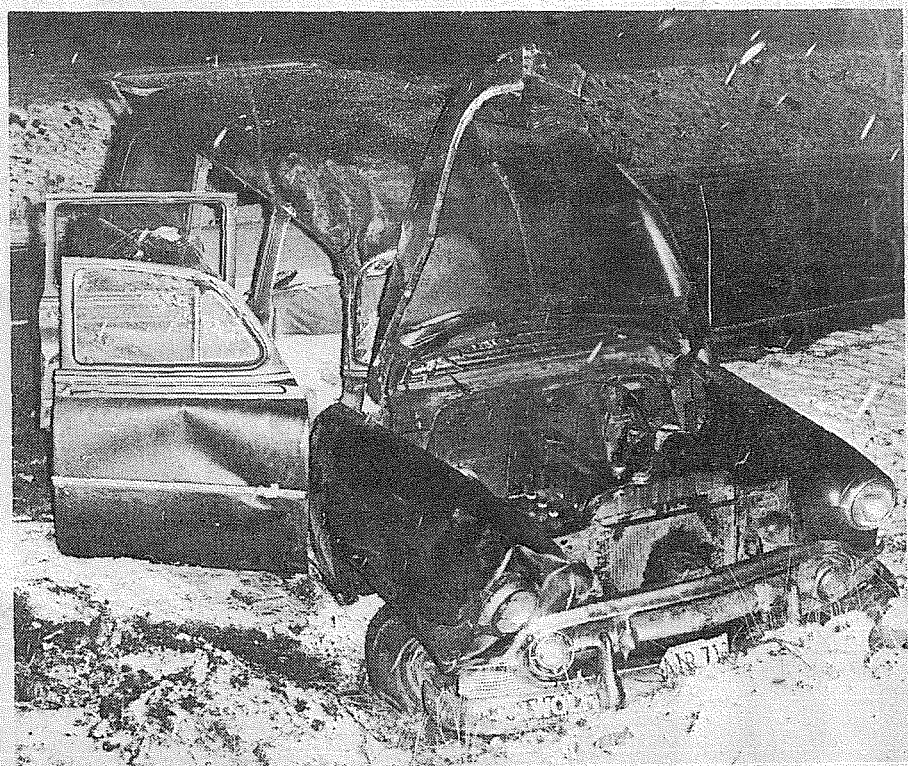
Registration for the Winter Quarter will be taken from 9:00 to 4:00 p.m. on January 2, 3 and 6, and 6:00 to 9:00 p.m. on January 2, at the main administrative offices of the College at 6010 Mount Tacoma Drive SW. Registration will also be held from 6:00 to 9:00 p.m. on January 6, 7, 8 and 9 at Clover Park High School, North Building, 10801 Gravelly Lake Drive.

## United Methodist Women To Meet

The Women's Society of Christian Service, Parkland United Methodist Church, will meet 10 a.m. Wednesday January 8 in the Fellowship Hall with Mrs. William Detering, presiding.

Theme of the program is "Now Prophets" as an agent for change. Luncheon will be served by Naomi Circle.

# Demon Winter Strikes



1968 went out with a roar as snow and frozen rain swept the area early this week causing extremely hazardous driving. Roll over, caused by snow on road, occurred on East 176th, while accident pictured below took place 3 miles from SR 507 on Harts Lake Loop Road. Injuries were reported in many accidents and ambulance crews were kept busy.

Pierce County Herald and

# The TIMES JOURNAL

Published weekly at 14620 Pacific Ave., Parkland 98444 and delivered by U.S. Mail and carrier to subscribers. Publishers: Pierce County Publishers, Inc.

Managing Editor . . . . . Em Matson  
 News Editor . . . . . Sandy Ingram  
 Sports Editor . . . . . Bob Ingram

Subscriptions \$3.50 per year, \$1.80 six months, or 30c monthly by carrier. News stand price 10c copy.

Qualified as a legal publication under Chapter 213 of the Legislature Acts of the 1941 regular session of the State of Washington

Second Class Postage Paid at Tacoma, Wash.

Vol. 25 No. 1 January 2, 1969

Discover the Fun of Winter

## '69 MERCURY SNOW VEHICLE

PARKLAND Sports CENTER

11122 PACIFIC AVENUE TACOMA, WASHINGTON PHONE LE.7-5677

OPEN EVES TIL 9 P.M.



**ARMOUR'S ASSORTED LUNCH MEATS**  
6-OZ. PKGS.  
**4/1<sup>00</sup>**

"FRESH FROM OUR OVENS"

**ASSORTED RYE BREADS**  
**29<sup>c</sup>**  
loaf

5-lb. TIN **BONELESS HAM** 3.95 TIN **79<sup>c</sup>**  
BAR-S lb

**ARMOUR'S HEAVY SMOKED THURINGER CHUBS** **89<sup>c</sup>**  
lb

**ARMOUR'S PAN-SIZED BACON** 12-oz. PKG. **53<sup>c</sup>**  
ea

**MEDIUM SHARP CHEESE** **69<sup>c</sup>**  
lb

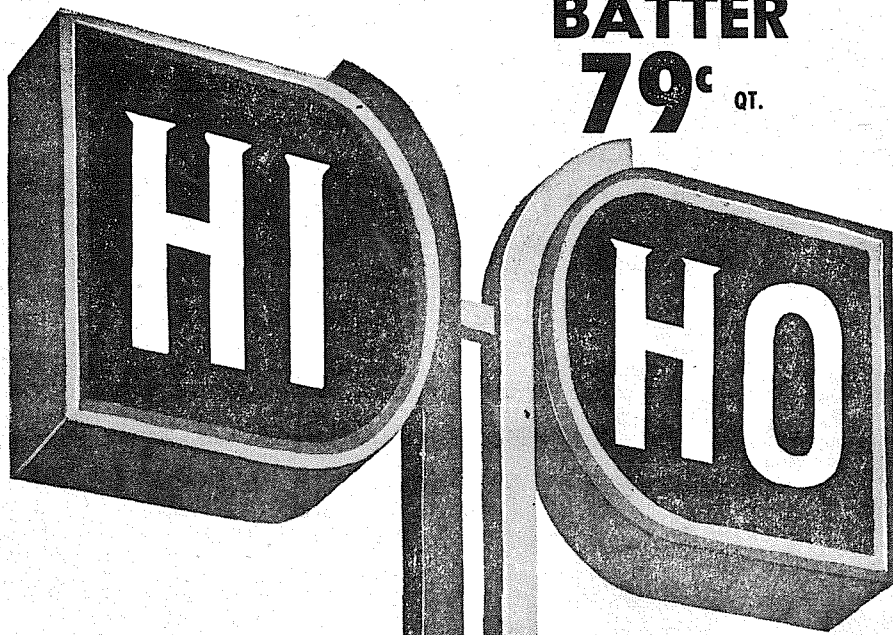
**LEAN CHOPPED SIRLOIN** **89<sup>c</sup>**  
lb

**4-PACK M-D TOILET TISSUE**  
**3/1<sup>00</sup>**  
1/2 GAL.  
**PUREX**  
**29<sup>c</sup>**

All Reg. Size **CAMPBELL'S SOUP** **7/1<sup>00</sup>**

**BETTY CROCKER CAKE MIXES** ALL REGULAR FLAVORS **3/79<sup>c</sup>**

**3-lb. FLUFFO SHORTENING**  
**59<sup>c</sup>**



**TOM and JERRY BATTER**  
**79<sup>c</sup>** QT.

**CHERRY TOMATOES**  
**29<sup>c</sup>** BASKET

**EXTRA FANCY RED DELICIOUS APPLES**  
**5** LBS. **1<sup>00</sup>**

**CABBAGE** **10<sup>c</sup>**  
lb  
**100% PURE ORANGE JUICE** **39<sup>c</sup>**  
QT.  
**LOWEST DRUG PRICES ANYWHERE**

REG. 1.59 **CONTAC** COLD CAPSULES **89<sup>c</sup>**

REG. 1.00 **MARLOWE BATH OIL BEADS** **39<sup>c</sup>**

REG. 2.98 **PALADAC Chewable VITAMINS** **1<sup>69</sup>**

REG. 1.09 **SECRET** ROLL-ON **DEODORANT** **49<sup>c</sup>**

**OLD-FASHIONED HAM SALE**  
WHOLE or BUTT HALF SHANK PORTION  
**SMOKED HAM** **59<sup>c</sup>**  
lb | **SMOKED HAM** **43<sup>c</sup>**  
lb

**PRELL SHAMPOO**  
Reg. 1.09  
**49<sup>c</sup>**  
REG. \$1.00 **PH<sup>4</sup> HAIR RINSE**  
**49<sup>c</sup>**

**2-lb. HILLS COFFEE** **1<sup>25</sup>**  
3-lb. Hills 2.09 . . . 1-lb. Hills 69<sup>c</sup> . . . 10-oz. Instant 1.35

**NO. 300 TINS—HUNT'S FRUIT COCKTAIL** **5/1<sup>00</sup>**

**IN TACOMA SUNDAY HOURS ARE 10 A.M. THRU 7 P.M.**

**WE WELCOME YOUR U.S.D.A. FOOD STAMPS**

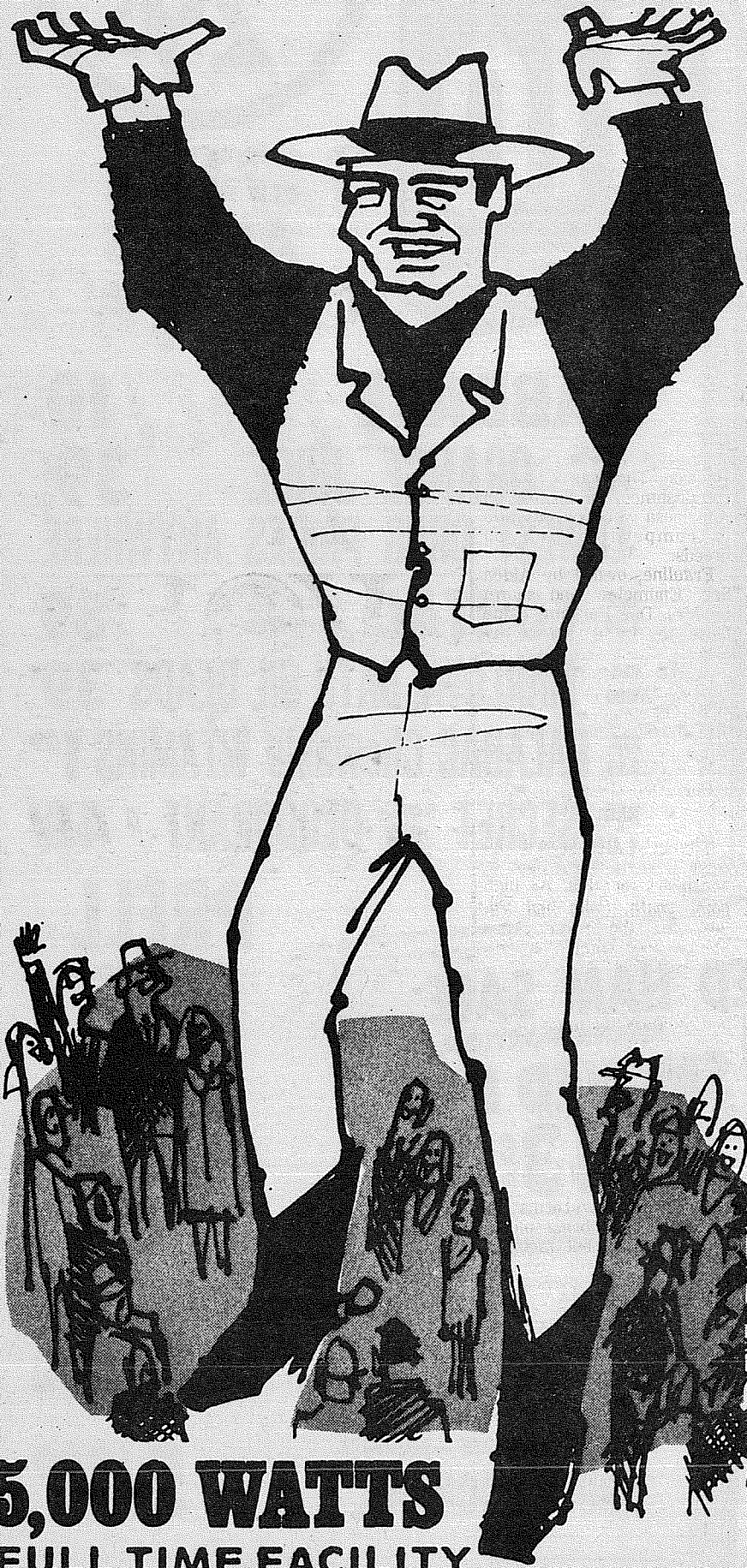
**HI HO SHOPPING CENTER**  
**OPEN 7 DAYS A WEEK**  
*Puyallup* *Tacoma*  
**RIVER ROAD & MERIDIAN 64th & YAKIMA**  
**PRICES EFFECTIVE NOW through JAN. 4**

**1/2 GAL. HI HO ICE CREAM**  
**59<sup>c</sup>**



# KMO 1360 kc

## THE COUNTRY GIANT TACOMA FT. LEWIS McCHORD SEATTLE



**5,000 WATTS  
FULL TIME FACILITY**

**Pierce County's Only  
24 HOUR  
Country and Western Station**

\* County News \* Tacoma News \* High School Sports

6 - 10 a.m. Hal Lavers  
4 - 7 p.m. Ed Dollar  
7 - 12 Midnight B.J. The D.J.  
12 Midnight - 6 a.m. Jim Bennett

**KMO RADIO 1360 A.M.**

### FRANLIN PIERCE SCHOOL DISTRICT 402 MENU FOR SECONDARY SCHOOL JANUARY 6-31

- Monday Jan. 6**  
Sloppy Joe on buttered bun, whole kernel corn, celery & carrot sticks, apricots, milk.
- Tuesday, Jan. 7**  
Chili con carne, stuffed celery, cinnamon roll & butter, milk.
- Wednesday Jan. 8**  
Creamed tuna, buttered rice, green beans with bacon, jello salad, peaches, milk.
- Thursday Jan. 9**  
Spaghetti and meat sauce, garlic bread, buttered peas, tossed salad, cookie, milk.
- Friday Jan. 10**  
**SURPRISE DAY**
- Jan. 13**  
Meat & gravy on mashed potatoes, green beans w/bacon, bread & butter, cottage cheese, apple, milk.
- Jan. 14**  
Weiner winks, potato salad, celery sticks, sheet cake, milk.
- Jan. 15**  
Turkey ala king, buttered rice, peas & carrots, corn bread with honey & butter, pickled beets, apricots, milk.
- Jan. 16**  
Tacos, whole kernel corn, carrot sticks, bread & butter, fruit jello, milk.
- Jan. 17**  
Fish sticks, mashed potatoes, green beans w/bacon, cole slaw, vanilla pudding with topping, milk.
- Jan. 20**  
Beef stew, bread & butter, celery sticks, tapioca pudding, milk.
- Jan. 21**  
Vegetable soup, Bar B Q beef sandwich, carrot sticks, chocolate cake, milk.
- Jan. 22**  
Spaghetti & meat sauce, garlic bread, green beans w/bacon, tossed salad, deep-dish apple pie, milk.
- Jan. 23**  
Meat gravy on mashed potatoes, peas, corn bread with honey & butter, molded salad, banana, milk.
- Jan. 24**  
**STAFF DAY**
- Jan. 27**  
Beefaroni, green beans w/ bacon, bread & butter, tossed salad, pineapple layer cake, milk.
- Jan. 28**  
Sloppy Joe on buttered bun, whole kernel corn, pineapple & cottage cheese, fruit jello, milk.
- Jan. 29**  
Chili hot dog, green beans, carrot & celery sticks, applesauce cake, milk.
- Jan. 30**  
Fried chicken, mashed potatoes, buttered peas, cottage cheese & pineapple, cookie, milk.
- Jan. 31**  
Vegetable beef soup, toast-cheese sandwich, relish dish, fruit pudding, milk.

### MENU FOR ELEMENTARY SCHOOL

- Jan. 6**  
Sloppy Joe on buttered bun, whole kernel corn, apricots, milk.
- Jan. 7**  
Chili con carne, stuffed celery, cinnamon roll & butter, milk.
- Jan. 8**  
Creamed tuna, buttered rice, green beans w/bacon, peaches, milk.
- Jan. 9**  
Spaghetti and meat sauce, garlic French bread, but-

Is the Profile of Protection  
ON YOUR AUTOMOBILE  
Complete?



**ASHFORD-McALOON  
INSURANCE**  
12201 Pacific Avenue  
(Parkland Square) LE 7-8647  
5436 So. Tacoma Way GR 4-8431

## State Income Tax Blasted By AWI

A leading industry spokesman today blasted political interpretations of the recent wave of school levy defeats as a public demand for a state income tax.

In an editorial in "Washington Business," Association of Washington Industries president, Luke Williams, Jr., of Spokane pointed out, "In these tumultuous times in Washington State politics it is perhaps, not surprising that so many of our political leaders have lost perspective in their evaluation of the people's desires. Or is it that they no longer believe the people should have the kind of government they want - only 'what is best for them?'"

"If these are strong

tered peas, cookie, milk.

**Jan. 10**

**SURPRISE DAY**

**Jan. 13**

Meat gravy on mashed potatoes, green beans w/bacon, bread & butter, apple, milk.

**Jan. 14**

Weiner winks, potato salad, celery sticks, sheet cake, milk.

**Jan. 15**

Turkey ala king, buttered rice, peas & carrots, corn bread with honey & butter, apricots, milk.

**Jan. 16**

Spanish rice, carrot sticks, bread & butter, fruit Jello, milk.

**Jan. 17**

Fish sticks, mashed potatoes, green beans w/bacon, vanilla pudding with topping, milk.

**Jan. 20**

Beef stew, bread & butter, celery sticks, tapioca pudding, milk.

**Jan. 21**

Vegetable soup, jelly sandwich, carrot sticks, chocolate cake, milk.

**Jan. 22**

Spaghetti & meat sauce, garlic French bread & butter, green beans w/bacon, deep dish apple pie, milk.

**Jan. 23**

Meat gravy on Mashed potatoes, peas, corn bread with honey & butter, banana, milk.

**Jan. 24**

Macaroni & cheese, bread & butter, whole kernel corn, orange juice, peaches, milk.

**Jan. 27**

Beefaroni, green beans w/ bacon, bread & butter, pineapple layer cake, milk.

**Jan. 28**

Sloppy Joe on buttered bun, whole kernel corn, fruit Jello, milk.

**Jan. 29**

Chili hot dog, carrot & celery sticks, applesauce cake, milk.

**Jan. 30**

Fried chicken, mashed potatoes, buttered peas, cookie, milk.

**Jan. 31**

Vegetable beef soup, toast-cheese sandwich, celery sticks, fruit pudding, milk.

words," he said, "it is because I am increasingly alarmed at the tortured interpretations politicians of both parties, as well as school spokesmen, have placed on the recent past elections. One after another they would have us believe that the people voted down school levies because they want tax reform."

"Not so! Particularly if the generally accepted definition of tax reform in this state is understood. When our politicians say tax reform they mean (1) an income tax, (2) broader tax base, and (3) more tax revenues for the state to spend."

Williams said that what he believed the voters were telling their public officials was, "we are paying more taxes, especially with the surtax on the federal income tax, than we like and we want some relief from the upward spiral in the overall tax load."

"They were not saying, 'we don't want to support schools.' It's just that school levies were the only available way to express their general dissatisfaction with the tax burden. Exceptions to this can be found, of course. Some legislators were defeated because they became known as apostles of 'tax reform' or, as in the case of one legislator, advocated removing all Constitutional restrictions from the Legislature's capacity to tax."

Such opportunities for voter expression were rare, however, and seldom clean-cut, he felt.

Another exception, Williams pointed out, was represented by those who voted no on school issues because they feel the schools are either well enough financed now, or, are not using their present resources to best advantage.

"The fact is the people of this state are not clamoring for an income tax," he said. "It is, at the least, doubtful that they would vote one in if a tax reform Constitutional Amendment were placed before them. What is far more certain is that they want a realistic 25% assessment-level lid put on the property tax and they, the silent citizens who sometimes 'speak' most eloquently with their vote, want less government spending . . . not more."

Pierce County's Only  
Professional  
**AMBULANCE  
SERVICE**  
Parkland Ambulance  
and  
Lakewood-Pacific  
JU 4-3344 LE 7-3322

**Angelo's**  
PIZZA HOUSE  
**ORDERS TO GO**

Featuring top sirloin and American dishes, spaghetti, rigatoni, meat balls, sausage, ravioli, beer and wine.

**Choice of Pizzas**  
cheese & tomato  
anchovie  
mushroom  
Italian sausage  
pepperoni  
tuna  
bacon  
peppers  
olive  
hamburgers  
ham  
salami  
onion

**LE 7-7233**  
14102 PACIFIC AVE.  
PARKLAND

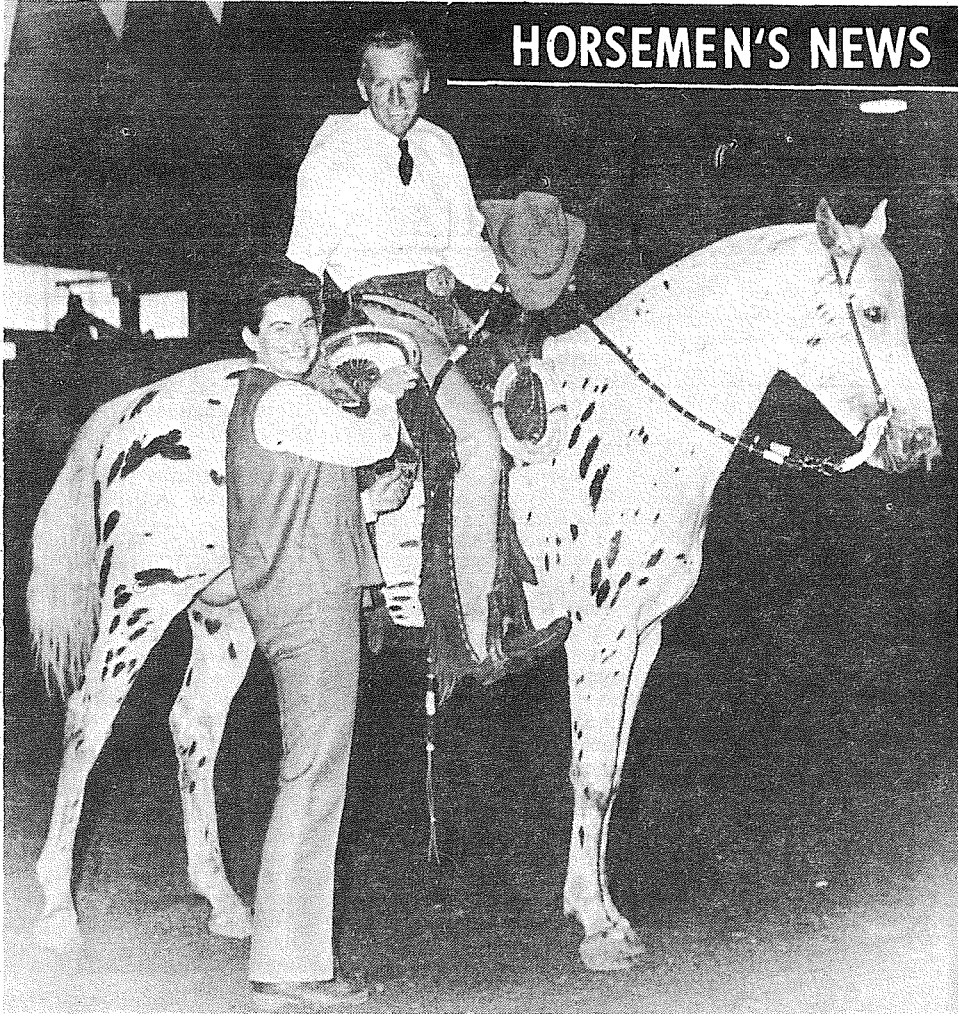
CALL AHEAD, IT'S  
PIPING HOT  
ALL THE WAY HOME

PICK UP A BOX, PAIL, BUCKET,  
OR A BARREL



**HORSEMEN'S NEWS**

**Over The Fence Rail**



**SPOOKS COMMANCHE BARS**, owned by Bud Robison of Eatonville, was one of the horses in Dee Parham's stables that made 1968 a memorable year. — Jerry Shea Photo

1968 will always hold treasured memories for Puyallup Training Stables operator Dee Parham, who produced four state champions during the past year.

Joker B. Fleet, owned by Alden See, Enumclaw, and trained and shown by Parham, won the title of Washington State Champion Senior Appaloosa Cutting Horse for the second successive year. This entitled him to compete in the World's Finals Appaloosa Performance Show in Las Vegas last November where he placed in the top ten.

Okaya Joe, also owned by Alden See during the show season but recently purchased by an Oklahoma City man, was the 1968 Champion Junior Appaloosa Cutting Horse. Joe also earned the title of 1968 Northwest Reserve Champion, Junior Appaloosa Cutting Horse which included Washington, Oregon, Idaho, Montana, and British Columbia.

Spooks Commanche Bars owned by Bud Robison, Eatonville, was 1968 Washington State Champion (Open) Western Pleasure Horse A Division. This was a big accomplishment for Spooks, an Appaloosa who won this title in competition with all breeds.

Frauline, owned by Alden See, Enumclaw and shown by Mrs. Dee Parham, came close to the ultimate by earning the reserve position as 1968 Champion Trail Horse, Open A Division WSH. Frauline also placed 4th in the state in Western Pleasure Division, A Division, WSH.

For Dee Parham, 1968 was a very good year.

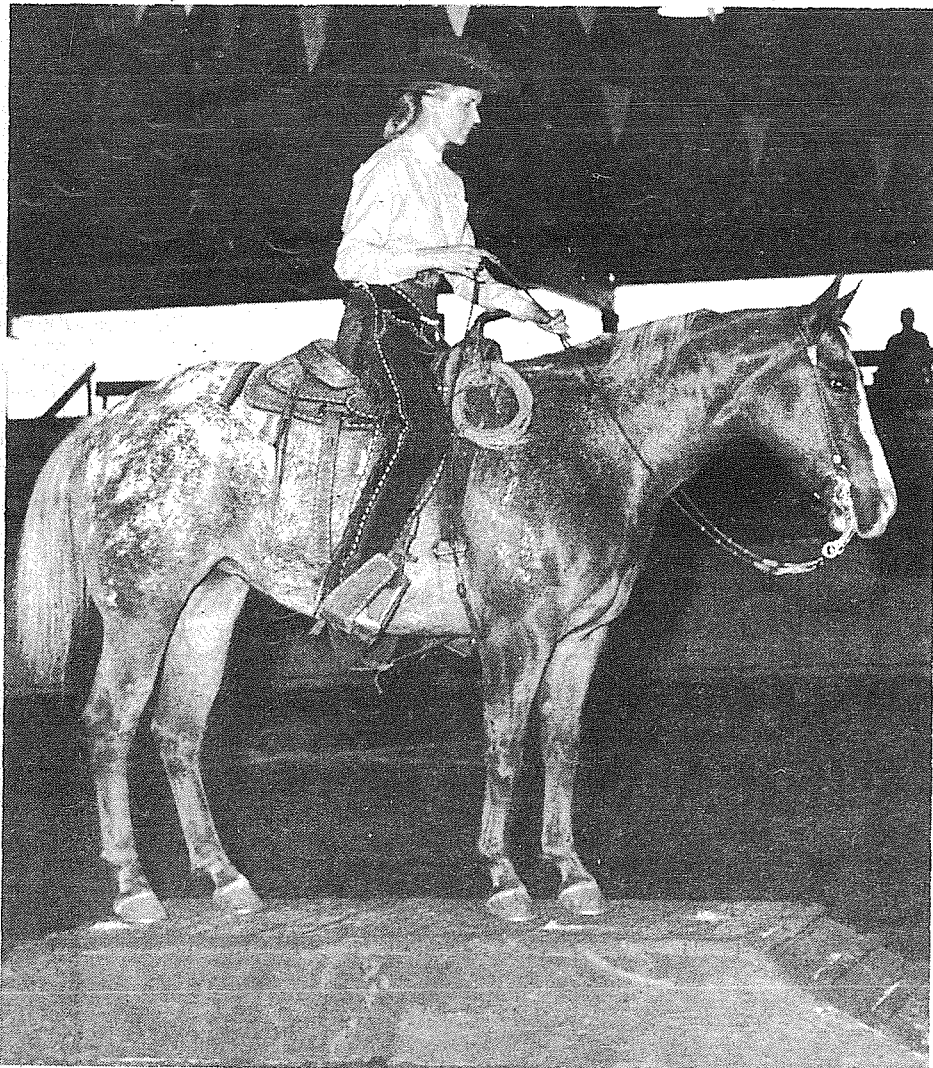
Kimberly Stecker will always have a warm spot in her heart for 1968. As high point youth, Colts and Fillies, for the year, Miss Stecker took home a custom made saddle created by Dean Vosburg. We're sure the past year will live in her memory for many years to come.

**Electric Motor  
Burnouts Cold  
Weather Hazard**

The first snowstorms of the winter can bring on a rash of burned out motors, Frank C. Jackson, county Extension agent, warned today.

The grease in the gearbox gets stiff. Ice and snow can freeze up moving parts. And blowing snow melts and breaks down the insulation if it gets inside the motor.

Such burnouts can be prevented by the right kind of motor protection from the weather and from overloads. Jackson advised.



**FRAULINE**, owned by Alden See, Enumclaw, was shown by Charlene Parham. Frauline brought Reserve 1968 Champion Trail Horse (All Breeds) A Division WSH honors to Parham's Stables. — Jerry Shea Photo

**"Horsemen's Market Place"**  
Classified Directory  
Board — Trainers — Breeders  
Outfitters — Feed Dealers

**Outfitters**  
**The Bunkhouse**  
COMPLETE LINE OF  
TACK & WESTERN APPAREL  
  
12605 Pacific Ave.  
Tacoma, Wa. 98445  
  
LE 7-5510

**Vet Supplies**  
Complete supply animal health  
products.  
Franklin - Farnam - Anchor  
at  
**ASHMORE'S**  
Spanaway Drugs  
165th & Pacific Ave. LE 7-5993

**CEDAR**  
**LUMBER - FENCING**  
TACOMA  
**CEDAR PRODUCTS CO.**  
"At the Waterfall"  
14512 Pacific LE 1-2559

**Back In Town**  
**BILL MAY**  
Horseshoeing  
**TH 5-4902**

\*\*\*\*\*  
Automobiles  
STATION WAGONS, CARS  
AND TRUCKS  
"Come See Us"  
\*\*\*\*\*

\*\*\*\*\*  
**Andy EGAN**  
**RAMBLER**  
Fairness to All  
\*\*\*\*\*

\*\*\*\*\*  
8223 Pacific GR 4-9404  
\*\*\*\*\*  
**HORSES BOARDED & RENTED**  
**B & B STABLE**  
on the Mountain Hiway  
1 1/2 miles past Roy Y on left.  
Open 10 a.m. to 5 p.m.  
**TUES. - SUN.**  
VI 7-7162

**Tacoma Livestock**



**Tacoma Livestock Market Report for Thursday, December 26.**

Due to the holidays, cattle numbers were down with 194 head cattle and 2 horses auctioned. The demand for slaughter cattle was strong and feeder cattle steady.

Record prices on veal — Choice \$40-\$45.50 cwt, good Holstein and White Face lows — \$18-\$20 cwt. All feeder and stocker cattle prices are steady with good demand, baby calves up to \$38 each. Expect a good market this Thursday on all classes of cattle. Ed and Lee Flood, Auctioneer, VI 7-7567.

do  
you  
really  
have  
enough  
money  
in  
your  
savings  
account?

*If you haven't,  
please read on.*

- 1 Do you pay yourself something every payday?
- 2 Do you have an automatic savings plan?
- 3 Do you get all the interest possible on your savings?

A "NO" answer to any of these three questions can cost you money!

- 1 **PAY YOURSELF** every payday. Deposit something—any amount—to your bank savings account.
- 2 **SAVE REGULARLY!** Your Bank of Washington Banking Center has an automatic savings plan that really works!
- 3 **DEPOSIT MONEY** in your savings account by the 10th of JANUARY and earn interest from the 1st!

**BANK OF WASHINGTON**

AT YOUR SERVICE:  
**PARKLAND BANKING CENTER**

NATIONAL BANK OF WASHINGTON / TACOMA, WASHINGTON  
MEMBER FEDERAL DEPOSIT INSURANCE CORPORATION



**INSURANCE**  
**Military - Home - Business**  
**LE 7-4904**  
 Auto Fire Life Bonds  
**IRENE CLEMENS**  
 Agency - Parkland  
 10329 Pacific Ave.

**BOWLING RESULTS**

Express - Dick Breon 595, 225; Betty Breon 508, 190. Splits: Fran Thomas 3-7. Stepladder: Dick Johnson 134-136-138.  
 Rolling Bees - Lois Lovelace 242-223-125, 590, 242; Lois Yurisch 202-182-184, 568.  
 The Belles - Ann Bryant 489; Rosella Greer 199.  
 Pinettes - Wanda Buckland 172-212-175, 559; Ginger Pittman 159-227-172, 558, 227; Gen Barlow 166-188-194, 548; Lee Leggett 187-174-184, 545; Jeanne Hoeking 182-159-199, 540; Evie Baskett 174-178-188, 540.  
 "600" Mixed - Fran Barry 170-199-174, 543; John Cooper 534, 202.  
 Parkland Merchants - Bill Wold 197-

224-199, 620, 224.  
 Hi-Lows - Barbara Coffey 503; Peggy Holder 188.  
 Parkland Mix - Jan Iverson 215-229-179, 623, 229; Sally Skorupski 521; Lois Yurisch 190. Split: Edna Comen 2-10.  
 850-Scratch - Doug Fogle 228-200-203, 631, 228.  
 Classic - Art Unkrur 224-215-224, 663; Mike Metcalf 185-266-190, 641.  
 Bowlerettes - Dawn Faulk 170-191-196, 557; Kathie Shults 190-207-154, 551; Mary Lou Ginther 212. Splits: Hanna McDonald 6-7-10.  
 Last Nitters - Bob Sims 562, 233; Betty Cooley 510; Jean Daniel 510, 210.  
 4X8's - Gene Bennett 530; Del Miller 203; Gerry White 504; Shirley Bennett 199.

For things YOU WANT. Classified ads can do it for you.

**Knights Challenge Loggers**

Unbeaten in nine games, the University of Puget Sound's nationally-ranked basketball team has taken a "break" for the holidays to resume play January 6 at home against Pacific Lutheran University.

The Loggers will play four home games in six days following their 15 day layoff and coach Don Zech describes the situation as "the lull before the storm."

PLU, Hastings College of Nebraska, and the University of British Columbia will supply the opposition during the "storm." Hastings is scheduled to visit Tacoma January 8 and UBC will engage Puget Sound in a two-game series January 10 and 11.

The Puget Sound cagers were rated 11th among the nation's college division teams according to the latest UPI (United Press International) poll. Included in the nine-game win streak are tournament championships in both the Daffodil Classic in Tacoma and the Cal Aggies Invitational at Davis, California.

"We're going to play them one at a time," Zech commented on the upcoming UPS schedule. That places Pacific Lutheran first on the Logger List. The Knights always have been tough on UPS teams, holding a 55-33 edge in the all-time series.

Hastings will bring a tall and talented team west, led by 6-11 Jack Kramer and 6-7 All-America candidate Glenn Mays, and British Columbia has one of the best teams in its history. The Thunderbirds won five of their first six games, including 117-112 decision over Portland State College in the title game of Vancouver's Totem Tournament.

**Girls Hoop Jamborees**

Girls teams from the Tacoma School District and Pierce County Park Department recreation basketball leagues will compete Jan. 3-4 in two Christmas jamborees at the Curtis Junior High School gymnasium.

Members of the two departments' Junior High Girls leagues will open the jamboree play at 4:25 p.m. Friday and will continue Saturday with semi-final play beginning at 5:30 p.m.

The Senior High Girls division will play its entire schedule Saturday beginning at 1 p.m.

The jamborees will prepare the girls' recreation basketball teams for the beginning of league play on Monday, Jan. 6.

**SENIOR HIGH GIRLS 2**

Game 1, Cardinalettes vs. St. Leo's, 2:10 p.m.; Game 2, Lakewood Lions vs. Shamrocks, 1 p.m.; Game 3, Royals vs. Aquinas Betterhalf, 1:35 p.m.; Game 4, Loser Game 2 vs. Loser Game 3, 2:45 p.m.; Game 5, Aquinas vs. Winner Game 1, 3:55 p.m.; Game 6, Winner Game 2 vs. Winner Game 3, 3:20 p.m.; Game 7, Loser Game 1 vs. Loser Game 4, 4:30 p.m.; Game 8, Loser Game 5 vs. Loser Game 6, 8:25 p.m.; Game 9 (championship), Winner Game 5 vs. Winner Game 6, 9 p.m.

**JUNIOR HIGH GIRLS 2**

FRIDAY - Game 1, Eaglettes vs. Los Novias, 4:25; Game 2, Good Shepherd vs. Trinity Lutheran, 5 p.m.; Game 3, Sabrettes vs. Sojne's, 7:55 p.m.; Game 4, Mann vs. Winner Game 1, 5:35 p.m.; Game 5, Nuggets vs. Winner Game 2, 6:45 p.m.; Game 6, SEOAA Comets vs. Indianettes, 7:20 p.m.; Game 7, Loser Game 1 vs. Loser Game 2, 6:10 p.m.; Game 8, Loser Game 3 vs. Loser Game 5, 8:30 p.m.; Game 9, Loser Game 4 vs. Loser Game 6, 9:05 p.m.

SATURDAY - Game 10, Winner Game 3 vs. Winner Game 4, 5:30 p.m.; Game 11, Winner Game 5 vs. Winner Game 6, 6:05 p.m.; Game 12, Winner Game 8 vs. Winner Game 9, 6:40 p.m.; Game 13, Loser Game 10 vs. Loser Game 11, 7:15 p.m.; Game 14 (championship), Winner Game 10 vs. Winner Game 11, 7:50 p.m.

**Pilot Tickets On Sale Monday**

Tickets for the Seattle Pilots' three home opening games with Chicago's White Sox on April 11, 12, and 13 will go on sale at Sicks' Stadium Monday, January 6.

Harry McCarthy, Director of Ticket Operations, said that Loge Box seats priced at \$4.50 and Reserved seats priced at \$3.50 would be available.

Seattle will observe the historic home opener at Sicks' Stadium on all three days and colorful ceremonies are planned for each game. The Pilots face the White Sox on Friday at 2 p.m., Saturday at 8 p.m., and again on Sunday at 2 p.m.

The games will mark the first appearance of major league baseball on a regular basis and mark Seattle's entry into the American League.

Further information may be obtained by calling Parkway 5-8500, or writing to Director of Ticket Operations, 2700 Rainier Ave. S., Seattle, Washington 98144.



Now EVERY DAY is DIVIDEND day at Tacoma Savings.

Earnings are computed on **daily balances**. This means your savings start earning the day you open or add to your account. Any day of the month. Dividends are compounded and paid every three months. You never lose your earnings as long as you leave a balance in your account. Enjoy **MAXIMUM** earnings, computed now on **DAILY** balances. We pay you **EVERY DAY**, from date of receipt.

Accounts are insured to \$15,000 by an agency of the United States Government and backed by our outstanding record of 151 **CONSECUTIVE** dividends. Now celebrating 70 years of thrift and home ownership service to the community.

WITH AN INVITATION TO OUR OPEN HOUSE DAYS JAN. 2-10.

**\$1,000 in**  
  
**Savings Accounts**

5% per annum on daily balances.

**FREE**

\$1,000 in Savings Accounts will be awarded during Open House Days, Jan. 2-10. No obligation. Just come in and register. Enjoy free refreshments, too. While they last, calendars for our customers.

**70 YEARS TACOMA SAVINGS and LOAN ASSOCIATION**

HOME OFFICE  
9th and A Sts.

LAKWOOD  
9802 Gravelly Lake Dr.

PARKLAND  
114th & Pacific Ave., So.

PORT ORCHARD  
West Bay Intersection



**Dryer MORTUARY**  
 (134th & Pacific) PARKLAND

**The Country Parson**

"The world seeks speed — a quicker way to do things which might better be done slowly."  
 Copyright, by Frank A. Clark

**Dryer MORTUARY**  
 (134th & Pacific) PARKLAND

**1969 LICENSE TABS**  
 Passenger Car, Truck, Trailer, Motorcycle  
**9-6 Mon. - Sat.**  
**MIDLAND SHOP-RITE**  
 99th & Portland Ave.  
**MIDLAND ORTHOPEDIC GUILD**



# CLASSIFIED ADS

## Call LE 7-0223 For Want Ads

### 1 Misc. For Sale

TRUMPET, good condition. Used 1 year. Special price, \$40. VI 7-7174. 68-612

ALDER Fireplace wood. 24 inches. \$26. Eatonville 832-6331. 68-611

TOP SOIL, gravel, LE 1-1124. 69-1

### INCOME TAX

## GR 4-3047

Leonard W. Burns  
9050 Pacific Ave.

McNESS PRODUCTS, GR 5-2734. 68-303



### LAKEWOOD GENERAL HOSPITAL

Mr. and Mrs. Jim Bolieu  
602 East 96th Tacoma,  
Washington, girl, December 20.

Mr. and Mrs. David Susan  
9111 McKinley Avenue Tacoma,  
boy, December 20.

Mr. and Mrs. Frank A.  
Monta 17023 Pacific Avenue  
Spanaway, girl, December 21.

Mr. and Mrs. Ronald G.  
Gill Rt. No. 2 Box 2581 D,  
Spanaway, boy, December 23.

Mr. and Mrs. John D.  
Kalles 614 South 126th Tacoma,  
girl, December 23.

Mr. and Mrs. James C.  
Parrish 5904 98th East Tacoma,  
girl, December 23.

Mr. and Mrs. Harold  
Shoup 10209 Barnes Lane  
Tacoma, girl, December 24.

Mr. and Mrs. Larry L.  
Strege, 9237 South Ceder,  
Tacoma, Washington, baby  
girl, Dec. 19, 1968.

Mr. and Mrs. Robert E.  
Dumbleton, 2319 South 80th,  
Tacoma, Washington, Dec.  
19, 1968, baby girl.

### GOOD SAMARITAN HOSPITAL

Dec. 11, Mr. and Mrs.  
Forrest Savory, boy, 8818  
24th Ave. East.

Dec. 12, Mr. and Mrs.  
George Lenz, boy Rt 1 Box  
1570, Spanaway.

Dec. 12, Mr. and Mrs.  
Ronald Davis, boy, 633 167th  
East, Spanaway.

Dec. 15, Mr. and Mrs.  
Ronald Miller, twin boys,  
12218 Golden Given Rd., Tacoma.

Dec. 17, Mr. and Mrs.  
Gene Thayer, boy, 4531 East  
F, Tacoma.

Dec. 17, Mr. and Mrs.  
Larry Atkins, boy, Rt. 1 Box  
215, Eatonville.

Dec. 11, Mr. and Mrs.  
Forrest Savory, boy, 8818  
24th Ave. East, Tacoma.

Mr. and Mrs. Joseph  
Stercks Rt. 1 Box 262-G, Eatonville, boy, December 19.

Your Friends & Neighbors remember, are the advertisers in these Classified ads.

### PIERCE COUNTY HEADQUARTERS FOR 1969

- ★ CHRYSLER
- ★ PLYMOUTH
- ★ VALIANT
- ★ BARRACUDA

CALL GR 4-0621

**Steven MOTOR CO.**  
2705 SOUTH TACOMA WAY

### 27 Misc. Services

### WATER PUMPS REPAIRED

All Makes  
**GRANGE SUPPLY**  
LE 1-5777

EXPERT alterations, men's and women's. Fast service and reasonable. LE 1-3506.

### MIDLAND AUTOMOTIVE

Complete Repair  
Foreign & Domestic  
Elect. - Alt. - Gen. - Weld. -  
Trans. - Overhaul - Valve Grind  
LE 1-4331 8-6 Mon.-Sat.

"WHERE TO GET SERVICE"  
**Parkland Enco Service**  
13303 PACIFIC AVE.  
LE 7-9954

### NEWBURY'S Dozer Service

LE 7-7455  
Sandy Loam Bank Run  
Mixed Soil Fill Dirt

CHILD CARE. Close to P.L.U.  
LE 7-6736. 68-400

Bargain Hunters shop classified. SELL your bargains with an ad.

### Legals

In the Superior Court of the State of Washington For the County of Pierce IN PROBATE No. 77961

Notice To Creditors IN THE MATTER OF THE ESTATE OF OSCAR EDWIN NORDSTROM Deceased.

Notice is hereby given that the undersigned has been appointed and has qualified as executrix of the estate of the above named deceased; that all persons having claims against said deceased are hereby required to serve the same, duly verified, on said executrix or his / her attorney of record at the address below stated, and file the same with the Clerk of said Court, together with proof of such service within four months after the date of first publication of this notice, or the same will be barred.

Date of first publication Dec. 19, 1968.

s Faye Pauline Nordstrom  
Faye Pauline Nordstrom  
Executrix of said Estate  
11024 Pacific Avenue  
Tacoma, Wash. 98444  
PETERS & TRACY  
s Phillip S. Tracy  
11024 Pacific Avenue  
Tacoma, Washington 98444  
LE 7-0264

Published in the Times Journal 12-19 - 12-26 - 1-2.

### Legals

In the Superior Court of the State of Washington For the County of Pierce IN THE MATTER OF THE ESTATE OF EUGENE M. WITHROW Deceased.

IN PROBATE No. 78032

Notice To Creditors Notice is hereby given that the undersigned has been appointed and has qualified as Executor of the estate of the above named deceased; that all persons having claims against said deceased are hereby required to serve the same, duly verified, on said Executor or his/her attorney of record at the address below stated, and file the same with the Clerk of said Court, together with proof of such service within four months after the date of first publication of this notice, or the same will be barred.

s/Oscar H. Withrow  
Oscar H. Withrow  
Executor of said Estate  
11024 Pacific Avenue  
Tacoma, Wash. 98444  
PETERS & TRACY  
s/Phillip S. Tracy  
Phillip S. Tracy  
Attorney for Estate  
11024 Pacific Avenue  
Tacoma, Washington 98444  
LE 7-0264

Published in the Pierce County Herald and Times Journal Dec. 26, 1968, Jan. 2, 1969, Jan. 9, 1969.

### 12 Real Estate For Sale

### Listings Wanted

Buying or Selling  
Real Estate-Service  
Call  
**Devereaux Realty**  
12152 Pacific Ave. LE 7-8658

### Sheet Metal

- Furnace Repair and Service
- Installations

### PARKLAND FUEL OIL

12002 Pacific Ave.  
LE 7-0256

### 39 Lost

LOST IN Vicinity of Muck Creek. Brittnay Spaniel, orange, white male. Training collar with Pierce County and McChord tags. Reward. LE 7-6380. 69-2

### 23 Help Wanted

LADIES CAN Earn \$40 to \$60 weekly showing new line of home care products. Fun and exciting. 2 to 4 hours a day. LE 1-2484. 69-4

HELP WANTED - LADIES - Exciting career opportunity - immediate income - \$2.00 per hour guarantee - plus bonus plan - great future. MA 7-6700. 69-3

### Library Board Meets Jan. 8

Board members of Pierce County Library will hold the monthly meeting January 8 at 1:30 p.m. in the headquarters building, 201 St. Helens Avenue. Mrs. Carl Lingren will preside. The meeting is open to the public.

### 19 For Rent Or Lease

3 ROOMS & bath with shower. Very small. Will be vacant Jan. 1st. No children, no pets. LE 7-5826. One block from P.L.U.

### HOME VACANT

We desperately need good rentals \$80 to \$150 per month

CALL NOW  
Let us handle your worries

### SUBURBAN REALTY

11302 Pacific Ave.  
LE 7-8638 or LE 7-6896

### 36 Personals

ARTHRITIS, rheumatism sufferers, try Alpha tablets. Relief lasts for hours. Johnson's Drug. 68-609

PERSONAL LOANS on diamonds. We buy, sell and trade diamonds. Vince's Loans, 16001 Pacific Ave. LE 1-5100. 68-588

INDIVIDUAL HOROSCOPES JU 8-8878, for appointment.

### 28 Building Services

REMODELING, leveling, block foundations, cabinets, free estimate. Reasonable. LE 7-3550. 68-48 TFN

STATE OF WASHINGTON DEPARTMENT OF WATER RESOURCES OLYMPIA

NOTICE OF GROUND WATER RIGHT APPLICATION NO. 9931

TAKE NOTICE: That JOSEPH R. GRABNER of Spanaway, Washington on December 10, 1968, filed application for permit to withdraw public ground waters through well situated within Lots 20 & 21, Block 7 plat of Denny Addition of Section 27, Township 19 N., Range 3 E.W.M., in Pierce County, in the amount of 20 gallons per minute, subject to existing rights continuously, each year for the purpose of community domestic supply, during irrigation season for irrigation.

Any objections must be accompanied by a two dollar (\$2.00) recording fee and filed with the Department of Water Resources within thirty (30) days from January 9, 1969.

Witness my hand and official seal this 18th day of December, 1968.

GLEN H. FIEDLER  
Assistant Director  
Division of Water Management  
Department of Water Resources  
Published January 2 and January 9, 1969, in the Pierce County Herald and Times Journal.

Department of Water Resources  
Published January 2 and January 9, 1969, in the Pierce County Herald and Times Journal.

Published in the Times Journal Dec. 12 & 26 - Jan. 2.

### Legals

STATE OF WASHINGTON DEPARTMENT OF WATER RESOURCES OLYMPIA

NOTICE OF GROUND WATER RIGHT APPLICATION NO. 9927

TAKE NOTICE: That ERNEST R. VINSON (VINSON'S VILLA TRAILER COURT) of Spanaway, Washington on December 9, 1968 filed application for permit to withdraw public ground waters through well situated within Gov't lot 3 of Section 4, Township 18 N., Range 3 E.W.M., in Pierce County, in the amount of 30 gallons per minute, subject to existing rights continuously, each year for the purpose of group domestic supply.

Any objections must be accompanied by a two dollar (\$2.00) recording fee and filed with the Department of Water Resources within thirty (30) days from January 9, 1969.

Witness my hand and official seal this 18th day of December, 1968.

GLEN H. FIEDLER  
Assistant Director  
Division of Water Management  
Department of Water Resources  
Published January 2 and January 9, 1969, in the Pierce County Herald and Times Journal.

Published January 2 and January 9, 1969, in the Pierce County Herald and Times Journal.

Published January 2 and January 9, 1969, in the Pierce County Herald and Times Journal.

Published January 2 and January 9, 1969, in the Pierce County Herald and Times Journal.

Published January 2 and January 9, 1969, in the Pierce County Herald and Times Journal.

Published January 2 and January 9, 1969, in the Pierce County Herald and Times Journal.

Published January 2 and January 9, 1969, in the Pierce County Herald and Times Journal.

Published January 2 and January 9, 1969, in the Pierce County Herald and Times Journal.

Published January 2 and January 9, 1969, in the Pierce County Herald and Times Journal.

Published January 2 and January 9, 1969, in the Pierce County Herald and Times Journal.

Published January 2 and January 9, 1969, in the Pierce County Herald and Times Journal.

Published January 2 and January 9, 1969, in the Pierce County Herald and Times Journal.

Published January 2 and January 9, 1969, in the Pierce County Herald and Times Journal.

Published January 2 and January 9, 1969, in the Pierce County Herald and Times Journal.

Published January 2 and January 9, 1969, in the Pierce County Herald and Times Journal.

Published January 2 and January 9, 1969, in the Pierce County Herald and Times Journal.

Published January 2 and January 9, 1969, in the Pierce County Herald and Times Journal.

Published January 2 and January 9, 1969, in the Pierce County Herald and Times Journal.

Published January 2 and January 9, 1969, in the Pierce County Herald and Times Journal.

Published January 2 and January 9, 1969, in the Pierce County Herald and Times Journal.

Published January 2 and January 9, 1969, in the Pierce County Herald and Times Journal.

Published January 2 and January 9, 1969, in the Pierce County Herald and Times Journal.

Published January 2 and January 9, 1969, in the Pierce County Herald and Times Journal.

Published January 2 and January 9, 1969, in the Pierce County Herald and Times Journal.

Published January 2 and January 9, 1969, in the Pierce County Herald and Times Journal.

Published January 2 and January 9, 1969, in the Pierce County Herald and Times Journal.

Published January 2 and January 9, 1969, in the Pierce County Herald and Times Journal.

Published January 2 and January 9, 1969, in the Pierce County Herald and Times Journal.

Published January 2 and January 9, 1969, in the Pierce County Herald and Times Journal.

Published January 2 and January 9, 1969, in the Pierce County Herald and Times Journal.

Published January 2 and January 9, 1969, in the Pierce County Herald and Times Journal.

Published January 2 and January 9, 1969, in the Pierce County Herald and Times Journal.

For ACTION within hours use Classified ads, they get your sales job done quickly and easily.

### ARE YOU IN DEBT? Bills Pressing? Civilian - Military GET OUT OF DEBT ONE PAYMENT AVOID

1. Letters to Employers
2. Letters to C.O.'s
3. Loss of paycheck

Call **MONEY MANAGERS** MA 7-1700

232 Security Bldg. 915 1/2 Pacific Ave. Tacoma, Wash. 98402

Eve. Appts. Home or Office 24 Hr. Svc. State Approved

### NEW! MORE POWERFUL the 1969's ARE HERE VOLKSWAGEN

27 MAJOR CHANGES COME IN!

Tom Carstens AUTOHAUS

7030 So. Tacoma Way GR 4-0666

TACOMA DEALER SINCE 1956

### RENT TV

Color TV

**RENTAL MARTS, INC.**

Parkland GR 5-3755 9440 Pacific Ave.

Lakewood JU 4-4100 108th & Bridgeport

### BUY SELL CLASSIFIED ADS TRADE LEASE

## FOR BEST RESULTS IN: BUYING SELLING RENTING

### USE THE WANT ADS

Ten Words . . . Only \$1<sup>00</sup>

### Use This Form For Ad Insert

Name \_\_\_\_\_  
Address \_\_\_\_\_  
City \_\_\_\_\_ Zip \_\_\_\_\_  
Amount Enclosed \_\_\_\_\_  
Classification \_\_\_\_\_  
Copy \_\_\_\_\_

The Times Journal PO BOX 2116 Parkland 98444  
LE 7-0223



Sweet Spanish Onions—The Big Ones



There are onions and Onions, but none that can approach the versatility of the Idaho-Oregon grown Sweet Spanish Onions now so plentiful in our markets. These are the striking king-size onions with paper-crisp skins of golden-bronze, sometimes creamy-white.

Known for their size and mild manners by way of flavor, they may be used in so many ways—as meat accompaniment (so good creamed, scalloped, baked, broiled, fried), as entree in themselves when filled with a savory stuffing (meat, rice and cheese, baked beans), to say nothing of the famous French Onion Soup, lacy French-fried Onion Rings, relishes and garnishes, and the zest they give to salads and sandwiches. No ordinary onions these, yet so inexpensive. *Salad Valencia* is a beautiful salad for a buffet table, a delightful example of flavor and texture contrasts for embroidery.

In the early morning, thin-slice 3 or 4 small peeled navel oranges and 3 large Sweet Spanish onions (easiest done by slicing through the unpeeled onion, then removing the skin from each slice). Arrange the slices in a shallow dish. Cover with a good tomato-free French dressing or a garlic-y Italian dressing. Let stand in the refrigerator 6 hours at

least, turning slices once or twice.

Tear into bite-size pieces salad greens of your choice. A mixture is good. Put to crisp in the refrigerator. Cut French bread into 3/4-inch cubes, to make a cup or more. Brown in heavy skillet in butter melted with a cut clove of garlic.

When ready to serve the salad, put greens into chilled bowl. Separate onion slices into rings and place along with orange slices atop greens. If desired, add sliced peeled avocado brushed with orange juice or dressing. Pour the leftover dressing over the salad. Sprinkle top with the garlic-buttered browned bread cubes. Makes 6 to 8 servings or more if you like. The orange and onion flavors blended with the dressing make for a most unusual and well-liked result.

You may like to serve this salad with two dressings alongside, one being additional oil dressing used for the salad marinating and the other a creamy Roquefort or Blue cheese salad dressing—an excellent partner for any sort of Sweet Spanish onion salads.

Winter Facilities

Open At Paradise

Mount Rainier National Park-Superintendent John A. Townsley announced today that winter use facilities at Paradise are now in operation on weekends and holidays. Four rope tows offer skiers a variety of slopes and there is now over eleven feet of snow and ample area for snow play with platters and tubes.

The Paradise Visitor Center is open until 5:30 P.M. with a large observation deck, food service and a ski shop with rental equipment available. Food service will close at 5:00 P.M. Visitor services include museum, movie and slide programs and information about the park and Paradise area. Ski instruction will again be offered under the direction of Dick Vanderflute.

Superintendent Townsley advised that visitors to the park should carry chains and be prepared to use them when the chains sign is displayed. Chains may be rented at the service station in Longmire.

Overnight accommodations are not available in the park during the winter, however, motel type facilities and food service are to be found along the road near the Nisqually Entrance to the park.

Sunshine Point Camp-ground, near Nisqually Entrance, will remain open throughout the winter.

Private owned oversnow vehicles are permitted on designated roads which are closed to normal vehicular travel for the winter. Permits and information may be obtained at Ranger Stations.

BUY, SELL, RENT, TRADE quickly by using Classified ads.

Winter Hours  
Open 7 Days A Week  
Sunday 10 - 9  
Weekdays 9 - 9



16618  
Pacific Ave. S. Spanaway  
LE 7-3371

No Sales To Dealers

WE RESERVE THE RIGHT TO LIMIT QUANTITIES

We Carry A Complete Line Of Sacked Feeds - Presto Logs

We Are Locally Owned & Operated  
HELP YOUR BUDGET  
WITH THESE SAVINGS

PRICES EFFECTIVE

Jan. 2-3-4  
Thur-Fri-Sat

ZEE  
**PAPER NAPKINS**  
60 CNT PKG. **10¢**

FLASHLITE  
**BATTERIES**  
Regular D Size For **3/25¢**

WEST BEST  
**APPLE JUICE**  
3 / \$1  
QTS.

LIBBY  
**GREEN BEANS**  
6 / \$1  
303 TINS

FAMILY JOY  
**MARGARINE**  
6 / \$1  
Lbs.

ROSDALE  
**PEAS**  
7 / \$1  
303 TINS

BETTY CROCKER  
**PIE CRUST MIX**  
29¢  
19 OZ.

**GOLDEN GRAIN DINNERS**  
SCALLOP A RONI, SPAGHETTI ITALIANO, NOODLE CASSEROLE  
3 / 79¢  
12 OZ.

LINDSAY  
**STUFFED GREEN OLIVES**  
39¢  
5 OZ.

BLOCK ICE	PRODUCE	PARTY ICE
<b>CHIQUITA BANANAS</b> 10¢ Lb.	<b>RUTABAGAS TURNIPS</b> 10¢ Lb.	<b>MED. SIZE DRY ONIONS</b> 2 13¢ Lb.
		<b>SNO-WHITE CAULIFLOWER</b> 29¢ Ea.

Everyday Low Meat Prices... 25 lb. Locker Boxes \$14.95

<b>GROUND ROUND</b> 69¢ Lb.	<b>GROUND BEEF</b> 49¢ Lb.	<b>COUNTRY STYLE PORK SAUSAGE</b> 49¢ Lb.
<b>BAR S FRANKFURTERS</b> Plump & Juicy 59¢ Lb.	<b>CUBE STEAK</b> 98¢ Lb.	<b>BAR S WIENERS</b> 59¢ Lb.

**CHURCH DIRECTORY**  
ATTEND OUR **WORSHIP SERVICES**

<b>PARKWAY Presbyterian Church</b> Sunday School 9:30 a.m. Worship Service 10:45 a.m. Nursery Service Provided 714-138th East LE 1-4234 Rev. Wesley J. Drummond	<b>Spanaway Assembly of God</b> 166th & Pacific Ave. Sunday School 9:45 a.m. Morning Worship 11 a.m. Evening Evangelistic 7 p.m. Family Night Wed. 7:30 p.m. LE 1-1412
<b>Spanaway Lutheran Church</b> 8:30 & 11 a.m. Worship Service 9:45 a.m. Sunday School Grades 1 & Up 11 a.m. Sunday School 3, 4 and 5 Year Olds John L. Briehl, Pastor 160th & A St. LE 7-5978.	<b>Parkland Lutheran Church &amp; Christian Day School</b> Worship... 10:30 a.m. Sunday School-Bible Study 9:15 a.m. All Ages H.A. Theisto, pastor LE 7-5492 LE 1-0777
<b>Trinity Lutheran Church</b> Worship Services 9 a.m & 11 a.m. Sunday School 10 a.m. Wednesday School 4-5 (through Grade 9) Erving C. Thompson Robert Drowes PASTORS 12115 So. Park LE 7-0201	<b>Spanaway United Methodist Church</b> Church School 9:30 a.m. Worship 11:00 a.m. R. Gordon Harrison, Pastor 163 & Pacific LE 7-5134