

P.L.U. Library  
Tacoma, Wn. 98447

Pierce County Herald and

# The TIMES JOURNAL

Vol. 25 No. 37 38

September 18, 1969

Single Copy

15¢

## Bethel Board 'To Hold Line' On Money Issue

The Bethel School Board, after having heard requests for more money for salaries for employees, more money for text books, supplies and materials, and more money to offset inflation, decided to "hold the line" on the total millage for schools in 1971. Voters will decide November 4th of this year on the issues. The Board did shift a portion of the money that could have been allocated for school construction to the operational funds. A M & O levy of 29.6 mills for \$650,000 and a bond sale of \$950,000 was approved by the board to be placed on the ballot.

The board accepted the resignation of William P. Hauser, M.D. from director district No. 1, effective immediately. Director district No. 1 includes the area west of Pacific Avenue. Persons wishing to file must do so by Friday, September 19th.

Superintendent Gramann reported an additional 69 students enrolled the first 8 days of school, bringing the total district enrollment to 4,942.

Mr. Gene Neeley, Transportation Supervisor, reported to the board on the problems in transportation. Discipline on the buses, problems on where to stop, and the possible need for more buses because of the increased enrollment were part of his report. Mr. Neeley commended the drivers, and the board commended Mr. Neeley for his work.

Mr. Zurfluh, board member, requested that information on the cost of school lunches and the possibility of free lunches be given at the next board meeting.

The board instructed Mr. Virgil Baker, Assistant Superintendent, to continue to explore the acquisition of a school site in the Crescent Park area. Three possible sites are under construction at this time.

The board also heard a report from Mr. Baker on the state conference he attended on Monday and Tuesday of this week on Planned Pro-

gram Budgeting Systems. The conference was held at Yakima and over 200 school business officials were in attendance.

## Dr. Hauser Resigns

Dr. William P. Hauser resigned as a Bethel School Board member in a letter made public during the September 16 board meeting.

His resignation brings 3 years of service to Bethel District education to a close. He had one year left in his term of office.

Dr. Hauser listed pressing business as reason for leaving the board and in a telephone conversation he told The Times Journal that increased responsibilities in the Arthritis and Rheumatic Foundation necessitated the resignation.

Dr. Hauser's resignation leaves Director District 1 open and those wishing to file for the Bethel School Board have until Friday to do so. Dr. Fred Gramann, Superintendent, told the Journal Wednesday. Boundary of School Director District One is the area West of Pacific Avenue in the Spanaway area.



To the Editor -

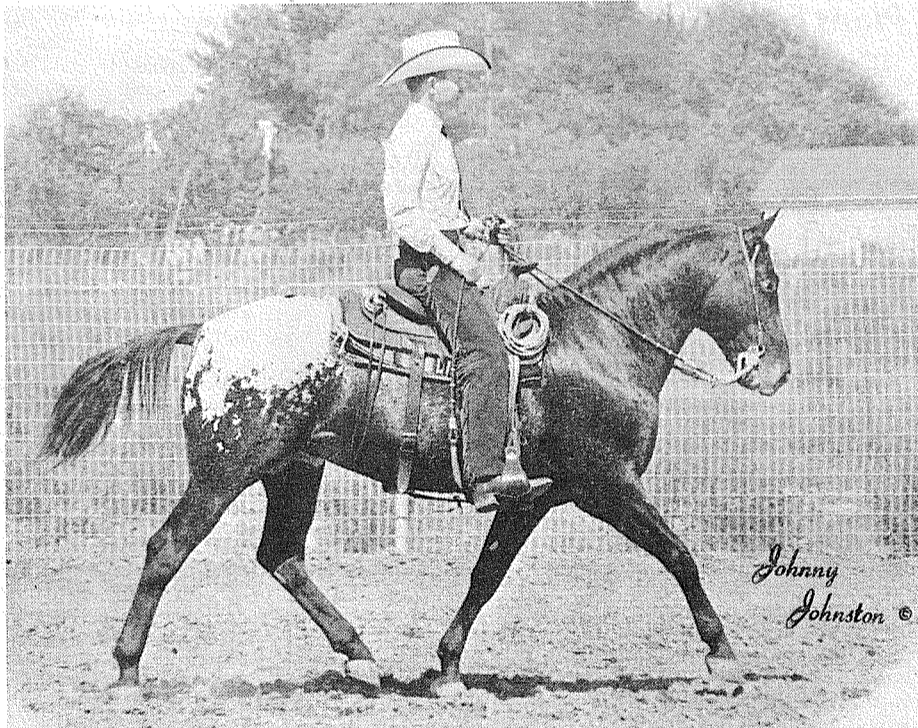
The people of Bethel School District could possibly be the best informed taxpayers in the state after the Booster Club Meeting on Monday night, Sept. 22nd. On the list of Speakers who will form up for a panel discussion about taxes relating to schools are; Ted R. Bottiger-State representative; Mr. John S. Roberts-Director of Appraisals-Pierce County Assessors office, Dr. Cutner-Puyallup MD, and Dr. Valentine DVM Parkland, plus a rep. from the state office of Public Instruction. Dr. Gramann and Mrs. Elsie Berggren will represent the School District.

With a line-up like this, the only reason a person wouldn't learn a great deal, would be because he was talking instead of listening. It looks like a well informed group. In any event, it looks like a most informative evening.

The rest of the year seems no less interesting. The Boosters have scheduled a discussion on narcotics, hypnosis and one evening when a student panel will let the adults have it, — both barrels?

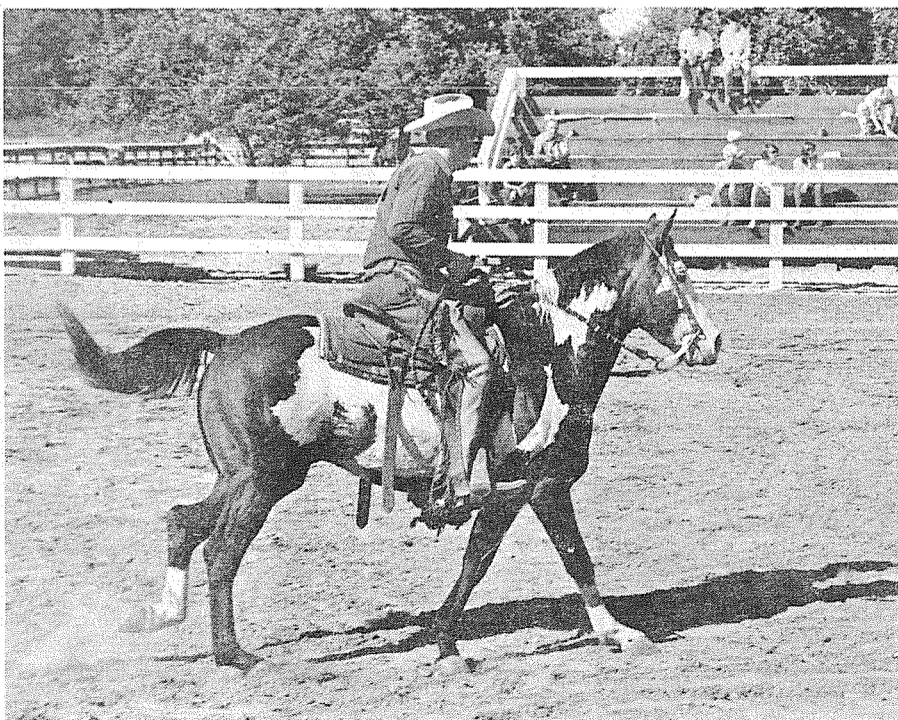
Hats off to the Booster Club.

Sincerely,  
Dean T. Wesner  
Rtz Box 2717  
Spanaway



Johnny Johnston ©

JACK STECKER will be riding Kitsap Mingo, a registered Appaloosa stallion, in competition during the Tacoma Horsemen Unit One sponsored Tri-Challenge Horse Show September 20-21 at the Unit Sports Arena.



DEE PARHAM will show the registered Paint stallion Bay Phantom Saturday and Sunday events for Paints at the Tacoma Unit Sports Arena. The Tri Challenge Show will feature the finest of three popular breeds competing in both performance and saddle events.

## In Our Opinion

# Property Reassessments Could Mean Tax Increases But Not For School Districts

Property owners in the Bethel and Franklin Pierce areas could experience an increase in property taxes on their 1971 tax statements due to the current reassessment, but local school districts can expect little or no net gain in total revenues received.

Biggest benefactor of the revaluation of property, if an overall increase should result, will be the various elements of county government. The recent reassessment in Cowlitz County gave the county approximately 20% increase in income.

Should the reassessment result in a like increase in this area, the total gains for schools could be offset by reductions in state apportionment money. A breakdown of current Franklin Pierce District income reveals 6% of the total realized from the 12 mill local share of property taxes within the 40 mill limit, 14% from special levies approved by the voters, 70% from the state, and the balance from gifts and special grants. It is expected that in this district any increase in the 6% local income figure could cause a similar decrease in the state money.

By the same token, the state receives 2 mills from property taxes for education, and an additional 2 mills for welfare. Since increased valuation would make one mill worth more dollars, the state would in all probability come out with a greater net dollar increase than the local school house.

Of the remaining 24 mills of the 40 mill limit, 6 are considered "floating mills" and are allocated to County Junior Taxing Districts (such as Fire Districts), and the balance used to finance county government services.

It is no secret that Pierce County is suffering from a lack of income, but it remains to be seen just how much local increases in assessments will help solve pressing problems.

However, even though some of us might find we are paying a greater sum as the result of our annual Valentine from the county, it appears the special school levy will still be with us. Only a significant change in the tax system will relieve property taxpayers of the annual extra millage needed to finance education.

PIERCE COUNTY SHERIFF'S POSSE  
MEETS EVERY THURSDAY 8 P.M.

TACOMA LARIETTES  
MEET EVERY MONDAY 8 P.M.

COLTS - FILLES GRILL TEAM  
MEETS EVERY SATURDAY 11 A.M.

TACOMA UNIT - ONE  
NEXT MEETING

WASHINGTON HORSEMEN INC.  
SPORTS ARENA  
TACOMA UNIT # ONE

HARRY TWOMEY  
RESIDENT TRAINER  
BOARDING & TRAINING  
VI-7-2071



HENRY TWOMEY, pictured on registered Quarter Horse stallion Cherokee Roan, will show the popular performance horse at the Tri-Challenge Horse Show. The show program will have a full schedule of AQHA halter and performance events with added competition for Appaloosas and Paints. New program innovations will offer added excitement for spectators.

## PLU President Challenges Students

A student-concerned administration working to define and apply freedom with responsibility is the goal of Dr. Eugene Wiegman, new president at Pacific Lutheran University.

Officially opening the university's 79th academic year in a special convocation Thursday, Dr. Wiegman pledged an administration advocating Christian freedom, and challenging the students to speak up against the injustices that deny human dignity.

"When you reach out to help others, when you tread the path of service and when you set principles above expediency and mercy above vengeance, then you have a hold on Christian freedom!" he emphasized.

He urged the entire university community to support causes by orderly means and maintained that the concept of Christian freedom, to be relevant, must spill off the campus into the community.

"This freedom must touch lives through the application of teaching and learning, for we are not an island unto ourselves," he asserted.

"We have much to offer this community in the arts, in the social sciences, in the natural sciences, in professional studies and in our concept of a way of life," Wiegman explained.

He rejected the concept of the modern university still clinging to traditions established during the Middle Ages, except in a historical context. "If we persist in this principle, then our scientists should run for cover, our theologians resign, and our administrators should fade away," he said.

"And our students should rightly close us down," the PLU president added.

But he spoke favorably of the genius of the American university and its ability to respond to change, though he admitted that the institutions are not quite in the vanguard of this change.

"But I see promises of breakthrough in this respect," he observed.

American universities have come to grips with the goal of learning for the sake of learning and learning for the sake of earning, he maintained, with success unchallenged anywhere in the world.

He pledged his administration to faculty rights and student rights. We shall operate in an atmosphere of free inquiry and free expression," he said, "We shall be free to examine and to discuss all questions of interest and to express opinions privately and publicly."

Wiegman's first public campus address, outlining the goals of his new administration, was heard by approximately 2,800 students, faculty, administrators community leaders in Clifford Olson Auditorium.

## Trucking Industry Welcomes Study

Spokesmen for the Washington trucking industry said today that the industry would welcome a thorough legislative study and evaluation of the current highway controversy involving tests of overlength trucks.

The inquiry was proposed by State Senator Al Henry, White Salmon, chairman of the joint legislative committee on highways, who said that results of the test on overlength trucks now being conducted by the State Highway Commission, Washington State Patrol and the trucking industry may reveal new legislative problems.

## GI Bill Vets Must Send Cards

Several thousand veterans in colleges throughout the nation this fall will not get the G.I. education check they expect in November from the Veterans Administration because they have failed to return to the VA their Certification of Attendance for their last term, Administrator Donald E. Johnson said in Washington, D.C.

It would make him very happy if the college-bound G.I. Bill veteran proved him wrong this fall, he declared.

The fact is, Johnson said, many who were enrolled in college last semester have failed to send in their end-of-term Certification of Attendance card, and cannot be paid in the upcoming school term until they do.

Administrator Johnson said the VA is also holding nearly a half million dollars worth of June G.I. Bill education checks, which cannot be mailed either until the attendance card reaches VA computers.

G.I. Bill college students who did mail in their attendance cards in June will get paid the new term allowances on time — but those who skipped mailing to VA the required card certifying that they had completed the spring term will not get paid until they straighten out their accounts with VA.

This can be done, Administrator Johnson said, by mailing in that 3 x 7 white card with a blue strip across the top to the VA immediately. If the veteran has lost this Certification of Attendance card, he should get in touch with the VA office which has his records, and ask for another.

Administrator Johnson said thousands of delays and thousands of lost man-hours are encountered on college campuses and in VA offices each year — all avoidable if campus G.I.'s and college registrars perform on time the few necessary chores to certify veterans' attendance.

## LEGION NOTES Legion Post Slates Meeting

Parkland Post 228 will hold its next meeting Sept. 22nd at Sunshine Hall 107th & So. Yakima, at 8:00 P.M. The Post will have as its guests for the meeting the Boy Scouts, the Legion Jr. baseball team, and the 4th District Officers.

The new Post officers for the coming year are, Commander - G.O. Griffiths; 1st vice Comm. Al Mackey; Jr. vice Comm. - Ray Tullis; Adjutant, - J.P. Jensen; Chaplain - Orland Wrigley; Sgt. at Arms - John Conrad; Service Officer - Severn Kittelson.

The American Legion is vitally interested in the welfare of the Veterans and their families, and extend an invitation to all veterans in the Parkland area to attend this meeting.

We especially invite the Viet Nam Veterans to contact our service officer if they have any problems concerning their veterans benefits.

The Auxiliary of Post 228 will have as their guests for the evening Miss Carol Bradley of Franklin Pierce High School who attended Girls State in June at Ellensburg, and the 4th District Officers, Miss Melna Forrester, President and Mrs. Howard Stroch, Vice President. A "Potluck Dinner" will be held at 6:30 P.M. for all members, friends and guests.

Auxiliary officers for the coming year are President, Mrs. Georgia Riem, Vice Pres. Mrs. Al Mackey, Sec.-Treas., Mrs. Glen Galbreath, Chaplain, Mrs. Mamie Jackson, Historian, Mrs. James Jensen, Sgt.-at-Arms, Mrs. Edna Unkrur.

## We Salute

### Spanaway Man Honored

SEATTLE, Wash., Sept. 9 — Mr. D. J. Olson, 916 - 196th East, Spanaway, was among the Seattle-based road drivers for Consolidated Freightways who recently drove for more than a million consecutive miles without an accident of any kind.

The group of intercity drivers, including men who operate between Seattle and Anchorage and Fairbanks, Alaska, on regular runs, began an accident-free record on March 27 and had achieved 1,012,644 safe miles on August 21.

"We are proud and pleased," said CF's Seattle Terminal Manager Marvin J. Goulet. "These 35 men deserve a lot of credit. In an industrial record of this type, any accident — preventable or not — is counted. To achieve a million miles without an accident takes defensive driving of professional caliber."

## Amusements

### Josh White At PLU

Josh White Jr., folk singer and comedian, performs his one-man variety show at Pacific Lutheran University Thursday, Sept. 18.

The program, sponsored by the PLU student body, will be held in Clifford Olson Auditorium beginning at 8:15 p.m.

## P.T.A. News

### Elk Plain PTA

#### Plans First Meet

This year's first meeting of the Elk Plain Parent-Teacher Association will be held Tuesday evening, September 23, announced Dr. John Siemens, president of the group. The meeting will begin at 8:00 p.m. in the multi-purpose room of the school. The 1969-70 teaching staff will be specially honored during the meeting.

Featured on the program are Mr. Ed Niehl, Director of Physical Education and Mr. Stewart Kimball, Director of Special Reading of the Bethel District. Mr. Niehl and Mr. Kimball will present a film taken last year of children in the district participating in the Motor Perceptual Skills program. This program is designed to develop coordination, eye skills, a sense of "leftness" and "rightness" and other skills children require before they begin to read. The Motor Perceptual Skills program for this year at Elk Plain will be outlined.

The annual membership drive has now begun and parents will be able to purchase the \$1.00 PTA memberships at the meetings September 23 and October 28. They also may send the money with their children to school.

A nursery will be provided for pre-school children and refreshments will be served by the Elk Plain Executive Board. All parents and residents of the Elk Plain area are encouraged to come.

Dr. Siemens also announced that the meeting of the Bethel Booster Club this Monday, September 22, will be concerned with local taxes. The Boosters hope that all citizens of the Bethel District take the opportunity to attend. The meeting begins at 8:00 p.m. in the Junior High School.

### Elmhurst PTA Meets

Elmhurst PTA will meet Tuesday, September 23rd, at 8:00 p.m. in the multipurpose room of the school.

Mr. Leo V. Gaume, Principal, will conduct the introduction of teachers and staff.

A board meeting will precede in the library at 7:00 p.m.

## SCHOOL NEWS

### Music Interest Increases At Bethel

While the Bethel School District today has approximately twice the enrollment it had eleven years ago, Mr. Glen Hull, director of Music, announces an even greater participation in music groups. "We have an increase of nearly 400 per cent over the number involved in 1958," stated Hull. "The most extreme example of this is shown in the band program, where in the fall of 1958 there was one junior high band with 34 students. This fall band enrollment at the same school includes 184 students divided into three bands. Another comparative figure shows the high school with one band of 32 members in 1958. Today the high has two bands, a cadet band of 70 members and a select band of 65."

When asked to explain why a higher percentage of students are today involved in the music department, Hull answered, "An organization such as a band or choir has a tendency to be more popular after it has 'its feet on the ground' and pride is built in the group. I also feel that members of the community are now more conscious of the value of the arts in our culture."

Hull continued, "The Bethel administration has given the music program continual support. It is also true that the music organizations are quite active and consequently appeal to the adventuresome student. I feel that better students find the music groups to be the 'in' thing. Many of the students you find at the core of school activities are also in band or choir or both."

The Bethel District is currently in the process of introducing the Kodaly method of classroom music teaching. In-service workshops will soon begin for the primary teachers. Projected plans for the school year 1970-1971 call for the launching of a district-wide string program. "This string program will fill out our music department to that of the quality of more metropolitan areas," said Hull.

### Bethel Adult

#### School Registration

Robert Anderson, Director of Bethel Adult Education, today reminded individuals interested in continuing their education that courses are available in business, vocational training, high school graduation and general interest. "You may register for these courses at Bethel High School office any time from

7:00 p.m. to 9:00 p.m. September 22 through the 25th," stated Anderson.

A course in adult basic education is being offered again for individuals interested in obtaining the G.E.D. certificate. This course is available at no cost to the student. In past years this course has proven quite successful for individuals lacking a high school diploma.

Information concerning any of the course offerings may be obtained by calling Mr. Anderson at Bethel High School, VI 7-2144, anytime between 7:00 p.m. and 9:00 p.m., Monday through Thursday.

## SPECIAL NOTICES

### REO Office Schedule

During the week of September 22nd the Rural Employment Office will be at the following locations from 10:00 A.M. to 3:30 P.M.

September 22nd Midland L & O Second Hand Store 9823 Portland Ave.

September 23rd Ashford Drive In.

September 24th Elbe Railway Station.

September 25th McKenna Gay's "76" Lot.

September 26th Eatonville Malcom's Shoprite.

### YWCA Lecture Offered

The Young Women's Christian Association of Tacoma-Pierce County is offering a lecture on Wills, Community Property Agreements, and Estate Problems, on Monday, September 22nd at 7:30 p.m. at the YWCA, 401 Broadway, Tacoma, Wa. Here is a chance to get some of your questions answered since there will also be a question and answer time. Mr. Joseph Roller, a local attorney, will be the speaker. This special session is open to everyone in the community without charge.

## BIRTHS

Mr. and Mrs. Edward Allenbaugh, Rt. 1, Box 128A, Graham, Sept. 7, girl.

Mr. and Mrs. Joseph McAninch, Rt. 2, Box 2732, Spanaway, Sept. 9, boy.

### Lakewood General Hospital

Mr. and Mrs. Phillip R. Griesse, Rt. 1, Box 1728, Spanaway, Boy, September 5.

Mr. and Mrs. Patrick O'Brien, 1018-138th East, Tacoma, Boy, September 5.

Mr. and Mrs. Charles D. Tuvey, Foss Hall, PLU, Tacoma, Girl, Sept. 8.

Mr. and Mrs. Benny R. Bagley, 11003 So. Ainsworth, Tacoma, Boy, Sept. 9.

Mr. and Mrs. Howard E. Brown, 12015 So. Alaska, Tacoma, Boy, Sept. 9.

Mr. and Mrs. Ray L. Shropshire, 8313 John Dower Rd., Tacoma, Boy, Sept. 10.

Mr. and Mrs. John C. Phillips Jr., 3102-90th St. So., Tacoma, Boy, Sept. 11.

Mr. and Mrs. Richard A. Naubert, 155 E. 34th St., Tacoma, Boy, Sept. 11.

<b>RENT TV</b>	
<b>RENTAL MARTS, INC.</b>	
Parkland GR 5-3755 9440 Pacific Ave.	Color TV Lakewood JU 4-4100 108th & Bridgeport

Pierce County Herald and <b>The TIMES JOURNAL</b>	
Published weekly at 14620 Pacific Ave., Parkland 98444 and delivered by U.S. Mail and carrier to subscribers. Publishers: Pierce County Publishers, Inc. LE 7-0223	
News and Advertising Deadline: Tuesday Noon	
Subscriptions \$4.00 per year, \$2.50 six months, or 40¢ monthly by carrier. News stand price 15¢ copy.	
Qualified as a legal publication under Chapter 213 of the Legislature Acts of the 1941 regular session of the State of Washington.	
<b>Second Class Postage Paid at Tacoma, Wash.</b>	
Vol. 25 No. 37	September 18, 1969

## LEWIS LLEWELLYN

### Church Funds For Militants?



James Forman, black militant leader, has declared plainly—in the introduction to the "Black Manifesto"—"We are dedicated to building a socialist society inside the United States, where the total means of production and distribution are in the hands of the state."

He does not say "Communist" but says "socialist," which is what the Communists call themselves.

Forman has been demanding money from the churches—at first, \$500,000,000, but later this was raised to \$3 billion.

Should our churches finance this program?

The Episcopal Church has voted to turn over \$200,000 to the National Committee of Black Churchmen. It is understood and has been stated that the money will go through this organization to Forman's National Black Economic Development Council.

Some Episcopal leaders—both lay and clergy—have objected strongly to this decision.

#### "Time Is Short"

If there is in your mind any lingering doubt, consider this quotation from Forman, "Think in terms of total control of the U. S. Prepare ourselves to seize state power. Do not hedge, for time is short."

Is financing rebellion and revolution the work of the church?

When did Jesus advocate that His disciples undertake to raise funds for such a purpose?

Have we strayed so far from the words of the Lord that it has come to the point that we will finance our own self-destruction?

Isaiah said, to the people of his time, "The leaders of this people cause them to err—and

they that are led of them are destroyed."

But Isaiah had also another message—which is also very appropriate to us in these times:

"Put away the evil of your doings from before Mine eyes. Cease to do evil. Learn to do well. Seek judgment. Relieve the oppressed. Judge the fatherless. Plead for the widow.

"Come now and let us reason together, saith the Lord. Though your sins be as scarlet, they shall be as white as snow. Though they be red like crimson, they shall be as wool."

There is a very proper place in the program of the church for the expression of compassion and care for the poor and neglected. This should not, however, take the place of the spiritual ministry of the church, but should complement it.

#### If We Began to Pray . . .

There is no place in the scriptural program of the church for the funding of the activities of those who would violently destroy the nation in which we have freedom of religion, replacing it with a state led by those who have already threatened to destroy the churches if they do not accede to their demands.

What do you suppose would happen if God's people began now to pray that the effect of this decision be annulled and that Forman's power and influence be diminished and destroyed?

It might be interesting to see.

(Copies of this column may be obtained, free of charge, by writing to Mr. Llewellyn, in care of this newspaper, enclosing a stamped, self-addressed envelope.)

RIB-END CUT  
**PORK  
CHOPS**  
**78<sup>c</sup><sub>lb</sub>**

LEAN  
**PORK LOIN  
ROAST**  
**68<sup>c</sup><sub>lb</sub>**

GRADE "A"  
14- to 16-lb.  
**WASHINGTON HEN  
TURKEYS**  
**36<sup>c</sup><sub>lb</sub>**

FRESH  
**RED  
SNAPPER  
FILLETs**  
**48<sup>c</sup><sub>lb</sub>**

MED. SHARP  
TILLAMOOK  
**CHEDDAR CHEESE**  
**68<sup>c</sup><sub>lb</sub>**

**This Week's Low, Low Meat Prices**

CENTER-CUT PORK CHOPS .....	lb. 89¢	HI HO GROUND BEEF .....	lb. 52¢
COUNTRY SPARERIBS .....	lb. 68¢	FRYER DRUMSTICKS .....	lb. 58¢
OUR OWN PORK SAUSAGE .....	lb. 49¢	CHOPPED SIRLOIN .....	lb. 89¢
SMOKED PORK CHOPS .....	lb. \$1.19	MEXICAN BURRITOS .....	lb. 65¢
HI HO CORNED BEEF .....	lb. 98¢	YOUNG STEER LIVER .....	lb. 59¢

MILWAUKEE  
COMBINATION PACK  
**LUNCHEON MEAT**  
**48<sup>c</sup><sub>ea</sub>**

25-lb. GOLD MEDAL  
**FLOUR** \$2<sup>19</sup>

BANQUET FROZEN  
**MEAT PIES** 15<sup>c</sup><sub>ea</sub>

4-PACK M-D  
**TOILET TISSUE 3/\$1<sup>00</sup>**

2-lb. BAG, 3-MINUTE  
**POPCORN 4/\$1<sup>00</sup>**

BALLARD or PILLSBURY  
**BISCUITS** 9<sup>c</sup><sub>ea</sub>

24-oz. CRISCO OIL 45<sup>c</sup>

TABLE-TESTED, FROZEN  
**VEGETABLES** 10<sup>c</sup><sub>ea</sub>

48-Count Kotex \$1<sup>39</sup>



**LOWEST DRUG PRICES ANYWHERE**

REG. 1.50  
**LEKTRO SET** 73<sup>c</sup>

REG. 1.49  
**LYSOL SPRAY** 97<sup>c</sup>

REG. 2.00—SOMETHING ELSE  
**Home Permanent** 79<sup>c</sup>

REG. 1.39—100s  
**ANACIN** 89<sup>c</sup>

REG. 19.95 BROXODENT  
**Electric Toothbrush** \$11<sup>95</sup>

REG. 1.69 HIDDEN MAGIC  
**HAIR SPRAY** 13-oz. 99<sup>c</sup>

LADIES' NYLON  
**SCARVES** 27<sup>c</sup>

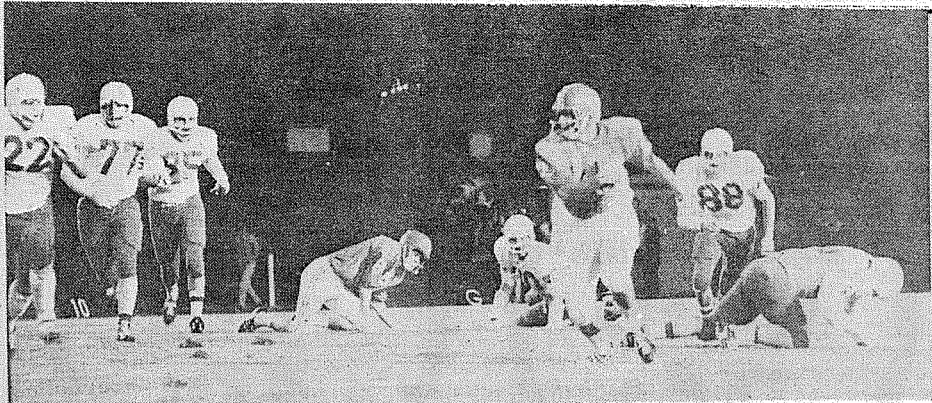
PRICES EFFECTIVE NOW THROUGH SEPT. 20th

SUNKIST  
**ORANGES**  
**8<sup>c</sup><sub>lb</sub>**

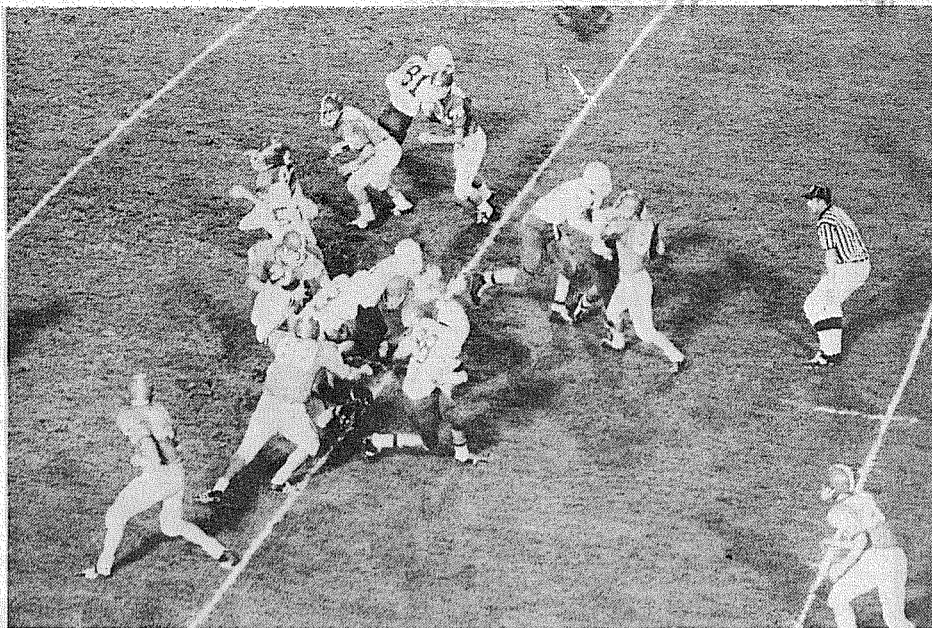
HUBBARD  
**SQUASH**  
**4<sup>c</sup><sub>lb</sub>**

VALLEY FRESH  
**CORN**  
**5<sup>c</sup><sub>ea</sub>**

VINE-RIPENED  
**TOMATOES**  
**19<sup>c</sup><sub>lb</sub>**



**TOUCHDOWN ROMP.** Cardinal Fullback Kirk Hopkins is pictured starting his 37 yard run for a Franklin Pierce score against Clover Park September 12. Pierce downed the Warriors 14-0.



**NO DAY LIGHT.** Warrior ball carrier Ross Shoemaker (23) found going tough when he tried to break through Cardinal defenders during the Franklin Pierce-Clover Park contest. About to make the tackle were Pierce defenders Jim McAllister (66), Dean Moore (71) and Kirk Hopkins (32).

### Cardinals Face Patriots In District Test

Civil war will break out in the Franklin Pierce School District Friday night when the Cardinals face the challenge of the Patriots in the first varsity-level meeting of the schools.

In their opening games, Pierce scalped the Clover Park Warriors 14-0, and Washington fell victim to an experienced Lakes eleven 0-7. Plunging fullback Kirk Hopkins and the talented toe of Mark Conrad were instrumental in the victory for Coach Jim Mancuso's Cardinals. Hopkins scampered 37 yards

for a Pierce six pointer in the first quarter, and charged through Warrior defenders for an insurance TD in the second quarter. Conversionkick after touchdown failed after the first Card tally, but Woody Harris toted the ball across following the second touchdown for a two-pointer.

The Washington Patriots didn't fare as well in their contest with the Lakes Lancers. In their first varsity competition, the Patriot eleven held the Lancers to only one touchdown and showed

the senior South Puget Sound League team some fine play execution. Quarterback Hans Woldseth completed 3 passes in 8 attempts for a total of 34 yards. The game was basically a defense struggle. Patriot Guard Tom Harmon was singled out for his outstanding job on defense.

The cross-district contest will start at 8 p.m. September 19 at the Franklin Pierce District stadium.

### Braves Stop Trojans

**By Bill Hallman**  
Consistant defensive efforts which allowed only 18 yards rushing and control of the ball for over 60 per cent of the game spelled victory for the Bethel Braves as they edged

Fife 6-0. Bethel head coach Ed Tingstad felt it was the best hitting game the Braves have played in the last four years.

Tingstad added special praise to the defensive performances of ends Steve Dawson and Skip Thiel, linebackers Chuck Bullion and Steve Bury, and middle guards James Dunham and Steve Benzing.

Offensively the team was missing the execution that is necessary to sustain a drive but still managed to gain over 200 yards. Once the execution begins to be performed properly the Braves will be a hard team to stop and surely one respected by every team in the league.

"Quarterback Skip Thiel showed fine poise and team leadership and Jody Miller continued to show why he is dangerous any time he has his hands on the ball. Chuck Bullion is improving all the time and will certainly be one of the best fullbacks in the league," commented Tingstad.

Jody Miller proved to be the leading groundgainer for the Braves as he rolled off 102 yards in 27 carries. He was followed by senior fullback Chuck Bullion who bulled his way through the middle for 68 yards in 16 carries.

Bethel stayed to the ground most of the evening gaining 217 yards but connected on three of five passes for 35 yards. The Braves ripped off

13 first downs as compared to the Trojans four.

Steve Benzing topped all Bethel defensive men with 11 tackles. He was followed by Steve Bury with eight and James Dunham with seven.

Tomorrow nights game with Enumclaw will be as big a game as any the Braves will play this year. Enumclaw is big and experienced and is expected to be as tough as any team the Braves will face this season. They are headed by an all veteran backfield which is lead by 200 pound Tom Poe. In coach Tingstad's words, "We know we will have our hands full but then so will Enumclaw."

Kickoff time for the contest to be played on Art Crate Field is 8:00 p.m.

(Advertisement)

### FREE LISTENING DEVICE

**WILL HELP YOU ENJOY YOUR FAVORITE RADIO-TV PROGRAMS**

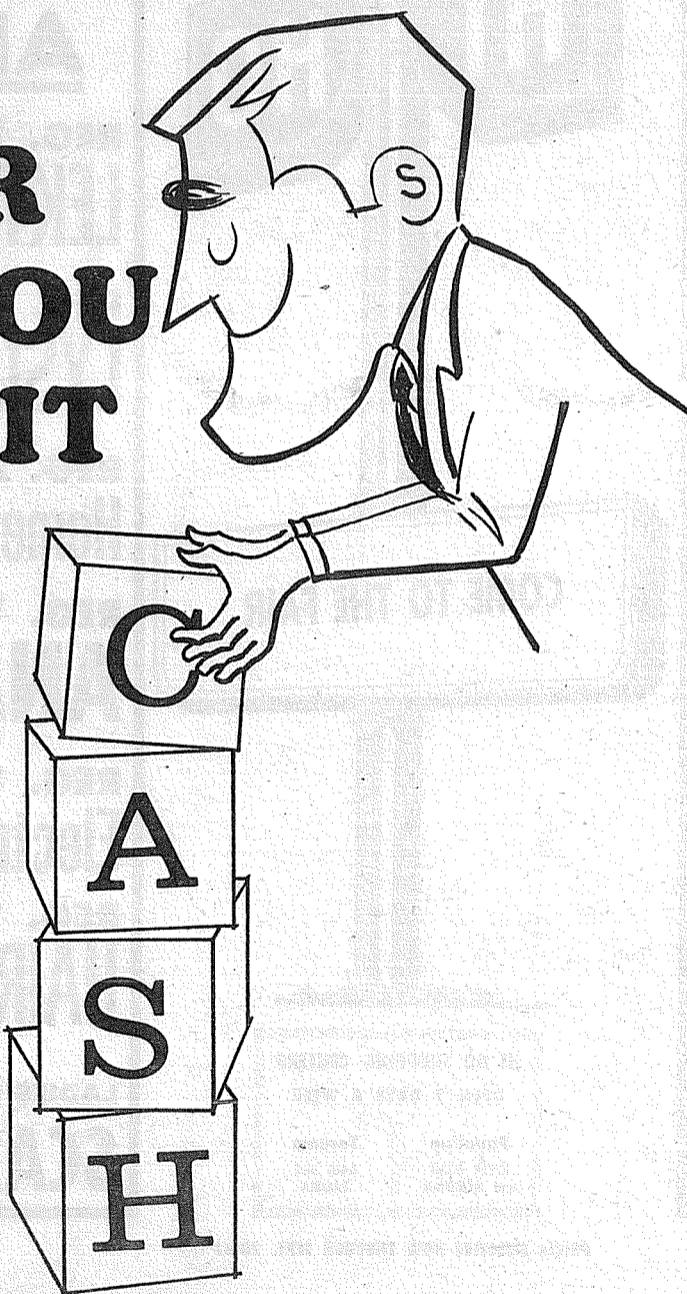
A new, easy-to-wear hearing device is now being offered free of cost to you people with faded hearing by National Information on Hearing Aids. It will help greatly to reduce the strain of listening to your radio and TV programs. This marvelous, little electronic device, while not a hearing aid, has proven to be a great blessing to those with impaired hearing, and helpful to all those around them.

Hardly a day goes by that we are not thanked for the amazing help derived from this tiny device. Do you hear sounds but fail to understand the words? Are you bothered by so-called mumblers?

Write today for your free device to National Information on Hearing Aids, 210 Fifth Ave., New York, N.Y. 10010.

You will receive this new electronic device just as soon as possible. It may help you as it has helped so many others. For people with a hearing problem only, please! One to a person.

# NO MATTER HOW YOU STACK IT



... it pays to bank here at Citizens State Bank.

Not only do we offer every type of modern banking service ... checking and savings accounts, home loans and personal loans of nearly every variety, bank-by-mail, money orders and safe deposit boxes to name a few. ... but we've been providing these services to our friends and neighbors in the Puyallup area now for over 70 years.

Ask any of the thousands of happy Citizens customers, they'll tell you "no matter how you stack it" it pays to bank at Citizens.

### KEEP ON TOP OF THE NEWS WITH CITIZENS:

7:55 AM NEWS REPORT

3:30 P.M. CAPITOL REPORT

KDFL



1560



## Citizens STATE BANK

MEMBER FEDERAL DEPOSIT INSURANCE CORPORATION



★ MAIN OFFICE - PUYALLUP

★ SUMNER

★ SUMMIT VIEW

★ EDGEWOOD - MILTON

★ WILLOWS

### INSURANCE

**Military - Home - Business**

# LE 7-4904

Auto Fire Life Bonds

**IRENE CLEMENS**

Agency - Parkland  
10329 Pacific Ave.

# the Second Forty

by Margaret Brookfield

A FORUM ABOUT MATURE WOMEN

### Lonely Widower

Dear Miss Brookfield:

I am a lonely widower. My wife and I had a good life together. Our marriage was really blessed. I am rearing three children. I own my house and keep it with the aid of the children. I cook, wash and clean. I do not smoke, drink or gamble. The church I attend is small and I do not meet eligible women. Can you put me in touch with a woman who is interested in marriage? I enjoy sports and traveling. I know I could never find a woman to take the place of my wife but I believe I could learn to love another woman just as much.

K.E., Vale, Ore.

Dear K.E.:

The country is full of eligible women but we cannot put you in touch with them. We do have a few suggestions, however. Since you have found spiritual fulfillment through your church, talk to your pastor about the possibility of getting involved in church activities. Also, contact the Oregon State Baptist Convention — or ask your pastor about it — to explore the church-oriented, social activities in larger communities that you can join. Good luck!

### Eye Problem

Dear Miss Brookfield:

My mother is a mature woman of 51. She looks great for her age and prides herself on her youthful appearance. For some years now she has needed eyeglasses but she refuses to admit it, let alone discuss it. She annoys my father by borrowing his glasses to read. Now, a few of her friends have complained because she passes them by on the street. They think she is slighting them. I can't convince them that she probably didn't see them. What do you suggest?

M.M., Boston, Mass.

Dear M.M.:

If you can convince your mother that she has failed to recognize her friends, you may be able to sell her on the idea of undergoing an eye examination. In the absence of any eye disease, chances

are that your mother is undergoing the normal, physiological eye changes of the over-40 age group. At 40 and certainly by 50, the average woman does need a pair of lenses for reading, according to Dr. Arthur Keeney, Chief of Professional Services at Wills Eye Hospital, Philadelphia, Pa. "The second and biggest change," according to Dr. Keeney, "is the fact that a little more light is needed to read by. For about every 13 years we live, we need twice as much light to see under dim circumstances. That's why grandmother fusses at some of the youngsters who seem to be reading in dim light."

If she gets her eyes examined, help her select attractive eyeglasses. Certainly there are plenty of them available. If you fail to find a pair at the first good optician's shop, try another. If, however, she still refuses to purchase even reading glasses despite the discomfort of going without them, convince her to have periodic eye examinations and give your father a second pair of reading glasses as a birthday present.

\*\*\*

### Male Menopause?

Dear Miss Brookfield:

I have heard that men go through some sort of a menopause, too. Is this true? My husband is 53 and has always been a good husband and a good father. But lately, when we visit friends he openly flirts with their daughters, who are in their late teens. What's behind this?

F.L., Kansas City.

Dear F.L.:

Your husband may be going through what some wives call the "silly stage." Some men try to recapture their youth by flirting with younger women, or buying gaudy clothes or a sports car. Others may have "one last fling." If your husband has always been a good mate and father, I wouldn't worry about his attentiveness to the daughters of friends.

As for your question, many physicians doubt the existence of a true "male menopause."

## Voter Registration In Parkland Area

Voter registration Wednesday, September 24, 7:00 to 9:00 p.m., at the following schools: Elmhurst, Collins, Harvard, and Parkland.

Voters moving from one County Precinct to another County Precinct must submit a change of address in order to be able to vote. All that is necessary is a post card or letter addressed to: County Election Dept., County-City Bldg., Tacoma. Voters will then receive their new Precinct cards in the mail.

However, voters moving from the City to the County, or County to City, must register.

## End Of Day Best Time

### To Buy Shoes

By Elizabeth Stewart  
Women's Medical News Service

Los Angeles (WMNS) — If you need new shoes, hold off buying them until the end of the day when you're footsore and weary, recommends a professor of physical medicine at the University of Southern California School of Medicine.

The method behind this heartless advice, Dr. Rene Cailliet says, is that tired feet are also relaxed, sensitive and slightly broadened by the day's wear and tear. New shoes that feel comfortable

under these conditions are almost certain to continue to feel comfortable.

However, the physician is highly skeptical about the fit of all women's shoes that are also acceptable stylistically. Describing the "good standard shoe" as having a reasonably low, broad heel, narrow waist and straight inner border, Dr. Cailliet says these seem to be limited to men's and children's shoe lines.

But men, women and children can all follow the doctor's prescription for socks: one-half inch longer than the longest toe, and changed daily.

## British Wives Meet

The British Wives Club a branch of the Transatlantic Brides and Parents association will hold their monthly social meeting at St. Johns Lutheran Church in Lakewood at 7:30 p.m. Friday Sept. 19. A Beeline clothing demonstration will be topic of the evening.

Refreshments will be served by hostesses Moira Jackson, Pauline Gardner and Liz Krahn.

# SPROUSE - REITZ SALE

### LOOK WHAT 17¢ WILL BUY AT SPROUSE-REITZ!

 <b>COSMETIC BAGS</b> Just <b>17¢</b> ea.	 <b>SPACE SAVER MUGS</b> Stack To Save Cupboard Space <b>17¢</b> ea.	 <b>ICING SET</b> For Cake & Cookie Decorating 5 Nozzles Easy To Clean Cannot Rust <b>17¢</b> ea.	 <b>TOY ASST.</b> Tea Sets — Baking Sets Baby Feeding Sets Friction Toys Your Choice <b>17¢</b> ea.
 <b>MAKE UP MIRROR</b> 5"x7" With Stand <b>17¢</b> ea.	 Reg. 39¢ <b>ADDRESS BOOK</b> <b>17¢</b> ea.	 <b>OVEN MITTS</b> <b>17¢</b> ea.	 <b>METAL DUST PAN</b> <b>17¢</b> ea.
<b>FRICTION TAPE 3/4"</b> <b>17¢</b> Roll		<b>CEREAL BOWLS</b> <b>17¢</b> ea.	
 Reg. 33¢ <b>TAPE MEASURE</b> <b>17¢</b> ea.	 <b>COFFEE MUGS</b> Choice Yellow or Green <b>17¢</b> ea.	 <b>LAUNDRY MARKING PENS</b> <b>17¢</b> ea.	 <b>HAIR BRUSH</b> <b>17¢</b> ea.
 <b>PAINT PAIL</b> <b>17¢</b> ea.	<b>BREAD BASKETS</b> <b>17¢</b> ea.	<b>JUMBO MARKER</b> <b>17¢</b> ea.	

SPROUSE

- REITZ

VARIETY STORES

8218 Pacific Avenue

NOTE BOOK

17¢

STORE HOURS

9 a.m. until 9 p.m.  
Monday thru Saturday  
10 a.m. until 7 p.m.  
Sundays

## FASHION

### Pants Looks For Fall



STYLISH — Pinwale cotton corduroy in a giant plaid turns up in fall's newest look: the bush jacket over cuffed pants. By Ardee of California, it comes in black and white or brown, mustard, and black plaid.

For Quick Cash Use Classified Ads

Dryer

MORTUARY

(134th & Pacific) PARKLAND

The Country Parson



"One of the most exciting things about tomorrow is its uncertainty."  
Copyright by Frank A. Clark

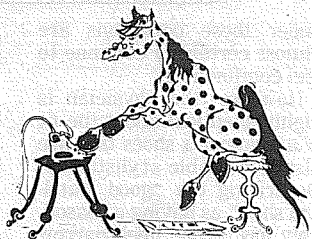
Dryer

MORTUARY

(134th & Pacific) PARKLAND

# HORSEMEN'S NEWS

## Over The Fence Rail



BY PEGGY PLUMMER

Events for this week are as follows:  
Tri-Challenge Show at the Tacoma Unit No. 1 Arena, Sept. 20th evening performances and the 21st.

Northwestern Livestock Commission Co. Horse Sale, Hermiston, Ore. Sept. 21.

Junior Rodeo, Oakville, Wn. Sept. 21.

Oakville, Wn. is holding a Junior Rodeo the 21st of Sept. beginning at 1:30 P.M. Books close at noon Sept. 21, with limited entries. The awards are; trophies to four places, buckles in each event, saddle to Jr. & Senior All-around, Jr. Division 8-13 and Sr. Division 14 to 18. Stock contractor is Jim Gibbs with the Rodeo being sponsored by the Black Hills Wranglers. Mail entries to Linda Mc Kim Rt. 1 Box 204 Oakville, Wn. or phone 273-9118.

- Events are:
- Jr. Calf Roping - \$2.00
  - Jr. Pony Riding - \$2.00
  - Jr. Roping (breakaway) - \$2.00
  - Open Barrel Racing - \$2.00
  - Sr. Bull Riding - \$2.00
  - Sr. Bareback Riding - \$4.00
  - Sr. Roping (tiedown) - \$2.00
  - Open Steer Undercorating - \$2.00

### \$1,000 Halter Futurity For Foals of 1969

Sponsored by the Washington Quarter Horse Association (Tacoma, Washington) (not to be confused with PNWQHA Futurity - Woodinville, Washington)

\$500 Guaranteed Purse for each division - Colts of 1969 \* Fillies of 1969.

#### RULES OF THE WQHA YEARLING HALTER FUTURITY

1. The 1970 Halter Futurity will be held at the Annual W.Q.H.A. Show in April 1970, to be held at Tacoma Unit number 1 Sports Arena in Spanaway, Wash.

2. This futurity is open to foals of 1969. Non-members interested in entering this futurity may do so by joining the WQHA in 1970 with the payment of \$5.00 in nomination fee (if not previously a member) and the payment of \$5.00 in annual dues, to equal \$10.00, and following the nomination fee schedule. Foals nominated must be registered in either the numbered Stud Book or the Appendix of the American Quarter Horse Assoc. or must be eligible to be registered. An individual may nominate more than one entry with proper payment of fees for each foal.

#### 3. NOMINATION FEE SCHEDULE:

- Any Before or on November 1, 1969 \$7.50
- On or before January 1, 1970 7.50
- Plus 1970 WQHA annual dues 10.00 (including \$5.00 initiation fee)
- On or before March 1, 1970 10.00
- On or before April 1, 1970 12.50

### HARDWARE FENCING

South End Hardware  
S.185th & Pac. Spanaway

### 9 Animals For Sale

3 YR. OLD Black Mule. 3 yr. white mule broke to drive. Car and harness. Hand-made leather saddle bag. TH 5-0390. (N)

## "Horsemen's Market Place"

### Classified Directory

Board - Trainers - Breeders  
Outfitters - Feed Dealers

### Back In Town

**BILL MAY**  
Horseshoeing  
LE 1-7768

### HORSESHOEING

**RAY JOHNSON**  
TH 5-6006

### Vet Supplies

Complete supply animal health products.  
Franklin - Farnam - Anchor at  
**ASHMORE'S**  
Spanaway Drugs  
165th & Pacific Ave. LE 7-5993

### Outfitters

**The Bunkhouse**  
COMPLETE LINE OF TACK & WESTERN APPAREL  
LE 7-5510  
12605 Pacific Ave. Tacoma, Wa.

The foals may be shown at any time. The total payment of \$37.50 may be paid in full at any time before the fee schedule goes into effect, or you may pay up the entire amount early, if so wished.

4. No nominations will be accepted under any circumstances after JAN. 31, 1970. Late entries will be accepted upon payment of regular fee schedule through January 1, 1970, DOUBLED - these late entries will only be accepted until JAN. 31, 1970. If a payment is late or missed, a penalty of double payment will be added for that payment. Nomination fee payments must be postmarked no later than the date due.

5. Purses: A purse of \$500.00 is guaranteed for each division by the WQHA. Monies will be paid as follows: 1st..50 percent. 2nd.. 25 per cent, 3rd.. 15 percent, 4th.. 10 per cent. Trophy and ribbons to 8 places. Ten percent of the gross purse will be deducted for the office expenses. All monies are divided according to sex and kept thereof.

6. An entry may change ownership and retain eligibility under the new owner, provided the WQHA is so advised, WQHA dues are paid, and the new owner keeps up all payments when due.

7. Entries must show in regular halter class, yearlings, as well as futurity.

8. Nomination owners agree to be bound by the Rules of the WQHA covering this futurity. There will be no refunds for any reason. AQHA registration certificates must be submitted to the WQHA HALTER FUTURITY SECRETARY before entering the arena for judging or proof thereof. Any possible problems arising shall be decided upon by the Halter Futurity Committee.

Make Checks payable to the Washington Quarter Horse Association:

Send Entries To:  
Mrs. Sue Buck  
2631 7th Street S.E.  
Puyallup, Washington  
zip: 98371

## Tacoma Livestock Market Report



Market Report for Tacoma Sale Thursday, September 11, 1969: 753 Cattle, 24 Hogs, and 12 Sheep. Demand strong for good Holstein heifers springing with sale prices recorded of \$400 and up.

- Good Veal \$36 to \$40 cwt.
  - Best heavy bulls \$27 to \$28 cwt.
  - Medium bulls \$24 to \$26.50 cwt.
  - Heavy fat bulls \$21 and up cwt.
  - Holstein cows \$18 to \$22.70 cwt. (Many Holstein cows sold for \$21 to \$22 up.)
  - White Face cows \$16 to \$22 cwt.
  - Colored cows \$16 to \$19 cwt.
  - Shell cows \$14 to \$16 cwt.
  - Heavy Holstein Steers \$21 to \$22.70 cwt.
  - Heavy Black Face Steers up to \$23 cwt.
  - Heavy White Face Steers \$24.90 cwt.
  - Good White Face Steers (700lbs) \$27.50 cwt.
  - Holstein steers (500-600lbs) \$23.50 to \$24 cwt.
  - Good steer calves up to \$31.50 cwt.
  - Good heifer calves up to \$26.50 cwt.
  - Light stock calves \$30 to \$40 cwt.
  - Lead Angus steer (500 lbs) \$29.00 cwt.
  - Baby calves \$25 to \$50 per head.
  - Block hogs \$24.75 to \$26 cwt.
  - Feeder pigs \$25 to \$29 per head.
  - Weaner pigs \$13 to \$16 per head.
- Sheep market steady last week. Notice...A special feeder sale will be held at the yard Monday October 13. Ed and Lee Flood.

### Pierce County's Only Professional

## AMBULANCE SERVICE

Parkland Ambulance and Lakewood-Pacific  
JU 4-3344 LE 7-3322

### Agenda Published

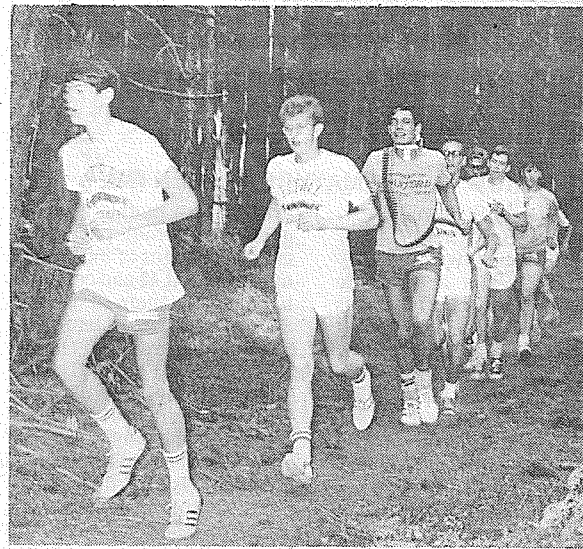
AGENDA -  
Pierce County Board of Adjustment Regular Meeting  
1:00 p.m., Monday, September 22, 1969  
Case No. V10-69  
Applicant: William White  
Request: A yard variance for a residential accessory building in an SR-9 Suburban Residential district.  
Location: A 190' x 150' rectangular tract of land located at the northeast corner of "K" Street South and 110th Street South commonly known as 1033 110th Street South in Parkland.

### An Endowed Care Cemetery



Fir Lane Memorial Park  
Dryer Fir Lane Chapel

924 East 176th Street Spanaway LE 1-5500



**JOGGING OUT OF HEAVY TIMBER** at the secret training ground near Bethel High School are Bethel Cross Country Runners, (left to right) Stan Adkins, Terry Browning, Steve Brown, Bob Nylander, Bob Francis, Ricky Rich and Steve Downy.

## BOWLING RESULTS

- PARKLAND BOWLING PARADISE BOWL**
- Rolling Bees - Jennie Rugers 522, Dorothy Clark 188.
  - The Belles - Betty Morrow 494, Dawn Faulk 167.
  - Pinettes - Loretta Smith 169-233-189 - 591; Eileen Andreason 214-181-171 - 566, Jean Daniel 235.
  - "600" Mix. - Vance Horton 502 - 196, Marie Spain 401, Charlene Kosche 172.
  - Sportsman - Rex Edman 551 - 209, Industrial - Bill Emmert 562, Bill Faulk 209.
  - Friendly Doubles - Augie Roehr 502 - 176, Chris Cope 474 - 178.
  - Premier - Buddy Elston 576, Vince Brown 230.
  - Sr. Citizens - Al Kleinsasser 506, George McCulley 217, Clara Friedrich 513 - 182.
  - Top Rollers - Jack Nell 574 - 205, Jean Taylor 484 - 189.
  - Mixers - Bob Sims 525, Roy Leber 192, Shirley Bennett 504 - 171.
  - Graham - Dick Hansch 559 - 204, Rose Eveleth 177-188-193 - 558, Rosalie Cole 215.
  - Eager Beavers - Arabelle Frerichs 467 - 183.
  - Hi-Lows - Lil Roller 504, Mabel Robinson 195.
  - Parkland Mix. - Jan Iverson 549 - 241, Bob Lovelace 549, Lois Yurisch 559 - 236.
  - 850 - Scratch - Ell Johnson 502 - 212.
  - Evergreen - Ken Deedes 531, Jim Hansen 531, Oscar Jacobson 205.
  - Classic - Joe Rausch 213-235-154 - 602, Bill Cook 247.
  - Bowlerettes - Betty Morrow 533, Rose Eveleth 211.
  - Last Niders - Don Butts 553, Burke Henderson 208, Sharon Bittner 491, Bev Henderson 244.
  - Mod Quads - Bill Emmert 552 - 213, Marion Skelton 213, Elise Emmert 528 - 193.

### Junior Cattleman

Tom E. Lindberg, Puyallup, Washington, was recently accepted as a Junior Member in the American Shorthorn Association, nation-wide registry for Shorthorn and Polled Shorthorn beef cattle, according to Sherman Berg, Junior Activities Director of the Association. By joining the Association, Tom has become a participant in promotion of the breed and a Junior Shorthorn program designed for education and participation in Junior beef events.

The American Shorthorn Association showed the largest growth this past year of any pure beef breed in the United States.

### Brave Harriers Prepare

Bethel Cross Country Coach Doug Wisness recently took time from a training session to comment on this year's runners. "The team is working very hard and will be ready for the competition in the Seamount League which begins September 23," said Wisness. "Curtis and Enumclaw will have to be rated as the strongest teams in the conference," he continued. "We will face them on our home course in our schedule of five home meets."

Bethel runners this year include returning lettermen Ricky Rich, Mike Smithlin, Terry Browning, Norm Cox, Bob Nylander and Dave Rayburn. Supporting the lettermen are rookies Al Bennest, Steve Downy, Bob Francis, Steve Brown, Tom Conant, Glen Ryder, Stan Adkins, Jim Conant, Mike Cox, Mark Riehm and Joe Price.

"Mike Smithlin and Ricky Rich are presently our top two runners," stated Wisness.

**BRAVES CROSS-COUNTRY '69 SCHEDULE**

Date	Event	WP
Sept. 20	Tac. Inv. Rlys	H
23	Penin. "Seahawks"	H
25	Tahoma "Bears"	H
30	Enmelw "Hornet"	H
Oct. 7	Tmwtr "T-Birds"	T
9	Sumner "Spartans"	T
14	Curtis "Vikings"	H
16	N. Thrstn "Rams"	T
21	Mt. Si "Wildcats"	H
23	N. Thrstn. Inv.	T

### Football Jamboree At Spanaway

The 1969 County-City Football Jamboree will be held at Sprinker Recreation Center, Spanaway, beginning at 1:00 p.m. on Sunday, September 21.

Competition will be offered in Small Fry, Rookie, Pee Wee, and Bantam divisions.

This year will mark the first time the City and County have combined leagues for the jamboree. Sprinker Center is equipped up to five contests at the same time.

## GLASS & HARDWARE

# DOOR

# 288

EA.

**8012 South Tacoma Way**

# MIRROR

# 1c

IN ROLLS 1 SQ. FT.

COMING SOON - GRAND OPENING

## RODEO

## CUSTOM SHOP

Dean & Bodie Vosburg

Complete Saddle Repair Shop  
Western Wear  
English Tack & Togs

164th & Pacific  
Spanaway, Wash.

Legals

NOTICE OF SALE OF COUNTY PROPERTY

NOTICE IS GIVEN THAT the Pierce County Treasurer will, on THURSDAY, the 9th day of OCTOBER, 1969 at the hour of 9:00 A.M., at the Tacoma Avenue Entrance to the County-City Building, Tacoma, Washington, receive bids at public auction for the sale of the following described parcels of real property:

ITEM NO. 1: That portion of the Northeast quarter of South-west quarter lying North-easterly of National Park Highway, less Bower Road. (Dia. 3) in Section 14, Township 18 North, Range 3 East. (Located on East side of Highway, 350 feet South-easterly of Entrance to County Shops at Elk Plain).

ITEM NO. 2: That portion of the North half of Northeast quarter lying Northeasterly of Old Military Road, less road in Section 19, Township 19 North, Range 3 East. (Dia. 1) (Located immediately North of the intersection of Old Military Road and McChord Field East Entrance Road).

ITEM NO. 3: Lots 1 thru 6, Block 17, Cultums Addition. (Located at the Southwest corner of South 130th Street and "Eye" Street in the Parkland area).

ITEM NO. 4: The residence only, at 9717 South Yakima Street, Tacoma, Washington. (Note: This house and property were recently purchased by the County Road Department to provide Right of Way for new street improvements. The house, being excess to County needs, is offered for sale with the provision that it be removed by the purchaser within 30 days of date of sale. House may be inspected by calling Mr. Jack Hunt, FU 3-3311, Ext. number 741.)

Minimum acceptable bids are: Item No. 1 - \$200.00 Item No. 2 - 800.00 Item No. 3 - 400.00 Item No. 4 - 1,500.00

All parcels shall be sold, at the Purchaser's option, for cash or on the following terms: A down payment equal to not less than 20 percent of the purchase price, paid within 24 hours following acceptance of the bid; the balance, together with interest at 7 per cent per annum, in five equal annual installments commencing one year after the date of sale. In the event any Purchaser chooses to purchase a parcel on terms other than cash he shall be required to execute a real estate contract. Upon payment of the purchase price in full for any parcel, it shall be conveyed to the Buyer by a Bargain and Sale Deed in Statutory form. PROVIDED FURTHER: That the Board of Pierce County Commissioners has reserved the right to reject any and all bids.

Prospective bidders are encouraged to examine the property; investigate Pierce County's title to the property; and examine the sample real estate contract available in the office of the Clerk of the Board of Pierce County Commissioners, Room 1046, County-City Building, which sample is in the form that will be executed with any purchaser who exercises an option to pay for the property in installments.

By ORDER OF THE BOARD OF COUNTY COMMISSIONERS of Pierce County, Washington, Dated SEPTEMBER 2ND, 1969.

BOARD OF COUNTY COMMISSIONERS Jack W. Sonntag, County Auditor and Clerk of the Board L. Hamre Deputy

Published in the Parkland Times Journal September 17, 1969.

Legals

STATE OF WASHINGTON ss.

County of Pierce ELMER PHILLIPS, being first duly sworn on oath, deposes and says: That he is the duly appointed personal representative in the above entitled estate; That he has read the within and foregoing return of sale of real property, knows the contents thereof and believes the same to be true.

ELMER PHILLIPS SUBSCRIBED AND SWORN TO before me this 8th day of September, 1969.

NOTARY PUBLIC in and for the State of Washington, residing at Tacoma.

Published in the Pierce County Herald and Times Journal September 11 and 18, 1969.

Legals

STATE OF WASHINGTON DEPARTMENT OF WATER RESOURCES OLYMPIA

NOTICE OF GROUND WATER RIGHT APPLICATION NO. 10366. TAKE NOTICE:

That MELVIN JUNIOR CRAIG of Tacoma, Washington on August 20, 1969 filed application for permit to withdraw public ground waters through a well situated within NE 1/4 NW 1/4 of Section 15, Township 18 N., Range 4 E. W.M., in Pierce County, in the amount of 6.5 gallons per minute, subject to existing rights continuously, each year for the purpose of domestic supply.

Any objections must be accompanied by a two dollar (\$2.00) recording fee and filed with the Department of Water Resources within thirty (30) days from September 25, 1969.

Witness my hand and official seal this 11th day of September, 1969.

GLEN H. FIEDLER Assistant Director

Division of Water Management Department of Water Resources Published in the Pierce County Herald and Times Journal Sept. 18, 25, 1969.

Legals

In the Superior Court of the State of Washington For the County of PIERCE IN PROBATE NO. 78890

Notice To Creditors IN THE MATTER OF THE ESTATE OF

ELDON WOLFER, Deceased Notice is hereby given that the undersigned has been appointed and has qualified as Executor of the estate of the above named deceased; that all persons having claims against said deceased are hereby required to serve the same, duly verified, on said Executor or his attorney of record at the address below stated, and file the same with the Clerk of said Court, together with proof of such service within four months after the date of first publication of this notice, or the same will be barred.

Date of first publication Sept. 11, 1969

s/ Weldon Wolfer Executor of said Estate

11024 Pacific Avenue, Tacoma, Wash.

PETERS & TRACY BY, s/ Phillip S. Tracy Attorney for Estate

11024 Pacific Avenue Tacoma, Washington 98444 LE 7-0264

Published in the Pierce County Herald and Times Journal Sept. 11, 18, 25, 1969.

Legals

In the Superior Court of the State of Washington For the County of Pierce

IN THE MATTER OF THE ESTATE OF EINAR JOHNSON, Deceased.

IN PROBATE No. 78905

Notice To Creditors

Notice is hereby given that the undersigned has been appointed and has qualified as Executor of the estate of the above named deceased; that all persons having claims against said deceased are hereby required to serve the same, duly verified, on said Executor or his attorney of record at the address below stated, and file the same with the Clerk of said Court, together with proof of such service within four months after the date of first publication of this notice, or the same will be barred.

Date of first publication Sept. 11, 1969.

PUGET SOUND NATIONAL BANK By: s/ William Cummings Trust Officer

Executor of said Estate

11024 Pacific Avenue Tacoma, Wash.

PETERS - TRACY BY: s/ Phillip S. Tracy Attorney for Estate

11024 Pacific Avenue LE 7-0264

Published in the Pierce County Herald and Times Journal Sept. 11, 18, 25, 1969.

Legals

Notice is hereby given that the Board of Directors of Franklin Pierce School will hold a public hearing and fixation of the final budget for the 1969-70 school year on September 30, 1969, at 8:00 p.m. at the District Administration Office. A copy of this budget will be furnished to any taxpayer who will request a copy from the Secretary of the Board. Any taxpayer may appear thereat and be heard for or against any part of such budget.

By order of the Board of Directors of Franklin Pierce School, Secretary

Thomas L. Stephens, Secretary Board of Directors

TLS:dgd

Published in the Pierce County Herald and Times Journal Sept. 18, 1969.

30 Repair Services

Sheet Metal • Furnace Repair and Service • Installations

PARKLAND FUEL OIL 12002 Pacific Ave. LE 7-0256

WATER PUMPS REPAIRED All Makes GRANGE SUPPLY LE 1-5777

Legals

In the Superior Court of the State of Washington For the County of Pierce

IN THE MATTER OF THE ESTATE OF GUS MATTES, Deceased.

IN PROBATE No. 78891

Notice To Creditors

Notice is hereby given that the undersigned has been appointed and has qualified as Executor of the estate of the above named deceased; that all persons having claims against said deceased are hereby required to serve the same, duly verified, on said Executor or his attorney of record at the address below stated, and file the same with the Clerk of said Court, together with proof of such service within four months after the date of first publication of this notice, or the same will be barred.

Date of first publication Sept. 11, 1969.

PUGET SOUND NATIONAL BANK By: s/ William Cummings Trust Officer

Executor of said Estate

11024 Pacific Avenue Tacoma, Wash.

PETERS & TRACY BY: s/ Phillip S. Tracy Attorney for Estate

11024 Pacific Avenue Tacoma, Washington LE 7-0264

Published in the Pierce County Herald and Times Journal Sept. 11, 18, 25, 1969.

Legals

ADVERTISEMENT FOR BIDS Sealed bids are invited by Franklin Pierce School District No. 402 for the purchase of 35 Language Masters.

Specifications may be obtained in the District Administration Office, 315 South 129th Street, Tacoma, Washington 98444.

Bids will be received in the District Administration Office until 2:00 p.m., Tuesday, September 30, 1969, at which time they will be opened and tabulated. These bids will be considered by the Board of Directors at their regular meeting on October 14, 1969, at 8:00 p.m. Bids received after the time fixed for opening will not be considered.

No bidder may withdraw his bid after the time set for the opening, therefore, unless the award is delayed for a period exceeding thirty days.

The District reserves the right to reject any or all bids and to waive informalities in bidding. Thomas L. Stephens Assistant Superintendent Business-Operations

Published in the Pierce County Herald and Times Journal Sept. 18, 25, 1969.

AT ARMSTRONG'S

We bought and built 22 years ago when prices were low which helps to keep our overhead down and our car prices LOW.

ARMSTRONG'S USED CARS 11009 Pacific Ave. LE 7-5524

READ USE CLASSIFIED ADS for fast results

LE 7-0223

1 Misc. For Sale

PRAM 8 ft. with oars, \$30; bowling ball 16 lb., \$6; deluxe Wonder horse, \$8; Frigidaire automatic ironer, \$20; bottle sterilizer with bottles, \$3. LE 1-2032.

WORLD BOOK - Child Craft. Special offer this month only. Save \$80. LE 1-4929, 69-222

BUFFALO DON'S

Murphy continues his Crazy Sale... Graded A/D Ext. Plywood for the same price as Shop Grade... New Lumber for the same low price as Used. Plenty of PLYWOOD, 2x4s, 2x6s, 4x4s... all Quality Products.

ROOFING below wholesale. Reg. \$4.95... now \$3.69 Reg. \$3.45... now \$2.69

From Demolition we have plenty of Lumber, Timbers, Steel Beams, Brick, Doors, Windows, Heating Equipment.

Open 7 Days a Week 8 AM-7 PM

MURPHY LUMBER & SALVAGE CO. 6401 Waller Rd., Tacoma LE 1-1160

TOP SOIL, gravel. LE 1-1124 69-1

EASY TERMS - FREE DELIVERY HOME FURNITURE 9324 So. Tacoma Way OPEN 10 to 9 DAILY

REMOVE excess body fluid with FLUIDEX tablets, only \$1.49 at Johnson's Drug 69-63

CHEST'S FLEA MARKET 11110 Pacific Ave. Open 10 a.m. - 7 p.m. 7 Days a Week

2 Autos For Sale

GOOD SELECTION USED CARS - TRUCKS GR 4-9294 LARRY ATTWOOD 8228 Pacific Ave.

'56 CLASSIC T-BIRD. Just overhauled. New paint. Excellent tires. Both hard and soft tops. Skirts. A real cream puff. \$1,795 cash. Only trade considered would be a small Econovan or truck of like type. See in front of Times Journal building, 14620 Pacific Avenue days. Or phone LE 7-0223 days or VI 7-7364 evenings.

VW DUNEBUGGY. \$1095 or best offer. GR 2-0846. 69-224

GOOD SERVICEABLE V-8 Ford station wagon, clean. \$325. LE 1-3939.

All Types Automotive Repair ART'S & DAVES AUTOMOTIVE VI 7-2966 20015 Mtn Highway Spanaway

NEW - MORE POWERFUL the 1969's ARE HERE VOLKSWAGEN 27 MAJOR CHANGES COME IN Tom Carstens AUTOHAUS 7030 So. Tacoma Way GR 4-0666 TACOMA DEALER SINCE 1955.

12 Real Estate For Sale

MOBILE HOME OWNERS

Would you like your very own private site? Reasonable contract terms on any of the following.

- 1. Double lot, near 146th & Canyon Rd. Water share included. (E16329) ... \$5,500.
2. 96th & Fruitland. Extra land for duplex. (E16272) ... \$6,000.
3. 114th & Steele. Watch the airplanes. (E17396) ... \$3,000.
4. Bethel Dist. Over 2 acres wooded. (A16976) ... \$4,750.
5. Near Johnson's Corner, 80' frontage on South Creek. (E17133-4) ... \$3,950.
6. 20 acres on Mt. Highway near Silver Lake. Trees & pasture. (A12868) ... \$19,500.

For information call Duane Cheetham, LE 1-1204 eves. or LE 7-8638 days. Suburban Realty Inc. 11302 Pacific Ave.

18 Real Estate Wanted

Listings Wanted Buying or Selling Real Estate Service Call Devereaux Realty 12152 Pacific Ave. LE 7-8658

19 For Rent Or Lease

NICE FURNISHED house near Bethel High. Double carport. VI 7-2503. 69-220

Let "SUBUR-MAN" serve YOUR RENTALS Selective Placement Regular Inspections Rental Management D. GENE BURNS Rental Mgr. Residence LO 4-6598 SUBURBAN REALTY 11302 Pacific Ave. LE 7-8638

27 Misc. Services

Attention MOBILE HOMES We install poles, power service, complete to trailer. Emergency Service Day or Night. LE 1-0593 E&S Electric 13621 Pacific

EXPERT alterations, men's and women's. Fast service and reasonable. LE 1-3506.

MILLIES STYLETTE BEAUTY SHOP Latest in Haircuts \$2.50 Open Mon. thru Sat. LE 7-8042

23 Help Wanted

PARTTIME BABYSITTER. Close to Parkland grade school. LE 1-0575. 223

36 Personals

Psychic Reader Can help through marriage, business and help. Can answer any question. 491-5040. 3305 Pac. Ave. Olympia 69-218.

38 Instruction

PIANO, LESSONS, beginning to advanced children and adults, home or studio. LE 1-3246 or SK 2-7695 68-179.

MAXINE CERAMIC STUDIO Sign now for daily evening classes in Summit area. CALL LE 1-1463

For Quick Cash Use Classified Ads

CHURCH DIRECTORY ATTEND OUR WORSHIP SERVICES

PARKWAY Presbyterian Church Sunday School 9:30 a.m. Worship Service 10:45 a.m. Nursery Service Provided 714-138th East LE 1-4234 Rev. Wesley J. Drummond

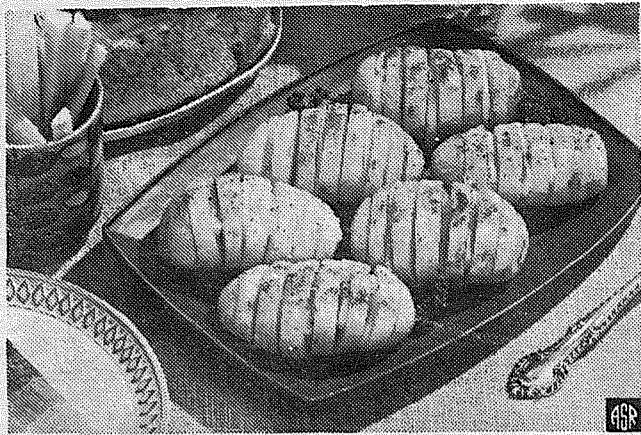
Spanaway Assembly of God 166th & Pacific Ave. Sunday School 9:45 a.m. Morning Worship 11 a.m. Evening Evangelistic 7 p.m. Family Night Wed. 7:30 p.m. LE 1-1412

Spanaway Lutheran Church 8:30 & 11 a.m. Worship Service 9:45 a.m. Sunday School Grades 1 & Up 11 a.m. Sunday School 3, 4 and 5 Year Olds John L. Briehl, Pastor 160th & A St. LE 7-5978.

Parkland Lutheran Church & Christian Day School Worship ... 10:30 a.m. Sunday School-Bible Study 9:15 a.m. All Ages H.A. Theisto, pastor LE 7-5492 LE 1-0777

Trinity Lutheran Church Worship Services 9 a.m. & 11 a.m. Sunday School 10 a.m. Wednesday School 4-5 (through Grade 9) Erling C. Thompson Robert Drowes PASTORS 12115 So. Park LE 7-0201

Spanaway United Methodist Church School ... 9:30 a.m. Worship Service ... 11:00 a.m. Nursery During Service R. Gordon Harrison, Pastor 163 & Pacific LE 7-5134



Counting calories? Then take a look at these golden Potato Fans. An ideal mate for leg of lamb or roast beef, each serving adds only 125 calories to the menu.

To create the fanned effect, the potatoes are partially slashed and filled with onion slices. Then a coating of low-calorie salad dressing and bread crumbs is added, turning to a golden crispness during baking.

Include potatoes often in your diet menu. They're a bargain in nutrition and a saving in calories.

**Calorie-Trimmed Potato Fans**

6 small potatoes (3 1/2 oz. each) 1/2 cup low-calorie salad dressing, Italian or French  
2 small onions, cut into thin slices 2 tablespoons dry bread crumbs, seasoned

Peel potatoes. Make vertical slashes 1/4 inch apart to within 1/4 inch of bottom of each potato. Insert onion slices in slashes. Coat well with dressing and sprinkle with crumbs. Bake, covered, at 425 degrees for 45 minutes. Uncover and bake 10 to 15 minutes longer. Baste frequently with dressing. Makes 6 servings. Approximately 125 calories per serving.

**Legals**

IN THE SUPERIOR COURT OF THE STATE OF WASHINGTON IN AND FOR THE COUNTY OF PIERCE NO. 78474

**RETURN OF SALE OF REAL PROPERTY**

In the Matter of the Estate of THELMA IRENE JOHNSON, Deceased.

COMES NOW the personal representative in the above referred estate, and respectfully shows the Court as follows:

That in compliance with the order of the Court heretofore entered, the subject hereinafter described real property was listed for sale with Tacoma Realty, Inc., a real estate broker licensed to do business in Pierce County. Several offers in the form of earnest money were received, the personal representative having examined and rejected those offers not complying with statute. The highest and best offer was made by Michael J. and Betty R. Murphy, husband and wife, offering the sum of \$8,675.00 as cash, less the amount of the outstanding mortgage, which the purchasers agree to assume and pay according to its terms and conditions. That said offer is 100% of the appraised value of the estate. The property is described as follows:

Lots 20 and 21, Block 10, CASCADE PARK ADDITION TC TACOMA;

Said bid was submitted through Tacoma Realty, who will be entitled to a commission of 6% upon closing sale.

The personal representative accepted said bid, sold the property subject to the approval of the Court, and recommends that this report be approved and that the sale be confirmed on or after September 22, 1969, and that the Court direct the execution of the necessary instruments of conveyance to consummate the sale.

R. Ted Bottiger  
Attorney for Estate  
8849 Pacific Ave.  
Tacoma, Wn. 98444

**Legals**

IN THE SUPERIOR COURT OF THE STATE OF WASHINGTON IN AND FOR THE COUNTY OF PIERCE NO. 78826

**NOTICE OF HEARING ON PETITION FOR AWARD**

In the Matter of the Estate of BURLIS CLEM WALKER, Deceased.

NOTICE IS HEREBY GIVEN that a Petition for an Award in Lieu of Homestead has been filed with the Clerk of this Court, and that the petition will be heard on the 2nd day of October, 1969, at 9:30 o'clock, A.M., in the Courtroom of the Presiding Judge of this Court.

Arnie B. Walker,  
Personal Representative

HEMMEN, COHOE & BOTTIGER  
By: R. Ted Bottiger  
Attorneys for Estate  
8849 Pacific Ave.  
Tacoma, Wn. 98444

Published in the Pierce County Herald and Times Journal September 11, and 18, 1969.

**Legals**

BETHEL SCHOOL DISTRICT NO. 403  
Route 2, Box 2442  
Spanaway, Washington 98387  
VI 7-2233

Notice is hereby given that the Bethel Board of Directors, Pierce County School District No. 403, Spanaway, Washington, shall conduct their regular Board meeting on the first and third Tuesdays of each month; as approved by Board action on the third day of September, 1969.

The next regular meeting is to be held on Tuesday, the sixteenth day of September, 1969, at the hour of 8:00 p.m. in the Board Room of the Administration Building.

Published in the Parkland Times Journal September 17, 1969.

Open 7 Days A Week  
Sundays 9-9  
Weekdays 9-9

**BARGAIN BASKET**

16618  
Pacific Ave. S. Spanaway  
LE 7-3371

No Sales To Dealers

WE RESERVE THE RIGHT TO LIMIT QUANTITIES

We Carry A Complete Line Of Sacked Feeds - Presto Logs

HELP YOUR BUDGET WITH THESE SAVINGS

We Are Locally Owned & Operated

PRICES EFFECTIVE  
Sept. 17-18-19  
Thur.-Fri.-Sat.

HI C FLAVORED JUICES

3 / \$1  
46 OZ. TINS

MJB COFFEE

3 Lb. Tin . . . \$1.89  
2 Lb. Tin - \$1.39 ONE POUND 73c  
10 Oz. Instant \$1.29

IVORY SOAP

Reg. 35c Value

4 / 29c  
BARS

FLUFFO

3 LB. TIN 65c

HOLIDAY MARGARINE

5 / \$1  
Lbs.

NALLEY SANDWICH SPREAD

59c  
Qt.

CAMPBELL SOUP

CHICKEN NOODLE AND/OR MUSHROOM  
6 / \$1  
TINS

ARMOUR POTTED MEATS

2 FOR 45c  
5 1/2 Oz. Tins

CAMPBELL SOUP

TOMATO  
8 / \$1  
CANS

Block Ice

PRODUCE

Party Ice

RED GRAPES

19c  
Lb.

TOMATOES

25c  
Lb.

ORANGES

5 Lb. Bag 69c

GREEN PEPPERS

9c  
Ea.

MEAT DEPARTMENT SPECIALS

LEAN GROUND BEEF

59c  
Lb.

CUT-UP STEWING CHICKEN

29c  
Lb.

FAMILY PACK PORK CHOPS

98c  
Lb.

BEEF

LIVER 45c  
Lb.

SEASONING

BACON 3 / \$1.39  
Lbs.

PORK LINK

SAUSAGE 89c  
Lb.

**Angelo's PIZZA HOUSE**

ORDERS TO GO

Featuring top sirloin and American dishes, spaghetti, rigatoni, meat balls, sausage, ravioli, beer and wine.

Choice of Pizzas  
cheese & tomato  
anchovie  
mushroom  
Italian sausage  
pepperoni  
tuna

bacon  
peppers  
olive  
hamburgers  
ham  
salami  
onion



LE 7-7233  
14102 PACIFIC AVE.  
PARKLAND

CALL AHEAD, IT'S PIPING HOT ALL THE WAY HOME



PICK UP A BOX, PAIL, BUCKET OR A BARREL