

# Bethel Issue Goes To Absentees

See Page 2

Pierce County Herald and

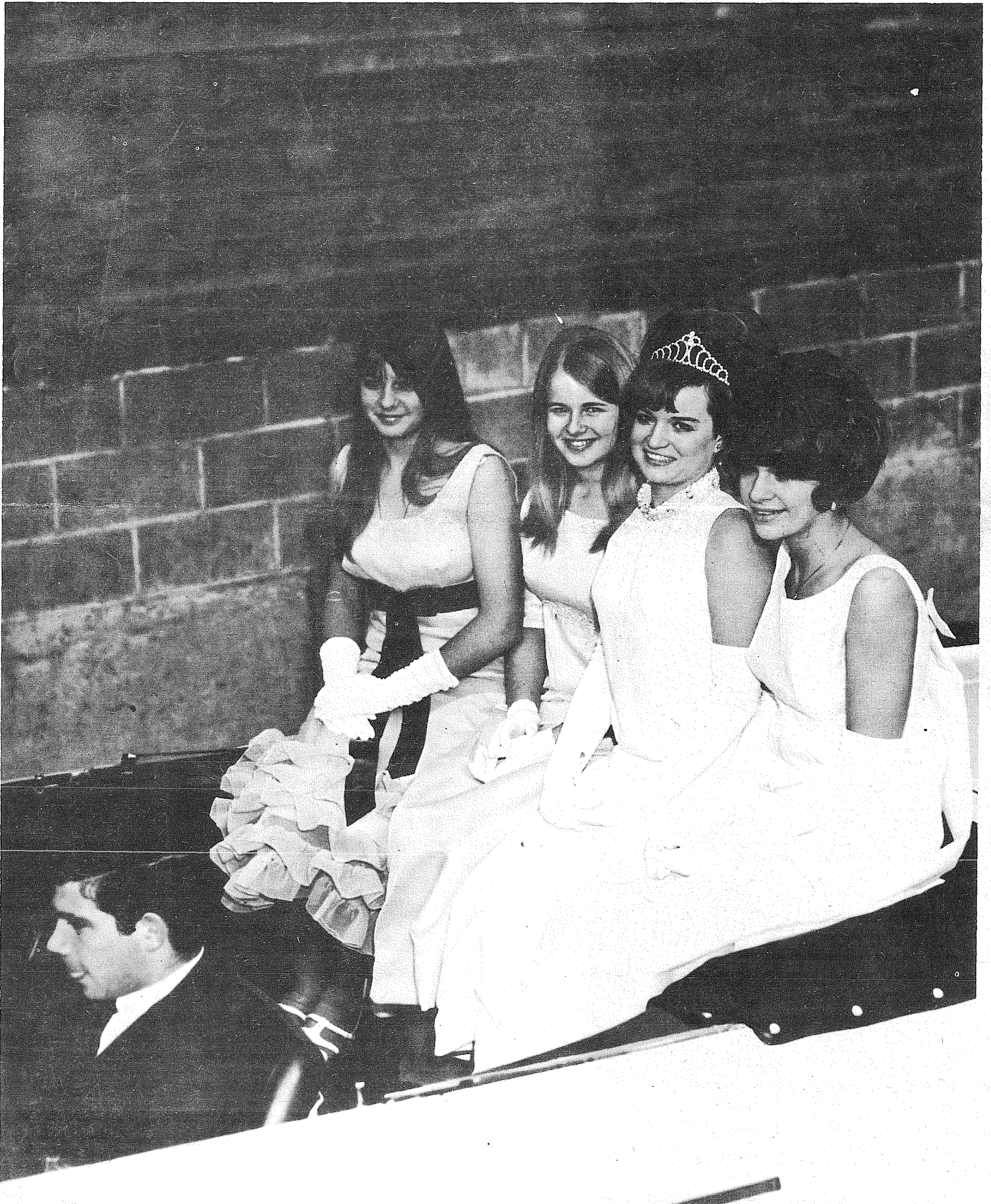
## The TIMES JOURNAL

Vol. 24 No. 45

November 7, 1968

Price Per  
Single Copy

**10¢**



**PIGSKIN POW-WOW** — Chosen as royalty for Bethel's homecoming ceremonies are, from left, Jeanine Larson, freshman attendant; Vicky Lindbo, junior attendant; Queen Cherry Nylander, senior; and Donna Haley, sophomore attendant. The 15th annual Homecoming activities will be held at Bethel

High School at 7:30 p.m. November 7th, in the gymnasium. The annual event consists of skits from the individual classes and clubs. Each skit will be centered around the Mt. Si Wildcats-Bethel Braves game on Friday, kick-off time for the game is 8 p.m.

# Bethel's Proposition II Running Short On Approval

## BETHEL RETURNS

Proposition I Maintenance and Operation		Proposition II Building Fund Levy		Proposition III Sale of Bond	
Yes	2,283	Yes	2,154	Yes	2,213
No	1,361	No	1,443	No	1,394
Total	3,644	Total	3,597	Total	3,607
Percentage Approval	62.65	Percentage Approval	59.88	Percentage Approval	61.35

Proposition II, the Building Fund Levy, so far has not received the necessary 60 per cent approval, according to Dr. Fred M. Gramann, superintendent of the Bethel School District. Propositions I and III passed with 62.65 and 61.35 per cent respectively. It is still hoped by the district that the absentee ballots will give them the needed affirmative vote.

If the absentee ballots do not bring the percentage above the State-required 60 per cent, then the district must re-submit the issue to the voters in January.

The 1969-70 building fund levy was for 10 mills, a drop of 3 mills from last year. Voter approval on this issue, along with the sale of bonds in Proposition Three would make the district eligible as an "Emergency district," which would mean a state matching ratio of approximately 82 per cent, but both issues had to receive approval to get the much needed extra monies from the state.

It will be a week before the absentee vote is counted and the election returns made official. "If there are 100 absentee voters, and 66 of them vote yes on Proposition II," stated Dr. Fred M. Gramann, superintendent of the district, "then the issue will carry."

If a January election is needed the district will have to secure forty per cent of the voters of Tuesday's general election to turn out and then secure 60 per cent of

that vote, which, according to Dr. Gramann may prove very difficult because of the tremendous turnout this time.

The basic project for which monies from Proposition Two would be used is an addition to the high school. Upon completion of the addition the school would house 1,350 students, which is the 1970-71 projection for the high school enrollment. The new buildings will have to be built in the 1969-70 school year to be ready in time.

Although it is difficult to predict the exact cost of the high school addition, the district was planning on using part of the building funds for the preliminary work on other projects.

The other projects include: — Equipping the classrooms being built; an addition to the Roy Elementary School of probably six classrooms; a four-classroom addition to the Kapowsin Elementary School; another elementary school in the Crescent Park Addition area; and acquiring additional sites.

Proposition I, the maintenance and operation levy received 62.65 per cent approval. The M and O levy was raised from last year because the assessed valuation per student in the district was dropped. The 25 mill levy will raise \$390,000.00 for the district.

Proposition III is approval for sale of bonds for \$300,000 during the next building program.



**GAS STATION FIRE.** A car maneuvering into position along the gas pumps at Brookdale Service, 13106 Pacific Ave., was reported to have sheared off a pump resulting in a spectacular fire last week. Parkland Fire Chief Ray Hixon used a 5 pound extinguisher to knock down the flames before firefighters doused the smouldering wiring. Damage was estimated at \$300.



**CARNIVAL** — The Andrew Christensen School PTA, 102nd and Barnes Lane, will sponsor a carnival from 6 to 9 p.m. November 9th at the school. Everyone is invited to join Mrs. Wusterbarth, above, president of the PTA for the games and booths. Two stuffed animals will be raffled.

FP RETURNS Proposition I	
Yes	4,964
No	2,018
Total	7,149
Percentage Approval	69.44
Proposition II	
Yes	4,651
No	2,422
Total	7,073
Percentage Approval	65.76

## School Board

By E. W. (Doc) Webster  
Chairman  
**Bethel School Board**  
November 4th, 1968 — This meeting ended at 11:30 p.m. We had one member absent. Dr. Gramann attended the Roy PTA meeting and was a little late to the board meeting, but Virgil Baker, assistant superintendent, reported on the building program and site selection. The contractors for the Chester Thompson Elementary School are asking for a 30-day extension. This means we will not be able to occupy the new school until approximately December 15th. There was a discussion on the problem of communications between the teacher

## PC Library Slates Meet

Pierce County Library Board of Trustees will meet November 13 at 1:30 p.m. at the library headquarters, 201 St. Helens Avenue. Mr. Carl Lindgren will conduct the meeting. The meeting is open to the public. \*\*\* The Midland and Parkland Libraries will be closed Monday, November 11, (Veteran's Day).

## WWI Veterans Slate Pot Luck Luncheon

Parkland Barracks and Auxiliary 2131 World War I Veterans will meet at noon November 12, for a potluck lunch at the James Sales Grange Hall, 113th and Park Avenue. The 1:30 p.m. meeting will include election of officers. Those attending are asked to bring their own table service.

## Am. Legion Auxiliary Sets Meet

American Legion, Auxiliary of Post 228, will meet at 8 p.m. November 11 (Veterans' Day), at Sunshine Hall. The post will not meet, but the auxiliary will be because it will be the only business meeting in November.

and the home. It seems there is a lack of reports on the student that is not doing too well. I am sure this problem can be worked out. Our goal should be the welfare of the student, so it is paramount that we create a good line of communication. As this is being written, we have no results on the school election, but to those that support our schools I say thank you. Our next meeting will be the 3rd Monday of this month. Remember you are always welcome to attend, 8 p.m. at the Bethel Administration Building.

## Veterans Day At F.P. Rummage Sale Slated

Our Lady Queen of Heaven will host a rummage sale from 9 a.m. to 5 p.m. and 7 p.m. to 9:30 p.m. November 12th, 13th and 14th in the Parish Hall at 146th and Pacific Avenue. Franklin Pierce High School speech classes will present the school's 12th Annual Veteran's Day program Friday as a part of the Voices of Democracy program sponsored by the National Association of Broadcasters and the Veterans of Foreign Wars. Using the theme "This Land is Your Land, Freedoms Challenged 1968", three student speakers will highlight the program. The Cardinal Band and Choir will perform. Student speakers include Jim Fleming, Cheryl Hansler, and Steve Lacey. Savings bonds will be awarded speech winners by local VFW posts.



**CONCERTINA** — Chin lacerations and a possible fractured jaw were injuries sustained by Nancy J. Miller, 21, of McChord AFB following a three-car rear-end accident. The accident occurred at 1:40 p.m. Sunday when Louis M. Wolf, 47, of 1101 So. 124th, was stopped on Pacific Avenue waiting to make a left turn onto 170th Street. A second car, driven by Hal J. Madsen, 19, of T. 1, Box 1997, Spanaway, was stopped behind Wolf's vehicle when he was struck from the rear by Miss Miller's car, pushing him into Wolf's car. \$50 damage was done to Wolf's car; \$500 to Madsen's, and \$1,000 to Miss Miller's (above).

## Altrusa Club To Sponsor Holiday Moods

"Holiday Moods," a display of Thanksgiving and Christmas floral decorations, will be sponsored by the Parkland Altrusa Club at 8 p.m. Tuesday, November 12th, at Barlo's Restaurant, 123rd and Pacific. This will be a special display of many holiday suggestions from Stella's Flower Shop. Coffee and cookies will be served by Altrusa members. Donation will be one dollar, all donations will aid the Altrusa Club with their civic projects. Tickets will be available at the door.

Pierce County Herald and  
**The TIMES JOURNAL**  
Published weekly at 14620 Pacific Ave., Parkland 98444 and delivered by U.S. Mail and carrier to subscribers. Publishers: Pierce County Publishers, Inc. Managing Editor . . . . . Em Matson. News Editor . . . . . Sandy Ingram Sports Editor . . . . . Bob Ingram  
Subscriptions \$3.50 per year, \$1.80 six months, or 30c monthly by carrier. News stand price 10c copy. Qualified as a legal publication under Chapter 213 of the Legislature Acts of the 1941 regular session of the State of Washington  
Second Class Postage Paid at Tacoma, Wash.  
Vol. 24 No. 45 November 7, 1968

**HEAD - HART - VOLKL**  
Ski Time is Here — Better Get Ready  
OPEN EVENINGS TIL 9 P.M.  
PARKLAND Sports CENTER  
11122 PACIFIC AVENUE TACOMA, WASHINGTON PHONE LE 7-5677

**GRADE "A"  
TURKEY  
HINDQUARTERS  
25<sup>c</sup>  
lb.**

**U.S.D.A. CHOICE  
Rump  
ROAST 87<sup>c</sup>  
lb.**

**"CHOICE" TENDER  
SIRLOIN TIP ROAST ..... lb. 1<sup>09</sup>  
LEAN GROUND ROUND ..... lb. 69<sup>c</sup>  
ARMOUR'S PAN-SIZE BACON ..... 12-oz. Pkg. 55<sup>c</sup>  
FULL CUT, U.S.D.A. "CHOICE"  
**ROUND STEAK 79<sup>c</sup>  
lb.**  
BAR-S CANNED PICNICS 3-lb. TIN ..... lb. 69<sup>c</sup>  
FRESH MEATY HAM SHANKS ..... lb. 27<sup>c</sup>**

**1/2 GAL.  
PUREX  
29<sup>c</sup>**

**ROSE-DALE CANNED GOODS SALE**  
CUT GREEN BEANS  
CREAM STYLE CORN  
WHOLE KERNEL CORN  
GARDEN PEAS  
TOMATOES  
NO. 303 TINS  
**7/1<sup>00</sup>**

**LARGE "AA"  
PUYALLUP  
EGGS  
39<sup>c</sup>  
DCZ.**



**NEW CROP UNBLEACHED OREGON  
WALNUTS 39<sup>c</sup>  
lb.**

**HI HO SHOPPING CENTER  
OPEN  
7 DAYS A WEEK 8 A.M. - 11 P.M.  
*Puyallup* | *Tacoma*  
RIVER ROAD & MERIDIAN | 64th & YAKIMA**

PRICES EFFECTIVE NOW through NOV. 9th

**AVOCADOS  
10<sup>c</sup>  
ea.**

**NEW CROP  
TEXAS  
GRAPEFRUIT  
10/\$1**

**FANCY  
CALIFORNIA  
CELERY  
10<sup>c</sup>  
lb.**

**LOWEST DRUG PRICES  
ANYWHERE**

REG. 2.94 **ONE-A-DAY VITAMINS** ..... 1<sup>39</sup>  
REG. 1.19 **"STYLE" HAIR SPRAY** ..... 63<sup>c</sup>  
REG. 1.05 **COLGATE DENTAL CREAM WITH NEW M.F.P.** ..... 67<sup>c</sup>  
REG. 99c **COLGATE BREATH SPRAY** ..... 49<sup>c</sup>

THE "GOOD TASTE" YOU WON'T FORGET

**CHOCOLATE  
GERMAN  
CAKE  
1<sup>39</sup>  
CINNAMON  
ROLLS  
6/29<sup>c</sup>**

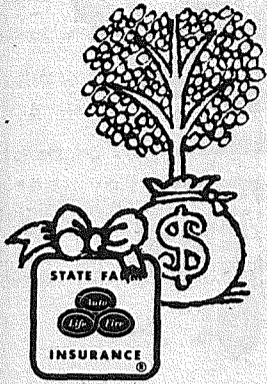
**GIANT 46-oz. STALEY'S SYRUP 59<sup>c</sup>  
REYNOLDS HOUSEHOLD ALUMINUM FOIL ..... 4/1<sup>00</sup>  
4-PACK WALDORF TOILET TISSUE ..... 29<sup>c</sup>**

**1/2 GALLON  
HI HO  
ICE CREAM  
59<sup>c</sup>**

**Full Time Performers**

Classified ads work for you around the clock. Place your ad by calling an experienced ad writer today.

Pierce County's Only Professional  
**AMBULANCE SERVICE**  
Parkland Ambulance and Lakewood-Pacific  
JU 4-3344 LE 7-3322



**The present your son wants least...**

He'd rather have a football, or a new bike. He'd never ask for insurance. But it's something he really needs. Just like a money tree, State Farm's Junior Protector Policy can grow with your son to give him cash for college... for emergencies. Or, it can keep growing when he has a son, too. And, guaranteed insurability allows him to expand coverage in the future. Call me today.



**Al Langseth**

9920 Pacific  
LE 1-1800



STATE FARM LIFE INSURANCE COMPANY  
Home Office: Bloomington, Illinois

P 6705



FRANKLIN PIERCE FFA Chapter received a Sears Roebuck Foundation grant last week to finance a rotation greenhouse for school programs. Pictured at the presentation were (l-r): Donald Kramer F.P. principal, Robert Haglund secondary ed, Harry Burningham Sears Roebuck, Steve Slavens FFA president, Dwight Howe FFA, and Eugene W. Teesdale, teacher.

**Family Concert Scheduled At PLU**

A family concert, presented by the Pacific Lutheran University Concert Band and sponsored by the Parkland Orthopedic Guild, will be presented Sunday, Nov. 17, in Eastvold Chapel at 2:30 p.m.

All proceeds from the concert will be used for the maintenance and operation of Mary Bridge Children's Hospital.

The band, under the direction of Prof. Gordon O. Gilbertson, and the Parkland Orthopedic Guild are presenting the program for the fifth consecutive year. The presentation is intended as "a contribution to the cultural life of the community," according to Mrs. Theodore

Apa, president of the Guild.

Professor Gilbertson has planned a program which will appeal to the whole family. There will be marches, novelty numbers and classics. Gilbertson will explain each number to the audience to give a background and better understanding of the program.

The program will open with two marches, "Liberty Bell" by Sousa and "On The

number, "Twinkle, Twinkle Little Star" — Picket, will be followed by a flute solo played by Karen Vance, "Concertino Opus 17" — Chaminade. The "Jamaican Folk Suite" — Walters, will be followed by another novelty, "El Burrito," and a trombone solo by Dennis Smith, "Concertpiece" — Muhlfeld. This number has been arranged for trombone by a senior music student at PLU Ron Ahre.

Rounding out the tentative program are two polkas, a Norwegian march and a popular number, "Can't Take My Eyes Off of You."

Guild co-chairmen for the event are Mrs. Randolph Valentine and Mrs. Ted Bottinger.

Tickets are \$2 for families, \$1 for adults and 35 cents for children. They may be purchased at the door or by calling Mrs. Valentine, VI 7-7827.

**Stephens College Rep. Meet Set**

**Pierce FFA Honored**

Mr. Harry Burningham, local representative of the Sears Roebuck & Company, presented Franklin Pierce FFA Chapter a check in the amount of \$250.00 on Thursday, October 24, 1968.

The Sears Roebuck Foundation funds will be used to finance a rotation greenhouse in the high school Agriculture and Horticulture programs. Dwight Howe has been selected as the first recipient of this project.

The modular structure will be placed on the students home property to offer the students an opportunity to pursue his own business venture. Upon completion, the structure can be completely disassembled in modules, transported to a new site and reassembled for future use.

A representative from Stephens College, the well known four-year liberal arts residential college for women, will be in the Tacoma area next week to counsel prospective students interested in the college. Norman J. Peters, Associate Director of Admissions, has made arrangements to meet with interested area high school students and their parents at the Sherwood Inn on Monday, November 11, at 10 a.m.

Stephens, known for unique programs tailored to meet the individual needs of women, draws students from all 50 states and several foreign countries with interests ranging from fashion to pre-medical training.

No appointments for the open meeting will be needed. Students or parents seeking more information or wishing to arrange a personal conference are urged to contact Mr. Peters at the motel.

**Holiday Moods Theme**



MRS. STELLA JACOBS

Stella's Flowers has served the greater Tacoma area for the past 20 years and is now in its fourth location in Parkland at 12169 Pacific Avenue.

The store is at present being enlarged and modernized and a rear entrance is being provided for those who desire to park at the back of the store.

Due to the accelerated pace of the day, Stella is heralding the Holiday Season early this year at a Pre-Holiday Season early this year at a Pre-Holiday showing of Thanksgiving and Christmas decorations entitled "Holiday Moods".

The showing will be held at Barlo's Restaurant at 8 p.m. Tuesday, November 12th.

Sponsored by the Parkland area Altrusa Club, the donation of \$1 at the door will go entirely to the club to aid in its civic projects.

The designs made by Stella will be for sale and may be ordered for later delivery for yourself or as a gift.

There will be favors for all who attend, a door prize and music and free coffee and cookies. The public is cordially invited.

— Pd. Adv.



- PARADISE BOWL**  
10/27/68
- FRANKLIN PIERCE FACULTY**  
Clint Richardson, 577, 203; Elnore Ketter, 500; Jean Mazzei, 213. Splits: Rose Gould, 4-7-9; Don Severson, 2-7-8.
- TOP ROLLERS**  
Tom Leggett, 595; Don Ellis, 212; Mary Ellen Rogers, 511, 200; Splits: Norm Nesting, 3-7.
- MIXERS**  
Carol Jackson, 537; Lacy Key, 201; Shirley McMilian, 459, 190; Splits: Nancy Villi, 6-7-10.
- GRAHAM**  
Dave Colbert, 599, 246; Audrey Lawyer, 500, 185.
- EAGER BEAVERS**  
Misako Garner, 502; Arabelle Frerichs, 220; Splits: Dee Nelson, 2-10; Step Ladder: Helen Fox, 135-137-139.
- BIRDS OF PARADISE**  
Lorraine Smith, 466; Iva Willhoite, 466; Cathy White, 211; Splits: Ruby Hegedus, 3-7-10.
- HILLOWS**  
Violette McGee, 500, 198; Step Ladder: Grace Dotson, 120-126-132; Maude Weeks, 148-149-150.
- PARKLAND MIXED**  
Bob Sims, 569, 206; Arabelle Frerichs, 551; Betty Berg, 236.
- 850 SCRATCH**  
Bill Faulk, 574; Iver Eliason, 233.
- EXPRESS**  
Dick Breon, 574, 224; Peggy Hartsel, 473, 180.
- THE BELLES**  
Willa Woodford, 180-171-190, 541, 190; Splits: Fran Weime, 4-10; Step Ladders: Gloria Gamblin, 110-128-146; Ole Steeves, 131-137-143.
- PINETTES**  
Ginger Pittman, 187-192-191, 570; Betty Lauenborg, 198-146-199, 543; Nadine Berka, 199; Jean Daniel, 199; Splits: Shirley Bennett, 4-7-10.
- "600" MIXED**  
Ken Deede, 583, 240; Linda Bejarano, 477, 173; Splits: Judy Nestegard, 4-10.
- PARKLAND MERCHANTS**  
Everett Semler, 572; Norm Nesting, 212; Split: Frank Armstrong, 6-7-10.
- ROLLING BEES**  
Lois Lovelace, 521; Willa Woodford, 215; Splits: Mary Lou Jurgens, 6-7-10.
- SPORTSMAN**  
Rex Raymond, 222-205-183, 610, 222.
- INDUSTRIAL**  
Russ Schaut, 534, Art Lystad, 215.
- PREMIER**  
Dick Corey, 200-190-210, 600; George Morgan, 266.
- FRIENDLY DOUBLES**  
Aaron Weis, 482; Jerry Cope, 186; Ann Pilcher, 451, 169.
- SR. CITIZENS**  
Al Kleinsasser, 214-181-223, 618; Harley Dawson, 235; Step Ladder: Wendale Gunderson, 171-181-191.
- CLASSIC**  
Fred Crump, 244-247-177, 668,

**Church Bazaar Scheduled Here**

A church bazaar, featuring antiques, fancy work, food, Christmas jellies, Christmas candles and arrangements, and a rummage room with clean ironed rummage will open at 10 a.m. Friday, November 8th, at the First Church of God, 9401 So. A Street.

A spaghetti dinner will be served from 5 to 8 p.m. by the church ladies. Donation for the dinner will be \$1.50.

**UGN Report**

At the report meeting held Monday noon at the Top of the Ocean, UGN reported the campaign drive now stands at 67.9 per cent or \$1,002,022.

The final report luncheon will be held on November 18.

- 247; Sonny Bowman, 198-232-179, 609.
- BOWLERETTES**  
Gaye Kempe, 182-180-188, 550; Winona Kupfer, 240.
- LAST NITERS**  
Don Butts, 582; Bob Sims, 211; Maxine Butts, 156-207-181, 544, 207.
- 4x8's**  
Bob White, 541; Marion Skelton, 207; Kay Kerstetter, 499, 191.
- BANTAMS (2 games)**  
Steve Hardwick, 300, 157.
- JUNIORS**  
Jerry Guizzetti, 159-223-187, 569; Mike Evans, 174-238-146, 558, 238.

**Angelo's PIZZA HOUSE**  
ORDERS TO GO

Featuring top sirloin and American dishes, spaghetti, rigatoni, meat balls, sausage, ravioli, beer and wine.

**Choice of Pizzas**  
cheese & tomato  
anchovie  
mushroom  
Italian sausage  
pepperoni  
tuna

bacon  
peppers  
olive  
hamburgers  
ham  
salamoni  
onion

LE 7-7233  
14102 PACIFIC AVE.  
PARKLAND

CALL AHEAD, IT'S PIPING HOT ALL THE WAY HOME

PICK UP A BOX, PAIL, BUCKET, OR A BARREL

**PRESTONE Anti-Freeze Coolant**

\* With unsurpassed exclusive magnetic film that gives double protection against rust and corrosion.  
\* Protects aluminum and all other cooling system parts, including rubber hoses  
\* Does not boil or foam away

Special White Supply Lasts!  
ONLY **\$1.57** Gal.

**SPROUSE REITZ VARIETY STORES**

Firstbank Card welcome here

8218 Pacific Ave.

**Holiday Specials (through Christmas)**

**Permanents**  
Reg. \$18.00 **\$13.50**  
Reg. \$21.00 **\$15.00**  
(Both prices include haircut)

**Donna's House of Beauty**  
16118 So. Park LE 1-6811

## Biology Prof. Receives Honors

Dedication is the key to effective teaching, according to Dr. Jens W. Knudsen, one of 20 educators across the country being honored today by the Dansforth Foundation.

A professor of biology at Pacific Lutheran University, Dr. Knudsen has been selected as a recipient of the 1969 E. Harrison Harbison Award for Distinguished Teaching. Today in St. Louis the Foundation is honoring the 20 teachers selected.

Along with the award, the 39-year-old biologist, artist and textbook author receives a \$4,000 grant, to be used as he desires in furthering his teaching and scholarship.

Individuals considered for the award must be outstanding in the art of teaching, in the significance of their scholarly contribution, in their concern for the student as an individual and in their commitment to ethical and spiritual values.

The Award, established in 1962, is named after the late Princeton University history professor.

Honors are nothing new for Knudsen. He was selected as Distinguished Teacher for 1967 at PLU. The same year he was presented the Faculty Award by the university's chapter of Blue Key, a national honorary fraternity, and the Tacoma Zoological Society's special award for community service.

A 1952 graduate of PLU, he has been a member of the university faculty since 1957. He was born in a

## Artillery Men Invited To Annual Ball

FORT LEWIS — Retired and active duty artillery officers in the area are invited to the annual Artillery Ball scheduled at the Fort Lewis Officers Open Mess Saturday, December 7.

Formal attire for the affair includes choice of officer's blue uniform, officer's blue mess uniform, red artillery blazer with tux trousers or tuxedo. Long formals are appropriate for ladies.

Active duty artillerymen are asked to make reservations with unit representatives. Retired artillery officers should call the adjutant, 2nd Battalion, 34th Artillery, 96-83426 or 96-84193.

Reservations should be made before November 20 and any cancellations no later than December 3.

## Elected To National Board

Two Pacific Lutheran University faculty members were elected to national boards of the American Lutheran Church at the ALC's biennial convention in Omaha, Neb., this week.

Dr. Richard Moe, dean of the college of professional studies, was voted a three-year term on the board of publications.

Dr. John Schiller, chairman of the department of sociology, was elected to a three-year term on the board of social service.

small California town where learning was sometimes frowned upon. "You would get beat up if you did your homework," he commented.

Nevertheless, Knudsen continued his education, with undergraduate work at PLU. He earned masters and doctors degrees at the University of Southern California.

Teaching, to Knudsen, is "the thrill of launching careers and thus becoming a part of agelessness." Inspired by his teachers during his collegiate days, he seeks to pass on the enthusiasm for learning instilled in him.

"Today's challenge is to produce an environment where such teachers may be created for the future," Knudsen believes. "Dedicated teachers are probably born as students."

He has, however, become concerned about the trend toward impersonal relationships between teacher and student, which he sees as one of the reasons for unrest on college campuses. "True teaching can only take place between two individuals, the student and the teacher, even in mass situations," he said.

"The teacher must transmit a poignant dedication to the truth," Knudsen continued. "He must project a meaningfulness into his subject matter and a sense of worth to the students."

"I teach biology, not as a bagful of facts, but as something I hope is relevant to their lives."

Taking his enthusiasm beyond the campus, Knudsen last year completed an exhibit for the Point Defiance Aquarium on oceanic food cycles. He is presently working on another which will depict types of animal camouflage, the only one of its kind in the Northwest.

He completed his first textbook last year and is also an accomplished artist.

Knudsen lives with his wife and son, Jim, in Spanaway.



**BOOK PRESENTATION.** A book documenting the history of the Evangelical Lutheran Synod written by Rev. Theodore Aaberg Jr. was presented to Pacific Lutheran University early this week by the author's mother, Mrs. Theodore Aaberg. Present for the presentation were (l-r): Mrs. H.A. Theiste, Rev. H.A. Theiste (Parkland Evangelical Lutheran Church), Mrs. Aaberg, and Dr. Robert Mortvedt accepting for PLU.

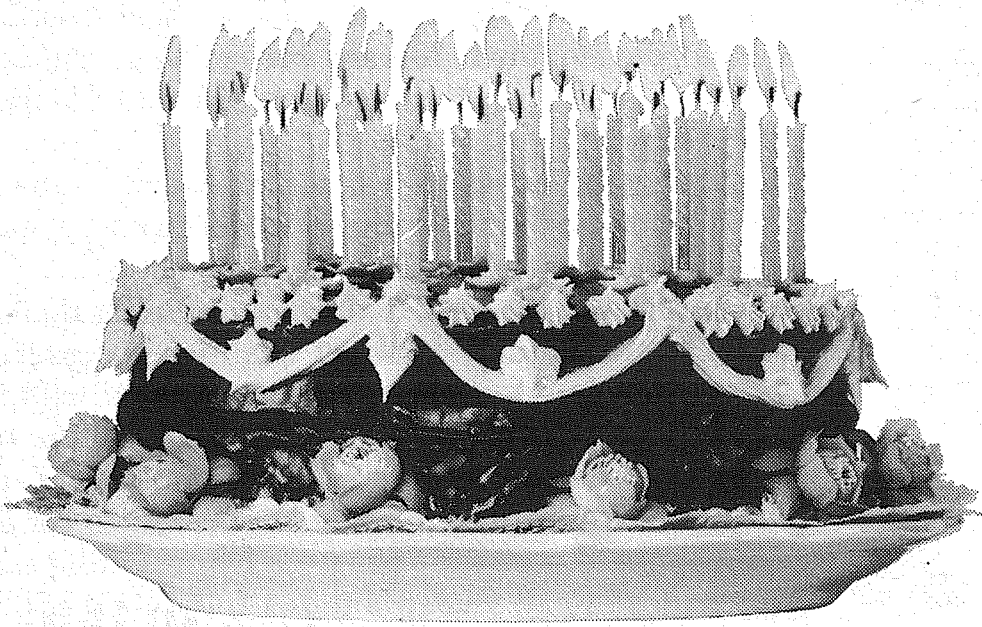
## ARE YOU IN DEBT?

- \* Civilian
- \* Military

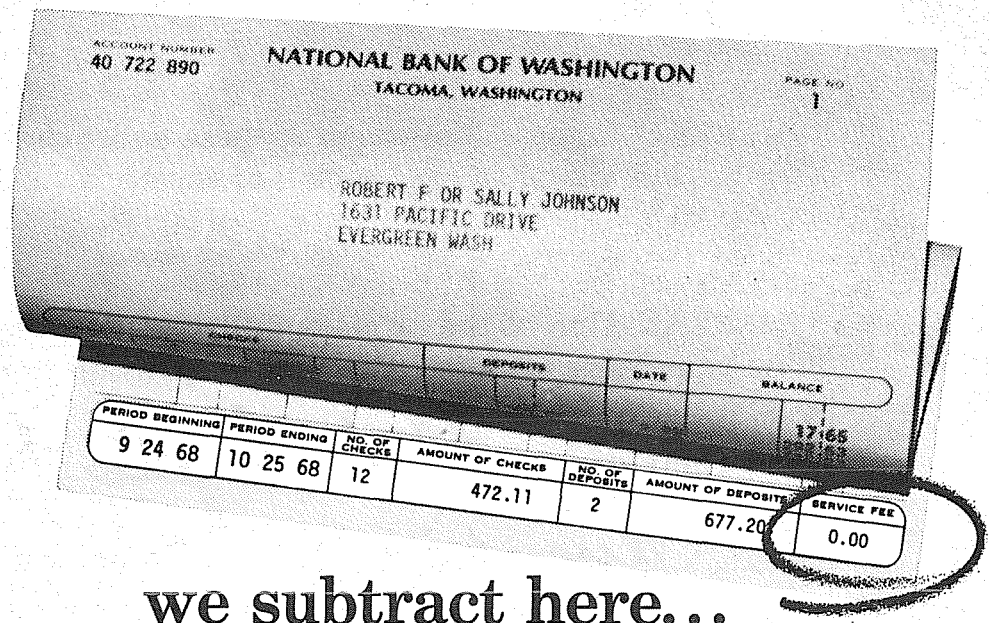
Call  
**MA 7-1700**  
**MONEY MANAGERS**

232 Security Bldg.  
915 1/2 Pacific Ave.

- Get Out of Debt**  
**One Payment**  
Avoid: Letters to Employers  
2. Letters to CO's  
3. Loss of Paycheck



When they add up here...



we subtract here...

**If you're 65 or older, you could be enjoying FREE checking account privileges right now!**

If you were born in 1902 or earlier, you've earned "Senior Customer" status at Bank of Washington. Among other things, this means you're entitled to a checking account with no service fees!

And it's so easy to arrange. Simply stop by your Bank of Washington Banking Center and tell us. We'll handle all details, including the automatic transfer of an existing account from any other bank.

Cost is the only thing we subtract from a Senior Customer account. Besides saving up to \$25 a year or more, you get the convenience of paying bills by mail... plus benefits like completely detailed monthly statements, no minimum balances and Bank of Washington's special brand of Personal Service.

It's such an easy way to cut your expenses without cutting corners, wouldn't now be a good time to start?

## BANK OF WASHINGTON

AT YOUR SERVICE: PARKLAND BANKING CENTER

NATIONAL BANK OF WASHINGTON/TACOMA, WASHINGTON/MEMBER FEDERAL DEPOSIT INSURANCE CORPORATION

**Dryer MORTUARY**  
(134th & Pacific)  
PARKLAND

**The Country Parson**

"A preacher must preach about what his members are least willing to hear."

Copyright, by Frank A. Clark

**Dryer MORTUARY**  
(134th & Pacific)  
PARKLAND

**INSURANCE**  
**Military - Home - Business**  
**LE 7-4904**  
Auto Fire Life Bonds  
**IRENE CLEMENS**  
Agency - Parkland  
10329 Pacific Ave.

*An Invitation . . .*

# To Examine Your School Programs

## A PROCLAMATION

**W**HEREAS, The quality of life in our nation's future will be determined largely by the direction given to and the character developed by today's youth; and

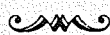


**W**HEREAS, Our nation's schools play a paramount role in defining that direction and shaping that character by endeavoring to—

- Offer pupils the opportunity to learn and practice society's values, direct intellectual development toward recognizing, making, and evaluating choices, and consider the curriculum in terms of its total impact on the value development of children;
- Recognize the needs of a complex society, view education in terms of national goals, encourage international understanding, and foster divergent and creative thinking as a means of improving society;
- Encourage the teaching of children as individuals and employ only teachers with the preparation and personal qualities necessary for effective teaching;
- Offer each child a meaningful education suited to his individual needs regardless of the child's ability level, geographic location, or socioeconomic status;
- Stimulate continuing inquiry, with emphasis placed on the value of learning for its own rewards, and provide opportunities for a broad general education;
- Contribute to economic progress by providing early and realistic career counseling, educating all students to the full extent of their abilities, and maintaining a vocational educational program of the highest quality;
- Enhance the human quality of students by helping them discover and develop their abilities and live contentedly within their limits, advocate constructive attitudes toward leisure interests, and encourage both adaptability to change and action to direct change in ways beneficial to humanity; and



**W**HEREAS, In the achievement of these endeavors lies the happiness and well-being of the individual as well as that of society as a whole; and



**W**HEREAS, One of the primary duties of an enlightened citizenry must, therefore, be knowledge of, interest in, and responsibility for the quality of our schools,

Now, Therefore, I, State Supt. Louis Bruno of  
(mayor or other official)  
Olympia, do hereby designate November 10-16, 1968,  
(city)

to be American Education Week and urge all citizens to examine more closely the existing and projected programs of our schools, as well as their own efforts to ensure the highest quality education for all.

### This message sponsored by the following businesses . . . . .

<b>Parkland Cleaners</b> 11004 Pacific LE 7-3221	<b>College &amp; Centre Cleaners</b> 11416 Park Ave. 415 Garfield LE 7-5361 LE 7-4300	<b>Parkland Enco Station</b> 13303 Pacific LE 7-9954
<b>Tahoma Flying Service</b> Parkland-Spanaway Airport VI 7-2266	<b>Cope's Auto Sales</b> H. E. Cope, owner 9614 Pacific LE 1-3060	<b>Dave's Nu-Way Cleaners</b> 7209 Pacific GR 5-1144
<b>Ashmore's Spanaway Drug</b> 165th & Pacific LE 7-5993	<b>Armstrong Used Cars</b> 11009 Pacific LE 7-5524	<b>Pierce County Refuse</b> LE 7-8688
<b>Devereaux Realty</b> 12152 Pacific LE 7-8658	<b>El Rancho Shell Station</b> 10619 Pacific LE 7-6700	<b>E &amp; S Electric</b> 13621 Pacific LE 1-0593



**NOTHING NEW** — Lieutenant Colonel Kenneth E. Carder, right, Director of Installations for USAHAC, administers reenlistment oath to four Sergeant Majors with a combined total of 91 years military service in Saigon. Taking the oath, from left, are SGM Roger E. Brooks, director of instruction; SGM Charles F. Hopper, USAWDMET; CSM Mervin L. Sanders, USAHAC; and SGM Raul M. Pinedo, IG Office USAHAC.

## Local Soldier Re-ups in VN

Ninety-one years of military experience combined among four enlisted men in the same unit — a commander could hardly ask for more than that.

The four Army Sergeants Major who make up that total are all members of US Army Headquarters Area Command in Saigon. In recent ceremonies held at USAHAC Headquarters, the quartet did just that — gave more. All four men reenlist-

ed for a period of 3 years service, bringing their combined total to an amazing 103 years.

A veteran of 25 years service, SGM Charles F. Hopper, 43, Spanaway, serves as Sergeant Major with the US Army Wound Data Munitions Effectiveness Team, Vietnam. The team studies various types of wounds to combat soldiers in order to perfect the Army's weaponry and body

armor. SGM Hopper came to Vietnam in June, 1968, from an assignment at Ft. Lawton, Wash. His wife, Fannie, is presently living in Spanaway.

SGM Raul M. Pinedo, 47, Ft. Smith, Arkansas, has the greatest period of time behind him with 28 years service. Assigned to the USAHAC Inspector General's office, SGM Pinedo leaves shortly for an assignment in Texas after an 18-month tour in Vietnam. Prior to serving with USAHAC, SGM Pinedo was assigned to Ft. Chaffee, Ark. His wife, Guadalupe, resides in Ft. Smith, Ark.

USAHAC's Command Sergeant Major, Mervin L. Sanders, 38, a native of Basile,

Louisiana, is about to pass the 20-year service mark. A veteran of the Korean conflict, CSM Sanders joined USAHAC in July, 1968. His most recent assignment before coming to Vietnam was as Command Sergeant Major of Sixth Army, Presidio, Calif. CSM Sanders' wife, Beverly, and three children make their residence in Eunice, La.

SGM Roger E. Brooks, 36, Tacoma, Washington, serves as Sergeant Major with USAHAC's Directorate of Installations (Post Engineers). Coming from an assignment at Ft. Belvoir, Virginia, the SGM arrived in Vietnam in May, 1968. An engineer for 18 years in the Army, SGM Brooks works with the larg-

est Post Engineer unit in the world, responsible for care and maintenance of all US and some Free World Forces installations in the Saigon-Cholon-Tan Son Nhut area. SGM Brooks' wife, Sue, makes her home in Tacoma, Wash.

Administering the oath to the quartet of experienced Sergeants Major at the reenlistment ceremonies was LTC Kenneth E. Carder, Fredonia, Kansas, the Director of Installations for USAHAC.

## Men In Service

above, on, and beneath the water's surface.

Bennington is flagship for Commander, Anti-Submarine Warfare Group Three.



**T/Sgt D. L. Thompson**  
U.S. Air Force Technical Sergeant Danny L. Thompson, son of Mr. and Mrs. Arben W. Thompson, 3804 E. 14th St., Vancouver, Wash., has been decorated with the U.S. Joint Service Commendation Medal at Wheeler AFB, Hawaii.

Sergeant Thompson, a draftsman, received the Department of Defense medal for his meritorious service with the National Military Command Center, Organization of the Joint Chiefs of Staff, Washington, D.C.

The sergeant, a 1956 graduate of Hudson's Bay High School, attended Clark College.

His wife, Bonny, is the daughter of Mr. and Mrs. Keith Bonnell, Rt. 2, Spanaway, Wash.

For Your Best  
New or Used Car Buy  
See Your Number One  
"GOOD GUY"

Dick Seamons USAF Ret.  
**MUNSON-SMITH MOTORS**

GR 2-3307 4107 South Tacoma Way Res. LE 7-7637

# Bring Your Trailer - Bring Your Truck



# Damage Sale

**Some Smoke Damaged — Some Water Damaged**

- ★ CHEST OF DRAWERS
- ★ BEDSTEADS
- ★ COFFEE & END TABLES
- ★ DRESSERS & MIRRORS

*Many One-of-a-Kind*

Take Your Pick of an Entire Truckload of

Fine Furniture Damaged During A Fire Halloween Night

**HUGE DISCOUNTS!**

Danish Modern  
**TRIPLE DRESSER**  
Walnut  
Reg. \$129.95

**49<sup>88</sup>**  
Easily Repaired

Slightly Damaged  
**CHESTS OF DRAWERS**  
Walnut Finish  
Reg. \$79.95

**29<sup>95</sup>**

**BED STEADS**  
Values To  
**\$100**  
Your Choice  
**\$22**  
AS IS

**EASY TERMS -**

**FREE DELIVERY -**

**USE YOUR BANK CARD**



**13014 PACIFIC AVE. OPEN 'TIL 9 P.M.**

# HORSEMEN'S NEWS

## Over The Fence Rail

By Ernie & Paulette Cook

Washington Quarter Horse Association is going to hold its show at the Tacoma Unit Sports arena November 9th and 10th.

Saturday's classes will include 31 classes held in the morning will be showmanship at halter, and halter classes for fillies, mares, broodmares, colts, stallions, and geldings, as well as grand champion and reserve grand champion horses in each of the halter categories.

Beginning at 1 p.m. Saturday the classes will be trail horse horsemanship, western riding, western pleasure, and reining.

Saturday night's performance will start at 7 p.m. and will include calf roping, heading and rearing, WBRA barrel racing, junior cutting, senior cutting and open cutting.

There will be two performances Sunday. One beginning at 8 p.m. with western riding, junior western pleasure, junior bit reining, barrel racing and jumping.

The afternoon performance begins at 1 p.m. with Senior western pleasure, junior hackamore reining, senior bit reining, working cow horse, Western pleasure owner to ride.

There will be high point saddles and high point youth awards given.

Entry fees will be \$7.50 per class for halter and performance; \$3.50 for youth activities. WBRA barrel racing will have an entry fee of \$10. Cow cutting is \$22.50, roping, \$12.50 and working cow horse is also \$12.50.

There will be a \$1.00 extra charge for post entries and a \$1 charge for parking. Stabling will be available on the grounds at a \$5 charge for the night.

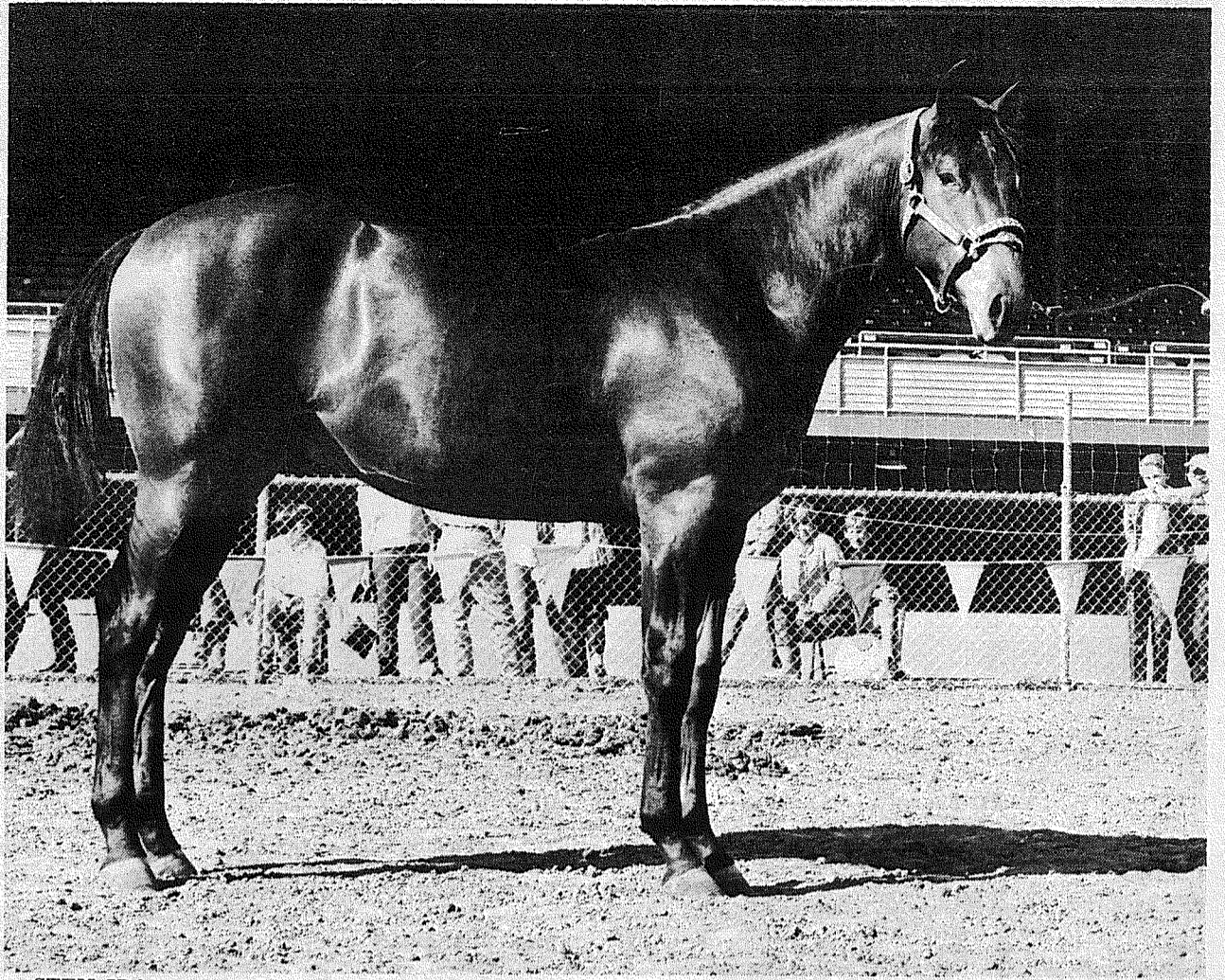
We hope Dee Parham will make it back in time for the show Saturday, and that he does well at the Cutting Show in Las Vegas.

Larriettes were not going to ride this month, but the large turnout Monday night prompted them to possibly ride a few more times this year in spite of the cold weather.

## Club Calendar

Colts and Fillies members have been working hard this year to accumulate enough points to win a trophy saddle being hand made by Dean Vosburg.

The saddle will be presented to the winning youth at the Colts and Fillies Awards Banquet to be held at Steve's Gay '90's November 22.



STEM IRON, owned by Arnold and Irene Strom, Wind Jammer Ranch, Spanaway, is pictured winning his yearling colt halter class at the Yakima Quarter Horse Show and Fair. Stem Iron also was

a winner in his class at the recent Tacoma and Vancouver, B.C., Quarter Horse Shows. He was sired by Fiddling Bo, owned by the Wind Jammer Ranch. — Photo Courtesy Stecker's Stables

## "Horsemen's Market Place"

### Classified Directory

Board — Trainers — Breeders  
Outfitters — Feed Dealers

**Outfitters**  
**The Bunkhouse**  
COMPLETE LINE OF TACK & WESTERN APPAREL  
12605 Pacific Ave. Tacoma, Wa. 98445  
LE 7-5510

**J. W. RANCH**  
Appaloosa Stud Service  
Colts for Sale  
Spanaway VI 7-2642

**Vet Supplies**  
Complete supply animal health products.  
Franklin - Farnam - Anchor at  
**ASHMORE'S**  
Spanaway Drugs  
165th & Pacific Ave. LE 7-5993

**CEDAR LUMBER - FENCING**  
TACOMA CEDAR PRODUCTS CO.  
"At the Waterfall"  
14512 Pacific LE 1-2559

**A & W SEARS**  
**BOARDING STABLES**  
Box Stalls, Pasture, Riding Trails & Arena  
**\$45.00 per mo.**  
Pole Line & Taylor Rd. E. Roy 843-2575

Everything In Hardware For The Horseman  
Fencing too!  
**South End Hardware**  
S. 185th & Pacific Spanaway

**Automobiles**  
STATION WAGONS, CARS AND TRUCKS  
"Come See Us"  
**Andy EGAN RAMBLER**  
"Fairness to All"  
8223 Pacific GR 4-9404

**HORSES BOARDED & RENTED**  
**B & B STABLE**  
on the Mountain Hiway  
1 1/2 miles past Roy Y on left.  
Open 10 a.m. to 5 p.m.  
TUES. - SUN.  
VI 7-7162

BOARDING-BREAKING-TRAINING-RACE TRACK-ARENA  
**MARS STABLES**  
BOB ROUNDY - TRAINER  
TH 5-1231 11919 144th E. Puyallup, Wash.

LE 1-4555  
**RODEO CUSTOM SHOP**  
Dean & Dodie Vosburg  
Complete Saddle Repair Shop  
Western Wear English Tack & Togs  
164th & Pacific Spanaway, Wash.

## Tacoma Livestock Market Report

Tacoma Livestock Market Report for Thursday, Oct. 31 — 543 Cattle, 24 Hogs, and 1 Horse. The market in general holding exceptionally well for this time of year. Cows are some softer the last 3 weeks, however, feeder and stock cattle are selling good.

Choice Veal	\$40.00-\$41.00 cwt
Heavy Bulls	\$22.00-\$24.00 cwt
Best Cows	\$17.00-\$18.80 cwt
Hol. Feeder Steers (1,000 lbs.) up to	\$21.00 cwt
W.F. & Angus Feed Steers (600-800 lbs.)	\$23.00-\$26.00 cwt
Good W.F. & Angus Steer Calves up to	\$28.30 cwt
Good W.F. & Angus Heifer Calves up to	\$24.00 cwt
Baby Calves per Head	\$10.00-\$37.00
Good Block Hogs	\$19.00-\$21.00 cwt
Light Block Hogs as low as	\$17.00 cwt
Good Weaner Pigs per head	\$12.50-\$15.00

For this Thursday we have one man's Beef Herd coming in, 60 Head of cows ad calves, and special consignments of Feeder Cattle. Also it looks like a good run of Slaughter Cattle.

Ed Flood & Lee Flood, Auctioneers Spanaway, Wash. Phone: VI 7-7567 (Graham, Wash.)

## Grange

The annual Pomona Grange Variety Show will be at 8 p.m. November 9th at Fruitland Grange Hall.

The 90-minute show will include scenes from the Musical "Lil Abner", which will be presented soon by the students of Puyallup High School.

"Marta the Marvelous Magician" will thrill the youngsters and oldsters alike as she performs her tricks of magic.

A group of students from the Suburban Dance Studio will be presented and there will be special accordion numbers by Jean Hansen and Robert Winter.

The only male hula dancers in the Northwest will perform their speciality.

Others billed include gospel singers Gail Kunz and Linda DelAir. Vocalist Dolly Smith and humorists also add to the enjoyment.

Harold C. Olson will act

as master of ceremonies. Donation will be \$1 for adults and fifty cents for children under 12.

## 4-H Dog Club Elects Officers

Carl Tankersley has been elected president of the Collins VIP 4-H Dog group.

Other officers installed include Michele Simon, vice president; Adel Leuesque, secretary; Theresa Gregory, treasurer; and Linda Tankersley, reporter.

The club held their first board meeting on October 30th and discussed plans for the new year.

**FEET TREAT — SAVE STEPS, FIND WHAT YOU'RE AFTER BY READING TODAY'S CLASSIFIED ADS.**

# ASK ME!

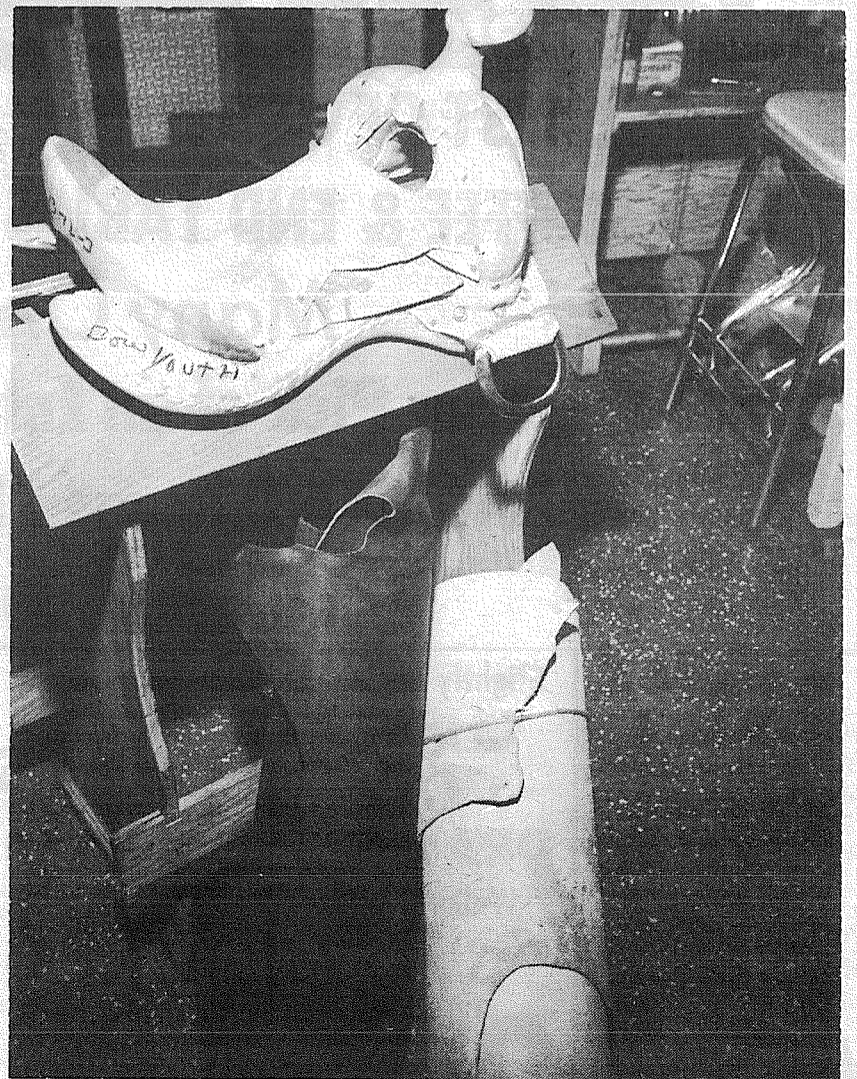
HOW MUCH YOU MAY SAVE ON YOUR CAR INSURANCE WITH STATE FARM!



Bill McMonnies  
16607 Pacific Ave. Spanaway



STATE FARM Mutual Automobile Insurance Company Home Office: Bloomington, Illinois



TROPHY SADDLE being built by Dean Vosburg, Rodeo Custom Shop, to be presented to the High Point Youth in the Colts and Fillies. Saddle tree is pictured with rolls of leather it takes to complete the project.



The TIMES JOURNAL

SPORTS

Braves Scalp Rams

By BILL HALLMAN

Sparked by the fine running of junior halfback Jody Miller, the Bethel Braves trounced the North Thurston Rams 27-14.

Miller broke loose for scoring jaunts of 51 and 68 yards and was stopped three yards short of the goal line on another good run. Jody carried the ball eleven times and picked up 170 yards for a 15.5 yards per carry average.

Toting the ball six times for 30 yards and a 5.0 yard per carry average was junior fullback Chuck Bullion. Chuck also scored on a three-yard run for the Braves and collected seven tackles.

The Braves senior quarterback Larry Loete played one of his better games of the season as he carried the ball eight times for 24 yards and passed for one touchdown and two extra points. Larry also was tied with Dale Failey for high tackles with nine each.

Bethel's outstanding senior end Steve Jasmer hauled in four passes against the Rams. One was a nine yard shot from Larry Loete which was good for the

Braves third touchdown of the season. Steve also caught a pass for an extra point.

Gary Grazzini and Rick James scored an extra point apiece for the Braves. James caught a Loete pass in the end zone and Grazzini scored on a pitchout.

Bethel ripped off 203 yards rushing as compared to North Thurston's 179. The Rams led in the passing department, gaining 102 yards in the air, holding the Braves to 83.

"That was as fine an offensive game as a Bethel team has shown in years, they have even impressed themselves with their ability to move the ball. We did not play as well on offense as we would have liked but with two games left and the enthusiasm building over our possibility of our best season in six years, these kids should be hard to handle," stated head coach Ed Tingstad.

Friday night the Braves will try for a homecoming win against the Mount Si Wildcats. Kickoff time is 8 p.m. with the presentation of the royal court at halftime.



LEAPING HIGH to successfully block a North Thurston pass is Brave Doug Bury (74), while Ken Krumpos (98) puts pressure on the Ram passer. Bethel won the contest 27-14. — Bethel High Photo

Cards Close Grid Play At Auburn  
Cruisers Regain Top Spot

Franklin Pierce will have one last chance to break into the South Puget Sound League win column when they meet Auburn (2-1-1) on the Trojan home field.

The Cardinals suffered through a long evening of football at Puyallup last Friday night, ending up on the short end of a 37-7 score. Rolling up 304 yards rushing and passing, the Viks had little trouble running the score up to 30-0 at halftime.

Auburn, currently holding down second place in league standings, eased by Glacier 12-7 last week in a cross-league game. The Trojans pulled the game out of the fire in the final 67 seconds of play to give them a season record of 4-3-1. Pierce has a season record of 1-6-1.

Eatonville scored twice in the final half to claim a tie for first place in East Central League standings in a game with Tenino last week.

The Cruisers had to come from behind, scoring on a 70 yard third quarter drive and a pass interception in the final 30 seconds of the fourth quarter, to win 14-6.

Eatonville, (4-0-1), shares the league honors with Orting (4-0-1).

With 28 seconds left in the game, Mike Hermson intercepted a Beaver pass and broke loose for the final tally. Hermson kicked the extra point.

Wildlife Pressure

John A. Biggs, Director of the State Game Department today cited the statz's needs for continuing outdoor recreation planning and financing.

"The current crowding of the out-of-doors brought about by the opening of our fall hunting seasons, gives us a pretty good idea of what it could be like most of the year as hunters and fishermen increase and available land decreases," says Biggs.

"As in all the other outdoor recreation fields, demand for the opportunity to participate in wildlife-oriented activities has been climbing steadily on our lands.

"This is true whether you are stalking about hunting, fishing, photography, bird spotting, or just plain sightseeing."

The State Game Department presently owns or controls about half-a-million acres of land throughout the state and available for public use.

In addition, the Department controls about 400 miles along streams providing public fishing access and boat launching sites.



BETTER SAFE THAN SORRY

You never know who'll come visiting next. In the middle of the night! Or on the weekend while you're away! It could be fire. Or theft.

But, with a safe deposit box here at Citizens State Bank, you won't have to care.

One of our safe deposit boxes can hold all the valuable belongings you want to keep safe from fire, loss or theft.

Contracts. Wills. Stocks and bonds. Family heirlooms. Jewelry and a whole host of others.

And it costs you only a little over one cent a day.

Aren't a few pennies worth a fortune in peace of mind?

Citizens STATE BANK

MEMBER FEDERAL DEPOSIT INSURANCE CORPORATION



★ MAIN OFFICE - PUYALLUP

★ SUMNER

★ SUMMIT VIEW

★ EDGEWOOD - MILTON

★ WILLOWS



for personalized

BUSINESS INSURANCE

call:

Ashford-McAloon

Ins.

12201 Pacific Ave.

(Parkland Square)

LE 7-8647

5436 So. Tacoma Way

GR 4-8431

he'll treat you like a person...not a number!

Smith Built

CAMPERS & CANOPIES



14606 Pacific Ave.

Phone LE 7-8022

Tacoma, Wash.

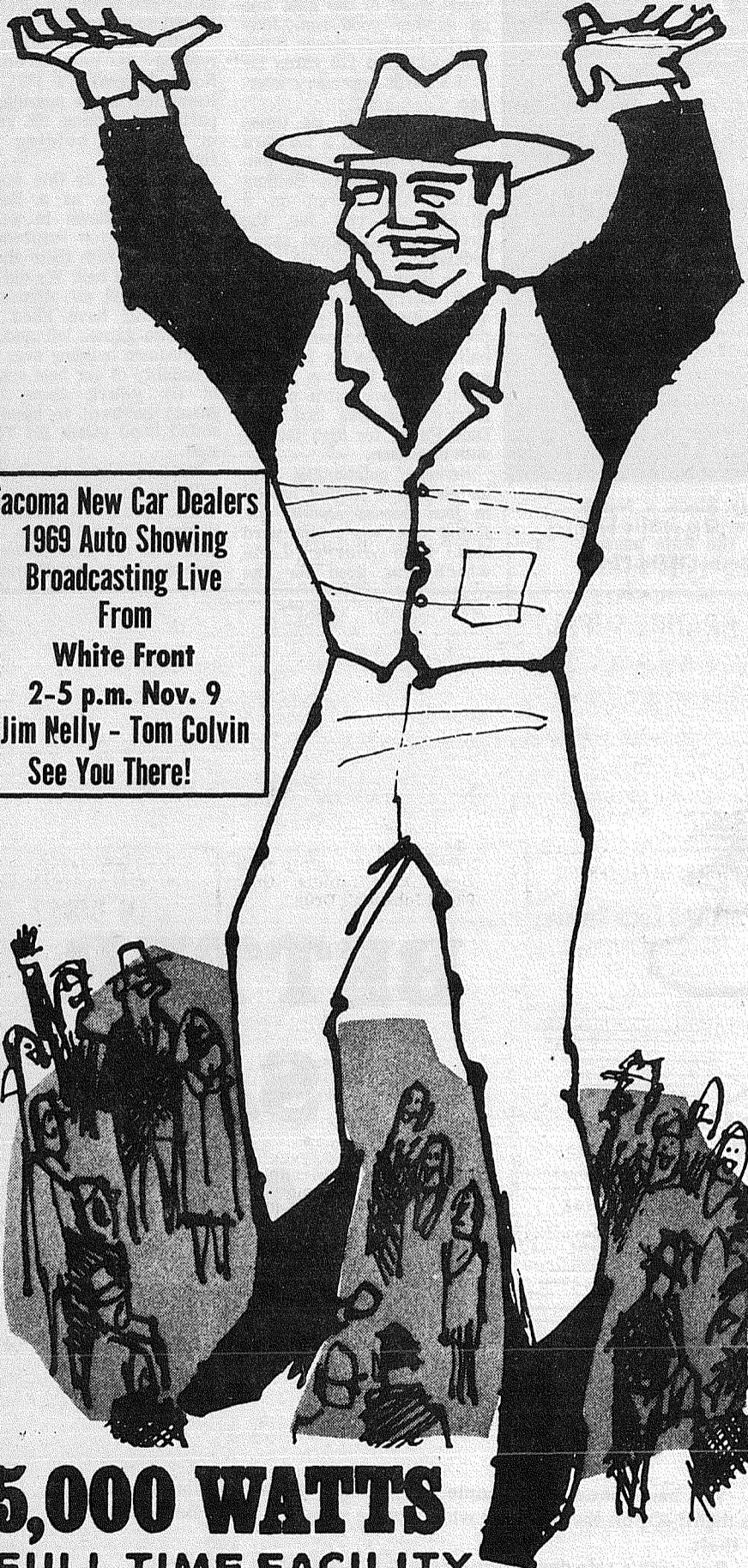
CUSTOM

QUALITY

# KMO 1360 kc

## THE COUNTRY GIANT

TACOMA FT. LEWIS McCHORD SEATTLE



Tacoma New Car Dealers  
1969 Auto Showing  
Broadcasting Live  
From  
White Front  
2-5 p.m. Nov. 9  
Jim Nelly - Tom Colvin  
See You There!

### 5,000 WATTS FULL TIME FACILITY

## Pierce County's Only 24 HOUR

### Country and Western Station

\* County News \* Tacoma News \* High School Sports

6 - 10 a.m. Hal Lavers

4 - 7 p.m. Ed Dollar

7 - 12 Midnight B.J. The D.J.

12 Midnight - 6 a.m. Jim Bennett

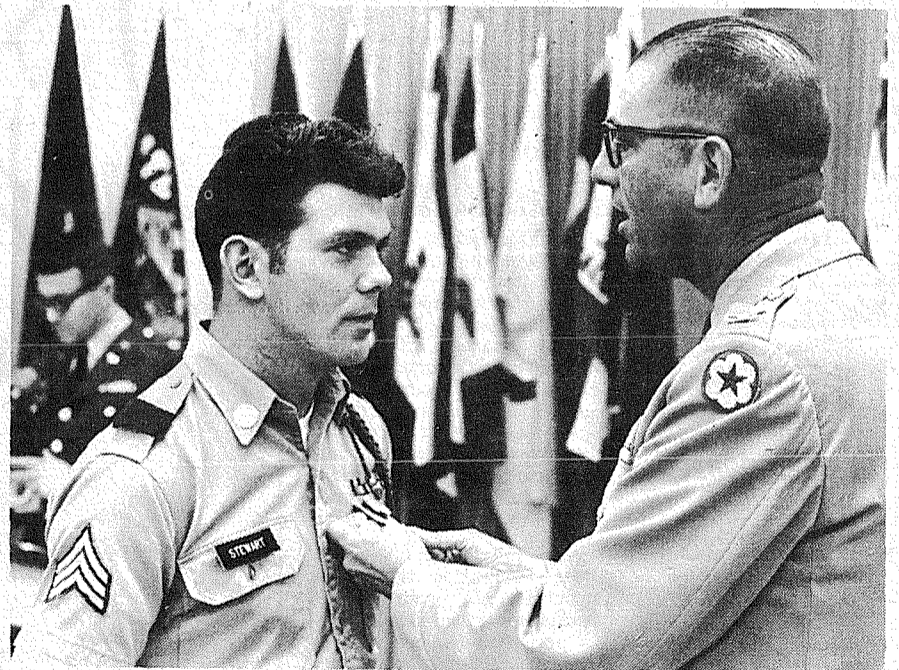
## KMO RADIO 1360 A.M.



**TRUCK FIRE.** A truckload of furniture belonging to Discount Furniture, 13014 Pacific Ave., was damaged by fire 10 p.m. Halloween night. "All evidence indicates the fire was set by Halloween pranksters," Parkland Fire Chief Ray Hixon reported. Most of the estimated \$3400 worth of furniture loaded on the truck at the time of the fire received some degree of damage, owner Chuck Cygan stated. Damage to the truck was listed at \$700 by Cygan.



**SALVAGED FURNITURE.** Some of the furniture that escaped flames but received smoke or water damage is pictured following a truck fire reportedly set by Halloween vandals last week. The merchandise belonged to Discount Furniture.



**SILVER STAR RECIPIENT** — Michael D. Stewart, son of Mr. and Mrs. Christ Bertsch, 865 So. 111th, has been awarded the Silver Star "For gallantry in Action" in the Republic of Vietnam. The Award states that . . . "Sergeant Stewart distinguished himself by heroic actions on 8 May 1968, while serving as a tank commander for Headquarters Company, 2nd Battalion, 34th Armor on a combat operation in Vietnam. When his tank came under intense enemy automatic weapons in an assault upon the enemy positions, Sergeant Stewart commanded his tank to continue the assault. When hit by an anti-tank round, he directed his tank right over the enemy positions. He repeatedly exposed himself to hostile fire and climbed out of the hatch to throw grenades into enemy spider holes. In spite of a heavy volume of anti-tank rocket fire at close range, he continued the devastating assault until his tank was hit by a fifth rocket and he was wounded . . ."

An Endowed Care Cemetery



924 East 176th Street  
Spanaway

LE 1-5500

### Mental Health Board To Meet

The monthly meeting of the Greater Lakes Mental Health Foundation Inc. has been set for Friday morning, November 8th, at the Lakewood General Hospital Library with Dr. Gay Balmes presiding.

On the organizations board from the Parkland-Spanaway area are Dr. Kristen Solberg and Mrs. Kurtis R. Mayer.

# CLASSIFIED ADS

## Call LE 7-0223 For Want Ads

### Misc. For Sale

NEW GAS furnace, slightly damaged shell, \$135. GR 4-2583. 68-569

KENMORE Dryer. Good condition. \$40. 161 E. Tule Lake Rd. 68-568

BETHEL School District 403 will offer for sale & accept the highest sealed bid for one 1946 Chev Pickup truck; one metal lathe, one 1950 58-passenger school bus (min. acceptable bid on bus \$700). Equipment can be seen at the Bethel Bus garage, VI 7-2102. Bids will be opened at 1 p.m., Mon., Nov. 18, 1968. 68-567

EMERSON Walnut Contemporary combination 23" TV A-M radio and stereo. New picture tube. Best offer. GR 4-8112, 8845 So. Park. 68-566

**CANDLES**  
Our fixtures aren't fancy — our prices aren't fancy — But our candles are, so stop in and look around. If you can't find what you want, we have all the supplies — wax, wicking, molds, etc. — so you can make your own.  
**PACIFIC TRADERS**  
14119 Pacific Ave.

McNESS PRODUCTS, GR 5-2734. 68-303

ALDER fireplace wood. Any length \$24 delivered. Eatonville 832-6331. 68-412

POOL TABLES, slate and others. Open 7 days 10 a.m. - 10 p.m. LO 4-9199. 68-535

8 SECTIONS of 12"x36" cement culvert. Save money. U haul. Yours for just \$30. Located at 146th & Pacific Ave. Phone LE 7-0223 days or VI 7-7364 evenings.

TOP SOIL, fill dirt, bank run gravel, J.E. Pelland. LE 1-1124.

**ARE YOU IN DEBT?**  
CIVILIAN-MILITARY MA 7-1700  
**MONEY MANAGERS**  
232 SECURITY BLDG. 915 1/2 PACIFIC AVE. TACOMA, WASH. 98402  
**GET OUT OF DEBT ONE PAYMENT AVOID:**  
1. LETTERS TO EMPLOYERS  
2. LETTERS TO C.O.'S  
3. LOSS OF PAYCHECK  
Eve. appts., Home or office 24-hour srvs.—State approved

GARAGE DOOR 8'x7' wood. With hardware, \$20. GE toaster \$5, electric skillet, three lots. GR 2-9086, 870 S. 80th. 68-565

SONY 500 4-track stereo tape recorder. Sacrifice, \$200. UL 7-2257. 68-570

1957 CHEV stationwagon "6", stick, \$250. 1010 John Deere special, like new \$1500. 250 gallon Hardie Sprayer, \$200. John Been potato and bulb elevator, sizer, aluminum conveyor, 8' and (1) 16' belt conveyor with (2) 220 volt motors, \$500. (2) bulb hand trucks \$10 and \$15. Evenings TH 5-8686.

TENT size 16x32. Army tent. \$50. or trade for equal value. Route 2 Box 48D, Yelm.

KOLSTRAND fishing hand gurdie, 1 machine vise, 1 woodworking vise, 1 marine head, 2 port lights (opening type), 2 winches. UN 3-9984 after 8 pm.

TWO old time glass showcases. Good for gift shop. Sell cheap. VI 7-7430.

1954 METROPOLITAN \$50. Good Ironrite ironer \$25. 1966 Elgin coastliner with trailer. 1964 Homelite motor. Excellent condition. TH 5-2671.

### 2 Autos For Sale

JEEP 4 w.d. pickup. '59 Lincoln, sedan. Best offer. 421 East 138th. 68-402

**PIERCE COUNTY HEADQUARTERS FOR 1969**  
★ CHRYSLER  
★ PLYMOUTH  
★ VALIANT  
★ BARRACUDA  
CALL GR 4-0621

**Steven MOTOR CO.**  
2705 SOUTH TACOMA WAY.

### NEW- MORE POWERFUL

**the 1969's ARE HERE VOLKSWAGEN**  
27 MAJOR CHANGES COME IN

**Tom Carstens AUTOHAUS**  
7030 So. Tacoma Way GR 4-0666  
TACOMA DEALER SINCE 1955

1962 CHEV Carry-All, \$895. Good condition. 848-1389.

1960 VOLKSWAGEN. 1200 sedan. \$500. TH 5-5488, 918 - 9th St. NW.

1965 CHEV Impala hardtop 327 Super Sport. 1956 Pontiac 4-door - needs repair. LE 7-7066.

### 9 Animals For Sale

POMERANIANS, AKC registered with shots. Write and we will contact you, Rt. 2, Box 33, Mineral, Washington.

REG. AUSTRALIAN Shepherd pups. LE 1-3568.

AKC registered poodles, black or brown, \$50. LE 1-0571.

SAANAN billygoat for sale or service. WA 2-8028.

WEINER PIGS. MA 7-6565, 843-2429.

STUD SERVICE. Miniature Dachshund. LE 7-6603. 68-563

PURE BREED German Shepherd pups. Mother & father registered. LE 7-8390. 68-562

### 19 For Rent Or Lease

NEW, brick, 2 bedrooms. Carpets, drapes, fireplaces, garage. 6910 East 113th Street. TH 5-2540.

**HOME VACANT**  
We desperately need good rentals \$80 to \$150 per month  
CALL NOW  
Let us handle your worries  
**SUBURBAN REALTY**  
11302 Pacific Ave.  
LE 7-8638 or LE 7-6896

FOR RENT. 3 rm. house, furn. \$65 mo. Utilities included. Carport. In Parkland. LE 7-5846. 68-561

### 19 For Rent Or Lease

FOR RENT OFFICE space. Two rooms. Light heat and garbage service included. Located in Times Journal Bldg. 146th and Pacific Ave. Ample Parking space for customers. \$50 per month lease. Phone LE 7-0223 or stop by.

FURNISHED 2 bedroom home. Easy access to freeway. \$90 plus utilities. \$50 deposit GR 4-2414 - BR 2-7464 evenings.

PROTECT YOUR boat & trailer. Covered stalls for rent, \$10 per month. Times Journal Bldg., 146th & Pacific Ave., LE 7-0223.

### 23 Help Wanted

EARN CHRISTMAS expenses early by selling Baum Toys and Gifts party plan. Car necessary. LE 7-5834, GR 2-6008, or GR 5-1215. 68-290

ATTENTION Boys & Girls. Parkland-Spanaway area - Earn extra money - Start a Times Journal route in your neighborhood. Call LE 7-0223. 68-401

EXPERIENCED mimeograph operator. Permanent position. Mr. Allen, LE 1-6900, Ext. 250. 68-564

BORED HOUSEWIFE? Thirtyish? Enjoy handcrafts? Part time assistant preparing library exhibits. Write Box 2116, Times Journal 68-409

**BILL PROBLEMS For Immediate Help Call MA 7-1700 Live Easier Pay One Place MONEY MANAGERS**  
232 Security Bldg. 915 1/2 Pacific Ave.

### 24 Work Wanted

CHILD CARE. Close to P.L.U. LE 7-6736. 68-400

IRONING, experienced, references. GR 5-5663. 68-311

IRONING Experienced, LE 7-5736. 68-282

BABYSITTING my home, Monday through Friday, Spanaway area, LE 1-2002. 68-310

CARPENTER Work. Remodeling repair. New additions. Custom built cabinets. VI 7-2601. 68-525

IRONING & BABYSITTING in my home. Experienced mother. LE 1-5979. 68-405

Save steps, find what you are after by For things YOU WANT. Classified ads reading today's Classified Ads. can do it for you.

**ARMSTRONG'S USED CARS**  
11009 Pacific Ave. LE 7-5524

1964 Chev Pickup	long-wide box	\$950
1962 Chev Impala	wagon, V-8, PG	695
1965 Ford Fairlane	2 dr. 6 cyl, AD	775
1963 Lincoln	Continental	995
1962 Ford Galaxie	500, 4-dr.	575
1961 Ford	Ranch Wagon V-8, OD	395
1963 Ford XL	2-Dr. Htp.	775
1963 Pontiac	Wagon	750
1965 Olds Cutlass	Htp	1550
1959 Olds	4-Dr. Htp.	175
1963 Rambler	Classic, 4-Dr., V-8, AD	575

### 27 Misc. Services

DOZING, LE 7-4934, GR 4-5663.

**Sheet Metal**  
• Furnace Repair and Service  
• Installations  
**PARKLAND FUEL OIL**  
12002 Pacific Ave. LE 7-0256

DOZING - REASONABLE. Call LE 7-5761 after 4 p.m. 68-557

AA ELECTRIC, new and re-wiring done. LE 1-4445.

EXPERT alterations, men's and women's. Fast service and reasonable. LE 1-3506.

**WATER PUMPS REPAIRED**  
All Makes  
**GRANGE SUPPLY**  
LE 1-5777

**MIDLAND AUTOMOTIVE**  
Complete Repair Foreign & Domestic Elect. - Alt. - Gen. - Weld. - Trans. - Overhaul - Valve Grind  
LE 1-4331 8-6 Mon.-Sat.

"WHERE TO GET SERVICE"  
**Parkland Enco-Service**  
13303 PACIFIC AVE. LE 7-9954

**NEWBURY'S Dozer Service**  
LE 7-7455  
Sandy Loam Bank Run Mixed Soil - Fill Dirt

**28 Building Services**  
REMODELING, leveling, block foundations, cabinets, free estimate. Reasonable. LE 7-3550. 68-48 TFN

**29 Land Services**  
Water - Gas Lines - Footings  
**DICK'S DIGGING SERVICE**  
LE 1-5401  
601 South 160th St. Spanaway, Wash.

### 35 Announcements

Republicans and Democrats: We have a platform you can read and understand. Write for free copy - no obligation. The Universal Party, P.O. Box 516, Berkeley, California 94701.

**33 Licensed Child Care**  
ONE CHILD age 3 or 4. Parkland. LE 7-4738. 68-507

**12 Real Estate For Sale**  
ONE ACRE building sites. Water available. LE 7-3469 or LE 7-8774. 68-526

**Listings Wanted**  
Buying or Selling Real Estate-Service Call  
**Devereaux Realty**  
12152 Pacific Ave. LE 7-8658

3 BEDROOM brick home, double garage, electric heat, finished daylight basement. 76th & Pacific. GR 5-0236.

### 37 Card Of Thanks

THE WIFE and children of Ira E. Jones wish to extend their gratitude for the understanding and kindness extended to them during their recent bereavement in the passing of Ira E. Jones, Mrs. Ira E. Jones and family.

### 36 Personals

LOSE WEIGHT safely with Dex-A-Diet Tablets. Only 98c at Johnson's Drug.

ARE YOU living with or near a drinking problem? JU 4-5212, GR 4-9907.

### 38 Instruction

JODY'S FLORAL ARTS, 4206 So. 66th. Holiday workshops with new ideas. Sign up now, starting the first week in November. Morning, afternoon & evening classes. Also gift wrapping classes in Nov. For more information call GR 4-4034.

PIANO LESSONS, beginning to advanced. Children and adults, home or studio. LE 1-3246 or SK 2-7695. 68-179

**PAVONES CERAMIC STUDIO**  
6702 106th Crt. E. Puyallup  
TH 5-6529  
Fall Class Open Weekdays & Evenings

### Legals

NOTICE OF ELECTION OF COMMISSIONER DRAINAGE IMPROVEMENT DISTRICT NO. 19  
NOTICE IS HEREBY GIVEN, that an Election will be held in Drainage Improvement District No. 19, on November 26, 1968, in accordance with Section 85.04.035, R.C.W. for the purpose of electing a Drainage Commissioner for a term of six (6) years. The following named persons have filed for said office: George H. McNett, 10208 Golden Given Rd. East, Tacoma, Washington.  
The Commissioners of said District hereby appoint the following electors of the District to serve on the Election Board: Inspector: Barbara Shanahan; Judge: Beryl Tefre; Judge: Mary Hushak.  
The Commissioners of said District do further declare that all precincts or parts of precincts within said Drainage Improvement District shall be declared as one precinct for the purposes of this election, the polling place to be at the

MIDLAND FIRE STATION 9312 East Jackson  
The polling hours are from 1:00 to 8:00 P.M. on said day of election.

C.H. Spragg  
George McNett  
Keith Jones  
Board of Commissioners of Drainage Improvement District No. 19

ATTEST:  
Lois Johann  
CLERK OF THE BOARD  
DATED: October 24, 1968.  
Published in the Times Journal November 7, 1968.

**ARE YOU IN DEBT? Bills Pressing? Civilian - Military GET OUT OF DEBT ONE PAYMENT AVOID**  
1. Letters to Employers  
2. Letters to C.O.'s  
3. Loss of paycheck  
Call **MONEY MANAGERS MA 7-1700**  
232 Security Bldg. 915 1/2 Pacific Ave. Tacoma, Wash. 98402  
Eve. Appts. Home or Office 24 Hr. Svc. State Approved

**USED CARS TWO YEAR GUARANTEE**

1968 Impala SS Custom Cpe	\$2895
1968 Impala Spt Cpe, 327, PG-PS-PB-Air	\$2895
1968 Ply GTX, mag wheels, 12,000 miles	\$2695
1967 Camaro Spt Cpe., 6 cyl, auto	\$2195
1965 Impala SS Cpe, V-8, Auto	\$1695
1964 Chevy II Station Wagon, V-8.	\$1195

**Used Trucks**

1967 El Camino V-8, Auto., P.S.	\$2195
1967 Ford Econoline 6 Cyl. Auto.	\$1795
1962 Chev 1/2 ton, V-8, 4 spd	\$1195
1956 Chev 6 cyl, 4 spd	\$395

**VAN EATON CHEVROLET**  
Phone 832-3131 Eatonville

**Legals**

**NOTICE OF ELECTION OF COMMISSIONERS DRAINAGE IMPROVEMENT DISTRICT NO. 14**

NOTICE IS HEREBY GIVEN, that an Election will be held in Drainage Improvement District No. 14, on November 26, 1968, in accordance with Section 85.04.035, R.C.W. for the purpose of electing a Drainage Commissioner for a term of six (6) years. The following named persons have filed for said office:

Doug Morris, 9513 Portland Ave., Tacoma, Washington.

The Commissions of said District hereby appoint the following electors of the District to serve on the Election Board:

Inspector: Barbara Shanahan  
Judge: Beryl Teffre  
Judge: Mary Hushek

The Commissioners of said District do further declare that all precincts or parts of precincts within said Drainage Improvement District shall be declared as one precinct for the purposes of this election, the polling place to be at MIDLAND FIRE STATION 9312 East Jackson

The polling hours are from 1:00 to 8:00 p.m. on said day of election.

Frank Baskett  
Doug Morris  
Board of Commissioners of Drainage Improvement Dist. No. 14

ATTEST:  
Lois Johann  
CLERK OF THE BOARD  
DATED: October 24, 1968  
Published October 31 in Pierce County Herald and Times Journal.

**Legals**

**SOUTH SUBURBAN SEWER DISTRICT, PIERCE COUNTY, WASHINGTON NOTICE OF PUBLIC HEARING ON ANNEXATION (AREA NO. 8)**

Pursuant to Resolution No. 27 of the Board of Commissioners of South Suburban Sewer District, Pierce County, Washington, NOTICE IS HEREBY GIVEN that a PUBLIC HEARING will be held at 4:00 P.M., Pacific Standard Time, on Wednesday, the 20th day of November, 1968, at the conference room of the Parkland Light and Water Company, 404 Garfield Street, Parkland, Pierce County, Washington, at which time and place the said Board of Sewer Commissioners will consider the petition of KENNETH L. PATE and others praying for the annexation of said sewer district of the area designated as Area No. 8 and more particularly described as follows:

**AREA NO. 8**

That portion of Sections 9, 16 and 17, Township 19 North, Range 3 East, W.M., in Pierce County, Washington, described as follows:

Beginning at the center of the intersection of 125th Street South and Yakima Avenue;

Thence easterly along the centerline of 125th Street South to the centerline of Park Avenue;

Thence southerly along said centerline to the centerline of 132nd Street South;

Thence westerly along said centerline to the centerline of Eye Street South;

Thence northerly along said centerline of Eye Street South to the centerline of 132nd Street, South;

Thence westerly along said centerline to the centerline of Jay Street South;

Thence northerly along said centerline of Jay Street South to the centerline of 130th Street South;

Thence westerly along said centerline of 130th Street South, continuing through a vacated section of said 130th Street South to the centerline of Tacoma L and W right-of-way by Superior Court Decision 30752.

Thence northerly along said right-of-way centerline to the centerline of Tule Lake Road South;

Thence easterly along said centerline of Tule Lake Road to the centerline of Yakima Avenue;

Thence northerly along said centerline to the point of beginning.

All interested persons are invited to appear at said hearing and voice approval or disapproval of the proposed annexation. Dated this 4th day of November, 1968.

SOUTH SUBURBAN SEWER DISTRICT  
By Clayton B. Peterson  
President.  
Robert Mortvedt  
Commissioner  
A. G. Swindland  
Commissioner

Attest:  
Robert Mortvedt  
Secretary of the Board of Sewer Commissioners.  
Published Nov. 7th, 1968 in Pierce County Herald and Times Journal.

Somthin' Old,  
Somthin' NEW,  
Somthin' For Me,  
Somthin' For YOU ...  
In Classified Ads —

9 a.m. - 10 p.m.  
7 DAYS  
A WEEK



16618  
Pacific Ave. S. Spanaway  
LE 7-3371

No Sales To  
Dealers

WE RESERVE THE  
RIGHT TO LIMIT  
QUANTITIES

We Carry A Complete Line Of Sacked Feeds - Presto Logs

**We Are Locally Owned & Operated**  
**HELP YOUR BUDGET**  
**WITH THESE SAVINGS**

**PRICES**  
**EFFECTIVE**  
Nov. 7-8-9  
Thur.-Fri.-Sat.

**PUREX**

1/2 Gal. **29¢**

**MUSHROOMS**

Family Joy  
Pieces & Stems  
4 Oz. **4 / \$1**

Silk  
**TOILET  
TISSUE**

4 Roll Pkg. **3 / \$1**

Campfire  
**MARSHMALLOWS**

One Pound **5 / \$1**

Nalley  
**POTATO CHIPS**  
Regular-Dippers-Barbeque  
Reg. 69c Box  
**49¢**

Darigold  
**BUTTER**  
One Pound Cubes **75¢**

Hipolite  
**MARSHMALLOW  
CREME**

7 oz. **4 / \$1**

Nalley  
**MEAT BALLS &  
SPAGHETTI**  
40 Oz. **59¢**

Cold Water  
**ALL**  
Powdered - King Size  
**99¢**

**BLOCK ICE**

**PRODUCE**

**PARTY ICE**

**RADISHES  
GREEN ONIONS**  
2 Bunches

**15¢**

**CALIFORNIA  
LETTUCE**

For **229¢**

**AVOCADOS**

**10¢** Ea.

Sweet & Juicy  
**SATSUMAS**

**19¢** Lb.

Everyday Low Meat Prices. . .25 lb. Locker Boxes **\$14.95**

**T-BONE**

**STEAK**  
**\$1.29** Lb.

**RIB**

**STEAK**  
**98¢** Lb.

**SIRLOIN**

**STEAK**  
**\$1.19** Lb.

**BEEF SHORT**

**RIBS**  
**39¢** Lb.

**BAR S**

**PICNICS**  
**43¢** Lb.  
Sliced & Tied 49¢ Lb.

**ROUND-UP**

**BACON**  
**65¢** Lb.

**Rubber  
Footwear**

**3 Eye  
Rubber  
Pacs**  
Boys' & Men's  
**\$3.99**

**Full Lace  
Insulated  
Rubber Pacs**  
**\$4.99** pr.

Use Your Bank Card



**PAUL'S**  
Shoes & Clothing  
161st & Pacific  
LE 7-0552

**CHURCH  
NEWS**

**PARKWAY**

Presbyterian Church  
Sunday School 9:30 a.m.  
Worship Service 10:45 a.m.  
Nursery Service Provided  
714-138th East LE 1-4234  
Rev. Wesley J. Drummond

Spanaway Assembly of God  
166th & Pacific Ave.  
Sunday School 9:45 a.m.  
Morning Worship 11 a.m.  
Evening Evangelistic 7 p.m.  
Family Night Wed. 7:30 p.m.  
LE 1-1412

**Spanaway Lutheran  
Church**

8:30 & 11 a.m. Worship Service  
9:45 a.m. Sunday School  
Grades 1 & Up  
11 a.m. Sunday School  
3, 4 and 5 Year Olds  
John L. Briehl, Pastor  
160th & A St. LE 7-5978.

**Parkland Lutheran  
Church & Christian  
Day School**

Worship ... 10:30 a.m.  
Sunday School-Bible Study 9:15 a.m.  
All Ages  
H.A. Theiste, pastor  
LE 7-5492 LE 1-0777

**Trinity Lutheran Church**

Worship Services 9 a.m. & 11 a.m.  
Sunday School 10 a.m.  
Wednesday School 4-5  
(through Grade 9)  
Erling C. Thompson  
Robert Drowes PASTORS  
12115 So. Park LE 7-0201

**Spanaway United  
Methodist Church**

Church School 9:30 a.m.  
Worship 11:00 a.m.  
R. Gordon Harrison, Pastor  
163 & Pacific LE 7-5134