

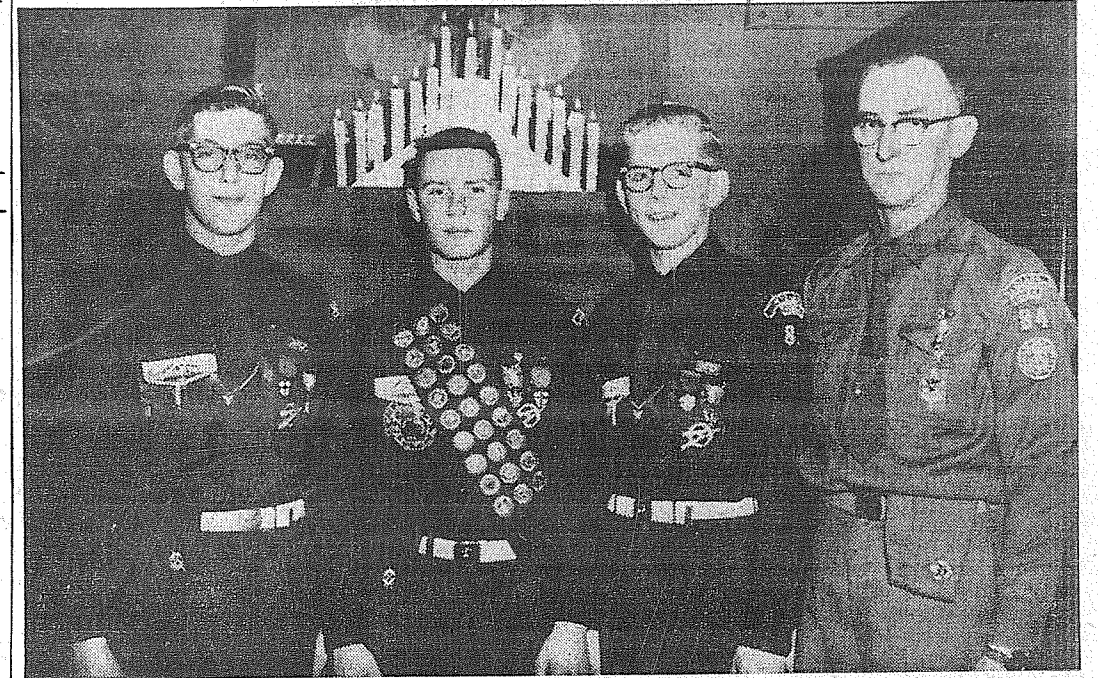
U.S. Postage Paid Sec. 34.66 P.L. & R. Parkland Branch Tacoma, Wash. Permit No. 9P

Rural Route Occupant or Boxholder Postmaster: If unable to deliver, return postage is guaranteed on addressed papers.

The TIMES JOURNAL

THURSDAY, DECEMBER 10, 1959 VOL. 15, NO. 14 PUBLISHED AT PARKLAND, WASH. LE 7-0223

Another Eagle Scout for Midland Troop



HAPPY OCCASION—Michael A. Gural, son of Mr. and Mrs. Frank J. Gural, 1223 East 85th (Midland) was presented with the Eagle Award at a special Court of Honor held in the Midland Improvement club hall Thursday evening, Dec. 3. Pictured above, the new Eagle Scout, flanked by the Huber twins, Dean and Gene, Eagle Scouts of the same troop, and Scoutmaster Charles H. Spragg; left to right; Dean Huber, Mike Gural, Gene Huber and Scoutmaster Spragg. (Photo by McKewen.)

Colors were presented by the Boy Scout Troop 34 and Explorer Post 84. Pastor Wesley Tollefson, of the Lutheran Church of Christ the King, gave the invocation and assisted in the candle lighting ceremony. The Eagle candidate was presented by James Woodbridge, and qualified by Carl Reinicke, (both former Scoutmasters of Troop 84).

Dick McNabb, commissioner, introduced the Court. Master of ceremonies for the Court was Howie Snowden, and guest speaker was Don N. Dowie, who chose as his theme "A Letter to Mike". A letter of congratulations to Mike from Arthur A. Schuck, the nation's Chief Scout Executive, was read by C. E. Townsend, Troop 84's committee chairman, after which Mrs. Gural pinned the Eagle award on her son's shirt, and Mike in turn pinned a miniature of the badge on his mother's dress. He was greeted into the rank by two other Eagle Scouts of his troop, Dean and Gene Huber, who attained the Eagle rank in March of this year.

Mike has been in Scouting for seven years, and has served the Scout Troop as Den Chief, Bugler, Assistant Patrol Leader, Patrol Leader, Senior Patrol Leader and Quartermaster. He has earned the

Altrusans Plan Project Party
Parkland Area Altrusa club meets Dec. 10 at 8:00 p.m. in the home of Blanch Lingbloom for the big gift wrapping party. The members bring gifts of jewelry, handkerchiefs, lotion, candy, etc. and gift wrap them for an after Christmas party they sponsor in one of the wards at Western State hospital.

This is the fourth year they have done this and they have found their small efforts are greatly appreciated by those receiving the packages. The members also have a gift exchange that evening. Florence Dryer and Mabel Seamons will assist as co-hostesses.

Kapowsin P-TA Meeting Tonight
Kapowsin elementary school PTA will meet at 8:00 o'clock this (Thursday) evening in the school gym. Mrs. Donald Connelly presiding. E. R. Hubner, former principal, is returning to tell of his present duties at Remann Hall, Tacoma, and will bring a film depicting how a county case is handled at Remann Hall.

The choir from the Graham Community church will sing Christmas carols. Refreshments will be served by the school faculty.

Boosters in 4th Annual Xmas Breakfast



PLEASANT EVENT—Plans are now complete for the fourth annual all-family Christmas breakfast, to be sponsored by the Franklin Pierce Hi Boosters Sunday, Dec. 13, in the school cafeteria with serving from 8:00 a. m. 'til 1:00 p. m. Pictured above, left to right, are: Cornell Meet, Hi Boosters president; Mrs. Robert Keller, breakfast chairman, and William Whitesell, principal.

The breakfast menu offers a choice of fruit juice, scrambled eggs and bacon, toast and jelly and coffee or milk or fruit juice, hotcakes and bacon with syrup and coffee or milk. Organ music will be played during breakfast and the high school chorus and the choir, under direction of Mrs. Frances Johnson, will entertain.

Franklin Pierce Music Groups Busy With Christmas Dates in Area



BUSY YULETIDE MUSICIANS—Already actively engaged in community and school programs during the Christmas Season are Franklin Pierce band and choir groups. Several of the principals for upcoming performances including a Dec. 22 public concert in the school gymnasium are, from left to right; Ron Smith, choir

director; Jerry Oksness, narrator, Eugene Ahrendt, band director; Judy Johnson, featured instrumentalist, Kathy Taylor, soloist for the choir and Joe Erdal, choir. The choir will be heard Dec. 18 at 6:30 on Radio Station KTAC.

Franklin Pierce Singers and musicians will be very busy during the yuletide season according to Band Director Eugene Ahrendt and Choral Director Ronald Smith. Radio appearances, hotel luncheons and a large Dec. 22 program at the high school dominate the busy agenda. The choir will appear at the Bon Marche, Hotel Winthrop and Lakewood Center, Dec. 16 marks

an appearance at the Hotel Winthrop with a recording to be made for radio station KTAC. They'll be heard Dec. 18 at 6:30 on KTAC and again on Christmas Day. The Christmas program at the school will start at 8:00 in the gymnasium with the choir, hand-mixed chorus, girls' glee, Nonettes and small ensemble groups performing. They'll present the story of Christmas in both words and music.

Top FFA Chapter To Select Harvest Queen
Sweetheart Dance—One of the five above Franklin Pierce High School co-eds will be named Sweetheart of the Pierce FFA Chapter Friday night in the school cafeteria at the annual Harvest Ball. The FFA recently won national recognition as member Phil Rousseau won the national public speaking contest in Kansas City. From left to right: in the back are Becky Grundlund, Leslie Sales and Jane Lawler. Seated are Diane Perryman and Marcella Lawler.

Committee for Incorporation Advises Public of Its Purpose and Findings
In a recent interview, Mr. Bill Black, chairman of the Committee for Incorporation of the City of Parkland, made known the following facts. He pointed out that no member of his committee intends to run for any city office and that the committee was not for or against incorporation until after many meetings and much study of comparable city operations and problems. He further pointed out that signing a petition does not incorporate Parkland. It only puts it on the ballot so the people will

receive more information, both pro and con and have the right to vote on it. Mr. Black further stated that this was the sole purpose of the committee. Felling that the entire community should be advised of their findings the committee has taken space on page 4 of this paper to clearly set forth all facts on incorporation, space permitting, as they find them to be.

Coloring Contest Closing Monday
The 1959 Christmas Coloring Contest sponsored by the local business firms has created much interest and many youngsters in the area are busy completing their entries. The contest will close Monday, Dec. 14, all entries to be deposited in the contest boxes before the business firms lock their doors for the night—since the closing hours vary with the different firms it is not practical to set a definite deadline.

The list of attractive prizes appeared in last week's Times Journal.

Today's Laff
Cannibal to man in pot — "Now close your eyes and open my mouth."
SALE
Mens Oxfords, Boys Oxfords, Girls Shoes, Womens Shoes Reg. To \$2.99 \$8.00 Pr.
Latex Galoshes for Ladies Cuban Heel Shoes Reg. \$2.69 29c pr.
HOURS 9 A.M. TO 6 P.M. FRIDAY TIL 9 P.M.

HILL TOP CONCRETE CO.
LOOK FOR THE BIG "H" THE SIGN OF SERVICE
WINTER IS COMING!! WEATHER—NO PROBLEM
WINTERIZED CONCRETE
HOT WATER MIX
SATURDAY DELIVERIES 8 a.m. to 12 Noon*
* (Due to Overtime Costs on Saturday There is a Slight Increase on Charges)
OUR BIG YELLOW TRUCKS MEAN
● Up To 6 Cubic Yards Per Load!
● 20 Ft. of Hydraulically Operated Chute.
WASHED SAND & GRAVEL CRUSHED ROCK
DRAIN GRAVEL PIT RUN
PHONE TH. 5-9525
2223 23rd Ave. S.E. Puyallup

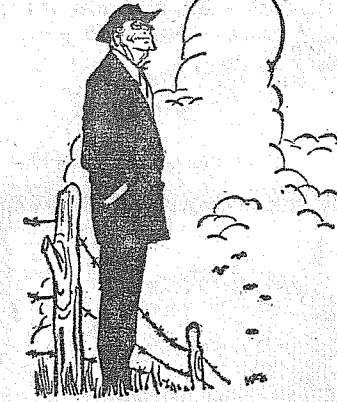
PAUL'S SHOES
Spanaway
161st & Pacific Ave.
LEnox 7-0552

Rodger Lunde VFW

Rodger Lunde Post No. 5052 and Auxiliary, Veterans of Foreign Wars, will have their Christmas party for families Monday, Dec. 14, at 7:30 p.m. at Sunshine Hall, 10106 Yakima avenue. Mrs. Ralph Rawley, chairman, is assisted by Mrs. Joe McGarr.

The Auxiliary will sponsor a Christmas party at Madigan General hospital Monday, Dec. 21. Members will gather at the home of Mrs. Joe McGarr to fill Christmas boxes for this party, time to be announced.

The Country Parson



"Some folks seem to think that every time they form a new opinion—God does, too."

DRYER'S FUNERAL PLAN CUTS COSTS
MORTUARY
PARKLAND
Dryer

SHOP & SAVE at BROOKDALE LUMBER CO.



KITCHEN VENT FANS
Good Ones \$18.95

LITE FIXTURES
AS LOW AS \$2.49

LATEX BASE PAINT
Easy to Use \$1.35 Per Qt.
(Yes, OK to Spray Xmas Trees)

Notice the New Pattern in **CEILING TILE**
Now As Low As 16c Sq. Ft.

LOOK OVER OUR **99c Tool Displays**
That Make Much Appreciated Gifts

CONCRETE MIX \$1.00 Per Bag
MASON MIX \$1.25 Per Bag

We Still Have Some of That 4 x 8 x 1/4 **MAHOGANY VENEER \$4.95**
Finish That Room Now!
A NEW FLOOR OF **TERRAFLEX TILE**

would be just the thing for a practical Christmas surprise; lay them yourself; many patterns.
Only 16 1/2c Each
COME IN
and look around... We can help you with a Nothing-Down Financing Problem

BROOKDALE LUMBER COMPANY
LE 7-8669
136th & Pacific

Highest QUALITY TEXACO
FUEL CHIEF
HEATING OIL
LE 7-8173
Lapenski Fuel Co.

PROFESSIONAL DIRECTORY
Farmers Mutual of Enumclaw
Fire — Auto
ED MAREK
12907 Pacific Ave LE 7-4000

Open 7 Days A Week
Sundays 8 a.m. to 4 p.m.
HUNTING & FISHING LICENSES, SPORTING GOODS, PAINT
SOUTH END PLUMBING AND HARDWARE
185th & Pacific Avenue Phone LE 7-4100

SAVE NYLONS Fall Shades All Sizes Pr. 79c
ODDS and ENDS JEWELRY
Values to 1.75 50c
CUFF LINKS A REAL BUY 79c
TIE CLASPS REG. 1.49
McAULEY SUMMIT DRUG
LE 7-0668 9 to 9 Weekdays Airport & Canyon Rd.

You Don't Need A Discount Card to Shop in Parkland
HEY KIDS
Santa Stops Here
Saturday, 12 to 5 p.m.
Christmas Specials Galore
SCHNEIDER'S
231 GARFIELD — PARKLAND
New And Used Furniture
Hobbies - Toys - Gifts - Novelties
ALL BRAND NEW MERCHANDISE

HILL TOP CONCRETE CO.
LOOK FOR THE BIG "H" THE SIGN OF SERVICE
WINTER IS COMING!! WEATHER—NO PROBLEM
WINTERIZED CONCRETE
HOT WATER MIX
SATURDAY DELIVERIES 8 a.m. to 12 Noon*
* (Due to Overtime Costs on Saturday There is a Slight Increase on Charges)
OUR BIG YELLOW TRUCKS MEAN
● Up To 6 Cubic Yards Per Load!
● 20 Ft. of Hydraulically Operated Chute.
WASHED SAND & GRAVEL CRUSHED ROCK
DRAIN GRAVEL PIT RUN
PHONE TH. 5-9525
2223 23rd Ave. S.E. Puyallup



Sweetheart Dance—One of the five above Franklin Pierce High School co-eds will be named Sweetheart of the Pierce FFA Chapter Friday night in the school cafeteria at the annual Harvest Ball. The FFA recently won national recognition as member Phil Rousseau won the national public speaking contest in Kansas City. From left to right: in the back are Becky Grundlund, Leslie Sales and Jane Lawler. Seated are Diane Perryman and Marcella Lawler.

Committee for Incorporation Advises Public of Its Purpose and Findings
In a recent interview, Mr. Bill Black, chairman of the Committee for Incorporation of the City of Parkland, made known the following facts. He pointed out that no member of his committee intends to run for any city office and that the committee was not for or against incorporation until after many meetings and much study of comparable city operations and problems. He further pointed out that signing a petition does not incorporate Parkland. It only puts it on the ballot so the people will

Coloring Contest Closing Monday
The 1959 Christmas Coloring Contest sponsored by the local business firms has created much interest and many youngsters in the area are busy completing their entries. The contest will close Monday, Dec. 14, all entries to be deposited in the contest boxes before the business firms lock their doors for the night—since the closing hours vary with the different firms it is not practical to set a definite deadline.

TODAY'S LAFF
Cannibal to man in pot — "Now close your eyes and open my mouth."
SALE
Mens Oxfords, Boys Oxfords, Girls Shoes, Womens Shoes Reg. To \$2.99 \$8.00 Pr.
Latex Galoshes for Ladies Cuban Heel Shoes Reg. \$2.69 29c pr.
HOURS 9 A.M. TO 6 P.M. FRIDAY TIL 9 P.M.

Season End Sale BAUM TOYS
Dec. 10, 1:00-8:00 p.m.
James Sales Grange
113th & Park
Reduced 10% to 35%
LE 7-4907 — WA 2-7828

SPANAWAY HARDWARE
ELECTRICAL AND PLUMBING SUPPLIES
SAND, GRAVEL & CEMENT PLASTIC PIPE
170th & Pacific LE 7-8378
Open Sundays 8:30-1:30

CLOVER CREEK BAPTIST CHURCH
A GROWING CHURCH WITH A VITAL MESSAGE
We Welcome You to Worship With Us
(Three Miles East of Pacific On 159th Street)
Lyle Bromblet, Pastor, LE 7-6421
Radio Broadcast, KAYE — 9:00 p.m., Tuesdays

For A Merrier Christmas
KEEP WARM WITH **RADIANT AIRE**
Call LE 1-2611 for an Expert's Estimate On Electric Heat Or Wiring Job
EVERGREEN ELECTRIC CONST. CO.
13021 Pacific Ave. (Home & Commercial) LE 1-2611

TRUST US WITH ALL YOUR DRY CLEANING!
(WE DON'T CLEAN 'BY PHONE' BUT WE GET THERE FAST—JUST CALL)
PARKLAND CLEANERS
11004 Pacific Avenue North of the Bank Corner LEnox 7-3221

CANYON READY-MIX CONCRETE
Covering the Southeast Tacoma Area IF YOU NEED OUR HELP CALL ON US
Form Construction, Elevations and Advice
6-Yd. Mix Trucks to Serve You
Washed Sand & Gravel—Bank Run
WE HAUL OR U-HAUL
We Furnish Wheelbarrows, Etc. On Call Free of Charge
ALL DAY SATURDAY DELIVERY
72ND AND CANYON RD. LE 7-3943

CLEARANCE SALE (OVERSTOCKED)
20% OFF—Storewide
Toys, Christmas Cards and Decorations, Dolls, Yardage, Gift Towel Sets, Jewelry, Lamp Shades, Baby Clothes, School Supplies, Bicycles and Hundreds of Other Items.
Our Prices Can't Be Beat Anywhere! Use Our Christmas Lay-Away Plan NOW and SAVE
Sale On Until December 15th —Ample Parking Space—
GARFIELD VARIETY
1/2 Block East of P.L.C. (LE 7-9959)
326 Garfield, Parkland
Open: 9 to 8 Monday Through Friday—Saturday 9 to 6 OPEN SUNDAY, 11 TO 5

Top your holiday dinner with



Dinner ends on a delightful note when you top dessert with Medosweet whipped cream. It will add zest to your holiday desserts. Your guests will love it on pie, cake or sundaes. Buy Medosweet Whipping Cream today.

Graham Boy on Ike Escort Team

A 2c Gary Milton, son of the Wayne Milton of Graham, is one of the four flight engineers to fly escort on President Eisenhower's 11-nation tour. Gary is stationed in the Azores and is a member of the Rescue Squadron.

Rebekahs
The Past Noble Grands of Kapowsin Rebekah Lodge No. 241 met Dec. 8 at 7 o'clock for a pot-

PACIFIC FLOOR COVERING
LINOLEUM, FORMICA, CARPETS
FREE ESTIMATES
131 & Pacific LE 7-4545



Leif Larson

Phone TH 5-8282

Larson's
PUYALLUP FURNITURE CO.

"EVERYTHING FOR THE HOME"

302 South Meridian
Puyallup, Wash.

luck dinner at the home of Winnie Huff. A Christmas exchange of gifts was held. Mrs. Guy Norman, the president, conducted the meeting.

Kapowsin Rebekah Lodge No. 241 will meet Dec. 15 at 8 p.m. in the Kapowsin Grange hall. A bake sale and Christmas exchange of gifts will be held. Noble Grand Mildred VanHorn and Vice Grand Inez Longwait will be in charge.

To Oregon
Einar Caspersen, accompanied by his mother, Gerda Caspersen, motored to Medford, Oregon, this past weekend to visit old time friends, Mr. and Mrs. Clarence Costa.

Mrs. Bertha Schiemer wishes to thank neighbors and friends at Graham for the many cards and flowers sent during her stay in the hospital.

Reporter—Mrs. Marie Thius, VI 7-7394.

It's the LAW

Trees On Boundary Line
Walter and John were neighbors and Walter had a large locust tree growing on his lot close to the boundary line of John's lot.

The tree was particularly split apart in a windstorm and the part of the tree which hung over John's lot looked as if it might fall and damage John's house.

John asked Walter to please cut the part of the tree which hung over the line before it caused some damage. Walter said "Cut it yourself if you want to. I understand you can cut any part of the tree that is over your yard, and I'm not responsible for any damage it might do if you don't cut it off yourself."

Two weeks later the weakened part of the tree fell, injuring two children playing below the tree and damaging John's house. Who do you think is liable for the injuries of the children and for the damage to the house?

The answer is that Walter, as owner of the tree, is liable for the injuries suffered by the children and for the damage to John's house. The fact that John could have cut off the protruding limbs, but Walter did have a duty to do so when it became apparent that

the tree was in a dangerous condition. Walter will have to pay for the damage caused by the falling tree limbs.

(This column is written to inform not advise. Facts may change the application of the law.)

Building Permit

Harold Jacobson, \$800 frame carport, Eatonville, Wn.

Clifford B. Wagner, \$500 frame garage, Rt. 2, Box 918, Puyallup.

Jarl Corner, \$3347 remodel to res., 803 South 112th.

Abner T. Jacobsen, \$10,300 frame residence, 11922 E. Taylor.

No. 19886, James Smith, \$6,000 trailer, 7402 E. Wilkeson Rd.

Fred Keller, Jr., \$14,000 frame residence, 8123 Fairview Rd., Puy.

No. 19891, Standard Oil of California, \$12,000 service station, 10716 Pacific Ave.

Maurice Anderson, 13,000 trailer park, 8813 Pacific Ave.

Elwyn E. Delano, Porch addn., \$200, 6821 E. Vickery Rd.

Zearl B. Taute, frame garage, \$600, 7622 E. 122nd, Puyallup.

QUALITY HOMES

DESIGN ASSISTANCE

Estimates Without Obligation

Hedlund Const.

920 So. 121st LE 7-4227

Four Annual Xmas Events at PLC

Four annual Christmas events are scheduled at Pacific Lutheran College Friday through Tuesday. The public is invited to attend these programs which will be held in the PLC auditorium.

Friday evening at 8:00 the traditional Lucia Bride Festival will be held. The program will include the crowning of the coed selected to be Lucia Bride, singing of carols by the Spurs, dressed in Scandinavian costumes, and vocal and instrumental solos. Following the program the Spurs will serve coffee and Scandinavian Christmas cookies and breads.

The famous Christmas opera, "Amahl and the Night Visitors," will be staged twice on Saturday at 2:30 and 8:30 p.m. Kathleen McCall will play the lead role in this annual presentation by the PLC Opera Workshop.

Choir, chorus and orchestra will

combine talents to present the annual Christmas concert Sunday afternoon at 3:30 and in the evening at 8.

Under the baton of Dr. R. Byard Fritts the Concert Chorus will sing 10 selections. Prof. Gunnar J. Malmrin will direct his "Choir of the West" in 8 numbers. Then choir and orchestra will join to present a series of favorite Yule carols. Prof. Gordon O. Gilbertson will direct the orchestra.

Tuesday night at 8 the Curtain Call Club will present its annual dramatic production of Charles Dickens "A Christmas Carol."

There are at least 10 cities on the Chinese mainland with population of more than a million.

PIERCE COUNTY REFUSE CO.

Weekly Garbage Collections
Phone LE 7-8688

Prescription Service

Open 7 Days a Week
9:30 a.m. - 9:30 p.m.
Sundays 10 a.m. - 6 p.m.

JACOBS PACIFIC DRUGS

Wallgreen Agency
Pay Light & Water Bills Here
84th & PACIFIC AVE.

Greenfield 2-6445

BIG SAVINGS

Cash in on THESE BUYS . . .

WHITE STAR

TUNA

CHUNK
STYLE

1/2 Size
Tin

25¢

NALLEY'S TANG

SALAD DRESSING Qt.

45¢

SKIPPY

DOG FOOD

Tall
Tin 13 for

\$1.00

VAN CAMP 2 1/2-Tin

PORK & BEANS 5 for

\$1.00

Large AA White
EGGS Doz. 48c

New Crop
MIXED NUTS Lb. 43c

K-P
LUNCH MEAT 12-Oz. Tin 35c

Del Monte
CATSUP 14-Oz. Bottle 3/49c

Hunt's
RED BEANS 300 Tin 2/29c

Walla Walla
ASPARAGUS Cut 300 Spears Tin 29c

Medosweet
COTTAGE CHEESE Pint Carton 27c

BIG SAVINGS

Cash in on THESE BUYS . . .

JAMES HENRY & SUMMIT FARMS

HAMS Lb.

WHOLE
OR
EITHER
HALF

45¢

FRESH GROUND

HAM LOAF Lb.

39¢

U. S. GOOD AND CHOICE
SIRLOIN OR RIB

STEAK Lb.

73¢

ORDER EARLY FOR A
FRESH TURKEY

SWANSON'S NEW QUICK FROZEN

TV Dinners Macaroni & Cheese 3/

\$1.00

Chicken Noodle or Swiss Steak EA. 49c

STORE HOURS

9 a.m. 'Til 9 p.m. Daily Except Sunday

SUMMIT
TRADING COMPANY

10409 Canyon Road, Tacoma

LE 7-5848

No Sales To Dealers

We Reserve The Right To Limit Quantities

SWANSON'S

MEAT PIES

Beef - Turkey - Chicken

5 for \$1.00

PRODUCE

Netted Gem No. 2

POTATOES

25-Lb. Bag **69¢**

EMPEROR

Grapes Lb. **9¢**

EXTRA FANCY

Delicious Apples

2 Lbs. 23¢

BIG SAVINGS

Cash in on THESE BUYS . . .

SUNSHINE

GRAHAM CRACKERS 2-Lb. Pkg.

59¢

CAMPBELL'S
TOMATO SOUP Reg. Size Tin

10¢

OLD RANGER Freestone

PEACHES 2 1/2 Tin

4/89¢

DEL MONTE Chunks - Crushed
Tidbits

PINEAPPLE No. 211 Tin

5/\$1.00

**Collins . . .
Christmas Party
For Collins Grange**

Collins Grange will have its Christmas party this (Thursday) evening at the hall at Allison and Burnett roads. This will be a pot-luck supper for Grange members and their families, starting at 6:00 o'clock. Following the brief Grange session, there will be en-

tertainment, Christmas carols and games. This will be the only meeting for the month.

A gift exchange game will be featured, each woman bringing a woman's gift, each man a man's gift (price limit 50 cents) and those bringing children should provide small presents for them. There will be candy and treats for the youngsters.

Due to a mistake in the officers' names last week, I would like to make a correction: Harley Hornbuckle is to be the steward and Bob Fletcher Jr., the assistant steward.

Don't forget to bring the family tonight for potluck.

Sympathy

Collins friends wish to extend their sympathy to Mrs. E. W. Purdue and sons Paul and Joe on the sudden passing of their husband and father, E. W. Purdue; also to George Purdue, a brother. He will be greatly missed for the interest he took in community affairs.

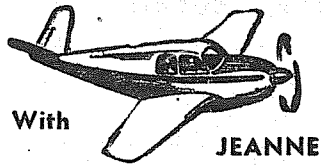
Cub Scout Pack 92 Round Table will be held Friday evening, Dec. 11, at the home of Warren Wallace. Den Mothers will meet with the Cubmaster 7:00 o'clock; committee members will meet at 8:00. The Pack meeting will be held at 7:30 p.m. Dec. 18 in the school gym.

Reporter—Mrs. John G. Gorov.

ORDER PHOTOGRAPHIC XMAS CARDS NOW
Over 100 Designs to Choose From
Bring Your Favorite Picture or Negative
And We Will Print Your Picture In a Folder or Christmas Card
They're So Friendly and Personal when made from your very own snapshot, negative or print.
QUALITY PHOTO SERVICE
9818 Pacific Ave. LE 7-7271

INTRODUCING . . .
A NEW LINE OF COSMETICS
"HOUSE OF HOLLYWOOD"
MEDICALLY FORMULATED FOR YOU . . .
DON'T ENVY A BEAUTIFUL WOMAN . . . BE ONE !!
Call or Come In for Free Demonstration
Charm Beauty Salon
413 Garfield St. LE 7-7475

Flying
With **JEANNE**



Cliff Johnson has bought O'Leary's Luscombe and is rebuilding it. Cliff hopes to have it flying next March.

Al Wiles and Phil Hubbard flew to Friday Harbor to hunt rabbits. A trip was made to Port Angeles by Bill Johnson in his Sea Bee. Dual cross-country training was completed by Del Smith this week with Slim Lawson instructing. Ray Jacobson made a short solo cross-country trip to Olympia and return.

Parkland Neighbors

The December Neighbors club will be the annual Christmas party at the home of Mrs. Sam Harris, retiring president, at 8:00 p.m. Dec. 15. The identity of Secret Pals will be revealed and names of next year's Pals will be drawn. New officers for 1950 will be installed. Mrs. Charles Craig is president; Mrs. Robert Brewer, vice president; Mrs. Virgil Larson, secretary; Mrs. Sam Harris, treasurer.

Those expecting to attend the party are Mesdames Mitchell Anderson, Milton Anderson, Carl Betschart, Charles Burgeson, Charles Craig, Gerald Griffith, Bob Jordan, Virgil Larson, Robert Meriman, Howard Pruitt, Otto Sorenson, Robert Strang, Vern Vance, Frank Olsen, Robert Brewer, John Lee, Robert Meritvold, Earl McDonald, George Stephenson, Donald Reed, Bob Beck and Howard Yurisch.

Rural Garbage Service
Serving Parkland, Midland, Summit and Spanaway
Pierce County Permit
LEnox 7-8688

Summit News

The Dwain Keller family of 4607 Montana St. wish to express their sincere appreciation to the Fairview Rd. Auxillary of the Summit Fire Department for the promptness with which they answered the call when the Keller's house caught fire on November 18th and the efficient manner in which the fire was brought under control. The fire had such a good start when discovered that it was a miracle that they were able to save the front part of the house. Hats off to our fire dept. for another job well done.

Mrs. Ira Wagner who underwent major surgery in the Puyallup Hospital December 2nd is making a satisfactory recovery and is expecting to be able to come home by the middle of this week.

Mrs. Henn Parrot has as guests, her son and his wife, Mr. and Mrs. Robert G. Parrot of Aberdeen, South Dakota who plans to spend the winter here.

Mr. and Mrs. Leroy Bush Sr. received word Saturday that their son and daughter-in-law, Mr. and Mrs. Marvin Bush of Santa Barbara, Cal. were the parents of a baby daughter who has been named Karen Louise. The Bushes have two grandsons but this is the first granddaughter.

Mrs. C. J. Creque and Mrs. Paul Davis entertained last Friday evening at the Creque home with a bridal shower for Marjorie Billy Simons whose marriage to Mr. John Harbinson, will take place in Summit Methodist Church Dec. 23rd. Party guests played games and enjoyed the opening of the gifts by the guest of honor and her fiance. Coffee, ice cream and a beautifully decorated cake were served at the close of the evening. Elmer Carlson, son of Mr. and Mrs. Bob Carlson incurred a severe injury to one eye Nov. 28 by the explosion of what he thought was a defunct fire cracker. The fire cracker had been lying out in the rain and Elmer put it into a plastic tube and lit it to see what would happen. The resulting explosion blew the plastic tube to bits and the boys eye-ball was

Building Permits

Russell Robbins, \$10000 move res. to prop., 1221 East 112th; Chas. Beitz, \$1000 garage, private, 11101 PACIFIC Avenue; C. A. Miller, \$2500 frame storage shed, 14606 Pacific Ave.; Darrell A. Borden, \$2200 trailer, Rt. 1, Box 293B, Graham; Weyerhaeuser School Dist., \$3000 addn. to school, McKenna area; Gordon S. Wood, \$6000 blacksmith shop, Rt. 1, on Spanaway Loop Rd.

Clara Halseth, \$1400, move res. to prop., 6116 So. 99th; Parkland Methodist Church, \$45,000 addn. to church, 12183 A St.; Country Chapel Church, \$3000 addn. to church, 2824 E. 112th; Earl H. Pearson, \$7000 residence, 6705 E. 128th, Puy.; H. Harrold, \$8000 frame res., 6008 Waller Rd.

Word received from Mrs. Ray Bixby last week reports that Mr. Bixby is out of the hospital and able to be about again. The doctor assures them that he is making excellent progress but Mr. Bixby finds it slow going. They wish to thank their friends for the many get well cards they have received, they were greatly appreciated.

The W. S. C. of Summit Methodist Church has field run Oregon walnuts for sale. Anyone interested may call Mrs. Clarence Ralph at LE 7-8476.

Christmas Gifts FOR THE WHOLE FAMILY . . .
Open 7 Days a Week, 7 a.m.-9
Barsotti & Timm
At the Roy Y LE 7-4221

THRIFTY SHOPPER SPECIALS

BORDEN'S - Tall Tins MILK 3 for 39¢

NALLEY'S Old Fashioned 28-Oz. Jar MINCE MEAT . . . 39¢

NUBORA LIQUID Giant Size Tin DETERGENT, IT . . 59¢

HALEY'S 32-Oz. Tin BEEF STEW . . . 75¢

S&W Oven 28-Oz. Tin BAKED BEANS . . . 2 for 59¢

Old Ranger Home Style Peaches . . . 3 for 89¢

Hills Bros. Coffee 2-Lb. \$1.17
Fine, Regular or Drip Grind

PRES-TO-LOGS
Clean Even Heat
3 Doz. \$3.23

Royal Instant PUDDING
No Cooking Dessert **3 for 25¢**

Always the Best . . . AT CHRISTMAS THE MOST!

Schwinn BICYCLES

"SCHWINN" SPEEDSTER \$62.95
With Gear Shift

WE CARRY A FULL LINE OF WAGONS - TRICYCLES PEDAL CARS AND BICYCLE ACCESSORIES

OPEN EVENINGS UNTIL 7:30 P.M. SATURDAY TIL 6 P.M. UNTIL CHRISTMAS

REBUILT BOYS' AND GIRLS' BIKES
16" - 20" - 24" - 26"
Painted and Guaranteed

IT PAYS TO BUY QUALITY
You can depend on Schwinn made in America with parts and service readily available!

SEE OUR LINE OF GO-CARTS

BICYCLES
PARKLAND CYCLE & KEY
11021 Pacific Ave. LEnox 7-5772

BOYS! GIRLS! DAD and MOTHER!
SIGN UP TODAY FOR *
FREE
CHRISTMAS AWARDS
* TWIN AWARDS *
LIONEL *
ELECTRIC TRAIN SET

EFFANBEE *
DOLL & LAYETTE *
* NOTHING TO BUY JUST COME SEE *

Gifts Galore *

Amity Leather Goods - Evening in Paris by Bourjois - Eastman Kodak Cameras - Jewelite Dresser Sets - Remington Shavers - Parker Pens - Sylvania Flashbulbs - Schick Shavers - Timex Watches - Williams Gift Sets - Westclox Clocks and Watches - and countless other wonderful holiday gifts!

ASHMORE'S R & DRUG
PHONE LE-7-5993
165TH & PACIFIC AVE. SPANAWAY, WASH.

THRIFTY! CHOICE! MEATS

Lean and Tender Young PORK CHOPS . . . 45¢

Young Tender Beef Lb. SIRLOIN STEAK 69¢

Half or Whole Young and Lean PORK LOIN Lb. 39¢

Old Fashioned Cured SLAB BACON Lb. 29¢

HOODY New King Size Peanut Butter 1.19

SWIFT'S PARD New Crunchers 8 1/2-Lb. Dry Dog Food 1.19

POPS-RITE Yellow POPCORN 4-Lb. Bag 49¢ or 2-Lb. Bag 33¢

QUALITY! FRESHNESS! VARIETY! PRODUCE

U. S. No. 1 Gems 25 Lb. Bag POTATOES 98¢

Golden Ripe BANANAS 2 Lbs. 27¢

Solid Head LETTUCE 10¢

Emperor Fresh GRAPES 10¢

Jack-N-Bean Stalk PUMPKIN 2 1/2 Tin 2 for 25¢ Or No. 2 Tin 10¢

"AA" Large EGGS Doz. 48¢

MCDANIELS
The Home of The Low Price
AIRPORT & CANYON ROAD
Store Hours: 9:00 'Til 9:00 - Sundays 9:00 'Til 7:00
Prices Effective Thurs., Fri. & Sat.

Give yourself a green Christmas

Green, like the color of money - money to pay your Christmas bills. This year, more than 11,000 Christmas Club members saved \$1,400,000.00. That's a lot of shopping!

Would you like to get a check in plenty of time for Christmas shopping next year? Then join our Christmas Club now. Your choice of two plans: weekly deposit or automatic monthly transfer from your checking account. Be a smart Santa - join this week for sure!

The Bank of Personal Service
Where Our Interest Is You!
PARKLAND BRANCH

SAVE EACH WEEK	HAVE NEXT NOVEMBER
\$.50	\$ 25.00
1.00	50.00
2.00	100.00
3.00	150.00
5.00	250.00
10.00	500.00

Plus Regular Bank Interest

NATIONAL BANK OF WASHINGTON
25 HELPFUL OFFICES

MEMBER FEDERAL DEPOSIT INSURANCE CORPORATION • MEMBER FEDERAL RESERVE SYSTEM

COMMITTEE REPORT ON INCORPORATION

These Are Facts & Figures Produced After Nearly A Year's Study; Not Just Fictitious Ideas;

A committee appointed by Parkland Business Club has been making a study of incorporation for Parkland. At this time the committee feels that it has gathered sufficient information in order to make a report.

To begin with, Parkland is no longer a rural area, but has become an urban community with a population estimated in excess of 10,000. In order to better deal with all of the problems incident to urban living, such a community is accorded, under the statutes of the State of Washington, the RIGHT TO SELF-GOVERNMENT. As a result of its study, the committee recommends that steps be initiated for the incorporation of Parkland.

After an impartial consideration of the many factors involved, the committee was lead to the making of the foregoing recommendation primarily for the accomplishment of the following objectives.

1. To preserve the identity of Parkland as a community.
2. To retain for the community the Franklin Pierce School District.
3. To insure that money paid in taxes in Parkland for local use is expended for needed improvements and services in Parkland.
4. To obtain additional funds for Parkland from State shared revenues available only to an incorporated city.
5. To obtain a government which is able to deal with local problems, and need not weigh the interests of Parkland with conflicting interests of other areas in the county.
6. To establish a local control in planning and zoning for Parkland in order that this community may have a comprehensive program for growth and development.

Financial considerations were given close study by the committee and in this connection, the above aspects of incorporation were investigated: (a) what difference incorporation would make in the taxes being paid by the people of Parkland, (b) what revenues might be anticipated for the finance of the city, and (c) whether a city could be operated on such revenues. We feel it can.

YOU BE THE JUDGE

TAXES

Present Levy in Mills 63.48, after incorporation would be 62.81. The following is a conservative estimate based on 9,500 population WITHOUT ANY RAISE IN YOUR TAXES:

CITY INCOME

40% liquor profits and surtax for general use	\$ 47,500.00
15% of first 5c gas tax for city streets	33,250.00
17% auto excise tax for fire, police and health	14,250.00
Real property tax	
Estimated assessed valuation	\$5,000,000.00
.015	\$ 75,000.00
Income from Police Dept.	\$ 5,000.00
Building permits	\$ 500.00
Total estimated revenues	\$180,500.00

CITY GOVERNMENT COST ANALYSIS

The actual staff of a city, and salaries paid, will be determined by elected officials. However, based on a study of the experience of other cities of this size, the following analysis is submitted showing what is believed to be an adequate city government with which to begin operation.

GENERAL GOVERNMENT

Elected officials: Mayor and two commissioners, salaries prescribed by statute; total for all three	\$ 5,600.00
Appointed officials: Including full-time clerk-treasurer, clerical help and part-time city attorney, building inspector, health officer, as well as provision for rent, telephone, insurance, printing and supplies	13,800.00

POLICE

Police chief, three patrolmen, two cars, police judge and the expenses of gas, rent, maintenance, insurance etc.	31,600.00
--	-----------

FIRE PROTECTION

By law, a city is authorized to contract with a fire protection district (Parkland District No. 6) for the continuance of fire protection under the present system. (4 mill levy on assessed valuation)	20,000.00
---	-----------

LIBRARY

Until such time as the city wanted to provide its own facilities, it could contract with the existing county library. (1.67 mill levy on assessed valuation)	8,350.00
--	----------

STREETS

Maintenance: Estimate based on 10 mill levy presently being paid to county road district. (Note: if additional funds needed, could be taken from reserve and capital outlay funds below)	50,000.00
--	-----------

OTHER

Available for capital outlay	26,150.00
Reserve for contingencies	25,000.00

\$180,500.00

INCORPORATION STUDY COMMITTEE

Spanaway Recreation Reviewed at Meet

"We finished what we started," commented John Newell, chairman of the Spanaway Recreation committee in reporting the comprehensive review achieved in the Friday evening meeting of all groups concerned with the project, held in the Metropolitan Park building in the Park by a "donut eating, coffee drinking crew."

"The short review of all activities of the Spanaway recreation program since its inception in 1957 showed starting supervised organized recreation and a completed recreation building in the Park," declared Newell. "Today approximately 3000 children per year are given some type of recreation; of these some 700 boys and girls living outside the area have come in for the Hunter Safety course during the past two years."

"The budget showed money spent, \$2,707.57; value received by the area, approximately \$17,000.00. This has been a good investment for everyone concerned."

"The teen-age committee has been added to sponsor young folks' dancing parties, with the July 4th celebration to raise money for the proposed cement block community building."

"Tom Cross gave us the good news—money will be available in January to pipe water into Spanaway park. Water plus fill dirt makes good grass plus good maintenance, all adding up to the things needed for our playground, Boys, we're under way!"

"Mr. Cross also congratulated the club on their strides of improvement. The discussion included adult recreation and a more varied scope of recreation for girls. Also the county will now have a regular basketball league."

Byron Parker, Al Guy, Ed Haines, John Twaites and Art Hallgren put up displays—bows and arrow, firearms, football and

Parkland Juniors Score at Show

Sunday, Dec. 6, the Woodbrook Jr. Saddle club put on a horse show under the direction of Mrs. Richard L. Urbon, riding instructor at Woodbrook Stables.

Four riders from the Parkland Juniors came out to represent their club and take home their share of trophies and ribbons. Miss Marie Palin did a wonderful job as judge; the announcer was Richard L. Urbon.

Here are the results of the show: Novice Jumping 1st place Phyllis Morris riding Ridgeway. 2nd place Diane Davis riding Dark Mystery. 3rd place Elithabeth Anderson riding Tonto.

English Pleasure, 13 and over—1st place Diane Davis, 2nd place Lana Dippolito, 3rd place Janie Weyerhauser.

English Pleasure under 13—1st place Cathy Urbon, 2nd place Cynthia Ketell, 3rd place Kathy Sidon.

Gretna Green Race—1st place Phyllis Morris, 2nd place Jerry Goodman, 3rd place Tommy Christensen.

Pairs English or Western—1st place Lana Dippolito and Linda Miles riding Dannie and Laddie. 2nd place Sharon Payson and Phyllis Morris riding Buddy and Ridgeway. 3rd place Janie Weyerhauser and Diane Davis riding Dark Mystery and Joy.

Musical Sacks—1st place Joyce Hislopp (Parkland), 2nd place Ann Henderson, 3rd place Nancy Smith.

Pole Bending English: 1st place Tommy Christensen, 2nd place Janice Hurst.

Pole Bending Western: 1st place Joyce Hislopp (Parkland).

Western Pleasure: 1st Place Ann Henderson, 2nd place Phyllis Morris, 3rd place Gary Turner, (Parkland).

County Agent's Corner

By C. R. Doran

Acree owners in Pierce County who depend on hay making to winter feed their cattle are always interested in other more dependable methods of preserving a quality roughage. This is true since hay is damaged and sometimes lost entirely by rains on the average of two years out of three.

Now we have a new leaflet summarizing the experiments with plastics carried on at the Puyallup Experiment Station, by Dr. F. R. Murdock and Scott Hodgson.

It offers good possibilities of making quality feed in large or small amounts with the help of plastics.

The bulletin describes their experience in making silage in bunkers, stacks and plastic bags: Write to the County Extension Service, 742 County-City Building, Tacoma, Wash., for "Plastics Protect Silage."

By George Purcell

Farmers are not getting rich contrary to many widely held opinions. According to Homer Fletcher, Farm Management Specialist of Washington State University, Extension Service, we see:

Net farm income in Washington is tending downward.

Year	Net Farm Income (1951-1900)	Purchasing Power of Net Farm Income (1951-1900)
1951	\$3467	\$3467
1952	3715	3675
1953	3764	3749
1954	3505	3480
1955	3054	3033
1956	3248	3178
1957	3478	3306
1958	3094	2889

Capital Requirements of Washington farmers now average about \$50,000 per farm and are expected to double by 1957.


According to Fletcher: "Net farm income includes an allowance for food raised and consumed on the farm and an allowance for rental of the farm home. It also includes return on investment. If these items were taken out, the

(Continued on page 8)

DRUG FACTS

FOR DEPENDABLE SERVICE HAVE YOUR PRESCRIPTIONS FILLED AT

ASHMORE'S SPANAWAY DRUG



GOOD SELECTION OF TIMEX WATCHES
Christmas Gift Sets

ASHMORE'S SPANAWAY DRUG PHONE LE-2993
165th & PACIFIC AVE. SPANAWAY, WASH.

Spanaway... Grandmothers in Christmas Party

The Spanaway Kan Do Grandmothers club will meet at the Spanaway fire hall Thursday, Dec. 17, at 12 noon for the annual Christmas party. Mrs. William Wain will conduct the short business session before the gift exchange. Hostesses will be Mrs. William Wain and Mrs. Jeff Williams.

Spanaway Post No. 118, American Legion, will meet at the Spanaway Legion hall Friday, Dec. 11, at 8 p.m.

Best Wishes

Speedy Get Well wishes are for Mrs. Bob Steidel Sr., who has been seriously ill with pneumonia and in the hospital; also to Don McLellan, who has been in the hospital recovering from injuries received in an auto accident.

Mr. and Mrs. Emerson Tarpenting had a pleasant time visiting Vancouver and vicinity on a recent weekend.

Sad Errand

Mr. and Mrs. L. Kirby returned recently from Vancouver where they were called by the critical illness of a relative.

Birthday Club

The Friendly Birthday club will meet at the home of Mrs. Charles Throssel of Roy for the Christmas party Dec. 10 at noon.

Sympathy

Deepest Sympathy to the family of Everett Griffith Noble who passed away Dec. 4.

WCS

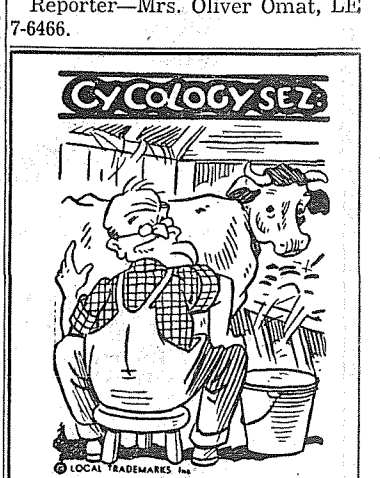
The Women's Society of Christian Service will hold the Christmas party Tuesday, Dec. 15, at 7:30 p.m. at the Spanaway Methodist church. Mrs. Eleanor Warne, missionary home on leave from rural Japan, will tell of her work.

The Wishing Well Gift Shop

Unusual and Hand-Made Gifts (At Roxbury Kennels)
10603 Portland Ave. LE 1-2262

Members are reminded to bring cookies for the coffee hour and also exchange gifts; also gifts for the children's home. Mrs. Harold Johnson will be hostess for the coffee hour. For further information contact Mrs. Orville Critchley, LE 7-8282.

Reporter—Mrs. Oliver Omat, LE 7-6466.



A GENTLEMAN FARMER IS A MAN WHO LOVES COWS BUT WHO DOESN'T KNOW HOW TO MILK THEM

MODERN FARMERS Use Modern Devices

Come in and Investigate Our Auto. Wood Burning Stoves
Prices Start At **66.95**

ASHLEY and **Kresky Buccaneer**

Parkland Hardware
We Give Friendly Service and Sell Quality.
ASHLEY THERMOSTATIC CONTROLLED WOOD HEATERS (AEROSS FROM PIGGLY WIGLY)
12169 PACIFIC AVE. • PARKLAND
Phone LE-7-3171

WOULD YOU!

Suppose someone were to show you a bottle containing three hundred pills, all exactly alike and were to tell you that one of them was deadly poison and twenty-nine would cause violent illness.

How Much Would He Have To Pay You To Take One Of Those Pills?

Nothing could induce you to take such a risk. . . . Yet you and you and you take similar risks daily when you drive or ride in a car for statistics show that for every three-hundred accidents, one will result in death & twenty-nine will cause disability. Statistics also show that flying is 400% safer than driving so if you must travel, why not go the safest way? . . . Fly!

GET INTO THE AIR AND LIVE Flying Is Fun — It's Safe and Economical Too! Your First Lesson Is Free at

Tahoma Flying Service
185TH & PAC. AVE. SPANAWAY AIRPORT LE 1-0442

BALDWIN \$995.00 MODEL 30



PROSSER PIANO & ORGAN CO.
6425 S. Tacoma Way GR 4-0605

BIG performance... small cost... that's the new

ASHLEY

24 HOUR THERMOSTATIC DOWNDRAFT WOOD HEATERS

new decorator colors

Famous ASHLEY fuel savings with the exclusive thermostatically controlled downdraft air intake

15 models - 15 prices

SEE PROOF OF ASHLEY CLAIMS

WEIR'S OPEN EVERY NIGHT 'TIL 9 (Sat. 'Til 6)

8419 PORTLAND AVENUE LE 7-0231

DON'T FORGET! Our Hardware Department is Open Sunday, 9 'Til 6 — LE 7-5262

IGA FOODTOWN IGA



NAVEL
JUICE
ORANGES

5 lbs.

49^c

FRYERS

IGA
TABLERITE
CUT-UP

Lb. 39^c

H
A
M
W
H
A
T
A
M

B
O
N
E
L
E
S
S

Lb. 89^c

L
A
M
B

LEG-O-LAMB Whole or Half lb. 69^c

LAMB CHOPS Rib Cut lb. 79^c

LAMB SHOULDER STEAK lb. 43^c

LAMB SHOULDER ROAST lb. 39^c

BREAST-O-LAMB STEW lb. 19^c

H
O
R
M
E
L
S
L
I
C
E
D
B
A
C
O
N

Lb. 43^c



ARIZONA
GRAPEFRUIT

White
Or
Ruby Red

8 Lbs.

49^c

BIG ONE CENT SALE ON ALL XMAS DECORATIONS — BUY ONE AT REGULAR PRICE . . . SECOND ONE FOR ONE CENT

PIK NIK — No. 303

PEAS

Packed by Green Giant

9/\$1

Christmas Ornaments
FOR A SPARKLING TREE!

GIANT ONE CENT SALE

TWINKLE SNOW BATTS

16" x 54" Each 59c
2 for 60c



GOTHIC CHURCH

\$1.95 Each
2 For 1.96

Tree Ornaments

Box 60c
2 Boxes 61c



VENUS ICICLES

Flame Proof Pkg. 10c
2 Pkgs. 11c

LEAD FOIL ICICLES

Flameproof Pkg. 49c
2 Pkgs. 50c



NOMA SNOW MAN

Illuminated. Ea. \$2.98
2 For 2.99

PLASTIC SNOW

Bag 25c
2 Bags 26c

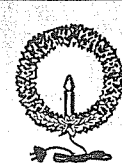


Colored Xmas Metal Bells

49c Box
2 for 50c

Small Glass Tree Balls

15c Each
2 Boxes 16c



Hy-Silton Floss

10c Each
2 For 11c

Xmas Stockings

18" 15c Each
2 For 16c

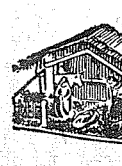


GARLAND TINSEL

25c Card
2 Cards 26c

CARDED METAL BELLS

25c Card
2 Cards 26c



HALO STARS

39c Doz.
2 Doz. 40c

Venus Reflectors

29c Box
2 Boxes 30c



Styrofoam Bells & Balls

49c Bag
2 Bags 50c

Buy One Reg. Price — Buy One for a Penny

Double Luck Cut
GREEN

BEANS

9/\$1

C & H — 10 Lbs.

SUGAR

95^c

GOLD MEDAL —

FLOUR

10 Lbs.

89^c

M.J.B. — 2 Lbs., \$2.17

COFFEE

59^c

IGA SNO-KREEM
Salad & Cooking

OIL

Qt.

43^c

SKIPPY — 1 Lb.

DOG FOOD

13/\$1

"AA" LARGE

EGGS

Doz. 47^c

CHEF BOY-AR-DEE

Pizza Pie Mix

45^c

KRAFT DELUXE — 1 Lb.

MARGARINE

31^c

SOFTASILK — 32-Oz.

CAKE FLOUR

33^c

NESTLE'S — 6-Oz.

CHOC. CHIPS Pkg.

19^c

G&H or U&I
BROWN OR
POWDERED

SUGAR

2/25^c

SWANSON'S TURKEY — CHICKEN — BEEF
HADDOCK — SIRLOIN OF BEEF

TV DINNERS

Ea. 49^c

AIRPORT (112th) AT PARK AVE.

AD DAYS Dec. 10-11-12

Roy Officers Are Listed

For the benefit of the residents of Roy, both old and new, the following is the list of the town officers and directors: Mayor, Irving Nygren; clerk, Marie Harrison; treasurer, Edna Porsch; municipal judge, Dave Harkness; night marshal, Sidney Coggins; board of directors, Henry Harrison, Bert L.

Canyon Road . . . Polluck for Community Club

All the members of the Canyon Road Community club and their families are invited to a potluck supper this (Thursday) evening at 6:30 in the Community hall. Turkey and dressing will be furnished by the club. With Christmas so near, could there be a nicer way to extend holiday greetings with friends and neighbors than over a dinner table. See you there!

Canyon Road . . . Polluck for Community Club

All the members of the Canyon Road Community club and their families are invited to a potluck supper this (Thursday) evening at 6:30 in the Community hall. Turkey and dressing will be furnished by the club. With Christmas so near, could there be a nicer way to extend holiday greetings with friends and neighbors than over a dinner table. See you there!

Best Wishes

On our "not so well" list is Mrs. Bunes and Mrs. Wuestney; we hope they will be feeling better soon. We are happy to report Larga Ladwig is home and feeling much better.

Cub Pack Meeting Stresses Projects

The regular Pack meeting of Cub Scout Pack No. 302 will be held at the parish hall, Our Lady Queen of Heaven, Dec. 15 at 7:30 p.m. Interested parents are invited. Father Greier, pastor of Our Lady Queen of Heaven church, will narrate the story of Saint Nicholas as part of the regular entertainment for the evening.

Boys decorated at the November Pack meeting were:

- Silver Arrow — David Berger, Steven Berger, and Gerald Jones.
- Wolf Badge—Larry Loete.
- Gold Arrow—Billy Thomas.
- Bob Cat Badge—Michael Buck.
- Next Round Table will be held Dec. 22 at Trinity Lutheran church.

Danish explorer Vitus Bering, sailing under the Russian flag, discovered Alaska in 1740.

BIG GIFT SELECTIONS
CHRISTMAS TREE LIGHTS

SEE THE NEW
Corning Ware Electromatic Skillet
We Carry A Full Line of Corning Ware

GIFTS FOR HIM
• Power Tools • Electric Appliances • Sporting Goods • Radios • Record Players • Fishing Tackle

GIFTS FOR HER
• Power Tools • Electric Appliances • Sporting Goods • Radios • Record Players • Fishing Tackle

LOTS OF
FREE PARKING

SOUTH END PLUMBING AND HARDWARE
185th & Pacific Avenue LE 7-4100

Parkland Christian Church
757 So. 138th, Parkland

Sunday School 9:45 a. m.
Morning Worship 11:00 a. m.
Youth Meeting 6:15 p. m.
Evening Service 7:30 p. m.
Bible Study, Thursday 7:30 p. m.

Richard Crane, Pastor

Santa Too, Loves . . . SMOKED SALMON • SALT ICELAND LUTEFISK • HERRING • HOLLAND HERRING • SALT EAST COAST COD • SALT BLACK COD • ANCHOVIES • HERRING TIDBITS • A GOOD VARIETY OF IMPORTED CHEESE • RULLE PULSE • SALOMI • POTATO SAUSAGE • POTATO LEFSE • FISH CAKES • FISH BALLS & COD ROE • (LINGONBERRIES, Bulk & Preserved) • SWEDISH YELLOW PEAS • BROWN BEANS • FLAT BREAD • HARDTACK & LUTEFISK • FISH PUDDING.

MARVIK'S FISH MARKET
8018 Pacific Avenue Phone GR 4-9211

Appreciation to Summit District

This is a "thank you" letter to that competent organization of men and women who helped put over the calendar drive during the closing weeks of November, by which nearly \$500 was raised to finish the outside of the Summit Youth Center building. Thanks also to friends and supporters who bought calendars, and to the merchants who took advertising space. The Summit Youth Center has been in the process of construction for several years, and just recently the interior was completed. Being less than modest, the writer does not hesitate to declare that the interior of the building made an all-out hit with its beauty and finish. Sometime before long there will be a dedication program and invitations will be wide open so you can see for yourselves. Thanks again. Wm. C. Rave, President Summit Youth Center Association.

SIGN PAINTING
"HAVE BRUSH — WILL RUSH"
Board Signs — Truck Lettering
VALLEY SIGN SHOP
7822 1/2 River Road TH 5-4913

BRAKE DRUM TURNING
Complete Motor Rebuilding, Lathe and Press Work, Brake Drum Turning, Reborring, Pin Fitting, Key Seating, Head Surfacing, Piston Grinding, Valve Seats Installed, etc.

Rupe Machine Works and Garage
AUTOMOTIVE & INDUSTRIAL WORK
13411 Pac. Ave. P.O. Box 2445, Parkland 44, Wn. LE 7-7450

O-O-OH LOOK!

TOYLAND IS OPEN!

Polyethylene DIAL TELEPHONE
Dial returns and rings concealed bell. 4x4 3/4 x 7-in.

88c A SURE HIT FOR XMAS

DISHWASHING SET
Eight pieces — poly dish pan, steel strainer, dish rack, sponge, cloth, Brillio, SOS, and soap.

88c

Sure to Please!

CHARLIE MAILBOX
A TEACHING TOY
All wood construction. Different shape blocks for mail. Plenty of fun for the young group.

88c

ALL METAL MUSICAL PLUNGER
Suction cup base holds top steady. Bright litho colors, and easy to operate for beautiful music.

88c

PLAYTIME SPORTSMAN SET
TOOTSIE TOY
6-pc. set includes metal station wagon pulling trailer and boat — Austin sports car — Cadillac and trailer. Each set in colorful box.

1.88 EACH

WHAT A BUY AT
2.88

2.88 What a Buy!

Exciting Toys for Little Girls!

"PLAYTIME" FOLDING DOLL STROLLER
Folding stroller with shopping bag and removable canopy. Handle height 22". 5" rubber tired wheels.

"PLAYTIME" FOLDING DOLL CARRIAGE
1 1/2" body and 22" handle height. Three bow hood and visor. 5" rubber tired wheels. Every little girl will love this carriage.

LOOK AT THIS SAVINGS

CONGA DRUM
Beautifully decorated 18 inch drum with fiber heads and metal rim.
SPECIAL AT ONLY 1.88

ALL STEEL FOLDING IRONING BOARD
Sturdy folding ironing board 27" long and 22" high. A big value at **1.88**

SEE HOW MUCH 88c WILL BUY

TROT-N-CHIME PULL TOY
13" long polyethylene horse pulls musical chimes on 5" poly wheels. A sure hit with the toddler.
88c

SEWING AND EMBROIDERY KIT
complete
1.88

GIFT BOXED!

Just the thing for creating a beautiful and decorative wall panel. Your little girl will love it.

TALKING ANIMAL BOOK
Giant 5-page animal story book. Each page has sound for the story.
88c

A REAL VALUE AT 88c

35" LONG

HOBBY HORSE
Palomino horse head mounted on stick with 5-inch plastic wheel. Sure to please the young cowboy.
88c EACH

GAMES! GAMES! GAMES!

88c YOUR CHOICE

Child Guidance Toy TAKE APART MOVIE CAMERA
The gears move. Three lenses are interchangeable. Lively action for 2 to 7 year group. Spec. at only **1.29**

FRICITION TOYS
4 styles—freight van, cattle truck, dump truck, or crane truck. Plenty of action in these powerful trucks.

SPECIAL AT 88c ea.

Polyethylene TANK
9-in. long with swivel gun turret that can be elevated. Shoots 3 polyethylene shells.

88c

GAMES! GAMES!
Big selection of board games in popular titles: Annie Oakley, Bobsey Twins, Happy Train, Sergeant Preston, and many others. Buy several for Christmas.

SPECIAL ONLY 88c ea.

MATADOR WITH LAUNCHER
Colorful plastic—easily assembled do-it-yourself package. Missile really takes off!

88c

POLYETHYLENE JET PLANE
2 1/4-in. long—shoots 2 soft shelled rockets. A sure hit with every boy!

88c

ALL POLYETHYLENE WHEELBARROW
Many hours of safe and happy play with this colorful toy wheelbarrow.

SPECIAL AT ONLY 1.88 EACH

DOLL BATHINETTE AND SCALE SET
Colorfully boxed. Hours of happy play for the little mother to bathe and weigh her baby doll.

A REAL BUY 1.88 ea. set

OPEN SUNDAYS
12 Noon 'Til 6 p.m.
OPEN 'TIL 10 P.M.
Dec. 14th - 23rd **PARKLAND STORE ONLY**

SHOP-ETTE
VARIETY and DEPARTMENT STORES
56th and Pacific Avenue
Open Daily 10 a.m. to 9 p.m.
Sundays 12 Noon to 6 p.m.

133rd & Pacific Avenue
Next to "Big Bear"

Sensational low, low price!

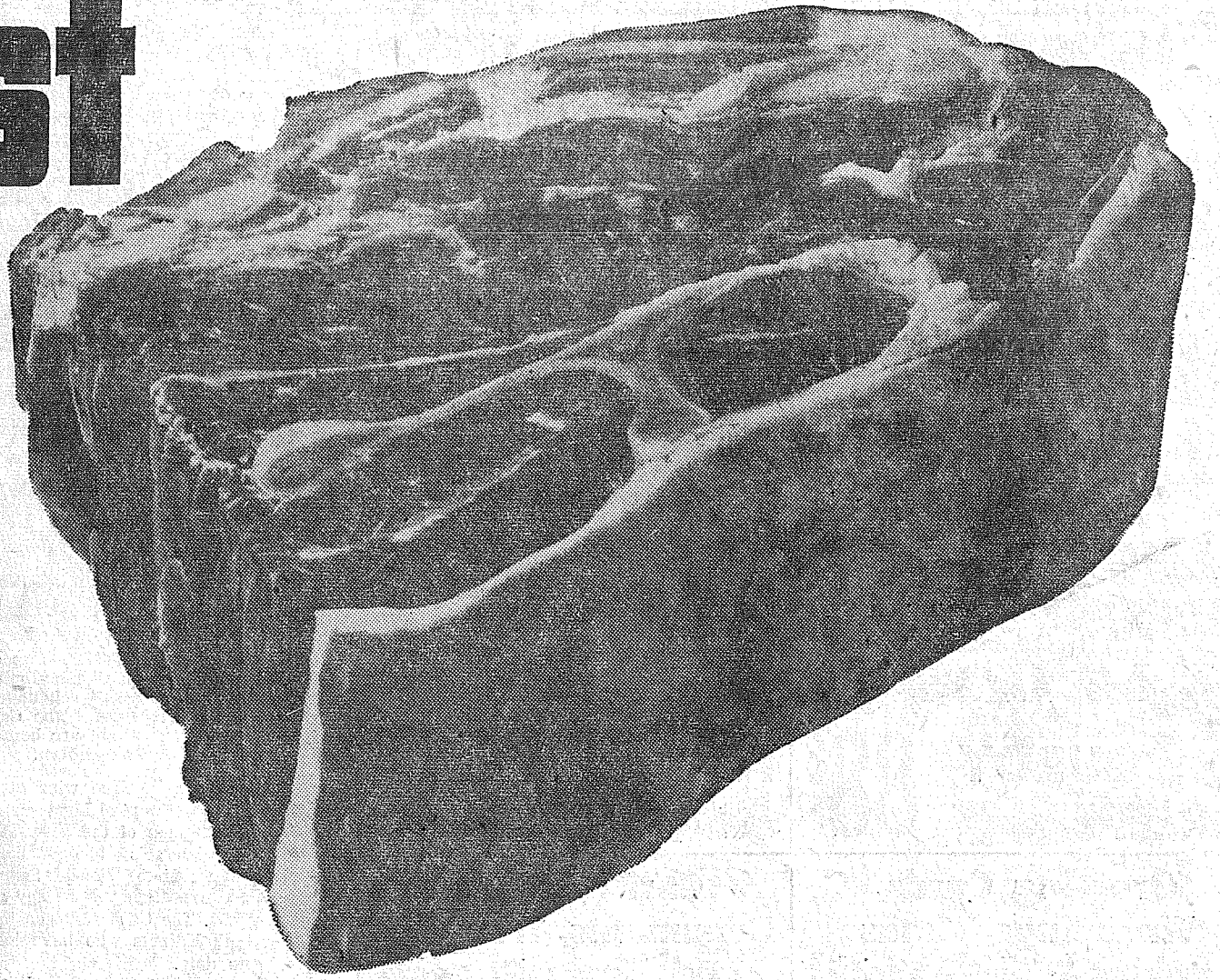


Chuck Roast

Center Cuts Included!

U. S. Graded Choice Beef . . . specially aged for complete tenderness and extra flavor! Center cuts and 7-bone roasts are included. Each roast is fully trimmed.

lb. **39¢**



- Ground Chuck** lb. **59¢**
Lean and fresh . . . ground hourly!
- Boneless Cross Rib** lb. **79¢**
U. S. Graded Choice Beef Roast.
- Chuck Steaks** lb. **49¢**
U. S. Choice Beef, well trimmed.

- Sliced Bacon** lb. **39¢**
Morrell's Comet . . . nice 'n' lean.
- Baby Halibut** lb. **29¢**
Whole, or piece; sliced, 35c lb.

Fresh Washington Grown Fryer Sale!

- FRESH DRUMSTICKS**
Cut from strictly fresh Washington Grown Fryers! No ordinary fryers these, but the very finest quality select birds. **lb. 49¢**
- FRESH THIGHS**
Guaranteed strictly fresh, plump and very tender. Sold on a money-back guarantee of complete satisfaction. A real value! **lb. 53¢**
- FRESH BREASTS**
Plump breasts of the very finest quality Washington Grown fryers. These fryers are guaranteed fresh and tender. **lb. 59¢**
- FRESH WINGS**
Cut from the very finest quality fryers. Washington Grown select birds that give you the finest and most tender eating. **lb. 29¢**
- FRESH CHICKEN NECKS and BACKS** **lb. 15¢**
Cut from guaranteed fresh Washington Grown Fryers. Selected for quality!

DOLE PINEAPPLE JUICE 3	46-oz. Cans	79¢
STOKELY APPLESAUCE 5	#303 Can	95¢
MINUTE MASHED POTATOES	Sc Off label 7-oz. Pkg.	28¢
MISSION LONG SPAGHETTI	24-oz. Pkg.	33¢
LUCKY SALAD OIL	Per Qt.	45¢

SUNKIST ORANGES

SWEET, JUICE-LADEN seedless, new crop navel oranges, med. size **Per Lb. 10¢**

PINK GRAPEFRUIT

TEXAS RUBY PINKS, Loaded with vitamin rich, sweet juice, large 48 size. **Each Only 5¢**

- CELERY** Per Lb. **10¢**
Calif. grown, tender, sweet, stringless Pascal variety.
- BROCCOLI** Per Lb. **15¢**
New crop Calif. grown top quality tender all green shoots, no waste.

This Christmas give apples, the all family gift. Extra fancy Red Delicious or Winesaps, Rome and Golden Delicious. Gift or standard box. Big Bear will handle shipping anywhere. Ask for details.

- MJB COFFEE** Reg. or Drip Can 1-lb. **59¢**
- FISHER FLOUR** 10-lb. bag **75¢**
- MARGARINE** Lucky 2 1-lb. Cubes **29¢**
- TIDE** Giant Size Detergent 5c off label Per Pkg. **69¢**
- FRUIT** Duchess Peaches—irregular Duchess Pears—irregular Duchess Apricots—(whole unpeeled) 4 No. 2 1/2 Cans **1.00**
- COTTAGE CHEESE** Medowsweet 1-lb. Ctn. **25¢**
- FROZEN DINNERS** Morton Per Pkg. **49¢**
- PURE HONEY** Sioux 5-lb. Bee **99¢**

- Market Day Seedless Raisins 2-lb. Pkg. **49¢**
- Duchess Cut Green Beans 7 #303 Cans **1.00**
- Nalley Tang Per Qt. **53¢**
- Sunny Jim Strawberry Preserves 3 12-oz. Jar **95¢**
- Vet's Dog Food 12 No. 1 Cans **1.00**
- Roman Meal Cereal 28-oz. Can **39¢**
- Real Gold Orange Base 2 6-oz. Cans **35¢**
- Scotties Facial Tissue 400 Ct. Box **29¢**
- Scott Toilet Tissue 4 Roll Pkg. **49¢**
- Del Monte Catsup 2 14-oz. Bottle **39¢**
- Snowmist Tuna 3 No. 1/2 Cans **79¢**
- Libby Green Lima Beans No. 303 Cans **29¢**
- IVORY SOAP 3 Med Bars **31c**
- PERSONAL IVORY 4 Bars **27c**
- IVORY FLAKES (10c OFF) Giant Pkg. **73c**
- IVORY SNOW (15c OFF) King-Size **1.20**
- CAMAY 2 Bath Size **31c**
- ZEST SOAP 2 Bath Size **43c**
- LAVA SOAP 2 Reg. Size **25c**
- DUZ Large Size **37c**
- OXYDOL (3c OFF) Large Size **34c**
- CHEER (12c OFF) King **1.23**
- DREFT Large Size **37c**
- INV 1000 (10c OFF) 22-oz. Can **65c**
- CASCADE 20-oz. Pkg. **49c**
- DASH Giant Size **83c**
- SPIC & SPAN (3c OFF) Reg. Size **25c**
- COMET 2 Reg. Size **33c**
- IVORY LIQUID (7c OFF) 22-oz. Size **68c**
- MR. CLEAN (10c OFF) 25-oz. Bottle **63c**

133rd & Pacific Ave. PARKLAND

Prices effective Wednesday through Saturday . . . limit rights reserved.



Galilee;" a Christmas cartoon will also be shown for the kiddies. Bring cookies or sandwiches for refreshments after the program. Don't forget the Grange potluck dinner and get-together Dec. 12.

Waller Road . . . Christmas Party For W. R. Grange

The Dec. 18 meeting of Waller Road Grange will be an open one with Grangers asked to bring their children for the annual Christmas treat and toy gift exchange. The program will feature showing of two appropriate films, "Silent Night" and "They Met in

Waller Road P-TA will meet Dec. 15 at 8:00 in the Community Hall for the annual Christmas party and 50 cent gift exchange (mark gifts "Men" or "Women"). The Flag presentation will be by members of Boy Scout Troop 23. Reporter — Mrs. Verne Fogle, LE 7-5210.

The TIMES JOURNAL

ADDRESS P.O. BOX 2008 PARKLAND, WASHINGTON
14620 Pacific Avenue Phone LEnox 7-0223

JACK BROWN PUBLISHER
NEVA T. HONEYWELL EDITOR
DARRELL DUGAN ADVERTISING
ESTHER GODDARD ADVERTISING
DON ROBERTS CLASSIFIED
CHET CHAMBERLAIN ACCOUNTING
DAVE HIBBARD SHOP FOREMAN
DOLORES BROWN CIRCULATION
WES MCKEWEEN PHOTOGRAPHER

CORRESPONDENTS

Mrs. John Folk, Kathryn Deady, Mrs. Gorow, Mrs. Marie Tinius, Marlene Corrigan, Mrs. Oliver Omat, Mrs. C. R. McMillan, Mrs. Verne Fogle, Margaret David, Lorna Wood, Mrs. Frank Jewell, Mrs. Ray Burkhardt.

Qualified as a Legal Publication under Chapter 213 of the Legislative Acts of the 1941 Regular Session of the State of Washington. Delivered free by U. S. Mail to all homes in the trade territory. Paid subscriptions elsewhere: In Washington State \$2.50 per year. Outside the state, \$3.00 per year.

ADVERTISING RATES ON REQUEST

Cards to Open PSL Chase at Enumclaw



JUNIOR PERFORMERS—Two of Coach Del Schaefer's junior basketballers figure in Cardinal plans this winter. At the left is Joe Mancuso, who is a fine rebounder despite his 5-10 height, and Jerry Manley, slim forward. The Cards make their first PSL start at Enumclaw Friday and are home next Tuesday and Friday against Puyallup and Kent-Meridian.

After two non-league wins over Olympia of the Capital League and Lake Washington of the KINGCO, Franklin Pierce's basketballers move right into Puget Sound League competition this Friday at Enumclaw. The Cards take on the improving Hornets who have lost twice to date.

Franklin Pierce will be back on the home court Tuesday against arch-rival Puyallup who want to settle a few scores from last year. Coming to Pierce Friday are the tall Kent-Meridian Royals. Both games will start at approximately 8:00 dependent on the 6:45 preliminary between the junior varsities.

Before two good crowds last week end, the Cardinal cagers showed signs of prowess but Del Schaefer's team has a lot of work to be done. The Cards appear to have a fine shooting team potential but need work on passing. They hustled past Olympia 42-34 and used speed in an easy 55-34 conquest of Lake Washington.

Schaefer used his entire bench in the Kanagoo fracas Saturday and positions are still wide open. Joe Mancuso, Jon Malmin and Rick Smidt and Gary Riharich appear

to have nailed down berths for Friday. Ken Southall and Jerry Manley are fighting it out for one of the forward slots. Dave Huseby and Tom Tommervik are also contenders.

Schaefer will be facing a tough Hornet zone tomorrow which has always bothered several of his senior players. The Cards lost out in the state tournament against Burlington and Ballard of Seattle because of their inability with it.

Puyallup is still on the warpath after a fine last two week's rush which fell short last year. The Vikings are hungry for a state tournament berth. Coach Dean Nicholson has Jim Clifton, clever and smooth veteran at guard, and several others back from last year. —By Ron Frank

Clover Creek . . . Women's Club Elects Officers

Meeting at the home of Mrs. Fred Pratt, the Clover Creek Women's club elected the following officers: President, Mrs. Vivian Codgrove; secretary (re-elected), Mrs. Alberta Tenynson; treasurer (re-elected) Mrs. Beatrice Gammon; work chairman (re-elected), Mrs. Donna Anderson; Sunshine chairman, Mrs. Hazel Lightbody. A nice lunch was served by the hostess. The club's Christmas party will be held Dec. 17 at the home of Mrs. Christine Lowman, with names of Secret Pals revealed.

Home From Trip
Mrs. Henry Ferguson returned recently from Minnesota where she spent a week.

Reporter — Mrs. Ray Burkhardt, VI 7-7386.

About 400 people died in the Eastern United States during the Great Blizzard of 1888.

PLC Cagers Start Important Season

Pacific Lutheran college basketball forces, Evergreen Conference champions for the past five seasons, open the 1959-60 season with a good backlog of seasoned players. With four starters gone from last year's club which finished second in the NAIA Kansas City tourney, Coach Gene Lundgaard has a major rebuilding task at Luteville. He has six returning lettermen, and pre-season workouts indicate his starting five will come from this nucleus.

Up front the Lutes will have three rangy men in sophomore Larry Poulsen 6-5, 205 pounds) at center, junior Ralph Carr (6-6, 205 pounds) at the low post, and Bill "Whity" Williams (6-3½, 200 pounds) at forward. Junior Norm Dahl, sole starter from last year, will be at guard. The 6-2 speedster can also play effectively on the post. Senior Glen Campbell and junior Bruce Alexander are battling for the other guard spot.

Another senior letterman, 6-2 Dennis Ross, will not be eligible until the second semester due to scholastic difficulties.

Up from the junior varsity squad are sophomores Jim Womack and Dean Haner, and senior Sam Gange.

Freshmen showing promise include Bob Jacobsen, 6-1 all-conference ace from Lincoln in Tacoma; Dick Nelson, 5-11 speed merchant from Richland's state championship five; and Bill Moscrip, all King-Co League guard from Bellevue.

Pete Gahloff, junior transfer from Lower Columbia J. C., and a product of Seattle's Garfield High, may help the Lute bench.

Others turning out include James Henson, Mt. Vernon; Joseph Lenberg, Moxee; Michael McIntyre, North Hollywood, Calif. Garry Nevers, Longview; Jerry Poppen, Oregon City; Kenneth Ruud, Hillsboro, Ore.; Gary Stubbs, Shoreline (Seattle); Jay Wagner, Monroe (Clark J. C.); and Leland Carlson, Tacoma (Port Angeles Hi.).

County Agent's Corner

(From page 4)
return for family labor and management would be very low or negative. These figures are the average for all farms in the state including part time as well as full time farms. Therefore, there are a great many farms in Washington today that are not receiving anything for their labor and very little for their investment.

If you look at the purchasing power of net farm income over the same period, the real income of farm families has been going down even more than the farm income figures show.

This trend has occurred even though we have fewer and larger farms today than ever before.

By Ernest Hopp
The second organizational meeting of a new poultry organization for commercial egg producers was held November 30, at the Western Washington Experiment Station, Winter School Building. Temporary chairman, Cecil Foster, from Buckley, led the group in discussing future by-laws for the organization. Marvin Bowman, also from Buckley, presented proposed by-laws which listed the primary objectives of the new group as legislative and promotional. At present the group is not seeking

an egg commission which can be formed under the state marketing and enabling act.

It is the intent of the Pierce county group to first organize commercial egg producers in Pierce county. The next step would be to organize other counties in Western Washington and eventually the entire state. The local group feels that a strong state wide organization of commercial egg producers could do much to help the passage of laws beneficial to commercial poultrymen and also to help promote the sale of eggs.

The next meeting of the group will be 8:00 p.m., Monday, January 4th, in the Winter School Building at the Western Washington Experiment Station.

The Holland Tunnel between New York and Jersey City is used by more than 20 million vehicles a year.

FLETT DAIRY

FARM FRESH
HOMOGENIZED AND
PASTEURIZED MILK
AND CREAM
ICE CREAM

Phone GR 2-3301

CLOSE-OUT—1/3 OFF ON ALL HARDWARE ITEMS

NOW UNDER NEW MANAGEMENT
Formerly General Supply Co.
NOW VIS-REY SHAKE AND SIDING CO.
12702 Pacific Ave. LE 7-4080

CALLING ALL SANTAS.. ALL SANTAS..



THIS IS THE
NORTHWEST
FLYER

PAPA OSCAR BRAVO
2008 OUT OF
PARKLAND, WASH. . .
DO YOU READ US?

If You Do You'll Know That a
Subscription to the Northwest
Flyer is the Only
PERFECT GIFT
For Anyone Interested
In Aviation

Christmas Special

Upon receipt of the subscription blank below, properly signed, we will mail to the person designated, a beautiful Christmas card identifying you as the donor of this unusual gift—ideal for the friend (or relative) who "has everything!" This entails no extra charge to you. The gift subscription for one year starts with the first 1960 Northwest Flyer, dated, January 1, 1960.

ONLY \$3.50 PER YEAR U.S. DELIVERY
\$4.50 Foreign Delivery

Fill Out The Subscription Blank Below and Mail

GIFT SUBSCRIPTION BLANK

The Northwest FLYER P. O. BOX 2008
PARKLAND, WASHINGTON
Date....., 19.....

Name.....
Address.....
P. O. Box.....
City..... Phone.....
(Please Print Plainly)

Mail subscriptions will be discontinued 30 days after expiration date. All mail subscriptions must be paid in advance to conform with Postal Laws and Audit Bureau of Circulation rules.

I hereby subscribe to the NORTHWEST FLYER for a period of (1) One Year and enclose \$3.50, U. S. Delivery; \$4.50, Foreign Delivery, in Cash, Check, Money Order.

Notice of expiration will be sent to:

Name.....
Address.....
City..... Phone.....

SIGNED.....

BOYS! GIRLS!
DAD and MOTHER
SIGN UP TODAY FOR
FREE

Christmas Awards
To Be Awarded

**LIONEL *
ELECTRIC TRAIN SET**

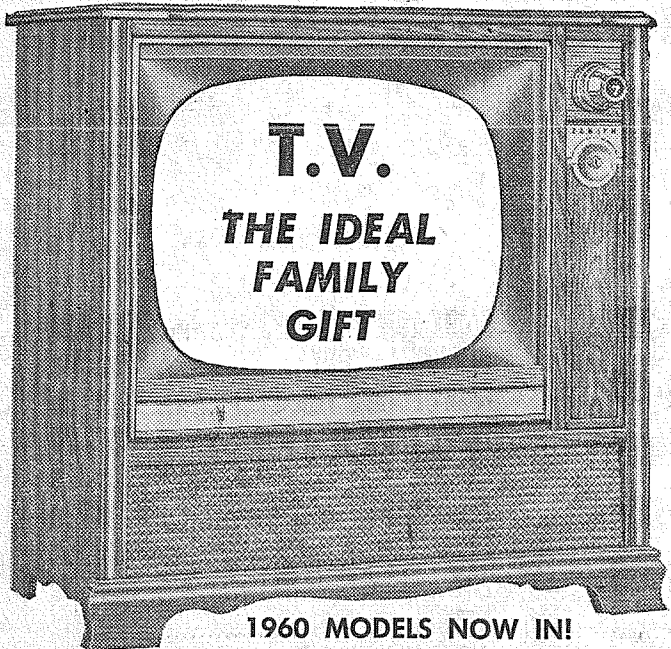
**EFFANBEE
DOLL AND
LAYETTE**

Gifts Galore
Amity Leather Goods — Evening in Paris by Bourjois — Eastman Kodak Cameras — Jewelite Dresser Sets — Remington Shavers — Parker Pens — Sylvania Flashbulbs — Schick Shavers — Timex Watches — Williams Gift Sets — Westclox Clocks and Watches — and countless other wonderful holiday gifts!

**GENE'S
MIDLAND DRUG**
9823 Portland Ave. LE 7-3305

ZENITH GIFTS

THAT SAY - "MERRY CHRISTMAS"



1960 MODELS NOW IN!
PRICES START AT \$144.95 AND UP

Exquisite Fine Furniture for the Finest Room in Your Home, and the Finest Family in the World. Cabinetry in Veneers and Hardwood Solids.

Made In America
for Americans

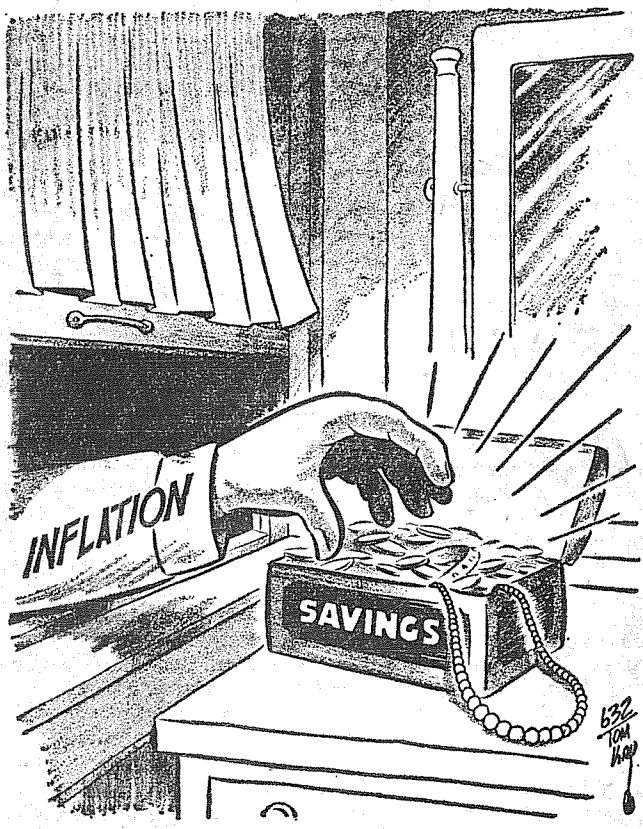
POCHEL
YOUR FUEL OIL & APPLIANCE DEALER
140th & Pacific Avenue

LISTEN TO **ZENITH**
NEW E-X-T-E-N-D-E-D
STEREOPHONIC
HIGH FIDELITY
Panoramic Listening
At Prices Any Family Can Afford

ZENITH **RADIOS** TABLE MODELS
CLOCK ZENITH
MAKE AN IDEAL GIFT FOR ANY AGE
New front-to-back styling . . .
Zenith famous tone quality . . .
New smart decorator colors

ZENITH **PORTABLE
RECORD PLAYERS**
BOUND TO PLEASE ANY 'TEEN'

**DISTRIBUTING
COMPANY**
Phone LEnox 7-8624



The Sneak Thief

**a-Wondering . . .
and a-Wandering . . .**
With JACK BROWN

"Now Harry, you know that that round thing you're trying to make will never work. You'll just have to carry what you want to take."

So said, no doubt, a cave wife thousands of years ago to her lazy husband who wanted to make wheels so he wouldn't have to pack everything on his back.

"That is ridiculous. Here is a man who thinks he can make a steam engine pull a lot of wagons, instead of using horses, as God intended."

No doubt this was the comment of many a wise man over a hundred years ago as man struggled upward, and was working on steam railway engines.

"Get that crazy contraption off the streets, it's scaring the horses."

Was said many and many a time as the first gasless buggies snorted and puffed down the roads of a half a century ago.

And then men trying to fly like birds? Don't be silly. If God had intended us to fly through the air, he would have given us wings.

And do you remember how the railroads had to fight to get right of ways; because it cut across farms? And how the modern highway often has right of way problems, but all these are pushed aside, because it is recognized that progress can't be stopped?

Of course it can be stopped in some localities. But if it is stopped one place, it pushes out in another, like air in a balloon.

You've probably already gotten the point. Tacoma needs a large airport where transports and passenger planes can land, just as the caveman needed wheels; civilization needed the cheaper and faster transportation of steam engines, automobiles, and now airplanes.

Unless the Tacoma City Fathers and the Port Commission work out an equitable solution to the problem and develop an airport now while Federal funds and sites (Note: I do mean the plural of site) are available, they may as well erect a neon sign over the County-City building that will say, "Watch Seattle Grow."

In the running of a ship the sailor is just as important to her operation as is the captain; each has his job to do. The sailor makes the ship function and the captain sets her course. The same could be said for labor and management in industry. Labor makes the industry function and management sets its course.

The question in my mind is whether labor is stepping beyond its bounds and attempting to take over management. If this is the case industry will deteriorate into an entity without leadership. How long would a ship sail without a captain?

This is flirting with chaos because hobbling the command leaves any organization without purpose whether it involves the captain of a ship, the management of an industry or the foreman on a job. Everybody cannot be "captain" and still keep the ship on a charted course.

One of the most ridiculous expressions that I've ever heard, and I've heard it many times, is the following: "If you want to get something done, get a busy man to do it."

I can counter this expression with a pet one of my own: "Don't work a good horse to death!"

Rural living has many attractions, but the constant demands for civic, church and youth participation is one of the difficulties encountered.

Most assuredly every resident of a community owes a certain amount of effort to his community, his clubs and his church. But because a person is willing to do his share is no reason for overloading him with someone else's chores. . . .

Somewhere in these rambling thoughts can probably be found the point of origin of that phrase that is fast becoming popular in my list of cliches: "Get off my back."

Franklin Pierce School Menu

December 14
Hot Meat Sandwich, buttered spinach, carrot sticks, refrigerator cookies and milk.
December 15
Macaroni & cheese, Raisin bread, cabbage-apple salad, jello with fruit and milk.
December 16
Chicken noodle soup with fresh veg., hot dog, potato chips, frosted grahams and milk.
December 17
Mashed potato-gravy, roast turkey, golden glow salad, bread & butter sandwich, plum pie, milk.
December 18
Tuna fish sandwich, tomato soup, fruit cobbler and milk.
The average depth of the earth's oceans is 12,451 feet.

Volkswagen Club

By Kreeha B. Alkire
Approximately 30 friends from the Volkswagen club of Tacoma will attend a festive holiday season "no host" dinner at the Parkland home of Mr. and Mrs. Jerry Siler, 10804 A street, on Saturday, December 12th at 5:00 p.m.
Helping Mrs. Siler plan the entertainment program will be Mrs. C. H. McMillan, Lakewood, and Kreeha B. Alkire, Tacoma.
The dinner will be served from a buffet table having a Christmas tree centerpiece designed and made by Mrs. Siler. Following dinner, a program will feature games and an old fashioned song fest of Christmas music with Miss Mary Siler accompanying the group on the piano.
Persons planning to attend this Christmas season party are Mr. and Mrs. L. R. Isaacs, Mr. and

Card Of Thanks

We wish extend our sincere thanks to all our friends and neighbors for their many kindnesses to us during our recent bereavement at the death of our beloved husband, father and brother, Ed Purdue.
Mrs. Ed Purdue
Joe and Jim Purdue
George Purdue

Grandmothers

Parkland Grandmothers club will meet at 12:30 Thursday, Dec. 17, at the home of Mrs. Severn Kittleson, 605 South 120th St., for the annual Christmas party. After a short business session, gifts will be exchanged.

BUY U.S. SAVINGS BONDS



TED SWANSON
INSULIN - VITAMINS
Downtown Prices
Pay Phone Bills Here
PLENTY OF FREE PARKING
TINCHER'S PHARMACY
8227 Park Ave. GE 4-3344
Across from Fern Hill P. O.

Bonnie Dollar's back again with exciting news about extra savings for you!

Bonnie Dollar is a pert lassie with a sharp eye for bargains. She stands for Safeway Dollar Days—the purse-pleasingest sale event that ever gladdened the hearts of thrifty shoppers! Come have yourself a baggain-ting.



Sale starts 9 a.m. Thursday, December 10 through Saturday, December 12, in Tacoma, Sumner and Puyallup.

SAFEWAY

DOLLAR DAYS

Dainties
HERSHEY'S Chocolate hips, 5½-oz. Pkg.
5 for \$1

Green Peas
VALLEY PRIME, Ideal for dinner—
8-oz. Can, 4 for 25c
16 for \$1

Pineapple Juice LIBBY'S 46-oz. Can **4 for \$1**
Pineapple LIBBY'S Crushed No. 2½ Can **3 for \$1**
Fruit Cocktail LIBBY'S 17-oz. Can **5 for \$1**
Libby's Peas 16-oz. Can **6 for \$1**
Libby's Catsup 14-oz. Bottle **6 for \$1**

BONELESS HAMS

Smoked, Whole, Half, or Quarter - Fully cooked
lb. 59¢

Canned Milk PET - Condensed - Ideal for cooking - Economical. Tall Cans **8 for \$1.00**
Gum Drops ROXBURY - Or Orange Slices, Spiced Jelly Drops, 14-oz. Package **4 Pkgs. \$1.00**
Satin Mix ROXBURY - Or Chocolate Drops, Filled Mix. Old Fashioned, 14-oz. Pkg. **3 Pkgs. \$1.00**
Tempt Lunch Meat Delicious for snacks, sandwiches-12-oz. Can **3 for \$1.00**
Skippy Dog Food Stock up now and give your pet a treat. 16-oz. Can **12 for \$1.00**

Green Beans
TITAN, Cut Style—16-oz. Can
8 for \$1

CURTSY
Apple Whirl
Special Breakfast Treat
Pkg. 39¢

Fresh Whole Fryers Tender Plump **Lb. 33¢**
Fresh Whole Fowl Delicious Meaty **Lb. 29¢**

Fryers Fresh - Cut up or Chicken and a half **Lb. 39¢**
Biscuits PILLSBURY or BALLARD, 10-oz. Pkg. **10¢**
Fryer Parts Breast, Thighs, Drumstick—Fresh **Lb. 59¢**
Fresh Fryer Wings **Lb. 29¢**
Necks & Backs Fresh Fryer **Lb. 19¢**
Pork Roast Round Bone Shoulder **Lb. 29¢**
Pork Steaks Blade Cut **Lb. 39¢**
Halibut Small Size 6 to 10 Lbs. **29¢**
Sole CAPTAINS CHOICE Fillets **Lb. 49¢**
Oysters Fresh Medium Size, 12-oz. Jar **49¢**

GRAPEFRUIT
ARIZONA, Seedless, Sweet and juicy. Ideal for serving economical half portions.
8-Lb. Bag 49¢

Peanut Butter
LUNCH BOX
18-oz. Jar **49¢**

Cake Mixes
PILLSBURY, White Yellow, Chocolate
2 18-oz. Pkgs. 59¢

Sugared Donuts
Or Plain, MRS. WRIGHTS, Doz. **35¢**

Tiny Shrimp
SEA TRADER, Pacific
3 4½-oz. Cans \$1.00

Dog Food
POOCH Dry Food **39¢**
5-lb. Bag

Mix or Match
Bacon PALACE Brand Lean Streaked
Sausage SAFEWAY Beef, 1-Lb. Roll
Sausage SAFEWAY Breakfast, 1-Lb. Roll
3 lbs. \$1

Chow Mein For Two
A Special Introductory Offer
20-oz. Package. Frozen
39¢
SHRIMP or CHICKEN, Chun King
CHUN KING CANTONESE FRIED RICE DINNER Each **29¢**
SCOTCH TREAT FROZEN STRAWBERRIES 10-oz. Pkg. 6 for **\$1.00**

ORANGE JUICE
SCOTCH TREAT 12-oz. Can **37¢**
2 6-oz. Cans **39¢**
BEL-AIR 12-oz. Can **41¢**
2 6-oz. Cans **43¢**

Vaughan's Values
5' x 9' x ¾" SHOPGRADE TABLE TOPS (Suitable for Ping Pong Tops) **9.95**
STANDS FOR PING PONG TOPS **7.95**
5' x 8' x ¾" GREEN TRAIN BOARDS **6.25**
WHITE CHRISTMAS TREE PAINT QUART **96¢**
TRUSTWORTHY NAIL HAMMERS **1.79**
Vaughan's
PACIFIC AVENUE LUMBER COMPANY
84th & Pacific Avenue GR 4-9515

Grapes EMPEROR, Just right for the table - Perfect flavor **lb. 9¢**
Potatoes U.S. No. 2 Washington Grown, Netted Gems. Save 4c **50-lb. Bag \$1.29**
Holiday Nuts Almonds, Brazils Filberts, Walnuts **lb. 59¢**
Peanuts Fresh Roasted, Delicious - Ideal for Holidays **3 lbs. \$1**
Fresh Dates DEGLET NOOR For holiday treats **2-lb. Pkg. 49¢**

SAFEWAY

Open House to Honor Golden Weds



Mr. and Mrs. Charles Hall were married in Paris, Illinois, Dec. 16, 1909, by the Rev. W. Lee Ewing. They moved to Oklahoma soon after their marriage and were engaged in farming, logging and running a harness shop. Then they moved to Iowa, then to Nebraska, and 20 years ago they came to Washington and have been permanent residents ever since. Mr. Hall worked as a carpenter, did some logging and farming and then was employed at McCord Field as a civilian employee and retired in 1956. Mr. and Mrs. Hall have five lovely grandchildren.



Mr. and Mrs. Charles Hall were married in Paris, Illinois, Dec. 16, 1909, by the Rev. W. Lee Ewing. They moved to Oklahoma soon after their marriage and were engaged in farming, logging and running a harness shop. Then they moved to Iowa, then to Nebraska, and 20 years ago they came to Washington and have been permanent residents ever since. Mr. Hall worked as a carpenter, did some logging and farming and then was employed at McCord Field as a civilian employee and retired in 1956. Mr. and Mrs. Hall have five lovely grandchildren.

American Legion

Parkland Post No. 228, American Legion, and the Auxiliary will hold the regular meeting in Sunshine hall this (Thursday) evening at 8:00 o'clock. Members are reminded to bring items of food for the two Christmas baskets for the needy. Fire wood will also be given, to be delivered to the homes.

Clover Creek Post No. 118 Birdie Ingham, Publicity Clover Creek Post No. 118, American Legion, will meet Dec. 11 at 8:00 p.m. in the Legion hall at Spanaway for the Christmas Party.

Four members of the Auxiliary went to American Lake hospital to wrap Christmas gifts for the patients.

The Post and Auxiliary gave one basket and helped two families with food and clothing at Thanksgiving.

Korean veterans who have not received their bonus must file their application before Dec. 31. The Department Presidents dinner will be held at Rhodes Post, 407 South G street, at 6:30 p.m. Dec. 15.

Elbe News

Thanksgiving Gadding Mr. and Mrs. Frank Shardelman motored to Bucoda.

Mr. and Mrs. Ted Kirkpatrick had dinner with Mrs. Kirkpatrick's brother and family in Onalaska.

Mr. and Mrs. Elmer Smith of Seattle were here for the weekend with Mrs. Smith's parents, the Floyd Kasts. Mr. and Mrs. Al Luond Sr. had dinner with their daughter and

family, the Art Kachenkos of Tacoma, the Kachenkos returning the visit over the weekend.

Mr. and Mrs. Buster Connally spent the day with the Frank Lamberts, a ritual with the two families for many years, 1959 marking the 33rd Thanksgiving together.

Sylvia Bringle of Laurelwood Academy of Gaston, Oregon, spent the holiday with her parents, Mr. and Mrs. Alva Bringle.

The Vince Rahier and Fred Mettler Jr. families had dinner together at the Rahier home. Dale Rahier was home from WSU.

Mr. and Mrs. Bud Iverson and Ronald spent the weekend with Mrs. Iverson's mother? Mrs. Highlower, and sister, Mrs. Tracy of Tacoma.

Mr. and Mrs. Jim Lanphere had dinner at the home of their daughter and family, the Jack Dickensons of Buckley. Also present were Mr. and Mrs. Bud Smith of Summit View. Jeanice and Dick Smith spent the weekend with their grandparents, the Lanpheres.

Mr. and Mrs. John Findlater enjoyed the holiday with their daughter and family, the Al Ostroms.

Visits, Trips Mr. and Mrs. Ray Engle motored to Bremerton Sunday to visit Ray's mother, Mrs. Herman Waugh, returning home Tuesday.

Mr. Al Luond Sr. and Mrs. Iverson were business callers in Morton Wednesday.

Visiting last week at the home of Mr. and Mrs. Fred Miller were their son-in-law and daughter, Mr. and Mrs. Jack Matthews and children of Blue Lake, Calif.

Mr. and Mrs. Jim Lanphere were overnight guests at the Adam Moser home in Auburn Thursday.

Reporter — Mrs. Ruth Lanphere, Elbe.

The Cathedral of the Assumption in Baltimore is the oldest Roman Catholic cathedral in the United States.

T.V. JINGLES by TELEVISION SERVICE CENTER

NO MATTER HOW YOU LOOK AT IT...

... don't be scared by stories of TV repair sharpies. Television Service Center, 8431 Pacific Avenue, stands for honest, reliable and low-cost TV repair. Call us at GR 2-3386 or JU 8-1000

TELEVISION SERVICE Center
"YOUR WINEGARD COLOR CEPTOR DEALER"
GR23386 JU-8-1000 8431 PACIFIC AVE.

Elk Plain ... Basketball Starting 19th

The Bethel Saturday basketball program will start on Saturday, Dec. 19, and the first games will be played on Jan. 9. Games will be played in the Bethel Junior and Senior High School gyms with 5th, 6th, 7th and 8th grade teams in the League. Mr. Pratt is the director of the Bethel recreation program.

The Bethel Junior High School basketball team will play a game with Dupont at Dupont at 7:30 p.m. Friday, Dec. 11.

Bethel Senior High School basketball team will play Orting at Bethel Dec. 11 at 8:00 p.m. and will play North Kitsap Saturday, Dec. 12.

Bethel wrestling team will meet the Wilson team at Bethel this (Thursday) evening at 7:30 o'clock.

Home on Leave
Seaman Apprentice Charles B. Ackerson, son of Mr. and Mrs. Velsey Acherson of Graham, arrived home Dec. 7 from Long Beach, Calif.; he is stationed aboard the USS Frank E. Evans. He is a graduate of Bethel.

Grateful
Mrs. Carolyn Guthrie, whose house burned Dec. 1, would like to thank all those who helped her and have been so generous. However, she is still in need of beds, bedding, chests of drawers, cook stove; also a house to rent in the Bethel district. She has seven children, aged from six months to 14 years.

In Hospital
Ted Otterstad is in the hospital again; cards would be appreciated.

4-H Girls
Elk Plain 4-H Girls club will go to the McGee Guest Home the evening of Dec. 18 to sing Christmas carols. Afterwards they will go to the home of Lina Hudson for their regular meeting and Christmas party. Each member a "white gift" of canned goods.

School Program
The Elk Plain School's Christmas program will be held Dec. 16.

Visiting
Ed Ittner and daughter visited with relatives in Corvallis, Oregon, over the Thanksgiving weekend.

Church News
The Elk Plain community church Sunday School has shown rapid growth of recent weeks. The church now has another building to accommodate the group, which now numbers 93. There is also a new youth program running on Sunday evenings at 7:00 o'clock.

Mrs. Slater and Mrs. Burnworth are in charge of the Junior group from the 4th through the 7th grades.

Mike Schmidt, Bob Williamson and Sherrie Beeson were elected acting officers for the Senior group.

Rev. Slater is pastor of the church.

Reporter—Mrs. Ray Burkhart, VI 7-7386.

BUSINESS TRAINING PAYS
TOP JOBS FOR STENOGRAPHERS AND RECEPTIONISTS - ENROLL NOW - KNAPP COLLEGE
10th & Pac. Ave. MA 7-2181

Shop Seymour's and Save!

LAY-AWAY NOW for Christmas
A SMALL DEPOSIT WILL HOLD YOUR GIFT SELECTIONS!

Men's Wash 'n Wear White Shirts
14 1/2 to 17 with dual cuffs... **2.98**
100% combed cotton shirts by Campus. Little or no ironing required. Convertible cuffs.

Boys' White Shirts 6 to 18 **1.99**

MEN'S MELTON SURGOATS
"Corsair" 36" length wool melton jacket with knit roll collar and cuffs. Rayon lined, leather-trimmed pockets. All sizes in grey/charcoal. **Low Priced! 9.98**

MEN'S GIFT SWEATERS
Men's bulky knit cardigans of 75% lambs wool, 25% orlon, grey, tan, charcoal. S, M, L, Ex L sizes. Layaway now! **7.98**
Others 5.95 to 9.98

Men's Flannel PAJAMAS
B-C-D **2.98**
"McKenzie" sanforized slipover and coat style pajamas. Attractive patterns. Adjustable elastic waists.

Brown Kidskin ROMEOS
Only **4.49**
Durable construction with composition sole, rubber heel, elastic side gores. 6 to 12.

Women's Flannel PAJAMAS
34 to 40 **2.98**
For gift giving! "Artloom" flannels in mandarin and convertible collars. Styled for comfort, good looks.

MEN'S INSULATED UNDERWEAR
Jackets and trousers of 100% quilted Miracron! Warmth without weight! S, M, L, Ex L. **7.98** Set

BOXED TIE AND SOX SETS
Smart argyle patterned stretch sox with fashion-smart tie... in handy gift box! **1.99** Set

Maternity Coordinated Sets
2-Piece Sets **6.98**
Rayon slub weave coordinates by "Hi-Stork". 10 to 18, in blue, grey, green, black, brown, with cut-out-front skirt.

Women's Turbo Orlon SHAG SWEATERS
Slipover shag sweaters in white, red, blue pink or green. Sizes 32 to 40. **2.98**

Cardigan Styles with 3/4 Sleeves **3.98**

Reg. 39c BOYS' STRETCH SOX
Outstanding wear and comfort! Stripes and argyles. 6 to 8 1/2, and 9 to 11. **4 Pairs 1.00**

Always Free Front Door Parking
Shop Daily 9:00 to 9:00 - Sunday 10:00 to 6:00

9714 Pacific Ave. **SEYMOUR'S** FAMILY DEPARTMENT STORE

Fern Hill 4-H
The first 4-H club in Fern Hill was organized in October with Mrs. Betty Jordin as leader and Ellen Beggs as assistant. There are 10 girls, 10 to 12 years of age, and the year's project is sewing. Members are Sandra Bramlette, Mary Dawson, Sylvia Graham, Nancy Jordin, Linda Lawing, Mary Helen Lockridge, Karen Stevens, Linda Stevens, Bonnie Wise and Regina Young.

At the first meeting, Mr. Purcell, Pierce County Extension Agent, explained 4-H to the girls and

SAVE BY MAIL!

WE PAY THE POSTAGE BOTH WAYS!

11th and PACIFIC LAKEWOOD at VILLA PLAZA
A MUTUAL SAVINGS INSTITUTION
Pacific Federal Savings and Loan Association
BELLINGHAM - SEATTLE - TACOMA - LORVIEUX - PORTLAND - EUGENE

Consequences Live Long After the Sin Is Forgiven

Jacob, himself an old trickster and deceiver, was getting fed up with similar treatment from his father-in-law, Laban. He had put up with it only because of his deep love for his wife, Rachel.

Finally Jacob decided to return to his homeland. With his company and possessions he left secretly but an enraged Laban overtook him and demanded the return of some idols that Rachel had taken.

Appeared as to the loss of his gods, Laban made a treaty of peace with Jacob, who was now facing what he thought to be the greatest danger of all. As he neared home, word came that his brother Esau was approaching with a great company of men.

For Jacob had long ago deceived the young and easy-going Esau of his birthright.

It stands to Jacob's credit that he was far more concerned about the others in his company than for himself in case of a hostile reception by Esau and his men.

We have the spectacle of a guilty conscience, and a recollection of grievous wrong done a brother, in conflict with the conquering force of a purpose to do what is in his power to retrieve a bad situation. It is striking evidence of the way that the consequences of sin remain long after a sinner has repented or even after he has been forgiven.

As it turned out, Jacob had nothing to fear. Esau also had improved with the years. From a careless, easy-going man he had become a man of substance. He received his brother with joy and without the slightest reproach concerning the ancient wrong that had been done him.

You Are Invited to Worship **ELK PLAIN COMMUNITY CHURCH** (By Woody's Market on Mt. Hwy.)
Sunday School 10:00 a.m.
Worship Service 11:00 a.m.
Youth Meeting 7:00 p.m.

STRICTLY FRESH

The only trouble with direction signals on autos is that they can't indicate which way the drivers are actually going to turn.

Those who tell you how wonderful things were "yesterday" haven't broken the ice on the water in the wash basin in many a year.

Light A Candle For Those Less Fortunate - BUY WHERE YOU SAVE

3-Pc. Ivory Bdrm Set \$17.50
Record Cabinet \$6.00
Oak Dresser \$10.00
Many Items For Gifts

VOLUNTEERS OF AMERICA
1517 Bdwy., BR 2-1633

CHEERY GIFTS TO BRING JOY

COLOGNES
Faberge, Ciro, Dana & Others **\$2 To \$6**

GIFTS FOR THE BABY
WE CARRY A FULL LINE THAT'S BOUND TO PLEASE, COME IN TODAY!

BLUE BIRD PYREX CASSEROLE
from **2.50 To 6.95**

MEN'S SETS
\$1.50 to \$6.00

Parkland Pharmacy
11000 PACIFIC AVENUE KELLERS KORT LEnox 7-8636

Pocket Radio BEST BUY!
All-Transistor Portable Radio

Complete With Carrying Case and Shoulder Strap

WEIR'S CARRY THE FULL LINE OF G.E. RADIOS
Prices Start At **\$21.95**

WHIRLS OPEN 9 'TIL 9
YOUR CORNER (SAT. 'TIL 6)
8419 PORTLAND AVENUE LEnox 7-0231

WEIR'S CARRY THE FULL LINE OF G.E. RADIOS
Prices Start At **\$21.95**

WHIRLS OPEN 9 'TIL 9
YOUR CORNER (SAT. 'TIL 6)
8419 PORTLAND AVENUE LEnox 7-0231

Business Service

BULLDOZING, Land Clearing, Excavation, Grading and Gravel. LE 7-5112. 3c14

DO YOU HAVE THIS TROUBLE?



CALL US ABC ELECTRONICS
Garfield & C Streets
LE 7-4900

TOP SOIL - SANDY LOAM, Parkland area special. Puyallup TH 6-8769.

COMMERCIAL - INSTALLATIONS
CORNELL Plumbing & Heating
LE 7-7293

BART'S Appliance Repair
All Electrical Equipment
LE 1-0528 Any Time

REWEAVING, dress making and alterations. Machine button holes 15c, bound button holes 25c. After 4:30 P.M. VI 7-2225. 3c17

DON ABBOTT COMPLETE TRACTOR WORK
Gravel and Driveways
LE 7-3846

GRAVEL for this driveway gravel, clean sand, top soil. LE 7-6391. 3c18

WELL DRILLING
Berkeley Pumps
• JETS
• SUBMERSIBLES
• CENTRIFUGALS
• TURBINES
Call LE 7-7281

TACOMA PUMP & WELL DRILLING CO.
14619 PACIFIC AVENUE
Terms Trades

Ace Dirt Moving Co.
Bulldozing Ditching
TOP SOIL - GRAVEL
SEPTIC TANKS AND DRAIN FIELDS
Phone TH 5-2452

USED AUTO PARTS
SATISFACTION GUARANTEED
Bring This Ad For 10% Discount
GORDIE'S AUTO WRECKING
10620 Pacific Avenue
LE 7-5565 - LE 7-4443

Multiple Listing Service

M. L. S. MULTIPLE LISTING SERVICE
9 LOTS
2 bedrm partly furnished house, 2-car garage, city water and lights. Price \$6000, \$700 down. Quick possession. Call Ralph Decker GR 4-9579. RA-3788

3 BEDRMS - BASEMENT
Portland Ave. Nicely arranged. New oil furnace. Elec range and refrigerator included. Immediate possession. Price \$7000, \$250 down FHA. Call Leo Olson GR 4-9579 or GR 4-0962. RB-3389

McKINLEY HILL REALTY
6311 McKinley Ave. GR 4-9579
Member of Multiple Listing Service and TACOMA REAL ESTATE BOARD

M. L. S. MULTIPLE LISTING SERVICE
HOMES FARMS ACREAGES INVESTMENTS
One Call Does It All

TACOMA REALTY, INC.
11004 Park Ave. LE 7-8681
Member Multiple Listing Service and Tacoma Real Estate Board

Home Plumbing & Heating Co.

REPAIRING, REMODELING, NEW CONSTRUCTION
1017 So. 112th
Call Day or Night
LE 7-4615

FOUNDATIONS - New additions, free estimates, financing. Work guaranteed. LE 1-5929. 3c19

CALL POCHTEL FOR Expert T.V. Repair
Satisfaction Guaranteed
Free Tube Testing
140th & Pacific LE 7-8624

EXPERT Pruning and spraying, GL 8-2210, GL 8-3218; P. O. Box 316, Yelm. 3c19

NEAT BEAUTY SHOP
GR 2-7628
6314 McKinley Avenue

ART'S SHOE SHOP
Shoes for the Entire Family
EXPERT SHOE REPAIRING
315 Garfield St.
Between 121st and 122nd
Opposite Parkland Postoffice

SPANAWAY ELECTRIC CONTRACTORS
Residential & Commercial Heating Specialists
LE 1-2127 LE 7-4792

Residential and Commercial PAINTING
Taping and Texturing
Broadwell Painting
LE 7-6893

CANYON ROAD GRAVEL AND SUPPLY, Pick-ups and trailers loaded or we haul. LE 7-8943. 3c20

Parkland Heating Co.
All makes of furnaces for sale; Specializing in Williams OIL 'O' MATICS; Oil, Gas, Hot Water Installations. Service; reasonable; 755 South 108th. Lenox 7-4045. 3c21

SEPTIC TANKS & WATER LINES, LE 7-4112. Kille & Brothers. Phone LE 1-0987 or LE 7-3210. 3c21

South End Auto Wreckers
USED PARTS - Motors, Transmissions, Tires, Batteries. We buy junk cars. Also Custom welding by Joe's Welding. 1 Mile East Roy on Mt. Hy. Spanaway LE 7-6534

GEORGE FURDE - Plumbing, Heating, New work, remodeling, repairs. Phone LE 7-4477. 3c21

SEPTIC TANK CLEANING
Prompt Service
C. V. HUTSON
GR 4-3980 GR 2-7038

ECONOMY KITCHENS
Remodeling - Roofing & Siding Foundations
LORD'S CONSTRUCTION CO., INC.
10426 Pacific Avenue. LE 7-8719

Webb Electric Co.
8240 B Pacific Ave.
GR 2-2902

ELECTRIC HEAT
All Types
Terms Can Be Arranged
FREE ESTIMATES
EMERGENCY PHONE
LE 7-4437

SOUTH CABINET SHOP - REMODELING, carpenter work, kitchen cabinets; we stock and cut glass. 16309 South Park, Spanaway LE 7-4856. 3c21

JACK SHANK'S Refrigeration Service
Parts & Service for All Makes
LE 7-0178

FOUNDATIONS, additions, remodeling. Free estimates. Financing, no down payment. Phone GR 4-7000 anytime. 3c21

Fuel
FOR SALE - Heavy planer ends, small and large loads. BULLDOZING, Puyallup TH 6-2857. 4c1

UPLAND SLAB WOOD, 2-ord load 314; VI 7-7301, call collect. 4c1

Help Wanted
AVON CALLING
DO YOU need Christmas expenses? Convenient territories now available, Parkland and vicinity. Call at once, MA 7-5271.

Wanted To Buy
JUNK CARS, trucks, old farm machinery. GR 4-3829, LE 1-0319. 3c21

Home and Income
In the heart of Parkland, handy to shopping, military, 1 blk. to city bus, also double garage, with furnished 2 bedrm apt. Requires \$1500 down or equity out. Only \$10,500. LE 7-5440.

LAKE FRONT BUILDING SITES \$50.00 Per Foot
Packard Pick-up, very good condition, \$225.00. Hunters Trailer, propane light & cooking, \$275.00. Air cooled engine, \$60.00, or will swap for Equity in small acreage South-end; call Bill LE 7-5440.

TERMS AND TRADES CONSIDERED
Call Mr. Black LE 7-5440 anytime
RURAL REAL ESTATE
14403 Pacific Ave. LE 7-5440
We Take Anything—Airplane, Car, Trailer, Boat, etc. Trades

Real Estate

FOR SALE—Lots, Firman Memorial Cemetery, Spanaway. Reasonable rates. Terms. LE 7-5754. 9c1f

FOR SALE—Nice 10 acres. Good buildings, land (mostly cleared) and well (drilled) with pressure pump. Good soil and modern conveniences, also creek, 3400 down or might take equity on house in south-east Tacoma. See map at Times Journal Office, 14620 Pacific Avenue. 9c14

LIST WITH SUBURBAN
Home and Farm Specialists in South End Properties. Two offices open every day and evening for your convenience.
SUBURBAN REALTY, INC.
118th and Pacific, LE 7-8638
112th and Canyon, LE 7-0229
Member Multiple Listing Service & Tacoma Real Estate Board. 3c1f

Rentals
FOR RENT—2 bedroom unfurnished house, Spanaway. Reasonable rates. Terms. LE 7-2180. 10c14

FOR RENT—Comfortable sleeping room, working person preferred. Call LE 1-2735. 10c14

FOR RENT—Two bedroom completely furnished house in Spanaway, \$60. Service people preferred. LE 7-0555. 10c14

Rental Management
List your rental property with us. Satisfaction is our by-word.
Rental Headquarters for the Suburban Area
SUBURBAN REALTY, INC.
LE 7-8638 or LE 7-6896

FURNISHED bachelor apartment, \$60. Includes all utilities. LE 7-2181. 10c14
PARKLAND small furnished lower apartment. Washer, dryer, utilities except oil. \$35. 211 South 120th. 10c14

TRAILER SPACE
Reasonable - Quiet
Close to McCook West Side
WOODBROOK TRAILER CT.
14818 Woodbrook Drive, SW
JU 8-9566 or SK 2-8792

THREE large rooms with bath and utility room. \$40. LE 7-6009. 10c14
FOR RENT—Two bedroom house; range, refrigerator, double garage. \$70. Inquire 10106 South Park, LE 7-5276. 10c14

REPAIR SERVICE
LAWN MOWER servicing, tune-ups, oil changes, spark plug replacement and repairs.
PAVING, CYCLING & KEY
LE 7-5772, 1021 Pacific Ave. 11c1f
WASHING MACHINE PARTS
Largest stock in town. Repairing that pleases. JH's Washer Service 3727 So. G. GR 4-8408. 11c1f

VALVE packing and seating \$1.00 cylinder; motor rebores, \$1.50 cylinder; by experts. TH 6-5182; Hagart's, 1615 & River Road, Puyallup. 11c1f

Automotive
FOR SALE—One 1957 Chevrolet 2-door sedan but you can take your choice from two. These are the Times Journal Publishing Co. cars, in top shape, and have had excellent care—graze jobs and oil change regularly—and like-new interiors. Will sell either for \$1295. 12c1f

1959 FORDS AND CHEVROLETS
Wholesale prices; bank terms. SMALLEY'S MOTORS, 10410 Pacific Ave. LE 7-4060 anytime. Open nights also. 12c1f

ATTENTION Horsemen, Ranchers
First time offered for sale: '42 Dodge 2 1/2 Ton semi tractor and '42 Checker Van Trailer, custom remodeled to carry 5 horses or several head of cattle. This was the Times Journal rig and has been religiously maintained. Has built-in box stalls, tack room and walk-up ramp. Motor recently overhauled, absolutely burns no oil. All 12 tires in excellent shape (tires value at least \$300). Brakes excellent, good heater. This unit perfect for hunting or trail riding trips. When in camp, disconnect the tractor and use like a pick-up and still have box stall facilities. Drive it away for only \$995. Lucky Sales & Service, 135th & Pacific Ave. LE 7-8688. 12c1f

WHO, ME?
Yes, you can assume \$5 monthly payment on a Hoover! \$19 due; free home demonstration. Open week nights 7:00-9:00. UPTON ELECTRIC CO., 1148 Market St., FU 3-2551. 12c1f

1952 STUDEBAKER Commander. Trade for piano, power tools, beef or what have you? LE 7-0497. 12c1f

COTTAGE ORGAN—Solid oak, excellent condition, sweet tone, \$125. Puyallup, TH 7-2885. 12c1f

BEAUTIFUL pedigreed Dalmatian, lovable, huggable puppies. Give a living Christmas gift. Call JU 8-6109. 12c1f

FREE TO GOOD HOME—Black male Labrador Retriever; very good with children. LE 1-0320. 12c1f

SWAP—will trade Necchi auto zig zag sewing machine for good refrigerator or washing machine. BR 2-8892. 12c1f

SINGER sewing machine, electric table made in Germany, only \$22 due; equipped to zig-zag and do fancy stitches. Assume \$5 monthly payments and get free home demonstration. Open 7:00-9:00. UPTON ELECTRIC CO., 1148 Market St., FU 3-2551. 12c1f

AKC REGISTERED Dachshund stud service, pedigrees, 1312 South 116th. 15c1f

ATTENTION HOUSEWIVES—POCHEL's are now the authorized dealers for Speed Queen washers, automatic or wringer type, and dryers. Come in and see them at 140th and Pacific Avenue. LE 7-8624. 15c1f

12A Foreign Cars
- ALL - FOREIGN CAR KEYS
107 Varieties
PARKLAND CYCLE & KEY
11021 Pacific Ave. LE 7-5772

STORKVILLE Baby Shop
Everything For Baby
Including Juvenile Furniture
9722 Pac. Ave. - LE 7-4664

BRAND NEW QUAKER oil heater, one only, \$35 free delivery. Open week nights 7:00-9:00 p.m. UPTON ELECTRIC CO., 1148 Market St., FU 3-2551. 15c14

TIRES NEW - USED - RECAPS
COMPLETE STOCK OF WINTER TIRES
- Liberal Budget Terms -
TIRES ARE OUR BUSINESS - NOT A SIDELINE
Ray's TIRE STORES
9639 Pacific Avenue LE 7-7355

Rural Carrier Examination Due

An examination for Rural Carrier There is no maximum age limit. However, persons who have passed the age of 70 may be considered only for temporary renewable appointments of one year.
Complete information about the examination requirements and instructions for filing applications may be obtained at the post office for which this examination is being announced. Application forms must be filed with the U.S. Civil Service Commission, Washington 25, D. C. and must be received or postmarked not later than the closing date.

New, Two-In-One Turnpike Carrier Aids Shippers



KANSAS CITY, KANSAS—Described as the world's longest single freight trucking unit, a new two-in-one "double bottom" carrier is now making regular runs on the Kansas Turnpike in a 3-month trial supervised by freeway authorities. The new freighter, assembled and operated by Pacific Intermountain Express, has been developed in a pioneering effort to increase productivity in the motor freight industry and minimize highway space requirements by condensing two units into one.
The new carrier, measuring 105 feet in length and powered by a 335 horsepower diesel engine, consists of a tractor unit and a regular line haul 40-foot trailer. A second line haul 40-foot trailer is attached to the first by a dolly, designed especially for turnpike use by Pacific Intermountain Express.

Saving highway space by condensing two line haul trailers into one unit, P-I-E long rigs are being tested on the Kansas Turnpike. Officials at the inaugural ceremonies are (left to right) Gale Moss, general manager of the Turnpike Authority; Rodman Fuller, Kansas City district manager for P-I-E; Senator Joseph E. McDowell, representing Kansas Governor George Docking; Don Hewett, member; and Frank McDonald, chairman of the turnpike authority.

gineering and maintenance laboratories. With 34 wheels on the road, weight is evenly distributed so that, even when fully loaded, the weight per axle is well within legal limits.

Farm Column

FOR SALE—15 big red laying hens, \$25 or \$2 each. LE 7-6425. 13c1f

BREED your cows artificially to sire proven great. Washington Proved Sire Exchange, 1109 Market St., BA 2-9565. 13c1f

MCCULLOUGH CHAIN SAWS, starting at \$145.45 (Terms); Pacific Saw & Knife, 234 Puyallup Ave., MA 7-2278. 13c1f

EASTERN WASHINGTON HAY—By the bale, ton or truck load. J. A. Dove, Phone LE 1-2185. 13c1f

DRY or GREEN SEAWEDS, 13c1f
Iceland slab and sawdust, SEAWED SUPPLY, LE 7-5757 after 6. 13c1f

FOR SALE—Deluxe model Tappan butane gas range, excellent condition, \$50. LE 7-3270. 13c1f

TAP, ACROBATIC, BALLET and BATON classes, all ages. Mildred Keller, LE 7-2885. 13c1f

FAT HENS, 60c each. RI, 3, Box 639, Tacoma. Waller Road. 15p14

FOR SALE—Plain and fancy holiday aprons, reasonable. Mrs. A. Friesz, 12015 South Pacific, LE 7-2465. 15c1f

WHO, ME?
Yes, you can assume \$5 monthly payment on a Hoover! \$19 due; free home demonstration. Open week nights 7:00-9:00. UPTON ELECTRIC CO., 1148 Market St., FU 3-2551. 12c1f

1952 STUDEBAKER Commander. Trade for piano, power tools, beef or what have you? LE 7-0497. 12c1f

COTTAGE ORGAN—Solid oak, excellent condition, sweet tone, \$125. Puyallup, TH 7-2885. 12c1f

BEAUTIFUL pedigreed Dalmatian, lovable, huggable puppies. Give a living Christmas gift. Call JU 8-6109. 12c1f

FREE TO GOOD HOME—Black male Labrador Retriever; very good with children. LE 1-0320. 12c1f

SWAP—will trade Necchi auto zig zag sewing machine for good refrigerator or washing machine. BR 2-8892. 12c1f

SINGER sewing machine, electric table made in Germany, only \$22 due; equipped to zig-zag and do fancy stitches. Assume \$5 monthly payments and get free home demonstration. Open 7:00-9:00. UPTON ELECTRIC CO., 1148 Market St., FU 3-2551. 12c1f

AKC REGISTERED Dachshund stud service, pedigrees, 1312 South 116th. 15c1f

Special Offer GREAT VALUES for THRIFT SHOPPERS

Cheese Tastewell Spread 2 Lb. - 69c

Mr. Clean 63c

New Crop Comb Honey Ea. 49c

Coffee FOLGERS¹ Lb. 69c; 2 Lbs. 1.37

Oysters 12 Oz. Jar 45c

Milk Shurfine Tall Tins 8 For 1.00

Roast Lb. 59c

Soup Lipton's Chicken Noodle 3 Pak 35c

Liver Sliced, Skinned Beef Lb. 27c

Stewing Hens Pederson's Cut-up Lb. 29c

Oranges SUNKIST Lb. 10c

Yams or Sweets Lb. 10c

PAPER SACK COAL - PRESTOLOGS - FEED
Pay PSPL Bills Here - We Issue Money Orders

HERMANS FOOD STORE
162nd & Park Ave. Spanaway
(Right to Limit Reserved)

Busy Beavers 4-H Officers Elected

Election of officers highlighted the November meeting of the Busy Beavers 4-H club, held at the home of the leader, Mrs. Roy Benson, Douglas Benson is the new president; Donald Robertson, vice president; Carole Lukenbill, secretary; Leanne Olsen, treasurer; Ronald Corbin, publicity; Christy McFarland, telephone.

Project plans were discussed and refreshments were served.

IS YOUR TV TIRED?

CALL GR 5-0658

We Use RCA Tubes A-1 TELEVISION AND RADIO SERVICE

GIVE HIM TOOLS FOR CHRISTMAS!

Nice Assortment of Small Appliances and Housewares
LUMBER, ALL GRADES PAINTS - GLASS - HARDWARE
WE CUT GLASS
BASKETT LUMBER CO.
9701 PORTLAND AVENUE LE 7-5844

SUNNY JIM PRESERVES

8 FULL LBS. - NO. 10 TINS \$1.98

Strawberry-Blackberry Peach-Fine Cot. Strawberry-Barb. YOUR CHOICE

SUNNY JIM SYRUP Giant No. 10 Tin 89c

ADAMS Reg. or Old Fashioned P'NUT BUTTER 3 Lbs. 99c

SUNSHINE Hydrox or Orbit COOKIES 3 Pkgs. For \$1.00

OCEAN BEAUTY CHUNK TUNA 5/\$1.00

AA LARGE RANCH EGGS Dozen 49c

FRESH PACIFIC OYSTERS Large Pint Size 45c

PEDERSON'S Cut Up FRYERS Lb. 39c

JAMES HENRY "Yankee" SLIC'D BACON Lb. 33c

BEEF Steaks R'nd Lb. 69c; Sirloin Lb. 59c

RUMP ROAST Lb. 59c

M.J.B. COFFEE Lb. 67c

MJB 6 oz. Instant Coffee 89c

PURE - NONE BETTER GROUND BEEF 3 lbs. 89c

California Lge. Size Bulk Tomatoes lb. 19c

TUBE Tomatoes pkg. 19c

White .5-lb. Cello Bag Grapefruit 29c

BOILING Onions 3 Lbs. 10c

Golden Ripe Bananas 2 Lbs. 29c

BARGAIN BASKET
16618 PACIFIC AVE. South SPANAWAY, WASH.

LARGE PARKING LOT IN REAR

Keep Christmas Merry
Very shortly we will be moving a part of Smoky Bear's forest into our homes. This reminds us of Smoky's terrific work to save his forest from fire.

The Parkland Fire Department would like to remind you that Smoky's tree will also burn your house if you are careless.

Christmas is our merriest time of the year, yet every Christmas season some Parkland home is saddened by fire. You can imagine how a fireman feels when he sees a fire destroying someone's Christmas joys, so we as firemen plead with you to be careful and make your Christmas merry as well as ours.

Fire prevention committee, Parkland Fire Department.

Abraham Lincoln delivered his Gettysburg Address on Nov. 19, 1863, more than four months after the battle.

WE GIVE S & H STAMPS
VIRG ADAMS
RICHFIELD BEACON SERVICE
8515 So. Tacoma Way
JU 8-9613



A Real Treat
● Tossed Salad
● French Fries
● Garlic Toast
CLUB STEAK . . . \$1.35

RESERVATIONS FOR PARTIES WELCOMED

NETTIE'S CAFE

VISIT OUR DAFFODIL ROOM
116 SO. MERIDIAN ST. PUYALLUP

TH 5-1156

Baby's Dress Is Important

BY EDNA MILES

A child has a monkeyish habit of imitating those around him. Some people wonder how the present crop of babies will act and dress as they grow up.

These are the tots with blue-jeaned, pin-curl moms who treat them as little animals and leave them messy from morning to bedtime. Although, we will admit that a freshly bathed child can get dirty again as soon as mother turns her back.

But it isn't a losing game and it is up to the family to teach a youngster good habits for his lifetime.

Wee ones can't tell you they don't like dirty, rough clothes. But even a small baby reacts to soft garments in contrast to harsh, scraggy ones. And a tiny infant also responds to pretty colors. Put pretty ruffles and bows on a little girl and watch her turn into a pint-size siren.

Not only how you dress a child but how you talk and handle him is important to his future. A baby will react happily and with security to a mother with soft hands, to a soothing rather than a strident voice and to smooth handling rather than yanking.



This future siren knows social serenity and feminine fashion in her ruffled panties.

Graham Church Buys Property

The Bethel Baptist church of Graham-Kapowsin district has entered into a sales agreement with the Bethany Lutheran church on Benston road and now available because of the uniting of the two Lutheran churches of the area.

According to the sales agreement, both churches will occupy the building until Jan. 1, 1960. The Baptists, under the leadership of Pastor William S. Kepple, will have Sunday school and church service Sunday mornings at 9:45 and 10:50, also a 7:00 p.m. service starting Dec. 13.

The Lutheran groups will have afternoon service as usual under the leadership of Pastor H. N. Svith who has served the Benston and Bethany churches for many years.

Altar Society

The Altar Society of Our Lady Queen of Heaven parish will meet Monday evening, Dec. 14, at 8:00 o'clock in the parish hall, Mrs. Margaret Feizer presiding.

Guest speaker will be Reverend Harvey Kochner from McChord AFB who will give "The Christmas Story."

Officers of the Altar Society will be hostesses for the Christmas party.

New Officers

New officers for the coming year were elected at the December meeting of the St. John of the Woods Alter Society which was held in the parish hall, December 3, with Mrs. Melvin Morrill presiding over the business session. Taking over the many activities and projects for 1960 will be Mrs. C. Miller, president; Mrs. Wally Squires, vice-president; Mrs. Ray Corrigan, secretary; and Mrs. R. Meisenburg, treasurer. Final plans for the parish potluck on December 6 were made and dates were set as follows for the annual Christmas party for all the grade school children an preschool kiddies, Sunday, December 20 at 2:00 p.m. with the stocking filling bee to take place, Thursday, December 17, at 10:00 a.m. and the church cleaning for Christmas for Wednesday, December 23, at 10:00 a.m.

All blue ribbon winners in the annual Sears 4-H contests in gardening, meal preparation, and food preservation will be honored at a special banquet, Saturday, December 12, at Wellman's. County Extension Agent, George Purcell, has planned a new order of program to give older 4-H boys and girls more opportunity to show what they can do. Reigning 4-H Queen Priscilla Pedersen will be toastmistress and will introduce the County 4-H Leaders' Council president, Mrs. Gaylord Green. State Extension 4-H specialist, Ed Reeves and his wife, and representatives of Sears Company, George Purcell and Leon Erickson of Sears will present the annual Sears Foundation awards. Joan Haakenson, 4-H'er of Parkland will give the invocation; Judy Anderson of Sears staff will sing; Linda Otto will speak on "What I Learned in My Food Preservation Project"; Bruce Bargmeyer on "My Gardening Project" and Queen Priscilla on "My Meal Preparation Project".

County Agents

By Morrill Delano
Current and proposed state legislation affecting the marketing of farm products will be aired at a meeting of farmers and processors to be held at Fruitland Grange Hall, near Puyallup, Thursday evening, December 17 at 8:00 o'clock.

Marketing specialists of the State Department of Agriculture and the Agricultural Extension Service will explain and discuss the Agricultural Enabling Act passed by the legislature in 1955; the general marketing enabling act introduced at the last session of the legislature (House Bill 450) and now under study by a legislative interim committee; and the proposed milk marketing act.

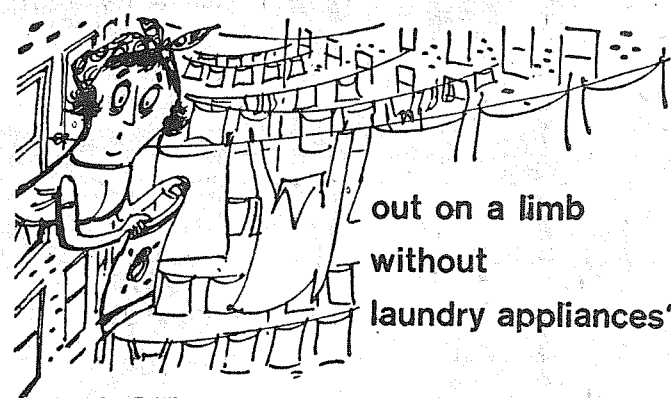
Speakers representing the State Department of Agriculture will be Don Olson, Supervisor of the Marketing Division; E. E. (Bill) Rosatto, Assistant Attorney General; and Virgil Cunningham, Assistant Director of Agriculture. Dr. Arthur W. Peterson, Washington State University Extension Marketing Leader, will discuss proposed legislation and other related matters affecting returns to farmers. Howard Forbes, President of Puyallup Chamber of Commerce, will be moderator.

The meeting is being arranged jointly by the Agricultural Extension Service and the Puyallup Chamber of Commerce. "Sponsorship of the meeting does not mean that either the Extension Service or the Chamber is taking a stand for or against any proposed

legislation," explained Morrill Delano, Pierce County Extension Agent, in announcing the meeting.

"We believe that the proposed measures have such far-reaching implications to both farmers and the general public that a well-informed citizenry is essential to the reaching of sound decisions."

Mankind has been smelting tin since at least 3500 B.C.



out on a limb without laundry appliances?

USE THE NEW

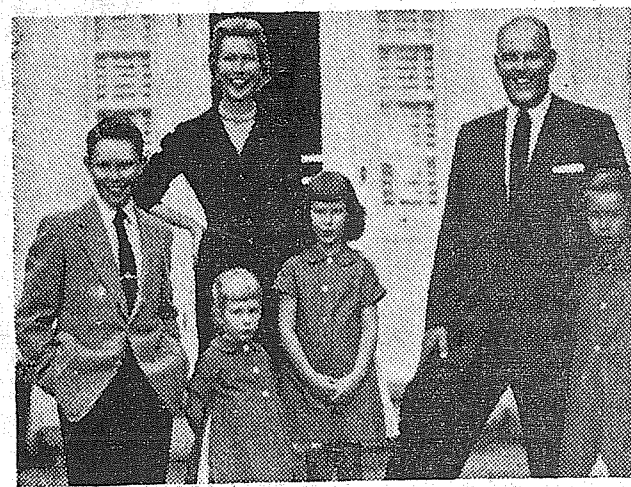
Econ-o-wash

SELF-SERVICE, COIN-OPERATED LAUNDRY

PARKLAND ECON-O-WASH

12171 Pacific Avenue

LE 7-9970



all dressed up... and places to go

to "visit" all those you love...

and to stay, without ever

outlasting your welcome... in a

family group portrait

Gather everyone together for a family

portrait that will keep all of you,

together, always, wherever you are.

Great for Christmas Greetings, too!

McKEWEN STUDIO

11812 Pacific Avenue

LE 7-3833

WOW!! PEDERSON'S WHOLE STEWING HENS lb 25c

HORMEL — DAIRY-BRAND SLICED BACON lb. 45c

LEAN — TENDER PORK STEAKS lb. 39c

GROUND - FRESH GROUND BEEF lb. 39c

WIENERS	STEAK
Hormel 12-oz. Pkg. 39c	Choice Cuts Rib or T Sirloin - Lb. 69c

PORK ROAST	CORNER BEEF
Fresh, Round Bone - Lb. 29c	Homemade Lean - Lb. 59c

Large Bologna	RUMP ROAST
Hormel By-the-Piece Lb. 39c	Tender, Well-Trimmed-Lb. 59c

SERVED ALL DAY FRIDAY & SAT. HOT DOGS 5c

FREE COFFEE FREE COOKIES

SUNNY JIM SYRUP No. 10 Tin 99c

NESTLES EVEREADY COCOA 2-Lb. Tin 89c

KRISPY CRACKERS 1-Lb. Pkg. 25c

CARNATION 2-Lb 12 7/8-Oz. INSTANT MILK 53c

SUREFINE COFFEE lb. 59c

SHINN'S LARGE EGGS AA - Doz. 45c

WALDORF 4-Roll Pack TOILET TISSUE 35c

SNO'MIST TUNA FLAT TINS 5/\$1

MEAT PIES Libby's Frozen 5/\$1

Bisquick 40-Oz. Pkg. 39c NUTS FILBERTS AND BRAZILS lb. 39c

SUNNY JIM 3-Lb. Jar P'nut Butter \$1.09 PILLSBURY 18-Oz. Pkg. Cake Mixes 4 For \$1

OPEN SUNDAYS KITCHEN'S EVERYDAY LOW PRICES

Right to Limit
Open 9 a.m. Til 10 p.m. Daily
10 a.m. Til 9 p.m. Sundays
PRICES EFFECTIVE THUR., FRI., & SAT.
12208 Pacific Ave.

No. 2 POTATOES \$1.29 50-Lb. Sack

Fine for Salads AVOCADOS

Large Size **2 for 19c**

Calif. Navel JUICE ORANGES

35-Lb. Box \$2.79

Lb. 8c

FENCING
Designers and Builders
EXPERT WORKMANSHIP
REASONABLE PRICES
Easy Monthly Payments
VAUGHAN'S
84th & Pac. Ave. GR 4-9515

Price Reductions... Big Selections COMPLETE YOUR GIFT LIST HERE!

CHRISTMAS TREE LIGHTS OUTSIDE 15 LITE \$3.49 25 LITE \$4.98 INSIDE 59c & 98c	BEAUTIFUL DOLLS Regularly \$3.98 NOW ONLY \$3.19
RIDE 'EM DUMP TRUCK Lots of Fun for Tots Reg. 5.98 \$4.49	ANIMAL BANKS \$1.00 And \$1.98

TONKA STATE HIWAY DEPT. SET NOW \$16.95
● Road Grader — Pick-up Truck — 2 Dump Trucks — School, Slow, ONLY
R.R. Crossing, Speed Limit, Detour and By-Pass Signs. Reg. 19.95

XMAS TREE STANDS 89c

Soft Stuffed Toys
Wonderful Gift For a Child of Any Age
Reg. \$1.98 **\$1.49 SPECIAL**

GAMES Reg. \$1.98 NOW 88c GAMES

MUSICAL TEDDY BEAR
Regularly \$4.98 **NOW \$3.98**

HUNDREDS OF OTHER GIFTS TO CHOOSE FROM
SPANAWAY 5 & 10
Mt. Hiway (Across from Spanaway School) LEnox 7-8322

WEIR'S HAS

Everything
TO
Make it a
White Christmas

...Give her a major appliance!

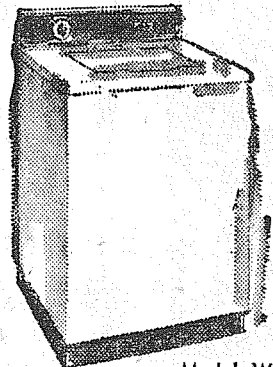
FULLY AUTOMATIC DRYER

Newest Hi Air Flo, Model DA320. Porcelain Drum, (Not Galvanized) Full Porcelain Top, Automatic Safety Door Switch.

128.00



General Electric
Famous "2 Cycle"
FILTER FLO
WASHER



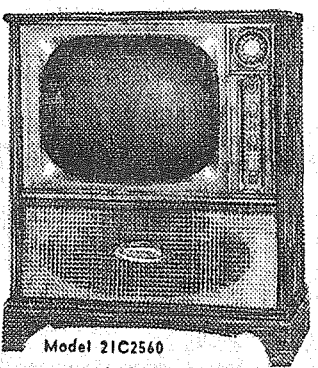
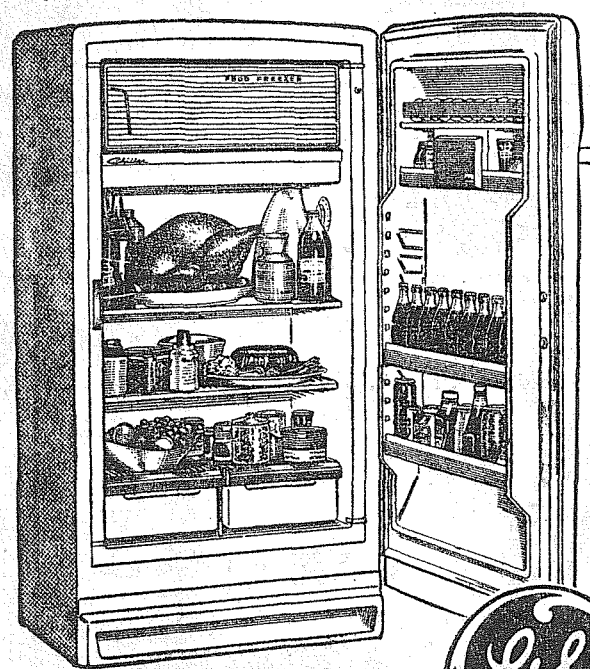
Model WA650S
PRICED AT ONLY **198.00** Exchange

OPEN EVERY NIGHT 'TIL 9 SATURDAY 'TIL 6

THE NEWEST 21" TV

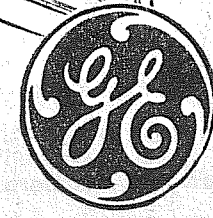
Model 21C2560

\$125 TRADE-IN

GENERAL ELECTRIC
REFRIGERATOR
10 CUBIC FEET

- MAGNETIC DOOR
- ADJUSTABLE SHELVES
- 40-LB. FREEZER
- 2/3 BUSHEL CAPACITY CRISPERS
- BUTTER KEEPER
- 5-YEAR WARRANTY



Priced At Only **198.00** Exchange

1960 GENERAL ELECTRIC SPACEMAKER RANGE

\$148

PUSH BUTTON MODEL J299-T



17" PORTABLE TV

Similar To Cut

New 1960 Slimline Designer Set

SPECIAL **\$168.00** 17T 3304



S
H
O
P
'N'
S
A
V
E
H
E
R
E
!

G-E AUTOMATIC PORTABLE DISHWASHER

- NO INSTALLATION NECESSARY!
- NEW FLUSHAWAY DRAIN!
- COMPLETELY AUTOMATIC!



SP30S

CHECK THESE "WHILE-THEY-LAST" VALUES!

G.E. Vacuum Cleaner.....\$49.95

G.E. Steam Iron.....\$14.88

G.E. Portable Mixer.....\$14.88

G.E. Heating Pads.....\$2.98

MANY OTHER ITEMS AT REDUCED PRICES



★ NO PAYMENT UNTIL MARCH

GENERAL ELECTRIC FACTORY

★ SERVICE WITH EVERY G-E APPLIANCE SOLD!

WEIR'S

YOUR GENERAL ELECTRIC CORNER

8419 PORTLAND AVE. LE 7-0231

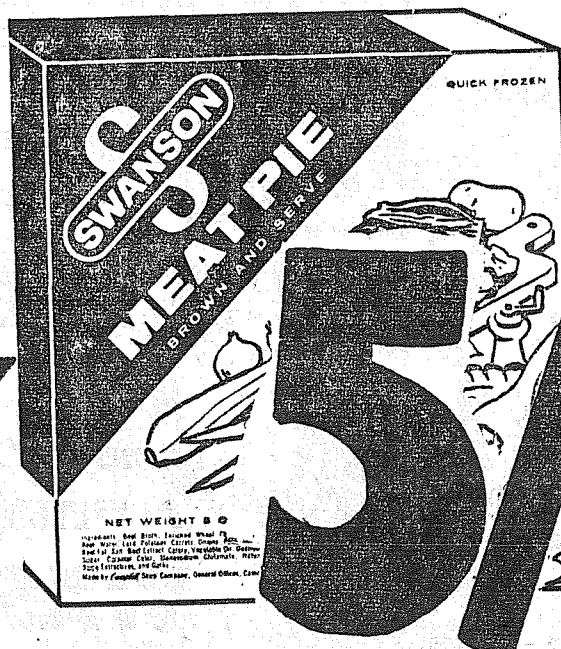
\$168

Summer's **Finest Flavors** ..

MEAT PIES



at Piggly Wiggly's
FROZEN FOODS Sale!



SWANSON CHICKEN, BEEF or TURKEY—**8-OZ. PIES!**
10c COUPON IN PACKAGE

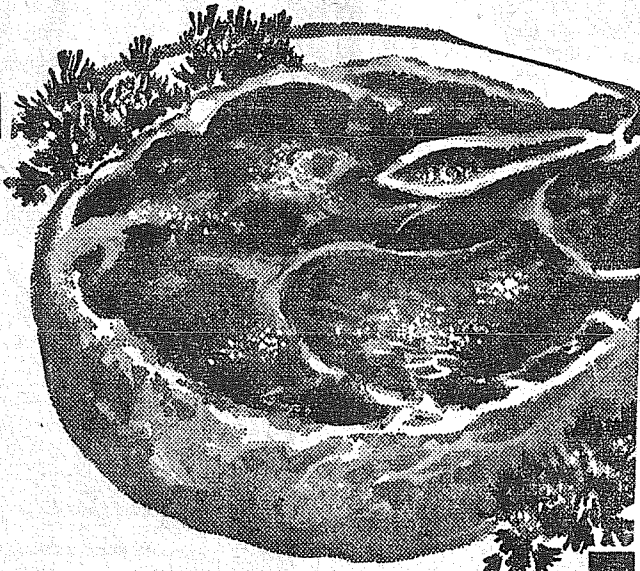
5/99

Limit Rights Reserved

Hygrade Beef Sale

POT ROAST 45¢
lb.

U.S. Good or Choice, Grain-Fed Steer, Blade Cut



SWANSON NEW MACARONI AND CHEESE (10c Coupon in Package)

TV DINNERS 3 for \$1

SWANSON CREAM OF CHICKEN OR SWISS (10c Coupon in Package)

STEAK DINNERS 49¢

SUNNIE, Ready in Seconds	7 1/2-oz. PKG.	49¢	CHET'S STUFFED PEPPERS	9-oz. PKG.	39¢
SUNNIE, Ready in Seconds	15-oz. PKG.	79¢	CHET'S SIRLOIN TIPS	14-oz. PKG.	89¢
CHET'S CHICKEN or BEEF TAMALES	12-oz. PKG.	37¢	BOOTH'S BREADED SHRIMP	10-oz. PKG.	53¢

POLAR NEW BULK PACK FROZEN FOODS

PEAS, CORN OR MIXED VEGETABLES YOUR CHOICE	2-LB. BAG	43¢
SLICED CARROTS	2-LB. BAG	31¢
KRINKLE-CUT POTATOES	1 1/2-LB. BAG	37¢

FRESH FRYERS

Piggly Wiggly or Pederson's 3-Legged Cut-Up Fryers

39¢ lb.

BEEF STEW Boneless lb. **69¢**

SLICED BACON Autumn Leaf 2 Pkg. **59¢**

JILG'S WIENERS Smoke Roasted .. lb. **45¢**

POLISH RINGS Jilg's 11-oz. each **39¢**

Sausage ROLLS Hot or Reg. Morrell's Eastern 3 Rolls (Ea. 27c) **79¢**

FRESH CRABS Ocean Caught lb. **39¢**

GROUND BEEF

Piggly Wiggly's Own Lean, Fresh-Ground

39¢ lb.

POTATOES

U.S. NO. 2 **25-LB. 69¢** BAG

EMPEROR GRAPES lb. **9¢**

SOLID GREEN HEADS CABBAGE lb. **5¢**

LONG, CRISP STALKS CELERY lb. **7¢**

ORANGE JUICE

MINUTE MAID 2 6-OZ. CANS **35¢**

LARGE EGGS

STRICTLY FRESH GRADE A . . DOZ. **45¢**

CAKE MIXES

BETTY CROCKER CHOCOLATE, WALNUT, HONEY SPICES, MARBLE, PEANUT DELIGHT, WHITE, YELLOW, DEVILSFOOD 3 PKGS. **89¢**

FLOUR

OCCIDENT (25-lb. Bag 1.79) 10-LB. BAG **89¢**

COFFEE

COFFEE HOUSE REGULAR OR DRIP . . 1-LB. CAN **57¢**

HI-HO CRACKERS

SUNSHINE 1-LB. BOX **25¢**

NALLEY'S SYRUP

(47-OZ. FAMILY SIZE, 69¢) 22-OZ. BOTTLE **29¢**

POTATO CHIPS

NALLEY'S DIPPER REG. OR BARBECUE, 69¢ BOX **59¢**

COFFEE

MAXWELL HOUSE 6-OZ. INSTANT JAR **89¢**

JELL-O Assorted Flavors .. Pkg. **5¢**

SPRY 3-lb. Can **59¢**

LIBBY'S DOLLAR SALE!

LIBBY'S APPLESAUCE	6 No. 303 CANS	1.00
FRUIT COCKTAIL	LIBBY'S... 3 No. 2 1/2 CANS	1.00
BARTLETT PEARS	LIBBY'S... 4 No. 303 CANS	1.00
LIBBY'S JUICE	PINEAPPLE... 4 46-Oz. CANS	1.00
GREEN BEANS	LIBBY'S CUT... 6 No. 303 CANS	1.00
CORN	LIBBY'S CREAM STYLE OR WHOLE KERNEL 6 No. 303 CANS	1.00
LIBBY'S PEAS	SWEET..... 6 No. 303 CANS	1.00
TOMATOES	LIBBY'S STEWED 5 No. 303 CANS	1.00
TOMATO JUICE	LIBBY'S... 4 46-Oz. CANS	1.00
PORK & BEANS	LIBBY'S... 5 No. 2 1/2 CANS	1.00
CHILI	LIBBY'S WITH SPAGHETTI 3 15 1/2-Oz. CANS	1.00
LIBBY'S CORNED BEEF	12-OZ. CAN	49¢
LIBBY'S BEEF STEW	24-OZ. CAN	47¢

Specials in Our Five Hardware Dept.

FELTROCK BATTS, 2" THICK 15" Bundle Contains 8 Ft. Pieces
INSULATION \$4.25 Special

ZONOLITE PER BAG..... **\$1.49**

FELTROCK—23" BUNDLE CONTAINS 6-8 FT. PIECES
INSULATION \$4.75 Special

TITAN, 220-VOLT, 4,000-WATT ELECTRIC
HEATER \$42.50

VAN DE KAMP CHOCOLATES
1-lb. box (reg. 1.39) . . 1.19
2-lb. box (reg. 2.69) . . 2.29
BANANA LOAF, reg. 59c . . 53c
Reg. 1.49 Dutch Chocolate
2-LAYER CAKE 1.35
Reg. 4 for 39c
BUTTERHORNs 4 for 33c

Van de Kamps BAKERIES
famous for
QUALITY • VARIETY • FRESHNESS • CONVENIENCE

Prices Effective Thurs., Fri., Sat., Dec. 10, 11, 12

OPEN 9 A.M. to 10 P.M.

PUYALLUP
1010 EAST MAIN

FIFE
Formerly ANDRE'S MARKET

SO. TACOMA
5252 SO. WASHINGTON

PARKLAND
PACIFIC AT GARFIELD

40th & Portland Ave.
TACOMA



PIGGLY WIGGLY for QUALITY