

The TIMES JOURNAL

THURSDAY, SEPTEMBER 29 Vol. 16, NO. 4 PUBLISHED AT PARKLAND, WASH. LE 7-0223

BULK RATE
U. S. Postage Paid
Parkland Branch
Permit No. 3P
Tacoma, Wash.

Rural Route
Occupant or Bosholder
Postmaster: If unable
to deliver, return post-
age is guaranteed on
addressed papers.

Meeting Changed

The Pierce County Fire District No. 7 Commissioners meeting has been changed from Oct. 10 to Oct. 17.

The meeting will be at 8 pm in the Spanaway Fire Station.

Shakespeare's Macbeth really lived. He was the usurper king of Scotland from 1040 to 1058.

SPANAWAY HARDWARE

ELECTRICAL AND PLUMBING SUPPLIES
SAND GRAVEL & CEMENT
PLASTIC PIPE

170th & Pacific
LE 7-8378

Open Sundays 8:30-1:30



BURNS CLEANER!

No smoke or odor with Texaco Fuel Chief Heating Oil. Contains Additive A-200, protects against rust and deposits.



LAPENSKI FUEL CO.
LE 7-8173

9910 PACIFIC AVE.

SHOP & SAVE at BROOKDALE LUMBER CO.



Did you know that for just over \$40.00 you can buy enough No. 1 Oak flooring for a 10'x12' room? Let us help you figure your needs.

FOR THAT UPSTAIRS ROOM

1"x8" Air Dry CEDAR PANEL
Only \$13.50 Per 100

STORM SASH KITS
From 39c To \$2.98

FELT and METAL DOOR BOTTOMS
Stop the Drafts! Only 49c And Up

Completely weatherstrip your door with long-lasting

PLASTIC-ON-ALUMINUM
\$3.95 Does a Whole Door

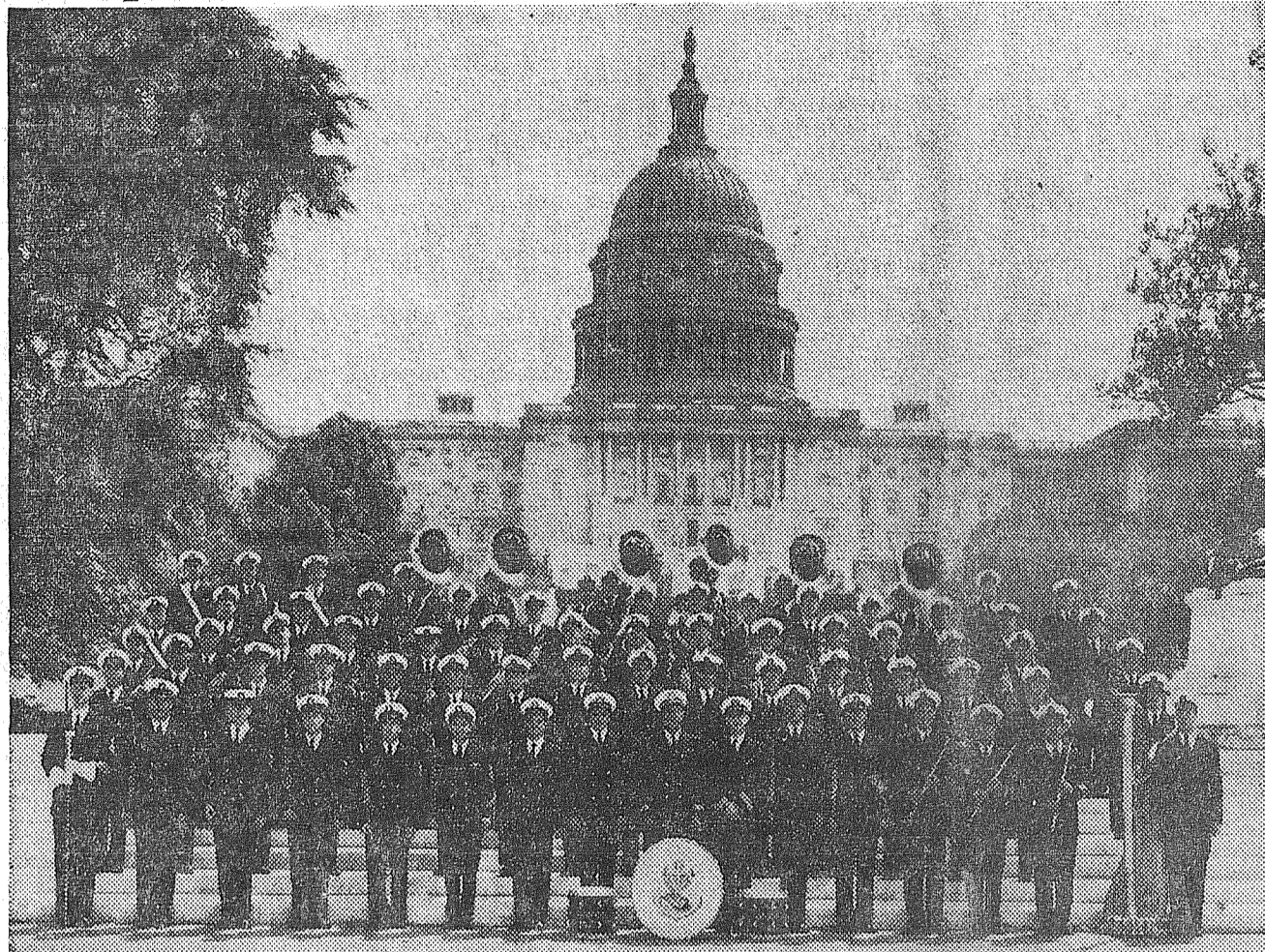
4'x8'x1/4" prefinished mahogany V GROOVE PANELS
Only \$4.95 Each

Corrugated FIBRE GLASS
Large Assortment 39c Sq. of Colors

See our 99c Tool Display

BROOKDALE LUMBER COMPANY
136th & Pacific
LE 7-8669

Navy Band Will Appear At PLU



The world famous United States Navy Band, under the direction of Commander Charles Brendler, poses in front of the Capitol Building in Washington, D.C.

The band will perform at Pacific Lutheran University in the Memorial Gymnasium next Thursday. Both a matinee and evening performance will be given.

The world famous United States Navy Band, presently on their annual tour, will be in the Memorial Gymnasium at Pacific Lutheran University for a matinee and evening performance Thursday, October 6.

The tour is annually approved by the president and directed by

Gib Sandefur, concert tour director.

On his inauguration day, March 4, 1925, President Coolidge signed a special act of Congress designating the Washington Navy Yard Band as the official USN band.

In the fall of 1925 they made their first Annual Concert Tour, and have been touring each year since with the exception of war years.

The band, composed of more than one hundred individual artists, is in the main a symphonic band, playing the works of the great masters. It is also a brass band specializing in the world's stirring marches. Its modern "swingphonette" section is known for their treatment of light operas and the latest hit tunes.

Commander Charles Brendler, who has conducted the band since 1941, is the first Navy musician to attain the rank of Commander in the Regular Navy.

Coomes Rest Home
MR. AND MRS. CLAUDE COOMES
OWNERS AND OPERATORS
Excellent food, individual attention. Private and Welfare patients. State Dept. of Health License No. 113.
321 South 116th St.
Tacoma 44 — LE 7-3022

LAUNDROMAT
WASH DRY
10c 10c
PER LOAD
56th & Pacific Ave.

SAVE 50 TO 75% ON FUEL
ASHLEY AUTOMATIC WOOD STOVE
FREE INSTALLATION
WRIGHT POWER BLADE SAW
PARKLAND HARDWARE
12169 PACIFIC AVE. LE 7-3171

CANYON

READY MIX CONCRETE COMPANY
72ND & CANYON ROAD LE 7-3943



WE GIVE PERSONALIZED SERVICE TO ALL OUR CUSTOMERS

WHETHER IT'S FOR A STEP, SIDEWALK OR FOUNDATION

One Call Does It All
After 6 P.M. Call LE 1-0095

—WASHED SAND —GRAVEL —DRAIN FIELD ROCK —BANK RUN



2ND INSTALLMENT

in LIFE of CHRIST

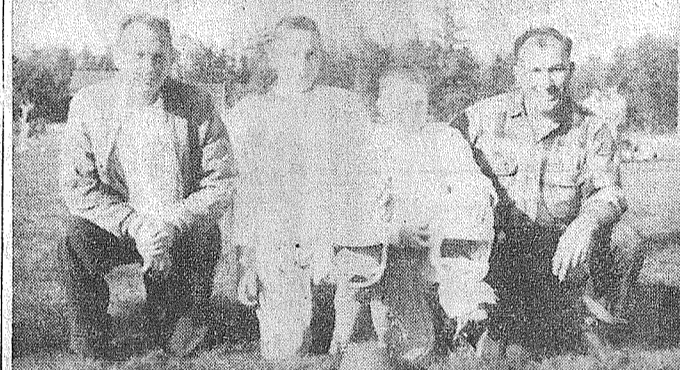
"Escape to Egypt"

Sunday, October 2

6 P.M. and 8:15 P.M.

IMMANUEL BAPTIST CHURCH
94th and Pacific Avenue

Minor 49'ers Trip Peninsula 7-0



THE SPANAWAY MINOR 49'ers of the County Pee-Wee League tripped Peninsula Sunday, 7-0. Left to right are Phil Zurluh, coach, Richard Anderson, Mike Wright and Frank Petoski, coach.

The Minor 49'ers, with Phil Zurluh and Frank Petoski coaching, travelled to Peninsula Sunday and came home a winner over the Peninsula Pee-Wee Club 7-0.

A night game may be played at Peninsula in the near future. Plans for a football night at Bethel

which would feature all six local teams in a round-robin affair are underway. The event should take place in about a month.

The Minor 49'ers remaining football schedule is as follows:

Oct. 2 49'ers vs. McChord Falcons at McChord.

Oct. 9 49'ers vs. Lakewood at Clover Park.

Oct. 16 49'ers vs. Fircrest at Bethel.

Oct. 23 49'ers vs. University Place at Curtis Jr. Hi.

All games start at 2 p.m.

Collie Match Will Be Held Saturday

The Overlake collie club will present an AKC approved puppy and sanction match for collies from noon to 5 p.m. Saturday, Oct. 1 at the Spanaway Park community Building.

Barbara Phelan of the Phelan K9 school will put on an obedience demonstration with her well-known doberman pincher, Robin.

Anyone owning a pure bred collie is invited to show it.

A film of a collie specialty show at Louisville, Ky., will be shown after the match.

TODAY'S LAFF
Most people have one thing they can't afford—it's called a standard of living.

NOW! 2 Full Floors of Shoes!

Our LOW overhead lets us meet or beat any price in town!

New Shipment

BOYS' 8" BOOTS
Oil tanned leather, lace-toe — Logger heel \$9.95
10-13, 1-6

BOYS' 8" BOOTS
Cape wedge \$8.95
13 1/2 to 3 \$9.95
3 1/2 to 6

10 pr. only Men's Crepe Wedge

HUNTING BOOTS
\$11.95

11 pr. leather top, rubber bottom. Size 9 only.
MEN'S PACS
\$4.95

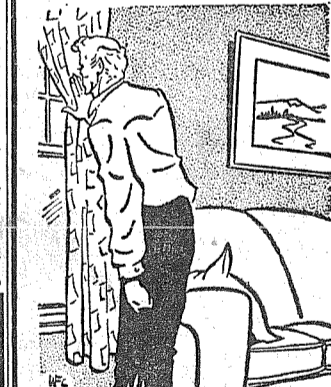
LADIES! We now have the latest modern equipment to repair your finest footwear—or to modernize your old style shoes.

FULL LINE OF MEN'S HUNTING BOOTS

OPEN EVERY SUNDAY
Friday Night 'til 9:00

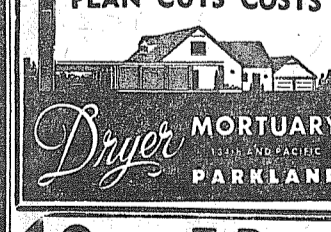
PAUL'S SHOES
161st & Pacific LE 7-0552
Closed Mondays

The Country Parson



"A man's conscience ought to operate like a doorbell and ring every time he starts to nap."

DRYER'S FUNERAL PLAN CUTS COSTS



Open 7 Days A Week
Sundays 8 a.m. to 4 p.m.

HUNTING & FISHING LICENSES, SPORTING GOODS, PAINT

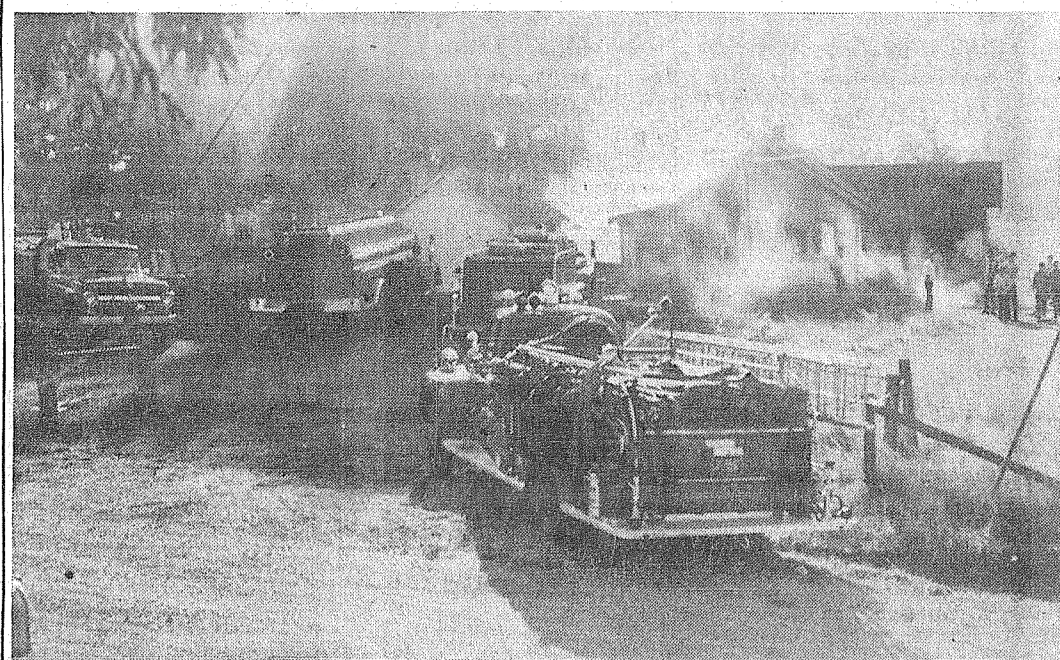
SOUTH END PLUMBING AND HARDWARE
185th & Pacific Avenue
Phone LEnox 7-4100

TRUST US WITH ALL YOUR DRY CLEANING!

Longer life for wardrobe and furnishings—puts a welcome stretch to the budget

PARKLAND CLEANERS
11004 Pacific Avenue
North of the Bank Corner
LEnox 7-3221

House Fails To Survive Two Burnings



Spanaway... Boy Scout Scrap Drive Underway

Spanaway boy scout troop will have a scrap drive which lasts from now through spring. For pick up call LE 7-8282 or LE 7-6134.

The Spanaway Volunteer Firemen and Auxiliary will meet Monday, Oct. 3 at 8 p.m. at Spanaway Firehall. Hostesses will be Mesdames Morgan Webb, Joe Barsotti, Donald Palmer. Business of evening will be rummage sale of Oct. 7 at Spanaway firehall. Anyone having rummage please call Mrs. Robert Rhone at LE 1-1313.

The Dr. Lee Rademaker guild will meet Tuesday, Oct. 4th at the home of Mrs. William Has-kins at 8 p.m.

Congratulations to Mr. and Mrs. John Fleming who recently celebrated their 70th wedding anniversary.

The Spanaway progressive community club will meet Tuesday at 8 p.m. in the Community hall Oct. 4th.

Get well wishes go to Mrs. Matilda Symmons who is ill in the hospital and to Mrs. Jack Henricksen who has been recovering from injuries received in a bad fall.

The Spanaway Kan Do grandmother's club re-elected the following officers last Thursday: President, Mrs. William Walin; vice pres., Mrs. Marion Smith; treasurer, Mrs. Edward Flannery; secretary, Mrs. Loreen Buck.

The Spanaway Preschool executive board will meet Wed., Oct. 5 at 8 p.m. in the home of Mrs. James Rosburn.

Reporter—Mrs. Oliver Omat.

Local Man Training At Fort Eustis

Pvt. Michael L. Edmonds, 1819 Vickery Rd., Tacoma, Wash., is receiving advanced individual training under the Reserve Forces Act program with the Army Transportation Training Command at Fort Eustis, Va. The training is scheduled to be concluded in January.

Edmonds is being trained in the duties of a seaman in the Transportation Corps.

After completing this phase of training, he is scheduled to spend the remainder of his military service with the 506th Transportation Company in Tacoma.

Edmonds is a 1960 graduate of Lincoln High School. His parents, Mr. and Mrs. Bert Edmonds, live at 1005 E. Division lane.

ALL SIZES DISPOSABLE VACUUM CLEANER BAGS
To Fit All Types of Cleaners
AVAILABLE HERE
PARKLAND HARDWARE
12169 Pacific Ave. LE 7-3171

PROFESSIONAL DIRECTORY

Farmers Mutual of Enumclaw
Fire — Auto
ED MAREK
12909 Pacific Ave. LE 7-4000

Farmers Insurance Group
Fire, Life, Auto
ROBERT GRAVES
1915 East 91st — LE 7-4506

Open 7 Days A Week
Sundays 8 a.m. to 4 p.m.
HUNTING & FISHING LICENSES, SPORTING GOODS, PAINT
SOUTH END PLUMBING AND HARDWARE
185th & Pacific Avenue
Phone LEnox 7-4100

TWO-WAY STRETCH

Longer life for wardrobe and furnishings—puts a welcome stretch to the budget

PARKLAND CLEANERS
11004 Pacific Avenue
North of the Bank Corner
LEnox 7-3221



"LIGHTNING STRUCK TWICE" at the residence of Mrs. Hazel Brown, Rt. 7, Box 600, last week. A fire broke out somewhere in the home, located on Mark Road near the Clover Creek school, about 2:30 p.m. last Wednesday. Mrs. Brown, mother of six, called the fire department, reporting that she believed her 14-month-old baby could have turned on an electric blanket which could have shorted out. Elk Plain, Spanaway, and Parkland fire trucks can be seen in top photo. When firemen left, the fire was completely out, and the house looked as it does in bottom photo. At 12:05 that night fire broke out again, cause unknown. This time the kitchen (left section in bottom photo) burned to the ground. Most of the roof also burned, leaving only a shell. (McKewen Studio photo.)

Loggers Tackle Lutes In Lincoln Bowl Sat.

Tacoma's two university elevens, Pacific Lutheran and Puget Sound, will open collegiate football for the 1960 season here Saturday night. The crosstown rivals will meet at 8 p.m. in Lincoln Bowl.

The PLU Knights and UPS Loggers played their first two games away. The Knights' record is a 19-13 win over the University of British Columbia and a 20-12 loss to Pacific U. The Loggers lost a heart-breaker to Willamette, 27-26.

The crosstown rivals will meet at 8 p.m. in Lincoln Bowl. The PLU Knights and UPS Loggers played their first two games away. The Knights' record is a 19-13 win over the University of British Columbia and a 20-12 loss to Pacific U. The Loggers lost a heart-breaker to Willamette, 27-26.

Coach Jim Gabrielsen's Lute club has an offense which has gained 645 yards, 334 on the ground and 317 in the air, in the first two games. Co-captain Bruce Alexander leads the ball packers with 175 yards in 38 carries for a 4.6 average. Quarterback Doug McClary has hit 22 of 43 pass attempts for 299 yards and three touchdowns. All-Conference end, Dave Bottemiller, leads the receivers with 13 for 142 yards. Alexander has snagged 6 aerials for 36 yards.

The Lute defensive line has been stingy, holding the two opponents to a net of 155 yards, for a 77.5

average per game. In the air the Knights have been more vulnerable, giving up 234 yards, or 117 per game.

This week's tilt opens Evergreen Conference play for the Tacoma teams.

Coach Gabrielsen plans to stick with his starting eleven which has Bottemiller and Bill Lennon at ends, Ken Knutsen and Bruce Nines at tackles, Norm Juggert and Dick Johnson at guards, and Al Svirth at center. In addition to McClary and Alexander, the backs include Dave Reynolds at right half and Keith Shaban or Ron Ratliff at full.

In the defensive alignment the Lutes have a tower of strength in John Mades at guard. He replaces Johnson. Co-Captain Lou Blaesi takes over for Lennon at end. Three newcomers are doing well as defensive backs. They are Rich Stanley, transfer from Olympia; Jack Cocchi, transfer from San Mateo; and Bobby Brodhan, fresh from Port Angeles. Alexander is the other defensive back.

Next week the PLU Knights travel to Cheney where they will stingy, holding the two opponents to a net of 155 yards, for a 77.5

For Clothing & Shoes for All the Family...
SHOP AND SAVE AT

SEYMOUR'S
9714 Pacific Ave. — 1 Block North Park 'N Shop
SHOP DAILY 9 to 9 EVERY SUNDAY 10 to 6

HILLTOP CONCRETE CO.

LOOK FOR THE BIG "H" THE SIGN OF SERVICE

Use Ready-Mixed CONCRETE



Keep The Mud Out Of The House NOW IS THE TIME!

POUR YOUR DRIVEWAY AND SIDEWALK Ready-Mix Orders Taken 'Til Noon Saturday

- Sack Cement
 - Washed Sand
 - Washed Gravel
 - Drain Gravel
 - Crushed Rock
 - 3/4" Beach Gravel
 - Select Pit Run
 - Fill Dirt
- Plant: 2223 - 23rd Ave. S.E. PUYALLUP TH 5-9525
P.O. Box 648 Puyallup TACOMA FU 3-3624

LUMBER
ALL GRADES
ALL STANDARD AND
BETTER LUMBER IS
WCLA
GRADE STAMPED
GLASS
HARDWARE
SHINGLES
ROOFING
GET OUR PRICE
FIRST ON ECONOMY
GRADE LUMBER

ORDERS NOW
BEING TAKEN FOR
SAWDUST—SHAVINGS
Baskett Lumber
9701 Portland Avenue
LE 7-8663

**Spanaway Revival
Meetin's Comin'**
Revival services will be held at Spanaway Baptist church, S. 167th and Pacific from Oct. 2 to Oct. 9. Services will be every night at 7:30. Junior choir practice at 7:00. Evangelist is M. D. Morton of Louisville, Ky. Special song service will be conducted by Dr. Don Henning of Tacoma.

**FOR RENT
TRUCKS
& CARS**
MA 7-9039
Save One Half
We Furnish Everything
HARMON'S
Driv - Ur - Self Co.
HARMON'S SERVICE
2112 Jefferson
Jim Harmon, Mgr.

**LETTERS
to the
EDITOR**
To The Times Journal:
Your write-up and feature in the Times Journal concerning Old Betsy calls to my mind an incident in the long past. In 1898 I was a day student at Pacific Lutheran Academy. Had my own small house at what is now the corner of Pacific Ave. and Tule Lake Road in Brookdale. One evening, tired of studying, my pal and I went out for some fresh air. It was a dark night and snow on the ground. What should we see but Old Betsy coming down the track from Parkland. We knew it would stop for water at the tank crossing at Clover Creek just a block away. We were there and ready when Mr. Wise got to lower the water spout. We snowballed him. Before we knew it he was after us and all but caught me. I had never run so fast in all my life. Am still having a bit of a guilty conscience but it is still hard to feel very serious about it all. But I do know why boys will do things they should not. But by the grace of God, strict teachers and parents we have been able to take our place in the furtherance and good of our fellows.

Rev. H. N. Svinth,
7302 So. Park Ave.
Tacoma, Wn.

Notice
Beginning October 3, 1960, all water bills for the Mile B Water Company are payable from 1:00 to 5:00 p. m. Mondays only at 11219 East Burnett, Tacoma 44.

**Waller Road . . .
Waller Road PTA
Will Meet Oct. 4**
The next Waller Road PTA board meeting will be held Oct. 4 at the home of Mrs. Florence Martin.
The PTA wishes to remind residents of the area that Nov. 28th & 29th are the dates for the rummage sale.
* * *
Mrs. William Hager was pleasantly surprised at her home last week when a group of friends and neighbors gathered to welcome her home from her trip to England.
Waller Road spinsters 4H group entered in the Baked Goods division at the Western Wash. Fair. Blue ribbons on cookies were won by Mary Jane Floyd, Sandra Hager and Jeanette Collins. Elaine Collins won a blue on her sewing.
Mary Jane Floyd was on a judging team which received a blue ribbon.
Camel milk is sweet; whale milk tastes oily.

**Pierce County PTA
Will Meet Tonight**
Pierce County Council of PTA is sponsoring an all-legislation meeting tonight at Brookdale School, from 7:00 p. m. to 9:30 p. m.
Topics from the Washington State PTA Legislation Action Program for 1960-1961 will be covered, with question and answer periods following each talk. Speakers will be Mr. Harold Gray, Principal of Clover Park High School, talking on "Our State Tax Structure" (school finances); Mr. Walter Corwin, Area Supervisor of the Washington State Division of Children and Youth, speaking on "Juvenile Problems and Issues"; and Mrs. Donald Reed, first vice president of Pierce County Council of PTA and past legislation chairman of Council, discussing "School Legislation Approach" on the local level.
Hosts for the meeting are Mr. L. V. Gaume, Principal, Brookdale Elementary School, Mrs. W. B. Carr, president of Brookdale Pre-School PTA, and Mrs. Sidney Wood, president of Brookdale Elementary PTA. The meeting will be conducted by Mrs. Chester L. Johnson, legislation chairman of Pierce County Council and Mrs. Martin Milne, co-chairman.

**Canyon Road . . .
Ladies Auxillary
Will Meet Thursday**
The Canyon Road Ladies Auxillary, after adjourning for the summer, will meet Thursday, Oct. 6, at 12:30 for a sack lunch in the Community Club. There are so many new families in this neighborhood that we invite everyone to come and meet your neighbor.
The Canyon Road garden club scored a clean sweep of all three places and won a sweepstake award for the most points at the Puyallup Fair.
Miss Nadine Agnes Johnson, daughter of Mr. & Mrs. Ishmal Johnson of Bentley Road, became the bride of Mr. William Thomas Morris of Puyallup at All Saints Church last Saturday evening. The reception was held at Ivans. The couple will honeymoon in Vancouver, B.C.
Mr. & Mrs. L. R. Field of E. 72nd announce they became grandparents when their grandson and his wife, Mr. & Mrs. Ronald Hopkins of Tacoma, became the parents of a 7 lb. 8 oz. boy Sept. 15th named Ronald Keith.
A class of square and round dancing will be held Oct. 11 at the Canyon Road Community Club at 7:30. Instructors will be Mr. and Mrs. Ralph Rowland.

**Building
Permits**
Gordon E. Boock, \$1000 addn. to res., 1409 37th St. NE Puyallup.
Lloyd E. Senard, \$200 addn. to res., 109 So. 166th St.
Fir Lane Memorial Park, \$150 sign, 176th and Pacific Ave.
Lillian O'Shea, \$1287 addn. to res., 904 114th St.
Chas. A. Marecic, \$15,000 addn. to res., 4305 E. 72nd.
Wm. W. Smith, \$500 shed, 128th and Spanaway, Loop Road.
Willard Hensen, \$300 shed, Rt. 3, Box 304, Tacoma.
Jim Harkins, \$14,000 residence, 11614 So. Alaska.
M. L. Butler, \$400 addn. to res., 10612 So. D.
West Coast Const. Co., \$17,500 res., 1602 So. 152nd.
Lee G. Wilson, \$13,500 residence, 1311 So. 114th.

**LINOLEUM, FORMICA,
CARPETS**
FREE ESTIMATES
PACIFIC FLOOR COVERING
131 & Pacific LE 7-4545

H. Cook, \$1,000 garage, 1320 So. 116th.
Northwest Hauling, \$2,500 residence, moved to property, 8815 128th St. Puyallup.

BICYCLES
For School & Play
FAMOUS MODELS
SCHWINN &
COLUMBIA
\$37.95 and Up
**PARKLAND
CYCLE & KEY**
11021 Pacific Avenue
LE 7-5772

SUMMIT VIEW AUTO REPAIR
FEATURING — QUALITY FIRST
All Work Ungonditionally Guaranteed
Parts and Labor
10904 E. Canyon Road LE 1-0424



PORK Lb.
STEAKS 49¢

OCEAN FRESH, RED
SNAPPER Lb. **29¢**

CUT FROM U.S. GOOD BEEF
RIB STEAKS Lb. **73¢**

PORK
CHOPS
Lb. **57¢**
CENTER CUTS 67¢

SUMMIT FARMS—FRESH SMOKED
DRY CURED—LESS SHRINKAGE
BACON Lb. **49¢**
By The Piece

HAM HOCKS
Lb. **23¢**

JOWL
BACON
FRESH GROUND
Lb. **27¢**

GRND. BEEF
Lb. **39¢**



BETTER MEALS
build BETTER FAMILIES

PRICES EFFECTIVE THURSDAY THROUGH SUNDAY

EARLY GARDEN
FREESTONE . . . 2 1/2 Tin **4 for Peaches 89¢**

SWANSON'S QUICK FROZEN
MEAT PIES TURKEY CHICKEN BEEF **5 for 1.00**

HI-C GRAPEADE OR
ORANGEADE 46-oz. Tin **4 for 1.00**

HOLIDAY
MARGARINE 6 lbs. **1.00**

SNOW FLAKE PREMIUM
CRACKERS 2-lb. Pkg. **47¢**

MISSION LONG SPAGHETTI OR
MACARONI 4-lb. Pkg. **59¢**

Make them just the way they're made at the Western Washington Fair . . .
SCONE MIX
A REAL TREAT!
29¢

ALBER'S
OATMEAL 9-lb. Bag **99¢**

JIFFY
PIE CRUST MIX Pkg. **10¢**

ZEE — Colors or White
TOILET TISSUE 4-Roll Pkg. **3/1.00**

HAPPYVALE
PEAS 303 Tin **8/1.00**

SUNSHINE COOKIES — Assorted
CUP CUSTARD 1-lb. Pkg. **43¢**

ALBER'S
PANCAKE FLOUR 4-lb. Pkg. **49¢**

LARGE AA
WHITE DOZ.
Eggs 58¢

**SUMMIT
TRADING COMPANY**
10409 Canyon Road, Tacoma LE 7-5848
No Sales To Dealers
We Reserve The Right To Limit Quantities

KLEENEX Facial Tissue 400 Ct. Pkg. **4/1.00**

KITTY CAT FOOD Tall Tin **6/49¢**

NESTLE'S CHOC. CHIPS (Reg. 53c) 12-Oz. Pkg. **39¢**

LIQUID
FELS NAPHTHA 22-Oz. **63¢**

BLEACH
PUREX 1/2 Gal. **37¢**

DET. POWDER
TREND Gt. Pkg. **49¢**

ENTER THE CARNATION CARNIVAL!!
WIN! 61 OF THE WORLD'S MOST GLAMOROUS '61 CARS
GET ENTRY BLANKS HERE

Carnation EVAPORATED MILK **3/43¢**

IT'S FRUIT EATIN' SEASON SUMMIT HAS A BIG SELECTION

GOLDEN RIPE BANANAS Lb. **10¢**

RED DELICIOUS APPLES 2 Lbs. **29¢**

VALENCIA ORANGES Lb. **15¢**

GREEN PEPPERS **10¢ POUND**

OPEN SUNDAYS
10 A.M. TO 7 P.M.
FOR YOUR CONVENIENCE
WEEKDAY HOURS
9 A.M. TO 9 P.M.

Many One Car Mishaps--Bellatch

A good percentage of the accidents in Washington, State involve only one car. In most cases the car merely ran off the roadway, with "hitting a fixed object" coming next in frequency of accident types.

These facts were announced today by Chief Roy A. Bellatch of the State Patrol.

"Most people think of accidents as involving two or more cars," said Chief Bellatch, "and yet a large number occur to just one car. Nearly half of all fatal accidents involve only one car."

He continued, "There are several causes of accidents of this type. Usually they are due to speed coupled with inattention or carelessness, although sometimes they may be caused by the driver falling asleep while driving."

"Being alone on a highway often creates a false sense of security. Too often a driver will drive carelessly because he feels safe," said Chief Bellatch, "and quite often he will exceed the speed limit and may fall to negotiate a curve."

He concluded, "Remember that it doesn't take two cars to make an accident. Drive wisely and carefully, and remember to allow for conditions such as rain or snow or sharp curves when you set your driving speed."

Summit . . . Pack 76, Hopeful Cubs To Meet

Pack 76 Cub Scouts, prospective Cubs, and families will meet in the Summit Youth Center, Friday, September 30, 8:00 p. m. The boys wishing to join in on scouting fun must be eight years old and no older than eleven. A coffee hour will follow.

October 4th is the date set for a potluck dinner at the Summit Youth Center for the Junior Ranchers 4-H group and families. Arrangements for the 6:00 p. m. dinner are being made by the girls.

The Youth Center Calendar Chairman and committee wish to thank the people of the community and places of business for making the calendar sale a success. Calendars are still available for anyone who hasn't been contacted. You may place your order with Mrs. Larry Taranoff at TH 5-5542.

The Busy Stitches 4-H group is planning a skating party for Saturday, October 1, at the Roller Bowl Skating Rink. The girls have earned this one day of relaxation after working so hard on their Fair exhibits.

Miss Sue Morris, a student at Morris E. Ford Junior High, has lost a tan, double-zippered handbag. The purse, with full identification within, may have been lost on the school bus. Sue is anxiously awaiting the return of the handbag or at least the billfold with her important papers.

Mrs. Gail Trowbridge received word that Mr. and Mrs. Rick Eustace (Alice Kincaid) became proud parents to a 7 pound 6 ounce girl August 30. Alice and her parents, Mr. and Mrs. J. W. Kincaid, formerly lived at 5220 East 104th. It is the first grandchild for the Kincaid's, who now live in Shiprock, New Mexico, and Mr. and Mrs. James Eustace, who live in the Bethel District.

Mrs. George J. (Alpha M.) Rave, 65, passed away Monday, September 19. Born in Tacoma, she moved here from Seattle three years ago. Mrs. Rave was a member of Jehovah's Witnesses. Our deepest sympathy is extended to her son, Don, Tacoma; and brother, Howard A. Sipple, Malo, Ferry County. Bobby Ashworth, a fourth grader, received a red ribbon on his Hubbard squash entry in the Puyallup Fair. The squash was displayed this week in his classroom at Central Avenue School. Reporter—Gwen Cail, LE 7-3766

Clover Creek Baptist Church
Military and Knobel Road
Three Miles East of Pacific On 159th Street
Sunday School — 9:45 a.m.
Morning Service — 11:00 a.m.
Young People — 6:00 p.m.
Evening Service — 7:00 p.m.
Radio Broadcast — KAYE-1450
Sunday at 9:45 p.m.
Lyle Bromblet, pastor
Phone LE 7-6421

Buoy Will Relay Radio Messages

A telemeter buoy for the radio transmission of oceanographic information from the high seas will be designed and installed by University of Washington scientists under a \$207,100 grant from the National Science Foundation.

The buoy will be anchored at the summit of the Cobb Seamount, an unusual underwater mountain about 270 miles off the coast of Washington. Cobb Seamount rises 9,000 feet from the ocean floor to about 100 feet from the surface.

The buoy will be capable of sending scientific data by radio signal. Initially, it will provide measurements of transient properties of the sea, such as salinity, temperatures and velocity. It also could be adapted to transmit meteorological information.

It is planned that the transmissions will be received automatically and recorded on magnetic equipment designed to read out data in forms suitable for interpretation and machine data-processing.

Dr. Robert G. Paquette, research associate professor of oceanography, will have the major responsibility for the project, under the direction of Dr. Richard Fleming, head of the oceanography department.

Dr. Paquette said the Cobb Seamount presents a unique opportunity to anchor a telemetering buoy for measuring conditions far at sea. "In this area of the ocean, transients are perhaps more important than average conditions and it is becoming increasingly important to describe these transients in order to understand the oceanography of the area," he commented. The current grant from the National Science Foundation is for a three-year period. The first year will be devoted primarily to designing and testing equipment in Puget Sound and the Straits of Juan de Fuca. After the equipment is checked and stabilized, uninterrupted operation and processing of data will be conducted.

The project eventually is expected to serve as a model for similar developments in both the Pacific and Atlantic Oceans.

UGN 1960 Goal Is \$996,317

Goal for the bigger 1960 United Good Neighbor campaign will be \$996,317, announced campaign chairman Douglas Gonyea.

A total of 40 health, recreation and welfare services are included in the once-a-year fund drive. This includes three agencies: Arthritis and Rheumatism Foundation, National Committee on Alcoholism and the Villa Majella Maternity Service.

The annual UGN campaign will "Kickoff" with an Employee Rally lunch, Tuesday, September 27 at Fellowship Hall.

The goal is about \$17,000 more than was raised last year, when for the first time in UGN's seven-year history the drive exceeded its quota and \$980,000 was raised on a goal of \$960,000.

Chairman Gonyea pointed out that the increase in goal is "very slight when it is realized that three new agencies have been added and that costs of labor and materials are also up."

The drive chairman emphasized that the total requests to the UGN budget committee from the member agencies was nearly \$30,000 more than the goal. "This means that if the agencies are to receive only barest minimum needs, the goal must not only be met but heavily oversubscribed," he said.

An "Army" of more than 6,000 volunteers will help UGN carry UGN solicitation to all parts of the county. Campaign report meetings will be held starting Monday, October 10.

Slogan for the fall fund drive will be "Care Enough to Share Enough."

Spanaway Water Co. Adds To System

The Spanaway water company, now five years old, has taken over the system from Service Hardware to form a completely home owned water system.

This summer the company has completed over a mile of pipe line, adding 25 new customers to the system with more joining all the time.

The company would like to thank all those who donated trucks and equipment and labor to make their addition possible, and also Hugh Gonyea, who has engineered the water system construction.

YOUNG FOR AGING
CASPER, Wyo.—What's in a name department? The chairman of the Natrona county committee on aging is Charles E. Young.

FLETT DAIRY
FARM FRESH
HOMOGENIZED AND
PASTEURIZED MILK
AND CREAM
Phone GR 2-3301

NOW! ANY COLOR YOU WANT IN THE SPECTRAL RANGE



With our Schorn Color Machine we can match draperies, bedspreads, upholstery, ceramics... anything! Now, a whole new world of decorating is at your fingertips—yours for the selecting.

South End Plumbing & Hardware
186th & Pacific Avenue
(PHEASANTS FOR SALE ALSO) LE 7-4100

MAYTAG Car Load SALE

"The Most Freest of Automatic Washers"

Model 123
REG. 279.95
\$199⁹⁵

FRICK AND FRANZ
2 Stores To Serve You
• 8406 So. Tacoma Way
JU 3-6686
• CANYON & AIRPORT RD.
LE 7-8676

REVOLUTIONARY new performance!

SIEGLER FORCED-AIR OIL FIRED HOME HEATERS

now give you amazing **SUPER FLOOR HEAT**

SIEGLER pours 4 times more heat over your floors for FULL HOUSE HEATING!

The big furnace volume blower drives 4 TIMES MORE air through the heart of the fire and out over your floors. Sieglers give you furnace comfort without costly pipes and registers.

new economy
Sieglers, with the patented Inner Heat Tubes and built-in Blower System captures the heat other heaters waste on the ceiling or out the chimney. It pays for itself with the fuel it saves!

new styling
Choose from glamorous new contemporary styled models or beautiful traditional designs. All Sieglers heaters are finished in lifetime porcelain.

MARV TOMMERVIKS PARKLAND FUEL OIL SERVICE
12002 Pacific Avenue LE 7-0256

SIEGLER GUARANTEES MORE HEAT OVER YOUR FLOORS THAN EVER BEFORE!

General Sheet Metal Work
Special Attention to Special Equipment

RAU MFG. CO.
LEnox 7-7372
14114 Pacific Avenue

Don't Let Just Anybody Monkey With Your TV Set!

CALL A-1 TELEVISION & RADIO CALL
1424 EAST 72ND. GR 5-0658

Nationwide Transportation Of Mobile Homes
Insured - Bonded - Safe - Reliable

TRANSIT HOMES Inc.
Tacoma Office
5442 So. Lawrence Greenfield 2-5429
ICC License No. MC 94350
AUTHORIZED FOR MILITARY PAYMENT

Vote for . . . **JENNIE GRODVG**
State Representative
28th District
REPUBLICAN
And Continue Her Service To The Community When Elected
Pd. Pol. Adv.

THIS IS WHERE YOU POCKET BIG SAVINGS

Fresh Meaty **SPARE RIBS 39^c**
Sugar Cured **SLAB BACON 39^c** POUND

LEAN — GRAIN FED PORK CHOPS 59^c POUND

TENDER SIRLOIN STEAKS 75^c LB. **STICK LIVER SAUSAGE OR BOLOGNA 39^c** LB.

COFFEE 59^c Hills Bros. 1-lb. Tin **\$ 1¹⁷** 2-lb. Tin

Alber's **FLAPJACK FLOUR 99^c** 10-Lb. Bag

OVEN FRESH CRACKERS 39^c 2 Pound Box

Friskies—No. 1 Tin **DOG FOOD 2/25^c**

JELL-O ALL FLAVORS Each 5^c

Nalley's Lumberjack SYRUP 29^c 22-Oz. Bottle

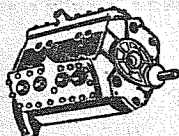
Mandalay PINEAPPLE 10^c 8-Oz. Tin

N.B.C. Lorna Doone Shortbread **COOKIES 29^c** 10 1/4-Oz. Pkg.

Sunshine—Hi-Ho CRACKERS 33^c 1-lb. Pkg.

Sweet Tokay GRAPES 10^c Pound **FRESH — LOCAL CORN 29^c** Dozen **"AA" Large EGGS 58^c** Doz.

McDANIELS The home of The Low Price
AIRPORT & CANYON ROAD
Store Hours: 9:00 'Til 9:00 — Sundays 9:00 'Til 7:00
PRICES EFFECTIVE Thursday Friday Saturday



BRAKE DRUM TURNING

Valve Seats Installed, Complete Motor Re-building, Re-boring, Pin fitting, Lathe and Press Work, Head Surfacing, Key Seating, Pistoning Grinding, etc.

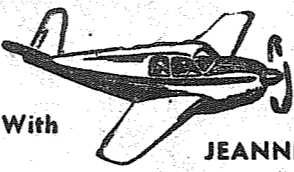
Rupe Machine Works and Garage

AUTOMOTIVE & INDUSTRIAL WORK
13411 Pac. Ave., P.O. Box 2445, Parkland 44, Wn., LE 7-7450

Riverside Booster Night Oct. 3

Riverside Valley Grange announces their annual Booster night Oct. 3rd at 8 pm in their hall, across the Clark's Creek bridge. Everyone in the Community is invited. Pictures will be shown by Miss Marie Sterrenburg on her trip to Holland and other countries. There will be other speakers and music.

Flying



With JEANNE

The 1st Annual 1960 Antique Fly-In at Pearson Airpark, Vancouver, Washington was well attended from this area. Atlee and Glenna Dyson flew down Friday in their Student Prince. Pete Bowers, of Seattle took his C-3. Don and Butch Abbott and a friend flew down in his 170 and Jack Brown flew down to cover the Fly-In for the Northwest Flyer.

Friday afternoon Otto and Butch Wicklander flew to California, returning here Saturday. Rick (Butch) Wicklander made his first solo flight recently in the Wicklander's Aeronca Champ.

The Charles Stillman family flew to Hillsboro, Oregon Sunday to spend the afternoon visiting. Keith Ghormley of Summer passed his Private Check ride this last week and is now a full fledged pilot.

Pat McFarland At Yakima Fair



Pat McFarland

Pat McFarland, 17, a Franklin Pierce senior, is presently competing at the State Fair in Yakima with his 4H demonstration. He had the top demonstration at the Summer Fair. Top prize at the Yakima Fair will be a trip to Chicago for a national 4-H conference.

Pat also did well at the Puyallup fair, winning a blue ribbon in an open class of 21 animals with his Jersey heifer.

Woodland... Harmony Hoedown At Fruitland Sat.

Saturday evening, October 1st is Harmony Hoedown night again at Fruitland Grange. Dancing will start at 8:30 p. m. preceded by a business meeting for the club members at 8 p. m. The new round dance of the month, "It Had to Be You", will be taught. There will be guests from the "Caper Cutin' Cousins" of Everett. All square dancers are welcome. Bring your cups and snacks. Coffee and tea will be served by the hosts and hostesses Jack and Vi Swayne, Dave and Phyllis Weller, Bill and Edna Westman, and Fred and Marie Scott.

Congratulations are in order to the members of several of the 4-H clubs in the Woodland area who

(Continued on Page 12)

Rural Garbage Service
Pierce County Permit
Serving Parkland, Midland, Summit and Spanaway
LEnox 7-8688

Built-In Oven Must Be Right Height for You



(General Electric)

Convenient built-in oven with four cooking units nearby saves footsteps and means more space.

There's a lot of cooking going on around a house these days. In many instances this means that mom is the indoor cook and dad the outdoor chef. When this is true, cooking units such as a built-in oven with a drop-in cooktop nearby should be placed near the doorway to a terrace or patio. Once cooking is done, guests can serve themselves from food set on the oven door. Color is coming to more kitchens, and this is true of this appliance which comes in four shades as well as the standard white. Remember, whether you plan to have one oven unit, two stack units or two side by side, see that the men set the units at a comfortable, convenient height for you. One housewife discovered workmen had installed her kitchen wall units at a height for the average woman, but she wasn't the average height, so the units had to be rehung.

BY EDNA MILES

OUT IT GOES!

FINAL WEEK BANKRUPTCY SALE

CENTRAL SURPLUS BANKRUPT

1000 Center Street

PRICES SLASHED FOR FINAL LIQUIDATION

Sale to Public Starts
Thurs. Noon, Sept. 29th
Daily 10 A.M. to 9 P.M.
Sunday 10 A.M. to 6 P.M.

SAVE UP TO 80%

PUBLIC NOTICE!
Doors Close Forever Soon
Be Here For The Final Week
Of This Great Sale — Prices
have been sharply reduced for
complete liquidation.

Partial List of Items On Closeout

WOMENS' PURSES Values to 5.95 88c	MENS' Tanker Jackets Quilted 4.49	BED PILLOWS Ea. 88c
CHILDRENS' SUN SUITS 19c	MENS' PANTS Sun Tan Or Grey 1.98	BLANKETS 62" x 82" Approx. 50% Wool 1.98
CHILDRENS' TENNIS SHOES 66c	MENS' Dress Oxfords \$4.49	FOAM RUBBER PILLOWS & CUSHIONS From 59c
CHILDRENS' Rubber Boots \$1.25	WOMENS' ROBES Nylon Quilted Value 14.95 3.88	BASS PLUGS TROUT LURES SALMON LURES GLASS RODS 1/2 PRICE
BOYS' DRESS SHOES Or Work 2.88	MENS' Plaid Jackets Flannel Lined 1.98	SPRAY PAINT Multicolor Reg. 1.98 88c
CAPRIS OR SKIRTS 88c	BLOUSES Girls' & Womens' 59c 2 For 1.00	Screwdrivers Plastic Handle 5c
CHILDRENS' PLAY SUITS 2 For 1.00	SWEATERS BULKY KNIT Men's or Women's 3.88	75' SKI TOW ROPES 1.49 WATER SKIS 6.88 PLASTIC SURF BOARDS 4.88
BOYS' Flannel Shirts 59c 2 For 1.00	25-FT. LAWN SOAKERS 49c	TENTS UMBRELLA & CABIN REDUCED
Toreador Pants Knit For Gym, Etc. 77c	WOMENS' Wool Knit Suits Sizes 12-14 Only Values to 25.00 7.88	MENS' RAIN SUITS Parkas & Pants Heavyweight Set 4.49

CENTRAL SURPLUS BANKRUPT

Open Thurs Noon 'Till 9 P.M. Daily 10 A.M. to 9 P.M.

1000 Center St. Sunday 10:00 A.M. to 6 P.M. 1000 Center St.

Estimates Without Obligation
QUALITY HOMES
DESIGN ASSISTANCE
Hedlund Const.
868 Tule Lake Rd. LE 7-4227

GOVERNMENT SURPLUS SALES
NOW anyone can buy DIRECT from U. S. GOVERNMENT SURPLUS DEPOSITS, by mail for yourself or for resale. Cameras, binoculars, cars, jeeps, trucks, boats, hardware, office machines and equipment, tents, tools and tens-of-thousands of other items at a fraction of their original cost. Many items brand new. For list of hundreds of U. S. Government Surplus Deposits, located in every State and overseas with pamphlet "How Government Can Ship Direct To You," plus procedures, HOW TO BUY and how to get FREE SURPLUS, mail \$2.00 to SURPLUS SALES INFORMATION SERVICES, P. O. Box No. 1818, Washington 5, D. C.

Pork Roasts Lb. 39c	Old Fashioned Sugar Cured Ham Lb. 49c Whole or Shank Half	Pork Chops Lb. 69c
Blade Cut Lb. 49c	Pure Pork Sausage Lb. 39c	WHOLESALE MEATS (Formerly Massner Meats) 116th & Spanaway Loop Rd. LE 7-3271

Al Farrar Says: "An Election Decision Demands a New Course"



By a 2-to-1 vote Pierce County citizens have expressed their desire for a definite change in the present policies and personnel of the TACOMA PORT COMMISSION.

The people of this county have clearly indicated by their ballots they want an aggressive, far-sighted, expanded program of action NOW on the part of their Port Commissioners. They have recognized the urgent need for a new course. A very impressive portion of the vote, in the three-way Port Commission race, was decisively registered on this score by the votes cast for me in the primary election. An even greater number registered themselves for this new course by their votes for the high man, Forrest Easterday. I congratulate these voters as I also extend congratulations to Mr. Easterday.

To you who voted for me go my warm thanks. My

AL FARRAR Says: "I Will Support Forrest Easterday"

Paid Political Advertisement

appreciation for your support can best be demonstrated by continuing the effort to elect a new Port Commissioner. This I will do by giving every possible assistance between now and November 8th to Forrest Easterday. He has a long outstanding record as a former Pierce County Commissioner, County Engineer, State Legislator, and present Tacoma City Councilman. Citizens of this county saluted that record with a huge and deserving vote of confidence last Tuesday. They know he will apply his experience of dedicated, able public service to the challenging responsibility of serving as a Port Commissioner.

I urge the many thousands who supported my candidacy to join in this tremendously important effort to insure the election of Easterday . . . an election decision which can so greatly affect the future industrial and economic life of Tacoma and Pierce County.

HEADQUARTERS FOR AUTOMATIC BUCCANEER WOOD HEATERS

OPEN 9 to 9 — SAT. 'TIL 6

● SAVE UP TO 35% ON YOUR WOOD BILL

● GIANT AUTOMATIC BLOWER

● AUTOMATIC THERMOSTAT

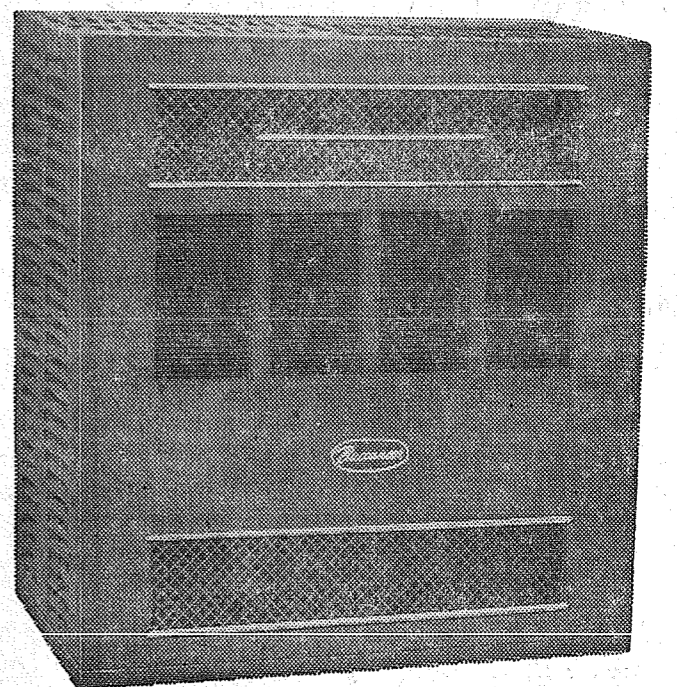
● WARM FLOORS



8419 PORTLAND AVENUE

LE 7-0231

LARGE TRADE-INS



BARGAIN HUNTERS

POLISHER 29⁹⁵
 "SHETLAND" FLOOR
CLEANS BUFFS SCRUBS WAXES

RAY-O-VAC
 Sportsmen's
 ELECTRIC
LANTERN

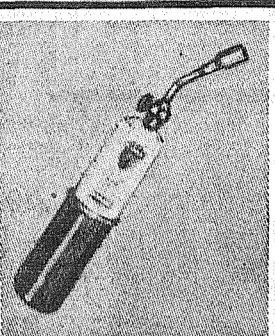
Reg. \$8.95 **\$6.66**

HOME TOWN
JIG SAWS

Reg. \$24.95 **\$18⁹⁵**
 Special

Sale

PRICES EFFECTIVE
THURSDAY, SEPT. 29
 THROUGH
SATURDAY, OCT. 1



PROPANE TORCH

Reg. \$5.69. Instant lighting. Adjustable. Long, steel plated burner head. Positive regulating knob. Special **4.25**

REFILL TANKS 1.45

MODERN DESK LAMP

Reg. 3.98. Weighted base; adjustable neck. Shade directs light where needed. Separate switch. Special **2.97**

TAP AND WRENCH SET

Reg. 1.00. Set consists of 5 taps 6/32" to 1/4" - 20 thread and tap wrench. Special **77¢**

MASKING TAPE

Regular 1.35. Big 60 yard roll. Width 3/4". Makes trimming a lot easier. Special **98¢**

11 PIECE 1/4" SOCKET SET

Reg. 4.98. Consists of reversible ratchet, extension bar, flex drive, 8 sockets to 7/16". Special **2.98**

WESTINGHOUSE AUTO. ELECTRIC

SAVE OVER \$4 PERCOLATOR

MARY PROCTOR - REG. \$22.95

STEAM IRON

SPRAY AND STEAM

17⁷⁷

REG. \$13³⁹

Special

CASSEROLE AND WARMER

Complete with brass finished candle warmer. Keeps food warm - more zestful. Highly decorative. White glass with clear glass cover. 1 1/2 quart round casserole. Reg. 2.98 **2.33**

PADLOCKS

Rugged; built to last. 5 pin tumblers. Your choice of combination type, regular type or bike padlock. Values to 1.10 **77¢**

25-PIECE ALL PURPOSE TOOL KIT

Reg. 4.98. All popular handy tools. Screwdrivers, combination wrenches, 1/4" sockets, reversible ratchet, extension bar, etc. All contained in plastic roll. Useful. Special **2.97**

ASSORTED HOOKS FOR WORK SHOP PEG BOARD

Reg. 2.45. Use these hooks with peg board in your garage or work shop. Have a place for every tool, 60 different hooks. Special **1.87**

9x12 PLASTIC COVER

Reg. 54c. Hunters, use it for tarp, rain protection. Paton furniture cover, etc. **39¢**

ALARM CLOCK

Sparkling, transparent case shows the well made movement in action. 30 hour. **4.39**

DEER BAG

Reg. 1.00. Made of cotton. Full 8 feet long. Keeps dirt and flies out. Special **66¢**

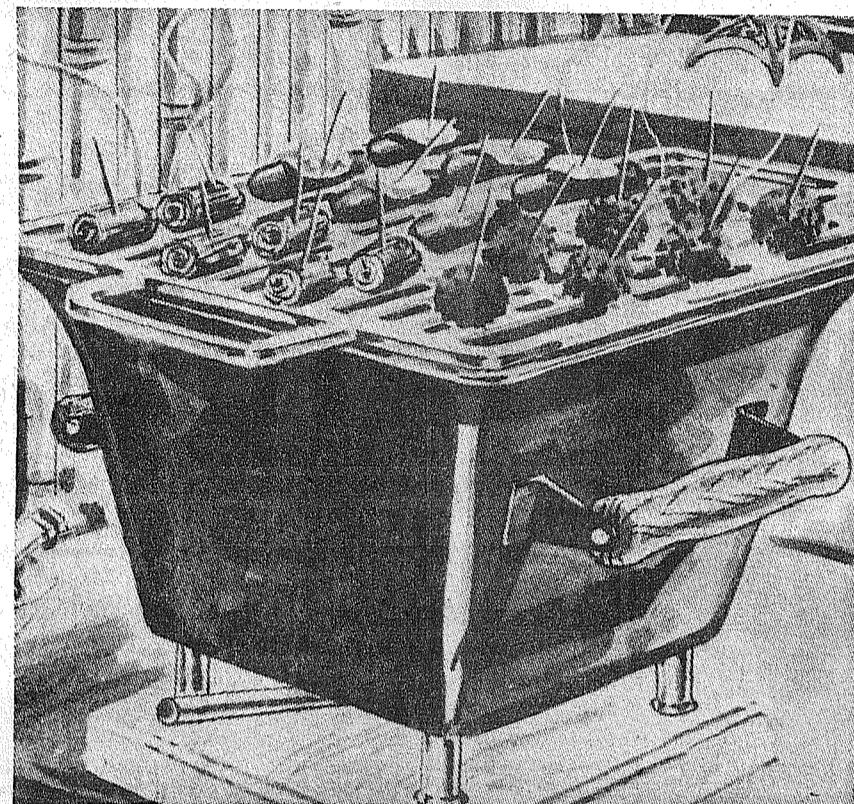
GUN CASE SALE

5.00 value. Smart looking two-tone virgin plastic cover with soft flannel lining. Full zipper opening. Carrying handle and rubber tip. Special **3.67**

ASSORTED SCISSORS

8" Bent Dressmaker Shear; 7" Straight Household Shear; 7" Barber Shear; 6" Sewing Scissors; 5" Sewing Scissors; 3" Embroidery Scissors. Values to 2.50. YOUR CHOICE **87¢**

HIBACHI



Fast becoming very popular for indoor charcoal cooking. Start it outside or in the fireplace then when charcoal is glowing bring it inside. Wood base protects dining table or cocktail table from heat. Let your guests prepare their own weiners, shrimp, hors d'oeuvres, etc. Grill 10" square with exclusive smokeless greaseless feature. Easy draft adjustment. Sturdy heavy steel body. On sale while supply lasts.

6⁵⁹

REGULAR \$10.00 VALUE

SUPER KEM-TONE
 COMPLETE STOCK
 Salesman's
 Demonstration
 Sat., Oct. 1st

27 GAL. SIZE
INCINERATOR

Black finish. Ventilating holes in sides and lid. A safe way to burn refuse. **4.88**

FIREPLACE SCREEN

All Brass finish. Adj. to fit most Fireplaces. Brush and Poker incl. Reg. \$24.95 **15⁸⁸**
 ANDIRONS EXTRA

Special \$21¹⁷

WHILE SUPPLY LASTS

For hunting, camping, parties, patio use, etc. Great for large groups. Polished aluminum. Flared bottom for faster heating. Heatproof plastic handle. Graduated. Bargain Hunter's special.



20-CUP COFFEE PERCOLATOR

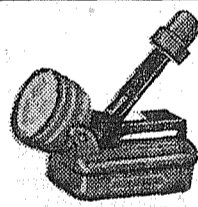
REG. \$3³⁹

Instant Lighting
 PROPANE
BERNZOMATIC
 CAMP STOVE
 Simplest to operate. Just light a match, turn a valve, and cook. Instant flame and instant heat. Single burner. Metal carrying case. Compact. Only **11.50**



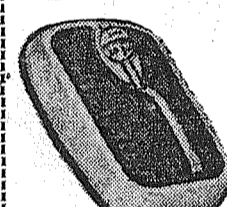
FLASHLIGHT BATTERY

Buy a dozen at this price and have them on hand for when they are needed. Standard size; guaranteed 7¢ fresh. Special **7¢**



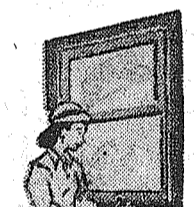
HUNTERS LANTERN

Regular \$3.98. For home, farm and sportsman use. Adjustable front spotlight. Red signal flasher light on handle. Batteries extra. Special **1.47**



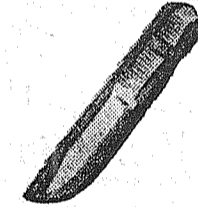
BATHROOM SCALE

Reg. \$8.45. Famous Borg accuracy. Easy reading magnified scale. Convenient carrying handle. A great bargain at a sensational price. Special **3.25**



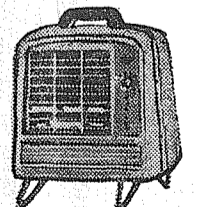
STORM WINDOW

Reg. 39c. Convenient 36" x 72" clear plastic sheet complete with fibre strips and nails. Saves heat; stops drafts. Easily installed. Special **29¢**



HUNTING KNIVES

Terrific value. Black and silver striped handle. Cutlery style blades with keen lasting edge. Complete with sheath. Hunter's special bargain **97¢**



ELECTRIC HEATER

Reg. \$19.95. Save over \$6.00. Floods of radiant heat, fan forced instantly. Thermostat control. Set it and forget it. 1600 watts. Special **13.88**



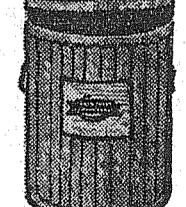
CHROME HAMMER

Regular \$2.75 value. Tubular steel shaft and handle for extra strength. Comfortable cushioned grip. Regular 16 ounce size. Bargain Hunter's special **1.67**



METAL RAKE

Regular \$1.49. With 22 sturdy, flexible spring steel tines. Overall width of tines 18". Smooth natural wood handle. Special **97¢**



GARBAGE CAN

Regular \$4.25. Popular 20 gallon size. Specially made for Home Town Hardware stores. Ruggedly constructed. Tight fitting lid. Special **2.97**



WEATHER STRIP

Regular 95c. Aluminum and rubberized felt for longer life and more protection. Length 20 feet. Can be curved. Special **67¢**



IRONING BOARD

Reg. \$10.95. Exclusive type top prevents pad and cover from slipping. 11 height adjustments from 25" to 36". Iron sitting down. Special **7.98**

PLASTIC AIR MATTRESS
 Reg. 4.25. With pillow. For camping, swimming or patio use. Special **2.66**

36" DOOR BOTTOM
 Reg. 32c. Brass plated. Felt strip hugs floor. Easily installed and adjusted. Special **30¢**

FIBRE ROOF COATING
 Reg. 1.35. Forms a waterproof surface. Liquid. Seals seams, cracks, etc. Gallon Special **1.10**

CAULKING COMPOUND
 Easy to apply tubes. White. Fills cracks, small holes, etc. 12 ounces. Special **63¢**

Spray Can Waterproofing
 Reg. 1.89. Protects boots, golf bags, sleeping bags, awnings, tents, tarps, clothing. Colorless. Special **1.33**

PLASTIC ROOF CEMENT
 Reg. 60c. Asphalt fibre cement. Use a round flashings, chimneys, vents, repairing roof, etc. Quart **45¢**

Ironing Board Pad & Cover
 Reg. 2.98. Waffle knitted cotton on top for insulation backed with foam rubber for cushion. Special **1.97**

Easy To Use Drain Cleaner
 Reg. 1.35. Flexible spring steel cable. Hook on end snags clogs, etc. Length 15 feet. Special **96¢**

MAGDANZ HARDWARE

11401 PACIFIC AVENUE (One Block South of Parkland Bank)

OPEN 'TIL 8 P.M.

YOUR HOME TOWN HARDWARE
 Independently Owned

POT ROAST U.S. CHOICE WELL TRIMMED LEAN BEEF **lb. 43^c**

GR. BEEF **3 lbs** **\$1⁰⁰**

TOMATO SOUP CAMPBELL'S No. 1 Tin **9^c**
EACH

EVAP. MILK CARNATION TALL TINS **8 For \$1⁰⁰**

PRESERVES STRAWBERRY IGA BRAND 20-oz. Jar **35^c**

DOG FOOD
"PARD" CRUNCHERS

4 lbs. **39^c** 8¹/₃ lbs. **79^c** 20 lbs. **\$1.89**

INSTANT MILK
"CARNATION" NON FAT

8 Qt. **69^c** 14 Qt. **99^c**

KRISPY CRACKERS
SUNSHINE 1 LB. PKG. **25^c**

LIPTON TEA

48 Bags **59^c** 1/2 Lb. **79^c**

POTATO CHIPS

IGA TRIPLE PACK COOKED IN CORN OIL **59^c**

EGGS AA LARGE Farm Fresh DOZ. **55^c**

CELERY LOCAL FRESH Stock **10^c**

112TH [AIRPORT RD] & PARK AVENUE

LEG-O-LAMB lb. **69^c**

LAMB **SHOULDER ROAST** lb. **45^c**

M.J.B. COFFEE 2 lbs. \$1.29 Pound **65^c**

SALAD OIL IGA BRAND QUART **45^c**

QUAKER OATS QUICK OR REGULAR LARGE SIZE **39^c**

CLAM CHOWDER
"SNOW'S"
IT'S DELICIOUS EACH **25^c**

QUICK RICE
"M.J.B."
WHITE OR BROWN 24-OZ. PKG. **39^c**

POPCORN
"JOLLY TIME"
WHITE OR YELLOW 20-OZ. TIN **29^c**

FROZEN FOODS

PET RITZ PIES
APPLE - CHERRY AND PEACH 24-oz. EA. **35^c**

T.V. DINNERS
Potatoes Au-Gratin 8-oz. EA. **19^c**
Macaroni & Cheese

HAWAIIAN PUNCH
REGULAR OR GOLDEN 6-oz. Tin **6** FOR **\$1**

LETTUCE LOCAL FRESH FIRM Head **10^c**

AD PRICES EFFECTIVE SEPT. 29-30 & OCT. 1st

It's the LAW

Trial by jury is one of the foundation stones of our system of jurisprudence. Although many attacks have been made on the jury system and proposals have been made for its abolition the judiciary believes that trial by jury should be preserved and strengthened rather than eliminated or weakened.

At one time the Federal Courts were bound by the rules of the states for the selection and qual-

ification of jurors — each court was bound by law of the state in which it was located. Finally the Federal judicial system adopted its own rules as to jurors for use in all the Federal courts. These rules established uniform qualifications for jurors in the Federal courts, without discrimination as to sex or race. It has from time to time increased the compensation of the juror as well as his subsistence and mileage. In the choice of jurors, methods are adopted to insure that all economic and social groups of the community are represented and that those selected should possess

as high a degree of intelligence, morality, integrity and common sense, as can be found.

The jury holds in its collective hands the life, the liberty and the welfare of individual defendants in criminal cases and the interests of litigants in civil cases. It should be impartial and efforts are constantly being made to insure impartiality. Selection of the prospective jurors must meet certain qualifications established by law. In some jurisdictions a personal interview is made with the prospect before he can qualify. In others, a questionnaire is completed by the selectee. After a juror is selected every effort is made to conserve the juror's time and to use it efficiently.

(This column is written to inform, not advise. Facts may change the application of the law.)

Elk Plain . . . Come To Church For Rally Day!

A special invitation is extended to all in the Elk Plain Community to come to Sunday School and Church next Sunday, Oct. 2, for Rally Day. The Sunday School goal is 150. Invite your friends and neighbors and help to make this rally a real success.

Get well wishes go to Grandma Tibbits who is still ill in the hospital. Same to Peggy Jasper who was in but is home now. Mrs. Ray Burkhart, VI 7-7386.

RED-BLOODED HOBBY

BUFFALO, N.Y. — Giving blood is a major hobby of Joseph A. Wurzer, a detective sergeant in the Police Auto Bureau. Since he began donating blood during World War Two, Wurzer estimates he has given about 76 pints — or well over nine gallons.

It Pays To Advertise in
The Times Journal

COUNTRY BOY'S AUTO PARTS

OPEN 7 DAYS A WEEK
CUT RATE PRICES ON ALL PARTS
SPECIAL BRAKE SHOES \$3.95 Set of 4 Most Cars
WILLOWS CORNER, AIRPORT & SO. MERIDIAN TH 5-4451

HUNT'S CATSUP
6 For 1⁰⁰
14-Oz.

WHILE THEY LAST
We Only Have 150
Boxes—If We Can
Get More, We'll
Have More. This is
The End Of The
—SEASON—
ELBERTA

PEACHES
Box 1⁵⁹

ATTENTION ALL MONKEYS
COCONUTS Ea. 10c

POTATOES
25 Lbs. No. 2's. 69c

TOMATOES lb. 10c

ADAMS PEANUT BUTTER
3-lb. Family Size 89c

Bar-S Thrifty
SLICED
BACON
Lb. 39c

PILLSBURY 10-lb. Bag
FLOUR 79c

OLYMPIC Half Gallon
DILL PICKLES 49c

OLD RANGER
PEARS 3 For 89c
OR
APRICOTS 2 1/2 Tins

AA LARGE FRESH DAILY
RANCH
EGGS Doz. 59c

SKOOKUM 2 1/2 Tin
APPLE SAUCE 4 For 1⁰⁰

CHICLETS 40-1c Packs
GUM only 25c

OUR OWN
PORK SAUSAGE
3 Lbs. For 1⁰⁰

PEDERSON, WASH. GROWN, WASTE FREE
CUT UP **FRYERS** Lb. 39c

ROUND • SIRLOIN • RIB
BEEF
STEAKS Lb. 69c

LAST OF SEASON
FRESH SLICED
HALIBUT
LB. 39c

T-BONE STEAK
LB. 79c

WELL TRIMMED
RUMP
ROAST
LB. 59c

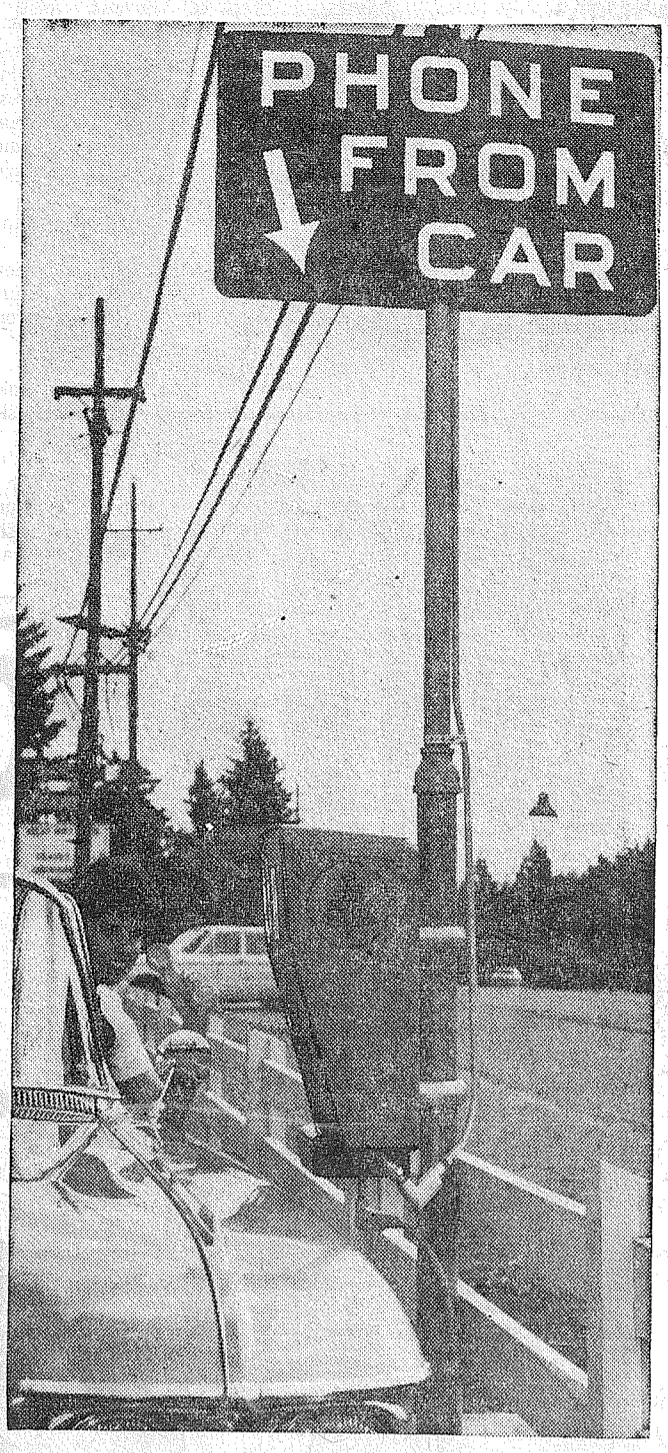
ALL MEAT, NO BONE
SIRLOIN TIP
ROAST
LB. 69c

SKIPPY
DOG FOOD
15 Cans For 1⁰⁰

WE RESERVE THE RIGHT
TO LIMIT QUANTITIES
STORE HOURS:
9 A.M. to 10 P.M.
7 DAYS A WEEK

BARGAIN BASKET
16618
PACIFIC AVE. South
SPANAWAY, WASH.

NO SALE TO
• DEALERS •
Our Prices Are
The Best Around



DRIVE-UP PHONE—Pretty Joan Pitts tries out the newest thing in public telephones offered by Pacific-Northwest — a drive-up phone booth. The trial booth, located near Bremerton, is the first of its kind in Washington and Northern Idaho. If the public accepts the new idea in telephone booths, others will be installed throughout the state.

247th Makes Fire For Cinema

The 247th Chemical Platoon at Fort Lewis for the past two weeks has been providing military assistance to the Andrew Stone Motion Picture Productions, a subsidiary of Metro-Goldwyn-Mayer Studios.

The men of the 247th Chemical have been supplying fire and smoke to simulate forest fires for the motion picture "Ring of Fire".

The Commanding Officer of the 247th, 1st Lt. John E. Harper, and 17 of his men traveled to Vernonia, Oregon where they have been putting to use military chemical supplies and equipment.

This Saturday, September 24, the platoon along with the cast and crews of "Ring of Fire" will simulate a forest fire near Metlock, Washington on either side of a railroad crossing for approximately 1 mile in length.

Using 8000 gallons of Napalm and gasoline the men will shoot flames from pressurized 4000 gallon tanks of CO.

The flame and smoke generators will also be used in the burning of a trestle bridge 200 feet high by 250 feet long. A locomotive and two freight cars passing over the bridge will plunge to the river below, when the bridge, weakened by the fire, collapses.

Fort Lewis has become a popular source of military assistance to the Motion Picture industry since the commendable work of enlisted men in the picture "All The Young Men" presently at local theaters.

Fair Breaks All-Time Record

The 57th edition of the Western Washington Fair bowed out with fireworks and a brand new attendance record on Sunday (September 25).

When the turnstiles were checked for the final time in 1960, a total of 406,744 visitors had come to see "the showcase of Western Washington agriculture". This topped the total of 404,244 established in 1946 when gas rationing went out the window and folks were anxious to go places and do things.

In many ways this was the most successful exposition in the history of the Fair. Exhibit space was filled capacity, animal barns were crowded to the limit and more 4-H and FFA youngsters competed in various judging events than ever before.

Concessionaires on the 46-acre fairgrounds reported that the record crowd was also a "spending crowd" which resulted in a generally successful nine-day venture for most vendors and ride operators.

The record single day crowd is still owned by the first Sunday in 1946 when 78,791 people packed the exposition's facilities. The first Sunday this year gave it an honest run for the money, though, as 76,726 visitors flocked to Puyallup for a day of fun, entertainment, education and fattening foods.

Several weeks' cleanup work will be required to button up the 1960 festival, according to J. H. McMurray, secretary-manager of the Fair. After that he and the other eleven men on the Fair's board of directors will go right to work on the 1961 event.

PROFIT IN ACCOUNTING
DES MOINES, Iowa—Thre's a profit in the accounting department of a Des Moines Transportation Company. She's A. Proffitt—as Ada H. Proffitt signs her name.



DUAL PURPOSE fallout shelter and carport-patio is shown under construction at the farm of John Holden near Hickory Corners, Mich. The shelter, to be used also for food storage, cost \$1,200. With the carport and patio now being added, the cost totaled \$2,300. Holden's family of three, and eight neighbors, gave the shelter a realistic workout recently when a small tornado struck nearby. An entrance to the shelter is in the foreground. (OCDM Photo)

Christensen Pre-School Will Meet

NOW'S THE TIME TO PAINT with PARKER
AT A SPECIAL PRICE
VARIETY ITEMS SCHOOL SUPPLIES

The Andrew Christensen pre-school will meet at 8:00 p.m. Wed., Oct. 5 in the multi-purpose room. Mr. Edwin L. Nelson, Supt. of Franklin Pierce School District, will speak on the school voting issue that will appear on the Nov. 8th ballot. A social hour will follow.

BARSOTTI & TIMM
At the Roy Y LE 7-4221
Open 7 Days a Week, 7 a.m.-9

The first great gift we can bestow on others is a good example. — Thomas Morell.

28th DISTRICT VOTERS

★
★
★
★
★
★
★

A VOTE FOR BURT RAYMOND IS
A VOTE FOR RESPONSIBLE GOVERNMENT

BURT RAYMOND
STATE SENATOR Republican

TELEVISION SERVICE CENTER PRESENTS TV CHUCKLES

WHERE'S CHARLIE?
Just slipped out to check the sensational TV service at Television Service Center.
CALL TODAY!

TELEVISION SERVICE Center
"YOUR WINEGARD COLOR CEPTOR DEALER"
GR23386 8431 PACIFIC AVE.

THIS IS THE LIFE

SAVE to enjoy it at the Family Savings Center

Pacific Federal Savings
and Loan Association
Bellingham • Seattle • Tacoma
Longview • Portland • Eugene

11th and Pacific
LAKWOOD AT VILLA PLAZA

CURRENT RATE
4% COMPUTED ON MONTHLY BALANCES
PAID 4 TIMES A YEAR

HOW ARE YOU, SON? MOTHER AND I WERE JUST IN THE MOOD FOR AN OUT-OF-TOWN TRIP. SO WE DECIDED TO GO. WE'VE BEEN TO SO MANY PLACES. YOU TELL A WE CAN'T AFFORD IT. IT'S MORE HARD TO WE CAN'T AFFORD IT. IT'S GREAT TO GET TOGETHER FOR FAMILY REUNIONS BY LONG DISTANCE. Pacific Telephone—Northwest

**a-Wondering . . .
and a-Wandering . . .**

With JACK BROWN

Both the parties have adopted planks endorsing federal aid to education. They differ in detail, but so far as principle is concerned they pretty much resemble the old comic strip characters, "Mike and Ike — They look alike."

The question that arises from this is simple: "Are our schools in so bad a fix that the only solution is federal aid, federal money, and growing federal control?"

Some facts produced by the Citizens Public Expenditures Survey may help you reach an answer.

Is there a nation wide classroom shortage? Hardly—since the end of World War II we have built, without federal handouts, 680,000 classrooms—more than half of all in use.

Is there a teacher shortage? If so, it's hard to pin down. There are 47.6 per cent more teachers now than in the 1949-50 period. The number of pupils has increased too, of course, but to a lesser degree—44.9 per cent.

Have the teachers' salaries lagged seriously behind? It doesn't look that way. In the last 11 years these salaries have increased by 99.8 per cent—almost doubled—while the cost of living has increased by only 23.6 per cent, according to the government's Consumers Price Index.

Has the public been stingy in its spending on schools? Again, it doesn't look that way. This spending increased from \$5.8 billion in 1949-50 to \$15.5 billion in 1959-60—a jump of 167.9 per cent. Putting it another way, we spent \$260.37 for each pupil in 1949-50; now we spend \$481.48.

No doubt political consideration dictated the federal aid-to-education planks in the platforms. But they certainly aren't backed up otherwise as I see it.

Writing in the Union Bridge, Maryland, Pilot, William Father says: "During a wakeful hour in the night, I got an answer to why business has lost so much in public esteem in recent decades. The reason is that business has become a gigantic tax collector for the government. Business collects the employer's income tax, the social security payment, and the gasoline, tobacco, liquor, entertainment, sales, and all other excise taxes. On top of this, business collects its own profits tax by a necessary levy on consumers. What it all adds up to is that business takes and Congress gives. At least so it seems to most of us."

"Is this good? It is not, but I can devise no way around it. The lawmakers have found a relatively painless method for collecting tax money. They will not alter it. Meanwhile, business (or capitalism, if you please) takes an undeserved beating. Without private enterprise, the economy would be sunk; yet enterprise is loaded with new, expensive and distasteful chores at every meeting of minds in Washington, state capitals, and city halls."

As we all know, an almost limitless number of "days" and "weeks" are observed in this country. They run a tremendous gamut, and are designed to honor and publicize just about everything from the Boy Scouts to pickles. Some are worthwhile, some are absurd, and some are down right assinine. In any case, they seem to be a permanent institution.

However, one extremely important element in this country has no special day or week. That is the taxpayer. He keeps the country running, but no one formally honors him.

This situation certainly calls for a remedy. Let there be a "Taxpayer Day" or a "Taxpayer Week" or a "Taxpayer Month". Let it be formally proclaimed by all heads of government, from the President of the United States down to town mayors and county commissioners. A suitable badge for the occasion would be a black armband. For, in the present state of federal, state and local taxation, mourning for the taxpayers is certainly in order.

Harmon Highlights

Still sitting in their 1959 chair of honor, the Rebels from the University of Mississippi are on top of the heap — Number One — in the first Top Twenty ratings of 1960. And though Memphis State is classed as a small school, the Tigers are only a 27-point underdog to powerful Ole' Miss.

In what is the inter-sectional game of the week, second-ranked Syracuse travels to Lawrence, Kansas, for a real tangle between "upper-crust" football teams. The Orangemen should clip 12-rated Kansas by two touchdowns.

And 3rd-ranked Washington will get its first major test of the season against rampaging Navy — still, the Huskies by 9 points. Illinois, number 4, will have things pretty much its own way with a 37-point victory over West Virginia.

5th-rated Iowa and 6th-ranked Northwestern . . . take your choice. Harmon shows only a slight, barely noticeable lean in the direction of the Hawkeyes — about one point's worth!

Texas, though beaten by Nebraska, gained sufficient strength with its win over Maryland last week to wind up in the number 7 spot. The Longhorns are favored over Texas Tech this week by three touchdowns.

Clemson, 8, is 27 points too strong for Virginia Tech, and 9th-ranked Arkansas is given a 10 point bulge over Texas Christian. Rounding out the first ten teams, the Ohio State Buckeyes will continue the renewed prestige gained last week by the Big Ten, by whipping Southern California by two touchdowns.

There was a slight error in the forecasting average as given for the games two weeks ago: rather than 71 right and a .724 average, Harmon picked 73 winners for a .745 average. And things forecast-wise picked up considerably last week as Harmon's crystal ball hit just over the .800 mark on major college games, and batted .779 in all games with 95 right and 27 wrong. There were 9 ties out of the 131 games. So — season to date — 168 correct, 52 wrong, and 11 ties for a .764 average.

HARVEST FROM BABY CROP
NEW YORK — Retail sales of baby foods are running along at the rate of \$270 million a year, and industry forecasters look for this volume to jump to \$500 million by 1970. Reason: They expect births to rise to 6.5 million in ten years over the present rate of about 4 million.

**Midland . . .
Midland Orthopedic
Meets Tuesday**

The regular meeting of the Midland Orthopedic Guild will be held Tuesday, October 4th, at noon, in the Midland Improvement Club Hall, with Mrs. Kenneth Lampitt presiding. Hostesses will be Mrs. Ellis Larson, Mrs. Herman Bolender, and Mrs. Henry Tefire.

The annual Ham and Turkey Dinner will be held on Thursday, October 13th, from 5:00 to 8:00 p.m. The chairman for this event will be Mrs. James Rhodes.

Officers for the coming year are President, Mrs. Kenneth Lampitt; Vice President, Mrs. James Rhodes; Secretary, Mrs. Henry Tefire; Treasurer, Mrs. Richard Tribble. Chairmen will be Membership, Mrs. Charles Brouwer; Publicity,

Mrs. Victor Eshpeter; Sunshine, Mrs. Charles Berg; Hostesses, Mrs. Ellis Larson; Birthdays, Mrs. Herman Bolender; Linen Boxes, Mrs. Lee Galycan; Program, Mrs. LaVerne Olson; Auto Licenses, Mrs. Francis Hushak; Memorial Cards, Mrs. LaVerne Olson and Mrs. Henry Tefire; Aprons and Linens, Mrs. Carl Taylor.

Anyone interested in becoming an Orthopedic Guild member is invited to attend any of the meetings, or call Mrs. Kenneth Lampitt, LE 1-0574, for further information.

Mrs. Ronald Curtis (Mary Shanklin) and Mrs. Herbert Ognoski (Sharon Eshpeter) are planning a reunion for the first Franklin Pierce Graduating Class — The Class of 1955, to be held on Saturday, December 3rd. Anyone wishing further information should call Mrs. Curtis, LE 7-6765.

Mr. Clayton Strandberg of Midland and Mr. Jack Allen of Browns Point have just returned from a two-week camping trip to Big Bar, which is fifty miles west of Clinton B. C. The outfitter for the party was A. J. Reynolds. The men bagged two moose, four deer, two goats, a bear and a ram.

We welcome to our community Mr. and Mrs. Fred Cook, who recently moved into their new home at 2108 East 88th Street.

A surprise birthday party was given recently for Jimmy Smith, son of Mr. and Mrs. C. B. Smith. A chicken dinner was served to guests Dee Blessing, George Rodrick, Don Rodrick, Mr. and Mrs. Edward Burness, Susan, Scott and David Burness, and brothers, Jerry and Jay Smith, and sister, Sandy. Reporter — Mrs. Frank Gural LE 7-5939.

**Elbe . . .
New Family
Now In Elbe**

We wish to welcome new neighbors, Mr. and Mrs. Dick Windling, formerly of Chehalis, who have purchased the Riverstone store from Peg and Quil Robertson. We wish them success in their new business. Peg and Quil have moved back to their home in Pleasant Valley.

Mrs. Charles Kirkpatrick was on the sick list a few days last week, but is feeling much better now.

Mrs. Emma Peterson is now home from the hospital, and showing much improvement after her recent illness.

Earl Fraser of Bellingham, enjoyed a weeks visit here with his brother and sister-in-law, Mr. and Mrs. John Fraser.

The Fraser's took Earl home to Bellingham, and while there they had a very nice visit with their son Bob, and his family.

Mrs. Kay Blakney of Seattle, visited here last week with her parents, Mr. and Mrs. Frank Shardelman.

Reporter — Ruth Lanphere

The prizes go to those who meet emergencies successfully.

**PIERCE COUNTY
REFUSE CO.**
Weekly
Garbage Collections
Phone LE 7-8638

POWER TOOLS FOR RENT
SANDERS—EDGERS—POLISHERS—HAND SANDERS
SKIL SAWS — ELECTRIC DRILLS — CEMENT MIXERS
ETC. — ALSO HAND TOOLS FOR RENT

Anderson Lumber

9813 Pacific Avenue

LEnoX 7-7311

Grand Opening Specials!



All Safeway Stores In Tacoma
Join in Celebrating — with these
Red Hot Specials—the Grand Opening
of Lakewood Villa Plaza Safeway.

SAFEWAY

Eggs
Flour
Coffee

Breakfast Gem.
Large A Doz. 55c
CREAM O' THE CROP
Med. 'AA' Doz. **49c**
GOLDEN HEART
Low Price 10-lb. Bag **69c**
EDWARDS. Rich
and aromatic.
2-Lb. Can \$1.13 **57c**

Tuna

SEA TRADER **5** 6 1/2-oz. **\$1.00**
Chunk Style Cans

Sherbet

LUCERNE. Choice of
assorted flavors.
Half
Gallon **49c**

Sugar

C&H Brown or Powdered
2 1-lb. Pkgs. **25c**

Ketchup

HEINZ
2 Bottles 14-oz. **35c**

Powder Room Facial
Tissues **5** Boxes **\$1**
of 400

Bel-Air Frozen
Orange Juice **3** 12-oz. **\$1**
Cans

Real Roast, Creamy or Chunky
Peanut Butter **3-lb. Jar 99c**

All Purpose
Gold Medal Flour **10-lb. Bag 89c**

M..D Assorted Colors
Toilet Tissue **3** 4-roll **\$1**
Pkgs.

TOWN HOUSE. Small or Large
White Beans **2-lb. Pkg. 29c**

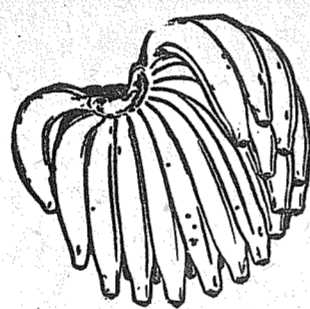
TOWN HOUSE. Idaho or Pinto
Red Beans **2-lb. Pkg. 29c**

DETERGENT

WHITE MAGIC. **49-oz. Pkg. 49c**
Special low price.

BANANAS

Perfectly
Ripened
Special
Low
Price **lb. 10c**



Your Choice!

39c

Local Grown, Large Ears

Sweet Corn

DOZ.

Extra Fancy Jonathan

Apples

10 LB. BAG

Yellow — Spanish — Medium

Onions

10 LB. BAG

Ice Cream

SNOW STAR. Asst. Flavors

Gallon \$1.17

2 1/2 Gallon \$2.89

Half Gal. **59c**

SAFEWAY

SHORTENING

Golden Keen **3-lb. Can 49c**

Beef

Pot Roast

U. S. CHOICE Blade Cut

lb. 39c

**Smoked
HAMS**

Shank Portion
HYGRADE Fully Cooked or
DIAMOND F, 12 to 16-lbs.
Take advantage of this special offer. Economical.

lb. 39c

GROUND BEEF

Fresh
Hourly **lb. 39c**

SLICED BACON

Morning
Glory **lb. 45c**

FRYERS

Pederson
Frozen, Cut-Up **lb. 35c**

VAUGHAN'S VALUES
YOUR REMODELING HEADQUARTERS



Easy Monthly Payments
ADD A ROOM—SAVE MONEY
INSULATE — SAVE MONEY

WEATHERSTRIP — SAVE MONEY
STORM SASH — SAVE MONEY

FREE ESTIMATE

VAUGHAN'S PACIFIC LUMBER

84th & Pacific Avenue

GR 4-9515

Sale starts 9 A.M. Wednesday, September 28th through Saturday, October 1st in Tacoma, Sumner and Puyallup. We reserve the right to limit quantities. No sales to dealers.

County Agent's Corner

By Morrill Delano
The Sumner Rhubarb Growers' Association are to be congratulated for their wholehearted cooperation and support of research work just getting underway on rhubarb troubles at the Western Washington Experiment Station at Puyallup. Administration generally feels

justified in putting time and money into research projects when the community group involved contribute to help carry on the research expense. This the Rhubarb Growers' Association has done by allocating a grant of \$6,000 to be used at the Puyallup Station.
At a meeting of the Rhubarb Growers scheduled for 8:00 P.M., Monday, October 3rd, at the Winter School Building, Dr. Allmendinger, Superintendent of the Puyallup Station, will report to the growers on the progress being made on the project.

By Jack Crawford

There's no doubt about it, the average dairy cow on DHIA returned a greater profit to its owner than the average dairy cow. Although there are many differences within the DHIA cows and the average U.S. dairy cow, records indicate a fifty dollar advantage to those in the DHIA group in net profit to the owner.
DHIA testing does not mean an automatic raise in production. By

By Ernie Hopp

The Washington Jr. Poultry Exposition is the next big activity on 4-H poultry members list. Exhibits, judging contest and educational displays will precede an awards banquet on Wednesday, October 5th, at the Western Washington fairgrounds. Exhibits are due before 6:00 P.M., Monday, October 3rd, at the Western Washington fair poultry building. The show is in session Tuesday and Wednesday, October 4 and 5.
Pierce county exhibitors include George Olson, Ethel Merrell, and Dale Goheen from Gig Harbor, Paul Smith, Jack and Jim Shireman from Edgewood and Ronald Moulden from Buckley.

The Pierce county Sr. poultry judging team which won top honors at the Western Washington fair will compete in the judging contest on Wednesday morning, October 5th. Led by Tim Geehan from Fife the other team members include Ethel Merrell and Dale Goheen from Gig Harbor, and Bob Larson from Edgewood. Jr. team members include Nancy Davies and David Reed from Woodland, George Olson, Gig Harbor, and Jim Gorham from Fife.

By Florence D. Allen

4-H club members in Pierce county, as well as sixteen other counties, will soon be coming to the Western Washington Fair. These boys and girls will exhibit livestock, dairy animals, clothing, canning, garden, foods, forestry, child care, electrical, flowers and other things.
Activities will be in progress during the Fair that will show more what these boys and girls can do in demonstrations, making dirndls, skirts in 2½ hrs., flower arranging, child care, fitting and showing livestock.

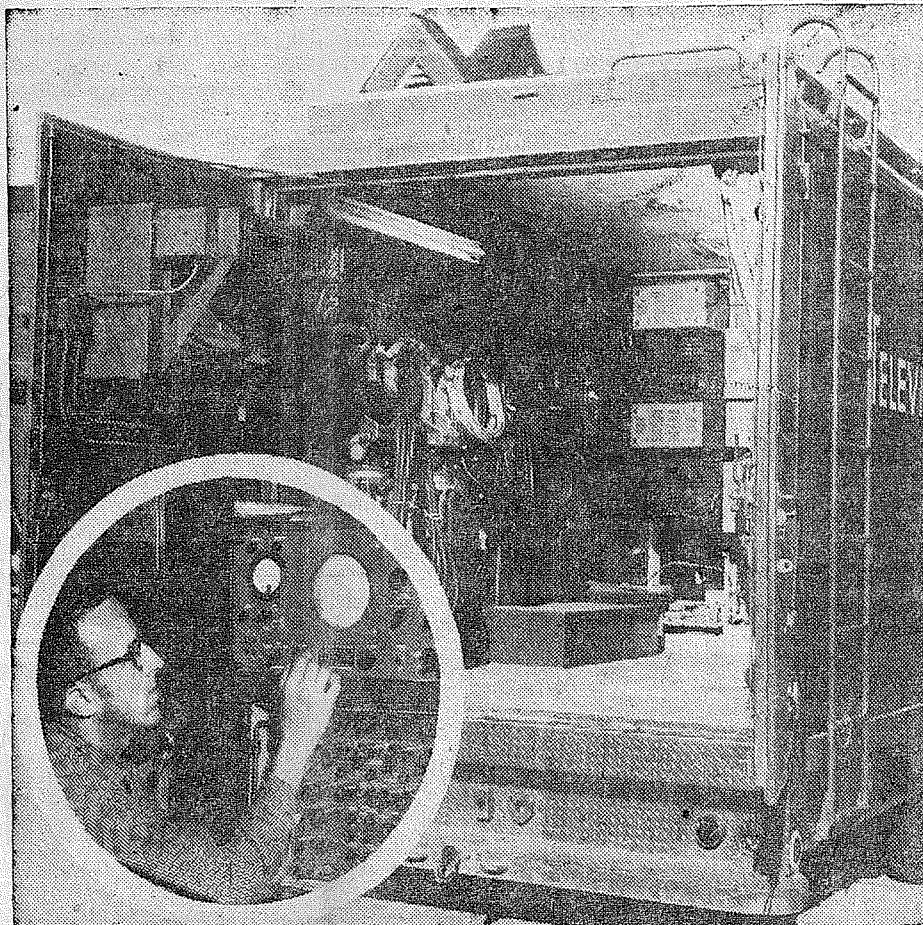
4-H is for boys and girls from 10 to 21 years of age. The club year starts October 1st, so why not organize a club in your neighborhood so your boys and girls can have an opportunity to learn by doing demonstrations, learning skills and having fun as a member of a good group. Call the county agents' office, FU 3-3311, ext. 511, to learn the details about how to organize and what leaders need to do.

By Jack Crawford

Some predictions have it we may be in a short hay supply situation this year. One method that Pierce county farmers may help the feed

using these records for culling low producers, feeding according to production, and selecting the best stock for herd replacements, the herd average may be increased. There are many good dairymen that do not production test, but the best would not be without such records.

Dairymen and all farmers need not take a back seat to anyone for increasing efficiency. It has been necessary to even exist with the tremendous cost-price squeeze. Since 1946, output per month in industry increased 2½% per year, while on farms it gained 6% per year.



EMERGENCY VAN—Two additional emergency vehicles similar to the one above will be ready for service soon with Pacific Telephone-Northwest. The van carries equipment capable of handling more than 250 long distance calls simultaneously over conventional wires and radio. Inset shows telephone company PBX repairman Ray Meyers adjusting a piece of the intricate equipment. (Pacific Telephone-Northwest photo).

How To Heat Your Home Properly

With the coming of cold weather it is now time to give some consideration to our home heating equipment. As we all know there will be increased demands on all heating equipment during the coming cold weather. Here are a few tips from the Parkland Fire prevention committee to make your home safer from fire and at the same time increase the efficiency of your heating equipment.

The best thing to do if possible situation is to plant rye for fall and early spring pastures. In tests conducted by Dr. Herman Austenson at the Western Washington Experiment Station, Abruzzi rye was the highest yielding. It should be planted immediately to get any fall growth. Seeding rates are 100 to 120 pounds per acre. Forty pounds of actual nitrogen per acre will speed up the growth.

The United States ranks sixth in the world in milk production per cow with an average of 6438 pounds. The Netherlands, Denmark, Belgium, West Germany and United Kingdom all rate above the United States, with the Netherlands 2641 lbs. above the United States. Pierce county DHIA members, however, are 5763 pounds above the United States average. This shows how production testing coupled with wise use of these records in management pays real dividends to these DHIA members.

is to call your local repairman and have him give your furnace or stove a thorough cleaning. If, however, you elect to do the job yourself, completely take down all pipes and clean thoroughly, then clean and inspect the chimney. Clean the inside of the burning pot and vacuum out all dirt and soot. Make sure the line leading to the burner is clean and free of carbon, clean and flush the carburetor, check your oil storage tank for water, if water is found clean and flush tank. Upon completion of cleaning put all pipes and lines back with good tight connections, making sure they are proper distance from walls and other combustibles.

If you operate your stove or furnace for long periods on low, once in a while turn on high, thereby decreasing the carbon buildup.

VETO RIGHT

A president of the United States may veto a declaration of war since he can veto any measure that is properly before him regardless of its character.

FENCING

Designers and Builders
EXPERT WORKMANSHIP
REASONABLE PRICES
Easy Monthly Payments
VAUGHAN'S
84th & Pac. Ave. GR 4-9515

Auxiliary Will Hold Rummage Sale

The auxiliary of the Parkland Fire department will have a rummage sale Oct. 7-8 at the Parkland Fire Hall.

Those wishing to contribute may call these numbers for pickup:
Mrs. Tatro — LE 1-1325; Mrs. Webster — LE 1-2048; Mrs. Moe — LE 7-5703.

IT'S CHEAPER TO RENT THE TOOL YOU NEED

GARDEN TILLER
POWER LAWN MOWERS
BELT HAND SANDERS
OSCILLATING HAND SANDERS
FERTILIZER SPREADER
LAWN ROLLERS
LAWN SEEDERS
PAINT SPRAYERS
RUG SHAMPOO MACHINE
POWER MOWER SHARPENING & REPAIR
WINDOW GLASS INSTALLED
PARKLAND HARDWARE
12169 Pacific Ave. LE 7-3171

"Escape to Egypt" Next Installment

The Immanuel Baptist Church will present the second episode in the Life of Christ Sunday, October 2. The installment, "Escape to Egypt" will be shown at 9:45 am for Sunday School and 6:00 and 8:15 pm for everyone else. Since the auditorium was filled last week, two evening showings will be made this week.

12 installments are being shown in all of the Cathedral films production which was four years in the making.

Rev. Ed Coy will conduct discussion groups and give supplementary background and interpretations.

"This Living Christ series was photographed in full color," Rev. Coy said. "Its cast includes more than 200 speaking parts. Never in the history of church teaching have

people been offered the opportunity to get so complete a political, economic and religious background of the greatest story ever told." There will be two church services again this Sunday morning at Immanuel Baptist. The first will begin at 8:30.

IVORY SOURCES

Other animals besides the elephant provide us with ivory. A poorer quality comes from tusks, horns and teeth of the hippopotamus, walrus and narwhal.

LOCKER SPECIAL EVERY MON.-TUES.-WED.

10# PURE GRD. BEEF
10# BEEF ROASTS
10# BEEF STEAKS
ALL FOR 15.49

HERMAN'S
162nd & Park Ave.

PROMPT PERSONALIZED
PRESCRIPTION SERVICE
TED SWANSON
INSULIN - VITAMINS
Downtown Prices
Pay Phone Bills Here
PLENTY OF FREE PARKING
TINCHER'S PHARMACY
2227 Park Ave. GR 4-3344
Across from Fern Hill P. O.

FIRST SEE NATIONALS
PARKLAND LE 1-1331
AUTO PARTS
127th & PAC. AVE.

JUST ARRIVED NEW FALL COLORS
WOOL SKIRT LENGTHS
ALLISON VARIETY STORE
99th & Portland Avenue LE 7-5658

Free! your first flying lesson!
PROVE TO YOURSELF THAT YOU CAN LEARN TO FLY!

Here is your invitation to new thrills, new friendships, new horizons. Discover, as thousands of others have, that flying is for everyone. If you have any doubts about whether you can learn to fly, just try it and see. We invite you to take your first lesson free. We're confident that's all it will take to convince you that flying is for you. Everybody's doing it—so call for your appointment today.

Investigate our BUDGET FLIGHT TRAINING PROGRAM less than \$10 per week

FOR DETAILS . . . CALL
TANOMA FLYING SERVICE
SPANAWAY AIRPORT 185th and Pacific LE 1-0442

IRVING'S FALL DISCOUNT PRICES ALL-WOOL SUITS

Beautiful Fall blends. Newest styles — 3-button "Musts"—To fill out your wardrobe. Fine names you can depend on.

44.50

"Credit with Courtesy"
No Interest or Carrying Charge on 90-Day Accounts

ALL WOOL TOPCOATS
Styles you'll love for smart winter wearing. As for the Value — You Can't beat the price!

39.95

IRVING'S CLOTHES SHOP
OPEN MONDAY AND FRIDAY NIGHTS TILL 9
1136 BROADWAY

THE STORE WITH BARGAINS EVERY DAY

SALVAGEMART

13014 Pacific Avenue HRS.—10 to 6 Open Fri. Til 8 Sun. 12 to 6

RAIN SUITS	O.D. and Yellow	2 Piece Heavyweight	4.99
GLASS TUMBLERS		1½-Oz. Figured	10/99c
WOMENS BRAS			2/88c
SOX	WHITE, CUSHION SOLED . .	Pair	4/1.00
DOLE PINEAPPLE		Chunk Style No. 2 Can	29c
PLASTIC DROP CLOTH		9x12 Ft.	2/99c
FLASHLIGHTS		EACH	29c
SWEAT SOX		BOYS' Pair	39c
RAIN COATS		4 COLORS Values to 8.95	1.00
CORDUROY CRAWLERS		Assorted Colors	99c
LOW COST SHOES		LOCATED IN THE SALVAGE MART	

CREPE SOLED HUNTING BOOTS	WOMEN AND CHILDRENS' SPECIAL ODDS & ENDS	Mens' Logger Boots
9.95 to 12.95	CLEANUP SALE 1.98	HEAVY BLACK OIL NEOPRENE SOLE STEEL SHANK TAN UPPERS LEATHER INSOLE
		9.95

LOOK WHO'S SERVING YOU NOW . . .

WHEN YOU THINK OF **AUTO PARTS and ACCESSORIES**

★ **ACCESSORIES** ★

THINK OF POCHEL'S

Our parts dept. has grown over the years to be accepted as First Stop for Quality and Savings . . .

TOOLS

BATTERIES AND TIRES

PARTS

MAY WE HELP YOU?

WHOLESALE & RETAIL

Buy Quality Mobil Brand

CLARE HARRINGTON

Clare Harrington has been in the Auto Parts business all his life. Clare has spent the past year at Pochel's as an outside salesman, having worked at Ballou & Wright in Tacoma before that.

Clare, 39, was born and raised in Massachusetts. He was shipped to Ft. Lewis in 1945, just after VE day, and was scheduled to go to Japan. About that time someone dropped a bomb on Hiroshima and Clare got discharged. He liked it around Tacoma and decided to stay.

Clare lives on Woodland Road with his wife Muriel and two children, David and Susan.

YOUR FUEL OIL AND APPLIANCE DEALER

POCHEL

DISTRIBUTING COMPANY
140th & Pacific LE 7-8624

It's the LAW
PRESENTED AS A PUBLIC SERVICE BY THE WASHINGTON STATE BAR ASSOCIATION

John is a salesman for Doe Company. His work causes him to travel by his own automobile, plane and railroad. He keeps some records of his major expenses, but estimates many others. He rarely keeps the supporting receipts, stubs or statements, but does jot some notes on the backs of envelopes and slips of paper.

John receives a salary and commission which is supposed to cover or include his expenses. For the year 1957 on his federal income tax returns, he showed substantial deductions for these expenses. Only a few of the deductions were itemized.

Later, a revenue agent asked him to come to the revenue service office and to bring with him all the records to prove his deducted expenses. John was surprised when the revenue agent disallowed more than half his deductions. On review of the revenue agent's determination at higher levels of the revenue service, more of these expense deductions were allowed. But John was still dissatisfied because he knows he spent the money and had to spend it to produce income.

Should John fight the case further?

The answer is probably not in view of his inadequate records. Ordinarily, the burden of proof of travel and salesman expenses is on the taxpayer. Failure to keep records of such expenses regularly, with the supporting vouchers and receipts, can result in having a substantial proportion of the deductions disallowed where there is lack of proof that the money was spent, for what it was spent, and the connection with the salesman's business.

John should keep a travel and entertainment expense diary showing the date, place, amount, to whom paid, persons entertained and their title, the purpose, and reimbursement if any. He should also keep a file of supporting vouchers, receipts, stubs, and the like, to support his diary. His auto expense records should show expenses of operation, maintenance, the number of trips and mileage of each. With such records he can easily prove the deductions he claims.

(This column is written to inform, not advise. Facts may change the application of the law.)

Bethel Membership Drive Will Begin

The Bethel Booster Club's 1960-61 membership drive will begin Oct. 3 and conclude Oct. 8.

Mrs. Ted Otterstad, membership chairman, will head the drive.

Beginning October 3, all available parents in the Bethel District will be contacted by authorized students, who will accept all memberships. Memberships will also be accepted at either the junior or senior high schools.

Assisting Mrs. Otterstad will be the following district chairmen: Mrs. Oscar Berggren, Roy; Mrs. Ralph Taini, Spanaway; Mrs. Donald Conley, Kapowsin, Graham; and Elk Plain by Mrs. Otterstad. The Clover Creek chairman will be announced at a later date.

LIVESTOCK CARE
WHILE YOUR VACATIONING
References
LE 1-1327

BOB'S BARBER SHOP
At
9820 Pacific Avenue

Bob runs a union shop Courteous Service
Hours 9 to 6, Tues. Thru Sat.
YOUR NEIGHBORHOOD SHOP

DRUG FACTS

QUALITY COUNTS! AND QUALITY INGREDIENTS COUNT IN FILLING PRESCRIPTIONS—THE WAY YOUR DOCTOR WANTS THEM FILLED... AT **ASHMORE'S SPANAWAY DRUG**



DAYTEEN
Vitamin Mineral Supplement for Growing Teenagers
100 Tablets \$4.39

ASHMORE'S SPANAWAY DRUG
PHONE LE-7-5993
165th & PACIFIC AVE. SPANAWAY, WASH.

Lucky and BIG BEAR STORES

Discover Finer Foods!



USDA CHOICE

Chuck Roast

Center Cut and 7-Bone Roasts included at the same price! US Choice Steer Beef... specially aged for tenderness... and wonderful flavor.

39¢
lb.

BONELESS ROAST..... lb. 79¢
U. S. Choice Boneless Cross Rib Roast.
CHOICE CHUCK STEAKS lb. 49¢
U. S. Graded Choice Beef—100% Juicy.
LUCKY WIENERS lb. 49¢

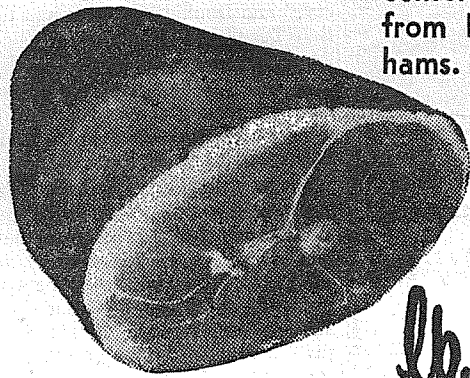
SMOKED HAMS..... lb. 53¢
Your choice of Whole or Butt Portions.
FRESH HALIBUT..... lb. 33¢
Whole or Piece, Sliced @ 39¢ a pound.
LEAN SLICED BACON... lb. 59¢
Morrell's Comet—Very nice and lean.

GROUND BEEF

29¢
lb.

Smoked Hams

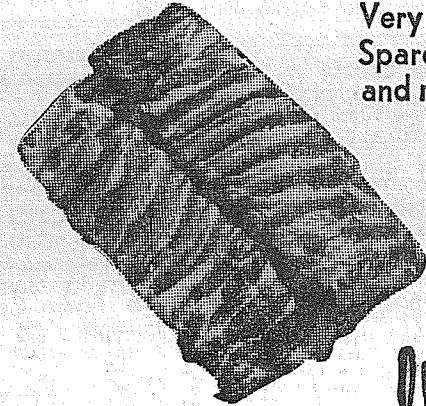
ARMOUR STAR Full Shank Halves! No center slices removed. Cut from 12 to 16 lb. average hams.



45¢
lb.

Spareribs

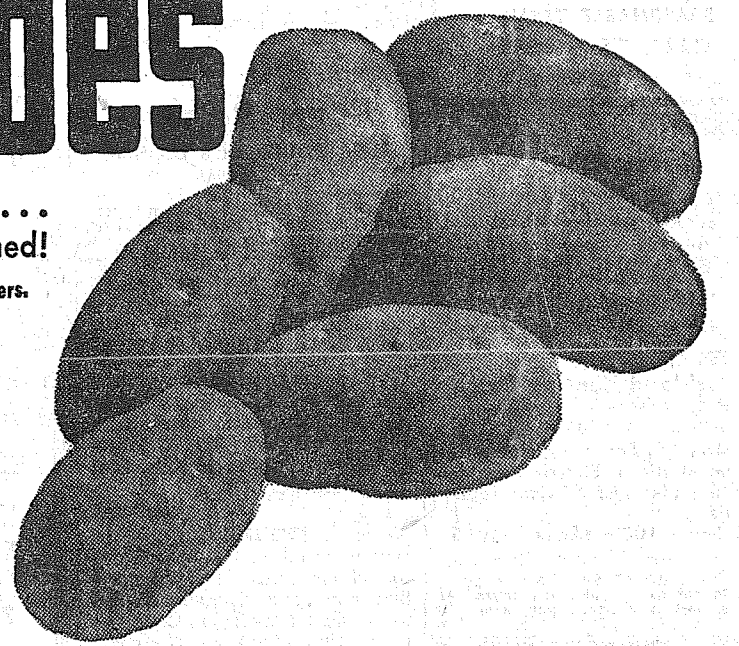
Very nice and meaty Pork Spareribs. Wonderful flavor and really juicy.



35¢
lb.

Potatoes

Selected U.S. No. 1 Grade... Russet Gems, Size A, Washed!
Smooth even size, best cookers and bakers.



10-lbs. 39¢

JONATHAN APPLES..... per lb. 14¢
Extra Fancy Grade, crisp, juicy, large size all purpose apple.

FRESH SWEET CORN..... per ear 5¢
Selected ears with small kernels—hydro-cooled to maintain its natural sugars.

GENUINE CONCORD GRAPES, Eastern Washington grown. Best for jams and jellies! 20-lb. box..... 1.39

No. 2 Potatoes 50-lb. Sack... **98¢**

LUCKY COFFEE Regular or Drip 1-lb. Can **49¢**
MARGARINE LUCKY BRAND 2 lbs. for **27¢**
PEANUT BUTTER Adams 3-lb. Jar **89¢**
CATSUP VAN CAMP'S 2 14-oz. Bottles **25¢**
TOILET TISSUE ZEE Brand 4-roll Pkg. **29¢**
CUT BEANS or PEAS Happyvale 8 #303 Cans **1.00**
APPLESAUCE STOKELY 2 No. 303 Cans **29¢**

LUCKY BLEACH..... 1/2-gal. for **29¢**
GRAPEFRUIT Broken Sections Duchess Brand 5 #303 cans **1.00**
ASPARAGUS SPEARS Grandview #303 cans **27¢**
HAWAIIAN PUNCH 3 46-oz. cans **1.00**
CANNED MILK DARIGOLD 6 tall cans **79¢**
MUSHROOMS Pcs. & Stems PRIZE CROP 4-oz. can **29¢**

TOMATOES CONTADINA 2 #2 1/2 cans **45¢**
CLAM Chowder SALT SEA 15-oz. Can **29¢**
CORNED BEEF LA RUTA 12-oz. can **47¢**
MACARONI ELBOW, MAJORETTE Lg. Family 2-lb. Cello Pkg. **33¢**
ZEE LUNCH BAGS 2 20-ct. pkgs. **19¢**
CAKE FLOUR 5c Off Label SOFTASILK 2-lb. pkg. **34¢**

All ad prices shown are effective all day WEDNESDAY thru Saturday. We reserve the right to limit purchases.

Lucky and BIG BEAR STORES

133rd and PACIFIC, PARKLAND

BENEATH THIS BANNER ARE THE WORLD'S BEST BARGAINS

CLASSIFIED ADS

Page 12 THURSDAY, SEPTEMBER 29, 1960
The TIMES JOURNAL

Business Service 3

CUSTOM-BUILT CABINETS
Pre-hung Doors—Free Estimates
FORMICA & GE TEXTOLITE COUNTERS
We Install Cabinets—Drain Boards
BAKER'S Woodworking Co.
LE 7-0565 — LE 7-3290
13415 Pacific Ave. Parkland

JACK SHANK'S Refrigeration Service
Parts & Service for All Makes
LE 7-0178

Ace Dirt Moving Co.
Building — Ditching
TOP SOIL — GRAVEL
SEPTIC TANKS and DRAIN FIELDS
Phone TH 5-2452

CALL POCHTEL FOR Expert T.V. Repair
Satisfaction Guaranteed
Free Tube Testing
140th & Pacific LE 7-8624

COMPLETE TRACTOR WORK
Gravel & Driveways
LE 7-3846

SEPTIC TANK CLEANING
Prompt Service
C. V. HUTSON
GR 4-3980 GR 2-7038

B & B Construction Service
PATIOS CARPORTS
Masonry & Foundation Work
Chimney Repair
Roofing & Siding Installed
Garages—Lake Cottages
Painting In and Outside
Insulating — Remodeling
REASONABLE TERMS
CALL TE 2-4869 ANYTIME

PHOTOS
5x7, \$1 — 8x10, \$2
For Appointment, Phone
GR 4-1986—Open Evenings
FAMILY PORTRAIT STUDIO
8411 South Park Ave.

Parkland Heating Co.
All makes of furnaces for sale;
Specializing in Williams OIL
'O' MATICS; OIL, GAS, Hot Water
Installations, Electric Heat &
Lighting Fixtures; Service; reasonable.
755 South 108th Lenox 7-4045

TOPSOIL
6 yards \$9.00
LAWNS
ROCKERIES
INSTALLED
LUBBESMEYER Landscape Co.
LE 7-6968

A-1 SANITARY SEPTIC TANK PUMPING AND SEWER CLEANING SERVICE
PUY. TH 5-2873

South End Auto Wreckers
USED PARTS—Motors, Transmissions, Tires, Batteries. We buy junk cars. Also Custom welding by Joe's Welding.
1 Mile East Roy on Mt. Hy. Spanway LE 7-6534

Boush Moving & Storage
Agents for U.S. Van Lines
Cost to Coast Service
11816 Pacific Avenue
LE 7-3696
Parkland, Wash.

Business Service 3

ART'S SHOE SHOP
Shoes for the Entire Family
EXPERT SHOE REPAIRING
315 Garfield St.
Between 121st and 122nd
Opposite Parkland Postoffice

T and T PAINTING CO.
Efficient, Courteous Service
2325 So. Ash Street BR 2-0454

WELL DRILLING
Berkeley Pumps
• JETS
• SUBMERSIBLES
• CENTRIFUGALS
• TURBINES
Call LE 7-7281

TACOMA PUMP & WELL DRILLING CO.
14619 PACIFIC AVENUE
Terms Trades

Webb Electric Co.
8240 B Pacific Ave.
GR 2-2902
ELECTRIC HEAT
All Types
Terms Can Be Arranged
FREE ESTIMATES
EMERGENCY PHONE
LE 7-4437

Help Wanted 5

WANTED—Man for Wednesday each week of Times Journal for wrapping and bundling papers. 5p

Real Estate 9

HIGHWAY frontage, 200 by 110 feet. Only \$12,000. Bank terms, see owner. Box 360 Mt. Highway. 5p

LIST WITH SUBURBAN
Home and Farm Specialists in South End Properties. Two offices open every day and evening for your convenience.

SUBURBAN REALTY, INC.
113th and Pacific, LE 7-8638
112th and Canyon, LE 7-0229
Member Multiple Listing Service & Tacoma Real Estate Board 8cfr

Fern Realty
11208 E. Leonard's Crossing
LE 7-8651

M. L. S.
MULTIPLE LISTING SERVICE
\$3,800 CASH
To settle estate, fully furnished, 1 bedroom, living room, kitchen and bath, 90x130' lot on McKinley Avenue at 68th. Call Ralph Decker, GR 4-9579. RA-7063

McKINLEY HILL REALTY
6311 McKinley Ave. GR 4-9579
Member of Multiple Listing Service and Tacoma Real Estate Board

M. L. S.
MULTIPLE LISTING SERVICE

Jennie L. Grodvis PARKLAND REALTY CO.
Insurance of All Kinds
Notary Public
Est. in Parkland Since 1941
LE 7-8609 Office
302 Garfield St., Parkland
Jennie Grodvis, LE 1-1211
Edna Taylor, LE 7-3556
Thelma Scott — Yvonne White
JU 8-3838 LE 7-0440
"Deal with the people who give you their personal attention" Member of Multiple Listing Service and Tacoma Real Estate Board

RAINIER REALTY
13201 Pacific Ave. LE 1-0252
Member Tacoma Real Estate Board; Member Multiple Listing Service.

Real Estate 9

LISTINGS WANTED
Let us sell your property. We specialize in personalized service.
FERN REALTY
11208 E. Leonard's Crossing
LE 7-8651

1960 SINGER
REPO. Balance due \$25.90
payment of \$4.15 per month
No attachments to buy, Zig zag, overcast, blind hem, button holes etc. Guaranteed.
Dealer. For more information call GR 4-0651.

Rental Management
List your rental property with us. Satisfaction is our by-word.
Rental Headquarters for the Suburban Area
SUBURBAN REALTY, INC.
LE 7-8638 or LE 7-6896

Repair Service 11
NOW AT SILER'S
Complete washer and dryer service. All makes. Fast, dependable, reasonable. LE 7-8634.
WASHING MACHINE PARTS — Largest stock in town. Repairing that pleases. BR'S WASHER SERVICE, 3727 So. G. GR 4-9409. 11cfr

Automobiles 12
COUNTRY BOYS AUTO PARTS, open 7 days a week. Located at Willows Corner, Airport Road and South Meridian. SPECIAL THIS WEEK—Bake Shoes set of 4, \$3.95, exchange. All parts cut at rate prices. TH 5-4451. 12cfr

Chinook Campers
As Low as \$1,045 at
ANDERSON'S
LE 7-0404
176th & Pacific Ave.

Foreign Cars 12A
- ALL - FOREIGN CAR KEYS
107 Varieties
PARKLAND CYCLE & KEY
11021 Pacific Ave. LE 7-5772

Farm Column 13
GUERNSEY cow with 7 month old white heifer calf, \$225. LE 7-7484 after 4-30. 13cfr

FOR EASTERN WASHINGTON HAY AND STRAW by the bale, ton or truck load, call Viv Sells. Sell's Farm Supply, VI 7-2127.
FOR SALE—Eastern Washington hay and grain. Jack Burks, Graham, VI 7-7645. 13cfr

EASTERN WASHINGTON HAY by the bale, ton or truck load, call J. A. Dove. Phone LE 1-2185. 13cfr

Work Wanted 14
IRONING IN MY HOME—80c an hour. LE 7-9718. 14cfr
BABY SITTING—Your home or mine. 13cfr South 120th. LE 1-0416.
CHILD CARE in my home for working mother. LE 7-7373. 14cfr
CHILD CARE my home. 411 So. 117th St. 14cfr
WILL DO WASHING and ironing, also sewing in my home. 14cfr
CHILD CARE in my home for working mother. LE 7-7373. 14cfr
LICENSED CHILD CARE—Hour, day, week; Outdoor gym. 8425 South "D". GR 2-9291. 14cfr
WILL DO WASHING and ironing in my home. Also sewing. LE 7-8747. 14cfr

Miscellaneous 15

DISPOSABLE BAGS
FOR ALL TYPES OF VACUUM CLEANERS
Phone Orders Taken
GR 4-0651
AMERICAN SEWING CENTER
8232 Pacific Avenue

Ace Dirt Moving Co.
BULLDOZING DITCHING
GRAVEL TOP SOIL SEPTIC TANKS DRAIN FIELDS
1750 9th St. S. W., Puyallup
Phone Puyallup TH 5-2452

TOY LAYAWAYS
AT PRE-SEASON PRICES
CRIB & CRADLE SHOP
FURNITURE CLEARANCE
TODAY AND FRIDAY
"TIL 9 P.M.
DAVENPORTS—CHAIRS & TABLES
TOP QUALITY—LOW PRICES
SHAFFERS' FURNITURE
8019 Portland
LE 1-2300

NOTICE TO CREDITORS
IN PROBATE
PETRO & TRACY
Attorneys
11024 Pacific Avenue
Tacoma, Washington
In the Superior Court of the State of Washington for the County of Pierce, the undersigned hereby certify that the undersigned has been appointed and has qualified as executor of the estate of Hugo Erick Martens, deceased, and that persons having claims against said estate should present them to the undersigned at the address below stated, that in case of your failure to do so, judgment will be rendered against you according to the demand of the complaint, which has been filed with the clerk of said Court. This is an action for divorce on the grounds of desertion.
PETERS & TRACY
By: s/ George F. Potter
11024 Pacific Avenue
Tacoma 44, Washington
Published in the Times Journal, September 8, 15, 22, 29, October 6, October 13, 1960.

Miscellaneous 15

SPECIAL ORDER CAKES—Phone LE 7-7271
LEAVE MOVIE & KODACHROME SLIDE FILM at QUALITY PHOTO for 2-day processing. 9818 Pacific Avenue. LE 7-7271, 15cfr

1960 SINGER
REPO. Balance due \$25.90
payment of \$4.15 per month
No attachments to buy, Zig zag, overcast, blind hem, button holes etc. Guaranteed.
Dealer. For more information call GR 4-0651.

Rentals 10
FURNISHED small home close to McClord. VI 1-2255. 10cfr
NEW MODERN furnished apartment. \$50. Graham, VI 7-7448. 10cfr
FURNISHED Apartment, two bedroom. Parkland area. Call after 6 p.m. LE 1-0996. 10cfr
LARGE furnished apartment, 3 rooms and bath, \$80. 2 room furnished apartment. 550. Parkland Center Bldg., LE 1-0446, if no answer, GR 4-1651. 10cfr

FOR SALE—Kenmore oil heater, good condition with two 29-gallon drums, \$45. Call evenings. WA 7-358. 15cfr
KIRBY
BRAND new attachments with this spotless repossessed \$200 outfit. Full guarantee, assume \$69.92 each week and get free home demonstration. Dir. BR 2-3502, 1148 Market Street. 15cfr
FOR SALE—Electric hay cutter machine, Mrs. T. Tall, 608 River Road, 1 mile past Indian Hospital. 15cfr
CLASSICAL piano instructions. Beginning or advanced students accepted on trial. Walter Rusted. JU 8-3561 evenings. LE 7-7271. 15cfr
FOR SALE—Heavy duty 110 gallon oil drum and stand used 1 year and 10 feet of copper tubing, \$20. LE 1-2977. 15cfr
YOUNG heifer, freshened in November, \$135. Milking Shorthorn cow, \$150. LE 7-6054. 15cfr
16 INCH VIRGIN FOREST WOOD, \$12 a cord on ground. LE 7-6543. 15cfr

ATTENTION HOUSEWIVES — POCHTEL'S
Speed Queen washers, automatic or wringer type, and dryers. Come in and see them at 140th and Pacific Avenue. LE 7-8624. 15cfr
WANTED—Cameras and photographic equipment for resale.
QUALITY PHOTO SERVICE
9818 Pacific, LE 7-7271 15cfr
FOR SALE—Near piano, Kenmore electric heater and fibre glass drafts. LE 1-0189. 15cfr
QUAKER oil circulator with fan and draft booster and 110 gallon tank with stand, \$30. GR 2-5679, 816 E. 62nd Street, Tacoma. 15cfr

CROFT TRAILERS
Local and One-Way Trailer Rentals — NATIONWIDE
Hiway 99 GR 4-8437
74th & So. Tacoma Way

HAIRCUTS \$1.00. 110th and South Yakima.
TAP, ACROBATIC, BALLET and BATON classes, all ages. Mildred Keller, LE 7-7881. 15cfr
PUPPIES—PUPPIES—PUPPIES
Pugs, Norwegian Elkhounds, Schipperkes and Bassetts. Cats and Dogs Bred. Professional and Home. Bathing, Roxbury Kennels, 10203 Portland Avenue. 15cfr
AIRWAY BARGAIN
LIKE new \$100 outfit repossessed with only \$49 due. Assume \$5 monthly payments and get free home demonstration. Dir. BR 2-3502, 1148 Market Street. 15cfr
PAY \$9 repair bill in this Hoover cleaner and it's yours. Dir. BR 2-3502, 1148 Market Street. 15cfr

LEGAL NOTICES
PETERS & TRACY
11024 Pacific Avenue
Tacoma 44, Washington
NOTICE OF HEARING AND REPORT AND PETITION FOR DISTRIBUTION
No. 67383
In the Superior Court of the State of Washington for the County of Pierce, In the Matter of the Estate of George A. Sharp, Deceased.
Notice is hereby given that Audrey L. Franklin, administratrix of the estate of George A. Sharp, and Della Sharp, have filed in the office of the Clerk of said Court her Final Report and Petition for Distribution of the Estate of said George A. Sharp, and that said report and petition will be heard on the 26th day of October, 1960 at 9:30 a. m., at the court room of the Probate Department of said Court, at which time and place any persons having claims against said estate may appear and file objections thereto and contest the same.
Dated this 27th day of September, 1960.
ROBERT L. DYKEMAN,
Clerk of said Court.
By: s/ W. LODGE,
Deputy.
Published in the Times Journal, September 27, Oct. 4, 11, 1960.

NOTICE OF GROUND WATER RIGHT
PPCATION 0533
State of Washington, Office Supervisor of Water Resources, Olympia.
That Parkland Light & Water Co. of Parkland, Washington on September 13, 1960, filed application for permit to withdraw public ground waters through a well (No. 6) situated within W. P. Melville D. C. Section 17, Township 10 N., Range 3 E. W.M., in Pierce County in the amount of 500 gallons per minute against said water rights continuously each year for the purpose of municipal supply.
Any objections must be accompanied by a two dollar (\$2.00) recording fee and filed with the State Supervisor of Water Resources within thirty (30) days from October 6, 1960.
My hand and official seal this 27th day of September, 1960.
M. G. WALKER,
State Supervisor of Water Resources.
Published in the Times Journal, September 27, Oct. 6, 1960.

ANNON W. MAY
Attorney
802 P.S.N. Bank Bldg.
Tacoma, Washington
NOTICE TO CREDITORS
No. 64793
In the Superior Court of the State of Washington for the County of Pierce, In the Matter of the Estate of Nelson A. Annan, Deceased.
Notice is hereby given that the undersigned has been appointed and has qualified as executor of the estate of Nelson A. Annan, deceased, and that persons having claims against said estate should present them to the undersigned at the address below stated, that in case of your failure to do so, judgment will be rendered against you according to the demand of the complaint, which has been filed with the clerk of said Court. This is an action for divorce on the grounds of desertion.
PETERS & TRACY
By: s/ George F. Potter
11024 Pacific Avenue
Tacoma 44, Washington
Published in the Times Journal, September 15, 22, 29, 1960.

IN THE SUPERIOR COURT OF THE STATE OF WASHINGTON FOR THE COUNTY OF PIERCE
SUMMONS BY PUBLICATION
No. 144629
VERNA ROBERTS,
Plaintiff,
vs.
CHARLES A. ROBERTS,
Defendant.
THE STATE OF WASHINGTON TO THE SAID CHARLES A. ROBERTS:
You are hereby summoned to appear in Court at 10:00 a.m. on the 8th day of September, 1960, and defend the above entitled action in the above entitled Court, and answer the complaint of the plaintiff, and serve a copy of your answer upon the undersigned attorneys for plaintiff, at their office below stated; that in case of your failure to do so, judgment will be rendered against you according to the demand of the complaint, which has been filed with the clerk of said Court. This is an action for divorce on the grounds of desertion.
PETERS & TRACY
By: s/ George F. Potter
11024 Pacific Avenue
Tacoma 44, Washington
Published in the Times Journal, September 8, 15, 22, 29, October 6, October 13, 1960.

FOR INFORMATION CALL Mrs. David Hanson, LE 7-3586 or Mrs. Raymond Goodman, LE 7-5202.

Parkland PTA May Have First Aid Class
The Parkland PTA plans to sponsor a first aid class if enough people are interested. The class will be held on Thursday evenings at the Parkland Elementary school.
For information call Mrs. David Hanson, LE 7-3586 or Mrs. Raymond Goodman, LE 7-5202.

THE STATE OF WASHINGTON TO THE SAID CHARLES A. ROBERTS:
You are hereby summoned to appear in Court at 10:00 a.m. on the 8th day of September, 1960, and defend the above entitled action in the above entitled Court, and answer the complaint of the plaintiff, and serve a copy of your answer upon the undersigned attorneys for plaintiff, at their office below stated; that in case of your failure to do so, judgment will be rendered against you according to the demand of the complaint, which has been filed with the clerk of said Court. This is an action for divorce on the grounds of desertion.
PETERS & TRACY
By: s/ George F. Potter
11024 Pacific Avenue
Tacoma 44, Washington
Published in the Times Journal, September 15, 22, 29, 1960.

IN THE SUPERIOR COURT OF THE STATE OF WASHINGTON FOR THE COUNTY OF PIERCE
SUMMONS BY PUBLICATION
No. 144629
VERNA ROBERTS,
Plaintiff,
vs.
CHARLES A. ROBERTS,
Defendant.
THE STATE OF WASHINGTON TO THE SAID CHARLES A. ROBERTS:
You are hereby summoned to appear in Court at 10:00 a.m. on the 8th day of September, 1960, and defend the above entitled action in the above entitled Court, and answer the complaint of the plaintiff, and serve a copy of your answer upon the undersigned attorneys for plaintiff, at their office below stated; that in case of your failure to do so, judgment will be rendered against you according to the demand of the complaint, which has been filed with the clerk of said Court. This is an action for divorce on the grounds of desertion.
PETERS & TRACY
By: s/ George F. Potter
11024 Pacific Avenue
Tacoma 44, Washington
Published in the Times Journal, September 15, 22, 29, 1960.

FOR INFORMATION CALL Mrs. David Hanson, LE 7-3586 or Mrs. Raymond Goodman, LE 7-5202.

FOR INFORMATION CALL Mrs. David Hanson, LE 7-3586 or Mrs. Raymond Goodman, LE 7-5202.

FOR INFORMATION CALL Mrs. David Hanson, LE 7-3586 or Mrs. Raymond Goodman, LE 7-5202.

FOR INFORMATION CALL Mrs. David Hanson, LE 7-3586 or Mrs. Raymond Goodman, LE 7-5202.

Crunchy Topped Apple Muffins



Here's a delicious, delicate muffin that will add a touch of excitement to any meal—Crunchy Apple Muffins. The batter—extra moist and tender because it's made with nonfat dry milk—is chock-full of apple-cinnamon flavor. It's topped with a spicy nut mixture, and popped into a piping hot oven. They bake with a delectable fragrance guaranteed to tempt folks even before they taste them.

Crunchy Apple Muffins
1 1/2 cups sifted all-purpose Flour 1/2 teaspt. Cinnamon
1/2 cup Sugar 1/4 cup soft Shortening
2 teaspt. Baking Powder 1 Egg
1 teaspt. Salt 1/2 cup Water
1/2 cup Best Instant (in dry form) 1 cup Apple (peeled and finely cut)
Topping 1/2 cup finely cut Nuts
1/2 cup Brown Sugar
1/2 teaspt. Cinnamon

Turn on oven and set at 375 (high moderate). Sift flour, sugar, baking powder, salt, nonfat dry milk and cinnamon together in a 1 1/2 qt. bowl. Add shortening, egg, water and apple all at once and mix quickly but thoroughly. Spoon batter into 12 greased muffin cups. Sprinkle on top of batter in cups a mixture of brown sugar, cinnamon and finely cut nuts. Bake near center of oven 20 minutes, or until lightly browned. Serve warm. Makes 12 muffins.

Top Musicians Harmony Hoedown At Fruitland Set

Concert pianist Van Cliburn, and Benny Goodman, "the King of Swing," will headline the Bell Telephone Hour program on NBC-TV when it returns to the air after a summer vacation on Friday, September 30, at 9 p.m. over KING-TV, Channel 5.
The hour-long colorcast "Holiday In Music," also will feature musical comedy stars, Sally Ann Howes and Howard Keel; an outstanding ballet group in an excerpt from Tchaikovsky's "The Sleeping Beauty," and Donald Voorhes and the Bell Telephone Orchestra.

Van Cliburn, who is making his first television appearance in two years, will play some of the piano solos he has presented in his summer concerts under the stars.
Benny Goodman will have with him the nine-man swing band that made musical history this summer. Red Norvo will be featured on the vibraphone, Flip Phillips on the sax, Ernie Green on trombone and Jack Sheldon on trumpet. Maria Marshall is vocalist for the group.

After the opening show on September 30, the Bell Telephone Hour will continue its third season on television with an hour-long colorcast every other Friday through April 28.
During the 1960-61 season such famous stars as Patrice Munsel, Robert Merrill, Jo Stafford, Dorothy Collins, Robert Preston and many others will be seen on the Bell Telephone Hour.

Parkland PTA May Have First Aid Class

The Parkland PTA plans to sponsor a first aid class if enough people are interested. The class will be held on Thursday evenings at the Parkland Elementary school.
For information call Mrs. David Hanson, LE 7-3586 or Mrs. Raymond Goodman, LE 7-5202.

THE STATE OF WASHINGTON TO THE SAID CHARLES A. ROBERTS:
You are hereby summoned to appear in Court at 10:00 a.m. on the 8th day of September, 1960, and defend the above entitled action in the above entitled Court, and answer the complaint of the plaintiff, and serve a copy of your answer upon the undersigned attorneys for plaintiff, at their office below stated; that in case of your failure to do so, judgment will be rendered against you according to the demand of the complaint, which has been filed with the clerk of said Court. This is an action for divorce on the grounds of desertion.
PETERS & TRACY
By: s/ George F. Potter
11024 Pacific Avenue
Tacoma 44, Washington
Published in the Times Journal, September 15, 22, 29, 1960.

FOR INFORMATION CALL Mrs. David Hanson, LE 7-3586 or Mrs. Raymond Goodman, LE 7-5202.

FOR INFORMATION CALL Mrs. David Hanson, LE 7-3586 or Mrs. Raymond Goodman, LE 7-5202.

FOR INFORMATION CALL Mrs. David Hanson, LE 7-3586 or Mrs. Raymond Goodman, LE 7-5202.

FOR INFORMATION CALL Mrs. David Hanson, LE 7-3586 or Mrs. Raymond Goodman, LE 7-5202.

FOR INFORMATION CALL Mrs. David Hanson, LE 7-3586 or Mrs. Raymond Goodman, LE 7-5202.

FOOD Festival

Coffee Hills Bros. 2 lb. \$1.23
Gold Medal Flour 10 lbs. 99¢ | Chiffon—Twin Packs
Syrup Tastewell Maple Flavor 24-oz. 29¢
T BONE Steaks lb. 79¢ | Fresh Sliced Halibut lb. 39¢
TASTEWELL PEAS BEANS CORN BEETS
1/2 CASE SALE 12 303 tins \$1.99

Sirloin Beef Steaks lb. 69¢
Sirloin Tip Roast lb. 79¢ | All Varieties Grapes lb. 10¢
Boneless Rump Roast lb. 69¢

Jonathan Apples \$1.98 | Cabbage ea. 10¢

Fresh Gr. Beef 100% Pure 3 lbs. 89¢
Spuds 50 lbs. 95¢ | Young Tender—Skinned Liver Beef Sliced Lb. 35¢

HERMANS FOOD STORE
162nd & Park Ave. Spanaway
(Right to Limit Reserved)

OUR GOAL IS TO HAVE THE GOVERNMENT FURNISH ALL OUR WANTS FOR FREE—THEN NOBODY WILL HAVE TO WORK ANYMORE!
JUST ONE LITTLE QUESTION—IF NOBODY WORKS, WHO'S GONNA EARN THE MONEY TO PAY THE TAXES TO PAY FOR ALL THIS?
POLITICAL PLANNER
NEW GOVERNMENT SPENDING PROGRAMS
Let's Hear Him Answer That!

Ten Word INTELLIGRAM

Check the correct word:
1—People related to you are (kith) (kin).
2—Palmly days are related to (palm trees) (palm of the hand).
3—"Light in August" was written by (William Faulkner) (Ernest Hemingway) (F. Scott Fitzgerald).
4—(Africa) (Asia) has greater land area.
5—The Great Wall of China was listed as one of the (ancient) (medieval) Seven Wonders of the World.
6—The second largest ocean in the world is the (Atlantic) (Indian).
7—The largest planet is (Jupiter) (Saturn).
8—Earth is (larger) (smaller) than the planet Mercury.
9—Easter will fall in (March) (April) in 1959.
10—A mouse lives about (three) (ten) years.
Count 10 for each correct choice. A score of 0-20 is poor; 30-60, average; 70-80, good; 90-100, excellent.

Decoded Intelligram
1—Kin 2—Hand 3—Faulkner 4—Asia 5—Medieval 6—A 7—Indian 8—Larger 9—March 10—Three.

IT PAYS TO ADVERTISE IN THE TIMES JOURNAL

CUSTOM MEAT CUTTING
U.S. GOV. INSPECTED GRAIN FED STEER BEEF
BY THE SIDE 49¢
HIND QUARTER 55¢
FRONT QUARTER 45¢
(All Prices Include Cutting and Wrapping)
ALL BEEF PROPERLY AGED BEFORE CUTTING TO SUIT YOU!!
You Receive Boneless Roasts — Fancy Cut Steaks
According To Your Specifications

ATTENTION HUNTERS! BRING US YOUR DEER!! Cutting and Wrapping Lb. 7¢
HOWARD MARTH AND DICK STEDTFELD
162nd & PARK AVE. Phone LE 7-8478 or JU 8-0518

"Old Fashioned"

Gay 90

Bargains and Quality to Match Anything that Grandma Knew!

BARCANT BAZAAR

Featuring Your Favorite Brands At Old Time Prices



Bob Says & Carroll Says

Wake the town and tell the people:

Clean out that attic and come arunnin' for the gayest sale since grandma's days. Enter our Gay 90 Con-test Take advantage of many grocery awards and bargains!

JET PUPS

A WIENER ON A STICK

SERVED ALL DAY FRI. AND SAT.

5¢

CARNATION INSTANT

DRY MILK 8-Qt. Size 59¢

SOUP CAMPBELL'S All Varieties TALL TINS 7 For \$1

"M.J.B." COFFEE

Tin \$1.25 2-lb.

SYRUP SUNNY JIM 22-oz. Btl. 29¢

Spaghetti Franco American 15 1/4-oz. Can 2/25¢

M.J.B. INSTANT COFFEE 6-oz. 99¢

FREE COFFEE SERVED ALL DAY FRIDAY & SATURDAY.

FRISKIES CAT OR DOG FOOD 9 Tall Cans 99¢

WESSON OIL QT. 49¢

AWARDS

FRIDAY and SATURDAY

Nothing To Buy!

We have an award for any adult bringing in any of the following items. (One award per person).

(1) Mustache Cup, (2) Bull Whip, (3) High Button Shoes, (4) Sugar Ration Stamp (with the word 'Sugar' on stamp), (5) Gold Pan, (6) Shilleagh.



POTATOES 98¢ No. 2 50-Lb. Bag

MORE 10¢ VALUES

Cauliflower 1 lb. JONATHAN Apples 1 lb. Bananas 1 lb.

10¢

Open 7 Days a Week For Your Convenience

PARKLAND Super MARKET

Right to Limit Reserved

HOURS: 9 a.m. 'til 10 p.m.

Formerly Kitchen's 12208 Pacific Avenue

PRICES EFFECTIVE THURSDAY THROUGH SUNDAYS EACH WEEK

"Carnation"

EVAPORATED MILK 8 FOR 99¢ Tall Tins

MILK 8 FOR 99¢



ALBERS

Reg. Price 59¢

PANCAKE FLOUR 4-lb. Pkg. 39¢

SUNNY JIM 60-oz. jar \$1.39 P-NUT BUTTER 18-oz. Jar 45¢

"POWDER ROOM" MIX 'EM—MATCH 'EM FACIAL TISSUE 400 Count 5/\$1

TOILET TISSUE 2-Roll Pkg. 5/\$1

3¢ COTTON CANDY FOR THE KIDDIES

BROWNIE SAYS: Let's dress up in that gay 90 costume and enter our contest to win a Smorgasbord Dinner at STEVE'S GAY 90 RESTAURANT IN SOUTH TACOMA. Two dinners to the best dressed man and two dinners to the best dressed woman to come in to Parkland Super Friday or Saturday between 9:00 a. m. and 5:30 p. m.

SPECIAL 25 LB. LOCKER BOX 1.95

GROUND FRESH HOURLY

GR. BEEF 3 lbs. 89¢

EASTERN-GRAIN FED PORK STEAK

RUMP ROAST OR SWISS STEAK

SWIFTS-BY THE PIECE LG. BOLOGNA

lb. 49¢

lb. 59¢

lb. 39¢

ARMOUR'S CRESCENT BRAND SLICED

BACON 3 lbs. \$1

LEAN-THICK-MEATY SPARERIBS

HENRY HOUSE BRAND Sausage Rolls

FOR CHARCOAL BROIL Chuck Steak

lb. 39¢

Fresh 3 lbs. \$1

lb. 49¢

STEAKS T-BONE LOIN ROUND LB. 79¢

SEE THE HARMON FOOTBALL FORECASTS EACH WEEK IN THIS AD.

TOP 20 TEAMS

1-MISSISSIPPI	117.2
2-SYRACUSE	113.4
3-WASHINGTON	103.6
4-ILLINOIS	103.4
5-IOWA	103.3
6-NORTHWESTERN	103.1
7-TEXAS	103.0
8-LEMONT	102.6
9-ARKANSAS	102.2
10-OHIO STATE	101.1
11-L. S. U.	101.0
12-KANSAS	100.2
13-MISSOURI	99.9
14-ALABAMA	98.7
15-PENN STATE	98.3
16-GEORGIA	97.7
17-WISCONSIN	97.3
18-TENNESSEE	97.1
19-GEORGIA TECH	96.7
20-BAYLOR	96.6

Friday, September 30

Calif. Western	18	Occidental	14
Cent. Oklahoma	12	Emporia State	9
Chattanooga	25	McMurry	0
Fresno State	26	Santa Barbara	6
Miami, Florida	22	North Carolina	18
SE Louisiana	34	Corpus Christi	0
West Chester	21	E. Stroudsburg	7

Saturday, Oct. 1—Major Colleges

Alabama	17	Vanderbilt	8
---------	----	------------	---

Arizona State	23	Washington St.	21
Arkansas	17	T. C. U.	7
Army	19	California	8
Boston U.	15	Holy Cross	6
Bowling Green	16	Miami, Ohio	14
Brigham Young	19	Colorado State	13
Bucknell	20	Cornell	14
Citadel	22	Davidson	8
Clemson	35	V. P. I.	0
Colorado	20	Kansas State	10
Columbia	25	Princeton	20
Dayton	9	Villanova	7
Denver	22	Utah State	16
Detroit	15	Xavier	8
Duke	22	Maryland	14
Florida State	20	Wake Forest	17
Georgia	27	South Carolina	0
Georgia Tech	14	Florida	8
Harvard	28	Massachusetts	13
Idaho	17	Montana	13
Illinois	37	West Virginia	0
Iowa	22	Northwestern	21
Iowa State	19	Nebraska	9
Kentucky	16	Auburn	15
Lehigh	19	Colgate	13
L. S. U.	10	Baylor	16
Marshall	21	Toledo	14
Michigan State	25	Michigan	19
Minnesota	22	Indiana	14
Mississippi	27	Memphis State	0
Miss. Southern	23	West Texas	0
Missouri	16	Penn State	14

New Mexico	10	Texas Western	0
N. Carolina St.	32	Virginia	0
North Texas	14	Cincinnati	13
Ohio State	20	So. California	8
Ohio University	18	Kent State	0
Oregon	10	Utah	7
Oregon State	20	Houston	7
Pacific	24	Dartmouth	7
Pennsylvania	17	Oklahoma	7
Pittsburgh	17	Oklahoma	14
Purdue	23	Notre Dame	22
Syracuse	14	Connecticut	12
Stanford	21	Air Force	20
Tennessee	26	Miss. State	8
Texas	26	Texas Tech	8
Texas A & M	30	Trinity	12
Tulane	8	Rice	7
Tulsa	23	Hardin-Simmons	22
V. M. I.	20	Richmond	6
Washington	22	Navy	13
West. Michigan	19	Baldwin-Wallace	7
Wichita	22	Montana State	7
William & Mary	16	Geo Washington	13
Wisconsin	26	Marquette	9
Wyoming	25	Arizona	6
Yale	22	Brown	0

EAST (small colleges)

Albright	20	Thiel	0
Alfred	18	Union	7
Buffalo	25	Temple	0

Carnegie Tech	16	Waynesburg	6
Coast Guard	12	Norwich	0
Delaware	21	Amherst	6
Geneva	12	St. Vincent	7
Hamilton	13	R. F. I.	6
Ithaca	28	Brookport	6
Lafayette	29	Muhlenberg	13
Maine	28	Vermont	0
Middlebury	23	Worcester Tech	7
New Hampshire	12	Rhode Island	0
Northeastern	24	Bridgeport	13
Post	8	Cortland	6
Rochester	23	Hobart	0
Tufts	28	Bates	0
Wash. & Lee	25	Dickinson	7
Williams	18	Springfield	14

MIDWEST & SOUTH (small colleges)

Abilene Christ	22	Lamar Tech	21
Appalachian	14	Elon	0
Bethany	18	Kansas Wesleyan	15
Bethel	13	Friends	12
Butler	24	St. Joseph	7
Colorado Coll	16	Fort Hays	6
Concordia	20	Augsburg	6
DePauw	14	Indiana State	13
East Carolina	18	Catawba	7
East Texas	23	N. Louisiana	6
Emory & Henry	20	Carson-Newman	18
Fairmont	14	West Va. Wesley	12
Hamden-Sidney	29	Bridgewater	0
Hillsdale	30	Adrian	0

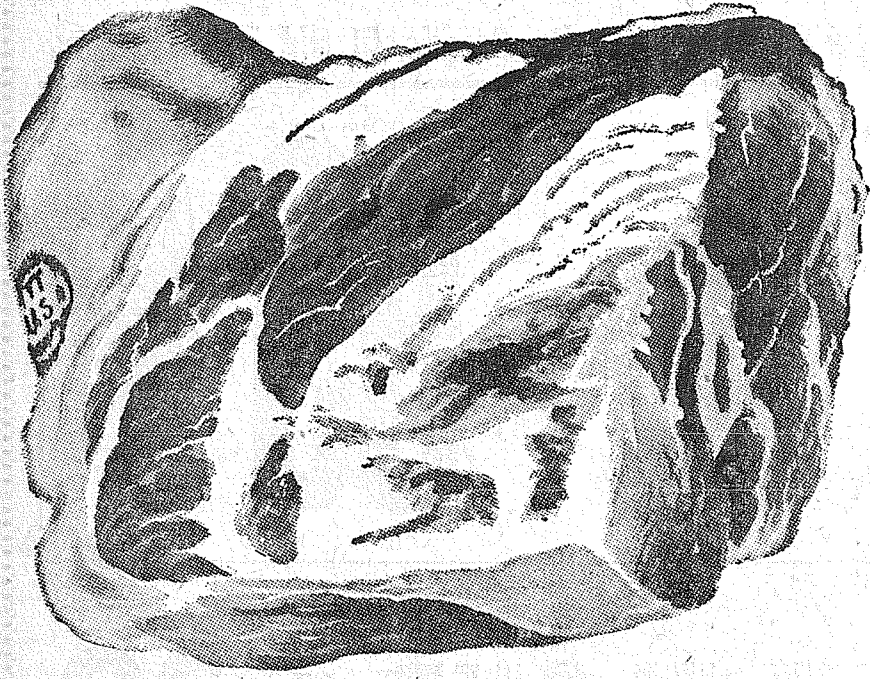
Howard	16	Georgetown	0
Kalamazoo	18	Olivet	0
Lenoir-Rhyne	13	Newberry	7
Louisville	21	Bradley	6
Michigan Tech	38	Moorhead	0
Missouri Valley	22	SW Missouri	6
N. Dakota State	22	Morningside	18
NE Oklahoma	18	SE Oklahoma	13
Pittsburg State	23	Mo. Mines	6
Platteville	15	Milwaukee	12
Shepherd	24	Davis & Elkins	6
Sul Ross	7	SW Texas	6
Tampa	18	West Carolina	7
Tenn. Tech	20	Morehead	0
Washington, Mo	14	Wabash	0

FAR WEST (small colleges)

Calif. Poly	24	San Diego St	7
Cent. Wash'ton	14	West. Wash'ton	12
E. Oregon	12	Oregon College	7
Humboldt	20	San Diego U	0
Idaho College	14	Westminster	0
Idaho State	23	Colo Western	6
Lewis & Clark	21	Linfield	7
Long Beach	21	Sacramento	19
Los Angeles	25	Pepperdine	7
Oregon Tech	21	Portland	6
Puget Sound	21	Pacific Luth'n	12
Riverside	26	California Tech	0
San Francisco	14	Calif. Poly	7
Whitworth	27	East. Wash	0
Williamette	14	Pacific U	13

PIGGLY WIGGLY-ARMOUR SALE

5¢ ARMOUR'S
HOT DOGS
SERVED FROM 10 TO 7
FRIDAY AND SATURDAY
ALL STORES



PORK ROAST

• FRESH PICNIC
STYLE, WELL-
TRIMMED,
LEAN AND **LB.**
MEATY ROASTS!

29¢



PIGGLY
WIGGLY
STORES
OPEN
9 A.M.-10 P.M.

LUNCHEON MEAT SPECIAL

ARMOUR'S TREET

SIMPLE SIMON APPLE, PEACH, CHERRY, BOYSENBERRY

FRUIT PIES

A BIG
VALUE!

12-OZ.
CAN **39¢**

3 24-OZ.
PIES **1⁰⁰**

ASSORTED FLAVORS

ROYAL GELATINS

5 PKG. **5⁰⁰**

DUCHESS

PEACHES

ANOTHER
VALUE!

5 NO. 2 1/2
CANS **1⁰⁰**

NALLEY'S FINEST

MAYONNAISE

QUART
JAR **47¢**

QUICK OR REGULAR

QUAKER OATS

42-OZ.
PKG. **39¢**

PIGGLY WIGGLY'S OR
PEDERSON'S, FRESH
DAILY! CUT-UP, WASHINGTON GROWN

FRYERS

LB.

37¢

ARMOUR'S STAR
SKINLESS
WIENERS
12-oz. Pkg.

35¢

Armour's Star (3-lb. Thick \$1.05)

SLICED BACONlb.

53¢

Armour's Star

SKINLESS LINKSlb.

49¢

Armour's Star "Ham What Am!"

(3-lb. Can \$3.19)

CANNED HAMS 1 1/2-lb. Can

1⁸⁹

PERRY FARMS TURKEY PARTS

Turkey
Backslb. **23¢**

Drum-
stickslb. **45¢**

Turkey
Wingslb. **39¢**

Turkey
Thighslb. **49¢**

COFFEE HOUSE

COFFEE

DRIP OR REGULAR

49¢

1-LB.
CAN
Parkland Store

ARMOUR VALUES!

ARMOUR'S
CHOPPED HAM 12-oz. Can **55¢**

ARMOUR'S CORNED
BEEF HASH 15 1/2-oz. can Can **35¢** (3c Off)

ARMOUR'S (23 1/4-oz. 25c)
POTTED MEAT 2 5 1/2-oz. Cans **37¢**

ARMOUR'S
BEEF STEW 24-oz. Can **49¢**

CHIFFON
LIQUID
10¢ OFF
22-OZ. CAN **53¢**

5¢ OFF
12-OZ. **33¢**

DIAL SOAP
ARMOUR'S
2 BATH BARS **41¢**

2 REG. BARS **31¢**

5¢ OFF LABEL

TIDE

GIANT PACKAGE

59¢

DARIGOLD "AA"

BUTTER

Prints or Quarters

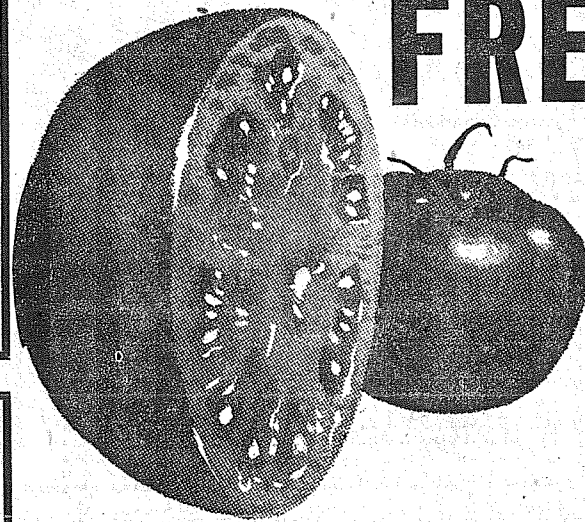
lb. 65¢

LYNDEN GRADE A
LARGE

EGGS

DOZEN

55¢



Green Bell
PEPPERS

2 FOR 9¢

FRESH TOMATOES

CALIFORNIA
BEEFSTEAK,
RED RIPE

POUND

10¢

GRAPES

FLAME
TOKAY **10¢**
LB.

CAULIFLOWER

Fresh Local
Snow-White
Heads. **15¢**
EACH

SUNNY JIM PEANUT BUTTER 18-oz. Jar	45¢
REAL VALUE ON QUALITY COFFEE YUBAN COFFEE 2-lb. Can	1²⁹
BLUE BELL POTATO CHIPS 3-Pak Box	59¢
24-OZ. SIZE, 43c NALLEY'S LASAGNE 40-oz. Size	59¢
MISSION BEST BET ELBO MACARONI, ELBO SPAGHETTI OR LONG SPAGHETTI 4-lb. Pkg.	59¢
ADAMS MIXED NUTS 14-oz. Can	69¢
5¢ OFF LABEL FLUFFO SHORTENING 3-lb. Can	65¢
GOLD HILL FRESH FROZEN PECAN WAFFLES 2 5 1/2-oz. Pkgs.	35¢
SUNSHINE KRISPY CRACKERS 1-lb. Box	29¢
SUNSHINE MARSHMALLOWS 12-oz. Pkg.	29¢
DEL MONTE WHOLE KERNEL OR CREAM CORN 2 No. 303 Cans	39¢
DEL MONTE GREEN PEAS No. 303 Can	23¢

**Van de Kamp's
SPECIALS**

"CAKE CARNIVAL"

ALL 2-LAYER CAKES
Reg. 1.15
SPECIAL **99¢**

ALL 4-LAYER CAKES
Reg. 1.15
SPECIAL **99¢**

ALL SQUARE CAKES
Reg. 93c
SPECIAL **83¢**

ANGEL FOOD CAKES
Uniced,
Regular 89c **79¢**

ICED
Regular 1.25 **99¢**

**Van de Kamp's
BAKERIES**

DEL MONTE GARDEN SPINACH 2 No. 303 Cans	33¢
DEL MONTE STEWED TOMATOES No. 303 Cans	23¢
DEL MONTE TOMATO SAUCE 3 8-oz. Cans	29¢
DEL MONTE WHOLE BEETS 2 No. 303 Cans	39¢
DEL MONTE TOMATO CATSUP 2 14-oz. Bottles	39¢
DEL MONTE ASPARAGUS SPEARS No. 300 Can	41¢
BLUE BELL WALNUT BITS 3 1/4-oz. Pkg.	49¢
WHITE STAR CHUNK TUNA No. 1/2 Can	33¢
4c OFF COMET CLEANSER 2 Giant Size	45¢
3c OFF SPIC 'N' SPAN Reg. Pkg.	26¢
ASSORTED COLORS KLEENEX TOWELS 2-Pack	43¢
SCOTT TOILET TISSUE 4-Roll Pack	49¢

SPECIALS IN OUR FIFE HARDWARE DEPT.

FOR COVER CROP

ABRUZZI RYE 100 lbs. **\$6²⁵** 10-lb. Bag **75¢**

MACHETE Corn Knife
16-inch Blade **\$1⁵⁰**

ALUMINUM STEPLADDER 6-ft. **15⁹⁵**

BAMBOO RAKE Kimura
Reg. \$1.20 **98¢**

HUNTING
AND
FISHING
LICENSES
NOW
AVAILABLE

Piggly Wiggly

PUYALLUP
1010 EAST
MAIN

PARKLAND
PACIFIC AT
GARFIELD

FIFE
FORMERLY
ANDRE'S MKT.

So. Tacoma
5252 SOUTH
WASHINGTON

40th & Port
land Ave.

PRICES EFFECTIVE THURSDAY, FRIDAY AND SATURDAY, SEPT. 29, 30, OCT. 1