

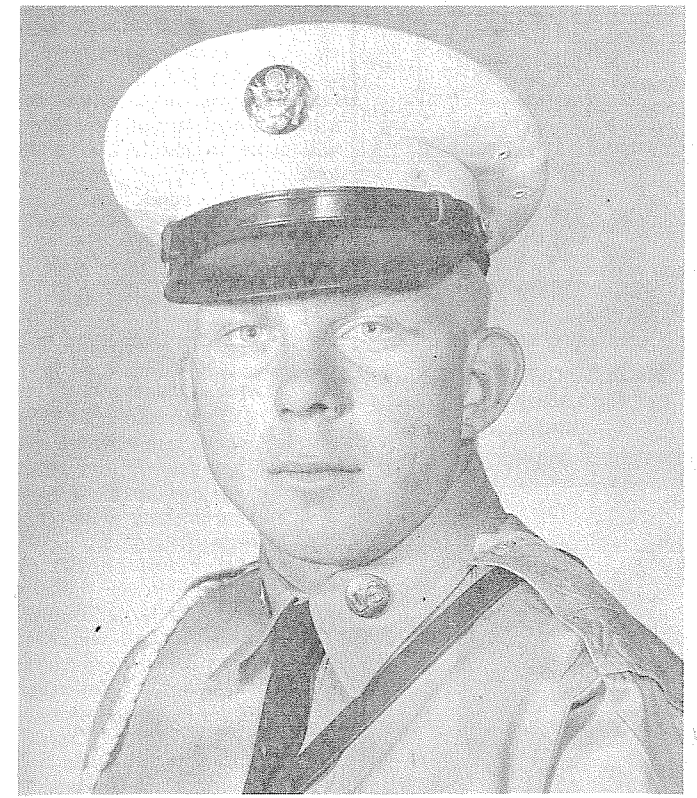
The TIMES JOURNAL

Thursday, July 27, 1961 Vol. 16 No. 47 Published at Parkland, Wn. LE 7-0223

BULK RATE
U.S. Postage Paid
Permit No. 9P
Parkland Branch
Tacoma, Wash.

Rural Route
Occupant or Boxholder
Postmaster: If unable
to deliver, return post-
age is guaranteed on
addressed papers.

Roy Youth Completes Military Police Training



Annual 4-H Fair

Thrift Community is having their annual 4-H fair this coming Saturday and Sunday, July 29 & 30, reports Walter Fritz, chairman.

Entries of vegetables, fruits, canning, clothing, flowers, electric, and baking must be entered by 10 a.m. Saturday.

Tractor driving and forestry contests will also be held Saturday. Games will start at 3:30 p.m. Saturday with cash prizes.

Entries must be there by 10 a.m. Sunday for sheep, beef, dairy, poultry, and rabbits.

Coffee, ice cream, pop and candy will be available. This is an old fashioned country fair, so everyone bring their own box lunch.

SHOP & SAVE
at
BROOKDALE LUMBER CO.

3/4"x8" Dip Treated SIDING
Per 100 Sq. Ft. **\$9.80**

Fine for your cabin or home
Put a door on that opening!

Good Mahogany DOORS
\$3.50 - \$4.50
Slight blemish one side

1x4 Kiln Dry FLOORING
Per 100 Sq. Ft. **\$8.50**

Ideal for that attic job
you're planning

4"x8"x1/2" PHILIPPINE MAHOGANY
Per Sheet **\$3.20**
Only
Cheaper than using fir

Good Split Cedar POSTS
ea. **50c**

USE OUR MONTHLY PAY PLAN!
It's cool under this!
"Solar Block"
FIBRE GLASS

Build a patio and enjoy it!
Sq. Ft. **39c**
Many Colors

Outside White PAINT
Per Gal. **\$2.98**

Good 2x4 8' STUDS
Just **24c** Each

Build that needed room before winter. You can have five years to pay and no down payment is required—come in and let's talk!

BROOKDALE LUMBER COMPANY

136th & Pacific
LE 7-8669

Yakima Girls Now In Business

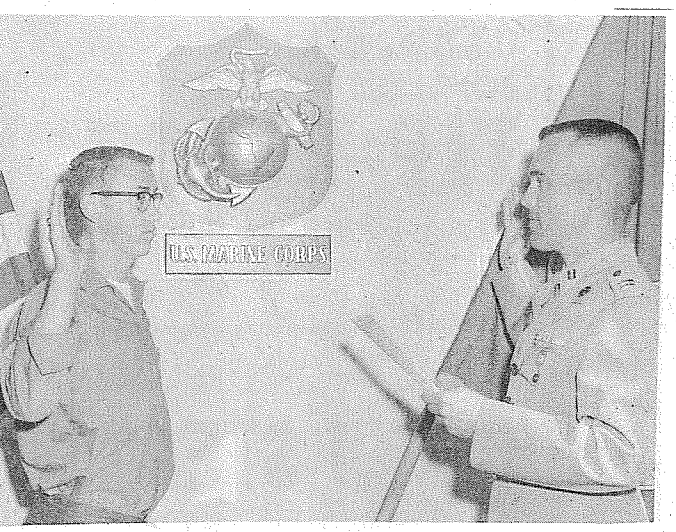
Three sisters from Yakima, Cora Blackford, Barbara Blackford and Ruth Berilla, have set up the Yakima Girls Fruit Stand at 12415 Pacific Ave., and will be at that location all summer.

They chose this particular site because of the success of their aunt and uncle, Mr. and Mrs. George Williams, with the Yakima Boys Fruit Stand, also on Pacific Ave.

High Voltage Wire Mysteriously Breaks

A high voltage wire unexplainably came down near 174th and Pacific Monday afternoon, causing a small grass fire. What caused the wire to break is still a mystery to State Police and the Spanaway Fire Dept., who attended the fire.

Parkland Youth Joins Marines



SWEARING IN—Jerry L. Anderson, son of Mr. and Mrs. Orval O. Anderson of 5221 E. 128th St., recently enlisted in the Marine Corps Reserve Six Month Active Duty Program. Pvt. Anderson will continue his education and after graduation from high school will be ordered to six months active duty with the Marine Corps. In the mean time Anderson will attend meetings of Tacoma's 28 Rifle Company USMCR.

Winter Hay Supply Uncertain-Hobson

By George Purcell
The hay supply this winter could get tight in some parts of the state in spite of the predicted increase in production.

George Purcell, County Extension Agent, said this precautionary note has just been received from Karl Hobson, WSU's Extension Price Specialist. He passes along Hobson's analysis of the hay situation as follows:

The Washington hay crop is forecast by the Crop Reporting Board at 6% larger than last year. The forecast is based on July conditions.

A heavy outbreak of grasshoppers, now moving into alfalfa fields, may consume quite a bit of the crop. Also it is possible that some hay may move out of the state into drought-stricken areas in Montana and the Dakotas.

If, in addition to these developments, Washington should have a severe winter, a hay shortage could develop.

The hay crop is up in Idaho and Oregon also, but they are likely to need considerably more hay. Ranges are drying rapidly in both of those states and more hay probably will be needed for fall feeding. They are also likely to ship quite a bit of hay to Nevada and Utah where the hay crops are very short.

call
PARKLAND CLEANERS
11004 Pacific Avenue
North of the Bank Corner
LEnox 7-3221

Week-End Sale

Receiving BLANKETS 24 x 36 **3/100**

Birdseye DIAPERS 27 x 26 1-Doz. Pkg. **159**

Little Girls MATCHING SHORTS & BLOUSE SETS Asst. Colors, 3 to 6X **99c**

One & Two Piece SUN SUITS Sizes 1 to 3 **99c**

Girls SWIM SUITS Sizes 2 to 6X **199**

Ladies Summer FLATS White Sizes 4 1/2 to 9 **SPECIAL 299**

Men's Wash & Wear DRESS SLACKS Black - Tan - Antelope Sizes 29 to 36 **399**

SEYMOUR'S
9714 Pacific Ave.—1 Block North Park 'N Shop
SHOP DAILY 9 to 9 EVERY SUNDAY 10 to 6

Open 7 Days A Week Summer Hours Sun. 9 to 4
HUNTING & FISHING LICENSES, SPORTING GOODS, PAINT
SOUTH END PLUMBING AND HARDWARE
185th & Pacific Ave. Open 8 to 7 Week Days VI 7-7211

FEEL LIKE A TEXAS MILLIONAIRE?
If you do - Fine! If not then look for dependability backed by years of experience!

Support Your Local Merchants
PROFESSIONAL DIRECTORY
Farmers Mutual of Enumclaw
Fire - Auto
ED MAREK
12909 Pacific Ave. LE 7-4000

WMA AUTO CLUB FRANKLIN LIFE INS.
Represented by
R. O. SANDQUIST
9702 So. Patterson LE 7-6979

ALUMINUM WINDOW SCREENS
Awnings - Storm and Screen Doors
Free Estimates - Installations
PARKLAND HARDWARE
12169 Pacific Ave. (Across from Piggly Wiggly) LE 7-3171

JULY SALE ART'S SHOES
Open MON. and FRI. Till 9:00
Between 121st and 122nd
Opposite Parkland P.O.

HILLTOP Concrete Co.
READY MIX TILL NOON SAT.
• CRUSHED ROCK • SAND
• GRAVEL • PIT RUN
• FILL DIRT
• DRAIN GRAVEL
DELIVERED
OR MACHINE LOADED ON YOUR TRAILER OR TRUCK
WEEK DAYS AND SATURDAY A.M.
TH. 5-9525
PLANT: 2223 23rd Ave. S.E., P.O. Box 648, Puyallup

The Country Parson
"Our early years are spent in learning our elders' prejudices—and our later years in trying to overcome them."
DRYER'S FUNERAL PLAN CUTS COST
DRYER MORTUARY
121st and Pacific
PARKLAND

Barbecued chicken, baked beans, assorted salads, garlic bread, ice cream, and homemade cookies will be served on the picnic grounds amongst the pine trees by Our Lady Queen of Heaven Church at Spanaway on Sunday, July 30. Dinner will be served from noon at a nominal fee. In case of inclement weather, dinner will be served in the parish hall.

Barbecued chicken, baked beans, assorted salads, garlic bread, ice cream, and homemade cookies will be served on the picnic grounds amongst the pine trees by Our Lady Queen of Heaven Church at Spanaway on Sunday, July 30. Dinner will be served from noon at a nominal fee. In case of inclement weather, dinner will be served in the parish hall.

Barbecued chicken, baked beans, assorted salads, garlic bread, ice cream, and homemade cookies will be served on the picnic grounds amongst the pine trees by Our Lady Queen of Heaven Church at Spanaway on Sunday, July 30. Dinner will be served from noon at a nominal fee. In case of inclement weather, dinner will be served in the parish hall.

Barbecued chicken, baked beans, assorted salads, garlic bread, ice cream, and homemade cookies will be served on the picnic grounds amongst the pine trees by Our Lady Queen of Heaven Church at Spanaway on Sunday, July 30. Dinner will be served from noon at a nominal fee. In case of inclement weather, dinner will be served in the parish hall.

Barbecued chicken, baked beans, assorted salads, garlic bread, ice cream, and homemade cookies will be served on the picnic grounds amongst the pine trees by Our Lady Queen of Heaven Church at Spanaway on Sunday, July 30. Dinner will be served from noon at a nominal fee. In case of inclement weather, dinner will be served in the parish hall.

Barbecued chicken, baked beans, assorted salads, garlic bread, ice cream, and homemade cookies will be served on the picnic grounds amongst the pine trees by Our Lady Queen of Heaven Church at Spanaway on Sunday, July 30. Dinner will be served from noon at a nominal fee. In case of inclement weather, dinner will be served in the parish hall.

Barbecued chicken, baked beans, assorted salads, garlic bread, ice cream, and homemade cookies will be served on the picnic grounds amongst the pine trees by Our Lady Queen of Heaven Church at Spanaway on Sunday, July 30. Dinner will be served from noon at a nominal fee. In case of inclement weather, dinner will be served in the parish hall.

Barbecued chicken, baked beans, assorted salads, garlic bread, ice cream, and homemade cookies will be served on the picnic grounds amongst the pine trees by Our Lady Queen of Heaven Church at Spanaway on Sunday, July 30. Dinner will be served from noon at a nominal fee. In case of inclement weather, dinner will be served in the parish hall.

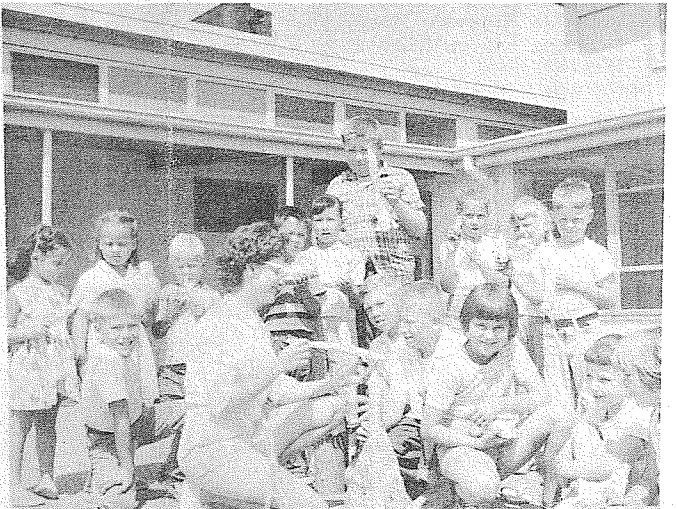
Barbecued chicken, baked beans, assorted salads, garlic bread, ice cream, and homemade cookies will be served on the picnic grounds amongst the pine trees by Our Lady Queen of Heaven Church at Spanaway on Sunday, July 30. Dinner will be served from noon at a nominal fee. In case of inclement weather, dinner will be served in the parish hall.

Annual Picnic

Fruitland Grange will hold their annual picnic Sunday, July 30th at Wildwood Park. It will be pot luck with the Grange furnishing coffee and ice cream. All members and their families are cordially invited.

The next meeting will be Aug. 24.

Will it Goto the Moon?



MISS SARA JOHNSTON, Pierce County Parks' craft specialist, is pictured with a group of James Sales Playground youngsters. Aluminum sculpturing was the feature of the day's craft projects and some of the work can be seen in the foreground. The daily handicraft program has become one of the standouts of the playground program.

Local playground leaders have found that the handicraft sessions held daily are one of the real highlights of the playground day. Aluminum sculpturing was the featured activity of the craft work the past week and was met with approval by youngsters of all ages.

Kids from five to fifteen are likely to take part, with the older youths often hoping the smaller ones work on their projects rather than doing original efforts of their own.

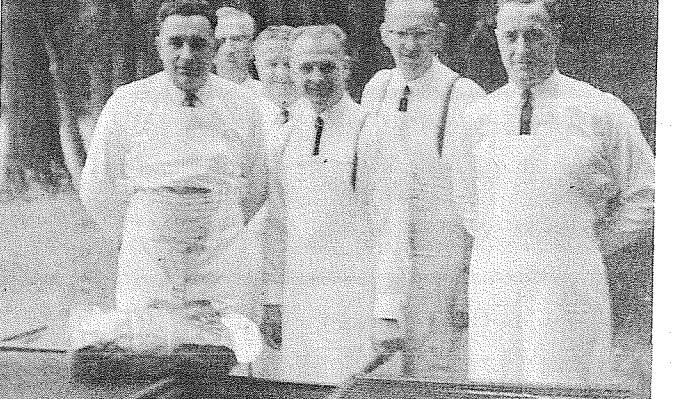
Miss Sara Johnston, craft specialist with the Pierce County Park Department, has outlined a comprehensive program which enables children of all ages to find a craft activity which fits their interest and ability.

Asbestos, aluminum foil, tempera paints, wood scraps, plaster of paris, and construction paper are just a few of the various craft media that are put to use in the program. Some of the many projects that will be taken up in future weeks are popcorn trees, plaster plaques, button figures, and paper bag animal sculpture.

All Franklin-Pierce, Parkland area playgrounds will hold pet shows in the coming week. Prize certificates are to be awarded to the pets judged biggest, smallest, most unique, best dressed, etc. Please remember that all animals must be kept on leashes throughout the activities.

Another item to remember is the deadline date of August 3rd for entries in the first annual Pierce County Junior Tennis Championships to be held August 7th to 17th on the Clover Park High School courts. Entry blanks may be picked up at the Pierce County Parks' office. A pogo stick contest, dry land fishing contest and a whistling contest are other local playground events to be held in the near future.

Chefs Plan For Church Picnic



ANDY LORENZ, Gunnar Nelson, Steve Kanton, Sid Bechard, Bob Boehlke and Fred Kanton (left to right), prepare for the Our Lady Queen of Heaven church dinner, July 30th.

Barbecued chicken, baked beans, assorted salads, garlic bread, ice cream, and homemade cookies will be served on the picnic grounds amongst the pine trees by Our Lady Queen of Heaven Church at Spanaway on Sunday, July 30. Dinner will be served from noon at a nominal fee. In case of inclement weather, dinner will be served in the parish hall.

Barbecued chicken, baked beans, assorted salads, garlic bread, ice cream, and homemade cookies will be served on the picnic grounds amongst the pine trees by Our Lady Queen of Heaven Church at Spanaway on Sunday, July 30. Dinner will be served from noon at a nominal fee. In case of inclement weather, dinner will be served in the parish hall.

Barbecued chicken, baked beans, assorted salads, garlic bread, ice cream, and homemade cookies will be served on the picnic grounds amongst the pine trees by Our Lady Queen of Heaven Church at Spanaway on Sunday, July 30. Dinner will be served from noon at a nominal fee. In case of inclement weather, dinner will be served in the parish hall.

Barbecued chicken, baked beans, assorted salads, garlic bread, ice cream, and homemade cookies will be served on the picnic grounds amongst the pine trees by Our Lady Queen of Heaven Church at Spanaway on Sunday, July 30. Dinner will be served from noon at a nominal fee. In case of inclement weather, dinner will be served in the parish hall.

Barbecued chicken, baked beans, assorted salads, garlic bread, ice cream, and homemade cookies will be served on the picnic grounds amongst the pine trees by Our Lady Queen of Heaven Church at Spanaway on Sunday, July 30. Dinner will be served from noon at a nominal fee. In case of inclement weather, dinner will be served in the parish hall.

Barbecued chicken, baked beans, assorted salads, garlic bread, ice cream, and homemade cookies will be served on the picnic grounds amongst the pine trees by Our Lady Queen of Heaven Church at Spanaway on Sunday, July 30. Dinner will be served from noon at a nominal fee. In case of inclement weather, dinner will be served in the parish hall.

Barbecued chicken, baked beans, assorted salads, garlic bread, ice cream, and homemade cookies will be served on the picnic grounds amongst the pine trees by Our Lady Queen of Heaven Church at Spanaway on Sunday, July 30. Dinner will be served from noon at a nominal fee. In case of inclement weather, dinner will be served in the parish hall.

Barbecued chicken, baked beans, assorted salads, garlic bread, ice cream, and homemade cookies will be served on the picnic grounds amongst the pine trees by Our Lady Queen of Heaven Church at Spanaway on Sunday, July 30. Dinner will be served from noon at a nominal fee. In case of inclement weather, dinner will be served in the parish hall.

Barbecued chicken, baked beans, assorted salads, garlic bread, ice cream, and homemade cookies will be served on the picnic grounds amongst the pine trees by Our Lady Queen of Heaven Church at Spanaway on Sunday, July 30. Dinner will be served from noon at a nominal fee. In case of inclement weather, dinner will be served in the parish hall.

Barbecued chicken, baked beans, assorted salads, garlic bread, ice cream, and homemade cookies will be served on the picnic grounds amongst the pine trees by Our Lady Queen of Heaven Church at Spanaway on Sunday, July 30. Dinner will be served from noon at a nominal fee. In case of inclement weather, dinner will be served in the parish hall.

Officers Installed

American Legion 228 and Auxiliary installed new officers at their July 13 meeting. Mary Marsden headed the installing team.

New officers are Mary Kittleson, president; Edna Unkrur, 1st vice president; Mimi Walsch, 2nd vice president; Elizabeth Fultz, Sgt. at Arms; Mamie Jackson, treasurer; Bertha Bailey, secretary; Gladys Lawson, chaplain; and Susan Swanson, historian.

Dignitaries included district president, Mary Forrester; and district president elect, Stella Collins. Also Mr. and Mrs. Wm. Bierer of Buckley, former officers.

The next meeting will be Aug. 24.

Graham Community Fair Produces Many Winners

Seventy-seven young showmen attended the first Graham Community Fair Sunday, July 23 at Pioneer Ball Park.

Lucky winners for the day were: Grand & Reserve Champion: senior grand and reserve, ions for fitting and showing in Steve Harlow and Gred Haaland. (Shorthorn.)

Sheep: Sr. grand and reserve champs—Kathy Polly and Mike Mastin. Jr. grand and reserve champs—Bobby Mexei, Cindy Polly. Top blues in type were Karen Fox, Hamp; Mike Mastin, Shropshire; Charles Temus, Romney.

Dairy awards: Guernsey top blue in type, Teresa Tomshck; Ayrshire top blue in type, Donald Larsoi; Brown Swiss top blue in type, Richard Starkel; Holstein top blue in type, Vickie Vollbrecht. Senior grand and reserve champs in fitting and showing were Pam Vollbrecht, Charlene Walters. Jr. grand and reserve winners were Teresa Tomchick and Vickie Vollbrecht.

Top blue in type of all breeds of beef, sheep and dairy were awarded one silver dollar. Grand and reserve champion ribbons were awarded in fitting and showing only.

Cub Pack 34 Plans Fishing Derby

The Cub Scouts of Pack 34 will hold their annual fishing derby on Saturday, July 29th. Prizes will be awarded for the longest and largest fish of any kind taken out of Spanaway Lake. The boys can fish any time during the day but must be accompanied by an adult.

There will be a potluck supper at 6 p.m. when all entries will be weighed and measured and prizes will be awarded.

School Plans Open Meeting

The Tacoma Life Line Christian School will hold a meeting at 9 p.m., July 31st, at the school. All those interested in learning the policies and functions of the school are invited to attend.

The school is located at 1708 E. 44th. It contains grades one thru 12. The school features an emphasis on religious training not ordinarily found in other public schools. All youths are welcome, as it is non-denominational.

Shop Parkland FIRST!

If You Have
ASTHMA
HAY FEVER - SINUS
Then you owe it to yourself to see a truly REMARKABLE new air PURIFIER and vacuum cleaner that is over 99% effective, does NOT use water, and is approved by the American Medical Association.

Please call LE 1-2000 for a demonstration at your convenience - day time or evening in your home. There is no obligation of course. All we ask is 15 minutes of your time. Doctors' inquiries welcomed and answered immediately.

—P.S. If you know someone with Asthma, please show this ad.

Parkland Sewing Center
12143 Pacific Ave.
In Parkland Theater Bldg.

CANYON READY-MIX CONCRETE
LE 7-3943

ALL DAY SATURDAY DELIVERY
(All Trucks Radio Dispatched)

We Give Personalized Service To All Our Customers

ONE CALL DOES IT ALL
72nd AND CANYON ROAD

HERE'S A COUPLE OF REAL COOL PRODUCTS

At a **RED HOT PRICE**

Large Family Size REFRIGERATOR WITH LARGE FREEZER

425 Lb. Capacity UPRIGHT FREEZER

NOW ONLY AT WEIR'S

Your Choice **\$188** No Pymt. Til Sept.

Each **WEIR'S**

Just Arrived 1961 STEREOS
And are they ever beautys... Prices are the lowest ever, only at WEIR'S!

Your Corner
Open Evenings Till 9 p.m. - Saturday Till 6 p.m.
8419 Portland Ave. LE 7-0231

Connie, from Seattle; Mrs. Laura Gregory, from Seattle; Mr. and Mrs. Dean Mellor and family, Mickey and Candy; Mr. and Mrs. Ralph Stauffer, and son, Lorrie; Mr. and Mrs. Chas. Cook, and daughter, Jill; Mrs. Nellie Tschuntz, from Kendrick, Idaho; Mrs. Sarah Bright; and Mrs. Ellis Walker.

4-H County Camp
The following boys from the Triple F 4-H group attended County Camp last week: Lewis Brozovich, Donald Fitzgerald, John Absten, Roger Absten, Terry Finklein, Edward Reding, Terry Ripoli, Bill Hammar, Darrell Peterson, Tom Bilyeu, and Eugene Gustafson.

Bethel Baptist Church
1 1/2 Miles E. of Johnson's Corner on Kapowsin Hiway. 2 Blocks left on Mathias Webster Road.
SUNDAY SCHOOL 9:45 a.m.
MORNING SERVICE10:55 a.m.
James E. Chisum
Pastor
GR 2-7597

Visits Victoria
Mr. and Mrs. Frank Highland and sons, Jeffrey and Scott, have just returned from a trip to Victoria, Canada. They enjoyed the ferry, the Princess Marguerite, and also motored to Birch Bay, on the way home they toured Seattle, Seattle's waterfront, and spent a day at Woodland Park.

Mothers' Festival
The Busy Hands and Fingers 4-H group held their annual Mothers' Festival.

FENCING
Designers and Builders
EXPERT WORKMANSHIP
REASONABLE PRICES
Easy Monthly Payments
VAUGHAN'S
84th & Pac. Ave. GR 4-9515

Mothers' Festival. The girls served a luncheon and put on a program. They also crowned their Junior Princess, Betty Absten. Attending were: Mrs. Jack Absten and Betty; Mrs. Fred Kertzman and Lorraine; Mrs. Ambrose Coleman and Carol; Mrs. Alfred Merkle and Maryanne; Mrs. James Kennedy and Kinene; Sandy Almont; Mrs. Marvin Creamer and Karen; Kathy and Marlene Hamblin, Junior Leaders, and Mrs. Ivy Hammar, leader of the group.

Lamb Killed
We are sorry to report that one of Bill Hammar's lambs was killed Monday by dogs. This is the second time this has happened to Bill. Bill is a member of the Triple F 4-H group.
Reporter—Mrs. Frank Gural.

The TIMES JOURNAL

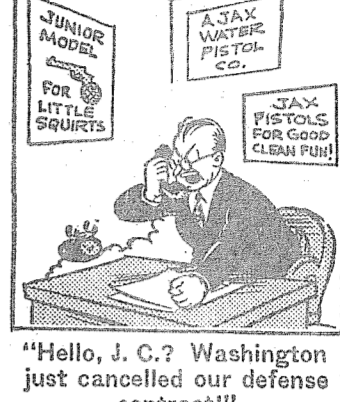
ADDRESS P. O. BOX 2008, PARKLAND, WASHINGTON
PUBLISHER JACK BROWN
EDITOR FLOYD FESSLER
ADVERTISING BETTY THOMPSON
CIRCULATION WAYNE JOHNSON
CLASSIFIED JUDY REED
ACCOUNTING CHET CHAMBERLAIN
SHOP SUPERINTENDENT DAVE HIBBARD
COMPOSING ROOM FOREMAN DICK MARCELLE
PHOTOGRAPHER CHUCK PARHAM
Qualified as a Legal Publication under Chapter 213 of the Legislative Acts of the 1941 Regular Session of the State of Washington.
Delivered free by U.S. Mail, or carriers, to all homes in the trade territory. Paid subscriptions elsewhere. In Washington State \$2.50 per year. Outside the state, \$3.00 per year.

County Agents Corner

What To Do If You Get Lost In The Woods
Wooded areas make ideal picnicking, camping or hiking sites. But remember these sites always present the hazard of getting lost as well.
For safety's sake be sure you or your family members are prepared to come through the ordeal.

This advice is from Loren Curry, County Extension Agent. He urges anyone headed for a hike, picnic or camp-out in the woods or mountains to go armed with a few safety devices. He suggests each person carry matches in a waterproof box, compass, map, knife, and a little concentrated food. They will come in handy if you get lost.
It's also a good idea to review a few safety measures with the group just in case.
Knut Lunnum, WSU Extension forester, suggests this list as a starter:
The moment you think you are lost start using your head instead of your legs!
Stop, sit down and try to figure out where you are and the direction you came from. (Panic is more serious than lack of food, water, clothing or hazards from wild animals).
At night or in foggy or stormy weather, find shelter quickly under a ledge or large boulder.
Then build a fire where it won't spread. And keep calm! Gather a supply of dry wood in case you have to wait; and keep warm until you can travel.
Always go downhill when trying to get out of the woods. If possible, follow a stream, trail, or any old road you may come across. Roads will eventually lead to homes, towns and people.
Walk. Don't exhaust yourself by running.
If you don't go on and must attract attention, make a signal smoke by throwing green branches and wet wood on a fire. A lookout man on a tower will spot the smoke and send help. But take care of the fire so it doesn't spread. One man lost in a western forest had to flee from his own fire to save his life.

Comedy Corner



Hi-Lifen
The Difference Is Much In Your Favor!
Ten years ago, 7 out of 10 of today's prescriptions could not have been filled. By keeping pace with medical science, we help your doctor help you to better health.
Parkland Rexall Pharmacy
11100 Pac. Ave. in Keller's Kort
LEnoX 7-8636

Black and White Film
In At 10 - Out At 5 p.m.
Same Day
We do the Finishing at our Own Plant
- Also -
Fastest Color Service In Tacoma
QUALITY PHOTO
9818 PACIFIC AVENUE

Bethel Baptist Church
1 1/2 Miles E. of Johnson's Corner on Kapowsin Hiway. 2 Blocks left on Mathias Webster Road.
SUNDAY SCHOOL 9:45 a.m.
MORNING SERVICE10:55 a.m.
James E. Chisum
Pastor
GR 2-7597

Fresh Smoked PICNICS 33¢ Lb.
DON'T MISS THIS VALUE
Fresh Grain Fed PORK CHOPS 59¢ Lb.
CENTER CUTS.....Lb. 69¢
Ocean Fresh RED SNAPPER Lb. 29¢

U.S.D.A. CHOICE BONELESS SIRLOIN TIP ROAST 89¢ Lb.
Ideal for outside cooking.
U.S.D.A. CHOICE FULL CUTS ROUND STEAKS Lb. 79¢
U.S.D.A. CHOICE WELL TRIMMED SIRLOIN STEAKS Lb. 79¢
U.S.D.A. GRADED CHOICE RUMP ROAST Lb. 79¢
BONELESS BRISKET - Waste Free CORNED BEEF Lb. 59¢

OLYMPIC Crisp Garlic DILL PICKLES Jumbo Jug 49¢
SWANSON'S T.V. DINNERS 49¢
BAKERS DOZEN SALE! BUY 12 BARS AT REGULAR PRICE GET 13TH BAR FREE Personal Size IVORY 59¢
13-Bar Pkg. Less Than 5c a Bar

DARIGOLD BUTTER Prints or Quarters Lb. 65¢
DARIGOLD EVAPORATED MILK Tall Tins 6/79¢
NALLEY'S Hot or Mild CHILI 303 Tin 49¢
TOWN PRIDE-No Sugar Needed Makes 1-Quart Asst. Flavors PUNCH BASE 8/\$100
MJB INSTANT COFFEE 6-Oz. Jar 79¢
SUNSHINE COOKIES Assorted Varieties Pkg. 43¢
A.B.C. FIG BARS 43¢

Our Special Value WALDORF White or Colors TOILET TISSUE 4-Roll Pkg. 25¢
Luxury Mild CHEESE Lb. 49¢
Coffee House COFFEE Lb. 57¢

ADAM'S Regular or Old Fashioned PEANUT BUTTER 17 Oz. Jar 39¢
LARGE "AA" WHITE EGGS 49¢ DOZ.
WALLA WALLA PEAS 6¢ 303 Tin

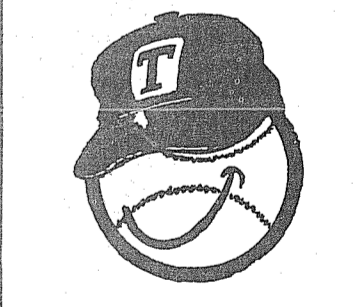
SUMMIT TRADING COMPANY
10409 Canyon Road, Tacoma LE 7-5848
No Sales To Dealers
We Reserve The Right To Limit Quantities
OPEN SUNDAYS 10 A.M. TO 7 P.M. FOR YOUR CONVENIENCE
WEEKDAY HOURS 9 A.M. TO 9 P.M.

FRESH PRODUCE
Wash. No. 1 POTATOES 10 Lbs. 27¢
Crisp Local CELERY 2/25¢
RADISHES GREEN ONIONS Bunch 3¢
Sunkist LEMONS Lb. 10¢

Briefly on Beauty



Brush In
After applying eyebrow pencil, use a clean mascara brush to blend the color into the brows. This trick will create a natural looking effect.



TACOMA GIANT FANS!

Packets of colored pictures of the Tacoma Giants are now available at your nearby Office of NATIONAL BANK OF WASHINGTON
Stop in and ask for yours. FREE while they last!
29 HELPFUL OFFICES
MEMBER FEDERAL DEPOSIT INSURANCE CORPORATION
MEMBER FEDERAL RESERVE SYSTEM

Little League All-Stars

Bethel Little League All-Star games will be held on the Bethel Main Field Friday, July 28 at 7:30 p.m. The Pee Wee All Star game will be from the North and South of the Bethel district.

The North All-Stars will consist of 4 players from the following teams: Elk Plain Five Buds, Kapowsin Cubs, and the Eatonville Tigers.

The South will consist of 4 players from each of the following teams: Spanaway Auctioneers, Clover Creek, Spanaway Hawks, and the Spanaway Sportsmen.

There will also be a game between the Midget All-Stars and the Bethel Junior High team.

The Midget All-Star team will consist of 4 players from each of the 4 teams in the Bethel district. They are: Elk Plain Elks, Kapowsin Loggers, Benson Grangers, and the Spanaway Firemen.

Visit
Mr. and Mrs. Merlin Dickinson and children are now visiting relatives and friends in Kansas and Oklahoma.

Mrs. Mary Passmore, mother of George Buck of Elk plain, left July 15 with her cousin, Mrs. Evelyn Whiteman, to visit friends and relatives in California, and tour Mexico, the Grand Canyon, Missouri and Kentucky. They plan to return home in September.

Fall
Mrs. Leona Buck fell and hurt her back and was in the hospital a few days. She is now home and feeling better.

Enlists
Neil Potter has enlisted in the Navy and will be leaving for California in August. He is the son of Mr. and Mrs. Bud Potter of Elk Plain.

Sympathy
We of the community wish to extend our sympathy to the Woody Esarey family in the recent death of Woody's mother, Mrs. Esarey.

Ocean
Mr. and Mrs. Bob Landgrebe, Pamela, and Bette, and Mr. and Mrs. Roy Landgrebe and Susan spent last weekend at the Ocean.

SARGENT'S A&W DRIVE-IN
We Are Proud of Our ROOT BEER
8442 Pacific Avenue

Rural Garbage Service
Pierce County Permit
Serving Parkland, Midland, Summit and Spanaway
LEnoz 7-8688

**Bicycles
Lawnmowers
Locks & Keys**
These Are Our Specialties
PARKLAND CYCLE & KEY
11021 PACIFIC AVENUE
LE 7-5772

Kudos
Congratulations to Lloyd Landgrebe on catching the 44 Lb. King Salmon at Westport recently.

Camp Time
The boys and girls of the Elk Plain Community Church will leave Sunday, July 30 for a weeks stay at Island Lake Bible Camp, north of Bremerton.

Anyone with news items may call VI 7-7386.
Reporter—Mrs. Ray Burkhardt.

Flying
The members of the Flying Signalers club are the proud owners of a 1960 Champion DX'er. The 172 is nearly booked solid for the summer months for family vacation trips so the second plane is necessary to keep all members happy. Chuck Stillman and his family just returned from a trip to North Dakota and Sunday morning Bob Villmont and his family took off for a two week vacation in southern California.

Two first solo flights were made this last week. They were made by Bill Leffell and Bob Mullay.

Bob Beck, Melvin McDonald and Dick Albertson have all made at least one solo cross-country trip this last week with their goal being at least ten hours of training on cross-country flying. Gene Johnston has also qualified for solo cross-country.

The Lewis County Chapter of the Washington Pilots Association was attended by Cecil Jackson in his twin engine Cessna with Lyle Penquite and his two daughters as passengers. Others from this area were Don Norris and Darrell Dugan for the Northwest Flyer and Slim and Jeanne Lawson.

The Snohomish Salmon Bake was attended by five planes from Thun Field and Spanaway. They were Jen and Orv McCaughy with their guests Linda and Butch Everett; Clarence and Marie Anderson; Gene Moye and his family; Jerry Edlund and Eileen Finn in the Mooney for the Mooney display and Cecil Jackson and his passengers flew in for lunch after having had breakfast at Chehalis.

Attend Wedding
Many friends and relatives attended the beautiful evening wedding of Miss Layne Ellen Turner, daughter of Mr. and Mrs. James Turner and Gerald McCullough, son of Mr. and Mrs. Robert McCullough, July at Our Lady Queen of Heaven Church.

The Rev. William Greir officiated.

Miss Margaret Kloster was maid of honor and Mrs. Gerry Susan and Miss Patricia Landon were attendants.

Garry Susan was best man, and Garry Turner, brother of the bride and Gerald Larson were ushers.

Mrs. Robert McCanney, organist, accompanied Mrs. Darold Haugen, soloist, sang the wedding hymns.

Assisting at reception were Mesdames Vern Kinsberg, W. N. Koch, Gerald Turner, Evelyn McCullough, Francis Sheppard, Jerry Irwin, Gordon Loyer, Wm. Treat and Ron Grunden. The

Retail Meats at Wholesale Prices
Buy Direct from The Packer

STEER BEEF
LIVER . . . lb. 29c
25 Lb. BEEF PACK **15.50**
10 Lbs. STEAK
10 Lbs. ROAST
5 Lbs. GROUND BEEF

Order Your Locker Beef Now!
We Finance
WHOLESALE MEATS VI 7-7277

Fellow Signs on Mt. Hiway at Elk Plain (Theil Dudleston Rd.)

4TH PARKLAND HARDWARE'S ANNIVERSARY SALE
SAVE ON FULLERS TOP GRADE PAINT NOW!

EXTERIOR LATEX HOUSE PAINT Reg. \$7.95 SPECIAL **\$6.28** GAL.
EXTERIOR RUSTIC (Shake & Shingle) Reg. \$5.79 SPECIAL **\$4.69** GAL.
EXTERIOR PRIMER Reg. \$5.55 SPECIAL **\$4.49** GAL.
EXTERIOR GLOSS WHITE Reg. \$6.95 SPECIAL **\$5.59** GAL.
WESTERN WHITE (For Fences, Outbuildings, Etc.) **\$3.66** GAL.

22" ELECTRIC FAN
2-Speeds Reg. \$39.95
Special **\$29.45**

1/2" PLASTIC HOSE
Reg. \$3.95 SPECIAL **\$3.29**

METAL TOOL BOXES **\$5.45**
Reg. \$6.95 SPECIAL

AIR MATTRESSES **\$6.95**
Reg. \$9.95 SPECIAL

BAR-B-Q TOOLS **79¢**
Reg. \$1.00 Each SPECIAL

PARKLAND HARDWARE LEnox 7-3171
12169 Pacific Ave.



FRIED CHICKEN DAYS are here again, so this young teenager sets an amusing barbecue table for her Party-of-the-Month. The honeycomb chef for the centerpiece has the rotund figure one should expect for such an occasion. The young hostess has wisely chosen almost unbreakable melamine dinnerware in a pretty modern design for service. Napkins and cups are decorated with the barbecue theme and are coordinated with the centerpiece. A modern grill that may be used indoors or outdoors will barbecue the chickens to perfection.

Scout Receives Star Award
Andy Ashmore, son of Mr. and Mrs. Hobart Ashmore, received the Star Scout Award at a recent Potluck Dinner of the Spanaway Scout Troop 34. Andy is the first scout in Troop 34 to receive such an award.

Camping Planned
Ten boys of Troop 34 are looking forward to a week of fun at Camp Hohobas on Hoods Canal. Orville Critchley, Scout Master, will be with them.

Get Well!
Speedy get well wishes to George Woracek who is home from the hospital with a foot injury.

Attend Wedding
Many friends and relatives attended the beautiful evening wedding of Miss Layne Ellen Turner, daughter of Mr. and Mrs. James Turner and Gerald McCullough, son of Mr. and Mrs. Robert McCullough, July at Our Lady Queen of Heaven Church.

The Rev. William Greir officiated.

Miss Margaret Kloster was maid of honor and Mrs. Gerry Susan and Miss Patricia Landon were attendants.

Garry Susan was best man, and Garry Turner, brother of the bride and Gerald Larson were ushers.

Mrs. Robert McCanney, organist, accompanied Mrs. Darold Haugen, soloist, sang the wedding hymns.

Assisting at reception were Mesdames Vern Kinsberg, W. N. Koch, Gerald Turner, Evelyn McCullough, Francis Sheppard, Jerry Irwin, Gordon Loyer, Wm. Treat and Ron Grunden. The



No Crystal Ball
Earlier this year much was made over the fact that Carry Back is what is politely termed "unfashionably" bred. The little horse that runs so big is, however, no less a Thoroughbred than the royally bred Globemaster for which Leonard P. Sasso paid \$80,000 as a yearling, both trace back to Eclipse. Thoroughbred breeding is a fascinating, baffling, and sometimes lucrative business. Two of the most sensationally successful breeders in American history apparently operated on contradictory theories. Calumet Farm held with the late William Woodward that "on the quality of its mares depends the success of a stud." John E. Madden, whose famed Hamburg Place led the breeders for eleven straight years—1917-27—stressed the im-

Daughter Visits Alfred Stoddens
Visiting at the home of Mr. and Mrs. Alfred Stoddens on Canyon Road is their oldest daughter, who with her family are now living in California. The visitors have taken in several of Tacoma's sights, including Point Defiance Zoo.

Summit Births
The following families are welcoming new additions to their households: Born July 7th in the Good Samaritan Hospital in Puyallup are a boy, born to Mr. and Mrs. Claude Ferguson of 10707 East Grant Ave. and another boy born to Mr. and Mrs. Jack Dornbusch of 9221 East Pennsylvania Ave. **Summittes . . . Note**

Because the summer times makes it difficult to get news for our column it would be appreciated if anyone in the area has an item, to please call me anytime during week days, preferably around dinner time, so that we can have the article for the paper. Remember, parties, anniversaries, dances, births, birthdays, vacations or any general item will go. You can call at LE 7-7150.

Complete Auto Body Repair
Brake Work Estimates Free
WHEEL ALIGNMENT
Call LE 7-8131
KIMBALL'S BODY SHOP
10225 Pacific Avenue

9 TO 9 Weekdays
PRESCRIPTIONS FAST SERVICE
Veterinary Supplies
Photo Equipment
Gifts for Everyone
From Infants to Grandfather
MAULEY SUMMIT DRUG
Airport & Canyon LE 7-6668

Clover Creek Baptist Church
Military and Knoble Road
Three Miles East of Pacific on 159th Street

Sunday School — 9:45 a.m.
Morning Service — 11:00 a.m.
Evening Service — 7:00 p.m.
Young People — 6:00 p.m.

Lyle Bramblet, pastor
Phone LE 7-6421

Franklin Pierce Baseball Scores
Rookie
A&S Egg Supply (Thompson, Southern) 14, Bombers (Protel and Richardson) 7.

Trinity Lutheran Cubs (Michael, Peterson) 21, Rebels (Hugler and Morley) 4. Home runs by Denis Morrison, Robert Wickem and Jim Mitchell for Cubs.

Missels (Jones and Johnson) 20, Bombers (Protel and Shepard) 6.

Yankees (Matson, Cail) 19, Paradise Bowl (Bartle, Harvie) 14. Home runs by Doug Cail (3) and Allyn Fille for Yankees.

Pee Wee
Millers (Johnson and Trett) 9, T. L. Giants (McKay and Bjorke) 2. Home run by Bob Trett for Millers.

Sparkers (Harvey, McLeon)
9, M. Giants (Blessing, Slater and Banks) 8. Home runs by Ron Slater for Giants.

Spikes (Horton and Moe) 13, City Hardware (Woodward and Houk) 12. Home run by Jimmy Tobacco for the Spikes.

Shop-Ette (Anderson and Jacobson) 20, Pups (Goodale and Strittmatter) 3. Home run by Dave Beach for Shop-Ette.

Shop-Ette (Greenlaw and Jacobson) 30, Trinity Lutheran Giants (MacGruder and Burke) 7.

Bantam
Termites (Ronjue and Resch) 10, Giants (Martin, Slopak) 9. Home run by Jim Chaple for Giants.

Foodtown (Kent and Williams) 17, Lucky 9 (Ketter and

Parsley Tip
To keep parsley fresh, wash in cold water, shake off excess drops and place in covered glass jar for refrigerated storage.

Woodland Lucky Clover 4-H Club will have their regular meeting on Tuesday, August 1st at the home of Chuckie and Nancy Woolley on Collins Rd. Further plans will be discussed for the coming Junior Fair in Summer. Three of the members showed at the Graham Fair on Sunday, July 23rd. Chuck Woolley received a blue for type and red for fitting and showing with his Hereford and Nancy

Woodland . . .
Round Dance Night Planned
Tonight, Thursday, July 27th will be Howdy Partners Round dance night at Fruitland Grange. This is workshop night with Willis Dodge at the mike. Dancing will start at 8 p.m. All dancers are welcome.

Spice CABINET
A kitchen cabinet with a built-in spice rack, providing a convenient place for spices and seasonings.

Woolley and DuWayne David membered me with cards and flowers during my recent stay red for fitting and showing in the hospital. Thanks so much." —Mrs. Lillian Denny, Reporter—Margaret David.

STEP LADDERS
Sturdy Wood & Metal Hdwr.
4-Ft. 5-Ft. 6-Ft.
3.39 4.19 4.99
GET ALL YOUR PAINT NEEDS HERE

EVERAIN SPRINKLERS
With Auto Dial Control
Reg. \$6.95 NOW **3.99**

SOUTH END PLUMBING & HARDWARE
185th & Pacific Ave.
VI 7-7211

FIRST SEE NATIONALS
LE 1-1331
PARKLAND AUTO PARTS
127th & PAC. AVE.

Polar Frozen STRAW BERRIES
5 10-Oz. Pkgs. **\$1**

Sunkist ORANGE BASE
4 6-Oz. Tins **49¢**

M-D NAPKINS
80 Count **10¢**

Rosedale Cut GREEN BEANS
7 303 Tins **\$1**

Polar Frozen RASPBERRIES
5 10-Oz. Pkgs. **\$1**

Fresh CHEESE SNACKS
12-Oz. Cello Bag **29¢**

EGGS
Large AA Doz. **49¢**

Spice CABINET
A kitchen cabinet with a built-in spice rack, providing a convenient place for spices and seasonings.

Woolley and DuWayne David membered me with cards and flowers during my recent stay red for fitting and showing in the hospital. Thanks so much." —Mrs. Lillian Denny, Reporter—Margaret David.

STEP LADDERS
Sturdy Wood & Metal Hdwr.
4-Ft. 5-Ft. 6-Ft.
3.39 4.19 4.99
GET ALL YOUR PAINT NEEDS HERE

EVERAIN SPRINKLERS
With Auto Dial Control
Reg. \$6.95 NOW **3.99**

SOUTH END PLUMBING & HARDWARE
185th & Pacific Ave.
VI 7-7211

FIRST SEE NATIONALS
LE 1-1331
PARKLAND AUTO PARTS
127th & PAC. AVE.

Polar Frozen STRAW BERRIES
5 10-Oz. Pkgs. **\$1**

Sunkist ORANGE BASE
4 6-Oz. Tins **49¢**

M-D NAPKINS
80 Count **10¢**

Rosedale Cut GREEN BEANS
7 303 Tins **\$1**

Polar Frozen RASPBERRIES
5 10-Oz. Pkgs. **\$1**

Fresh CHEESE SNACKS
12-Oz. Cello Bag **29¢**

EGGS
Large AA Doz. **49¢**

Spice CABINET
A kitchen cabinet with a built-in spice rack, providing a convenient place for spices and seasonings.

Woolley and DuWayne David membered me with cards and flowers during my recent stay red for fitting and showing in the hospital. Thanks so much." —Mrs. Lillian Denny, Reporter—Margaret David.

STEP LADDERS
Sturdy Wood & Metal Hdwr.
4-Ft. 5-Ft. 6-Ft.
3.39 4.19 4.99
GET ALL YOUR PAINT NEEDS HERE

EVERAIN SPRINKLERS
With Auto Dial Control
Reg. \$6.95 NOW **3.99**

SOUTH END PLUMBING & HARDWARE
185th & Pacific Ave.
VI 7-7211

FIRST SEE NATIONALS
LE 1-1331
PARKLAND AUTO PARTS
127th & PAC. AVE.

Polar Frozen STRAW BERRIES
5 10-Oz. Pkgs. **\$1**

Sunkist ORANGE BASE
4 6-Oz. Tins **49¢**

M-D NAPKINS
80 Count **10¢**

Rosedale Cut GREEN BEANS
7 303 Tins **\$1**

Polar Frozen RASPBERRIES
5 10-Oz. Pkgs. **\$1**

Fresh CHEESE SNACKS
12-Oz. Cello Bag **29¢**

EGGS
Large AA Doz. **49¢**

Woolley and DuWayne David membered me with cards and flowers during my recent stay red for fitting and showing in the hospital. Thanks so much." —Mrs. Lillian Denny, Reporter—Margaret David.

STEP LADDERS
Sturdy Wood & Metal Hdwr.
4-Ft. 5-Ft. 6-Ft.
3.39 4.19 4.99
GET ALL YOUR PAINT NEEDS HERE

EVERAIN SPRINKLERS
With Auto Dial Control
Reg. \$6.95 NOW **3.99**

SOUTH END PLUMBING & HARDWARE
185th & Pacific Ave.
VI 7-7211

FIRST SEE NATIONALS
LE 1-1331
PARKLAND AUTO PARTS
127th & PAC. AVE.

Polar Frozen STRAW BERRIES
5 10-Oz. Pkgs. **\$1**

Sunkist ORANGE BASE
4 6-Oz. Tins **49¢**

M-D NAPKINS
80 Count **10¢**

Rosedale Cut GREEN BEANS
7 303 Tins **\$1**

Polar Frozen RASPBERRIES
5 10-Oz. Pkgs. **\$1**

Fresh CHEESE SNACKS
12-Oz. Cello Bag **29¢**

EGGS
Large AA Doz. **49¢**

MORTON'S FROZEN PIES
Apple, Cherry, Peach, Boysenberry
3 \$1
1 1/2 Pound Pies

KOOL-AID
3 FOR 10¢

Pillsbury BUTTERMILK PANCAKE MIX
8 Pound Bag **89¢**

Beefsteak TOMATOES
19¢ Lb.

Golden Bantam CORN
5¢ Each

Danish SQUASH
7¢ Each

Large LETTUCE
9¢ Each

WE FINANCE LOCKER MEATS
ALL STEER BEEF
1/2 Beef Cut and Wrapped . . . Pound **45c**
Front Quarter Cut & Wrapped . . . Pound **43c**
Hind Quarter Cut & Wrapped . . . Pound **55c**

PEDERSON'S CUT-UP FRYERS
35¢ Pound

PURE GROUND BEEF
3 Lbs. For **98¢**

NORTHWEST SKINLESS WIENERS
45¢ Pound

RIB - ROUND - SIRLOIN STEAKS
69¢ Pound

RATH, CHUNK BOLOGNA
39¢ Pound

McDANIELS
The Home of The Low Price
AIRPORT AND CANYON ROAD
Store Hours: 9:00 'til 9:00, Sundays 9:00 'til 7:00

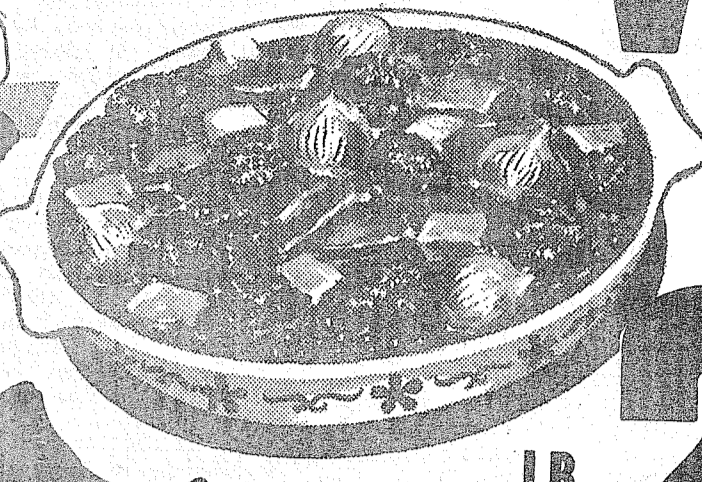
PRICES EFFECTIVE THURSDAY FRIDAY SATURDAY

EVERYBODY LOVES

BREAST OF VEAL

STEW

Serve it Tonight!



To Bake or Stew

LB. 29¢

GROUND BEEF 100% PURE 3 Lbs. 98¢

RUMP ROAST Lb. 59¢

Our Own Country Style PORK SAUSAGE 3 Lbs. \$1

Steer Beef T-BONE STEAK Lb. 89¢

Steer Beef Boneless SIRLOIN TIP ROAST Lb. 69¢

Filet RED SNAPPER Lb. 29¢

Veal

STEAK

Shoulder Lb.

49¢

CHOPS

Lean Meaty Lb.

69¢

STEER BEEF STEAKS Round Rib Sirloin Lb. 69¢

SYRUP Sunny Jim 5 Pound Long John 79¢

PURINA DOG CHOW 25-Lb. Sack \$2 59

Instant SANKA 5-Oz. Jar 89¢

Book MATCHES Pkg. 10¢

Cleaner & Disinfectant PINE SOL Pt. 39¢

EGGS Snyder Large Chex Dozen 39¢

Snyder Large Chex

39¢

Last Chance for Yakima Tilton APRICOTS 26 to 28-Lb. Box \$2 29

SALAD DRESSING Bargain Basket Qt. 39¢

CUCUMBER CHIPS Olympic 48-Oz. 69¢

MILK Darigold Canned Tall Tins 3 for 43¢

Darigold Canned Tall Tins

43¢

Beefsteak TOMATOES Lb. 19¢

Polski

POLISH DILLS Qts. 49¢

49¢

STRAWBERRY PRESERVES Sunny Jim 20-Oz. 39¢

Sunny Jim 20-Oz.

39¢

ORANGE MARMALADE King Kelly 2-Lb. Jar 39¢

King Kelly 2-Lb. Jar

39¢

MACARONI DINNERS Kraft 2 Pkgs. 29¢

Kraft 2 Pkgs.

29¢

NBC Oreo COOKIES 11-Oz. 3 Pkg. 89¢

3 Pkg. 89¢

SUNSHINE GRAHAM CRACKERS 1-Lb. Pkgs. 29¢

29¢

No. 1 Yakima Red POTATOES 10/29¢ Lbs.

Fresh Hale PEACHES 2 Lbs. 29¢

a-Wondering . . . and a-Wandering . . .

with JACK BROWN
In the past weeks I've ground out a lot of nonsense and we've all had a few laughs so I think it's time for a little serious thought this week.

Communities, like people, do not or cannot remain the same. Either we grow or we slip backward. As with any vital, living thing, there is no status quo. In your estimation . . . how goes the battle in Parkland, Spanaway, Eatonville, Roy and the other communities in our area?

One of the best and simplest editorials on transportation matters that has yet appeared comes from the Scottsbluff, Nebraska, Star-Herald. Here it is: "James Hoffa of the Teamsters Union calls upon Congress to pass a law to require the Interstate Commerce Commission in fixing freight rates to consider the effect that railroad piggyback methods have on competing forms of transportation."

"He argues that the efficiency of trailers on flat cars is taking jobs that 'belong' to trucking employees and he expresses no concern for the consumers who pay the bill."

"Railroads lost business and employes when trucks moved goods more efficiently and economically than railroads. The railroads by their own resources are now able to recapture some of that lost business. The consumers will ultimately benefit in terms of the retail price they must pay. There should never be legislation to hamstring efficiency or the free enterprise system."

It's easy to understand the objection of the truckers to loss of business. But what they should be doing is seeking ways to make their own services more attractive to the shipper—not asking Congress for a law that would give them the traffic whether they deserve it or not on the basis of economy and efficiency. A main reason for competition is to make a profit by giving consumers the best in goods and services at minimum costs. That goes for transportation as well as all other enterprise.

Proposed new postage rates would increase postal costs for small-town weekly and daily newspapers by an average of 254 per cent—and would undoubtedly force many of them out of business. That is the gist of figures compiled by the National Editorial Association, and presented by an Association spokesman to the House Post Office and Civil Service Committee.

Almost everyone agrees that something must be done about the Post Office deficit, which is currently running in the vicinity of \$700 million a year. But a rate increase such as this on the smaller newspapers—coming as it would on top of other rate increases amounting to 89 per cent which have been imposed during the last 10 years—would be out of all reason. The carrying of newspapers and magazines has been regarded as an essential public service to maintain an enlightened public ever since this government began. It is thus comparable to the military forces, and it has rarely been argued that they should wholly pay their own way.

Just to keep the record straight, this article is not one intended to feather my own nest for this paper has been mailed third class throughout the years and therefore the amount we pay far exceeds that of the papers under discussion.

Here's something for you gals to think about. The other day at The Dalles, Oregon, I happened to see a very well dressed refined looking lady, somewhere in her 60s, I would judge, waiting at the terminal building. I naturally assumed she was waiting for the next commercial flight. A little later I happened to look out just in time to see her pull off her high heels, slip on a pair of low ones, step into a small two place plane and make a beautiful take-off.

Later that same evening I was at the Lake 'O The Woods airport, 5,000 ft. up in the mountains near the California line and I happened to be standing by my own plane when I saw a sleek little two place Luscombe come gliding in for a beautiful 3 point landing. The pilot? Another woman.

The next day in Medford one of my newly acquired employees in that area introduced me to her mother-in-law. She was a diminutive little woman with a motherly type appearance that belied the fact that around sunset I would pass her, in her own plane, flying the airways to Portland. The moral of this little article is that even if your old man is afraid to get both feet off the ground, what's holding you back?



Egg-Head Knows Best?

Baby Shower Surprises

Collins Bike Riders surprised Mrs. James Stockwell with a baby shower Wednesday, July 19 by pedaling her to the Sportsmen's Club picnic grounds where many friends were already gathered. After opening the gifts, cake and ice cream were served by the hostesses, Mrs. Lawrence Baskett, Mrs. Clarence Sagen, and Mrs. Pete Svinth.

At Camp Members of Troop 92 Boy Scouts are camping at Camp Hahobas for a week. At Home Mr. and Mrs. Gordon Geisler and family and Rhoe Ann Earle are spending a few days at the Geisler summer home on Mason Lake.

Guests Mr. and Mrs. Walter Earle are guests of Mr. and Mrs. E. R. Reynolds on a cruising trip to the San Juan Islands. Campbells Mr. and Mrs. Ellsworth Campbell and son Marvin, Mr. and Mrs. Lloyd Erlandson and family visited Whiddy Island recently. Home Mr. and Mrs. David Harper are home after a trip by jet to Los Angeles to visit Mr. Harper's sister. Reporter — Eva Pearl Morris.

True enjoyment comes from activity of the mind and exercise of the body; the two are ever united. — Alexander Humboldt

AUTOMATIC TRANSMISSIONS Complete Overhaul
FORDOMATIC 51-55 . . \$100
MERCOMATIC 55-60 . . \$135
POWERGLIDE 50-52 . . \$ 65
53-60 . . \$ 95
POWER FLIGHT \$ 75
TORQUE FLITE \$ 85
HYDRAMATIC 50-54 . . \$100
55-60 . . \$140
Sheridan Motors
LE 7-3840
10203 So. Sheridan

WE MAKE LUMBER
LUMBER
GLASS
HARDWARE
SHINGLES
ROOFING
FIR SAWDUST
GET OUR PRICE
FIRST ON ECONOMY
GRADE LUMBER
Baskett Lumber
9701 Portland Avenue
LE 7-8663

TV INSTALLATION AND REPAIRS
A.B.C. ELECTRONICS
Garfield & C Street
LE 7-4900
Guaranteed WORK
LOW RATES

PROMPT PERSONALIZED PRESCRIPTION SERVICE
TED SWANSON INSULIN - VITAMINS
Downtown Prices
Pay Phone Bills Here
PLENTY OF FREE PARKING
TINCHER'S PHARMACY
8227 Park Ave. GR 4-3844
Across from Fern Hill P. O.

FOR RENT TRUCKS & CARS
MA 7-9039
Save One Half
We Furnish Everything
HARMON'S
Drive - Ur - Self Co.
HARMON'S SERVICE
2112 Jefferson
Jim Harmon, Mgr.

WATER WELL DRILLING
BERKELEY PUMPS — WATER FILTERS
TACOMA PUMP & DRILLING CO.
We Are Fully Insured For Your Protection
LE 7-7281 Trades - Terms 14621 Pacific Ave.

Vaughan's Values
MODERNIZE YOUR HOME
Have a 3 Bedroom Home at Your PRESENT ADDRESS
Add a Room - Install Modern Cabinets
Re-roof - Repair
FREE PLANNING & ESTIMATES
VAUGHAN'S PACIFIC AVENUE LUMBER
84th & Pacific Avenue GR 4-9515

TELEVISION SERVICE CENTER
PRESENTS TV CHUCKLES
WHERE'S CHARLIE?
He couldn't wait. It was time for "Maverick" and he didn't want to miss it since T.V. Service Center put his set back into first class condition.

TELEVISION SERVICE Center
"YOUR WINEGARDED COLOR CEPTOR DEALER"
GR23386
8431 PACIFIC AVE

HOME PLUMBING AND HEATING
Residential - Commercial
LE 7-4615
1015 VIOLET MEADOW

KFHA
1480
YOUR LAKES AREA RADIO STATION
TO BEGIN OPERATION
TUESDAY, AUGUST 1st At 6:00 A.M.

Store Hours: 9 a.m. to 10 p.m. DAILY
BARGAIN BASKET
16618 PACIFIC AVE. South SPANAWAY, WASH.
NO SALE TO DEALERS
LE 7-3371

Business Service 3

ART'S SHOES
Shoes for the Entire Family
EXPERT SHOE REPAIRING
315 Garfield St.
Between 121st and 122nd
Opposite Parkland Postoffice

HAY MOWING, plowing, disking, rotovating and lawn work.
R. D. Beeler, LE 7-4940. 3cft

DICK'S
Repair Service
Outdoor & Lawn Mower
Small Appliances
Motor Repair Service
141st & Pac. Ave. LE 1-2910

SEPTIC TANK, Drainfields, Sewer Installation. Luke, GR 2-7243. 3cft

WEBB ELECTRIC
COMPANY
Commercial—Residential

ELECTRIC HEATING
WIRING & ELECTRICAL SUPPLIES
24 HR. EMERGENCY SERVICE LE 7-4437

LE 1-1133
11112 Pacific Avenue

NOW AT SILVER'S
Complete service on electric ranges. All makes. Fast, dependable, reasonable. LenoX 7-8634. 3cft

Boush Moving & Storage
Agents for U.S. Van Lines
Cost to Coast Service
11816 Pacific Avenue
LE 7-3696
Parkland, Wash.

TOP SOIL — SANDY LOAM — Parkland area special. Puyallup TH 5-8759. 3cft

South End Auto Wreckers
USED PARTS—Motors, Transmissions, Tires, Batteries. We buy junk cars. Also Custom welding by Joe's Welding
1 Mile East of Roy Y on Mt. Hy. Spanaway VI 7-7242

FOUNDATIONS, ADDITIONS, REMODELING, Free Estimates, Financing, no down payment. Ph. GR 4-7000 any time. 3cft

CALL POCHEL FOR Expert T.V. Repair
Satisfaction Guaranteed
Free Tube Testing
140th & Pacific LE 7-8624

PHOTOS
5x7, \$1 — 8x10, \$2
For Appointment, Phone GR 4-1986—Open Evenings
FAMILY PORTRAIT STUDIO
8411 South Park Ave.

ROTOVATING & Tractor Work. Light Blade Work. Reese, LE 7-7559. 3cft

Parkland Heating Co.
All makes of furnaces for sale; Specializing in Williams Oil 'O' MATICS; OIL, GAS, Hot Water Installations. Electric Heat & Lighting Fixtures; Service—reasonable.
755 South 108th LenoX 7-4045

SEPTIC TANK CLEANING
Prompt Service
C. V. HUTSON
GR 4-3980 GR 2-7038

BULLDOZING, grading, plowing, disking, Tractor evenings, weekends. Crawler Tractor. LE 7-4051. 3cft

TV REPAIR
Free Pick Up and Delivery
All Work Guaranteed
McWIK'S
Call Bill Bean
JU 4-3300
or
LE 7-7933
Two Shops to Serve You

AVAILABLE — For Carpenter work, building, remodeling cabinets. LE 1-0192. 3p49

A-1 SANITARY SEPTIC TANK PUMPING AND SEWER CLEANING SERVICE
PUY. TH 5-2873

Fuel (4)
FOR SALE — Alder fireplace wood, \$12.50 per cord delivered. LE 1-2827 after 5:00 p.m. 4cft
Shop Parkland FIRST!

Help Wanted 5

BOYS & GIRLS — Part time Work. SK 2-0200. 5c48

MEN or WOMEN
Parkland - Spanaway - Lakes area. Part time or full time servicing customers with famous Watkins Products. Earn 2 to 3 dollars per hour. No age limit - no investment necessary. Apply 8408 Pacific Avenue

Lost & Found 6

LOST — Duffel bag full of baseball equipment at Gonyea field. Call GR 2-8595. 6c47

Real Estate 9
FOR SALE — In Spanaway, 2-bedroom home, furnished or unfurnished. Electric heat; 2-car separate garage; located on 4 completely fenced lots. LE 7-5585. 9c47

M. L. S.
MULTIPLE LISTING SERVICE.
EQUITY SALE
FULL PRICE \$5,500. Equity \$2,150. pmts. \$31.00 mo. 4 1/2 int. Lot 55x395'. On bus line, close to stores. Heat and clean. one bedroom. Good garage. Call Ralph Decker, GR 4-9579. RA-10396

QUICK POSSESSION
I HAVE a few 1, 2 and 3 bedroom homes with very low down payments and very easy monthly payments. Call Ralph Decker, GR 4-9579.

McKINLEY HILL REALTY
6311 McKinley Ave. GR 4-9579
Member of Multiple Listing Service and TACOMA REAL ESTATE BOARD

M. L. S.
MULTIPLE LISTING SERVICE
So. 128th
SMALL 2 bedroom home, nice for a couple. SA-10283

Airport Road
NICE income property with 2 bedroom house. AB-10128
Call LE 1-0252 or VI 7-2157

RAINIER REALTY Co.
13201 Pacific Avenue
Member M.S.L.

M. L. S.
MULTIPLE LISTING SERVICE
Jennie L. Grodvig
PARKLAND REALTY CO.
Insurance of All Kinds
Notary Public
Est. in Parkland Since 1941
LE 7-8609 Office
302 Garfield St., Parkland
Jennie Grodvig, LE 1-1210
Edna Taylor, LE 7-3556
Thelma Scott — Yvonne White
JU 8-3838 LE 7-0440

"Deal with the people who give you their personal Attention"
Member of Multiple Listing Service and Tacoma Real Estate Board

LIST WITH SUBURBAN
Home and Farm Specialists in South End Properties. Two offices open every day and evening for your convenience.

SUBURBAN REALTY, INC.
1128 E. Leonard St. LE 7-8628
112th and Canyon, LE 7-0229
Member Multiple Listing Service & Tacoma Real Estate Board

FERN REALTY
"Our Salespeople are Aged" DON'T MISS THIS. 50 acres, 3 bedroom home, barn and other buildings. Property all fenced. Price \$14,500. Terms Call Mrs. Hughes (The Farm Gal.) LE 7-8651. 912

SECLUDED & BEAUTIFUL, 185 acres all fenced. 60 acres hay meadow, 50 pasture, rest in small timber. 2 large spring fed ponds, large barn and shed, plus 1 year old 3 bedroom rambler, recreation room, 2 fireplaces, 2 bath, large utility, paved patio, landscaped yard. Call Mary Nagley, LE 7-8651. 1050

FERN REALTY
11208 E. Leonard's Crossing
LE 7-8651

FOR SALE — Choice Bldg. sites, Franklin Pierce Dist. \$1350. Terms. LE 1-1059. 9c47

G. I.
Now is the time to buy, nothing down, many homes, all price ranges and good locations.

A 2 Z REALTY
LE 7-0259
10 TO 90 ACRES nice spring and soil, some cleared; VI 7-2196. Rt. 1, Box 153A, Graham 9c49

Rentals 10
FOR RENT — Cozy Cottage, furnished, all electric. Call GR 2-4082. 10c47

LARGE FURNISHED or unfurnished apts. Three rooms and bath. One two room furnished apt. LE 1-0446, or GR 4-1651. 10c1f

RENTALS
2 BED. 908 Sales Road, Unf., \$60. 2 Bed, 10112 Patterson, Unf., \$75. 2 bed, 11052 S. Ainsworth, Furn., \$75. 3 bed, 9713 So. Sheridan, Unf., \$75. 1 bed, 11707 1/2 Pacific, Furn. all utilities, \$85. 2 bed plus rec., 2411 S. 96th, Unf., \$95. 3 bed, 12914 S. Yakima, Unf., \$90.

Suburban Realty, Inc.
11302 Pacific Avenue
LE 7-8638

2 BEDROOM side-by-side furnished duplex, 914 So. 119th. Parkland \$95. SK 9-6002. 10c1f

FOR RENT — 3-room furnished house, \$42.50 per month plus utilities. 1 mile past Roy "Y" on right hand side at "Miller's Place". -10c1f

2 BEDROOM side-by-side furnished duplex, 914 So. 119th. Parkland, \$95. SK 9-6001. 10c1f

2-BEDROOM furnished apartments in Parkland area. LE 7-0259, hours 9 to 5, after 5:00 p.m. LE 1-0642. 10c1f

Repair Service 11
APPLIANCE REPAIR
9606 Portland Avenue — LE 1-1155. 11c1f

WASHING MACHINE PARTS — Largest stock in town. Repairing that pleases. BB'S WASHER SERVICE, 3727 So. G. GR 4-9409. 11c1f

Farm Ads 13
FOR SALE — 13 weeks old pigs at \$20; Graham, VI 7-7850. 13p47

WHY PAY MORE?
16 Week PULLETS \$1-35
Vaccinated and Delivered
Tacoma LE 7-6049

BULL SERVICE delivered \$5. Hauling, Tom Grove, Puyallup, TH 5-1890. 13c1f

FOR SALE — Selection of ducks and geese never better. Buy now: 208 East "E", Mountain Road, 2nd house left side. VI 7-2268. 13c47

Situation Want 14
WASHING & IRONING, LE 7-8747. 14c47

PRACTICAL NURSE wants work. LE 7-0524. 14c47

WILL FINISH the job your husband started. Remodeling, repairs and new work. TH 5-4002. 14p49

CHILD CARE day, night, weekends. My home. 8428 South Yakima, GR 2-9391. 14c1f

Miscellaneous 15
SIGN PAINTING and Truck Lettering. VI 7-7276. Glenn Walker. 15c1f

SPECIAL ORDER CAKES — Phone LE 7-3330. Patsy Ann Bakery. 15c1f

RENT invalid and guest equipment. Bunco Rental Inc., 4516 So. Tacoma Way, GR 2-3348. 15c1f

NEW — 19 Cu. Ft. G.E. FREEZERS
Slightly scratched in shipment
3 ONLY \$269.95
WITH THIS AD
WEIR'S 8419 Portland Ave. LE 7-0231

ATTENTION HOUSEWIVES — POCHEL'S are now the authorized dealers for Speed Queen washers, automatic or wringer type, and dryers. Come in and see them at 140th and Pacific Ave. LE 7-8624. 15c1f

Portable TV's & Radios Serviced
Transistors Welcomed
EMERSON SALES and SERVICE

PAWN TELEVISION
New Hours: 9-6
8326 Park Ave. GR 2-2060

FOR SALE — Shavings, call after 4 p.m. TE 2-5238, Eatonville. 15c1f

REFORM BOOKS — Office supplies, rubber stamps, all at Blauvelt Printing Co., 8614 Portland Ave. LE 7-5853. 15c48

Shop Parkland FIRST!

Life With The Rimples
TOM, YOU HOLD THIS LADDER FOR ME!
HEY...?
IT'S OKAY POP, SAGAMORE'S HOLDING IT FOR YOU!

OLD PAPERS for sale — 15 lbs. for 15c. Times Journal Pub. Co., 14620 Pacific Ave. 15p1f

For Sale
FIRE PROOF STRONG BOX
4"x8 1/2"x11" Inside Mesmt.
Write Box B
c/o Times Journal

FOR SALE — Shavings, call after 4 p.m. TE 2-5238 Eatonville. 15c1f

FOR SALE — Colonial door with new lock, \$7.00; Combination outside & screen door, \$1.50, with lock, \$5.00; Drapes and curtains, \$2.00; Two windows, at \$1.00; Six year crib sheets, \$1.00; Dress, coats and blouses, size 14-16, \$1.00. 15c47

LADIES — Learn to sew, the new easier Bishop way. Morning, afternoon or evening classes. LE 1-2445 for information. Special classes for your church or social group. 15c47

DRESSMAKING, tailoring, alterations. Children's clothes a specialty. LE 1-2445. 15p47

LEAVE Your Kodachrome or Ektachrome Film at
QUALITY PHOTO SERVICE
9818 Pacific Avenue
In At 10 a.m.—Out at 5 p.m. Same Day

\$10 RENTS this TV with option to buy. Nice Motorola with balance only \$69. Buy today, deliver today. Open Monday & Friday till 9 p.m. Upton Electric, 1148 Market St., FU 3-2551. 15c47

UPRIGHT FREEZER—18 Cu Ft., chicken equipment for 2000 birds, display counters. LE 7-7993. 15c47

PRIVATE DRIVER TRAINING Lessons. Pick up at home. Call LE 7-4495 anytime. 15p47

RENT OR BUY TV's and appliances on 25c each day meter plan. Open Monday and Friday till 9 p.m. Upton Electric, 1148 Market, FU 3-2551. 15c47

FOR SALE — 6 year old crib, new mattress. Collapsible play pen. LE 7-8400. 15c47

ASSUME TV THIS 21" RCA TV was repossessed due to transfer. Assume \$39 balance at \$10 each month and get today delivery. Open Monday and Friday till 9 p.m. Upton Electric, 1148 Market, FU 3-2551. 15c47

FRIGIDAIRE
APPLIANCES
New & Used
No Down Payments
Minimum Monthly Payments
Maximum Trade-In Allowances

McWIK'S
JU 4-3300

CERTIFIED TEACHER will tutor any subject, grades one thru Junior High. LE 1-2242. 15c48

SOME NEW, used lumber, 1-pc. Masonite, Box 12' ceiling tile, flat top desk, fruit, jam jars, TV Antenna, Laundrell Automatic Washer (needs repair); Rockery rock, fruit trees, top soil, plants. Sell all or trade any part for good chain saw, '48 Chev., Sedan, 10 ft. utility trailer for pickup. 1517 S. 112th. 15c47

DUMPING
All uncalled for vacuum cleaners, Kirby's, Hoovers, Electro-lux as low as \$9. Open Monday and Friday till 9 p.m. Upton Electric, 1148 Market St., FU 3-2551. 15c47

FASHION PROCKS — Lovely styles, reasonable prices; dress and casual wear, all sizes. TH 5-0109. 15c47

For Sale
SMALL OFFICE SAFE
FOR HOME OR OFFICE USE
Write Box A
c/o Times Journal

KIRBY
This outfit is spotless and shines like a girl's first diamond. New guarantee. Full price only \$49 with \$5 monthly terms. Free home demonstration. Open Monday and Friday till 9 p.m. Upton Electric, 1148 Market, FU 3-2551. 15c47

FOR SALE — TV 17" Portable, Ice Box, Twin Laundry Tubs on casters. LE 7-4726. 15p47

PIANO FOR SALE — Fine spinet, like new. Assume low monthly payments. For information write, Credit Manager, Box 2085, Idaho Falls, Idaho. 15c48

CROFT TRAILERS
Local and One-Way Trailer Rentals — NATIONWIDE
Hiway 99 GR 4-8437
74th & So. Tacoma Way

Horses & Equip 16
ARABIAN STALLION at stud. Also Appaloosa, located at Kapowsin, W. B. Harvey. Phone Orting TW 3-5276. 16c1f

Aviation 17
FREE—FIRST FLYING LESSON. LEARN TO FLY—\$10 A WEEK
New and Used Aircraft Sales. TAHOMA FLYING SERVICE, Spanaway Airport, LE 1-0442. 17c1f

LEGAL NOTICES
NOTICE TO CREDITORS IN PROBATE
No. 69120
In the Superior Court of the State of Washington for the County of Pierce.
In the Matter of the Estate of ELLA K. OHL, Deceased.
Notice is hereby given that the undersigned has been appointed and has qualified as Executrix of the estate of Ella K. Ouhl, Deceased; that all persons having claims against said deceased are hereby required to serve the same, duly verified on said Wilma Ouhl or her attorney, at the address below stated, and file the same with the Clerk of Court, together with proof of such service within six months after the date of first publication of this notice, or the same will be barred.
Date of first publication July 20, 1961.
s/Wilma Ouhl
Executrix of said Estate
11024 Pacific Ave.,
Tacoma 44, Wash.
s/George F. PETER & TRACY
Attorneys for Estate
11024 Pacific Ave.,
Tacoma 44, Wash.
Published in the Times Journal July 20, 27, Aug. 3, 1961.

NOTICE OF GROUND WATER RIGHT APPLICATION
No. 5970
State of Washington, Office of Supervisor of Water Resources, Olympia.
TAKE NOTICE: That Henry G. Amundsen of Roy, Washington on June 8, 1961 filed application for permit to withdraw public ground waters through a well situated within S4SE1/4 of Section 8, Township 17 N., Range 3 E., W.M., in Pierce County, in the amount of 200 gallons per minute, subject to existing rights during irrigation season, each year for the purpose of irrigation.
Any objections must be accompanied by a two dollar (\$2.00) recording fee and filed with the State Supervisor of Water Resources within thirty (30) days from July 27, 1961.
Witness my hand and official seal this 7th day of July, 1961.
M. G. WALKER
State Supervisor of Water Resources
Published in the Times Journal July 20, 27, 1961.

It's The Law
WHO CAN BE GARNISHED
Henry owed \$425 to the Hometown Hardware Store for tools and equipment he purchased on a 30 day account.
He had some bad luck financially and could not pay the \$425 the first month when it was due, but he paid \$25 on the account. The hardware store sent him a notice the next month that the account was overdue and that the balance of \$400 was payable immediately.
Henry replied by sending in another payment of \$25, which the store accepted. The next month the same thing happened and Henry again paid \$25.
Two days after he made the payment, Henry was sued and his bank account was garnished. He was furious and exclaimed, "That store can't do that to me! I know my legal rights! They can't garnish my wages or my bank account when I am paying on the bill!"
Do you think Henry knows his legal rights? Can he be garnished when he is paying on an overdue bill?
Unfortunately for Henry, he does not know his legal rights. When money is due and payable, a creditor may, if he wishes, accept partial payments on

the account. But he is not compelled to accept partial payments.
A partial payment on an overdue bill cannot prevent the creditor from suing and garnishing unless the creditor has agreed or contracted to take a partial payment or weekly or monthly payments on the account.
(This column is written to inform, not to advise. Facts may change the application of the law.)



Little Leaguer
By Hank O'Neill
Even if he owns the ball, an outfielder should return it to the infield as soon as he gets it. I guess the reason so many Little League outfielders hold on to the ball is that they don't very often get to see it. As you must know, it's pretty

there a couple of miles away while you think it over. One of the worst things to watch is an outfielder who almost throws the ball in 700 times. He almost throws the ball to the shortstop; he almost throws it to the third baseman, Oops! maybe the second baseman and so on. Meanwhile back at home plate—you guessed it, four runs in.

Remember, outfielders should plan ahead where they are going to throw the ball. But most of all they should be sure to throw. Even if you throw it straight up, maybe the wind will be with you.

One outfielder used to throw the ball into the weeds or the lake. That way the runners only got one base. But this is not considered a good thing to do either.

An outfielder, just like any other fielder, should always know before each play what he will do if the ball comes to him.

However, in case the outfielder is not much of a planner, there are two things for sure: 1. Whether it is a fly ball or grounder he has to throw it in the general direction of the infield. 2. He should throw it just as soon as he gets his hands on it.

Curry plans along the following tips. Do's for the skiers are:

1. Be a good swimmer. Learn to water ski from an accredited instructor.
2. Wear a flotation device—a belt or life jacket—when ever skiing.
3. Check equipment for any protruding parts—bolts or splinters—and for loose runners or bindings.
4. Be courteous. Stay a reasonable distance away from fishermen, swimmers, and boatmen. Never ski directly in front of another boat—you could fall.
5. Watch the water ahead at all times. Stay clear of solid objects—docks, boats, pilings, or rocks.
6. Run parallel to the shore and come in slowly when landing. If you find you are coming in too fast, sit down on the skis.
7. If you fall, try to avoid falling forward if possible. Then signal the driver that all is well by clasping both hands over the head.
8. Recover skis quickly. They will help you keep afloat. If you are in a well-traveled boating area, hold on a ski after taking a spill as a warning signal to oncoming boats.
9. Learn new stunts progressively.

They tell the story about the counterfeiter whose apprentice accidentally ran off a stack of \$18 bills.
"Don't worry," soothed the apprentice, "I'll take them into the hills and pass them off on some hicks!"
Accordingly he drove to a small town and asked a clerk in a general store if he could make change for an \$18 bill.
"Sure thing," said the clerk, "How do you want it: two nines or three sixes?"

Mr. and Mrs. Lawrence Wood, formerly of Roy, recently visited in Winchester, Idaho with Mrs. Nellie Wilson, Mrs. Wood's mother.
Reporter — Martha Berggren

Nothing But TIRES
New — Used — Recaps
Buy — Sell — Trade
RAY'S OK Tire Store
LE 7-7355
9639 Pacific Avenue

By Les Carroll
NO, NO! PLEASE, MRS. FINKLE, DON'T LET YOUR CAT OUT!

House Wiring
Sheet Metal Fabrication
Roscoe Furnace
Sales and Installation
Riley's Electric & Sheet Metal
Formerly RAU'S
14114 Pacific LE 7-7372

K F H A
1480
YOUR LAKES AREA RADIO STATION
TO BEGIN OPERATION
TUESDAY, AUGUST 1st At 6:00 A.M.

Nothing But TIRES
New — Used — Recaps
Buy — Sell — Trade
RAY'S OK Tire Store
LE 7-7355
9639 Pacific Avenue

By Les Carroll
NO, NO! PLEASE, MRS. FINKLE, DON'T LET YOUR CAT OUT!

Nothing But TIRES
New — Used — Recaps
Buy — Sell — Trade
RAY'S OK Tire Store
LE 7-7355
9639 Pacific Avenue

Nothing But TIRES
New — Used — Recaps
Buy — Sell — Trade
RAY'S OK Tire Store
LE 7-7355
9639 Pacific Avenue

Nothing But TIRES
New — Used — Recaps
Buy — Sell — Trade
RAY'S OK Tire Store
LE 7-7355
9639 Pacific Avenue

Nothing But TIRES
New — Used — Recaps
Buy — Sell — Trade
RAY'S OK Tire Store
LE 7-7355
9639 Pacific Avenue

Nothing But TIRES
New — Used — Recaps
Buy — Sell — Trade
RAY'S OK Tire Store
LE 7-7355
9639 Pacific Avenue

Nothing But TIRES
New — Used — Recaps
Buy — Sell — Trade
RAY'S OK Tire Store
LE 7-7355
9639 Pacific Avenue

Nothing But TIRES
New — Used — Recaps
Buy — Sell — Trade
RAY'S OK Tire Store
LE 7-7355
9639 Pacific Avenue

Canyon Road Families Visit

Mrs. Flea Panchot of East 84th was visited last week by her two sons and families, Mr. and Mrs. Wayne Panchot with Linda, Ronny and Johnny from Sierra Vista, Arizona, and Mr. and Mrs. Elmer Panchot and daughter Karen of Portland. Mr. and Mrs. Otto Guthrie entertained Mr. Guthrie's brother and sister-in-law, Mr. and Mrs. Steven Guthrie and small daughter Kathleen from California. Mrs. John Folk had guests from Portland and Hillsboro, Oregon, Mrs. Lilly Folk and Mrs. Billie Brown. All their husbands were fishing in Canada. Mr. To mFolk made it a four-some. Miss Sherry Folk returned from Seaside and brought a guest, Miss Julie Bartlett, daughter of Mr. and Mrs. Bill Bartlett of Seaside.

Sympathy
Our sympathies are extended to Mr. and Mrs. Ray Lester of Canyon Road upon the passing of Mrs. Lester's brother, Mr. Fred Shernbery of Tacoma.

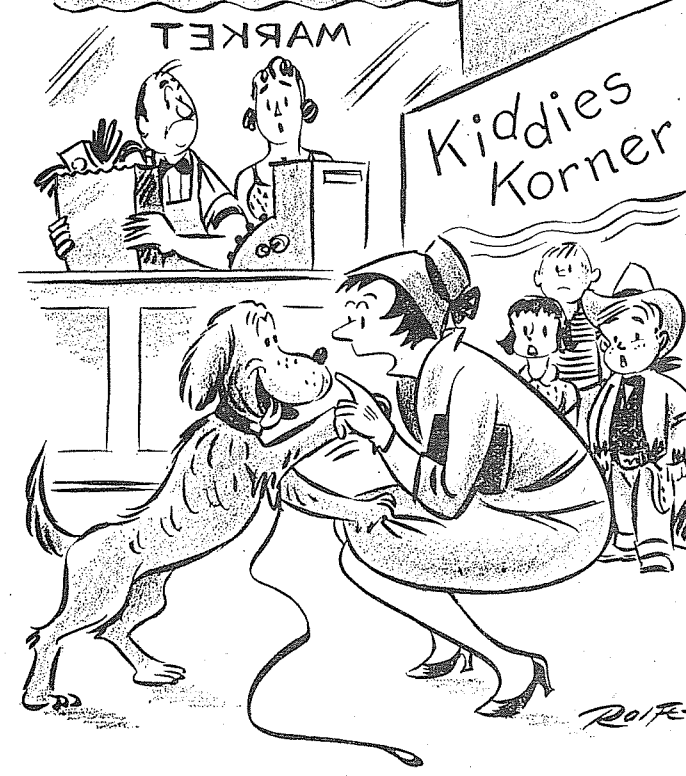
Square Dance
The newly organized square dance club, the Twilight Twirlers, with Sid Lane as their caller, will dance at the Canyon Road Community Club July 28, the fourth Friday of the month. Dancing will start at 9 p.m.

Picnic
This community was well represented at the Hix 'n' Chix Square Dance picnic at Carpenters Beach at Long Lake. Mr. and Mrs. John Andrews and Linda, with Ed Hoffmann, Don Hansens, Tom Folk and John Folks with guest Julie Bartlett all went.
Reporter—Mrs. John Folk

Shopping Around

By Rolfe

The fullest possible enjoyment is to be found by reducing our ego to zero.
—G. K. Chesterton



"Now be a good doggie while I shop! You know how you like to romp with children!"

It pays to read Times Journal Classified Ads!

PIERCE COUNTY REFUSE CO.
Weekly
Garbage Collections
Phone LE 7-8688

FACTORY CLOSE OUTS
PARKER'S
Shake Paint
Reg. \$5.45 Gal.
SALE PRICE **\$3.50** Gal.

Strains
Reg. \$3.00 Gal.
SALE PRICE **\$2.50** Gal.

Exterior Trim
Reg. \$8.82 Gal.
SALE PRICE **\$5.61** Gal.
(Limited to Colors on Hand)

BARSOTTI & TIMM
At the Roy Y LE 7-4221
Open 7 Days A Week, 7-9

Shop Parkland FIRST!

We
T & O Concrete
Color Patios - Floors - Steps
Sidewalks - Driveways
Foundations
Complete Block Work
Free Estimates -
Evening Appointments
"Oake" VI 7-7338

Prescription Service

Open 7 Days a Week
9:30 a.m. - 9:30 p.m.
Sundays 10 a.m. - 6 p.m.

JACOBS PACIFIC DRUGS
Wallgreen Agency
Pay Light & Water Bills Here
84th & PACIFIC AVE.
Greenfield 2-6445

Fresh Yakima **CORN** Doz. Large Ears **60¢**

RED HAVEN
YAKIMA PEACHES
YAKIMA TOMATOES
Santa Rosa **PLUMS**

YAKIMA GIRLS
Hours: 9 a.m. until 10 p.m. 7 days wk.
12415 Pacific Avenue Parkland

WEEKLY CROSSWORD PUZZLE

Dormouse

Here's the Answer

1	2	3	4	5	6	7	8	9	10
11	12	13	14	15	16	17	18	19	20
21	22	23	24	25	26	27	28	29	30
31	32	33	34	35	36	37	38	39	40
41	42	43	44	45	46	47	48	49	50
51	52	53	54	55	56	57	58	59	60

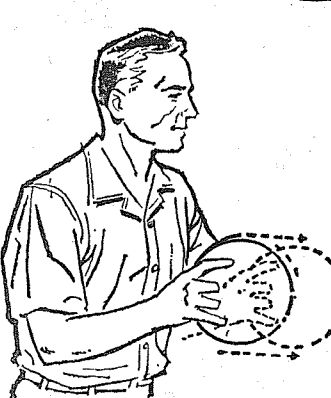
HORIZONTAL

1 Depicted animal
6 Zealous
11 Click beetle
13 It is native to northern
14 Entangle
15 Mitigate
17 Skittish
18 Italian goddess of the harvest
19 Requires
20 Also
21 Nova Scotia (ab.)
22 Half-er.
23 Wapiti
26 Short-napped fabric
28 Whirlwind
29 Correlative of either
30 Of the thing
31 Tone E (music)
32 Corded fabric
33 Dance step
35 Negative reply
36 Credit (ab.)
38 Room in a seraglio
40 Narrates
45 Three times (comb. form)
46 Unit of reluctance
47 Utopian
48 Cereal grain
49 Internal
51 It also is found in southern
53 Expiate
54 Precepts

VERTICAL

1 Citrus fruit
2 Pass away, as time
3 Rodents
4 On time (ab.)
5 Gull-like bird
6 News
7 Area measure
8 Pith of a matter
9 Reverberates
10 Glossy fiber
12 Scottish sheepfold
13 Assist
16 Myself
24 Learning
25 Retain
26 Frolic merrily
27 Operatic solo
32 Rat
34 Abrade
35 Water wheel
37 Ceremonies
39 Too
40 Movement of the ocean
41 Dutch city
42 French article
43 New Guinea port
44 Stigma
45 Implement
50 Preposition
52 Symbol for ruthenium

Better Bowling



Electrician's Mate Graduates

Jacksonville, Fla. (FHTNC)—Graduation from Aviation Electrician's Mate School at the Naval Air Technical Training Unit, Jacksonville, Fla., July 7, was John R. Frey aviation electrician's mate airman apprentice, USN, son of Mr. and Mrs. Robert G. Gritman of 517 Center St., W., Eatonville, Wash. Graduates of the 22-week school are qualified to maintain, repair and test all electrical equipment and instruments found both on and around Navy aircraft.

Pushaway is important

The pushaway starts your delivery and proper execution determines your bowling potential. Hold chest high, the ball is moved forward on your first step to start the pendulum motion. Failure on this point throws everything out of balance. Form is lost and pins left standing. Key to good score is form; key to form is rhythm, and rhythm starts with the pushaway.

AIR CHARTER

FLIGHT INSTRUCTION
Approved Flight School

Wash. MOONEY Distributor
TAHOMA FLYING SERVICE
Spanaway Airport VI 7-2266

RENTAL TOOLS

GARDEN TILLER
POWER MOWER
BELT HAND SANDERS
OSCILLATING HAND SANDERS
SABER SAWS
PAINT SPRAYERS
RUG SHAMPOO MACHINE
FLOOR SANDERS

POWER MOWER SHARPENING & REPAIR
WINDOW GLASS INSTALLED
Small Appliance Repair
PARKLAND HARDWARE
12169 Pacific Ave. LE 7-3171

DRUG FACTS

FLASH THAT SMILE AND HE'LL FALL ALL RIGHT!

WELL, IF HE DOES, I'LL SEND A NOTE OF THANKS TO MY DENTIST AND TO

ASHMORE DRUG

ASHMORE'S SPANAWAY DRUG
Phone LE 7-5993
165th & PACIFIC AVE.
SPANAWAY, WASH.

SUGAR C & H 10 Lb. Bag **69¢**
With Purchase of 4 Sylvania Light Globes at Regular Price

"Golden Crest"
HONEY 89¢
5-Lb. Can

"Medosweet"
COTTAGE CHEESE 23¢
Pint Ctns.

"Medosweet"
BIG DIP 1/2 Gal. **59¢**

"Hunt's"
PORK & BEANS 5 No. 2 1/2 Can **\$1**

"Borden's Starlac"
DRY MILK 69¢
12-Qt. Box
Reg. Price \$1.09
BORDEN'S INSTANT COFFEE 5-Oz. Jar . . . 69¢

"Good And Rich"
CAKE MIXES 10¢
Reg. Pkg.
Chocolate, White, Yellow and Corn Muffin

"Libby's"
DILL PICKLES 59¢
A Big 2 Qt. Jar

FRYERS 79¢
2-Lb. 4-Oz. And Up EA.

SAUSAGE ROLLS 3/\$1
Armour's Star 1-Lb. Roll

RIB STEAK 65¢
Lb.

Swift's
WIENERS 1-Lb. 45¢
RUMP ROAST 59¢
Lb.
Bar-S 10 Varieties
LUNCH MEAT 3 Pkgs. \$1

FOR SWISSING
ROUND STEAK 63¢
Lb.

TOP
ROUND STEAK 69¢
Lb.

ORANGES Calif. Full 'O Juice 5 Lb. Bag **49¢**

PEPPERS Ea. 5¢

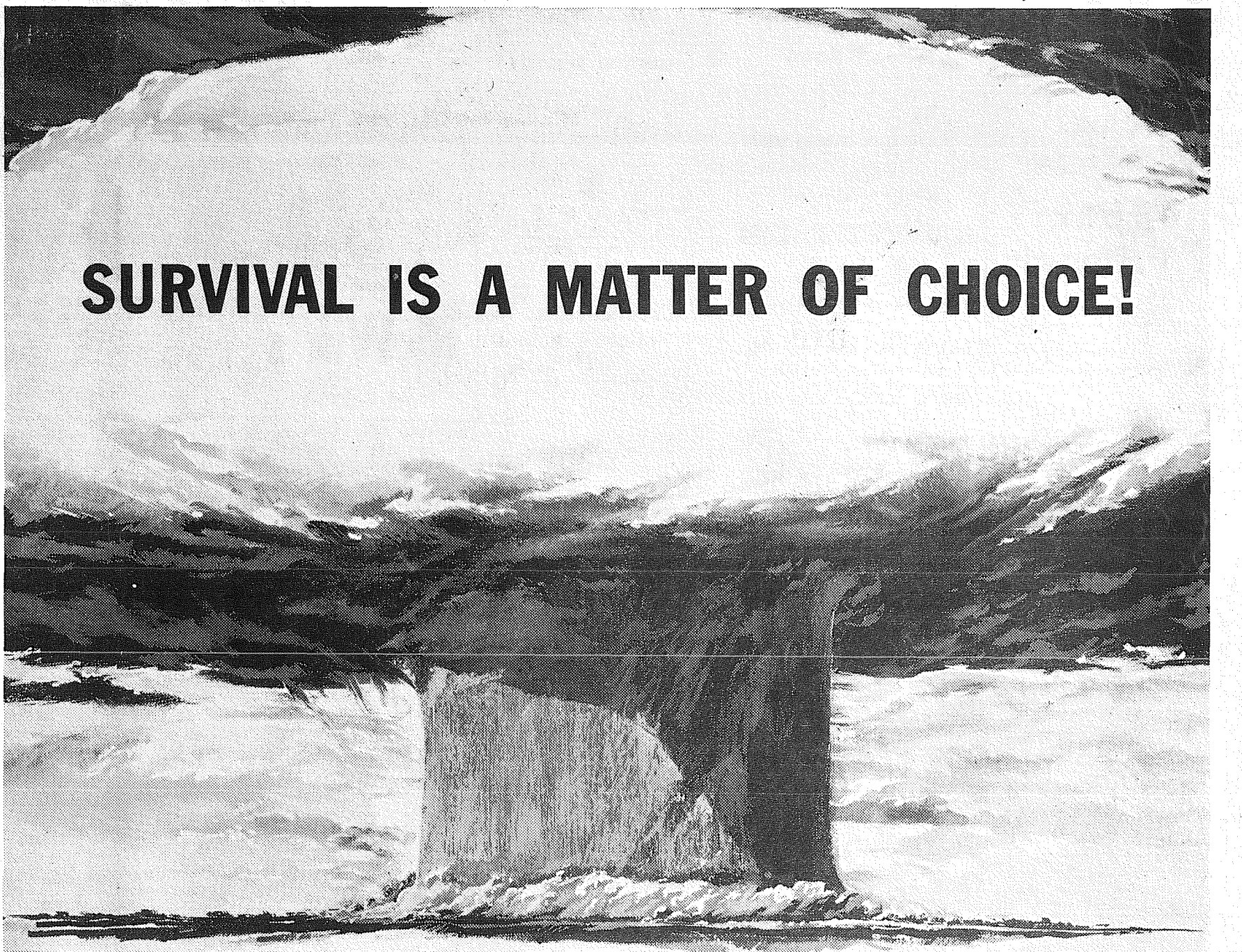
TOMATOES Lb. 19¢

CUKES 2 For 15¢

LETTUCE 2 Heads 19¢

OPEN 7 DAYS A WEEK For Your Convenience
NEW STORE HOURS: Sun. 9 a.m. - 9 p.m., Week Days: 9:00 a.m. until 10:00 p.m.

PARKLAND Super MARKET
Formerly Kitchen's
12208 Pacific Avenue
PRICES EFFECTIVE THURSDAY THROUGH SUNDAYS EACH WEEK



SURVIVAL IS A MATTER OF CHOICE!

If nuclear war ever occurs, individuals will be more on their own than ever before in their lives. Families will be almost totally dependent upon their own resources—yet studies now show that survival is possible. Proper fallout shelters offer protection found nowhere else . . . a chance to survive.

Of course, no one can guarantee survival, but the chances will be a thousandfold better for those who are prepared . . . those who have pro-

vided a family shelter; who have kept themselves informed on emergency measures; and who have stored sufficient emergency supplies. These will constitute the majority of survivors.

Preparedness is a matter of personal decision . . . survival is a matter of choice.

In your interest, National Bank of Washington has official Civil Defense literature dealing with the problem of survival. Ask for it when you next visit us.

Presented as a public service by **NATIONAL BANK OF WASHINGTON**