

# Two Areas Annexed To Sewer District

Pierce County Herald and

## The **TIMES** JOURNAL

Vol. 23 No. 37

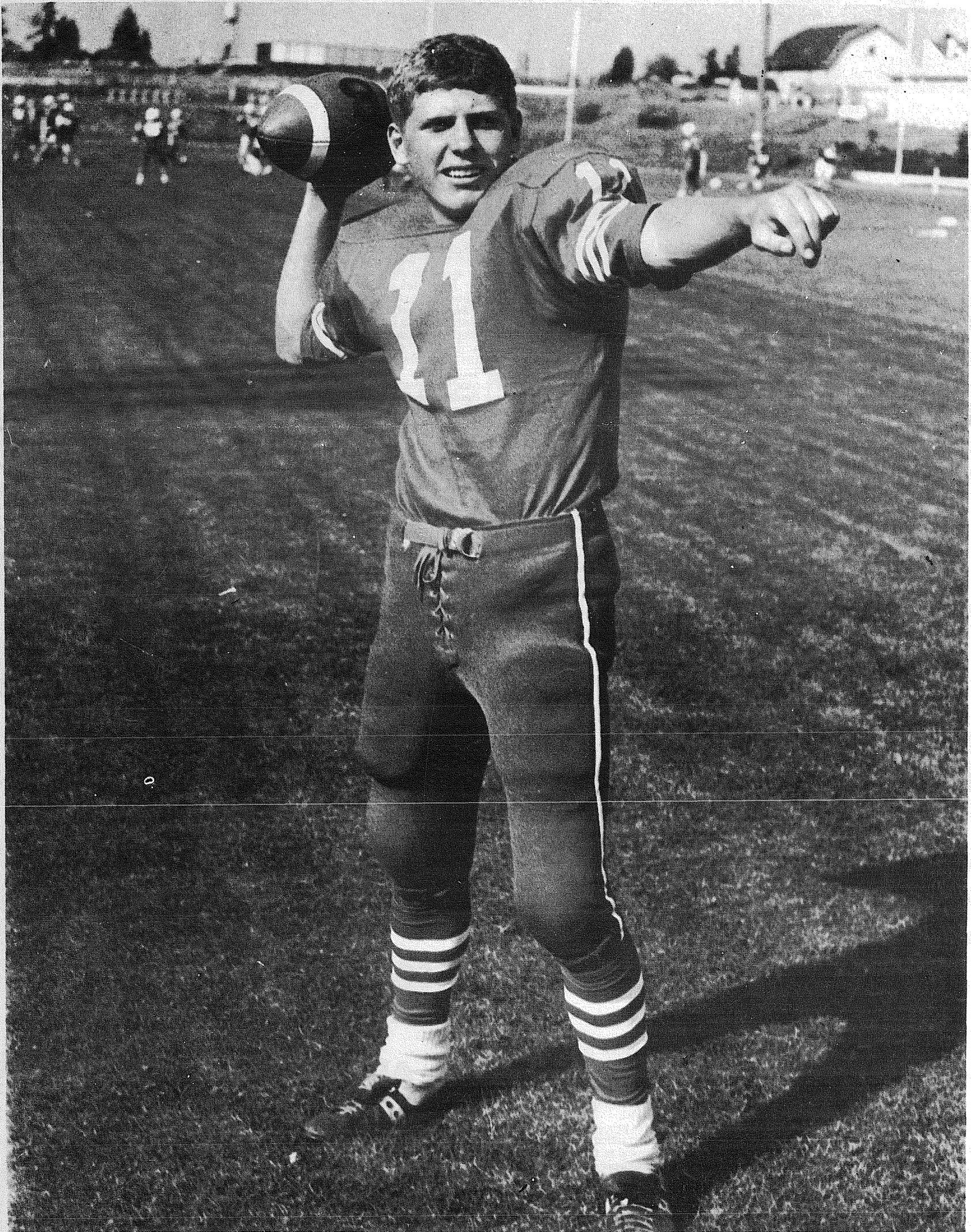
September 14, 1967

See Page  
Two

Price Per  
Single Copy  
**10<sup>c</sup>**

# King Football Takes Throne

## This Issue: Special Football Section

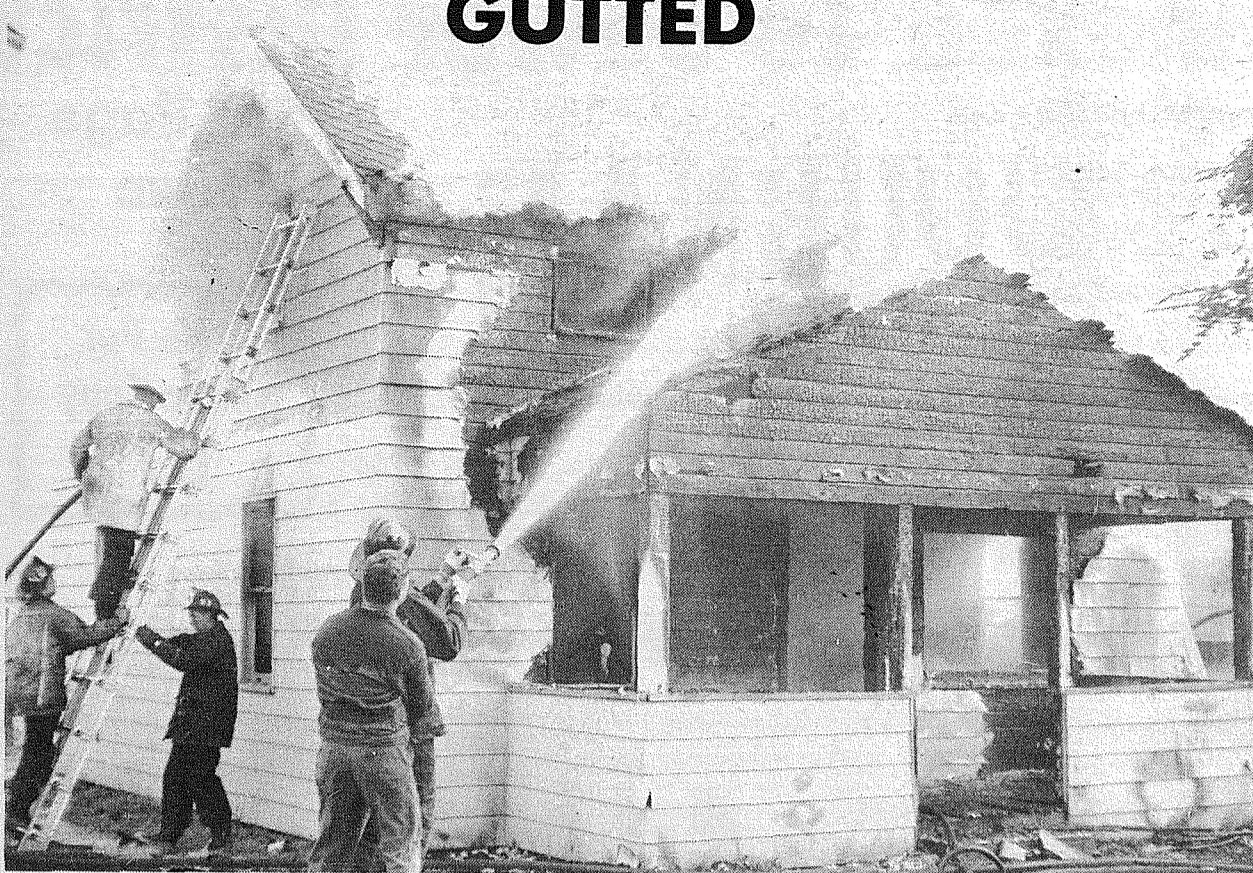


FRANKLIN-PIERCE QUARTERBACK Jim Hadland unlimbers his passing arm during practice early this week in preparation for the opening game against

Tyee Friday night at Highline. See special 3 page sports section for details. Pages 7-8-9.

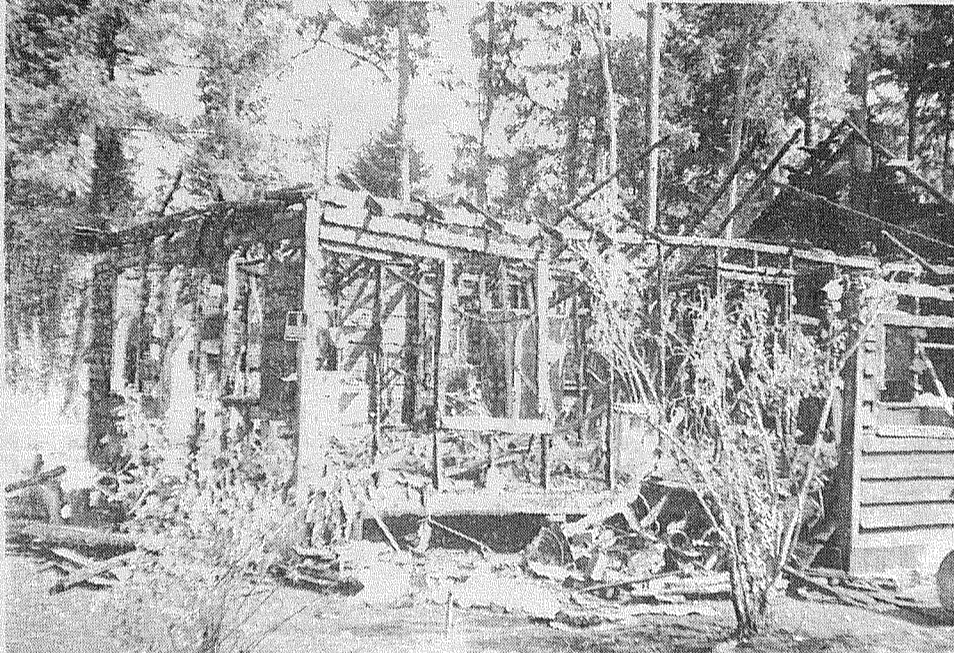


# GUTTED



**TOTALED** — This was the scene Friday at 863 So. 108th, when Parkland Fire Fighters battled blazing heat and smoke at the residence owned by Mercer Realty, 4638 So. Yakima, as it burned itself to a shell. The fire department was called out to the same house

on Sunday when electrical wires in the house connected and touched the aluminum siding, causing a "hot" house. Fire officials stood by until the power company shut off all power into the lines. (Times Journal Staff Photo).



**NOT EVEN A SHELL** — The house at Route 1, Box 1485, a rental unit owned by Louie A. Einert, burned to the ground last Tuesday, scorching trees and surrounding houses. The fire was apparently started by children playing with matches. (Times Journal Staff Photo)



**Spanaway**  
 Fire Reports at Spanaway-Elk Plain Fire Department this week included:  
 9/4/67 at 807 East 152nd, a brush fire caused by burning leaves.  
 9/5/67 at Route 1, Box 1485, a house fire. The house, owned by Louie A. Einert, was a total loss. The fire was apparently started by children playing with matches.  
 9/5/67, Mrs. Clark of Route 1, Box 1186 was given first aid on 15 bee stings.  
 9/6/67 at 175th and Pacific, an auto collision.  
 9/7/67 at Route 2, Box 2298, a short in an oven switch started the alarm, but no damage was done.  
 9/10/67 at 16411 22nd East, a grass fire caused from burning debris.  
 9/11/67 at 15409 East "B," a rescuator call.

**Parkland**  
 Fire reports turned into the Parkland Fire Department this week included:  
 9/4/67 at 319 Garfield, a grass fire, no damage.  
 9/4/67 at 1114 So. 113th, a grass fire, no damage.  
 9/4/67 at the West side of Kiethley Junior High

School, a grass fire, no damage.  
 9/4/67 at 902 So. 96th, a house fire. The house, owned by Paul Chavet of Yukon Territory, Alaska, was unoccupied at the time of the fire. An estimated \$2,500 damage was incurred.  
 9/5/67 at 303 East 133rd, a grass fire, no damage.  
 9/5/67 at 1628 111th, a rescuator call.  
 9/6/67 at 10223 So. Wilkeson, a grass fire, no damage.  
 9/8/67 at 863 So. 108th, a house fire. The house, owned by Mercer Realty of 4638 So. Yakima, was occupied by Harry Brannon. An estimated \$8,000 damage was done to the residence.  
 9/8/67 at 11311 So. Park, a grass fire which burned a fence.  
 9/8/67 at 9115 So. Violet Meadow, a grass fire caused by a burn barrel with screening.  
 9/8/67 at 502 So. Judson, a rescuator call.  
 9/8/67 at 507 East 131st, a rescuator call.  
 9/10/67 at 11111 So. Steele, a mattress fire in a trailer house.  
 9/10/67 at 863 So. 108th, an electrical short, no fire.

## New Addition To Licenses

Something new has been added to Washington driver licenses that are issued to juveniles, minors and motorcycle riders.

The Department of Motor Vehicles has re-designed the license because of two new laws passed by the 1967 legislature. One law establishes a new "juvenile" driver license classification, and the other law requires motorcycle riders to pass a special examination and carry a special motorcycle endorsement on their licenses.

The newly-designed license has space for the motorcycle endorsement, and it distinguishes between drivers aged 16-18 and those aged 18-21. The word "juvenile" will now be stamped in green on licenses issued to persons under 18, and "minor" will be imprinted in red on licenses issued to persons under 21. Juvenile and minor licenses may be exchanged when the driver reaches the ages of 18 and 21 respectively.

## Disease Census Slated In Area

Information about the extent to which children are immunized against smallpox, polio, measles, diphtheria, whooping cough, tetanus and mumps will be obtained in a survey here the week of September 18, Director John E. Tharaldson of the Census Bureau Regional Office in Seattle announced today.

Local residents will also be asked about the medical care received by children under 13 who have not been immunized against all of these diseases. The information will be used in research by the U.S. Public Health Service.

In addition, the surveyors will obtain information about employment and unemployment to be used by the U.S. Department of Labor's Bureau of Labor Statistics in preparing current national figures.

The survey will be taken simultaneously in other areas of the U.S. to obtain data from a representative sample of the nation's households.

## Parkland Teachers Tour McChord AFB

McCHORD AIR FORCE BASE, WASH. — Thirty-six school teachers, representing elementary, junior high, and high schools in the Parkland area, were taken on a drive-through tour of the base this week to get acquainted with their next door neighbor — McChord Air Force Base.

At the 62nd Military Air-lift Wing they boarded a C-141 Starlifter and learned about the aircraft's performance and capability.

The tour was part of an orientation program set up by Dr. Edward Hill, superintendent of Franklin Pierce School District, to familiarize teachers, new in this area, with their immediate surroundings.

Census interviewers who will visit households in this area beginning September 18 is Mrs. Dorothy A. Carden, 1912 East 91st Street, Tacoma, Washington, 98445.

## Vote of Confidence From ULID Residents

The South Suburban Sewer District has received an overwhelming vote of confidence from the landowners in Utility Local Improvement District (U.L.I.D.) according to Dr. Robert Mortvedt, Secretary of the District. Only 4.56 per cent of the land ownership in the proposed U.L.I.D. protested the formation of the improvement district. Under state law an improvement district formed by resolution of the sewer commissioners can be overruled by protests of 40 per cent of the land ownership. The official compilation of the protests was made by Harstad Associates, Inc., Seattle, consulting engineers to the sewer district.

"We are pleased," Dr. Mortvedt said, "by this positive affirmation of the need for sewers in the Parkland area and the necessity to proceed as quickly as possible to secure them. Because of rising costs of labor and building materials the sooner we can get sewers the cheaper they will be."

The sewer commissioners voted to form the new U.L.I.D. at their August meeting. Notices of this action and assessment notices were mailed to all landowners in the improvement district which includes most of the area in the expanded sewer district. Assessments were made on the basis of \$5.00 per front foot and one-half cent a square foot for the acreage in each lot. A hook-up charge of \$100 was also included.

A public hearing was held at which landowners could object to the formation of the improvement district or the assessments. In response to questions from those present the commissioners explained the process required under the law for the formation and implementation of a sewer district. A number of landowners expressed their concern for getting sewers at the earliest possible moment because business and housing developments are being held up in the area.

The Commissioners will now proceed with the necessary steps to complete the formation of the U.L.I.D. This involves securing the approval of the revised comprehensive plan by the county engineer, the State Board of Health and the State Water Pollution Control Commission, finalizing the assessment roll and securing federal assistance grants. It is hoped that these can be completed so that construction can begin early next year.

Landowners who feel that inequities exist in their assessments are invited to submit their request for revision of the assessments to the Commissioners at P.O. Box 2117. These requests will be carefully evaluated by the engineers and if inequities are found, proper adjustments will be made.

## Late News Flash

### Areas 7 And 9 Annexed By County Fathers

The County Fathers voted to annex areas seven and nine of the South Suburban Sewer District Monday on the evidence that had been brought before them.

Petitions before the Commissioners contained the necessary signatures and after questioning the Sewer District officers on the need and benefit to the areas cited it was moved and seconded.

Opposition to the annexations came from Leo Wilson and A.H. Bottiger, both members of the Pierce County Improvement Association, whose goal it is to dissolve the sewer district.

Several residents of the areas in question were at the hearing to give reasons why they want the sewers installed into their areas.

# NOTICE!!

## LIQUIDATION NECESSARY

# WE QUIT

### DON'T MISS THIS OPPORTUNITY

### Final Stages Near!

## ALL PRICES REDUCED ON

## GROCERIES, FURNITURE,

## CLOTHING

# SALVAGE MART

**13014 PACIFIC AVE. OPEN 'TIL 9 P.M.**



HI HO

PUYALLUP

HI HO

# WHOLE CHICKENS

## FOR STEWING CUT-UP STEWERS

**19<sup>c</sup>**  
**27<sup>c</sup>**

# MEAT BUYS

## "FLAVORFUL" BEEF STEAKS

BONELESS CHUCKWAGON STYLE **1<sup>29</sup>** lb.

LIVER SAUSAGE By the Piece **49<sup>c</sup>** lb.

TENDER **BABY BEEF**

**LIVER 59<sup>c</sup>** lb.

HI HO'S OWN PET FOOD **3 lbs. 49<sup>c</sup>**

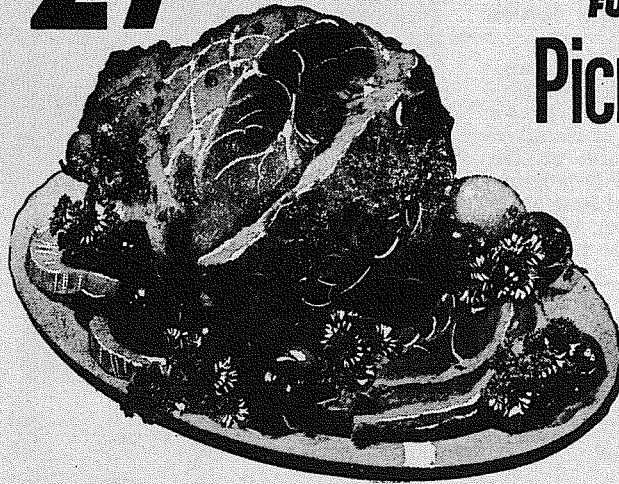
Country fresh

## EGGS



LARGE "AA" PUYALLUP

**39<sup>c</sup>**  
DOZ.



FULLY-COOKED Picnic Hams

**39<sup>c</sup>** lb.

FULLY-COOKED SLICED PICNIC Hams **47<sup>c</sup>** lb.

# Produce O' Plenty

CHIQUITA

## BANANAS

**2 lbs. 25<sup>c</sup>**



## CARMEL APPLES

**2 FOR 25<sup>c</sup>**

HUBBARD or MARBLEHEAD

## SQUASH 5<sup>c</sup>

 lb.

NEW CROP CLIP-TOP

## CARROTS

**10<sup>c</sup>** lb.

24-OZ. CRISCO

## OIL

**49<sup>c</sup>**

12-OZ. SMUCKERS

APRICOT-PINEAPPLE • ORANGE-MARMALADE • SEEDLESS BLACK-BERRY • RASPBERRY • STRAWBERRY

**3/1<sup>00</sup>**

BETTY CROCKER

## CAKE MIXES

**27<sup>c</sup>** ea

EL PASEO

## PITTED OLIVES

**4/1<sup>00</sup>**

200 2-PLY CHIFFON FACIAL TISSUE **5/1<sup>00</sup>**

ZEE 2-PACK TROPICONE TOWELS **39<sup>c</sup>**

BANQUET FRUIT PIES **4/1<sup>00</sup>**

# Compare! BEST FOOD BUYS

HERE

OPEN 8 A.M.

CLOSE 11 P.M.

BREADS-ROLLS-CAKES-COOKIES

# BAKERY DELIGHTS

ASSORTED COOKIES **4<sup>D</sup> 99<sup>c</sup>** DOZ  
BANANA BREAD **49<sup>c</sup>** ...Loaf



in PUYALLUP

PRICES EFFECTIVE SEPT. 11th through 16th

Plenty of Free Parking  
72° Weather Inside Year-Round

## DRUGS

REG. 79¢ BUFFERIN **39<sup>c</sup>**  
REG. 1<sup>09</sup> SCORE HAIR CREAM **49<sup>c</sup>**  
REG. 95¢ FACT TOOTH PASTE... **39<sup>c</sup>**  
REG. 1<sup>00</sup> GET SET HAIR SPRAY... **49<sup>c</sup>**

HI HO

PUYALLUP

HI HO



Pierce County Herald and  
**The TIMES JOURNAL**

Published weekly at 14620 Pacific Ave., Parkland 98444 and delivered by U.S. Mail and carrier to subscribers. Publishers: Pierce County Publishers, Inc.  
 Managing Editor . . . . . Em Matson  
 News Editor . . . . . Sandy Ingram  
 Sports Editor . . . . . Bob Ingram

Subscriptions \$3.50 per year, \$1.80 six months, or 30c monthly by carrier. News stand price 10c copy.

Qualified as a legal publication under Chapter 213 of the Legislature Acts of the 1941 regular session of the State of Washington.

Application to mail at second-class rates is pending at Tacoma, Washington.

Vol. 23 No. 37  September 14, 1967

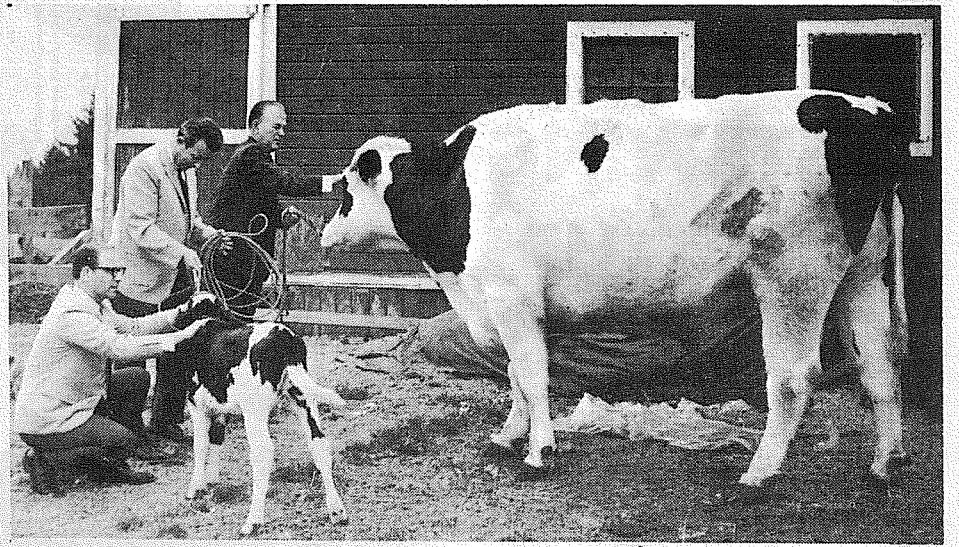
**Nurses Schedule First Fall Meet**

The Pierce County Nurses Association will schedule its first fall meeting at Jackson Hall on September 11, at 7:30 p.m., according to Mrs. T.E. Marchesini, the association's publicity chairman.

Mrs. Helen Edwards will serve as president this year following the resignation of Mary Lou Love, who will further her nursing education in Brooklyn, N.Y., working in Community Mental Health.

The program for the evening will be on current psychiatric concepts involved in the treatment of disturbed children. Reports on the economic security program in the local and state areas will also be given. All nurses in the area are invited to attend.

**Parkland Monster Steer To Make Public Appearance**



**PARKLAND'S MONSTER STEER** will be on display at McDonald's Drive-In, 72nd and Pacific, September 24 from 1-8 p.m. The huge Holstein measures over 6 foot in height, 12 feet from nose to tail, and weighs more than 3,500 pounds.

**Story Hours Set For Pre-Schoolers**

Story hours for preschool children will begin next week in branch libraries of the Pierce County Library system.

Young patrons of Midland Library may hear stories on Wednesdays, at 10:30 a.m., starting September 13. Parkland Library will hold story hours on Tuesdays, at 10:30 a.m., beginning September 12.

**Pacific Lutheran University Adds Huge Load To Local Utility**



The Parkland Light and Water Company takes this opportunity to say "Thanks" to the University for the large increase in sales volume that will be made possible upon the completion of the new all-electric nine-story Tingelstad Hall.

The Company has estimated that this one building alone will be equal to adding 73 all-electric homes to the system.

Under present conditions, the expected net revenue will be equal to about one-half of the General Manager's salary.

The Company's Board of Trustees and the Administrative Staff can attend meetings, hold study sessions, cut economic corners and make future plans, all of which are helpful and necessary, but it is the ever increasing sales of electrical units that have made possible the "Free" monthly bills and rate decreases that have come to the Company members and customers.

On behalf of all Parkland Light and Water Company members, the Board of Trustees are pleased to publically congratulate the University and its Administrators on the new Parkland building and further to express appreciation for the sizeable economic boost that will soon come to the Company and the Community it serves.

**THE PARKLAND LIGHT AND WATER COMPANY**  
 "The Nation's Oldest Cooperative Light Company"

The Company sells only electricity and water. Providing up-to-date information to the membership for the efficient use of these units is the best way to increase sales, which in turn reduces rates.

Mail this coupon, or call the office for expert advice on Electric Heating Cost and Operation, or other uses of electricity. The service is a benefit offered to all members at no cost.

Please contact me regarding questions on the use of Electricity or Water.

Name \_\_\_\_\_

Phone No. \_\_\_\_\_

Address \_\_\_\_\_

Best time of day to call \_\_\_\_\_

**Parkland Light and Water Company**  
 LE 1-5666

404 Garfield Street  
 Box 2278

Parkland, Washington 98444



## Thoreson Named R.E.O. Director

Merlin H. Thoreson has been named director of the Rural Economic Opportunity, Inc., with offices, Mr. C. Melvin McKenney, president of the board of trustees, announced late last week.

In making the announcement, McKenney disclosed that Thoreson was selected from many applicants because of his qualifications for the position. He had two years experience in teaching in the Tacoma Schools, and also taught while serving in the Air Force. He retired with the rank of Lt. Col. in 1962.

Thoreson is a graduate of Pacific Lutheran University with a BA in Education. He also has held the position of purchasing agent for

Boeing Company, and production supervisor for Hoffman Electronics.

"This will be a new and interesting experience being with one of the component agencies of the Tacoma-Pierce County Opportunity and Development Corporation," he stated. "The work of the Rural Economic Opportunity office in Parkland and throughout Pierce County is a new part of the program, having been organized in March of this year."

He continued, "We need the cooperation of the communities concerned, and particularly of Parkland where the administrative office is located."

As his first official act he invited all Parkland area residents to visit the office at 401 Garfield Street South.

**CLASSIFIED ADS**  
Really work

## Pacific Lutheran University

Late Afternoon and Evening Classes  
Tuition: \$44.00 per Semester Hour  
Fall Semester 1967

REGISTRATION - Part-time day students may register Wednesday afternoon, September 20. Packets may be secured in the Administration Building lobby. Part-time evening students may register in the classroom at the first meeting of the class, September 21-27.

Course No.	Subject and Credit Hours	Time	Day	Instructor
218	Lettering and layout (2)	7:00-7:30 p.m.	M.	Staff
313	Ceramics (2)	7:00-9:40 p.m.	T.	Mr. Roskos
325	S1 Art in the Elementary School (2)	7:00 p.m.	T.	Mr. Laughlin
325	S2 Art in the Elementary School (2)	7:00 p.m.	Th.	Mr. Laughlin
<b>BIOLOGY</b>				
222	Conservation of Natural Resources (2)	4:30-6:10 p.m.	Th.	Mr. Ostenson
371	Parasitology (4)	Lecture 4:30-6:20 p.m. Lab 4:30-6:20 p.m.	T, W, Th	Mr. Knudsen
<b>BUSINESS ADMINISTRATION</b>				
211	S3 Financial Accounting (4)	7:00-8:40 p.m.	M, W	Mr. Walker
340	Principles of Business Education (3)	4:30-5:45 p.m.	T, Th	Mr. Peterson
251	S2 Organization and Management (3)	7:00-9:40 p.m.	Th.	Mr. Stintzi
364	S2 Business Finance (3)	7:00-9:40 p.m.	W.	Mr. Bancroft
371	S2 Marketing (3)	7:00-9:40 p.m.	M.	Mr. McMaster
441	Statistical Methods (3)	See Psychology		
457	Principles of Public Administration (3)	4:00-5:15 p.m.	T, Th	Mr. Culver
473	Purchasing (3)	5:00-7:30 p.m.	M.	Mr. King
504	S1 Managerial Economics (3)	7:00-9:40 p.m.	M.	Mr. Holman
504	S2 Managerial Economics (3)	5:45 p.m.	T.	Mr. Holman
512	Accounting Information and Control (3)	7:00-9:40 p.m.	T.	Mr. Peterson
550	Organizational Behavior (3)	7:00-9:40 p.m.	W.	Mr. King
551	Seminar in Industrial Management (3)	7:00-9:40 p.m.	Th.	Mr. Stintzi
552	Seminar in Management (3)	7:00-9:40 p.m.	Th.	Mr. Hulcheon
553	Public Policy and Business (3)	7:00-9:40 p.m.	Th.	Mr. Hulcheon
564	Seminar in Business Finance (3)	7:00-9:40 p.m.	Th.	Mr. Bancroft
571	Seminar in Marketing (3)	7:00-9:40 p.m.	W.	Mr. McMaster
590	Case Studies in Business (3)	6:00-8:40 p.m.	T.	Mr. King
595	Methods and Techniques of Research (2)	7:00 p.m.	Th.	Mr. Spjoding
596	Research in Business 1 (1-2)	6:00-8:40 p.m.	T.	Mr. King
597	Research in Business 11 (1-2)	6:00-8:40 p.m.	T.	Mr. King
598	Thesis (1-4)	5:40-8:40 p.m.	T.	Mr. King
<b>ECONOMICS</b>				
102	Principles of Economics (3)	7:00 p.m.	W.	Mr. Holman
211	S3 Financial Accounting (4)	7:00-8:40 p.m.	M, W	Mr. Walker
300	General Economics (3)	7:00 p.m.	M.	Mr. Genda
364	S2 Business Finance (3)	7:00-9:40 p.m.	W.	Mr. Bancroft
504	S1 Managerial Economics (3)	7:00 p.m.	M.	Mr. Holman
504	S2 Managerial Economics (3)	5:45 p.m.	T.	Mr. Holman
<b>EDUCATION</b>				
315	Instructional Materials (2)	4:30 p.m.	Th.	Mr. Hegen
319	S2 The Teaching of Arithmetic (2)	4:30 p.m.	T.	Mr. DeBower
<b>ENGLISH</b>				
370	S1 Principles of Guidance (2)	4:30 p.m.	T.	Miss Williamson
<b>FOR ELEMENTARY SCHOOL TEACHERS</b>				
370	S2 Principles of Guidance (2)	4:30 p.m.	Th.	Staff
<b>FOR SECONDARY SCHOOL TEACHERS</b>				
405	Adolescent Psychology (2)	7:00 p.m.	T.	Mr. Severson
413	Science in the Elementary School (2)	4:30 p.m.	M.	Mr. Stein
416	Parent-Teacher Conference (2)	4:30 p.m.	T.	Mrs. Kahlbeck
419	Administration of the School Library (2)	4:30 p.m.	Th.	Mrs. Bungegarder
423	Language Arts in the Elementary School (2)	4:30 p.m.	Th.	Mrs. Napjus
440c	English in the Secondary School (2)	4:30 p.m.	W.	Mrs. Napjus
440e	Mathematics in the Secondary School (2)	3:30 p.m.	T, Th	Mr. Peterson
441	Statistical Methods (3)	See Psychology		
450	Psychological Testing (2)	7:00 p.m.	M.	Mr. Holmberg
472	Occupational Information (2)	7:00 p.m.	W.	Staff
475	Emotional Problems of Children (2)	4:30 p.m.	Th.	W.
505	Philosophy of Education (3)	7:00 p.m.	T, W	Mr. Jones
546	Curriculum Development (2)	7:00 p.m.	M.	Mr. Johnston
557	Evaluation (2)	7:00 p.m.	T.	Mr. Spjoding
582	Administrative Internship (2-4)	To be arranged		Mr. Johnston
595	Methods and Techniques of Research (2)	7:00 p.m.	Th.	Mr. Spjoding
599	Graduate Seminar (0)	7:00 p.m.	M.	Mr. Spjoding
<b>ENGLISH</b>				
349	Modern Poetry (3)	7:00-9:30 p.m.	M.	Mr. Reigstad
443	Major Southern Writers of the U.S. (3)	4:30 p.m.	T, Th	Mr. Sole
<b>HEALTH AND PHYSICAL EDUCATION</b>				
234	American Red Cross Life Saving Course (1)	7:30 p.m.	T.	Mr. Alseth
237	Water Safety Instruction (2)	7:30 p.m.	T.	Mr. Alseth
241	Methods in Field Drawing (2)	7:30 p.m.	W.	Mr. Berg
450	The School Physical Education Program (2)	7:00 p.m.	Th.	Mr. Salzman
<b>HISTORY</b>				
210	S2 The Pacific Northwest (3)	7:00 p.m.	M.	Mr. Akre
421	History of Ideas: European Civilization (3)	7:00 p.m.	M.	Mr. Schnackenberg
501	Historiography and Bibliography (3)	7:00 p.m.	T.	Mr. Halseth
<b>LATIN</b>				
201	Intermediate Latin (3)	7:00-8:15 p.m.	M, W	Mr. Toven
<b>MATHEMATICS</b>				
112	Plane Trigonometry (2)	7:00-9:00 p.m.	T.	Mr. Lueder
319	S1 Modern Elementary Mathematics (3)	4:30-6:00 p.m.	T, Th	Mr. Baker
319	S2 Modern Elementary Mathematics (3)	4:30-6:00 p.m.	M, W	Mr. Peterson
437	Modern Algebraic Concepts for the Secondary School Teacher (3)	7:00-9:50 p.m.	M.	Mr. Eggon
<b>MUSIC</b>				
136	University Orchestra (1)	7:00 p.m.	M.	Mr. Kracht
363	Languages for Singing (3)	To be arranged		Staff
<b>PHILOSOPHY</b>				
221	S2 Introduction to Ethics (3)	7:00-9:30 p.m.	T.	Mr. Huber
300	S2 Principles of Philosophy (3)	7:00-9:30 p.m.	Th.	Mr. Arbough
<b>PHYSICS</b>				
487	Seminar (1-2)	4:30 p.m.	M.	Staff
<b>POLITICAL SCIENCE</b>				
101	S4 Introduction to Political Science (3)	7:00 p.m.	T, Th	Mr. Ulbricht
457	Principles of Public Administration (3)	4:00-5:15 p.m.	T, Th	Mr. Clabaugh
483	Political Systems of the British Commonwealth (3)	4:30-5:45 p.m.	M, W	Mr. Farmer
<b>PSYCHOLOGY</b>				
101	S5 General Psychology (3)	4:30-6:00 p.m.	M, W	Mr. Holmberg
370	Principles of Guidance (2)	See Education		
405	Adolescent Psychology (2)	7:00 p.m.	T.	Mr. Severson
430	Group Processes & Group Leadership (2)	7:00-8:40 p.m.	M, W	Mr. Holmberg
441	S2 Statistical Methods (3)	4:30-5:45 p.m.	M, W	Mr. Bexton
441	S3 Statistical Methods (3)	4:30-5:45 p.m.	T, Th	Mr. Pierson
441	S4 Statistical Methods (3)	7:00 p.m.	M.	Mr. Davis
450	Psychological Testing (2)	7:00 p.m.	M.	Mr. Holmberg
<b>RELIGION</b>				
305	Religious Education (3)	4:30 p.m.	M, W	Mr. Gavig
307	Ancient Church History (3)	7:00-9:30 p.m.	M.	Mr. Eklund
341	American Churches (2)	4:30 p.m.	T.	Mr. Eklund
<b>SOCIOLOGY</b>				
360	Human Migration (3)	4:30-5:45 p.m.	T, Th	Mr. Knorr
435	Introduction to Social Welfare (3)	7:00-9:30 p.m.	M.	Mr. Schiller
436	Interviewing (2)	7:00-8:30 p.m.	W.	Staff
441	Statistical Methods (3)	See Psychology		
<b>SPANISH</b>				
201	Intermediate Spanish (3)	3:45-5:00 p.m.	M, Th	Mr. Lemmon
<b>SPEECH</b>				
101	S8 Fundamentals of Oral Communication (3)	4:30-6:00 p.m.	T, Th	Mr. Karl
337	Speech Pathology (3)	4:30 p.m.	M, W	Mr. Utzinger

## EDUCATIONAL

Superintendent Fred M. Gramann noted that although personnel for the district were all selected approximately a month ago, this was the first meeting at which the contracts could be approved for the following: Miss Thelma Prideaux, 5th; Mrs. Mary Skeen, 6th; Mrs. Sharon Stinnett, 5th; and Mrs. Alma Brockman, 3rd—all at Kapowsin Elementary. Mrs. Shirley Anderson, 1st & 2nd combination, and Carleton Robinson, 6th, at Roy. Mrs. Patricia Shaw for elementary remedial reading and Ronald Warren will teach social economics at the high school.

A presentation of a request for the consolidation of two separate building projects previously approved was heard. The original building program approved last spring was a 10-room elementary school and an 8-room intermediate school on separate sites. The consolidation of these two facilities into a complete 18-room elementary school on the north 10 acres of a site at 159th, now owned by the Bethel District, was approved.

The preliminary plans for this 18-room school and a 3-room addition to the Spanaway Elementary School were approved. Mr. Wall of Jacobson and Wall presented the two phase program to update the Spanaway Elementary School into a modern 14-room school.

The board was appraised of the need for additional monies for the building program and heard the request to ask the voters of the district for approval for the sale of \$325,000.00 of bonds. In addition to the bonds, a building levy of approximately 13 mills was discussed to supplement the bond issue.

The maintenance and operation levy was discussed with a preliminary estimate of needs at \$305,000.00. This would be an increase of approximately 7 mills.

The resignation from the school board of Mr. R. T. Westerman was accepted with regrets. He has served the district since April of 1960 as a director from the Clover Creek area.

A special "thank you" to Mr. Ed Niehl, athletic director, Bethel District, was indicated by Fred Reno, representing the little league. The organization and grounds maintenance were the reasons for the commendation.

## Area Couple



ENGAGED - Mr. and Mrs. Arthur A. Thayer of 811 So. 99th, announce the engagement of their daughter, Marjorie Eileen, to James Woodrow Krotzer, son of Mr. and Mrs. Woodrow W. Krotzer of Keyport, Wash. Miss Thayer and Krotzer are graduates of Franklin Pierce High School. Wedding plans are tentatively set for July 6th, 1968, at the First Church of the Nazarene, So. 37th and M Street in Tacoma.

## Course Slated For McChord Cadets

Land search and rescue methods will be taught to cadets of the McChord Cadet Squadron of the Civil Air Patrol in a special course beginning next week, Lieutenant Carl Maxwell, squadron commander, announced.

Two hour lessons will be held every Tuesday from 7 to 9 p.m. in the squadron building No. 1402 at the base.

Fifteen minutes will be reserved for physical education, 20 minutes for outdoor training and an hour and 15 minutes will be spent in the class room.

Lessons will be taught by cadets Jim Kelley, 5601 111th St.; Roger Quesenberry, 8822 Park Ave. So., and Karl Moore, 6615 48th Ct. W., under the supervision of Mr. Robert Way. Way is the director of the land search and rescue team and has been working for years with boy scouts.

Anyone interested in the search and rescue program or the CAP program in general is invited to visit the squadron on either Tuesday or Wednesday night. Necessary paperwork to join the organization will be available and may be processed at that time.

## Talking Books To Be Applied For

Application for Talking Book Machines for the blind and visually or physically handicapped persons may soon be made through the Tacoma and Pierce County Libraries, it was announced this week.

Lending the Talking Book Machines has been the responsibility of the Washington State Department of Public Assistance and was taken over by the Seattle Public Library on September 1st through a contract with the Washington State Library.

Recent Federal legislation has expanded the Talking Book program to include visually and physically handicapped persons, unable to read conventional printed materials.

A one-day invitational workshop to acquaint public librarians and school library supervisors with the procedures and methods of the program will be held Friday, September 15, 1967, at the Northwest Regional Rehabilitation Center for the Blind in Seattle.

## Workshop Set For Librarians

A one-day invitational workshop to acquaint public librarians and school library supervisors with procedures and techniques involved in providing Talking Book Machines to the State's blind, visually and physically handicapped has been scheduled for Friday, September 15, at the Northwest Regional Rehabilitation Center for the Blind. Going from Tacoma Public Library will be Miss Mary Frances Borden, assistant director, and Miss Edith Ohlson, assistant in general services department. Mrs. Carolyn Else, director of Pierce County Library, will attend, as will Mr. Carl Holland of the county system.

Until now persons wishing to borrow Talking Book Machines have applied to the Department of Public Assistance offices.

This function was assumed by the Seattle Public Library on September 1, 1967, through a contract with the Washington State Library. Applications for the machines may soon be made at any cooperating library in the state.

Willard O. Youngs, Librarian of the Seattle Public Library, in announcing the workshop, said the program speakers will include a representative of the

## 95 Courses Set For PLU

Ninety-five courses of study will be offered by Pacific Lutheran University in its late afternoon and evening program for the fall semester. Classes will begin Thursday, Sept. 21.

The 19 general areas in which courses will be given include art, biology, business administration, economics, education, English, physical education, history, Latin, mathematics, music, philosophy, physics, political science, psychology, religion, sociology, Spanish and speech.

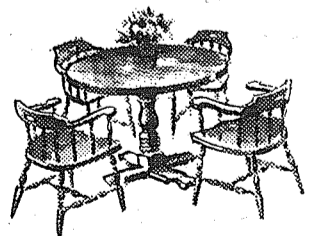
## Burt Nelson Home

Burt Nelson, son of Mrs. Mate while on duty with Ethan Nelson, Spanaway, has completed his tour of duty in Washington, D.C., arrived home September 2. Until he commences college, he will work at the Bargain Basket installing a music system.



## SIMPLICITY WITH ELEGANCE

This wonderful, hospitable group includes a 48-inch round table, opening to 68 inches with leaves, and four comfortable captain's chairs in solid hardrock maple.



## The Early American, Inc.

8021 Portland Avenue LEnox 1-6314

Fridays, Noon to 9 p.m.  
Saturdays, 10 a.m. to 4 p.m.



# Overstock Sale

**Myers**

..the first name in pumps

Grange outsells because Grange Undersells. You never never pay retail at GRANGE SUPPLY.

Store Hours

8 a.m. to 5 p.m.

Closed Sunday

## CROSBY SHAKE & SIDING PAINT

Oil Base for lasting protection. Dries to a soft flat finish 12 colors and white

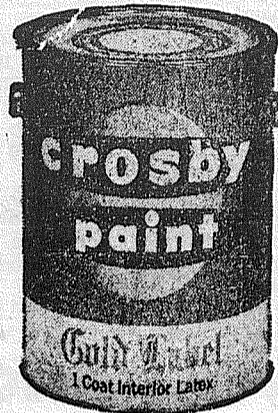
MFG. LIST 6.00

**\$3.49**

GALLON

NOW

4 Gallons . . . 11.97



## Crosby Gold Label

Our Best Interior Paint

Latex Wall Paint  
GUARANTEED TO COVER IN 1 COAT  
Dripless. Dries in 30 Min. Odorless, Easy Water Clean Up. The Finest Wall Paint Made. Free Choice of 3,000 Custom Colors. Mfg. Sugg. List 6.90.

**3.97**

Gallon

4 Gal. 14.97

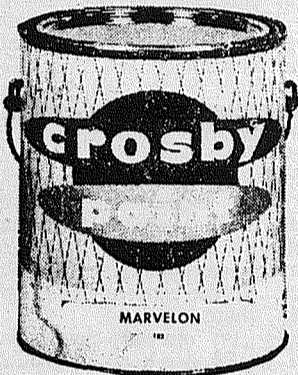
NOW

Save 50% on SANDPAPER Reg. 4c Sheet **2c**

Flint Sandpaper, Fine, Extra Fine & Medium. White supply lasts. SPECIAL

9201 4 INCH **BRUSH** **3.22**

Utility Brand FENCE & BARN PAINT **1.77** Gallon  
For fences & utility use.



## CROSBY MARVELON ACRYLIC LATEX HOUSE PAINT

Our Best Exterior Paint

CROSBY MARVELON

ACRYLIC LATEX HOUSE PAINT

Lasts 8 Years, Dries in 30 Min. Paint Even in Damp Weather, Easy Clean-up With Water

Free Choice of 3,000 Decorator Colors

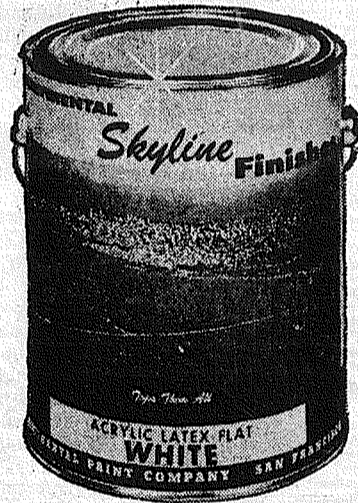
**\$4.97**

NOW

Gallon

Mfg. List 6.80

4 Gallons 17.77



## CROSBY ACRYLIC LATEX FLAT WALL FINISH.

Free Choice of 3,000 Colors  
Washable, Dries in 30 Min. Easy Clean-up in Water. Odorless.

Mfg. List 6.00

**2.97**

Gallon

4 GALLONS/10.97

NOW

## Wondersheen LATEX BASE OUTSIDE WHITE

Dries in 30 minutes. Easy clean-up with water.



**2.11** Gal. 10.97

NOW



## CROSBY Semi-Gloss ENAMEL

Flows on with no effort with brush or roller. Dries to a soft satin finish.

Mfg. List 2.80 Qt. **1.97** Qt.

NOW

**VALUABLE COUPON**

**PAINT THINNER**  
In Your Own Metal Container

With Coupon Per Gallon **35¢**

SAVE

Save \$2 Gallon!

\$3.98 Value WONDERSHEEN

## REDWOOD STAIN

**\$1.49** GALLON



For fences, outdoor furniture, etc.

All Paint Unconditionally Guaranteed.  
Free Custom Coloring On All White Paint Sold.

**Grange Supply sells to everybody**

**DU PONT TRIM BRUSH**

#359 2" Tynex Nylon Brush.

Reg. 1.49  
NOW **97¢**

No Membership Required

# GRANGE SUPPLY

No Membership Required

106th & Pacific

LE 1-5777



# PLU Varsity Hopefuls



**TWO AREA FOOTBALL STARS** — Head Coach Roy Carlson (center) of Pacific Lutheran University discusses the school's season opener with two of his star performers, Doug Jansen (left) of Sumner and Hans Lindstrom (right) of Puyallup. Jansen will start as defensive safety and Lindstrom as offensive halfback Saturday when PLU meets California Lutheran College at 1:30 on Franklin Pierce High School field.

## Final Warmups For PLU Knights

The Pacific Lutheran University Knights are going through final preseason warmups this week in preparation for their game Saturday against a tough California Lutheran College team.

Head Coach Roy Carlson, speaking with more optimism than in years past, said his team will be ready for the season opener. Game time is 1:30 at Franklin Pierce Stadium.

Carlson said this year's team is larger and stronger than his last squad which ended the 1966 season with a 2-5-2 record.

"We have some depth in the positions this year; something we haven't had before," he said. One of his biggest worries up to last week was the quarterback slot where graduation took his star of last year, Tony Lister.

"We now have two capable boys to direct the team. Bob Beller, a senior letterman who didn't play much last season, has improved greatly this year, and is pushing Bob Lovell, a junior transfer, for the starting role," said Carlson.

Last weekend at Franklin-Pierce Field Carlson gave his team a chance to perform. In the inter-squad game Beller tossed for 166 yards and two touchdowns, while Lovell pegged the pigskin for 80 yards and one touchdown.

The Lutes have strength in other departments. Leading the team is captain and all-conference end Jeff Carey. The 6-4, 215-pound senior end is considered a prime pro prospect.

Other three-year lettermen back are Mike Arkell, 5-11, 215-pound senior center; Al Fruetel, 5-9, 200-pound linebacker and guard; Bill Krieger, 6-0, 215-pound tackle; and Chuck Lingelbach, 5-11, 190-pound guard.

Carlson has back two outstanding defensive backfield men in Bill Ranta and Doug Jansen, the latter a Sumner High graduate.

But the coaching staff at PLU isn't counting on the lettermen alone this season. Newcomers assured of regular positions include Hans Lindstrom, the 5-11, 175-pound halfback who sparked Puyallup High last year.

In the squad game last week Lindstrom carried the ball nine times to gain 80 yards. Besides leading the team in rushing, Lindstrom's defensive play was highly praised by the coaching staff.

Dave Roller, a 6-2, 210-pound end from Franklin Pierce High School, will see a lot of action during his freshman year according to Carlson. Last weekend he snagged three passes for 6 yards.

The Lutes face a rough schedule this season. After California Lutheran they entertain Eastern Washington, last year's Evergreen Conference champions. The following weekend they host Willamette University, a Northwest Conference power.

Other home games are College of Idaho on Nov. 4, and Lewis and Clark College on Nov. 18.

## Area School Board Candidates File

Candidates for school board positions in the Bethel, Eatonville, and Franklin Pierce School Districts began filing for the November election last Friday.

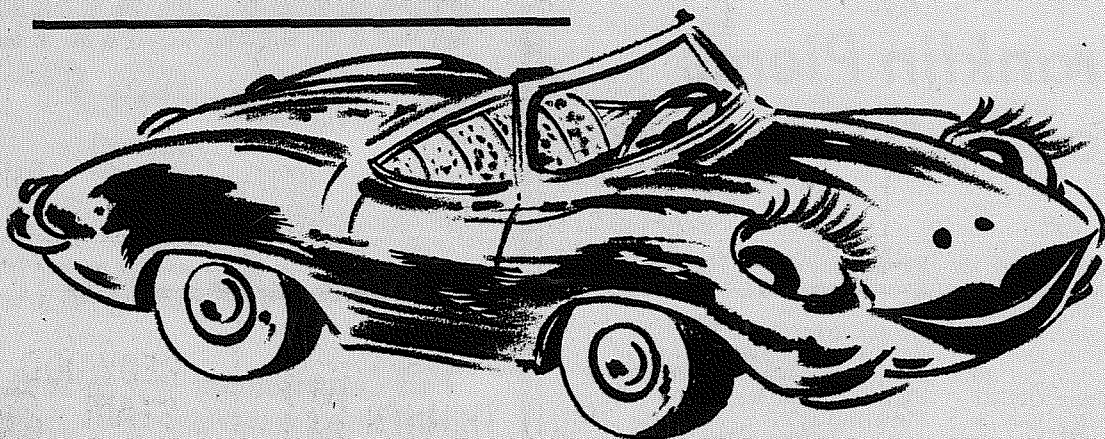
As of press time, the County Auditor's office reported filings for most of the positions up for election. Candidates have until September 22 to get their name on the November ballot.

Bethel incumbents William P. Hauser and E.W. "Doc" Webster are seeking re-election to positions one and three respectively. Don Goddard has filed for the position four seat now held by Mrs. Phyllis Connelly, who has not yet declared her candidacy for re-election. There have been no filings for the position two seat vacated by Robert Westerman. Westerman resigned from the board at the September director's meeting.

Two are running for Eatonville School Director offices. Fred Guske Jr. is seeking position one and Louis L. Miller has filed for position four.

In Franklin Pierce, Mrs. Jo Anne Matson has filed for the position four seat now held by her husband, E. N. Matson. Matson has announced he will not seek re-election. Walter C. Snackenberg will be on the ballot running for re-election to position one. Snackenberg was recently appointed to the board to fill the vacancy left by the resignation of Mrs. Phyllis Erickson. Although the County Auditor reported no one has filed for position three, incumbent Harold Sherry has indicated he will file before the September 22 deadline.

## Buying a New Buggy This Year?



In just a few short days we will again be celebrating one of our great annual events: **NEW CAR TIME!**

And your Puyallup-area automobile dealers will be featuring one of the greatest arrays of new styles in many years.

We suggest you stop by and see them all. And, when you find the one you like, remember we here at Citizens can put you into it faster.

That's right! We mean it when we say "New Car Loans Cost Less at Citizens". Figure it out for yourself and you'll see how our low 4½% new car loans not only save you money. . . . . but peace of mind as well.

You and the family will be proud of your new 1968 car. And you'll be proud, too, knowing you found the best financing possible.

This year finance that new buggy here at Citizens . . . . . and save money doing it.

**Citizens STATE BANK**



MEMBER FEDERAL DEPOSIT INSURANCE CORPORATION  
 ☆ MAIN OFFICE · PUYALLUP  
 ☆ EAST SUMNER OFFICE  
 ☆ SUMMIT VIEW OFFICE  
 ☆ EDGEWOOD-MILTON OFFICE

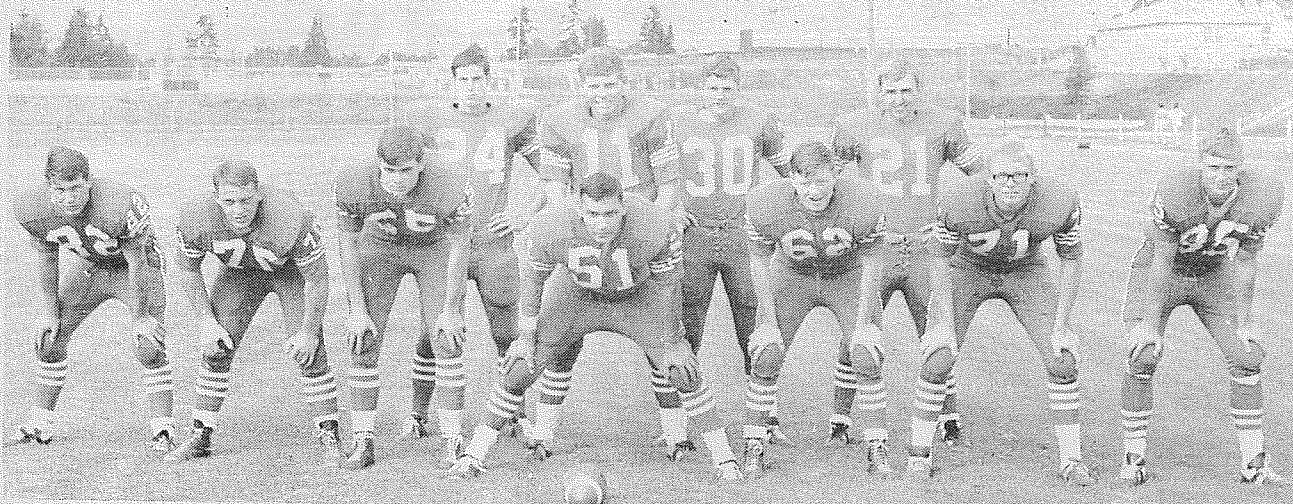
**WOW!**

**Come on out for Lunch.  
 SOMETHING DIFFERENT  
 Each Day Mon. - Sat.  
 Little Park Cafe**

171st & Pacific Ave. — LE 1-1343  
 Open 6 a.m. — 10 p.m.



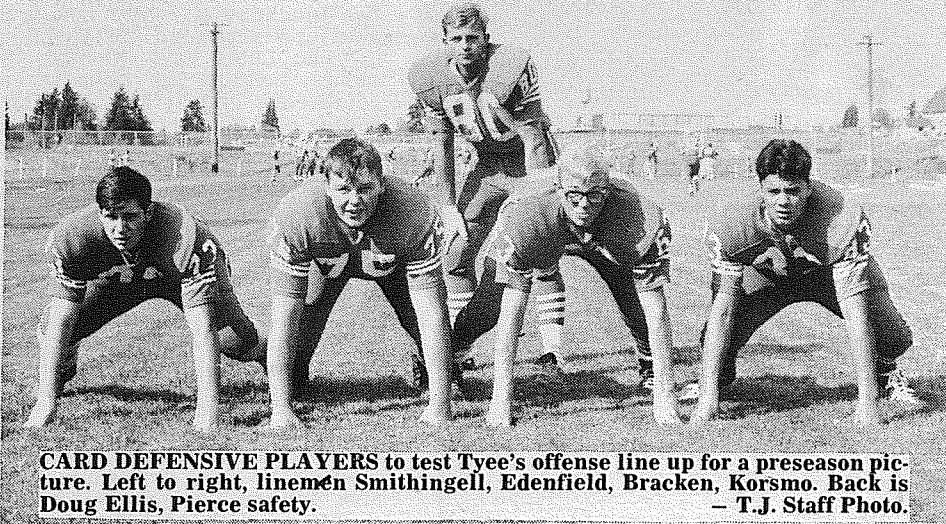
# Franklin Pierce Lacks Lettermen . . . But Loaded With Fight



PIERCE OFFENSE lines up. Probable starters against Tyee will include (l-r line) Stogsdill end, Downs tackle, Severeid guard, Colbert center, Morlin guard, Korsmo

tackle, and Armstrong end. Backs are Morris HB, Hadland QB, Radcliffe FB, and Renfrow H.B.

## F.P. Defensive Specialists



CARD DEFENSIVE PLAYERS to test Tyee's offense line up for a preseason picture. Left to right, linemen Smithingell, Edenfield, Bracken, Korsmo. Back is Doug Ellis, Pierce safety. - T.J. Staff Photo.

Out of 117 prepsters turning out for football at Franklin Pierce, Coach Eldon Kylo could count only 5 returning lettermen. But don't count the Cards out of competition!

"This bunch is fired up with enthusiasm," Kylo told the Journal Friday. "They don't think they're going to lose a game."

Of the coming season, Kylo said, "It's a real challenge to take an inexperienced ball club and see what can be done." He pointed out that none of the lettermen were starters last year, and the Puget Sound League has some real competitors in its ranks this year.

The Cardinal coach rated Puyallup as the Southern Division team to beat, with Lakes and Federal Way not too far behind. In the Northern Division, Renton appears to be the big threat, he stated, adding that Highline and Kent also will be tough to beat.

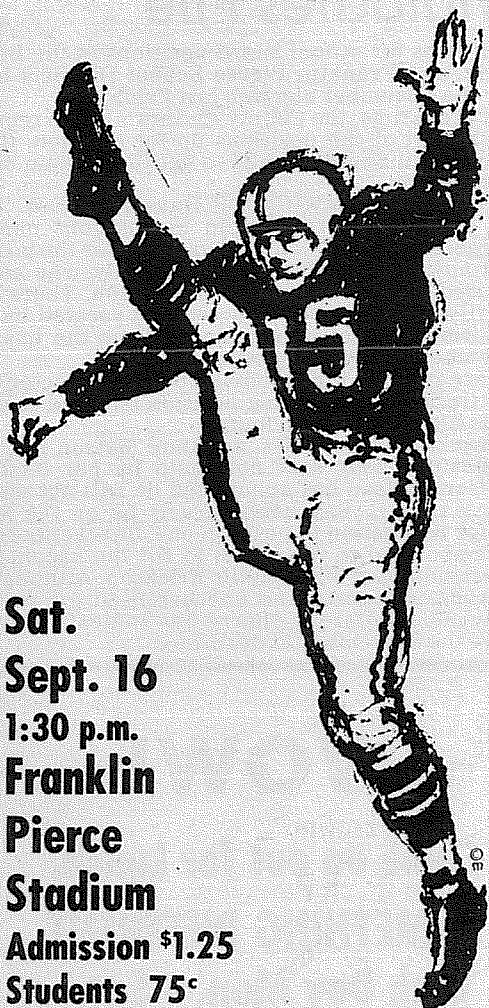
The 1967 Cardinals will depend on the passing arm of quarterback Jim Hadland to roll up yardage. Hadland won his letter last year playing defense, but has looked good in the signal-calling spot.

The Pierce running game will not be as good as last year's, but Kylo expects speedster Mike Renfrow to give opposing defensive squads something to worry about. The Cards will field a strong offensive and defensive line built around lettermen Dave Colbert, Mike Stogsdill, and Al Downs. Linemen Marv Korsmo and 260 pound, 6-foot-2 inch, Dave Edenfield are expected to bolster the defensive line.

The Cards are scheduled to play Tyee in the first game of a doubleheader Friday, 7 p.m., at Highline Field. Clover Park will take on Glacier in the nightcap.

Franklin Pierce will return to play Evergreen Sept. 22 on their home field, then meet a tough Lincoln team at Lincoln, Sept. 29. The Cards will be matched with Clover Park to open conference play October 6.

### Season's Opener Pacific Lutheran V.S. California Lutheran



Sat.  
Sept. 16  
1:30 p.m.  
Franklin  
Pierce  
Stadium  
Admission \$1.25  
Students 75¢

Intersectional Collegiate  
Football

### Franklin Pierce Football Schedule

Friday, Sept. 15 FP at Tyee (7 p.m. Highline Fld.)  
Friday, Sept. 22 Evergreen at FP  
Friday, Sept. 29 FP at Lincoln  
Friday, Oct. 6 FP at Clover Park  
Friday, Oct. 13 Kent-Meridian at FP  
Friday, Oct. 20 FP at Lakes (Clover Park Field)  
Friday, Oct. 27 FP at Federal Way  
Friday, Nov. 3 Puyallup at FP  
Friday, Nov. 10 Auburn at FP

**SPANAWAY SPEEDWAY**  
\*PRESENTS\*  
AUTO RACING INC.



**SUPER STOCKS**  
SUNDAY, SEPT. 17th  
TIME TRIALS 1:30 PM RACING 3 PM  
\*TROPHY DASHES \*HEATS \*MAINS  
PLUS  
25 EXCITING LAPS  
**PUFF DERBY POWDER**  
**SPANAWAY SPEEDWAY**  
2 MILES EAST OF PACIFIC  
ON 59TH...TACOMA

Ted & Darlene Bottiger Say:

**DON MCGAVICK**

Will get our Port of  
Tacoma Moving!  
Vote

**DON MCGAVICK**

Port Commissioner # 3 on Sept. 19  
All Pierce County Votes on This Position

### BROOKDALE LUMBER

PIERCE COUNTY'S FASTEST GROWING INDEPENDENT  
FULL SERVICE BUILDING MATERIAL DEALER

THIS WEEK'S SPECIAL  
**90 # Roll Roofing**  
Green - Red - White  
4<sup>95</sup> Roll

USE YOUR  
BANKAMERICARD  
OR  
FIRST BANK CARD

**Pratice Board**  
(Underlayment)  
3/8"x4x8 ..... 2<sup>74</sup>  
1/2"x4x8 ..... 2<sup>98</sup>

**Pine Shelving**  
1x12 ..... 16¢ ft.  
1x10 ..... 13¢ ft.

We carry many  
plumbing and elec-  
trical items for your  
home repair needs.

**Fir Flooring**  
1x4 Econ. .... 4 1/2¢ ft.  
2x4 Studs #4 .. 24¢ ea.

**Rubberglo Latex**  
Interior Paint  
3<sup>99</sup> Not  
gal. Much  
Left  
At this price

**Pegboard**  
2x4 Walnut ..... 1<sup>20</sup> ea.

There is still time to  
build that new cabin  
you've always wanted.

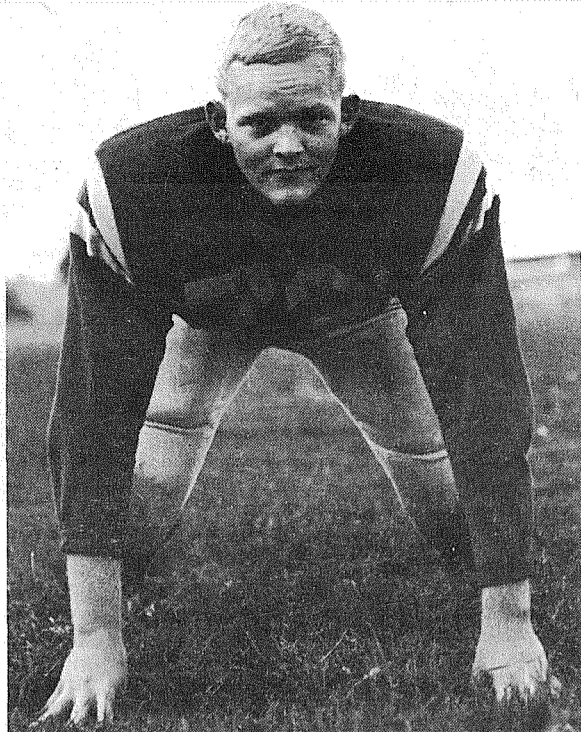
**BROOKDALE LUMBER**  
13602 Pac. Ave. INC. LE 7-8669



# Braves Feature Well Balanced Offense



**JOHN ZURFLUH** — Rambling two year letterman can run and pass. Probable starter at quarterback.



**ED WARING** — Two year letterman key man in Bethel line.

The Bethel football squad will be bolstered by returning lettermen and a host of upcoming talent as they meet Tumwater Friday at Tumwater.

The Braves are expected to field a well-balanced offense with two quarterbacks scrambling for the number one signal calling assignment. Two-year letterman John Zurfluh is challenged by Larry Loete for the job. Both can pass and run. Zurfluh has cinched a defensive halfback position.

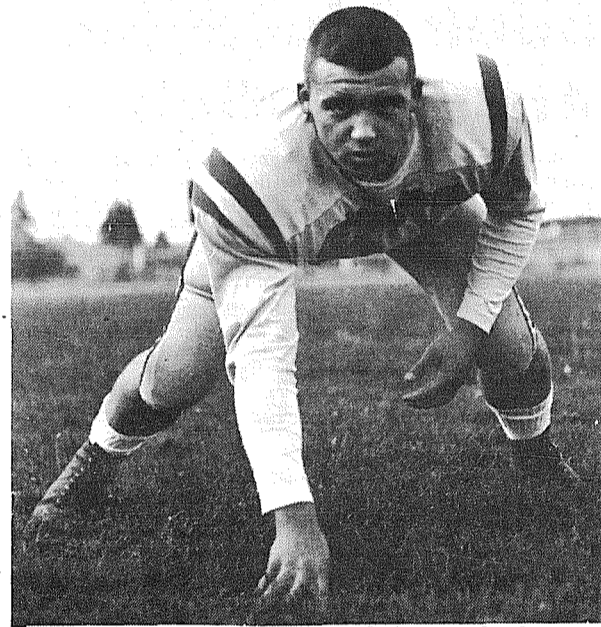
Other two-year lettermen slated to see action are Mike Poorman, a guard who plays both offense and defense, Ed Waring an offensive center and defensive middle guard, and Ed Mayo, an extra point and punt specialist. All are seniors.

Bethel has a bumper crop of high-spirited sophomores coming along, according to assistant varsity coach Jim Geise. He stated the coaching staff has been impressed with Jody Miller, who earned a starting spot on the Brave offensive squad by scoring twice in a recent intersquad game.

Following the Tumwater, the Braves will play a strong Mount Si team September 22 at Art Crate Field. Kickoff time is slated for 7:45 p.m.

Coaching the Braves are head coach Ed Tingstad, Geise, John Ostrander, Don Ash, Joe Butcher, and Chuck Manual.

Appraising the Seamount League, Geise rated Sumner, North Thurston, and Enumclaw as tough competition. In addition to meeting conference teams, the Braves will take on O'Dea High School of Seattle later in the season. "They should give us a real test," Geise stated. "We're looking forward to that contest."



**MIKE POORMAN** — Two year letterman back to bolster Brave offense and defense.

## Bethel Braves Football Schedule

- VARSITY FOOTBALL** — Game Time 8:00 P.M.
- Sept. 15 — Bethel at Tumwater
  - Sept. 22 — Mount Si at Bethel
  - Sept. 29 — Bethel at North Thurston
  - Oct. 6 — Enumclaw at Bethel
  - Oct. 13 — O'Dea at Bethel (Non-League)
  - Oct. 20 — Bethel at Sumner
  - Oct. 27 — Bethel at Curtis
  - Nov. 3 — Peninsula at Bethel
  - Nov. 10 — Tahoma at Bethel
  - Nov. 17 — League Championship Game (Site to be determined)

## Spanaway Regatta Rained Out

Fifty four boats, drivers and pit crews, from Washington, Oregon and Canada, at the Spanaway Autumn Regatta last Sunday were extremely disappointed when the wind and rain didn't let up and the race was called.

The boats were left high and dry after crews had worked all Saturday night getting ready for the races. Tuneups and some major repairs including installation of new engines and putting in new steering shafts, kept crews working until 3:30 a.m. Sunday.

One comment overheard at the scene of the race was: "We can go back to the old way of weather forecasting. If you can see Mt. Rainier, it's going to rain; if you can't see it, it's raining already."

This coming weekend the boats and drivers who were at Spanaway and a few others will be at Harrison Hot Springs, British Columbia. There will be two days of racing, with the excitement beginning at noon Saturday.



**WASHED UP OR WASHED OUT** — This was the scene as the Spanaway Autumn Regatta was called off Sunday because of wind and rain. (Times Journal Staff Photo)

**CALL GR 5-1228 NOW!**

**New 3-M Heating Panel System** that permits full use of space — without interfering with furniture, drapes or wall space!  
**Easy To Install**

Convert to Perimeter Ceiling Heat using 3-M Brand Electric Radiant Heating Panels. Every corner of your home will be warm and cozy. The installation is less expensive than you'd think. It takes only a day.

The panels are simply attached to your existing ceiling and wired. No pipes, flues or ducts to worry about.

You don't have to touch your present heating system until the installation is completed, so you're never inconvenienced.

**Ask DANARD for details!**

Find out how you can install 3-M Panels under Parkland Light & Water's Reimbursement Program.

**\$22,500**

will be reimbursed to Parkland Light members on buildings now being built or remodeled with electric heat.

Estimates Furnished On Request

*"We Excel in Quality Electric Heat Installations"*

**DANARD ELECTRIC COMPANY**  
4832 Pacific Ave.

## New Seamount Prices Adopted

New Seamount League admission prices have been adopted for the 1967-68 school year. They are as follows: Adults, \$1.25; Visiting Students with A.S.B. Cards, .50; Grade School and Junior High, .50.

## Pre-Rain Special FREE

**Fiberglass Furnace Filters with our Cleaning Special**

**Only \$1950**  
MOST MODELS

**Includes Ducts, Blower, Chimney, Smoke Pipe. Special Lower Rates on Stoves & Fireplaces**

Free Estimates on Service or installation of burners, stoves, furnaces.

Free Estimates on Gutter & Downspout Work

*Satisfaction Guaranteed or your soot refunded*

## HOME FURNACE

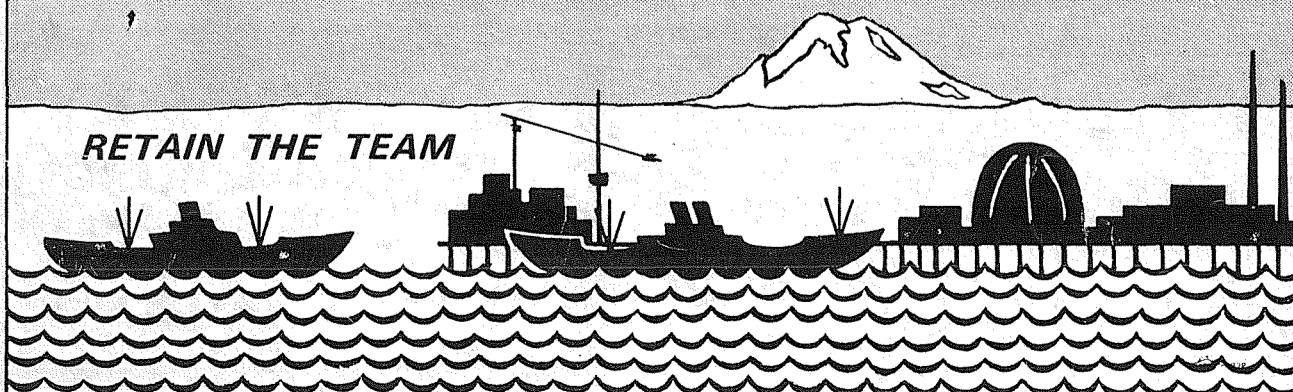
**GR 2-5591 - 24 hrs. 30 Years Experience**

## ELECT PORT COMMISSIONERS

**ROBERT G. EARLEY**  
1ST DISTRICT

**A. E. BLAIR**  
2ND DISTRICT

**RICHARD D. SMITH**  
3RD DISTRICT



## Next Week

The Journal looks at High School Football in Eatonville, Lincoln (Tacoma), and Mt. Tahoma.

## \$\$\$ VAUGHAN'S VALUES \$\$\$

Reg. NOW

**Armstrong ceiling tile** 12 x 12 - each **15¢ 12¢**

**Michigan Birch Panelling** 4 x 8 - each **6<sup>95</sup> 5<sup>99</sup>**

**Unfinished mahogany Panelling** — 4 x 8 **3<sup>49</sup> 2<sup>69</sup>**

**Unfinished redwood Panelling** — 4 x 8 **3<sup>95</sup> 2<sup>99</sup>**

PLENTY OF FREE PARKING

**VAUGHAN'S**  
6402 South Tacoma Way

Building Materials Inc.  
GR 2-4494 & GR 4-9515



# Waller Road

By Mrs. Verne W. Fogle Le 7-5210

Waller Road School opened Tuesday, Sept. 7th, with an enrollment of 445 pupils, according to Principal, Florence Martin.

Kindergarten pupils numbered 66 with two classes in session. The three first grade classes had 72 students and the fifth grade also had to utilize three classes with 77 pupils.

Three new teachers have been added to the faculty. They are Miss Peggy Biller, first grade; Mrs. Ruth Ditsch, first grade; and David John Harrigan, fifth grade.

Pierce County Grange Home Makers, after a summer vacation, will meet Tuesday, Sept. 12th, in the Graham Grange Hall at 10:45 a.m.

All County Granges, having candidates for memberships in the Grange Centennial Membership drive, are invited to bring them to Ohop Grange for first and second degrees of initiation at 8 p.m., Sept. 13th. Ohops team will exemplify the work.

Rev. and Mrs. Paul Jueling, long-time residents of the Waller Road area, enjoyed a gathering of friends and relatives recently to help Mrs. Jueling celebrate her 86th birthday. She takes things easy nowadays, but does love company.

Mr. and Mrs. J.M. Heath, former Waller Road residents who have been in Florida for several years, were recent visitors in the area. They were traveling by trailer and were on their way to Oregon to attend a convention of folks who love the carefree trailer life.

# FLYING WORLD



**ACCEPTED CHALLENGE** - Congress Floyd V. Hicks, representative 29th Legislative District, left, climbs into the Press plane of the Northwest Flyer with Jack Brown, publisher of the Flyer, right, to take a tour of the General Aviation layout in Western Washington. Brown invited Rep. Hicks to see the magnitude of the flying world in this area when it was made known that private pilots may have to pay a "user tax." Patti Bullo, Brown's office manager, and Mrs. Hicks also took the trip, which included Seattle, Tacoma, Ocean Shores and other private landing strips.

## Adult Education At Bethel High

The adult evening school program, will begin at the Bethel High School on October 1st. of meeting the educational de-Registration will begin on Sep-sires of anyone not regularly tember 25th, according to Rob-enrolled in the day-school pro-ert Anderson, director of the

evening school.

Courses in basic education, for adults who wish to complete their 8th grade and high school education will be offered, also courses in history, Mathematics, Science and English.

Classes will be designed for vocational training or upgrading, high school completion, increasing knowledge and skills in subjects, and providing hobby or interest classes.

High school credit may be given for most of the classes. Persons wishing to receive high school credit for classes must arrange for a conference with the high school counselor to schedule classes which will meet graduation requirements of Bethel High School, through which diplomas are granted.

There are no educational requirements for entrance into most of the classes.

Registration for Evening School courses will be accepted between 6 and 9 p.m. at the Bethel High School Office, Monday through Thursday for one week prior to the first class session.

**NEW- MORE POWERFUL**

**the 1967's ARE HERE**

**VOLKSWAGEN**

27 MAJOR CHANGES COME IN AND

**Tom Carstens AUTOHAUS**

7030 So. Tacoma Way  
GR 4-0666  
TACOMA DEALER SINCE 1955

**Dryer MORTUARY**  
(134th & Pacific)  
PARKLAND

**The Country Parson**

8-24  
"God gave men the right to choose—men should give men the same right."  
Copyright, by Frank A. Clark

**Dryer MORTUARY**  
(134th & Pacific)  
PARKLAND

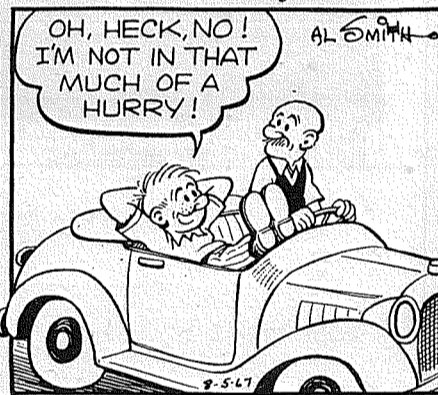
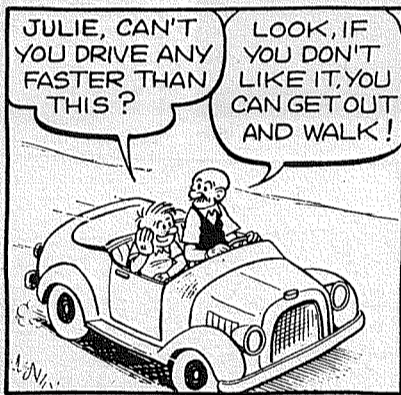
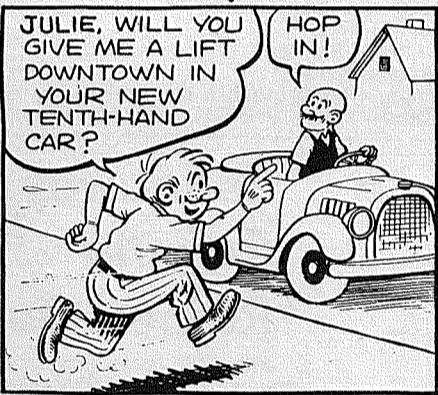
**RENT TV**

Portables All Sizes Color TV

GR 5-3755 9440 Pacific **United Rent-Alls** 10012 Bridgeport JU 4-4100

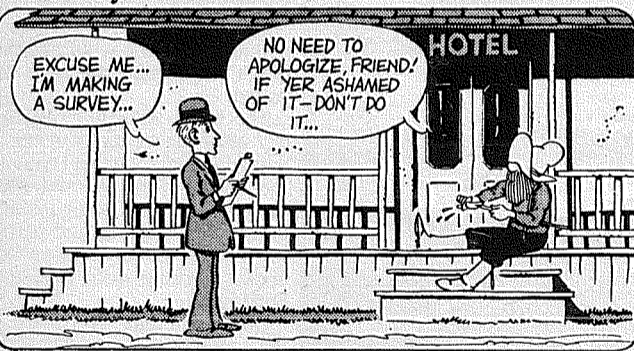
# OUR WEEKLY COMICS

### Rural Delivery



By Al Smith

### Grubby





# CLASSIFIED ADS

### 1 Misc. For Sale

APPLIANCES. Private party. LE 1-6597.

CHOICE AFRICAN violets. 10214 East B. LE 1-1926.

WOOD RANGE with coils and hot water tank. TH 5-5674.

McNESS Products. GR 5-2734.

BULLDOZING, ditching, gravel, top soil. ADM Co. TH 5-2452.

PYLON clear plastic, cement sealer and paint \$7.95, a gallon. LE 1-5718.

ORDER LETTERMEN school sweaters. Any color. River Road Gift Shop. TH 5-4336.

'65 FLEET CRAFT 15' with brakes, gas lights, window guard. Sleeps 6. \$895 including license. New Fleet Craft trailers, too. Bunco-U-Rent, 1812 E. Main. TH 5-7527.

GRAVEL FOR driveways. Coarse or fine screen. 5 1/2 yards, \$14. Coarse washed sand, pea gravel crushed rock, mixes for concrete work. Cedar fence rails and posts. Phone evenings. Norman, LE 7-4088.

56 CHEV station wagon \$225 or best offer; 2 wheel utility trailer \$45; Guernsey cow \$125. Arc cutting torch with gauges and 100 foot hose \$110. LE 1-2891.

19 cubic foot chest freezer, new motor, \$95. 3 blonde end tables, \$5 each. Small tractor, \$50. International Farmall tractor, 140 with plow and disc, \$1,595. No Saturday calls. 832-3888.

CAKLEBERRY RANCH has fine fat white hens - 40¢ each. This week special. 122nd and Canyon Road. LE 1-0352.

35 REMINGTON with sling and case. Box and a half of ammunition. UN 3-4871.

1964 FLEETCRAFT 15' camper trailer. Self contained. \$950. TH 5-3421.

GARDEN TRACTOR one year old with dozer blade and cultivator attachments. \$325. UN 3-1167, after 5.

### 4 Boats, Equipment

12 FT. PLASTIC boat, wide beam - reasonable. LE 1-3079. #67-81

15 HORSE Evinrude. 1957. A-1 shape. Sumner UN 3-1684 after 6.

### 6 Musical Instruments

BUNDY Bb Clarinet. Good condition. UN 3-7834.

KAY steel guitar. New. \$70. TH 5-7709.

NEWLY reconditioned clarinet. \$60. TH 5-3485 after 4:30.

STUDENT VIOLIN, \$20. 12 Bass accordion, \$40. TH 5-4266.

SILVER FLUTE - Excellent condition. \$70. TH 5-2638.

ALTO sax - \$100. TH 5-4510.

PRICED for quick sale. Used clarinet - good for beginner - \$35. Galanti accordion - like new. \$150. TH 5-8096.

SPINET PIANO. Like new. TH 5-5679.

### 7 Furniture, Appliances

KENMORE deluxe washer with suds saver. Used 2 years. A-1 condition. \$85. TH 5-4812.

DELUXE Hotpoint washer. \$90 or trade? LE 7-7227.

36" NORGE range. Ample storage. Deluxe model. \$125 or best offer. TH 5-0138.

MOVING! Spinet piano. Misc. household and patio furniture. Nic nacs, ceramics, etc. 1411-4th St. S.E.

NORGE ELECTRIC range, good condition, \$35. 6 year crib and mattress. TH 5-4564.

6 YEAR CRIB, Kenmore dryer. TH 5-6220.

TWO DOOR G.E. Deluxe Refrigerator. UN 3-7989.

**TROPHY STORM DOORS**  
Heavy Duty Aluminum Full Piano Hinge  
6 Models to Choose From  
Manufacturer - Repair Service  
Parkland Door Inc.  
318 East 96th GR 4-7011

### 9 Animals For Sale

ONE PACK or riding burro. \$55. TH 5-0213.

THREE - YEAR - old registered Appaloosa mare. Gentle, good blanket. Best offer. LE 7-8253 after 5:30.

2 SHETLAND ponies - both gentle. WA 2-5975.

MALLARD DUCKS, full grown. LE 7-6302.

DACHSHUNDS, thoroughbred. 6 weeks. No papers. \$25. UN 3-6901.

3 MONTHS old Holstein bulls. Angus heifer. UN 3-1688.

MINIATURE mahogany dash-hund for sale. LE 7-6603. AKC Reg. #67-79

POMERANIAN PUPS. Can be registered. Shots. 9228 Fuitland Ave.

### 10 For Sale Or Trade

MINI-BIKE for feeder calf. VI 7-2110, after 5.

### 11 For Free

FREE to good homes - Large and small dogs, puppies, healthy cats. WA 7-1119, WA 7-0163.

MOTHER CAT, spayed. Two kittens, 4 mo. old, house-broken. All half Siamese. Well trained and spoiled. TH 5-5552.

1 1/2 ACRES valley land for cultivating. UN 3-1440.

KITTENS - 2 months old. 1 grey minx. TH 5-8556.

### 23 Help Wanted

CHILD CARE. My home, 5 year old girl. LE 1-4958.

BABYSITTER during Fair week. Afternoon and evening work. TH 5-0022.

BABYSITTER Thursday mornings, my home in Mayfair, two children. LE 1-4446. #67-72

### 24 Work Wanted

IRONING, EXPERIENCED, references. LE 1-6597.

### 25 Rides Wanted

RIDE wanted to Boeing Kent 7:30 am to 4 pm shift. From 614 S. 127th. LE 1-4743.

### 27 Misc. Services

EXPERT Alterations, Men & women's fast service and reasonable. LE 1-3506. #67-84

DRIVEWAY GRAVEL; Bank run \$2 a yard, screened \$14 for 5 yard load, Don Abbott, tractor work. LE 7-3846.

DOZER, LOADERS, dump trucks, excavating, grading, backfill, roads, gravel & fill. Hour or contract. VI 7-7193.

YOUR OWN baby shoes eternitized in ever lasting metal. 832-5211.

### 28 Building Services

REMODELING, leveling, block foundations, cabinets. Free estimates. Reasonable. LE 7-3550.

### 29 Land Services

TOP soil, sandy loam, black soil, mixed soil. LE 7-7455.

BULLDOZING. Days, weekends. LE 1-1892.

TOP SOIL, lawns, leveling, landscaping. ADM Company. TH 5-2452.

TOP SOIL and gravel. Loader work. R.D. Beeler. LE 7-4940.

### 31 Animal Services

ARTIFICIAL BREEDING. 15 breeds, dairy & beef. ABS. TA 5-3441, TE 3-7722, 893-3651, 458-3931.

POODLE and cocker clipping - \$4.00. LE 1-5558.

LICENSED FARM slaughtering and custom cutting. 893-4012, Orting. Call collect.

GROOMING to your liking. Dogs given tender loving care. Call Kaye, TH 5-3105.

PROFESSIONAL poodle grooming, private grooming lessons. Pet and professional courses. Lovely orange apricot pups. Stud service. Mr. Lucky's Kennel. LE 1-4131.

### 33 Licensed Child Care

LICENSED day care. Summit View area. LE 1-2358.

### 34 Baby Sitting

CHILD CARE my home. LE 1-6586. #67-80

### 38 Instruction

PIANO studio - 72nd & Canyon Road. LE 7-5064.

PIANO and organ lessons. LE 7-4242.

PIANO, guitar, band instruments. Students home or studio. LE 1-3246, SK 2-7695

DRIVER TRAINING. 3 week course. Free Pick up. LE 1-0505 anytime.

### 39 Lost

\$5.00 reward return Rollfast girls bike lost Spanaway Park Aug. 14. LE 1-5577. #67-83

### 12 Real Estate For Sale

BY OWNER: 3 bedrooms, 1 1/2 baths, hardwood floors, built-in oven, range, fireplace. Oil heat. Two car attached garage. Write Box X, Pierce County Herald.

BROWNS POINT: Marine view, 2 bedrooms, excellent condition. By owner. WA 7-9688.

BY OWNER! 5 acre farm. 3 bedroom, wall to wall carpeting, basement, furnace, fireplace. Income property. TH 5-1852 for appointment.

NICE CLEAN 3 bdrm bungalow centrally located; spacious living, fireplace, h.w. floors, attached garage, lovely fenced yard. Only \$15,500. TH 5-8154.

LARGE wooded lots. 11214-86th Ave. E., Puyallup.

OPEN HOUSES: Saturday and Sunday. 2 new 3 bedroom homes. Attached garages, fireplace, slate entry, range-dishwasher. South on Meridian to Patzner Road (136th St.), left 1 block, left on 103rd Ave. E. TH 5-6467, UN 3-4183.

2 1/2 ACRES on new, wide Country road. 128th and Canyon area. \$5000. TH 5-5676.

BUILDING SITES on Fife Heights. Suitable for any type house. WA 2-7815, WA 2-8175.

WIDOW LEAVING beautiful new 2 bdrm, 2 bath, 2 car garage, enclosed breezeway. Well kept yard and shrubs. Excellent location. \$18,500 893-4640, Orting.

**Listings Wanted**  
Buying or Selling  
Real Estate Service  
Call  
**Devereaux Realty**  
12152 Pacific Ave. LE 7-8658

**M.L.S.**  
MULTIPLE LISTING SERVICE  
**McKinley Hill Realty**  
6311 McKinley Ave. GR 4-9579  
Member of Multiple Listing Service and Tacoma Real Estate Board

### 19 For Rent Or Lease

RENT high-weed mowers, 5 sizes. United Rent - Alls. 9440 Pacific Ave.

2 BEDROOM house, stove, drapes, fenced yard, \$115. Damage deposit, no pets, 1 child. Call after 6 p.m. TH 5-0406.

LARGE ONE bedroom. Appliances and drapes. Carport. No children or pets. 219-6th Ave. NW. Puyallup.

CAMP trailers for rent. Call Roy 843 - 2273

LARGE 3 bdrm rambler, dishwasher, disposal, 2 baths, fireplace, double garage, water paid. \$175 mo. WA 7-5913.

### Legals

IN THE SUPERIOR COURT OF THE STATE OF WASHINGTON IN AND FOR THE COUNTY OF PIERCE NO. 177612

SUMMONS BY PUBLICATION  
SHARON D. McCLINTOCK, Plaintiff, vs. ELMER McCLINTOCK, Defendant.  
THE STATE OF WASHINGTON TO: ELMER McCLINTOCK:

YOU ARE HEREBY SUMMONED to appear within sixty (60) days after the date of the first publication of this Summons upon you, and to answer the Complaint and serve a copy of your Answer upon the undersigned at the place below specified, and defend the above entitled action in the Court aforesaid; and in case of your failure so to do, judgment will be rendered against you, according to the demand of the Complaint which will be filed with the Clerk of the said Court, a copy of which is herewith served upon you.

This is an action in which the plaintiff seeks a divorce from the defendant on the grounds of having lived separate and apart for more than two years.

McCAWICK, HEMMEN & BOTTIGER  
By: M. H. Hemmen  
Attorneys for Plaintiff  
8849 Pacific Avenue  
Tacoma, Washington 98444

Order to Publish Summons - Published Aug. 31, Sept. 6, 13, 20, 27, Oct. 4, 1967.

IN THE SUPERIOR COURT OF THE STATE OF WASHINGTON FOR THE COUNTY OF PIERCE NO. 76316

NOTICE TO CREDITORS  
IN THE MATTER OF THE ESTATE OF ALBERT E. SEWARD, Deceased.

Notice is hereby given that the undersigned has been appointed and has qualified as co-executors of the above entitled estate; that all persons having claims against said deceased are hereby required to serve the same, duly verified, on said co-executors or their attorney of record at the address below stated, and file the same with the Clerk of said Court, together with proof of such service, within six months after the date of first publication of this notice or the same will be barred.

Date of first publication September 7, 1967.

Miles J. King  
Chris A. Leber  
Co-executors of said Estate  
Address 8849 Pacific Ave., Tacoma, Wash.

R. TED BOTTIGER  
Attorney for Estate  
8849 Pacific Avenue,  
Tacoma, Washington  
Published Sept. 7, 14, 28, 1967.

SUPERIOR COURT FOR WASHINGTON IN PIERCE COUNTY NO. 72661

NOTICE OF SALE OF REAL ESTATE  
In the Matter of the Estate of FRED E. JOHNSON, Deceased.

NOTICE IS HEREBY GIVEN that CARRIE CHRISTENSEN, in her capacity as Administratrix of the above estate, will sell, at private sale and for cash the following described real property:

Lots 15 and 16, Block 57, McCoy's Addition to Tacoma, W.T. as per map thereof recorded in Book 2 of Plats, Page 77, records of Pierce County Auditor, Pierce County, Washington,

to the highest and best bidders. Bids must be submitted in writing and will be left with the attorney for the Administratrix, George F. Potter, at 159 South 112th Street, Tacoma, Washington 98444. Bids will be received until the date of the sale.

The sale will be made on or after October 2, 1967. The Administratrix reserves the right to reject any or all bids.

s/Carrie Christensen, Administratrix  
George F. Potter  
Attorney at Law  
159 South 112th Street  
Parkland, Washington 98444  
LEnox 1-2889

George F. Potter  
Attorney at Law  
159 South 112th Street  
Tacoma, Washington 98444  
Published September 14, 21, 1967.

**Journal Classifieds**  
Get Results  
LE 7-0223

**AUCTION**  
EVERY FRI. 7:30 P.M.  
34233 Pacific Hwy. So.  
Buy, Sell or Consign  
WA 7-2611 VE 8-9622

## Hamburgers Best Sellers

Hamburgers are number one on the food list at the Western Washington Fair. Ballparks and racetracks can set the hot dog selling records; at the Puyallup Fair, opening September 16, people want hamburgers.

Last year a few less than a half-million people tramped through the turnstiles during the nine-day exposition. Statistically speaking, each spectator ate a little more than half a burger. In all, 253,044 were sold.

No records were kept as to how they wanted them, but the odor of frying onions is as much a part of any fair as the smell of the saw dust in the cattle and horse barns. The mustard and catsup was shipped to the 46-acre exhibition by the truckload.

Hot dogs ran a very poor second. According to the fair management, 25,368 were sold.

The count on sandwiches is a tough one to make or even estimate. Sliced bread, besides serving as the handhold for sandwiches is also used in the many restaurants around the grounds as part of the menu for breakfasts, luncheons and dinners.

Fair officials have a pretty good idea why the hamburgers outsell the hot dogs. The Western Washington Fair is so large and takes so long to see that spectators want something more than the snack of a hot dog. They want something they can get their teeth into; like, for example, a hamburger.

According to the bakers who supply the Puyallup Fair, 73,633 slices of white and 7,080 slices of whole wheat (not counting the crusts which most probably ended up as stuffing or bread pudding) were swallowed.

## LOOKING AROUND

Vernon Lamons of Kendall, Michigan, was shot by a lawnmower. Blade of his mower hit a .22 cal. bullet, which fired and the slug went through Lamons' leg.

School teacher Bertram Banks has installed a homemade noise meter in his classroom in Southborough, England. When noise reaches a disturbing level a big warning bell starts clanging.

Mothers can check their children in New York City parks for three hours at a charge of 25 cents, but if mom leaves the kids longer than that the rate is \$1 an hour.

**Used Car**  
HEADQUARTERS  
"MOST FOR THE MONEY"  
"It Makes... All Kinds"  
**ARMSTRONG'S**  
USED CARS LE 7-5524  
11109 Pacific Ave.

**PIERCE COUNTY HEADQUARTERS FOR 1967**  
★ CHRYSLER  
★ PLYMOUTH  
★ VALIANT  
★ BARRACUDA  
CALL GR 4-0621  
**Steven MOTOR CO.**  
2705 SOUTH TACOMA WAY

# BUSINESS DIRECTORY

**Fencing**  
**FENCING**  
Designers and Builders  
EXPERT WORKMANSHIP  
REASONABLE PRICES  
Easy Monthly Payments  
**VAUGHAN'S**  
6402 S. Tacoma Wy. GR 4-9515

**Furnaces**  
**Sheet Metal**  
• Furnace Repair and Service  
• Installations  
**PARKLAND FUEL OIL**  
12002 Pacific Ave.  
LE 7-0256

**Top Sell**  
**BALMER & SON**  
EXCAVATING  
Bulldozing - Loader  
Land Clearing - Dump Trucks  
Blasting - Road Construction  
Top Soil, Backhoe For Hire  
FREE ESTIMATES  
LE 7-3165 VI 7-7133

**Boush Moving & Storage**  
Agents for U.S. Van Lines  
Coast to Coast Service  
121 WEST STEWART  
TH 5-5436

**INTERURBAN AUTO FREIGHT INC.**  
3-Trips Daily  
To Parkland, Spanaway,  
Summit, Midland.  
GENERAL FREIGHT  
MA 7-4121

\*\*\*\*\*  
**Use the Want-ads - It Pays**



**FROM OUR**  
*Correspondents*

**Roy**

By Marie Harrison Tele. No. 843-2323

The Rodeo Association held its monthly meeting Friday, Sept. 8th at the Rodeo Hall and heard the best financial report on any Rodeo to date. Plans for an Association appreciation dinner were made for early October.

The Ladies' Aid of the Congregational Church met at the home of Mrs. Jennie Locke on Wed. the 6th, with eight members in attendance. October 6th was chosen as the date for the Aids annual Bazar and Buffet Supper, which will be held in the Church Social Hall.

Mr. Dick Thurston reports that the Lacams Community Fair was a great success, with better than 250 friends and neighbors in attendance to see the many fine exhibits and to attend the evening program.

The family of Otto Guske, Mrs. Eva Guske and Mrs. Kenneth (Irene) Harlan wish to extend heartfelt thanks to the many friends who so kindly expressed their sympathy with flowers, visits, and donations to the Roy Congregational Church, the Heart Fund and the Orthopedic Hospital in memory of Mr. Guske, who passed away Sept. 1, 1967.

Recent visitors in our community were Mrs. Jackie Herman of Walnut Creek, Calif. Mr. and Mrs. Jack Sherman of Sacramento, and Mrs. Kenneth Harlan of Yorba Linda, California, all visiting at the home of Mrs. Otto Guske.

Mr. and Mrs. Richard Dittbenner and daughter of Sacramento, Cal. were in town over Labor Day weekend visiting his parents the Jim Dittbenners.

The Roy Grange will hold a regular meeting at their hall on Thursday, September 21 at 8 p.m.

Teen Dance this Friday, Sept. 15 at the Roy Rodeo Hall.

**Collins**

Mrs. W.S. Morris, LE 1-2421

The first meeting of the fiscal year of Thrifti Maids Homemakers' Club, will be at 10 a.m. Wednesday, Sept. 13, in the home of Mrs. Verne Johnson, 12415 34th Ave. E. Discussion will be on the coming bazaar and state conventions, the latter of which will be convening in Olympia in October. Any interested women are invited to attend.

Lance Corporal Neal Shafer, who was stationed in Okinawa, surprised his parents the evening of Aug. 24th, by coming home unexpectedly for a twenty day leave, after which he will go to Camp Pendleton, Calif.

Mr. and Mrs. George Nagle, Sr., of Canyon Road and 144th St., recently returned from a five weeks' vacation trip to the East coast, during which time they visited with relatives in Detroit, Mich., where they happened to be at the time of the riots. They visited in Newport, R.I., with their daughter, Patricia, whose husband is in the U.S. Navy. They went on to Province Town and Boston, Mass., thence on through Cape Cod and on to Montreal to the Exposition, returning home through Canada and Anacortis, where they visited relatives. Last week-end the Nagles enjoyed a visit with their sons, George Jr., and wife Rhoda, from Lake Oswego, Oregon, and Donald from Stayton, Ore., who also brought a friend with him. George Jr., has been teaching in the elementary school in Lake Oswego for three years, where he also will teach this year. This summer he attended school in Portland State College studying toward his masters degree in education, Donald will be teaching in Stayton Junior High.

Mr. and Mrs. Chas. Moore and son Dean came up from Westport, Ore., last weekend to visit with Mrs. Moore's brother Neal Shafer and her parents, Mr. and Mrs. Kenneth Shafer.

Several Collinsites are spending a little time in hospitals, including Jay Mabin, Ann Rousseau's father, went to the hospital for surgery and is reported to be expected home the first of the week. Martin Bugg, an ex-service man, is in Madigan Hospital. John Vetterhurs, who has been in Tacoma General is reportedly improving. And Mrs. Fred Dow (Lola) is again in St. Joseph's Hospital.

**9 a.m. - 10 p.m.**  
**7 DAYS A WEEK**



**BARGAIN BASKET**

16618  
Pacific Ave. S. Spanaway  
LE 7-3371

**No Sales To Dealers**  
WE RESERVE THE RIGHT TO LIMIT QUANTITIES

We Carry A Complete Line Of Sacked Feeds - Presto Logs

**We Are Locally Owned & Operated**

**HELP YOUR BUDGET WITH THESE SAVINGS**

**PRICES EFFECTIVE**  
Sept. 14, 15 & 16  
Thur.-Fri.-Sat.

<p><b>Bake Rite</b> Pure <b>Shortening</b> 3 lbs. <b>55¢</b></p>	<p><b>B &amp; K</b> <b>LUNCHEON MEAT</b> 3 / \$1.00 12 OZ. TIN.</p>	<p><b>Folger's</b> <b>Coffee</b> 3 LB. <b>\$1.99</b> 2 Pound <b>\$1.37</b> ONE POUND <b>73¢</b></p>
<p><b>Fantastik</b> <b>Household Cleaner</b> 22 OZ. <b>49¢</b></p>	<p><b>Folger's</b> <b>Instant</b> 10 OZ. <b>\$1.19</b></p>	<p><b>NALLEY</b> <b>Sandwich Spread</b> <b>63¢</b> Qt.</p>
<p><b>LIBBY</b> <b>CUT Green Beans</b> 6 / \$1 303 TIN</p>	<p><b>Sunshine</b> <b>Yum Yums</b> 11 OZ. <b>39¢</b></p>	<p><b>Hi Country Pure</b> <b>Apple Juice</b> 32-OZ. <b>23¢</b></p>

**PRODUCE**

<p><b>WOW!</b> <b>BEEF STEAK</b> <b>Tomatoes</b> <b>10¢</b> LB.</p>	<p><b>Solid Heads</b> <b>LETTUCE</b> <b>2 FOR</b> <b>25¢</b></p>	<p><b>Slicing</b> <b>CUKES</b> <b>10¢</b> EA.</p>	<p><b>Chiquita</b> <b>Bananas</b> <b>2 25¢</b> LBS.</p>
---	--	---	---

**Everyday Low Meat Prices . . . 25 lb. Locker Boxes \$14.95**

<p><b>Henry House</b> <b>BACON</b> <b>\$1.69</b> 2 Lbs.</p>	<p><b>Beef</b> <b>LIVER</b> <b>39¢</b> LB.</p>	<p><b>Split</b> <b>FRYERS</b> <b>39¢</b> LB.</p>
<p><b>Boneless</b> <b>Beef Stew</b> <b>69¢</b> LB.</p>	<p><b>Short Ribs</b> <b>39¢</b> LB.</p>	<p><b>Ham</b> <b>Shanks</b> <b>39¢</b> LB.</p>

**"Wesco" HANDMADE BOOTS**

We carry a **LARGE** stock of:

**LOGGER'S CALKED BOOTS** Size 6-13, 8" - 12" Tops

**LINEMAN'S BOOTS** Size 6-13, 12" or 16" Tops

**WORK BOOTS** Size 6-13, 8" to 12" Tops

"Why Not Have The Best?"

OPEN SUNDAYS

**PAULS SHOES**

161 st & Pacific Open 9 to 9 Daily  
LE 7-0552 Till 6 Sat. & Sunday