

P.L.U. Library
Tacoma, Wn. 98447

Pierce County Herald and

The TIMES JOURNAL

Vol. 26 No. 17

April 30, 1970

Leading
Lively Lives
See Page 17

AUCTION

Car Up For Bids At School

Washington High School will hold a student body fund raising auction this Saturday at 1 p.m.

Those who wish to buy a car will be delighted to know that a 1960 Thunderbird, donated by Larry Thomsen, will be auctioned off. While those fishermen who have found their equipment has seen its better days will be pleased to note that brand new fishing outfits also are scheduled to be sold to the highest bidder. A dishwasher, warming stoves and a set of new lamps are also on the agenda.

The proceeds taken in by the auction will go to the Washington High School Student Body Activities Fund. Gordon and Paul Korsmo are co-chairmen of the event.

The auction will take place in the Washington High School Field House. Mike Jonkers, a professional auctioneer, has volunteered his services for the event.

The student body hopes to raise \$25,000 to get school activities at the new high school off to a good start. The auction is just the beginning for this group of energetic students.

Important Bethel Event Changed

Tuesday, May 19, 1970, will be the big day for the Bethel Fine Arts departments. The Spring Fine Arts Festival, which was scheduled for this Friday, May 1, is being postponed to be included with the annual Spring Band Concert.

Mr. James Naggs said the interest and enthusiasm shown has been so great that it was decided to combine the Arts Festival with the annual Spring Band Concert on May 19.

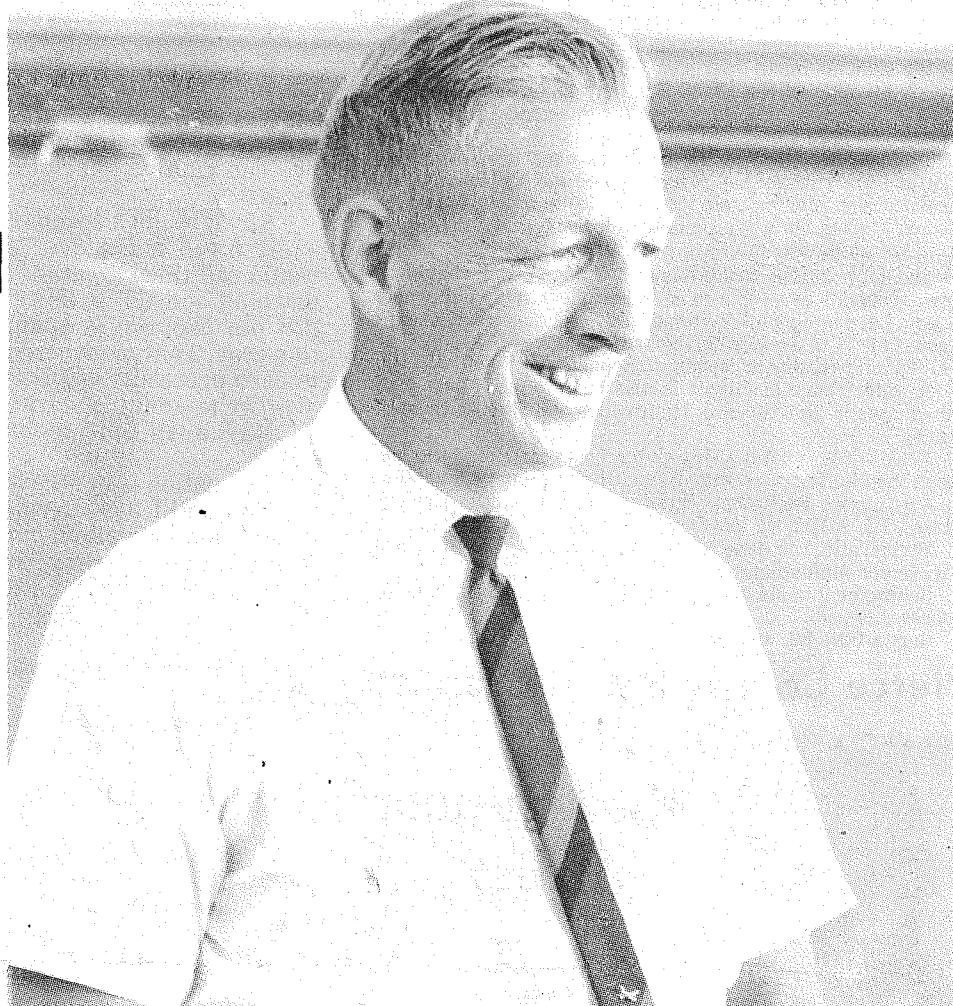
Principals' Retirement Announced

Two veteran Franklin Pierce administrators are retiring at the end of the school year in June.

They are Paul Larson, principal at Parkland Elementary School, and Delos Wesley, vice principal at Keithley Junior High School.

Larson has been an elementary teacher at Parkland since 1940, serving there many years before the Franklin District was formed in 1948. He was appointed principal of the school in 1954.

Wesley has served at Keithley since it opened about eight years ago. Prior to that he taught at Ford Junior High School and at Elma, Montesano, Monroe and Eatonville. He was an elementary principal and audio-visual coordinator in Eatonville for 11 years.



Eldon Kylo New Principal At Parkland Elementary

Wiegman Elected Chairman

President Eugene Wiegman of Pacific Lutheran University was elected chairman of the Tacoma Area Urban Coalition at the organization's annual meeting and banquet held Monday noon at the Winthrop Hotel in Tacoma. He also gave the main address on the theme, "The Challenge Before Us."

Elected co-chairman to work with Dr. Wiegman was Jerome Crawford of the Washington State Board Against Discrimination.

In his address Dr. Wiegman pointed out that the Coalition can be an agent to bring people together, and he called upon the citizens of the area

to band together to insure that every citizen enjoys the rights which are his under the laws of the land.

He pointed to areas where the Coalition can direct its attention during the coming year. These include housing, attitudes toward race, health, recreation, education and government.

"Equal education at all schools and levels of education is our goal," he said. "Specialized education for physically, socially and culturally handicapped must be provided now."

He added, "The Coalition has a duty to support a government founded on the human principles of the dignity of man and worth of the individual. When the mayor, city councilmen and county commissioners move vigorously to meet the challenges of government, we shall support them."

Board Chooses Kylo Principal

Eldon Kylo has been chosen principal for Parkland Elementary School by the Franklin Pierce District School Board Tuesday.

He will replace retiring Paul Larson, who has been principal at Parkland since 1954.

"I am very pleased and happy to accept the principalship at Parkland and will do the best I can in my new position," said Kylo of his new appointment.

He has a master's degree in science and has been teaching since 1949. He spent a year and a half teaching junior high school and another half year teaching elementary school prior to instructing at Franklin Pierce High School from 1953-68. He was made vice-principal at Washington High School in 1968.

James T. Hill was appointed vice-principal at Keithley Junior High School at the same meeting, replacing the retiring Delos Wesley. Hill has been assistant vice-principal at Keithley since last year and has a master's degree in administration. He has been teaching in the district since 1959. He taught at Ford Junior High School until 1964 and then moved to Keithley where he became boys counselor until his appointment as assistant vice-principal.

SHERIFF'S CALLS

April 22:

A 17-year-old armed robber was apprehended yesterday within five minutes of the robbery by Deputy Gaylord Mattes of the Pierce County Sheriff's Department. At 2 p.m. yesterday an armed robbery was reported by the Monta Vista Motel at 9801 So. Tacoma Way, the robber fled on foot with over \$200. The call was quickly responded to by Deputy Mattes who says, "Because the information was so accurate and concise, following was no problem." Deputy Gaylord captured the gunman within a block of the motel, the gun and money still on his person.

The home of Mr. George Gonter an 80 year old pioneer of Sumner, was entered last night by breaking a window and many items of furniture and some lighting fixtures were taken. The loss was valued at over \$1,000.

George Blake of 12411 Naomi Lawn S.W. reported his home was entered last night possibly through an unlocked door, there were no signs of a break-in. The loss reported to be \$750. included stereo components and an expensive camera.

April 23:

Interstate Homes reported a house under construction at 16801 9th Ave. East was broken into and an electric range and dishwasher were taken. The loss was estimated to be \$250.

Donald Williams of 9114 West 29th St. reported his garage was entered through an unlocked door and two complete sets of golf clubs

were taken, clubs, bags and carts included.

Pierce County Sheriff Carl Peterson reported that a break-in at Spanaway Golf Course clubhouse is under investigation this morning. Complete details are unknown, deputies are still gathering information. The report did confirm extreme vandalism to the restaurant and pro-shop.

Modahl Auto Parts at 163rd and Pacific was burglarized last night. Entry was gained by sawing a hole in a wooden door and unlocking the door from the inside. Files were gone through and generally messed up, some cash, between \$50 and \$75 was taken along with some checks made out to Modahl.

April 24:

Burglars entered the mobil home of Margaret Jensen, 22411 Cedar View Drive, Sumner, through an unlocked door and took two cameras and some woman's clothing. The loss was estimated at \$850.

A mobile home owned by John Marshall of Rt. 2, Box 2227, Spanaway, was the victim of burglars last night. Entry was gained by chopping a hole in his door and they removed a stereo-radio console and a color TV valued at \$625.

April 27

Pierce County Sheriff Carl Peterson reported the Binger Service Station at 7502 Custer Road was robbed Sunday evening for the second time in three weeks. The report stated a young white male entered the station, displayed a small caliber revolver and asked for money. The loss was \$200.

The residence of James D. Kellogg of 918 So. 98th St. was entered through an unlocked door Sunday night and a rifle, a revolver and some cash were taken valued at \$400.

The death of Barry Doyle, 25 year old resident of the Concordia Arms Apartments at 114 So. 129th was blamed to smoking. The victim was apparently watching TV and fell asleep on the davenport which caught fire. The extreme heat in the apartment caused an estimated \$5,000 damage to the interior and contents according to the Parkland Fire Department.

School vandals went on a destruction rampage in Tacoma over the weekend causing a total of \$10,000 damage to Mount Tahoma High, Lincoln High, Gray Junior High, and Edison Elementary. Tacoma police said the hardest hit was Mount Tahoma High School where intruders broke into the school manual training shop and the gymnasium and caused estimated \$5,000 damages.

April 28:

Yesterday seemed to be the day for daylight activities from the criminals in our area. Ray's Shoprite at 3851 Steilacoom Blvd. S.W. had its safe tapped for \$280 during working hours.

Albert Meier of north Puyallup reported his home was broken into at mid-day. A glass door was broken to gain entry, some jewelry and a small amount of cash was taken valued at \$250.

Tacoma police and Pierce County deputies yesterday were seeking at least two vandals who inflicted approximately \$10,000 damage to six schools in this area.



Paul Larson

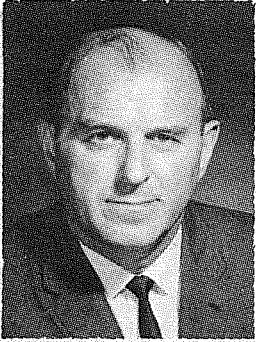


Delos Wesley

Wesley's year's of experience total 38, both as a classroom teacher and as a principal.

The two principals will be

honored by the Franklin Pierce Education Association May 15 at the organization's annual banquet at Olav's Restaurant in Lakewood.



COUNTY NEWS

By George Sheridan
Pierce County Commissioner

An editorial appeared immediately above this column in last week's issue appropriately calling attention to the need to accelerate extension of the 5th lane to provide left-turns on Pacific Avenue.

It is timely, therefore, to report that your county commissioners, working in close cooperation with 29th District members of the Legislature, have been making progress. While it is premature to make a definite announcement at this time, indications are that encouraging developments are under way and good news should be forthcoming.

County Commissioners have been busy this week reworking the county budget in light of additional revenue to be available during the remainder of the fiscal year from the 1/2 cent local sales tax authorized by the 1970 extraordinary session of the Legislature. We must determine how much additional "expendable" money will be available and reconcile this with the overwhelming demands for expanded service resulting from the tremendous growth our area is experiencing. Every department of county government, in varying degree, lacks the capability to provide the level of service you should be receiving. Our problem is to establish priorities so as to spread the limited financial resources to fill the most urgent needs.

From the innumerable calls received, I feel you will agree that better police protection and law enforcement tops the list. We hope to provide a substantial increase in personnel for the Sheriff's office. In this connection, it should be pointed out that providing salaries for additional deputies is only the first in a "row of dominoes." Each officer added entails a corresponding increase in funding for vehicles, equipment and back-up employees. There results a chain reaction, requiring more personnel in the prosecuting attorney's office, the courts, the jail, county clerk's office, probation service and all related functions. Because of these variable factors, it may be necessary to expand our law enforcement capacity in stages, hoping in the next year to reach the maximum level possible.

As in previous years, the county is gearing-up to assist in the annual Parkland Cleanup project, to be held Saturday, May 2. I am pleased to report that the 2nd District road crew will again cooperate. We will provide 8 trucks with drivers who will be donating their time. Special arrangements have been made at the county sanitary dumps to accommodate deposits without charge during the week preceding the cleanup. We will collect refuse that is not picked up Saturday, on Monday, May 4. To obtain this service, call VI 7-2231, the Elk Plain County Shop. Many other public-spirited organizations and individuals are joining in this drive and will be meeting at the Parkland Fire Station at 8:00 a.m., Saturday.

Memorial Service

A Memorial Service for Tech. Sgt. Gordon Gaylord who resided with his family at 10216 S. Ainsworth, will be held this coming Sunday afternoon, May 3, at 3 p.m. in the Parkway Presbyterian Church, 714 East 138th Street. Sgt. Gaylord was killed in Vietnam on April 6 while on a flight mission for the Air Force over hostile territory.

The Gaylords came to Parkland in 1963 and had lived here until he received his overseas assignment in 1969. Late in 1969 the family moved back to Harvard, Illinois, and Mr. Gaylord left for Vietnam in November. Sgt. Gaylord was a Flight Engineer in the 8th MAS.

A color guard and bugler will be provided by McChord AFB for the memorial service. The pastor of the church, the Rev. Wesley J. Drummond, will officiate and tributes to Mr. Gaylord will be given by Mr. Robert Eldridge and Mr. Robert Pew.

While living here in Parkland, Mr. Gaylord had been an active elder in the Parkway Presbyterian Church and had also served as Stated Clerk for the Session. At the request of Mrs. Gaylord, any memorial should be directed to the Parkway Church and a suitable memorial in his memory will be selected.

"The Magic Carpet Cleaners"
CARPET CARE OF TACOMA

This economical new Griffin deep steam process will give your wall-to-wall carpets that new look and texture. Gentle and thorough. Recognized by DuPont and the Carpet Institute as the best. Carpets stay clean and bright many times longer than with ordinary abrasive scrubbing. Call us for free demonstration and costs. The Results Are Amazing Phone 588-2017 Anytime Phone 584-2233

MERCURY OUTBOARDS
BOATS
PARKLAND SPORTS CENTER

OPEN EVENINGS TILL 9 P.M. LE 1-6501
11122 PACIFIC AVE

School Changes Support Adage

"Education is a changing process," says an old adage. To find out how true this adage really was we decided to investigate into the educational program at the newest high school in the area, Washington.

Next year for the first time in an area school there will be no mandatory senior English class. Previously the district had required students to take four years of high school English, however Washington is putting a stop to this next year and requiring only three.

Another interesting aspect is that the Washington Social Studies Department has been recruiting speakers from various extremist organizations to spout their philosophies in order that the students make their own judgements on the organizations. A member of the Black Panthers and members of the John Birch Society have spoken so far this year. However the names could not be obtained for publication.

Student reactions to the speakers have been favorable according to Principal Del Schaefer, and have promoted further discussion ranging from violent opposition to the speakers by some students to a sympathetic approach taken by others, but all within the realm of school supervision.

The study hall program has also changed from that of an assigned seating in a room to an independent study hall where students have no special room for study and may study as they please. This is to develop further responsibility in the student as to his study habits according to Schaefer.

A wider range of credits is also being offered next year with classes in Shakespeare, Humanities and Human Involvement.

Washington is not the only high school broadening themselves in the offering of credits. Bethel High School will be offering Aero Space Rocketing, Outdoor Recreation (an Ecology course), Black History and Oceanography.

Bethel also has done away with a requirement for next year, senior mathematics.

So maybe that old adage about education and its changing processes is true.

Just a little bit, anyway.

Pierce County Sheriff Reports



Misdemeanor Arrests

By Carl Petersen
Pierce County Sheriff

A common misunderstanding by the general public concerning law enforcement is in the area of misdemeanor arrests. Misdemeanor is a minor offense such as shoplifting, fighting, drunkenness, traffic violations and taking of property under a specific value of \$75.

To make an arrest for a misdemeanor violation, the officer must see the offense or have the violation committed in his presence. This is difficult for many people to understand.

When a citizen does observe a misdemeanor being committed he should observe such details as a description of the person, the time, the place, and an added bonus would be to have a witness who will be willing to cooperate in telling of the viewing of the offense. This information should then be taken to the prosecuting attorney where the complaint is lodged and a warrant will be issued for the violator. Then the arrest may be made legally by the law enforcement officer.

A citizen arrest for a misdemeanor will be discussed at a later date.

The above is written to inform, not advise. Facts may change the application of the law, see your attorney.

ALL NEW - BRAND NEW!

Gremlin
A NEW BREED OF FUN CAR

1878.*

- FUN TO DRIVE
- COSTS LESS TO BUY
- COSTS LESS TO OWN
- BEST MILEAGE OF ANY U.S. BUILT CAR.

* Does not include freight, pre-delivery, sales tax and license

Andy EGAN
YOUR AMERICAN MOTORS DEALER

AMBASSADOR - REBEL - JAVELIN - HORNET - AMX
8223 PACIFIC AVE. GR 4-9404

"FAIRNESS TO ALL"

Paul Harvey This Week



A Recession; So What?

By Paul Harvey

We are told that business, generally, is "in recession." Economists can't agree on a definition for the word but most seem to figure if our nation's gross national product is in decline for two consecutive quarters, then our nation is in recession.

All right, let's accept that criterion.

If I ran a business employing salesmen, I would call them together at 10 o'clock tomorrow morning and tell it like it is: "The experts predict our business is going to be off 10 per cent this year. That means that our company is going to earn precisely the same as last year, only this year we're going to work 10 per cent harder!"

Maybe it's time for some such top-sergeant talk.

Our nation is in recession; so what?

You and I have seen and somehow survived a recession every four years since the Big War. You can't get the gravy train running three sections and everybody climbing aboard for a free ride . . . without stalling out. So sometimes we have to get off our comfortably planted posteriors and climb down and get back on our feet and push.

Some of our professional order-takers might even have to get off the phone and get out and pound pavement and start selling again. Well good! It won't kill us. It might even be good for us.

Did you hear about Leonard Lefkowitz of Louisville? He knew what he wanted when he telephoned the insurance company. He wanted to buy some insurance for his car.

The man who answered the telephone said, "Mister, you'll have to call back later! I can't talk to you now, we're in a sales meeting!"

U.S. News & World Report has surveyed job opportunities for next June's graduates and finds "the big hiring spree has come to an end."

Recent years industry has had recruiters on campuses trying to sign up potential employees even before graduation. There's much less of that now.

College placement officials say there's still work enough for everybody, but some of it is "work," now. A lot of college grads expecting a "position" are instead going to be offered a "job."

Americans, who'd been growing accustomed to the notion that they could do less and less work for more and more pay, have found themselves paid off in stage money. You do less for the dollar; it does less for you; 5 per cent less this year than last.

A shakeup is due, if not overdue.

Unemployment nationally is still less than 5 per cent and every metropolitan newspaper is bulging with job opportunities.

You want something to worry about, it should not be the fact that our overheated economy is cooling. Worry about the lazy idle who don't have to be.

And the lazy worker who has been putting forth less than his best effort.

So business is going to be off 10 per cent. Work 10 per cent harder. Or, better yet, work 20 per cent harder and this may yet be your greenest year of all.

Copyright 1970, Gen. Fea. Corp.

Pierce County Herald and
The TIMES JOURNAL

Published weekly at 409 Garfield St., Parkland 98444 and delivered by U.S. Mail and carrier to subscribers. Publishers: Sun Publishing Company, LE 1-8885 News and Advertising Deadline: Tuesday Noon Subscriptions \$4.00 per year, \$2.50 six months, or 40c monthly by carrier. News stand price 10c copy. Qualified as a legal publication under Chapter 213 of the Legislature Acts of the 1941 regular session of the State of Washington. Second Class Postage Paid at Tacoma, Wash.

Vol. 26 No. 17 April 30, 1970

MOTHER'S DAY GIFTS

CAMELLIAS
RHODODENDRONS
and
AZALEAS
IN BLOOM

LOTS OF BUDS

\$4.95

BEDDING PLANTS

Box of 7 **30^c** and up

CLEMATIS VINES

2 years old
will bloom this year

ALL COLORS **\$3.50**

SEED POTATOES 5 lbs. **59^c**

STRAWBERRY PLANTS

EVERBEARING QUINAULT - 25 for **\$2.49**

CERTIFIED NORTHWEST - 25 for **\$1.98**

FUCHSIAS

Well Rooted

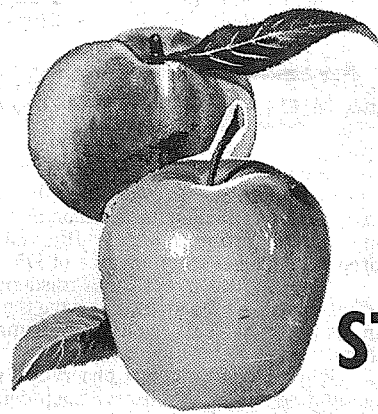
39^c and up

Also with Baskets



GERANIUMS

Martha Washington
and
Trailing



TREE

ROSES

\$9.95

APPLE
and

PEACH
TREES

DWARF, SEMI, and
STANDARD **\$2.95**

Values up to \$5.00

INDIVIDUALLY POTTED

TOMATO
PLANTS

15^c each and up



STA-GREEN

6401 PACIFIC AVE. GR 2-8672

SEED SPECIALS

1/2 lb. Bulk Packs Peas, Beans, Corn **40^c** and up

1/2 oz. Bulk Packs

Beets, Carrots, Squash, Cucumbers Only **35^c**

Keep the **WORMS OUT** of your
Radishes, Onions, Carrots, Beets

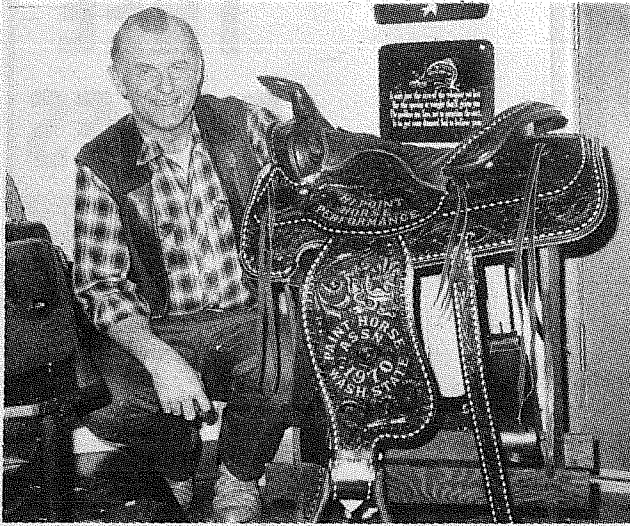
for only **\$1.79**

STARK REALITY

Mr. Larry Arndt, the new manager of the Sprouse Reitz Store at 8222 Pacific Avenue, is very enthusiastic about his new responsibilities. Larry, who was born in Minnesota and lived there most of his life, except for a four year hitch in the service, has big plans for the development of his store as an asset to the community.

Mrs. Arndt, a former Seattleite, met Larry in Germany while he was in the U.S. Army. After returning home from Europe and released from duty, Larry and Teri were married in Seattle. They think Pierce County is a fine place to live. Larry has been with the Sprouse Reitz Company for about six months.

If you've ever been to a horse show and observed the fine saddle trophies that are given to the big winners and see the joy expressed by the enthusiastic recipients, you will appreciate the comfort in the hearts of Dean and Dottie Vosberg, who have been supplying most of these saddles for many years.



Dean Vosberg happily displaying one of his fine pieces of leather craft.



Dean Vosberg and Jim Miller, hard at work on the tooling of the leather for a new saddle trophy.

The Vosbergs, owners of the Rodeo Custom Shop in Spanaway, not only sell many trophy saddles yearly to the various horse shows in Washington, but they have a particular pride in the fact that six of these shows hold a very special interest for them and they donate, free from cost, saddles to be awarded.



News Bureau Director at PLU, Jim Peterson, will become regular columnist for The Times Journal.

PLU News Regular Feature

A new column entitled "Campus Communique" will become a weekly Times-Journal feature beginning next week.

Prepared by Jim Peterson, news bureau director at Pacific Lutheran University, the column is intended to help build a closer relationship between the Parkland-Spanaway community and the university campus.

Items concerning the role of PLU faculty, staff and students in community affairs

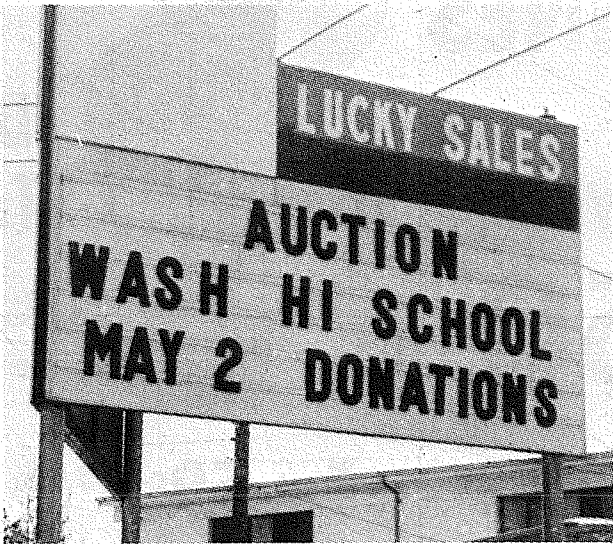
will receive special emphasis. Services which PLU can provide the local community will be discussed, and a calendar of weekly events at PLU will be included.

Questions concerning PLU activities and the university's educational role will also be welcomed.

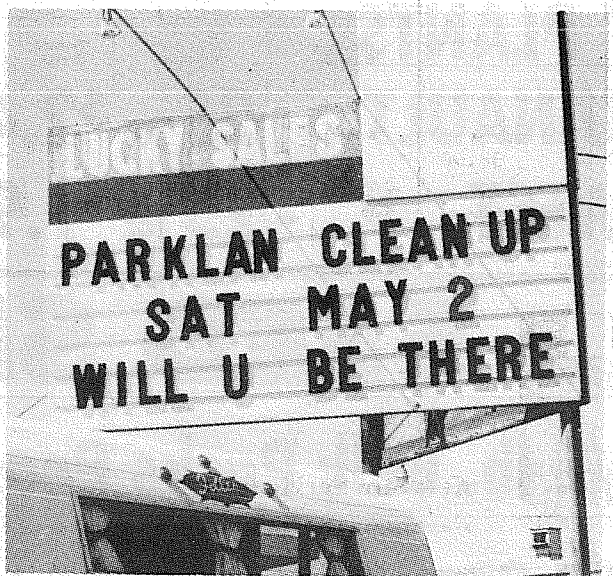
Peterson has served as PLU news bureau director for the past two years after two years as editor of the Suburban Times in Lakewood. He was also editor of the McChord Defender (now Airlifter) from 1964-66 while stationed at McChord Air Force Base.

A Nebraska native, he earned a bachelor's degree in journalism at the University of Nebraska in Omaha.

Sign Split at LeMay's



NORTH SIDE



SOUTH SIDE

Community activities caused a splitting of the sign at a local firm at 13502 Pacific Ave. The signboard is being split between PDA and PTA, each vying for community notices of activity on May 2nd. Mr. Le May is President of the P.D.A. (Parkland Development Association) who are having their big clean-up day on May 2. Cleanup chairman is Mrs. John Hartzell. Mrs. Le May is President of the Washington Hi Parent Teachers Association who are having an auction on Saturday May 2. The auction chairmen are the Korsmo Brothers.

It's the LAW
 PRESENTED AS A PUBLIC SERVICE
 BY THE
 WASHINGTON STATE BAR ASSOCIATION

When is a Search Warrant Needed?

There has been misunderstanding in recent years over the rights of the citizen versus the rights of the police in searching the house or apartment of a person arrested without a search warrant.

In one California case, a person was arrested in his home by police. They had a warrant for the arrest, but no search warrant. Over the protest of the person arrested, the police searched his house and found what they considered evidence.

In another California case a person was arrested several blocks from his home. He was then taken to his home, where the police searched for evidence.

In a New Jersey case, a person was arrested in a house where he lived with another person. Following the arrest, the police searched the entire three-floor, 16-room house for evidence.

All of the searches were made by the police as part of what they considered "search incident to arrest." The idea is to find the evidence to support the arrest and find weapons which might be used against the policemen.

However, in all three cases there were no search warrants for the houses. The convictions in each case were reversed by the U.S. Supreme Court.

The Court said, in effect, that the police had violated the Fourth Amendment which prohibits unreasonable search and seizure of a person's property. Under the rulings, the police search without a warrant is limited to the immediate area around the person arrested.

The Court rulings prohibit a search without warrant of drawers or other closed spaces within the room where the arrest is made but which are not under the "possession" or "control" of the person arrested.

Arresting a person two blocks from his home and then making a search of the home without a warrant was considered "unreasonable" because it "went far beyond the area" from within which the person might have obtained a weapon or destroyed evidence.

The Court did not overturn the general ruling that motor vehicles may be searched without a warrant where it is not practicable to secure one.

(This column is written to inform, not advise. Facts may change the application of the law.)

CUSTOM
 ★Cutting
 ★Wrapping
QUICK-FREEZE

O'Neils
 grocery
 Kapowsin
 VI 7-7929 832-5851

GET Gardening
RENTAL MARTS, INC.
Rents Anything!

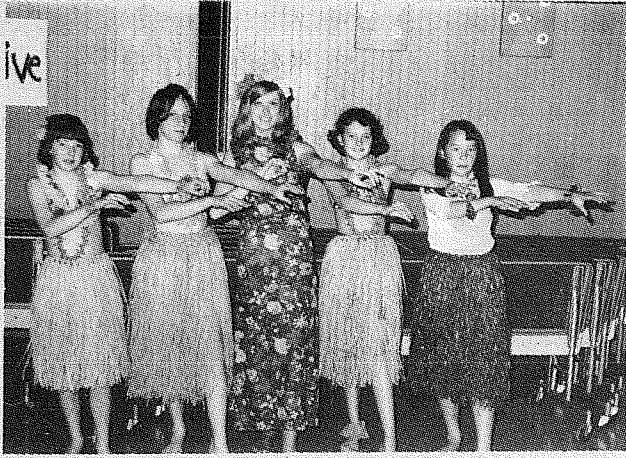
MOWERS
 TILLERS
 HAND and POWER Garden Tools
 SOD CUTTERS
 SPRAYERS

9440 Pacific Avenue
 Tacoma, Washington 98444
 GR 5-3755

CLIP THIS COUPON
 GOOD ONLY
 TUESDAY, WEDNESDAY, THURSDAY

Permanent - reg. 17.50 **\$12.50** with coupon
 Hair Color - reg. 9.00 **\$7.50** with coupon
 Hair Cut, Shampoo, and Set - reg. 6.50- **\$5.00** with Coupon

Sherry's Styling Hut
 1211 East 142nd LE 1-4660
 Coupon Cash Value 1-20 of 1 Cent
SAVE MORE!



Anita Clark, Jayne Deerwister, Mrs. Wicks, Dianna Schoonover and Jane Buchanan getting ready to show the students the hula dance they learned.



Maudelle Smith, Dianna Ackley, Donna Garrett and Tresa Niggetto showing off their talents with a Hawaiian dance.



MISS AMERICA JOINS FIGHT

Beautiful Pamela Anne Eldred of Birmingham, Michigan, crowned Miss America of 1970, holds the Sword of Hope—symbol of the AMERICAN CANCER SOCIETY—to remind everyone to support the Society's 1970 Crusade which raises funds for Research, Education and Service.



A Trip to Hawaii Via the Classroom

Mrs. Vernell Wicks, fifth grade teacher at Brookdale Elementary School, had lived in Hawaii for several years and asked her fellow team teachers, Mr. Doherty and Mr. Ferri, if she could present to their Social Studies group the section on Hawaii. Mrs. Wicks was able to bring the exciting life in Hawaii first hand to the young people by teaching them to speak Hawaiian, to sing Hawaiian songs in the native tongue and she taught the girls the beautiful Hawaiian dances.

leaving their classroom was a tremendous experience for the fifth grade students at Brookdale.

The youngsters learned of the economy, industry and life among the Hawaiian families. The series was highlighted with an authentic Hawaiian Luau which included poi, papaya, coconut and pineapple. Mrs. Wicks brought her husband to the luau and he taught the children the simple way of getting the coconut out of the shell.

Another fun activity was making volcanos that actually erupted.

For young people to have a trip to Hawaii without



Fifth grade girls doing their Hawaiian thing.

SAVE MONEY
ON
• Business Cards • Stationery
• Letterheads — Business & Personal
• Announcements
ORDER NOW
at
THE TIMES JOURNAL
P.O. Box 2116 409 Garfield LE 1-8885

INSURANCE
Military - Home - Business
LE 7-4904
Auto Fire Life Bonds
IRENE CLEMENS
Agency — Parkland
10329 Pacific Ave.

MOTHERS DAY SALE

MU MU'S SPECIAL PRICE \$347
EASY CARE S.M.L.
LADIES' SHIRTS \$347
ASST. STYLES
FLORAL PRINT SHELLS \$1.99
NYLON BOUCLE
Pastel **PEIGNOR AND GOWN SETS \$3.99**
65% Kodel
35% Cotton
PANTY HOSE \$1.00
ROSE QUEEN
ONE SIZE FITS ALL
ASST. SHADES

FABULOUS FABRICS
Spring Selection
DRESS & SPORTSWEAR
PRINTS & SOLIDS
45" WIDE 2 yds. **\$1.00**

"FLORAL BOUQUET" VELOUR TOWEL ENSEMBLE
PINK, YELLOW or BLUE PRINT
BATH TOWEL \$1.17
HANDTOWEL .67
WASH CLOTH .37

DECORATOR SHAG AREA RUGS
27" x 48" **\$2.77** EA.

SPROUSE - REITZ VARIETY STORES
8218 PACIFIC AVE.
GR 4-3070 TACOMA

FOR THE GRADUATE
ENGRAVED OR PRINTED ANNOUNCEMENTS
For the Bride
INVITATIONS
FAVORS
BIRTH ANNOUNCEMENTS
FOR Baby

The TIMES JOURNAL
Come In And See Us
P.O. Box 2116 409 Garfield St. LE 1-8885

LEWIS LLEWELLYN

Do We Need God's Help?



When the Apollo 13 spacecraft was crippled by an explosion in mid-space and Astronauts Lovell, Haise, and Swigert were in mortal peril, the people of the nation joined in prayer for their safe return.

After they splashed down in the Pacific, the president proclaimed Sunday, April 19, a day of prayer and thanksgiving — a time to express our gratitude to God for His help in this emergency.

This was in keeping with our finest national tradition of expectantly turning to God when in need and then remembering to thank Him.

This tradition, however, has been somewhat neglected in recent years.

Firm Trust in God

The picture of George Washington, kneeling in the snow at Valley Forge, is well known.

Whether or not this picture is historically accurate in every particular I do not know. But that Washington had a firm and unflinching trust in God and that he relied on divine assistance in difficult times is crystal clear.

In a letter written on January 22, 1777, he said, "Providence has heretofore saved us in a remarkable manner, and on this we must principally rely."

Later, when the army which he commanded was beginning to achieve the longed-for victory, he wrote, "The hand of Providence has been so conspicuous in all this that he must be worse than an infidel that lacks faith, and more than wicked that has not gratitude enough to acknowledge his obligations."

It is certainly evident that, in the time of our first president, there was a ready disposition to seek the help and guidance

of God in finding solutions to problems of great difficulty.

I submit that we have problems today which are of sufficient magnitude that we should again consider asking for help from the One Who is always on the side of right and Whose aid has, on countless occasions, enabled those who put their trust in Him to triumph.

Perhaps it is time for us to admit to ourselves that we need God's help — in some areas of our national life, at least.

In Viet Nam we are bogged down in a war which we should never have entered without the intention of winning.

Hundreds of American men are hapless prisoners of the Reds, subjected to viciously inhumane treatment.

Widespread crime is making the streets of our cities unsafe for law-abiding citizens.

Mushrooming drug abuse is poisoning our society — particularly our young people of college and high school age.

The diseases which accompany sexual immorality are of epidemic proportions in some areas of our country.

God's Promise

How about asking God to give us guidance and help in solving these most urgent problems?

Would God help us, if we asked Him?

The Bible says, "Ye have not, because ye ask not."

Psalm 50 contains this counsel, "Call upon Me in the day of trouble. I will deliver thee and thou shalt glorify me."

What better help could we get?

If you will be one of a committee of 1,000 to pray for our nation now, write and tell me so, addressing me in care of this newspaper.

Christian Science News

The importance of guarding thought against the influence of evil suggestions will be stressed in the Christian Science Lesson-Sermon to be read on Sunday, May 3.

Bible readings on the subject of "Everlasting Punishment" will include a warning by Jesus to "fear not them which kill the body, but are not able to kill the soul; but rather fear him which is able to destroy both soul and body in hell."

SEE US FOR **Fast, Expert DRY CLEANING**

PARKLAND CLEANERS
LE 7-3221
110th & Pacific
IN KELLER'S KORT

COLLECTORS' POT POURRI

For sale collectors' items of all kinds: gifts, toys, furniture, tools, clothing, and a lot of Wha-Cha-Mah-Call-Its.

Sat. May 9 9 A.M. to 7 P.M.

PARKLAND UNITED METHODIST CHURCH
12183 A St. Tacoma

SPROUSE REITZ
SPRING THING

1/2" GARDEN HOSE
100% Vinyl, 50-foot length, 10-year guarantee.
\$1.77
SALE

LAWN SPRINKLER
Oscillating, covers 2200 sq. ft. area, adjustable.
\$3.33

ICE TEA SET
64 oz. pitcher and six 16 oz. tumblers. Avocado or Gold. Gift boxed.
\$2.99 Set

"Daisy Bug" KITCHEN TOWEL ENSEMBLE

Lively oranges, yellows, and greens to brighten any kitchen.

Apron **\$1.39**
Terry Towel **69¢**
Pot Holder **49¢**
Dish Cloth **49¢**
Terry Mit **99¢**

BELLE-TONE LATEX WALL PAINT

2 GAL. \$5.00 FOR

- Homogenized for easy application.
- Dries in 1 hour.
- Choose from new flower fresh colors.

REG. \$2.99 GAL.

COLORAMA ALUMINUM COOKWARE

New Decorator Colors
Avocado - Harvest Gold - Poppy

7-Cup Perk **\$1.99**
10" Teflon Fry Pan **\$1.99**
2 1/2 Qt. Whistling Teakettle **\$2.99**

PLASTIC HOUSEWARES

Dish pan, Laundry basket, Waste basket, 10-qt. pail, Cutlery tray, 3-pc. Mixing bowl set.

Values to 99c **47¢ EA.**

7-INCH PAINT ROLLER AND METAL TRAY SET
66¢

NYLON BRISTLE PAINT BRUSH
For Latex Paint
Choice 3", 3 1/2", 4" widths.
77¢ EA.

COLUMBIAN PORCELAIN WARE

Can-Well **\$2.59**
Steam-Well **\$3.49**
5-Way Cooker **\$2.49**

Local Church Women To Attend Luncheon

The Women's Society of Christian Service of Parkland United Methodist Church has invited the women of seven neighboring churches in the Parkland area to attend its meeting and luncheon to be held at 11 a.m., Wednesday May 6th, at their church, at 12183 "A" Street, Tacoma. Reservations have been requested by April 30th.

Music is being provided by Franklin High School and devotions will be read by Mrs. E. Russell Searce.

An interesting program on the work of the Group Therapy Department at St. Jo-

seph's Hospital will be presented.

Luncheon is provided by all Circles of Parkland UMC Church.

A short business meeting, presided over by Mrs. William Detering will be held at 10 a.m.

Nursery care will be provided.

Fame Doesn't Help

Judy Holliday, Robert Taylor, Walt Disney, Gary Cooper, all movie personalities who succumbed to cancer. Fame doesn't help when cancer strikes. But your dollars to the American Cancer Society can help in the fight.

CHURCH DIRECTORY ATTEND OUR WORSHIP SERVICES

PARKWAY Presbyterian Church 714-138th East LE 1-4234 Rev. Wesley J. Drummond	Spanaway Assembly of God 166th & Pacific Ave. Sunday School 9:45 a.m. Morning Worship 11 a.m. Evening Evangelistic 7 p.m. Family Night Wed. 7:30 p.m. LE 1-1412
Spanaway Lutheran Church 8:30 & 11 a.m. Worship Service 9:45 a.m. Sunday School Grades 1 & Up 11 a.m. Sunday School 3, 4 and 5 Year Olds John L. Briehl, Pastor 160th & A St. LE 7-5978.	Parkland Lutheran Church & Christian Day School Worship... 10:30 a.m. Sunday School-Bible Study 9:15 a.m. All Ages H.A. Theiste, pastor LE 7-5492 LE 1-0777
Trinity Lutheran Church Worship Services 9 a.m. & 11 a.m. Sunday School 10 a.m. Wednesday School 4-5 (through Grade 9) Erting C. Thompson Robert Drowns PASTORS 12115 So. Park LE 7-0201	Spanaway United Methodist Church School... 9:30 a.m. Worship Service... 11:00 a.m. Nursery During Service R. Gordon Harrison, Pastor 163 & Pacific LE 7-5134

BOWL BRUSH
Plastic handle, polypropylene bristles, decorator colors.
87¢ EA.

5-QUART PLASTIC PAINT PAIL
Reg. 35c
NOW 21¢

ELMER'S GLUE-ALL
All-purpose glue for home, shop and school.
4 OZ. 37¢

BLUE LUSTRE

Be Safe! Be Sure!

RENT CARPET SHAMPOOER

\$1 a day with purchase of BLUE LUSTRE

CLEAN CARPETING FOR ABOUT 1¢ PER SQ. FT.

New Machines New Merchandise

SPROUSE REITZ VARIETY STORES

the Second Forty

by Margaret Brookfield

A FORUM ABOUT MATURE WOMEN

Oh Dad, Poor Dad

Dear Miss Brookfield:

Until a year ago, my parents lived in another state and we saw them infrequently. Dad was retired but he was always busy, puttering around the house, making minor repairs or gardening. He was reluctant to sell the house, but mom eventually convinced him and they moved here, where they rent a small apartment. Mom is a big help and she is involved with my children to a great extent. But we're worried about dad. He has no friends. We tried to involve him in community activities but without success. He is fond of the grandchildren but doesn't take the interest in them that mom does. Lately, he sleeps most of the day. Can you offer any suggestions?

J.L., New Haven, Conn.

Dear J.L.:

Yes. First have him checked by a doctor to rule out a health problem as a cause of his lethargy. Once this is done, you, but more important, your mother should talk to a skilled counselor.

The move closer to you has buoyed your mother with a new role as grandmother because you need her and the grandchildren need her. But your dad, who has been reluctantly uprooted, has been left out in the emotional cold. Before, he had a role as "man of the house." Now, no one really "needs" him. His message is loud and clear: he has been put into limbo. So he feigns this state with the closest thing to it: sleep.

Trying to involve him in community activities or "make-work" chores and errands will not solve the problem. He needs to return to the emotional mainstream, where his life will have meaning and purpose. His present problem may be the culmination of a long-standing one. A skilled counselor can determine this and offer some insight into the problem and its ultimate solution. Good Luck.

Weight Problem

Dear Miss Brookfield:

I am 49 and have read a lot about "growing old gracefully." But how can one be graceful with fat accumulating around the waistline and hips? I have tried dieting without success. Is this hopeless "middle-age spread?"

M.G., Tacoma, Wash.

Dear M.G.:

A visit to your doctor will answer part of your question. He can recommend a sensible and helpful diet. Stick to it. Nothing is that hopeless.

Your weight problem may also be menopausal. While about 15 to 20 percent of all women go through menopause with virtually no symptoms, and a small number experience severe ones, the majority of women may be troubled intermittently by one symptom or another, according to Dr. Elizabeth Connell, associate professor of Obstetrics and Gynecology at Columbia-Presbyterian Medical Center. These include weight gain and weight redistribution, along with hot flashes, abnormally profuse or irregular menstruation, headaches, crying spells and palpitations. Not all women, of course, suffer all these problems.

Dr. Connell defines the menopause as a biological change that requires social and psychological adaptability. And, according to another medical authority: "It couldn't happen at a worse time in a woman's life. She is often raising teenagers; her husband is too busy to give her emotional support; she is just beginning to have health problems."

Both point out that estrogen replacement therapy (to restore hormonal balance) as well as other palliative therapy may be helpful to some women for some of their problems. Your doctor is the best one to advise you about this. Once you feel better, you may even feel like looking better — and start dieting in earnest.

Have you a problem as a mature woman, or with one? For advice and help, write to Margaret Brookfield, Information Center on the Mature Woman, 3 West 57th Street, New York, N.W. 10019.



Mr. and Mrs. Robert A. Hokenson of Tacoma announce the engagement of their daughter Susan Kay to Edward David Loughrey, son of Mr. and Mrs. E. L. Loughrey also of Tacoma. Miss Hokenson, an employee of the Tacoma News Tribune, graduated from Lincoln High School and attended Olympic Jr. College. Mr. Loughrey, a graduate of Bellarmine is attending Tacoma Community College and plans to enter U.P.S. in the fall as a Junior. He spent three years in the Marine Corps, most of the time in Viet Nam. The wedding is planned for January 23, 1971.



Violinist Program Feature

Violinist Ann Tremaine will be the featured soloist as the Pacific Lutheran University Symphony Orchestra presents its fourth and final concert of the 1969-70 season Tuesday, May 5.

The complimentary program begins at 8:15 p.m. in PLU's Eastvold Auditorium.

Mrs. Tremaine, PLU faculty member and concertmistress of the orchestra, is well known in the area for her

teaching and her numerous guest appearances throughout the Northwest as soloist and recitalist. She will perform the Mozart "Violin Concerto No. 3 in G Major," K.216.

Also included on the program are the Beethoven "Coriolan Overture," Op. 62, and "Symphony No. 2" by the early American composer Charles Ives.

Other PLU faculty members appearing in the 60-member symphony orchestra conducted by Jerry Kracht will be Gordon Gilbertson, violinist; Vivian King, cellist; Lawrence Meyer, trumpeter; and David Robbins, timpanist.

Twenty-Fifth Anniversary Celebration

Mr. and Mrs. George Woracek of Spanaway will be honored on their twenty-fifth wedding anniversary by an open house given by their three daughters. The daughters are Miss Sandra Woracek, Mrs. Charles (Karen) Anderson and Mrs. Charles T. (Joyce) Graves.

The celebration will be Sunday, May 3rd from 2 p.m. to 6 p.m. at the Anderson home, 17404 South Yakima, Spanaway.

All friends and relatives are cordially invited.

Doug Lieberg Musical Recital Tonight at 8:15

Doug Lieberg, basso, a senior music major at PLU, will be heard in senior recital Thursday evening, April 30, in Eastvold Auditorium at 8:15 p.m.

The recital will feature works by Mozart, Schubert, Von Williams and Percell. A cantata by Schutz includes both piano and trombone quartet accompaniment.

Freshman Sara Quigley will accompany Lieberg, along with four trombonists from the PLU Concert Band.



Graham Firemen's Helpers left to right are: Mrs. Leah Mulcahey, Mrs. Victor Anderson, and Mrs. Ken Singleton.

Rummage & Bake Sale

The Graham Firemen's Helpers are having a Rummage and Bake Sale on Friday, May 1 and Saturday, May 2 from 9:00 a.m. to 4:00 p.m.

This two day event will take place at the Graham Frontier Park on the Meridi-

an Highway. Free coffee will be offered.

If you have any rummage to donate you may call VI 7-7288 or VI 7-7345. Those in charge of the sale are Mrs. Leah Mulcahey, Mrs. Victor Anderson, and Mrs. Ken Singleton.



It's Spruce-Up Home Time, Now

Now is the time to let us add a touch of newness to your draperies, blankets, curtains and bedspreads. Trust us to dry-clean everything to your satisfaction.

7209 PACIFIC AVE. GR 5-1144
DAVE'S CLEANERS

Now!

Get dial-it-yourself discounts on most out-of-state calls.

	MON TUE WED THU FRI	SAT	SUN
8:00 am to 5:00 pm	3 MIN. DAY RATE \$1.35 or Less	3 MIN. WEEKEND RATE \$.70 or Less	3 MIN. \$1.35 or Less
5:00 pm to 11:00 pm	3 MIN. EVENING RATE \$.85 or Less		
11:00 pm to 8:00 am	1 MIN. NIGHT RATE \$.35 or Less		

Rates shown are for maximum 1 and 3 minute out-of-state station calls you dial yourself to anywhere in the U.S. except Alaska and Hawaii—tax not included.

And it's easy to dial-it-yourself: Just dial "1", the out-of-state Area Code, and then the phone number.

Pacific Northwest Bell

BUY • SELL • TRADE

- New Furniture
- Used Furniture
- Appliances
- Miscellaneous

PACIFIC AVENUE FURNITURE

LE 7-3523

16318 PAC. AVE.

QUICK COPY SERVICE

10¢ A COPY
THE TIMES JOURNAL
409 Garfield So.

Special

Decorative Colored
PLASTIC PANELS
24x48 REG. \$3.88 — \$2⁸⁸
24x72 REG. \$4.88 — \$3⁸⁸

Heavy Duty
ALUMINUM WINDOW GUARDS
\$6⁹⁵ & UP



GLASS SHOP
8012 So. Tacoma Way



Enjoying the water play at the Parkland Cooperative Nursery School are from left: Leslie Van Beek, Jason Sichmeller, Trina Christopherson, and Caryn Colton.

Co-Op Nursery To Begin New Registration

Parkland Cooperative Nursery School is now receiving applications for the 1970-71 classes. Children who are four by Sept. 13, 1970 are eligible for one of the four year old classes, and the children who are three by Sept. 13, 1970 are eligible for one of the three year old classes. Classes begin on Sept. 21, 1970. Persons wishing more information or registration forms should contact Mrs. Fred Miklosky, LE 1-6265.

Excursions are especially designed for fun and learning by experience. Visits to the Parkland Fire Department, Pumpkin farm, Parkland Dentist and Wrights Park are just to name a few. Visitors are also an important part of the curriculum. The Sheriff's Deputy stops by to speak to the children on safety and a representative from the Humane Society entertained the children with a puppet show on kindness to animals.

The Parkland Cooperative Nursery School meets at the fieldhouse at Gonyea Park at South 133rd and J Streets.

Dryer MORTUARY
(134th & Pacific)
PARKLAND

The Country Parson



"The fellow who won't work for better government is at least as dangerous as the fellow who threatens to overthrow it."
Copyright by Frank A. Clark

Dryer MORTUARY
(134th & Pacific)
PARKLAND

Camp Fire News

Fathers, Big Brothers, Uncles, Cousins: We need help for Camp Wakoma work weekends, May 2 and May 16. Call Camp Fire Office MA 7-8153 for information.

Attention Leaders! Rehearsal for Grand Council Fire May 5 at 7:00 p.m. at Cheney Stadium.

The following Parkland girls passed the Beginners Swim Test: Debra Eager, Carol Hathway and Patricia Murry. They will receive the Polliwog Emblem.

The Advanced Beginner Test was passed by Jane Magdanz, Karen Pawlaski and Sherri Troutman. These girls will receive the Frog Emblem.



"Be Kind to Animals Week"

May 3-9, 1970

CALL JU4-3344 or LE7-3322
Professional AMBULANCE SERVICE
PARKLAND AMBULANCE and LAKEWOOD PACIFIC

Auxiliary No. 619 McChord To Have Luncheon

Auxiliary No. 619 McChord is giving a Membership Luncheon Social at the Bavarian Restaurant on April 29 at noon. All who are interested in becoming a member must be Air Force personnel.

For reservations call Mrs. Don Lyons at JU 4-2779 or Mrs. Floyd Holden at 968-5860. Those attending will meet at 11:45 a.m. at McChord N.C.O. Club and will go in a group.

The last day for reservations is April 28th according to Irene H. Howell, Publicity Chairman.

BIRTHS

Lakewood General Mr. and Mrs. Kenneth E. Lien, 16903-32nd Ave. E., Tacoma, boy, April 17.

Mr. and Mrs. George E. Sibbach, 7605 South C, Apt. No. 3, Tacoma, girl, April 17.

Mr. and Mrs. James Curtright, 11714 Woodbine Lane S.W., Tacoma, boy, April 21.

Mr. and Mrs. Larry A. Parker, 10223-123rd St. Court East, Puyallup, girl, April 21.

Mr. and Mrs. James K. Dunn, 11518-107th St. S.W., Tacoma, boy, April 22.

Mr. and Mrs. Dale C. Koley, 9633 Bridgeport Way S.W., Tacoma, boy, April 22.

Mr. and Mrs. Paul M. Holmes, 6622 South Puget Sound, Tacoma, girl, April 22.

Mr. and Mrs. Raymond W. Kubista, 5819 South M St., Tacoma, girl, April 22.

Mr. and Mrs. Timothy W. Kinkade, 8606 Pacific Ave., No. 27, Tacoma, girl, April 22.

Mr. and Mrs. Richard L. Killian, 10628 South Andover, Tacoma, boy, April 22.

Mr. and Mrs. Carlton H. Lange, 8903-26th Ave. So., Tacoma, boy, April 22.

Mr. and Mrs. Richard L. Brown, 224-59th Ave. No., Puyallup, girl, April 22.

Good Samaritan
Mr. and Mrs. Ronald Brewster, 825 13th St. S.E., Puyallup, girl, April 15.

Mr. and Mrs. Prentice Cook, 1210 West Pioneer, Puyallup, boy, April 15.

Mr. and Mrs. Larry Jamerson, Box 309, Eatonville, boy, April 16.

Mr. and Mrs. Chris Barry, 11221 96th Ave. E., Puyallup, girl, April 20.

Mr. and Mrs. Ralph Lutterloh, 5603 16th N.W., Puyallup, boy April 20.

Mr. and Mrs. Edward Sulkosky, 504 3rd St. S.E., Puyallup, girl, April 20.

Mr. and Mrs. Kevin Vollmer, 414 5th St. N.E., Puyallup, girl, April 21.

Mr. and Mrs. Terry Mocerri, 12016 110th Ave. E., Puyallup, boy, April 21.

Mr. and Mrs. Kermit Wagner, 1002 8th Ave. N.W., Puyallup, boy, April 21.

Mr. and Mrs. Harris Statema, 8219 50th Ave. E., Tacoma, boy, April 21.

Mr. and Mrs. Ronald Sasaki, 5701 15th St. E., Tacoma, boy, April 21.

Mr. and Mrs. Leonard McVey, 102 S. 160th, Spanaway, boy, April 22.

Mr. and Mrs. Donald Broeker, 1523 4th Ave. N.W., Puyallup, girl, April 22.

Mr. and Mrs. Richard Nickolaus, Rt. 1 Box 202, Graham, boy April 17.

Over-50 Singer Reveals Beauty Hints Zest for Living At Any Age

By Frieda Kaye

New York (MW) — Hildegard, who has entertained U.S. presidents, royalty, VIPs, habitués of swank supper clubs, and plain Joes at political rallies, confesses that when the show is on she's a star, but when the lights dim she is as shy as anyone.

Distinguishing between the on-stage Hildegard with the legendary props consisting of long white gloves, roses and a linen-lace handkerchief — and the off-stage woman, she admitted in an interview: "I get in front of the politicians at a rally and I'm just as persuasive as can be. But when I'm back in my apartment, I'm back in my shell again."

Her shyness, however, does not extend to a subject that leaves most women mute: her age. Hildegard's book (now available in paperback edition), in which she reveals her beauty secrets, in defiantly entitled: "Over-50 — So What!" Without hesitation she says: "I am well over 50... but I feel like 32. I just have a great zest for living."

Fashion Views

The Wisconsin-born chanteuse is a great believer in good diet, exercise, grooming and fashion-sense. Simplicity is the basis of elegance, according to Hildegard. And she qualifies as an expert, having made the "ten best-dressed" list three times.

Her opinions on the new midi look are mixed. While she has a few new suits in the midi length — which she calls "elegant and modest" — she firmly believes the shorter hemline will endure. "I'm not going to get rid of my short clothes because I think this longer length is just a fad. It may last a year or two."

The shorter length, she claims, is more attuned to today's emancipated women. "It makes you step light and feel young and vital. I think it will never go out of style."

Food and Diet

Hildegard, whose looks belie her age, follows the old maxim: "Make the most of what you've got." She claims that proper skin care is a matter of "discipline and wanting to improve." And the same goes for dieting.

"You've got to start in the mind. A lady will say to herself: 'I'm not bad looking — but my figure could be improved; my face could be improved.' And if she does something about it, it will improve." Hildegard, who admits she "never misses a day" without devoting time to skin care, also believes in eating only organically grown foods and in drinking pure mountain water. "You are what you eat," she says.

And even at the age of 50, one can be attractive. "As a matter of fact," she said, "a woman looks marvelous starting at 50. When I was 50, I looked in the mirror and thought: 'I don't look any different.' Life begins at that age. I think it's wonderful when a person gets to be 50. She has ceased growing up and a whole new life is in front of her. The children are grown so the woman now has a chance to pamper herself and live for herself. Life is just beginning."

Music - Old and New

Interviewed shortly before the start of her engagement at the St. Regis-Sheraton here in New York, Hildegard said that in addition to the nostalgic standbys — "Darling, Je Vous Aime Beaucoup," "The Last Time I Saw Paris," and other numbers — her repertoire will also include rock-and-roll. "I love the music of today. There are some beautiful ballads."

One song she'll be singing is: "The Show Is On and I Am It." She explained: "That's my favorite expression, especially when I have a slow, restless audience. I stop and say, 'Uh-uh. The show is on and I am it.'"

But after the blue and lavender spotlights dim, the off-stage Hildegard returns, a woman once described as being "as shy as Elsie Dinsmore."

British Wives Meet Friday

The Tacoma British Wives, a branch of the Transatlantic Brides and Parents Association, will hold their monthly business meeting Friday, May 1st at 7:30 p.m. at St. John's Lutheran Church in Lakewood.

Auxiliary Pot Luck At Grange

The Barracks and Auxiliaries of District 5, Veterans of World War I will meet for a Pot Luck Luncheon at noon May 9 at the James Sales Grange, South 113th and Park Avenue, Parkland.

The hostess will be Auburn 1401 and the Co-hostess Puyallup 752. Those planning to attend are urged to bring their table service.

Commander Warren Ferguson and President Mrs. Orval Fly will conduct a business meeting at 1:30 p.m. to elect officers for the coming year.

THE LEEN PLAN

The LEEN Plan is the safe, sensible way to control weight without missing three meals a day. No monotonous liquid meals. Start the LEEN Plan today.

PAY 'N SAVE DRUGS
9830 PACIFIC AVE.
TACOMA WASH 98444
LE 1-6555

MOTHER WOULD LOVE A BEAUTY GIFT CERTIFICATE FROM

MILLIE'S STYLETTE

Beauty Salon
MILLIE COASH
owner & operator
HAIRCUT - SHAMPOO
and SET 6⁰⁰
— 3 TOP STYLISTS —

THE BIGGEST LITTLE SHOP AT THE END OF THE ROAD
LE 7-8042 Mon.-Sat.
228 - 169th E. SPANAWAY

LATEX PAINT SALE

5⁹⁵ GAL.

NALPLEX
Latex Flat Wall Finish

6⁹⁵ GAL.

Dutch Boy
Latex Satin Gloss Enamel

NALPLEX
Latex Flat Wall Finish

- Dutch Boy's finest flat wall finish
- Acrylic formula — water clean-up
- Free of odor — one-coat hiding!
- Made for rollers — 30 minute dry!

LATEX
Satin Gloss Enamel

- Finest of all semi-gloss finishes
- For kitchens, baths, cabinets, trim
- Odorless — easy water clean-up
- Fast drying — resists fading.

DUTCHMAN Drive In CAFE

Home Cooked Lunches
Monday — Friday
ORDERS TO GO
VI 7-2179
3/4 Mile South of Roy Y on Mountain Hiway
Enjoy Our
Hamburgers - Hot Dogs
Fish n Chips

SOUTH END HARDWARE

Hunting & Fishing Supplies — Licenses
Paints & Plumbing Supplies
Call VI 7-7211 So. 188th & Pacific



Pacific Lutheran University's Spurs Linda Hansen, Kathy Burwash, Karen Fynboe and Sharyl Erickson give Parkland Cleanup Publicity Chairman Larry Armstrong a big smile posing for picture.

Parkland's Clean-Up Headed For Big Day

Parkland's Clean-up Drive Committee headed by John Hartsell, is preparing for the main big all-out clean-up day Saturday, May 2nd. However, free dumping of garbage in any amounts will still be allowed at the Pierce County garbage dump 182nd and Meridian South on Sunday, May 3rd, according to Curt Roberts, supervisor in charge of the dump.

A huge turnout of area residents is expected on Saturday. A few of the local groups planning participation include Pacific Lutheran University Spurs, Parkland DeMolays, all Explorer Scouts and Scout troops, various churches in the neighborhood, Parkland Lions, Jaycees and Kiwanis, schools in the area, Parkland Development association, sponsors of the project, and Parkland Business Club.

All volunteer workers and equipment will meet at 8:30 a.m. Saturday by the Parkland Fire Hall, 114th and A streets. Hartsell asks those having scoop shovels to bring them along for loading and unloading the trucks.

Free pop and home made cookies will be served to all volunteers and a lunch wagon

will be on hand selling coffee, hamburgers and hot dogs.

TACBRA, the Tacoma Citizens Band Radio Association will furnish communications between clean-up headquarters at the Fire Hall and the clean-up units in the field. Tritons and Road Runners car clubs have been working all week long helping dispose of the junk cars. They hope to see most of the unwanted old vehicles resting in the local wrecking yards by Saturday night. For advice and assistance in their removal residents should call JU 8-1775 or LE 7-8687.

Everyone in the community is asked to help by cleaning up their own back yards, attics and garages and by eliminating fire hazards such as empty boxes and burnables around chimneys and flues etc.

Anyone wishing to volunteer services should call Al McManis LE 7-3953 or Ray Manges LE 1-0671. Those wishing to volunteer trucks or equipment should call John Hartsell LE 7-8687 or Henry Hetle LE 7-4468. Those wishing to get in contact with their block captains should call block captain chairman Bud Larson LE 7-3737.

Governor Evans Says Earth Day Observance Shouldn't End

PULLMAN, Wash. — Governor Dan Evans keynoted the Earth Day observance at Washington State University and concluded that the event shouldn't be the last of its kind.

"Perhaps we need an annual observance of this kind to remind ourselves why we should be concerned," the Governor declared.

A variety of speakers, including top national political leaders such as Senator Henry M. Jackson, industry executives, an attorney from the group that is seeking to halt construction of dams on northwest streams and faculty members at the University, spoke at WSU's Earth Day.

Sen. Jackson drew the most response from the large crowd that jammed its way into Wilson Compton Union for the day-long program. He was pelted with marshmallows during his talk, but the Senator also drew loud ap-

plause when he caught several of the soft missiles and threw them back to the students.

The Senator spoke on environmental legislation already passed or under deliberation in Congress. He spoke for 30 minutes and stayed another 10 minutes for a question and answer session.

Jackson drew a strong burst of applause when he said that "99 per cent of our students believe in the right of dissent without being disagreeable."

In his address, Jackson challenged the students "to work for a better environment and to improve the quality of life through active participation in the political process."

He urged the students to "get involved every day of the year, and to inject environmental concerns at every point in our political system. Make the environment an issue in campaigns for every

office from city councilman to president."

Dr. Allen F. Agnew, Pullman, director of the State Water Research Center, told his audience that broad public support against water pollution must be achieved before improvements can be made.

Agnew said the fight against pollution is not merely a responsibility of the government — it is a matter for the private sector as well.

"The private sector — the taxpayers and taxpayers to be — has a vital role in solving pollution problems," Agnew said.

Agnew said the problems of pollution must first be recognized, solutions must then be devised and they in turn must be implemented.

"Are we willing to accept austerity in order to have environmental quality?" Agnew asked.

The water research director said students and other segments of society must follow through on their ideas and ideals by providing support and necessary funds which will be required to restore and maintain quality water resources in the nation.



The highest recorded live birth rate is 62 lives per 1,000 of the Guinea population (Africans only, 1955 sample survey), and Mali (1960-61 sample survey). The lowest was 11.9 per 1,000 in West Berlin, 1963.

Wondering what to name the baby? You prefer not unusual names but more popular ones? The most common name in the world is Muhammed!

Pottery nurses with pottery nipples were given weaning babies of ancient Greece. They were used for 2000 years! Many early Americans, imported pewter nipples, although families in frontier cabins carved nipples from wood, hollow gourds or cows' horns!

1ST ANNUAL ART SHOW RAINIER LEAGUE OF ARTS

(*Also Jr. Division)

MAY 1, 2, 3, 1970
12:00 a.m. to 8:00 p.m.

at
BARLO'S PANCAKE HOUSE
12221 PACIFIC AVE.

Sponsored by:
Parkland
Kiwanis Club

* Students
attending Bethel,
Franklin Pierce
and
Washington
High
Schools

ARTISTS
DEMONSTRATING
DAY & NITE

All paintings
for sale

Don Vowell's PARKLAND TIRE SERVICE

13201 Pacific Ave - LE 7-7616

POLY FIBER / ESTER GLASS

G78x14 Dual Whitewall \$34⁹⁵
Plus Ex. Tax \$2.54

Batteries Reg. \$12.95 NOW \$9⁹⁵

Credit Available



Angelo's PIZZA HOUSE

ORDERS TO GO

Featuring top sirloin and American dishes, spaghetti, rigatoni, meat balls, sausage, ravioli, beer and wine.

- | | |
|------------------|------------|
| Choice of Pizzas | |
| cheese & tomato | bacon |
| anchovie | peppers |
| mushroom | olive |
| Italian sausage | hamburgers |
| pepperoni | ham |
| tuna | salami |
| | onion |



LE 7-7233
14102 PACIFIC AVE.
PARKLAND



CALL AHEAD, IT'S
PIPING HOT
ALL THE WAY HOME

PICK UP A BOX, PAIL, BUCKET
OR A BARREL

SPRING FESTIVAL OF SAVINGS

AT YOUR SHOP MART DEPARTMENT STORE

13322 PACIFIC AVE.

SALE STARTS THURS. APR. 30




OPEN EVERY SUNDAY NOON TIL 5 P.M.

PATIO CHAISE



- ALUMINUM FRAME
- FIRST QUALITY WEB
- IDEAL FOR PATIO

ONLY **\$5.99**

PATIO CHAIR



\$5.00

2 For \$5.00

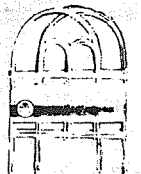
(\$2.99 EACH)

ALUMINUM LAWN EDGING

4 Inch High
40 Ft. Long

99¢

COATED ENAMEL WIRE GARDEN FENCE



99¢

10 FT. LONG 10 IN. HIGH

30-QUART SIZE STYROFOAM COOLER



LIMIT (1) ONE
Reg. \$1.19

77¢

5-POUND BAG GRASS SEED ONLY

99¢

BREVONI PANTY HOSE



MOST POPULAR COLORS FOR SUMMER WEAR

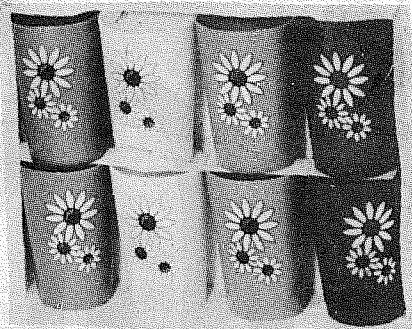
ONLY **76¢ PAIR**



SHOP MART DEPARTMENT STORE

13322 PACIFIC AVE. NEXT TO LUCKYS

Weekdays 11 a.m.-9 p.m.
Sat. 10 to 6; Sun. Noon 'til 5 p.m.



SET OF "8" PLASTIC GLASSES

- ATTRACTIVELY BOXED
- ASSORTED COLORS
- DISHWASHER PROOF

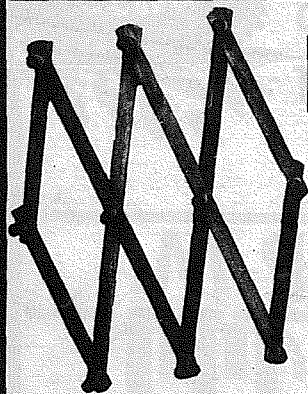
87^c

REG. \$1²⁹ VALUE

SAVV

FROM SHOP

WEEKDAYS
SAT. 10-6, SUN.



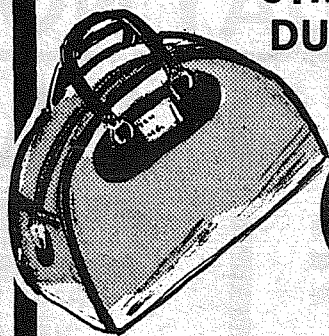
EXPANDO RACK 10-PEGS

IDEAL FOR
CLOSETS -AND
BEHIND DOORS.

66^c

BOSTON BAG

STRONG ROOMY
DURABLE - WITH
ZIPPER



99^c

TWIN OR DOUBLE MATTRESS PROTECTOR



FINE QUALITY
PLASTIC.

ONLY

57^c

ICE CREAM SCOOP 66^c

WOVEN-RATTAN TOTE BAG 99^c

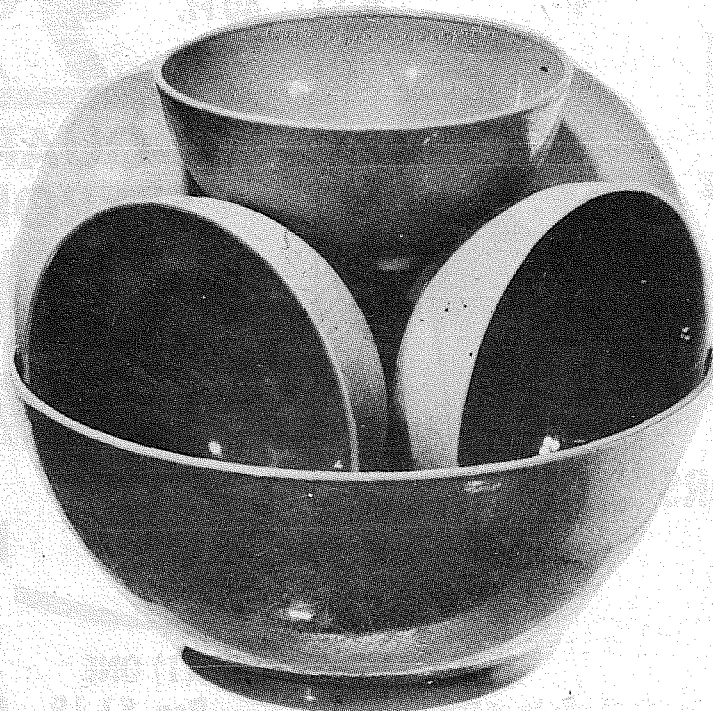
19"x27 IN SCATTER RUG 66^c

PERCALE PILLOW CASES PAIR 99^c

BATTERY JUMPER \$1⁸⁷ CABLES

6Ft.-9Ft.-12Ft. EXTENSION CORD ALL 3 FOR 99^c

7-PIECE PLASTIC BOWL SET

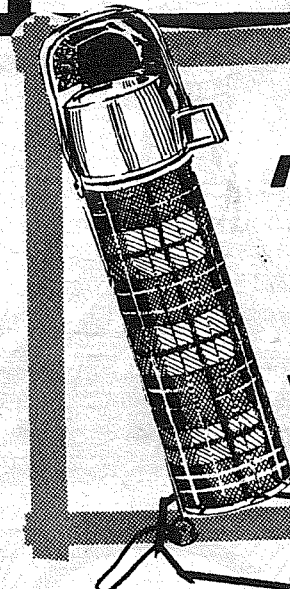


ASSORTED COLORS.
IDEAL FOR PICNICS

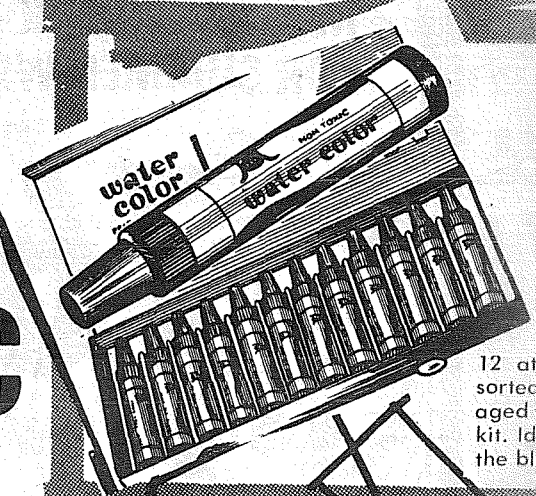
Reg. \$1³⁹ VALUE

99^c ONLY

ONE QUART S "THERMO BOTTLE WITH CARRYING HANDLE



BADMIN SET

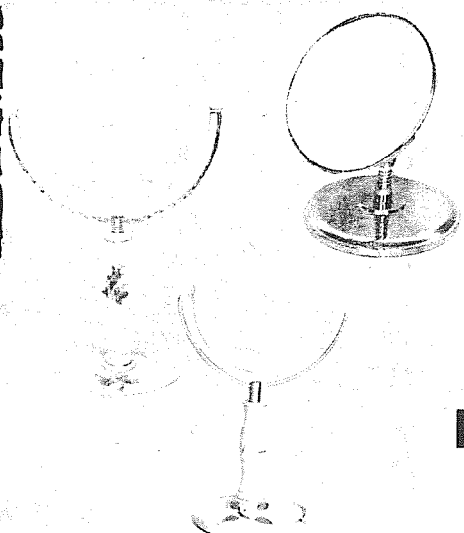


12 attra
sorted p
aged in
kit. Ideai
the bloo

INGS

WART DEPARTMENT STORE

a.m. - 9 p.m.
MOON 'TILL 5 p.m.



MAKE-UP MIRRORS

A LARGE CHOICE TO CHOOSE FROM BEAUTIFULLY STYLED MIRRORS.

99c



ELECTRIC COFFEE PERC.

\$2.77

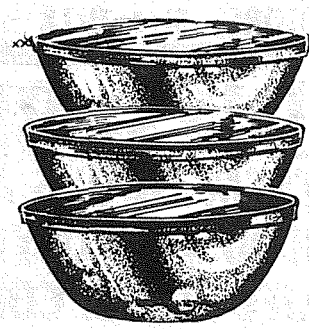
COMPLETE WITH ELECTRIC CORD, IDEAL FOR BREWING 4 CUPS O'COFFEE



KING SIZE PLASTIC ICE BUCKET

\$1.37

(ASST'D COLORS)



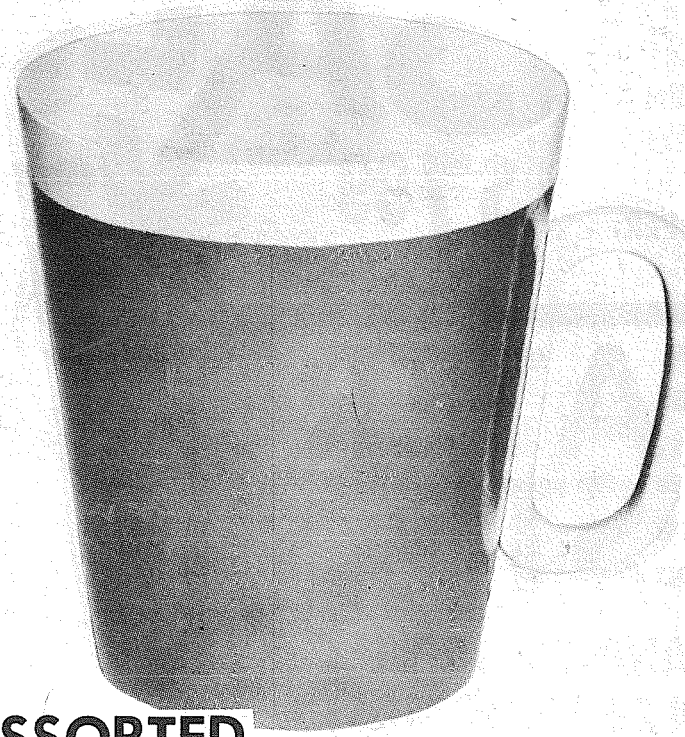
6-Pc. PLASTIC BOWL SET

6 PLASTIC BOWLS WITH LIDS IN A SET

99c

REG. \$2.98
\$1.47 EACH

4-PIECE PLASTIC THERMAL MUGS.



ASSORTED BEAUTIFUL PATIO COLORS ONLY

87c

SET OF 4

- MULTICOLOR PLASTIC SHOPPING BAG **66c**
- METAL MUG RACK **69c**
- SIZE D FLASHLIGHT BATTERY **7c**
- G.I. TYPE CANTEEN WITH COVER **99c**
- FULL SIZE SHOWER CURTAIN **99c**
- HOSE WASHERS **7c** CARD

4-PLAY WOOD HANDLES
\$2.99

12 Piece - Non Toxic
WATERCOLOR MARKER SET
88c

five shades in assorted colors. Pack reusable carrying for youngsters and young artist.

Spring FESTIVAL OF SAVINGS

WEEKDAYS 11 a.m. - 9 p.m. SAT. 10 to 6; SUN. Noon till 5 p.m.

SHOP-MART DEPT. STORE



COOL SAVINGS JAMAICAS

STRETCH DENIM
PERMANENT PRESS
PASTEL COLORS - Sizes 8-18

\$1.99
PAIR



GIRLS' 2-PIECE SHORT SETS

PERMANENT PRESS
ALL THE LATEST STYLES & COLORS TO CHOOSE FROM
SIZES 7 to 14

\$1.77



LADIES' BLOUSES

A TREMENDOUS ASSORTMENT OF BLOUSES. POLYESTER COTTON LIFE PRESS. CONVERTIBLE COLLARS. ROLL UP SLEEVES.

PLAIDS - WHITE
SIZES 32-40

\$4.00



DOUBLE KNIT LADIES' PANTS

BY PAQUETTE

- 2-WAY STRETCH
- EACH PAIR PROPORTIONED
- WASH AND TUMBLE DRY
- PULL ON STYLE

SIZES 10-18



GIRLS' KNIT TOP

100% COTTON, STRIPES, SOLIDS
SIZES 4 to 12

99c



FRITZI TANK TOPS

• 100% COTTON
• POPULAR STRIPES

\$4.00



LADIES' SWEATERS

A BEAUTIFUL SELECTION OF LONG SLEEVE SWEATERS
HIGH FASHION COLORS
ALL WITH BACK ZIPPER
SIZES 34-40

SALE

\$7.99 **\$10.95** PAIR



SWEATER VESTS

A GAY AND COLORFUL SELECTION OF THESE MOST POPULAR VESTS - SIZES 34-40

ONLY



CLEARANCE BESTFORM BRA SLIPS

BEAUTIFUL PASTEL COLORS. SIZES 32 to 38. A AND B CUPS

VALUES TO \$6.00

ONLY \$3.27



**TIE ON
CHAIR
PADS**

A LARGE SELECTION
ALL SOLID FOAM.

CLOTH
COVER

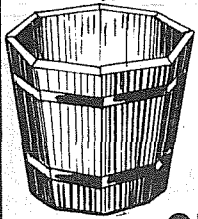
99¢

**Spring
FESTIVAL OF SAVINGS**

WEEKDAYS 11 a.m. - 9 p.m. SAT. 10 to 6; SUN. Noon till 5 p.m.

SHOP-MART DEPT. STORE

12 in. HIGH
REDWOOD

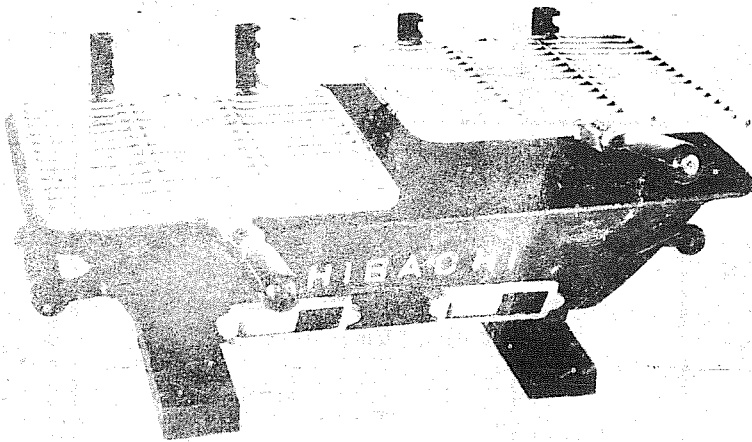


PLANTER
TUB

\$2.99

ONLY

HIBACHI



A CAST IRON HIBACHI
IDEAL FOR PATIO FUN

20 INCH LONG
10' INCH WIDE
7 INCH HIGH

\$6.99

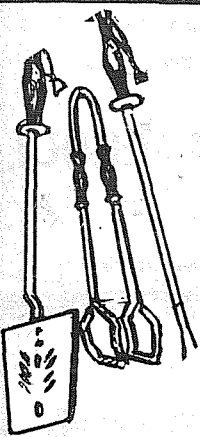
ONLY

11 in. LONG
GRASS
SHEARS



\$1.17

ONLY



3-Pc.
BAR
B
QUE

\$1.37



45-Pc
POTTERY
DINNER
WARE
SET

6 PATTERNS
TO SELECT

\$29.95

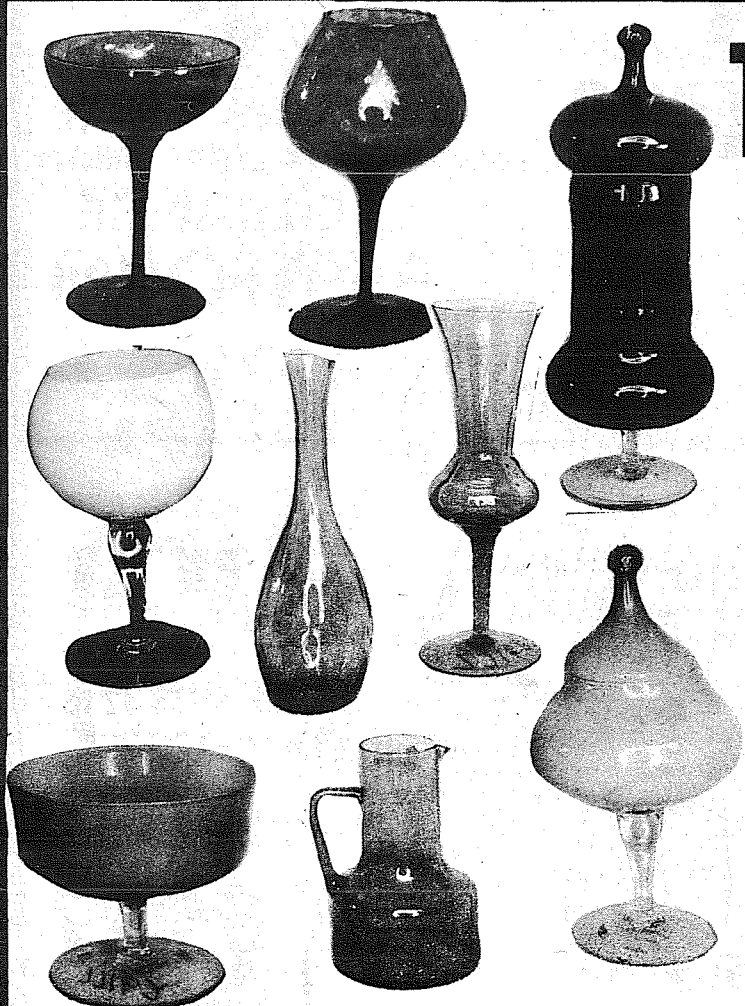
**EARLY BIRD S-P-E-C-I-A-L
BEACH TOWELS**

FULL SIZE TOWELS
WITH GAY COLORFUL
DESIGNS - PATTERNS

99¢

**HURRY!
SAVE!**

**HURRY!
SAVE!**



1/2 PRICE SALE
ON
IMPORTED

**ITALIAN
GLASSWARE**

A MAGNIFICENT SELECTION OF FINE IMPORTED
GLASSWARE WILL BE PLACED ON SALE IN OUR
GIFT DEPARTMENT. HURRY. MANY ARE ONE OF A
KIND AND STYLE.

4 DAYS ONLY

THURS. APR. 30
FRI. MAY 1

SAT. MAY 2
SUN. MAY 3

Success nowadays is making more money to pay the taxes you wouldn't be paying if you hadn't made so much money already.—Ed Kummer, The Eaton (Colo.) Herald.

When you come to the end of a perfect day, it's the things you haven't done that are going to count most tomorrow.—Harold S. May, The Florence (Ala.) Herald.



Women now comprise almost 38 per cent of the total work force, according to the U. S. Department of Labor.

April 27:
Spanaway Fire Department responded to a home at 118 So. Lauvre St. Sunday afternoon. No one was home at the time and cause of the fire is still undetermined. The loss from smoke and super heated air was extensive.

April 28:
Graham Fire Department answered a call to an old house in which kids had set fire to a mattress. Firemen had things quickly under control.

April 22:
Parkland Fire Department responded to two calls last night almost back to back. At 8:52 they went to 409 East 138th St. to the home of Henry Hendricksen where the furnace had backfired causing minor soot damage but no fire damage.

At 9:28 they responded to a call from Robert Kondrat of 770 So. 110th St. where an overheated furnace blower motor caused some anxious moments but no serious damage.

April 23:
The Spanaway Fire Department had an early 3:28 a.m. call this morning to a roof fire started by sparks

from a chimney. The house occupied by Mike Jasuro at 144th and C St. was quickly put out and damage was held to a minimum.

Chief Hixon of the Parkland Fire Department reported a call yesterday at 11:38 a.m. to 11109 So. Steele St. where a baseboard heater shorted out. There was no fire damage, only damage to the wiring of the heater.

At 6:29 p.m. yesterday there was a fire reported in the dumpster at the Lucky Store, 13320 Pacific Ave. Papers and boxes in the dumpster set up quite a blaze, but there was no damage to the store building.

NOW SERVING
Parkland-Spanaway Area

SECURITY
AMBULANCE SERVICE

- 24 Hour Service
- Oxygen
- Resuscitator
- Trained Personnel
- Parkland Based

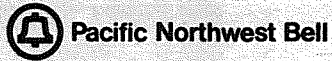
LE 7-4455

The Trimline®



Phone:

Think of it as a small home improvement.



An Endowed Care Cemetery



Fir Lane Memorial Park
Dryer Fir Lane Chapel

924 East 176th Street
Spanaway

LE 1-5500

AUCTION

SATURDAY

MAY 2nd 1 P.M.

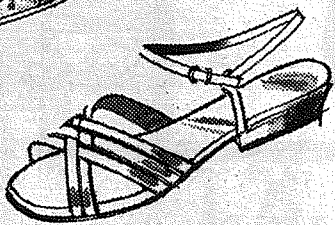
Appliances, Cars, Bikes,
Fish Poles, Light Fixtures
- Many, Many Items

WASHINGTON HIGH SCHOOL
PARKLAND

12420 SOUTH AINSWORTH AVE.

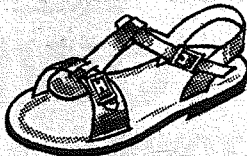
SANDALS

Ladies'



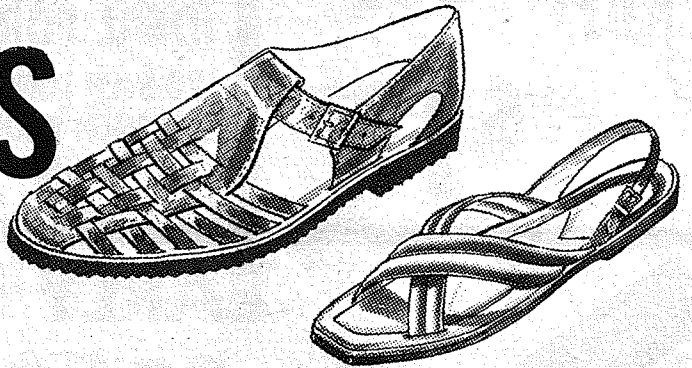
From
\$2.97 To \$9.97

Boys'



& Men's

From
\$3.97



MEN'S
Terry - Crew
Surfer Socks

80% Cotton - 20% Nylon
White with Striped Top
1 Size Fits 10-13

67c

Boys' Sport
Shirts

\$1.97
STRIPES



NYLON JACKETS

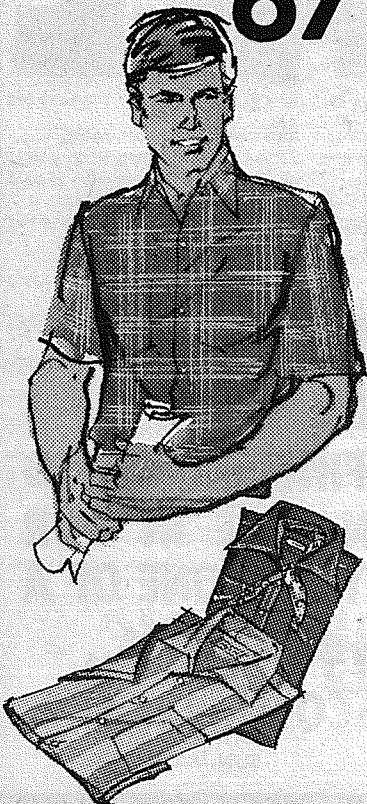
Lots of
New Colors
&
Patterns

From
\$4.97



Men's
Sport Shirts

\$2.97 Or 2/ For \$5.00



FAMOUS
LEVI'S

\$6.50

Zipper or
Button Fly



LEVI'S

SHOP MART
DEPARTMENT STORE

Weekdays 11 a.m.-9 p.m.
Sat. 10 to 6; Sun. Noon 'til 5 p.m.

13322 PACIFIC AVE.
NEXT TO LUCKYS

Leading Lively Lives

Pierce County Senior Citizens Month — May



Senior Citizens doing their thing.



"NOW START IT LADY"

Carl Gaut, volunteer mechanic at the Senior Center proves that the old dog can keep pace with the new tricks.

Thousands of senior citizens in Pierce County, now retired, are leading lively lives. They have rejected rocking chair retirement in favor of a form of retirement that is a way of living rather than a way of aging. They call what they aim for "dynamic maturity," a retirement filled with new experiences and the U.G.N. Council on Aging, church, fraternal and civic organizations here in Tacoma have joined with them to "get their lives moving again."

To dramatize this program, May 1970, has been named Senior Citizens Month and Pierce County's senior citizens will be going all out to show the world and each other that their is happy, exciting, and needful living ahead for those who have entered the "golden years."

This month's activities open May 3rd with "Senior Citizens Day" as a feature in all local churches.

Then on Monday, May 4th, it's the Senior Citizens Annual Breakfast. This will be held at the New Yorker in Tacoma with food service at 9 p.m. and the program underway at 10. Bruce Brooke will be acting as Master of Ceremonies.

Assisting with the event are Mrs. Wm. H. Boering, general chairman, Brig. Gen. Charles H. Swartz, chairman of Senior Citizens month in Pierce County, Gordon Johnson, who will represent the City of Tacoma, Miss Mary Ann Truitt, executive director of Senior Centers Inc. who will talk briefly about the senior citizen of the year program. Mrs. Ellen Pinto, chairman of the annual Senior Citizens Conference who will discuss the all-day conference program. Mrs. Isabel Havel, supervisor of Recreation for the Metro-Park System and Tacoma School District, who will cover events set for "A-Day-In-The-Park," scheduled for May 23rd in Wright's Park, and Mrs. Gamell, program chairman.

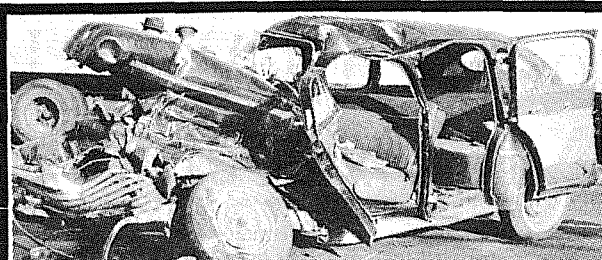
Speaker for the breakfast is the Rev. Norman R. Lawson whose subject is titled ... NEEDED.

The second major event on the Senior Citizens calendar for May will be held on the 11th of May at the First United Methodist Church. Registration for this all-day conference begins at 9:30 a.m. when coffee is served, while the conference program starts promptly at 10.

This year's conference is labeled "A Day of Discovery" and those who attend will have a chance to join in panel discussion groups and discover for themselves new ways of living economically, of helping themselves and others, of being creative when you have the time to be creative and such new fields of activity as politics.

The concerns of "The Aging" will also be discussed in panels on problem areas such as safety, housing, taxes, health, medical and nursing home needs, social security, employment, recreation and money problems.

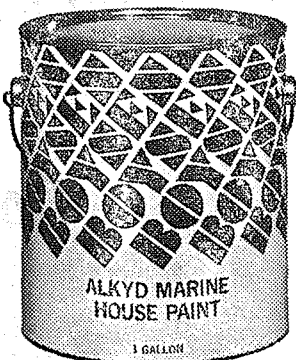
Then on May 23rd it's "A-Day-In-The-Park" for senior citizens. Under the chairmanship and direction of Mrs. Isabel Havel, Wright's Park has been selected for the setting of this all-day event. Features of interest will include musical entertainment supplied by bands and other musical groups, a baton contest, sales booths, dancing, horseshoes, giant checkers, putting and bowling on the green and other activities. For viewing there will be an art exhibit and a flower show.



Gordie Says: We'll tow away your old wrecks for Clean-up time in Parkland.

South End Auto Wrecking MOUNTAIN HIWAY SPANAWAY VI7-7242

BOYSEN PAINT ONE CENT SALE



ALKYD MARINE

Alkyd Marine House Paint combines the deep beauty of its smooth glossy finish with the ingredients for the toughest coating around. 10 colors and white.

**\$8.87 a gallon PLUS
ONE GALLON FOR 1¢**



RUSTIC- KOTE

Heavy wood grain shakes, shingles, fences and siding really come to life with Rustic-Kote Exterior Flat finish. 6 colors and white.

**\$5.45 a gallon PLUS
ONE GALLON FOR 1¢**



DREEM LATEX

Forget painting problems when you use the amazing Dreem Latex Flat Wall Paint ... washable, odorless, fast drying. 10 colors and white.

**\$7.48 a gallon PLUS
ONE GALLON FOR 1¢**

OTHER NIFTY THRIFTY BARGAINS!

DREEM ACRYLIC LATEX ENAMEL
The really modern way to put a beautiful semi-gloss finish on all interior surfaces.
only \$2.29 a quart You save 46¢

PLASOLUX
The world's finest gloss enamel... a plastic finish for everything that needs flexible, durable protection.
only \$2.74 a quart You save 49¢

SUPERIOR ROOF OIL
It's a clear color preservative with excellent waterproofing and was designed solely for shingle and shake roofs.
only \$2.74 a gallon You save 46¢

DREEM ODORLESS SEMIGLOSS
Makes trim sparkle in one fast drying, smooth flowing coat.
only \$2.29 a quart You save 39¢

VI-KO EXTERIOR WOOD PRIMER
VI-Ko gives you a positive seal and perfect holdout for finish coats.
only \$7.29 a gallon You save \$1.33

VICTORTONE UNDERCOATER
Perfect when you want to do a truly professional job on interior enamel finishes.
only \$1.79 a quart You save 86¢

PORCH, DECK AND FLOOR ENAMEL
Handles tough problem areas where heavy traffic wears off normal enamel.
only \$2.18 a quart You save 39¢

VI-KO BOND
Solves problems of adhesion on chalky exteriors. Works equally well when applied over vinyl, latex or acrylic.
only \$3.09 a gallon You save \$1.11

VI-KO LATEX HOUSE PAINT
It's water thinnable and easy to apply to either wood or stucco.
only \$6.74 a gallon You save \$1.21

THE BOYSEN GRAB BAG
Save, save, save on a bundle of items including roller sets, brushes, drop cloths, spackling compound, masking tape, sandpaper, pails and many more. There have never been savings like these.

GOLFERS' SPECIAL
Gary Player Signature Liquid Center Golf Balls Pack of three... Regular \$3.00 for the period of this Nifty Thrifty 1¢ Sale... only \$1.19. Limit three to a customer.

Custom colors available (except Plasolux, undercoater, primer, and oil) at slightly higher prices. Sale ends May 16.

Out-Of-This-World Colors Brighten Your Feet

By Martha and Bob Wanger

Moon dust, pyrite, fireball! Out-of-this-world colors go right down to the soles of your shoes. This year, American shoe designers have literally gone to the moon for their ideas.

For years, European footwear designers have led the industry in styling but now the pendulum is swinging back and American footwear is the vanguard of colorful, new foot fashions. Innovative manufacturing techniques allow American designers more freedom for imagination. And since Americans consider footwear such an important part of an overall ensemble look, designers here give much thought to the whole shoe, from the uppers and linings to the soles.

One manufacturer, Bearfoot Corporation, has color-matched its cellular crepe soles to leather and fabric and wearing apparel. The colored soles blend with the upper and the entire ensemble to give the wearer an attractive, fashion-wise appearance.

Smart, well-dressed consumers know what they want in shoe styling and quality and American footwear designers and manufacturers are giving them just that.

BROOKDALE LUMBER, INC.

13602 PACIFIC AVE. - TACOMA, WASH.

WEEKDAYS
STORE HOURS: 8:00 A.M. to 5:30 P.M.

SAT.
8:00 A.M. - 5:00 P.M. PHONE: LE 7-8669

Local Girl Wins In Court; AMA Expected To Appeal

Debbi Selden, 19 year-old female motorcyclist of Parkland won her first battle in her fight to obtain a professional motorcyclist's license in Pierce County Superior Court last Friday.

Judge Robert Jacques ruled that Debbi will be able to compete professionally in American Motorcycle Association sanctioned races. Previously she had been restricted to an amateur status only by the AMA because of her sex.

However the AMA is expected to appeal the case to a higher court within the next 30 days. The case is building in national momentum and may serve as a key judicial precedence in other cases if appealed.

She started racing at 12½ in powder puff competition and at 14 turned to amateur racing on her 220-pound cycle.

Debbi, 5'4½" and 118 pounds, was given admirable testimony on her racing ability by fellow competitors, David Yost and Emil Ahola. L.E. Parkhurst, 73, the first member of the national Harley-Davidson racing team also gave her a seal of approval.

After turning 18 last April, Debbi applied for and was refused a professional license by the AMA due to the fact the national organization has a regulation barring female participants from professional competition.

Robert Peterson, Debbi's attorney, said that she was being discriminated against and that the AMA has a monopoly on motorcycle racing in this state, thus subjecting her to races of amateur status.

However the defense said since the AMA is a national organization that the state had no right in handing down a decision on the matter.

During the days Debbi works as a parts manager at her father's Parkland Cycle Shop. She does most of her racing at the Graham Speedway.

Washington Surprises Pierce 2-1

Washington High School behind the strong pitching performance of Jim Rouse upset league-leading Franklin Pierce 2-1 in a baseball contest held at Pierce Tuesday.

The loss dropped Pierce out of sole possession of first place in the Southern Puget Sound League and made the race for the title a real log-jam. Jefferson and Clover Park are currently tied with Pierce for the lead.

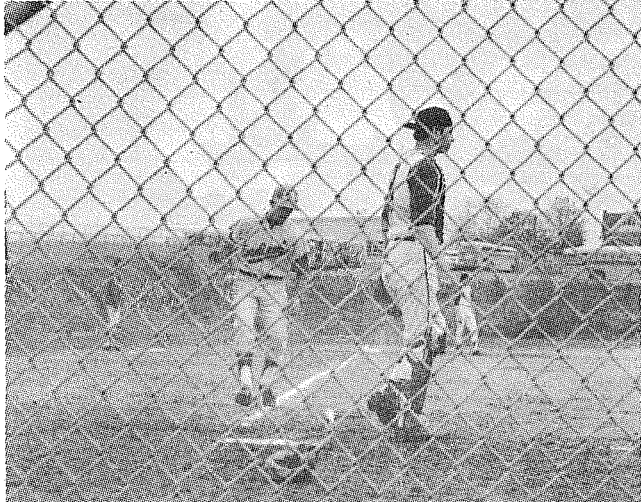
Rouse pitched excellent ball for six innings, holding the tough Pierce nine to only two hits, with Gary McCabe picking up where Rouse left off in the seventh to keep Pierce hitless in the final frame.

Coach Gordy Hansen's Washington nine scored all it needed in the third inning with Victor Coy leading off with a single and Bryan Gaume following with another single putting Coy on third. Wayne Hammer then slammed a triple to deep centerfield to score both Coy and Gaume. Pierce scored its sole run in the fourth on a lead-off triple by losing pitcher Dick Shadle and a fielder's choice to shortstop provided by Steve Heyer.

Washington 0 2 0 0 0 0 - 2 6

Pierce 0 0 0 1 0 0 0 - 1 2
Rouse, McCabe (7) and Harmon Shadle and Taylor, Jenkins (6).

Pierce To Vie With Jefferson For Lead Tues.



LOOKING ON WITH HOPELESS DISDAIN is an Auburn catcher as Bob Mann scores the first run in a 3-2 Franklin Pierce victory last week. The Cardinals are currently tied for the lead in the South Puget Sound League, with Jefferson and Clover Park.

By Dan Hickman

All hopes of a SPSL title come forward when the league leading Franklin Pierce Cardinals journey to Jefferson Tuesday.

Tomorrow the Cards play host to the lower division Rogers Rams, who fell to the FP attack 10-2 earlier in the year.

Following the crucial contest with Jefferson, who handed the Cards a 3-0 loss April 7, the Cardinals must battle the powerful Clover Park Warriors, who are currently tied with Jefferson and FP for the league lead.

A late inning rally pushed the Cards past the Lake Lancers 4-3 last Thursday at Lakes.

Woody Harris drove in the winning run in the ninth inning with a bases loaded single. Bob Mann 'upped' his batting average to .545, with two singles during the contest.

County Sports List Changes

Adult baseball received a shot in the arm this week when three outside teams filed application for entry into the Southwest Washington Baseball League. Olympia, Out-Side Inn from Bremerton, and the Cheney Studs from Burien will join Lakewood, Billings Electric, Madigan, Puyallup, McNeil Island, and The Auburn Elks for the 1970 season.

There is a possibility that Fort Lewis and another Tacoma team will each field a squad if sponsorship details can be worked out. This would increase the league to 10 or 11 teams.

PLU Thinclads Host League In Meet Sat.

PLU will host the upcoming Northwest Conference Track and Field Championships this Friday and Saturday on their home track.

The Knight thinclads will be out to strip defending champion Lewis and Clark of its title and are rated a good chance to do so by experts.

Willamette, Pacific, Linfield and the College of Idaho are also entered in the meet.

Coach Paul Hoseth's Knights are loaded with talent this year as PLU athletes hold six conference records this year. Freshman John Oberg owns the conference mark in intermediate hurdling with a 56.1 mark, while freshman Dan Pritchard holds the disc record with a throw of 145'-1½" and the shot put mark with a toss of 49'8". Other conference mark holders are Glenn Higgins with 9.8 in the 100 yard sprint, high hurdler Phil Bement with a time of 15 seconds flat, javelin thrower Phil Tundel with a hurl of 222 feet and the mile relay team with a time of 3:28.4.

Preliminaries will be held Friday while the finals get under way Saturday at 1 p.m.



ACCORDING TO BETHEL Baseball Coach Jim Geise this has been the year of the pitchers. Pictured above is Chuck Brown, Senior member of the pitching staff. Brown is averaging 1½ strikeouts per inning and has allowed only 7 earned runs in 7 games. BETHEL PHOTO by Mike Cox

Bowling Results

- EXPRESS — Dick Breon, 563, 219; LaVaun Tatro, 476, 168.
- ROLLING BEES — Lois Lovelace, 176-181-206, 563; Willa Woodford, 223.
- THE BELLES — Gaye Kempe, 211-146-194, 551, 211; Lois Herbrand, 211.
- "600" MIXED — Ace Edwards, 537; John Gravatt, 188; Laura Catchpole, 462, 165.
- SPORTSMAN — Dick Henning, 549, 218.
- INDUSTRIAL — Harold Crisman, 583; Dave West, 213.
- FRIENDLY DOUBLES — Augie Roehr, 538; Jay Tarwater, 215; Chris Cope, 456; Ethel Laviguer, 183.
- PREMIER — Bob Bjork, 247-205-165, 617, 247; Art Unkrur, 224-177-205, 606.
- SR. CITIZENS — Clarence Zacharias, 591, 210; Beth McLellan, 537, 188.
- TOP ROLLERS — Jack Mitchell, 578; Ken Olson, 213; Jeanne Nigro, 488; Linda Watkins, 182.
- MIXERS — Bob Sims, 584, 225; Betty Breon, 535, 187.
- GRAHAM — Walt McGee, 589, 211; Leann Burkes, 516; Rose Eveleth, 183.
- EAGER BEAVERS — Arabelle Frerichs, 245-182-175, 602, 245; Dorothy Bonnell, 194-164-196, 554.
- BIRDS OF PARADISE — Ruby Hegedus, 520, 219.
- HI-LOWS — Sue Sweaney, 512; Dot Clark, 191.
- PARKLAND MIXED — Bob Lovelace, 552; Larry Coulure, 212; Jeannie Rogers, 540; Lois Yurisch, 214.
- 850-SCRATCH — Bill Emmert, 235-216-171, 622.
- CLASSIC — Ed Cooper, 594; John Nelson, 248.
- EVERGREEN — Lindy Ingram, 553, 234.
- BOWLERETTES — Rose Eveleth, 490, 191.
- LAST NITERS — John O'Leary, 577, 233; Lily Duke, 483; Elise Emmert, 200.
- MOD QUADS — Bud Bird, 577; John James, 223; Betty Morrow, 533; Lois Herbrand, 199.

Ash Demonstrates Serving Form



Linda Ash of Bethel High School shows good serving form in practice as she prepares for a singles match against Mt. Tahoma. Linda went on to defeat her opponent in a contest held last week by a score of 6-2, 6-1. The final score in the contest was Bethel 4 and Mt. Tahoma 4.

LAKE SPANAWAY
Golf Course · Driving Range
"Golf Lessons"
Roger Weister Professional LE 1-3660 Ken Tyson Manager

For your car, your home, your life, and your health.
State Farm is all you need to know about insurance.

See us
AL LANGSETH & BILL EHLL

Phone: LE 1-1800
9920 PACIFIC AVENUE

Tacoma, Washington 98444



STATE FARM
Insurance Companies

Home Offices: Bloomington, Illinois

SALE
TRAIL BIKE
SPECIAL DISTRIBUTOR DISCOUNT CAN BE PASSED ON TO YOU!

★ All New ★ Still in the Crates ★

100cc MOTOBETA XTR 100A

\$269⁰⁰

FEATURES:
KNOBBY REAR TIRE, SCRAMBLER BARS, 9 1/2-HP., STREET AND TRAIL GEARS, 48" WHEELBASE, CHROME FENDERS, HOP-UP KITS AVAILABLE

★ COMPLETE PARTS SUPPLY GUARANTEED ★
★ DEMONSTRATION RIDES ★

Hours: 10-6 Daily — This Sunday Only 10-6

GRANGE SUPPLY
10625 Pacific Ave. LE 1-5777

Pierce Upsets Mt. Tahoma In Track Meet

The Franklin Pierce Track Team, Coached by Tom Buckner, upset previously unbeaten Mount Tahoma Tuesday night in the Franklin Pierce Invitational Meet.

The final score was Pierce 120, Mount Tahoma 100, Fort Vancouver 86, Renton 69, Puyallup 61 and Washington 58. The win makes Franklin Pierce a strong favorite to take the state Track and Field championships this year if they can get by unbeaten Clover Park.

Paul Ketter of Pierce set a new meet record at the event for a mark of 42' 5" in the triple jump, edging out Jeff Hill of Washington who leaped 40' 4". Pierce also took the mile run with Rich Poethig turning in a time of 4:26.7, the 180 yard low hurdles on Dennis McKown's 20.3 effort, the shot put with Dean Moore's toss of 56' 6 1/4" and the 440 relay with a 45.4 performance.

Runner-up finishers for the Pierce thinclads were Dennis McCown in the 120 high hurdles with a 15.3 effort. McCown was beaten by Jerry Bulur of Renton in a photo finish as both turned in the same times. Mark Conrad turned in a 10.6 time in the 100, losing to Allyn Filley of Mount Tahoma by three-tenths of a second. Conrad also came in second in the 220 yard dash losing to the same Filley who posted a 22.9 time. Conrad ran it in 23.8.

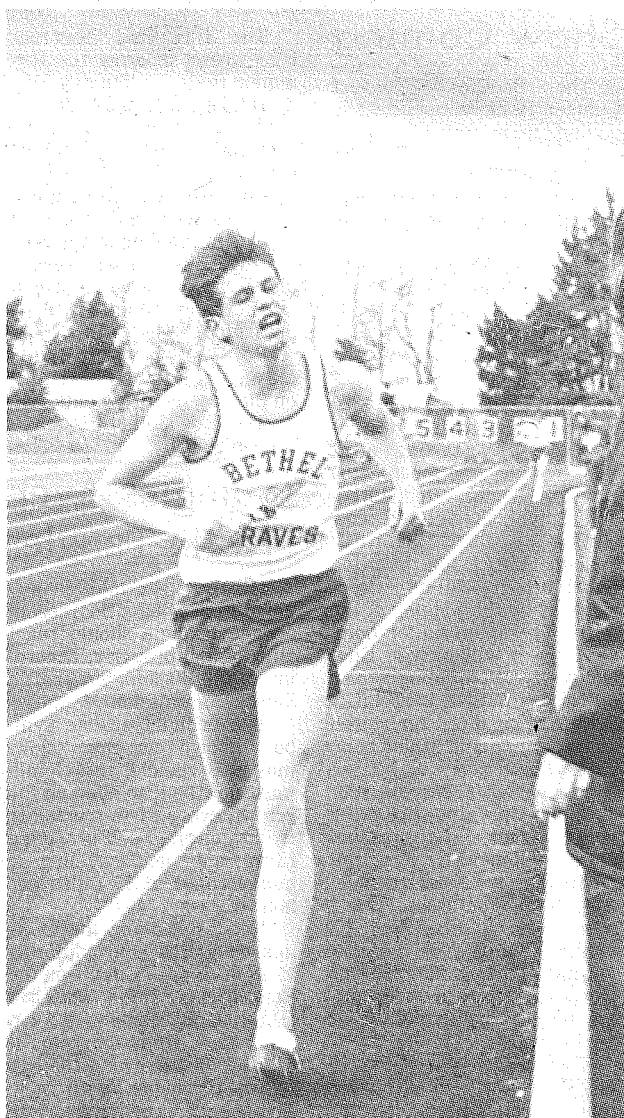
Pierce ran runner-up in the mile relay, losing to Fort Vancouver which posted a new field record in the event at 3:27.4, Pierce's time was 3:28.7. Doug McKenna, although tying Fort Vancouver in the high jump at six feet, was given second due to his number of missed attempts. The same thing happened in the pole vault with Rick Tripp taking second for the same reason. He vaulted 13'. Dana Deluc took two seconds for Washington in the discus and shot put. He threw the discus 151' 4 1/2" and put the shot 53' 1". Washington also took second in the 440 relay with a time of 46.4.

Both teams will start a fresh tomorrow at the High-Line Relays.

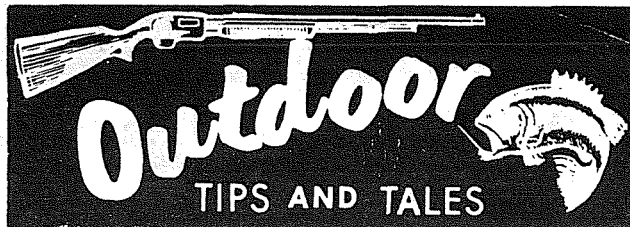
EVENTS CALENDAR —

- April 30 — Colt League Coaches Meeting, Room 271, County-City Building, 7:30 p.m.
- April 30 — Connie Mack League Coaches Meeting, Room 271, County-City Building, 8:30 p.m.
- May 2 — Pierce County Pre-season Slow-Pitch Tournament begins.
- May 5 — Final DEADLINE — Adult Slow-Pitch Leagues.

Sophomore Stan Atkins



Stan has lowered Bethel's school record in the two-mile run on four occasions this season; bringing the record from 10:39.1 down to 10:04.5. Coach Doug Wisness commented on Stan's season thus far: "Easy Strider" as I prefer to call Stan has made a great comeback after an injury riddled cross country season last fall which ended with a fatigue fracture at the state meet. With experience and the continuing of his rigid training schedule, I think he will develop into one of the greatest distance runners in the state. Stan is the son of Mr. and Mrs. Ernie Adkins of Route 1, Spanaway.



By Herb Williams

THE FOLLOWING may explain what happened to many of our steelhead this past season.

In 1964, fishermen discovered the ocean feeding grounds of Atlantic salmon and since then have been catching them on the high seas.

Atlantic salmon are much like our steelhead. In fact they are more like our steelhead than our salmon in that they don't die after spawning as salmon do. They are also caught mainly in rivers.

When their feeding grounds were discovered off Greenland, commercial fishermen moved in, particularly from Denmark and the Faroe Islands.

The chart shows in metric tons how this commercial catch has increased since then: (A metric ton is 2,204.6 pounds.)

- 1965 — 36 tons
- 1966 — 119 tons
- 1967 — 305 tons
- 1968 — 548 tons
- 1969 — 1,000 tons (estimated)

These fish average about 7 pounds each when caught, which would total about 290,000 fish in 1969. To get an idea of how many this is, it's about equal to the total sport catch some years in either Oregon or Washington.

We could have a similar problem here. By actual count, we have more than a dozen Korean, Japanese and Russian fleets working the high seas. Many catch bottom fish, hake and such species.

But it's entirely possible that one of these countries has found the ocean feeding grounds for steelhead. One fleet, working seriously at it, could come close to wiping out a particular run of steelhead.

Steelhead rivers along the West Coast are separated by more than a thousand miles, so there's a good chance steelhead aren't all in the same place in the ocean at the same time. Net fishermen working them over could take more of the fish from one river or section of coast than another, thus explaining why some rivers were down as much as 40 per cent and others were closer to normal.

This is speculation, but if true, we could be faced with one of the biggest threats to our steelhead fishing we've ever faced.

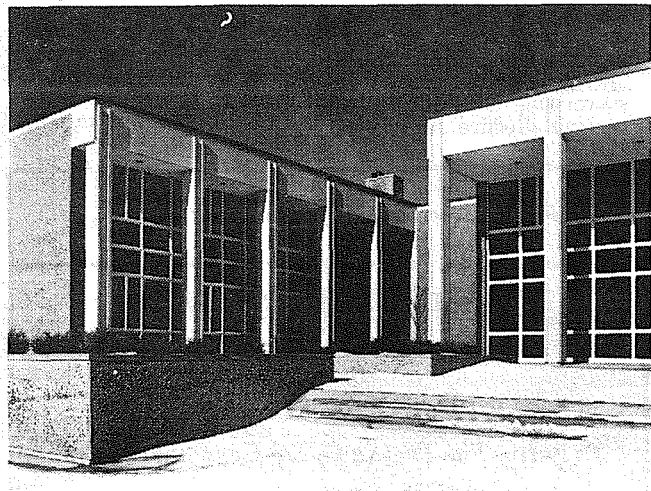
It's happening on the other side of the country to the cousin of our steelhead, the Atlantic salmon. It could be happening here.

FISHING thought for the day: As soon as you start fishing a lure only one way, you're on the way to being out of business.

For on some days, for no apparent reason, the old tried and true method doesn't work. That's the time to retrieve faster, slower, or to shorten or lengthen your leader.

Most of us have seen a fish come up to a lure, perhaps nudge it with its nose, or even strike at it and then dart away. Something wasn't right to the fish at that particular time. So when the regular method doesn't work, change a little.

D&J's SPORTING GOODS
Be sure to get your fishing licenses
12816 Pacific Ave. LE 1-1515



The handsome curtainwalls in this office represent a construction innovation. They are stock Perma-Shield casement and fixed-sash windows by Andersen, which were fabricated into curtainwalls by the on-site construction crew. The windows, with solar-tinted welded insulating glass, cost considerably less than conventional curtainwalls which have to be custom-fabricated.

Glass-Walled Office Breaks Window Rule

A glass-walled office building is not a home. For one thing, entirely different types of windows are—as a rule—used in each.

To obtain windows for homes, garden apartments or light commercial structures, all builders need do is select stock units from the wide range of sizes and styles available at local lumber yards. But, glass curtainwalls used for offices must be custom-made by a fabricator—at considerably higher cost than stock windows.

The window rule is sometimes broken, however, as in a county office building in Stillwater, Minnesota. Maintenance-free curtainwalls for that structure were made from stock window units with solar-tinted, welded insulating glass and vinyl-clad wood sash and frames available at local lumber dealers.

Cerny Associates, Inc., architects with offices in Minneapolis and St. Paul, designed the building and detailed the method of assembling the cur-

tainwalls on standard steel T-bars to provide rigidity and perfect window alignment.

Windows used for the construction were Perma-Shield casement and fixed-sash units, made by Andersen Corporation, which require no painting and provide year-round comfort in both heating and cooling seasons. All glazing was done in the Andersen factory. In a major departure from usual curtain wall construction techniques, the stock units were delivered to the job site and fabricated into two-story glass curtainwalls by the builder's work crew.

The vinyl-clad wood windows and masonry walls provide an exterior that is maintenance-free, except for routine cleaning.

The building's six curtainwalls open offices to outdoor views in all directions and flood the interior with natural light. At night, when the building is illuminated, the glass walls radiate a warm glow over the grounds.

Air Force Reserve To Accept Enlistments For Only 40 Vacancies

Colonel Thomas G. Bowie, Senior Air Force Reserve Commander at McChord Air Force Base, announced today that enlistments into reserve units in this area will be closed to non-prior service personnel over 18 1/2 years of age at the end of May. Special authority has been granted up to this time to enlist personnel up to 26 years of age; however, Department of Defense policy directs that high school graduates will be given priority consideration in June.

Only 40 vacancies remain to be filled of the 300 allocated to Reserve units early in March. Remaining vacancies in aircraft maintenance, air passenger, airframe repair, communications security, administrative, fire protection and personnel fields will be filled for entry into basic training on May 2nd, 9th, 16th and 23rd.

Interested applicants should report to Building 1189, McChord AFB, to make application and arrange for physical examinations and Air Force Qualification Tests.

Wish I'd Said THAT



When a person is misguided, he likes to blame his situation on someone else. Usually, he is merely swayed by his own arguments.—James H. Russell,

GRAND OPENING SPECIAL

HARDWOOD FLOORS REFINISHED

\$145

Sq. Yard

Includes:

- Sanding
- Sealing
- Filling
- Surfacing



George Libby



Ron Morasch

UNITED FLOORS

12148 C STREET - PARKLAND - LE 1-7825

FREE PRIZES

- 1st 30 Sq. yards carpeting installed (not to exceed \$270.00)
- 2nd 20 sq. yds of inlaid vinyl installed (not to exceed \$120.00)
- 3rd 25 sq. ft. of lam. plastic counter top installed (not to exceed \$75.00)

GRAND OPENING ENTRY BLANK

Drawing 1:00 P.M. Sat., May 30, 1970
Deposit this slip at United Floors

NAME.....
ADDRESS.....
PHONE NO.....

Winners will be posted at United Floors
Need Not Be Present to Win

BOWLING

35¢

Saturdays Until 7 p.m.

Sunday Until 1 p.m.

PARADISE BOWL

108th & Pacific
LE 7-6012

HORSEMEN'S NEWS

Over The Fence Rail



By Steve Bryson

On May 9th there will be a youth performance show held at Frontier Park in Graham. Entry blanks can be picked up at the gate. For information call Mr. Tardiff at VI 7-7027.

This last Sunday some of the Tacoma Unit's performance riders headed for Gig Harbor to participate in a show that was held at Srogh's Arena, all the members did well and out-performed all other contestants, those attending were Cheryl Douglas, Lynn Robinson, Andria Tardiff and Terry Tardiff and Steve Bryson. Altogether we brought home 5 firsts, 6 seconds, 7 thirds, 6 fourths and 1 fifth, which is a pretty good record.

May 16 and 17 there will be a State Open Performance Show held at Tacoma Unit No. 1. For information call Bud Root at LE 7-5021.

Last Friday the nine candidates running for Rodeo Queen had to perform in front of the judges doing figure eights and Rodeo Runs. Please support the Parkland Rodeo that's coming up on June 13 and 14th — and buy a button.

Silver Spurs 4-H Club Horse Performance

The club is very busy preparing for the horse show which will be held May 9 at the Graham Frontier Park on Meridian Highway. Starting time is 8 a.m. and entry fees will be \$1.00 per class. All the riders must have a signature of a parent or guardian. The club assumes no responsibility for injuries or stolen equipment.

This is an all-youth performance and the events will include junior, intermediate and senior trail, fitting and showing, western and English equitation, bareback equitation, roadster and jumping.

Trophy and ribbons in five places in all classes will be given except Equitation — Trophy and ribbons to 7 places in all Equitation classes. The age groups are: 11 and under, Junior; 12 to 13, Intermediates; 14 and over, Seniors.

The judge is Mr. Chuck Kendrick of Gresham, Oregon. He is a member of the Oregon State 4-H Advisory Board and well known 4-H

Hardy Lilacs Need Help Too

The lilac bush often looks too hardy to need a lot of attention, but shrubbery experts say it is often struck with blight, one of the more difficult yard problems to combat.

William Scheer, Area Extension Agent in Horticulture, says the common symptoms of this problem are tip die-back and flower cluster blighting. Brown spots on stems and leaves of young shoots are seen first and often develop in early spring. These spots become black and increase rapidly in size, especially during rainy periods.

The bacterium causing blight overwinters in diseased twigs. At the moment there is no completely effective chemical control for this blight. A copper spray of 2-2-5 Bordeaux mixture, applied as soon as the disease appears, may give partial control.

Pruning the shrubs to permit good air circulation will make conditions less favorable for the bacteria to grow. Blighted shoots should be cut out and burned as soon as they are seen. Care should be taken to disinfect the pruning shears in alcohol or other disinfectant after cutting out diseased twigs.

White flowered varieties of lilac are usually more seriously affected than the colored varieties, so the more resistant varieties should be sought.

Another serious problem is the "Lilac Leaf Miner." The adult is a small brownish

judge. A portion of the proceeds from this show will be contributed to Pierce Co. 4-H Fairgrounds for improvements on the grounds.

This should be a good show for 4-H'ers to come out to and get ready for the coming show season.

There is also a similar show being put on by another Silver Spurs Club in Bremerton on this same day, May 9.

Horsemanship Judging May 5

The Parkland Round-Up princesses horsemanship judging will be held at Tacoma Unit No. 1 Sports Arena, 176th Street East, at 7:30 p.m., May 5th.

The Parkland Business Club, and Tacoma Unit No. 1 are co-sponsoring this event. Admission will be by having a Parkland Round-Up Button.

The concession stands will be open, so bring the family, have hamburgers, etc., and enjoy the evening.

Fruit Fly Is Cherry Spoiler

If you want to eat the cherries from your backyard tree, but don't want to eat the cherry "worms" or "maggots" — they're easier to see in dark cherries — you have to take action against the cherry fruit fly, advises William Scheer, Area Extension Agent.

Diazinon, malathion, and methoxychlor are three insecticides which are used as sprays against the cherry fruit fly which lays its eggs in the fruit just as it's getting ripe on the tree.

The right time for first spraying varies for different cherry varieties, but it generally should be sometime toward the end of May. Since these insecticides are effective for only a short time, the cherries will be to be sprayed several times to "keep the flies off them."

Scheer reminds users to read the pesticide label so they will know the recommended cut-off time to stop spraying before picking the cherries. Additional information on the control of this insect is available at the Cooperative Extension Service, 742 County-City Bldg., Tacoma, Wash. 98402.

moth. Greenish larvae mine and roll leaves down at the tips. Leaf mining results in large brown blotches. Privet and ash are also subject to attack.

This insect can be controlled with sprays containing diazinon or malathion. Apply when larvae are in mines on rolled leaves, usually in June and again in August.

Quarter Horse Show Coming

The Pacific Northwest Quarter Horse Association is having their annual Spring Quarter Horse Show in Tacoma May 2 and 3 at the Tacoma Unit Sports Arena, one mile East off Pacific Avenue on 176th.

Judging will be Mr. Jack Kyle of Santa Rosa, New Mexico. The show has approvals of the AQHA, PNWQHCC, NCHA, NWCHA and WBRA.

The show will begin at 8:30 a.m. Saturday with conformation classes. Starting at 2 p.m. will be the Open, \$500 Novice, Senior Registered, and Junior Registered cow cutting. At 8:30 Saturday evening the \$1,000 yearling halter futurity will be judged, followed by the judging of the grand champion halter horses. Classes will include English pleasure, jumping senior bit reining, WBRA barrel racing, pole bending, registered barrel racing and senior pleasure.

The show will resume at 8:30 Sunday morning with youth halter and showmanship classes, followed by trail horse and the western pleasure futurity classes. The 2 p.m. show Sunday will include the finals of the cow cutting, the balance of the working classes and awarding of all-around high point horse awards.

Donation at the gate will be \$1.00 per car. Refreshments are available on the grounds.

Pollution Problem Passing

Midland Elementary School students got into the Earth Day act when they scooped up thousands of bottles and cans, and decreased a large source of pollution in their area.

The Earth Day enthusiasts were introduced to the problems of pollution by an assembly presenting Frances Bell, a National Forest Ranger, who discussed pollution, and the film "A Matter of Time."

The students then went out into the Midland area and spent the day collecting bottles, cans and other items that they felt contributed to the pollution of their area.

Roy Rodeo Sunday, May 3

The Roy and Lacamas PTA are sponsoring the Roy Junior Rodeo on Sunday May 3 starting at 1 p.m. This is held in a covered grandstand and coffee and eats will be available.

Four saddles will be given away to each boy and girl winner in the Junior and Senior divisions. To the second and third place winners belt buckles and trophies will be presented.

Boys and girls from 8 to 18 may enter the calf scramble on Sunday for fifty cents.

The Roy Junior Rodeo is recognized by the National

Triangles Avert Traffic Tangles

Drivers overtaking any vehicle carrying a fluorescent orange triangle should react quickly and properly, according to the Washington Traffic Safety Commission.

The brilliant orange symbol, known as the "slow-moving vehicle emblem," must now be displayed on the rear of every farm tractor or trailer, or other self-propelled farm implement traveling on public roads at 25 miles per hour or less.

Road speed for the average tractor is approximately 15 mph. a spokesman for the Commission said. Thus, a motorist approaching a farm implement from the rear at 65 mph. is narrowing the gap between vehicles at 50 mph. The effect is equivalent to coming upon a parked or stalled vehicle in the traveled lane of the roadway.

Proper reaction includes three points, the Traffic Safety Commission noted:

1. As soon as an emblem is seen, reduce speed as quickly as possible under prevailing traffic conditions. Pump the brakes rapidly to warn vehicles to your rear with brake light flashes.

The Midland area is now minus 20,737 items of pollution, thanks to the elementary school students.

The classes that picked up the most bottles and cans were Mrs. Vernon's fourth grade class with 93 items per child, and a grand total of 2,511 for the whole class. The runner up class was Mrs. Afton Schafer's class with 1,873.

The Pierce County Refuse Co. has consented to pick up the cans and bottles at no additional cost on the next pick up at homes, Iver Eliason, Midland principal, said.

Junior Rodeo Association.

Rodeo Queen Thea Vellias, daughter of Mr. and Mrs. Christ, and Princesses Deanne Wood, daughter of Mr. and Mrs. Gordon Wood, and Linda Erickson, daughter of Mr. and Mrs. George Erickson will be there to help present the winners with their awards.

REO Meeting Wednesday, May 6th Barlo's

The regular monthly meeting of the Board of Trustees, Rural Economic Opportunity, Incorporated, will be held at 11:45 a.m., Wednesday, May 6, 1970, at Barlo's Restaurant, 12221 Pacific Avenue, Parkland, Washington.

The Mobile Unit of Rural Economic Opportunity, Inc. will be off the road Monday, May 4th, Tuesday, May 5th, and Wednesday, May 6th, so Mrs. Verna Hofner can attend a training workshop.

2. Check oncoming traffic. If it is safe to pass, signal your intention and move only when certain that no vehicle is attempting to pass your automobile. Warn the slow-moving vehicle operator with your horn, and proceed to pass.

3. If oncoming traffic makes it impossible to pass, slow down and follow the slowmoving vehicle until it is safe to pass.

The triangular emblems, with red reflective borders and orange fluorescent centers, are highly visible both day and night. Washington's law requiring this symbol on slowmoving farm equipment became effective January 1, 1970.

Rural Affairs Task Force Announced

The formation of a Rural Affairs Task Force was announced Monday at a press conference in Seattle. Present at the conference were Dr. Glenn Terrell, President of Washington State University, who has accepted the Chairmanship of the Task Force from Governor Evans and Secretary of State Kramer and Mr. Don Moos, Director of the State Department of Agriculture who has accepted the Vice-Chairmanship.

In remarks at the conference President Terrell explained why he personally requested the Governor to form a Task Force on Rural Affairs: "Through such an organization rural Washington may gather some of the limelight heretofore, apparently reserved to the largest population centers. Too often we have seen problems facing our rural areas — health, housing, transportation, job opportunities, education — receiving considerably less attention than similar problems in urban areas. This has been true despite the fact that many urban problems are interrelated with rural problems."

Mr. Moos emphasized in his remarks that "the Task Force has a broad membership — people who can find solutions to problems as well as people who can identify sore spots. With such a combination, vital recommendations can be made to the Legislature, the executive branch of government, state and federal agencies, and the private sector."

The Rural Affairs Task Force is the outgrowth of a recommendation from the 1967-69 Governor's Advisory Council on Urban Affairs report — "Urban Washington: Action or Apathy?"

for a Mountain of Service

OLYMPIC REAL ESTATE CO.

announces the opening of the

ELK PLAIN - BETHEL BRANCH

To Serve The People Of So. Cent. Pierce Co.

22208 Mountain Hiway E.
VE 7-6226

Members - Tacoma Board of Realtors
Multiple Listing Service

BUY
SELL

CLASSIFIED ADS

TRADE
LEASE

FOR BEST RESULTS IN:

BUYING

SELLING

RENTING

USE THE WANT ADS

The Times Journal PO BOX 2116 Parkland 98444
LE 1-8885

Ten Words . . . Only 50¢

Use This Form For Ad Insert

Name _____

Address _____

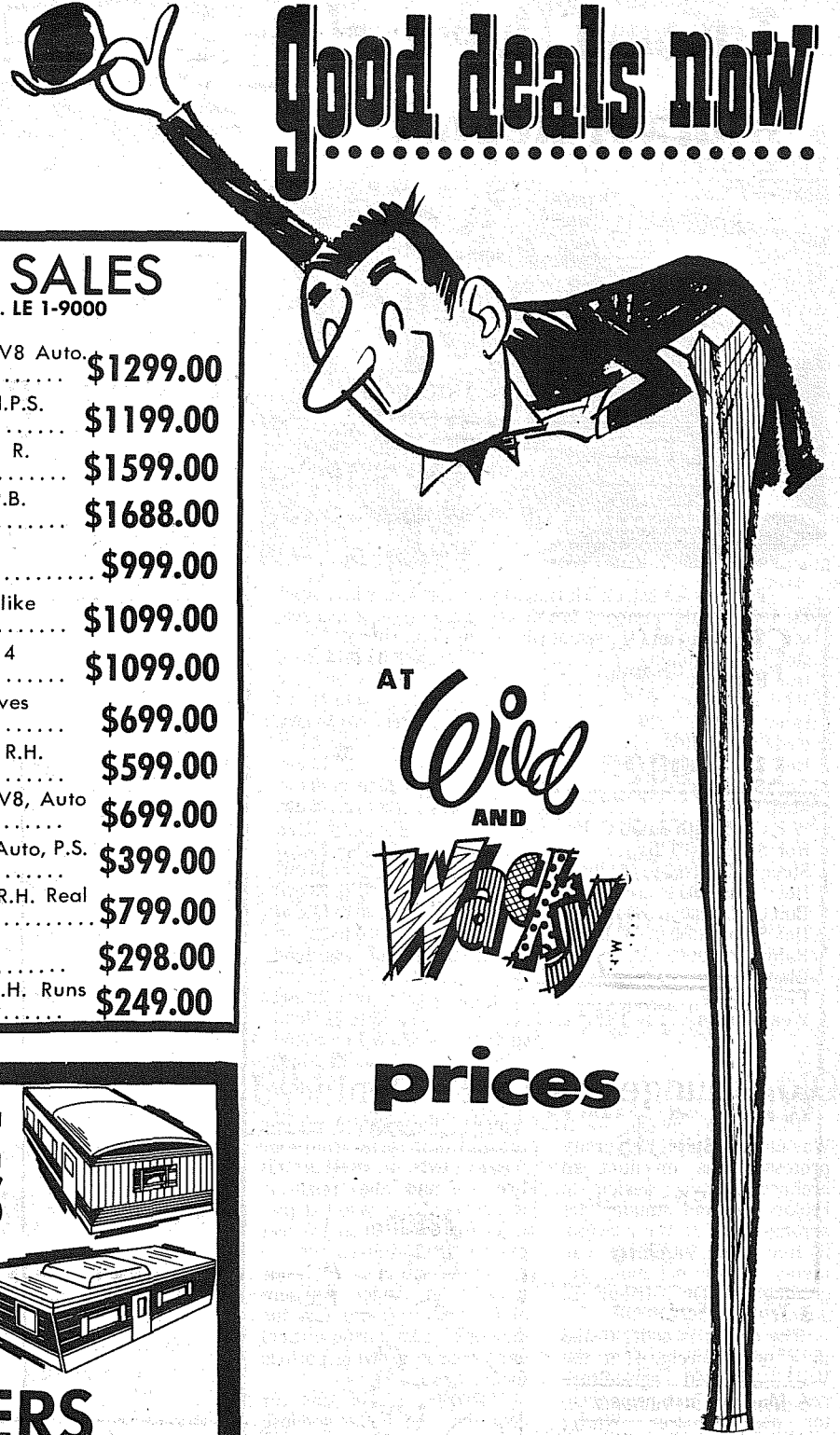
City _____ Zip _____

Amount Enclosed _____

Classification _____

Copy _____

**WHERE ARE ALL THE USED CAR SAVINGS?
RIGHT HERE!**



Good deals now

AT
**Wild
AND
Wacky**

prices

BELIEVE US
THESE ARE
UNBELIEVABLE USED CAR BUYS

PARADE of USED CAR BUYS!
AT

ARMSTRONG'S USED CARS

11009 Pacific Ave.	LE 7-5524
1965 Chev Impala	\$895 ⁰⁰
1963 Chev II Wagon	\$450 ⁰⁰
1962 Chev Impala Conv.	\$450 ⁰⁰
1963 Tempest Cpe V-8	\$495 ⁰⁰
1966 Buick LeSabre 4 Dr. Htp.	\$1175 ⁰⁰
1964 Ford FI/Cpe.	\$425 ⁰⁰
1962 Falcon Wagon	\$350 ⁰⁰
1963 Ford Fairlane Wgn.	\$495 ⁰⁰
1966 Dodge Charger	\$1095 ⁰⁰
1967 Simca 4 Dr. Sharp	\$595 ⁰⁰

ASH GMC SALES & SERVICE
the truck people from General Motors

Transportation

'63 DODGE, 4-dr. station wagon, V-8, straight stick.	\$299
'62 FORD Galaxie, 500 4-dr., V-8, auto.	\$199
'62 FORD Country Sedan, R., H., auto., P.S.	\$399
'61 VALIANT 4-dr. Sharp	\$399
'61 RAMBLER American, 2-dr.	\$199
'60 PLYMOUTH, 2-dr. hardtop.	\$199
'60 RAMBLER, 4-dr. station wagon	\$149
'59 DODGE, 4-dr., R., H., automatic	\$149
'59 PONTIAC 4-dr. wagon, R., H., auto.	\$149
'57 PONTIAC Star Chief, hdtop., sharp	\$149
'58 DODGE Carryall, 6-cyl., 4-spd.	\$199
'52 DODGE 1/2-ton pickup	\$199

ASH GMC Motors
the truck people from General Motors

9415 Pacific Ave. GR 5-2222
Open Till 9:00 P.M.

B-K AUTO SALES
10025 PACIFIC AVE. LE 1-9000

1966 Mustang, 2 Dr. Hardtop V8 Auto. P.S. Sharp	\$1299.00
1966 Chev. Malibu 327-4SP R.H.P.S. Like New	\$1199.00
1967 Chev. Camaro 2 Dr. H.T. R. Sport 396, 4 SP Sharp	\$1599.00
1968 Cougar 2 Dr. Ht. V8 P.S.P.B. Hurry on this one	\$1688.00
1966 Volks 2 Dr. R.H. A Little Gem	\$999.00
1964 T-Bird 2 Dr. Ht. air cond. like new, fully equip.	\$1099.00
1966 Olds. 2 Dr. Ht. 442 R.H. 4 Speed. Perfect Car	\$1099.00
1964 Olds. 2 Dr. H.T. Looks, Drives Good.	\$699.00
1964 Ford 4 Dr. Wgn. V8, Stick, R.H. Perfect Car	\$599.00
1965 Chev, Belair 4 Dr. Wgn. V8, Auto P.S. Special on this	\$699.00
1962 Dodge 9 pass. Wgn. R.H. Auto, P.S. Sharp	\$399.00
1965 Chev, Nova 4 Dr. Wgn. R.H. Real Gas Saver	\$799.00
1962 Merc. 4 Dr. Ht. R.H. Auto. P.S. Clean Car	\$298.00
1958 Chev, 2 Dr. V8 Stick, R.H. Runs Good Better Hurry.	\$249.00

66 Pont. GTO 2 DHTP Buckets, Auto.	\$1595
66 Pont. Cat. 2 DHTP, New Cond.	\$1395
66 Ford V8 Gal. 500 4 DHTP Sharp	\$1095
65 Mustang V8 P.S. Auto Sharp	\$1195
64 Rambler V8 2 DHTP Excellent	\$795
64 Buick LESA 4 Door, Clean	\$895
64 Comet 2 Dr. V8 Stick, Sharp	\$795
65 Ply. Baracuda, New Paint, Tires	\$995
64 Ford Fairlane 6, 4 Dr. Stick	\$545
63 Pont, Cat. 4 Dr. Clean	\$495
63 Dodge V8 440 Sedan	\$495
61 Fal. Wgn 6, Mtr. Overhauled	\$395

Check Our Serv. Dept. For Free Estimate To Repair Your Car.

RUSSELL'S AUTO SALES & SERVICE
13401 PACIFIC AVE. LE 1-2124

MOBILE HOMES

CAMPERS

PICKUPS

LUCKY SALES
13502 PACIFIC AVE.
OPEN SUNDAY LE 7-8487

GR 4-9404
You're Calling the Right Number for SERVICE

CAR RENTALS AVAILABLE

SERVICE HOURS
Monday through Friday 8 a.m. to 5 p.m.

Authorized American Motors Dealer

Andy EGAN
8223 PACIFIC AVE. GR 4-9404

"FAIRNESS TO ALL"

Don Vowell's LTV MOTORS
13123 PACIFIC AVE. LE 7-7722

SPECIAL OF THE WEEK
1954 Chev. 2 Dr. Custom Upholstery \$275.00
4 Speeds

1966 Ford XL 500	\$1199 ⁰⁰
1966 Comet Cyclone	\$1299 ⁰⁰
1965 VW Clean	\$999 ⁰⁰
1964 Corvair Convert.	\$599 ⁰⁰

65 Dodge 2 Dr. H/T Auto.	\$1199 ⁰⁰
65 Ford Sta. Wgn. One Owner	\$1299 ⁰⁰
65 Mustang Real Nice	\$1199 ⁰⁰
64 Ford 4 Dr. Galaxie 500	\$599 ⁰⁰
63 Falcon Sta. Wgn. Stick 6	\$499 ⁰⁰
62 Chev Convert. Stick, V8	\$499 ⁰⁰
62 Chev. Convert. Auto V8	\$499 ⁰⁰
63 Ford Galaxie 500	\$499 ⁰⁰
63 Rambler	\$399 ⁰⁰
62 Chev Sta. Wgn. Stick 283	\$399 ⁰⁰
60 Olds. 2 Dr. H/T Runs good	\$199 ⁰⁰
60 Pont. 2 Dr. H/T Runs good	\$179 ⁰⁰
59 Olds New Seat Covers	\$189 ⁰⁰
62 Rambler	\$99 ⁰⁰

We can approve our own contracts.

CLASSIFIED ADS

1 Misc. For Sale

1965 CHEV. Super Sport, full power & air, \$1250. 1 wheel trailer, \$65; electric lawn mower, \$65. 8318 Golden Given LE 1-0991.

CUSTOM DRAPES
Very reasonable, hundreds of samples. LE 7-0186. No. 69429.

LOSE weight safely with Dex-A-Diet, and remove excess fluid with Fluidex. Only 98 cents and \$1.69 at Johnson's Parkland Drug.

10" TABLE SAW, Foley Saw Filer. Call Cliff's Key & Mower - LE 1-8600.

SELECTED FENCE slabs, fireplace slabs \$18 a cord. Alder \$28 a cord. Delivered. VI 7-2428.

COMMERCIAL ICEMAKER, super cuber. Bass accordion. Typewriter, portable. LE 7-6772.

CERAMICS
Parkland Ceramics
1303 So. 117th
Custom Firing
Lessons
LE 1-0823

TIRES?
Dunlop - Miller
New - Retreads
See Tiny
TINY'S TIRE CENTER
108th & Pacific - LE 1-4535

**AMATEUR
WINE & BREW
SUPPLIES**
308 EAST 26th
BR 2-3736

3 Trucks, Equipment

CAMPER RENTALS reserve now - LE 1-4748, 10002 Pacific Ave.

5 Musical Instruments

PIANO BUY. Famous make Console Spinnet Piano. Like new, \$392.50 or assume low mo. pmts. Phone BR 2-5282 or write Credit Mgr., 1107 Bdwy., Tacoma, Wn., 98402.

7 Furniture, Appliances

UPHOLSTERY SPECIAL
Daveno & chair, \$125.00, fabric included. LE 7-0186. No. 69428.

9 Animals For Sale

SAINT BERNARD puppies registered AKC. Pedigree championship line. Large breed. VI 7-281969-303TFN

WEIMARANER - Male, year and half old, some training - \$50. VI 7-2025.

12 Real Estate For Sale

3-BDRM HOME, plus rec. room, family kitchen, 1 1/2 baths. Borders golf course, well landscaped, Mountain view. LE 7-3530.

19 For Rent Or Lease

2 BEDROOM APT., first floor, party furn. Handy to shopping & bus. Adults only. GR 4-0486. 69-405

SMALL BACHELOR house, \$65 a mo. Util. paid. LE 7-5454.

15 Mobile Homes

**2 ONLY
MOBIL HOME**

- 12 x 52
- 1 BEDROOM
- ALL ELECTRIC
- FURNISHED
- STORM WINDOWS

**MANY MORE OPTIONS
\$500 Dn.**

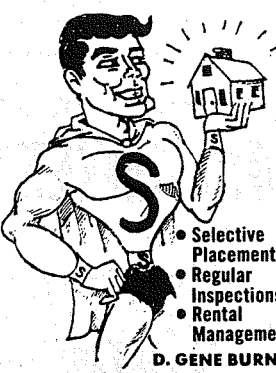
**RENT YOUR OWN
DOWN PAYMENT**

LUCKY SALES
13502 PACIFIC AVE
OPEN SUNDAY LE 7-8487

18 Real Estate Wanted

Listings Wanted
Buying or Selling
Real Estate Service
Call
Devereaux Realty
12152 Pacific Ave. LE 7-8658

Let "SUBUR-MAN" serve YOUR RENTALS



- Selective Placement
- Regular Inspections
- Rental Management

D. GENE BURNS
Rental Mgr.
Residence
LO 4-6598

SUBURBAN REALTY
11302 Pacific Ave.
LE 7-8638

23 Help Wanted

LADY TO WATCH and care for home in lovely forest while owner away. Live in. Children okay. Write Box 3094, Lacey, Wash.

EARN \$200-\$1,200 MO. selling the fabulous slim gym, LE 7-6489, LE 7-4200 69-364T.F.N.

27 Misc. Services

TOP JOB RESUME

NATIONAL AND INTERNATIONAL. Professional editing, Counseling. Low cost. 107 No. Tacoma Ave. Tacoma. MA 7-6357, anytime. 69422

PIANO TUNING & REPAIR. SK 9-3947 or SK 2-7695. 69-4181f

TOP SOIL, Gravel. LE 1-1124. 69-1

27 Misc. Services

PRUNING, sprinkler repair, landscaping LE 1-1117 LF 1-4776. 7010:TFN

**ALL MAKES
WATER PUMPS
REPAIRED**

**For Sale
CAL PUMP**
model 52B210
1/2 HP Submersible Pump
\$159⁹⁵
For wells up to 100 ft
635GPH

GRANGE SUPPLY
LE 1-5777

DEEL'S BARBER SERVICE
PARKLAND SQUARE
SHOPPING CENTER

ADULTS \$2.00
Children under 12 \$1.50
Open Mondays
Dick Moorish & Lee Deel
12209 Pacific - By Barlos

MIXED SOIL
Sandy Loam • Black Humus
Mixed Bank Run
LE 7-7455
NEWBURY'S DOZING
SERVICE

Sheet Metal

- Furnace Repair and Service
- Installations

**PARKLAND
FUEL OIL**
12002 Pacific Ave.
LE 7-0256


38 Instruction

PIANO LESSONS, beginning & advanced. Home or studio. South-end and Northend studio. Children and adults, SK 2-7695 or SK 9-3947. 69-4191f

EXPERIENCED GUITAR teacher will give lessons to beginners & advanced. VI 7-7636. 69-432

It takes YOU to fight cancer says the American Cancer Society. "Fight cancer with a check-up and a check" is this year's slogan.

LOCALLY OWNED & OPERATED



**UNLIMITED
EMPLOYMENT
SERVICES**

Gal Friday, diversity, congeniality, good fringe benefits, salary \$392 to start is offered by local firm to sharp-looking mature girl. If you have what it takes, call Lavina.
LE 1-9191
12602 Pacific Avenue

MOWER REPAIR
Cliff's Key & Mower
BICYCLE & LAWN MOWER REPAIR
325 GARFIELD SO.
CLIFF SIRON - PARKLAND - LE 1-8600

Portables
All Sizes
Color
TV
GR 5-3755
9440 Pacific

RENT TV

RENTAL MARTS, INC.

JU 4-4100
10012 Bridgeport

AT ARMSTRONG'S

One of our trucks will be gathering up rubbish in Area 12 on Saturday, May 2 the main day of Parkland's Clean-up Drive.

ARMSTRONG'S USED CARS
11009 Pacific Ave. LE 7-5524

27 Misc. Services

Serving Your Local Area
For All Your Heating Needs

PACIFIC COAST OIL

GENE SCOTT
MA 7-1112 DAYS
LE 1-0468 EVES.

- DIESEL
- STOVE OIL
- FURNACE REPAIR
- INSTALLATIONS
- ESTIMATES

Union Oil Products

GO!

To Lucky O'Neals
For Locker Meats

BEAT!

The One Piece Price

**L & L
LOCKER MEATS**
1023 Valley Ave. NE.
Puyallup
848-3626 or TH 5-7043

AOK Excavating
Backhoe - Dozer - Hauling
Orv Swim
LE 1-2084

CONCRETE FINISHING
PLACING & FORMING
J. L. Lewis
LE 1-5409

**WANT ADS
WORK
EVERYWHERE**

Legal Notices

IN THE SUPERIOR COURT OF THE STATE OF WASHINGTON FOR THE COUNTY OF PIERCE IN PROBATE No. 79622

NOTICE TO CREDITORS
IN THE MATTER OF THE ESTATE OF GENEVIEVE F. SWANSON, Deceased.

Notice is hereby given that the undersigned has been appointed and has qualified as Executrix of the estate of the above named deceased; that all persons having claims against said deceased are hereby required to serve the same, duly verified, on said Executrix or his/her attorney of record at the address below stated, and file the same with the Clerk of said Court, together with proof of such service within four months after the date of first publication of this notice, or the same will be barred.

Date of first publication April 23, 1970.

Joan L. Gross
Executrix of said Estate
8849 Pac. Ave.,
Tacoma, Wa.
HEMMEN, COHOE & BOTTIGER
Attorney for Estate
8849 Pacific Ave.,
Tacoma, Wash. 98444
GR 5-4800

Published in Times Journal
April 23, 30 and May 7, 1970.

HEMMEN, COHOE & BOTTIGER
Attorney for Estate
8849 Pacific Ave.,
Tacoma, Wash. 98444
GR 5-4800

Published in Times Journal
April 23, 30 and May 7, 1970.

36 Personals

PSYCHIC READER
HELP & ADVICE
On All Your Problems
Answer All Your Questions
Can Tell you of Changes

You Should Or
Should Not Make

OPEN
DAILY AND SUNDAY
3305 PACIFIC AVENUE
OLYMPIA
CALL 491-5040

**PART TIME
EARN
\$60 TO \$90
PER WEEK**

WORK 2-3 HRS
PER EVE. ALL WORK
IS LOCAL IN THIS
AREA. COMPANY
PAID & TRAINING.

FOR APPOINTMENT
CALL GR 5-7075

It's Your Fight
For yourself, for those you love, give now to the American Cancer Society. Cancer strikes in one out of four American families.

Legal Notices

IN THE SUPERIOR COURT OF THE STATE OF WASHINGTON FOR THE COUNTY OF PIERCE DEPARTMENT OF WATER RESOURCES

OLYMPIA

NOTICE OF GROUND WATER RIGHT APPLICATION NO. 10747 TAKE NOTICE:

That PARKLAND LIGHT & WATER CO. of Tacoma, Washington on March 30, 1970, filed application for permit to withdraw public ground waters through a well situated within Christopher Mahon D.L.C. No. 48 of Section 22, Township 29 N., Range 3 E.W.M., in Pierce County, in the amount of 2,000 gallons per minute, subject to existing rights continuously, each year for the purpose of municipal supply.

Any objections must be accompanied by a two dollar (\$2.00) recording fee and filed with the Department of Water Resources within thirty (30) days from April 30, 1970.

Witness my hand and official seal this 14th day of April, 1970.

GLEN H. FIELDER
Assistant Director
Division of Water Management
Department of Water Resources

Published in Times Journal
April 23 and 30, 1970.

ABANDONED VEHICLE SALE

In compliance with the revised code of Washington No. 46.52.110, Lucky Towing will sell to the highest cash bidder at 13502 Pacific Avenue at the hour of 10 a.m. on May 4th, 1970, the following vehicles:

1954 Buick	BKC 740
1960 Chevrolet	BLH 263
1955 Ford	AZU 589
1956 Ford	DSE 821
1965 Pontiac	DCW 727
1958 Pontiac	SLN 841
1955 Plymouth	BBD 302

Published in the Times Journal and Pierce County Herald
April 30, 1970.

IN THE SUPERIOR COURT OF THE STATE OF WASHINGTON FOR THE COUNTY OF PIERCE In Probate No. 79633

NOTICE TO CREDITORS
In the Matter of the Estate of O.K. BLOMELIE, Deceased.

Notice is given that the undersigned has been appointed and has qualified as personal representative of this estate. Persons having claims against the deceased are required to serve the same, duly verified, on the undersigned or the attorney of record at the address stated below and file the same with the Clerk of this court, together with proof of such service within four months after, or the same will be forever barred.

Lillian Ferguson, Executrix
5203 So. Thompson
Tacoma, Wn.

Herbert Gelman
Attorney for Estate
505 Rust Bldg.
Tacoma, Wn., 98402
Published in the Times Journal
April 30, May 7 & May 14, 1970.

The TIMES JOURNAL

CLASSIFIED ADVERTISING RATES*

WORDS	1x	2x	3x	4x	5x	6x	7x
1-10	.50	.85	1.20	1.50	1.85	2.20	2.50
11-15	.75	1.25	1.75	2.25	2.75	3.25	3.75
16-20	1.00	1.70	2.40	3.00	3.70	4.40	5.00
21-25	1.25	2.10	2.95	3.75	4.60	5.45	6.25
26-30	1.50	2.50	3.50	4.50	5.50	6.50	7.50
31-35	1.75	2.95	4.15	5.25	6.45	7.65	8.75
36-40	2.00	3.35	4.70	6.00	7.35	8.70	10.00
41-45	2.25	3.75	5.25	6.75	8.25	9.75	11.25
46-50	2.50	4.20	5.90	7.50	9.20	10.90	12.50

EXTRA SPECIAL RATES*

13 Weeks without change 18¢ per line per week
26 Weeks without change 17¢ per line per week
39 Weeks without change 16¢ per line per week
52 Weeks without change 15¢ per line per week

* ABOVE RATES PLUS 50% OF 1x PRICE
WILL BE INCLUDED IN TWICE-MONTHLY
ADVERTISER MAILED TO 15,000 HOMES!

Put More Fun In Your Driving!

**1970
VOLKSWAGEN**

World's No. 1 Economy Car

IMMEDIATE DELIVERY

AUTOHAUS, INC.
7030 South Tacoma Way GR 4-0666
Tacoma's Dealer Since 1954

PLU Students To Attend UPS May Festival

Special guests at the "May Festival" of the International Club at the University of Puget Sound will be foreign students and international club members from Pacific Lutheran University and Tacoma Community College.

The festival will be held from 2-5:30 p.m., Friday (May 1) on the second floor of the Student Union Building on the UPS campus.

Display booths and a program of music and dances

will feature the customs and styles of over nine countries, according to Jean Gaba, club president and a sophomore from Central African Republic.

Gaba points out that the festival is an "ideal opportunity for people in the community to see and find out from the students more about these other lands."

The International Club at UPS is made up not only of foreign students but also has many political science majors as members who indicate they enjoy the stimulation of the multi-cultural group.

Among the countries represented at the display booths, which will have food, posters and slides, are Belgium, Holland, Japan, Germany, China, Thailand, India and Ethiopia.

Music and dancing will feature students from the countries of Japan, China, Thailand and the Philippines.

Forty-two gaily costumed folk dancers will perform 22 dances from nine different countries during the 36th annual Mayfest at Pacific Lutheran University May 1-2.

The festivities begin each evening at 8 p.m. in Olson Auditorium with the coronation of the May Queen. The queen and her court are se-

lected from among eight finalists and 16 candidates from women's residence halls on campus. The final selections are made by the student body.

Specialty dance numbers will be alternated with performances by the Mayfest dancers. Featured dancers include Norwegian instructor Audun Toven and senior Kaye Halwas in a Scandinavian number; seniors Ron Gintz and Linda Lee, also performing a Scandinavian folk dance; freshman Craig Evans and sophomore Sharon Weiss in a ballroom interpretation; and Sandy Dimler, freshman from Kailua, Hawaii, in a Hawaiian dance.

The Mayfest dancers will perform routines native to the Ukraine, Portugal, Germany, Israel and Scandinavian countries.

Dancers have been practicing weekly since September. They have been featured guests at the Mountaineer's Club in Seattle, the Pioneer Serviceman's Center in Tacoma, and several Scandinavian Days programs in both cities.

Davis Strandemo, a junior from Kenyon, Minn., will be the master of ceremonies. Co-chairmen for the event are seniors Linda Nelson and Kaye Halwas.

The Old Timer



"Anybody who thinks money grows on trees is going to have trouble getting out of the woods."

SUBSCRIBE NOW!

52 Issues of the Times Journal For Only \$4⁰⁰ per Year CALL LE 1-8885

or send to our new office 409 Garfield PO Box 2116 Parkland 98444

COLUMBIA CRESTVIEW ESTATES

- Beautiful Mt. View Lots
- Underground Utilities, Fire Hydrants
- Large Size Building Sites
- Protective Covenant
- Owner Will Carry Contract

256th & Meridian E.

GRAHAM AREA

Located On Meridian 1 Mile So. Graham Fire Dept.

RAIN?? OR SHINE??

YOUR CHOICE

RUBBER BOOTS \$3⁹⁹
(MEN'S - BOYS')

RAIN BOOTS \$1⁹⁹
(WOMEN'S)

RAIN COATS \$1⁹⁹
VINYL (MEN'S - WOMEN'S)

RAIN COATS \$2⁹⁹
(BOYS')

RAIN CAPES \$3⁹⁹
PINK - BLUE (GIRLS')

TENNIS

WOMEN'S 2 pr. \$5⁰⁰

CHILDREN'S \$1⁹⁹

MEN'S \$3⁹⁹
(OXFORD - SLIPON)

KED'S & REDBALLS \$2⁹⁵
BROKEN SIZES \$3⁹⁵

SANDALS! SANDALS!
SANDALS!

PANTY HOSE 88^c

PAUL'S

SHOES AND CLOTHING

USE YOUR BANK CARDS

161 PACIFIC AVE. LE 7-0552

OPEN 9-9 DAILY 9-6 SAT. 11-5 SUN.



Bob Dudley Says—

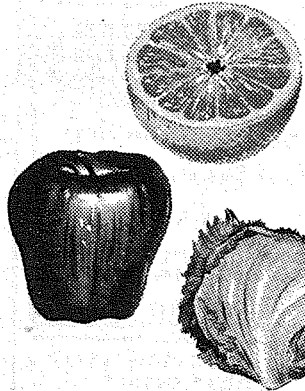
shop THESE SPECIALS IT HELPS THE BUDGET!

jilg's Lunch Meats 6 Oz. Pkg. 3/69^c

BAR S Wieners 12 Oz. Pkg. 59^c Pkg.

"OUR OWN" BULK Pork Sausage 59^c lb.

TASTY EATING PRODUCE DELICIOUS APPLES 4 lb. bag 59^c



PINK GRAPEFRUIT 10^c each LETTUCE 2 HEADS 29^c

S&W COFFEE 2 lb. Can \$1.59

Swansdown CAKE MIXES 6 Varieties 3/89^c

Sunny Jim JUICES 32 Oz. 6 Varieties 4/\$1.00

Duchess PEANUT BUTTER Crunchy or Creamy 36 Oz. Jar 99^c

Duchess STRAWBERRY and RASPBERRY PRESERVES 2 lb. Jar 59^c

Duchess MANDARIN ORANGES 11 oz. Can 5/\$1.00

NORTHERN TOILET TISSUE 4 ROLLS 39^c

FRITO-LAY POTATO CHIPS reg. 69^c 49^c a box

BASKETS OF BARGAINS



FROM THE BARGAIN BASKET

16618 Pacific Avenue LE 7-3371