

U.S. Postage Paid
Parkland Branch
Tacoma, Wash.
Permit No. 9P
Sec. 34.66 P.L. & R.

Rural Route
Occupant or Boxholder
Postmaster: If unable
to deliver, return post-
age is guaranteed on
addressed papers.

The TIMES JOURNAL

THURSDAY, DECEMBER 17, 1959 • VOL. 15, NO. 15 • PUBLISHED AT PARKLAND, WASH. LE 7-0223

Continued Growth For Parkland Methodist Church



The Methodist people in Parkland are erecting a new Church School unit as an addition to the Army Chapel that was purchased two years ago and moved from North Fort Lewis to their new site as 123rd and "A" Streets. The new building will be 100 feet long and 40 feet wide. The two-story structure will be of frame construction and will provide 13 classrooms, rest rooms on both floors and spacious corridors.

At a recent worship service, the project was launched with a fitting ceremony at which the Superintendent of the Tacoma District, Rev. Raymond Proudfoot, presided. After preaching the morning sermon, Rev. Proudfoot presented a copy of the Methodist Discipline to be placed in a metal box and sealed in the foundation wall. The signatures of all persons present at the worship service were also gathered and placed

Christmas Concert Tuesday at F. P. Hi.

Christmas music for the Franklin Pierce district public will be heard Tuesday, Dec. 22, in a decorated Christmas atmosphere in the school gymnasium. District officials are urging all area people to bring their families for the annual program which promises to be the best in several years. Starting time is 8:00 o'clock.

The choir, band, mixed glee, girls' club, Nonettes and small ensemble have been preparing for nearly a month in anticipation of their first appearance of the year. The choir will be heard Friday night at 6:30 on KTAC for those interested.

Opening the concert will be the band, playing "Christmas Fantasy," the choir singing "To Us is Born Emmanuel," "The Christmas Story," "To Shepherds' Best A Night," and "Our Sweet

Savior Dear." The band will also play "Twas The Night Before Christmas," "The Holly and Ivy" and "Jingle Bells" will be sung by the small ensemble. Singing with the ensemble are Elaine Erlandson, Eleanor Dinwiddie, Ginny Clinton, Ginny Clinton, Jackie Mains, Jack Hill, Don Ramsey, Joe Erdahl, and Joe Logan.

Want to Help a Blind Child?



GIFT SUGGESTION—Pictured are Christine Buckley nine-year-old 4th grade pupil at Central school, and Earl Clarke, of the Tacoma Civitan Group, holding a World Famous Claxton Fruit Cake. The Civitans are sponsoring the fruit cake sale and the entire proceeds will be used to aid the blind children's education. Orders for either one-pound or five-pound fruit cakes may be placed by calling BR 2-0379. Let your Christmas fruit cake bring double cheer this year by ordering to aid the blind children.—(Photo by Dixon).

Jobs Daughters Bethel 23 to Install



HONORED QUEEN—Miss Sharilyn Conklin, daughter of Mr. and Mrs. Frank Conklin, will be installed as Honored Queen of Jobs Daughters Bethel 23 on Saturday, Dec. 19, at 8:00 p. m. in the Fern Hill Masonic Temple.—(Photo by McKewen).

"Purity and Love" will be her theme, with white Bibles and red roses for decorations.

Conklin and Danny Christensen will be ushers. The Flower Talk will be given by Elwood Siliffant with the assistance of members of Keater Chapter, Order of DeMolay. Ivy Chapter Choir are participating in the installation ceremonies and also providing entertainment afterwards. Miss Diane Dexter will sing "The Lord's Prayer." DeMolay Dreamboats elected for the ensuing term are Wally Stevenson, King; Larry Frickel, Senior Prince; Ron Robinson, Junior Prince.

Bethel members elected as line officers for the ensuing term are to be Karlene Scott, Senior Princess; Claudia Pitzler, Junior Princess; Susan Wheeler, Guide; Diana Scott, Marshal.

Presiding at the reception following installation are Mrs. Henry Brereton, Worthy Matron of Ivy Chapter, and Mrs. Alfred Grodovic, Worthy Matron of Faith Chapter, pouring and assisted by Mrs. Verlye Hart, Mrs. James Conklin, Mrs. Kenneth Gaul, Mrs. Ray Scruton, and Mrs. Charles Baker. Jan Gaul will be the punch server and Barbara Cullen will cut cake. There will be dancing for everyone after the reception.

The Country Parson



"The Christian church is divided by a lot of opinions—many of which have nothing to do with Christianity."

Spanaway's Santa to Drop From Sky

Something new has been added! Santa Claus will arrive in Spanaway Saturday in a novel and exciting manner—he will just drop in!

Maybe Santa's reindeer are taking it easy before their traditional night run Christmas Eve and therefore not available. At any rate, John Thun of Thun Field has offered a timely assist and will fly one of his planes to the scene and Santa will land via

parachute at 11:00 a.m. Saturday in the grassy section of the Spanaway park at South 146th and C streets.

As the poly poly Santa makes his landing, decked out in the standard scarlet costume, he will be joined with members of the Spanaway-Elk Plain Volunteer Fire Department, who will hand out candy canes to all the youngsters.

To insure the safety of the children, arrangements have been made to have Washington State Patrol officers present to handle traffic and assist in any possible way. The event is sponsored by (Continued on Page 4)

DRYER'S FUNERAL PLAN CUTS COSTS
MORTUARY
PARKLAND

WINTER COMFORT
HEATING OIL
LAPENSKI FUEL CO.
LE 7-8173

Christmas Coloring Contest Judged; Prizes Await Winners

The annual Christmas Coloring Contest ended Monday evening at the close of business and sponsoring firms had a busy time choosing the winning entries from the excellent ones which came in. The business houses who have made the contest possible will take real pleasure in handing out the attractive prizes to the winners. The prizes may be claimed at any time.

Winners are as follows: Parkland Pharmacy, play bowling set, to Laura Parkhurst, 7, 11304 South Park.

skates to Roberta Nicholson, 6, Rt. 1, Box 493, Spanaway. Parkland Grill, \$5 in cash to ... Shop-Ette Variety, Polyethylene Pumper Fire Truck to Ricky Cullen, 10, 909 South 115th St., and Aluminum Toy Dish Set to Roberta Nicholson, 6, Rt. 1, Box 493, Spanaway.

SHOP & SAVE at BROOKDALE LUMBER CO.

Steel Garage Doors
(8'x7') Each \$54.50

Rough Cedar Siding
(3 to 6' Lengths) \$5.50 Per 100 BM

Economy 2x4 8'
29c Ea.

Canada Hardboard
4x8 Use under Linoleum \$2.56 Per Sheet

1 3/8" Flush Doors
(Rej.) Mahogany, Birch, Fir, Eo. \$4.95

ZONOLITE Glass Fiber Insulation
(Foil Faced) Per 100 Sq. Ft. \$7.50

ZONOLITE Pour Insulation
Approx. 17' 3" Deep Per Bag \$1.75

4x8 1/4 Shop Grade Plywood
\$3.17 Per Sheet

Protect Your Car GARAGES & CARPORTS
Easy Monthly Payments

BROOKDALE LUMBER COMPANY
LE 7-8669
136th & Pacific

Open 7 Days A Week Sundays 8 a.m. to 4 p.m.
HUNTING & FISHING LICENSES, SPORTING GOODS, PAINT
SOUTH END PLUMBING AND HARDWARE
185th & Pacific Avenue Phone LEnox 7-4100

PIPER FUNERAL HOME
PHONE Greenfield 2-3353 5436 SO. PUGET SOUND

CANYON-READY-MIX CONCRETE

Covering the Southeast Tacoma Area IF YOU NEED OUR HELP CALL ON US
Form Construction, Elevations and Advice
6-Yd. Mix Trucks to Serve You
Washed Sand & Gravel—Bank Run
WE HAUL OR U-HAUL
We Furnish Wheelbarrows, Etc. On Call Free of Charge
ALL DAY SATURDAY DELIVERY
72ND AND CANYON RD. LE 7-3943

F. P. Leaders Announce Plans

From Ron Frank
Franklin Pierce Superintendent Edwin L. Nelson announced today that Christmas vacation will begin Dec. 24 with schools in the district



Edwin L. Nelson closing one hour early on Dec. 23. He wishes, on behalf of the entire district, to extend greetings to the holiday season.

PROFESSIONAL DIRECTORY
Farmers Mutual of Enumclaw Fire—Auto
ED MAREK LE 7-4000
12909 Pacific Ave.

Christmas Movie, Treat For Parkland Kids

Sponsored by the Parkland Business club, the annual Christmas party and treat for all children in the area will be held Saturday, Dec. 19, John Kane, manager of the Parkland theatre, will be host for the free show starting at 1 p.m. (the theatre will open at 12:30). After the show, at approximately 2 o'clock, the children will be escorted across Pacific avenue by officers from the State Patrol and Sheriff's office, to the decorated tree on the Parkland school grounds. One of the Parkland big (Continued on Page 3)

SPANAWAY HARDWARE
ELECTRICAL AND PLUMBING SUPPLIES
SAND, GRAVEL & CEMENT PLASTIC PIPE
170th & Pacific LE 7-8378
Open Sundays 8:30-1:30

For A Merrier Christmas KEEP WARM WITH RADIANT AIRE

Call LE 1-2611 for an Expert's Estimate On Electric Heat Or Wiring Job
EVERGREEN ELECTRIC CONST. CO.
13021 Pacific Ave. (Home & Commercial) LE 1-2611

LUMBER SPECIAL WHILE IT LASTS

1x12 Pine Shelving . . . 15c lin. ft.
2x4s . . . 10c each
4x4 cedar . . . 10c lin. ft.
2x6 decking . . . \$50M
2x4, 2x6, 2x8, 2x10 specified lengths . . . \$48M
1x10 cedar channel siding . . . \$85M
Good 1x6 shiplap \$45M
Good 1x8 shiplap \$48M
Dry 1x8 S4S . . . \$78M
1x4, 1x6, 1x8 cedar S4S . . . \$75M
Rough timbers . . . \$85M
12 miles South of Tacoma; 2nd house past Roy "Y" on the Mountain Highway. Open 7 days a week. Sunday, 10 a.m. to 4 p.m.
Terms and Delivery Arranged
BUTH LUMBER SUPPLY
LE 7-4464

TRAPEZE "DANGER IN EVERY DROP"
TUJOURS MOI "ALWAYS ME"
CORDAYS Three Great Parfums
FAME "ANYTHING CAN HAPPEN WHEN YOU WEAR IT"
EXCLUSIVELY YOURS
From \$2 to \$20.00
McAULEY SUMMIT DRUG
LE 7-0668 9 AM to 9 PM Weekdays Airport & Canyon Rd.

Christmas Program At Kapowsin School

Kapowsin elementary school will present its Christmas program Tuesday, Dec. 22, at 8:00 p.m. The program will feature the Primary department in several skits and the 4th, 5th and 6th grades will present instrumental and choral selections.

TODAY'S LAFF

Some strong men can hold up 300 pounds—but any teen-age girl can hold up 10 miles of telephone line.

SHOE SALE

Women's Flats, Heels, Suedes, White, Black, Red; 4 to 10
Pair \$2.99

Men's Ripple Sole Oxfords, Waterproof, Never Need Shining
\$2.99

Dress Oxfords - Broken Sizes Reg. to \$18.00
\$5.95

Bedroom Slippers 99c

Boys' Ripple Sole Oxfords 4 thru 10 \$2.99

Dress Oxfords 2 1/2 to 6 \$5.95

Creme Sole Boots \$8.95 & \$9.95

Rubber Boots 9 to 13 - 1 to 3 \$3.99

Girls' Pixie Slippers 69c

T.V. Sox Leather Socks, Wool Tops Sizes 8 to 3 Regular \$2.99 99c

Kedette Campus Sox Cushion Inside, Rubber Sole Black Only, Sizes 4 to 10 Regular \$6.95 \$1.99

HOURS 9 A.M. TO 6 P.M. FRIDAY TIL 9 P.M.

PAUL'S SHOES
Spanaway
161st & Pacific Ave.
LEnox 7-0552
See Additional Adv. on Page 3

BE WISE
Look Sharp!
FREQUENT DRY-CLEANING SAVES CLOTHES
PARKLAND CLEANERS
For Fast Service Call
11004 Pacific Avenue North of the Bank Corner LEnox 7-3221

CLEARANCE SALE
(OVERSTOCKED)
20% OFF—Storewide
Toys, Christmas Cards and Decorations, Dolls, Yardage, Gift Towel Sets, Jewelry, Lamp Shades, Baby Clothes, School Supplies, Bicycles, Boy's and Men's Shirts and Hundreds of Other Items.
Our Prices Can't Be Beat Anywhere
Use Our Christmas Lay-Away Plan. NOW and SAVE
—Ample Parking Space—
GARFIELD VARIETY
1/2 Block East of P.L.C. (LE 7-9959)
326 Garfield, Parkland
Open: 9 to 8 Monday Through Friday—Saturday 9 to 6
OPEN SUNDAY, 11 to 5

HILL TOP CONCRETE CO.
LOOK FOR THE BIG "H" THE SIGN OF SERVICE
WINTER IS COMING!!
WEATHER—NO PROBLEM
WINTERIZED CONCRETE
HOT WATER MIX
SATURDAY DELIVERIES 8 a.m. to 12 Noon*
(Due to Overtime Costs on Saturday There is a Slight Increase on Charges)
OUR BIG YELLOW TRUCKS
MEAN
● Up To 6 Cubic Yards Per Load!
● 20 Ft. of Hydraulically Operated Chute.
WASHED SAND & GRAVEL CRUSHED ROCK
DRAIN GRAVEL PIT RUN
PHONE TH. 5-9525
2223 23rd Ave. S.E. Puyallup

SWANSDOWN CAKE MIXES

All Regular 33c Varieties

4 for \$1.00

FOR HOLIDAY BAKING

OCCIDENT FLOUR

25-Lb. Bag

\$1.85

HILLS
COFFEE lb. **59c**

SNOWDRIFT
SHORTENING
3-Lb. Tin **59c**

U&I SUGAR

Brown or Powdered 2/25c

ALL FLAVORS

JELL-O REG. SIZE PKG. **4/25c**

OCEAN SPRAY - Whole or Jellied
Cranberry Sauce 2/35c

PICTSWEEP Quick Frozen
PEAS 10-Oz. Pkg. **7 for \$1.00**

LIBBY'S
CORN CREAM STYLE 303 Tin **6 for \$1.00**

MINUTE MAID
ORANGE JUICE

6-Oz. Tin **5 for \$1.00**

Jack 'N Bean Stalk
PUMPKIN

Large 2½ Tin
Ea. **10c**

LIBBY'S FAMILY SIZE
Olives Tall Tin **2/55c**

INSTANT COFFEE 6-Oz. Jar **89c**
MAXWELL HOUSE



NABISCO SALTINE
CRACKERS 2-Lb. Pkg. **47c**

DREAM WHIP 4-Oz. Pkg. **47c**

JELL-O - Regular & Instant
PUDDINGS **4/35c**

BAKER'S - Lemon, Carmel or
CHOC. CHIPS 2/49c

NALLEY'S 24-Oz. Jar
SWEET PICKLES **55c**

KAISER HEAVY DUTY Pkg.
ALUMINUM FOIL **63c**

SCOTT - 4-Roll Pkg.
TOILET TISSUE **45c**

LARGE "AA" WHITE
EGGS Dozen **48c**

MINUTE SLICED
POTATOES Pkg. **35c**

NALLEY'S 28-Oz. Jar
MINCEMEAT **39c**

HAM

for Christmas!

BONELESS JAMES HENRY FULLY COOKED

HAMS LB. **79c**

QUICK FROZEN - 10 to 14-Lb. Avg. Wt.

TURKEYS LB. **49c**

OUR OWN FRESH MADE POTATO

SAUSAGE LB. **49c**



AN IDEAL GIFT
BONELESS, SKINLESS COOKED

ARMOUR'S STAR
Picnics 3-Lb. Tin **\$1.99**

FRESH Lb.
Lutefisk **29c**

FRESH PACK SALT Lb.
Herring **29c**

SOCIETE HOLIDAY CANDIES
Wide Assortment

Holiday Fudge in 5 minutes!

CARNATION 5-MINUTE FUDGE
No beating! No failures!
Combine ½ cup (small can) undiluted Carnation Evaporated Milk, 1½ cups sugar and ½ teaspoon salt in saucepan over medium heat. Heat to boiling. Cook 5 minutes, stirring constantly. Remove from heat. Add 1½ cups (16 medium) diced marshmallows, 1½ cups Baker's Chocolate Chips and ½ cup chopped nuts. Stir 1-2 minutes (or until marshmallows melt). Pour into buttered 9-inch square pan and allow to cool.

The secret is Carnation Milk
TALL TINS **3/44c**



SUNKIST NAVAL

ORANGES

2 Lbs. **19c**

NO. 1 LARGE SIZE

SWEET POTATOES

3 Lbs. **29c**

CALIFORNIA FANCY

CELERY

7c Lb.

STORE HOURS

9 a.m. 'Til 9 p.m. Daily Except Sunday

SUMMIT TRADING COMPANY

10409 Canyon Road, Tacoma

LE 7-5848

No Sales To Dealers

We Reserve The Right To Limit Quantities

Jobs Daughters

(From Page One)
ian, cordially extend an invitation to All Friends, Jobies, Rainbows.

PACIFIC FLOOR COVERING
LINOLEUM, FORMICA,
CARPETS
FREE ESTIMATES
131 & Pacific LE 7-4545

XMAS TREES
75c TO \$2.00

3 Miles East of
Pacific on Airport Rd.
10:00 a.m. to 9:00 p.m.

DeMolays, Eastern Star, Amaranth, and Masons.

Carol Service At Summit Methodist
A candlelight Christmas Carol service will be held at Summit Methodist church Sunday, Dec. 20, at 7:30 p.m. A coffee hour in the church hall will follow the service. Bring the family and join in this pre-Christmas activity.

It has been announced that the services of Mrs. Einar Sytle have been secured for the nursery for small children during the 11:00 o'clock worship hour. Parents may leave children in her care at Bandy Cottage next to the church.

The MYF group of Summit church Sunday evening to see a film on inter-faith marriage.

New Books At Library
The Parkland public library, 119th and Pacific, announces the receipt of a new shipment of books Dec. 15. Books for adults and children are included in the assortment.

The library will be closed Christmas day and New Years day.

PIERCE COUNTY REFUSE CO.
Weekly
Garbage Collections
Phone LE 7-8688

Summit . . . Carol Service At Summit Methodist

It has been announced that the services of Mrs. Einar Sytle have been secured for the nursery for small children during the 11:00 o'clock worship hour. Parents may leave children in her care at Bandy Cottage next to the church.

The MYF group of Summit church Sunday evening to see a film on inter-faith marriage.

F. P. Leaders
(From Page One)
gram this past fall. Both in buildings and instructional phases of our work, we've tried to look ahead."

One future elementary school site in the Brookdale area at South 133rd and East E Street has been acquired, according to the Franklin Pierce official. Another site acquisition is now being studied and the directors will decide. He was referring to property owned by the state at South 84th and Arley Road.

"I want to emphasize that both

SIGN PAINTING
"HAVE BRUSH — WILL RUSH"
Board Signs — Truck Lettering
VALLEY SIGN SHOP
7822 1/2 River Road TH 5-4913

BUSINESS TRAINING PAYS
TOP JOBS FOR
STENOGRAPHERS
AND
RECEPTIONISTS
- ENROLL NOW -
KNAPP COLLEGE
10th & Pac. Ave. MA 7-2181

FLETT DAIRY
FARM FRESH
HOMOGENIZED AND
PASTEURIZED MILK
AND CREAM
ICE CREAM
Phone GR 2-3301

TELEVISION SERVICE CENTER
"Your Winegard Color Ceptor Dealer"
GR 23386
JU 8-1000 8431 PACIFIC AVE.

Thursday, December 17, 1959
The TIMES JOURNAL

of these sites would not be used in the near future," Nelson stressed. "However, we certainly are going ahead with preliminary planning on the second junior high school. Although the purchase has not been made of 20 acres of Lakeview Dairy property, it is only being held up by the concrete defining and legal description of the property."

Nelson said he visited Chinook Junior High in the Highline while attending the Teacher Educational and Professional Standards Conference in Seattle Saturday. Nelson stressed to college educational leaders the need for teachers to fill specific needs of the district. In some areas, we are having difficulty finding qualified people and its always a competition with the biggest districts of the state.

Mrs. Ruth Gaume, and Robert Haglund, curriculum coordinators are helping to plan the long-range program on the instructional side of the ledger. Mrs. Gaume was at the Human Relations in Education Conference in Seattle.

Mrs. Gaume said she was quite pleased with the meeting. The general feeling of the delegates was "to do away with pre-judging of minority groups and remember the rights of the individual."

Sen. Richard Neuberger of the state of Oregon was the principal speaker at the conclave.

Nelson reminds parents that school will resume Jan. 4.

Parkland Methodists
(From Page One)
The estimated cost of the project is \$45,000 although this will not include the interior completion of the second floor and will require a considerable amount of volunteer labor.

Erection of this unit is the second step in a long range plan that will provide complete facilities for the Parkland Methodist Church at this new and larger site.

Mr. and Mrs. Everett Ingham of Parkland are receiving congratulations on the birth of their 12th grandchild, a little girl born Dec. 1 to Mr. and Mrs. Lowell Shellstad of Cosmopolis.

INTERURBAN AUTO FREIGHT INC.
3 Trips Daily
To Parkland, Spanaway
Summit, Midland
GENERAL FREIGHT
MA 7-4121

TELEVISION SERVICE CENTER
"Your Winegard Color Ceptor Dealer"
GR 23386
JU 8-1000 8431 PACIFIC AVE.

Coloring Contest

(From Page One)
Midland Food Center, Doll to Linda Swensrud, 11, 11710 Cedar Road, Puyallup, and Tinker Toy Set to William Barrow, 7, 7818 East Wilkeson St.

IGA FOODTOWN, Jell-E-Maker to Pauline Goodman, 8, 10224 East B St., and Bantum Set to Dicky Newell, 8, 11405 East Taylor St.

Brookdale Lumber Co., Roller Skates to Rose Russo, 8, 1015 West Pipeline Road.

Kitchen's Market, Little Mother Doll Set to Kathy Reeves, 8, Rt. 7, Box 451, Tacoma, and Jungle Hunter Set to Tom Bortle, 6, 12114 Golden Given Road.

Art's Shoe Shop, Pair of Shoes to Gayle Hutchins, 13, P.O. Box 334, Spanaway; second prizes, Pair of Tennis Shoes to Debbie Bain, 4, 774 Violet Meadow; Pheasant Feather, LaMonte Hedlund with feather 22 3/4 inches long.

Redi-Gas, Gun and Western Holster to Donald West, 7, 10514 Fruitland Avenue, Puyallup.

Seymour's, Sweater to Elizabeth Grove, 11, 12601 A St., and Scout Bag to Mark Zirkle, 8, Rt. 7, Box 516, Tacoma.

Pierce County Refuse, Pair Roller Skates to Anna Uselman, 9, 9036 South D St.

Safeway, Giant Stuffed Honey Bear to Richard Hoffman, 12, 4906 East 112th St.

Barsotti & Timm, Timex Wrist Watch (\$6.95 value) to Felicia Gelvin, 8, Rt. 3, Box 484, Tacoma.

Piggly Wiggly, Certificate good for 10 Quarts of Ice Cream to Richard Hoffman, 12, 4906 East 112th St.

Parkland Western Auto, Doll to Margaret Campbell, Rt. 1, Box 13, Roy, and Game to John Thompson, Rt. 1, Box 616, Spanaway.

Parkland Xmas Treat
(From Page One)
red fire trucks will arrive with siren screaming and Santa Claus and helpers aboard to hand out a treat to the kiddies.

Howie Snowden, chairman of the committee in charge, is assisted by Art Wing, Roger McDonald and John Kane, also Parkland Post No. 228, American Legion, and many business firms of the district.

In case of rain, the treat will be given to the children as they leave the theatre.

A new economy, direct-drive chain saw called the "BUZ" has just been announced by HOMELITE, a division of Textron Inc., Port Chester, New York.

"The cost of the new "BUZ", states Fred Erickson, local dealer for Homelite Chain Saws, "starts at only \$153.50, complete with bar and chain. It's the ideal chain saw for the occasional cutter."

"Weighing only 19 pounds, less bar and chain, the new "BUZ" has plenty of power," continued Mr. Erickson. "It will cut through 16" trees in 16 seconds . . . fell trees up to 3 feet in diameter. So easy to handle, a beginner can use it profitably for cutting firewood or fence posts . . . clearing campsites . . . repairing storm damage . . . pruning and trimming . . . building shelters . . . clearing land . . . maintaining rights-of-way."

"This new "BUZ" gets its power from the famous short-stroke Homelite engine. It is available with 12", 17", and 21" straight blades. The flush cut handle on the new "BUZ" allows trees to be felled level with the ground, eliminating unsightly and dangerous stumps."

Fred Erickson invites you to his shop, The Graham Garage at Graham, Wn. at any time for a free demonstration of the new Homelite "BUZ" chain saw.

Pd. Reader Adv.

BIG "7" DAY SALE

M.J.B. Regular, Drip or Fine COFFEE 2-Lb. Tin \$1.17

PIXIE Minn. Menu-ett MARSHMALLOWS 10 1/2-Oz. Bag 2 For 39c

BORDEN'S - 3-Oz. Pkg. CREAM CHEESE Each 10c

ICY WATERS Tiny SHRIMP 4 1/2-Oz. Tin 3 For 99c

POLAR FROZEN 10-Oz. Pkg. VEGETABLES 6 for 87c

MISTY VALE Frozen, 10-Oz. Pkg. PEAS 10c each

EMERALD, 10-Oz. Pkg. WALNUT MEATS 79c

LIBBY'S Frozen Fruit PIES 2 for 75c

MEDOSWEET "Frozen Dessert - Ice Cream" BIG DIP 1/2 Gal 59c

CANADA DRY Lemon Sour, Ginger Ale- Grape-fruit and Collins MIXERS PLUS DEPOSIT 2/35c

N.B.C. Chippers, Salt Tangs, Rye, Wheat Triangle and Vegetable Thins 3 Pkgs. for \$1.00

Golden Ripe BANANAS 2 Lbs. 27c

Cello Tube TOMATOES 2 for 39c

Fresh Salad AVOCADOES Each 7c

Southern Grown YAMS lb. 10c

MCDANIELS

The Home of The Low Price
AIRPORT & CANYON ROAD
Store Hours: 9:00 'Til 9:00 — Sundays 9:00 'Til 7:00

HAVEN OF LOST SOLES

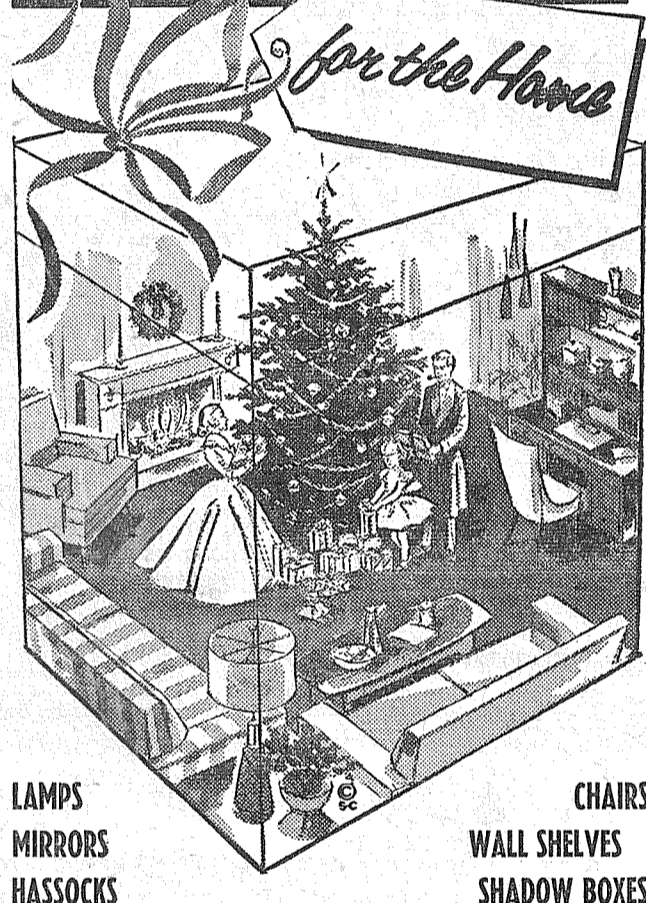
Fast, Guaranteed Shoe Repair
WE SPECIALIZE IN

1. Repair of CREPE Sole Shoes
2. Orthopedic Corrections as Prescribed by Your Doctor
3. Full Soles, Crepe, Leather, Rubber
4. Any Job Other Shops CAN'T Do or Refuse to Do!

PAUL'S SHOES & REPAIR

161st & Pacific — Spanaway

GIFTS for the Home



LAMPS MIRRORS HASSOCKS CHAIRS WALL SHELVES SHADOW BOXES

WE HAVE EVERYTHING FOR YOUR HOME AT SAVINGS

PRICES SHOP US FIRST OR LAST & YOU'LL SAVE

PARKAY FURNITURE

141st & Pacific Avenue Open 9 'Til 9 LE 7-3941

Put more **FUN** into Christmas

SAVE EACH WEEK	HAVE NEXT NOVEMBER
\$.50	\$ 25.00
1.00	50.00
2.00	100.00
3.00	150.00
5.00	250.00
10.00	500.00

Plus Regular Bank Interest

NATIONAL BANK OF WASHINGTON
25 HELPFUL OFFICES

The Bank of Personal Service
Where Our Interest Is You!

PARKLAND BRANCH

MEMBER FEDERAL DEPOSIT INSURANCE CORPORATION
MEMBER FEDERAL RESERVE SYSTEM

DEPENDABLE PHARMACY SERVICE

Bob Vaughan
Owner

CHRISTMAS GIFTS
FOR EVERYONE ON YOUR LIST.

Listen to the
PLC BASKETBALL HOME GAMES on KTAC

Parkland Rexall Pharmacy
11000 Pac Ave
LEnox 7-8636
Keller's Kort
INTEGRITY • SERVICE • SAFETY



Letter to the Editor

9910 Pacific Ave.
Tacoma 44, Washington
Dec. 11, 1959

Dear Editor:

Using the figures that the 'Committee on Incorporation' printed we would budget \$50,000 a year for roads. Figures from the County Engineer's office show that the county pays 2 1/4 times that amount per year to maintain the roads in this proposed area. May I quote from their letter that is in my possession.

"From 1954 to 1958 there has been spent in the Parkland area \$561,315.38. A large portion of this has been for maintenance which covers such things as road surface repairs, minor drainage structures, signs, etc. The costs for 1959 have

not, as yet, been tabulated. These costs will be available after the 15th of January; however, we do have the totals for the majority of the construction work. The contract price for the Wheeler Street and 138th Street project is \$83,000.00. The contract price for the improvement of Collins Road is \$22,879.80."

The four years mentioned above do not include any year with a major improvement job—just general maintenance. The county of course has the equipment to do the job with. Equipment we have paid our tax money for. As an incorporated area we wouldn't own a pick or a wheelbarrow, let alone the heavy equipment.

The above years do not include any year with a heavy freeze followed by a quick thaw, which can happen. If that should happen (and it can) what would an incorporated area use for money to re-surface their roads? The only way they have of raising the money is through LID's. Most of us are familiar with these. In fact quite

a few people live in this area that is unincorporated to escape LID's. Road plans for this area for the next two years are quite extensive. May I again quote from the letter.

"We are basing our major improvement program for the Parkland Area on the Porter, Urquhart, McCreary & O'Brien report, and are hoping to get 96th Street, the extension of Sheridan Avenue to tie into Spanaway Loop Road, Park Avenue and perhaps some of the other requirements completed within the next few years. In fact we have programmed for the next two year period sections of 96th Street, Park Avenue to Ainsworth (\$40,000.00); a section of Ainsworth, 115th to Spanaway Loop Road (\$65,000.00); Park Ave. from the City Limits to P. L. C. (\$498,000.00) and perhaps we may be able to extend 96th Street from Park Avenue to Pacific Highway, and Park Avenue to 138th. These improvements, of course, will depend upon the availability of right-of-way."

If the rest of the figures published are no more accurate than those proposed for roads I would like to know and will make an effort to find out. If it took nearly a year's study to list \$50,000.00 for road maintenance for this area something is wrong. Hoping to hear from others in the letter box.

Sincerely,
Mrs. Frank Lapenski

Santa To Drop From Sky

(From Page One)

the Spanaway-Elk Plain Volunteer Fire Department.

Credit also goes to the firemen

for the beautiful Christmas decorations at Spanaway. Darrell Dugan, Jim Grey, R. Frericks, C. Mathis, W. Symmons, J. Symmons, J. Todd and Don Palmer put up the tree at the fire station. Then on to Spanaway grade school where they picked up Les Caus and Ben Turner who helped in-

install the Christmas lights and build the manger scene on the school grounds.

A beautiful display!

David C. Ressler, son of Mrs. Jean F. Brakebush of Graham, is reported as graduating from recruit training Dec. 11 at the Naval Training Center in San Diego.

Attend The Church Of Your Choice

BETHEL BAPTIST CHURCH

Benston Road
William S. Kipple, Pastor

SUNDAY, December 20—
10:00 a.m.—Special Christmas Program. Christmas Message, "God's Gift to the World"
7:00 p.m.—Evening Service; Special Music by the Choir

A CORDIAL WELCOME TO ALL

BETHANY LUTHERAN, SPANAWAY TRINITY LUTHERAN

"Behold, I bring you good tidings of great joy, which shall be to all people. For unto you is born this day in the city of David a Saviour, which is Christ the Lord."

FESTIVAL SERVICES
Dec. 20—Weyerhaeuser Sunday School program, 7:30
Dec. 22—Spanaway Trinity Sunday School program, 7:30
Dec. 25—Morning Worship at 11:00 a.m. at the Bethany Church
Dec. 27—All-Parish Christmas tree and program, 8:00 p.m.

H. N. Svinth, Pastor

SPANAWAY ASSEMBLY OF GOD

166th Street and Pacific Avenue
Rev. C. C. Wilcox, Pastor

SUNDAY, December 20—
11:00 a.m.—Beginners and Primary Christmas program. Missionettes will hold installation of officers
7:30 p.m.—Junior Department will present "In the Light of a Star"
Senior Department will present "No Room in the Inn"

EVERYONE WELCOME

ELK PLAIN COMMUNITY CHURCH

Next to Woody's Market on Mountain Highway
Rev. Vern Slater, Pastor

Your friendly, non-denominational church is here to encourage you to worship the Christ during the Christmas season and every week

SUNDAY, December 20—
10:00 a.m. Sunday School for all
11:00 Morning Worship: subject, "Following the Christmas Star"
7:30 p.m. Christmas program presented by Sunday School and Youth Groups; treats distributed at the close
A special Christmas movie will be shown Sunday, Dec. 27, at 7:00 p.m. All are welcome.

THE METHODIST CHURCH IN PARKLAND

Donald Nothdurft, Pastor

CHRISTMAS PROGRAM
Dec. 18, 7:00 p.m.—Christmas program presented by children through the Primary Department
Dec. 20, 7:00 p.m.—Christmas program presented by older children, youth and adults.
Dec. 20, 9:30 and 11:00 a.m.—Identical services of worship
Dec. 24, 7:00 p.m.—Christmas Eve Candle Lighting service
All services to be held in the Sanctuary at 12183 A Street

PARKLAND BAPTIST CHURCH

South 112th at J Street
Andrew D. Seago, Pastor

"For unto you is born this day . . . a Saviour"
Luke 2:11.

Christmas Program Sunday, Dec. 20, 7:10 p.m.

Treats for Children

FAITH LUTHERAN CHURCH

(Wisconsin Synod)
96th and A Streets
Paul E. Nitz, Pastor

Sunday School Christmas Service—
Sunday, Dec. 20, 7:00 p.m.

CHRISTMAS DAY—
Candlelight Service, 6:00 a.m.
Festival Worship Service, 11:00 a.m.

CLOVER CREEK BAPTIST CHURCH

Corner Military and Knoble Roads
Three Miles East of Pacific on 159th Street
Lyle Bramblet, Pastor; Phone LE 7-6421

SUNDAY, December 20—
9:30 a.m.—Sunday School; Classes for all ages
11:00 a.m.—Church Service; "No Room in the Inn"
7:00 p.m.—Sunday School Christmas Program
Romans 6:23—"The wages of sin is death; but the gift of God is eternal life through Jesus Christ our Lord."
— WELCOME —

MT. VIEW BAPTIST CHURCH

Meeting Place: Central Avenue School
Knapp Road and Central Avenue

Sunday School 9:45 a.m.
Church Service 11:00 a.m.
Evening Service 7:30 p.m.

The Rev. Don Leach will be full time pastor, starting in January.

COME AND WORSHIP WITH US

TRINITY LUTHERAN CHURCH

121st and South Park Avenue

DECEMBER 20—
9:30 and 11:00 Divine Worship (Celestial Choir at 9:30, Senior Choir at 11:00).
4:30 P.M.—Christmas Program (presented by the Sunday School pupils from the 9:30 session).
6:30 P.M.—Christmas Program presented by the Sunday School pupils from the 11:00 session).

DECEMBER 24, CHRISTMAS EVE—
7:00 P.M.—Candlelight Service (special music by Choir).
11:00 P.M.—Candlelight Service (special music by the Senior Choir).

DECEMBER 25, CHRISTMAS DAY—
11:00 A.M.—Divine Worship (special music by the joint choir—Celestial, and Carolers; and the Senior Choir).

COVENANT COMMUNITY CHURCH

Peterson Road, Graham
Rev. Paul T. Nelson, Pastor

SUNDAY, December 20—
9:45 a.m.—Sunday School program.
11:00 a.m.—Message "Caesar's Census Book and the Lamb's Book of Life."
7:30 p.m.—Play, "Simeon the Stable Hand."

WEDNESDAY, December 24—
11:00 p.m.—Christmas Candle Light Service with Choir and other talent participating.

OUR LADY QUEEN OF HEAVEN PARISH

14601 A Street
Rev. William Greier
Tacoma, Washington

Feast of the Nativity of Our Lord Jesus Christ
December 25, 1959
12:00—Midnight Mass
8:30 a.m.—Mass
10:30 a.m.—Mass

Thursday, Dec. 24—Confessions from 2:00 to 4:00 and 6:30 to 8:30 p.m.

FERN HILL METHODIST CHURCH

8409-23 South G Street, Tacoma
Adam S. Forch, Pastor

December 20—
11:00 A.M.—Reception of members.
7:30 P.M.—Presentation of cantata, "The Nativity" (Eric Thinan); soloists Sandy and Clair Bolander, Christine Schuckman, Julie Anderson, Leona Bates, Esther Anderson; directed by Leonard Schuckman; reception to follow.

December 24—
Christmas Eve Midnight Service beginning at 11:00.

December 31—
New Year's Watch Night beginning at 11:00; in charge of Senior Youth Fellowship.
KEEP CHRIST IN CHRISTMAS.

COLLINS COMMUNITY CHURCH

Wishes you a truly Joyous Christmas

Christmas Observances Sunday, Dec. 20—
Sunday School 9:45 a.m.
The Christmas Sermon 11:00 a.m. Soloist Allen Laursen
The Christmas Program 7:30 p.m. "The King Has Come", the children "Immanuel Forever", the choir

Robert E. Pottinger, Pastor

ST. JOHN OF THE WOODS CHURCH

9903 East Taylor Street
Rev. Andrew M. Prouty

Christmas Eve—
Confessions, 10:00-11:30 a.m.; 2:00-5:00 p.m.
7:00-9:00 p.m.

Christmas Masses—
12:00 Midnight Mass - 8:00 a.m. Mass
10:30 a.m. Mass.

PARKLAND EV. LUTHERAN CHURCH

123rd and Pacific Avenue, Parkland

SUNDAY, December 20—
Children's Christmas Service 7:30 p.m.

DECEMBER 25—
Christmas Service 10:30 a.m.

DECEMBER 27—
Sunday School and Bible Class 9:15 a.m.
Worship 10:30 a.m.

Rev. H. A. Theiste, Pastor

CORDIAL CHRISTMAS GREETING TO ALL

SUMMIT METHODIST CHURCH

(The Community Church)
East 104th and Canyon Road
Rev. Floyd E. Cronkite Pastor

SUNDAY, December 20—
9:45 a.m.—Early Worship Service and Church School
11:00 a.m.—Morning Worship
7:30 p.m.—Christmas Vesper Service for the family

James Sales P-TA Meeting Monday

James Sales P-TA Preschool will meet Monday, Dec. 21, at the school, Mrs. Russell Semple presiding for the short business session.

Mrs. Frances Johnson will direct the students' Christmas program. The following 3rd grade mothers will be hostesses for the evening: Mesdames H. E. Lord (chairman), Carl Bowen, James Carpenter, Arnold Tommervik, Roland Dwang, William Humphrey, Harold Carnahan, Carl Wagenblast, James Hansen and LeRoy Trett.

Parkland Christian Church

757 So. 138th, Parkland

Sunday School 9:45 a. m.
Morning Worship 11:00 a. m.
Youth Meeting 6:15 p. m.
Evening Service 7:30 p. m.
Bible Study, Thursday 7:30 p. m.

Richard Crane, Pastor

BENSTON ASSEMBLY OF GOD

2 1/2 Miles East of Johnson's Corner on Kapowsin Highway

Annual Christmas Program
Sunday, Dec. 20
8:00 p.m.

A play will be presented in addition to the departmental program.

A cordial invitation is extended to the public.

Treats Will Be Given to the Children

Rev. Gene T. Neeley, Pastor

SHOULD YOU SIGN A PETITION TO INCORPORATE PARKLAND?

Here Are The Answers To Some Of The Questions Being Asked

- What is the difference between incorporation and annexation?**
ANNEXATION: Parkland becomes part of Tacoma
INCORPORATION: People of Parkland retain their own government and can KEEP PARKLAND THE WAY IT IS.
- What will be done about the sewer problem?**
Does not affect this problem. Parkland, if it becomes a city, could not develop a sewer system until authorized by a vote of the people at some future time.
- What about the light, water and garbage systems?**
No changes contemplated. Again, Parkland could not operate utilities as a city until authorized by vote of people at some future time.
- What will happen to our Franklin Pierce School District?**
An incorporated Parkland would protect Franklin Pierce from larger districts nearby which might otherwise expand into and take over our district piecemeal.
- What about fire protection?**
Parkland Fire District No. 6 would continue as it is now. The people of Parkland are proud of our fire department.
- What about police protection?**
If incorporated, 3 full-time officers are proposed. This, together with cooperation from State Patrol and Pierce County Sheriff's office, available for any emergency, will give Parkland 24-hour protection.
- Why become a city?**
Let's face it. Parkland is a city now. By incorporation, the people of Parkland insure that they will be making the decisions as to the future and progress of Parkland.
- Pd. Adv. By Incorporation Study Committee



SAVE ON GIFT WRAPS

Beautiful

ROLL TRIO

3 Big rolls of beautiful gift wrap — each 120"x 20"

3 ROLL PKG. 77c

BIG SELECTION OF XMAS TREE ORNAMENTS

Decorate your Xmas tree from our big selection of Domestic and Imported ornaments. Beautiful solid colors and dazzling fancy ornaments.

ALL AT POPULAR PRICES!



XMAS TREE STAND

All metal stand. 3 1/2" diameter cup and sturdy base.

THIS SALE

88c ea.

Light Up Your Christmas Tree

ONE GOES OUT THE REST STAY LIT	Extra Special
99c SET	66c SET
7-Piece Light	SERIES 8-Piece Light

SALE NOW GOING ON

SPRAY-PAINT

COPPER
SILVER
GOLD

88c

SNOW SPRAY

THIS SALE

88c

Add beauty to your tree and other holiday decorations with this fluffy snow. Flame-proof and harmless.

Our Dept. Store section has a wonderful selection of gifts for children. Women and men gifts of clothing are always appreciated.

YOURS FOR VALUES

7-PC. TOM & JERRY SET

Gaily decorated with bars of music of "Auld Lang Syne." Generous size bowl with set of six 6-oz. cups.

1.99

NOW ONLY

OPEN SUNDAYS

12 NOON TO 6 P.M.

Parkland Store Only

SHOP-ETTE

VARIETY And DEPARTMENT STORES

Open Daily 10 a.m. to 10 p.m.
Sundays, 12 Noon to 6 p.m.

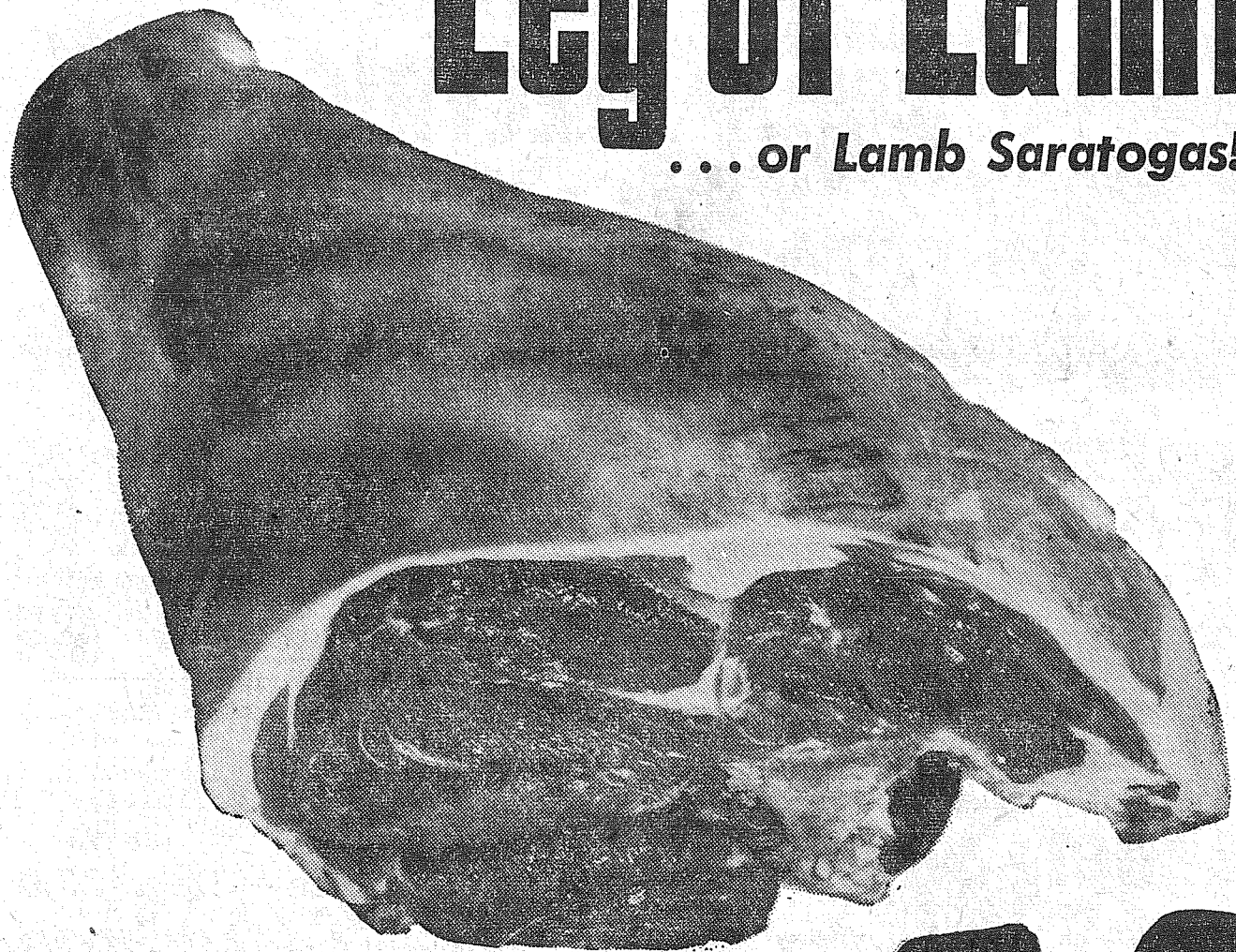
133rd & Pacific
Next To Big Bear

BIG BEAR
A DIVISION OF
Lucky STORES

PRE-HOLIDAY VALUES!

Leg of Lamb

... or Lamb Saratogas!



Cut from U. S. Choice Lamb! Choose from an extra tender, well trimmed Leg of Lamb, or extra tender, fully boneless rolled Saratogas of Lamb.

lb. **59¢**

- RIB LAMB CHOPS** Per Lb. **69c**
Nice 'n Lean — Cut From Choice Lamb
- LOIN LAMB CHOPS** Per Lb. **89c**
Extra Tender, Well Trimmed and Lean
- BREAST OF LAMB** Per Lb. **19c**
Ideal for Rullepulsa or for Braising

- SWIFT'S BOLOGNA** Per Lb. **39c**
Premium Grade — Whole or by the Piece
- SLICED LEAN BACON** Per Lb. **43c**
Hygrade! Streaked With Lean
- RUMP ROAST CHOICE** Per Lb. **77c**
The King of Oven Roasts — Choice Beef!

ROUND STEAK U.S. Choice Boneless Full Cut Round Steak! Specially aged for tenderness and full flavor. **lb 79¢**

GROUND BEEF No ordinary ground beef this, but Big Bear's finest quality and, it's ground fresh hourly. **3 lbs. for 1.00**

- STRAWBERRIES** POLAR Frozen 10-Oz. Pkg. **15¢**
- LARGE 'AA' EGGS** RANCH FRESH Per Doz. **47¢**
- C & H SUGAR** BROWN or POWDERED 2 1-lb. Pkgs. **25¢**
- MARGARINE** LUCKY BRAND 2 1-lb. Cubes **29¢**
- COFFEE** MAXWELL HOUSE WESTERN BLEND 1-lb. Can **59¢**
- ORANGE JUICE** MINUTE MAID FROZEN 6-oz. Can **19¢**

- JELL-O ASSORTED FLAVORS** 3 pkgs. for **25c**
- LOG CABIN SYRUP** (4c OFF LABEL) 24-oz. bottle **59c**
- LIBBY SLICED PINEAPPLE** No. 2 can **33c**
- PACIFIC PEARL CRAB MEAT** No. 1/2 can **67c**
- QUICK, FAMILY SIZE** (10c OFF LABEL) 2 3/4-lb. pkgs. **89c**
- KRAFT MINIATURE MARSHMALLOWS** 10 1/2-oz. pkg. **29c**
- MINUTE MAID GRAPEFRUIT JUICE** Fresh Frozen 2 6-oz. cans **37c**
- WHITE STAR CHUNK STYLE TUNA** No. 1/2 can **33c**
- INSTANT SANKA COFFEE** 4-oz. jar **83c**
- CHEF PIZZA MIX** 15-oz. pkg. **49c**
- FRESH SOCIETE CHRISTMAS CANDIES** 50 Varieties

SCOTKINS Dinner Napkins 2 pkgs. for 49c	NBC RITZ Crackers 12-oz. box 29c	S & W FANCY Mixed Nuts Per Lb. 49c Bulk
CANADA DRY Mixers 2 large btl. 41c plus deposit	POST'S CEREAL Heart of Oats 2 pkgs. for 39c	FAMILY SIZE Hawaiian Punch 46-oz. can 37c

MD BRAND Toilet Tissue 4-roll pkg. 39c	S & W QUALITY Mincemeat 28-oz. jar 53c	BLUEBELL Potato Chips Triple Pkg. 69c
OVEN READY Ballard Biscuits 2 pkgs. for 25c	STOKELY Applesauce 5 No. 303 cans 95c	DE JEAN Medium Shrimp 4 1/2-oz. can 49c

- ANGEL FOOD CAKE** BAKERY FRESH—Reg. 39c Special (3 for 1.00) EACH ONLY **35c**
- BIG BEAR ICE CREAM** ALL FLAVORS Per Qt. **43c**
- PHILADELPHIA CREAM CHEESE** 2 3-oz. pkgs. **29c**
- WHOLE KERNEL CORN** NIBLETS 2 12-oz. cans **35c**
- FANCY PUMPKIN** JACK 'N BEAN STALK No. 2 1/2 can **10c**

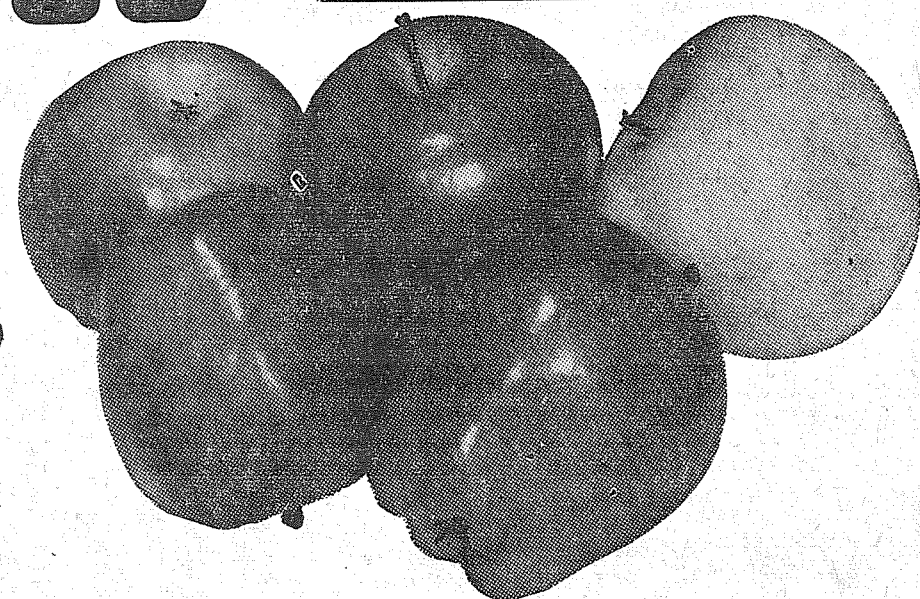
Prices effective Wednesday through Saturday . . . limit rights reserved.



Apples

WASHINGTON STATE EXTRA FANCY CRISP AND JUICY . . .

—THIS CHRISTMAS GIVE APPLES—
... the all-family gift, packed in a regular or special gift box. We handle shipping.



per lb. **12¢**

- CRANBERRIES** 2 1-lb. cello bags **45c**
Ocean Spray — Fresh packed and assured safe.
- D'ANJOU PEARS** 2 lbs. for **29c**
Washington State straight extra fancy pears! Firm-ripe and guaranteed fresh. A real treat!
- HEAD LETTUCE** 2 heads for **25c**
Arizona grown . . . really top quality. Extra crisp, solid large heads. Wonderful value.

- Firm-ripe Golden Bananas** Fine quality select fruit. So good so many different ways. 2 lbs. for **29¢**
- Sweet Potatoes or Yams** . . . your choice! U.S. Number 1 grade. Strictly premium quality. 3 lbs. for **29¢**

Beautiful Poinsettias and a full line of cut flowers . . . attractively wrapped and economically priced.

133rd and Pacific, Parkland

Xmas Program At Church On Sunday

The Christmas program of the Elk Plain Community church will be held Sunday, Dec. 20, at 7:30 p.m. "The Christmas Story" will be presented by the Sunday School and Youth groups. Everyone is cordially invited.

In the Hospital
Granpa Greenlaw is ill in the

skits, poems and agricultural reports. Actively participating were Emil Lauenborg, Mrs. Ruth Gund, Mr. and Mrs. Harold Jacobson, Mr. and Mrs. Bryan Dalin, Mr. and Mrs. Dean Thorson and, assisted by Harrison Ford of Crocker, an added attraction — the arrival of Santa (alias Viv Selle). Benston will hold a regular business meeting on Dec. 22. The Christmas party for members and their families has been changed to Wednesday, Dec. 23.

hospital. We wish him a speedy recovery.

Wedding Reception
A wedding reception was held Dec. 11 at the Elk Plain Grange hall for Mr. and Mrs. Jerry Plumb, who were married recently. A large crowd of friends and relatives attended and the couple received many lovely gifts. Card games were played and the young folk sang and danced. Refreshments were served.

Reporter — Mrs. Ray Burkhart, VI 7-7386.

Benston Grange
Benston rolled out the welcome mat for visitors from Crocker

Rural Garbage Service
Serving Parkland, Midland, Summit and Spanaway
Pierce County Permit
LEnox 7-8688

**PAINTS . . .
HARDWARE
AND
VARIETY**

Open 7 Days a Week, 7 a.m.-9

Barsotti & Timm
At the Roy Y LE 7-4221

**PROMPT PERSONALIZED
PRESCRIPTION SERVICE**

TED SWANSON
INSULIN - VITAMINS
Downtown Prices
Pay Phone Bills Here
PLENTY OF FREE PARKING
TINCHER'S PHARMACY
8227 Park Ave. GR 4-3344
Across from Fern Hill P. O.

General Sheet Metal Work
Special Attention to Special Equipment
RAU MFG. CO.
LEnox 7-7372
14114 Pacific Avenue

Hunting License Fishing License
Super Kem Tone & Kem Glo
PARK AVENUE HARDWARE
Ave., GR 4-0051
Corner 83rd & Park

24 HOUR LUBE SERVICE
VIRG ADAMS
RICHFIELD BEACON SERVICE
8515 So. Tacoma Way
JU 8-9613

'B' IS FOR BABY FURNITURE TOYS & EQUIPMENT
Small Fry
Tacoma - 1109 Market - BR 2-9505
and **V/I/P** LAKEWOOD JU 8-1628
VILLA PLAZA

Bethel Parents Club
Bethel High Parents club will hold its monthly meeting Monday, Dec. 21, at 8:00 p.m. in the multi-purpose room at the school. Following a short business session, the school music department will present a Christmas concert. There will be no charge.

Back To School Set At Collins
A "back to school" Christmas Yuletide program. Santa will be present with a treat for all children.

The area of land under irrigation for agriculture in Turkey has increased 300 per cent since 1950.

FENCING
Designers and Builders
EXPERT WORKMANSHIP
REASONABLE PRICES
Easy Monthly Payments
VAUGHAN'S
84th & Pac. Ave. GR 4-9515

DRASTIC Reductions!

ALL CHRISTMAS MERCHANDISE MUST CLEAR NOW!

MANNING - BOWMAN AUTOMATIC ELECTRIC Fry Pan Reg. \$13.38
11" 19.95

Tremendous value and complete with cover and cord. Here's a grand gift that will give years of enjoyment. Simply set the automatic thermostat to the temperature desired. No burning — no overcooking.

DUAL CONTROL ELECTRIC BLANKETS \$22.88

Full 72"x84" size. Unconditionally guaranteed for 2 years. 100% nylon binding. Dual control. Special

CAPTURE Christmas Magic
with **ZENITH**
STEREOPHONIC HIGH FIDELITY

Manning-Bowman Chrome Electric PORTABLE MIXER Reg. \$12.88
17.95

Stainless STEELWARE Reg. 15.00 \$7.38

For the Man in Your Life
Saber Saws Reg. \$29.95. With 3 blades. Cuts 17" circles and 2x4's. Special \$21.77

Ray-O-Vac SPORTSMENS LANTERN Reg. \$8.95 \$6.66

Golden Palomino WONDER HORSE Reg. \$12.00 \$8.59

DRINK & WET DOLL Big 20" Size — Reg. \$8.00 \$4.88

What a beauty! Cute as can be. Fully jointed, all vinyl. Curly, poodle style rooted hair. Pretty cotton romper with matching bonnet. With drinking bottle.

Electric CORN POPPER Reg. \$4.49 \$3.90

Westinghouse Electric PERCOLATOR Reg. \$17.95 \$13.88

MAGDANZ LUMBER & HARDWARE CO.
11401 Pacific Avenue (Open 'til 8 p.m.) LE 7-5538

ZENITH HI FI
"THE CHOPIN" MODEL SFD280
The One Gift That Outshines All Others . . .
Early American Styling

PRICED AT ONLY **\$350.00** INCLUDING THIS \$79.95 VALUE

MATCHING STEREOPHONIC REMOTE SPEAKER MODEL SRD20

PLUS OUR FREE GIFT TO YOU
(OFFER GOOD UNTIL CHRISTMAS EVE ONLY)

A \$39.95 "NORTHERN" FULLY AUTOMATIC LUXURIOUS GUARANTEED WASHABLE MOTH PROOF **ELECTRIC BLANKET**

(This Electric Blanket Also Available Free with Other Merchandise)

THIS IS BEYOND A DOUBT THE **GREATEST VALUE** EVER OFFERED

COME IN AND SEE THEM TODAY AT
POCHEL DISTRIBUTING COMPANY
YOUR FUEL OIL & APPLIANCE DEALER
140th & Pacific Avenue Phone LEnox 7-8624

NALLEY'S CHILI Reg. or Hot 15-Oz. **4/1.00**

BEEF STEW Nalley's 15-Oz. **39c**

STERLING — Holds 30 Ties **TIE HOLDER** Reg. 98c **49c**

MEN'S OD WOOL PANTS **3.98**

CHRISTMAS WRAP 3 Big Rolls, Reg. 98c **69c**

HOODED, To Size 16 SWEATSHIRTS **1.49**

ALL PURPOSE FLOUR 10-Lb. **69c**

MEN'S WRINKLE RESISTANT SLACKS Reg. 6.98 **3.79**
Reg. 9.98 **4.98**

PROCTOR, Reg. 12.95 IRONING BOARD **\$5.95**
and **\$6.95**

CHRISTMAS CANDY Regular 39c **23c** Lb.

8-Oz. — Reg. 25c BABY BOTTLES 5/75c

12-Oz. Size WHEATIES **4/1.00**

50 Feet 1/4" ROPE **39c**

Good For Sandwiches TUNA **5/1.00**

SALVAGE MART
13014 PACIFIC AVENUE—HRS.: 10-6, FRIDAY 'TIL 8
OPEN SUNDAYS 12-6

Woodland . . .
112th Boosters Meeting Tonight

Tuesday afternoon, Dec. 22 at 1:30 in the Video room at Woodland school will be the annual Christmas party for the pre-school children in the Woodland area. December birthdays will be honored and Santa plans to visit the children with a treat for all. Come and bring the little ones.

of the Howdy Partners club falls on Christmas Eve, the night has been changed to Tuesday evening Dec. 22 at 8:00. The ladies of the club will bring cookies and coffee and tea will be served by the hosts and hostesses, Leo and Lois Brewer and Jim and Beverly Bigelow. Come and join us then.

P-TA Grateful

The Woodland P.T.A. would like to extend sincere thanks to all those who made our recent Carnival the huge success it was. Special thanks to Kenneth Brown, Ways and Means Chairman for P-TA and 6th grade teacher, and to Hank and Mary Bassi, without whose help each year we would indeed be lost. Their untiring devotion to P-TA and their help has made things much easier for those who work with them.

Also our thanks to the kitchen crew for the wonderful dinner, to the girls who decorated tables and served, and to all the people that worked in the booths to make this year's Carnival the biggest and best yet!

Last but not least, our thanks to the many merchants who donated gifts and to the Times Journal for the wonderful publicity.

Sincerely,
Mrs. Robert Vorak

Woodland P-TA Publicity Chmn

Waller Road . . .
Xmas Program Planned Friday

The annual Christmas program for parents and friends by the kindergarten and primary grades of Waller Road school will be held at the school Friday, Dec. 18, with two showings. At 9:45 a.m. those interested in the morning kindergarten class are invited; at 1:30 p.m. the afternoon class parents.

Children will bring in true Christmas spirit their interpretation of the theme, "The Meaning of Christmas."

School vacation starts Dec. 23, classes resuming Jan. 4.

Grange Open Meeting Friday evening Waller Road. Grange will hold an open Christ-

mas meeting for families and friends. The films, "Silent Night" and "They Met in Galilee," will be shown. There will be a Christmas treat for the youngsters and parents are asked to bring toy gifts for their own children, each marked with the child's name.

Reporter — Mrs. Verne Fogle, LE 7-5210.

Party For Cubs

Cub Pack No. 103 will meet Dec. 17 at 7:30 p.m. at the James Sales school for the annual Christmas party; bring the whole family.

There will be awards for achievements, also skits and stunts by the Dens. There will be a special surprise for all the kiddies later in the evening.

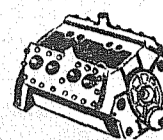
Parents and Cubs from the Andrew Christiansen district are also welcome.

Franklin Pierce School Menu

December 21
Cook's Choice
December 22
Cook's Choice
December 23
Cook's Choice
December 24
MERRY CHRISTMAS AND A HAPPY NEW YEAR TO ALL OUR FAVORITE CUSTOMERS.

Christmas Contest
Entries for the outdoor Christmas decorations contest being sponsored by the Capitol District Garden club group are still being received. Anyone interested in listing an outdoor Christmas tree or other outstanding decoration should call BR 2-2141 or SK 9-9493.

Winds up to 200 miles an hour make Commonwealth Bay in Antarctica the windiest spot in the world.



BRAKE DRUM TURNING

Complete Motor Rebuilding, Lathe and Press Work, Brake Drum Turning, Reborring, Pin Fitting, Key Seating, Head Surfacing, Piston Grinding, Valve Seats Installed, etc.

Rupe Machine Works and Garage

AUTOMOTIVE & INDUSTRIAL WORK
13411 Pac. Ave., P.O. Box 2445, Parkland 44, Wn., LE 7-7450

VAUGHAN'S VALUES
FIX UP THAT RUMPUS ROOM FOR THE NEW YEAR PARTY
WOOD GRAINED PLASTERBOARD PRE-FINISHED

KNOTTY PINE } 4x8 43¢
CHERRY WOOD } Sheets ...
SABLE WOOD }
CONOLITE COUNTER TOPPING SQ. FT. 60¢
LATEX RUBBER BASE PAINT Gal. 2.69

VAUGHAN'S PACIFIC LUMBER
84th & Pacific Avenue GR 4-9515

FOR RENT TRUCKS

& CARS
MA 7-9039
Save One Half We Furnish Everything
HARMON'S
Driv - Ur - Self Co.
HARMON'S SERVICE
2112 Jefferson
Jim Harmon, Mgr.

PARKLAND ECON-O-WASH

LEAVE IT FOR US TO DO
Washing Drying 2 HR. SERVICE
Shirts Dry Cleaning 24 HR. SERVICE
OR DO IT YOURSELF ANYTIME, DAY OR NIGHT
12171 Pacific Avenue LE 7-9970

TRAILERS, 8 and 10 wide. We take anything in Trade. Also we trade you new carpeting Furniture & Appliances for your trailer
Beautiful Selection of Furniture Maple and Contemporary

LINDSTROM'S HOME FURNISHINGS

8021 Portland Ave. LE 7-8627



SKI SCHOOL SPECIAL

- Skis
- Poles
- Safety Binding
- Double Boot

RENTAL FOR FOUR WEEKS

ALL THIS FOR . . . \$15.00

With Option To Buy

PARKLAND SPORTS CENTER

(Formerly Western Pacific Gun Shop)
11122 Pacific Ave. Hrs. 9 AM to 9 PM LE 7-5677

LOWCOST SHOE MART

13022 Pacific Avenue (Next to Salvage Mart)

Boys' Overshoes 2.98
4 Buckle - Size 11 to 6

Cuffed Boots 3.98
Size 4 1/2 - 9

Men's Pacs 3.98
Leather Tops - Rubber Bottom

Slippers 1.98
Men's

Saddle Oxfords 1.88
Children's Plastic Washable, Scuff Proof



Margarine COLD BROOK 2 lbs. 29¢

Eggs CREAM O' THE CROP Medium "AA" Guaranteed Fresh Daily Dozen 39¢

Pumpkin Libby's Large No. 2 1/2 Cans 35¢

TUNA NOODLE CASSEROLE STAR-KIST - It's new at Safeway. Buy one at Regular Price get the second for only 1c.
Each 24¢ Or 2 for 25¢

BONELESS HAMS

FRONTIER BRAND, Canned, Whole or Half, 10 to 13-Lbs. lb. 59¢

Smoked Hams DIAMOND F, Whole or Shank Half 10 to 16-Lbs. Lb. 49¢

Sliced Bacon ARMOUR'S STAR Lean Streaked Lb. 43¢

Turkeys LYNDEN or NORBEST 20 to 24-lbs. Lb. 49¢ MANOR HOUSE or LYNDEN 10 to 18-lbs. Lb. 53¢

Boneless Hams FIESTA or HOLIDAY, Whole or Half, 8 to 10-lbs. Lb. 79¢ U. S. Choice Blade Cut Beef Pot Roast Lb. 43¢

Breaded Shrimp CAPTAIN'S CHOICE, 10-oz. Package 65¢ U. S. Choice Beef 7-Bone Roast Lb. 49¢

Fish Sticks CAPTAIN'S CHOICE 8-Oz. Pkg. 33¢ U. S. Choice Beef - Tender T-Bone Steak Lb. 98¢

Sirloin Steak U.S. Choice Beef, Waste-Free Lb. 89¢

SUNKIST ORANGES

New Crop, Navels, Sweet and juicy — Ideal for juicing or serving in salads. 10 Lbs. 99¢

Rome Apples Fancy Grade, Ideal for Baking, Tasty in Pies Lb. 10¢

Fancy Lettuce Solid Heads Crisp and Fresh 2 for 19¢

Sweet Potatoes Holiday Vegetable 3 Lbs. 29¢

Fresh Cranberries OCEAN SPRAY 1-Lb. Pkgs. 19¢

Tangelos Ideal for Christmas stockings, sweet. 2 Lbs. 35¢

Shortening ROYAL SATIN 3-Lb. Can 59¢

Sherbet LUCERNE, Red Raspberry, Pineapple, Orange, Rainbow Half Gallon 49¢

Peaches TOWN HOUSE Freestone 4 No. 2 1/2 Cans \$1

Corn NIBLETS Whole Kernel Vacuum Pack 2 12-Oz. Cans 35¢

Corn NIBLETS Whole Kernel Vacuum Pack 2 12-Oz. Cans 35¢

N.B.C. Mix or Match

Wheat Thins
Triangie Thins
Vegetable Thins
Potato Chippers
Salt Tang Lunch Sticks
Your Choice
3 FOR 1



Sale starts 9 A.M. Thursday, Dec. 17, through Saturday, December 19, in Tacoma, Sumner and Puyallup.

QUALITY HOMES
DESIGN ASSISTANCE
Estimates Without Obligation
Hedlund Const.
920 So. 121st LE 7-4227

C. C. Grange To Hold Open Meeting

Clover Creek Grange will hold an open meeting in the hall Friday, Dec. 18. There will be a special award and the public is invited to attend.

Riverside Valley Grange
Riverside Valley Grange will have the annual Christmas party Dec. 21 at the hall, with potluck supper at 6:30 p.m. and a good Christmas program. Bring gifts for your own children. Instead of a gift exchange, there will be gifts for the Grange; suggested items, coffee, dish towels and cash donations for redecorating the hall.

The Clover Creek Women's club will meet with Mrs. John Lowman for a Christmas party Dec. 17. There will be no P-TA meeting in December but everyone is invited to come out for the Christmas program at the school Dec. 22 at 7 p.m.

CHRISTMAS TREES
The Clover Creek 4-H'ers have Christmas trees for sale at Fritz's place on Military road, two blocks west of Radmaker road.

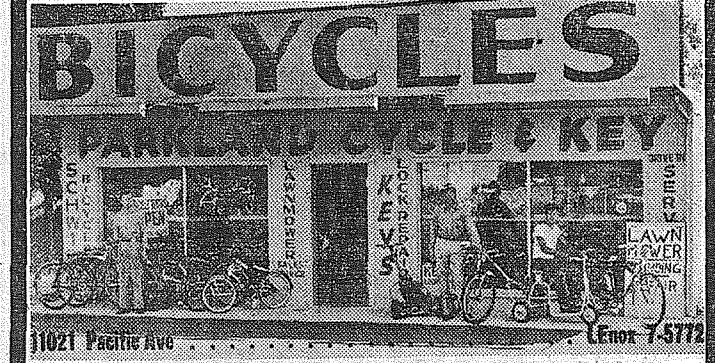
THIS CHRISTMAS GIVE A Schwinn BICYCLE

BOYS' 20 - Inch 24 - Inch 26 - Inch &
OR GIRLS' \$39.95 \$41.95 \$43.95 Up



WE CARRY A FULL LINE OF WAGONS - TRICYCLES PEDAL CARS AND BICYCLE ACCESSORIES

OPEN EYE'S. 'TIL 7:30 P.M. SAT. 'TIL 6 P.M.



ANNUAL OUTDOOR Christmas Display

EVERY EVENING UNTIL THE NEW YEAR
6:30 TO 10 P.M.

The public is cordially invited to visit Mountain View's annual

ILLUMINATED CHRISTMAS PAGEANTRY

3-Dimensional Nativity Scenes
THE THREE WISE MEN SHEPHERDS IN THE FIELD
THE MANGER SCENE
NO ROOM AT THE INN
Christmas music from the Mountain View Garden Chapel

Mountain View MEMORIAL PARK

LOCATION: Turn into the park at the lighted entrance on Stellacom Blvd., about one-half mile from Highway 99.

Altar Society Elects Officers

St. Joan's Circle of the St. John of the Woods Altar Society had 16 members present at their December Christmas meeting. Mrs. William Baughn presided over her last meeting. Reports for the year were given by the committee chairman and officers. Samples of the cassacks and surplices donated by the Circle as part of their yearly project were shown to the members. Election of officers was held and though a chairman was not selected at this session the other officers chosen were: Vice-chairman, Mrs. W. Glasser; secretary, Mrs. Louis Weir; treasurer, Mrs. Walter Corrigan; telephone chairman, Mrs. Albert Bombardier and Mrs. Donald Becker; novelty gift chairman, Mrs. Fred Siehl and Mrs. Herman Portz.

Mrs. Corrigan presented Mrs. Baughn and her assistant for the past year, Mrs. Weir, with tokens of appreciation for their successful term. Mrs. Allen Zook was presented a Sunbeam electric frypan. Hostesses for the meeting were Mesdames Fred Siehl, Walter Corrigan and Peter Tefre. Six members of the Tapaderas 4-H club were presented with blue ribbons and trophies at the annual Sears luncheon Saturday, Dec. 12, at Wellman's, for the winners of the Meal Preparation contest. They were Marcia Lochridge, Teri Griffith, Linda Crewse, Connie McCue, Connie Stokes and Linda Stokes. The delicious chicken dinner was enjoyed by everyone, also the good

entertainment. Mrs. Eugene Stokes, their leader, was present and each girl was accompanied by one parent.

DRUG FACTS

YOU'RE NOT LOOKING VERY FIT, BILL. - WHY DON'T YOU ASK YOUR DOCTOR IF YOU NEED VITAMINS? YOU'LL FIND **ASHMORE'S SPANAWAY DRUG**

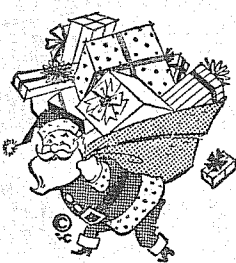
HAS A COMPLETE SUPPLY ON HAND!



100 MG. VITAMIN C 89c
UNICAPS 100 Bottle \$3.11

ASHMORE'S SPANAWAY DRUG
165th & PACIFIC AVE. SPANAWAY, WASH.

SANTA'S SUGGESTIONS FOR Christmas



SHOTGUNS AND RIFLES

WINCHESTER RIFLE
CLEANING KIT
For .22 to .270 Caliber
Reg. 3.50 Xmas Special... **\$1.98**

FISHING TACKLE

Electric Appliances

Christmas Tree Lights
Our Price Can't Be Beat

AIRMASTER TRANSISTOR Radios as Low as 22.95

SOUTH END PLUMBING AND HARDWARE

185th & Pacific Avenue LE 7-4100

DAISY BB Guns & TARGET Pistols \$4.98 Up

Beautifully Decorated **GIFT GLASSES**
As Low As **89c** Set

Tools Of All Kinds

SKIL SAWS \$34.95 As Low As

BRAND NAME 1/4" Elec. Drills As Low As \$12.89

Seymour's Christmas Buys!

STOP! SHOP! SAVE!

SELECT WHILE ASSORTMENTS ARE STILL GOOD! A SMALL DEPOSIT WILL LAYAWAY!

7 More Shopping Days at Seymour's! Open Daily 9 to 9, Sunday 10 to 6

8 BIG DAYS, DECEMBER 18th THROUGH 24TH

KRAFT DINNERS Pkg. 10c

FOLGERS **COFFEE Lb. Tin 69c**

SUNNY JIM OR ADAMS **P'NUT BUTTER 3-LB. FAMILY SIZE 99c**

ARMOUR'S FULLY COOKED **Boneless Hams Lb. 59c**

JACK & BEANSTALK **PUMPKIN 2 1/2 Tin 9c**

Pederson's Cut-Up **FRYERS Lb. 43c**

GRADE A **TURKEYS AT COMPETITIVE PRICES**

GROUND BEEF 3 Lbs. \$1.00

BANANAS 2 Lbs. 29c

TANGARINES 2 Lbs. 29c

EMPEROR **GRAPES Lb. 10c**

SUGARY SAM YAMS 2 1/2 Tin 2/49c

HAROLD'S KIST MIXERS Qt. 2/35c Plus Deposit

BIG 1 ORANGE JUICE 46-Oz. Tins 3/\$1.00

WHITE KING SOAP Giant Size 55c

BARGAIN BASKET'S OWN FRENCH DRESSING Full Pint 33c

BARGAIN BASKET'S OWN CHILI CON CARNE 1 1/2 Oz. 4/\$1.00

NESTLE'S EVEREADY COCOA 2-Lb. Family Size 79c

PETER PAN CORNED BEEF HASH 16-Oz. Tins 3/\$1.00

PILLSBURY CHOC. CHIP COOKIE MIX 13 3/4-Oz. Pkgs. 2/59c

HI-HO CRACKERS 1-Lb. Pkg. 33c

MIX 'EM OR MATCH 'EM STOCKTON TOMATOES OLD RANGER CUT GR. BEANS HAPPY HOME PEAS 303 Tins - Your Choice 6/\$1.00

FRESH PEANUTS LB. 29c

BARGAIN BASKET
16618 PACIFIC AVE. South SPANAWAY, WASH.

Women's Quilted DUSTERS

A variety of dainty styles and colors in quilted Nylonized fabrics and embossed cottons.

3.98 and 4.98

Gift Lingerie

Choice of Many Styles and Colors! **2.98**

Beautiful rayons, cuddly-warm flannels, wash-n-wear fabrics . . . in full-length gowns, waltz length, baby dolls. Lace trims and ruffles. Gift priced!

Only **2.98** Fashioned in hi-bulk Turbo Orlon in choice of white, red, charcoal, blue, pink or green. Seymour's price is low!

INFANTS' HOODED SWEAT SHIRTS

Warmly knit sweat shirts with draw-string hood. Age 1-2-3. Choice of white or turquoise.

1.29

INFANTS' CARDIGAN SWEATERS

Styles for boys and girls, 6 mo. to 3X. Cardigans of hi-bulk Orlon.

1.99

BOYS' "GIFT" STRETCH SOCKS

Attractive patterns and argyles. Always perfect fitting. Special low price!

4 Pairs 1.00

MEN'S WOOL-ORLON SWEATERS

New bulky-knit pullovers woven of 75% lambs wool, 25% Orlon. Tan, blue, charcoal, many with new square necks.

5.98

MEN'S ARGYLE STRETCH SOCKS

Combed cottons or stretch styles in colorful argyles. Sizes 10 1/2 to 13.

69c 3 PAIRS 2.05

KNIT STOCKING CAPS

Attractive all-wool knits in a selection of colors and styles for all the family!

98c To 1.49

Slippers, Slippers, AND MORE SLIPPERS

HUNDREDS OF SLIPPERS! SIZES, STYLES, COLORS TO PLEASE EVERYONE IN THE FAMILY! SAVE!

YOUR CHOICE 1.99 PAIR

Only . . .

Women's Terry Cloth Slippers 1.99

Double fabric, white rubber soles, 4 to 10.

Men's Wool Felt Slippers 1.99

Cuff style, leather soles, in 7 to 12's.

Youth's Pile-Lined Slippers 1.99

Leatherette uppers, rubber sole, 10 to 3.

Kiddies' Corduroy Booties 1.99

Sponge style, warmly lined, with zip. 7 to 3.

Girls' Satin Quilted Slippers 1.99

Pastel blue, fur trimmed, sponge sole 11-3.

Women's Wool Felt Slippers 1.99

Blue or wine, soft leather soles, 4 to 10.

Men's Flannel Sport Shirts 1.99

Hundreds to Choose From!

Large selection of stripes, checks, patterns in washable, warm flannels! Convertible collars. Every man would like one under the Christmas Tree! S-M-L sizes.

Shop Daily 9 to 9, Sundays 10 to 6 P.M.

9714 Pacific Avenue ONE BLOCK NORTH OF PARK 'N SHOP

SEYMOUR'S
FAMILY DEPARTMENT STORE

a-Wondering . . . and a-Wandering . . .

With JACK BROWN

Some years ago a youngster came into my office and asked me if I, or rather the Times Journal, would sponsor him in the Soap Box Derby. I was greatly impressed with the lad and agreed. He built a beautiful little racer and did an exceptional job on it even down to lettering it exactly like our company cars. He didn't place in the race but that was the least important part. This boy had had the courage and energy to make the effort and that in itself was the important thing. Here, I thought, was a young boy who would grow up to become a credit both to his parents and his community.

Recently the mother visited my office and asked me if I remembered . . . I said I sure did and inquire as to his whereabouts. His mother then told me a sad story of a wonderful young boy who had gotten off on the wrong track. She told me . . . had now seen the errors of his ways and was seeking a way to warn other teenagers of the pitfalls along the road he had first chosen. Could I help him? I told the mother to have him write out in his own words the message he wanted other young folks to receive and I would see what I could do.

Today he brought in a letter and after reading it several times I am taking the liberty of printing it verbatim . . .

Dear Teenager's and Parent's,

I am a boy 15 years old and attend a local High School. I have a true story that I feel will help, in some small way to prevent other teenagers from becoming Juvenile Delinquents.

I wanted to be a Big-Shot and to become known to my school mates as an important boy. I wasn't very good at school work and felt that no one liked me, even my Parents. To gain attention, I joined a Gang, a gang that enjoyed breaking into stores and schools. One day after we had broken into a school, two other boys and I were caught and sent to Remann Hall in Tacoma. Now we were Big-Shots, or so we thought! We wouldn't squeal on the rest of the gang and took all the blame ourselves. We stayed in Remann Hall two weeks and then were released to our Parents. The gang broke up, but I still wanted to become a Big-Shot so I broke into the school again, was caught and sent back to Remann Hall. I was getting bigger and bigger, so I thought. Once again I was released after two weeks. My Parents wouldn't let me go to my friends houses as they were afraid of what I would do, so I felt they didn't love me any more. I became a big proplem at school and spent my days messing around instead of studying, until I was sent home, to be taken back to Remann Hall again. I was going to be smart, I thought, I wasn't going to let them send me back there again.

I ran away to California where I stole a car. I had the car two days when I ran a red light and hit another car, and injured two innocent people. The California Police sent me back to Remann Hall in Tacoma again. I went to Court and was sentenced to Western State Hospital for three months to find out why I did the things that I had done, and why I enjoyed them.

While I was at Western State Hospital, I met boys that had no Parents, lost boys, and boys that were really bad in every sense of the word. No I thought I really was a big shot or I wouldn't be here.

I thought, "let those Doctors do their darndest, they won't find out any thing about me, any way I only have to stay here for three months".

I thought I was Big until I had to go up against the toughest kids and leaders of the different Wards. After having been beaten up several times, I wished that I would die. I had only a few days left till I would get out when I was recommitted for another three months.

I felt sick, I thought I had lost all hope of getting out and seeing my Parents and freedom again. Suddenly the only things that mattered were my Parents, family and the home I had run away from.

I finally realized that I had not become a BIG-SHOT, instead I had become a BIG-Fool.

I am deelypley hurt and remorsefull, for all the hardships and pain that I haved caused my Parents and I have been through.

I know that I will never get into trouble again, and I sincerely hope that my story will help keep other Teenagers from doing some thing that they will regret for the rest of their life, as I know I will.

A boy that had to learn the hard way, through his Parents worries and grief.

This post script was attached to the boys letter also . . . P.S. This boy is fast becoming a credit to his home, family and community, and I am proud of him.

Signed, . . . his mother
Now I know that I was right from the start about this boy. Any youngster who worries enough about his fellow teenagers to pour out his soul in a message such as this in the hope it will help others, is already a credit to his family and community.

As soon as this paper is out I'm going to ask my two sons to sit down and read this article. If you have a teenager in your home I hope you'll do the same.

Franklin Pierce Cards Vs. Royals Friday Night

FronRon Frank

The Franklin Pierce Cardinals take on their third and toughest foe in the Puget Sound League this winter when they host the tall and talented Kent-Meridian Royals in the Franklin Pierce gymnasium Friday. Tipoff time for the two teams is 8:15 p.m.

Fans will get a chance to look at one of the tallest players in prep basketball when 6-10 Steve Roberts takes the floor at center for Kent. The Royal junior is an excellent rebounder and his shooting has improved considerably over last year. The Cards are, in fact, plenty worried over the

height differential.

Coach Jack Burrell will start Captain Rick Sortun and Jim Simpson at the forwards, and Terry Jensen and Rodney Brunelle, a clever guard, along with, stratospheric Steve.

Coach Del Schafer will counter with his usual starting five. That will place Ken Southall and Joe Mancuso at the forwards, Jon Malmin at center and Rick Smidt and Gary Rihitarich at the guards. Jerry Manley, Tom Tommervik and some of the others are expected to see considerable action. The Cards downed the Enumclaw Hornets in their first PSL

Woodie's Used Tires
Wholesale — Retail
10727 Sales Road
LE 7-3821

Thursday, December 17, 1959
The TIMES JOURNAL

Page 9

BHUTAN DRESSES
Women's dress in the kingdom of Bhutan consists of a single piece of cloth the size of a bedspread which often is used as a blanket at night.

— LOOK —
CLOSING - OUT SALE
Storewide Reduced Prices
Do Your Christmas Shopping Here
For the Best Bargain in Town
HIGHWAY VARIETY STORE
7025 PACIFIC AVENUE

KUGLER SERVICE

Formerly Rowe's Corner
96th & WALLER RD.

OPEN 7 DAYS A WEEK 7 am to 9 pm
GROCERIES
Union 76 Gas-Mechanical Work
LE 1-2342

IGA FOOD TOWN IGA



Now is the time to do your holiday shopping at your friendly IGA Food Store. Your IGA Food Stores have received their large Christmas orders now, and you'll find everything for the holiday meals at IGA's everyday low prices! Serve the finest foods . . . save money, too . . . shop at IGA.

• **NALLEY POTATO CHIPS** 11 1/2-Oz. Package **59c**

• **STUFFED GRN. OLIVES** Libby's 2-Oz. Jar **25c**

• **RIPE OLIVES** Wyandotte Select, Pitted, 5 1/2-Oz. or Lge. Ripe, 7-Oz., Ea. **23c** **4/89c**

• **INSTANT MILK** IGA's New, U.S.D.A. Approved, Non-Fat, 8-Quart Size **59c**

• **CUT BEANS** IGA Fancy, Blue Lake, 303 Tins **2 FOR 35c**

• **INSTANT COFFEE** Maxwell House 6-Oz. Jar **89c**

• **SAMURAI MANDARIN, 11-Oz. Tin - 23c**
ORANGES 4 for **89c**

• **IGA SEEDLESS, Ready To Use!**
RAISINS 15-Oz. Pkg. **19c**

• **IGA Quart Jar, Fresh, Rich**
MAYONNAISE **49c**

• **WHITE STAR - 6 1/2-Ounce Tin**
CHUNK TUNA **25c**

WALLA WALLA, 303 Tin, Each 15c
BLENDED GREEN PEAS
CREAM STYLE CORN **6 FOR 89c**
WHOLE KERNEL CORN

• **IGA DELUXE COFFEE**
1-Lb. Tin **59c** 2-Lb. Tin **1.17**

• **MANNINGS COFFEE**
1-Lb. Tin **59c** 2-Lb. Tin **1.17**

• **SANKA INSTANT COFFEE**
10c Off Deal Pack!
46-Ounce Jar . . . Each **69c**

ORDER YOUR XMAS TURKEY TO-DAY!
TURKEYS, 10-14 lb.
HENS lb. **49c**

TURKEYS 18-22 Lb. Avg.
TOMS lb. **47c**
CANNED 3-Lb. PICNICS **\$1.89**

• **MINUTE MAID FROZEN, 6-oz. 4/79c**
ORANGE JUICE 12-Oz. Tin **37c**
• **Pictsweet Frozen Peas, Corn, Spinach**
VEGETABLES 2 for **29c**

TOP ROUND STEAK lb. **89c**

BONELESS FIESTA FULLY COOKED HAMS lb. **79c**

BOTTOM ROUND STEAK lb. **79c**

SWIFT'S PREMIUM SLICED BACON lb. **39c**

IGA Oregon No. 2 25 Lbs. Large Sunkist 2 Lbs. Potatoes **69c** Oranges **29c**
No. 1 Pound Extra Fancy Red Delicious Apples **10c**
Bananas **14 1/2c**

XMAS DECORATIONS - BUY ONE REGULAR PRICE . . . 2nd For 1c
Airport Road (112th) & Park Avenue
Ad Days - Dec. 17-18-19

Prescription Service
Open 7 Days a Week
9:30 a.m. - 9:30 p.m.
Sundays 10 a.m. - 6 p.m.
JACOBS PACIFIC DRUGS
Wallgreen Agency
Pay Light & Water Bills Here
84th & PACIFIC AVE. Greenfield 2-6445

ATTENTION PHOTO FANS!
20 TO 50% OFF ON ALL
CAMERAS, PROJECTORS, ETC.
Tape Recorder Reg. 159.00. NOW **\$99.50**
Film **97c**
Photo Flash Bulbs GE No. 5 Reg. 15c **9c**
QUALITY PHOTO SERVICE
9818 Pacific Avenue LE 7-7271

-Classified-

Page 10 Thursday, December 17, 1959

M. L. S.
MULTIPLE LISTING SERVICE
LOW DOWN
4 bedrms, two 3-pc baths, lrg living rm, separate dining rm, utility rm, wired 220, 2 lots, garage. Paved street, good location, close to bus, stores and schools. Call Ralph Decker Gr 4-9579. RA 3588.

MIDLAND DIST.
Clean, 2 bedrms, lrg living rm, kitchen, wired 220, small greenhouse, garage and workshop. Land 90x310. GI equity \$2,000, 4% on balance, or will carry contract, \$1000 down. Price \$5,950. Call Ralph Decker Gr 4-9579. RA 3862.

McKINLEY HILL REALTY
6311 McKinley Ave. GR 4-9579
Member of Multiple Listing Service and TACOMA REAL ESTATE BOARD

M. L. S.
MULTIPLE LISTING SERVICE
HOMES FARMS ACREAGES INVESTMENTS

One Call Does It All
TACOMA REALTY, INC.
11004 Park Ave. LE 7-8681
Member Multiple Listing Service and Tacoma Real Estate Board

M. L. S.
MULTIPLE LISTING SERVICE
PARKLAND REALTY CO.
Jennie L. Grodvis
Insurance of All Kinds
Notary Public
Est. in Parkland Since 1941
LE 7-8609 Office
302 Garfield St., Parkland
Jennie & Al Grodvis, LE 1-1210
Edna Taylor, LE 7-3556
"Deal with the people who give you their personal Attention"
Member of Multiple Service and Tacoma Real Estate Board

A NUMBER YOU CAN COUNT ON...

Your TV need repairing? Give us a call. You can count on us for expert service fast, with the finest of parts. For example, in picture tubes, we recommend RCA SILVERAMA. Made of all-new glass and all-new parts, it offers you the clearest picture your TV set can deliver. Phone or stop in.

GR 5-0658
A1 TELEVISION & RADIO SERVICE

Corner of 72nd & Portland Ave.
1424 East 72nd GR 5-0658
Local TV Headquarters for
RCA Silverama
ALL-NEW PICTURE TUBES

Power-Plus SOUND
From GENERAL ELECTRIC!
NEW
7-Transistor Portable RADIO

FOUNDATIONS, additions, remodeling. Free estimates. Financing, no down payment. Phone GR 4-7000 anytime.

SEPTIC TANK CLEANING
Prompt Service
C. V. HUTSON
GR 4-3980 GR 2-7038

SEPTIC TANKS & WATER LINES INSTALLED. Riley Brothers Phone LE 1-0987 or LE 1-320.

Residential and Commercial PAINTING
Taping and Texturing
Broadwell Painting
LE 7-6893

WELL DRILLING
Berkeley Pumps
• JETS
• SUBMERSIBLES
• CENTRIFUGALS
• TURBINES
Call LE 7-7281

TACOMA PUMP & WELL DRILLING CO.
14619 PACIFIC AVENUE
Terms Trades

BART'S
Appliance Repair
All Electrical Equipment
LE 1-0528 Any Time

DON ABBOTT
COMPLETE
TRACTOR WORK
Gravel and Driveways
LE 7-3846

Webb Electric Co.
8240 B Pacific Ave.
GR 2-2902

ELECTRIC HEAT
All Types
Terms Can Be Arranged
FREE ESTIMATES
EMERGENCY PHONE
LE 7-4437

SPANAWAY ELECTRIC CONTRACTORS
Residential & Commercial Heating Specialists
LE 1-2127 LE 7-4792

JACK SHANK'S
Refrigeration Service
Parts & Service for All Makes
LE 7-0178

Ace Dirt Moving Co.
Building - Ditching
TOP SOIL - GRAVEL
SEPTIC TANKS and DRAIN FIELDS
Phone TH 5-2452

Parkland Heating Co.
All makes of furnaces for sale. Specializing in Williams OIL O MATICS; Oil, Gas, Hot Water Installations. Service; reasonable; 755 South 108th. Lenox 7-4045.

Stump Lifting - By special machine. Problem stumps a specialty. No powder, no dozer. Sandner, 6400 Fairview Road, Puyallup, LE 7-8897 LE 7-8156, LE 7-8885.

South End Auto Wreckers
USED PARTS - Motors, Transmissions, Tires, Batteries. We buy junk cars. Also Custom welding by Joe's Welding. 1 Mile East Roy on Mt. Hy. Spanaway LE 7-6534

FOUNDATIONS - New additions; free estimates. Financing. Work guaranteed. LE 1-2929.

CALL POCHEL FOR Expert T.V. Repair
Satisfaction Guaranteed
Free Tube Testing
140th & Pacific LE 7-8624

EXPERT Pruning and spraying. GL 8-3210, GL 8-3218; P. O. Box 316, Yelm.

DO YOU HAVE THIS TROUBLE?
CALL US
A B C ELECTRONICS
Garfield & C Streets
LE 7-4900

NEAT BEAUTY SHOP
GR 2-7628
6314 McKinley Avenue

Hot Water Heating Residential and Remodel Work
CORNELL PLUMBING & HEATING
LE 7-7293

ART'S SHOE SHOP
Shoes for the Entire Family
EXPERT SHOE REPAIRING
315 Garfield St.
Between 121st and 122nd
Opposite Parkland Postoffice

GEORGE PURDUE - Plumbing, Heating, New work, remodeling, repairs. Phone LE 7-4477.

ECONOMY KITCHENS
Remodeling - Roofing & Siding Foundations
LORD'S CONSTRUCTION CO., INC.
10426 Pacific Avenue. LE 7-5770

USED AUTO PARTS
SATISFACTION GUARANTEED
Bring This Ad For 10% Discount
GORDIE'S AUTO WRECKING
10620 Pacific Avenue
LE 7-5565 - LE 7-4443

FOR SALE - Heavy planer, enos, small and large joints, 10" x 14" FUEL, Puyallup TH 5-2857. 4ct

FIREPLACE ALDER WOOD, 818 cord delivered. LE 7-5479 after 5.

UPLAND SLAB WOOD, 2-cord load \$14; VI 7-7301, call collect. 4ct

Help Wanted 5
BECOME A BEAUTY ADVISOR for famous Hollywood Cosmetic Co. and earn up to \$3 an hour, full or part time. I will show you how. Your neighborhood. Call LE 7-3041.

Wanted To Buy 8
JUNK CARS, trucks, old farm machinery. GR 4-3829, LE 1-0319.

Real Estate 9

FERN REALTY
8234 Pac Ave. GR 4-0503
35 ACRES - Small house, good barn and feeding sheds, sprinkler irrigation system. This is good to see. Call Barney Barnard Gr 4-0503 or Yelm GI 8-3217.

ANDERSON ISLAND - 110' of western view waterfront. House completely furnished, double garage, 16' boat and 6 H.P. motor, all for \$8,500. \$500 down and \$60.00 per month. Call Mrs. Rabel Sk 2-8143 or LE 7-8661.

FERN REALTY
Main Office 8234 Pac. Ave. GR 4-0503
Summit Office 11208 East Leonard's Crossing - LE 7-8651

LIST WITH SUBURBAN
Home and Farm Specialists in South End Properties. Two offices open every day and evening for your convenience.

SUBURBAN REALTY, INC.
118th and Pacific, LE 7-8638
118th and Canyon, LE 7-0229
Member Multiple Listing Service & Tacoma Real Estate Board

Rentals 10
THREE large rooms with bath and utility room. \$40. LE 7-6097.

Repair Service 11
LAWN MOWER SERVICING
Bridges & Stratton, Clinton, Power Products & Lauson, Engine Parts and Repairs.
PARKLAND CYCLE & KEY
LE 7-5772, 11021 Pacific Ave. 11ct

WASHING MACHINE PARTS - Largest stock in town. Repairing all makes. Elmer Washer Service 3727 So. G. GR 4-9409. 11ct

Automotive 12
FOR SALE - One 1957 Chevrolet 2 door sedan, but you can take your choice from two cars. These are the Times Journal Publishing Co. cars, in top shape, and have had excellent care - grease jobs and oil change regularly - and like-new interiors. Will sell either for \$1295. See at The Times Journal Publishing Co., 1420 Pacific Avenue or phone LE 7-0223. 12ct

'50 CHEV STEEL WAGON. Rebuilt motor. Best offer over \$175. Grant, Box 353, Bath Road off Orting-Kapowsin Highway. 12ct

1959 FORDS AND CHEVROLETS - Wholesale prices. Bank terms. SMALLBY'S MOTORS, 10410 Pacific Ave. LE 7-4060 anytime. Open nights also. 12ct

Auto Glass Installed
Approved By All Insurance Companies
WE are Tacoma's authorized replacement center for - United Service Automobile Assoc., International Service Ins. Co., Government Employee's Ins. Co.

Seat Covers and Convertible Tops
ART'S GLASS & UPHOLSTERY CO.
709 Tacoma Ave. MA 7-2200

12A Foreign Cars
- ALL - FOREIGN CAR KEYS
107 Varieties
PARKLAND CYCLE & KEY
11021 Pacific Ave. LE 7-5772

Farm Column 13
BREED your cows artificially to sire proven great. Washington Proved Sire Service, dairy breeds - 7 best breeds. Summer UN 2-672, Yelm 351. 13ct

McCULLOUGH CHAIN SAWS; starting at \$145.45 (Terms) Pacific Saw & Knife, 224 Puyallup Ave., MA 7-2278. 13ct

EASTERN WASHINGTON HAY - By the bale, ton or truck load. A. Dove, Phone LE 1-2185. 13ct

DRY or GREEN SHAVINGS, upland slab and sawdust. SHAVING SUPPLY, LE 7-5787 after 5. 13ct

Work Wanted 14
BABY SITTING - Day care in licensed home. LE 7-5586. 14ct

EXPERIENCED woman wants housework and ironing. LE 7-3447. 14ct

WANTED - Baby sitting, your home or mine; 1812 South 120th. LE 1-0416. 14ct

Miscellaneous 15
READ & WEEP - Wife gone; no need now for nice KIRBY outfit worth \$150 but you can assume \$40 balance at \$5 each month. FREE TURKEYS on all purchases over \$100. Open till 9:00 p.m., evenings. UPTON ELECTRIC CO., 1148 Market St., FU 3-2551. 15ct

LEAVE MOVIE & KODACHROME SLIDE FILM AT QUALITY PHOTO for 2-1/2 hrs. 9518 Pacific Ave., LE 7-1271. 15ct

AKC REGISTERED Dachshund stud service, pedigrees. 1312 South 116th. 15ct

ATTENTION HOUSEWIVES - POCHEL'S are now the authorized dealers for Speed Queen washers, automatic or wringer type, and dryers. Come in and see them at 140th and Pacific Avenue. LE 7-8624.

STORKVILLE Baby Shop
Everything For Baby
Including Juvenile Furniture
9722 Pac. Ave. LE 7-4664

BICYCLES AND TRICYCLES, completely rebuilt, low price. Take trade regardless of condition. Spanaway Bargain Center, Across from Spanaway School. 15ct

FOR SALE - Player piano, good condition, \$175; sun lamp \$7.50; pressure pan \$7.50; whistling teakettle \$2.50; child's white chest of drawers \$6; LE 7-8660. 15ct

HOT DEAL on a wet, cold December day! Large refrigerator cut to only \$38; free delivery. FREE TURKEY on purchase over \$100. Open till 9:00 p.m. UPTON ELECTRIC CO., Market St., FU 3-2551. 15ct

FOR SALE - Large tricycle, \$5. Bed frame, baby play pen. LE 7-5369. 15ct

FOR SALE - Enrico Rosellini accordion, 120 bass, 2 switch; with case. Cost new \$350. Set for \$70. JU 8-2005. 15ct

BABY FURNITURE, Radios, Small Appliances. Low prices. Spanaway Bargain Center, Across from Spanaway School. 15ct

FOR SALE - Baby stroller just like new. Cost \$32.50. Sell for \$10. Brown velvet coat, cost \$75. Sell for \$7.50. Brown water repellent coat, cost \$24.50, sell for \$5. LE 7-6206. 15ct

FOR SALE - Hoffman 17-inch table model TV set, FREE radio, phonograph and 10-inch TV. \$50. Singer sewing machine, cabinet model, \$15. Shick electric shaver, navy, \$10. LE 7-9253. 15ct

ELECTROLUX
UNABLE to pay \$29 balance due assume \$5 monthly payments and save yourself! FREE TURKEY on purchase of over \$100. Open till 9:00 p.m. UPTON ELECTRIC CO., 1148 Market St., FU 3-2551. 15ct

CERAMICS
POUR YOUR OWN FREE LESSONS
DOE'S CERAMIC COTTAGE
120th & A St. LE 1-0833

BED, FULL SIZE with coil springs. All for \$9.50. Oil heater, practically new. \$35. Radios, \$4 up. Spanaway Bargain Center, Across from Spanaway School. 15ct

WILL SWAP - Auto zig zag sewing machine for refrigerator or washing machine. GR 2-4246. 15ct

BOSTON TERRIER puppies for sale; also stud service. LE 7-8897. 15ct

TRANSISTOR RADIOS half price, limited quantity. FREE TURKEY on purchase over \$100. Open till 9:00 p.m. UPTON ELECTRIC CO., 1148 Market St., FU 3-2551. 15ct

Ace Dirt Moving Co.
BULLDOZING DITCHING
GRAVEL TOP SOIL - SEPTIC TANKS DRAIN FIELDS
1750 9th St. S. W., Puyallup
Phone Puyallup TH 5-2452

FOR SALE - Girl's bicycle with trainer wheel, good condition, \$7.50. LE 7-7948. 15ct

SPECIAL ORDER CAKES - Phone LE 7-8330. P.atty Ann Bakery. 15ct

BABY FURNITURE - New and used. For sale or rent. SMALL FLY EX-JHANGB, 1100 Market St., BU 2-9505. 15 ct

ANITA'S KENNELS - Boston Terrier puppies and stud service. Maltese puppies and stud service. 14208 Pacific Avenue, Tacoma; LE 7-7485. 15ct

WANTED - Cameras and photographic equipment for resale. QUALITY PHOTO SERVICE, 9313 Pacific, LE 7-1271. 15ct

\$50 CASH REWARD if you catch me out of AIRWAY bags; 1950s, parts, repairs for all cleaners. FREE TURKEYS on all purchases over \$100. Open till 9:00 p.m. UPTON ELECTRIC CO., 1148 Market St., FU 3-2551. 15ct

PARKLAND FURNITURE - New and used miscellaneous. Airport and Pacific Ave. Residence phone LE 7-8748. 15ct

STAMPS FOR COLLECTORS, all countries. Also penny approvals. JU 8-0777. 15ct

Horses & Equip 16
HORSESHOEING, Breaking, Training, Gaiting, etc., made and repaired. GR 5-0711 or WA 7-1000. 16ct

Aviation 17
FREE - FIRST FLYING LESSON
LEARN TO FLY - \$10 A WEEK
New and Used Aircraft Sales
TACOMA FLYING SERVICE
Spanaway Airport LE 1-0442
17ct

Schools 18
NIGHT SCHOOL, enroll now.
Call MA 7-2181
KNAPP BUSINESS COLLEGE
10th & Pacific 18ct

LEGAL NOTICES
BUILDING TO BE MOVED OR RAZED
FOR SALE AT AUCTION
10:00 A. M., Tacoma, December 21, 1959
-Story Five House, Attached Garage at 1206 South 109th.
By the State of Washington, Department of Highways, to the highest and best bidder:
The above listed parcel will be offered for sale at public auction on December 21, 1959, starting at 10:00 A. M., at the site of the property. Purchaser is required to MAKE PAYMENT IN FULL AT THE TIME OF SALE and to remove purchased items and resultant debris from State Highway properly by February 21, 1960, complying with all Federal, State or Local laws and ordinances that may apply, otherwise the purchaser shall forfeit all rights to such improvements and all payments made therefor. Further, the purchaser shall indemnify and save the State harmless from any and all claims occasioned by said removal. The State reserves the right to withdraw any parcel from the sale and to reject any and all bids.
Published in the Times Journal, Dec. 10, 17, 1959.
Parcel No. 16832

Monte Vista
The Monte Vista Garden club is meeting at the home of Mrs. Eugene Ahrendt Thursday, Dec. 17, at 12:30. Mrs. Charles Evans assisting. Christmas decorations for show are displayed in five categories - Religious, Children, Candles, Swags and Contemporary.
Home baked goodies, with their recipes, are used in the gift exchange. "Christmas Custom in Our Home" is the roll call theme.

Whatever You Want to BUY or RENT SELL or HIRE
Call Us for Free Information
WA 2-5454
TRADER STEVE'S AD-MARKETS
Suite 8 Century Bldg.
Fife Square
Tacoma 22, Washington

TV's that work good as low as \$39; nice choice. Inquire about our 25c-each-day meter. FREE TURKEY on purchase over \$100. Open nights till 9:00 p.m. UPTON ELECTRIC CO., 1148 Market St., FU 3-2551. 15ct

FOR SALE - Player piano, good condition, \$175; sun lamp \$7.50; pressure pan \$7.50; whistling teakettle \$2.50; child's white chest of drawers \$6; LE 7-8660. 15ct

HOT DEAL on a wet, cold December day! Large refrigerator cut to only \$38; free delivery. FREE TURKEY on purchase over \$100. Open till 9:00 p.m. UPTON ELECTRIC CO., Market St., FU 3-2551. 15ct

FOR SALE - Large tricycle, \$5. Bed frame, baby play pen. LE 7-5369. 15ct

FOR SALE - Enrico Rosellini accordion, 120 bass, 2 switch; with case. Cost new \$350. Set for \$70. JU 8-2005. 15ct

BABY FURNITURE, Radios, Small Appliances. Low prices. Spanaway Bargain Center, Across from Spanaway School. 15ct

FOR SALE - Baby stroller just like new. Cost \$32.50. Sell for \$10. Brown velvet coat, cost \$75. Sell for \$7.50. Brown water repellent coat, cost \$24.50, sell for \$5. LE 7-6206. 15ct

FOR SALE - Hoffman 17-inch table model TV set, FREE radio, phonograph and 10-inch TV. \$50. Singer sewing machine, cabinet model, \$15. Shick electric shaver, navy, \$10. LE 7-9253. 15ct

Happy Holiday Eating
DUCKS, TURKEYS, GEESE, ROASTING CHICKENS, & CORNISH GAME HENS

Fancy Bulk Mixed Nuts Lb. 39c	Aunt Jemima Pancake Flour Pay 55c Get Back 75c
Holiday Mix Hard Candy 2-Lb. Bag 59c	2-Lb. Box Krispy Crackers 49c
Good & Choice LEG O' LAMB Lb. 69c	
Stock up for the Holidays	1/2-Gal. Powdered or Brown Dairysweet
Ice Cream 69c	Sugar 2 pkgs. 29c
No Waste SIRLOIN TIP ROAST Lb. 79c	
Maxwell House Coffee Lb. 69c	Orangeade HI-C 3 for 79c
2 Pounds \$1.37	
Our Own Make LITTLE PIG SAUSAGE Lb. 49c	
Unbleached Walnuts 3 Lbs. \$1	Fancy Navel 40-lb. Box Oranges \$2.98
Fiesta BONELESS HAM Lb. 75c	
Yams or Sweets Lb. 10c	California Green Onions or 2 Bunches Radishes 13c
Crisp California, Stalk Celery 10c	Dept Agric. OK'd 1-lb. Box Cranberries 19c
Well Aged T-Bone Steak Lb. 69c	Our Own Make Rolla Poulsen, Salami Liverwurst, Bologna
SIRLOIN STEAK Lb. 59c	
HERMANS FOOD STORE 162nd & Park Ave. Spanaway (Right to Limit Reserved)	

Flying American Legion News

Another member of the Flying Signalers has successfully made his first solo flight. Jerry McCullough, has joined his mother and dad in making a "flying family". Jerry soloed the Champ under the supervision of Slim Lawson.

The Flying Signalers had their annual Christmas Party last Thursday. This is a very active flying club as well as being compatible socially.

Wes Hanson, a member of the Flying Signalers as well as a part time employ of Tacoma Flying Service, just returned from three months mechanical training at Fort Rucker, Alabama. Welcome home, Wes.

Jerry Hedlund, of Tacoma Flying Service and Don Norris, of the Northwest Flyer, attended the Washington State Aviation Association Annual Convention in Seattle last Thursday.

A solo cross-country training flight to Port Angeles and return was made by Del Smith.

Saturday, December 19th is the Western Travelers' annual Christmas Party. The party is to be at Wellman's for all members and their invited friends.

Wishing everyone a Merry Christmas and a Happy New Year.

Birdie Ingham, publicity

Parkland Post No. 228, American Legion, and the Auxiliary have been notified that Santa Claus will be at Sunshine hall Friday, Dec. 18, starting at 7:30 p.m. There will also be entertainment.

Xmas Tree Sale
Troop 29, Fern Hill Boy Scouts, are selling Christmas trees at Woody's TV Shop, 99th and Park, to raise money to send delegates to the National Jamboree at Colorado Springs in July. Dave Stokesberry, Scoutmaster of the troop, is one of those chosen from this area to attend the Jamboree.

SAVE BY MAIL!

WE PAY THE POSTAGE BOTH WAYS!

11th and PACIFIC LAKEWOOD at VILLA PLAZA

A MUTUAL SAVINGS INSTITUTION

Pacific Federal Savings and Loan Association
BELLINGHAM, SEATTLE, TACOMA, EVERETT, PORTLAND, COVING

Lute Jerstad, shown above, who teaches English and is the drama instructor at Franklin Pierce, will see plenty of action Saturday evening at 8:00 in the Cardinal gymnasium. He'll join former teammates Rog Iverson and Tim Beck of the Tacoma Athletics in their season debut against Ft. Lewis. Tipoff time for opener is 8:15 with a 6:30 preliminary featuring the Franklin Pierce grade school teams also slated.

WEIR'S CARRY THE FULL LINE OF G.E. RADIOS

Prices \$21.95 Start At

WEIR'S CORNER
8419 PORTLAND AVENUE LEnox 7-0231

OPEN 9 'TIL 9 (SAT. 'TIL 6)

The ghost bat is regarded with superstition by the Australian aborigines because its wings and fur are white and it feeds on other bats.

Fruitland Grange Christmas Party

Fruitland Grange is having a Christmas party Dec. 18th. It is to be a pot-luck dinner starting at 6:30 p.m. after which there will be a program and Santa Claus for the children. All members are cordially invited to come and bring their family.

The Wishing Well Gift Shop
Unusual and Hand-Made Gifts
(At Roxbury Kennels)
10603 Portland Ave. LE 1-2262

Make It a Gift of Sporting Goods

AT PRESBA'S SPORTING & GIFT SHOP
Say Merry Christmas With
FINE FISHING ITEMS — HUNTING SUPPLIES
ATHLETIC AND CAMPING EQUIPMENT
ALSO... MAY WE SUGGEST —
GLASSWARE AND BARBECUE SUPPLIES
12816 Pacific Avenue LE 1-2131



treat yourself to a prepaid Christmas next year

join our popular Christmas Club

Deposit from 50c to \$10 a week, and 50 weeks later we'll hand you a check big enough to take care of your 1960 Christmas shopping. Join now!

84TH & PACIFIC OFFICE

PUGET SOUND NATIONAL BANK
CONVENIENT NEIGHBORHOOD OFFICES • FREE CUSTOMER PARKING
MEMBER-FDIC

Athletics To Debut At Pierce Saturday

Franklin Pierce's Key Club will present one of the highlights of the basketball season in the Parkland area Saturday night when the Tacoma Athletics meet the improving and powerful Ft. Lewis Chieftains. Tipoff time for the cage struggle is 8:15 at the Franklin Pierce gym.

The Chieftains feature two former All-American stars and are expected to be "up" for the game against Tacoma's prize players of the past seven years. Fred Diehl of Colorado State and Owne Lawson of Western Kentucky are two soldiers with many rave notices and mention in college.

Rog Iverson and Jim Van Beek, who need no introduction to Parkland area fans, lead the Athletics who are coached by Warren Moyles. Moyles, three times an all-

CYCOLOGY SETS



THEY SAY THE BRAIN IS Dullest AFTER A HEAVY MEAL - PROOF! AFTER-DINNER SPEAKERS

LAST MINUTE SHOPPERS

Fireplace Screen...19.95
Comb. Storm and Screen Door w/z Bar...39.95
Come in and See the Remarkable Pyroceraan Cookware
Prices Start at 3.95
Start a Set for Xmas

Parkland Hardware
We Give Friendly Service and Sell Quality
ASHLEY THERMOSTATIC CONTROLLED WOOD HEATERS
(ACROSS FROM PIGGLY WIGLY)
12169 PACIFIC AVE. • PARKLAND
Phone LE-7-3171

AAU player, also plays but will be unavailable Saturday.
Along with Iverson at guard will be either Don Moseid or Lute Jerstad. The latter may get the call since he's a teacher at Pierce and will be performing for the home folks. Moseid is a product of Seattle University and the College of Puget Sound.

Moseid and Iverson were stand-out guards in 1954 at Stadium and Lincoln and later at college. Many consider them the two finest guards in modern Tacoma history. Fans will be treated to an all-grade school preliminary in the 6:30 headliner. Key Cub advisor Al Schimke said he hopes that the fans will support the game as it is a benefit and service project of the Kiwanis-sponsored organization.

Others on the Tacoma Athletic Commission five are Dennis Vermillion of Gonzaga, Tom Nmes of CPS and Tom Sahli and Nick Kelderman of Pacific Lutheran.
—From Ron Frank

Air Force Lt. Donald G. Dickinson, son of Mr. and Mrs. Harley O. Dickinson of 861 So. 107th St., recently piloted a Super Sabre jet non-stop across the Atlantic. The mission, "Operation Spearhead," was one of the largest exercises of fighter aircraft performed by the Tactical Air Command.

Pack Meeting Friday

Cub Scouts No. 133 will hold a Pack meeting Dec. 18 at Trinity Lutheran parish house.

The adult committee meeting will be held Jan. 11 at 7:00 p.m. in the Friendship room. Parents are urged to attend to help plan

the next month's activities. Den No. 3 holds this month's attendance record; others dens are trying for next month's honors. How about it, parents — see if your boy's den can get the attendance award next time!
Clem Bjork, secretary

It's Egg Nog Season!

Medosweet's holiday special — Egg Nog with that home-made flavor is now ready at your store or from your driver.

Use just as it comes from the carton, or dilute to taste with Medosweet Homogenized Milk. Welcome your holiday guests with Egg Nog drinks. The small-fry love it, too. And don't forget it makes a delicious pie filling. At your store, at your door — Medosweet Egg Nog!

Medosweet

TASTY TREATS FOR A Merry Christmas FEAST

Prices Effective For 7 DAYS
Thur. thru Wed.

FROZEN TURKEYS
TOMS 16 to 22 Lb. Ave. Lb. 49c
HENS 12 to 15 Lb. Ave. Lb. 53c
Fresh Turkeys on Order Only

GROUND BEEF 3 lbs. 89c
FRESH GROUND HOURLY

"SHINN'S" FRESH EGGS
AA Large Doz. 45c

FOR YOUR CHRISTMAS BAKING
PURE LARD 2 Lbs. 29c

FRESH FROM THE BEDS — Medium
OYSTERS 12-Oz. Jar 49c

EASTERN GRAIN FED PORK
LOIN ROAST Lb. 33c

HORMEL VALUE BRAND
SLICED BACON Lb. 29c

TENDER
STEAKS Round, Loin, Rib Lb. 69c

LEAN, EASTERN GRAIN FED
PORK CHOPS Lb. 53c

LEAN TENDER BEEF
POT ROAST Lb. 39c

HORMEL — Shank Portion
HAM Pre-Cooked Lb. 39c

SHURFINE LARGE OLIVES
No. 1 Tin 25c

KITCHEN QUEEN FLOUR
10-lb. Bag 79c

MARGARINE Tastewell POUND 15c

MAYONNAISE Durkees Freezer Jar 39c

MINCEMEAT OR PUMPKIN
PIES 1-Lb., 8-Oz. Libby's Each 39c

BALLARD BISCUITS
Pkg. 10c

GIANT TIDE
Pkg. 69c

MINCEMEAT NONESUCH 1-Lb., 12-Oz. Jar 39c

SWEET POTATOES 2 lbs. 19c

US 1 NETTED GEM POTATOES
10-Lb. Bag 49c
Golden Ripe BANANAS 2 Lbs. 25c

CALIFORNIA ORANGES
5-Lb. Bag
GRAPEFRUIT
8-Lb. Bag
YOUR CHOICE 49c



COME IN FOR A REAL WESTERN TREAT

(From Western Italy)
SPAGHETTI DINNER 1.10
Solid, Dinner Roll, Coffee, Grated Italian Cheese and Meat Sauce Seasoned to Perfection
HOME MADE PIES
8413 Pacific Avenue Brandin' Iron Restaurant 757 So. 38th Dorothy Snover, Mgr.



GIVE HIM TOOLS FOR CHRISTMAS!
Nice Assortment of Small Appliances and Housewares
LUMBER, ALL GRADES
PAINTS - GLASS - HARDWARE
SLAB WOOD
BASKETT LUMBER CO.
9701 Portland Avenue LE 7-5844

YOU'LL FIND EVERYTHING ON YOUR GOOD SELECTION OF TOYS

DISNEYLAND GAMES
Regular 98c 79c

BULLDOG TANKS
SPECIAL \$9.95

WELLS FARGO GUN SET 4.69

- TRICYCLES
- BICYCLES
- WAGONS
- PEDAL CARS
- LIONEL TRAINS



FOR THE WHOLE FAMILY
ELECTRIC Organ \$67.95
SKYSCRAPER BUILDING SETS \$6.29

Parkland Western Auto
11108 PACIFIC AVENUE LEnox 7-3112

OPEN SUNDAYS
KITCHEN'S
EVERYDAY LOW PRICES
Right to Limit
Open 9 a.m. 'Til 10 p.m. Daily
10 a.m. 'Til 9 p.m. Sundays
12208 Pacific Ave.
Prices Effective Thurs., Fri., Sat., Sun., Mon., Tues. & Wed.

NALLEY'S 11-Oz. Jar SWEET PICKLES 29c
OCEAN SPRAY 303 Tin 19c
CRANBERRIES 39c
MIXED NUTS Lb. 39c
VET'S DOG FOOD No. 1 Tins 14 / 1.00

It won't be long now!



...save time!
shop-
Piggly Wiggly

JOHNSTON'S
FRESH FROZEN
PIES
• Mince
• Pumpkin
• Apple
• Peach
• Boysenberry
Ea. **39¢**

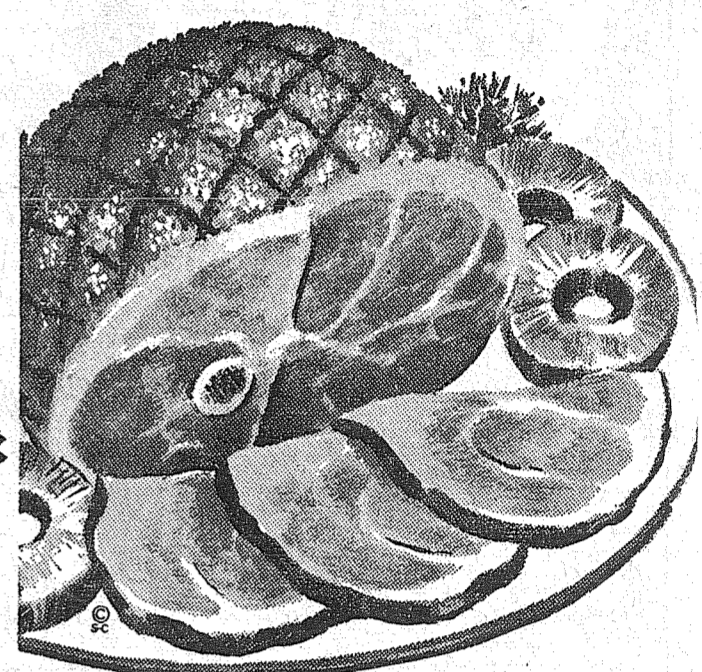
JACK 'N BEAN STALK

PUMPKIN
LARGE
NO. 2 1/2
CAN **10¢**
(3 No. 303
Cans 23¢)

TURKEYS **47¢**
Lynden Brand, Finest Wash-
ington Grown. 17- to 24-lb.
Average. Grade "A", U.S. In-
spected.
Hen Turkeys Lynden, 11 to
14-lb. avg., LB. **49¢**
"A", U.S. INSPECTED

HAMS

• Hormel's Finest
14- to 16-lb. Avg.
Shank Half
43¢
lb.



HILLS BROS. (Hills Bros. Instant, 10-oz. 1.39)
COFFEE (2-lb. can 1.14) **57¢**
1-LB. CAN

GRADE A STRICTLY FRESH
LARGE EGGS .. DOZ. **45¢**

PLYMOUTH—PIGGY WIGGLY'S OWN
MARGARINE .. CTN. **15¢**

CENTENNIAL SILK-SIFTED
FLOUR .. A BIG 10-LB. **79¢**
SAVING! .. BAG

DUCHESS FRUIT
COCKTAIL No. 303 **19¢**
CAN

WELCOME—ALL FLAVORS
ICE CREAM .. 1/2 **59¢**
GAL.

PACIFIC PEARL TINY
SHRIMP 4 1/2-oz. **33¢**
CAN

B & W FANCY MIXED
NUTS 1-LB. **49¢**
PKG.

VALLEY'S
TANG .. QT. **43¢**
JAR

For Holiday Baking!
BISQUICK 40-Oz. **35¢**
Pkg.
WALDORF—Asst. Colors
TISSUE 4-Roll **33¢**
Pack
SCOTT—Family White
NAPKINS 60-Count **10¢**
Package
NALLEY'S Sweet
PICKLES (24-Oz. 11-Oz. **29¢**
Jar 49¢) Jar
NALLEY'S
MINCEMEAT 28-Oz. **39¢**
Jar
IMPERIAL
MARGARINE 1-lb. **39¢**
Ctn.
CHOCOLATE or Strawberry
LUCKY WHIP REGULAR **49¢**
Can
GOOD LUCK
MARGARINE 2 1-lb. **55¢**
Ctns.
LOG CABIN
SYRUP 24-oz. Bottle **59¢**
MINUTE SLICED
POTATOES 8-oz. **39¢**
Pkg.
FACIAL TISSUE
SCOTTIES Pkg. of **29¢**
400

HORMEL'S FINEST
BUTT PORTION
OR WHOLE
Ham lb. **47¢**

GROUND BEEF 3 lbs. **99¢**

Piggly Wiggly's Own Lean Fresh Ground Beef.
Our customers say it's the "Best in Town!"

SPARE-RIBS
Fresh Small
Lean Tender
lb. **39¢**

ANOTHER HYGRADE BEEF SALE
RIB STEAKS 7-Inch **79¢**
Cut..... lb.
ROUND STEAK Full **79¢**
Cut..... lb.
RUMP ROAST Tender, **79¢**
Juicy..... lb.
SIRLOIN TIP STEAKS lb. **89¢**

SWIFT'S
PREMIUM
SLICED BACON
REGULAR OR
THICK SLICED
lb. **39¢**



CANNED MILK 3 TALL **43¢**
DARIGOLD 3 CANS
CARNATION Pkg. **69¢**
INST. MILK 8 Qts. Makes
SPERRY Pancake, Waffle **49¢**
FLOUR 4-lb. BAG
SCOTT Paper Asstd. 2 REG. **43¢**
TOWELS Colors 2 SIZE
NABISCO, Rye, Wheat, Triangle, Vegetable **35¢**
THIN SNACK CRACKERS PKG.
S & W—1-lb. Bag **49¢**
WALNUTS

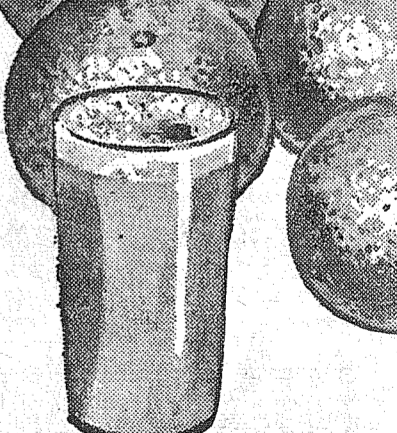
IDEAL TOPPING **47¢**
DREAM WHIP 4-oz.
ANOTHER VALUE! **45¢**
MINUTE RICE 13-oz. PKG.
REYNOLDS Aluminum 25-Ft. **59¢**
FOIL 18-INCH ROLL
CUT RITE **29¢**
WAX PAPER 125-Ft. ROLL
SUNSHINE Party Mix **49¢**
CANDY 26-oz. PKG.
WHITE STAR CHUNK **33¢**
TUNA No. 1/2 CAN

SWANS DOWN
CAKE MIXES
WHITE, YELLOW,
DEVILSFOOD,
BUTTERSQUASH,
APPLE CHIP, LEMON
FLAKE, CHOC. CHIP,
BANANA, MAPLE,
POUND, ORANGE
COCONUT
3 PKGS. **89¢**

**Specials in Our
Fife Hardware Dept.**
RADIO SUPER WAGON
7" Double Disc Wheels
With 1 1/4" Super Balloon **\$6.95**
Tires. Reg. 8.70.....
RADIO FLYER WAGON
10" Double Disc Wheels
With 1 1/4" Semi-Inflated
Tires. Reg. 13.90..... **\$9.95**
FIRE EXTINGUISHER \$10.50
1-Qt. Pyrene. Reg. 17.50
9" PYREX PIE PLATE 27¢
Reg. 39c. Special

ORANGES
Sunkist, Full of Juice

5-lb. Bag 49¢



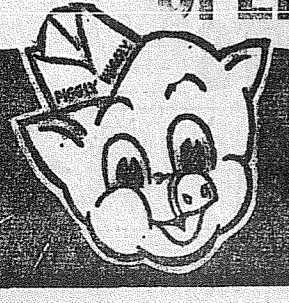
Sweet
POTATOES
U.S. No. 1
Jerseys..... **9¢**

ROMAINE
For Holiday
Salads
Head..... **15¢**

Arizona
GRAPEFRUIT
8-lb. Cello **45¢**
Bag

VAN DE KAMP CHOCOLATES
1-lb. Box (Reg. 1.39) **1.19**
2-lb. Box (Reg. 2.69) **2.29**
Poultry Dressing Special.. **49¢**
Pecan Loaf Special..... **53¢**
Lemon Sponge 4-LAYER **93¢**
CAKE
Christmas Cup Cakes 5/49¢
Van de Kamp's
SPECIALS
famous for
QUALITY • FRESHNESS
VARIETY • CONVENIENCE
Van de Kamp's
BAKERIES

Prices Effective Thurs., Fri., Sat., Dec. 17, 18, 19 RIGHT TO LIMIT RESERVED
OPEN 9 A.M. to 10 P.M. | PUYALLUP 1010 EAST MAIN | FIFE Formerly ANDRE'S MARKET | SO. TACOMA 5252 SO. WASHINGTON | PARKLAND PACIFIC AT GARFIELD | 40th & Portland Ave. TACOMA



PIGGY WIGGLY for QUALITY