

The TIMES JOURNAL

THURSDAY, JANUARY 19, 1961 • VOL 16, NO. 20 • PUBLISHED AT PARKLAND, WASH. LE 7-0223

BULK RATE
U. S. Postage Paid
Permit No. 92
Parkland Branch
Tacoma, Wash.

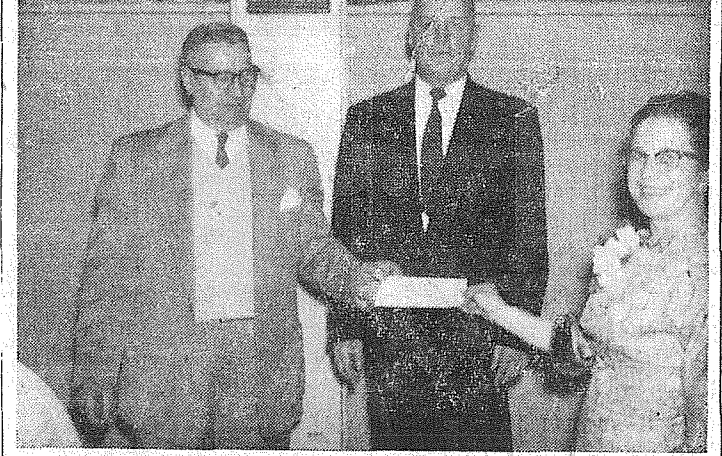
Rural Route
Occupant or Boxholder
Postmaster: If unable
to deliver, return post-
age is guaranteed on
addressed papers.

FP DAFFODIL PRINCESS



Ann Bluhm, Franklin Pierce Daffodil princess for 1961, is being congratulated by Wes McKewen, president of the Parkland business club. Miss Bluhm was selected by five local judges, Mary Tommervik, Verne Ashford, Mrs. McKewen, Stella Jacobs, and Dr. Theodore Karl. She and her usherettes, Melody Martin and Wanda Steffeldt, were chosen from a field of 12 girls, all of whom had to be seniors with at least a 3.00 grade average. Miss Bluhm will compete with girls yet to be chosen from surrounding communities for the honor of becoming Daffodil Queen of 1961. (McKewen Studio photo.)

\$1,000 CHECK PRESENTED



Mrs. Robert Rhone, past president of Spanaway Fire Dept. Auxiliary, hands a check for \$1000 from the auxiliary to Bill Rignetti, Spanaway fire commissioner, as Harold Hillman looks on. The check was for the laying of the floors in the new edition of the Spanaway Fire Department. (McKewen Studio photo.)

A Christmas present that came a little late was presented to the Spanaway Fire Department recently. The members didn't mind the late arrival, however, as the gift was well worth waiting for. It was a check for \$1000, presented on behalf of the Spanaway Fire Dept. Auxiliary by Mrs. Robert Rhone, past president. The auxiliary, which has done a great deal to help the department in the past, presented the check to Bill Rignetti and Harold Hillman, Spanaway Fire District commissioners.

New Bank In Parkland Area

In the near future, residents of the South End area will find a new bank open for their convenience at the corner of Garfield and C Street.

New Branch
The Puget Sound National Bank, realizing the need for a bank further out in the South End area, has decided to install a branch in the Parkland Center Building, in the area where Johnson's Drug used to be.

Lease Soon
The lease will be signed with Peggy Grattis, owner of the building, within the next few days. As soon as it is signed, the remodeling and construction necessary to convert the site for full banking facilities will begin.

Ready in February
The bank should be ready for public use by the end of February, although work will not be entirely completed. Since it will naturally take longer to fully adapt the site to the proper condition, the bank feels that the public will appreciate being able to use the new branch as soon as possible, rather than waiting for the finishing touches to be added.

SHOP & SAVE at BROOKDALE LUMBER CO.

REJECT 5x9 3/4 PING PONG TOPS \$7.64

COMPOSITION SHINGLES
Individuals.
Close Out — Odd Colors Per \$2.50 Bdle. \$2

PRE-FINISHED MAHOGANY PANEL 4x8 \$4.95 Ea.

4x8x1/8" Masonite Type HARDBOARD \$2.56 Ea.

4x6x3/4" BIRCH POPS For Cabinets \$7.20 Ea.

2x4x8' ECONOMY STUDS Ea. 24¢ & 15¢

1x6 Economy CEDAR SHEATHING You Haul \$35.00 Per M.

Unsanded PLYWOOD BLOWS 4x8x3/4" \$3.20 Ea. 4x8x3/8" \$2.88 Ea. 4x8x3/8" \$2.24 Ea.

PLUMBING AND WIRING SUPPLIES

BROOKDALE LUMBER COMPANY 136th & Pacific LE 7-8669

WINTER COMFORT

LE 7-8173
LAPENSKI FUEL COMPANY

JANUARY CLEARANCE SALE

ART'S SHOE SHOP
Across From Parkland PO
LE 7-8771

The Country Parson

"Some church members have a hard time remembering accurately how little they've put in through the year by... they get income tax forms."

IS YOUR HOME High, Wide & Handsome?
It can look lower and narrower with paint from

PETERSON COLOR CENTER
LE 1-0711 Hours: 10 to 9 11000 Pacific Ave.

PROFESSIONAL DIRECTORY
Farmers Mutual of Enumclaw Fire — Auto
ED MAREK
12909 Pacific Ave. LE 7-4000

WMA AUTO CLUB FRANKLIN LIFE INS.
Represented By
R. O. SANDQUIST
9702 So. Patterson LE 7-6979

SAVE 50 TO 75% ON FUEL
ASHLEY AUTOMATIC WOOD STOVES
FREE INSTALLATION
WRIGHT POWER BLADE SAWS
PARKLAND HARDWARE
12169 PACIFIC AVE. LE 7-3171

CANYON

READY MIX CONCRETE COMPANY
72ND & CANYON ROAD LE 7-3943

WE GIVE PERSONALIZED SERVICE TO ALL OUR CUSTOMERS

WHETHER IT'S FOR A STEP, SIDEWALK OR FOUNDATION ALL DAY SATURDAY DELIVERY

WHEELBARROWS — FLOATS — CONCRETE TOOLS FURNISHED FREE

One Call Does It All ALL TRUCKS ARE RADIO DISPATCHED
After 6 P.M. Call LE 1-0095

HEAVY DATE? ANNIVERSARY?

WHAT EVER THE OCCASION LOOK YOUR BEST

Have Your Clothes Cleaned By

PARKLAND CLEANERS
11004 Pacific Avenue North of the Bank Corner
LEnox 7-3221

TRUST US WITH ALL YOUR DRY CLEANING!

FAST PERSONALIZED SERVICE WE PICK UP AND DELIVER

Paper Boy Route Service Expanding, Calls Appreciated

In November the Times Journal announced plans for the use of paper boys to help improve our delivery service.

We are now happy to announce that 18 routes have already been established, with paper boys delivering in areas from 111th to 143rd, and from Ainsworth to East "F" Street.

Larger Service Planned
Eventually we plan to add enough new routes to extend service to practically all of the Parkland-Spanaway area.

Let Us Know
Bob Gunn, circulation manager, has announced hopes that "anyone not receiving a paper at any time will call the Times Journal immediately and leave their name and address. In that way we may remedy the situation as soon as possible."

Don't Hesitate
"If by some chance you are not receiving your paper in the proper place, or if you happen to receive more than one copy of the same issue, please don't hesitate to call us," Gunn added. "Only with the cooperation of the public can we expect to offer the best service possible, as fast as possible."

Local M/Sgt. Will Serve Inauguration

PORT RILEY, Kan. (AHTNC — Army M-Sgt. Paul W. Svith, son of the Rev. H. N. Svith, 7302 S. Park Ave., Tacoma, Wash., recently was designated to be a member of the 400-man Armed Forces Honor Guard scheduled to serve during inauguration ceremonies for President-elect John F. Kennedy in Washington, D. C., tomorrow.

Sergeant Svith is one of the outstanding soldiers selected to represent the Army on the honor guard. His selection was based on his soldierly appearance, military bearing and performance of duty. The honor guard will consist of approximately 100 men from each of the armed services.

Before departing for Washington, the 33-year-old soldier received three days of briefings on the duties he will perform at the ceremonies, dinners and other events during the inauguration.

Svith is regularly assigned as non-commissioned officer in charge of the Division Engineer Section at Fort Riley, Kan. He entered the Army in August 1945 and was last stationed on Guam.

The son of Mrs. Edna M. Svith, Somers, Mont., he attended Chemawa (Ore.) Indian School. His wife, Doris, lives with him at Fort Riley, Kan.

Midland Library Needs Improvement

The Midland branch of the Pierce County Library has had an exchange of several hundred books. If they don't have a particular book, they can get whatever is desired.

The Midland library is in the same situation as the Parkland library, (Times Journal, Jan. 12), with the exception that the Midland branch has no sponsor.

Everything concerning the care of the building and library has been up to the lady who is custodian. She was hired by the county to act as librarian, but for the past nine years has been janitor, jack of all trades.

Right now, a sponsor and library board are needed to help the library function properly.

The Midland Library is located in the Midland school grounds and has the following hours: Monday 1-5, Wed. 1-5, 7-9, Friday, 1-5, closed holidays.

HILLTOP CONCRETE CO.

LOOK FOR THE BIG "H" THE SIGN OF SERVICE

Use Ready-Mixed CONCRETE

CALL US FOR DRIVEWAY GRAVEL

WINTERIZED CONCRETE AND THESE QUALITY ITEMS

- Sack Cement
- Washed Sand
- Washed Gravel
- Drain Gravel
- Crushed Rock
- 3/8" Beach Gravel
- Select Pit Run
- Fill Dirt

Plant: 2223 - 23rd Ave. S.E. PUYALLUP TH 5-9525 P.O. Box 648, Puyallup TACOMA FU 3-3624

READY-MIX ORDERS DELIVERED 'TIL NOON SATURDAY

Open 7 Days A Week Winter Hours Sun. 9 to 4
HUNTING & FISHING LICENSES, SPORTING GOODS, PAINT
SOUTH END PLUMBING AND HARDWARE
185th & Pacific Avenue Phone LEnox 7-4100

WEEK END SPECIALS

WOMEN'S CORDUROY CAPRIS 1.29
Solid Colors
Red, Black, Antelope
1 Pocket with Matching Belt
Sizes 10 to 18 Reg. 2.49

LITTLE BOYS' FLANNEL SHIRTS 49¢
Medium Weight
Mostly Checked Patterns
Sizes 3 to 6 Reg. 88¢

LITTLE BOYS' — SETS PANTS & SHIRT 1.29
Corduroy Flannel Lined Pants
And Flannel Shirt to Match
Sizes 2 to 6 Reg. 1.99

MEN'S FLANNEL WORK SHIRTS 1.00
Plaids and Checks
Sizes Small, Medium, Large Reg. 1.49

MEN'S WINTER SPORT JACKETS 6.98
Quilted, Lined,
2 Slash Pockets, Zipper Front
Sizes 36 to 46 Reg. 9.98

MEN'S LONG SLEEVE SPORT SHIRTS 1.99
Wash and Wear
Plaids, Checks and Plain Colors Reg. 2.98

Shop Daily 9 to 9—Every Sunday 10 to 6
9714 Pacific Avenue

SEYMOUR'S

SELF SERVICE DRY CLEANING

8 LBS. \$1.50

An average load could be either of these or combination.

MAMA BEAR LAUNDROMAT

134TH AND PACIFIC AVENUE IN BIG BEAR PARKING LOT

10-SWEATERS
6-SKIRTS
6-TROUSERS
2-LONG COATS

This New Home Features "RHEEM" GAS HEAT

SOLD!
Wise home buyers get quality and economy with a **RHEEM Gas Furnace!**

A model for every need and purse

GAS HEAT IS: • Safe • Economical • Dependable • Clean

Nothing Down . . . 3 Years to Pay
Pay NOTHING Till April

CALL FU 3-5544

BOWMAN-WALESBY
Heating Pierce County For Over A Quarter of a Century
1708 SIXTH AVENUE

Over 130 Million Phones In Use

Telephone users here cannot get through to Basutoland, Iml, Swaziland, Christmas Island or a few other remote spots. But they can reach more than 130 million other telephones around the world and these represent more than 3 percent of all the phones on earth, according to Pacific Telephone Northwest manager J. R. Olson.

The 1960 edition of "The World's Telephones," released recently by the American Telephone and Telegraph Company, parent company of Pacific Telephone Northwest, reports that in 1959 the number of phone in the world rose to 133.6 million, a gain of almost 9 million over the previous year. More than half of these phones are in the United States.

All figures in the report are as of the end of 1959. It takes the bespectacled statisticians a year to compile the statistics. At that time, (Dec. 31, 1959) the United States had 70,821,000 phones. Today there are more than 74 million.

The U. S. also led the field in telephones per 100 persons, with 39.5. Brazil, with 1.48 telephones per 100, reported the smallest number per capita of the major countries. Russia was second, from the bottom with 1.9 telephones per 100.

The "talkingest" people in the world, according to the report, are the Canadians, who averaged more than 530 phone conversations per person in 1959. Next was Iceland, with 508 conversations per person. The average in the United States was 496.

Since 1950, the report shows, the number of telephones in the world has almost doubled. The United States' phones increased 74 percent in that period, while in Asia, the number of phones more than tripled. In Europe and South America, they doubled. No growth figures were available from Russia.

The oil in a sperm whale's head is believed to serve as a cushion to protect vital organs from the excessive pressure during its deep ocean dives.

SPANAWAY FIREMEN'S DANCE
ELK PLAIN GRANGE HALL
FEB. 18 — 9 'TIL 2 A.M.
BUY YOUR TICKET FROM A FIREMAN

Local Man Heads New Bowling Lanes

Mr. Cleve Redig of E. 72nd will be part owner and manager of the new Bowling Lanes, the Bowlero, which will open in May on Stella-coom Blvd. There will be 32 lanes available for the convenience of the public.

Special Meeting
Mrs. Dorothy Westcott, president of the Canyon Road Ladies Auxiliary, has announced a special meeting for tomorrow morning at 10:30 in the Community Hall. Members are asked to bring a sack lunch.

It's a Boy!
It's a boy for the DeForest Bullock family on Fairview Road. David Arthur Bullock was born Dec. 7th and weighed seven lbs. He was welcomed home recently by two sisters, Bonnie and Barbara, and grandparents Mrs. Clara Lange of Fairview Rd. and Mr. and Mrs. Arthur Bullock of California. Reporter, Mrs. John Folk.

NOTICE OF MEETING

The annual meeting of the members of the Southeast Tacoma Mutual Water Co. will be held Tuesday, February 7, 1961, at 8:00 P.M., at the Midland Fire Station, for the election of two trustees, and the transaction of such business as may come before the meeting.

CLARENCE P. JOHANN
President.

A fire team leader in Companyer, Mrs. Anita H. Kelner, lives at A of the division's 12th Cavalry, 3501 Lucile St., Seattle, Wash.

Specialist Strocscher entered the Army in January 1958 and completed basic training at Fort Ord, Calif.

The 20-year-old soldier is the son of Harry A. Strocscher, 165 S. Pacific, Spanaway, Wash. His mother, Mrs. Anita H. Kelner, lives at 3501 Lucile St., Seattle, Wash.

General Sheet Metal Work
Special Attention to Special Equipment

RAU MFG. CO.
LEnoX 7-7372
14114 Pacific Avenue

Estimates Without Obligation
QUALITY HOMES
DESIGN ASSISTANCE

Hedlund Const.
868 Tule Lake Rd. LE 7-4227

INCOME TAX SERVICE
AT
SUBURBAN REALTY, INC.

11302 Pacific Avenue
REAL ESTATE and INSURANCE
LE 1-1081 — LE 7-8638

JERRY HANSON

ALL ROADS LEAD TO SUMMIT TRADING FOR THESE MID-WINTER FOOD BUYS

ALL PURPOSE FLOUR
GOLD MEDAL 10-Lb. Bag **89c** 25-lb. bag **\$1.98**

NALLEY'S MAYONNAISE Full Quart **49c**

CAMPBELLS TOMATO JUICE 46-oz. Tin **4/89c**

HILLS COFFEE 2-Lb. Tin **1.17** lb. **59c**

SKIPPY Tall Tins DOG FOOD **14/\$1**

ALBERS FLAPJACK FLOUR 10-Lb. Bag **95c**

PICTSWEET QUICK FROZEN PEAS CORN PEAS & CARROTS SPINACH 10-oz. Pkg. **6/\$1**

ABC FIG BARS Large Pkg. **39c**

FISHER'S FARINA 5-Lb. Pkg. **69c**

DINTY MOORE, Save 10c BEEF STEW 24-Oz. Tin **43c**

DARIGOLD MILK Tall Tins **3/39c**

SUMMIT TRADING COMPANY
10409 Canyon Road, Tacoma LE 7-5848
No Sales To Dealers
We Reserve The Right To Limit Quantities

OPEN SUNDAYS 10 A.M. TO 7 P.M. FOR YOUR CONVENIENCE WEEKDAY HOURS 9 A.M. to 9 P.M.

HORMEL'S 12-oz. tin SPAM 39c

LARGE AA WHITE EGGS DOZ. 55c

COMET CLEANSER REG. SIZE 2/29c

ARTIFICIAL 2-BUD Rose 67c

BLEACH PUREX 1/2 Gal. 39c

Tide 5c OFF Normal Price of GIANT SIZE you pay only 69c

FRYERS PEDERSONS—Fresh Wash. Grown Pan Ready

FRYERS 3 Legged Or Regular **LB. 39c**

HENRY HOUSE—Ranch Style THICK SLICED BACON 2-Lb. Pkg. **98c**

U.S. GOOD—An Economy Meal Short Ribs Lb. **29c**

U.S. GOOD—Rib STEAKS Lb. **69c**

fresh PRODUCE
NETTED GEM NO. 2 **POTATOES** 25-Lb. Bag **89c**

FACIAL TISSUE

KLEENEX 400 Count Pkg. **2/49c**

ZEE LUNCH BAGS 50 Count Pkg. **29c**

GOLDEN RIPE Bananas 2 Lbs. **25c**

GREEN Peppers lb. **19c**

CALIF. Tomatoes lb. **19c**

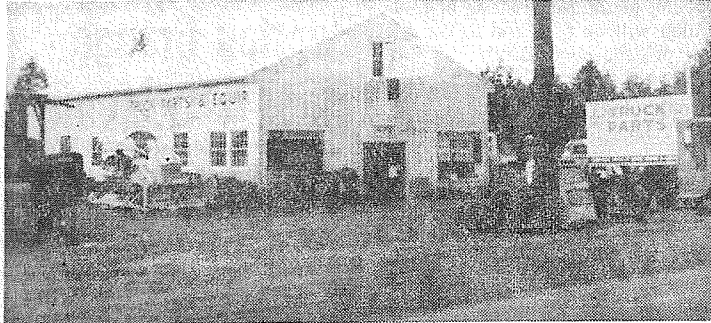
These Are The South End Firms That Made News In

WEBB ELECTRIC



In 1953 Art and Grace Webb first made the name Webb Electric known to the public, operating from their home at 615 Violet Meadow. In 1956 they moved to 84th and Pacific. Last October they decided to better serve the people of Parkland by moving to their present location at 112th and Pacific. Art, an electrical contractor, does residential and community wiring. He also has wire and fixtures available at the store for the do-it-yourself enthusiasts. Webb Electric specializes in electric heat and features Swan Vect-O-Ray electric heat, with other types available on request. One of the advantages of the new location is having everything under one roof, such as the office, 5,000 square feet of warehouse space, garage for five trucks, and complete planning facilities for wiring.

TRUCK PARTS & EQUIPMENT



ONE YEAR OLD — Truck Parts & Equipment began serving the people of the South End in January, 1960. Owned by Don Bowerman and Cody Miller, both well known for 15 years of logging and trucking in our area, the business has flourished from a small beginning to what it is today — an outfit doing business throughout the whole northwest. Don stocks all kinds of truck and tractor parts as well as used equipment, tires and engines. If Don and Cody don't have it in stock they can soon find it for you. They're open six days a week from 8:30 to 5:30.

BARGAIN BASKET



The Bargain Basket, locally owned Spanaway super market, was in the limelight on July 7th with a grand opening of their newly remodeled store. This particular opening made news since the entire operation stems from a Mom and Pop type small store which opened in 1946. At that time it was given small chance of success, but co-operation and teamwork proved what can be done, as evidenced by the present modern establishment. The entire Nelson family and Wes Drake, store manager, take great pride in their achievement and invite one and all to stop in and see what teamwork can build.

PLU Professor Doing Arctic Food Supply Research

In the not too distant future the U.S. government will be using atomic energy to blast out a harbor near Point Hope, Alaska. Before they do this, however, every effort must be made to determine what damage this would do to the seals and whales which are depended on for food by the Eskimos.

This where Burt Ostenson, of 1322 Tule Lake Road comes in. Mr. Ostenson, a professor at Pacific Lutheran, is presently on leave of absence to conduct a research mission in the Eskimo village of Point Hope. His job is to study the habits, environment and travel of marine animals, mainly seals and whales, to determine what effect atomic explosions in the area would have on them.

The Ostensons recently sent mimeographed letters to several Parkland residents telling of their experiences in the "frozen north." Some of the highlights are included in the following paragraphs: "We are very comfortably quartered in the St. Thomas Episcopal mission hospital building used as laboratory and living quarters (also as storage for our eight months stock of groceries and supplies). A hundred pounds caribou and trout are frozen in our cache outside, safely out of reach of husky dogs. Our fuel supply is stacked up in barrels as is our water supply in the form of ice frozen in five gallon plastic bags. "The people are friendly and helpful. They are very cheerful in spite of few material blessings and a struggle for a living. This they do by hunting for seal and polar bear on the ocean ice in winter, whaling from skin boats in the spring, fishing in summer and caribou hunting in the fall. "The sun doesn't quite make it over the horizon so we have a glorious sunrise (on clear days) from about 10 to 1, with daylight from 9 to 2. It has been a fairly mild fall with minimum temperatures about 20 below and with few high winds."

The Ostenson family is due back in July.

The new Committee consists of the following: Cubmaster — Toby Torbet, Asst. Cubmaster—Charles Ashworth, Committee Chairman—Norm Chilberg, Treasurer—Richard Smith, Advancement — Mike Cail, Membership—Fred Huggler.

At the January 18th P-TA meeting the Cub Scout Charter was presented, as well as the Cub Scout Committee.

Riverside Grange Slates Open House

Riverside Valley Grange will present an "Open House Night" Jan. 21st at 8 p.m. at their hall, located at the North approach of the Puyallup River bridge at Clark's Creek. Regular Grange meetings are the 1st and 3rd Mondays each month.

45 POUND ROLL ROOFING

Per Roll **\$2.88**

SOUTH END PLUMBING & HARDWARE

185th & Pacific Ave. LE 7-4100

Mothers Meet

Central Avenue Preschool Mothers Club will meet on January 24, at 8:00 p.m. in the school cafeteria. A panel from the Crippled Childrens School P-TA will discuss their own handicapped children. A very interesting program on the daily life experiences in the home is highly recommended. Refreshments will be served.

Cub Scouts
Cub Scouts and families will meet in the Summit Youth Center Friday, January 27th, 8:00 p.m. A skit will be presented by Mrs. Torbet's Den for the monthly pack meeting.

At the January 18th P-TA meeting the Cub Scout Charter was presented, as well as the Cub Scout Committee.

The new Committee consists of the following: Cubmaster — Toby Torbet, Asst. Cubmaster—Charles Ashworth, Committee Chairman—Norm Chilberg, Treasurer—Richard Smith, Advancement — Mike Cail, Membership—Fred Huggler.

PIERCE COUNTY REFUSE CO.
Weekly
Garbage Collections
Phone LE 7-8688

Institutional Representative — Ray Stratton Webelos Leaders — Maurice Barrackman, and Fred Mackey, and Den Mothers Betty Adler, Ruth Almont, Ann Earle, and Fran Torbet.

Troop 76
A training session for Boy Scout adult leaders was held on January 14, 1961 in the Summit Youth Center. The session was attended by twelve Scouters from Troops 76, 64, 73, 78 and 133, Explorer Post 92, and Pack 76 Webelos, who completed their basic leaders training. The Scouters wish to thank Mrs. Tom Swenson, Mrs. Dick Robbins, and Mrs. Jack Houtz, who served coffee and "goodies" during the lunch break. The session leader was Jack Houtz, Troop 76 Scoutmaster assisted by Howard Pruitt, Leonard Pherenton and Dick Robbins. The training was well received by the participants, but the attendance was rather disappointing.

Belated thanks are extended to Gene's Midland Drug and Wing's

9 TO 9 Weekdays
PRESCRIPTIONS
FAST SERVICE
Veterinary Supplies
Photo Equipment
Gifts for Everyone
From Infants to Grandfather
McAULEY SUMMIT DRUG
Airport & Canyon LE 7-0668

Thursday, January 19, 1961

THE TIMES JOURNAL

Summit Auxiliary Donates Check

Shop-Elite Variety in Parkland. These firms supported the Troop 76 Santa Claus hike with generous gifts of toys.

A Court of Honor was held on the 9th of January at Summit Youth Center by Troop 76. Scouts receiving their Tenderfoot Badges, were Wayne Barrackman, Robbie Dearth and Mark Nelson. James Hart was awarded a Home Repair merit badge. James Bartram was awarded a one-year pin and the Camporee insignia. Mother pins were presented to Mrs. Robert Nelson, Mrs. Maurice Barrackman and Mrs. John Dearth.

The Mother's Auxiliary for Troop 76 met on January 9th to hold their annual election of officers. Those elected to serve during 1961 were

The Summit Fire Department recently presented a check to the Summit Fire Dept. for the purchase of new equipment.

Items to be purchased include a Burns First Aid Kit, oxygen tank, and a manifold to fill small oxygen tanks.

1961 CAR LICENSE
at
MIDLAND FOOD CENTER
East 99th & Portland
(Pass Cars Only)
Midland Orthopedic Guild

JUST OPENED
SPANAWAY BEAUTY SHOP
JUNE SCOTT MANAGER

Opening Special
\$20 PERMANENT
\$10.00
FOR
Plus Haircut
(1-Week Only)

THURSDAY-FRIDAY
EVENINGS
BY APPOINTMENT

165th & Pacific Avenue LE 1-2812

BEST FOOD BUYS

FOR WINTER BUDGETS

SLICED LAMB LIVER

29^c

FRESH LAMB HEARTS

SLICED FLAVORING BACON

29^c

XTRA LEAN PORK SAUSAGE

Spokane Valley

PORK and BEANS

5 ^{2 1/2} Tins **\$1.00**

Blue Lake Cut

GREEN BEANS

7 ³⁰³ Tins **\$1.00**

ABC OVEN FRESH

CRACKERS

2-lb. Pkg. **39^c**

Albers

FLAPJACK MIX

4-lb. Pkg. **39^c**

Jewel

SHORTENING

3-lb. Tin **59^c**

Star Kist

Chunk Style

TUNA

No. 1/2 Tin **23^c**

Friskies Meal or Cube

DOG FOOD

5-lb. Bag **59^c**

SOLID LETTUCE

10^c Each

GREEN PEPPERS

EACH **5^c**

"AA" LARGE EGGS Doz. **55^c**

McDANIELS

The Home of The Low Price

AIRPORT & CANYON ROAD

Store Hours: 9:00 'Til 9:00 — Sundays 9:00 'Til 7:00

CELLO CARROTS

7^c Each

PRICES EFFECTIVE Thursday Friday Saturday

JANUARY CLEARANCE SALE

YOU CAN BE SURE...IF IT'S

MORSE ZIG ZAG Westinghouse

YOU GET THIS ALL NEW WESTINGHOUSE STEREO

89⁹⁵ + 1^c

MORSE

SALE PRICE **\$89⁹⁵**

WESTINGHOUSE STEREO . . .01

BOTH FOR \$89⁹⁶

LIMITED SUPPLY

THE MORSE

- Ziz Zags
- Button Holes
- Sews on Buttons
- Embroiders
- Overcasts
- Blind Hems

Guaranteed by Good Housekeeping

NO ATTACHMENTS NEEDED

REPLACEMENT OF A STITCH OF THREAD

NO. 45 ADVERTISED THEREIN

This Morse Sewing Machine is Guaranteed by Good Housekeeping. Commended by Parents Magazine.

Open Monday & Friday Till 9 • Other Days 9 To 5:30. Closed Sun.

American Sewing Center

8232 PACIFIC AVENUE GR 4-0651

Lucky and BIG BEAR STORES SPECIALS!

LUCKY BRAND

COFFEE 29

LB.

THIS WEEK ONLY!
With purchase of 1.00 or more of light bulbs

FRESH FRYERS	PORK ROASTS
LB. 33	ROUND BONE LB. 35
PORK STEAK lb. 45¢	
PORK HOCK lb. 19¢	

LUCKY BRAND	ABC OVEN FRESH
BLEACH 29	CRACKERS 19
ONE HALF GALLON	ONE POUND BOX

GOLDEN BANANAS 12 1/2

Top quality selected fruit per pound only

FOR ADDITIONAL FOOD VALUES, SEE OUR REGULAR PAGE AD IN THE WEDNESDAY TRIBUNE

13320 PACIFIC AVE.

Store Hours - 9 to 11 Daily - 9 to 9 Sunday

SALE PRICES EFFECTIVE WEDNESDAY THROUGH SATURDAY. WE RESERVE THE RIGHT TO LIMIT PURCHASES.



Midland Preschool Will Meet Wed.

"Kindergarten parents speak," a panel and group discussion about common problems surrounding the kindergarten child, will be the subject of the regular meeting of Midland Preschool on Wednesday, January 25, at 8 p.m. at Midland School, Mrs. Weldon Hebllich presiding.

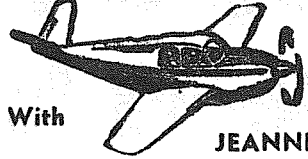
Refreshments will be served following the meeting by the hostesses: Mrs. Donald Becker, Mrs. Robert Campbell, Mrs. John Gibson, Mrs. Leland Louderback and Mrs. Ronald Pease.

Preschool Meets

Parkland preschool will meet Jan. 23 at 8 p.m. at the Parkland Grade School, Mrs. James Maze presiding.

Dr. Kristen Solberg, newly elected Dean of Men at PLU, will speak on "Problems in Preschoolers."

Flying



Attention all pilots! Are you interested in a little flying fun? If so, be at Thun Field January 29 for spot landing and bomb dropping contests. There will be prizes for some and lots of fun for everyone.

Tom Calhoun recently flew a dual cross-country flight from Spanaway to North Bend, Boeing Field and return. Another cross-country flight was made by Chuck Whittemore to Ennumclaw, Bellevue, Boeing and back to Spanaway. Chuck has now started to get in his ten hours of solo cross-country.

Auction Tonight

James Sales Grange is planning an auction at their meeting this evening for the benefit of the March of Dimes. Mince pies made from a recipe over 100 years old will be auctioned. A fine program is also being offered in addition.

Hi-Boosters Meet

Franklin Pierce Hi-boosters will meet Tuesday night, Jan. 24 at the Franklin Pierce cafeteria.

Mrs. Stan Reynolds, program chairman, will present "buzz" sessions with such questions as "why aren't more parents attending booster meetings?"

Rural Garbage Service

Pierce County Permit
Serving Parkland, Midland, Summit and Spanaway
LEnoz 7-8688

Greenfield 4-8989 5424 PUGET SOUND

NEW CRYSTAL STEAM BATHS

Bring In This Ad and Get Our Regular \$1.50 Steam Bath For only \$.50

New Owner - Orville Grant


LADY ATTENDANT HOURS: 9 a.m. - 10 p.m.

the only thing that hasn't changed!

Imagine shopping back in the "good old days!" Everything has changed . . . except S & H Green Trading Stamps. Thrifty families have been saving S & H Green Stamps in Washington State for more than 40 years. Wherever S & H Stamps are given, you receive the finest quality merchandise and service, competitively priced to give you more for your dollar. Ask for S & H Green Stamps—your bonus when you buy!

You get cash instead of MERCHANDISE for S & H Stamps:

In Washington State, S & H stamps are redeemable for cash only. State law requires that dealers who wish to give trading stamps for redemption in merchandise must pay an annual tax of \$6,000 for the privilege.




Mr. Alan Ruud, his wife Mildred and their two daughters, five year old Diane and two year old Gail will be just four of nearly 1000 persons from the Tacoma, Puyallup Valley area who will be delegates to the three-day Jehovah's Witnesses Seminar in the Five High School auditorium Feb. 10-12. The Ruuds, who live at 1314 South 110th Street, are shown here having their regular weekly Bible study. They also attend five hours of Bible study weekly at the Tacoma East Unit Kingdom Hall of Jehovah's Witnesses.

Waller Road . . . Grangers Plan Building Move

Waller Road Grangers have accepted the Community building from the Puyallup School District and are making plans for moving it to a new location.

Committees appointed by Master Harold Olson are working on the raising of the large sums of money which will be required to complete the project successfully.

Anyone wishing to join the Grange may call Grace Fogle at LE 7-5219 for more information.

Auxiliary Will Meet

Mrs. E. O. Perrin will entertain the Grange Auxiliary at her home on Waller Road Thursday, Jan. 26th. A potluck luncheon will be served at noon, followed by a business session. The afternoon program will be in charge of Mrs. Robert Myron.

Secret Pals

Secret Pals for last year will be revealed. Each member should bring a gift for the person who has been her secret pal. New names will be chosen. New members of the Waller Road Grange are invited to attend.

Reporter, Mrs. Verne Fogle.

Benson Grange Plans Busy Month

A busy schedule lies ahead for Benson Grange, with an exchange program from Crocker Grange and the "Open House Pies for Polio" meeting in February. Brother L. E. Lovitt, Grange Insurance manager for this district, was a guest at a recent meeting and spoke on new insurance regulations.

Special degree work will be conducted at Ohop Grange January 25th. New members to be initiated include Mr. and Mrs. Warren Milton and Mr. and Mrs. G. R. Brooks.

Mrs. Ruth Jacobson, practical nursing instructor from the Tacoma Vocational-Technical School, will present a health program at the January 24th meeting.

Benson Grange Auxiliary will meet with Sister Vera Johnson January 26 for a noon luncheon with business meeting following.

PROMPT PERSONALIZED PRESCRIPTION SERVICE

TED SWANSON INSULIN - VITAMINS

Downtown Prices
Pay Phone Bills Here
PLENTY OF FREE PARKING

TINCHER'S PHARMACY
8227 Park Ave. GR 4-3344
Across from Fern Hill P. O.

SPECIAL! LUBE 50¢

JOB ANY MAKE WITH THIS COUPON AD

14423 Pacific Ave. UNDER NEW MANAGEMENT
HILLTOP SERVICE

ENTER FRIGIDAIRE'S "SWEETHEART SWEEPSTAKES"

win a 5 day all expense WESTERN Sun Break WINTER VACATION for 2 in ARIZONA

at the fabulous Scottsdale Country Club Resort (near Phoenix)
Nothing to write! Nothing to Buy!
ENTER EVERY WEEK

6 FREE TRIPS FOR TWO
Contest is limited to residents of the Pacific Northwest.

ENTER HERE TODAY!

Your Pioneer Fuel Oil & Appliance Dealer

POCHEL DISTRIBUTING COMPANY

140th and Pacific Avenue LE 7-8624



GENERAL ELECTRIC
30 INCH ELECTRIC RANGE

- FULLY AUTOMATIC
- REMOVABLE OVEN DOOR
- LARGE 23" OVEN

\$167⁷⁷ W/T

BUYS OF THE YEAR

DIRECT FROM THE BOX CAR
TREMENDOUS DISCOUNTS
ON ALL 1960 MODEL APPLIANCES
TREMENDOUS TRADES ON ALL '61 MODELS
FREE DELIVERY SIX DAYS A WEEK

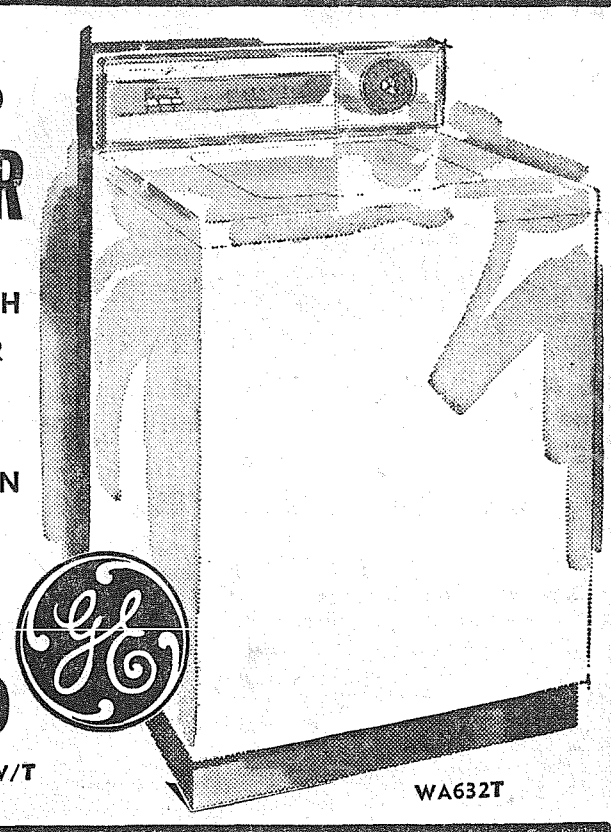
WHIRLS

YOUR CORNER

8419 PORTLAND AVENUE OPEN 9 TO 9 SAT. 'TIL 6 LE 7-0231

GENERAL ELECTRIC
FILTER-FLO WASHER

- 2 CYCLE WASH
- WATER SAVER
- LARGE LOAD CAPACITY
- ALL PORCELAIN TUB
- 5 YEAR WARRANTY



\$185⁰⁰ W/T

Elk Plain 4-H Meets

The Elk Plain Girl's 4-H Club will hold their business meeting Jan. 25 at 7 p.m. in the home of Diane Parker.

Rec Program
The Pierce County Recreation program is now in progress in the Bethel District. Basketball games will be played every Saturday morning in the Bethel gym.

Burkhart
PFC Dennis L. Burkhart left Fort Dix, New Jersey, Jan. 10th for his new base at Baumhold, Germany. He will be stationed in Germany for two years.

Rifle Club
The Elk Plain Junior Rifle Club will hold a rifle shoot tomorrow at the Pierce County Community Building from 7 to 9 p.m. All members are urged to attend.

Get Well
Best wishes for a speedy recovery go to Mrs. Olive Tibbits and to Mrs. Frances Plumb.

Joint Installation
Joint installation of the Spanaway-Elk Plain Fire Departments and auxiliary officers was held Sat., Jan. 14, at the Firs.

Elk Plain Fire Dept. officers installed were Neil Dorner, president; Robert Landgrebe, vice president; secretary, Al Fox; and treasurer, Connie Lawson.

Auxiliary officers were Ida Landgrebe, president; Delores Goddard, vice president; secretary, Helen Fox, and treasurer, Gaye Farren.

Youth Groups
The senior and junior youth groups of the Elk Plain Community Church visited with the Lake City Community Church groups Sunday night, Jan. 8.

Call for News
Anyone wishing to have items in the paper please call VI 7-7386. Reporter, Mrs. Ray Burkhart.

Woodland Dance At Fruitland Grange Tonight

Harmony Hoedowners will dance again Saturday evening, January 21, at Fruitland Grange. The business meeting is at 8, with dancing at 8:30.

Square Dance Lessons
Monday evening, January 23, is the last time anyone can sign up for this year's square dance lessons.

Get Well
We're hoping the end of this week will see little Marty Denny, 3½ year old son of Mel and Buzz Denny of Grebe Road, home from the hospital. Marty has been at Good Samaritan Hospital in Puyallup for two weeks because of a broken leg.

Welcome
We'd like to welcome a new family in the Woodland area. Jim and Ann Burnett have recently moved from Tacoma to a home on Grebe Road. Jim and Ann have three foster children, David, Cindy and Jimmie. Reporter, Margaret David, LE 7-6668.

NO WONDER
MEMPHIS, Tenn. — Mrs. Ann Maples Watterson had a headache. She felt her vision was failing, too, until she looked in the mirror and found she was wearing her 14 year old son's glasses.

AIR CHARTER
FLIGHT INSTRUCTION Approved Flight School
Wash. MOONEY Distributor
TAHOMA FLYING SERVICE
Spanaway Airport LE 1-0442

Roy Resident Leaves Hospital

Mrs. Maggie Golding is reported to be recovering nicely from her recent surgery. Saturday she left the hospital to convalesce at the home of her daughter.

Church Meets
Sunday evening, at the home of Rev. and Mrs. Irving Nygren, the annual meeting of the Congregational Church was held. Roy Nixon was re-elected trustee; Mrs. Marie Harrison, clerk; Mrs. Elizabeth Wallace, treasurer; Mrs. Mabel Kleiven, Sunday School superintendent; and Mrs. Bernice Gore, Sunday School superintendent.

Transferred
Harold Lambertsen, son of the George Lambertsen, was transferred last week from his position in Olympia to Bellingham, where he is now living at the YMCA until he locates other living quarters.

Coming Home
Mrs. Douglas Buchanan, at this writing, is to return to her home from the hospital. She is reported to be recovering rapidly.

Back to School
Mrs. Floyd Corbin, who was confined to her home last week for several days, has returned to her teaching at Kapowsin Grade School.

Miss Marlene Dickson, daughter of Mrs. Tony Raczkykowski, became the bride of PFC Roy Tribble of Fort Lewis at the home of her parents on New Year's Eve. Chaplain Gary Roush performed the ceremony. Gail Loveland was the bride's attendant and James Melanese was best man. Reporter, Martha Berggren.

FENCING
Designers and Builders
EXPERT WORKMANSHIP
REASONABLE PRICES
Easy Monthly Payments
VAUGHAN'S
84th & Pac. Ave. GR 4-9515

"COLUMBIA" EXERCISER
REDUCING MACHINE
Speedometer Tells How Fast You Do. Timer, \$59.95
Adjustable Load Control

See The New "Jacobson" GRASS CATCHER ROTARY LAWNMOWERS
AT
PARKLAND CYCLE & KEY
11021 Pacific Ave. LE 7-5772

DRUG FACTS
WE GUARD YOUR WELFARE AND OUR REPUTATION AT
ASHMORE'S SPANAWAY DRUG
BY FILLING EVERY PRESCRIPTION WITH CARE AND PRECISION!

ASHMORE'S SPANAWAY DRUG
Phone LE 7-5993
165th & PACIFIC AVE. SPANAWAY, WASH.

Spanaway Tickets Ready Soon For Game

Tickets will be made available by the Dr. Lee A. Rademaker Orthopedic Guild for the basketball game between Seattle's Buchanan Bakers and Akron's Wingfoots at South End Plumbing Feb. 8th. The contest will be held at the University of Puget Sound Fieldhouse. For more information call LE 7-4100.

Get Well
Get well wishes go to Mrs. Don McLellan who has been ill in the hospital, also to Mrs. Ed Masengale who is home from the hospital recovering from illness.

Congratulations
Congratulations to Mr. and Mrs. Tom O'Brien (Wanda Joy McLellan) on the birth of their second son, Ronald Patrick, Dec. 30th. He

is welcomed home by brother Donald.
Grandparents are Mr. and Mrs. Don McLellan and Mr. and Mrs. Harry O'Brien of Eastonville.
Proud Parents
Proud parents are Mr. and Mrs. James Seacare, whose first son was born Jan. 4th. He was named Kurt Edward and is welcomed home by sister Kimberly Ann.

Grandmas
Six members of the Spanaway Grandmother's Club attended a dinner at Steve's in honor

Grandmas Meet

The Parkland Grandmother's club will meet today at 1 p.m. at the home of Mrs. R. T. Mason, 811 So. 121st, for a dessert lunch and business meeting.

of the National Grandmother, Mrs. Florence Newhall, Jan. 13th. They were Mesdames Edward Flannery, George Schnelle, Oliver Omat, Beulah Ballard, Emily Ball and Ina Quinlivan.

Birthday Party
Don Funhauser was completely surprised by a birthday party Sat., Jan. 14. On Jan. 11th a birthday party was held for his two year old son, Donnie.

Goof
Last week's item concerning Mrs. Charles Phipps' trip to the Rose Bowl unfortunately left out her last name. Reporter, Mrs. Oliver Omat.

Playschool Meets

The mother's meeting of the Summit co-operative play school will be held tonight at 8 in the home of Mrs. Albert Baard, 1319 E. 112th.

Co-hostesses will be Mrs. James Brooks and Mrs. Charles Waldherr.

Guest speaker will be Hana Dehler, who will speak on self-improvement of young mothers. There also will be a discussion of the coming white elephant sale.

PARKLAND TRAILER VILLAGE
NEW ENCLOSED CAR PORTS A FRIENDLY PLACE FOR YOUNG AND OLD
507 E 131st. LE 7-9926

Graham Man In Navy Promotion

Alvin E. Main, Electronics technician, USN, has been promoted to First Class Petty Officer. Mr. Main is the husband of the former Dorothy McNeil and son-in-law of Mr. and Mrs. Charles McNeil of Graham, Washington. At present Mr. Main is serving aboard the USS Ely PCE 880.

Rodeo Dates Set

The newly elected officers of the Roy Rodeo pioneer rodeo association held their first business meeting for 1961 recently. Rodeo dates for the coming season were set. The spring show will be held Sunday, June 4. The annual two-day rodeo will be held over the labor day week end, Saturday and Monday, Sept. 3 and 4.

INCOME TAX SERVICE
PARKLAND REALTY
CHARLES PETERSON
For Appointment Call LE 7-8609

EGGS

FRESH

AA LARGE

51^c

Doz.

SPARE RIBS Tablerite, Fresh, Medium Size Lb. **39^c**

GROUND BEEF Fresh Made Lb. **39^c**

SAUSAGE LINKS Hormel's 12-Oz. Pkg. **39^c**

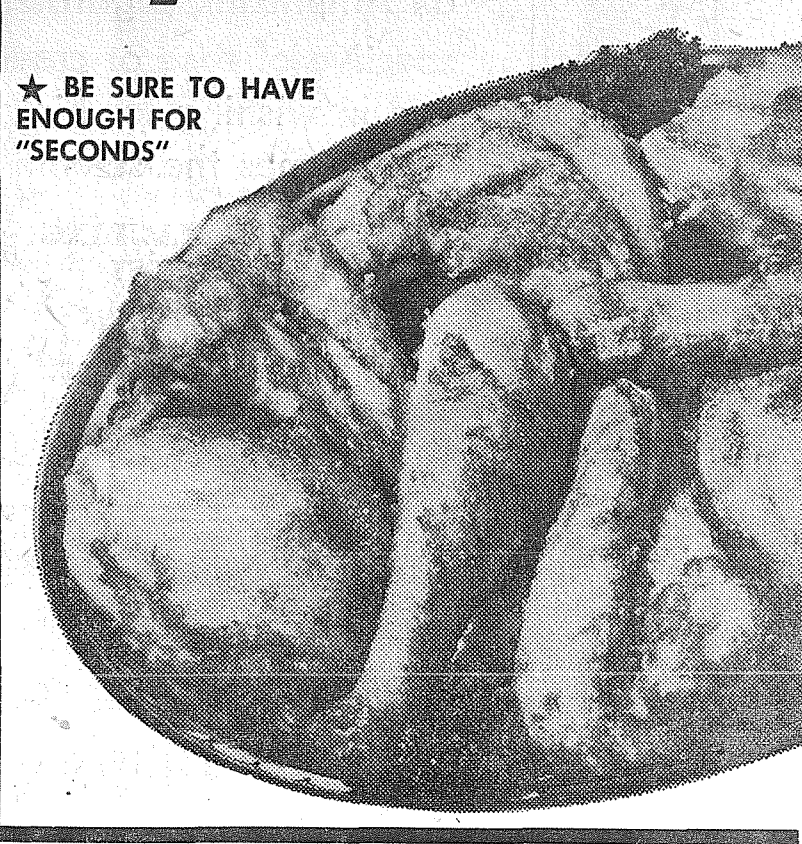
ARMOUR STAR SMOKED BONE-IN SHANK PORTION.
4-18 LBS. AVERAGE

Hams lb. 45^c

Tablerite Washington Grown Cut-Up, Pan-Ready

Fryers lb. 39^c

★ BE SURE TO HAVE ENOUGH FOR "SECONDS"



- IGA SALAD OIL Quart Bottle **49c**
- IGA YELLOW MARGARINE 6 1-Pound Packages **\$1**
- NALLEY'S MAYONNAISE Quart **45c**
- IGA CHUNK TUNA No. ½ Tin Each 23c 4 For **89c**
- IGA HARD WHEAT FLOUR 10 Lbs. **79c** 25 Lbs. **179**
- IGA BOOK MATCHES 50 Count **10c**
- GIANT SIZE TIDE DETERGENT **65c**
- CHIFFON FACIAL TISSUES 400 **19c**
- IGA STRAWBERRY PRESERVES 20-Oz. **39c**

U.S. NO. 1 FANCY GOLDEN **12 ½^c**

BANANAS LB.

APPLES
ROME BEAUTY Lb. **10c**

CELERY
FANCY Lb. **10c**

WHILE THEY LAST
REG. \$1.49
PLASTIC WASTE BASKET
SPECIAL **66^c ea.**

- IGA PEANUT BUTTER 18-Oz. **39c**
- PET-RITZ FRUIT PIES Apple, Peach, or Boysenberry 24-Oz. **39c**
- KRAFT CHEEZ-WHIZ 16-Oz. Jar **55c**
- TABLERITE SLICED CHEESE Nat. Swiss or Med. Cheddar 6-Oz. Pkg. **31c**

FOOD IGA TOWN

Airport (112th) at Park Ave. Ad Days Jan. 19-20-21

Buying a Used Car?
Buying a New Car?
Want to Lower Your Monthly Payments?

Check With The Puget Sound about an **AUTO LOAN**
("PS" auto loans may be arranged through many Tacoma dealers)
84TH & PACIFIC
PUGET SOUND NATIONAL BANK
There's a PS Bank near you—to serve you better.



Inauguration Day

2702 JAN '61 M.P. 27

Tomorrow, a new president, John Fitzgerald Kennedy, dedicates himself to the leadership and service of our country in the four critical years that lie ahead. Today, all Americans, regardless of political affiliation, irrespective of race or creed, close ranks and become as one in wishing for him a successful administration. As he assumes the solemn responsibilities of the office of

President, we pray for him the good health to bear its heavy burdens, and Divine guidance in the difficult and far-reaching decisions that he must make. We pledge to him our loyal support in the execution of the oath he takes tomorrow, to faithfully to execute the office of President of the United States and to the best of his ability, preserve, protect and defend the Constitution of the United States.

NORTHWEST HAULING
NELLO GRASSI
TIMES JOURNAL
PUBLISHING CO.
VERNE H. BATES, for
The Tacoma Vocational-Technical School
FRITZ GEIGER,
Pierce County Commissioner

EMMET BURKS,
Pierce County Commissioner
HARRY SPRINKER
Pierce County Commissioner
JACK W. SONNTAG,
Pierce County Auditor
L. R. JOHNSON,
Pierce County Treasurer

MRS. RUTH BETHEL
Pierce County School Supt.
L. W. CRAIG,
Pierce County Assessor
DR. FRANK JAMES,
Pierce County Coroner
GAFFNEY
FUNERAL HOME

Teamsters, Chauffeurs, Warehousemen & Helpers, Local No. 313
Ferrante's Furniture
THE SALVATION ARMY
THRIFT STORES,
JOHN FISHBURNE

PARK AVENUE SHOES
GORDON BROWN
JOHN C. BERINGER
BILL BLACK
ELWELL H. HOYT
WALTER COPE
Frank Bartenetti Jr.

Midland . . . Guild Sells Car Plates At Midland Food Center

The Midland Orthopedic Guild held their regular monthly meeting at the Midland Improvement Club Hall on January 10. Hostesses were Mrs. Albert Asplund, Mrs. James Rhodes, and Mrs. Kenneth Lampitt.

The Guild is now selling license plates at the Midland Food Center, between the hours of 9 to 6 p.m. Proceeds earned from the license plate sale will go to Mary Bridge Children's Hospital.

Also, Mrs. Lee Galyean, chairman, announces the linen boxes will be ready soon.

Altar Society
St. Rita's Circle of St. John of the Woods Altar Society is holding their next meeting at the home of Mrs. A. Hellwich, 3322 East 112th, tonight at 8 p.m.

Court Of Honor
Midland's Boy Scout Troop No. 84 will hold its next Court of Honor, Monday night, January 23, at 7 p.m., at the Boy Scout Hall, 96th and East Harrison Streets. All parents and scouts are urged to attend.

Seventeen boy scouts from the troop camped in the snow at Silver Springs, on Mt. Rainier, last week end, with Scoutmaster Forrest Sallee, and assistants, Dave Lorraine, Clermont Blessing, and Al McCue.

Improvement Club
The Midland Improvement Club held their monthly meeting Wednesday, January 11th, at the Midland Improvement Club Hall. The following officers were elected: President, Floyd Ayers; vice president, Carl Reinicke; secretary, Mrs. Floyd Ayers; treasurer, Leslie Roley; trustee (3 year period), George Baskett; trustees, Albert Bombardier, Ed Ganey; sunshine,

Mrs. Albert Bombardier; publicity, Mrs. Carl Reinicke.

The outgoing officers are: vice president, John Pyette; secretary, Mrs. Clarence Skog; trustee, Carl Reinicke; sunshine, Mrs. Carl Reinicke. We wish to take this opportunity to thank these officers for all their fine work last year.

The Midland Improvement Club meets each month on the second Wednesday, and everyone is invited to the meetings.

Housewarming
A housewarming party was given by the Midland Fire Department Auxiliary Saturday night honoring Mr. and Mrs. George Turner, charter members of the Midland Fire Department.

Guests attending were the Messrs. and Mesdames Andrew Christensen, Walter Olsen, William Stevens, Verne Blauvelt, Frank Johnson, Richard Johnson, Albert Bombardier, Edward Burness, Cameron Miner, Leslie Roley, Gaylen Harkey, David McPherson, Robert Hansler, Donald Kemp, William Shanahan, Floyd Ayers, James Hartley, Clarence Johann, Ralph Taylor, Frank Baskett, Frank Gural, Donald Peterson, Alex Kreshak, and Edward Chalberg.

Mrs. William Shanahan and Mrs. Verne Baluvelt were chairmen of the midnight supper, and Mrs. Cameron Miner, Mrs. Richard Johnson, Mrs. Edward Burness and Mrs. Walter Olsen were in charge of the gift selection.

A beautiful pole lamp was presented to the Turners for their many years of service to the Midland Fire Department.

Birthday Club
The Midland Birthday Club met at the home of Mrs. Floyd Ayers on January 12. Attending were the

Mesdames Alex Kreshak, Carl Taylor, Art Perkins, Harold Johnson, Donald Kemp, James Gill and Lillian Campbell. A luncheon was enjoyed by all. Unable to attend were Mrs. George Turner and Mrs. George Williams. The February meeting will be held at the home of Mrs. Harold Johnson on the 9th of February.

Harvard Preschool
Harvard Preschool will hold their next meeting tonight at 8 p.m. in the kindergarten room, with Mrs. James Smith presiding. Our theme for January is "Safety for Children."

Detective Smith from the Pierce County Sheriff's office will speak on child molesting. A film will be shown called "Dangerous Stranger" which your children were shown earlier in the year. Latest fashions for 1961 will be modeled by the board members. Refreshment will be served in the auditorium.

The "Lazy Daisy" and the

Fruitland Grange Elects Officers

Fruitland Grange had their first meeting of the year recently with the new officers presiding. Mrs. Oscar Swalander, master, is the first Fruitland Grange woman to be head officer.

Mrs. Swalander has appointed the following committees to work for the year: Agriculture, Frank Ballou; Building and Grounds, Mitchell Milne, Robert Ballou, Ed Swalander and Roland Marsh; Community Service, Mrs. Jack Swayne and Mrs. Joe Janowski; Membership, L. E. Lovitt, Gerald Ballou, Mrs. Wm. Geddes and George Fisher; Legislative, Robert Gilmore, Buster Brouillet, and Albert Ockfan; Youth, Frank Parks,

Taylor, Art Perkins, Harold Johnson, Donald Kemp, James Gill and Lillian Campbell. A luncheon was enjoyed by all. Unable to attend were Mrs. George Turner and Mrs. George Williams. The February meeting will be held at the home of Mrs. Harold Johnson on the 9th of February.

"Busy Bluebirds" held a combined meeting at the home of Mrs. David Lorraine, on January 12. The "Lazy Daisy" group consists of Corinne Leavitt, Letty Wolfe, Christy Lorraine, Denise Fleming, Marilyn Theno, Patty Qunell, and Judy Crawford, with Mrs. Lorraine as leader. Alice Casey, Christy Brogden, Anita Wolfe, Christy Downs, Darlene Fleming, Joella Gordon, Sandra Sween, Colleen McCullough, and Linda Ludford make up the "Busy Bluebirds," with Mrs. Albert Downs as leader.

As guests, the girls had Diana Noble and Denise Downs. The treats were furnished by Patty Qunell and Anita Wolfe.

The girls each made a pretty plaque for their mothers, and plans were made to go roller skating on January 26. Reporter, Mrs. Frank Gural.

Mrs. Ray LaCoss, Miss Maxine Arbuclke and Roger Lovitt. Finance, Jack Swayne William Geddes, and Delbert Runkel. Hospitality, Mrs. Frank Ballou and Mrs. Cliff Hurst; Insurance, L. E. Lovitt; Entertainment, Mrs. Harold Hanson and Mrs. Nick Morris; Square dance; William Geddes, Jack Swayne and Jim Bigelow; Fair Exhibit, Mrs. Mitch Milne, Mrs. Ed Swalander and Mrs. Frank Ballou; Drill captains, Clarence Otto and Roger Lovitt; Roads committee, Cliff Hurst and Publicity, Mrs. Joe Janowski.

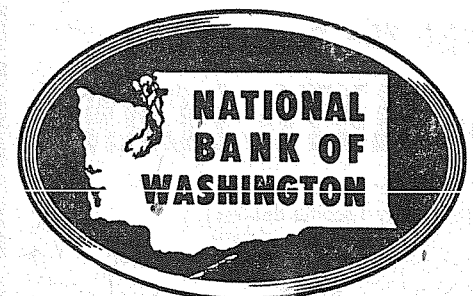
The most northern point of the nation's road system is Circle, Alaska.



Home Loans

Tired of paying rent? Owning your own home is an excellent investment, not to mention the other rewards you and your family will enjoy. Let us help you work out an FHA loan to suit your budget. FHA loans on FNMA terms are available through National Bank of Washington. Down payments as low as 3% . . . terms up to 30 years. See or phone us for further information.

PARKLAND BRANCH



THE BANK OF PERSONAL SERVICE . . . WHERE OUR INTEREST IS YOU! • 27 HELPFUL OFFICES
MEMBER FEDERAL DEPOSIT INSURANCE CORPORATION • MEMBER FEDERAL RESERVE SYSTEM

a-Wondering . . . and a-Wandering . . .

With JACK BROWN

Which product is the most essential—mink coats or gasoline?

No one will have any difficulty answering that question. Mink coats are pretty things, and those who want and can afford them are certainly entitled to buy them. But they're a pure luxury—while gasoline is an absolute necessity in this nation on wheels.

But the tax laws don't seem to see it that way. The excise tax on mink coats — and also on other outright luxuries, including diamonds—is 10 per cent. The average excise tax on gasoline, federal and state combined, is almost 50 per cent of its retail price at the service station, and 85 per cent of its wholesale price at the refinery gate.

We motorists are now paying close to \$5 billion a year in gasoline taxes. The theory is, or at least used to be, that the tax pays for roads. The recent increase in the federal tax was imposed on the grounds that it was needed to pull the multi-billion dollar superhighway fund out of the red. But it certainly is unreasonable that the motorist alone should carry such highway costs—particularly in view of the fact that the current program is a national defense measure.

Moreover, excessive gas taxes are proving to be self-defeating. Cost of operation is a primary reason for the dramatic increase in the sale of small foreign and American "compact" cars which stress fuel economy. And motorists with the larger cars reduce their driving when the cost gets high enough.

So, as the price of "taxoline" soars, a point of diminishing return is reached and use declines. So proportionately do the government's tax revenues, yet it seems that we are about to get socked again with another cent per gallon. Anyone want to borrow one of my saddles?

The American Medical Association News observed that the proliferation of fund-raising health organizations is causing headaches for agency officials and confusion among donors. National drives have skyrocketed from 15 in 1940 to more than 100 today, and annual contributions total \$1 billion. Duplication abounds—to take one example, 19 agencies compete nationally for money to aid the blind. Seems to me there should be some consolidations made soon or their abundance will defeat their purpose.

Current events give special interest to a statement which has been issued by 277 of the nation's Roman Catholic bishops, including five U.S. cardinals. As reported by United Press International, they view with grave concern a decaying trend toward conformity and call for a revival of traditional ideals of individualism "before it is too late." They find that "we have been faced by a frequent lack of truly responsible leadership both on the part of management and of labor." In attaining social welfare goals, they believe, "pressures are growing for a constantly greater reliance on the collectivity rather than on the individual." Further that, "An inordinate demand for benefits, most easily secured by the pressures of organization, has led an ever-growing number of our people to relinquish their rights and to abdicate their responsibilities . . . intensive socialization can achieve mass benefits but man and morality can be seriously hurt in the process."

The statement of these high-ranking churchmen is directed to parents, businessmen, labor leaders and to government which has done so much through a philosophy of welfare-statism, to undermine individualism and personal responsibility.

Criticism and suggestions on this situation should be invited from all. It's high time Americans rediscover the backbone required to stand up on their own hind legs and fend for themselves.

Local Man Grad At Airborne School

FORT BRAGG, N.C. (AHTNC)—

Army PFC Randolph K. Simon, son of Joseph K. Simon, 249 E. 106th, Tacoma, Wash., recently was graduated from the 82d Airborne Division Jump School at Fort Bragg, N.C.

Simon received his parachutist wings after completing four weeks of intensive ground and aerial training which included five parachute jumps.

He entered the Army last April and was last stationed at Fort Gordon, Ga.

The 19-year-old soldier is a 1959 graduate of Rankin Pierce High School.

LINOLEUM, FORMICA, CARPETS
FREE ESTIMATES
PACIFIC FLOOR COVERING
131st & Pacific LE 7-4545

BARSOTTI & TIMM

Top Values HARDWARE VARIETY & PAINT

At the Roy Y LE 7-4221
Open 7 Days A Week, 7 a.m.-9

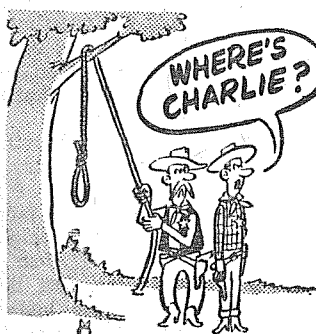
BOOKKEEPING—TAX REPORTS—AUDITS

JOHN L. CROSSEN INCOME TAX SPECIALISTS

8410 Pacific Avenue

GR 2-8002

TELEVISION SERVICE CENTER
PRESENTS TV CHUCKLES



Charlie is smart. He has seen this picture before. He knew the sheriff would have done his duty, so Charlie decided to get his TV fixed and watch the midnight movie instead.

TELEVISION SERVICE Center
"YOUR WINEGARD COLOR CEPTOR DEALER"

GR23386 8431 PACIFIC AVE.

Personnel Changes At Mt. Rainier

Park Superintendent Preston P. Macy has announced several personnel changes at Mount Rainier National Park. Charles I. Ellis, Roads and Trails Supervisor, retired January 7 after 37 years service with the National Park Service. A farewell party in honor of Ellis was held at Gateway Inn January 6, attended by many friends and fellow employees. A Commendable Service Award was presented Ellis at his retirement party along with a Department of the Interior Lifetime Pass and a gift from fellow employees.

Mr. John A. Rutter reported for duty December 30, 1960 as Assistant Superintendent for Mount Rainier National Park. He fills the vacancy created by the retirement of Curtis K. Skinner.

Other personnel changes at Mount Rainier included the appointment of a permanent plumber and carpenter. Mr. Kenneth L. Osborn of Ashford, Washington, entered on duty as a carpenter on January 9. Mr. Charles A. Martindale entered on duty the same date as a plumber and will reside at Longmire with his wife. Henry J. Evans, Supply Clerk, was awarded a 30-year service pin for his service in Mount Rainier National Park.

SUMMIT VIEW AUTO REPAIR
20% DISCOUNT ON ALL PARTS AND LABOR
10904 E. Canyon Rd. LE 1-0424

Woodland PTA Holds Dad's Nite

Woodland PTA held a Dad's Night meeting last night in the school gym. Mrs. Robert Vorak presided.

The program, under the direction of Ray Tobiason, principal, included instrumental selections by the following men:

Leonard Aikins, guitar; Edward Saylor, banjo; Michael Carney, bass fiddle; and John Joyce, violin. Ben Miracle entertained with poetry.

TWO POLE BARBER SHOP
9820 Pacific Avenue
Haircuts \$1.50, Children \$1.00
Courteous Service Always
Mon. thru Fri. 10 to 7
Saturday 9 to 7

Prescription Service

Open 7 Days a Week
9:30 a.m. - 9:30 p.m.
Sundays 10 a.m. - 6 p.m.

JACOBS PACIFIC DRUGS

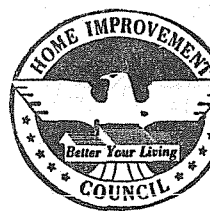
Wallgreen Agency
Pay Light & Water Bills Here
84th & PACIFIC AVE

Greenfield 2-6445

Thursday, January 19, 1961

THE TIMES JOURNAL

VAUGHAN'S VALUES UNSIGHTLY CRACKED CEILINGS



We will fix them without the mess of replastering or removing old plaster. Skilled applicators will cover your old ceiling with a new ceiling of Armstrong tile, that will not crack, chip, or peel. We can do your room in less than a day.

CALL US FOR FREE ESTIMATE

ARMSTRONG CEILINGS
completely installed for **\$49.95**
(Average 10x10 room)

ASK ABOUT OUR BUDGET PLAN
VAUGHAN'S PACIFIC LUMBER
84th & Pacific Avenue GR 4-9515

BAR-S-WEEK . . .



at SAFEWAY

BAR-S Hams

SMOKED 7 to 9 Pounds **39¢**
SHANK PORTION lb.

BAR-S Bologna Rings OR POLISH Each **39¢**

BAR-S Skinless Wieners lb. **49¢**

BAR-S Sliced Bacon THICK SLICED lb. **59¢**

Center Cut Ham Roast 3 TO 5 POUNDS lb. **79¢**

Butt Portion Ham Roast 6 TO 8 POUNDS lb. **49¢**

Beef Flank Steaks FROM YOUNG CHOICE BEEF lb. **89¢**

Sliced Beef Liver U.S. CHOICE BEEF lb. **39¢**

Fresh Ground Round lb. **59¢**

Whiting Fish CAPTAIN'S CHOICE—AN ATLANTIC OCEAN FISH. 1½-lb. Pkg. **39¢**

Rupert's Fish & Chips 1-lb. Pkg. **55¢**

BEEF Round Steak
OR ROAST—FULL CUT—U.S. CHOICE lb. **69¢**

BAR-S Smoked Picnics
6 to 8 lbs. LEAN AND TENDER. lb. **35¢**

SILVER Salmon
WHOLE OR HALF Steaks lb **89¢** Roast lb. **79¢**

LUCERNE Ice Cream

BUTTERFINGER OR CHERRY VANILLA Half Gallon **89¢**

GOURMET VANILLA Half Gallon **98¢**

LUCERNE Sour Cream
FOR DRESSING UP EVERYDAY DISHES

Pint **55¢** Half Pint **29¢**

Family Flour GOLDEN HEART 10 lb. Bag **69¢**

Hi-C Orange Drink 3 46-oz. **79¢**

Nalley's Chili WITH BEANS—HOT OR REGULAR 4 15-oz. **89¢**

Pork and Beans VAN CAMPS 5 No. 2½ Cans **\$1.00**

Tide Detergent 47-oz. Pkg. **65¢**

LUCERNE COTTAGE CHEESE
FRESH DAILY—ADDS EXTRA GOODNESS TO SALADS

½ Gal. **89¢** Qt. **45¢** Pt. **23¢**

Old Fashioned Style LUNCH BOX Peanut Butter
18-oz. **49¢**

HUNT'S Tomato Puree 10½-oz.
Tomato Paste 6-oz.

Your Choice 8 Cans **\$1.00**

MRS. WRIGHT'S Cinnamon Rolls
FRESHLY BAKED—SERVE HEATED FOR BREAKFAST

Pkg. **33¢**

IT'S NEW Swansdown Bread Mix
CHOICE OF CINNAMON RAISIN, RYE OR ONION

Pkg. **35¢**

White Bread Mix...Pkg. 33¢

Town House Beans
IDAHO REDS, GREAT NORTHERN OR BABY LIMAS 4 2-lb. Pkgs. **\$1.00**

Spaghetti Sale
DINNER HOUR BRAND ELBO MACARONI 24-oz. LONG SPAGHETTI 24-oz. EGG NOODLES 16-oz. 3 Pkgs. **89¢**

IMPORTED English Candy lb. **49¢**

S.O.S. Cleaning Pads Pkgs. of 10 **49¢**

HUNT'S Tomato Juice 4 46-oz. **\$1.00**

LETTUCE

ARIZONA—CRISP, SOLID HEADS—JUST RIGHT FOR SALADS



2 for 19¢

U.S. No. 1—LARGE SIZE FOR STUFFING
Green Peppers lb. **19¢**

CALAVOS—WONDERFUL FOR SALADS.
Avocado 2 for **19¢**

SERVE CANDIED WITH BROWN SUGAR.
Fancy Yams lb. **19¢**

BANANAS

GOLDEN No. 1—OUR TOP QUALITY!

2 lbs. 25¢



Sale starts 9 a. m. Thursday, January 19 through Saturday, January 21, in Tacoma, Sumner, Puyallup and Lakewood. We reserve the right to limit quantities. No sales to dealers.

Classified

Thursday, January 19, 1961
THE TIMES JOURNAL

Business Service 3

NOW AT SILER'S Complete service on electric ranges. All makes. Fast, dependable, reasonable. LE 7-8634.

CALL POCHER FOR Expert T.V. Repair

Satisfaction Guaranteed
Free Tube Testing
140th & Pacific LE 7-8624

Business Service 3

ART'S SHOE SHOP
LET ART CHANGE THOSE HIGH HEELS FROM THIS TO THIS
All Work Guaranteed
315 Garfield Street
Opposite Parkland Postoffice

GEORGE PURDUE - Plumbing, Heating, New work, remodeling, repairs. Phone LE 7-4477.

Parkland Heating Co.
All makes of furnaces for sale; Specializing in Williams' OIL O' MATICS; OIL, GAS, Hot Water Installations, Electric Heat & Lighting Fixtures; Service; reasonable. 755 South 108th LENOX 7-4045

Business Service 3

COMPLETE TRACTOR WORK
Gravel & Driveways
LE 7-3846

WEBB ELECTRIC COMPANY
Commercial-Residential

ELECTRIC HEATING
WIRING & ELECTRICAL SUPPLIES
24 HR. EMERGENCY SERVICE LE 7-4437
LE 1-1133
11112 Pacific Avenue

PHOTOS
5x7, \$1 - 8x10, \$2
For Appointment, Phone GR 4-1986-Open Evenings
FAMILY PORTRAIT STUDIO
8411 South Park Ave.

A-1 SANITARY SEPTIC TANK PUMPING AND SEWER CLEANING SERVICE
PUY. TH 5-2873

Boush Moving & Storage
Agents for U.S. Van Lines
Cost to Coast Service
11816 Pacific Avenue
LE 7-3696
Parkland, Wash.

We Have BUYERS for your HOUSE!
FARM and BLDG. SITES

Listings Wanted

DICK DEVEREAUX REALTY
Multiple Listing Service
Buying or Selling
Call LE 7-8659
11002 Pacific Avenue

Business Service 3

PARKLAND APPLIANCE SERVICE
LE 1-0528 3c20

Ace Dirt Moving Co.
 Bulldozing Ditching
 TOP SOIL GRAVEL
 SEPTIC TANKS and
 DRAIN FIELDS
 Phone TH 5-2452

FOUNDATIONS, ADDITIONS, REMODELING. Free Estimates. Financing, no down payment. Phone GR 4-7000 any time. 3c21

South End Auto Wreckers
USED PARTS—Motors, Transmissions, Tires, Batteries. We buy junk cars. Also Custom welding by Joe's Welding
1 Mile East of Roy Y on Mt. Hy. spanaway LE 6-534

SEPTIC TANK, Drainfields Sewer Installation, YOUR NEIGHBORHOOD PAINTER and tapers neat and reasonable. LE 1-2465. 3c21

SEPTIC TANK CLEANING Prompt Service
C. V. HUTSON
GR 4-3980 GR 2-7038

TOP SOIL—SANDY LOAM—Parkland area special. Puyallup. TH 4-8759. 3c21

Help Wanted 5
WANTED—Middle aged lady, to baby sit for 2 young children. Parkland area. Must have own transportation. LE 1-2427. 5c20

Lost and Found 6
LOST, in the area of So. 96th January 14th 3 month old brown with white chest German short-hair PUP. REWARD, GR 4-9635.

Real Estate 9
BY OWNER—Modern 3 bedroom home, newly decorated, near school, shopping center and bus. Easy terms. LE 7-5461. 9c20

LIST WITH SUBURBAN
Home and Farm Specialists in South End Properties. Two offices open every day and evenings for your convenience.
SUBURBAN REALTY, INC.
113th and Pacific, LE 1-8638
112th and Canyon, LE 7-0228
Member Multiple Listing Service & Tacoma Real Estate Board 8c2r

M. L. S. MULTIPLE LISTING SERVICE
\$250 DOWN FHA
Clean, well built, 2 large bedrooms, living room 23x13 with good fireplace, nice kitchen with dinette, oil furnace, separate utility, concrete foundation, garage, 2 lots. View of mountain. A-1 district. Price \$7,950. Call Ralph Decker, GR 4-9579. RB-8031

EAST SIDE
Near Portland Avenue, \$275 down FHA. 2 bedrooms, combination living & dining room, large kitchen, tiled bath, unfinished attic. Room for 2 bedrooms up, 1/2 basement, 2 car garage. Call Rusler, GR 4-0029 or GR 4-9579. RB-8238

MCKINLEY HILL REALTY
6311 McKinley Ave. GR 4-9579
Member of Multiple Listing Service and TACOMA REAL ESTATE BOARD

M. L. S. MULTIPLE LISTING SERVICE
Jennie L. Grodtrig
PARKLAND REALTY CO.
Notary Public
Insurance of All Kinds
Est. in Parkland Since 1941
LE 7-8609 Office
302 Garfield St., Parkland
Jennie Grodtrig, LE 1-1210
Edna Taylor, LE 7-3556
Thelma Scott — Yvonne White
JU 8-3838 LE 7-0440
"Deal with the people who give you their personal Attention"
Member of Multiple Listing Service and Tacoma Real Estate Board

RENTALS 10
TWO bedroom home, stove, refrigerator, rest furnished. \$75 a month. LE 7-5658 after 5. 10 What
FURNISHED Apartment, two bedroom, Parkland area. Call after 6 p.m. LE 1-0996. 10c1F

REPAIR SERVICE 11
PIANO TUNING, St. George Messesgo Co. (Guild Member). JU 8-7072. 11c20
WASHING MACHINE PARTS - Largest stock in town. Repairing that pleases. B's WASHER SERVICE. 3727 So. G. GR 4-9409. 11c1F

RENTALS 10
NEW, MODERN furnished apartment, \$50 month. VI 2-7448. Grabzoo. 10c1F
LARGE unfurnished 2 1/2 bedroom house; fenced yard, garage. Midland district. LE 7-4469. 10c20
TANWAX LAKE-2 bedroom, unfurnished home. Call TE 2-4332. Eastonville. 10c1F

RENTALS 10
TWO BEDROOM unfurnished home convenient to McChord and Ft. Lewis. VI 7-2100. 10c20

RENTALS 10
NEW, MODERN furnished apartment, \$50 month. VI 2-7448. Grabzoo. 10c1F
LARGE unfurnished 2 1/2 bedroom house; fenced yard, garage. Midland district. LE 7-4469. 10c20
TANWAX LAKE-2 bedroom, unfurnished home. Call TE 2-4332. Eastonville. 10c1F

REPAIR SERVICE 11
PIANO TUNING, St. George Messesgo Co. (Guild Member). JU 8-7072. 11c20
WASHING MACHINE PARTS - Largest stock in town. Repairing that pleases. B's WASHER SERVICE. 3727 So. G. GR 4-9409. 11c1F

RENTALS 10
NEW, MODERN furnished apartment, \$50 month. VI 2-7448. Grabzoo. 10c1F
LARGE unfurnished 2 1/2 bedroom house; fenced yard, garage. Midland district. LE 7-4469. 10c20
TANWAX LAKE-2 bedroom, unfurnished home. Call TE 2-4332. Eastonville. 10c1F

REPAIR SERVICE 11
PIANO TUNING, St. George Messesgo Co. (Guild Member). JU 8-7072. 11c20
WASHING MACHINE PARTS - Largest stock in town. Repairing that pleases. B's WASHER SERVICE. 3727 So. G. GR 4-9409. 11c1F

RENTALS 10
NEW, MODERN furnished apartment, \$50 month. VI 2-7448. Grabzoo. 10c1F
LARGE unfurnished 2 1/2 bedroom house; fenced yard, garage. Midland district. LE 7-4469. 10c20
TANWAX LAKE-2 bedroom, unfurnished home. Call TE 2-4332. Eastonville. 10c1F

REPAIR SERVICE 11
PIANO TUNING, St. George Messesgo Co. (Guild Member). JU 8-7072. 11c20
WASHING MACHINE PARTS - Largest stock in town. Repairing that pleases. B's WASHER SERVICE. 3727 So. G. GR 4-9409. 11c1F

RENTALS 10
NEW, MODERN furnished apartment, \$50 month. VI 2-7448. Grabzoo. 10c1F
LARGE unfurnished 2 1/2 bedroom house; fenced yard, garage. Midland district. LE 7-4469. 10c20
TANWAX LAKE-2 bedroom, unfurnished home. Call TE 2-4332. Eastonville. 10c1F

REPAIR SERVICE 11
PIANO TUNING, St. George Messesgo Co. (Guild Member). JU 8-7072. 11c20
WASHING MACHINE PARTS - Largest stock in town. Repairing that pleases. B's WASHER SERVICE. 3727 So. G. GR 4-9409. 11c1F

RENTALS 10
NEW, MODERN furnished apartment, \$50 month. VI 2-7448. Grabzoo. 10c1F
LARGE unfurnished 2 1/2 bedroom house; fenced yard, garage. Midland district. LE 7-4469. 10c20
TANWAX LAKE-2 bedroom, unfurnished home. Call TE 2-4332. Eastonville. 10c1F

REPAIR SERVICE 11
PIANO TUNING, St. George Messesgo Co. (Guild Member). JU 8-7072. 11c20
WASHING MACHINE PARTS - Largest stock in town. Repairing that pleases. B's WASHER SERVICE. 3727 So. G. GR 4-9409. 11c1F

RENTALS 10
NEW, MODERN furnished apartment, \$50 month. VI 2-7448. Grabzoo. 10c1F
LARGE unfurnished 2 1/2 bedroom house; fenced yard, garage. Midland district. LE 7-4469. 10c20
TANWAX LAKE-2 bedroom, unfurnished home. Call TE 2-4332. Eastonville. 10c1F

REPAIR SERVICE 11
PIANO TUNING, St. George Messesgo Co. (Guild Member). JU 8-7072. 11c20
WASHING MACHINE PARTS - Largest stock in town. Repairing that pleases. B's WASHER SERVICE. 3727 So. G. GR 4-9409. 11c1F

RENTALS 10
NEW, MODERN furnished apartment, \$50 month. VI 2-7448. Grabzoo. 10c1F
LARGE unfurnished 2 1/2 bedroom house; fenced yard, garage. Midland district. LE 7-4469. 10c20
TANWAX LAKE-2 bedroom, unfurnished home. Call TE 2-4332. Eastonville. 10c1F

REPAIR SERVICE 11
PIANO TUNING, St. George Messesgo Co. (Guild Member). JU 8-7072. 11c20
WASHING MACHINE PARTS - Largest stock in town. Repairing that pleases. B's WASHER SERVICE. 3727 So. G. GR 4-9409. 11c1F

RENTALS 10
NEW, MODERN furnished apartment, \$50 month. VI 2-7448. Grabzoo. 10c1F
LARGE unfurnished 2 1/2 bedroom house; fenced yard, garage. Midland district. LE 7-4469. 10c20
TANWAX LAKE-2 bedroom, unfurnished home. Call TE 2-4332. Eastonville. 10c1F

9c SALE

SKIPPY DOG FOOD 13 For 99c
PARKAY Kraft 4 For 99c
S & W PEAS 303 Can 5 For 99c
S & W GREEN BEANS 4 For 99c
S & W MINCED CLAMS 3 For 99c
TUNA Van Camp Grated 5 For 99c
BISCUIT MIX Big 40-oz. Pkg. 4 For 99c
PEACHES Tastewell, 2 1/2's 4 For 99c
PORK LINK SAUSAGE 2 lbs. 99c

Center Cuts PORK
Chops..... lb. 69c
 Loaf End or Shoulder PORK
Roasts..... lb. 45c

Fresh LIVER
Rings..... lb. 49c
 LARGE JUICY FRANKS or SKINLESS WIENERS - 2-lb. Bag **79c**
 Steer Beef Sirloin or Rib **Steak..... lb. 69c**
 Darisweet 900 Calorie **Contraal 79c**
 The Best Tasting

COAL — FEED — PRESTO LOGS

HERMANS FOOD STORE

162nd & Park Ave. Spanaway
(Right to Limit Reserved)

Indian River Pink, lge. 40 size Grpfrt. 2 for 15c
Solid Cabbage..... lb. 5c
Fancy Rome Beauty, 23-lb. Box \$1.99
No. 1 verifine, 7-lb. bag Onions..... 35c
2 full lb. bag Grandma's Ass't Cookies..... ea. 69c
Kraft 24 oz. Mayonn..... 39c

County, Washington, described as:
 The West 50 feet of the East 100 feet of the following: Beginning 977.55 feet West and 1224.84 feet South of the Northwest corner of Lot 2 in Section 8, Township 19 North Range 3 East of the Willamette Meridian, Thence South 100 feet, thence East 250 feet, thence North 100 feet, thence West 250 feet to the point of beginning.

PETERS AND TRACY,
 GEORGE F. POTTER,
 Attorneys for Plaintiff
 11024 Pacific Avenue
 Tacoma 44, Washington.
 Published in the Times Journal, December 22, 29, 1960; January 5, 12, 19, 26, 1961.

County Agent's Corner
 By Jack Crawford
Proper Identification Important to Dairy Herd Improvement
 Start the New Year by making sure that you have identification records for all your dairy animals. This suggestion comes from Kenneth Gross, WSU's Extension dairy specialist. Here's what Gross has to say about the importance of identification records:
 Breeding progress and herd management require proper identification of animals in the herd. Without an identification system that positively identifies animals and their ancestors, breeding and management improvement will be greatly hampered.
 Adequate identification records may be any system you can refer to to check on the ancestry and other important data of an animal. An animal may be identified by registration papers, ear tags, tattoo, photo or drawings of color markings.
 Proper identification is important in buying and selling animals. Prospective purchasers will pay more for animals they know are sired by their favorite bulls or are out of favorite cows.
 Many bulls lack proofs because their daughters are not identified. Over 90 per cent of the services from Washington artificial insemination bulls are to grade cows. However, only about half the records used in proving sires are from grade daughters. One of the main reasons is lack of proper identification of the grade daughters. Another reason, of course, is that many of the grade daughters are not included in a production testing program.

By Florence Allen Family Spending
 When the tenth of each month comes and the bills have to be paid, do you wish for rubber money so you could stretch it over more items in the budget? Lacking any source of rubber money so you can cover all those bills, do you pay the ones that are pressing the most and let the rest go? So you get a little farther behind each month and you just think that you can never catch up again.
 Keeping a record of everything that is spent is one of the keys to success in handling money. Planning your expenditures as a family is another way that will help do away with problems. If your income is \$5000 a year, just think in five years you have had the management of \$25,000. Has this money been managed so that you have received the most satisfaction, or are you thoroughly discouraged about your financial situation?
 Your County Extension Service in Room 742 of the County-City Building can help you with bulletins, called "A Guide for Planning Family Spending and a Family Account Book."

There are only 107,000 inhabitants in the 70,800 square miles of territory that make up Alaska.

CARNATION, TALL TINS
CANNED MILK 3 FOR 39c

10 LB. GOLD MEDAL FLOUR 89c

SKIPPY, TALL TINS
DOG FOOD 13 CANS \$1 FOR

SPOKANE VALLEY, 2 1/2 TINS
Pork & Beans 5 CANS \$1 FOR

100% PURE
Grd. Beef 3 LBS. FOR 89c

ROUND • SIRLOIN • RIB
STEAKS 69c Lb.

WELL TRIMMED
Rump ROAST 59c Lb.

ALL CUTS
T-Bone STEAK 79c Lb.

ALL MEAT • NO BONE
Sirloin Tip ROAST 69c Lb.

SWISS OR BROIL
Chuck STEAK 49c Lb.

WE RESERVE THE RIGHT TO LIMIT QUANTITIES
 STORE HOURS:
 9 A.M. TO 10 P.M.
 7 DAYS A WEEK

BARGAIN BASKET

16618 PACIFIC AVE. South SPANAWAY, WASH.

TUBE TOMATOES 19c Pkg.

DENNISON'S Spaghetti AND Meat Balls
3 Tall Tins For 69c

50 Lbs. POTATOES
 Ore. No. 2
\$1.49

OLD RANGER PEACHES
3 2 1/2 Tins For 89c

GREEN PEPPERS 5c Ea.

KING KELLY Orange Marmalade
2 FULL POUND JARS 39c

10-lb. Cello Bag North Dakota RED POTATOES 39c

WE HAVE SACK GOAL FEEDS PRESTO LOGS MONEY ORDERS
 For Your Convenience

It Pays To Advertise in The Times Journal Classified Section

Bobcats Invade Knights' Home Maples Tonight

The Montana State Bobcats will invade the Pacific Lutheran University maples for a non-conference hoop tilt tonight. Saturday

night the Lutherans will travel to Bellingham for a return engagement with the Western Washington Vikings who upended them here last Saturday night, 77-66, to break a 37 game conference winning streak on their home court.

Summit . . .

(Continued From Page 3)
Mrs. Perry Bartram, president; Mrs. Dick Robbins, vice-president and Mrs. Larry Taranoff, Secretary-treasurer.

Bluebirds

On January 26th two Bluebird groups from Central Avenue will be attending the All-City potluck 50th Anniversary Birthday Dinner. The Lucky Bluebirds and Little Homemakers will be among the anticipated 1,000 to be in the Fellowship Hall.

Girl Scouts

The Girl Scouts elected officers at a recent meeting. The chairman will be Marshelle Trobet. She will be helped in her new role by the following: Scribe—Peggy Aldrich; Treasurer—Susan Dowrie; Treats—Sally Daffer; Games—Dixie Almont; Songs—Martha Vickers. Each girl is responsible for helping to plan part of the program.

4-H'ers

Stock Raisers—The Stock Raisers have two celebrities among their members. Glenna Haaland won a trip to Pullman, Washington, as a result of her excellent demonstration on "Dairy Foods." She was judged in the early spring and late fall by two dairy specialists. Glenna has reason to be proud for winning this 4-H Senior Campership award.

Pat MacFarland won the Kiwanis Junior Leadership award. There are seventeen Kiwanis awards presented each year. One for each category, such as dairy, beef, etc. Each winner receives a gold cup with his name inscribed. At the year's end it is returned and passed on to the new winner. Mrs. MacFarland, Pat's mother, will be remembered as office clerk at Central Avenue School several years ago.

At the next regular meeting, Tuesday, January 24, Mike Waldrop will give a demonstration on his project of Nutria fur. The Irish's will be host to this meeting.

Congratulations

Congratulations are extended to Grandpa and Grandma Colton. Their first grandchild, David Ronald Colton, was born Tuesday, January 10th. He weighed in at 7 pounds 11 ounces. Proud parents are Mr. and Mrs. Ronald Colton of Parkland.

We wish to extend our sympathy to Mary Hart and her family on the death of her father in Iowa. Mary has gone east to be with her family.

Newcomers

The welcome mat is being put out for 1961 newcomers to Central Avenue School. Mr. and Mrs. Robert Gilbertson and children, Judy, Richard, and Robert are living at 4812 East 104th. Mr. and Mrs. Donald Hamilton and children, Janis, Ronald, and Steven are residing at 3401 East 112th. For each of you, may lasting friendships and enjoyable memories develop through our friendly community.

Square Dancers

The Summit Youth Center Square Dancers will meet Saturday, Jan. 21st at 8:30 p.m. at the Youth Center. Al and Alice Smith and Joe and Margaret Hoffo will be hosts for the evening. Coffee and tea will be served. Ed Hendricks will be the caller. All square dancers are cordially welcome. Reporter, Sue Johnson, LE 7-7150.

Tough Opposition

Coach Dobbie Lambert will bring a club which has won 4 and lost 6 this season, but the opposition has been much tougher than the opponents the Knights (who stand 8-4 for the season) have met. Last week end, the Bobcats dropped road tilts to Regis and the Air Force Academy. The week before they split at home with Idaho State.

Rangy

MSC will start rangy, 6-7 Bill Monton at center, 6-4 John Bryant and 6-3 Armand Erias at forwards. All are juniors and Bryant leads the Bobcat scorers with a 14.6 average. Guards will be Tom Sawyer, a smooth 6-0 junior, and Senior Jim Murphy, 5-10 speedster, will be the other guard.

No Change

Coach Gene Lundgaard anticipates no change in his starting five which will have Norm Dahl and Larry Poulsen at forwards, Ralph Carr at center, Bruce Alexander and Dick Nelson at guards. Dahl returned to the lineup last week after three weeks on the shelf with an injured toe. He should be at full strength this week. Marv Fredrickson, ace frosh guard, is still out with a sprained knee and his return is indefinite. Mike Healy, another smooth frosh guard, who has had a sprained ankle, may be ready this week.

Alexander Leads

Alexander leads the PLU point getters with 182 for a 15.2 average. Dahl is next with 157 points for a 15.7 average (he missed two tilts). Carr and Poulsen have identical totals of 140 for 11.7 marks and Nelson has tallied 101 for an 8.4 average. As a team the Lutes are hitting 40.8 from the field while their opponents have hit 39.7 percent of their shots. The Lutes have scored 72.5 points per game to 69.5 for the opposition, but are behind on rebounds 49.0 to 47.6.

PTA Meets Tonite

The January meeting of the Collins PTA will be held at 8 p.m. tonight in the school gym, Ralph Fuller presiding.

The Franklin Pierce school board will be represented at the meeting. There will be an open discussion concerning the forming of a district council within the Franklin Pierce School District.

Refreshments will be served after the meeting.

BETHEL SCHOOL DIST. MENUS

January 23 - 27

Monday
Spaghetti and meat balls, mixed string beans and corn, fruit, bread and butter sandwich, milk.

Tuesday
Chicken noodle vegetable soup, bologna or cheese sandwich, apple and pineapple dessert, milk.

Wednesday
Noodle corn and meat casserole, tossed salad, applesauce, bread and butter sandwich, milk.

Thursday
Weiner on buttered bun, vegetables, potato salad, date delight, milk.

Friday
Macaroni and cheese, stewed tomatoes, peanut butter sandwich, milk, frosted grahams.

Summit Methodist Plans Fund Crusade

The building fund crusade of the Summit Methodist Church will be initiated next Sunday, January 22,



Rev. J. H. Soltman with the sermons at 9:45 and 11 a.m.

Services will be given by the director of the crusade, Rev. John Henry Soltman of Auburn.

A reception for Rev. and Mrs. Soltman will be held in the social hall of the church on Friday evening, Jan. 20, at 7:30. Everyone interested in the work of the church is invited.

It's the LAW

PREPARED AS A PRACTICE SERVICE BY THE WASHINGTON STATE BAR ASSOCIATION

WHO OWNS SAVINGS BONDS?
John Husky, a welder, bought U.S. Savings Bonds by funds withheld from his wages.

When he had purchased bonds of the face value of \$2,500, his wife, Mary, contended that the bonds were community property and that she owned a half interest in the bonds.

John told her the bonds were all his and she didn't have any claim on them. He said that he knew that the U.S. Treasury regulations provide that the issuance of the bonds in his name alone was positive proof that he owned the bonds.

Who do you think is right in this situation? Does Mary have a community interest in the bonds?

The answer is that Mary is right. She does own a community interest in the bonds. In a similar situation the court ruled that the treasury regulations providing that the person in whose name the bond was registered was the "owner" of the bond was for the convenience of the government only. It does not decide who owns the money which will be received when the bonds are cashed in.

Ownership of the money is decided by the laws of the state where the couple live. In Washington a husband or wife cannot be deprived of his or her interest in the wages of the other by either the husband or the wife purchasing government bonds.

(This column is written to inform, not advise. Facts may change the application of the law.)

LETTERS to the EDITOR

To the Editor:

My husband and I wish to take this opportunity to publicly thank the Parkland Times Journal and all of the merchants who contributed to the 1961 Parkland Baby Derby. We were very surprised and very thrilled to learn we were the winners of the derby, with the help of our new son, of course, and in time we hope to thank each merchant personally.

Mr. and Mrs. R. J. Rehr

SMALL CUTE EFFICIENCY APARTMENTS
SEPARATE BEDROOMS
\$57.50 and Electricity
LORING COURT
12605 Pacific Avenue

Building Permits

Boyd Lundstrom, \$45,000 total (4) duplexes, 9200 112th St. SW, Armstrong Const. Co., \$14,000 residence, 5009 27th St. NE, Puyallup. Leonard W. O'Hern, \$28,000 service station, 159th and Pacific. W. G. Tucker, \$200 each (2) carpools, 11415 West Pipeline Road. Darrell D. Nelson, \$250 barn, Rt. 7, Box 374, Tacoma. H. E. Thaden, \$14,000 each (2) residences, 703 and 715 East Johns St. Edward A. Greenlaw, \$12,000 duplex, 3225 South 94th St. Ivan M. Cheesman, \$17,000 residence, 8302 43rd Place. Chas. R. Steiner, \$8500 residence, Pioneer Way, Puyallup. Lewis M. Tenesch, \$600 addn. to res., Rt. 7, Box 429. Evergreen State Builders, \$20,000 residence, 8306 So. 41st. Andrew E. Gundy, \$350 garage, 765 So. 113th. Edward L. Alberts, \$15,000 residence, 609 So. 141st. C. M. Pitzer, \$16,500 residence, 15024 16th Ave. Court, So. Harrington-Cowden, Inc., \$10,000 addition to res., 10413 Glenwood Drive, SW.

John M. Bohren, \$850 garage, 315 Jovita Blvd. NE, Puyallup. Erspamer Const. Co., \$16,000 residence, 8617 Woodland Rd., Puyallup. Arthur Stanke, \$12,000 residence, 13819 East B St. Lee Anderson, \$500 utility bldg. for Trailer Court, 8104 112th Street East, Puyallup. Philip E. Johnson, \$12,000 residence, 13701 58th Ave. Court East, Tacoma. Griffin Fuel Co., \$12,000 residence, 7909 E. 126th, Puyallup. B. J. Gallagher, \$12,000 residence, 3803 13th St. NE, Puyallup. Adam J. Ross, \$15,000 residence, Rt. 2, Box 2338, Gig Harbor. Andrew Lund, \$18,000 residence, 4601 9th St. NW, Puyallup. John T. Yearian, \$6000 residence, Rt. 4, Box 4512, Gig Harbor. Harrington-Cowden, Inc., \$19,500 residence, 10604 Glenwood Dr. SW. James L. Frost, \$25,000 residence, 10 Forest Glen Lane. F. D. VanRheeden, \$3200 remodel to res., 909 So. 117th. H. F. Syford-T. Betz, \$4000 remodel to comm. bldg., cor. Gravely Lake Dr. and 111th SW. Frank M. Williams, \$8000 remodel to res., 6802 Meridian St. N, Puyallup. Dudley Hensley, \$10,000 residence, 11452 So. J. Ned Shera, \$10,000 remodel to res., 8516 1305th St. SW. Hjalseth and Son, \$20,000 each (2) res., 7022 Madrona Drive and 4410 70th Ave. Court West.

Vern L. Geesey, \$13,000 residence, 1110 Violet Meadow. Duane Hatterson, \$16,750 residence, 810 So. 138th. L. R. Hudson, \$10,000 res., 175 E. Tule Lake Rd. Russell

White, \$10,000 res., Raft Island; Gig Harbor. L. T. Caraway, \$15,000 addn. to auto parts store, 12904 Pac. Highway SW. Peterson Bldg. Co., \$13,000 res., 13002 Lake City Blvd. SW. Stanley Raczkowski, \$200 mov. shed to prop., 4804 Clarks Creek Rd. Eugene M. Smalley, \$5000 addn. to body and fender shop, 10325 Pac. Ave. Charles H. Bowker, \$3000 remodel to res., 717 18th St. NE, Puyallup. Edward A. Hager, \$1000 cabin, Colovis Passage, Gig Harbor. Wm. Becker, \$2500 trailer, 6516 Fairview Rd., Puyallup. Jack Burkhardt, \$21,000 res., 8611 So. 43rd. Donald E. Hixon, \$500 cabin, Ohop Lake.

White, \$10,000 res., Raft Island; Gig Harbor. L. T. Caraway, \$15,000 addn. to auto parts store, 12904 Pac. Highway SW. Peterson Bldg. Co., \$13,000 res., 13002 Lake City Blvd. SW. Stanley Raczkowski, \$200 mov. shed to prop., 4804 Clarks Creek Rd. Eugene M. Smalley, \$5000 addn. to body and fender shop, 10325 Pac. Ave. Charles H. Bowker, \$3000 remodel to res., 717 18th St. NE, Puyallup. Edward A. Hager, \$1000 cabin, Colovis Passage, Gig Harbor. Wm. Becker, \$2500 trailer, 6516 Fairview Rd., Puyallup. Jack Burkhardt, \$21,000 res., 8611 So. 43rd. Donald E. Hixon, \$500 cabin, Ohop Lake.

"THE MIGHTY MIDGET"
THE WANT AD
Will Do the Job for You

TIMES JOURNAL
WANT ADS
Just 6c Per Word
With A 60c Minimum

NATURAL GAS SPECIALISTS IN CONVERSIONS
LICENSED GAS INSTALLERS
GR 2-8613
DUCOLON FURNACE
29th Year 210 So. 38th

INTERURBAN AUTO FREIGHT INC.
3 Trips Daily
To Parkland, Sponaway
Summit, Midland
GENERAL FREIGHT
MA 7-4121

YELM THEATRE
DOUBLE FEATURE
Fri.-Sat., Jan. 20 & 21
WRECK OF THE MARY DEARE
With GARY COOPER
CHARLTON HESTON
Plus
CIRCUS STARS
A Paramount Release
Cartoons
SUNDAY, JAN. 22
THE GLENN MILLER STORY
With JAMES STEWART
JUNE ALLYSON
Cartoons

PISTON GRINDING
Valve Seats Installed, Complete Brake Drum Turning, Reboring, Pin fitting, Lathe and Press Work, Head Surfacing, Key Seating, Motor Rebuilding, etc.

Rupe Machine Works and Garage
AUTOMOTIVE & INDUSTRIAL WORK
13411 Pac. Ave. P.O. Box 2445 Parkland 44, Wn. LE 7-7450

WE MAKE LUMBER
LUMBER
GLASS
HARDWARE
SHINGLES
ROOFING
GET OUR PRICE FIRST ON ECONOMY GRADE LUMBER
Baskett Lumber
9701 Portland Avenue
LE 7-8663

FOOD BUYS

COFFEE CHASE AND SANDBORN 2 Lb. Can \$1.15

WHITE KING "D" GIANT SIZE 59c

Cake Mix GINGH BRAND 5 Pkgs. \$1

Choc-Chips GHIRARDELLI 6-oz. 5 Pkgs. \$1

Vegetables POLAR BRAND FROZEN - ALL VARIETIES 6 Pkgs. 89c

Beans WE REPEAT - Idaho Red, Small White, Pinto 2 Lbs. 29c

CHILI DENNISON'S 303 Cans 4 For 99c

TISSUE GUEST RANCH 4 Roll Toilet 25c

EGGS "AA" LARGE Doz. 55c

T-BONE STEAKS Choice Cuts lb. 79c

PICNICS Armour Star, Dble Smoked lb. 35c

LARGE BOLOGNA By The Piece 39c

STEAKS RIB 69c

RING BOLOGNA 3/\$1

VEAL CUTLETS 4 Steaks lb. 79c

Tangerines FLORIDA lb. 10c

Bananas RED RIPE lb. 10c

Tomatoes lb. 19c

PARKLAND Super MARKET
Formerly Kitchen's
12208 Pacific Avenue

PRICES EFFECTIVE WEDNESDAYS THROUGH SUNDAYS

OPEN 7 DAYS A WEEK For Your Convenience
Right to Limit Reserved
SUNDAY 9 a.m. to 8 p.m.
WEEKDAYS 9 a.m. to 9 p.m.
FRIDAYS 9 a.m. to 10 p.m.

NO DOWN PAYMENT
NO PAYMENT FOR 30 DAYS!

No Freezer Purchase Required

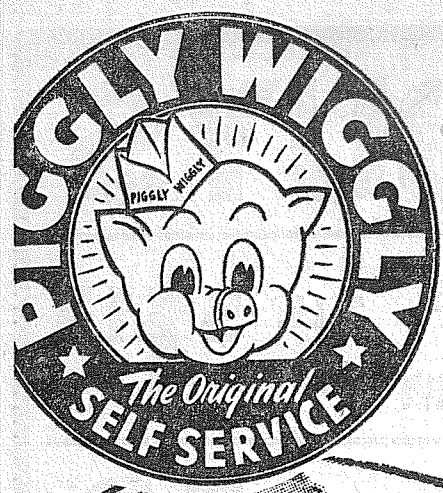
Basic 3-Month Supply Consists of
120 Lb. 1/2 SIDE USDA GRADED CORN-FED STEER BEEF

6-7 T-Bone Steaks	6 Pot Roasts	PLUS!—46 LBS. USDA PORK
7 Big Steaks	1 Rump Roast	PLUS!—12 PKGS. FROZEN FRUITS & BERRIES
4 Sirloin Steaks	1 Sirloin Tip Roast	PLUS!—27 CANS OF JUICES
4 Large Round Steaks	26 Lbs. Ground Beef	PLUS!—2 CASES FROZEN VEGETABLES
4 Swiss Steaks	2 Pkgs. Boiling Beef	PLUS!—We Will Pay First 3 Mo. Locker Rental
4 Chuck Steaks	2 Pkgs. Meaty Soup Bones	
2 Pkgs. Cube Steaks	2 Pkgs. Beef Stew	

FREE DELIVERY GUARANTEED PRODUCTS

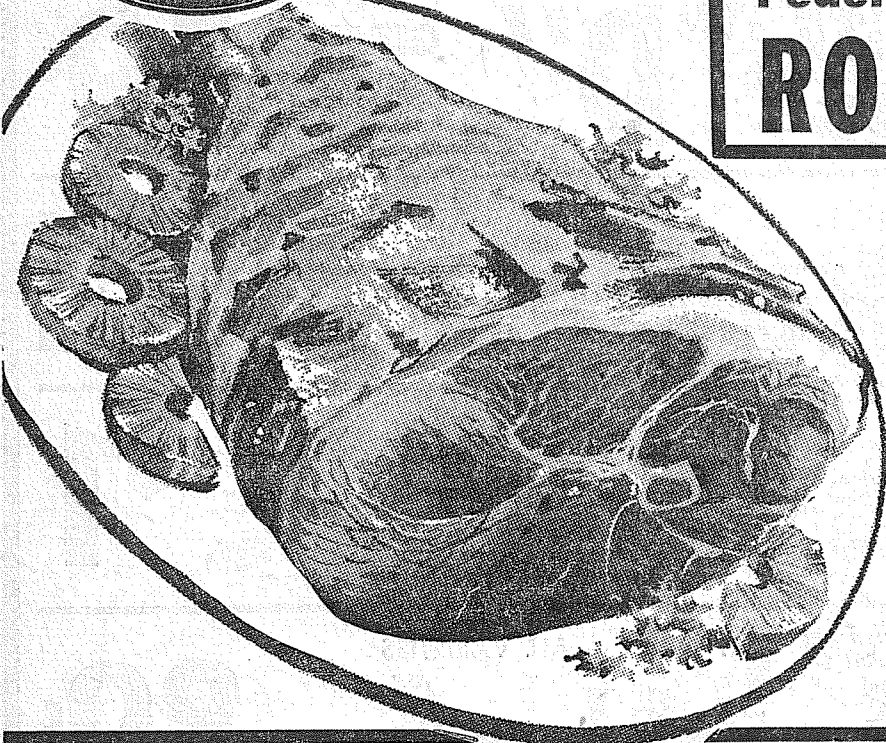
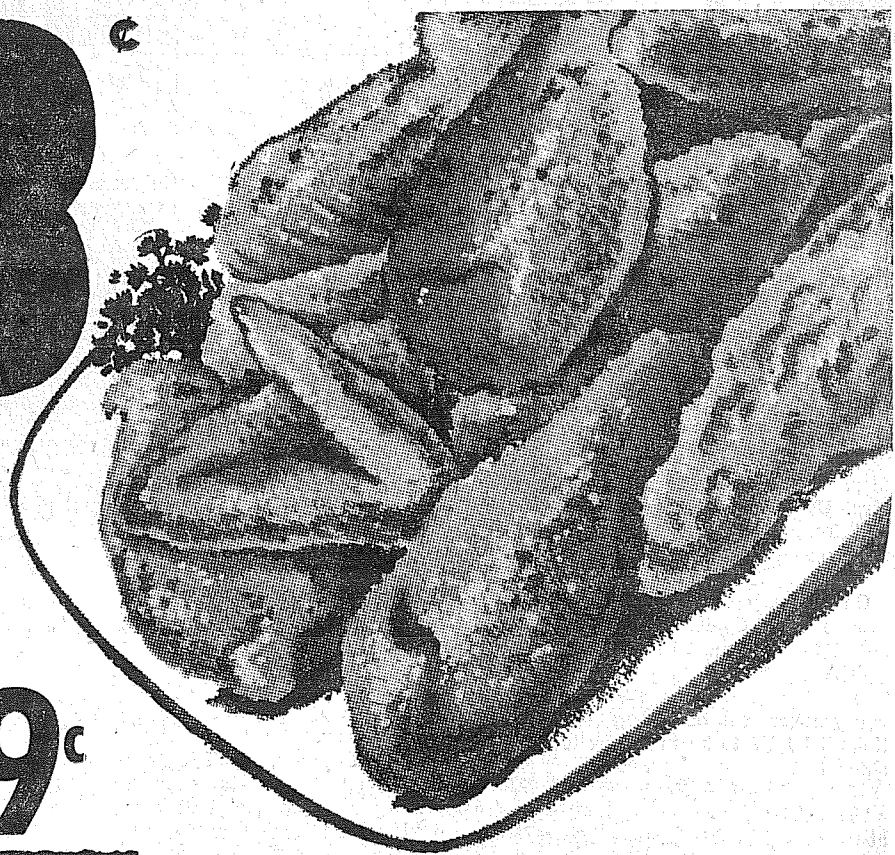
BUDGET FROZEN FOOD SERVICE

Call **JU 4-1526** Any Time For Information
Open Saturday and Sunday



FRESH FRYERS 33¢

• PLUMP, TENDER NO. 1 WASHINGTON-GROWN WHOLE-BODIED FRYERS—NONE FINER ON THE MARKET!



Pederson's Fresh Washington-Grown
ROASTERS TENDER LB. **39¢**

Lean Fresh-Ground Hourly
GROUND BEEF Lb. **29¢**
Parkland Store

SPARERIBS
• FRESH, BRIGHT, SMALL LEAN RIBS . . . REGULAR OR COUNTRY STYLE! LB. **49¢**

SLICED BACON
• ARMOUR'S CRESCENT BRAND LB. **39¢**

PORK LOIN ROAST
LOIN OR RIB END 3 TO 4 LBS. EACH
LB. **49¢**

HAMS
• HORMEL'S FINEST HAMS—FULL SHANK HALF
(Whole Hams, 12-16-Lb. Avg., Lb. 53¢)
(Butt Portion, 3-5-Lbs., Lb. 55¢)
LB. **49¢**

MORRELL'S PRIDE PORK (EACH 35¢)
Sausage Rolls 3 1-LB. ROLLS **97¢**
HYGRADE'S FINEST QUALITY
Skinless Wieners LB. **49¢**

COUNT YOUR SAVINGS AT PIGGLY WIGGLY!

DE GETS CLOTHES CLEANER
TIDE SOAP 5c OFF! SAVE! SAVE!
GIANT PKG. **59¢**

JAMS—YOUR FAVORITE PEANUT BUTTER
PEANUT BUTTER 18-OZ. JAR **39¢**

ALL FLAVORS! MIX 'EM OR MATCH 'EM!
JELL-O GELATINS 3 3/4-OZ. PKG. **5¢**

THE BEST AT A BIG SAVING!
GOLD MEDAL FLOUR 10-LB. BAG **89¢**

THE BUNNET
MARGARINE ANOTHER BIG VALUE! 5 1-LB. CTNS. **1.00**

OUR CHOICE OF PRINTS OF QUARTERS
DARIGOLD BUTTER 1-LB. **65¢**

HUNT'S
FRUIT COCKTAIL NO. 300 CAN **19¢**

LYNDEN BRAND
EGGS GRADE A LARGE DOZEN **53¢**

HILLS BROS.
COFFEE FAMOUS RED CAN (1-lb. can 65¢)
2-LB. CAN **\$1.29**

Van de Kamp's SPECIALS
QUALITY • FRESHNESS VARIETY • CONVENIENCE

ROSETTE COFFEE CAKE
Reg. 6 for 39¢
Special. 6 for **35¢**

Van de Kamp's BAKERIES

SUNNIE FRESH FROZEN
PATIO STEAKS 15-oz. Pkg. **69¢**
NALLEY'S (8c OFF)
MAYONNAISE Quart Jar **49¢**
NALLEY'S BULK STYLE
SAUERKRAUT 2 22-oz. Cans **49¢**
TREET (5c OFF)
LUNCHEON MEAT 12-oz. Can **39¢**
POPULAR FAVORITE
3-MINUTE OATS 2 12-oz. Pkgs. **25¢**
LESS THAN 20c PER POUND
3-BEE HONEY Nutritious! 5-lb. Pail **99¢**
HALVES OR SLICED
HUNT'S PEACHES 4 No. 2 1/2 Cans **99¢**
KRAFT
CHEEZ WHIZ 16-oz. Jar **59¢**

HUNT'S TOMATO SAUCE 11 8-oz. Cans **\$1.00**
HUNT'S TOMATO CATSUP 6 14-oz. Bottles
HUNT'S TOMATO PASTE 9 6-oz. Cans
HUNT'S SOLID PACK TOMATOES 6 No. 300 Cans
HUNT'S STEWED TOMATOES 6 No. 300 Cans

LIPTON
TEA BAGS 48-Ct. Pkg. **67¢**
INST. TEA 1 1/2-oz. Size **49¢**
MINUTE MAID TANGERINE, PINEAPPLE OR
GRAPE JUICE 6 6-oz. Cans **1.00**
SUNSHINE MARSHMALLOW
BANANAS 14-oz. Pkg. **39¢**

FAVORITE BLEACH 1/2-Gallon **39¢**
REYNOLDS ALUMINUM FOIL 25-Ft. Roll **35¢**
ASSORTED COLORS SCOTTOWELS 250-Count **35¢**
WALDORF TOILET TISSUE Asstd. Colors 4-Roll Pack **39¢**

GIANT SOUP AND CRACKER SALE!

CRACKERS Sunshine Krispy 1-lb. pkg. **25¢**
SOUP Lipton Chicken Noodle 3-pack pkg. **39¢**
MUSHROOM Lipton Soup 2-pack pkg. **33¢**

TOMATO Lipton Soup 2-pack pkg. **29¢**
ONION Lipton Soup 2-pack pkg. **33¢**
GREEN PEA Lipton Soup 2-pack pkg. **29¢**

SNOW MIST
CHUNK TUNA No. 1/2 Can **29¢**
CLEANER (3c OFF)
COMET 2 Lge. Size **43¢**
ANOTHER VALUE
DREFT Large Pkg. **39¢**
NEW BLUE
CHEER Large Pkg. **39¢**

GET CLOTHES WHITER
OXYDOL Large Pkg. **39¢**
PERSONAL SIZE
IVORY 4 Bars **29¢**
IVORY LIQUID OR LIQUID
JOY 22-oz. Size **69¢**
3 BATH BARS 32c
CAMAY 2 Med. Bars **31¢**

OPEN 9 A.M. TO 10:00 P.M. DAILY

SPECIALS IN OUR FIVE HDWE. DEPT.

PLASTIC DISHPAN
Oblong, Asst. Colors
REG. 1.98 SPEC. **1.00**

FOAM PLASTICS
Assorted Sizes New Stock

PLASTIC COVERS
9'x12' **98¢**
10'x20' (H.D.) **1.49**

BINDER TWINE
5-LB. BALL **1.19**
BALE **10.45**

GRAPEFRUIT
TEXAS PINK
5¢ EA.

LUSCIOUS RED RIPE Tomatoes 2-lb. Cello **33¢** THICK MEATED HUBBARD SQUASH . . . lb. **4¢**

POTATOES
10 LBS. **39¢**

Piggly Wiggly

PUYALLUP 1010 EAST MAIN | PARKLAND PACIFIC AT GARFIELD | FIFE FORMERLY ANDRE'S MKT. | SO. TACOMA 5252 SOUTH WASHINGTON | 40TH AND PORTLAND AVE.

Prices Effective Thursday, Friday, Saturday, Jan. 19-20-21.
We Reserve Right to Limit
No Sales to Dealers