

WAR 28 1968

PACIFIC LUTHERAN UNIVERSITY

P.O. Box 71 Library  
Tacoma, Wn. 98447

Pierce County Herald and

# The TIMES JOURNAL

Vol. 24 No. 13

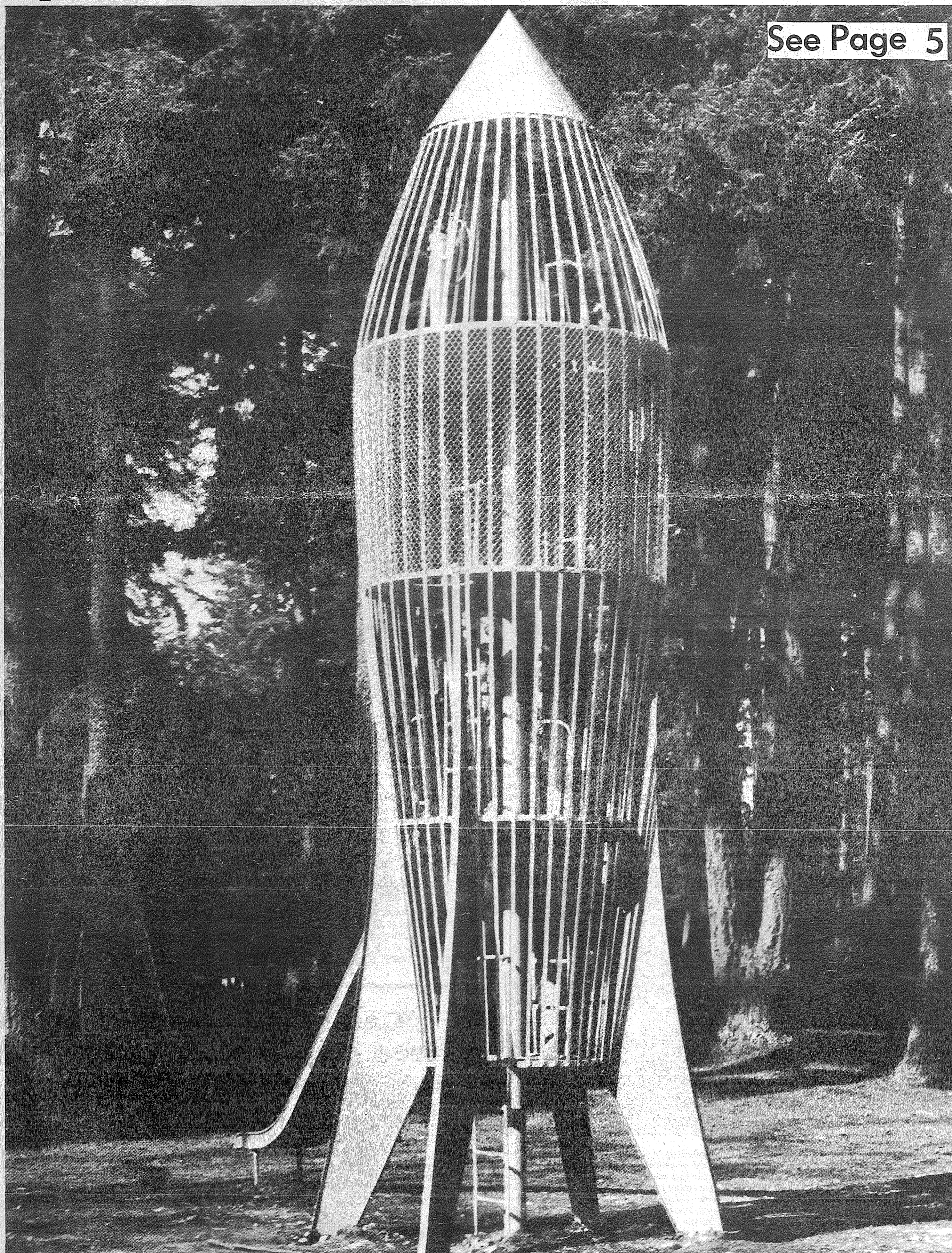
March 28, 1968

Price Per  
Single Copy

10¢

## Span-A-Land Nears Completion

See Page 5



✱



# Sue Wells Crowned Bethel Float Queen

Susan Elaine Wells, daughter of Mr. and Mrs. Gordon G. Wells of 14810 Terry Lane East, Spanaway, was crowned "Queen of The Bethel Daffodil Float" Friday night in ceremonies at the High School gymnasium.

The 17-year-old senior, who was surprised she was even drafted as one of the five candidates, received her crown from master of ceremonies, John Briehl.

The new "Queen's" yellow lace overlay dress was a beautiful contrast to her brunette hair and rosy cheeks which appeared when she felt the crown being placed.

When asked about her future plans, Miss Wells did not think that she would attend college and "had not really thought about what I want to do," but indicated that maybe she would attend business school.

The five candidates, Faye Coonc, Debi Miles, Carla Nelson, Cindy Polly and Sue were chosen by the Seniors at the High School and then a vote was taken of the High School Student body to select the Queen.

An array of entertainment preceded the coronation including: Music by the Bethel High School Band, a modern dance selection by Delores Nichols and Bonnie Young, selections from "Dr. Doolittle" by the Clover Creek Elementary Boys Choir, "Adios Micorazan," "For Carlos" and "Walk Don't Run" by the Guatemala Tin, A comedy strip, by court Jesters Sonja Alvarez, Carole Dolfin, Shirley Moore and Cherry Nylander, the "Wall Street Rag" by Karen O'Neill, Sue Swensen and Wendy Staab, "Younger Than Springtime" by Tenor Mike Buck, a modern dance to "Spanish Flea" by Judy Domser and Timm Singleton, "Adagio Allegro" a flute duet by Joyce Sullivan and Laura Winslow, a medley of "Silhouettes" by the Bethel Chorales and "The Daffodil Story" by Donna Nichols.

The Fan Fare was given by David Hull, Clover Creek Elementary, Paul Tomchick, Kapowsin Elementary, and David Brook, Clover Creek Elementary, and Drum Roll by Larry Boettner and Kelly Tomchick, Kapowsin Elementary, and Dan Poorman and Mike Konshu, Clover Creek Elementary.



SHINING GLORY — Miss Susan Elaine Wells, "Queen of the Bethel Daffodil Float" is escorted from the stage by Harold Thomas after the coronation ceremonies.

—Times Journal Staff Photo

# Five Students On Dean's List

Five local students, Mikkel Thompson, Linda A. Thompson, David W. Sjoding, Frank A. Hagen and Jeffrey D. Highland, have been placed on the "Dean's List" at Pacific Lutheran University for earning a grade point of 3.3 or better.

Mikkel Thompson, son of Rev. and Mrs. Erling C. Thompson of 12115 So. Park, is a sophomore majoring in liberal arts.

Miss Thompson, daughter of Mr. and Mrs. Robert J. Thompson of 2418 Brookdale Road, is in her freshman year, majoring in elementary education.

Majoring in political science is senior David Sjoding. He is the son of Dr. and Mrs. Theodore Sjoding of 705 S. 121st.

Son of Mr. and Mrs. Arnold J. Hagen, 1102 So. 120th, is junior Frank. He is a physics and math major.

Also a junior is Jeffrey D. Highland, son of Mr. and Mrs. Frank Highland. The younger Highland is majoring in History.

# PDA Clean Up Organizing

An appeal for assistance in preparing for the 1968 Annual Parkland Clean Up Campaign scheduled for May 8-9-10-11 has been issued by Henry Hettle, chairman.

This will be the 5th year for the project, sponsored by the Parkland Development Association. The clean up-fix up committee is now organizing, having held their first meeting March 26.

Much of the detail work is handled by other clubs and citizens of the community, Hettle said and asked for their cooperation again this year. Final clean up day climaxing the campaign will be Saturday, May 11.

Residents and businesses are urged to start beautifying their premises prior to clean up day.

# Rummage Sale

A rummage sale has been slated for March 28, 29 and 30 at the Parkland Methodist Church, 12183 "A" Street.

The doors will be open from 9:30 a.m. to 4 p.m.

# Salaries, Unions, Fund Investments FP Board Agenda

Proposed Nurses Salaries, Investment of Funds and a proposed agreement for Classified Personnel with Bargaining Units made up the agenda of the Franklin Pierce School Board meeting Tuesday night.

The base salary for the nurses' schedule was increased 6.30 per cent, from \$5,300 to \$5,634.

The RN classification that requires one year's less training than a PHN was eliminated from the schedule. The percentage increase represents an over-all increase of 5.6 per cent for the nurses presently employed by the district, which is less than the over-all percentage increase the teachers received.

A resolution authorizing the investment of School District Funds which are not required for immediate necessities of the School District was approved and it was moved that \$135,000.00 from the Building Fund be invested in U.S. Treasury Bills for 90 days.

A proposed agreement for classified personnel with Bargaining Units was brought before the board for discussion.

After rapid discussion between Herbert Gelman, board member, F. Inslow, attorney for the Teamster's Union, and Dr. Hill, superintendent, it was decided that the agreement would require more discussion, because, Dr. Hill said, "the major items, such as security clauses and seniority, had not been agreed upon, but the rest is agreeable to all parties."

The board will have to take action if for any reason representatives cannot complete the agreements.



JOHN J. O'CONNELL, declared gubernatorial candidate, slices prime roast beef under the supervision of his wife prior to a testimonial dinner held in his honor Sunday at the Tacoma Sportsmen's Club Chateau. Over 900 enthusiastic supporters attended between 2:30 p.m. and 6:30 p.m., Charles McPhail, dinner chairman, reported. O'Connell, pleased with the huge turnout, renewed old acquaintances and stated it was one of the largest gatherings of voters he has met so far during his candidacy.

# Mayfair Meeting Time Changed

Mayfair Association members will meet 8 p.m. April 1st, at Elmhurst Elementary School. Meeting time had been previously reported at 7:30 p.m.



CHEERY CHIPMUNK BLUEBIRDS celebrated their organization's 58th Anniversary last week by presenting the Times Journal a chocolate cake on behalf of all the Bluebirds in the area. The girls baked the cake in a cooperative effort and reported they only dropped one egg during the mixing. Accepting for the paper is News Editor Sandy Ingram. Bluebirds are left to right: front row — Marlys Anderson, Connie Nash, Medori Howell, Marcy Mattoni. Middle Row — Susan Hooks, Deann Joy, Kristine Kylo, Naomi Koch. Back Row — Karen Klingenberg, Jackie Matthys, Wendy Revard. Leader, not pictured, is Mrs. Eldon Kylo. The girls are third graders at Elmhurst Elementary School.

# The TIMES JOURNAL

Published weekly at 14620 Pacific Ave., Parkland 98444 and delivered by U.S. Mail and carrier to subscribers. Publishers: Pierce County Publishers, Inc. Managing Editor . . . . . Em Matson News Editor . . . . . Sandy Ingram Sports Editor . . . . . Bob Ingram

Subscriptions \$3.50 per year, \$1.80 six months, or 30c monthly by carrier. News stand price 10c copy.

Qualified as a legal publication under Chapter 213 of the Legislature Acts of the 1941 regular session of the State of Washington

Second Class Postage Paid at Tacoma, Wash.

Vol. 24 No. 13 March 28, 1968

## "Can't find the number? Need directory assistance?"



### Look in the "CALL GUIDE" section— in the front of your TELEPHONE DIRECTORY



HI HO

PUYALLUP

HI HO

# EASTERN CORN-FED PORK SALE!

<b>PORK CHOPS</b>	<b>FIRST CUT</b>	<b>69<sup>c</sup></b>	<b>lb</b>
<b>CENTER CUT PORK CHOPS</b>		<b>79<sup>c</sup></b>	<b>lb</b>
<b>FRESH RED SNAPPER</b>		<b>39<sup>c</sup></b>	<b>lb</b>
<b>MILWAUKEE WIENERS</b>		<b>53<sup>c</sup></b>	<b>lb</b>
<b>GRADE A TURKEY HINDQUARTERS</b>		<b>25<sup>c</sup></b>	<b>lb</b>
<b>FLAVOR CURE BAR-S BACON</b>		<b>69<sup>c</sup></b>	<b>lb</b>
<b>10-oz. JAR MEDIUM OYSTERS</b>		<b>75<sup>c</sup></b>	

50 lbs. No. 2  
NETTED GEM  
**POTATOES**  
**99<sup>c</sup>**

CALIFORNIA  
GREEN  
**CABBAGE**  
**10<sup>c</sup>**  
lb

**MAPLE BARS**  
**6/39<sup>c</sup>**



Open 8 A.M.

Closed 11 P.M.

PUYALLUP

PRICES EFFECTIVE MARCH 25 THROUGH 30TH

8-LB. CELLO BAG  
COACHELLA VALLEY  
White  
**GRAPEFRUIT**  
**59<sup>c</sup>**

GIANT PACK  
**POTATO ROLLS**  
**2 doz. 59<sup>c</sup>**

## LOWEST DRUG PRICES ANYWHERE

REG. 1.45	<b>SCOPE MOUTHWASH</b>	<b>79<sup>c</sup></b>
REG. 95c	<b>GLEEM TOOTHPASTE</b>	<b>49<sup>c</sup></b>
REG. 69c	<b>ALKA-SELTZER</b>	<b>39<sup>c</sup></b>
REG. 1.45	<b>PRELL CONCENTRATE</b>	<b>79<sup>c</sup></b>

9-oz. Tins  
**BIRDS EYE AWAKE**  
Frozen Orange Drink  
**4/1.00**

10-lb.  
**OCCIDENT FLOUR**  
**79<sup>c</sup>**

<b>NO. 2 1/2 TINS</b>	<b>DUCHESS PEACHES</b>	<b>APRICOTS PLUMS</b>	<b>4/1<sup>00</sup></b>
<b>BANQUET</b>	<b>FROZEN FRUIT OR</b>	<b>CREAM PIES</b>	<b>4/1<sup>00</sup></b>
	<b>BEE KEEPER HONEY</b>	<b>5 lbs.</b>	<b>99<sup>c</sup></b>
<b>10-lb.</b>	<b>FRISKIES CUBE DOG FOOD</b>	<b>BAG</b>	<b>1.09</b>
<b>2-lb.</b>	<b>NESTLE'S QUIK</b>		<b>69<sup>c</sup></b>
<b>26-oz.</b>	<b>MORTON'S SALT</b>		<b>10<sup>c</sup></b>
<b>200 2-PLY</b>	<b>SCOTTIES TISSUE</b>		<b>4/1.00</b>
<b>KOTEX-12s</b>			<b>3/1.00</b>

38-oz.  
**CRISCO OIL**  
**69<sup>c</sup>**

HI HO

PUYALLUP

HI HO



### Community Groups Aid in Grange Clean-Up Work

Members of Elk Plain Grange No. 782 and members of the "Square Crows" square dance club, met at the Grange Hall recently and sheetrocked and painted the kitchen and rest rooms and repaired and installed new plumbing.

Members of the Spanaway-Elk Plain Volunteer Fire Department will join the work group on March 30th and April 6th to install ceiling tile and paneling in the front hall.

A hot lunch will be served at noon by Home Ec Chairman Minnie Parker.

Members of the Elk Plain Sod Busters 4-H group under the leadership of Mrs. Robert Kuper, William Folk and Dr. Ryncarz met at the hall on March 23rd to clean up the grounds.

### Committee To Hear On Eatonville Extension

There will be a meeting of the Subcommittee on Extensions at the Masonic Temple in Eatonville at 1 p.m. Friday, April 26th, to discuss a proposed extension of SSH 5-N from Eatonville southeasterly to a junction with PSH No. 5 in the vicinity of Elbe.

The public is invited to submit testimony for the subcommittee to consider in making its recommendation to the legislature on this extension.

### Parkland 4-H Demonstrates

By Barbara Evans Reporter

**Parkland Milk-A-Ways**  
To receive a year pin at the end of the year, we have to give a demonstration.

On March 16 we did just that. On March 15th, the night before, our club had a 4-H meeting and practiced our demonstrations. The next day we had to give them to the judges.

Our club did real well on their demonstrations and we all hope that we do as well in our future activities.



Dear Mrs. Stanley:

Can you see it clear to explain to me how the County can supply a sewer system that is more feasible, when the county would have to set up a new sewer department, billing for accounts, hiring new personnel etc. (this is not done now). Assuming that the South Suburban Sewer District would have to make the same moves, the cost would surely be close to the same. Both would have to have the actual construction contracted out. Also under the County plan, I can just hear what a few thoughtless tightwads would say when they have to pay for sewers going all the way on into lets say Eatonville.

M. Doyle



**DUAL PINNING** - Mrs. Newell Hinote, left, and Mrs. Ronald Rauch pin a "Golden Acorn" pin on each other after a dual presentation at an Elmhurst Elementary PTA meeting recently. Each thought she would be presenting to the other. The "Golden Acorn" is given to a member of the community who has devoted time and energy to bettering the area in which we live.

-Times Journal Staff Photo



Mr. and Mrs. B. Dayle Collison, 968 E. 121st, girl, March 12th.

Mr. and Mrs. Herbert Gelman, 1010 S. 129th, girl, March 14th.

Mr. and Mrs. Andrew Spriggs, 1722 E. 39th, girl, March 15th.

### Office Supply Holds Opening This Weekend

Grand Opening for the Parkland - based Davis Office Supply has been slated for Friday and Saturday, according to owner-operator, Mrs. Ann Davis.

Although the store is new, Mrs. Davis has been serving some businesses in the area for over a year on a sales-service route.

According to the owner, while traveling in the area she noted the growing need for an Office Supply Store here.

Stocks available at the new store, located in the Parkland Theater building at 12147 Pacific Avenue, will not just include regular supplies, but also printing, rubber stamps, business forms and wedding and graduation announcements.

Catalogue orders for non-stock items will be available and delivery will be offered.

### Former Resident Dies In Seattle

Mrs. Olof A. Karin Westlund, 82, a former resident of Graham, died Friday in an Edmonds hospital.

Born in Sweden, Mrs. Westlund moved to Graham in 1915 and relocated to Seattle in 1963.

She was a member of the Lutheran Church and the Graham Grange.

Surviving are two grandsons, Jon M. Hansen of Seattle and Laird Hansen of Louisiana.

Services were held Tuesday at the Mt. View Garden Chapel with Rev. William L. Duggen officiating. Burial was in the Mt. View Memorial Cemetery.

### They Meet

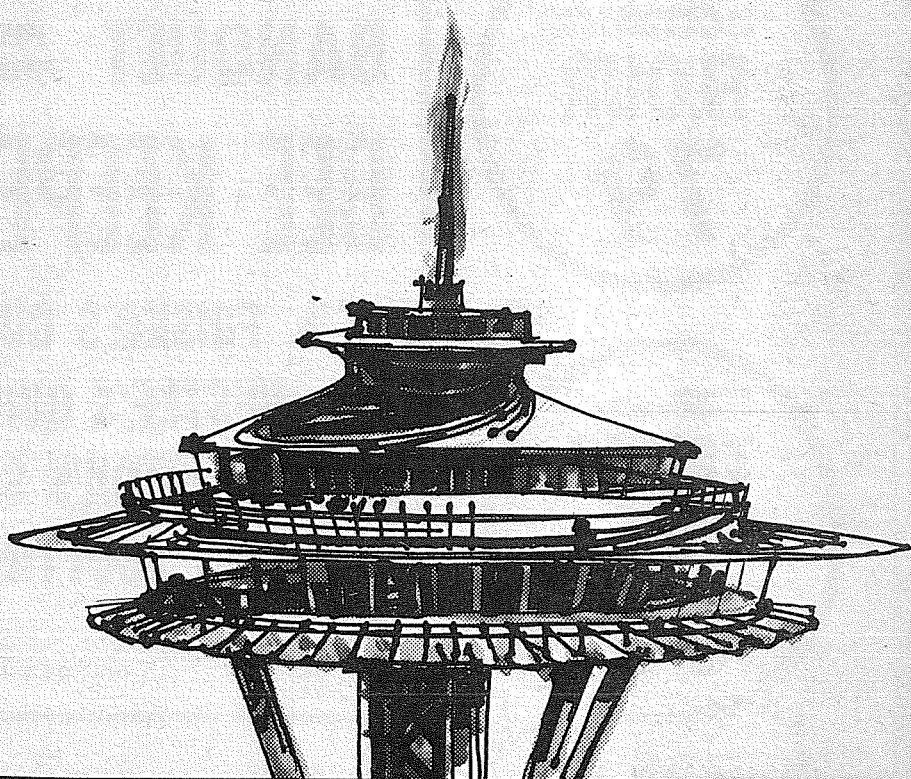
Spanaway American Legion, Post 118, Woman's Auxiliary has changed meeting nights. The meets are now slated for the first and third Wednesday of each month at 8 p.m. at 416 So. 160th.

## Buy a new gas range and we'll have you up for dinner!

A \$25.00 dinner for two at the Space Needle, Seattle's famous revolving restaurant in the sky! That's the bonus for every retail purchaser who buys a new range from Washington Natural Gas Company.

See the fabulous Caloric, Magic Chef and Hardwick Natural Gas ranges at your Washington Natural Gas office today. Convenient terms and liberal trade-in for your old range, of course! (Offer expires May 31, 1968.)

WASHINGTON NATURAL GAS COMPANY  
An equal-opportunity employer



## SPROUSE-REITZ SPECIALS FOR EASTER

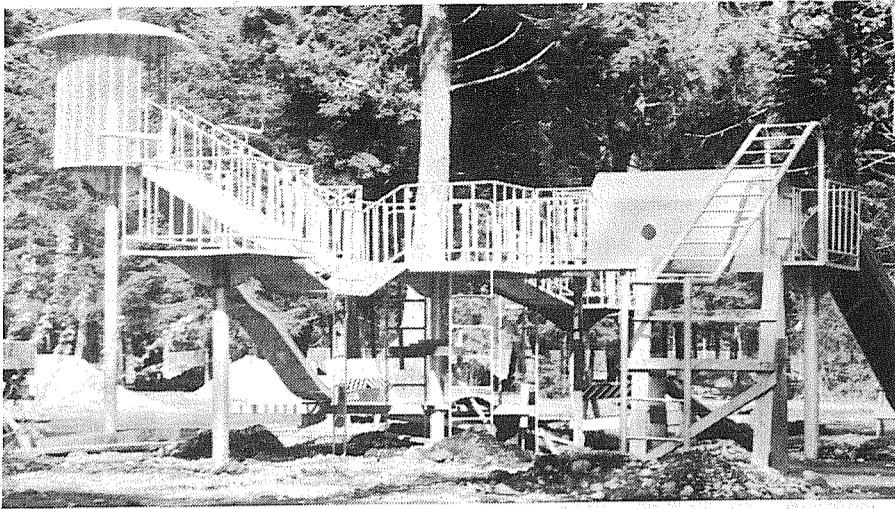
<p><b>Musical Toys</b></p> <p>Plush, cuddly with wind up music box.</p> <p><b>\$1.88 ea.</b></p>	<p><b>New Springtone Fabrics</b></p> <p>Easy care miracle blends, all 1st quality, 45" wide.</p> <p><b>2 yds. \$1.00</b></p> <p>Values to \$1.00 yd.</p> <p>We are Headquarters for your sewing needs.</p> <p>• Patterns • Trims • Notions • Zippers • Buttons • Thread</p>	<p><b>SOLID STATE RADIO</b></p> <p>6 Transistors <b>TONEX</b></p> <p>1 year replacement guarantee. Full carrying case, batteries &amp; earphone included. <b>\$5.47</b></p> <p>Reg. 7.49</p>
<p><b>LADIES' LYCRA Panty Girdles</b></p> <p>Lightweight, reinforced control panels, panty and long leg styles.</p> <p>Reg. \$2.99 <b>\$1.99</b></p>	<p><b>Easter Bunny Helpers</b></p> <p>Bright Easter Baskets in many sizes... Safe Easter dyes, novelty fillers, ribbon.</p>	<p><b>Envelopes</b></p> <p>Box of 100.</p> <p>Reg. 49c <b>33c</b></p>
<p><b>JEWELRY</b></p> <p>Wide selection of beautiful earrings, necklaces.</p> <p><b>\$1.00</b></p>	<p><b>Easter Baskets</b></p> <p>We make up our own Easter Baskets and load them with extra value. Lots of styles.</p> <p>Priced from 59c-\$1.99</p>	<p><b>Writing Tablets</b></p> <p>Ruled or plain. Sizes 6" x 9" or 5" x 8".</p> <p>Reg. 49c <b>33c</b></p>
<p><b>CHILDREN'S SHOES</b></p> <p>Easter, Spring shoes for the little ones.</p> <p>by <b>WEE WALKER</b></p>	<p><b>LADIES' Half Slips</b></p> <p>Satinette Nylon, lace trim, white or pastel colors.</p> <p><b>\$1.99 value 88c ea.</b></p>	<p><b>EASTER CARDS</b></p> <p>by Rustcraft</p> <p>Let a card convey your Easter greetings.</p> <p><b>2 pr. \$1.00</b></p>
<p><b>Rose Queen Girls' Panties</b></p> <p>Acetate tricot.</p> <p>Reg. 3 for \$1.35 <b>88c</b></p>	<p><b>EASTER SPECIALS Bulk Candy</b></p> <p>39c - 49c lb.</p> <p>Favors Chicks-rabbits-eggs</p> <p>Priced from 2/5c</p>	<p><b>Men's Stay Press SHIRTS</b></p> <p>New Soil release finish. No ironing.</p> <p>Plain or button Collar 4 Colors to choose from</p> <p><b>2/\$5</b></p>

**SPROUSE - REITZ VARIETY STORES**

Store Hours  
Mon. - Sat.: 9 a.m. - 9 p.m.  
Sundays: Noon 'til 6 p.m.  
**8218 Pacific Ave.**



# Spanaway Projects Near Completion



**IMAGINE CITY.** Four decks joined by astro walkways designed to stir the imagination of youthful spacemen. Ejection cylinder (extreme right), 16 foot escape slide, chain ladder loading deck, and parallel bar escape ladder will keep young visitors busy.



**NEW BOAT HOUSE.** Unique Chinese motif provides spacious concession deck above and boat storage below. New boats were added to inventory and Shorty Campbell reports the facility will be open for the first day of fishing season.

Two projects in Lake Spanaway Park's all-family recreation area are being prepared for public opening in the near future.

Fishermen will find a new, two-level boathouse in Chinese motif ready for use by opening day of lowland lakes. The upper deck will provide space for concessions and open air eating. Hamburgers, milk shakes, and other snacks will be available at the concession stands.

Young astronauts and frontiersmen can expect plenty of adventure in Span-A-Land, a new playground with realistic replicas of equipment from the eras of the old west and the space age. Construction is scheduled to be completed by May 1.

Simulated forts, a life-like prairie schooner, cannon, Indian teepees, and a horse swing set will be included in the play items designed to catch the fancy of the western set. To attract those who look to the heavens for adventure, the county will have rockets, an imagination city, and other astro type models waiting for space crews.

A 32 foot high, 4 deck rocket complete with 12 foot escape slide is expected to be put to hard use by county youngsters. The nose cone deck houses controls and levers needed for successful make-believe blast-offs into orbit.

Imagine City, elevated by steel poles, will offer four decks interconnected by walkways. A gun deck engineered to ward off attacks by enemy space craft, an observation turret, a loading deck, and an ejection deck

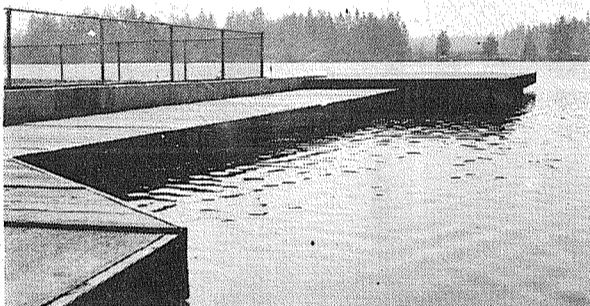
will make up the complex.

Conventional boards have been replaced with missile-like seats on the astro swing set. Workers seated the supports for this innovative piece of playground equipment late last week.

Nearly 6000 yards of dirt was used to fill the space formerly occupied by the old dance hall and expand the

beach area. Lumber from the hall was salvaged to build a dock and walkway adjacent to the boat launch. The dock will be used to load and unload boats, as well as provide a space for kid's fishing.

Other park improvements include nearly three miles of curbing installed by job corpsmen and some landscaping.



**WALKWAY AND DOCK** were constructed from lumber salvaged from old dance hall. Chain-link fence separates dock from recently enlarged beach area.

## \$100 buys one.

**National Bank of Washington**

**5% 90-Day Certificate**

One hundred dollars is all the savings you need to earn 5% interest... at BANK OF WASHINGTON

Anything unusual about that? YES, indeed! (And since we're discussing your savings, we thought you'd like to know.)

Most banks offer Certificate Savings Accounts but most banks require a minimum of \$500 to open this type of account. Many banks have a \$1,000 minimum. Some require \$5,000.

**You can earn 5% on \$100 in savings... at our Bank!**

Your Certificate savings start earning 5% per annum the first day... pay you after only 90 days (not six months or a year as at some banks) ... pay interest every 90 days... and are renewable automatically.

Like we said, it's your savings. You can lose interest, or gain it, depending on where you save.

## BANK OF WASHINGTON

AT YOUR SERVICE: PARKLAND BANKING CENTER

All savings accounts—including 5% Certificate Savings—insured to a maximum of \$15,000 by the FEDERAL DEPOSIT INSURANCE CORPORATION.

NATIONAL BANK OF WASHINGTON / TACOMA, WASHINGTON

### This Week

The Board of Trustees of Rural Economic Opportunity, Inc. is holding its regular monthly meeting Wednesday, April 3rd at 1:30 p.m. in the Parkland Office at 401 Garfield So.

**Dryer MORTUARY**  
(134th & Pacific)  
PARKLAND

The Country Parson



"I guess we're not as much in need of a way to end wars as a way to prevent them."

Copyright, by Frank A. Clark

**Dryer MORTUARY**  
(134th & Pacific)  
PARKLAND



**Be backed by the big one**

State Farm—The Big One with some 13,000 State Farm agents and claim representatives to give you unbeatable claim service wherever you drive. All this at low cost from State Farm. The drivers of more than 9 million cars are already getting the world's best car insurance value from State Farm. Stop by.

**Al Langseth**  
9920 Pacific Ave.

LE 1-1800



STATE FARM MUTUAL AUTOMOBILE INSURANCE COMPANY  
Home Office: Bloomington, Illinois



### 4-H Leaders Plan Clean-Up Day

Pierce County 4-H leaders are planning a clean-up day at the new Fairgrounds. It will be held Sunday, March 31, starting at 1:30 p.m.

All 4-H members and their parents are invited to assist clearing brush and general cleanup around the livestock buildings. Pruning saws, rakes and shovels are the tools needed for the afternoon's work.

The workday will give members, parents and leaders an opportunity to familiarize themselves with the Fair site. It is located 9 miles south of Puyallup on Meridian on the Frontier Park grounds.

### Surprise Party For 80-year-old

Albert N. Nelson, Route 2, Box 2576, will be honored guest at a surprise open house on Sunday. Mr. Nelson will be celebrating his 80th birthday.

Born in Tacoma on March 31, 1888, Nelson was raised in the Spanaway area. He and his wife, Katie, have resided at their present address for many years. The couple has one daughter, Mrs. Delbert Gooch of Stockton, Calif., who is unable to attend, but sends best wishes.

Friends and relatives are invited to call at the ex-loggers home between 2 and 5 p.m.

### FP Teacher President-Elect Of WSC for SS

Gordon R. Jones, social studies teacher at Franklin Pierce High School, has been chosen president-elect of the Washington State Council for the Social Studies.

Jones, who has just completed a term as vice president of the organization, will automatically take over as president during the 1969-1970 school year.

Other officers elected at the group's meeting in Renton last week include, Elton Feno, of Walla Walla, president; Dr. Gordon Martinen, of Cheney, vice president; and Esther Arrasmith, of Bellevue, secretary-treasurer.

Donald Amundson, of Highline Schools, is the outgoing president.

## Bees Must Be Registered By April 1

Each person owning or having bees in his possession is required by state law to register, without charge, with the County Extension office in the county where the bees are located, before April 1 of each year.

The necessary information for registration includes: name, address and telephone number of the owner, the location of the bees and the number of colonies owned. A colony is any hive occupied by bees. A copy of this information should be posted at the bee yard. To register bees in Pierce County you may call the Extension office, FU 3-3311, Ext. 511, mail in the information, or come to the office, 742 County-City Building, Tacoma, Wash. 98402.

## PNB Awards Cable Contract To Local Firm

National Mechanical Contractors, Inc. of 3209 96th S., will be placing cable for the Pacific Northwest Bell's \$64,000 underground telephone cable project north and west of PNB's Juniper switching center, 6330 111th SW.

Some 2,000 feet of conduit and 6,100 feet of cable will be placed by the company.

Completion date is set for May.

### FP Adult Program Offers Electronics

A series of four electronics courses are available in the Franklin Pierce Adult Education program, with classes beginning March 25.

Each of the classes carries credit from Clover Park Community College, and registration may be handled at the Franklin Pierce Adult Education Center, 1124 Portland Ave.

The four courses are basic electronics theory, fundamentals of electronics laboratory, transistor and semi-conductors laboratory.

The basis class in electronics is held from 7 to 9:30 on Monday and Wednesday and the laboratory section is held at the same time on Tuesday and Thursday. The transistor theory class meets from 7 to 9:30 on Tuesday and Thursday, and the laboratory section meets on Monday and Wednesday.

Other classes being offered for college credit include pole line safety and basic climbing, intermediate oil painting, group process-sensitivity training and general safety and traffic safety for course II driving training instructors.

### Hot Water Tanks

Come in and let us show you how to save

**\$50.00**

**Magdanz Hardware**  
11401 Pacific Ave.

## PLU English Teacher Received Growth Award

Grace E. Blomquist, associate professor of English at Pacific Lutheran University, has received a Faculty Growth Award from the Board of Education of the American Lutheran Church, announced PLU President Robert Mortvedt.

Miss Blomquist has been granted a sabbatical leave for the second semester of the 1968-69 school year to travel throughout Europe with funds

received from the award.

A veteran teacher, Miss Blomquist intends to review children's literature while in Europe. She will visit libraries and universities to study.

Miss Blomquist, a native of Minnesota, graduated from Concordia (Minn.) College in 1934, and received her master of art's degree from Syracuse University in 1939. She came to PLU that year as an instructor and assistant dean

of women. She became the dean in 1943 and served in that capacity for several years before returning to full-time teaching.

An active member of several community organizations, Miss Blomquist has served as president of Tacoma's Quota Club and the local branch of the American Association of University Women. She is also a member of numerous professional associations.

## "Need to know the area code for Scarsdale, New York?"



Look in the "CALL GUIDE" section—in the front of your TELEPHONE DIRECTORY

## Announcing Our New

# 5%

## Savings Certificates

Here's exciting news for investors and savers.....large and small.

Now you can begin earning more when you invest a minimum of \$500 or more in our new 90-Day Savings Certificates.

Not only will your savings earn more than most "blue chip" stocks, but there's no need to worry about the day-to-day state of the economy either. Because your savings are insured by the Federal Government up to \$15,000.

There's no need to worry about getting down to the bank at the end of each 90-day period.....because we will automatically renew your CITIZENS Savings Certificate for successive periods of 90 days or longer, if you wish.

And, we will pay you the interest each 90 days in any way that best fits your needs: a check mailed directly to you -or- a deposit to your checking or savings account -or- by adding the interest to the face amount of the certificate, thereby compounding your interest in the next 90-day period.

For top earnings in the most stable investment available, while keeping your funds liquid and close at hand, we think you'll like 5% Savings Certificates at

# Citizens STATE BANK

MEMBER:  
FEDERAL  
DEPOSIT  
INSURANCE  
CORPORATION

- ☆ MAIN OFFICE · PUYALLUP
- ☆ EAST SUMNER OFFICE
- ☆ SUMMIT VIEW OFFICE
- ☆ EDGEWOOD-MILTON OFFICE



PARKLAND THEATER BLDG.

DAVIS  
OFFICE  
SUPPLY

GRAND  
OPENING

FRI. & SAT., MARCH 29-30  
REFRESHMENTS

112th

Parkland — So. Tacoma Way  
Freeway

DAVIS OFFICE SUPPLY  
12<sup>th</sup> 47 Pacific Ave.  
LE 1-1740

Mon.-Fri. 10 A.M. - 5 P.M.  
SAT. 12 P.M. - 4 P.M.

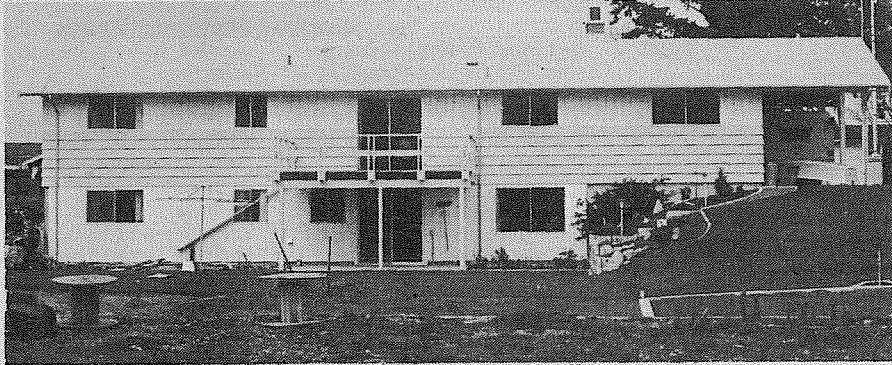
Pacific Ave.



# Somebody Started A Rumor

**For Your Electric Heat Installation  
Call One of these Dealers!**

**It costs Paul Russell Only \$130 Yearly  
To Heat This Home Electrically With  
A Lennox Electric Furnace**



Above home has 2400 sq. ft. floor space

## PARKLAND HEATING

755 - 108th South

LE 7-4045

**that 4 out of 5 new homes use flame heating**

*IT'S NOT TRUE, at least not in Parkland where in 1967 more than 7 out of 10 used flameless electric heat.*

*This is a prime reason why the member-owned electric utility could be listed among the nation's more progressive, and where benefits to members are the highest of any known utility.*

*This trend will continue as long as the Light Department members continue to increase their use of electricity.*

*Any member who has a heating or hot water heating need or problem should by all means call the Company office before taking action.*

**THE CALL MAY SAVE HUNDREDS OF DOLLARS.**

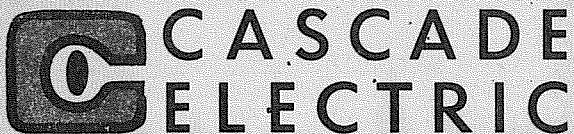
## Parkland Light and Water Co.

LE 1-5666

Hot Water Tank Special

Present reimbursements to members are \$50.00 toward the cost of replacing old worn out hot water tanks and \$20.00 per kw (1000 watt heater) of heating equipment. Subject to Company provisions.

**Congratulations  
To  
Parkland  
Light & Water  
on an  
Excellent Job  
of Customer  
Relationships**



"Over 25 Years of Dependability"

Electric Contractors Featuring  
Cascade Electric Baseboard Heat

3524 McKinley

BR 2-4221

Plenty Free Parking

## Specializing in Electrical Heating



★ Free Estimates

★ FHA Financing

CALL

*Groff's*

**ELECTRIC  
HEAT**

3308 S. Union

FU 3-5329

**See Your Dealer For  
Electric Heat Installation!**

**It Cost E.E. Eklund Only \$176 \*  
To Heat This Home Electrically  
With Heat Cable**



**All Types of Electrical  
Heat Installed By  
ABC ELECTRONICS**

LE 7-4900

\*Verified By Parkland Light & Water

## Call Danard Electric For

- ★ BASEBOARD HEATING
- ★ CEILING PANELS
- ★ CABINET TYPE WALL HEATERS

Don't buy just a bunch of heaters -  
Purchase **QUALITY** engineered  
electrical heating & installation.

★ Estimates Furnished On Request

★ Bank Financing

*"We Excel In Quality Electric Heat Installations & Engineering"*

## DANARD ELECTRIC CO.

4832 Pacific Ave.

GR 5-1228

**It Cost Mrs. E. Wilson 124 Tule Lk. Rd. E.  
Only \$90 \* per Year To Heat This  
Home Electrically**



ABOVE: — Mrs. Wilson Tells Contractor Ernie Skance the benefits of low-cost Electric Heat.

Electrical Heating Installed By —

## E & S ELECTRIC

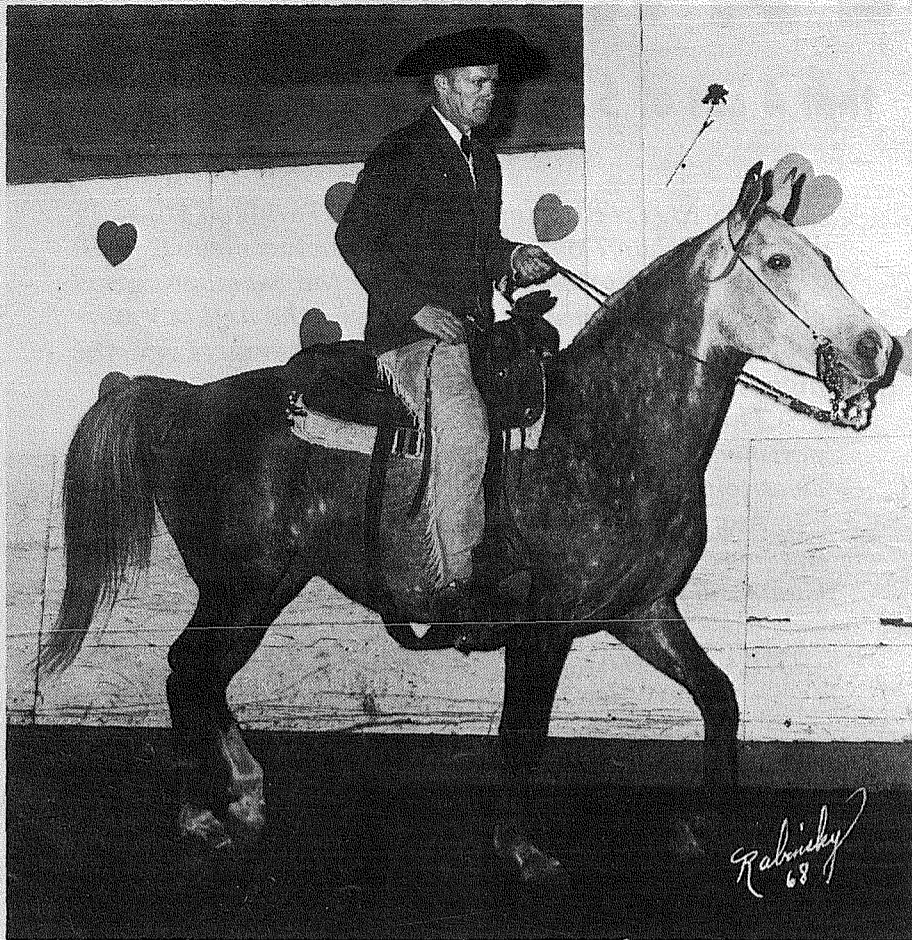
13621 Pacific Ave.

LE 1-0593

\*Verified by Parkland Light & Water



# HORSEMEN'S NEWS



DON BRIGGS, Graham, is pictured riding his 4-year-old Arabian mare Rasinalla, trained by Jack Stecker. Don is one of the largest Arabian Breeders in the Northwest and will enter his horses in the Daffodil Arabian Show April 5-6-7.

## Tacoma Lariettes

Following are the results of the Tacoma Lariette State and Zone approved Game Show, held March 24, 1968, at the Tacoma Unit Arena. Judge was Chet Kelley and Show Steward, Bonnie Parker.

1. INDIVIDUAL FLAG RACE, JR.
  1. Rocky Cindy Loveland
  2. Champagne Kaye Val Merrill
  3. Brandy Cindy Branham
  4. Silver Bonnie Kaasa
  5. Red River Tim Brown
2. INDIVIDUAL FLAG RACE, SR.
  1. Starlite Joyce Christensen
  2. Jewel Bud Thomas
  3. Beaver McGee Marie Fesler
  4. Kit Richard Cross
  5. Penny Carol Winjum
3. INDIVIDUAL SCURRY, JR.
  1. Rocky Cindy Loveland
  2. Lady Bill Bailey Deb Dauderer
  3. Brandy Cindy Branham
4. INDIVIDUAL SCURRY, SR.
  1. Beaver McGee Marie Fesler
  2. Starlite Joyce Christensen
  3. Starlite Ward Bradley
  4. Royal Red River Liz Waller
  5. Kentucky Gambler Ernie Cook
5. FIGURE EIGHT STAKE RACE, JR.
  1. Champagne Kaye Nancy Merrill
  2. Stormy Marlene Midley
  3. Rocky Cindy Loveland
  4. Lady Sheik Diane Cook
6. FIGURE EIGHT STAKE RACE, SR.
  1. Starlite Joyce Christensen
  2. Beaver McGee Marie Fesler
  3. Bill Sheri Anderson
  4. Starlite Ward Bradley
  5. Tandy George Peil
7. RESCUE RACE (2 riders, 1 horse)
  1. Starlite Ken Christensen
  2. Romanoff Jean Thomas
  3. Tandy Bud Thomas
  4. Red River Mary Winjum
  5. Bandoleer George Peil
8. INDIVIDUAL POLE BENDING, JR.
  1. Rocky Cindy Loveland
  2. Champagne Kaye Val Merrill
  3. Thunder Sheryl Wilbar
  4. Mitsy Vickie Stallcap
  5. Brandy Cindy Branham
9. INDIVIDUAL POLE BENDING, SR.
  1. Starlite Joyce Christensen
  2. Beaver McGee Marie Fesler
  3. Starlite Ward Bradley
  4. Royal Red River Liz Waller
  5. Bolt Sandy Woolery
10. TEXAS BARREL RACE, JR.
  1. Rocky Cindy Loveland
  2. Champagne Kaye Val Merrill
  3. Copper Jayne Monahan
  4. Mitsy Vickie Stallcap
  5. Stormy Marlene Midley
11. TEXAS BARREL RACE, SR.
  1. Beaver McGee Marie Fesler
  2. Starlite Joyce Christensen
  3. Romanoff Jean Thomas
  4. Chili Pepper K Darleen Swanson
  5. Royal Red River Liz Waller
12. KEYHOLE RACE, JR.
  1. Rocky Cindy Loveland
  2. Champagne Kaye Val Merrill
  3. Lady Bell Bailey Deb Dauderer
  4. Copper Jayne Monahan
  5. Lady Sheik Diane Cook
13. KEYHOLE RACE, SR.
  1. Beaver McGee Marie Fesler
  2. Chili Pepper K Darleen Swanson
  3. Golly Dee Mary Winjum
  4. Bill Sheri Anderson
  5. Penny Carol Winjum

## Over The Fence Rail

Stecker's Stables will hold a grand opening April 1st, with a new barn, wash stall, tack room, office, and indoor arena.

Barn stalls are 12 x 12, and Carol Stecker reports everything but the arena has been completed. She states that visitors are always welcome.

Debbie Danhauser, formerly of Spanaway, will help George and Joy Karr train horses specializing in jump and hunt.

Debbie holds the 1966 Open Jumper Championship, 1966 Junior Jump Champion, 1966 WSAHSA Hunt Seat Medal, and Final Reserve Championship. Her highest competitive jump was 6'4" riding her Thoroughbred Galloline at the Pacific International Show in Portland Oregon.

Training horses has been her life-long ambition and according to George, she has great potential as a trainer.

We understand the first competitive Arab jumping at a Tacoma area horse show will be April 4-5-6 at Tacoma Unit One Arena during the Daffodil Arab Show. It will be well worth attending.

14. HANGMAN (2 riders, 1 horse)
  1. Colonel Gary May, Bob Davis
  2. Brandy W. Bryant, Ernie Cook
  3. Red River Liz Waller, Tim Brown
  4. Golden Boy Andy Siemans, Dr. John Siemans
  5. Bolt Sandy Woolery, Cindy Branham
15. BATON RELAY (teams of four)
  1. Chili Pepper K Dorleen Swanson
  2. Amigo Sandy Peil
  3. Lucky Deb Bowerman
  4. Bandoleer Gayle Weinberger
  5. Holiday Nancy Merrill
  6. Stormy Marlene Midley
  7. Starlite Ward Bradley
  8. Sugar Bob Davis
  9. Colonel Gary May
  10. Tippy Don Jones
  11. Golden Boy Dr. John Siemans
  12. Golly Dee Mary Winjum
  13. Romanoff Jean Thomas
  14. Picasso Bud Thomas
  15. Tandy George Peil
  16. Royal Red River Liz Waller
  17. Midnight Tim Brown
  18. Penny Carol Winjum
  19. Lady Sheik Diane Cook

(Continued on Page 9)

## Tacoma Unit One

### TACOMA UNIT ONE

Sixty new box stalls have been constructed on the Tacoma Unit One grounds by Western Washington members of the Arabian Horse Association. The additions were built for the Daffodil Horse Show.

Tacoma Unit One now has a total of 90 stalls available for horse show use.

Members have been turning out to paint and help beautify the grounds. Donations of shrubs and flowers are requested to help beautify the area.

### COLTS AND FILLIES

The juniors are busy preparing for the Daffodil Parade, and plan to enter about 20 mounted riders. Each will be decorated with daffodils. The Colts and Fillies won the Mounted Award last year so watch for the red white and blue riders at the parade.

## Rodeo Calendar

### Top State Barrel Racers

1. Janie Curcio, Walla Walla, \$142.10
  2. Jann Kremlin, Enumclaw, \$95.06
  3. Terry Bussey, Port Orchard, \$66.64
  4. Mary Parsons, Walla Walla, \$49.00
  5. Katherine Anderson, Ellensburg, \$44.10
  6. Dorcene Nissel, Menlo, \$41.65
  7. Wynette Russel, Parkland, \$41.65
  8. Helen Moxley, Walla Walla, \$17.64
  9. Marty Kruckenberg, Castle Rock, \$16.66
- Approved Barrel Races  
 April 13, Wash. Qtr. Horse Show, Spanaway.  
 May 4-5, Renton Eagles Rodeo, Renton.  
 July 4, WBRA Race, Oak Harbor.

### "Horsemen's Market Place"

Classified Directory  
 Board - Trainers - Breeders  
 Outfitters - Feed Dealers

<p style="text-align: center;"><b>AT STUD</b></p> <p style="text-align: center;"><b>Madsen Arabians</b>  <b>STALLIONS</b>  <b>AT STUD</b></p> <p style="text-align: center;">Rt. 1 Box 1297                  Spanaway VI 7-7721</p>	<p style="text-align: center;"><b>Horseshoeing</b></p> <p style="text-align: center;"><b>PROMPT RELIABLE SERVICE</b>  <b>HORSESHOEING</b></p> <p style="text-align: center;">VI 7-2449                  P.O. Box 142                  FLOYD A. GREEN Puyallup, Wash.</p>	<p style="text-align: center;"><b>Training</b></p> <p style="text-align: center;"><b>BILL JACKSON</b>  <b>BREAKING-TRAINING</b></p> <p style="text-align: center;">VI 7-7854                  Rt. 1 Box 186B Eatonville</p>		
<p style="text-align: center;"><b>Feed Dealers</b></p> <p style="text-align: center;"><b>WALLER ROAD FEED</b>                  7710 Waller Road</p> <p style="text-align: center;">Fisher and Alber's Feed                  Hay - Grain - Tack                  Vitamins - Vet Supplies                  LE 7-5552</p>	<p style="text-align: center;"><b>Tack</b></p> <p style="text-align: center;"><b>TACK SUPPLIES</b>                  SAVE AT  <b>Grange Supply</b>                  10625 Pacific Ave.                  LE 1-5777</p>	<p style="text-align: center;"><b>Outfitters</b></p> <p style="text-align: center;"><b>The Bunkhouse</b>                  COMPLETE LINE OF                  TACK &amp; WESTERN APPAREL                  12605 Pacific Ave.                  Tacoma, Wa. 98445                  LE 7-5510</p>		
<p style="text-align: center;">Support                  Times Journal Advertisers                  - It Pays!</p>				
<p style="text-align: center;"><b>ALBERS FEED</b>                  Open Sunday</p> <p style="text-align: center;"><b>The Farm Boys</b>                  112th Canyon Rd.</p>				
<p style="text-align: center;">We can't shoe your horses                  BUT                  We can shoe your cars - trucks - trailers  <b>TINY'S TIRE SERVICE</b>                  108th &amp; Pacific Ave. LE 1-4535</p>				
<p style="text-align: center;"><b>Boarding - Training</b></p> <table style="width: 100%; border: none;"> <tr> <td style="width: 50%; padding: 5px; border: 1px solid black;"> <p style="text-align: center;"><b>DIGGERS STABLES</b>                              HORSES BOARDED                              Rt. 2 Box 2254 Spanaway                              VI 7-2789</p> </td> <td style="width: 50%; padding: 5px; border: 1px solid black;"> <p style="text-align: center;"><b>STECKER'S STABLES</b>                              New Location                              2021 - 176th St. East                              Spanaway                              LE 1-3126                              Watch For Our Grand Opening</p> </td> </tr> </table>			<p style="text-align: center;"><b>DIGGERS STABLES</b>                              HORSES BOARDED                              Rt. 2 Box 2254 Spanaway                              VI 7-2789</p>	<p style="text-align: center;"><b>STECKER'S STABLES</b>                              New Location                              2021 - 176th St. East                              Spanaway                              LE 1-3126                              Watch For Our Grand Opening</p>
<p style="text-align: center;"><b>DIGGERS STABLES</b>                              HORSES BOARDED                              Rt. 2 Box 2254 Spanaway                              VI 7-2789</p>	<p style="text-align: center;"><b>STECKER'S STABLES</b>                              New Location                              2021 - 176th St. East                              Spanaway                              LE 1-3126                              Watch For Our Grand Opening</p>			
<p style="text-align: center;"><b>BOARDING-BREAKING-TRAINING-RACE TRACK-ARENA</b>  <b>MARS STABLES</b>                  DON LINDQUIST-TRAINER                  TH 5-1231 11919 144th E.                  Puyallup, Wash.</p>				
<p style="text-align: center;"><b>Fencing - Hardware</b>                  Everything                  In Hardware For                  The Horseman                  Fencing tool!  <b>South End Hardware</b>                  S. 185th &amp; Pacific Spanaway</p>				

## If This Is Your House...

### You Are A Winner!

This Week's Jackpot is \$16

Each week our photographer takes a random picture of a home in the Times Journal coverage area. If you can identify the pictured home as yours, you can claim the jackpot.

Winners receive Times Journal Trade Bucks, redeemable in merchandise or cash at the following businesses.

<p><b>ARMSTRONG'S USED CARS</b>                  11009 Pacific Ave.</p> <p><b>ANDERSON LUMBER</b>                  9813 Pacific Ave.</p> <p><b>EDON'S WIG SERVICE</b>                  11214 Pacific Ave.</p> <p><b>ELMHURST MUTUAL POWER &amp; LIGHT CO.</b>                  120 So. 132nd</p>	<p><b>LAKE SPANAWAY PRO SHOP</b>                  15602 Pacific Ave.</p> <p><b>LAKE SPANAWAY Golf Course Restaurant</b>                  15602 Pacific Ave.</p> <p><b>MILLIE'S STYLETTE BEAUTY SHOP</b>                  228 169th E.</p> <p><b>PARKLAND LIGHT &amp; WATER CO.</b>                  404 Garfield St.</p>
--	--

Winner Must Claim Jackpot Before 5 p.m. Tuesday following date of publication.

### LE 1-4555

## RODEO

### CUSTOM SHOP

**Dean & Dodie Vosburg**

164th & Pacific  
 Spanaway, Wash.

Complete Saddle  
 Repair Shop  
 Western Wear  
 English Tack & Togs

Board-Train-Riding Lessons  
 Also At Stud

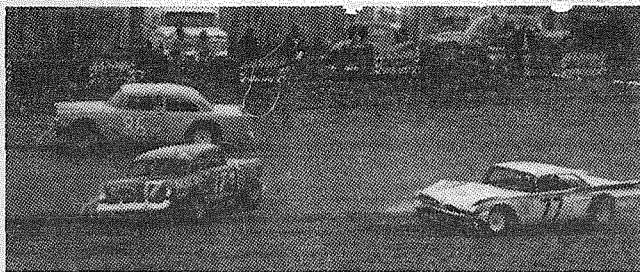
S-Will-Dee. . . . . Appaloosa  
 Marion's Dice. . . . . Quarter Horse  
**THUNDER'S KEMOSABE**  
 IS HERE

We have Arabian; Quarter  
 Horses, Appaloosa, Walking  
 Horse Stallions. A few breed-  
 ings available on these fine  
 horses.  
 Visitors Always Welcome.  
**VI 7-2881**  
**George Karr**  
 Tacoma Unit #1 Stables  
 1 Mile East of Pacific on 176th



# The TIMES JOURNAL

## SPORTS



**COLLISION.** Although Bob Short (17) had already won the double 'A' 40 lap main at Spanaway's opening last Sunday, he still didn't get back to the pits unscathed. Short was tagged by Ron Eaton (77) while taking his cool-off lap.

### Short Wins Spanaway Opener, Superstocks Go Again Sunday

### No Winner Last Week

The owner of the home pictured in last week's issue of the Times Journal failed to identify his home by the Tuesday deadline.

Eight dollars carried over will be added to this week's contest raising the jackpot to \$16.

Winners are reminded they must identify the home by 5 p.m. Tuesday as the contest is terminated on that day. Unclaimed jackpots are added to the next week's total.

**SPANAWAY** - A record crowd of 2,500 stock car fans turned out for the opening day at Spanaway Speedway last Sunday and were treated to a fast paced, slam bang program.

Bob Short, driving his red 17 car to the limit, slowly pulled away from Steve Kaiser and took the 40 lap double "A" main checkered flag from starter Lucky O'Neil. In the cooling off lap, Short was tagged solidly by Ron Eaton in the back shute. Kaiser captured 2nd and Eaton managed to last for 3rd.

The double "A" main was the only race Kaiser entered without coming out on top, winning the trophy dash, heat, and "A" 40 lap main. Ken Longley and Terry Boyle followed Kaiser across the finish line in the "A" main.

Next Sunday will find the A.R.I. superstocks back for another full slate, including trophy dashes, heats and mains. Some of the promised "hot iron" should be in the pits, including Bob Rollins and Ed Looney. Over 40 cars turned out for the opener, but mechanical bugs during the time trials eliminated about a dozen before they could even look at the starter's flag.

AA main event (40 laps)—1, Short; 2, Kiser; 3, Ron Eaton, Tacoma. No time listed.

First AA heat (eight laps)—1, Bob Bull, Seattle; 2, Vern Huson, Everett; 3, Dick Saylor, Tacoma. 2:23.39.

Second AA heat (eight laps)—1, Eaton; 2, Bull; 3, Huson. 2:25.10.

AA trophy dash (four laps)—1, Eaton; 2, Shor. 1:14.75.

A main event (40 laps)—1, Kiser; 2, Ken Longley, Seattle; 3, Terry Boyle, Seattle. No time listed.

First A heat (eight laps)—1, Vaughn Cress, Tacoma; 2, Dick Mitchell, Tacoma; 3, Harold LeGault, Tacoma. 2:47.29.

Second A heat (eight laps)—1, Kiser; 2, Longley; 3, Paul Strook, Seattle. 2:24.82.

A trophy dash (four laps)—1, Kiser; 2, Longley; 3, Dick Williams, Seattle. 1:13.28.

# Cards In Opener

**PARKLAND** - The Puyallup track team will host the Federal Way Eagles Friday at Viking Field, hoping to hang up their second straight win in the young season.

Puyallup grabbed their first victory last Friday 67-60 in a dual meet with Franklin Pierce on the Cardinal's cinders. The Norse grabbed 9 first place finishes to secure the win. Bright spot for the Cards was Terry Johnson's new school record in the two mile run, turning the 8 laps in 10:22.4.

Nabbing first places for the Norse were triple winner Steve Harlow in the long jump and high and low hurdles, Dennis Barry in the century, Chuck Temus in the shot put, T.R. Stewart in the 440 and Sterling Silvers in the 220. The mile relay team, consisting of Jim Haney, Bob Thrift, Mike Phipps and Bob Bolan finished in front, as did the 880 relay team of Mike Webe, Silvers, John Bullo and Barry.

Franklin Pierce will get into the second game of its baseball circuit with a home contest against Kent - Meridian on Thursday. The Cardinals were second in the Southern Division last season behind P.S.L. champion Puyallup.

Cardinal trackmen will also see action this week, entering their 3rd meet of the year against Renton and Clover Park in a 3-way meet on Friday. Lincoln of Tacoma entertained Franklin Pierce and Stadium in a triple - team affair Tuesday evening.

### Ex Navy Man Joins Reserves

Frank T. Fehrenback of 5725 14th St. N.W. Puyallup recently joined the Naval Air Reserve at Sand Point Naval Air Station in Seattle after completion of three years of active duty with the Navy.

Frank is the son of Mr. and Mrs. Frank E. Fehrenback of Route 1, Box 218, Eatonville. He is married to the former Miss Susan E. Lorenz of Graham and they have a two year old daughter.

An aviation ordnanceman third class, Fehrenback joined the Navy in Tacoma in 1965 and was stationed at the Naval Air Station in Alameda during his active duty.

Fehrenback is a 1966 graduate of Bethel High School and is employed at the Boeing Company.

Army Private Edwin N. Baez, 20, son of Mr. and Mrs. Esteban Baez, 1737 E. 41st St., Tacoma, Wash., received a Parachutist Badge March 6 upon completion of the Infantry School's threeweek airborne course at Ft. Benning, Ga.

His training, which included five jumps from a C-130 airplane flying 170 miles an hour at an altitude of 1,250 feet, qualified him as a parachutist. He also underwent strenuous physical conditioning.

### Coaches For WHS Announced By FP

Re-assignments of coaches in football, basketball, wrestling and cross country and track for Franklin Pierce High School and Washington High School for the 1968-69 school year was released by the school district Tuesday.

Heading the Franklin Pierce football coaches will be Jim Mancuso, Mancuso is himself an ex-FP student and played football for the University of Washington and U.P.S. and was assistant coach for the U.P.S. team.

Tom Whalen, an ex-PLU student now teaching physical education and History at Morris Ford Junior High School, will head the basketball section at Franklin Pierce.

Wrestlers will be under the direction of Don Tulesevich. Tulesevich will come to the school district from U.P.S. where he has been assistant football coach. He also will assist with football at present high school.

Cross country and track will be turned over to Tom Buckner. Buckner has been coaching track and now takes on the added activity.

Richard Larson will become the Franklin Pierce Athletic Director. Larson at present is the head wrestling coach and assistant football coach.

The new high school coaching staff will include Tom Gilmer, presently assistant football coach at FP, as head football coach.

Bob Ross will become head basketball coach. Ross has been junior varsity coach.

Wrestling activities will be headed by Tom Sawyer. This will be a straight transfer for Sawyer.

Cross Country and Track will be under the direction of Jon Herrington. Herrington is transferring from Cross Country coach at FP.

### Pre-Season Meet For Baseball Slated At Bethel

An important pre-season meeting for the coming summer baseball season will be held on Monday evening, April 1 at 8:00 p.m. in the Bethel High School. This meeting is open to the parents that would like to help in our boys' and girls' baseball soft-

ball program. Ed Niehl, Area Director, stated that last year we fielded thirty-one (31) teams in our district and if all goes as indicated so far, we can expect enough youngsters to field about forty (40) teams this year.

Coaches and helpers are needed to work with these youngsters. So attend the meeting and give your support!

**Used Car**

**HEADQUARTERS**

"MOST FOR THE MONEY"  
All Makes...All Kinds

**ARMSTRONG'S**  
**USED CARS** LE 7-5524

**Wanted**  
**Milk - Fed Veal**

**Ace Packing Co.**

Call Collect - BR 2-8386

**SPANAWAY SPEEDWAY**

2 Miles East of Pacific Ave. On 159th, Tacoma

Presents... **A.R.I. SUPERSTOCKS**

**SUNDAY, MAR. 31st**

Full Racing Card Includes  
\*TROPHY DASHES \*HEATS  
\*2 BIG MAINS

**TIME TRIALS 1:30 PM**  
**RACING 3 PM**

**PATIOS**  
General Concrete Work  
**Free Estimates**  
WA 2-8618 or  
LE 7-7296 After 6 p.m.

**INCOME TAX**  
**GR 4-3047**  
Leonard W. Burns  
9050 Pacific Ave.

**WATER PUMPS**  
**REPAIRED**  
All Makes  
**GRANGE SUPPLY**  
LE 1-5777

"WHERE TO GET SERVICE"

**Parkland Enco Service**  
13303 PACIFIC AVE.  
LE 7-9954

**Income Tax Service**  
and business bookkeeping  
(24 years legal training)  
**Delbert M. Bresemann**  
Military Road Spanaway, Wash.  
**LE 1-1666**

**NEW - MORE POWERFUL**

the **1968's**  
ARE HERE  
**VOLKSWAGEN**  
27 MAJOR CHANGES

**Tom Carstens**  
**AUTOHAUS**  
7030 So. Tacoma Way  
GR 4-0666  
TACOMA DEALER SINCE 1955

**9,500,000!**

State Farm now insures more than 9,500,000 cars! And, with us each car is "No. 1." Why not start enjoying the kind of Famous Low Rates and Hometown Service that have made people insure more cars with us than with any other company? Call today!

**STATE FARM**  
INSURANCE

Bill McMonnies  
16607 Pacific Ave.

STATE FARM MUTUAL  
AUTOMOBILE INSURANCE COMPANY  
Home Office: Bloomington, Illinois

Spanaway LE 1-6833

**PIERCE COUNTY HEADQUARTERS FOR 1968**

★ CHRYSLER  
★ PLYMOUTH  
★ VALIANT  
★ BARRACUDA

CALL GR 4-0621

**Steven MOTOR CO.**  
2705 SOUTH TACOMA WAY

**PIERCE COUNTY'S FASTEST GROWING BUILDING MATERIALS RETAILER**  
Full Line of Lumber - Roofing - Plywood  
Also Electrical and Plumbing Supplies

4x4 CEDAR POSTS . . . . . 19c ft.	<b>SHELVING</b>
1x6 CEDAR BOARDS . . . . . 8c ft.	1x12 Pine . . . . . 16c ft.
1x8 CEDAR BOARDS . . . . . 12c ft.	1x10 Pine . . . . . 13c ft.
	1x 8 Pine . . . . . 11c ft.

Standard Composition Roof Shingles 235 Lb. . . \$10.45 sq.	Paneling Econ Laun 3.98
Ceiling Tile - white . . . 14c sq. ft.	Vinyl Clad 6.99
Fir Flooring (E Grade) . . . . \$4.50/100 lin. ft.	Brasilia 7.99

Bank Americard & Firstbank Cards Welcome  
**BROOKDALE LUMBER INC.**  
13602 Pacific Ave. LE 7-8669

**NEED ELECTRICAL WORK?**

SALES • SERVICE • WIRING  
NEW CONSTRUCTION • EXISTING & REMODELING • INSTALLATION  
OF ALL TYPES OF ELECTRICAL  
HEAT • FINANCING UP TO 5 YEARS  
FREE ESTIMATES • NO OBLIGATION

Goedert's Electric Heat Center  
FRANK GOEDERT 753 South 108th Street LE 1-6711  
RES. SK 2-5211 TACOMA, WASHINGTON



**ENTERTAINMENT**

**Students Act**



**HIGH SCHOOL DRAMA** — "You Can't Take It With You," a three-act play by Moss Hart and George S. Kaufman, will be presented at 8 p.m. March 28 and 29 at Bethel Senior High School. Performers in the play include, from left, Pam Stocking, Richard Wilson, John Guthrie, Judy Jorgenson, Mickey Wright and Lunece Thacker. Donation for the play, directed by Kathy Klinger, will be 75 cents for adults and 50 cents for students.

**Trinity Choir Concert**

The choir of Trinity Lutheran Church will present a concert of Lenten and Easter music on March 31, 8 p.m. The concert will be in the church sanctuary at 121st and Park.

The choir, directed by Professor David Urness of the Pacific Lutheran University music department, will be assisted by members of the University Symphony Orchestra in the performance of the Bach Cantata No. 4, "Christ Lay In Death's Dark Prison."

Also included on the program will be "How Lovely Is Thy Dwelling Place" from Brahms's Requiem, and "De Profundis," by Mozart. There will be a free will offering which has been designated for Trinity's organ fund.

**Play Slated By Little Theater Daffodil Week Opens**

"Barefoot in the Park," a comedy by Neil Simon, which was described by New York critics as "one of the funniest comedies ever," will open at the Tacoma Little Theatre Mar. 29th, and also play Mar. 30, Apr. 4, 5, 6, 10, 11, 12, 13.

"Barefoot in the Park" is an hilarious saga of a pair of newlyweds as they first set up housekeeping in a rickety Greenwich Village apartment, with complications provided by the bride's mother and an over-friendly, odd-ball neighbor from the attic above.


Cast in the Little Theatre's production are Candy Hincks, Mike Healy, Erick Peterson, Bruce Cohoe, Edna Peterson, David Isaacson. John Culbertson is the director.

Saturday marks the opening event of the 35th Puyallup Valley Daffodil Festival in the Puget Sound heart — land communities of Puyallup, Sumner, Orting and Tacoma. The Junior Parade in downtown Tacoma, 10 a.m. will be the lead-off event.

Some 1000 youngsters of assorted sizes and varied costumes will parade Pacific Avenue from 8th street to 13th street. Miniature floats will be pulled, as will decorated wagons, while others push bicycles and tricycles.


Queen Carol Parcheta and members of the 1968 royal court will take part in the Junior Parade. There will be martial music, balloons and lots and lots of color.

**TONITE**



**Bob Braman and his Quintet**

Winthrop Hotel Tacoma



**ENTERTAINMENT**

**1 P.M. and 7:30 P.M.**

Open to Public 3508 McKinley Ave.

**BYRON**

U.P.S.\*

**APR. 11**

**A\$3 11**

& **MERRILEE**

**"Antigone" At PLU**

The University Theatre of Pacific Lutheran University will present the ancient Greek tragedy "Antigone" next week on the stage of Eastvold Auditorium.

Tickets for the 8:15 p.m. performances on Thursday, Friday, and Saturday may be reserved by calling PLU's ticket office during the afternoon.

Karen Krebbs of Kirkland, Wash., and Douglas Lieberg of Bellevue, Wash., have the principal leads. They will be supported by David Monson, Pamalee Eubanks, Cathy Ogren, Phyllis Booth, Philip Mattox, and Howard Gedrose.

Director Abe Bassett, assistant professor of speech, said the play was modernized in 1944 from an older version. It was one of the few plays performed in Paris during the German occupation of World War II, said Bassett, because both the French and their conquerors saw different meanings in it.

The play was first performed in the United States in 1946 when Guthrie McLintic brought it to Broadway. The playwright for PLU's presentation is Frenchman Jean Anouilh.

"The moral question of the play: 'To whom does one owe his allegiance, God or his country' is being asked today," said Bassett, "and this makes the play especially interesting to younger people."

**Dutchman Drive-In Cafe**

¾ Mile from Roy "Y" on Mountain Highway



Choice of two German Foods Every Fri-Sat-Sun

Hours  
Fri-Sat 10 a.m. - 11 p.m.  
All other Days  
10 a.m. - 10 p.m.

VI 7-2179

**THREE DAY WIG SALE!**

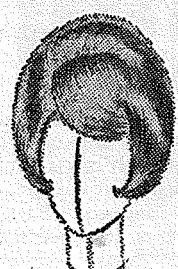
Thur.-Fri.-Sat. March 28-29-30th

OUR LOWEST PRICES EVER

**WIGLETS \$5<sup>95</sup>**

100% Human Hair

HURRY! SUPPLY LIMITED!

**WIGS 100% HUMAN HAIR \$23<sup>50</sup>**

Machine welted and beautifully finished for an instant hairdo.

**COUPON**

**\$2<sup>50</sup>** FREE GIFT CERTIFICATE To apply toward your first cut and style at our convenient location — On Sale Wigs

**THE WIG DIGGINS VISITS**

From Ruby Edwards of Portland

**Charm Beauty School**

Blanche Lingbloom, Prop.

**413 Garfield Street**

**LE 7-7475**

Hours  
9 a.m. - 6 p.m.  
Saturday 'til 4 p.m.

**LARGE WIGLET**

100% Human Hair Fashion Postiche **9<sup>50</sup>**

**HAND TIED WIGS 49.95**

Values \$149.50

**FALLS \$29<sup>95</sup>**

Long, Luxurious

**SAMPLE SALE ITALIAN WIGS**

Frosted and many high fashion one of a kind wigs available in this closeout. HURRY for best selection.

**Angelo's PIZZA HOUSE**

**ORDERS TO GO**

Featuring top sirloin and American dishes, spaghetti, rigatoni, meat balls, sausage, ravioli, beer and wine.

Choice of Pizzas

cheese & tomato	bacon
anchovie	peppers
mushroom	olive
Italian sausage	hamburgers
pepperoni	ham
tuna	salami
	onion



LE 7-7233  
14102 PACIFIC AVE. PARKLAND

CALL AHEAD, IT'S PIPING HOT ALL THE WAY HOME

PICK UP A BOX, PAIL, BUCKET OR A BARREL



# CLASSIFIED

**MATA'S WIGS**  
Styling and Sales  
119 South 143rd  
LE 7-3427

Reconditioned  
**Water Pumps**  
\$250 & Up  
**GRANGE SUPPLY**  
LE 1-5777

### 1 Misc. For Sale

SCHWINN 10 speed like new.  
LE 7-7736. 68-66

TRAVEL trailer 55 Airstream  
16'. GR 2-5016.

DRY chicken fertilizer. 6  
sacks \$3.50. LE 1-1722.  
68-64

PEKING duck eggs. WA 2-  
8248.

GRAVEL - fine screened, 5  
yards \$13.50. Washed sand,  
pea gravel, drain rock, 10 ft.  
cedar fence rails. Norman  
LE 7-4088.

HAY WAGON and heavy work  
harness for sale. LE 1-6742.  
68-71

STEREO Console 1968 model.  
Never used. Beautiful walnut  
cabinet. Full price only  
\$37.00. Will accept payments  
of \$1.25 weekly. MA 7-5555  
or BR 2-6892. 68-67

### Parkland Ceramics

Greenware, Gifts and  
Supplies. Firing priced by  
firing chart by the piece.  
Free general instruction  
1303 S. 117th LE 1-0823

RABBIT HUTCH. TH 5-6954.

PUYALLUP raspberry plants.  
TH 5-2579.

### 23 Help Wanted

OPENING for meter reader.  
Position is Permanent. \$3.00  
to \$3.43 per hour plus fringe  
benefits. Applicants should  
be able to walk long distanc-  
es, good health, approximate  
age 21 to 30 years, 2 years  
college desired, reside in the  
Elmhurst Mutual Power and  
Light Company area. Apply  
Washington State Employ-  
ment Security Department.

### 36 Personals

HAVE an alcoholic problem?  
GR 5-1093 or VI 7-7715.  
Write box 2265 Parkland.  
67-194.

### 30 Repair Services

PIANO TUNING \$11. Repair.  
George Messgege. JU 8 -  
7092.

### 9 Animals For Sale

REG. 6 year Shetland mare  
with saddle and bridle. Gen-  
tle. \$200. TH 5-8074.

FIVE 4 months Muscovy duck-  
lings. All for \$4. WA 2-8418.

YEAR OLD live layers, roas-  
ters 50¢ - your container.  
TH 5-7662.

POODLE puppies. 6 weeks  
old, \$25. TH 5-6417.

### 19 For Rent Or Lease

4 BEDROOM house. Ideal  
place for children. TH 5-  
7234, TH 5-3380.

NASHUA 36' trailer house.  
Will rent or sell. TH 5-9389.

### 12 Real Estate For Sale

6 ACRES. Cleared, view  
property. Set up for trailer.  
Water, lights in. \$3,000 down,  
balance - \$150 per month.  
TH 5-4336.

TAKE OVER payments on 126x  
158 daylight basement site.  
Summit area. TH 5-7371.

### 24 Work Wanted

BOY 17 desires odd jobs,  
yard work, painting, etc. Ex-  
perienced. LE 1-0293. 68-57

OFFICE cleaning? Floor wax-  
ing? I need work. United Jan-  
itor Service. WA 7-0574.

IRONING, experienced, refer-  
ences. LE 1-6597.

### Legals

In the Superior Court  
of the State of  
Washington  
For the County of  
PIERCE

IN PROBATE  
No. 77012  
Notice To Creditors  
IN THE MATTER OF THE ESTATE  
OF LENA MAE STEWART a k a  
MAE L. STEWART, Deceased.

Notice is hereby given that the  
undersigned has been appointed  
and has qualified as Administra-  
tor of the estate of the above  
named deceased; that all per-  
sons having claims against said  
deceased are hereby required to  
serve the same, duly verified, on  
said Administrator or  
his attorney of record at the  
address below stated, and file  
the same with the Clerk of said  
Court, together with proof of  
such service within four months  
after the date of first publication  
of this notice, or the same will be  
barred.  
Date of first publication March  
14, 1968.

Hugh C. Stewart  
Administrator of said Estate  
11024 Pacific Avenue  
Tacoma, Wash.  
PETERS & TRACY  
By: Phillip S. Tracy  
11024 Pacific Avenue  
Tacoma, Washington 98444  
LE 7-0264  
Published in the Pierce County  
Herald and Times Journal March  
14, 21, 28, 1968.

IN THE SUPERIOR COURT  
OF THE STATE OF  
WASHINGTON  
FOR THE COUNTY  
OF PIERCE  
IN PROBATE  
No. 77046  
NOTICE TO CREDITORS  
IN THE MATTER OF THE  
ESTATE OF HUGH C. HARTLE,  
Deceased.

Notice is hereby given that the  
undersigned has been appointed  
and has qualified as Executor of  
the estate of the above named  
deceased; that all persons having  
claims against said deceased are  
hereby required to serve the  
same, duly verified, on said  
Executor or his/her attorney of  
record at the address below  
stated, and file the same with  
the Clerk of said Court, together  
with proof of such service within  
four months after the date of  
first publication of this notice, or  
the same will be barred.  
Date of first publication March  
21, 1968

William C. Hartle  
Executor of said  
Estate  
159 South 112th St.  
Address: Parkland, Wn.,  
98444

George F. Potter  
Attorney for Estate  
159 S. 112th St.  
Parkland, Wash., 98444  
LEnox 1-2889

Published in the Pierce County  
Herald and Times Journal March  
21, 28, and April 4, 1968.



HEAD ON. 1957 Chev Belair hit Buick to climax a 4-car collision at 167th and Pacific Ave. Monday. Six were reported injured in the accident.



YOUNG VICTIMS of 4-car collision at 167th and Pacific were loaded into an ambulance and taken to Lakewood General Hospital for emergency treatment.



DON GILES, Lakewood Pacific Ambulance, applies first aid to 6-year-old Douglas Reaves, 121 East 114th, after he reportedly dashed into the side of a moving vehicle at 112th and A Street late last week. He was taken to Madigan General Hospital for treatment. Giles (left) is assisted by state trooper and ambulance attendant.

Original Designs  
Custom Made Fashions  
**Boutique 49**  
Specializing in Hard to Fit Sizes  
2314 - 168th St. East  
Spanaway  
LE 7-6440

### 31 Animal Services

KAT'S PA RANCH. Horses  
boarded stall and feed \$30  
per month, pasture with some  
shelter and feed \$20. Three  
blocks from Stecker's. Mor-  
gan stud service special con-  
sideration to 4-H. LE 1-6742.  
68-71

AKC registered Mini poodle  
and toy poodle at stud, good  
lines. Silver or black. Days,  
LE 1-5778, After 5 p.m. GR  
2-7735. 68-79

### 27 Misc. Services

EXPERT alterations, mens &  
womens fast service and rea-  
sonable. LE 1-3506. 67-186

REMODELING, leveling,  
block foundations, cabinets,  
free estimate. Reasonable.  
LE 7-3550. 68-48

**Trophy Storm Doors**  
Heavy Duty Aluminum  
Full Piano Hinge  
Standard & Special Sizes  
Also Storm Windows  
Repair Service Available  
Manufactured By  
**PARKLAND DOOR INC.**  
318 E. 96th GR 4-7011

**RENT TV**  
Rentals  
All Sizes  
Color TV  
Parkland  
GR 5-3755  
9440 Pacific Ave.  
Lakewood  
JU 4-4100  
108th & Bridgeport

## BUSINESS DIRECTORY

Furnaces  
**Sheet Metal**  
• Furnace Repair  
and Service  
• Installations  
**PARKLAND  
FUEL OIL**  
12002 Pacific Ave.  
LE 7-0256

Fencing  
**FENCING**  
Designers and Builders  
EXPERT WORKMANSHIP  
REASONABLE PRICES  
Easy Monthly Payments  
**VAUGHAN'S**  
6402 S. Tacoma Wy. GR 4-9515

Top Soil  
**NEWBURY'S**  
Dozer Service  
LE 7-7455  
Sandy Loam Bank Run  
Mixed Soil Fill Dirt

## Where To Buy INSURANCE

CALL LE 7-8647  
**Ashford - McAloon**  
Insurance  
**SAFECO**  
INSURANCE 1901 Pacific Ave.

**INSURANCE**  
Military - Home - Business  
**LE 7-4904**  
Auto Fire Life Bonds  
**IRENE CLEMENS**  
Agency - Parkland  
10329 Pacific Ave.

**Journal Classifieds**  
Get Results  
LE 7-0223

**Listings Wanted**  
Buying or Selling  
Real Estate Service  
Call  
**Devereaux Realty**  
12152 Pacific Ave. LE 7-8658

**HOME VACANT**  
We desperately need good  
rentals \$80 to \$150 per month  
CALL NOW  
Let us handle your worries  
**SUBURBAN  
REALTY**  
11302 Pacific Ave.  
LE 7-8638 or LE 7-6896

## CHURCH DIRECTORY ATTEND OUR WORSHIP SERVICES

**CHRIST THE KING  
Lutheran Church**  
8:30 & 11 a.m. Worship  
Service  
9:45 a.m. Sunday School  
East 85th at Van Buren  
LE 7-4272

**Spanaway Assembly of God**  
166th & Pacific Ave.  
Sunday School 9:45 a.m.  
Morning Worship 11 a.m.  
Evening Evangelistic 7 p.m.  
Family Night Wed. 7:30 p.m.  
LE 1-1412

**Spanaway Lutheran  
Church**  
8:30 & 11 a.m. Worship Service  
9:45 a.m. Sunday School  
Grades 1 & Up  
11 a.m. Sunday School  
3, 4 and 5 Year Olds  
John L. Briehl, Pastor  
160th & A St. LE 7-5978

**Parkland Lutheran  
Church & Christian  
Day School**  
Worship ... 10:30 a.m.  
Sunday School-Bible Study 9:15 a.m.  
All ages  
H.A. Theiste, pastor  
LE 7-5492 LE 1-0777

**Trinity Lutheran Church**  
Worship Services 8:30 & 10:30  
Sunday School 9:30 & 11:30  
PASTORS  
Erling C. Thompson  
Robert Drews  
121 So Park LE 7-0201

**TAKE YOUR  
FAMILY  
TO CHURCH  
THIS SUNDAY**



