

PLU (Haley)

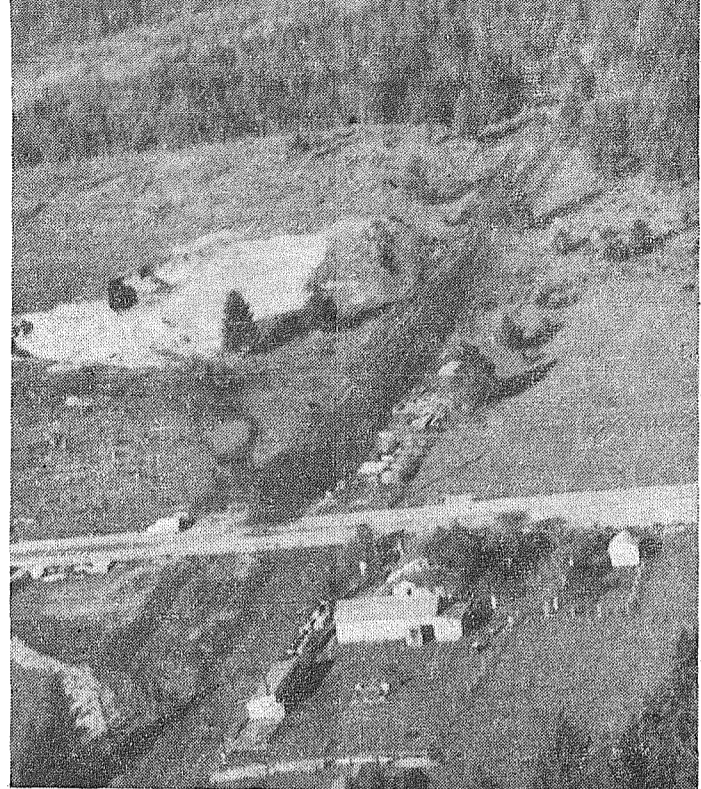
BULK RATE
U. S. Postage Paid
Permit No. 9P
Parkland Branch
Tacoma, Wash.

Rural Route
Occupant or Boxholder
Postmaster: If unable
to deliver, return post-
age is guaranteed on
addressed papers.

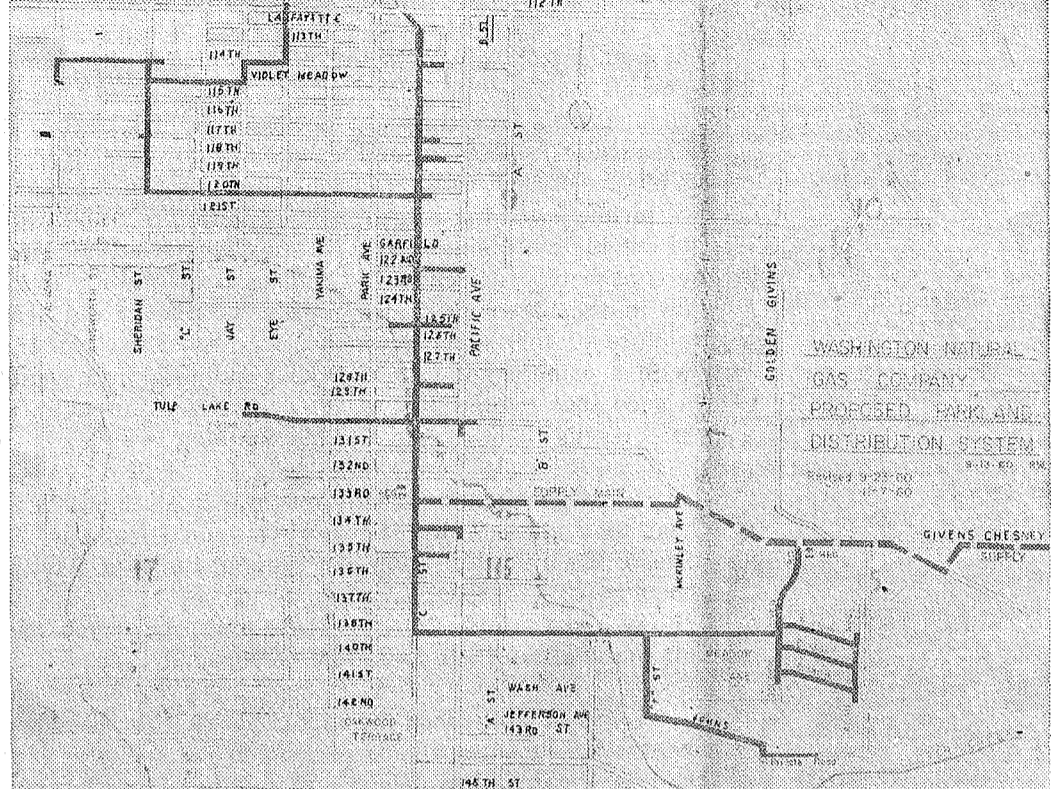
The TIMES JOURNAL

WEDNESDAY, NOVEMBER 23, 1960 • VOL. 16, NO. 12 PUBLISHED AT PARKLAND, WASH. LE 7-0223

Natural Gas Coming To Parkland



DARK VERTICAL line cutting across Thun Field Road indicates direction of new natural gas pipeline. The portion of the pipeline extending beyond the trees cannot be seen due to thick undergrowth. (Photo by McKewen from Times Journal plane.)



HERE IT IS! Complete up-to-date route of the natural gas pipeline is indicated by heavy black lines. The route may be added to before final completion of the pipeline. If enough people on a given street sign a petition, then natural gas will extend down that street.

A major link in Puget Sound's rapidly expanding natural gas industry pipeline system was forged this week with the completion of a new gate station at Frederickson, near Parkland, Washington. Total investment for the new service facilities, including gas mains for the Parkland commercial and residential area will total nearly a third of a million dollars in the next twelve months, according to Leland E. Jones, vice president and southern division manager for Washington Natural Gas Company.

energy available for parklike industrial developments near potential manpower pools. Easy access to rail transportation is afforded by the main lines of Union Pacific, Chicago-Milwaukee and St. Paul which the pipeline parallels from Frederickson to the South Tacoma Border Station.

64,000 Feet
In Parkland 64,000 feet of mains will establish a natural gas distribution system serving the residential and business districts. Completion of the entire system is expected within the next few months, company officials stated.

From El Paso
The Frederickson gate station is

on the El Paso Natural Gas Company's main pipeline which supplies natural gas to the Pacific Northwest from fields in the San Juan Basin in New Mexico, Wyoming's Big Piney fields and the Canadian fields of Northern Alberta. From the city gate the Washington Natural Gas main runs in a northwesterly direction for 12,000 feet to the South Tacoma border station, then due west to Parkland, picking up the Mayfair residential sub-division on Brookdale Road near the golf course.

SHOP & SAVE
at
BROOKDALE LUMBER CO.

HAUL YOURSELF AND SAVE
1x6 and 1x8 Cedar
SHEATHING
\$35 Per Thousand

2x6-8-10 Econ. Grade
\$35 Per Thousand

1x4 "E" Grade
DRY FLOORING
\$850 Per 100 Ft.

PLYWOOD
ALL SIZES
NEW LOW PRICES

DAMAGED SHEET ROCK
YOU HAUL \$1 Per Sheet

The Country Parson

"I guess the reason we close our minds to world problems is that we'd rather have our minds at peace than the world."

DRYER'S FUNERAL PLAN CUTS COST

Dryer's MORTUARY
PARKLAND

MD Drive Appears To Be Successful

First day returns from the Thanksgiving Muscular Dystrophy march are encouraging, indicates Sheriff Frank Stojack, chairman of the Pierce County house to house appeal.

The drive has been extended through Thanksgiving, Stojack continued.

In the Midland area, the Midland Fire Department is voluntarily calling on residents for contributions.

In the State of Washington during 1959, on an average, 9 traffic accidents occurred every hour.

ALL SIZES DISPOSABLE VACUUM CLEANER BAGS
To Fit All Types of Cleaners
AVAILABLE HERE
PARKLAND HARDWARE
12169 Pacific Ave. LE 7-3171

MAN OR MOUSE?
I Don't Know But I'm Warmer Since I Insulated With PCC INSULATION For As Low As \$42.50 Average House.
PETERSON'S COLOR CENTER
LE 1-0711 11000 Pacific Ave.

It's Winter Again!

A MOUNT RAINIER Park Ranger points to chain sign. It is unlawful to drive beyond this sign without tire chains on both rear wheels of your car.

Longmire — Hazardous driving conditions are encountered by the visitor to Mount Rainier National Park during the winter months. Superintendent Preston P. Macy pointed out today. From now until sometime in May, persons driving to Paradise Valley or over Cayuse Pass on the East Side of the Park should be prepared for ice or snow on the roads at all times. Tire chains should be carried in all cars.

Chains are frequently required, and when they are, the visitors is notified by a large red and white sign that reads: "CHAINS REQUIRED ON ALL VEHICLES — SPEED 35 MILES — By Order of the Park Superintendent". This sign is similar to the one posted by the State of Washington Department of Transportation (See Page Two)

WE WISH ALL OUR CUSTOMERS A HAPPY THANKSGIVING
Open 8 A.M. to 1 P.M. Thanksgiving Day
SOUTH END PLUMBING & HARDWARE
185th & Pacific Avenue LE 7-4100

TRUST US WITH YOUR DRY CLEANING!

PARKLAND CLEANERS
11004 Pacific Avenue North of the Bank Corner
LEnox 7-3221

— But why wait to send — or bring in — garments you'll want for the Holidays!

SPANAWAY HARDWARE
ELECTRICAL AND PLUMBING SUPPLIES
SAND, GRAVEL & CEMENT
PLASTIC PIPE
170th & Pacific
LE 7-8378
Open Sundays 8:30-1:30

PROFESSIONAL DIRECTORY
Farmers Mutual of Enumclaw
Fire — Auto
ED MAREK
12909 Pacific Ave. LE 7-4000

WE CUT GLASS
Make Your Own Storm Windows
Really Clear PLASTIC
All Widths 9¢ Sq. Ft. Only

BROOKDALE LUMBER COMPANY
136th & Pacific
LE 7-8669

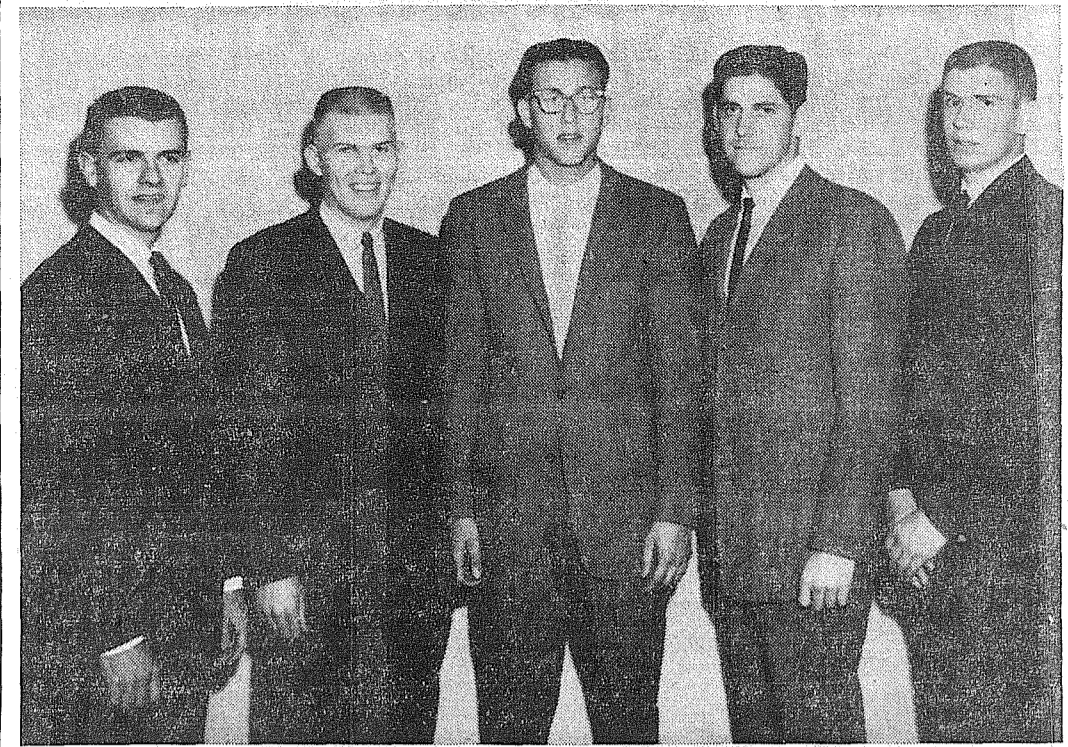
CANYON
READY MIX CONCRETE COMPANY
72ND & CANYON ROAD LE 7-3943

WE GIVE PERSONALIZED SERVICE TO ALL OUR CUSTOMERS
WHETHER IT'S FOR A STEP, SIDEWALK OR FOUNDATION
ALL DAY SATURDAY DELIVERY
One Call Does It All
— WASHED SAND — GRAVEL — DRAIN FIELD ROCK — BANK RUN
After 6 P.M. Call **LE 1-0095**

WINTER COMFORT

Lapenski Fuel Co.
LE 7-8173
9910 PACIFIC AVE.

Playground Benefit Game Nov. 26



HERE ARE some of the Pederson's Fryer stars who will be meeting Buchan's nationally famous Bakers at the PLU gym Nov. 26. Left to right are Glenn Campbell, Don Moseid, Jim Van Beek, Warren Moyles, and Ron Crowe. (Photo by McKewen).

Give Thanks In All Circumstances

By Dr. S. C. Eastvold
President of Pacific Lutheran University

This is the time of year when all Americans have been encouraged by the President of the United States to follow our long custom as a people to pause from our labors for one day at the close of the harvest season, and give thanks to Almighty God for the bounty which he has bestowed upon our land.

As we come to the close of this year, we are aware of the fact that our country has been blessed with an abundant harvest. The founders of our nation were a God-fearing people. It is therefore certainly fitting and appropriate that we have a national Thanksgiving and offer our thanks to Almighty God, who has bestowed uncounted blessings upon us as individuals and as a nation.

been visited a few months before that. We need no one to prove to us that we are the most fortunate people under the sun to live in such a country as we have. We are in full and complete sympathy and favor with the leaders of our nation who are working for the support of less favored nations, and in cooperation with other nations in directing us toward the solution of world food problems.

We are grateful for the heart-warming contributions made by uncounted citizens and groups of religious societies, who are giving support to this great program. With more than half of the population of earth going to bed hungry every night, it is good for us Americans to become aware of the organizations that seek for freedom from hunger campaigns throughout the world. We are happy to know that our government fully supports the objectives of such enterprises. If we are to succeed, and be thankful in all of these respects, it will be necessary to have active cooperation and generous citizens at home and around the world. God has blessed us with enough food for every hungry person in the world. We have the potentials to feed twice as many people as we now have on the earth. May we give a benevolent Providence an opportunity through us to succeed in these great objectives.

The season's first major basketball game in the Pacific Northwest will find the former National AAU champion Buchan Bakers facing the challenge of the Pederson's Fryers, formerly Tacoma All-Stars, at the Pacific Lutheran University Memorial Gym Saturday, November 26th.

Near Sellout
A near sellout is fast looming as over 700 tickets have already been sold. However, The Times-Journal has been assured that many tickets will still be available at the gate.

Pre-Game Action
Pre-game action will be provided by the Puyallup Merchants and Hollywood Boats, two crack women's teams, starting at 6:30.

Trampoline
At halftime of the regular game, trampoline, bar bell, and mat work artists will entertain the crowd.

For Playground
Proceeds for the game will go to the Parkland Playground, through efforts of the Parkland Business Club.

We are grateful that we have a Congress in the United States which, by joint resolution, has designated the fourth Thursday in November in each year as Thanksgiving Day. Who could contemplate what would be the result in a war-torn, troubled, chaotic world, if every head of every nation on earth would call the people in their various kingdoms to acknowledge the sovereignty and power and Saviourhood of Almighty God?

Wouldn't it be wonderful if every head of every nation would urge the people of the earth to give grateful thought to the observance of such a day of Thanksgiving?

About two years ago, Mrs. Eastvold and I went around the world and put our feet down upon thirty-four different countries. This was in addition to many others that had

need to remember the words of the ancient apostle when he said, "Give thanks in all circumstances; for this is the will of God in Christ Jesus for you". To give thanks under all circumstances, no matter what happens, is a big order. It is so big that you and I can't fill it by ourselves. But God means to fulfill it in us, because the apostle adds, "For this is the will of God in Christ Jesus for you."

I am told that a Christian labor leader in Minneapolis was accidentally struck down by a car and had to be hospitalized. He reports that throughout this experience, his heart has been thankful to God. Immediately after the accident he praised God for being alive, and continues doing so. He magnifies God for what recovery he has made, but not complete at this writing. He gives God thanks for his hospital room-mate, a fellow Christian; God strengthens one through another. He lauds God for the privilege of witnessing for Christ to a former room-mate — he has been in the hospital for a month.

Parkland Well-baby Clinic Will Meet

The Parkland well baby clinic will meet the first Wednesday of each month. Doors open at 8:30 a.m. Dr. J. J. Erickson, attending physician, will be in attendance. For further information call LE 1-2107.

Coomes Rest Home
MR. AND MRS. CLAUDE COOMES
OWNERS AND OPERATORS
Excellent food, individual attention. Private and Welfare patients. State Dept. of Health License No. 112.
321 South 116th St.
Tacoma 44 — LE 7-3022

LAUNDROMAT
WASH DRY
10c 10c
PER LOAD
56th & Pacific Ave.

TODAYS LAFF
OLD TIMER: That's a person who remembers when a dollar would buy 50¢ worth of anything.

JUST BOUGHT OUT STOCK OF SO. TACOMA STORE
SAVE UP TO 90%!

MEN'S, WOMEN'S & CHILDRENS SHOES
OPEN SUNDAYS!
Rebuilt Combat Boots And Oxfords \$3.99
Rebuilt Shoe Pairs \$2.99

OPEN EVERY SUNDAY
Friday Night 'til 9:00
PAUL'S SHOES
161st & Pacific LE 7-0552
Closed Mondays

HILLTOP CONCRETE CO.
HILLTOP concrete company
LOOK FOR THE BIG "H" THE SIGN OF SERVICE

Use Ready-Mixed CONCRETE

HOT WATER MIX
Is Recommended for Cold Weather Pours
When You're Ready To Pour A Slab, Foundation Or What—Call For The Big Yellow Truck With All Weather Ready Mix.
Complete Protection — No Lost Time

- Sack Cement
- Washed Sand
- Washed Gravel
- Drain Gravel
- PUYALLUP
- Crushed Rock
- 3/8" Beach Gravel
- Select Pit Run
- Fill Dirt
- TACOMA

Plant: 2223 - 23rd Ave. S.E. P.O. Box 648, Puyallup
TH 5-9525 FU 3-3624
READY-MIX ORDERS TAKEN 'TIL NOON SATURDAY

SAVE 50 TO 75% ON FUEL
ASHLEY AUTOMATIC WOOD STOVES
FREE INSTALLATION
WRIGHT POWER BLADE SAWS
PARKLAND HARDWARE
12169 PACIFIC AVE. LE 7-3171

For Clothing & Shoes for All the Family...
SHOP AND SAVE AT
SEYMOUR'S
9714 Pacific Ave. — 1 Block North Park 'N Shop
SHOP DAILY 9 to 9 EVERY SUNDAY 10 to 6

It's Winter Again!

(From Page One)
partment of Highways at the various mountain passes. This chain regulation requirement is for your safety and protection, as it is a proven fact that serious accidents may be prevented by the proper

use of tire chains on icy or snow-covered roads. Macy stated that persons driving beyond one of these posted chain signs are in violation of the law and will be cited by a park ranger to appear before the United States Commissioner.

FIRST SEE NATIONALS
PARKLAND LE 1-1331
AUTO PARTS
127th & PAC. AVE.

Visitors occasionally raise the question as to whether or not snow tires are a satisfactory substitute for tire chains. Superintendent Macy stated that experience in Mount Rainier indicates that a set of tire chains is the only device that will cope with the heavy, wet snow encountered in this area. Accordingly, so-called snow tires do not meet the requirements of the chain sign.

Superintendent Macy went on to list several tips for persons planning winter trips to Mount Rainier National Park.

1. Be sure that your chains are in good condition and that they fit the wheels of your car. The best way to be sure that they do fit is to try them on at home before you get out in the snow.

2. When applying brakes with tire chains on the car, pump your brakes. This allows the chains to grip at frequent intervals. If you lock your brakes the value of your chains is nullified.

3. Reduce your speed when travelling down grade. The distance required to stop on a snow covered down grade is much greater than on a level or up grade.

4. If you do become stalled on a snow covered road try to furnish approaching motorists, particularly those travelling down grade, adequate warning that the road is obstructed. This action is often sufficient to avoid a collision.

Superintendent Macy stated that a winter trip to Mount Rainier can be a delightful experience to the visitor who is properly prepared and fore-warned. On the other hand such a trip can easily become a nightmare for a visitor who is unprepared.

Clover Creek ... Cub Scout Pack Meets Tonight

Cub Scout pack will meet Wednesday, November 23, at 7:30 p.m. in the Clover Creek multi-purpose room.

All parents of boys ages 8 to 10½ are invited. Martin Berger Jr. will be cubmaster of this new group.

Sorry to hear Mrs. Ed Tennyson is back in the hospital and not doing so well.

Also sorry to hear Mr. John Patterson is in the hospital for an operation.

Clover Creek Grange has elected officers. They are: master, Roy Melvin; overseer, Henry Ferguson; Melvin; overseer, Henry Ferguson; steward, Ruth Huddleston; lecturer, Daisy Pratt; chaplain, Helen Ferguson; assistant steward, Fred Pratt; treasurer, Beatrice Gannon; secretary, Ethel Wetherell; gate keeper, H. Sparks; cress, Kathryn Deady; pomona, Fern Peters; flora, Beatrice Melvin; lady assistant steward, Donna Anderson; home economics, Christine Lowman; 1 year executive committee, Augusta Mathiesen; 2 year, William Mathiesen; 3 year, Ira Davis.

Reporter — Kathryn Deady, LE 7-8897.

a-Wondering ... and a-Wandering ...

With JACK BROWN

Wandering around this last week, I happened upon a few interesting sights and into a few interesting situations. For example, I found myself in a borrowed car stalled in traffic on the Los Angeles Freeway at the height of the five o'clock rush. To make the stew a little thicker, the transit drivers picked that same day to go out on strike.

I bogged down on the Harbor Freeway near its intersection with the Hollywood Freeway. At this point there are twelve lanes abreast, and all I could see was a sea of cars. I was caught in the middle of a traffic jam to end all traffic jams. Ahead of me I could see the interchange with four different decks of stalled traffic. It's practically impossible for the human mind to conjure up a picture of such vast confusion. There I sat in the middle of history with the biggest case against the inadequacies of our highways unfolded before my very eyes, and—yep, you probably guessed it! My camera was carefully locked up in the plane back at the airport. I never did see a picture of this super jam. Probably no other newsman with a camera got caught in it and those that wanted a good shot couldn't get up on the freeway to get it. Oh well, that's the way the cookie crumbles.

I had some work done on my plane in Burbank. While that took place, I decided to visit some friends in San Diego. The round trip via bus brought me to a startling conclusion. Those who travel the buses today are the young and the old. Between these age groups you meet all the misfits of life as fellow passengers.

I was in Hollywood the night Clark Gable died. Each person who mentioned his passing to me spoke as if he had just lost a dear friend. An old news vendor on a street corner was the first to ask me if I had heard, and I swear he had tears in his eyes as he told me that Gable had just passed away. It's hard to realize that so many people could have the warm feeling of deep friendship for one man as was displayed for Gable.

A surprising, and yet sad sight met my eyes in San Diego. When I first got there, my friends asked me if I knew it was considered a distress area. I had been told this by a navy man I met in Bremerton. When telling about it back here at home, everyone said I had misunderstood him and had me convinced that I had, but down in San Diego my friends soon proved to me that what I had originally understood was the gospel truth. We drove by literally miles of empty new homes. In one platt of approximately three hundred new houses we saw only three that were occupied. It seems that builders came to "Dago" from miles around to make their fortunes building homes. Lending agencies eager to be on the gravy train put up the money, and soon the new homes so far exceeded the demand that by the time realization hit the financiers and the builders, the die was cast and many a fortune has been lost instead of made. The multitudes estimated to start pouring into "Dago" have not materialized; and with a large lay-off in the aircraft industry, vacant homes are in evidence everywhere. Many people have just walked off and let their down payments go down the drain. This in turn has sunk many an investor in the area.

Talk about shades of the past. As I walked up Broadway in San Diego every young seaman I met brought back memories out of my past. As I came to the USO, I stood with my nose pressed against the glass looking inside at my favorite chair of yesteryear. For a minute I could just visualize myself setting there reading a book with boredom the largest factor in my life at the time. In the same old spot sat a young sailor reading a magazine. I wouldn't give him a penny for his thoughts for I knew everyone of them well. I wonder how many thousands of young men over the past 19 years since I sat in that chair have sat there too and dreamed of home and loved ones. No, his thoughts aren't worth a penny to me. They are burned too deep in my mind for me to ever forget.

An airplane is the only invention man has ever made that can have you yelling about the heat one day and shoveling snow off your roof the next.

Summit Residents Home From Armed Forces Duty

A very belated, "welcome home," is extended to M-Sgt Perry Bartram. The welcoming committee for papa Bartram's arrival was wife Esther, Perry Jr., Barbara, Jimmy, and Bobby. Perry just spent a year in Korea, four miles south of the 38th parallel. After arriving stateside he was flown from San Francisco to Tacoma via jet. Sgt. Bartram was assigned to Madigan Army Hospital. With only two years left to complete twenty, he hopes it will be spent here.

Already Perry is active in youth work. Before going to Korea, he was Advancement Man for the Boy Scouts of Troop 76. Besides filling the same position, he is the Commissioner for the Summit Methodist Church sponsored Explorer Scouts.

Cubs Meet
Cub Scouts and families will meet in the Summit Youth Center Friday, November 25, 8 p.m. Another den has been added to the Pack, with Ruth Almont as the new Den Mother. If your boy has not been placed in a Den, please call Mr. Torbet at LE 1-2128.

Xmas Decor
The public is invited to attend a program on Christmas decorations Tuesday, November 29, 7:30 p.m. in the Central Avenue multipurpose room. The program will be presented by the Central Avenue Preschool Section.

Mrs. Claude Purvis will demonstrate the practical and economical art of making swags, wall plaques, and center pieces with materials that are found within or around the home.

A demonstration on foam crafts, corsages, bees wax candles, and fibre wood flowers will be given by Mrs. Burt Ohlinger. A supply of materials can be purchased. There will be displays, with instructions, on gift wrapped packages, glo-wax candles, and cone wreaths. A small admission of 10c per person is asked to cover demonstrator expenses.

Webelos
Cub Scouts from the Webelos Den planned and participated in a good old-fashioned hike. The boys met at the Summit Youth Center at 10 a.m. Saturday, November 19. Instructions were, "If it isn't raining at 9 a.m., we're going." It wasn't raining at 9 a.m., but the rest of the day is a matter of record... R A I N. The Cub spirits weren't dampened one bit. They hiked in to the Sportsmen's Chateau, about a three mile hike, played baseball, had a pine cone fight, and roasted weiners and (See Page Three)

X-ray Unit Here

The Tuberculosis Association's mobile chest x-ray unit is scheduled for the following location:
Piggly Wiggly Store, Parkland, Dec. 1, 10 to 1 and 2 to 6, Dec. 2, 10 to 1 and 2 to 6, Dec. 3, 10 to 1 and 2 to 6.

The Tacoma - Pierce County Health Department-co-sponsors the program. All adults are urged to have their x-rays while the unit is in the neighborhood.

Swimming Party Held At YMCA

The junior and senior youth groups enjoyed a swimming party at the YMCA in Tacoma Saturday night, Nov. 19. They were: Larry and Ricky Burkhardt, Arlan D, Cleatus, and Kervin Hogan, Larry Lankin, Steve and Mark Smith, LeAnn Banks, Sherrie Benson, and Danny Harrison.

Also attending were Larry Potter, Cheryl Potter, Mary Hourter, Cheryl Potter, Mary Lou Esarey, Larry Barber, Jeff Shull, Wilbert Kinne, Colleen Smith, Neil Potter, Mike Balmer, Elton Felkins, Phillip Burrington, Gordie Burrington, Bobby Dickensen.

Adults were Ray Burkhardt, Bud Potter, Ed Hogan and Mr. Slater, pastor of the church. A social function is planned for the group once each month.

Family Night
Sunday, Nov. 27, is Family night at the Elk Plain Community Church, starting at 6:30.

A Thanksgiving Day service will be held at the church, starting at 7:30 p.m.

Country Store
A Country Store Day with theme of "Do your Christmas Shopping at the Country Store," will be at the Elk Plain Grange Sunday, Nov. 27 from 2 p.m. on.

The first sewing meeting of the Elk Plain Girls 4-H Club was at Mrs. Paul Hudson's home Nov. 11. The first cooking meeting was at Mrs. McDougall's home Nov. 9. Reporter, Mrs. Ray Burkhardt.

AIR CHARTER

FLIGHT INSTRUCTION
Approved Flight School
Wash. MOONEY Distributor
TAHOMA FLYING SERVICE
Spanaway Airport LE 1-0442

POWER TOOLS FOR RENT
SANDERS—EDGERS—POLISHERS—HAND SANDERS
SKIL SAWS—ELECTRIC DRILLS—CEMENT MIXERS
ETC.—ALSO HAND TOOLS FOR RENT

Anderson Lumber
9813 Pacific Avenue LEnox 7-7311

GROUND ROUNDlb. 49c
COUNTRY SAUSAGElb. 49c
ROLLED ROASTlb. 89c

WHOLESALE MEATS
Retail Meats At Wholesale Prices 116th & Spanaway Loop Rd. LE 7-3271
(Formerly Massner Meats)

TELEVISION SERVICE CENTER
PRESENTS TV CHUCKLES

Charlie Says:
The trees can wait. I have to get my TV repaired right away for the holidays.

TELEVISION SERVICE Center
"YOUR WINEGARD COLOR CEPTOR DEALER"
GR23386 8431 PACIFIC AVE.

POCKET SAVINGS  on all **FOOD NEEDS**
Prices Effective Friday Through Sunday Nov. 25, 26 & 27

COUNTY FAIR
ICE CREAM 1/2 GAL. **69c**

CAMPBELLS
SOUP CHICKEN NOODLE REG. SIZE **6/95c**
VEGETABLE BEEF TIN
CHICKEN VEGETABLE

HORMEL'S
SPAM LUNCHEON MEAT 12-oz. TIN **3/\$1.00**

HOLIDAY
MARGARINE lb. **15c**

SUNSHINE KRISPY
CRACKERS 2-LB. PKG. **47c**

HUNT'S
PORK & BEANS 2 1/2 TIN **5/\$1.00**

LARGE AA WHITE
EGGS Doz. **59c**

GIANT SIZE
TIDE **69c**

FRISKIES
DOG MEAL 5-lb. Bag **63c**

SUMMIT TRADING COMPANY
10409 Canyon Road, Tacoma LE 7-5848
No Sales To Dealers
We Reserve The Right To Limit Quantities

OPEN SUNDAYS
10 A.M. TO 7 P.M.
FOR YOUR CONVENIENCE
WEEKDAY HOURS
9 A.M. to 9 P.M.

NORTHWEST'S FINEST
WEINERS 2 lb. bag **89c**

ARMOUR'S STAR
FULLY COOKED, BONELESS, SKINLESS
PICNICS 3 lb. tin **\$1.99**

Golden Ripe
BANANAS 2 Pounds **25c**

Texas Pink
GRAPEFRUIT Each **5c**

Benston Grange Elects Officers

Benston Grange held election of officers on Nov. 8. They are:
Master, Harold Johnson; overseer, Harold Jacobson; steward, Rola Moreland; gatekeeper, William Swanson; lecturer, Esther Moreland; chaplain, Della Lauenborg; Treasurer, Beulah Selle; secretary, Vera Johnson; asst. steward, Vivian Selle; Lady asst. steward, Lavonne Kronquist; ceres, Barbara McVicker; pomona, Sophie Peterson; flora, Katie Nelson; and executive committee, George Rose.

The annual pot luck dinner for members and their families helped to celebrate Benston's "birthday" on Nov. 22. Entertainment was provided by members and their children.

IT'S CHEAPER TO RENT THE TOOL YOU NEED
GARDEN TILLER
POWER LAWN MOWERS
BELT HAND SANDERS
OSCILLATING HAND SANDERS
FERTILIZER SPREADER
LAWN ROLLERS
LAWN SEEDERS
PAINT SPRAYERS
RUG SHAMPOO MACHINE

POWER MOWER SHARPENING & REPAIR

WINDOW GLASS INSTALLED

PARKLAND HARDWARE
12169 Pacific Ave. LE 7-3171

Cub Pack 79 Meets

Cub Scout Pack 79 will meet at the Clover Creek school gymnasium at 7:30 tonight.

WE MAKE LUMBER
LUMBER
GLASS
HARDWARE
SHINGLES
ROOFING
GET OUR PRICE FIRST ON ECONOMY GRADE LUMBER

Baskett Lumber
9701 Portland Avenue LE 7-8663


JUST IN TIME FOR EARLY SHOPPERS—NEW SHIPMENT
FAMOUS SCHWINN BICYCLES
NOW WITH THE NEW BENDIX AUTOMATIC BICYCLE TRANSMISSION—2 SPEEDS & POWER BRAKE (Limited Quantity) Several Models To Choose From

PARKLAND CYCLE & KEY 11021 Pacific Avenue LE 7-5772
See the Buchan Bakers vs. Pederson's Fryers Sat. Nov. 26 at PLU

Summit Residents Home From Duty

From Page Two
marshmallows. Chaperones and boys returned home in the early afternoon wet, tired, and happy. The hikers were: Messrs. Maurice Barrackman, Fred Mackey, and

Perry Bartram; and Rodney Mackey, Allan Cail, Bob Adler, Kim Morris, Bobby Bartram, Wayne Barrackman, Mark Nelson, Wayne Taranoff, Gary Skarr, Frank Bednash, Kenny Korsmo, Jim Gunderson, and Jim Martinson.

Youth
The Summit Youth Center game night will be held Saturday, November 26, at 8 p.m. Everyone is invited.

4-H
A new livestock 4-H group is being formed in the vicinity of Vickers Road, between Knapp and Airport Road. The first meeting will be held Saturday, November 26, 2 p.m. at the home of Mr. Sherman Mathis, 10816 Vickers Road.

Stock Raisers—New club mem-
Allan Cail, a fifth grader at Central Avenue, lost a billfold either at or on the way home from school. The billfold isn't too valuable to anyone money wise. It was a gift from Allan's grandmother, who is in Anchorage, Alaska. She sent it as a prize in a family contest. His name is written inside the billfold, as well as, on the identification within. It is hoped that anyone finding it will please contact him at LE 7-3766. Reporter, Gwen Cail, LE 7-3766.

SUMMIT VIEW AUTO REPAIR
WINTER IS HERE
HAVE YOUR CAR CHECKED
10904 E. Canyon Rd. LE 1-0424

Estimates Without Obligation
QUALITY HOMES DESIGN ASSISTANCE
Hedlund Const.
868 Tule Lake Rd. LE 7-4227

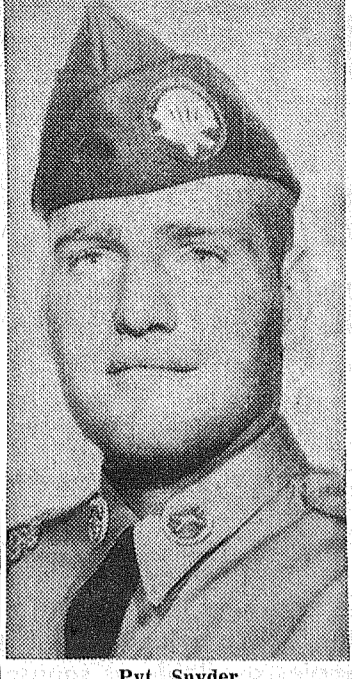
PROMPT PERSONALIZED
PRESCRIPTION SERVICE
TED SWANSON
INSULIN VITAMINS
Downtown Prices
Pay Phone Bills Here
PLENTY OF FREE PARKING
TINCHER'S PHARMACY
8227 Park Ave. GR 4-3344
Across from Fern Hill P O

Open 7 Days A Week Sundays 8 a.m. to 4 p.m.
HUNTING & FISHING LICENSES. SPORTING GOODS. PAINT
SOUTH END PLUMBING AND HARDWARE
185th & Pacific Avenue Phone LEnox 7-4100

LITTLE PARK SPECIAL
STEAK \$1.25
FRI. AND SAT. NIGHT ONLY
Delicious Steak, Lots of Hash Browns,
Little Park's Special Tossed Green Salad With Our
Own Dressings, Garlic Bread & Home Made Dressing
171st and Pacific Avenue LE 1-1343

Graham Man Is Army Graduate

(AHTNC)—Army Pvt. Samuel B. Snyder, son of Mr. and Mrs. Samuel F. Snyder, Route 1, Graham, Wash., recently was graduated



Junior quarterback Doug McClary wrote his name into the Pacific Lutheran University passing records this season as he bettered two minor marks.
The former all-state prep from Tacoma's Lincoln High cracked the record for most passes completed in one season last Saturday night against Eastern Washington College when he connected on his 76th aerial of the campaign to top Marv Tommervik's 75 in 1939 and 1940. McClary also attempted the most passes in one season—160 as compared to Tommervik's 157 in 1939.
On the season, McClary passed for 805 yards (76 of 160) and rushed for 180 yards to annex the Knights' total offense honors with 985 yards for nine games.

Brookdale Meets
Brookdale pre-school will meet Wednesday, November 30, at 8 p.m. in the school.
"Books for our children to grow on" will be the theme with Miss Grace Blomquist speaking.

Hardware—Paints—Variety
STOP and SHOP
BARSOtti & TiMM
At the Roy Y LE 7-4221
Open 7 Days a Week, 7 a.m.—9

McClary Rewrites Knight Football Record Book

Helping out on the passing end were ends Dave Bottemiller, a junior from Milwaukie, Oregon, who pulled in 36 passes for 384 yards, and senior Bill Lennon from Jacksonville, Florida, with 23 catches for 291 yards.
Senior co-captain Bruce Alexander was the top rusher with 418 yards in 105 carries, a 4.0 average. Sophomore Dave Reynolds was second with 365 yards and a 3.9 average. Both preped at nearby Franklin Pierce High.
PLU's marks over the 1960 campaign hide its 3-6 record. In rushing, the Lutes bettered their opposition, 156.9 yards to 107.1 and edged past opponents in passing, 96.0 yards to 94.1.

MOTOR REBUILDING
Valve Seats Installed, Complete Brake Drum Turning, Reboring, Pin fitting, Lathe and Press Work, Head Surfacing, Key Seating, Pistoning Grinding, etc.
Rupe Machine Works and Garage
AUTOMOTIVE & INDUSTRIAL WORK
13411 Pac. Ave. P.O. Box 2445, Parkland 44, Wn. LE 7-7450

Spana-Park 4-H Elects Officers

An impressive candle lighting ceremony Nov. 11 led by Mrs. Graves elected new officers to Spana-Park 4-H.
They are: president, Judy Graves; vice-president, Ken Cashman; secretary, Andrea Hoke; treasurer, Sharon Reed; representative, Carol McCormick; and parliamentarian, Davis Graves.
A family potluck dinner preceded the installation.

The more patient pedestrians, the fewer pedestrian patients.

Bob's Barber Shop
9820 Pacific Avenue
Courteous Service Always
Hours 9 to 6 Tues. thru Sat.

The right of way is not worth dying for. Let the other fellow have the right of way, you take the right way.

FENCING
Designers and Builders
EXPERT WORKMANSHIP
REASONABLE PRICES
Easy Monthly Payments
VAUGHAN'S
84th & Pac. Ave. GR 4-9515

LINOLEUM, FORMICA, CARPETS
FREE ESTIMATES
PACIFIC FLOOR COVERING
131st & Pacific LE 7-4545

Rural Garbage Service
Pierce County Permit
Serving Parkland, Midland, Summit and Spanaway
LEnoz 7-8688

COUNTRY BOY'S AUTO PARTS
OPEN 7 DAYS A WEEK
CUT RATE PRICES ON ALL PARTS
SPECIAL BRAKE SHOES \$3.95 Set of 4 Most Cars
WILLOWS CORNER, AIRPORT & SO. MERIDIAN TH 5-4451

BENEFIT BASKETBALL GAME SATURDAY NOVEMBER 26th, 8 p.m.

AT PACIFIC LUTHERAN UNIV. GYMNASIUM

BUCHAN BAKERS vs. PEDERSON'S FRYERS

Sponsored by the Parkland Business Club—All Proceeds To Be Used On the Parkland Play Ground

ADULTS \$1.25 Donation
STUDENTS 75¢ Donation



This Advertisement Made Possible Thru the Generosity of the Following Parkland Business Club Members

- ARMSTRONG'S USED CARS 11009 PACIFIC AVE.
- COOK MOTORS 9715 PACIFIC AVE.
- ERO MOTORS 11001 PACIFIC AVE.
- COPE'S AUTO SALES 9614 PACIFIC AVE.
- LUCKY SALES & SERVICE 13502 PACIFIC AVE.
- SHOPPETTE VARIETY 13322 PACIFIC AVE.
- PARKLAND HARDWARE 12169 PACIFIC AVE.
- PARKLAND FUEL OIL SERVICE 12002 PACIFIC AVE.
- BROOKDALE LUMBER CO. 13602 PACIFIC AVE.
- ANDERSON LUMBER CO. 9813 PACIFIC AVE.
- RURAL REALTY 14403 PACIFIC AVE.
- TIMES JOURNAL PUBLISHING CO. 14620 PACIFIC AVE.
- CARLSON'S USED CARS 10027 PACIFIC AVE.
- O.K. TIRE STORE 9636 PACIFIC AVE.

bag these FOOD BUYS!

14-TO-16 POUND YOUNG TURKEYS Pound 41¢

TENDER—FULL CUT ROUND STEAK Pound 79¢

YANKEE — SLICED BACON Pound 49¢

EXTRA-LEAN Pork Sausage 3 Pounds \$1.00

Fairlane or Polar Fresh Frozen VEGETABLES 6 For 89¢

FAIRLANE FRESH FROZEN STRAWBERRIES 2 10-oz. Pkgs. For 39¢

ROYAL ALL FLAVORS GELATIN 5¢ Each

Pacific Pearl MANDARIN ORANGES 11-oz. Tin 5 For 99¢

HiHo or Ritz Crackers 1-lb. Pkg. 33¢

"AA" Large EGGS 59¢ Doz.

HILLTOP PITTED OLIVES 303 Tin 25¢

SEA SURF TINY SHRIMP 4-Oz. 33¢

CATSUP VAN CAMPS 14-oz. 15¢

TOKAY GRAPES 10¢ Lb.

CELERY Fresh Crisp 10¢ Each

GOLDEN-RIPE BANANAS 2 POUNDS 25¢

McDANIELS
The Home of The Low Price
AIRPORT & CANYON ROAD
Store Hours: 9:00 TH 9:00 — Sundays 9:00 TH 7:00
PRICES EFFECTIVE Wednesday Friday Saturday



NAME _____ AGE _____
 ADDRESS _____
 PHONE NUMBER _____

BARGAIN BASKET

16618 Pacific Ave. South Spanaway



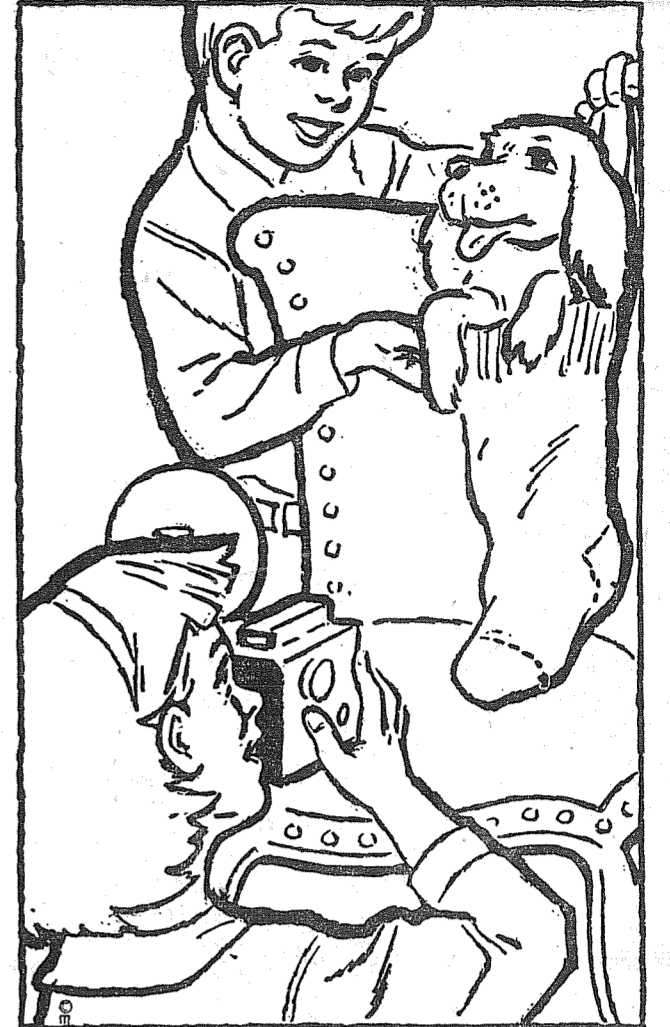
HERE ARE THE SIMPLE RULES:

A pack-full of exciting prizes is waiting for the children who win this coloring contest. Just color these pictures in paint, pencil or crayon and drop them in the box provided at the sponsoring stores with your name, address, phone number and age. Extra copies available at sponsoring stores.

1. This contest is open to all boys and girls 14 years of age or younger, except children of employees of the sponsors or of this newspaper.
2. Color each picture to the best to your ability. All entries must be submitted by December 14th.
3. Print your name and phone number clearly in space provided and TAKE YOUR COLORED PICTURE TO THE SPONSOR SHOWN ON THE AD.
4. Decisions of the judges will be final. Finished pictures become the property of the sponsors, who reserve the right to publish the winning names.

OFFICIALS WILL BE INSTRUCTED TO TAKE INTO CONSIDERATION THE AGES OF THE CHILDREN COMPETING AND JUDGE ACCORDINGLY.

WATCH THIS NEWSPAPER FOR NAMES OF WINNERS!



NAME _____ AGE _____
 ADDRESS _____
 PHONE NUMBER _____

SOUTH END PLUMBING AND HARDWARE

185th and Pacific Avenue LE 7-4100



NAME _____ AGE _____
 ADDRESS _____
 PHONE NUMBER _____

PARKLAND REXALL PHARMACY

11000 Pacific Avenue LE 7-8636



NAME _____ AGE _____
 ADDRESS _____
 PHONE NUMBER _____

BROOKDALE LUMBER CO.

136th and Pacific Ave. LE 7-8669



NAME _____ AGE _____
 ADDRESS _____
 PHONE NUMBER _____

PARKLAND WESTERN AUTO

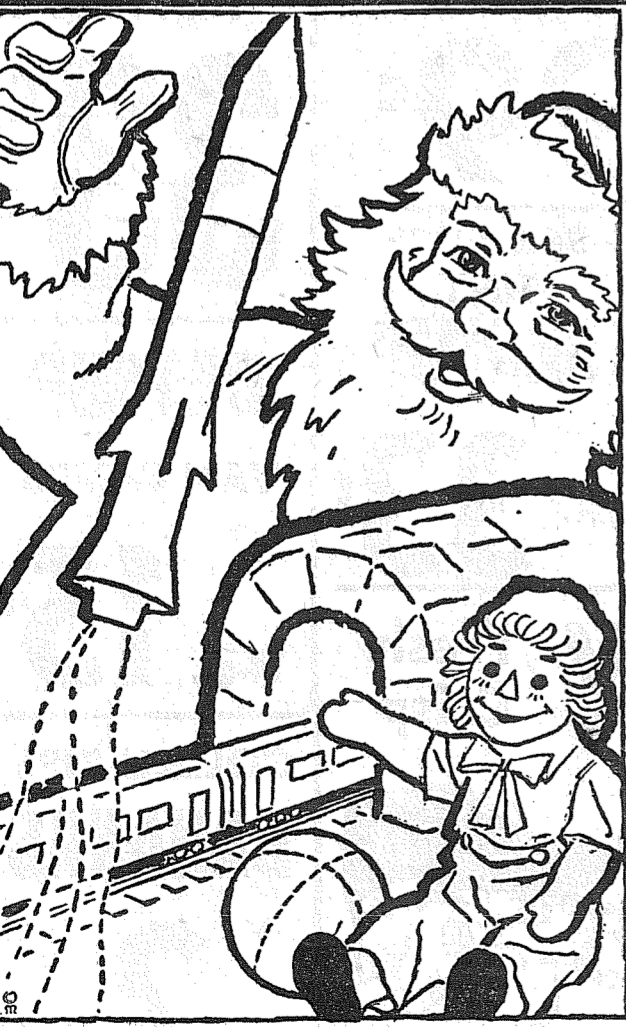
11108 Pacific Ave. LE 7-3112



NAME _____ AGE _____
 ADDRESS _____
 PHONE NUMBER _____

PAUL'S SHOES

The Only Shoe Store With An Upstairs Bargain Basement
 161st and Pacific Ave. LE 7-0552



NAME _____ AGE _____
 ADDRESS _____
 PHONE NUMBER _____

SHOP-ETTE VARIETY AND DEPARTMENT STORE

133rd and Pacific Ave.—In Big Bear Center



NAME _____ AGE _____
 ADDRESS _____
 PHONE NUMBER _____

BIG BEAR STORE

133rd and Pacific Ave.



NAME _____ AGE _____
 ADDRESS _____
 PHONE NUMBER _____

ASHMORE'S SPANAWAY DRUG

165th and Pacific Ave. LE 7-5993



NAME _____ AGE _____
 ADDRESS _____
 PHONE NUMBER _____

SUMMIT TRADING CO.

10409 Canyon Road LE 7-5848

BUY! SELL! SWAP! READ and USE THE

WANT ADS

Miscellaneous 15 SPECIAL ORDER CAKES - Phone LE 7-3550. Puffy Ann Bakery. 15cft

Business Service 3 BYRON'S SEPTIC SERVICE - Septic tanks, drain fields, water lines, ditching, base-ments and bank-run gravel. WA 2-8344. 3cft

Business Service 3 SEPTIC TANK CLEANING Prompt Service C. V. HUTSON GR 4-3980 GR 2-7038

Business Service 3 YOUR NEIGHBORHOOD PAINTER and paper, neat and reasonable. LE 1-2265. 3cft

Real Estate 9 We Have BUYERS for your HOUSE! FARM and BLDG. SITES

Real Estate 9 Listings Wanted DICK DEVEREAUX REALTY Multiple Listing Service Call LE 7-8659

Real Estate 9 Ace Dirt Moving Co. BULLDOZING DITCHING GRAVEL TOP SOIL SEPTIC TANKS DRAIN FIELDS 1750 9th St. S. W. Puyallup Phone Puyallup TH 5-2452

22 PLU Knight Hoopster Hopefuls Turning Out Coach Gene Lundgaard welcomed a group of 22 Pacific Lutheran University basketball prospects to their first regular workouts this week.

Business Service 3 ART'S SHOE SHOP LET ANY CHANGE THOSE HIGH HEELS FROM THIS TO THIS All Work Guaranteed 315 Garfield Street

Business Service 3 Boush Moving & Storage Agents for U.S. Van Lines Cost to Coast Service 11816 Pacific Avenue LE 7-3696

Real Estate 9 M. L. S. MULTIPLE LISTING SERVICE SOUTH END Furnished one bedroom home, 2 level lots. One block off Park Ave. and 74th.

Rentals 10 1 BEDROOM furnished house. LE 7-6009. 10cft

Farm Column 13 SHAVINGS, call after 5 p. m. LE 7-5757. SHAVINGS SUPPLY. 15cft

Aviation 17 FREE-FIRST FLYING LESSON-LEARN TO FLY-810 A WEEK New and Used Aircraft Sales TAHOMA FLYING SERVICE Spanaway Airport. LE 1-0442. 17cft

Applicants Meet At PLU Nov. 28 A Naval Officer Information Team from Seattle will interview and test interested applicants for the Navy's Officer Programs at Pacific Lutheran University on Monday, November 28.

Business Service 3 A-1 SANITARY SEPTIC TANK PUMPING AND SEWER CLEANING SERVICE PUY. TH 5-2873

Business Service 3 CUSTOM-BUILT CABINETS Pre-nung Doors-Free Estimates FORMICA & GE TEXTOLITE COUNTERS We Install Cabinets - Drain Boards BAKER'S Woodworking Co. LE 7-0565 - LE 7-3290

Real Estate 9 McKINLEY HILL REALTY 6311 McKinley Ave. GR 4-9579 Member of Multiple Listing Service and TACOMA REAL ESTATE BOARD

Repair Service 11 NOW AT SILER'S Complete washer and dryer service. All makes. Fast, dependable, reasonable. LE 7-8634. 11cft

Work Wanted 14 IRONING PICK UP AND DELIVER, 80c an hour. LE 7-6718. 14cft

Dance at Graham Grange Dec. 3 The Kapowsin - Graham Area Park Board is holding a Benefit Dance in the Graham Grange Hall on December 3rd to pay for moving a building into Pioneer Park and fixing it up so the boys and girls of this area can use it.

Dance at Graham Grange Dec. 3 The Kapowsin - Graham Area Park Board is holding a Benefit Dance in the Graham Grange Hall on December 3rd to pay for moving a building into Pioneer Park and fixing it up so the boys and girls of this area can use it.

Business Service 3 Ace Dirt Moving Co. Bulldozing Ditching TOP SOIL GRAVEL SEPTIC TANKS AND DRAIN FIELDS Phone TH 5-2452

Business Service 3 WEBB ELECTRIC COMPANY Commercial-Residential ELECTRIC HEATING WIRING & ELECTRICAL SUPPLIES 24 HR. EMERGENCY SERVICE LE 7-4437

Real Estate 9 M. L. S. MULTIPLE LISTING SERVICE Jennie L. Grodny PARKLAND REALTY CO. Insurance of All Kinds Notary Public Est. in Parkland Since 1941 LE 7-8609 Office 302 Garfield St., Parkland Jennie Grodny, LE 1-1211 Edna Taylor, LE 7-3556 Thelma Scott - Yvonne White JU 8-3838 LE 7-0440

Automobiles 12 BUY OF A LIFETIME 1961 SIMCA DE LUXE 4-DOOR With 14 World Records Fully Equipped, Delivered in Tacoma-Reg. \$1,869 NOW ONLY \$1,544 THE BEST BY FAR Kraus Motor Co. Simca-Jeep Headquarters Cor. 13th and A BR 2-5177

Miscellaneous 15 FOR SALE - One yellow parakeet and cage, \$5. One powder blue parakeet and cage. \$5. Kitchen table and three chairs. \$5. One croch fabric cloth, \$3.25. Antique wash bowl and pitcher. \$5. Man's dark blue gabardine suit, size 42, \$19. All home every foreign and evening. 7526 E. 124 St. Puyallup, WA. D. J. laney, Summit District. 15cft

Ladies Auxiliary Meets Dec. 8th The Canyon Road Ladies Auxiliary will meet Dec. 8th at 12:30 in the Community Hall for a potluck luncheon and a gift exchange not to exceed 50c.

Ladies Auxiliary Meets Dec. 8th The Canyon Road Ladies Auxiliary will meet Dec. 8th at 12:30 in the Community Hall for a potluck luncheon and a gift exchange not to exceed 50c.

Business Service 3 South End Auto Wreckers USED PARTS - Motors, Transmissions, Tires, Batteries. We buy junk cars. Also Custom Welding by Joe's Welding. 1 Mile East of Roy on Mt. Hy. LE 7-6534

Business Service 3 LANDSCAPE PLANNING TREES - SHRUBS EARLE'S EVERGREEN NURSERY LE 1-1055 South End of Vicky Road

Real Estate 9 LIST WITH SUBURBAN Home and Farm Specialists in South End Properties. Two offices open every day and evening for your convenience. SUBURBAN REALTY, INC. 113th and Pacific, LE 7-8848 112th and Canyon, LE 7-0229 Member Multiple Listing Service & Tacoma Real Estate Board 3cft

Foreign Cars 12A ALL FOREIGN CAR KEYS 107 Varieties PARKLAND CYCLE & KEY 11021 Pacific Ave. LE 7-5772

Miscellaneous 15 WANTED - Cameras and photographic equipment for resale. QUALITY PHOTO SERVICE 9818 Pacific, LE 7-7271 15cft

Fall Festival Will be Nov. 26 Ten dressed turkeys will be given as prizes at the annual Fall Festival held in Parish Hall of Our Lady Queen of Heaven Church at 14601 East "A" Street on Saturday, Nov. 26th at 8 p.m.

Evangelist At Clover C. Church Evangelist Tom C. Fair, well known as "The Tennessee Singing Evangelist," will return to Tacoma again for a series of meetings at the Clover Creek Baptist Church.

Business Service 3 TREES - SHRUBS LANDSCAPE PLANNING EARLE'S EVERGREEN NURSERY LE 1-1055 South End of Vicky Road

Business Service 3 CALL POCHEL FOR Expert T.V. Repair Satisfaction Guaranteed Free Tube Testing 140th & Pacific LE 7-8624

Rentals 10 UNFURNISHED 2-bedroom home on Tanager Lake. Available about Dec. 1. Call Terrace 2-4352. Eatonville, after 6 p.m. 10cft

WELL DRILLING Berkeley Pumps JETS SUBMERSIBLES CENTRIFUGALS TURBINES Call LE 7-7281 TACOMA PUMP & WELL DRILLING CO. 14619 PACIFIC AVENUE Terms Trades

Miscellaneous 15 ATTENTION CONTRACTORS - Metal ladder rack for panel or pickup truck with canopy. \$6.50. See at Times Journal's Office. HAIRCUT SUNDAY. \$1.25. 10639 So. Sheridan. WEIMARANERS, AKC registered. Excellent bird dog, 4 weeks old. LE 1-1602. 12907 W. Pipeline Road. PUPPIES - PUPPIES - PUPPIES Pugs, Norwegian Elkhounds, Schipperkes and Bassets. Cats and Dogs Boarded. Professional handling, grooming and bathing. Roxbury Kennels, 10603 Portland Avenue. 15pft

Elk Plain Grange "County Store" The Elk Plain Grange is having a "County Store" on Nov. 27th at 2 p.m. Theme is "Come and Do Your Christmas Shopping at our County Store."

Evangelist At Clover C. Church Evangelist Tom C. Fair, well known as "The Tennessee Singing Evangelist," will return to Tacoma again for a series of meetings at the Clover Creek Baptist Church.

LOOK WHO'S SERVING YOU NOW... TOM MOORE nothing more than a gas station and a cafe. Then they acquired the Mobil distribution for southern Pierce county. The appliance department was part of the long-range program at the time. Starting with a two-wheel trailer with a hand pump, Pochel's now has a large fleet of trucks which serve all Mobil stations from 72nd and Pacific to the towns of National and Rainier.

WELL DRILLING Berkeley Pumps JETS SUBMERSIBLES CENTRIFUGALS TURBINES Call LE 7-7281 TACOMA PUMP & WELL DRILLING CO. 14619 PACIFIC AVENUE Terms Trades

Elk Plain Grange "County Store" The Elk Plain Grange is having a "County Store" on Nov. 27th at 2 p.m. Theme is "Come and Do Your Christmas Shopping at our County Store."

Elk Plain Grange "County Store" The Elk Plain Grange is having a "County Store" on Nov. 27th at 2 p.m. Theme is "Come and Do Your Christmas Shopping at our County Store."

FUEL OIL You can be sure of an ample supply of clean burning MOBIL HEAT when you order our automatic fill up service.

APPLIANCES Pochel's carry a full line of small and major appliances. TVs, ranges, refrigerators, washers, dryers, Freezers, etc.

AUTO PARTS AND ACCESSORIES When you need auto parts get our prices first. We sell quality. Wholesale and retail.

HEATING PLANTS Pochel can offer you many choices in home and industrial heating. They are especially proud of their excellent installation and maintenance dept.

YOUR FUEL OIL AND APPLIANCE DEALER POCHEL DISTRIBUTING COMPANY 140th & Pacific LE 7-8624

Tand T PAINTING CO. Efficient, Courteous Service 2325 So. Ash Street BR 2-0454

Elk Plain Grange "County Store" The Elk Plain Grange is having a "County Store" on Nov. 27th at 2 p.m. Theme is "Come and Do Your Christmas Shopping at our County Store."

Elk Plain Grange "County Store" The Elk Plain Grange is having a "County Store" on Nov. 27th at 2 p.m. Theme is "Come and Do Your Christmas Shopping at our County Store."

YOUR FUEL OIL AND APPLIANCE DEALER POCHEL DISTRIBUTING COMPANY 140th & Pacific LE 7-8624

YOUR FUEL OIL AND APPLIANCE DEALER POCHEL DISTRIBUTING COMPANY 140th & Pacific LE 7-8624

SINGER ZIG ZAG WALNUT CABINET MODEL. Just turn the dial to zig zag, sew on buttons, buttonhole, blind hem, etc. No attachments needed. Full bal. due \$30.29 or assume monthly payments of \$5.13. For further information Call GR 4-0651 anytime.

Attends Funeral Mr. and Mrs. Walter Earle attended the funeral of her aunt, Mrs. McAdoo, in Snohomish November 14.

Attends Funeral Mr. and Mrs. Walter Earle attended the funeral of her aunt, Mrs. McAdoo, in Snohomish November 14.

DISPOSABLE BAGS FOR ALL TYPES OF VACUUM CLEANERS Phone Orders Taken GR 4-0651 AMERICAN SEWING CENTER 8232 Pacific Avenue

Beithel School Menu Monday: Bologna or cheese sandwich, chicken noodle soup, pears and milk. Tuesday: Baked beans, weiners, apple-pineapple salad, gelatin with whipped cream, brown bread and milk. Wednesday: Meat and vegetable stew, bread and butter sandwich, sliced peaches and milk. Thursday: Hamburgers on bun, cabbage slaw, rice custard and milk. Friday: Tuna fish sandwich, stewed tomatoes and green beans, apple crisp and milk.

Beithel School Menu Monday: Bologna or cheese sandwich, chicken noodle soup, pears and milk. Tuesday: Baked beans, weiners, apple-pineapple salad, gelatin with whipped cream, brown bread and milk. Wednesday: Meat and vegetable stew, bread and butter sandwich, sliced peaches and milk. Thursday: Hamburgers on bun, cabbage slaw, rice custard and milk. Friday: Tuna fish sandwich, stewed tomatoes and green beans, apple crisp and milk.

DISPOSABLE BAGS FOR ALL TYPES OF VACUUM CLEANERS Phone Orders Taken GR 4-0651 AMERICAN SEWING CENTER 8232 Pacific Avenue

The Taxpayer - Only Source of Government Money WE'LL GET THE MONEY FROM THE FEDERAL GOVERNMENT AND WE WON'T TAX YOU A CENT FOR IT! WONDERFUL! TWP TAXPAYER FEDERAL GOVERNMENT C'MON - DIG DOWN! WILL I EVER LEARN THAT THERE'S NO SUCH THING AS SOMETHING FOR NOTHING!

The Taxpayer - Only Source of Government Money WE'LL GET THE MONEY FROM THE FEDERAL GOVERNMENT AND WE WON'T TAX YOU A CENT FOR IT!

Parkland Preschool Meets Nov. 28 Parkland preschool will meet Monday, Nov. 28 at 8 p.m. Mrs. James Maze will preside. It will be dance nite and open house. Hostesses will be Mrs. Mabel Davis, Swanson, and Ward. The board will meet at 7 p.m. in the lunch room.

2 DAY SPECIAL

BACON

 BY THE SLAB
BY THE PIECE LB. **35^c**

Norwest Apricots

 2 1/2 Size **5/\$1**

BLACK & GOLD PEACHES

 SLICED OR WHOLE 2 1/2 Size **3/79**

TUNA

 STAR KIST CHUNK STYLE 1/2 Size Can **25^c**

COFFEE

 BOYD'S INSTANT 6-Oz. Jar While They Last **59^c**

BEETS

 LIBBY'S DICED, SLICED CUT or SHOESTRING 303 Size Can **10^c**

MARCAL ROLL PAPER TOWELS

 ASST. COLORS 2 For **27^c**

80 COUNT-ASST. COLORS PAPER NAPKINS

 Pkg. **9^c**

COFFEE

 NESCAFE INSTANT 6-oz. Jar **79^c**

COLUMBIA SLICED CUCUMBER CHIPS

 16-oz. Jar **19^c**

FIRESIDE FIG BARS

 2-lb. Pkg. **37^c**

YAMS

 SUGARY SAM 303 Tin **19^c**

MARGARINE

 IMPERIAL Lb. **33^c**

BANANAS

 U.S. NO. 1 **9^c**

FOODTOWN

Airport 112th at Park Fri.-Sat. Nov. 25-26

Baby Shower Given For Mrs. Symmons

Mrs. Joe Symmons was the honored guest at a pink and blue shower given by the Spanaway Volunteer firemen's auxiliary. Hostesses were Mesdames James Grey, George Schelle, Robert Rhone, and Harry Thomas.

Home from Hospital
Little Donnie Funkhouser, son of Mr. and Mrs. Donald Funkhouser, is now home from Mary Bridge Hospital after a bout with pneumonia.

Get Well!
Get well wishes go to Mrs. Clyde Slater, who has been ill at home. Same to Mrs. Clarence Johnson, who is recovering from a serious operation.

Out of Incubator
We are glad to hear that the infant son of Mr. and Mrs. Dale Cooley—Brian Dale—is home from the hospital after spending a month in an incubator.

Sympathy
Deep sympathy to the family of Mr. Kidd of Roy. He was survived by Mrs. Clarence Johnson and Mrs. Conway.

Secret Pal Club
The Secret Pal Club met at the home of Mrs. George Stephenson. Those present were Mesdames Jack Henriksen, Edward Flannery, Ted O'Neill, Don McLellan, Robert Rhone, Emerson Tarpenning, Robert McCullough, Harry White, Oliver Omat, and Beulah Ballard. Plans were made for a Christmas Party in December at Richards.

Reporter, Mrs. Oliver Omat.

County Agents Corner

By Florence D. Allen
"Turkey for Your Table" is the title of a new bulletin you will want for facts about buying and cooking turkey. This has the latest information on how to buy and cook turkey to have the kind of meat that you would enjoy.

The first section tells about buying young or mature birds. Washington state inspection in processing plants and labeling that shows bird quality are discussed. Do you often wonder how big a bird to buy? A handy table gives you information on the amount to buy of birds ready to cook weight for numbers of servings.

Storing the turkey, thawing frozen turkey are other important subjects discussed. Complete thawing of the bird before cooking is now the recommended procedure. New recommendations on roasting are given along with a time table of hours needed for different weight birds. Stuffing is discussed and a recipe given.

Directions for steamed turkey, poached turkey and braised turkey complete this bulletin.

If you would like this information just write a post card to county agents' office, Room 742 County-City Building, Tacoma, Washington.

Two 4-H clubs have been organized recently. Mr. and Mrs. Willard B. Dawson on South Sheridan are leaders of the club in that district. Mrs. Carl T. Tynboe and Mrs. C. E. Rash are the new leaders of a club in Lakewood. The 4-H year is from October 1st, so these clubs in getting organized now will be able to give the club members a good experience in their club work.

By Jack Crawford
Tuberculosis testing of local dairies is progressing in this area. A recent U. S. Public Health Service ordinance requires a complete test of all Grade A dairy cattle every 6 years. The ordinance also specifies that each animal must be individually identified.

Deadline for compliance in the state of Washington has been set for April 1961. Retests will be required every six years.

The testing must be done by private veterinarians at the owners expense. State and Federal budgets and personnel are inadequate to perform this volume of testing before April.

Dr. Fred Shigley, inspector in charge, Agricultural Research Service, and Dr. Delbert McGill, supervisor of the State Department of Agriculture, have stated that their departments will cooperate as much as possible and will tag

SANTAS ELFS
Have Delivered Toys To PETERSON'S COLOR CENTER
LE 1-9711 1100 Pacific Ave.

It's the LAW

Bill Smith was driving on a country road, approaching a state arterial highway. He stopped his car at the stop sign at the highway's edge, looked to his right and saw a car driven by John Jones approaching from the right, but at such a distance that Bill thought he had plenty of time to drive across the highway.

As a matter of fact, Bill would

LETTERS TO THE EDITOR

Dear Editor:
While visiting in the home of a friend, I became acquainted with a Times-Journal booklet called "Let's Get Acquainted With The Greater South-End Merchants."

Since that time, I take this booklet on every shopping trip. It has made my shopping much easier, and saves me time because it tells me just where to shop for the items I need.

Praises go to you and your newspaper for this fine shopping guide for us busy mothers.
Sincerely yours,
Judith Barkley.

PLU Tea

Pacific Lutheran University Dormitory Auxiliary will have a Christmas tea at the home of Mr. and Mrs. Clifford Olson, 874 So. 120th, on Dec. 4th from 3 to 7 p.m.

Boy Scouts Need Old Newspapers

The Woodland Boy Scout Troop 174 is going to have a paper drive November 26. The drive will cover the Woodland District and Parkland. If it is raining Saturday, the drive will be called off until a late date. If you have a lot of papers that need to be hauled away, please call TH 5-6811 or TH 5-1500 and someone will come and pick them up.

and brand all reactors. They will also do the follow-up testing on the ranches where reactors are found.

Dairymen are urged to have cattle tested early as people who delay may be unable to schedule a date for testing before the April deadline.

have had plenty of time to drive across the highway before John's car arrived at the intersection if John had been driving at a lawful rate of speed. However, John was racing with a car behind him, and though Bill could not tell it by looking at the approaching car, John was driving more than 100 miles an hour.

Deceived into thinking he had plenty of time to cross the highway, Bill started across the intersection. His car was hit by John's car and both Bill and John were hurt, Bill seriously.

In the hospital John told a friend, "Well, I guess I'm in the clear." I was on the arterial highway, and the other guy should have kept out of my way instead of driving in front of me when I was speeding that way."

I was on the arterial highway, and the other guy should have kept out of my way instead of driving in front of me when I was speeding that way."

Is the driver of the speeding car in the clear, as far as any liability to Bill is concerned?

The answer is no. A driver on an arterial highway has the right of way over cars entering the highway, but he has no license to trap and demolish cars driven by careful drivers who are deceived by such recklessness. Bill was entitled to recover damages from John.

(This column is written to inform, not advise. Facts may change the application of the law.)

Why Drive Down Town Pay Less Here 10% Off To Everyone
TODAY'S SPECIAL WHITE TOILET SEATS American \$3.99 Made
PARK AVENUE HARDWARE AND PAINT CO.
83rd and Park
Open 9 A.M. to 6 P.M.
Sunday 10 to 4
GR 4-0051

General Sheet Metal Work
Special Attention to Special Equipment
RAU MFG. CO.
LEnoX 7-7372
14114 Pacific Avenue

NEW CRYSTEL STEAM BATHS
UNDER NEW MANAGEMENT
ORVILLE GRANT
New Owner
BRING IN THIS AD AND GET OUR REGULAR 1.50 STEAM BATH FOR ONLY 50c
HRS. 9 A.M. TO 10 P.M. (Later by Appointment)
5424 So. Puget Sound GR 4-8989

IT'S SMART TO WINTERIZE YOUR HOME AS WELL AS YOUR CAR!



Do it now and cash in on our money-saving winterizing specials.



Re-insulate with ZONOLITE
For maximum cozy comfort at minimum cost, insulate your attic with Zonolite Vermiculite. Do it yourself in an afternoon or less. Just pour, level and leave it. Cover old worn-out insulation and watch fuel bills shrink. Cost is amazingly low. Ask for free estimate. As low as **159** Per Bag

VAUGHAN'S PACIFIC LUMBER
84th & Pacific Avenue GR 4-9515



EVANGELIST TOM C. FAIR

Don't Miss Hearing TOM C. FAIR
THE TENNESSEE SINGING EVANGELIST
Internationally Known — Different — Dynamic
Author Many Songs and Poems—10 Years on Radio and Stage with His Own Name Band and Show Troupe
One Time Professional Gambler and Self-Styled Atheist
HAROLD HANSON, Song Leader
Clover Creek Baptist Church
3 Miles East of Pacific on 159th Street
Corner of Military and Knoble Roads
TACOMA, WASHINGTON
November 29-December 11, 1960—7:30 Each Evening (Except Saturday) Sundays, 11:00 a.m. and 7:00 p.m.
LYLE BRAMBLET, Pastor Phone LEnox 7-6421