

U.S. Postage Paid
Sec. 34.66 P.L.&R.
Parkland Branch
Tacoma, Wash.
Permit No. 9P

The TIMES JOURNAL

THURSDAY, OCTOBER 22, 1959 • VOL. 15, NO. 7 • PUBLISHED AT PARKLAND, WASH. LE 7-0223

School Carnival At Collins 30th

The annual Collins school carnival, sponsored by most of the local organizations, will be held at the school Friday, Oct. 30, starting at 7:00 p.m. with a smorgasbord supper.

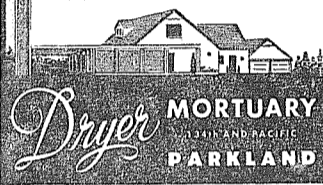
There will be many carnival type attractions and a free nursery sponsored by the Girl Scouts. Mrs. Robert Stephens, planning chairman, and her many assistants and sponsors are working hard to make this family fun carnival a huge success.

The Country Parson



"Compromising with evil is like letting a hungry lion have a small bite out of you to keep him from eating your whole body."

DRYER'S FUNERAL PLAN CUTS COSTS



Open 7 Days A Week 9 a.m. to 4 p.m.
HUNTING & FISHING LICENSES, SPORTING GOODS, PAINT
SOUTH END PLUMBING AND HARDWARE
185th & Pacific Avenue Phone LEnox 7-4100

TRUST US WITH ALL YOUR DRY CLEANING!

Readiness Is the Watchword of V.I.P.s. Our Work Comes Up to the Standards They Expect

PARKLAND CLEANERS

11004 Pacific Avenue North of the Bank Corner LEnox 7-3221

— And Do Things —

For Fast Service CALL

CAR GETTING WEATHER-BEATEN?
You Need a Brookdale-Built Garage!

NO DOWN PAYMENT

3 YEARS TO PAY

14x20 \$595
19.65 per Month

16x20 \$650
21.40 per Month

20x20 \$795
26.35 per Month

Free Estimates Given on Other Sizes

PRE-FABRICATED PATIO SHELTERS . . . CARPORTS

Easy to set up (or we will erect at small extra cost).

16x20 Only \$10 A Month
\$169⁰⁰ FREE DELIVERY!

Other Sizes on Request

BROOKDALE LUMBER CO.
136th and Pacific Avenue LE 7-8669

Sourdough Breakfast

Faith Chapter, O.E.S., of Parkland will hold its annual Sourdough Breakfast Sunday, Oct. 25, 8:00 a.m. till 1:00 p.m., in the James Sales Grange hall, 113th and Park avenue.

The committee for the breakfast, Harry West and Mrs. Harold Abelson, state that genuine Alaska sourdough hot cakes will be served, with ham, juice and coffee. The donation is nominal.

The public is invited to share this delicious breakfast.

Pow-Wow Postponed

Due to a conflict in scheduled activities with the Bethel Junior High School, the Sixth Annual Bethel Senior High Pigskin Pow-Wow has been postponed from tonight until next Thursday, Oct. 29, according to Principal Earl Platt.

The Pow-Wow will get underway next Thursday, Oct. 29, at 7:30 p.m. in the Bethel Senior High gym and will include over 18 acts and skits. Chairman Sue Fager has announced. Over 150 students, representing nearly every club and organization at the Senior High, will appear in this annual extravaganza.

TODAY'S LAFF . . .

Communism: That's where one man writes everybody's diary.

Ladies' Pull-on RUBBER GALOSHES For Cuban Heels Reg. \$2.69 99c

Boys' and Girls' TENNIS SHOES 3-4-4 1/2-5; 8-9-10-11-12-15 99c & \$1.99 Come a' Runnin'!

PAUL'S SHOES
Spanaway
161st & Pacific Ave.
LEnox 7-0552
Open Friday and Monday
Til 9:00

Disabled Worker Contest Winner

On Tuesday Parkland Electric installed a complete heating unit in the home of George L. Boswell, 36802 Military Road, Puyallup, near Five Mile lake. C. "Slim" Mulkins and Jim Conway, owners of Parkland Electric, really enjoyed that installation though it didn't put a penny into the company purse; the job was done for the winner in the contest featured in the firm's formal opening Sept. 18 and 19.

Mr. Boswell has been living on a State Industrial Insurance pension for several years, having suffered disabling injuries in a fall while working as a painter. Though unable to do much physical labor, he has been remodeling his home for the past six years and had completed everything except the heating. He chose an electric heating system for his two-bedroom home and is reported delighted with results.

Incidentally, Mr. Boswell read about the formal opening in a copy of the Times Journal in Puyallup; being interested in heating, he attended.

PROFESSIONAL DIRECTORY

Farmers Mutual Ins. Co.
Auto — Fire — Liability

J. J. GUNNS Agency
and BARBER SHOP
303 East 176th LE 7-7757
2 Blocks East of Transformers Spanaway

Farmers Mutual of Enumclaw
Fire — Auto
ED MAREK
12907 Pacific Ave LE 7-4000

DR. A. W. RESCHKE
Announces the opening of his office for practice of Obstetrics and Gynecology at
5920 Lake Steilaacoom Avenue,
Lakewood Professional Village
JU 4-1911

Tapaderos 4-H

The Tapaderos 4-H club held their organization meeting and election at the home of their leader, Mrs. Eugene Stokes last week.

The small jars the club had made for the blind children of the community were presented to Miss Harriett Caldwell of the resource room at Faucett School. Connie Stokes, Diane Martineau, and their assistant leader, Mrs. Martineau, made the presentation. These jars contain spices and common household commodities that are important for the blind children to recognize immediately by smell.

Cub Scout Pack 105

Cub Scout Pack 105, sponsored by James Sales P-TA, will hold a pack meeting in the school this (Thursday) evening at 7:30 o'clock.

A big evening is planned for the parents and Gubbies from Andrew Christensen and James Sales districts. Honor guest will be Mr. Edwards from Mt. Rainier Council of National Boy Scouts.

Benston Grange In Busy Schedule

A busy fall schedule awaits Benston Grange members.

Thursday (tonight) Benston's degree drill team will confer 3rd and 4th degrees at Elk Plain Grange. A party is planned Saturday, Nov. 7. Election of officers will be held at the regular meeting Nov. 10.

On Nov. 24 Benston Grange will celebrate its 31st birthday with a dinner for members and their families.

An exchange meeting with Crocker Grange has been scheduled. Crocker members will visit Benston Tuesday, Dec. 8, and Benston will return the visit Dec. 9.

The Grange has voted to again hold a Christmas party for members and families Dec. 22.

Grange Auxiliary meets today (Thursday) at 1:00 o'clock with Mrs. Lauseal Theno, 506 South Violet Meadow, Parkland.

Sandra Anderson Homecoming Queen



CROWNED—Queen Sandra Anderson received her crown last Friday in the Homecoming Assembly from Franklin Pierce Senior High Principal William F. Whitesil. Looking on are Homecoming King Jay Kinsley and Jeffrey Kylo and Debbie Elbersen, train-bearers. The coronation was the highlight of the week-long event, dampened only by the defeat of the Cardinal footballers by the Highline Pirates.

Co-Op Playschool

The mothers' group of Harvard Co-Op Playschool will hold an organizational meeting Oct. 26 at 8 p.m. at the home of Mrs. King-ley Woodhead, 7822 East L street.

All interested mothers are invited to attend. Any mother wishing to enroll her child in the playschool should call Mrs. William C. Burke, LE 7-8176.

Midland Preschool

The October meeting of Midland Preschool will be held Wednesday, Oct. 28, at 8:00 p.m. at the school, Brownie Troop 313, under the leadership of Mrs. Cliff Becklund, will present the flag and entertain with a Halloween program.

Hostesses for the coffee hour are Mrs. Kenneth Crawford, Mrs. William Bowlin and Mrs. Vernon Hansen.

Girl Scout Leaders

All Girl Scout leaders, assistant leaders and interested adults of the Parkland area are invited to the Neighborhood meeting to be held at 10:00 a.m., Tuesday, October 27, at the Trinity Lutheran church.

Mrs. Anderson to Appear on TV Saturday



ATTRACTIVE FEATURE—Franklin Pierce's Mrs. Shirley Freeman of Brookdale elementary school, shown above with her 1st grade class, will appear on Channel 11 Saturday afternoon at 2:30. She'll be guesting on "These Are Yours," educational program. Also appearing will be Pierce's elementary supervisor, Mrs. Ruth Gaume. Franklin Pierce's reading readiness program in the 1st grade will be highlighted. Parents are urged to watch.

Kapowsin P-TA Carnival Exciting Event for Saturday



BUSY COMMITTEE—Viewing prizes to be awarded Saturday evening at the annual Kapowsin P-TA Carnival in the elementary school are four members of the committee: left to right: Mrs. Shirlee Benston, Mrs. Harold Larsen, Mrs. Donald Connelly and Principal Virgil Baker. The Carnival, 6:30 to 9:30 p. m., will feature every type of booth, display and refreshments possible, also a rummage sale. The event is open to the public and is the only money-making project of the P-TA year. Kapowsin elementary school is on McDonald road just off Meridian.

TB Tests Set at FP Elementaries

Tuberculin tests will be given 1st, 2nd and 3rd graders beginning Monday at all Franklin Pierce elementary schools to check the presence, if any, of tuberculosis germs. Mrs. Delores Schmechel and her staff of school nurses will be assisting a team of volunteer physicians.

The Mantoux test will be administered by the doctors on the forearm of those pupils who have had parent consent slips signed. The test is given free of charge. Should the findings be positive, it does not mean that your child has active TB. It only means that some TB germs have entered the body at one time or another, according to Mrs. Schmechel.

Pierce and Tuberculosis Association officials are hoping for a 100

percent turnout among the first three grades in order to have a complete check. "It helps to see that no pupil or teacher can contact TB while at school and offers itself as a control for the entire community," Mrs. Schmechel said.

Also cooperating in the program are the Pierce County Medical Society and the Tacoma-Pierce County Health Department.

Parkland and Harvard elementaries will be tested Monday; Brookdale, James Sales and Christensen on Tuesday and Midland, Collins and Central Avenue on Nov. 2.

Tests will be read by Doctor John Steele two days following the test. Should a positive test occur, pupils and their families will be recommended to take the chest X-ray. This will determine if the TB germs are active.

"Franklin Pierce is grateful to have the opportunity to participate in the program and hopes that parents will give it their strong support," Mrs. Schmechel said.

Kapowsin P-TA

Kapowsin P-TA will meet this (Thursday) evening at 8:00 o'clock in the Kapowsin grade school gymnasium, "Dad's Night" to be the theme for the evening. The evening's entertainment will be keyed to the interest of the men. A skit will be presented by the members of the faculty and some of the fathers.

A social hour will follow the short business session; everyone invited.

RUMMAGE SALE

A rummage sale will be held by the Preschool Friday and Saturday, Oct. 23 and 24, beginning at 9:00 a.m., at the corner of Portland Ave. and 99th St. (Walker building).

Bethel Boosters In Big Meet 26th

A busy evening is seen for the next general meeting of the Bethel Booster club Monday, Oct. 26, at 8:00 p.m. in the Bethel Senior High auditorium.

Commissioner Harry Sprinker will be guest speaker. The business session agenda includes reports on the recent membership drive by Mrs. Jerry Fager and figures by Art Crave on income from the recent Booster Night football game. A request from the Senior High staff for additional photo equipment will be heard.

Entertainment will present a vocal group. The Preludes (Lorinda Green, Carla Lamka, Sue Daines, Beth Bartle, Jeannette Leedom, Gloria Krumpus, Alice Tibbitts, Lucille Winslow, Wanda Stedfeldt, Bette Marriot, Monica Gunderson, Martha Berggren, Gail Loveland and Carlene Hoover) directed by Mrs. Joanne Curtiss; also a demonstration of the recently purchased trampoline by the Senior High P.E. department (Ellen Willis, Virginia Gay, Rosalie Eyeleth, Gloria Krumpus, Fred Michel, Bruce Moore, Rod Parham and Don Raper, directed by Mrs. Beth Bardwell and Ed Niehl). Faculty members of the two high schools will vie with Boosters in a singing contest.

All meetings of the Booster club are open to the public.

Hold-over Booster Club stuff fall

4-H Electric Club

A second-year 4-H electric project club, with A. C. Herstrom, electrical engineer from Tacoma City Light, as the instructor will meet Oct. 28 at 7:30 p.m. at the home of Mrs. Roy Benson, leader. New members and their parents are invited; anyone interested may call LE 7-7057.

FRIENDLY SERVICE SINCE 1908

Now With a 100 Car Free Parking Lot right next door.

PIPER FUNERAL HOME
PHONE Greenfield 2-3353 • 5436 SO. PUGET SOUND

CANYON READY-MIX

Covering the Southeast Tacoma Area
READY-MIX AT ITS BEST

6-Yd. Mix Trucks to Serve You
Washed Sand & Gravel — Bank Run

WE HAUL OR U-HAUL

We Furnish Wheelbarrows, Etc.
Free of Charge
Ask for Them on First Call

ALL DAY SATURDAY DELIVERY

72ND AND CANYON RD. LE 7-3943

REMODEL NOW

**NO MONEY DOWN
EASY PAYMENTS**

- NEW ROOFS
- NEW SIDING
- FOUNDATIONS
- BASEMENTS
- NEW GUTTERS
- GARAGES
- BATH ROOMS
- KITCHENS
- ADDITIONS

Phone Me (Russ the Bldr.) Today
GRAHAM-VINEWOOD, 7-2168

Free Estimates . . .
No Obligations

SPANAWAY HARDWARE

ELECTRICAL AND PLUMBING SUPPLIES
SAND, GRAVEL & CEMENT
PLASTIC PIPE

170th & Pacific
LE 7-8378
Open Sundays 8:30-1:30

WINTER COMFORT

TEXACO FUEL CHIEF
HEATING OIL
LAPENSKI FUEL CO.
LE 7-8173

MAMA BEAR

Self Service LAUNDROMAT
GENTLE ACTION

Located in the Big Bear Shopping Center
Open 24 Hours Per Day 7 Days A Week
SELF-CLEANING WASHERS

ROOFING

CALL BR 2-9629

HILL TOP CONCRETE CO.
HILLTOP concrete company

LOOK FOR THE BIG "H" THE SIGN OF SERVICE

WINTER IS COMING!!
GET THAT MUDDY
DRIVEWAY PAVED NOW!

CALL FOR FREE ESTIMATE
SATURDAY DELIVERIES 8 a.m. to 12 Noon*
(*Due to Overtime Costs on Saturday There is a Slight Increase on Charges)

OUR BIG YELLOW TRUCKS MEAN

- Up To 6 Cubic Yards Per Load!
- 20 Ft. of Hydraulically Operated Chute.

WASHED SAND & GRAVEL CRUSHED ROCK
DRAIN GRAVEL PIT RUN

PHONE TH. 5-9525
2223 23rd Ave. S.E. Puyallup

COMPLETELY RECONDITIONED — SOME WITH NEW PIX-TUBE

TABLE MODELS — CONSOLES AND COMBINATIONS

PRICED FROM \$60 TO \$125

OPEN SUNDAY OCTOBER 25th & NOVEMBER 1st

A-1 TELEVISION AND RADIO SERVICE

72nd & PORTLAND AVENUE
PHONE GR 5-0658

21" ZENITH COMBINATION
2 RCA TABLE MODELS
With New Picture Tube and 1-Year Guarantee

21" ARVIN CONSOLE
With New Picture Tube and 1-Year Guarantee

SYLVANIA — DUMONT — MOTOROLA
PLUS MANY, MANY MORE!!

Frozen blueberries, in 10-ounce packages, may be had in some food markets. Use them in recipes that call for (and have been tested) with both the fresh and frozen variety.

Midland . . . National Honors For Two FFA Boys

Special congratulations go to two F.F.A. boys from the Tacoma area who really "went to town" at the National F.F.A. Convention just completed in Kansas City, Mo. Lyle Rader, 21, graduate of Fife high school, received the highest honor that can be bestowed on an F.F.A. lad, the coveted Star American Farmer. Then our own Franklin Pierce Chapter member, Phil Rousseau, won the National F.F.A. public-speaking contest with his talk on "Food For Our Nation". Midlanders are still vacationing

and among those who just recently returned are the Doug Morrisons who flew by jet plane back to New York where they visited their daughter and family, Mr. and Mrs. Joseph DeLeonardo and son Joey, who reside on Long Island, and also relatives in upstate New York; the Carl Taylors, who had a wonderful trip to Hawaii visiting their daughter and family, Mr. and Mrs. Robert Fredericks and two sons — they also made the trip by plane and liked the trip and place so well that they are anxious to go back again and see more of the islands; the Floyd Cooks who took a bus trip to Lindsay, California to visit Mr. Cook's aunt and uncle, Mr. and Mrs. Mark Fruin, also visited the Fruin's summer home in Cuyucos, and toured many missions and the famous Hearst Castle, as well as visiting Santa Anna and Santa Maria; also word was received by the

Victor Eshpeters, Sr., that their son, Vick, Jr., and his wife and daughter who have been residing in Germany took an extended trip through Denmark, Norway and Sweden and enjoyed visiting friends and relatives and seeing a lot of Europe in their newly purchased Volkswagen.

Cub Scouts
The first fall meeting of the Midland Cub Scout Pack 84 was the occasion of many awards presented by the Cubmaster, George Rodrick, Jr. Receiving the September honors were the following—Bob Cat for new members, Michael Kelly, Billy Cook, Steven Goretti, Leslie Whiteman, Thomas Fletcher, Mark Vetter and Bob Bargeit; Den 1—1 year pin to Bob Bradley and one gold arrow to Steve Afikelson; Den 2—one year pin and Denner to Morris Shanahan; one year pin and assistant Denner to Glen Harkey; one year pins to Richard Johnson, Donald Hubachek, Frank Eshpeter, and Stanley Stevens; Den 8—two silver Arrows to Robert Cupp; Bear, one gold Arrow and two silver Arrows to Mike Metcalf; Lion, one gold Arrow and two silver Arrows to

Alfred Winterton; Den 10 — Wolf and Denner to Donald Becker; Wolf and Assistant Denner to John Crawford; Wolf and one gold Arrow to Brian Baskett, Michael Zitka, Tommy Fletcher, Ronald and Rickie Reding; Den 6—Two year pin to George McCue. Honor Flag for most awards went to Den 10 with Mrs. George Baskett as Den Mother. Den 2 with Mrs. Richard Johnson, Den Mother, served the refreshments. Den Mother pins were presented to Mesdames Richard Johnson, George Baskett, and L. Louderback. Special honors went to the retiring Den Mothers who were presented corsages, Mesdames William Shanahan, John Both, Alfred Winterton, and L. E. Wolfe.

Cloverettes, Cloverbuds
Nancy Bombardier, JoAnne Ayers and Anita McElroy of the Midland 4-H Cloverettes modeled their three piece clothing outfits at the Western Washington Fair Sunday, September 27. Marcella Lawler received two blues in sewing, one red in baking and reserve champion in type on her Hereford heifer and blue in showing and fitting; JoAnne, one blue in baking; Nancy, two red in baking; and Julie Johnson, one white in baking.

Awards for exhibits entered in the Western Washington Fair for the Midland 4-H Cloverbuds were Baking—Donna Ayers, one blue; Jane Lawler, one blue and one

red; Janet Bombardier, two reds; and Denner to Donald Becker; Arrangements—Kathie Jones, one blue, one red and one white; Janet Bombardier, one white. The girls who modeled their three piece clothing outfits during the Pierce County Dress Revue were Janet Bombardier, Sally Hanson, Kathie Jones and Nadine Olsen.

Good news was received this week from the state 4-H competition at the Yakima Fair when it was announced that the Midland 4-H Cloverbud luncheon team of Janet Bombardier and Donna Ayers received a blue award for the luncheon they prepared on Wednesday. Congratulations, girls!

Collins . . .
Collins Grange Meeting Tonight
Collins Grange will meet this meeting; there were 60 present. (Thursday) evening at 8:00 o'clock in the Grange hall. Mrs. Clara Heinselman has a very interesting program planned. Bob Williams will show pictures taken while on duty with the Navy on the ice breaker Burton Island at the South Pole. Games and a social hour will follow.

Grange women are reminded to bring the aprons and pot holders they have made to sell at the Grange booth at the Collins P-TA bazaar Oct. 30.

Tots Club Board
The Collins Tots club board will meet Tuesday, Oct. 27, at 8:00 p.m. at Shirley Beam's home. Final plans will be made for the Oct. 30 Collins Community Carnival, in which the Tots club will sponsor four booths—Handcraft, Cake Walk, Grab Bag, Doll Award.

Missionary Guild
Collins Community church Missionary Guild entertained the Lend-A-Hand Guild from Lake City church for luncheon at the Oct. 13

THIS FINE DEALER SELLS MY ASHLEY 24 HOUR THERMOSTATIC WOOD HEATERS

FREE INSTALLATION

RENTALS

GARDEN TILLER
HAND SANDER
FLOOR WAXERS
POWER SAWS
RUG SHAMPOO MACHINE

For That Professional Job

Parkland Hardware
12169 Pac. Ave. LE 7-3171
Across from Piggly Wiggly

Prescriptions INSULIN

Open 9:30 to 9 Weekdays
(Closed Sunday)

ASHMORE'S SPANAWAY DRUG
165th & Pacific LE 7-5993

BUSINESS TRAINING PAYS

TOP JOBS FOR STENOGRAPHERS AND RECEPTIONISTS - ENROLL NOW -

KNAPP COLLEGE
10th & Pac. Ave. MA 7-2181

PIERCE COUNTY REFUSE CO.

Weekly Garbage Collections
Phone LE 7-8688

Altar Society
Mrs. Melvin Morrill presided over the business session of the October meeting of the St. John of the Woods Altar Society. Reports were given by the different chairmen and an interesting talk on the benefits of the C.C.D. program was given by the pastor, the Rev. Father Andrew Prouty. Mrs. Morrill appointed the chairmen of the six circles as the nominating committee to present a slate of officers for the new year at the November meeting. Mrs. Robert Meisenburg was elected to take over the position of Treasurer after the present one, Mrs. Harry Budke, announced she was moving to California for the winter.

Reporter—Marlene Corrigan, LE 7-8545.

Collins . . .
Careful Drivers!
See us for Auto Insurance 10/20/5 6 Mos. \$26.14

Fire Insurance 15% Savings

Hal Underwood
6311 McKinley Ave.
GR 4-9579

ALLISON'S VARIETY STORE

FULL LINE OF SEWING SUPPLIES — BUTTERICK PATTERNS
WOOL YARNS — RUG PATTERNS — RUG YARNS
RAIN CAPES

99th & Portland Avenue — LE 7-5658

DEL MONTE PINEAPPLE
Crushed, Chunks, Tidbits

211 Tin **5/1⁰⁰**

DEL MONTE — (Save 15c)
SECTIONS GRAPEFRUIT 303 Tin **4/85^c**

NALLEY'S — (Save 10c)
MAYONNAISE Qt. Jar **55^c**

SEE HOW MUCH YOU'D SAVE this Weekend

HI - WEST Quick Frozen PEAS
10-Oz. Pkg. **10^c**

LARGE AA EGGS Dozen **50^c**

BETTY CROCKER'S (Save 10c) BISQUICK 40-Oz. Pkg. **39^c**

GERBER'S STRAINED (Save 10c) BABY FOOD 10/79^c

DARIGOLD BUTTER Prints or Quarters lb. **69^c**

MCP LEMON JUICE 5 1/2-Oz. Tin **10^c**

ZEE — 20-Count Pkg. GARBAGE BAGS **27^c**

ZEE — 50-Count Pkg. LUNCH SACKS **29^c**

COLGATE TOOTH PASTE Economy Size **69^c**

BAYERS ASPIRIN 50-Tablet Bottle **39^c**

LIQUID DETERGENT TREND 22-Oz. Tin **49^c**

BLEACH CLOROX 1/2 Gal. **35^c**

BAR LAUNDRY SOAP FELS NAPHTHA **2/23^c**

STORE HOURS
9 a.m. Til 9 p.m. Daily Except Sunday

SUMMIT TRADING COMPANY

10409 Canyon Road, Tacoma LE 7-5848
No Sales To Dealers
We Reserve The Right To Limit Quantities

FREE CEREAL BOWL!
WITH ALBERS OATS **45^c**

NEW CROP DATES 2-Lb. Pkg. **59^c**

KRAFT ALL PURPOSE (Save 16c) OIL Quart Bottle **39^c**

Large Family Size (Save 6c)
JELL-O **2/29^c**

MARKET DAY RAISINS 4-Lb. Pkg. **98^c**

MAXWELL HOUSE — (Save 17c) COFFEE 1-Lb. Tin **59^c**
2-Lb. Tin **1¹⁷** (Save 32c)

HI-C — (Save 24c on 4 Tins) ORANGEADE or GRAPEADE 46-Oz. Tin **4/1⁰⁰**

BUY NOW FOR HALLOWE'EN

HUBBARD SQUASH lb. **1^c**

CALIFORNIA LETTUCE lb. **10^c**

Idaho Tepee, No. 1 10-Lb. Bag Dry **3 Lbs.**

Spuds 49^c Onions 10^c

FRESH GRAIN FED PORK CHOPS lb. **49^c**
CENTER CUTS — Lb. **59^c**

JAMES HENRY SLICED BACON 2-Lb. Pkg. **98^c**

OCEAN-FRESH FILE RED Snapper lb. **29^c**

HAM Boneless Fully Cooked 3-Lb. Tin **\$2.89**

Elk Plain New Odd Fellow Lodge Possible

Discussion of the possible institution of an Odd Fellows Lodge at Elk Plain will highlight the meeting of Starlite Rebekah Lodge Oct. 28 at 7:00 p.m. Everyone interested is invited.

Improving
Danny Austin, badly burned two weeks ago when a hand grenade exploded in his hand while he and playmates were on the Fort Lewis reservation, is improving nicely and will soon be back in school.

Visiting
Mrs. Mary Kuper is visiting her daughter and family in Everett.

Football Bethel Braves will meet Eatonville Friday evening on the Bethel field in the non-league "King's Axe" game, the winner to keep the axe till next year.

Bethel junior high school will play Dupont Oct. 22 at Bethel. There will be a short dance following the game, sponsored by the 9th grade; the 7th and 8th grades will sponsor dances later in the season.

Birthday Party
Mrs. Wayne DeNune gave a birthday party for her daughter, Linda, Oct. 16. Guests were Connie Jean Burkhardt, Debbie Glenn, Pamela Landgrebe, Wendy Lambert and Sherry Sweeney. Linda received charming gifts and all enjoyed the birthday treat.

Hunting Trip
Ross and Terry Plumb, Phil Kuger and Al Tabar went deer hunting at Fall Creek last weekend.

New Daughter
Kathryn Lorraine is the name chosen by Mr. and Mrs. Larry Black (Peggy Wright) for the daughter born to them Oct. 11.

Anyone with items for the Elk Plain news may call VI 7-7386 and I'll be happy to include them.
Reporter—Mrs. Ry Burkhardt.

Franklin Pierce School Menu

October 26—Italian Spaghetti, Cabbage and Raisin Salad, Hot Garlic Bread, Ice Box Cookies, Milk.

October 27—Chili Con Carne, Bread and Butter Sandwich, Warm Cinnamon Rolls with Butter, Applesauce, Milk.

October 28—Hot Dog - Bun, Baconized Green Beans, Cherry Cobbler, Milk.

October 29—Hamburger Gravy on Mashed Potato, Corn Bread - Butter and Jelly, Fruit Jello, Milk.

October 30—Washington Clam Chowder, Peanut Butter Sandwich, Lettuce Salad - French Dressing, Halloween Donut, Milk.

Assembly of God In Special Event

"Before the Harvest" Word of Life's Fellowship's sound colored film, will give a glimpse of jungle darkness, and living among the Xingu Indians of Brazil. Highlight of the picture is the colorful and mystic Dance of the Flying Arrows. This film drew such interest that it was shown on the T.V. program, "I Search for Adventure."

It will be shown Thursday, Oct. 22, at 7:30 p.m. in the Spanaway Assembly of God, 166th street, west of Pacific Ave.

**QUALITY HOMES
DESIGN ASSISTANCE**
Estimates Without Obligation
Hedlund Const.
920 So. 121st LE 7-4227

FLETT DAIRY
FARM FRESH
HOMOGENIZED AND
PASTEURIZED MILK
AND CREAM
ICE CREAM
Phone GR 2-3301

FURNACE FILTERS
Paint - Hardware
Lumber - Glass
SHINGLES - ROOFING
FULL LINE OF HAND TOOLS
BASKETT LUMBER
9701 Portland Avenue
LE 7-5844 - LE 7-8663

Summit News Newcomers to Area Welcomed

Among the newcomers to Summit are Capt. and Mrs. Warren Bowers and two daughters who have moved into the house built by Mr. Guy at 5220 East 104th. Former occupants of the house, the J. W. Kincaid family, were transferred to a hospital in the south central part of the country when the Indian hospital here closed.

JUNE BUG GARDENERS
The June Bug Garden club will meet Tuesday, Oct. 27, at 10:15 a.m. at the Summit Youth Center to view the landscaping project, then travel to the home of Mrs. Robert Rave for a short business session; Mrs. John Martinson is co-hostess. Roll call theme: Flower most enjoyed in your garden the past summer. Dessert luncheon will be served. A chrysanthemum tour is planned.

GRATEFUL
Members of the Summit Firemen's Auxiliary wish to thank all who attended their luncheon Oct. 8. These women do a very worthwhile work raising money for various projects of the Summit Fire Department and always deserving of support.

IN HOSPITAL
Einar Syltje of 10218 Waller road suffered a stroke last week and was taken to Mt. View hospital.

IMPROVING
Lenhard Winters was allowed to come home last week from the hospital, recovering nicely following major surgery.

Gail, 17-months-old daughter of Mr. and Mrs. William Irish, lost the end of a finger in a door recently. She is now undergoing plastic surgery and a skin graft

Notice

TO THE MEMBERS OF ELM-HURST MUTUAL: REGARDING RECENT REFUND AND NOTICE ABOUT THE SAME.

I am and always have been a staunch supporter of a refund month, and the Company minutes will show this as a fact.

I voted for the refund month to be given.

I voted against this distribution of letters to the patrons giving price figures for several reasons, one being that they are incomplete, and therefore do not represent the complete business.

SIGNED: A. E. PETERSON, Trustee.

Brookdale Preschool

Brookdale Preschool P-TA meets Wednesday, Oct. 28, at 8 p.m. in the school library. Mrs. Tom Stewart presiding. "Different Levels of Behavior," program theme, will feature Dr. Kristen Solberg, psychology department, PLC, as speaker.

which doctors hope will restore the finger tip to a more normal shape.

HOME FROM TRIPS
Mr. and Mrs. E. E. Jones of 1015 Canyon road returned recently from a month's trip to Montana where they visited friends and relatives in Butte and other points. Mrs. Mildred Bandy is home after a very enjoyable trip to California.



OCCIDENT — Hard Wheat FLOUR25-Lb. **\$179**
PLASTIC TABLECLOTH IN EACH BAG

SPRUANCE — Old Fashioned BREAD MIX3-Lb. Bag **69c**

MARKET — Fancy Sliced PINEAPPLE2½ Tin **3 For \$1.00**

SWEET TREET — Crushed PINEAPPLE300 Tin **2 For 39c**

KING DELITE — Whole Unpeeled APRICOTS2½ Tin **4 For \$1.00**

Stockton Solid Pack TOMATOES
303 Tin **2 For 25c**

Brovo, 12-oz. Tin CORNED BEEF
45c

LEAN BACON SQUARES **19c** POUND

YOUNG TENDER POT ROASTPound **39c**

EXTRA LEAN GROUND BEEF3 Lbs. **\$1.00**

TENDER RIB STEAKPound **59c**

SLICED YOUNG PORK LIVERPound **23c**

"AA" Large EGGSDozen **50c**

Pet New Instant POWDERED MILK 8-Qt. SizeEach **55c**

ROCKWOOD CHOCOATE CHIPS 6-Oz. Pkg. **2 for 45c**

NBC Snow Flake CRACKERS 1-Lb. Box **25c**

Sunshine Custard Cup COOKIES 11-Oz. Pkg. **33c**

MCDANIELS
The Home of The Low Price
AIRPORT & CANYON ROAD
Store Hours: 9:00 'Til 9:00 — Sundays 9:00 'Til 7:00
Prices Effective Thurs., Fri. & Sat.

88c
88c **MANY** 88c
88c **ITEMS** 88c
88c **TO** 88c
88c **CHOOSE** 88c
88c **FROM** 88c

USE OUR LAY-AWAY PLAN for Birthdays, Christmas, etc.
GARFIELD VARIETY STORE
326 Garfield St., ½ Block East of College
Open Till 8 p.m., Week Days LE 7-9959

NOW IS THE TIME FOR MOST CONVENIENT LAY-A-WAYS
Bicycles — Tricycles and Wheel Goods
BUY NOW WHILE SELECTIONS ARE COMPLETE
Avoid the Rush
PARKLAND CYCLE and KEY
11021 Pac. Ave. LE 7-5772

T.V. JINGLES TELEVISION SERVICE CENTER
... the repair department at Television Service Center, 8431 Pacific Avenue will enable you to sit down before the sharpest picture your tired old eyes ever enjoyed. For top-notch repair, Call GR 2-3386 or JU 8-1000

TELEVISION SERVICE Center
"YOUR WINEGARD COLOR CEPTOR DEALER"
GR 23386 JU 8-1000 8431 PACIFIC AVE.

Spudnut
For PARTY TIME
Special Orders at Discount Prices
FREE DELIVERY
8201 So. Tac. Way JU 8-5051

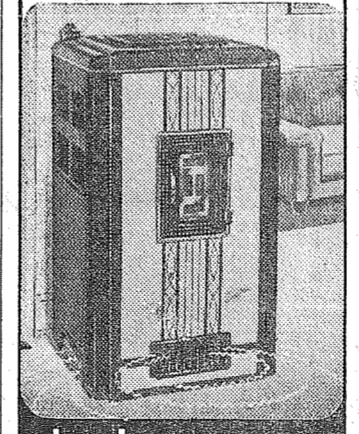
PROMPT PERSONALIZED PRESCRIPTION SERVICE
TED SWANSON INSULIN - VITAMINS
Downtown Prices
Pay Phone Bills Here
PLENTY OF FREE PARKING
TINCHER'S PHARMACY
8227 Park Ave. GR 4-3844
Across from Fern Hill P. O.

SAVE BY MAIL!

WE PAY THE POSTAGE BOTH WAYS!
11th and PACIFIC LAKEWOOD at VILLA PLAZA

A MUTUAL SAVINGS INSTITUTION
Pacific Federal Savings and Loan Association
BELLINGHAM - SEATTLE - TACOMA
LONGVIEW - PORTLAND - EUGENE

The ONLY Heater in America built to
HEAT EVERY ROOM IN YOUR HOME



the glamorous new **Sieglar** PATENTED FORCED AIR OIL HOME HEATER

now gives you **SUPER FLOOR HEAT**

SIEGLAR PAYS FOR ITSELF WITH THE FUEL IT SAVES
see it soon at **MARY TOMMERVIK'S PARKLAND FUEL OIL SERVICE**
120th & Pac. Ave. LE 7-0256

Grand Opening
OCT. 23 THROUGH 27 Fri., Sat., Mon. & Tues.
GENE'S Midland Drug
9823 PORTLAND AVENUE — HEART OF THE MIDLAND DISTRICT
Announces the Opening of a Complete **TOY & BABY DEPARTMENT**

OPEN 9 A.M. TO 8 P.M.

30 - INCH PLUSH BEARS
Assorted Colors **\$2.99**

BABY TRAINER PANTS
Double Thickness
4 Prs. 99c

FREE COFFEE & DOUGHNUTS Served All Day Fri. & Sat.
BALLOONS FOR THE KIDDIES

SATELLITE RADIO
Nothing to Wear Out or Replace
Last Indefinitely. It Really Plays... **\$3.98**

HUCKLEBERRY HOUND PLUSH ANIMALS
COMPLETE SET **\$3.98 To \$9.98**

GAMES FOR ALL AGES
FOR HALLOWE'EN MAKE-UP - MASKS - CANDY
USE OUR CHRISTMAS LAY-AWAY PLAN

PAINT BY NUMBERS PICTURE SET 98c & Up
FIGURINES Each **\$3.98**
Sample On Display Paints Included

COMPLETE LINE OF MODELS & CUSTOMIZING KITS

FOR RENT TRUCKS & CARS
MA 7-9039
Save One Half We Furnish Everything
HARMON'S
Driv - Ur - Self Co.
HARMON'S SERVICE
2112 Jefferson
Jim Harmon, Mgr.

BAKE SALE
Rainer Guild of Washington Association for Retarded Children will hold a bake sale at the Summit Trading Co. store Saturday, Oct. 24, beginning at 10:00 a.m. Proceeds will be used to help retarded children.

LAF
LE 7-4984 330 Garfield St.
REDUCED PRICE ON TYPEWRITERS CAMERAS
Store Hours 9:00 to 5:00 Daily except We are Closed Wednesday.

Garden Club Year Off to Good Start
The first Waller Road Garden club meeting of the '59-'60 working year was held Oct. 1 at the Community hall, Mrs. Verne Fogle presiding.
The club is open to any person who wishes to follow the fine work done by the garden clubs. Waller Road Garden club is one of the 165 clubs making up the Capital District and perhaps the only club with membership open to men as well as woman. It was voted at the last meeting to offer a reduced membership fee to husband and wife. The club is proud of its male members and extends an invitation to other men interested in membership to join.
Lawrence Savage gave an in-work demonstration on taking cuttings from geraniums and the method used to assure success in their growing. Mrs. Victor Johnson gave a talk and demonstration on starting cuttings from fuchsia

plants before cutting back to store for winter; she also demonstrated a small home made green house that has worked very well for her.
Horticulture specimens were passed for discussion. Mrs. George Oeh will continue as chairman of the horticulture committee as well as program chairman.
Arrangements carried out the Halloween theme, using fall material. "We all learn by doing" is the motto of the arrangement department. Arrangements to be brought by members to the November meeting will feature flowers and fruit, used singly or together, suitable for a Thanksgiving table.
Mrs. Rudolph Geise brought

Spanaway . . . Mrs. Wm. Walin to Head Grandmothers
With Mrs. Ima Quinlivan as installing officer, Mrs. William Walin was seated as president of the Spanaway Kan-Do Grandmothers club Thursday, Oct. 15. Others installed are: Vice president, Mrs. Marion Smith; secretary, Mrs. Lorien Buck; treasurer, Mrs. Edward Flannery. Retiring officers, in the same order, were Mesdames George Schelle, William Walin, Edward Flannery and Emerson Tarpenning. Appointed for the coming year: Chaplain, Mrs. George Schelle; historian, Mrs. Emily Ball; buyer, Mrs. Marion Smith; sunshine, Mrs. Emerson Tarpenning.
Bridal Showers
Miss Joyce Walin daughter of Mr. and Mrs. J. W. Walin, who was married to William Walsh, son of Mr. and Mrs. Jerry Walsh of Londonberry, Ohio, Oct. 17 in the Parkland Methodist church, has been honored at several bridal showers. Mrs. Joy Christie of Brown's Point gave a party for her

COMPLETE MOTOR REBUILDING
Head Surfacing, Lathe and Press Work, Brake Drum Turning, Reboring, Pin Fitting, Key Seating, Valve Seats Installed, Piston Grinding, etc.
Rupe Machine Works and Garage
AUTOMOTIVE & INDUSTRIAL WORK
13411 Pac. Ave., P.O. Box 2445, Parkland 44, Wn., LE 7-7450

Parkland Christian Church
757 So. 138th, Parkland
Sunday School 9:45 a. m.
Morning Worship 11:00 a. m.
Youth Meeting 6:15 p. m.
Evening Service 7:30 p. m.
Bible Study, Thursday 7:30 p. m.
Richard Crane, Pastor

Lucky Hunters
Emerson Tarpenning and Bill Righetti journeyed to Canada for a week and brought back two moose.
Congratulations
Mr. and Mrs. Emerson Tarpenning are rejoicing in the birth of a granddaughter, Monica Susanna, first-born child of Mr. and Mrs. Harold Tarpenning, who arrived in Livorno, Italy, where Harold is stationed.
Reporter—Mrs. Oliver Omat, LE 7-6466.



SAFeway's TRAINLOAD SOUP SALE

CAMPBELL or HEINZ Tomato Soup
America's favorite Soup
10 1/2-Oz. Cans **9c**

Campbell's or Heinz
VEGETABLE: Heinz Vegetable, or Campbell's Cream of Celery, Cream of Asparagus, Tomato with Rice, Cream of Vegetable, Bean with Bacon, or Green Pea.
7 10 1/2-oz. \$1.00 Cans

Campbell's or Heinz
SOUPS WITH MEAT: Heinz Mushroom, Beef with Vegetable, or Chicken Noodle—Campbell's Chicken Noodle, Cream of Mushroom, Vegetable Beef, Turkey Noodle, Chicken Vegetable, Minestrone, Beef, Beef Noodle, Chicken with Rice, Chicken Gumbo, Clam Chowder and Cream of Chicken.
4 10 1/2-oz. 69c Cans

Tomato Soup RANCHO Delicious 11 10 1/2-Oz. \$1 Cans

Vegetable RANCHO Flavor Fine 8 10 1/2-Oz. \$1 Cans

Noodle with Chicken RANCHO 6 10 1/2-Oz. \$1 Cans

Green Pea Lipton Soup Mix Pkg. of 2 31c

Noodle Lipton Soup Mix Pkg. of 3 41c

Soda Crackers BUSY BAKER 2-Lb. 45c Pkg. 1-Lb. Pkg. 23c

Edwards Coffee 1-Lb. 59c Can 2-Lb. Can, \$1.17

Spam Luncheon Meat 12-Oz. Can 39c

Sioux Bee Strained Honey 5-Lb. Can 99c

Icy Water Salad Shrimp 3 4 1/2-Oz. 85c Cans

Libby's Corned Beef 12-Oz. Can 49c Ideal for a quick and tasty Meal.

Graham . . . Rebekah Auxiliary Meeting Tuesday
The Auxiliary of Kapowsin Rebekah Lodge No. 241 will meet Oct. 27 for a 12:30 potluck dinner at the home of Mrs. James Nelson with Mrs. John Nelson as co-hostess. Conducting the meeting will be Mrs. Claude Napier, past president.

Visits Lodge
Marie Brown, president of the Rebekah Assembly of Washington, visited the Kapowsin Rebekah Lodge No. 241 Oct. 20 and gave an interesting talk. A special program honored her visit.
In Hospital
Emma Carlson is still in Good Samaritan hospital, Puyallup. We expect her to be home soon as she is improving fast.
Reporter—Marie Tinius VI 7-7394

ARTHROITIS?
I have been wonderfully blessed in being restored to active life after being crippled in nearly every joint in my body and with muscular soreness from head to foot. According to medical diagnosis I had Rheumatoid Arthritis and other forms of Rheumatism. For FREE information on how I obtained this wonderful relief write:
MRS. LELA S. WIER
2805 Arbor Hills Drive—WN37
P. O. Box 2695
Jackson, Mississippi

YOUR ROOM LOOK LIKE THIS?

Why not redecorate with low-cost Dramex? Get DRAMEX from SOUTH END PLUMBING & HARDWARE
185th & Pacific Ave.
LEnox 7-4100

Clover Creek Baptist Church INVITES YOU
9:45 a.m.—Sunday School; Classes for All
11:00 a.m.—Morning Church—"What is it to crucify the Son of God afresh?"
6:00 p.m.—Training Unions
7:00 p.m.—Evening Church; "The Fire of God."
Tuesday—8:30 Radio Broadcast over KAYE, 1450
Thursday, 7:45—Prayer Meeting
Lyle Bramblet, Pastor — Phone LE 7-6421

PORK ROAST lb. 29c
Fresh Picnic Style

Fresh Pork Steaks Blade Cut Lb. 39c

Boneless Pork Roast Shoulder Cut Lb. 49c

Beef Rump Roast U. S. Choice Lb. 77c

Beef Round Steak U. S. Choice Full Cut Lb. 79c

Carsten's Sliced Bacon HYGRADE Delicious Lb. 39c

Fresh Ground Beef Ground Fresh Hourly at Safeway Lb. 39c

Turkey Wings Oysters Snapper
Serve Fricasee lb. 29c
Fresh, Medium Size Captains Choice 12-Oz. Jar 43c
Fresh Red Snapper Tastes Great Lb. 25c

Lunch Box Sandwich Spread Pint Jar 35c

Melrose Snaps Chocolate, Vanilla Lemon 2 2-Lb. Pkgs. 89c

Fresh Eggs Cream O' The Crop Medium "AA" Doz. 39c

BANANAS
Golden — Perfectly Ripened for the Finest Flavor. Just Right for Eating Pleasure. Delicious for Dessert
2 Lbs. 25c

Large Purple Beauties, Excellent for juicing.

Is. Bell Grapes 17-Lb. \$1.19 Lug

Prescription Service
Open 7 Days a Week
9:30 a.m. - 9:30 p.m.
Sundays 10 a.m. - 6 p.m.

JACOBS PACIFIC DRUGS

Wallgreen Agency
Pay Light & Water Bills Here
84th & PACIFIC AVE. Greenfield 2-6445

Orange Juice SCOTCH TREAT 4 6-Oz. 89c Cans 12-Oz. Can 43c

Tuna Pies MANOR HOUSE 5 7-Oz. \$1.00 Cans

Bel-air Peas Fresh Frozen Premium Quality 6 10-Oz. 99c Pkgs.

Celery Sweet, Always a family favorite - Serve stuffed

Carrots Tasty, Crisp, Sweet Tops removed, no waste

Rutabagas Sweet - Excellent with boiled dinner

5 lb.

Vaughan's Values REMODEL - REPAIR FINISH THAT ATTIC

FREE PLANNING AND ESTIMATES
We Can Furnish Competent Workmen Or "Do-It-Yourself" with Our Guidance
ASK ABOUT OUR MONTHLY PAY PLAN

Vaughan's
PACIFIC AVENUE LUMBER COMPANY
84th & Pacific Avenue GR 4-9515

Fig Bars Melrose 2-Lb. Pkg. 49c

A VALUABLE SAFEWAY COUPON
To Acquaint You With a New Catfood Product Good At All Safeway Stores Until October 31, 1959
KAT-NIP CAT FOOD
Three 15-Oz. Cans - 19c with this coupon without coupon 29c
A VALUABLE SAFEWAY COUPON

Highway Beans
KIDNEY BEANS, PORK AND BEANS, BLACK EYE PEAS, BUTTER BEANS, PINTO BEANS, ETC.
15-OZ. CANS 10c

Cinnamon Loaf CURTSY Fresh Baked Goodness Pkg. 29c

Doughnuts Mrs. Wright's Jumbo Ass't. Pkg. of 6 29c

SAFEWAY

for Electric Heat

insist on SWAN

Vectoray Baseboard Heat
thousands in use with never a failure!

FOR INFORMATION
CALL WEBB ELECTRIC CO.
8240 B Pacific Avenue
GR 2-2902 EMERGENCY PHONE LE 7-4437

Sale starts 9 a.m. Thursday, Oct. 22 through Saturday, October 24, at 82nd & Pacific Safeway.

Bethel Braves Show Promise for 1959 Football Season



ON THEIR WAY—Despite a 13 to 6 defeat in their opening game with Peninsula Hi Friday night, the Bethel Braves footballers are in no way discouraged; all feel the challenge to give their best to the season's play. Shown above are the members of this year's team. They are: Front Row, left to right; Bayard Crate, Roger Simmons, Larry Gehring, Rodney Parham (co-captain), Don Raper, Bill Bell.

Lloyd Williams, Gary Justice, Jerry Brodigan, Doug Woods and Chuck Lamka. In the back row, from left to right are: Assistant Coach Jack Justice, Asst. Coach "Babe" Buholm, Don Smith, Warren Ward, John Hartsell, Gerald Gustafson, Mike Wharton, Gene Holt, Larry Stearns, John McGee, Bruce Moore, Tom McFadden, Jay Brown, Neil Lambertsen, Miland Krumpus (co-captain), Doug Hudson, Don Strassburg, Clyde Hoover, Dave Belvin and Head Coach Ed Niehl. Not pictured is Steve Wickline, also a member of this year's varsity squad.

Bethel Boosters In Big Meet 26th

Slightly over two years ago a group of interested Bethel residents gathered at the high school to discuss plans for forming the Bethel Booster Club in hopes that this organization would prove to be of a benefit to the school district. Now the Booster prepare for their first project of their third year, the sponsoring of this Friday night's game at the high school. It is with a great amount of pride that the Boosters can state that the club has lived up to, and even passed, the greatest dreams of its founders.

One of the biggest projects of the Boosters is nearing completion, according to Art Crate who has served as chairman of the junior high playfield committee. This project called for the leveling of over 18 acres of ground to the side and the rear of the Bethel Junior High school for a playground area for the new school. Crate kicked off the project last spring by asking for and securing enough volunteer labor to completely level, survey and grade the field. Just recently a pipe to carry water to the field was placed in position and the area is now ready for planning. This project has been estimated as having saved over \$8000 to the Bethel taxpayers.

This type of work was not new to the Boosters, however. This same organization had already undertaken 14 other major projects before undertaking this one. Included in these projects were: The erection of a field house for a field dressing room and public lavatories to the left of the football field; the erection of a ticket booth on the field; the placing of a cement curb around the track; and the construction of an archery range at the high school. During the years these projects were being completed, Art Crate served as president of the hustling club. Crate points out that not only Boosters were involved on these projects but a great number of other people who spent hours and money in giving a helping hand to enable the completion of the work.

Founded primarily to help the school activities purchase items that the school district may not use funds for, the Boosters have already purchased uniforms for the senior high school band; given financial aid to both the junior and senior high school annuals; provided funds to go into the Bethel Area P-TA Scholarship fund; purchased basketball uniforms for the junior high school; provided funds for the junior high activity program. Probably one of the biggest services the Boosters have rendered during the past two years was the emergency benefit they had for a high school teacher who was seriously ill. On that occasion the Boosters raised over \$2700 to provide for his family while he was

The Harmon Forecasts

PRESENTED WEEKLY COURTESY OF POCHEL DISTRIBUTING CO.

TOP 20 TEAMS

| | | | | | |
|----------------------|-------|----------------------|-------|-----------------------|------|
| 1—Mississippi | 114.1 | 8—Southern Cal | 103.2 | 14—Georgia Tech. | 99.9 |
| 2—Syracuse | 111.2 | 9—Purdue | 103.1 | 15—Illinois | 98.7 |
| 3—L. S. U. | 108.3 | 10—Auburn | 102.5 | 16—Georgia | 98.6 |
| 4—Texas | 105.5 | 11—Arkansas | 101.2 | 17—Penn State | 98.4 |
| 5—Northwestern | 105.3 | 12—Oklahoma | 100.9 | 18—Army | 98.3 |
| 6—Wisconsin | 103.7 | 13—S. M. U. | 100.3 | 19—T. C. U. | 98.3 |
| 7—Iowa | 103.6 | | | 20—Ohio State | 97.9 |

FRIDAY, OCTOBER 23

| | | | |
|--------------------|-------|--------------------|------|
| Auburn | 102.5 | Miami, Fla. | 92.6 |
| Baylor | 76.1 | Connecticut | 67.1 |
| Clemson | 94.8 | S. Carolina | 93.0 |
| U. C. L. A. | 88.7 | Air Force | 86.8 |
| West Chester | 78.4 | Shippensburg | 50.3 |

EAST (Small Colleges)

| | | | |
|---------------------|------|---------------------|------|
| Amherst | 55.1 | Wesleyan | 43.6 |
| Bucknell | 68.0 | Lafayette | 62.5 |
| Calif. State | 53.7 | Clarion State | 51.6 |
| Coast Guard | 38.0 | Wor. Tech | 36.0 |
| E. Stroudsb'g | 47.0 | Waynesburg | 30.8 |
| Geneva | 56.5 | Slippery Rock | 46.6 |
| Gettysburg | 52.7 | Muhlenburg | 41.3 |
| Grove City | 36.7 | Allegheny | 28.6 |
| Hofstra | 66.2 | Temple | 36.8 |
| Mass. | 43.7 | Northeastern | 39.0 |
| Marion | 45.6 | Leb. Valley | 33.5 |
| New Hampshire | 61.3 | Bradeis | 31.8 |
| New Haven | 56.0 | New Britain | 24.8 |
| Penn Military | 36.0 | Drexel Tech | 23.6 |
| Springfield | 64.3 | Amn. Int'l | 42.6 |
| Tufts | 51.6 | Williams | 46.6 |
| Upsala | 45.9 | Bridgeport | 23.2 |

SAT., OCT 24 — MAJOR COLLEGES

| | | | |
|----------------------|-------|----------------------|-------|
| Army | 98.3 | Colo. State U. | 92.6 |
| Baylor | 87.8 | Texas A & M | 84.1 |
| Boston Coll. | 85.8 | Marquette | 69.0 |
| Bradley | 45.2 | Drake | 39.2 |
| Brown | 60.0 | Rhode Island | 52.0 |
| Colorado | 70.1 | Arizona | 60.3 |
| Denver | 61.9 | Brig. Young | 59.2 |
| Detroit | 77.8 | Tulsa | 74.8 |
| Duke | 90.8 | N. Carolina St. | 77.8 |
| Florida State | 82.8 | Richmond | 73.5 |
| Georgia | 98.6 | Kentucky | 88.1 |
| Georgia Tech | 99.9 | Tulane | 80.8 |
| H. Simmons | 68.9 | West Texas | 61.6 |
| Harvard | 71.3 | Dartmouth | 66.0 |
| Holy Cross | 81.6 | Columbia | 57.0 |
| Illinois | 98.7 | Penn State | 98.4 |
| Iowa | 103.6 | Purdue | 103.1 |
| Iowa State | 84.4 | Kansas State | 68.6 |
| Lehigh | 76.7 | Rutgers | 78.2 |
| L. S. U. | 108.3 | Florida | 90.7 |
| Mich. State | 96.5 | Indiana | 89.0 |
| Minnesota | 90.8 | Michigan | 84.5 |
| Mississippi | 114.1 | Akansas | 101.2 |
| Miss. Southern | 89.6 | Abilene Ch. | 71.0 |
| Miss. State | 88.5 | Memphis State | 79.7 |
| Missouri | 85.2 | Nebraska | 80.2 |
| Navy | 86.2 | Penn | 85.8 |
| New Mex. State | 81.3 | Texas West | 65.2 |
| N. Carolina | 91.2 | Wake Forest | 81.4 |
| North Texas | 89.1 | Houston | 81.7 |
| Northwestern | 105.3 | Notre Dame | 92.9 |
| Oklahoma | 100.9 | Kansas | 86.7 |
| Okla. State | 87.6 | California | 82.0 |
| Oregon State | 85.6 | Wichita | 82.4 |
| Princeton | 80.9 | Cornell | 66.5 |
| Southern Cal. | 103.2 | Stanford | 82.6 |
| S. M. U. | 100.3 | Texas Tech | 83.5 |
| Syracuse | 111.2 | W. Virginia | 80.9 |
| Tennessee | 95.4 | Chattanooga | 69.4 |
| Texas | 105.5 | Rice | 93.5 |
| T. C. U. | 98.3 | Pittsburgh | 83.9 |
| Vanderbilt | 90.5 | Virginia | 56.4 |
| V. M. I. | 76.2 | Davidson | 63.1 |
| V. P. I. | 80.2 | Villanova | 61.8 |
| Washington | 95.5 | Oregon | 93.3 |
| Wash. State | 89.4 | Idaho | 57.0 |
| W. Michigan | 68.2 | Toledo | 52.9 |
| Wm. & Mary | 67.0 | Geo. Wash. | 59.9 |
| Wisconsin | 103.7 | Ohio State | 97.9 |
| Wyoming | 87.1 | Utah | 68.2 |
| Yale | 76.1 | Colgate | 59.7 |

*** Thursday Game

FOR LIVING WARMTH WITH MOBIL HEAT
PHONE YOUR FUEL OIL AND APPLIANCE DEALER

POCHEL DISTRIBUTING COMPANY

140th & PACIFIC AVE. LE 7-8624

community by sponsoring Easter Sunrise Services and egg hunts for the past two years and presenting the Senior High football team with a banquet the past two years. Probably one of the biggest services the Boosters have rendered during the past two years was the emergency benefit they had for a high school teacher who was seriously ill. On that occasion the Boosters raised over \$2700 to provide for his family while he was in the hospital.

Last spring Glenn Ash was elected to serve as president of the Boosters and he has announced that the Booster kick off membership drive was launched last week with Mrs. Jerry Fager serving as the membership drive chairman.

HAND IT OVER
MADISON, Wis.—Refusal to give up a party telephone line during an emergency could prove costly in Wisconsin. Governor Gaylord Nelson has signed into law a bill calling for a \$500 fine in such cases.

Fishing License Hunting License
Super Kem Tone & Kem Glo
PARK AVENUE HARDWARE
Ave., GR 4-0051
Corner 83rd & Park

CHILDREN'S SLEEPERS Reg. \$1.49 2.98

HANES — SHRINK RESISTANT, 1-PIECE, FEET IN, BLUE, YELLOW, GREEN & PINK
Spring Garden PEAS 303 Tins 8 For \$1.00

White Star Chunk — Reg. 33c Can TUNA 5 For \$1.00

Libby's Cream Style CORN 303 Tin 8 For \$1.00

40-Oz. Pkg. BISQUICK 39c

William Tell APPLE JUICE 24-Oz. 8 For \$1.00

Men's White T-SHIRTS 39c

Tastewell APPLESAUCE 303 Tin 8 For \$1.00

Childrens Assorted Colors, Size 2 to 6 FALL JACKETS \$1.98

Kraft MIRACLE WHIP Quart 39c

Men's Flannel, All Sizes and Colors SHIRTS \$1.49

All-Purpose FLOUR 10 Lbs. 69c

Men's Full Length RAINCOATS 98c

These are not so called "Advertised Specials", they are EVERYDAY selling prices and are therefore subject to stocks on hand.

SALVAGE MART

13014 PACIFIC AVENUE—HRS.: 10-6, FRIDAY 'TIL 8

MEET YOUR FRIENDS

AT THE NEW

A & W DRIVE-IN

8442 PACIFIC AVENUE

REFRESHMENT HEADQUARTERS

STRESSING fast SERVICE • low PRICES • and QUALITY

Featuring . . .

5c—A & W ROOT BEER—10c

The Nation's leading draft root beer — dispensed from all-stainless steel equipment and served ice-cold in sparkling clean glass mugs, pre-chilled to enhance the matchless flavor of all natural ingredients.



TAKE ALONG SOME ROOT BEER

Quart 20c
1/2 Gallon 40c
1 Gallon 75c

Plus Container Charge

If you haven't tried our CHILI DOGS with A&W Sauce you haven't lived!

CARRY-OUT SPECIAL

October 23rd Through 29th

Root Beer Floats & Frosties

4 Beef Burgers & 1/2 Gal. Root Beer ONLY \$1.50

PRESENT THIS COUPON

For A

Free 8-oz. Mug of A&W Root Beer (Limit: 1 to a Customer)

A & W Orange Drink

Look for the ORANGE Building

SARGENT'S A&W DRIVE-IN, 8442 Pacific Avenue

Open 11 A.M. - 11 P.M. Daily

Fri. & Sat. 11 A.M. Til Midnight

ASHLEY WOOD HEATERS — HOUSE WARES — GARDEN SUPPLIES — PLUMBING SUPPLIES — SPORTING GOODS — PAINTS — RICHFIELD GASOLINE — ELECTRICAL SUPPLIES — TOOLS — HARDWARE

OPEN SUNDAYS 'TIL 6 P.M.

WEIR'S MIDLAND HARDWARE

8502 PORTLAND AVE. LE 7-5262

OPEN 9 TIL 9 SATURDAY AND SUNDAYS 9 TO 6 P.M.

IGA FOOD TOWN IGA

PRIME RIB lb. 79^c

ROAST OR STEAK

PORK ROAST 29^c

TABLERITE ROUND BONE POUND..

Pork Steak lb. 39^c Sausage PORK lb. 29^c

Pork Hocks lb. 19^c BOLOGNA RINGS 3 for \$1
POLISH RINGS

BISQUICK 35^c

BETTY CROCKER'S ALL-PURPOSE MIX!
40-OZ. PACKAGE

FRUIT PIES Pet-Ritz Frozen Apple, Cherry Peach, 24-Oz. Each 39^c PET MILK 8 Tall Tins \$1⁰⁰

INSTANT COFFEE Maxwell House 6-Oz. Jar \$1⁴⁵ INSTANT MILK Pet 6-Qt. 69^c

HORM. SPAM 35^c

12-OZ. TIN

ALBER'S OATS With Free Cereal Bowl - Large 39^c NALLEY SYRUP Lumberjack 22-Oz. 25^c

DOG FOOD Skippy 1-Lb. Tin, 8c 13 FOR \$1⁰⁰ PANCAKE MIX Sperry 28-Oz. 31c 4-Lb. Pkg. 49^c

HILLS BROS. COFFEE 1¹⁷

1-Lb. Tin Each 59c 2-Lb. Tin

U.S. NO. 1 - WASH. GEMS Potatoes 10 lbs. 29^c EXTRA FANCY RED DELICIOUS Apples 4 lb. Bag 45^c

CELLO CARROTS 1-Lb. Pkg. 10^c LOCAL WASHINGTON CORN Dozen Ears 29^c
LOCAL CELERY Stalk

Mr. Spooky Bones Luminous... Glows in the Dark 24" Tall 19c Each
Jack-O'Lanterns 29^c Ea.
Hallowe'en Masks Children and Adults 5c 10c 15c
Party Makeup Non-Toxic, Easy to Remove 10c 19c 29c
COSTUMES Children's Sizes \$1.59 Each
ASSORTED TABLE OR ROOM DECORATIONS For Hallowe'en

Airport Road (112th) & Park Avenue Ad Days - Oct. 22-23-24

a-Wondering . . . and a-Wandering . . .

With JACK BROWN

One of the most disturbing developments in our modern way of life is the ever increasing trend toward conformity. Too often these days a person is considered slightly nuts if he dares to do things differently.

Whether it be that he refuses to conform to generally-accepted society patterns, or holds unusual views on religion, or has individualistic opinions in politics, or any of a number of other things, the person among us who dares to be different is risking the ridicule, gossip and even scorn of too many of our fellow citizens.

Of course, there are certain limits of good taste and behavior and judgement which must be observed. Beyond cats, beatniks, etc., individualism is a good thing. In fact, it is what made the United States the most productive and fastest-growing country in the world, economically.

The trend toward conformity is worrying some of the wisest of our country's citizens. There never has been any merit in absolute conformity, and yet, with television and other mediums now tending to "standardize" all of us, to an extent, the person who refuses to fit himself into the mold is sometimes abused.

Why should the intelligent person, for instance, be considered odd if he can't stomach the hours on end of westerns on television, or some of the moronic commercials? Why should he dress exactly like John Doe? Why should he be considered an odd ball if he doesn't care to spend his time watching football or baseball games?

Why should the woman who doesn't follow the style manipulators like the rest of the women-sheep of America be considered odd if she don't play bridge, or doesn't go in for hypocritical social functions or so much club doings?

The point is that individualism often brings us great gains and the individualists of our country have pioneered more success and progress than the conformists. For the conformist, basically, is either afraid to go his own way or lacks the imagination or intelligence which allows him to dare to be different.

Next time, you feel the urge to make a sarcastic remark about someone who dares to be different, or who refuses to conform to your notions about life and how to live, think twice about it. And next time you hear a novel opinion, or an unusual one, presented sincerely; think twice before you brush it off. For the individual who dares to be different, who refuses to conform to much of the pattern fast being established in America life, and who thinks for himself is an asset in our society and he is following in the great American tradition.

There's nothing like a stroll through the woods in autumn for getting your shoes muddy, your nose runny and your wife worried about your mental condition.

The word progress is deceptive. It cannot be defined without qualifications. We cannot go backward, but at some point along the line we have lost something in our rush forward toward ever higher standards of living which demand a tremendous price. If we could have "progress" that retained some of the peacefulness, security, and traditions of the past we would lead a more enjoyable existence.

The change brought about by progress is illustrated by H. H. Bushnell of Wallowa, Oregon, in a description of the Oregon State Fair of a past generation. Said Mr. Bushnell: "Within easy walking distance from the main entrance to the fair was a grove of oak trees and under the shade was Tent City, with streets laid out and defined lots, each capable of containing a tent. Shortly before the fair opened, families arrived in wagons from various sections of the Willamette Valley, and they unloaded cots and bedding, stoves and dishes, usually sufficient for camping out. Many of them were fair exhibitors . . . "coming out of the fair grounds in the evening, one could see the white tents lit by kerosene lamps, the flies back, and hear the neighbors talking and laughing. Friends were invited in to eat supper and discuss the judging and placing of awards. The Willamette Valley was inhabited by one big family and the fair was a family reunion.

Of course we can't go back but there is something about Mr. Bushnell's descriptions that stirs the memory of more carefree days—less crowding, speed, noise, costs, restrictions, laws, regulations, taxes. Along with progress it is too bad to lose so many of the virtues of the past which were less conducive to heart failure and nervous breakdown.

YOU DON'T NEED TO BUY A CLOTHES DRYER
COME IN AND USE OURS ANYTIME DAY OR NIGHT
We Have 7 Big Dryers Metered
PARKLAND ECON-O-WASH
WE NEVER CLOSE
12171 Pacific Avenue LE 7-9970

"RADIANT-AIR" ELECTRIC HEAT
— OCTOBER SPECIAL —
F Your Choice - Free With Every "Radiant Aire" F
R Electric Heat Installation During October. R
E Portable Mixer - Coffee Pot - Steam Iron E
E - Electric Tea Kettle E
FREE ESTIMATE 20% OFF ON ALL LIGHT FIXTURES OBLIGATION NO
EVERGREEN ELECTRIC CONST. CO.
13021 Pacific Avenue LE 1-2611

POWER TOOLS FOR RENT
SANDERS - EDGERS - POLISHERS - HAND SANDERS
SKIL SAWS - ELECTRIC DRILLS - CEMENT MIXERS - ETC.
ALSO HAND TOOLS FOR RENT
Anderson Lumber
9813 Pacific Avenue LEnox 7-7311

BIG BEAR

A DIVISION OF

Lucky STORES

BETTER MEATS... BETTER VALUES!

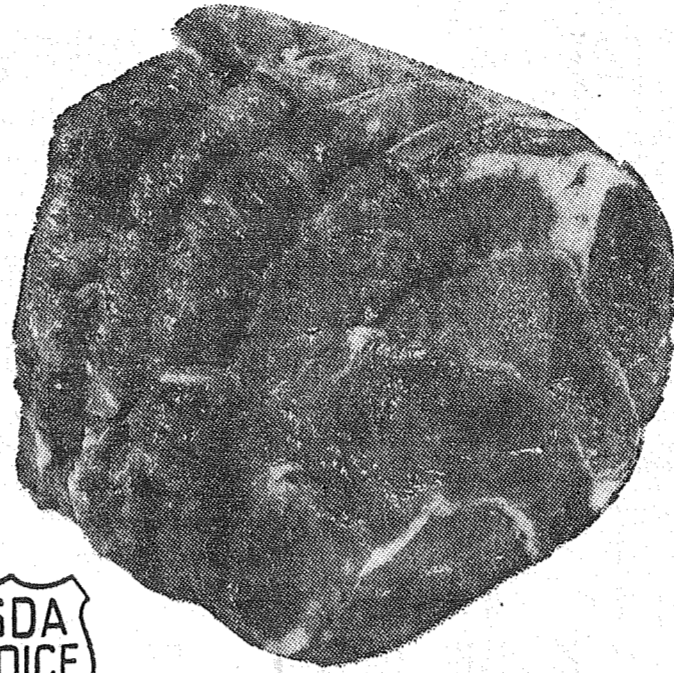


CENTER CUTS INCLUDED

Chuck Roast

U.S. Graded Choice Chuck Roast, 7-bone and blade cuts... especially aged for complete tenderness.

lb. **43¢**

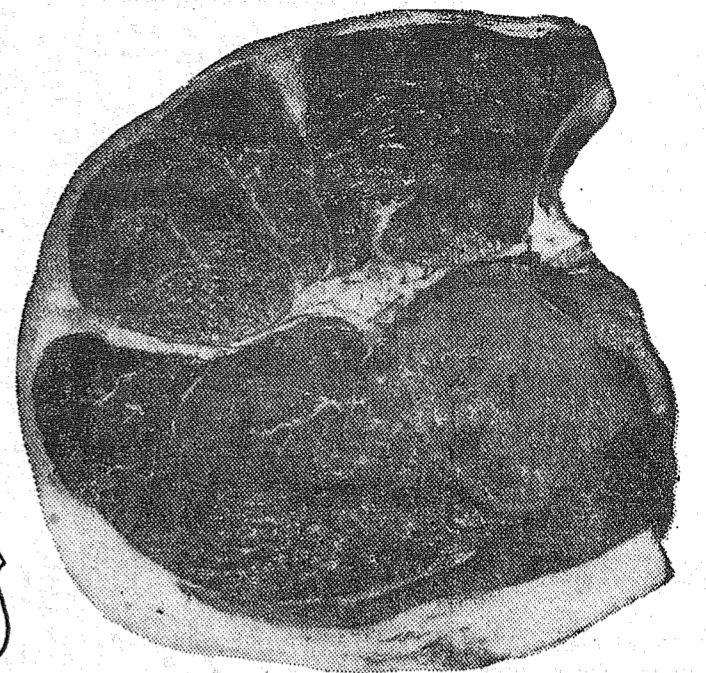


BONELESS

Rolled Roast

Boneless Cross Ribs of Beef! Tender... rich 'n juicy. Cut from U. S. Graded Choice Steer Beef!

lb. **75¢**



BONELESS

Round Steak

U.S. Graded Choice Full Cut Round Steak... cut from special aged tender beef! Rich in full flavor.

lb. **79¢**

LAMB, LEGS OR SARATOGAS

U. S. GRADED CHOICE..... Choose from whole or half legs... or boneless Saratoga roasts.....

lb. **65¢**

U. S. CHOICE LAMB CHOPS

RIB CHOPS WELL TRIMMED. An exceptionally fine value on nice 'n' lean chops from U.S. Choice lamb.

lb. **79¢**

U. S. CHOICE BREAST OF LAMB

IDEAL FOR BRAISING..... Or, for stewing. Lots of lean meat on each rib. Extra tender.

lb. **23¢**

FRESH FILET OF SNAPPER

Makes an economical meal. Guaranteed fresh.....

lb. **29¢**

CHOICE CHUCK STEAKS

Really ideal for swissing. U. S. Choice beef!.....

lb. **53¢**

MORRELL'S SLICED BACON

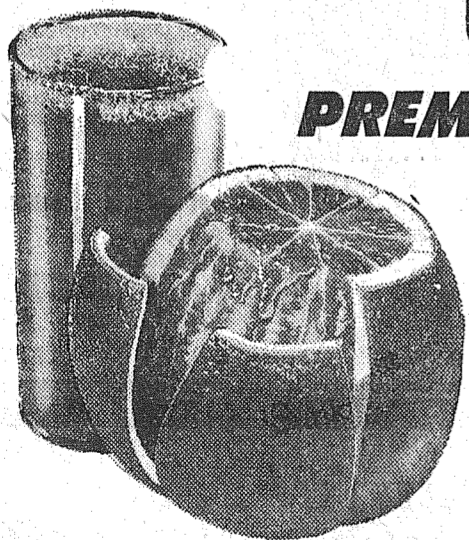
Come! Nice and lean... and extra tender.....

lb. **43¢**

Sunkist

Oranges

PREMIUM QUALITY



thin skinned, loaded with vitamin-rich sweet juice!

lb. **10¢**

FLORIDA GRAPEFRUIT

Ruby Red Seedless Grapefruit! Juice laden, large No. 32 size. Per lb.

10¢

GARDEN FRESH CELERY

Thick coated large stalks, large full flavored, stringless Pascal. stalk only

10¢

Red DELICIOUS APPLES

Extra fancy grade, 100 size 'n larger, Richard Red Delicious Per lb.

12 1/2¢

FRESH SWEET DATES

New crop of desert sweet dates, Full rich in natural sugar. 1-lb. Pkg.

29¢

MAXWELL HOUSE

COFFEE Reg. or Drip

1-lb. can **59¢**

MD TOILET TISSUE

4-roll pkg. **33¢**

STRAWBERRIES

POLAR FROZEN

10-oz. pkg. **17¢**

ORANGE JUICE

POLAR FROZEN

5 6-oz. Cans **1.00**

PORK & BEANS

VAN CAMPS

No. 2 1/2 cans **19¢**

PEANUT BUTTER

SUNNY JIM Cream or Crunchy

18-oz. jar **43¢**

NALLEY'S CHILI

4 15-oz. cans **1.00**

CUT GREEN BEANS LIBBY 5 #303 Cans **1.00**

CREAM or WK CORN LIBBY 5 #303 Cans **95¢**

GARDEN PEAS LIBBY..... 6 #303 Cans **1.00**

LIBBY SAUERKRAUT ... 2 #303 Cans **29¢**

LIBBY WHOLE BEETS 5 #303 Cans **1.00**

LIBBY PUMPKIN 2 #2 1/2 Cans **37¢**

TRAPPEY YAMS 4 #303 Cans **1.00**

LIBBY DE LUXE PLUMS 2 #303 Cans **45¢**

KIDNEY BEANS Joan of Arc Lite Red... 2 #300 Cans **27¢**

STARLAG INSTANT 8-Qt. Pkg. **69¢**

PANCAKE MIX Aunt Jemima Large Size **39¢**

Muffin Mix (4c Off Label) Betty Crocker, Blueberry 13-oz. Pkg. **35¢**

PUSS & BOOTS Cat Food 6 15-oz. Cans **87¢**

PRESERVES Kraft Strawberry 20-oz. Jar **49¢**

Hi-Ho CRACKERS 1-lb. Box **33¢**

KELLOGG'S Concentrate ... 6-oz. Pkg. **49¢**

INSTANT RALSTON 4c Off Label 18-oz. Pkg. **31¢**

POPSRITE POPCORN Yellow or white 2-lb. Bag **29¢**

MARSHMALLOWS Kraft Jif ... 2 10-oz. Pkgs. **49¢**

STAN'S APPLE CIDER ... 1/2-gal. for **49¢**

KRAFT CARMELS 1-lb. Bag **39¢**

NATIONAL FISH WEEK!

SCALLOPS 4 Fishermen, Frozen ... 7-oz. Pkg. **59¢**

BOOTH PRAWNS Frozen 10-oz. Pkg. **69¢**

BREADED SHRIMP Booth, Frozen, 10-oz. Pkg. **53¢**

BOOTH FISHSTICKS Frozen ... 8-oz. Pkg. **35¢**

CCA SHOWMIST Chunk Style Tuna No. 1/2 Can **29¢**

CCA HANSEN'S Sunbeam Bread Large Loaf **33¢**

CCA RED ROSE Tea (10c Off Label) 48-Qt. Bags **55¢**

CCA KITTY Cat Food No. 1 Cans **21¢**

CCA NALLEY'S Potato Chips Triple Pack **69¢**

CCA Dual Filter Tareyton Cigarettes Per Pack **28¢** Per Tin **2 1/2**

Prices effective Wednesday through Saturday... limit rights reserved.



BIG BEAR
A DIVISION OF Lucky STORES

133rd & PACIFIC... PARKLAND

-Classified-

The TIMES JOURNAL
Thursday, October 22, 1959

M. L. S.
MULTIPLE LISTING SERVICE

12 LOTS
Good 3 bedroom home, separate dining room, kitchen wired 220, breakfast nook, 3 piece bath, concrete foundation, garage, fruit, fenced yard. Price \$8,500. FHA or GI terms. Call Ralph Decker, GR 4-9579. RB-3094.

PACIFIC AVE. DIST.
Cute, clean 2 bedroom home, nice kitchen wired 220, breakfast nook, hardwood floors, concrete foundation, 2 lots. Close to bus and stores. \$7,950. FHA terms. Call Ralph Decker GR 4-9579. RB-3087.

MR. BULLDER!
3 acres, excellent location. East 98th and Vickery Road. Cleared. Ideal building site. Full price \$3,500. Equity \$1,550 at \$30 per month. Call Leo Olson, GR 4-0062 or GR 4-9579.

McKINLEY HILL REALTY
6311 McKinley Ave. GR 4-9579
Member of Multiple Listing Service and TACOMA REAL ESTATE BOARD

M. L. S.
MULTIPLE LISTING SERVICE

HOUSES FOR RENT
Very Nice
Large 4 bedroom home in Parkland, with range and refrigerator. Has fenced back yard. Ideal location to McChord and Fort Lewis. \$85.00 base rental.

Furnished 1 bedroom house close to PLC and close to McChord. \$65.00.

Partly furnished 2 bedroom home on South 12th. Convenient to shopping schools and churches. Available October 28th.

Furnished 2 bedroom home very comfortable. Has large yard, fenced, garage. Available Nov. 1st. \$80.00.

Call Jennie Grodovic LE 7-8609 for appointment to see. Parkland Realty Company.

HOMES FOR SALE
4 bedroom home on 6 1/2 x 100 lot near schools, bus, stores in PARKLAND. Available for possession middle of November so you can move your family into a larger home and be settled for Thanksgiving and Christmas! \$d 2295. Call Jennie for showing.

Nice retirement home with lots of fruit and garden space on lot 90 x 310 in Midland area. SEE THIS! AA 2747.

42 acres at Eatonville with 4 bedroom home where right buyer can have quick possession. Ae 3033.

Many other lovely homes for sale, so if these don't suit your needs give me a call. Jennie Grodovic LE 7-8609 office, LE 1-1210 home.

PARKLAND REALTY CO.
302 Garfield LE 7-8609
Next To Piggy Wigly or LE 1-1210
Member Multiple Listing Service and Tacoma Real Estate Board
Established in Parkland 1941

M. L. S.
MULTIPLE LISTING SERVICE

HOMES
FARMS
ACREAGES
INVESTMENTS

One Call Does It All

TACOMA REALTY, INC.
11004 Park Ave. LE 7-8631
Member Multiple Listing Service and Tacoma Real Estate Board

Sharp
Cheeselb. 59c
T-V Dinners ea. 55c
Chili Bricks ca. 49c
M & M's
Candy15-oz. 79c
Kentucky
Mints11-oz. 39c
Armour's Corned Beef
Hash 1 1/2-oz. Can 35c
Sirloin
Steaklb. 69c
T-Bone
Steaklb. 69c
Lettuceca. 15c
Cabbagelb. 5c
Indian River
Grapefr't 2/25c

Gibbons FOOD CENTER
SPANAWAY

Business Service 3
GRAVEL for fills, driveway gravel, clean sand, top soil. LE 7-6391. 3cft

Home Plumbing & Heating Co.
REPAIRING, REMODELING
NEW CONSTRUCTION
1017 So. 112th
Call Day or Night
LE 7-4615

JACK SHANK'S
Refrigeration Service
Parts & Service for All Makes
LE 7-0178

ECONOMY KITCHENS
Remodeling — Roofing & Siding
Foundations

LORD'S CONSTRUCTION CO., INC.
10426 Pacific Avenue. LE 7-6779

TRAILER SPACE
Reasonable — Quiet
Close to McChord West Side
WOODBROOK TRAILER CT.
14818 Woodbrook Drive, SW
JU 8-9566 or SK 2-8792

Ace Dirt Moving Co.
Building — Ditching
TOP SOIL - GRAVEL
SEPTIC TANKS and
DRAIN FIELDS
Phone TH 5-2452

Hot Water Heating Residential and Remodel Work
CORNELL PLUMBING & HEATING
LENOX 7-7293

BULL-DOZING
Excavating • Grading
Gravel
LE 7-5112

CANYON ROAD GRAVEL AND SUPPLY. Pick-ups and trailers loaded or we haul. LE 7-3943. 3cft

Residential and Commercial PAINTING
Taping and Texturing
Broadwell Painting
LE 7-6893

ART'S SHOE SHOP
Shoes for the Entire Family
EXPERT SHOE REPAIRING
315 Garfield St.
Between 121st and 122nd
Opposite Parkland Postoffice

NEAT BEAUTY SHOP
GR 2-7628
6314 McKinley Avenue

SPANAWAY ELECTRIC CONTRACTORS
Residential & Commercial
Heating Specialists
LE 1-2127 LE 7-4792

SEPTIC TANK CLEANING
Prompt Service
C. V. HUTSON
GR 4-3980 GR 2-7038

CALL POCHTEL FOR Expert T.V. Repair
Satisfaction Guaranteed
Free Tube Testing
140th & Pacific LE 7-8624

FAMILY PORTRAIT STUDIO
8 x 10 Dozen \$15
5 x 7 Dozen \$10
Please Phone GR 4-1986 for Appointment
8411 So. Park Ave.

Parkland Heating Co.
All makes of furnaces for sale; Specializing in Williams OIL 'O' MATICS; Oil, Gas, Hot Water Installations. Service; reasonable; 755 South 108th. LENOX 7-4045. 3cft

South End Auto Wreckers
USED PARTS—Motors, Transmissions, Tires, Batteries. We buy junk cars. Also Custom welding by Joe's Welding. 1 Mile East Roy on Mt. Hy. Spanaway LE 7-6534

WELL DRILLING
Berkeley Pumps
JETS
SUBMERSIBLES
CENTRIFUGALS
TURBINES
Call LE 7-7281

TACOMA PUMP & WELL DRILLING CO.
14619 PACIFIC AVENUE
Terms Trades

WE HAVE BUYERS FOR YOUR HOUSE!
FARM and BLDG. SITES

USED FURNITURE
WE BUY, SELL & TRADE TERMS
TRADING POST
722 So. 112th LE 1-0242

Webb Electric Co.
8240 B Pacific Ave.
GR 2-2902
ELECTRIC HEAT
All Types
Terms Can Be Arranged
FREE ESTIMATES
EMERGENCY PHONE
LE 7-4437

RADIO and SERVICE
ABC ELECTRONICS
Garfield & C Streets
LE 7-4900

USED AUTO PARTS
SATISFACTION GUARANTEED
Bring This Ad For 10% Discount
GORDIE'S AUTO WRECKING
10620 Pacific Avenue
LE 7-5565 — LE 7-4443

RADIATOR CLEANING & REPAIRING
Guaranteed Work
DEL'S RADIATOR
10620 Pacific Avenue
LE 1-1144; Home: LE 1-1288

Fuel 4
UPLAND SLAB WOOD, 2-cord load \$14; VI 7-7301, call collect. 4cft
FOR SALE—Heavy planer engine, Small and large loads. BICHLER FUEL, Puyallup TH 5-2857. 4cft

Help Wanted 5
FOUR LADIES wanted 3 hours a day, \$10 per day to help with Christmas business; Stanley Home Products, LE 7-4206. 5cft

WITH AVONS XMAS GIFT LINE
Work 4-5 Hours Per Day — Earn \$40 - \$50 per week. For home interview, Call MA 7-5271.

HELP WANTED: Wanted 5 men in City of Tacoma who will work 8 hours per day. NO, you can not make \$15,000 per year but you can earn a good living. Special attention given to retired service men, ministers and teachers. Guaranteed salary with fringe benefits. For personal interviews call at 7941 Pacific Avenue 10 AM to 12 Noon only. 5cft

Listings Wanted
DICK DEVEREAUX REALTY
Multiple Listing Service
Buying or Selling
Call LE 7-8659
11002 Pacific Avenue

Lost And Found 6
LOST—Gray and white male kitty, crooked left ear. Knapp and Taylor Roads. LE 7-8286. 6cft

Wanted To Buy 8
LIST WITH SUBURBAN
Home and Farm Specialists in South End Properties. Two offices open every day and evening for your convenience.

Real Estate 9
COZY home, 10 acres, snuggled in Nature's evergreens. Yours today for \$4,900. \$36 monthly. Call VI 7-7429. 9cft

FERN REALTY
8234 Pac Ave. GR 4-0503
1 ACRE fine Valley Land. Will raise most anything. Neat 3 Bdrm. family home. First class shop, barn, close to Grade & High Schools. Call Mrs. Cummings Gr. 2-7078 or Gr. 4-0503.

Handyman not needed here. 3 Bdrm. Bungalow. Large Liv. Rm., Large Kitchen, Full Basement, Large Det. Garage more special attractions here than when Presley was in town. Have no doubt. Call Mr. Hohn or Mrs. Birklund. LE 1-2983, Gr. 2-4057, your 24 hr. service team.

STORKVILLE Baby Shop
Everything For Baby Including Furniture
Juvenile Furniture
9722 Pac. Ave. LE 7-4664

FERN REALTY
8234 Pac Ave. GR 4-0503

Rentals 10
CABIN FOR RENT—Electric heat, insulated, bath, water and garbage paid, pensioner preferred; very reasonable. Available Nov. 1. P. O. Box 2533 Parkland 44, Washington, VA. Call 7-7429. 10cft

Rental Management
List your rental property with us. Satisfaction is our by-word.
Rental Headquarters for the Suburban Area
SUBURBAN REALTY, INC.
LE 7-8638 or LE 7-6896

Repair Service 11
LAWN MOWER SERVICING
Briggs & Stratton, Clinton, Power Products & Lauson. Engine Parts and Repairs.
PARKLAND CYCLE & KEY
LE 7-6772, 11021 Pacific Ave. 11cft

Automotive 12
1959 FORDS and CHEVROLETS—Wholesale prices; bank terms; SMALLLEY'S MOTORS, 10410 Pacific Ave. LE 7-4060 anytime. Open nights also. 12cft

12A Foreign Cars
- ALL - FOREIGN CAR KEYS
107 Varieties
PARKLAND CYCLE & KEY
11021 Pacific Ave. LE 7-5772

Farm Column 13
WILL pasture horses or cattle. Good pasture. Phone Roy 542. 13cft

BREED your cows artificially to sire service great. Washington Proved Sire Service. Dairy breeds—7 best breeds. Summer UN 3-492, Yelm 3931. 13cft

EASTERN WASHINGTON HAY—By the bale, ton or truck load. J. A. Dove, Phone LE 7-2155. 13cft

DAY or GRUBB SHAVINGS, Shaving slabs and sawdust. SHAVING SUPPLY, LE 7-5757 after 5. 13cft

Work Wanted 14
EXPERT DRESSMAKING. Alterations, designing, restyling and mending. Mrs. Woolard. LE 7-9256. 14cft

Miscellaneous 15
BE A EARLY BIRD and take advantage of this bargain on \$49 at \$2 each week; free home demonstration. Open till 9:00 p.m. UPTON ELECTRIC CO., 1148 Market St., LE 7-2551. 15cft

Ace Dirt Moving Co.
BULLDOZING - DITCHING
GRAVEL - TOP SOIL - SEPTIC TANKS DRAIN FIELDS
1750 9th St. S. W., Puyallup
Phone Puyallup TH 5-2452

Real Estate 9
COZY home, 10 acres, snuggled in Nature's evergreens. Yours today for \$4,900. \$36 monthly. Call VI 7-7429. 9cft

FERN REALTY
8234 Pac Ave. GR 4-0503
1 ACRE fine Valley Land. Will raise most anything. Neat 3 Bdrm. family home. First class shop, barn, close to Grade & High Schools. Call Mrs. Cummings Gr. 2-7078 or Gr. 4-0503.

STORKVILLE Baby Shop
Everything For Baby Including Furniture
Juvenile Furniture
9722 Pac. Ave. LE 7-4664

FERN REALTY
8234 Pac Ave. GR 4-0503

Rentals 10
CABIN FOR RENT—Electric heat, insulated, bath, water and garbage paid, pensioner preferred; very reasonable. Available Nov. 1. P. O. Box 2533 Parkland 44, Washington, VA. Call 7-7429. 10cft

Rental Management
List your rental property with us. Satisfaction is our by-word.
Rental Headquarters for the Suburban Area
SUBURBAN REALTY, INC.
LE 7-8638 or LE 7-6896

Repair Service 11
LAWN MOWER SERVICING
Briggs & Stratton, Clinton, Power Products & Lauson. Engine Parts and Repairs.
PARKLAND CYCLE & KEY
LE 7-6772, 11021 Pacific Ave. 11cft

Automotive 12
1959 FORDS and CHEVROLETS—Wholesale prices; bank terms; SMALLLEY'S MOTORS, 10410 Pacific Ave. LE 7-4060 anytime. Open nights also. 12cft

12A Foreign Cars
- ALL - FOREIGN CAR KEYS
107 Varieties
PARKLAND CYCLE & KEY
11021 Pacific Ave. LE 7-5772

Farm Column 13
WILL pasture horses or cattle. Good pasture. Phone Roy 542. 13cft

SPECIAL VALUES SPECIAL LOW PRICE SPECIAL SPECIAL

Pork
Roastlb. 28c
Sausage \$1.09
Our Own Little Pig 2 LBS.

Fresh Ground Beef 3 lbs. \$1.00

12-oz. Nestle's Morsels 39c
Hunt's No. 303 Potato's 3/37c

6-oz. Nescafe 79c
Pacific Pearl Shrimp 3 Tins 9c

Tastewell
Margarine 5 Lbs. 95c

12-oz. Jar Oysters 47c
Fresh Snapper .lb. 29c

Shurline No. 303 Fruit Cocktail 3/55c
Tail Tins Shurline Milk 2/25c

Bananas lb. 10c
Locker Deal
Cabbage lb. 3c
10-Lb Steaks
Maxwell Western Blend COFFEE 2 Lb. Tin 1 25
5-Lb. Short Ribs
5-Lb. Gr. Beef
Best Foods MAYONNAISEQt. 55c
All for \$14.75

"EVERYDAY QUALITY MEATS WITHOUT THE HIGH OVER HEAD PRICE ATTACHED"

HERMAN'S FOOD STORE
162nd & Park Ave. Spanaway
(Right to Limit Reserved)

Schools 18
NIGHT SCHOOL enroll now. Call MA 7-2181
KNAPP BUSINESS COLLEGE 10th & Pacific 18cft

LEGALS
SUMMONS NO. 141166
IN THE SUPERIOR COURT OF THE STATE OF WASHINGTON IN AND FOR PIERCE COUNTY
TSUYAKO Y. LEWIS, Plaintiff,
vs.
ELWIN LEWIS, Defendant.

LEGALS
SUMMONS NO. 141159
IN THE SUPERIOR COURT OF THE STATE OF WASHINGTON IN AND FOR PIERCE COUNTY
VIRGINIA A. MCCUTCCHAN, Plaintiff,
vs.
KENNETH W. MCCUTCCHAN, Defendant.

LEGALS
SUMMONS NO. 141158
IN THE SUPERIOR COURT OF THE STATE OF WASHINGTON IN AND FOR PIERCE COUNTY
VIRGINIA A. MCCUTCCHAN, Plaintiff,
vs.
KENNETH W. MCCUTCCHAN, Defendant.

LEGALS
SUMMONS BY PUBLICATION NO. 171379
In the Superior Court of the State of Washington in and for Pierce County.
S. Orville Storaasi and Lillie M. Storaasi, husband and wife, Plaintiffs, vs. The heirs at law of W. E. Connor, deceased; Ella J. Connor, if living, or if deceased, the unknown heirs at law of Ernest P. Phillips, deceased; The State of Washington, and all other persons or parties unknown claiming any right, title, estate, lien or interest in the real estate described in the complaint herein, Defendants.

LEGALS
SUMMONS BY PUBLICATION NO. 171379
In the Superior Court of the State of Washington in and for Pierce County.
S. Orville Storaasi and Lillie M. Storaasi, husband and wife, Plaintiffs, vs. The heirs at law of W. E. Connor, deceased; Ella J. Connor, if living, or if deceased, the unknown heirs at law of Ernest P. Phillips, deceased; The State of Washington, and all other persons or parties unknown claiming any right, title, estate, lien or interest in the real estate described in the complaint herein, Defendants.

WINTER TREADS SPECIAL
Nation-wide Guarantee
13.95* 6.70-15
Big, massive, rugged treads to give you more grip—less slip on all types of roads.
Not this... but this! *Plus tax and retreadable tire
LIBERAL BUDGET TERMS
TIRES ARE OUR BUSINESS — NOT A SIDELINE
Ray's TIRE STORES
9639 Pacific Avenue LE 7-7355

REPEATED BY POPULAR DEMAND

KRAFT SHORTNING 3 LB. TIN 49c
SUNNY JIM PEANUT BUTTER 3 Lb. 99c
FISHER'S 40-OZ. BISCUIT MIX 35c

KRAFT MACARONI DINNERS 10c

POT ROASTLb. 39c
7 BONE ROASTLb. 49c
RIB STEAKSLb. 59c
GROUND BEEF . . . 3 Lbs. 89c
FILLET OF RED SNAPPERLb. 29c
JAMES HENRY BACON THICK SLICED..... 2 Lbs. 89c

NORTHWEST SKINLESS POTATOES Lb. 3c
WEINERS Lb. 3c
OR OLD FASHIONED FRANKS 2 Lb. Bag 79c
Gr'n Peppers Ea. 3c

ROUND BONE ROASTLb. 53c
PORK LIVERLb. 19c

BARGAIN BASKET
16618 PACIFIC AVE. South SPANAWAY WASH.

Nalley Reg. or Hot 15-oz. Chili 4 For \$100
Fresh Pacific Med. Size ... Oysters 12-oz. Jar 43c

GOOD LOOKING—GOOD LISTENING!

NEW GE All-Transistor Portable Radio

MODEL P795
200 HOURS PLAY ON LOW COST FLASHLIGHT BATTERIES

90 day warranty on both parts and labor—full one year warranty on portable radio cases.

Beautiful... TRANSISTOR PORTABLES
START \$28.88 AT . . .
YOUR GENERAL ELECTRIC CORNER
WEIL'S
8419 PORTLAND AVENUE LE 7-0231
Open Every Night 'Til 9 p.m., Saturday 'Til 6 p.m.

American Legion News

By Hazel Mackey
Parkland Post and Auxiliary No. 228, American Legion, will meet this (Thursday) evening at Sunshine hall with potluck dinner at 6:30 o'clock. An invitation is extended to organizations and the public to attend and bring a covered dish.

Making their official visits at this time will be 4th District president Mrs. Hans Lemcke and 4th District vice president Mrs. Tony Forrester; also 4th District commander Ed Davis. Anyone interested in joining either the Post or the Auxiliary should make an effort to attend and learn just what the American Legion stands for and its aims and purposes.

Under its ways and means pro-

ject, the Unit members are selling specially packed candy. A rummage sale is also planned; anyone with articles to donate should call the Unit President at LE 7-5505. Everything must be clean and in good condition. The Past President Farley will meet Oct. 29 with Mrs. Arthur Hart as hostess.

Members of the Parkland Unit who belong to the Pierce County Salon No. 220 8 et 40 will furnish the entertainment at a Halloween party Oct. 27.

FINE TRIP EAST

Mr. and Mrs. Fred O. Rud of the Rainier Tractor & Equipment Company of Puyallup flew to Philadelphia to attend the 60th Annual Convention of the National Retail Farm Equipment Association as the guests of the Oliver Corporation. The trip was awarded to the Puyallup firm for sales performance the past year.

Following the convention the Ruds plan to enjoy a Broadway musical in New York City, some sightseeing in Washington, D.C., and visit friends in Wisconsin on their return trip.

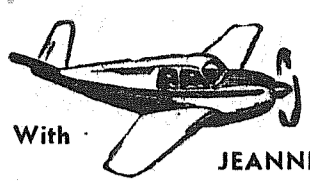
INTERURBAN AUTO FREIGHT INC.

3 Trips Daily
To Parkland, Spanaway
Summit, Midland
GENERAL FREIGHT
MA 7-4121

PAINT VARIETY HARDWARE

Open 7 Days a Week, 7 a.m. - 9
Barsotti & Timm
At the Roy Y LE 7-4221

Flying



With JEANNE

Otto Wicklander and Merle Muxen flew to Ellensburg in Otto's 180 to pick up Merle's 170 he had left there due to bad weather at the passes.

Joe Jackson has purchased a Stinson Station Wagon and is basing it at Spanaway.

Mr. Dickie and Mr. Johnson from Rapid City, S.D., flew into Thun Field in their new fuel injection Bonanza. They are here visiting friends in Taöma.

Dennis Curtiss of Seattle is tying his Aerona Chief down at Thun Field.

Otto Wicklander and Don Abbott flew to Redmond, Oregon in Otto's 180 this past weekend to visit friends.

Martha Mathwig made a dual flight with John Thun to Yakima and return in the Mathwig's 180.

John Overhulse and David Madrid are setting up a new magnaflex shop at Thun Field and are about ready for business.

Ward Clemmo flew to Portland in his 140.

Cliff Johnson has his Aerona Chief back in the air again.

John Thun made a business trip to Portland this past week in his 172.

Reports have it that the cement slab has been poured in the new shop at Thun Field.

Jerry Berkenpas made a dual cross-country trip, with Slim Lawson instructing, to Yakima and return. Jerry then made a solo cross-country to Toledo, Chehalis and return later in the week.

Another dual cross-country training flight was made by Jack Smith Sunday. Jack made his trip to Yak-

ima with return by way of Portland.

Ron and Gary Peters made a trip to Reno, Lake Tahoe and return this last week in Peters' Ercope.

Del Cheney and Art Wing in Art's Ercope and Jack Brown and son Monte in Jack's Pacer flew to Tion Emergency strip where they spent the weekend hunting.

Waller Road . . .
Waller Road Fair Disbands Project

At a final meeting of the Waller Road Fair board, attended by representatives of all organizations of the community, it was decided to disband as an active group.

The money in the treasury was divided equally among the youth groups of the community. Art Weston presided for the session.

GRANGE DEGREES
The 3rd and 4th degree initiation for the Pierce County Granges will be held at Elk Plain hall on the Mountain Highway this (Thursday) evening. Candidates should be there at 8 o'clock. New members for Waller Road Grange include Mr. and Mrs. Dean Howard, Mrs. Douglas Howard, Mrs. Helen Hansen, Miss Lyla Hansen, Miss Sue Farley, Mrs. Hilma Sundquist, Mrs. Anna Russell, Mr. and Mrs. Herb Foss and Donald Rauch.

Sign Painting
"HAVE BRUSH - WILL RUSH"
Board Signs - Truck Lettering
VALLEY SIGN SHOP
7822 1/2 River Road TH 5-4913

Woodland . . .

Howdy Partners Party Nite Due

Tonight, Oct. 22, is party night again for Howdy Partners. Dancing will be from 8:00 to 10:00 p.m. with lunch following. Each couple is asked to bring a pumpkin pie. Coffee and tea will be served by the club. Hosts and hostesses for the evening are Harold and Kathryn Hanson and Charles and Ruth Sienkewich. Hoping to see all round dancers there.

112th St. Boosters

Monday night, Oct. 26, at 8:00 is the monthly meeting of the 112th Booster club, at the Mel Denny home on Grebe Road. President Gordon David will be in charge of the meeting. Anyone interested in the club is welcome to attend.

Girl Scout Dinner

There will be a Girl Scout dinner Oct. 28 at the First Methodist church in Puyallup; everyone welcome. Tickets may be had from any Girl Scout or at the door. Proceeds will go toward maintaining Girl Scout camps and other projects.

Joins Air Force

John A. Seaman, son of Mr. and Mrs. Norman Seaman, left Monday for Lackland AFB, Texas, for basic training.

Wednesday evening Oct. 21 at 8:00 will be Woodland school P-TA

meeting. The program will have Miss Florence Pope, Elementary Co-ordinator of the meeting Schools. The theme of the meeting is "Know Your School" and she will speak on the grading system. The 6th grade mothers will be in charge of the refreshments.

Reporter - Margaret David, LE 7-6668.

Special Meeting

A special meeting of Mile B Water & Power Company will be held Monday, October 26th, 8:00 p.m. at the Collins Grange to vote on the following: A petition, with the required signatures, was received by the Board of Trustees contesting the election of Harley Hornbuckle to the Board by a majority of one vote over Mr. Later and the feasibility of keeping a five member committee to work with the Board. Mrs. Hornbuckle represented the Collins Grange, but Article 4, Section 1 of the By-Laws states that no member shall be entitled to more than one vote. The Board of Trustees was negligent in allowing the misuse of the By-Laws.

FENCING

Designers and Builders
EXPERT WORKMANSHIP
REASONABLE PRICES
Easy Monthly Payments
VAUGHAN'S
84th & Pac. Ave. GR 4-9515

Thursday, October 22, 1959

LEGAL NOTICE

NOTICE TO CREDITORS
NO. 47032
In the Superior Court of the State of Washington for the County of Pierce.
In the Matter of the Estate of Julius A. Richert, Deceased.

Notice is hereby given that the undersigned has been appointed and has qualified as executrix Marie M. Richert of the above entitled estate; that all persons having claims against said deceased are hereby required to serve the same, duly verified, on said Marie M. Richert or her attorneys of record at the address below stated, and file the same with the Clerk of said Court, together with proof of such service, within six months after the date of first publication of this notice or the same will be barred.

Date of first publication, Oct. 22, 1959.
MARIE M. RICHERT,
Executrix of said Estate,
Address 11024 Pacific Avenue,
Tacoma 44, Washington.

Phillip L. Tracy
Peters and Tracy
Attorneys for Estate
11024 Pacific Avenue
Tacoma 44, Washington.
Published in the Times Journal Oct. 22,
29; Nov. 5, 1959.

Teach children fire safety.

GIESE IRON WORKS

Welding & Blacksmith
Ornamental Iron Work
TH 5-8012 Puyallup
4 Miles South on Meridian
Across From Figrove School

General Sheet Metal Work

Special Attention to
Special Equipment
RAU MFG. CO.
Lenox 7-7372
14114 Pacific Avenue

WHY WORRY?

BOOKKEEPING ACCTS.
INSURANCE AND
TAX SERVICES
C. H. COOK
Large or Small Accts.
5411 1/2 Pacific Avenue
PHONE GR 5-1474

DEPENDABLE PHARMACY SERVICE

Bob Vaughan
Owner

WE ARE MOVING
OCT. 25th
1 BLOCK NORTH
TO
11000 Pacific Avenue

Parkland Rexall Pharmacy

Pacific Avenue & Airport Road
Lenox 7-8636

INTEGRITY • SERVICE • SAFETY

SHOP THIS WEEKEND AT SEYMOUR'S



Specials for Thursday, Friday, Saturday, Sunday

Girls' Hooded Car Coats
The season's best buy! Popular new style car coats that are sanforized, guaranteed washable, water repellent! Zipper hood, slash pockets, quilted lining. Girls' sizes 10 to 18 in red, black, turquoise or beige.
Seymour's Low Price!
4.99

Women's Terry-Knit SHIRTS
Reg. 2.98 **1.49**
Good, heavy quality terry-knit sweatshirt style with hood. 2 pockets, knit wrists. Sizes 12 to 20.
Childs 6 to 10 \$1.00
Reg. 2.49, Also . . .

Women's BRAS
"Royal Lady" cotton bras, with circular stitch cups, adjustable straps. Sanforized. 32 to 40, A, B, C cups.
2 For 88c

Girls' Durable Plastic Rain Coat and Hat
ONLY **1.99** Set
Choose in yellow, white, blue! Smart heavy weight plastic raincoats with snap front, corduroy collar. Sizes 4 to 14. Hats included at our low price!

Childs' Boxer-Waist LONGIES
with Flannel Lining
Sanforized blue or red poplin, with colorful flannel lining. Elastic boxer-style waist. 1 to 6X. Reg. 1.49.
1.19

Misses Black Flatties
Trimly styled flatties so popular with all ages! Choice of two styles, in black, sizes 4 1/2 to 9.
REG. 2.98
1.99

Men's 2-Piece Thermal Shirts AND DRAWERS
Insulated lightweight fabric, with nylon reinforced neck. S, M, L, Ex. L. sizes, in white or ecru.
1.69 Each Pc.

Boys' Pile-Lined Winter Jackets
Water repellent Zelantreated jacket, with luxurious pile lining. 2-way knit collar and cuffs. Sizes 4 to 12 in beige, blue, charcoal, red.
Special!
7.98

Men's Part Wool BOOT SOCKS
Regular 49c Pair . . . **3 Pcs. \$1.00**

Women's Broadcloth Blouses
Large assortment of styles, colors, in short or roll-up sleeves. Sizes 32, 34, 36, 38.
Reg. 1.00 **88c**

SEYMOUR'S
FAMILY DEPARTMENT STORE
Shop Daily 9:00 to 9:00-Sunday, 10:00 to 6:00
9714 Pacific Avenue One Block North of Park 'n Shop

WOW!!
GROUND BEEF PURE - FRESH HOURLY
3 lbs. 87c

TENDER SIRLOIN OR RIB Steaks lb. 69c

| | | | | | |
|---|------------|---|------------|--|--------------|
| Big, Fat, Juicy FRANKFURTERS OR Hormel's Large, Piece BOLOGNA Lb. | 39c | Armour's Star LIVER SAUS. Lb. | 39c | Armour's Crescent Sliced Bacon Pound | 3/\$1 |
| Armour's Star Picnic HAMS Lb. | 33c | Tender, Baby Beef LIVER Lb. | 39c | VET'S - 5-Lb. 49c DOG FOOD 10-Lb. | 98c |

KITCHEN'S OFFERS FINER FOOD VALUES
LIBBY'S Frozen
MEAT PIES 5/\$1.00

COFFEE FOLGER'S
2 Lb., \$1.29 Lb. **65c**

TUNA FISH Sno-Mist Flats **5/\$1.00**

MARGARINE Tastewell Pound **15c**

| | |
|---|---|
| LARGE "AA" SHINN'S EGGS doz. 49c | LIBBY'S FROZEN ORANGE JUICE 12-Oz. 2/89c 4/\$1 |
| CAMPBELL'S TOMATO SOUP 3/29c | TASTEWELL Gr. Style Corn Beans & Peas 8/\$1.00 |

| | |
|--|--------------|
| HUNT'S TOMATOES 2 1/2 Size | 3/85c |
| ROSEDALE PEARS 2 1/2 Tins | 33c |
| DURKEES MAYONNAISE Freezer Jar | 49c |
| SUNSHINE ORBIT CREME SANDWICHES Pkg. | 39c |

OPEN SUNDAYS
KITCHEN'S
EVERYDAY LOW PRICES
Right to Limit
Open 9 a.m. 'Til 10 p.m. Daily
10 a.m. 'Til 9 p.m. Sundays
PRICES EFFECTIVE THURS., FRI. & SAT. 12208 Pacific Ave.

| | | |
|---|------------|---|
| FIRM - RED RIPE TOMATOES Lb. | 19c | RED DELICIOUS APPLES C GRADE 23-LB. BOX \$1.39 |
| SWEET & TENDER CABBAGE Lb. | 4c | |



ONE DOLLAR

DOLLAR DAYS

at
PIGGLY WIGGLY

EAT BETTER FOR LESS!

OPEN DAILY 9 A.M. TO 10 P.M.

- NALLEY'S MILD OR HOT **CHILI CON CARNE** 4 15-OZ. CANS \$1
- CHIFFON—ASSORTED COLORS **FACIAL TISSUE** . 5 PKGS. OF 400
- SWIFT'S SPAGHETTI AND **MEAT BALLS** ... 3 24-OZ. CANS
- DOXSEE'S—Manhattan or New England **CLAM CHOWDER** 4 NO. 1 CANS

DOLLAR DAYS SPECIAL!

STOKELY'S Finest Whole Kernel or No. 303 Cans
CREAM CORN 6 \$1

STOKELY'S Finest French Cut or Whole No. 303 Cans
GREEN BEANS 5 \$1

Shop **PIGGLY WIGGLY**

OPEN EVERY DAY FROM 9 A.M. TO 10 P.M.

DOLLAR DAYS SPECIAL!

STOKELY'S FINEST FRUIT NO. 303 CANS
COCKTAIL 4 \$1

VAN CAMP'S TOMATO 14-OZ. BOTS.
CATSUP 6 \$1

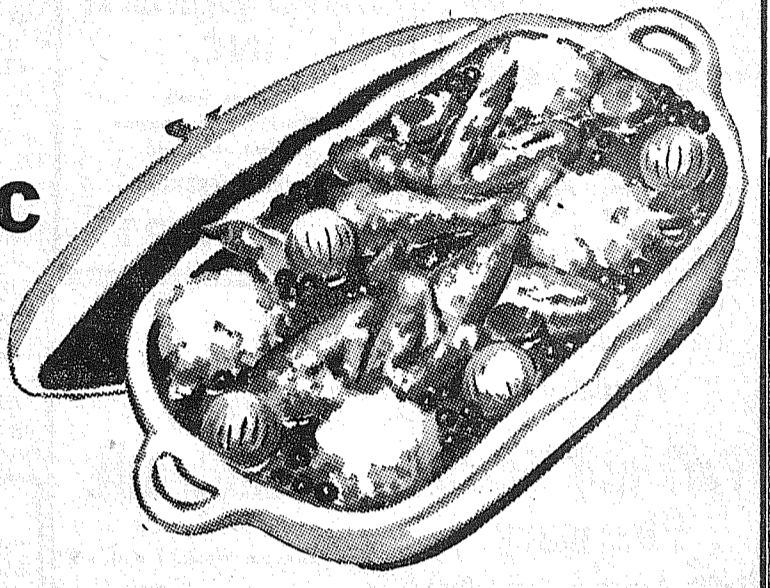
Shop **PIGGLY WIGGLY**

STEWING CHICKEN

• Armour Star, Fresh Washington Grown . . . Cut-Up Ready to Prepare With Dumplings

29^C

POUND



LEG O' PORK ROAST

SHANK HALF OR PORTION LB. **43^c**

BUTT HALF OR PORTION LB. **47^c** CENTER CUTS LB. **53^c**

STEAK SALE!

Aged Grain-Fed Beef, Guaranteed Tender

U.S. GOOD SIRLOIN STEAK OR **ROUND STEAK FULL CUT** LB. **89^c**

U.S. GOOD SIRLOIN TIP STEAK OR **T-BONE STEAK** LB. **98^c**

VARIGOLD AA SWEET CREAM

Butter 1-LB. PRINTS OR QUARTERS **59^c**

OFFEE HOUSE—DRIP OR REGULAR

COFFEE 1-LB. CAN **49^c**

SWANSON TV BRAND CHICKEN, TURKEY OR BEEF DINNERS! YOUR CHOICE . . . EA. **49^c**

No Work Before...No Dishes After!

DOLLAR DAYS SPECIAL!

VAN CAMP'S **PORK & BEANS** 5 No. 2 1/2 CANS \$1

STOKELY'S FINEST SECTIONS **GRAPEFRUIT** 4 No. 303 CANS \$1

STOKELY'S FINEST **APPLESAUCE** 6 No. 303 CANS \$1

Shop **PIGGLY WIGGLY**

DOLLAR DAYS SPECIAL!

STOKELY'S FINEST **RED CHERRIES** 4 No. 303 CANS \$1

STOKELY'S FINEST **SHELLIE BEANS** 5 No. 303 CANS \$1

PINEAPPLE-GRAPFRUIT **PING DRINK** 4 27-OZ. CANS \$1

Shop **PIGGLY WIGGLY**

MAMMOTH CHEESE SALE National Seafood Week Features

WISCONSIN SHARP, REDSKIN **CHEESE** lb. **59^c** SAVE 20c PER POUND

FRESH SALMON By the Piece lb. **43^c**

RED SNAPPER Fresh Fillets lb. **29^c**

PLYMOUTH—1-LB. QUARTERS

MARGARINE . **6/1**

BIRDSEYE FRESH FROZEN

JUICE ORANGE 4/89^c

6-OZ. CANS

LARGE GRADE "A"

EGGS DOZ. **45^c**

NALLEY'S—QUART JAR

MAYONNAISE **49^c**

BLUE BELL POTATO

CHIPS Reg. 69c BOX **59^c**

HILLS BROS.—DRIP OR REGULAR

FLOUR HARD 10-LB. BAG **89^c**

WHEAT

HILLS BROS—DRIP OR REGULAR

COFFEE 2-LB. 1-LB. CAN **59^c**

CAN 1.17

SPECIALS—FIFE HDWE. DEPT.

ATTENTION BRICKLAYERS

We Carry Goldblatt Tools and American Levels
Sizes 18", 24", 36", 42", 48"

BINDER TWINE 5-lb. Ball **1¹⁹**

BINDER TWINE, BALE 10.45

APEX PAINT Gallon **2⁶⁹**

LATEX BASE FLAT, WASHABLE

RAW BONE MEAL 10-lb. Pkg. **69^c**

REDEEM YOUR COUPONS NOW ON...

LUX LIQUID ECON. SIZE **70^c** WITH COUPON

PRAYSE 2 BATH 38c 2 Reg. Bars **28^c** WITH COUPON

all 3-LB. PKG. **71^c** WITH COUPON

IMPERIAL 1-LB. CTN. **33^c** WITH COUPON

HANDY ANDY QUART **66^c** WITH COUPON

BANANAS

GOLDEN RIPE **13^c** POUND

AVOCADOS Salad Favorite ea. **10^c**

CABBAGE Fresh Solid Heads lb. **5^c**

APPLES Red Delicious, Extra Fancy lb. **12^c**

PARD DOG CRUNCHERS 8 1/2-lb. Bag **98^c**

SWIFT'S CHOPPED BEEF STEAKS 12-oz. Can **59^c**

Favorite Shortening CRISCO 3-lb. Can **79^c**

Open Every Day 9 A.M. to 10 P.M.

Prices Effective Thurs., Fri., Sat., October 22, 23, 24

BUTTER RING CAKE REG. 93c, SPECIAL **81^c**

2-LAYER CAKE PLUM TORTE, REG. 1.05 **93^c**

BUTTERHORNS REG. 4 FOR 39c **4 FOR 33^c**

Van de Kamp's BAKERIES

Piggly Wiggly

PUYALLUP 1010 EAST MAIN

PARKLAND PACIFIC AT GARFIELD

40th and Portland Ave. TACOMA

SO. TACOMA 5252 SO. WASHINGTON

FIFE FORMERLY ANDRE'S MARKET