

AN
2
P5

DEC 4 1969

PACIFIC LUTHERAN UNIVERSITY

P. O. Box 100
Tacoma, Wn., 98407

Pierce County Herald and

The TIMES JOURNAL

Vol. 25 No. 48 49

December 4, 1969

Single Copy
15¢

In Our Opinion

Firefighters Deserve Special Thanks During Holiday Season

During the holiday season when thoughts are generally centered on gifts, feasting, and reunions, little is said or written about those who unselfishly give their time as volunteer firemen.

Throughout the year, most county fire departments hold once a week training drills in addition to being called out all hours of the day or night to fight a blaze or administer resuscitation to a heart attack victim.

It is comforting to know there are men in the community who stand ready to interrupt their personal lives to help a neighbor. Should a fire call come at a time when gifts are about to be opened, or as turkey dinner is being served, it is answered and without hesitation.

Since fire is always a serious threat to householders this time of year, it might be well to pay special attention to fire prevention tips suggested annually by local fire departments. By doing so, the householder might not only save himself a tragic holiday experience, but will give his volunteer firemen an uninterrupted day with their families.

And while we are handing out accolades to our local fire departments may we make this suggestion. Why not include your fire department on your Christmas Card mailing list with a note of thanks.

Herb Gelman Hailed As "Merv Griffin"

We would be remiss not to congratulate Franklin Pierce School Board member Herbert Gelman who received statewide recognition during the recent Washington State School Director's Association Conference in Spokane last weekend.

Gelman was billed as the "Merv Griffin of the WSSDA" for his skill in moderating a discussion panel December 2 composed of Bircher Larry Abraham; WEA President-elect Mrs. Jackie Hutcheon, and British Columbia School Trustee Prexy James Campbell.

Pierce Board Resolution Passes

The Franklin Pierce School Board Resolution asking for clarification of religion in public schools passed the State School Director's Association by a unanimous vote.

It requests President Richard Nixon to appoint a study commission for the purpose of re-examining and expressing contemporary meanings for those parts of the First Amendment to the Constitution which pertains to religion and relates to education.

Telephone Rates To Increase

L. M. Maxon, Tacoma District telephone manager, said today that residence telephone rates here will be increased from \$6.00 to \$6.55 per month for one-party service; from \$4.90 to \$5.15 for two-party service; from \$4.05 to \$4.25 for four-party service; all less local tax.

Business rates will be increased from \$15.50 to \$17.00 per month for one-party service; from \$7.75 to \$8.50 for one-party measured service; all less local tax.

The service installation charge for residence service will be increased from \$7 to \$10, and for business from \$15 to \$20 per main line. The move and change charge will be increased for both business and residence customers from \$5 to \$7.

A charge of 20 cents per call will also be made for station-to-station calls when they are placed "collect", "charge to third number" or when "time and charges" are asked.

Under the new tariff a charge of 50 cents per month will be made for telephone numbers not published in the directory, and charges for additional listings will increase from 75 to 85 cents per month for business customers and from 35 to 40 cents per month for residence customers.

The new rates will go into effect on December 1 if approved by the Washington Utilities and Transportation Commission.

Other nearby towns affected by increased business and residence service rates:

	1 Party		Message Rate		4-party		suburban	
	old	new	old	new	old	new	old	new
TACOMA								
bus.	15.50	17.00	7.75	8.50
res.	6.00	6.55	4.90	5.15	4.05	4.25
ASHFORD								
bus.	6.75	8.25	5.50	6.50	4.25	4.75
res.	4.10	4.40	3.35	3.60	2.85	3.05	3.10	3.30
GRAHAM								
bus.	16.25	17.75	8.25	9.00	6.50	7.00
res.	6.50	7.05	5.30	5.55	4.35	4.55	4.60	4.80
PUYALLUP								
bus.	15.50	17.00	7.75	8.50	6.00	6.50
res.	6.00	6.55	4.90	5.15	4.05	4.25	4.30	4.50
ROY								
bus.	17.00	18.50	8.75	9.50	6.75	7.25
res.	7.00	7.55	5.65	5.90	4.55	4.75	4.80	5.00
SUMNER								
bus.	15.50	17.00	7.75	8.50	6.00	6.50
res.	6.00	6.55	4.90	5.15	4.05	4.25	4.30	4.50

.... Service not offered

Loveland Mutual Proxy Votes Support Sale

A landslide of proxy votes overwhelmed the voice of dissent to give Loveland Mutual directors the membership approval needed to dissolve the company and sell its assets to the City of Tacoma.

Those casting ballots at the meeting opposed dissolution 2-1, however stacks of proxy votes changed the tide to an unofficial conclusion of 826 For and 149 Against. Approximately 641 members declined to vote. Results of those voting during the meeting was 99 Against, 42 For.

Commenting on the election, Paul Boyle attorney for Spanaway Water stated that the fact there was considerable yes vote dropoff from the previous election indicates many members had changed their minds.

A number of members had paid \$150 for their memberships, while others paid only \$15, Boyle said. Yet everyone is receiving the same amount, he pointed out saying, "Somehow, this doesn't seem fair."

The election results are expected to be made official by press time. The remaining hurdle facing the directors is a court test in early 1970.

Jaycee's Sponsor Christmas Award

This year for the first time in our local area residents will have the opportunity to compete with their neighbors throughout the greater Parkland area to see who decorates their outside surroundings the best.

The Parkland Jaycees will judge and then award a plaque to the home deemed the most beautiful in the greater Parkland area. If you wish to enter your home in the contest or if you think your neighbors is really sharp, just phone in your name and address or your neighbor's for them.

The following two phone numbers will take the information: Mrs. Isley — LE 1-7743 or LO 4-5092, Mrs. Reinke. Entries can also be sent into the Christmas Decoration Contest, Parkland Jaycees, P.O. Box 2071, Parkland, Wash. 98444.

Judging will be held on two evenings around the third week in December so entries must be made prior to that time.

F-P Ski School To Register

The second annual Franklin Pierce ski school is now accepting registration from students in the Franklin Pierce School District. Skiing is scheduled to begin Jan. 10 at Crystal Mountain.

Students in grades five through twelve are eligible to take part in the eight week instruction, according to Richard Larson, ski school director. However, he said, all those who sign up must attend a mandatory equipment check meeting Jan. 5 at 7 p.m. at Franklin Pierce High School.

Registration for the school will continue until Dec. 10, but enrollment is limited to



Pacific Lutheran University's Lucia Bride finalists await the traditional Swedish ceremony during which one of them will be selected Queen of Light at PLU. They are from left, Karen Larsgaard, Sumner; Rochelle Rysanek, Tacoma; and Jan Morsman, Battleground, Wash. The 23rd annual Lucia Bride ceremony at PLU will be held in Eastvold Auditorium Friday, Dec. 5, at 8:15 p.m., with a reception following in Chris Knutzen Fellowship Hall.

Altrusa Donates To Vocational Ed

The Parkland Area Altrusa Club has recently presented a check for \$200.00 to the Clover Park Vocational Technical Institute to be used for loans and grants to deserving students, according to Mrs. Betty Mauermann, advisor to the school's student council.

The funds were made available through the Altrusa Club's Founders Fund Vocational Aid Project (FFVA) which was established in 1952 by the Altrusa International Foundation, Inc. Clubs throughout the nation make similar awards to schools for purposes of assisting (primarily) women to become employable or to increase their employability. Awards are not made for college degree education.

According to Mrs. Mauermann, the funds are a welcome addition to the heretofore limited financial aid available to Clover Park Vocational Technical students. She said she anticipates now that many students who need only small amounts to meet school obligations will be able to remain in school to further their vocational objective.

Ted F. Cooley, Coordinator Public Relations



CHURCH SALE. Leon Wayt (left) and Fred Rupe show off some of the merchandise Summit Methodist Church has lined up for a "Progressive Garage Sale" to be held at four locations 9 a.m. until 4:30 p.m. Saturday, December 6.

Legion Buys Building

Parkland Post 228 and its Auxiliary are pleased to announce that they have at last purchased a building to be used as a meeting hall for the Post. The building is located at 111th and So. Yakima.

Post 228 will hold its regular meeting at Sunshine Hall on Dec. 8, and urges all members of the Post to attend. As a special order of business at this meeting there will be the formation of a building corporation to handle the affairs of the new building.

The Legion's annual Christmas party for members and friends will be held Dec. 15th, at Sunshine Hall, time 7:30 p.m.

There are many ways the members of Post 228 can be

of help to our Veterans who are returning from service to our country. Come to the meetings of the Post and help promote those services.

REO Schedule

During the week of December 8th the Rural Employment Office will be at the following locations:
December 8 — Buckley, TB&M Thriftway Parking Lot.
December 9 — Burnett, Chesley Store.
December 10 — Wilkeson, Main Street.
December 11 — Carbonado, School.
December 12 — Summit View, Thriftway, 5309 East 112th St.

LEWIS LLEWELLYN

Reduce Crime by This Method?



A "task force" of 14 members, headed by UCLA psychologist Evelyn Hooker, has hit upon a way to lower our constantly increasing crime rate.

The crime rate, as you already know, has been skyrocketing, year by year.

Stores are being closed in some cities because they have been robbed so many times that the managements have decided that it is no longer worthwhile to take the risks of doing business in those places.

The declining level of general morality in the country is a cause of concern among national leaders.

But now the "task force" has the answer to a way to decrease crime in at least one category—immoral acts between members of the same sex, known as homosexual crimes.

Eliminate This Crime

The remedy for the situation, the group suggests, is to legalize such acts, when committed by consenting adults in private.

This method of lowering the crime rate has fascinating possibilities.

The next step might be to make adultery legal, when committed by consenting adults in private.

Already it has been suggested that the use of marijuana be legalized, thus doing away with another class of crime.

In Denmark, they have eliminated completely the crime of publishing and selling pornographic literature by the simple expedient of legalizing this type of activity.

In this country, we are moving in the same direction.

Are there any other laws that you would suggest we might do away with, in decreasing the incidence of crime?

Or do you favor, instead, holding to the laws that we have and enforcing them, so that decent people may have a decent country in which to live and bring up their children?

Immorality—and especially homosexual acts—characterized the city of Sodom just before it was destroyed by fire because of its wickedness.

Should We Take This Course?

Here is what the Bible says about homosexuals, referring particularly to some in the past who practised this vile sort of immorality, but recording these thoughts for our admonition and instruction.

"For this cause God gave them up unto vile affections, for even their women did change the natural use into that which is against nature. And likewise also the men, leaving the natural use of the woman, burned in their lust one toward another, men with men working that which is unseemly, and receiving in themselves that recompense of their error which was meet.

"And even as they did not like to retain God in their knowledge, God gave them over to a reprobate mind, to do those things which are not fitting—being filled with all unrighteousness, fornication, wickedness, covetousness, maliciousness."

Is this the course which you think we should follow?

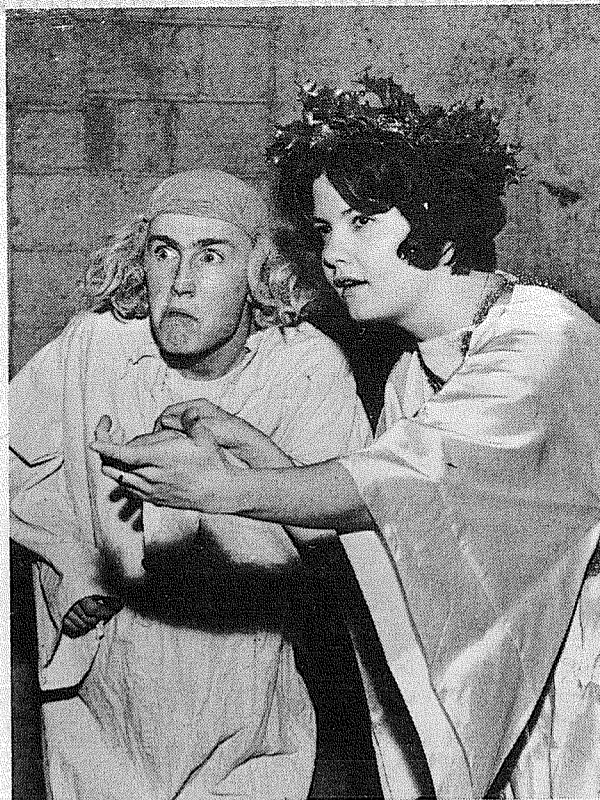
Parkland Lions Eye Holidays

December is here, and the days are rapidly clicking off until the arrival of Christmas once more. For the Parkland Lions, this means work, plenty of it, manning the Xmas tree sales yard at the Piggly Wiggly Store, Garfield and Pacific. Since most of the Lions are business or professional men, getting time away from the job at this most particularly busy time of the year, is difficult, to say the least. However, some way or another, most of them will find time to serve their shifts, be it one or several, during the period from December 13th to December 24th.

Other than earning what they can through the tree sales to assist with community services in the area, the club will be interested in bringing whatever Xmas cheer and help they can, in the local area.

It is only fitting at this time, to thank the Times Journal for their very much appreciated publishing of our monthly Lions news. Also, the Lions would like to thank all those good people who through their patronizing of Lions sales and projects, have helped us to make this just a little bit better community in which to live.

By Lion Ben. F. Potter



Lynn Hatcher, portraying the Ghost of Christmas Past, points out to a distressed Ebenezer Scrooge the evils of his former ways during rehearsals for next Wednesday's performance of Dickens' "Christmas Carol" at Pacific Lutheran University. Bill Hope plays Scrooge in the production, which will be held in Eastvold Auditorium at 8:15 p.m. Tickets are available at the door.

Traffic Deaths Catastrophe

SEATTLE, Nov. 29 — If every man, woman and child living in Yakima or Everett was killed or injured as the result of a major catastrophe, the people of Washington State would be aghast at the horror of the tragedy.

Yet, using the last official census and state reports as a basis for comparison, something quite similar to such a catastrophe actually did occur.

Enough people were killed or injured as a result of motor vehicle accidents in Washington last year to affect more than the entire population of Everett or Yakima.

I.I.I. noted that 930 deaths occurred on Washington highways last year and 49,446 people were injured in the same senseless manner. The population of Yakima in 1960 was 33,284 and Everett was 33,849 — both well under the 50,376 total number killed or injured on Washington highways.

According to the Insurance Information Institute, this highway tragedy has apparently failed to alarm the public because it kills and injures one-by-one and two-by-two, in scattered accidents here and there across the entire state.

What this pattern of auto crashes signifies — besides human suffering and economic waste — is rising automobile insurance rates, the I.I.I. pointed out.

Automobile insurance premiums are directly affected by the number and severity of accidents in which insured autos are involved.

Methodists Hold Sale

Summit United Methodist Church will hold a progressive garage sale 9 a.m. until 4:30 p.m. Saturday, December 6 in four locations.

The sale will be held at Summit Feed Co., 104th and Canyon; 4020 East King Street; 4409 East 96th; and 4920 East 104th. Antiques, old bottles, a movie projector, dishes, tires, lawn mowers, a walking tractor, furniture, typewriter, and assorted baby items are a few of the items to be offered for sale.

Pierce District Basketball Registration

Registration for boys' and girls' basketball will be held Saturday December 6 at Morris Ford and Keithly Junior High Schools.

Fifth grade boys will register at 9:30 a.m., Sixth grade boys at 10:30 a.m., and Seventh grade boys at 11:30. Fifth and Sixth grade girls will register at 12:30 p.m., while registration for Seventh and Eighth grade girls will be at 1:30 p.m.

Teams will play 3 Saturdays in December, 4 Saturdays in January, and 4 Saturdays in February. Registration fee is \$2.50.

Winslow Homer Art Displayed

Prints of wood block engravings by Winslow Homer will be on display at the Midland and Roy branches of Pierce County Library next week.

Long considered one of America's master painters in both oil and transparent watercolors, Winslow Homer, who lived from 1836 to 1910, had another less known career as a wood block designer. The prints now being shown in branches of the county library date from 1857 to 1875, and are printed in black and white from the original wood blocks. They first appeared in such publications as Harper's Illustrated Weekly, Ballou Pictorial Drawing Room Companion, and Appleton's Journal.

The prints are from an exhibit sponsored by the Washington State Library and State Capitol Museum, with technical assistance from the Washington State arts Commission. They will be displayed in the branch libraries for two weeks.

Bethel Recreation Casaba Schedule

Bethel Recreation

Monday marked the annual opening of Bethel's winter recreation basketball program.

Eight gymnasiums will be used for a ten-week basketball program which will include both boys and girls.

On January tenth league play will begin for those youngsters interested in team play and competition.

League play will be held at both the high school and the junior high on Saturday mornings from January tenth through February twenty eighth.

GYMNASIUM	SUPERVISOR	DAY	TIME
Clover Creek	Dwight Williams	Tuesday	6:00-9:00
Elk Plain	Wally Platt	Thursday	6:30-9:30
Kapowsin	Dick Hansch	Monday	6:30-9:30
Roy	Mike Nelson	Tuesday	6:00-8:00
Spanaway	Dick Krause	Monday	6:30-9:30
Thompson	Al Reitin	Thursday	6:30-9:30
High School	Hal Madison	Thursday	6:30-9:00
Junior High	Bob Kain	Daily	4:00-5:00

The high school program will be for High School students and adults only.

Pierce County Herald and
The TIMES JOURNAL

Published weekly at 14620 Pacific Ave., Parkland 98444 and delivered by U.S. Mail and carrier to subscribers. Publishers: Pierce County Publishers, Inc. LE 7-0223 News and Advertising Deadline: Tuesday Noon Subscriptions \$4.00 per year, \$2.50 six months, or 40¢ monthly by carrier. News stand price 15¢ copy.

Qualified as a legal publication under Chapter 213 of the Legislature Acts of the 1941 regular session of the State of Washington.
Second Class Postage Paid at Tacoma, Wash.

Vol. 25 No. 48 December 4, 1969

INSURANCE
Military - Home - Business

LE 7-4904

Auto Fire Life Bonds
IRENE CLEMENS
Agency — Parkland
10329 Pacific Ave.

TACOMA'S PRO SKI SHOP

SKI FASHION AND SKI EQUIPMENT

1st STOP FOR THE SKIER

OTHER PACKAGES AVAILABLE

SKI PACKAGE No. 1
Nordica Buckle Boots, Step-in Bindings, Tyrolia Skis, 28 Lamination... **\$69.95**

NO INFERIOR BINDINGS

• Bank Cards • Layway • Eves 'til 9 P.M.

PARKLAND Sports CENTER
1122 PACIFIC AVENUE TACOMA, WASHINGTON PHONE LE 7-5677

Use the Want-ads — It Pays
LE 7-0223

GIFT SUGGESTIONS

- ★ Decorator Bedspreads
- ★ Shower Curtains
Many Styles - Plains and Prints
- ★ Decorator Pillows
Pillows galore and many more From \$1.50. Velvets - silk fur novelties. Select now for better choice.
- ★ Framed Wall Pictures
Famous Prints
- ★ Wall Mirrors-Carved Frames

NEW LOCATION SHADLES 111 West Main Puyallup TH 5-6856

Across from Liberty Theater
Draperies Samples - Estimates in Your Home By Appointment

We Specialize in Custom Drapes

U.S.D.A. CHOICE
BLADE-CUT
POT ROAST
44^C
lb

EXTRA-LEAN
GROUND BEEF
44^C
lb

FANCY
BAKING HENS
44^C
lb

MILWAUKEE
BEEF-N-CHICKEN
12-oz.
WIENERS
44^C
Pkg.

LEAN and MEATY
BEEF
SHORT RIBS
44^C
lb

This Week's Low, Low Meat Prices

POT ROAST <small>Center Cut</small>lb.	59¢	STANDING RIB ROAST.....lb.	97¢
ROUND-BONE POT ROAST.....lb.	69¢	RIB STEAK.....lb.	1.19
BONELESS CROSS-RIB ROAST.....lb.	98¢	CLUB STEAK.....lb.	1.29
BONELESS CHUCK STEAK.....lb.	79¢	BOILING BEEF.....lb.	27¢
BONELESS BEEF STEW.....lb.	88¢	FISHSTICKS.....lb.	59¢

HI HO'S OWN
PORK SAUSAGE
ROLLS
44^C
lb

½ GAL. HI HO ICE CREAM	59^C
3½-LB. KRUSTEAZ PANCAKE MIX	59^C
NALLEY'S LUMBERJACK SYRUP 24-OZ.	39^C
LARGE GRADE "AA" EGGS	59^C
TREESWEET FROZEN ORANGE JUICE 6-OZ.	7^F FOR \$1
HI-HO EVAPORATED MILK	7^F FOR \$1
38-OZ. DUCHESS PEANUT BUTTER	89^C
WAGNER'S FRUIT DRINKS	4^F FOR \$1
MASCOT DOG FOOD	14^F FOR \$1



WE HAVE A LARGE SELECTION OF GIFTS FOR EVERY MEMBER OF THE FAMILY.

REG. 19.95 SCHICK HOT LATHER DISPENSER	15⁹⁵
REG. 1.05 CREST	59^C
REG. 1.00 MENNEN GIFT SET	59^C
REG. 83¢ HALO HAIR SPRAY	39^C
REG. 69¢ PEPSODENT TOOTHBRUSH	19^C

PRICES EFFECTIVE NOW through DEC. 6TH

NEW CROP
Sunkist Navel
ORANGES
10^C
lb

Fresh Oregon
CABBAGE
10^C
lb

Oregon
WALNUTS
39^C
lb

LE 'ANDRES
Bleu Cheese
DRESSING
16-OZ. JAR
69^C

WOMEN'S WORLD

the Second Forty
by Margaret Brookfield

A FORUM ABOUT MATURE WOMEN

Tacoma Man Comments

Dear Miss Brookfield:

Just a word on the problem of the New Jersey woman who keeps dozing off while watching television. I probably should not be butting in, as yours is a women's column and I am a man. But I thought the husband in this case was a bit selfish, getting angry when his wife fell asleep while watching television. If this happened to my wife, I would just go over, give her a little kiss and let her rest. Many people have a difficult time falling asleep. I am one of them. I wish I could doze while watching television but I can't. I say: let this wife sleep, as long as her husband wakes her up in time to go to bed.

D.F., Tacoma, Wash.

Dear D.F.:

With more kind and understanding husbands like you, there would be a lot less marital friction in this world.

P.S. We always welcome male opinions.

Widow's Children

Dear Miss Brookfield:

I am a widow doing my best (I hope) to provide a stable home for my teenage daughter and 10-year-old son. I am employed full-time and hate to come home to constant bickering between the children. I am an easy-going person and the children take

advantage of me. I joined Parents Without Partners, but it is difficult for me to break into a group. I was widowed almost five years ago. I am tired of a routine that consists of just eating, sleeping, and working. I am 45, bored with women friends, and yet all the men I meet disgust me. Can you offer any advice? I would return to school, but can't be away from the children both day and night. We are all having a difficult time adjusting.

L.E., Chicago, Ill.

Dear L.E.:

There are no easy solutions for a widow trying to care for children, earn a living and cope with the problem of being alone. You cannot be both a mother and father to the children — just being a good mother is difficult enough under the circumstances. At times you may feel cheated or envious of other women. You may even yearn for a way to escape your burdens. Your wish to attend school nights may be just such an "escape" plan. You may feel guilty about admitting these feelings but they are perfectly normal.

The real problem confronting women in your situation is either letting the children know they are a burden or masking guilt feelings by being overindulgent. The wise mother avoids both courses. You can't spare the children from a fatherless home but you can make it up to them

Thanks

The Parkland Methodist Junior High Sunday School Class wishes to thank the people in the Parkland area who contributed to the Thanksgiving Dinner drive on Sunday, November 23. The response was overwhelming and because of your generosity several families in the Parkland area enjoyed a Thanksgiving dinner that would not have been possible otherwise.

with love and understanding. Scolding won't hurt them, if you provide the warmth and support they need.

Children react to the death of a parent in different ways. The age of the child at the time of the parent's death is one factor, but not necessarily the only one involved in the child's emotional reactions. The surviving parent's attitudes and decisions have a great deal to do with the child's ultimate adjustment. Subconsciously, many children feel guilty over the death of a parent, viewing it as an abandonment for which they hold themselves responsible.

We would suggest that you contact a family counselor, through religious or school affiliation or community resources. The counselor will need to know a good deal more than the scanty details provided in your letter. But you will gain insight into yourself and the children and, hopefully, achieve a healthy adjustment to the situation.

Have you a problem as a mature woman, or with one? For advice and help, write to Margaret Brookfield, Information Center on the Mature Woman, 3 West 57th Street, New York, N.Y. 10017.

Advent Social At Trinity

Trinity Lutheran Church Women will close their year of activities with an Advent-Christmas Social to be held on Sunday, Dec. 7 at 3 P.M. in the Fellowship room of the church. The men of the church are invited to join the women for this event. Tea and coffee with refreshments will be served from three to three-thirty after which a delightful program will be presented. The program will feature Mrs. and Mrs. Carol Kastle who will tell us about their two years just spent in Nigeria, especially Christmas customs observed there. Special music will be presented by Mrs. David E. Enarson accompanied by Mrs. Erling Thompson. A mothers' chorus made up of women of the church will sing, directed by Mrs. Clifford Olsen and accompanied by Mrs. Emil Johnson. During the singing of their last number, a consecration number, the new officers of the organization will be installed. They are Presi-

Church Hosts Dinner

Friday, Dec. 5, from 5-7 p.m. The Roy Community Congregational Church will be the scene of the annual turkey dinner. It is being prepared by the Evening Guild. Ladies Aid will also participate with Bazaar items for sale. The public is invited.

dent - Mrs. David Olsen; Vice President - Mrs. George Wise; Recording Secretary - Mrs. Walter Galusha; Corresponding Secretary - Mrs. Albert Schimks; Treasurer - Mrs. Richard Colburn; Assistant Treasurer - Mrs. Lyle Feller; Secretary of Education - Mrs. Robert Winters; and Secretary of Stewardship - Mrs. Floyd Beers.

Guests will be greeted by Mrs. Robert Olsen, Mrs. Carl Fynbee, and Mrs. Mikkel Lane.

Decorations are in charge of Mrs. Kelmer Roe and Miss Ida Morken, and the kitchen committee is in charge of Mrs. John Holmes.

Hostesses are the members of the Lois and Hannah Circles and the program is in charge of the Rachel, Rebecca and Ruth Circles.

Good Samaritan Hospital

Mr. and Mrs. Gary Bone, Rt. 1 Box 472, Graham, boy, Nov. 20.

Mr. and Mrs. Edward Quillen, 10026 E. Polk St., Tacoma, boy, Nov. 20.

Mr. and Mrs. James Harpel, 24415 86th Ave. E., Graham, girl, Nov. 21.

Mr. and Mrs. Richard Mothershead, Rt. 1 Box 246-B, Graham, girl, Nov. 22.

Mr. and Mrs. Robin Ladeley, 11523 17th Ave. E., Parkland, boy, Nov. 22.

Mr. and Mrs. John Withers, Rt. 1 Box 1042, Spanaway, boy, Nov. 24.

BOWLING 35c

SATURDAY UNTIL 7 P.M.
SUNDAY UNTIL 1 P.M.

BOWLING BALLS

AMF - BRUNSWICK AND COLUMBIA - LOW AS 17.95
INCLUDES FITTING-DRILLING

BEST BALL POT GAME

SATURDAYS 2 P.M.
PARADISE BOWL
108th & Pacific LE 7-6012




CHRISTMAS

IS JUST AROUND THE CORNER
HOLIDAY OUTFITS will be brought back to life with the Professional Care of

DAVE'S NU-WAY CLEANERS

7209 Pacific GR 5-1144



FORT STEILACOOM COMMUNITY COLLEGE

Higher Education Learning Opportunities

Technical Education . . . Freshman-Sophomore Academic Subjects . . . and Continuing Education for Adults.
Fort Steilacoom Community College offers three different degrees . . . Associate in Technology, Arts and Science, and General Studies Degrees . . . plus High School Diplomas, GED, and College Credits.
Fees . . . \$6.00 per credit hour. Full-time student \$70.00.

WINTER QUARTER STARTS
JANUARY 5, 1970

REGISTER: New students Dec. 8 to 9
Late Registration Jan. 5 to 6

Division of Business Occupations

Course Number	Course	Credit	Time	Days
174	Principle of Accounting I	5	5:30-7:40	TTh
262	C.P.A. Coaching-Law (18 wks)	8	7:00-10:00	W
111	Survey of Economics	3	10:30-Noon	MW
101	Intro. to Business	5	5:30-7:40	MW
105	Business Communications	5	5:30-7:40	TTh
107	Business Mathematics	5	5:30-7:40	TTh
283	Principles of Management	5	7:50-10:00	MW
182	Creative Salesmanship	5	7:50-10:00	TTh
131	Typewriting I	2	4:00-5:20	MW
132	Typewriting II-III	2	7:50-9:20	MW
131	Typewriting I-II	2	6:30-8:30	TTh
134	Medical Terminology	2	4:30-5:20	TTh
135	Business Machines	3	5:30-7:00	TTh
141	Business English	3	7:50-9:20	TTh
138	Intermediate Shorthand (Prereq: SS 137 or 1 yr. HS)	5	5:30-7:40	MW
232	Production Typing (Prereq: SS131, 132, 133 or 1 yr. H.S.)	2	5:30-7:00	TTh

Division of Humanities

Course Number	Course	Credit	Time	Days
51	Creative Crafts	2	7:00-10:00	T
71	Interior Design I	2	7:00-10:00	W
201/3	Oil Painting, Beg., Inter., Adv.	2	5:30-7:30	MW
201/3	Oil Painting, Beg., Inter., Adv.	2	7:00-9:00	TTh
201/3	Oil Painting, Beg., Inter., Adv.	2	1:00-4:30	W
205	Watercolor, Beg., Inter.	2	7:50-9:50	MW
29	Everyday Writing & Speaking	2 1/2	5:30-7:40	TTh
22	English 11th Grade	2 1/2	5:30-7:30	TTh
50	Review Reading	3	5:30-7:30	MW
61	Review English	5	5:30-7:40	TTh
70	Speed Reading	2	7:50-9:50	MW
70	Speed Reading	2	5:40-7:40	MW
70	Speed Reading	2	7:00-9:00	TTh
101	English Comp	5	7:50-10:00	MW
202	Introduction to Drama	5	7:50-10:00	TTh
102	Humanities	5	7:50-10:00	MW
52	Spanish Conversation Intermed. (Prereq: Spanish 51)	2	7:50-9:50	M
107	Survey of Music	2	7:50-9:50	MW
100	Intro to Philosophy	5	5:30-7:40	MW
100	Speech Fundamentals	5	5:30-7:40	MW

FRANKLIN PIERCE
11124 Portland Avenue
Tacoma, Washington 98445
TELEPHONE: LE 7-0211
Classes begin January 12
Registration Hours:
Day: Dec. 8-19 and Jan. 5-16 8:30-3:00 p.m.
Eve: Jan. 5-7 and 12-14 7:00-9:00 p.m.
Phone for a free class schedule — 40 courses available

BETHEL
Route 2, Box 2438
Spanaway, Washington 98387
TELEPHONE: VI 7-2144
Classes begin January 26
Registration Hours:
Eve: January 19-22
7:00-9:00 p.m.
Phone for a free class schedule — 25 courses available

COMMUNITY SERVICE COURSES

Course Number	Course	Credit	Time	Days
00	Woodworking (\$12 Fee)	0	7:00-10:00	T
00	Woodworking (\$12 Fee)	0	7:00-10:00	M
00	Photography (\$12 Fee)	0	7:00-9:00	M
00	Learn to Read I-II-III (Foreign Born) (No Fee - ABE)	0	7:00-9:00	TTh
00	Auto Driving (6 wks-Fee \$35)	0	5:40-7:40	MW
00	Auto Driving (6 wks - Fee \$35)	0	7:50-9:50	MW
00	Personal Income Tax (\$12 Fee)	0	7:50-9:50	M
00	Investments in Stocks (\$12 Fee)	0	7:50-9:50	T
00	Real Estate for Homeowner (\$12 Fee)	0	7:50-9:50	Th
00	Drawing, Beg., Inter. (\$12 Fee)	0	9:00-Noon	T
00	Portraiture, Beg. & Inter. (\$12 Fee)	0	9:00-Noon	W
00	Oil Painting, Beg. & Inter. (\$12 Fee)	0	1:00-4:00	W
00	Creative Writing (6 sessions \$12 Fee)	0	7:00-10:00	1-3 W
00	Writer's Workshop (3 sessions) (\$6.00 Fee) (Instructor's Permission)	0	7:00-10:00	1st Th
00	Writer's Workshop (3 sessions) (\$6.00 Fee) (Instructor's Permission)	0	7:00-10:00	2nd T
00	Poetry Techniques (6 sessions) (\$12 Fee)	0	7:00-10:00	1-3 M

Division of Science

Course Number	Course	Credit	Time	Days
102	Breeding & Genetics	2	7:50-8:40	TTh
104	Engineering Graphics I	3	7:50-10:30	MW
105	Engineering Graphics II	3	7:50-10:30	MW
71	Engineering Fundamentals	3	5:45-7:00	TTh
37	Review Arithmetic	2 1/2	7:50-9:50	MW
50	Intro. to Algebra	5	7:50-10:00	TTh
50	Intro. to Algebra	5	7:50-10:00	MW
101	Interm. Algebra	5	7:50-9:20	MWF
101	Interm. Algebra	5	7:50-10:00	TTh
102	Survey of Mental Health	2	7:50-9:40	N
50	Slimnastics - Women	1	7:00-9:00	M
100	Body Conditioning - Coed	1	7:50-9:50	TTh
111	Intermediate Swimming - Coed	1	7:50-8:50	MW
151	Beg. Snow Skiing - Coed (Fee \$50) (Jan. 10 to Feb. 28)	1	7:50 a.m. - 5:30 Sat.	
151	Beg. Snow Skiing - Coed (Fee \$12) (Jan. 6 to Feb. 10)	1	Evening	T
160	Volleyball - Coed	1	7:50-8:50	MW
160	Volleyball - Coed	1	7:00-9:00	W

ACADEMIC TRANSFER COURSES
Fort Steilacoom Community College offers a wide variety of academic transfer courses within the respective academic divisions. Information relative to the course offerings can be secured by contacting the Registrar. JU 8-3623.

MAIL REGISTRATION FORM FOR
COMMUNITY SERVICE CLASSES ONLY
AT
FORT STEILACOOM COMMUNITY COLLEGE

CLASS TITLE _____

STUDENT'S NAME (Last) _____ (First) _____

STUDENT'S ADDRESS (Street) _____ (City) _____ (Zip Code) _____

STUDENT'S PHONE NO. _____

FEES (Check) _____

RETURN TO: REGISTRAR
FORT STEILACOOM COMMUNITY COLLEGE
6010 MOUNTAIN VIEW DRIVE S.W.
TACOMA, WASHINGTON 98499

Boy's Hockey Seeks Funds

The Lakewood Hockey Club, made up of boys from Parkland, Spanaway, and Lakewood, will sell candy in an effort to raise \$800 needed to equip their teams.

The club is divided into four age groups, each fielding a team. The Lakewood teams will play in a league made up

of entries from Seattle, Burien, Highland, and Gold Creek (near Woodenville). Games will be played Sundays Noon to 2 p.m., and a few are scheduled for 7-8 a.m. Saturday mornings.

Additional information is available by calling JU 8-9107 or LE1-2702.

Bethel Board Meeting Changed

Bethel School Directors will meet December 8, 8 p.m., in the Board Room of the Bethel Administration Building.

The meeting is in place of one that had been scheduled for December 2, 1969.

British Wives

The British Wives Club, a branch of the Transatlantic Brides and Parents Association, will hold their monthly business meeting at St. Johns Lutheran Church in Lakewood on Friday, Dec. 5th, at 7:30 p.m. Hostesses for the evening will be Betty Clayton, Pat Bosswell and Lee Petre.

Outsiders And Sex Education

By Louise Chase
Women's Medical News Service

Chevy Chase, Md. (WMNS) — Why should any outsider participate in a child's sex education?

The answer lies in the inevitable nature of parent-adolescent relations, says Dr. E. James Lieberman, chief of the Center for Studies of Child and Family Mental Health of the National Institute of Mental Health: Teenagers cannot bear to admit that their parents are sexual creatures.

Even relaxed parents who conscientiously answer questions about sex, Dr. Lieberman notes, will eventually be brought up short by a teenager's need for "a hazy but all important zone of privacy or non-involvement" and by the parent's own need for appropriate modesty. "Some questions cannot be comfortably asked by the child or answered by the parent," the physician points out. "Nudity, seductiveness and details of the parents' sex life are not good sex education for children."

Parents Still Important
This unavoidable limita-

tion on parent-teenager communication does not gainsay the fact that parents remain their children's most important sex educators. But, during adolescence, "much needed information and counsel" can usually only come from respected outsiders — whether a teacher, a physician, a minister, a family friend, an aunt or uncle.

Writing in the Journal of the American Medical Association, Dr. Lieberman suggests that doctors can be especially effective if they are prepared to truly level with young people. This means a willingness to hear out any question without condemnation or embarrassment, enough delicacy to avoid probing into uncomfortable regions, the honesty to avoid the scare technique.

Specifically, the physician counsels against regarding sex education only as a deterrent weapon to premarital intercourse.

More Than a Deterrent

Although good sex education might act as a deterrent by curbing impulsive actions, Dr. Lieberman believes that adults must admit that "from the standpoint of interpersonal relations, one cannot say that premarital sex is inevitably destructive."

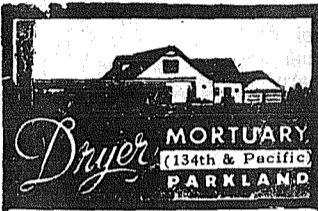
Parents and sex educators make a mistake, he believes, if they confuse a youngster's first sexual experience with promiscuity and if they presume that the sexually experienced adolescent is beyond reach.

Emphasizing that sexual experience, like smoking and drinking, is only symbolically adult, Dr. Lieberman says that non-virgins still need advice and limits from adults — for example, information from teachers about reliable contraception rather than repeated, heavy-handed warnings about venereal disease and unwed pregnancy.

Voltage, Not Facts

"Young people are subject to a tremendous amount of sexual stimulation, but not much helpful information. Even when parents do a good job, children will get information from other sources, and it is part of our responsibility to see that some of this is of good quality."

To clinch his point about the inconstancies of parental prestige, Dr. Lieberman quotes the hoary joke about the son who, returning home after college, exclaims to his father, "Gee, Dad, you sure learned a lot in the last four years!"

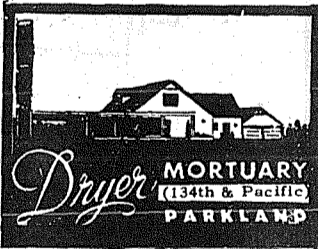


The Country Parson



"Seldom does a family need as much income as a father feels he must provide."

Copyright, by Frank A. Clark



CENTS Make Dollars

when invested in Classified Ads. Place your ad by telephoning now.

If Santa smiles on you — sock some away

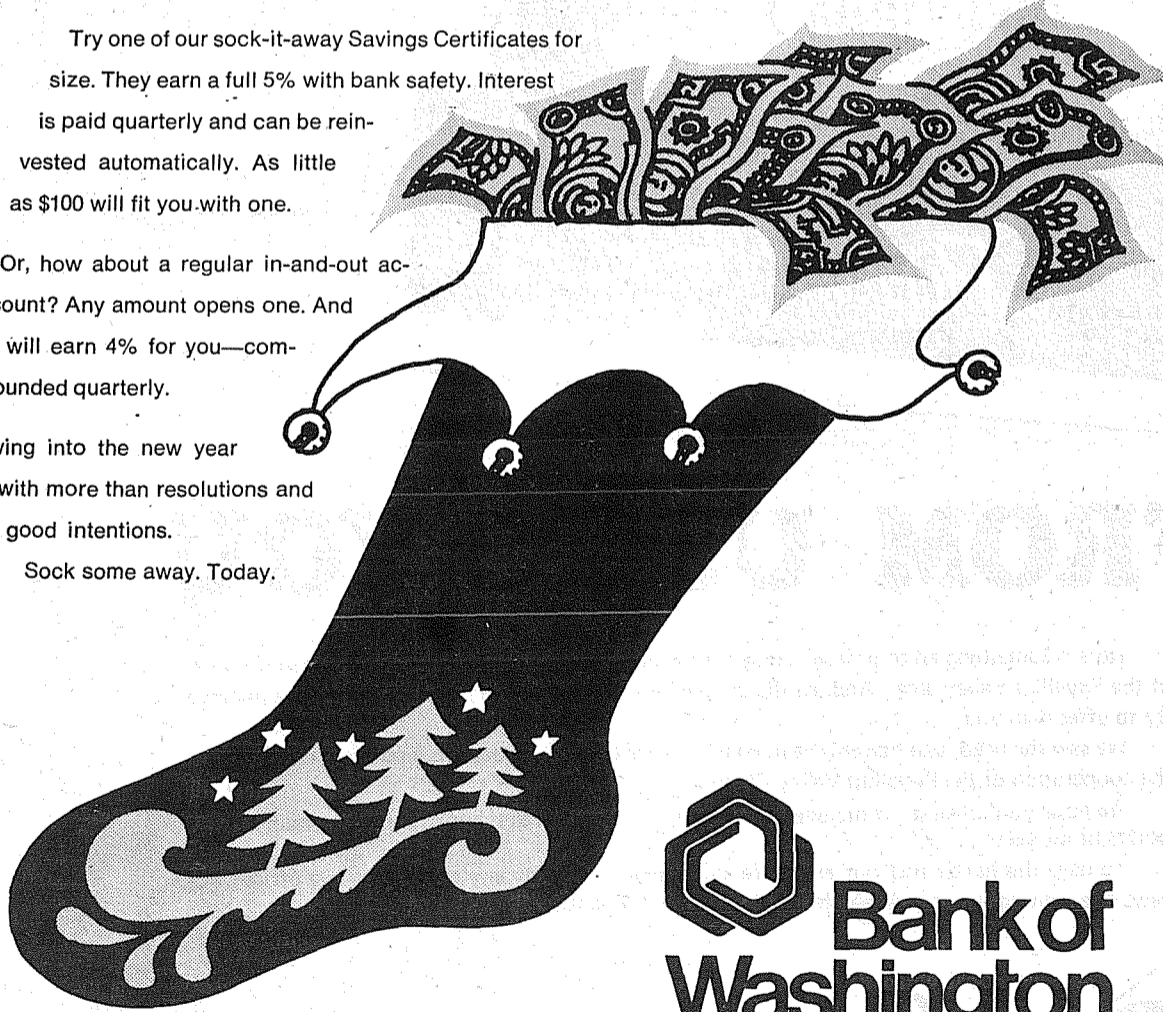
Before your Christmas windfall gets caught up in a flurry of bills and bargains—sock some away.

Try one of our sock-it-away Savings Certificates for size. They earn a full 5% with bank safety. Interest is paid quarterly and can be reinvested automatically. As little as \$100 will fit you with one.

Or, how about a regular in-and-out account? Any amount opens one. And it will earn 4% for you—compounded quarterly.

Swing into the new year with more than resolutions and good intentions.

Sock some away. Today.



Bank of Washington

AT YOUR SERVICE:
PARKLAND BANKING CENTER

NATIONAL BANK OF WASHINGTON / TACOMA, WASHINGTON / MEMBER FEDERAL DEPOSIT INSURANCE CORPORATION

Angelo's

PIZZA HOUSE

ORDERS TO GO

Featuring top sirloin and American dishes, spaghetti, rigatoni, meat balls, sausage, ravioli, beer and wine.

Choice of Pizzas

cheese & tomato
anchovie
mushroom
Italian sausage
pepperoni
tuna

bacon
peppers
olive
hamburgers
ham
salami
onion



LE 7-7233
14102 PACIFIC AVE.
PARKLAND

CALL AHEAD, IT'S
PIPING HOT
ALL THE WAY HOME



PICK UP A BOX, PAIL, BUCKET
OR A BARREL

HORSEMEN'S NEWS

Over The Fence Rail

By Barb. Menge



Family Fun Festival

Saturday, November 29, Family Fun Night was held at the Tacoma Unit No. 1. Two performance classes were offered and a series of game events. The show will begin at 6:00 p.m.

Riding Club Formed

Bethel Senior High School has recently offered a riding club as an extra-curricular activity.

"There are many high school students very interested in the horse world and we only hope to get these young people together so they may share mutual interests and learn from each other," commented advisor Mary Lou Griffin. Mr. Don Ash and Wyona Worthington also advise the activity. At the present the club is in the first stage of organization and are very much interested in outside sponsors. Future plans include trail rides, films, horse care lectures, horse shows, and guest speakers.

Sunday Roping

A series of calf roping outings have been scheduled for Sunday afternoons at the Tacoma Unit No. 1. Some of our local barrel racers have also been turning out on chilly Sunday afternoons to keep their ponies in shape over the winter months.

Grand Champion Quarter Horses

Following are the top scoring horses of the November 8-9 Fall Quarter Horse Show. A large congratulations to all reserve and grand champion winners.

Jr. Champion Gelding - Sparkey General, Doug Graham, Saratoga, Calif.; Reserve - Dino Jay, Pete & Leslie Braun, Vancouver.

Sr. Champion Gelding - Mr. Nimble Toes, Doug Graham, Saratoga, Calif.; Reserve - Could Be 5 Bar, Jerry & Sue Buck, Puyallup, Wash.

Jr. Champion Mare - Dee Bar Bell, Doug Graham, Saratoga, Calif.; Reserve - Red Ball Bar, Darrell Dudley, Puyallup, Wash.

Sr. Champion Mare - Sunglow Senorita, Kay Marshall, Yelm, Wash.; Reserve - Driftwood Mickey - Roxana Lewis, San Louis.

Sr. Champion Stallion - Docs Dee Bar, Cindy & Don Avila, Eugene, Ore.; Reserve - Terrible Scotch, R. Bruce Tedtrum & Ted Finley, Salem, Ore.

Jr. Champion Stallion - Courting Trouble, John Moore, Randle, Wash.; Reserve - Rambling Tom, Donna Coleman, Centralia, Wash.

Grand Champion Gelding - Sparkey General; Reserve - Mr. Nimble Toes.

Grand Champion Mare - Dee Bar Belle; Reserve - Sunglow Senorita.

Grand Champion Stallion - Docs Dee Bar; Reserve - Terrible Scotch.

Sport Regulations Aired At Hearing

Proposals for 1970 sport fishing regulations for salmon and other food fish will be presented by the Department of Fisheries at a public hearing at 10 a.m., Saturday, December 20, in the main

floor conference room in the General Administration Building in Olympia, Fisheries Director Thor C. Tollefson said today.

● **HARDWARE**
● **BUILDING SUPPLIES**
South End Hardware
S. 185th & Pacific - Spanaway

8 Livestock
HORSE bridle and saddle, VI 7-2110. (C)

ONE milk cow and 2 calves, \$425. LE 1-0720. (L)

"Horsemen's Market Place"

Classified Directory

Board - Trainers - Breeders
Outfitters - Feed Dealers

Back In Town
BILL MAY
Horseshoeing
LE 1-7768

HORSESHOEING
RAY JOHNSON
TH 5-6006

Vet Supplies
Complete supply animal health products.
Franklin - Farnam - Anchor
at
ASHMORE'S
Spanaway Drugs
165th & Pacific Ave. LE 7-5993

Outfitters
The Bunkhouse
COMPLETE LINE OF TACK & WESTERN APPAREL
LE 7-5510
12605 Pacific Ave. Tacoma, Wa.

NOW OPEN IN NEW LOCATION
LE 1-4555
RODEO CUSTOM SHOP
Dean & Dodie Vosburg
17302 Pacific Spanaway, Wash.
Complete Saddle Repair Shop
Western Wear
English Tack & Togs

Milk Products May Speed Gain In Young Horses

If you have a colt, recently weaned, that's not gaining as well as you'd like, feeding milk products may be the answer for added thriftiness. Eddie Thomason, county Extension agent, advises horse owners.

He hands this suggestion along from Joe Johnson, Washington State University Extension livestock specialist.

A colt weaned in September or October may not be growing very well about this time of year, even though it's been wormed and had proper care all along, Johnson said. If the animal isn't as thrifty as it should be, try adding a grain mixture and some dried milk or milk replacer to the daily ration.

Milk will put the pounds on just as well as, if not better than, an expensive commercial feed additive, the specialist suggests.

Studies by WSU animal scientists have borne out the value of adding milk products to the young animal's diet, Johnson reports. Recent research at Cornell University and other places adds evidence to the WSU findings.

The clue to the recently weaned colt's poor growth is probably in the function of the caecum, an organ somewhat like the cow's rumen. As Johnson explains it, the caecum - like the rumen - takes poor quality protein and, by bacterial action, turns it into high quality protein.

The caecum - again like the rumen - comes to full function slowly. The mare's milk diet of the foal doesn't require it. In the weanling, it doesn't do the job as well as it does in the adult horse.

So adding milk, the natural food of the very young animal, helps put on weight during the months that the colt's digestive system is not fully mature, Johnson advises.

YOUR OFFICIAL MAP OF THE Puyallup Valley Area

PUYALLUP SUMNER ORTING and VICINITY

Prepared For You By
CITIZENS STATE BANK
with the cooperation of the
PUYALLUP VALLEY CHAMBER OF COMMERCE

FROM US TO YOU

Here is something all of us have needed for a long, long time. An up-to-date map and index of the Puyallup Valley area. And, all the people here at Citizens are proud to have this opportunity to offer it to you.

We saw the need, and had this new, comprehensive map produced as a public service, with the cooperation of the Puyallup Valley Chamber of Commerce.

We hope you'll like it. It includes an index to all Valley-area schools, parks and many other points of interest.

To have this handy map and reference guide, merely stop by any of Citizens five offices. We have one waiting for you. Absolutely free of course.



Citizens STATE BANK

MEMBER FEDERAL DEPOSIT INSURANCE CORPORATION



- ★ MAIN OFFICE - PUYALLUP
- ★ SUMNER
- ★ SUMMIT VIEW
- ★ EDGEWOOD - MILTON
- ★ WILLOWS

Full Time Performers

Classified ads work for you around the clock. Place your ad by calling an experienced ad writer today.

BOWLING RESULTS

EXPRESS — Geo. Moe, 553, 201; Doris Stephenson, 463, 172.
ROLLING BEES — Gerie Rich, 534; Edna Slezler, 194.
THE BELLES — Mickey Boutiette, 511; Dawn Faulk, 196.
PINETTES — Lee Leggett, 183-203-208, 594; Sue Sweaney, 215.
'600' MIX — Jim Hall, 558, 193; Lorraine Overway, 438, 173.
SPORTSMAN — Loren Donahue, 576, 221.
INDUSTRIAL — Bob Wulfekuhle, 588; Clem Jergens, 222.
PREMIER — Art Unkrur, 204-199-214, 617; Bob Unkrur, 245.
SR. CITIZENS — Bill Langdon, 531; Arnie Thorsen, 222; Celia Fadness, 454, 163.
TOP ROLLERS — Norm Nesting, 579, 230; Arabelle Frerichs, 493, 190; Pat Ellis (all spare game), 185.
MIXERS — Bob Sims, 525, 206; Alyce Sims, 486, 222.
GRAHAM — Tom McFadden, 209-212-192, 613; Dick Hansch, 214; Arlene Daugherty, 506, 200.
BOWLERETTES — Rose Eveleth, 176-193-181, 550; Marge Gribi, 199.
LAST NITERS — Harold O'Brien, 557, 243; Sharon Bittner, 532; Betty Morrow, 205.
MOD QUADS — Jerry O'Leary, 561, 230; Bonnye Burton, 175; Lily Duke, 469.

Legals

Abandoned vehicles: in compliance with the revised code of Wash. No. 46.52.110.
 Lucky Towing will sell to the highest cash bidder at 13502 Pacific Ave. at the hour of 10 a.m. on Dec. 9, 1969, the following vehicles:
 '53 Ford KVH-344
 '57 Plymouth BAV-988
 '55 Mercury RAB-995
 '59 Chevy 6-4599
 Published in the Times Journal and Pierce County Herald, Dec. 4, 1969.

Legals

IN THE SUPERIOR COURT OF THE STATE OF WASHINGTON FOR THE COUNTY OF PIERCE In Probate No. 79130

NOTICE TO CREDITORS In the Matter of the Estate of STEPHEN DEXTER NEWCOMB, Deceased.

Notice is given that the undersigned has been appointed and has qualified as personal representative of this estate. Persons having claims against the deceased are required to serve the same, duly verified, on the undersigned or the attorney of record at the address stated below and file the same with the Clerk of this court, together with proof of such service within four months after November 20, 1969, or the same will be forever barred.

George R. Newcomb
 2110 N. Orchard
 Tacoma, Washington

Herbert Gelman
 505 Rust Building
 Tacoma, Wn. 98402
 Published in the Times Journal and Pierce County Herald November 20, 27 and December 4, 1969.

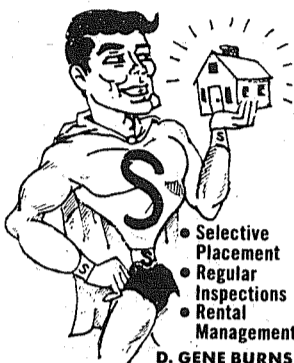
18 Real Estate Wanted

Listings Wanted
 Buying or Selling
 Real Estate Service
 Call
Devereaux Realty
 12152 Pacific Ave. LE 7-8658

19 For Rent Or Lease

TWO, 2 bedroom trailer houses for rent. Nice inside & out. Ready by Dec. 4 \$75 a month. Water furnished. Call mornings. 843 2228. Roy, Wash.

Let "SUBUR-MAN" serve YOUR RENTALS



- Selective Placement
- Regular Inspections
- Rental Management

D. GENE BURNS
 Rental Mgr.
 Residence
 LO 4-6598
SUBURBAN REALTY
 11302 Pacific Ave.
 LE 7-8638

30 Repair Services

Sheet Metal

- Furnace Repair and Service
- Installations

PARKLAND FUEL OIL
 12002 Pacific Ave.
 LE 7-0256

WATER PUMPS REPAIRED
 All Makes
GRANGE SUPPLY
 LE 1-5777

Attention **MOBILE HOMES**
 We install poles, power service, complete to trailer. Emergency Service Day or Night.
 LE 1-0593
E&S Electric 13621 Pacific

READ USE CLASSIFIED ADS for fast results

LE 7-0223

1 Misc. For Sale

BUFFALO DON MURPHY

Announces the liquidation sale of 4 million B.F. of lumber and plywood. The largest stock, the best quality building materials at unbelievably low prices.

Remember, the Northwest's biggest dismantling company — gives you choice of good used building materials, as well as low overhead new materials.

STRETCH your dollar by getting a Bid from us on your Dismantling and Demolition. STRETCH your dollar by buying from us what you need to build and remodel with.

DEAL NOW!!!

MURPHY LUMBER & SALVAGE SALES

6401 Waller Rd., Tacoma
 Phone: LE 1-1160
 Open 7 days a week!!

GEORGIA-PACIFIC Branch Office at Port of Olympia open 6 days a week!!

WALNUT ELECTRIC organ with Leslie speaker. Sacrifice, owner moving. Terms or cash. Also spinet piano, phone adjustor, BR 25282. Tacoma.

T.V. \$5.00, Shoe Skates \$3.00. Coat size 16 \$10.00. Hand made violin & new stand \$45.00. Call LE 1-9377. 69-303

EASY TERMS — FREE DELIVERY HOME FURNITURE

9324 So. Tacoma Way

OPEN 10 to 9 DAILY

OPEN SUNDAYS, 1-5

DOLL CLOTHES and wardrobe. All sizes. VI 7-2710. 69-299

HAIRCUT \$1.25. 110th & So. Yakima, Parkland. 69-253 TFN

TOP SOIL, Gravel. LE 1-1124. 69-1

2 Autos For Sale

'63 DODGE DART. Stick shift. \$450. LE 7 4955. 69-308

'65 FORD 6 F100. In top shape. \$1,200. GR 4 2583. 69-306

'55 CHEVY. 2 door hardtop. 283. 3-speed hurst. Chromes. Wide ovals. Jack and gauge. Best offer. VI 7-2595. 69-309

1959 ¾ ton pickup. A dual wheel trailer toter. Runs good, needs work. Best offer. LE 1-6069. 69-262

NEW- MORE POWERFUL

the 1970's ARE HERE

VOLKSWAGEN
 2. MAJOR CHANGES

COME IN
Tom Carstens AUTOHAUS

7030 So. Tacoma Way
 GR 4-0666

Tacoma Dealer Since 1955

38 Instruction

PIANO LESSONS. Beginning to advanced. Children & Adults, home or studio. LE 1-1021 or SK 2-7695. 69-179-TFN

DRIVING LESSONS. JU 8-6848. 69-279

DRIVER TRAINING — 2 wk. course. Pick-up. Learn driving. LE 1-0505. 69-278

15 Mobile Homes

CALL MOBILE HOME transporters, if you need a mobile home moved, or set up anywhere in the state of Wash. Licensed and insured movers. Call LE 1-6069. 69-263.

PREVIEW

First Showing In This Area — All New, Roomy **PENTHOUSE 20'x57' MOBILE HOME** Now on Display Also See our Selection of 12's-20's-And 24's

ARIZONA BOUND? Special-8x30 Tip Out Kinsile Cost New \$5800 68 Months Now \$4175

LUCKY SALES
 13502 Pacific Ave.

27 Misc. Services

CUSTOM CUTTING. Locker beef and also wild game. LE 1-2168. 69-291

MILLIE'S STYLETTE BEAUTY SHOP

Latest in Haircuts \$2.50 Open Mon. thru Sat.

CROWN CLEANERS SPECIALTY
 Alterations — Iron Shirts Dry Cleaning Self Laundry Service
CROWN CLEANERS WASHETTE
 506 S. 112

9 Animals For Sale
 MOTHER Burro and baby. WA 2-8406. (A)

23 Help Wanted

HIGH INCOME — BUSINESS — SPARE TIME — NO SELLING. Will start the right person with vision and a modest investment in his own business refilling local route of new candy machines featuring exclusive tested products. Immediate income generated with bright expansion prospects. For full details from the NATIONAL LEADER OF THE INDUSTRY, send name, address, & phone number to METRO VENDA, P.O. Box 5151, Oakland, California, 94605. 69-301

24 Work Wanted

JOB WANTED. Odd jobs around house. Call Ken at LE 1-5543. 69-310

SPECIAL NOTICES

STOLEN: A cement figure of a Jockey holding a lantern. The coloring on the figurine is blue hat, black boots, blue vest. The lantern was red. For any information leading to the recovery of the figurine call LE 1-4637. 69-311.

MOBILE HOME SPACE complete with newly renovated 14'x20' add-a-room. Separate utility room wired for washer and dryer with it's own electric hot water tank, plus space in adjoining carport for your car or small boat and trailer. If you are cramped in your trailer now this add-a-room will make living much more comfortable. Big yard. City buses by the door. Prefer childless family or one with infant only due to rentals in carport. Only \$55.00 per month. Phone LE 7-0223 days or VI 7-7364 evenings. Ask for Jack or Darlene.

36 Personals

SPIRITUAL READER & advisor. Consult on all problems of life. Call for appointment. GR 4-2495. Tacoma, Washington.

LOST & FOUND

LOST OR STRAYED: 11/20/69 Male Labrador from Brookdale area. LE 1-8582. Reward. 69-304

AT ARMSTRONG'S

Never at any time in our sixteen years of car business were finer cars offered at better prices.

ARMSTRONG'S USED CARS

11009 Pacific Ave. LE 7-5524

CHURCH DIRECTORY ATTEND OUR



SERVICES

PARKWAY Presbyterian Church
 Sunday School 9:30 a.m.
 Worship Service 10:45 a.m.
 Nursery Service Provided
 714-138th East LE 1-4234
 Rev. Wesley J. Drummond

Spanaway Assembly of God
 166th & Pacific Ave.
 Sunday School 9:45 a.m.
 Morning Worship 11 a.m.
 Evening Evangelistic 7 p.m.
 Family Night Wed. 7:30 p.m.
 LE 1-1412

Spanaway Lutheran Church
 8:30 & 11 a.m. Worship Service
 9:45 a.m. Sunday School
 Grades 1 & Up
 11 a.m. Sunday School
 3, 4 and 5 Year Olds
 John L. Briehl, Pastor
 160th & A St. LE 7-5978.

Parkland Lutheran Church & Christian Day School
 Worship... 10:30 a.m.
 Sunday School-Bible Study 9:15 a.m.
 All Ages
 H.A. Theiste, pastor
 LE 7-5492 LE 1-0777

Trinity Lutheran Church
 Worship Services 9 a.m. & 11 a.m.
 Sunday School 10 a.m.
 Wednesday School 4-5 (through Grade 9)
 Erling C. Thompson
 Robert Drowes PASTORS
 12115 So. Park LE 7-0201

Spanaway United Methodist
 Church School... 9:30 a.m.
 Worship Service... 11:00 a.m.
 Nursery During Service
 R. Gordon Harrison, Pastor
 163 & Pacific LE 7-5134

Midland and Pacific Ave. Areas Carriers Wanted A few routes open Times Journal LE 7-0223

RENT TV

Portables All Sizes

Color TV

RENTAL MARTS, INC.

GR 5-3755 9440 Pacific

JU 4-4100 10012 Bridgeport

B&I HARDWARE & GLASS PLASTIC

8012 South Tacoma Way



Weather Protection

4 Mil Only 1 Sq. Ft.

Door Mirrors

NOW Only

2 88

Sanitation Is His Business



Alvin O. Frederickson's job description would cover several pages because of his many duties with Pierce County Refuse.

One day Al will be attired in a business suit making arrangements with town officials for refuse collection services, and the next will find him dressed in coveralls cutting stencils for commercial refuse containers. As Company Systems Troubleshooter, Al's duties take him where his services are most needed.

He has faced problems varying from cutting out a section of re-inforced concrete bulkhead to build an out-of-sight compartment for refuse containers to solving hangups in public relations.

Al and his wife Luella live at 4604 South 375th Place, Puyallup, and have two children, Lisa 17 and Kent 11. He has been with the company since January 1964.

Pierce County Refuse
 LE 7-8688

Col. Brennan Retires

McChord AFB, Wash. (MAC) — After 13,000 flying hours in ten different aircraft and 20 consecutive years in military airlift operations, McChord Air Force Lt. Col. William T. Brennan retired.

Sunday was the last active day in the Air Force for Colonel Brennan, chief of current operations, 62nd Military Airlift Wing. However, his close association with air transportation will continue with the Federal Aviation Agency.

Colonel Brennan's service

career started 23 years ago as an enlisted man. He earned his pilot's wings and commission in 1950 through the Aviation Cadet Program. Since then he has flown the B-25 Mitchell Bomber, the C-47 Gooney Bird, several cargo aircraft including the C-124 Globemaster, and the C-141 at McChord.

He was assigned as operations staff officer to the 62nd Air Transport Wing at McChord in 1965, serving in that capacity through the unit's redesignation to the 62nd in January 1966. He became chief of the current operations division in March of this

year. Even before coming to McChord, the colonel's association with the 62nd MAW was close. He was previously stationed in the 19th Air Transport Squadron at Kelly AFB, Tex. The 19th MAS is assigned to the 62nd.

In 1960, the colonel was awarded a bachelor of arts degree in business administration and economics under "Operaton Bootstrap" at the University of Omaha, Omaha, Neb. Since living in the Tacoma area, he has attended the University of Puget Sound.

After retirement, Colonel Brennan and his wife, Gail,

Jimmie Herd Ft. Lewis Grad

FORT LEWIS, WASH. — A 17-year-old Tacoma soldier who comes from a "military family" Friday will become the 150,000th basic combat trainee to graduate since the U.S. Army Training Center, Infantry, opened here in 1966.

Private Jimmie Herd, 865 So. 90th, Tacoma, will graduate with Company A, 4th Battalion, 1st Brigade.

Major General Willard Pearson, Ft. Lewis commander, will temporarily establish residence at 2112 90th Street in Tacoma.

manding general, will present Herd with an engraved gold watch and plaque to commemorate the event.

Born in Gissenen, Germany, Herd has lived in Tacoma for nine years and attended Mt. Tahoma High School before entering the Army in September.

Herd has five brothers and sisters at home who are expected to attend the ceremony Friday; Margaret, 15; Mitchell, 14; Ralph, 11; Bruce, 8; and James, 8 months.

BIRTHS

Lakewood General Hospital

Mr. and Mrs. Julius L. Sessions, 1627 South 116th Street, Tacoma, girl, Nov. 23.

Mr. and Mrs. Daryl E. Berys, 853 South 96th, Tacoma, boy, Nov. 26.

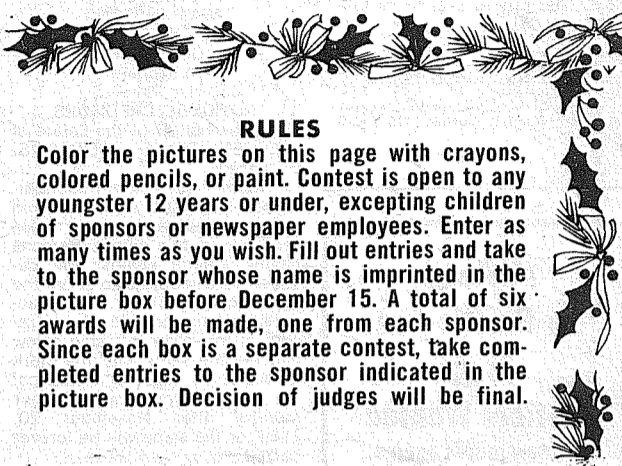
Mr. and Mrs. Bob Charles Manley, 1717 South 114th Street, Tacoma, boy, Nov. 26.

Mr. and Mrs. Gerald Ivery, 24909 51st Street East, Graham, girl, Nov. 21.

Mr. and Mrs. Douglas M. Kenyon, 617 140th South, Tacoma, girl, Nov. 21.

BOYS! GIRLS! ENTER OUR

Christmas COLORING CONTEST



RULES

Color the pictures on this page with crayons, colored pencils, or paint. Contest is open to any youngster 12 years or under, excepting children of sponsors or newspaper employees. Enter as many times as you wish. Fill out entries and take to the sponsor whose name is imprinted in the picture box before December 15. A total of six awards will be made, one from each sponsor. Since each box is a separate contest, take completed entries to the sponsor indicated in the picture box. Decision of judges will be final.



NAME _____ AGE _____

ADDRESS _____ PHONE _____

Shop Mart

Department Store

133rd & Pacific Avenue Next To Lucky Store



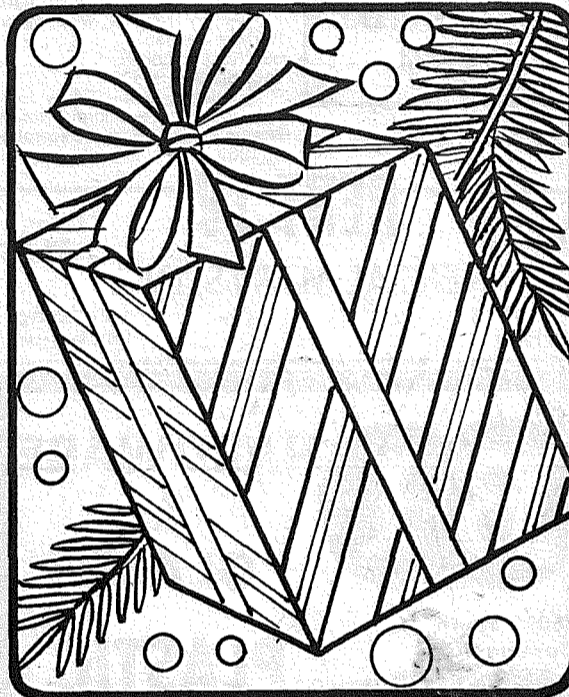
NAME _____ AGE _____

ADDRESS _____ PHONE _____



PARKLAND THRIFTCO

138th & Pacific Ave.



NAME _____ AGE _____

ADDRESS _____ PHONE _____

idon's WIGS

LE 1-2676

11214 Pacific Ave.



NAME _____ AGE _____

ADDRESS _____ PHONE _____

Parkland Cleaners

110th & Pacific Ave.

Call LE 7-3221

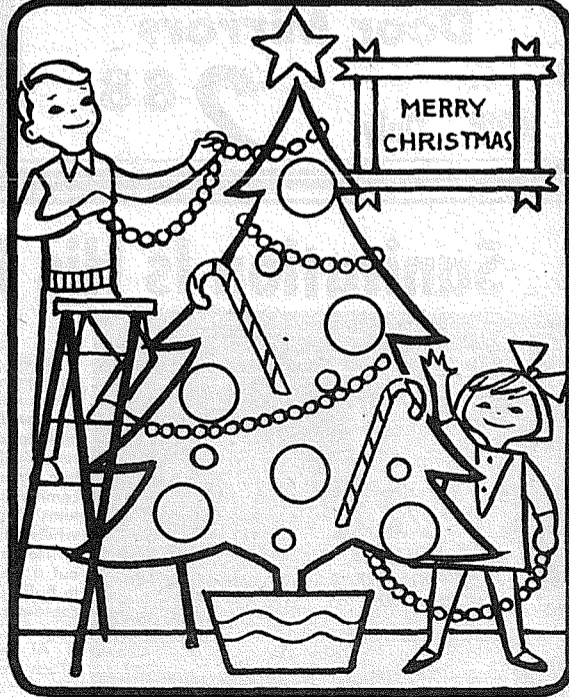


NAME _____ AGE _____

ADDRESS _____ PHONE _____

SPANAWAY VARIETY

(Formerly Stansbie's)
165th & Pacific Avenue



NAME _____ AGE _____

ADDRESS _____ PHONE _____

PAUL'S

SHOES & CLOTHING

LE 7-0552

161st & Pacific Ave.