



THIS IS THE LIFE

SAVE to enjoy it at the Family Savings Center

A MUTUAL SAVINGS INSTITUTION
Pacific Federal Savings and Loan Association
 Bellingham • Seattle • Tacoma
 Longview • Portland • Eugene
 11th AND PACIFIC LAKEWOOD AT VILLA PLAZA

CURRENT RATE
4% COMPUTED ON MONTHLY BALANCES
 PAID 4 TIMES A YEAR

PTA Board Meets

The Andrew Christenson PTA executive board will meet Wed., Oct. 12 at 8 pm in the home of Mrs. George Miller Jr., 513 So. 107th.

FLETT DAIRY

FARM FRESH
 HOMOGENIZED AND
 PASTEURIZED MILK
 AND CREAM

Phone GR 2-3301

SUMMIT VIEW AUTO REPAIR
 FEATURING — QUALITY FIRST
 All Work Unconditionally Guaranteed
 Parts and Labor

10904 E. Canyon Road LE 1-0424

COUNTRY BOY'S AUTO PARTS
 OPEN 7 DAYS A WEEK
 CUT RATE PRICES ON ALL PARTS

SPECIAL BRAKE SHOES \$3.95 Set of 4 Most Cars

WILLOWS CORNER, AIRPORT & SO. MERIDIAN TH 5-4451

Summitites Win at Fair

The George Haaland children did very well with the showing of their Shorthorn beef at the Puyallup Fair. Trygve, 16 years old, won a pink ribbon in open class with his yearling heifer, Haaland Golden Star; Glenna, 15 years old, 4-H grand champion female won third in open class with Hilldale Augusta Fame 2; Gregory, 12, with Haaland Golden George, 6 month-old junior and grand champion 4-H bull stood fourth in adult competitions; and Rachel, 6, was third in her class in open competitions with Sun-

flower, 6 month-old heifer.

BIRTHDAY DINNER PARTY
 Mrs. Kermit Williamson and Mrs. J. Allen helped Shelia Williamson celebrate her eighth birthday by giving a birthday dinner party in her honor. Shelia's friends from Central Avenue and Midland schools, as well as, relatives and neighbors were on hand to wish her many happy returns. Guests were: Sigrid Korsmo, Betty Beggs, Leslie Nix, Lynn Marie Nygard, Tommy and Nancy Sundqvist, Christi Downs, Fayetta and Carolyn Rone, Jimmy Kinder, Steve Allen, Deann Cail, and Aunts, Mrs. Harry Dalstone and Mrs. William J. Kinder.

RETURNS FROM VACATION
 Mrs. Brown Romans recently returned from a two week vacation in Hawaii and a week vacation in Reno, Nevada. She has returned to work, but will have all winter to relive her wonderful vacation.

EXPLORER SCOUTS
 This past week a program was begun for the God and Country award by scouts in the Summit Methodist church sponsored post. This is the second highest award in scouting and it requires 12 months of study and service under

the guidance of a minister. A scout or Explorer of any rank may enroll for the award but cannot receive it until he has achieved 1st Class rank or has had 1 year of experience in Exploring. The boys working for this award include Perry Bartram, Dave Leavens, Norman and Jerry MacDicken, Charles Osborn, and Greg Rice.

DECEASED
 Mrs. Nils (Marie E.) Solli, 91, passed away Tuesday, September 27. Born in Willmar, Minnesota, she came to Tacoma in 1900. She was a member of Parkland Lutheran Church. Our deepest sympathy is extended to her sons Gerhard of Mankato, Minnesota, and Arthur of Tacoma, and daughter, Mrs. Esther Jahnke of Tacoma. Reporter—Gwen Cail, LE 7-3766

Harmon Highlights

One quick look at the Top Twenty teams this week and it's fairly obvious that the deck was vigorously shuffled: some members of the elite just couldn't stand the rarefied atmosphere.

Ole' Miss and Syracuse got the scares of their football lives from Memphis State and Kansas, and barely eked out victories. So, as they have been relegated to the 2nd and 3rd positions respectively, a new No. 1 college football team sits atop the ladder this week — the Hawkeyes from the University of Iowa.

Washington dropped from 3rd down to 13th, and Illinois, in spite of its one-sided win over West Virginia, just got by-passed by some new customers scurrying up the football ladder. Purdue and Minnesota, namely, came out of nowhere to take over No. 4 and No. 5 in the ratings. Northwestern dropped out of sight, and Clemson just managed to grab the bottom rung — number 20 — as it fell from the 8th spot.

Texas, Ohio State, Missouri, Wisconsin, and Baylor all moved up this week while Penn State, Tennessee, and Georgia Tech were ousted by "social-climbers." Mi-

chigan State and Navy happily filled in some of the gaps.

Harmon's forecasting average for last week is just plain unavailable — too many small college scores failed to come in over the wire. In top games this Saturday, 15th-ranked Baylor meets 9th-rated Arkansas in the Southwest Conference's feature attraction — and the Razorbacks will continue undefeated with a 3-point squeaker over the Bears.

In the East, Penn State and Army meet in a coin-toss; Penn State will trip the Black Knights by a point. And Missouri, ranked 8th this week, draws a toughie in the Air Force Academy. The Falcons will fall from their perch by 13 points.

On the West Coast, Washington will renew its winning ways by giving Stanford a 21-point whipping and the new "king" — Iowa — is favored by three touchdowns over 16th-rated Michigan State.

Down in Florida-country, the two Florida powers are in for a couple of teeth-grinders. The Gators are slim 2-point favorites over Rice, and the Miami Hurricanes meet a real tough-luck Pittsburgh team; Miami in this one by 2 points again.

LONG ROAD
 The Burma Road, wartime supply line to China, extended 750 miles from Lashio in Burma to Kunming in China's Yunnan Province by "social-climbers." Mi-

EYE STOPPER FOOD BARGAINS!

HUNTERS ATTENTION
 YOUR DEER CUT & WRAPPED lb. 7¢
 MINIMUM CHARGE \$5.00
 SKINNING \$1.50 Extra

HUNTERS — OCT. 9TH OPENING DAY OF DEER SEASON

FOLGER'S COFFEE 2-lb. Tin \$1.25 Lb. 63¢

PILLSBURY FLOUR ALL PURPOSE
 10-lb. Bag 95¢ 25-lb. Bag \$1.83

MAYONNAISE NALLEY'S
 Full Quart 45¢

PIES PET RITZ—Quick Frozen
 PEACH APPLE CHERRY Ea. 35¢

SANKA INSTANT COFFEE — Reg. \$1.15 97% CAFFEIN FREE
 5-oz. Jar 69¢

BAKED BEANS B & M
 28-Oz. Tin 4/1⁰⁰

COTTAGE CHEESE MEDOSWEET
 Pint Carton 27¢

CHEESE LUXURY MILD
 lb. 53¢

JACK MACKEREL VAN CAMP
 Tall Tin 2/35¢

PEANUT BUTTER ADAM'S
 REGULAR — OLD FASHIONED OR NUTTY NUT
 3 lb. Jar 89¢

AMMONIA PARSON'S SUDSY
 Qt. 29¢

POPCORN GOLDEN GRAIN WHITE OR YELLOW
 2-lb. Pkg. 29¢

LUNCH BAGS ZEE
 50 Count Pkg. 25¢

HUNTERS CAMP-OUT SPECIALS

NALLEY'S BEEF STEW 15-Oz. Tin 3/1⁰⁰

NALLEY'S CHILI Hot or Mild 15-Oz. Tin 4/1⁰⁰

NALLEY'S SYRUP LUMBERJACK 22-Oz. Bottle 33¢

GUITTARD'S MILK CHOCOLATE Bar 49¢

LARGE AA WHITE EGGS Doz. 58¢

PRICES EFFECTIVE THURSDAY THROUGH SUNDAY

FRESH PRODUCE

CORN LOCAL DOZ. 39¢

JONATHAN FANCY GRADE APPLES Pear Box \$1.75

HUBBARD SQUASH Lb. 2¢



U.S. GOOD-WELL TRIMMED RUMP ROAST Lb. 69¢

BACON CARSTEN'S HYGRADE SLICED
 1-lb. Pkg. 49¢

STEAKS U.S. GOOD-SIRLOIN or ROUND
 lb. 73¢

GRND. BEEF FRESH GROUND
 lb. 39¢

SCALLOPS FRESH FROZEN
 1-lb. Pkg. 69¢

LARD Fresh Rendered
 Lb. 13¢

SUMMIT TRADING COMPANY
 10409 Canyon Road, Tacoma LE 7-5848
 No Sales To Dealers
 We Reserve The Right To Limit Quantities

OPEN SUNDAYS
 10 A.M. TO 7 P.M.
FOR YOUR CONVENIENCE
WEEKDAY HOURS
 9 A.M. TO 9 P.M.

Hunting Season Will Open October 9th

Nimrods Anticipate Large Kill

Conditions now indicate that nearly all national forest land in Washington will be open to hunters when the regular deer season begins October 9.

Regional Forester J. Herbert Stone of the U.S. Forest Service said some areas of high fire hazard in the national forests of Washington are still closed. However, he said, it is quite likely that by the time deer hunting season starts most of the closures on the west side of the Cascades will be lifted, and many of the closed areas on the east side may also be open.

Before entering national forest areas hunters should check at the nearest ranger station to find out if any areas are closed and determine the exact boundaries of such areas.

The Forest Service welcomes hunting as one of the major recreational uses of our national forests. Stone said, and the annual harvesting of the wildlife resource is beneficial to both the forest and the game.

The Regional Forester noted that public cooperation in forest fire prevention has been very good this year, and it is hoped that it will continue.

The large total of forest fires this year is mostly attributable to lightning storms. To September 1 there were 112 man-caused fires in the national forests of Washington. Last year on that date there were 152.

Hunters were responsible for only 6 fires in the national forests of Washington last year, but in 1958 hunters caused 23 fires. In the dry fall of 1952, there were 62 hunter-caused fires in the state.

Most of the fires are caused when hunters abandon warming or cooking fires without extinguishing them. Although campfire permits are not required in the national forests, it is unlawful to leave a camp or warming fire unattended without extinguishing it. All hunters are asked not to

abandon any fire, no matter how damp the weather seems.

Hunter fire incidence on the west side of the Cascades is never as heavy as on the east side. Two reasons appear to account for this. Many hunters go to the east side areas, and the rainfall there is considerably lighter than in the western zones. It is believed that hunters coming from the areas of heavier rainfall sometimes are lulled into a false sense of security, not realizing how quickly the forest dries out after light rains or cold frosty nights. Principal trouble spots are the Wenatchee and Okanogan National Forests.

Smoking in national forests is prohibited while traveling except in vehicles on roads. Smoking in the woods can be done without danger if the smoker stops in a safe place and makes sure burning material is out by crushing it on a rock or in cleared mineral soil.

Elk Plain . . . 49'ers Play Lakewood

The Spanaway Minor 49'ers tripped the McChord Falcons Sunday 7-0. They will play Lakewood next Sunday at Clover Park. Game time is 2 p.m.

Bethel will go to Peninsula Friday night for their first league game in the newly formed Seamount League.

At 2:45 tomorrow afternoon Bethel Jr. High will play Peninsula. Grandma Tibbits is out of the hospital and is now in the Clearview Nursing home until she is able to come home. Cards and letters would be greatly appreciated. The address is 6856 Portland Ave.

Get well wishes also go to Jeff Shull who is in the hospital. He was hurt while cleaning out a well.

Mr. & Mrs. Jack Gripp of Lynnwood, Wash. are proud parents of a baby boy born Sept. 24. He weighed 8 lbs 8 ozs and was named Michael Duane. Mrs. Gripp is the former Delores Otterstad. Maternal Grandparents are Mr. & Mrs. Otterstad of Elk Plain. Thorne Tibbits, son of Mr. & Mrs. Tibbits, son of Mr. & Mrs. Tibbits. (Continued on Page 5)

Knights Tackle Eastern Savages Saturday Night

The Pacific Lutheran University Knights and Eastern Washington Savages will be seeking their first league grid wins of the season when they tangle Saturday night at Cheney. The Knights lost their Evergreen opener to the Puget Sound Loggers, 21-14, and the Savages came out on the short end of a 40-13 encounter with defending champion Whitworth.

Lute mentor Jim Gabrielsen was pleased with the spirit of his club which lost to the Loggers in the final seconds. "Our two best half-backs, Bruce Alexander and Dave Reynolds, had to miss that one and the rest of the club fought well. But we missed that experience, both on offense and defense, which those two men could give us."

Co-captain Alexander, who was down with the flu, is expected to be ready this week, but Reynolds, suffering from a swollen knee, is a question mark. All-Conference end Dave Bottemiller banged up his leg and defensive tackle Marv Snell his shoulder in the Logger tiff. They are question marks for the Savage till.

Quarterback Doug McClary, Lute junior, hit on 10 of 19 pass tries Saturday to bring his season's total to 32 completions in 62 attempts for 397 yards. The busy McClary scored two touchdowns and rambled over 50 yards to bring his total offense figure to 469 yards in 88 plays.

Coach Gabrielsen's starters against Eastern will probably be Bill Lennon and Lou Blaesi at ends, Ken Knutsen and Bruce

HUNTERS ATTENTION

We Will
OPEN AT 3 A.M.
Sun., Oct. 9th

STOP IN FOR
BREAKFAST

Open 6 a.m. to 8 p.m.
Every Sunday For Balance
of Hunting Season

LITTLE PARK CAFE

171st & Pacific Ave.
SPANAWAY

Hunters Breakfast Will Be Sunday

The Columbia Crest PTA is sponsoring a hunters breakfast Sunday, Oct. 9, at their school from 3 a.m. to 1 p.m. The school is on the Mt. highway 4 miles east of Elbe.

The menu will include hotcakes, eggs and bacon. There will be roast beef sandwiches to take out. Price is \$1.00 for adults, 50 cents for children, and 50 cents for sandwiches.

AMMUNITION AND HUNTING SUPPLIES

WESTERN AUTO SUPPLY

11108 PACIFIC AVE.
LE 7-3112

Rifle Club Meets Wed.

The Spanaway snipers junior rifle club will hold their first meeting Wednesday, Oct. 12, at the Spanaway Park recreation building at 7 p.m. All parents with boys & girls 18 and under are invited.

49'ers Trip McChord, 7-0

The Spanaway minor 49'ers, playing heads up football and intercepting several key passes, turned back the McChord pee-wee club 7-0 Sunday at McChord. New uniforms have been bought for the club by the Bethel district funds, matched by the county recreation funds. Faceguards and jerseys will soon be added — thanks to help from the Tacoma South East Lions Club's funds.

HUNTERS

WE ARE OPEN
24 HRS. A DAY
7 DAYS A WEEK
EAT YOUR BREAKFAST ON YOUR WAY OUT
ELK PLAIN CAFE

HUNTING SEASON OPENS

AMMUNITION

GUNS

• HATS & CAPS
• FLASHLIGHTS
• LANTERNS

THERE'S STILL TIME TO TRAIN YOUR DOG . . . PHEASANTS FOR SALE

SOUTH END PLUMBING & HARDWARE

185th & PACIFIC AVENUE
Open 7 Days a Week — Sundays, 8 a.m. to 4 p.m.

Licenses and Game Laws
Duck Stamps
LEnox 7-4100

GOOD HUNTING Begins at

Presba's Sporting & Gift Shop
HUNTING SUPPLIES AND AMMO. LICENSES
FINE DISPLAY OF HATS—CAPS—COATS—SWEAT SHIRTS
GOOD SELECTION OF KNIVES,
GOOSE AND DUCK DECOYS

12816 Pacific Avenue LE 1-2131

HUNTERS' SPECIAL

Travel Alarms \$7.95
AND WRISTS ALARM \$16.95

Waterproof Watches \$9.95

Playing Cards or Dice 54¢

Hunting Hats Red, Yellow, All Sizes 98¢

FIRST AID KITS SPECIAL Was 3.59. NOW 2.59

FLASHLIGHTS 98¢

FILM 620—127—120 2 ROLLS FOR 97¢

PRESCRIPTIONS FILLED PROMPTLY

McAULEY SUMMIT DRUGS

LE 7-0668 — 9 to 9 Weekdays Airport & Canyon Roads

LOW COST SHOES

LOCATED IN THE SALVAGE MART

HUNTING BOOTS

LEATHER MOC-TOE 8⁹⁵ To 12⁹⁵

WEDGE CREPE
NEOPRENE CREPE

RUBBER PACS \$5⁹⁵

INSULATED
RUBBER PACS 7⁹⁵ & 8⁹⁵

Hunting Licenses ISSUED HERE

SHOTGUN SHELLS AND AMMUNITION

ALSO FISHING LICENSES

2-PIECE RAIN SUITS \$4.99

With Zipper

ALL HUNTING AND CAMPING SUPPLIES

HUNTING HATS \$1.69

RED & YELLOW — CRUSHER TYPE

SPANAWAY 5 & 10

Mt. Highway Across From Spanaway School LE 7-8322

HUNTERS

COMPLETE STOCK OF SNOW TIRES OR YOUR TIRES CAPPED
LIBERAL BUDGET TERMS
TIRES ARE OUR BUSINESS — NOT A SIDELINE

Ray's STORES

9639 Pacific Avenue LE 7-7355

AL DERITIS SPORTING GOODS

HUNTING LICENSES HUNTING SUPPLIES

OPEN ALL NIGHT SATURDAY

OCT. 8TH

8242 Pacific Avenue GR 2-2725

HUNTERS SPECIALS

BOOT SOX 50% Wool Pair 69c

RAIN SUITS 2-Pc., O.D. & Yellow 4.99

Water Repellent

HUNTING CAPS Red and Yellow 89c

Heavyweight Hooded

SWEAT SHIRTS Red or Yellow 2.98

FLASHLIGHTS 29c

SALVAGE MART

13014 Pacific Avenue

GUNS . . . AMMUNITION

Complete Hunting Equipment
Bow Hunters Headquarters
Hear-Eze Insured Hunting Caps
HUNTING AND FISHING LICENSES

AL GUY'S SPORTING GOODS

9450 Pacific A.e. GR 2-8524

FARM FRESH "AA" EGGS

Jumbo 63¢
Ex. Large 59¢
Large 55¢
Medium 49¢

Henry House WIENERS 47¢

Young Beef SWISS STEAK 59¢
Pound

Tender Young Beef POT ROAST 39¢
Pound

Young Tender BEEF LIVER 33¢
Pound

Swans Down White Yellow Butterscotch Devils Food
CAKE MIX 19¢

Pillsbury
FLOUR \$1.79
25 lb. bag . . .

Bakers Chocolate, Lemon & Caramel
8-Oz. Pkg.
CHIPS 6 for \$1

Powder Room
FACIAL TISSUE 5 for 1
400 Count Pkg.

Hunt's 8-Oz. Tin
TOMATO SAUCE 12 for \$1

Hunt's 14-Oz. Bottle
TOMATO CATSUP 6 for 1

CHEESE SLICED AMERICAN 39¢
POUND

Fresh Cello Pkg.
CARROTS 7¢ each

BANANAS 10¢
Golden Fancy Pound

M.D.
TOILET TISSUE 39¢
Four Roll Pkg.

McDANIELS

The Home of The Low Price

AIRPORT & CANYON ROAD

Store Hours: 9:00 'til 9:00 — Sundays 9:00 'til 7:00

PRICES EFFECTIVE Thursday Friday Saturday

VW Club Will Meet

An election of new officers is scheduled by the Volkswagen Club of Tacoma at its business meeting at 8:00 p. m., October 13th at the Autohaus, 5636 South Tacoma Way.

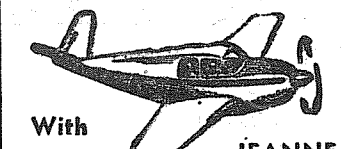
- PARKER PAINT PRODUCTS
- HARDWARE
- VARIETY
- KEYS MADE

BARSOTTI & TIMM
At the Roy Y LE 7-4221
Open 7 Days a Week, 7 a.m.-9

LIVESTOCK CARE WHILE YOUR VACATIONING
References LE 1-1327

Rural Garbage Service
Pierce County Permit
Serving Parkland, Midland, Summit and Spanaway
LEnox 7-8688

Flying



With **JEANNE**

The Western Travelers will have their monthly meeting Friday, October 7th, at the Club House at Thun Field.

Joe and Betty Jackson flew to Bellingham in their Stinson Friday evening to spend the weekend returning here Sunday afternoon.

A Piper J-5 belonging to Paul Logsdon, was flown in to Spanaway Airport Sunday. The Logsdon family moved to this area recently.

Norm Skinner made his first

solo flight Saturday. A solo cross-country flight was made up from Evjen to Yakima and return.

The McChord Field 2nd annual general aviation Fly-In was attended by a good many private aircraft from near and far. Although the late morning smog played havoc with the schedule, the McChord Field personnel showed those in attendance a very enjoyable day.

The Pierce County Chapter of the Washington Pilots Association met at the Spanaway Airport Friday night. The By-laws were adopted putting this organization well under way. All pilots and people seriously interested in furthering private aviation are invited to join a chapter. The meeting place for the Pierce County Chapter will be announced later.

Midland . . .

Bombardier's 25th Anniversary Honored

A reception, given by their daughters, honoring Mr. and Mrs. Albert L. Bombardier on the occasion of their twenty-fifth wedding anniversary was held Sunday afternoon, October 2nd, from two until five o'clock.

An orchid and white motif was used in decorating the Parish Hall of St. John of the Woods. Serving at the collation table were Mrs. William Baughn and Mrs. Bella Deric. Others assisting included Mrs. Orville Bombardier, guest book; Mrs. William Bombardier and Mrs. Russell Lloyd, gift table; Mrs. Buford Bombardier, and Mrs. Guerino Carrara, punch bowl; and Mrs. Frank Baskett and Mrs. Clarence Gemmill served cake.

In the receiving line including

the honored couple were their eldest daughter, Valeria, and nephew, Dick Bombardier. Over three hundred guests congratulated the pair.

The October meeting of the Midland Cooperative Play School will be held at the home of Mrs. Kenneth Crawford, 1417 East Mt. Tacoma Drive, on Thursday, October 13th, at 8:00 p. m. All mothers with children enrolled should be present at this meeting.

Keep in mind that the Midland Orthopedic Guild will hold their annual Ham and Turkey Dinner on Thursday, October 13th, from 5:00 to 8:00 p. m., at the Midland Improvement Club Hall.

A Court of Honor for Midland's Boy Scout Troop 84 was held Monday, September 26th, with Scoutmaster C. E. Townsend and Committee Chairman Charles Sprague presenting the following awards: Tenderfoot Rank — George McCue, Bruce Creamer; Second Class Rank — Mike Seney, Scott Highland, Steve Becklund, John Gjukan, Alfred Winterton; and Life Rank to David Gural.

Merit Badges: Danny Loranca, Basketry, Camping; Edward Ketcham, Painting, Cooking; David Gural, Nature, Fishing, Swimming; Steven Becklund, Swimming; Jeffrey Highland, Public Health, Cooking; and Larry Townsend, Camping.

Camp Habobas Segments — 1st year, Scott Highland, Tom Solomon, Steve Becklund, Mike Seney, Randy Walker, Alfred Winterton, Gary Larson, Charles Price, Richard Bradley, John Gjukan; 2nd year, Tom Powell, Danny Loranca, Dean Walker, Peter Sallee, Mike Hart, Don McCarty; 3rd year, Jeff Highland, Scott Moore, Ed Ketcham, Ed Reding, Dave Gural, and Larry Townsend.

Midland are proud to announce the marriage of their daughter, Nina Mae Ayers, to John Andrew Troutner, son of Mr. and Mrs. Bert C. Troutner, of Bellingham, at Lincoln Park Church.

The bride, a graduate of Franklin Pierce High School, is now enrolled as a senior at Western Washington College of Education. The groom was graduated from Bellingham High School and is also in his senior year at WWCE.

Miss Donna Ayers was her sister's maid-of-honor, and Mrs. Robert Shaw, sister of the bridegroom, Miss Gail Denny and Miss Marilyn Jensen and Miss Jo Ann Ayers, sister of the bride, were attendants. Miss Valeria Bombardier and Miss Marlene Corrigan lighted the tapers; and Kenneth Adams was the ring bearer and Cherie Strand was the flower girl.

James Troutner was his brothers best man, and Richard Van Antwerp, Terance Todd, David Klingensmith, and David Porter, were ushers.

Assisting at the reception in the church parlors immediately following the ceremony were Mesdames Douglas Hoff, James Troutner, Robert Sather, and the Misses Linda Breese, Carolyn Gjoavagg, Shirley Sheppard, Vicki Chatterton and Judy and Frank Eshpeter.

The newly wedded couple will make their first home in Bellingham, where they will both continue their studies at WWCE — the bride in education and the bridegroom in anthropology.

The KO DA WAH CA Campfire Girls of Midland really had their heads in the clouds this month. The reward received by a very hard working group of girls on their spring candy sale was spent touring Puyallup and vicinity, by Helicopter! The happy fliers were Anna Becker, Gail Campbell, Deborah Cody, Wendy Leavitt, Linda Yehle and Guardians Becker and Cody. After the "Pre-Ride Period" of nervous fits, chewing hats, and riddling tickets, the girls decided that the roller coaster was really child's play, but only after their safe return to earth. The feeling of being in the clouds was further intensified by the fact that the seven girls who entered exhibits in the fair floated off with 37 ribbons; 14 of which were blue, 10 red and 13 white. If the blue ribbons mean anything we have some future champion cooks or grade A homemakers. The exhibitors were Jane Ericson, Anna Becker, Deborah Cody, Gail Campbell, Wendy Leavitt, Judy Hansen, and Linda Yehle. Your guardians are bursting with pride, as we know your parents are! Keep up the hard work!

Mrs. Herbert Ognoski (Sharon Eshpeter) and son, Jim, left Midland Wednesday with her grandmother, Mrs. Lulu Boss, and her aunt, Mrs. John Braaten, for Oakland, California, where she will be joined by her husband. They will first visit in Phoenix, Arizona, and then travel to Houston, Texas, to visit Mr. Ognoski's parents.

Reporter — Mrs. Frank Gural, LE 7-5939.

Here's where smart shoppers will be getting this week's biggest food savings!

CANNED FOOD SALE

7 Big Days

Fruit Cocktail

Heinz Ketchup

Libby's Pears

Tomatoes

Sale Starts 9 A.M. Thursday, October 6th through Wednesday, October 12th in Tacoma, Sumner and Puyallup. We reserve the right to limit quantities. No sales to dealers.

<p style="margin: 0;">HUNTS. Dozen \$2.39. Case of 24 Cans \$4.75</p> <p style="margin: 0;">Dozen Btls. \$2.39 Case of 24 \$4.75</p> <p style="margin: 0;">Bartlett. Doz. \$3.98. Case of 24 Cans \$7.95</p> <p style="margin: 0;">GARDENSIDE. Special low price. Doz. \$2.39. Case of 24 \$4.75</p>	<p style="margin: 0; font-size: 2em;">5</p> <p style="margin: 0;">15-oz. Cans \$1⁰⁰</p> <p style="margin: 0; font-size: 2em;">5</p> <p style="margin: 0;">14-oz. Bottles \$1⁰⁰</p> <p style="margin: 0; font-size: 2em;">3</p> <p style="margin: 0;">No. 2½ Cans \$1⁰⁰</p> <p style="margin: 0; font-size: 2em;">5</p> <p style="margin: 0;">No. 2½ Cans \$1⁰⁰</p>	<p style="margin: 0; font-size: 2em;">TOMATO JUICE</p> <p style="margin: 0;">HUNT'S. Special low price. 46-oz. Can 19^c</p> <p style="margin: 0; font-size: 2em;">TOMATO SOUP</p> <p style="margin: 0;">CAMPBELL'S. Cs. 10½-oz. of 48 Cans \$4.75 10^c</p> <p style="margin: 0; font-size: 2em;">TOMATO SAUCE</p> <p style="margin: 0;">TOWN HOUSE Cs. of 48 Cans \$3.69 10 79^c</p>	<p style="margin: 0; text-align: center; font-weight: bold;">MEAT PRICES EFFECTIVE THURSDAY, OCT. 6TH Through SATURDAY, OCT. 8TH ONLY</p> <div style="text-align: center;"> <h3 style="margin: 0;">SMOKED PICNICS</h3> <p style="margin: 0;">HYGRADE, 6-8 lb. Average SPECIAL LB. 29^c</p> <h3 style="margin: 0;">TURKEYS</h3> <p style="margin: 0;">Grade A. Manor House or Lynden. 10-17 Lbs. Lb. 45^c</p> <p style="margin: 0;">Leg of Lamb or Boneless Shoulder. U.S.D.A. Choice lb. 65^c</p> <p style="margin: 0;">Lamb Loin Chops U.S.D.A. Choice lb. 85^c</p> <p style="margin: 0;">Lamb Rib Chops U.S.D.A. Choice lb. 69^c</p> <p style="margin: 0;">Lamb Stew U.S.D.A. Choice. Low Price. lb. 25^c</p> <p style="margin: 0;">Piece Bacon Diamond F. Any size piece lb. 49^c</p> <p style="margin: 0;">Sliced Bacon Hormel Dairy lb. 59^c</p> <p style="margin: 0;">Canned Bacon Plumrose 1-lb. Can 69^c</p> <p style="margin: 0; text-align: center; font-weight: bold;">FISH STICKS</p> <p style="margin: 0;">CAPTAINS CHOICE. Frozen. (2-14-oz. Pkgs. \$1.00) 3 8-oz. \$1</p> </div>
--	--	---	---

Big POTATO AND ONION SALE

<p style="margin: 0; font-size: 2em;">No. 1 Potatoes</p> <p style="margin: 0;">Netted Gems. Clean Washed. Seasons low price.</p> <p style="margin: 0;">100-lb. Sack \$3⁸⁹</p> <p style="margin: 0; font-size: 3em;">10 LBS. 39^c</p> <p style="margin: 0; font-size: 2em;">Crisp Celery</p> <p style="margin: 0;">Each 8c</p> <p style="margin: 0; font-size: 3em;">Apples</p> <p style="margin: 0;">Jonathan. Fancy grade. Excellent for lunches, pies, sauce. Today's Best Buy.</p> <p style="margin: 0;">23-lb. Box \$1⁷⁹</p>	<p style="margin: 0; font-size: 2em;">Yellow Onions</p> <p style="margin: 0;">Mature, Sweet Spanish. Seasons low price</p> <p style="margin: 0;">50-Lb. Sack \$1.49</p> <p style="margin: 0; font-size: 3em;">3 LBS. 10^c</p> <p style="margin: 0; font-size: 2em;">Green Cabbage</p> <p style="margin: 0;">Each 10c</p>
--	--

PRODUCE PRICES EFFECTIVE THURSDAY, OCTOBER 6TH THROUGH SATURDAY, OCTOBER 8TH ONLY.

PROMPT PERSONALIZED PRESCRIPTION SERVICE

TED SWANSON

INSULIN · VITAMINS

Down town Prices
Pay Phone Bills Here
PLENTY OF FREE PARKING

TINCHER'S PHARMACY

8227 Park Ave. GR 4-3344
Across from Fero Hill P. O.

TELEVISION SERVICE CENTER PRESENTS TV CHUCKLES

WHERE'S CHARLIE?

He's staying down until his TV is repaired by Television Service Center. And Charlie won't have to wait for long — although we don't suggest he hold his breath! We offer Guaranteed repairs in the shortest time possible.

CALL TODAY!

TELEVISION Service Center

"YOUR WINEGARD COLOR CEPTOR DEALER"

GR23388 8431 PACIFIC AVE.

Check With The Puget Sound

Tacoma's Home-Owned Preferred Service Bank!

Paying bills is bad enough. Paying in cash means time and money spent running from place to place. So why not check with the Puget Sound — and pay your bills by mail! It's a Preferred Service convenience that everyone can enjoy. Open your account today — regular or Check-Master.

PUGET SOUND NATIONAL BANK
84th and PACIFIC

MEMBER FDIC

Sale starts 9 A.M. Thursday, October 6th through Wednesday, October 12th in Tacoma, Sumner and Puyallup. We reserve the right to limit quantities. No sales to dealers.

**Woodland . . .
Pre-School
Will Meet**

Woodland Pre-school will meet Wednesday, October 12th at 8 p.m. in the Woodland School. The speaker for the evening will be Mr. Norman C. Mattern, Director of the Tacoma, Pierce County Assn. for Mental Health. The subject of the evening is "Emotional Development in the Formative Years." Hostesses for the evening are Mesdames; Art Harber, Mel Denny, Mike Patton, and L. Conatser.

Committee meeting for Cub Scout Pack 91 will be at the Robert Dore home in Puyallup at 8 p.m. on October 12th.

Wood Bees Garden Club monthly meeting will be held on October 13th at Mae Elsdon's on Woodland Avenue. Guest speaker for the evening will be Mrs. Jack Swayne of Puyallup.

**Foliage Club
Meets Thurs.**

Foliage fanciers garden club will meet Thursday, Oct. 13. Mrs. Robert Tomberg will be hostess.

The program will be about "past presidents day". Each member is asked to bring plants for the plant sale.

**Woodland Boy
Scouts Hold Pot
Luck Dinner**

On September 27, 1960, the Woodland Boy Scout Troop 174 had a potluck dinner and a Court of Honor at Woodland School. It was well attended by the parents and the Scouts.

At the beginning of the Court of Honor, Marion MacRea, district executive, presented the troop charter to the president of the Woodland P.T.A. Mrs. Robert Vorak. The Court of Honor then started with the candle lighting ceremony. George Newcomer, Scoutmaster, presented Martin Cuellar with his Tenderfoot award. Troop Committeeman Victor Gawley presented Second class awards to Bill Ferguson, Bill Long, Richard McLeod, and Eric Brakkenn. Steven Stokesberry and Dana Gawley was presented their First Class award by Bill Grass, Institutional Representative of the troop.

Arnold Simmons, Troop committeeman, Bill Newcomer and Kenneth Quirie, Assistant Scoutmasters presented the following boys with merit badges: Armand LeBlanc — Painting, Coin Collecting, Swimming, Canoeing; Dana Gawley — Home Repairs, Cooking, First Aid; Tom Grass — Farm Mechanics, Athletics, Canoeing; Steve Brown — Fishing, Cooking, Rowing; Bobby Grass — Lifesaving, Swimming, Canoeing; Doug Kauki — Citizenship in the Home, Electricity; Russell Brown — Fishing, Rowing; Paul Denny — Firemanship, Cooking; Kenny Quirie — Rowing, Canoeing; Tony Simmons — Canoeing; Mike Pederson — Rowing.

Camp Hahobas awards were presented to the following boys by George Newcomer; 1st year, Bill Long, Bill Ferguson, Phillip Farcy, Eric Brakken, Richard McLeod, Andy Linn; 2nd year, Russell Brown, Steve Brown, Mike Pederson, Steven Stokesberry, Tony Simmons, Kenny Quirie; 3rd year, Doug Kauki, Joey Wilson, Mike Forbragd, Armand LeBlanc, Bobby Grass, Paul Denny; 4th year, Tom Grass. The Boy Scout Life Guard was received by Kenneth Quirie and Tom Grass, Russell Brown and Steven Stokesberry got their 2nd year service stars. The fellows that go to Camp Hahobas for their first year, received their Camp T shirts from the Scoutmaster. Steven Stokesberry became a senior Scout and received his badge.

Doug Kauki, Tom Grass, Tony Simmons, the three boys that went to the National Jamboree at Colorado Springs, presented George Newcomer a plaque of different Scout Council patches from all over the world.

Thanks goes to Mrs. Willis Grass and Mrs. Clarence Ferguson for making the arrangements for the potluck and making the dinner a success.

**Job's Daughters
Sponsor Dance**

"Harvest Dreams" is to be the theme of the dance sponsored by Bethel No. 23 of Job's Daughters to be held on Saturday, October 15th at Fern Hill Masonic Temple, at 84th and Park Avenue. The hours will be from 8:30 to 11:30. There will be live music.

Those working on the committees for the dance are: Misses Barbara Berntsen, Catherine Conklin, Susan Wheeler, Claudia Pitzer, Diana Scott, Gracie Brown, Anne Gjuka, Norene Sharp and Karlene Scott. Bethel No. 23 invites all teen-agers to attend their Harvest Dreams dance.

Tickets are being sold in advance by the girls, and will also be sold at the door. The prices are \$1.00 per couple and 75 cents stag. Further information may be had by calling Catherine Conklin, or Barbara Berntsen.

RADIATORS
CLEANED, REPAIRED,
RE-CORED, REMODELED
Fast, Guaranteed Service
OPEN NIGHTS
DEL'S RADIATOR
10620 Pacific Ave.
LE 1-1288 or LE 1-1144

FENCING
Designers and Builders
EXPERT WORKMANSHIP
REASONABLE PRICES
Easy Monthly Payments
VAUGHAN'S
84th & Pac. Ave. GR 4-9515

Weekend guests at the Mel Denny home on Grebe Road were Mr. and Mrs. Steve Grosulak and daughters Marianne and Marlene of Portland. Sunday dinner included the guests from Portland and Mr. and Mrs. Ralph Richardson, son Russ and girl friend Barbara Tople of Bremerton, Mrs. Lillian Denny from Minnesota, and Mrs. Mary Kanski, Bobby, Margie, & Sharon of Seattle and son Dave home on leave from basic training with the army.

A recent visitor the past couple of weeks in the Gordon David home on Grebe Road was Mrs. Elizabeth David of Centralia. She will be spending a time in Bremerton before returning to Centralia. Reporter—Margaret David, LE 7-6668

**Leif Erickson
Festival Oct. 9**

The Leif Erickson Fall Festival will be held Oct. 9 at 3 pm in the Normanna Hall, So. 15th & K St. The public is invited.

The program will include the presentation of flags in native costume, singing, and a talk by Rev. Laursen on Leif Erickson. Refreshments will be served.

**Riverside Parents
Meet Tonight**

The Riverside Parents Club will meet tonight at the Riverside school.

The program will include introduction of teachers, special music, and speaker of the evening Commissioner Burke. A social hour will follow. All parents are invited to attend.

Dr. Phyllis E. Buckley announces the opening of her office for the practice of pediatrics. 9618 Belmont Drive, JU 4-1911.

Laboure Nursing Home
All on ground floor, no wards, no steps. Cheerful surroundings, expert care, excellent food. Doctor referred. Aged and convalescents. State Dept. of Health Lic. No. 116.
901 Tule Lake Rd. LE 7-7857

AIR CHARTER
FLIGHT INSTRUCTION
Approved Flight School
Wm...MOONEY, Distributor
TAHOMA FLYING SERVICE
Spanaway Airport LE 1-0442

DRUG FACTS
I CAN GET ALL THESE
NATIONALLY ADVERTISED BRANDS MY
WIFE WANTS AT
ASHMORE'S SPANAWAY DRUG
THAT'S MY IDEA OF A
REAL STORE!
ASHMORE'S SPANAWAY DRUG
PHONE LE 7-5993
165th & PACIFIC AVE.
SPANAWAY, WASH.



**"LOAD YOUR
Dozens & Dozens of Frozen Foods**

MINUTE MAID ORANGE JUICE FRESH FROZEN 3 12-oz. Cans 99¢ 5 6-oz. Cans 99¢
BANQUET MEAT PIES BEEF, CHICKEN, TURKEY or MACARONI & CHEESE..... 5 for 1.00
MARIANI BERRIES FRESH FROZEN BLUEBERRIES, STRAWBERRIES, RASPBERRIES, BLACKBERRIES, BOYSENBERRIES 4 10-oz. pkgs. 89¢

ORE-IDA POTATOES
FRENCH FRIES 3 16-oz. Pkgs. 89¢
TATER TOTS 3 16-oz. Pkgs. 89¢
HASH BROWNS 5 12-oz. Pkgs. 89¢

GOLD HILL TURNOVERS
APPLE GOLD HILL..... Pkg. 4 49¢
PEACH GOLD HILL..... Pkg. 4 49¢
CHERRY GOLD HILL..... Pkg. 4 49¢

SUNNEE STEAKS
CUBE STEAKS 2 7½-oz. Pkgs. 89¢
Sandwich STEAKS 2 Pkgs. of 4 69¢
MINIT STEAKS 2 Pkgs. of 4 69¢

POLAR
VEGETABLES:
Fresh Frozen—Baby Limas, Broccoli Cuts & Spears, Cut or Sliced Beans, Brussels Sprouts, Cauliflower, Corn, Peas, Mixed Veggies, Peas & Carrots, Leaf or Chop Spinach, Squash or French Fries.
6 pkgs. 89¢ for

VEGETABLES IN LARGE BAGS
Fresh Frozen—Peas, Cut Corn, Mixed Veggies, Peas & Carrots, French Fries, Krinkle Cuts.
3 Large 1½ lb. Poly Bags 99¢

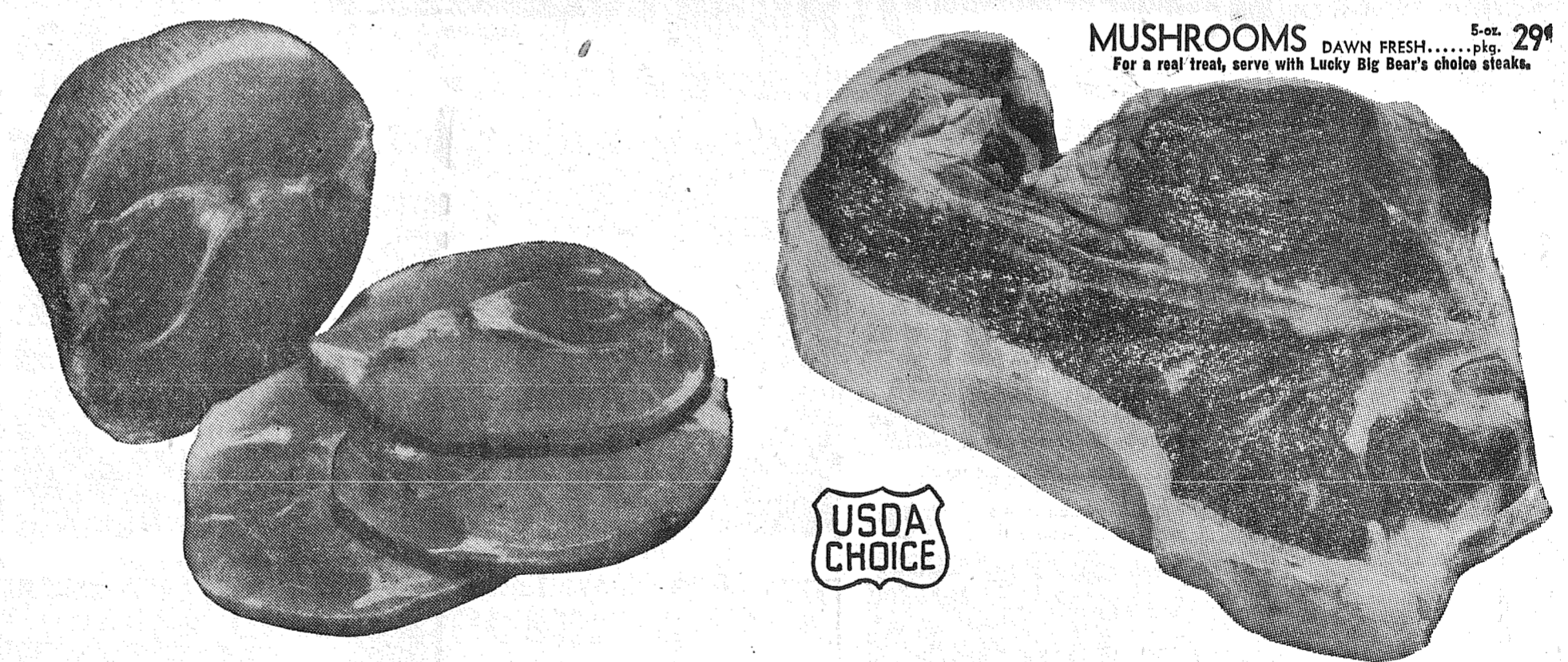
BIRDS EYE
VEGETABLES:
Fresh Frozen—Peas, Squash, Potato Puffs, Mixed Vegetables, Corn, Chopped Broccoli, Butter Beans or Sliced Beans. Choose from these fancy quality vegetables!
2 10-oz. pkgs. 39¢ for

FROZEN DINNERS:
Your choice of 5 different varieties of fresh frozen complete dinners . . . at this low price. each only **49¢**

FOUR FISHERMEN
FROZEN PRAWNS16-oz. pkg. 1.09
FROZEN FISHSTICKS8-oz. pkg. 37¢
FROZEN FISHSTICKS14-oz. pkg. 65¢
FROZEN FISHSTICKS24-oz. pkg. 95¢
FROZEN SCALLOPS7-oz. pkg. 45¢

FLASH STEAKS
BEEF, PORK or VEAL 15-oz. pkg. 89¢
SANDWICH STEAKS Pkg. of 8 89¢
BEEF PATTIES in Cheese 15-oz. pkg. 89¢
BUTTER STEAKS 15-oz. pkg. 79¢

Moreno MEXICAN FOOD
BEEF ENCHILADASpkg. 49¢
BEEF TACOSpkg. 49¢
MEXICAN DINNERSpkg. 49¢
CHEESE ENCHILADAS..... 2 for 89¢
TORTILLAS 2 for 55¢



Boneless Ham Jilg's famous smoke-roasted, fully boneless and cooked hams. Whole hams or pieces. **lb. 79¢**

T-Bone Steak ... or PORTERHOUSE Steaks! U.S. Graded Choice Beef . . . specially aged for flavor, and complete tenderness. **lb. 98¢**

LUCKY-BIG BEAR'S FINEST QUALITY
GROUND BEEF **lb. 29¢**

CUT-UP FRYERS FRESH WASHINGTON GROWN, PAN READY . . . **lb. 39¢**

RILEY'S ICE CREAMERY
14106 PACIFIC AVENUE
24 Flavors to Choose From
OUR BEST FANCY PACK
Ice Cream, ½ gal. 76c 3/1.69
Frozen Desert, 29c qt. 4/1.00
FRESH DONUTS, 3 doz \$1.00
TV COOKIES, 3 doz 49¢

FREEZER SALE!

...Priced Extra Ordinarily Low!



Agen Peas	FANCY GRADE A FRESH-FROZEN	10-oz. Pkgs.	10¢
Strawberries	Fresh Frozen ESKIMO or AGEN	3 10-oz. Pkgs.	49¢
Pillsbury Flour		10-lb. Bag	79¢
Darigold Butter		1-lb. Cubes	65¢
Banquet Dinner	Beef, Chicken, Ham, Turkey, Salisbury Steak or Haddock. Each only		39¢
Fruit Pies	MORTON'S Apple, Cherry, Peach, Boysenberry & Coconut Custard.	3 for only	1.00

CHEESE or FRENCH BURGER 55¢
FIVE STAR BRAND Each only

PAUL'S CHEESE CAKE 79¢
A REAL VALUE! 1-lb.

COOKIN BAG Banquet 3 5-oz. 1.00
BEEF, CHICKEN OR TURKEY. IN GRAVY! Bags

MINUTE MAID JUICES 6 6-oz. 1.00
Your choice of Pineapple, Grape, Tangerine
Orange and Grapefruit or Grapefruit juice. Cans

TREE SWEET FRESH FROZEN
ORANGE JUICE
INDIAN RIVER
5 6-oz. 89¢
Cans for

WASHINGTON STATE
Apples
JONATHAN
Fancy grade — large even
size—all-purpose apple.
Crisp and juicy.
23-lb. 1.69
Box
4-lb. cello bag 49¢

RED DELICIOUS APPLES EXTRA FANCY GRADE YOUR CHOICE Per Lb. **13¢** EXTRA FANCY GOLDEN DELICIOUS lb. 23¢

JONATHAN APPLESEXTRA FANCY GRADE

FRESH CAULIFLOWER each only 15¢ Home grown, large compact snow white heads

MUSCAT GRAPES lb. 15¢ Luscious ripe—large, firm meated, honey sweet. Enjoy in fruit salads.

133rd & Pacific
PARKLAND

TIP TOP FRUIT DRINKS
Raspberry—Lemon, Black Cherry, Strawberry—
Lemon or Pineapple-Raspberry

6 Fresh Frozen 6-oz. 79¢
Cans

FROZEN ORANGE or GRAPEFRUIT DRINK
7 6-oz. 1.00
Cans

Kiddies ...
LOOK!!
J. P. PATCHES
IN PERSON
SATURDAY
October 8th
2 P.M. 'Til 3:30 P.M.
At Our
PARKLAND STORE



Elbe Residents On Sick List

Several Elbe residents are on the sick list this week. Jack Chapel is still in St. Joseph's hospital in Tacoma, having suffered a compound fracture of his leg nearly two weeks ago. He is expected to remain in the hospital about two weeks longer.

Emma Peterson returned to Mountain View hospital in Tacoma Monday, for a series of treatments which will keep her in the hospital for several weeks.

Fred Miller is convalescing nicely at home from recent surgery in a Tacoma hospital.

Chris Christensen, young son of Mr. and Mrs. Bill Christensen, is recovering slowly from a tonsillectomy performed at an Everett Hospital.

Mrs. Mary Thompson remains quite ill at the Hillhaven Rest Home in Tacoma.

We wish to welcome two new families to this vicinity. Mr. and Mrs. Don "Blackie" Bernard have moved into their new home here, and Mr. and Mrs. Milton Orren, and three boys of Ashford, have moved into their new home, formerly the Roy Montague place.

The Elbe Grange annual carnival held Saturday night was very successful. Mrs. Mae Kirkpatrick was the lucky winner of the lovely hamper full of linens.

Mr. and Mrs. Quil Robertson of Pleasant Valley made a trip to Portland over the week end.

Visiting at the Vince Rahier home on Sunday were Mr. and Mrs. E. Northrup and children, of Tacoma.

Week end guests at the Harold Milbrath home were Mr. and Mrs. Paul Dupuis (Harold's sister) from Spokane, Washington.

The Bill Christensen's spent the week-end visiting his parents the Wm. Christensen's at Everett, Washington.

Reporter—Ruth Lanphere

Graham ... Kapowsin Grands Meet

Past Noble Grands of the Kapowsin Rebekah Lodge will meet at the home of Mrs. Guy Norman Oct. 11.

Mr. & Mrs. Emil Lauenborg had as their guests for the last week Mrs. Lauenborg's granddaughter, Mrs. Darlene Williams and great grand children Larry & Gregory of Olympia.

The Kapowsin Rebekah Auxiliary met at the home of Mrs. Victor Anderson last Tuesday. The coming series of card parties was discussed.

The Graham Grange will meet Monday night, Oct. 10. It would be nice to see more members out.

Mr. and Mrs. John La Pore were surprised with a visit from old friends and neighbors, Mr. & Mrs. Keil Johnson of Tacoma, and Mr. Sam Jacocetti of Dutton, Mont.

Reporter—Mrs. Marie Tinius

Waller Road ... Garden Club Meets Tonight

Waller Road garden club will hold their first meeting tonight at 8 in the Community hall.

Members are asked to attend and sign with the secretary to have their names in the yearbook.

Mrs. Lena McMonigle of Puyallup will talk on the beauty of driftwood. Arrangements will carry the theme "salute to autumn". The horticultural topic will be "air layering".

Reporter—Mrs. Vern Fogle

Garden Club Meets Tuesday

The regular meeting of Clover Creek Garden Club will be 8 pm, Tuesday, October 11, at the home of Mrs. Claude Blythe on Brookdale Road. Guest speaker is Mrs. Van Antwerp who will demonstrate candle making.

Spanaway ...

Rummage Sale

The Spanaway Volunteer Firemen's Auxiliary will have their rummage sale Friday, Oct. 7 at the Spanaway Firehall from 9 to 8. Call Mrs. Robert Rhone for pick-up.

The Rainbow Mother's Club of Faith Assembly 145 will meet Thursday Oct. 6 at the home of Mrs. Everett Schumann with Mesdames Charles Allen and George Kenoyer co-hostesses.

Deepest sympathy to Andrew Qualland whose mother passed away recently and to Phillip Zurluh whose brother also passed away.

Mr. & Mrs. Bob Stedel Sr. spent their vacation in Vancouver B. C. last week.

Registration books close Oct. 8th. You may register at Gibbon's Food Center next to Spanaway Post Office or at the home of Mrs. James Frame on the Spanaway Loop Road.

Oct. 16, Sunday, is the Annual Smorgasbord of the Dr. Lee A. Rademaker guild at Our Lady Queen of Heaven Church.

The Spanaway Well Baby Clinic will be held Tuesday, October 11 at the Assembly of God Church. Registration will be from 8:30 to 10:00. Dr. Kline will be present to give examinations. For further information call Mrs. Lloyd Landgreb at LE 7-8814.

Mrs. Oliver Omat, Reporter.

FIRST SEE NATIONALS
PARKLAND LE 1-1331
AUTO
127th & PAC. AVE. PARTS

LUMBER
ALL GRADES
ALL STANDARD AND BETTER LUMBER IS WCLA GRADE STAMPED
GLASS HARDWARE SHINGLES ROOFING
GET OUR PRICE FIRST ON ECONOMY GRADE LUMBER

ORDERS NOW BEING TAKEN FOR SAWDUST—SHAVINGS
Baskett Lumber
9701 Portland Avenue LE 7-8663

General Sheet Metal Work
Special Attention to Special Equipment
RAU MFG. CO.
LEnox 7-7372
14114 Pacific Avenue

Prescription Service
Open 7 Days a Week
9:30 a.m. - 9:30 p.m.
Sundays 10 a.m. - 6 p.m.
JACOBS PACIFIC DRUGS
Wallgreen Agency
Pay Light & Water Bills Here
84th & PACIFIC AVE. GREENfield 2-6445

AN EXPERIENCE IN DINING
NETTIE'S
STEAK DINNER FOR TWO
FULL 16-OZ. OF CHOICE BEEF WITH KING SIZE SALAD BAKED POTATO ALL THE COFFEE YOU CAN DRINK \$5.25 FOR TWO
IN THE DAFFODIL ROOM
TH 5-1156 116 SO. MERIDIAN ST. PUYALLUP

POWER TOOLS FOR RENT
SANDERS—EDGERS—POLISHERS—HAND SANDERS SKIL SAWS—ELECTRIC DRILLS—CEMENT MIXERS ETC.—ALSO HAND TOOLS FOR RENT
Anderson Lumber
9813 Pacific Avenue LEnox 7-7311

BICYCLES



For School & Play
FAMOUS MODELS
SCHWINN &
COLUMBIA
\$37.95 and Up
PARKLAND
CYCLE & KEY
11021 Pacific Avenue
LE 7-5772

Fire Auxiliary Puts On Rummage Sale

The auxiliary of the Parkland fire department will have a rummage sale Oct. 7 & 8 at the Parkland fire hall from 9 to 6 p.m.

Numbers to call for pickup are: Mrs. Tatro - LE 1-1332; Mrs. Webster - LE 1-2048; Mrs. Moe - LE 7-5703.

INTERURBAN AUTO FREIGHT INC.

3 Trips Daily
To Parkland, Spanaway
Summit, Midland
GENERAL FREIGHT
MA 7-4121

Phone-Larynx Developed

For thousands of persons who have lost their power to speak an electronic larynx has been introduced by Pacific Telephone Northwest and The Bell Telephone System.

Developed by the Bell Telephone Laboratories, the new voice is available on a non-profit basis. It will help the person whose larynx has been removed or paralyzed, and who has not been able to master esophageal speech. The electronic larynx provides a substitute for the sound of the vocal cords.

Bob's Barber Shop

9820 Pacific Avenue
Courteous Service Always
Hours 9 to 6 Tues. thru Sat.

larynx is designed to be held against the outside of the throat while it is being operated. It transmits sound waves into the throat cavity, replacing those normally produced by air passing over the vocal cords. Speech is produced by forming words with teeth, tongue and lips—just as in normal talking.

The electronic larynx is produced in two models—one is high pitched to simulate the female voice; the other, for men, has a lower pitch. The device uses transistors and is powered by self-contained mercury batteries of a type available at most radio and camera stores. Battery life ranges up to several months, depending on amount of use.

It is manufactured by Western Electric and its cost to manufacture—\$45—is also the cost to the customer.

Initially the new larynx is available at any Pacific Telephone Northwest business office.

Clover Creek ... School Board Meets Tuesday

The Clover Creek School will have their executive board meeting Tuesday, Oct. 11 at 1:30 at the Clover Creek School.

Clover Creek Grange will meet tomorrow night at 8 p.m. in the hall.

The Clover Creek American Legion Post 118 and auxiliary will meet at the hall in Spanaway Oct. 7 at 8 p.m.

Kathryn Deady, Reporter.

Rodger Lunde Auxiliary Meets

Members of Rodger Lunde post 5052 auxiliary will meet at the home of Mrs. Jim McGuire, 8042 A St. tonight at 8.

Mrs. Ralph Rawley, president, will preside. Plans will be made for the Gold Star mothers tea to be held with the American Legion 228 of Parkland.

Don't Let Just Anybody
Monkey With Your TV Set!

A-1 TELEVISION & RADIO
SERVICE
1424 East 72nd
Call GR 5-0658

WE USE RCA TUBES

IN CONCERT TODAY

Thursday Oct. 6th

THE UNITED STATES NAVY BAND

The World's Finest



CDR CHARLES BRENDLER, USN - Conductor

AT THE
MEMORIAL GYMNASIUM
PACIFIC LUTHERAN UNIVERSITY

TODAY, THURSDAY, OCTOBER 6, 1960

**Sponsored By The Parkland
Area Kiwanis Club**

GET YOUR TICKETS NOW FOR TWO OF THE FINEST AND MOST THRILLING MUSICAL PROGRAMS EVER PRESENTED IN PARKLAND!

Matinee 1:00 p.m. Sharp
Evening 8:00 p.m. Sharp

The Kiwanis Club and the Parkland area are pleased and proud to be able to act as hosts to the famous United States Navy Band. "The World's Finest," at an afternoon matinee and evening concert at Pacific Lutheran University gymnasium on October 6th. Those named on this advertisement join wholeheartedly in welcoming these outstanding representatives of the U. S. Navy to our hospitable and friendly area and join in urging the residents to take advantage of this rare opportunity to see and hear such a world famous and talented organization.

- PARKLAND CYCLE SHOP
- PARKLAND CLEANERS
- COLLEGE AND CENTRE CLEANERS
- PARKLAND GRILL
- WILMA'S BEAUTY SALON
- PATTY ANN BAKERY
- VAUGHAN'S PACIFIC AVENUE LUMBER
- RILEY'S ICE CREAMERY
- NATIONAL BANK OF WASHINGTON
Parkland Branch Member F. D. I. C.
- VERNE ASHFORD INSURANCE AGENCY
- CARL T. LINDGREN, REALTOR
- SHOP-ETTE
- SILER'S T.V. AND APPLIANCES
- WATKINS PRODUCTS
- PARK 'N SHOP MIDLAND THRIFTWAY
- LAURINAT'S APPAREL
- PARKLAND PHARMACY
- MOUNTAIN VIEW CLEANERS
- ARMSTRONG'S USED CARS
- BROOKDALE LUMBER CO.
- PARK AVENUE SHOES
- DRYER MORTUARY
- RUDY'S FEED AND SEED
- THE BARGAIN BASKET
- MC KEWEN STUDIO
- TIMES JOURNAL PUB. CO.

PARKLAND FUEL OIL SERVICE

HUNTERS SPECIAL

BAR-S THRIFTY
Sliced BACON Lb. 39¢

AA LARGE - RANCH
Fresh Daily EGGS Doz. 57¢

ALBERS - PANCAKE
FLOUR 4-lb. Bag 39¢

HOME MADE - COUNTRY STYLE
SAUSAGE 3 Lbs. For \$1

MJB
COFFEE 1-lb. 65¢

BARGAIN BASKET
SYRUP 22-oz. Jar 29¢

HUNT'S SMALL WHOLE - 300 TIN
POTATOES 10¢

NALLEY'S - 15-Oz. Tins
BEEF STEW 3 For \$1

NALLEY'S - 15-Oz. Tins
CHILI Reg. or Hot 3 For \$1

SKIPPY
DOG FOOD 15 Cans For \$1

25-lb. GOLD MEDAL
FLOUR Only \$1 79

BEEFSTEAK
TOMATOES Lb. 10¢

2 lb. KRISPY
CRACKERS 49¢

MEDIUM
ONIONS 3 Lbs. For 10¢

RED DELICIOUS
APPLES 2 Lbs. For 29¢

TOKAY
GRAPES Lb. 10¢

10 -lb. Cello
Bag POTATOES 29¢

FRESH
CORN 6 For 19¢

BONELESS
Fillet
RED SNAPPER Lb. 29¢

FRESH, 100% PURE
GROUND BEEF 3 Lbs. For 89¢

T-BONE
STEAKS All Cuts Lb. 79¢

BEEF STEAKS ROUND • SIRLOIN RIB Lb. 69¢

RUMP
ROAST Well Trimmed Lb. 59¢

HYGRADE
BOLOGNA - Or - LIVER SAUSAGE CHUBS Lb. 39¢

SIRLOIN
TIP ROAST All Meat, No Bone Lb. 69¢

WE RESERVE THE RIGHT
TO LIMIT QUANTITIES

STORE HOURS:
9 A.M. TO 10 P.M.
7 DAYS A WEEK

BARGAIN BASKET

16618
PACIFIC AVE. South
SPANAWAY, WASH.

NO SALES TO
DEALERS

Our Prices Are
The Best Around

**a-Wondering . . .
and a-Wandering . . .**
With JACK BROWN

Many a moon has passed since there was a truly close Presidential election in this country. The last was that of 1916, when almost complete returns gave Charles Evans Hughes every reason to believe he had won. But the next day it was learned that Woodrow Wilson had carried California, an almost totally unexpected event, and that was enough to put him in the White House.

Subsequent elections have been won by wide and often overwhelming margins. But many people think something like the 1916 pattern may appear in 1960. The standard polls, as of now, certainly indicate that. They have the two tickets running absolutely neck and neck with only a percentage point or two separating them. These polls also indicate that a comparatively small number of voters—five or six per cent or so—are undecided in their choice.

This year your single vote may be more important than ever. Don't throw it away.

The other day a friend in the wholesale food business brought to my attention a copy of an authentic bulletin board notice posted by one of Boston's leading firms just 84 years ago. If you think things haven't changed too much in this old world just read this. Remember, these were actually conditions expected to be lived up to in less than one lifetime ago.

1. Office employees each day will fill lamps, clean chimney and trim wicks. Wash windows once a week.

2. Each clerk will bring in a bucket of water and a skuttle of coal for the day's business.

3. Men employees will be given an evening off each week for courting purposes.

4. After 13 hours of labor in the office, the employee should spend the remaining time reading the Bible.

5. Every employee who has performed and labored faithfully and without fault for five years, will be given an increase of 5 cents per day in his pay, providing profits from business permit it.

6. Every employee should lay aside from his earnings for his benefit during his declining years so that he will not become a burden on society.

7. Any employee who smokes any cigars, uses liquor in any form, or frequents pools and public halls or gets shaved in a barber shop will give good reason to suspect his work intentions, integrity and honesty.

The above is of particular interest to me since I am in the process of negotiating with the Typographical union on a contract that contains language which will compel me to pay as much as \$54.02 for a 3½ hour shift under some conditions. Is it unreasonable of me to think that perhaps some day my grandson may be negotiating a contract from one side of the table or the other, containing language compelling the payment of up to \$500 per hour?

Perhaps I'm just a big dumb jerk but there are certain facets of this situation that just don't make sense to me. I remember when I was first married I worked for \$16.00 per week. I rented a house that was far from being a shack, I was buying a car on time and not too bad a heap for the time either, we paid the way into this world for our first child and still had enough money left over to enjoy life. In fact my life in those days seemed to be on an exact par with the life of my employees today in the \$100 per week bracket.

Who has gained by this great increase in wages? It beats me. The wage earner seems to be getting by just about the same except that he probably has a few more idle hours on his hands to spend. A few fortunes have been amassed in the meantime by people like Dave Beck and a lot of people are taking bows for their efforts on behalf of the working man.

Who has lost by this situation? That's an easy one to answer. All our elder citizens and people who have saved up a little nest egg to retire on have taken it right on the chin. Those who felt they had enough saved up to live nicely on for the rest of their lives found they didn't have enough to keep a bevy of humming birds alive for the balance of their expected life span.

Inflation has caught up with and wiped out too many a nest egg to suit me. It's a cinch there's an answer to the problem someplace but I'm sure not smart enough to know the answer. Maybe a soft freeze on prices and wages for a few years might do some good. One thing I'm sure of is that if the spiral keeps on there will be no such thing as a well earned retirement for anyone except through government expenses.

Like I said, it doesn't make sense to me. Now any of you people who get mad about the above article do not call here to tell me to take my filthy paper out of your mailbox, like some of you have in the past when I've mentioned Dave Beck, Hoffa, unions or something pertaining to them, because I won't do it. Who knows? Maybe next week I'll say something to please you.

CHEESE SALE

CHEESE SPECIAL
WONDER MILD

CHEESE LB. **49^c**

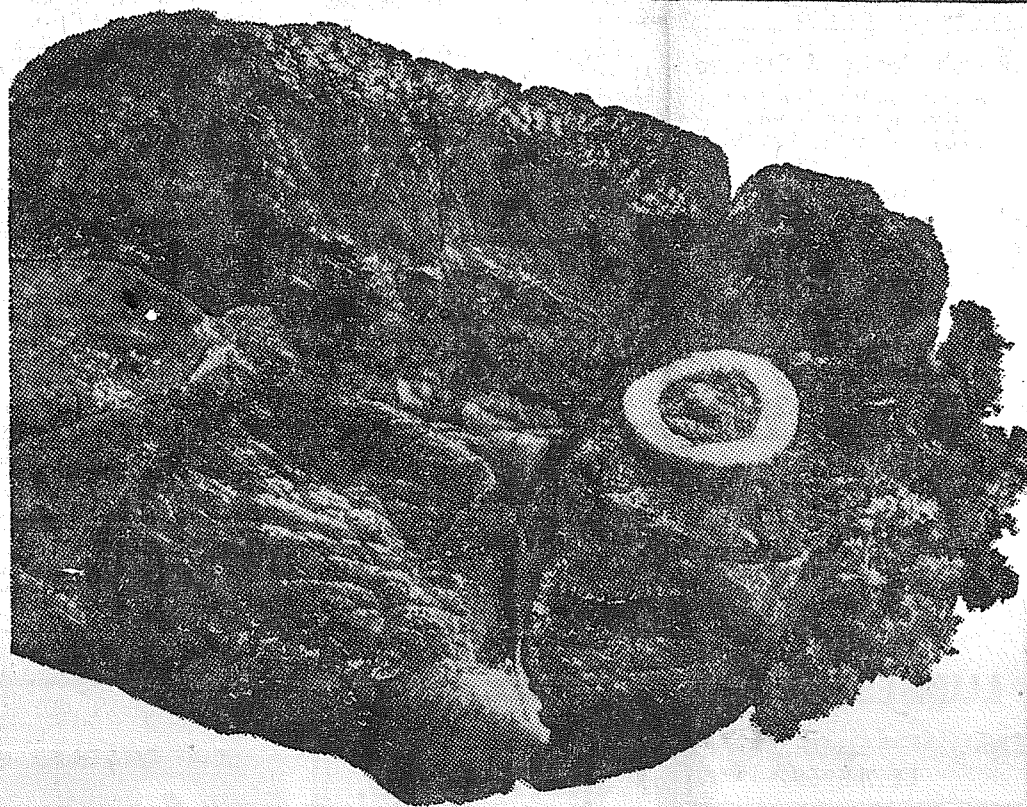
Parmesan CHEESE **29^c**
KRAFT GRATED
3 OUNCE PKG.

Creamed CHEESE **37^c**
PHILADELPHIA
8 OUNCE PKG.

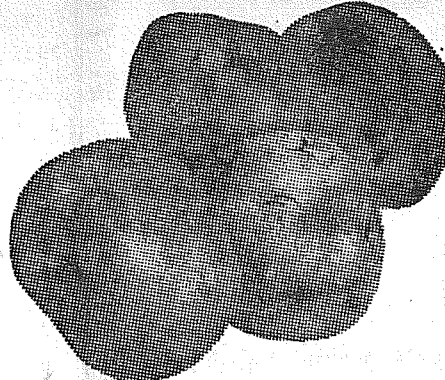
Natural CHEESE **3/\$1**
KRAFT SWISS OR SHARP
6 OZ. PKG. 35^c

CHEEZ WHIZ **55^c**
KRAFT
16 OUNCE JAR

CHEESE STICKS **43^c**
TABLERITE
MELLOW, 10 OZ.



MUSHROOMS **29^c**
Ostrom Pieces
And Stems • 4-oz.
2-oz.—2 for 33cTin



FRENCH FRIES **10^c**
Everfresh, Frozen
9-ounce Package

STEAK SALE

BOTTOM ROUND lb. **79^c**

TOP ROUND lb. **89^c**

T-BONE STEAK lb. **\$1⁰⁹**

SIRLOIN STEAK lb. **89^c**

WIENERS **37^c**
ARMOUR'S SKINLESS 12-oz. Pkg.

VEAL CUTLETS **89^c**
RANDY'S FROZEN 4-4-oz. Steaks lb.

• Betty Crocker Label
8 Flavors! Each 27c
CAKE MIXES **4 FOR \$1**

• ORANGE JUICE DRINK
Tip Top Frozen
12-oz. Tins **2 For 49^c**

Procter & Gamble
Detergent
Giant Size
Tide **65^c**

RED HOT SPECIAL
PRESTO
LOGS **10 FOR 79^c**
8^c Each

Sunny Jim, Top Quality
Pancake and Waffle
Syrup 22-oz. Bottle **29^c**

Ranch Fresh
Grade "AA"
Large Eggs Doz. **57^c**

Betty Crocker
All-Purpose
Bisquick 40-oz. Pkg. **39^c**

BRAKE DRUM TURNING
Valve Seats Installed, Complete Motor Rebuilding, Reboring, Pin fitting, Lathe and Press Work, Head Surfacing, Key Seating, Pistoning Grinding, etc.
Rupe Machine Works and Garage
AUTOMOTIVE & INDUSTRIAL WORK
13411 Pac. Ave. P.O. Box 2445, Parkland 44, Wa., LE 7-7450

U.S. No. 1 Washington Gems
POTATOES **10 Lbs. 39^c**

Large Beefsteak
TOMATOES **2 Lbs. 25^c**

Hydro Cooled
CORN **10 Ears 49^c**

Juice
ORANGES **5 lb. bag 49^c**

VAUGHAN'S VALUES
Convenient Kitchens
Let Us Help You Plan
Your Kitchen for Beauty,
Convenience and Comfortable Living
FREE ESTIMATES — BUDGET PAYMENTS
VAUGHAN'S PACIFIC AVENUE LUMBER
84th & Pacific Avenue GR 4-9515

FOOD IGA TOWN

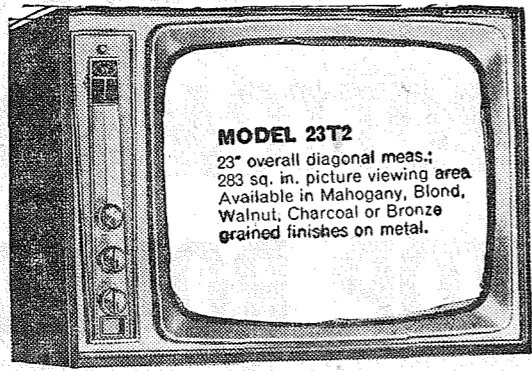
112th At Park Ave — Ad Days Oct. 6-7-8

Personal 1 Business Service 3

OUT IT GOES 3 DAYS ONLY-THURSDAY-FRIDAY & SATURDAY, OCT. 6-7-8 BANKRUPT SALE

CENTRAL SURPLUS 1000 Center St. Savings up to 80% SHOES, FISHING TACKLE, RAINCOATS, BLANKETS, HARDWARE, TENTS, SPORTING GOODS, CLOTHING

MOTOROLA 'WOW' EXCLUSIVE



at SILERS

Guaranteed in Writing

NOW!! ONLY AT SILERS One Year Warranty ON ALL LABOR

FULL YEAR GUARANTEE ON ALL TUBES AND PARTS

RADIO DISPATCHED SERVICE TRUCKS FOR FAST, EFFICIENT SERVICE



Motorola's Exclusive Tube Sentry Unit protects every tube and part in these sets from warm-up power surge...

These sets also have Premium Rated Tubes... built and tested to meet rigid Motorola Standards that are 100% higher than published EIA ratings...

11230 Pacific Avenue

LEnox 7-8634

OPEN 'TIL 9:00

Thursday and Friday HUNTING SPECIALS

QUICK POSSESSION 3 BEDROOMS—2 FIREPLACES Recreation room, with fireplace. Also Living-room with fireplace. Tile bath, large closets in every bedroom, hardwood floors...

G.I. SPECIAL \$ SAVED \$7950 TOTAL PRICE 2 bedroom, hardwood floors, Furnace, outdoor patio, modern cottage with fenced yard...

RURAL REAL ESTATE 14403 Pacific Ave. LE 7-5440

Business Service 3 Ace Dirt Moving Co. Bulldozing Ditching POP SOIL GRAVEL SEPTIC TANKS and DRAIN FIELDS

Webb Electric Co. 8240 B Pacific Ave. GR 2-2902 ELECTRIC HEAT All Types

Call POCHET FOR Expert T.V. Repair Satisfaction Guaranteed Free Tube Testing 140th & Pacific LE 7-8624

Business Service 3 Boush Moving & Storage Agents for U.S. Van Lines Cost to Coast Service 11816 Pacific Avenue LE 7-3696

A-1 SANITARY SEPTIC TANK PUMPING AND SEWER CLEANING SERVICE PUY. TH 5-2873

TOPSOIL 6 yards \$9.00 LAWNs ROCKERIES INSTALLED LUBBESMEYER Landscape Co. LE 7-6968

COMPLETE TRACTOR WORK Gravel & Driveways LE 7-3846

SEPTIC TANK CLEANING Prompt Service C. V. HUTSON GR 4-3980 GR 2-7038

BULL-DOZING Excavating Grading Gravel LE 7-5112

WELL DRILLING Berkeley Pumps • JETS • SUBMERSIBLES • CENTRIFUGALS • TURBINES Call LE 7-7281

TACOMA PUMP & WELL DRILLING CO. 14619 PACIFIC AVENUE Terms Trades

Real Estate 9

40 ACRES WITH RUSTIC LOG CABIN Two bedroom home. Exterior of the log cabin is about 30 years old. Inside is nicely finished...

M. L. S. MULTIPLE LISTING SERVICE SO. TACOMA Low down payment. Quick possession. 2 large bedrooms, 2 1/2 lots...

East 112th A beauty, 1300 sq. ft and approximately 1/2 acre. Extra large living room, fireplace, dining room, birch kitchen...

McKinley Hill REALTY 6311 McKinley Ave. GR 4-9579 Member of Multiple Listing Service

M. L. S. MULTIPLE LISTING SERVICE Jennie L. Grodvig PARKLAND REALTY CO. Insurance of All Kinds

LIST WITH SUBURBAN Home and Farm Specialists in South End Properties. Two offices open every day and evening for your convenience.

Suburban Realty, Inc. 113th and Pacific, LE 1-8838 112th and Canyon, LE 7-0228

RENTALS 10 HOUSE FOR RENT—1 bedroom furnished. Close to Roy Y. S45, VI 7-7825. 10C5

T and T PAINTING CO. Efficient, Courteous Service 2325 So. Ash Street BR 2-0454

ART'S SHOE SHOP LET ART CHANGE THOSE HIGH HEELS FROM THIS TO THIS All Work Guaranteed 315 Garfield Street

CUSTOM-BUILT CABINETS FORMICA & GE TEXTOLITE COUNTERS We Install Cabinets - Drain Boards

BAKER'S Woodworking Co. LE 7-0565 - LE 7-3290 13415 Pacific Ave. Parkland

Fuel 4 Dry 16" virgin forest wood on ground. 512, LE 7-6543. 4C5

BUDGET BUYS

Loin End PORK Roast lb. 49¢ Center Cut PORK Chops lb. 69¢ PORK LINK SAUSAGE Our own 99c 2 lbs. SLAB BACON FEDERAL BRAND LB. 37c

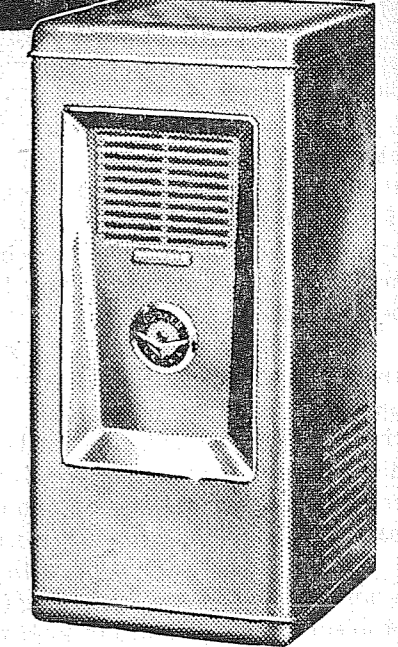
HERMANS FOOD STORE 162nd & Park Ave. Spanaway (Right to Limit Reserved)

RENTALS 10 HOUSE FOR RENT—1 bedroom furnished. Close to Roy Y. S45, VI 7-7825. 10C5

TRUCK PARTS & EQUIPMENT CO. NEW AND USED TRUCK & JEEP PARTS LARGE STOCK OF NUTS & BOLTS

Quaker 'LITTLE GIANT'

MORE HEAT on LESS FUEL Heats 2 to 4 rooms • Produces more heat than other heaters costing much more.



- 1. Exclusive Quaker "Smokeless" Burner 2. Exclusive Built-in "Heat-Saver" Baffle 3. Air-Tight Welded One-piece Construction 4. Low Chimney Outlet 5. All-Steel "Furnace Type" Construction 6. Outstanding Beauty 7. Scientifically Engineered Cabinet Construction

- 8. Handy Front Lighting Door 9. Approved for Safety 10. Waist High Fingerprint Control 11. Evr-Clear Flame Door 12. Certified Rating 13. Luxurious Baked-on Finish 14. Automatic Safety Oil Valve 15. Automatic Draft Regulator

Only \$7850 At

MARV TOMMERVIK'S PARKLAND FUEL OIL SERVICE 12002 Pacific Avenue LEnox 7-0256

FINAL CLEARANCE!

50% OFF ON ALL REMAINING STOCK

STORE FIXTURES COUNTERS-SHELVING-CASH REGISTER-GAS PUMPS-SCALES - COKE MACHINE & MANY OTHER ITEMS

USED APPLIANCES USED HEATERS USED FLOOR FURNACES Your Choice \$5

CORNER SOLD! MUST VACATE!

MIDLAND HARDWARE 8502 Portland Ave.

Classified

(CONTINUED FROM PAGE 10)

● Repair Service 11

LAWN MOWER SERVICING
Briggs & Stratton, Clinton, Power Products
& Lauson, Engine Parts and Repairs.
PARKLAND CYCLE & KEY
11021 Pacific Avenue LE 7-5772 11cft

● Automobiles 12

MUST SELL 1953 Buick 2 door hardtop.
First class condition. JU 8-9343. 12c5

ANDERSON'S CARS FOR LESS CHINOOK CAMPERS

LE 7-0404
176th & PACIFIC AVE.

● Foreign Cars 12A

**- ALL -
FOREIGN CAR KEYS**
107 Varieties
PARKLAND
CYCLE & KEY
11021 Pacific Ave. LE 7-5772

● Farm Column 13

FOR SALE—Eastern Washington hay and
grain. Jack Burks, Graham, VI 7-7645. 13cft

● Farm Column 13

HOLSTEIN heifer, just fresh. Frank Hoff-
man, Route 1, Box 136, Saltonville. Go to
Fogge's store on Mt. Highway for direc-
tions.
FOR EASTERN WASHINGTON HAY and
STRAW by the bale, ton or truck load.
Call Viv Selie, Selie's Farm Supply, VI
5-2727. 13cft

● Work Wanted 14

IRONING IN MY HOME—80c an hour. LE
7-6718. 14cft

● Miscellaneous 15

DUMP
Disposing of all uncalled for vaccums,
KIRBY'S, HOEVERS, ELECTROLUX. Pay
roadside bill as low as \$8 on these clean-
ers and it is yours for free. Upton Electric,
1148 Market, BR 2-3392. 15c5

● Farm Column 13

FOR SALE—Eastern Washington hay and
grain. Jack Burks, Graham, VI 7-7645. 13cft

● Miscellaneous 15

FOR SALE—Electric 75 ampifier welder,
\$35 cash with accessories. LE 7-7984. 15cft

DISPOSABLE BAGS FOR ALL TYPES OF VACUUM CLEANERS

Phone Orders Taken
GR 4-0651
AMERICAN SEWING CENTER
8232 Pacific Avenue

● Miscellaneous 15

FOR SALE—Kenmore oil heater, good con-
dition with two 30-gallon drums. \$45. Call
evenings. WA 2-7858. 15c5

● Miscellaneous 15

FOR SALE—Electric hay cutter machine,
Mrs. T. Talk, 3628 River Road, 1 mile
past Indian Hospital. 15cft

● Miscellaneous 15

WITH POLISHER. Repossessed with only \$21
due. Assume \$5 monthly payment and get
free home demo. Upton Electric, BR 2-
3392, 1148 Market St.
SAANAN billy goat service. Graham, VI
7-7867. 15c5

Ace Dirt Moving Co.

BULLDOZING • DITCHING
GRAVEL TOP SOIL • SEPTIC
TANKS DRAIN FIELDS
1750 9th St. S. W., Puyallup
Phone Puyallup TH 5-2452

1960 SINGER REPO. Balance due \$25.90 payment of \$4.15 per month

No attachments to buy. Zig
zag, overcast, blind hem, but-
ton holes etc. Guaranteed.
Dealer. For more information
call GR 4-0651.

● Miscellaneous 15

FOR SALE—Kenmore oil heater, good con-
dition with two 30-gallon drums. \$45. Call
evenings. WA 2-7858. 15c5

● Miscellaneous 15

SPECIAL ORDER CAKES—Phone LE
1-3550 Patty Ann Bakery.

CROFT TRAILERS

Local and One-Way Trailer
Rentals—NATIONWIDE
Hiway 99 GR 4-8437
74th & So. Tacoma Way

● Miscellaneous 15

FOR SALE—Heavy duty 110 gallon oil drum
and stand used 1 year and 10 feet of cop-
per tubing. \$20. LE 1-2977. 15c5

● Aviation 17

FREE—FIRST FLYING LESSON—LEARN
TO FLY—4 TO A WEEK
New and Used Aircraft Sales
TACOMA FLYING SERVICE
Spanaway Airport, LE 1-0442. 17cft

LEGAL NOTICES

PETERS & TRACY Attorneys

11024 Pacific Avenue
Tacoma 44, Washington
**NOTICE OF HEARING FINAL REPORT
AND PETITION FOR DISTRIBUTION**
NO. 4793
In the Superior Court of the State of Wash-
ington for the County of Pierce.
In the Matter of the Estate of George A.
Sharp and Della Sharp, Deceased.
Notice is hereby given that Audrey L.
Franklin, administratrix of the estate of
George A. Sharp and Della Sharp has
filed in the office of the Clerk of said
Court her Final Report and Petition for
Distribution, asking the Court to settle said
report, distribute the property to the per-
sons thereto entitled and to discharge said
Audrey L. Franklin, administratrix and
that said report and petition will be heard
on the 26th day of October, 1960 at 9:30
a. m., at the court room of the Probate De-
partment of said Court, at which time and
place any person interested in said estate
may appear and file objections thereto and
contest the same.
Dated this 22nd day of September, 1960.
ROBERT L. DYKEMAN,
Clerk of said Court.
By J. W. LODGE,
Deputy.
Published in this Times Journal, Septem-
ber 29, Oct. 6, 13, 1960.

NOTICE OF GROUND WATER RIGHT APPLICATION NO. 5733

State of Washington, Office of Supervisor
of Water Resources, Olympia.

That Parkland Light & Water Co.
Tacoma, Washington, on September 13,
1960, filed application for permit to with-
draw public ground waters through a
well (No. 6) situated within W. P. Mel-
ville D. L. C. of Section 17, Township 19
N., Range 10 E., in Pierce County, in
the amount of 500 gallons per minute,
subject to existing rights continuously,
and for the purpose of municipal
supply.

LEGAL NOTICES

ANNON W. MAY Attorney

802 P. S. Bank Bldg.
Tacoma
NOTICE TO CREDITORS
No. 6423
In the Superior Court of the State of Wash-
ington for the County of Pierce.
In the Matter of the Estate of Nelson
Blaine Eshom, Deceased.
Notice is hereby given that the under-
signed has been appointed and has qual-
ified as Executor of the above entitled
estate; that all persons having claims
against said deceased are hereby required
to serve the same, duly verified, on said
Ina Mae Eshom or her attorney of record
at the address below stated, and file the
same with the Clerk of said Court, to-
gether with proof of such service, with-
in six months after the date of first publi-
cation of this notice or the same will
be barred.
Date of first publication September 29,
1960.
Executor of said Estate
INA MAE ESHOM,
Address 802 Puget Sound Bank Bldg.
Tacoma, Washington
Attorney for Estate
802 Puget Sound Bank Bldg.
Tacoma, Washington
Published in the Times Journal, September
29, Oct. 6, 13, 1960.

IN THE SUPERIOR COURT OF THE STATE OF WASHINGTON IN AND FOR PIERCE COUNTY

SUMMONS BY PUBLICATION
No. 144829
V. ERNA ROBERTS,
Plaintiff,
vs.
CHARLES A. ROBERTS,
Defendant.
The State of Washington to the
said Charles A. Roberts:
You are hereby summoned to appear
within sixty (60) days after the 6th day of
September, 1960, and defend the above
entitled action in the above entitled Court,
and answer the complaint of the plain-
tiff, and serve a copy of your answer up-
on the undersigned attorneys for plaintiff,
at their office below stated; that in case
of your failure to do so, judgment will be
rendered against you according to the de-

BUILDING PERMITS

D. V. Wilson, \$9000 residence,
Rt. 3, Box 624, Tac.; A. L. Soine,
\$10,000 duplex, 1506-08 So. 120th;
Bernhard W. Brunner, \$16,000 resi-
dence 12922 Portland Ave.; J. D.
Long, \$2000 Bird Aviary, 3735
Waller Road; Robt. Boskovich,
\$3000 Barn, Rt. 1 Graham; Mayer
& Peterson, \$14,000 residence, 1724
So. 120th; Al Rapp Const. Co.
(2) residences \$21,500 each, 10717
& 10723 Woodland Rd. Puy.; Gerald
M. Kiewe, \$1000 garage, 9005 E.
Vickery Rd.; Collins Community
Church, \$3000 addn. to church,
12416 Bingham Rd.; Hedlund Const.
\$15,000 residence, 911 Tule Lake
Rd.; Rainier Bldrs., \$13,000 resi-
dence, 9207 118th St. East; Harry
F. Larson, \$8000 residence, On
Knoble Rd., Span area; James
Nylander, \$16,000 residence, 864 So.
142nd; Harold McGee, \$12,000 resi-
dence, 5409 Vickery Rd.; Gerald
Youngdey, \$6000 trailer, 1424 East
22nd; E. R. Bauer, \$500 garage,
10925 Vickery Rd.

LEGAL NOTICES

mand of the complaint, which has been
filed with the clerk of said court. This
is an action for divorce on the grounds
of desertion.

SEE THE HARMOND FOOTBALL FORECASTS EACH WEEK IN THIS AD

TOP 20 TEAMS				Saturday, Oct. 8 — Major Colleges				EAST (Small Colleges)				MIDWEST & SOUTH (Small Colleges)				FAR WEST (Small Colleges)																																																																																																																																																																																																																																																																							
1-IOWA	2-MISSISSIPPI	3-SYRACUSE	4-PURDUE	5-MINNESOTA	6-TEXAS	7-OHIO STATE	8-MISSOURI	9-ARKANSAS	10-ILLINOIS	11-KANSAS	12-WISCONSIN	13-WASHINGTON	14-ALABAMA	15-BAYLOR	16-MICH. STATE	17-L.S.U.	18-GEORGIA	19-NAVY	20-CLEMSON	Arizona State	Auburn	Boston College	Bowling Green	Clemson	Colorado	Colorado State	Dartmouth	Dayton	Florida	Florida State	Harvard	Hillsdale	Iowa	Kansas	Kent State	Kentucky	L. S. U.	Memphis State	Miami, Florida	Michigan	Minnesota	Mississippi	Miss. State	Missouri	Navy	Nebraska	New Mex State	N. Carolina St.	North Carolina	Ohio State	Oklahoma State	Oregon	Oregon State	Ohio Univer.	Pacific	Penn State	Presbyterian	Princeton	Purdue	Richmond	Rutgers	Syracuse	Tennessee	Texas	Texas A & M	T. C. U.	Texas Western	Utah State	Wake Forest	Washington	Washington St.	William & Mary	Wyoming	Yale	Amn. Int'l	Bowdoin	Bloomsburg	Buffalo	Carnegie Tech	Connecticut	Delaware	Hamilton	Lehigh	Muhlenberg	New Hampshire	Rhode Island	Rochester	Slippery Rock	Bucknell	Oberlin	Massachusetts	Massachusetts	Northwestern	Oskosh	S. Benedict	Southwestern	Superior	Texas A&I	Texas Lth'n	Yalparaiso	West Carolina	West Illinois	Whitewater	Michigan Tech	Winona	Trinity	Morehead	Northern Ill	Sheriff Falls	SW Missouri	Bethany	Milwaukee	East Texas	Sul Ross	DePauw	Catawba	West Virginia	La Crosse	Fresno State	Montana State	LaVerne	Pacific Luth'n	Omaha	Whitman	San Diego St	East Oregon	Oregon College	Puget Sound	Cent. Wash'ton	Humboldt	Portland	West Wash'ton	Lewis & Clark	117.1	112.2	111.2	105.8	105.1	103.0	102.8	102.3	102.0	101.8	101.3	101.2	100.7	99.9	99.1	99.0	98.9	98.3	97.9	97.4	23	15	10	35	12	23	22	Hardin-Simmons	Baylor	Chattanooga	Marquette	West Michigan	Virginia	Arizona	Drake	Brown	Xavier	Rice	The Citadel	Cornell	Toledo	Michigan State	Iowa State	Miami, Ohio	Marshall	Georgia Tech	North Texas	Pittsburgh	Duke	Northwestern	Vanderbilt	Arkansas State	Air Force	S. M. U.	Kansas State	New Mexico	Maryland	20	19	23	21	15	14	12	21	19	17	15	14	13	12	13	13	13	13	18	16	21	17	14	21	17	14	14	18	16	15	14	13	12	11	10	9	8	7	6	5	4	3	2	1	15	14	13	12	11	10	9	8	7	6	5	4	3	2	1	15	14	13	12	11	10	9	8	7	6	5	4	3	2	1	15	14	13	12	11	10	9	8	7	6	5	4	3	2	1

TIDE GIANT SIZE BOX 39¢ With Purchase of 4 Sylvania Light Globes At Regular Price 25-40-60-75 & 100 Watts

SHORTENING 3-Lb. Can 29¢ Snowdrift With Purchase of 4 Sylvania Light Globes at Regular Price 25, 40, 60, 75 and 100 Watts.

COFFEE M.J.B. 2-Lb. Can 79¢ With Purchase of 4 Sylvania Light Globes at Regular Price 25, 40, 60, 75 and 100 Watts.

FLOUR GOLD MEDAL 10-Lb. Bag 79¢

EGGS LARGE AA SHINN'S FARM FRESH DOZEN 55¢

DOG FOOD 15 Cans \$1 00 Vets Tall \$1 00

ANGEL CAKE MIX 4 Pkgs. \$1 00 Orange Reg. Price 55¢ ea.

MACARONI 4-lb. Bag 59¢ Mild Cheddar **CHEESE lb. 49¢**

POT ROASTS Lean Meaty Beef lb. 39¢

PARKLAND Super Market 12208 Pacific Avenue
Right to Limit Reserved
HOURS: 9 a.m. 'til 10 p.m.
PRICES EFFECTIVE THURSDAY THROUGH SUNDAYS EACH WEEK

STEAK SIRLOIN T-BONE ROUND & RIB Lb. 69¢

Pork Steak lb. 49¢ Spareribs lb. 39¢

Corned Beef lb. 59¢ Beef Rump Roast or Swiss Steaks lb. 59¢

HUNTERS SPECIAL "Swift's" Asst. Lunch Meat 12-Oz. Pkgs. 4/\$1

PIECE BOLOGNA or DINNER FRANKS lb. 39¢

U.S. Choice Grade LAMB SHLDR. CHOPS lb. 59¢

SLAB BACON Hormel Or Armour's Star Any Size Cut lb. 49¢

25 lb. LOCKER BOX SPECIAL \$11.95

TOMATOES Large Size Calif. lb. 10¢
BANANAS Golden Ripe lb. 10¢
APPLES Extra Fancy Delicious 2 lbs. 29¢
YAKIMA GEMS POTATOES 10 lb. Bag 39¢

No matter how you figure...

... you always do better at **PIGGLY WIGGLY!**

HILLS BROS. (12¢ off label) **\$1¹⁷**

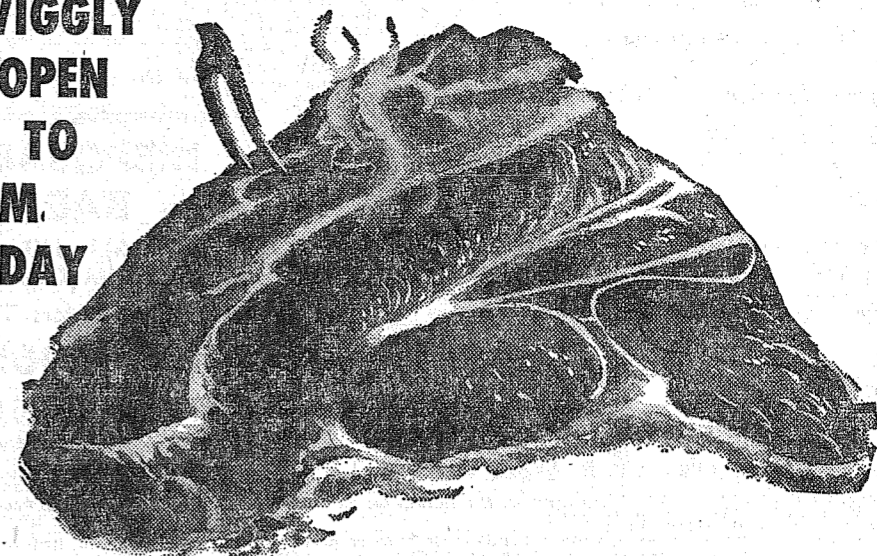
COFFEE 2-LB. CAN

ASSORTED FLAVORS

JELL-O PACKAGE **5⁵**



PIGGLY WIGGLY
STORES OPEN
9 A.M. TO
10 P.M.
EVERY DAY



CHUCK STEAK

• WELL-TRIMMED STEAKS
FOR SWISSING OR
TENDERIZING

Lb. 49[¢]

U.S. GRADED GOOD OR CHOICE
ROUND BONE ROAST **Lb. 59[¢]**

Ground Chuck
FRESH GROUND LEAN
CHUCK BEEF

Lb. 59[¢]



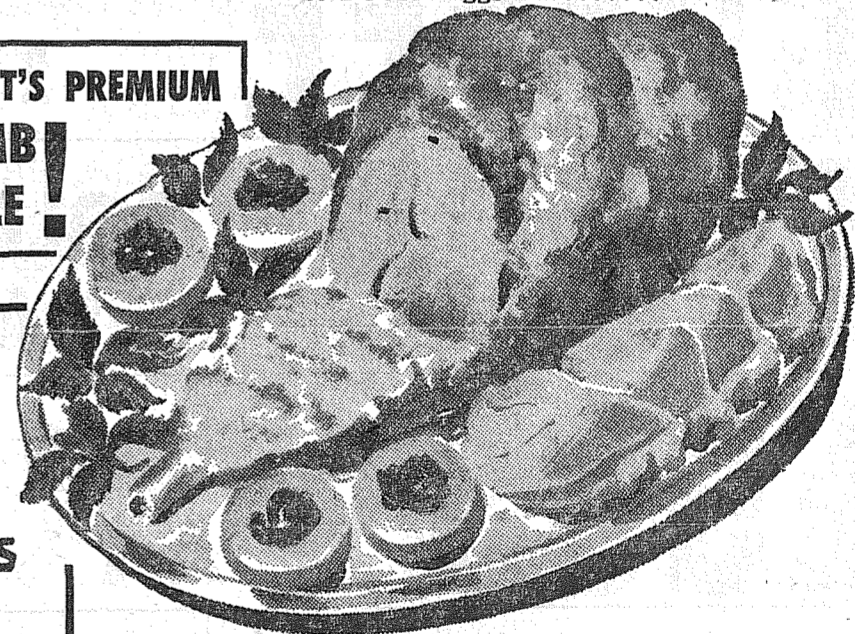
SAVE!

U.S. GRADED
GOOD
RIB STEAK **Lb. 79[¢]**

HYGRADE'S TOP-QUALITY
SLICED BACON **Lb. 49[¢]**

SWIFT'S BROOKFIELD
SKINLESS LINKS 10¢ Coupon in Package
Good Toward Purchase
of 1 Dozen Eggs... **Lb. 49[¢]**

**SWIFT'S PREMIUM
LAMB!
SALE!**



SWIFT'S PREMIUM
LEG O' LAMB **Lb. 63[¢]**

SWIFT'S PREMIUM LAMB
SHOULDER ROAST **Lb. 49[¢]**

LAMB LOIN CHOPS, Lb. 89¢
LAMB RIB CHOPS **Lb. 69[¢]**

SWIFT'S PREMIUM
LAMB PATTIES **Lb. 49[¢]**

PICTSWEET
FROZEN FOODS

FLAVOR TRAIN
SALE

PICTSWEET
CUT CORN
PEAS OR
MIXED
VEGETABLES

5 PKGS. 89[¢]

PICTSWEET CHOPPED
OR LEAF SPINACH

6 PKGS. 89[¢]

SUN SIP FRESH FROZEN
ORANGE JUICE 7 6-OZ. CANS **\$1⁰⁰**

SWANS DOWN WHITE, YELLOW, BUTTERSCOTCH, DEVILS FOOD
CAKE MIXES . 4 FOR **89[¢]**

NUCOA—3¢ OFF LABEL PACK
MARGARINE . 5 1-LB. CTNS. **\$1⁰⁰**

KRAFT—5¢ OFF LABEL
MAYONNAISE . 24-OZ. FREEZER JAR **39[¢]**

VETS'—AT A BIG SAVING!
DOG FOOD . 14 NO. 1 CANS **\$1⁰⁰**

LARGE EGGS Lynden Grade A.....Doz. **55[¢]**

BABY FOOD Gerber's Strained..... 12 Cans **99[¢]**

GERBER'S JUICE Assorted Flavors..... 6 Cans **59[¢]**

ANGEL FOOD Swans Down Hawaiian, White Lemon, Strawberry...Pkg. **39[¢]**

PEANUT BUTTER Adams... 18-oz. Jar **39[¢]**

CRISCO (4¢ Off Label Pack)..... 3-lb. Can **73[¢]**

ROYAL BROOMS Household..... Each **98[¢]**

INSTANT SANKA..... 5-oz. Jar **79[¢]**

Get \$1⁰⁰
FOR 5 LABELS
NEW!
GREEN GIANT
"LITTLE BROTHER SIZE"
PEAS
5 No. 303 **\$1⁰⁰**
Green Giant Brand Very Young Tender Sweet Peas
Get details at our store



FREE
BOSCO BEAR **YO-YO**
when you buy 24-oz.
BOSCO 59[¢]

TOILET TISSUE
ZEE, ASST. COLORS
4-ROLL PACK
33[¢]

Washington. U.S. No. 2
POTATOES
50 Lb. Bag **97[¢]**
Parkland Store

FANCY WASHINGTON NO. 1
JONATHAN APPLES 23-lb. Box **1⁶⁹**

CELERY Fresh, Crisp, Locally Grown, Each **9[¢]**

LOCAL, FRESH, CRISP **Carrots**, 2 1-lb. Bags **15[¢]** | FLAME TOKAY **GRAPES** lb. **9[¢]**

IN OUR FIFE HARDWARE DEPT.

MARBLE'S WATERPROOF MATCH BOX Reg. **75[¢]**
..... \$1.50

REGULAR \$3.50 SHOTGUN CLEANING KIT **\$1⁷⁵**
Rod, Patches, Brush, Oil, Solvent.

STEEL HANDLE, RUBBER GRIP HUNTERS' AXE Reg. **\$4⁹⁵**
..... \$7.70
With Sheath

REGULAR \$12.95 CHARCOAL STOVE and GRILL **\$9⁹⁵**
Will Also Burn Wood, Coal, Etc.
We Sell Metsker's County Maps, each.....\$1.25

Choc., Lemon or Caramel **BAKER'S CHIPS**... 6-oz. pkg. **39[¢]**

Baker's Farmington Plain or Almond **CHOCOLATE BARS** 3 9 1/2-oz. Bars **\$1**

Jell-O Puddings or PIE FILLINGS... 7 Pkgs. **49[¢]**

Giant Size **TREND SOAP**..... **49[¢]**

Nalley's **BEEF STEW**..... 3 15-oz. Cans **\$1**

Nalley's Corned **BEEF HASH**..... 3 15-oz. Cans **\$1**

Nalley's **SPAG. AND MEAT** 4 15-oz. Cans **\$1**

Nalley's Lima **BEANS AND HAM**... 24-oz. Can **39[¢]**

10¢ Off Label **JOY LIQUID** .. 22-oz. Can **59[¢]**

Premium Snowflake **CRACKERS** 1-lb. Pkg. **29[¢]**

Household Size 25-ft. **REYNOLDS FOIL** Roll **35[¢]**

Another Value **PUREX BLEACH**, 1/2 Gallon **37[¢]**

10¢ Off Label Pkg. of **RED ROSE TEA**... 48 Bags **59[¢]**

Snow Mist No. 1/2 **CHUNK TUNA** Can **29[¢]**

Waxtex WAX PAPER... 100-ft. Roll **23[¢]**

Crescent Ice Cream Asstd. Flavors **TOPPING**..... 2 Cans **37[¢]**

Zee (3¢ Off) 225-ct. **PAPER TOWELS** Pkg. **28[¢]**

Zee Asstd. Colors **LUNCH BAGS**... 2 Pkgs. of 20 **31[¢]**

Van de Kamp's SPECIALS
Thurs., Fri., Sat.

GOLDEN FUDGE CAKE
Reg. 1.15
Special..... **99[¢]**

BUTTERFLY COFFEE CAKES
Reg. 6/41c
Special..... **6/35[¢]**

ENGLISH MUFFINS
Reg. 6/41c
Special..... **6/35[¢]**

COCONUT MACAROONS
Reg. 35c Pkg.
Special, Pkg..... **31[¢]**

Van de Kamp's BAKERIES

Piggly Wiggly

PUYALLUP 1010 EAST MAIN
PARKLAND PACIFIC AT GARFIELD
FIFE FORMERLY ANDRE'S MKT.
So. Tacoma 5252 SOUTH WASHINGTON
40th & Portland Ave.

PRICES EFFECTIVE THURSDAY, FRIDAY AND SATURDAY, OCT. 6-7-8.
WE RESERVE RIGHT TO LIMIT. NO SALES TO DEALERS.