

Permit No. 9P
Tacoma, Wash.
Sec. 34.66 P.L. & R.
U.S. Postage Paid
Parkland Branch

Rural Route
Occupant or Boxholder
Postmaster: If unable
to deliver, return post-
age is guaranteed on
addressed papers.

Tacoma Southeast Lions to Hold Auction Sale Sunday



DON'T MISS THIS! — A lot of fun, and fabulous bargains besides, will be enjoyed by all who attend the third annual auction sale sponsored by the Tacoma SE Lions club at the Spanaway Auction on Pacific avenue on Sunday, May 15, beginning at 1:00 p.m. Auctioneer Phil Zurfluh Jr. will get the sale underway at 1:00 p.m. and a good assortment of merchandise will be put on the block. Pictured above, left to right, George Dorfner, Dan Martin and Tony Marsh are shown unloading donations which they had collected from homes; many other loads have been brought in within the past week. — (Photo by McKewen)

The money raised from this Auction is used by the Lions for the betterment of the community in many ways, perhaps foremost among them being the annual donation to Spanaway Recreations. Last winter, the donation from the Tacoma Southeast Lions Club to this organization enabled over 200 people, both young and old, to engage in physical recreational activities. Basketball, Volleyball, Baseball, Archery, Rifle Shooting and Hunter Safety Training are but a few of the many activities your donations will finance. The original \$1,000 donation by the

Lions to build the Spanaway Recreations building was raised partially from our first Auction Sale and it is only with the help of the people of this community that this work can be carried on from year to year. For a full report on the activities of your Lions Club, tune in this Friday evening, May 13, Channel 13, KTVW, to the Norm Paige show, 10:00 to 11:00 p.m. when members of the Tacoma Southeast Lions will appear on a live telecast, to give a first hand report on what this group of hard working local business men is doing to make our community a better place in which to live.

Lions members have been busy gathering up material and many of you fine people in this community have been very generous with your donations, but we can still use articles of any nature that could be auctioned. A call to John Newell at LE 7-7425, Tony Marsh, LE 7-5567, or Herb Horner, LE 7-8342, will bring a car to your door to pick up your donations anytime up until Sunday noon. That old chair, table, picture, wheelbarrow, garden tool, electrical appliance, radio, etc., that has been gathering dust in your attic, basement, or garage, and is of no value to you, could help immeasurably in the sight Conservation Program being carried on in Franklin Pierce and Bethel School Districts by the Tacoma Southeast Lions Club. This program, which has been carried on over the past five years, has provided many needy children with eye care, examinations, and glasses, and it is a program that is universal with Lions Clubs the world over.

Phone LE 7-7425, LE 7-5567, LE 7-8342 if you wish donations to be picked up, or material may be left at Riley Bros. on 176th St., Spanaway, or at Cec Clessons Roofing Co. on 96th St. near Golden Given. Come to the Auction on Sunday, May 15, starting at 1:00 p.m. Enjoy some light refreshments served by the Tacoma Southeast Lady Lions, buy yourself some bargains and at the same time buy a youngster a chance to see, or the opportunity to engage in healthful recreational activities.

Round-up Queen Candidates Now Number Fifteen

Fifteen lovely young girls of the area, each sponsored by a business firm or organization, are listed as candidates for Queen of the 1960 Parkland Round-up. Sponsors and candidates are as follows:

- Park 'n Shop — Donna Anderson.
- Times Journal — Judy Reesman.
- Parkland Sportshop — Sharon Schafer.
- Tacoma Lariettes — Karen Winch.
- Parkland Grill — Karen Selk.
- Lincoln Hi Riders — Joey Hofer.
- Pierce County Posse — Diane Bernard.
- City of Fircrest — Judy Thelander.
- Paragon Printers — Sharon Hughes.
- Colts & Fillies — Wynette Russell.
- Parkland Juniors — Robin Ross.
- Rural Real Estate — Lynda Buckler.
- Parkland Hardware — Signey Sheppard.
- Stella's Flowers — Ann Brannfors.
- Puyallup Valley Riding club — Pat Greeley.

The girls and their horses were highlights of the Spring Gymkhana held Sunday by Tacoma Unit No. 1 of Washington Horseman on the Unit grounds. All were present except Sharon Hughes, who had gone to Portland for the quarter horse auction.

This weekend the candidates will appear at the Woodbrook Hunt club show and also at the Bremerton Silver Spurs show. Queen Mother Martha Strout is proud as a peacock about the whole thing. "Those girls are marvelous — beautiful, charming and fine riders. I'm glad I don't have to make a choice between them!"

Eatonville P-TA

Eatonville P-TA will meet Monday, May 16, at 8:00 p.m. in the grade school cafeteria, Mrs. Alvin Miller presiding. The program will include the installation of the following 1960-61 officers: President, Mrs. Hugo LaPlante; vice president, Mrs. Donald Olson; secretary, Mrs. Oscar Haarstad; treasurer, Mrs. Sig Osterdahl.

Grade School Principal Jack DeFigh will lead a discussion on next year's elementary program; subjects will include combination rooms and sports activities.

The 3rd grade mothers will serve refreshments.

FP Baseball Teams Require Sponsors

An attractive baseball program for Franklin Pierce district is being planned for the summer by the coaches, to be made possible by contributions from the local business firms. This week the coaches are making the rounds soliciting funds for the project; anyone donating \$10 or more will receive a green sponsor card to be displayed in the place of business. The money will be used to buy equipment for the baseball season, June 1 to August 1. Contributions in any amount will be greatly appreciated.

The next meeting of the Franklin Pierce Baseball committee will be held May 19 at 8:00 p.m. at the high school.

A new Junior League will be formed this year of boys in the 14-15 year age bracket; also Bantam, 13 and under; Pee Wee, 12 and under, and Rookie, 11 and under.

Anyone having any questions should contact Bro Galusha, county Park Board representative of the area, LE 1-0968, or Lawrence Alkofler, LE 7-3607.

Eighteen Youngsters Finish Course



CLASSES ENDED—Pictured above are 18 boys who completed the Hunter Safety course at Spanaway Monday evening. Bill Righetti (South End Plumbing), their instructor, has had many years of teaching hunter safety and is well qualified. This is the last group instruction in this area until the fall school sessions resume again. — McKewen Studio Photo

New Books Due at Parkland Library

Parkland library is scheduled to receive 300 new books by May 29; they will cover many subjects and be of interest to young and old. The service of the library is constantly increasing, with more than 2,000 book checked out during April. The Parkland library is housed in a remodeled quonset hut on 119th street, just west of Pacific avenue. A coat of shiny new white paint is planned for the near future, just as soon as weather permits. The library is open Monday, Tuesday, Wednesday and Thursday of each week from 1:00 to 5:00 p.m.; Wednesdays, 7:00 to 9:00 p.m. also.

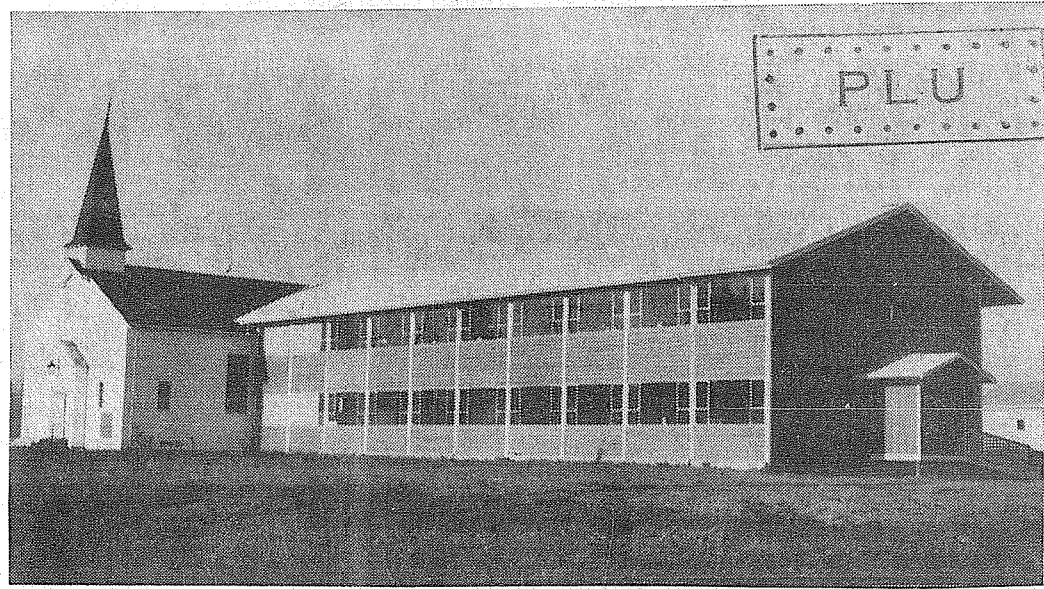
Grandmothers Club

The Parkland Grandmothers club will meet at the home of Mrs. R. T. Mattson, 811 So. 121st street, Thursday, May 19, at 12:30. The 6th anniversary will be celebrated with a potluck luncheon. Members are asked to bring old greeting cards, spoons, small fancy bottles and embroidery thread for Rainier school at Buckley.



BURNS CLEANER!
HOME OF CLEAN HEATING OILS
LAPENSKI FUEL OIL
LE 7-8173
9910 Pacific Ave.

Parkland Methodists to Hold Open House in New Building



SIGN OF PROGRESS — Rejoicing in the completion of the handsome new unit pictured above, a step forward in an ambitious building program, the membership of Parkland Methodist church will hold open house Sunday, May 15, from noon till 4:00 p.m. at 12183 A street. — (Photo by McKewen)

The newly constructed Church School wing is now in use and provides 13 spacious rooms for Sunday School, youth groups, committee meetings, study groups and other small gatherings. Two of the rooms are separated by folding doors that can be opened to provide a larger room for small fellowship gatherings. A kitchenette at one end of the room provides cooking facilities.

A reception will be held in this room during the early part of the afternoon on Sunday with Mrs. George H. Miller in charge. Assisting her will be Mrs. Mary Kirby, Mrs. Mae Ford, Mrs. Guy Nedervold, Mrs. Harry Skinner, Mrs. R. T. Westerman, Mrs. Glenna Leonard, and Mrs. W. C. Gregory. In the Sanctuary, from about 12:30 until 2:00 p.m., musical selections will be presented for the enjoyment of those who wish to spend a few moments in quiet meditation. Mrs. Beulah Plotts will be in charge of the various children's choirs and the adult choir; Mrs. Don Waddell will be at the organ.

The two-story addition is 100 feet long, and 40 feet wide, of frame construction with large, clear glass windows making up almost the entire wall on the east and west sides. The rooms open into a wide, well lighted central corridor that opens to the outside at one end and into the sanctuary at the other end. Rest rooms are provided on both floors with an additional children's rest room between two Kindergarten rooms.

Before construction began, the cost was estimated at \$73,000 but with good management and much volunteer labor the cost was kept to \$41,000. Wilbur Roberts is the chairman of the Building Committee and supervision of the construction was the responsibility of a "working committee" made up of Burt Brewer, Herb Cox and Charles Peterson. Val Berntsen was the builder. The architectural firm is Durham, Anderson and Freed of Seattle.

Many Reported In Baby Bonanza

With the deadline for reporting National Baby Week Bonanza winners still two days away, the tally now stands at 18 babies born to Times Journal readers during the week, April 30 to May 7, inclusive. There were 11 boys and 7 girls. All parents expressed delight in listing their offspring for a share in the "bonanza" gifts, which will be delivered to the homes in the near future. A full list of the winners, and also the business firms who make the contest possible, will appear in the May 19 Times Journal.

Smorgasbord

Elk Plain P-TA announces its annual spring smorgasbord for Sunday, May 15, 1:00 to 5:00 p.m. in the school cafeteria. Mrs. Rendel Daines, P-TA president, is general chairman for the affair. The public is invited. Proceeds will be used for projects benefiting the school.

Scout Leaders To Meet

Girl Scout leaders in neighborhoods A and B, together with other interested women will meet at 10:00 a.m. May 17 at the new building of Parkland Methodist church, 123rd and A streets.

Harvard Preschool

The last meeting of the year for Harvard Preschool P-TA will be held in the Harvard school kindergarten room May 17 at 8:00 p.m. New officers will be installed and there will be a convention report. A 1st grade teacher and the kindergarten teacher will give advice on starting children to school next fall. An informal question and answer period will follow. Refreshments will be served.

The Country Parson



"All we expect of our friends is that they overlook our shortcomings—and have none of their own."

DRYER'S FUNERAL PLAN CUTS COSTS

Dryer MORTUARY
TACOMA AND PACIFIC
PARKLAND

Coomes Rest Home
MR. AND MRS. CLAUDE COOMES
OWNERS AND OPERATORS
Excellent food, individual attention.
Welfare and private patients. State Dept. of Health License No. 112.
321 South 116th St.
Tacoma 44 — LE 7-3022

WE HAVE THE ANSWER!

TRUST US WITH ALL YOUR DRY CLEANING!

It takes a lot of **KNOW-HOW** — but we think you'll be pleased with our service!

PARKLAND CLEANERS
11004 Pacific Avenue
North of the Bank Corner
LEnox 7-3221

PROFITABLE INVESTMENT

Construction on the Lakewood General Hospital is progressing rapidly. Upon completion, the 100 bed hospital will be one of the most modern and complete Medical General Hospitals on the Coast. It will conform in all details to the requirements of the Washington State Health Department, the State Fire Marshall's office and the American Medical Association.

The hospital is a community owned project which will serve the people of the entire Southwest district of the state, being owned by the people — not one individual or group.

Securities being sold are offered in units of ten (10) shares of preferred and one (1) share of common stock. The preferred stock bears six percent (6%) interest on a cumulative basis, is non-assessable and fully participating, and is redeemable by the corporation at 110% of its par value.

Purchase of securities can be made only from Security Agents licensed by the State of Washington Securities, as available, are limited by prior commitments and are offered only to bona fide residents of the State of Washington.

Call Juniper 8-1711, Tacoma, Wash.

CLIP AND MAIL TODAY

send to: 5702 Lake Steilacoom Ave., S.W.
Tacoma, Washington

LAKWOOD HOSPITAL ASSN., INC.

YES — I AM INTERESTED IN THE NEW GENERAL HOSPITAL

Name

Address

Phone

SHOP & SAVE at BROOKDALE LUMBER CO.

HOME IMPROVEMENT COUNCIL

"PLYWOOD SALE"
All Pops — Fir, Sanded

4x8 — 1/4".....Each \$2.56
4x10 — 1/4".....Each \$3.20
4x8 — 3/8".....Each \$3.20
4x8 — 1/2".....Each \$4.16
4x8 — 3/4".....Each \$5.44

Summer Cabins
\$490.00 — \$625.00
\$950.00
All Sizes
On Display at Our Yard

Siding Shakes
with undercourse
Per Square \$8.95

1x4 Kiln Dried Flooring
Per 100 Sq. Ft. \$8.50

1x8 Air Dried Cedar Paneling
Per 100 Sq. Ft. \$13.50

Concrete Mix
Per Sack \$1.00

Install Your Own **OASIS SWIMMING POOL**
\$1640.00 15'x30'
Complete With Filter & Accessories

BROOKDALE LUMBER COMPANY
136th & Pacific
LE 7-8669

PROFESSIONAL DIRECTORY

Farmers Mutual of Enumclaw
Fire — Auto
ED MAREK
12909 Pacific Ave. LE 7-4000

Farmers Insurance Group
Fire, Life, Auto
ROBERT GRAVES
1915 East 91st — LE 7-4506

We Wish To Announce

The OPENING of PARKWAY VETERINARY CLINIC

14103 Pacific Ave.
LE 1-0454 Dr. Dale Tibbitts
Associate D.V.M., Dr. R. C. Valentine

HILLTOP CONCRETE CO.
LOOK FOR THE BIG "H" THE SIGN OF SERVICE

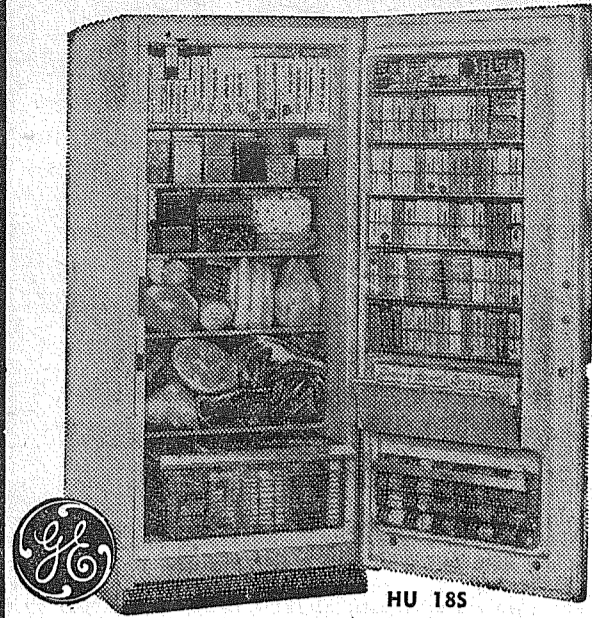
READY MIX CONCRETE HOME OWNERS!!

Ask About **OUR NOW PAY LATER** Our **PLAN**

SATURDAY — OPEN TILL NOON
For Pickup Only
As Listed Below

- Sack Cement
- Washed Sand
- Washed Gravel
- Drain Gravel
- Crushed Rock
- 3/8" Beach Gravel
- Select Pit Run
- Fill Dirt

PUYALLUP TH 5-9525
TACOMA FU 3-3624
Plant: 2223 - 23rd Ave. S.E. P.O. Box 648, Puyallup



BOY!! WHAT A DEAL!!!

18 CU. FT. GENERAL ELECTRIC FREEZER

Was \$449.95

NOW \$**299⁰⁰** At

W H O R S

OPEN
EVERY
NIGHT

LARGEST DISPLAY OF GENERAL ELECTRIC APPLIANCES
IN THE WHOLE PACIFIC NORTHWEST!

YOUR  CORNER

TILL 9 P.M.

8419 PORTLAND AVE. PARK FREE AT OUR FRONT DOOR

LE 7-0231 (Saturday 'til 6)

LUXURY MILD
WEDGE CUT
CHEESE Lb. **49^c**

ABC
FIG BARS Large Pkg. **43^c**

DARIGOLD
BUTTER Print Pkg. or Qtrs. Lb. **67^c**

HILLS OR NESCAFE INSTANT
COFFEE 6-Oz. Jar **83^c**

KRAFT FRENCH AND COLESLAW
Dressing Twin Pack 2 8-Oz. Bottles **49^c**

LARGE AA WHITE EGGS SMALL AA EGGS .3 Doz. 1.00
Doz. **46^c**

NABISCO ICE CREAM
CONES Reg. 19c Pkg. **2/29^c**

GIANT FOOD SALE

SUNSHINE
SODA CRACKERS 2 Lb. Pkg. **47^c**

CAMPBELL'S
TOMATO SOUP Reg. Size Tin **10^c**

BALLARD OR PILLSBURY
BISCUITS 8 oz. Pkg. **10^c**

SUNNY JIM STRAWBERRY
PRESERVES 20-oz. Jar **39^c**

HOLIDAY
MARGARINE LB. **15^c**

OPEN SUNDAYS NOW

Summit Trading Co. will be open every Sunday, 10:00 a.m. till 7:00 p.m., during the summer months. Special weekend prices will be for four days - Thursday, Friday, Saturday, Sunday.

This extra day of service has been requested by many of our customers and we feel that it will be important to people of the community, especially during the season of holidays, vacations, entertaining guests, summer trips and other variations from routine activities.

PRODUCE

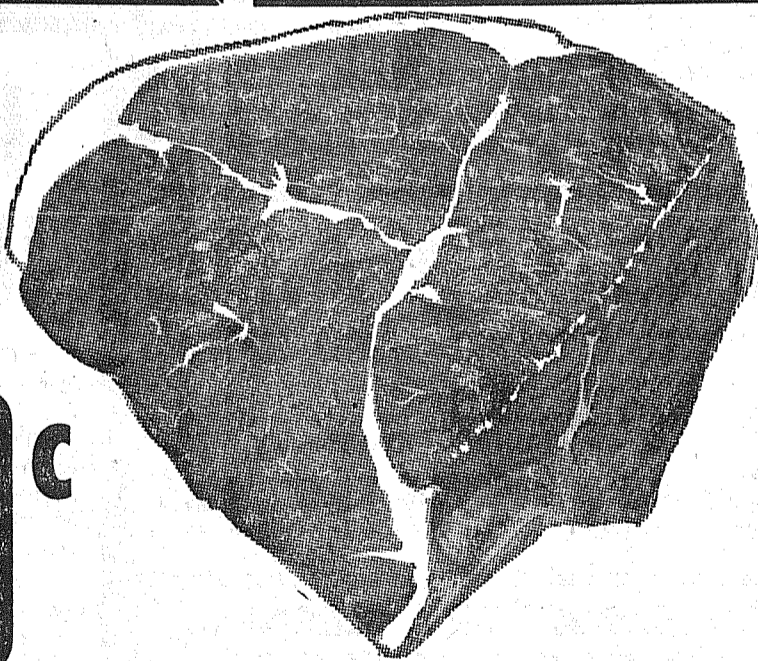
CALIFORNIA
LETTUCE 2 Heads **17^c**



CELLO PKG.
CARROTS 2/15^c

SUNKIST
LEMONS Lb. **10^c**

U S GOOD
ROUND
STEAK
FULL CUTS
THICK or THIN
LB. **79^c**



HUCK FINN (It's New)
DOG FOOD Tall Tin **14** for **1⁰⁰**

SWANSON'S
MEAT PIES Beef Turkey Chicken **5/1**

HI-C
ORANGEADE 46-Oz. Tin **4/1**

BONELESS ROLLED BRISKETS U.S. GOOD
CORNERD BEEF lb. **59^c**

BULK PACK SPECIAL
U.S. GRADED GOOD BEEF
• 10 Lbs. Steaks
• 10 Lbs. Roasts
• 5 Lbs. Gr'd Beef
• 5 Lbs. Short Ribs
ALL FOR **\$19⁹⁵**
Reg. Price \$21.95

U.S. Good RUMP or
BONELESS CHUCK
ROAST
Lb. **73^c**

STORE HOURS
9 a.m. 'Til 9 p.m. Daily Except Sunday
SUMMIT
TRADING COMPANY
10409 Canyon Road, Tacoma LE 7-5848
No Sales To Dealers
We Reserve The Right To Limit Quantities

HIRES BONUS PACK
ROOT BEER 8 Bottle Carton **55^c**
ROOT BEER FLOATS
SAMPLED FREE FRI. & SAT. Plus Deposit

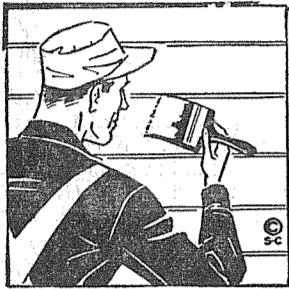
BLUE DETERGENT
CHEER Gt. Size **69^c** Reg. 79c

PAINT SALE

THERE IS NO SUBSTITUTE FOR QUALITY

BUY NOW AND SAVE ON "PARKER" INDOOR AND OUTDOOR PAINT PRODUCTS!

RUBBER BASE WALLKOLOR Reg. \$5.44 To \$5.44 Now \$4.34 Per Gal.



PARKER EXTERIOR HOUSE PAINT

Reg. \$6.95 Per Gal.

\$5.75 PER GAL.

"PARKER" HI GLOSS MARINE ENAMEL

Reg. Prices of \$7.61 to \$8.10 Per Gal. Depend on Colors To \$6.10 - \$6.48 Per Gal.

PARKER SEMI-GLOSS ENAMEL Regular Price \$7.05 Per Gal.

NOW \$5.63 Per Gallon

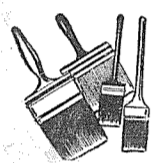
PARKER SHAKE PAINT Reg. \$5.43 Gal.

NOW \$4.35 PER GAL.

BARN ROOF AND FENCE PAINT Reg. \$3.91 Per Gal.

NOW \$3.11 Per Gallon

ALL VARNISHES & OTHER PAINTS IN GALLON LOTS PRICED AT WHOLESALE



ALL QUART PRICES BRUSHES - ROLLERS AND PANS

10% OFF



BARSOOTTI AND TIMM

AT THE ROY "Y" - SPANAWAY OPEN 7 DAYS A WK. 7 A.M. TIL 9 P.M.

BASEBALL

The Little League Baseball registration was so gratifying. Instead of the anticipated two teams, there will be four teams. Managers and helpers are: 9 year olds - Harold Lemmer and Bud Hellwich; 10 year olds - Bob Adler, Fred Mackey, Mike Cail, and Steve Greco; 11 year olds - Bob Ward and Jerry Foster; and 12 year olds - John Gilbertson and Steve Palmer. We are pleased with the many volunteers, but still need more high school help for the 9, 11, and 12 year olds. Any experienced teenage baseball player interested in helping, please call Mike Cail - LE 7-3766.

Since we have so many teams, we'll need financial support to help equip the teams. We are grateful to the Summit View Merchants, who have already contributed to the baseball fund. They are: Summit Furniture and Appliance, Summit View Thriftway, MacAuley's Drug, Parker's Restaurant, and McDaniels Market.

Reporter - Gwen Cail, LE 7-3766.

Invite Viewers Hospital Week

Observing National Hospital Week with the 6,800 hospitals throughout the country, the Lakewood General Hospital in the near future will support the theme of commemorating, "The Hospital - Many Hands and Many Skills."

Today there are over one and one-half million people working in the hospital industry, which ranks fourth, nationally. When in operation the Lakewood General Hospital will provide an economic boost to merchants in this area, estimating its spending at nearly a million dollars annually, for salaries, food and supplies. Primary in its objective, however, will be providing the best care possible to the community at the lowest possible cost, due in part to the planning and design, structurally. Not only to have the newest diagnostic and therapeutic equipment, it will also assume its role in the education and training of nurses, technicians and auxiliary personnel. Research in hospital administration and nursing practice will be included. Also, in time, it will establish itself as a common center for health education.

During the entire National Hospital Week, the Lakewood General Hospital will provide guided tours of the building, presently under construction, daily from 4:30-6:00 p.m. and 1:30-5:00 p.m., Saturday and Sunday.

Spanaway Ball Club Starts Year

Spanaway baseball club is off to a fine start with four practice games without a loss. Popular players Ray Bramer, Ken Kelly, Bob Howard and Dick Hansch are playing again and Darold Billings is the manager.

Playing Sunday afternoons at 2:00 on the Spanaway diamond, the team will be in the Valley League as always and may possibly play one night game under the lights each week with the County League. All fans are urged to turn out for the games.

Mothers Day Tea
Spanaway Preschool will hold its Mothers Day tea and installation of officers May 17 at 8:00 p.m. in the new school gym. Members are urged to bring mothers or daughters. This is the last meeting of the year. The executive board meets this Thursday evening at 8:00 at the home of Mrs. Donald Palmer.

Grandmothers
The Spanaway Kan-Do Grandmothers club meets today for noon luncheon at the fire hall.

Parents Club
Bethel Junior High School Parents club will meet Monday, May 16, at 8:00 p.m. at the school.

Best Wishes
Cheery get well wishes to Mrs. Grace Kintz who underwent surgery Friday.

Transferred
Mr. and Mrs. Ray Flannery and four children have arrived from New Mexico where they have been living. Ray has been transferred to Seattle and they will reside there.

Birthday Club
The Friendly Birthday club met Thursday with Mrs. Margaret Wright, the honored birthday guest being Mrs. Edward Flannery. Mrs. William Zumbuhl will be hostess next month.

New Son
Mr. and Mrs. John Todd, formerly of Spanaway but now residing in Whittier, Calif., report a new son, John Joseph, born May 4. Five sisters welcome the newcomer.
Reporter - Mrs. Oliver Omat, LE 7-6466.

Parkland Fire Department News

Parkland's fire commissioners elected to lead County Association for the year 1960. At a recent meeting of the Pierce County Fire Commissioner's Association, O. H. Ellingson and John Curtis of Parkland were elected president and vice president respectively. This is an association for the purpose of bettering fire administration and to help form legislation that is beneficial to the fire service. Sid Waring of Summit was elected secretary treasurer for the coming year. Ed Gardner, the new executive secretary, was introduced to members: Ed is the man who represents all the fire districts in the state.

ANNOUNCING THE OPENING OF A NEW Western Store HT WESTERN CORRAL

"Everything For A Horse and Rider" WESTERN CLOTHING, BOOTS - SADDLES & LEATHER GOODS

Come In and Browse Around Mr. and Mrs. W. H. Thackeray JUNCTION OF AIRPORT AND MERIDIAN - WILLOWS CORNER Open Mon. Thru Sat. From 9:30 A.M. TIL 5:30 A.M. AND FRI. EVE. TIL 9 P.M.

PAINT NOW LUMBER ALL GRADES All Standard and Better Lumber is now Grade Stamped GLASS HARDWARE SHINGLES ROOFING FULL LINE OF HAND TOOLS Baskett Lumber 9701 Portland Avenue LE 7-8663

your ONE-STOP food center

PICNIC STYLE lb. **Pork Roast 29^c**

YOUNG TENDER lb. **Beef Liver 39^c**

XTRA LEAN PORK SAUSAGE 35^c POUND
LEAN-TENDER PORK STEAK 43^c POUND

SUPER SAVINGS

CHASE & SANBORN COFFEE 1-lb. Tin 55^c 2-lb. Tin 1⁰⁹

BLUE BONNET - 1-Lb. Pkg. MARGARINE 5/\$1

Betty Crocker's ANGEL FOOD CAKE MIX Each 35^c

STAR KIST Solid Pack Tuna 3/89^c WESCO Plain or Iodized Salt 26-oz. Pkg. 10^c

Pillsbury or Ballard Biscuits each 10^c POPS-RITE YELLOW 4-Lb. Bag Pop Corn 55^c

El Paseo Lunch-N-Mix OLIVES Qt. Jar 65^c

THANK YOU, FRIENDS We were very happy to greet so many of you last weekend and deeply appreciated your warm congratulations and best wishes at the occasion of our first anniversary party. The year in the community has confirmed our judgment in entering this area and we are looking forward to serving all of you for a long, long time. Be seen' you at a lot of anniversary parties!
ED HARRINGA AND STAFF

fresh PRODUCE

FRESH SPINACH 3 Large Bunches 17^c

CELLO CARROTS Each 7^c

GREEN ONIONS 3 Bun. 10^c

SOLID-FRESH LETTUCE Each 9^c

McDANIELS The Home of The Low Price AIRPORT & CANYON ROAD Store Hours: 9:00 'til 9:00 - Sundays 9:00 'til 7:00

Sunshine or N.B.C. Graham Crackers 1-Lb. Box 31^c "AA" Large EGGS DOZ. 46^c



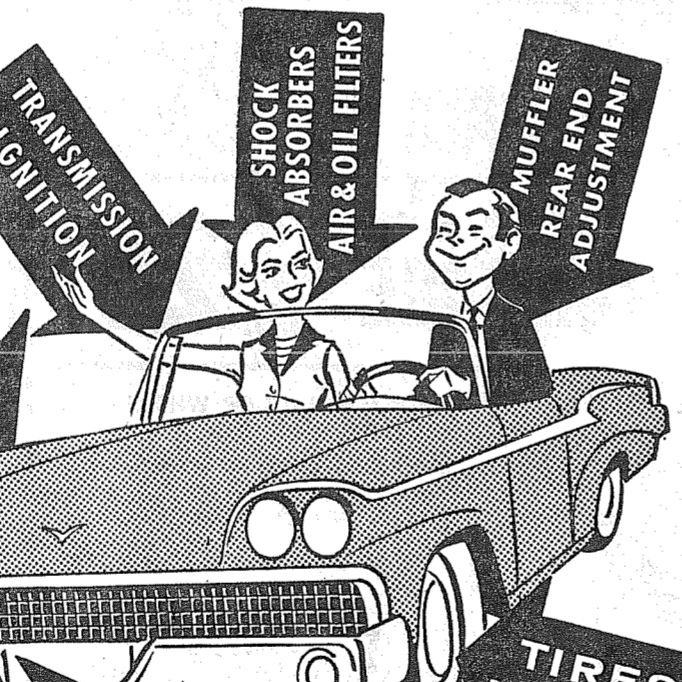
GET YOUR CAR READY FOR SUMMER

MARFAK LUBE JOBS \$1.75

Free Installation MUFFLERS & TAILPIPES

ACCURATE Wheel Alignment

TUNE UPS Average Labor on Most 6-Cyl. Cars ONLY 5.50



GAS and OIL At COMPETITIVE PRICES

MOST FORDS PLYMOUTHs & CHEVs. BRAKE JOBS RELINE ADJUSTING & TESTING \$17.95 Price Includes Bonded Lining

BOB'S PLACE

112th (Airport Road) & Jay St. (25 Years in Parkland) LEnox 7-3395

PRICES EFFECTIVE Thursday Friday Saturday

A quick bread, made with dates, often benefits from substituting brown sugar for white.

Woodland News

Tonight, Thursday, May 12, is Howdy Partners night again at Fruitland Grange Hall. Dancing will start at 8:00 with Willis Dodge as caller. There will be reviews of the rounds that will be on the State Festival programs. Coffee

and tea will be served by the club at 10 so bring your cups and snacks. Hosts and hostesses for the evening are Don and Jan Anderson and Jim and Beverly Bigelow. The new hospitality chairman for the coming year is Kathryn Hanson.

CAR WASH

Saturday, May 14, is the day picked by the Woodland Preschool car wash. There will be ladies at both Thriftway parking lot on

Airport and Canyon and at Summit Trading parking lot on Knapp and Canyon Road.

12TH BOOSTERS

Tuesday evening, May 17, is the monthly square dance of the 12th Booster club. Jim Bigelow will start calling the squares at 8:00 in the Summit Youth Center building behind Central Avenue school. All dancers are welcome to come and spend a couple of hours dancing. Bring your cups and snacks. Coffee and tea will be served by the club.

GARDEN CLUB

Thursday evening May 5th was the meeting night for the Wood-Bee

Garden club to meet at the home of Mrs. Warren Sergeant on Charles Road. A report of the Capitol District meeting held in Olympia was given by Mrs. Bill Westman. After refreshments were served all members participated in a plant exchange. Members present were Mesdames Kenneth Hoff, Stanley Maye, Don Hart, Burt Parrott, Ashley Butler, Bill Westman, Robert Strang and Mrs. Edna Stramphor and the hostess.

Reporter—Margaret David LE 7-6668.

Improve Mail Box, Urges Postal Dept.

The Post Office Department has designated the week of May 16 to 21, 1960, as Mail Box Improvement Week. This will be the 22nd year that rural patrons have been asked to provide suitable mail receptacles that present a neat appearance and are properly erected, according to Postmaster Helen G. Young of Spanaway.

Patrons of rural routes are required to provide boxes of the standard approved type. Names of box owners should be inscribed on the side of the box visible to the carrier as he approaches, or on the door if boxes are grouped. The number may be inscribed on the box and the box and support should be kept painted.

The approaches to the box should be kept level and properly graded for easy and safe accessibility. Boxes that are no longer serviceable must be replaced.

It is believed that where mail boxes are improved the mail service will be improved.

ice is likewise improved. Every rural patron will find the local Post Office employees anxious to give excellent service at all times. The cooperation of all owners of rural mail boxes is asked in this drive.

Exercise Elk Horn

YAKIMA FIRING CENTER, Wash. (AHTNC)—Army PFC Paul G. Aaberg, 24, son of Mrs. Aletta J. Aaberg, 13424 South C street, Parkland, Wash., is scheduled to participate with other personnel from the 30th Artillery in Exercise Elk Horn, a strategic Army Corps (STRAC) field maneuver, at The Yakima (Wash.) Firing Center, May 9-23.

Elk Horn, one of the year's largest Army maneuvers, will provide nearly 18,000 participating troops with training in all phases of modern warfare under simulated combat conditions. For greater realism, some 2,500 troops will play the part of an aggressor force which is assumed to be attacking the U. S. from the north. Aaberg, a driver in the artillery's Battery A at Fort Lewis, Wash., entered the Army in August 1958 and completed basic training at Fort Ord, Calif.

He attended Franklin Pierce High School in Parkland.

bers and parents are mighty proud of the blue ribbon they received on their decorative booth at the gigantic Scoutorama held Friday evening, May 6, in the University of Puget Sound Fieldhouse. We are very sorry for a couple of omissions inadvertently made in the awards presented at the Midland Cub Scout Pack meeting last month; a gold arrow was presented to Ronald Reding and the Honor Flag for the most awards was presented to Den 10 with Mrs. George Baskett as Den Mother.

Graham News

The Ladies Aid of the Graham Covenant church will meet May 18 for a noon luncheon, with Bible study at 1:00 p.m. and the regular monthly meeting following.

Visiting

Mildred Logstan from Longview recently visited her brothers and wives, Mr. and Mrs. Paul Lindberg and Mr. and Mrs. Bill Lindberg.

Mrs. John LaPore is spending a week visiting her sister, Diantha Hanson of Maple Valley.

Rebekahs

The Kapowsin Rebekah Lodge No. 241 will meet at the Graham Grange hall May 17 at 8:00 p.m., having moved from the Kapowsin Grange hall. In charge of the meeting will be Noble Grand Marie Timius and Vice Grand Betty Napier.

Grange Auxiliary

Kapowsin Grange No. 804 Auxiliary will hold their meeting and clean-up day at the hall May 3. Reporter — Mrs. Marie Timius, VI 7-7394.

Lunde VFW 5052

Rodger Lunde VFW 5052 Auxiliary met May 5 and made plans for the carnival at American Lake Hospital May 11-12. Those attending were Mesdames Richmond Anderson, Arthur Huff, Guy Steele, Robert Surplus, Arthur Mitchell, Joseph McGarr and Ralph Hawley. Plans for the May 20-21 Buddie Poppy sale were discussed.

Rodger Lunde Post, meeting May 12, will plan memorial services with the Auxiliary at the Parkland cemetery and Rocky Ridge cemetery.

Anyone interested in joining the Post or Auxiliary may contact Guy or Eva Steele, GR 2-2363.

Midland News

Midland P-TA will meet Wednesday, May 18, at 8:00 p.m. at the school, Mrs. Lyle F. Landon presiding. Officers for the coming year will be installed. The program will feature a spring concert, to be presented under direction of Mrs. Walletha Carlson and Eugene Ahrendt.

ALTAR SOCIETY

Mrs. William Glasser presided over the business session of the May meeting of St. Joan's Circle members of the St. John of the Woods Altar Society, Thursday evening, May 5, in the parish hall. Many coming events were discussed, the Circle's Luncheon is served, May 9; the Altar Society's rummage sale to be held May 19, 20 and 21 at 745 1/2 Tacoma Avenue; First Communion, Sunday, May 15, with breakfast following for the communicants and their parents, and the midsummer festival planned for August. Present beside the chairman were Mesdames Clement Miller, Donald Becker, Edward Cody, Allen Zook, Walter Corrigan, Albert Bombardier, Louis Weir, James LeMay, Irl Harrison, and Oscar Qunell.

Thursday evening, May 12, at 8:00 p.m. is the date of two Circle meetings: St. Rita's members gathering at the home of Mrs. John Mikelich and St. Elizabeth's at the home of Mrs. Mike Koval.

CUB SCOUTS

Midland Cub Scout Pack 84 mem-

FLETT DAIRY

FARM FRESH
HOMOGENIZED AND
PASTEURIZED MILK
AND CREAM
Phone GR 2-3301

PROMPT PERSONALIZED PRESCRIPTION SERVICE

TED SWANSON
INSULIN - VITAMINS
Downtown Prices
Pay Phone Bills Here
PLENTY OF FREE PARKING
TINCHER'S PHARMACY
8227 Park Ave. GR 4-3344
Across from Fern Hill P. O.

FENCING
Designers and Builders
EXPERT WORKMANSHIP
REASONABLE PRICES
Easy Monthly Payments
VAUGHN'S
84th & Pac. Ave. GR 4-9515

Worley Const., Inc.
GR 5-1030
REMODELING
Room additions, cabinets, etc.
Foundations, Basements,
Block & Concrete Work.
Financing Available

WE'RE MOVING!
To . . . 12605
PACIFIC AVENUE
THE BUNKHOUSE
EVERYTHING FOR HORSE AND RIDER

GRAND OPENING
KOZY KORNER KAFE
FREE COFFEE AND DONUTS
BALLOONS - BUBBLE GUM
FOR THE KIDDIES
ALL DAY SATURDAY, MAY 14
162nd and PACIFIC AVE. SPANAWAY

T.V. JINGLES by TELEVISION SERVICE CENTER
NO MATTER HOW YOU LOOK AT IT
Television Service Center, 8431 Pacific Ave. will make a hit with you for quick, expert TV service and repair. What's more, our rates are as you like 'em, low! Call GR 2-3386 or JU 8-1000.

TELEVISION SERVICE Center
"YOUR WINEGARD COLOR CEPTOR DEALER"
GR 23386 JU 8-1000 8431 PACIFIC AVE.

U AND I SUGAR 10 Lb. Bag **93c**

STAR KIST CHUNK TUNA No. 1/2 Tin **2/49c**

FLUFFO SHORTENING 3 Pound Tin **59c**

FAMOUS BRANDS

IGA DELUXE INST. COFFEE 6-Oz. Jar **69c**

LUCKY LEAF PIE FILLINGS Apple, Lemon, Peach, Cherry, 22-Oz. Pkg. 34c... **3 for 98c**

PRESERVES Sunny Jim Strawberry Or Strawberry-Rhubarb **3 FOR \$1** 20-OUNCE JAR 35c

NIBLETS OR MEXICORN 12-Ounce Tin 18c **4 for 69c**

LARGE 'AA' EGGS Ranch-Fresh Carton Pack Dozen **45c**

PLAYFAIR DOG FOOD 1-Pound Tin 8c **13 FOR \$1**

SOLID-PACK TOMATOES Sacramento 2 1/2 Tin 21c **5 for \$1**

DARIGOLD BUTTER 'AA' Sweet Cream Cubes or Print Lb. **65c**

SCOTTISSUE WHITE OR COLORED **4 ROLLS 39c**

PURE CLOVER HONEY Silver Bow 4 Lb. Tin **83c**

POST'S DRY CEREALS 8 Varieties Each 25c **4 for 97c**

BAR-S SLICED BACON 1 Lb. **53c**

FROZEN VEGETABLES Everfresh Squash, French Fries, Chopped or Leaf Spinach, Peas, Peas & Carrots, Each 12c **9 for \$1**

BULK Our Own SAUSAGE Lb. **29c**

WESSON OIL Quart Bottle **49c**

BLADE CUT PORK STEAK Lb. **39c**



KRAFT MIRACLE WHIP Salad Dressing Quart Jar **49c**

PICNIC STYLE PORK ROAST Lb. **29c**

FRESH HALF OR WHOLE HALIBUT 5 to 10-lb. Avg. **29c LB.**

ROUND BONE PORK ROAST **35c LB.**

U.S. No. 1 BANANAS Lb. **12 1/2c**

1-LB. CELLO PACK CARROTS **2/19c**

JUMBO SIZE AVOCADOS **3/25c**

U.S. No. 1 SHAFTER POTATOES 10 Lbs. **49c**

FoodTown Clowns Will Be In Store Saturday Afternoon 1 Till 5. Awards For Shrine Circus Tickets At 5 PM, Saturday, May 14th.

IGA FOODTOWN AIRPORT (112th) AD DAYS MAY AT PARK AVE. 12-13-14

a-Wondering . . . and a-Wandering . . .

With JACK BROWN

Statistics sometimes can be interesting. For example, take tomorrow Friday the 13th. Traditionally it's supposed to be a day of bad luck, but this year it has its good side.

It marks the first day of 1960 that the average American citizen can start calling his earnings his own.

To explain — The earnings of Mr. Average American up until May 13th just about equal his annual local, state and federal tax payments.

If his total 1960 tax bill was withheld before his take-home pay started, tax payments would have taken all wages earned during the past four months and 13 days.

If there is any ill omen, it is that this tax free day first occurred on April 27th. During the past 12 years, the ever-increasing tax burden has added 16 days to the average American's tax-work debt. Where will it end? You figure it out!

Just about all of us have known people who retired in seemingly good health, and within a brief span of time we were buying flowers for them. It happens far more often than it should. And a major reason is that too many people reach retirement age without being prepared for it. Boredom sets in — the zest for living is lost. They don't know what to do with themselves. Senility follows as night follows day.

Dr. Theodore G. Klumpp, a member of the American Medical Association's Committee on Aging, has some important things to say about useful living in the latter years. First of all, of course, people must take the obvious physical precautions — proper diet, exercise and rest. But that's just part of it. Purposeful useful activity is also vitally important.

In Dr. Klumpp's words, "You can run to retirement or you can run from retirement. To retire from is tragedy, but to retire to may mark the beginning of the most satisfying part of your whole existence." This means, he pointed out, that preparation for useful activity must begin before retirement, not after. And this activity should not be related solely to a person's pre-retirement job. New and interesting horizons are needed and easily found.

Long ago, Robert Browning wrote: "Grow old along with me! The best is yet to be, the last of life, for which the first was made." There is a deep truth in that philosophy — but the goal is not reach automatically. It must be earned.

I number among my friends those of all ages and several are in the sunset years of their lives. Knowing some of them has been the stimulus for spending the time to prepare the above article.

I hate funerals. Why don't we put yours off just a little longer?

Elbe News

Buster Taylor is in the Morton hospital recuperating from a recent appendectomy. He is getting along nicely, and we all wish him a speedy recovery.

Mr. and Mrs. Floyd Kast visited with the Herman Teitzel family in Puyallup last Sunday. On Tuesday night the Kast's were guests at a farewell dinner for Fred C. and Ruby Miller of Tacoma, who are moving to the East Coast. The Miller's are former Elbe residents.

A welcome guest at the Frank Lambert home recently was Mrs. Ray Wright (Mrs. Lambert's sister) from Yakima, who stopped in on her way home from attending the Ice Follies in Seattle.

Miss Dawn Johnson of Ashford was an overnight visitor at the Al Ostrom home last Tuesday night.

Mr. and Mrs. Frank Jewell motored to Wenatchee last Sunday, to attend the Apple Blossom Festival, and reported having a very enjoyable time.

Mrs. Sidney Sowers, and Mrs. Balis Burgess, from Eatonville, Mrs. Dick White, and Mrs. Wite, from Tacoma, and Mrs. Vince Rahier of Elbe, went to WSU in Pullman for Mothers Day week end. They all had a very enjoyable time being with their children, seeing the campus, and knowing now just how the students spend their time.

Mr. and Mrs. Floyd Kast, and Mr. and Mrs. Frank Jewell, spent Mothers Day with Mr. and Mrs. Elmer Smith in Seattle. Mrs. Anna Smith also enjoyed her Mothers Day with them. A buffet turkey dinner was served.

Juanita Lutkins and Gerald De Wald were married Saturday even-

Canyon Road News

The regular meeting of the Canyon Road Community club will be held in the hall this (Thursday) evening at 8:00.

Blood Bank
IMPORTANT!! Friday, May 15, at 3:00 p.m. will find the Blood Bank set up in the Community club hall. This supposedly unlucky day might be the luckiest day in your life because it might be YOU who will need the next pint of blood.

ing, May 7, at the Assembly of God Church in Mineral. The bridegrooms mother, Mrs. Rose Barnhart, of Hydesville, California, was here to attend the wedding of her son. We extend best wishes to the newlyweds.

Golden Wedding
Mr. and Mrs. Louis Hoffraan of 9803 Canyon road are inviting all their friends to an open house Sunday, May 15, 3:00 to 5:00 p.m., in celebration of their 50th wedding anniversary.
Reporter — Mrs. John Folk, LE 7-5801.

Clover Creek Baptist Church
Military and Knoble Road
One Mile East of Pacific On 159th Street
Sunday School — 9:45 a.m.
Morning Service — 11:00 a.m.
Young People — 6:00 p.m.
Evening Service — 7:00 p.m.
Radio Broadcast — KAYE-1450 Sunday at 9:45 p.m.
Lyle Bramblet, pastor
Phone LE 7-6421

Midland — Summit — Parkland CUSTOM
Bookkeeping and Tax Service
Also do-it-yourself method recommendations and consultation for small businesses
LE 7-4589

BART'S
PARKLAND APPLIANCE SERVICE
Specialist in Small Appliances
LE 1-0528 Any Time

Try Our . . .
French Fried Louisiana Prawns
Tartar Sauce
It's Delicious!
NETTIE'S CAFE
VISIT OUR DAFFODIL ROOM
116 SO. MERIDIAN ST. PUYALLUP
TH 5-1156

enjoy the finest beef in town!



SAFEWAY SIRLOIN STEAK is trimmed close to give you just the best-tasting center portion.

Beef Sirloin Steak

U.S.D.A. Grade
Choice. Aged to perfection. **lb. 89¢**

SAFEWAY BEEF SALE

When Safeway has a BEEF SALE, it's an event to bring joy to the hearts of beef lovers (and who isn't?). The time is here! And the values we're offering give you reasons a plenty to put beef on the table often. A golden opportunity, too, to stock your freezer.



The above symbol on Safeway meats means it has been inspected by the United States Department of Agriculture. Only meats with this symbol are U.S. Inspected.

BEEF T-Bone Steak
or Club Steak. U.S.D.A.
\$1.09
lb.

Beef Round Steak
Beef Chuck Steak
Sliced Bacon
Split Broilers

U.S.D.A. Choice. Full Cut.

lb. **75¢**

Beef Rump Roast U.S.D.A. Choice lb. **75¢**
Sirloin Tip Roast U.S.D.A. Choice Beef lb. **49¢**

U.S.D.A. Choice.

lb. **49¢**

Pot Roast U.S.D.A. Choice Blade Cut, Beef lb. **49¢**
7-Bone Roast U.S.D.A. Choice Beef lb. **55¢**

2-lb. Pkg. **99¢**

Fryers Fryer N' Half or MANOR HOUSE Cut Up, Frzn. lb. **45¢**
Boneless Beef Cubes lb. **79¢**
Scallops Eastern. Serve French Fried lb. **69¢**

lb. **39¢**

Halibut Fresh STEAKS lb. **39¢** ROASTS lb. **29¢**

Eggs

Large AA
Cream O' The Crop
doz **45¢**

Large A
Breakfast Gems
doz **43¢**

Velveeta

KRAFT

2-lb. Loaf **69¢**

Fluffo

Golden Shortening

3-lb. Can **59¢**

Cherub Milk

Babies everywhere love it.

2 Tall Cans **25¢**

S&W Peas

3 Sieve. Ideal dinner vegetable.

6 17-oz. Cans **\$1.00**

Orange Juice

BEL-AIR.—Frozen—2 12-oz. Cans 79¢

4 6-oz. Cans **79¢**

Chunk Tuna WHITE STAR 4 6½-oz. Cans **\$1.00**

Reddi Whip Dessert Topping 6-oz. Can **49¢**

Grape Drink Or Orange Half LUCERNE Gallon **29¢**

Pears TOWN HOUSE Bartlett 3 No. 2½ Cans **\$1.00**

Fab Detergent 3c Off 19-Oz. Pkg. **34¢**

Ajax Cleanser 2c Off 14-oz. Can **29¢**

Charcoal Briquets

RED BAND Made from hardwood 10-lb. Bag **59¢**

Kraft Caramels 1-lb. Pkg. **29¢**

IXL Chili with Beans 4 16-oz. Cans **\$1.00**

Spaghetti and Meat 4 15½-oz. Cans **\$1.00**

Donuts Old Fashioned Pkg. of 6 **29¢**

Bear Claws CURTSY Pkg. **29¢**

Apple Whirls CURTSY Pkg. **39¢**

ICE MILK

"Lucerne" Frozen Dessert Treat

Half Gal. **49¢**

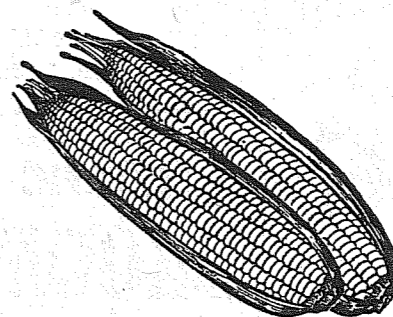
NALLEY'S
Potato Chips
Triple Pack **59¢**

WORCHESTERSHIRE
Sauce
FRENCH'S 5-oz. Bottle **19¢**

HIGHWAY
Catsup
2 14-oz. Bottles **29¢**

SWEET CORN

Tender, Flavorful. New crop. Family treat. "Lucerne" Froze



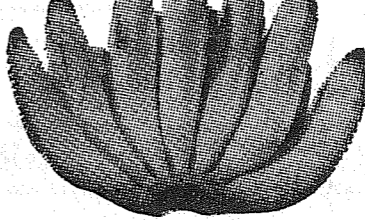
5 Ears **39¢**

Head Lettuce Crispy-fresh 3 Heads **25¢**

Avocados Delicious in salads each **10¢**

Mushrooms Dawn Fresh 2 5-oz. Pkgs. **49¢**

Peat Moss MICHIGAN 50-lb. Sack **\$1.49** 95-lb. Sack **\$2.49**



BANANAS
Perfectly ripened for finest flavor.

2 lbs. **29¢**

MEAT PIES

MANOR HOUSE FROZEN BEEF — CHICKEN OR TURKEY

5 8-OZ. PIES

\$1.09

SAFEWAY

Sale starts 9 A.M. Thursday, May 12th through Saturday, May 14th in Tacoma, Sumner and Puyallup. We reserve the right to limit quantities. No sales to dealers.

Prescription Service

Open 7 Days a Week
9:30 a.m. - 9:30 p.m.
Sundays 10 a.m. - 6 p.m.

JACOBS PACIFIC DRUGS

Wallgreen Agency
Pay Light & Water Bills Here
84th & PACIFIC AVE.

Greenfield 2-6445

VAUGHAN'S VALUES

Everyday Low Prices

RANGE HOOD AND FAN **24.95**
LATEX RUBBER BASE PAINT GAL. **2.69**
MAGNETIC DOOR CATCHES **25¢**
FRONT DOOR LOCKS **5.45**
CLAM SHOVELS **2.70**
7" CEILING FAN **12.49**

VAUGHAN'S PACIFIC LUMBER
84th & Pacific Avenue GR 4-9515

Become a Pilot for Less Than \$10 a Week!

FLYING'S EASY!



Business woman, school teacher, career girl, secretary, college student, housewife — women from all walks of life are learning to fly today. You will, too, after you've proved to yourself how easy it really is through our FREE DEMONSTRATION FLYING LESSON. Act now!

FIRST LESSON IS FREE
Just to prove that you can fly, we offer you a demonstration lesson absolutely FREE! Call and make an appointment today!



FOR DETAILS CALL

TAHOMA FLYING SERVICE

SPANAWAY AIRPORT
185th and Pacific

LE 1-0442

LINOLEUM, FORMICA, CARPETS
FREE ESTIMATES
PACIFIC FLOOR COVERING
131 & Pacific LE 7-4545

Mothers Honored
In a special Mothers Day program at Mt. View Baptist church, corsages were presented to Mrs. St. Amour as the oldest mother present and Mrs. Clinton Weed as the youngest mother. The pastor, Rev. Don Leach, spoke on the need of parents to establish Christian homes.

The Louise Bunniss Missionary Circle will meet at the home of Mrs. Howard Shaffer Friday, May 13, at 12:30.

Sunday afternoon, May 15, at 3 p.m. in the Youth Center a mother-daughter tea honoring Sunday school girls and their mothers is planned.

General Sheet Metal Work
Special Attention to Special Equipment
RAU MFG. CO.
LEnox 7-7372
14114 Pacific Avenue

Boosters in Wild Game Smorgasbord
BEAR, COUGAR, ELK, DEER—How does this sound for dinner? The Franklin Pierce High School Boosters are having a Wild Game Smorgasbord Saturday, May 14, at the Franklin Pierce High School cafeteria with Mrs. Robert Keller chairman. The serving hours will be from 3:00 until 7:00 p.m. with entertainment during these hours. The whole family can eat for \$2.50 donation or adults for \$1.00 and students for 50 cents. Ham and turkey will also be served in addition to a variety of salads, vegetables etc.

This year the Hi Boosters, with Cornet Meek, president, purchased blackout curtains for the cafeteria and these will be installed before school begins next fall. They have also purchased shrubs and trees to be added to the planned landscaping of the high school.

The Hi Boosters also give a \$125.00 scholarship to a senior boy and girl at graduation. All proceeds from the dinner will be used to help the Hi Boosters in their many projects to benefit the high school and Mr. Meek invites all friends in the area to come to the smorgasbord.

Rural Garbage Service
Pierce County Permit
Serving Parkland, Midland, Summit and Spanaway
LEnox 7-8688

Benston Grange
Pomona Master Ed McGuire made his first official visit to Benston Grange No. 892 at the regular meeting on April 26. All were pleased to have him present and more than a little pleased to hear his words of praise for our members who worked so hard in the preparations for the recent 50th Anniversary Celebration of Pomona Grange.

Three awards were made during the evening. Certificates and pins, denoting 25 years of active service in the Grange were presented to Mr. and Mrs. Harry Crask. Vivian Selle was awarded a past-master pin. Mr. Selle served as master of Benston in 1959.

It was decided by vote of the Grange to hold one meeting per month during the summer months of June, July and August. Meetings for those three months will be held on the 4th Tuesday of each month.

During Lecture Hour, Mrs. Harry Crask sang two delightful Irish melodies. Films of camping and fishing were shown by Harold Johnson.

Those who were unable to join in the Grange tour to Hawaii in April were treated to a small-size Hawaiian luau following the meeting.

Benston Drill Team will confer 3rd and 4th Degrees at the Crocker Grange on May 25.

Benston will return to Thun's Cessna 150.

Congratulations are in order for Mark Hoskins who recently received his Private Pilot's License.

Election of officers was held at the Western Travelers meeting last Friday. Those conducting the local flyers in furthering aviation by informative programs and the organization of flights for the group are Cecil Jackson, president; Don Calhoun, vice-pres; Hazel Cook, secretary; and Marie Anderson, treasurer.

After the meeting a send-off party for Bud Blanchard was started by a song written by some of the members and sung to the tune of Daisy. A beautifully decorated cake was then brought in and a check was presented to Bud from the club to be used for postage to write and tell every one how he is doing.

Flying With JEANNE



This weekend the majority of the flyers wishing to make a breakfast flight chose Port Angeles. From Thun Field we had Gene Moye and his family; Orv and Jen McGoy had as their guests Ed and Laury Currah; Gil Aldrich joined the group in his Champ.

Those from Spanaway participating in the flight were Clarence and Marie Anderson and Darrell Dugan and his son Steve.

Bud Blanchard and Tony Cairone flew to Port Angeles too in Bud's Stinson. This may well be Bud's last flight in this area for about a year. Bud, who has been the mechanic at Thun Field for several years, and Tony are about to start on a years bicycle tour of the United States.

Another flight of interest Sunday was the one to the Apple Cup races at Lake Chelan. Mel Kauzlarich in the Signaleers 172 took as his passengers his girlfriend and Jerry Simon and his girlfriend. The Kamloops, Canada Fly-In was taken in by Jack Brown and son Mark.

A dual cross-country training flight was taken by Dave Cooper with John Schell instructing. They

Local Man Heads Veterinary Clinic
Headed by Dr. Dale Tibbitts, the Parkway Veterinary Clinic is now open to serve Southern Pierce county.

The clinic occupies the former Parkway Furniture Co. building at 14103 Pacific avenue. Remodeled to conform to standards of other fine veterinary clinics, Parkway houses laboratory facilities, isolation wards and examining room. Dr. Tibbitts, resident doctor, and his partner, Dr. R. C. Valentine, anticipate eventually a 40-kennel capacity.

Son of Mr. and Mrs. Thorn Tibbitts of Loveland, Dr. Tibbitts graduated from Bethel High school and took his degree in veterinary medicine at Washington State College. Last year he practiced in Astoria, Oregon.

Dr. Valentine is presently associated with a veterinary hospital in Seattle and hopes before long to actively join Dr. Tibbitts.

Parkland P-TA
Pat Hill from the American Red Cross will speak on a subject of interest this time of year, "Water Safety", at the next Parkland PTA meeting Wednesday, May 18 at 8:00 p.m. in the school auditorium.

New officers to be installed are: Mrs. Don Dovey, president; Mrs. Alfred Emery, 1st vice president; Ervin Dammel, 2nd vice president; Mrs. Robert McCormick, secretary; Mrs. Forrest Olson, treasurer.

Fifth grade mothers will serve refreshments after the meeting.

Ham Dinner
The Auxiliary of Parkland Post No. 228, American Legion, will serve a ham dinner to the public Sunday, May 15, 12:00 noon till 5:00 p.m. in the James Sales Grange hall, 113th and Park Ave.

WE DID IT! PRICES CHOPPED

88¢

ADJUSTABLE IRONING BOARDS
Reg. \$7.95
\$5.88
• 12 EASY HEIGHT ADJUSTMENTS
• PERFORATED STEEL TOP
• VENTILATED IRONING SURFACE
• RUBBER-TIPPED LEGS

4 PLAYER BADMINTON SET
4 official size nylon string blue arrow badminton racquets with rubber grips, 2 plastic shuttlecocks, a 20 ft. taped top net, metal poles, ground stakes and ropes. \$5.88
2 PLAYER SET \$1.99

STRONG—STURDY WOOD LADDERS
Reinforced safety steps & rust resistant hardware.
5 Ft. 6 Ft.
Reg. \$6.59 Reg. \$8.95
\$4.19 \$5.29

GOOD QUALITY SHOVELS EDGERS RAKES HOES EA. \$1.69

BRASS HOSE NOZZLE 49c

National Aluminum STORM & SCREEN DOOR
Deluxe Model \$35.89

OUTDOOR CLOTHES DRYER
22 plastic lines... 132 feet of drying space. Steel center post, ground box. Reg. \$13.98 \$9.99

PAIN ROLLER & TRAY SET 88¢
All metal tray and fiber roller are easy to clean and store.

45-LB. 'PABCO' TACKLE BOXES
13"x6"x4" with tray \$1.99
MANY OTHER GOOD BUYS IN OUR TACKLE DEPARTMENT

TRUSTWORTHY HACK SAWS
Pistol grip. Shock-proof handle. Adjustable for 8 to 12" blades. \$8.88

BRAZIER
With hood and U.L. approved electric rotisserie. Cooks poultry, roasts, etc. Beautiful copper-tone finish is fire-resistant; won't burn off. Has bottom tray & towel bar. Worth \$29.95 \$16.88

WHITE WITH COVERED HINGES TOILET SEATS... 3.99

YOUR CHOICE \$9.99

AUTO. STEAM & DRY IRON
19 steam jets provide a "Blanket of Steam" for faster, easier ironing. Weighs only 3 pounds.

12-CUP AUTO. COFFEEMAKER
Starts perking immediately. Signals when ready. Keeps coffee hot. Compare with others at \$14.95.

AUTO. POP-UP TOASTER
No pre-heating needed. Snap-open crumb tray. Others as good cost \$13.95.

IMMERSIBLE ELECTRIC SKILLET
Full 12" size includes aluminum cover and 24-page cook book. Wash this handy appliance like a dish.

FULL YEAR GUARANTEE

WE CARRY A COMPLETE STOCK

GARDEN NEEDS
FERTILIZERS
LAWN SEED—WEED KILLERS

SAVE

GOOD QUALITY—WHITE FENCE PAINT...Gal. 1.89

CORNING WARE SAUCE PAN SET
Start Your Set at This Low Price. Reg. 14.95 \$12.88

TERRIFIC BROOM BARGAIN 88¢
a real quality broom with four rows of stitching for long life.

GRASS SHEARS 88¢
Real American-made quality.

HANDY UTILITY OR CASH BOX 99¢

20 Broad Spring Steel Teeth GRASS RAKES 79¢

ROLL ROOFING
Per Roll Only \$2.88

ROLL ROOFING
Per Roll Only \$2.88

QUALITY HOMES
Estimates Without Obligation
DESIGN ASSISTANCE
Hedlund Const.
920 So. 121st LE 7-4227

PIERCE COUNTY REFUSE CO.
Weekly Garbage Collections
Phone LE 7-8688

FOR RENT TRUCKS & CARS
MA 7-9039
Save One Half We Furnish Everything
HARMON'S
Driv - Ur - Self Co.
HARMON'S SERVICE
2112 Jefferson
Jim Harmon, Mgr.

Boush Moving & Storage
Agents for U.S. Van Lines
Cost to Coast Service
11816 Pacific Avenue
LE 7-3696
Parkland, Wash.

SPRING SPECIAL
21" DELUXE SAVAGE ROTARY MOWER
Briggs & Stratton 4 Cycle Engine Recoil Starter
PARKLAND CYCLE & KEY
11021 Pacific Ave. LE 7-5771

ATTENTION
Beginners and Advance ACCORDION STUDENTS
Mrs. Maxine Frackenhof certified accordion teacher is now taking enrollment for spring and summer private lessons. LE 1-1564.

Clover Creek P-TA Plans Mothers Tea
Clover Creek P-TA will hold its annual Mothers Tea Friday, May 13, from 1:30 to 3:30 p.m. in the school gym; a Hawaiian theme is planned.

A short program will be presented by the pupils of Richard Curtis. Corsages will be given to the oldest mother, the youngest mother and the mother with the most children. All women in the community are invited to attend.

The planning committee includes Mesdames Len Wade, Tennyson, Robert Leonard, Edward O'Neill

BUSINESS TRAINING PAYS
TOP JOBS FOR STENOGRAPHERS AND RECEPTIONISTS
- ENROLL NOW -
KNAPP COLLEGE
10th & Pac. Ave. MA 7-2181

AUTO PARTS and ACCESSORIES
NATIONALS
PARKLAND AUTO PARTS
127th & Pacific Avenue LE 1-1331

DEPENDABLE PHARMACY SERVICE

Bob Vaughan
Owner

DON'T RISK THE HEALTH OF YOUR FAMILY
Bring all your prescriptions to us! Our trained and licensed pharmacists follow your doctor's directions precisely, using only the finest pharmaceuticals!

Parkland Rexall Pharmacy
11000 Pac Ave
Keller's Kort
LEnox 7-8636
INTEGRITY • SERVICE • SAFETY

LOOK WHO'S SERVING YOU NOW...

SEE OUR FRIGIDAIRE Introductory SPECIAL

"FRIGIDAIRE" 20 CU. FT. UPRIGHT FREEZER
Deluxe Model Green Pastel Interior Shelves in Door, Reg. \$529 \$359.00

MADE ONLY BY GENERAL MOTORS

"Frigidaire" 17½ Cu. Ft. CHEST TYPE FREEZER
Reg. Price \$499. You Can Depend on Frigidaire Quality... \$339.00

BARGAIN PRICES ON ALL 1959 FRIGIDAIRE APPLIANCES

POCHEL DISTRIBUTING COMPANY
140th & Pacific LE 7-8624

"ORV" L. HESS
You may see this man most any place! He is Orvid L. Hess, who "doubles in brass" for Pochel Distributing Co. He is usually on the floor at Pochel's and is so well informed on appliances that he is a real help to customers looking for the particular washer, dryer, television, range, etc., to exactly suit their needs. When not in sight, you may assume that he is out in the field working with contractors, selling furnaces and/or appliances for new homes being built. He also spends considerable time calling on Pochel oil accounts.

Hess has been with Pochel's for three years and has had a total of seven years' experience in the appliance field; he has also worked in floor coverings and has been a salesman for 17 years in all.

Marine veteran of World War II, he has been married 12 years and lives at 3448 Tacoma avenue with his wife and four-year-old son.

SOUTH END PLUMBING AND HARDWARE
185TH & PACIFIC AVENUE (PHEASANT EGGS FOR SALE) PHONE LE 7-4100

Elk Plain News

Don't forget the smorgasbord at Elk Plain school Sunday, May 15, 1:00 to 5:00 p.m. The public is welcome.

Used clothing is still needed for the World Relief project of the Elk Plain Community church. Articles should be clean and in good repair and may be brought to the church or left at the Thorn Tibbits home.

The Elk Plain 6th grade enjoyed a field trip to Columbia Crest school and to a tree farm, each student bringing home a Douglas fir seedling.

The Elk Plain 1st grades gave a mothers tea May 6 in the school library. Mrs. Jorgenson and Mrs. Phelps are the teachers.

The Elk Plain Grange will meet May 12 at 8:00 p.m. in the hall.

The Elk Plain Firemen and Auxiliary will meet in the fire hall May 16 at 8:00 p.m. They wish to thank everyone who helped make their dance a success.

Elk Plain PTA will install officers Monday, May 16, at 8:00 p.m. in the all-purpose room of the school, the students presenting the program.

Mrs. W. G. Brown, with her daughter, Mrs. C. P. Thorleifson of Seattle, flew to Chicago Tuesday to attend the wedding of Mrs. Brown's son, Dick, Saturday, May 14. Dick is attending school in Chicago and expects to make his home there. Mrs. Brown and Mrs. Thorleifson will visit friends and relatives in Joliet, Ill., before returning home.

Mr. and Mrs. Robert Carlson are parents of a new son; grandparents are Mr. and Mrs. Harold Carlson and Mr. and Mrs. William Hayes, all of Elk Plain.

Get Well wishes to Charles South worth, in the hospital following surgery.

Reporter — Mrs. Ray Burkhart

Brookdale Plans May Day Fete 18th

Brookdale's annual May Day fete will be held Wednesday, May 18, at the elementary school, South 132nd and Park, the colorful May-pole dance and other festive features beginning at 12:30 p.m.

Boys from grades 1 to 6 will

compete in the field events which start at 9:30 a.m. . . . off in the same grade groups, giving everyone an opportunity to win a ribbon.

Robert Winters and his 52-piece Morris Ford Junior High School band will be present to play several numbers during the afternoon.

They won a Superior rating at the recent Washington music con-

test at Sumner. Mrs. Frances Johnson's 6th grade chorus of boys and girls will sing.

The Brookdale P-TA will hold its annual tea at 10:00 a.m. in the school multi-purpose room, featuring installation of both P-TA and Preschool officers. Principal Leo Gaume and P-TA officers extend a cordial invitation to all interested to attend.

Franklin Pierce School Menu

May 16
Scalloped potatoes with ham cubes, peanut butter sandwich, colelaw, rosy applesauce or grapefruit sections, milk.
May 17
Hot pork sandwich, frozen peas

and carrots, fruit jello, milk.
May 18
Hamburger patty on bun, relish, vegetable soup, peach cobbler, milk.

May 19
Baked beans, buttered corn bread, celery-carrot sticks, apricot whip, milk.

May 20
Friday Surprise. Lunch, milk.

<p>BOOKKEEPING \$3 Per Week, Small Firms \$15 to \$50 Per Month, Large Firms CONTINUED PERSONALIZED ATTENTION LE 1-1224 OR LE 7-6671 11024 PACIFIC AVE.</p>	<p>SEWING AND ALTERATIONS Call Mrs. Officer LE 7-0403 12001 Pacific Avenue</p>
--	---

Lucky BIG BEAR ANNIVERSARY MONTH!
SAVE UP TO \$10.19*

*... over everyday, average "shelf prices." Here's real savings—and the \$10.19 is calculated on only a minimum average purchase.

- HILLS COFFEE** 2-lb. Can 1.17 (LUCKY COFFEE 1-lb. 57c) 1-lb. Can **59c**
- GIANT TIDE** (LUCKY Det. Giant Size 59c) Per Box **69c**
- BISQUICK** 40-oz. Pkg. **33c**
- LUCKY MAYONNAISE** Per Qt. **47c**
- TOMATO JUICE** LIBBY'S 2 46-oz. Cans **45c**
- FROZEN DINNERS** BANQUET Chicken, Beef or Turkey Each Only **39c**
- ORANGE JUICE** TREESWEET FROZEN 3 6-oz. Cans **49c**
- C&H CANE SUGAR** 10-lbs. for **93c**

Fresh Fryers
PAN-READY CUT UP



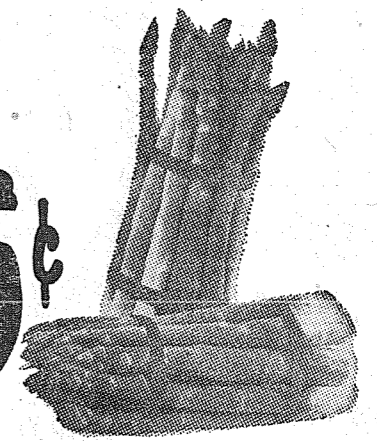
Your choice of whole, split or cut-up fryers at this fabulous price! Guaranteed the finest, freshest fryers anywhere **lb. 39c**

- SMOKED HAMS** 49c Full shank 1/2, 8-9 lb. avg. . . . Lb.
- SMOKED HAMS** 53c Built portions. Lb.
- ROUND STEAK** 79c U. S. Choice . . . Full cut. . . . Lb.
- RUMP ROAST** 77c U. S. Choice Lb.
- GROUND BEEF** 39c Our very finest quality. . . . Lb.
- FRESH HALIBUT** 29c Sliced @ 39c lb. Whole or pc. Lb.
- WIENERS** 49c Hygrade's skinless wieners . . . Lb.
- SLICED BACON** 53c Morrell's Comet—nice 'n lean. Lb.

Asparagus

Washington State grown, selected, U. S. No. 1 top grade, all green, and at peak of goodness — Can or home freeze now!

lb. 15c



- HEAD LETTUCE** California grown, large heads . . . Crisp, solid top quality lettuce. **LARGE HEADS 10c**
- CALAVO AVOCADOS** Firm—ripe . . . large 30 size. Sweet nutty flavor . . . enjoy them now. **2 FOR ONLY 15c**
- FRESH SPINACH** New crop, home grown, garden fresh. Broad thick leaves, washed clean. **2 LARGE BUNCHES 19c**

- FEATURED ITEMS**
- Fresh Strawberries
 - New Crop Corn
 - Selected Tomatoes
 - Garden-fresh Peas
 - New Crop Carrots

BREAKFAST CEREAL Wheaties 3 12-oz. Pkgs. 81c	SUNSHINE Krispy Crackers 1-lb. Box 27c	SUNSHINE Hydrox Cookies 1-lb. Cello 49c
LYNDEN Boned Chicken 2 5-oz. Pkgs. 95c	LYNDEN Chicken & Noodles 2 29-oz. for 89c	LYNDEN Chicken Raviola 40-oz. Pkg. 49c

Ad prices are effective Wednesday thru Saturday. We reserve the right to limit.



- KING KELLY MARMALADE** 2-lb. Jar **49c**
- FRISKIES DOG FOOD** No. 1 Cans **6 for 87c**
- KRAFT FRENCH DRESSING** 8-oz. Bottle **2 for 47c**
- WELCH'S GRAPE JELLY** 20-oz. Bottle **37c**
- SKIPPY PEANUT BUTTER** 12-oz. Jar **2 for 85c**
- HEINZ TOMATO KETCHUP** 14-oz. Bottle **19c**
- DUCHESS WHOLE UNPEELED APRICOTS** No. 2 1/2 Cans **4 for 1.00**

- Grapefruit Sections** 4 for **97c** Libby's No. 303 Cans
- Mandarin Oranges** 4 for **1.00** Prize Crop 11-oz. Cans
- Sliced Pineapple** 5 for **1.00** Rosedale No. 1 1/4 Cans
- Oregon Prunes** **49c** Medium Size 2-lb. Cello
- Home Pack Raisins** **19c** Full of Energy 11-oz. Pkg.
- Small Oysters** 3 for **95c** Sun Belle 8-oz. Cans
- Cut Green Beans** 2 for **29c** Rosedale No. 303 Cans
- Cream Style Corn** 2 for **29c** Rosedale No. 303 Cans
- Garden Sweet Peas** 2 for **27c** Rosedale No. 303 Cans
- Paper Napkins** 2 for **23c** MD Brand 80-ct. Pkgs.
- Alber's Oats Cereal** **45c** Quick or Regular Large Box
- C&H Cane Sugar** 3 for **39c** Brown or Powdered . . . 1-lb. Ctns.
- Flapjack Flour** **37c** Albers 2-lb. Pkg.
- Hawaiian Punch** **37c** Fruit Flavored 46-oz. Can

- CIRCUS FANCY PEANUTS** 6 1/2-oz. Cans **3 for 98c**
- KRAFT MINIATURE MARSHMALLOWS** 10 1/2-oz. Pkgs. **2 for 47c**
- CARNATION CANNED MILK** Tall Cans **3 for 39c**
- CARNATION DRY MILK** 8 Qt. Pkgs. **67c**
- KLEENEX FACIAL TISSUE** 200 Ct. Pkgs. **2 for 29c**
- PILLSBURY LOAF CAKE** Marble, White or Yellow 9-oz. Pkgs. **8 for 1.00**
- NESTLES QUICK COCOA** 1-lb. Pkg. **47c**
- LIQUID VEL, LARGE PACKAGE** Per Pkg. **39c**
- WESSON SALAD OIL** Per Qt. **49c** . . . or . . . **LUCKY OIL** Per Qt. **47c**
- POLAR FROZEN FOODS** Beans, Baby Limas, Cut Broc., Brussels Sprouts, Corn, Mixed Veg., Peas. . . 6 Pkgs. for **99c**

SHOP EARLY...STOCK UP AND SAVE!

133rd & PACIFIC AVENUE, PARKLAND

DRUG FACTS

IT DIDN'T TAKE OUR NEW NEIGHBOR LONG TO FIND OUT THE RELIABLE PLACES IN TOWN. I SAW HER IN ASHMORE'S SPANAWAY DRUG

HAVING A PRESCRIPTION FILLED.

ASHMORE'S SPANAWAY DRUG PHONE LE 7-2993
165th & PACIFIC AVE. SPANAWAY, WASH.

The outlook is bright at the Family Savings Center

4%

CURRENT RATE ON INSURED SAVINGS

Computed on Monthly Balances

PAID **4** TIMES A YEAR

We transfer your funds without charge from anywhere in the U.S.

13 sources over \$236,000,000

Pacific Federal Savings and Loan Association
Bellingham • Seattle • Tacoma
Longview • Portland • Eugene

Classified

Clam Ch'der 25c
Bisquick Pkg. 35c
 Detroit or Sunnydale **Margarine** 5 Lbs. 89c
Bacon Swift's Premium — Thick Sliced Lb. 53c
 Swift's — Pork **Sausage** 3 Lbs. \$1.00
 Swift's — Chunk or Sliced **Bologna** Lb. 39c
 Ex. Fancy Winesap **Apples** Lb. 10c
 Solid Crisp Heads **Lettuce** 2 for 15c
 RADISHES or GR. ONIONS 3 Bun. 10c
 Crisp Crunchy **Carrots** Bag 5c

Gibbons FOOD CENTER
 SPANAWAY

Personal
 CERTIFIED TEACHER will do tutoring in any subject, grades 2 through 8. LE 7-4309.
 HAIRCUTS \$1. 110th and South Yakima. 1p36

Business Service
 COMPLETE remodeling, patios, porches, garages. Free estimate. SK 2-7587. 3c1f

PHOTOS
 5x7, \$1 — 8x10, \$2
 For Appointment, Phone GR 4-1986—Open Evenings
FAMILY PORTRAIT STUDIO
 8411 South Park Ave.

Machine knitting lessons. Qualified instructor all machines. Lorraine Beeson, 217 Garfield St. LE 1-1312. 3c37

CUSTOM-BUILT CABINETS
 Pre-hung Doors—Free Estimates
FORMICA & GE TEXTOLITE COUNTERS

We Install Cabinets - Drain Boards

BAKER'S Woodworking Co.
 LE 7-0565 — LE 7-3290
 13415 Pacific Ave. Parkland

TAPING and texture work a specialty. Also painting and paperhanging. BR 2-8790. 3c1f

5 ACRES, WITH TREES
 ABOUT 8 MILES FROM PARKLAND, 600 feet frontage on surfaced road. Full price \$3,950 on E.Z. terms. OR MAKE CASH OFFER; call anytime, LE 7-5440.

KEY CENTER DANDY \$8,250
 OWNER WILL SELL ON CONTRACT \$750 down, and \$50 month, this dandy 2 bedroom remodeled home with 1 acre, with more land available. Located near Key Center. This you should see today. Call LE 7-5440 or Mrs. Aldem, GR 2-3056 evenings.

LAKE CITY, BUILDING SITES
 ON SMALL SPRING-FED LAKE. 100 ft. frontage, \$4,950. E.Z. terms. FOUR sites available and it's in a newly developed area. Call JACK SARTELL or BILL, LE 7-5440 or eves call TE 2-4450 Eatonville.

NEWLY-WEDS DREAM
 JUST A SMALL COTTAGE TUCKED AWAY in the Fir Trees, yet close in to Parkland and handy to Military Base. Full price \$5,950. However must have at least one-half CASH, large corner grounds with outbuildings and garden spot. Call Bill, LE 7-5440.

RURAL REAL ESTATE
 14403 Pacific Ave. LE 7-5440
 We Take Anything—Airplane, Car, Trailer, Boat, etc. Trades

We Have BUYERS for your HOUSE!
FARM and BLDG. SITES

Listings Wanted
DICK DEVEREAUX REALTY
 Multiple Listing Service
 Buying or Selling
Call LE 7-8659
 11002 Pacific Avenue

DEL'S RADIATOR
 Lowest Prices
 Guaranteed Work
 LE 1-1288
 LE 1-1144 Saturdays

South End Auto Wreckers
 USED PARTS—Motors, Transmissions, Tires, Batteries. We buy junk cars. Also Custom welding by Joe's Welding. 1 Mile East Roy on Mt. Hy. Spanaway LE 7-6534

FOUNDATIONS—New additions; free estimates, financing. Work guaranteed. LE 1-2929. 3c1f

ALUMINUM SIDING, Best, most reasonable. Financing. BOTTLESON CONSTRUCTION CO., LE 1-2929. 3c1f

Business Service
SEPTIC TANKS & WATER LINES INSTALLED. Riley Brothers. Phone LE 1-0987 or LE 7-3204. 3c1f

Parkland Heating Co.
 All makes of furnaces for sale; Specializing in Williams Oil 'O' MATICS; Oil, Gas, Hot Water Installations. Service; reasonable; 755 South 108th. LEnox 7-4045. 3c1f

BLASTING BY BUD—Stumps, ditches, hard-rock, etc. Problem jobs a specialty. Free estimates; insured. TH 5-9091. Puyallup. 3c1f

USED AUTO PARTS
 SATISFACTION GUARANTEED
 Bring This Ad For
10% Discount
GORDIE'S AUTO WRECKING
 10620 Pacific Avenue
 LE 7-5565 — LE 7-4443

STUMP LIFTING—Pulling over (uprooting) trees; chain saw and haul away work. Free estimate. LE 7-3897. LE 7-8156. LE 7-3885. 3c1f

Webb Electric Co.
 8240 B Pacific Ave.
 GR 2-2902

ELECTRIC HEAT
 All Types
 Terms Can Be Arranged
FREE ESTIMATES

EMERGENCY PHONE
 LE 7-4437

A-1 SANITARY SEPTIC TANK PUMPING AND SEWER CLEANING SERVICE
 PUY. TH 5-2873

GRAVEL FOR FILLS—Driveway gravel, clean sand, top soil. LE 1-2494. 3c1f

TRASH HAULED, basements cleaned, reasonable. BR 2-7833 for free estimate. 3c38

NOW AT SILER'S Complete service on electric ranges. All makes. Fast, dependable, reasonable. LE 7-8634. 3c1f

JACK SHANK'S Refrigeration Service
 Parts & Service for All Makes
 LE 7-0178

SEPTIC TANK, Drainfields, Sewer installation. Luke, GR 2-7243. 3c1f

FAST, DEPENDABLE BONDED TV-RADIO SERVICE
A B C ELECTRONICS
 Garfield & C Streets
 LE 7-4900

GEORGE PURDUE—Plumbing, Heating, New work, remodeling, repairs. Phone LE 7-4477. 3c1f

LOOK FOR THIS SEAL
 which is displayed only by service organizations approved by the Television & Radio Electronics Institute of Washington

TO GET EXPERT T.V. & RADIO SERVICE BY LICENSED, TRAINED TECHNICIANS,

A-1 TELEVISION AND RADIO SERVICE
 CORNER OF 72nd & PORTLAND AVE.

CALL GR 5-0658

WE USE RCA TUBES

better food Values

MAYONNAISE Borden's Quart 53c
PICNIC HAMS Federal Pound 33c

Shurfresh 1-lb. Tin 59c
Coffee 2-lb. \$1.17
 Corn Oil
Mazola qt. 49c

Wieners or Large Franks 2-lb. Bag 79c

Jiffy 40-oz.
Biscuit Mix 27c
 Olympic Ass'd. Dills
Pickles 24-oz. 35c

Chic a Dee 2 1/2s
Apricots 2/49c
Purex Gal. 49c

M.D.
Napkins 10c

Adams 18-oz.
P-Nut B'ter 43c
 Swift's Ass't. 6 oz. pkg.
L'nch Meat 29c

Little Pig
Sausage 2-lb. 99c
 Tender and Lean Beef
Cube St'k lb. 79c

Florida Juice
Oranges Lb. 9c
SALAD MIX or COLE SLAW Pkg. 10c

Shafter 10-lb. bag
Potatoes 49c
 Bulk
Tomatoes lb. 29c

Last Call — Barrel
Kraut 2 lbs. 19c

HERMANS FOOD STORE

162nd & Park Ave. Spanaway
 (Right to Limit Reserved)

Real Estate 9 **Automobiles** 12

M. L. S. MULTIPLE LISTING SERVICE
EQUITY SALE
 Priced at only \$11,750. 3 bedroom rambler, just 1 1/2 years old and like new. Large living room, dining room, 4 piece vanity bath, attached garage, GE oil furnace, new lawn. Close to bus and store. District of new homes. Equity only \$1475. Call Ralph Decker, GR 4-9579. RC-5574

GI NO DOWN PAYMENT
 GI appraised \$5500. Clean as a pin. 2 bedrooms, living room, separate dining room, concrete foundation, garage, sewer and sidewalks. Close to McKinley Avenue and 43rd. Very good district and a very good buy. Call Ralph Decker, GR 4-9579. RA-4850

McKINLEY HILL REALTY
 6311 McKinley Ave. GR 4-9579
 Member of Multiple Listing Service and TACOMA REAL ESTATE BOARD

Real Estate — All Types
TACOMA REALTY, INC.
 11004 Park Ave. LE 7-8681

M. L. S. MULTIPLE LISTING SERVICE
PARKLAND REALTY CO.
 Jennie L. Grodvig
 Insurance of All Kinds
 Notary Public
 Est. in Parkland Since 1941
 LE 7-8609 Office
 302 Garfield St., Parkland
 Jennie & Al Grodvig, LE 1-1210
 Edna Taylor, LE 7-3556

"Deal with the people who give you their personal Attention"
 Member of Multiple Service and Tacoma Real Estate Board

Rentals 10
 FOR RENT—Small modern apartment on Clear Lake, Eatonville; near Clear Lake Inn; by day, week or month. John Sartell, Rt. 1, Box 239-A, Eatonville, TE 2-4556. 10c1f

FOR RENT—James Sales Garage hall for parties, private dances, receptions; Mr. Cox, LE 7-8132. 10c1f

NEW modern three-room furnished apartments, all electric. Adults only. \$50 per month. VI 7-7448. 10c1f

FOR RENT—Two bedroom home on Tanwax Lake, Fireplace, electric range. 825. Eatonville, TE 2-4532. 10c1f

CLEAN, NICELY FURNISHED 1 bedroom home in park-like setting; two buses at door, 5 minutes from downtown Tacoma. 20 minutes from McChord. GR 2-9959. GR 2-5167. 10c36

FOR RENT—One bedroom house, \$40. Elderly couple preferred. MA 7-1499. After 5:00 p. m. 10p36

PARTLY FURNISHED 5-room house for rent, \$50; 5503 East 112th. GR 2-0705. 10p36

FOR RENT—Furnished one bedroom apartments, \$50 to \$75 plus electricity, 12605 Pacific Ave. Parkland. 10c36

WANTED: RENTAL UNITS. We have families waiting for rentals in South End, Parkland and Summit area. FERN REALTY Summit Office LE 7-8651.

FOR RENT—Clean, modern, furnished bachelor apartment. \$40 per month. LE 7-2716. 10c36

FOR RENT—One bedroom house, \$40. Elderly couple preferred. MA 7-1499. After 5:00 p. m. 10p36

FOR RENT—Furnished one bedroom apartments, \$50 to \$75 plus electricity, 12605 Pacific Ave. Parkland. 10c36

REPAIR SERVICE 11
JOE WHITE APPLANCE REPAIR
 906 Portland Ave. 11c1f

VALVE FACING and seating, \$1.00 cylinder; motor reworking, \$1.50 cylinder; by experts; TH 5-9193; Haggen's Auto Parts, 15th & River Road, Puyallup. 24c1f

NOW AT SILER'S Complete refrigerator service. Fast, dependable, reasonable. LE 7-8634. 11c1f

LAWN MOWER SERVICING
 Briggs & Stratton, Clinton, Power Products & Lauson, Engine Parts and Repairs.
PARKLAND CYCLE & KEY
 11021 Pacific Avenue 11c1f

WASHING MACHINE PARTS — Largest stock in town. Repairing that pleases. BB's Washer Service, 3727 So. G. GR 4-4409. 11c1f

NOW AT SILER'S Complete washer and dryer service. All makes. Fast, dependable, reasonable. LE 7-8634. 11c1f

Automobiles 12

ANDERSON'S CARS FOR LESS
CHINOOK CAMPERS
 LE 7-0404
 176th & PACIFIC AVE.

1960 FORDS AND CHEVROLETS—Wholesale prices. Bank terms. SMALLLEY'S MOTORS, 10410 Pacific Avenue. LE 7-4060 any time. Open nights also. 12c1f

Classified Continued
 On Page 9

Hey Kids!
J. P. WILL BE HERE
SATURDAY, MAY 14 FROM 2:PM TO 4:PM
AND HE HAS A SURPRISE FOR YOU.



DELICIOUS — WINESAP — NEWTOWN — C-GRADE
KRAFT All Purpose OIL 99c Qt.
APPLES BOX 18-lb. 99c
MARGARINE 6 Lbs. 99c

MJB Instant COFFEE 6-oz. 79c
Sunshine KRISPY CRACKERS 1-lb. Box 25c

BISCUITS Ballard or Pillsbury 9c Each

STEAKS
 RIB — or — ROUND
 SIRLOIN — or — T-BONE
 Lb. 69c Lb. 79c

DILL PICKLES Evergreen Full Quart 23c

BONELESS Fillet RED SNAPPER Lb. 29c

ROASTS
 WELL TRIMMED ALL MEAT - NO BONE
 RUMP RO'ST SIRLOIN TIP
 Lb. 59c Lb. 69c

Roasting Ears CORN from Florida 3 for 29c
SHAFTER POTATOES 10 lbs. for 49c

Van Camp PORK & BEANS 2 1/2 Tin 19c

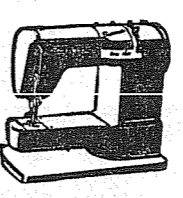
100% PURE Ground Beef 3 Lbs. For 89c
Country Style Pork Sausage 3 Lbs. For \$1.00

LETTUCE 9c Ea.

BARGAIN BASKET
 16618 PACIFIC AVE. South SPANAWAY, WASH.
WEINERS 2 lb. Bag 79c

CALL GR 5-0658
 WE USE RCA TUBES

Do You Have One of the Following Sewing Machines?
 Singer Necchi White Kenmore Bell Vigorelli Universal Famous Belaire Pfaff Sew Gem Adler Remington
 Elna Domestic Brother Viking Sewmore Atlas Empire New Home Free Westinghouse Montgomery Ward Cromwell Compact National
 We'll Service Any One of the Above Machines in Your Home
For Only \$1.95
 We also Rent New NECCHI-ELNA Machines For \$4.95 per month.
Lakewood NECCHI-ELNA CO.
 Lakewood Center JU 8-2331



Miscellaneous 15

BABY BASSINET with pad and hood. Sterilizer with six 8 oz. bottles and two 4 oz. bottles with caps and disks, \$10. Car seats and toddler-beds, \$5. New 3 1/2 size Hollywood bed, \$30. LE 1-2694, 15336

SAVE \$160 on repossessed range; assume \$10 monthly payments and get P.D.O. delivery. Open till 9:00 p.m. Mondays, Fridays. UFTON ELECTRIC CO., 1148 Market St., FU 3-2551. 15336

WAYNE GAS PUMP with 500 gal. tank and all fittings. Will sell or trade for live stock. VI 7-2127. 15336

JASPER RIDING BOOTS, worn very little. Reasonable. LE 7-5126. 15336

MINI BICYCLES: Girl's Monarch, \$30; Schwinn, \$25. See at James Tomara home 1028 1/2 Box 192A, Spanaway. 15336

JAN'S BEAUTY SHOP is offering "Mother and Daughter" Duart Coldwaves, two for the price of one, \$15 complete. Call LE 1-1181 for appointment or stop in at 13118 Pacific Avenue. 15336

KC REGISTERED Wirehaired Fox Terrier puppies. Also KC registered Blue Rippers, Caramel Kennels, 1736 South 90th, GR 7-4082. 15336

SEVEN MONTH OLD CHIHUAHUA puppies. KC registered, \$45. Stud service, \$30. 1-7077. 15336

CREAM FOR SALE—90c a quart. LE 1-1142 after 3:30. 15336

SINGER Swing Needle ZIG-ZAG

MAHOGANY CONSOLE MODEL: Full balance due \$34.74. THIS IS NOT a straight stitch machine. Equipped to zig-zag but has everything BUILT IN. Just turn the dial to button hole, sew on buttons, evenest seams, applique, embroidery, monogram, etc. Take over payments of \$4.27 per month; 20-year guarantee. For free home demonstration, call FU 3-4373 anytime. DLR. 15336

NEW LUMBER \$30 per thousand; VI 7-7448, 15336

SPECIAL ORDER CAKES—Phone LE 7-5338. Paity Ann Bakery. 15336

WANTED—Cameras and photographic equipment for resale. 15336

QUALITY PHOTO SERVICE 9818 Pacific, LE 7-7271. 15336

FOR SALE—Electric fence control, two hand button churns, post hole digger, fan, older pieces. LE 7-4331. 15336

FERTILIZER—Chicken or rabbit, any amount, \$1 sack. GOOSE EGGS, 25c each. VI 7-7810. 15336

WORKING, FISHING, DANCING MOTHERS—Licensed child care day or night, outdoor gym. 8425 South D, GR 2-9991. 15336

MODERN 1958 40' Mobile Home, floor heat, 2 bedrooms. Small down payment. See at 12222 Golden Green Road. 15336

GOOD ELECTROLUX with attachments. Full price \$15. Open 'til 9 p.m. Fridays and Mondays. UFTON ELECTRIC CO., 1148 Market Street, FU 3-2551. 15336

FOR SALE: Apt. size refrigerator \$20. Apt. size elect. stove \$20. Girl's 26" bicycle \$10. GR 4-3073. 15336

FOR SALE—Boston Bull Terrier \$35; VI 7-2228. 15336

Horses & Equipment 16

FOR SALE—One large work horse and harness. Works single or double. VI 7-7649. 15336

HORSESHOEING
Including Corrective Shoeing for All Conditions
Ken Lehman — TH 5-5536

Aviation 17

FREE—FIRST FLYING LESSON—LEARN TO FLY—IN A WEEK
New and Used Aircraft Sales
TAMOMA FLYING SERVICE
Spanaway Airport, LE 10-442. 17336

Schools 18

NIGHT SCHOOL—ENROLL NOW
Call MA 7-2181
KNAPP BUSINESS COLLEGE
10th & Pacific. 18336

LEGAL NOTICES

PETERS & TRACY, ATTORNEYS
11024 Pacific Ave., Tacoma 44, Washington
IN PROBATE
NO. 67977

NOTICE TO CREDITORS
In the Superior Court of the State of Washington for the County of Pierce. In the matter of the estate of Marian Lucille Mastick, deceased.
Notice is hereby given that the undersigned has been appointed and has qualified as administrator of the estate of Marian Lucille Mastick, deceased; that all persons having claims against said deceased are hereby required to serve the same, duly verified, on said administrator or his attorneys of record at the address below stated, and file the same with the clerk of this court, together with proof of such service within six months after the date of the first publication of this notice, or the same will be barred.
Date of first publication May 12, 1960.
PETER S. & TRACY, ATTORNEYS
Administrators of said Estate
Address 11024 Pacific Avenue, Tacoma, Wn.
11024 Pacific Avenue
Published in the Times Journal May 12, 19, 26, 1960.

The earth is 50 times the size of the moon.

Grange Auxiliary Plans Luncheon

Fruitland Grange Auxiliary is having a spring luncheon Tuesday, May 17 at 12:00 noon. Those assisting with the affair are: Mesdames Lester Goelzer, Joe Heil and Clara Lavik, Kitchen; Mrs. Clifford Hurst, white elephant table; Mrs. Mitchell Milne, tickets; Miss Diane Milne, posters; Mesdames Lawrence Holbert and William Geddes, apron and bazaar table; Mesdames Everett Knoll and George Fisher, decorations; Mesdames Robert Gilmore and George Fisher, hostesses; Mesdames Oscar Swander and Robert Vorak, games; Mrs. Harold Hanson, drawing for prizes; and Mrs. Joe Janowski, publicity.

Everyone is cordially invited. There will be a donation fee charged and children under 12 will be admitted for half price.

Registration Urged by Bethel

Registration for kindergarten classes in the Bethel School District will be held next week in all of the five grade schools, according to Superintendent Dewane Lamka. Children must be five years old on or before September 10, 1960 in order to enroll and parents must bring birth date at the time of registering their children for kindergarten.

Registration will be open in the following schools on the following days and times: Spanaway Grade School, Monday (May 16) through Friday (May 20) from 9:00 a.m. to 2 p.m. in the school office; the Elk Plain, Roy and Kapowsin grade schools will accept registration on Thursday and Friday, May 19 and 20, from 1 to 3 p.m. in the schools' offices; and Clover Creek grade school on Thursday, May 19, from 1 to 3 p.m. in the school office.

Tiny New Telephone Fit for Princess



IT'S LITTLE... IT'S LOVELY... IT LIGHTS—Pacific Telephone-Northwest's newest phone, the Princess, was unveiled recently by employee princess Anita Eller. Only three and a half inches high, its base covers and area little larger than a dollar bill—and the dial lights when the receiver is picked up or can be turned on to burn constantly as a night light. Telephone manager Ron Johnson said that the phone would be available here in a few months.

Roy News

Mix Master 4-H club is having a Car Wash at the Flying A Service Station beside the Big Bear store on Saturday from 10:00 to 3:00. Money from the car wash will be used to help the girls attend 4-H Club Camp.

The Progress Day planned by the joint 4-H clubs in the area was postponed because of rain. A new date has not yet been set.

Fire of undetermined origin destroyed the home of Douglas Averill on Saturday night, despite the efforts of Roy Fire Department, assisted by a Yelm truck.

Roy Pioneer Association has scheduled its first Rodeo for Sunday, June 19. The Annual Rodeo dance will be held Saturday night, June 18, in the Elk Plain Grange hall.

Roy Grange had the first of its series of card parties to begin a building fund for a Grange Hall on Friday. The Grange plans to hold card parties once a month. Reporter — Martha Beggren, Roy 229.

Lacamas School District No. 324 announces a special meeting at the school house May 13 at 8:30 p.m. to consider the preliminary budget.
R. Boyce, Clerk

It's the LAW

JURY DUTY
Today as yesterday, our jury system is under fire. Critics say that juries waste time, that people don't want to serve, that jurors make stupid mistakes. Let the experts administer justice, some critics say. These criticisms hold true only if citizens forsake their right to serve, or if they do not do their level best to reach just verdicts. We'd like to do our duty, of course, but it is hard to break up our routine of pleasant living. As citizens some of us shirk voting and some try to get out of jury service. Perhaps we don't value our freedoms enough. We inherited them and didn't earn them the hard way. Only a free people can enjoy the privilege of jury duty. An ancient philosopher once said that the mark of a citizen, as opposed to an alien, is his right to take part in the due administration of justice. When jury duty calls, think of yourself as a juror seeking truth, hearing all the evidence, and hearing the court's instructions. Follow the lawyers' arguments and lay

aside prejudice and follow your intelligence and not your emotions. Respect your fellow jurors, as they must respect you. In tolerance try for agreement, but never a verdict which violates the court's instructions or finds as a fact what you know is untrue. When they call you to jury duty make a liar out of the critics. Be a good juror and make our system of justice work. (This column is written to inform, not advise. Facts may change the application of the law.)

Woodland P-TA

Woodland P-TA will hold installation of the following new officers, at the final meeting of the school year, May 18, at 8:00 p.m. in the school Gym: President, Mrs. Robert Vorak; first vice - president, Mrs. Richard Erskine; second vice - president, Mrs. Leonard Aikens; secretary, Mrs. Clifford Cuellar; treasurer, Clifford Laycock. A report on the convention will be given by Mrs. Vorak, and the record book will be on display. A decision on what to give the school will be made. Refreshments will be served by the 1st grade mothers.

St. Louis Cathedral in New Orleans was built in 1794.

SUMMERTIME BARBECUE

FRESH GR. BEEF 3 lbs. 89¢
GROUND FRESH HOURLY

MEATS • POULTRY

25-LB. LOCKER BOX SPECIAL \$11.95

PERRY BROTHERS

FRYERS lb. 35¢
WHOLE BODIED FOR BARBECUE

CHUNK OLD FASHIONED BOLOGNA—HOT DOGS lb. 39¢

YOUNG BABY BEEF SIRLOIN or RIB STEAKS lb. 69¢
SERVE WITH ONION RINGS LIVER BABY BEEF lb. 29¢

LEAN SLICED BACON 3 lbs. \$1
Another Kitchen's Smash Hit

LIP SMACKIN' GOODNESS T-BONE STEAKS lb. 79¢
WELL TRIMMED TENDER BEEF RUMP ROAST lb. 59¢

Shop SEYMOUR'S
EACH DAY 9:00 to 9:00—SUNDAYS 10 to 6

Save on Men's & Boys'

Canvas Shoes 2.99
Washable brown or blue canvas shoes! Sizes 11-2, 2 1/2-6, 6 1/2-13. Durable rubber soles for casual wear!

BOY'S SURF RIDERS 2.98
Beach Combers by Campus! Black, white, with contrasting side stripes. 6-16.

KIDS' CANVAS OXFORDS 1.99
Sturdy, washable canvas shoes in red or blue. Sizes 5 to 12.

CHILDREN'S JACKETS 2.98
Reversible - wear summer - weight jackets! Many colors! Wash 'n wear! 3 to 14.

WOMEN'S NEW DUSTERS 2.98
Attractive embossed crinkle cottons in S, M, L, XL. Several styles!

MEN'S SPORT SHIRTS 2.49
New summer weights and colors! Wash 'n wear cottons and knits!

CARDIGAN JACKETS 4.98
Men's Nylo-Gab wash 'n wear jackets by Campus. Zipper front.

Girl's SUMMER WEAR 1.19 to 1.99
Shorts, capris, pedal pushers, jamaicas, in washable cottons. Appliqued designs. 3 to 14.

RIB-TICKLER TOPS, 1.19 to 1.49

Women's Flatties 2.99 and 3.99
Blacks, whites, blues, reds, beige in a variety of popular styles.

Young Men's Loafers 6.99
Black and brown "moc" toes, swirl toes with elastic gores. 6 1/2 to 12.

MEN'S NEW Wash 'n Wear Slacks 4.98
Polished cottons and bedford cords in favorite shades of blue, antelope and tan.

WOMEN'S CAPRIS ONLY 3.98
Summer colors in wash 'n wear fabrics, with zipper, and elastic insert. 10-20, 32-40.

KNIT TOPS S-M-L 1.99
Favorite knits with boat, square and round collars. All colors!

Use Seymour's Layaway Plan

Shop Sunday 10 to 6 Weekdays 9 to 9

FREE FRONT-DOOR PARKING

9714 PACIFIC AVENUE SEYMOUR'S FAMILY DEPARTMENT STORE
ONE BLOCK NORTH OF PARK 'N SHOP

SHORTENING you'll always find LOW prices here!
Tastewell 3-Lb. Tin 59¢

FRESH FROM SHINN'S FARM LARGE "AA" EGGS Doz. 45¢

TASTEWELL 1-Lb. Package MARGARINE 2/25¢

MORTON'S FROZEN—Large FRUIT PIES 3/\$1
Apple-Cherry-Peach

SUNSHINE 1-Lb. Package KRISPY CRACKERS 25¢

FLORIDA ORANGES Large Juicy lb. 9¢

CALIFORNIA LETTUCE Large, Crisp Heads Ea. 10¢

OPEN SUNDAYS KITCHEN'S EVERYDAY LOW PRICES
Right to Limit
Open 9 a.m. 'Til 10 p.m. Daily
10 a.m. 'Til 10 p.m. Sundays
12208 Pacific Ave.

GOLDEN RIPE 2 LBS. BANANAS 25¢

NEW WHITE POTATOES 10 lbs. 39¢

SHURFINE 1 lb. 10-oz. Box SALT 10¢

MAXWELL HOUSE 6-oz. Jar INSTANT COFFEE 89¢

TASTEWELL Sliced 303 Tins BEETS 8/\$1

TASTEWELL Halves 303 PEARS 5/\$1

1/2 Gallons Welcome ICE CREAM 69¢

MELLOGRAIN — 1-lb., 3-oz. Pkg. Wheat Puffs 47¢

4 PADS IN BOX SOS PADS 10¢



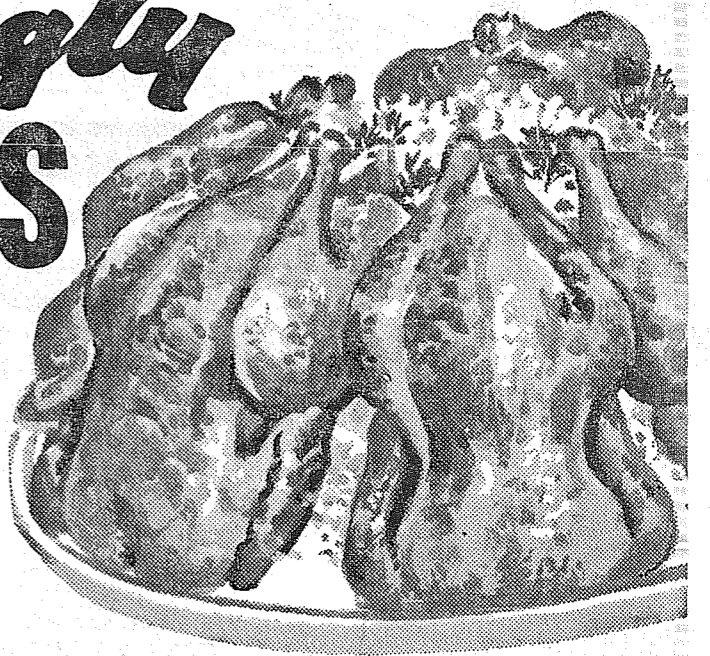
The TAPE tells the TALE

at Piggly Wiggly

FRESH FRYERS

• Fresh Whole-Bodied, Plump and Tender
 Birds . . . Broil or Cut Up and Pan-Fry or Oven-Bake!

LB. **35**¢



MORSE SEWING MACHINE TO BE AWARDED SAT., 5 P.M. AT OUR FIFE STORE

FREE

20 OUTDOOR BARBECUES



Four to Be Given Away at Each of Our Piggly Wiggly Stores! Just Come In and Register! Nothing to Buy!

GROUND BEEF

PIGGLY WIGGLY'S OWN LEAN FRESH LB. **39**¢

SWIFT'S PREMIUM, FULLY COOKED

PICNICS

FAMILY SIZE 5- TO 8-LB. AVG. LB. **35**¢

CRAB

FRESH OCEAN CRAB FROM THE DEEP PACIFIC! LB. **29**¢

HALIBUT

FRESH, BY THE PIECE (STEAKS . . . LB. 39¢) LB. **29**¢

MARIANA FRESH FROZEN

STRAWBERRIES 10-OZ. PKG. **17**¢

FREE SWEET FRESH FROZEN

ORANGE JUICE 7 6-OZ. CANS **1** 00

MORTON'S FRESH FROZEN BEEF, CHICKEN, TURKEY

POT PIES STOCK UP AT THIS PRICE 5 PIES FOR **1** 00

LYNDEN GRADE A STRICTLY FRESH

LARGE EGGS DOZ. **43**¢

HUNT'S FRUIT

COCKTAIL 5 NO. 300 CANS **99**¢

MORTON'S—Peach, Cherry, Apple, Boysenberry, Coconut, Custard

FRUIT PIES LARGE 8-INCH EACH **33**¢

WHITE, YELLOW, BUTTERSCOTCH, DEVILS FOOD Swans Down.. 4 PKGS. **89**¢
 BLUE BONNET (2c OFF LABEL) MARGARINE 5 1-LB. **1** 00
 WALDORF, ASSORTED COLORS TOILET TISSUE 4 -ROLL PACK **29**¢
 NALLEY'S MAYONNAISE QUART JAR **49**¢
 NALLEY'S WHOLE KOSHER OR PLAIN DILL PICKLES 24-OZ. JAR **33**¢
 COFFEE HOUSE COFFEE Drip or Regular..... 1-LB. CAN **59**¢
 STAR-KIST CHUNK TUNA 4 NO. 1/2 CANS **1** 00

CHUNK BOLOGNA OR LIVER SAUSAGE • HYGRADE LB. **39**¢

KRAFT MILD CHEDDAR CHEESE LB. **49**¢

JACK 'N THE BEAN STALK SALE!

JACK AND THE BEANSTALK FANCY CUT BEANS ... 6 NO. 303 CANS **1** 00
 JACK AND THE BEANSTALK FANCY SWEET PEAS ... 6 NO. 303 CANS
 FANCY WHOLE KERNEL OR CREAM CORN 6 NO. 303 CANS
 FANCY CUT OR SLICED BLUE LAKE BEANS 8 8-OZ. CANS

FLUFFO (10c Off Label)..... 3-lb. Can **59**¢
 TABLE NAPKINS Kleenex (3c Off) Pkg. **19**¢
 CORN FLAKES Carnation 12-oz. Pkg. **22**¢
 DRY MILK Carnation 8-Qt. Size **65**¢
 MASHED POTATOES Minute 2 Pkgs. **49**¢

WAXTEX WAX PAPER 100-Foot Roll **23**¢
 WASHDAY NEED ELASTIC STARCH Quart Bottle **29**¢
 10c OFF LABEL RINSO BLUE Giant Size **69**¢
 POWDER ROOM FACIAL TISSUE ... 5 Pkgs. **1** 00
 CAT FOOD PUSS'N BOOTS ... 4 8-oz. Cans **33**¢
 BEST BET NOODLES 1 1/2-lb. Pkg. **45**¢

FRESHEST PRODUCE IN TOWN!

ORANGES SUNKIST 5-lb. Bag **49**¢

SPINACH Fresh Green Bunch **5**¢
ASPARAGUS Washington Local, No. 1 2 lbs. **33**¢
CALAVOS The Aristocrat of Salad Fruit 3 for **19**¢

SUNSHINE—1-LB. BOX HI HO CRACKERS ... **33**¢
 SUNSHINE MARSHMALLOW PEANUTS 10-oz. Pkg. **29**¢
 CANNED MILK DARIGOLD 3 Tall Cans **46**¢
 SANITARY NAPKINS MODESS Pkg. of 12 **49**¢
 SAVE HERE! TREND 2 Large Pkgs. **39**¢
 TEA BAGS RED ROSE Pkg. of 48 **69**¢

Specials in Our Fife Hdwe. Dept.

3" BOAT OR HOUSE NUMBERS Luminous, Weatherproof..... 20¢ Ea. (1" 10c Ea.)
 COMPLETE SET NUMBERS AND LETTERS STENCILS 1" 90¢ 3" \$1.55
 FENCE PAINT White only..... \$1.98 Gal.
 EARLY ROSE, NETTED GEMS, BURBANK SEED POTATOES 10 lbs. **75**¢

DREAM WHIP..... 4-oz. **39**¢
 CHIPS Baker's Chocolate... 2 Pkgs. **45**¢
 COFFEE Maxwell House Instant... Jar **89**¢
 PUREX BEADS 18-oz. Pkg. **43**¢
 MIX Swans Down Cr. 14-oz. Pkg. **39**¢
 DOG FOOD Sure-champ... 10-lb. Bag **1.29** (25-lb. Bag **2.98**)

TIP TOP JUICES

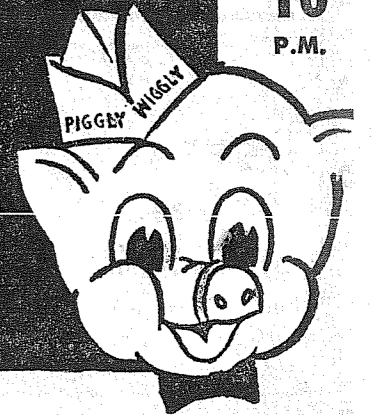
• Raspberry-Lemon
 • Pineapple-Raspberry
 • Strawberry-Lemon
 • Black Cherry
8 CANS (Mix or Match) **1** 00

It's Cookie Week!
 All Varieties—Specially Priced!
 NEW! CHOCOLATE MINT 2-LAYER CAKE (Reg. \$1.19) Special **\$1.00**
 PECAN LOAF (Reg. 59¢) Special **53**¢
Van de Kamp's SPECIALS
 famous for QUALITY • FRESHNESS VARIETY • CONVENIENCE
Van de Kamp's BAKERIES

Puyallup 1010 EAST MAIN
 Parkland PACIFIC AT GARFIELD
 Fife FORMERLY ANDRE'S MKT.
 So. Tacoma 5252 So. Washington
 40th & Portland Ave. TACOMA

piggly wiggly

...your assurance of **QUALITY!**



PRICES EFFECTIVE THURS., FRI., SAT., MAY 12, 13, 14

OPEN EVERY DAY UNTIL **10** P.M.

NO SALES TO DEALERS—WE RESERVE RIGHT TO LIMIT