

Sewer District Opponent Challenged See Page Two

Pierce County Herald and

The **TIMES** JOURNAL

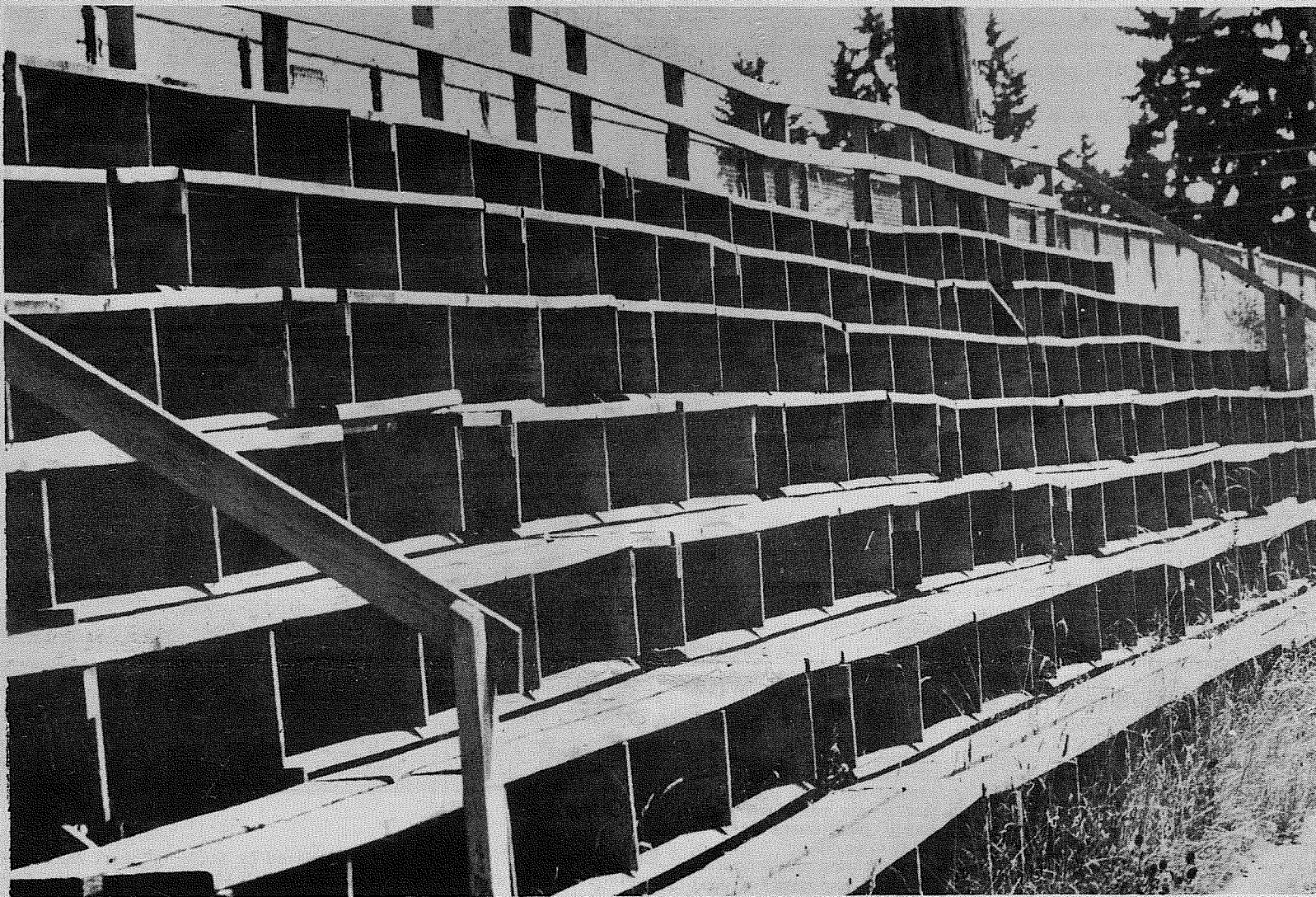
Vol 23 No. 33

August 16, 1967

Price Per
Single Copy

10¢

Franklin Pierce High School Bleachers Condemned! See Page Four



Parkland Monster Steer And Other Features

See Page
Five



New Look Comes To Times Journal

This week's Times Journal marks a radical departure from previous format.

We have redesigned the paper page by page, striving for uniqueness in our approach to presenting the news. The tabloid-size page was retained because many of our readers found it convenient to read and easy to handle.

Although the new Times Journal may have a contemporary appearance, we pledge old-fashioned honesty in reporting the news.

After studying weekly and daily papers from around the country, we felt this would be the format that would best serve our readers. I hope you'll agree.
ENM

In This Issue

Page 10

Comics

Classified

Page 7

Bethel Board Report

Page 9

Sports

Page 5 6 7 8

Special Feature Section

Sewer District Opponents Challenged

By Sandy Ingram

"Does your organization have a plan?" "What would be the alternative cost?" and "When would the alternate sewer plan be operational?" were the three questions that set the trend of a controversial discussion between Parkland Kiwanians and A.H. Bottiger, one of the officials of the Pierce County Improvement Association, at a Kiwanis Club meeting Thursday night.

The Pierce County Improvement Association does not have a plan, said Bottiger, but is opposing sewer in the Parkland area under the South Suburban Sewer District's plan of annexation by petition.

Dr. Ed Hill, superintendent of Franklin Pierce School District, contended that to make a decision on what would be best for the area, residents would have to be able to make a comparable choice, and yet, as far as could be seen, there is no other plan at this time.

Dr. Hill asked Bottiger if he was opposed to sewers in general in the area, to which the reply was negative from Bottiger, who does not see an immediate need for sewers in this area. He also replied negatively

when asked when he thought there would be an immediate need.

Bottiger said that only faculty members of Pacific Lutheran University voted on whether or not there should be sewers.

Emmett Ecklund, a professor at the University, asked clarification on the statement and stated that the faculty members of PLU did not vote on this issue, but in actual fact a few members of the faculty are commissioners in the South Suburban Sewer District and there is no tie between the university as such and the commissioners of the sewer district, although the university is included in the sewer plan.

Earlier at the meeting Bottiger stated: "Pacific Lutheran University should provide themselves with sewers, or make arrangements with the County Commissioners until a main sewer line and disposal plant can be built by the county and then be the first to hook-up."

Bottiger said that there is an urgent need for sewers at the University, but added the PLU "got into

this by itself" by what he termed "short-sighted planning." He added that the University's sewer plant "functions well, but is too small."

If people are going to have to pay for sewers, they should have had a voice in the plans," claims Bottiger.

Under the South Suburban Sewer District's annexation program at least 60 per cent of the land owners must sign a petition before the district can be annexed. The sewer district presented a petition with the need percentage of land owner, said Bottiger, but when Pierce County Improvement Association presented a petition in the same area they received more signatures.

Al Raber, manager of Parkland Light and Power, contended that in a democracy, it is more fair to enter a petition of this kind by ownership of land than by population, because he explained, "a man owning 10 acres of land should have more say so, than a man owning a 50 foot lot, if the man owning the 10 acres is going to have to pay accordingly."

Sewer District Adopts New Plan

The Commissioners of the South Suburban Sewer District have adopted an amended comprehensive plan and have acted to form the first utility local improvement district (U.L.I.D.) according to Clayton B. Peterson, president of the sewer district.

"We have expanded our comprehensive plan for the second time," Peterson said, "to include all of the land in areas thus far annexed that can be economically served with sewers. Other U.L.I.D.'s will be formed as additional land is annexed or other conditions warrant."

Assessment notices are now being mailed to all landowners in the area. Upon the recommendation of Harstad and Associates, their consulting engineers, the Commissioners have established the assessment rate at \$5.00 per front foot plus a \$.05 per square foot acreage charge. This action was taken to provide the most equitable kind of assessment for all properties in the area. For most people the costs will be lower than originally projected. Large land owners are also protected by the acreage assessment so that their property may have sewer service available when needed.

Under this plan of assessment a landowner with a lot 100 feet square would pay \$500 for the front footage and

\$50 for the acreage. This is \$150 less than if a straight \$7 per front foot were assessed. Persons living on corner lots would have a 150 foot exemption on the second side of their property.

The total cost of the amended comprehensive plan is \$3,880,000. Federal grants in the amount of \$1,570,000 are being sought. The assessments against the properties total \$1,500,000, which is 38.7 per cent of the cost. The remaining \$810,000 covering costs of interceptor and disposal facilities will be paid out of monthly service charges. The service charge is estimated at \$4 - \$4.50 per month.

The amended comprehensive plan has been submitted to the County Engineer, the County Health Director and the State Pollution Control Commission for their approval.

A public hearing upon formation of the proposed ULID No. 1 will be held on August 31 at 7:30 p.m. at the Parkland Light and Water Company Auditorium for hearing of matters relating to the formation of the U.L.I.D., the ordering of the improvements and for determining the method of payment.

After the public hearing the next step is to prepare the specifications so that bids for construction can be sought. However, this step will not be taken until assurance has been received that federal grants

are available. "We need these construction grants," Peterson said, "because it is not economically feasible to build the sewer system without them."

"The securing of sewers will be a great step forward for not only the people of Parkland but for all of south county," Peterson said. "The establishment of an operating sewer system will give great impetus to the plans of the County Commissioners for an area-wide disposal system. But the county needs customers in order to finance its system. South Suburban can provide those customers. Our system has been planned so that it can connect with the county plan whenever it is ready to go.

"By moving ahead now we can save ourselves a good deal of money. Building costs are steadily rising. Postponing action can only cost more, not only in construction costs but in school taxes. If there are no sewers a disposal plant costing \$200,000 or more must be built for the new high school and this must come from the taxes of the people of this area."

Fire Department Sponsors Outing

The Spanaway-Elk Plain Volunteer Fire Department will be sponsoring Chicken Bar-B-Q in Spanaway Park from noon to 6 p.m. on August 20.

"We do this once a year to get the community together for a visit," said officials at the Fire Department.

The menu includes tossed salad, baked beans, hot rolls and butter, cold drinks and coffee.

Last year's outing resulted in the sale of 225 chickens.

The Bar-B-Q costs \$1.25 for adults and 75 cents for children. There will be games in the afternoon for the children.

Crash Injures Soldier



LAKEWOOD-PACIFIC Ambulance assisted by State Troopers and Sheriff's Deputies, administer first aid to Roger Schuster, Fort Lewis. After Schuster was dragged approximately 73 feet down Pacific Avenue pinned under the pickup truck pictured in the background. The victim was placed on the critical list at Madigan Hospital. T.J. Staff Photo

Story Hours Attracted Over 1,000

Story hours offered by the children's summer bookmobile of Pierce County Library came to a close Thursday with over a thousand listeners having attended the sessions.

For many children, said bookmobile librarian Maudie Baltzell, the weekly story period led to their first library card. Each stop was scheduled for an hour and the children could check out books, phonograph records and magazines before and after the stories were told.

A decided success from the point of view of children and librarians, the children's summer bookmobile is now being restocked for its winter runs.

Ft. Lewis Soldier On Critical List

A freak three car accident near 168th and Pacific Avenue injured three, one critically, shortly after midnight Thursday, State Troopers reported.

One of the victims, Roger Schuster, was placed on the critical list and given intensive care treatment at Madigan General Hospital after being dragged 73 feet down Pacific Avenue while pinned under a pickup truck.

The driver of the truck, Sidney E. Lee, 41, Lakewood, and his wife Elaine were treated for multiple face abrasions and bruises at Lakewood General Hospital.

The stage for the tragedy was set when Schuster, a Fort Lewis soldier, could not get his 1956 model station wagon started on a tavern parking lot. He pushed his stalled vehicle onto a northbound lane of Pacific Avenue where he raised the hood and started to check the battery cables, Troopers said.

Schuster's vehicle then was rammed from the rear by the pickup truck. Impact from the crash hurled the soldier under the pickup, and his station wagon was knocked into a third car parked approximately 25 feet from the point of collision.

Schuster received severe face lacerations, a fractured hip, internal injuries, and a possible leg fracture, Troopers stated.

Both Schuster's and Lee's vehicles were declared totaled by inspecting officers. The third car, which was unoccupied at the time of the crash, was driveable but sustained body damage.

15' REINELL DELUXE

Boat-1967 Mercury Holsclaw Trailer Complete **\$1995.00**

EVES TIL 9 PM

PARKLAND Sports CENTER

11122 PACIFIC AVENUE TACOMA, WASHINGTON PHONE LE-7-5677

Fire Department Sponsors Outing

The Spanaway-Elk Plain Volunteer Fire Department will be sponsoring Chicken Bar-B-Q in Spanaway Park from noon to 6 p.m. on August 20.

"We do this once a year to get the community together for a visit," said officials at the Fire Department.

The menu includes tossed salad, baked beans, hot rolls and butter, cold drinks and coffee.

Last year's outing resulted in the sale of 225 chickens.

The Bar-B-Q costs \$1.25 for adults and 75 cents for children. There will be games in the afternoon for the children.

AN ENDOWED CARE CEMETERY

Fir Lane Memorial Park

924 EAST 176TH STREET

LE 1-5500

HI HO

PUYALLUP

HI HO

Calavo
AVOCADOS
10^c
ea

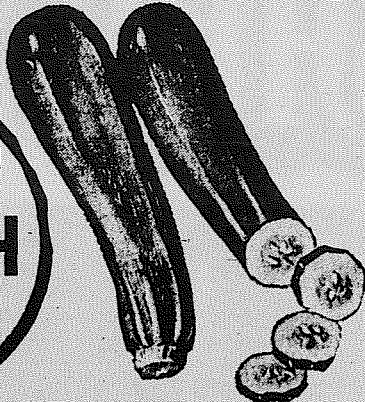
TEMPTING PRODUCE!



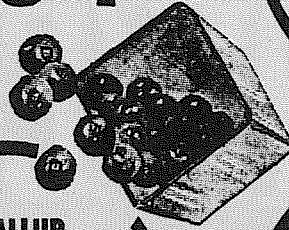
HOTHOUSE
CUCUMBERS
10^c
ea

ARDEN
Cottage
CHEESE
25^c
Pt.

VALLEY-GROWN
ZUCCHINI
SQUASH
10^c
lb



PUYALLUP
VALLEY
BLUEBERRIES
29^c
Cup



SNOW MIST
TUNA
25^c

#2
FLOWERLAND
PINEAPPLE
5/\$1⁰⁰

BUDGET *Meat* BUYS

LEAN GROUND BEEF	39 ^c lb
CHOICE RIB STEAKS	98 ^c lb
TENDER VEAL CUBE STEAKS	98 ^c lb
BAR-S ASSORTED LUNCH MEAT	3 6-oz. Pkgs. 98 ^c
HYGRADE'S NEW! VIRGINIA BACON	lb. 79 ^c
MILWAUKEE SKINLESS WIENERS	lb. 53 ^c
HI HO's OWN "ALL-BEEF" PET FOOD	3 lbs. 49 ^c

2-lb. BAG
TATER BOY
FRENCH FRIES
5/\$1⁰⁰

100-CT. DIXIE
PAPER
PLATES
69^c

10 lb. KINGSFORD
CHARCOAL
BRIQUETS
69^c

Lower Food Costs **HERE!**
GET MORE FOR YOUR MONEY

JUMBO
DECORATED
SCOTT
TOWELS
3/89^c

OPEN
8 a.m.

CLOSE
11 p.m.



OPEN
8 a.m.

CLOSE
11 p.m.


ALL VARIETIES
CAMPBELL'S
SOUPS
6/\$1⁰⁰

1-GAL.
FARMAN'S
VINEGAR
69^c

IN
PUYALLUP
PRICES EFFECTIVE AUG. 14th through 19th

FALL FESTIVAL OF *Bakery Treats*

FRUIT BARS	4 doz. 99 ^c
CHAMPAGNE CAKES	159 ^c oz.



12-OZ.
SPAM
LUNCH MEAT
49^c

6-oz. FROZEN
MINUTEMAID
LEMONADE
10^c
Can

Reg. 1.19
Mennen
SPEED-STICK
DEODORANT
69^c



REG. 1.45
PRELL
CONCENTRATE
77^c

REG. 2.00
TONI HOME
PERMANENT
\$1²⁹

HI HO

PUYALLUP

HI HO

RENT TV
 Portables All Sizes Color TV
 GR 5-3755 9440 Pacific
 United Rent-alls THE NATION'S NEIGHBOR
 JU 4-4100 10012 Bridgeport

Franklin Pierce School Bleachers Condemned!

Workers are expected to start demolition of the Franklin Pierce High School wooden bleachers this week following a school board order declaring them "unsafe."

Replacement will depend on the outcome of a one mill levy scheduled for voter approval during the November 7 election. The levy would raise an estimated \$23,000 to be combined with \$7,000 already collected by Franklin Pierce Students to finance the new structure.

The bleachers were purchased to provide temporary stands for athletic events in 1953, Assist. Supt. R.C. Richardson stated. They were offered to the district by the B & I Store, South Tacoma, who had used them several years for horse shows behind their store, Richardson said.

If voters approve the November special levy, new uncovered concrete bleachers would be constructed at the same site. When Parkland's new high school opens in 1969, it will share the athletic field with Franklin Pierce High School.

"With the new stands, we will be able to seat our students when Franklin Pierce and the new high school play home games," Dr. E.E. Hill told board members recently. The board approved a resolution to place the one mill levy on the November ballot during the August director's meeting.

Prior to the board meeting, directors inspected the present facilities and declared the wooden bleachers "unsafe."

New Parkland High School....

"George Washington High" Leading Name Contender

The name "George Washington High School" seems to be the leading contender for the title for the new high school scheduled to be built in Parkland for a September 1969 opening.

The name was suggested in a letter to Herbert Gelman, President of the Franklin Pierce District School Board, from Ronald C. Coltom, Assistant Director of Admissions at Pacific Lutheran University. Copies of the letter were distributed to board members recently.

Coltom cited the following reasons to back his proposal:

- Both schools in the district would be named after former Presidents.
- Both schools would be named after political areas, our county (Pierce), and our state (Washington).
- No other high school in the state has this name.
- There are only five other high schools on the West Coast with this name, four in California and one in Oregon.

Using the nickname "Patriots" with red and blue school colors, the theme of the revolutionary era could be carried out in everything from athletics to band and drill teams, Coltom stated. He noted that the red and blue colors are used by only 12 schools in the state, and are not used by any schools in the Puget Sound League.

Other names suggested have included Kennedy High School, Parkland High School, and Harry Sprinkler High School. A committee has been appointed to recommend a name for the new school.

Pierce County

Sheriff's Reports

To Roy L. Durham, Badge No. 33, of the Pierce County Sheriff's Department, every tour of duty may or may not bring a new experience.

Take an ordinary day, like August 7, Deputy Durham reported for duty at the normal hour. At 8:03 p.m. a call from Mrs. Evelyn M. Gayda of Route 1, Box 233, Eatonville sent the deputy to Rt 1, week included:

Theft of three new 19" portable televisions, worth \$337.50, from Tomhoff's Furniture, in Parkland, was reported. The incident occurred between 2:30 and 4:30 p.m. on 8-9-67. The TVs were stacked in boxes outside the furniture store.

Stolen from Standard Chevron Station, 10716 Pacific, between 11 p.m. 8-7-67 and 7:30 p.m. 8-8-67, was \$271.15 in cash.

And a 12-volt battery was removed from an automobile belonging to Raymond LaVon Burke of 16709 So. Park. The auto was parked in front of the residence. No attempt was made to enter the locked auto, Box 233C, where he found Mrs. Donna Ruth Wilston, of that address, on the ground outside the residence. At 8:10 p.m. after calling for plenty of hot water and sheets a bouncing baby boy, weighing approximately 8 lbs. 4 ozs., was born.

Dryer MORTUARY
 (134th & Pacific) PARKLAND

The Country Parson

"One of the hardest things for a father to understand is that his son may not want to be what he's trying to make him." Copyright, by Frank A. Clark

Dryer MORTUARY
 (134th & Pacific) PARKLAND

OUR 1st

BIG ENOUGH TO SERVE YOU AND SMALL ENOUGH TO KNOW YOU

ANNIVERSARY



Friday & Saturday AUGUST 18 & 19

GUESS THE WEIGHT OF OUR WATERMELON 5 P.M. SAT. DRAWING

- FREE DOUBLE COLA
- POP CICLES 5¢
- FREE ICE CREAM CONES
- COTTON CANDY 10¢
- FREE BOXES OF GROCERIES
- DRAWING FOR ICE CREAM & GROCERIES SAT. 5 P.M.

All Proceeds Made On Cotton Candy Go To Firemens Auxiliary

FREE 2 MONTHS SUPPLY OF ICE CREAM 1/2 GAL. EACH WEEK

ROUND STEAK LB. 89¢		FULLY COOKED HAMS LB. 59¢	Chuck Steak LB. 49¢
U&I SUGAR 10 LB. BAG 89¢	FRITO CORN CHIPS REG. 49¢ 29¢	DOUBLE COLA 8 PK. PLUS DEP. 59¢	MJB COFFEE 1 Lb. 69¢ 3 Lb. \$1.89 \$1.35 2 lbs.
ALPINE ICE CREAM 1/2 GAL. 69¢	NALLEY'S CHIPS REG. 69¢ BOX 49¢	DUCHESS CAN POP 15/\$1	PREM Luncheon Meat 12 OZ. CAN 39¢
TASTY FRESH BANANAS LB. 10¢		CELLO POTATOES 10 LB. BAG 49¢	SEEDLESS GRAPES LB. 19¢

O'NEIL'S GROCERY

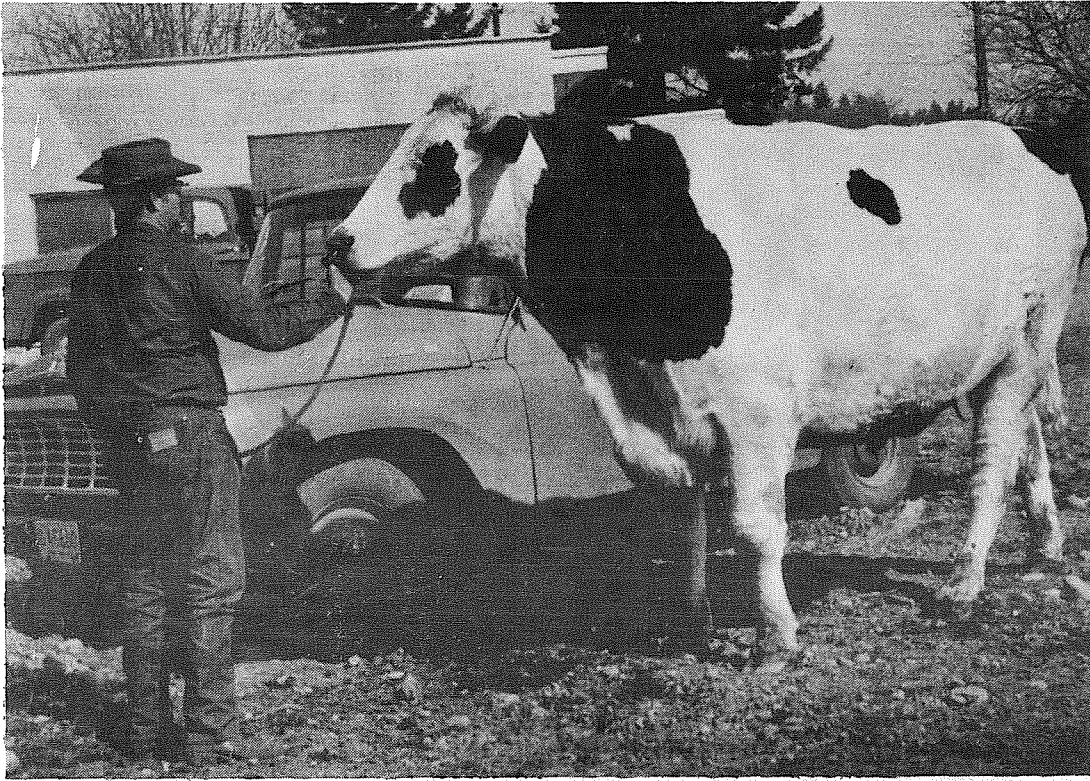
KAPOWSIN CORNER 832-5851 (EATONVILLE)

STAR VALU
 FOOD STORES

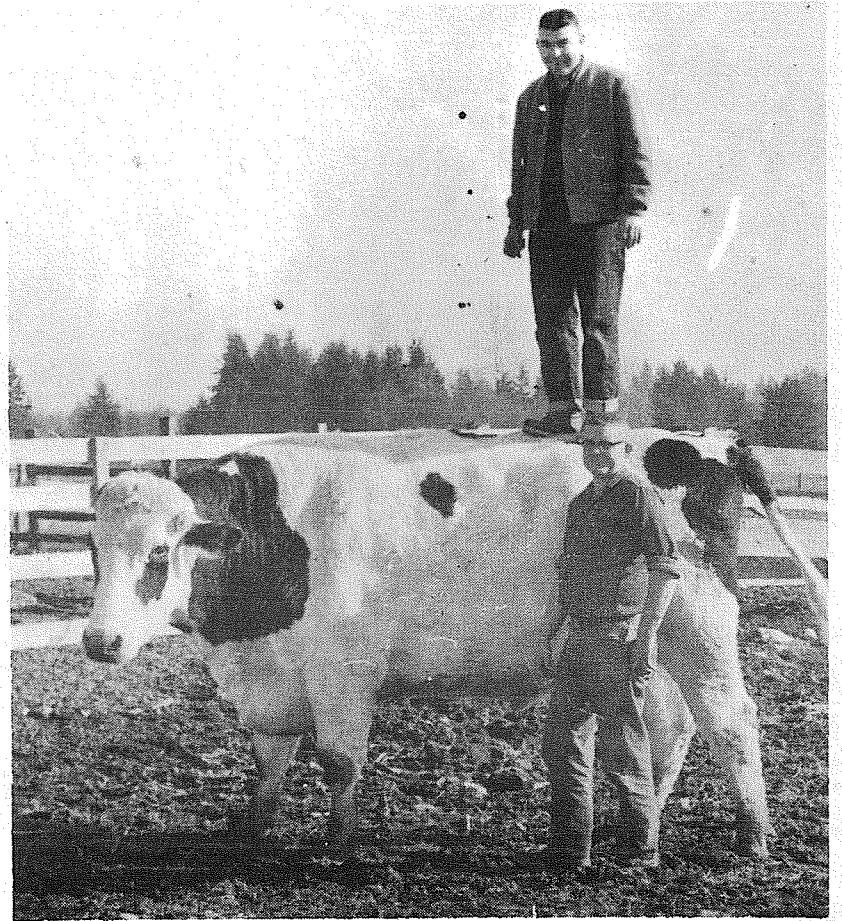
Parkland Steer

May Be World's Largest Living

Special Features Section



HUGE HOLSTEIN nearly dwarfs the 1/2 ton pickup truck in the background. Owner Dick Hawley, who is pictured steadying the animal, stands six feet 1" tall. TJ Photo



KING OF THE MOUNTAIN. Dr. Dale Tibetts finds plenty of solid footing on top of The king-sized steer as the animal sleepily poses for a snapshot. Rancher Dick Hawley, who is 6 ft 1 inch, stands by. TJ Staff Photo

Bovine Topsy Just Grew And Grew

By Em Matson

It's a lot of bull, almost. A 3,500 pound Holstein steer belonging to Richard W. Hawley, Parkland, Washington is the Topsy of the bovine world.

Like Topsy, the huge steer grew and grew, and according to Hawley, the animal is still growing. The 4 1/2 year old monster stands over 6 feet at the shoulder, and approaches 12 feet from nose to tail.

What do you do with a steer that big? "It's a cinch I can't afford to butcher him for beef," says Hawley who now faces the dilemma of how to financially justify the animal. "He has already eaten feed costing more than his value in meat."

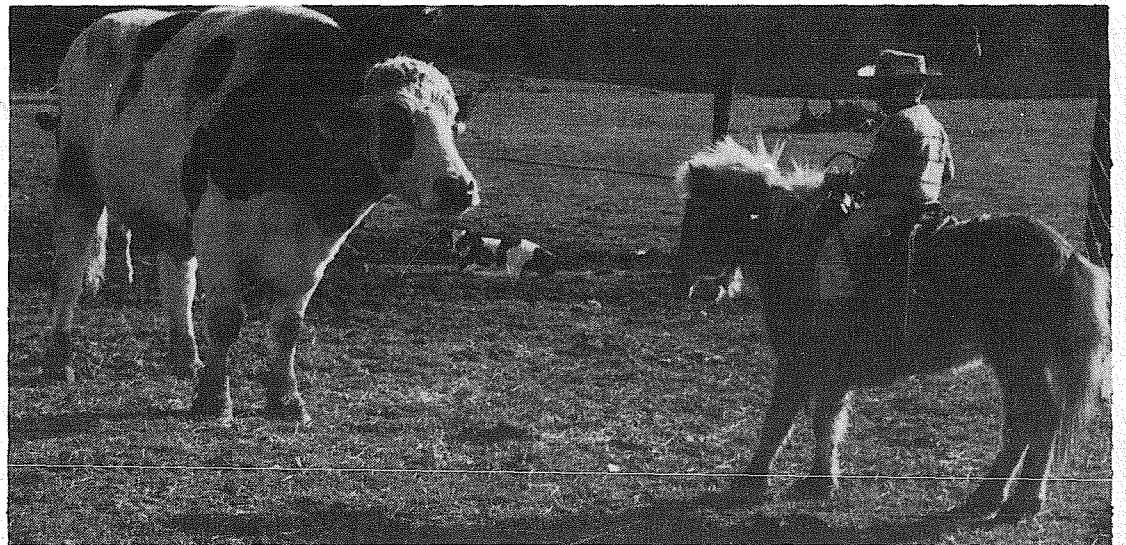
Hawley, a cattle raiser and meat cutter, noted that as a calf the animal had an alarming rate of growth. He has allowed it to escape his meat cutters' knives just to see what size it would attain at full growth, and figures the steer has another 12 months of growing left.

"If he isn't the biggest steer in the world, I'll bet his feed bill is," Hawley states. He points out that the big Holstein downs enough hay and grain to fill all the stomachs of several milking cows.

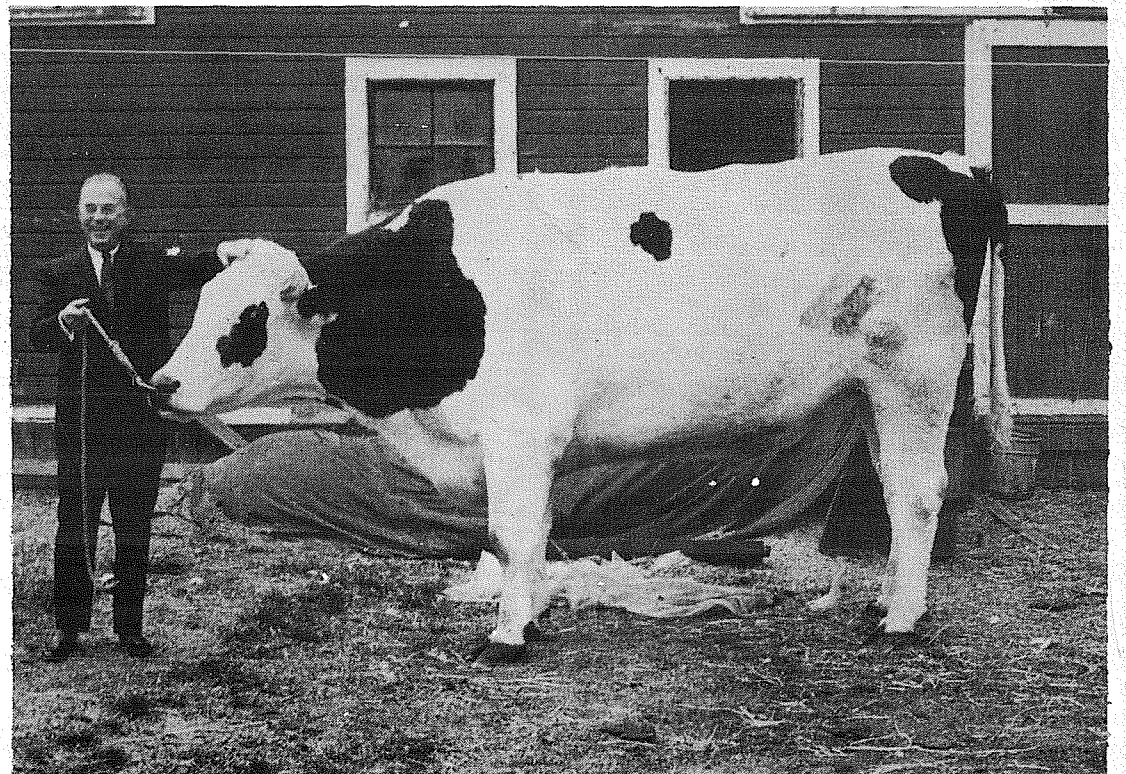
"But he's just a great big pet," Hawley explains, attempting to substantiate his reasons for keeping the animal. "Five or six kids can be comfortably seated on his back, and he seems to enjoy giving them brief rides around the barnyard."

Hawley hopes the animal might eventually challenge some of the world's size records set back in 1910 by a Kokomo, Indiana Hereford-shorthorn steer. According to The Guinness Book of World Records revised June 1966 by Norris and Ross McWhirter, the long-standing world's record is credited to a steer that measured 6 feet 4 inches at the shoulder and weighed 4,720 pounds. It died in 1910 at the age of 8 years.

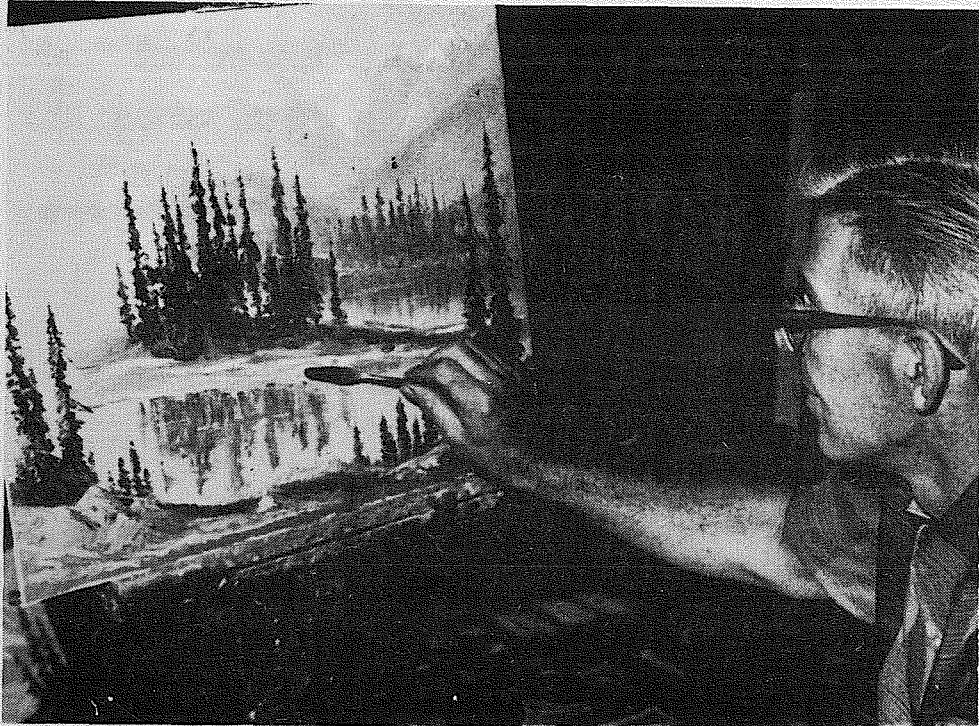
When asked if his Holstein might someday challenge a world's record that has stood the past 57 years, Hawley replied, "At \$2.50 per day I don't know if I can hold out that long, but we're going to give it the old college try."



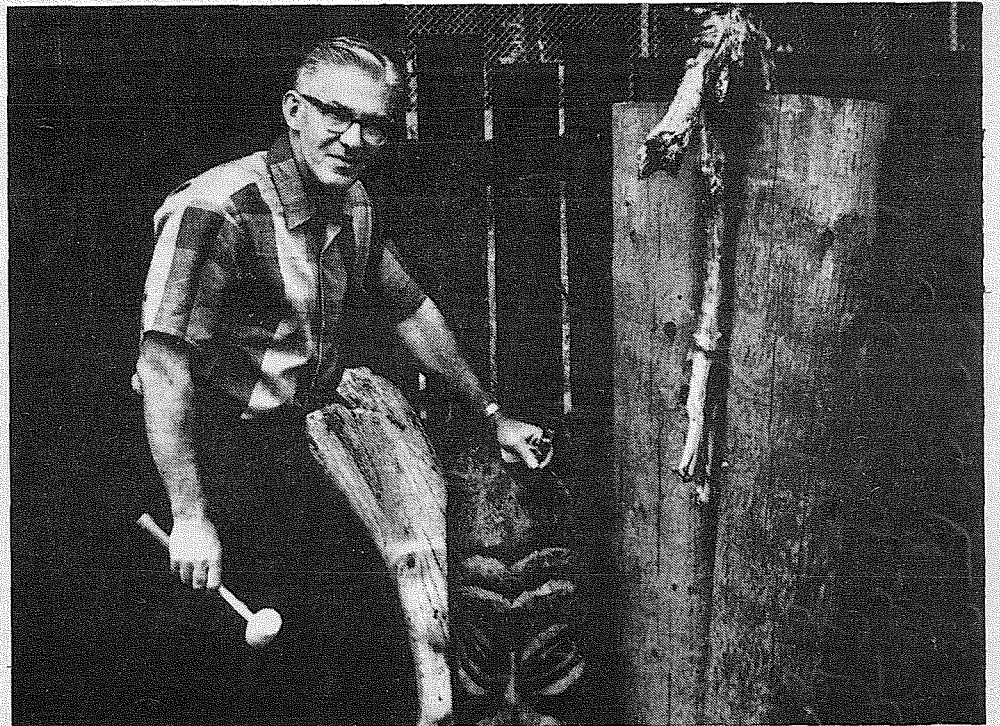
A YOUNG COWBOY riding a shetland pony looks for help after successfully lassoing the large steer. The shetland kept a tight line, but not because it was trained as a roping horse. The pony had a natural fear of the big animal.



PLENTY OF BURGERS. Ray Kroc, Chairman of the Board of McDonald's Hamburgers, recently flew up from California to inspect the big steer. Kroc heads McDonald's nationally. The holstein was used to help publicize the opening of the chain's new Renton drive-in last month.



SPANAWAY ARTIST PAUL CHALK puts the finishing touches on a mountain lake scene that has been etched in his memory since his boyhood. Landscapes and seascapes are his favorite subjects with Mt. Rainier the most saleable. TJ Staff Photo



CARVING TIKI'S from cedar poles for a change of pace, Paul Chalk uses only a mallet and chisel. Tiki's are created from pencil sketch patterns. Poles are acquired from telephone company discards. TJ Staff Photo

The Journal Visits....

A Spanaway Artist At Work

By Em Matson

Shoe repair and painting pictures are not even closely related.

But to Spanaway shoe store operator Paul Chalk selling and repairing shoes provides the income to finance leisure hours of painting. He paints everything from pounding surf to deserted mining towns.

Transforming memories of things he has seen onto canvas provides him the opportunity of expression needed to break the routine of re-soling shoes, he told the Journal. One of his favorite works is an abandoned cabin in a deserted Montana mining town he saw many years ago. The memory of the cabin haunted him until he recorded it in oils.

Chalk has not always been a serious artist. In 1946 he turned out single panel spot cartoons for men's magazines, with agents on both the east and west coast.

"It wasn't until about four years ago that I got serious about my painting," Chalk recalls. Since that time he has sold most of his paintings with Mount Rainier his most saleable subject.

How did he get started in the shoe business? "My wife's father was a shoemaker and I picked it up as a teenager," he answered. He opened his first shop when he was 18 years old and has been at it ever since.

Working in a sound-proofed, 20 ft by 22 ft studio adjacent to his home, Chalk has broadened his artistic projects by turning out cedar wood carvings and commercial signs as well as painting. The demand for his oils has increased to where he is able to have three advance orders waiting and devote most of his spare time to profitable painting.

His largest painting was a four foot by five foot oil of Mount Rainier sold to Mrs. Effie McGee, a rest home operator. Other favorites include a portrait of a collie dog and two seascapes on display at his store.



DI AN, VIETNAM (AHTNC) - Army Private First Class Donald M. Andersen, 22, son of Mr. and Mrs. Morten Andersen, 415 E. 121st, Tacoma, was assigned to the 1st Infantry Division in Vietnam July 15.

A clerk in the division's 1st Administration Company located near Di An, Pvt. Andersen entered on active duty last November and was last stationed at Ft. Benjamin Harrison, Ind.

Andersen is a 1964 graduate of Franklin Pierce High School.

(Z0863) MEMPHIS, TENN. (FHTNC) - Airman Apprentice Brooke P. Drexler, USN, son of Mr. and Mrs. Joseph A. Drexler of 176 & Yakima Ave., Spanaway, has completed the Aviation Mechanical Fundamentals School at the Naval Air Technical Training Center in Memphis, Tenn.

The four-week course introduces students to mathematics, physics and the principles of electricity. Subjects stressed include atomic theory, static and dynamic electricity, magnetic theory and the construction of aircraft batteries.

This month - long course prepares Navy, Marine Corps and Coast Guard personnel for entrance into more advanced courses at the center.

**

Senior Citizens Meet

The Parkland Action Club will meet Thursday 11 a.m. to 4 p.m. August 17 for an old timer's party at James Sales Grange Hall, 612 South 113th.

There will be a pot luck lunch at noon with a program, prizes, and games in the afternoon. Bring your own table service. Coffee, tea, and punch will be furnished.

VINCE'S LOANS
160th & Pacific Ave
LE 1-5100
We buy guns. Highest cash paid for good guns. Will buy one gun or a collection.
See Vince First!



ARTIST CHALK takes time out from his oils to admire his wife's latest rug punching project. Nelda Chalk plans to enter her work in the Puyallup Fair. Using Complementary colors, she creates hypontic designs. TJ Staff Photo

BOYSEN PAINT
2 FOR 1 SALE

VI-KO
A new exterior latex paint with a color retention far superior to ordinary paints. Dries quickly. Water cleanup. Good on wood or stucco. 10 ready mixed colors. (Custom colors slightly higher.)

SAVE 7⁹⁸
SPECIAL THRU SEPT. 2nd
2 GALLONS 7⁹⁸

BROOKDALE LUMBER
13602 PACIFIC

NEW AND DIFFERENT Back-To-School Styles
ARRIVING DAILY AT
LOU JEAN APPAREL
406 GARFIELD
Parkland

BOWLING 30¢ INCL. TAX
Price Good Through Labor Day
BALLS \$17.95
AMF PLASTIC & COLORED RUBBER COLUMBIA PLASTIC
PRICE INCLUDES FITTING, DRILLING, ENGRAVED NAME OR INITIALS AND 10 FREE PRACTICE GAMES. BALL PRICE GOOD THROUGH SEPT. 15
PARADISE BOWL 108th Pacific LE 7-6012

Used Car
HEADQUARTERS "MOST FOR THE MONEY"
It Makes... All Kinds
ARMSTRONG'S USED CARS LE 7-5524
11109 Pacific Ave.

Advertisers Must Follow Through

(Ed. Note: Following is the first of two articles about a new consumer protection law which regulates the advertising and sale of cars.)

When a car is advertised for "no down payment," "no payments for three months," or "10 percent below cost," the dealer had better follow through on the promise -- or face penalties under a new state law.

Many forms of false or misleading advertising are prohibited under Senate Bill 280, which was passed by the last legislature with the support of the Washington State Auto Dealers Association and other industry groups.

The law provides that a car dealer cannot advertise "no down payment" if one is actually required, nor can he advertise a smaller down payment than he requires. When a car is advertised at a certain percentage above or below cost, that "cost" must be the exact amount of the dealer's factory invoice for the car.

In general, advertising claims must accurately reflect the terms the dealer is prepared to offer. Also, financing terms must be explained more fully.

When a car is advertised at \$20 a week, for example, the ad must say how many weeks it will take to complete the payments. When it's advertised at "one percent interest" on the financing, the ad must specify whether the interest is an annual or monthly charge.

"Reputable car dealers in the state strongly supported this law," Department of Motor Vehicles Director Douglas Toms comments. "Unethical practices by a small minority of dealers put the reputable ones at a disadvantage."

Regulation of advertising is only one of the consumer protection aspects of the new law. Other portions of the law prohibit certain practices in the sale of cars and require the licensing of car salesmen.

Padding the costs of the license fees or other extra charges is banned, as are all "false, deceptive or misleading statements or representations within the terms of a purchase or sale agreement."

Reneging on an agree-upon trade-in price is prohibited, unless the trade-in car meanwhile suffers some physical damage or unless a latent mechanical defect is found "that could not have been reasonably discovered" at the time of the original agreement.

The referral plan of selling is now illegal; dealers cannot promise a purchaser that he can refer a certain number of prospective customers in lieu of making his car payments.

The new law also provides that a dealer must comply fully with the terms of any written guarantee he gives the buyer.

Violations of the new law should be reported to the Department of Motor Vehicles at Olympia. The motor vehicles director is empowered to conduct investigations and hold hearings. A car dealer who is found guilty of the unethical practices prohibited by the new law would face suspension or revocation of his license to operate.

Bethel School Board Report

A full agenda, including a decision to re-open Lacamas School, faced the Board of Directors of the Bethel School Board at their last meeting before school opening.

Dr. Fred M. Gramann reported the reactivation of the Lacamas School to house kindergarten, first and second grades in the Lacamas area. The rental of the old Baptist Church at Clover Creek for one half day kindergarten also would be used to contend with the overflow.

Dr. Gramann said this would give five extra rooms, they could be used temporarily.

The Board recommended that more information should be obtained before rendering a decision on whether to allow the Mt. Rainier Radio Control Club to receive right of way for an access road on the north end of the Junior High School. Bruce Gale, representative of the radio club, has been invited to attend a board meeting and submit a complete report on the contemplated project.

Gene Jack, insurance broker, appeared before the board and summarized the district's insurance program during the 1966-67 school year and recommended its continuation of the present liability, boiler, fidelity bond, burglary and robbery policies now in force. He also recommended a five percent increase of the total insurance value, now \$5,167,700.00, of all insurable buildings. A motion was moved and seconded that the board accept the proposed insurance program and increase the building values five percent under the fire protection plan.

Also reported by Dr. Gramann was the architect and engineers estimate for remodeling the old tram building at Spanaway. The estimate was \$100,000.00. The Board deemed it advisable to consider replacement rather than spend a large sum on remodeling.

It was resolved by the board that the architectural firm of Jacobson and Wall be retained for the 1st phase of the building program, 10-room elementary school, 8-room intermediate on 30 acre site, and 3 rooms at Spanaway Grade School.

Dr. William P. Hauser recommended that parents be notified when their children are assigned to a high school course, especially if the course is deemed advisable for college entrance. The Board was informed that

schedules of all high school students are now being sent home for parent approval and signature.

Dr. Gramann reported on a survey of operating costs of swimming pools in a neighborhood high schools. Results of the survey indicate that after initial capital outlay the pools are self supporting. Pools are open to the public on week nights and Saturdays. Fees collected defray salary and operating costs.

Directors expressed hope that additional lighting, fencing, and increased patrolling of Spanaway Elementary School might help reduce the vandalism problem experienced during the past school year and summer. The Pierce County Sheriff's Office will be asked to increase patrols in the area.

Anticipating increases in lunchroom costs, the directors increased 67-68 adult prices to 45¢. Student lunches will remain at 30¢ for elementary and 35¢ for secondary.

A comprehensive report was made by Gene Jack, A.E. Long Company, on the district insurance program. Board members agreed to increase coverage under the classifications of extended fire and vandalism on buildings to approximately five million dollars for the next school year. The limit of liability is to remain at one and one third million dollars.

The date of August 16 at 2 p.m. was set for the opening of bids on the sale of \$360,000 bonds. This meeting will be held at the County Treasurer's Office.

Bethel Graduate Is "Outstanding"

Airman First Class Lyle J. Barker, son of Mr. and Mrs. Clem D. Barker of Rt. 1, Eatonville, received a cash award upon being named Outstanding Airman in his unit at Nakhon Phanom Royal Thai AFV, Thailand.

Airman Barker, an aircraft mechanic, was selected for his exemplary conduct and performance of duty. He is a member of the Pacific Air Forces, America's overseas air arm in Southeast Asia, the Far East and the Pacific.

The airman is a 1964 graduate of Bethel High School.

PLU Parkland Grads Listed

TACOMA - Fifteen Parkland area students are among the 69 students at Pacific Lutheran University who are candidates for graduation Thursday, August 17.

They are Sharlene R. Crane, Rt. 1 Box 1940, Spanaway, BS IN Nursing; Thelma Ganes Freiter, 1622 S. 106th, Tacoma, BS in Nursing; E. Marlin Cram, 805 S. 121st, Tacoma, Bachelor of Business Administration; Richard D. Newell, 617 S. 128th St., Tacoma, Bachelor of Business Administration; Wayne E. Dotson, 628 126th S., Tacoma, BA in Education; Norman A. LeMay, 2724 S. 96th, Tacoma, BA in Education; Michael S. McKay, 612 S. 126th, Tacoma, BA in Education; Dan R. Nichols, 608 S. 126th, Tacoma, BA in Education; Vivian M. Nilson, 512 1/2 S. 122nd, Tacoma, BA in Education; Theodore E. Theiste, 12201 Pacific Ave., Tacoma, BA in Education; Paul F. Benson, 722 S. 129th St., Tacoma, BA in English; Cheryl K. Glarry, 11603 Yakima S., Tacoma, BA in Art; David Marzano, 11501 S. Park Ave., Tacoma, BA in Mathematics; and Ping Kwan, 512 S. 122nd Tacoma, Master of Natural Science. They will receive their diplomas during formal graduation exercises at 3:30 p.m., Thursday, in Eastvold Chapel.

The ceremony will be the first formal graduation exercise held during the summer. An increasing number of August graduates made a regular ceremony necessary.

Dr. Angelo Giardoni, superintendent of the Tacoma Public Schools, will give the commencement speech.

LOOK THE RANCH

DINE AND DANCE ORCHESTRA Every Sat. Night

Pan-Fried Chicken, Char-Broiled Steaks, Prawns, True Italian Spaghetti served with every order.

For Reservations or Directions Call JU 8-9933 or JU 8-9145 10203 Sales Road

Pre-Rain Special

FREE--Fiberglass furnace filters!!

With our cleaning special.

ONLY \$16.50 Most Models

Includes Ducts, Blower,

Chimney, Smoke Pipe

Special lower rates on

Stoves and fireplaces

FREE Estimates

on service or installation

of Burners,

Stoves, Furnaces

FREE Estimates on

Gutter and

Downspout work

Beat Bad Weather

HOME FURNACE SERVICE

Gr 7-5591 - 24 Hrs.

30 Years Experience

VAUGHAN'S VALUES

OUR LAST WEEK AT 84th & PACIFIC

- 6 FOOT FENCE SECTIONS Reg. \$6.95 NOW \$3.99
- ODD DOORS 99¢ AND UP
- FULLER PAINT CLOSE OUT 75% DISCOUNT
- CABINET HINGES Regular 65¢ NOW 15¢
- DOOR LATCHES 99¢
- SASH WINDOWS AND SCREENS 49¢ AND UP
- WOOD PANELING AND SIDING CLOSE OUTS DISCOUNTS 75%
- MISCELLANEOUS STORAGE CABINETS Priced to GO
- WOOD SCREEN DOORS \$2.99

All Sales Final and For Cash No Phone Orders

VAUGHNS BUILDING MATERIALS INC.

84th & Pacific Avenue

PIERCE COUNTY HEADQUARTERS FOR **1967**
 ★ CHRYSLER
 ★ PLYMOUTH
 ★ VALIANT
 ★ BARRACUDA
 CALL GR 4-0621
Steven MOTOR CO.
 2705 SOUTH TACOMA WAY

Texans Picnic

The Texacoma Club is planning their fourth annual Texas State Picnic at Spanaway Park, Picnic Area 2 and 3, from 11 a.m. to 6 p.m. August 20. All Texans in the area are invited to attend the crowd for the picnic. Bring your own picnic basket, free lemonade and coffee will be at the area and there will be games and prizes for the kiddies.

Dining Room Elegance!

Warm and casual Early American styling in a wide variety of designs, woods and finishes

The **Early American Inc.**



THE EARLY AMERICAN INC.

8021 PORTLAND AVENUE

LEnox 1-6314

INSURANCE Auto-Fire-Life-Bonds

A COMPLETE SERVICE FOR HOME OR BUSINESS

IRENE CLEMENS INSURANCE AGENCY

10329 PACIFIC AVE.

AGENT-BROKER-NOTARY

Mid-Summer Frigidaire Freezer Sale!

Just In Time For The Harvest Season. Select Your Freezer Now And Save...But Hurry, Sale Lasts 3 Days Only.

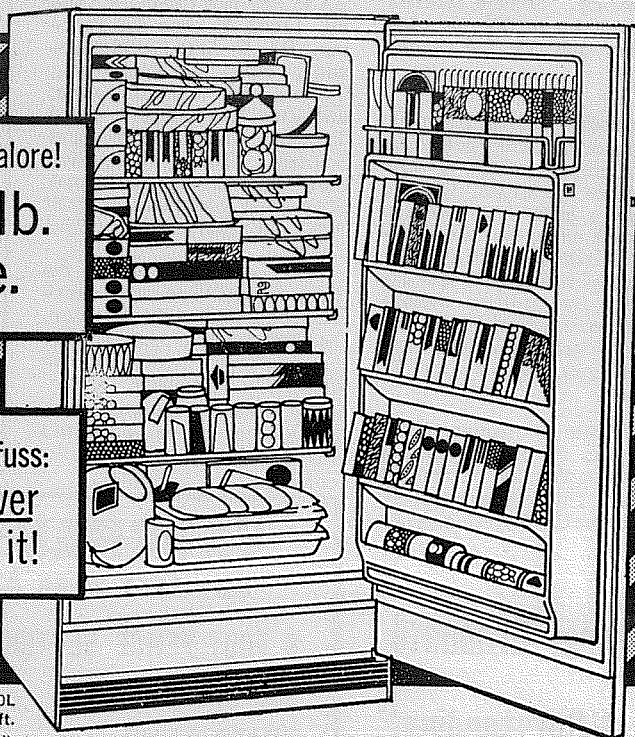
It's a Frigidaire Happening!

THRIFTIEST FRIGIDAIRE FROST-PROOF FREEZER

stores lots of food with less fuss!

Storage galore!
406-lb. size.

Lots less fuss:
you never defrost it!

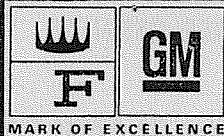


UFPD-120L
11.6 cu. ft.
(NEMA standard)

Your own private supermart!

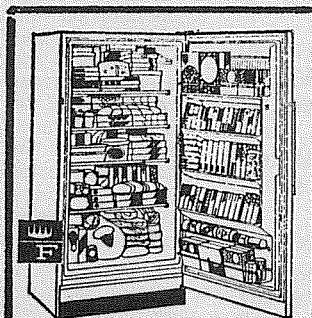
- Four full-width, full-depth freezer shelves.
- New molded-in-door package shelves.
- Handy juice can holder.
- Built-in door lock.
- Automatic interior light.

\$248⁰⁰



Come to where all the happenings are...

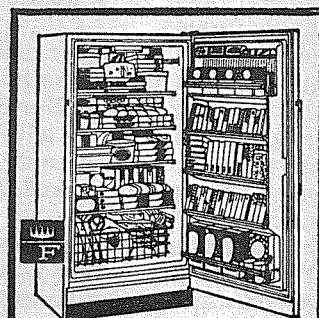
Prices Good Thurs., Fri., & Sat.
CASH IN ON THESE
Mid-Summer Special Savings!
NEW 1968 MODELS



UFD-16L
15.6 cu. ft.
(NEMA standard)
Now! Frigidaire 546-lb. size Freezer at a budget price! Lots of storage room for the money! Five full-width shelves — including three Fast-Freeze. New style door shelves hold more. Frozen juice can holder, built-in door lock.

\$238.00

UFD-16L



UFPD-15L
14.9 cu. ft.
(NEMA standard)
Now — completely Frost-Proof 522-lb. size Frigidaire Freezer! You'll never have to defrost! Big, big size for more food storage. Four full-width shelves, five door shelves, frozen juice can holder. Sliding basket drawer, built-in door lock.

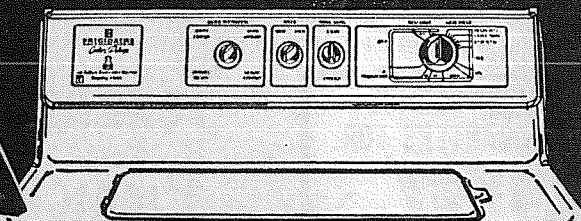
\$288.00

UFPD-15L

1967 WASHER CLOSEOUT!

FRIGIDAIRE

1967 "Rapidry-1000" Washer with DPC is unsurpassed for "no-iron" clothes care!



WCDATL, 5 colors or white

Now there's even more action in Jet Action!

DP means Durable Press Care—better looks, longer wear for your no-iron clothes!

- "Rapidry-1000" Spin whirls clothes faster, drier than any other brand!
- Patented Deep Action Agitator for gentle, deep cleaning!
- Cool Jet-Away Rinse keep wrinkles from setting—"jets" away lint, scum. No lint trap!

\$209⁰⁰

While They Last!

5-YEAR Nationwide Warranty

BACKED BY GENERAL MOTORS

FOOD FREEZER WARRANTY

5-YEAR NATIONWIDE WARRANTY!
1-year Warranty for repair of any defect in the entire food freezer, plus 4-year Warranty for repair of any defect in the refrigerating system, without charge.

WASHER WARRANTY

5-YEAR NATIONWIDE WARRANTY!
1-year Warranty for repair of any defect, without charge, plus 4-year Protection Plan (parts only) for furnishing replacement for any defective part in the complete transmission, drive motor, or large capacity water pump.

Low Down Payment-Convenient Credit *O.A.C.

Open til 8 P.M. Mon-Fri.

9 AM-6 PM Sat.

APPLIANCE & TV

POCHEL'S

14001 PACIFIC AVE.

LE 1-1040

"AWARD OF MERIT SERVICE DEPT."

The TIMES JOURNAL

SPORTS

Longley, Hall Capture Spanaway Main Events

SPANAWAY - Auto Racing incorporated will head their super stocks into the waning weeks of a highly successful season next Sunday with a full schedule on tap. Both A and double A point leaders, Steve Kiser and Jack Kuper, will be out to maintain slim leads over stiff competition. Both leaders were out of the money in main event features last Sunday, losing ground to their opponents.

Ken Longley captured the 50 lap A main, outlasting Bruce Wooten and Rick Norton for the checkered flag. Don Hall took advantage of racing luck when his top competition, Bob Rollins, Jack Kuper and Ray Goodman were involved in an accident that kept them all from finishing the 30 lap AA main. Hall was followed over line by Bruce Liner and Mike Willard.

Dave Rogers received a rollover trophy for his spectacular flip a week ago, Rogers

tangled with two other cars in the east turn and rolled completely over in front of oncoming traffic. Heads up driving averted what could have been a serious accident.

Results of last Sunday's slate is as follows:

"B" Trophy Dash - Larry Davis (82), Ron Wilbert (1) man, B. Johnson, L. Murphy. 9:00 - M. Stevens, S. Kerr, B. Hitch, M. Jones.

9:07 - D. Gratzler, L. Pasquier, L. Robinson, R. Templeman, R. Collins.

9:15 - D. Carlisle, C. Tubbin, S. Hansen, R. Thompson, G. Wentworth, and Neal Miesse (33). Time 1.15:95.

"A" Trophy Dash - Walt Wooten (69), Steve Kiser (63) and Ken Longley (92). Time 1.12:72.

"AA" Trophy Dash - Jack Kuper (1), Mike Willard (65) and Ray Goodman (66). Time 1.07:82.

1st Heat - Bruce Liner (5), Bill Hunter (9) and Harold LaGault (22). Time 3.15:19.

2nd Heat - Bruce Wooten (68), Bob Aarhus (38) and Ken Longley (92). No Time.
3rd Heat - Liner (6), Del MacWatters (24) and Rick Swaim (41). Time 2.28:12.
4th Heat - Bob Rollins (7-11), Don Hall (5) and Ray Goodman (66). Time 2.19:04.
50 lap A main - Longley, Wooten (68) and Rick Norton (51). No time.
30 lap AA main - Hall, Liner and Willard. Time 9.39:62.

Firearms Safety Classes Slated

A hunter firearms safety course conducted by Bill Righetti will be offered 6:30 p.m. August 17-18 at the Spanaway Fire Hall, 163rd and Park Avenue.

All hunters under 18 years of age must successfully complete the course to be eligible to purchase a Washington State Hunting License.

Since the hunter safety program was instituted in 1957, hunting accidents have been reduced 50%, Righetti said. Last year 38 attended the Spanaway course.

Beitz Wins Beef

Chuck Beitz, 11101 Pacific Avenue, won approximately 900 pounds of beef on the roof when he was named winner of the Parkland Roundup beef drawing Thursday.

Winners Announced

Pierce County Fair Blue Ribbon Winners

Many area youngsters entered exhibits in the Pierce County Fair, held last weekend at Sumner. The Blue Ribbon Winners, announced by press time, at the fair are as follows:

FOODS - Sharlene Peterson, Penny Nelson, Donna Steinhoff, Parla Perryman, Julie Feller, Terry Brown, Rebecca Kramer, Martha Thomsen, Dianne Steinhoff and Carol Welch, all of Parkland; Karen Daker, Susan Delahaye, Richard Taylor, Jo Ann Sahulaske and Cecilia Hearlson, all of Graham; and Ernest Hamilton, Susan Auty, Karen Auty, Debra Nelson, Becky Rose and Kathy McCormick, all of Eatonville.

KNITTING - Janet Little, Lydia Smith, Penny Nelson and Georgia Phelps, all of Parkland.

CLOTHING - Charlene Rohr and Linda Rind of Eatonville; and Julie Feller, Jeanne Ahrendt, Sherry Barner, Donna Steinhoff and Penny Nelson, all of Parkland.

Tracy Graves of Graham was awarded a plaque as well as her blue ribbon for the Photography contest.

HALTER PONY - Cathy McCabe of Graham.

FITTING AND SHOWING Horses - Junior - Debbie Smith and Sandra Johnson,

both of Graham; Jeanine Larson of Roy and Jimmy Conent of Eatonville.

FITTING AND SHOWING - Pony Junior - Vicki Stalcup and Cathy McAbee, both of Graham and Cynthia Amell of Roy.

FITTING AND SHOWING - Horses - Intermediate, Marcia Boyce, and John Davis of Eatonville; and Janet Johnston and Pam Walker of Roy.

FITTING AND SHOWING - Horses - Senior - Steve Bryson of Parkland, Karen Vormestrand of Eatonville and Jessie Haire of Spanaway.

BEST OF BREED (Rabbits) - Donald Vincent of Parkland, won Grand prize with his New Zealand. Blue Ribbon winner was Peter Stuard of Eatonville.

WINNERS IN DRESS REVEUE - Parkland's Molly Stuen and Spanaway's Penny Nelson both won J.C. Penney Co. Award of Half Express (17.50) to the State Conference. Half Expenses to County 4-H Camp from J.C. Penney Co. went to Annette Anderson and Diane Steinhoff, both of Parkland.

Blue Ribbon winners in this category included Paula Perryman, Charlene Sales, Jami Sales and Betty Absten, all of Parkland; and Janet Little and Diana Smith, of Spanaway.

FITTING AND SHOWING, Beef - Senior - Sherry Dusek and Mike Milbye, both of Graham received blue ribbons.

FITTING AND SHOWING, beef - Junior - Champion went to Susan Auty of Eatonville.

FITTING AND SHOWING, beef - Novice - Blue Ribbons went to Dave Crockett and Tim Crockett, both of Graham.

CROSSBREED, Beef - Sherry Diesek of Graham won champion with Tim Crockett, also of Graham, taking reserve champion.

SHORTHORNS, Beef - Mark Graham of Eatonville won Reserve Champion.

HEREFORDS - Beef - Susan Auty of Eatonville won Reserve Champion.

Blue Ribbons in this category were won by Karen Auty of Eatonville, and Mike Melbye and Dave Crockett, both of Graham.

GARDEN, Junior - Michael Anderson of Eatonville was second with 14 blue ribbons. Other blue ribbon winners included Brandt Olson and Sharlene Peterson, both of Parkland; James Robertson, Lee Stuard, Michael Anderson, Mark Graham, Jack Guske, Jerry Hatcher and Mark Nelson, all of Eatonville; and Douglas Hinchberger of Graham.

DOGS - Senior handling - Blue Ribbons went to Sherry

Dusek, Bonnie Hartman and Debbie Weaver of Graham; and Judy Hansen and Sue Willis, both of Parkland.

DOGS - Senior Fitting and Showing - Bonnie Hartman of Graham took Reserve Champion and Debbie Weaver, Sherry Dusek and Mark Dusek, all of Graham, took blue ribbons.

DOGS - Intermediate handling - Blue Ribbons to Carl Tankersley, Janis Atlee and Lesia Harshman, all of Parkland.

DOGS - Intermediate Fitting and Showing - Blue Ribbon to Janis Atlee of Parkland.

DOGS - Junior handling - Rebecca Whitfield of Parkland received Reserve Champion.

DOGS - Junior Fitting and Showing - Jeannie Churchill of Parkland won Grand Champion.

DOGS, Judging - Blue Ribbons went to Rebecca Whitfield of Parkland. In judging, Senior - Blue Ribbons to Sherry Dusek, Mark Dusek, Bonnie Hartman and Debbie Weaver, all of Graham; and Judy Hansen and Sue Willis, both of Parkland. In Intermediate Judging - Janis Atlee of Parkland won a blue ribbon.

HORSES, Western Equitation - Julie Arnestad of Roy won Reserve Champion, Blue Ribbon winners included, Jimmy Conant of Eatonville, Sanfra Johnson of Graham.

HORSES, Intermediates - Pam Walker of Roy, Grand Champion, Marcia Boyce of Eatonville, John Davis of Eatonville, Janet Johnson of Roy.

HORSES, Senior - Cathy Foster and Jessie Haines both of Spanaway, Karen Vormestrand of Eatonville, all won blue ribbons.

PONY Equitation, - Junior, Winners include Vickie Stalcup of Graham, Res. Champion. Blue ribbon winners include Cynthia Amell of Roy, Sheila Baskett of Graham.

ROADSTER PONY, Senior - Teresa Baskett won Graham Reserve Champion.

FLOWERS and Flower Arrangements - Sharlene Peterson and Barbara Peterson, both of Parkland and Donna Snyder and Nancy Neilson, both of Eatonville, and Roger Hoskins of La Grande, all took blue ribbons.

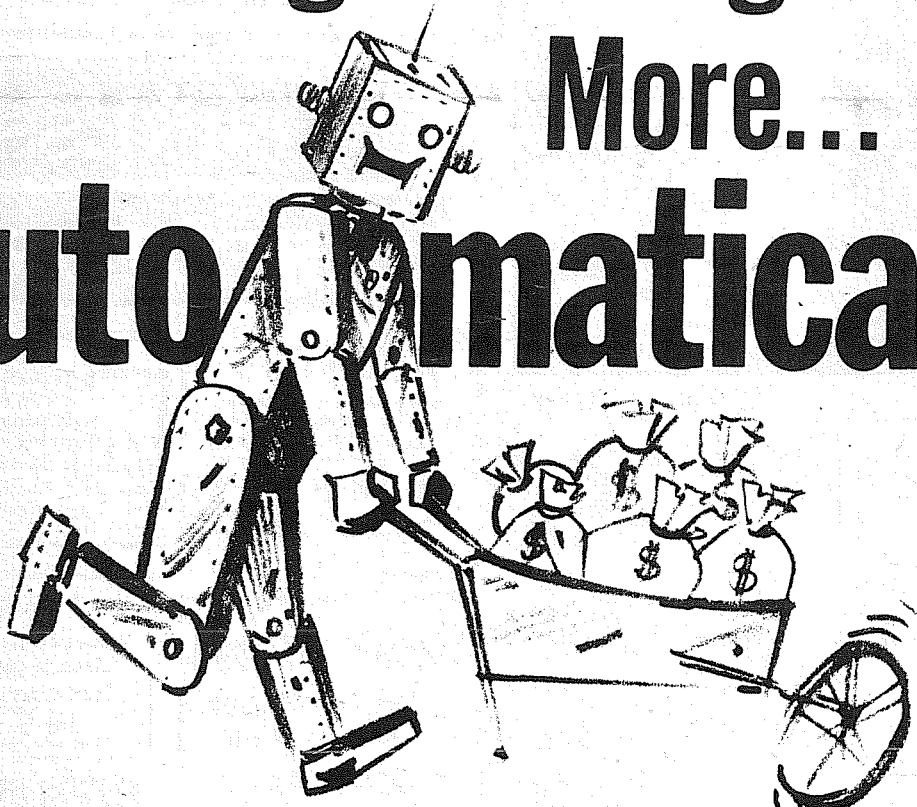
FORESTRY, Rocks and Minerals, Natural Resources - Carl Bennett of Parkland; David Taylor of Graham; and Steven Rose, Rick Hurley and Joan Rave, all of Eatonville.

POULTRY, Fitting And Showing - Jim Bennett of Parkland won Grand Champion.

POULTRY, Best of Breed - Jim Bennett won Reserve Grand Champion with his White Leghorn.

POULTRY, Ducks - Carl Bennett of Parkland won Grand Champion Duck. Blue Ribbons winners included Ralph Keyport and George Upham of Parkland; Carl Bennett of Spanaway; Richard Hartman of Graham and Roger Hoskins of LaGrande.

Begin Saving More... automatically



It's a fact! Your savings add up a lot faster when you begin saving in an automatic savings account at Citizens State Bank.

Here's how it works. Tell us how much you want to save each week, month or regular pay period. Then we will regularly transfer the amount you've requested from your Citizens checking account to your savings account.

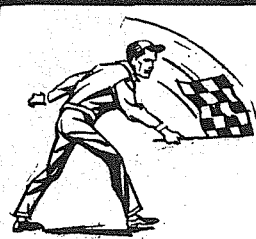
It's as easy as that. Before you know it your savings will begin piling up. And the chances are you won't even miss the amount you're putting away.

What's even better, is the fact they are growing at our regular, lively interest rate, too. And, they're safe. Insured up to \$15,000 by the Federal Government.

Citizens STATE BANK

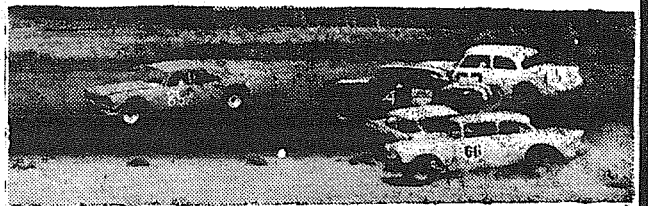
MEMBER FEDERAL DEPOSIT INSURANCE CORPORATION

★ MAIN OFFICE - PUYALLUP
★ EAST SUMNER OFFICE
★ SUMMIT VIEW OFFICE
★ EDGEWOOD-MILTON OFFICE



SPANAWAY SPEEDWAY

PRESENTS ARI SUPER-STOCKS



SUNDAY, AUG. 20th

*TROPHY DASHES*HEATS*MAINS

TIME TRIALS 1:30-RACING 3 P.M.

*THRILLS *CHILLS *SPILLS

2 Miles East Of Pacific on 159th, Tacoma

SPANAWAY SPEEDWAY

WANT ADS

Expecting overnight guests?



RENT A ROLLAWAY AND SAVE

Our beds are always clean, comfortable, sanitized. Lightweight, easy to set up, easy to rollaway. Baby beds available, too. It's cheaper to rent for occasional use than to buy. When company calls, call us.

Member AMERICAN RENTAL ASSOCIATION

United Rent-Alls

9440 PACIFIC AVE.
OPEN SUNDAY TOO
GR. 5-3755

Autos For Sale

1966 GALAXIE 500, XL, Auto. transm., power steering and brakes. \$2400. TH 5-9691.

'59 FORD V8. Radio, heater. Excellent condition. TH 5-7162.

JEEPSTER 1950 6 cyl. Overdrive. Good Condition. \$650 TH 5-7709.

1965 HARLEY Davidson motorcycle. Electraglide. \$1,400. UN 3-1749.

1964 ECONOLINE Club wagon. One owner. \$1395. TH 5-0968.

1952 GMC 1/2 ton pickup. Real good condition. LE 1-3944.

Real Estate For Sale

LAKE TAPPS

New residential rec area. Large private park for your enjoyment on the water. Underground power, hard-surfaced streets, piped pressure water all included. Priced from only \$2395 with \$50 down.

Drive to Sumner. Go East on Highway 410 to Lake Tapps Sales Office.

Lake Tapps Sales Company

UN 3-4406 or VE 8-9393

Journal Classifieds Get Results
LE 7-0223

AUCTION
EVERY FRI. 7:30 P.M.
34233 Pacific Hwy. So.
Buy, Sell or Consign
WA 7-2611 VE 8-9622

HOME VACANT
We desperately need good rentals \$80 to \$150 per month
CALL NOW
Let us handle your worries
SUBURBAN REALTY
11302 Pacific Ave.
LE 7-8638 or LE 7-6896

Real Estate For Sale

10 BEAUTIFUL ACRES EDGEWOOD
EXQUISITE 1-bedroom modern home (ideal for caretaker). A honey of a 3-car garage, swell small barn about 50x30 for feeding out cattle. (Owner raises, sells 15 head per year plus his own meat.) Corrals. Floodlights. Dandy fences. 1907 65th NE. \$30,000. Low terms. JAMES McMENAMIN, SK 9-5329, GR 4-8408.

EXECUTIVE HOME EDGEWOOD AREA
LUXURIOUS 3-bdrm. custom rambler. Honey, this has everything. Built-ins, double plumbing, carpeting, rec. room, everything the very latest. Lovely landscaped yard. Wonderful country area, 4522 9th St. NW. \$25,000. Terms. JAMES McMENAMIN, SK 9-5329, GR 4-8408.

MOST BEAUTIFUL 80-ACRE FARM
IN PIERCE COUNTY. One owner 44 years. Think of that. Wonderful valley farmland, creek through middle (fishing, ducks galore). Dandy grade-A barn (200-ton), with misc. bldgs. Very clean and neat 4-bdrm. farm home (basement, new furnace). Tremendous supply delicious spring water. Timber. Pasture. \$57,800, low payments. JAMES McMENAMIN, SK 9-5329, GR 4-8408. McMenamini's.

M.L.S. MULTIPLE LISTING SERVICE
McKinley Hill Realty
6311 McKinley Ave. GR 4-9579
Member of Multiple Listing Service and Tacoma Real Estate Board

Real Estate For Sale

AVAILABLE: Names and addresses of owners who wish to sell acreage, farms, ranches or income property in State of Washington. Contact owners direct. Lists mailed monthly. Write, Michael J. Prociw's Public Relations Office, 1712 Broadway, Seattle, Washington 98122, EA 5-3088.

PUYALLUP - 3 bedrooms, separate dining room, fireplace, gas heat. Make offer. Seattle, MA 3-6302.

INDUSTRIAL location. Approximately 600' frontage. Rail Switch. One acre ground, utilities adjacent. Will sell or lease or submit your proposal. Zoned G-General, Box 100A, Times Journal, 67-41

DUPLEX - Zoned G-General. Live in one 3-bedroom apartment; use other apartment for acceptable business or professional office (or family rental residence). Plenty parking space. Owner wants 1/4 down. Total price \$20,000. Box 100-A, Times Journal, 67-42.

BY OWNER: 3 bedrooms, 1 1/2 baths, hardwood floors, built-in oven, range, fireplace. Oil heat. Two car attached garage. Write Box X, Pierce County Herald.

Legal Notices

R. TED BOTTIGER, ATTY.
In the Superior Court of the State of Washington For the County of Pierce IN THE MATTER OF THE ESTATE OF HUGH LEWIS SMITH, Deceased No. 76250

NOTICE TO CREDITORS
Notice is hereby given that the undersigned has been appointed and has qualified as Administratrix of the above entitled estate; that all persons having claims against said deceased are hereby required to serve the same, duly verified, on said Mavis E. Swift or R. Ted Bottiger attorney of record at the address below stated, and file the same with the Clerk of said Court, together with proof of such service, within six months after the date of first publication of this notice or the same will be barred.

Date of first publication August 2, 1967.
Mavis E. Swift, Administratrix of said Estate
Address 7607 76th Avenue S.W.
Tacoma, Washington
R. Ted Bottiger
Attorney for Estate
8849 Pacific Avenue
Tacoma, Washington
Published August 2, 9 and 16, 1967.

FAMOUS CHEF BURGERS
6 FOR \$1.00
DARI-FLO
1210 East Main - Puyallup
2 blocks East of Piggly Wiggly

APPLIANCE PARTS
ADAMS APPLIANCE SERVICE
817 EAST MAIN
TH 5-1395

OUR WEEKLY COMICS

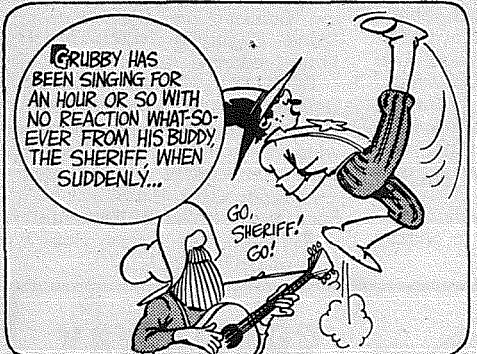
Rural Delivery



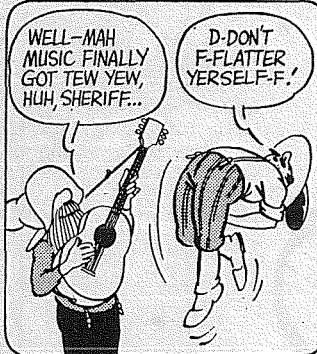
By Al Smith



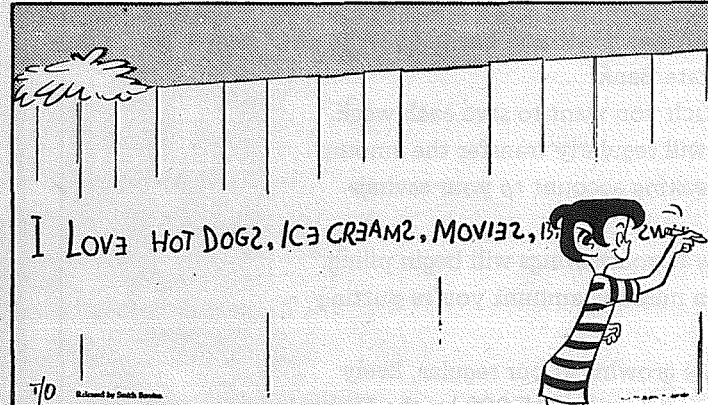
Grubby



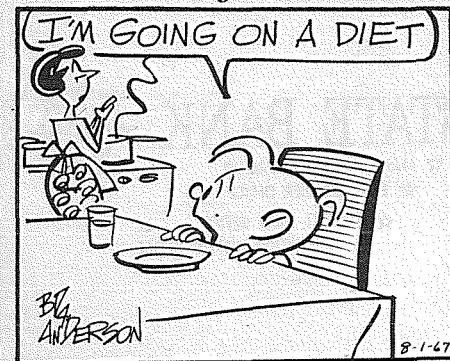
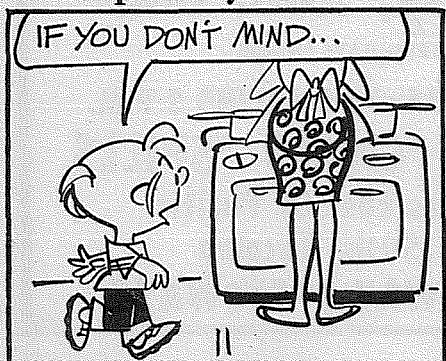
By Warren Sattler



DEEMS



Grandpa's Boy



By Brad Anderson

PLASTER BOARD
4X8X 1/2".... \$1⁹⁸ EA.
Anderson Lumber
9813 PACIFIC AVE.

BUSINESS DIRECTORY

Fencing
FENCING
Designers and Builders
EXPERT WORKMANSHIP
REASONABLE PRICES
Easy Monthly Payments
VAUGHAN'S
84th & Pac. Ave. GR 4-9515

Top Soil
BALMER & SON
EXCAVATING
Bulldozing - Loader
Land Clearing - Dump Trucks
Blasting - Road Construction
Top Soil, Backhoe For Hire
FREE ESTIMATES
LE 7-3165 VI 7-7133

Furnaces
Sheet Metal
• Furnace Repair and Service
• Installations
PARKLAND FUEL OIL
12002 Pacific Ave.
LE 7-0256

Boush Moving & Storage
Agents for U.S. Van Lines
Coast to Coast Service
121 WEST STEWART
TH 5-5436

INTERURBAN AUTO FREIGHT INC.
3-Trips Daily
To Parkland, Spanaway, Summit, Midland.
GENERAL FREIGHT
MA 7-4121

MAIL IMMEDIATELY
If you haven't already entered your subscription to the new Times Journal.
Please place my name on the Times Journal delivery list as indicated below.
 \$3.50 Annual \$1.80 Six Months
 30¢ Month (Carrier Routes Only)
 Bill Me Check Enclosed
Name.....
Address..... Zip.....
Send to Subscriptions P.O. Box 2116
Parkland 98444

CLASSIFIED ADS

Miscellaneous For Sale

FENCE PICKETS, 3¢ ft. Cove 3/4 round molding, 5¢ ft. 8441 S. Park.

RENT ADMIRAL portable TV's. All sizes, color too. United Rent-Alls, GR 5-3755, 9440 Pacific Ave.

TOP SOIL, lawns, leveling, landscaping. ADM. Co. TH 5-2452.

COW FERTILIZER. Double MB Dairy. We deliver. TH 5-1309.

CHOICE AFRICAN violets. 10214 East B. LE 1-1926.

McNESS Products. GR 5-2734.

GRAVEL FOR driveways. Coarse or fine screen. 5 1/2 yards, \$14. Coarse washed sand, pea gravel crushed rock, mixes for concrete work. Cedar fence rails and posts. Phone evenings. Norman, LE 7-4088.

RYLOCK ALUMINUM window. 10x4 with screen. Like new. \$25. WA 7-1653.

'65 FLEET CRAFT 15' with brakes, gas lights, window guard. Sleeps 6. \$895 including license. New Fleet Craft trailers, too. Bunce-U-Rent, 1812 E. Main. TH 5-7527.

TO SEE Minnesota woolens, new fall line, call WA 2-8473.

LUGGAGE CARRIER for station wagon. Used twice - like new. 1/2 price. GR 4-2757.

BARBER SHOP equipment. 2 chairs, uptown Puyallup. TH 5-8198.

PYLON plastic cement sealer and paint. Reg. \$12.95 now \$7.95. LE 1-5718.

14' BOAT, motor and trailer. \$275. 517 Kincaid. UN 3-1814.

FINE, YOUNG ducks. Rouen, Muscovy, Pekin. VI 7-2268.

HAND SPLIT shakes and shingles. Ridge. BR 2-6083.

APPLIANCES. Private party. LE 1-6597.

KNAPP SHOES - G.H. Rowe, 711 East 133rd St. LE 7-5128.

MARINE CENTRAL. Used boats. 4532 6th Ave. Tacoma, SK 9-1943.

WEDDING DRESS and veil. Size 16. Reasonable. TH 5-2840.

TWO, NEW transistorized tape recorders. Loads of new tape. LE 1-6415. 67-52

MOVING SALE: Stove, coffee table, clothes, crib, misc. household items. Wednesday - Thursday only. 1809 - 7th St. SW., Puyallup.

OIL TANK and stand, \$10. WA 2-7206.

GIRLS CLOTHING sizes 10, 12, 14. Coats, dresses, skirts, sweaters. Brass fireplace screen and irons, \$10. Rt. 1, Box 318, Eatonville. 832-4712. 67-56

12 GALLON fish aquarium. Accessories, pump, \$20. WA 2-6717. 67-57

1963 HONDA 50. Excellent condition. UN 3-7636.

DAYLINER canopy to fit '63 Ford 3/4 ton pickup. UN 3-7636.

ELECTRIC IRONER, portable sewing machine. 843-2221. 319 N. James, Roy.

QUAKER OIL heater. \$20. TH 5-1304.

Miscellaneous For Sale

KILN dried planer ends, Eichler Fuel, TH 5-2857.

HIDE-A-BED. Almost new, used very little. Cost \$150 new - sell for \$95. Rose beige nylon. 2910 - 7th St. N.E., TH 5-2810.

CARBED, \$7. Baby's dressing table, \$10. Electric stove, \$30. VI 7-7200.

ELECTRIC range. Good condition, \$50. TH 5-4565.

ROUND OAK tables, desks, 6-year-crib, 2-piece sectional, pickling crocks, adding machines, chest of drawers, Highland Used Furniture, TH 5-4824.

RUGS, CAR top carrier, daventry, hand mower, old dresser. UN 3-1836, after 3.

AIRCO Oxy-Acetelene gauges, 100' hose, Lincoln or Victor cutting torch, good condition. \$115 cash or trade. LE 1-2891.

BABY BUGGY. \$10. TH 5-9417.

SMALL ANTIQUE buffet, \$40. 3303 N. Meridian.

COUCH, 6-YEAR crib and high chair, 2 wool rugs. TH 5-6897.

COMPACT vacuum cleaner. Price cut to only \$49 for fast sale. Hose, parts, and repairs for all makes vacuum cleaners. Upton's, 1148 Market St., FU 3-2551, open Monday and Friday nights till 9.

SGT. GOT transferred to Vietnam and returned 2 dr. Philco refrigerator with only \$69 due. Assume \$7 monthly payments and save some money. Upton's, 1148 Market St., FU 3-2551, open Monday and Friday nights till 9.

RENTAL PURCHASE plan at Upton's on TVs and appliances. Rent may apply on purchase. Upton's, 1148 Market St., FU 3-2551, Open Monday and Friday nights till 9.

EMERSON combination TV - radio record player. Returned to store because of army discharge with only \$169 due. Assume \$15 monthly payments and you can save some money. Upton's, 1148 Market St., FU 3-2551, Open Monday and Friday nights till 9.

MISC. SALE. TH 5-8465.

14' SKI BOAT, 40 horse, \$695. 407 Comet, Milton.

RUMMAGE SALE. Beta Sigma Phi. Aug. 17-19 at 211 Meridian So. (Formerly Harold's Card Shop).

ONE WHEEL trailer with hitch. \$70. TH 5-4141.

MOVING. Used clothing for sale, size 14 to 18. Likenew. TH 5-2393.

MUST SELL: G.E. Refrigerator Freezer combination. 16 cu. ft. Copper color. Used less than 5 mos. \$285. TH 5-4211.

MOVING - must sell household items, camping equipment, rubber boats, baby furniture, rubber boats, baby furniture. UN 3-6656.

ONE 16" used boys bike. Hand brakes, 3-speed gear shift. \$20. 1614 - 5th Ave. S.E.

RUMMAGE SALE sponsored by Naomi Chapter OES at Paulson Motor Co., 116 W. Pioneer August 25-26, 8am-6 pm. All proceeds to go toward Eastern Star training awards for religious leadership.

OIL PAINTINGS - reasonable. Aug. 19, 12622 Waller Road. 67-46.

Miscellaneous For Sale

MOVING SALE: Washer, dryer, misc. furniture, toys, girls bike. TH 5-0963.

NEW LINE of Baum toys for parties. UN 3-1519.

TWO WHITE uniforms, size 14; 1 pair white shoes, size 7. \$4 each. New Coleman catalytic heater, \$15. UN 3-6263.

For Trade

HOME MADE cabover camper for small-wheeled utility trailer. UN 3-1140, after 6 p.m.

Livestock For Sale

SHETLAND pony - friendly 3 year old gelding. \$65. Angus steer. Orting 893-5875.

3 SHEEP. 1 ewe, 2 ewe lambs. LE 1-1901.

4 DUCKS. (1 drake). \$3 a pair. TH 5-8556.

LIVE LAYERS. Good producers, Reasonable. Your container. 5910 Clark Creek Rd., TH 5-7662.

VERY GENTLE gelding riding horse, anybody can ride. 14 1/2 hands. Reasonable. 893-4694.

RABBITS. 2 does, buck, 15 friers. Hutches. UN 3-7329.

WIENER PIGS. TH 5-2719, VI 7-2495.

For Free

FOUR kittens. UN 3-9297.

TO GOOD homes. 23-month old Cameo, Calico kittens. Both housebroken. 1822 1/2 E. Pioneer before 7 p.m.

MOVING: free part cocker female pups, 8 mo. old. Housebroken. All shots. LE 7-7714.

FREE PUPPIES. Part dachshund and chihuahua. LE 1-3556.

2 MALE CATS. 16-months-old, white, Manx. 13-months-old. TH 5-8556.

FREE to good homes - Large and small dogs, puppies, healthy cats. WA 7-1119 - WA 7-0163.

Pet Care

POODLE and cocker clipping - \$4.00. LE 1-5558.

GROOMING to your liking. Dogs given tender loving care. Call Kaye, TH 5-3105.

PROFESSIONAL poodle grooming, private grooming lessons. Pet and professional courses. Lovely orange apricot pups. Stud service. Mr. Lucky's Kennel. LE 1-4131.

Repair Services

FOR FURNACES, repairs, sheet metal work, call Parkland Fuel Oil. LE 7-0256.

RADIO, TV and Appliance repair. 6 years experience. Repair all makes and models. 1735 East 65th. GR 2-1532.

Land Services

TOP soil, sandy loam, black soil, mixed soil. LE 7-7455.

BULLDOZING. Days, week-ends. LE 1-1892.

TOP SOIL and gravel. Loader work. R.D. Beeler. LE 7-4940.

DOZER & LOADER WORK
Hour or Contract
Hauling State CC Permit
8-10 yd. new truck
NEWBURY'S
DOZER SERVICE
LE 7-7455

Miscellaneous Service

REMODELING, roofing and siding additions. Free estimates, financing. No down payment. GR 4-7000 anytime.

FACTORY to you Trophy Aluminum storm doors. Shop repairing of storm and screen doors. Parkland Door, Inc., 318 East 96th. GR 4-7011

EXPERT ALTERATIONS. Men's and women's. Fast guaranteed work. Reasonable prices. LE 1-3506.

CAR ILL? Bring it to Hill, at Ayley's Richfield Service, 2nd and West Pioneer, Puyallup.

TREE topping and removal. Bonded and free estimates. UN 3-1017.

DRIVEWAY GRAVEL: Bank ran \$2 a yard, screened \$14 for 5 yard load, Don Abbott, tractor work. LE 7-3846.

DOZER, LOADERS, dump trucks, excavating, grading, backfill, roads, gravel & fill. Hour or contract. VI 7-7193.

HAVE TRUCKS. Will haul trash, dump, old buildings. Free estimate. LE 1-2618.

Building Services

REMODELING, leveling, block foundations, cabinets. Free estimates. Reasonable. LE 7-3550.

Help Wanted

SITTER for 2 boys after school, 2:30-6. Your home or mine. Central Ave. School area. LE 1-6536, evenings.

BABYSITTER. Starting Sept. 2. Parkland area. LE 1-3157. 67-53.

NEED BABYSITTER with child 4-years-old as companion for same. Only Summer residents need apply. UN 3-4597 after 6.

ATTENTION men and women 18 - 80. I guarantee \$2 an hour servicing our customers. Must work 17 hours a week. For information call James Sellers, Fuller Brush Company. TH 5-5393.

COOK, full charge for children's summer camp. Nine weeks. Also assistant cook, call Seattle MA 4-8431 or write JCC, 1306-2nd Ave., 98101 for details.

AVAILABLE NOW -- Rawleigh Business in Pierce County. Trade well established. No investment needed. See or phone Mr. Elliott, 5415 So. 338th St., Auburn, WA 7-3847, or write Rawleigh, 306 Adeline, Oakland, Calif.

MALE -- LICENSED high pressure boiler fireman. Apply West Coast Store, So. 32nd and Pine, Tacoma.

TEACHER needs babysitter - my home. Begin Sept. 1. 2 in school, 1 toddler. Light housework, 8-5. Own transportation. References. TH 5-4874 after 1:30.

MEN & WOMEN earn \$2,000 - \$4,000 or more per year. Part time as dealer for Fuller Brush Company. LE 7-6965, 5 - 7 p.m. 67-49

Situations Wanted

BOYS at Dyslin's Ranch want any kind of work. LE 7-3891.

IRONING, EXPERIENCED, references. LE 1-6597.

EXPERIENCED babysitter with references will work week days. TH 5-2300.

SEWING and dressmaking. Reasonable rates. LE 7-7917.

Personals

HAVE AN alcoholic problem? LE 1-1022, GR 2-5267, LE 7-8526. Write Box 2265, Parkland

\$50 CASH to churches, clubs, schools or groups for selling 84 bottles Watkins Vanilla. Call between 8 and 10 a.m. Monday thru Friday. LE 7-6101

LOSE WEIGHT safely with Dex-A-Diet tablets. Only 98¢ at Bealls Rexall.

ARE YOU living with or near a drinking problem? GR 2-8011, LE 1-5979.

LOSE WEIGHT safely with Dex-A-Diet Tablets. Only 98¢ at Ashmore Drug.

PSYCHIC READER & advisor will help you with your life's problems. Will tell you what you need to know about your friends, associates and domestic problems - before you say a word! Full life readings. Donations only. 9 a.m. - 9 p.m. LA 4-0487 for appointment. 5241 University Way NE, Seattle.

Lost

1 PARAKEET. 104th & Woodland. TH 5-4068.

BY ELK PLAIN Cafe. Small black poodle. Needs medication. Reward. VI 7-2378.

Found

WATCH on Wheeler St. Early in July. LE 7-3292. 67-54.

Instruction

PIANO studio - 72nd & Canyon Road. LE 7-5064.

PIANO and organ lessons. LE 7-4242.

PIANO, guitar, band instruments. Students home or studio. LE 1-3246, SK 2-7695

DRIVER TRAINING. 3 week course. Free Pick up. LE 1-0505 anytime.

Announcements

OPENINGS for four - year olds. All creative learning, cooperative play, art and music. Contact president Jean O'Neill, LE 7-4371, Kay Hofer, LE 1-1058. 67-56.

For Rent

RENT high-weed mowers, 5 sizes. United Rent - Alls, 9440 Pacific Ave.

CAMP trailers for rent. Call Roy 843 - 2273

OFFICE SPACE for rent. 30x30 center office in the Times Journal Building. Larger customer counter, lighters, water, heat, and garbage furnished. Ideal for real estate, insurance, bookkeeping office. Plenty of customer parking space. \$65 per month. Or 30x15 space for \$100 per month. Contact Jack Brown or Patti Bullo at Times Journal office 10 a.m. to 4 p.m. or phone LE 7-0223 ... or better yet come on in and we'll drink coffee and swap lies. 67-24

BOAT OWNERS attention: For rent, stall for dry storage of your boat-on trailer. 10' wide by 11'6" high by 25 deep. Lights, constant surveillance, easy access behind the Times Journal Bldg. on Pacific Ave. \$15. per month. Phone Jack LE 7-0223 or LE 7-0473 evenings.

SMALL HOUSE near Bethel High. Also acreage. Same area Redford-Harrison Rd. Evenings, VI 7-7807. 67-50.

2 BEDROOM house, fenced yard, garage, furnished. Near Spinning School. \$90. TH 5-7489.

HOUSE, small secluded, split level, 2 bdrm, w/w carpet, fireplace, view, \$125. UN 3-4677.

SMALL furnished house. Elderly lady preferred. No pets. By Safeway. TH 5-3038.

FURNISHED bachelor apt. Five area. WA 2-6071.

Trailer Space For Rent

TRAILER SPACE for rent. Call Craney Crow Trailer Park. VI 7-2560.

Mobile Homes

WOULD LIKE to take over payments on late model mobile homes, 10' or 12' wide, 3 bedrooms, separate dining room. JU 4-6572 after 6 p.m. 67-55.

1962 COLUMBIA. 55x10, 2 bedrooms, front kitchen. \$2,000 equity - take over payments. VI 7-7222.

45 MOBILE Home, lot. Bethel Green Acres, SW of Graham. VI 7-2403.

Wanted To Rent

TWO CAR garage with possible storage space. Near PLU business district. LE 1-2302. 67-51.

The TIMES JOURNAL
and Pierce County Herald

Published weekly at 14620 Pacific Ave., Parkland and delivered by U.S. Mail and carrier to subscribers.
Publishers: Pierce County Publishers Inc.
Managing Editor.....Em Matson
News Editor.....Sandy Ingram
Subscriptions \$3.50 per year, \$1.80, 6 months, or 30¢ monthly by carrier.

Qualified as a legal publication under Chapter 213 of the Legislative Acts of the 1941 regular session of the State of Washington.

Vol. 23 No. 33 August 16, 1967

FROM OUR
Correspondents

Collins Road

By Mrs. Fred W. Dow Le 7-8393

Mrs. Betty Brather of Isaquah has been a guest of Mr. and Mrs. Walter Myatt. Mr. and Mrs. Myatt drove Mrs. Bratten home on Sunday and enjoyed the beautiful scenery on the trip.

Mr. and Mrs. Milo Conable of Sacramento, Calif., have been guests of Mr. and Mrs. Harl Burton. They were all former neighbors while residing in Kansas.

The Friendly Club held a picnic in Spanaway Park last Wednesday. The day was ideal and a large group of retirees attended.

Mrs. Gamin accompanied her daughter to her home in Oak Harbor on Wednesday.

Mr. and Mrs. Earle Ahrens, daughter, Corrine, and son Bill, of Monte Vista, Colo., have been guests of Mr. and Mrs. Alvin Overland. A family reunion was held at Judson Park, where the parents reside. Mrs. Ahrens is a missionary in Colorado and works among the Spanish people. She gave a talk on her work last Thursday at Collins Community Church.

(Editor's Note: Mrs. Dow will be unable to continue her weekly column as she will be going into hospital. Mrs. W.J. Morris will be taking over for her and asks if you have any news for next weeks paper please feel free to call her at LE 1-2421.

Waller Road

By Mrs. Verne W. Fogle Le 7-5210

Mr. and Mrs. Dwight Robinson, have for many years been raising fine raspberries on their farm on Vickery Rd. The same people have been returning each year to get their berries for freezing and for jam making, in fact, their pickers return year after year and grandchildren of their first pickers are now employed by the Robinsons.

They know their berries! "The season this year ended two weeks earlier than last year, and a drop in production amounting to approximately half of what was harvested last year resulted," Mrs. Robinson said.

The Robinsons blame the production drop on the late frost in the spring. They did not get the lateral growth for good production.

Waller Road Grange will meet in regular session at 8

p.m., August 18. Many folks are on vacations, but there is still a lot of folks keeping things running. Join the members for an evening filled with information and good old-fashioned friendliness.

Robert Ryan and sons, Robert Jr. and Jon of Norwalk, Calif., spent three weeks with his brother and sister-in-law, Mr. and Mrs. Dwight Robinson. Their stay was during the peak of the raspberry season, so much visiting was done across the berry row. However, the pleasant evenings allowed for long talks and other activities to make their vacation one to remember.

If you have any news for next week please call me at LE 7-5210. See you then. -- Mrs. Fogle

Roy

By Marie Harrison Tele. No. 843-2323

Roy Senior Citizens held a meeting last Tuesday at the Grange Hall and elected their new officers. Elected as president was Andrew Chopic; vice president, Otto Sokolick; and secretary-treasurer is Mrs. Robert E. Barr.

It was decided at the meeting that the club would host a booth at the Lacamas Fair, to be September 9. The booth will house hobbies and crafts. Refreshments were served to about 15 members.

Last Thursday the Mayor and city council met with engineer James Koss to discuss plans for a water system for the Town of Roy.

The Roy Warren Rebekah Lodge's Chuck Wagon was on the Road at Chamber Lake August 5 and 6 and at the Rochester Field area August 12 and 13.

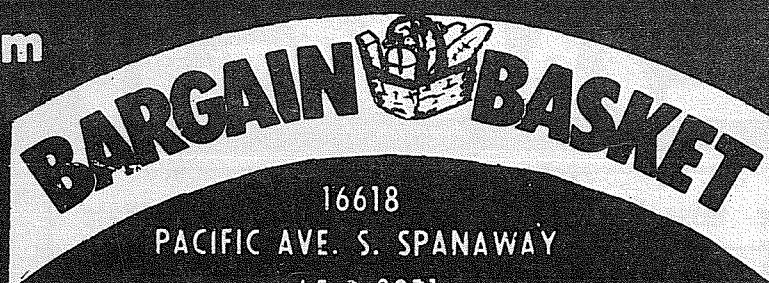
Chief Rediske and Tony Rotondo are working on the rodeo grounds in preparation for the September 3 and 4 Rodeo. The Poster committee have been working around the country. Mrs. Flowers and Mrs. Lyons are working with the cook shack and any hold would be wonderful.

The new street lights are now effective in our town.

The post office has announced new hours to go into effect September 1. They are: Weekdays, 8 a.m. to noon and 1:30 p.m. to 5 p.m. Saturdays, 8 a.m. to noon. Closing time for outgoing mail on Saturdays will now be 2:45 p.m.

I want to thank you all for the wonderful cards and flowers I received during my recent hospital visit. They were truly appreciated. -- Marie.

9 am - 10 pm
7 DAYS
A WEEK



16618
PACIFIC AVE. S. SPANAWAY
LE 7-3371

No Sales To
Dealers

WE RESERVE THE
RIGHT TO LIMIT
QUANTITIES

We Carry A Complete Line Of Sacked Feeds-Presto Logs

We Are Locally Owned & Operated
HELP YOUR BUDGET WITH THESE SAVINGS

Prices
Effective
Aug. 17-18-19

SUNNY JIM
SYRUP
20 Oz. **29¢**

FAMILY JOY
Chile Beans
300 Tins **8 For \$1**

FIRESIDE
SALTINE CRACKERS
One Pound **19¢**

REAL LEMON PURE
Lemon Juice
24 Oz. Bottle **49¢**

FAMILY JOY
RED BEANS
300 Tin **8 For \$1**

SILK
Toilet Tissue
4 Roll Pack **37¢**

SKIPPY
DOG FOOD
NO. 1 TIN **13 FOR \$1**

JOY
Liquid Detergent
Giant Size **49¢**

FAMILY JOY
FRUIT COCKTAIL
300 Tin **6 \$1**

PRODUCE

LETTUCE
10¢ Ea.

Slicing
CUKES
10¢ Ea.

Radishes
Gr. Onions **5¢** Bunch

Beef Steak
Tomatoes
23¢ Lb.

EVERYDAY LOW MEAT PRICES ... 25 LB. LOCKER BOXES \$13.95

HENRY HOUSE
OLD FASHIONED FRANKS
LB. **53¢**

HENRY HOUSE
SLAB BACON
LB. **63¢**

HENRY HOUSE
Chunk Bologna
LB. **49¢**

ROUND & SIRLOIN
STEAK
LB. **89¢**

RIB
STEAK
LB. **79¢**

COUNTRY STYLE
Pork Sausage
LB. **49¢**

LEAN GROUND
BEEF
Bulk LB. **43¢**

CHOPPED
SIRLOIN
LB. **79¢**

POT ROAST
(Blade Cut) **43¢**
7 Bone **53¢**
Round Bone **59¢**

School Shoes
Get them NOW
Before the Rush
While Stocks Are Complete
EASY PRICES EASY PARKING
PAULS SHOES
161 st & Pacific
LE 7-0557
Open 9 to 9 Daily
Till 6 Sat. & Sunday