

The TIMES JOURNAL

THURSDAY, NOVEMBER 3, 1960 • VOL. 16, NO. 9 • PUBLISHED AT PARKLAND, WASH. LE 7-0223

Brookdale PTA Dinner Nov. 4



THE BROOKDALE PTA is sponsoring a "Five and Dime Dinner" Friday, Nov. 4th from 5:00 to 7:30 p.m. at the Brookdale school in the multi-purpose room. Members of the PTA advertising the dinner are (left to right) Leo Gaume, Mrs. Elmer Theil, Mrs. Gordon Loyer, and Mrs. Sidney Wood.

Vote November 8th



"We wouldn't have to preach about religion so much if we'd demonstrate it more."

DRYER'S FUNERAL PLAN CUTS COST

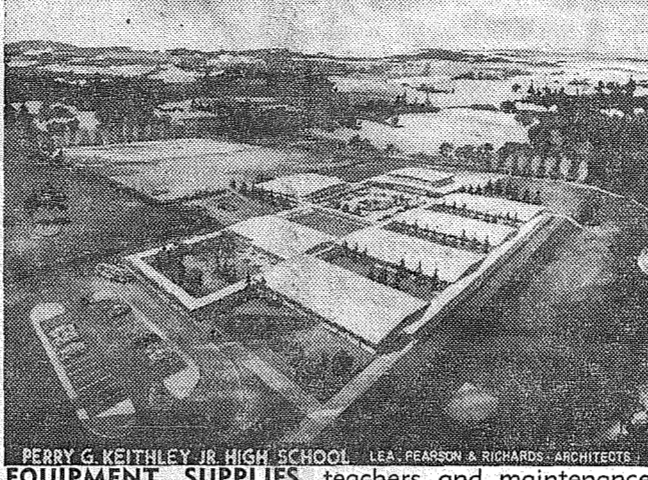
MORTUARY PARKLAND

49'ers Honored At Dinner



MEMBERS OF THE Spanaway 49'ers and their families gathered for a pot luck dinner at Spanaway Recreation hall last Thursday. Over 100 people turned out, filling the hall. Coaches Phil Zurfluh, (back row, extreme left) Howard Campbell and Frank Petaski (back row, extreme right) and the boys wish to thank the parents for their fine participation throughout the season. Each of the boys received a felt football with "49's" embroidered on it, some of which can be seen in the picture. (McKewen Studio Photo).

New Jr. Hi Planned



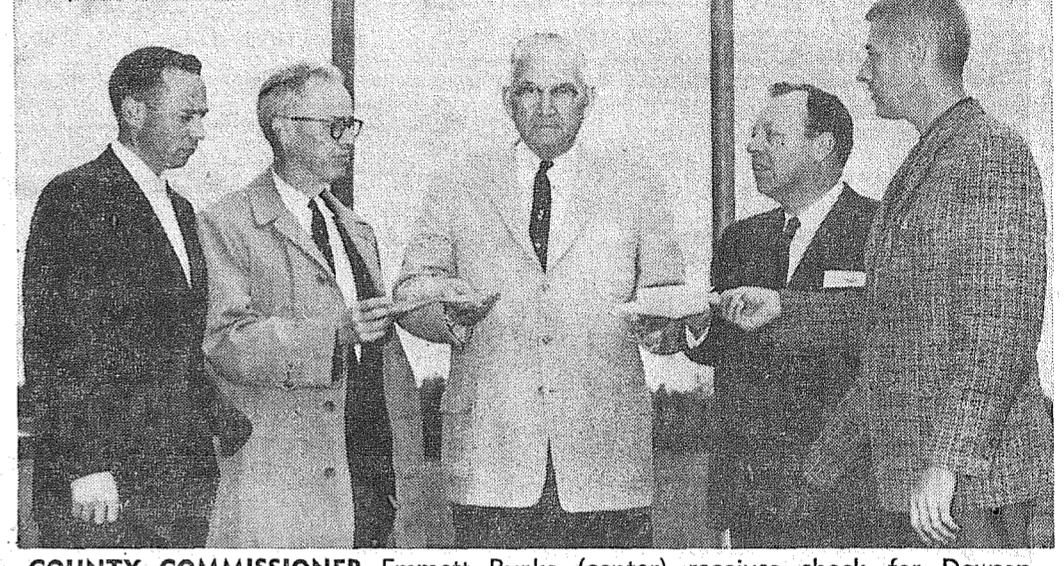
PERRY G. KEITHLEY JR. HIGH SCHOOL. LEA, PEASE & RICHARDS ARCHITECTS. EQUIPMENT, SUPPLIES, teachers and maintenance for the Perry G. Keithley Junior High School, an architect's drawing of which appears above, will be supplied by the two Franklin Pierce School District excess levy requests to be voted on next Tuesday in the general election. The propositions will appear in the upper right portion of the ballot, school officials have said.

Craft Club Convenes

South Tacoma Community Craft will hold classes in photo-tinting November 10 and 17. The instructor will be Mrs. Louise Weller.

Fifty more classrooms are needed in the Franklin Pierce School District by 1963, school officials estimate. In view of this prediction, plans for future buildings are being made by the school directors, to include the Perry G. Keithley Junior High School soon to be built on the west side of the Pacific Lutheran University campus. This school is designed for 32 rooms. A 14-room elementary school is also being planned by the School District, to open in 1962. A 6-room elementary school addition and a 10-room junior high school addition are in planning for 1963 and 1964, respectively.

Dawson Playground Given Facelift



COUNTY COMMISSIONER Emmett Burks (center) receives check for Dawson playground's new hard surface area from (left to right) Del Schafer, recreation director; R. J. Frazer, Kiwanis president; Ben Cheney; and Les Roley, Midland improvement club. (See Story on Page 2)

CANYON

READY MIX CONCRETE COMPANY
72ND & CANYON ROAD LE 7-3943

WE GIVE PERSONALIZED SERVICE TO ALL OUR CUSTOMERS

WHETHER IT'S FOR A STEP, SIDEWALK OR FOUNDATION ALL DAY SATURDAY DELIVERY

One Call Does It All

- WASHED SAND
- GRAVEL
- DRAIN FIELD ROCK
- BANK RUN

After 6 P.M. Call LE 1-0095

Open 7 Days A Week Sundays 8 a.m. to 4 p.m.

HUNTING & FISHING LICENSES, SPORTING GOODS, PAINT

SOUTH END PLUMBING AND HARDWARE

185th & Pacific Avenue Phone LE 7-4100

Furrowed Brow?

TRUST US WITH ALL YOUR DRY CLEANING!

It's Simple. Frequent dry-cleaning makes your clothes-dollar go further.

PARKLAND CLEANERS

11004 Pacific Avenue North of the Bank Corner LEnox 7-3221

SALE — THURSDAY - FRIDAY - SATURDAY

Only **4.90** A PAIR OR **7.90** 2 PAIRS

FLATS

Women's sizes 4-10 N & M Widths

12 STYLES TO CHOOSE FROM LANCERS—SKIMMERS—BOOT STYLES—SQUASH HEELS

SOINE'S PARKLAND 411 Garfield SHOE STORE Open 10-6 LE 7-3526

School Props. Need 60%

Sixty per cent of those casting ballots next Tuesday must vote yes on the school propositions. This plurality is required by law if the Franklin Pierce School District is to equip, supply and maintain its new junior high school due to open in September. Five hundred new students will also need supplies and teachers that will not be available if the school issues fail to receive sufficient votes.

Proposition I is an excess levy request for \$147,600, which is approximately 11 mills. Funds derived from this millage will also be used to acquire and improve new buildings sites, in addition to equipping and supplying the new junior high school. Approximately nine mills, or

\$120,000, is being requested in Proposition II to pay the cost of general maintenance and operation of school facilities for the 1961-62 school year. The reason for excess levy requests at the present time, according to school officials, is that the District is bonded to the maximum 10 per cent already, and so (Continued on Page 2)

LAUNDROMAT

WASH DRY 10c 10c PER LOAD

56th & Pacific Ave.

Coomes Rest Home

MR. AND MRS. CLAUDE COOMES OWNERS AND OPERATORS

Excellent food, individual attention. Private and Welfare patients. State Dept. of Health License No. 112.

321 South 116th St. Tacoma 44 — LE 7-3022

WINTER COMFORT

TEXACO FUEL CHIEF HEATING OIL

LE 7-8173

LAPENSKI FUEL COMPANY

9910 Pacific Ave.

VOTE NOVEMBER 8TH

25% OFF

With This Coupon On all Toys with Purchase of 1 Gal. or More of Spred Satin

PETERSON'S COLOR CENTER

Kellers Korl 11000 Pacific Ave. LE 1-0711

PROFESSIONAL DIRECTORY

Farmers Mutual of Enumclaw Fire — Auto

ED MAREK 12909 Pacific Ave. LE 7-4000

SAVE 50 TO 75% ON FUEL

ASHLEY AUTOMATIC WOOD STOVES

FREE INSTALLATION

WRIGHT POWER BLADE SAWS

PARKLAND HARDWARE

12169 PACIFIC AVE. LE 7-3171

For Clothing & Shoes for All the Family...

SHOP AND SAVE AT

SEYMOUR'S

9714 Pacific Ave. — 1 Block North Park 'N Shop

SHOP DAILY 9 to 9 EVERY SUNDAY 10 to 6

FRIENDLY SERVICE SINCE 1908

Now With a 100 Car Free Parking Lot right next door.

PIPER FUNERAL HOME

PHONE Greenfield 2-3353 5436 SO. PUGET SOUND



LIFE OF CHRIST

6 p.m. and 8 p.m., Sunday, Nov. 6

IMMANUEL BAPTIST CHURCH

WIN FREE PGL PRE-FINISHED PANELING

Ask us about it today!

MAHOGANY • BIRCH • ASH CEDAR • CHERRY • OAK WALNUT • PINE • MADRONA

Finished like fine furniture, in a mellow gloss that's been baked on for lasting good looks.

BROOKDALE LUMBER COMPANY

136th & Pacific LE 7-8669

HILLTOP CONCRETE CO.

LOOK FOR THE BIG "H" THE SIGN OF SERVICE

Use Ready-Mixed CONCRETE

NOW IS THE TIME

TO USE CONCRETE THAT HAS BEEN COLD WEATHER FORTIFIED FOR YOUR PROTECTION

READY-MIX ORDERS TAKEN 'TIL NOON SATURDAY

- Sack Cement
- Washed Sand
- Washed Gravel
- Drain Gravel
- Plant: 2223 - 23rd Ave. S.E. PUYALLUP TH 5-9525
- Crushed Rock
- 3/8" Beach Gravel
- Select Pit Run
- Fill Dirt
- P.O. Box 648 Puyallup TACOMA FU 3-3624

SPANAWAY HARDWARE

ELECTRICAL AND PLUMBING SUPPLIES

SAND, GRAVEL & CEMENT

PLASTIC PIPE

170th & Pacific LE 7-8378

Open Sundays 8:30-1:30

TODAY'S LAFF...

Have you heard of the new material that's exactly like silk and wool? It runs and shrinks!

FLATS

WOMEN'S WEDGES

\$1.99 Pr.

CANVAS LEATHER

SLIPPERS

REBUILT **COMBAT BOOTS** PR. \$3.99

OPEN EVERY SUNDAY Friday Night 'til 9:00

PAUL'S SHOES

161st & Pacific LE 7-0552 Closed Mondays

W. J. (Bill) O'CONNELL

Salutes the farms and rural homes in the 28th District. The past legislature gave farmers new self-help tools while protecting the consumer. The states, third largest billion dollar industry deserves attention and gets it. O'Connell fought for good rural roads at the last session. His record is good.

W. J. O'CONNELL Experience Counts

RE-ELECT W. J. O'CONNELL

STATE REPRESENTATIVE

DEMOCRAT

VOTE YES FOR PARKLAND FIRE PROTECTION

PD. POL. ADV. SPONSORED BY — SUBURBAN REALTY, I.G.A. FOOTOWN, VERNE ASHFORD INSURANCE AGENCY, ROLF INSURANCE AGENCY, ED MAREK INSURANCE AGENCY, IRENE CLEMENS INSURANCE AGENCY, LANGSETH STATE FARM INSURANCE & TIMES JOURNAL PUB. CO.

SPECIAL ELECTIONS	YES	NO	YES	NO	YES	NO
PROPOSITION NO. 1 — SUBMITTED BY S. D. NO. 402 EXCESS TAX LEVY — BUILDING FUND			PROPOSITION NO. 2 — SUBMITTED BY S. D. NO. 402 EXCESS TAX LEVY — MAINTENANCE AND OPERATION		PROPOSITION NO. 3 — SUBMITTED BY P. P. D. NO. 4 EXCESS LEVY FOR PURCHASE OF EQUIPMENT	



Bee West will work hard to secure an honest distribution of road funds for the 28th District, that will not overlook our present problems. The incumbent has completely disregarded our state roads.

For Action in Olympia

Elect

BEE WEST

State Representative 28th District, Republican

Pd. Pol. Adv.

Pre-School Plans Nov. 19 Carnival

Woodland pre-school members are busy on their project for the school carnival on November 19th. There will be no regular monthly pre-school meeting this month as the preschool and P.T.A. are combining for a Back to School Night on the 9th.

Hoe down

Saturday, November 5th, at 8:30 p.m. is Harmony Hoe-downers night again at Fruitland Grange. Elk hunting will take the regular caller, Willis Dodge, away for the evening; but the mike will be ably handled by Guest Caller Al DeWinter from Seattle. Al will be accompanied by his wife Helen and some of the dancers from his

Pi R Squares club in Seattle. All dancers are welcome to join the Hoedowners in making these guests welcome. Bring your cups and snacks. Coffee and tea will be served by the club with Don and Jan Anderson, Howard and Phyllis Brown, Bob and Reba Bennett, and Elmer and Lucille Wilhites as hosts and hostesses. The 8:30 dancing is preceded by a business meeting for the members at 8 p.m.

4-H

The Lucky club's regular monthly meeting will be tonight, Thursday Nov. 3rd at 7:30 p.m. at the home of David Muxen on Woodland Avenue. This will be election of officers for the coming year so all members are urged to be present.

Reporter — Margaret David, LE 7-6668.



IN THE DAFFODIL ROOM

AN EXPERIENCE IN DINING

NETTIE'S

STEAK DINNER FOR TWO

FULL 16-OZ. OF CHOICE BEEF WITH KING SIZE SALAD

BAKED POTATO

ALL THE COFFEE YOU CAN DRINK

\$5.25 FOR TWO

TH 5-1156 116 SO. MERIDIAN ST. PUYALLUP

Graham Dinner Will Be Sunday



MRS. MARVIN ANTONIE (left) and Mrs. William Lauenburg are among those making plans for the Gloria Motycka Orthopedic picnic smorgasbord.

The Gloria Motycka Orthopedic and baked beans will be part of the menu which is \$1.25 for adults, 75 cents for children 6 to 12 and 50 cents for children under 6.

Proceeds go towards the support of the Mary Bridge Children's Hospital.

FENCING
Designers and Builders
EXPERT WORKMANSHIP
REASONABLE PRICES
Easy Monthly Payments
VAUGHAN'S
84th & Pac. Ave. GR 4-9515

Dawson Playground Given Facelift

(Continued from Page 1)

Because a number of agencies got together, the youth of the Franklin Pierce and Dawson area have a brand new hard surfaced area. The project was jointly financed by contributions from the Parkland Kiwanis Club, The Midland Improvement Club, Ben Cheney, Pierce County Commissioners and the Board of Park Commissioners from the Metropolitan Park District.

County Commissioners led off with a \$600 donation, Park District contributed the basketball standards and the two clubs and Ben Cheney picked up the tab for the remainder of the cost.

Mr. Cheney has long advocated the need for hard surfaced areas on playgrounds throughout Tacoma and Pierce County. In making his stated that he was most happy to see one of his dreams come true in the inauguration of the community sponsored hard surfaced areas on playgrounds.

The Midland Improvement Club donation was made by Les Roley, the Treasurer of the organization. Roley stated he hoped this was just the start of the further development of this popular playground on 90th and Portland Ave. He said the Midland Improvement Club was a small organization but the members were keenly interested in community projects.

R. J. Fraser, representing the Parkland Kiwanis Club, told Commissioner Burks in presenting him the check that their service organization was most happy to be a part of this worthwhile project. Parkland Kiwanis Club has also been extremely active in the development of the J. H. Gonyea Playground on So. 134th and J St. Del Schafer, area recreation director, summed up the feeling of the youngsters in the district by stating that attendance has tripled on the playground since the completion of the hard surface facilities.

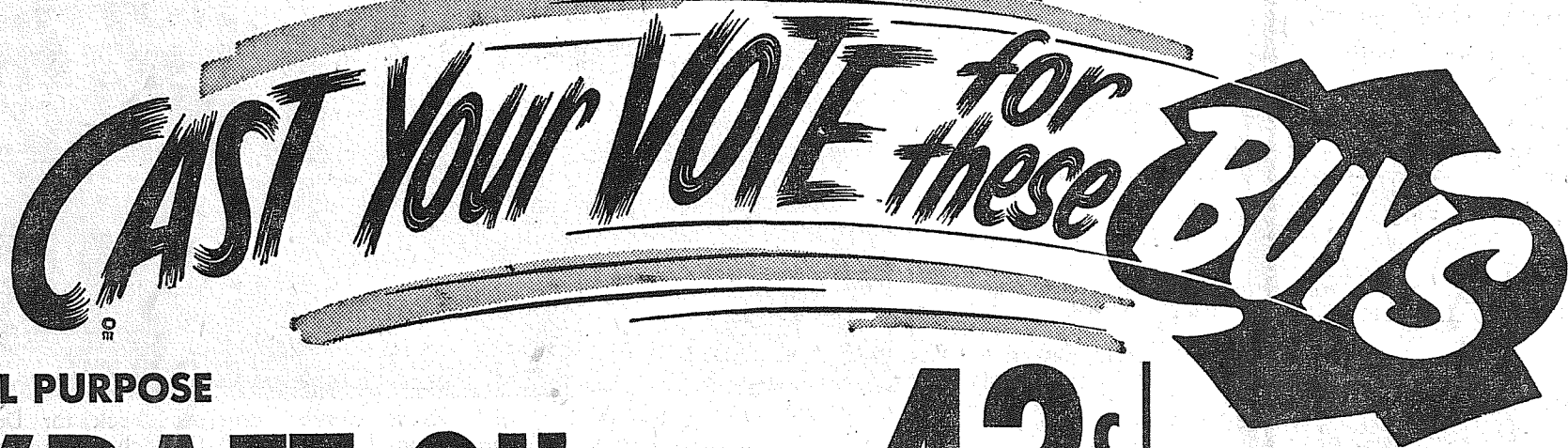
Proposition Needs 60%

(Continued from Page 1)

can not finance further projects by this method.

"The levies are not in addition to the taxes that are now appearing on the tax statements," Edwin L. Nelson, Franklin Pierce superintendent, said this week. "They are a continuation and will not appear on the tax statement until 1962."

The predatory dragonfly snares its victims on the wing by making a basket out of its front legs.



ALL PURPOSE

KRAFT OIL

Qt. Bottle

43^c

AT SUMMIT TRADING CO.

FLOUR — YOUR FAVORITE

GOLD MEDAL

25-lb. Bag

\$1.89

INSTANT COFFEE

MAXWELL HOUSE

6-oz. Jar

79^c

HILL'S COFFEE

2-lb. Tin

\$1.15

DEL MONTE

FRUIT COCKTAIL

303 Tin

5/\$1

DEL MONTE CATSUP

14-Oz. Bottle \$1

DEL MONTE CORN

Cream Style or Whole Kernel

303 Tin

5 For **89^c**

DEL MONTE

TOMATO JUICE

46-Oz. Tin

4 For **\$1**

DEL MONTE PEAS

303 Tin 5 For **89^c**

DEL MONTE SPINACH

303 Tin 7 For **\$1**

DEL MONTE CUT **GREEN BEANS**

5/\$1

DEL MONTE — 300 Tin **TOMATO SAUCE**

8/\$1

LUXURY MILD **CHEESE**

Lb. **53^c**

LIQUID DETERGENT (Reg. 69c) **TREND**

Quart Size **59^c**

DEL MONTE **PINEAPPLE JUICE**

46-Oz. Tin 4 For **\$1**

NABISCO **GINGER SNAPS**

1-lb. Pkg. **35^c**

WHITE STAR **CHUNK STYLE TUNA**

1/2 Size Tin

25^c

Alpine Waxed **LOCKER WRAP**

150-Ft. Roll **\$1.49**

LARGE AA **WHITE EGGS**

Doz. **56^c**

DON'T FORGET TO **VOTE** NOV. 8th

Fresh Produce

CALIFORNIA

Lettuce

Ea.

9^c

CALIF. BEEFSTEAK

2 lbs.

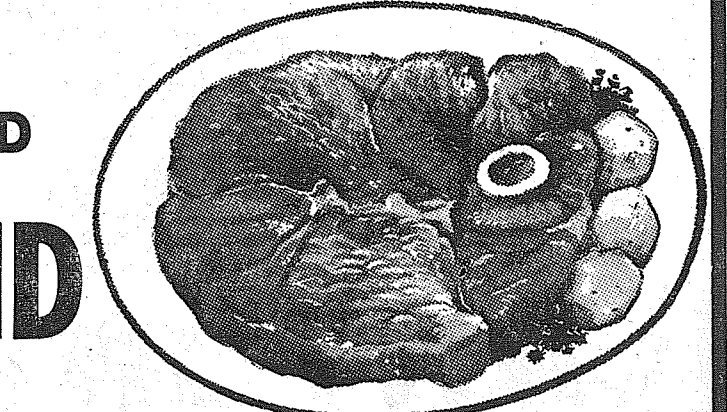
Tomatoes

25^c

Eastern Wash. No. 2, 50-lb. bag

RED POTATOES

\$1.35



U.S. GOOD **ROUND STEAKS**

Full Cuts lb. **73^c**

U.S. GOOD — SIRLOIN OR **RIB STEAKS** lb. **73^c**

U.S. GOOD — WELL TRIMMED **RUMP ROAST** lb. **69^c**

FRESH GROUND **GRND. BEEF** 3 lbs. **99^c**

CUTTING & WRAPPING LB. **5^c**

QUICK FREEZING LB. **1^c**

Fresh Rendered **Pure Lard** lb. **13^c**

Iceland—Fresh Pack **Salt Herring** ea. **29^c**

SUNNY JIM **PRESERVES**

STRAWBERRY BLACKBERRY APRICOT-PINEAPPLE 20-oz. Jar

39^c

PET RITZ FROZEN **FRUIT PIES**

APPLE PEACH CHERRY

Ea. **39^c**

PRICES EFFECTIVE THURSDAY THROUGH SUNDAY

SUMMIT TRADING COMPANY

10409 Canyon Road, Tacoma

LE 7-5848

No Sales To Dealers We Reserve The Right To Limit Quantities

OPEN SUNDAYS 10 A.M. TO 7 P.M. FOR YOUR CONVENIENCE WEEKDAY HOURS 9 A.M. to 9 P.M.

WHY PAY MORE?

(77c WILL HOLD ANY TOY IN OUR STORE 'TIL DECEMBER)

<p>TOY</p>  <p>SALE</p>	<p>GREYHOUND BUS</p>  <p>Powerful Friction Motor All-Metal Body, Large Size</p> <p>77c</p>	<p>ELDON Attack Transport</p>  <p>With Rocket Firing Cannon, 2 Life Boats, 4 Armored Vehicles</p> <p>Only \$1.77</p>	<p>TOY</p>  <p>SALE</p>
<p>OFFICIAL SIZE AND WEIGHT ALL-WEATHER FOOTBALL OR BASKETBALL</p>  <p>YOUR CHOICE EACH</p> <p>\$2.77</p>	<p>ACTION TEDDY BEARS Durable • Wind-up Motor</p>  <p>YOUR CHOICE OF 4 STYLES EACH</p> <p>77c</p>	<p>OLD TIME CARS All-Metal Powerful Friction Motors</p>  <p>YOUR CHOICE OF 4 MODELS EACH</p> <p>77c</p>	<p>LITTLE MISS MUFFET TEA SET</p>  <p>36 PIECE SERVICE FOR 4 Unbreakable</p> <p>\$1.77</p>
<p>FISHING SET Complete with 3-Piece Bamboo Rod, Hooks, Line and Sinkers</p>  <p>WITH VINYL CARRYING CASE</p> <p>77c</p>	<p>OLD TIME CARS All-Metal Powerful Friction Motors</p>  <p>YOUR CHOICE OF 4 MODELS EACH</p> <p>77c</p>	<p>14-KEY ZYLOPHONE All-Metal Tone Bars Realistic Tone</p>  <p>77c</p>	
<p>2-PLAY CHAMPIONSHIP TABLE TENNIS SET</p>  <p>Complete with Rubber-Faced Paddles, Net, Posts and 2 Ping Pong Balls</p> <p>Only \$1.77</p>	<p>NOVELTY FELT ANIMALS Amusing, Entertaining</p>  <p>YOUR CHOICE OF SIX STYLES EACH</p> <p>77c</p>	<p>DUMP TRUCK Durable Friction Motor All-Metal Construction</p>  <p>77c</p>	
<p>DOUBLE BARRELED POPGUN</p>  <p>All-Metal Safe — Durable</p> <p>77c</p>	<p>DELUXE BINOCULARS CENTER FOCUS</p>  <p>Full Size With Shoulder Strap</p> <p>77c</p>	<p>10" DRINK AND WET BABY DOLL</p>  <p>Jointed Arms and Legs Unbreakable</p> <p>77c</p>	
<p>TOY</p>  <p>SALE</p>	<p>ALL-METAL BI-PLANE</p>  <p>Durable Friction Motor Unbreakable Prop</p> <p>77c</p>	<p>8-KEY CHIME-TONE PIANO</p>  <p>Bright Lacquer Finish</p> <p>77c</p>	<p>TOY</p>  <p>SALE</p>

Bloodmobile In Elbe Area
The Pierce County Bloodmobile will be at the Columbia Crest School today from 3:30 to 7 p.m. Mrs. Earl Rembusch is convalescing in the Virginia Mason Hospital in Seattle, having undergone major surgery there one day last week.

Ethel Taylor is home from the hospital, but is still confined to her bed after having had a very serious bout with the flu. Paulette Hall is confined at home with a very bad case of tonsillitis. Mr. and Mrs. Howard Noffsinger spent the week end at the home of Mrs. Noffsinger's parents, Mr. and Mrs. Tom Cram in Rainier, Wash. They brought their children, Robert and Cindy, home with them, having enjoyed a two week visit with their grandparents.

J. Sales Election Will Be Tonight
Officers will be elected at the James Sales Grange at tonight's meeting. All members are urged to come and vote.

June Bugs Gather Nov. 8
The June Bug Garden Club will hold its annual Thanksgiving and Christmas Arrangement Program Tuesday, November 8, at 12:30 p.m. at the Summit Youth Center. Mrs. Lloyd Landgrebe a TLE informative program on making and arranging swags, center pieces and fireplace arrangements that make your home so becoming through the holidays. Mrs. Henry Hofto is a marvellous speaker and demonstrator. You won't want to miss this opportunity to prepare yourself for the approaching holidays. A donation of 35 cents per person is asked to help pay the speaker expense.

Members meeting time will be 10:30 a.m. at the Youth Center. The Well Baby Clinic will be held Wednesday, November 9, at the Midland Fire Hall. The Clinic is maintained by the Public Health Department. Check-ups, vaccinations, and immunizations are given to children under 5 years of age. The only request the Health Department makes is that your child is healthy when taking him to the clinic. Registration begins at 9:00 a.m. and concludes at 10:00 a.m.

Vote for ... JENNIE GROD VIG
And Continue Her Service To The Community When Elected
Only Candidate Outside City of Tacoma
State Representative
28th District
REPUBLICAN
Pd. Pol. Adv.



PROTECT YOUR RIGHTS VOTE NOV. 8TH

VOTE FOR BOTH... QUALITY VALUE

HORMELS RED LABEL BACON SLICED Pound	35c
LEAN PORK STEAK Pound	49c
STICK BOLOGNA Lb. 39c	SMOKED LIVER SAUSAGE Lb. 39c
GRAIN FED PICNIC STYLE PORK ROAST Pound	31c
KRAFT COOKING OR SALAD OIL Qt. Bottle 37c	MAXWELL HOUSE 1-lb. Tin COFFEE 59c
CLEARFIELD MARGARINE 1-lb. Pkg. Each	15c
ALL FLAVORS JELL-O Each 5c	CALO DOG AND CAT FOOD No. 1 Tin 2 For 25c
PILLSBURY BEST FLOUR 25-lb. Bag	Only \$1.79
HOODY'S PEANUT BUTTER 3-lb. Jar \$1.09	ABC OVEN FRESH SALTINE — 1-LB. PKG. CRACKERS 19c
VAN CAMP'S PURE TOMATO CATSUP 14-oz. Bottle	2 For 33c
FANCY-RIPE BANANAS 2 Pounds 25c	"AA" Large EGGS Doz. 56c
McDANIELS The Home of The Low Price	TEXAS PINK GRAPEFRUIT 4 FOR 25c
AIRPORT & CANYON ROAD Store Hours: 9:00 Til 9:00 — Sundays 9:00 Til 7:00	BEEFSTEAK TOMATOES 2 LBS. 25c

PRICES EFFECTIVE Thursday Friday Saturday

Summit Trading - HARDWARE -
10409 Canyon Road
Hours: 9 - 9 Monday - Saturday

THE ASSOCIATION OF INDEPENDENT HOME OWNED HARDWARE STORES
A NATIONAL WIDE ASSOCIATION OF MEMBERS
DEDICATED TO SERVICE, QUALITY, VALUE

Grange Officers Elected Oct. 27

At the Oct. 27 meeting of the Elk Plain Grange, officers were elected.

They are: master, Mrs. Henry Schmidt; overseer, Frank Smith; lecturer, Mrs. Lloyd Landgrebe; steward, Cal Sartain; asst. steward, Neil Dorfner; chaplain, Mrs. Cal Sartain; treasurer, Henry Schmidt; secretary, Mrs. Ed Draper; gatekeeper, Einar Brandt; Ceremony, Mrs. Juida Kavanaugh; pomona, Mrs. Ray Landgrebe; flare, Mrs. Jerry Plumb; lady assistant steward, Janet Wright; home economics, Mrs. Frank Smith; first year trustee, Jerry Plumb.

All Grange members are invited to Third and Fourth degree at the Elk Plain Grange Hall Thursday Nov. 10 at 8 p.m.

The Elk Plain Girls 4-H club met at Mary Parker's home Oct. 26 and elected the following officers:

President, Billie Sue McDougall; vice president, Carolee Buc; secretary, Pam Ouhl; treasurer, Carol Ockfen; reporter, Mary Parker; recreation, Patty Alamaas; sunshine, Diane Parker; Telephone Decky Harlow; song leader, Carol Doyle; leader for cooking Mrs. McDougall, leader for sewing, Mrs. Hudson; leader in cooking and sewing for the older girls.

Bake Sale At Spanaway Nov. 8

The Women's Society of Christian Service will hold a bake sale Nov. 8th at the Spanaway School. They are asking for donations of any baked goods or candy. Please call LE 7-8282, LE 1-2629, or LE 7-7002 for pickup.

Mrs. Dave Parker, jr. leader is Martha Hovey.

Best wishes for a speedy recovery go to Bob Landgrebe who is ill in the hospital. He was in an auto accident Oct. 26 on his way home from work. Cards and letters would be greatly appreciated.

Mr. and Mrs. Ted Otterstad visited in Spokane last week at the home of their daughter Mrs. John Walters and family.

The Elk Plain World Outlook league is sponsoring a bake sale at the school Nov. 8. Donations of baked goods may be brought to the school or call VI 7-2227 or VI 7-7427. Proceeds will go to missionary work.

Reporter — Mrs. Ray Burkhart.

Girl's Club Needs Paper, Bottles

The Girl's Club sponsored by the Starlight Rebekah Lodge No. 332 is having a paper and pop bottle drive. If you have either, please call LE 7-0519, TH 5-6833 or VI 7-7202 for pick up.

Don't Let Just Anybody Monkey With Your TV Set!



WE USE RCA TUBES

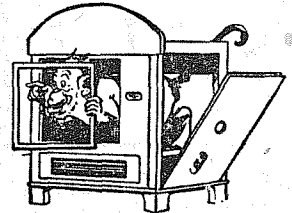
"Old Time Fair" Tomorrow Nite

An "Old Time Fair" is being sponsored by Fern Hill Methodist Church, 8421 So. G Street, a jam dinner will be served and booths for a bazaar are being planned. Dinner will be served at 5, 6 and 7 p.m., with a nominal price of \$1.35 for adults; 75 cents for children, five through 12; and children, four and under, free. Because of limited dining room facilities, early reservations will insure you of the dinner hour you desire. For reservations, please call Greenfield 2-5973.

AIR CHARTER



FLIGHT INSTRUCTION Approved Flight School
Wash. MOONEY Distributor
TAHOMA FLYING SERVICE
Spanaway Airport LE 1-0442



A-1 TELEVISION & RADIO SERVICE
1424 East 72nd

Call GR 5-0658

NOMADS

Gypsies once were found only in India. About 1300, they began to wander through Asia into Egypt and North Africa and, by 1500, they had reached Europe.

C. Creek PTA Sale

The Clover Creek PTA will hold a sale Nov. 8 in the Clover Creek School library. Proceeds will go to the PTA.

AMERICA'S CUP

The America's Cup first was won in England by the yacht America in 1851 and has been defended by the New York Yacht Club ever since.

Prescription Service

Open 7 Days a Week
9:30 a.m. - 9:30 p.m.
Sundays 10 a.m. - 6 p.m.

JACOBS PACIFIC DRUGS

Wallgreen Agency
Pay Light & Water Bills Here
84th & PACIFIC AVE.

Greenfield 2-6445



FOR STATE SENATOR

Burt Raymond will represent the working man. Burt Raymond has been a union man for 46 years. He first joined Local 117 AFM in 1914 and currently is retired on pension from IBEW. Burt Raymond understands Labor's problems.

FOR RESPONSIBLE STATE GOVERNMENT

VOTE FOR BURT RAYMOND

28th District

Republican

Pd. Pol. Ad.

CREATE MORE JOBS

VOTE FOR 205

WHAT IS INITIATIVE 205?

It will permit Licensed Taverns of The State to Sell Mixed Drinks and Cocktails in their Establishments.



205 WILL... PROVIDE FUNDS

FOR MEDICAL RESEARCH!

Initiative 205 will bring Washington into step with other major tourist states which now have modern, sensible laws.

205 WILL... MAKE WASHINGTON A REAL TOURIST STATE!!

The Initiative calls for money from the additional license fees to go to our State Universities for medical and biological research.

VOTE NOV. 8TH

205 WILL...

PROVIDE STATE REVENUE!

Class T licenses will increase Washington State revenue without adding to the individual citizen's tax burden.

CREATE JOBS!

Passage of a sensible liquor-by-the-drink law will enable Washington's taverns to hire more people, improve and modernize; will employ thousands of citizens in construction, entertainment and service fields.

REMEMBER..

TAVERNS ARE THE ONLY LICENSED PREMISES WHERE MINORS ARE NOT ALLOWED AND WILL NOT BE ALLOWED!

WHY THE OPPOSITION TO INITIATIVE 205?

Isn't it obvious that the present holders of liquor licenses are doing everything in their power to continue the monopoly they now enjoy? They know the passage of 205 will give Washington a sensible liquor-by-the-drink law that will enable taverns to compete on a fair and equal basis — as well as allowing equal opportunity for all citizens to purchase their choice of drinks where they wish!

Paid Political Advertisement Sponsored By The Following Public Spirited Firms and Individuals . . .

- | | | | | | |
|--|---|--|--|--------------------------------------|---|
| HILDA AND HARRY
FRITZ'S TAVERN | JOYCE & CHUCK
BROWER'S TAVERN | WAYNE & ROCKY
BLUE MOON TAVERN | FLORENCE HANSON
TIPPERARY TAVERN | J. YUROCHAK
HAVEN'S TAVERN | WALLY & DOUG
MIXING BOWL |
| RUTH AND VIC
MIDLAND TAVERN | JOY & BARNEY
FERN HILL TAVERN | THE BUNGALOW | ANTZ & BUD
SHAMROCK TAVERN | RAY & MARY
GOLDEN SLIPPER | HARRY BERGER
DICK'S TAVERN |
| | | | | | CURLY & ROD
SHADY REST TAVERN |

Initiative 205 Will Increase State Revenue Without Additional Individual Tax Burdens

Let's Not Be Fooled . . .

By a Political Play for Sympathy Votes

We believe a State Senator should seek the reward of re-election on the basis of the issues and his record while in Olympia.

In his Advertisement of Oct. 17, Mr. Knoblauch's backers label his voting blunders as only "human mistakes". We ask the voters. Are these "mistakes" or poor judgment? And why should the taxpayer pay for them even if they are mistakes?

1. Because he failed to act, Mr. Knoblauch lost the 25th District a real chance for an annual payroll of over one million dollars.
2. Mr. Knoblauch opposed our farmers by voting to place a tax on rented farmlands. This tax was later declared unconstitutional by the courts because it violated the rights of the farmer.
3. Mr. Knoblauch opposed clean government when he voted to surrender the protection the Steele Act offers the people from possible corruption in Liquor Control Board appointments.
4. Mr. Knoblauch opposed our small businesses by voting to saddle them with UNFAIR taxes (The business tax which taxes gross sales, NOT profit).
5. Mr. Knoblauch opposed our right of privacy by voting for the Tax Snooper Law, one of the cruelest laws now on our books.
6. Mr. Knoblauch is for higher and higher taxes.

Here are the new or increased taxes he has voted for:

Sales tax	Liquor tax
Business & Occupation tax	Cigaret tax
Farm land rent tax	Tobacco tax
Widow's insurance tax	Use tax
Medical bills tax	Automobile tax

7. Mr. Knoblauch opposed the working man by voting to increase the state sales tax to 4%, even on food purchases. His voting record indicates he never misses an opportunity to tax the people, yet, he FAILS to see that we get FULL VALUE RESULTS for our tax dollars.

Considering the Above Record, We Believe it is Time to Change State Senators. We are voting for TOM MONTGOMERY because he has a positive program, and can back it up with 12 years of ACTIVE experience in the State Legislature.

This Time . . .

Elect TOM MONTGOMERY

STATE SENATOR 25TH DISTRICT REPUBLICAN

Committee to Elect Tom Montgomery, E. N. Matson, Chairman

Tomorrow Is Family Night

Family night will be held at the Graham Covenant Church Nov. 4, at 7:45. Members of the Mt. Rescue Council are showing films of their work, also pictures of Mt. Rainier.

Mr. and Mrs. Emil Lauenborg and Mrs. Lauenborg's sister, Prudence Campbell of Puyallup, took a pleasure ride to Yakima Sun., Oct. 30.

A birthday party was held at the home of Elaine Rodgers Wed., Oct. 26 in honor of Mrs. Rodgers and Mrs. Becky Wibbur. The guests were Madames Myrna

Scraps Collected For Korean Kids

A group, unnamed as yet, meets every Wednesday morning to collect scraps from sewing to make clothes for the Holt Orphanage in Seoul, Korea. Anyone with scraps may call Mrs. Francis Wood at LE 7-4302 for pick-up.

Peterson, Ellen Weston, Sina Goff, Gwen Becker, Gladys Larson, Virginia Lauenborg, Mary Anderson, Babe Watson, and Margareitte LaPore.

Mt. View Masonic Lodge 194 will hold a special meeting tomorrow night at Graham Grange Hall.

Reporter — Marie Tinus.

Spanaway . . .

Firemen Meet

The Spanaway Volunteer Firemen and Auxiliary will meet Monday, Nov. 7 at 8 p.m. in the Spanaway Firehall.

Mark Lewis, infant son of Mr. and Mrs. William Schubert had a serious operation Oct. 17th when he was two days old. He has just been taken off of the serious list at the Seattle Orthopedic Children's Hospital.

Mr. and Mrs. M. L. Kirby have just returned from visiting Mr. Kirby's cousin who is ill in Vancouver, B.C.

The Spanaway Volunteer Firemen's Auxiliary will have a Bake sale at the Spanaway Fire Hall Nov. 8.

Speedy get well wishes to Mrs. Robert Rhone who is ill in the hospital.

Members Honored

Fern Hill Women's Society of Christian Service will honor charter members at Fern Hill Methodist Church at 10 a. m. Thursday, Nov. 10. Lunch will be served after the business meeting.

PROMPT PERSONALIZED PRESCRIPTION SERVICE

TED SWANSON
INSULIN · VITAMINS
Downtown Prices
Pay Phone Bills Here
PLENTY OF FREE PARKING
TINCHER'S PHARMACY
8227 Park Ave. GR 4-3344
Across from Fern Hill P U

Have Your Lawn Mower "SUMMERIZED"
Repaired & Sharpened
Free Winter Storage
All Ready For Spring
Avoid The Rush
PARKLAND CYCLE & KEY
11021 Pacific Avenue
LE 7-5772

LUMBER
GLASS
HARDWARE
SHINGLES
ROOFING
GET OUR PRICE
FIRST ON ECONOMY
GRADE LUMBER
Baskett Lumber
9701 Portland Avenue
LE 7-8663

JOIN IGA's LIGHTS ON VOTES OUT

Turn On Your Porch
Light and Let
Freedom Shine
From 8 to 9 p.m.
November 7 (Election Eve)



Prices Effective
Thurs.-Fri.-Sat., Nov. 3, 4, 5

IGA Quart Bottle
SALAD OIL 45c

IGA SHORTENING, 3-Lb. Tin
SNO-KREEM 59c

Grade 'AA' . . . Doz.
LARGE EGGS 55c

Centennial, 4-lb. bag
PANCAKE MIX 43c

KRAFT PARKAY
MARGARINE 4 lbs. 89c

2-Pound Tin \$1.19
HILLS BROS. 1-Lb. Tin 65c

Toilet Tissue
WALDORF 4 Rolls For 29c

★ PICTSWEET FROZEN FOODS ★

- Green Peas • Mixed Vegetables • Squash
- Peas & Carrots • French Fries • Broccoli Guts
- Creamed Whole Kernel Corn • Leaf Spinach
- Chopped Spinach

EACH 17c **6 Regular Packages 99c**

U.S. NO. 1

BANANAS

13c lb.

Buy 3 Cans of Heinz Soup and Heinz Will Buy the Crackers. Come in for Complete Details.

HEINZ Veg. Beef, Chicken Noodle, Split Pea, Mushroom
SOUPS 6 Tins 99c
N.B.C. SNOWFLAKE
CRACKERS lb. 25c

JONATHON

APPLES

4 lbs. 39c

FOOD IGA TOWN

112th At Park Ave. — Ad Days Nov. 3 - 4 - 5

CONGRESSMAN Thor Tollefson

Gets Things Done for You in Congress!



1 SENIORITY—Tollefson's 14 years of seniority make his a powerful voice in Congress, able to get more done for you.

2 EDUCATION—Tollefson has obtained more Federal funds for education in the 6th District than all but four other districts in the entire United States!

3 SHIPPING—Tollefson preserved the 6% differential giving more jobs to West Coast shipbuilders. The Butler-Tollefson bill has resulted in over \$1,500,000,000 additional shipping for U. S. ships. Tollefson sponsored legislation for the first atomic ship.

4 FISHING—At this year's International Law-of-the-Sea Conference, Tollefson preserved fishing rights for Washington fishermen.

5 JOBS—Both labor and management praise Tollefson's accomplishments building local jobs. Tollefson played a major part in securing this year's \$105,000,000 work order for Bremerton.

6 CONSERVATION—Tollefson is fighting for full utilization of Mt. Rainier Nat'l Park. He has worked hard to develop and preserve Pacific Northwest natural resources.

Re-Elect TOLLEFSON
6TH DISTRICT REPUBLICAN

Tollefson-for-Congress Committee, F. Mechem, Chmn.,
205 Security Bldg., Tacoma



Park Avenue Shoes

Fall Parade

of SLIPPERS

- For Ladies WELCO'S FELTS SATINS Wedgies - Flats - Scuffs
- For Men LEATHERS FELTS WELCO CORDS
- For Children ZIP CORDS RIPPON KNITS FLEECE LEATHERS

prices? \$1.98 to \$6.98

8229 Park Avenue

Collins Livestock Club Elects

The Collins Livestock club met at the home of Chuck and Karen Styfe recently. Elected were president, Cheryl Taylor; vice president, Shellah Taylor; secretary, Mary Sales; treasurer, Chuck Styfe; reporter George Wood. The next meeting will be at the Styfe residence Nov. 19.

Well Baby Clinic Will Be Nov. 8

The Spanaway Well Baby Clinic will be held Tuesday, Nov. 8th in the Assembly of God Church. Registration will be from 8:30 to 10:30. Dr. Kline will be the attending Physician. For further information call Mrs. Lloyd Langrebe at LE 7-8814.

Co-Op Play School Meets

The Midland Cooperative Play School will hold its November meeting at the home of Mrs. Lester Wolfe, 9601 East Taylor, on Thursday, November 10th, at 7:30 p.m. All mothers with children enrolled in the Play School are urged to attend.

It's A Girl!

Congratulations to Mr. and Mrs. George Sheppard, 1615 East 95th, on the birth of their daughter, Christina Marie, born Tuesday, October 25th. She joins brothers, Mark and Mike, and sister, Karen. Grandparents are Mr. and Mrs. Max Russ, of Berlin, Germany, and Mrs. Mecie Sheppard, of Tacoma.

Moved To Oakland

Mr. and Mrs. Karl Strand and family have recently moved to Oakland, California, where Mr. Strand accepted a new position. While here, Mr. Strand was very active in scouting and community club work, and Mrs. Strand was a former Harvard - Midland P.T.A. President. Their son, Bob, is attending the University of California, at Berkeley. The Strands will be missed in our community.

Newcomers

We welcome new residents to our community - Mr. and Mrs. Jack Doore, and children, Kathleen and Ralph. They reside at 1911 East 90th Street.

Sister Visits

Visiting for the past week at the home of Mr. and Mrs. Clyde Spencer, 1322 East 90th Street, was Mrs. Spencer's sister, Miss Lois Miller, from Port Angeles.

Smith-Vielle Wedding

Billi Jo Smith, daughter of Mr. and Mrs. Ervin B. Smith of Harvard, and Richard Vielle of New York City, New York, were married Saturday, October 22nd. Miss Patricia Connors was the bridesmaid, and Mr. Budd Smith, brother of the bride, was the best man.

The bride wore a beige dress and carried a bouquet of white rose buds. The bridesmaid wore a brown dress, and carried a bouquet of pink carnations. The brides mother wore a blue dress, with a Lily of the Valley corsage.

After the ceremony, a buffet supper was served to seventy guests at the home of the bride's parents. The wedding cake was Mrs. James Baker, and Mrs. David Mayer, who also took care of the serving and the guest book.

Bluebirds

A new Bluebird group, the Silver Shells, is now being formed at Harvard School, with Mrs. Jack Doore, leader of the group, and Mrs. Herbert Kennedy, Jr. assisting. Sponsors and helpers will be Mrs. E. R. Kennedy, Mrs. T. V. Nylund, and Mrs. E. Carden, Jr. The nineteen girls in the group, all second graders, are Gail Allison, Peggy Bargelt, Rebecca Carden, Debra Carlin, Kathleen Doore, Janet Francis, Charlene George, Patricia Isakson, Cheryl Kennedy, Darlene LeMay, Lorraine Martin, Ann Nylund, Mary Porter, Betty Parkinson, Elaine Reding, Gayle Roberts, Theresa Spencer, Melody Spittler, and Judy Kennedy.

Be Sure To Vote!

A vote of thanks to Harvard's Pack 103, and Midland's Cub Scout Pack 84, Troop 84, and Explorer Post 84 for delivering the GET OUT THE VOTE bells to all houses in the district. Reporter - Mrs. Frank Gural, LE 7-5939.

"Decumba?" "No, Tacoma!"

Where is Decumba, Washington? Somewhere in an airline terminal in Boston, Massachusetts sits a man who found a letter addressed to Decumba, Wash., and promptly put it in the Tacoma stack. Two days later, Mrs. Robert Bartley of 1005 So. 112th St. received the letter. It was sent by Mrs. G. Gleason of Boston, Mass. who, the Bartleys later found out, had taken the address over from the phone and apparently had never heard of Tacoma.

DRUG FACTS

I'VE FOUND OUT, TOO, THEY LOOK OUT WELL FOR DIABETICS AT

ASHMORE'S SPANAWAY DRUG



LOCAL TRADEMARKS, Inc.

91% Isopropyl Alcohol PINTS98c SUCARYL4-oz. 89c SODIUM PINTS 2.98

ASHMORE'S SPANAWAY DRUG 165th & PACIFIC AVE. SPANAWAY, WASH.

Rodeo Queen Now Modeling



MISS JUDY REESMAN, former Franklin Pierce High School student and Queen of the Parkland Rodeo, modeled at a portrait photography demonstration at the Fort Lewis Special Services Craft Shop last night. The demonstration was part of the 1960 Army Arts and Crafts week program which runs through Nov. 7th.

LETTERS to the EDITOR

Dear Editor: The October 20th issue of the TIMES JOURNAL captioned the historical flag raising of Mt. Suribachi during the Iwo Jima campaign in 1945. Those who served with the Marine Corps may feel a qualified resentment to the inference that the TIMES JOURNAL acclaims recognition for uncovering information that the Rosenthal photograph did not depict the true facts behind the epic flag raising.

The Marine Corps never intended that the public be misled into believing that the Rosenthal photo be construed as the first flag raising. Newspapers, magazines, documentary accounts and official Marine Corps campaign publications informed the public many years before the TIMES JOURNAL that the Rosenthal flag raising was not the first American flag to fly over Mt. Suribachi.

Regardless of who raised the first flag, or who first photoed this event, the public must not dwell upon the needless distinction between photographs; rather, the unforgettable carnage in one of the most costly single campaigns of World War Two.

Respectfully, R. R. Campbell.

C. Creek Garden Club Will Meet

Clover Creek Garden Club will hold its regular monthly meeting Tuesday, Nov. 8 at 8 p.m. in the home of Mrs. Russell Dawson, 3802 East "D" St. Each member will bring a craft idea to be used as a Christmas decoration. The annual Christmas party will be planned.

Rainbow Mothers Will Meet Tonight

The Rainbow Mother's Club of Faith Assembly 145 will meet at the home of Mrs. Fred Anderson tonight at 7:30 for coffee time and 8:00 for the business session. Members should bring scissors and crepe paper since crepe roses are going to be made. Call Mrs. Fred Anderson for further information at VI 7-2160.

"Return To Nazareth" Film Will Be Shown

Familiar incidents in the life of Christ are dramatized in full color in the motion picture, "Return to Nazareth," to be shown Sunday, November 6th, at 6:00 p.m. and again at 8:00 p.m. at the Immanuel Baptist Church at the corner of 94th and Pacific Avenue.

The Rev. Ed Coy, Pastor, of the film portrays the wedding feast, at which Jesus changes water to wine; His ejection from the synagogue as He declares that the prophesy of Isaiah has been fulfilled; and His meeting with the Samaritan woman by the well.

"These and other events are reverently, accurately and dramatically portrayed in the magnificent motion picture," Rev. Coy said. "The series which we are now running is giving many people a new and vivid impression of the greatest story ever told."

The public is invited to all showings.

This Sunday at the Church, there will be morning worship services at 8:30 a.m. and 11:00 a.m. During the 9:45 a.m. Sunday School hour, all youngsters in the Junior Department and under will be privileged to see the seventh installment in the "Living Christ" series film. All youth groups meet at 5:45 p.m. After the 6:00 p.m. showing of the film, evening services begin at 7:00 p.m. A repeat of the film will be shown at 8:00 p.m.

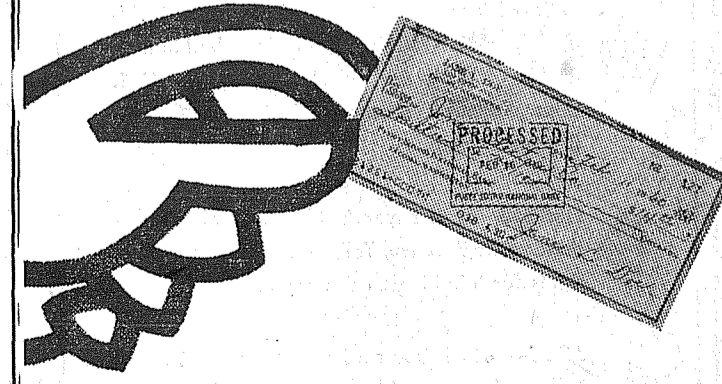
Bob's Barber Shop
9820 Pacific Avenue
Courteous Service Always
Hours 9 to 6 Tues. thru Sat.

BARSOTTI & TIMM
Top Values
VARIETY & PAINT
At the Roy Y LE 7-4221
Open 7 Days a Week, 7 a.m.-9

SUMMIT VIEW AUTO REPAIR

FEATURING - QUALITY FIRST
All Work Unconditionally Guaranteed
Parts and Labor
10904 E. Canyon Road LE 1-0424

you can prove you paid that bill



Check With The Puget Sound

Tacoma's Home-Owned Preferred Service Bank!

Pay by check and have a receipt that can't be questioned - positive proof of payment, and mighty handy at income-tax time, too. (Even if you lose your cancelled check, Puget Sound has a microfilm record.) Just another Preferred Service you get when you check with the Puget Sound!



PUGET SOUND NATIONAL BANK

84th and PACIFIC

MEMBER FDIC

7 Reasons why we Urge you to VOTE...

FOR STATE SENATOR

RETURN

TOM Montgomery

TO OLYMPIA

For State Representatives

ELECT

CHUCK BOND

YOU VOTE FOR BOTH

ELECT

W. T. "WALLY" STAATZ

For This 25th District Team

1. We are tired of saturation tax programs to back up big state spending sprees. We do not appreciate being saddled with the second highest tax burden in the entire nation.
2. We are tired of expensive political machines that fail to give FULL VALUE results for our tax dollars.
3. We are tired of losing payrolls because the incumbents failed to act... We need active representation in Olympia.
4. We are tired of the incumbent State Senator who avoids discussion of the vital issues, whose voting record has led to a deterioration of the state's financial condition, and now asks re-election by seeking sympathy votes.
5. We believe our state representatives should both live and work in this district. We need representatives that have ALL their interests in the 25th District, NOT in the City of Tacoma, as do the incumbents.
6. We are tired of incumbents who attempt to fool us by bragging that they "fought" for the Puyallup-Eatonville cutoff when responsible citizens laid the groundwork as early as 1944. Authorization to place this highway on the state road system was granted before one of the representatives was even elected!
7. We do not like the fact that the incumbents became YES men to the Rosellini political machine.

We Urge You, Our Neighbors, to Join With Us When We Vote for MONTGOMERY, BOND, and STAATZ Next Tuesday. (REPUBLICANS)

Dr. Jack T. Scott, Dentist.....	Sumner	Joe Snopko, Farmer.....	Edgewood	Elton Rumburg, Accountant.....	Puyallup	
Ben Gonter, Farmer.....	McMillin	Margaret Groff, Town Clerk.....	Orting	Louis Dacca, Farmer.....	Pife	
Les Goels, Milkman.....	Orting	Kenneth Spooner, Sr., Farmer.....	Alderton	George Mason, Carpenter.....	Puyallup	
E. C. Williams, Jr., Farmer.....	Orting	Jerry Norris, Druggist.....	Puyallup	Norm Baldwin, Retired.....	Sumner	
Marvin Cooney, Airline pilot.....	Sumner	Fred M. Robbins, Retired.....	Puyallup	Merle McMillan, Electrician.....	Puyallup	
Albert Perdue, Contractor.....	South Prairie	Theresa Dassl, Housewife.....	Sumner	Harold A. Binder, Laundry driver.....	Puyallup	
Clifford Davenport, Retired farmer.....	Orting	John Finley, Retired.....	Puyallup	Gordon Hopkins, City clerk.....	Pife	
Dave Williams, Telephone worker.....	Eatonville	Chester K. Edwards, Farmer.....	Lake Tapps	Leo Sutter, Dairy driver.....	Puyallup	
Vern Fisher, Radio salesman.....	Eatonville	Malvin L. Storoz, Retired.....	Puyallup	Ed Shoe, Barber.....	North Puyallup	
Larry Cleary, Sign painter.....	Midland	Gifford Van Eitan, Custodian.....	Puyallup	John Poolman, Plant worker.....	Sumner	
Mervl Ham, Tractor driver.....	Carbonado	Nels V. Ronn, Farmer.....	Edgewood	Owenin (Swanee) Swanson, Mechanic.....	Puyallup	
Emil Torrinson, Retired.....	Orting	Jacob Norstrom, Electrician.....	Puyallup	Mrs. James (Elean) Roll, Teacher.....	McMillin	
Freeman Mover, Insurance man.....	Orting	R. O. Loran, Retired teacher.....	Mt. View	Erwin Corken, Minister.....	Puyallup	
Peter S. Heinz, Chemical worker.....	Sumner	Glen Cushing, Retired.....	Puyallup	Janet Waterhus, Teacher.....	Puyallup	
Wilmer Reiso, Farmer.....	McMillin	Ray Brustad, Auto Salesman.....	Puyallup	J. N. Phillips, Retired school sub.....	Buckley	
A. R. Gately, Telephone Manager.....	Orting	Jynn McQueston, Machinist.....	Electron	Andrew Helling, Teacher.....	Puyallup	
Wm. Herbert, Greenhouse.....	Edgewood	Frank Siders, Mechanic.....	Orting	Jacob Kessler, Farmer.....	Pife	
Alan Manning, Mechanical Engr.....	Puyallup	Ruth Bryan, Office worker.....	Puyallup	Jack Willis, Salesman.....	Puyallup	
Ruth Heinz, Office worker.....	Sumner	Paul Weaver, Retired.....	Sumner	Fred Heimbiener, Burner serviceman, Woodland	D. D. Roberts, Plant worker.....	Puyallup
Richard Wall, Papermill worker.....	Sumner	C. E. Waller, Retired.....	Puyallup	Allen Mayers, Oil company.....	Sumner	
C. W. Van Scoype, Real Estate.....	Orting	Victor McMann, Cold storage.....	Orting	Merve Ward, Farmer.....	Alderton	
Henry J. Walsworth, Sr., Electrician.....	Orting	Arthur Johnson, Warehouseman.....	Puyallup	Rufus Fairbanks, Telephone employee.....	Puyallup	
Gary Gonter, Teacher.....	McMillin	Lee Haase, Engineer.....	Sumner	Robert W. King, Personnel worker.....	Mt. View	
Grace Wall, Teacher.....	Sumner	Paul McCarty, Vault worker.....	Puyallup	Wade Ince, Tree manager.....	Buckley	
W. K. Adams, Retired.....	Orting	John Lear, Truck driver.....	Sumner	Ernie Whitmore, Hardware.....	Buckley	
Phil Ham, Logger.....	Carbonado	Allen Green, Safety director.....	Puyallup	Dorrie Koval, Registered nurse.....	Puyallup	
B. Brewer, Farmer.....	Orting	Julius Grotzer, Dairyman.....	Edgewood	Mrs. Denny Butler, Storekeeper.....	Kavowsin	
Bill Hemmings, Nurse.....	Sumner	Quentin MacFathon, Salesman.....	Puyallup	Under Phillips, P.-I. Agent.....	Puyallup	
Herbert Jones, Jr., Airline pilot.....	Eatonville	Mrs. Clara Wentworth, Housewife.....	Puyallup	W. MacDonald, Insurance.....	Buckley	
John Balmer, Dairyman.....	Orting	Austin Sears, Farmer.....	Orting	Charles Massey, Cabinet maker.....	Puyallup	
Jack Brewer, Contractor.....	Orting	Mrs. Elvina Custard, Housewife.....	Puyallup	Frank Sutter, Dairy worker.....	Pife	
Shirley Wickell, Glove Mfg.....	Orting	Bernard J. Johnson, Mill worker.....	Puyallup	E. G. Peterson, Retired logger.....	Buckley	
Floyd Forrestal, Forestry.....	Firestone	O. P. Youngblood, Horticulturist.....	Mt. View	John A. Lenfestey, Retired.....	Puyallup	
William Hamolan, Farmer.....	Orting	Elizabeth Benson, Secretary.....	Puyallup	George Savage, Miner.....	Wilkeson	
Frank Johnson, Tractor salesman.....	Midland	Vern Virgil, Carpenter.....	Edgewood	Raymond Richards, Mechanic.....	Puyallup	
Robert D. Cone, Forester.....	Orting	Harley Butler, Retired.....	North Puyallup	E. E. Peake, Retired.....	Summit	
Louis Miller, Forestry.....	Eatonville	Tony Larson, Plant worker.....	Sumner	Miles Hatch, Farmer.....	Alderton	
Harold Irish, Bank worker.....	Orting	Myrtle V. Jones, Bookkeeper.....	Puyallup	Paul F. Sulkosky, Sr., Farmer.....	Puyallup	
James O'Ravez, Farmer.....	Edgewood	Ernest Caster, Electrician.....	Sumner	George A. Newcomber, Painter.....	Woodland	
Ronna Weaver, Librarian.....	Orting	Burnett Campbell, Gas sta. attendant.....	Puyallup	Dr. J. W. Kalkns, Retired.....	Mt. View	
C. W. Hughes, Blacksmith.....	Orting	Paris Hurst, Painter.....	Puyallup	Glenn A. Huber, Farmer.....	No. Puyallup	
Dr. J. H. Corliss, Retired.....	Sumner	Harvey Runga, Produce manager.....	Edgemont	Frank A. Chervenka, Farmer.....	Alderton	
Clarence J. Ball, Service Station.....	Alderton	Marion A. MacRea, Youth worker.....	Puyallup	Darrell Carpenter, Railroad worker.....	Puyallup	
Dr. W. B. Mitchell, Physician.....	Sumner	W. J. (Pete) Peterkin, Teacher.....	Sumner			
		George Simpson, Draftsman.....	Puyallup			

This Ad Paid For by the Citizens Committee for Better Government, Miles B. Hatch, Alderton, Secretary

a-Wondering . . . and a-Wandering . . .

With JACK BROWN

One of our customers has a pet peeve, and justly so. He's the kind of big hearted businessman that gives till it hurts everytime a member of some local club puts the bite on him for a donation. Finally the day comes the club has a buck or two to spend. Where do they go to part company with same? Downtown to the needle nose boys . . . Natch. Can you blame him if he starts pitching the gimme boys out on their ears? I think all of us should think a little before we buy whether for a group or for ourselves. If anyone deserves our consideration it's our local merchants. They live in our area, serve our area, and support our area in every way. If it were not for their tax dollars our spending money would be considerably less after we had made up the tax deficit. Why not shop at home and really save in more ways than one?

"Americans are giving auto makers abroad a severe jolt by snubbing foreign cars for Detroit's compacts." This year's sales of imported cars is estimated at a little more than 500,000 units, as against 610,000 in 1959. And a further drop, to 450,000 imported units, is forecast for 1961.

We've all read prophecies to the effect that the Soviet Union is swiftly overtaking us in production, and that we're in danger of becoming a second-rated power.

An antidote to that has been provided by Bryce N. Harlow, deputy assistant to President Eisenhower, who said, "In order to enjoy the glories of the present Soviet system, we would have to abandon three fifths of our steel capacity, two thirds of our petroleum capacity, 95 per cent of our electric motor output, destroy two of every three of our hydro-electric plants, and get along on a tenth of our present volume of natural gas. We would have to rip up 14 of every 15 miles of our paved highways and two of every three miles of our mainline railway tracks. We'd sink eight of every nine ocean-going ships, scrap 19 of every 20 cars and trucks, and shrink our civilian air fleet to a shadow of its present size. We would cut our living standard by three fourths, destroy 40 million TV sets, nine of every ten telephones, and seven of every ten houses; and then we would have to put about 60 million of our people back on the farm . . . In answer to the claims that the Russians are leap-frogging us in electric power facilities, Mr. Harlow declared that if they are to catch up with us by 1980, they must, in the next 20 years, build the equivalent of a brand new Hoover Dam every 21 days . . ."

Mr. Harlow also dealt with the military picture. We are, according to him, well ahead of the Soviet in various important weapons and other assets — including bombers, nuclear submarines, aircraft carriers, and allies and foreign bases.

No one with good sense underestimates Soviet power, existing or potential. But it's equally senseless to under-rate our own achievements and strength.

In this 1960 election, the nominees of both parties might well advise their listeners to consider their arguments in a strictly American context.

My advice to you would be not to take Khrushchev or the God of war into the voting booth with you on Nov. 8th. Go in there alone and use your cherished right to choose wisely between two good Americans.

Canyon Road . . . Polluck Dinner Will Be Nov. 10

The Canyon Road Community Club will have a pot luck supper next Thursday at 6:30 p.m. Chairman for the event will be Mrs. Clarence Baker with ladies of the club assisting. The main dish will be furnished by the club with the members asked to bring two of the following: hotdish, salad or dessert. Guest speaker will be Mr. John Simac who will give a talk and show slides of the Mt. Rescue Service.

New Neighbors

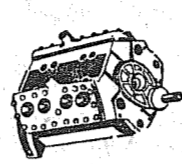
We are very glad to welcome to this community Chief Warrant Officer and Mrs. Otto Guthrie, son Steven and daughters Valerie and Denise. The Guthries have purchased the Moody Home on Canyon Rd. They have just returned from Wertheim, Germany, where they were stationed for 3 years. Mr. Guthrie is now at Ft. Lewis. Renting The John Moddy family are renting the Gallagher home on Canyon Road until they can build a new one which will also be on Canyon Road. Square Dance News There is a class in intermediate Round Dancing held at the Canyon Road Community Hall every Tuesday evening after the Square Dance lessons finish at 8:45. No lessons will be held next week however. Reporter — Mrs. John Folk.

On a treadmill at the University of Maryland, a snail maintained an average speed of 23 inches an hour.

Bethel Board Meets Nov. 4

The Bethel High School library will be the scene of the regular meeting of the Bethel School Board, November 4. The meeting will begin at 8 pm. Dr. Henry Bertness, Director of the County Cooperative Services, will speak on the county testing and psychological program that will benefit the Bethel district. Other routine business will be discussed.

**LINOLEUM, FORMICA,
CARPETS
FREE ESTIMATES
PACIFIC FLOOR COVERING
131st & Pacific LE 7-4545**



BRAKE DRUM TURNING

Valve Seats Installed, Complete Motor Rebuilding, Reboring, Pin fitting, Lathe and Press Work, Head Surfacing, Key Seating, Pistoning Grinding, etc.

Rupe Machine Works and Garage

AUTOMOTIVE & INDUSTRIAL WORK
13411 Pac. Ave. P.O. Box 2445 Parkland 44, Wn. LE 7-7450

VAUGHAN'S VALUES

SAVE FUEL — SAVE MONEY

Insulate with ZONOLITE



EASY TO USE—JUST POUR IT

(10 Day Special)

PER BAG **1.59**

VAUGHAN'S PACIFIC LUMBER

84th & Pacific Avenue GR 4-9515



Fall STOCK-UP!

SAFEWAY

What a joy to have
your cupboards well-stocked!

-- and you can do it now at BIG SAVINGS

Crisco

Pure vegetable shortening. All-purpose. Special low price.

3-lb. Can **69¢**

Flour

FISHERS. Special weekend feature. 5-lb. Bag 45c.

10-lb. Bag **79¢**

Soup

CAMPBELL'S Tomato. Special feature. Weekend low price.

10½-oz. Can **10¢**

Sale starts 9 A.M. Thursday, November 3rd through Saturday, November 5th in Tacoma, Sumner, Puyallup and Lakewood. We reserve the right to limit quantities. No sales to dealers.

Fresh Eggs

LARGE "AA" Cream O' The Crop. Dozen

55¢

MEDIUM "AA" Cream O' The Crop. Dozen

50¢

Ice Cream

SNOW STAR, Assorted flavors . . . take home several of this delightful dessert. Gal. \$1.17

Half Gallon **59¢**

Peaches

MELLOWEST Sliced Elberta. Dozen \$2.95

4 No. 2½ Cans **\$1.00**

Waldorf Tissue

White or Assorted 4 Roll Pack **29¢**

Scot Towels Assorted colors. 5 Reg. \$1 Rolls

Scot Tissue Assorted colors. 4-Roll Pack **45¢**

Scotties Assorted colors. 2 Pkgs. of 400 **49¢**

Paper Napkins SCOTT Pkg. of 60 **10¢**

Confidets Sanitary Napkins. Pkg. of 12 **45¢**

Pancake Mix BETTY CROCKER 4-lb. Pkg. **49¢**

Raised Donuts Mrs. Wright's Dozen **39¢**

SHORTENING

Golden Keen

3-lb. Can **49¢**

Cereal Sale

TWINKIES 8½-oz. COCOA PUFFS 8½-oz. WHEATIES 12-oz. CHEERIOS 10½-oz.

3 Pkgs. **79¢**

DOLLAR CANNED FOOD BUYS

TOWN HOUSE. Low price. Dozen \$2.39
Fruit Cocktail 5 16-oz. Cans **\$1**

TITAN Cut. Low price. Dozen \$1.29
Green Beans 9 16-oz. Cans **\$1**

GARDENSIDE. Low price. Dozen \$1.69
Tomatoes 7 16-oz. Cans **\$1**

Special low price. Dozen Btls. \$1.69
Catsup STOCKTON 7 Btls. **\$1**

With Beans. Hot or Mild. Dozen \$2.95
Nalley's Chili 4 16-oz. Cans **\$1**

EMPRESS, Orange, California Style
Marmalade 4 10-oz. Jars **\$1**

Beef Rib Roast

U.S.D.A. Choice. Chose one of these specially prepared, scientifically aged Beef Ribs. Safeway prepares them for your oven for easy carving.

LB. **75¢**

Fresh Pork Spareribs lb. 49¢

Beef Loins lb. 89¢

U.S.D.A. Choice. Whole. Flanks Removed. Includes Club, T-Bone, Porterhouse, Sirloin Steaks.

Pork Roast Shoulder, Round Bone lb. **33¢** Steak U.S.D.A. Choice Beef. Spencer Steaks. Boneless. lb. **\$1.29**

Hams FRONTIER, Boneless. Whole, Half or quarter. 11-13-lb. lb. **69¢** Turkeys LYNDEN, 18 to 22-lb. 1960 Crop. Grade A. lb. **43¢**

Pork Steaks Shoulder, Blade Cut. lb. **49¢** Fresh Pork Shanks lb. **19¢**

Bacon Diamond "F" Piece, Whole or Half. 6 to 10-lb. Slabs. lb. **45¢** Fish Sticks CAPTAIN'S CHOICE 3 8-oz. Pkgs. **\$1.00**

Scotch Treat Fresh Frozen

STRAWBERRIES 2 10-oz. Pkgs. **39¢**

Safeway's Fresh Produce!

No. 1 Potatoes

Select Netted Gems. Washington Grown 100-lb. Sack **\$4.89** **10 lbs. 49¢**

Texas Pink Grapefruit 4 for **29¢**

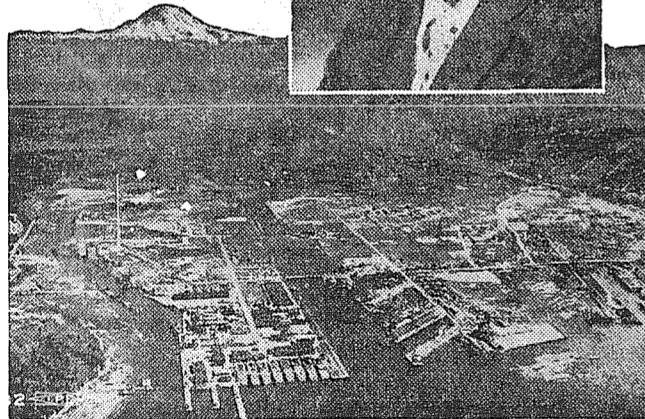
Onions Yellow 5 lbs. **19¢** Emperor Grapes lb. **10¢**

Fresh Dates 2 lb. **59¢** Assorted Nuts lb. **49¢**

COUNTRY BOY'S AUTO PARTS
OPEN 7 DAYS A WEEK
CUT RATE PRICES ON ALL PARTS
BRAKE SHOES **\$3.95** Set of 4 Most Cars
WILLOWS CORNER, AIRPORT & SO. MERIDIAN TH 5-4451

Port Commissioner

ARCHIE BLAIR



To My Friends in Parkland:

Retain PORT COMMISSIONER
A. E. (Archie) BLAIR



Blair's program of development for the Port of Tacoma is sound and progressive. The policies now guiding this vast public enterprise must not be scrapped. My urgent recommendation to you: Vote to retain Port Commissioner Archie Blair.

CLIFF OLSON



VOTE YES ON Initiative 210

DAYLIGHT SAVING TIME
WILL GIVE US . . .
**MORE TIME . . .
TO LIVE MODERN**

**MORE TIME . . .
TO PLAY**

**MORE TIME . . .
TO ADVANCE**

Pd. Pol. Adv. By Merchants For
Daylight Savings Time

Kotzebue Hotel Owner Visits

Miss Doris Kigrook was a visitor at the Robert Bartleys on 112th St. last week. Miss Kigrook came all the way from Kotzebue, Alaska on a trip to California, stopping to visit the Bartleys on the way. She has the distinct honor of running the only hotel in Kotzebue, which caters to a growing tourist trade every season despite the fact it is over 100 miles north of Ketchikan.

Games Night At Benston Saturday

The Benston Grange Auxiliary is busy making final plans for two occasions. Saturday, Nov. 5 will be Games Night; and Saturday, Nov. 12 will be sponsorship of the 4-H Leaders Banquet at the Benston hall.

Nov. 8 will be election night for Benston members. Officer for 1961 will be elected.

The annual Grange birthday dinner will be Nov. 22.

The Auxiliary will meet on Friday, Nov. 25 with Mrs. Anna Stromberg.

Estimates Without Obligation
QUALITY HOMES
DESIGN ASSISTANCE

Hedlund Const.
868 Tule Lake Rd. LE 7-4227

John Adams, Benjamin Franklin and John Hay concluded the final treaty with Great Britain in London in 1783.

WIT'S END GIFT SHOP

**NOW OPEN TO SERVE YOU
WITH GIFTS FOR EVERY OCCASION**

Virginia Invites You To Have A
Cup of Coffee With Her During
The Official Grand Opening

NOV. 12

5322 East 112th

Summit View

**Lucky and
BIG BEAR
STORES**

MEAT SPECIALS

**SLAB
BACON lb. 29**

WHOLE OR HALF SLAB

**GROUND
BEEF lb. 29**

GROUND FRESH HOURLY

BEEF TONGUE	NO. 1 STEER BEEF	lb. 39
BEEF HEARTS	FRESH! IDEAL FOR STUFFING	lb. 35
BEEF LIVER . . .	FANCY NO. 1 STEER BEEF	lb. 39

**NALLEY'S
MAYONNAISE**

PER
QUART **39**

**LUCKY
SHORTENING**

CAN
3-LB. **49**

**HUBBARD
SQUASH lb. 1**

Thick Meated, Full Flavored, Well Matured . . . Any Size Piece

FOR ADDITIONAL FOOD VALUES, SEE OUR
REGULAR PAGE AD IN THE WED. TRIBUNE!

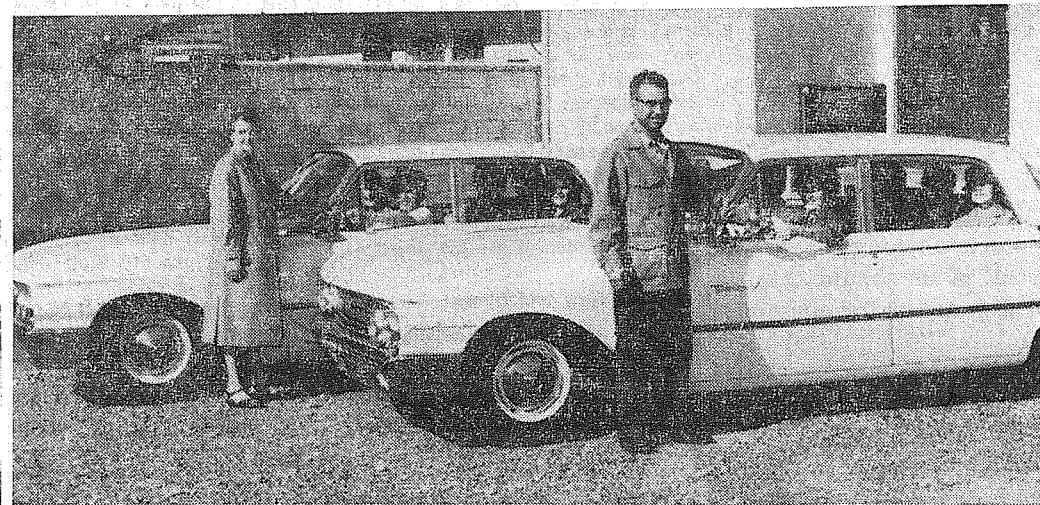
FREE PRIZES THIS WEEK . . . DETAILS IN THE TRIBUNE

133rd & Pacific - Parkland
Store Hours 9 to 11 Daily—9-9 Sunday

**Lucky and
BIG BEAR
STORES**

SALE PRICES EFFECTIVE WEDNESDAY THROUGH SATURDAY
WE RESERVE THE RIGHT TO LIMIT PURCHASES

Here Is One Way To Get A New Car Free!



A TEAM of local Tupperware managers receive the keys to identical 1961 Ford Fairlane 500 automobiles in a presentation ceremony this week. The presentation is being made by Mr. and Mrs. Philip King, independent Tupperware distributors in the area. Those receiving the cars were Carol Hominda of Spanaway and Bertha Montgomery of the Lakewood area. The managers, who operate local independent businesses, were provided the cars for a two-year period on a replacement basis. (Photo by McKewen.)

New Cub Pack Organized

The organization of a new Cub Pack 107 is under way covering the Andrew Christensen School area. The second Pack Meeting is scheduled for November 17, 1960 at 7:30 p.m. in the school Multipurpose Room.

Appointed to the Pack Committee are R. Cushnyr, chairman; D. Hulbrook, secretary; J. Nuckolls, treasurer; W. Hart, membership; R. Houseman, awards; G. Potter, Institutional Representative.

Den mothers are Mrs. B. Bell, Mrs. B. Mundell, Mrs. G. Simpson and Mrs. B. Hart, with Mrs. B. Ellis, Mrs. D. Macera, Mrs. B. Hall and Mrs. M. Nuckolls acting as assistant den mothers. Appointed as den dads are D. Carr, Mundell, C. Cooper and W. Hart. Cubs registered to the Pack are Dale Adams, Terry Anderson, Gary Buckman, Arthur Butler, John Carson, Larry Cooper, Gerald Cushnyr, Steve Devel, Roger Ellis, Alan Hall, Michael Harbert, William Hart, Richard Houseman Jr., Patrick Hulbrook, Brian Johnson, Kerry Kennedy, Timmy Kinkade, Robert Meyer, David Mundell, John Nuckolls, Barry Potter, Kirk Potter, Dan Simpson, Ronnie Torgeson, Douglas Williams, and Ronnie Woodward.

D. J. Carr has been appointed cubmaster and his installation will take place at the November 17th meeting.

All interested parents in the Christensen area are urged to attend, bringing with them their boys who want to become part of the Cub Scout Program. Further information can be obtained from Mr. Hart, LE 7-3930.

Back To School Night Nov. 7

Back to School Night for parents in the Roy area will be the theme for the Roy PTA meeting to be held Nov. 7 at the Roy Grade School. Mr. Solie, Program Chairman, has a special program planned.

Election of officers was the main order of business in the October 30 meeting of the Silver Spurs 4-H club. Those members elected were Marjan Kravic, president, Teresa Jones, Secretary, Kathy Kizer, Vice President, Henry Trusler, reporter, Bonnie Engbreton, Historian, Richard Dickey, Sergeant at Arms and Elsie Trusler, Recreation Chairman and Trail Boss. Meeting dates are set for the first Sunday afternoon (1:30 p.m.) of each month. The next meeting will be held at the home of the assistant leader, Mrs. Ted Lantz. Three interesting demonstrations are planned—Grooming the Horse, Safety Rules for Handling the Horse, Blemishes and Unsoundness of the Horse.

The club is collecting deer hides for projects planned for the year. Anyone having these hides which they would like to donate is asked to call the leader, Mr. Henry Trusler, at Roy 373.

A very interesting and instructive year is planned for this club. Any potential 4-H member who would like to carry a horse project and be a part of the club is welcome to come to the next meeting.

Reporter — Martha Berggren.

Local Army Men Return Home

Medical Specialist 4 Robert Kaelin, son of Mr. and Mrs. Conrad Kaelin, is now at home after receiving his army discharge Oct. 27.

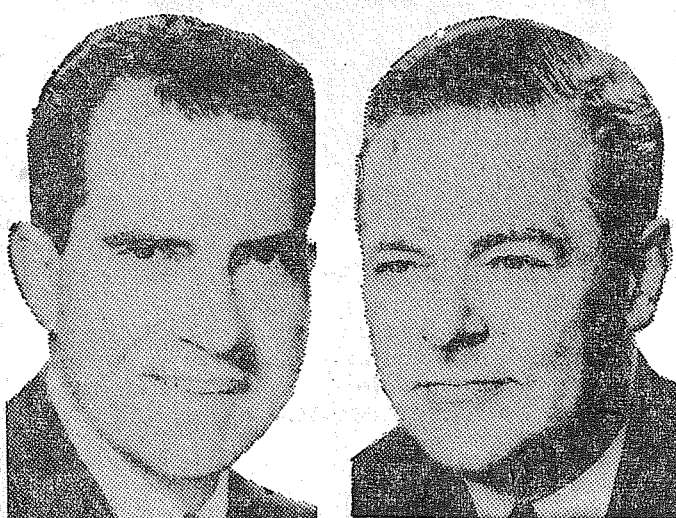
Lloyd Eclandson has received his army and is home again.

Mrs. Conrad Kalin and Mrs. Gordon Geisler visited Mrs. Bandle of South Prairie on Wednesday.

Mr. and Mrs. Les Doyle are parents of a daughter born Oct. 27th.

Reporter — Mrs. Eva Pearl Morris.

VOTE NIXON LODGE TOLLEFSON



It's
Experience
That
Counts



Pd. Pol. Adv.—Rep. Nat. Committee



Well Baby Clinic Meets Next Wed.

The Harvard, Midland, Central Avenue and Collins well baby clinic will be at Midland Fire Hall Wednesday, Nov. 9.

Registration will be from 9 to 10. Dr. William McPhee is the attending physician. For further information contact Mrs. Dave Lorange.

Ham Dinner Will Be Served Sunday

A ham dinner will be served by St. Ann's Parish at St. Ann's School, 72nd & G St., from 12 to 6 Sunday, Nov. 6. Prices are \$1.50 adults, 75 cents children, and \$5.00 family rate.

It Pays To Advertise in
The Times Journal
Classified Section

Rural Garbage Service
Pierce County Permit
Serving Parkland, Midland,
Summit and Spanaway
LEnox 7-8688

**DURING SALE
10% OFF
To Everyone**

Why Drive Down Town
— WE CARRY —
**GLASS, HARDWARE
PAINT
— FISHING TACKLE —
LICENSES**
Hrs. 9 to 6 P.M.

**Park Ave. Hardware
AND PAINT COMPANY**
83rd & Park GR 4-0051

NEWS FLASH

SIGN UP NOW FOR NATURAL GAS

AT PARKLAND HEATING

We are happy to make the announcement that Natural Gas has finally reached the Parkland area. As specialists in gas heating equipment, we recommend the Payne Gas Furnace for those who may be considering a change from an obsolete heating system to modern natural gas. If you are interested in seeing the map of the gas line routes and how they are being laid, Parkland Heating Co. has one posted in their office, and will be happy to assist you in any way.

Payne FORCED AIR HEATING

with **astrogard**

Payne MAKES THE DIFFERENCE

Has A Model And Size For Every Need or Requirement

Fail-Proof . . . Rust-Proof Heart . . . Unequaled Quality . . . Matchless Performance. "Gas Heat is Safe, Clean Heat"

CALL LE7-4045

For the finest in natural gas heating
Easy Financing—Free Estimates

PARKLAND HEATING CO.

755 So. 108th Parkland

ALL THROUGH
YOUR HOME



Super-Kem-Tone

Even if you have never painted, you can give walls and woodwork a uniform coat of color . . . with this velvet-smooth paint.

We Carry A Complete Stock

STEP LADDERS
5 Ft. Reg. 6.95 \$4.19
6 Ft. Reg. 8.95 \$5.29

**SOUTH END
PLUMBING &
HARDWARE**

185th & Pacific Ave. LE 7-4100
PHEASANTS FOR SALE

Building Permits

Frank X. Hansler, \$1,000 addition to residence, 414 So. Violet Meadow; A. L. Sonie, \$400 adn. to res., 722 So. 117th; Lawrence Leigh, \$500 remodel to garage, Kapowsin; Obed VanVolkenburg, \$200 adn. to trailer, Knoble Rd. Span. area; James Schultz, \$16,750 residence, 9918 Pennsylvania Ave.; Mrs. F.H. Steichen, \$90 shed, 9813 So. Park Ave.; W.C. Roley, \$2,000 adn. to office, 1813 E. 99th and Louis Von Salzen, \$4,200 residence, Ashford, Wash.
 Carl F. Miller, Jr., \$13,000 residence, 10445 So. Ainsworth; Mayer and Peterson, \$13,000 residence, 10504 E. Spruce; Jerry Brooks, \$14,000 residence, 8703 E. Taylor; Napoleon Bestoso, \$300 carpet for trailer, 11419 Lundbald Rd.; Harry R. Bemis, \$500 garden shed, 11818 Golden Given and Elmer Haake-son, \$1,000 trailer, 13113 A Street.
 Eunice Mae Dixon, \$400 adn. to residence, 905 So. 115th; Clinton R. Capps, \$10,500 residence, 5217 E. 138th; Wesley E. Baker, \$6,000 residence, 176th & Stony Rd. Span.; Vern L. Geesey, \$13,000 residence, 11451 L Street; Ray Henricksen, \$20,000 residence, Rt. 1, Box 104, Eatonville; Town & County Realty, \$8,800 residence, 804 So. 137th; Paul B. Sparkman, \$1,000 residence, 10223 Pac. Ave. and Lawrence Briske, \$750 remodel to residence, 8714 E. Taylor.

PIERCE COUNTY REFUSE CO.
 Weekly Garbage Collections
Phone LE 7-8688

POWER TOOLS FOR RENT

SANDERS-EDGERS-POLISHERS-HAND SANDERS SKIL SAWS-ELECTRIC DRILLS-CEMENT MIXERS ETC.-ALSO HAND TOOLS FOR RENT

Anderson Lumber

9813 Pacific Avenue LE 7-7311

Prof. At Parkland Church



PROFESSOR BOYD L. LAMMIMAN from Puget Sound College of the Bible in Seattle will be speaking at the Parkland Christian Church the first three week ends in November. The church is located at 138th and Yakima. There will be a series of classes on each Friday and Saturday evenings at 7:30 p.m., on the two themes "The Gospel Story," and "The Church That Jesus Built." A sermon series will be given Sunday mornings at 11:00 a.m. and Sunday evenings at 6:30 p.m. on the theme of Evangelism as follows: Sunday, Nov. 6, A.M. "The Harvest Field"; P.M., "As You Go." Sunday, Nov. 20, A.M., "They Had Been With Jesus"; P.M., "Til We Meet" Vincent D. Smith, minister, extends a cordial invitation for all to attend these services.

It's the LAW
 WASHINGTON STATE BAR ASSOCIATION
 Jerry Jones, 20, was stopped and arrested on a reckless driving charge. The officer who arrested him saw several bottles of beer in the car. Jones and Willy Smith, 18, a passenger in the car, had both been drinking. Jones was charged with unlawfully having liquor in his possession and unlawfully supplying beer to a minor, in addition to reckless driving. At the trial Jones testified that he had obtained the beer in Idaho. (This column is written to in-where a 20-year-old may lawfully purchase beer. Both boys testified

County Agent's Corner

By Joseph Buhaly
 Dozens of Christmas tree displays provided a holiday setting for the third annual Christmas Tree Trade Fair held recently in Portland, Oregon. Producers and buyers from Washington, Oregon, and California were present making purchase arrangements for the coming holiday season. Several Pierce county evergreen producers were in evidence with attractive and interesting displays.
 One Puyallup producer has developed a new type of Christmas tree especially suitable for trailers, apartments, and small dwellings. It is a two dimensional tree having height and width but very little depth. Such a tree takes up a minimum of space, yet provides an attractive Christmas tree background effect. Placing the tree in a store display window would dec-

orate, yet take up a bare minimum of space. This new type Christmas tree sparked the interest of several large purchasers.
 The Trade Fair is sponsored by the Northwest Christmas Tree Association in the interest of more efficient marketing of Christmas evergreen products. In addition a business meeting is held to air problems of producer, wholesaler and retailer. Benefits accrue to all participants through the ex-

THURSDAY, NOVEMBER 3, 1960
 The TIMES JOURNAL
 change of ideas and ultimately to the consumer in a better holiday product.
 By Ernest I. Hopp
 We are happy and proud when some of our local people are asked to share their experiences and knowledge with others. Such is the case with the 3rd annual Washington State University Poultrymen's (Continued on Page 11)

IT'S CHEAPER TO RENT THE TOOL YOU NEED
 GARDEN TILLER
 POWER LAWN MOWERS
 BELT HAND SANDERS
 OSCILLATING HAND SANDERS
 FERTILIZER SPREADER
 LAWN ROLLERS
 LAWN SEEDERS
 PAINT SPRAYERS
 RUG SHAMPOO MACHINE
 POWER MOWER SHARPENING & REPAIR
 WINDOW GLASS INSTALLED
PARKLAND HARDWARE
 12169 Pacific Ave. LE 7-3171

INTERURBAN AUTO FREIGHT INC.
 3 Trips Daily To Parkland, Spanaway Summit, Midland
 GENERAL FREIGHT
MA 7-4121

FIRST SEE NATIONALS
PARKLAND AUTO PARTS
 127th & PAC. AVE. LE 1-1331

Want convenience?
THINK FIRST OF PACIFIC FEDERAL SAVINGS

Pacific Federal Savings and Loan Association
 Bellingham • Seattle • Tacoma
 Longview • Portland • Eugene
 11th AND PACIFIC LAKEWOOD AT VILLA PLAZA

4% CURRENT RATE
 COMPUTED ON MONTHLY BALANCES
 PAID 4 TIMES A YEAR

PEDERSON WASH. GROWN CUT UP

FRYERS Lb. 39c

STEAK 69c
 ROUND • RIB • SIRLOIN Lb.

100% PURE
★ GROUND BEEF ★ 3 Lbs. For 89c

T-BONE STEAK Lb. 79c
 All Cuts

WELL TRIMMED
RUMP ROAST Lb. 59c

LARGE
CHEX EGGS Doz. 49c

BETTY CROCKER
FROSTING MIXES - OR - CAKE MIXES 3 Pkgs. For 89c
 MIX 'EM OR MATCH 'EM All Assorted Flavors

VETS DOG FOOD 15 CANS FOR \$1.00

3 LITTLE KITTENS CAT FOOD 9 CANS FOR 89c

MAXWELL HOUSE COFFEE 1-LB. 65c 2-LB. \$1.29

INSTANT MAXWELL HOUSE 6-OZ. 89c

BAR-S Thrifty Sliced BACON Lb. 43c

SIRLOIN TIP ROAST ALL MEAT NO BONE NO WASTE Lb. 69c

FRESH Pacific Med. OYSTERS 12-oz. 59c

BARGAIN BASKETS OWN SYRUP 22-oz. 29c

CHILI CON CARNE 4/99c

FRESH CAULI. 15c EA.

LARGE BEEFSTEAK TOMATOES Lb. 10c

LETTUCE Head Only 10c EA.

INVENTORY CLEARANCE

OUT THEY GO! APPLIANCES

GENERAL ELECTRIC (HERE'S AN EXAMPLE)

AUTOMATIC WASHER \$100

Large 10-lb. Capacity Tub - Agitator Type Washer

FOLKS THIS IS JUST A SAMPLE OF THE SAVINGS YOU FIND AT WEIRS

Largest G.E. Display In The Pacific Northwest

WEIRS YOUR CORNER

8419 PORTLAND AVENUE LE 7-0231

OPEN 9 TO 9 SAT. 'TIL 6

ENTER THE CARNATION CARNIVAL!!
WIN! 61 OF THE WORLD'S MOST GLAMOROUS '61 CARS
 GET ENTRY BLANKS HERE

Carnation INSTANT 5 Qt. Envelope Pack 49c

Carnation Instant Chocolate Drink 10-oz. 35c

3/39c
 Carnation EVAPORATED MILK

NO SALES TO DEALERS

Our Prices Are The Best Around

BARGAIN BASKET
 16618 PACIFIC AVE. South SPANAWAY, WASH.

WE RESERVE THE RIGHT TO LIMIT QUANTITIES

STORE HOURS:
 9 A.M. TO 10 P.M.
 7 DAYS A WEEK

Classified

Page 10 THURSDAY, NOVEMBER 3, 1960
The TIMES JOURNAL

Business Service 3

COMPLETE remodeling, patios, porches, garages. Free estimate. SK 2-7587 3cfr

WELL DRILLING
Berkeley Pumps
• JETS
• SUBMERSIBLES
• CENTRIFUGALS
• TURBINES
Call LE 7-7281

TACOMA PUMP & WELL DRILLING CO.
14619 PACIFIC AVENUE
Terms Trades

SEPTIC TANK Drainfields Sewer installation. Luke. GR 2-7243

T and T PAINTING CO.
Efficient. Courteous Service
2325 So. Ash Street BR 2-0454

RADIATORS
CLEANED, REPAIRED, RE-CORED, REMODELED
Fast, Guaranteed Service
OPEN NIGHTS
DEL'S RADIATOR
10620 Pacific Ave.
LE 1-1288 or LE 1-1144

Boush Moving & Storage
Agents for U.S. Van Lines
Cost to Coast Service
11816 Pacific Avenue
LE 7-3696
Parkland, Wash.

COMPLETE TRACTOR WORK
Gravel & Driveways
LE 7-3846

South End Auto Wreckers
USED PARTS—Motors, Transmissions, Tires, Batteries. We buy junk cars. Also Custom welding by Joe's Welding.
1 Mile East Roy on Mt. Hy. Spanaway LE 7-6534

OUR NEIGHBORHOOD PAINTER and Taper; neat and reasonable. LE 1-2262 3cfr

CUSTOM-BUILT CABINETS
Pre-hung Doors—Free Estimates
FORMICA & GE TEXTOLITE COUNTERS
We Install Cabinets—Drain Boards
BAKER'S Woodworking Co.
LE 7-0565 — LE 7-3290
13415 Pacific Ave. Parkland

REMODELING
Winter rates, no money 'til February. Expert workmanship. Reasonable. LE 1-2923 3cfr

REMODELING
Winter rates, no money 'til February. Expert workmanship. Reasonable. LE 1-2923 3cfr

REMODELING
Winter rates, no money 'til February. Expert workmanship. Reasonable. LE 1-2923 3cfr

REMODELING
Winter rates, no money 'til February. Expert workmanship. Reasonable. LE 1-2923 3cfr

REMODELING
Winter rates, no money 'til February. Expert workmanship. Reasonable. LE 1-2923 3cfr

REMODELING
Winter rates, no money 'til February. Expert workmanship. Reasonable. LE 1-2923 3cfr

REMODELING
Winter rates, no money 'til February. Expert workmanship. Reasonable. LE 1-2923 3cfr

REMODELING
Winter rates, no money 'til February. Expert workmanship. Reasonable. LE 1-2923 3cfr

REMODELING
Winter rates, no money 'til February. Expert workmanship. Reasonable. LE 1-2923 3cfr

REMODELING
Winter rates, no money 'til February. Expert workmanship. Reasonable. LE 1-2923 3cfr

REMODELING
Winter rates, no money 'til February. Expert workmanship. Reasonable. LE 1-2923 3cfr

REMODELING
Winter rates, no money 'til February. Expert workmanship. Reasonable. LE 1-2923 3cfr

Business Service 3

COMPLETE remodeling, patios, porches, garages. Free estimate. SK 2-7587 3cfr

ART'S SHOE SHOP
Shoes for the Entire Family
EXPERT SHOE REPAIRING
315 Garfield St.
Between 121st and 122nd
Opposite Parkland Postoffice

NOW AT SILER'S
complete service on electric ranges makes Fast dependable. reasonable. LE 7-8634

ALL LE 3cfr

Parkland Heating Co.
All makes of furnaces for sale; Specializing in Williams OIL CO. MATICS OIL GAS Heat Water Installations. Electric Heat & Lighting Fixtures; Service; reasonable.
755 South 108th LE nox 7-4045

Ace Dirt Moving Co.
Bulldozing Ditching
TOP SOIL GRAVEL
SEPTIC TANKS AND
DRAIN FIELDS
Phone TH 5-2452

JACK SHANK'S
Refrigeration Service
Parts & Service for All Makes
LE 7-0178

GEORGE PURDUE—Plumbing Heating
New work remodeling, repairs. Phone LE 4-477

PHOTOS
5x7, \$1 — 8x10, \$2
For Appointment Phone
GR 4-1986—Open Evenings
FAMILY PORTRAIT STUDIO
8411 South Park Ave.

WEBB ELECTRIC COMPANY
Commercial—Residential
• ELECTRIC HEATING
• WIRING & ELECTRICAL SUPPLIES
• 24 HR. EMERGENCY SERVICE LE 7-4437
LE 1-1133
11112 Pacific Avenue

REMODELING
Winter rates, no money 'til February. Expert workmanship. Reasonable. LE 1-2923 3cfr

REMODELING
Winter rates, no money 'til February. Expert workmanship. Reasonable. LE 1-2923 3cfr

REMODELING
Winter rates, no money 'til February. Expert workmanship. Reasonable. LE 1-2923 3cfr

REMODELING
Winter rates, no money 'til February. Expert workmanship. Reasonable. LE 1-2923 3cfr

REMODELING
Winter rates, no money 'til February. Expert workmanship. Reasonable. LE 1-2923 3cfr

REMODELING
Winter rates, no money 'til February. Expert workmanship. Reasonable. LE 1-2923 3cfr

REMODELING
Winter rates, no money 'til February. Expert workmanship. Reasonable. LE 1-2923 3cfr

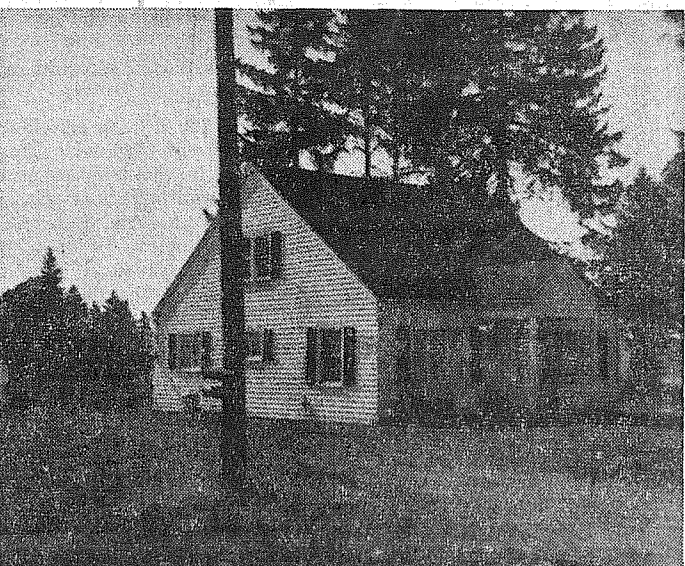
REMODELING
Winter rates, no money 'til February. Expert workmanship. Reasonable. LE 1-2923 3cfr

REMODELING
Winter rates, no money 'til February. Expert workmanship. Reasonable. LE 1-2923 3cfr

REMODELING
Winter rates, no money 'til February. Expert workmanship. Reasonable. LE 1-2923 3cfr

REMODELING
Winter rates, no money 'til February. Expert workmanship. Reasonable. LE 1-2923 3cfr

REMODELING
Winter rates, no money 'til February. Expert workmanship. Reasonable. LE 1-2923 3cfr



FOR RENT or FOR SALE QUICK—\$1,000 DOWN, \$85 MONTH
This spacious home is quality built, and could make a very desirable home for any size family. To see is to believe. Call LE 7-5440, we will be happy to show you thru.

RURAL REAL ESTATE

14403 Pacific Ave. LE 7-5440

We Have BUYERS for your HOUSE!
FARM and BLDG. SITES

Listings Wanted
DICK DEVEREAUX REALTY
Multiple Listing Service
Buying or Selling
Call LE 7-8659
11002 Pacific Avenue

Business Service 3
TOP SOIL—SANDY LOAM—Parkland area special. Puyallup. TH 4-8759 3cfr

TREES—SHRUBS LANDSCAPE PLANNING
EARLE'S EVERGREEN NURSERY
LE 1-1055
South End of Vickery Road

A-1 SANITARY SEPTIC TANK PUMPING AND SEWER CLEANING SERVICE
PUY. TH 5-2873

CALL POCHEL FOR Expert T.V. Repair
Satisfaction Guaranteed
Free Tube Testing
140th & Pacific LE 7-8624

SEPTIC TANK CLEANING
Prompt Service
C. V. HUTSON
GR 4-3980 GR 2-7038

Fuel
TWO foot Alder or Fir wood, \$8 per cord. 16-in Alder or Fir, \$10 per cord, you haul. Route 1, Box 119, Roy, 2 miles west of Johnson's Corner on Roy-Christie Road, C. L. Grace, Phone Roy 351. (Attention Fuel Dealers). 4cfr

ALDER WOOD, freshly cut, 24 inch, 34, 16-inch, \$16 per cord. Write J. Doerkens, Route 1, Box 217, Spanaway. 4p

FOUND—Bicycle. Owner may have by identifying and paying for ad. LE 7-7941. 4p

LIST WITH SUBURBAN
Home and Farm specialists in South End Properties. Two offices open every day and evening for your convenience

SUBURBAN REALTY, INC.
113th and Pacific, LE 1-8623
112th and Canyon, LE 7-0229
Member Multiple Listing Service & Tacoma Real Estate Board 3cfr

40 Acres Bethel Dist..... \$15,000
1 1/2 Acres, marine view..... 8,000
5 Acres, University Place..... 15,000
125x240, E. 97th St..... 2,150
300x150, Rainier Terrace..... 1,850
1/4 Acre close in..... 1,375
110x330, Woodland Rd..... 1,750
1/4 Acre, Ohop Lake..... 3,000
1 Acre, Summit area..... 2,000
1 1/2 Wooded acres..... 800
2 1/2 Acres, Waller Rd..... 4,000
3 1/2 Acres, Vickery Rd..... 3,300
5 Acres, Collins Rd..... 4,500
75x150x150 So. 134th St..... 1,250
24 Lots between 43rd & 44th on Wilkeson..... 10,000
10 Acres, 9th S.W..... 8,500
8-75x120 sites, S. 84th..... 6,750
9 Acres, Spanaway..... ea. 1,750

SPANAWAY
Fenced level 1/2 acre, barn and corral plus 2 bedroom home, brick fireplace. Price \$7,500. Call Mary Nagley, LE 7-8651. 787

SPANAWAY
Fenced level 1/2 acre, barn and corral plus 2 bedroom home, brick fireplace. Price \$7,500. Call Mary Nagley, LE 7-8651. 817

Fern Realty
11208 E. Leonard's Crossing
LE 7-8651

Rentals 10
FURNISHED Apartment, two bedroom, Parkland area. Call after 6 p.m. LE 1-0976. 10cfr
TWO BEDROOM furnished house. LE 7-4107. 10cfr
LARGE FURNISHED Apartment, 3 rooms and bath, \$80. 2 room furnished apartment, \$50. Parkland Center Building. LE 1-0446. (If no answer: GR 4-1651. 10cfr
FURNISHED three room house, electric kitchen, large fenced yard, \$50. LE 1-0092. 10cfr

Rentals 10
NEW, MODERN furnished apartment, \$50 month. VI 7-448. Graham. 10cfr
FURNISHED Bachelor apartment. Utilities paid. \$40 month. LE 1-1349. 10cfr

OPEN
EVERY DAY AND SUNDAY
Brookdale Lumber Company's
DISPLAY HOME
\$6,995, built on your lots
NO DOWN PAYMENT—FHA TERMS
FEATURES

concrete foundations and porches * Aluminum windows * 6' glass patio doors * forced air furnace * mahogany flush doors * No. 1 oak flooring * all plumbing and wiring complete with fixtures
ALL YOU do is painting, lay floor tile and Formica which is furnished

SHELL HOUSE PLAN
THE SAME HOUSE, completely framed, with finished roof applied and aluminum windows installed and front and rear doors installed, you finish. Only \$2,995

AREAS WE SERVE
TACOMA — PUYALLUP — FEDERAL WAY — GIG HARBOR — OLYMPIA

BROOKDALE LUMBER CO.
13602 Pacific Ave., Tacoma—LE 7-8669

M. L. S. MULTIPLE LISTING SERVICE
CASH \$3800
To settle estate. Partly furnished. 1 bedroom, needs some work. Lot 90x130 on McKinley Ave. at 68th. Call Ralph Decker, GR 4-8579. RA-7063

MOVE IN TODAY
\$300 down on contract. \$60 mo. Clean, 4 bedrooms, concrete foundation, wired for washer and dryer. Separate dining room. Close to schools and shopping. Nice view. Price only \$6,900 Call Ralph Decker, GR 4-8579. RB-5985

NEAR NP HOSPITAL
Over 1300 square feet of floor space. Nearly full basement, automatic oil furnace, 3 large bedrooms, living room 15x26, fireplace, dining room, nook space in kitchen, 4 piece bath. Lot 75x120. Covered patio and garage. A real buy at \$10,500. Call Ralph Decker, GR 4-8579. RC-7314.

McKINLEY HILL REALTY
6311 McKinley Ave. GR 4-9579
Member of Multiple Listing Service and TACOMA REAL ESTATE BOARD

M. L. S. MULTIPLE LISTING SERVICE
Jennie L. Grodvg
PARKLAND REALTY CO.
Insurance of All Kinds
Notary Public
Est in Parkland Since 1941
LE 1-8009 Office
302 Garfield St., Parkland
Jennie Grodvg, LE 1-121
Edna Taylor, LE 7-3556
Thelma Scott — Yvonne White
JU 8-3838 LE 7-0440
"Deal with the people who give you their personal Attention"
Member of Multiple Listing Service and Tacoma Real Estate Board

Rentals 10
FURNISHED Apartment, two bedroom, Parkland area. Call after 6 p.m. LE 1-0976. 10cfr
TWO BEDROOM furnished house. LE 7-4107. 10cfr
LARGE FURNISHED Apartment, 3 rooms and bath, \$80. 2 room furnished apartment, \$50. Parkland Center Building. LE 1-0446. (If no answer: GR 4-1651. 10cfr
FURNISHED three room house, electric kitchen, large fenced yard, \$50. LE 1-0092. 10cfr

Rentals 10
NEW, MODERN furnished apartment, \$50 month. VI 7-448. Graham. 10cfr
FURNISHED Bachelor apartment. Utilities paid. \$40 month. LE 1-1349. 10cfr

BUY OF A LIFETIME 1961 SIMCA
DE LUXE 4-DOOR
With 14 World Records Fully Equipped. Delivered in Tacoma—Reg. \$1,869
NOW ONLY \$1,544
THE BEST BY FAR
Kraus Motor Co.
Simca-Jeep Headquarters
Cor. 13th and A BR 2-5177

ANDERSON'S CARS FOR LESS CHINOOK CAMPERS
LE 7-0404
176th & PACIFIC AVE.

ALL FOREIGN CAR KEYS 107 VARIETIES PARKLAND CYCLE & KEY
11021 Pacific Ave LE 7-5772

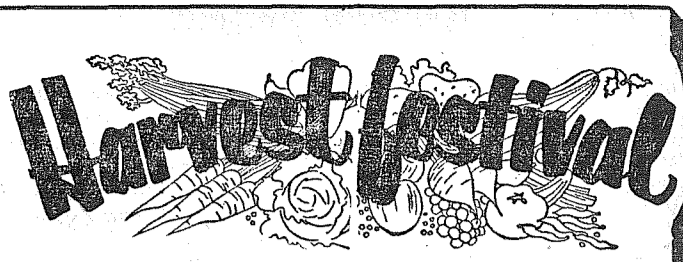
Farm Column 13
FOR EASTERN WASHINGTON HAY and STRAW by the bale, ton or truck load, call Viv Selle. Sell's Farm Supply, VI 7-2127. 12cfr
ONE EGGMATTER Egg Cleaner, one 16 foot aluminum conveyor on wheels, Locker, beef, VI 7-2197. Graham. 12cfr
MILKING SHORTHORN Cows. Bull service, registered, polled, Shorthorn beef. 15cfr
STOCK and on-job hauling. Miscellaneous work. LE 7-7938. 13cfr
FOR SALE—Eastern Washington hay and grain. Jack Burks, Graham, VI 7-7445 13cfr

Work Wanted 14
ALTERATION and mending done in my home. 1016 Violet Meadow, LE 1-2828. 14cfr
IRONING, 80c an hour. Pick-up and delivery. LE 7-6718. 14cfr
IRONING my home, 75c per hour. LE 7-3106. 14cfr
BABY SITTING—Your home or mine. 1312 South 120th. LE 1-0416. 14cfr
LICENSED CHILD CARE—Hour, day, week. Outdoor gym. 8425 South "D". GR 2-9291. 14cfr

Miscellaneous 15
PEDIGREE does or bucks. Sell or swap. GR 2-0073. 15cfr
YOUNG male English Springer, AKC, papers. Very reasonable. LE 7-6728. 15cfr
PUPPIES—PUPPIES—PUPPIES
PUGS, Norwegian Elkhounds, Schipperkes and Bassets. Cats and Dogs. Boarded. Professional handling, grooming and bathing. Roxbury Kennels, 10603 16th Avenue. 15cfr

Aviation 17
FREE FIRST FLYING LESSON—LEARN TO FLY—\$10 A WEEK
New and Used Aircraft Sales
TAHOMA FLYING SERVICE
Spanaway Airport LE 1-0442 17cfr

CROFT TRAILERS
Local and One-Way Trailer Rentals — NATIONWIDE
Hiway 99 GR 4-8437
74th & So. Tacoma Way



Krispy Crackers 1-lb. 4/\$1.00

Shurfresh 2-lb. 1.17 Reg. or Drip
Coffee 1 lb. 59¢ Sanka 1 lb. 79¢
40-oz. BISCUIT
Mix 29¢ All Veg., Shurfresh, 3-lb. tin Shortening 69¢

Syrup Tastewell 2 For 59¢
Big 24-oz.

Hygrade, 2 lb. CHEESE
Spread 69¢ Sugar 2 for 29¢
Brown or Powdered, 1 lb.

Orange Juice Shurfresh
Frozen 6-oz. 3/49¢

Pork Chops Center
Cuts lb. 69¢

Loin End PORK
Roast lb. 49¢ VEAL SHOULDER Cutlets lb. 59¢

Sausage Links Little Pig
Our Own 2 lbs. 99¢

Large Bologna Sliced
or Chunk Lb. 39¢

New crop, 9 to 13 lb. HEN
Turkeys lb. 49¢ Cabbage ea. 9¢
Solid

4 in carton
Toms. 2/25¢ 10 lb. Shopping Bag Spuds 39¢

IT'S HERE!
Florida Pink Grapefruit ea. 7c

HERMANS FOOD STORE
162nd & Park Ave. Spanaway
(Right to Limit Reserved)

Work Wanted 14
ALTERATION and mending done in my home. 1016 Violet Meadow, LE 1-2828. 14cfr
IRONING, 80c an hour. Pick-up and delivery. LE 7-6718. 14cfr
IRONING my home, 75c per hour. LE 7-3106. 14cfr
BABY SITTING—Your home or mine. 1312 South 120th. LE 1-0416. 14cfr
LICENSED CHILD CARE—Hour, day, week. Outdoor gym. 8425 South "D". GR 2-9291. 14cfr

Miscellaneous 15
PEDIGREE does or bucks. Sell or swap. GR 2-0073. 15cfr
YOUNG male English Springer, AKC, papers. Very reasonable. LE 7-6728. 15cfr
PUPPIES—PUPPIES—PUPPIES
PUGS, Norwegian Elkhounds, Schipperkes and Bassets. Cats and Dogs. Boarded. Professional handling, grooming and bathing. Roxbury Kennels, 10603 16th Avenue. 15cfr

Aviation 17
FREE FIRST FLYING LESSON—LEARN TO FLY—\$10 A WEEK
New and Used Aircraft Sales
TAHOMA FLYING SERVICE
Spanaway Airport LE 1-0442 17cfr

CROFT TRAILERS
Local and One-Way Trailer Rentals — NATIONWIDE
Hiway 99 GR 4-8437
74th & So. Tacoma Way

Waller Road Garden Club Meets Tonite

The Waller Road Garden Club will meet tonight at 8 in the Waller Road hall.
Ground covers for the area will be discussed. Mrs. John Otterson will talk on chrysanthemums. Year books will be given out to members.

Thanksgiving arrangements for dinner table will be exhibited.
Following the meeting everyone will make wax grapes.
Waller Road Grange will meet Nov. 4.
Wa-Kon-Da Camp Fire Girls elected new officers recently. Elected were Linda Brien, president; Nani Mae Lovell, vice - president; secretary, Diane Ebert; and treasurer, Sharon Ruchshier.

A new Forestry 4-H Club has been organized with Gilbert Carlson as leader and Mrs. Richard Pullin as Assistant Leader. The boys call themselves "the Woodchucks" and will meet at the Carlson home the first and third Saturday of each month.

Officers are Kelly Houser, president; Steve Pullin, vice - president; Kenneth Jones, secretary; Al Downes, Recreation; and Gerry Houser, reporter. The other member of the club is Richard Jones.

Scott, Edward is the name chosen for the new son of Mr. and Mrs. Leo Bassett. Proud grandparents are Mr. and Mrs. Harvey Bassett.

Mrs. Harvey Bassett is recuperating at her home on E. 80th after undergoing recent surgery.
PLU students from Waller Road are Jeanette and Claudette Baker, Robert Husted, Jim Geise and Danny Reed. Frank Weeks is in his second year at Olympic J. C. Don Geise and George Oeh are in their final year in the College of Engineering at the U. W.
Reporter — Mrs. Verne Fogle.

Missionary Circle Will Meet Nov. 4

The Louise Bunes Missionary Circle of the Mountain View Baptist Church will meet Friday, November 4, at 12:30 at the George Nagle home on Canyon Road. The speaker for the meeting will be Mrs. Paul Sweeney. This meeting has been moved up a week because of Veterans' Day the following week.

The literal translation of the word "geology" is "knowledge of the earth."

DISPOSABLE BAGS
FOR ALL TYPES OF VACUUM CLEANERS
Phone Orders Taken
GR 4-0651
AMERICAN SEWING CENTER
8232 Pacific Avenue

WHICH WILL BE YOUR CHOICE IN TUESDAY'S ELECTION?

THIS RECORD? or THIS MAN!

State Buying Chief Says He Was Told To Favor 5 'Friends of Administration'

Politics' Role In Purchasing Admitted
Lee Foster, suspended yesterday as state purchasing supervisor, was told to favor five firms because they were "friends of the administration." The Seattle Times' probe of state purchases has disclosed.
"I think it is correct to assume that the state department of purchasing is not supposed to be a political party," Foster said.
"I saw an opportunity to do some business on a Tuesday."

State Purchasing Chief Admits Favoring Kin's Firm

Hospital Property Trades Probed
TACOMA, Jan. 2 — (A.P.) — What appears to be improper transfers of property at Washington State Hospital are under investigation.

SCANDALS
Lee Foster and five other state purchasing supervisors were suspended Tuesday for alleged favoritism in awarding contracts to five firms.

ROSELLINI'S STATE SENATE VOTING RECORD ON LIQUOR
As a State Senator, Albert D. Rosellini ...

... voted for sale of liquor in parks and beach resorts (SB 231; '39)
... introduced bill shortening residence in state for retail liquor license applicants from one year to one month (SB 160; '43)
... introduced bill repealing law which makes it a felony to sell liquor to minors (SB 460; '39)

FAVORITISM
Two Thirds of State's Moving Jobs Handled by One Firm
One company has handled them that after all we were two thirds of the state's move, members of the party and we are in the past all we should be getting, members.



The man with the heart, the head, the courage, and the experience to be your GOVERNOR

Vote for Lloyd J. ANDREWS for GOVERNOR Republican
Andrews for Governor Committee, Wash Woodward, Chairman
Vance Building, Seattle

LEGAL NOTICES

NOTICE OF ELECTION OF SUPERVISORS DRAINAGE IMPROVEMENT DISTRICT NO. 19

Notice is hereby given that an election will be held in Drainage Improvement District No. 19 on November 22, 1960, in accordance with Section 85-08-300, R.C.W., for the purpose of electing a Drainage Supervisor for a term of four (4) years.

The Supervisors of said District hereby appoint the following electors of the District to serve on the Election Board:

Inspector—Mrs. Peter Hominda,
Judge—Mrs. John Tull,
Judge—Mrs. Howard Bluhm.

The Supervisors of said District do further declare that all precincts within said or parts of precincts within said Drainage Improvement District shall be declared as one precinct for the purpose of this election. The polling place to be at the Glasgow Food Store, 318 94th St. (94th and East D St.).

The polling hours are from 1:00 to 7:00 p. m. on said day of election.

JOHN CURTIS
GEORGE MOE
Board of Supervisors for Drainage Improvement District No. 19.

Published in the Times Journal, October 27 and November 3, 1960.

LEGAL NOTICES

CALL FOR BIDS

Pierce County Fire District No. 7 (Spanaway-Elk Plain) will receive bids for an addition to Station No. 1 at Spanaway Wash., until Monday, November 21, 1960 when they will be publicly opened and read at the Spanaway Fire Hall, 1638 and Park Ave.

Plans are available at the Tacoma Pump & Well Drilling Co., 14621 Pacific Avenue or at South End Plumbing & Hardware Co., 1838th Pacific Avenue.

The District reserves the right to reject any and all bids and are not bound to accept the low bid.

Board of Commissioners,
Fire Protection District No. 7
Wm. RIGHETTI, Chairman.

Published in the Times Journal, October 27; November 3, 10, 1960.

PETERS & TRACY
Attorneys for Guardian
11924 Pacific Avenue
Tacoma 44, Washington
NO. 68998

NOTICE OF SALE OF REAL ESTATE

In the Superior Court of the State of Washington in and for Pierce County.

In the Matter of the Estate of Lorina Mae Berg, a Minor.

Notice is hereby given that Edith Loden, in her capacity as guardian of the above estate, will sell, at private sale and for cash or upon the best terms available, the following described real estate:

Commencing at a point on the West line of the Southeast quarter of Section 25, Township 17 North Range 3 E. E.W.M. 684.5 feet North of the Southwest corner of said subdivision, running thence North on the West line of said subdivision, 230.5 feet; thence East parallel with the South line of said subdivision, 2610 feet to the West line of the National Park Highway; thence South on the West line of said Highway 83.5 feet; thence West parallel with the South line of said subdivision 130.5 feet; thence South parallel with the West line of the National Park Highway 167 feet; thence West parallel to the South line of the said subdivision 1395 feet to the point of beginning. Situate in Pierce County, State of Washington.

To the highest and best bidder. Bids must be submitted in writing and may be left with Peters & Tracy, attorneys for the

LEGAL NOTICES

guardian at 11024 Pacific Avenue, Tacoma 44, Washington. Bids will be received until 12:00 noon on November 14, 1960. The date of sale will be on or after 12:00 noon November 14, 1960 and the guardian reserves the right to reject any and all bids.

EDITH LODEN,
Guardian.
Peters & Tracy
Attorneys for Guardian.
11024 Pacific Avenue
Tacoma 44, Washington.

Published in the Times Journal, October 27 and November 3, 1960.

NOTICE OF ELECTION OF SUPERVISORS DRAINAGE IMPROVEMENT DISTRICT NO. 14

Notice is hereby given that an election will be held in Drainage Improvement District No. 14 on November 22nd, 1960, in accordance with Section 85.04.035, RCW and Section 29.13.020, RCW, for the purpose of electing a Drainage Supervisor for a term of four (4) years. The following named persons have filed for said office:

A. L. BOMBARDIER, 2903 East Harrison Street, Tacoma, Washington.

The Supervisors of said District hereby appoint the following electors of the District to serve on the election board:

Inspector—Lois Johann,
Judge—Nellie Taylor,
Judge—Barbara Shanahan.

The Supervisors of said District do further declare that all precincts or parts of precincts within said Drainage Improvement District shall be declared as one precinct for the purpose of this election, the polling place to be at the Midland Fire Station, 94th and Jackson Street.

The polling hours are from 1:00 to 7:00 p. m. on said day of election.

FRANK BASKETT
A. L. BOMBARDIER
Board of Supervisors for Drainage Improvement District No. 14.

Attest
Lois Johann
Clerk of Board
Dated October 13, 1960.
Published in the Times-Journal, October 27; Nov. 3, 1960.

942 Spooks Invade Dryer's



AN ALL-TIME record was set when 942 spooks, goblins, and parents visited Dryer Mortuary Monday night for the annual Halloween open house. (Left to right) Florence Dryer, an unidentified helper, Trav, Gerry and Mary Dryer welcome two little goblins named Debbie and Doug Saugen. Cotton candy was provided for all. (Photo, by McKewen).

periment Station scientists appearing on the program include Dr. L. R. Berg and Dr. C.M. Hamilton.

Other program features include restricted feeding, lighting, general management, coccidiosis control, use of credit, food and drug administrations view of medicated feeds, and a discussion of Russian agriculture by Dr. Igor Kosin.

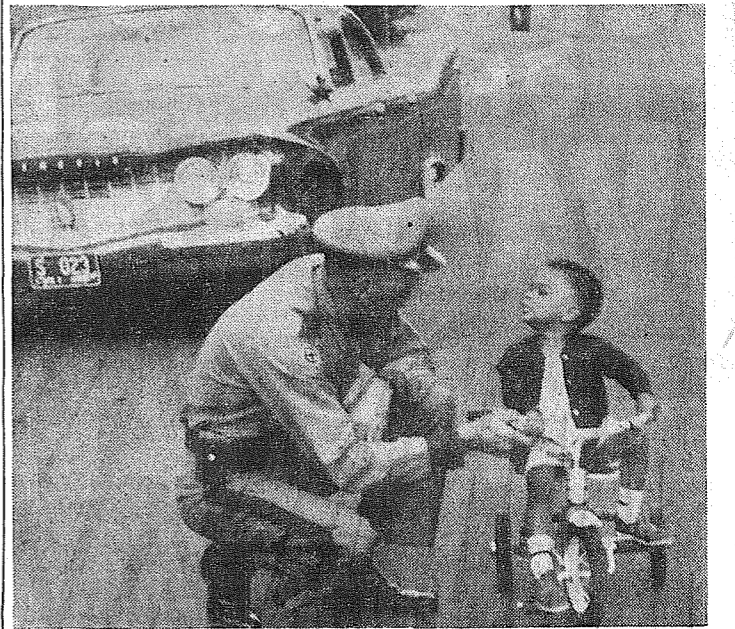
All poultrymen and field service workers are invited to attend the institute.

The latest poultry building construction in Pierce county is on the Everett Shinn farm at Fig Grove. Between daily chores Everett is busy putting together a new cage house for layers. It will have 3 feet by 5 feet community cages. The welded wire botoms will double as a roll away nest. Feeders will be located along the front. A water trough will be at the back of each cage to serve birds from two cages located back to back. An unusual feature of the house is the pole type construction. Treated poles, sunk in the ground, serve as studs for the side walls. Plywood is used for siding and roofing.

This is Everett's first experience with cages. He needed more housing space and felt that this was one way to get the most space for the least money.

October 1st marks the beginning of a new 4-H club year. Many people are inquiring about starting a new club. The place to get the necessary information and help is the County Agents' office, 742 County-City Building. We will be happy to help.

"You Don't Scare Me!"



"SOME DRIVERS just won't cooperate," says Lieutenant George Amans of the Washington State Patrol, who seems to be getting the worst of this argument. The young cyclist who appears to be questioning the officer's authority is Anthony R. Rudd of 1110 West 5th Avenue, Olympia, Washington.

IT PAYS TO ADVERTISE IN THE TIMES JOURNAL

General Sheet Metal Work

Special Attention to Special Equipment

RAU MFG. CO.

LEnox 7-7372
14114 Pacific Avenue

GOOD YEAR GREATEST snow tire sale in our history!

New Suburbanites

This \$ **15.95** *
year...
6.70 x 15 blackwall tube-type plus tax and receivable tire

Other sizes proportionately low, too!

Famous 3-T SUBURBANITES

Lowest prices ever! More go in slush, mud or snow... more mileage on dry pavements!

NO MONEY DOWN WITH YOUR OLD TIRE!

GOOD YEAR
MORE PEOPLE RIDE ON GOODYEAR TIRES THAN ON ANY OTHER KIND.

GR 2-9607
ROGERS SERVICE CENTER
82nd AND PACIFIC AVENUE
NO MONEY DOWN WITH YOUR RICHFIELD CREDIT CARD

Flying

With **JEANNE**

We have a new Private Pilot in our midst. Last Tuesday Brainard Lee took his check ride with the FAA in Seattle. Congratulations, Brainard!

Once again the Big Car Race at Sacramento enticed some of our local pilots. Don Abbott and Vern Blauvelt and their sons left Friday, a day earlier than usual, because they wanted to show the boys some of the sights along the way.

Otto Wicklander, Cecil Jackson and Paul Gasch left Saturday morning in Otto's 180. Slim Lawson, Harold Rody and Brainard Lee also left Saturday morning in a Tahoma Flying Service Tri-Pacer. According to reports they were all in Sacramento Saturday night and ready to enjoy the race Sunday afternoon.

Chuck Holmes of Oak Harbor was in his Stinson Saturday to visit friends in this area.

The annual Halloween Party of the Western Travelairs was a huge success. Judy Blanchard won the prize for women dressed in an old type bathing suit complete with parasol. John Thun pulled a switch by coming dressed as a "Mummy". Johnny walked off with the men's prize.

County Agents Corner

(Continued from Page 9)

Institute October 20 - 21st at Pullman. This year's theme is "How to Cut Poultry Production Costs." Truman Wilcox, commercial egg producer from Harts Lake, will appear on a panel to discuss methods used on his farm to cut egg production costs. Truman has many years' experience plus a fine farm to confirm his ability in this field. Gordon Bearse, poultry scientist at the Western Washington Experiment Station, will moderate the panel.

Other Western Washington Ex-

"I'm a chair that will be bought for the new Franklin Pierce Junior High School if PROPOSITION II passes."

"I will pay for maintenance and operation, & hire teachers and custodians for the new Junior High School if PROPOSITION I passes."

LOOK FOR THE PROPOSITIONS AT THE TOP RIGHT OF THE BALLOT

Vote YES for Franklin Pierce School Dist. Issues

Paid for by Franklin Pierce Education Council

WE SHARPEN OUR PRICES AND YOUR KNIVES AND SCISSORS FRIDAY & SATURDAY FROM 10 A.M. TO 6 P.M. - YOU BRING IN YOUR DULL KNIVES AND SCISSORS AND WE'LL SHARPEN THEM FREE- COMPLIMENTS OF THE BORDEN COMPANY AND YOUR PARKLAND SUPERMARKET.

MARGARINE	DUTCH MAID	8 ONE POUND PACKAGES	\$1.00
COFFEE	HILLS BROS.	PRICE REG. \$1.49	2-Lb. Can \$1.15
MAYONNAISE	OUR OWN NEW PARKLAND SUPER	Reg. 59c Qt.	39c Qt.
BISCUITS	BORDENS	Buttermilk or Sweet Milk	3 Cans 25c
PEANUT BUTTER	SCHOOL BOY	REG. PRICE \$1.39	89c
POTATOES	BORDEN'S INSTANT	16 Serving Family Dinner Pkg.	39c
SYRUP	NALLEY'S NORTH WOODS	Reg. Price 35c	22-oz. Bottle 25c
DUTCH CHOC.	BORDEN'S	Reg. Price 99c	2-Lb., 6-Oz. Economy Size 79c
WASH. GROWN FRESH FRYERS	RIB STEAKS	Young, Tender Beef	LB. 69c
WHOLE BODIED 33c lb.	CORNER BEEF	Lean, Our own	Homemade LB. 59c
	HEARTS	Young Baby Beef	LB. 29c
	PURE LARD	For Your Holiday Baking	2 LBS. 29c
	WIENERS	Armour's Or Swift's	12-oz. Pkg. 39c
	LARGE BOLOGNA	By The Piece	lb. 39c
	ALL CHOICE CUTS	T-BONE STEAKS	lb. 79c
	ASST LUNCH MEAT	All Swift's 6-oz. Pkgs.	4 For \$1
	BEEF SHORT RIBS	Lean Thick Meated	LB. 33c
	BABY BEEF LIVER	Tender	LB. 29c
	SWISS STEAKS OR RUMP ROAST		LB. 59c
	DINNER FRANKS	Serve With Sauerkraut	LB. 39c
	SPECIAL	25-LB. LOCKER BOX	\$11.95

Open 7 Days a Week For Your Convenience

PARKLAND

Right to Limit Reserved

HOURS: 9 a.m. 'til 10 p.m.

Super MARKET

Formerly Kitchen's
12208 Pacific Avenue

PRICES EFFECTIVE THURSDAY THROUGH SUNDAYS EACH WEEK

Sorry We Ran Out Of These Last Week - So Here's Another Go At It.

GOLDEN DELICIOUS

APPLES

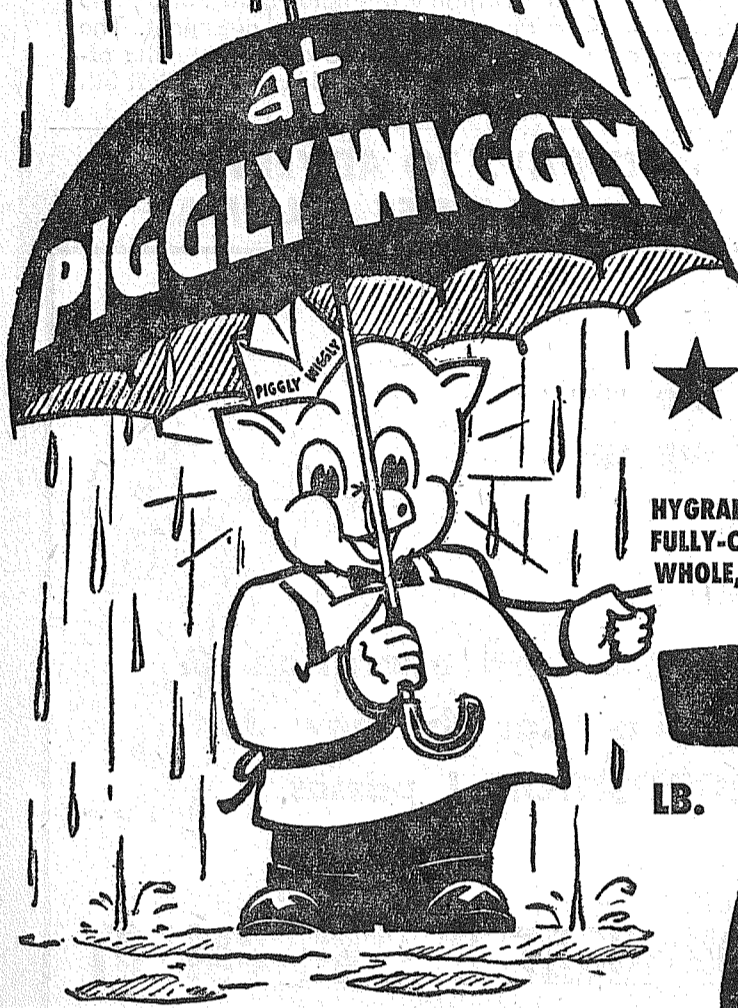
23 Lb. Box **\$1.69**

TOMATOES lb **10c**

BANANAS LB. **10c**

GRAPEFRUIT PINK **3 FOR 25c**

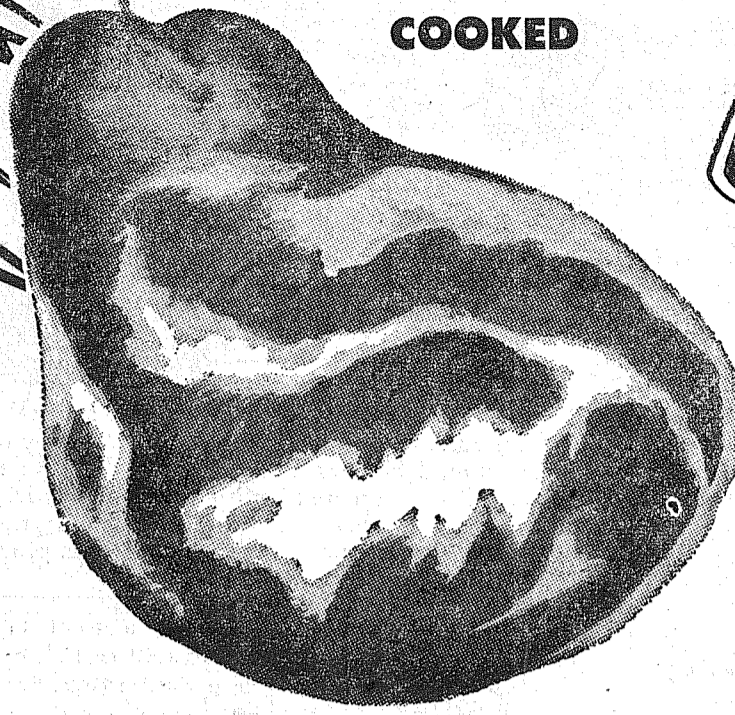
CLOUDBURST OF VALUES!



HYGRADE'S BONELESS, FULLY-COOKED HAMS, WHOLE, HALF OR QUARTERS

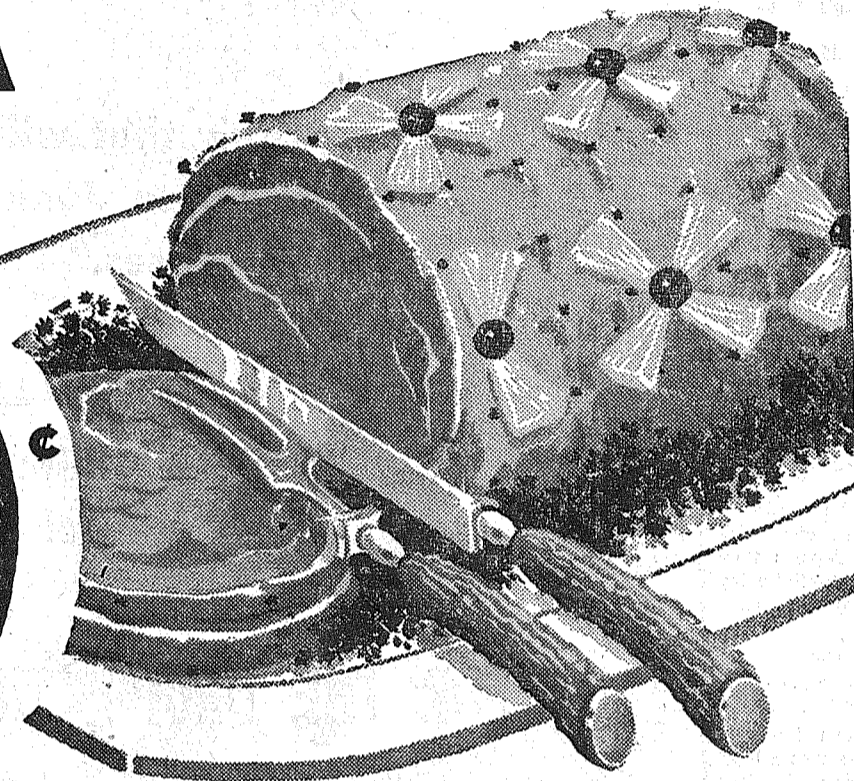
79 LB.

SWIFT'S PREMIUM FULLY COOKED



U.S. GOOD, WELL-TRIMMED **SIRLOIN STEAKS LB. 69¢**

FIESTA HAMS



PICNICS!

LEAN, TENDER, TASTY, NO FURTHER COOKING NEEDED. FROM EASTERN CORN-FED PORK 5-8-lb. Average **POUND 33**

U.S. GOOD, AGED, TENDER **T-BONE STEAKS LB. 79**

SLICED BACON HYGRADE'S BEST . LB. **53**

BOLOGNA HYGRADE CHUNK OR LIVER SAUSAGE LB. **39**

OCEAN CRABS FRESH FROZEN LB. **39**

FRESH OYSTERS SMALL OR EX. SMALL 12-OZ. HOOD CANAL . . . JAR **59**

U.S. CHOICE LAMB SALE!

LEG O' LAMB AT ITS BEST LB. **63**

LOIN LAMB CHOPS LB. **89**

RIB LAMB CHOPS LB. **69**

NALLEY'S FINEST **MAYONNAISE** QUART JAR **49¢**

ALLSWEET TOP QUALITY **MARGARINE** A REAL SAVING! 5 1-LB. CTNS. **\$1.00**

VETS—YOUR PET'S FAVORITE! **DOG FOOD** STOCK UP! 14 NO. 1 CANS **\$1.00**

TOMATOES Perfect Slicers **10¢** lb. CALIFORNIA RED RIPE

YELLOW ONIONS Oregon Grown 10-lb. Bag **37¢** | **FRESH CELERY** Locally Grown Large Stalks lb. **5¢** | **TOKAY GRAPES** Luscious California Flame Tokays lb. **9¢**

SPECIAL WHITE KING GARDEN OFFER! **20 GIANT RANUNCULUS BULBS** ONLY **50¢** WITH WHITE KING SOAP **59¢** LIQUID "D" Giant 59¢

WHITE STAR CHUNK **TUNA** 4 NO. 1/2 CANS **99**

HEINZ—14-OZ. BOTTLE **KETCHUP . . . 19**

MORE PIGGLY WIGGLY VALUES

FACIAL TISSUES Kleenex Assorted Colors 2 Pkgs. of 400 12-oz. **49**
NESTLE'S MORSELS Pkg. **49**
BANANA-ORANGE JUICE New Minute Maid 4 Cans 6-oz. **\$1.10**
INSTANT COFFEE Chase and Sanborn 10-oz. Jar **\$1.12**
ROYAL PUDDINGS Assorted Flavors 3 Reg. Pkgs. **29**
KRAFT OIL 7c Off Label Quart Bottle **49**
BARONET CREMES N.B.C. 1-lb. Pkg. **49**
PARD CRUNCHEES 18c Off Label Pack 4-lb. Bag **51**
NEW HANDY WRAP 100-Foot Roll **29**
ZEE PAPER TOWELS 2 150-Foot Rolls **43**
NABOB TEA BAGS Package of 16 **25**
WAXTEX WAXED PAPER 100-Foot Roll **23**
CHUN KING DINNER Chicken Combination Package **77**
QUICK ELASTIC STARCH Quart Bottle **29**
OXYDOL (7c Off) Giant Size **76¢** (4c Off) Reg. Size **35**

60¢ REFUND! For trying Mission's Spaghetti and new Spaghetti Sauce. Just send the labels to Mission Macaroni Company. Details in store at display.
 Spaghetti Sauce 2/37¢
 Long Spaghetti 19¢
 Italian Cartwheels, 12-oz. 19¢

Van de Kamp's SPECIALS
COCONUT MACAROONS Special 15 for 29¢
CINNAMON LOAF Special 35¢
PECAN LOAF Special 49¢
Dutch Chocolate Cake Special 135¢
 Van de Kamp's BAKERIES

IN OUR FIFE HDWE. DEPT.
FLASHLIGHT Magnet Grip, Less Batteries **89¢**
SAWHORSE BRACKETS Use With 2x4 Lumber PAIR **\$1.88**
WORK GLOVES Plastic Coated PAIR **88¢**
PIPE INSULATION Fiberglass W/tape, Dill cover 17' of 1/2" pipe. ONLY **75¢**

LYNDEN GRADE "A" STRICTLY FRESH **LARGE EGGS** DOZEN **53¢**
 COFFEE HOUSE **COFFEE** REGULAR OR DRIP 1-LB. CAN **55¢**
 POLAR FRESH FROZEN **VEGETABLES** 17 VAR. 6 PKGS. **89¢**
 ADAMS **PEANUT BUTTER** 3-LB. JAR **98¢**
 DARIGOLD AA SWEET CREAM **BUTTER** 1-LB. PRINTS OR QTRS., CTN. **65¢**
 NALLEY'S SYRUP (10c OFF LABEL) **LUMBERJACK** . . . 47-OZ. BOTTLE **59¢**
 JIFFY **BISCUIT MIX** 40-OZ. PKG. **29¢**
 PREM **LUNCHEON MEAT** 12-OZ. CAN **39¢**
 M-D ASSORTED COLORS **TOILET TISSUE** . . . 4-ROLL PACK **35¢**
 10c OFF **SWIFT'NING** 3-LB. CAN **59¢**

SW PEAS FANCY SMALL 5 No. 303 Cans **\$1.00**
SW CORN CREAM STYLE 5 No. 303 Cans **1.00**
SW APPLESAUCE 5 No. 303 Cans **1.00**
 REGULAR **IVORY SOAP** 3 Bars **32¢** | GETS CLOTHES CLEANER **TIDE** Giant Pkg. **79¢**
 PERSONAL **IVORY SOAP** 4 Bars **29¢** | NEW BLUE **CHEER** Large Pkg. **39¢**
 BATH SIZE, COLORS **CAMAY SOAP** 2 Bars **31¢** | LIQUID **JOY** 12-oz. Size **43¢**
 4c OFF **DASH** Reg. Pkg. **37¢** | 10c OFF **CASCADE** 20-oz. Pkg. **39¢**

KRAFT PRESERVES
 • APRICOT • BLACK RASPBERRY
 • STRAWBERRY • ORANGE MARM.
 (5¢ OFF LABEL) **5 JARS FOR \$1.00**
 12-OZ. JARS

Piggly Wiggly

PUYALLUP 1010 EAST MAIN | **PARKLAND** PACIFIC AT GARFIELD | **FIFE** FORMERLY ANDRE'S MKT. | **So. Tacoma** 5252 SOUTH WASHINGTON | **40th & Port land Ave.**

• PRICES EFFECTIVE THURSDAY, FRIDAY and SATURDAY, NOV. 3, 4, 5. WE RESERVE THE RIGHT TO LIMIT—NO SALES TO DEALERS—OPEN 9 A.M. TO 10 P.M. DAILY.