

Misuse of School Funds Aired Here

See Page Two

Pierce County Herald and

The **TIMES** JOURNAL

Vol. 24 No. 7

February 15, 1968

Price Per
Single Copy

10¢

One Day Cooking School Monday ^{See Page} 9



BETTY G. NELSON, Food Arts Economist, and Helen Brady will present new ideas in creative cookery during two sessions Monday, February 19 at Keithley Junior High. Afternoon program will begin at 1:30 and evening session is scheduled for 7:30 p.m.

Elmhurst Mutual Power and Light, Parkland Light and Water, and Times Journal are sponsoring school as a public service. Admission is by invitation, free at any of sponsors' offices.

School Funds Face Possible Cuts

80 Per Cent Expected To Be Funneled By State

By SANDY INGRAM

Misuse of federal funds by the State was charged Saturday by Senator John T. McCutcheon, D-29th District, at a meeting of the education subcommittee of the Interim Committee on Governmental Cooperation.

The meeting, at Mt. Tahoma High School, was called by Sen. McCutcheon at the request of Lieut. Gov. John Chereberg to inquire into the effect of the present state school formula on Public Law 874 in school districts impacted by military installations.

Under the present state formula, 70 per cent of the funds appropriated by the federal government, to help tighten the slack in the impacted areas, such as Franklin Pierce and Bethel School districts, are being funneled off into the State Treasury and being re-appropriated among all of the districts in the state, said Sen. McCutcheon.

Committee members hearing testimony from the schools in the Southern Pierce County area besides McCutcheon were Sen. Jack Metcalf, R-Mukilteo, and Rep. P.J. Gallagher, D-Tacoma.

A list of requested funds under Public Law

874 by Pierce County school districts which totaled \$3.9 million was passed out by the committee. Estimated entitlements in the Bethel district showed, \$135,000 and Franklin Pierce, \$275,000.

According to Dr. Fred M. Gramman, superintendent of the Bethel District, who attended the meeting, said 25 per cent of his district's students are involved in PL 874. Franklin Pierce has almost the same percentage with 2088 of 8,176 students involved, stated Franklin Pierce representative Tom Stephens, assistant superintendent.

"The loss of Pierce County in 1967-68 will be in the neighborhood of \$2,450,000.00, and for the school year 1968-69 closer to \$3,000,000.00," said McCutcheon. "The state deduction for the latter year will reach 85 per cent," he added.

"In my opinion these funds were allotted to districts in the Federally impacted areas for one purpose, and it is illegal for the State to dip into them for general school purposes, besides, Congress may do away with the 874 appropriations altogether if they find we are diverting them from their intended use," he stated.

Rep. Frank B. Brouillet, chairman of the legislature's interim committee on education, told the committee that he felt the 874 controversy was only one aspect of the school financial

problems in the state and that the major problem was the special levies. "The special levies are the No. 1 problem," he said, adding, "They magnify the other problems."

"The special levy financing must be worked over," charged Sen. Metcalf. "The basic, long-range, optimistic, idealistic picture," he added, "is to make educational financing the responsibility of the state. The more dependent we become on federal money, it seems, the worse off we will be. If there were to be any emergency, the Federal Government would cut back on spending and the school systems would be left WITHOUT."

Sen. McCutcheon made it perfectly clear to all in attendance that he was against the high formula, saying the county districts "are being sent a gold brick by freight." He added that the burden imposed on the districts by the formula is shifted to the shoulders of the local taxpayers. Each year, he stated, the cost of education in the state has gone down and the local cost has gone up.

Sen. McCutcheon told the Times Journal: "I intend to try and change the State Formula in the next session."

The committee was given plenty upon which to ponder by local school officials and it is hoped that a solution to the problem of financing education will soon be found.

Spanaway Business Club Cub Scouts To Hear Set Banquet Marc Anderson

Spanaway Cub Scout Pack No. 134 will host its annual Blud and Gold Banquet beginning at 6:30 p.m. Thursday, February 22nd, in the Spanaway Elementary School Gymnasium.

The buffet-type dinner will be furnished by the mothers of cub scout members.

Mrs. Rosemary Johnson's Den 5 will present a skit composed of a home made band. Mrs. Follse and mothers of Den 3 will furnish and serve the refreshments.

Projects made by the cub scouts during the past year will be on display.

Marc Anderson, Development Manager of the Port of Tacoma, is expected to reveal plans for industrial expansion into the Fredrickson area at the Parkland Business Club meeting, 7:30 p.m. February 21 at Barlo's.

Anderson, who is to head the Fredrickson project for the Port Commission, will tell the club members of the objectives of the Commission. He will accompany his talk with slides of district operations.

Land on option for the Fredrickson project is now being considered for rezoning to heavy industrial use.

A social hour will start at 6:30 p.m. with dinner served at 7:30 p.m. The Parkland Business Club meets the 3rd Wednesday of each month.

Local Residents Support Re-opening Of JFK Investigation

Members of the Washington State chapter of the Citizens' Committee of Inquiry have collected more than 350 signatures on a petition calling for a new investigation of the Kennedy Assassination, said Sherry J. Adams of Auburn.

Miss Adams, state executive secretary, said many of the signatures came from the Parkland-Puyallup area.

The petitions were forwarded to national CCI headquarters in Los Angeles where they will be added to others from throughout the nation and submitted to Congress.

The local CCI chapter has its headquarters at 7001 106th St. E., Puyallup. It is the state chapter of the committee founded two years ago by author Mark Lane, political satirist Mort Sahl and Congressman Theodore Kupferman.

Goal of the committee is to re-open the investigation of the assassination of President John F. Kennedy.

Burglaries, Vandalism Plague Area Last Week

Sheriff's Deputies investigated a rash of burglaries and vandalism that struck the Midland - Parkland - Spanaway area last week. One arrest was made.

A 17 year old high school student was arrested by Deputies A.M. Anderson and G.D. Mattes after he was discovered burglarizing the College Drive In, 12302 Pacific Ave.

The officers disclosed that while on patrol duty in Parkland, they spotted someone inside the drive-in, about 4:32 a.m. last week. When first seen, the suspect crouched behind a counter to hide, but broke and ran for the rear exit when the deputies approached.

The youth, who lives in the Parkland area, was intercepted as he climbed out of the window used to gain entry.

After his arrest, he told officers he wanted a smoke, and entered the firm to get cigarettes.

PARKLAND

Vandals caused approximately \$200 damage to windows of 5 cars on the lot of Cook Motors, 9715 Pacific Avenue, Deputy Richard A. Ritthaler reported last week.

The vandalism was caused by a BB or pellet gun, Ritthaler said.

Parkland Shell, 13221 Pacific Avenue lost \$153.65 in cash and checks during a recent break-in according to Deputy Sheriff Tom Sotak. A repair bay window was broken to enter, Sotak stated.

MIDLAND

Burglars netted approximately \$123 in cash and merchandise during a burglary of the 2121 Club, 2121 East 112th, Deputy Tom Sotak reported.

Breaking a window to gain entry, the thieves pried open coin boxes of pinball machines and the juke box, Sotak said.

About \$10 worth of nickels were spilled as the burglars left through the broken window.

A car belonging to W.E. Lasley, Parkland, was vandalized while parked on East McKinley in the Midland area, Deputy Karl R. Kastner stated last week.

Damage was estimated at \$120, and was caused by throwing rocks at the vehicle, the deputy disclosed.

Burglars entered Weir's Appliance, 8419 Portland Ave., and removed an undetermined quantity of portable television sets, Deputy Tom Sotak reported.

Entry was gained by smashing a large hole in the side of the building.

SPANAWAY

Guns, ammunition, and cigarettes were among items stolen during a burglary of South End Hardware that was investigated by Deputy J.C. Taylor early last week.

After breaking a window to enter, the burglars cut a gun rack chain to steal a .410 shotgun and five high powered rifles, Taylor stated. Also taken was a single shot 22 cal. Ithaca rifle. Loss totaled over \$500, he said.

SUMMIT VIEW

Burglars forced their way into a garage belonging to G.G. Ramsey, 5116 East 116th, and took 300 pounds of copper wire valued at \$150, Deputy Sheriff Ralph L. Dybdahl reported.

Entry was made through a window, he said.



Spanaway

2-6-68: 6:51 p.m., Resuscitation Call.

2-7-68: 9:15 p.m., Resuscitation Call.

2-8-68: 4 p.m., Smoke in house at 134 East 175th. A pan of grease on stove ignited involving upper cabinet, exhaust fan and light.

2-8-68: 7:20 p.m., Odor of smoke at Route 1, Box 1076. No damage.

Parkland

2-5-68: 1:12 p.m., A grease fire at 12403 1/2 So. "A" Street. \$50 damage.

2-5-68: 4:16 p.m., Car fire at 138th and Pacific. \$100.00 damage.

2-6-68: 10:25 p.m., A mattress fire at Henderlie Hall,

PLU.

2-6-68: 3:53 p.m., An over-heated oil stove at 10628 Andover. No damage.

2-10-68: 5:19 p.m., An over-heated oil stove at 1216 So. 116th. No damage.

2-10-68: 6:47 p.m., An over-heated oil stove at 756 So. 116th. No damage.

Colts And Fillies To Parade

The Colts and Fillies, the junior group of the Washington Horsemen Tacoma Unit No. 1, are busy getting ready for the 1968 Daffodil Parade. This year they hope to have at least sixteen members riding in the big event.

They drill every Saturday in the arena on the Unit grounds at 176th Street under the supervision of Drill Master Clem Wulfekuhle.

Franklin Pierce School Board

By Sandy Ingram

Contract for the new High School grandstand was awarded to Arvid Keith of Spanaway, contingent upon an administrative check of the firm's references, it was announced by the Board of Directors at Franklin Pierce School District Tuesday night.

Keith's company presented a low bid of \$20,984. Other bidders included H & C Construction of Tacoma, \$22,390; Rushforth Construction of Tacoma, \$23,150; Puget Sound Construction of Tacoma, \$30,568; Freigang Construction Co. of Tacoma, \$25,800; Goettling Construction of Tacoma, \$27,430; Claude C. Purvis of Tacoma, \$33,333; Lincoln Construction of Spanaway, \$27,590; and Leverage Construction of Parkland, \$22,971.

The preliminary plans for Washington High School are essentially finished, it was announced by Dr. Edward E. Hill, superintendent of the District. The plans, Dr. Hill said, will be presented at the next board meeting.

According to Dr. Hill, the architectural planning for the new high school is on time, but state approvals are running approximately six weeks behind schedule.

A study is now being concluded to determine whether Washington High School can be properly equipped with funds now voted said Dr. Hill. The districts "matching" ratio has been approved at 70.19 per cent and will yield almost \$200,000 less than the 74.39 per cent the district has been receiving for the past four years.

This change in the matching ratio has eliminated the flexibility the district had in buying sites and equipment out of the building fund dollars.

"A request for millage, if made," said Dr. Hill, "would be for five mills to equip the new high school and five mills to continue site purchase."

Dr. Hill added that the proposed issues will be presented to the committee planning the new high school and to the Education Council before a recommendation is made to the board. If proposed, voting on these issues would probably be in late May or early September, he stated.

The Board gave its permission for an American Field Service Chapter to be organized in the Franklin Pierce area. The chapter organization is the first step in obtaining a foreign exchange student.

It was announced by Dr. Hill that William Whitesel, principal of Franklin Pierce High School, has been selected as one of the three finalists for "State Administrator of The Year". Whitesel was recently named Franklin Pierce "Administrator of The Year."

The school calendar for 1968-69 was explained to the board. Action on the calendar will be taken by the board at the next meeting.

The calendar has three changes from the 1967-68 year:

a) Christmas vacation has been increased from 7 to 10 days because both Christmas and New Year's occur on Wednesdays.

b) Easter vacation has been reduced from 5 to 3 days.

c) More time has been provided for parent-teacher conferences by changing the elementary staff day from January 24 to November 7.

The TIMES JOURNAL

Published weekly at 14620 Pacific Ave., Parkland 98444 and delivered by U.S. Mail and carrier to subscribers. Publishers: Pierce County Publishers, Inc. Managing Editor Em Matson News Editor Sandy Ingram Sports Editor Bob Ingram

Subscriptions \$3.50 per year, \$1.80 six months, or 30c monthly by carrier. News stand price 10c copy.

Qualified as a legal publication under Chapter 213 of the Legislature Acts of the 1941 regular session of the State of Washington

Second Class Postage Paid at Tacoma, Wash.

Vol. 24 No. 7 February 15, 1968

HEAD
sign of the serious
SKI SHOP

OPEN EVES. 'TIL 9

Here skiers serve your every skiing need

OPEN EVES. 'TIL 9

PARKLAND SPORTS CENTER

11122 PACIFIC AVENUE TACOMA, WASHINGTON PHONE LE 7-5677

HI HO

PUYALLUP

HI HO

HYGRADE'S
SLAB
BACON
49^c_{lb}

MEATY
SHORT
RIBS
29^c_{lb}

BOILING
BEEF
19^c_{lb}

PORK
SPARERIBS
39^c_{lb}

RIB
STEAKS
97^c_{lb.}

OUR OWN, GROUND BEEF
PET FOOD 3 lbs. 59^c

FRESH
GROUND
BEEF
39^c_{lb.}

RATH'S CHUNK
BOLOGNA
39^c_{lb}

RATH'S SLICED
BOLOGNA lb. 69^c

CHIQUITA
BANANAS 2 lbs. 25^c

ROMAINE
LETTUCE 19^c_{ea}

YELLOW
ONIONS 10^c_{lb}



PUYALLUP

PRICES EFFECTIVE Feb. 12th Through 17th

HEART SHAPE, VALENTINE
CAKE SINGLE LAYER 99^c

LOWEST DRUG PRICES
ANYWHERE

HIDDEN MAGIC HAIR SPRAY REG. 99c 57^c
RIGHT GUARD REG. 1.00 59^c
ALKA-SELTZER REG. 69c 39^c
VO⁵ HAIR DRESSING REG. 1.09 69^c

VALENTINE
COOKIES 49^c_{doz.}

WHEATIES 12-OZ.
CHEERIOS 10 1/2-OZ.
TOTAL 8-OZ. 3/1⁰⁰
COCOA PUFFS 9-OZ.

64-COUNT, RED ROSE
TEA BAGS 59^c

LARGE "AA"
PUYALLUP
EGGS
41^c_{doz.}

2 1/2 TINS, DUCHESS
PEACHES
PLUMS
APRICOTS 4/1⁰⁰

TALL TINS, HI HO
EVAPORATED
MILK 7/1⁰⁰

4 1/2-OZ.
ICY WATERS
SHRIMP
39^c

6-OZ. FROZEN
MINUTE MAID
ORANGE JUICE
6/1⁰⁰

ALL REG.
PILLSBURY
CAKE MIXES
4/1⁰⁰

4-lb. Bag
3-MINUTE
POPCORN
49^c

HI HO

PUYALLUP

HI HO

HI HO

HI HO

PUYALLUP

PUYALLUP

HI HO

HI HO

Eatonville Schools Sponsor Space Day

Eatonville School District 404 will sponsor an Aero-Space Day in connection with the visit of a Spacemobile on Monday, February 19. NASA's Spacemobile is a lecture demonstration used as a teaching aid for the space sciences, and as a means to acquaint large numbers of the educational community and the general public with the major accomplishments and future objectives of the Space Agency, NASA.

District 404 schools have been preparing for Aero-Space Day by making space articles available to the students, by showing films about early accomplishments in space, by bulletin board displays on space accomplishments and by general classroom discussions.

The Spacemobile lecturer will be Mr. William S. Horvath. Mr. Horvath was born in South Bend, Indiana where he received his grammar and high school education. World War II interrupted his undergraduate work and after serving in the European theatre as an officer with the 3rd Infantry Division, Mr. Horvath returned to obtain a Bachelor of Science degree from Purdue University. He is now working toward an advanced degree in science education. For twelve years Mr. Horvath has taught science and mathematics in Illinois, Wyoming and California.

His students have won first place in Northern California Science Fairs for the past four years. He is taking a 15 month leave of absence from his teaching position to travel with NASA's Spacemobile team in the Pacific Northwest. Knowledge gained from NASA's exploration programs will be presented to teachers and students. His principle hobby is mineralogy, more specifically the area of crystallography.

The program on Aero-Space Day will consist of two lecture demonstrations in the morning and two classroom visits in the afternoon. Students from 4th through 8th grades will see the demonstrations from 10:00 am to 11:00 am in the High School auditorium. Students from Columbia Crest Grade School and Weyerhaeuser Grade School will attend. At 11:15 am the high school students will convene to see the space equipment and have it explained.

At 1:00 pm, Mr. Horvath will visit a classroom and give talks to smaller groups. Junior High and some Senior High students will attend these lectures. At 2:30 pm Mr. Horvath will meet in another classroom with Senior High students to discuss and demonstrate.

The public is invited to attend these lectures and demonstrations. There is no admission charge.

Hearings Slated On Air Pollution

Public hearings regarding proposed Regulation I of the Puget Sound Air Pollution Control Agency will be held in accordance with Chapter 42.32 Revised Code of Washington. Interested persons may obtain copies of proposed Regulation I from the Agency's office in Seattle - 1104 Mercer St. or Everett - 408 Commerce Bldg. or Tacoma - 213 Hess Bldg., or from the City Clerk's Office in each incorporated city in King, Pierce and Snohomish Counties.

Public hearing will be held at 10:00 a.m.:

February 28, Room 402 King County Courthouse, Seattle.

February 29, Conference Room 325, Snohomish County Courthouse, Everett.

March 1, 10th Floor Conference Room, County-City Bldg., Tacoma.

March 13, Auditorium, Main Library, 4th & Madison, Seattle.

By order of the Board of Directors of the Puget Sound Air Pollution Control Agency, dated January 24, 1968.

Baptist Church Sets Conference

Mountain View Baptist Church at 84th and Vickery has set their Missionary Conference for Feb. 13 thru Feb. 18, beginning at 7:00 each night.

The following schedule has been slated:

Tuesday: Dr. Milton Baker - Sec. of Conservative Baptist Foreign Missionary Society.

Wednesday: Lee Van Sickle - Missionary to Alaska.

Thursday: Lynn Lundquist - Madagascar; Gail Stark - Ivory Coast, Teacher.

Friday: Rev. Robert McKinnon - Taiwan; Rev. David Rogers - Congo.

Saturday: Rev. Hugh Collins - France; Miss Melba Means - Ivory Coast, Literacy work.

Sunday morning: Rev. George Bowman - Bolivia, South America; Rev. Ronald Halberg - Japan.

Sunday evening: Mr. Paul Vincent - State Coordinator with C.B.A.; Miss Melba Means - Ivory Coast, Literacy work.

There also will be a missionary luncheon Thursday at noon and a potluck supper on Saturday at 6:00 p.m.

CPCC Looks For New Nomenclature

According to Dr. Marion O. Oppelt, President of the Clover Park Community College, the College Board of Trustees is in the process of selecting a new name for the institution.

By state law, Clover Park Community College, like all the state's two-year colleges, is entirely separate from any public school system. However, Clover Park Community College is located within Clover Park School District #400 near the Clover Park High School.

Community College District No. 11, which is all of Pierce County except the city of Tacoma and the Peninsula area, is served by the Clover Park Community College. Doubtless in time there will be other community colleges in District No. 11, but at the present time, District No. 11 is also called the Clover Park Community College District.

The confusion with the Clover Park Public School system extends to communications, business relations, accounts, deliveries and even to bond and levy issues.

To reduce this confusion, the Board of Trustees of Community College District No. 11

are considering adoption of a distinctive name for the college. They will welcome suggestions from residents of the entire college district.

Such suggestions should be mailed or delivered to the College Name Selection Committee at the Clover Park Community College headquarters, 6010 Mount Tacoma Drive S.W., Lakewood Center, Washington 98499, not later than February 19.

Water Class Slated At FP

A course in "Basic Water Works Training" will be presented beginning Feb. 12 through the Franklin Pierce Adult Education program.

Approved by the State Board for Vocational Education, the course will be taught by Howard Godat, a consulting engineer from Olympia.

The course is designed primarily for employees of suburban water departments. A manual will be furnished to the students who register for the class.

The 10 week course will meet in Room 1105 of Franklin Pierce High School each Monday evening. Students may register and pay the \$5 fee at the first class meeting.

Grange Sets Dual Celebration

Waller Road Grange invites members and friends to attend a combination "Mortgage Burning" and birthday celebration at 8 p.m. March 16th.

Carl Schuler will reside over the meeting. State Grange Master A. Lars Nelson will address the audience. Other state officials will be present for the occasion.

Past Masters, Charter members and other past officers are especially invited to be part of the celebration.

Fire-women Elect Officers

Installation of officers for the Spanaway Firemen's Auxiliary was held recently.

Incoming officers include Mmes. Chas. (Shirley) Mathis, president; William (Lynda) Davis, secretary; and Darrell (Gloria) Dugan, treasurer.

Board members for the 1968 year include Mmes. Joel (Lillian) Davis, Joe (Alda) Barsotti, Oliver (Doris) Omat, George (Marie) Woracek, Emerson (Olive) Tarpenning, Skip (Lois) Reeves, Louis (Tillie) Symmons and Edward (Ione) Larson.

Meetings are slated for the first Tuesday of each month and invitation was given for all ladies in the fire district to join.

Firemen To Dance

Parkland firefighters will hold their annual ball February 17 at the James Sales Grange Hall.

Money collected from ticket donations will be used for improvements around the station not covered by tax money.


Jack Siler's dance band will provide the music, and dancing will start about 9 p.m. Tickets are available at the Parkland Fire Hall or from any member of the department.

This Bank's Interest Is In Saving Lives

BE A BLOOD PROVIDER CALL FU 3-2553 Tacoma-Pierce County BLOOD BANK 1211 South 12th

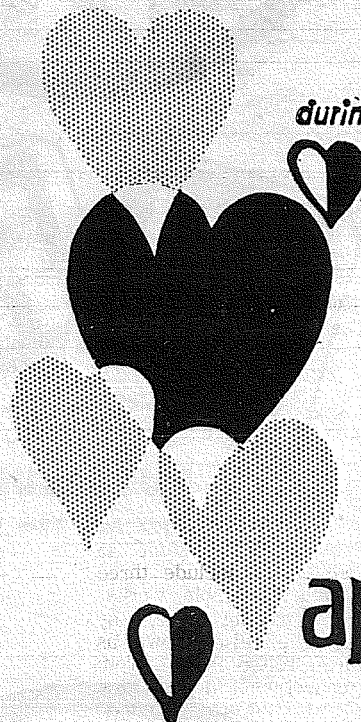
Where To Buy INSURANCE

CALL LE 7-8647



Ashford - McAloon Insurance
SAFECO INSURANCE 1901 Pacific Ave.

INSURANCE
Military - Home - Business
LE 7-4904
Auto Fire Life Bonds
IRENE CLEMENS
Agency - Parkland
10329 Pacific Ave.



during valentine month

it's customer appreciation time

...and time for a personal thank you to our community

It has been a great pleasure to serve the banking needs of our growing community area since 1898. For nearly 70 years we have been privileged to serve thousands of our neighbors and friends. Now, as this area stands on the threshold of a vigorous new era, we want to say "thank you" to our growing family of customers and renew our pledge of providing the finest banking services to everyone in the years ahead.

Citizens STATE BANK

MEMBER FEDERAL DEPOSIT INSURANCE CORPORATION

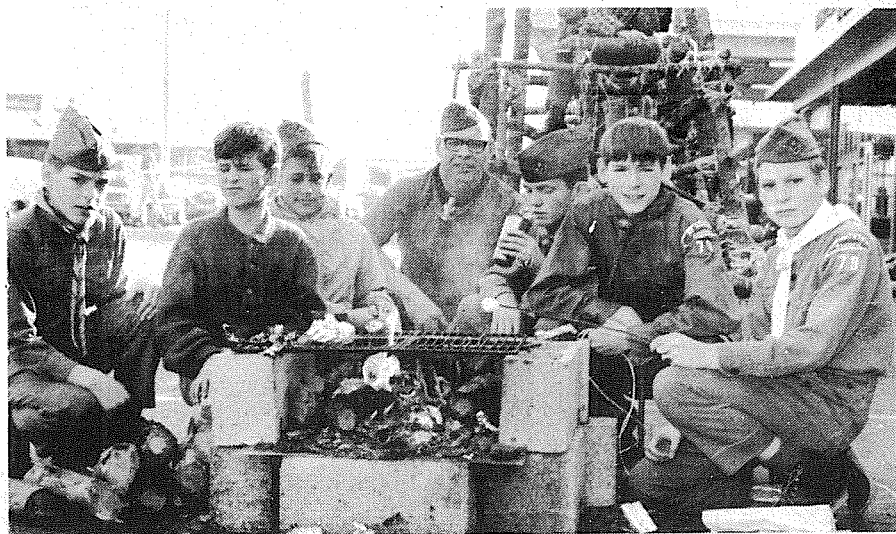
- ☆ MAIN OFFICE - PUYALLUP
- ☆ EAST SUMNER OFFICE
- ☆ SUMMIT VIEW OFFICE
- ☆ EDGEWOOD-MILTON OFFICE



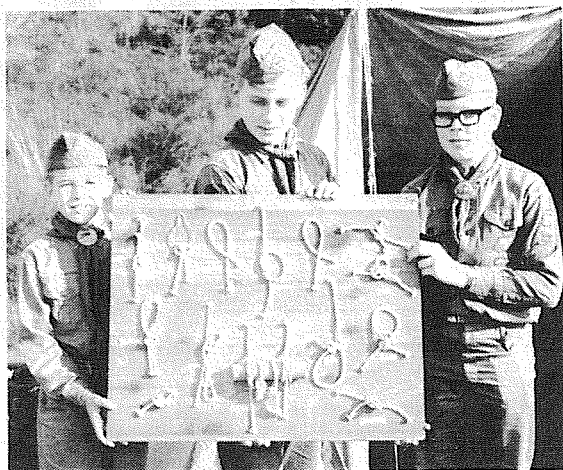
Displays Climax Scout Week Saturday



TROOP 30 members Aron Scott (left) and Jim Penning demonstrate first aid techniques on Steven Penning during special Scout Week camp set up Saturday at Garfield Street and Pacific Avenue. Steven was wearing a plastic severed artery simulator that provided realistic practice including the flow of blood. Aron lives at 12902 A Street and the Penning brothers reside at 9117-24th Avenue East.



TROOP 79 Scouts from the Clover Creek area constructed this walkway bridge on the Lucky Store parking lot Saturday. Construction was under the supervision of Scoutmaster Delbert Force.



KNOT DISPLAY was explained by Ronald Woods (left), Steve Fite, and Rockney Nigretto. The trio belong to the Troop 30 Pinetree Patrol.



STEVE JOHNSON (background) 13901 Allen Ave. East, displays his culinary talents by baking Mexican corn bread while John Thompson, 2418 Brookdale Road East, takes a peek at his cherry-peach cobbler. Both are members of Troop 30.

Pierce County's Only Professional
AMBULANCE SERVICE
Parkland Ambulance and Lakewood-Pacific
JU 4-3344 LE 7-3322

SING
a song of value on car, home and life insurance. Contact me today.

To Call For The Best Buy On Your Auto Insurance

Al Langseth
9920 Pacific Ave.
LE 1-1800



P 6470
STATE FARM
Insurance Companies
Home Offices: Bloomington, Illinois

Men In Service

Sergeant Fred Gilmour, son of Mrs. Charlotte Robinson of Rt. 1, Spanaway, Wash., is on duty at Da Nang AB, Vietnam. Sergeant Gilmour, an automotive body repairman, is a member of the Pacific Air Forces. Before his arrival in Vietnam, he was assigned to Pease AFB, N.H. The sergeant is a 1956 graduate of Lincoln High School, Tacoma.

The two most celebrated Alaskan painters of all time, Eustace Ziegler and the late Sydney Laurence, will share billing at a unique show to open at Allied Arts of Tacoma on February 13th.

The exhibit of some 45 paintings will include three particularly notable works: "The Vanishing Race," by Laurence (also known as "Raven Totem Pole"), from the collection of Mr. and Mrs. Richard C. Cook; "Tanana Mother and Child", loaned by Mr. and Mrs. Fred M. Giessel of Fife; and Laurence's "Off to the Potlatch", loaned by Mrs. Adolph Schmidt of Olympia.



"TANANA MOTHER AND CHILD", by contemporary Seattle artist Eustace Ziegler, is one of the featured paintings which will be on display at Allied Arts of Tacoma for three weeks beginning February 13. Ziegler specializes in Alaskan scenes.

STATE TRAFFIC DEATHS	
TO DATE	
LAST YEAR	THIS YEAR
88	77

Pierce County TRAFFIC DEATHS	
TO DATE	
LAST YEAR	THIS YEAR
11	14

DRIVE LEGALLY
WASHINGTON STATE PATROL

Coin Operated
attendant to assist you
2
Two Locations
Laundry & Dry Cleaning
up to 25 & 50 lb. machines
U-Do or WE Do
Rugs Washed - Dried & Dyed
Coffee & Refreshments

FERNHILL **LAKEWOOD**
GR 2-9736 **JU 4-9760**
8420 Pacific Ave. 4924 115th Ct. S.W.
Tye Poly. Clean Center
FERNHILL LAUNDRY MATIC & CLEANERS

Dryer MORTUARY
(134th & Pacific)
PARKLAND

The Country Parson



"A marriage is on solid footing if the parties laugh together daily."
Copyright, by Frank A. Clark

Dryer MORTUARY
(134th & Pacific)
PARKLAND

MILLIE'S STYLETTE BEAUTY SHOP



NOW OPEN BY POPULAR REQUEST MONDAY Through SATURDAY (Evenings by Appointment)

★ CUTTING ★ PERMANENTS
★ TINTING ★ BLEACHING ★ FROSTING

We sell and service WIGS, FALLS, WIGLETS and HAIR PIECES.

228 169th E. Spanaway

LE 7-8042

CHURCH DIRECTORY ATTEND OUR WORSHIP SERVICES

CHRIST THE KING Lutheran Church
8:30 & 11 a.m. Worship Service
9:45 a.m. Sunday School
East 85th at Van Buren
LE 7-4272

Spanaway Assembly of God
166th & Pacific Ave.
Sunday School 9:45 a.m.
Morning Worship 11 a.m.
Evening Evangelistic 7 p.m.
Family Night Wed. 7:30 p.m.
LE 1-1412

Spanaway Lutheran Church
8:30 & 11 a.m. Worship Service
9:45 a.m. Sunday School
Grades 1 & Up
11 a.m. Sunday School
3, 4 and 5 Year Olds
John L. Briehl, Pastor
160th & A St. LE 7-5978

Parkland Lutheran Church & Christian Day School
Worship... 10:30 a.m.
Sunday School-Bible Study 9:15 a.m.
All ages
H.A. Theiste, pastor
LE 7-5492 LE 1-0777

An Invitation to Creative Cookery

Food Arts Americana Program



Cooking can be fun, creative and enjoyable!

A new dimension in cookery will be presented February 19, 1968, at Keithly Junior High School, 124th and South 'L' Street, Parkland, Washington 98444, in the auditorium by Food Arts. Two sessions will be scheduled, one starting at 1:30 p.m., and an evening program at 7:30 p.m.

Each person attending will receive a recipe booklet and can follow the recipes as they are prepared on stage by Mrs. Betty G. Nelson, Food Arts Home Economist. As an added attraction, hostess and company dinner fashions will be modeled during the program.

"The art of preparing food depends on understanding the ingredients and equipment used," Mrs. Nelson says. To receive maximum enjoyment from what often is considered a routine chore, a new approach can supply refreshing results.

The Food Arts two-hour program will present new ideas to stimulate kitchen creativity using electric appliances. In addition to the recipe booklet, a wide variety of prizes will be awarded, including each recipe prepared during the show.

You are invited to attend. Admission to the cooking schools will be by special ticket, available free by calling or stopping by one of the sponsors' offices. Reservations are being taken now. Your early selection of time will insure your being able to pick the program of your choice.

**Elmhurst Mutual
Power & Light Co.**
120 South 132nd
LE 1-4646

**The Times Journal
Newspaper**
14620 Pacific Ave.
LE 7-0223

**Parkland Light &
Water Company**
404 S. Garfield
LE 1-5666

LETTERS TO THE EDITOR



Editor: Times Journal

The caption, "South Suburban Answers P.C.I.A. Claims," published in the Pierce County Herald & Journal dated February 8, 1968, is not in keeping with the article that followed. None of the claims made by the Pierce County Improvement Association were answered in the story. The information furnished to the Herald by the Association has been well-substantiated by letters from the different versified Departments. These letters were published in previous issues of the Herald.

The election to dissolve was not "virtually thrown out of court", as claimed by Clayton Peterson, South Suburban Sewer District Commissioner. The matter was turned over to the Boundary Review Board by mutual agreement of the attorneys. It is rather difficult for anyone to believe that a judge, who is the final protector of our right to life and liberty, would throw a vote of the people out of court.

The P.C.I.A. has stated on several occasions that it would abide by a decision of a majority vote. If the District were maintained, it would also mean there would be no objections to its commissioners. It was only when the District and its supporters used legal technicalities to impose upon the people's right to self-government that the P.C.I.A. rendered its decision for re-organization.

The competing Sewer District, referred to in the article by Mr. Peterson, was far larger than the original College Sewer District of thirty-six people, which was organized by them.

Mr. Peterson also stated that one of his petitions for annexation contains "more than 60 per cent of the landowners". Never have any of the petitions for annexation contained "60 per cent of the landowners'" signatures, but that of 60 per cent of the "land area".

The county is planning only to build the main trunk line and treatment plant, but the S.S.S.D.'s plan will not be furnishing customers to the county. It will be providing customers to the small sewer district originally formed with the campus of P.L.U., thus depriving Parkland of the county's plan, as the county commissioners will not interfere with sewer districts.

The P.C.I.A. believes that the County Commissioners need to reply to the often repeated statement that the S.S.S.D. is the only hope that the county has for customers for their main line and treatment plant to be built. How the S.S.S.D., with a planned main line to Steilacoom, fits in with the county plan, needs explanation.

We firmly believe the H.B. 139, empowering the county to go into the sewer business, is the answer to Parkland's sewage problem, and that the S.S.S.D. can only continue to give the community false hopes.

It must be remembered that in order for the S.S.S.D. or any other sewer district in this age to build a sewer system, approval must be secured from the State Pollution Control Commission and the Federal Housing and Urban Development Department. Is it not strange that the commissioner never explains how he intends to build a sewer system in defiance of these authorities, who have carefully and repeatedly laid down the requirements for their approval to the S.S.S.D.?

In the final analysis, we must again call attention that the plan presented to the citizens of this area is inadequate and poorly planned.

Without the approval of the Federal authorities, it is financially not feasible. (This is according to Mr. Peterson's own statements.)

If the S.S.S.D. really wants sewers for us, they should gracefully bow out and let the county provide a modern sewer and drainage system for the whole Clover Creek Drainage Basin. Then, and only then, will a modern progressive South Pierce County emerge to take its rightful place as the finest area of the County.

The majority of the citizens realize this and voted in a fair election after being subjected to a concentrated effort to change their opinion — hardly ever approached, even in the bitterest of political campaigns.

Pierce County Improvement Association

SOCIAL CALENDAR

Starlite Rebecca Lodge No. 332 will meet at 8 p.m. February 15 at the Summit Youth Center. Nobel Grand John Allen will preside, assisted by Mrs. W. B. Doering. There will be an exchange of Valentines.

Andrew Christensen P.T.A. will meet at 8 p.m. Thursday, February 15th in the school's multi-purpose room.

An instrumental group from Keithley Junior High School, under the direction of Mr. Winters, will provide musical selections.

A Golden Acorn award will be presented and there will be open house for third and fourth graders.

Thrifty Maids of the Pierce County Homemakers will host their monthly meet at 10 a.m. February 21st at the home of Mrs. Wayne Hasiman.

A lesson on convenience foods will be given by Mmes. John Nelson and James Wistrach.

In preparation for the season of Lent, Our Savior Lutheran Church will present a film, "The Life of Christ", at 6 p.m. Sunday, February 25th.

A coffee hour will follow the film at the family night meeting.

The Board of Trustees of Community College District No. 11 will hold a special meeting at 3 p.m. Monday, February 26, 1968, in the Clover Park Community College board room at 6010 Mt. Tacoma Dr. S.W.

Bible-Science Lecture Feb. 19

The Rev. Walter Lang will discuss the value of the creation approach in the Bible and Science in an illustrated lecture to be presented at Parkland Lutheran Church & School in the School Auditorium at 124th & Pacific Ave., on Monday, February 19, at 7:30 p.m. The public is invited.

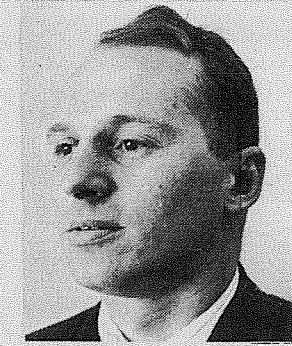
The Rev. Walter Lang is the Executive Director of the Bible-Science Association composed of several hundred prominent scientists and men of letters who are engaged in research and writing on this subject.

There is no admission charge. A free-will offering will be received.

STORK REPORT

- Lakewood General**
Mr. and Mrs. Ronald F. Hagen, 12719 So. A, girl, January 26.
Mr. and Mrs. Robert Duggins, Rt. 2, Box 2742-H, Spanaway, boy, January 31.
Mr. and Mrs. Kenneth Twing, 1024 E. 61st., girl, February 3.
Mr. and Mrs. Robert L. Dinsmore, 1237 E. 141st, girl, February 7.
Mr. and Mrs. Wayne L. Willcock, 4409 So. 73rd, girl, February 7.
Mr. and Mrs. Donald D. Perkins, 612 Brookdale Rd. E., girl, February 7.
Mr. and Mrs. Robert N. Turnmire, 631 So. 161st., girl, February 8.
Mr. and Mrs. William McAuliffe, 603 E. 84th, girl, February 8.
Mr. and Mrs. Everett

New Trustee For Library



Richard Wolff
Richard Wolff has been appointed by county commissioners to the Pierce County Library Board of Trustees.

- Recommended by Commissioner Pat Gallagher, Mr. Wolff will fill the position left vacant by the resignation of Mrs. Clarence Johann.
Mr. Wolff brings to his new post a strong interest in libraries and a background in newspaper work. For the past year he has been a reporter for the Tacoma News Tribune, and prior to that he was news editor for the Anchorage Daily News.
A native of Puget Sound, Mr. Wolff is an alumnus of the University of Washington and has owned property in Pierce County for seven years. He resides with his wife and two daughters at 4909 44th St. East in a newly-completed home.
Brooks, Rt. 2, Box 2444-X, Spanaway, boy, February 8.
Good Samaritan
Mr. and Mrs. Richard Charlston, 309 E. 84th, girl, February 7.
Mr. and Mrs. Richard George, 10142 E. 48th Ave., boy, February 7.
Mr. and Mrs. Jimmie Hall, 1217 E. 139, girl, February 7.

They Meet This Week

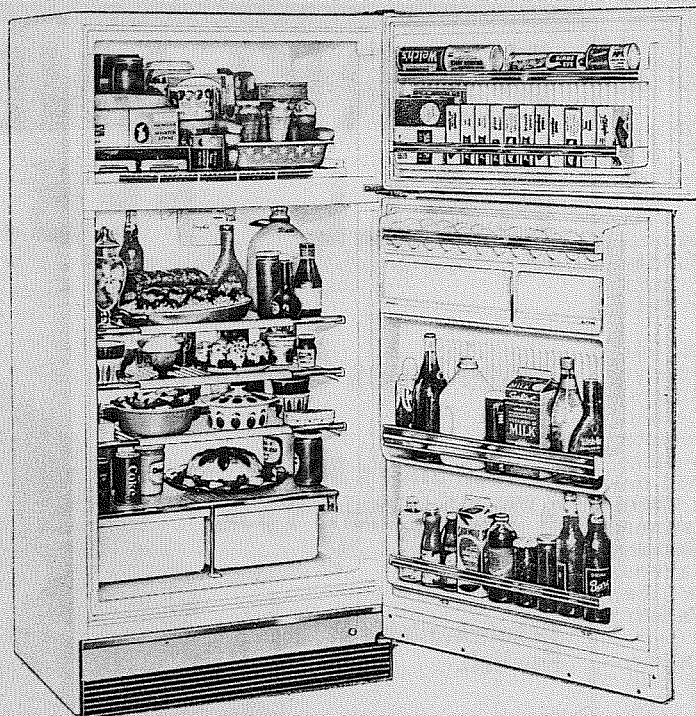
- Thursday**
Kiwanis International, 6:15 p.m., Brad's Restaurant.
Andrew Christensen P.T.A., 8 p.m., School multi-purpose Room.
Starlite Rebecca Lodge No. 332, 8 p.m., Summit Youth Center.

Libraries To Close Washington's Day

Community libraries in the Pierce County Library system that are usually open Thursdays will be closed for Washington's Birthday. Those affected include Parkland and Roy libraries.

See These Frigidaire Appliances In Action Feb. 19th

At Food Art's Americana Show - Keithley Jr. High



BIG 14.6 cu. ft. Refrigerator

- * Flowing Cold Air Circulation Throughout
- * Separate Zero Zone 126 lb. Freezer Section
- * Completely Frost Proof
- * Magnetic Door Seals
- * Flush-Hinged Doors

Trim Tailored Double Oven "30" Range



With "Teflon" lined oven panels that slide out to go to sink.

- * Now you can make oven cleaning simple. As easy as cleaning your frying pan.
- * Double oven fits into 30" space
- * Rotary surface unit controls with infinite heat settings

It's Cleanable!

RC1 639VN

"Award of Merit Service Dept."

Pochel's

TV & Appliance
14001 Pacific Ave.
LE 1-1040

Spanaway Artists Exhibit

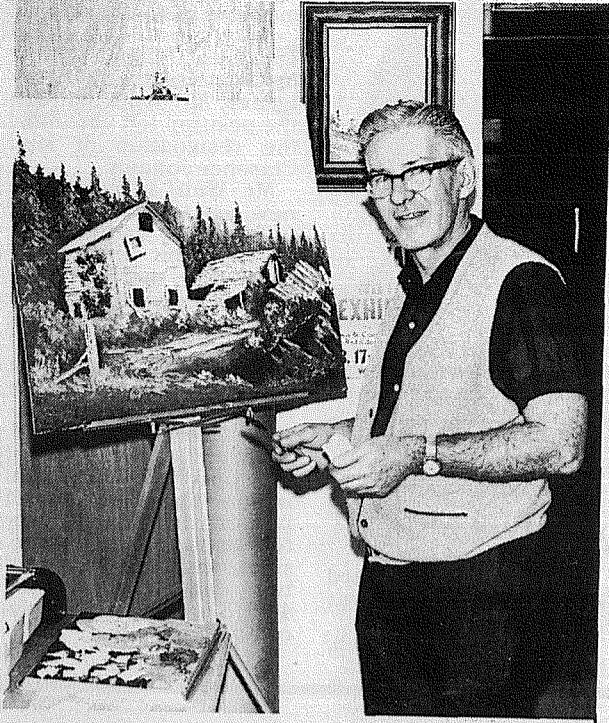
A pair of Spanaway artists, Paul Chalk and Herbert Schraml, will exhibit paintings at the 3rd Annual Tacoma Mall Art Exhibit, February 17 through March 2.

Chalk, well known for his landscapes and seascapes, recently completed a one man sponsored show at Federal Way. He operates Paul's Shoes in Spanaway.

Schraml, 17101 South Park, began painting as a small boy in Germany and went on to study under some of Europe's finest teachers. He attended the Munich Academy of Art for three years.

He exhibited his work in Europe before coming to the United States in 1959, and since has won several awards in West Coast exhibits. He has painted many murals including most of the Bavarian Village paintings in Leavenworth, Washington.

At present he teaches art courses at his Spanaway studio.



PAUL CHALK, will be one of two Spanaway artists exhibiting paintings at third annual Tacoma Mall Art Exhibit Feb. 17 through March 2. Herbert K. Schraml, 17101 South Park, will join Chalk and other local artists in contributing to the show.

FP Menu

February 15 - Wiener Winks, Buttered Corn, Orange Juice, Chocolate Pudding, Milk.

February 16 - Toasted Cheese Sandwich, Buttered Carrots, Celery Sticks, Applesauce, Milk.

February 19 - Chopped Meat/Gravy on Whipped Potatoes, Green Salad, B/B Sandwich, Apple Pie/Cheese, Milk.

February 20 - Chili Con Carne, Crackers, Yeast Rolls with Honey/Butter, Spicy Applesauce, Milk.

February 21 - Mashed Potato with Giblet Gravy, Fried Chicken, Buttered Peas, B/B Sandwich, Cher-

Choir Of The West To Appear At PLU

Pacific Lutheran University will host its Choir of the West in concert Tuesday evening following the completion of its tour through the Midwest.

The Homecoming Concert in Eastvold Chapel begins at 8:15 p.m., and tickets are being sold at area Lutheran churches. The event is sponsored by the Pierce County Lutheran Ministerial Association.

Director Maurice Skones and his 68-voice choir left their campus Jan. 26 and have since performed 17 concerts in six states, including Minnesota and Iowa. On Sunday they are singing their last tour concert in Seattle.

Skones, now in his fourth year as director of the a cappella singers, will open his Homecoming Concert with "Cantate Domino," written by Heinrich Schutz. Next will be Johann Bach's "The Righteous." Johannes Brahms' piece "O Saviur, Throw the Heavens Wide," will close the first of the concert's four groups.

Opening the second section will be Jean Berger's "Magnificat" featuring a soprano solo in Latin. Four contemporary anthems and carols will be sung before intermission. They are "Arise, Shine For Thy Light Has Come," by Kenneth Jennings; "Make a Joyful Noise," by Paul Fetler;

"Bring a Torch, Jeanette, Isabella," by Robert Wetzel; and Robert Graham's "Alleluia, Christ is Born."

The final group will include two motets by the contemporary composer Miklos Rozsa. He wrote the first piece, "The Vanities of Life," especially for the Choir of the West in 1964. It is based on the first chapter of the Book of Ecclesiastes. The other selection is "To Everything There Is a Season."

The TIMES JOURNAL

ENTERTAINMENT

Radio Station On Air Feb. 17

Radio Station KOOD will commence broadcasting on 1480 kc. February 17, serving Lakewood and surrounding areas, Manager Douglas Taylor disclosed last week.

The station will feature the "Golden Sound", playing all time favorite records that have sold a million or more copies. Programming will be broadcast during the daylight hours.

Taylor, a veteran radio-television broadcaster, first introduced the Golden Sound on a Victoria B.C. station and it proved so successful it soon spread to other markets in the U.S. and Canada.

MATA'S WIGS Styling and Sales

119 South 143rd
LE 7-3427

Income Tax Service

and business bookkeeping
(24 years legal training)

Delbert M. Bresemann

Military Road Spanaway, Wash.

LE 1-1666

Severe Winter Causes Bee Loss

Severe winter weather has caused serious reduction in the available crop of packaged bees from Eastern and Southern sources, according to Charlie Cross, Milton, President of the local Beekeepers Association. Growers who need bees should order early.

For information about bees and beekeeping, call the Extension office.

Journal Classifieds Get Results LE 7-0223

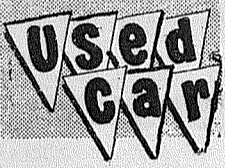
LITTLE PARK CAFE

full dinner menu featuring **STEAK and SEAFOOD** daily lunch specials

Open 7 Days A Week
6 A.M. to 9 P.M.

171st & Pacific

LE 1-1343



HEADQUARTERS

"MOST FOR THE MONEY" All Makes...All Kinds

ARMSTRONG'S USED CARS LE 7-5524

PIERCE COUNTY HEADQUARTERS FOR **1968**

- ★ CHRYSLER
- ★ PLYMOUTH
- ★ VALIANT
- ★ BARRACUDA

CALL GR 4-0621

Steven MOTOR CO.
2705 SOUTH TACOMA WAY

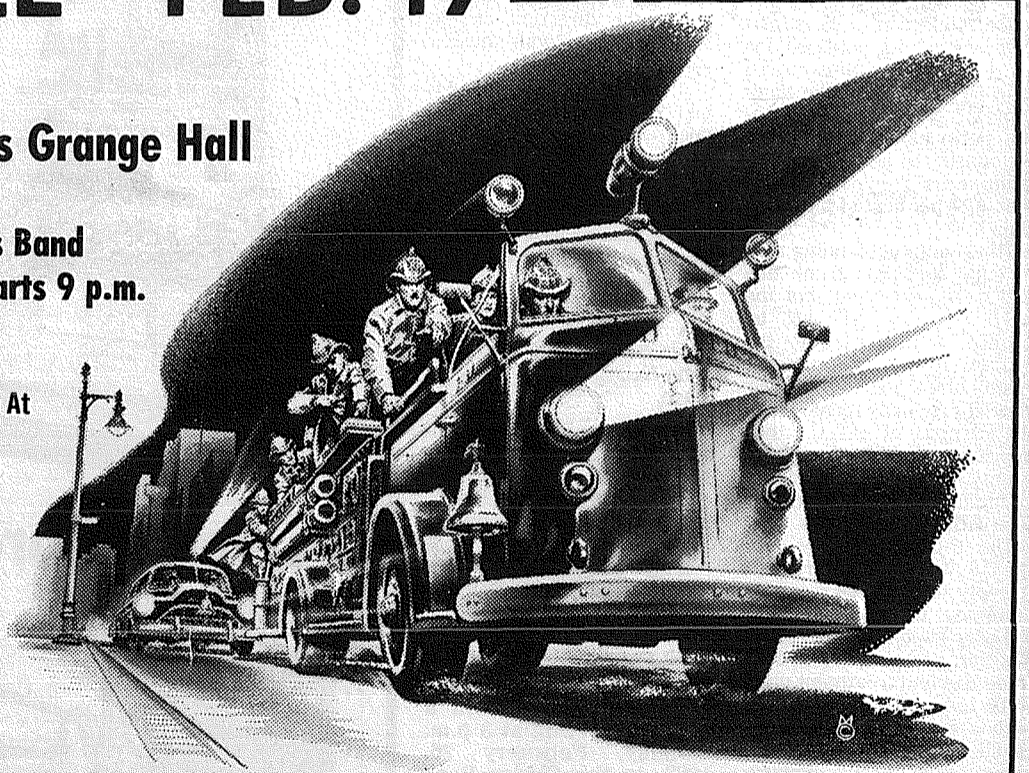
PARKLAND FIREMEN'S BALL - FEB. 17TH

James Sales Grange Hall

- ★ Jack Siler's Band
- ★ Dancing Starts 9 p.m.

Tickets Available At Fire Hall.

Take Your Valentine.



THE FOLLOWING MERCHANTS BRING YOU THIS MESSAGE AS A PUBLIC SERVICE

<p>INSURANCE IRENE CIEMENS AGENCY-PARKLAND 10329 Pacific Ave. LE 7-4904</p>	<p>VIS-REY INC. 12702 Pacific Ave. Parkland, Wash. LE 1-3230</p>	<p>Parkland Light & Water Co. Serving the Hub of Pierce County 404 Garfield St. Parkland, Wash. LE 1-5666</p>	<p>The Treasure Mart 508 Garfield St. Parkland, Wash. LE 1-2302 WE BUY, SELL & TRADE CLOSED SUNDAY & MONDAY</p>
<p>Elmhurst Mutual Power & Light Co. 120 So. 132nd Parkland, Wash. LE 1-4646</p>	<p>LOU JEAN APPAREL 406 Garfield St. Parkland, Wash. LE 7-5317</p>	<p>THRIFTCO FOOD & DRUGS 13819 Pacific Ave. LE 7-0281</p>	<p>REALTOR Carl T. Lindgren 410 Garfield St. Parkland, Wash. LE 7-0234</p>

Angelo's PIZZA HOUSE

ORDERS TO GO

Featuring top sirloin and American dishes, spaghetti, rigatoni, meat balls, sausage, ravioli, beer and wine.

Choice of Pizzas

- cheese & tomato
- anchovie
- mushroom
- Italian sausage
- pepperoni
- tuna
- bacon
- peppers
- olive
- hamburgers
- ham
- salami
- onion



LE 7-7233
14102 PACIFIC AVE.
PARKLAND



CALL AHEAD, IT'S PIPING HOT ALL THE WAY HOME

PICK UP A BOX, PAIL, BUCKET OR A BARREL

Bearcats End Lute String

By DAVE HALSTEAD
The PLU Knights finished their first of three straight rough weekends by beating the Willamette University Bearcats 98-77. The previous night's action left the Lutes on the short end of the score, 91-88 in overtime.

The Bearcats ended the Lute's hopes of breaking the school record of consecutive Northwest Conference victories by beating them 91-88 Friday night in PLU's first overtime match of the year.

The Lutes, after pulling ahead by seven points, ran into trouble against the Bearcat's full court press and fell behind by six, 17-11 with 12:31 remaining. But a PLU comeback, led by senior forward Dennis Buchholz' seven consecutive points, pulled the Lutes ahead 21-20 with 10:05 left in the first half. The lead slowly mushroomed into a bulge of 17 points, 42-25, with 4:28 remaining, as the Lutes hit 52 per cent from the field in the first half. Willamette managed to reduce this bulge

to an 11 point deficit at halftime with the score at 48-37.

The Bearcats matched the Lutes basket for basket at the beginning of the second frame, but again began capitalizing on numerous turnovers due to the full court press. With 9:31 left, Willamette was within striking distance, 67-62.

The Bearcats pulled ahead for the first time in the second half, 79-77, on a jump shot by Jack Dale. With 1:33 remaining sophomore Leroy Sinnes tossed in a 20 foot jumper to even the score 79-79. A Willamette free throw pushed the Bearcats ahead by one, but the Lutes again managed to score, as junior Rick Ancheta pushed in a 20 footer with 0:47 remaining. Another free throw pulled the Bearcats even, and the score finished 81-81 in regular time.

The five minute overtime session began with Willamette drawing first blood, and pulling ahead by three, 85-82. Exchanges of baskets left the Lutes on the short end; the

final score read 91-88 in favor of Willamette. This evened the series for the year at one each.

Willamette's Jim George led all scorers with 34 points. Buchholz gained 23 for the Lutes with 17 rebounds, while Sinnes, junior Ron Groth and Ancheta each totaled 18, 12,

and ten. Sophomore Al Kollar pulled down 12 rebounds, while being held to just nine points.

The beginning of Saturday night's game was a near repeat of the previous nights start.

League Standings

AMERICAN (Final Standings)

	W	L	PF	PA
Malcom's Shop-Rite	7	1	702	578
McNeil Vikings	5	2	515	464
Parkland XXX	5	2	552	525
48th St. Tavern	2	3	305	349
Bird's Const.	2	4	437	482
Gig Harbor Merchants	1	5	377	436
Pacific Ave. Motors	0	5	311	365

NATIONAL (Final Standings)

	W	L	PF	PA
Tacoma Trailers	6	1	475	367
Villa Thriftway	5	2	468	355
Brand X	4	2	378	305
2J's Tavern	3	3	361	328
Lumberjacks	2	4	367	393
Midland Fuel Oil	2	4	366	328
Bonn's Supply	0	6	202	541

CONTINENTAL (Final Standings)

	W	L	PF	PA
Stud Olde Timers	6	0	405	299
Volunteers	5	1	385	331
Beach Tavern	4	2	376	320
Shady Rest Tavern	2	4	342	320
Spanaway Merch.	2	4	255	319
Lakers	1	5	275	412
Lakewood Merch.	1	5	305	342

ADULT CHURCH

	W	L	PF	PA
Spanaway Assy. of God	6	0	268	205
St. John of the Woods	4	2	270	244
Immanuel Baptist	1	4	192	222
Our Savior Lutheran	0	5	186	245

SENIOR BOYS

	W	L	PF	PA
Sumner Golds	6	1	443	318
Sumner Purple	5	1	292	247
Franklin Pierce	5	2	368	304
UP Boosters	2	4	293	309
Trojans	1	5	266	320
Pied Pipers	0	6	227	371

Cooking School Proves Popular

Tickets to the Feb. 19 Food Arts Americana Cooking and Fashion Show are proving to be a popular item with area residents.

Sponsors are furnishing the invitational tickets free on request, and the response has been gratifying. Out of several hundred, the Times Journal office reports its supply rapidly diminishing.

"A cooking school can be fun as well as instructive," says Food Arts home economist Betty G. Nelson. She and her associate, Helen E. Brady, have presented the show in every corner of the state and many parts of Oregon and Idaho.

Because of the enthusiastic response to the program where it has been presented, the sponsors scheduled the show for the community. An afternoon session is slated for 1:30 p.m. and the same program will be presented again at 7:30 p.m.

Prizes will be awarded, including all dishes prepared. Each person will receive a printed booklet containing all recipes prepared on the program.

Pochel Appliance and Television will furnish the appliances to be used.

Mrs. Nelson is a home economics graduate from the University of Washington, and has worked in many facets of her field. She has done consultant work in Sweden, worked as director of Home Economics for Nalley's Inc., Good Housekeeping Magazine, nutritionist for Washington State Dairy Council, and taught home economics at Tacoma-Vocational School. Mrs. Brady is the office manager of a paper processing plant as well as a partner in Food Arts. She assists Mrs. Nelson with the demonstrations.

Invitations can be obtained from Elmhurst Mutual Power and Light, Parkland Light and Water, and the Times Journal office.

Boosters Plan Dinner

Bethel Booster Club will sponsor a chicken dinner Wednesday, Feb. 21, from 4:30 to 7 p.m. in the Bethel High School cafeteria.

The menu for the dinner includes barbecued or plain fried chicken, mashed potatoes and gravy, salad, rolls, homemade pie, and coffee or milk. The price is \$1.50 for adults and high school students and 75 cents for grade school children.

The dinner will be followed by a home basketball game between the Bethel Braves and the North Thruston Rams. Junior Varsity will play at 6:15 p.m. with the Varsity game at 8 p.m. Regular home game admission will be charged.

LOOKING AROUND

D. H. Wilcockson told physical education specialists in Durham, England, "if Twigg's teachers had spotted her physical defects and arranged remedial treatment she might now be a Gina Lollabrigida."

The United States Alcohol Tax Office destroyed 714 whiskey stills in North Carolina last year. They report the stills were capable of producing nine million gallons of (tax exempt) whiskey.

At a highway intersection in Fort Lauderdale, Fla., police pass out 20 to 30 tickets a day to drivers shifting among the must-left, straight-ahead and must-right lines. They also got Mayor Edmund Burry. He paid his fine but picketed the corner, calling it a "police trap."

PRAIRIE TAVERN

CHICKEN & PIZZA

Food! Dancing!

LIVE MUSIC

FRIDAY & SATURDAY

Jean & Chris — Betty Jean & Wade
on The Mountain Highway at Roy "Y"

SPANAWAY FIREMEN'S BALL

FEB. 17TH

ELK PLAIN GRANGE HALL

BOETTNER'S BAND

Dancing Starts At 9:30 p.m.

Tickets Available At The Door.



The Following Merchants Bring You This Message As A Public Service

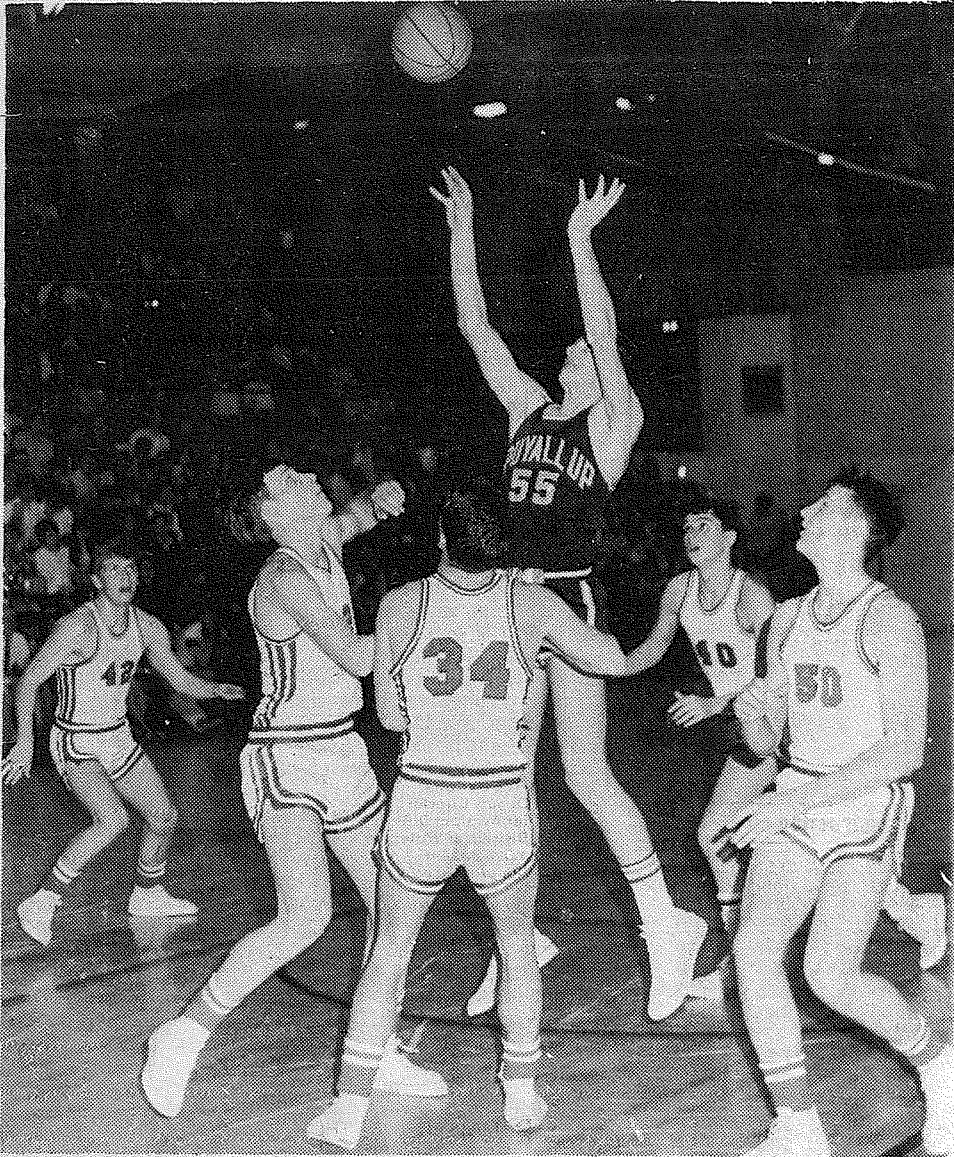
Thurmond Real Estate 16217 Pacific Ave. Spanaway, Wash. LE 1-1308	MODAHL AUTO PARTS 16317 Pacific Ave. Spanaway, Wash. LE 7-8677	INSURANCE IRENE CIEMENS Agency - Parkland 10329 Pacific Ave. LE 7-4904	Ashmore Spanaway Drug 165th & Pacific Ave. Spanaway, Wash. LE 7-5993
PAUL'S SHOES 161st & Pacific Spanaway, Wash. LE 7-0552	Parkland Light & Water Co. 404 Garfield St. Parkland, Wash. LE 1-5666	OUHL'S RICHFIELD SERVICE 16002 Pacific Ave. Spanaway, Wash. LE 7-9956	Elmhurst Mutual Power & Light Co. 120 So. 132nd Parkland, Wash. LE 1-4646

Introducing —
THE ALL NEW
KOOD
RADIO LAKEWOOD

"Home of the Golden Sound" —

DIAL **1480** KC.

ON THE AIR
FEB. 17TH 1968



JACK-IN-THE-BOX. Viking postman Todd Huber (55) is completely surrounded by the entire Cardinal team, but managed to get off a close-in jumper in 1st period action last Friday night. Putting the clamps on the effort are Jim Hadland (42), Mark Korsmo (52), Mike Stogsdill (34) Jim Furlong (40) and Glen Harkey (50).

Cards Torrid

How They Stand County

The Franklin Pierce Cardinals, climbing to the top of the Southern Division and clinching a playoff spot with a 63-57 win over defending PSL champ Puyallup Friday night, will travel to Lakes this Friday and try to pick up their seventh league win from the winless Landers.

Coach Del Shafer will be expecting big things from his squad, as three of the Cardinal starters scored in double figures in the Puyallup game. Percentage shooting has pulled the Cards out in front during the second half in recent league contests, and Coach Shafer looks for further improvement against the Lancers, who are 0-7 at the bottom of the PSL Southern Division.

Against Puyallup, Franklin Pierce rode a 15 point outburst in the third quarter to collect a big win over the Viks. Puyallup controlled the ballgame during the first half, holding a 33-32 halftime lead over the Cardinals. Franklin Pierce, however, came out and shot down the Viking zone in the second half, hitting 9 of 14 field goal attempts for a torrid .65 per cent.

Mark Korsmo, scoring 16 of Pierce's 31 points in the second half, tallied 24 points to lead all scorers in the contest. Jim Hadlund and Jim Furlong followed for the Cards with 15 and 14 points respectively.

One big reason for Puyallup's defeat was foul trouble, as Viking mainstays Gary Picha and Todd Huber drew their third infractions midway thru the first half.

PSL STANDINGS (As of Monday)

Northern Division						
League	Season	W	L	PF	PA	
Evergreen	7	1	522	353	12	2
Glacier	7	2	571	471	12	3
Kent-Meridian						
.....	6	2	489	394	9	4
Renton	5	3	450	429	8	6
Tyee	2	7	453	629	2	13
Highline	1	7	399	504	4	10
Mount Rainier						
.....	1	7	421	525	2	12

Southern Division						
League	Season	W	L	PF	PA	
Franklin Pierce						
.....	6	1	402	352	10	5
Puyallup	5	2	403	358	11	4
Auburn	4	3	380	345	8	6
Federal Way						
.....	4	3	377	358	6	9
Clover Park						
.....	2	5	372	409	5	9
Lakes	0	7	338	450	2	13

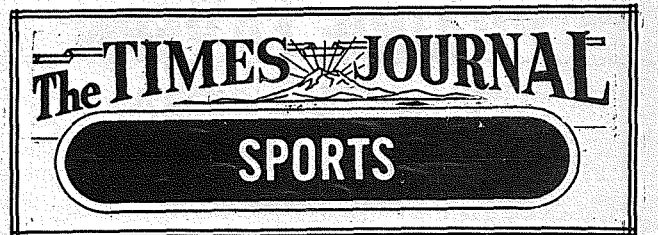
Competition is well under way in the Pierce County Park Department's boys and girls Hoop Shoot contests at elementary and junior high schools throughout the county.

Boys competition will be held in elementary and junior high divisions. All contestants will receive 25 shots to qualify for the Pierce County Championships March 5 at Curtis High School.

Elementary and junior high girls from schools in Tacoma and Pierce County will be eligible for the county contest and will earn berths in the March 5 championships.

Winners at each school will automatically advance to the county finals. In addition, elementary boys who make 13 or more and junior high shooters who make 18 or more attempts will also qualify for the finals.

Preliminary contests will continue through Feb. 29 at all schools.



Bethel Setback

In Seamount action, once victorious Bethel lost a ballgame to Mount Si by a score of 68-56. Mark Belvin tallied 17 points to lead the Braves in scoring, and Bob Niehl grabbed 18 rebounds and collected 13 points for Bethel.

The Braves will host Curtis in a league contest Friday night. The Bulldogs are 2-5 in league compared to Bethel's 1-6 slate, and the game should be a close one.

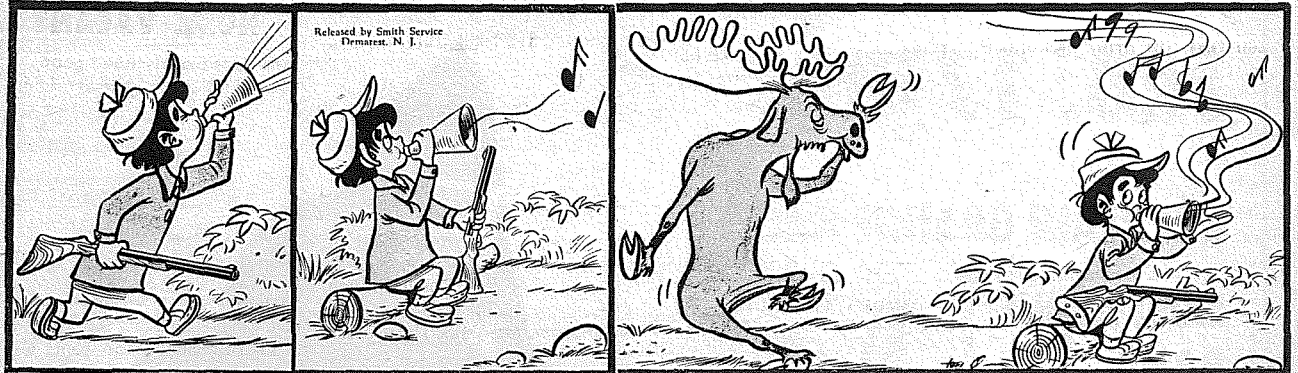
Seamount Round-Up

League	Season	W	L	PF	PA	W	L
Fife	7	0	497	334	11	2	
Sumner	6	1	416	360	12	1	
Peninsula	5	2	410	419	9	5	
Mount Si	5	2	447	345	11	3	
Enumclaw	4	3	481	433	10	4	
Tumwater	4	3	356	389	6	8	
Foster	3	4	404	437	6	8	
North Thurston	3	4	295	344	6	8	
Curtis	2	5	436	461	3	11	
Bethel	1	6	416	484	4	9	
White River	1	6	386	472	1	13	
Tahoma	1	6	369	415	3	11	



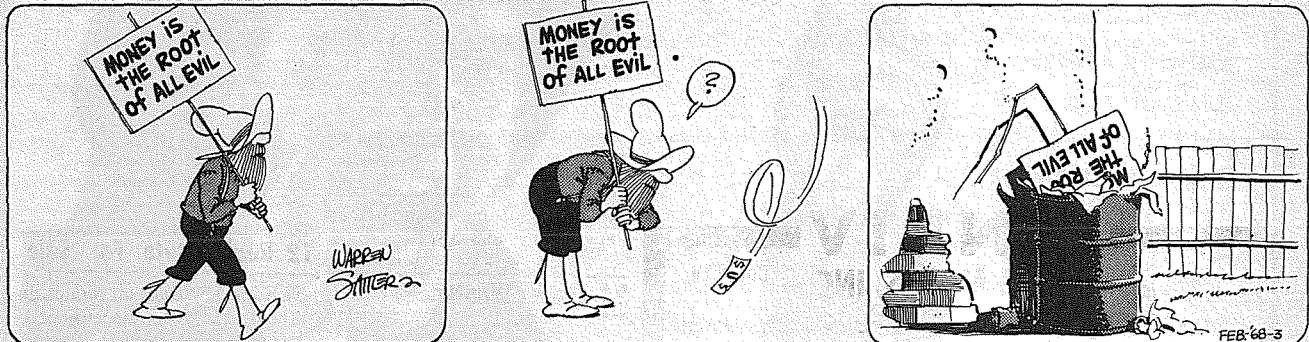
OUR WEEKLY COMICS

DEEMS



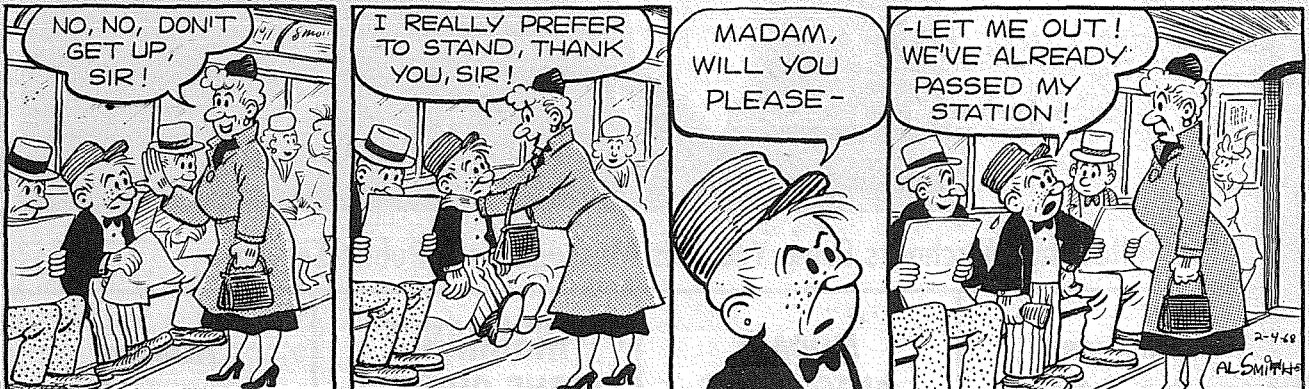
By TOM OKA

Grubby



By Warren Sattler

Rural Delivery



By Al Smith

Grandpa's Boy



By Brad Anderson

BOWLING

SATURDAY UNTIL 7 P.M.
SUNDAY UNTIL 1 P.M.

35c

Juniors (18 and under) and Senior Citizens (55 and over) 35c anytime.

Daytime open lanes everyday except on Tuesday 10:30 a.m. to 3:30 p.m., and on Wednesday after 3:30 p.m.

Open lanes at night on weekends and Monday-Tuesday, Thursday and Friday at 9 p.m.

PARADISE BOWL

BROOKDALE LUMBER

PIERCE COUNTY'S FASTEST GROWING INDEPENDENT FULL SERVICE BLDG MAT'L DEALER

This Week's Special

2x4 STUDS
23c ea.

SEE OUR DISPLAY OF GARAGES - HOMES AND VACATION CABINS

235# ROOFING SHINGLES
U-HAUL **895 SQ.**

1/4" INT. SHOP PLYWOOD	\$3.33
1/2" INT. SHOP PLYWOOD	5.25
3/8" EXT SHEATING PLY.	3.33
1/2" EXT SHEATING PLY.	4.29

BRASILIA 1/4x4x8 PANELING 7.95
ECONOPLY MAHOGANY 3.98
VINYL CLAD PECAN or WALNUT 6.99

DIMENSION LUMBER

2x4 #2	10c ft.
2x6 #2	15c ft.
2x12 #2	30c ft.
1x8 SHIPLAP	8c ft.
1x6 FIR BOARDS	7c ft.
1x4 FIR BOARDS	8c ft.
1x4 ECON. FLOORING	4 1/2c ft.

BANK AMERICARD
FIRSTBANKCARD
WELCOME

BROOKDALE LUMBER INC.
13602 PACIFIC AVE. LE 7-8669

CLASSIFIED ADS

Call LE 7-0223 For Want Ads

1 Misc. For Sale

TV IN YOUR HOME TONIGHT. 25c each day, meter plan or \$10 monthly rental. Rent may apply on purchase. We also rent washers, dryers, ranges and refrigerators. Upton Electric, 1148 Market, FU 3-2551. Open Monday and Friday nites till 9 p.m.

Original Designs Custom Made Fashions
Boutique 49
Specializing in Hard to Fit Sizes
2314 - 168th St. East Spanaway
LE 7-6440

HAY, seeded grass for sale. 75¢ a bale. 458-7687 Jan Stebrs Farms in Yelm.

REFRIGERATOR, freezer, range, oil drum, stand, restaurant equipment. LO 4-1892.

TREASURE MART
Buy, sell, trade.
Fisher Treasure Finder
508 Garfield

ALL STATE scooter also '56 Olds engine and transmission. LE 1-1961.

OLD ENGLISH pattern silver tea set. TH 5-9445.

FOUR almost new tires - 900 x 14, 4 ply. \$25 each. TH 5-4150.

200 GAL oil drum and stand. Good condition. \$10. TH 5-5142.

220 GAL. tank - extra heavy, with legs. TH 5-6914.

FLOOR length gown. Speed-queen washer. TH 5-4670.

Trophy Storm Doors
Heavy Duty Aluminum Full Piano Hinge Standard & Special Sizes
Also Storm Windows Repair Service Available
Manufactured By
PARKLAND DOOR INC.
318 E. 96th GR 4-7011

RENT TV
Rentals All Sizes **RENTAL MARTS, INC.** Color TV
Parkland GR 5-3755 Lakewood JU 4-4100
9440 Pacific Ave. 108th & Bridgeport

BUSINESS DIRECTORY

Furnaces
Sheet Metal
• Furnace Repair and Service
• Installations
PARKLAND FUEL OIL
12002 Pacific Ave.
LE 7-0256

1 Misc. For Sale

SLAB WOOD for sale \$1.00 pickup load. Gale, Patterson Road, Orting.

BROWNIE - SCOUT outfit, complete - \$4. Cub Scout shirt, \$1.50. 2 white uniforms (1 Tiffany) size 12-14, \$4 each. Gas apartment size range, \$25. Table \$10. Boy's blazer and white shirt, \$6. TH 5-3020.

Hot Water Tanks
Come in and let us show you how to save
\$50.00
Magdanz Hardware
11401 Pacific Ave.

AC MODEL G and attachments. Used cedar post - Berry wire. 5' tandom disc. TH 5-6534.

NEW 2-wheel utility trailer. All steel frame. 318 - 19th St. N.W., TH 5-9336.

YOUR MINNESOTA woolen fashion adviser is waiting to serve you with wearables for the entire family. TH 5-6101.

GRAVEL - fine screened, 5 yards \$13.50. Washed sand, pea gravel, drain rock, 10 ft. cedar fence rails. Norman LE 7-4088.

Parkland Ceramics
Greenware, Gifts and Supplies. Firing priced by firing chart by the piece. Free general instruction
1303 S. 117th LE 1-0823

6 Musical Instruments
SMALL Prince organ. WA 2-7421.

PIANO TUNING, \$11.00. George Messgege repair, JU 8-7092.

7 Furniture, Appliances
TWIN bed, box springs and mattress with headboard. Like new, \$45. TH 5-8116.

4 Boats, Equipment
DAMAGED 19' inboard 1957 Owens Cruiser. Needs new bottom. TH 5-3800.

9 Animals For Sale

GREY English call ducks, \$5. each. TH 5-9614 after 5.

YOUNG laying hens. LE 1-1832.

BEAGLE - COCKER - male, neutered, all shots. Excellent with children. TH 5-5154 after 4:30.

BLACK poodle, mini toy, 4 months all shots, make offer. GR 4-6929 before 4:30, 68-38

BANTAM chicks, your choice while they last 10¢ each. LE 1-2032. 68-H02

GERMAN SHEPHERD pups, 3 months, AKC registered champions both sides, mild obedience trained, \$45. LE 7-7102.

36 BROWN egg hens and 12 leghorn hens, LE 1-0370. 68-42

23 Help Wanted

MACHINIST wanted for laths and milling. Contact Jones Engineering Co., 1619 13th Ave. NW.

It's easy and pleasant to make money demonstrating and selling
LUZIER COSMETICS
Subsidiary of Bristol-Myers
Call LE 1-2379

WANTED young, neat appearing mechanically minded man for rental yard. BUNCE - U Rent. 1812 East Main, Puyallup.

MEN or women, full or part time. \$2. hour guarantee, 15 hour minimum. Car and phone. Call TA 5-3780 collect for appointment.

CAN EARN \$3.00 up hourly. Part time-full time in Pierce County. Write Rawleigh, 306 Adeline, Oakland, Calif.

LADIES WANTED - Make up to \$1.68 per hour doing simple sewing in your spare time. Write, Jamster Industries, Inc., 100 Ashmun, Sault Ste. Marie, Mich., Zip. 49783

BAR TENDERS. Girls 21-30 willing to work nights and weekends. Don's Tavern, Orting. Some experience necessary. 893-3572.

24 Work Wanted

IRONING, experienced, references. LE 1-6597.

MATURE man, the best of credentials. Reliable and responsible, needs employment in Parkland, Spanaway or Summit area. Lion, Eagle and Church member. Call LE 7-7915. 68-41

33 Licensed Child Care

LICENSED CHILDCARE in my home. Spanaway-Parkland area. LE 1-1953.

35 Announcements

LIKE TO DANCE! Age 21-101? Private dance club needs members. Congenial, informal group. For information VI 7-2645. 68-40

INCOME TAX SPECIALISTS
ALL KINDS - SINCE 1948
Business tax services
24 North Tacoma Ave.
Tacoma - BR 2-1767
8 A.M. to 7 P.M. Daily
Saturdays 8 A.M. to 4:30 P.M.

36 Personals

HANDWRITING analyzed \$1 P.O. Box 2054 Parkland, Wash. 98444. 68-23

TREAT a friend, Gary's Dairy Queen, 111 River Road, Puyallup, TH 5-5064 each Tuesday 7 to 10 p.m. 1¢ Sundae Sale.

LOSE WEIGHT safely with Dex-A-Diet Tablets. Only 98¢ at Johnson's Drug.

HAVE an alcoholic problem? GR 5-1093 or VI 7-7715. Write box 2265 Parkland. 67-194.

38 Instruction

BATON CLASSES now forming, group and/or private, all ages, TH 5-8540.

27 Misc. Services

TREE topping and removal. Bonded and free estimates. UN 3-1017.

EXPERT alterations, mens & womens fast service and reasonable. LE 1-3506. 67-186

30 Repair Services

"WHERE TO GET SERVICE"
Parkland Enco Service
13303 PACIFIC AVE.
LE 7-9954

19 For Rent Or Lease

HOME VACANT
We desperately need good rentals \$80 to \$150 per month
CALL NOW
Let us handle your worries
SUBURBAN REALTY
11302 Pacific Ave.
LE 7-8638 or LE 7-6896

OFFICE SPACE - Boat & Trailer Space for rent. Office \$50.00 per month. Lights, heat, water, and garbage furnished. Covered boat and trailer spaces \$10.00 per month. Phone LE 7-0223 days 10 to 4. 67-164

NEW 2 bedroom apartment - range, refrigerator, drapes, rugs. Adults, no pets. \$125 a month. TH 5-7976.

12 Real Estate For Sale

ELK PLAIN Cafe on Mountain Road, 125' frontage Subject to lease. By appointment only. \$18,000. For details phone VI 7-2196. 68-33

BY OWNER. Attractive 2 bedrooms, stone fireplace, living room carpeted, kitchen nook, carport, close to college-schools - bus - shopping. Nice neighborhood. \$8400, \$1000 down. 506 South 132nd, LE 7-5436 after 6.

Listings Wanted
Buying or Selling
Real Estate Service
Call
Devereaux Realty
12152 Pacific Ave. LE 7-8658

42 INCOME TAX

Legals

State of Washington Department of Resources Olympia
Notice of Ground Water Right Application No. 9172
Take notice: That Gus G. Bresemann of Spanaway, Washington on January 24, 1968 filed application for permit to withdraw public ground waters through two wells situated within Gov't Lot 10 of Section 20, Township 19 N., Range 3E. W.M., in Pierce County, in the amount of 60 gallons per minute, subject to existing rights continuously, each year for the purpose of group domestic supply; during irrigation season for irrigation.
Any objections must be accompanied by a two dollar (\$2.00) recording fee and filed with the Department of Water Resources within thirty (30) days from February 22, 1968.
Witness my hand and official seal this 1 day of February, 1968.
Fred D. Hahn,
Deputy Director
for Assistant Director
Division of Water Management
Department of Water Resources
Published in the Pierce County Herald and Times Journal February 8, 15, 1968.

IN THE SUPERIOR COURT OF THE STATE OF WASHINGTON FOR THE COUNTY OF PIERCE IN PROBATE No. 76855
Notice To Creditors THE ESTATE OF HERMAN J. FROREICH, SR., Deceased.

Notice is hereby given that the undersigned has been appointed and has qualified as Executor of the estate of the above named deceased; that all persons having claims against said deceased are hereby required to serve the same, duly verified, on said Executor or his/her attorney of record at the address below stated, and file the same with the Clerk of said Court, together with proof of such service within four months after the date of first publication of this notice, or the same will be barred.
Date of first publication February 1, 1968.
Herman J. Froreich, Jr.
Executor of said Estate
159 South 112th Street
Address: Parkland, Wash. 98444
George F. Potter
Attorney for Estate
159 South 112th Street
Parkland, Wash. 98444
LEnox 1-2889

Published in the Pierce County Herald and Times Journal February 1, 8, and 15, 1968.

2 Autos For Sale

'58 CHEV Biscayne for parts, \$60 - runs. TH 5-3279.

NEW - MORE POWERFUL
the 1968's
ARE HERE
VOLKSWAGEN
27 MAJOR CHANGES
Tom Carstens AUTOHAUS
7030 So. Tacoma Way
GR 4-0666
TACOMA DEALER SINCE 1955

NOTICE OF ANNUAL MEETING

The annual meeting of the Elmhurst Mutual Power and Light Company will be held Monday, February 26, 1968, at 8:00 p.m., in the auditorium of the Elmhurst Elementary School, 420 East 133rd Street.

The purpose of the meeting is to hear reports by the officers of the Company, to elect two (2) Trustees for a term of three (3) years, and to transact any other business that may properly come before the meeting. Refreshments will be served.

We would appreciate your attendance.

Respectfully,
HAROLD E. LEMAY, President

SUPERIOR COURT OF WASHINGTON FOR PIERCE COUNTY No. 180501 SUMMONS BY PUBLICATION

MARTHA RICHARDSON, Plaintiff, vs.

INA MAHONEY and JOHN DOE MAHONEY, husband and wife, JAMES MAHONEY and JANE DOE MAHONEY, husband and wife, the unknown heirs at law of LEONARD MAHONEY of LOIS MAHONEY DEVINE, of MARGARET WALLACE, of MARGARET MAHONEY and of MARY A. KELLY; THE STATE OF WASHINGTON and any and all other Persons or Parties unknown claiming any right, title, lien, estate or interest in the real estate described in the Complaint herein, Defendants.

The State of Washington to Ina Mahoney and John Doe Mahoney, husband and wife, James Mahoney and Jane Doe Mahoney, husband and wife, the unknown heirs at law of Leonard Mahoney, of Lois Mahoney Devine, of Margaret Wallace, of Margaret Mahoney and of Mary A. Kelly, and any and all other persons or parties unknown claiming any right, title, estate, lien or interest in the real estate described in the complaint herein, Defendants:

You, and each of you, are hereby summoned to appear within sixty (60) days after the date of the first publication of this summons, to wit, within sixty (60) days after the 15th day of February 1968, and defend the above-entitled action in the superior court aforesaid and answer the complaint of the plaintiff and serve a copy of your answer upon the undersigned attorney for the plaintiff, at his office below stated; and in case of your failure to do so, judgment will be rendered against you according to the demands of the complaint in this action, which has been filed with the clerk of said court.

The object of this action is to quiet title in plaintiff to real estate in Pierce County, Washington, described as: Lots 22, 23 and 24 in Block 43 of THE ARMOUR ADDITION TO TACOMA, PIERCE COUNTY, W. T., as per map thereof recorded in Book 3 of Plats at Page 76, records of Pierce County Auditor.

EXCEPT Primary State Highway No. 5 TOGETHER with the South half of vacated Violet Meadow Street, adjacent thereto, as vacated by Resolution No. 10949 of the Pierce County Commissioners, recorded under auditor's Fee No. 2130780.

against the claim of the defendants and any one of them.

George F. Potter
Attorney at Law
159 South 112th Street
Parkland, Wash., 98444
LEnox 1-2889

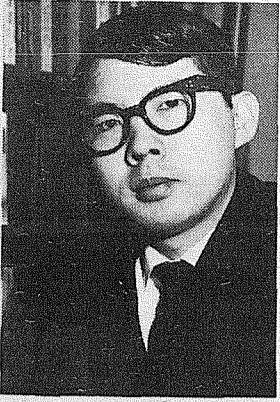
Published in the Pierce County Herald and Times Journal February 15, 22, 29, March 7, 14 and 21, 1968.

2 Autos For Sale

1959 CHEV Wagon, 6 cylinder, standard transmission, \$425, excellent condition. LE 1-1092. 68-35

1962 RAMBLER. 2-door, 6 cylinder, stick shift, \$400. TH 5-5606 after 5.

Idaho Professor To Speak At PLU's China Conference



Dr. Kuang-huan Fan

Another Asian scholar has added his name to the list of speakers scheduled to appear at Pacific Lutheran University's West Coast China Conference Feb. 23 and 24.

Dr. Kuang-huan Fan, assistant professor of political science at the University of Idaho, announced last week that he would appear at the conference to speak on the recent Chinese Cultural Revolution.

A native of Formosa, Dr. Fan has specialized his education in the field of Far Eastern politics and government. As a result of his continuous interest in Communist China's behavior in international affairs, he has written a book on the Cultural Revolution that will be published this spring.

Employment Surveyed Here

A selected sample of households in this area will be asked questions about their employment during 1967 as part of the February Current Population Survey conducted by the U.S. Department of Commerce's Bureau of the Census, according to John E. Tharaldson, Director of the Bureau's Regional Office in Seattle.

Census interviewers who will interview householders in this area during the week of February 19-24 are: Mrs. Alene Riehel, 4515 So. Fawcett Ave., Tacoma, Wn. 98408; Mrs. Harriett D. Lindom, 10919 39th Ave. S.W., Seattle, Wn. 98146.

According to Dr. Fan, the book is a collection of official documents brought together to explain what the Chinese are attempting to accomplish. It also outlines the impact the Cultural Revolution may have on the Western world.

Dr. Fan is a graduate of Bethel (Kansas) College, and he received his advanced degrees from Brooklyn College and New York University.

He will join three other top Asian scholars at PLU's two-day conference. Dr. John G. Stoessinger, executive director of the doctoral program in political science at the City University of New York, and Dr. George Taylor, director of the University of Washington's Far Eastern and Russian Institute, were scheduled earlier.

Another North American authority on Asian affairs to address the meeting will be Charles Burchill, a faculty member at the Royal Roads Military Academy in Victoria, B.C.

Foreign Student Project Meeting Slated Here

On Wednesday, January 31, a group of Parkland residents got together to discuss the feasibility of having a foreign student at Franklin Pierce High School for the coming school year 1968-69. This project, if realized, would be accomplished through the American Field Service.

We decided that such a project as this should be discussed with the various community leaders, such as officers of service clubs and organizations. Therefore, we are holding another meeting to discuss this endeavor and to get an American Field Service Chapter formed, if the project is approved.

This meeting will be held Thursday, February 15, at 7:30 p.m. in the Franklin Pierce High School Faculty Room, which is in the main building. We are hoping that you or a member of your organization will attend, since the success of this project rests on the participation of the community and school. If you have any questions, please contact Mrs. Coralie Johnson, a French teacher at Franklin Pierce, but can be reached more easily at home. Her phone number is GR 2-1579.

9 a.m. - 10 p.m.
7 DAYS
A WEEK

BARGAIN BASKET

16618
Pacific Ave. S. Spanaway
LE 7-3371

No Sales To Dealers

WE RESERVE THE RIGHT TO LIMIT QUANTITIES

We Carry A Complete Line Of Sacked Feeds - Presto Logs

We Are Locally Owned & Operated
HELP YOUR BUDGET
WITH THESE SAVINGS

PRICES EFFECTIVE

Feb. 15-16-17
Thur.-Fri.-Sat.

Kleenex
Facial Tissue
4/\$1.00
200 Count

Family Joy
MARGARINE
6 Lbs. \$1.00

Kleenex
GIANT SIZE
Paper Towels
3 For \$1.00

MJB
Instant Rice
3 For \$1.00
14 oz. Pkg.

MJB
COFFEE
One Pound71c
Two Pound \$1.35
Three Pound
\$1.99
10 oz. Instant
1.39

Sunshine
Krispy
Crackers
One Pound 33c

MISSION
Macaroni-Cheese
Dinners
3/49c

NALLEY
Potato Chips
Reg. - Dippers - Barbecue
69c or Regular
Box 49c

PUREX
5 Qt. Size 59c

PRODUCE

Tube
Tomatoes
23c ea.

Lettuce
Large Heads
2 for 25c

Slicing
Cukes
10c ea.

Fancy
Delicious
Apples
10c lb.

Everyday Low Meat Prices . . . 25 lb. Locker Boxes \$14.95

Slab
BACON
59c Lb.

Bar-S
WIENERS
49c Lb.

Cut-Up
FRYERS
39c Lb.

Whole Body
FRYERS
35c Lb.

Boneless
BEEF STEW
69c Lb.

Cube
STEAKS
98c Lb.

WASHINGTON'S PRE-SALE BIRTHDAY

22c SHOE SALE

50 Pair Women's - Babies' Kids' Shoes
Your Choice 22c pr.

Women's Panty Hose \$1.19
Now in stock - Day's Men's Trousers

PAUL'S SHOES

161st St. & Pacific Ave.
LE 7-0552

Open 9 to 9 Daily
Til 6 Sat. & Sunday