

Parkland Library Lacks Public Use

The TIMES JOURNAL

THURSDAY, JANUARY 12, 1961 • VOL. 16, NO. 19 • PUBLISHED AT PARKLAND, WASH. LE 7-0223

BULK RATE
U. S. Postage Paid
Permit No. 9P
Parkland Branch
Tacoma, Wash.

Rural Route
Occupant or Boxholder
Postmaster: If unable
to deliver, return post-
age is guaranteed on
addressed papers.

Firemen's Course Completed

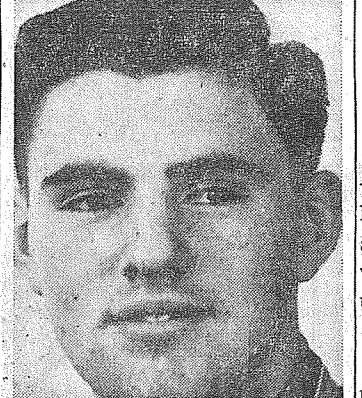


Members of Parkland, Spanaway, and Elk Plain fire departments watch George Dague give the final lecture of the State fire school at the Parkland Fire Hall. Firemen have been attending the lectures on their own time over the past year, learning new techniques. This lecture covered the subject of salvage. (McKewen Studio photo).

Bethel Chooses Boy, Girl Of Month



Judy Furro



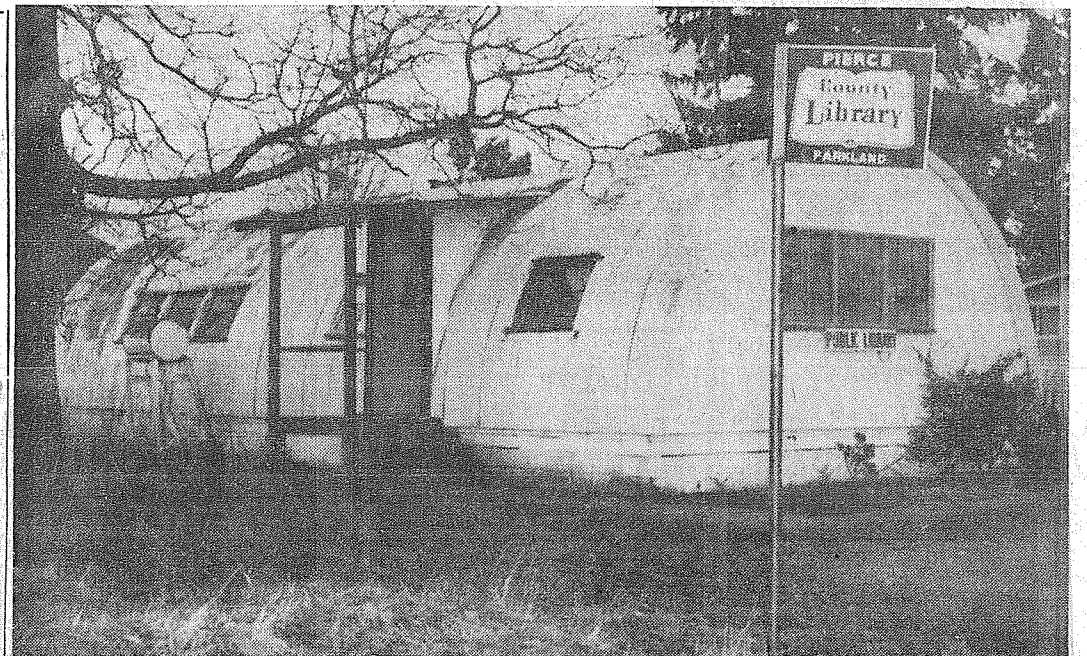
Merle Carey

Judy Furro and Merle Carey have been chosen Girl and Boy of the Month at Bethel Senior High School by a student-faculty committee as the outstanding students for the month of December. Judy is secretary of the junior class, leads her class scholastically with a 3.95 grade point average, and held a part in the junior class play. She is a member of "B" Club and is also active in GAA.

Tickets To Firemen's Dance



Harry A. Stroscher (right) sells the first ticket to clerk Wes Drake of Bargain Basket for the Spanaway Fire Department Dance, Feb. 18, at the Elk Plain Grange. Harry topped all sellers last year with a total of 200 ducats to his credit. The Fire Dept. will be distributing Emergency cards and selling dance tickets in the Spanaway area Jan. 23. (McKewen Studio photo.)



The Parkland Pierce County Public Library, a remodeled quonset hut, is located on 119th and Pacific Ave. The library leaves something to be desired at the present time, due to lack of use. (Photo by McKewen).

Many people are not aware that a library with full facilities is ready and willing to serve them on the corner of 119th and Pacific. Although one may not think so at first, the library actually has full facilities, since anyone may order any book they desire merely by asking for it. Records and movies on almost any subject may be had for the asking.

The library is now open Monday through Thursday from one to five p.m., and Wednesday nights from 7 to 9 p.m.

Kiwanis Take Over
The Parkland Kiwanis, who have recently taken over the project of building up the library to something the area can be proud of, have hopes of extending the hours to one to five p.m., six days a week, and three or four nights a week as well.

Public Interest Lacks
They cannot do this, however, without help from the public. Almost double circulation is needed in order to convince Pierce County Libraries, downtown headquarters, which controls all libraries in the county, that longer hours are needed.

Improvements Planned
Many exterior as well as interior improvements are planned by the Kiwanis in the near future. Better lighting, heat, and more shelves are planned for the inside. Rust removing, washing, painting, and extensive lawn work are planned for the outside.

All For Nothing?
The Times Journal, as well as

Using the Slogan "Protect Your Pets," the Pierce County License Department announced that County Dog Licenses would go on sale at Agencies throughout the County immediately.

According to Gus K. Partridge, Director of Licenses for Pierce County, an effort will be made to license every dog in Pierce County through Agencies established in each community. All Veterinarians have agreed to handle licenses, as well as several retail outlets in the densely populated areas.

To enforce the Dog License Resolution, Frank Stojack, Pierce County Sheriff, has agreed to police the County thoroughly with his Pet Patrol Wagon and his deputies on regular assignment.

Unlicensed dogs will be impounded at the kennels of the Tacoma-Pierce County Humane Society, 2608 Center Street, Tacoma, where the owners may reclaim the pet by paying the impounding fee and purchasing a license for the animal.

According to Partridge over 350 lost dogs were returned to their owners in 1960 through the Licensing Program.

More water is used for industrial purposes in Ohio than in any other state of the Union.

SAVE 50 TO 75% ON FUEL
ASHLEY AUTOMATIC WOOD STOVES
FREE INSTALLATION
WRIGHT POWER BLADE SAWS
PARKLAND HARDWARE
12169 PACIFIC AVE. LE 7-3171

TODAY'S LAFF
There's a new product on the market called "Instant Money" — Just add work.
CLOSE OUT SHOE SALE!
DISCONTINUED LINES, STYLES, ETC.
10 pr. Women's SNOW BOOTS \$2.99!
200 pr. Men's & Boys' U.S. KEDS 11 to 12 \$4.45!
16 pr. Men's 8" BOOTS Oil tan, Logger Heels \$8.95!
COMBAT BOOTS Rebuilt \$3.99!
Open Every Sunday Paul's Shoes Fri. Nite 'til 9 p.m. LE 7-0552 161 & Pacific Don't Forget: CLOSED MONDAYS

HILLTOP CONCRETE CO.
LOOK FOR THE BIG "H" THE SIGN OF SERVICE
Use Ready-Mixed CONCRETE
WINTERIZED CONCRETE
Call For Recommendations
● Sack Cement ● Crushed Rock
● Washed Sand ● 3/8" Beach Gravel
● Washed Gravel ● Select Pit Run
● Drain Gravel ● Fill Dirt
Plant: 2223 - 23rd Ave. S.E. PUYALLUP TACOMA TH 5-9525 FU 3-3624
READY-MIX ORDERS DELIVERED 'TIL NOON SATURDAY

THE COUNTRY PARSON
"We've grown so used to having others do things for us that we even ask God to do for us what He expects us to do."
DRYER'S FUNERAL PLAN CUTS COST
MORTUARY
119th and Pacific
PARKLAND

WEPKO ALUMINUM STORM & SCREEN DOORS
\$22.50 & \$29.95
BROOKDALE LUMBER COMPANY
136th & Pacific LE 7-8669

FRIENDLY SERVICE SINCE 1908
Now With a 100 Car Free Parking Lot right next door.
PIPER FUNERAL HOME
PHONE Greenfield 2-3353 • 5436 SO. PUGET SOUND

ALL SIZES DISPOSABLE VACUUM CLEANER BAGS To Fit All Types of Cleaners AVAILABLE HERE **PARKLAND HARDWARE** 12169 Pacific Ave. LE 7-3171

COLOUR UP NOW COUGH UP LATER
Yes, since you can cough up payments in small amounts on our easy payment plan.
PETERSON COLOR CENTER
LE 1-0711 Hours: 10 to 7 1100 Pacific Ave.

Notice
The Parkland Pierce County Library has announced that many uncalled for new cards are being held at the library. Since the cards are not sent through the mail, it is advised that anyone not yet receiving his card should contact the library.
Coal produces more electric energy than gas, oil and water-power combined.

For Clothing & Shoes for All the Family...
SHOP AND SAVE AT
SEYMOUR'S
9714 Pacific Ave. - 1 Block North Park 'N Shop
SHOP DAILY 9 to 9 EVERY SUNDAY 10 to 6

CANYON
READY MIX CONCRETE COMPANY
72ND & CANYON ROAD LE 7-3943
WE GIVE PERSONALIZED SERVICE TO ALL OUR CUSTOMERS
WHETHER IT'S FOR A STEP, SIDEWALK OR FOUNDATION ALL DAY SATURDAY DELIVERY
One Call Does It All
After 6 P.M. Call LE 1-0095

Open 7 Days A Week Winter Hours Sun. 9 to 4
HUNTING & FISHING LICENSES SPORTING GOODS PAINT SOUTH END PLUMBING AND HARDWARE 185th & Pacific Avenue Phone LEnox 7-4100

THIS MAN IS ON HIS WAY UP HIS CLOTHES WERE CLEANED BY **PARKLAND CLEANERS**
11004 Pacific Avenue North of the Bank Corner LEnox 7-3221

JANUARY CLEARANCE SALE
YOU CAN BE SURE... IF IT'S
MORSE ZIG ZAG + 1c
Westinghouse
YOU GET THIS ALL NEW WESTINGHOUSE STEREO
● True dual channel stereo amplifier all in one cabinet.
● Twin detachable speaker enclosures for extended stereo effect.
● 4-speed turntable with 45 RPM adapter
● Stereo cartridge with dual sapphire needles

MORSE \$89.95
SALE PRICE
WESTINGHOUSE STEREO...01 \$89.96
BOTH FOR LIMITED SUPPLY

This Morse Sewing Machine is Guaranteed by Good Housekeeping. Commended by Parents Magazine.
THE MORSE
● Ziz Zags ● Embroiders
● Button Holes ● Overcasts
● Sews on Buttons ● Blind Hems

Open Monday & Friday Till 9 • Other Days 9 To 5:30. Closed Sun.

American Sewing Center
8232 PACIFIC AVENUE GR 4-0651

HILLTOP CONCRETE CO.
LOOK FOR THE BIG "H" THE SIGN OF SERVICE
Use Ready-Mixed CONCRETE
WINTERIZED CONCRETE
Call For Recommendations
● Sack Cement ● Crushed Rock
● Washed Sand ● 3/8" Beach Gravel
● Washed Gravel ● Select Pit Run
● Drain Gravel ● Fill Dirt
Plant: 2223 - 23rd Ave. S.E. PUYALLUP TACOMA TH 5-9525 FU 3-3624
READY-MIX ORDERS DELIVERED 'TIL NOON SATURDAY

DRYER'S FUNERAL PLAN CUTS COST
MORTUARY
119th and Pacific
PARKLAND

FRIENDLY SERVICE SINCE 1908
Now With a 100 Car Free Parking Lot right next door.
PIPER FUNERAL HOME
PHONE Greenfield 2-3353 • 5436 SO. PUGET SOUND

SHOP & SAVE at BROOKDALE LUMBER CO.
After Inventory Close Outs
STEEL OVERHEAD GARAGE DOORS (Slight Defects) \$39.95
BIRCH PLY REJECTS 4x8x3/4" \$9.50 ea.
MAHOG-CEDAR-PINE REJECTS 3/4" \$9.50 ea.
PLYWOOD SHEATHING REJECTS 3/4" \$3.20 ea.
1/4" \$1.60 5/8" \$2.88
MAHOG. 1/4 12x12 TILE Reg. 40c NOW 15c ea.
MASONITE TYPE PLANK-BOARD 4x8x1/4" \$3.20 ea.
PING PONG BOARDS 3/4"x5x9 \$7.64
WEPKO ALUMINUM STORM & SCREEN DOORS \$22.50 & \$29.95
BROOKDALE LUMBER COMPANY
136th & Pacific LE 7-8669

WMA AUTO CLUB. FRANKLIN LIFE INS.
Represented By **R. O. SANDQUIST**
9702 So. Patterson LE 7-6979

PROFESSIONAL DIRECTORY
Farmers Mutual of Enumclaw Fire - Auto ED MAREK 12909 Pacific Ave. LE 7-4000

Local Couple Weds In Olympia

Mr. and Mrs. Vincent Heitz (Lorraine Huston) were married December 26th in Olympia at the home of Mr. and Mrs. James Rushforth, the bridegroom's sister. The wedding ceremony was performed by the Rev. H. J. Wuerth of Tumwater. The ceremony was attended by the immediate families and close friends.

The bride wore a white wool dress with gold embroidery. Her corsage was of carnations and roses. The matron of honor was Mrs. William Clark, who wore a

SUMMIT VIEW AUTO REPAIR
20% DISCOUNT ON ALL PARTS AND LABOR
10904 E. Canyon Rd. LE 1-0424

9 TO 9 Weekdays
PRESCRIPTIONS
FAST SERVICE
Veterinary Supplies
Photo Equipment
Gifts for Everyone
From Infants to Grandfather
McCAULEY SUMMIT DRUG
Airport & Canyon LE 7-0658

Estimates Without Obligation
QUALITY HOMES DESIGN ASSISTANCE
Hedlund Const.
868 Tule Lake Rd. LE 7-4227

PISTON GRINDING
Valve Seats Installed, Complete Brake Drum Turning, Reboring, Pin fitting, Lathe and Press Work, Head Surfacing, Key Seating, Motor Rebuilding, etc.
Rupe Machine Works and Garage
AUTOMOTIVE & INDUSTRIAL WORK
13411 Pac. Ave. P.O. Box 2445 Parkland 44. Wn. LE 7-7450

dress of aqua chiffon. Best man on a 5-month tour recently. was Leonard Imhoff.

Square Dance Lessons
Classes will begin next week at Fruitland Grange for lessons in beginning square and round dancing, etc. Monday evening, at 8 p.m. sharp until 10 p.m. Mr. and Mrs. Willis Dodge will be the instructors for these classes. The public is invited to attend.

Cub Scouts
Midland's Cub Scout Committee Meeting of Pack No. 84 will be held Friday evening, January 13th at 8 p.m., at the Boy Scout Hall, 96th and East Harrison. Parents of all the Cub Scouts are urged to attend and help with the scout program.

Get-Well Wishes
We were sorry to hear that Cindy Heyer, daughter of Mr. and Mrs. Harold Heyer, 1512 East 90th, was injured when she fell from a horse. Best wishes for a speedy recovery, Cindy!

Trip to Norway
Visiting Mr. and Mrs. Harold Anderson, of McKinley Hill, were Mr. and Mrs. Willis Dodge, of Midland. The Andersons show beautiful colored slides of Norway, and other parts of Europe, taken

PIERCE COUNTY REFUSE CO.
Weekly Garbage Collections
Phone LE 7-8688

Parkland Private Now In Germany

ASCHAFFENBURG, Germany (AHTNC)—Army Pvt. George D. Hofmeister, son of Mrs. Ida M. Wakefield, 14423 Pacific Avenue, Parkland, Wash., recently arrived in Germany and is now a member of the 557th Ordnance Company.

Hofmeister, an automotive mechanic in the company in Aschaffenburg, entered the Army last June and received basic training at Fort Ord, Calif.

The 18-year-old soldier, son of David C. Hofmeister, Route 1, Kent, is a 1960 graduate of Lincoln High School in Tacoma.

Texas and areas around Air Bases where he had been stationed.

Mrs. Robert Jordan, Mrs. Jack Getaz, Mrs. Claude Blessing and Mrs. Norman Martin helped Mrs. Fred Dimond, Jr. with the refreshments for the occasion. Reporter, Mrs. Frank Gural, LE 7-5939.

1961 CAR LICENSE
of MIDLAND FOOD CENTER
East 99th & Portland (Pass Cars Only)
Midland Orthopedic Guild

Swampside 4-H Meets

Swampside 4-H held a meeting Jan. 7. It was decided to donate \$2 each from child care and dairy projects to buy flags and a gavel for the club.

Members who have been in for a year or more will give demonstrations at the next meeting. The new members will judge the demonstrations. Plans are being made to have a bake sale in the near future.

IT'S CHEAPER TO RENT THE TOOL YOU NEED
BELT HAND SANDERS
OSCILLATING HAND SANDERS
SABER SAWS
PAINT SPRAYERS
RUG SHAMPOO MACHINE
POWER MOWER
SHARPENING & REPAIR
WINDOW GLASS INSTALLED
PARKLAND HARDWARE
12169 Pacific Ave. LE 7-3171

Thank You

The family of Fred P. Patrick wishes to thank all their friends and neighbors for their flowers, cards, and many kindnesses which were extended at the time of his recent death.

INTERURBAN AUTO FREIGHT INC.
3 Trips Daily
To Parkland, Spanaway
Summit, Midland
GENERAL FREIGHT
MA 7-4121

Guest Speaker

A veteran preacher and camp speaker, the Rev. Melvin Dahlstrom of Seattle, will be the guest of the Harvard Covenant Church, 1611 E. 85th, for a meeting beginning Sunday, Jan. 15 at 11 a.m., and every evening at 7:30 p.m. through Friday, Jan. 20th with the exception of Monday evening. Wednesday evening is the Church's 10th anniversary. A social hour will follow the observance. The public is cordially invited to these services. (Paid Advertisement).

Don't Cook At Home Sunday
TRY OUR
SOUTHERN FRIED CHICKEN \$1.35
Salad—Mashed Potatoes—Coffee—Rolls—Dessert
Children 75c
BREAKFAST Ham or Bacon - Eggs 85c
PAT'S RESTAURANT
1101 East 112th St.
Airport & Golden Given

HEINZ Ketchup 14-oz. Bottle 19c **JANUARY BUDGET STRETCHERS**

NALLEY'S LUMBERJACK SYRUP 22-oz. Bottle 29c



CHUNK STYLE TUNA BREAST O' CHICKEN 4/\$1

SUNNY JIM. Reg. or Old Fashioned PEANUT BUTTER 3 Lb. Jar 98c

YUBAN COFFEE 2-lb. Tin \$1.23

NABISCO PREMIUM CRACKERS 2-lb. Pkg. 47c

SUNSHINE GRAHAM CRACKERS 2-Lb. Pkg. 59c

LARGE AA WHITE EGGS Doz. 57c

DOXSEE'S MINCED CLAMS 8-oz. Tin 4/\$1.00

Wong's FROZEN CHINESE FOODS

- CHICKEN CHOP SUEY
- EGG FOO YOUNG
- PORK CHOP SUEY
- FRIED RICE
- SWEET & SOUR PORK
- EGG ROLLS

39c
49c

WONG'S Cantonese Dinner 59c

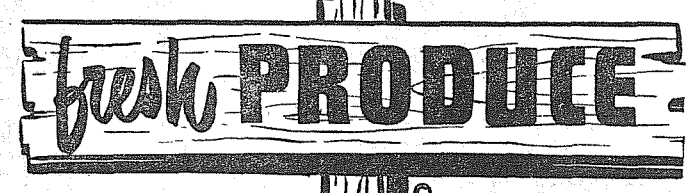
U.S. GOOD WELL TRIMMED RUMP ROAST 67c lb.

U.S. GOOD FULL CUTS Rnd. Steaks 79c lb.

FRESH GROUND Ham Loaf 39c lb.

U.S. GOOD BONELESS, AN ECONOMY MEAL BEEF STEW 59c lb.

ARMOUR'S STAR BONELESS, FULLY COOKED, SKINLESS OPEN AND SERVE PICNIC 3-lb. Tin 1.99 | **FANCY U.S. GOOD CUBE STEAKS Lb. 98c**



SUMMIT TRADING COMPANY
10409 Canyon Road, Tacoma LE 7-5848
No Sales To Dealers
We Reserve The Right To Limit Quantities

STORE HOURS:
Monday through Saturday
9 A.M. - 9 P.M.

SUNDAY HOURS:
10 A.M. to 7 P.M.

HI-C — 46-oz. Tin Orangeade 4/\$1.00

CALO CAT FOOD 15-Oz. Tin 2/29c

LIQUID LUX 22-Oz. Plastic Bottle 69c

BLEACH CLOROX 1/2 Gal. 39c

FREE! CLASSICS ILLUSTRATED COMIC BOOKS
For details see specially marked Big cereal

- 12-oz. Pkg. WHEATIES 3
- 10 1/2-oz. Pkg. CHEERIOS 3
- 5-oz. Pkg. KIX FOR
- 9 1/2-oz. Pkg. FROSTYOS 79c
- 7-oz. Pkg. TWINKLES 79c

EMPEROR GRAPES lb. 10c

ARIZONA GRAPEFRUIT 8-lb. Cello Bag 49c

BROCCOLI lb. 15c

DRY — YELLOW ONIONS lb. 5c

a-Wondering... and a-Wandering...

With JACK BROWN

If there is one word which describes the condition under which we and all civilized people live today, it is the word "Distraction."

This is a common enough word, but it has wide and significant meanings. For one thing, the dictionary tells us, it means a drawing off or diversion of the mind. It means confusion and perplexity, frenzy and even madness.

We have plenty of distractions these days. The cold war goes on and on, ever-broadening, with no end in sight. The world's eyes were recently riveted on an unprecedented meeting of chiefs of state at the United Nations in New York where, literally, one well-aimed rifle shot could have marked the beginning of World War III. We have just gone through a political campaign of unique intensity, in which the decision was agonizingly close. We have witnessed a reign of terror in Africa which reads like a chapter from the Dark Ages. We have seen the establishment of what amounts to a Communist-dominated state a few miles from the South-eastern tip of this nation. And—in a single year—some 40 new countries, with their own flags, parliaments, aspirations, and latent and unknown powers, have come into being.

On top of all this, we have our deep and passionate controversies at home—as to what should be done in such diverse fields as education, aviation, medical care for the old, the production of electric power in the nuclear age and, above all, the proper role of government in ordering and directing the lives of the people.

So "Distraction" is the symbolic word. Our minds are torn in a hundred fragments. The problem has been compounded to an enormous degree by the magical progress of communication, TV and radio. In a matter of seconds, some event taking place half a world away is made known to us, in sound and pictures. In a matter of hours, we ourselves can physically travel half a world away from our homes.

It is no wonder that, living as we must in this turmoil, it becomes, as the old proverb has it, more and more difficult to see the forest because of the trees. Fundamentals become dim and may even be lost beneath the cruel and blinding light of changing and threatening events.

But some things do not change. That is what we, because of our heritage and because of our inescapable position as leaders of a free world confronted by a slave world which wants to destroy us, cannot afford to forget.

The question is: What is it all for, this spending of almost unimaginable resources of energy and treasure on a scale never before so much as approximated in history? Why may we be asked, as a people, for personal, material sacrifices greater than any we have yet known?

There is a simple answer—that we must defend ourselves and our friends among the nations against the forces of darkness which are our enemies. But that is not the whole answer by any means.

The real answer is that we are doing this—if it is to have any real and permanent meaning at all—in order to preserve the best and oldest ideal that history knows, which is freedom. Freedom means many things. It means a high degree of personal responsibility and pride, in which one should care for himself and his

Summit...

Central PTA Meets

Central Avenue P-T-A and Pre-school will meet Wednesday, Jan. 12, at the school multi-purpose room. The first meeting of 1961 will be called to order at 8:00 p.m. by Mrs. Hylan Johnson, president. Miss Margaret Bixby, from the Pierce County Public Library, will discuss "Appropriate Childrens Literature."

A social gathering will follow in the school cafeteria. Mesdames Lawrence Koval, Stan Ratcliff, John Spears, and Palmer Cail are in charge of the refreshments.

The Boy Scouts of troop 76 held a Court of Honor Monday night at the Summit Youth Center. Tenderfoot badges were presented during a "Living Horseshoe" ceremony to Wayne Taranoff, Wayne Barrackman, Kenneth Korsmo, Rodney Mackey, Frank Bednash, and Mark Nelson. James Bartram was awarded a one-year pin and a Camporee insignia. Mother pins were presented to Mrs. Robert Nelson, Mrs. Fred Mackey, Mrs. Martin Korsmo, Mrs. Jean Bednash, Mrs. Maurice Barrashman, and Mrs. Larry Taranoff.

Mothers Meet
The Mothers' Auxiliary of Troop 76 held their January meeting at the Summit Youth Center on Monday evening. Refreshments were served following the Court of Honor.

Santa Hike
A Santa Claus hike was held

family without looking to government for aid unless no other avenue is open. It means a government which is the servant and never the master of the people. It means that leadership and national purpose come from the people and are not imposed upon them from above. It means a deep spiritual belief that every man is important, as a person and an entity—and that men in the mass can never be allowed to sink the individual, and make him a number among faceless millions of numbers.

Whatever we have done, are doing, or must do, will be worth every necessary cost if this ideal is kept bright and shining before us. But if we lose it—if we allow the individual to become a powerless, driven pawn in a game played by rulers—everything worth-while will be lost too.

CLOSE OUT SALE

Take Advantage of Low, Low Prices and Save.

HI-WAY VARIETY STORE
7025 Pacific Avenue

Open From 10:30 to 6

WE MAKE LUMBER

LUMBER
GLASS
HARDWARE
SHINGLES
ROOFING

GET OUR PRICE FIRST ON ECONOMY GRADE LUMBER

Baskett Lumber

9701 Portland Avenue
LE 7-8663

LOCKED OUT?



Call
LE 7-5772

Cars and Homes Opened
Keys Fitted, Combinations
Changed, Keys Made &
Duplicated

CALL A LOCKSMITH
CALL
PARKLAND CYCLE & KEY

DRUG FACTS

LET
ASHMORE'S SPANAWAY DRUG
HELP YOU TAKE
CARE OF YOUR
HEALTH.



VICKS FORMULA 98c
44 Cough Syrup 1.49
PERTUSSION AEROSOL VAPORIZER 1.49
130 VIGRAM M VITAMINS 2.75
DRISTAN TABLETS 1.69

STEAM VAPORIZERS
2.98 to 9.95

ASHMORE'S SPANAWAY DRUG
Phone LE 7-5993
165th & PACIFIC AVE.
SPANAWAY, WASH.

THURSDAY, JANUARY 12, 1961
THE TIMES JOURNAL

Evening Classes Will Begin At FP

Many people in the Parkland, Midland and surrounding areas will have an opportunity to further their education through Monday evening classes at the Franklin Pierce High School, beginning January 30th.

Two new classes will be added

General Sheet Metal Work.
Special Attention to Special Equipment.

RAU MFG. CO.
LEnox 7-7372
14114 Pacific Avenue

PROMPT PERSONALIZED
PRESCRIPTION SERVICE

TED SWANSON
INSULIN - VITAMINS
Downside Prices
Pay Phone Bills Here
PLENTY OF FREE PARKING
TINCHER'S PHARMACY
8227 Park Ave. GR 4-3344
Across from Fern Hill P.O.

BOOKKEEPING—TAX REPORTS—AUDITS

JOHN L. CROSSEN
INCOME TAX SPECIALISTS

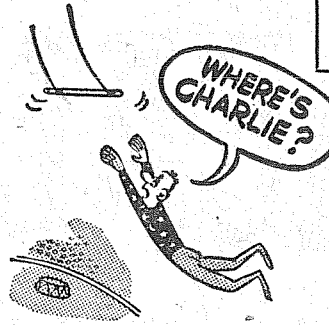
8410 Pacific Avenue

GR 2-8002

Rural Garbage Service
Pierce County Permit
Serving Parkland, Midland,
Summit and Spanaway
LEnox 7-8688

SMALL CUTE EFFICIENCY
APARTMENTS
SEPARATE BEDROOMS
\$57.50 and Electricity
LORING COURT
12605 Pacific Avenue

TELEVISION SERVICE CENTER
PRESENTS TV CHUCKLES



Charlie just missed the final performance of his partner because he went to get his TV repaired and stayed to watch his favorite program.

Call us, we guarantee our work.

TELEVISION SERVICE Center
"YOUR WINEGARD COLOR CENTER DEALER"
GR 2-3366
8431 PACIFIC AVE.

KING-SIZE

EASTERN — PORK

SPARE RIBS

Pound

39¢

REGULAR SIZE RINGS

POLISH SAUSAGE

3 For

1.00

TENDER

SIRLOIN STEAKS

Pound

79¢

ALL CUTS — LEAN

PORK CHOPS

Pound

59¢

Borden's MAYONNAISE

Quart Jar

49¢

White King "D"
Detergent

Giant Size

59¢

Darigold BUTTER

1-lb. Cubes

69¢

PUREX

The Safe Bleach

1/2 Gal. Jug

35¢

MANNING'S COFFEE

1 lb. tin

59¢

2 lb. tin

\$1.17

Minute RICE

23 1/2-oz. Pkg.

59¢

Clearfield Powdered MILK

22 1/2 Qt. Tin

\$1.59

Sunshine SHREDDED WHEAT

12-Oz. Pkg.

19¢

N.B.C. Snow Flake Saline CRACKERS

1-lb. Pkg.

25¢

Johnson's Stride wash 'n wear LIQUID WAX

26-oz. Tin

99¢

Large Navel ORANGES

10¢ Pound

Golden Ripe BANANAS

10¢ Pound

"AA" Large EGGS 57¢ doz.

Firm Ripe AVOCADOS

10¢ Each

McDANIELS

The Home of The Low Price

AIRPORT & CANYON ROAD

Store Hours: 9:00 'Til 9:00 — Sundays 9:00 'Til 7:00

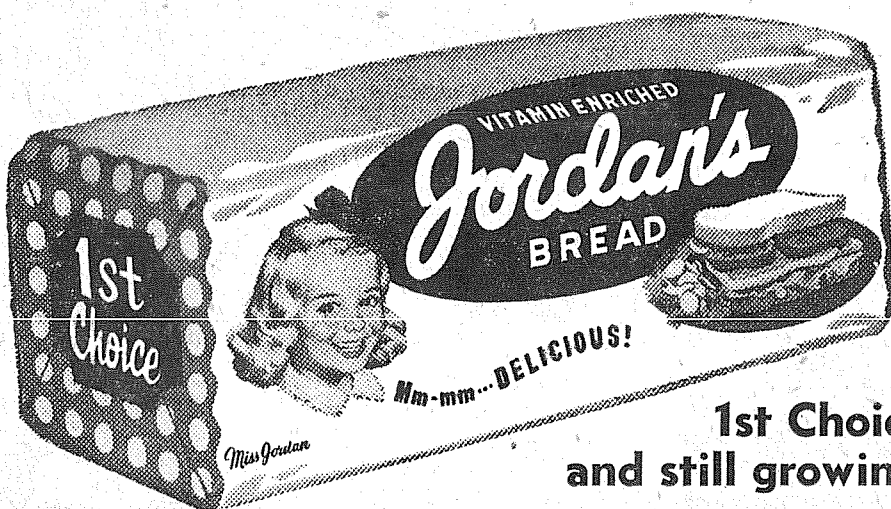


PRICES EFFECTIVE Thursday Friday Saturday



So good you just can't wait...

It's such a help to have a man around the house! Why, at this rate Dad will have the table cleared before it's set. You can't blame him, though — Jordan's tempting home-baked flavor is just too good to wait for dinner. Listen to this: Every slice of Jordan's is enriched to give you the same wholesome nutrients found in whole wheat bread! Mom knows Jordan's is "so good you just can't wait." That's why she always has an extra loaf handy. Don't you?



1st Choice... and still growing!

Canyon Road ...
Community Club Meets Tonight
Canyon Road Community Club met last week and installed their new officers after a luncheon. Officers will be installed, and plans will be made for the coming year.
Returns Home
Mrs. Fleta Panchot returned home recently after traveling through most of the United States.

since last August. In Hutchinson, Kansas she visited her daughter, Mrs. Kenneth Whitney. In Shelbyville, Missouri she visited relatives she hadn't seen in 14 years. In New Plymouth, Idaho she visited friends, then went to Portland where she spent the holidays with her son and his family.
Good News
The holidays were made happier for two local families by recent

contact with their sons. The John Andrews of Canyon Road heard from their son Rusty aboard a submarine enroute to Australia. Michael Kershner, son of Mr. and Mrs. Vernon Kershner, was unable to be home for Christmas due to boot camp, but did manage to get home for the New Year.
Jr. Garden Clubs
The Merri-Golds, Jr. Garden

Clubbers, will meet Saturday, Jan. 14th at 1pm in the home of Gail Coblentz, 10922 Fairview Rd.
In Hospital
Mrs. Wesley Nequette of E. 84th is still in the hospital where she has been confined for the last two weeks.
Reporter—Mrs. John Folk, LE 7-5801.

PTA Will Plan Pancake Bazaar
Clover Creek PTA will meet next Wednesday at 7:30 in the school gym.
There will be discussion and plans for the Pancake Supper bazaar.
Girl Scouts
Girl Scouts and Brownies are saving all used Christmas and greeting cards for projects. Several scrapbooks were made from cards and sent to Rainier State School.

Help Wanted
Donations of handmade articles, white elephants, are needed for the Clover Creek School Pancake Supper-Bazaar Feb. 16th. Call Mrs. Vi Leonard LE 7-6359, if you are interested.
Down South
Mr. and Mrs. Will Mathiasen went to see their son and family in California for Christmas, returning last week.
Reporter—Kathryn Deady, LE 7-8897.

BARSOTTI & TIMM
Top Values
HARDWARE
VARIETY
& PAINT
At the Roy Y LE 7-4221
Open 7 Days A Week, 7 a.m.-9

ACT NOW! **REAL SAVINGS** **ACT NOW!**
We're Buying New Cars And Instead Of Trading In These Cars We're Offering Them To You At ...
GIVE-AWAY PRICES

LOOK!

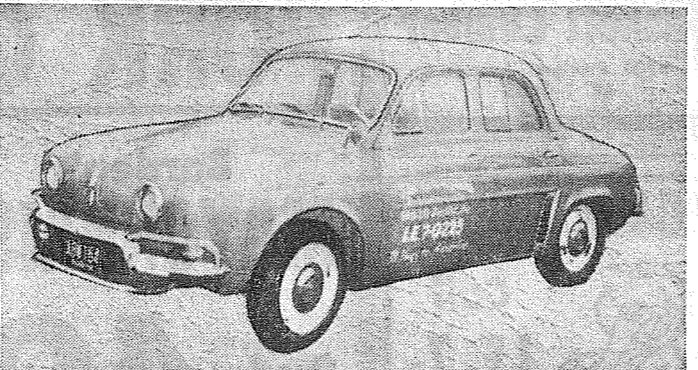
1958 Chevrolet 9-Passenger Wagon
This is the deluxe black and cream Brookwood model with straight stick and overdrive. Economical six. Has radio, heater and sport-lite. Only 45,795 actual miles. Equipped with air ride overload springs. Blow them up when you need them and ride in passenger car comfort the rest of the time. Our mechanic has just given this car an extensive going over. Why take a chance? Buy this beauty and be sure of a mechanically perfect car with good rubber.
Priced at only **\$1475.00**

LOOK!

1959 Renault Dauphine
This is the fun car. You've never really enjoyed driving 'til you've sat behind the wheel of this economical little black beauty. We'll vouch for the advertised mileage on these cars. This one has always given 38 miles per gal., plus. Save all the way around. Use only two quarts of oil to a change. One quart of anti-freeze fixes you up for the winter. Tires last forever it seems. Only 23,273 carefully driven miles on this one. Here's a perfect second (or first for that matter) car for any family. Complete with heater and good rubber, for only **\$795.00**

Completely Checked Over by Our Mechanic and Put In Top Shape!


1957 Chevrolet 2-Door
What can we say about this one except that for a two door family car it can't be beat. Economical six cylinder, with stick shift, gives you excellent mileage. Only 42,638 miles. Car is clean as a pin and in perfect mechanical condition. Has been serviced regularly and given a good going over by our mechanic.
Solid Red with black and silver leopard design interior. Good rubber.
Steal it for only **\$895.00**



1957 Renault Dauphine
Here's truly the perfect second car for any family. At this low, low price you can't afford to be without it. Economical 38 to 40 miles per gallon. Good rubber. Brand new upholstery. Complete with heater. Only 28,164 miles. Car is solid blue in color. Clean and in perfect running order. Drive it home for only **\$595.00**


ON DISPLAY SAT. JAN. 14 - 10 A.M. 'TIL 5 P.M.
At The

Times Journal Publishing Company
14620 PACIFIC AVENUE Parkland, Washington PHONE TACOMA LEnox 7-0223

ANY CAR CAN DRIVE LIKE A DREAM

Don't Fight Your Car Down the Road ... Drive it Down the Road with Ease ...
BRING IT IN TODAY FOR AN EXPERT
WHEEL ALIGNMENT
\$6.95
SPECIAL ONLY ANY MODEL

GASOLINE & OIL
TEXACO
At Competitive Prices

BOB'S PLACE
AIRPORT ROAD (112th & JAY ST.) 25 YEARS IN PARKLAND LE 7-3395

DON'T GET LEFT IN THE COLD

GET MORE HEAT "BUCCANEER" AUTOMATIC WOOD HEATER
● GIANT AUTO. BLOWER
● AUTOMATIC THERMOSTAT
● WARM FLOORS
Save Up To 35% On Fuel Bills
WHIRRS
EASY TERMS
OPEN 9 TO 9 SAT. 'TIL 6 LE 7-0231
8419 PORTLAND AVE.

Woodland ...
Dance Tonite

Tonight is Howdy Partners dance nite again at Fruitland Grange. Dancing will be from 8 to 10 p.m. The round dance of the month "Very Chic" will be taught. This is party night, so bring cups and snacks. Coffee and tea will be served by the club. Hosts and hostesses for the evening are Arne and Bess Bolter, and Jack and Violette Swayne. All dancers are welcome.

Square Dance

Tuesday evening, January 17th will be the regular monthly square dance of the 112th Booster Club. Jim Bigelow will be at the mike calling the squares from 8 to 10. The club dances at the Summit Youth Center behind the Central Avenue School on Knapp Road. Bring cups and snacks. Coffee and tea will be served by the club. All dancers are welcome.

Classes

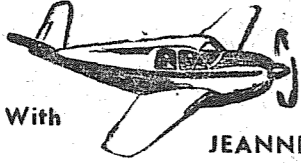
Monday night, January 23rd, is the last time new members will be accepted to the new classes in square dancing sponsored by the Fruitland Grange. This is the 4th year the grange has sponsored a square dance class with Willis and Loraine Dodge as instructors. For a lot of fun and good companionship come out and join the new class each Monday evening from 8 to 10 p.m.

Woodland Lucky Clovers 4-H Club had their regular meeting on January 5th at the home of Susan and George Stean on Lundblad Road. All members were present and one visitor, Christie Cordes. Discussion was held about getting some demonstrations ready for the next meeting. They also talked about their visit as a club to play and sing for the residents of the Valleyhome: Nursing Home and Stillwell Sanitarium on December 27th. With four of the members and two junior leaders playing instruments and the rest singing, the group decided to practice and go to the homes as their contribution to Community Service. The next meeting will be at the home of John and Tom Meurer on Cherry Street February 2nd. A vacation trip to California and on into Mexico was enjoyed by Mr. and Mrs. Wayne Vrieze and family of Woodland Road Extension during the recent holidays. Disneyland, Knotts Berry Farm and Balboa Park in San Diego were visited during the vacation. Reporter, Margaret David, LE 7-6668.

Auxiliary Meets

Parkland Auxiliary 228 will meet tonight at 8 in Sunshine Hall. The group is saddened by the death of Mrs. Hulda Kieling Dec. 30th. Mrs. Kieling was the mother of Mrs. James (Helene) Linder, an auxiliary member.

Flying



With JEANNE

During the last two weeks of December Ronald Johnson got in enough training to make his first solo flight and go on to check out for night flying. Ron is with the Federal Aviation Agency in Alaska and was down here to visit his family.

Dual cross country training flights were made by Chuck Whitmore and Bill Loomis. Sally and Ray Rymor and Slim and Jeanne Lawson made a night flight to view the lights of the surrounding cities during the holiday season.

Jake and Gordon Jacobson flew to Portland to welcome in the new year with their relatives in that area.

Lynn and Jim Swanson were flown to Vancouver, Washington, by John Thun in his 172 Sunday.

Brainard Lee made quite a flight up around the ski areas Sunday enjoying the sights and flying in general.

Midland PTA

The Midland PTA will hold their regular meeting on Wednesday, January 18 at 8 p.m. at Midland School. Mrs. Kenneth McCulloch presiding.

Mr. Judd Doughty, an associate of the Clover Park School District T.V. Station, will speak on "T.V.—Teaching in the Elementary School."

The fourth grade mothers will be serving refreshments following the meeting.

PUBLIC NOTICE

The Summit Water and Supply Co. wishes to announce as of February 1, 1961, the membership fee of this company will raise from \$300 to \$335. This raise effected by action of the Board of Directors, by virtue of the bylaws, Art. V, section 5. Published in the Times Journal January 12, 19 & 26, 1961.



AIR CHARTER
FLIGHT INSTRUCTION
Approved Flight School
Wash. MOONEY Distributor
TAHOMA FLYING SERVICE
Spanaway Airport LE 1-0442

Roy ...
Roy Residents Ill, In Hospital

George Lisk has had a recurrence of severe asthma and is under the care of a doctor in his home.

Mrs. I. L. Larson has been confined to her home with an attack

Mack Lyons returned home from Doctor's Hospital on Friday. He is feeling much better but must still take it very easy.

Mrs. Maggie Golding entered the

hospital on Wednesday and went into surgery on Saturday. She is in Tacoma General and would appreciate cards and letters.
Reporter—Martha Berggren

First large ship to pass through the Panama Canal was the SS Ancon, on Aug. 15, 1914.

THURSDAY, JANUARY 12, 1961
THE TIMES JOURNAL

Judo Experts For Dads' Nite

The Eatonville PTA Dads Night meeting will be held Monday, Jan. 16th at 8 pm in the high school auditorium.

PARKLAND TRAILER VILLAGE
NEW ENCLOSED CAR PORTS
A FRIENDLY PLACE FOR YOUNG AND OLD
507 E 131st. LE 7-9926

IGA CANNED FOODS SALE

• IGA CANNED MILK 9 TALL TINS \$1.00

• PORK & BEANS VAN CAMP'S 300 TIN 13c 5 2 1/2 TINS \$1.00
4 FOR 49c

• BABY FOOD GERBER'S STRAINED 12 REG. TINS \$1.00

• NEW POTATOES Hunt's Best! 9 No. 300 TINS \$1.00

• PEACHES EARLY GARDEN ELBERTA SALAD-CUT, 2 1/2 TIN 21c 5 FOR \$1.00

• IGA PEAS or CREAM CORN, 303 Tin 15c
PEAS or CORN 6 FOR 89c

MEXICORN 12-Oz. Tin Each 19c 5 For 89c
NIBLETS CORN 12-Oz. Tin Each 19c 5 For 89c
CHICKEN CHOW MEIN Chun King 2-Lb., 12-Oz. 89c
BEEF CHOP SUEY Chun King 2-Lb., 12-Oz. 89c

TABLERITE CUT-UP FRYERS 39c LB.

APRICOTS NORWEST WHOLE UNPEELED 2 1/2 TIN 23c 4 FOR 89c

CHOW MEIN NOODLES Chun King 2 1/2 Tin 25c
WELCHADE GRAPE Quart 3 For 89c
ROYAL RED CRAB MEAT 1/2 Tin 59c
SPRY SHORTENING 3-Pound Tin 69c

US Good or Choice BOTTOM ROUND STEAK 79c LB.

TOMATOES Hunt's Solid Pack 303 tin 17c; 6 for \$1 2 1/2 TIN 27c 4 FOR \$1

TOMATO JUICE Hunt's 46-Oz. 27c 4 For \$1
TOMATO SAUCE Hunt's 8-Oz. 19c 6 For 49c
TOMATO PASTE Hunt's 6-Oz. 12c 6 For 69c
TOMATO CATSUP Hunt's Giant 20-Oz. 27c

TOP ROUND STEAK 89c LB.

PEARS NORWEST SALAD-CUT BARTLETT PEARS 2 1/2 TIN 29c 3 FOR 85c

LARGE FRESH SUNKIST ORANGES 3 LBS. 25c

FRESH GROUND BEEF 3 LBS. \$1

DOG FOOD PARD 1-LB. TINS EACH 13c 8 FOR \$1

NALLEY'S SYRUP 22-oz. Bottle 29c

FOOD IGA TOWN

Airport (112th) at Park Ave.

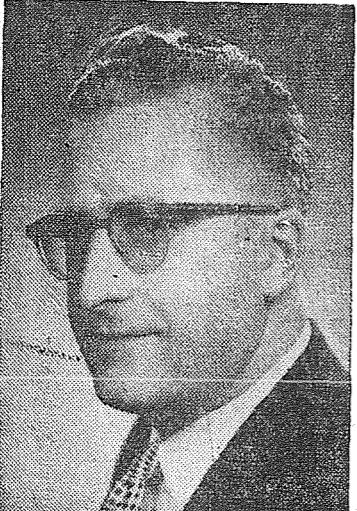
Ad Days Jan. 12-13-14

INCOME TAX SERVICE

PARKLAND REALTY
CHARLE PETERSON
For Appointment Call LE 7-8609

BE SURE TO HEAR

Dr. Ernest Malyon
Moody Bible Institute Speaker
IN NEW LIFE CAMPAIGN AT
Collins Community Church
(Just North of Collins School)
JAN. 15-22
SUN. MORNINGS 11:00
EVENINGS 7:30



PROTECT YOUR PET

Under Pierce County Resolution #6658 (Amended), it is required that all Dogs in Pierce County shall be licensed.

Licenses for 1961 are now on sale at the following Agencies for your convenience:

- TACOMA-PIERCE COUNTY HUMANE SOCIETY
2608 Center Street, Tacoma
- B & I SHOPPING CENTER
8012 So. Tacoma Way, Tacoma
- BRIDGEPORT VETERINARY HOSPITAL
11419 Bridgeport Way, S.W., Lakewood
- CLOVER PARK VETERINARY HOSPITAL
6129 Lake Steilacoom Ave., S.W., Lakewood
- FIFE VETERINARY CLINIC
Old Fife Square, Fife
- FIRCREST VETERINARY HOSPITAL
6920 S. 27th, Fircrest
- GLAISYER VETERINARY HOSPITAL
Harbor Heights, Gig Harbor
- LINDEN DRIVE VETERINARY HOSPITAL
Linden Drive, Puyallup
- LAKEWOOD VETERINARY HOSPITAL
7307 Steilacoom Blvd., S.W., Lakewood
- LAKEWOOD COUNTRY STORE, GARDEN & PATIO SHOP
6207 Mt. Tacoma Drive, S.W., Lakewood
- PACIFIC AVENUE VETERINARY HOSPITAL
10234 Pacific Avenue, Parkland
- UNIVERSITY PLACE ELECTRIC
8216 South 27th Street, University Place
- RIVER ROAD VETERINARY CLINIC
7818 River Road, Puyallup
- PARKWAY VETERINARY CLINIC
14103 Pacific Avenue, Spanaway
- PIERCE COUNTY LICENSE DEPARTMENT
137 County-City Bldg., Tacoma.

PIERCE COUNTY DOG LICENSE FEES
Male \$1.00 Female \$2.50 Spayed Female \$1.00
AFTER FEBRUARY 1, 1961 UNLICENSED DOGS FOUND RUNNING AT LARGE OUTSIDE INCORPORATED CITY LIMITS WILL BE IMPOUNDED.

Birthday Club Elects Officers

The Friendly Birthday Club met at the home of Mrs. Grace Splane. The following officers were elected:

President, Mrs. Emily Ball; vice president, Mrs. Emerson Tarpenting; secretary, Mrs. William Zumbul; treasurer, Mrs. Edward Flannery.

Grandmas

The Spanaway Kan Do Grandmother's Club will meet Thursday January 19th at the Spanaway Firehall at noon. Hostesses will be Mesdames William Wain and Emily Ball.

Get Well!

Get well wishes go to Mrs. Jeff Williams who is ill in the hospital—and to Tom Bailey Sr.

Sympathy

Deepest sympathy to the families of Mrs. John Schwab, Mrs. Russel Black, and Mr. and Mrs. Richard Roberson for loss of their infant son Kelly Lee.

Dr. Tomlinson At Fern Hill Church

Dr. Warren Tomlinson, associate Professor of History at the University of Puget Sound, will speak at Fern Hill Methodist Church Sunday, Jan. 15th at 6 pm in the Sanctuary.

Dr. Tomlinson, speaking in connection with the Church's theme "One World, One Mission", will discuss his many travels around the world. Everyone is invited.

Local Men Enlist

Two men from nearby communities enlisted in the Navy during the month of December.

They are John O. Swenson, son of Mr. and Mrs. Swen O. Swenson, 110 Rainier St., Eatonville; and Knighten M. Wells, son of Mrs. Mary L. Wells, 1612 Milwaukee Ave., Puyallup.

NATURAL GAS SPECIALISTS IN CONVERSIONS
LICENSED GAS INSTALLERS
GR 2-8613
DUCOLON FURNACE
29th Year 210 So. 38th

Grange Will Meet

Collins Grange will hold its first meeting of the year tonight at 8 in the Grange Hall at Allison and Burnett Rds. Candlelight service for the new year will be conducted by the new Lecturer Gertrude Ellison. Refreshments and social hour will follow the meeting. For the members convenience, the Secretary will be at his desk to receive their dues for the new year by 7:30.

Children are much more prone to sleepwalking than are adults.

Clover Creek Baptist Church

Military and Noble Road Three Miles East of Pacific On 159th Street
Sunday School — 9:45 a.m.
Morning Service — 11:00 a.m.
Evening Service — 7:00 p.m.
Young People — 6:00 p.m.
Radio Broadcast — KAYE-1450
Sunday at 9:45 p.m.
Lyle Bramblet, pastor
Phone LE 7-6421

TV INSTALLATION AND REPAIRS



A.B.C. ELECTRONICS
Garfield & C Street
LE 7-4900

Guaranteed WORK
LOW RATES

YELM THEATRE
DOUBLE FEATURE
Fri.-Sat., Jan. 13 & 14
THE CONQUEROR

With SUSAN HAYWARD JOHN WAYNE Plus
ROCK ALL NIGHT
With THE PLATTERS
Show Starts 7:00 P.M.

SUNDAY, JAN. 15
POLLYANNA
A WALT DISNEY PRODUCTION
Matinee Starts 2 P.M. Sunday

Parkland PTA Will Meet Wednesday

The Parkland PTA will hold its January meeting in the school auditorium at 8 p.m. Wednesday, Jan. 18, Mrs. Don Dovey presiding.

A "Talent Review" will be presented by children of the Parkland school.

Parkland PTA is selling tickets to the Jan. 25th showing of the "The Bat" by the Tacoma Little Theatre. Prices are adults, \$1.50 and students, 75c.

LINOLEUM, FORMICA, CARPETS, FREE ESTIMATES
PACIFIC FLOOR COVERING
131st & Pacific LE 7-4545

Fancy Florida
CUKES
15^c Each

PEACOCK LUNCHEON MEAT
12-oz Tin 39^c

MED **ONIONS**
4^c Lb.

KRAFT GELATIN DESSERT GIANT
24-oz Pkg. 49^c

FRESH **RADISHES & GREEN ONIONS**
3 Bun. for 19^c

MIXEM • **NUTS**
Peanuts Mixed Walnuts Brazil
39^c Your lb. Choice

1/2 BOX **NAVEL ORANGES**
56-Size 1.79

SUNSHINE KRISPY CRACKERS
2-lb. Box 49^c

LARGE CHEX EGGS Doz. 53^c

NALLEY'S Reg. or Hot CHILI 4 15-oz. Tins For 89^c

M.J.B. **101 TEA BAGS** 89^c
MJB 1/2 LB. BULK TEA 69^c

BARGAIN BASKET'S OWN SYRUP 22-oz. 29^c

GOLDEN GRAIN Long Grain White RICE 5 Lb. Box 79^c

2 FULL POUNDS Cream Delight COOKIES 59^c

JAMES HENRY Tenderized Smoked PICNICS Lb. 33^c

Pederson CUT UP — PAN READY FRYERS Lb. 39^c

BAR-S Thrifty Sliced BACON Lb. 39^c

100% PURE GRND. BEEF 3 Lbs. For 89^c

FRESH HOODS CANAL OYSTERS Med. 12-oz 55^c

COUNTRY STYLE PORK SAUSAGE 3 Lbs. For \$1

BARGAIN BASKET
16618 PACIFIC AVE. South SPANAWAY, WASH.
STORE HOURS 9 a.m. to 10 p.m. 7 DAYS A WEEK

Bethel School Menu
January 16-20
Monday
Mexicale pie, pear halves, bread and butter sandwich, milk.
Tuesday
Cook's choice.
Wednesday
Mashed potatoes, roast beef gravy, bread and butter sandwich, string beans, dessert, milk.
Thursday
Hamburger on buttered bun, potato chips, Harvard beets, sliced peaches, milk.
Friday
Creamed tuna on hot biscuit, buttered peas, dessert, milk.

Lucky and BIG BEAR STORES

SPECIALS

CHUCK STEAKS ^{USDA CHOICE} LB. 47

GROUND BEEF FRESH HOURLY GROUND LB. 29

SWANSDOWN ANGEL FOOD CAKE MIXES
Real "home-made" flavor
PER PKG. 33

BANQUET FROZEN DINNERS
Chicken, Beef or Turkey
EACH ONLY 39

ICY KREAM AN ICE MILK PRODUCT Per Qt. 25

RED POTATOES North Dakota grown. U.S. NO. 1 GRADE Dry Land Potatoes 10 - pound mesh bag only.... 49

FOR ADDITIONAL VALUES, SEE OUR REGULAR PAGE AD IN THE WEDNESDAY TRIBUNE
13320 PACIFIC AVENUE
Store Hours 9 to 11 Daily — 9 to 9 Sunday
SALE PRICES EFFECTIVE WEDNESDAY THROUGH SATURDAY
WE RESERVE THE RIGHT TO LIMIT PURCHASES

Lucky and BIG BEAR STORES

From Soup To Nuts

By Floyd Fessler

THE CUSTOMERS ALWAYS WRITE:

"Just finished reading your column, 'From Soup to Nuts,' in the December 22nd issue of The Times Journal — enjoyed it very much. Hope you won't object to a few comments —

Just by way of explanation, I think you realize that my forecasting is done from statistical formula — personal opinion doesn't enter into the rating of any team. If it did, I'm afraid I wouldn't be able to boast of anything close to a .774 forecasting average.

In analyzing Washington's season, I think you might have to agree with me on the Harmon ratings on this basis: a "Schloredt-led" Washington team ranked 3rd in the nation on October 1st. However, the "Schloredt-less" Huskies, only one point winners over Oregon State, Oregon, and Washington State, ranked between 13th and 22nd the rest of the season. (The Harmon ratings are based on a power index, not games won and lost.)

So — with Schloredt back in the quarterback spot, Washington certainly proved in the Rose Bowl that (with him) they are definitely where I had rated them back in early October — among the top 5 teams in the country. . . .

—Robert Harmon, Middleton, N.Y.

Amen. However, in defense we must point out that Oregon State and Oregon were both good enough to compete in post-season bowl games, even though the OSC contest fizzled out when officials changed their minds too often about an opponent. (Of course, Husky fans will argue that they knew all along Washington was much stronger than the other clubs, and that the Huskies should have been rated high in the nation because of their "potential" strength, even though the "potential" was sitting on the bench.)

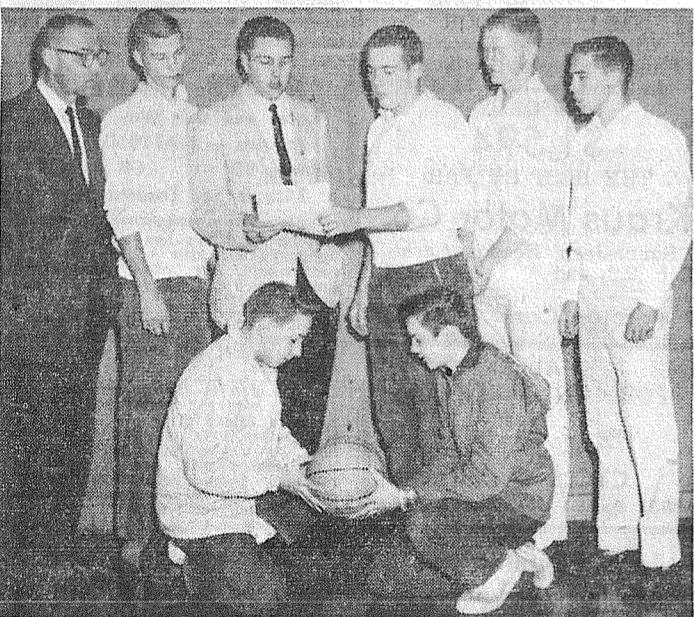
All in all, everything worked out for the best. Mr. Harmon's .774 forecasting average certainly proves that he is one of the most accurate prognosticators around. Washington proved themselves to the nation for the second year in a row. Husky fans couldn't be happier. Happy new year, one and all!

The Beginning Or The End?

There is one question, however, that cannot be overlooked, Jim Owens has placed himself in a most difficult position, thanks to his habit of proucing miracles. The more that he does, the more that is expected of him.

Washington football has entered a new era. The Huskies have definitely established themselves as one of the major powers of the nation. They have pulled the Big Five up by its own bootstraps to a position of prominence. The question is: can they keep it up?

With the wealth of potential talent available to the five member schools, there is no reason why the Big Five cannot eventually be regarded equally with the Big Ten as a conference of major power.



Making final arrangements for the Franklin Pierce Grade School Basketball tournament scheduled for Friday night, are members of the sponsoring Key Club at Franklin Pierce High School and grade school representatives. Looking at the ball in front are sixth grade players Gary Harrington and Gary Hammer, both of Andrew Christensen school. Lined up in back are Key Club adviser A. E. Schimke; treasurer Jerry Manley; Richard DeJardine, president of the Grade School Coaches Association; Key Club President Ed Halterman; Secretary Tom Lumsden; and Vice-president Jerry Irwin

Pint-Sized Jamboree At FP

Basketball miniature style comes to town Friday night when the Franklin Pierce Grade School Basketball Jamboree gets underway at the high school gym at 7 o'clock.

The tourney, sponsored by the high school Key Club, pits the elementary schools of the western part of the District against those in the eastern part. A continuous score will be kept for each set of teams.

Playing for the West will be Parkland, Brookdale, Christensen and James Sales. On the East side will be Midland, Harvard, Central Avenue and Collins.

The teams will play for 5 minutes quarters each, then return for another two quarters against another team. Parkland will play Midland and Collins, Brookdale will go against Harvard and Midland, Christensen will take on Central Avenue and Harvard, and James Sales will tackle Collins and Central Avenue.

The East rosters will sit on the right hand side of the gym and the West fans or the left side. Admission of 25 cents for children and 50 cents for adults has been set by the sponsors. The Key Club uses the funds derived from this annual affair to provide a graduating senior with a \$100 scholarship.

Back From Cal

Mr. and Mrs. Sam Tillman and son Jack returned from a ten day trip to California January 1. They visited their daughter, Miss Beth Tillman, at UCLA.

Jet powered Rugges Mrs. James Rugges and children recently flew back to their Iowa home by jet after an extended visit with her parents, Mr. and Mrs. Ellsworth Campbell.

Back from N.D. The Walter Earle family returned home after spending the Christmas holiday with relatives in Hansler, N.D. Mrs. Earle's mother, Mrs. McAdoo, returned with them for a visit.

In Oregon Mr. and Mrs. David Barry spent the recent holidays with former Tacomaans Mr. and Mrs. Kenneth Day at The Dalles, Ore. Mr. and Mrs. Gordon Geisler visited with relatives in Oregon for a few days.

Lutes Face Viks After Loss To UPS Loggers Jan 6

Pacific Lutheran's hoop forces will try to get back in the win column when they entertain the Western Washington Vikings Saturday night. The Lutes dropped two league tilts last week end, losing to Central Washington 75-68 and to the University of Puget Sound, 81-73. It was their first loss to UPS since Jan. 14, 1954. In the meantime PLU had won 21 straight.

Coach Gene Lundgaard hopes to have his club at full physical strength for the Western game for the first time in a month.

Norm Dahl, starting senior forward, missed last week's game because of an infected toe. Marv Fredrickson and Mike Healy, the club's two top frosh guards, have been out for a month. Fredrickson had a sprained knee and Healy a sprained ankle. All three should be able to play this week.

Senior guard Bruce Alexander leads PLU scoring with 173 points in 11 college games for a 15.7 average per game. Norm Dahl is next with 142 in nine games and has a 15.8 average. Senior center Ralph Carr has tallied 126 points for 11.5 average and junior forward Larry Poulsen is right behind him with 123. Dick Nelson, sophomore guard and the other starter, has scored 96 points. Bob Jacobsen, sophomore forward who filled in for the ailing Dahl, has scored 85 points.

As a team the Lutherans have outscored their opposition by 73.3 points per game for the season to 68.8. They have hit on 41.2 per cent of their field goal attempts, and are even with their opponents on rebounds with 53 each per game. The Lutes, defending Evergreen

Conference champions who shared the crown with Western, now own a 1-2 league mark, and have a 9-3 record against all opposition this season.

Legion Will Meet

American Legion Post and Auxiliary of Spanaway will meet at the hall Jan. 13 at 8 pm for a business session.

Dad's Nite Tuesday

The James Sales Preschool and PTA will meet Tuesday, January 17 at 8 p.m., with Mrs. Ralph McLaren presiding.

Lyle Catt, principal, will present the program for 'Dad's Nite'. Highlight of the program will be a shooting demonstration.

An estimated 40 million boating enthusiasts will spend approximately \$2.5 billion this year on recreational boating.

Prescription Service
Open 7 Days a Week
9:30 a.m. - 9:30 p.m.
Sundays 10 a.m. - 6 p.m.

JACOBS PACIFIC DRUGS

Wallgreen Agency
Pay Light & Water Bills Here
84th & PACIFIC AVE
Greenfield 2-6445

Bob's Barber Shop
9820 Pacific Avenue
Courteous Service Always
Hours 9 to 6 Tues. thru Sat.

FENCING
Designers and Builders
EXPERT WORKMANSHIP
REASONABLE PRICES
EASY Monthly Payments
VAUGHAN'S
84th & Pac. Ave. GR 4-9515

Greenfield 4-8989 5424 PUGET SOUND

NEW CRYSTAL STEAM BATHS
Bring In This Ad and Get Our
Regular \$1.50 Steam Bath For
only \$.50
New Owner — Orville Grant.
LADY ATTENDANT HOURS: 9 a.m. - 10 p.m.

Take advantage of these amazing storewide values at **SAFEWAY**



BABY YOUR BUDGET

- Fruit Drink DEL MONTE PINEAPPLE-GRAPEFRUIT 4 46-oz. \$1⁰⁰
- Vegetable Soups CAMPBELL'S—WITHOUT MEAT 7 10 1/2-oz. \$1⁰⁰
- Tomato Soup CAMPBELL'S—GREAT WITH NBC SODA CRACKERS 10 10-oz. 10c
- Soda Crackers NBC PREMIUM lb. 25c 2-lbs. 49c

- S & W Features**
- 3 Sieve Peas 5 17-oz. \$1⁰⁰
 - Green Spinach 7 15-oz. \$1⁰⁰
 - Stewed Tomatoes 5 16-oz. \$1⁰⁰
 - Red Kidney Beans 7 17-oz. \$1⁰⁰

STAR-KIST—QUICK AND EASY TO PREPARE

Chunk Tuna 4 6 1/2-oz. \$1⁰⁰

BALLARD OR PILLSBURY—SERVE WITH CHICKEN
Biscuits 2 Pkgs. of 10 19c

LUCERNE—DELICIOUS FOR DRINKING
Instant Milk 12-Qt. Pkg. 79c

Edwards Coffee 2-lb. \$1¹⁷ lb. 59c

Folgers Coffee 2-lb. \$1²⁹ lb. 65c

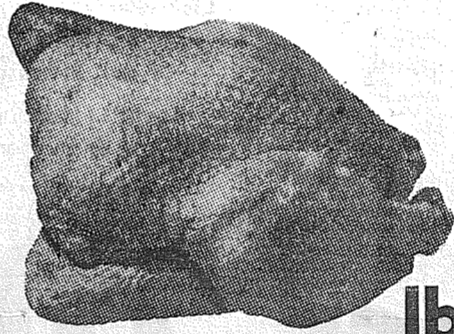
Nob Hill Coffee 2-lb. \$1¹⁵ lb. 57c

Airway Coffee 2-lb. \$1⁰⁹ lb. 55c

SPECIAL OFFER
REGAL 40-CUP ALL-AUTOMATIC COFFEE MAKER
SAVE UNWINDING BANDS FROM EDWARDS COFFEE
FULL DETAILS AT YOUR SAFEWAY STORE

FRESH FRYERS

WHOLE, PLUMP, TENDER—2-3 lbs.—JUST RIGHT FOR FRYING OR BAKING



lb. **33c**

- Fresh Fryer Parts**
- Fryer Breasts lb. 59c
 - Fryer Thighs lb. 65c
 - Fryer Drumsticks lb. 55c
 - Fryer Wings lb. 29c
 - Fryer Neck & Backs lb. 15c

SAFEWAY
Superb MEATS

DOUBLE VALUE

Pork Loins
WHOLE OR HALF—EACH PACKAGE
CONTAINS ROAST AND
CENTER CUT CHOPS.
lb. **59c**

- Piece Bologna** BY THE PIECE—LARGE SANDWICH SIZE lb. 39c
- Piece Bacon** DIAMOND F, 6-8 lbs. ANY SIZE PIECE lb. 49c
- Breaded Shrimp** CAPTAINS CHOICE 2-lb. Pkg. \$1⁹⁹
- Fish Sticks** CAPTAINS CHOICE—HEAT AND EAT. 3 8-oz. Pkgs. \$1⁰⁰
- Fish Sticks** CAPTAINS CHOICE—HEAT AND EAT. 2 14-oz. Pkgs. \$1⁰⁰
- Fresh Oysters** CAPTAINS CHOICE—MEDIUM SIZE 12-oz. Jar 55c

Gerbers Baby Food STRAINED FRUITS AND VEGETABLES 12 Cans \$1⁰⁰

Ice Cream SNOW STAR—STRAWBERRY, CHOCOLATE OR VANILLA. Gallon \$1¹⁷ Half Gallon 59c

Quaker Oats QUICK OR REGULAR—TRADITIONAL OATMEAL NOURISHMENT AND FLAVOR. 42-oz. 45c

- Large Ivory Soap 2 Bars 33c
- Personal Ivory Soap 4 Bars 29c
- Medium Ivory Soap 4 Bars 38c
- Zest Beauty Bar 2 Reg. Bars 31c
- Zest Beauty Bar 2 Bath Bars 43c
- Comet Cleanser 2 14-oz. 33c

FRESH EGGS

EVERY EGG GUARANTEED FRESH

Cream O' The Crop Large AA Dozen 55c

Breakfast Gem Large A Dozen 53c

DETERGENT

WHITE MAGIC—CLOTHES WHITE, DISHES BRIGHT. LOW PRICE!

49 1/2-oz. Pkg. 49c

Grapefruit

TEXAS PINK—FULL OF JUICE; DOZEN... 59c Each **5c**

Apples

EXTRA FANCY GRADE—WASHINGTON STATE'S FINEST

3 lbs. 49c

LUCERNE

Ice Cream
SPUMONI or PEPPERMINT CANDY
Half Gallon **69c**

Safeway Bakery Special
Cherry Lemon Whirl
MRS. WRIGHT'S—FRESH—SERVE HEATED FOR BREAKFAST. Pkg. **35c**

- Sunshine Cinnamon Wafers 11-oz. 29c
- Ivory Snow Soap Powder 12 1/2-oz. 39c
- Cascade Dishwasher Detergent 20-oz. 49c
- Lava Toilet Hand Soap 2 Regular Bars 25c

- Select Celery CRISP AND CRUNCHY—IDEAL FOR SALADS OR RELISH TRAYS. lb 7c
- Navel Oranges LARGE SIZE lb 10c

SAFEWAY
Sale starts 9 A. M. Thursday, January 12th through Saturday, January 14th in Tacoma, Puyallup and Lakewood. We reserve the right to limit quantities. No sales to dealers.

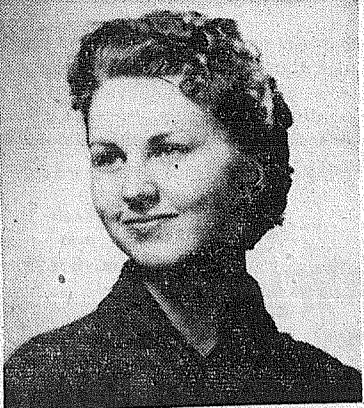
Classified

THURSDAY, JANUARY 12, 1961
THE TIMES JOURNAL

TO BETTER SERVE YOU...

The Following Advancements Have Been Made

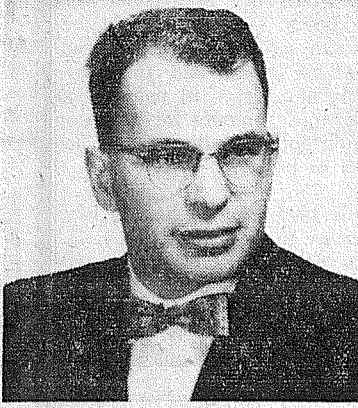
SECRETARY



BETTY LOE LOE

Betty Lou Loe joined Suburban Realty Inc. about five years ago. She started as a receptionist and stenographer. She was recently elected as Secretary to the corporation and will now be in charge of the rental department as well as directing the activities of the office.


MANAGER



JERRY HANSON

Jerry Hanson joined Suburban Realty Inc. upon his graduation from Pacific Lutheran College and has had a vast experience in Income Tax work and Insurance and will therefore be a real asset managing the Summit office in the growing Summit area. He is also President of the Suburban Developers.

VICE PRESIDENT



DUANE CHEETHAM

Duane Cheetham who has had about ten years experience as an associate broker has now been promoted to the position of Vice President in order that Suburban Realty Inc. may benefit from his vast real estate experience as second in command to Mr. Ernest Harmon, President of the corporation.

SUBURBAN REALTY Inc.

11302 Pacific Avenue LE 7-8638

Business Service 3

ART'S SHOE SHOP
Shoes for the Entire Family
EXPERT SHOE REPAIRING
315 Garfield St.
Between 121st and 122nd
Opposite Parkland Postoffice

BULL-DOZING
Excavating • Grading
• Gravel
LE 7-5112

A-I SANITARY SEPTIC TANK PUMPING AND SEWER CLEANING SERVICE
PUY. TH 5-2873

WEBB ELECTRIC COMPANY
Commercial—Residential
ELECTRIC HEATING
WIRING & ELECTRICAL SUPPLIES
24 HR. EMERGENCY SERVICE LE 7-4437
LE 1-1133
11112 Pacific Avenue

ACE DIRT MOVING CO.
Building TOP SOIL
DITCHING GRAVEL
SEPTIC TANKS and DRAIN FIELDS
Phone TH 5-2452

South End Auto Wreckers
USED PARTS—Motors, Transmissions, Tires, Batteries. We buy junk cars. Also Custom welding by Joe's Welding 1 Mile East of Roy Y on Mt. Hy. Spanaway LE 7-6534

Parkland Heating Co.
All makes of furnaces for sale; Specializing in Williams OIL O MATICS; OIL, GAS, Hot Water Installations. Electric Heat & Lighting Fixtures; Service; reasonable.
755 South 108th LEnox 7-4045

PHOTOS
5x7, \$1 — 8x10, \$2
For Appointment Phone GR 4-1986—Open Evenings
FAMILY PORTRAIT STUDIO
8411 South Park Ave.

Business Service 3

BERT MASE UPHOLSTERY
FREE ESTIMATES
LE 1-1141 Nites GR 2-4058
11808 PACIFIC AVE.

COMPLETE TRACTOR WORK
Gravel & Driveways
LE 7-3846

CALL POCHEL FOR Expert T.V. Repair
Satisfaction Guaranteed
Free Tube Testing
140th & Pacific LE 7-8624

GEORGE PURDUE — Plumbing, Heating
New work, remodeling, repairs
LE 7-4471

SEPTIC TANK CLEANING
Prompt Service
C. V. HUTSON
GR 4-3980 GR 2-7038

TOP SOIL—SANDY LOAM—Parkland area
special. Puyallup, TH 5-8759

Boush Moving & Storage
Agents for U.S. Van Lines
Cost to Coast Service
11816 Pacific Avenue
LE 7-3696
Parkland, Wash.

Business Service 3

FOUNDATIONS, ADDITIONS, REMODELING. Free Estimates. Financing, no down payment. Phone GR 4-7000 any time. 3ctf

TREES — SHRUBS LANDSCAPE PLANNING
EARLE'S EVERGREEN NURSERY
LE 1-1055
South End of Vickery Road

WET DRIPPY WINDOWS
WE FIX 'EM WA 7-0646 3ctf

YOUR NEIGHBORHOOD PAINTER
(Interior) neat and reasonable. LE 1-2665, 3ctf

Rentals 10

MODERN 2-bedroom unfurnished, \$80. GR 2-1933. Near Military. 10c19

PARKLAND—Furnished 1 bedroom house. 1/2 bath. \$50. LE 7-6099. 10c19

FURNISHED Apartment, two bedroom. Parkland area. Call after 4 p.m. LE 1-0996. 10c19

NEW, MODERN furnished apartment. \$50 month. VI 7-4468. Graham. 10c19

Rental Management
List your rental property with us. Satisfaction is our by-word.
Rental Headquarters for the Suburban Area
SUBURBAN REALTY, INC.
LE 7-8638 or LE 7-6896

Rentals 10

SMALL 2-BEDROOM HOUSE, furnished. 2 blocks from Parkland Triplex. \$45 per month. LE 7-4468. 10c19

RENTALS
2 Bed Furn. 1214 So. 119th Street, \$85.00.
1 Bed Unf. 10309 E. Polk, \$50.
2 Bed S/R, 1113 Violet Meadow, \$65.00.
2 Bed Furn. 6926 S. Stevens, \$65.00.
2 Bed, S/R, 182nd & Pacific Ave., \$75.00.
2 Bed Duplex, 11212 South L Street \$110.00
2 Bed Unf. 10224 East Polk \$75.00.
2 Bed Unf. 140 East Linden \$60.00.
We have others which will be available soon. Call Suburban Realty, Inc., Rental Department LE 7-8638.

TANWAX LAKE—2 bedroom, unfurnished home. Call TE 2-4352. Eatonville. 10c19

TWO BEDROOM unfurnished home convenient to McChord and Ft. Lewis. VI 7-2100, 10c20

Repair Service 11
WASHING MACHINE PARTS — Largest stock in town. Repairing that pleases. BB'S WASHER SERVICE. 3727 So. G. GR 4-9409. 11c19

NOW AT SILER'S
Complete refrigerator service. Fast, dependable, reasonable. LE 7-8634. 11c19

LIST WITH SUBURBAN
Home and Farm Specialists in South End Properties. Two offices open every day and evening for your convenience.
SUBURBAN REALTY, INC.
113th and Pacific LE 1-8638
112th and Canyon, LE 7-0229
Member Multiple Listing Service & Tacoma Real Estate Board 8c19

EATONVILLE — 4 Bedrm. Home, lge Kit., spacious Living and Dining area. Landscaped yd and acreage, bordered by Mashell River. \$13,500. Terms. Call Mary Nagley, LE 7-8651. 787

BARGAIN — 1 Bedrm. room for 2 up, lge living and dining comb., very spacious kit, with eating space. Landscaped yd. Eatonville. Price \$2,900. Call Mary Nagley, LE 7-8651. 876

\$7,500. CASH for all this. Good cottage, 36x70 chicken house. Property 200x300. Drilled well. "Beautifully wooded" lge fir and oak. Room to build fine home, also Lake privileges, for appointment call Mr. Schuler GR 2-1618 or LE 7-8651 877

FERN REALTY
11208 E. Leonard's Crossing
LE 7-8651

PARKLAND
No Down Payment — No Closing Costs

4 HOMES to choose from. Close to bus, college, schools. All have 3-bedrooms, carpet and patio, electric heat, birch cabinets.
No. 1 — Corner of Garfield and So. Ainsworth, \$12,700. \$72.40 per mo., plus insurance & taxes.
No. 2 — 1633 South Garfield, \$7,800 per month plus insurance and taxes.
No. 3 — 712 Tule Lake Road, \$12,450. \$70.80 per month plus insurance and taxes.
No. 4 — 11452 So. J St. \$12,900. \$75.34 per month plus insurance and taxes.

BROOKDALE LUMBER CO.
13602 Pacific Ave. LE 7-8669

M. L. S. MULTIPLE LISTING SERVICE
\$250 DOWN FHA
Clean, well built, 2 large bedrooms, living room 23x13 with good fireplace, nice kitchen with dinette, oil furnace, separate utility, concrete foundation, garage, 2 lots. View of mountain. A-1 district. Price \$7,950. Call Ralph Decker, GR 4-9579. RB-8031

NEAR 64TH & PACIFIC
One bedroom, large living room, kitchen wired 220, 3 piece bath, concrete foundation, new roof. A good buy for \$3,500. Call Ralph Decker, GR 4-9579. RA-8058

McKINLEY HILL REALTY
6311 McKinley Ave. GR 4-9579
Member of Multiple Listing Service and TACOMA REAL ESTATE BOARD

M. L. S. MULTIPLE LISTING SERVICE
6 LOTS
With 3 bedroom house in good location in Brookdale area. Large garage with workshop. Owners leaving, anxious to sell. Will accept some terms. Edna Taylor, LE 7-8609 or LE 7-3556.

Jennie L. Grodvg PARKLAND REALTY CO.
Insurance of All Kinds
Notary Public
Est in Parkland Since 1941
LE 7-8609 Office
302 Garfield St. Parkland
Jennie Grodvg, LE 1-1210
Edna Taylor, LE 1-3556
Thelma Scott — Yvonne White
JU 8-3838 LE 7-0440

"Deal with the people who give you their personal Attention"
Member of Multiple Listing Service and Tacoma Real Estate Board

We Have BUYERS for your HOUSE!
FARM and BLDG. SITES

Listings Wanted
DICK DEVEREAUX REALTY
Multiple Listing Service
Buying or Selling
Call LE 7-8659
11002 Pacific Avenue

McKINLEY HILL DIST. GI SPECIAL, \$7,950
2 BEDROOMS, liv. room, with hardwood floors. Kitchen with nook, back yard patio, sep. garage, completely fenced. Closing costs only, down, or will trade large equity. Mr. Black, call LE 7-5440.

4 LAKE FRONT SITES, DAYLIGHT BASEMENT
BUY 'em quick, only \$2,500 each, and take 'em all. E-Z terms to right party. Near School, shopping, military bases, and lights and water available. Call Bill, LE 7-5440.

LIKE NEW, 3 BEDROOMS
FHA equity, \$3,500. Assume balance \$80 month, 5 1/2% including taxes and ins., and LOOK, 2 fireplaces, liv. room and rec. room, completely all electric, excellent Parkland location. Call Bill for details. LE 7-5440.

CASH REALLY TALKS, SPLIT-LEVEL, 3 BEDROOMS
NEED to cash out this one QUICK, take a look, and make an offer. Located near Y on Route 1 Spanaway. Be happy to show it any time. Call Bill, LE 7-5440.

RURAL REAL ESTATE
14403 Pacific Ave. LE 7-5440

SAVINGS Plus QUALITY

COFFEE SHUR-FRESH 2-lb. Tin \$1.15
1-lb. Tin 59c

Stew Nalley's 30-oz. 79c

SOUPS Campbell's Meat Variety 3/49c

SHURLAC No Fat Dry Milk 14-Qt. 98c
Money Back Guarantee. Size

Krispy's, 1-lb. Van Camp, PORK AND BEANS 2 1/2s 5/91

Fletts, Fresh Every Day, Cottage Cheese Pints 25c

Fresh A.B.C., 1 1/2 lbs. Fig Bars 39c

Soflin Facial, 400 ct. Tissue 2/49c

Local, AA Med. Eggs 2 Doz. 99c

ROUND STEAK U.S.D.A. Good Steer Beef lb. 79c

CUBE Steak lb. 79c

Center Cuts, PORK Chops lb. 69c

LETTUCE, solid crisp 10c ea.

AVOCADOS, good size

Whole or Half, PORK Loins lb. 53c

Boneless RUMP or ROUND Roasts lb. 69c

Fresh, 2 lbs. Cnberries 25c

COAL — LOGS — FEED — MONEY ORDERS

HERMANS FOOD STORE
162nd & Park Ave. Spanaway
(Right to Limit Reserved)

Repair Service 11
APPLIANCE REPAIR
9606 Portland Avenue—LE 1-1155. 11c19

LAWN MOWER SERVICING
5719 1/2 & Stratton, Clinton, Power Products & Luson. Engine Parts and Repairs.
PARKLAND CYCLE & KEY
1071 Pacific Avenue
LE 1-5772 11c19

Automobiles 12
FOR SALE—1955 BUICK, hydramatic, 1956 Olds, straight stick. VI 7-7195, Graham. 12c22

ANDERSON'S CARS FOR LESS CHINOOK CAMPERS
LE 7-0404
176th & PACIFIC AVE.

BUY OF A LIFETIME 1961 SIMCA
DE LUXE 4-DOOR
With 14 World Records
Fully Equipped, Delivered in Tacoma—Reg. \$1,869
NOW ONLY \$1,594
THE BEST BY FAR
Kraus Motor Co.
Simca-Jeep Headquarters
Cor. 13th and A BR 2-5177

Foreign Cars 12A
ALL FOREIGN CAR KEYS
107 Varieties
PARKLAND CYCLE & KEY
11021 Pacific Ave. LE 7-5772

Farm Column 13
GOOD local hay, by bale or ton, 2 miles west of Johnson's corner — Mountain Highway. Pete Knudson. 13c19

TIED DOWN? LIVESTOCK CARE
While You're Vacationing
LE 1-1327

Real Estate 9
TRADE EQUITY 2 bedroom rambler, 4 1/2 GI loan for building site. LE 1-1422 9c19

FOR SALE—HIDE-A-BED, black and white tweed, \$45. LE 7-7545, 235 So. 163 St. 15c19

SUMMERIZE YOUR LAWNMOWER
Free Pickup, Storage, and Spring Delivery
Parkland Cycle & Key
11021 Pacific Ave. LE 7-5772

PUPPIES—PUPPIES—PUPPIES
PUGS, Norwegian Elkhounds, Schipperkes and Bassetts. Cats and Dogs Bordered. Professional handling, grooming, and bathing. Roxbury Kennels, 10603 Portland Avenue. 15p19

FOR SALE—2 piece Krohler sectional, extra long, 106 inches. Turquoise nylon trieze covering. Excellent condition, \$90. Muskrat cape, sable dyed, restyled, good condition, \$30. Black velvet formal with extra cocktail jacket. Size 14, never worn, \$15. LE 7-3916. 15c19

RENT OR BUY—TV's and appliances on Upton's 25c per day meter plan or weekly rental. Upton Electric, 1148 Mkt. St., FU 3-2551. 15c19

WELL DRILLING Berkeley Pumps
• JETS
• SUBMERSIBLES
• CENTRIFUGALS
• TURBINES
Call LE 7-7281

Farm Column 13
10 days to 4 weeks. CALVES and well started, call "RAE" at Roy 356. 13c20

FOR SALE—Eastern Washington hay and grain. Jack Burks. Graham, VI 7-7645. 15c19

Work Wanted 14
BABY SITTING—Your home or mine. 1312 South 120th. LE 1-0416. 14c19

Miscellaneous 15
ATTENTION CONTRACTORS — Metal ladder rack for panel or pickup truck with canopy, \$6.50. See at Times Journal Office.

PHEASANTS FOR SALE—Full grown fryers. LE 7-4100. 15c19

T and T PAINTING CO.
Efficient, Courteous Service
2325 So. Ash Street BR 2-0454

WANT SOMEONE to take over payments on repossessed KIRBY. Only \$79 due, 2 year guarantee. Like new. Upton Electric, 1148 Mkt. St., FU 3-2551. 15c19

TAP, ACROBATIC, BALLET and BATON classes, all ages. Mildred Keller, LE 7-7881.

REGISTERED German Shepard puppies, 3 months old. Have shots. LE 1-2475. 15c19

CROFT TRAILERS
Local and One-Way Trailer
Rentals — NATIONWIDE
Hiway 99 GR 4-8437
74th & So. Tacoma Way

SHIPPED OUT—His less your gain. Motorola TV with only \$49 or due at \$10 each month. Buy today, deliver today. Upton Electric, 1148 Mkt. St., FU 3-2551. 15c19

CLASSICAL piano instructions. Beginning or advanced students accepted on trial. Walter Rostedt, St. FU 3-2551. 15c19

LEAVING STATE—Dinette set with pads, chairs with red leather cushions, \$25. Kenmore deluxe dryer. Push button temperature. Like new, \$95. Hoipoint deluxe 39" range, push button control, timer and plug-in. Look-in oven with rotisserie, 2-way lightswitch, excellent condition. \$165. Maple double bed-sted, \$10. 22" Reo reel-type lawn mower, 4-cycle, grass-catcher, \$45. LE 7-5904. 15c19

WELL DRILLING Berkeley Pumps
• JETS
• SUBMERSIBLES
• CENTRIFUGALS
• TURBINES
Call LE 7-7281

Growing with Washington

NATIONAL BANK OF WASHINGTON

CONDENSED STATEMENT OF CONDITION
DECEMBER 31, 1960

RESOURCES	
Cash and Due from Banks	\$ 25,520,456.82
U. S. Government Securities	41,758,138.57
State, County and Municipal Bonds	11,712,485.08
Other Bonds and Securities	621,536.67
Total Cash and Securities	\$ 79,612,617.14
Loans and Discounts	104,214,919.27
Federal Reserve Bank Stock	339,000.00
Bank Premises, Furniture, Fixtures and Safe Deposit Vaults	4,863,652.29
Other Real Estate Owned	161,499.22
Interest Earned—Not Collected	782,048.41
Customers' Liability Under Letters of Credit and Acceptances	467,094.91
Other Resources	224,688.02
TOTAL RESOURCES	\$190,665,519.26

LIABILITIES	
Deposits:	
Demand	\$ 92,861,082.92
Savings and Time	76,158,717.31
Total Deposits	\$169,019,800.23
Interest Collected—Unearned	1,982,242.60
Letters of Credit and Acceptances	467,094.91
Other Liabilities	933,290.84
Reserve for Interest, Taxes, etc.	1,808,602.37
Reserve for Possible Loan Losses	1,713,012.65
Capital	\$ 5,600,062.50
Surplus	5,699,937.50
Undivided Profits	3,441,475.66
Total Capital Funds	14,741,475.66
TOTAL LIABILITIES	\$190,665,519.26

PARKLAND BRANCH
Officers
A. G. Swindland, Manager
Earl H. Dryden, Assistant Cashier
John H. Hehn, Assistant Cashier
Dale A. Phillips, Assistant Cashier
Deposits \$8,075,440.07

NATIONAL BANK OF WASHINGTON
The Bank of Personal Service

27 BANKING OFFICES

MEMBER FEDERAL DEPOSIT INSURANCE CORPORATION • MEMBER FEDERAL RESERVE SYSTEM

Classified Continued
On Page 9

Classified

(CONTINUED FROM PAGE 8)

Miscellaneous 15

ATTENTION HOUSEWIVES - POCHET'S are now the authorized dealers for Speed Queen washers, automatic or wringer type and dryers. Come to see them at 140th and Pacific Avenue, LE 7-8624.

PRIVATE accordion lessons. Your home, Parkland-Tacoma-Puyallup area. Jane Borem. GR 4-4766. 15C19

SPECIAL ORDER CAKES - Phone LE 7-3330. Patsy Ann Bakery. 15C21

Aviation 17

FREE-FIRST FLYING LESSON-LEARN TO FLY-\$10 A WEEK
New and Used Aircraft Sales
TACOMA FLYING SERVICE
Spanaway Airport, LE 13442. 17C21

LEGAL NOTICES

SUMMONS BY PUBLICATION

NO. 145988
In the Superior Court of the State of Washington in and for Pierce County.
Katharine Hamann, Plaintiff, vs. Ruth A. and John Doe Delle, husband and wife, and Metropolitan Mortgage and Securities Co., Inc., a corporation, and all other persons of parties unknown claiming any right, title, estate, lien or interest in and to the real estate as herein described. Defendants:
The State of Washington to the said Ruth A. Delle and John Doe Delle, husband and wife, and Metropolitan Mortgage and Securities Co., Inc., a corporation, and all other persons of parties unknown claiming any right, title, estate, lien or interest in and to the real estate as herein described, defendants:
You, and each of you, are hereby summoned to appear within sixty (60) days after the 22nd day of December, 1960, and defend the above-entitled action in the Superior Court aforesaid and answer the complaint of the plaintiff and serve a copy of your answer upon the undersigned attorneys for the plaintiff, at their office below stated; and, in case of your failure to do, judgment will be rendered against you according to the demands of the complaint in this action which has been filed with the Clerk of said Court.
The object of this action is to quiet title in plaintiff's estate in Pierce County, Washington, described as:
The West 50 feet of the East 100 feet of the following: Beginning 977.55 feet West and 1224.84 feet South of the Northeast corner of Lot 2, Section 8, Township 19 North Range 3 East of the Willamette Meridian. Thence South 100 feet, thence East 250 feet, thence North 100 feet, thence West 250 feet to the point of beginning.
against the claims of the defendants and any one of them.
PETERS AND TRACY,
GEORGE F. POTTER,
Attorneys for Plaintiff
11024 Pacific Avenue
Tacoma 2, Washington.
Published in the Times Journal December 22, 29, 1960; January 5, 12, 19, 26, 1961.

NOTICE OF CALL FOR BIDS

Bids will be received by Pierce County Fire District No. 6 for one motorized combination pumping fire engine of 1000 G.P.M. capacity. Specifications may be had at the Parkland Fire Station located at 130 South 114th, Parkland 44, Washington. Bids are to be opened at 7:30 p.m. on January 26th, 1961 at Parkland Fire Station located at 130 South 114th, Parkland, Washington. For further information call LE 7-8530. Published in the Times Journal, January 5, 12, 19, 1961.

SUMMONS

NO. 145973
In the Superior Court of the State of Washington in and for the County of Pierce.
Charles L. Minick, Plaintiff, vs. Mari A. Minick, Defendant.
The State of Washington to the said Mari A. Minick:
You are hereby summoned to appear within sixty (60) days after the date of the first publication of this summons, to-wit, within sixty (60) days after the 12th day of January 1961, and defend the above-entitled action in the above entitled Court and answer the complaint of the Plaintiff and serve a copy of your answer upon the undersigned attorney for Plaintiff at his office below stated and in case of your failure to do, judgment will be rendered against you according to the demands of the complaint which has been filed with the Clerk of said Court.
The above-entitled action is an action for divorce based on the grounds of burdened home life and desertion.
ANNON W. MAY
Attorney for Plaintiff
602 Puget Sound Bank Building
Tacoma 2, Washington.
Published in the Times Journal, January 12, 19, 26; February 2, 9, 16, 1961.

WCS Will Meet

The Women's Society of Christian Service will meet Tuesday, Jan. 17th at 7:30 pm in the Spanaway Methodist Church.

County Agent's Corner

By Ernest Hopp

Loren Curry joined the Pierce County Extension Service staff on January 1, 1961. His primary work responsibility will be in the forestry field. This will include both adult and 4-H club work.

Curry is well acquainted with Pierce County, having served here as farm forester with the Washington State Department of Natural Resources for the past 4½ years. His base of operation was at Puyallup. In this capacity he has carried on forestry service work with Pierce County woodland owners. His many friends welcome him to the new position.

Previous work experience also includes farm forestry work with the Soil Conservation Service in northern California.

A native of Washington state, Mr. Curry grew up on an apple and diversified farm near Stratford, Washington, in the Columbia Basin.

His forestry degree was earned at the University of California, Berkeley, California.

Mr. and Mrs. Curry, with their four youngsters, reside near Sumner, Washington.

By Ernest I. Hopp

Now that the new year has arrived, it will soon be income tax reporting time. For farmers the deadline is February 15th. It seems as if income tax reporting is getting more complicated each year. The government offers a little help to soften the blow. It comes in the form of a bulletin called "Farmers' Tax Guide."

We have the free publication available in the County Agents' office. The material is loaded with helpful information to prepare income tax forms. Let us know and we will be happy to send you a copy.

Meetings of two study committees of the Pierce County Rural-Suburban Council were held this week. On Tuesday evening the poultry group met to hear Henry Fors describe integration and future trends in the poultry industry. Henry and Ernest Fors have much experience with integration since they own and operate both a hatchery and feed mill. The poultry committee is studying the poultry situation in order to learn more about industry problems. Recommendations for action programs will be submitted to the Rural-Suburban Council. R. C. Miller, Firogrove, is chairman of the group.

On Wednesday afternoon the Public Affairs Committee met to hear attorney Paul Simitt describe land acquisition methods used by the state and national governments when acquiring land for new highway construction. This committee also is preparing recommendations for the Rural-Suburban Council.

The next meeting of the Rural-Suburban Council will be held at 8 p.m. Tuesday, January 17th, at the Western Washington Experiment Station Winter School Building, Puyallup. Election of officers and agricultural committee reports

Waller Road PTA Will Convene

Waller Road PTA will meet January 17th in the school multipurpose room. It will be "Dad's Night."

4-H
The Waller Road Lassies 4-H Club and the Woodchuck's forestry group enjoyed a holiday party together. A pot luck lunch was followed by games and gifts.

Quick Change
The Garden Club meeting last week was momentarily delayed due to lack of heat in the hall. The meeting was moved to a member's home, however, where it continued successfully.

Adult Education
Two hundred twenty-two adults registered for classes in the Puyallup Night School Program last Wednesday evening. This was the largest first night registration ever obtained for the second semester classes. The only larger first night registration was last fall when 229 signed for classes.

The classes in Clothing and Upholstering filled quickly and no more registrations can be taken in these. Classes were organized in French, Typing, Bookkeeping, Office Machines, Landscape Gardening, Interior Decorating, Tailoring, Driver Training, Farm Machinery Repair, Electronics, Short-hand, and Mathematics. Additional registrations will be taken on Monday and Wednesday evenings in all of these.

Classes will also be started next Monday in Citizenship and Cake Decorating, and on Wednesday in Intermediate Spanish.

Reporter, Mrs. Verne Fogle.

Joint Fellowship Meet Stated

The Mountain View Baptist Church young people's group will hold a joint fellowship gathering with the Evergreen Baptist Church Tuesday, January 17, at 6:30 p.m. in the Central Avenue school gym.

The Louise Bunn Missionary Circle will hold their monthly business meeting Friday the 13th at 12:30 in the home of Mrs. Clarence Bunn, 4905 E. 72nd. Mrs. Howard Shaffer will be the speaker.

The annual Business Meeting of the church will be held after a shortened Bible study and prayer at the home of Mr. and Mrs. Clinton Weed, 3203 East 80th tonight at 7:30. Election of officers will be held.

Self-Service
Dry Cleaning
8 Lbs. \$1.50
Mama Bear
Laundromat
134th & Pacific Parkland

FOR RENT
TRUCKS
& CARS
MA 7-9039
Save One Half
We Furnish Everything
HARMON'S
Driv - Ur - Self Co.
HARMON'S SERVICE
2112 Jefferson
Jim Harmon, Mgr.

INCOME TAX SERVICE
AT
SUBURBAN REALTY, INC.
11302 Pacific Avenue
REAL ESTATE and INSURANCE
LE 1-1081 — LE 7-8638



JERRY HANSON

ECONOMY WEEK

Yes! You'll Save Money This Week at the Parkland Super with these Economical Food Items

FLOUR 25-lb. Sack **\$1.89** PILLSBURY

SUNNY JIM 46-oz. Tins
JUICES 4 for **\$1**
Pineapple-Grapefruit, Orange, Party Punch and Grape

POWDER ROOM
FACIAL TISSUE 5 For Pkgs. of 400's **\$1**

C & H
SUGAR 10 lbs. **99¢**

STRAINED — Reg. \$1.19
HONEY 5 Lb. Can **89¢**

PILLSBURY
ANGEL CAKE MIX
WHITE OR ORANGE.....Reg. Pkg. **39¢**

SMALL WHITE, IDAHO RED OR PINTO
BEANS 2 lbs. **29¢**

PILLSBURY
MASHED POTATOES
Reg. 39¢ Ea. **4 Reg. \$1**

CENTENNIAL
PANCAKE FLOUR 10 Lb. Bag **99¢**
FARM FRESH "AA" LARGE
EGGS Doz. **57¢**

GROUND BEEF
Pure Fresh **3 lbs. 89¢**

Young & Tender
BEEF HEARTS lb. **29¢**
Serve With Bacon or Onions
Baby Beef Liver lb. **29¢**
BEEF POT ROAST lb. **43¢**
HAMS Sugar Cured Shank Portion lb. **49¢**

SAUSAGE ROLLS Delicious Any Time **3 for \$1**

U.S.D.A. Choice Lamb Shoulder
Chops or Roast lb. **59¢**

SWIFT'S PREMIUM
Franks Flavor Packed Juicy **LB. 49¢**

Young Tender Steer Beef—3 lbs. & up
Rump Roast lb. **59¢**

CORNED BEEF 59¢
OR TONGUE Home Made lb.

RIB STEAKS BEEF Lean & Tender **LB. 69¢**

T-Bones Choice Cut. Best for Guests **lb. 89¢**

RED POTATOES Sno-Boy 10 lb. Bag **49¢**

GRAPEFRUIT 8 lb. Bag **49¢**

Celery Hearts SNO-BOY Pkg. **23¢**
ORANGES Large Size 2 lbs. **25¢**

REVOLUTIONARY NEW SYSTEM OF GAS HEATING!

SUPER FLOOR HEAT OUTLETS on all 4 sides!

the versatile, new SIEGLER Mark III GAS HEATING SYSTEM

New heating comfort
for homes, restaurants, offices, shops, anywhere! Furnace comfort without costly installation. Stand it flush to wall or recess it. Pours heat out front and can be piped to rooms at side or back.

New season selector
Operates on low fire on mild days, high fire in cold weather. Perfect automatic heating on less fuel!

New trim styling
Always looks built-in. Vent cover hides the flue. Finished in 2-tone cordovan and beige.

on display now at
Propane or Natural Gas Installation
REDI GAS SERVICE
14012 Pacific Avenue LE 7-0208

1/2 PRICE Sale

PLAYTEX FOR BABY

WATER PROOF

DRESS EEZ-SNAP ON-PULL ON AND PARTY PANTS - SAVE!

FAMOUS BRAND NAMES Toiletries
REVLON, CARA NOME, YARDLEY, LANOLIN PLUS, HAZEL BISHOP

SAVE!!! 1/2
Many Other Items Thru-Out The Store...
Prescriptions Carefully Compounded

PARKLAND PHARMACY Located In Kort Keller's
11000 PACIFIC AVE.
LE 7-8636

Open 7 Days a Week For Your Convenience

PARKLAND Right to Limit Reserved

HOURS
Sunday 9 a.m. to 8 p.m.
Weekdays 9 a.m. to 9 p.m.
Fridays 9 a.m. to 10 p.m.

Super MARKET PRICES EFFECTIVE WEDNESDAYS THROUGH SUNDAYS

Formerly Kitchen's
12208 Pacific Avenue

MAMMOTH BEEF SALE



TENDER AND JUICY GRAIN-FED BEEF!

SIRLOIN STEAKS LB. **79[¢]**

DAD'S FAVORITE! WELL-TRIMMED!

RIB STEAKS LB. **73[¢]**

PIGGLY WIGGLY'S FAMOUS FULL-CUT

ROUND STEAKS LB. **79[¢]**

KING OF ALL STEAKS!

T-BONES LB. **89[¢]**

CHUCK STEAKS

FROM EASTERN STEER GRAIN-FED BEEF!

49[¢]
LB.

Swanson's Beef, Chicken, Turkey
MEAT PIES 5 8-oz. PIES **99[¢]**

MINUTE MAID FRESH FROZEN
ORANGE JUICE 5 6-oz. CANS **89[¢]**

LYNDEN GRADE A STRICTLY FRESH
LARGE EGGS DOZ. **55[¢]**

COFFEE HOUSE
COFFEE DRIP OR REGULAR 1-LB. CAN **55[¢]**

FAVORITE CANNED MILK
CARNATION 2 TALL CANS **25[¢]**

PLYMOUTH—PIGGLY WIGGLY'S OWN
MARGARINE 1-LB. CTN. **15[¢]**

VAN CAMP'S
PORK & BEANS NO. 2 1/2 CANS **19[¢]**

GROUND BEEF

LEAN, FRESH GROUND DAILY
LB. **29[¢]**

(PARKLAND STORE)

EASTERN STEER BEEF
7-Bone ROAST lb. **53[¢]**

TENDER, ECONOMICAL!
ROUND BONE ROAST ... lb. **59[¢]**

PIGGLY WIGGLY'S BONELESS
BEEF STEW ... lb. **69[¢]**

Hormel's Dairy Brand, Thick or Thin
Sliced Bacon LB. **59[¢]**

MILWAUKEE SKINLESS

WIENERS 12-oz. Pkg. **39[¢]**

MILWAUKEE BRAND
POLISH RINGS 11-oz. Each

MILWAUKEE—SERVE CREAMED!
SMOKED CHIPPED BEEF 4-oz. Pkg.

39[¢]

MORE PIGGLY WIGGLY VALUES

- Jell-O Pie Fillings or **JELL-O PUDDINGS** 7 Pkgs. **49[¢]**
- Plain or Almond **FARMINGTON BARS** 3 Bars **\$1.00**
- Mild or Hot **NALLEY'S CHILI** 4 15-oz. Cans **\$1.00**
- Nalley's (22-oz. Jar 39c) **CUCUMBER CHIPS** 2 16-oz. Jars **49[¢]**
- Albers **FLAPJACK FLOUR** 4-lb. Pkg. **49[¢]**
- Friskies **DOG OR CAT FOOD** 8 No. 1 Cans **\$1.00**
- Mazola (Gallon \$1.99) **PURE CORN OIL** ... Quart **59[¢]**

GENERAL MILLS' CEREAL VALUES

- CHEERIOS** ... 10 1/2-oz. PKG. **3 PKGS. 89[¢]**
- WHEATIES** ... 12-oz. PKG.
- KIX CEREAL** ... 9-oz. PKG.

1 CAN FREE WHEN YOU MAIL 3 LABELS
(See us for details)

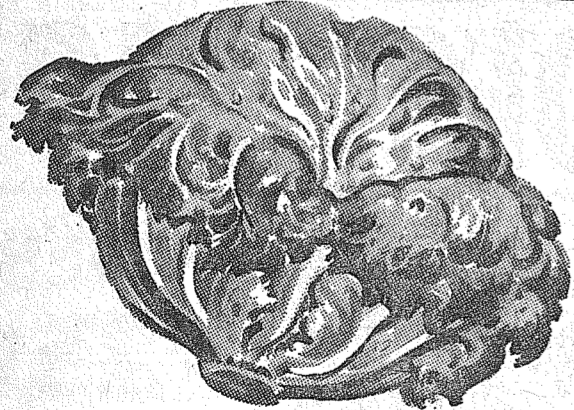


STAR-KIST 4 No. 1/2 Cans **99[¢]**

GREEN GIANT DOLLAR SALE!

- CREAM CORN** 6 No. 303 Cans **\$1.00**
- NIBLETS CORN** 6 12-oz. Cans
- MEXICORN** 5 12-oz. Cans
- SWEET PEAS** 5 No. 303 Cans

LETTUCE



CALIF. FRESH CRISP
LARGE HEAD **9[¢]**

APPLES Extra Fancy Red Delicious 2 lbs. **25[¢]**

CAULIFLOWER Calif. Fresh Cello Wrap ... ea. **19[¢]**

ORANGES LARGE SUNKIST NAVELS **lb. 10[¢]**

- PINEAPPLE-ORANGE OR HI-C FRUIT PUNCH** 3 46-oz. Cans **1⁰⁰**
- CHASE & SANBORN INSTANT COFFEE** 6-oz. Jar **79[¢]**
- BLUE BELL POTATO CHIPS** Reg. 69c Box **59[¢]**
- YOUR CHOICE! JOY LIQUID OR IVORY LIQUID** 3 12-oz. Size **1⁰⁰**
- SUNSHINE MARSHMALLOW PEANUTS** Pkg. **29[¢]**
- WISHBONE DE LUXE (5c OFF) FRENCH DRESSING** 8-oz. Bottle **26[¢]**
- YOUR FAVORITE CLOROX BLEACH** 1/2-Gallon **39[¢]**
- ALUMINUM ALCOA FOIL** 25-Ft. Roll **35[¢]**
- 10c OFF FAB SOAP** Giant Pkg. **69[¢]**
- KITCHEN NEED BRILLO PADS** Pkg. of 12 **29[¢]**
- ASSORTED COLORS ZEE NAPKINS** 2 80-Ct. Pkgs. **27[¢]**
- ASSORTED COLORS ZEE TOWELS** 2 150-Ct. Pkgs. **41[¢]**
- ZEE WAX PAPER** 200-Ft. Roll **39[¢]**
- CHIFFON—ASSORTED COLORS FACIAL TISSUES** Pkg. **29[¢]**
- BLUE BELL MIXED NUTS** 5 1/2-oz. Pkg. **49[¢]**

SPECIALS IN OUR

FIFE HDWE. DEPT.

- Prevent Peach Leaf Curl! Spray Now With Puratized SPRAY** ... Pint **2.10**
- SHEARS** Italian Pruning ... **89[¢]**
- RUBBER BASE PAINT** 13 Colors, Everyday Low Price ... **2.89**
- Reg. 3.25 Mirro Square
Angel Cake Pan **1.49**

OPEN 9:00 A.M. TO 10:00 P.M. DAILY

Piggly Wiggly

- PUYALLUP** 1010 EAST MAIN
- PARKLAND** PACIFIC AT GARFIELD
- FIFE** FORMERLY ANDRE'S MKT.
- SO. TACOMA** 5252 SOUTH WASHINGTON
- 40th and Parkland Ave.**

Prices Effective Thursday, Friday, Saturday, Jan. 12, 13, 14.

We Reserve Right to Limit

No Sales to Dealers