

P.L.U. Library
Tacoma, Wn. 98147

PACIFIC LUTHERAN UNIVERSITY

JAN 11 1968

Pierce County Herald and

The TIMES JOURNAL

Vol. 24 No. 2

January 11, 1968

Price Per
Single Copy

10¢



POINT those skis in! Beginning skiers from the Bethel-Franklin Pierce districts received initial instruction last Sunday in the first 1968 local area ski school. Mastering the "snowplow" technique of descending the slopes is one of the first things taught beginning skiers. While instructor Dave Cooking-

ham skied in reverse holding her ski tips together, Janet Parker found that snowplowing wasn't so hard after all, and presented this picture for the Times Journal camera. More pictures and story on page eight.

Cost Of Education - Up, State Aid - Down

By Sandy Ingram

Costs to educate the 785,000 children in this state's public schools were released today by State Superintendent Louis Bruno.

During the 1966-67 school year, it cost taxpayers, on a statewide average, \$547 for each child in school. This is \$3 per day or 50 cents per hour per pupil.

In the Franklin Pierce School district the overall cost, excluding construction and food costs, amounts to

\$516 per pupil. The Bethel District costs, also excluding construction and food costs, tallies \$535.31 per student.

These figures include costs such as transportation, salaries of teachers and administrators, instructional and administrative supplies and materials, maintenance and operation of school buildings (utilities, repair, etc.), Bruno said.

"Unfortunately, even though the State Constitution says that 'education is a paramount responsibility of the state,' state support has been decreasing the past few years," Bruno pointed out. "In 1965-66, the state supplied 58 per cent of the cost of operating the schools. In 1966-67, it was down to 55.2 per cent."

"More and more school support money has had to come from local sources... the special levy. In fact, 16 per cent of the money used to operate schools for last year was raised by special levies."

In 1966-67 Bethel School district raised 6.8 per cent of its total budget from local property owners. It is interesting to note that Bethel found it virtually impossible to continue at this low rate and will have to raise the amount funded locally. The Franklin Pierce School District was forced to raise 10.8 per cent of its funds to continue with the present educational program.

"It's fiscally impossible for a school district to plan economically even for the next year when it must depend annually on a special levy to provide its money for day-to-day operations," Bruno said.

The problem in schools getting enough to operate on seems to lie in the Legislature and its appropriations. It appears that the Legislature has taken on the opinion that

if the schools can raise it locally they do not have to appropriate it.

Another root of the problem lies in the Valuation Laws of districts. According to a statement in support of a resolution for Low Valuation Districts, Herbert Gelman, immediate past president of the Franklin Pierce School Board, said: "One of the basic principles of our present apportionment formula was the concept that with an equal effort (A statewide levy of 14 mills) each student could be provided an equal opportunity for education regardless of where he lived in the state. This right for an equal education is now being threatened by the special levy economy. Now it is only through unequal effort that low valuation districts are able to offer equal educational opportunities. Conservative estimates presently indicate it will take at least \$120 per student more than the present per pupil guarantees to meet the minimum requirements for accreditation."

"In the Franklin Pierce School District, a one mill levy will yield \$2.60 per student. The patrons of this district are immediate neighbors to Tacoma. Tacoma has the least wealth per student of any of the three largest cities, but does raise \$6.44 for every mill levy. In other words, our taxpayer, who lives across the street from the Tacoma taxpayer must pay a maintenance and operation tax rate almost three times greater than his neighbor to insure an equal education opportunity for his student."

Other statistics show that if Seattle had a millage of 13.35 they would raise \$14,306,000. Franklin Pierce would have to ask 25.12 mills to raise \$544,000 and Bethel would levy 11.60 mills to raise \$163,970.

LETTERS TO THE EDITOR

Journal Story Misleading Charges P.C.I.A.

The Times Journal January 6, 1968
14620 Pacific Avenue
Parkland, Washington 98444
Gentlemen:

In reference to the article published Dec. 21st, 1967, captioned, "Sewer Plan OK'd", we feel the need for further clarification. An investigation made by the Pierce County Improvement Association has found the article to be misconstrued by its readers.

We have compiled the attached information in hopes that you will disseminate a much clearer picture of the sewer plan to your subscribers.

Sincerely,
Leo G. Wilson

President, Pierce County Improvement Association

The State Pollution Commission will require additional provisions other than those outlined in their November 3 letter to commissioners of the South Suburban Sewer District, members of the Pierce County Improvement Association predicted in a release received by the Journal Monday.

Improvement Association members, who have been sharp critics of the sewer district, sent the release attached to a letter to the editor and a copy of the correspondence in question between the state and the district.

Referring to the provisions outlined by the Water Pollution Control Commission, the release stated: "Until these provisions have been complied with, no stamp of approval shall come from the State Pollution Control Commission, the State Health Department, or any of the other departments concerned."

"Nor will an application for grants be accepted," the release further stated.

"No attempt whatsoever has been made by the South Suburban Sewer District to contact the Lakewood Water District concerning the provisions mentioned in the letter to the Commissioners of the S.S.S.D.," Improvement Association members charge.

Describing the South Suburban Plan, the Improvement Association states:

"The main trunk line is basically a 21" line, from Tule Lake Road south to 103rd Ave. S.W., connecting to the 21" existing interceptor line of Steilacoom; a 24" line for a short distance beginning 500 feet west of Spanaway Loop Road on 116th Street South, and ending at the west margin of Pacific Highway and Sharondale Street. There have been various answers from the different departments as to the adequacy of the interceptor lines' future use.

"One answered, 'from five to ten years', others, 'three to five years', all depending on the district's growth. Two pumping stations are included in the entire system, one 1,030 feet east of Golden Givens Road on 121st Street East, the other in the Lakewood vicinity. Lateral lines are mostly 8" with a few 10" to 18" lines throughout the District. Expansion of Steilacoom's plant includes clarifier structure and equipment."

"It is interesting to note," the Association concludes, "How much the foregoing information differs from that given at the open meetings sponsored by the Citizen's Council to 'accurately inform' the citizens of Parkland."

Letter Reprinted

The letter referred to in the above release, and the basis for the December 21 Times Journal story, is printed below for the information of readers.

November 3, 1967

Board of Commissioners
South Suburban Sewer District
114 Administration Building
Pacific Lutheran University
Tacoma, Washington 98447

Attention: Mr. Clayton B. Peterson, President
Subject: Amended Comprehensive Plan
Resolutions 19 and 20
South Suburban Sewer District
Pierce County

Gentlemen:

In accordance with the Rules and Regulations of the Water Pollution Control Commission, the subject amended comprehensive plan has been reviewed and is hereby approved with the following provisions:

1. The District shall work closely with other existing and future entities that may provide sewer service within the Clover Creek and Chambers Creek Drainage Basin toward the most rapid and feasible development of a comprehensive system of sewers and sewage treatment to meet the ultimate needs within the basin.

2. The South Suburban Sewer District interceptor sewer will be designed for the removal of sewage from the District, and will also be designed for incorporation as an integral part of any system of sewers developed by Lakewood Water District. An agreement to this effect shall be enacted by both Districts prior to construction of the interceptor sewer to prevent duplication of facilities.

Very truly yours,
Roy M. Harris
Director

cc: Harstad Associates
Pierce County Health Department
Pierce County Engineer, Keith Jones
State Department of Health, Olympia and Seattle.

Journal Readers Asked To Donate Blood

Due to the critical shortage of blood in the Pierce County Blood Bank, The Times Journal is arranging for a special mobile unit to visit the area in late January.

A visit to the Bank offices at 1211 South 12th, Tacoma, disclosed that none of the common types were in the stock last Friday, and donors are not coming in to bring the supply up to a safe level.

One reason offered by blood bank officials for the shortage is that military personnel, who during peacetime helped maintain the supply, are now donating for wounded comrades in Vietnam.

To provide adequate service for this country, 500 to 700 units of blood are needed each month. Nine hospitals depend on the blood bank for transfusion units.

The Tacoma-Pierce County Blood Bank, a non-profit, self-supporting service organization has asked the Times Journal readers for help.

It takes a minimum of 20 donors to warrant sending the mobile unit to this area.

If you are an eligible donor, and are willing to donate, please call us at LE 7-0223 or better yet, visit the Blood Bank at 1211 South 12th Street. Their telephone number is FU 3-2553.

Pierce Daffodil Plans To Be Discussed Jan. 15

Representatives of Franklin Pierce District Service Clubs and interested citizens are invited to attend a meeting 7:30 p.m. January 15 at Parkland Light and Water Building to help plan Franklin Pierce participation in the 1968 Daffodil Festival, Don Visser, publicity chairman announced Monday.

A committee will be organized and committee assignments made to be prepared for the fast approaching annual event, Visser told the Journal.

Five finalists, to be named January 23, will compete for the title of 1968 Franklin Pierce Daffodil Princess in a special program Tuesday night, January 30, at the High School. William F. Whitesel will head the princess selection program committee.

Admission to the January 30 program will be by ticket only, and sale of the tickets is expected to finance a large portion of the expenses involved in participating in the Daffodil Festival, Visser said. Tickets will be available at the meeting.

Four judges will be selected from names submitted by the local service organizations.

Memorial Fund Started For Mark Haskell Community Planning Deadline is Close

A fund has been started in memory of Mark Henry Haskell, 1234 East 142nd, who died last week after a backyard accident involving a golf club.

Many friends and neighbors who expressed a desire to help the family may now do so by making their donation at the National Bank of Washington, 112th and Pacific Ave. Wes Gilbertson and Ken Tucker head the committee from the Mayfair area formed to raise the funds.

The 14-year-old youngster was not covered by insurance.

The deadline for high school students to submit their ideas on community planning is fast approaching, Willis D. Rives, Pacific Northwest Bell vice president and general manager said today.

PNB is sponsoring an \$8,000 contest for students ninth through twelfth grades who want to take a stand on the future development of the state. Entries must be post-marked no later than January 15, Rives said. They can take any form from models to tape recordings to essays and should be on the subject, "What do I want my neighborhood, my community or my state to be like in 1976?"

"We want to hear from the future citizens of this state during this time of rapid growth," Rives said.

PDA Banquet Friday, Jan. 19 Book Display Slated At FP

The Parkland Development Association will be holding its annual banquet at Barlo's Restaurant, 123rd and Pacific Avenue, Parkland, Friday, January 19th.

There will be a social hour beginning at 6:30 p.m. with dinner at 7:30 p.m.

Mr. Harry Sprinker, Pierce County Commissioner, will be master of ceremonies, and will preside for the installation of new officers for the year of 1968.

The featured speaker of the evening will be Dr. Dale Turner, of the Uni-

versity. More than 800 books representing some 60 different publishers will be on display Jan. 8 through 19 at the Pupil Services Building of Franklin Pierce School District.

Mrs. Leila McCoy, Franklin Pierce library coordinator, said the books, which are for all ages kindergarten through high school, are the fiction and non-fiction materials published during 1967.

Carl Lindgren Kiwanis Proxy

Parkland Realtor Carl Lindgren, a resident of the area 35 years, was installed as Parkland Kiwanis president in special installation ceremonies last Thursday night at Barlo's Restaurant.

Other Kiwanians taking office were Paul Larson 1st VP; Al Raber 2nd VP; William Olson treasurer; and William H. Chambers secretary. Newly installed directors were Bob Ross (2 year term), Dr. E. E. Hill (2 year term), Emmet Eklund (2 year term), and Sam Harris (2 year term). As outgoing president, Del Schafer joined the board.

Long active in community affairs, Lindgren has served on the Pierce County Library Board, Parkland Development Association Board of Directors, Franklin Pierce Education Council, and is a past president of the Tacoma Society of Real Estate Appraisers. In addition, he is currently president of the Tacoma Real Estate Board, a member of the Library Board, and will be installed as vice president of the Parkland Development Association January 19.

He has been a Kiwanian the past 15 years.



Dr. Dale Turner

versity Congregational Church. Dr. Turner is known throughout the Northwest for his dynamic and inspiring ideas for community involvement. He has spoken to countless service clubs throughout the area, including Kiwanis, Lion and Rotary. Tickets may be had from any member of the Association, or at the door.

For further information or reservations please call: Ruth McManis, LE 1-5666; Carl Lindgren, LE 7-0234; Lynn Messenger, LE 1-4300.

The TIMES JOURNAL

Published weekly at 14620 Pacific Ave., Parkland 98444 and delivered by U.S. Mail and carrier to subscribers. Publishers: Pierce County Publishers, Inc.

Managing Editor Em Matson
News Editor Sandy Ingram
Sports Editor Bob Ingram

Subscriptions \$3.50 per year, \$1.80 six months, or 30c monthly by carrier. News stand price 10c copy.

Qualified as a legal publication under Chapter 213 of the Legislature Acts of the 1941 regular session of the State of Washington

Second Class Postage Paid at Tacoma, Wash.

Vol. 24 No. 2

January 11, 1968

HI HO

PUYALLUP

HI HO

**FRESH
GROUND
BEEF**
39^c_{lb}

**FRESH
CUT-UP
STEWERS**
27^c_{lb}

**BLADE CUT
CHUCK
ROAST**
43^c_{lb}

**7-BONE
CHUCK
ROAST**
55^c_{lb}

ROUND-BONE ROAST.....lb. **67^c**
RATH'S SLICED BOLOGNAlb. **79^c**

CENTER CUT CHUCK STEAKS.....lb. **56^c**
OUR OWN LAMB PATTIES.....lb. **49^c**

**CHIQUITA
BANANAS 8^c_{lb}**

**HOT FROM OUR OVENS
FRENCH BREAD**
19^c_{Loaf}

**SWANSON'S
TV DINNERS**
49^c

LARGE-SIZE HAWAIIAN
PINEAPPLE .. 39^c_{ea}

3-lb. BAG BOILING
ONIONS .. 19^c

ADAMS GIANT 40-oz.
PEANUT BUTTER
99^c

LOWEST DRUG PRICES ANYWHERE

REG. 1.50 **VO⁵ HAIR SPRAY .. 89^c**
REG. 1.09 **VO⁵ HAIR DRESSING ... 69^c**
REG. 1.00 **LEMON VO⁵ CREME RINSE 59^c**
REG. 1.09 **VO⁵ SHAMPOO .. 69^c**
REG. 2.00 **NEW DAWN HAIR COLOR..... 1²⁹**



**IN
PUYALLUP**
PRICES EFFECTIVE JAN. 8th through 13th
**DELICIOUS, FRESH-BAKED
BANANA CAKE .. \$1³⁹**

**JUMBO, CORONET,
TOWELS .. 4/\$1⁰⁰**

12-oz. WHEATIES
10½-oz. CHEERIOS
8-oz. TOTAL
9-oz. COCOA PUFFS } **3/1⁰⁰**

**LARGE "AA"
PUYALLUP
EGGS**
39^c_{doz.}

**QUART
HI HO
MAYONNAISE**
44^c

**WHITE STAR
CHUNK
TUNA**
4/\$1⁰⁰

**HI HO
MARGARINE**
6^{lb.}/1⁰⁰

HI HO

PUYALLUP

HI HO

HI HO

HI HO

PUYALLUP

PUYALLUP

HI HO

HI HO

Adult Education Announces Openings

The evening school of the Bethel School District has announced openings in all classes for the new semester beginning January 29th.

One academic course, adult basic education, will be offered Monday and Wednesday from 7 to 9:30 for 10 weeks. The course is recommended for adults interested in obtaining a GED certificate (graduation equivalent diploma). Individual instruction will

be given in the basic reading language, math and science skills as well as work in American history and government.

Adult secondary education courses, offered for adults and students of high school level who have not been able to complete their high school requirements as required by the state, will include general math, general science, American government, United States history, world history, English literature, English composition, writing for fun and profit, conversation French, economics and speed reading.

Forkner shorthand, bookkeeping, office practice and typing will compile the business education phase of the program.

Clothing instruction for

the homemaker will be offered in beginning, intermediate and advanced on Wednesdays.

Vocation and general interest courses will include art, auto mechanics, small gas engines, welding, advanced welding, upholstery, horse management, landscaping and slimnastics.

High school credit will be given for most of the classes. Persons wishing to receive credit for classes must arrange for a conference with the high school counselor to schedule classes which will meet graduation requirements of the Bethel High School.

Registration for the evening school courses will be accepted between 6 p.m. and 9 p.m. at the Bethel High School office, Monday through Thursday for one week prior to the first class session.

Opportunity Asked For CP Children

"Children afflicted with cerebral palsy don't ask for charity... they ask for opportunity," declared Mrs. Margaret Lloyd, "Miss Margaret" of television's "Romper Room School," 1968 campaign chairman for United Cerebral Palsy of Pierce County.

Mrs. Lloyd said that 3,000 volunteers would be calling on their neighbors for contributions Sunday, January 14th, in the community-wide house-to-house campaign.

What children handicapped by cerebral palsy are really asking, she said, is the chance to develop their individual abilities and to learn skills they will need to lead useful independent lives.

"When our campaign volunteers go to their neighbors for contributions, they'll be asking to help make possible the special treatment, education and training programs that youngsters with cerebral palsy require," Mrs. Lloyd stated.

UCP of Pierce County hopes to raise \$20,000 through the residential solicitation, commerce and industry drive and other phases of its month-long annual fund campaign.

The CP leader pointed out that there are almost 1,200 persons stricken with cerebral palsy in the area.



UCP President Dr. William W. Mattson Jr. appoints Mrs. Margaret Lloyd, "Miss Margaret" of television's "Romper Room School" the 1968 campaign chairman for Pierce County United Cerebral Palsy.

The Parkland Altrusa Club will hold their dinner meeting at Barlo's Restaurant, Thursday January 11, at 7 p.m.

Mrs. Royetta Alshire, Chairman of International Relations, will have Mrs. David Whitehall, a student at PLU who recently arrived from Germany give us her impressions of our United States in comparison with Germany.

The American Legion Auxiliary, Parkland Post 228, will meet at Sunshine Hall 8 p.m. January 15th.

Start the New Year right. Attend your Grange meeting. The Elk Plain Grange will meet at 8 p.m. January 15th. Also announced by the Grange is availability of the Hall. Anyone wishing to use the hall should contact the Grange.

WANTED
Tacoma Pierce County Blood Bank Needs
25 Donors Daily BLOOD SUPPLY
DANGEROUSLY LOW
Your Help Is Needed Now!
CALL FU 3-2553
Tacoma-Pierce County BLOOD BANK
1211 South 12th

1968 LICENSE TABS
AUTO-TRUCK-TRAILER
HONDA - MOTORCYCLE
SOUTH END HARDWARE
SOUTH 185TH & PACIFIC SPANAWAY
VI 7-7211

SPROUSE - REITZ
JANUARY SALE

Springtime Fabrics
Fresh fashion prints in designer colors. All first quality.
Values to 49¢ yard
4 yards for \$1.00

Lace Trims
Asst. cotton & nylon laces. 2 1/2-8 yd. hanks.
Val. to \$1.00
37¢

Knitting Worsted
100% wool, 4 oz. pull-out skein.
Comp. Value \$1.19
77¢

Soft & Natural Hair Spray
Jumbo 13 oz. can.
49¢

Metalcraft Photo Frames
Sizes 11" x 14" large variety mouldings.
Reg. to \$2.59
99¢

MELMAC Service For 8
Reg. 12.95
9.98

750 Pc. Adult Jigsaw Puzzles
18" x 22" Kodachrome scenes. Wide selection.
Reg. \$1.00
66¢

Bic Pens
Family size pkg. of 6 pens for home, school, office.
Reg. 99¢ pkg.
57¢

Bath Towels
Big 24" x 46", choice of solid colors or stripes.
Reg. \$1.00
2 for \$1

Matching Wash Cloths
4 for \$1.00

Terry Kitchen Towels
Wide selection of patterns.
Values to 79¢ each, if perfect.
3 for \$1.00

Pillow Tubing
Reg. \$1.98
\$1.17

Bed Pillows
Dainty floral ticking, foam filled.
Reg. \$1.98
2 for \$3

Room Size Rug
Luxurious 100% Nylon, 8 1/2' x 11 1/2'
Reg. \$24.95
\$19.99

Place Mats
Foam-backed vinyl. Asst. colors & designs. 4 to a set.
\$1.16 Value
77¢

Panty Hose
100% Seamless nylon Elastic waist. Perfect for short skirts.
Reg. \$1.79
\$1.00

Ladies Panties
Acetate tricot. Elastic waist & legs.
Reg. \$1.35 pkg.
\$1.00

Pillow Cases
Peaceful floral patterns. Also piped and drawn hems.
One pair in pkg. only
99¢

Chenille Hobnail Bedspreads
Attractively fringed, choice of colors. Both full and twin size.
Sale Priced
\$2.99

Tier Curtain & Valance Set
Choice of styles and colors, some in permanent press fabrics. 58" x 30" with 54" x 10" Valances.
Values to \$2.98
\$1.57

SPROUSE - REITZ VARIETY STORES
Store hours
Mon. through Sat. 9 a.m. - 9 p.m.
OPEN SUNDAYS Noon til 6 p.m.

8218 Pacific Ave. Tacoma

Management Course Offered By Bethel And Life Underwriters Assn.

A pilot program in economics for the home-owner, under the sponsorship of the Pierce County Life Underwriters, will debut January 31st at the Bethel School District's Adult Evening School, according to Dwane Rose, president of the Consumer Education Committee of the County's Underwriters Association, and Bob Anderson, director of Bethel's Adult School.

The program, one of two in the state, will provide practical education to the students in banking, insurance — home & life, personal income tax, Real Estate, wills and property settlements, investments, and social security and Medicare.

The classes, scheduled for 10 weeks, will be on Wednesdays from 7 to 9 p.m. The first session will include an outline of the course, and issuance of materials.

Eight two-hour study periods will be given by guest lecturers, each a specialist in his field, arranged for by the education committee. No set order for speakers has been determined, Rose said, it will depend upon the availability of the persons donating time.

"This is a practical course, not technical," added the education committee president, "the classes will be of value to everybody."

"We hope they will be received well enough that most schools in the county will add them to their adult education."

Study outline for the course is being provided by, and in conjunction with, the University of California.

A fee of \$10 will be charged. More information can be obtained by calling Rose at BR 2-2203 or Bob Anderson at the Bethel School.

Men In Service



Clifton B. Nelson

Marine Corporal Clifton B. Nelson, son of Mrs. Helen Vertrees of Rt. 2, Eatonville, Wash., was graduated from Non-Commissioned Officer's Leadership School at Camp Books, eight miles northwest of Da Nang, Vietnam.

The school, operated by Force Logistic Command (FLC) for young NCO's in the command, is aimed at supplementing leadership skills gained ordinarily through years of service.

Men attending the week-long course came from FLC units scattered throughout the northernmost portion of Vietnam.

Roy Reservist Headed For Fleet Assignment

Marvin R. Berka, son of Mrs. Marie S. Berka of Box 167, Roy, Washington, has been temporarily assigned to Treasure Island Naval Receiving Station in San Francisco

where he is now awaiting a two year assignment with the Navy's Pacific Fleet.

Airman Apprentice Berka, 19, has been a member of a Naval Air Reserve squadron at Sand Point Naval Air Station in Seattle since September, 1966. He is a 1966 graduate of Bethel High School in Spanaway, Wash.

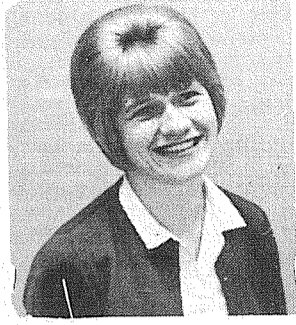
"Need to know the area code for Scarsdale, New York?"



Look in the "CALL GUIDE" section — in the front of your TELEPHONE DIRECTORY

Spanaway Memoirs . . .

Yawanaps Was The Name



By Sandy Ingram

Spanaway, the name, used to be called Yawanaps - Spanaway spelled backwards - the Indians named the lake Yawanaps, which meant "beautiful waters." A pioneer wit came along and pokingly spelled the word backwards arriving at Spanaway, which he thought was hilariously funny.

But the name stuck, just as Buchalier's Creek finally became Spanaway Creek.

When the boom days of 1890 arrived, the townsite of Spanaway was surveyed and named "Lake Park." But after the boom days were over, the name gradually swung back to the old name of Spanaway. As a matter of record, no one owns or can own a single foot of land in the townsite of Spanaway, but owns it in Lake Park.

First settlers in the area were the Lockes, who took up a 160-acre homestead in 1870 that included all of the present townsite of Spanaway.

The Lockes built a two-room house at which is now 10th and Pacific Street. During the entire summer it had been rather smoky from the Indian fires, so one morning, after the first heavy rain, Mrs. Locke was startled to see a gigantic form looming over the eastern horizon.

She immediately called her husband, who dashed away to the nearest neighbor one and a half miles away, who informed him that it was Mt. Tacoma. There were times in the early days that folks had to light lamps to eat by because of the darkness of the overhanging smoke.

After a decade on the prairie, Locke sold the whole homestead for \$650 and moved with his wife and nine children to Old Tacoma, where he started a boarding house with his newly-acquired capital. Four years later, the Lockes returned to a farm five miles south of the lake, where they raised hops.

No one can mention the history of Spanaway without mentioning the name of Gustav Bresemann.

Bresemann was born in Prussia, Germany, in the village of Luderhagen, near the city of Stralsund, March 20, 1845.

He was educated in his native place and learned his trade of furniture-maker in Stralsund, and having mastered it sufficiently he traveled throughout Germany. In 1865 he entered the Prussian army, in the 42nd Infantry and was stationed at Swinemunde.

He left the army in 1867 and worked his trade until, in 1869, he decided to try his fortunes in America.

For the first year after his arrival here he was engaged in the furniture business in Chicago, Illinois. Territorial Governor Edward S. Salomon wrote to the emigrating Germans in Chicago and told of the Puget Sound area.

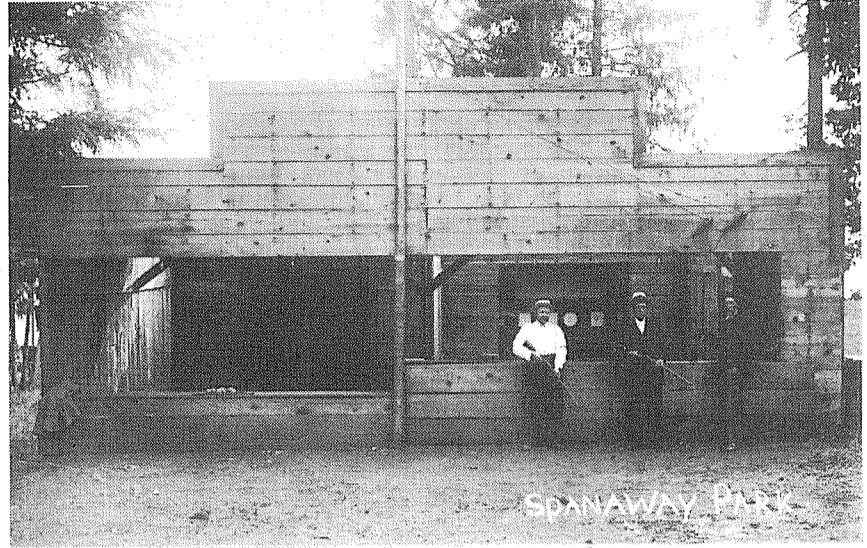
One hundred and thirty heard the call and came.

Steilacoom was the goal of the party. At the time of their arrival on the Sound, Tacoma was marked by only a few board shacks and the Hanson mill; while Steilacoom was known as the metropolis of the Northwest.

Bresemann rented a place at the head of Steilacoom Lake and began making furniture in partnership with August Burow. After two years they rented an old flour mill at the outlet of Lake Steilacoom; put in machinery and began the manufacture of furniture. They ran the factory there only about a year; where Bresemann took up a claim near Spanaway Lake and built a shop. He made his furniture by water power, still in partnership with August Burow, finding a market in Steilacoom, Olympia and Tacoma.

In 1882 they abandoned the furniture business and built a sawmill at the same place, which they ran for six years, when Bresemann sold his place to Tacoma Light and Water Company. In 1889 he located in Tacoma, then again going into the furniture business, with Joe Klee.

Furniture built by Bresemann was sold to the Governor and much of it is still in use in the State Capitol.



RIFLES - The Spanaway Park Rifle amusement range as it was before it was torn down.



PICNIC AREA - The picnic area of Spanaway Park is shown as it was at the turn of the century. (Photos courtesy of the Bresemann Family)



FINALLY - The TJ finally got hold of a picture of "Old Betsy." The train took the residents of Parkland and Spanaway down to South Tacoma, where they

transferred to a street car to go into Tacoma City.

Spanaway Girl Weds



Winslow-Martin

Miss Alberta Lucille Winslow of Spanaway and Russell Alan Martin of Union City, N.J., were united November 23 in a double-ring ceremony in the Woodland Park Avenue Church of God in Seattle.

The bride, daughter of Mr. and Mrs. Ralph F. Winslow of Spanaway and granddaughter of Mrs. William J. Taylor of Lakewood, was graduated from Bethel High School and Seattle Pacific College. She presently teaches English at Auburn High School. The bridegroom, son of Mr. and Mrs. Fred E. Martin, graduated from Stevens Institute of Technology in Hoboken, N.J. He is presently employed by the Boeing Company of Seattle as a design engineer.

Arrangements of autumn leaves and bronze chrysanthemums decorated the church for the wedding service. Given in marriage by her father, the bride wore a full-length, A-line gown of white brocade, fashioned with full-length bell sleeves and square neckline, trimmed with velvet. Belgian lace completed the sleeves. A hand-sewn train of tulle and lace was caught at the shoulders by two Belgian lace butterflies. A third butterfly perched atop the headpiece. Her shoulder-length veil also was of tulle and lace. The bridal bouquet was a large, white orchid surrounded by autumn-orange rosebuds and stephanotis.

Miss Rosetta Winslow was her sister's maid-of-honor. She and the

bridesmaids wore street-length A-line dresses of gold brocade, fashioned with lace-trimmed, square neckline and elbow-length bell sleeves. They wore gold net veils and carried nosegays of gold chrysanthemums. Miss Laura Winslow, as junior bridesmaid for her sister, wore a wristlet of autumn-orange rosebuds. Other bridesmaids were Misses Priscilla Davis of Seattle, Carol Eveland of Madras, Oregon, and Gail Stark of Mossyrock, Washington.

Best man was Jody Radelet of Portland. Other attendants were Douglas Westlake of Pomona, Calif.; Albert Tashdjian and Arek Shakarian of Seattle.

Officiating at the service was the Reverend Wilbur C. Skaggs. Music was provided as a vocal duet by Mr. and Mrs. Ray E. Taylor and a flute duet by the bride's sisters. Miss Ardyth De Water played the organ.

The couple was honored at a Thanksgiving-wedding dinner given by the Ray E. Taylors, uncle of the bride, in Alderwood Manor. Other honored guests were the groom's parents and aunt.

The bride's mother wore a jacket dress of burnt sienna, and the groom's mother wore green brocade and matching hat. Both mothers wore corsages of yellow rosebuds.

A reception for the couple took place in the church fellowship hall which was decorated with a horn of plenty arrangement, and doves.

Franklin Pierce Elementary Menu

Following is the menu for the Franklin Pierce Elementary Schools. The menu is subject to change.

Monday, Jan. 15
Mashed Potatoes,
Hamburger, Gravy,
Green Beans/Bacon,
b/b Sandwich,
Spicy Applesauce,
Milk.

Tuesday, Jan. 16
Beef Stew,
Fresh Vegetables,
Wh. Wh. Muffin,
Honey Butter,
Cherry Jello,
Wh. Topping,
Mil.

Wednesday, Jan. 17
Vegetable-Beef Soup,
Crackers,
Hot Dog,
Buttered Bun,
Orange Juice,
Gingerbread,
Milk.

Thursday, Jan. 18
Spanish Rice,
Meat Balls,
Green Salad,
B/B Sandwich,
Vanilla Pudding,
Milk.

Friday, Jan. 19
Macaroni & Cheese,
Harvard Beets,
Wh. Wh. Rolls & Butter,
Apple Wedge,
Milk.



FATALITIES - State Trooper Ed Hewitt explains to Sandy Ingram, news editor of TJ, the "Scoreboard" phase of a program that is under way to inform citizens of the fatalities which occur on Washington's roads.

Be Aware Program

A major attack against highway traffic deaths was launched this week by the state's weekly newspapers in cooperation with the Washington State Patrol.

Developed by the president of the Washington Newspaper Publisher's Association, Patrick J. Graham, Colville co-publisher, the program involves the publication each week of a traffic fatality scoreboard.

The space is donated by this newspaper with statistical information being supplied by the State Patrol. Patrol Chief Will Backofner, working in conjunction with the publishers, pledged full cooperation with the weekly press in dramatizing the number of traffic fatalities.

The scoreboard will show the number of deaths statewide for this year and last year, plus deaths in Pierce County for 1967, 1968.

"Publication each week will keep readers informed as to the number of highway deaths, and hopefully make the motorist more aware of the danger, thereby promoting safety," said Graham.

Emerson Matson, managing editor of the Times Journal, expressed confidence in the program and stated that the TJ would cooperate.

SCOREBOARD:-

	To Date 1968	This Date 1967
Pierce County	1	0
Statewide	11	23
Rural	10	17
Total statewide for 1967 - 866		
Total for Pierce County in 1967 - 50.		

LOOK
8 ft. **2 x 4's**
25^c ea.
Anderson Lumber
9813 Pacific Ave.

FREE MOBILE HEARING UNIT

will be in this area

at
Parkland Food King
South 112th and Park Ave.
Mon., Jan. 8 through Sat., Jan. 13

and
Piggly Wiggly
South 56th & Pacific
Mon. Jan 15 through Sat. Jan. 20

- * FREE Hearing Evaluations
- * Some Repair - Cleaning
- * Adjusting - Most Batteries in Stock

Sponsored By
Beltone Hearing Aid Center
1126 Broadway - Tacoma
BR 2-1700

Dryer MORTUARY
(134th & Pacific) PARKLAND

The Country Parson

"A wife should give her husband all the tender attention he used to deserve when he was her suitor."
Copyright, by Frank A. Clark

Dryer MORTUARY
(134th & Pacific) PARKLAND

1967 Opening

E & S ELECTRIC

E & S ELECTRIC completed this new building at 13621 Pacific Avenue last fall and formally opened December 1, 1967. Owner Ernie Skonce and his crew specialize in electrical heating sales as well as electrical contracting. The firm is also well known for installation of outdoor lighting. Ernie invites you to stop by and get acquainted or call him for an estimate at LE 1-0593.

These Firms Were 1967 Newsmakers



MARV TOMMERVIK opened this ultra-modern service station featuring a complete line of Chevron products last May at 119th and Pacific Avenue. The new facility is designed for easy access and fast, efficient service. Marv's Parkland Fuel Oil Service, 12002 Pacific Ave., was completely remodeled during the summer months and offers furnace repair, service, and installations.



VIS-REY INC. added this 10,000 square foot building June 2 to the Parkland skyline at 12702 Pacific Ave. The main floor merchandises wallpaper, furniture, finished lumber, roofing, an expanded paint department, builders' hardware, hand tools, and plumbing supplies. The rear of the building provides for both inside and outside lumber storage. A U-shaped mezzanine floor displays building materials and bathroom fixtures.



CRISWELL TRAILER SERVICE moved into larger and more convenient quarters at 11216 Pacific Avenue May 1st. Owner Cris Criswell stocks parts for campers and mobile homes, in addition to selling, installing, and servicing furnaces for trailers. The firm is an authorized mobile home furnace service center. If you own a pickup camper or any size trailer, why not get acquainted with Cris Criswell?



IDON'S WIGS opened November 1, 1967 in a striking lavender building at 11214 Pacific Avenue. Owners Ida and Don Doyle feature 100% human hair wigs, wiglettes, and falls. Each can be individually styled to the desire of the purchaser. Bank Americards are welcomed, or 100% financing can be arranged. The Doyles, who are residents of the Parkland area, invite you to stop by and get acquainted.



THE ORIENTAL SAUNA AND MASSAGE opened last November at 16804 Pacific Avenue, featuring five Oriental and American masseuses. The new facilities include large private massage rooms, a large waiting room, and both front and rear parking. Miss Yong, pictured above, is manager.



BAMBOO SAUNA manager Miss Coreen greets customers with a cup of coffee before showing them to the firm's authentic old world sauna and massage facilities. Two experienced American masseuses specialize in Swedish and Oriental type massages. The firm opened at 14403 Pacific Avenue last November and is open 10 a.m. until 10 p.m. Monday through Saturday. Appointments can be made by calling LE 1-5171.

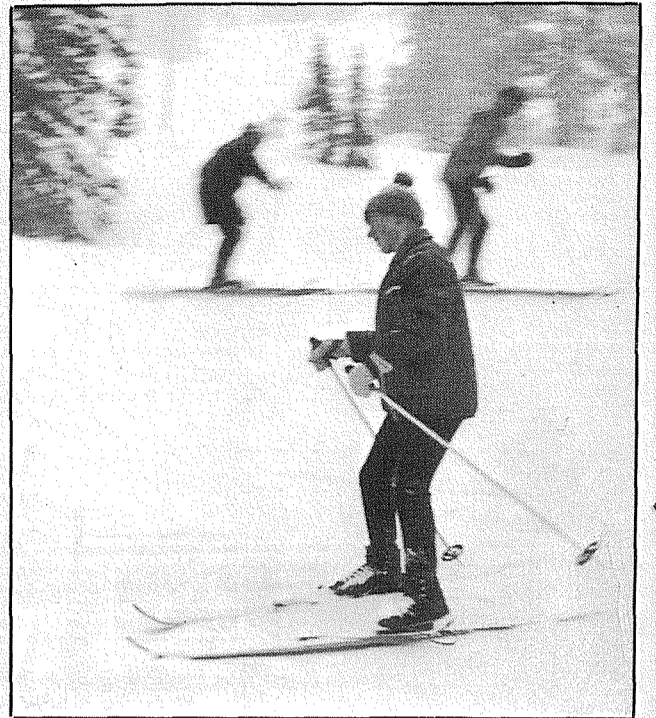
Times Journal Visits . . . First Day of Pierce-Bethel Ski School



OOPS. Linda Thompson finds powder snow at Paradise slippery and cold after making a slight miscalculation in practicing her downhill techniques.



RELAXING after stimulating day of skiing are (l-r) Arlene Crobin, Allyson Davis, and Linda Thompson. The trio found the Paradise Visitors' Center lounge warm and inviting while waiting for "Yellow Dog" ski bus.



STEVE OLSON, Franklin Pierce, practices basic turns on beginners' slope.



DAVE COOKINGHAM Demonstrates the "Snowplow" for beginner class.

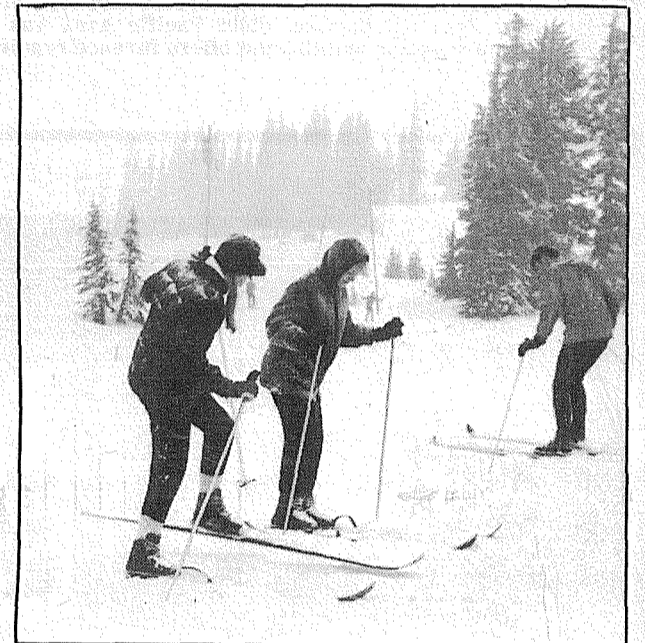
By Em Matson
Students from the Bethel-Franklin Pierce areas, including one housewife, rode the "Yellow Dog Bus" to Paradise last Sunday for the first 1968 locally sponsored ski school.

The school, sponsored by Dick Vanderflute, is designed to give area skiers economical transportation to the slopes and lessons if they desire. Although the first class was attended primarily by beginners, more advanced instruction is available including a beginning racing course.

Instructor Dave Cookingham, who doubles as bus driver for the trip up and back, expects good response to his offer of racing lessons. "After a skier becomes proficient at the sport, racing offers a new challenge," he told the Journal.

Cookingham plans to set up a beginner's race course when he has sufficient number of students ready for the instruction. Last Sunday, most of the first-time skiers found maneuvering on skis a problem, but Cookingham had them successfully "snowplow" down the beginner's slope by lunch time.

The "Yellow Dog Bus", as skiers affectionately refer to their transportation, leaves the Parkland area 7:30 a.m. Sunday mornings and returns about 6:30 p.m. Ride and instruction tickets are available at Parkland Sports Center, 112th and Pacific Avenue.



ALLYSON DAVIS, Franklin Pierce area, gingerly edges in direction of Arlene Corbin while unidentified student in background ponders the problem of turning about. Early in instruction beginners found wearing skis altered normally simple movements. Most problems were solved after initial lesson and a little practice.



FREE HEARING tests sponsored by Beltone Hearing Aid Center are available at this Mobile Hearing Unit parked at Parkland Food King, South 112th and Park Ave. through January 13.



CINDY VOLLBRECHT, Bethel High School student, receives help with bindings from instructor. Most students in class were first time beginners.



UNDER watchful eye of instructor, Dave Cookingham, Arlene Corbin makes first attempt at "Snowplow." Individualized instruction by Cookingham helps students progress faster in basic fundamentals.

Beginners SKI PACKAGES

Number One. Skis - Boots Poles & Bindings **\$59⁹⁵**

Number Two. Fischer Skis - Step-in Bindings - Buckle Boots and Poles **99⁵⁰**

Number Three Skis, Bindings & Poles. Ptex type Base 1 yr. Guarantee **29⁹⁵**

Also Head - Fischer Alu-Kneissl - Kastle - Vol K1-K2 Skis To Choose From.

Tacoma's Pro Ski Shop Open Evs 'Til 9 P.M.



11122 PACIFIC AVENUE TACOMA, WASHINGTON PHONE LE-7-5677

1968 LICENSE TABS

9-6 MON.-SAT

MIDLAND SHOP RITE

99th & PORTLAND AVE.

MIDLAND ORTHOPEDIC GUILD

ADVANCE GLASS & UPHOLSTERY

Service while you wait
Residential and Auto Glass

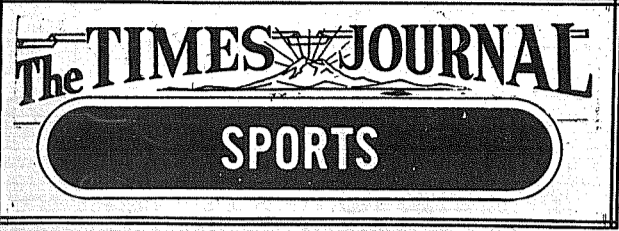
we handle all insurance claims
For your car's interior:

Complete water leak service
complete upholstery
repair of torn or worn parts
carpets

10321 Pacific Ave.

LE 7-8301

Vikings, Cards In Friday Clash



Cruisers Face Wright

ARI Awards Banquet

TACOMA An overflow crowd of 400 racing drivers and guests packed the Tacoma Sportsmen's Chateau last Saturday evening at the Auto Racing Inc. annual awards banquet.

Ken Longley, a young wiry driver who competed in both A and AA divisions, received the highly coveted inspirational sportsmen's trophy, an award considered uppermost in rac-

ing circles. Longley also took home the second place season trophy for A competition cars. Jackie Kuper, Don Hall and Bob Short led the hardware gatherers in double A season point standings, Kuper overtaking Hall in the final race of 1967 for 1st place.

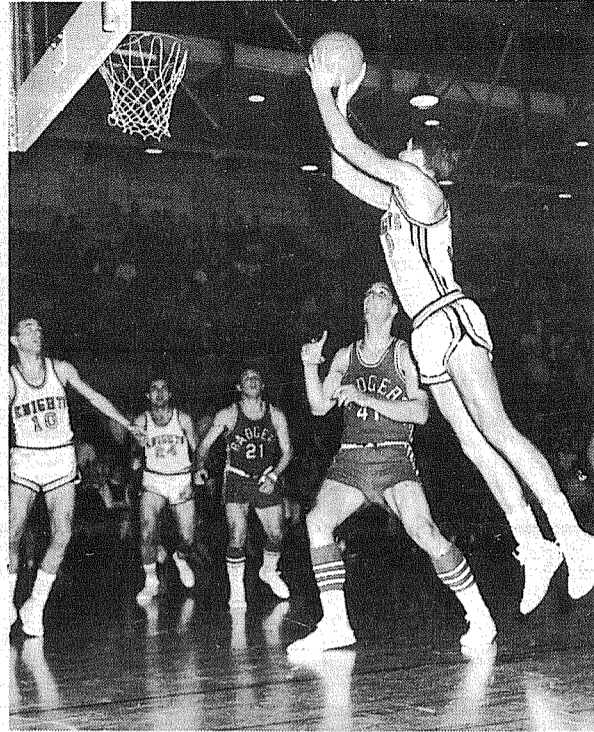
Consistant Steve Kiser received the 1st place trophy for the A division, with Dennis (the menace) Scott capturing 3rd place.

Eatonville travels to Charles Wright Friday after Tuesday's contest with St. Martins and handing White Pass its first defeat of the season last weekend.

The Cruisers overcame a 1 point first quarter deficit to easily dump White Pass 80-67. Buzz Bloom, 6-5 senior, was high point man of the contest bucketing 28 points.

Others putting points on the Cruiser score column were Fitzer 21, Chappell 14, Rose 9, and Kreger 8.

Knights Win 2 Game Bout



AL KOLLAR dribbles past a Pacific University defender to turn and sink a shot for the Knights during action last weekend. The Lutes won both games to bring their season record to 4 wins and 4 losses.

Arch-rivals Puyallup and Franklin Pierce will square off this Friday evening at Viking gymnasium for their first meeting of the season and the second Southern Division League game for both squads.

The Vikings opened their defense of the Puget Sound League Championship on a sour note last Friday when they were upset by a tenacious Auburn quintet 48-42. The Cardinals meanwhile, returned to the win column with a close 52 to 50 victory over Clover Park. The Cards stand 5-4 for the season while the defending champs are 6-3.

The contest is a "must" win for Rich Hammermaster's five if they are to stay in the running for PSL laurels and a Seattle Tournament berth. Failing to receive many pre-season notices, Franklin Pierce now is in the drivers seat and will be hoping to stay there with an upset win over the Viks. "We're expecting a real tough game," remarked Cardinal mentor Del Schafer, "and we'll hope that the ball will bounce in the right direction for us."

Franklin Pierce ran away to a 10 - 0 first quarter lead and were never behind against the Warriors, but they could never keep a wide margin in the Friday encounter.

The Pacific Lutheran University Knights opened the new year and their entry into Northwest Conference competition last weekend by winning a two-game bout against the Badgers of Pacific University.

Now 4-4 for the season, the Lutes will travel to McMinnville, Ore., Friday for one of their toughest contests of the year. Their opponent, Linfield College, has its usual strong team. However, the Lutes are always up for a Linfield game, especially since both teams share the league championship crown.

Coach Gene Lundgaard was pleased with last week's wins, and he thinks he has partially solved his guard problem. He started both games with his usual threesome up front: Al Kollar, Dennis Buchholz, and Leroy Sinnes. At guards he stayed with Kevin Miller, but added Ron Groth, a 6-3 junior letterman from Castle Rock, Wash.

However, he replaced Groth in both contests with transfer Tom Meeks of Lakewood, Calif., and he dumped in 17 and 14 points for the two games. The left-handed junior pushed his game average up from 7.5 to 9.5 after the weekend.

Rick Anqueta, the flashy ball-handler from Auburn, Wash., will continue to see action, said Lundgaard, but will be used mainly when his ball-control abilities are needed.

BOWLING

PARADISE BOWL

Sportsman - Joe Avila, 235-204-165, 604; Tarp Emerson, 201-204-197, 602; Jim Langseth, 248.

Industrial - Orin Bunn, 192-194-230, 616, 230; Split pick up, Leo Rodriguez, 3-7-10.

Friendly Doubles - Ted Haikkila, 537, 197; Pauline Simpson, 474, 169; Split pick up, Andy Ketter, 6-7.

Premier - Buddy Elston, 216-181-251, 648, 251.

Sr. Citizens - Clarence Zacharias, 501, 201; Cora Zacharias, 433, 159.

Franklin Pierce Faculty - Russ Fulkerson, 547; John Eyres, 210; Hazel Miller, 501, 240. Hazel is a 130 avg. bowler. She will receive the Century Award for bowling 100 pins over her avg. She is high game for the season.

Mixers - Bob Johnson, 570, 240; Rose Bachman, 491, 205. Mike Metcalf split pick up and step ladder, 6-7-10, 171-181-191.

Top Rollers - Ken Olson, 541; Jerry Varner, 194; Marian Unkrur, 491; Gladys Morley, 212.

Graham - Art Harped, 590; Marion Curtiss, 219; Nadine Berka, 521, 195.

Eager Beavers - Betty Howard, 514, 209.

Birds of Paradise - Marie Harrison, 502; Joyce Brouwer, 177; Split pick up, Cissy Mendes, 6-7-10.

Hi-Lows - Florence Gri-met, 494; Sue Sweaney, 175; Split pick up, Lil Roller, 6-7-10.

Parkland Mixed - John Bergstrom, 595; Chuck Ellis, 232; Lois Yurisich, 568, 199.

850 Scratch - Dick Henning, 224-183-198, 605; Leo Arnestad, 178-188-235, 601, 235.

Classic - Jay Young, 217-196-190, 603; Tom Leggett, 237.

Evergreen - Jim Hansen, 549; Ken Wedin, 242.

Bowlerettes - 554, 201.

Last Niters - 572, 211; Eve Hale, 531; Margie Cook, 199; Split pick up, Don Hill, 6-7-10, Phyllis Mullen, 6-7-10.

4x8's - Larry Bintz, 518; Don Divelbiss, 243; Ann Pilcher, 456; Nena Thompson, 189.

Bantams - (2 games), Steve Hardwick, 298; Steve Burkhardt, 170, Vickie McTaggart, 259, 148.

Juniors - Allen Tobacco, 559, 215; Rick Burdick, 215; Kathy Ness, 424; Laurie Ristvet, 182.

Express - Dick Breon, 558; Del Miller, 223; Betty Breon, 495, 175; Doris Quigley, 175; Split pick up, Sharon Rose, 3-7-10, Janice Ramsey, 3-7.

Little Lutes - Gordy Omdal, 564, 202; Coreen Deetz, 519, 181.

Citizens STATE BANK

MEMBER: FEDERAL DEPOSIT INSURANCE CORPORATION

★ MAIN OFFICE - PUYALLUP
★ EAST SUMNER OFFICE
★ SUMMIT VIEW OFFICE
★ EDGEWOOD-MILTON OFFICE

Statement of Condition

December 31, 1966	\$ 450,000.00
	230,000.00
	220,000.00
	187,998.96
	\$ 1,087,998.96
	272,028.12
	401.15
	207,619.36
	37,802.40
	40,246.01
	16,220,381.04
	\$17,866,477.04

December 31, 1967	\$ 450,000.00
	230,000.00
	220,000.00
	187,998.96
	\$ 1,087,998.96
	272,028.12
	401.15
	207,619.36
	37,802.40
	40,246.01
	16,220,381.04
	\$17,866,477.04

LIABILITIES

Capital Stock
Capital Notes
Surplus
Undivided Profits
Total Capital Accounts
Income Collected in Advance
Letters of Credit Outstanding
Reserve for Possible Loan Losses
Reserve for Bond Fluctuations
Other Liabilities
Deposits

December 31, 1966

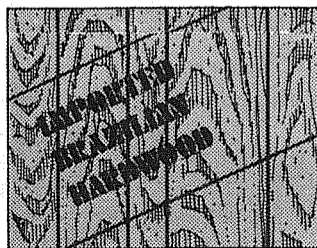
\$ 2,052,871.45
2,871,776.53
149,937.50
20,100.00
1,484,421.64
1,500,000.00
9,497,751.79
401.15
172,780.49
78,282.24
38,154.25
\$17,866,477.04

December 31, 1967

\$ 2,180,165.99
4,157,079.17
100,000.00
20,400.00
2,263,180.05
0
10,444,964.88
180.68
275,314.46
100,615.07
60,039.46
\$19,609,899.79

RESOURCES

Cash and Due from Banks
U.S. Government Securities
Government Agency Securities
Stock in Federal Reserve Bank
State and Municipal Securities
Federal Funds Sold
Loans and Discounts
Customers Lab. on Letters of Credit
Banking House
Furniture and Fixtures
Other Assets



New Brasilia T.M.
ALL WOOD PANELING
FROM GEORGIA-PACIFIC

795
Introductory price per 4' x 8' panel

BROOKDALE LUMBER INC.
13602 PACIFIC

Where To Buy INSURANCE

CALL LE 7-8647

Ashford - McAloon Insurance
INSURANCE 1901 Pacific Ave.

INSURANCE

Military - Home - Business

LE 7-4904

Auto Fire Life Bonds

IRENE CLEMENS
Agency - Parkland
10329 Pacific Ave.

The TIMES JOURNAL

ENTERTAINMENT

Norwegian Singers Will Present Concert

Between 100 and 125 men will join in singing the songs of Norway and America on Sunday, January 21, when the Normanna Male Chorus of Tacoma will be host to the Norwegian Singers of Seattle and Everett at a concert at 4 p.m. in Eastvold Chapel, at Pacific

Lutheran University.

The concert will be conducted by Prof. August Werner, Director in Chief of the Pacific Coast Norwegian Singers Assn.

Musical accompaniment will be by Mrs. Gunnar Malmin, who will take part in conducting the group.

Prof. Gunnar Malmin, director of the Normanna Chorus, is presently teaching at Camrose, Alberta, Canada, and Mrs. Malmin has very ably been filling in for him as director.

Prof. August Werner, who has directed the Seattle Norwegian Singers for many years, now retired from the teaching staff of the University of Washington, a sculptor, painter and composer, expressed his wish to present his bust of Edvard Greig, the Norwegian composer, to Pacific Lutheran Univer-

sity, and it was this wish that prompted the Normanna Male Chorus to arrange for a joint concert to set the stage for the presentation, at which time Dr. Robert Mortvedt, President of Pacific Lutheran will accept the sculptured bust of Greig on behalf of the University.

Parkland, the site of Pacific Lutheran University, is also the site of the birth of the Normanna Male Chorus of Tacoma, as it was there that in 1888 that a group of eight men, all immigrants from Norway, gathered together to sing the songs of Norway, and they called their little group "Luren Sang-Kvarten," and in later years, upon becoming a part of the Norwegian community of Tacoma, and the building of Normanna Hall, the name was changed to Normanna Male Chorus of Tacoma.

Tickets for the concert will be available at the door, and from any member of the Normanna Male Chorus.

"Poor Richard" Slated By Little Theatre

"Poor Richard," a comedy by Jean Kerr, author of "Mary, Mary," will open at the Tacoma Little Theatre January 12th.

The play is a comedy of wit and wisdom. It concerns a gifted, raffishly charming poet who has come to America to consult with his publisher and to attend the dedication of a hospital wing to the memory of his late wife.

Beneath all of his charm he is terribly unsure of himself, which presents humorous problems for both the publisher and the publisher's secretary, who has had a secret crush on the poet since she was 15.

Cast in the production, under direction of John Culbertson, include John Gayton, Nancy Sellin, Ruth Schilling, Erick Peterson and John Thun.

The play will run January 12, 13, 18, 19, 20, 24, 25, 26, and 27.

FIRST

IN SAFETY / ECONOMY
COMFORT / CLEANLINESS

Oil heats more Northwest homes than all other fuels combined



BETHEL HAY

ALFALFA HAY
MUCK-KAPOWSIN RD. ON CEDAR
VI 7-7252

GAME NIGHT

Every Thursday Eve.

7:30 p.m. At
New Parkway Hall
3508 McKinley Ave.

Sponsored By
VFW Post 969

Plenty of Free Parking

Bring a friend for an enjoyable evening

BOWLING

SATURDAY UNTIL 7 P.M.
SUNDAY UNTIL 1 P.M.

35¢

JUNIORS and SENIOR CITIZENS
all day - every day

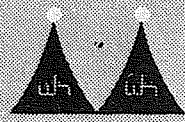
PARADISE BOWL

108th & Pacific

LE 7-6012



Wild & Wacky
The Topnotchers
Winthrop Hotel
Tacoma



sabre
FOAM

PRAIRIE TAVERN

CHICKEN & PIZZA

Food! Dancing!

LIVE MUSIC

FRIDAY & SATURDAY

Jean & Chris - Betty Jean & Wade
on The Mountain Highway at Roy "Y"

Angelo's

PIZZA HOUSE

ORDERS TO GO

Featuring top sirloin and American dishes, spaghetti, rigatoni, meat balls, sausage, ravioli, beer and wine.

Choice of Pizzas

cheese & tomato
anchovie
mushroom
Italian sausage
pepperoni
tuna

bacon
peppers
olive
hamburgers
ham
salami
onion



LE 7-7233
14102 PACIFIC AVE.
PARKLAND



CALL AHEAD, IT'S PIPING HOT ALL THE WAY HOME

PICK UP A BOX, PAIL, BUCKET OR A BARREL

Social Security Income Should Be Reported

Disabled veterans, widows and orphan children receiving nonservice-connected pension payments and parents receiving dependency and indemnity compensation checks from

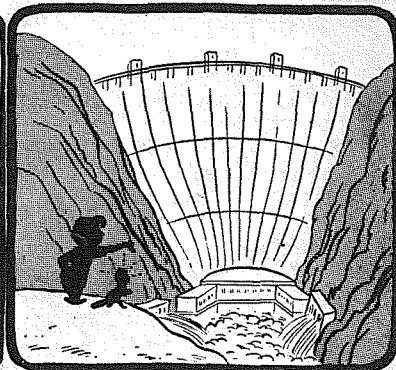
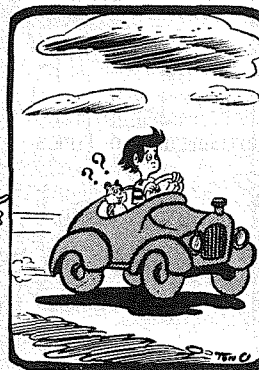
the Veterans Administration should report their annual Social Security income - for 1967-68 VA income questionnaire purposes - at the rate they are being paid under the law now in effect for both 1967 and 1968.

OUR WEEKLY COMICS

DEEMS



Released by Smith Service Democrat, N. J.



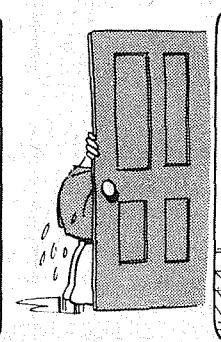
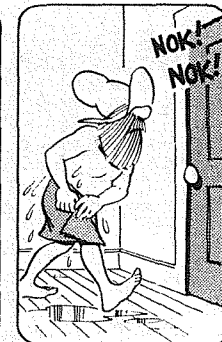
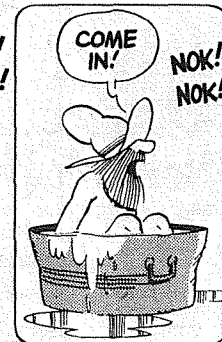
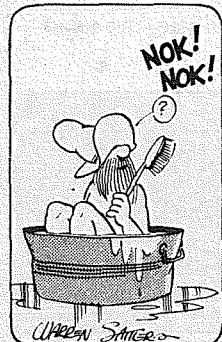
By TOM OKA

Rural Delivery



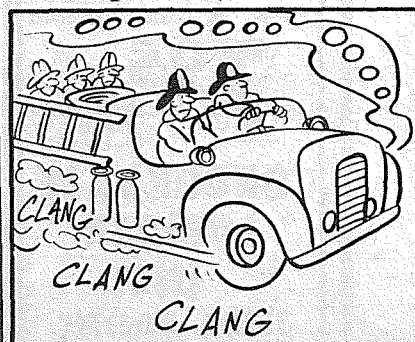
By Al Smith

Grubby



By Warren Sattler

Grandpa's Boy



By Brad Anderson

CLASSIFIED ADS

Call LE 7-0223 For Want Ads

1 Misc. For Sale

MOVING, must sell golf clubs, bag and cart, \$65. New 16mm Revere movie camera, \$100. Play pen and new pad, \$12. Potty chair, \$3. TH 5-9691.

Trophy Storm Doors

Heavy Duty Aluminum Full Piano Hinge Standard & Special Sizes Also Storm Windows Repair Service Available

Manufactured By **PARKLAND DOOR INC.** 318 E. 96th GR 4-7011

BRADLEY combination commercial fertilizer seeder and spreader. TH 5-2511.

8'x37' TRAILETTE. Must sell. Make offer. 897-4606 or TH 5-4671.

SKIS. Older style. 6', bindings, poles and ladies size 7 boots. \$25. TH 5-5348.

SPARK oil heater, 30 ft. copper pipe, large tank on stand. \$20. TH 5-9231.

3-WHEEL bicycle, large basket. New condition. TH 5-8127. 312 - 5th St. S.E.

BUNKBEDS \$50. LE 1-0662.

USED BIKES, \$6. Used parts cheap. The bicycle Wrecking Yard. LE 1-4741.

KNAPP Shoes. G. Rowe. 711 E. 133rd, Tacoma, LE 7-5128. 68-206

NEW CRADLE, \$35. Buggy-stroller combination, \$25. VI 7-2869.

6 Musical Instruments

ARTISTE accordion, 120 bass. Good condition. \$65. TH 5-3633 evenings.

PIANO tuning \$11.00. George Messagee Repair JU 8-7092. 68-1

7 Furniture, Appliances

BLUE davenport, chair and ottoman. \$50. 2625 East 72nd LE 7-5457.

21" MOTOROLA cabinet model TV, black and white. Perfect shape. \$40. UN 3-6989.

CROMWELL refrigerator. Runs good. \$20. TH 5-2671.

DINING table, two leaf, 6 chairs, sideboard \$75.00. LE 7-7798 after 5 p.m. 68-4

9 Animals For Sale

GOOD FAMILY Holstein milk cow, \$250. 60-90 lb. feeder pigs, \$25-\$35. LE 7-4294.

YOUNG layers, white Leghorns. \$1.00. Your container. TH 5-7662.

SIX mixed male dachshunds puppies for sale. LE 7-6603 Gladys Waltz. 68-6

23 Help Wanted

LOOKING for a Career? Wanted management trainees to train for management positions in Variety Store Chain. Inquire at Sprouse Reitz Co. Inc. 8218 Pacific Ave., Mr. Bradshaw GR 4-3070. 68-7

WOMAN 35 - 55 years, some typing and customer service. Part time, 11216 Pacific. 68-5

ATTRACTIVE woman 25-40 years old for rapidly expanding advertising dept. of Times Journal. Must have basic knowledge of display advertising, some writing. Call LE 7-0223. 68-3

24 Work Wanted

IRONING experience. LE 1-1904. 68-208.

IRONING. My home. LE 1-4138.

DAY NURSERY - Play School. Summit View area. LE 1-2358. #39124

36 Personals

HAVE an alcoholic problem? GR 5-1073 or VI 7-7715. Write Box 2265, Parkland. 67-194

ARE YOU living with or near a drinking problem? LE 1-3847, LE 7-4332.

38 Instruction

HELEN'S Parkland Ceramics Lessons-Supplies-Firing 1303 S. 117th LE 1-0823

PIANO and organ lessons. LE 7-4242.

39 Lost

READING GLASSES at Citizens State Bank, Summit Branch. Call LE 1-4427.

27 Misc. Services

EXPERT alterations, mens & womens fast service and reasonable. LE 1-3506. 67-186

DRIVEWAY GRAVEL: Bank run \$2 a yard, screened \$14 for 5 yard load. Don Abbott, tractor work. LE 7-3846.

19 For Rent Or Lease

2 BEDROOM APT. Range, refrigerator, drapes, carport, no pets. \$100. TH 5-5819.

TWO BEDROOM home, 900 South 121st. \$125 month. TH 5-3807.

HOME VACANT

We desperately need good rentals \$80 to \$150 per month

CALL NOW Let us handle your worries **SUBURBAN REALTY** 11302 Pacific Ave. LE 7-8638 or LE 7-6896

OFFICE SPACE - Boat & Trailer Space for rent. Office \$50.00 per month. Lights, heat, water, and garbage furnished. Covered boat and trailer spaces \$10.00 per month. Phone LE 7-0223 days 10 to 4. 67-164

12 Real Estate For Sale

BY OWNER - new 3 bedroom. 7908-49th Ave. East, Tacoma. LE 1-3574.

LIST WITH LION. Our experienced and qualified personnel will appraise your property at no cost to you. Call Lion Realty Inc. LE 1-2242 11457 Pacific Ave.

Need Money?

We have investors who will buy your equity or loan on second mortgage.

Lovelace Realty

12920 Pacific - LE 1-5555

Midland and Pacific Ave. Areas Carriers Wanted A few routes open

Times Journal LE 7-0223

12 Real Estate For Sale

17 1/2 ACRES in Prosser, Wash. - "the banana belt." Cheap irrigation water. 2 bedroom comfortable country home. Family orchard and grapes. \$10,500. UN 3-1556.

10 ACRES across from Thun Field. \$25,000 - Terms. TH 5-4675.

NEARLY NEW 3 bedroom home on large lot. South Hill, near Puyallup. 2 fireplaces, 1 1/2 baths, daylight basement, 2 car garage, carpeting, drapes, built-in range. TH 5-3102.

Listings Wanted Buying or Selling Real Estate Service Call Devereaux Realty 12152 Pacific Ave. LE 7-8658

Legals

Job No. 6715. INVITATION TO BID

1. NOTICE TO BIDDERS Sealed bids will be received by the Board of Directors of Franklin Pierce School District No. 402, Pierce County, at 1124 Portland Avenue, Tacoma, Washington 98445, until 4:00 P.M., P.S.T., Thursday, January 18, 1968, for the General Contract which includes mechanical and electrical work, for the construction of: A Library Addition to James Sales Elementary School, South 112th and Sheridan Avenue, Pierce County, Washington, and the said bids will then and there be publicly opened and read aloud. Bidders and others properly interested are invited to be present at the bid opening. Bids received after the time fixed for opening cannot be considered.

2. DOCUMENTS Specifications, including bid and contract documents, and Drawings, may be examined at the following offices: Associated General Contractors offices, Seattle and Tacoma; Associated Subcontractors of Washington, Inc., Tacoma; Northwest Plan Centers, Seattle; and The Plan Bureau, Seattle. Bona fide bidders may obtain one set only at the office of Donald F. Burr, A.I.A., and Associates, 6103 Mt. Tacoma Drive S.W., Tacoma, Washington 98499. Architect, upon deposit of a check payable to the Architect in the amount of \$15.00 for each set. Should a bidder wish additional sets or parts of sets, he may obtain them by paying the cost of reproduction.

3. REFUND OF DEPOSITS The full amount of the previously paid deposit for documents will be refunded to bona fide bidders upon return of the documents in good condition to the Architect's office at or before the time set for opening bids. There will be no refund for the return of additional sets or parts of sets. Plan holders who do not submit a bona fide bid and do not return the documents at least 2 days before the time set for opening bids will forfeit the full amount of their deposits.

BY ORDER OF: FRANKLIN PIERCE SCHOOL DISTRICT NO. 402, Pierce County By: Thomas Stephens, Clerk of the Board Published in the Parkland Times-Journal January 4, 11 and 18, 1968.

Legals

IN THE SUPERIOR COURT OF THE STATE OF WASHINGTON IN AND FOR PIERCE COUNTY NO. 76682 NOTICE OF HEARING ON PETITION FOR AWARD IN LIEU OF HOMESTEAD

IN THE MATTER OF THE ESTATE OF ALMON E. SHEPHARD, Deceased. NOTICE IS HEREBY given that R. Ted Bottiger as administrator of Almon E. Shephard, deceased, has filed with the Clerk of this Court a Petition for Award in Lieu of Homestead requesting the Court to award to Marion Shephard, the surviving spouse of Almon E. Shephard the balance of the Estate after costs of administration to Marion Shephard, the surviving spouse and discharge the said personal representative and that such report and petition will be heard on the 5th day of February, 1968 at 9:30 a.m. at the Court Room of the Presiding Judge of said Court at which time and place any one interested in said Estate may appear and file objections thereto and contest the same. Dated: January 5, 1968.

(s) Don Perry Clerk of the Court McGAVICK, HEMMEN & BOTTIGER Attorneys for Estate By: R. Ted Bottiger Published January 11, 1968, in the Pierce County Herald and Times Journal.

Legals

IN THE SUPERIOR COURT OF THE STATE OF WASHINGTON IN AND FOR PIERCE COUNTY NO. 176214

SUMMONS BY PUBLICATION AMELIA R. ACKLES, Plaintiff, vs. RONALD B. ACKLES, Defendant. THE STATE OF WASHINGTON TO: RONALD B. ACKLES, Defendant: YOU ARE HEREBY SUMMONED to appear within sixty (60) days after the date of the first publication of this Summons upon you, and to answer the Complaint and serve a copy of your Answer upon the undersigned at the place below specified, and defend the above entitled action in the Court aforesaid; and in case of your failure so to do, judgment will be rendered against you, according to the demand of the Complaint which will be filed with the Clerk of the said Court, a copy of which is herewith served upon you. This is an action in which the plaintiff seeks a divorce from the defendant on the grounds of failure to support.

McGAVICK, HEMMEN & BOTTIGER By: R. Ted Bottiger Attorneys for Plaintiff 8849 Pacific Avenue Tacoma, Washington 98444 Phone: GR 5-4800 Published Dec. 28, 1967; Jan. 4, 11, 18, 25, and Feb. 1, 1968.

SUPERIOR COURT OF WASHINGTON FOR PIERCE COUNTY NO. 179436 SUMMONS BY PUBLICATION ONEIDA C. MATNEY, Plaintiff vs. DENNIS O. MATNEY, Defendant. THE STATE OF WASHINGTON, to the said DENNIS O. MATNEY. YOU ARE HEREBY SUMMONED to appear within sixty (60) days after the date of first publication of this summons, to-wit: Within sixty days after the 7th day of December,

1967, and defend the above-entitled action in the above-entitled Court, on answer the complaint of the above-named plaintiff and serve a copy of your Answer upon the undersigned Attorney for above-named, George F. Potter, at his office below stated; and in case of your failure to do so, judgment will be rendered against you according to the demand of the complaint for divorce which has been filed with the Clerk of said Court.

This is an action for Divorce. George F. Potter Attorney for Plaintiff 159 South 112th Street Parkland, Washington 98444 LE 1-2889 Published in the Parkland Times-Journal Dec. 7, 14, 21, 28, 1967, and Jan. 4 and 11, 1968.

George F. Potter Attorney for Plaintiff 159 South 112th Street Parkland, Washington 98444 LE 1-2889 Published in the Parkland Times-Journal Dec. 7, 14, 21, 28, 1967, and Jan. 4 and 11, 1968.

NEW- MORE POWERFUL

the 1968's ARE HERE VOLKSWAGEN

27 MAJOR CHANGES

Tom Carstens **AUTOHAUS** 7030 So. Tacoma Way GR 4-0666 TACOMA DEALER SINCE 1955.

Robert Strange 920 South 112 Tacoma

Groomery For Poodles, Toys \$5.00 Miniatures \$6.00

Call LE 7-3910

Avenue Furniture

- New and used quality furniture
- Appliances
- We buy - sell - trade
- In Spanaway

LE 7-5144

16318 Pacific

WANT ADS WORK EVERYWHERE

DOING MORE THINGS FOR MORE PEOPLE AT LOWER COST THAN ANY OTHER KIND OF ADVERTISING

Used Car

HEADQUARTERS "MOST FOR THE MONEY" All Makes...All Kinds **ARMSTRONG'S USED CARS LE 7-5524**

PIERCE COUNTY HEADQUARTERS FOR 1968

- ★ CHRYSLER
- ★ PLYMOUTH
- ★ VALIANT
- ★ BARRACUDA

CALL GR 4-0621

Steven MOTOR CO. 2705 SOUTH TACOMA WAY

RENT TV RENTAL MARTS, INC.

Portables All Sizes Color TV

Parkland GR 5-3755 Lakewood JU 4-4100 9440 Pacific Ave. 108th & Bridgeport

BUSINESS DIRECTORY

Sheet Metal

- Furnace Repair and Service
- Installations

PARKLAND FUEL OIL 12002 Pacific Ave. LE 7-0256

Fencing

FENCING Designers and Builders EXPERT WORKMANSHIP REASONABLE PRICES Easy Monthly Payments **VAUGHAN'S** 6402 S. Tacoma Wy. GR 4-9515

Top Soil

DOZER & LOADER WORK Hour or Contract Hauling State CC Permit 8-10 yd. new truck **NEWBURY'S DOZER SERVICE** LE 7-7455

Boush Moving & Storage

Agents for U.S. Van Lines Coast to Coast Service 121 WEST STEWART TH 5-5436

Classified Ad Deadline is Monday 11 a.m.

FROM OUR
Correspondents
Waller Road

By Mrs. Verne W. Fogle Le 7-5210

Once a year the Waller Road Garden Club members hold a pot luck supper to which the husbands are invited. As Waller Road has several who are regular members, this is not such an unfamiliar experience for the men to get together.

The supper is scheduled for 6:30 p.m. Thursday, January 11th at the Waller Road Grange Hall.

Bird Feeders will be roll call topics. Bird food formulas will be discussed.

The flower arrangement is to be all green - foliage, feather, ribbon paper or polyethylene. A fine of 25 cents will be imposed for not bringing an arrangement.

There will be a surprise feature. Hostesses will be Mrs. W. Farrington and committee.

Waller Road Grange Auxiliary will hold their regular meeting at the home of Mrs. Ronald Fogle, 5606 90th St. E. Puyallup at 11:30 a.m. Tuesday, January 23rd.

The pot luck luncheon will be followed by regular business session conducted by Mrs. Verne Fogle, President. Mrs. Gilbert Carlson will be in charge of a short program of interest to the women.

"Pies for Polio" is known throughout the nation as the Grange way of raising money for the March of Dimes. Waller Road Grange will hold a pie sale during the social hour, following the regular meeting, slated for January 19th. All members are to bring a pie. They will be served by the slice, or sold whole.

FP Adult Ed.

Five Electronics Courses

Five different courses in electronics are being offered in the Franklin Pierce Adult Education program beginning Jan. 8.

The courses, all of which carry community college credits, are a radar service clinic, basic electronics theory I and II and fundamentals of electronic lab I and II.

Each of the classes will meet two nights a week from 7 to 9:30 in the electronics laboratory at Franklin Pierce High School.

The radar service clinic, to be taught by Raymond Hart, is designed to prepare a person for the F.C.C. radar endorsement examination. The basic electronics theory classes offer work in direct and alternating circuits, electrical units, components, simple circuits, metering, switching and practical application.

The laboratory course is an introduction to procedures, construction of basic circuits, and application of instruments to the measurement of current, voltage and resistance.

Non-Academic Laboratory Class

Problems in human relationships and leadership is the content of an unusual non-academic laboratory course being offered in the Franklin Pierce Adult Education program which began January 10.

Called "Psychology of Group Process and Sensitivity Training," the class will be taught by H. R. Nichols, a psychologist from Western State Hospital.

There is no textbook-classroom structure or a teacher as in a regular classroom, Nichols explained. Instead, the subject matter of the class is the wealth of experiences brought in by the students in the class.

Basically, he said, the classroom is a laboratory of democratic living. Educators and business management personnel, he said, have been interested in this type of course, also called intensive group experience, basic encounter or T-group training.

The class will meet each Wednesday from 7 to 10 p.m. in the pupil services building at 11124 Portland Avenue. For those who desire, the course carries three credits from Clover Park Community College.

Sheriff's Reports

Parkland - A pair of 750x14 slicks stolen last November from Tiny's Tire Center, 10805 Pacific Avenue, were recovered by Sheriff's detectives January 5, Det. E. W. Meyer reported last week.

The tires, valued at \$60, were taken from a tire rack in front of the shop. The slicks were recovered

with the arrest of a 20-year-old Air Force man.

Parkland - Thieves entered three well pump houses to steal approximately \$300 of equipment belonging to Parkland Light and Water, Deputy J. C. Taylor reported last week.

Entry was gained by cutting a hole in the 7-foot cyclone fence surrounding the property, Taylor stated.

CHURCH DIRECTORY
ATTEND OUR
WORSHIP
SERVICES

<p>CHRIST THE KING Lutheran Church 8:30 & 11 a.m. Worship Service 9:45 a.m. Sunday School East 85th at Van Buren LE 7-4272</p>	<p>Spanaway Assembly of God 166th & Pacific Ave. Sunday School 9:45 a.m. Morning Worship 11 a.m. Evening Evangelistic 7 p.m. Family Night Wed. 7:30 p.m. LE 1-1412</p>
<p>Spanaway Lutheran Church 8:30 & 11 a.m. Worship Service 9:45 a.m. Sunday School Grades 1 & Up 11 a.m. Sunday School 3, 4 and 5 Year Olds John L. Briehl, Pastor 160th & A St. LE 7-5978</p>	<p>TAKE YOUR FAMILY TO CHURCH THIS SUNDAY</p>

9 a.m. - 10 p.m.
7 DAYS A WEEK

BARGAIN BASKET
16618
Pacific Ave. S. Spanaway
LE 7-3371

No Sales To Dealers
WE RESERVE THE RIGHT TO LIMIT QUANTITIES

PRICES EFFECTIVE
Jan. 11-12-13
Thur.-Fri.-Sat.

We Carry A Complete Line Of Sacked Feeds - Presto Logs

We Are Locally Owned & Operated
HELP YOUR BUDGET WITH THESE SAVINGS

<p>ARMOUR CHILI 3 FOR 303 Tin 89¢</p>	<p>Betsy Ross GRAPE JUICE 24 Oz. 25¢</p>	<p>TIDY CAT LITTER 25 Lb. Bag 99¢</p>
<p>THREE BEE HONEY 5 Lb. 99¢</p>	<p>Fireside CRACKERS One Pound Box 19¢</p>	<p>ZEE TISSUE 4 Roll Pack 3/\$1</p>
<p>WILSON CORN BEEF 12 Oz. 49¢</p>	<p>ARMOUR BEEF SLOPPY JOES 303 Tin 49¢</p>	<p>NALLEY MAYONNAISE Qt. 49¢</p>

PRODUCE

<p>No. 2 POTATOES 20 LB. 49¢</p>	<p>DRY ONIONS Med. Size LB. 10¢</p>	<p>TUBE TOMATOES EA. 29¢</p>	<p>ROME COOKING APPLES LB. 10¢</p>
--	---	--	--

Everyday Low Meat Prices . . . 25 lb. Locker Boxes \$14.95

<p>Whole Body FRYERS 35¢ Lb.</p>	<p>Cut Up FRYERS 39¢ Lb.</p>	<p>SLAB BACON 59¢ Lb.</p>
<p>CUBE STEAK 98¢ Lb.</p>	<p>HYGRADE WIENERS 49¢ Lb.</p>	<p>GROUND ROUND 79¢ Lb.</p>