

AN
P 5

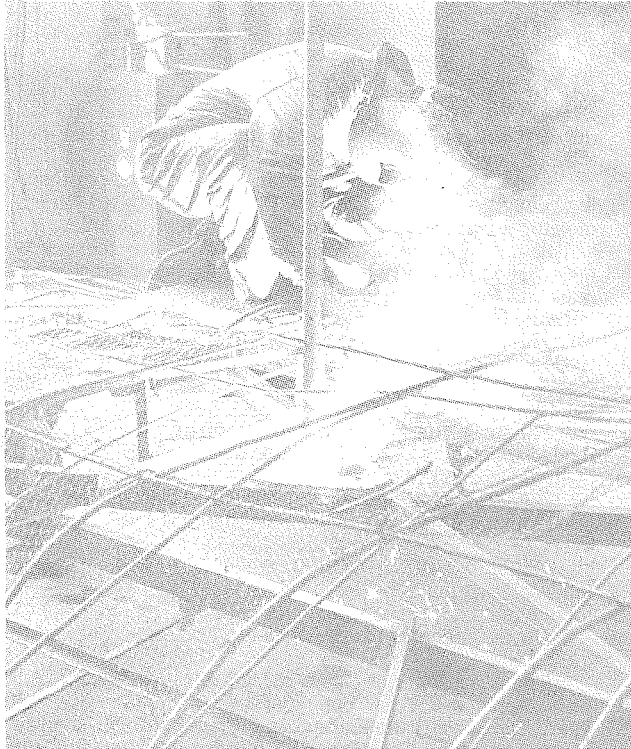
P.L.U. Library
Tacoma, Wn. 98447

Pierce County Herald and

The TIMES JOURNAL

Vol. 26 No. 14

April 9, 1970



John Bury, President of Bethel Booster Club (left), and Bill F. Childers, B.H.S. Art Dept. Head and Float Designer, who are supervising work parties on the Bethel Community Float.

John Bury, President of Booster Club, putting finishing touches on welding work for Bethel Community Float.

F.P. Students Win Awards At Forensics Tournament

By Mike Kerr

Four Franklin Pierce High School girls won trophies at the University of Puget Sound High School Forensics Tournament, which over 35 schools throughout Washington attended during Easter vacation.

Seniors Caroline Bradley and Kathy Marceau placed first and second, respectively, in the junior division of oratory, which is a form of speech. Senior Tammy Brown took second place in the senior division of oratory, and Randi Hansen, also a senior, took second place in the senior division of interpretive reading.

The girls are all students of Larry Roshau's advanced speech class and entered into the contest as a result of their work in his class.

Tammy has been asked for copies of her oration by the UPS student newspaper and by THE PHOENIX, the Tacoma Resistance newspaper, so parts of it can be printed in the papers. Her oration is about the changing role of women in society.

Also participating in the tournament were Seniors Steve Goff, Ginny Gordon, Joe Hester and Mike Kerr in interpretive reading, and Seniors Carol Fletcher and Nikki Schautweker in the junior division of oratory. None of these students placed in the finals, however.

The FP debate team, advised by Mrs. Morgia Belcher, also attended the tournament, but did not place. Members of the debate team are Tom Smith, Jack Simmons, Dean Martineau, Dick Ketcham, Dan Hossley and Marj Lund.

Dick, Dan, Dean and Jack also took part in the extemporaneous speech event, and Dean and Tom entered the expository speech event.

Mrs. Belcher was pleased with FP's showing at the tournament.

"It's highly unusual for one school to win so many trophies in individual events," she said.

Pierce County Sheriff Reports

April 1:

A burglary at Zachers Enco Station at 2524 East 112th St. last night, where entry was gained by prying a window open, resulted in a loss of \$250 in tools and service station equipment.

An unlocked garage owned by Darrell McLaughlin of 615 So. 165th was ransacked last night and \$700 in motorcycle parts were taken including motorcycle engine and transmission.

April 2:

The "Rock Festival" held last Monday night by vandals was brought to a close Wednesday when Tacoma City Police arrested two men ages 25 and 21 for throwing large rocks through plate glass windows. The men admitted to being on a "spree" and doing damage to many

businesses along Pacific Avenue and adjacent streets.

Collins Elementary School at 4608 128th East reported the loss of two tape recorders which were apparently removed while janitors were doing their spring cleaning during last week's vacation.

Two burglaries Wednesday night were being investigated. The James Collins residence at 7760 44th St. West was entered by prying open a door and an expensive console color TV was removed. The garage of the Edward Marshall's at 13013 224th East in Graham, was entered by prying open a door and removing some meat from the freezer, a chain saw, saddles, and camping equipment.

April 3:

A burglarly Thursday night at the home of Mrs.



Parkland Jaycee's helping the WSARC, from left to right: Frank Middleton, George Haskins, President Don Smith, State Director Larry Brewer, and Barry Long, displaying jars of honey.

Parkland Jaycee's Honey Sunday

The "Greater Parkland Jaycee's are sponsoring what they feel is to be one of their most worthwhile projects of the year. This is selling honey on Sunday, April 12th from which all proceeds will go to benefit Mentally Retarded Children in our own community for which funds are desperately needed.

They have the complete support of the Washington State Association for Retard-

ed Children. More support is urged through community participation by purchasing honey on this Sunday from Jaycee's who will be in the neighborhood and at stations set up in local stores.

Help is needed and anyone wishing to contribute their services to this worthwhile project should contact Jim Heinzman, chairman of the Honey Drive in the Parkland area, at LE 1-3509.

Florence Rohrs, 20002 Orting-Kapowsin Highway, was reported by Pierce County Sheriff's Department. The home was entered by forcing open the door and the loss is estimated at \$800 including a console color TV set and some meat from a freezer.

April 6:

Pierce County Sheriff Carl Peterson announced the quick completion of a Parkland homicide and arson Friday night, the victim Mrs. Dorothy May Fletcher of 172 East 123rd St., with the arrest of a 20-year-old Fort Lewis soldier, George M. Boggs Jr. Boggs was said to have been a friend of the Fletcher family for some time. He was arrested by detectives Henry Suprunowski and Emil Meyer and the arresting officers obtained his confession. Sheriff Peterson praised the ar-

resting officers Suprunowski and Meyer and Chief George Janovich, Captain Ernest Keck and Officers Ward Archer, Walter Stout and Bill Regan for their tremendous effort in bringing the case to a close.

The death by asphyxiation of Malcomb B. Hutchison of 604 East 124th St. sometime Sunday morning, was reported by the Sheriff's Department. Mr. Hutchison had moved from his home to an apartment at 12610 Pacific Ave., where a couch destroyed by fire, possibly ignited by a cigarette, caused the accidental death.

A burglary was reported by Henry Kuenzer, 13703 So. J St., of his mobile home. Entry was gained by prying open the door and a coin collection valued at between \$300 and \$400 was taken.

Bethel Daffodil Float Brings Students, Parents, Faculty To Common Goal

By Jim Knaggs

Final welding of metal rods and pipes were completed on the chassis of the Bethel area Daffodil Float this weekend by a crew of Bethel citizens under the direction of John Bury, Booster Club President, and Bill F. Childers, Bethel High School art teacher. The next two days will be used to complete the art work and finish the decoration of the float with Daffodils by Art Club members from Bethel High.

At 10:00 a.m., the Bethel area float, sponsored by the Booster Club and the Bethel High School, will begin its four city appearance as part of the Annual Puyallup Valley Daffodil celebration. Members of the Bethel Pep Staff, the High School Marching Band and Drill Team will join the float in parading through Tacoma, Puyallup and Sumner on Saturday. The Bethel area float will also be in the Orting Parade and be on display at Bethel High School next Sunday. Serving as float driver will be H. J. Dempsey and Don Leonard will be the co-pilot.

Extensive chassis work was needed this year on the float as the engine burned-out at the completion of last year's parade. A crew under the supervision of Mr. Bury installed another engine and worked on the transmission linkage, completing this phase of the work the end of March. This last weekend a crew under the supervision of Mr. Childers completed the extensive rod and steel welding required to give shape to this year's float. Early this week, students from the high school installed the chicken wire netting for the flowers and paper construction and the float was moved to the parking area of Costume & Display in Tacoma to have the art and decoration work completed.

The crews of adults in the Bethel area that worked on the engine installation and welding work included: Robert Ohlund, Gay Jasmer, Mike Calabrese, Bill Bennett, Dean Wesner, Lloyd Hopkins, Bill Childers and John Bury.

The Bethel Community's 1970 Puyallup Valley Daffodil Pageant Float's theme is "Trapeze." The float is 34 feet long, 11 feet wide, and 13 feet high. It will use 25,000 yellow and 5,000 white daffodils to carry out its theme. Basic colors on this year's float will be "daffodil" yellow and royal purple. Three trapezes, the "bigtop," streaming pennants from flag poles and a huge clown are being incorporated in the float to carry-out the Pageant's theme of "The Greatest Show On Earth." The float design was created by Mr. Childers.

The five seniors on the float were elected by the Senior Class, with the Float Queen Sue Swensen, elected by a popular vote of the Bethel High Student Body. The girls elected to serve as float royalty this year are: Float Queen Sue Swensen, Princesses Helen Adams, Debbi Daffer, Janet Ingle and Linda Seanard. They will be attired in royal purple leotards and seated on trapezes at the rear section of the float.

This year's Bethel Community float entry was made possible through the Bethel Booster Club which furnished the float chassis, the Bethel High School Art Club which designed and created the art work, and the Bethel High School Associated Student Body which furnished the funds for the daffodils and the float expenses. Money for these expenses were raised through bake sales, a splash party, the Annual Bethel Daffodil Pageant and a generous contribution from the Spanaway Lion's Club. The budget called for \$600 for this year's float.

The marching portion of the Bethel Community Area parade entry will feature the five members of the Varsity Pep Staff, the 42-member Marching Band, the 40-member Drill Team and the Jaycee Pep Staff who will be dressed as clowns and escort the float. Mr. Glenn Hull and Mrs. Glenda Clemons will direct the marching units during the parade route.

Daffodil Festival Flower Show

The Puyallup Valley Daffodil Festival Flower Show is sponsored by the Hill and Dale League of Capitol District of Garden Clubs, comprised of 15 garden clubs of the Puyallup Valley, and the Puyallup Valley Daffodil Festival. The show will be April 10th, 11th and 12th in the War Memorial Building, 601 Meridian North, Puyallup, Washington.

The Daffodil Queen and her court will open the show at 2 p.m. on April 10th. At 3:00 p.m. Roger High's "Swing Choir" from Puyallup will sing. At 5:00 p.m. Bethel High's two vocal groups "The Choralairs" and "The Preludes" will perform. Puyallup High School's Singing Group will be heard at 7:00 p.m. The show will remain open until 9 p.m.

Saturday morning the show will open at 10 a.m. The "Nonettes" from Edgemont Junior High will sing at 3 p.m., then the "Folk Ensemble" from Sumner High at 5 p.m. and the last group of the day are the Japanese Dancers from Tacoma. The show will stay open until 9 p.m.

On Sunday, April 12th, the flower show will open at 12 noon, with the vocal group

"Good Friends" from Milton singing at 1 p.m. Next, at 3 p.m. Mt. Tahoma High's "Studio Choir" and finally at 5 p.m. Fife High's Float Queen vocalist Karen Heckert.

The theme "Greatest Show on Earth" for this year's festival is certainly being followed here.

Garen planting carrying out the theme of the show, "The Greatest Daffodil Show on Earth" will be designed by the following clubs: Garden Hour, Glove & Trowel, and Wishing Well. Public participation is welcomed. It is not necessary to be a Garden Club member. Anyone growing flowers or shrubs may enter in the Horticulture Division if they have a good specimen. Children from 6 to 16 years of age may enter in the Junior Division.

Canyon Road Junior Garden Club is displaying an educational Conversation exhibit. Mrs. Harold Knutson is arranging an array of all daffodil varieties in the Valley. Mr. A.N. Kanouse, Olympia, is exhibiting his many new hybridized daffodil blossoms in the entryway at the show.

Sheridan Takes up Pen Will Inform Residents

George Sheridan, our County Commissioner, will join the roster of Times Journal columnists next week.

Sheridan gave up his seat in the State Legislature to become County Commissioner, 2nd District and has pledged his talents to this responsible position in keeping county government a model of efficiency. He understands the county's problems and has the experience and vision to find solutions and wants to keep our community informed of the challenges brought before him.

As our rural population grows a multitude of new problems demand solutions. Air and water pollution; police protection; sewage and garbage disposal; utilities; recreation are a few of the problems that commissioner Sheridan will be reporting in his column each week here in the Times Journal.

Sheridan is a native son, born on a farm at Marietta, Washington. Active in youth work he was an Eagle Scout and Scoutmaster. Now widowed, he has raised 4 children and has 6 grandchildren. He came to Tacoma in 1940 as State Director of National



George Sheridan, Pierce County Commissioner

Youth Administration. Served as assistant Area Director of War Manpower Commission before entering the Army in World War II. Was Executive Secretary of State Development Board, and chairman of State Youth Advisory Committee, was State Representative 27th District and in his

term was named "outstanding freshman legislator." In the Legislature he sponsored and secured passage of many measures of importance to Pierce County residents. He served 12 years as Pierce County Democratic chairman. A proven leader in public affairs and as County

Commissioner he has demonstrated an unusual capacity to get things done.

Follow **GEORGE SHERIDAN COUNTY NEWS** regularly in the pages of the Times Journal and keep abreast of the important developments in our county government.

CALL JU4-3344
or **LE7-3322**

Professional AMBULANCE SERVICE
PARKLAND AMBULANCE and LAKEWOOD PACIFIC

"The Magic Carpet Cleaners"
CARPET CARE OF TACOMA

This economical new Griffin deep steam process will give your wall-to-wall carpets that new look and texture. Gentle and thorough. Recognized by DuPont and the Carpet Institute as the best. Carpets stay clean and bright many times longer than with ordinary abrasive scrubbing. Call us for free demonstration and costs.
The Results Are Amazing
Phone 588-2017 Anytime
Phone 584-2233

Washington P.T.A. Holding Auction

Fugitives such as paintings, lamps, antiques, household appliances, furniture, trunks, automobiles, etc. new or used, in workable condition are wanted for an auction sale at Washington High School Field House, Tule Lake Road and Ainsworth Avenue South. This project is sponsored by the P.T.A. and assisted by the students, the funds raised to be used for various student activities.

The auction will be Saturday, May 2, 1970 at 1:00 p.m., merchandise can be previewed after 10:00 a.m., the sale starting at 1:00 p.m. Mike Jonkers, an experienced auctioneer from Puyallup has volunteered his services.

The P.T.A. needs everyone's help in soliciting items for this sale. Contact LE 7-6905, Le 7-8716, anytime, or LE 1-1543 after 4:00 p.m. Volunteers will pick up items for storage and inventory.

LIVE MUSIC
AGAIN TY WILLARD AT MOONEE'S PUYALLUP
SPECIAL DURING DAFFODIL CELEBRATION SATURDAY

Kindergarten Enrollment Begins April 27

Bethel Elementary schools will enroll kindergartners the week of April 27 through May 1. It is paramount that parents enroll their next year's kindergartener, so that the schools can make an intelligent projection as to the number of rooms and teachers that will be needed in September. Birth certificates are required.

Enrollees must be 5 years old as of September 10, 1970. Spanaway Grade School will enroll from 9:00-11:00 a.m. and 1:00-3:00 p.m. All other Bethel Elementary Schools will enroll from 9:30-11:00 and 1:00-3:30 p.m.



April 1:

The Spanaway Fire Department responded to a small brush fire at 4:44 p.m. Tuesday at 175th and Pacific Ave. No damage was reported.

At 8:35 p.m. Tuesday the Midland Fire Dept. was called to 8401 McKinley Avenue to put out a house fire. The small house, that had been vacant for some time, was totally involved when firemen arrived and had also caught two adjacent out-buildings. Owners of the property are not known and the extent of loss has not been set.

April 6:

Parkland Fire Chief Raymond E. Hixon praised his firemen for getting the Fletcher home quickly under control Friday night. A few more minutes and the home would have been a roaring furnace.

Parkland firemen responded to a call at the Paradise Bowl, Sunday, where an "electrical odor" was traced to the over-heated furnace blower motor, no damage reported.

April 7:

An oven fire at the home of William E. Smith at 19429 Aurora Drive in Crescent Park was quickly extinguished by the Spanaway Fire Department. The call came in at 1:06 p.m. Monday and the only damage reported was the well done meat being broiled.

Paul Harvey This Week



Strictest Churches Still Growing Fastest

by Paul Harvey

It was the belief of Pope John XXIII that his Church must adapt itself to changing times or get left behind. He believed it was the inflexibility of Catholicism which supplied the "excuse" for Martin Luther's Reformation.

And thus, hopeful of reinforcing the faith and reattracting young people to the Church, Pope John initiated the era of ecumenical dialogue and modernization of the Mass.

Some now blame those compromises for the subsequent trend toward marriage for priests, short dresses for nuns and the myriad manifestations of modernity.

And if a "diluted dogma" was intended to revitalize the Church, it has had the opposite effect. During the past year the membership gain in the Roman Catholic Church was less than 1 per cent; less than the population increase; the least increase in 25 years.

Similarly, major Protestant denominations which have tended toward liberalization in doctrine, liturgy and social attitudes are in the most trouble.

Lutheran churches in the United States gained only two-tenths of 1 per cent in membership last year; the least ever.

United Methodist Church, which has perhaps "gone modern" with the boldest strides, suffered a decline in membership approximating 2 per cent.

On the other hand, the strictest churches continue to grow fastest.

The Assemblies of God, America's largest Pentecostal body, enjoyed a 9 per cent increase in membership last year. The strictly fundamentalist Church of Christ grew about 9 per cent. The Mormon Church, which continues to frown on drinking, smoking, dancing and such, established new congregations last year at a rate of almost one a day!

How much the diluted dogma of the major denominations can be blamed for recent rebellion outside the church is impossible to establish. All that can be said for certain is that a decline in church participation and an increase in crime (11 times greater than our population increase) have been simultaneous.

UPI's religion writer, Louis Cassells, says the statistics do prove a discernible pattern: "A great many Americans are weary of the controversy, doubt and confusion which inevitably attend change.

"They seek a haven of certitude, a feeling of continuity with the past, the comforting assurance of old familiar ways.

"If he finds in church internal dissension rather than fellowship, theological faddism rather than confident faith, he will be more demoralized than refreshed."

The sobering 1969 statistics have caused some churches to take another look at the mirror in 1970. Every few days of the young year Pope Paul VI has reaffirmed historic Church law.

Recently he responded to rebellious priests saying "celibacy for priests is a 'capital law' of the Church and, as such, not a proper subject for either debate or discussion."

Almost daily we are hearing clergymen of prominence begin again to reiterate respect for the laws of Moses, reverence for the essence of all scripture, John 3:16 and the firm opposition to "liberals."

Dr. Wallie Criswell, President of the mostly conservative and growing Southern Baptist Convention, put down a revolt by a Virginia faction of young liberals saying the liberals, at bat, struck out. "When the going gets rough the deeply committed prevail."

Parkland Roundup Queen Official Entry Blank

Single girls, ages 16-20 years, who can furnish a horse and transportation, are invited to enter.

Name _____

Address _____

Age _____ Phone _____

Need Sponsor? _____

Clip and Send To:
Roundup Queen Advisor

c/o Larry King, Puget Sound Bank
P.O. Box 2128, Parkland 98444

For Information Call VI 7-7545 Eves.

Pierce County Herald and
The TIMES JOURNAL

Published weekly at 409 Garfield St., Parkland 98444 and delivered by U.S. Mail and carrier to subscribers.
Publishers: Sun Publishing Company, LE 1-8885
News and Advertising Deadline: Tuesday Noon
Subscriptions \$4.00 per year, \$2.50 six months, or 40c monthly by carrier. News stand price 10c copy.
Qualified as a legal publication under Chapter 213 of the Legislature Acts of the 1941 regular session of the State of Washington.
Second Class Postage Paid at Tacoma, Wash.

Vol. 26 No. 14 April 9, 1970

50 H.P. 1970 MERCURY HOLSCLAW TRAILER STARCRAFT

\$2297⁰⁰

OPEN EVENINGS TILL 9 P.M.

PARKLAND SPORTS CENTER

11122 PACIFIC AVENUE TACOMA, WASHINGTON PHONE LE-7-5677

Salvation Army Week, April 12-18

The Salvation Army cares. Next week, April 12-18, is National Salvation Army Week. This is a good time to remember that for over 80 years this organization has been caring deeply about what happens to people here in these United States.

The Salvation Army has helped countless men and women to revive their faith in God and their fellowmen and themselves.

Last year in the greater Tacoma area, the Army provided over 60,000 free meals and thousands of nights of free lodging. Clothing and emergency care were given in many thousands of cases.

Much of the Army's work was made possible by the generous gifts of household discards and clothing to the Men's Social Service Center by members of this community.

This Center, like the many hundreds in this country, provides rehabilitation facilities through a program of self-help for men with alcoholic and other emotional problems.

The Salvation Army salutes the residents of this community. It wishes to thank them for their loyal support.

Jefferson-Jackson Democratic Dinner

A very festive and interesting program has been arranged for the Jefferson-Jackson Day Dinner. This, the highlight of the Pierce County Democratic Party, will be held in Fellowship Hall in the Masonic Temple, 47 St. Helens Avenue on April 10, 1970. No-host cocktail party has been arranged between the hours of 5:30 and 7:00 p.m. at the Tacoma Motor Hotel, 402 St. Helens Ave. and Scotty's, 29 N. Tacoma Ave. Dinner music will be rendered by Ted Magnuson on the organ. Dinner at 7:30 p.m.

A delightful and different program will be presented for the enjoyment of the Democrats and their friends. Master of Ceremonies will be Martin J. Durkan, State Senator and the featured speaker will be Karl Herrmann, Insurance Commissioner. The food will be supervised by George Cicovich and promises to be delicious. To climax the evening, door prizes will be given to the lucky ticket holders.

Donations \$12.50 per person and tickets may be purchased from your District Chairman or at Pierce County Democratic Central Committee, 739 St. Helens Ave., or call MA 7-0863. Come and join the fun. Free parking at the rear of Buckley King for our dinner guests, also at Tacoma Motor Hotel.

Do A Good Turn For The Retarded

Here is a great chance for all Cubs, Scouts and Explorers to help those less fortunate than we. In order to better serve the Retarded the Pacific Day Care Center needs a bus. For only 500,000 Betty Crocker coupons the bus can be a reality. The Tacoma Guilds for Retarded Children and the Parkland J. C. wives have joined hands to collect the coupons. To date 200,000 have been collected and Scouting has been asked to Do A Good Turn for the handicapped by gathering Betty Crocker Coupons and turning them over to Mrs. Betty Heinzman, 608 So. 127th St., Parkland, Wn. 98444 or phone at LE 1-3509. Even outdated coupons are acceptable.



OUR SECRET WEAPON

Bank of Washington is cutting red tape. As a result, we're offering a new and better kind of service to the people of Washington. Single Statement Banking. One statement (instead of three) covering your checking, savings and loan business.

A Personal Line of Credit that allows you to draw on a pre-established sum of money whenever you wish. Day or night, weekdays or weekends, by sending in a loan draft slip or just writing a check.

We're cutting the red tape out of savings, too.

Making it easier than ever for you to build a good bankroll. Because, now you can automatically transfer a pre-determined sum from your checking to your savings account by just asking. (And it's reported each month on that beautiful Single Statement.)

Red tape? It's retreating fast at Bank of Washington. Because of the programs you've just read about and a whole lot more. Find out about the full story at one of our Banking Centers.

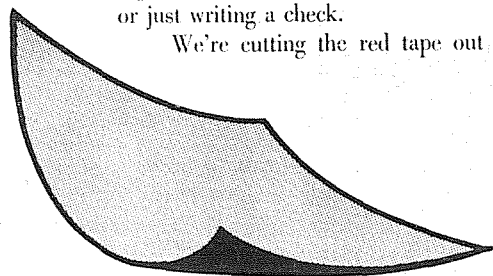
And shear a little red tape out of your life today.



At Your Service: PARKLAND BANKING CENTER
SPANAWAY BANKING CENTER

Bank of Washington

National Bank of Washington/Tacoma, Washington/Member Federal Deposit Insurance Corporation



the Second Forty
by Margaret Brookfield

A FORUM ABOUT MATURE WOMEN

by Margaret Brookfield
Midi versus Mini

Dear Miss Brookfield:

I wonder what other mature women think of the latest fashions — the midi length? My friends are all anti-midi. True, we resisted the shorter hemline for a long time — until it became impossible to buy a dress in our sizes and styles that wasn't above the knee. So we adjusted. I recently shortened some old clothes, about an inch above the knee. (The mini is for the young.) Now that my wardrobe has been irrevocably altered, the big fashion news is the midi length. Do you think that maybe just this once women will resist the "in" fashion and "do their own thing?"

G.D., Los Angeles, Calif.

Dear G.D.:

Some will, some won't. But if the majority begin to resist the new modes, nervous prostration may become an occupational disease in many of the haute couture salons of Paris and New York. Temporarily, many women have come to the conclusion that they would rather switch than fight, so they are buying pants-suits until the midi-versus-mini hemline controversy is settled.

Actually, some mature women have stuck to the midi length for the last five years while some swinging senior citizens have adopted the mini look. It is difficult to say whether mature women will resist or adopt the midi. Today's fashions seem to be made for, and by, the young. They popularized the mini and unisex fashions, forcing hemlines up and gray-haired ladies into pants. One woman of 52 summed up fashions in a line: "My grandchildren kept telling me my dresses were too long, so I had them all shortened."

This Fall will tell whether the midi length takes hold. Meanwhile, keep away from the sewing basket. If the midi becomes popular and you decide to "do your own thing," go right ahead. The midi will pass, just as the "new look" of the post-World-War-II era did.

Mature and in Love

Dear Miss Brookfield:

What do you think of a mature married couple (she is in her 40's; he is over 50) who act like a pair of lovebirds in public? They giggle, hold hands, hug and kiss. I happen to think that love is lovely but not in a crowded room. All their friends just grin and bear it. But I've reached the point where I would like to drop a hint. Should I?

B.M.D., Corpus Christi, Tex.

Dear B.M.D.:

No. If their conduct bothers you that much, either seat them in a corner at your next party or invite them over with so many other guests that half of your company is forced to stand up. If the gal can then balance a plate, utensils, possibly a cigarette, handbag and a glass — and still hug and kiss her husband, she deserves a medal — not criticism.

P.S. If you don't want to invite too many people over, just hide half of your chairs.

Soap Opera Fan

Dear Miss Brookfield:

When my children married, I fell into a new routine — one that included watching soap operas on television during the day. Now my husband has switched to night work and he is home during the day. When I try to watch these programs, he heckles me and insists they are silly and stupid. I enjoy them. What can I do?

J.S., Boston, Mass.

Dear J.S.:

Heckle him when he is watching his favorite TV programs, or find something useful for him to do (like fixing a leaky faucet — preferably a chore in another room) while you're watching the soaps. If this doesn't help, try convincing him to return to the day shift.

Have you a problem as a mature woman, or with one? For advice and help, write to Margaret Brookfield, Information Center on the Mature Woman, 3 West 57th Street, New York, N.Y. 10019.



The Clover Creek Guild chairman for the sale is Mrs. Vincent Radtke, left, assisted by Mrs. L. E. Willoughby, center, and Mrs. Richard Parks, right.

Clover Creek Annual Evergreen Sale, April 11-12

Rhododendron, Azaleas and Mugho Pines are just three of the many beautiful evergreens that will be offered by the Clover Creek Guild for Retarded Children, at their annual evergreen sale, to be held April 11th and 12th at Pay'n Save parking lot, 99th and Pacific Avenue. Proceeds from the sale will be used for the sponsorship of more than 35 children at the Rainier School in Buckley, Washington and for the Pacific Care Center for retarded children.

Clover Creek guild is one

of nine guilds in the Tacoma area affiliated with the Washington Association of Retarded Children.

The members of Clover Creek Guild have, for 2 years, sponsored Meyer Hall at Rainier School assuring the children, ranging in age from 6 to 16 a special Christmas party, Easter, Thanksgiving, Valentine and Halloween treats.

Many other varieties of evergreens, flowering trees and shrubs will be sold. Other unusual plants can be ordered at the sale.

Daffodil Horse Show Set For April 10, 11, 12

Presented by the Western Members of the Arabian Horse Association of Washington and the Clover Park Kiwanis, the Daffodil Arabian Horse Show is one of the biggest Arabian shows on the West Coast. Over 500 horses from Washington, Oregon, California and Canada will be shown. Last year's show was one of only 20 in the United States to receive a "Star Rating" for excellence from the American Horse Shows Association.

The show will be held at the Tacoma Unit Sports Arena which is located one mile east of Pacific Avenue on 176th Street. The arena will

be decorated with 12,000 daffodils. The public is invited.

The classes run from Friday afternoon to Sunday evening. Featured will be Halter, Western, Driving, English, Jumping, Cow Cutting, and Native Costume classes.

The schedule of events is as follows: Breeding Division: Friday afternoon, 2:30 p.m.; Saturday morning, 8:00 a.m.; Sunday morning, 8:00 a.m. Performance Division: Friday evening, 7:00 p.m.; Saturday afternoon, 1:00 p.m.; Saturday evening, 7:30 p.m.; and Sunday afternoon, 1:30 p.m.

BROOKDALE P.T.A.

Since the doorprize is a beautiful, stuffed Purple Cow, our carnival has taken the name of "The Purple Cow Moo-In". It will be held this Friday, April 10th from 5:00-8:00 in the multipurpose room, 132nd and Park Avenue. The chairman, Betty Heinzman and Bev McLaren invite everyone to come as there will be fun, prizes and games. As an added attraction the "Bird Whistler" from the Puyallup Fair will be there to demonstrate his famous bird calls.

PARKLAND P.T.A.

The Parkland PTA is sponsoring a basketball game at the Parkland School gym on Friday, April 10th at 6:45. This is family game night, when the fathers, using only one arm play against the 6th grade boys. Also the mothers oppose their daughters, usually 6th grade girls, at a game of volley ball.

According to PTA president, Mrs. Robert Teitzel there will also be other games, a fish pond, a country store, pies and cakes for sale. A fine time to be had by all, and your money will be going to a worthy cause.

Recent winners of the Golden Acorn Awards from the Parkland PTA were Mrs. Edna Pfeil and Mrs. Lou Kimmel. These women were honored for contributing outstanding service and time for the development of youth in the community.

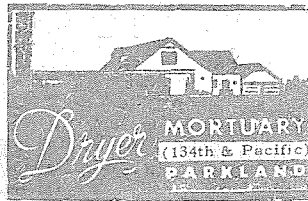
The Parkland PTA meets every fourth Thursday in the evening during the school year.

Civil Defense Meeting Scheduled

There will be a meeting of the Civil Defense on April 15, at 10:30 a.m. at the Spanaway Fire Hall, 162nd and Park Avenue, Spanaway.

A speaker will enlighten everyone on emergency communications for Bethel schools. Remember, emergencies can happen here too, everyone should attend this meeting.

There will be a pot luck luncheon.

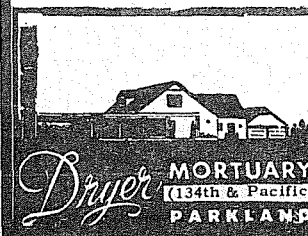


The Country Parson



"Some of the men who have served our people best were not much appreciated while they were doing it."

Copyright, by Frank A. Clark



WWI Group To Honor Charter Members

Parkland Barracks and Auxiliary 2131 of World War I will meet for pot luck at noon at the James Sales Grange April 14th. They will honor their charter members on their tenth anniversary. There will be entertainment by the Trebleaires. Also candy and aprons will be for sale. The meeting starts at 1:30 P.M.

Eveleths Honored At Sunday Housewarming

Friends and relatives of Mr. and Mrs. Orville Eveleth of Graham are having a housewarming for them on Sunday, April 12th. It will be open house from 1 p.m. to 5 p.m. at their new home 29712 Webster Road East. A gift of a money tree will be presented to the honored couple.

The Eveleths have been long time residents of Graham and have been active in many community activities including the management board of Frontier Park.

Altrusa Club Birthday Dinner

Miss Marie Tomich President, of the Parkland Area Altrusa Club will preside at the special Birthday dinner. This April is Altrusa's month to celebrate with 53 candles on their International Birthday Cake. Dinner will be held at Cecantis' Restaurant Thursday April 9th at 7 o'clock. Special guest speaker for the meeting will be Mr. Clay Patterson, Director of Washington Disability, Inc.

Music and entertainment by Paula and Bill Wolfe, on the Electric and Steel guitars.

Altrusa Information chairman Evelyn Kramer and her committee members, Marlene Cunningham, Reyetta Aleshire, and Blanchs Lingbloom are in charge of the program. Many guests have been invited, also Altrusa Clubs in the surrounding area.

NOW SERVING Parkland-Spanaway Area

SECURITY AMBULANCE SERVICE

- 24 Hour Service
- Oxygen
- Resuscitator
- Trained Personnel
- Parkland Based

LE 7-4455

ONLY 6 DAYS LEFT

WHICH TWIN does his own

INCOME TAX

It's easy to spot the wise man who takes his return to H & R BLOCK. He's smiling, happy and secure. Smart taxpayers from coast-to-coast know the value of qualified tax assistance.

COMPLETE RETURNS \$5 UP

GUARANTEE
We guarantee accurate preparation of every tax return. If we make any errors that cost you any penalty or interest, we will pay the penalty or interest.

H & R BLOCK Co.
America's Largest Tax Service with Over 4000 Offices

Puyallup 800 N. Meridian	Parkland 11810 Pacific Ave.
------------------------------------	---------------------------------------

Weekdays 9 A.M. to 9 P.M., SAT. and SUN. 9 A.M. to 5 P.M.

NO APPOINTMENT NECESSARY

For your car your home your life and your health

State Farm is all you need to know about insurance.

See me.
BILL McMONNIES
16607 Pacific Ave.
Spanaway
LE 1-6833



STATE FARM
Insurance Companies
Home Offices: Bloomington, Illinois

SEE US FOR *Fast, Expert* DRY CLEANING

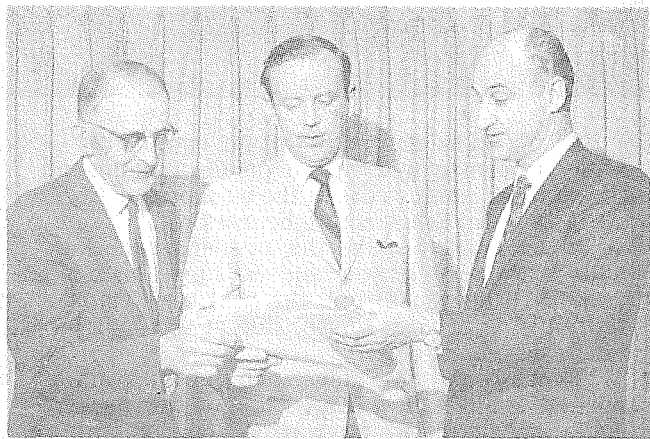
PARKLAND CLEANERS
LE 7-3221
110th & Pacific
IN KELLER'S KORT

INSURANCE
Military - Home - Business
LE 7-4904

Auto Fire Life Bonds

IRENE CLEMENS
Agency - Parkland
10329 Pacific Ave.

"OPEN SPACE PREFERENTIAL TAX ASSESSMENT" To Be Aired At Roy Grange



County Extension Chairman Frank C. Jackson (right) plans a meeting to explain the new Open Space Tax Assessment Relief Law with State Representative R. Ted Bottiger (center), and I. L. Larson (left) lecturer of the Roy Grange.

HB26, Open Space Legislation, will be the subject of a public meeting sponsored by Roy Grange No. 702 in their hall April 9th at 8 p.m.

I. L. Larson, Lecturer, reports that Ted Bottiger, 29th District Representative, and representatives from the Extension Service will bring information on the effect of this legislation on local farmers.

Landowners wondering if they might be eligible for reduced tax assessments under the terms of the new Open Space Law will want to be present. State Representative, R. Ted Bottiger will share the platform with Dr. James C. Barron, W. S. U. Resource Development Specialist and Frank C. Jackson, Chairman of the Pierce County Cooperative Extension Service.

The panel will explain the terms of "House Bill 26" passed by the last legislature providing preferential tax assessment for qualifying farm, timber and open space lands. Frank C. Jackson, Moderator, will give background briefing. Dr. Jim Barron will explain the provisions of the new law. Rep. Bottiger will critique the law and describe needed changes. Question and Answer Period will follow.

Property owners who want a better understanding of the terms of the bill, or how to apply for this tax relief will want to be present. The Roy Grange Hall is reached by driving south on Pacific Avenue, taking the right fork of the "Roy Y" and continuing 8 miles on Hwy. 5H.

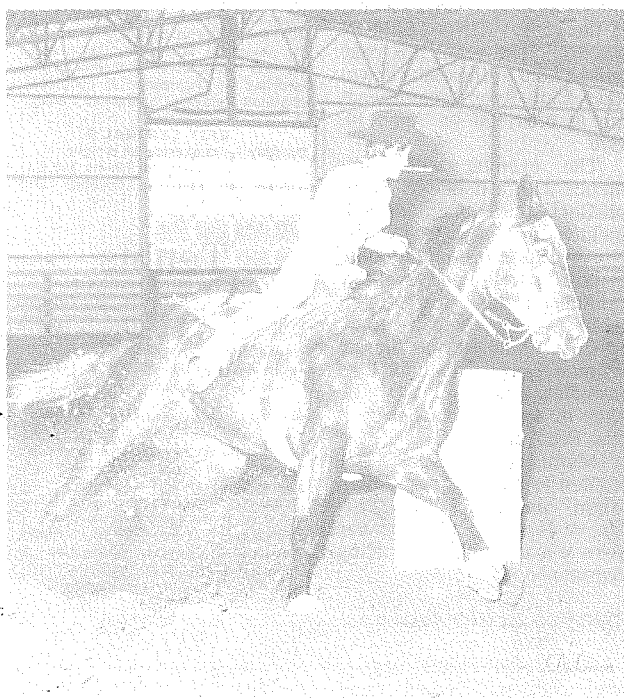
Tour Scheduled For Dairymen

The Annual Pierce County Dairy Buildings and Ideas tour will be held Tuesday, April 14, announces County Extension Dairy Agent Eddie Thomason.

The schedule and ideas which tour participants will have an opportunity to see are:

- 11:00 a.m. Faith Dairy, 3509 72nd Street East, Tacoma
 - a. Rubber free-stall mats — no shavings used.
 - b. Automatic malt feeder.
 - c. "Continuous honeywagon" liquid manure distribution.
- 1:00 p.m. Al Houtsma 208th Street East, Spanaway
 - a. New double-10 herringbone milking parlor. Inside walls of parlor and milkhouse are of smooth plaster finish designed to avoid painting and surface-coating maintenance.
 - b. Sprinkler-type pre-wash system in holding pen.
 - c. High pressure hose-down of parlor accomplished by strategically-placed water storage tanks.
- 3:00 p.m. Wilcox Farms Dairy, off Hart's Lake Loop Rd. near McKenna.
 - a. New calf housing with automatic flush down cleaning system.
 - b. Udder wash and machine rinse sanitizing system.
 - c. A. I. collection unit
 - d. Alfalfa for green chop and silage.

Thomason encourages all dairymen and interested dairy industry personnel to participate in this tour.



Wynette Russell at Port Orchard, 1968 where she also won the barrels.

HORSEMEN'S NEWS

Over The Fence Rail

by Steve Bryson



Local winner, Wynette Russell recently traveled to Kennewick, Washington, where she placed first in the first go-round. On the second go-round she had a little bad luck as her horse "Cus" fell going around the second barrel but made a fast recovery and still came in 2nd place. There were twenty girls competing. Wynette still holds first place in the Washington Barrel Racers Association. Congratulations Wynette!

COMING EVENTS

The All Arabian horse show will be held at the Tacoma Unit No. 1 April 10-11 & 12th.

May 9 Open Horse Show at Frontier Park in Graham. English & Western. More information later.

May 15 & 16 Open Horse Show, Zone Approved at Tacoma Unit No. 1. For information Contact Bud Root, Show Chairman at LE 7-5021.

The Parkland Rodeo will be held June 13th and 14th. If there is any girl 16 through 19 years of age who is interested in running for Rodeo Queen, she can contact Sallie Wilson at 20218 22nd Ave. E., Spanaway, Wn. 98387, or call VI 7-7545. You can pick up entry blanks for this at the Rodeo Custom Shop, The Bunkhouse and Simon's. Entires will be closed this week.

On May 5th, there will be a horsemanship judging for queen by three Northwest Rodeo Association members at the Tacoma Unit at 7:30 p.m. The Coronation will be at Barlo's on Pacific Avenue on May 15th. Anyone interested in being in the Round-up Parade can call Larry Armstrong at LE 7-5524.

PUBLIC AUCTION

For Chester Hutches and Robert Hutches
Route 1, Box 317, Yelm, Wash. Phone 458-7692
LOCATED 1 1/2 MILES NORTH OF YELM ON WILKENSEN ROAD

SUNDAY, APRIL 12th

Time: 11:30 A.M. Sharp Lunch on grounds.

Tractors, Trucks and Farm Machinery

- | | |
|--|---|
| T.B. 6 INTERNATIONAL CRAWLER with blade, drum and arch | 1961 FORD 2-ton Dodge with V8 motor—19-1/2 flatbed, side boards for Grain (in good shape) |
| JOHN DEERE CRAWLER with loader | 1958 FORD dump truck—12-ft. flatbed (in good shape) |
| A.C. WD TRACTOR with loader | 1959 FORD pickup |
| CASE 400 TRACTOR like new | 1953 DODGE tractor and 28-ft. van |
| A.C. TRACTOR Model WC | 1956 2-ton CHEV. dump truck |
| 1961 FORD F100 1/2-ton pickup | |
| 1961 DODGE 3 1/2-ton pickup | |

Farm Machinery

- | | |
|--|---|
| OLIVER grinder and mixer (extra good) | SCRAPER BLADE (3-point hitch) |
| OLIVER combine, 11-ft., self propelled | 2-row CORN PLANTER |
| FAIRM FIELD CHOPPER | 2-bottom DISK PLOW |
| 2 JOHN DEERE No. 5 mower | PASTURE HARROW |
| 10-FT. EASY FLO fertilizer | SIDE DELIVERY RAKE |
| 8-ft. GRAIN DRILL | SPRINGTOOTH and SPIKETooth harrows |
| JOHN DEERE No. 33 manure spreader | 2 - 7-ft. TANDEM DISK |
| P.T.O. manure spreader with big box | ELEVATOR with motor |
| T45 INTERNATIONAL baler | GRAIN AUGER with motor |
| A.C. FIELD CHOPPER with corn head and grass head | 10-ft. SPRINGTOOTH harrow (3-point hitch) |
| SILAGE WAGON | MACHINERY TRAILER |
| A.C. blower with motor | HAMMER MILL |
| 2-bottom 16-in. PLOW (3-point hitch) | 2-BOTTOM 14-INCH PLOW |
| | CATTLE HEADGATE |
| | CEMENT MIXER with motor |

Dairy Equipment

2-unit SURGE milker complete, stainless steel wash vat, cream separator with electric motor. Also small tools and miscellaneous articles.

Auctioneer's Note:—Owner has sold his farm, and in doing so made this sale possible.

—Terms of Sale Cash—

Auctioneers: ED & LEE FLOOD Phone VI 7-7567

"Horsemen's Market Place"
Classified Directory

Board — Trainers — Breeders
Outfitters — Feed Dealers

HORSESHOEING
RAY JOHNSON
TH 5-6006

Vet Supplies
Complete supply animal health products.
Franklin - Farnam - Anchor at
ASHMORE'S
Spanaway Drugs
165th & Pacific Ave. LE 7-5993

BILL MAY
Horseshoeing
LE 1-7768

\$500 REWARD
For information resulting in the arrest, conviction, & sentencing of any persons stealing, butchering or shooting cattle on the Ft. Lewis Military Reservation.
PHONE VI 7-7511

WANT ADS WORK EVERYWHERE

A STUDD APPALOOSA, spoofs, Comanche Bars, Wash. State champion, also T.B. Jockey Club Spotted pharo. 16307 Canyon Rd. LE 1-1479.
7 YR. GRAY MARE, gentle, very sound. \$250. LE 7-5073. 69423.

SOUTH END HARDWARE
HUNTING & FISHING SUPPLIES - LICENSES
PAINTS & PLUMBING SUPPLIES
Call VI 7-7211 So. 185th & Pacific Ave. Route 1 - Box 1360

NOW OPEN IN NEW LOCATION
LE 1-4555
RODEO CUSTOM SHOP
Dean & Dodie Vosburg
Complete Saddle Repair Shop
Western Wear
English Tack & Togs
17302 Pacific Spanaway, Wash.

Tacoma Livestock Market Report

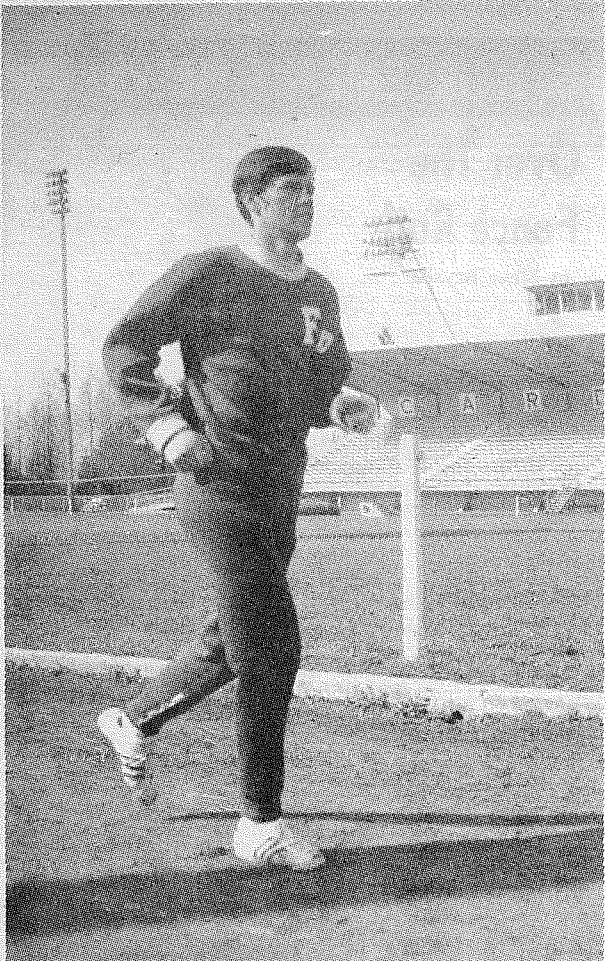


Livestock market report for Tacoma Sale Yard, at Spanaway, Wash. Thursday, April 2, 1970. 541 Cattle, 10 hogs, 18 sheep, and 3 horses. Dairy Cattle market steady for some time now, however Hol. Hefs ready to breed are in extra good demand.

- Veal \$38 to \$48 cwt.
- Heavy Bulls \$28 to \$31 cwt.
- Light Bulls \$24 to \$28 cwt.
- Heavy Hol. Steers \$26 to \$27 cwt.
- Good Slaughter Cows \$22 to \$25 cwt.
- Med. Cows \$20 to \$21.50 cwt.
- Colored Cows \$17 to \$22 cwt.
- Shell Cows \$16 to \$18.50 cwt.
- Hol. Steers (800 lbs.) \$29 cwt.
- W. F. Steers (600 lbs.) \$33 to \$34.50 cwt.
- Hefs. (600 lbs. to 700 lbs.) \$28.50 to \$29.60 cwt.
- Good Steer Calf (400 lbs.) up to \$39 cwt.
- Good Hef. Calf (400 lbs.) \$32 to \$37 cwt.
- Dairy feeder Calf \$36 to \$50 cwt.
- Baby Calfs \$25 to \$60 Head
- Ewe and Lamb Pair \$36 Head
- Black Hogs (330 lbs.) \$25.50 cwt.
- Heavy Boars (600 lbs.) \$7.75 cwt.
- Heavy Sows \$18 to \$22 cwt.

One load of good Hol. Springers consigned for this Thursday's sale. Dairy sale starts at noon sharp.

Ed & Lee Flood, Auctioneers
VI 7-7567



Martin Rogers jogging at Franklin Pierce Track warming up for coming event with Puyallup.

F. P. Speedster Sets Dash Record

Martin Rogers set a new Franklin Pierce record in winning the 100 yard dash in :09.8 and also won the 220 in near record time of 22.8 inches, leading the F. P. Cards to a decisive 105 to 31 win over Lakes High last week.

The previous record for the 100 yard dash was held by Steve Slavens at :09.9 who is

now a student at Central Washington and also a track star there. Steve and Martin were close "buddys" on F. P. Track Team and both ran in last year's State Track Meet.

Martin has a perfect win record this season in three meets and the last outing against Lakes was the first time he was clocked under :10 in competition.

This Week's Prep Sports

Monday the weather was the winner of all Seamount and South Puget Sound contests. With some help from the weatherman the local teams have several events scheduled this week that should show some trends for the balance of the season. The big event this week will be the Daffodil Relays at Harry Sprinker Park in Spanaway on Saturday.

Baseball

SOUTH PUGET SOUND
Tuesday — Franklin Pierce at Clover Park, Auburn at Washington, Puyallup at Jefferson, Federal Way at Rogers.
Thursday — Washington at Lakes, Clover Park at Puyallup, Rogers at Auburn, Jefferson at Federal Way.

King Salmon Night Sportsmen's Feature

Once again, The Salmon Committee of the Tacoma Sportsmen's Club is featuring one of the Clubs Gala Events of the year, "KING SALMON NIGHT". The event this year will be held at the clubs downtown Club Rooms commencing at 8:00 PM on April 10, 1970.

The evening will commence with a delicious Salmon Barbecue Dinner and will include dancing to one of the Northwests more outstanding Bands, as well as other entertainment. This most worthwhile event is held annually to raise funds for the Annual Salmon Derby which in turn provides funds to assist the Club in its Salmon Conservation Programs.

Members and Guests are invited to both "King Salmon Night" and the Salmon Derby. A Donation of \$1.50 per person is asked for the "King Salmon Night".

Braves Scalp Trojans

The Bethel Braves opened their Seamount League track schedule Friday by scalping the Fife Trojans 94 to 51. The Braves captured 12 first places and swept first, second, and third in discuss, 220, and 880 yard dashes.

Sprinter Steve Dawson was the only triple winner. The swift Senior Brave won the low hurdles, 220, and ran the first leg of the winning 880 relay team.

Mike Smithlin, the Braves outstanding long distance runner, won first in the mile with a 4:46.9 and came back to outkick teammate Stan Adkin for first in the two mile in 10:24.3.

Senior Bob Niehl, produced the best jump in the state for the outdoor track season, winning with his second best jump ever in competition at 6'6 1/2".

Brave discuss throwers went 1-2-3, Steve Bruner, Steve Bury, and Bob Hammond in that order. Brave half milers Bob Nylander, Jim Conant, and Terry Browning finished 1-2-3, while the sprinters Steve Dawson, Doug Alsip, and Gary Johnson swept the 220.

Sophomore Doug Wilson leaped to a new school record in the triple jump of 40'2". Sophomore teammate Milton Westbrook, also broke the old mark of 38'9" held by Gary Hopkins, putting together a jump of 40'1".

Dan Zurfluh, a senior, won his throw for the third straight meet in the javalin with a good early season throw of 159'4".

Junior Steve Benzing won his 3rd race in four outings, running a 16.1.

Two school records in prior meets were established. Mike Smithlin broke the 880 record he set last year by .6 of a second, running a 2:06.2. Also, Sophomore Stan Adkin has cut 18 seconds off Dick Hopkins two mile record, winning at Lincoln with a time of 10:21.3.

SEAMOUNT
Tuesday — xWhite River at Tahoma, xBethel at Enumclaw, xNorth Thurston at Olympia, xBellarmine at Fife.
Wednesday — xSumner at Fife, xTumwater at Centralia, xBethel at Eatonville.
Thursday — xEnumclaw at Lincoln, xCurtis at Stadium, xTahoma at Mount Si.
Friday — xBethel at Sumner, xCentralia at North Thurston, xPeninsula at North Mason.
Saturday — xNorth Mason at White River (2), xMonroe at Tahoma (2)

EAST CENTRAL
Tuesday — Tenino at St. Martin's, xLakeside at Wright.
Wednesday — xBethel at Eatonville.
Friday — Eatonville at Tenino, Wright at St. Martin's, Orting at Laughbon.

Track

SOUTH PUGET SOUND
Tuesday — Franklin Pierce at Puyallup, Auburn at Washington, Jefferson at Lakes, Clover Park at Federal Way.
Friday — Washington at Rogers, Puyallup at Jefferson, Federal Way at Auburn, Lakes at Clover Park.
Saturday — xDaffodil Relays at Spanaway Park.

SEAMOUNT
Tuesday — Enumclaw at Mount Si, xTahoma and South Kitsap at Lincoln, xStadium at Curtis.
Thursday — Tumwater at North Thurston, Peninsula at Bethel, Fife at Curtis, Mount Si at Foster, Tahoma at Sumner, White River at Enumclaw.
Saturday — xTumwater at Longview, xDaffodil Relays at Spanaway Park.

EAST CENTRAL
Tuesday — xLakeside at Wright.
Friday — St. Martin's, Tenino and Eatonville at Orting, Laughbon and Wright at Yelm.

Tennis

SOUTH PUGET SOUND
Tuesday — xJefferson at Lincoln, xAuburn at Federal Way, Clover Park at Stadium, xRogers at Washington.
Wednesday — xLakes at Curtis.
Thursday — xFederal Way at Issaquah
Friday — xInterlake at Auburn.

SEAMOUNT
Tuesday — Enumclaw at Sumner, Foster at Tahoma, White River at Mount Si, Fife at Bethel, Tumwater at North Thurston, Curtis at Peninsula.
Wednesday — xLakes at Curtis, xGlacier at Enumclaw.
Thursday — Enumclaw at Tahoma, Mount Si at Sumner, White River at Foster, Fife at North Thurston, Peninsula at Bethel, Curtis at Tumwater.

EAST CENTRAL
Monday — xBellarmine at Wright.
Wednesday — Elma at Wright, Laughbon at Eatonville, Yelm at Montesano.
x — Non-league contests.

BOWLING RESULTS

PARADISE BOWL
EXPRESS — George Stephenson, 206-211-198-615-211; Betty Breen 494-199.
ROLLING BEES — Willa Woodford, 531; Jennie Rugers, 190.
THE BELLES — Nancy Cosgrove, 516; Barbara Barna, 193.
PINETTES — Betty Lauenborg, 170-226-219-615; Marge Miller, 162-135-279-576-279; Sue Sweeney, 191-178-188-557; Rose Eveleth, 229-145-181-555; Liz Jowell, 172-188-193-553.
"60" MIXED — John Gravatt, 510; Lyle Coats, 202; Doris Whitman, 431; Laura Catchpole, 181.
SPORTSMAN — Ray Frerichs, 541; John Davis, 218.
INDUSTRIAL — Herb Hollstrom, 572; Gary Harvey, 229.
FRIENDLY DOUBLES — John Ax1, 518-201; Edris Hakkkila, 512-179.
PREMIER — Bob Bjorke, 593, 232.
SR. CITIZENS — Bert Bissell, 507; Al Kleinsasser, 201; Clara Friedric.
FRANKLIN PIERCE FACULTY — Lee Ehrington, 583-244; Eleanor Ervin, 513-191.
MIXERS — Harold Crisman, 553-202; Wava Thompson, 485; Ruth Rickert, 183.
GRAHAM — Ron Nabozny, 144-257-200-601-257; Rose Eveleth, 506; Anne McGee, 203.
EAGER BEAVERS — Dorothy Bonnell, 506; Misako Garner, 188.
BIRDS OF PARADISE — Julie Christie, 505; Chris Cope, 195.
HI-LOWS — Shirley Bartie, 171-177-222-570-222.
PARKLAND MIX — Ardeen Iverson, 564; Bob Lovelace, 203; Lois Yurisch, 520-188.
850-SCRATCH — Bill Faulk, 202-210-202-614; Bill Emmert, 216.
EVERGREEN — Del Gunns, 552; Johnny Resp, 219.
CLASSIC — Ed Cooper, 575; John Nelson, 224.
BOWLERETTES — Betty Morrow, 516; Beth McLellan, 202.
MOD QUADS — John O'Leary, 581-222; Helga Geyer, 465-175.
LAST NITERS — Steve Kanton, 548; Walt Daniel, 201; Betty Morrow, 529; Donita Williams, 190.



AS SURE to happen as the sun coming up — some fishermen will go out on the opening of the summer fishing season the weekend of April 18-19, without their fishing licenses.

If you plan to make this opener, reach into your billfold right now and be sure you have your 1970 license. If not, the next time you set foot outside of your house, stop at the sporting goods shop and get it.

Every year, some fishermen get out for the opener, realize they forgot to get the new license, decide to fish anyway and end up with a ticket. The fine being what is for this little oversight, they end up in effect having paid for a license several times and still don't have one.

So check your billfold now.

FISHERMEN will try everything department: A friend who is really a serious fisherman, always pours Coke on his fishworms. "It makes channel cats really go for them," he says.

If you don't go for the Coke routine, you still may be interested in the following way to outwit fishworms that are always crawling to the bottom of the container you have them in.

Cut both ends off a coffee can and use the plastic lids that come with so many brands of coffee. All you have to do to get the deep crawling worms on top is turn the can upside down and take off the lid that had been on the bottom.

And there they are, on top.

For long periods of time, don't store the worms with both lids on, for they need air, just as all living things do.

DUCKS UNLIMITED, the U. S. organization that builds duck breeding grounds in Canada, had another good year in 1969, completing 40 new projects totaling 120,000 acres of prime breeding habitat.

Waterfowl hunters in this country contributed a cool \$2 million to DU in 1969 to help build more of these "duck factories." This is a new record for contributions and a 22 per cent increase over the previous top year of 1968.

In its 33-year history, DU has built more than 900 such projects, with a total of 1,600,000 acres of nesting habitat and more than 8,200 miles of productive shoreline.

Those who contribute to DU know this story well: Those who don't but who like to hunt ducks, could do well to pitch in a few dollars each year, for Canada is where four out of five ducks in North America begin life.

D&J's SPORTING GOODS
12816 Pacific Ave. LE 1-1515

LAKE SPANAWAY Golf Course · Driving Range
"Golf Lessons"
Roger Weister Professional LE 1-3660 Ken Tyson Manager

IT'S OUR MOVE!
In the past few months so many people have been switching over to Farmers Insurance that, well, we've just had to move to new quarters where we can serve our many friends even better than before.
The next move is up to you. Before renewal time rolls around let us give you all the money-saving facts on Farmers—the best insurance buy in America today.
Fast · Fair · Friendly
Call these numbers
LE 1-8889
LE 1-1119
LE 1-1777
16322 Pacific Ave., Spanaway

GO!
To Lucky O'Neals For Locker Meats
BEAT!
The One Piece Price
L & L LOCKER MEATS
1023 Valley Ave. NE. Puyallup
848-3626 or TH 5-7043

NEW LIFE FOR OLD SHOES
Repair Them
Have those worn shoes made "NEW."
Prompt, friendly service.
LEE'S SHOES
12213 Pacific Ave.

Angelo's PIZZA HOUSE
ORDERS TO GO
Featuring top sirloin and American dishes, spaghetti, rigatoni, meat balls, sausage, ravioli, beer and wine.
Choice of Pizzas
cheese & tomato
anchovie
mushroom
Italian sausage
pepperoni
tuna
bacon
peppers
olive
hamburgers
ham
salami
onion
LE 7-7233
14102 PACIFIC AVE. PARKLAND
CALL AHEAD, IT'S PIPING HOT ALL THE WAY HOME
PICK UP A BOX, PAIL, BUCKET OR A BARREL

BOWLING 35c
Saturdays Until 7 p.m.
Sunday Until 1 p.m.
PARADISE BOWL
108th & Pacific
LE 7-6012

CLASSIFIED ADS

1 Misc. For Sale

CUSTOM DRAPES
Very reasonable, hundreds of samples. LE 7-0186. No. 69429.

**RHODODENDRONS
AZALIAS**
5102 EAST 72nd.

TIRES?
Dunlop — Miller
New — Retreads
See Tiny
TINY'S TIRE CENTER
108th & Pacific - LE 1-4535

CERAMICS
Parkland Ceramics
1303 So. 117th
Custom Firing
Lessons
LE 1-0823

FREE FERTILIZER for the hauling.
LE 1-0370. No. 69414.

3 Trucks, Equipment

1½ TON 1950 Chev truck, ¾ ton Ford pick-up, 1954. Camper Bus, 1950 model. Call after 2. LE 7-6772. 69426.

6 Musical Instruments

PIANO BARGAIN. Mediterranean spinet console piano. Like new, assume low mo. pyts. Phone Credit Mgr., BR 2-5282, Tacoma, Wn. 98402. 69425.

7 Furniture, Appliances

OVERSTUFFED CHAIR, table saw, garden aid tractor, ping pong board 5x9, wringer-type washing machine, Speed Queen, good condition. LE 7-3430. No. 69420.

UPHOLSTERY SPECIAL
Davenport & chair, \$125.00, fabric included. LE 7-0186. No. 69428.

PATIO SALE — 11th and 12th, clothing and household items. 1217 E. 138th. 69424.

ANTIQUER STERLING Silver flatware. LE 7-6772. 69427.

9 Animals For Sale

SAINT BERNARD puppies registered AKC. Pedigree championship line. Large breed. VI 7-281969-303TFN

2 Autos For Sale

*Put More Fun
In Your Driving!*
**1970
VOLKSWAGEN**
World's No. 1
Economy Car
**IMMEDIATE
DELIVERY**
at
Tom Carsten's
**AUTOHAUS
INC.**
7030 South Tacoma Way
GR 4-0666
Tacoma's Dealer Since 1954

15 Mobile Homes

ONE ONLY, 15½ travel trailer - New. Was \$1595 - now \$1425 - 10% down. Lucky Sales, 13502 Pac. Ave. LE 7-8487. No. 69416.

NEW 10½ CAMPER, installed in 64 Ford ¾ ton - \$2695, 15% down 42 mo. on balance. Lucky Sales, 13502 Pac. Ave. LE 7-8487. No. 69415

**MOBILE HOMES
"MAJOR SOURCE"
NEW HOUSING**
*President Nixon sends
Report to Congress*

It said: "Mobile homes at present constitute a major if not the largest single source of acceptable new housing available at prices which moderate-income families can afford."


For the
FINEST MOBILE HOMES
see
Lucky Sales
LE 7-8487
13502 PACIFIC AVE.

18 Real Estate Wanted

Listings Wanted
Buying or Selling
Real Estate Service
Call
Devereaux Realty
12152 Pacific Ave. LE 7-8658

19 For Rent Or Lease...

**Let "SUBUR-MAN" serve
YOUR RENTALS**



- Selective Placement
- Regular Inspections
- Rental Management

D. GENE BURNS
Rental Mgr.
Residence
LO 4-6598

SUBURBAN REALTY
11302 Pacific Ave.
LE 7-8638

CAMPER RENTALS — \$5 per day. Complete equipment. Reserve now. Trucks available. LE 1-4748. 10002 Pacific Ave. 69-386

2 BEDROOM APT., first floor, partly furn. Handy to shopping & bus. Adults only. GR 4-0486. 69-405

33 Licensed Child Care
MIDLAND AREA LE 1-4055 69048

27 Misc. Services

Serving Your Local Area
For All Your Heating Needs
PACIFIC COAST OIL
GENE SCOTT
MA 7-1112 DAYS
LE 1-0468 EVES.

- DIESEL
- STOVE OIL
- FURNACE REPAIR
- INSTALLATIONS
- ESTIMATES

Union Oil Products

ALL MAKES
WATER PUMPS
REPAIRED
For Sale
CAL PUMP
model 52B210
1/2 HP Submersible Pump
\$159.95
For wells up to 100 ft
635GPH
GRANGE SUPPLY
LE 1-5777

AOK Excavating
Backhoe - Dozer - Hauling
Orv Swim
LE 1-2084

TOP JOB RESUME
NATIONAL AND INTERNATIONAL.
Professional editing, Counseling.
Low cost. 107 No. Tacoma Ave.
Tacoma. MA 7-6357, anytime. 69422

PRUNING, sprinkler repair, landscaping LE 1-1117, LE 1-4776. 70103TFN

TOP SOIL, Gravel. LE 1-1124. 69-1

PIANO TUNING & REPAIR. SK 9-3947 or SK 2-7695. 69-418tf

36 Personals

PSYCHIC READER
HELP & ADVICE
On All Your Problems
Answer All Your Questions
Can Tell you of Changes
You Should Or
Should Not Make
OPEN
DAILY AND SUNDAY
3305 PACIFIC AVENUE
OLYMPIA
CALL 491-5040

38 Instruction
PIANO LESSONS, beginning & advanced. Home or studio. South-end and Northend studio. Children and adults, SK 2-7695 or SK 9-3947. 69-419tf

43-Income Tax
D.H. ROBINSON, your home or my office, call for appt. afternoons
LE 1-8426 69-367T.F.N

INCOME TAX SERVICE
AT
PARKLAND REALTY
CALL TH 5-0101
FOR APPOINTMENT

EXCEPTIONAL OPPORTUNITY in Tacoma area for CPA level person. Must be proficient in real estate and land development. Excellent salary and benefits. Call Helen,
LE 1-9191
12602 Pacific Avenue

RENT TV
RENTAL MARTS, INC.

DEEL'S BARBER SERVICE
PARKLAND SQUARE
SHOPPING CENTER
ADULTS \$2.00
Children under 12 \$1.50
Open Mondays
Dick Moorish & Lee Deel
12209 Pacific — By Barlos

MIXED SOIL
• Sandy Loam • Black Humis
• Mixed Bank Run
LE 7-7455
**NEWBURY'S DOZING
SERVICE**

**CONCRETE FINISHING
PLACING & FORMING**
J. L. Lewis
LE 1-5409

**SUBSCRIBE
NOW!**
52 Issues
of the
Times Journal
For Only
\$4.00 per Year
CALL
LE 1-8885

or send
to our new office
409 Garfield
PO Box 2116
Parkland 98444

30 Repair Services
Sheet Metal
• Furnace Repair
and Service
• Installations
**PARKLAND
FUEL OIL**
12002 Pacific Ave.
LE 7-0256

23 Help Wanted
EARN \$200-\$1,200 MO. selling the fabulous slim gym, LE 7-6489, LE 7-4200 69-364T.F.N.
I NEED HELP in my business, full or part time, write 7240 So. Alder, Tacoma. 69-400

Legal Notices

In the Superior Court of the State of Washington
For the County of PIERCE
IN PROBATE
No. 79568
Notice To Creditors
IN THE MATTER OF THE ESTATE OF
FREDA E. CLAUSEN
Deceased.

Notice is hereby given that the undersigned has been appointed and has qualified as Executor of the estate of the above named deceased; that all persons having claims against said deceased are hereby required to serve the same, duly verified, on said Executor or his/her attorney of record at the address below stated, and file the same with the Clerk of said Court, together with proof of such service within four months after the date of first publication of this notice, or the same will be barred.

/s/ Theodore G. Clausen
Executor of said Estate
8849 Pacific Avenue,
Tacoma, Washington 98444
HEMMEN, COHOE & BOTTIGER
By: R. Ted Bottiger
Attorney for Estate
8849 Pacific Avenue,
Tacoma, Washington 98444
GR 5-4800
Published in Times Journal
April 9 and 16, 1970.

Legal Notices

IN THE SUPERIOR COURT OF THE STATE OF WASHINGTON IN AND FOR THE COUNTY OF PIERCE
Notice of Hearing Final Report and Petition for Distribution
IN THE MATTER OF THE ESTATE OF
KARL HIRIS
Deceased

Notice is hereby given that the personal representative of the above named Estate has filed in the office of the Clerk of said Court a final Report and petition for distribution, asking the Court to settle said Report, distribute the property to the persons there-to entitled and to discharge said Personal Representative; and that said Report and petition will be heard on the 29th day of April, 1970, at 9:30 o'clock A.M. in the Court Room of the Probate Department of said Court, at which time and place any person interested in said Estate may appear and file objections thereto and contest the same.


Dated this 1st day of April, 1970.
/s/ John Boyle
HEMMEN, COHOE & BOTTIGER
R. Ted Bottiger
8849 Pacific Avenue
Tacoma, Washington 98444
GR 5-4800
Published in Times Journal
April 9, 1970.

**COLUMBIA CRESTVIEW
ESTATES**

- Beautiful Mt. View Lots
- Underground Utilities, Fire Hydrants
- Large Size Building Sites
- Protective Covenant
- Owner Will Carry Contract

256th & Meridian E.
GRAHAM AREA
Located On Meridian 1 Mile So. Graham Fire Dept.

An Endowed Care Cemetery



Fir Lane Memorial Park
Dryer Fir Lane Chapel

924 East 176th Street
Spanaway
LE 1-5500

CHURCH DIRECTORY
**ATTEND OUR
WORSHIP
SERVICES**



**PARKWAY
Presbyterian Church**
Sunday School 9:30 a.m.
Worship Service 10:45 a.m.
Nursery Service Provided
714-138th East LE 1-4234
Rev. Wesley J. Drummond

Spanaway Assembly of God
166th & Pacific Ave.
Sunday School 9:45 a.m.
Morning Worship 11 a.m.
Evening Evangelistic 7 p.m.
Family Night Wed. 7:30 p.m.
LE 1-1412

**Spanaway Lutheran
Church**
8:30 & 11 a.m. Worship Service
9:45 a.m. Sunday School
Grades 1 & Up
11 a.m. Sunday School
3, 4 and 5 Year Olds
John L. Briehl, Pastor
160th & A St. LE 7-5978.

**Parkland Lutheran
Church & Christian
Day School**
Worship... 10:30 a.m.
Sunday School-Bible Study 9:15 a.m.
All Ages
H.A. Theiste, pastor
LE 7-5492 LE 1-0777

Trinity Lutheran Church
Worship Services 9 a.m & 11 a.m.
Sunday School 10 a.m.
Wednesday School 4-5
(through Grade 9)
**Erling C. Thompson
Robert Drowes PASTORS**
12115 So. Park LE 7-0201

**Spanaway United
Methodist**
Church School... 9:30 a.m.
Worship Service... 11:00 a.m.
Nursery During Service
R. Gordon Harrison, Pastor
163 & Pacific LE 7-5134

AT ARMSTRONG'S
We are planning for an entry in the Park-land Round-Up Parade at 10 A.M., June 13th.
ARMSTRONG'S USED CARS
11009 Pacific Ave. LE 7-5524

Crab Feed Palsy Benefit

The Tacobat Grotto of Tacoma will hold its annual Spring Crab Feed Sunday, April 12 from 1 to 5 P.M. at the VFW Hall, 2000 S. Union, Tacoma. Proceeds will go to the support of the Cerebral Palsy Home for Children in Spokane.

1200 pounds of fresh Westport cracked crab will be featured on the menu along with spaghetti, beverage, and salad. Adults donation is \$3.00. Children's portions are half price. Tickets may be obtained at the door or from a Tacobat Grotto member.

Parkland Round-Up Buttons To Go On Sale April 10th

The Parkland Business Club announces that the candidates for the Parkland Round-Up Queen and Princesses, will be selling buttons starting April 10th in support of the coming Round-Up activities.

The purchase of a button will entitle the holder to attend the Horsemanship judging of the princesses May 5th, at Tacoma Unit No. 1 Sports Arena.

All net proceeds of the button sale will go to the support of Gonyea Park, 135th and South J Street.

Church Plans Terry Baker Fund Aid

The Senior High Baptist Youth Fellowship of the Immanuel Baptist Church will hold a car wash, Saturday, April 11, at Dick's Richfield Station, 112th and Portland Avenue. The proceeds from this car wash will go to the Terry Baker Fund for her open heart surgery. Donation of \$1.00.

Chemical Weed Killers Meeting Topic

The use of chemical weed-killers to stretch ones labor supply and increase efficiency of production will be the theme of a meeting held Thursday, April 9, at 8:00 P.M. in the Winter Classroom Building, Western Washington Research and Extension Center.

Tom R. Edward, representative of Geigy Chemical Company, will be the featured speaker. He will discuss such topics as use of herbicides, how herbicides work, how to control different weed species, weed identification and weed control in pastures, corn, caneberrries and strawberries.

William Scheer, Area Extension Horticultural Agent, will discuss safety in handling and using weed control chemicals.

LATE AFTERNOON BANKING COMES TO PUYALLUP!



CITIZENS MAIN OFFICE IN DOWNTOWN PUYALLUP

ANNOUNCES

CONTINUOUS

ALL-DAY DRIVE-UP WINDOW SERVICE

10 AM TO 5:30 PM

(UNTIL 6 ON FRIDAYS)

Six years ago we at CITIZENS pioneered late afternoon hours in our branch offices. This concept has proven so popular that we are now extending it to our drive-up window in downtown Puyallup.

So now you can do your banking...without leaving the car...anytime from 10 a.m. to 5:30 p.m. at any of CITIZENS five convenient locations.

And if you'd rather come inside to see us, you'll find the entire bank open from 10 to 3 (plus 4 to 6 on Fridays) in downtown Puyallup...and from 12:30 to 5:30 (6 on Fridays) in the four branch locations.

YOURS FOR EASIER BANKING.....!

Citizens State BANK



MAIN OFFICE / SUMMIT VIEW / SUMNER / EDGEWOOD-MILTON / WILLOWS
301 Meridian S. in Puyallup / 112th & Canyon Road / Sumner Shopping Center / East of Edgewood Square / 116th & Meridian

WINDOW GLASS CUT TO SIZE

also

- Aluminum Windows
- Storm Doors
- Patio Doors

JU 8-3025



GLASS SHOP

8012 So. Tacoma Way