

The TIMES JOURNAL

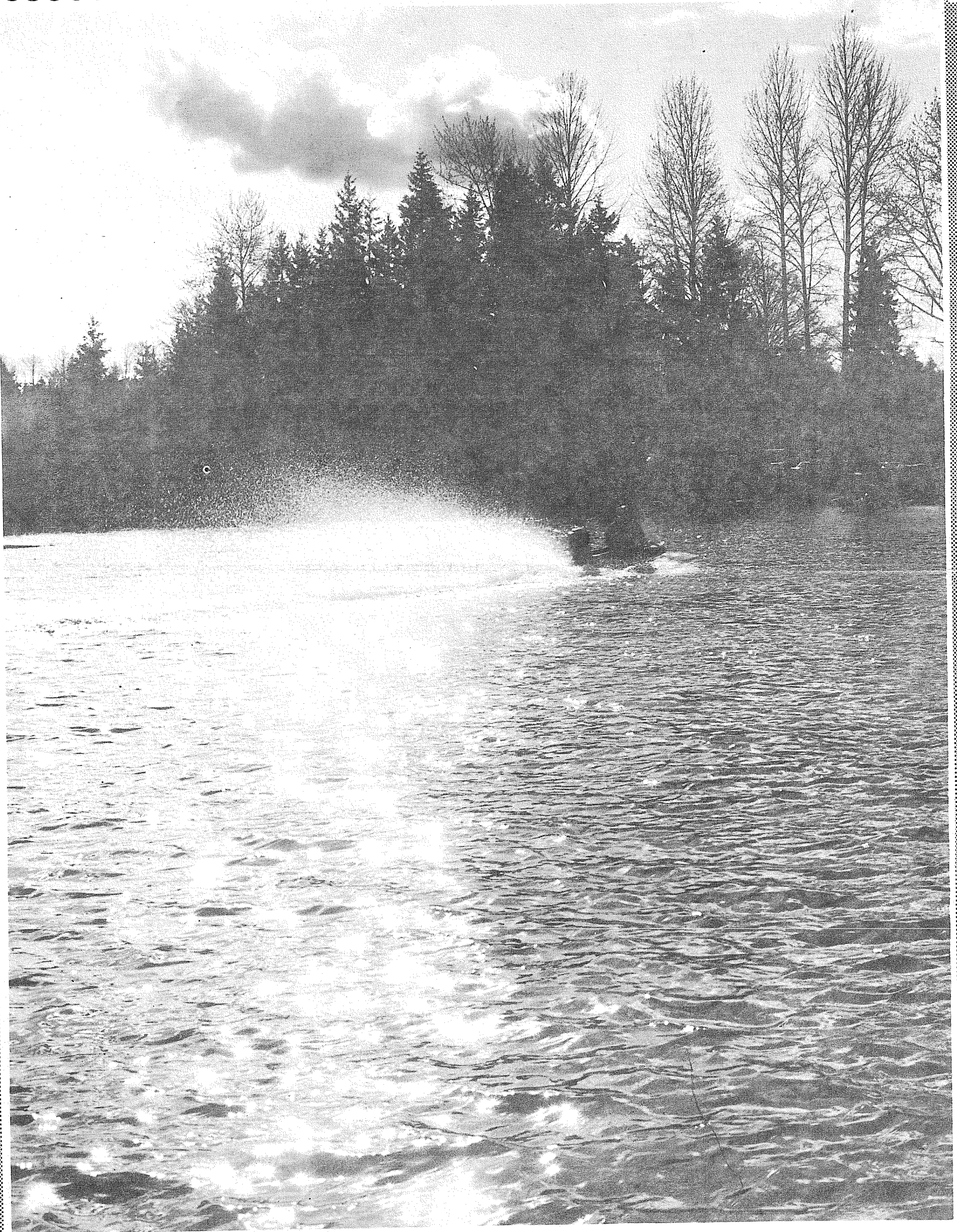
Vol. 25 No. 145

April 10, 1969

Price Per
Single Copy

10¢

Daffodil Festival
Criticized
See Page Two



One of the sure signs of spring in this area is the screaming of outboard racing machines as they compete on tight turns and run flat out at freeway speeds on the local lakes. Sunday afternoon at Lawrence Lake in the Bald Hills saw competition from the choppy whine of the little utilities to the jet-like scream of the alcohol burners and the highly modified four cylinder gas engines. The Tacoma Racing Association strictly enforced the rules of both competition and safety in the well-run meet under slightly cloudy skies.

—Staff photo

Editorial

County Areas Play Second Fiddle In Daffodil Festival

The 1969 Puyallup Valley Daffodil Festival Queen was selected Monday, but only after a time-consuming marathon of guitar plunking and sagebrush serenades more akin to fields of cactus rather than golden daffodils.

Despite the fact that the entertainment acts were generally outstanding, hillbilly and western music somehow is not compatible with the regal pomp usually connected with the traditions of naming a Daffodil Festival Queen. Due to the amount of time allocated the western entertainers in relation to the coronation ceremonies, one felt he was attending a cowboy concert instead of what he came to see, namely a pretty lass named Daffodil Queen.

We hope that next year the festival shortens the entertainment portion of the program by at least 1½ hours, and suggest that the Princesses be featured more than the fleeting glimpses accorded this year.

Daffodil Policy Unfair To Rural Schools

While the Festival is under our editorial gun, we would be remiss if we failed to blast the unfair policy of requiring suburban and rural schools to enter a float in the parade if their students are to participate in the festivities. This requirement forced Bethel to drop out of the activities last year, and may doom future Franklin Pierce participation.

The unfairness of the policy is compounded by the fact that Tacoma City Schools are spared the problems connected with do-it-yourself float building because most of the big business in the county is centered in their area.

Unfortunately, the Bethel and Franklin Pierce areas have a noticeable shortage of large enterprises that are financially able to pick up the tab for parade entries.

As a result, the burden of fund raising, design, frame construction, daffodil stuffing, and then moving it to the parade route, falls on the faculty and student body of these schools. It would be wise to remove these unfair barriers to suburban and rural areas before the 1970 Festival.

And in the meantime, congratulations to Queen Linda Michel and best wishes to her Royal Court.

Bethel Float

Work on the Bethel area's Daffodil Float is now underway with students and faculty members of Bethel High School and Bethel area adults donating spare time and their talents to build a float which will represent the entire Bethel area in the Daffodil Parade on April 12.

The Bethel float this year, as last year, will be unusual in that the float will be completely designed, built and financed through the efforts of students, instead of being financed and built by a commercial organization as a means of advertising. The Bethel High Student Body is undertaking this project again this year to insure that the Bethel High School Marching Band and Drill Team will be able to participate in the parade.

Chief Float Designer Bill F. Childers and Student Co-Designers Robert Harmon and Mike Tilton have completed all art sketches and pre-planning for the float which will be entitled "Childhood Memories." The float, built on a float chassis provided by the Bethel Booster Club, will use 30,000 yellow daffodils and 5,000 white daffodils to carry out the float theme on its thirty-four long, eleven feet wide and thirteen feet high chassis.

Spanaway Lions Send Thank You

A special thanks was offered to all the people who donated so generously to the Sight Conversation Project by Spanaway Lions Club members Tuesday.

Thank yous were also extended to the various business establishments that allowed the Lions to use their facilities to pass out White Canes. Donations will be used to establish an eye bank in the Northwest.

REO Job Bus

The new Rural Employment Office, installed in a bus, will be dedicated 1:30 p.m. May 2 on the PLU Parking lot. A reception will be held from 2-3 p.m. at Trinity Lutheran Church.

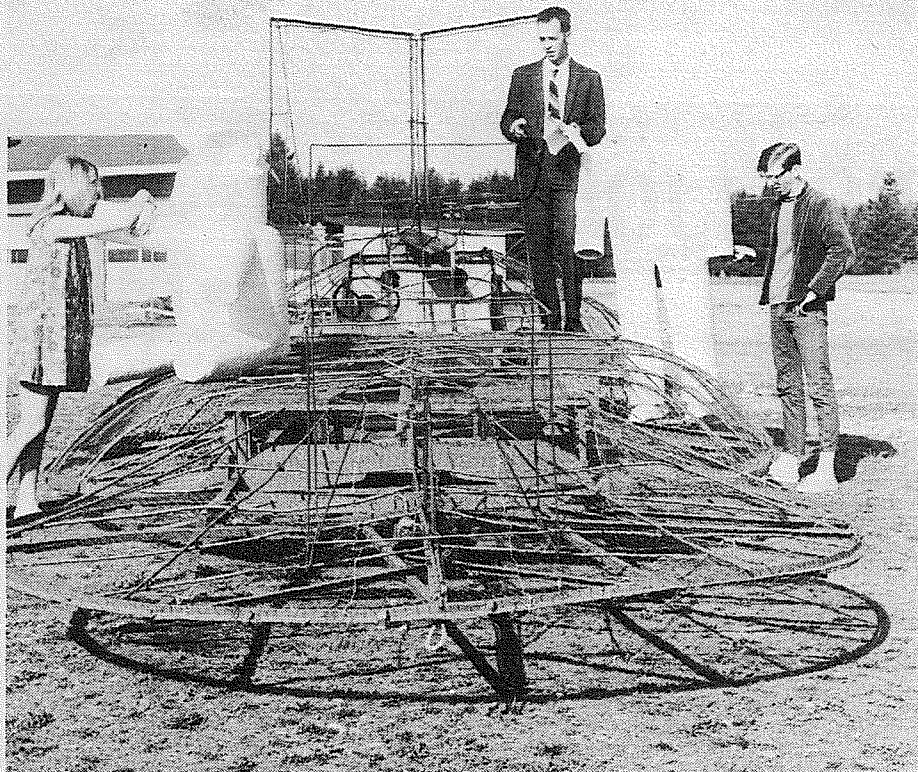
Elected SPC VP

Byron Stay, son of Mr. and Mrs. Werner Stay, 12113 A St. in Tacoma, has been elected second vice president of the Associated Students of Seattle Pacific College.

Stay, 21, is a junior at the college. He is majoring in philosophy.

While a student at Franklin Pierce, Stay was active in honor society, track, cross country and the Voice of Christian Youth.

Seattle Pacific College is a four-year, liberal arts college of 2,000 students which was founded in 1891 by the Free Methodist Church. It offers majors in 30 areas and masters degrees in five areas.



BETHEL ART TEACHER, Bill Childers, heads a crew of design students as they experiment with ideas for the Bethel Daffodil float for Saturday's parade. Cathy Halverson and Dick Morgan try different places for giant soldier and teddybear figures in the fanciful design representing memories of childhood. For the benefit of parents who wish to take pictures of children with the huge figures on the float, the float will be on display at the high school starting at noon on Sunday. PTAs in the Bethel District will serve coffee and cookies at the high school on Sunday during the display.



NARROWLY escaping serious injury in this one car roll-over on the Ohop Valley Extension Road Thursday night were driver Roy Jennings, 19, of Rt. 1, Box 143 Eatonville and his brother-in-law Paul Blaylock, 14.

New Parking Spot For Mobile Unit

The Mobile unit of Senior Center, Inc., has found a new parking spot with access to a recreation hall.

This is the answer to most of the dreams of the seniors in the Parkland area, according to Dan Phillips, community representative. The address is 16308 East B. Street, and the hall is located in the Country Mobile Estates.

Thursday, April 10, Mrs. Nellie Wallace, community representative from Buckley, will present her color slides and commentary on Hawaii. The show starts at 1 p.m. The unit will be open at the above address from 9 a.m. to 4 p.m. for any information desired on the program.

On Friday, April 11, the Mobile unit will move to the Lucky Store parking lot at 133rd and Pacific Avenue where Mrs. Arvilla Johnson, craft specialist with Senior Centers, Inc., will give the follow-up class in dippy flowers.

On Tuesday, April 15, the Mobile unit will move to the Midland area where it will be located in the Circle K Cafe parking lot at 99th and Pacific Avenue, according to Tony Cruse, community representative. Here on April 15 at 1 p.m., Mrs. Arvilla Johnson will give the follow-up class on dippy flowers, showing how to assemble the flowers made in the first class.

On Wednesday, April 16, at 11 a.m., Fred Pleske, volunteer music specialist with Senior Centers, Inc., will play his accordion in a way that will please music lovers. Mrs. Ione Lewis, Mobile Center coordinator, will be on hand to greet all interested seniors.

Altrusa Birthday

The Parkland Altrusa club will hold their Annual Birthday dinner at Ceccanti's Restaurant Thursday April 10 at 7 o'clock.

The guest speaker for the evening's program will be Alma Hagen, missionary from Nepal, India who is on a years furlough.

Music will be furnished by soloist Carmie Chalgren.

Many of the surrounding Altrusa Clubs have been invited for the special occasion.

The Birthday committee members are Stella Jacobs, chairman, with coworkers Florence Dryer, Edith Roley, and Evelyn Kramer.

Track Coaches Wanted For Summer Program

An important preseason meeting for the coming summer baseball and track season will be held 7:30 p.m. Thursday April 17 at Bethel High School.

This meeting is open to all parents that would like to help in boys' and girls' baseball, softball, or track programs. Last year over 30 teams played in the Bethel area, and this year an increase is expected.

For the first time, a summer track program will be held. Coaches and helpers are needed. For further information call Ed Niehl, VI 7-2217 or VI 7-2353.

Tom Stephens Lion President

The Parkland Lions Club elected Tom Stephens as President for the 1969-70 year at their April 1st meeting.

Other officers elected were: 1st Vice president, Jerry Kingsbury, 2nd Vice president, Orin B. Fjeran, Secretary-Treasurer Darrel Behounek, and Board of Directors Jerry Russell, and Lamar Lovelance.

President Stephens pledged an active year for the Parkland Lions Club in rendering services to the community.

GOP's Meet

Wednesday, April 9, the 29th District Republican Club will hold its regular monthly meeting at Brad's Restaurant, 9201 Pacific Avenue. Dinner begins at 6:30 p.m. with the formal meeting called to order at 7:30.

Featured speaker will be Representative Helmut Jueling of the 28th District. Mr. Jueling will report on the progress of the current legislative sessions.

PDA Meets

The Parkland Development Association will meet 8 p.m. Monday, April 14 at the Parkland Light and Water Building.

Newly appointed committee chairmen to be announced by Cleanup Drive Chairman Hank Hette will include Ray Manges, recruiting chairman; John Hartsell, equipment chairman; Quincey Carrell, reader boards; Al McManus, area captains; and Vern Voss, junk cars.

A board of directors meeting will precede the general meeting at 7 p.m.

Pierce County Herald and
The TIMES JOURNAL

Published weekly at 14620 Pacific Ave., Parkland 98444 and delivered by U.S. Mail and carrier to subscribers. Publishers: Pierce County Publishers, Inc. LE 7-0223 News and Advertising Deadline: Tuesday Noon Subscriptions \$3.50 per year, \$1.80 six months, or 30c monthly by carrier. News stand price 10c copy.

Qualified as a legal publication under Chapter 213 of the Legislature Acts of the 1941 regular session of the State of Washington.
Second Class Postage Paid at Tacoma, Wash.

Vol. 25 No. 14 April 10, 1969

1969 4 HP MERCURY 12' STARCRAFT

● Full Gear Shift
 ● Remote Gas Tank
 ● No Shear Pins

\$425

OPEN EVENINGS TIL 9 P.M.

PARKLAND SPORTS CENTER

11122 PACIFIC AVENUE TACOMA, WASHINGTON PHONE LE 7-5677

U.S. CHOICE
BLADE-CUT
POT ROAST
45^c/_{lb}

U.S. CHOICE
CENTER-CUT
POT ROAST
59^c/_{lb}

FRESH
FILLET OF RED
SNAPPER
39^c/_{lb}

LEAN AND FRESH
GROUND BEEF
47^c/_{lb}

U.S. CHOICE
ROUND-BONE **POT ROAST** 69^c/_{lb}

CHOPPED SIRLOIN 98^c/_{lb}

ROCK
CORNISH **GAME HENS** 59^c/_{lb}

MILWAUKEE
SKINLESS **WIENERS** 59^c/_{lb}

CHOICE BONELESS
CROSS-RIB **ROAST** 98^c/_{lb}

HORMEL'S SIZZLERS 59^c/_{lb}

WIENERS 59^c/_{lb}

14-oz. HEINZ
KETCHUP 5/1⁰⁰

28-OZ. MJB RICE 3/1⁰⁰

SWANSON
TV DINNERS 49^c

40-oz. DUCHESS
PEANUT BUTTER 89^c

LOWEST DRUG PRICES ANYWHERE

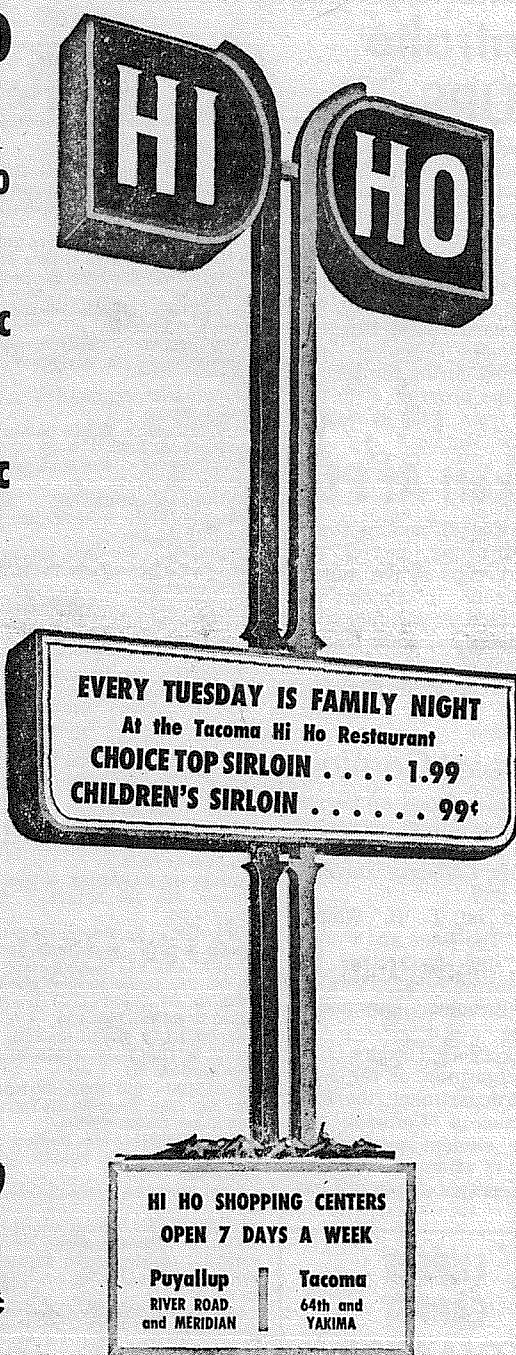
REG. 1.00
EXTRA DRY **ARRID** 2/1⁰⁰

REG. 1.49
LYSOL SPRAY 89^c

REG. 89^c
ULTRA BRITE **TOOTHPASTE** 49^c

REG. 89^c
PRO **TOOTHBRUSH** 39^c

NO. 2½
HALVES OR SLICED
HUNT'S PEACHES
4/1⁰⁰



REG. 88^c
TOP MODEL CONCENTRATED SHAMPOO
2/88^c

25-lb. GOLD MEDAL
FLOUR 2¹⁹

HI HO LIQUID
DETERGENT 39^c

HI HO QUARTS
SALAD DRESSING 39^c

REG. 1⁴⁹ FIRST-QUALITY
PANTY HOSE 77^c

TERRY KITCHEN
TOWELS 3/77^c

PRICES EFFECTIVE
NOW through APRIL 12

RUBY RED
TEXAS
GRAPEFRUIT
15/\$1⁰⁰

GREEN PEPPERS
10^c/_{ea}

CELLO CARROTS
10^c/_{1-lb. BAG}

FRESH ARTICHOKE
2/25^c

Angelo's


PIZZA HOUSE

ORDERS TO GO

Featuring top sirloin and American dishes, spaghetti, rigatoni, meat balls, sausage, ravioli, beer and wine.

Choice of Pizzas
 cheese & tomato
 anchovie
 mushroom
 Italian sausage
 pepperoni
 tuna

bacon
 peppers
 olive
 hamburgers
 ham
 salami
 onion



LE 7-7233
 14102 PACIFIC AVE.
 PARKLAND

CALL AHEAD, IT'S
 PIPING HOT
 ALL THE WAY HOME

PICK UP A BOX, PAIL, BUCKET
 OR A BARREL

WOMEN'S WORLD



SHARRY NYLANDER is shown leaving the stage after answering a question posed by mc Howard Hardin. The Bethel Princess told the audience that she hoped to be a high school teacher, likes mini skirts, and enjoys sewing her own clothes.

New Kind of Women Returning To Work

By **GLORIA MILLER**
 Ne York (MW) — Married women once took jobs because they had to. Now many work because they want to. This change, according to a series of interviews conducted here, has led to a dramatic new life style for matature women.

Years ago, for example, most married women remained at home. The woman who went to work, usually for family economic reasons, was less than well-educated and had to settle for low-paying factory, clerical and domestic jobs.

Today's nature woman bears little resemblance to her predecessor, the interviews disclosed. She is better educated and has a much wider choice of vocations. Although she likes the idea of bringing her family a second income, she is "very differently motivated." She is preoccupied with "discovering her own potential and realizing herself."

The interviews concentrate on working women in the 40- to 60-year age range and included a key question: "Why did you want to take a job, after raising a family?" These were some of the responses:

A 42-year-old sportswear designer replied, "There are many personal satisfactions besides the money. You have a definite status in the business world."

A 50-year-old social worker said, "I wanted a career and two other things: time with my children and an income."

A 45-year-old woman who has just completed a course in teacher-training answered, "If you don't develop outside interests by the time your kids reach a certain age, your life can be pretty empty."

A 48-year-old magazine production assistant replied, "Having a job makes you feel useful. It's a nice feeling."

A 55-year-old law firm secretary said, "The biggest return is self-confidence. It gives my life an extra dimension."

Back-to-Work Movement

According to the U.S. Department of Labor, the number of mature women returning to work after raising a family is on the increase. Government statistics reveal that one out of every three workers today is a woman.

This feminine back-to-work movement, experts believe, has been made possible largely through modern advances in medical science. Women, they note, once saw themselves exclusively as housewives and mothers. By the time they had reached their forties, they considered their lives on the decline.

Now, many doctors point out, fewer women entering their forties feel that their active lives are over. Today's control of disease, knowledge of nutrition and diet, and hormone replacement therapy during menopause, they say, are combining to keep women more vital and more involved in the world around them.

PIANO LESSONS, beginning to advanced. Children and adults, home or studio. LE 1-3246 or SK 2-7695. 68-179

the Second Forty

by Margaret Brookfield

A FORUM ABOUT MATURE WOMEN

Sad and Lonely

Dear Margaret:
 I know at 47 I'm not really old, but it's too old to be single. I've been divorced for almost three years. I'd like to marry again, but I wonder if it's possible. It is depressing to see all the sweet young things snaring men. What are the chances for a woman like me?
 J.R.P., Cedar Rapids, Iowa
 Dear J.R.P.:

Cheer up! Government statistics show that women over the age of 45 have a good chance for remarriage: widows have a one-in-three chance, while divorcees have a two-out-of-three chance. The figures are more heavily in your favor than if you'd never been married. This isn't a guarantee, but you do have a chance — if you'll stop feeling sorry for yourself and join activities where you can meet people.

Tired and Blue

Dear Margaret:
 I am a happily married woman who used to laugh at women who catalogued their vague aches and pains. Now I find myself in the same situation. It's as if as soon as I passed by fifty-third birthday, I started to fall apart. I feel tired and irritable a great deal of the time. Worst of all, I don't seem to enjoy sex as much as I used to. Is this all part of growing older? Are there more symptoms in store for me? I don't know if I can take it.
 G.J., Oakland, Calif.

Dear G. J.:
 Vague aches and pains do not warrant laughter. They warrant sympathy, kindness, and a visit to your physician. Experts agree that it's especially important for the woman over forty to have a semi-annual checkup whether or not she has any aches.

The symptoms you describe seem to be connected with the menopause. During this time, a woman's body stops producing female hormones, and often the disturbing symptoms connected with change of life are due to a hormonal imbalance. Endocrinologist Dr. Herbert S. Kupperman explains:

"The human female is unique in the animal kingdom . . . she has a life purpose beyond her years of reproduction. In the animal world, when the ovary dies the animal has served her purpose and usually dies along with it. The human female, on the other hand goes on living. But as a result of subsidence of ovarian function, changes take place . . . There is a definite estrogen deficiency, characterized by . . . certain changes in her bones, loss of elasticity of her skin, dryness of her mucous membranes, and so on . . . some of these changes can be prevented. Some, indeed, may even be reversed."

Naturally, only your physician can decide if this is happening to you and whether estrogen replacement will alleviate your distress. In any case, a checkup is called for to pinpoint the cause of your symptoms. There is no reason for you not to have an enjoyable sex life well into your older years. You should discuss this problem with your doctor. He is the person most qualified to help you.

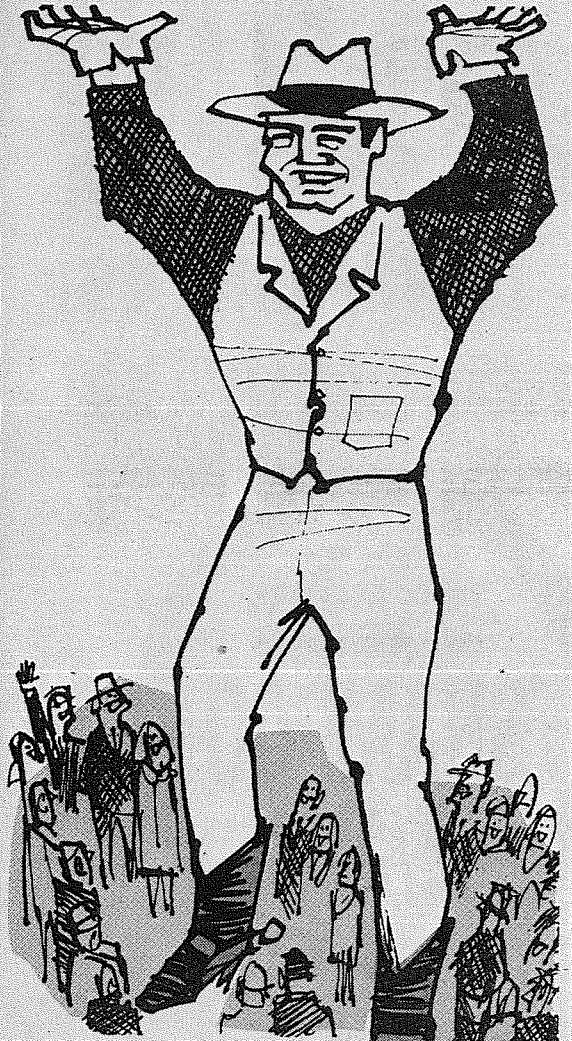
Egg Hunt Success

The first annual Easter Egg Hunt sponsored by the Spanaway Lady Lions at Spanaway Park April 5, was termed by club members a tremendous success.
 "It was very gratifying to have so many people turn out with their children," one Lady Lion told the Journal. "This reception made it all worthwhile."
 Next year the Lady Lions promise to hide more eggs.

KMO

1360 kc

THE COUNTRY GIANT
 TACOMA FT. LEWIS MCHORD SEATTLE



5,000 WATTS
 FULL TIME FACILITY
 Pierce County's Only
24 HOUR
 Country and Western Station

* County News * Tacoma News * High School Sports



Join the country giant's Hal Lavers each morning at 6:00 for all the latest news . . . weather . . . sports . . . club news . . . delivered in a warm and friendly manner designed to brighten your day and keep you informed of all the happenings in the Puget Sound area. For listening at its best . . . its Hal Lavers playing the music you want to hear on KMO . . . the country giant.

KMO RADIO 1360 AM

Contralto At UPS

Miss Margaret Myles, widely acclaimed Northwest contralto, will offer a distinctive program at her recital at 8:15 p.m. April 11, in Jacobsen Recital Hall at the University of Puget Sound, beginning with the opening cantata, the rarely heard "Salve Regina" by Giovanni Pergolesi, and highlighted during the second half of the program with the prayer from Tchaikovsky's "Moscov Cantata."

Puckett At PLU

Gary Puckett and the Union Gap, currently one of the hottest groups in the nation, will appear in concert at Pacific Lutheran University's Memorial Gymnasium Thursday, April 10, at 8 p.m.

The concert is sponsored by the PLU Student Entertainment Series.

Camelot Coming

"Camelot," one of Lerner and Loewe's most successful musicals, will be performed at Pacific Lutheran University May 8-10. Based on T. H. White's novel, "The Once and Future King," the production has been eminently successful as both a Broadway play and as a movie. Produced by Theodore O. H. Karl, chairman of the PLU speech department, the PLU production of "Camelot" will feature student performers, several of whom are veterans from previous university musicals.

EXPERT CARPET CLEANING

At Prices you can Afford

It costs no more to have professionals clean your carpets.

AAA Carpet Cleaners Res. & Comm. LE 1-9018

An Endowed Care Cemetery



Fir Lane Memorial Park
 Dryer Fir Lane Chapel

924 East 176th Street Spanaway LE 1-5500

BOWLING RESULTS

- Paradise Bowl
- EXPRESS — Doris Quigley, 462, 178; Jim Gostele, 546; Virgil Tatro, 199.
 - ROLLING BEES — Dee Widger, 505, 207.
 - THE BELLES — Ann Bryant, 516; Le-la Mires, 206. SPLITS — Oma Smith, 2-7-10; Mickey Boutiette (stepladder), 125-140-155.
 - PINETTES — Rosalie Cole, 539; Ger-tie Rich, 213.
 - '600' MIXED — Chuck Barry, 565; Tom Nestegard, 216; Marie Spain, 466, 170.
 - PARKLAND MERCHANTS — Earl Wilson, 582, 220.
 - SPORTSMAN — Wayne Butler, 573; Rex Raymond, 215.
 - INDUSTRIAL — Bob Sims, 596; Bill Emmert, 225.
 - FRIENDLY DOUBLES — Aaron Weis, 515; Bruce Webster, 188; Mar-lyce Ellis, 502, 196.
 - PREMIER — Bill Wold, 217-186-202, 605; Tom Leggett, 189-224-187, 600; Bill Emmert, 268.
 - SR. CITIZENS — Jack McKay, 549; Al Blades, 196; Beth Mclellan, 487, 172; Edith Skaar, 172. SPLITS — Al Klein-sasser, 3-6-7; Lee Harris, 4, 10.
 - MIXERS — Joe Bachman, 550-208; Shirley McMilian, 459, 181.
 - TOP ROLLERS — Ken Olson, 546; Norm Nesting, 213; Marilyn Varner, 487; Carol Mitchell, 178. SPLITS — Jack Mitchell, 3-6-7; Garry Ellis, 6-7-10.
 - GRAHAM — Bill Lauenborg, 576, 210; Rose Eveleth, 500; Edna Banks, 186.
 - SPLITS — Irma Antoni, 6-7.
 - EAGER BEAVERS — Dottie Potter, 526; Lois Reeves, 222. SPLITS — Mary Lou Jurgens, 7-8-10.
 - BIRDS OF PARADISE — Merrillis Johnson, 518, 206. SPLITS — Ruby Hegedus, 3-7.
 - HILLOWS — Vi McGee, 178-175-213, 566, 213. SPLITS — Stella Prall, 3-7, 10.
 - PARKLAND MIX. — Art Bolstad, 216, 191-205, 612; Grand Harlow, 222; Dorothy Curry, 477, 182. SPLITS — Dot Eichler, 6-7-10; Ed Van Sant, 2, 10.
 - 850-SCRATCH — Bill Emmert, 190-244-177, 611; Bill Wold, 191-215-201, 607; Fred Hartlieb, 245.
 - CLASSIC — Bill Wold, 235-208-236, 679, 236; Stan Rau, 221-214-179, 614; Walt Ehnat, 175-222-207, 604.
 - EVERGREEN — Jim Hanson, 547; Bill Farrington, 214. SPLITS — Roy Rice, 6-7-10.
 - BOWLERETTES — Rosalie Cole, 518, 201.
 - LAST NITERS — Walt Daniel, 235-182-201, 618, 235; Dawn Hill, 527, 200.
 - SPLITS — Jan Butts, 6-7-10; Dick Horn, 49; Frank James, 6-7-10; Bob Widger, 6-8-10.
 - 4x8'S — Bob White, 552, 204. Vi McGee, 514, 191.

STORK REPORT

LAKWOOD GENERAL HOSPITAL
 April 4, 1969
 Mr. and Mrs. Billy M. Stevens, Rt. No. 2, Box 2883, Spanaway, March 28, 1969, boy.
 Mr. and Mrs. Earl S. Hardie, P. O. Box 246, Spanaway, March 31, 1969, girl.
 Mr. and Mrs. Jerry Caw-drey, 7625 John Dower Road, Tacoma, April 2, 1969, girl.

HERMIE HELGRETH and JACK MEYRING
 At the **JOLLY ROGERS**
 Live Music and Dancing 6 nites weekly
 Doors open 6 p.m.
 Continuous food service til 4 a.m.
 3724 East 112th on Corner of 112th & Vickery Rd.

LEWIS LLEWELLYN

Who Has Right To Break Law?



Who can remember clear back to the time when all school-teachers, college professors, and ministers were united behind the principle that laws should be obeyed by all the people?

Now we have the unprecedented situation—unprecedented in this country, at least—that schools have been closed because of teachers' striking in defiance of a state law (in New York); a college has been shut down because of violent protests by students, supported by some faculty members (in California); and a member of Congress feels that it has become necessary for him to say, "When a church states that rioters should not be condemned, we face a cultural security problem."

When, in all our history, has there been a comparable breakdown in respect for the law?

Unsafe to Go to Church?

In Washington, D. C., a church has announced that it is considering moving from its present location because of the hazards faced by its members in attending services.

Women members of the church have been attacked, near the church building. One was beaten and had her purse snatched from her as she was about to enter the building.

Chairs have been stolen from the church and windows have been broken.

Where is this church located? On Capitol Hill, not far from the place where the U. S. Congress meets.

Remembering that some clergymen have been willing to condone rioting and other mis-

deeds in certain cases, one might be tempted to say that "chickens have come home to roost." But there is no indication that the pastor of this church was engaged in any such loose interpretation of rights and wrongs.

In fact, it is doubtful that any clergyman would approve of the kind of behavior which some of the residents of the area have engaged in.

Break Some Laws?

But, when a man states that it is all right to break some laws, of which he does not approve, isn't it obvious that another man may prefer to break other laws, which he considers inconvenient or undesirable?

The Bible says, "Submit yourselves to every ordinance of man for the Lord's sake . . . As free, and not using your liberty for a cloak of maliciousness, but as the servants of God."

In his syndicated column, David Lawrence asked, some time ago, "Will churchgoers in America have to be armed in order to defend themselves as they go to and from places of worship?"

This may have been necessary in the days of the early settlers of the country, when marauding Indians could be expected to attack a party of colonists going to or from church, but surely it should not be so now.

Let us all stand where the Bible stands on law enforcement—and the land will be safe for law-abiding citizens.

Where do you stand?

Farm Work Available

There will be a greatly increased need for men and women to work in the farm areas of Puyallup and Summer commencing next Monday, April 14th.

In addition to present needs for women to work in the bulb fields and in certified strawberry plant trimming, the growers will need a large number of men and women to harvest and pack field rhubarb. Wages range from \$1.30 to \$1.75 per hour.

Individuals interested in

Rowing Benefit Garage Sale

A garage sale, with proceeds to be used for the PLU Rowing Club, will be held Friday evening and all day Saturday, April 12, at Meridian and Pioneer, Puyallup.

this type of farm work are requested to contact the Washington State Farm Labor Office at 207 10th Street, SE, Puyallup, or telephone TH 5-8535 (Puyallup) between 7:00 a.m. and 3:30 p.m., Monday through Friday.

LSJ TV
 Rental - Sales and Service
 Repair All Makes
 LE 1-7414 12602 Pacific Ave.

RUGS — FURNITURE LAMP SHADES — CLEANED

Your Home - Our Shop

LE 1-5718 FREE ESTIMATES

Parkland Carpet Cleaners

Fisherman Breakfast

Dear Editor,

The Annual Fisherman's Breakfast will be held again this year in the McKenna School Cafeteria on the opening day of fishing season. This breakfast will be sponsored by the Yelm-McKenna P. T. A.

We will be serving breakfast Saturday, April 19 from 6:00 a.m. until Sunday, April 20 at 2:00 p.m. All the ham, eggs, pancakes, and coffee you can eat for just \$1.00 for Adults and 50 cents for Children, Pre-schoolers Free. Thermos bottles will also be filled.

McKenna School is located on Highway 507, between ROY and YELM. Signs will be posted along the highway giving directions to McKenna School. We hope to see all fishermen and their friends, as well as any one who likes good food at a reasonable price.

Sincerely,
 Susan Johnson
 Publicity Chairman

Legals

ADVERTISEMENT FOR BIDS

Sealed bids are invited by Franklin Pierce School District No. 402 for classroom furniture and equipment for the new Washington High School.

Specifications may be obtained in the District Administration Office, 315 South 129th Street, Tacoma, Washington 98444.

Bids will be received in the District Administration Office until 2:00 P.M., Monday, April 21, 1969, at which time they will be opened and tabulated. The bids will be considered by the Board of Directors at their meeting on April 22, 1969, at 8:00 P.M. Bids received after the time fixed for opening will not be considered.

The District reserves the right to reject any or all bids and to waive informalities in bidding.

No bidder may withdraw his bid after the time set for the opening, therefore, unless the award is delayed for a period exceeding thirty days.

Thomas L. Stephens
 Assistant Superintendent
 Business-Operations

Published two consecutive weeks April 10 and 17, 1969 in the Pierce County Herald & Times Journal.

"WHERE TO GET SERVICE"

Parkland Enco Service
 13303 PACIFIC AVE.
 LE 7-9954

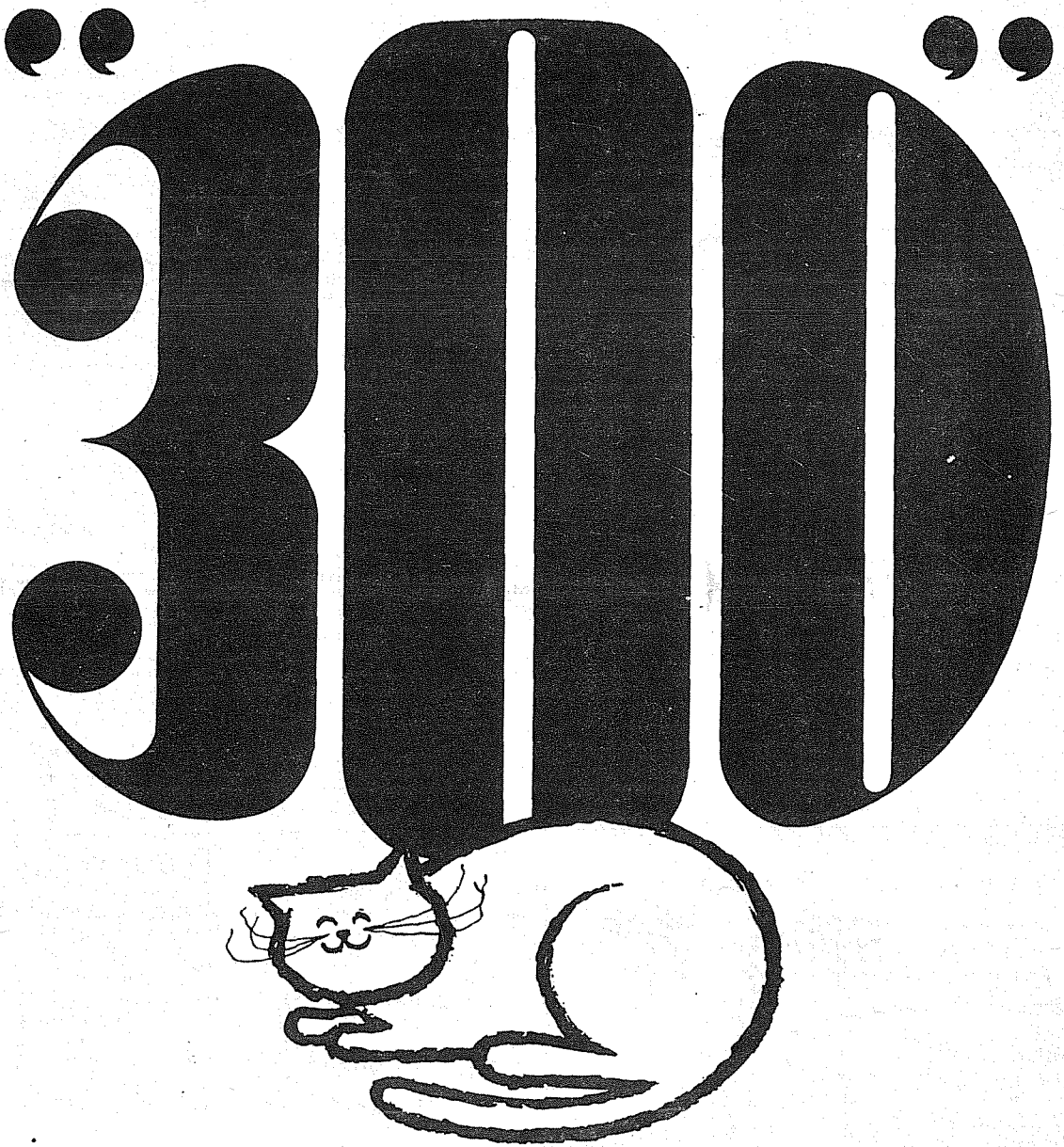
B&I GLASS & HARDWARE

8012 South Tacoma Way **DOOR**

MIRROR
 288 EA.

4 Mil PLASTIC
 IN ROLLS **1c** SQ. FT.

Bank of Washington is tickled to present the



FREE...CHECKING ACCOUNT!

NOW you never need pay a service fee on your checking account when you maintain a balance of \$300 or more! And, you'll always have a fat checking account with a tidy balance, a nice little nest egg! SAVE MONEY on checking account costs NOW! Write the checks you need ABSOLUTELY FREE! THIS ISN'T THE END OF THE BARGAIN! If your account balance falls below \$300, all you pay is a flat \$2 for that month's service fee. The "300" is an optional checking account plan for individuals. If you like the idea of saving money, stop by your nearest Bank of Washington Banking Center. Regular checking and budget checking accounts are, of course, still available for those who prefer them.

AT YOUR SERVICE: PARKLAND BANKING CENTER

BANK OF WASHINGTON

NATIONAL BANK OF WASHINGTON, TACOMA, WASHINGTON / MEMBER FEDERAL DEPOSIT INSURANCE CORPORATION

The Fat Checking Account

HORSEMEN'S NEWS

Over The Fence Rail



By PEGGY PLUMMER
I thought it would be a good idea to publish, every month, a run down on coming events. The month of April is as follows: 10-13 Wn. State Hunter & Jumper Assoc. Horse Show, Gold Creek Stables, Woodinville, Wn. 11-13 Daffodil All-Arabian Show, Tacoma Unit No. 1 Arena, Spanaway, Wn. 12-W.H.O. Judges Clinic, Country Squire Motel, Eugene, Oregon. 13-Willamette Valley Appaloosa Assoc. 3rd Annual Spring Show, Lane, City. Fairgrounds, Eugene, Oregon. 16-P.N.W.Q.H. Assoc. Lecture & Films on worming horses (free), Dr. Max Nichols, Sterling Stables, Woodinville, Wn. 19-20 Wash. Quarter Horse Assoc. Spring Show, Tacoma, Unit No. 1, Spanaway, Wash. 19-20 Northwestern Livestock Commission Co. ALL BREED Horse Sale, Hermiston, Oregon. 20-Horse Sale, Snohomish, Wash. 27-Okanogan Empire Q.H. Assoc. 3rd annual Jackpot Roping and Racing Meet, Fairgrounds, Okanogan, Wash. 27-Private Treaty Horse Sale, Mt. Vernon, Wash.

Rodeos scheduled for the beginning of next month start with Arlington, Oregon's Rodeo on the 3rd and 4th of May. Everybody will be attending this Rodeo since it's the first one this season.

Results of the Family Horse Festival, which was held last Saturday night, are as follows: Junior Halter — Judy Ruthledge, Dave Wilson, Senior Halter — Martin Berger, Joe Twomey, Junior

Equitation — Kim Stecker, Dave Wilson, Senior Equitation — Joe Twomey, Martin Berger, Junior Barrels — Jack Wulfekuhle, Becky Erb, Senior Barrels — Clem Wulfekuhle, Ward Bradley, Junior Poles — Jack Wulfekuhle, Jacky Dillman, Senior Poles — Clem Wulfekuhle, Ward Bradley, Junior Keyhole — Jack Dillman, Vicky Stallcop, Senior Keyhole — Linda Pilcher, Bill Perry, Hangman Race — John and Andy Seimans, Mike Moors and Chico. High point senior is Debbie Bauderer with 41 points, 2nd is Clem Wulfekuhle with 36. High Point Junior is Jack Wulfekuhle with 42 points, 2nd is Debbie Darrin with 37.

They now have 150 entries for the entire show. Next show will be scheduled for the 26th of April.

Parkland Rodeo Dates Finalized

Parkland Roundup Rodeo dates have been finalized for July 5 and 6 according to Dayle Collison, Parkland Business Club president.

Committee assignments include Donald Doyle, 1969 Roundup General Chairman; Lawrence Armstrong, Parade Chairman; and Robert Magdanz, who will assist Armstrong with parade activities.

Parkland's Annual Western Parade will be held July 5, the same date as Tacoma's Centennial.

Army Girl Band Needs Girls

A call is out for qualified musicians to fill specific vacancies in the Women's Army Corps Band. This is unique unit with the distinction of being the only women's band in the Armed Forces.

Specifically needed at this time are young women who can play the trumpet, tuba, jazz piano and guitar. The guitarist must also be proficient in another band instrument.

The piano and guitar need to be able to improvise, as the entertainment ensembles rarely use sheet music in rehearsal or in performance.

Beef Cattle Day April 25 At WSU

The emphasis will be on cattle feeding operations at Washington State University's 1969 Beef Cattle Day, Frank C. Jackson, said today.

But there will also be a wide range of topics under a discussion which concern both cow-calf operators and feeders, he commented.

Announcement of plans for the all-day event, scheduled for April 25 on the Pullman campus, has come from Dr. I. A. Dyer, WSU animal science professor and program chairman.

About 150 representatives of both segments of Washington's beef cattle industry are expected to attend.

A primary objective of the day-long session, according to Dr. Dyer, is "to bring the cattle industry up to date with what's going on in university research which affects feeders and breeders in their day-to-day operations."

In line with this goal will be a variety of reports on projects by WSU staff members. A highlight will be a paper on "A Nutritional Cause of Pulmonary Emphysema" by Dr. J. R. Carlson, assistant professor of animal science and leader of the research team studying the increasingly serious livestock disease.

A. D. Howes, an advanced doctoral candidate, will discuss "Selenium and Manganese in Reproduction." Howes, Dr. Dyer noted, was honored for presenting the most distinguished research paper at last year's annual meeting of the western section of the American Society of Animal Sciences.

Registration is set for 9 to 10 a.m. at the WSU Livestock Pavilion, where morning and afternoon sessions will be held. A no host luncheon at the Compton Union Building is planned.

The morning will be devoted to topics of broad general concern to the industry, the afternoon to research reports. The session will close with a visit to the Washington Cattle Feeders Association test cattle at the University Test Feedlot.

Dairy Tour April 15

Pierce County and surrounding area dairymen will have an opportunity to see some of the latest ideas in new dairy buildings and facilities during a tour April 15. Arranged by County Agent Eddie Thomason, the tour will feature new facilities and innovations at the Hlede Bros. dairy near Buckley and the Bill Bachman, Jr. dairy near Sumner. The tour will start at Hlede Bros. dairy on Bagnall Road at 10:30 a.m.

At the Hlede Bros. dairy emphasis will be placed on the epoxy paint and surfacing materials used in their new herringbone milking parlor. Keeping paint on milking parlor surfaces is quite a problem, says Thomason. Once the paint does peel and the surface absorbs moisture the problem is compounded. Mr. Basil Gray, from Pacific Coatings, Inc., Sumner, will discuss this problem and various surfacing materials during the Hlede Bros. stop.

At the Bachman dairy, tour participants will have an opportunity to see a new hay storage, loafing stalls complex, with a semi-automatic, flood-type wash down system. Bachman's new idea saves labor and provides a high degree of cleanliness.

Spanaway Speedway

Clem Goddard and Dennis Scott won the Class AA and Class A 50-lap main events respectively during last Sunday's Spanaway Speedway races.

Goddard edged out Terry Standish who finished second with Rick Brock and Art Skramstead next. Scott topped Vaun Cress and Bruce Limer who took second and third in the Class A action.

Meanwhile Class A trophy dash winners were Larry Davis in 1:13.47 and Dave Rogers in 1:10.33. Class AA dash winners were Rick Brock in 1:12.24 and Arlen Wolanski in 1:06.99, a track record for trophy dashes.

Class AA 8-lap heats and Pete Burton winning the first with Don Buson and Vern Huson next.

Seattle Pilots Home Opener Fri.

SEATTLE — (Special) — Al Lopez, the man they call The Senor, will come to the Pacific Northwest full of optimism when his Chicago White Sox meet the Pilots in Seattle's historic American League opener here Friday afternoon, April 11.

The case of his optimism is the early bloom of several White Sox youngsters who caught his eye during spring training at Sarasota, Fla.

Names such as Hopkins, Melton, Bradford, May, Nyman and Lazer may not be too familiar to most major league fans, but to Lopez they are the hope for a high finish in the American League's Western Division.

Tacoma Livestock



Tacoma Livestock Market Report for Thursday, April 3rd, 454 Head of cattle a lighter run of cattle due to Easter, however prices were extra good on all classes of cattle. Good close up Holstein Heifers up to \$420.00 per head, open Hol. Heifers by weight over \$30.00 per hundred.

Good Veal..... up to \$43.25
1 Hol. Bull (2195 lbs.)
at \$27.50 per hundred \$603.63
Best Hol. Cows \$19.00 to 20.60 cwt
Best W.F. & Angus Cows up to 21.25 cwt
Good Feeder Steers (700 lbs.)... 29.00 to 33.00 cwt
Hol. Steers around 700 lbs. up to 27.00 cwt
Light Hol. Steers up to 30.00 cwt
Good Steer Calves up to 34.00 cwt
Good Heifer Calves 29.00 to 30.00 cwt
Baby Calves Average, per head . 25.00 to 42.00

Hog Market is steady for last 2 weeks. For this coming sale, special consignments are as follows — 40 Head of W.F. Steers (600 to 700 lbs.) 30 Head of W.F. Cows and Calves and 41 Head of mixed feeder Cattle. Auctioneers: Ed and Lee Flood, Route 2, Box 2330, Spanaway, Wash. Phone VI 7-7567.

— SPECIAL DAIRY SALE —
Monday, April 14th, at Tacoma Livestock Market
Time: 12:30 Sharp

We will be selling heavy Springers, a few fresh Cows, Bred Heifers, and some open Heifers. We have always had a good selection of Dairy Cattle at our special Sales, so be here Monday for this Dairy Cow Sale.

Auctioneers: Ed and Lee Flood, Route 2, Box 2330, Spanaway, Wash. Phone: VI 7-7567.

INSURANCE
Military - Home - Business
LE 7-4904
Auto Fire Life Bonds
IRENE CLEMENS
Agency — Parkland
10329 Pacific Ave.

BOWLING 35¢
Saturdays Until 7 P.M.
Sundays Until 1 P.M.
PARADISE BOWL
108th & Pacific LE 7-6012

THE A.R.I. SUPER STOCKS ARE BACK!
See Racing Thrills and Action Every Sunday at
SPANAWAY SPEEDWAY
*TROPHY DASHES *HEATS *MAINS
Time Trials 1:30, Racing 3 PM
EXPANDED GRANDSTAND & FACILITIES FOR YOUR COMFORT & CONVENIENCE
See You At The Races!!
2 MILES EAST OF PACIFIC ON 159th IN SPANAWAY

"Horsemen's Market Place"

Classified Directory

Board — Trainers — Breeders
Outfitters — Feed Dealers

Back In Town
BILL MAY
Horseshoeing
TH 5-4902

HORSES BOARDED & RENTED
B & B STABLE
on the Mountain Hiway
1 1/2 miles past Roy Y on left.
Open 10 a.m. to 5 p.m.
TUES. - SUN.
VI 7-7162

HORSESHOEING
RAY JOHNSON
TH 5-6006

Vet Supplies
Complete supply animal health products.
Franklin - Farnam - Anchor at
ASHMORE'S
Spanaway Drugs
165th & Pacific Ave. LE 7-5993

Outfitters
The Bunkhouse
COMPLETE LINE OF TACK & WESTERN APPAREL
LE 7-5510
12605 Pacific Ave. Tacoma, Wa.

Leader of the "FLYING L" Herd



The DROVER 800 16' Tandem Stock Trailer

Stock trailers with the "Flying L" brand stand out. They're tough, durable... built of steel. The big capacity of a "Flying L" stock trailer lets you haul almost anything — easily and economically. Excellent field loading, too.

The DROVER 800 is just one of a complete line of stock and horse trailers.

Built by LINCOLN STEEL CORPORATION Sold by

Distributor
Art's Auto Mart
33333 Pacific Hwy So.
Federal Way
WA 7-4900

PLYWOOD

6 RAILROAD carload lot liquidation Sale. These prices are net mill prices. Your chance to pick quality plywood at the lowest wholesale price. All exterior and exterior glued interior plywood, all sheets 4x8:

1/4" AC Grade .. \$4.44 per sheet
3/8" AC Grade .. \$6.95 per sheet
1/2" AC Grade .. \$8.13 per sheet
3/4" AB Grade .. \$11.28 per sheet
3/8" AD Grade .. \$6.54 per sheet
1/2" AD Grade .. \$7.60 per sheet
3/4" AB Grade .. \$10.66 per sheet
3/8" AA Grade .. \$8.01 per sheet
3/4" AA Grade .. \$12.10 per sheet

ALL QUALITY plywood sanded, 2 sides, perfect for boats, side boards, canopies, car ports, cabinets, partitions or any purpose. Do not wait, we expect to be sold out in 30 days.

Open seven days a week
8:00 A.M. to 7:00 P.M.
Murphy Lumber and Salvage Sales
6401 Waller Road
Phone: LE 1-1160

LE 1-4555
RODEO
CUSTOM SHOP
Dean & Dodie Vosburg
Complete Saddle Repair Shop
Western Wear
English Tack & Togs
164th & Pacific Spanaway, Wash.

Horses Trained and Boarded
Excellent Facilities
Performance Training
Horses A Specialty
HARRY TWOMEY
Washington Horseman
Tacoma Unit 1 Resident Trainer VI 7-2071

READ USE CLASSIFIED ADS for fast results

LE 7-0223

1 Misc. For Sale

TOP SOIL, gravel, LE 1-1124. 69-1

McNESS PRODUCTS. GR 5-2734. 68-303

UPRIGHT PIANO, good condition. Human-hair wig, ash brown. Human hair fall. Dark brown. LE 1-9731 69-96

EARN a free wig. Call Marilyn, LE 1-6496. 69-89

THEATRE ORGAN. Illuminated horseshoe console with Leslie speaker. Like new, take over low monthly pmts. Phone Brokers, BR 2-5282, Tacoma. 69-86

12-foot ALUMINUM trailer, good condition, \$400. 14 foot boat. "Needs Repair," with trailer, 33% HPM, \$200. LE 1-2868. 69-102

GE ELECTRIC ROASTER, dinette set, wringer washer, refrigerator, electric dryer, davenport and chair, chain saw, 5 acres on Clover Creek 3818 Military Rd. E. LE 1-0061.

EARN A Wig - Have a wig party. Call Gay, LE 1-0186 or GR 2-4647. 69-96

REMOVE excess body fluid with FLUIDEX tablets, only \$1.49 at Johnson's Drug. 69-63

1 Misc. For Sale

14" SADDLE, reconditioned. \$60. TH 5-1628.

2 Autos For Sale

59 FORD 6 cylinder. Stick shift \$200. LE 7-3027. 69-101

1968 FORD F100 1/2 Ton Pick-Up, 6 cyl, automatic, custom cab, less van, 3000 miles, camper. \$3,000. Roy 843-2203 after 6 p.m. 69-95

2 Autos For Sale

GOOD SELECTION USED CARS - TRUCKS
GR 4-9294
LARRY ATTWOOD
8228 Pacific Ave.

9 Animals For Sale

Norwegian Elkhound pups. Reasonable. LE 7-3308. 69-91

19 For Rent Or Lease

SMALL Bachelor house - \$65.00 a month. Utilities paid. LE 7-5454. 69-99

RENT DOZERS, backhoes, loaders, T.V.s, Tomhoffs Rent-All. LE 1-1851. 69-80

TWO BEDROOM furnished trailer, 203rd & Browns Road, \$75 includes utility. Call 1-9 p.m. GR 5-4442. 69-85

NEW LOCATION Tomhoff's Rent-All
Now Located At
13014 Pacific Avenue
We Rent
Dozers - Backhoes - TV's
Loaders - LE 1-1851

18 Real Estate Wanted

Listings Wanted
Buying or Selling
Real Estate Service
Call
Devereaux Realty
12152 Pacific Ave. LE 7-8658

Wanted to Rent

CHRISTIAN to rent small house. Pay \$75. LE 1-0372. LE 7-3298. 69-92

23 Help Wanted

NEED SECOND Paycheck? If married, presently employed, have car, 16-18 spare hrs. wkly. For appointment call JU 4-6644. 69-100

24 Work Wanted

PAINTING exterior only. LE 7-6537. 69-94

Journeyman Carpenter
Wants work remodeling, repair, building cabinets, room additions, garages, carports.
Castle VI 7-2601

TROPHY ALUMINUM PRODUCTS
By Parkland Door

- Storm Windows and Screens
- Heavy Duty Storm Doors
- Standard and Special Sizes
- Awnings - Door Hoods
- Carports - Patio Covers
- Shop Repair Service

FREE ESTIMATES
5606 Portland Ave.

TERMS
GR 4-7011

38 Instruction

SAXOPHONE, clarinet, flute, guitar, drums, brass instruments. Private lessons. LE 1-3246.

PIANO LESSONS, Beginning to advanced. Children and adults, home or studio. LE 1-3246 or SK 2-7695. 68-179 TFN

27 Misc. Services

WATER PUMPS REPAIRED
All Makes
GRANGE SUPPLY
LE 1-5777

BACKHOE-DOZING
Reasonable
LE 7-5761
After 4 p.m.
Doyle's Dozing

EXPERT alterations, men's and women's. Fast service at reasonable. LE 1-3506.

Northwest Engine Service
Complete
Volkswagen Service and Rebuild
Heli-arcing - Parts
Hours: 8 a.m.-8 p.m.
3117 S. Procter BR 2-4644

FOR BEST SEAMSTRESS, LE 7-3355 Thursday & Friday. 69-97

CONCRETE
Patios, driveways, basements, foundations block work
LE 1-3277

ROTIVATING, plowing, harrow, disc, blade work. LE 7-6058. 69-95

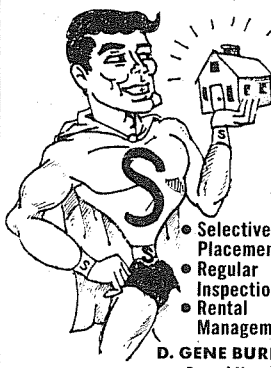
NEWBURY'S Dozer Service
LE 7-7455
Sandy Loam Bank Run
Mixed Soil Fill Dirt

IRONING. LE 7-5736. 69-46

Pierce County's Only Professional
AMBULANCE SERVICE
Parkland Ambulance and Lakewood-Pacific
JU 4-3344 LE 7-3322

19 For Rent Or Lease

Let "SUBUR-MAN" serve YOUR RENTALS



- Selective Placement
- Regular Inspections
- Rental Management

D. GENE BURNS
Rental Mgr.
Residence
LO 4-6598

SUBURBAN REALTY
11302 Pacific Ave.
LE 7-8638

30 Repair Services

Sheet Metal

- Furnace Repair and Service
- Installations

PARKLAND FUEL OIL
12002 Pacific Ave.
LE 7-0256

AT ARMSTRONG'S

Whether for a touch-up or a full paint job, paints are mixed on the premises. That is another reason why such sharp cars can be sold at such low prices.

ARMSTRONG'S USED CARS
11009 Pacific Ave. LE 7-5524

CHURCH DIRECTORY
ATTEND OUR
WORSHIP SERVICES

PARKWAY Presbyterian Church
Sunday School 9:30 a.m.
Worship Service 10:45 a.m.
Nursery Service Provided
714-138th East LE 1-4234
Rev. Wesley J. Drummond

Spanaway Assembly of God
166th & Pacific Ave.
Sunday School 9:45 a.m.
Morning Worship 11 a.m.
Evening Evangelistic 7 p.m.
Family Night Wed. 7:30 p.m.
LE 1-1412

Spanaway Lutheran Church
8:30 & 11 a.m. Worship Service
9:45 a.m. Sunday School
Grades 1 & Up
11 a.m. Sunday School
3, 4 and 5 Year Olds
John L. Briebl, Pastor
160th & A St. LE 7-5978.

Parkland Lutheran Church & Christian Day School
Worship... 10:30 a.m.
Sunday School-Bible Study 9:15 a.m.
All ages
H.A. Theiste, pastor
LE 7-5492 LE 1-0777

Trinity Lutheran Church
Worship Services 9 a.m. & 11 a.m.
Sunday School 10 a.m.
Wednesday School 4-5 (through Grade 9)
Erving C. Thompson
Robert Drowes
PASTORS
12115 So. Park LE 7-0201

Spanaway United Methodist Church
Church School 9:30 a.m.
Worship 11:00 a.m.
R. Gordon Harrison, Pastor
163 & Pacific LE 7-5134

THIS YEAR, WILL IT BE.....

Sequim or Sunny Spain

It's spring! And already you can begin to hear people talking and planning about their upcoming summer vacation.

Well, this year there's no reason why you have to take the back seat to anybody. Now, with your Citizens Master Charge Card, you can travel nearly anywhere. . . . do nearly anything. . . . and charge it all on your handy Citizens Master Charge.

For instance, did you know you can charge your train and bus fares. (Even your airline cost if you really want to fly to sunny Spain.)

And your Citizens Master Charge is good at hundreds of thousands of motels, hotels, restaurants and merchants in every state in the union.

So this year do it right. Make this year the year you finally take the vacation you've put off for so long.

And remember, whether it's Sequim, Washington. . . or sunny Spain. . . you will enjoy it more with your Citizens Master Charge.

Citizens STATE BANK

MEMBER:
FEDERAL
DEPOSIT
INSURANCE
CORPORATION



- ★ MAIN OFFICE - PUYALLUP
- ★ SUMNER
- ★ SUMMIT VIEW
- ★ EDGEWOOD - MILTON
- ★ WILLOWS

Legals

NOTICE OF PUBLIC HEARING BEFORE THE PIERCE COUNTY BOUNDARY REVIEW BOARD NOTICE IS HEREBY GIVEN that the Pierce County Boundary Review Board will conduct a public hearing on a proposal to ANNEX to the CITY OF PUYALLUP approximately 1,030 acres reaching approximately from South Meridian to Shaw Road on the east and west and south from the present City Limits to 112th Street East within Sections 2 and 3, Township 19 North, Range 4 East, and Section 35, Township 20 North, Range 4 East, W.M.

Said HEARING will be held in the City Council Chambers, 3rd Floor County-City Building, Tacoma, Washington, on THURSDAY, the 1ST day of MAY, 1969, commencing at the hour of 1:00 P.M.

The purpose of the hearing is to receive evidence relating to all factors recited in Section 17 of the Boundary Review Act of 1967 (Chapter 189, Laws of 1967), to the end that the Board can decide whether to approve, disapprove or modify the said proposal.

BOUNDARY REVIEW BOARD
By Marlene Ellsworth
Chief Clerk

Published in the Pierce County Herald and Times Journal April 10, 19, and 24, 1969.

Legals

IN the Superior Court of the State of Washington For the County of Pierce


IN PROBATE
No. 78333
Notice To Creditors
IN THE MATTER OF THE ESTATE OF OLLIE E. HARMON, Deceased.

Notice is hereby given that the undersigned has been appointed and has qualified as Administrator of the estate of the above named deceased; that all persons having claims against said deceased are hereby required to serve the same, duly verified, on said Administrator or his/her attorney of record at the address below stated, and file the same with the Clerk of said Court, together with proof of such service within four months after the date of first publication of this notice, or the same will be barred.

Date of first publication April 3, 1969.

s/ Paul H. Harmon
Administrator of Estate
11024 Pacific Avenue
Tacoma, Wash.
PETERS & TRACY
s/ Phillip S. Tracy
11024 Pacific Avenue
Tacoma, Washington 98444
LE 7-0264

Published in The Pierce County Herald and Times Journal April 3, 10, and 17th, 1969.




SAFECO INSURANCE

ASHFORD-McALOON INSURANCE

12201 Pacific Avenue
Parkland Square LE 7-8647
5436 So. Tacoma Way GR 4-8431

for personalized
AUTO INSURANCE




Dryer MORTUARY
(184th & Pacific)
PARKLAND

The Country Parson



"When I was a boy folks were easily shocked—which made being a boy less confusing."

Copyright, by Frank A. Clark



Dryer MORTUARY
(184th & Pacific)
PARKLAND

Winter Hours
Open 7 Days A Week
Sunday 10 - 9
Weekdays 9 - 9

BARGAIN BASKET

16618
Pacific Ave. S. Spanaway
LE 7-3371

No Sales To Dealers

WE RESERVE THE RIGHT TO LIMIT QUANTITIES

We Carry A Complete Line Of Sacked Feeds - Presto Logs

HELP YOUR BUDGET WITH THESE SAVINGS

We Are Locally Owned & Operated

PRICES EFFECTIVE

April 10-11-12
Thurs.-Fri.-Sat.

GIANT SIZE
Northern
PAPER TOWELS

3 / \$1

LA CHOY CHOW MEIN DINNERS

BEEF CHICKEN PORK

89¢

SNOW MIST TUNA

4 / \$1

1/2 Tins

PILLSBURY BROWNIE MIX

Fudge 21 Oz.

39¢

DEL MONTE CORN
Cream Style or Whole Kernel

5 / \$1

303 TINS

VETS DOG FOOD

10 / 99¢

15 Oz. Tin

ABC Party Assortment COOKIES

17 Oz.

59¢

FAMILY JOY STRAWBERRY PRESERVES

2 Lb. Jar

59¢

NORTHERN TOILET TISSUE

4 Roll Pkg.

3 / \$1

Block Ice	PRODUCE		Party Ice
CELLO CARROTS	SNO-WHITE CAULIFLOWER	GREEN PEPPERS	CHIQUITA BANANAS
1 # 10¢ Each	29¢ Ea.	2 For 19¢	10¢ Lb.

Everyday Low Meat Prices . . . 25 Lb. Locker Boxes \$14.45

HYGRADE WIENERS

12 Oz. Pkg.

55¢

POT ROAST

Blade Cut

59¢ Lb.

LEAN PORK STEAK

79¢ Lb.

HOT SAUSAGE
Polish Link

89¢ Lb.

HYGRADE BACON

Forest Brook

63¢ Lb.

CHUNK BOLOGNA

59¢ Lb.

DUNLOP SUPER SPORTS RED LINE



THE RED HOT ONE!

Safe at sustained speeds of 125 mph!

SIZE 775x14

Set of Four Exchange **\$99.00** Plus Tax Excise Tax \$2.58 ea.

TINY'S TIRE CENTER

108th & Pacific LE 1-4535