

Pierce County Herald and

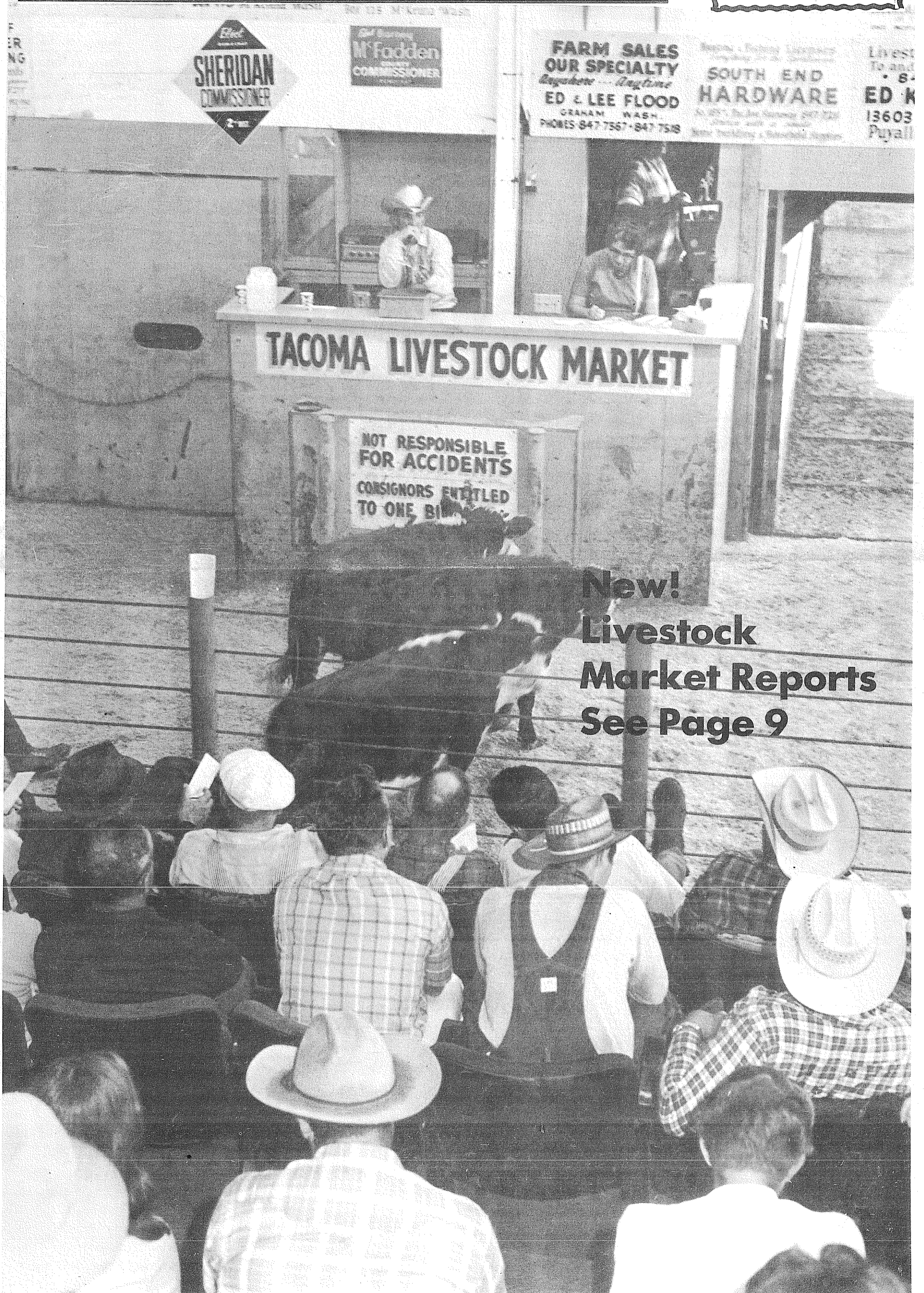
The TIMES JOURNAL

Vol. 24 No. 38

September 19, 1968

Price Per
Single Copy

10¢



**New!
Livestock
Market Reports
See Page 9**

Bethel Board Meet . . .

District Valuation Up: Student Valuation Down

The assessed valuation of the Bethel School District rose \$1,428,410, but the assessed valuation per student dropped \$85, from \$3,468 to \$3,383, stated Dr. Fred Gramann, superintendent of Bethel Schools, at a Board meeting Monday night.

The major reason in the drop in amount of money per student, according to Dr. Gramann, is the increase in mobile homes in the Bethel area.

Last year \$2,095 was received by Bethel to supplement the lack of property taxes paid by mobile home owners, with approximately another \$1,800 still coming. This total amounts to about \$16 per mobile home paid in school taxes.

"If the State Legislature does not do something to remedy this problem the Bethel residents can look forward to increased taxes," warned Dr. Gramann.

"This is a serious problem in our district," the superintendent added, "it means that every mill raised will go a little less than before — with the tremendous increase in mobile homes, it is not something that can be solved locally."

Drawings for the Spanaway Elementary School replacement are 75 per cent complete and it is expected that bids will go out around the first of the year.

The preliminary plans for the new middle school were viewed by board members.

It is planned that the school will be in operation by the 1969 school year.

Elk Plain PTA Meets

The first meeting of the Elk Plain PTA will be held on Tuesday, September 24, at 8:00 p.m. in the multipurpose room of the school.

Guest speakers will be Stuart Kimball and Ed Niehl, who will discuss a new program being used in our school this year, Motor Perceptual Skills, or the use of motor exercises to develop coordination and readiness for reading.

Before the meeting, from 7:30 to 8:00, there will be an Open House for Kingergarden through the 4th grades. Parents are invited to visit their child's room during this time. Also, during the meeting there will be a supervised nursery for children who accompany parents.

W. Roberts Nominated To County Directorship

Wilbur Roberts, Chairman of the Board of Franklin Pierce School Board of directors, has been nominated to serve as vice president of the Pierce County School Directors' Association.

Election of officers for the organization will take place at 8 p.m. September 25th in the Music Room of White River Junior-Senior High School in Buckley.

Other officers nominated for the board include Fred Miller of White River, president; Michael Sterbick of Tacoma and Roberts, vice

Spanaway Lions News

Richard Hunt, governor District 19-C Lions International, will be guest of the Spanaway Lions at the regular meeting 6:30 p.m. Tuesday, September 24th at the Little Park Cafe.

Spanaway Lions recently attended the Zone 19-C1 meeting and were recognized for having the largest percentage attendance during the past year. The local Lions also were honored to be able to install a new member into their midst while at the meet. Dick Jenkins, who has been made an honorary member of the club for his services during the year, was initiated as a regular member. The zone gathering was at the New Yorker on September 10th.

president; Mrs. Vanitta Bowler of White River, secretary-treasurer, John Van Eaton of Eatonville and Darrell Mills of Carbonado, board members.

Nominated for the County Committee on School District Organization are Mrs. Betty Ostenson for a five-year term and Mrs. Betty Drost for a three-year term.

A free-for-all discussion of legislative matters is planned with Herbert Gelman, also a Franklin Pierce School Board Member, as referee.

FP Holidays Announced

Holidays and early dismissal days have been announced by Franklin Pierce School officials.

Robert C. Richardson, assistant superintendent for personnel, said that all schools in the district will be dismissed during the following holidays:

October 18, teachers' work day; Nov. 7, 14 and 21, elementary schools only, for conferences; Nov. 11, Veteran's Day, Nov. 28 and 29, Thanksgiving; Dec. 23 through Jan. 5, Christmas; Jan. 24, teachers' work day for secondary schools only; April 3-7, Easter, and May 30, Memorial Day.

Early dismissal will be granted to students here, only on the following days:

Nov. 27, April 2, and June 6, the last day of school.

Co-op Nursery Slates Opening



Mrs. Walter Perkuhn, Parkland Cooperative Nursery School, which meets at Gonyea Park Fieldhouse, will begin classes for three and four-year-olds on October 1st.

Mrs. Walter Perkuhn, a 26-year resident of Parkland, will teach for the year. She has had extensive training in childhood development, having taught in the nursery and day care center at McChord Field and at the Tacoma Day Nursery.

Officers of the Parkland Nursery School this year include Mrs. Burton L. Nessel, president; Mrs. Richard J. Sears, first vice president; Mrs. Leonard J. Sager, second vice president; Mrs. Fred Snowden, secretary; and Mrs. Fred Tobiason, treasurer.

Information regarding classes and registration is available by calling Mrs. Burton Nessel, LE 7-7678, or Mrs. Leonard J. Sager, LE 1-5273.

Parkland Legion Meets

Parkland Post 228 and Auxiliary, American Legion, will meet 6:30 p.m. September 23 at Sunshine Hall. This will be a potluck dinner.

Special guests will include the Parkland Connie Mack baseball team sponsored by the Post and Boys' Staters. The ball team won their league championship.

Bethel Board

By E. W. (Doc) Webster
Chairman
Bethel School Board
September 16th

As usual the meeting was held at the Administration Building. All board members were present. I will have to admit that yours truly was absent for the September 4th meeting. I was doing four days time in Tacoma General Hospital. Glad to say I feel much better now.

Thanks goes to Phil Zurluf Jr., vice president, for conducting that meeting.

Dr. Gramann related that the Thompson Elementary School is still on schedule and expected to open in November. Also we received a report by the Middle School by architects Jacobson and Wall. That program is being processed at this time.

With the added 518 students over last year, it is very important that our building program loses no time in getting completed.

Your school board meets the first and third Monday of each month and you are always welcome to attend. P.S. A report on the school elections will soon be made.

PLU Faculty Promotions FPEA Supports School Levies

Faculty promotions and the granting of tenure were announced at Pacific Lutheran University Thursday by Dr. Robert Mortvedt, university president.

Promotions were given to 13 faculty members and tenure was granted to five persons at a morning convocation officially beginning the school year.

Changes in university communication were outlined in an address given by Dr. Dwight J. Zulauf, professor of business administration, who returned to PLU this fall after a year at the University of Minnesota where he served as a visiting professor.

Doctor Aulaufer referred to two types of communication found more and more frequently on university campuses: ANTAGONISTIC, "ferocious" dialogue, which he defined as the "hot line," and the cold line, defined as no communication at all, resulting in misunderstanding and indifference.

Promotions to professor were granted to Dr. William Giddings, chemistry; Dr. Curtis Huber, philosophy; Dr. Lynn Stein and Dr. Jane Williamson, education.

Named associate professor were Dr. Lowell Culver, political science; Calvin Knapp, music, Dr. Erving Severson, psychology, and Dr. Frederick L. Tobiason, chemistry.

Promoted to assistant professor were Joseph Broeker, physical education; Melba Cather, nursing; and Kathryn Strickland, music.

Granted tenure were Roy E. Carlson, physical education, Josephine Fletcher, nursing; Gene Lundgaard, physical education; Alice Napjus, education, and Dr. Philip Nordquist, history.

Appointed chairman of departments were Dr. Jens Knudsen, biology; Dr. John Herzog, (acting) mathematics, Dr. David Olson, health, physical education and athletics, and Dr. Rodney Swenson, foreign languages.

The Franklin Pierce Education Association has gone on record as supporting both propositions which will appear on the Nov. 7 ballot for the Franklin Pierce schools.

In a special resolution passed by the teacher organization's executive board, the two issues were given "full support," according to Jerry Corrigan, FPEA president.

"Passage of the maintenance and operation levy is absolutely essential if the Franklin Pierce schools are to continue to offer a program of quality education," Corrigan said.

The purchase of additional school sites at this time will alleviate greater financial problems in the future, he added.

The two issues are a \$792,000 excess levy request of about 33 mills to help operate the schools for the 1968-69 school year and a \$38,000 excess building levy request of about six mills to purchase three elementary school sites and to complete the purchase of a junior high school site.

Phone Expansion Underway Here

A telephone cable project representing an investment of \$133,100 is underway south of Pacific Northwest Bell's LEnox switching center, 601 S. 113th, according to Robert F. Heuser, PNB manager.

Nearly 11,000 feet of underground cable and 5000 feet of conduit will be placed from 138th St. and "C" St. S. to Military Road and across Pacific Ave.

"PNB forecasts 340 new telephone customers in this area each year," Heuser said. "This kind of growth requires continual expansion and improvement of telephone facilities."

National Mechanical Contractors, Inc., of Tacoma has the cable contract. Completion of the project is slated for January 1969.



DEDICATED — A drinking fountain, in memory of Mr. and Mrs. Lloyd Swick, was dedicated during half time of the Bethel vs. Fife football game Friday night. The fountain, a monument to the devotion, time, effort and interest the Swick's had in the future of Bethel High School, was erected by the Bethel High School Booster Club. Seen busy with the construction at the Art Crate Field are, from left, Gerhard Gehrke, George Stephenson, Glenn Swick and Stanley Krutson. Further plans have been made to landscape the surrounding area.



FP GRADS MEET PRESIDENT — Two Franklin Pierce High School graduates who are freshmen at Pacific Lutheran University meet Dr. Robert Mortvedt, PLU president, at the annual faculty reception for new students held over the weekend. The students are Pamela Peterson, daughter of Mr. and Mrs. Clayton Peterson; and Paul Schiller, son of Dr. and Mrs. John Schiller.

Parkland LWV Schedule Meets

The Parkland League of Women Voters have announced meetings for the coming week.

The evening group will meet at 8 p.m. Monday, September 23rd, at the home of Mrs. F. E. Wood, 125 So. 116th.

September 26th at 9:30 a.m. the Morning group will gather at the residence of Mrs. Rex Harrington, 13303 Tule Lake Lane.

Topics for both meetings will be "Study on fair housing criteria".

Pierce County Herald and

The TIMES JOURNAL

Published weekly at 14620 Pacific Ave., Parkland 98444 and delivered by U.S. Mail and carrier to subscribers. Publishers: Pierce County Publishers, Inc.

Managing Editor Em Matson
News Editor Sandy Ingram
Sports Editor Bob Ingram

Subscriptions \$3.50 per year, \$1.80 six months, or 30c monthly by carrier. News stand price 10c copy.

Qualified as a legal publication under Chapter 213 of the Legislature Acts of the 1941 regular session of the State of Washington

Second Class Postage Paid at Tacoma, Wash.

September 19, 1968 Vol. 24 No. 38

HI HO

PUYALLUP

HI HO

1/2 GALLON
HI HO
ICE CREAM
59^c

TURKEYS 12-16-lb. Avg. **29^c lb**
 LEAN **SHORT RIBS** **29^c lb**
 BONELESS **BEEF ROAST** **89^c lb**
 CUT-UP **STEWERS** **29^c lb**
 1/2-LB. PKG. **HYGRADE LUNCH MEAT** **3/1⁰⁰**
 PICKLE and PIMENTO, OLIVE, SPICED LUNCHEON, ALL BEEF, BOLOGNA, SALAMI
 HORMEL'S **SMOKED HAM** WHOLE OR SHANK HALF **57^c lb**

FOREMOST
**INSTANT
BREAKFAST**
49^c

**FRESH
GROUND
BEEF** **39^c LB.**

CHIQUITA
BANANAS
10^c LB.

MASCOT
DOG FOOD
14/1⁰⁰

OPEN 7 DAYS EACH WEEK **HI HO** OPEN 8 A.M. 'TIL 11 P.M.

VALLEY-GROWN
CELLO PACK
CARROTS
10^c PKG.

IN PUYALLUP AND TACOMA
64TH AND YAKIMA

PRICES EFFECTIVE SEPT. 16th THROUGH 21st

HI HO
LIQUID
DETERGENT
3/1⁰⁰

LOWEST DRUG PRICES ANYWHERE

Reg. 99c	Suave HAIR SPRAY	2/1⁰⁰
Reg. 99c	Suave SHAMPOO	2/1⁰⁰
Reg. 1.45	Colgate "100" MOUTHWASH	79^c

**YELLOW
ONIONS**
5^c LB.

DEL MONTE CANNED GOODS

NO. 303	CUT GREEN BEANS	} 5/1⁰⁰
NO. 303	CREAM STYLE CORN	
NO. 303	Whole Kernel CORN	
NO. 303	PEAS	
NO. 303	SPINACH	
NO. 303	FRUIT COCKTAIL	
NO. 300	TOMATO SAUCE	

THOMPSON
SEEDLESS
GRAPES
15^c LB.

HI HO

PUYALLUP

HI HO

Dryer MORTUARY
(134th & Pacific) PARKLAND

The Country Parson

"We invent devices to save time and use what we save to hunt ways to spend it."

Copyright, by Frank A. Clark

Dryer MORTUARY
(134th & Pacific) PARKLAND

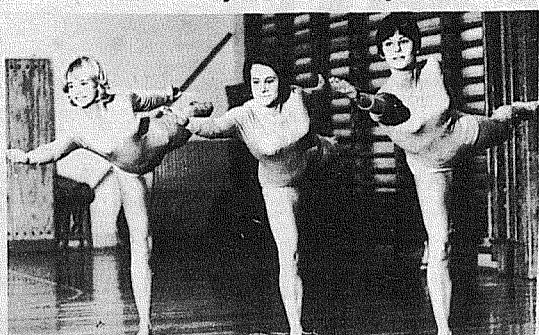
MathClass

The Pacific Lutheran University National Science Foundation In-Service Institute in Mathematics for secondary school teachers holds its first meeting Monday, Sept. 16, at 7 p.m. in room A-206 at the university, Dr. John Herzog, instructor of the class, announced Friday.

The first semester class, according to Doctor Herzog, will be a course in axiomatic geometry as developed by the School Mathematics Study Groups (SMSG). Teachers of junior high school mathematics are invited to call the PLU department of mathematics or attend the first class session for additional information.

Sweden's SOFIA GIRLS

Internationally Renowned Gymnasts



At Memorial Gymnasium
Pacific Lutheran University
FRIDAY SEPT. 27 8 p.m.
On Canadian-American Tour
Sponsored By Lute Club



FIVE PARKLAND COEDS TOGETHER AT PLU - Five young ladies who have grown up together in the Parkland area are freshmen at Pacific Lutheran University this fall. They are pictured above at the faculty reception for new students held over the weekend in the College Union. From left, the group includes Dr. and Mrs. Thomas H. Langevin, academic vice president and his wife, Karen Vance, Carol Christensen, Geringer Gregerson, Kathy Drewes and Linda Colburn.

Elmhurst PTA Slates Meet

Introduction of Teachers and Staff and a short musical interlude featuring third-graders are on the agenda of the ELMHURST PTA set for 8 p.m. September 24th in the school's multi-purpose room. A board meeting will precede in the library at 7 p.m.

Junior Rifle Club Sets Fall Schedule

The Paul Bunyan Rifle and Sportsman's Club announces the start of the 1968-69 Junior Club activities, slated for the Clubs range and Club house, located at 17902 Meridian So., Puyallup, with meetings and marksmanship classes to be held each Tuesday evening at 6:30 p.m.

The emphasis of the Junior program is instructing boys and girls between the ages of 12 and 19, in basic and advanced marksmanship, conservation, water and air pollution, and wildlife management. Heavy emphasis is placed on fire arms safety and .22 cal rifle competition. Instruction is provided by several NRA-Certified Rifle instructors, and club delegates to the Pierce County and the Washington State Sportsman's Councils, as well as guest speakers at the monthly business meetings.

The Junior Club operates as a separate organization, within the frame work of the Paul Bunyan senior club, and has its own officers, is responsible for its own financial affairs, with supervision from Junior Advisors and instructors.

The Juniors have available .22 cal target rifles, shooting gloves, some shooting coats and spotting scopes, as well as ammunition, for the use of the Junior shooters. There is a small charge for the ammo, but the over-all cost of participating in the program is held very, very low.

Any and all boys and girls between the above ages are invited to join the Paul Bunyan Juniors and participate in the comprehensive shooting and conservation program which stresses responsibility, sportsmanship and fair play.

For further information contact Junior advisor Dave Taylor at LE 7-4706 or R.C. (Tiny) Pratt at LE 1-5355.



"Representing the world's largest car insurance company means I can get you top car insurance value—top service, and protection. Let's talk!"

Bill Ehli
9920 Pacific
LE 1-1800



State Farm Mutual
Automobile Insurance Company
Home Office: Bloomington, Illinois

Continuing Education

With Franklin Pierce Night Education Program

Adult Education Office

11124 Portland Ave.

LE 7-0211

FALL SEMESTER

Community College Classes Start Sept. 23.
All Others Start Sept. 30.
Registration Through First Week of Classes.

WHO MAY ENROLL

Adults need not live in Franklin Pierce District. Day students will be accepted on a limited basis in specified night school courses.

OFFICE OCCUPATIONS

DATE PROCESS - BASIC COURSE M & W, 7-9:30 p.m., 10 wks, \$5, rm. 063. Orientation course in data processing for those employed in data processing or persons interested in learning about the field. Hands-on lab sessions on modern data processing equipment, as well as field trips to large and small computerized data processing installations. GERRY RUSSELL

TYPING - I M & W, 7-8:25 p.m., 10 wks, \$10, rm. 203. Beginning and review. Technique, drills, development of speed and accuracy for business or personal use. DEAN RENNIE

BUSINESS MACHINES M & W, 8:35-9:55 p.m., 10 wks, \$10, rm. 202. Instruction and practice on adding machines, rotary calculators and comptometer. Proper use and speed stressed. DEAN RENNIE

ADVANCED TYPING M & W, 7:35-9:55 p.m., 10 wks, \$10, rm. 201. Various letter and punctuation styles. Rough draft drill assignments, addressing envelopes, carbon pack assembly. Use of elec. typewriters. BARBARA CONWAY

OFFICE PRACTICE M & W, 8:35-9:55 p.m., 10 wks, \$10, rm. 201. Filing, use of office and transcribing machines, elec. typewriters, typing stencils and business letters. BARBARA CONWAY

BOOKKEEPING - BEGINNING M & W, 7:35-9:55 p.m., 10 wks, \$10, rm. 205. Practice in keeping systematic records, setting up and keeping books. Accounts, financial data and reports. GEORGE NORDI

BUSINESS LAW M & W, 8:35-9:55 p.m., 10 wks, \$5, rm. 205. Study instruments used in business: wills, deeds, mortgages, real estate agreements, etc., and their application. GEORGE NORDI

HOW TO INVEST Wed. 7-9:30 p.m., 10 wks, \$10, rm. 1012. Investment course conducted by registered representative of the New York Stock Exchange covering all aspects of the stock market, investment objectives, terminology, trading procedures in detail and analysis of business news. JIM LAYTON

HOW TO CONDUCT A MEETING Wed. 7-10, 10 wks, \$5, rm. 503. Class designed to acquaint students with rules of conducting a meeting - Robert's Rules of Order. C. MELVIN MCKENNEY

NOTE:

CERTIFICATE TO EMPLOYERS indicating successful completion of Office Occupations courses and a Job Referral service.
* "Certificate of Proficiency" will be awarded to those eligible. Serves in lieu of Civil Service test.

LANGUAGES

NORSE - BEGINNING Mon. 7-9:55, 10 wks, \$10, rm. 1102. Study of Norwegian as spoken today, emphasizing conversation and vocabulary with reference to Norwegian life. REV. GULHAUGEN

GERMAN - BEGINNING Mon. 7-9:30 p.m., 10 wks, \$10, rm. 805. STAFF

GENERAL INTEREST

INTERIOR DECORATING Wed. 7-9:55 p.m., 10 wks, \$5, rm. 504. Study of color selection and coordination, selection of furniture, draperies, carpeting, paints and design. JANE FISCHBACH

HAIR PIECE & WIG CLINIC Wed. 7-9:30 p.m., 3 wks, \$5, rm. 605. Basic instruction for putting on and caring for your synthetic or human hair items. Some display models. DONNA EDWARDS

CAKE DECORATING - BEGINNING Wed. 7-9:55 p.m., 9 wks, \$10, rm. 406. Class for homemakers and bakery employees. Make sugar molds and decorate a different cake each week. CAROL ALLEN

CAKE DECORATING - ADVANCED Thurs. 7-9:55 p.m., 9 wks, \$10, rm. 406. Advanced class in decorating - wedding cakes. CAROL ALLEN

UPHOLSTERY Tues. 7-9:55 p.m., 10 wks, \$10, Upholstery Shop. Class limited to first 15 registrations. Beginners should work on simple item such as occasional chair. Work on your own furniture while learning. Bring project, screwdriver, pliers and tack hammer first night. HENRY PETERS

UPHOLSTERY Thurs. 7-9:55 p.m., 10 wks, \$10, Upholstery Shop. Class limited to first 15 registrations. HENRY PETERS

WOODWORKING - BEGINNING & ADVANCED Wed. 7-9:55 p.m., 10 wks, \$10. Wood Shop. Men and Women. Cabinet and furniture making, opportunity to build and complete a project. BILL FISCHER

DRIVER TRAINING FOR HOUSEWIVES \$45. Adults interested should call LE 7-3441 weekday evenings between 5 and 7. Pick up is made at your home. AL SCHIMKE

- SEWING CENTER
AT FRANKLIN PIERCE HIGH SCHOOL -

TAILORING Mon. 7-9:55 p.m., 10 wks, \$5, rm. 402. Advanced sewing techniques - suits and coats. Call LE 7-4937. EDITH JONES

BISHOP - I SEWING Tues. 7-9:55 p.m., 10 wks, \$5, rm. 402. Basic techniques and procedures in garment construction and fitting using cotton fabrics. EDITH JONES

BISHOP FITTING & PATTERN ADJUSTMENT Wed. 7-9:55 p.m., 10 wks, \$5, rm. 402. Fitting, using muslin pattern and construction of proof dress. Limit - 15 students. LAURA KRUCKEBERG

BISHOP - II SEWING Thurs. 7-9:55 p.m., 10 wks, \$5, rm. 402. A continuation of Bishop - I sewing. LAURA KRUCKEBERG

New Adult Education Center Keithley Jr. High School

BISHOP - I SEWING Mon. 7-9:55 p.m., 10 wks, \$5, rm. 404. Basic techniques and procedures in garment construction and fitting using cotton fabrics. SANDRA KING

BISHOP - II SEWING Tues. 7-9:55 p.m., 10 wks, \$5, rm. 404. A continuation of Bishop - I sewing. DARDEE COLVIN

TAILORING Wed. 7-9:55 p.m., 10 wks, \$5, rm. 402. Advanced sewing techniques - suits and coats. SANDRA KING

'STRETCH' SEWING Thurs. 7-9:55 p.m., 10 wks, \$5, rm. 404. Learn the special techniques of sewing stretch fabrics. Make your own ski pants, bathing suits, other garments. EDITH JONES

WATCH FOR
NOVEMBER 18
SHORT TERM CLASSES

EDUCATION CLASSES

LANDSCAPE GARDENING & ORNAMENTAL HORTICULTURE Mon. 7-9:55 p.m., 8 wks, \$5, rm. 033. Soils, pruning, lawns, mulches, sprays, fertilizers. Landscape design and maintenance. GENE TEESDALE

ENGLISH LITERATURE Tues. 7-9:55, 10 wks, \$10, rm. 1101. Survey of literature with emphasis on novels. RUTH RICKERT

ENGLISH COMPOSITION Mon. 7-9:55, 10 wks, \$10, rm. 1101. Grammar review and various forms of composition. RUTH RICKERT

CONTEMPORARY WORLD PROBLEMS Wed. 7-9:55 p.m., 10 wks, \$10, rm. 604. Study of present day events. DON HILL

U.S. HISTORY - I Thurs. 7-9:55, 10 wks, \$10, rm. 406. JIM WRIGHT

GENERAL SCIENCE Mon. 7-9:55, 10 wks, \$10, rm. 301. Course will meet high school Science credit requirement. JOE KISTLER

MEDICAL SELF-HELP & RED CROSS
Will be offered Spring Semester
Basic Education Classes
NO TUITION FEE - Monday & Wednesday
7-9:30 p.m., 10 wks, rm. 1103. Franklin Pierce District is offering classes in BASIC ADULT EDUCATION for the adult who wishes a basic review of reading, writing, spelling, sentence structure and math. ELIZABETH SULLIVAN & DON MCCASKIE

DRIVER EDUCATION FOR HIGH SCHOOL-AGE STUDENTS - Class begins Wed., Sept. 18, 7-9:30 pm, Mon. & Wed. for 6 wks, rm 107, \$15. Pay at F.P. High School Business Office. Driving schedule arranged during class. Adults are welcome to audit the class sessions at no cost. AL SCHIMKE

GENERAL SAFETY & TRAFFIC SAFETY FOR COURSE I FOR INSTRUCTORS - Class begins Sept. 23, 7-9:55 pm, M & W, rm 901, F.P.H.S. 2 Sem. Hr. credits, \$40. Contact Mr. Al Schimke, register first night of class or thru P.L.U. Registrar's Office. PRESENTED IN COOPERATION WITH PACIFIC LUTHERAN UNIVERSITY.

BASIC WATER WORKS TRAINING - FIRST HALF Begins Mond., Oct. 7 - 7-10 p.m. 8 wks, \$10, rm 1105. State vocational certified class for water works employees & others interested. Manual furnished. Certificate awarded. HOWARD GODAT

BASIC WATER WORKS TRAINING. Same as above except class meets on Wed., beginning Oct. 9. JOHN ROBISCHON

Why Not

Try A College Credit Course?

You do not need a high school diploma to take a community college class.

Select From This List Of Courses

Art - Wood Sculpture	Electronics I
Art - Oils, Beginning	Electronics III
Art - Oils, Intermediate	Electronic Lab - I
Beginning Band	Typing
Physical Ed. - Women	Shorthand
Community Band	Electronics 69
Psychology	Communications
Amateur Radio I	Pole Line Safety

LIMITED OPENINGS REGISTER NOW!

Days Phone Evenings
LE 7-0211 LE 7-0217

Fall Classes Enrolling At FSCC

According to J. Paul Steadman, Director of Student Services, Students may enroll for all fall quarter classes of Fort Steilacoom Community College at the College Administrative Headquarters, 6010 Mount Tacoma Dr. SW.

Registration hours are set as follows: Friday, September 13, 8:30 to 12 noon and 1:00 to 4:30 p.m.; Monday and Tuesday, September 16 and 17, 1:00 to 5:00 p.m. and 6:00 to 9:30 p.m.

Fall quarter will run from September 23 through December 13.

In addition F.S.C.C. will

conduct classes at seven extension centers, throughout Community College District No. 11. Students may enroll,

if they prefer, at these centers according to the following schedule:

Franklin Pierce High School, daily September 3-25 from 8:30 a.m. to 3:00 p.m.

Evenings, September 23-26 from 8:00 to 9:00 p.m.

Keithley Junior High — Students will enroll at Franklin Pierce according to above schedule.

Fernwood Garden Club will meet at 8 p.m. September 25th in the Parkland Light and Water building.

Mrs. Jeff Henderson, president, will preside over this the first meeting of the season.

CALL LE 7-8647



Ashford-McAloon Insurance
SAFECO INSURANCE 1901 Pacific Ave.

Teacher Corps Program Begins At PLU This Fall

Washington state's first Teacher Corps begins this fall in Tacoma under the direction of Arne K. Pedersen, associate professor of education and director of teacher placement at Pacific Lutheran University.

Thirty-two Tacoma area students with degrees in other fields will spend the next two years earning certification as teachers as well as a masters degree in elementary education.

The students will work half-days with disadvantaged children in the Tacoma area during the two years and continue in a full-time capacity in these areas upon completion of degree requirements. The remainder of their time will be spent in intensive study and practical classroom work.

A federal grant of \$133,000 finances the program, with funds available for up to 41 interns and team leaders.

Joe Lassoie, deputy superintendent of schools in Tacoma, coordinates the program for the Tacoma schools.

Insects Moving In Say Extension Agents

Insects are now seeking winter shelter. Most of the seasonal invaders are interested only in temporary quarter. They are not likely to damage the house or furnishings.

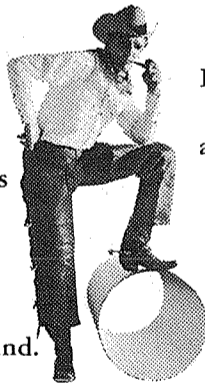
In large numbers they can be a nuisance.

Art Retan, Washington State University Extension entomologist, says insects most likely to show up include elm leaf beetles, lady beetles, box elder bugs, strawberry root weevils, clover mites, and cluster flies.

Any good household surface spray containing 5 per cent DDT or 2 per cent malathion or materials such as diazinon can control most of the unwanted pests. Apply around baseboards, at doorways, and on window ledges.

Retan says one fall insect that should get prompt attention is the cricket. Crickets destroy both fabrics and food and are active in homes all winter. An occasional cricket can be killed with a fly swatter. But if the pests show up in large groups, Retan suggests use of an insecticide barrier around entrances and outside foundations. He says a chemical barrier can be formed by mixing DDT wettable powder with water, then soaking the ground around the house with the solution.

The Natural Gas we get here in Washington comes by pipeline all the way from huge fields in Canada and as far south as New Mexico. When your home is served by Natural Gas, you're connected to the most efficient fuel distribution system ever devised. There's no delivery problem. Everything's underground.



And the real clincher is low cost. Ask any friend or neighbor who heats with Natural Gas. Compare fuel bills. You'll find that Natural



Gas is unquestionably the most economical way to heat. And when a home has gas for both house heating and water heating, you automatically get the benefit of the special Home Energy

Rate—actually pay less for all the gas you use.

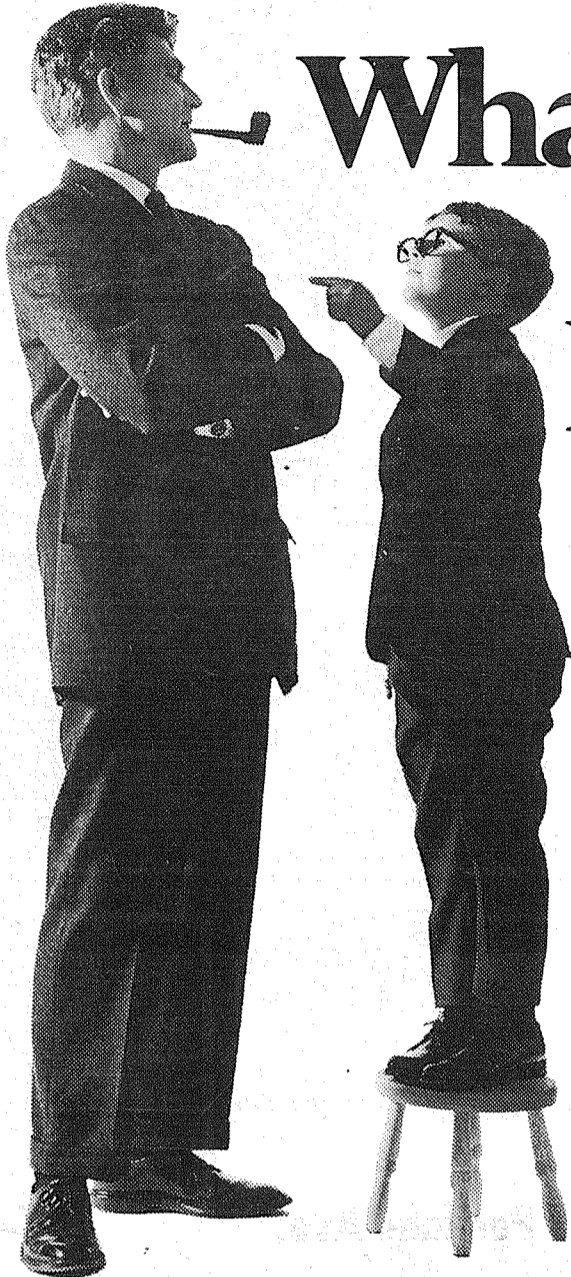
Natural Gas is amazingly clean. It burns completely, so there's no soot, no smoke, no residue of any kind. Not in your house, and not up your chimney. When Natural Gas burns, the only by-products are carbon dioxide and water vapor—the same stuff that comes out of your sweet little mouth when you breathe.



Natural Gas burners are remarkably trouble-free. The only thing that moves at all is the fan that forces the clean warm air into your home. No pumps to clog, no elements to wear out. No dirt to clog the orifice.



What's so hot about Natural Gas?



Melvin, my boy, Natural Gas is incredible stuff. It's actually millions of years old. Created by decaying plant matter trapped underground by ancient geological upheavals, Natural Gas has been lying there all this time, just waiting for mankind to come along and get smart enough to use it.

and that's why Natural Gas is nature's most perfect fuel.



WANTED SINGLES
Square Dance Lessons
MON. Sept. 23rd
8 P.M.
10213 So. Yakima
Info. Call LE 1-0437



FREE! This useful outdoor thermometer. Just let us show you how little it would cost to convert your present heating system to Natural Gas. No obligation. Just call your dealer or Washington Natural Gas Company.

Washington Natural Gas Company.
An equal-opportunity employer

INSURANCE

Military - Home - Business

LE 7-4904

Auto Fire Life Bonds

IRENE CLEMENS

Agency - Parkland
10329 Pacific Ave.

Angelo's


PIZZA HOUSE

ORDERS TO GO

Featuring top sirloin and American dishes, spaghetti, rigatoni, meat balls, sausage, ravioli, beer and wine.

Choice of Pizzas

cheese & tomato	bacon
anchovie	peppers
mushroom	olive
Italian sausage	hamburgers
pepperoni	ham
tuna	salami
	onion



LE 7-7233
14102 PACIFIC AVE.
PARKLAND

CALL AHEAD, IT'S PIPING HOT ALL THE WAY HOME

PICK UP A BOX, PAIL, BUCKET, OR A BARREL

Seat Belts A Must Say Patrolmen

State troopers and other traffic safety experts are becoming more and more concerned about the failure of drivers and passengers to use their seat belts. The modern automobile is safe and reliable when it is used properly. But, with some 40,000 lives lost in traffic accidents each year, it is clear that improper use of the automobile has become an epidemic of national proportion.

Accidents are caused by people...the people who misjudge road conditions and speed, or permit their attention to wander, or grossly disregard the rules of the road and good driving practices. As long as these people persist in such driving errors on our streets and highways, it becomes possible for anyone of us to be involved in a serious acci-

dent caused by someone else's carelessness.

Seat belts can protect you and the members of your family, says State Patrol Chief Will Bachofner. A great deal of scientific study and research, including actual vehicle crashes under controlled conditions, proves that the automobile seat belt is the most effective single item of protective equipment now available to reduce the heavy toll of traffic injuries and deaths.

Here are the facts: Thousands of lives are lost because people are thrown against windshields or out of the car by the impact of auto crashes. Your seat belt will help hold you in position in the car, and reduce by five times your chance of being killed.

Contrary to popular notion, seat belts offer a great deal of protection at moderate speeds. Records show that over half of the accidents causing serious injury and death involved speeds of

less than 40 miles per hour. Seat belts can prevent or lessen injury in an accident and possibly save your life.

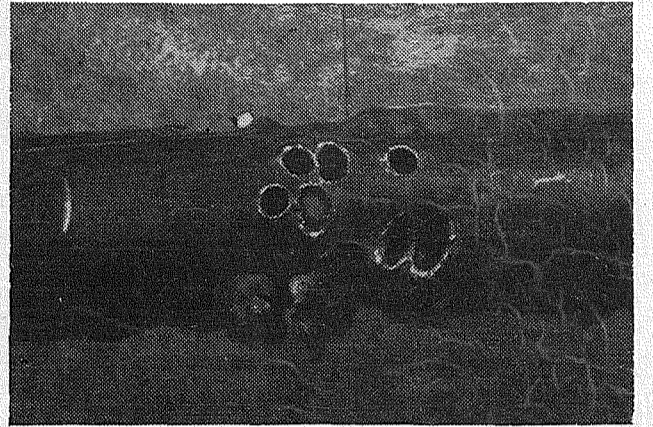
Many people mistakenly believe they don't need to wear seat belts because they only drive in their own community rather than on long trips. However, figures show that three out of four traffic deaths occur within 25 miles of the home. Seat belts can protect you in town as well as on the highways.

Some people still stubbornly hold on to the idea that the use of seat belts would make it impossible to escape their vehicle in case of fire. Contrary to these mistaken beliefs, seat belts greatly improve your chances of survival even in

accidents where your car becomes engulfed in flames or becomes submerged in water. Your seat belt greatly increases your chances of remaining conscious, so you can get clear of a submerged or burning car. A seat belt can be unfastened in an instant with only one hand.

All race drivers use them and military pilots use them — so do all pilots of all types of aircraft, and all State Troopers in the Washington State Patrol use them — all the time they are driving. With all this proof that seat belts may save your life in the event of an automobile accident, shouldn't you use them too?

Hunters Damage Cables Says Telephone Company



CONVERSATION STOPPER — This section of telephone cable was carrying many conversations — some of them possible emergency calls — when gun blasts disconnected the parties. Annual repair of gunshot damage to overhead cables is an expensive and time-consuming task for Pacific Northwest Bell repairmen. The company has issued an appeal to hunters not to fire at birds roosting on phone wires.

Washington bird hunters are taking to the fields after pigeons and doves but the opening of bird season means open season on overhead telephone wires to Pacific Northwest Bell.

Gunfire damage to telephone cables has become so extensive that PNB is mounting its own campaign against the thoughtless hun-

ter, according to Robert F. Heuser, manager.

"When a hunter tries to pick a bird off a phone line it could be a matter of life and death for more than the bird," Heuser said. "The cable could be carrying an emergency conversation. It could even be carrying a defense call of national urgency."

When a cable is damaged by gunfire, it may take a telephone repairman six hours or more to locate the damage, dig out the pellets and splice the cable. A single break in a major cable can create a twenty-thousand dollar job, he said.

When government circuits are fired upon, the Federal Bureau of Investigation can take jurisdiction over the case. "A shot at a sitting bird may be a federal offense," he added.

In one area PNB patrols overhead lines with a radio-equipped light plane. In all areas the telephone company is working closely with game and law enforcement officials to minimize service outages caused by gunfire during the fall hunting seasons.

An Endowed Care Cemetery



Fir Lane Memorial Park
Dryer Fir Lane Chapel

924 East 176th Street
Spanaway **LE 1-5500**

Remember 1904, when.....

OUR FAIR WAS JUST 5 YEARS OLD

It was the fall of 1904. (The Fair was held in October of that year.) While a war was raging between the Japanese and the Russians, and while the Republicans and Democrats were settling their party platforms, we here in Puyallup were getting ready for the greatest show of them all.

And it was! Why, the Wagner Band was brought all the way down from Seattle to perform. A "genuine minstrel show" was featured, along with running races every day. And a special train to the Fair ran from Tacoma every day as well. (50 cents a round trip.) The Fair broke all records in 1904 with a staggering 20,000 attendance. Over 8,000 attended on the last day alone.

Of course, Puyallup wasn't too big itself in those days. The 1904 population was 3,507. There were four schools, 19 teachers and 1,102 students. What's more, we had over 14 miles of streets and eight miles of city sidewalks. The total assessed real estate evaluation of Puyallup was \$723,760....."and the city had never had a dollar of bonded indebtedness."

Meanwhile, while the Fair and the city were growing, we here at Citizens were growing right along with them. We were two years older than the Fair away back in 1904, and already serving the banking needs of a growing community. We hope that in the years ahead we can remain as much a part of our city as we have in the more than 70 years past.

Citizens

STATE BANK

- ★ MAIN OFFICE - PUYALLUP
- ★ SUMNER
- ★ SUMMIT VIEW
- ★ EDGEWOOD - MILTON
- ★ WILLOWS



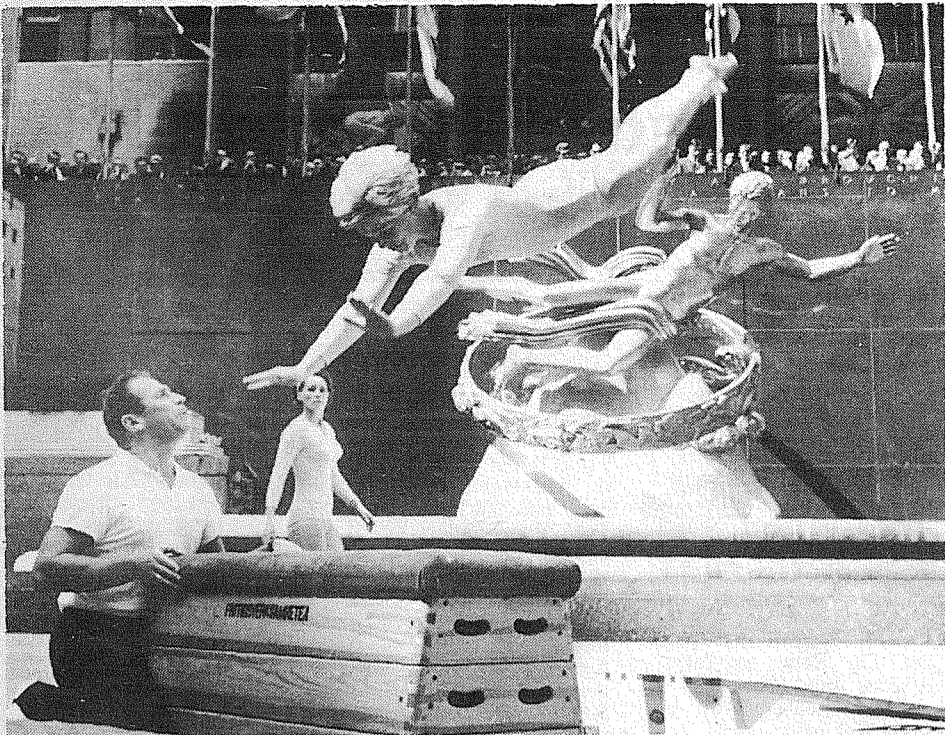
MEMBER: FEDERAL DEPOSIT INSURANCE CORPORATION

Listings Wanted
Buying or Selling
Real Estate Service
Call
Devereaux Realty
12152 Pacific Ave. LE 7-8658

Pierce County's Only
Professional
AMBULANCE SERVICE
Parkland Ambulance
and
Lakewood-Pacific
JU 4-3344 LE 7-3322

CHURCH DIRECTORY
ATTEND OUR
WORSHIP
SERVICES

<p style="text-align: center;">PARKWAY</p> <p style="text-align: center;">Presbyterian Church</p> <p>Sunday School 9:00 a.m. Worship Service 10:00 a.m. Nursery Service Provided</p> <p>714-138th East LE 1-4234 Rev. Wesley J. Drummond</p>	<p style="text-align: center;">Spanaway Assembly of God</p> <p>166th & Pacific Ave. Sunday School 9:45 a.m. Morning Worship 11 a.m. Evening Evangelistic 7 p.m. Family Night Wed. 7:30 p.m.</p> <p style="text-align: right;">LE 1-1412</p>
<p style="text-align: center;">Spanaway Lutheran Church</p> <p>8:30 & 11 a.m. Worship Service 9:45 a.m. Sunday School Grades 1 & Up 11 a.m. Sunday School 3, 4 and 5 Year Olds</p> <p style="text-align: center;">John L. Briehl, Pastor 160th & A St. LE 7-5978.</p>	<p style="text-align: center;">Parkland Lutheran Church & Christian Day School</p> <p>Worship... 10:30 a.m. Sunday School-Bible Study 9:15 a.m. All ages H.A. Theiste, pastor LE 7-5492 LE 1-0777</p>
<p style="text-align: center;">Trinity Lutheran Church</p> <p>Worship Services 9 a.m & 11 a.m. Sunday School 10 a.m. Wednesday School 4-5 (through Grade 9)</p> <p style="text-align: center;">Ering C. Thompson Robert Drowes PASTORS 12115 So. Park LE 7-0201</p>	<p style="font-size: 1.2em; font-weight: bold;">Attend Church This Sunday</p>



SOFIA GIRL Anita Jacobsson is pictured during a 1967 performance at Rockefeller Plaza, New York City. The world-famous Swedish gymnast troupe will perform September 27 at Pacific Lutheran University.
— Picture by John Qedin, N.Y. Daily News.

Sofia Girls At PLU

Sweden's famed Sofia Girls, a group of 16 outstanding gymnasts, will perform their acclaimed gymnastic and acrobatic routines at Pacific Lutheran University's Memorial Gymnasium Friday, Sept. 27, at 8 p.m.

The 16 girls, now on a tour of the United States and Canada, are the Sofia Girls' elite group. They have been chosen for the international performance tour from among nearly 700 members of the Sofia Girls organization in Stockholm.

When they are not touring, the elite group practices a minimum of four hours a week in addition to the time spent supervising the train-

ing of others.

The performance stresses gymnastics and acrobatics, but also includes Swedish folk dancing in original, colorful native costumes. This exemplifies as basic belief of the Sofia Girls — physical fitness should be fun.

The performance is sponsored by the PLU Lute Club. Chairman of the committee is Clifford Olsgon.

Founded thirty years ago by Maja Carlquist, leading authority on physical education, the group was chosen to represent Sweden at the 1936 Olympic Games in Berlin. The performance was an instant success and in the ensuing years, the group has toured and appeared on leading TV shows in many countries on different continents.

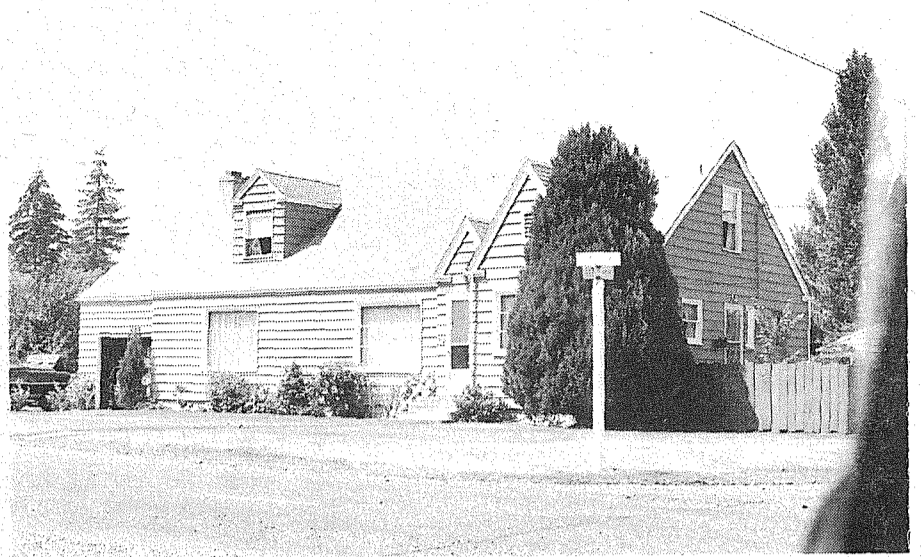
Rythmical gymnastics, mixing muscular exertion with flowing body move-

ments, have been the hallmark of the group now in its seventh tour of the United States. Last year's tour, the most successful ever, took the group to Expo '67, the Concord Hotel, Rockefeller Plaza as well as high schools and colleges and was highlighted by four impressive TV appearances.

Men In Service

Webb F. Hester, son of Mrs. Josephine Hester, 1313 S. 121st St., Tacoma, Wash., a student at the University of California, Los Angeles, has completed Army Reserve Officers' Training Corps summer camp. The course ended August at Ft. Lewis, Wash.

If This Is Your House...



You Are A Winner! **\$9**
This Week's Jackpot is

Each week our photographer takes a random picture of a home in the Times Journal coverage area. If you can identify the pictured home as yours, you can claim the jackpot.

Winners receive Times Journal Trade Bucks, redeemable in merchandise or cash at the following businesses.

ARMSTRONG'S USED CARS
11009 Pacific Ave.

PIERCE COUNTY REFUSE
13502 Pacific Ave.

ANDERSON LUMBER
9813 Pacific Ave.

LITTLE PARK CAFE
South 171st and Pacific Ave.

ELMHURST MUTUAL POWER & LIGHT CO.
120 So. 132nd

PARKLAND LIGHT & WATER CO.
404 Garfield St.

SQUIRE BARBER SHOP
132 162nd So.

E & S ELECTRIC
13621 Pacific Ave.

SHOP MART DEPT. STORE
133rd and Pacific

Winner Must Claim Jackpot Before 5 p.m. Tuesday following date of publication.

MONEY FROM Parkland

Light and Water

MONEY FROM Elmhurst

Mutual Power and Light

MONEY FROM Tacoma City

Light and Water

Go Electric Now And Save — Look At This!

If you live or are building in Parkland Light & Water Service Area.

Subject to company provisions, reimbursements of \$20.00 per KW (1000 watt heater) are available to members.

Installation Savings up to **\$500⁰⁰** and more are being paid as member

If You Live or Are Building in Elmhurst Mutual Power & Light Service Area.

You have until Sept. 30, 1968 to qualify for an allowance up to **\$450⁰⁰**

by installing Radiant Aire electric heat in your home. Elmhurst will pay up to \$150 in cash, and a credit allowance up to \$300 towards underground construction costs.

Check with the Sales Office For details on Tacoma's Reimbursement Program

Switch to Flameless Electric Heat Now!

Electric heat is the modern method of heating homes. It has a great many advantages over fuel-burning systems.

If you are planning on building a new home or modernizing your present heating system, you will be happier with electric heat.

The entire electric industry works continuously to develop electric heat to make it a superior heating system for your home.

Call today ... It may save you hundreds of dollars!



Made in Parkland



You Know You LIVE better electrically ... now, HEAT better electrically.

INTERCITY MANUFACTURING CO.

for details call one of these dealers

BILLINGS ELECTRIC

100th SW & Steilacoom Blvd.

JU 4-4344

PARKLAND ELECTRIC

13415 Pacific

LE 7-0397

GOEDERT'S ELECTRIC

753 S. 108th

LE 1-6711

HORSEMEN'S NEWS

Over The Fence Rail

By Ernie & Paulette Cook

The Fun Day scheduled to be held at Muffett Acres formally Peterson Stables, on September 21, has been cancelled in support of the Quarter Horse Appaloosa Spectacular. We hope everyone will turn out to watch some of the best registered Appaloosa's and Quarter Horses in the state compete for trophies in halter, and performance.

There will be another Fun Day at Muffett Acres about the first of October.

Mr. Richard Shrake, of Salem, Oregon, has announced that he will judge the performance classes of the Tacoma Unit No. 1 United States Equestrian Team Benefit Open Horse Show, to be held at the Tacoma Unit No. 1 Sports Arena, October 19th and 20th.

Mrs. Edna Berger, of Mar-Ed Farm, has recently acquired two more Morgan Mares to add to the broodmare band at Mar-Ed farms. The farms head stud, Shawalla Ringo, already has several foals on the ground in this area, and from the look of things, Edna plans to increase the number of Mor-

gans in our area again. Next season. Speaking as a Morgan owner, I can only say, that if more people tried a Morgan, the breeds popularity would boom.

We see by the daily paper that Mr. Al Bannerman, of Bannerman Quarter Horse Ranch is dispersing some of his fine stock. Bannerman's Quarter Horse Ranch is the home of Opie Micky, and Shorty Starr, two of our areas many fine Quarter Horses.

Our Tacoma Polo Club will be finishing up their season the end of September. Closing out the season the officers of the Polo Club are Dr. Clinton Piper, Captain. Bill Linberg, Secretary-Treasurer. Dr. Piper attended the American Polo Club meeting in Spokane, September 5, 1968. At the meeting Mr. John Emery, of Portland, Oregon was elected Governor for the Pacific Northwest Polo Club.

A bit of good news. Our boys met with Portland at Portland, and brought home a victory by beating Portland 8-3. Plans are in the making for a match with Vancouver. So polo fans watch this column for the details.

COLTS AND FILLIES
Saturday, September 14,

1968, despite discouraging rain the Colts and Fillies finished off a day of drill with a ride on the reservation. Accompanying our junior riders were Lariettes, Carol Stecker — who is doing a fine job as Drill Mistress — Edna Berger — Barb Rike — and Mary Sturdivant. Everyone got drenched, and everyone had a fine time, even the horses.

Spectators at the Tacoma Unit No. 1 Quarter Horse — Appaloosa Spectacular will be treated to the privilege of being the first to sit on the newly painted stands. This sure will brighten up the arena a lot.

We have a new trainer in our area, Mr. Jerry Edwards. He and his family are busy getting their new place ready. When it is ready, it will be our pleasure to welcome Jerry, his family, and his fine Arabian Horses to this area.

The Competitive Trail Ride Division of Washington State Horsemen held its Championship Ride Sept. 7 and 8. It is held at the Lorang Ranch out of Tenino. The ride is 40 miles Saturday and 20 miles on Sunday. It is kept marked and ready so anyone can and ride it and train for the championship ride.

In the Junior division were: Champion Barbara Dahl, 23015 27th Ave., Bothell, on Cy's Ringo; Reserve Don Gantenbein, Rt. 3 Box 386, Olympia, on Max; 1st place Debbie Hampton, Rt. 2

Quarter Horse vs. Appaloosa In Tacoma Unit Horse Show

Appaloosas will compete with Quarter Horses for show championship awards during the first annual Quarter Horse

Show September 21-22 sponsored by Tacoma Unit #1, Washington Horsemen, at the Unit's Sports Arena in Spanaway.

Box 417, Raymond, on Trigger.

Placing in the Lightweight division were: Champion Cheryl Edgcombe, 21906 39th Ave., Bothell, on Sundance; Reserve Betty Hampton, Rt. 2 Box 417, Raymond, on Twill; 1st place Don Hanson, Rt. 1 Box 110, Leavenworth, on Skaget Klasko.

In the Middleweight division were: Champion Ted Pinger, Elma, on Grady; Reserve Judy Morgan 23020 148th S.E., Kent, on Taffy; 1st place Anne Hanson Rt. 1 Box 110, Leavenworth, on Skaget Wakanda.

Placing in the Heavyweight division were: Champion Kenneth Hurley, Rt. 2 Box 342, Raymond, on Maverick; Reserve Dr. Richard Berg, 2609 Rd. 76 — N.W., Pasco, on Casavubu; 1st place Jean Iverson, 29420 164th S.E., Kent on Nacoma.

The Grand Champion was Kenneth Hurley riding Maverick. The Reserve Champion was Barbara Dahl riding Cy's Ringo.

The top rider award went to Kenneth Hurley.

The 7th Annual 100 Mile Ride, sponsored by the Northwest Trail Horse Association was held Aug. 24

and 25. It is held each year at the Lorang Ranch. It had a good turn out of riders from California and Washington and was a well marked trail.

The ride is a Northwest Trail Horse Ride, approved by Washington State Horsemen and North American Trail Ride Conference. It is judged by three sets of rules, which really keeps the judges and secretaries busy.

The judges this year were Mrs. Patti Curtis of Raymond, Wash., Don Witke of Selah, Wash., and Dr. John Siemens D.V.M., of Spanaway, Wash.

The top award went to Sue Fowler of Berkeley, Calif. a Junior. The Reserve Champion was Beverley Tibbitts of Maraga, Calif.

In the weight divisions Sue Fowler took first place in the Juniors riding Lucky a 3/4 Arab. Dr. Richard Berg, of Pasco, took first place in the Heavyweights riding Casavubu an Arab stallion. Mrs. Beverley Tibbitts took first place in the Middle weights riding Casey a grade. Miss Jean Gallo-way, of Calif. took first place in the Lightweight riding Buck a registered Mustang.

Preliminary events will include a full schedule of Appaloosa performance classes. Winners will compete with top Quarter Horses in reining, pleasure and trail classes in these divisions for show championships.

Appaloosa halter classes are not planned, but if interest indicates, it will be added next year, officials stated. All Quarter Horse halter championship events will be judged at the Saturday evening show.

Quarter Horse competition is scheduled with over 40 classes including halter and performance. Over 400 horses from the West Coast and Canada are expected. Grand Champion mare, stallion, and gelding will each receive monogrammed horse blankets donated by the Bunkhouse Western Store. In addition, there will be special surprise awards.

Champion Quarter Horse and Appaloosa Horses will each receive trophy breast collars donated by the Rodeo Custom Shop, Spanaway. Hansen's Western Store has donated three halters for Reserve Championship Awards. There will be a full schedule of events for junior riders

(Continued on Page 9)

"Horsemen's Market Place"
Classified Directory
Board — Trainers — Breeders
Outfitters — Feed Dealers

Notice to our customers

We have joined forces. We will be shoeing at 13808 Spanaway Loop Road. Call LE 1-1616 for appointment.

Everett Reed and Fred Kingwell

PROMPT RELIABLE SERVICE
HORSESHOEING

VI 7-2449
FLOYD A. GREEN
P.O. Box 142
Puyallup, Wash.

"WHERE TO GET SERVICE"

Parkland Enco-Service
13303 PACIFIC AVE.
LE 7-9954

Automobiles
STATION WAGONS, CARS
AND TRUCKS
"Come See Us"

Andy EGAN
RAMBLER
Fairness to All

8223 Pacific GR 4-9404

Outfitters

The Bunkhouse

COMPLETE LINE OF
TACK & WESTERN APPAREL

12605 Pacific Ave.
Tacoma, Wa. 98445
LE 7-5510

We can't shoe your horses
BUT
We can shoe your cars — trucks — trailers

TINY'S TIRE SERVICE
108th & Pacific Ave. LE 1-4535

Vet Supplies
Complete supply animal health products.

Franklin - Farnam - Anchor
at
ASHMORE'S
Spanaway Drugs
165th & Pacific Ave. LE 7-5993

Fencing

CEDAR LUMBER - FENCING
TACOMA
CEDAR PRODUCTS CO.
"At the Waterfall"
14512 Pacific LE 1-2559

HORSES BOARDED & RENTED
B & B STABLE
on the Mountain Hiway
1 1/2 miles past Roy Y on left.
Open 10 a.m. to 5 p.m.
TUES. - SUN.
VI 7-7162

AT STUD

J. W. RANCH
Appaloosa Stud Service
Colts for Sale
Spanaway VI 7-2642

BOARDING-BREAKING-TRAINING-RACE TRACK-ARENA

MARS STABLES
BOB ROUNDY - TRAINER
TH 5-1231 11919 144th E.
Puyallup, Wash.

Hardware

Everything
In Hardware For
The Horseman
Fencing too!

South End Hardware
S. 185th & Pacific Spanaway

LE 1-4555
RODEO CUSTOM SHOP

Dean & Dodie Vosburg

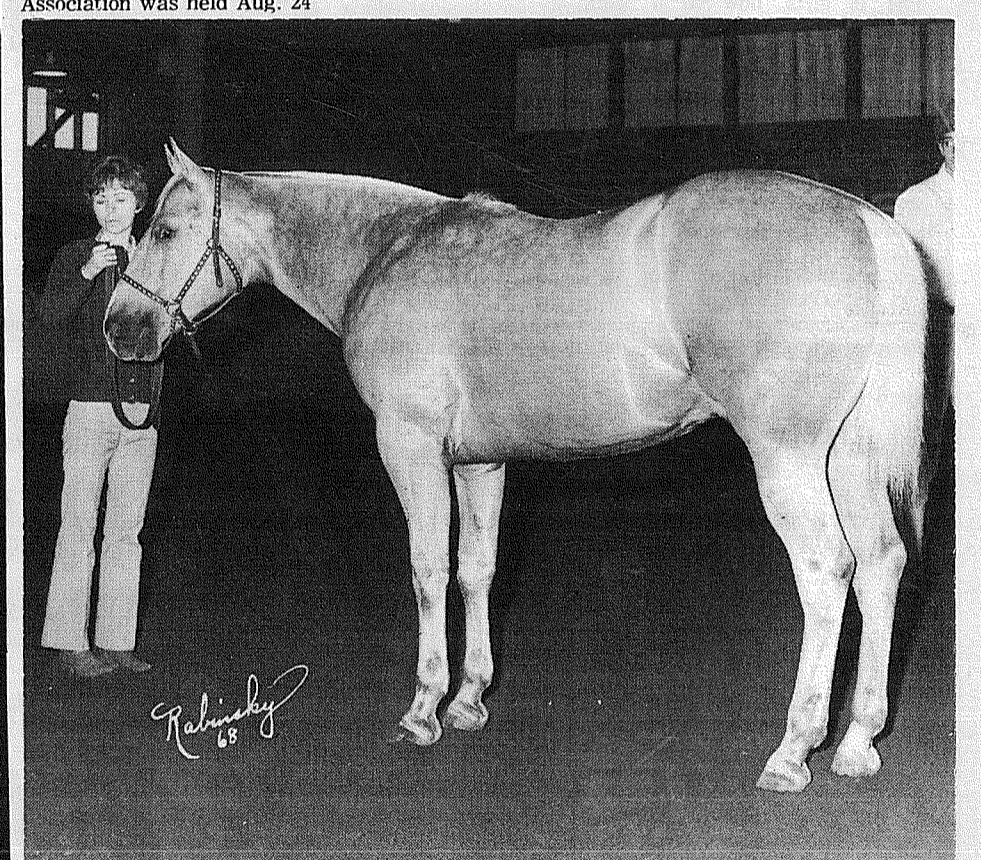
Complete Saddle
Repair Shop
Western Wear
English Tack & Togs

164th & Pacific
Spanaway, Wash.

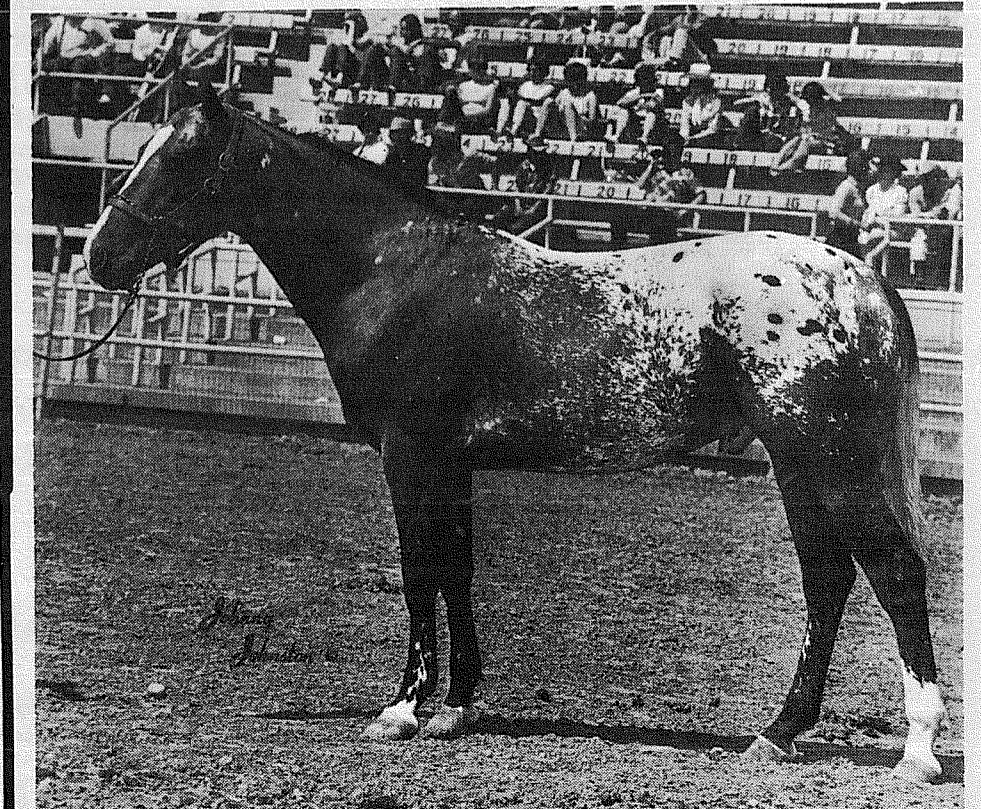
Board-Train-Riding Lessons

English And Western
Jumping And Cutting
Quality Stallions At Stud
Quality Horses For Sale
Champions Made And Shown
To Your Specifications.

Visitors Always Welcome.
VI 7-2881
George Karr
Tacoma Unit #1 Stables
1 Mile East of Pacific on 176th



QUARTER HORSE gelding Kap'n Krunch, owned by Mark Jones Sr. and shown by his daughter Terry, is one of the many fine horses to compete in the coming Tacoma Unit No. 1, Washington Horsemen, Quarter Horse - Appaloosa Show scheduled for the Unit Arena September 21-22.



KRAUS McCUE, registered Appaloosa gelding owned by Christy Kraus, will be entered in the Tacoma Unit No. 1 Quarter Horse-Appaloosa Show. McCue has won a number of trophies and ribbons in past competition.

also. Halter classes are scheduled for Saturday morning, with working events slated for the afternoon. Some of the classes offered are jumping, trail horse, girl's barrel racing, pleasure, reining, and Western riding. The evening show will begin at 7 p.m.

Sunday's program will see working events in the morning, with the champion working horses to be named during the afternoon show. Drill teams representing the Lariettes, Colts and Fillies, and Pierce County Sheriff's Posse will add color to the program.

Local competitors will include Wynette Russell, Tome Ropke, Bob Evans, Sue Buck, Jack Stecker, William Stecker, Dee Parham, Teresa Jones, George Karr, and Al Bannerman. Official show judge will be Dr. R.B. Barsaleau, Visalia, Calif. Show manager is Marie Hayes and Horse Shows Secretarial Staff will do the office work.

Tacoma Unit #1 Sports Arena is one mile east of Pacific Avenue on East 176th. A spaghetti dinner will be served Saturday afternoon and evening. Show officials invite everyone to turnout and root for their favorite breed of horse.

Schedule of Events

Saturday, Sept. 21, 8:00 A.M.

HALTER CLASSES - A.Q.H.A.

- Class
- 1 Showmanship - Youth
- 2 Youth Halter - Mare
- 3 Youth Halter - Gelding
- 4 Fillies of 1968
- 5 Fillies of 1967
- 6 Fillies of 1966
- Jr. Champion and Reserve
- 7 Mares of 1965
- 8 Mares of 1964 and before
- 9 Broodmares
- 10 Colts of 1968
- 11 Colts of 1967
- 12 Colts of 1966

- Jr. Champion and Reserve
- 13 Stallions of 1965
- 14 Stallions of 1964 and before
- 15 Geldings of 1967
- 16 Geldings of 1966
- Jr. Champion and Reserve
- 17 Geldings of 1965
- 18 Geldings of 1964 and before
- LUNCH BREAK
- 19 Youth Trail Horse - A.Q.H.A.
- 20 Hackamore Reining - A.Q.H.A.
- 21 Western Pleasure - Mens - Appaloosa
- 22 Youth Reining - A.Q.H.A.
- 23 Jr. Bit Reining - A.Q.H.A.
- 24 Trail Horse - All Ages - A.Q.H.A.
- 25 Trail Horse - All Ages - Appaloosa
- 26 Barrel Racing - All Ages - A.Q.H.A.
- DINNER BREAK
- 27 Judging of Halter Champions Mares - Stallions - Geldings
- 28 Jumping - All Ages - A.Q.H.A.
- 29 Western Pleasure - Gelding - A.Q.H.A.
- 30 Barrel Racing - WBRA Approved
- 31 Youth Western Pleasure - A.Q.H.A.
- 32 Stock Horse - Open - Appaloosa
- 33 Western Pleasure - Senior - A.Q.H.A.
- 34 Costume Class - Appaloosa
- 35 English Pleasure - A.Q.H.A.
- 36 Championship Trail Horse
- Sunday, Sept. 22, 1968 9:00 a.m.
- 37 Western Pleasure - Youth - A.Q.H.A.
- 38 Western Pleasure - Youth - Appaloosa
- 39 Sr. Bit Reining - A.Q.H.A.
- 40 Jr. Reining - Appaloosa
- 41 Western Riding - All Ages - A.Q.H.A.
- 42 Western Riding - Youth - A.Q.H.A.
- 43 Western Pleasure - Ladies - Appaloosa
- 44 Western Pleasure - Junior - A.Q.H.A.
- 45 Western Pleasure - Open - Appaloosa
- 46 Championship Stock Horse Reining
- 47 Championship Western Pleasure
- Awarding of
- Hi Point A.Q.H.A. Youth
- Hi Point Quarter Horse
- Hi-Point Appaloosa

Tacoma Livestock Market Report

Sales Thursday Sept. 12
 501 head of cattle, 9 hogs, 8 sheep, and 2 horses.
 Good holstein hfrs. (Springing) \$375 to \$430; Hol. Hfrs. (open) up to \$28.50 per 100 lbs. Good support on all Dairy Cattle Thursday. Best Veal up to \$37.50 per 100 lbs. Heavy lean Bulls up to \$26.40 per 100 lbs. Good Hol. and Beef type cows up to 19.00 to \$20.50 per 100 lbs. Good colored cows reached \$17.00 per 100 lbs. Hol. Strs weighing 1300-1500 lbs \$22.60 per 100 lbs. Hol. Strs weighing 600 lbs \$24.50 per 100 lbs. Hol. Strs weighing 500 lbs \$25.00 per 100 lbs. Good W.F. Str. Calves \$26.00 - \$30.00 per 100 lbs. Good W.F. Hfr. Calves \$24.00 - \$27.00 per 100 lbs. Good Feeder Steers up to \$26.00 per 100 lbs. Baby Calves \$10.00 to \$37.50 per head. Block Hog \$21.75 per 100 lbs. Feeder Pigs \$17.00 to \$20.00 per Head. Weaner Pigs \$11.00 to \$13.00 per Head. Good Lambs \$23.30 per 100 lbs.

Feeder Sale Thursday, October 3 in addition to the Tacoma Livestock Market regular sale rather than Thursday, September 26 as previously advertised.

Special Consignments

40 Head Angus Stock cows all preg. tested; 100 head of good Hol. feeder steers and several good consignments of W.F. calves and yearling steers. Auctioneers: Ed and Lee Flood, Route 2, Spanaway.

Livestock Expo Oct. 4-12

Three top nationally rated shows in the beef cattle division are on the schedule of the 1968 Pacific International Livestock Exposition in North Portland October 4 to 12, according to Irvin Mann, Jr. of Stanfield, chairman of the livestock show committee.

Two new ratings which have been added are the Four-Star Angus Show and the Standard of Perfection Polled Hereford Show.

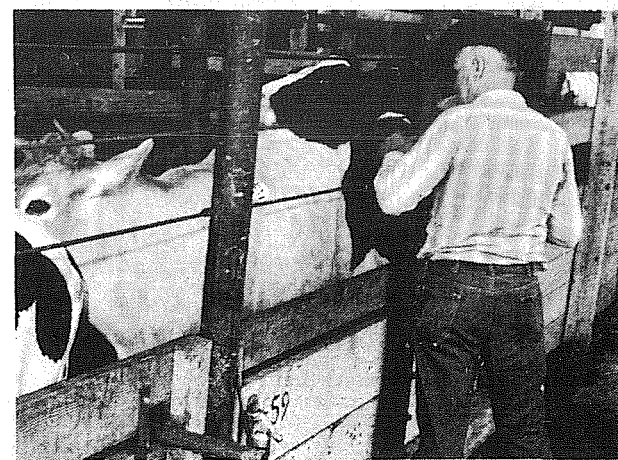
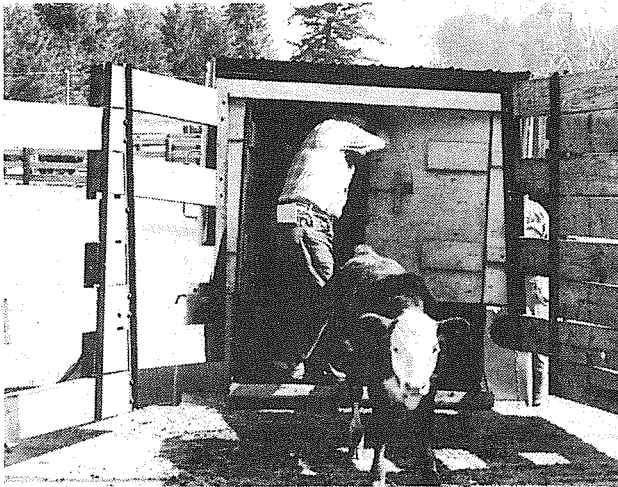
Mann said the Hereford Shows combined are expected to draw more than 200 entries, representing a substantial increase over the number entered in the past.

The Charolais cattle show

is expected to attract 75 to 100 head, more than double previous years' entries.

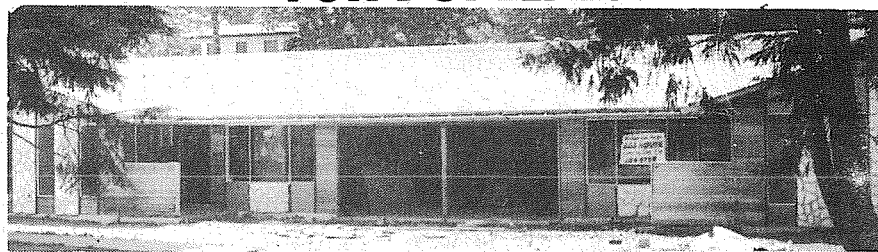
Mann said the emphasis will be on the modern show animal which does not carry excessive fat and is a good, efficient producer of red meat.

In addition to the shows, there will be three beef cattle sales—Angus, Charolais and the Junior Hereford Association calf sale. Another lively event of interest to livestock families will be the calf scrambles, which are presently scheduled for each of the 12 arena performances under sponsorship of Kiwanis Clubs of the Pacific Northwest.

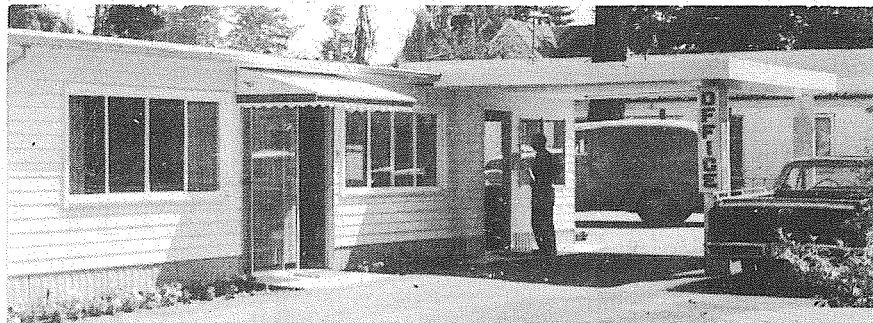


IN PARKLAND ELECTRIC HEAT IS PAYING OFF!

Parkland Light & Water's "Provide The Heat" Reimbursement Program Continues FOR HOMES! FOR DUPLEXES!



FOR MOTELS!



FOR ALL TYPES OF NEW CONSTRUCTION OR REPLACEMENT!

An Invitation To Investigate

If you are one of our 4000 members and haven't yet investigated the electric heat, range, and hot water tank programs, we invite you to do so.

Our staff is ready to help you with electric heat installation information. We'll run a heat loss survey on your home or business, and give you

an estimate of what it might cost to heat, cook, and enjoy plenty of hot water electrically.

By switching to clean, efficient electric heat, or replacing that old, unrepairable hot water tank with a new electric model, you might qualify for one of our popular member reimbursement programs.

Why not call us soon.

Building or Remodeling?

You may qualify for our reimbursement program available to members.

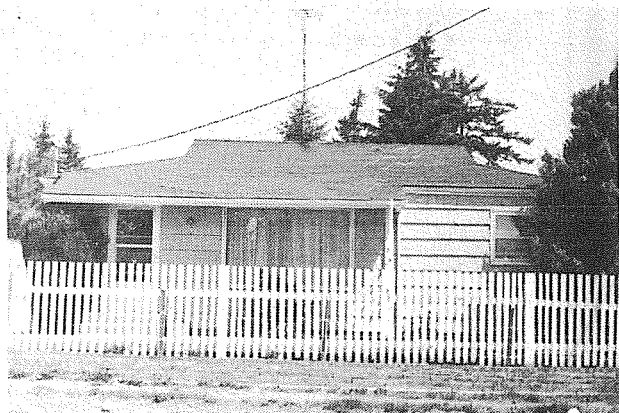
CALL

a participating contractor or the Company Office. It may save you hundreds of dollars.

"The Nation's Oldest Mutual Leads The Way"

Parkland Light & Water Co.

LE 1-5666



SPORTS

F.P. Travels To Glacier Bears' Lair

Franklin Pierce will be seeking its first win Friday as they travel to Highline Memorial Stadium to face the Glacier Grizzlies. Both teams lost their initial games of the year, Glacier to Federal Way, 19-0, the Cardinals, 33-14 to Bellevue.

FP went into the fourth Defensive Minded Trojans Play Host To Curtis

The Vikings of Curtis tangle with Fife as the two first-round winners in the Seamount League try to stay in the driver's seat. Fife, who defeated Bethel 12-0 in last week's play, will be at home.

Defense beat the Braves as the Trojans scored both of their touchdowns following Bethel miscues. Trojan defenders held their opponents

quarter carrying a 14-13 lead at Bellevue, but then Bellevue started showing its power. The home-town team pushed three touchdowns over, one on a 24-yard pass play, two on runs of 2 and 9 yards. Franklin Pierce's touchdowns both came on Bellevue flubs. Curt Hopkins recovered a fumble and Woody Harris intercepted a pass to start Cardinal scoring drives.

First-year coach Jim Mancuso stated, "We played a fairly good game for three quarters, but from then on, it was just a matter of time."

to a minus 6 total yards gained compared to 231 for the Trojans.

Offensively, Fife scored all 12 points in the first quarter, while watching second half drives die on the Bethel 11, 9, and 8 yard lines. Bethel's only threats came when blocked Trojan punts gave the Braves the ball deep in Fife territory.

Coach Rick Daniels was pleased with the effectiveness of the green Fife backfield and especially proud of his offensive and defensive lines. "Defensively, it was a real fine job," he commented. "It was a real team effort."

The final UPS score came in the fourth quarter as Cason capped a long sustained drive with a two-yard plunge.

PLU Knightlog Knights Face Cal Lutheran

By Jim Peterson
Pacific Lutheran University's Knights began preparing Monday for another extremely tough non-conference grid tilt against California Lutheran College after falling to a veteran University of Puget Sound Logger team, 21-6, Saturday at Franklin Pierce Field.

Two long "home-run" strikes by the Loggers altered the final result of what was otherwise a reasonably even contest. A 59-yard punt return by UPS halfback Jerome Crawford early in the second quarter and an 80-yard pass from quarterback Bob Cason to end Dan Thurston gave Bob Ryan's gridders the scores that made the difference.

The Knights' only score came late in the second quarter as substitute quarterback Rod Bolek, a freshman from Mount Tahoma, hit on five consecutive passes during a 55-yard drive that culminated in Bolek's three-yard scoring aerial to end Mike Murphy.

At halftime the Loggers led 7-6.

Both coaches may have found a new quarterback

during the season's opening contest. Bolek was a replacement for starter Bob Lovell, a senior from Port Angeles, who was the PLU varsity signal-caller last year. Cason replaced Logger starter Bob Botley in the second half after Botley had hit on only one of seven aerials in the first half.

For the Lutes, Gary Hammer hammered out 69 yards on the ground in 15 carries, caught two passes for 12 yards and fielded two kick-offs for 34 yards to lead the PLU offense. For the Loggers it was substitute halfback Doug Whidden, who picked up 51 yards in five carries.

The Loggers' Thurston picked up 116 yards on four receptions, including the 80-yard touchdown pass.

Knight head coach Roy Carlson was displeased with the two defensive lapses and the four early game fumbles, but was optimistic as he looked ahead to the CLC contest this Saturday in Thousand Oaks, Calif.

He will be experimenting with both his offensive and defensive backfields this week, seeking some additional speed. Quarterback Grant Spencer will get a try at fullback, and end Tim Chandler will get a shot at a defensive halfback slot. Bolek may have gained the starting nod at quarterback.

BOWLING
30¢
Inc. Tax
Saturdays til 7 p.m.
Sundays til 1 p.m.
BALLS \$17.95
Includes 10 FREE Practice Games
PARADISE BOWL
108th & PACIFIC
LE 7-6012

STATISTICS		Fife	Bethel
FIRST DOWNS	(Rushing, Passing)	169	5
Rushing		12	3
Passing		3	0
Penalty		1	2
RUSHING (No. Plays)		54	33
Yards Gained		198	47
Yards Lost		11	55
Net Yards Gained		187	8
PASSES		3-6	1-5
Number Had Intercepted		1	2
Net Yards Gained		44	2
TOTAL PLAYS	(Rushing, Passing)	66	38
TOTAL OFFENSE	(Rushing, Passing)	231	30
PUNTS (No.-Avg.)		4-16	2-0
PUNT RETURNS (No.-Avg.)		2-16	3-4
KICKOFF RETURNS (No.-Avg.)		2-12	0-0
INTERCEPTION RETURNS (No.-Yards)		1-3	2-20
FUMBLES		2	3
Ball Lost		0	2
PENALTIES (No.-Yards Lost)		8-70	4-30

F.P. Sports Schedules

- Cross Country**
 Fri., Sept. 20 Puyallup at F.P.
 Fri., Sept. 27 F.P. at Jefferson
 Fri., Oct. 4 F.P. at Clover Park
 Fri., Oct. 11 Federal Way at F.P.
 Fri., Oct. 25 Lakes at F.P.
 Fri., Nov. 1 F.P. at Auburn
- Golf**
 Thur., Sept. 19 Lakes at F.P.
 Mon., Sept. 23 Jefferson at F.P.
 Thur., Sept. 26 F.P. at Puyallup
 Mon., Sept. 30 Federal Way at F.P.
 Thur., Oct. 3 F.P. at Clover Park
 Mon., Oct. 7 F.P. at Federal Way
 Thur., Oct. 10 F.P. at Lakes
 Mon., Oct. 14 F.P. at Auburn
 Thur., Oct. 17 Puyallup at F.P.
 Mon., Oct. 21 F.P. at Jefferson
 Thur., Oct. 24 Clover Park at F.P.
 Mon., Oct. 28 Medalist Tourney

- Varsity**
 Sept. 13 F.P. at Bellevue
 Sept. 20 F.P. at Glacier
 Sept. 27 Lincoln at F.P.
 Oct. 4 Clover Park at F.P.
 Oct. 11 Tye at Franklin Pierce
 Oct. 17 Lakes at F.P.
 Oct. 25 Federal Way at F.P.
 Nov. 1 F.P. at Puyallup
 Nov. 8 F.P. at Auburn
- J.V. 3:30 P.M.**
 Sept. 16 Auburn at F.P.
 Sept. 23 Puyallup at F.P.
 Sept. 30 Federal Way at F.P.
 Oct. 7 F.P. at Clover Park 7:30
 Oct. 7 F.P. at Clover Park
 Oct. 21 F.P. at Auburn
 Oct. 28 Puyallup at F.P.
 Nov. 4 F.P. at Federal Way 7:30
- Soph 3:30 P.M.**
 Sept. 19 F.P. at Federal Way
 Sept. 26 Clover Park at F.P.
 Oct. 3 F.P. at Puyallup
 Oct. 10 F.P. at Washington
 Oct. 17 Auburn at F.P.
 Oct. 24 Puyallup at F.P.
 Oct. 31 F.P. at Lakes
 Nov. 7 Washington at F.P.



- SPORTSMAN**
 Rex Edman 549; Ed Gagne, 220.
- INDUSTRIAL**
 George Stephenson, 537 - 198.
- FRIENDLY DOUBLES**
 Don Sedergren, 503 - 201; Jean Elston, 444; Ilse Malvaney, 172.
- PREMIER**
 Art Unkrur 219-188-203 - 610 - 219
- SENIOR CITIZEN**
 Wendale Gunderseon 483; R. Pitts, 181; Cora Zacharias, 422; Maude Blades, 152.
- MIXERS**
 Ben McMilian 549 - 199; Judy Leber, 451; JaNeane Key, 183.
- TOP ROLLERS**
 Don Ellis, 534; Ken Olson, 187; Marian Unkrur, 470 - 167.
- GRAHAM**
 Marion Curtiss, 542 - 196; Keith Lawyer, 196; Dixie McGee, 464; Shirley Lauenborg, 185; Split Pick Up; Leone Applegate, 47-10.
- EAGER BEAVERS**
 Rita Bilderback, 467; Gloia Gates, 190; Split Pick Up;

- May Gallagher, 4-7-9
BIRDS OF PARADISE
 Merrilliss Johnson, 463 - 179.
- HI-LOWS**
 Sue Sweeney, 168-213-233 - 614 - 233; Lil Roller, 218-176-161 - 555
- PARKLAND MIX**
 Paul Harmon, 535; Grant Harlow, 202; Mickey Bou-tiette, 481 - 181.
- 850 SCRATCH**
 Rex Edman, 555 - 215.
- CLASSIC**
 Leo Arnestad, 592 - 237.
- EVERGREEN**
 Gene Ketter, 523; Del Gunns - 208.
- BOWLERETTES**
 Jerry Garrett, 485 - 176; Split Pick Up; Al Butcher, 4-7-10; Joyce Prince, 6-7-10.
- LAST NITERS**
 Don Butts, 555; Walt Daniel, 555 - 223; Jean Daniel, 524 - 191.
- 4x8'S**
 Bob White, 545; Gene Bennett, 190; Kay Kerstetter, 500 - 175.
- EXPRESS**
 George Stephenson, 610 - 232; 232-159-219; Betty Breon, 429; Gloria Rogers, 158.

Spanaway Speedway

SPANAWAY - Jup Pluvius again emerged victorious at Spanaway last weekend, wiping out both the Saturday evening midget program and Sunday's A.R.L. Superstock show, including the slated grudge match between point leaders Jackie Kuper and Don Hall.

Auto Racing Inc. takes over both days this weekend for their season championship show, slating the "A" class cars Saturday evening and double "A" Sunday afternoon. Both classes will race each

day and will produce over 300 laps of action for spectators. Double points will be in the offing, putting the season point championship up for grabs in the "AA" class.

Bob Short is reported to have retired the bright red 17 car, and will trot out a repainted, renumbered version for the season's final card. It is expected he will race at more than one track in the '69 stock season.

Used Car
 HEADQUARTERS
 "MOST FOR THE MONEY" All Makes...All Kinds
ARMSTRONG'S USED CARS LE 7-5524

PIERCE COUNTY HEADQUARTERS FOR 1969
 ★ CHRYSLER
 ★ PLYMOUTH
 ★ VALIANT
 ★ BARRACUDA
 CALL GR 4-0621
Steven MOTOR CO.
 2705 SOUTH TACOMA WAY

Smith Built
 CUSTOM QUALITY
 CAMPERS & CANOPIES

 14606 Pacific Ave.
 Phone LE 7-8022 Tacoma, Wash.

Spanaway Speedway Presents A.R.I. Superstocks SEASON CHAMPIONSHIPS
 Saturday & Sunday
 Sept. 21st. & 22nd
 Over 300 laps of racing. With double points awarded.....
 DON'T MISS THE ACTION!
 *Trophy Dashes *Heats *Mains
 Time Trails: 6:30 Racing: 8:00 P.M. Sat.
 Time Trials 1:30 Racing 3:00 P.M. Sun.
2 MILES EAST OF PACIFIC ON 159TH, TACOMA

McCann's Gun Shop
 Repair - Hand re-loading - Bluing
 Custom Stockwork - Buy - Sell - Trade
 PLUS HUNTING GEAR
 132 So. 162nd LE 7-6919

INVENTORY CLEARANCE
 22 NEW MODELS PLUS 9 Demos Must Be Sold At Any Cost!!
 ★ BIG SAVINGS
 ★ GIANT DISCOUNTS
 ★ HUGE ALLOWANCES
 HURRY! HURRY! HURRY!
 (No Reasonable Offer Refused)
 EXAMPLE
 '68 AMBASSADOR, Diplomat, 4-dr. sedan, V-8, P.S., P.B., R., H. auto., was \$3,896.40, now \$2,789.
 All Select Used Cars Reduced
 "COME SEE US"
"ANDY" EGAN RAMBLER
 COMPLETE SERVICE FACILITIES
 8223 PACIFIC AVE.
 GR 4-9404
 OPEN MON. THROUGH FRI. TILL 9 P.M.
 "FAIRNESS TO ALL"

- HUNTERS - We Got 'Em!
 * - 9 - PICKUPS - 9 - *
 1/2 Tons - Long, wide -
 Short boxes - 4x4
 Four Wheel Drives
 Take Your Pick!
 Priced From \$295 to \$795
 Buy At Wholesale Prices at
LARRY ATTWOOD
 Auto Wholesale
 8228 Pacific Ave. GR 4-9294

CLASSIFIED ADS

Call LE 7-0223 For Want Ads

1 Misc. For Sale

WAGON Wheel Bunkbeds, as new. \$70. LE 7-3574. 68-297

16' BERRY GARAGE DOOR, as new. \$70. LE 1-5673 or LE 7-9954. 68-307

PARKLAND CERAMICS
fall classes start Sept. 3rd sign up early for day or evening classes
Supplies, firing, instruction
1303 So. 117th - LE 1-0823
Helen & John Krafcik - Parkland

McNESS PRODUCTS, GR 5-2734. 68-303

19' CABIN CRUISER with 85 H.P. Merc, tandem trailer. New glassed bottom and wagon top plus many other extras. All clear, fresh and ready to go. Willing to sell as package or separately. Call LE 1-5427 after 5 p.m. 68-

TOP SOIL, fill dirt, bank run gravel, J.E. Pelland. LE 1-1124.

500 AMP. Portable Welder, trailer mounted, 6 cylinder Dodge motor. Written bids accepted at Bethel School District #403 Business Office, Rt. 2 Box 2442, Spanaway, Washington, before September 26, 1968. 68-309

1 Misc. For Sale

UTILITY TRAILER \$65. Good condition. LE 1-0787. 68-305

500 AMP. portable welder, trailer mounted, 6-cylinder Dodge motor. Written bids accepted at Bethel School District #403 Business Office, Rt. 2 Box 2442, Spanaway, Washington before September 26, 1968.

2 HP outboard motor. Trail bike. Good condition. LE 1-6466 after 4:30.

ADDING machine and check protector. LE 1-4958.

POOL TABLES - SLATE. Regular bar size, 4 x 8, \$490.00 delivered. Open 7 days 10 - 10. LO 4-9199. 68-400

6 Musical Instruments
COMBINATION Thomas one manual organ and hi fi with complete lesson records. \$275. LE 1-5709. 68-314

Custom Made Cabinets
Free Estimate
LE 7-7011
Rainier Cabinet Shop
East 166th & Pacific Ave.

2 Autos For Sale

1955 FORD V-8, 4 door sedan, automatic transmission. Written bids accepted at Bethel School District #403 Business Office, Route 2, Box 2442, Spanaway, Washington before September 26, 1968. 68-308

1955 PONTIAC stationwagon. By owner. Excellent condition. VI 7-7172.

1962 8' ROMER camper, sleeps 4. \$950. 848-2068.

'66 MUSTANG GT, 4 speed transmission, stereo tape, excellent condition. \$1500. LE 1-4405. 68-313

11 For Free

FEMALE, long - haired, 3 month old kitten. LE 1-4790.

23 Help Wanted

HOUSEKEEPERS needed for night shift in classroom buildings. P.L.U. LE 1-6900 Ext. 247. 68-306

WANTED - Older woman for live-in babysitter and some light housework. Dial LE 1-4220 after 5:30 or Saturday and Sunday.

23 Help Wanted

TYPIST to work in own home. Electric typewriter furnished. Good technical background important. Accuracy essential. Call LE 1-4300, Mrs. Stoner for appointment, 9 a.m.-5 p.m. 68-311

PERMANENT babysitter, my home. No teenagers. Call after 3 p.m. 403 South 144th. LE 1-3157. 68-316

EARN CHRISTMAS expenses early by selling Baum Toys and Gifts party plan. Car necessary. LE 7-5834, GR 2-6008, or GR 5-1215. 68-290

BABY SITTING Parkland LE 1-5430. 68-306

BABYSITTING my home, Monday through Friday, Spanaway area, LE 1-2002. 68-310

MATURE babysitter 11:15 am-5:15 pm. LE 7-5261. 68-312

24 Work Wanted

IRONING Experienced, LE 7-5736. 68-282

IRONING, experienced, references. GR 5-5663. 68-311

CHLD care my home. VI 7-2695. 68-299

Legals

NOTICE
Notice is hereby given that the Board of Directors of Franklin Pierce School will hold a public hearing and fixation of the final budget for the 1968-69 school year on September 24, 1968 at 8:00 p.m. at the District Administration Office. A copy of this budget will be furnished to any tax payer who will request a copy from the Secretary of the Board. Any tax payer may appear there at and be heard for or against any part of such budget.

By order of the Board of Directors
Thomas L. Stephens, Secretary
Board of Directors
Published Sept. 19, 1968 in the Pierce County Herald and Times Journal.

In the Superior Court of the State of Washington
For the County of Pierce
IN PROBATE No. 77684
Notice To Creditors

IN THE MATTER OF THE ESTATE OF SELMA A. CROSETTI, Deceased.

Notice is hereby given that the undersigned has been appointed and has qualified as Executor of the estate of the above named deceased; that all persons having claims against said deceased are hereby required to serve the same, duly verified, on said Executor or his /her attorney of record at the address below stated, and file the same with the Clerk of said Court, together with proof of such service; within four months after the date of first publication of this notice, or the same will be barred.

Date of first publication Sept. 12, 1968.
s/ Paul N. Crosetti
Executor of said Estate
11024 Pacific Avenue
Tacoma, Wash. 98444

PETERS & TRACY
s/ Phillip S. Tracy
Attorney for Estate
11024 Pacific Avenue
Tacoma, Washington 98444
LE 7-0264

Published in the Pierce County and Times Journal Sept. 12, 19 and 26, 1968.

37 Card Of Thanks

WE WISH to extend our heartfelt thanks to our friends and neighbors for their acts of kindness and sympathy during our recent bereavement.

The Family of
August J. Baunach
68-313

Legals

IN THE SUPERIOR COURT OF THE STATE OF WASHINGTON
For the County of Pierce
IN PROBATE
NO. 77569

Notice To Creditors
IN THE MATTER OF THE ESTATE OF ROBERT JOHNSON and MARGO JOHNSON, Both Deceased.

Notice is hereby given that the undersigned has been appointed and has qualified as Administrator of the estate of the above named deceased; that all persons having claims against said deceased are hereby required to serve the same, duly verified, on said Administrator or his/her attorney of record at the address below stated, and file the same with the Clerk of said Court, together with proof of such service within four months after the date of first publication of this notice, or the same will be barred.

Date of first publication Sept. 12, 1968.

John Skusek
Administrator of said Estate
11024 Pacific Avenue
Tacoma, Wash. 98444

PETERS & TRACY
Phillip S. Tracy
Attorney for Estate
11024 Pacific Avenue
Tacoma, Washington, 98444
LE 7-0264

Published Sept. 12, 19, 26, 1968 in the Pierce County Herald & Times Journal.

Legals

IN THE SUPERIOR COURT OF THE STATE OF WASHINGTON FOR THE COUNTY OF PIERCE
In Probate
No. 77577

NOTICE TO CREDITORS
In the Matter of the Estate of OSCAR SOLHEIM, Deceased.

Notice is given that the undersigned has been appointed and has qualified as personal representative of this estate. Persons having claims against the deceased are required to serve the same, duly verified, on the undersigned or the attorney of record at the address stated below and file the same with the Clerk of this court, together with proof of such service within four months after Wed., Sept. 11, 1968, or the same will be forever barred.

Harold Solheim
Personal Representative
11316-24th Ave. East
Tacoma, Washington

R. Ted Bottiger
Attorney for Estate
8849 Pacific Avenue
Tacoma, Washington 98444
Published Sept. 12, 19, 26, 1968 in the Pierce County Herald & Times Journal.

Sheet Metal

- Furnace Repair and Service
- Installations

PARKLAND FUEL OIL

12002 Pacific Ave.
LE 7-0256

RENT TV

Color TV
RENTAL MARTS, INC.

Parkland
GR 5-3755
9440 Pacific Ave.

Lakewood
JU 4-4100
108th & Bridgeport



USED CARS

TWO YEAR GUARANTEE

- 1966 Impala Cpe, V-8, 27,000 miles \$2100
- 1967 Camaro Spt. Cpe., 6 cyl. auto..... \$2195
- 1966 Chevelle Spt Cpe,
327, Auto, Pwr Str\$1895
- 1965 Plymouth Fury II, 4 dr, 40,000 miles \$1495
- 1964 Ford Gal. 500, Spt Cpe V-8 . . .

USED TRUCKS

- 1963 Chev 1/2 ton 292 \$1395
- 1961 Chev 1/2 ton V-8, auto clean \$1195
- 1960 Chev 1/2 Ton..... \$795
- 1956 Ford 1/2 Ton..... \$195

Good Transportation

- 1962 Corvair Monza Cpe \$495
- 1964 Chev 4-door Sedan
6 Cyl., Auto. Trans.....\$995
- 1962 Plymouth Spt. Fury.....\$695
- 1963 Renault R-8 New Trans..... \$495
- 1961 Ford Hardtop V-8..... \$495
- 1960 Dodge 4 dr. \$295

VAN EATON CHEVROLET

Phone 832-3131

Eatonville



Mt. Hiway "66" Service

IS OPEN
UNDER NEW OWNERSHIP

And
MANAGEMENT

Of
ROD CHASE

And Offers
TOP LINE COMPLETE AUTO SERVICE
AND REPAIR

All Work Guaranteed

Mon.-Thurs. 7 a.m.-10 p.m. - Fri.-Sat. 8 a.m.-11 p.m.
Sunday 9 a.m.-10 p.m.

Route 1, Box 1092

VI 7-2584

(Just over a mile past Roy Y)

NEW- MORE POWERFUL

the 1968's
ARE HERE
VOLKSWAGEN

27 MAJOR CHANGES
COME IN

Tom Carstens
AUTOHAUS

7030 So. Tacoma Way
GR 4-0666
TACOMA DEALER SINCE 1955

Use the Want-ads-It Pays

27 Misc. Services

AA ELECTRIC, new and re-wiring done. LE 1-4445.

EXPERT alterations, men's and women's. Fast service and reasonable. LE 1-3506.

MIDLAND AUTOMOTIVE

Complete Repair Foreign & Domestic Elect. - Alt. - Gen. - Weld. - Trans. - Overhaul - Valve Grind LE 1-4331 8-6 Mon.-Sat.

DOZING, LE 7-4934, GR 4-5663.

WATER PUMPS REPAIRED

All Makes GRANGE SUPPLY LE 1-5777

RILEY CONSTRUCTION, Ditching and hauling. No job too large or too small. LE 1-0987. 68-307

35 Announcements

HUNTERS. Sight in at Paul Bunyan covered range. Nights, Wednesday - Thursday. Days - Saturday, Sunday. Details GR 2-0863. 68-315

36 Personals

LOSE WEIGHT safely with Dex-A-Diet Tablets. Only 98c at Johnson's Drug.

Waterproof Footwear!

We Carry

- * Pacs
- * Insulated Boots
- * Hip Boots For Men
- Women-Children \$2⁹⁹ & up
- Rain Clothes Too!

PAUL'S

Shoes & Clothing 161st & Pacific LE 7-0552

21 Wanted To Rent

HOME VACANT

We desperately need good rentals \$80 to \$150 per month

CALL NOW

Let us handle your worries

SUBURBAN REALTY

11302 Pacific Ave. LE 7-8638 or LE 7-6896

28 Building Services

REMODELING, leveling, block foundations, cabinets, free estimate. Reasonable. LE 7-3550. 68-48 TFN

29 Land Services

NEWBURY'S

Dozer Service

LE 7-7455

Sandy Loam Bank Run Mixed Soil Fill Dirt

30 Repair Services

Canvas-Leather-Naughayde Upholstery Repair

and

Custom Service

Tents - Tarps - Seats & Covers for Trailers - Boats Lawn Swings - Cars Furniture

B&E Upholstery

322 So. 126 LE 7-7847

38 Instruction

PRIVATE tutor for English language. LE 7-5274, SH 2-2758. 98-296

PIANO LESSONS, beginning to advanced. Children and adults, home or studio. LE 1-3246 or SK 2-7695. 68-179

12 Real Estate For Sale

FOR SALE - 3 bedroom Rambler, paneled living-room, fireplace, attached garage. Buy our equity, assume monthly payments of \$89. at 5 1/4% interest. GR 5-2786. 68-291

NARROWS VIEW, by builder. 3 bedroom, fireplace, carpeted, electric garage door, large patio, on bus. \$16,900. 8449 So. 18th. LE 1-3021. 68-300

2-BEDROOM HOME, 1 acre of land. 1/2 down, balance on time. Will take camper as part payment. LE 1-5572. 68-298

19 For Rent Or Lease

FOR LEASE, adults only, 2 1/2 acres, furnished or unfurnished 2-bedroom home, good barn, nice yard. \$125. Box L. 68-304

9 a.m. - 10 p.m.

7 DAYS A WEEK

BARGAIN BASKET

16618

Pacific Ave. S. Spanaway

LE 7-3371

No Sales To Dealers

WE RESERVE THE RIGHT TO LIMIT QUANTITIES

We Carry A Complete Line Of Sacked Feeds - Presto Logs

We Are Locally Owned & Operated

HELP YOUR BUDGET WITH THESE SAVINGS

PRICES

EFFECTIVE

Sept. 19-20-21

Thur-Fri-Sat

Nalley Lumber Jack SYRUP
21 Oz. **29^c**

Sunshine VANILLA WAFERS
12 Oz. **35^c**

Folger's COFFEE
10 Oz. Instant **99^c**

Sunny Jim PEANUT BUTTER
40 Oz. **99^c**

Stokely FRUIT COCKTAIL
303 Tin **5/\$1**

Armour POTTED MEAT
3 Oz. **10^c**

Family Joy CANNED FOOD SALE!

PEAS
Tender Sweet 303 Tin

Tomatoes
303 Tin

GREEN BEANS
303 Tin

Your Choice **7/\$1**

BLOCK ICE PRODUCE PARTY ICE

U.S. No. 1 POTATOES
10# CELLO **39^c**

NEW CABBAGE
7^c LB.

TOKAY GRAPES
15^c LB.

GREEN PEPPERS
5^c EA.

Everyday Low Meat Prices. . .25 lb. Locker Boxes \$14.95

Ground BEEF
Lean - Full-Flavored
45^c Lb.

Seasoning BACON
3 Lb. Box **98^c**

FRANKS
Large - Juicy
55^c Lb.

Sirloin STEAK
Tender - Semi Boneless For Broiling
\$1.15 Lb.

T-Bones & Porterhouse STEAK
\$1.19 Lb.

Braunschweiger and All Beef Bologna
Chunks **53^c** Ea.

REWARDING CAREERS for the business-trained

New Classes beginning September 23

OPPORTUNITIES are waiting for trained auditors, tax consultants, CPAs, financial managers, secretaries and junior executives.

STREAMLINED courses, limited to practical business subjects, makes it possible to qualify for well-paid positions in from 3 to 24 months.

Stenographic 6 months	Typing 3 months
Gen. Secretarial . . . 9 months	Junior Accounting . . 9 months
Medical Secretary . . 12 months	Professional Accounting 18 months
Fashion Secretary . . 12 months	Public Accountant . . . 24 months
Airline Secretary . . . 12 months	I.B.M. Key Punch 6 months
Legal Secretary 12 months	
Executive Secretary . . 12 months	

OUR PLACEMENT office receives more job offers than we can fill.

TELEPHONE today, or send the coupon below for free catalog describing job opportunities and time-saving courses. No obligation.

KNAPP COLLEGE

10th and Pacific Ave., Tacoma MA 7-2181 Accredited by the Accrediting Commission for Business Schools.

Please send me your free 1968 catalog, describing careers in business offices and your time-saving training.

Name Age
Address Phone
City State Zip

JTJ 968-GEN